



CARDINALS

2016 LOUISVILLE WOMEN'S SOCCER



/ULWOMENSSOCCER



@ULWOMENSSOCCER



@ULWOMENSSOCCER

2016 SCHEDULE/RESULTS

Overall Record: 7-4-3
Conference Record: 2-2-2
H: 6-4-0 A: 1-0-2 N: 0-0-0

8.19	at Indiana	T, 1-1 2OT
8.21	INDIANA STATE	W, 4-0
8.26	UAB	W, 4-0
8.28	TOLEDO	W, 4-0
9.2	KENTUCKY	L, 1-3
9.4	HARVARD	W, 3-0
9.9	BALL STATE	L, 1-0 2OT
9.11	BELMONT	W, 2-1 OT
9.17	at Pittsburgh	W, 1-0
9.22	at (6/7)Duke	T, 0-0 (2OT)
9.25	(17) BOSTON COLLEGE	W, 3-2(2OT)
10.1	(15) NOTRE DAME	L, 2-1 (2OT)
10.6	(24)NC STATE	T, 1-1 (2OT)
10.9	(15) CLEMSON	L, 1-0
10.15	at (24) Virginia Tech	T, 1-1 (2OT)
10.20	at Miami	7:00 p.m.
10.23	at Florida State	1:00 p.m.
10.27	VIRGINIA	7:00 p.m.
10.30	ACC Quarterfinals	TBA
11.4-6	ACC Championship	TBA
11.11-12	NCAA First Round	TBA
11.18-19	NCAA 2nd/3rd Rounds	TBA
11.25-26	NCAA Quarterfinals	TBA
12.2 & 4	NCAA College Cup	TBA



MATCH COMPARISONS

UL.....	CATEGORY.....	UM.....	FSU
7-4-4.....	OVERALL RECORD.....	8-7-0.....	10-2-2
26.....	GOALS.....	27.....	23
1.73.....	GOALS PER GAME.....	1.80.....	1.64
.098.....	SHOT PERCENTAGE.....	.112.....	.098
124.....	SHOTS ON GOAL.....	116.....	101
17.7.....	SHOTS PER GAME.....	16.1.....	16.7
74.....	CORNER KICKS.....	55.....	95
2-3.....	PENALTY KICKS.....	2-2.....	0-0
20.....	ASSISTS.....	33.....	28
63.....	SAVES.....	50.....	34
0.85.....	GAA.....	0.79.....	0.35

LOUISVILLE INDIVIDUAL LEADERS

GOALS.....	4.....	Brooklynn Rivers
SHOTS.....	30.....	Brooklynn Rivers
ASSISTS.....	3.....	Four Players
SAVES.....	62.....	Taylor Bucklin
GAME WINNERS.....	2.....	Two Players

TODAY'S GAME



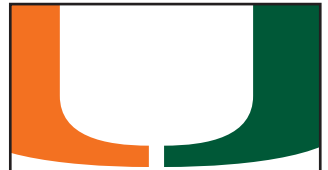
Louisville (7-4-4, 2-2-3)
CARDINALS

GAME 16

Date Oct. 20, 2016
Time 7:00 p.m. EST
Field Cobb Stadium
Location Coral Gables, Fla.
Series Record..... UL leads 1-0-1
Live Stats..... GoCards.com
TV ACC Network Extra

GAME 17

Date Oct. 23, 2016
Time 1:00 p.m. EST
Field Seminole Soccer Complex
Location Tallahassee, Fla.
Series Record..... FSU leads 0-4-0
Live Stats..... GoCards.com
TV ACC Network Extra



Miami (8-7-0, 3-4-0)



#7 Florida State (10-2-2, 4-1-2)

PROBABLE STARTERS



18 TAYLOR BUCKLIN
GK | SR. | 5-8

Greenwich, Conn.
(Michigan)



15 JILL VETERE
F | SO. | 5-8

Mason, Ohio
(George Mason)



4 SHELBY COHEN
D | JR. | 5-2

LaGrange, Ky.
(Oldham County)



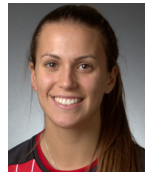
20 ALISON PRICE
MF | JR. | 5-5

Clemmons, N.C.
(West Forsyth)



17 INGER KATRINE BJERKE
D | JR. | 5-8

Baerum, Norway
(Nadderud VGS)



16 SARAH FEOLA
F | FR. | 5-8

Quebec, Canada
(Lester Be. Pearson)



14 GABRIELLE VINCENT
MF | SO. | 5-8

Columbia, Md.
(McDonogh School)



13 BROOKLYNN RIVERS
F | FR. | 5-11

Fort Thomas, Ky.
(IHighlands)



8 NIAMH NELSON
D | FR. | 5-11

San Diego, Calif.
(Cathedral Catholic)



22 KAELA DICKERMAN
F | JR | 5-4

Cedar Rapids, Iowa
(John F. Kennedy)



10 CALLIE MCKINNEY
MF | FR. | 5-7

Franklin, Tenn.
(Franklin)



KAREN FERGUSON-DAYES
HEAD COACH

17th Season

**UNIVERSITY FACTS**

Location: Louisville, Ky.
Founded: 1798
Enrollment: 22,000
Nickname: Cardinals
Colors: Red & Black
Conference: ACC
Affiliation: NCAA Division I
President: Neville Pinto (interim)
Athletics Director: Tom Jurich
Faculty Representative: Elaine Wise

PROGRAM HISTORY

First Year: 1985
All-Time Record: 197-280-31 (.415), 28 Seasons
NCAA Tournament Appearances: 4
..... (2006, 2007, 2011, 2013)
NCAA Tournament Record: 2-4

WOMEN'S SOCCER STAFF

Head Coach Karen Ferguson-Dayes
Alma Mater: Connecticut '93
Overall Record (Years): 141-135-29 (16 Seasons)
Record at School (Years): 141-135-29 (16 Seasons)
Office Phone: (502) 852-0104
Assistant Coaches: Rade Tanaskovic (North Georgia '12)
..... Natalie Cocchi (West Virginia '08)
Strength & Conditioning Coach: Heather Engle
Athletic Trainer: Jimmy Dorneman
Academic Counselor: Scott Sallade
Equipment Manager: Scott Norton

TEAM FACTS

2016 Record: 7-4-3
Starters Returning/Lost: 8/3
Letterwinners Returning/Lost: 14/8

LYNN STADIUM FACTS

Home Field: Dr. Mark and Cindy Lynn Stadium
Seating Capacity: (5,300)
Surface: Grass
Press Box Phone: (502) 852-2386

SPORTS INFORMATION FACTS

Assistant SID/Women's Soccer Contact: Kim Pemberton
Office Phone: (502) 852-7711
Fax: (502) 852-7401
Email: kimp@gocards.com
Web Site: www.GoCards.com
Shipping Address: Sports Information Office
..... Student Activities Center
..... 2100 S. Floyd Street
..... University of Louisville
..... Louisville, KY 40208

SETTING THE STAGE

The University of Louisville women's soccer team will visit the Miami Hurricanes in Coral Gables, Fla. and the Florida State Seminoles on Thursday night and Sunday afternoon, respectively. Louisville is coming off a 1-1 draw with Virginia Tech on Sunday afternoon. This was the third tie in ACC play for the Cardinals this season.

Brooklynn Rivers leads the Cardinals with 11 points. She has four goals and three assists on the year. Gabrielle Vincent enters the game second on the team in points with three goals and two assists, while Jill Vetere and Allison Whitfield each add two goals and three assists on the year.

Taylor Bucklin leads the Cardinals in goal with a 7-4-4 record and five shutouts on the season. She has a 0.87 goals against average, allowing only 14 goals. She also has 62 saves on the year.

Head coach Karen Ferguson-Dayes is in her 17th season with the Cardinals. She has guided Louisville to four NCAA Tournament appearances, including a Sweet 16 appearance in 2011.

SCOUTING MIAMI

The Hurricanes are led by freshman forward Kristina Fisher who has amassed seven goals and six assists on the season. Senior forward Gracie Lachowecki is second on the team in points with 19 and first on the team in goals with nine. Freshman forward Dejah Cason leads the Canes in assists on the year with eight.

Redshirt-sophomore goalkeeper Phallon Tullis-Joyce leads the Hurricanes in the goal. She has a 0.82 goals against average and has logged 45 saves on the year. She has only allowed 12 goals for the season.

Mary-Frances Monroe is in her fourth season as the head coach of the Hurricanes. Before coming to Miami she coached at the University of Albany and played for the Boston Breakers of the WPSL Elite League.

SERIES HISTORY

The Cardinals lead the all time series with a record of 1-0-1 all time. Louisville won the last matchup in 2015 at Lynn Stadium with a score of 1-0.

SCOUTING FLORIDA STATE

The Seminoles are led in points by freshman forward Kristen McFarland and sophomore midfielder Megan Connolly at 12. McFarland has five goals and two assists on the season, while Connolly has four goals and four assists on the year. Freshman forward Deyna Castellanos is tied for the lead in goals with five on the year for Florida State as well.

Redshirt-junior goalkeeper Cassie Miller defends the goal for the Seminoles. She has a 0.36 goals against average and has made 34 saves on the year. She has amassed eight shutouts on the year and has only allowed five goals on the season.

Mark Krikorian is in his 12th year as the Seminoles head coach. He has led the Seminoles to a National Championship in 2014, eight College Cup appearances, three national title game appearances, three ACC regular season titles, and four league championships. He has also kept Florida State ranked in the top 10 of the NSCAA poll for 11 straight seasons.

SERIES HISTORY

Florida State leads the all time series with Louisville with a 4-0-0 record. They won the last matchup in 2015 at Lynn Stadium with a score of 3-1.

CARDINALS QUICK HITS

- The Cardinals have scored four goals in straight three matches this season. The only time in school history the Cardinals have scored four or more goals in three consecutive games in a season was in 1986. Louisville defeated Morehead State 5-0 on Oct. 8, then defeated Morehead State again 4-1 on Oct. 10, and defeated Kentucky 7-0 on Oct. 11.

- Freshman Brooklynn Rivers is the only Cardinal player to score multiple goals in multiple games this season. She scored two goals against Belmont and two goals against Toledo.

- Gabrielle Vincent's hat trick on Aug. 26 was the first hat trick since Emily Cardell scored on against then ranked No. 20 Marquette on Oct. 17, 2010.

- This season the Cardinal roster has five international players. Returners Inger Katrine Bjerke is from Norway while Tina Marolt is from Slovenia. Joining the Cardinals this season is Sarah Feola from Quebec, Canada, Mhairi Fyfe from Livingston, Scotland, and Kathellen Sousa-Feitoza from



Sao Vicente, Brazil.

- Freshman Allison Whitfield has followed in her sister Casey's footsteps, playing at Louisville. She also wears the number 23, same as Casey. The also are similar in both play, Casey was one of the top play makers for the Cardinals and so far, Allison has lived up to those expectations.

- The Cardinals have two freshmen with national team experience this season. Freshmen Sarah Feola and Gabrielle Kouzelos have played this summer with their national teams.

- Once again the Cardinals played Duke to a scoreless tie. All four meetings in the series have resulted in scoreless ties. Both team have played 440 minutes and neither team has scored a goal.

- In the RPI this week the Cardinals are ranked 52nd.

LAST TIME OUT

The University of Louisville women's soccer team earned a point in ACC play, tying No. 24 Virginia Tech 1-1 on Sunday afternoon.

It took both teams a while to settle into their offense in the first period. The Hokies were able to keep the majority of possession finishing the half with an 8-3 shot advantage and a big 8-1 advantage in corner kicks. Taylor Bucklin finished the first half with four saves while Virginia Tech's Blayne Fink finished with two.

The Cardinals made some adjustments at the half and dominated possession early on and were able to apply offensive pressure to the Hokies' defense. The Cardinals pressure paid off in the 66th minute. Louisville stuck first, converting on a series of chances off a corner kick from freshman forward Brooklynn Rivers. Freshman midfielder Callie McKinney corralled a rebound just inside the box and sent her bending shot toward the left post and out of Fink's reach for her first career goal as a Cardinal.

Looking to score the equalizer, the Hokies pressured the Cardinal defense. The Louisville defense held tough until a series of corner kicks in the 78th minute but Virginia Tech. Sophomore midfielder Kristina Diana took a shot at the net, but Bucklin was there to make the stop. However, Murielle Tiernan was just inside the penalty box and was able to capitalize on Diana's rebounded shot for the equalizer in the 81st minute.

The Cardinals made a strong push late in the second half, tallying two shots, one on-goal, and three corner kicks in the final three minutes of regulation, but Fink stood her ground each time. Louisville's best chance was a shot from a driving Kaela Dickerman in the 87th minute.

Neither team had a clean look at the net in the two overtime periods, ending in a tie.

Virginia Tech finished with a 19-13 edge in shots. Fink had five saves on the day, while Louisville's goalkeeper Taylor Bucklin had eight stops. The Hokies claimed an 11-6 edge in corner kicks.

RIVERS EARNS TOP 100 HONORS

The University of Louisville's freshman forward Brooklynn Rivers has been named one of Top Drawer Soccer's Top 100 Freshman. Rivers debuted at No. 31 on the list. She is one of 25 freshman listed from the ACC. She is ranked as the 12th best freshman in the Atlantic Coast Conference, at 31 overall.

The Fort Thomas, Ky. Native leads the Cardinals in scoring this season. She leads the team with 11 point from four goals and three assists. She is the team leader in goals scored, shots and shots on goal. She also leads the team with two game winning goals against Harvard and Belmont. She is the only player on the team to score multiple goals in multiple matches.

WORKING OVERTIME

Louisville played four straight double overtime games in one stretch and six in the last eight games. In those three games the Cardinals went 1-1-2. All four matches were to ranked teams as well. This season the Cardinals have played eight overtime matches. Louisville has played 7 of

2016 RECORD BREAKDOWN

Total	7-4-4
Conference	2-2-3
Non-Conf	5-2-1
Post-Season	0-0-0
Home	6-4-1
Away	1-0-3
Neutral	0-0-0
Day	3-1-1
Night	4-3-3
Overtime/Double Overtime	1-2-4
Shutouts	4-2-1
Scoring 0-2 goals	2-4-4
Scoring 3-4 goals	5-0-0
Scoring 5+ goals	0-0-0
Opponent 0-2 goals	7-3-4
Opponent 3-4 goals	0-1-0
Opponent 5+ goals	0-0-0
Scored in 1st 10 minutes	2-2-0
Scores first	5-2-1
Opp. scores first	2-2-2
Leading at halftime	5-0-0
Trailing at halftime	2-1-1
Tied at halftime	0-3-3
Out-shot opponent	6-2-2
Out-shot by opponent	1-3-2
Shots are tied	0-0-0
Out-cornered opponent	3-2-1
Out-cornered by opponent	2-2-2
Corners are tied	2-0-1
Last 5 games	1-2-2
Last 10 games	4-3-3
vs. Ranked teams	1-2-2
In August	3-0-1
September	4-2-1
October	0-2-2
November	0-0-0
Monday	0-0-0
Thursday	0-0-2
Friday	1-2-1
Saturday	1-1-0
Sunday	5-1-1
Current streak	0
Longest winning streak	3
Longest unbeaten streak	4
Longest losing streak	1

THE LAST TIME A CARDINAL...

Scored a hat trick	Gabrielle Vincent vs. UAB - 8/26/16
Scored two goals	Brooklynn Rivers vs. Harvard - 9/4/16
Scored three or more goals	Gabrielle Vincent vs. UAB - 8/26/16
Had two assists	Jill Vetere vs. Harvard - 9/4/16
Scored five points	Charlyn Corral vs. Rutgers - 9/29/13
Scored six or more points	Gabrielle Vincent vs. UAB - 8/26/16
Scored in first five minutes	Alison Price (5th min) vs. #15 Notre Dame - 10/1/16
Scored in first 6-10 minutes	Sarah Feola (8th min) vs. Kentucky - 9/4/16
Scored in overtime	Brooklynn Rivers (99th min) vs. Belmont - 9/11/16
Scored in double overtime Kaela Dickerman (101st min) vs. Boston College - 9/25/16 (3-2)	
Had seven or more shots	Charlyn Corral (10) vs. Memphis - 11/3/13
Posted a shutout	Taylor Bucklin vs. Duke - 9/22/16 (0-0)
Had 5-9 saves	Taylor Bucklin (8) vs. #24 Virginia Tech - 10/16/16
Had 10 or more saves	Taylor Bucklin (10) vs. Duke - 10/11/15
Was Offensive Player of the Week	Charlyn Corral - 8/26/13
Was Defensive Player of the Week	Gabrielle Vincent - 8/29/16
Was Rookie of the Week	Paige Brown - 9/30/13
Was Goalkeeper of the Week	Paige Brown - 10/21/13

THE LAST TIME LOUISVILLE...

Had 25 or more shots	vs. UAB - 8/26/16 (32)
Had 20-24 shots	vs. NC State - 10/6/16 (21)
Scored 4 goals	vs. Toledo - 8/28/16 (W 4-0)
Allowed 4 goals	vs. Cincinnati - 10/25/13 (W 5-4 OT)
Scored 5 goals	vs. Cincinnati - 10/25/13 (W 5-4 OT)
Allowed 5 goals	vs. #17 Illinois - 8/25/13 (L 5-4 OT)
Scored 6 goals	vs. St. John's - 9/23/12 (W 6-0)
Allowed 6 or more goals	vs. Charlotte - 10/23/02 (L 6-1)
Scored 7 goals	vs. Morehead State - 9/13/13 (W 7-2)
Allowed 7 goals	at #2 UCLA - 9/7/01 (L 7-0)
Scored on a PK	vs. #17 Boston College - 9/25/16 (Jill Vetere)
Opponent scored on a PK	vs. Marquette - 9/20/13 (Maegan Kelly)
Stopped a PK	vs. West Virginia - 10/3/10 (Taylor Vancil)
Opponent stopped a PK	vs. Belmont - 9/11/16 (Stephanie Bukovec)
Posted a shutout	at Duke - 9/22/16 0-0, (Bucklin)
Were shutout	vs. #12 Clemson - 10/9/16 (1-0)
Won in overtime	vs. Belmont - 9/11/16 (2-1)
Lost in overtime	vs. #17 Illinois - 8/25/13 (5-4)
Won in double overtime	vs. #17 Boston College - 9/125/16 (3-2, Kaela Dickerman)
Lost in double overtime	vs. #15 Notre Dame - 10/1/16 (2-1)
Won a match on PK's	vs. Cincinnati (10-25-13)
Lost a match on PK's	vs. Duke (NCAA 1st Rd.) - 11/10/06 (6-5)

**2016 STATISTICAL LEADERS****GOALS**

Brooklynn Rivers.....	4
Gabrielle Vincent.....	3
Kaela Dickerman.....	3
Sarah Feola.....	2
Jill Vetere.....	2
Allison Whitfield.....	2
Alison Price.....	2
Inger Katrine Bjerke.....	2

ASSISTS

Allison Whitfield.....	3
Jill Vetere.....	3
Niamh Nelson.....	3
Brooklynn Rivers.....	3
Gabrielle Vincent.....	2
Sarah Feola.....	2
Callie McKinney.....	2

POINTS

Brooklynn Rivers.....	11
Gabrielle Vincent.....	8
Allison Whitfield.....	7
Jill Vetere.....	7
Sarah Feola.....	6
Kaela Dickerman.....	6

SHOTS

Brooklynn Rivers.....	30
Alison Price.....	29
Jill Vetere.....	24
Kaela Dickerman.....	23
Niamh Nelson.....	21
Sarah Feola.....	19
Allison Whitfield.....	18
Gabrielle Vincent.....	18
Callie McKinney.....	18

SHOTS ON GOAL

Brooklynn Rivers.....	16
Alison Price.....	13
Sarah Feola.....	11
Kaela Dickerman.....	11
Jill Vetere.....	10
Gabrielle Vincent.....	9
Niamh Nelson.....	9
Arianna Ferraro.....	9

GAME-WINNING GOALS

Brooklynn Rivers.....	2
Kaela Dickerman.....	2
Gabrielle Vincent.....	1
Sarah Feola.....	1
Allison Whitfield.....	1

GAME-WINNING ASSISTS

Niamh Nelson.....	1
Sarah Feola.....	1
Brooklynn Rivers.....	1
Callie McKinney.....	1
Jill Vetere.....	1

MULTI POINT GAMES

Brooklynn Rivers.....	2
Kaela Dickerman.....	1
Allison Whitfield.....	1
Gabrielle Vincent.....	1

SAVES

Taylor Bucklin.....	62
Victoria Gabor.....	1

SHUTOUTS

Taylor Bucklin.....	5
---------------------	---

the last 9 matches in overtime. In one overtime period the Cardinals own a 1-0-0 record and in double overtime they own a 1-2-4 record. Overall the Cardinals are 2-2-4 in extra periods played.

HOME SUCCESS

Louisville is off to a 6-4-1 start at home. Last season the Cardinals finished with a 5-3-1 record at Lynn Stadium, marking the ninth time in the last 10 seasons that the Cards have finished with above a .500 winning percentage at home. In the past 10 seasons under Karen Ferguson-Dayes, the Cards have posted a 56-40-11 record in home matches.

THE ROAD HAS BEEN GOOD

In just four road games this season the Cardinals have put in some solid play. They currently are 1-0-3 on the road. Louisville tied Indiana in the season opener 1-1 and most recently played No. 7 Duke to a scoreless tie. The Cardinals defeated Pittsburgh 1-0 in Sept. and then tied Duke. Most recently the Cardinals tied No. 24 Virginia Tech 1-1.

HOMEGROWN TALENT

The Cardinals roster featured five players from the state of Kentucky. Two players are from the city of Louisville, Allison Whitfield and Maddie Spencer. Junior Shelby Cohen is from LaGrange, senior Hannah Harris is from Danville, and freshman Brooklynn Rivers is from Fort Thomas, Ky. Two of the five players have started for the Cardinals this season. Rivers starts up front and Cohen starts on the back line and Whitfield has started in three matches.

FAB FRESHMEN

The Cardinals' freshmen have made a big impact this season. The group as a whole is one of the most talented classes to play at Louisville. Forward Brooklynn Rivers leads the Cardinals in scoring with four goals and three assists for 11 points. Allison Whitfield is third on the team in scoring with two goals and three assists for seven points. Sarah Feola is right behind her with two goals and two assists for six points. Callie McKinney scored her first goal for the Cardinals against Virginia Tech. She has started every game in midfield. Niamh Nelson has started every game in the back for the Cardinals. While Arianna Ferraro has seen significant time in the line up as well, scoring one goal.

CARDINALS IN THE POLLS

The University of Louisville women's soccer team fell out of the polls last week. They were ranked 21st in last week's Soccer America poll. The week before, they debuted at No. 18 for first time the Cardinals since they appeared at No. 24 on Oct. 29, 2013 in the Soccer America poll. Louisville is one of eight ACC teams ranked in the poll.

The Cardinals earned one point in ACC play last week as they played then-No. 7 Duke to a scoreless tie in Durham. On Sunday, Louisville came from behind to defeat No. 17 Boston College 3-2 in double overtime.

FEOLA AND KOUZELOS CALLED UP

University of Louisville freshmen Sarah Feola and Gabrielle Kouzelos have been called up to participate in their national team camps this week. Feola was called up by Canada while Kouzelos was called up by the United States. Feola missed both matches last weekend while Kouzelos missed Friday's match and the Harvard match.

Feola is in training camp competing for a roster spot with Canada for the FIFA U-20 World Cup. The FIFA U-20 Women's World Cup is held every two years, this year's edition is in Papua New Guinea from November 13 to December 3.

Kouzelos is with the U.S. Under-18 Women's National Team in San Diego for a training camp at the U.S. Olympic Training Center in Chula Vista, Calif., running from Sept. 3-10. She is one of 26 players called up by U.S. Soccer Women's Technical Director April Heinrichs. The U-18s will drive up to Long Beach to face Beach FC Women of the WPSL on Friday, Sept. 9, at Long Beach State with a kickoff at 2 p.m. PT. The goal for this age group is to ultimately qualify for the 2018 FIFA U-20 Women's World Cup which will be held in France.

VINCENT EARNS NATIONAL AND ACC WEEKLY HONORS

Sophomore defender Gabrielle Vincent was named the NSCAA Division I College Player of the Week and the ACC Defensive Player of the Week on Aug. 30.

Vincent totaled seven points for the week on three goals and an assist in 4-0 wins over UAB and Toledo last week. She scored her first career hat trick against UAB with goals in the 32nd, 72nd



and 84th minutes leading the Cardinals. On the defensive end against, the centerback helped hold the Blazers without a shot for the entire game while Louisville secured the shutout. Two days later against Toledo, Vincent found Alison Price in the 21st minute for the second score of the game. She also blocked a few shots in front of the box as Louisville earned its third straight shutout of the season.

PRESEASON CRYSTAL BALL

The Louisville women's soccer team was chosen to finish 10th in the Atlantic Coast Conference in a vote by the league's head coaches. Florida State was chosen to repeat as the Atlantic Coast Conference women's soccer champion. The Seminoles received nine first-place votes en route to 191 total points, followed by Virginia (three first-place vote, 178 points) and Duke (two first-place vote, 158 points). Below is the preseason poll:

1. Florida State (191 points, 9 first place votes)
2. Virginia (178, 3)
3. Duke (158, 2)
4. North Carolina (155)
5. Clemson (140)
6. Notre Dame (128)
7. Virginia Tech (122)
8. Boston College (96)
9. Wake Forest (74)
- 10. Louisville (63)**
11. Pitt (59)
12. Syracuse (50)
13. NC State (39)
14. Miami (27)

CARDINALS HAVE 17 TV APPEARANCES

The Cardinals are scheduled to have 17 matches on ACC Network Extra, starting with the Aug. 21 game against Indiana State. All the Cardinals home matches and ACC matches will be broadcast on ACC Network Extra.

The coverage marks the initial phase of the full ACC Network announced July 21 by ESPN and the Atlantic Coast Conference. Live streaming of Olympic sports will increase annually, culminating with 1,300 total ACC events when the linear network launches in 2019.

The 2016 Fall Olympic sports schedule includes 354 total events involving ACC schools, with ESPNU scheduled to carry six contests and the Regional Sports Network an additional 17. Every conference Fall Olympic sport championship will be shown live on either a linear platform or ACC Network Extra, beginning with the ACC Cross Country Championships on Oct. 28.

The events covered by ACC Network Extra will be immediately available to users who have access to WatchESPN and the ESPN app. More than 600 total Olympic sporting events – encompassing the fall, winter, and spring seasons – will be carried exclusively by ACC Network Extra during the 2016-17 academic year.

LYNN STADIUM OPENING

After 14 seasons at Cardinal Park, the Louisville soccer programs officially opens its new home in 2014 with the debut of Dr. Mark and Cindy Lynn Stadium. The Cardinals played their final official match at Cardinal Park on Nov. 16, 2013 when they hosted Illinois State in a first round match in the NCAA Championship. Playing host to some of the program's most memorable matches, Cardinal Park remains as the home to the Louisville track and field program. Located across from Papa John's Cardinal Stadium just south of Cardinal Park on Floyd Street, Lynn Stadium is a state-of-the-art stadium featuring a capacity of more than 5,300 as well as a 15,500-square-foot training center. The Cardinals' move into the highly competitive ACC this season is aided by arguably the nation's best soccer facility.

RECORD BREAKING CROWDS

The Cardinals currently rank second in the ACC in attendance, averaging 1,356 per game. The Cardinals' largest crowd this season was against UAB on Aug. 26 with 3,018. Louisville has had two crowds over 1500 this season. The other match was against Kentucky with 2,190 in attendance.

SOCCER AMERICA POLL

(as of Oct. 18, 2016)

Rk	Team	Rec.	Previous
1.	West Virginia	(13-1-1)	1
2.	Georgetown	(12-1-2)	2
3.	South Carolina	(14-0-1)	3
4.	Stanford	(12-1-1)	4
5.	USC	(11-3-0)	5
6.	Duke	(11-2-2)	8
7.	Florida State	(10-2-2)	9
8.	California	(12-2-1)	10
9.	BYU	(12-2-1)	11
10.	Virginia	(10-3-2)	7
11.	Notre Dame	(10-2-3)	15
12.	North Carolina	(8-3-3)	6
13.	UCLA	(10-3-1)	13
14.	Penn State	(10-2-4)	14
15.	Clemson	(10-3-2)	16
16.	Connecticut	(13-2-1)	17
17.	Auburn	(11-4-0)	18
18.	Arkansas	(13-3-0)	12
19.	Florida	(10-3-0)	19
20.	Minnesota	(12-3-2)	20
21.	Northwestern	(13-1-2)	21
22.	Colorado	(12-3-0)	22
23.	Utah	(10-2-2)	NR
24.	Pepperdine	(10-3-3)	NR
25.	Virginia Tech	(10-4-2)	24

WEEK-BY-WEEK RANKINGS

Date	NSCAA	Soccer America
Preseason	NR	NR
Aug. 23	NR	NR
Aug. 30	NR	NR
Sept. 6	NR	NR
Sept. 13	NR	NR
Sept. 20	NR	NR
Sept. 27	NR	18
Oct. 4	NR	21
Oct. 11	NR	NR
Oct. 18	NR	NR

ACC STANDINGS

(As of Oct. 16, 2016)

School	ACC	Overall	Streak
Duke	6-0-1	11-2-2	W 5
Notre Dame	5-1-1	10-2-3	W 1
Florida State	4-1-2	10-2-2	W 1
Clemson	4-1-2	10-3-2	W 2
Virginia	3-2-2	10-3-2	L 1
North Carolina	3-2-2	8-3-3	L 1
NC State	3-3-1	9-5-1	L 2
Louisville	2-2-3	7-4-4	
Virginia Tech	2-3-2	10-4-2	
Miami	3-4-0	8-7-0	L 3
Boston College	2-5-0	10-5-1	L 2
Syracuse	1-4-2	8-5-3	W 1
Wake Forest	1-6-0	9-6-0	W 1
Pittsburgh	1-6-0	2-12-1	L 1



- Louisville shattered the previous attendance record with 5,100 at the Dr. Mark and Cindy Lynn Stadium debut. The record crowd witnessed the Cardinals defeat Ole Miss 1-0 on Aug. 29, 2014. The previous record was 2,643 in the Cards' win over Kentucky on Sept. 9, 2010 in Cardinal Park. The following weekend the second best crowd in school history (4,166)packed Lynn Stadium to watch the Cards take on Kentucky. So far this season the Cardinals are averaging 2,406 fans a match.

- Last season the Cardinals ranked fifth in the nation in average attendance last season. Louisville averaged 2,406 fans a match. Louisville ranked behind Texas A&M with 2,953, South Carolina with 2,923, Portland with 2,918 and BYU 2,640.

2016 LOUISVILLE ROSTER

NO	Name	POS	HT	CL	Hometown/High School
1	Gabrielle Kouzelos	GK	5-7	FR	Wadsworth, Ohio (Cuvahoga Valley Christian)
2	Hannah Harris	D/MF	5-7	SR	Danville, Ky. (Boyle County)
3	Lauren Ellis	D	5-7	FR	Charlotte, N.C. (Providence HS)
4	Shelby Cohen	D/MF	5-2	JR	LaGrange, Ky. (Oldham County HS)
5	Victoria Gabor	GK	5-6	r-SO	White Hall, Md. (Notre Dame Prep)
6	Arianna Ferraro	MF/D	5-8	FR	Manalapan, N.J. (Manalapan HS)
7	Sanela Hodzic	F/MF	5-4	FR	Highlands Ranch, Colo. (Thunderridge HS)
8	Niamh Nelson	D/MF	5-11	FR	San Diego, Calif. (Cathedral Catholic HS)
9	Bridget Stewart	MF	5-3	r-SO	O'Fallon, Mo. (Fort Zumwalt South)
10	Callie McKinney	MF	5-7	FR	Franklin, Tenn. (Franklin HS)
11	Tina Marolt	MF	5-2	SO	Smatevz, Slovenia (Gimnazija Velenje)
12	Bailey Florek	D	5-9	FR	Colorado Springs, Colo. (Rampart HS)
13	Brooklynn Rivers	F	5-11	FR	Fort Thomas, Ky. (Highlands HS)
14	Gabrielle Vincent	MF	5-8	SO	Columbia, Md. (McDonogh School)
15	Jill Vetere	F	5-8	SO	Mason, Ohio (William Mason HS)
16	Sarah Feola	MF	5-8	FR	Quebec, Canada (Lester B. Pearson HS)
17	Inger Katrine Bjerke	D	5-8	JR	Baerum, Norway (Nadderud VGS)
18	Taylor Bucklin	GK	5-8	SR	Greenwich, Conn. (Michigan)
19	Maddie Spencer	D	5-7	FR	Louisville, Ky. (Assumption HS)
20	Alison Price	F	5-5	JR	Clemmons, N.C. (West Forsyth HS)
21	Mhairi Fyfe	F	5-4	SR	Livingston, Scotland (Campbellsville)
22	Kaela Dickerman	F	5-4	JR	Cedar Rapids, Iowa (John F. Kennedy HS)
23	Allison Whitfield	F	5-9	FR	Louisville, Ky. (DuPont Manual HS)
24	Daryl Bell	F	5-4	JR	Sarasota, Fla. (West Florida)
25	Caroline Kimble	D/MF	5-8	SR	Ashton, Md. (Our Lady of Good Counsel)
32	Kathellen Sousa-Feitoza	MF	5-10	JR	Sao Vicente, Brazil (Monroe College)
33	Andie Lakin	MF	5-2	SR	Wayne, N.J. (Vanderbilt)

Head Coach: Karen Ferguson-Dayes (Connecticut, 1993), 16th season at Louisville

Assistant Coaches: Natalie Gorman, Rade Tanaskovic

Volunteer Assistant: Hunter Norton

PRONUNCIATION GUIDE

Inger Katrine Bjerke
(Byour -KEE)

Gabrielle Kouzelos
(Kah-ZELL-us)

Arianna Ferraro
(Fah-Rah-RO)

Sanela Hodzic
(Sah-NAIL-AH)

Niamh Nelson
(NEE-vah)

Sarah Feola
(FEE-oh-lah)

Mhairi Fyfe
(Vah-Har-EE)

Kathellen Sousa-Feitoza
(Kathleen)
(Soza-Fee-toe-zah)

Rade Tanaskovic
(Rah-day)
(Tah-NAS-Kov-itch)

Jill Vetere
(VAH-Terry)



KAREN FERGUSON-DAYES

In her 16 seasons, Karen Ferguson-Dayes has taken a soccer program at the University of Louisville and molded it into a team that has finished near the top of the conference and advanced to the NCAA Tournament four times. The winningest coach in Cardinal history, she has improved the team's record nearly every season she has been at the helm and rewritten the record books.

During her tenure, Ferguson-Dayes has guided the Cardinals to not only their first NCAA Tournament berth, but multiple trips to the dance. She has also seen the Cardinals through the transition into the nation's toughest soccer conference in the ACC and into their new state-of-the-art facility at Dr. Mark and Cindy Lynn Stadium.

A season after leading Louisville to its best season in school history with a school record 14 wins, a first ever BIG EAST National Division title and its first ever NCAA Sweet 16 appearance in 2011, Ferguson-Dayes led the Cardinals double-digit wins for the third straight season and the seventh time.

The 2011 BIG EAST Coach of the Year, she has coached three All-Americans including Christine Exeter in 2011, Joanna Haig in 2007 and Jamie Craft in 2006 and a pair of Academic All-Americans in Haig (2007) and Amy Seng (2006). She also coached multiple player of the year winners as Exeter was selected as BIG EAST Offensive Player of the Year in 2011 while Charlyn Corral was BIG EAST Midfielder of the Year in 2012. The superlatives are nearly too numerous to list completely. Needless to say Ferguson-Dayes has been the most successful coach in UofL women's soccer history and is one of the top coaches in the nation.

In 2013, Louisville earned its fourth NCAA Tournament appearance after finishing second in the AAC with a 7-1-0 record. The Cardinals had two players earn player of the year honors with Corral and Exeter earning midfielder and offensive player honors for the second time in their careers.

In 2012, Louisville had four players earn All-BIG EAST honors with Corral, who was also an NSCAA All-Region honoree, leading the way with her First Team selection. Midfielder Angelika Uremovich was named Second Team All-BIG EAST while Exeter and goalkeeper Chloe Kiefer earned Third Team honors.

During the record-setting 2011 season, the

Cardinals also advanced to their first ever BIG EAST Tournament title game and ended the season ranked 24th overall in the final NSCAA coaches' poll. Along with Exeter's league honors, Jennifer Jones was a Third Team All-BIG EAST selection in 2011 while Erin Yenney was named to the conference's All-Rookie Team.

Louisville earned an at-large berth into the 2011 NCAA Championship and was selected as a host for the first time in the post-season tournament. The Cardinals delivered on the opportunity to play in front of the home fans earning a dominating 2-0 victory over Dayton for the program's first ever NCAA Championship win. They followed that with an impressive 2-0 road triumph over No. 5 Memphis in the second round before falling to ninth-ranked Florida State in the Sweet 16.

In 2010, the Cardinals were led by Exeter, who was selected as the BIG EAST Rookie of the Year, and Uremovich, who was named to the league's All-Rookie Team. UofL opened the season with a school record seven straight wins, which included victories over No. 13 South Carolina and rival Kentucky, and then closed the season by advancing to the BIG EAST Championship for the fifth time in six seasons.

Prior to a disappointing 2009 season where injuries limited the Cardinals' success on the field, the 2008 season served as a learning experience for a team that featured only three seniors. Even with the loss of All-American goalkeeper Joanna Haig and three other key starters, UofL advanced to the quarterfinals of the BIG EAST Tournament for the third straight season and won nine games overall against one of the toughest schedules in the nation.

Seniors Jessica Mello and Shannon Smyth earned Third Team All-BIG EAST honors and were joined by senior Mallory Lampson as NSCAA Academic All-Region selections.

In 2007 a trip to the BIG EAST semifinals was a new plateau of success for the program, as were the five players honored on All-BIG



EAST teams. In tying the school record with 13 wins and advancing to the NCAA's for the second consecutive season, the team collectively posted a 3.416 GPA in the classroom.

Haig established five school records, and finished the season third in the nation in save percentage (0.893) and fifth in GAA playing in Ferguson-Dayes' defensive brand of soccer.

The 2006 squad became the first in school history to earn a national ranking, peaking at 15th in the nation. It was also the first team to advance to the coveted plateau that is the NCAA Tournament. Success was not limited to the field, as the team set marks in the classroom with the second-highest team GPA, a record number of Red and Black Scholars and members of the AD Honor Roll, as well as the first Academic All-American in school history (Amy Seng). Six players earned All-Region honors, three found their name on the All-BIG EAST squads and two players were named All-American (Jamie Craft and Joanna Haig), just the second and third such honored in Cardinal history. Craft moved on to a career in professional soccer, enjoying a solid season with the W-League Boston Renegades.

The fall of 2005 meant the first foray into the BIG EAST, a conference that Ferguson-Dayes had spent seven years in as a player and assistant coach. With the jump into one of the elite conferences, it was expected that the Cardinals might stumble in making the jump,



but under the guidance of Ferguson-Dayes, the team notched double figure wins for the second consecutive season. Three team members were honored by the BIG EAST, led by junior Jamie Craft, a first-team selection who was also named to two difference All-Region teams.

Ferguson-Dayes' appointment and success here at Louisville has not gone unnoticed.

University of Louisville Director of Athletics Tom Jurich knew who he wanted to lead the then-struggling women's soccer team when Ferguson-Dayes was hired to be the eighth head coach of the UofL women's soccer team in 2000.

"Her name kept rising to the top during our national search and she came to us with incredible recommendations," noted Jurich.

Nobody believed the process of turning the Louisville women's soccer program into a winner is one that would occur overnight, as evidenced by the tough first season for Ferguson-Dayes and staff, but growth and success wasn't measured by wins and losses. Not initially. Now the ante has been upped as the program continues its rise with upcoming move to the Atlantic Coast Conference.

"The University has provided us with the resources we feel are necessary to become an elite program, and that is our goal," said Ferguson-Dayes.

Her tenure is the longest in the program's history. She has already watched assistant coaches Jen Mead and Carmelina Moscato move on to pursue a career in professional soccer, former assistant Carole Dutchka is now the athletic director at Louisville's Presentation Academy, and former assistant Tim Nowak departed for a head coaching opportunity.

Achieving at a high level is not something new for Ferguson-Dayes, who has previously worked as the ODP Girls 1993 age group head coach and the Region II liaison for the US Soccer National Teams in charge of tracking and following the progress of members of the US Soccer Youth National Team system. She served as an assistant coach of the USA U-21 team for their 2004 season.

During the summer of 2003 she served as an assistant coach for the U-19 Adidas Youth Team and she has also served as the head coach of the Region II 87 girls' team, which competed in the Adidas ESP event and the November Inter-regional event in Boca Raton, Florida.

In 2003 she worked with the Region II girls U-15 team, and accompanied the team to

numerous interregional events.

Prior to accepting her position at Louisville, she was the assistant coach at the University of Connecticut for three seasons. The Huskies were 60-12-2 during the three years she spent as an assistant, advanced to the final eight twice (1998 and '99), and were national runner-up in 1997.

A 1993 graduate of UConn, Ferguson-Dayes coached under and played for legendary soccer coach Len Tsantiris who has not missed the NCAA Division I soccer tournament during his tenure. Before coaching at UConn, Ferguson-Dayes served as an assistant at Boston University during its first two seasons of soccer where the team was an astonishing 24-7-2 overall.

In her playing career at UConn as a midfielder, she was named first team All-America in '91, '92 and '93. The Huskies were 63-24-3 during her four-year career and she tallied 53 points (18 goals and 17 assists.)

In 1990 as a freshman, the Huskies competed in the national semifinal where she was named to the NCAA All-Tournament team. Soccer America Magazine selected her as a Team MVP in 1992, an award given to 11 players nationally.

Ferguson-Dayes' playing career was not

limited to the collegiate level. She played for the U.S. National Team in 1992 and 1993.

While at UConn, she was involved in the Connecticut Olympic Development Program and served as staff coach in Region One. Ferguson-Dayes holds an NSCAA Advanced National Soccer license, as well as a USSF B license.

A native of Holbrook, N.Y., and a graduate of Sachem High School, Ferguson-Dayes is married to Hylton Dayes and the couple has one son, Brandon.

Karen Ferguson-Dayes' NCAA Record

Season	Team	Role	Record	Postseason
1990	UConn	Player	15-8-1	NCAA Runner-up
1991	UConn	Player	16-5-0	NCAA QF
1992	UConn	Player	15-5-1	NCAA 1st Rd.
1993	UConn	Player	17-6-1	NCAA QF
1995	Boston	Asst. Coach	10-3-2	none
1996	Boston	Asst. Coach	14-4-0	none
1997	UConn	Asst. Coach	23-4-0	NCAA Runner-up
1998	UConn	Asst. Coach	21-2-2	NCAA QF
1999	UConn	Asst. Coach	17-8-0	NCAA QF
2000	UofL	Head Coach	1-18-1	none
2001	UofL	Head Coach	4-13-0	none
2002	UofL	Head Coach	5-12-1	none
2003	UofL	Head Coach	7-9-2	none
2004	UofL	Head Coach	12-5-3	C-USA SF
2005	UofL	Head Coach	11-8-0	BIG EAST QF
2006	UofL	Head Coach	13-4-3	NCAA 1st Rd.
2007	UofL	Head Coach	13-6-2	NCAA 1st Rd.
2008	UofL	Head Coach	9-7-3	BIG EAST QF
2009	UofL	Head Coach	5-11-1	none
2010	UofL	Head Coach	10-9-0	BIG EAST 1st Rd.
2011	UofL	Head Coach	14-7-3	NCAA 3rd Rd.
2012	UofL	Head Coach	10-4-4	BIG EAST QF
2013	UofL	Head Coach	12-5-2	NCAA 1st Rd.
2014	UofL	Head Coach	7-9-2	none
2015	UofL	Head Coach	8-8-2	none

Overall: 279-178-36 | UofL (16 seasons): 141-135-29



Aug. 19 Indiana	Aug. 21 Indiana State	Aug. 26 UAB	Aug. 28 Toledo	Sept. 2 Kentucky	Sept. 4 Harvard	Sept. 9 Ball State	Sept. 11 Belmont
Bucklin - GK Cohen - D Vincent- D Bjerke - D Nelson - D McKinney - MF Vetere - MF Price - MF Dickerman - F Rivers - F Feola - F	Bucklin - GK Cohen - D Vincent- D Bjerke - D Nelson - D McKinney - MF Vetere - MF Price - MF Dickerman - F Rivers - F Feola - F	Bucklin - GK Cohen - D Vincent- D Bjerke - D Nelson - D McKinney - MF Vetere - MF Price - MF Dickerman - F Rivers - F Feola - F	Bucklin - GK Cohen - D Vincent- D Bjerke - D Nelson - D McKinney - MF Vetere - MF Price - MF Dickerman - F Rivers - F Feola - F	Bucklin - GK Cohen - D Vincent- D Bjerke - D Nelson - D McKinney - MF Vetere - MF Price - MF Dickerman - F Rivers - F Feola - F	Bucklin - GK Cohen - D Vincent- D Bjerke - D Nelson - D McKinney - MF Vetere - MF Price - MF Dickerman - F Rivers - F Feola - F	Bucklin - GK Cohen - D Vincent- D Bjerke - D Nelson - D McKinney - MF Vetere - MF Price - MF Dickerman - F Rivers - F Whitfield - F	Bucklin - GK Cohen - D Vincent- D Bjerke - D Nelson - D McKinney - MF Vetere - MF Price - MF Dickerman - F Rivers - F Kimble - F
Sept. 17 Pittsburgh	Sept. 22 Duke	Sept. 25 Boston College	Oct. 1 Notre Dame	Oct. 6 NC State	Oct. 9 Clemson	Oct.16 Virginia Tech	
Bucklin - GK Cohen - D Vincent- D Bjerke - D Nelson - D McKinney - MF Vetere - MF Price - MF Dickerman - F Rivers - F Whitfield - F	Bucklin - GK Cohen - D Vincent- D Bjerke - D Nelson - D McKinney - MF Vetere - MF Price - MF Dickerman - F Rivers - F Whitfield - F	Bucklin - GK Cohen - D Vincent- D Bjerke - D Nelson - D McKinney - MF Vetere - MF Price - MF Dickerman - F Rivers - F Feola - F	Bucklin - GK Cohen - D Vincent- D Bjerke - D Nelson - D McKinney - MF Vetere - MF Price - MF Dickerman - F Rivers - F Feola - F	Bucklin - GK Cohen - D Vincent- D Bjerke - D Nelson - D McKinney - MF Vetere - MF Price - MF Dickerman - F Rivers - F Feola - F	Bucklin - GK Cohen - D Vincent- D Bjerke - D Nelson - D McKinney - MF Vetere - MF Price - MF Dickerman - F Rivers - F Feola - F	Bucklin - GK Cohen - D Vincent- D Bjerke - D Nelson - D McKinney - MF Vetere - MF Price - MF Dickerman - F Rivers - F Ferraro - F	

The Automated ScoreBook
Louisville Combined Team Statistics (as of Oct 17, 2016)
All games

RECORD:	OVERALL	HOME	AWAY	NEUTRAL
ALL GAMES	7-4-4	6-4-1	1-0-3	0-0
CONFERENCE	2-2-3	1-2-1	1-0-2	0-0
NON-CONFERENCE	5-2-1	5-2	0-0-1	0-0

Date	Opponent		Score	Att.	#	Player	gp	g	a	pts	sh	sh%	sog	sog%	gw	pk-att
Aug 19	at Indiana	To2	1-1	379	13	Brooklynn Rivers	15	4	3	11	30	.133	16	.533	2	1-1
Aug 21	INDIANA STATE	W	4-0	1214	14	Gabrielle Vincent	15	3	2	8	18	.167	9	.500	1	0-0
Aug 26	UAB	W	4-0	3018	15	Jill Vetere	15	2	3	7	24	.083	10	.417	0	1-1
Aug 28	TOLEDO	W	4-0	658	23	Allison Whitfield	12	2	3	7	18	.111	7	.389	1	0-0
Sep 02	KENTUCKY	L	1-3	2190	22	Kaela Dickerman	15	3	0	6	23	.130	11	.478	2	0-0
Sep 04	HARVARD	W	3-1	456	16	Sarah Feola	13	2	2	6	19	.105	11	.579	1	0-0
Sep 09	BALL STATE	Lo2	0-1	1348	8	Niamh Nelson	15	1	3	5	21	.048	9	.429	0	0-0
Sep 11	BELMONT	Wot	2-1	1243	20	Alison Price	15	2	0	4	29	.069	13	.448	0	0-0
* Sep 17	at Pitt	W	1-0	523	17	Inger Katrine Bjerke	15	2	0	4	6	.333	4	.667	0	0-0
* Sep 22	at #6/7 Duke	To2	0-0	461	10	Callie McKinney	15	1	2	4	18	.056	8	.444	0	0-1
* Sep 25	#17 BOSTON COLLEGE	Wo2	3-2	1230	6	Arianna Ferraro	13	1	0	2	16	.062	9	.562	0	0-0
* Oct 01	#15 NOTRE DAME	Lo2	1-2	1144	11	Tina Marolt	10	1	0	2	7	.143	1	.143	0	0-0
* Oct 06	#24 NC STATE	To2	1-1	1237	25	Caroline Kimble	8	1	0	2	6	.167	1	.167	0	0-0
* Oct 09	#15 CLEMSON	L	0-1	1179	9	Bridget Stewart	7	1	0	2	3	.333	1	.333	0	0-0
* Oct 16	at #24 Virginia Tech	To2	1-1	617	32	Kathellen Feitoza	15	0	1	1	9	.000	5	.556	0	0-0

TEAM STATISTICS	LOU	OPP
SHOT STATISTICS		
Goals-Shot attempts	26-266	14-175
Goals scored per game	1.73	0.93
Shot pct.	.098	.080
Shots on goal-Attempts	124-266	79-175
SOG pct.	.466	.451
Shots/Game	17.7	11.7
CORNER KICKS	74	65
PENALTY KICKS	2-3	0-0
PENALTIES		
Yellow cards	8	8
Red cards	0	1
ATTENDANCE		
Total	14917	1980
Dates/Avg Per Date	11/1356	4/495
Neutral Site #/Avg	0/0	

#	Player	gp	g	a	pts	sh	sh%	sog	sog%	gw	pk-att
7	Sanela Hodzic	7	0	1	1	2	.000	1	.500	0	0-0
4	Shelby Cohen	15	0	0	0	7	.000	2	.286	0	0-0
24	Daryl Bell	3	0	0	0	4	.000	3	.750	0	0-0
21	Mhairi Fyfe	2	0	0	0	3	.000	2	.667	0	0-0
33	Andie Lakin	4	0	0	0	2	.000	1	.500	0	0-0
12	Bailey Florek	5	0	0	0	1	.000	0	.000	0	0-0
19	Maddie Spencer	3	0	0	0	0	.000	0	.000	0	0-0
3	Lauren Ellis	1	0	0	0	0	.000	0	.000	0	0-0
	Total	15	26	20	72	266	.098	124	.466	7	2-3
	Opponents	15	14	10	38	175	.080	79	.451	4	0-0

#	Goalie	GP	Min.	GA	GAAvg	Saves	Pct	W-L-T	Sho
5	Victoria Gabor	2	36:41	0	0.00	1	1.000	0-0-0	0/2
18	Taylor Bucklin	15	1444:00	14	0.87	62	.816	7-4-4	3/2
	Total	15	1480:41	14	0.85	65	.823	7-4-4	5
	Opponents	15	1480:41	26	1.58	98	.790	4-7-4	3

Goals by Period	1st	2nd	OT	OT2	Total
Louisville	12	12	1	1	26
Opponents	8	4	0	2	14

Shots by Period	1st	2nd	OT	OT2	Total
Louisville	105	133	18	10	266
Opponents	78	68	20	9	175

Saves by Period	1st	2nd	OT	OT2	Total
Louisville	34	21	6	4	65
Opponents	38	50	9	1	98

Corners by Period	1st	2nd	OT	OT2	Total
Louisville	30	37	3	4	74
Opponents	27	31	4	3	65

Fouls by Period	1st	2nd	OT	OT2	Total
Louisville	57	75	11	7	150
Opponents	65	64	3	2	134