



www.GoCards.com



E.P. Tom Sawyer State Park **CHAMPIONSHIP FAN GUIDE**



NCAA Division I
Men's and Women's
Championships

University of Louisville
Louisville, Kentucky



TABLE OF CONTENTS

E.P. Tom Sawyer State Park.....	3
Spectator Information	4
State Park Map.....	5
Driving Directions / Parking	6
Women's 6,000 Meter Course Map.....	7
Men's 10,000 Meter Course Map	8
Championships at Tom Sawyer	9
Host: University of Louisville	10
University of Louisville Campus Map	11
Directions to UofL Belknap Campus	12
Louisville, Kentucky	13
Hotels and Accommodations.....	14-16
Emergency / Transportation	17
Entertainment / Parks	18-20
Restaurants and Dining	21-24
Division I Championship History.....	25
Championships Coming to Louisville	26



E.P. TOM SAWYER STATE PARK

3000 FREYS HILL ROAD
LOUISVILLE, KENTUCKY 40241

NUMBERS TO REMEMBER

State Park Office: 502/429-3280
UofL Athletics: 502/852-5732
UofL Ticket Office: 502/852-5151
UofL Ticket Office: 800/633-7105
UofL Campus: 800/334-UofL
Campus Security: 502/852-6111

ADDITIONAL CHAMPIONSHIP INFORMATION

For complete information on E.P. Tom Sawyer State Park including a list of prohibited items, facility policies, and safety tips visit:
<http://parks.ky.gov/findparks/recparks/ep/>

For complete information on the Championship including policies, fan guidelines, schedule of events, and event times, visit:
www.GoCards.com

For additional information on the City of Louisville and Downtown Louisville including maps, entertainment guides, and visitor information visit:
www.gotolouisville.com



University of Louisville, September 2014
NCAA logo and NATIONAL COLLEGIATE ATHLETIC ASSOCIATION
are registered marks of the Association.

Photos courtesy of: Greater Louisville Convention & Visitors Bureau
and the University of Louisville

E.P. TOM SAWYER STATE PARK



E.P. "Tom" Sawyer State Park
3000 Freys Hill Road
Louisville, KY 40241-2132

Business Office: 502/429-3280
Rec Office: 502/429-7270
Park Manager: Clay Foreman

Welcome to E.P. Tom Sawyer State Park, site of the **2015 NCAA Division I Men's and Women's National Championships!**

Tom Sawyer State Park is a 369-acre oasis on the outskirts of the Louisville metropolitan area. The rolling fields that were once farmland are now the site of some of the finest indoor and outdoor recreation facilities in Kentucky. The park is named in honor of Erbon Powers "Tom" Sawyer, a Louisville leader and visionary. He and his wife Jean raised two daughters, Linda and Diane, host of ABC's "Good Morning America."

Tom Sawyer Park has served as the host site for the 2012 NCAA Division I Cross Country National Championships. In 2006, 2007, 2009, 2010, 2011, and 2014 the park served as host site to the Southeast Regionals. The National Championships are slated to return to Louisville, Kentucky in 2017.

The facilities include the recreation building, which has a gym, a basketball court, weight room, and areas for badminton and volleyball. There is a 50-meter swimming pool that is the largest in the Kentucky state parks system. There is a fitness trail along with an archery field, three lighted baseball diamonds, six soccer fields, 12 all-weather tennis courts, and picnic areas. The park also boasts one of the nation's best bicycle moto-cross (BMX) tracks and a 400-foot by 35-foot paved runway for electronically controlled model airplanes and cars.

E. P. "Tom" Sawyer State Park was once a farm where many remnants, such as barns and cemeteries, still remain on park property. Over the years, the park's Foundation Board has planted and cared for hundreds of trees. Here at E. P. "Tom" Sawyer State Park, we are part of one of the nation's finest state park systems. We welcome you to explore our Unbridled Spirit.

SPECTATOR INFORMATION

Admission

There is no admission fee to the 2014 NCAA Cross Country Southeast Regional Championship.

Animals

All dogs must be on a leash at all times. You must pick up after pets and dispose of waste in a trash receptacle.

Banners, Flags, or Signs (Spirit)

Banners and signs can be brought into the park if they reflect good sportsmanship and do not interfere in any way with the course. These decorations, posters, or other materials must in no way damage the facilities and must be removed after the championship.

Climate

During the month of November, Louisville usually experiences a 55-65 degree range in temperature, cool mornings and an increase in temperature in early afternoon. Visitors can expect rain temperature to range from 50-60 degrees and mildly humid conditions. For race day weather conditions, please visit the National Weather Service online at <http://www.weather.gov>.

Concessions

Concession tent is located at E.P. Tom Sawyer State Park near the finish line and parking area. The concession tent will open two (2) hours prior to the first race.

First Aid

For assistance in any medical emergency, individuals need to go to the medical tent located at the finish line.

Lost Children

Parents/guardians with a lost child should contact the announcer to notify them that their child is missing. Measures will be taken to locate the child. If a child gets separated from his/her party, he/she should notify the nearest police or event staff member.

Restrooms

Port-a-johns will be located near the finish line at the edge of the parking lot and also at the starting line.

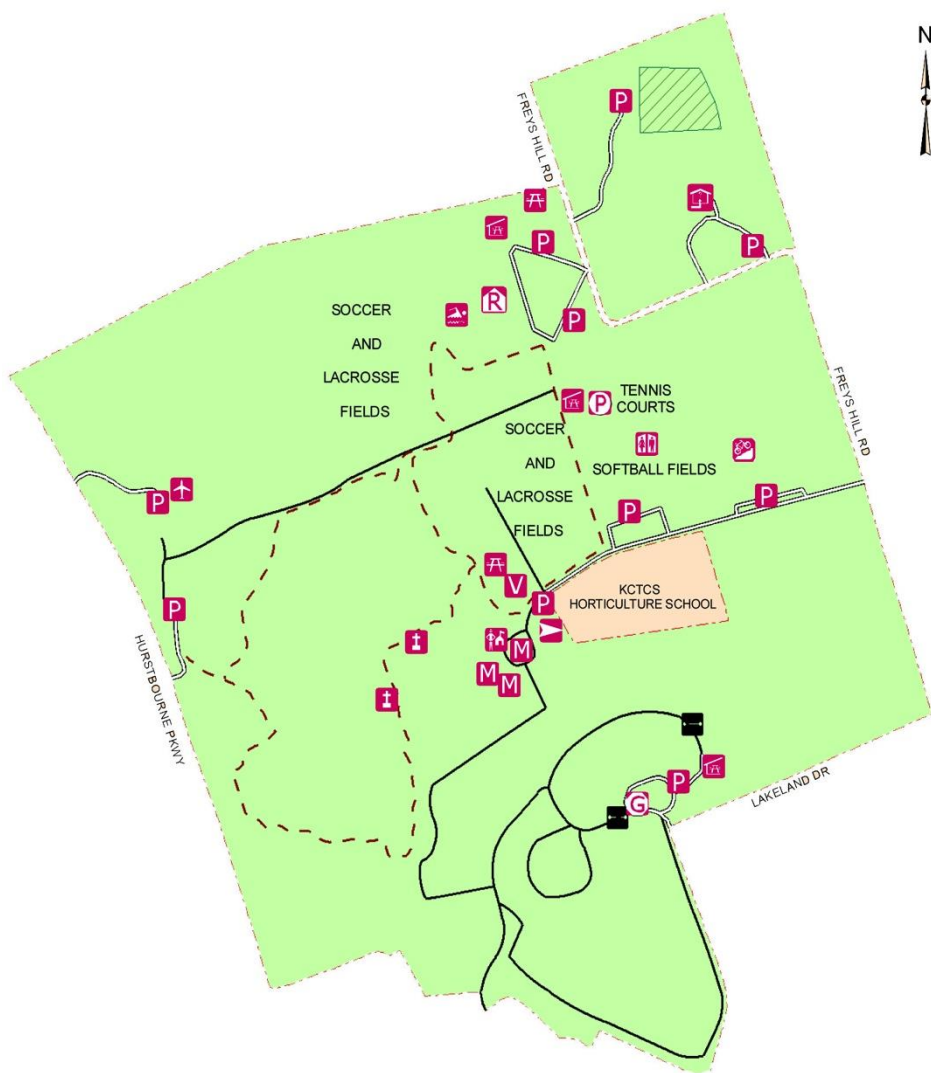
Results




















Results will be posted following each race on the race result board located near the finish line and online at www.GoCards.com

Awards

The Awards Ceremony will be conducted immediately following the conclusion of both competitions.

E.P. TOM SAWYER STATE PARK MAP



 Administration Building, Classrooms	 Restroom	 Cemetery
 Recreation Building, Restroom, Bathhouse	 BMX Track	 Maintenance Building
 Pool	 Playground	 Gate
 Parking Lot	 Gazebo	 Trail
 Ranger Office	 Archery Range	 Road
 Picnic Shelter, Restroom	 Volleyball	 Service Road*
 Picnic Grove	 Radio Controlled Airfield	 Dog Run

DRIVING DIRECTIONS / PARKING

To E.P. Tom Sawyer State Park

HEADING EAST ON WESTPORT ROAD

Turn right onto North Hurstbourne Road
Take the KY-146 (La Grange Road) ramp
Turn left onto KY-146
Turn left onto Lakeland Road
Turn right at the 3-way stop
Take the first left onto Freys Hill Road
Turn left at signs for TEAM PARKING LOT

HEADING WEST ON WESTPORT ROAD

Turn left onto North Hurstbourne Road
Take the KY-146 (La Grange Road) ramp
Turn left onto KY-146
Turn left onto Lakeland Road
Turn right at the 3-way stop
Take the first left onto Freys Hill Road
Turn left at signs for TEAM PARKING LOT

HEADING NORTH ON NORTH HURSTBOURNE ROAD

Turn left onto the KY-146 Ramp
Turn left onto KY-146
Turn left onto Lakeland Road
Turn right at the 3-way stop
Take the first left onto Freys Hill Road
Turn left at signs for TEAM PARKING LOT

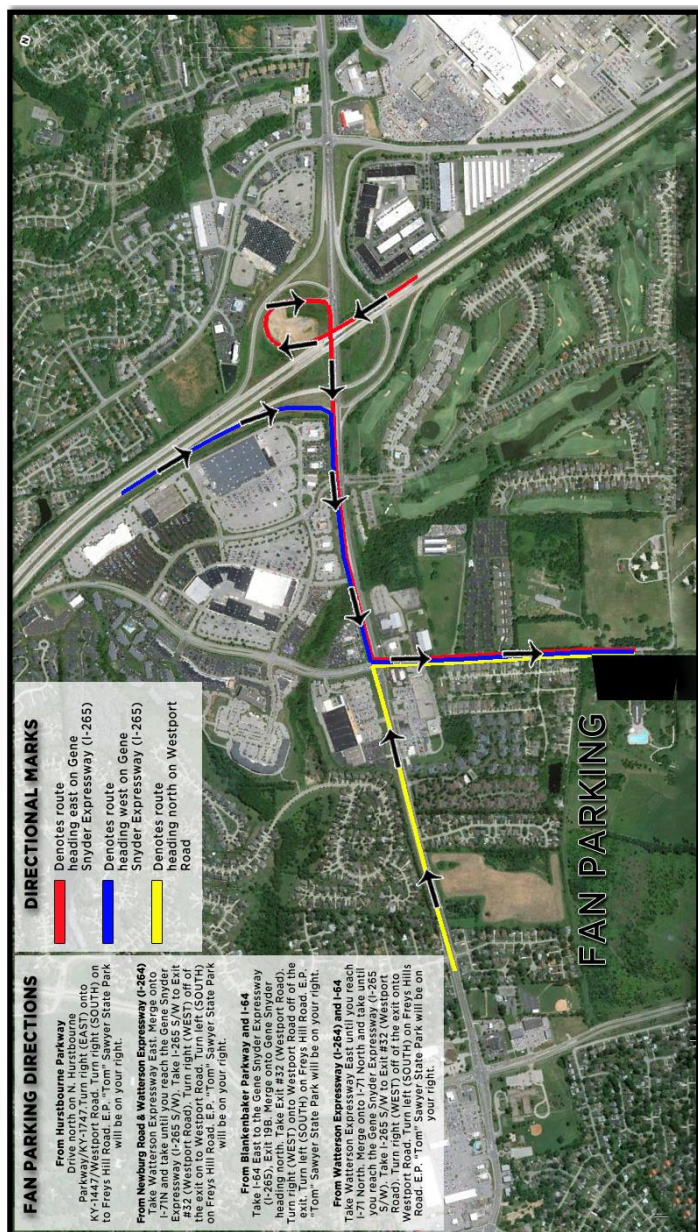
HEADING SOUTH ON NORTH HURSTBOURNE ROAD

Take the KY-146 (La Grange Road) ramp
Turn left onto KY-146
Turn left onto Lakeland Road
Turn right at the 3-way stop
Take the first left onto Freys Hill Road
Turn left at signs for TEAM PARKING LOT



2014 CROSS COUNTRY CHAMPIONSHIPS

DIVISION I • LOUISVILLE, KENTUCKY

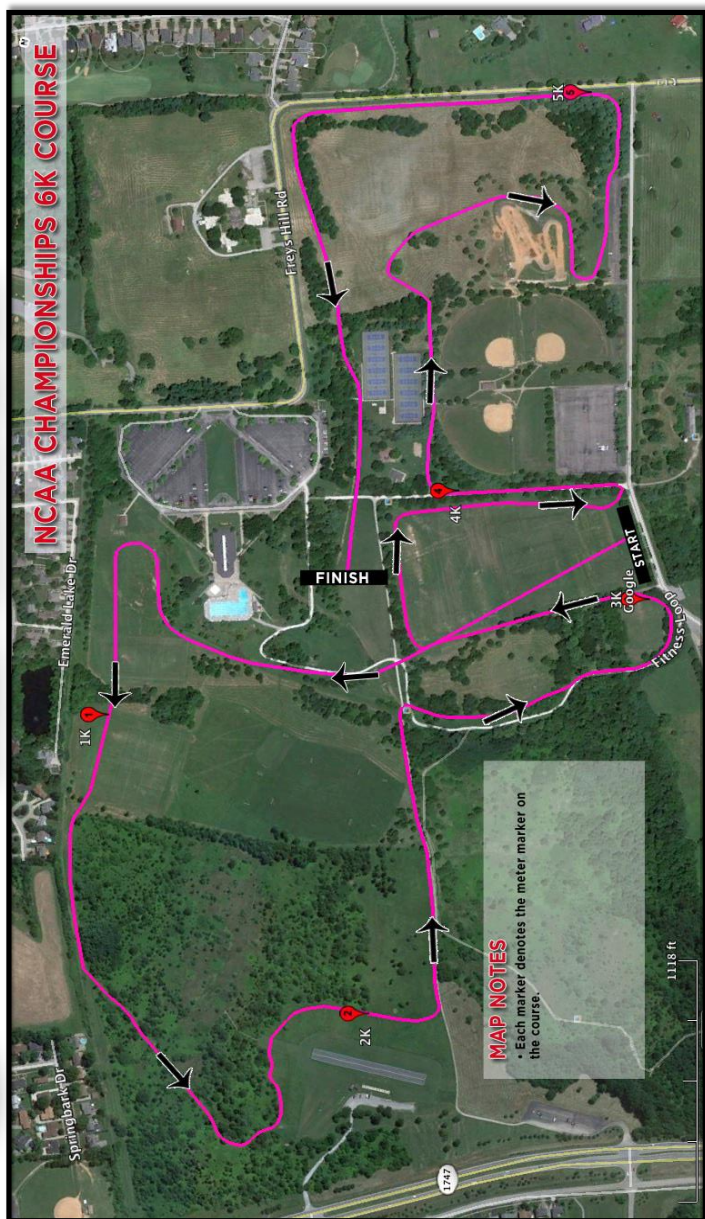


WOMEN'S 6,000 METER COURSE MAP



2014 CROSS COUNTRY CHAMPIONSHIPS

DIVISION I • LOUISVILLE, KENTUCKY

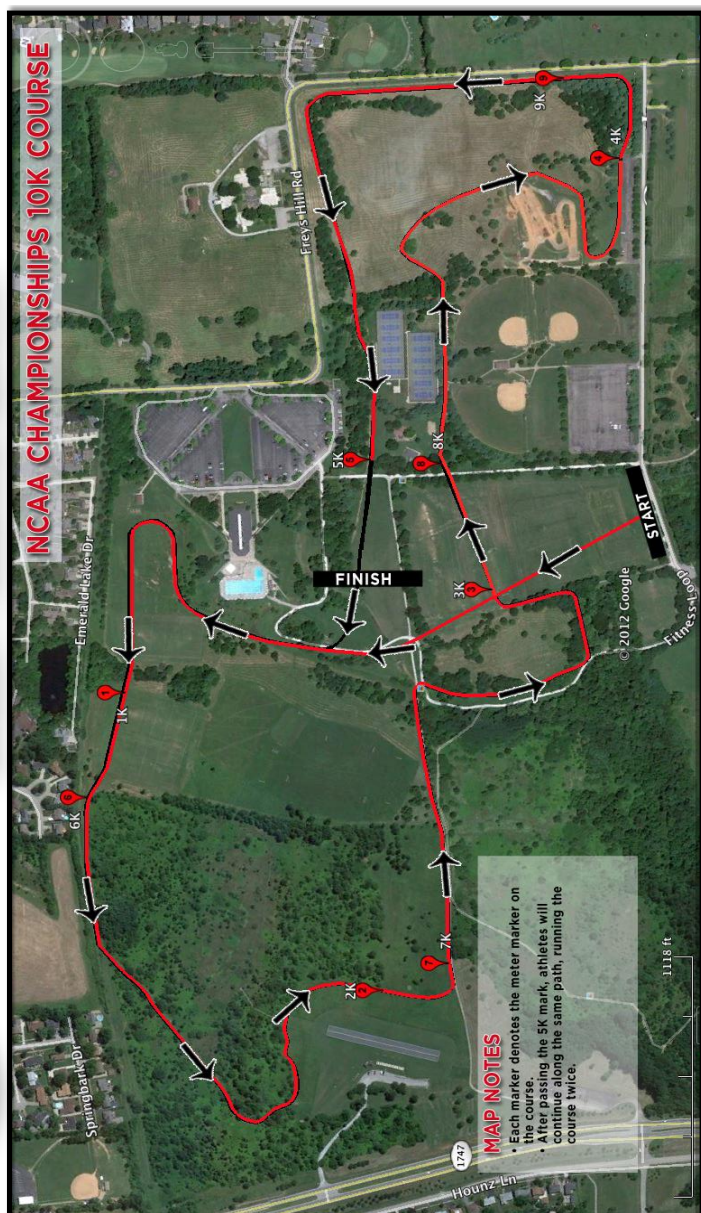


MEN'S 10,000 METER COURSE MAP



2014 CROSS COUNTRY CHAMPIONSHIPS

DIVISION I • LOUISVILLE, KENTUCKY



CHAMPIONSHIPS AT TOM SAWYER STATE PARK

PREVIOUS NCAA MARKS AT E.P. TOM SAWYER STATE PARK

Women's Top Finishes

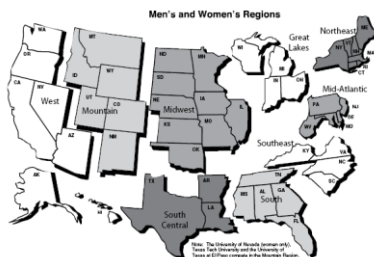
19:27.9	Betsy Saina, <i>Iowa State</i>	2012 NCAA National Championship
19:28.6	Abbey D'Agostino <i>Dartmouth</i>	2012 NCAA National Championship
19:28.6	Jordan Hasay <i>Oregon</i>	2012 NCAA National Championship
19:33.6	Aliphine Tuliamuk-Bolton <i>Iowa State</i>	2012 NCAA National Championship

Men's Top Finishes

28:31.3	Kennedy Kithuka, <i>Texas Tech</i>	2012 NCAA National Championship
28:38.6	Stephen Sambu, <i>Arizona</i>	2012 NCAA National Championship
28:51.8	Lawi Lalang, <i>Arizona</i>	2012 NCAA National Championship
29:13.5	Anthony Rotich, <i>UTEP</i>	2012 NCAA National Championship

PAST CHAMPIONSHIPS AT TOM SAWYER

2012 NCAA DI National Championships
2011 NCAA Division I Southeast Regional
2010 NCAA Division I Southeast Regional
2010 BIG EAST Conference Championship
2010 NCAA Division II National Championships
2009 NCAA Division I Southeast Regional
2007 NCAA Division I Southeast Regional
2007 BIG EAST Conference Championship
2006 NCAA Division I Southeast Regional



Site of the 2012, 2015, and 2017 NCAA Division I Men's and Women's Cross Country National Championships



E.P. Tom Sawyer State Park – Louisville, KY

UNIVERSITY of LOUISVILLE

The success of U of L's teams contribute to a sense of pride in the community and across the state. The very mention of the "Cardinals" evokes a sense of history, tradition and championships.

It's Happening Here! When the University of Louisville adopted that simple motto in the winter of 2008, it challenged itself and its community to strive for excellence. It also sent a message to the nation that Kentucky's metropolitan research university is on the verge of greatness.



One of the nation's oldest metropolitan universities, U of L has a longstanding reputation in areas such as business, law, engineering and medicine. The university is building on that reputation, establishing itself as a national leader in areas ranging from the humanities to entrepreneurship, from logistics and distribution to music composition, from social work to nursing and dentistry.

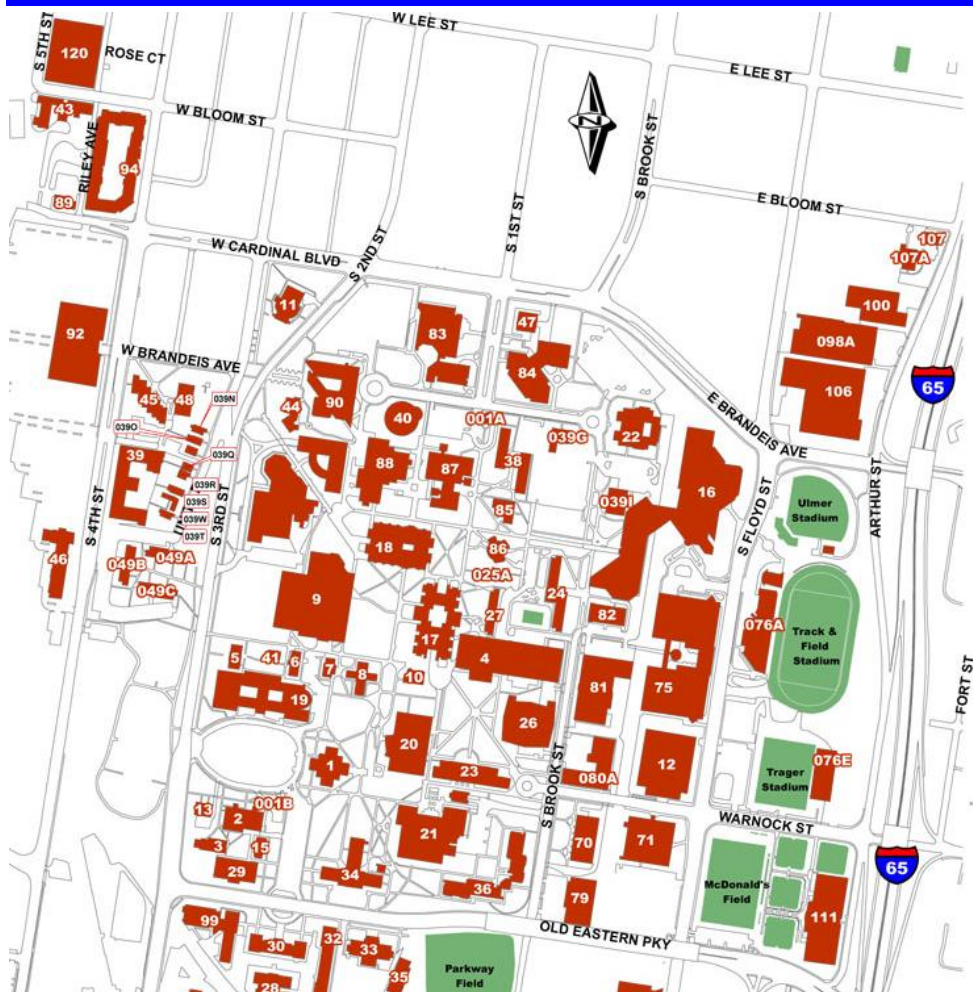
Two recent examples include U of L's entrepreneurship program, now ranked among the nation's top 10 by Success magazine, and the Brandeis School of Law boasts a student body that has won several national competitions.



U of L has begun to gain recognition on the national level in a variety of ways. A Wall Street Journal article cited U of L as being among the top 30 schools in the nation for sending students to elite graduate schools. And Consumers Digest rated the university 25th in the Top 50 Best Values for Public Colleges and Universities based on academic excellence, educational quality and costs of attendance.

Most students study on the Belknap Campus. Located in the heart of Kentucky's largest city, the park-like campus is noted for its combination of historical and contemporary buildings. Three motion picture companies filmed on campus this year alone.

UNIVERSITY of LOUISVILLE CAMPUS MAP



1900 So. Fourth St. Dorm	92	Ecumenical Center	86	Johnny Unitas Tower	47	Robbins Hall	44
Arch Survey/Transport	100	Ehs Service Center	07A	Johnston Building	77	Sackett Hall	31
Archives/Surplus Pro	98	Ekstrom Library	y 9	Jouett Hall	6	Schneider Hall	20
Baptist Student Ctr	85	Engineering Graphics	37	Kappa Delta Sorority	39S	School Of Business	90
Bass-Rudd Tennis Ctr	111	Ernst Hall	33	Kersey Library	28	Sigma Phi Epsilon	39R
Belknap Parking Gar.	75	Ford Hall	7	Lambda Chi	39W	Solvent Storage	36A
Belknap Research Bldg	4	Fraternity A	48A	Life Sciences	18	Stadium Facilities	109
Bettie Johnson Hall	94	Fraternity Bldg C	49C	Longrun/Environment	107	Steam & Chilled Water	70
Billy Minardi Hall	46	Gardiner Hall	18	Louisville Hall	45	Stevenson Hall	27
Bingham Humanities	17	Gheens Sci/Rauch Pl	40	Mccandless Hall	13	Stoddard Johnston	77
Brigham Hall	2	Gottschalk Hall	10	Miller Hall	38	Strickler Hall	88
Brodtschi Hall	41	Grawemeyer Hall	1	Miller Info Tec	21	Studio Arts/Slper	71
Cardinal Hall	46	Health And Counseling	82	Minority Affairs	39G	Swain Student Activities Ctr	16
Central Receiving	06A	Honors Dorm (B)	49B	Music School	83	The Playhouse	11
Chemistry Building	36	Honors Prog. Bldg.	25A	Natural Sciences	34	Threlkeld Hall	24
Chi Omega Sorority	39N	Houschens Building	81	Oppenheimer Hall	5	Triangle Fraternity	39O
College Of Education	84	Hughes Carpet Shop	103	Papa John's Cardinal	108	University Club Bldg	22
Community Park	39	Hughes Ground Shop	101	Parkway Fieldhouse	35	University Tower Apt	48
Crawford Gymnasium	26	Hughes Hydro-Tech	104	Patterson Hall	3	Updc Univ Plan & Con	89
Davidson Hall	87	Hughes Office Bldg.	102	Paul B. Lutz Hall	23	Urban Research Insti	43
Delta Zeta Sorority	39T	Information Center North	1A	Personnel/Payroll	106	Vogt Building	99
Dev. & Univ Relation	79	Information Center South	1B	Pi Beta Phi	39Q	W.S. Speed Hall	32
Dougherty Hall	29	Inst Of Inter. Dev	15	Ralph Wright Natatorium	12	Wilson Wyatt Hall	19
Early Learning Campus	120	J.B. Speed Hall	30	Red Barn	39I	Yum Center	14

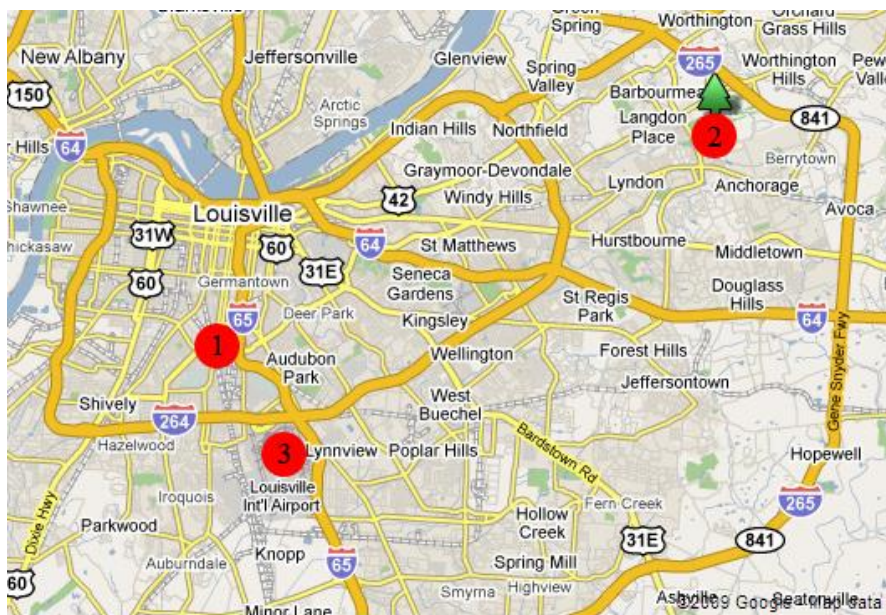
DIRECTIONS TO THE UNIVERSITY OF LOUISVILLE CAMPUS

I-65 South

Take I-65 South (Toward Nashville), to Exit 134 (Arthur Street), if you reach the Fairgrounds/Watterson Expressway exits, you have gone too far. Continue to the first stop sign, Arthur street and Brandeis Avenue. Turn right onto Brandeis Avenue / Cardinal Boulevard. Turn left onto Floyd Street. The first building on your right is the Student Activities Center. Turn right at the first entrance to the Student Activities Center. This will be a circular drive beside the three-story parking garage. You may park in the visitor's lot in the garage.

I-65 North (I-65 is accessible from I-71, I-64, and I-264)

Take I-65 North (Toward Indianapolis) to Exit 133B (the second Eastern Parkway exit). There is a stop sign at the end of the exit ramp. Veer right, following the curve around to the traffic light at Eastern Parkway (Denny's is on the corner). Turn right. Continue on Eastern Parkway until it dead-ends at Third Street. Turn right. Continue on Third Street to the third traffic light at Cardinal Boulevard. Turn right. Continue on Cardinal Boulevard to the second traffic light. Turn right onto Floyd Street. The first building on your right is the Student Activities Center. Turn right at the first entrance to the Student Activities Center. This will be a circular drive beside the three-story parking garage. You may park in the visitor's lot in the garage.



- 1 – University of Louisville campus
- 2 – E.P. “Tom” Sawyer State Park
- 3 – Louisville International Airport

LOUISVILLE, KENTUCKY



The Louisville area owes its existence to the Falls of the Ohio, the only place where the 981-mile river flows over bedrock. The falls were really rapids where the river dropped about 27 feet in three miles, usually blocking passage.

Known as the "Gateway to the South", Louisville has the flavor and gentleness of a Southern town. The Belle of Louisville steamboat still paddles its way up and down the Ohio River daily, mint juleps are still served under an old oak tree during the hot and muggy summers and fishing in the many lakes and rivers of Louisville and surrounding counties is still a favorite pastime. The Kentucky Center for the Arts is one of the nation's premier performing arts facilities, housing three spacious theatres.

Sports, including U of L athletics, are an important facet of life in the Louisville area. Churchill Downs has hosted three Breeders' Cups and continues its traditional Run for the Roses each May. The 1996 and 2000 PGA Championships were held at Valhalla Golf Course in eastern Jefferson County. The Louisville Bats, the triple-A baseball team of the Cincinnati Reds, drew over a million fans to games in a single season. Over 140 public parks, 20 golf courses and 226 tennis courts also provide outdoor entertainment.



The population of approximately one million is the nation's 16th largest metropolitan area. A great climate exists in Louisville with an average annual rainfall of 43 inches and an average summer to fall temperature of 88 degrees.

Another favorite in Louisville is trying to figure out the correct pronunciation of the city. So if you're a tourist, don't say Louie-ville or Lewis-ville. Natives claim it's Lou-a-vuhl. Either way, Louisville is still the great hometown.



Louisville is home to...legendary Churchill Downs and the Kentucky Derby, known as "the greatest two minutes in sports"... Papa John's Pizza... the first electric trolley ... Derby Pie ... the first cheeseburger ... the nation's largest annual fireworks display ... the nation's 25th largest public school system ... and more than 3.5 million visitors annually. WELCOME!

HOTELS AND ACCOMMODATIONS

AIRPORT / FAIRGROUNDS

Best Western Airport East
1921 Bishop Lane
www.bestwestern.com/airportheast
502/456-4411 11.0 miles

Candlewood Suites - Airport
1367 Gardiner Lane
www.candlewoodsuites.com/
502/357-3577 10.2 miles

Comfort Inn & Suites - Airport
653 Phillips Lane
www.choicehotel.com/hotel/ky212
502/375-2233 19.2 miles

Courtyard by Marriott - Airpt/Fair
810 Phillips Lane
www.marriott.com/sdfap
502/368-5678 12.2 miles



Crowne Plaza
830 Phillips Lane
www.cplouisville.com/
502/367-2251 14.7 miles

Days Inn - Airport & Fair/ExpoCtr
2905 Fern Valley Road
www.daysinn.com/
502/968-8124 12.4 miles

Mileage Estimated from State Park
Hampton Inn – Airport
800 Phillips Lane
www.hampton-inn.com/hi/louisville-airport
502/366-8100 12.3 miles

Hilton Garden Inn - Fairgrounds
2735 Crittenden Drive
www.louisvilleairport.stayhgi.com/
502/637-2424 12.2 miles

Holiday Inn - Airport East
4004 Gardiner Point Drive
www.hiairportheast.com/
502/452-6361 11.5 miles

Holiday Inn - Airport/Fairgrounds
447 Farmington Avenue
www.holidayinn.com/louisvilleky
502/637-4500 12.4 miles

Residence Inn by Marriott Airport
700 Phillips Lane
www.residenceinn.com/sdfra
502/363-8800 12.3 miles

Sleep Inn Airport/Fairgrounds
3330 Preston Highway
www.sleepinnlouisville.com/
502/368-9597 14.2 miles

SpringHill Suites by Marriott Air.
820 Phillips Lane
www.marriott.com/SDFLA
502/361-9009 12.2 miles



HOTELS AND ACCOMMODATIONS

DOWNTOWN

Mileage Estimated from State Park

The Camberley Brown Hotel
4th & Broadway
www.brownhotel.com/
502/736-2988 15.1 miles

Courtyard by Marriott Downtown
100 South Second Street
www.marriott.com/sdfd
502/562-0200 11.2 miles

Fairfield Inn & Suites by Marriott
132 East Jefferson Street
www.marriott.com/SDFFD
502/569-3553 11.1 miles

Hampton Inn - Downtown
101 E. Jefferson Street
www.louisvilledowntown.hamptoninn.com/
502/585-2200 12.3 miles

Hyatt Regency - Louisville
320 W. Jefferson
www.louisville.hyatt.com/
502/217-6088 11.3 miles

Marriott Louisville - Downtown
280 W. Jefferson Street
www.marriott.com/
502/627-5045 11.3 miles

Residence Inn by Marriott Dwn.
333 East Market Street
www.marriott.com/SDFGJ
502/589-8998 10.9 miles

The Seelbach Hilton
500 Fourth Avenue
www.seelbachhilton.com/
502/585-3200 11.5 miles

SpringHill Suites by Marriott
132 East Jefferson Street
www.marriott.com/SDFSJ
502/569-7373 11.1 miles



EAST END

Mileage Estimated from State Park

Breckinridge Inn
2800 Breckenridge Lane
www.breckinridgeinn.com/
502/456-5050 7.8 miles

Courtyard by Marriott - East
9608 Blairwood Road
www.marriott.com/
502/429-0006 5.9 miles

Embassy Suites - Louisville East
9940 Corporate Campus Drive
www.louisvilleeast.embassysuites.com/
502/426-9191 3.4 miles

Hawthorn Suites
751 Cypress Station Drive
www.hawthorn.com/
502/899-5959 6.8 miles

Holiday Inn-Hurstbourne
1325 S. Hurstbourne Pkwy.
www.hihurstbourne.com/
502/426-2600 5.8 miles

Homewood Suites
9401 Hurstbourne Trace
www.homewoodsuites.com/
502/429-9070 3.1 miles

Jameson Inn
1301 Kentucky Mills Dr.
www.jamesoninns.com/
502/267-8100 11.7 miles

Louisville Marriott - East
1903 Embassy Square
www.marriott.com/
502/499-6220 5.0 miles

HOTELS AND ACCOMMODATIONS

EAST END

Spring Hill Suites by Marriott
10101 Forest Green Blvd.
www.marriott.com/sdfsh
502/326-3895 *1.9 miles*

Mileage Estimated from State Park



INDIANA

Holiday Inn Lakeview
505 Marriott Drive
Clarksville, Indiana 47129
www.holiday-inn.com/clarksvilleky
812/283-4411 *15.5 miles*

Mileage Estimated from State Park

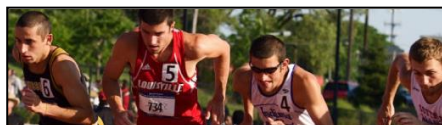
Sheraton Louisville Riverside Hotel
700 W. Riverside Dr.
Jeffersonville, Indiana 47130
www.sheraton.com/louisvilleriverside
812/284-6711 *15.5 miles*

NORTHEAST

Courtyard by Marriott - Northeast
10200 Champion Farms Drive
www.marriott.com/sdfne
502/429-9293 *0.9 miles*

Mileage Estimated from State Park

Hilton Garden Inn at the Summit
9850 Park Plaza Avenue
www.louisvillenortheast.hgi.com/
502/423-0018 *2.3 miles*



Residence Inn - Louisville NE
3500 Springhurst Common Drive
www.marriott.com/sdfri
502/412-1311 *1.1 miles*

SOUTH

Fairfield Inn Marriott
Louisville South
362 Brenton Way
www.marriott.com/SDFFS
502/955-5533 *17.2 miles*

Mileage Estimated from State Park

Fern Valley Hotel &
Conference Center
3317 Fern Valley Road
www.fernvalleyhotel.com/
502/964-3311 *21.8 miles*

EMERGENCY AND PHARMACIES / TRANSPORTATION

EMERGENCY LISTINGS

Mileage Estimated from State Park

Jewish Hospital Medical Center East, Frazier Rehabilitation Center
3920 Dutchmans Lane, Louisville, KY 40207 502/259-6600 5.7 miles

Frazier Rehabilitation Institute, Sports Medicine
201 Abraham Flexner, Louisville, KY 40202 502/560-8300 10.8 miles

PHARMACIES

Mileage Estimated from State Park

Meijer Pharmacy
4100 Towne Center, Louisville, KY 40241 502/326-5201 0.7miles

Walgreens
9702 Westport Road, Louisville, KY 40241 502/425-1434 0.7 miles

Kroger Pharmacy
9501 Westport Road, Louisville, KY 40241 502/326-1345 0.9 miles

TRANSPORTATION

Airport

Louisville International Airport
www.louintlairport.com/

Airlines

Air Alliance	888/247-2262
American	800/433-7300
ASA	800/282-3424
Comair	800/354-9822
Continental	800/525-0280
Delta	800/221-1212
Delta Express	800/325-5205
Midway Airlines	919/595-6000
Midwest Express	800/452-2022
Northwest	800/225-2525
Southwest	800/435-9792
TWA	800/221-2000
United Express	800/241-6522
US Airways	800/428-4322

Car Rentals

Avis	502/368-5851
Budget	502/363-4300
Dollar	502/366-1600
Hertz	502/361-0181
Enterprise	502/366-4700
National	502/361-2515
Thrifty	502/367-2277

Taxi Service

Green Cab	502/635-6400
Taxi Services	502/244-9480
Yellow Cab Co.	502/636-5511

Amtrak

Amtrak	877/632-3788
--------	--------------

Charter Bus Service

Miller Transportation of Louisville	502/368-5644
Miller Transportation of Southern Indiana	317/224-4287

LOUISVILLE ORIGINALS

Churchill Downs

700 Central Avenue
Louisville, KY 40208
502/637-7097 - 12.9 miles
www.churchilldowns.com



The world's most legendary racetrack and home to the greatest two minutes in sport for more than 135 years, the Kentucky Derby.

Kentucky Derby Museum

704 Central Avenue
Louisville, KY 40208
502/637-7097 - 12.8 miles
Excitement of every Derby, every day

Muhammad Ali Center

144 North Sixth Street
Louisville, KY 40202
502/584-9254 - 14.1 miles



Cultural center inspired by Ali's life and ideals

Frazier Int'l History Museum

829 West Main Street
Louisville, KY 20202
502/753-5663 - 11.3 miles
1,000 years of international history including 300 pieces from Great Britain's Royal Armouries

Louisville Slugger Museum/Factory

800 West Main Street
Louisville, KY 40202
877/775-8843 - 11.3 miles
Honoring baseball's greatest hitters

Louisville Science Center and IMAX Theater

727 West Main Street
Louisville, KY 40202 - 11.2 miles
40,000 sq. ft. of hands-on fun

Louisville Zoo

1100 Trevilian Way
Louisville, KY 40213 - 9.9 miles



Over 1,300 animals, plus the amazing Gorilla Forest

Speed Art Museum

2035 South Third Street
Louisville, KY 40208
502/634-2700 - 17.0 miles
Collection of 12,000 pieces spanning 6,000 years

Kentucky Kingdom

937 Phillips Lane
Louisville, KY 40209
502/366-2231 - 12.0 miles



Water park, coasters, and thrills for all ages

BOWLING / ARCADE

Mileage Estimated from State Park

Lucky Strikes at 4th Street Live Bowling
427 South Fourth Street, Louisville, KY 40202

502/560-1400
14.3 miles

Renaissance Fun Park
201 Park Place Drive, Louisville, KY 40243

502/253-9700
4.5 miles

Executive Strike and Spare
911 Phillips Lane, Louisville, KY 40209

502/368-1651
19.1 miles

MOVIE THEATERS

Mileage Estimated from State Park

Baxter Avenue Theatres
1250 Bardstown Road, Louisville, KY 40204

502/459-2288
16.0 miles

Cinemark Tinseltown USA
4400 Towne Center Drive, Louisville, KY 40241

502/326-0088
0.9 miles

Showcase Cinemas Stonybrook
2745 S. Hurstbourne Pkwy, Louisville, KY 40220

502/499-6656
5.6 miles

Cinemark Theaters St. Matthews
5000 Shelbyville Road, Louisville, KY 40207

502/259-9649
15.4 miles

SHOPPING

Mileage Estimated from State Park

Jefferson Mall
4801 Outer Loop, Louisville, KY 40219

502/968-4101
12.0 miles

Mall Street Matthews
5000 Shelbyville Road, Louisville, KY 40207

502/895-7467
15.4 miles

The Summit
Westport Road at I-265, Louisville, KY 40241

502/425-3441
1.9 miles



SENECA PARK

3151 Pee Wee Reese Road, Louisville, KY 40207

Seneca Park covers 333 acres and is one of the many outstanding metro parks located in Louisville. The popular park is highlighted by its 18-hole golf course and 3.1 mile cross-country trail.

Amenities: Seneca Golf Course (18-hole), ballfields (4), basketball (2), cross-country trail (3.1 miles), field hockey, horseback riding trails, picnic tables, playground, restrooms, soccer, tennis (10), volleyball, walking path (1.2 miles).



IROQUOIS PARK

2120 Rundill Road, Louisville, KY 40214

Iroquois Park was planned by Frederick Law Olmsted as a “scenic reservation” of forested hillsides and breathtaking vistas. The park features the WPA-era Iroquois Amphitheater.

Amenities: Archery range, basketball (2), bikeway and walking paths, disc golf course, fishing lake, grills, hiking trails, horseback riding trails, horseshoe pits, picnic shelters, picnic tables, playground/splash play area, restrooms, scenic overlooks, tennis (8), volleyball, walking path (1.6 miles).



CHEROKEE PARK

745 Cochran Hill Road, Louisville, KY 40206

Cherokee Park's main feature is the 2.4-mile Scenic Loop, with separate lanes for vehicle traffic (one-way) and recreational users. One of the original parks designed by Frederick Law Olmsted, the park provides a pastoral setting amid rolling hills, open meadows, and woodlands of the Beargrass Creek valley.

Amenities: archery range, ballfield, basketball (3), dog run (fenced off-leash area), fishing lake, grills, hiking trails, Hogan's fountain, horseback riding trails, horseshoe pit (2), mountain biking trails, Nettletooth Bird Sanctuary, picnic shelters (3), picnic tables, playgrounds, restrooms, scenic loop (2.4-mile multi-use path), spray pool, tennis (2), walking path (3).



AIRPORT

Dining Approx 15 Miles from State Park

RESTAURANTS AND DINING

Bob Evans Restaurant
1463 Gardiner Ln.
Louisville, KY 40213
502/456-2636

Bob Evans Restaurant
4620 Preston Hwy.
Louisville, KY 40213
502/361-8161

Bob Evans Restaurant
11800 Standiford Plaza Dr.
Louisville, KY 40229
502/969-3812

Buckhead Mountain Grill
4112 Outer Loop
Louisville, KY 40219
502/966-5555

Cardinal Hall of Fame Cafe
2745 Crittenden Dr.
Louisville, KY 40209
502/635-8686

Cracker Barrel
2701 Crittenden Dr.
Louisville, KY 40209
502/636-2263

Derby Café
704 Central Ave.
Louisville, KY 40208
502/634-0858

Ernesto's Mexican Restaurant
1921 Bishop Ln.
Louisville, KY 40218
502/456-4411

Fifth Quarter
1241 Durrett Ln.
Louisville, KY 40213
502/361-2363

Hooters
4948 Dixie Hwy.
Louisville, KY 40216
502/449-4194

Hooters
7701 Preston Hwy.
Louisville, KY 40219
502/968-1606



Kem's Cafe & Bar
447 Farmington Ave.
Louisville, KY 40209
502/637-4500

Mark's Feed Store Bar-B-Q
10316 Dixie Hwy.
Louisville, KY 40272
502/933-7707

Mike Linnig's, Inc.
9308 Cane Run Rd.
Louisville, KY 40258
502/937-6197

Outback Steakhouse
6520 Signature Dr.
Louisville, KY 40213
502/964-8383

Red Lobster
4639 Outer Loop
Louisville, KY 40219
502/964-9647

Sportsville Bar & Grill
4004 Gardiner Point Dr.
Louisville, KY 40213
502/452-6361

Texas Roadhouse Outer Loop
3322 Outer Loop
Louisville, KY 40219
502/962-7600

Tumbleweed Southwest Grill
4255 Outer Loop
Louisville, KY 40219
502/966-0307

Tumbleweed Southwest Grill
380 Brenton Way
Shepherdsville, KY 40165
502/955-5747

Tumbleweed Southwest Grill
9701 Dixie Hwy.
Louisville, KY 40272
502/937-9951

Wick's Pizza & Pub
10966 Dixie Hwy.
Louisville, KY 40272
502/995-4333

FRANKFORT AVENUE

Bourbons Bistro
2255 Frankfort Ave.
Louisville, KY 40206
502/894-8838

Irish Rover, The
2319 Frankfort Ave.
Louisville, KY 40206
502/899-3544

J. Gumbo's Down-Home Cajun
2109 Franfort Ave.
Louisville, KY 40206
502/896-4046

L & N Wine Bar and Bistro
1765 Mellwood Ave.
Louisville, KY 40206
502/897-0070

Dining Approx 10 Miles from State Park

Porcini
2730 Frankfort Ave.
Louisville, KY 40206
502/894-8686

Buck's at the Mayflower
425 W. Ormsby
Louisville, KY 40203
502/637-5284

RESTAURANTS AND DINING

BARDSTOWN ROAD

Asiatique Restaurant
1767 Bardstown Rd.
Louisville, KY 40205
502/451-2749

Baxter Station Bar & Grill
1201 Payne St.
Louisville, KY 40204
502/584-1635

Bristol Bar & Grille
1321 Bardstown Rd.
Louisville, KY 40204
502/456-1702

Buckhead Mountain Grill
3008 Bardstown Rd.
Louisville, KY 40205
502/456-6680

Cafe Metro
1700 Bardstown Rd.
Louisville, KY 40205
502/458-4830

Club Grotto, American Bistro
2116 Bardstown Rd.
Louisville, KY 40205
502/459-5275

Cumberland Brews
1576 Bardstown Rd.
Louisville, KY 40205
(502) 458-8727

Flanagan's Gourmet Pizza
934 Baxter Ave.
Louisville, KY 40204
502/585-3700

Impellizzeri's Pizza
1381 Bardstown Rd.
Louisville, KY 40204
(502) 454-2711

Jack Fry's
1007 Bardstown Rd.
Louisville, KY 40204
502/452-9244

John E's Restaurant & Lounge
3708 Bardstown Rd.
Louisville, KY 40218
502/456-1111

Lilly's
1147 Bardstown Rd.
Louisville, KY 40204
502/451-0447

Lynn's Paradise Cafe
984 Barret Ave.
Louisville, KY 40204
502/583-3447

Mark's Feed Store Bar-B-Q
1514 Bardstown Rd.
Louisville, KY 40205
502/458-1570

Molly Malone's Irish Pub
933 Baxter Ave.
Louisville, KY 40204
502/473-1222

O'Shea's Irish Pub
956 Baxter Ave.
Louisville, KY 40204
502/589-7373

Sapporo Japanese Grill
1706 Bardstown Rd.
Louisville, KY 40205
502/253-0036

Tumbleweed Southwest Grill
3602 Bardstown Rd.
Louisville, KY 40218
502/454-2727

Uptown Cafe
1624 Bardstown Rd.
Louisville, KY 40205
502/458-4212

Wic's Pizza & Pub
975 Baxter Ave.
Louisville, KY 40204
502/458-1828

Winston's at Sullivan Univ.
3101 Bardstown Rd.
Louisville, KY 40205
502/456-0980

Dining Approx 14 Miles from State Park

DOWNTOWN

Another Place Sandwich Shop
119 S. 7th St.
Louisville, KY 40202
502/589-4115

Artemisia
620 E. Market St.
Louisville, KY 40202
502/583-4177

Bearno's by the Bridge
131 W. Main St.
Louisville, KY 40202
502/584-7437

Bistro 301
301 W. Market St.
Louisville, KY 40202
502/584-8337

J. Gumbo's-Down Home Cajun
416 S. Fourth St.
Louisville, KY 40202
502/589-9245

Jeff Ruby's Steakhouse
325 W. Main St., Ste. 120
Louisville, KY 40202
502/584-0102

Joe's Crab Shack
131 River Rd.
Louisville, KY 40202
502/568-1171

Los Aztecas
530 W. Main St.
Louisville, KY 40202
502/561-8535

Quizno's Classic Subs
223 S. 5th St.
Louisville, KY 40202
502/589-5520

Red Star Tavern
401 S. 4th St.
Louisville, KY 40202
502/568-5656

Ri Ra Irish Pub
427 Fourth St.
Louisville, KY 40202
502/587-1825

RIVUE at Galt House
140 N. Fourth Street, 25th Fl.
Louisville, KY 40202
502/568-4239

Dining Approx 13 Miles from State Park

RESTAURANTS AND DINING

DOWNTOWN (CONTINUED)

Blu Italian Mediterranean Grille
280 W. Jefferson St.
Louisville, KY 40202
502/627-5045

Bluegrass Brewing Co.
660 S. 4th St.
Louisville, KY 40202
502/586-2224

Bodega At Felice
829 E Market St., Ste. D
Louisville, KY 40206
502/569-4100

Bristol Bar & Grille Downtown
614 W. Main St.
Louisville, KY 40202
502/582-1995

Caviar Japanese Restaurant
416 W. Muhammad Ali Blvd.
Louisville, KY 40202
502/625-3090

Champions Sports Bar
280 W. Jefferson St.
Louisville, KY 40202
502/671-4246

English Grill at Brown Hotel
335 W. Broadway
Louisville, KY 40202
502/583-1234

Hard Rock Cafe
424 S. 4th St.
Louisville, KY 40202
502/568-2202

Intermezzo Cafe & Cabaret
316 W. Main St.
Louisville, KY 40202
502/561-3344

Lucky Strike
427 S. 4th St.
Louisville, KY 40202
502/560-1400

Maker's Mark Bourbon House
446 S. Fourth St.
Louisville, KY 40202
502/568-9009

Mayan Cafe
813 E. Market St.
Louisville, KY 40206
502/566-0651

Morton's, The Steakhouse
626 W. Main St.
Louisville, KY 40202
502/584-0421

Oakroom at Seelbach Hilton
500 S. 4th Ave.
Louisville, KY 40202
502/585-3200

Old Spaghetti Factory
235 W. Market St.
Louisville, KY 40202
502/581-1070

Proof on Main
702 W. Main St.
Louisville, KY 40202
502/217-6360

Pub, The
412 S. Fourth St.
Louisville, KY 40202
502/569-7782

Sully's Restaurant and Saloon
434 S. Fourth St.
Louisville, KY 40202
502/585-4100

Dining Approx 13 Miles from State Park

Tengo sed Cantina
432B S. Fourth St.
Louisville, KY 40202
502/540-1461

TGI Fridays
415 S. Fourth St.
Louisville, KY 40202
502/585-3577

Toast On Market
736 E. Market St.
Louisville, KY 40202
502/569-4099

Tumbleweed Southwest Grill
1201 River Rd.
Louisville, KY 40206
502/585-4107

Vincenzo's Italian Restaurant
150 S. 5th St.
Louisville, KY 40202
502/580-1350

Wet Willie's
441 S. Fourth St., 2 FL
Louisville, KY 40202
502/581-1332

Yaching's East West Cuisine
105 S. Fourth St.
Louisville, KY 40202
502/585-4005



EAST END & HURSTBOURNE

Bob Evans Restaurant
9797 Blairwood Rd.
Louisville, KY 40222
502/423-0236

Equus
122 Sears Ave.
Louisville, KY 40207
502/897-9721

Dining Approx 8 Miles from State Park

Outback Steakhouse
4621 Shelbyville Rd.
Louisville, KY 40207
502/895-4329

EAST END & HURSTBOURNE

Approx 8 Miles from State Park

RESTAURANTS AND DINING

Bonefish Grill
657 Hurstbourne Ln.
Louisville, KY 40222
502/412-4666

Brendan's Public House
3921 Shelbyville Rd.
Louisville, KY 40207
502/895-1212

Bristol Bar & Grille
300 N. Hurstbourne Pkwy.
Louisville, KY 40222
502/426-0627

Buca di Beppo
2051 Hurstbourne Pkwy.
Louisville, KY 40220
502/493-2426

Buckhead Mountain Grill
10206 Westport Rd.
Louisville, KY 40241
502/339-0808

Cheesecake Factory, The
5000 Shelbyville Rd.
Louisville, KY 40207
502/897-3933

Chili's
421 Hurstbourne Pkwy.
Louisville, KY 40222
502/425-6800

Corbett's - An American Place
5050 Norton Healthcare Blvd.
Louisville, KY 40241
502/327-5058

Delfrisco's
4107 Oechsli Ave.
Louisville, KY 40207
502/897-7077

Domino's Pizza
2400 Brownsboro Rd.
Louisville, KY 40206
502/896-3030

Fuji Japanese Steakhouse
3576 Springhurst Blvd.
Louisville, KY 40241
502/339-1978

Hooters
4120 Dutchmans Ln.
Louisville, KY 40207
502/895-7100

Ichiban Samurai Japanese
Steakhouse & Sushi
1510 Lake Shore Ct.
Louisville, KY 40223
502/412-3339

La Tea Da
4600 Shelbyville Rd.
Louisville, KY 40207
502/895-3226

Le Relais
2817 Taylorsville Rd.
Louisville, KY 40205
502/451-9020

Limestone Restaurant
10001 Forest Green Blvd.
Louisville, KY 40223
502/426-7477

Mark's Feed Store Bar-B-Q
11422 Shelbyville Rd.
Louisville, KY 40243
502/244-0140

Martini Italian Bistro
4021 Summit Plaza Dr.
Louisville, KY 40241
502/394-9797

Mitchell's Fish Market
4031 Summit Plaza Dr.
Louisville, KY 40241
502/412-1818

Napa River Grill
1211 Herr Ln.
Louisville, KY 40222
502/893-0141

Red Lobster
986 Breckinridge Ln.
Louisville, KY 40207
502/899-3334

Ruth's Chris Steak House
6100 Dutchmans Ln., 16th Fl.
Louisville, KY 40205
502/479-0026

Shogun Japanese Steakhouse
9026 Taylorsville Rd.
Louisville, KY 40299
502/499-5700

TGI Fridays
9990 Linn Station Rd.
Louisville, KY 40223
502/425-8185

Tumbleweed Southwest Grill
3550 Springhurst Commons
Louisville, KY 40241
502/412-8172

Tumbleweed Southwest Grill
8609 Citadel Way
Louisville, KY 40220
502/493-0905

Westport Village
1315 Herr Ln., Suite 210
Louisville, KY 40222
502/581-8800

Wick's Pizza & Pub
2927 Goose Creek Rd.
Louisville, KY 40241
502/327-9425

Wick's Pizza & Pub
12717 Shelbyville Rd.
Louisville, KY 40243
502/213-9425

Z's Oyster Bar & Steakhouse
101 Whittington Pkwy.
Louisville, KY 40222
502/429-8000



NCAA CHAMPIONSHIP HISTORY

<i>Year</i>	<i>Men's Champion</i>	<i>Women's Champion</i>	<i>Year</i>	<i>Men's Champion</i>	<i>Women's Champion</i>
1938	Indiana		1975	UTEP	
1939	Michigan St.		1976	UTEP	
1940	Indiana		1977	Oregon	
1941	Rhode Island		1978	UTEP	
1942	Penn State/Indiana		1979	UTEP	
1943	N/A		1980	UTEP	
1944	Drake		1981	UTEP	Virginia
1945	Drake		1982	Wisconsin	Virginia
1946	Drake		1983	*UTEP	Oregon
1947	Penn St.		1984	Arkansas	Wisconsin
1948	Michigan St.		1985	Wisconsin	Wisconsin
1949	Michigan St.		1986	Arkansas	Texas
1950	Penn St.		1987	Arkansas	Oregon
1951	Syracuse		1988	Wisconsin	Kentucky
1952	Michigan St.		1989	Iowa St.	Villanova
1953	Kansas		1990	Arkansas	Villanova
1954	Oklahoma St.		1991	Arkansas	Villanova
1955	Michigan St.		1992	Arkansas	Villanova
1956	Michigan St.		1993	Arkansas	Villanova
1957	Notre Dame		1994	Iowa St.	Villanova
1958	Michigan St.		1995	Arkansas	Providence
1959	Michigan St.		1996	Stanford	Stanford
1960	Houston		1997	Stanford	BYU
1961	Oregon St.		1998	Arkansas	Villanova
1962	San Jose St.		1999	Arkansas	BYU
1963	San Jose St.		2000	Arkansas	Colorado
1964	Western Mich.		2001	Colorado	BYU
1965	Western Mich.		2002	Stanford	BYU
1966	Villanova		2003	Stanford	Stanford
1967	Villanova		2004	Colorado	Colorado
1968	Villanova		2005	Wisconsin	Stanford
1969	UTEP		2006	Colorado	Stanford
1970	Villanova		2007	Oregon	Stanford
1971	Oregon		2008	Oregon	Washington
1972	Tennessee		2009	Oklahoma St.	Villanova
1973	Oregon		2010	Oklahoma St.	Villanova
1974	Oregon		2011	Wisconsin	Georgetown
			2012	Oklahoma St.	Oregon
			2013	Colorado	Providence

- *Participation in the championships vacated by the NCAA Committee on Infractions.*

NCAA CHAMPIONSHIPS COMING TO LOUISVILLE



MEN'S AND WOMEN'S CROSS COUNTRY

Division I Cross Country National Championships
E.P. Tom Sawyer State Park, Louisville, KY
2015 and 2017



MEN'S BASKETBALL

Division I Men's Basketball Championship
Regional
KFC Yum! Center, Louisville, KY
March 24 and 26, 2016

For complete coverage of all 90 NCAA Championships, visit

NCAA.com