

2023  
BLUE HOSE FOOTBALL

*GAMEDAY*



PRESBYTERIAN  
VS. SAN DIEGO  
NOVEMBER 4  
BAILEY MEMORIAL STADIUM



# PC TABLE OF CONTENTS



## SAN DIEGO (2-6, 2-3) VS. PRESBYTERIAN (3-5, 1-4)

Saturday, November 4, 2023  
Bailey Memorial Stadium • Clinton, S.C.

### 3 Stadium Information

4 Radio/TV Information

19 PRESIDENT  
ANITA GUSTAFSON

26 Scotsman Club

5 Today's Matchup

20 AD DEE NICHOLS

28 Compliance

6 PC Clear Bag Policy

21 PC DEPTH CHART

29 Social Media Directory

11 2022 Blue Hose

22 PC ROSTER

30 PC Fall Sports

16 HC Steve Englehart

23 OPPONENT ROSTER

17 Assistant Coaches/Support Staff

24 PC STATISTICS

18 Presbyterian College

25 Presbyterian Coaches

## CAMERAS

Video cameras are strictly prohibited. Additionally, tripods and large lenses that could inconvenience other patrons are prohibited.

## DISABILITY ACCOMMODATIONS

Disability accessible seating is available at Bailey Memorial Stadium. If you require disabled seating, please contact the PC Ticket Office at 1-864-833-8240.

## ELEVATOR

An elevator is available at the front of Bailey Memorial Stadium across from the concession area. This elevator provides access to the Scotsman level for disabled guests and to the President's Level for appropriately ticketed patrons and credentialed personnel.

## EMERGENCY SERVICES

Please report any emergency to a member of the event staff wearing white shirts or a public safety officer and they will alert the appropriate stadium personnel. Announcements and paging for emergencies are coordinated by contacting event staff.

First Aid stations are located on the concourse level across from the concession area. An ambulance will be available for emergency service at all games.

## ENTRANCE & ADMISSION

All guests must have a valid ticket to enter. Once in the stadium, guests may not exit and re-enter. All patrons are asked to enter Bailey Memorial Stadium through the front gate. Gates will open 90 minutes prior to kickoff.

## FAN BEHAVIOR

Presbyterian College hopes to provide a memorable game day experience for all fans. Please help us to enhance the fan experience by demonstrating sportsmanship at all times. If you encounter unruly behavior, please contact a game management representative. Event Staff will be wearing white shirts or yellow jackets with ShowPros on the back. Spectators must remain off the playing field until 15 minutes after the game ends. Presbyterian College reserves the right to remove from the stadium, without refund, any individuals disrupting other fans, team representatives, or officials.

## LOST & FOUND

Found items are returned to the Athletics Department located at Templeton Gym. The office can be reached at 864-833-8240 Monday through Friday.

## TOBACCO USE

Presbyterian College is a tobacco free campus, which includes all athletic venues. The use of any tobacco products, including but not limited to traditional cigarettes, e-cigarettes, chewing tobacco, pipes and cigars, is prohibited in Bailey Memorial Stadium.

## WILL CALL & DAY OF GAME TICKETS

Will Call is located at the Ticket Booth located at the front of Bailey Memorial Stadium. Will Call will open 90 minutes before kickoff and close at halftime. Will Call pick ups will require a photo ID.

If available, day-of-game sales will take place at the PC Ticket Office. Game day sales are cash and credit card only.

## HEAT-RELATED ISSUES

In South Carolina, particularly in August and September, development of heat related problems are a common occurrence during football games at Bailey Memorial Stadium. A high heat index increases the body temperature leading to significant sweating and fluid loss. Unless fluids are appropriately replaced, heat-related illness may occur. Fans with cardiac, respiratory or gastrointestinal problems are at higher risk for heat illness. Heat problems can usually be prevented by:

- Applying sunscreen 15-30 SPF
- Wearing a hat
- Wearing light, loose fitting clothes
- Drinking plenty of water or sports drinks
- Limiting alcohol intake

If you become hot, sweaty, fatigued and thirsty, you should get out of the sun immediately and begin to replenish your fluids. If these symptoms continue or you develop dizziness or muscle cramps, you should go to the aid station for further evaluation and treatment.

Other medical problems may occur during a game. Should you become ill and feel the need for medical attention during a game, Event Staff or Security Personnel can direct you to find the nearest aid station or they can summon Emergency Medical Personnel if you are too sick to be moved. If you have significant medical problems, please bring a list of your medications with you to the game in case you have to be seen in our aid stations.



# RADIO/VIDEO INFORMATION

## Video

Presbyterian currently is slated to have all home football games available to watch live on an online digital network. See the remaining video schedule for the 2023 football season below.

Sept. 2	at Murray State	ESPN+	L, 10-41
Sept. 9	VA-Lynchburg	ESPN+	W, 48-17
Sept. 16	at Wofford	ESPN+	W, 23-20
Sept. 30	at Butler	Flo Sports	L, 17-27
Oct. 7	Stetson	ESPN+	L, 24-28
Oct. 14	at Dayton	FB Live	W, 20-17 (OT)
Oct. 21	Marist	ESPN+	L, 10-19
Oct. 28	at Davidson		L, 28-45
Nov. 4	San Diego	ESPN+	12:00 PM
Nov. 11	at Drake	ESPN+	1:00 PM
Nov. 18	Morehead State	ESPN+	1:00 PM





## BLUE HOSE vs SAN DIEGO



## BY THE NUMBERS

Record	3-5	Record	2-6
Home	1-2	Home	2-3
Away	2-3	Away	0-3
Conference	1-4	Conference	2-3
Points Scored	22.5	Points Scored	21.1
Points Allowed	26.7	Points Allowed	28.0
Total Offense	349.5	Total Offense	330.9
Rush Yards	121.0	Rush Yards	103.3
Passing Yards	228.5	Passing Yards	227.6
TD Rush/Pass	6/13	TD Rush/Pass	8/10
Total Defense	330.1	Total Defense	357.6
Rush Yds Allowed	189.3	Rush Yds Allowed	145.0
Pass Yds Allowed	140.8	Pass Yds Allowed	212.6

### 2023 PC SCHEDULE AND RESULTS

Date	Opponent	W-L	Score
Sept. 2	at Murray State	L	10-41
Sept. 9	Virginia-Lynchburg	W	48-17
Sept. 16	at Wofford	W	23-20
Sept. 30	at Butler*	L	17-27
Oct. 7	Stetson*	L	24-28
Oct. 14	at Dayton*	W	20-17 (OT)
Oct. 21	Marist*	L	10-19
Oct. 28	at Davidson*	L	28-45

Date	Opponent	Video	Time
Nov. 4	San Diego*	ESPN+	12:00 PM
Nov. 11	at Drake*	ESPN+	1:00 PM
Nov. 18	Morehead State*	ESPN+	1:00 PM

### 2023 SAN DIEGO SCHEDULE AND RESULTS

Date	Opponent	W-L	Score
Sept. 2	at Cal Poly	L	10-27
Sept. 9	Colorado Mesa	L	21-28 (OT)
Sept. 16	Princeton	L	12-23
Sept. 23	Dayton*	W	40-25
Sept. 30	at Davidson*	L	33-55
Oct. 14	at Marist*	L	16-30
Oct. 21	Drake*	L	20-25
Oct. 28	Morehead State*	W	17-11

Date	Opponent	Time
Nov. 4	at Presbyterian*	12:00 PM
Nov. 11	St. Thomas*	1:00 PM
Nov. 18	at Stetson*	12:00 PM

## Mikko Makes Jerry Rice Award Watch List

• First-year kicker Mack Mikko has been summoned to the 2023 FCS Jerry Rice Award Watch List, presented by Stats Perform and FedEx Ground. The annual honor, awaiting its 13th recipient, is presented to the most outstanding freshman player in the Football Championship Subdivision.

• Making the cut of 22 individuals nationwide – while being the only special teams player on the entire list – Mikko gets the invite after pouring in 13 field goals in eight appearances this season (the second-highest among any kicker at the FCS level regardless of class).

• Debuting in 2011 and named after legendary Hall of Fame wide receiver Jerry Rice (who attended Mississippi Valley State University), the award is voted on by a national panel of more than 40 sports information and media relations directors, broadcasters, writers, and other various dignitaries.

## Opponent Profile

• Transitioning to a new era of San Diego football after the departure of long-time head coach Dale Lindsey, former NCAA champion Brandon Moore has taken over the job in 2023 to the tune of a 2-6 debut mark thus far.

• A linebacker for the Oklahoma Sooners on a squad that captured an FBS trophy 23 years ago, Moore arrived in SD after taking Colorado School of Mines to the Division II National Championship game in his one and only season as the Orediggers' head coach last fall.

• In wide receiver Ja'Seem Reed, the Toreros have one of the most dynamic playmakers on the offensive end. The junior ranks eighth at the FCS level with 733 receiving yards already on six catches per contest.

## Last Time Out

• A valiant effort against one of the two remaining unbeaten schools in a Pioneer League setting, the Blue Hose were nonetheless bested by Davidson seven days ago in the latest edition of the Carolina Border Clash by a 45-28 margin.

• PC stayed within arm's length partly due to Tyler Wesley's brilliance in the rushing attack (a career-best 198 rushing yards on 16 attempts, part of a 387-yard total offensive yardage effort by the second-year blossomer).

• Over the past eight quarters, the Blue Hose have allowed a total of only 91 passing yards, including a school-low 22 versus Marist at Bailey Memorial Stadium the prior weekend. Alex Herriott continues to anchor the PC defense with 32 tackles in the past two meetings, creeping near 100 stops altogether as a junior.

# PRESBYTERIAN COLLEGE CLEAR BAG

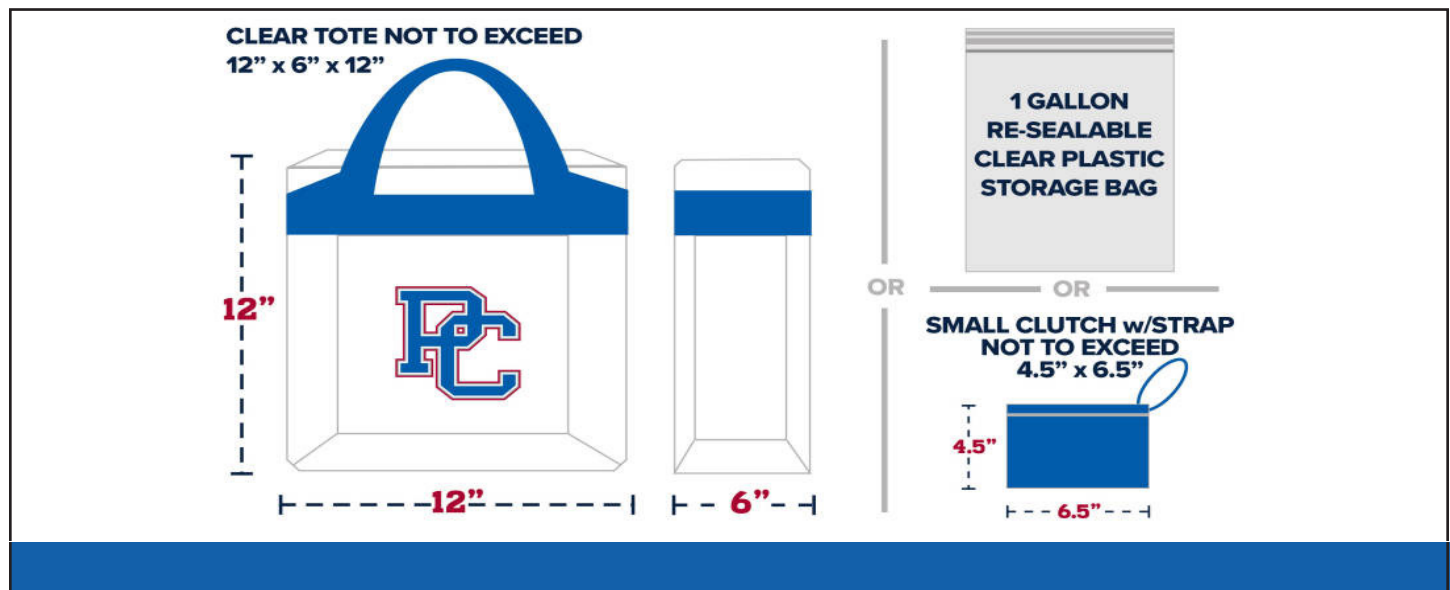
Only clear tote bags that do not exceed 12 in x 6 in x 12 in or one-gallon plastic freezer bags will be allowed. In addition, small handheld clutch purses no larger than 4.5 in x 6.5 in will be permitted. Fans will also be able to carry other items into the venues, such as binoculars, blankets, cameras and smartphones.

## Approved Bags

- Clear plastic, vinyl or PVC bags that do not exceed 12" x 6" x 12"
- One-gallon clear plastic freezer bag
- Small handheld clutch bags no larger than 4.5" x 6.5"
- Medically necessary items (after proper inspection at specified gates)

Prohibited bags include, but are not limited to:

- Purses larger than a clutch bag
- Seat cushions that have pockets, zippers, compartments or covers
- Briefcases
- Backpacks
- Fanny packs
- Cinch/Drawstring bags
- Luggage of any kind
- Computer bags
- Diaper bags
- Binocular cases
- Camera bags
- Coolers





## PC SPONSORS



NOW DELIVERING TO PC!

# TicketSmarter®



**LCWSC** Trust in  
Every Drop

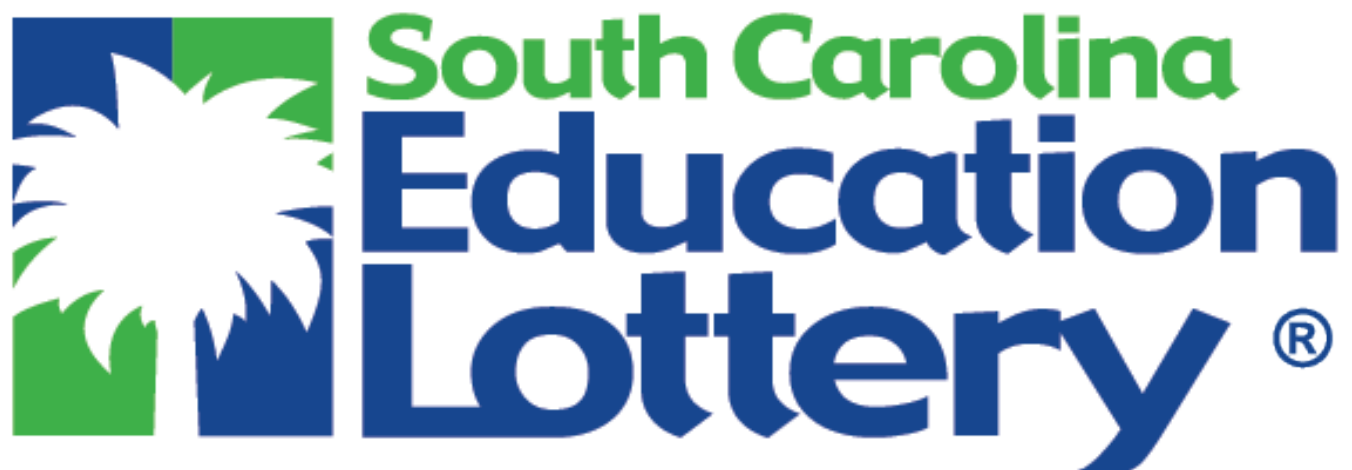
SELF REGIONAL  
  
H E A L T H C A R E



pepsi®







**PRISMA** HEALTH.®





**G GAME  
ONE™**



**PINNACLE  
PARTNERSHIP**



**HOMETOWN**



# 2023 BLUE HOSE



Cincere Gill  
WR | Jr. | Foxboro, Mass.



Malik Lewis  
DB | So. | Cocoa, Fla.



Dominic Kibby  
WR | So. | Catonsville, Md.



Jordan Irizarry  
WR | Sr. | Hollywood, Fla.



Dillon Towles-Kendle  
DB | Jr. | Cerritos, Calif.



Ty Englehart  
QB | So. | Melbourne, Fla.



George Wilder  
DB | Jr. | Lake City, S.C.



JB Seay  
RB | Jr. | Polk County, Fla.



Zach Switzer  
RB | Jr. | Spring Hill, Tenn.



Wyatt Hodges  
WR | Jr. | Peachtree Corners, Ga.



Austin Wilkes  
DB | So. | Rock Hill, S.C.



Nathan Hajduk  
LB | So. | Charlotte, N.C.



Collin Hurst  
QB | Fr. | Davie, Fla.



Chandler Jones  
WR | Sr. | Milton, Ga.



Deverious Abercrombie  
WR | So. | Greenville, S.C.



Jaydn Harris-Ervin  
DB | Jr. | Bakersfield, Calif.



Ezra King  
K | Sr. | Newborn, Ga.



Max Monroe  
QB | Jr. | Louisville, Fla.



Keith Elmore  
DB | Fr. | Summerville, S.C.



Brennan Taranto  
WR | So. | Weston, Fla.



Anthony Thornton  
DB | Sr. | Missouri City, TX



Jayden Pressey  
WR | So. | Martin County, Fla.



Tyler Wesley  
QB | So. | St. Cloud, Fla.



Thompson Defhommes  
DB | Fr. | Naples, Fla.



David Herring  
WR | Jr. | Jacksonville, Fla.



**15**  
Shawn Lodge  
WR | So. | Akron, Ohio



**16**  
Malek Horlback  
LB | So. | Charleston, S.C.



**16**  
Warner Bush  
QB | RSo | Smyrna, Ga.



**17**  
Bradley Russ-Martin  
DB | So. | Travelers Rest, S.C.



**18**  
Jalen Patrick  
WR | Fr. | Hephzibah, Ga.



**19**  
Jakari Geter  
DB | Fr. | Lawndale, N.C.



**20**  
Dealo Parson  
RB | Jr. | Fayetteville, Ga.



**21**  
Dewayne Gissendanner  
DB | So. | Charlotte, N.C.



**22**  
Boyce Bankhead  
LB | So. | Columbia, S.C.



**23**  
Caleb Francis  
DB | So. | Jacksonville, Fla.



**24**  
Arnav Thornhill  
DB | So. | Ashburn, Va.



**25**  
Brooks Russ-Martin  
DB | Jr. | Travelers Rest, S.C.



**26**  
Quante Jennings  
RB | Jr. | Cartersville, Ga.



**27**  
Jamil Tucker  
DB | Fr. | Raleigh, N.C.



**28**  
Aaron Lawrence  
LB | Fr. | North Charleston, S.C.



**28**  
Jaden Wright  
RB | Sr. | Savannah, Ga.



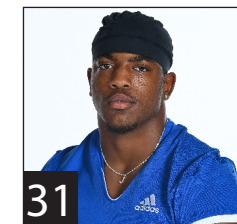
**29**  
Alex Ward  
DB | So. | Greenville, S.C.



**29**  
Jacob Deller  
WR | Fr. | Charlotte, N.C.



**30**  
Sebastian Conwell  
LB | Jr. | Bowling Green, Ky.



**31**  
Jaylon Stoker  
LB | Fr. | Cincinnati, Ohio



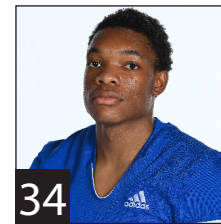
**32**  
Jafari Clarke  
LB | So. | Melbourne, Fla.



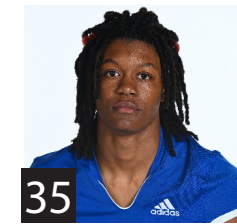
**33**  
Cade Lewis  
LB | So. | Aynor, S.C.



**34**  
Zane Smith  
P | Jr. | North Myrtle Beach, S.C.



**34**  
Lorenzo Duren  
DB | Jr. | Chesnee, S.C.



**35**  
Will Ferrell  
DB | Fr. | Miami, Fla.



# 2023 BLUE HOSE



36 Mack Mikko  
K | Fr. | Newnan, Ga.



37 Hunter Satterfield  
WR | Fr. | Due West, S.C.



38 JT Patton  
DB | Fr. | Mount Holly, N.C.



39 Traejon Roberts  
DB | Fr. | Parkland, Fla.



40 Coby Cornelius  
LB | Jr. | Columbia, S.C.



41 Panos Burlos  
LB | So. | Charlotte, N.C.



42 JJ Coleman  
LB | Fr. | Matthews, N.C.



42 CJ Johnson  
RB | Fr. | Greenville, S.C.



43 Peter Lipscombe  
K | So. | Baltimore, Md.



44 Alex Herriott  
LB | Jr. | Hanahan, S.C.



45 Jason Briones  
LB | Sr. | Morgan Hill, Calif.



46 Constantine Gandis  
K | Fr. | Greenville, S.C.



47 Zihaire Jackson  
LB | Fr. | Charleston, S.C.



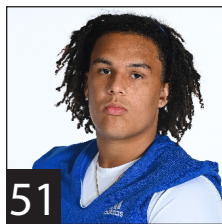
48 Raymond McCray  
LB | Fr. | Fayetteville, N.C.



49 Zeb Stroup  
DB | So. | Mount Airy, N.C.



50 Kenneth Odugba  
DL | Fr. | Gastonia, N.C.



51 Jalyn Turner  
LB | Fr. | Clearwater, Fla.



52 Christian Ohagwu  
DL | So. | Bradenton, Fla.



53 Jacob Thornton  
DL | Fr. | Orlando, Fla.



54 Dixon Musgrove  
LB | Fr. | Cumming, Ga.



55 Robert Porter  
DL | Jr. | Livermore, Calif.



56 RJ Lampkin  
LB | Fr. | Sunrise, Fla.



57 Anthony Dye  
DL | Jr. | Gastonia, N.C.



58 Dandrevius Dorsey  
DL | Fr. | Cocoa, Fla.



59 Lawton Cox  
LB | Fr. | Johns Creek, Ga.





60

Jake Greule  
DL | Fr. | Folsom, Calif.



61

Patch Bennett  
OL | Jr. | Blackshear, Ga.



62

Caleb Rentz  
OL | So. | Spartanburg, S.C.



64

Zian Attawalla  
OL | Fr. | Coconut Creek, Fla.



65

Joe Lentine  
OL | Fr. | Cape Coral, Fla.



66

Noah Peterson  
OL | So. | Johnston, S.C.



67

Malachi Bingham  
OL | So. | Houston, Texas



68

Landing Sauls  
OL | Fr. | Myrtle Beach, S.C.



69

Clint Caldwell  
OL | Sr. | Lake City, S.C.



70

Jayden Massey  
DL | Fr. | Fort Lauderdale, Fla.



71

Kyle Duncan  
OL | So. | Jacksonville, Fla.



72

Jacob Gardner  
OL | Fr. | Baxley, Ga.



73

Will Averbuck  
OL | Jr. | Santa Rosa, Calif.



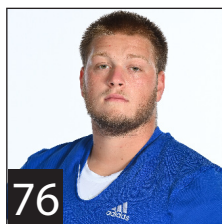
74

Anthony Marin  
OL | So. | Whitestone, N.Y.



75

Marcello Coleman  
OL | Fr. | Jacksonville, Fla.



76

Maxx Todden  
OL | Jr. | Jackson, Calif.



77

Collin Dudley  
OL | So. | Augusta, Ga.



78

Brodie Thompson  
OL | So. | Salt Rock, W.V.



79

JT Hill  
OL | Fr. | Snellville, Ga.



80

Orlando Lima  
TE | Fr. | Weston, Fla.



81

Frank Santiago  
WR | Fr. | Melbourne, Fla.



83

Jonathan Joseph  
WR | Jr. | Savannah, Ga.



84

Worth Warner  
TE | Sr. | Raleigh, N.C.



85

Zach Champagne  
LS | So. | Charleston, S.C.



86

Dakotah Johnson  
WR | Fr. | Fort Lauderdale, Fla.

# 2023 BLUE HOSE



Nathan Levicki  
TE | So. | Annapolis, Md.



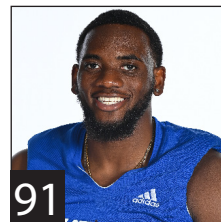
Dylan Boone  
TE | Jr. | Savannah, Ga.



Terik Mulder  
TE | So. | Lexington, Ky.



James Hyland  
DL | Jr. | Fort Mill, S.C.



Suubi Mutebi  
DL | Jr. | Lawrenceville, Ga.



Isaiah Hernandez  
DL | So. | Little Elm, Texas



Carson Freese  
DL | So. | Melbourne, Fla.



Dalton Epps  
DL | So. | Myrtle Beach, S.C.



TJ Booker  
DL | Jr. | Union, S.C.



Nigel Brown  
DL | Jr. | Wagener, S.C.



Carter Szydlowski  
DL | So. | Mt. Pleasant, Tenn.



Nathan Cantrell  
DL | So. | Mansfield, Texas



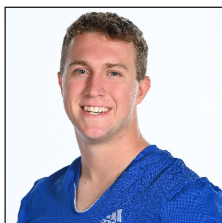
Harrison Kennedy  
DL | Jr. | Winnsboro, S.C.



Sam Martin  
DL | Fr. | Mooresville, N.C.



JD Robinson  
DB | Fr. | Rock Hill, S.C.



George Schodowski  
WR | So. | Irmo, S.C.





Presbyterian College and the Blue Hose athletic department announced the 17th head coach in PC football's 111-year history in January 2022, awarding the honor to Steve Englehart. A head coach for 13 years at Florida Institute of Technology and Rose-Hulman Institute of Technology, Englehart's hiring came after a national search conducted by the Parker Executive Search firm, working with a committee including Presbyterian faculty, staff, coaches, and members of the College's Board of Trustees.

The search committee decided unanimously to hire Englehart as PC's next football coach following an extensive review of a strong candidate pool. A majority of the 120 candidates had significant college coaching experience.

Englehart, a two-time Gulf South Conference Coach of the Year recipient, has compiled a record of 74-64 during his 11-year head coaching career and has coached two teams to the NCAA Division II playoffs.

In his last head coaching position, Englehart assisted in starting and guiding the Florida Tech Panthers football program from 2011-20, compiling a 44-35 record. In 2014, the Panthers' second season as a football program, he guided the team to a 6-5 record garnering Gulf South Conference Coach of the Year honors.

In 2015, he guided the Panthers to a 7-4 record with wins over two teams ranked in the Top Five of the D-II national rankings. He was named Gulf South Conference Coach of the Year for the second straight season.

In 2016 and '18, he led the Panthers to the NCAA D-II playoffs. Prior to his coaching stint at Florida Tech, Englehart served one season as offensive coordinator for his alma mater, Indiana State.

In 2010, Englehart coached a Sycamores' offense that finished 14th in the nation in scoring after tallying a school-record 351 points.

In 2006, Englehart was hired as the youngest head coach in the NCAA, spending four seasons at Rose-Hulman in Terre-Haute, Ind., where he led the program to four consecutive seasons with at least six wins. In 2007, he guided the Fightin' Engineers to a 7-3 record, the program's best since 1994.

The Terre Haute native graduated from Indiana State with a degree in health education in 2000. During his playing career from 1996-99, he played quarterback and was a three-time GTE Scholar-Athlete award winner.

Englehart and his wife, Carrie, reside in Clinton and have three children, Ty, who is a freshman quarterback for the Blue Hose, Caden, and Lila.



# ASSISTANT COACHES / SUPPORT STAFF



Jayson Martin  
Assistant Head Coach/TE



Daniel Owen  
Defensive Coordinator



Leroy Wilson  
Running Backs



Nolan Genovese  
Wide Receivers



Blake Stone  
Offensive Line



Liam Smith  
Defensive Line



Chad Veccharella  
Outside Linebackers



Quinton Lee  
Inside Linebackers



Will Kirkendall  
Defensive Backs



Jake Maggio  
Assistant - Special Teams





## PC at a Glance

Founded  
1880

Enrollment  
1,016 • Undergraduate  
264 • Pharmacy

Student/Faculty  
Ratio  
12:1 • Undergraduate  
11:1 • Graduate

Avg. Class Size  
14-17 Students

Majors, Minors & Programs  
107

Website  
[Presby.edu](http://Presby.edu)

## What About Presbyterian College Makes Us Stand Out?

**We Are a Community, All Day Long.**

At PC we know that creating a strong community makes for a great college experience. *Dum Vivimus Servimus*—While We Live, We Serve—that's our motto and we take it to heart.

### WANT TO BE INSPIRED?

Presbyterian College is located on a striking 240-acre campus of natural beauty steeped in South Carolina history in Clinton, between Columbia and Greenville, S.C. Since 1880, PC has been offering challenging academics and a culture of honor, ethics, and service that prepares students to be leaders in communities. PC offers its students the benefit of engaging with an exceptional faculty who take individual interest in their students' well-being, both personally and in the classroom. The comfortable, rolling campus has fostered decades of lasting friendships and served as the starting ground for students' lifelong commitment to serving others.

## WHAT'S A BLUE HOSE?

It began in the early 1900s when sportswriters referred to the Presbyterian College sports teams as the "Blue Stockings" because of the blue socks (or hose) they wore.

Former PC Public Relations specialist Ben Hay Hammet noted in his 1982 centennial history of PC that blue-stockings Presbyterians also refers to "Presbyterians with strong puritan leanings."

"The sports nickname was shortened to 'Blue Hose' in 1954," Hammet wrote, "presumably under the assumption that it sounded somewhat fiercer to carry onto the field of athletic battle."





# ANITA GUSTAFSON

## PRESIDENT



The Presbyterian College Board of Trustees named Anita Olson Gustafson, Ph.D., as the institution's 20th president, effective Aug. 1, 2023. Gustafson comes to PC formerly as the dean of the College of Liberal Arts and Sciences and a professor of history at Mercer University, a private research university in Macon, Ga.

Prior to her role at Mercer, Gustafson served on the faculty and administration at PC for nearly two decades. She will be the first female president in the college's history.

"I am excited and honored to be returning to Presbyterian College as its next president," Gustafson said. "PC is a special place, and I am eager to connect with faculty, staff, alumni and friends. I look forward to working with the entire PC community to implement the strategic plan and continue to move the college forward."

Gustafson joined Mercer in 2016 and managed the university's largest academic undergraduate college with nearly 2000 students and 40 academic programs. As dean, she collaborated consistently with the provost and deans from 11 other university programs, including the Schools of Law, Business, Engineering, Education, Theology, Professional Advancement, Music, Medicine, Pharmacy, Nursing, and Health Professions. In 2018, she worked with faculty to develop and implement a strategic plan for the College of Liberal Arts and Sciences and has continued to monitor its progress in subsequent years. Gustafson also oversaw all academic programming and worked with the provost, department chairs, and program directors at Mercer to manage budget targets.

"It is my honor to welcome Dr. Gustafson on behalf of the Board of Trustees and the entire PC community," said Ruth Roper, chair of the Board of Trustees. "She is a highly distinguished leader who not only has the experience and vision to lead PC in its next chapter, but roots that already run deep here in Laurens County and amongst the entire PC community. I look forward to being part of this exciting transition."

Gustafson earned her doctorate and master's degrees in history from Northwestern University in Evanston, Ill. She holds a bachelor's degree with majors in economics and Swedish and a minor in history from North Park University in Chicago.

Gustafson and her husband, Charles, have one son, Karl, who is a graduate student in global sustainability at the University of Helsinki, Finland.



# DEE NICHOLS

ATHLETIC DIRECTOR | 1ST YEAR

Longtime administrator Dee Nichols has been chosen to serve as Presbyterian College's new director of athletics.

"Dee Nichols brings with her 24 years of leadership experience in intercollegiate athletics", said PC president Dr. Anita Gustafson. "At PC, she has worked closely with student-athletes and the coaching staff across all sports, and she is well-known and well-respected throughout the community. I am confident that Dee is the right person at the right time to be PC's next athletic director."

Nichols said she is deeply honored to be chosen as PC's next athletic director.

"I am profoundly grateful for this opportunity to serve Presbyterian College in this new role", she said. "I am blessed every day to be surrounded by so many great coaches and professionals in this department and touched by their support and confidence. I look forward to working with our staff and faculty to provide the very best experience for our Blue Hose student-athletes and excited to continue the work of building on the championship spirit at PC."

Nichols joined the PC Department of Athletics in 2009 as assistant athletic director and quickly established herself as a leader within the program and across campus. An instrumental part of the department's operations, Nichols has served various stints supervising athletic offices responsible for NCAA compliance, scholarships, programming, and facilities operations, in addition to a period as interim AD.

Nichols played an integral role in several influential periods in the department's history, including the Division I transition, the addition of four varsity sports, assisting the recent \$8 million campaign to fund new athletic facilities, and serving as an adviser on the design of three new athletic facilities.

Over the past 13 years, Nichols has grown the department's first NCAA Division I compliance program, focusing on education and monitoring. She has aided in the creation and development of the academic services position to provide resources to student-athletes.

During her tenure, Nichols has held titles of assistant athletic director (2009-12), associate athletic director (2012-15), senior associate athletic director (2015-19), and interim athletic director (April to August 2019), as well as the senior woman administrator role she was appointed to in 2010 and still holds today.

She also holds numerous other leadership positions on campus, from her post on the Diversity and Inclusion Advisory Council, as adviser to the Student-Athlete Advisory Council, and as the athletic department's liaison to campus departments, including Residential Life, Financial Aid, Conduct, and Title IX. Nichols was also named an Honorary Alumna of PC in 2020.

A 1991 graduate of Georgia Southern University with a Bachelor of Health and Physical Education, Nichols earned her master's degree in physical education from GSU in 1992. As a student, she was a four-year starter in volleyball for the Eagles.

Nichols began her professional career in intercollegiate athletics as an assistant volleyball coach at GSU in 1992. She served as head volleyball coach for her alma mater from 1994-97 before switching to women's basketball as a recruiting coordinator. Before joining PC's athletics staff, Nichols was the assistant compliance director at the University of Rhode Island.

Nichols resides in Clinton with her husband, Harold '89. They have three children – Cassie '20, Cameron, and Corey.



# PRESBYTERIAN DEPTH CHART

## OFFENSE

LT	69 CLINT CALDWELL	6-3	270	Sr.
	67 Malachi Bingham	6-7	285	RSo.
LG	66 NOAH PETERSON	6-2	320	So.
	78 Brodie Thompson	6-4	315	So.
C	62 CALEB RENTZ	6-3	250	So.
	65 Joe Lentine	6-2	285	Fr.
RG	61 PATCH BENNETT	6-3	265	Jr.
	76 Maxx Todden	6-2	290	Jr.
RT	79 JT HILL	6-4	335	Fr.
	73 Will Averbuck	6-5	280	Jr.
TE	84 WORTH WARNER	6-4	215	Sr.
	89 Terik Mulder	6-5	230	So.
WR	1 DOMINIC KIBBY	6-1	175	So.
	14 David Herring	5-10	171	RJr.
WR	9 DEVERIOUS ABERCROMBIE	6-4	177	So.
	15 Shawn Lodge	6-0	170	So.
WR	2 JORDAN IRIZARRY	5-11	180	Sr.
	6 Wyatt Hodges	5-9	178	Jr.
QB	13 TYLER WESLEY	6-3	180	So.
	3 Ty Englehart	6-4	195	So.
RB	4 JB SEAY	5-10	195	Jr.
	5 Zach Switzer	5-11	190	Jr.

## DEFENSE

DE	57 ANTHONY DYE	5-11	228	RJr.
	90 James Hyland	6-2	230	RJr.
NT	55 ROBERT PORTER	6-2	285	Jr.
	52 Christian Ohagwu	5-11	280	So.
DT	97 CARTER SZYDLOWSKI	6-3	280	So.
	95 TJ Booker	6-0	230	RJr.
OLB	16 MALEK HORLBACK	6-2	225	So.
	33 Cade Lewis	6-3	220	So.
ILB	44 ALEX HERRIOTT	5-11	210	Jr.
	40 Coby Cornelius	5-10	210	Jr.
ILB	30 SEBASTIAN CONWELL	6-0	215	Jr.
	32 Jafari Clarke	6-1	215	So.
OLB	0 MALIK LEWIS	6-0	175	So.
	7 Nathan Hajduk	6-1	190	So.
CB	17 BRADLEY RUSS-MARTIN	5-7	150	Jr.
	3 George Wilder	6-0	170	Jr.
S	12 ANTHONY THORNTON	5-10	175	Sr.
	11 Keith Elmore	6-0	190	Fr.
S	25 BROOKS RUSS-MARTIN	5-8	160	Jr.
	9 Jaydn Harris-Ervin	5-11	195	Jr.
CB	23 CALEB FRANCIS	6-2	180	So.
	21 Dewayne Gissendanner	5-10	180	So.

## STAT LEADERS

### RUSHING LEADERS

#	Player	Car.	Yards	TD
13	Tyler Wesley	66	395	2
5	Zach Switzer	48	182	0
4	JB Seay	47	153	2
20	Dealo Parson	33	81	0
3	Ty Englehart	22	76	1

### PASSING LEADERS

#	Player	C-Att-I	Yards	TD
13	Tyler Wesley	103-198-3	1537	10
3	Ty Englehart	25-34-2	273	3

### RECEIVING LEADERS

#	Player	Rec.	Yards	TD
1	Dominic Kibby	32	627	4
84	Worth Warner	26	346	3
2	Jordan Irizarry	16	231	0
9	Deverious Abercrombie	9	184	2
0	Cincere Gill	14	105	2
15	Shawn Lodge	7	94	0
89	Terik Mulder	5	76	1

### DEFENSIVE LEADERS

#	Player	Tac.	TFL	Sacks
44	Alex Herriott	93	7.0-29	1.5-6
12	Anthony Thornton	41	3.0-11	1.0-7
0	Malik Lewis	34	1.0-1	0-0
17	Bradley Russ-Martin	34	1.0-1	0-0
25	Brooks Russ-Martin	34	0-0	0-0
30	Sebastian Conwell	34	4.5-5	0-0
16	Malek Horlback	32	7.5-30	3.0-20
97	Carter Szydlowski	28	4.5-14	1.5-7
7	Nathan Hajduk	25	2.5-26	2.0-19
23	Caleb Francis	23	0-0	0-0

## PLAYER TO WATCH



#13 QB -  
Tyler  
Wesley

198 Rushing Yds at Davidson  
2nd-most in PC's  
single-game D-I history

## SPECIAL TEAMS

K	36 MACK MIKKO	5-8	175	Fr.
	34 Zane Smith	6-0	200	Jr.
P	34 ZANE SMITH	6-0	200	Jr.
	10 Ezra King	6-0	170	Sr.
LS	85 ZACH CHAMPAGNE	6-0	260	So.
	84 Worth Warner	6-4	215	Sr.
H	6 WYATT HODGES	5-9	178	Jr.
	3 Ty Englehart	6-4	195	So.
KR	15 SHAWN LODGE	6-0	170	So.
	0 Cincere Gill	6-1	185	Jr.
PR	15 SHAWN LODGE	6-0	170	So.
	0 Cincere Gill	6-1	185	Jr.





# PRESBYTERIAN ROSTER

No.	Name	Yr.	Pos.	Ht.	Wt.
Hometown / Prev. School					
0	Cincere Gill	Jr.	WR	6-1	185
Foxboro, Mass. / McDougle Technical Institute					
0	Malik Lewis	So.	DB	6-0	175
Cocoa, Fla. / Cocoa HS					
1	Dominic Kibby	So.	WR	6-1	175
Catonsville, Md. / Mount Saint Joseph HS					
2	Jordan Irizarry	Sr.	WR	5-11	180
Hollywood, Fla. / NSU University School					
2	Dillon Towles-Kendle	Jr.	DB	5-11	185
Cerritos, Calif. / Long Beach City CC					
3	Ty Englehart	So.	QB	6-4	195
Melbourne, Fla. / Holy Trinity HS					
3	George Wilder	Jr.	DB	6-0	170
Lake City, S.C. / The Carolina Academy					
4	JB Seay	Jr.	RB	5-10	195
Polk County, Fla. / Discovery HS					
5	Zach Switzer	Jr.	RB	5-11	190
Spring Hill, Tenn. / Memphis					
6	Wyatt Hodges	Jr.	WR	5-9	178
Peachtree Corners, Ga. / Wesleyan School					
6	Austin Wilkes	So.	DB	5-10	187
Rock Hill, S.C. / Northwestern HS					
7	Nathan Hajduk	So.	OLB	6-1	190
Charlotte, N.C. / Providence HS					
7	Collin Hurst	Fr.	QB	5-10	160
Davie, Fla. / Western HS					
8	Chandler Jones	Sr.	WR	5-11	185
Milton, Ga. / Charleston Southern					
9	Deverious Abercrombie	So.	WR	6-4	177
Greenville, S.C. / Wade Hampton HS					
9	Jaydn Harris-Ervin	Jr.	DB	5-11	195
Bakersfield, Calif. / Bakersfield CC					
10	Ezra King	Sr.	K/P	6-0	170
Newborn, Ga. / Wofford					
10	Max Monroe	Jr.	QB	6-1	218
Louisville, Fla. / Ridgeview HS					
11	Keith Elmore	Fr.	DB	6-0	190
Summerville, S.C. / Summerville HS					
11	Brennen Taranto	So.	WR	6-0	175
Weston, Fla. / Western HS					
12	Jayden Pressey	So.	WR	5-10	170
Martin County, Fla. / Martin County HS					
13	Thompson Dethommes	Fr.	DB	6-0	175
Naples, Fla. / Naples HS					
13	Tyler Wesley	So.	QB	6-3	180
St. Cloud, Fla. / Edgewater HS					
14	David Herring	R-Jr.	WR	5-10	171
Jacksonville, Fla. / Robert E. Lee HS					
15	Shawn Lodge	So.	WR	6-0	170
Akron, Ohio / St. Vincent St. Mary HS					
16	Warner Bush	R-So.	QB	6-2	187
Smyrna, Ga. / Whitefield Academy					
16	Malek Horlback	So.	LB	6-2	225
Charleston, S.C. / Fort Dorchester HS					
17	Bradley Russ-Martin	Jr.	DB	5-7	150
Travelers Rest, S.C. / Travelers Rest HS					
18	Jalen Patrick	Fr.	WR	6-0	175
Hephzibah, Ga. / Hephzibah HS					
19	Jakari Geter	Fr.	DB	5-11	172
Lawndale, N.C. / Burns HS					
20	Dealo Parson	Jr.	RB	5-7	167
Fayetteville, Ga. / Sandy Creek HS					
21	Dewayne Gissendanner	So.	DB	5-10	180
Charlotte, N.C. / Providence HS					
22	Boyce Bankhead	So.	OLB	6-2	193
Columbia, S.C. / A.C. Flora HS					
23	Caleb Francis	So.	DB	6-2	180
Jacksonville, Fla. / Andrew Jackson HS					
24	Arnav Thornhill	So.	DB	5-9	179
Ashburn, Va. / Broad Run HS					
25	Brooks Russ-Martin	Jr.	DB	5-8	160
Travelers Rest, S.C. / Travelers Rest HS					
26	Quante Jennings	Jr.	RB	5-11	200
Cartersville, Ga. / Cartersville HS					
27	Jamil Tucker	Fr.	DB	6-0	170
Raleigh, N.C. / Cardinal Gibbons HS					
28	Aaron Lawrence	Fr.	LB	6-0	205
North Charleston, S.C. / Fort Dorchester HS					
28	Jaden Wright	Sr.	RB	5-10	190
Savannah, Ga. / Bethesda Academy					
29	Jacob Deller	Fr.	WR	6-0	175
Charlotte, N.C. / Charlotte Catholic HS					
29	Alex Ward	So.	DB	5-8	170
Greenville, S.C. / Travelers Rest HS					

30	Sebastian Conwell Jr.	LB	6-0	215	
Bowling Green, Ky. / Greenwood HS					
31	Jaylon Stoker	Fr.	LB	6-0	220
Cincinnati, Ohio / Princeton HS					
32	Jafari Clarke	So.	LB	6-1	215
Melbourne, Fla. / Melbourne HS					
33	Cade Lewis	So.	DE	6-3	220
Aynor, S.C. / Aynor HS					
34	Lorenzo Duren Jr.	DB	5-10	175	
Chesnee, S.C. / Chesnee HS					
34	Zane Smith	Jr.	K/P	6-0	200
North Myrtle Beach, S.C. / Florida State					
35	Will Ferrell	Fr.	DB	6-2	150
Miami, Fla. / Miami Killian HS					
36	Mack Mikko	Fr.	K/P	5-8	175
Newnan, Ga. / The Heritage School					
37	Hunter Satterfield	Fr.	WR	5-11	168
Due West, S.C. / Dixie HS					
38	JT Patton	Fr.	DB	5-11	175
Mount Holly, N.C. / Mountain Island Charter School					
39	Traejon Roberts	Fr.	DB	5-11	175
Parkland, Fla. / Deerfield Beach HS					
40	Coby Cornelius	Jr.	LB	5-10	210
Columbia, S.C. / Spring Valley HS					
41	Panos Burlos	So.	LB	6-0	210
Charlotte, N.C. / South Mecklenburg HS					
42	JJ Coleman	Fr.	LB	6-1	216
Matthews, N.C. / David W. Butler HS					
42	CJ Johnson	Fr.	RB	5-10	170
Greenville, S.C. / St. Joseph's Catholic School					
43	Peter Lipscombe	So.	K/P	6-0	135
Baltimore, Md. / Mount Saint Joseph HS					
44	Alex Herriott	Jr.	LB	5-11	210
Hanahan, S.C. / Hanahan HS					
45	Jason Briones	Sr.	LB	6-0	225
Morgan Hill, Calif. / Gavilan CC					
46	Constantine Gandis	Fr.	K/P	5-11	228
Greenville, S.C. / Christ Church Episcopal School					
47	Zihair Jackson	Fr.	LB	6-3	215
Charleston, S.C. / Porter Gaud HS					
48	Raymond McCray	Fr.	LB	6-2	215
Fayetteville, N.C. / Seventy-First HS					
49	Zeb Stroup	So.	DB	6-2	185
Mount Airy, N.C. / Mount Airy HS					
50	Kenneth Odugba	Fr.	DL	6-0	245
Gastonia, N.C. / Forest View HS					
51	Jalyn Turner	Fr.	LB	5-10	200
Clearwater, Fla. / Calvary Christian HS					
52	Christian Ohagwu	So.	DL	5-11	280
Bradenton, Fla. / IMG Academy					
53	Jacob Thornton	Fr.	DL	6-3	275
Orlando, Fla. / Jones HS					
54	Dixon Musgrove	Fr.	6-5	215	
Cumming, Ga. / West Forsyth HS					
55	Robert Porter	Jr.	DL	6-2	285
Livermore, Calif. / Granada HS					
56	RJ Lampkin	Fr.	LB	6-0	200
Sunrise, Fla. / American Heritage HS					
57	Anthony Dye	R-Jr.	DL	5-11	182
Gastonia, N.C. / Hunter Huss HS					
58	Dandrevius Dorsey	Fr.	DL	5-11	275
Cocoa, Fla. / Cocoa HS					
59	Lawton Cox	Fr.	LB	5-11	210
Johns Creek, Ga. / Chattahoochee HS					
60	Jake Greule	Fr.	DL	6-6	290
Folsom, Calif. / Folsom HS					
61	Patch Bennett	Jr.	OL	6-3	265
Blackshear, Ga. / Pierce County HS					
62	Caleb Rentz	So.	OL	6-3	250
Spartanburg, S.C. / Chesnee HS					
64	Zian Attawalla	Fr.	OL	6-3	290
Coconut Creek, Fla. / Monarch HS					
65	Joe Lentine	Fr.	OL	6-2	285
Cape Coral, Fla. / Bishop Verot Catholic HS					
66	Noah Peterson	So.	OL	6-2	320
Johnston, S.C. / Strom Thurmond HS					
67	Malachi Bingham	R-So.	OL	6-7	285
Houston, Texas / Houston Christian HS					
68	Landing Sauls	Fr.	OL	6-4	265
Myrtle Beach, S.C. / Myrtle Beach HS					
69	Clint Caldwell	Sr.	OL	6-3	270
Lake City, S.C. / Lake City HS					
70	Jayden Massey	Fr.	DL	6-1	235
Fort Lauderdale, Fla. / Cardinal Gibbons HS					
71	Kyle Duncan	So.	OL	6-3	315
Jacksonville, Fla. / Sandalwood HS					

72	Jacob Gardner	Fr.	OL	6-4	275
Baxley, Ga. / Appling County HS					
73	Will Averbuck	Jr.	OL	6-5	280
Santa Rosa, Calif. / Santa Rosa HS					
74	Anthony Marin	So.	OL	6-2	317
Whitestone, N.Y. / Holy Cross HS					
75	Marcello Coleman	Fr.	OL	6-3	300
Jacksonville, Fla. / Atlantic Coast HS					
76	Maxx Todden	Jr.	OL	6-2	290
Jackson, Calif. / Argonaut HS					
77	Collin Dudley	So.	OL	6-6	300
Augusta, Ga. / Greenbrier HS					
78	Brodie Thompson	So.	OL	6-4	315
Salt Rock, W.V. / South Point HS					
79	JT Hill	Fr.	OL	6-4	335
Snellville, Ga. / Brookwood HS					
80	Orlando Lima	Fr.	TE	6-4	220
Weston, Fla. / Cypress Bay HS					
81	Frank Santiago	Fr.	WR	5-10	160
Melbourne, Fla. / Melbourne HS					
83	Jonathan Joseph	Jr.	WR	5-9	175
Savannah, Ga. / Bethesda Academy					
84	Worth Warner	Sr.	TE	6-4	215
Raleigh, N.C. / Broughton HS					
85	Zach Champagne	So.	LS	6-0	260
Charleston, S.C. / Collegiate Academy					
86	Dakotah Johnson	Fr.	WR	6-1	188
Fort Lauderdale, Fla. / Plantation HS					
87	Nathan Levicki	So.	TE	6-3	220
Annapolis, Md. / Broadneck HS					
88	Dylan Boone	Jr.	TE	6-5	225
Savannah, Ga. / Sol C. Johnson HS					
89	Terik Mulder	So.	TE	6-5	230
Lexington, Ky. / Bryan Station HS					
90	James Hyland	R-Jr.	DL	06-28	2
Fort Mill, S.C. / Fort Mill HS					
91	Suubi Mutebi	Jr.	DL	6-3	235
Lawrenceville, Ga. / Parkview HS					
92	Isaiah Hernandez	So.	DL	6-1	230
Little Elm, Texas / Little Elm HS					
93	Carson Freese	So.	DL	6-4	246
Melbourne, Fla. / Melbourne HS					
94	Dalton Epps	So.	DL	6-1	230
Myrtle Beach, S.C. / Myrtle Beach HS					
95	TJ Booker	R-Jr.	DL	6-0	230
Union, S.C. / Union County HS					
96	Nigel Brown	Jr.	DL	5-11	235
Wagener, S.C. / Wagener-Salley HS					
97	Carter Szydlowski	So.	DL	6-3	280
Mount Pleasant, Tenn. / Adrian College					
98	Nathan Cantrell	So.	DL	6-3	240
Mansfield, Texas / Mansfield HS					
99	Harrison Kennedy	R-Jr.	DL	5-11	270
Winnsboro, S.C. / Fairfield Central HS					
	Sam Martin	Fr.	DL	6-2	250
Mooreville, N.C. / Lake Norman HS					
	JD Robinson	Fr.	DB	5-11	180
Rock Hill, S.C. / Legion Collegiate Academy					
	George Schodowski	So.	WR	6-0	170
Irmo, S.C. / Southern Wesleyan					

# SAN DIEGO ROSTER

No.	Name	Pos.	Ht.	Wt.	Yr.
Hometown/Prev. School					
1	Nick Murray	CB	5-11	175	Jr.
Stockton, CA / Saint Mary's					
2	Eric Haney	CB	5-10	180	Sr.
Peoria, AZ / Centennial					
3	Jayden Wickware	OLB	6-0	185	Gr.
San Diego, CA / Princeton / San Diego					
4	Zamir Wallace	CB	6-1	180	Gr.
Fairfield, CA / De La Salle					
5	Joshua Hong	S	6-1	180	Gr.
Las Vegas, NV / Faith Lutheran					
6	Ruben Lopez	S	6-0	180	So.
Mission Viejo, CA / Mission Viejo					
7	Amir Wallace	CB	6-0	175	Gr.
Fairfield, CA / De La Salle					
8	Conor Lawlor	WR	6-1	175	So.
San Diego, CA / Scripps Ranch					
9	Dom Nankil	QB	6-0	160	Fr.
Chula Vista, CA / Mater Dei					
10	Nathan Brown	QB	6-2	215	So.
Pleasant Ridge, MI / Ole Miss / University of Detroit Jesuit					
10	Tanner Jellison	QB	6-4	180	Jr.
Lake Stevens, WA / Lake Stevens					
11	Re-al Mitchell	QB	6-0	210	RS Sr.
Eastvale, CA / Temple / St. John Bosco					
12	Grant Sergeant	QB	6-2	212	RS Sr.
Salinas, CA / Palma					
13	Christian Brown	WR	5-9	175	Gr.
Gig Harbor, WA / Bellarmine Prep					
14	Trevor Kan	CB	6-0	185	Sr.
Honolulu, HI / Iolani					
15	Isaiah Smith	RB	5-9	190	Sr.
Oakland, CA / Encinal					
16	AJ Perez	QB	6-4	195	So.
Huntington Beach, CA / Huntington Beach					
17	Cole Monach	WR	6-1	185	So.
San Juan Capistrano, CA / San Juan Hills					
18	Josh Heverly	WR	6-1	200	Jr.
Pleasanton, CA / Amador Valley					
19	Adam Criter	WR	6-3	195	So.
Downer's Grove, IL / Saint Francis					
20	Matt Ballentine	CB	6-3	205	Sr.
Santa Clarita / Eastern Kentucky / Saugus					
21	Trey Ortega	S	5-11	185	Jr.
Rio Rancho, NM / V. Sue Cleveland					
22	Isaiah Williams	RB	6-2	220	Sr.
San Diego, CA / Olympian					
23	Paliku Kamaka	S	6-0	175	Jr.
Kailua, HI / Kamehameha					
24	James Scott	RB	5-9	205	So.
Peoria, AZ / Centennial					
25	Rashaan Ward	WR	5-7	140	RS Sr.
Salinas, CA / Carmel					
26	Aidan Lehman	K	6-0	170	Jr.
Littleton, CO / J.K. Mullen					
27	Ezekiel Swayne	CB	6-0	180	So.
Clovis, CA / Buchanan					
28	Dana White III	S	5-11	185	RS Jr.
Las Vegas, NV / Faith Lutheran					
29	Noah Miles	CB	5-10	175	RS Jr.
Seattle, WA / O'Dea					
30	Brett Bostad	FB	6-0	240	Gr.
Kennedale, TX / Northern Illinois / Kennedale					
31	Logan Gingg	RB	5-10	200	Jr.
Buckeye, AZ / Verrado					
32	Jerry Rangel	OLB	5-10	190	So.
Clovis, CA / Buchanan					
32	Kai Hall	RB	5-8	185	Fr.
Santa Rosa, CA / St. Vincent De Paul					
33	Jake Higgins	CB	6-1	195	So.
Mission Viejo, CA / Mission Viejo					
34	Noah Thomas	LB	6-0	215	Jr.
Danville, CA / San Ramon Valley					
35	Nick Guarena	S	5-11	180	Sr.
San Diego, Ca / Montana / Cathedral Catholic					
36	Nico Mosley	RB	5-8	180	Fr.
San Diego, CA / Mater Dei					
37	Eddie Rodriguez	DB	6-0	175	Fr.
Brea, CA / Villa Park					
37	Jalen Shaw	RB	6-0	170	So.
San Diego, CA / Scripps Ranch					
38	Nathaniel James	S	5-10	165	So.
Los Angeles, CA / Notre Dame					
39	Ryan Meloche	S	6-0	180	So.
Phoenix, AZ / Pinnacle					

40	Zach Zwart	TE	6-4	230	Fr.
Visalia, CA / Central Valley					
41	Tyree Hayes-Trusty	RB	5-10	195	Fr.
Littleton, CO / Columbine					
41	TJ Roelen	TE	6-0	210	RS Jr.
Mission Viejo, CA / Mission Viejo					
42	Trey Stott	S	5-11	195	Fr.
Parker, CO / Valor Christian					
43	James Allemann	TE	6-5	230	So.
Dana Point, CA / Dana Hills					
44	Jerry Riggins	OLB	5-11	215	Jr.
San Diego, CA / Helix Charter					
45	Jagger Filippone	TE	6-6	235	So.
Encinitas, CA / Wyoming / Torrey Pines					
46	Garrett Carney	LB	6-1	205	Sr.
Sammamish, WA / Eastlake					
47	Andrew Young	OL	6-2	220	So.
El Cajon, CA / Christian					
48	Chris Wilson	LB	6-3	225	RS Jr.
Arcadia, CA / Utah / Arcadia HS					
49	Aydan Corrales	K/P	6-1	180	Fr.
Fullerton, CA / Troy					
50	Giovanni Iovino	LB	6-1	225	Jr.
Las Vegas, NV / Washington State / Bishop Gorman					
51	Luke Legarreta	LB	6-0	220	Fr.
Boise, ID / Bishop Kelly					
52	Antonio Barcelos	LB	6-0	210	So.
San Diego, Ca / Rancho Bernardo					
53	Chase Lyons	OLB	6-4	225	Sr.
Aurora, CO / Smoky Hill					
54	Giulio Fernandes	LB	6-1	220	Jr.
Lake Forest, CA / El Toro					
56	Nick Felago	OLB	6-2	235	Fr.
Encinitas, CA / La Costa Canyon					
57	Jagger Pagano	LB	6-2	215	Sr.
Houston, TX / Sant Pius X					
58	David Loch	LB	6-2	220	Fr.
Chicago, IL / York Community					
59	Malcolm Williams	LB	6-1	230	So.
San Diego, CA / Saint Augustine					
60	Jonathan Greaves	DL	6-3	265	RS Jr.
Mission Hills, CA / Bishop Alemany					
61	John Dearing	DL	6-4	235	Fr.
Houston, TX / Second Baptist					
62	Oliver Bari	OL	6-3	260	Fr.
Sunnyvale, Ca / Saint Francis					
63	Finley Lecky	OL	6-1	270	Sr.
Chandler, AZ / Hamilton					
64	Cody Going	G	6-2	275	Fr.
Mission Viejo, CA / Mission Viejo					
65	Taki Dadiotis	OL	6-2	280	Fr.
Denver, CO / Cherry Creek					
66	Zane Feltz	OL	6-3	280	Fr.
Fort Collins, CO / Rocky Mountain					
67	Kaz Aslay	OL	6-2	275	Fr.
Yorba Linda, CA / Yorba Linda					
68	Nick Struempf	OL	6-3	285	So.
Danville, CA / Monte Vista					
69	Trey Price	OL	6-6	300	Gr.
Woodland, CA / Nevada / Christian Brothers					
70	Julian Rodriguez	OL	6-6	275	Jr.
Sacramento, CA / Christian Brothers					
71	Mark Mahoney	OL	6-6	261	RS Jr.
San Diego, CA / St. Augustine					
72	Jack D'Ambra	OL	6-3	290	So.
Wildomar, CA / Vista Murrieta					
73	Evans Bowling	OL	6-6	235	Jr.
El Paso, TX / Cathedral					
74	Noah Yeh	DL	6-4	235	Fr.
Pittsburg, PA / Shady Side					
75	JaeVon Reels	DL	6-1	285	Fr.
San Jose, CA / Bellarmine College Prep					
76	Sean Scheck	DL	6-3	260	Fr.
Batavia, IL / Marmion Academy					
76	Christian Vaikona		6-4	280	Fr.
Palm Desert, CA / Xavier College Preparatory					
77	Malachi Cooper	DL	6-4	260	Jr.
San Diego, CA / Serra					
78	Brandon Myers	DL	6-4	250	Fr.
San Diego, CA / Poway					
79	Maicah Talavou	OL	6-2	190	So.
Long Beach, CA / St. John Bosco					
80	JJ Conrad	WR	6-1	185	Fr.
Yorba Linda, CA / Yorba Linda					
80	Marques Johnson	WR	6-1	190	So.
Henderson, NV / Liberty					

81	Liam McHale	TE	6-6	245	Gr.
Buchanan, NY / Fordham Prep / Georgetown					
81	Charlie Specht	WR	6-1	175	Fr.
Elmhurst, IL / York Community					
82	Kollen Murphy	WR	6-3	170	Fr.
Pomona, CA / Rancho Christian School					
83	Deric Woo	WR	5-9	170	So.
San Diego, CA / Cathedral Catholic					
84	Elijah Johnson	WR	6-4	227	Jr.
Dunnigan, CA / Pioneer					
85	Zane Fullmer	TE	6-4	230	So.
Williamsport, PA / Windermere					
86	Yosei Takahashi	WR	5-7	170	Fr.
Osaka, Japan / St. Louis					
87	Peyton Smith	TE	6-4	240	So.
Rocklin, CA / Rocklin					
88	Brad McClure	TE	6-7	245	Jr.
Indio, CA / Xavier College Prep					
89	Ja'seem Reed	WR	6-2	230	Jr.
Thousand Oaks, CA / Westlake					
90	Landon Colvin	DE	6-2	220	RS Jr.
Boulder, CA / Fairview					
91	Brian Coburn	DL	6-4	230	Jr.
Salem, OR / McKay					
92	Shayden Molina	DL	6-2	280	Jr.
Aiea, HI / Iolani / College of the Sequoias					
93	Jacob Saewitz	DL	6-2	230	RS Jr.
Carlsbad, CA / La Costa Canyon					
94	Frank Ward	DL	6-4	240	Fr.
Pacifica, CA / Terra Nova					
95	Will Buck	DT	6-0	285	RS Sr.
Sacramento, CA / Capital Christian					
96	Hreinson Vanover	DT	6-2	260	So.
Draper, UT / Corner Canyon					
97	Alijah Brown	DE	6-4	220	So.
Oakland, CA / Bishop O'Dowd					
98	Jack Hemmert	DT	6-2	280	So.
Sacramento, CA / Jesuit					
99	Doogie Harvey	DL	6-3	265	Jr.
Needles, CA / Needles					

## Rushing

Player	gp	att	gain	loss	net	avg	td	lg	avg/g
Tyler Wesley	8	66	495	100	395	6.0	2	73	49.4
Zach Switzer	8	48	205	23	182	3.8	0	18	22.8
JB Seay	6	47	168	15	153	3.3	2	24	25.5
Dealo Parson	8	33	96	15	81	2.5	0	15	10.1
Ty Englehart	6	22	95	19	76	3.5	1	24	12.7
Jaden Wright	5	14	61	2	59	4.2	0	19	11.8
Quante Jennings	5	8	28	1	27	3.4	0	8	5.4
Dominic Kibby	8	3	21	3	18	6.0	0	16	2.3
Cincere Gill	8	3	8	0	8	2.7	0	5	1.0
Jordan Irizarry	6	1	5	0	5	5.0	0	5	0.8
Nigel Brown	8	1	2	0	2	2.0	1	2	0.3
Team	8	2	0	34	-34	-17.0	0	0	-4.3
<b>Total</b>	<b>8</b>	<b>248</b>	<b>1184</b>	<b>212</b>	<b>972</b>	<b>3.9</b>	<b>6</b>	<b>73</b>	<b>121.5</b>
<b>Opponents</b>	<b>8</b>	<b>354</b>	<b>1699</b>	<b>171</b>	<b>1528</b>	<b>4.3</b>	<b>15</b>	<b>70</b>	<b>191.0</b>

## Passing

Player	gp	effic	comp-att-int	pct	yds	td	lg	avg/g
Tyler Wesley	8	130.9	103-198-3	52.0	1537	10	93	192.1
Ty Englehart	6	158.3	25-34-2	73.5	273	3	40	45.5
Warner Bush	2	217.6	1-1-0	100.0	14	0	14	7.0
Ezra King	6	-200.0	0-1-1	0.0	0	0	0	0.0
<b>Total</b>	<b>8</b>	<b>133.8</b>	<b>129-234-6</b>	<b>55.1</b>	<b>1824</b>	<b>13</b>	<b>93</b>	<b>228.0</b>
<b>Opponents</b>	<b>8</b>	<b>117.5</b>	<b>96-177-4</b>	<b>54.2</b>	<b>1113</b>	<b>8</b>	<b>64</b>	<b>139.1</b>

## Receiving

Player	gp	no.	yds	avg	td	lg	avg/g
Dominic Kibby	8	32	627	19.6	4	93	78.4
Worth Warner	8	26	346	13.3	3	31	43.3
Jordan Irizarry	6	16	231	14.4	0	39	38.5
Cincere Gill	8	14	105	7.5	2	20	13.1
Deverious Abercrombie	8	9	184	20.4	2	66	23.0
Zach Switzer	8	8	62	7.8	0	50	7.8
Shawn Lodge	8	7	94	13.4	0	28	11.8
JB Seay	6	5	9	1.8	0	6	1.5
Terik Mulder	8	5	76	15.2	1	23	9.5
Dealo Parson	8	3	25	8.3	0	12	3.1
Wyatt Hodges	8	1	11	11.0	0	11	1.4
Dylan Boone	7	1	11	11.0	1	11	1.6
Ty Englehart	6	1	29	29.0	0	29	4.8
Jalen Patrick	1	1	14	14.0	0	14	14.0
<b>Total</b>	<b>8</b>	<b>129</b>	<b>1824</b>	<b>14.1</b>	<b>13</b>	<b>93</b>	<b>228.0</b>
<b>Opponents</b>	<b>8</b>	<b>96</b>	<b>1113</b>	<b>11.6</b>	<b>8</b>	<b>64</b>	<b>139.1</b>

## Punt Returns

Player	no.	yds	avg	td	lg
Shawn Lodge	9	49	5.4	0	39
<b>Total</b>	<b>10</b>	<b>48</b>	<b>4.8</b>	<b>0</b>	<b>39</b>
<b>Opponents</b>	<b>10</b>	<b>76</b>	<b>7.6</b>	<b>1</b>	<b>18</b>

## Interceptions

Player	no.	yds	avg	td	lg
George Wilder	1	0	0.0	0	0
Caleb Francis	1	32	32.0	1	32
Jaydn Harris-Ervin	1	29	29.0	0	29
Anthony Thornton	1	0	0.0	0	0
<b>Total</b>	<b>4</b>	<b>61</b>	<b>15.3</b>	<b>1</b>	<b>32</b>
<b>Opponents</b>	<b>6</b>	<b>91</b>	<b>15.2</b>	<b>1</b>	<b>48</b>

## Kick Returns

Player	no.	yds	avg	td	lg
Cincere Gill	18	318	17.7	0	31
Shawn Lodge	5	57	11.4	0	15
<b>Total</b>	<b>23</b>	<b>375</b>	<b>16.3</b>	<b>0</b>	<b>31</b>
<b>Opponents</b>	<b>25</b>	<b>532</b>	<b>21.3</b>	<b>0</b>	<b>49</b>

## Fumble Returns

Player	no.	yds	avg	td	lg
Malek Horlback	1	6	6.0	0	6
Carter Szydlowski	2	2	1.0	0	2
Brooks Russ-Martin	1	0	0.0	0	0
<b>Total</b>	<b>5</b>	<b>8</b>	<b>1.6</b>	<b>0</b>	<b>6</b>
<b>Opponents</b>	<b>6</b>	<b>100</b>	<b>16.7</b>	<b>1</b>	<b>57</b>

# PRESBYTERIAN COACHES



Thomas Addison  
Men's Golf



Steve Benson  
Volleyball



Kara Christian  
Acrobatics & Tumbling



Eric Clakeley  
Lacrosse



Mark Cody  
Wrestling



John Collins  
Men's Tennis



Anne Marie Covar  
Women's Golf



Steve Englehart  
Football



Quinton Ferrell  
Men's Basketball



Nick Finotti  
Men's Soccer



GJ Hudgens  
Cross Country



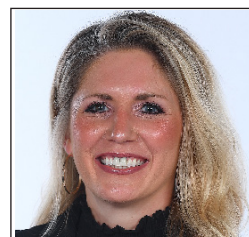
Elton Pollock  
Baseball



Brian Purcell  
Women's Soccer



Joel Roberts  
Women's Tennis



Alaura Sharp  
Women's Basketball



Lu Steinfeldt  
Cheerleading



David Williams  
Softball





The Scotsman Club has helped support Presbyterian College student-athletes since 1937. Our Blue Hose faithful, who are all listed below, that give year in and year out have made it possible for athletics to grow and compete on the field and in the classroom. Gifts to the Scotsman Club make an impact on our student-athletes' lives while they are on campus and long after they graduate.

Those that have supported PC for so long have enabled the Scotsman Club to surpass their goals year after year and we'd like to recognize those people and the number of years they have supported PC. The following is a list of gifts from July 1, 2022, to June 30, 2023.

Presbyterian College has made every effort to ensure the accuracy of this listing, and we apologize for any errors or omissions.

## Contact Information

Emily Hughes

Assistant Director of Annual Giving & Volunteer Engagement

864-833-8247 | ehughes@presby.edu



## Scotsman Club Members

### Walter Johnson Champion \$10,000+

Philip '73 & Ruth Everhart, Clover, SC  
John '87 & Tish Inman, Atlanta, GA  
E. G. '69 & Marianne '71 Lassiter, Atlanta, GA  
Tam '72 & Suellen '73 Milton, Greensboro, NC  
Mica Nixon '79, Clinton, SC  
Stan '74 & Tricia '76 Reid, Greenville, SC  
Jerry Smith '50, Greenville, SC

### Walter Johnson Medallion \$5,000+

Steve '78 & Alison '81 Churm, Clover, SC  
Steve '73 & Libby Crowe, Piedmont, SC  
John '94 & Stephanie Edwards, High Point, NC  
Lyman '73 & Lee Hamrick, Gaffney, SC  
Rusty Hightower '88, Savannah, GA  
Frank King '64, Thomaston, GA  
Tommy '71 & Katherine Lawson, Charlotte, NC  
Carlton '69 & Belinda '71 Manley, Simpsonville, SC  
J.C. '00 & Tori Mauldin, Milton, GA  
Andy '82 & Christine Nish, Gainesville, GA  
Rodney '85 & Amy '85 Revis, Greer, SC  
Brad '85 & Mary '84 Spearman, Clarkesville, GA

### Walter Johnson Sustaining Fellow \$2,500+

Bill '72 & Cheryl Brearley, Lexington, SC  
Danny '79 & Hunt '78 Cook, Clinton, SC  
Hartwell '75 & Susan Dew, Atlanta, GA  
Charles '84 & Suzanne Dixon, Thomasville, GA  
Toby '64 & Anne Garrett, Fountain Inn, SC  
Rob '68 & Teresa Hibbits, Orangeburg, SC  
Kevin '97 & Ashley '00 Lindler, Columbia, SC  
Sandra '88 & Steven Moore, Westminster, SC  
Richard '68 & Virginia Munn, Palmetto, GA  
Bill '69 & Martha Scott, Lanett, AL  
Monty '79 & Sissy Todd, Columbia, SC  
Walt '66 & Susan Todd, Columbia, SC  
Pepsi-Cola of Greenville, SC

### Cally Gault Fellow \$1,000+

Joe & Martha Aiken, Charlotte, NC  
Doug Allen '66, Bonneau, SC  
Jim '66 & Cissy '69 Bankhead, Spartanburg, SC  
Bill '70 & Karen Beaty, Rock Hill, SC  
Tyler Bennett '06, Summerville, SC  
Jim '06 & Lynn '82 Black, Clinton, SC  
Tina Bolden '05, Simpsonville, SC  
Jerry '77 & Jena Broome, Georgetown, SC  
Brad '75 & Kay '76 Bryant, Atlanta, GA  
Bob '69 & Barbara Byard, Fayetteville, GA  
Thomas '04 & Aimee '04 Cameron, Monroe, GA  
Hart '69 & Anne Cobb, Atlanta, GA  
Midge Cornwell, Blackstock, SC  
Courtney '01 & Luis Costales, Charlotte, NC  
Ted & Frances Davenport, Clinton, SC  
David '66 & Jackie Davies, Inman, SC  
Chris '02 & Hannah '05 Dickerson, Monroe, NC  
Bailey Dixon, Clinton, SC  
P'Nut Dowdle '59, Clinton, SC

Bill '53 & Millie Dudley, Mount Pleasant, SC  
Steve '87 & Catherine '95 Durst, Mount Pleasant, SC  
Chriss & Angela Flynn, Richburg, SC  
Rad '69 & Judy Free, Bamberg, SC  
Pat Frenz '17, Atlanta, GA  
Larry '68 & Bridget Geddie, McColl, SC  
John '91 & Katherine '91 Gentry, Athens, GA  
Gene '63 & Carol Goodwyn, Easley, SC  
Michael '85 & Lee Ann Greene, Inman, SC  
John & Nancy Griffith, Davidson, NC  
Karen Griggs, North Myrtle Beach, SC  
Sandy '65 & Wanda Hagood, Easley, SC  
Jarett '99 & Andrea '99 Harrelson, Lexington, SC  
Richard '90 & Ansley Hilton, Fort Mill, SC  
Irby '73 & Fran Hipp, Clinton, SC  
Kurt '03 & Andrea Hitzeman, Carrollton, GA  
Toby '59 & Barbara Hunter, Greenville, SC  
Heather & Tim Hyland, Fort Mill, SC  
John '73 & Alison '73 Jeselnik, Rocky Ford, GA  
John '58 & Rosemary Knox, Marietta, GA  
David '83 & Nan '83 Lake, Whitmire, SC  
Laine '70 & Ann Ligon, Columbia, SC  
Bob '77 & Amy '89 Link, Clinton, SC  
David '98 & Vicki Massey, Marietta, GA  
Robert & Katie McDaniel, Lake Mary, FL  
Wyatt '15 & Maddie '16 Mills, Greenville, SC  
Joe Mooneyham '82, Greenville, SC  
Wes '86 & Dawn Nalley, Greenville, SC  
Mike '85 & Toni Newsome, Atlanta, GA  
Woody & Patty O'Cain, Laurens, SC  
Dan '68 & Diane O'Connell, Spartanburg, SC  
Richard '56 & Marge Oliver, Alpharetta, GA  
Larry '81 & Lee Owens, Spartanburg, SC  
Ashley '17 & Brown Patterson, Laurens, SC  
Phil '82 & Jeri '81 Perkins, Johns Island, SC  
Blake '95 & Mandy Price, Ninety Six, SC  
Gracen Price '23, Cayce, SC  
Randy '75 & Kim '79 Randall, Clinton, SC  
Jimmy '56 & Sandy Rea, Fort Mill, SC  
Davis '03 & Allison '05 Rice, Simpsonville, SC  
Scott '90 & Nancy '90 Rutledge, Simpsonville, SC  
Xandi Sanderson '78, Livermore, CA  
Robb '86 & Daryn '88 Sasser, Florence, SC  
Mack '67 & Joyce Singleton, Myrtle Beach, SC  
Jimmy '81 & Natalie Spence, Lexington, SC  
Bob '68 & Phyllis Staton, Lexington, SC  
Jeff '87 & Amy '86 Stevenson, Atlanta, GA  
Catherine Swetenburg, Clinton, SC  
Matt '95 & Carly '96 Tebbetts, Greenville, SC  
Dan '77 & Karen Tillman, Cheraw, SC  
Missy '08 & Richard Turpin, Clinton, SC  
Barry '70 & Mary Alyce Visoli, Anderson, SC  
Fritz Whittemore '03, Easley, SC  
Hugh '64 & Eleanor Wilson, Charlotte, NC  
David '83 & Katherine '83 Wise, Spartanburg, SC  
Chris Yonce '96, Johnston, SC

### Highland Scot \$500+

Anonymous  
Brian '06 & Mary Ellen Barnwell, Eastover, SC  
Bill '61 & Kay Benton, Alpharetta, GA  
Dick '75 & Kathy Brabham, Loris, SC  
Jennifer '94 & Bryant Butler, Burke, VA  
Roy & Suzette Campbell, Simpsonville, SC  
Will '11 & Jess Churm, Charlotte, NC  
Terry '70 & Pamela Clyburn, Kershaw, SC  
Barbara Creel, Clinton, SC  
Cindy '85 & Eric Davis, Greer, SC  
Mel '68 & Lois Davis, Seneca, SC  
Melvin & Glenda Davis, Greenwood, SC  
Tommy '71 & Pat Edwards, Anderson, SC  
Charles & Caryl Elliott, Myrtle Beach, SC  
Tom Free '91, Saint Petersburg, FL  
Torrell Funderburk '11, Charlotte, NC  
Morris '79 & Susan '80 Galloway, Clinton, SC  
Grant '00 & Becca Gillespie, Columbia, SC  
Gordon Glaspey '83, Banner Elk, NC  
Lauren '09 & Kyle Glass, Greenville, SC  
Lance & Sharon Godfredson, Berkeley Lake, GA  
Margaret '70 & Frederick Gourdin, Asheville, NC  
Dave '62 & Mary Beth Greenslade, Newberry, SC  
Emily Grigg '03, Gaffney, SC  
David '00 & Elizabeth Hassen, Inman, SC  
Jimmy '80 & Meekin Herlong, Columbia, SC  
Jack '98 & Christi Hibbits, Mount Pleasant, SC  
Bobby '08 & Joni '08 Holmes, Lake Wylie, SC  
Rod Isom '03, Greensboro, NC  
Don '80 & Janet Jeter, Columbia, SC  
DeAnn & Timothy Knight, Raleigh, NC  
Robin Krask, Pawleys Island, SC  
Joe '82 & Sally Lane, Tallahassee, FL  
Rick '70 & Sandra Little, Gaffney, SC  
Tommy '77 & Vickie Little, Greenville, SC  
Gwyn '66 & Lisa McCutchen, Loris, SC  
Bill '68 & Mary McFaddin, Richmond, VA  
Dooley '75 & Margarette Miller, Spartanburg, SC  
Jim '58 & Margaret Newsome, Atlanta, GA  
Harold '89 & Dee Nichols, Clinton, SC  
Kevin & Janie O'Neill, Peachtree City, GA  
David '86 & Elizabeth '87 Parker, Elgin, SC  
Lisa Printup '99, Atlanta, GA  
Brian '87 & Kim '87 Purcell, Greenwood, SC  
Tom & Jenny Sease, Salem, VA  
Joey '67 & Mary Gene Singleton, Myrtle Beach, SC  
Bob Smith '61, Easley, SC  
Mike '82 & Lynn '82 Smith, New Castle, DE  
Ron Smith, Spartanburg, SC  
Jerre & Tiffaney Threatt, Clinton, SC  
Martie '73 & Kathryn Tiller, Charleston, SC  
Ed '50 & Shirley Timmerman, Greenville, SC  
Joey '76 & Jean '76 Trice, Donaldsonville, GA  
Phil '93 & Nedra '92 Ulrich, Seneca, SC  
Greg '78 & Linda Walker, River Vale, NJ  
Johnny '69 & Kasey Walther, Marietta, GA  
Cynthia Waltz, Pembroke Pines, FL

# SCOTSMAN CLUB

Sam '66 & Becky Williams, Monroeville, AL  
Arthur State Bank  
Sadler-Hughes Apothecary

## Blue Scot \$250+

Wyatt '58 & Mary Aiken, Burlington, NC  
Jeff & Stacey Antolik, Charlotte, NC  
Donna Arnold, Johnson City, TN  
Jordan Ashley '16, Greenville, SC  
John & Laurie Bailey, Coppell, TX  
Ed Bradley '68, Columbia, SC  
Michael '93 & Tricia Bradshaw, Memphis, TN  
Shannon Brakstad, Tega City, SC  
Buddy & Renee Bridges, Clinton, SC  
Keagan '02 & Laura Broussard, Irmo, SC  
Blake '98 & Catherine Buchanan, West Columbia, SC  
John & Tracy Buchanan, Alpharetta, GA  
Karlie '14 & Matt Cain, Chapel Hill, NC  
Dionne Carter '94, Potomac Falls, VA  
Pete '81 & Genie Chamberlin, Athens, GA  
Rob Coleman '11, Greenville, SC  
Kristen Cometto '10, Fort Lauderdale, FL  
Jordan '14 & Garret '15 Conover, Greenville, SC  
Tommy Cox '84, Laurens, SC  
Holland '88 & Jill Crosswell, Columbia, SC  
Denyel '98 & James Davis, Newnan, GA  
Jim & Rebecca Dearman, Alpharetta, GA  
Wilbur '62 & Barbara Douglas, Winnsboro, SC  
Vaughan '03 & Jen Dozier, Lexington, SC  
Quinton Ferrell '07, Simpsonville, SC  
Parker '10 & Virginia '10 Fleming, Columbus, OH  
Andrew '99 & Julia Folks, Columbia, SC  
Ed Galloway '64, Melbourne, FL  
Cecil '57 & Jo Ann Geddings, Martinez, GA  
Jean Gettys '63, Black Mountain, NC  
Natasha Getway '95, Denver, NC  
John Glymph '73, Greenville, SC  
Eric '99 & Jenell '99 Godfree, Suwanee, GA  
Henry '63 & Virginia Gordon, Seneca, SC  
Tony '94 & Cindy Grant, Solon, OH  
Hunter '15 & Stephanie '14 Gray, Greenville, SC  
Wellborn Gregg '64, Wimberley, TX  
Susan '72 & Dennis Grills, Charlotte, NC  
Mike '85 & Sharon Gruber, Newnan, GA  
Robert '70 & Vanda Guess, Union, SC  
Rae '07 & Matthew Harms, Davidson, NC  
Barley '85 & Beth Harris, Lexington, SC  
Josh Hinson '11, Charlotte, NC  
Tom '78 & Myra '79 Horonzy, Rutherfordton, NC  
Courtney '92 & Jamie Howard, Thornton, CO  
John '70 & Beth Jackson, Sumter, SC  
George '88 & Heather Jenkins, Columbia, SC  
Bo '80 & Pam Johnson, Leesburg, GA  
Marty Joiner '87, Greenville, SC  
Les '87 & Hillary Jones, Hilton Head Island, SC  
Robby '93 & Amanda '96 Kirk, Athens, GA  
Nic '10 & Tricia '10 Lanzo, Alpharetta, GA  
Charles '86 & Nicole Larry, Geneva, IL  
Bruce '67 & Brianna Lawrence, Greenwood, SC  
Tom '72 & Karen Ligon, Georgetown, SC  
Yvonne Littlefield, Pacolet, SC  
Ann Morgan '81, Rock Hill, SC  
John '84 & Jill '84 Moylan, Edisto Island, SC  
Ted '94 & Christina Pitts, Lexington, SC  
Elton '95 & Karen Pollock, Irmo, SC  
Anne Poss '02, Hull, GA  
Craig '86 & Ashley '89 Powell, Clinton, SC  
Rick '66 & Linda Rhame, Greenville, SC  
Justine Schwindel '08, Murrells Inlet, SC  
Gaither '69 & Pamela Shaw, Mountainside, NJ  
Greg & Rosemary Skoog, Hickory, NC  
Steve '84 & Gayla '85 Smith, Waxhaw, NC  
Nate Snellings '94, Dpo, AE  
Carl Spilly '08, Washington, DC  
Don '75 & Nancy Stelling, Fountain Inn, SC  
Randall & Robie Stenoien, Houston, TX  
John '71 & Ellen '73 Stephenson, Camden, SC  
Margot '73 & Jim Stewart, Greer, SC  
Pat '65 & Janice Sudduth, Greer, SC  
Kenneth Thompson '53, Brunswick, GA  
Donny '01 & Virginia Thoresen, Dunwoody, GA  
Colin '15 & Raleigh Thornton, Charlotte, NC  
Trey '04 & Emily Turner, Columbia, SC  
Townley '13 & Chris Ventners, Wendell, NC  
Tommy Volz '03, Blythewood, SC  
David '83 & Susan '83 Waldkirch, Simpsonville, SC  
Amy '86 & Robby Warner, Myrtle Beach, SC

Jennifer '99 & Parker Webb, Columbia, SC  
Jonathan & Anna White, Buford, GA  
Tonya Williams '92, Sumter, SC  
Dan '72 & Mary Page Yarborough, Spartanburg, SC  
Kevin Yascur '19, Greenville, SC

## Garnet Scot \$100

Anonymous  
Shannon Allan, Ladson, SC  
JoAnne '94 & Robert Ard, Cochran, GA  
Janet Bailey '79, Prosperity, SC  
BoBo '78 & Paula Beasley, Atlanta, GA  
Hugh '57 & Frances Betchman, Sumter, SC  
Kylie Birch '17, Moore, SC  
Becky '85 & David Bourne, Roswell, GA  
Phil '57 & Mija Cannella, Midland, GA  
Marvin '75 & Ginny '74 Cartee, Laurens, SC  
Mack '65 & Martha Cobb, Marietta, GA  
Jason '99 & Michelle Cochcroft, Irmo, SC  
Justin '17 & Brooke '17 Cooper, Rock Hill, SC  
Larry & Tammy Cooper, Laurens, SC  
Nathan '14 & Nichole Crocker, Chamblee, GA  
Matt Davis '21, Fort Mill, SC  
Ben '08 & Madison Dollar, Charleston, SC  
Ronald & Nancy Dove, Clinton, SC  
Lynn '85 & Trevor Downie, Laurens, SC  
Bill & Dina Eagen, Fuquay Varina, NC  
Loren '63 & Kathy Eagles, Lumberton, NJ  
Dave '73 & Gale '75 Eckstein, Marietta, GA  
Caroline Edwards '05, Anderson, SC  
Phyllis & Charles Elvington, North Myrtle Beach, SC  
Bill '81 & Roban '83 Everett, Alpharetta, GA  
Robyn '02 & David Fallaw, Aiken, SC  
Amy '02 & Willie Fowlkes, Greenville, SC  
William & Kate Freeland, Greenville, SC  
Milton '64 & Margaret Fulton, New Smyrna Beach, FL  
Maurice '03 & Denise Gibbs, Las Vegas, NV  
Kathryn '96 & Ronnie Glenn, Fort Mill, SC  
Brian '98 & Joy Gorney, Marietta, GA  
Randy '68 & Suzanne Grant, Columbia, SC  
Jimmy Grantham, Greenville, SC  
Andy '91 & Kim Hamilton, Hartsville, SC  
Cerano Harrison '94, Summerville, SC  
Cathie Hopkins, Rock Hill, SC  
Emily & Walter Hughes, Clinton, SC  
Lee '94 & Kristen Hunter, Atlanta, GA  
Bud Jeter '14, Columbia, SC  
David '89 & Anna Jenkins, Saint Louis, MO  
Larry & Betty Johnson, Aynor, SC  
Tiara Jones '15, Laurens, SC  
Mark '87 & Kathryn King, Smyrna, GA  
Jim '69 & Steva Kiser, Inman, SC  
Joe '66 & Susan Lawson, Union, SC  
Alyssa Leaman '20, Penryn, CA  
Debbie Leone, Crystal Lake, IL  
Jennifer '94 & Keith Littrell, Greer, SC  
Gordon '58 & Shirley Livingston, Piney Flats, TN  
Jay '15 & Ashtin '15 Lizanich, Easley, SC  
Olivia Looney Bajoczky '12, Clemson, SC  
Matt McAdam '16, Asheville, NC  
Robbie McCombs '79, Easley, SC  
Richard '73 & Myra Medlin, Loganville, GA  
Fred '73 & Tammy Melson, Columbia, SC  
Catie Monroe '15, Greenville, SC  
Taylor '14 & Grayson Moore, Charlotte, NC  
Jason & Jennifer Mueller, Winter Haven, FL  
Christie Mueller, Greenville, SC  
Mitchell '09 & Tara Odom, Charleston, SC  
Thad Palmer '07, Columbia, SC  
June '74 & Kyle Parks, Hagan, GA  
Kathy Poss, Hull, GA  
Kathryn Anne '09 & Myles Potter, North Augusta, SC  
Daniel '62 & Bunny Powers, Greenville, NC  
Amanda Priest '05, Sherwood, AR  
Richard '68 & Dianne '70 Quillen, Knoxville, TN  
Andy '85 & Andrea Rogers, Matthews, NC  
Nick Roosevelt '09, Santa Clara, CA  
Anky '51 & Eva Rowe, Milledgeville, GA  
Mike '66 & Ellen Smith, Manakin Sabot, VA  
Holly '10 & Matthew Smith, Travelers Rest, SC  
Thornton '66 & Joanne Stewart, Flat Rock, NC  
Brooklyn Taylor  
Nickie Templeton '04 & Katharine Anne Ashmore '14, Taylors, SC  
Katie Thompson '20, Greenville, SC  
Scott & Kelly Thomson, Johns Creek, GA  
Jim & Allison Vogler, Richmond, VA

Joe '13 & Antonia Wideman, Blythewood, SC  
David & Jen Williams, Clinton, SC  
Blakely '03 & Blair Williams, Beaufort, SC  
David '94 & Carey '96 Yarem, Greer, SC  
Debbly '21 & Al Young, Clinton, SC

## Scot \$50+

Kaylee Allen '18, Saint Augustine, FL  
Jay '01 & Elizabeth Biber, Charlotte, NC  
Elizabeth '98 & Damon Boone, Mobile, AL  
Trey '10 & Jesse Bures, Lone Jack, MO  
Skye Campbell, Fargo, ND  
Tracy Campbell '81, Greer, SC  
Serina Combs '21, Greenacres, FL  
Robert '06 & Katie '08 Cook, Greer, SC  
Micah Dowling '13, Orlando, FL  
Megan Duncan '07, Florence, SC  
Jim '59 & Margaret Ann Elliott, Georgetown, SC  
Tom '62 & Shirley Elliott, Fort Mill, SC  
Will Farrar '23, Birmingham, AL  
Dean & Jane French, Toronto, ON  
James Galloway, Rock Hill, SC  
Libby Galloway, Brevard, NC  
Penny '83 & Cinda Ginn, Clinton, SC  
Rodrigo Gomez, Irmo, SC  
Jo Grier, Rock Hill, SC  
Jesse '71 & Denise Hegler, Kershaw, SC  
Chris '08 & Kelly Heiden, Marietta, GA  
Jack Henegan '23, Greenville, SC  
Derek Herron '10, Greenville, SC  
Alex Horton '92, Surprise, AZ  
Marilyn Hyman, Rock Hill, SC  
Kelli Kragh '23, Estero, FL  
Frank Kurtz '57, Chattanooga, TN  
Amanda Ledford '02, Charleston, SC  
Suzannah Mayo '90, Atlanta, GA  
Chris McRae '00, Charlotte, NC  
Christina Miller '17, Cayce, SC  
Pierre '12 & Maurissa '13 Miller, Ruston, LA  
Anna Mills '09, Taylors, SC  
Laura Ann Moore '23, Westminster, SC  
Whitney Newby '05, Greenwood, SC  
Cassie Nichols '20, Clinton, SC  
Heather Phillips '99, Cayce, SC  
Tracey Ray, Kennesaw, GA  
Tony & Cayla Richardson, Sugar Hill, GA  
Tex Ritter '70, Cumming, GA  
Elijah '03 & Leslie Roberts, Asheville, NC  
Patsy Sadler & Walt Hughes, Clinton, SC  
Keith '99 & Sarah '99 Sargent, Buford, GA  
Alaura Sharp, Clinton, SC  
Walt '71 & Jean '70 Shealy, Newberry, SC  
Emily Skinner '07, Charlotte, NC  
Abby Sparkman '23, Meridian, ID  
Mark Spring '06, Apex, NC  
Susan & Jeff Tallman, Clinton, SC  
Cole Taylor '23, Carlisle, SC  
Monica Taylor, Laurens, SC  
Lynn Todd, Conway, SC  
Connie Tomaszewski, Clinton, SC  
Thomas & Ann Warren, Crewe, VA  
Ernie & Lynda Weston, Richmond, VA  
Courtney White '21, Ridgeville, SC  
Brandon '06 & Ansley '06 Wilson, Summerville, SC

## ASK BEFORE YOU ACT

THIS MESSAGE HAS BEEN CREATED TO INFORM SUPPORTERS OF PRESBYTERIAN COLLEGE ATHLETICS ON THE RULES AND REGULATIONS OF THE NATIONAL COLLEGIATE ATHLETIC ASSOCIATION (NCAA). "REPRESENTATIVES OF ATHLETICS' INTERESTS" ARE ALL ALUMNI AND FRIENDS OF PRESBYTERIAN COLLEGE ATHLETICS PROGRAMS; YOU ARE BOUND UNDER THE SAME RULES AND REGULATIONS AS THE ATHLETES, COACHES, AND STAFF. THIS CONTAINS A BRIEF OVERVIEW, AND IF FUTURE QUESTIONS/SITUATIONS ARISE PLEASE BE SURE TO "ASK BEFORE YOU ACT" BECAUSE CONSEQUENCES OF NCAA VIOLATIONS INCLUDE:

- ENROLLED STUDENT-ATHLETES DECLARED INELIGIBLE
- ELIGIBILITY OF PROSPECTIVE STUDENT-ATHLETES JEOPARDIZED
- NCAA REGULATIONS AND SANCTIONS PLACED ON THE COLLEGE AND ATHLETIC DEPARTMENT
- ATHLETICS REPRESENTATIVES FORCED TO DISASSOCIATE FROM THE COLLEGE AND/OR LOSS OF TICKET PRIVILEGES

## WHAT IS A REPRESENTATIVE OF ATHLETICS INTERESTS (BOOSTER/DONOR)?

ALL ALUMNI, FRIENDS, AND EMPLOYEES OF THE COLLEGE ARE CATEGORIZED AS 'REPRESENTATIVES OF ATHLETICS INTEREST'. THE NCAA STIPULATES THAT ONCE AN INDIVIDUAL HAS BEEN IDENTIFIED AS A 'REPRESENTATIVE' OR "BOOSTER/DONOR" HE/SHE RETAINS THIS STATUS FOREVER EVEN IF THE INDIVIDUAL IS NO LONGER ASSOCIATED WITH THE ATHLETICS PROGRAM. FURTHERMORE, THE NCAA STATES THAT IT IS POSSIBLE FOR A PERSON TO BE A REPRESENTATIVE OF MORE THAN ONE INSTITUTION AT THE SAME TIME.

## A REPRESENTATIVE OF ATHLETICS INTEREST IS ANYONE WHO HAS EVER:

- MADE ANY TYPE OF CONTRIBUTION TO THE ATHLETICS DEPARTMENT OR TO A BOOSTER CLUB,
- JOINED THE INSTITUTION'S BOOSTER CLUB OR ANY SPORT SPECIFIC GROUP,
- PROVIDED OR HELPED ARRANGE EMPLOYMENT FOR A STUDENT-ATHLETE,
- PROVIDED BENEFITS TO ENROLLED STUDENT-ATHLETES OR THEIR FAMILIES,
- ASSISTED IN ANY MANNER IN THE RECRUITMENT OF PROSPECTIVE STUDENT-ATHLETES,
- PROMOTED THE INSTITUTION'S ATHLETICS PROGRAMS IN ANY MANNER.

## AS A REPRESENTATIVE OF ATHLETICS INTEREST YOU MAY NOT:

- CONTACT A PROSPECT'S COACH, PRINCIPAL OR COUNSELOR IN AN EFFORT TO EVALUATE A PROSPECT,
- VISIT THE PROSPECT'S INSTITUTION TO PICK UP FILM OR TRANSCRIPTS,
- CONTACT A PROSPECT, HIS/HER PARENTS, LEGAL GUARDIANS, OR SPOUSE ON OR OFF CAMPUS,
- CONTACT A PROSPECT BY TELEPHONE OR LETTER,
- MAKE SPECIAL ARRANGEMENTS TO ENTERTAIN A RECRUIT,
- PROVIDE EXTRA BENEFITS TO A PROSPECT OR STUDENT-ATHLETE, OR TO THE PARENTS, FAMILY AND/OR GUARDIANS OF A PROSPECT OR STUDENT-ATHLETE.

## WHO IS A PROSPECTIVE STUDENT-ATHLETE?

A PROSPECTIVE STUDENT-ATHLETE IS A PERSON WHO HAS STARTED NINTH (9TH) GRADE, REGARDLESS OF HIS/HER ATHLETIC ABILITY AND/OR PARTICIPATION. PLEASE REMEMBER THAT A PROSPECTIVE STUDENT-ATHLETE REMAINS A PROSPECT EVEN AFTER SIGNING A NATIONAL LETTER OF INTENT (NLI) OR ACCEPTS AN OFFER OF FINANCIAL AID FROM THE INSTITUTION. A PERSON REMAINS A PROSPECT UNTIL HE/SHE REPORTS FOR THE FIRST DAY OF CLASSES FOR A REGULAR (FALL/SPRING) TERM.

## WHAT IS AN "EXTRA BENEFIT"?

ANY SPECIAL ARRANGEMENT BY AN INSTITUTIONAL EMPLOYEE OR A REPRESENTATIVE OF THE INSTITUTION'S ATHLETICS PROGRAMS TO PROVIDE A STUDENT-ATHLETE (OR RELATIVE/FRIEND) A BENEFIT THAT IS NOT GENERALLY AVAILABLE TO OTHER PRESBYTERIAN COLLEGE STUDENTS. PLEASE TAKE SPECIAL CONSIDERATION OF THE FOLLOWING:

## ILLEGAL BENEFITS (I.E EXTRA BENEFITS):

- PROVIDING CASH OR OTHER TANGIBLE ITEMS (E.G. CLOTHES, CARS, SHOES, GIFTS, MONEY, TICKETS, HAIR CUT) TO A PROSPECT OR A STUDENT-ATHLETE OR HIS/HER FAMILY OR FRIENDS.
- PURCHASING ITEMS OR SERVICES FROM A PROSPECT/STUDENT-ATHLETE'S FAMILY AT INFLATED PRICES.
- PROVIDING COMPENSATION FOR A PROSPECT/STUDENT-ATHLETE'S NAME, IMAGE, LIKENESS ACTIVITIES THAT IS ABOVE THE GOING RATE/FAIR MARKET VALUE OR IS IN EXCHANGE FOR NIL ACTIVITIES NOT ACTUALLY PERFORMED/PROVIDED.
- PROVIDING THE USE OF A CAR (INCLUDING OFFICIAL VISITS TO STUDENT HOSTS) OR ANY FREE OR REDUCED COST SERVICES TO A PROSPECT/STUDENT-ATHLETE OR HIS/HER FAMILY OR FRIENDS.
- PROVIDING A LOAN, CO-SIGNING A LOAN OR GUARANTEEING A BOND FOR A PROSPECT/STUDENT-ATHLETE.
- PROVIDING TICKETS TO AN ATHLETIC EVENT (INSTITUTIONAL OR COMMUNITY), OR FREE ADMISSION TO AN INSTITUTION'S AWAY FROM HOME CONTEST FOR A PROSPECT/STUDENT-ATHLETE OR HIS/HER FAMILY OR FRIENDS.
- PROMISING EMPLOYMENT AFTER GRADUATION OR PROMISING FINANCIAL AID FOR POST GRADUATE EDUCATION.
- PAYING OR ARRANGING FOR THE PAYMENT OF TRANSPORTATION COSTS INCURRED BY A PROSPECT/STUDENT-ATHLETE'S FAMILY OR FRIENDS TO VISIT THE CAMPUS OR ELSEWHERE.
- ENTERTAINING RELATIVES OR FRIENDS OR A PROSPECT/STUDENT-ATHLETE INCLUDING AT YOUR HOME OR ANOTHER FACILITY (E.G. RESTAURANT).
- EMPLOYING RELATIVES OR FRIENDS OF PROSPECTS AS AN INDUCEMENT FOR ENROLLMENT.
- BUYING CHRISTMAS, BIRTHDAY GIFTS OR ANY GIFTS OR AWARDS FOR ATHLETIC PERFORMANCE.
- PROVIDING AN HONORARIUM TO A STUDENT-ATHLETE FOR A SPEAKING ENGAGEMENT. (ONLY NECESSARY TRAVEL EXPENSES MAY BE PROVIDED AND THIS MUST BE APPROVED BY THE ATHLETIC DEPARTMENT PRIOR TO THE SPEAKING ENGAGEMENT.)
- FREE/REDUCED COST OF ROOM AND/OR BOARD CANNOT BE PROVIDED TO A STUDENT-ATHLETE. THIS IN-

CLUDES ON OR OFF CAMPUS AND AT ANY LOCATION OR TIME OF YEAR.

-STORAGE ROOM CANNOT BE PROVIDED. USE OF COPY MACHINE, FAX MACHINE, OR OTHER DEPARTMENT EQUIPMENT MAY NOT BE PROVIDED.

## PERMISSIBLE BENEFITS:

- HAVE STUDENT-ATHLETES ATTEND A CHARITY EVENT IN WHICH YOU ARE INVOLVED. NOTE: PLEASE CONTACT THE INSTITUTION'S ATHLETIC COMPLIANCE DEPARTMENT.
- PROVIDE SUMMER EMPLOYMENT TO A STUDENT-ATHLETE, PROVIDED COMPENSATION IS ONLY FOR WORK ACTUALLY PERFORMED AND AT A RATE COMMENSURATE WITH THE GOING RATE IN THE LOCALE FOR SIMILAR SERVICES PERFORMED.
- INVITING A STUDENT-ATHLETE/TEAM TO DINNER AT YOUR HOME (NEVER A RESTAURANT), OR TO MEET WITH A GROUP OF ALUMNI IN A CITY WHERE THE TEAM IS PLAYING. NOTE: PLEASE CONTACT THE INSTITUTION'S ATHLETIC COMPLIANCE DEPARTMENT.
- A BOOSTER CLUB, CIVIC ORGANIZATION OR ALUMNI GROUP OF WHICH YOU ARE A MEMBER MAY AWARD A SCHOLARSHIP TO A PROSPECT. NOTE: SOME RESTRICTIONS APPLY – PLEASE CONTACT THE INSTITUTION'S ATHLETIC COMPLIANCE DEPARTMENT.
- ONLY REASONABLE (I.E.-WITHIN A 30 MILE RADIUS) AND OCCASIONAL LOCAL TRANSPORTATION MAY BE PROVIDED

## WHAT IS NAME, IMAGE, LIKENESS?

NAME, IMAGE & LIKENESS (NIL) ACTIVITIES INCLUDE ANY SITUATION IN WHICH A STUDENT-ATHLETE OR PROSPECTIVE STUDENT-ATHLETE USES THEIR NAME, IMAGE, LIKENESS OR PERSONAL APPEARANCE FOR COMMERCIAL OR PROMOTIONAL PURPOSES. SUCH ACTIVITIES MAY BE ATHLETICALLY OR NONATHLETICALLY RELATED, AND MAY BE COMPENSATED OR UNCOMPENSATED. PER NCAA POLICY, A STUDENT-ATHLETE MAY ENGAGE IN NIL ACTIVITIES THAT ARE CONSISTENT WITH STATE LAW. SOUTH CAROLINA STATE LAW, EFFECTIVE AS OF JULY 1, 2021, RESTRICTS AND/OR LIMITS THE USE OF INSTITUTIONAL LOGOS, FACILITIES AND THE INVOLVEMENT OF INSTITUTIONAL STAFF AND REPRESENTATIVES OF ATHLETICS' INTEREST DURING ALL NIL ACTIVITIES, AND ALL ACTIVITIES MUST BE DISCLOSED TO THE INSTITUTION. NOTE: PLEASE CONTACT THE INSTITUTION'S ATHLETIC COMPLIANCE DEPARTMENT.



Presbyterian College Athletics Compliance

Josie Rollins

Associate Athletics Director / Compliance

Phone: (864) 833-7117

E-mail: [jmrollins@presby.edu](mailto:jmrollins@presby.edu)





# PRESBYTERIAN COLLEGE SOCIAL MEDIA

## Official Athletic Department Accounts



@BlueHoseSports



Blue Hose Sports



@BlueHoseSports



Blue Hose Athletics

## Official Sport-Specific Accounts

Baseball  
@PresbyterianBSB (Twitter)



Men's Basketball  
@BlueHoseHoops (Twitter/Instagram)



Women's Basketball  
@BlueHoseWBB (Twitter/Instagram/Facebook)



Cross Country  
@BlueHoseXC (Twitter/Instagram/Facebook)



Football  
@BlueHoseFtball (Twitter/Instagram)



Men's Golf  
@PCMensGolf (Twitter)



Women's Golf  
@PCWomensGolf (Twitter/Facebook)  
@PCWG (Instagram)



Women's Lacrosse  
@PCWomensLax (Twitter/Instagram)



Men's Soccer  
@BlueHoseSoccer (Twitter/Instagram)



Women's Soccer  
@PCWSoccer (Twitter)  
@BlueHoseWS (Instagram)



Softball  
@PresbySB (Twitter)  
@BlueHoseSoftball (Instagram)



Men's Tennis  
@PackthePondo (Twitter)  
@PCMensTennis (Instagram/Facebook)



Women's Tennis  
@Hose\_Tennis (Twitter/Instagram/Facebook)



Volleyball  
@BlueHoseVolley (Twitter)  
@BlueHoseVB (Instagram/Facebook)



Men's Wrestling  
@PCMensWrestle (Twitter/Instagram)



Women's Wrestling  
@PCWomensWrestle (Twitter)  
@PCWomensWrestling (Instagram)



# PRESBYTERIAN COLLEGE FALL SPORTS

## Men's Soccer

Date	Opponent	Time/Result
<b>Aug. 24</b>	<b>Southern Wesleyan</b>	<b>W, 8-1</b>
Aug. 31	at Davidson	L, 0-2
Sept. 5	at Clemson	L, 0-6
Sept. 9	at VMI	W, 1-0
<b>Sept. 16</b>	<b>ETSU</b>	<b>L, 1-2</b>
<b>Sept. 19</b>	<b>Jacksonville</b>	<b>W, 1-0</b>
Sept. 23	at UNC Asheville*	W, 3-2
<b>Sept. 26</b>	<b>Belmont</b>	<b>L, 1-3</b>
<b>Sept. 30</b>	<b>Gardner-Webb*</b>	<b>T, 1-1</b>
<b>Oct. 3</b>	<b>Wofford</b>	<b>L, 0-2</b>
Oct. 7	at USC Upstate*	W, 4-2
Oct. 11	at High Point*	L, 0-1
<b>Oct. 14</b>	<b>Winthrop*</b>	<b>L, 1-2</b>
Oct. 17	at Furman	T, 2-2
Oct. 28	at Longwood*	L, 2-3
<b>Nov. 1</b>	<b>Radford*</b>	<b>T, 2-2</b>

\* Big South game; Bold denotes a home game

## Women's Soccer

Date	Opponent	Time/Result
<b>Aug. 17</b>	<b>Furman</b>	<b>L, 0-1</b>
Aug. 20	at Kennesaw State	L, 0-1
<b>Aug. 25</b>	<b>Columbia International</b>	<b>W, 2-0</b>
Aug. 27	at Georgia State	L, 0-1
<b>Aug. 31</b>	<b>Navy</b>	<b>L, 1-3</b>
Sept. 3	at Jacksonville	T, 2-2
Sept. 10	at Davidson	L, 0-3
<b>Sept. 14</b>	<b>Western Carolina</b>	<b>L, 0-4</b>
Sept. 23	at Radford*	L, 1-3
Sept. 27	at UNC Asheville*	L, 1-4
<b>Sept. 30</b>	<b>High Point*</b>	<b>L, 0-4</b>
<b>Oct. 4</b>	<b>Gardner-Webb*</b>	<b>W, 2-0</b>
Oct. 9	at Winthrop*	W, 1-0
<b>Oct. 18</b>	<b>Charleston Southern*</b>	<b>T, 1-1</b>
Oct. 21	at USC Upstate*	L, 0-4
<b>Oct. 25</b>	<b>Longwood*</b>	<b>T, 1-1</b>

\* Big South game; Bold denotes a home game

## Men's & Women's Cross Country

Date	Opponent	Time/Result
Sept. 1	Belmont Opener	M- 10th/W- 11th
Sept. 15	Queen City Invite	M- 10th/W-7th
Sept. 29	FSU Invite	M-27th/W-27th
Oct. 14	USC Upstate Invite	M-24th/W-27th
Oct. 28	Big South Championship	M-8th/W-8th

## Volleyball

Date	Opponent	Time/Result
Aug. 25	Stetson^	L, 1-3
Aug. 26	Fordham^	L, 1-3
Aug. 26	at UNC Wilmington	L, 0-3
Sept. 1	Incarnate Word^	L, 0-3
Sept. 1	Louisiana Tech^	L, 2-3
Sept. 2	at UT Arlington	L, 0-3
Sept. 8	at Wofford	L, 0-3
Sept. 8	Belmont^	L, 1-3
Sept. 9	Saint Francis^	W, 3-2
<b>Sept. 14</b>	<b>Furman</b>	<b>L, 2-3</b>
<b>Sept. 16</b>	<b>Georgia State</b>	<b>W, 3-2</b>
Sept. 22	at Charleston Southern*	W, 3-1
Sept. 29	at UNC Asheville*	W, 3-1
Sept. 30	at USC Upstate*	W, 3-1
<b>Oct. 6</b>	<b>Gardner-Webb*</b>	<b>W, 3-1</b>
<b>Oct. 7</b>	<b>Winthrop*</b>	<b>L, 2-3</b>
<b>Oct. 13</b>	<b>High Point*</b>	<b>L, 0-3</b>
<b>Oct. 14</b>	<b>Radford*</b>	<b>W, 3-1</b>
Oct. 20	at Winthrop*	L, 0-3
Oct. 21	at Gardner-Webb*	L, 2-3
<b>Oct. 27</b>	<b>USC Upstate*</b>	<b>W, 3-1</b>
<b>Oct. 28</b>	<b>UNC Asheville*</b>	<b>L, 1-3</b>
Nov. 3	at Radford*	6:00 PM
Nov. 4	at High Point*	2:00 PM
<b>Nov. 10</b>	<b>Charleston Southern*</b>	<b>6:00 PM</b>

\* Big South game; Bold denotes a home game

^ Neutral game