

# 2012 Georgia State Panthers Women's Tennis

## Sports Communications

125 Decatur Street, Suite 130, Atlanta, GA 30303

Women's Tennis Contact: Randy Lieberman, Graduate Assistant

Office: 404-413-4034 • Cell: 570-460-6464 • Email: rlieberman1@gsu.edu

www.GeorgiaStateSports.com



## 2012 Schedule (9-6, 1-2)

Jan. 21	at Furman	W, 4-3
Jan. 22	at #62 Wake Forest	W, 4-3
Jan. 27	at # 13 Georgia Tech	L, 2-5
Jan. 28	vs. #43 William & Mary*	W, 4-2
<b>Feb. 9</b>	<b>ETSU</b>	<b>W, 7-0</b>
Feb. 25	at UNC Wilmington*	L, 3-4
Feb. 27	at #43 Sacramento State	L, 2-5
Feb. 29	at UC Santa Barbara	W, 6-1
Mar. 2	at Fresno State	L, 3-4
<b>Mar. 6</b>	<b>Samford</b>	<b>W, 7-0</b>
<b>Mar. 12</b>	<b>North Florida</b>	<b>W, 5-2</b>
Mar. 17	at #35 South Carolina	L, 3-4
<b>Mar. 21</b>	<b>Kennesaw State</b>	<b>W, 7-0</b>
Mar. 30	at #50 VCU*	L, 3-4
Apr. 8	at #37 USF	W, 4-3
Apr. 19-22	CAA Championships	All Day
May 11	NCAA 1st & 2nd Rounds	All Day
May 17	NCAA Tennis Championships	All Day

## Roster

Name	Ht.	Yr.	Hometown
Alexandra Brouillette	5-2	Fr.	Kennesaw, Ga.
Whitney Byrd	5-3	Jr.	Atlanta, Ga.
Masa Grgan	5-6	Fr.	Maribor, Slovenia
E'Ja Jenkins	5-7	So.	Columbus, Ohio
Maryna Kozachenko	5-6	So.	Kiev, Ukraine
Tereza Lerova	5-8	Sr.	Ostrava-Bartovice, Czech Republic
Megan Nelms	5-4	Fr.	Lilburn, Ga.
Martina Ondrackova	5-8	Jr.	Rapotin, Czech Republic
Chaimaa Roudami	5-6	Fr.	Casablanca, Morocco
Abigail Tere-Apisah	5-6	So.	Port Moresby, Papua New Guinea
Reba Williams	5-7	Jr.	Conyers, Ga.

**Head Coach:** Miha Lisac (Fifth Year, Georgia State '05)

**Assistant Coach:** Lauren Meier (First Year, Kentucky '11)

**Volunteer Asst. Coach:** Clarence Boyd (Georgia State '07)

## The Tere-Apisah File

- Three-Time CAA Player of the Week in 2012
- 2011 CAA Rookie of the Year
- Most Outstanding Performer at 2011 CAA Championships
- 28-3 Career Singles Record (5th-Best in GSU History)

**#36** ITA Women's National Singles Ranking

**14-1** 2012 Singles Record

**4-1** vs. Nationally-Ranked Singles Opponents



*Abigail Tere-Apisah*

## CAA CHAMPIONSHIP

April 19-22 - All Day  
Folkes-Stevens Tennis Center  
Norfolk, Va.  
Bracket

## GEORGIA STATE TENNIS

GSU Women's Tennis  
Overall: 9-6, CAA: 1-2  
#63 National Ranking  
#3 Seed-CAA Champ.

## PROVING A POINT

The story of the 2011-12 Georgia State women's tennis team centers on a team-wide effort to prove a point. Fifth-year head coach **Miha Lisac** set lofty goals for his Panthers prior to this season: 1) Earn a Top 40 national ranking 2) Compete at the National Indoor Championships 3) Win the CAA Title and 4) Win a First Round NCAA Championship match. Georgia State battled a tough schedule that forced the team to win games against talented opponent to prove it belonged with the nation's elite. GSU didn't back down and won nine matches this year, including five away from home. The Panthers achieved a national ranking of No. 37 earlier this season, crossing off one goal. They now turn their attention to the CAA Championships to attempt to check another goal off their 2012 checklist.

## 2012 CAA CHAMPIONSHIPS

Georgia State earned the third seed in this year's CAA Championship. It will mark the third consecutive season the Panthers enter the tournament as the three seed. GSU battles the winner of sixth-seeded James Madison vs. 11th-seeded George Mason. GSU and James Madison have played twice in the history of the two programs and both times the matchup occurred in the CAA Championship. Georgia State took both of the meetings, 4-0 in 2009 and 4-1 in 2010. Georgia State and George Mason have never met in women's tennis.

## THE COMEBACK KID

Sophomore **Abigail Tere-Apisah** has mounted two amazing comebacks vs. ranked opponents this season on the way to victories. She first fought off two match points while down 5-2 and 5-4 in the third set to defeat No. 44-ranked Jillian O'Neal of Georgia Tech 7-6, 3-6, 7-5. Just recently, the Port Moresby, Papua New Guinea, native battled to a 3-6, 6-3, 7-5 win against USF's No. 41-ranked Ecaterina Vasenina. Tere-Apisah faced a 5-0 deficit in the third set when she won a game to narrow the deficit to 5-1. The next game, Tere-Apisah trailed 40-0, but climbed all the way back to win the game and six straight games following for the victory.



*Abigail Tere-Apisah*

# 2012 Georgia State Panthers Women's Tennis

## Georgia State Quick Facts

School .....	Georgia State University
Location .....	Atlanta, Ga.
Founded .....	1913
Enrollment .....	32,000+
Nickname .....	Panthers
Colors.....	Blue (PMS 286) and White
Affiliation.....	NCAA Division I
Conference .....	Colonial Athletic Association Sun Belt Conference (2013)
President.....	Dr. Mark P. Becker/3rd Year
Athletics Director .....	Cheryl L. Levick/3rd Year
Athletics Dept. Phone .....	(404) 413-4000
First Year of Competition.....	1976 (36th yr.)
Overall Record.....	296-253 (.539)
Conference Championships.....	1

## Women's Tennis Staff

Head Coach.....	Miha Lisac (Georgia State, 2005)
Career Record .....	53-37
Record at Georgia State .....	53-37
Office Phone.....	(404) 413-4072
Fax .....	(404) 413-4001
E-mail.....	mlisac@gsu.edu
Assistant Coach .....	Lauren Meier
E-mail.....	lmeier1@gsu.edu
Volunteer Assistant Coach .....	Clarence Boyd
Speed, Strength & Conditioning .....	Devin Vernick
Athletic Trainer.....	Jessica Hemsley (Florida '10)

## 2011 Review

2010-11 Overall Record.....	15-4
Splits.....	Home 4-1, Away 8-2
2010-11 CAA Record.....	4-2
Conference Splits.....	Home 1-0, Away 1-1
2011 CAA Tournament .....	Reached CAA Finals
Final ITA Ranking.....	L, 2-4 vs. William & Mary #65

## Sports Communications

Associate AD.....	Allison George
Assistant AD .....	Charlie Taylor
Associate SID .....	Mike Holmes
Assistant SID .....	Ned Colegrove
Graduate Assistant .....	Rob Carnes
Women's Tennis Contact .....	Randy Lieberman
Phone .....	570-460-6464
Email .....	rliberman1@gsu.edu
Website.....	www.GeorgiaStateSports.com

## Tennis Tweets

Follow the GSU women's tennis team on Twitter to receive match updates, recaps, box scores, videos and more straight to your personal device. Visit [twitter.com/GSUWTennis](https://twitter.com/GSUWTennis) and click "Follow" or scan the code on the right.



## BATTLE-TESTED BUNCH

The Georgia State women's tennis team hasn't shied away from battling tough competition this season. The Panthers own victories against No. 37, 43 and 62-ranked teams already this season with a couple of close losses to other ranked opponents. In total, GSU took on seven ranked foes this year with all of those matches being away from home.

## GSU IN THE CAA CHAMPIONSHIPS

Georgia State is 8-5 all-time in the CAA Championships and 7-3 in it during the tenure of fifth-year head coach **Miha Lisac**. The Panthers are 18-16 all-time in conference tournament dating back to their days as a member of the Atlantic Sun and Trans-Atlantic Athletic Conference.

## SPRING TRAINING

In every season of fifth-year head coach **Miha Lisac's** tenure, the Panthers have entered the CAA Championships coming off a victory. This includes in 2009 when GSU won the CAA Championship following four straight victories. This year is no different as Georgia State rallied for a huge 4-3 victory at #37 South Florida to close its regular-season on Apr. 8.

## FRESHENING UP

Freshmen **Masa Grgan** and **Chaimaa Roudami** have made huge impacts during their rookie seasons this year. Roudami has stepped into the No. 6 singles slot and recorded an 11-4 record, including seven wins in her last 10 matches. She has delivered key points by winning her singles match in five of GSU's seven matches against ranked opponents. Grgan arrived at Georgia State in the fall and has made an immediate impact this spring. The Maribor, Slovenia, native is 9-5 this year in singles play. She has also found a home in the No. 3 doubles slot by pairing with junior **Martina Ondrackova**. Together, the two own a 7-6 record together. Grgan began her GSU career by winning her singles flight at the Roberta Allison Fall Classic in Tuscaloosa, Ala., this fall.



Masa Grgan



Chaimaa Roudami

## SPRING CLEANING

Twice this spring the Panthers swept the CAA Player of the Week awards for women's and men's tennis. Women's tennis sophomore **Abigail Tere-Apisah** and men's tennis sophomore **Thomas Cook** each earned the honors on Mar. 7. Tere-Apisah earned it again on Apr. 10 as men's tennis junior **Victor Valente** followed suit on the same day.

## HIGH FIVE

At the start of the 2012 season, junior **Whitney Byrd** and sophomore **Maryna Kozachenko** had never played a match together in dual matches. But Coach Lisac switched up his pairings for a Mar. 6 match vs. Samford and the two have hit it off since. Byrd and Kozachenko are 5-1 since taking an 8-4 win vs. Samford. The duo's only loss has come to Dominika Kanakova and Adriana Pereira of No. 35-ranked South Carolina.

## CAA TRIFECTA

Sophomore **Abigail Tere-Apisah** earned CAA Player of the Week honors

# 2012 Georgia State Panthers Women's Tennis

three times this year. She first earned it on Feb. 15 after beginning the year 5-0 with wins over the 93rd and 44th-ranked singles players. The sophomore earned her second honor on Mar. 7 after she defeated Fresno State's No. 42-ranked Marianne Jodoin in straight sets. Tere-Apisah's most recent CAA weekly honor came on Apr. 10 after she defeated USF's No. 41-ranked Ecaterina Vasenina following a dramatic comeback in the third set.



Whitney Byrd

## BYRD CAA-LL

Junior **Whitney Byrd** earned her first career CAA Player of the Week award on Mar. 20. She posted a hard-fought 7-6 (7-4), 4-6, 6-2 win vs. South Carolina's Dominika Kanakova in the No. 3 singles slot. Byrd is playing in her first season with GSU after sitting out last year due to NCAA transfer rules. She transferred from NAIA women's tennis power Auburn-Montgomery where she was a second-team NAIA All-American in 2010.

## UPSET IN TAMPA

Georgia State displayed its resiliency in a 4-3 upset victory at #37 South Florida on Apr. 8. The Panthers rallied from losing the doubles point and trailing 3-2 in the team score for the victory. Sophomore **Abigail Tere-Apisah** paced the Panthers with a comeback win for the ages. She rallied from being down 5-0 in the third set, fighting off three match points, on the way to a 3-6, 6-3, 7-5 win vs. the No. 41-ranked Ecaterina Vasenina. Junior **Whitney Byrd** sealed the victory with a 6-3, 3-6, 6-2 win at No. 3 singles.

## "BYRD'S EYE VIEW"

Junior Whitney Byrd has been chronicling the GSU women's tennis season with her own blog, "Byrd's Eye View" on [www.GeorgiaStateSports.com](http://www.GeorgiaStateSports.com). So far, Byrd has posted numerous articles throughout the year on various topics such as the road trip to California, community service time and a pregame photo shoot earlier this season. Follow Byrd's blog by clicking [here](#) or visiting the women's tennis page on [www.GeorgiaStateSports.com](http://www.GeorgiaStateSports.com) and clicking on the "Byrd's Eye View" tab on the top right side of the page.

## CZECH-ING OUT

Seniors, and natives of the Czech Republic, **Tereza Lerova** and **Martina Ondrackova** look to extend their careers for a couple more matches at the CAA Championships. Lerova will finish her career as one of the best doubles players in recent history at GSU. She owns 28 career victories in doubles, with another 22 wins in singles. Ondrackova is not far behind with 21 doubles victories in her career, adding 10 singles wins. Lerova's leadership and excellent play in the No. 2 slot for GSU will be sorely missed when she departs after this season.



Tereza Lerova

## A BASELINE FOR SUCCESS

Georgia State women's tennis team and head coach **Miha Lisac**

## GSU in the CAA Championship

2006 (Newport News, Va.)	
4/21 - vs. UNCW.....	L, 3-4
2007 (Newport News, Va.) - #4 Seed	
4/20 - vs. UNCW.....	W, 4-2
4/21 - vs. William & Mary.....	L, 0-4
2008 (Norfolk, Va.) - #4 Seed	
4/18 - vs. Delaware.....	W, 4-1
4/19 - vs. William & Mary.....	L, 0-4
2009 (Norfolk, Va.) - CAA Champions - #1 Seed	
4/17 - vs. James Madison.....	W, 4-0
4/18 - vs. Old Dominion.....	W, 4-2
4/19 - vs. VCU.....	W, 4-3
2010 (Norfolk, Va.) - #3 Seed	
4/16 - James Madison.....	W, 4-1
4/17 - William & Mary.....	L, 0-4
2011 (Norfolk, Va.) - #3 Seed	
4/22 - vs. Delaware.....	W, 4-0
4/23 - vs. VCU.....	W, 4-2
4/24 - vs. William & Mary.....	L, 2-4

## 2012 Dual Match Stats

All Matches.....	9-6
Home.....	4-0
Away.....	4-6
Neutral.....	1-0
CAA Matches.....	1-2
Home.....	0-0
Away.....	0-2
Neutral.....	1-0
vs. Ranked Opponents.....	3-4
No. 1-30.....	0-1
No. 31-50.....	2-3
No. 51-75.....	1-0
vs. Unranked Opponents.....	6-2
January.....	3-1
February.....	2-2
March.....	3-3
April.....	1-0
Sunday.....	2-0
Monday.....	1-1
Tuesday.....	1-0
Wednesday.....	2-0
Thursday.....	1-0
Friday.....	0-3
Saturday.....	2-2
Winning Doubles.....	6-1
Losing Doubles.....	3-5

## 2012 Panthers

Letterwinners Returning/Lost:	4/3
Starters Returning/Lost:	4/3
Newcomers:	4
CAA Players of the Week:	Whitney Byrd, Abigail Tere-Apisah (3)

# 2012 Georgia State Panthers Women's Tennis

## Match Clinchers

Whitney Byrd: 2 (William & Mary, South Florida)  
 Maryna Kozachenko: 3 (Furman, Samford, Kennesaw State)  
 Tereza Lerova: 1 (UC Santa Barbara)  
 Abigail Tere-Apisah: 3 (Wake Forest, ETSU, North Florida)

## GSU in the Rankings

### ITA Division I Women's Rankings:

#### Team Rankings

Date	Rank
January 3	58
January 24	54
February 2	47
February 16	40
February 22	38
February 29	50
March 6	NR
March 13	66
March 20	70
March 27	74
April 3	NR
April 10	60
April 17	63

### ITA Division I Women's Singles Rankings:

#### Abigail Tere-Apisah

Date	Rank
January 3	NR
February 16	58
February 28	54
March 13	34
March 27	39
April 10	35
April 17	36

## Last Time GSU...

Won at Home..... 3/21/12 vs. Kennesaw St. (7-0)  
 Won on the Road..... 4/8/12 at #37 USF (4-3)  
 Won at Neutral Site ..... 1/28/12 vs. #43 W&M (4-3)  
 Lost at Home..... 3/13/11 vs. #23 Yale (2-5)  
 Lost on the Road ..... 3/30/12 at #50 VCU (3-4)  
 Lost at Neutral Site ..... 4/24/12 vs. #44 W&M (2-4)\*  
 Earned Shutout..... 3/21/12 vs. Kennesaw St.  
 Was Shutout ..... 4/17/10 vs. W&M (0-4)\*  
 Swept Doubles Point..... 3/21/12 vs. Kennesaw St.  
 Lost Doubles Point ..... 4/8/12 at #37 USF  
 Earned Back-to-Back Shutouts..... 2009  
 1/24 vs. Ga. Southern (7-0) & 1/31 vs. Tulane (4-0)

\* at CAA Championships

announced the "Baseline Club," a new program for fans to support a successful tennis team at GSU for years to come. With the formation of the Baseline Club, fans can now help build one of the top programs in college tennis at Georgia State. The Baseline Club's primary purpose is to serve as a grassroots initiative for the fundraising needs of the Georgia State women's tennis program.

## A HISTORIC RANKING

After earning its highest ranking in school history the previous week, Georgia State eclipsed it by earning a No. 38 ranking in the ITA Women's Division I Team rankings on Feb. 22. The Panthers were ranked No. 40 prior to earning the program-best No. 38 ranking the following week.

## POINTLESS AT PIEDMONT

Georgia State was dominant at home this season with a perfect 4-0 record. It took visiting teams three months into the season to record a point against the Panthers as well. Georgia State won its first two matches at home 7-0 against ETSU on Feb. 9 and Samford on Mar. 6. GSU only dropped two points all season at home.

## HIGH PRAISE FROM TECH COACH

Georgia Tech head coach **Bryan Shelton** had kind words after GSU fought hard with the Yellow Jackets in a 5-2 defeat on Jan. 27. Shelton said, "I thought Georgia State played really well and I give them a lot of credit. I think [head coach] **Miha Lisac** has done a tremendous job of putting a great squad together. Not only were they talented, but they competed like champs. They certainly pushed us to the limit. It's certainly the best Georgia State team I've seen in my 12 years at Georgia Tech."

## MASA + MATH = WINNER

Freshman **Masa Grgan** recently took first place in the Spring 2012 "The Mile - Math 1111 College Algebra Contest." She was honored by Georgia State University's Department of Mathematics and Statistics for her accomplishment. Her tasks included finishing 10 extensive math problems that contained logarithms, parabolas and other algebraic equations.



Masa Grgan

## WOMEN'S TENNIS ON TWITTER

Fans can follow the Georgia State women's tennis team on twitter by visiting [www.twitter.com/GSUWTennis](http://www.twitter.com/GSUWTennis) and clicking follow. Fans can also follow head coach Miha Lisac by following his account [@MihaLisac](https://twitter.com/MihaLisac).

## ROUDAMI, NELMS FINALIZE 2012 RECRUIT CLASS

Two newcomers, Chaimaa Roudami and Megan Nelms, signed with Georgia State this January just prior to the spring season. Chaimaa Roudami (SHAYmah ROO-dah-mee) arrived at GSU from Casablanca, Morocco. She won a U16 doubles championship at the International Junior Championships of Botswana during her prep career. Nelms, a native of nearby Lilburn, Ga., joined the Panthers after graduating from Parkview High School in Gwinnett County. She was a four-year letter-winner at Parkview and was named an All-Region player in 2008.

# 2012 Georgia State Panthers Women's Tennis

## GSU ALUM BOYD JOINS STAFF

Head coach **Miha Lisac** welcomed fellow Georgia State alum **Clarence Boyd** to his staff prior to the 2012 spring season. Boyd served as the team manager for the Georgia Tech men's tennis team for the past four seasons and helped develop freshman Guillermo Gomez into the ACC Freshman of the Year in 2008, just the second player in Yellow Jackets men's tennis' history to earn the honor. Boyd graduated from Georgia State in 2007 with a degree in psychology.



Clarence Boyd

## PANTHERS ADD ANOTHER CAT

Head coach **Miha Lisac** proudly announced the hiring of **Lauren Meier** as the first full-time women's tennis assistant coach at Georgia State. Meier spent the Fall 2011 season with the Panthers as a volunteer assistant. She brings Division I playing and coaching experience to GSU from her days at Kentucky. She completed an internship at UK Sports Marketing and was an assistant coach for the women's tennis team at Henry Clay H.S. in Lexington, Ky., last spring when Henry Clay reached the state championships. Meier graduated from Kentucky last May with a bachelor's degree in marketing.



Lauren Meier

## GSU ADDS INTERNATIONAL WINNER

GSU announced it will add **Natallia Vavulina** in 2012 after she signed a National Letter of Intent last November. A native of Minsk, Belarus, the 18-year old Vavulina has an ITF ranking of No. 112. In Tennis Europe, Vavulina was No. 3 in the rankings in U-16 competition. During her junior tennis competition around the world, she earned five wins over players ranked in the top 100. She competed in the main draw of the Australian Junior Tennis Open. Vavulina won five junior international tournaments over the past three years, posting at least four wins in each of those events in France, Finland, Morocco, Lithuania and Uzbekistan.

## FOUR PANTHERS ADVANCE IN GAINESVILLE

Junior **Whitney Byrd** and sophomores **Abigail Tere-Apisah** and **Maryna Kozachenko** each notched first-round victories on the first day of the challenging 2011 USTA/ITA Southeast Regional Championships. Each fell in the second round to SEC competition. Byrd and Kozachenko fell to foes from host University of Florida on the final day of play.

## GRGAN ROLLS IN TUSCALOOSA

Freshman **Masa Grgan** led the Georgia State women's tennis team at the 24th Roberta Alison Fall Classic hosted by the University of Alabama on Oct. 15. She posted a perfect 3-0 singles record in the flight seven bracket. After posting two singles victories on the first day, the Maribor, Slovenia, native finished off Mississippi's State Petra Ferancova 4-6, 6-3, 6-4 on the final day to complete her undefeated weekend.

## BYRD, TERE-APISAH EARN SHOOTOUT TITLES

The Georgia State women's tennis team wrapped up a successful weekend at the Southern Shootout, with several victories on Sept. 25. Notably, sophomore **Abigail Tere-Apisah** and junior **Whitney Byrd** capped undefeated weeks with singles victories. Tere-Apisah recorded a 6-1, 6-1, win over South Alabama's Alina Vollman in the No. 1 singles slot. No. 3 singles player Byrd knocked off Ramona Ghermani of South Alabama 6-3, 6-3.

## Tere-Apisah vs. Nationally Ranked Opponents in 2012

### Jan. 22

Win, 6-4, 2-6, 6-1

vs. No. 93 Kayla Duncan (Wake Forest)

- Second career victory over a ranked opponent
- First since she defeated Yale's 88th-ranked singles player Elizabeth Epstein 6-3, 6-3 in 2011
- Fell to Florida State's Noemie Scharle, ranked No. 66, in 2011

### Jan. 27

Win, 7-6, 3-6, 7-5

vs. No. 44 Jillian O'Neal (Georgia Tech)

- Fought off two match points while down 5-2 and 5-4 in the third set.
- Battled an ankle injury that forced her to take a time-out in the second set

### Mar. 2

Win, 6-3, 6-4

vs. No. 42 Marianne Jodoin (Fresno State)

- Second career victory over a ranked opponent in straight sets

### Mar. 21

Loss, 6-7 (4-7), 6-3, 2-6

vs. No. 45 Anya Morgina (South Carolina)

- Snapped a season-high 11-match winning streak for Tere-Apisah

### Apr. 8

Win, 3-6, 6-3, 7-5

vs. No. 41 Ecaterina Vasenina (South Florida)

- Fought back from down 5-0 in the third set to earn the win
- Won the next game after falling down 5-0 by a 40-0 margin
- Tere-Apisah fell behind 40-0 in the following game and fought off three match points to win the game
- Won her match when GSU trailed 3-2 in the team score

## Probable Lineup

### Doubles

No.1 - Abigail Tere-Apisah/Tereza Lerova (4-2)

No. 2 - Whitney Byrd/Maryna Kozachenko (5-1)

No. 3 - Chaimaa Roudami/Masa Grgan (0-1)

### Singles

No. 1 - Abigail Tere-Apisah (14-1)

No. 2 - Tereza Lerova (6-8)

No. 3 - Whitney Byrd (9-6)

No. 4 - Maryna Kozachenko (6-7)

No. 5 - Masa Grgan (9-5)

No. 6 - Chaimaa Roudami (11-4)

# 2012 Georgia State Panthers Women's Tennis

## 2012 Season Statistics

Overall record: 9-6 • CAA: 1-2 • Region: 1-1 • Home: 4-0 • Away: 4-6 • Neutral: 1-0  
 vs National ranked: 3-4 • vs Regional ranked: 0-0

SINGLES	Overall	Dual	Tour	CAA	1	2	3	4	5	6	vs ranked		Strk	Last 10	Career
											Nat'l	Reg'l			
Whitney Byrd	9-6	9-6	0-0	2-1	---	---	6-4	3-2	---	---	0-0	1-0	W1	7-3	9-6
Masa Grgan	9-5	9-5	0-0	1-2	---	---	---	2-0	7-5	---	0-0	0-0	W1	7-3	9-5
Maryna Kozachenko	6-7	6-7	0-0	1-2	---	---	2-3	4-4	---	---	0-0	0-2	L1	5-5	16-14
Tereza Lerova	6-8	6-8	0-0	0-2	---	6-8	---	---	---	---	0-1	1-3	L2	4-6	22-27
Martina Ondrackova	0-1	0-1	0-0	0-0	---	---	---	---	---	0-1	0-0	0-0	L1	0-1	10-10
Chaimaa Roudami	11-4	11-4	0-0	2-1	---	---	---	---	2-1	9-3	0-0	0-0	W1	7-3	11-4
Abigail Tere-Apisah	14-1	14-1	0-0	3-0	14-1	---	---	---	---	---	4-1	6-1	W3	9-1	28-3
Totals	57-32	57-32	0-0	9-8	14-1	6-8	8-7	9-6	9-6	11-4	4-2	8-6			
Percentage	.640	.640	.000	.529	.933	.429	.533	.600	.600	.733	.667	.571			

DOUBLES TEAMS	Overall	Dual	Tour	CAA	1	2	3	4	5	6	vs ranked		Strk	Last 10
											Nat'l	Reg'l		
Maryna Kozachenko/Abigail Tere-Apisah	3-4	3-4	0-0	0-1	3-4	---	---	0-1	0-1	0-1	0-1	L1	3-4	
Whitney Byrd/Tereza Lerova	4-5	4-5	0-0	1-1	0-2	4-3	---	0-1	0-3	L1	4-5			
Masa Grgan/Martina Ondrackova	7-6	7-6	0-0	1-2	---	---	7-6	0-0	1-0	L3	4-6			
Maryna Kozachenko/Chaimaa Roudami	0-1	0-1	0-0	0-1	---	0-1	---	0-0	0-0	L1	0-1			
Chaimaa Roudami/Abigail Tere-Apisah	0-1	0-1	0-0	0-0	---	0-1	---	0-0	0-1	L1	0-1			
Tereza Lerova/Abigail Tere-Apisah	4-2	4-2	0-0	1-0	4-2	---	---	0-2	3-0	L1	4-2			
Whitney Byrd/Maryna Kozachenko	5-1	5-1	0-0	1-0	---	5-1	---	0-0	0-0	W3	5-1			
Martina Ondrackova/Chaimaa Roudami	1-0	1-0	0-0	0-0	---	---	1-0	0-0	0-0	W1	1-0			
Masa Grgan/Chaimaa Roudami	0-1	0-1	0-0	0-0	---	---	0-1	0-0	0-0	L1	0-1			
Totals	24-21	24-21	0-0	4-5	7-8	9-6	8-7	0-4	4-5					
Percentage	.533	.533	.000	.444	.467	.600	.533	.000	.444					

Date	Opponent	Score	Overall	CAA	Nation	Region
Jan 13, 2012	at Furman	W 4-3	1-0	0-0	#58	
Jan 22, 2012	at #62 Wake Forest	W 4-3	2-0	0-0	#58	
Jan 27, 2012	at #13 Georgia Tech	L 2-5	2-1	0-0	#54	
* Jan 28, 2012	vs #43 William and Mary	W 4-2	3-1	1-0	#54	
Feb 09, 2012	ETSU	W 7-0	4-1	1-0	#47	
* Feb 25, 2012	at UNCW	L 3-4	4-2	1-1	#38	
Feb 27, 2012	at #43 Sacramento State	L 2-5	4-3	1-1	#38	
Feb 29, 2012	at UC Santa Barbara	W 6-1	5-3	1-1	#50	
% 3/2/2012	at Fresno State	L 3-4	5-4	1-1	#50	
Mar 06, 2012	SAMFORD	W 7-0	6-4	1-1	#50	
Mar 12, 2012	NORTH FLORIDA	W 5-2	7-4	1-1		
3/17/2012	at #35 South Carolina	L 3-4	7-5	1-1	#66	
Mar 21, 2012	KENNESAW STATE	W 7-0	8-5	1-1	#70	
* Mar 30, 2012	at #50 Virginia Commonwealth	L 3-4	8-6	1-2	#74	
% Apr 08, 2012	at #37 South Florida	W 4-3	9-6	1-2		

# 2012 Georgia State Panthers Women's Tennis

## 2012 Team Match-by-Match Statistics

Georgia State University Women's Tennis Georgia State 2012 Team Match-by-Match											
Date	Opponent	Score	Singles						Doubles		
			1	2	3	4	5	6	1	2	3
Jan 13, 2012	at Furman	W 4-3	W	W	W	L	L	L	W	W	W
Jan 22, 2012	at #62 Wake Forest	W 4-3	W	L	L	Wr	W	Wf	L	L	W
Jan 27, 2012	at #13 Georgia Tech	L 2-5	W	L	L	L	L	W	L	L	W
* Jan 28, 2012	vs #43 William and Mary	W 4-2	W	u	L	W	W	W	L	L	W
Feb 09, 2012	ETSU	W 7-0	W	W	W	W	W	W	W	W	W
* Feb 25, 2012	at UNCW	L 3-4	W	L	L	W	L	W	L	W	L
Feb 27, 2012	at #43 Sacramento State	L 2-5	W	L	L	W	L	L	L	L	W
Feb 29, 2012	at UC Santa Barbara	W 6-1	W	W	W	W	L	W	W	W	L
% 3/2/2012....	at Fresno State	L 3-4	W	W	L	L	W	L	L	L	L
Mar 06, 2012	SAMFORD	W 7-0	W	W	W	W	W	W	W	W	W
Mar 12, 2012	NORTH FLORIDA	W 5-2	W	L	W	L	W	W	W	W	L
3/17/2012...	at #35 South Carolina	L 3-4	L	L	W	L	W	W	L	L	L
Mar 21, 2012	KENNESAW STATE	W 7-0	W	W	W	W	W	Wf	W	W	W
* Mar 30, 2012	at #50 Virginia Commonwealth	L 3-4	W	L	L	W	L	L	W	W	L
% Apr 08, 2012	at #37 South Florida	W 4-3	W	L	W	L	W	W	L	W	L

## Abigail Tere-Apisah Match-by-Match Statistics

Abigail Tere-Apisah					
SINGLES	Team/School	Pos	Opponent (Rank Nat/Reg)	Singles score	
	Jan 13, 2012 at Furman	1	Lauren Kline	Won	6-4, 6-2
	Jan 22, 2012 at #62 Wake Forest	1	Kayla Duncan (93/16)	Won	6-4, 2-6, 6-1
	Jan 27, 2012 at #13 Georgia Tech	1	Jillian O'Neill (45/10)	Won	7-6 (7-3), 3-6, 7-5
*	Jan 28, 2012 vs #43 William and Mary	1	Jeltje Loomans (-/14)	Won	6-3, 6-4
	Feb 09, 2012 ETSU	1	Marine Wieliczko	Won	6-3, 6-4
*	Feb 25, 2012 at UNCW	1	Olga Blank	Won	6-4, 6-1
	Feb 27, 2012 at #43 Sacramento State	1	KAPSHAI, Tatsiana (-/15)	Won	4-6, 6-2, 6-0
	Feb 29, 2012 at UC Santa Barbara	1	Natalia Lozano	Won	6-1, 2-6, 6-2
%	3/2/2012 at Fresno State	1	Marianne Jodoin (42/8)	Won	6-3, 6-4
	Mar 06, 2012 Samford	1	Kristin Lewis	Won	6-1, 6-0
	Mar 12, 2012 North Florida	1	Aline Berkenbrock	Won	6-4, 6-4
	3/17/2012 at #35 South Carolina	1	Anya Morgina (45/4)	Lost	6-7 (4-7), 6-3, 2-6
	Mar 21, 2012 Kennesaw State	1	Vera Shkundina	Won	6-3, 6-3
*	Mar 30, 2012 at #50 Virginia Commonwealth	1	Ana Bara	Won	6-3, 6-0
%	Apr 08, 2012 at #37 South Florida	1	Ecaterina Vasenina (41/11)	Won	3-6, 6-3, 7-5
DOUBLES	Team/School	Pos	Opponent (Rank Nat/Reg)	Doubles score/partner	
	Jan 13 at Furman	1	Katherine Oudin/Alex Moreno-Kaste	Won	8-4/Maryna Kozachenko
	Jan 22 at #62 Wake Forest	1	Kayla Duncan/Kathryn Talbert (20/3)	Lost	5-8/Maryna Kozachenko
	Jan 27 at #13 Georgia Tech	1	Jillian O'Neill/Alex Anghelescu	Lost	2-8/Maryna Kozachenko
	Feb 09 ETSU	1	Paula Jaime/Guila Andreazza	Won	8-2/Maryna Kozachenko
*	Feb 25 at UNCW	1	Kelly Cameron/Angie Sekely	Lost	3-8/Maryna Kozachenko
	Feb 27 at #43 Sacramento State	2	MELIUK, Maria/BACA, Clarisse (-/4)	Lost	1-8/Chaimaa Roudami
	Feb 29 at UC Santa Barbara	1	Jordan Dockendorf/Kiersten Meehan	Won	8-2/Maryna Kozachenko
%	3/2/2012 at Fresno State	1	Marianne Jodoin/Olga Kirpicheva	Lost	8-9 (3-0)/Maryna Kozachenko
	Mar 06 Samford	1	Kristin Lewis/Lindsey Mallory (-/8)	Won	8-3/Tereza Lerova
	Mar 12 North Florida	1	Aline Berkenbrock/Lorena Aviles (-/10)	Won	8-5/Tereza Lerova
	3/17/201 at #35 South Carolina	1	Jaklin Alawi/Any Morgina (70/-)	Lost	4-8/Tereza Lerova
	Mar 21 Kennesaw State	1	Alexandra Apostu/Virginie Stein	Won	8-4/Tereza Lerova
*	Mar 30 at #50 Virginia Commonw	1	Alex Bara/Ana Bara (-/4)	Won	8-5/Tereza Lerova
%	Apr 08 at #37 South Florida	1	Loreto Alonso/Ecaterina Vasenina (54/-)	Lost	5-8/Tereza Lerova

# 2012 Georgia State Panthers Women's Tennis

## Tereza Lerova Match-by-Match Statistics

Tereza Lerova					
SINGLES	Team/School	Pos	Opponent (Rank Nat/Reg)		Singles score
	Jan 13, 2012 at Furman	2	Katherine Oudin	Won	6-1, 6-1
	Jan 22, 2012 at #62 Wake Forest	2	Ryann Cuttillo	Lost	6-7 (5-7), 3-6
	Jan 27, 2012 at #13 Georgia Tech	2	Caroline Lilley	Lost	2-6, 7-6 (7-5), 1-6
*	Jan 28, 2012 vs #43 William and Mary	2	Marlen Mesgarzadeh (-/16)	-	4-6, 6-4, 2-5, unfinished
	Feb 09, 2012 ETSU	2	Paula Jaime (-/11)	Won	6-1, 6-4
*	Feb 25, 2012 at UNCW	2	Christina Lee	Lost	6-1, 4-6, 6-7 (3-7)
	Feb 27, 2012 at #43 Sacramento State	2	BACA, Clarisse	Lost	2-6, 3-6
	Feb 29, 2012 at UC Santa Barbara	2	Sofia Novak	Won	6-2, 6-4
%	3/2/2012 at Fresno State	2	Olga Kirpicheva	Won	6-2, 6-7 (5-0), 6-2
	Mar 06, 2012 Samford	2	M.Janse Van Rensburg	Won	6-4, 6-0
	Mar 12, 2012 North Florida	2	Lorena Aviles (-/15)	Lost	3-6, 3-6
	3/17/2012 at #35 South Carolina	2	Jakiin Alawi (82/7)	Lost	0-6, 2-6
	Mar 21, 2012 Kennesaw State	2	Alexandra Apostu	Won	6-3, 6-3
*	Mar 30, 2012 at #50 Virginia Commonwealth	2	Alex Bara (-/11)	Lost	3-6, 5-7
%	Apr 08, 2012 at #37 South Florida	2	Loreto Alonso	Lost	5-7, 3-6
DOUBLES	Team/School	Pos	Opponent (Rank Nat/Reg)		Doubles score/partner
	Jan 13 at Furman	2	Lauren Kline/Margaret Boyette	Won	8-6/Whitney Byrd
	Jan 22 at #62 Wake Forest	2	Ryann Cuttillo/Rebecca Siegler	Lost	3-8/Whitney Byrd
	Jan 27 at #13 Georgia Tech	2	Caroline Lilley/Jasmine Minor (33/5)	Lost	4-8/Whitney Byrd
*	Jan 28 vs #43 William and Mary	1	Jeltje Loomans/Maria Belaya (-/3)	Lost	4-8/Whitney Byrd
	Feb 09 ETSU	2	Diana Navrostska/Kelsey Williams	Won	8-2/Whitney Byrd
*	Feb 25 at UNCW	2	Christina Lee/Alyssa Ritchie	Won	8-3/Whitney Byrd
	Feb 27 at #43 Sacramento State	1	KAPSHAI, Tatsiana/DELGADO, Rebeca (-/2)	Lost	4-8/Whitney Byrd
	Feb 29 at UC Santa Barbara	2	Natalia Lozano/April Scatliffe	Won	8-2/Whitney Byrd
%	3/2/2012 at Fresno State	2	Bianca Modoc/Melissa McQueen	Lost	7-9/Whitney Byrd
	Mar 06 Samford	1	Kristin Lewis/Lindsey Mallory (-/8)	Won	8-3/Abigail Tere-Apisah
	Mar 12 North Florida	1	Aline Berkenbrock/Lorena Aviles (-/10)	Won	8-5/Abigail Tere-Apisah
	3/17/201 at #35 South Carolina	1	Jakiin Alawi/Any Morgina (70/-)	Lost	4-8/Abigail Tere-Apisah
	Mar 21 Kennesaw State	1	Alexandra Apostu/Virginie Stein	Won	8-4/Abigail Tere-Apisah
*	Mar 30 at #50 Virginia Commonw	1	Alex Bara/Ana Bara (-/4)	Won	8-5/Abigail Tere-Apisah
%	Apr 08 at #37 South Florida	1	Loreto Alonso/Ecaterina Vasenina (54/-)	Lost	5-8/Abigail Tere-Apisah

## Whitney Byrd Match-by-Match Statistics

Whitney Byrd					
SINGLES	Team/School	Pos	Opponent (Rank Nat/Reg)		Singles score
	Jan 13, 2012 at Furman	4	Margaret Boyette	Lost	4-6, 6-2, 5-7
	Jan 22, 2012 at #62 Wake Forest	3	Kathryn Talbert	Lost	4-6, 3-6
	Jan 27, 2012 at #13 Georgia Tech	4	Jasmine Minor	Lost	6-4, 4-6, 4-6
*	Jan 28, 2012 vs #43 William and Mary	4	Anik Cepeda	Won	7-6, 3-6, 6-2
	Feb 09, 2012 ETSU	4	Kelsey Williams	Won	6-2, 6-0
*	Feb 25, 2012 at UNCW	4	Kelly Cameron	Won	6-3, 6-4
	Feb 27, 2012 at #43 Sacramento State	3	DELGADO, Rebeca	Lost	1-6, 1-6
	Feb 29, 2012 at UC Santa Barbara	3	Kiersten Meehan	Won	6-2, 6-4
%	3/2/2012 at Fresno State	3	Aishwarya Agrawal	Lost	3-6, 2-6
	Mar 06, 2012 Samford	3	Stephanie N'tcha	Won	6-2, 6-4
	Mar 12, 2012 North Florida	3	Danielle Day	Won	6-2, 6-0
	3/17/2012 at #35 South Carolina	3	Dominika Kanakova	Won	7-6 (7-4), 4-6, 6-2
	Mar 21, 2012 Kennesaw State	3	Virginie Stein	Won	6-2, 6-3
*	Mar 30, 2012 at #50 Virginia Commonwealth	3	Olga Terteac	Lost	6-4, 3-6, 0-6
%	Apr 08, 2012 at #37 South Florida	3	Fanny Fracassi (-/19)	Won	6-3, 3-6, 6-2
DOUBLES	Team/School	Pos	Opponent (Rank Nat/Reg)		Doubles score/partner
	Jan 13 at Furman	2	Lauren Kline/Margaret Boyette	Won	8-6/Tereza Lerova
	Jan 22 at #62 Wake Forest	2	Ryann Cuttillo/Rebecca Siegler	Lost	3-8/Tereza Lerova
	Jan 27 at #13 Georgia Tech	2	Caroline Lilley/Jasmine Minor (33/5)	Lost	4-8/Tereza Lerova
*	Jan 28 vs #43 William and Mary	1	Jeltje Loomans/Maria Belaya (-/3)	Lost	4-8/Tereza Lerova
	Feb 09 ETSU	2	Diana Navrostska/Kelsey Williams	Won	8-2/Tereza Lerova
*	Feb 25 at UNCW	2	Christina Lee/Alyssa Ritchie	Won	8-3/Tereza Lerova
	Feb 27 at #43 Sacramento State	1	KAPSHAI, Tatsiana/DELGADO, Rebeca (-/2)	Lost	4-8/Tereza Lerova
	Feb 29 at UC Santa Barbara	2	Natalia Lozano/April Scatliffe	Won	8-2/Tereza Lerova
%	3/2/2012 at Fresno State	2	Bianca Modoc/Melissa McQueen	Lost	7-9/Tereza Lerova
	Mar 06 Samford	2	M.Janse Van Rensburg/Rebecca Kirven	Won	8-4/Maryna Kozachenko
	Mar 12 North Florida	2	Simona Weymar/Rebeca Pereira	Won	8-2/Maryna Kozachenko
	3/17/201 at #35 South Carolina	2	Dominika Kanakova/Adriana Pereira	Lost	7-9/Maryna Kozachenko
	Mar 21 Kennesaw State	2	Therese Lagerkvist/Vera Shkundina	Won	8-0/Maryna Kozachenko
*	Mar 30 at #50 Virginia Commonw	2	Olga Terteac/Daria Yakaleva	Won	9-8 (7-5)/Maryna Kozachenko
%	Apr 08 at #37 South Florida	2	Paula Montoya/Lucie Rey	Won	8-6/Maryna Kozachenko

# 2012 Georgia State Panthers Women's Tennis

## Maryna Kozachenko Match-by-Match Statistics

Maryna Kozachenko					
SINGLES	Team/School	Pos	Opponent (Rank Nat/Reg)		Singles score
	Jan 13, 2012 at Furman	3	Michele Stanford	Won	2-6, 6-4, 6-2
	Jan 27, 2012 at #13 Georgia Tech	3	Elizabeth Kilborn	Lost	0-6, 1-6
*	Jan 28, 2012 vs #43 William and Mary	3	Maria Belaya (-/17)	Lost	3-6, 3-6
	Feb 09, 2012 ETSU	3	Guila Andreazza	Won	6-1, 6-4
*	Feb 25, 2012 at UNCW	3	Angie Sekely	Lost	6-0, 3-6, 2-6
	Feb 29, 2012 at UC Santa Barbara	4	April Scatliffe	Won	6-2, 6-2
%	3/2/2012 at Fresno State	4	Melissa McQueen (-/18)	Lost	6-0, 6-7 (5-0), 5-7
	Mar 06, 2012 Samford	4	Rebecca Kirven	Won	6-2, 6-4
	Mar 12, 2012 North Florida	4	Melanie Aguirre	Lost	0-6, 6-2, 3-6
	3/17/2012 at #35 South Carolina	4	Katerina Popova	Lost	0-6, 1-6
	Mar 21, 2012 Kennesaw State	4	Jana Hueckinghaus	Won	6-0, 6-0
*	Mar 30, 2012 at #50 Virginia Commonwealth	4	Alena Gerasimova	Won	5-7, 7-5, 1-0 (10-8)
%	Apr 08, 2012 at #37 South Florida	4	Danielle Mills	Lost	0-6, 4-6
DOUBLES	Team/School	Pos	Opponent (Rank Nat/Reg)		Doubles score/partner
	Jan 13 at Furman	1	Katherine Oudin/Alex Moreno-Kaste	Won	8-4/Abigail Tere-Apisah
	Jan 22 at #62 Wake Forest	1	Kayla Duncan/Kathryn Talbert (20/3)	Lost	5-8/Abigail Tere-Apisah
	Jan 27 at #13 Georgia Tech	1	Jillian O'Neill/Alex Anghelescu	Lost	2-8/Abigail Tere-Apisah
*	Jan 28 vs #43 William and Mary	2	Hope Johnson/Anik Cepeda	Lost	2-8/Chaimaa Roudami
	Feb 09 ETSU	1	Paula Jaime/Guila Andreazza	Won	8-2/Abigail Tere-Apisah
*	Feb 25 at UNCW	1	Kelly Cameron/Angie Sekely	Lost	3-8/Abigail Tere-Apisah
	Feb 29 at UC Santa Barbara	1	Jordan Dockendorf/Kiersten Meehan	Won	8-2/Abigail Tere-Apisah
%	3/2/2012 at Fresno State	1	Marianne Jodoin/Olga Kirpicheva	Lost	8-9 (3-0)/Abigail Tere-Apisah
	Mar 06 Samford	2	M.Janse Van Rensburg/Rebecca Kirven	Won	8-4/Whitney Byrd
	Mar 12 North Florida	2	Simona Weymar/Rebeca Pereira	Won	8-2/Whitney Byrd
	3/17/201 at #35 South Carolina	2	Dominika Kanakova/Adriana Pereira	Lost	7-9/Whitney Byrd
	Mar 21 Kennesaw State	2	Therese Lagerkvist/Vera Shkundina	Won	8-0/Whitney Byrd
*	Mar 30 at #50 Virginia Commonw	2	Olga Tertea/Daria Yakauleva	Won	9-8 (7-5)/Whitney Byrd
%	Apr 08 at #37 South Florida	2	Paula Montoya/Lucie Rey	Won	8-6/Whitney Byrd

## Masa Grgan Match-by-Match Statistics

Masa Grgan					
SINGLES	Team/School	Pos	Opponent (Rank Nat/Reg)		Singles score
	Jan 13, 2012 at Furman	5	Alex Moreno-Kaste	Lost	4-6, 5-7
	Jan 22, 2012 at #62 Wake Forest	4	Rebecca Siegler	Won	3-1, retired
	Jan 27, 2012 at #13 Georgia Tech	5	Lynn Blau	Lost	1-6, 1-6
*	Jan 28, 2012 vs #43 William and Mary	5	Hope Johnson	Won	6-0, 6-0
	Feb 09, 2012 ETSU	5	Diana Navrostska	Won	6-3, 2-6, 6-1
*	Feb 25, 2012 at UNCW	5	Alyssa Ritchie	Lost	3-6, 2-6
	Feb 27, 2012 at #43 Sacramento State	4	LOHSCHIEDT, Sophie	Won	7-5, 6-0
	Feb 29, 2012 at UC Santa Barbara	5	Paola Cos	Lost	1-6, 4-6
%	3/2/2012 at Fresno State	5	Bianca Modoc	Won	6-3, 6-3
	Mar 06, 2012 Samford	5	Lindsey Mallory	Won	6-2, 6-2
	Mar 12, 2012 North Florida	5	Simona Weymar	Won	6-2, 7-6 (7-3)
	3/17/2012 at #35 South Carolina	5	Adriana Pereira	Won	7-5, 6-2
*	Mar 30, 2012 at #50 Virginia Commonwealth	5	Daria Yakauleva	Lost	2-6, 7-5, 4-6
%	Apr 08, 2012 at #37 South Florida	5	Alessandra Bonte	Won	6-4, 6-2
DOUBLES	Team/School	Pos	Opponent (Rank Nat/Reg)		Doubles score/partner
	Jan 13 at Furman	3	Michele Stanford/Amanda Murray	Won	9-7/Martina Ondrackova
	Jan 22 at #62 Wake Forest	3	Brigita Bercyte/Karen Forman	Won	8-0/Martina Ondrackova
	Jan 27 at #13 Georgia Tech	3	Christina Ngo/Muriel Wacker (-/7)	Won	8-3/Martina Ondrackova
*	Jan 28 vs #43 William and Mary	3	Marlen Mesgarzadeh/Katie Kargl	Won	6-5/Martina Ondrackova
	Feb 09 ETSU	3	Jessica Brumit/Marine Wieliczko	Won	8-3/Martina Ondrackova
*	Feb 25 at UNCW	3	Casey Dashiell/Olga Blank	Lost	6-8/Martina Ondrackova
	Feb 27 at #43 Sacramento State	3	KNOEBL, Katharina/LOHSCHIEDT, Sophie	Won	8-4/Martina Ondrackova
	Feb 29 at UC Santa Barbara	3	Erica Cano/Sofia Novak	Lost	6-8/Martina Ondrackova
%	3/2/2012 at Fresno State	3	Laura Pola/Aishwarya Agrawal	Lost	7-9/Martina Ondrackova
	Mar 06 Samford	3	Emily Mallory/Stephanie N'tcha	Won	8-4/Martina Ondrackova
	Mar 12 North Florida	3	Danielle Day/Melanie Aguirre	Lost	7-9/Martina Ondrackova
	3/17/201 at #35 South Carolina	3	Katerina Popova/Josefin Andersson	Lost	1-8/Martina Ondrackova
*	Mar 30 at #50 Virginia Commonw	3	Alena Gerasimova/Salome Kvitashvili	Lost	1-8/Martina Ondrackova
%	Apr 08 at #37 South Florida	3	Fanny Fracassi/Danielle Mills	Lost	2-8/Chaimaa Roudami

# 2012 Georgia State Panthers Women's Tennis

## Chaimaa Roudami Match-by-Match Statistics

Chaimaa Roudami					
SINGLES	Team/School	Pos	Opponent (Rank Nat/Reg)		Singles score
	Jan 13, 2012 at Furman	6	Susan Bitetti	Lost	4-6, 6-4, 8-10
	Jan 22, 2012 at #62 Wake Forest	5	Karen Forman	Won	6-2, 6-1
	Jan 27, 2012 at #13 Georgia Tech	6	Alex Anghelescu	Won	1-6, 6-3, 6-1
*	Jan 28, 2012 vs #43 William and Mary	6	Katie Kargl	Won	6-4, 6-4
	Feb 09, 2012 ETSU	6	Jessica Brumit	Won	6-4, 7-6 (8-6)
*	Feb 25, 2012 at UNCW	6	Casey Dashiell	Won	6-3, 5-7, 6-1
	Feb 27, 2012 at #43 Sacramento State	5	KNOEBL, Katharina	Lost	7-6 (7-3), 4-6, 2-6
	Feb 29, 2012 at UC Santa Barbara	6	Jordan Dockendorf	Won	6-2, 6-4
%	3/2/2012 at Fresno State	6	Tanya Murtagh	Lost	4-6, 3-6
	Mar 06, 2012 Samford	6	Jessica Diamond	Won	6-1, 6-1
	Mar 12, 2012 North Florida	6	Marina Cunningham	Won	6-4, 6-4
	3/17/2012 at #35 South Carolina	6	Josefin Andersson	Won	6-4, 6-2
	Mar 21, 2012 Kennesaw State	5	Therese Lagerkvist	Won	6-2, 6-4
*	Mar 30, 2012 at #50 Virginia Commonwealth	6	Salome Kvitashvili	Lost	6-7 (5-7), 0-6
%	Apr 08, 2012 at #37 South Florida	6	Paula Montoya	Won	6-2, 6-3
DOUBLES	Team/School	Pos	Opponent (Rank Nat/Reg)		Doubles score/partner
*	Jan 28 vs #43 William and Mary	2	Hope Johnson/Anik Cepeda	Lost	2-8/Maryna Kozachenko
	Feb 27 at #43 Sacramento State	2	MELIUK, Maria/BACA, Clarisse (-/4)	Lost	1-8/Abigail Tere-Apisah
	Mar 21 Kennesaw State	3	Jana Hueckinghaus/Tamara Plocher	Won	8-3/Martina Ondrackova
%	Apr 08 at #37 South Florida	3	Fanny Fracassi/Danielle Mills	Lost	2-8/Masa Grgan

## Martina Ondrackova Match-by-Match Statistics

Martina Ondrackova					
SINGLES	Team/School	Pos	Opponent (Rank Nat/Reg)		Singles score
	Feb 27, 2012 at #43 Sacramento State	6	MELIUK, Maria	Lost	6-3, 2-6, 4-6
DOUBLES	Team/School	Pos	Opponent (Rank Nat/Reg)		Doubles score/partner
	Jan 13 at Furman	3	Michele Stanford/Amanda Murray	Won	9-7/Masa Grgan
	Jan 22 at #62 Wake Forest	3	Brigita Berocyte/Karen Forman	Won	8-0/Masa Grgan
	Jan 27 at #13 Georgia Tech	3	Christina Ngo/Muriel Wacker (-/7)	Won	8-3/Masa Grgan
*	Jan 28 vs #43 William and Mary	3	Marlen Mesgarzadeh/Katie Kargl	Won	6-5/Masa Grgan
	Feb 09 ETSU	3	Jessica Brumit/Marine Wieliczko	Won	8-3/Masa Grgan
*	Feb 25 at UNCW	3	Casey Dashiell/Olga Blank	Lost	6-8/Masa Grgan
	Feb 27 at #43 Sacramento State	3	KNOEBL, Katharina/LOHSCHEIDT, Sophie	Won	8-4/Masa Grgan
	Feb 29 at UC Santa Barbara	3	Erica Cano/Sofia Novak	Lost	6-8/Masa Grgan
%	3/2/2012 at Fresno State	3	Laura Pola/Aishwarya Agrawal	Lost	7-9/Masa Grgan
	Mar 06 Samford	3	Emily Mallory/Stephanie N'tcha	Won	8-4/Masa Grgan
	Mar 12 North Florida	3	Danielle Day/Melanie Aguirre	Lost	7-9/Masa Grgan
	3/17/201 at #35 South Carolina	3	Katerina Popova/Josefin Andersson	Lost	1-8/Masa Grgan
	Mar 21 Kennesaw State	3	Jana Hueckinghaus/Tamara Plocher	Won	8-3/Chaimaa Roudami
*	Mar 30 at #50 Virginia Commonw	3	Alena Gerasimova/Salome Kvitashvili	Lost	1-8/Masa Grgan

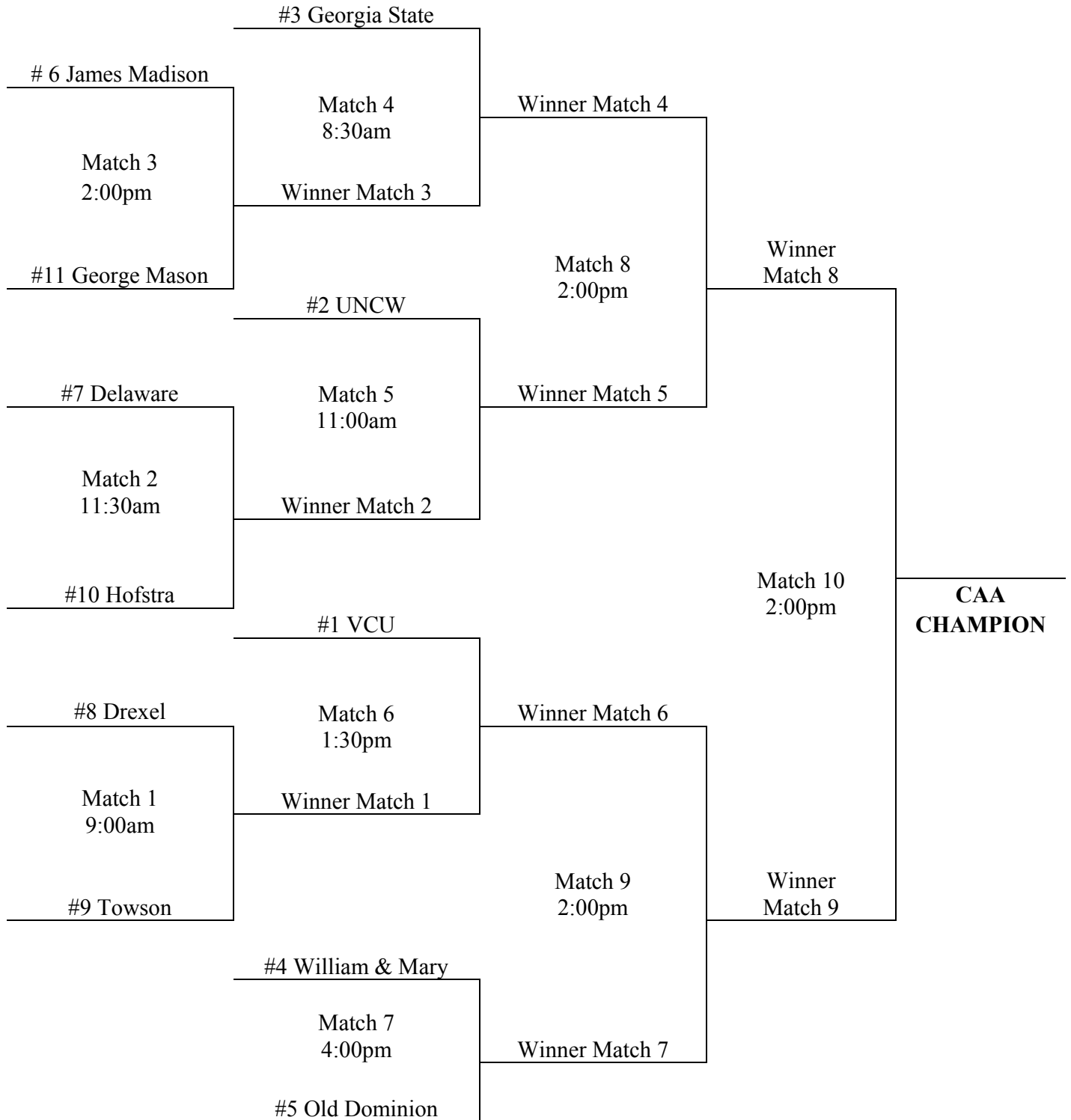
# CAA Women's Tennis Championship Bracket

**First Round**  
Thursday, April 19

**Quarterfinals**  
Friday, April 20

**Semifinals**  
Saturday, April 21

**Finals**  
Sunday, April 22

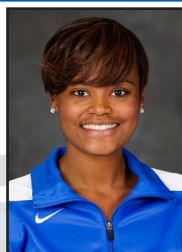


# 2012 Georgia State Panthers Women's Tennis

## Georgia State Panthers Roster/Coaching Staff



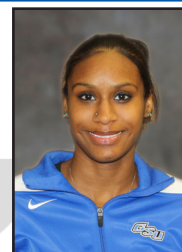
**ALEXANDRA  
BROUILLETTE**  
Freshman  
Kennesaw, Ga.  
North Cobb High School



**WHITNEY  
BYRD**  
Junior  
Atlanta, Ga.  
Auburn Montgomery



**MASA  
GRGAN**  
Freshman  
Maribor, Slovenia  
Il Gimnazija Maribor



**E'JA  
JENKINS**  
Sophomore  
Columbus, Ohio  
Gilbert A. Dater



**MARYNA  
KOZACHENKO**  
Sophomore  
Kiev, Ukraine  
Kiev International School



**TEREZA  
LEROVA**  
Senior  
Ostrava-Bartovice, Czech Republic  
Matigni Gynazium Ostrava



**MEGAN  
NELMS**  
Freshman  
Lilburn, Ga.  
Parkview High School



**MARTINA  
ONDRACKOVA**  
Junior  
Rapotin, Czech Republic  
School of Business Prerov



**CHAIMAA  
ROUDAMI**  
Freshman  
Casablanca, Morocco  
Groupe Scolaire d'Anfa



**ABIGAIL  
TERE-APISA**  
Sophomore  
Port Moresby, Papua New Guinea  
Albury High School



**REBA  
WILLIAMS**  
Freshman  
Conyers, Ga.  
Heritage High School



**MIHA  
LISAC**  
Head Coach (Fifth Year)  
Velenje, Slovenia  
Georgia State ('05)



**LAUREN  
MEIER**  
Assistant Coach (First Year)  
Woodstock, Ga.  
Kentucky ('11)



**CLARENCE  
BOYD**  
Volunteer Asst. Coach (First Year)  
Southfield, Mich.  
Georgia State ('07)