



## GENERAL INFORMATION

Full Name.....	Georgia State University
Location.....	Atlanta, GA 30303
Founded.....	1913
Enrollment.....	28,000
Nickname.....	Panthers
Colors.....	Blue and White
Affiliation.....	NCAA Division I
Conference.....	Colonial Athletic Association (CAA)
President.....	Mark P. Becker (1st year)
Interim Athletic Director.....	Bill Curry
Sport Administrator.....	Robert Slavis

## SOFTBALL INFORMATION

Head Coach.....	Bob Heck (22nd season)
Alma Mater/Year.....	Georgia/1951
Record at Georgia State/Yrs.....	628-540-2/21
Softball Office Phone.....	(404) 413-4085
E-mail.....	athreh@langate.gsu.edu
Fax.....	(404) 413-4035
Assistant Coaches.....	Roger Kincaid
Athletic Trainer.....	Matthew Piechoski
First Year of Fast Pitch.....	1985
All-Time Record.....	728-620-2
2008 Overall Record.....	37-18
2008 CAA Regular Season Record.....	15-5
2008 CAA Season Finish.....	2nd
2008 Letterwinners Returning/Lost.....	13/3
2008 Pitchers Returning/Lost.....	3/2
2008 Starters Returning/Lost.....	7/3
Home Field.....	Bob Heck Field
Location.....	Panthersville, GA
Dimensions (LF/CF/RF).....	190/220/190

## SPORTS INFORMATION

Mailing/Delivery Address.....	Georgia State Sports Arena 125 Decatur Street, Suite 130 Atlanta, Ga. 30303
Softball SID.....	Lauren Lamb
E-Mail.....	athlal@langate.gsu.edu
Cell Phone.....	(404) 271-7234
Office Phone.....	(404) 413-4034
Fax.....	(404) 413-4035
Website.....	GeorgiaStateSports.com
Associate A.D. - Sports Communications.....	Allison George
E-Mail.....	ageorge@gsu.edu
Office Phone.....	(404) 413-4032
Asst. A.D. - Sports Communciations.....	Charlie Taylor
E-Mail.....	ctaylor@gsu.edu
Office Phone.....	(404) 413-4031
Assistant Sports Information Director.....	Mike Holmes
Office.....	(404) 413-4033
E-Mail.....	athrmh@langate.gsu.edu
Graduate Assistants.....	Cavan Fosnes, Deandra Duggans, Lauren Lamb

## ABOUT GEORGIA STATE

Georgia State University is one of the nation's leading urban-research universities and is the second largest of the 35 universities in Georgia. Located in the heart of downtown Atlanta, State prides itself on its diversity, array of degrees, nationally-ranked programs, and Panthers Athletics.

## TABLE OF CONTENTS

2009 Roster.....	2
2009 Schedule.....	3
Season Preview.....	4
Player Profiles.....	5-15
Head Coach Bob Heck.....	16-17
Assistant Coaches.....	18
Athletics Administration.....	19
2008 Season in Review.....	20-21
2008 Season Results.....	22
All-Time Letterwinners.....	23
Records.....	24-25
Versus All Opponents.....	26-27
2009 Opponents.....	28-30
All Time Results.....	31-39
This is Georgia State.....	40-41
Colonial Athletic Association.....	42
Academics.....	43
Student-Athlete Housing.....	44-45
Athletic Facilities.....	46-47
This is Atlanta.....	48

## CREDITS

The 2008 Georgia State Softball media guide is an official publication of the Georgia State Communications Department. This publication was written, designed and edited by Lauren Lamb. Special thanks to Allison George and Charlie Taylor for their assistance and all previous SIDs for their records. Photographic contributions were made by Charlie Taylor, Randy Wilson, and many unidentified photographers of the past.

## SOFTBALL SID INFORMATION

Lauren Lamb is in her first year as a graduate assistant in the sports communications office at Georgia State University. She serves as the primary contact for men's soccer and softball. Lamb previously worked as a graduate assistant in the marketing department at Georgia State and as a marketing and promotions intern at Florida State University. The Chicago native earned a bachelor's degree in Communications from Florida State University in 2007 and is pursuing a master's in Sports Administration at Georgia State.





## 2009 ROSTERS

# Numerical Roster

No.	Name	Pos.	B/T	Ht.	Yr.	Hometown/High School
10	Gore, Madi	P	R/R	5-6	Sr.	Acworth, Ga. (Kell HS/University of Virginia)
11	Fetters, Lauren	OF	R/R	5-2	Jr.	Canton, Ga. (Sequoyah HS)
12	Bess, Tiffany	OF	R/R	5-3	So.	Watkinsville, Ga. (Oconee County HS)
13	Willis, Holly	OF	R/R	5-7	Sr.	Chesapeake, Va. (Great Bridge HS)
14	Roles, Rebecca	2B	R/R	5-7	So.	Lawrenceville, Ga. (Collins Hill HS)
15	Jones, Lauren	1B	R/R	5-5	So.	Stockbridge, Ga. (Union Grove HS)
16	Althafer, Emily	C	R/R	5-8	Fr.	Sugar Hill, Ga. (North Gwinnett HS)
17	Berry, Natasha	OF	R/R	5-5	Sr.	Victoria, BC, Canada, (North Florida CC)
18	Sparks, Chelsea	OF	L/R	5-5	Fr.	Palmetto, Ga. (Northgate HS)
19	Whitaker, Emily	OF	L/R	5-5	Fr.	Sugar Hill, Ga. (North Gwinnett HS)
20	Thomas, Elizabeth	OF	R/R	5-4	Jr.	Athens, Ga. (Oconee County HS)
21	Thomas, Alana	P	R/R	5-8	Fr.	Athens, Ga. (Oconee County HS)
22	Morgan, Chelsey	P	R/R	5-6	Sr.	Chesterfield, N.J. (Northern Burlington County Reg. HS)
23	Lee, Catherine	C	R/R	5-9	So.	Covington, Ga. (Eastside HS)
24	Roddy, Danielle	3B	L/R	5-4	Jr.	Canton, Ga. (Woodstock HS)
25	Cunningham, Rachel	SS	R/R	5-6	Jr.	Cumming Ga. (South Forsyth HS)
26	Kallasta, Megan	1B	R/R	5-8	Fr.	Tyrone, Ga. (Sandy Creek HS)
27	Collins, Erin	P	R/R	5-7	Fr.	Lawrenceville, Ga. (Collins Hill HS)
28	Boese, Cassie	SS	L/R	5-6	Fr.	Middlebury, Ind. (Northridge HS)
29	Skelton, Lily	3B	R/R	5-9	Jr.	McDonough, Ga. (Union Grove HS)
30	Gaskill, Kate	P	R/R	5-10	Jr.	Murrieta, Ca. (Vista Murrieta HS/Georgia)

**Head Coach:** Bob Heck

**Assistant Coach:** Roger Kincaid

# Alphabetical Roster

No.	Name	Pos.	B/T	Ht.	Yr.	Hometown/High School
16	Althafer, Emily	C	R/R	5-8	Fr.	Sugar Hill, Ga. (North Gwinnett HS)
17	Berry, Natasha	OF	R/R	5-5	Sr.	Victoria, BC, Canada, (North Florida CC)
12	Bess, Tiffany	OF	R/R	5-3	So.	Watkinsville, Ga. (Oconee County HS)
28	Boese, Cassie	SS	L/R	5-6	Fr.	Middlebury, Ind. (Northridge HS)
27	Collins, Erin	P	R/R	5-7	Fr.	Lawrenceville, Ga. (Collins Hill HS)
25	Cunningham, Rachel	SS	R/R	5-6	Jr.	Cumming, Ga. (South Forsyth HS)
11	Fetters, Lauren	OF	R/R	5-2	Jr.	Canton, Ga. (Sequoyah HS)
30	Gaskill, Kate	P	R/R	5-10	Jr.	Murrieta, Ca. (Vista Murrieta HS/Georgia)
10	Gore, Madi	P	R/R	5-6	Sr.	Acworth, Ga. (Kell HS / University of Virginia)
15	Jones, Lauren	1B	R/R	5-5	So.	Stockbridge, Ga. (Union Grove HS)
26	Kallasta, Megan	1B	R/R	5-8	Fr.	Tyrone, Ga. (Sandy Creek HS)
23	Lee, Catherine	C	R/R	5-9	So.	Covington, Ga. (Eastside HS)
22	Morgan, Chelsey	P	R/R	5-6	Sr.	Chesterfield, N.J. (Northern Burlington County Reg. HS)
24	Roddy, Danielle	3B	L/R	5-4	Jr.	Canton, Ga. (Woodstock HS)
14	Roles, Rebecca	2B	R/R	5-7	So.	Lawrenceville, Ga. (Collins Hill HS)
18	Sparks, Chelsea	OF	L/R	5-5	Fr.	Palmetto, Ga. (Northgate HS)
29	Skelton, Lily	3B	R/R	5-9	Jr.	McDonough, Ga. (Union Grove HS)
21	Thomas, Alana	P	R/R	5-8	Fr.	Athens, Ga. (Oconee County HS)
20	Thomas, Elizabeth	OF	R/R	5-4	Jr.	Athens, Ga. (Oconee County HS)
19	Whitaker, Emily	OF	L/R	5-5	Fr.	Sugar Hill, Ga. (North Gwinnett HS)
13	Willis, Holly	OF	R/R	5-7	Sr.	Chesapeake, Va. (Great Bridge HS)



## 2009 SCHEDULE

Date	Day	Opponent	Location	Time
<b>Feb. 7</b>	<b>Sat.</b>	<b>Georgia Tech</b>	<b>Panthersville</b>	<b>1p.m. DH</b>
Feb. 11	Wed	at Auburn	Auburn, AL	6 p.m.
<b>Feb 14-15</b>	<b>Sat.-Sun.</b>	<b>Georgia State First Pitch Classic</b>		
Feb. 14	Sat.	Evansville vs. Missouri	Panthersville	10 a.m.
<b>Feb. 14</b>	<b>Sat.</b>	<b>Georgia State vs. Evansville</b>	<b>Panthersville</b>	<b>12:15 p.m.</b>
Feb. 14	Sat.	Missouri vs. Virginia Tech	Panthersville	2:30 p.m.
<b>Feb. 14</b>	<b>Sat.</b>	<b>Georgia State vs. Virginia Tech</b>	<b>Panthersville</b>	<b>4:45 p.m.</b>
Feb. 15	Sun.	Evansville vs. Virginia Tech	Panthersville	10 a.m.
<b>Feb. 15</b>	<b>Sun.</b>	<b>Georgia State vs. Missouri</b>	<b>Panthersville</b>	<b>12:15 p.m.</b>
Feb. 15	Sun.	Consolation	Panthersville	2:30 p.m.
Feb. 15	Sun.	Championship	Panthersville	4:45 p.m.
<b>Feb. 21-22</b>	<b>Sat.-Sun.</b>	<b>Panther Invitational</b>		
Feb. 21	Sat.	Lipscomb vs. Eastern Kentucky	Panthersville	10 a.m.
<b>Feb. 21</b>	<b>Sat.</b>	<b>Georgia State vs. ECU</b>	<b>Panthersville</b>	<b>12:15 p.m.</b>
Feb. 21	Sat.	Lipscomb vs. Georgetown	Panthersville	2:30 p.m.
<b>Feb. 21</b>	<b>Sat.</b>	<b>Georgia State vs. Georgetown</b>	<b>Panthersville</b>	<b>4:45 p.m.</b>
Feb. 22	Sun.	Georgetown vs. ECU	Panthersville	10 a.m.
<b>Feb. 22</b>	<b>Sun.</b>	<b>Georgia State vs. Lipscomb</b>	<b>Panthersville</b>	<b>12:15 p.m.</b>
Feb. 22	Sun.	Consolation	Panthersville	2:30 p.m.
Feb. 22	Sun.	Championship	Panthersville	4:45 p.m.
<b>Feb. 25</b>	<b>Wed.</b>	<b>Georgia Southern</b>	<b>Panthersville</b>	<b>3 p.m. DH</b>
Mar. 6-8	Fri.-Sun	Buzz Classic	Marietta, GA	TBA
Mar. 11	Wed.	at Western Carolina	Cullowhee, NC	2 p.m. DH
Mar. 17	Tues.	at Mercer	Macon, GA	5 p.m. DH
Mar. 21	Sat.	at Drexel*	Philadelphia, PA	1 p.m. DH
Mar. 22	Sun	at Drexel*	Philadelphia, PA	11 a.m.
Mar. 24	Tues.	at Troy	Troy, AL	TBA
<b>Mar. 28</b>	<b>Sat.</b>	<b>Delaware*</b>	<b>Panthersville</b>	<b>12 p.m. DH</b>
<b>Mar. 29</b>	<b>Sun.</b>	<b>Delaware*</b>	<b>Panthersville</b>	<b>12 p.m.</b>
Mar. 31	Tues.	at Kennesaw State	Kennesaw, GA	4 p.m.
Apr. 4	Sat.	at James Madison*	Harrisonburg, VA	12 p.m. DH
Apr. 5	Sun.	at James Madison*	Harrisonburg, VA	12 p.m.
<b>Apr. 8</b>	<b>Wed.</b>	<b>Furman</b>	<b>Panthersville</b>	<b>3 p.m. DH</b>
<b>Apr. 11</b>	<b>Sat.</b>	<b>George Mason*</b>	<b>Panthersville</b>	<b>12 p.m. DH</b>
<b>Apr. 12</b>	<b>Sun.</b>	<b>George Mason*</b>	<b>Panthersville</b>	<b>12 p.m.</b>
<b>Apr. 15</b>	<b>Wed.</b>	<b>Kennesaw State</b>	<b>Panthersville</b>	<b>4 p.m.</b>
Apr. 18	Sat.	at Hofstra*	Hempstead, NY	12 p.m. DH
Apr. 19	Sun.	at Hofstra*	Hempstead, NY	12 p.m.
Apr. 25	Sat.	at Towson*	Towson, MD	12 p.m. DH
Apr. 26	Sun.	at Towson*	Towson, MD	12 p.m.
<b>May. 1</b>	<b>Fri.</b>	<b>UNC Wilmington*</b>	<b>Panthersville</b>	<b>3 p.m. DH</b>
<b>May. 2</b>	<b>Sat.</b>	<b>UNC Wilmington*</b>	<b>Panthersville</b>	<b>12 p.m.</b>
May. 6-9	Wed.-Sat.	CAA Tournament	TBA	TBA

All games are EST  
Home games are in **bold**

DH denotes doubleheader  
\* denotes conference game



## 2009 SEASON PREVIEW

The Panthers will be looking for their 18th winning season in 25 years of competition. In order to obtain yet another winning season, the team's success will depend on the 13 returning letterwinners and strong newcomers.

In its fourth year in the Colonial Athletic Association, the team has made two CAA championship game appearances and seen ten players earn All-CAA honors in those first three seasons. The Panthers are hungry for their first CAA Championship and another NCAA post-season berth.

The Panthers return three of their five-member pitching staff that produced 37 wins in 2008. The 13 returnees feature four seniors, five juniors, and four sophomores.

### **Battery**

The Panthers pitching staff is again expected to be a powerful asset with three returnees, two incoming freshmen, and one junior transfer.

Right-handed senior Madi Gore comes off last year with a 2.88 ERA and 14-8 record on the season. The Acworth, Ga. native received All-CAA Second Team honors for the second consecutive year while recording two shutouts and striking out 101 of the 506 batters she faced.

Also returning is senior Chelsey Morgan. The right-handed Morgan saw time in four innings before being sidelined in the middle of the 2008 season.

A newcomer to the pitching staff is the right-handed junior transfer from the University of Georgia, Kate Gaskill. Gaskill led the 2008 Bulldogs with a 2.07 ERA, four saves, and 164 strikeouts while tying for the team lead in victories with her 15-6 record. Gaskill was named SEC Pitcher of the Week twice for the 2008 season.

Freshmen Erin Collins and Alana Thomas will also prove to be assets to the Georgia State pitching staff. Collins posted a 10-4 record and an 0.59 ERA in 83 innings during her senior year. The right-handed Alana Thomas was named the 2006 AAA Pitcher of the Year and this marks the third pitcher of the year that has chosen to attend Georgia State. She finished her senior year with a 36-5 record, 296 strike-outs, and an ERA of 0.13.

Returning behind the plate will be sophomore Catherine Lee who had one of the most prolific offensive seasons in school history. The right-hander batted .411 with 17 home runs, 63 RBI, and 51 runs scored, all of which are Georgia State records. Lee earned All-CAA First Team, CAA All-Rookie honors, and was named CAA Player and Rookie of the Year. Freshman Emily Althafer will serve as back-up catcher for State. Althafer comes from North Gwinnett High School where her team was a 2005 state finalist and a 2006 and 2007 region finalist.

### **Infield**

Leading the infield will be juniors Rachel Cunningham and Danielle Roddy. Cunningham is one of four Panthers to start every game for

the 2008 season and will once again be anchoring the defense at shortstop this year. She was named to the All-CAA First Team and CAA All-Tournament team while batting .320 with 54 hits, 35 runs scored and 25 RBI.

Returning at third base is Roddy, who was second on the team and fourth in the CAA with a .376 batting average in 2008. She connected with a CAA second-best 65 hits, including 13 doubles and two triples. Roddy had 20 multiple-hit games, including a nine-game hitting streak in March.

Other key returners are junior Lily Skelton and sophomore Rebecca Roles. Skelton started 37 games and finished the season with a .265 batting average and drove in 22 runs off 30 hits. Roles started every game at second base as a freshman for the 2008 season. Sophomore Lauren Jones begins the season at first base, after starting all 55 games for the Panthers last year. Jones batted .302 with 51 hits, 11 doubles, and four home runs.

Look for newcomers Cassie Boese and Megan Kallasta to make an impact with the Panthers infield. Boese is a shortstop out of Middlebury, Ind. where she earned two All-Conference honors and two All-State honors. Kallasta is a right-handed first baseman and recorded a .337 batting average, 25 singles, seven doubles, three triples, and 11 RBI during her senior year.

### **Outfield**

Senior Holly Willis should once again be a leader in the outfield and make a significant impact for the 2009 season. She was named a All-CAA First Team outfielder in addition to being named the CAA Softball Scholar-Athlete of the Year. Willis had the third-highest batting average for the Panthers with .354 and produced 52 hits, driving in 27 runs while crossing the plate 36 times.

Senior Natasha Berry returns after being named All-CAA Second Team for 2008. The right-fielder started 53 games and finished with a .321 batting average, blasting 51 hits, including 10 doubles and four home runs. Junior Elizabeth Thomas makes her debut for the Panthers in the outfield after serving as pitcher for the last 2 seasons. Freshman Chelsea Sparks will also make an impact in the outfield.

The 2009 schedule features match-ups against five NCAA Tournament teams of last year (Georgia Tech, Auburn, Hofstra, Missouri, and Virginia Tech) and 2 nationally-ranked teams including Missouri (16) and Virginia Tech (20). The Panthers will look to win both the CAA regular season and tournament titles, but need to overcome seven-time CAA champion Hofstra, who has won 11 straight conference tournament titles dating back to its days in the America East conference, and last season's runner-up James Madison.

Georgia State looks to improve on its 37-18 record from the 2008 season and return to the four-team CAA tournament for the fourth consecutive season. With the leadership of 13 veterans and the addition of eight talented newcomers, the Panthers have the ability to attain their goal of winning the conference championship.



2009 PANTHERS

SENIORS



**MADI** #10  
**GORE** P

Senior • 5'6"  
Bats: Right • Throws: Right  
Acworth, Ga.  
Kell HS/University of Virginia

first-team All-State...Was also named the *Atlanta Journal-Constitution* 2003 All-Classification Softball Player of the Year and Cobb County Pitcher of the Year...Named Sequoyah High School team MVP in her freshman and sophomore seasons...Two-time *Cherokee Ledger* All-County First Team pick (2001 and 2002)...*Cherokee Tribune* Pitcher of the Year in 2002 as well as a first-team All-County pick in 2001 and 2002...2004-05 Advanced Placement Scholar...Received the 2003-04 Georgia Certificate of Merit winner for being in the top five percent of her class...A 2003-04 National Science Merit Award Winner...Also a NFCA Academic All-American Scholar Athlete in 2003-04.

**2008:** Received All-CAA Second-Team honors for the second consecutive year... Went 14-8 on the season... Had a 2.88 ERA with two shutouts and struck out 101 of the 506 batters faced...Tied fifth in CAA with 14 wins...Appeared in 26 games, started 21 and completed 15...Held opponents to a .277 batting average...Named to the Athletic Director's Honor Roll in the fall...A CAA Commissioner's Academic Award honoree.

**2007:** Became the sixth Panther to win 20 games with a 20-12 record... Had a 2.48 ERA with five shutouts and 173 batters retired...Appeared in 37 games, started 34 and completed 23...Ranked No. 63 nationally in victories with 20...Was second in the league in innings pitched, strikeouts, wins and appearances...Named CAA Pitcher of the Week on March 7...Received All-CAA Second Team honors...On the Dean's List in the fall and the Athletic Director's Honor Roll in both semesters...A CAA Commissioner's Academic Award honoree.

**2006:** (at UVA) Posted a 4-2 record with a 3.55 ERA...Started three games, completed one, and earned a save during her freshman campaign... Pitched 49.1 innings while striking out 35 batters...Recorded eight assists and one error, starting in her only game in the field.

**Prep:** Four-year letterwinner on the softball team at Kell High School (03-04) and Sequoyah High School (01-02)...Helped Kell to the Georgia 5A State Championship in 2003 and 2004...Threw a nine-inning perfect game with 13 strikeouts in the 2003 state title game...Named 2004 Gatorade Player of the Year for Georgia...Was a 2004 Louisville Slugger/National Fastpitch Coaches Association High School third team All-American...Also earned 2004 Louisville Slugger/NFCA High School All-Region South First Team accolades...Named the *Marietta Daily Journal* Pitcher of the Year for Cobb County in 2003 and 2004...Also named to the *Marietta Daily Journal* All-County First Team in 2003 and 2004... As a junior was named the 2003 Georgia 5A Pitcher of the Year and

**Personal:** Madison Gore was born February 27, 1987 in Roswell, Ga...Daughter of Kathy and Mitchell Gore...Volunteered at MUST Ministries, a food and clothing pantry for the needy...Interested in traveling and international business...Majoring in history and minoring in German...Enjoys shopping, watching soccer, and hanging out with friends...Favorite athletes are Roy Keane, Xabi Alonso, and Tom Glavine... Would most like to meet Roy Keane...Career goal is to become an AP History teacher...Chose Georgia State to get a good education and to play softball.



Gore's Career Statistics																			
Year	ERA	W	L	G	GS	CG	SHO	CBO	SV	IP	H	R	ER	BB	SO	AB	AVG	WP	HB
2007	2.48	20	12	37	34	23	5	0	0	220.0	202	84	78	61	173	824	.245	9	18
2008	2.88	14	8	26	21	15	2	2	0	126.33	140	62	52	26	101	506	.277	3	5
Totals	2.63	34	20	63	55	38	7	2	0	346.33	342	146	130	87	274	1330	.257	12	23



# HOLLY #13 WILLIS OF

Senior • 5'7"  
Bats: Right • Throws: Right  
Chesapeake, Va.  
Great Bridge HS

**2008:** Named the 2008 Colonial Athletic Association Softball Scholar-Athlete of the Year...All-CAA First Team outfielder... Played in 55 games this season, started in 54...Had the third-highest batting average with .354...Ranked ninth in CAA batting average...Produced 52 hits, driving in 27 runs, while crossing the plate 36 times...Tied for second on the team with six sacrifice bunts...Stole 17 bases in 20 attempts...Doubled her last year's multiple-hit game performance, finishing the season with 16...Had nine outfield assists...Made a game-saving play in the top of the seventh against Hofstra on 4/12 from left field, throwing out the tying run at the plate, winning the game 1-0...Made the Dean's List both semesters.

**2007:** Started 52 of 58 games played...Had the third-highest batting average with .301 while producing 44 hits...Hit a double and a triple with 16 RBIs this season...Stole a season-high 10 bases...Had nine sacrifice bunts to advance runners...Powered her first career home run versus Delaware on May 5...Finished the season with eight multiple-hit games and four multiple-RBI games...Ended the season on a two-game hitting streak...Was sixth in the CAA in both sacrifice hits and stolen bases...On the Dean's List in the fall and Athletic Director's Honor Roll in both semesters...CAA Commissioner's Academic Award recipient.

**2006:** Appeared in 18 games, primarily as a pinch runner... Scored nine runs...Recorded a stolen base...Was a Faculty Scholar, Dean's List and Athletic Director's Honor Roll honoree in the fall...Earned Dean's List and A.D Honor roll

in the spring...Received the CAA Commissioner's Academic Award.

**Prep:** Lettered for four years in softball and in volleyball for two seasons...Was named Most Valuable Player of her team in 2005...Received first-team All-Region, All-Tidewater, and All-Southeast District in 2005 with the Great Bridge High School Wildcats...Also was named second-team All-Southeast District in 2004.

**Personal:** Born October 6, 1987, in Chesapeake, Virginia...Her parents are Kathy Bryan and Howie Bryan...Has two older brothers (Robert Willis and Casey Bryan), and a younger sister (Leighann Bryan)...Holly chose Georgia State because of its academic reputation and downtown Atlanta campus setting...Nursing major.



Willis' Career Statistics

Year	GP/GS	BA	AB	R	H	RBI	2B	3B	HR	SB/A	BB	K	HB	SF/SH
2006	18/0	.000	0	6	0	0	0	0	0	0/0	0	0	0	0/0
2007	58/52	.301	146	20	44	16	1	1	1	10/14	9	25	2	0/9
2008	55/54	.354	147	36	52	27	3	0	0	17/20	6	22	0	1/6
Totals	131/106	.328	293	62	96	43	4	1	1	27/34	15	47	2	1/15



**2009 PANTHERS**

**SENIORS**



**CHELSEY #22**  
**MORGAN P**

Senior • 5'6"  
Bats: Right • Throws: Right  
Chesterfield, N.J.  
N. Burlington County Regional HS

**2006:** Appeared in 19 games...Started 13 games, finishing with a 5-6 record...Was 4-1 in CAA play...Pitched 70.1 innings with a 4.18 ERA...Struck out 30 batters...Retired a season-high eight players against Wisconsin (3/3)...Helped teammate Elizabeth Hyman with a no-hitter against George Mason (5/6)...Pitched four complete games.

**Prep:** Lettered for four years for coach Brian Wolverton's North Burlington HS Greyhounds...Her team won the New Jersey State Championship in 2002, and reached the title game in 2005...Had a record of 25-5 in 2004 and 25-4 in 2005...Chelsey was named first team All-South Jersey in 2004-05, and first team All-Area in 2005...She was also named first team Liberty Division in 2003-05.

**Personal:** Chelsey was born April 17, 1987 in Trenton, New Jersey...Parents are Bill and Sabine Morgan...Chelsey has an older sister (Stacey) and two younger brothers (Will and Danny)...Chelsey wants to become an elementary school teacher...Early Childhood Education major.

**2008:** Saw time in four innings before being sidelined in the middle of the season...Threw against Savannah State on 2/12, striking-out eight batters in the Panthers' 33-2 record-breaking victory.

**2007:** Started nine of 17 game appearances and completed two games...Finished the season with a 2-8 record with a 6.68 ERA...Pitched 51.1 innings and fanned 16 batters...Did not give up an earned run in a complete game versus Appalachian State on 3/9.

Morgan's Career Statistics																			
Year	ERA	W	L	G	GS	CG	SHO	CBO	SV	IP	H	R	ER	BB	SO	AB	AVG	WP	HB
2006	4.18	5	6	19	13	4	0	0	0	70.33	88	50	42	20	30		.297	10	1
2007	6.68	2	8	17	9	2	0	0	0	51.33	75	55	49	26	16	223	.336	6	2
2008	1.75	0	0	1	0	0	0	0	0	4	2	2	1	0	8	15	.133	0	0
Totals	5.12	7	14	37	22	6	0	0	0	125.66	165	107	92	46	54	248	.665	16	3

**2008:** Starting right fielder named All-CAA Second Team...Ranked 19th in the nation with 0.30 sacrifice hits per game, tied for first in the CAA with 16 sac bunts...Started in 53 out of 54 games played...Finished with a .321 batting average, fifth best on the squad...Blasted 51 hits, including ten doubles and four homers...One of two players to connect with a pair of triples...Stole 19 bases out of 25 attempts, third best in the CAA...Fourth in the CAA in runs scored (39)...Batted a combined perfect 8-for-8 in three games against Western Carolina.

**2005-2007:** Natasha played softball for two years at North Florida Community College in Madison, Florida...Named to the FCCAA All-Panhandle Conference First Team in 2007...Her sophomore year at NFCC, Natasha batted .375 and was seventh in the nation with 51 stolen bases out of 56 attempts...In her last season, Natasha batted .385 with 55 hits, 29 runs, 22 RBIs, 10



**NATASHA #17**  
**BERRY OF**

Senior • 5'5"  
Bats: Right • Throws: Right  
Victoria, B.C., Canada  
North Florida CC

doubles, four triples and two home runs.

**Personal:** Natasha was born on April 3, 1989 in Victoria, B.C. Canada. She is the daughter of Stephen and Bobbi Berry...Natasha has an older brother, James, and a younger sister, Taylor...Natasha is majoring in psychology.

Berry's Career Statistics														
Year	GP/GS	BA	AB	R	H	RBI	2B	3B	HR	SB/A	BB	K	HB	SF/SH
2008	54/53	.321	159	39	51	26	10	2	4	19/25	18	28	1	1/16
Totals	54/53	.321	159	39	51	26	10	2	4	19/25	19	28	1	1/16



**JUNIORS**

**2009 PANTHERS**



**RACHEL #25  
CUNNINGHAM SS**

Junior • 5'6"  
Bats: Right • Throws: Right  
Cumming, Ga.  
South Forsyth HS

**Prep:** Lettered and started all four years under the direction of head coach Ronnie Davis...Was All-Forsyth County and All-Region every year as well as a two-time All-State honoree... Led the team in batting for two years and was in the top three in all offensive categories every year...Pitched, played shortstop, and in the outfield at South Forsyth...Awarded Best Defense honor...Received Who's Who is Sports honor...Won the Wendy's Heisman award at South Forsyth.

**2008:** Named to All-CAA First Team and CAA All-Tournament team... Started in all 55 games her sophomore season... Batted .320 with 54 hits, 35 runs scored and 25 RBI... Connected with 12 doubles and five homers, one of which came in the CAA Tournament against James Madison ... On 2/10 collected four RBI against Lipscomb on two hits... Had 15 multiple-hit games...Named to the Athletic Director's Honor Roll in the spring.

**2007:** Started all games she played...Was second on the team in batting average (.316)... Had 61 hits with 14 doubles and 27 RBIs...Produced 16 multiple-hit games and six multiple-RBI games...Longest hitting streak was 10 games...Went 3-4 with two doubles, an RBI and two runs scored against East Tennessee State on 3/2...Was 3-4 with a double and three runs scored versus Hofstra on 4/6...Led the CAA in assists with 146...Was fifth in hits and seventh in doubles among CAA players...Named to the CAA All-Rookie team...Athletic Director's Honor Roll and CAA Commissioner's Academic Award list in the spring.

**Personal:** Born on November 9, 1987 to Addie and Bonnie...Youngest of three (Jacque 27 and Erica 21)... Enjoys bowling, movies, and hanging out with friends...Favorite sports team is the Atlanta Falcons...Would like to meet Mike Candrea...Career goal is to get her masters or PhD in business... Chose Georgia State for the great program, school, and teammates... Marketing major and Spanish minor.

Cunningham's Career Statistics														
Year	GP/GS	BA	AB	R	H	RBI	2B	3B	HR	SB/A	BB	K	HB	SF/SH
2007	63/63	.316	193	23	61	27	14	0	0	1/1	13	31	0	1/2
2008	55/55	.320	169	35	54	25	12	0	5	0/0	11	23	0	1/3
Totals	118/118	.318	362	58	115	52	26	0	5	1/1	24	54	0	2/5

**2008:** Appeared in four games...Held a 1.75 ERA...Named to the Athletic Director's Honor Roll for both semesters.

**2007:** Appeared in nine games and started two games while posting a 1-1 record...Pitched 19.1 innings with a 6.16 ERA...Struck out a season-high four batters against Georgia Southern on 2/20 while pitching a season high 4.2 innings... On the Athletic Director's Honor Roll in the fall.

**Prep:** Was first team All-State and All-Region in 2005 with teammate Lacy Carter... Pitched 196 innings, retiring 204 batters with a 0.50 ERA, posting a 28-3 mark and was named 2005 GACA Pitcher of the Year...Batted .359 with 21 RBI during her senior season...Honor roll student at Oconee County...Earned Most Valuable Defensive Player as a freshman...Lettered three years in softball for the Oconee County Warriors under head coach Brian Dickens... Had a pair of perfect games in 2005 and 2006.



**ELIZABETH #20  
THOMAS OF**

Junior • 5'4"  
Bats: Right • Throws: Right  
Watkinsville, Ga.  
Oconee County HS

Thomas' Career Statistics																			
Year	ERA	W	L	G	GS	CG	SHO	CBO	SV	IP	H	R	ER	BB	SO	AB	AVG	WP	HB
2007	6.16	1	1	9	2	0	0	0	0	19.33	41	22	17	5	16	100	.410	4	3
2008	1.75	0	0	4	0	0	0	0	0	4	3	1	1	4	14	.214	0	2	
Totals	5.40	1	1	13	2	0	0	0	0	23.33	44	23	18	6	20	114	.386	4	5

**Personal:** Born on May 21, 1988 to Donnie and Martha Thomas... Has a younger sister, Alana, who also plays softball...Enjoys a variety of things including shopping, interior decorating, and traveling...Would most like to meet the President...Inspired by her dad...Chose Georgia State because of the great softball program and school...Major is marketing.



**DANIELLE #24**  
**RODDY 3B**

Junior • 5'4"  
Bats: Left • Throws: Right  
Woodstock, Ga.  
Woodstock HS



**2008:** Started and played in 54 games as a sophomore...Second on the team and fourth in the CAA with a .376 batting average...Connected with CAA second-best 65 hits including 13 doubles and two triples...Crossed the plate 47 times for the Panthers (second best in CAA), while driving in 19 runs... Led the CAA in walks with 32...Finished second in the CAA with a .483 on base percentage...Had 20 multiple-hit games, including a nine-game hitting streak from 3/1 to 3/8.

**2007:** Named CAA co-Rookie of the Year...Earned All-CAA First Team and CAA all-Rookie team honors...One of two players to start and play in 63 of the 64 games...Posted a team-high 70 hits with 13 doubles and 21 RBI...Led the league with 43 walks which was team high and school record...Recorded six stolen bases...Ranked nationally in two categories (No. 22 walks and No. 21 Toughest to strikeout)...Was second in the CAA in on base percentage, runs scored, and tied for hits...Led the team with a .348 batting average and a .461 on base percentage...Went 1-1 with a home run, a season-high four walks, two RBIs and three runs scored versus Army on 2/17...Recorded a school record going 5-5 with four RBIs and a run scored against Furman on 2/18...Went 3-4 with a run scored over George Mason on 3/24...Hit 3-5 with a double, two RBIs and two runs scored against Towson on 4/28... Received CAA Player of the Week honors on 2/20.

**Prep:** Was Athlete of the Week, Defensive Player of the Year, and All-Region First-Team...Received 25 walks, hit seven doubles and had 18 RBIs in 36 games...Lettered four years in softball for the Woodstock Wolverines...All-State in 2004 and 2005...Best individual performance was going 5-5 with two doubles, three singles, and four RBIs...Wolverines were state runners-

up in 2005 with a 32-4 record.

**Personal:** Daughter of James and Terri Roddy... Born on November 9, 1987...Has two younger sisters, Nikki and Rachael...Enjoys softball, bowling, putt-putt golf, and movies...Would most like to meet Andruw Jones formerly of the Atlanta Braves...Career goal is to become a neonatologist...Chose Georgia State for the excellent nursing program...Nursing major.



Roddy's Career Statistics														
Year	GP/GS	BA	AB	R	H	RBI	2B	3B	HR	SB/A	BB	K	HB	SF/SH
2007	63/63	.348	201	49	70	21	13	0	3	6/7	43	10	0	1/0
2008	54/54	.376	173	47	65	19	13	2	0	2/2	32	14	4	0/1
Totals	117/117	.361	374	96	135	40	26	2	3	8/9	75	24	4	1/1



**JUNIORS**

**2009 PANTHERS**



**LAUREN #11  
FETTERS OF**

Junior • 5'2"  
Bats: Right • Throws: Right  
Canton, Ga.  
Sequoyah HS

in both semesters...On the CAA Commissioner's Academic Award list.

**Prep:** Scored 24 times and batted in 12 teammates...Was the MVP and a three-year starter as a member of the Sequoyah softball team...Selected to the All-County, All-Region First-Team and All-State team in 2005...Won the Offensive Award in 2005...Lettered one year in track...Sequoyah Chiefs were fifth in Georgia in 5A with a 32-9 record.

**Personal:** Lauren is the daughter of June Fetters...One of four sisters (Lindsay, Jamie, and Logan)...Enjoys hanging out with friends, movies, the computer, and shopping...Favorite athletes are Laura Berg and Jessica Mendoza...Inspired by Karen Baker...Career goal is to get a Ph.D in psychology...Chose Georgia State for the atmosphere and surroundings...Pre-nursing major.

**2008:** Saw time in 42 games, primarily as a pinch-runner...Stole two bases on two attempts...Went 5-for-7 in the doubleheader against Savannah State on 2/12, bringing in five runs and scoring two...Named to the Dean's List in both semesters and received CAA Academic honors.

**2007:** Started 17 of 44 games played...Produced eight hits, three doubles and a triple...Went 2-3 with a double and a triple against UAB on 3/11...Blasted her first collegiate home run at Western Carolina on April 18 while hitting 2-4 with three RBI...Dean's List in the fall and Athletic Director's Honor Roll

Fetters' Career Statistics														
Year	GP/GS	BA	AB	R	H	RBI	2B	3B	HR	SB/A	BB	K	HB	SF/SH
2007	44/17	.186	43	18	8	7	3	1	1	6/7	2	16	1	0/1
2008	41/2	.500	12	13	6	5	1	0	0	2/2	2	1	0	0/1
Totals	85/19	.255	55	31	14	12	4	1	1	8/9	4	17	1	0/2

**2008:** Started in 37 of 44 games played...Finished the season with a .265 batting average...Drove in 22 runs off 30 hits, including three homers and eight doubles while crossing the plate 12 times...Drove in three runs while going 2-for-2 against Drexel on 5/3...Went 3-for-4 against Appalachian State on 3/8 with a double, home run and three RBIs.

**2007:** Had a team-high and CAA second-best 10 home runs, which is second-most ever in a season at Georgia State...Started 44 of 52 games played...Recorded a team-high .524 slugging percentage...Received 28 walks, ranked third on the team...Went 2-3 with a home run, two RBIs and two runs scored against Mercer on 3/6...Sent a grand slam over center field against Hofstra on April 6...Hit 2-4 with a home run, two RBIs and a run scored versus Western Carolina on 4/18...Was No. 79 nationally in walks over the season...

**Prep:** Had seven runs batted in and one double while batting .289 in 40 at bats...Won the Wolverine Award, an award given to the athlete that represents the best way a Union



**LILLY #29  
SKELTON 3B**

Junior • 5'9"  
Bats: Right • Throws: Right  
McDonough, Ga.  
Union Grove HS

Grove athlete should portray themselves...Recovered from an ankle injury suffered during her senior year...Won the Coca-Cola Athletic Award...Lettered two years in softball for the Union Grove Wolverines.

**Personal:** Daughter of Mark and Suzy Skelton...Margaret Lillian Skelton was born on September 14, 1987...Has a twin brother (Jake)...Has one older brother, Josh, and one younger brother, Robbie...Enjoys camping, fishing, being outdoors, and hanging out with friends...Favorite athlete is Brian McCann of the Atlanta Braves...Chose Georgia State for the great physical therapy program and its proximity to home so her family can watch her play...Exercise Science major.

Skelton's Career Statistics														
Year	GP/GS	BA	AB	R	H	RBI	2B	3B	HR	SB/A	BB	K	HB	SF/SH
2007	52/44	.258	124	16	32	27	3	0	10	0/0	28	40	3	1/1
2008	44/37	.265	113	12	30	22	8	0	3	0/0	14	27	7	0/2
Totals	96/81	.262	237	28	62	49	11	0	13	0/0	42	67	10	1/3



2009 PANTHERS

SOPHOMORES



**CATHERINE #23**  
**LEE** **C**

Sophomore • 5'9"  
Bats: Right • Throws: Right  
Covington, Ga.  
Eastside HS

**2008:** Record-setting catcher who was named NFCA First-Team All-South... First All-Region honoree in school history...Enjoyed the most prolific offensive season in school history and one of the best in CAA annals, batting .411 with 17 home runs, 63 RBI and 51 runs scored, all Georgia State records...Season totals rank second in CAA...Named CAA Player and Rookie of the Year...Earned First-Team All-CAA and CAA All-Rookie honors...Ranked fourth in the nation with 1.15 runs batted in per game, 10th with 0.31 home runs per game, 13th with a .810 slugging percentage, 29th with a .411 batting average...Led CAA in eight offensive categories, including runs scored, runs batted in, hits, doubles and home runs... Already ranks fifth in Georgia State history in career home runs...Started all 55 games behind the plate for the Panthers...Threw-out a league-high 13 runners

and picked-off three...Had 20 multiple-hit games and 19 multiple-RBI games...Had three multiple-home run games...Earned CAA Rookie of the Week four times on 3/4, 4/1, 4/8 and 4/21... Named to the Dean's List both semesters and earned CAA Academic honors.

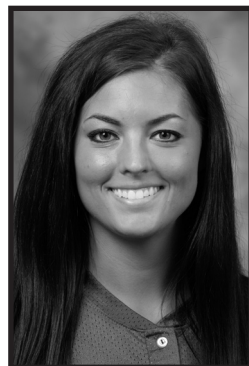
**Prep:** Graduated with honors from Eastside High School in Covington, Georgia...Lettered four years in softball, basketball and tennis at EHS...Batted .353 as a senior in 41 games with seven home runs and 37 RBIs...Was named All-Newton County her freshman, junior and senior years...In her senior year Catherine was named MVP and received both the Leadership and Coach's Awards...2006 Player of the Year in Newton County...Earned All-State First Team her senior year.

**Personal:** Born on April 19, 1989 at Piedmont Hospital in Atlanta, Georgia...Parents are Gary Brown and Kay Lee...Has one brother, Duke and four sisters, Lydia, Leslie, Neal and Martha... Catherine intends to major in International Business and minor in French.

Lee's Career Statistics														
Year	GP/GS	BA	AB	R	H	RBI	2B	3B	HR	SB/A	BB	K	HB	SF/SH
2008	55/55	.411	168	51	69	63	16	0	17	0/0	28	27	4	1/1
Totals	55/55	.411	168	51	69	63	16	0	17	0/0	28	27	4	1/1

**2008:** Played in 24 games as a freshman...Primarily saw time in the outfield and as a pinch runner... Went 2-for-4 with two runs scored and three RBIs against Savannah State on 2/12... Named to the Dean's List in the fall and earned Faculty Scholar honors in the spring.

**Prep:** Lettered in softball all four years at Oconee High School...Played in 42 games as a senior while batting .328 with 26 runs scored, six doubles, two triples and two home runs...She also batted in 26 runners and received 14 walks... Bess was a key member of the Oconee Warriors on their 2004, 2005, and 2006 Georgia State Championship teams...Bess earned 3A first team All-State honors in 2006 and was named to the Georgia Athletic Coaches Association (GACA) All-Star Roster...Lettered in basketball two years and track three years with the Warriors.



**TIFFANY #12**  
**BESS** **OF**

Sophomore • 5'3"  
Bats: Right • Throws: Right  
Watkinsville, Ga.  
Oconee County HS

**Personal:** Born on March 7, 1989 in Tifton, Georgia...Parents are Dan and Jane Bess...Tiffany has one younger sister, Amber...Enjoys working out and shopping...Names Derek Jeter and Alex Rodriguez as her favorite athletes... Majoring in pre-nursing

Bess' Career Statistics														
Year	GP/GS	BA	AB	R	H	RBI	2B	3B	HR	SB/A	BB	K	SF/SH	
2008	24/3	.222	18	5	4	5	1	0	0	1/1	0	3	0/0	
Totals	24/3	.222	18	5	4	5	1	0	0	1/1	0	3	0/0	



**LAUREN #15**  
**JONES 1B**

Sophomore • 5'5"  
Bats: Right • Throws: Right  
Stockbridge, Ga.  
Union Grove HS

**2008:** Starter in center field, named CAA Player of the Week on 2/19 after breaking a new school record with 8 RBIs in one game off five hits...One of three freshmen to start all 55 games...Batted .302 with 51 hits, 11 doubles and four homers...Ranks third on the team in RBIs...Brought home 31 runs, crossing the plate 21 times...Had 12 multiple-hit games, while starting off the season with a seven-game hit streak...Named to the Dean's List in the fall.

**Prep:** Lettered in softball and basketball at Union Grove High School...She was part of a team that went 24-13 overall and 6-1 in the Region...Led Union Grove to the Region 2 5A Championship title...Jones played in 36 games and saw the plate 124 times...She batted .226 as a senior with four doubles and 15 RBI...Jones received nine walks and was 4-4 in stolen bases...She received 5A honorable mention All-State in 2006...Named to the All-Region First Team three consecutive years (2004-2006)...2005 Defensive Player of the Year for the Wolverines...Participated in the 2007 GACA All-Star game.

**Personal:** Born on November 4, 1988 in Henry, Georgia...Parents are Bobby and Lorraine Jones...Has one older brother, Chris...Lauren chose Georgia State because of its academic reputation, its excellent coaches, and the team members...Major is biological science.

Jones' Career Statistics														
Year	GP/GS	BA	AB	R	H	RBI	2B	3B	HR	SB/A	BB	K	HB	SF/SH
2008	55/55	.302	169	21	51	31	11	0	4	1/1	8	28	1	1/1
Totals	55/55	.302	169	21	51	31	11	0	4	1/1	8	28	1	1/1



**REBECCA #14**  
**ROLES 2B**

Sophomore • 5'7"  
Bats: Right • Throws: Right  
Lawrenceville, Ga.  
Collins Hill HS

**2008:** Started in every game as a freshman...Batted .227 with 34 hits, including five doubles and 14 RBI with 24 runs scored...Went a perfect 3-for-3 against Towson on 4/19, with three singles...Named to the Dean's List both semesters.

**Prep:** Lettered for three years in softball, basketball and diving at Collins Hill High School in Lawrenceville, Georgia...Was named the *Atlanta Journal-Constitution* All-Star second baseman in 2006...Member of the 2006 and 2007 East Cobb Bullets Gold 18U team...A part of the 2006 Region 75A Championship team, 2006 State Runner-up team, and the 2005 State Championship team with the Collins Hill Eagles.

**Personal:** Born November 24, 1988, in Atlanta, Georgia...Parents are Doug and Teresa Roles...Has one older brother, William and one older sister, Lauren...Enjoys going to the movies and hanging out with friends...Names Jeff Francoeur and Chipper Jones as her favorite athletes...She would most like to meet Peyton Manning...Rebecca chose Georgia State because of its location and for its outstanding softball program...Majoring in biological science.

Roles' Career Statistics													
Year	GP/GS	BA	AB	R	H	RBI	2B	3B	HR	SB/A	BB	K	SF/SH
2008	55/55	.227	150	24	34	14	5	0	1	1/1	8	23	2/6
Totals	55/55	.227	150	24	34	14	5	0	1	1/1	8	23	2/6



## 2009 PANTHERS

## NEWCOMERS



# KATE #30 GASKILL P

Junior • 5'10"  
Bats: Right • Throws: Right  
Murrieta, Calif.  
Vista Murrieta HS/Georgia

**At Georgia:** Tied for the team lead in victories in 2008 with a 15-6 record... Led the 2008 Bulldogs in ERA (2.07), saves (4) and strikeouts (164)...Named Louisville Slugger/NFCA Division I Collegiate Player of the Week & SEC Pitcher of the Week on March 17, 2008 after posting a 4-0 record with a 0.00 ERA in 23 innings pitched on the week of March 11-16. During that week, she struck out 39 batters while walking just two and had a stretch of 41 consecutive batters retired that included a perfect game against South Carolina March 16 ... Named SEC Pitcher of the Week on March 5, 2008 after tossing 17.0 innings in relief, striking out 30 batters in Georgia Softball Classic Feb. 29-March 2...

Season-high 13 strikeouts in a one-hitter against Kent State (March 23)...As a freshman in 2007, compiled a 2-4 record with a 3.35 ERA and two saves in 62.2 innings pitched...Hurled a no-hitter with a career-high 15 strikeouts against Western Kentucky...Struck out 11 in complete game effort against Louisiana-Lafayette.

**Prep:** Four-year All-League selection. . . All-Valley First Team by The Californian News. . . Four-year varsity starter at pitcher and first base. . . Posted a 0.72 ERA and 213 strikeouts in 135.1 innings as a senior... Participated in the 2006 Southern Section Inland Valley-Orange County All-Star Game.

**Personal:** Kate Gaskill was born July 25, 1988 in San Diego, Calif...Parents are Enos and Kristi Gaskill...Has a younger brother, Jacob...Enjoys photography, the beach, and teaching pitching lessons... Major is psychology.



# EMILY #16 ALTHAFER C

Freshman • 5'8"  
Bats: Right • Throws: Right  
Sugar Hill, Ga.  
North Gwinnett HS

**Prep:** Attended North Gwinnett High School...was awarded the Scholar Athlete Award...Lettered three years in softball...Was part of the 2006 squad that competed at state sectionals..2005 high school state finalist....2006 and 2007 region finalist

**Personal:** Emily Ruth Althafer was born May 15, 1990 in Atlanta, Ga...Parents are Chuck and Karen Althafer...Has one older brother, Tyler... Enjoys photography and playing tennis...Her favorite athlete is Bryan McCann....Brad Pitt is her favorite actor...Plans to major in Early Childhood Education and wants to eventually teach the first grade...Chose Georgia State because of the College of Education and for the opportunity to play for the Georgia State coaches.



# CASSIE #28 BOESE SS

Freshman • 5'6"  
Bats: Left • Throws: Right  
Middlebury, Ind.  
Northridge HS

**Prep:** Attended Northridge High School where she graduated with honors... Lettered four years in softball and two years in volleyball...Was the Team MVP and awarded the Best Bat and Best Glove Awards...Earned two All-Conference Honorable Mentions, two All-Conference Honors, and two All-State

Honors...Was a part of the squad that won four sectional titles, one regional title, one conference title, and went to the state finals in 2005.

**Personal:** Cassie Boese was born April 3, 1990 in Stockton, Calif...Parents are Mark and Vickie Boese...Has two older sisters, Jessica and Ashlee...Enjoys snowboarding and volleyball... Names Shia LaBeouf as her favorite actor and the person that she would most like to meet... Chose Georgia State because of the location, coaches, and education opportunities.

**NEWCOMERS**

**2009 PANTHERS**



**ERIN** #27  
**COLLINS** P

Freshman • 5'7"  
Bats: Right • Throws: Right  
Lawrenceville, Ga.  
Collins Hill HS

**Prep:** Attended Collins Hill High School where she lettered three years in softball...Was a 2006 Gwinnett County High School Honorable Mention... Earned the honor of being named 2007 Gwinnett All-County and the 2007 Gwinnett County Team of the Month...Was a part of a squad that was the

2005 Georgia High School Class 5A State Champions and the 2006 Georgia High School Class 5A State Runner-up...Finished with a 10-1 record and an 0.58 ERA in 71 innings in the fall of 2006....During the fall of 2007, she posted a 10-4 record and a 0.59 ERA in 83 innings.

**Personal:** Erin Kathleen Collins was born August 19, 1990 at Kennestone Hospital in Marietta, Ga... Parents are Shawn and Laura Collins...Has one younger brother, Alex...Names Cat Osterman and John Smoltz as her favorite athletes...Chose Georgia State because of the location and the softball program...Majoring in pre-nursing.



**MEGAN** #26  
**KALLASTA** 1B

Freshman • 5'8"  
Bats: Right • Throws: Right  
Tyrone, Ga.  
Sandy Creek HS

**Prep:** Attended Sandy Creek High School where she graduated with honors... Lettered four years in softball...Recorded a .337 batting average, 25 singles, 7 doubles, 3 triples, and 11 RBIs during her senior year...Earned the Patriot Golden Glove Award in 2004, the Triple Threat Award in 2006, and the Best Defensive

Award in 2007...Was named to the All-County First Team and All-Area First Team in 2006 and was an All-State Honorable Mention... Earned the Scholar-Athlete Award in 2007.

**Personal:** Megan Lynn Kallasta was born December 22, 1989 in Atlanta, Ga...Parents are Steven and Julie Kallasta...Has an older brother, Chris...Enjoys going to the lake and the beach and hanging out with friends...Names Brett Favre and Chipper Jones as her favorite athletes...Chose Georgia State because she likes the city life and the coaching staff.



**CHELSEA** #18  
**SPARKS** OF

Freshman • 5'5"  
Bats: Left • Throws: Right  
Palmetto, Ga.  
Northgate HS

**Prep:** Attended Northgate High School where she graduated with honors... Was named All-County 3rd Base for all four years...Lettered in softball... High school team was state runner-up in 2006 and state champion in 2007...

...Overcame a knee injury during her senior year to come back and play in the state playoffs and the state championship game.

**Personal:** Chelsea Lauren Sparks was born December 28, 1989 in Newnan, Ga...Parents are Edward and Diana Sparks...Enjoys reading and traveling to the beach and the mountains..... Counts the Braves and the Falcons as her favorite sports teams...Names Adam Sandler as the person that she would most like to meet...Plans to major in psychology and minor in sociology.



## 2009 PANTHERS

## NEWCOMERS



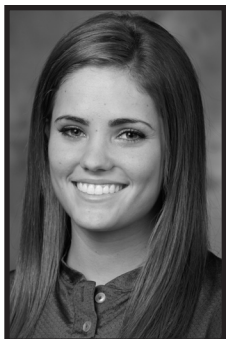
# ALANA #21 THOMAS P

Freshman • 5'8"  
Bats: Right • Throws: Right  
Athens, Ga.  
Oconee County HS

**Prep:** Attended Oconee County High School where she was on the Honor Roll all four years...Was a four-year letter winner in softball...Was the 2006 AAA Pitcher of the Year...In 2007, she was named the AAA State Co-Player of the Year and the Northeast Georgia Player of the Year....Was an integral part in

the squad's 2004, 2005, and 2006 3A Georgia High School State Championships...Finished her junior year with a 34-4 record, 209 strike-outs, and an 0.08 ERA...Finished her senior year with a 36-5 record, 296 strike-outs, and an ERA of 0.13.

**Personal:** Alana Joy Thomas was born May 18, 1990 in Macon, Ga...Parents are Donnie and Martha Thomas...Sister, Liz Thomas, also plays softball for Georgia State...Enjoys hiking, biking, kayaking, and playing intramural sports...Would most like to meet actress Julia Roberts...Favorite sports teams are the Braves and the Patriots...Plans to major in business economics.



# EMILY #19 WHITAKER OF

Freshman • 5'5"  
Bats: Left • Throws: Right  
Sugar Hill, Ga.  
North Gwinnett HS

**Prep:** Attended North Gwinnett High School...Lettered three years in softball...Was named All-County and All-Region during her junior and senior years...Ended her junior year with a .333 batting average....Finished her senior

year with a .448 batting average.

**Personal:** Emily Ann Whitaker was born November 11, 1989...Has a younger brother, Joseph, and an older sister, Rachel...Names Jeff Francoeur and Michael Phelps as her favorite athletes...Favorite performers include Carrie Underwood and Rascal Flatts...Nursing major...Chose Georgia State because of the downtown campus location and the university's academic reputation.

## ROSTER BREAKDOWN

### By Eligibility

**Seniors (4):** Natasha Berry, Madi Gore, Chelsey Morgan, Holly Willis

**Juniors (6):** Rachel Cunningham, Lauren Feters, Kate Gaskill, Danielle Roddy, Lily Skelton, Elizabeth Thomas

**Sophomores (4):** Tiffany Bess, Lauren Jones, Catherine Lee, Rebecca Roles

**Freshmen (7):** Emily Althafer, Cassie Boese, Erin Collins, Megan Kallasta, Chelsea Sparks, Alana Thomas, Emily Whitaker

### By Home State

**California (1):** Kate Gaskill  
**Georgia (16):** Emily Althafer, Tiffany Bess, Erin Collins, Rachel Cunningham, Lauren Feters, Madi Gore, Lauren Jones, Megan Kallasta, Catherine Lee, Danielle Roddy, Rebecca Roles, Chelsea Sparks, Lily Skelton, Alana Thomas, Elizabeth Thomas, Emily Whitaker

**Indiana (1):** Cassie Boese

**New Jersey (1):** Chelsey Morgan

**Canada (1):** Natasha Berry

### By Batting Hand

**Right (17):** Emily Althafer, Natasha Berry, Tiffany Bess, Erin Collins, Rachel Cunningham, Lauren Feters, Kate Gaskill, Madi Gore, Lauren Jones, Megan Kallasta, Catherine Lee, Chelsey Morgan, Rebecca Roles, Lily Skelton, Alana Thomas, Elizabeth Thomas, Holly Willis

**Left (4):** Cassie Boese, Danielle Roddy, Chelsea Sparks, Emily Whitaker

### By Height

**5-2 (1):** Lauren Feters

**5-3 (1):** Tiffany Bess

**5-4 (2):** Elizabeth Thomas, Danielle Roddy

**5-5 (4):** Natasha Berry, Lauren Jones, Chelsea Sparks, Emily Whitaker

**5-6 (4):** Cassie Boese, Rachel Cunningham, Madi Gore, Chelsey Morgan

**5-7 (3):** Erin Collins, Rebecca Roles, Holly Willis

**5-8 (3):** Emily Althafer, Megan Kallasta, Alana Thomas

**5-9 (2):** Catherine Lee, Lily Skelton

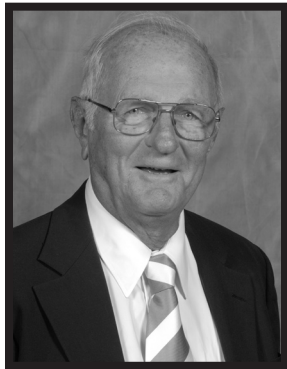
**5-10 (1):** Kate Gaskill



## HEAD COACH ROBERT "BOB" E. HECK

# BOB HECK

Head Coach(22nd season) **Overall Record:** 628-540-2



One person will forever be known as the founder, architect and icon of Panthers' fast-pitch softball.

Georgia State's living legend of softball, Bob Heck, took the program from slow-pitch to fast-pitch status 24 years ago and has continued the growth pattern ever since. When the

normal called for two years to take a program into NCAA fast-pitch, Bob Heck said he could do it in one year. Three years ago, when Georgia State moved to the Colonial Athletic Association and some sports needed time to grow, Bob Heck stepped up to the challenge and won the regular-season title in his first year and advanced to the tournament championship game.

The enthusiastic octogenarian begins the 2008 season with 1,170 games coached in 21 seasons as the head coach at Georgia State with 628 career victories. He has been voted the Coach of the Year in the previous Atlantic Sun Conference and the current CAA.

### Still Going Strong

Bob Heck will be 83 when the 2009 season begins, but there is no question that he is still going strong, evidenced by a 2008 campaign in which the Panthers posted a 37-18 record and finished second in the CAA standings while leading the conference in virtually every offensive category.

State's successful season was fueled by a freshman class that was likely the most talented in school history, led by all-conference performer and record-setting catcher Catherine Lee.

Lee enjoyed one of the most prolific offensive seasons in State and CAA history with 17 home runs, 63 runs batted in, 51 runs scored and a .411 batting average. She was named CAA Player and Rookie of the Year and became Georgia State's first NFCA All-Southeast Region honoree. Outfielder Holly Willis was named the CAA Softball Scholar-Athlete of the Year and All-CAA First Team. A total of seven Panthers were tabbed to the All-CAA team.

With Lee's selection in 2008, Heck has recruited the CAA Rookie of the Year in each of State's three seasons in the league.

### The Formulative Years

The World War II vet began in 1981 as a volunteer assistant coach with Georgia State's slow-pitch softball team. In 1984, he served as the head coach of the slow-pitch team, but the NCAA did not recognize this as a sport. In the spring of 1985, Georgia State was playing NCAA fast-pitch softball, thanks first and foremost to Bob Heck's efforts.



Coach Heck's 600th win came on February 23, 2008 after an 8-2 victory over Dayton.

All the team had in 1985 was a rough, over-used Recreation Department field, no locker rooms, no practice facilities and no scoreboard. In other words, it was as basic as basic could have possibly been.

Year by year, Bob Heck took this theme: "The ladies deserve the best place to prepare and play, so I will do whatever I can to provide that for them."

For Bob Heck, that meant coming up with most of the money and providing his own extra financial support to put in a fence, to move the playing field to a new area, to upgrade the playing surface and grounds, to put up a beautiful scoreboard, to put in dugouts with bathrooms, to build a stadium with concrete stands and arm-chair seats, to build a concession stand and press box, and to build a state-of-the-art year-round, indoor practice facility with batting and pitching cage. The facility has locker rooms, a training room, a video room, a game room, a weight room, and restroom facilities. It is no wonder the scoreboard, the field itself and the team house are all aptly named in his honor.

Unlike most softball coaches, he has been a diligent groundskeeper in maintaining his field as well as any professional landscaper. Now, he has help with that. He has actually planted, maintained and manicured, cut the grass, painted the lines, and rolled out the tarp. Bob Heck Field is recognized as an excellent facility and hosted the 2006 CAA Championship.

### Putting Georgia State softball on the map

Remember, he started a college Division I program from scratch, pretty much by himself. He has recruited his student-athletes on his own merits. He has scheduled all the top schools and has a philosophy of being willing to play anyone, anywhere, anytime. He has guided the fledging program from the NSWAC (New South) through its growth into the TAAC (Trans America) and then the A-Sun (Atlantic Sun). In 2005-06, the school moved into the Colonial Athletic Association (CAA).

The first season was his only losing record in his first 10 years. From 15-24 with losses to SEC, ACC, Big 10 and even a future CAA school (VCU), Heck turned year two into .500 at 26-22 and then year three into a winner at 26-22.



## HEAD COACH ROBERT "BOB" E. HECK

By his fourth year, he had produced his first 40-win team with a 42-20 squad (.677). By year five, he had a NSWAC championship team. In year six (1990), he had yet another conference championship team, a school record-tying 42-win team. In 1993, his 39-16 conference championship team was in the top five in the NCAA South Region rankings.

In just his 10th year, he had built a team that was ranked in the Top 25 in the nation, and No. 3 in the South rankings, and earned an NCAA Tournament bid. Ironically, he lost a 2-1 game to UCLA in the tournament and that school stole his top pitcher of two years away. That pitcher that Heck first recruited, Kaci Clark, went on to an outstanding professional softball pitching career. Coach Heck was named the conference Coach of the Year in that 1994 season.

By 1995, his 30-win team marked the eighth time in the short 11-year history he had a team hit the 30-win plateau.

After 14 successful years as State's head coach, Bob Heck actually thought he wanted to retire. That worked out for three years, before Georgia State convinced him to come back in 2001 and coach some more.

Bob Heck showed he is still as competitive and successful as ever. He led the 2005-06 team into its first year in the Colonial Athletic Association (CAA) and was picked to finish fifth by the league's coaches. It should not have been a surprise when he led the team to the regular season championship and the No. 1 seed on its home field. His team lost the CAA championship game. That team set a record for most home runs at Georgia State and the top pitcher, Elizabeth Hyman, set a new school record for strike outs in leading the CAA. Heck coached the CAA Pitcher of the Year and the CAA Rookie of the Year in being named the CAA Coach of the Year. He produced an Academic All-American, Meghan McCoy, as well.

In 2006-07, Heck guided his team back to the championship game of the CAA Tournament with another 30-win season as five players earned All-CAA recognition. This team set 11 school records, including the best defense the school had ever had and the Panthers boasted the league's Rookie of the Year for the second straight year, with Danielle Roddy named a co-winner of the award.

Heck has now coached 21 seasons of his "second career" and given his signals from the third base box for 1,170 games. He has led his teams to five conference championships and has advanced to seven other championship games before bowing out during his tenure.

During his career at State, Heck has had 46 student-athletes earn All-Conference First Team recognition and 26 more earn second team honors.

While Georgia State has moved into the CAA, Coach Heck has also played, and often won, against some of the NCAA's bigger schools, who have much larger budgets. In just the past nine years for example, Heck has built the Georgia State program to a level where it has wins over schools in major conferences like SEC schools Arkansas, Auburn, Georgia, Kentucky, South

Carolina; Big Ten schools Iowa, Michigan State, Purdue; ACC schools Boston College, Georgia Tech, Maryland, North Carolina, Virginia Tech; Big East schools Pittsburgh and St. John's; and the Big 12's Iowa State. He believes in playing anyone who will play him and challenges his team to rise to the competition. He is an avid teacher of the fundamentals of the game.

### Life Before Georgia State

Before softball and Georgia State entered into Bob Heck's life, he had a remarkable life that showed his dedication, devotion and service. As a young man, World War II interrupted his classroom education for three years of service to his country in the U.S. Navy and an education in the reality of the world.

Coming out of the service in 1946, Bob began an education path that earned a college degree from the University of Georgia. Studious Bob then earned a master's degree from Emory, and yet another master's degree in business from Georgia State.

His early jobs included being a high school teacher at Druid Hills High in Atlanta for five years, serving as the head coach of the track team and the assistant coach for the football team.

In 1957, Heck put his master's in business to good use and began a career as a national bank examiner with the Controller of the Currency's office for 10 years. He moved on up to the Federal Reserve, the arm of the government that oversees the nation's banking system and manages the supply of money, credit, and interest rates.

All the while he had his "day job" for 35 years, Bob stayed busy as a high school football referee for 25 years and was a high school basketball official for five years.





## HEAD COACH ROBERT "BOB" E. HECK (cont.)

For most normal folks, this biography might end here with a nice retirement package, a little golf, some travel and "the easy life." But, for Bob Heck, life was just beginning and this is where Georgia State and softball became the biggest beneficiaries of his remarkable life.

### Honored off the field

The ever-generous Heck is also known in other ways. Georgia State University honored him in 2005 with its Sparks Award and asked him to serve as the head of the university-wide fundraising campaign. He has generously helped other collegiate softball programs in the metro Atlanta area with his donations and his time.

Heck is one of the eight Founding Life Members of the Georgia State Department of Athletics by contributing at least \$100,000 to the athletics department in a three-year pledge. He is respected by his First United Methodist Church and serves on its Board of Stewards among his other lifelong service with that church.

Raised in Charleston, W. Va., Robert E. Heck's family has proven to be the hundreds of young ladies he has tutored in softball and nurtured into adult life, as well as the hundreds of people he has touched in the Georgia State community and the city of Atlanta.

His leadership, dedication, commitment and passion for Georgia State and the sport of softball most likely will never be equaled. But, his commitment will always be remembered.



## BOB HECK YEAR-BY-YEAR

Year	Won	Lost	Tie	Games	Honors
1985(1)	15	24		39	
1986(2)	26	26		52	
1987(3)	26	22		48	
1988(4)	42	20		62	
1989(5)	31	23		54	NSWAC Champs
1990(6)	42	23		65	NSWAC Champs
1991(7)	35	32		67	
1992(8)	35	27	1	63	TAAC Champs
1993(9)	39	16		55	TAAC Champs
1994(10)	40	27	1	68	TAAC Champs NCAA Regionals TAAC Coach of the Year
1995(11)	30	19		49	
1996(12)	20	24		44	
1997(13)	22	30		52	
1998(14)	28	23		51	
Retired, 1999-2001					
2002(15)	38	27		65	
2003(16)	22	33		55	
2004(17)	18	33		51	
2005(18)	19	35		54	
2006(19)	29	28		57	CAA Reg-Season Champs CAA Coach of the Year
2007(20)	34	30		64	
2008(21)	37	18		55	
<b>Totals:</b>					
21 years	628	540	2	1,170	



## SUPPORT STAFF

### ASSISTANT COACH



## Roger Kincaid

### First Season

### Alma Mater: Georgia

Kincaid also coached at Parkview High School as the 8th grade offensive coordinator.

Roger's interest in softball began when his daughter started to play. He began to coach her team after sitting in the stands and watching for one season. He and a colleague coached The Rookies softball team before later starting Xtreme Fastpitch, which began a 12 year coaching odyssey that eventually led to Georgia State.

Roger Kincaid enters his first year as an assistant coach with the Georgia State softball program. Kincaid was named assistant coach by Bob Heck prior to the start of the 2008 fall season. Roger Kincaid is a graduate from the University of Georgia's Terry College of Business, earning his degree in Business Management. While at UGA, Kincaid played football and was a member of the 1980 National Championship Team. Being around coaches such as Vince Dooley, Erk Russell, and Bill Lewis helped build the foundation for his current coaching philosophies.

Kincaid comes to Georgia State after spending 24 years as a coach, over 12 of which he has worked with various softball programs in the area. He comes from Union Grove High School in McDonough, Ga., where he worked under Brian DeBerry as Varsity Softball Community Coach. In addition to his work at the high school level, he has extensive experience in travel ball as manager of the Xtreme-Mavericks of Georgia Gold, Xtreme of Georgia and with the help of 2 colleagues, started the Georgia Xtreme Softball Organization which now consists of six teams.

After graduating from college, Roger began coaching football with the DeKalb Yellow Jackets youth football organization. His duties included being a defensive coordinator and head coach.

A native of Decatur, Ga., Kincaid has spent his entire life living and working in the Metro Atlanta community. Roger has a daughter, Karly Kincaid, currently a junior at the University of Georgia. He is in a relationship with Becky Chase of McDonough, Ga.

---

### ATHLETICS SUPPORT STAFF



**Robert Slavis**  
Assistant Athletics Director  
Compliance/Sport Administrator



**Keisha Jones**  
Student-Athlete Development



**Ken Coggins**  
Strength and Conditioning Coach



**Matthew Piechoski**  
Softball Trainer



## 2008 YEAR IN REVIEW

Records fell and milestones were reached for the 2008 Georgia State softball team and coaches. The Panthers were honored several times throughout the season by the Colonial Athletic Association and post-season by both the CAA and the University. State's legendary head coach also reached win number 600.

The Panthers opened its 2008 season by hosting three tournaments in February and March for the fourth consecutive year: the Georgia State First Pitch Classic, the Panther Invitational, and the Georgia State Spring Showdown. State went 4 for 4 at the First Pitch Classic before continuing their winning streak as they welcomed Savannah State and Western Carolina the next week.

The team was honored by the CAA as outfielder Lauren Jones was named Player of the Week and pitcher Alicia Mills was named Rookie of the Week for their performances in the 4-0 sweep of Savannah State and Western Carolina.

The Panthers fell for the first time in 2008 to Tennessee State during the second tournament, the Panther Invitational. Georgia State went 3-1 in the tournament and scored 28 runs. Head coach Bob Heck earned his 600th win as the Panthers opened the tournament by defeating Dayton 8-2.



Freshman catcher Catherine Lee earned CAA Rookie of the Week Honors four times in 2008

The following weekend, State hosted its final tournament of the year, winning its first three games before falling in the championship game to in-state rival Kennesaw State.

Once again, the Panthers were honored by the conference as freshman Catherine Lee was named Rookie of the Week for her performance in the Spring Showdown. Lee received the honor after hitting four home runs in 13 at-bats, including the grand slam against Western Carolina in Georgia State's 16-0 win. Lee racked up 10 RBIs in the course of three games, while scoring four runs for State.

The Panthers then welcomed North Carolina State for a non-conference match up and fell 1-2 to the Wolfpack. Two days later, the Toledo Rockets came to Panthersville and were defeated 9-4, 6-2 in a doubleheader.

The Panthers then traveled to Tallahassee to play in the Florida State Invitational where they placed second to FSU. Roddy and third baseman/outfielder Lily Skelton, along with freshman Catherine Lee earned All-Tournament Team honors for their performances over the weekend.

On March 21st, the Panthers opened CAA play as they traveled to Delaware and swept the three game series with 41 hits and 25 runs scored. Pitcher Alicia Mills was once again honored as the CAA Rookie of the Week and first baseman Jessica Gowin earned CAA Player of the Week honors.

Hosting James Madison on March 29th and 30th, State split the doubleheader, but fell in the series finale. It was during that week that Catherine Lee earned her second CAA Rookie of the Week honors after the catcher hit .500 (9-for-18) on the week, belting her 10th and 11th homeruns of the season.

State traveled to George Mason where they shut out the Patriots 14-0 and 8-0 for the doubleheader. Catcher Lee reached and passed the school RBI record (51) that weekend as she batted 5-for-7



Freshman Rebecca Roles hit her first career home run in 2008

with four doubles, collected five RBIs and scored five runs to help the team with the shutout. Mills threw the first game and allowed just six hits and two walks, while fanning ten batters in five innings. Ashley Cowan threw the second game and allowed just five hits in five innings, fanning four Patriots. During that same week, Lee earned her third CAA Rookie of the Week honors for the second consecutive week.

The Auburn Tigers came to Panthersville on March 9th and managed to shut out the Panthers 0-1 and 0-3. It was back to conference play as the Hofstra Pride came to Panthersville on the 12th and 13th. Georgia State split the doubleheader and fell in the series finale as their record dropped to 28-12, 7-4 CAA.

State traveled to Furman and split the doubleheader against the Paladins. The Panthers went two for three against conference foe Towson as Catherine Lee earned her fourth CAA Rookie of the Week honors. The freshman finished the week batting .333 (5-for-15) with two runs scored, a double, two home runs and three RBIs. State then took on cross-town rival Georgia Tech and fell in both games of the doubleheader before traveling to Wilm-



## 2008 YEAR IN REVIEW

ington, North Carolina for their final conference road game of the regular season against the Seahawks. The Panthers swept the Seahawks as freshman Rebecca Roles blasted her first career homerun and Lee connected with her 16th.

For the final regular season conference match up, State hosted Drexel and went three for three, defeating the Dragons 5-4, 8-5, and 5-3. After that performance, Georgia State earned a number two seed for the CAA Tournament that following weekend.

The Panthers fell to James Madison 1-2 in the opening round of the tournament after a two-run homerun in the seventh inning put the Duke Dogs on top. Georgia State (37-18) concluded their final game of the 2008 season as they fell to Towson, 5-4, in the second game of the Colonial Athletic

Association Championship Tournament. Catherine Lee smashed her 17th homer of the season, bringing home two RBI's, tying her with the CAA single-season RBI (63) and runs scored (51) records.

The Panthers finished the season with a 37-18 record as Heck improved his coaching record to 628-540-2. Lee was named the CAA Player and Rookie of the Year. She batted .412 with school-record totals of 17 home runs, 63 runs batted in and 51 runs scored. She led the CAA in homers, RBI, runs, hits, doubles, total bases, slugging percentage and on-base percentage while ranking second in batting average. Among all freshmen in the nation, Lee ranks first in homers and second in RBI and batting average.

Lee is the second straight Panther to win the league's top rookie award after third

baseman Danielle Roddy shared the honor in 2007. Lee, shortstop Rachel Cunningham, and designated player Holly Willis were all named First-Team All-CAA while Jessica Gowin, outfielder Natasha Berry, and pitchers Madi Gore and Alicia Mills were named Second-Team All-CAA. Willis was also named the CAA Softball Scholar Athlete of the Year

The Panthers return 13 players for the 2009 season, including CAA Player and Rookie of the Year Lee. Returnees include seniors Madi Gore, Holly Willis, Natasha Berry, and Chelsey Morgan, juniors Lauren Fetters, Liz Thomas, Roddy, and Cunningham, sophomores Tiffany Bess, Rebecca Roles, and Lauren Jones.

## 2008 Statistics

**Record: 37-18 Home: 26-11 Away: 9-5 Neutral: 2-2 CAA: 15-5 (2nd)**

Player	AVG	G-GS	AB	R	H	2B	3B	HR	RBI	TB	SLG%	BB	HB	SO	GDP	OB%	SF	SH	SB-AT	PO	A	E	FLD%
Lee, Catherine	.411	55-55	168	51	69	16	0	17	63	136	.810	28	4	27	1	.502	1	1	0-0	354	34	7	.982
Roddy, Danielle	.376	54-54	173	47	65	13	2	0	19	82	.474	32	4	14	2	.483	0	1	2-2	30	70	10	.909
Willis, Holly	.354	55-54	147	36	52	3	0	0	27	55	.374	6	0	22	1	.377	1	6	17-20	56	9	3	.956
Gowin, Jessica	.335	55-55	161	29	54	8	0	6	30	80	.497	17	3	20	0	.402	3	0	0-0	313	24	3	.991
Berry, Natasha	.321	54-53	159	39	51	10	2	4	26	77	.484	19	1	28	0	.394	1	16	19-25	42	1	0	1.000
Cunningham, Ra.	.320	55-55	169	35	54	12	0	5	25	81	.479	11	0	23	1	.359	1	3	0-0	95	108	17	.923
Jones, Lauren	.302	55-55	169	21	51	11	0	4	31	74	.438	8	1	28	0	.335	1	1	1-1	60	1	1	.984
Skelton, Lily	.265	44-37	113	12	30	8	0	3	22	47	.416	14	7	27	0	.381	0	2	0-0	0	3	0	1.000
Roles, Rebecca	.227	55-55	150	24	34	5	0	1	14	42	.280	8	0	23	2	.263	2	6	1-1	116	67	13	.934
Fetters, Lauren	.500	41-2	12	13	6	1	0	0	5	7	.583	2	0	1	0	.571	0	1	2-2	2	0	0	1.000
Bess, Tiffany	.222	24-3	18	5	4	1	0	0	5	5	.278	0	0	3	0	.222	0	0	1-1	0	0	0	.000
Mills, Alicia	.175	18-17	40	6	7	1	0	3	13	17	.425	15	1	10	0	.404	1	0	0-0	4	16	2	.909
Thomas, Elizabeth	.000	6-2	0	1	0	0	0	0	0	0	.000	0	0	0	0	.000	0	0	0-0	0	3	0	1.000
Morgan, Chelsey	.000	3-3	0	0	0	0	0	0	0	0	.000	0	0	0	0	.000	0	0	0-0	0	0	0	.000
Gore, Madi	.000	1-1	0	0	0	0	0	0	0	0	.000	0	0	0	0	.000	0	0	0-0	6	23	0	1.000
Totals	.323	55-55	1479	319	477	89	4	43	280	703	.475	160	21	226	7	.394	11	37	43-52	1082	401	59	.962
Opponents	.264	55-55	1441	165	381	59	4	36	154	556	.386	72	16	330	5	.306	4	23	29-43	1034	393	77	.949

LOB - Team (360), Opp (314). DPs turned - Team (11), Opp (12). CI - Team (1), Lee, C. 1, Opp (1). IBB - Team (4), Roddy, D.3, Gowin, J. 1, Opp (2). Picked off - Roles, R. 1.

Player	ERA	W-L	APP	GS	CG	SH/CB	SV	IP	H	R	ER	BB	SO	2B	3B	HR	AB	B/Avg	WP	HB	BK	SFA	SHA
Mills, Alicia	1.19	14-5	20	15	14	4/1	0	117.1	91	33	20	19	163	21	3	7	442	.206	6	4	0	1	6
Gore, Madi	2.88	14-8	26	21	15	2/2	0	126.1	140	62	52	26	101	19	1	17	506	.277	3	5	0	1	8
Cowan, Ashley	3.28	8-5	22	19	8	3/1	0	109.0	145	67	51	27	54	19	0	10	464	.313	5	5	0	2	9
Thomas, Eliz.	1.75	0-0	4	0	0	0/2	1	4.0	3	1	1	0	4	0	0	1	14	.214	0	2	0	0	0
Morgan, Chelsey	1.75	1-0	1	0	0	0/0	0	4.0	2	2	1	0	8	0	0	1	15	.133	0	0	0	0	0
Totals	2.43	37-18	55	55	37	12/3	1	360.2	381	165	125	72	330	59	4	36	1441	.264	14	16	0	4	23
Opponents	4.96	18-37	55	55	28	8/3	3	344.2	477	319	244	160	226	89	4	43	1479	.323	14	21	2	11	37

PB - Team (15), Lee, C. 15, Opp (12). Pickoffs - Team (3), Lee, C. 3, Opp (1). SBA/ATT - Lee, C. (29-42), Cowan, A. (12-18), Gore, M. (9-14), Mills, A. (7-9), Morgan, C. (1-1), Thomas, E. (0-1).



## 2008 SEASON RESULTS

Game date	Opposing team	Score	r h e / r h e	Inns	Overall	CAA	Pitcher of record	Attend	Time
!Feb 09, 2008	UT MARTIN	W 4-3	4 11 1 / 3 5 1	(8)	1-0-0	0-0-0	Cowan, A. (W 1-0)	129	1:55
!Feb 09, 2008	GEORGIA TECH	W 11-3	11 12 1 / 3 6 1	6	2-0-0	0-0-0	Gore, M. (W 1-0)	130	2:30
!Feb 10, 2008	LIPSCOMB	W 6-2	6 8 0 / 2 7 3	7	3-0-0	0-0-0	Gore, M. (W 2-0)	122	1:43
!Feb 10, 2008	UT MARTIN	W 6-0	6 8 0 / 0 4 1	7	4-0-0	0-0-0	Cowan, A. (W 2-0)	167	1:20
Feb 12, 2008	SAVANNAH STATE	W 33-2	33 30 1 / 2 2 11	5	5-0-0	0-0-0	Morgan, C. (W 1-0)	56	1:30
Feb 12, 2008	SAVANNAH STATE	W 19-0	19 15 0 / 0 0 3	5	6-0-0	0-0-0	Mills, A. (W 1-0)	63	1:20
Feb 17, 2008	WESTERN CAROLINA	W 21-0	21 19 0 / 0 0 1	5	7-0-0	0-0-0	Mills, A. (W 2-0)	117	1:40
Feb 17, 2008	WESTERN CAROLINA	W 8-0	8 6 0 / 0 3 1	5	8-0-0	0-0-0	Gore, M. (W 3-0)	132	1:20
#Feb 23, 2008	DAYTON	W 8-2	8 12 2 / 2 6 2	7	9-0-0	0-0-0	Mills, A. (W 3-0)	182	2:00
#Feb 23, 2008	TENNESSEE STATE	L 0-3	0 3 1 / 3 7 0	7	9-1-0	0-0-0	Gore, M. (L 3-1)	75	1:40
#Feb 24, 2008	DAYTON	W 8-2	8 15 1 / 2 6 1	7	10-1-0	0-0-0	Cowan, A. (W 2-0)	83	1:30
#Feb 24, 2008	TENNESSEE STATE	W 3-1	3 6 1 / 1 5 0	7	11-1-0	0-0-0	Mills, A. (W 4-0)	57	1:35
\$Mar 01, 2008	EVANSVILLE	W 3-2	3 7 0 / 2 4 0	7	12-1-0	0-0-0	Mills, A. (W 5-0)	63	1:45
\$Mar 01, 2008	WESTERN CAROLINA	W 16-0	16 15 1 / 0 5 1	5	13-1-0	0-0-0	Gore, M. (W 4-1)	157	1:45
\$Mar 02, 2008	KENNESAW STATE	W 2-0	2 3 1 / 0 1 0	7	14-1-0	0-0-0	Mills, A. (W 6-0)	187	1:22
\$Mar 02, 2008	KENNESAW STATE	L 3-7	3 5 3 / 7 8 3	(8)	14-2-0	0-0-0	Gore, M. (L 4-2)	63	1:52
Mar 03, 2008	NC STATE	L 1-2	1 3 0 / 2 10 0	(8)	14-3-0	0-0-0	Mills, A. (L 6-1)	41	1:57
Mar 05, 2008	TOLEDO	W 9-4	9 12 0 / 4 7 1	7	15-3-0	0-0-0	Gore, M. (W 5-2)	61	1:47
Mar 05, 2008	TOLEDO	W 6-2	6 10 0 / 2 3 0	7	16-3-0	0-0-0	Mills, A. (W 7-1)	61	1:42
&Mar 08, 2008	vs Connecticut	W 3-2	3 11 0 / 2 8 1	7	17-3-0	0-0-0	Mills, A. (W 8-1)	100	1:50
&Mar 08, 2008	vs Appalachian State	W 7-1	7 12 0 / 1 8 1	7	18-3-0	0-0-0	Gore, M. (W 6-2)	100	1:41
&Mar 09, 2008	at Florida State	L 0-1	0 2 0 / 1 7 0	7	18-4-0	0-0-0	Mills, A. (L 8-2)	384	1:35
&Mar 09, 2008	at Florida State	L 0-3	0 5 1 / 3 7 0	7	18-5-0	0-0-0	Cowan, A. (L 3-1)	404	1:45
Mar 11, 2008	MERCER	L 5-6	5 8 3 / 6 7 2	(8)	18-6-0	0-0-0	Mills, A. (L 8-3)	76	2:10
Mar 11, 2008	MERCER	W 12-4	12 12 0 / 4 6 0	5	19-6-0	0-0-0	Gore, M. (W 7-2)	81	1:25
*Mar 21, 2008	at Delaware	W 7-0	7 10 1 / 0 3 2	7	20-6-0	1-0-0	Mills, A. (W 9-3)	130	1:45
*Mar 21, 2008	at Delaware	W 8-6	8 16 5 / 6 14 6	(10)	21-6-0	2-0-0	Cowan, A. (W 4-1)	130	2:50
*Mar 22, 2008	at Delaware	W 10-5	10 15 3 / 5 9 4	7	22-6-0	3-0-0	Mills, A. (W 10-3)	190	2:05
Mar 24, 2008	HARVARD	W 10-2	10 11 0 / 2 5 1	5	23-6-0	3-0-0	Mills, A. (W 11-3)	87	1:25
Mar 24, 2008	HARVARD	W 6-5	6 11 0 / 5 13 2	7	24-6-0	3-0-0	Cowan, A. (W 5-1)	97	1:58
*Mar 29, 2008	JAMES MADISON	L 0-4	0 4 1 / 4 5 1	7	24-7-0	3-1-0	Mills, A. (L 11-4)	102	1:42
*Mar 30, 2008	JAMES MADISON	W 8-7	8 6 4 / 7 10 1	7	25-7-0	4-1-0	Gore, M. (W 8-2)	115	2:14
*Mar 30, 2008	JAMES MADISON	L 0-14	0 3 3 / 14 13 2	5	25-8-0	4-2-0	Cowan, A. (L 5-2)	125	1:35
*Apr 05, 2008	at George Mason	W 14-0	14 12 1 / 0 6 1	5	26-8-0	5-2-0	Mills, A. (W 12-4)	112	1:30
*Apr 05, 2008	at George Mason	W 8-0	8 10 0 / 0 5 1	5	27-8-0	6-2-0	Cowan, A. (W 6-2)	43	1:17
Apr 09, 2008	AUBURN	L 0-1	0 5 3 / 1 7 0	7	27-9-0	6-2-0	Cowan, A. (L 6-3)	133	1:53
Apr 09, 2008	AUBURN	L 0-3	0 6 1 / 3 6 0	7	27-10-0	6-2-0	Gore, M. (L 8-3)	156	1:42
*Apr 12, 2008	HOFSTRA	W 1-0	1 4 0 / 0 12 0	7	28-10-0	7-2-0	Gore, M. (W 9-3)	142	1:32
*Apr 12, 2008	HOFSTRA	L 2-5	2 7 1 / 5 12 1	7	28-11-0	7-3-0	Gore, M. (L 9-4)	219	2:21
*Apr 13, 2008	HOFSTRA	L 2-15	2 4 2 / 15 17 0	5	28-12-0	7-4-0	Cowan, A. (L 6-4)	225	1:47
Apr 16, 2008	at Furman	L 0-3	0 5 4 / 3 4 2	7	28-13-0	7-4-0	Gore, M. (L 9-5)	117	1:12
Apr 16, 2008	at Furman	W 2-1	2 3 2 / 1 8 2	7	29-13-0	7-4-0	Cowan, A. (W 7-4)	106	1:31
*Apr 19, 2008	TOWSON	W 2-1	2 11 2 / 1 7 0	7	30-13-0	8-4-0	Gore, M. (W 10-5)	110	1:30
*Apr 19, 2008	TOWSON	L 4-7	4 11 3 / 7 13 2	7	30-14-0	8-5-0	Gore, M. (L 10-6)	145	1:43
*Apr 20, 2008	TOWSON	W 5-1	5 9 0 / 1 4 1	7	31-14-0	9-5-0	Gore, M. (W 11-6)	109	1:33
Apr 23, 2008	at Georgia Tech	L 1-9	1 2 1 / 9 9 0	5	31-15-0	9-5-0	Cowan, A. (L 7-5)	122	1:13
Apr 23, 2008	at Georgia Tech	L 1-4	1 5 1 / 4 6 0	7	31-16-0	9-5-0	Gore, M. (L 11-7)	172	1:23
*Apr 26, 2008	at UNC Wilmington	W 5-0	5 8 0 / 0 7 3	7	32-16-0	10-5-0	Gore, M. (W 12-7)	167	1:40
*Apr 26, 2008	at UNC Wilmington	W 4-0	4 5 0 / 0 8 3	7	33-16-0	11-5-0	Cowan, A. (W 8-5)	165	1:45
*Apr 27, 2008	at UNC Wilmington	W 2-1	2 8 1 / 1 5 4	7	34-16-0	12-5-0	Gore, M. (W 13-7)	109	1:50
*May 03, 2008	DREXEL	W 5-4	5 11 0 / 4 8 1	7	35-16-0	13-5-0	Gore, M. (W 14-7)	110	1:52
*May 03, 2008	DREXEL	W 8-5	8 10 2 / 5 11 0	7	36-16-0	14-5-0	Mills, A. (W 13-4)	125	2:01
*May 04, 2008	DREXEL	W 5-3	5 8 0 / 3 8 2	7	37-16-0	15-5-0	Mills, A. (W 14-4)	221	1:38
May 08, 2008	vs James Madison	L 1-2	1 4 1 / 2 4 0	7	37-17-0	15-5-0	Mills, A. (L 14-5)	410	1:35
May 10, 2008	vs Towson	L 4-5	4 3 0 / 5 10 1	7	37-18-0	15-5-0	Gore, M. (L 14-8)	385	1:51

\* = Conference Game

! = Georgia State First Pitch Classic

# = Panther Invitational

\$ = Georgia State Spring Showdown

& = FSU Tournament



## ALL-TIME LETTERWINNERS

### A

Kathryn Abbott	(2002)
Angela Allgood	(1991)
Jody Anderson	(1985)
Staci Anderson	(1991-92)

### B

Ann Baxley	(1989-92)
Jane Baxter	(1985)
Heidi Berger	(1994-95)
Natasha Berry	(2008-)
Sara Berzofsky	(2003-06)
Tiffany Bess	(2008-)
Carol Bishop	(1985)
Scarlett Black	(1986)
Katie Blue	(2000-03)
Cheryl Bodziony	(1999-02)
Lauren Booth	(2000-01)
Annie Boyle	(1998-99)
Alison Bradford	(2004-07)
Nikki Bradford	(2007)
M.K. Branan	(2004-07)
Theresa Bredwell	(1986-88)
Gina Brooks	(1986-89)
Kiley Brooks	(2003-04)
Lindsey Bryant	(2002-03)
Angie Buckem	(1998-01)
Amanda Bush	(1996)
Gina Byrum	(1986)

### C

Jamie Cagle	(2003-06)
Malynda Carruth	(1985, '88)
Lacy Carter	(2007)
Jacquelyn Cheek	(1991)
Charlene Chilton	(1991-94)
Buffie Chournos	(1999-02)
Kaci Clark	(1993-94)
Liz Cook	(1985)
Amanda Corley	(1997-00)
Debbie Cotton	(1990)
Ashley Cowan	(2007-08)
Tracy Crowe	(1985)
Rachel Cunningham	(2007-)

### D

Christine Dangler	(1996-00)
Jaci Davis	(1997-00)
Jennifer Davis	(1987-88)
Melany DelGallo	(1994-97)
Kortney Dempsey	(2001)
Lisa Diamond	(1988)
Cheryl Dunmeyer	(1993)

Gina Dwornicki	(1986)
Stephanie Dyble	(2002-03)

### E

Paige Elsner	(1986-89)
Wendy Evilsizor	(1989-90)
Dianne Ewing	(1992)

### F

Lauren Fetters	(2007-)
Lindsey French	(2002-03)
Susan Fryer	(1992-95)
Angie Fulkerson	(1993-96)

### G

Megan Galhouse	(1997)
Cindy Gillies	(2001-02)
Sandra Gross	(1985)
Jessica Gowin	(2005-08)
Madi Gore	(2006-)
Nichole Griffin	(2006-07)
Gretchen Gruber	(1990-91)
Valerie Guthrie	(1990-91)

### H

Debbie Hale	(1990-91)
Kim Hall	(1989)
Missy Hall	(1998-2001)
Jessie Harmon	(2006-07)
Stephanie Harmon	(1986-87)
Shannon Harrell	(1985)
Crystal Hartman	(1997-00)
Nickie Hashley	(1991)
Kathy Hazinski	(1989-90)
Jennifer Hester	(2001-03)
Claudia Hickey	(1998)
Malinda Hill	(1994)
Lori Hodges	(1987-88)
Elizabeth Hyman	(2005-06)

### J

Jackie Jaegle	(2006)
Christy Jameson	(1993-96)
Stacey Jessen	(1995-97)
Candace Jones	(2004-06)
Laura Jones	(2005)
Lauren Jones	(2008-)

### K

Jeannine Kemme	(1991)
Carrie Kirk	(1995-98)
Melanie Kotlar	(1996-99)

### L

Carrie Laase	(1996-97)
Susan Lanier	(2003-06)
Catherine Lee	(2008-)
Lora Lischinsky	(1987-90)
Melissa LeComte	(2001-02)
Jennifer Loucks	(1996)
Adrienne Lyman	(1997-00)
Leigh Lynch	(1990-91)

### M

Tanya Maxwell	(1988-91)
Shannon McCormick	(2000-03)
Meghan McCoy	(2003-06)
Jennifer McClendon	(1987-90)
Andrea McNary	(2001-04)
Yolanda McRae	(2001)
Alicia Mills	(2008)
Beth Miller	(2003-06)
Tina Miller	(1989-92)
Elizabeth Mitchell	(1989-92)
Tara Mitchell	(1994-97)
Chelsey Morgan	(2006-)
Jennifer Morgan	(1987-90)
Lauren Morlock	(2003-06)
Helen Myers	(1992)

### N

Alisia Narodowski	(2003)
Mila Nelson	(1998)

### O

Vannessa Ocampo	(2000)
Pamela O'Neal	(2004-??)

### P

Monica Pardo	(1998)
Michelle Parker	(1993-96)
Carrie Partlowe	(1994)
Stephanie Payne	(1999-00)
Stacey Peterson	(1991-94)
Tonya Pike	(1987-88)
Candi Pogue	(1987-88)
Danielle Polley	(1995-98)
Alexandrea Pratt	(2003-06)
Emily Pritchett	(2001-04)
Jenny Pruett	(1991)

### Q

Lee Quattrocchi	(2001)
-----------------	--------

### R

Missy Radaker	(1995)
Melanie Ramers	(1986-87)
Janet Redd	(1985)
Kristy Redlinger	(1991-93)
Candace Respress	(1995-98)
Aimee Reszczyński	(1992)
Jan Riddle	(1991)
Corrie Roberts	(1999-02)
Rebecca Roles	(2008-)
Danielle Roddy	(2007-)
Kim Rogers	(1992-93)
Karen Roy	(1986-88)
Missy Russell	(1993-96)

### S

Holly Schilling	(1997)
April Sisson	(1991)
Lily Skelton	(2007-)
Franki Smith	(1985, '87-89)
Heather Smith	(1986-89)
Marissa Smith	(1999)
Missy Smith	(1992-94)
Andrea Stratigos	(1986)
Janna Stringer	(1985)
Susan Sweat	(1994)

### T

Tracey Taylor	(1990-91)
Elizabeth Thomas	(2007-)
Shannon Tiahur	(2001-05)

### V

Brownie Vaughn	(1986-89)
----------------	-----------

### W

Brandi Watson	(1992-93)
Elizabeth Watson	(2003-05)
Shauna Whaley	(1995)
Karen Whitley	(1986)
Holly Willis	(2006-)
Karen Witcher	(1985)
Joy Wright	(1996-97)

### Y

Chandra Yorgason	(1999-01)
Lynda Young	(1986)

\*Players listed are from the fastpitch era that began in 1985.



## SINGLE-SEASON RECORDS

### Batting

#### Batting Average

1. Michelle Parker, 1995 ..... 433
2. **Catherine Lee, 2008 ..... 411**
3. Michelle Parker, 1996 ..... 406
4. Theresa Bredwell, 1988 ..... 405
5. Corrie Roberts, 2001 ..... 387
6. **Danielle Roddy, 2008 ..... 376**

#### Hits

1. Gretchen Gruber, 1991 ..... 77
2. Corrie Roberts, 1999 ..... 73
3. Theresa Bredwell, 1988 ..... 70
4. **Catherine Lee, 2008 ..... 69**
5. Cindy Gillies, 2002 ..... 68
- Michelle Parker, 1995 ..... 68

#### Doubles

1. Corrie Roberts, 1999 ..... 20
2. Corrie Roberts, 2001 ..... 18
3. Cindy Gillies, 2002 ..... 17
4. **Catherine Lee, 2008 ..... 16**
- M.K. Branan, 2007 ..... 16
6. Nichole Griffin, 2007 ..... 15

#### Triples

1. Gretchen Gruber, 1987 ..... 9
2. Gretchen Gruber, 1991 ..... 9
- Six tied with ..... 8

#### Home Runs

1. **Catherine Lee, 2008 ..... 17**
2. Katie Blue, 2003 ..... 12
3. Lily Skelton, 2007 ..... 10
- Buffie Chournos, 1999 ..... 10
5. Corrie Roberts, 2001 ..... 9
- Meghan McCoy, 2006 ..... 9
- Nichole Griffin, 2007 ..... 9

#### Runs Scored

1. **Catherine Lee, 2008 ..... 51**
2. Danielle Roddy, 2007 ..... 49
3. **Danielle Roddy, 2008 ..... 47**
4. Jennifer Morgan, 1990 ..... 44
5. Brownie Caldwell, 1998 ..... 43
- Corrie Roberts, 2000 ..... 43

#### Runs Batted In

1. Catherine Lee, 2008 ..... 63
2. Heather Smith, 1988 ..... 49
3. Corrie Roberts, 2001 ..... 48
4. Nichole Griffin, 2007 ..... 46
5. Corrie Roberts, 1999 ..... 38
6. Corrie Roberts, 2000 ..... 37

#### At Bats

1. Gretchen Gruber, 1991 ..... 220
2. Susan Fryer, 1994 ..... 213
- Corrie Roberts, 1999 ..... 213
4. Jennifer Morgan, 1990 ..... 211
5. Stacey Anderson, 1992 ..... 203

#### Slugging Percentage

1. **Catherine Lee, 2008 ..... 810**
2. Corrie Roberts, 2001 ..... 702
3. Corrie Roberts, 1999 ..... 624
4. Mel DelGallo, 1995 ..... 584
5. Danielle Polley, 1997 ..... 570
6. Corrie Roberts, 2000 ..... 550

#### Walks

1. Danielle Roddy, 2007 ..... 41
2. Meghan McCoy, 2006 ..... 35
3. **Danielle Roddy, 2008 ..... 32**
- Alison Bradford, 2007 ..... 32
5. Jennifer Morgan, 1989 ..... 29
6. **Catherine Lee, 2008 ..... 28**
7. Cindy Gillies, 2002 ..... 27
- Corrie Roberts, 2001 ..... 27

#### Stolen Bases

1. Missy Hall, 2000 ..... 25
2. Corrie Roberts, 2001 ..... 24
3. Missy Hall, 2000 ..... 22
4. Brownie Caldwell, 1989 ..... 21
- Jennifer Morgan, 1989 ..... 21
- Kaci Clark, 1994 ..... 21

### Pitching

#### ERA

1. Kaci Clark, 1993 ..... 0.91
2. Debbie Hale, 1990 ..... 0.97
3. Karen Roy, 1987 ..... 1.04
4. Mel DelGallo, 1995 ..... 1.08
5. Alicia Mills, 2008 ..... 1.19
- Debbie Hale, 1991 ..... 1.19

#### Strikeouts

1. Elizabeth Hyman, 2006 ..... 260
2. Kaci Clark, 1994 ..... 239
3. Elizabeth Hyman, 2005 ..... 232
4. Kaci Clark, 1993 ..... 229
5. Andrea McNary, 2004 ..... 183

#### Wins

1. Lora Lischinsky, 1990 ..... 25
2. Kaci Clark, 1993 ..... 22
3. Missy Radaker, 1995 ..... 20
- Andrea McNary, 2002 ..... 20
- Kaci Clark, 1994 ..... 20

#### Shutouts

1. Kaci Clark, 1993 ..... 15
2. Debbie Hale 1990 ..... 11
3. Kaci Clark, 1994 ..... 8
4. Andrea McNary, 2002 ..... 7
- Angela Buckem, 2000 ..... 7
- Stacy Peterson, 1992 ..... 7

#### Innings Pitched

1. Lora Lischinsky, 1990 ..... 248.0
2. Jaci Davis, 2000 ..... 235.1
3. Kaci Clark, 1994 ..... 228.2
4. Andrea McNary, 2002 ..... 227.2
5. Elizabeth Hyman, 2005 ..... 215.1

#### Complete Games

1. Lora Lischinsky, 1990 ..... 31
2. Jaci Davis, 2000 ..... 28
3. Kaci Clark, 1993 ..... 27
- Kaci Clark, 1994 ..... 27
5. Andrea McNary, 2002 ..... 26
- Missy Radaker, 1995 ..... 26



## CAREER RECORDS

### Batting

#### Batting Average

1. Michelle Parker, 1993-96 ..... 357
2. Corrie Roberts, 1999-02..... 349
3. Theresa Bredwell, 1987-88..... 324
4. Missy Hall, 1998-01 ..... 319
5. Mel DelGallo, 1994-97 ..... 312

#### Hits

1. Corrie Roberts, 1999-02..... 271
2. Michelle Parker, 1993-96 ..... 237
3. Susan Fryer, 1992-95 ..... 223
4. Cheryl Bodziony, 1999-02..... 212
5. Mary Brannan 2004-07.....201



Meghan McCoy

#### Doubles

1. Corrie Roberts, 1999-02..... 68
2. Cheryl Bodziony, 1999-02..... 43
3. Mary Brannan, 2004-07..... 42
4. Michelle Parker, 1993-96 ..... 39
5. Danielle Polley, 1995-98..... 35  
(Cunningham enters season with 26)

#### Triples

1. Mel DelGallo, 1994-97 ..... 26
2. Heather Smith, 1986-89..... 22
3. Corrie Roberts, 1999..... 18
4. Brownie Caldwell, 1988-89 ..... 13



Elizabeth Hyman

#### Runs Batted In

1. Corrie Roberts, 1999-02..... 155
2. Heather Smith, 1986-89..... 120
3. Michelle Parker, 1993-96 ..... 106
4. Mel DelGallo, 1994-97 ..... 98
5. Danielle Polley, 1995-98..... 89

#### At Bats

1. Susan Fryer, 1992-95 ..... 726
2. Amanda Corley, 1997-00 ..... 672
3. Michelle Parker, 1993-96 ..... 664
4. Jennifer Morgan, 1987-90 ..... 661

#### Walks

1. Jennifer Morgan, 1987-90 ..... 100
2. Meghan McCoy, 2003-06 ..... 79
3. **Danielle Roddy 2007- ..... 75**
4. Alison Braford, 2004-07 ..... 71
5. Paige Elsner, 1986-89 ..... 70

#### Runs Scored

1. Corrie Roberts, 1999-02..... 151
2. Susan Fryer, 1992-95 ..... 136
3. Michelle Parker, 1993-96 ..... 112
4. Brownie Caldwell, 1986-89..... 109
5. Danielle Polley, 1995-98..... 104  
(Roddy enters season with 96)

#### Home Runs

1. Corrie Roberts, 1999-02..... 31
2. Meghan McCoy, 2003-06 ..... 24
3. Danielle Polley, 1995-98..... 23
4. Mel DelGallo, 1994-97 ..... 18  
Nichole Griffin, 2006-07
6. **Catherine Lee 2008-..... 17**

### Pitching

#### ERA

1. Kaci Clark, 1993-94 ..... 1.14
2. Elizabeth Hyman, 2005-06..... 1.69
3. Andrea McNary, 2001-04..... 1.89
4. Jaci Davis, 1997-2000..... 2.13
5. Angela Buckem, 1998-01 ..... 2.14

#### Wins

1. Lora Lischinsky, 1987-90..... 61
2. Stacy Peterson, 1991-94 ..... 56
3. Angela Buckem, 1998-01 ..... 51
4. Andrea McNary, 2001-04..... 50
5. Kaci Clark, 1993-94 ..... 42  
(Gore enters season with 34)

#### Strikeouts

1. Andrea McNary, 2001-04..... 582
2. Elizabeth Hyman, 2005-06..... 492
3. Kaci Clark, 1993-04 ..... 464
4. Angela Buckem, 1998-01 ..... 363
5. Stacy Peterson, 1991-94 ..... 329  
(Gore enters season with 274)

#### Innings Pitched

1. Andrea McNary, 2001-04..... 695.0
2. Lora Lischinsky, 1987-90..... 674.0
3. Stacy Peterson, 1991-94 ..... 609.1
4. Angela Buckem, 1998-01 ..... 608.1



Kaci Clark



## VERSUS ALL OPPONENTS

Team	W	L	T	First	Last	Last Result	Team	W	L	T	First	Last	Last Result
Adelphi	1	1		1985	1990	W, 11-4	Florida State	1	15		1985	2008	L, 0-3
Alabama	0	2		1997	1997	L, 0-12	Fordham	1	0		1999	1999	W, 6-0
Appalachian State	5	2		1984	2008	W, 7-1	Fresno State	0	2		1997	1998	L, 0-9
Arizona	0	2		1994	1996	L, 1-4	<b>Furman</b>	<b>32</b>	<b>22</b>		<b>1985</b>	<b>2008</b>	<b>W, 2-1</b>
Arkansas	2	0		2001	2001	W, 3-2	Gardner-Webb	7	1		1984	2005	W, 4-3
Arkansas State	0	1		1986	1986	L, 0-6	<b>George Mason</b>	<b>16</b>	<b>4</b>		<b>1986</b>	<b>2008</b>	<b>W, 8-0</b>
Army	3	0		1992	2007	W, 12-0	Georgia	2	8		1997	2007	L, 0-9
<b>Auburn</b>	<b>3</b>	<b>6</b>		<b>1998</b>	<b>2008</b>	<b>L, 0-3</b>	Georgia College	6	0		1990	1996	W, 4-3
Augusta	7	0		1986	1991	W, 5-2	<b>Georgia Southern</b>	<b>32</b>	<b>11</b>		<b>1986</b>	<b>2007</b>	<b>W, 5-4</b>
Austin Peay	3	0		1992	2001	W, 15-0	<b>Georgia Tech</b>	<b>20</b>	<b>35</b>		<b>1984</b>	<b>2008</b>	<b>L, 1-4</b>
Ball State	3	1		1991	2004	L, 1-5	Greensboro	1	0		1988	1988	L, 1-3
Belmont	9	1		1998	2005	W, 5-4	Gulf Coast CC	0	1		1984	1984	L, 4-6
Bethune-Cookman	1	1		2000	2001	L, 1-2	Gustavus Adolphus	2	0		1988	1988	W, 1-0
Birmingham-South.	3	1		2002	2007	L, 2-5	Harvard	3	1		2003	2008	W, 6-5
Boston	1	1		2003	2005	L, 2-7	Hiwassee	0	1		1984	1984	L, 2-5
Boston College	0	1		2002	2002	L, 3-4	<b>Hofstra</b>	<b>4</b>	<b>12</b>		<b>1994</b>	<b>2008</b>	<b>L, 2-15</b>
Bowling Green	0	2		1995	2004	L, 0-12	Houston	0	1		2002	2002	L, 3-4
Bradley	8	8		1985	2006	L, 0-2	Illinois	0	1		2001	2001	L, 1-4
Brown	1	1		2000	2002	L, 2-5	Illinois State	0	2		1989	1990	L, 2-3
Butler	1	0		2000	2000	W, 5-3	Illinois-Chicago	2	1		1996	1999	W, 5-4
BYU	0	1		2002	2002	W, 2-1	Indiana	1	1		1990	2001	W, 9-3
California	0	1		2002	2002	L, 0-1	Indiana State	1	1		1999	1999	W, 4-0
Campbell	11	6		1991	2005	W, 3-2	Iowa	0	4		2002	2003	L, 1-9
Canisius	1	1		1994	1994	L, 1-2	Iowa State	3	3		1992	2004	L, 0-1
Catawba	0	1		1984	1984	L, 3-4	Jackson State	1	0		2007	2007	W, 11-1
Centenary College	20	9	1	1992	2007	L, 4-1 0	Jacksonville State	19	20		1994	2007	L, 0-2
Central Michigan	1	0		2004	2004	W, 2-1	<b>James Madison</b>	<b>7</b>	<b>4</b>		<b>2006</b>	<b>2008</b>	<b>L, 0-14</b>
Charleston So.	3	0		1992	2005	W, 6-2	Kansas	0	3		1992	1995	L, 2-6
Coastal Carolina	3	0		1986	1991	W, 5-1	<b>Kennesaw State</b>	<b>6</b>	<b>10</b>		<b>1991</b>	<b>2008</b>	<b>L, 3-7</b>
Col. of Charleston	2	0		1995	2001	W, 6-2	Kent State	2	1		1991	1999	W, 6-1
Columbus State	8	6		1984	1996	W, 6-2	Kentucky	1	0		1999	1999	W, 3-1
Connecticut	2	3		1990	2008	W, 3-2	Kutztown	2	0		1993	1993	W, 4-3
Connecticut State	1	1		2000	2000	W, 5-1	LaGrange College	4	0		1984	1984	W, 15-3
Creighton	1	0		1986	1986	W, 4-0	Landers	2	3		1985	1989	W, 5-0
CS-Fullerton	1	1		1995	1997	W, 9-2	Lenoir-Rhyne	0	1		1984	1984	L, 2-5
CS-Northridge	0	3		1994	1998	L, 0-9	Liberty	3	2		1985	1991	L, 1-5
Dayton	2	0		2008	2008	W, 8-2	Limestone	11	1		1986	1999	W, 5-3
<b>Delaware</b>	<b>8</b>	<b>3</b>		<b>2006</b>	<b>2008</b>	<b>W, 10-5</b>	<b>Lipscomb</b>	<b>3</b>	<b>2</b>		<b>2004</b>	<b>2008</b>	<b>W, 6-2</b>
Delta State	1	0		1984	1984	W, 9-8	Louisiana State	0	1		1997	1997	L, 2-4
DePaul	1	3		1985	1986	L, 1-2	Louisiana Tech	0	7		1985	1994	L, 0-7
Detroit	1	3		1990	1991	L, 2-4	Loyola-Chicago	2	0		1986	1999	W, 4-0
Drake	0	1		1993	1993	L, 0-2	Maine	1	2		1986	2007	W, 4-3
<b>Drexel</b>	<b>12</b>	<b>3</b>		<b>1991</b>	<b>2008</b>	<b>W, 5-3</b>	Manhattan	0	1		2003	2003	W, 5-2
East Carolina	3	8		1985	2005	L, 0-1	Marshall	2	4		1996	2003	L, 2-6
East Tenn. State	0	1		2005	2005	L, 0-6	Maryland	2	2		1995	2005	L, 2-3
Eastern Illinois	1	1		1993	2004	W, 1-0	Massachusetts	2	2		1988	2000	L, 0-2
<b>Eastern Kentucky</b>	<b>6</b>	<b>2</b>		<b>1994</b>	<b>2006</b>	<b>W, 8-4</b>	McNeese State	1	0		1994	1994	W, 9-0
Eastern Michigan	2	0		1995	2001	W, 9-1	<b>Mercer</b>	<b>48</b>	<b>13</b>		<b>1985</b>	<b>2008</b>	<b>W, 12-4</b>
Elon	2	0		2002	2003	L, 4-6	Miami (Ohio)	3	3		1986	1997	L, 1-2
ETSU	1	0		2007	2007	W, 11-1	Michigan	0	3		1996	2004	L, 1-12
<b>Evansville</b>	<b>1</b>	<b>3</b>		<b>1997</b>	<b>2004</b>	<b>L, 1-8</b>	Michigan State	2	2		1985	2002	W, 1-0
Faulkner State	1	0		1984	1984	W, 8-1	Middle Tenn. State	4	1		1996	2003	W, 5-3
Florida A&M	17	6		1985	2007	W, 6-1	Minnesota	2	1		1996	1997	W, 4-2
Florida Atlantic	7	12		1996	2005	W, 1-0	Mississippi	0	5		1985	1998	L, 1-2
Florida Intern.	2	1		1999	2002	W, 3-0							



## VERSUS ALL OPPONENTS

Team	W	L	T	First	Last	Last Result	Team	W	L	T	First	Last	Last Result
Mississippi St.	0	2		1985	1986	L, 0-2	SW Louisiana	3	8		1989	1997	L, 0-8
<b>Missouri</b>	<b>2</b>	<b>2</b>		<b>1989</b>	<b>2000</b>	<b>L, 0-1</b>	SW Mo. St.	1	0		2000	2000	W, 8-7
Morehead State	1	0		1986	1986	W, 15-2	Syracuse	1	1		2006	2007	W, 5-2
N.C.A&T	1	1		1992	1997	L, 0-8	Temple	0	1		1989	1989	L, 0-1
N.E. Louisiana	1	0		2000	2000	W, 6-5	Tennessee	0	1		2002	2002	L, 0-4
Nevada Las Vegas	0	1		1998	1998	L, 0-8	Tennessee-Chatt.	7	11		1994	2000	L, 1-4
Newberry	1	0		1985	1985	W, 18-2	Tennessee State	3	1		2004	2008	W, 3-1
Nicholls State	4	11		1985	2007	W, 8-2	Tennessee Tech	15	5		1985	2007	L, 2-4
North Carolina	4	9		1987	2003	L, 3-10	Tennessee-Wesleyan	2	1		1991	1991	W, 9-0
North Carolina St.	1	1		2004	2008	L, 1-2	Tennessee-Martin	3	1		1995	2008	W, 6-0
North Florida	1	0		2006	2006	W, 5-4	Texas	0	1		1998	1998	L, 0-6
North Georgia	2	1		1984	1984	L, 6-9	Texas A&M	0	3		1994	2003	L, 0-5
Northern Illinois	1	0		1988	1988	W, 5-0	Texas Tech	0	1		2003	2003	W, 6-0
Northern Iowa	4	2		1990	2000	W, 9-7	Texas-Arlington	1	0		1994	1994	W, 8-0
Notre Dame	0	1		2004	2004	L, 2-4	Toledo	5	3		1989	2008	W, 10-5
NW Louisiana	1	1		1991	1994	W, 3-2	<b>Towson</b>	<b>6</b>	<b>3</b>		<b>2006</b>	<b>2008</b>	<b>W, 5-1</b>
Oakland	1	0		2006	2006	W, 3-1	<b>Troy</b>	<b>9</b>	<b>30</b>		<b>1984</b>	<b>2007</b>	<b>W, 6-0</b>
Ohio	1	0		2004	2004	L, 1-4	Truitt-McConnell	1	2		1984	1984	L, 7-15
Ohio State	4	3		1986	2002	L, 1-3	Tulsa	0	1		2004	2004	L, 1-2
Oklahoma City	1	0		1992	1992	W, 8-4	UAB	6	8		2000	2007	W, 10-2
Oklahoma State	0	5		1990	1995	L, 4-9	UCF	3	8		2001	2005	W, 6-2
Onadaga	1	1		1985	1985	W, 3-2	UCLA	1	0		1993	1993	W, 6-0
Payne College	1	0		1984	1984	W, 9-3	UIC	0	1		1994	1994	L, 0-3
Penn State	1	2		1990	1999	L, 3-4	UNC-Charlotte	11	2		1986	2000	W, 6-0
Pensacola JC	0	1		1984	1984	L, 2-13	<b>UNC-Wilmington</b>	<b>12</b>	<b>5</b>		<b>1990</b>	<b>2008</b>	<b>W, 2-1</b>
Pittsburgh	2	0		1999	2001	W, 3-2	Univ. of Mobile	2	0		1994	1994	W, 1-0
Princeton	2	2		1995	2002	W, 1-0	USC- Aiken	3	0		1988	1994	W, 3-0
Purdue	1	0		1998	1998	W, 12-2	USC- Spartanburg	6	1		1987	1991	L, 0-2
Radford	0	1		2006	2006	L, 5-7	Utah	0	3		1998	2006	L, 0-2
Rhode Island	0	1		1993	1993	L, 0-2	Utah State	0	1		1994	1997	L, 3-9
Rutgers	2	0		1991	1992	W, 8-5	UTEP	0	1		2006	2006	L, 5-7
Sacred Heart	0	2		1985	1985	L, 0-6	Valparasio	3	0		1987	1988	W, 3-0
Saginaw Valley State	2	2		1988	1989	L, 4-6	VCU	0	2		1985	1985	L, 0-2
Samford	53	12		1987	2003	W, 4-2	Villanova	1	0		2005	2005	W, 2-0
Savannah State	4	0		1986	2008	W, 19-0	Virginia	6	6		1985	2002	L, 2-3
SC- Spartanburg	1	0		1992	1992	W, 7-0	<b>Virginia Tech</b>	<b>3</b>	<b>5</b>		<b>1998</b>	<b>2007</b>	<b>L, 2-6</b>
SE Louisiana	12	6		1993	1997	W, 4-0	Virginia Wesleyan	1	0		1984	1984	W, 8-3
South Carolina	5	32		1987	2000	L, 0-8	Wagner	0	1		2003	2003	L, 3-4
South Florida	4	10		1984	2001	L, 1-2	Washington	0	3		1994	1997	L, 0-5
Southeast Missouri	1	0		1992	1992	W, 18-1	West Florida	2	1		1984	1987	W, 5-0
Southern Illinois	1	7		1991	1988	L, 2-3	West Georgia	6	2		1984	1986	W, 7-1
Southern Miss.	3	2		1985	1999	L, 0-4	<b>Western Carolina</b>	<b>6</b>	<b>1</b>		<b>2006</b>	<b>2008</b>	<b>W, 8-0</b>
Southwest Texas	0	1		1998	1998	W, 5-1	Western Illinois	2	5		1985	2004	W, 8-3
St. Augustine	0	1		1984	1984	L, 5-6	Western Kentucky	2	0		2002	2002	W, 6-5
St. Bonaventure	1	0		2004	2004	W, 10-0	Wichita State	1	2		1991	2001	W, 8-1
St. Francis	1	0		2005	2005	W, 8-0	Wilmington(Ohio)	4	0		1986	1988	W, 19-0
St. John's	3	0		2000	2001	W, 3-0	Winthrop	9	6		1985	1993	W, 4-2
St. Joseph's	1	1		2004	2004	W, 6-1	Wisconsin-Oshkosh	0	1		1994	1994	L, 2-3
St. Louis	2	1		1998	2004	W, 5-4	Wisconsin	1	1		2006	2007	L, 4-5
St. Mary's	1	0		1986	1986	W, 11-15	Wittenberg	2	0		1984	1984	W, 23-1
St. Peter's	2	0		1994	1994	W, 8-2	Wright State	3	2		1998	2005	L, 1-2
Stetson	16	24		1986	2005	L, 0-2							
SUNY-Stonybrook	0	1		2005	2005	L, 0-2							

\*2009 opponents in bold



## 2009 OPPONENTS

### Georgia Tech

February 7 • Panthersville

Location.....Atlanta, Ga.  
 Nickname.....Yellow Jackets  
 Enrollment.....19,393  
 Colors.....Old White and Gold  
 President.....Dr. Gary Schuster  
 Athletic Director.....Dan Radakovich  
 Conference.....Atlantic Coast  
 Facility.....TBA (1,500)  
 Head Coach.....Sharon Perkins (Nicholls State, '96)  
 Career Record.....86-47 (2 years)  
 Record at Georgia Tech.....Same  
 2008 Record.....32-31  
 SID.....Seth Gerard  
 SID E-mail.....sgerard@athletics.gatech.edu  
 SID Office Phone.....404-894-5467  
 SID Fax.....404-894-1248  
 Website.....www.ramblinwreck.com

### Virginia Tech

February 14 • Panthersville • First Pitch Classic

Location.....Blacksburg, Va.  
 Nickname.....Hokies  
 Enrollment.....30,000  
 Colors.....Chicago Maroon and Burnt Orange  
 President.....Charles W. Steger  
 Athletic Director.....Jim Weaver  
 Conference.....Atlantic Coast  
 Facility.....Tech Softball Park (1,082)  
 Head Coach.....Scot Thomas (East Tenn. State '91)  
 Career Record.....483-307 (14 years)  
 Record at Virginia Tech.....Same  
 2008 Record.....49-19  
 SID.....Bryan Johnston  
 SID E-mail.....blj@vt.edu  
 SID Office Phone.....540-231-3387  
 SID Fax.....540-231-6984  
 Website.....www.hokiesports.com

### Georgetown

February 21 • Panthersville • Panther Invitational

Location.....Washington, DC  
 Nickname.....Hoyas  
 Enrollment.....14,148  
 Colors.....Blue and Grey  
 President.....John J. DeGioia  
 Athletic Director.....Bernard Muir  
 Conference.....Big East  
 Facility.....Guy Mason Field (200)  
 Head Coach.....Pan Conlan (Connecticut '93)  
 Career Record.....16 years  
 Record at Georgetown.....(4 years)  
 2008 Record.....21-35  
 SID.....Ryan Sakamoto  
 SID E-mail.....ras228@georgetown.edu  
 SID Office Phone.....202-687-5241  
 SID Fax.....202-687-2491  
 Website.....www.gohoyas.com

### Auburn

February 11 • Auburn, Ala.

Location.....Auburn, Ala.  
 Nickname.....Tigers  
 Enrollment.....22,928  
 Colors.....Orange and Navy Blue  
 President.....Dr. Jay Gogue  
 Athletic Director.....Jay Jacobs  
 Conference.....Southeastern  
 Facility.....Jane B. Moore Field(1,500)  
 Head Coach.....Tina Deese (Florida State '86)  
 Career Record.....620-409-1 (20 years)  
 Record at Auburn.....334-286-1 (12 years)  
 2008 Record.....38-22  
 SID.....Bob Grant  
 SID E-mail.....grantrs@auburn.edu  
 SID Office Phone.....334-844-9800  
 SID Fax.....334-844-9807  
 Website.....www.auburntigers.com

### Missouri

February 15 • Panthersville • First Pitch Classic

Location.....Columbia, Mo.  
 Nickname.....Tigers  
 Enrollment.....28,253  
 Colors.....Old Gold and Black  
 President.....Dr. Brady Deaton  
 Athletic Director.....Michael Alden  
 Conference.....Big 12  
 Facility.....University Field (500)  
 Head Coach.....Ehren Earleywine (Westminster '94)  
 Career Record.....183-79 (4 years)  
 Record at Missouri.....40-24 (1 year)  
 2008 Record.....40-24  
 SID.....Emily G. Murray  
 SID E-mail.....gatewoode@missouri.edu  
 SID Office Phone.....573-884-8519  
 SID Fax.....573-882-4720  
 Website.....www.mutigers.com

### Lipscomb

February 22 • Panthersville • Panther Invitational

Location.....Nashville, Tenn.  
 Nickname.....Bisons  
 Enrollment.....2,744  
 Colors.....Purple and Gold  
 President.....L. Randolph Lowry  
 Athletic Director.....Philip Hutcheson  
 Conference.....Atlantic Sun  
 Facility.....Draper Diamond (250)  
 Head Coach.....Kristin Peck (Lipscomb '04)  
 Career Record.....42-60 (2 years)  
 Record at Lipscomb.....same  
 2008 Record.....28-26  
 SID.....Mark McGee  
 SID E-mail.....mark.mcGee@lipscomb.edu  
 SID Office Phone.....615-966-5862  
 SID Fax.....615-966-1806  
 Website.....www.lipscombsports.com

### Evansville

February 14 • Panthersville • First Pitch Classic

Location.....Evansville, Ind.  
 Nickname.....Purple Aces  
 Enrollment.....2,647  
 Colors.....Purple, Orange, and White  
 President.....Stephen G. Jennings  
 Athletic Director.....John Stanley  
 Conference.....Missouri Valley  
 Facility.....Cooper Stadium(650)  
 Head Coach.....Gwen Lewis (Indiana State, '85)  
 Career Record.....467-402-1 (16 years)  
 Record at Evansville.....same  
 2008 Record.....25-21  
 SID.....Shanna Alexander  
 SID E-mail.....sa54@evansville.edu  
 SID Office Phone.....812-488-2350  
 SID Fax.....812-488-2090  
 Website.....www.gopurpleaces.com

### Eastern Kentucky

February 21 • Panthersville • Panther Invitational

Location.....Richmond, Ky.  
 Nickname.....Colonels  
 Enrollment.....12,166  
 Colors.....Maroon and White  
 President.....Doug Whitlock  
 Athletic Director.....Mark Sandy  
 Conference.....Ohio Valley  
 Facility.....Gertrude Hood Field (550)  
 Head Coach.....Jane Worthington (Utah State '82)  
 Career Record.....452-409 (17 years)  
 Record at EKU.....same  
 2008 Record.....28-22  
 SID.....Kevin Britton  
 SID E-mail.....kevin.britton@eku.edu  
 SID Office Phone.....859-622-2006  
 SID Fax.....859-622-2120  
 Website.....www.ekusports.com

### Georgia Southern

February 25 • Panthersville

Location.....Statesboro, Ga.  
 Nickname.....Eagles  
 Enrollment.....17,764  
 Colors.....Blue and White  
 President.....Dr. Bruce F. Grube  
 Athletic Director.....Sam Baker  
 Conference.....Southern  
 Facility.....Eagle Field (700)  
 Head Coach.....Maggie Johnson (UNCW '01)  
 Career Record.....first year  
 Record at Georgia Southern.....first year  
 2008 Record.....37-30  
 SID.....Barrett Gilham  
 SID E-mail.....bg00251@georgiasouthern.edu  
 SID Office Phone.....912-478-5448  
 SID Fax.....912-478-0046  
 Website.....www.georgiasoutherneagles.com



## 2009 OPPONENTS

### Western Carolina

March 11 • Cullowhee, NC

Location.....Cullowhee, N.C.  
 Nickname.....Catamounts  
 Enrollment.....9,056  
 Colors.....Purple and Gold  
 President.....Dr. John W. Bardo  
 Athletic Director.....Chip Smith  
 Conference.....Southern  
 Facility.....Catamount Softball Complex (250)  
 Head Coach.....Christine Hornak (UNC Greens '98)  
 Career Record.....47-70 (3 years)  
 Record at Western Carolina.....same  
 2008 Record.....19-36  
 SID.....Denise Gideon  
 SID E-mail.....dgideon@email.wcu.edu  
 SID Office Phone.....828-227-2336  
 SID Fax.....828-227-7688  
 Website.....www.catamountsports.com

### Troy

March 24 • Troy, Ala.

Location.....Troy, Ala.  
 Nickname.....Trojans  
 Enrollment.....27,000  
 Colors.....Maroon and White  
 President.....Dr. Jack Hawkins Jr.  
 Athletic Director.....Steve Dennis  
 Conference.....Atlantic Sun  
 Facility.....Softball Field  
 Head Coach.....Melanie Davis (Alabama '84)  
 Career Record.....707-369-2  
 Record at Troy.....609-348-2 (16 years)  
 2008 Record.....33-23  
 SID.....Taylor Bryan  
 SID E-mail.....bryant@troy.edu  
 SID Office Phone.....334-670-5655  
 SID Fax.....n/a  
 Website.....www.troytrojans.com

### James Madison

April 4-5 • Harrisonburg, Va.

Location.....Harrisonburg, Va.  
 Nickname.....Duke Dogs  
 Enrollment.....16,900  
 Colors.....Purple and Gold  
 President.....Linwood H. Rose  
 Athletic Director.....Jeffrey Bourne  
 Conference.....Colonial  
 Facility.....JMU Softball Complex (500)  
 Head Coach.....Katie Flynn (Colgate '90)  
 Career Record.....355-354 (15 years)  
 Record at James Madison.....195-180 (8 years)  
 2008 Record.....32-33  
 SID.....Brian Hansen  
 SID E-mail.....hansenbj@jmu.edu  
 SID Office Phone.....540-568-6154  
 SID Fax.....540-568-3703  
 Website.....www.jmusports.com

### Mercer

March 17 • Macon, Ga.

Location.....Macon, Ga.  
 Nickname.....Bears  
 Enrollment.....7,050  
 Colors.....Orange and Black  
 President.....William D. Underwood  
 Athletic Director.....Bobby Pope  
 Conference.....Atlantic Sun  
 Facility.....Sikes Field (400)  
 Head Coach.....Mike Raynor (Georgia Southern '74)  
 Career Record.....46-73 (2 years)  
 Record at Mercer.....same  
 2008 Record.....32-27  
 SID.....Andy Stabell  
 SID E-mail.....stabell\_al@mercer.edu  
 SID Office Phone.....478-301-5218  
 SID Fax.....478-301-5224  
 Website.....www.mercerbears.com

### Delaware

March 28-29 • Panthersville

Location.....Newark, Del.  
 Nickname.....Blue Hens  
 Enrollment.....20,342  
 Colors.....Blue and Gold  
 President.....Patrick T. Harker  
 Athletic Director.....Edgar N. Johnson  
 Conference.....Colonial  
 Facility.....Softball Diamond (200)  
 Head Coach.....Bonnie Jill Ferguson (Springfield '79)  
 Career Record.....581-535-7 (29 years)  
 Record at Delaware.....same  
 2008 Record.....22-26  
 SID.....Kenny Kline  
 SID E-mail.....kkline@udel.edu  
 SID Office Phone.....302-831-2186  
 SID Fax.....302-831-8653  
 Website.....www.bluehens.com

### Furman

April 8 • Panthersville

Location.....Greenville, S.C.  
 Nickname.....Paladins  
 Enrollment.....2,600  
 Colors.....Purple and White  
 President.....Dr. David Eshi  
 Athletic Director.....Dr. Gary Clark  
 Conference.....Southern  
 Facility.....Pepsi Stadium (300)  
 Head Coach.....Dana Jenkins (Furman '96)  
 Career Record.....177-284-1 (8 years)  
 Record at Furman.....101-201-1 (5 years)  
 2008 Record.....21-33  
 SID.....Jordan Caskey  
 SID E-mail.....jordan.caskey@furman.edu  
 SID Office Phone.....864-294-3065  
 SID Fax.....864-294-3061  
 Website.....www.furmanpaladins.com

### Drexel

March 21-22 • Philadelphia, Pa.

Location.....Philadelphia, Pa.  
 Nickname.....Dragons  
 Enrollment.....19,885  
 Colors.....Navy Blue and Gold  
 President.....Constantine Papadakis  
 Athletic Director.....Dr. Eric Zillmer  
 Conference.....Colonial  
 Facility.....Drexel Field  
 Head Coach.....Kim Camara (Rhode Island '02)  
 Career Record.....47-40 (3 years)  
 Record at Drexel.....same  
 2008 Record.....29-20  
 SID.....Britt Faulstick  
 SID E-mail.....bef29@drexel.edu  
 SID Office Phone.....215-895-6895  
 SID Fax.....215-895-2038  
 Website.....www.drexeldragons.com

### Kennesaw State

March 31/April 15 • Kennesaw, Ga./Panthersville

Location.....Kennesaw, Ga.  
 Nickname.....Owls  
 Enrollment.....20,500  
 Colors.....Black and Gold  
 President.....Dr. Daniel S. Papp  
 Athletic Director.....Dr. Dave Waples  
 Conference.....Atlantic Sun  
 Facility.....Bailey Park (500)  
 Head Coach.....Scott Whitlock (Piedmont)  
 Career Record.....970-171 (23 years)  
 Record at Kennesaw State.....same  
 2008 Record.....36-17  
 SID.....Jessica Steadman  
 SID E-mail.....jsteadm2@kennesaw.edu  
 SID Office Phone.....678-797-2192  
 SID Fax.....770-423-6665  
 Website.....www.ksuowls.com

### George Mason

April 11-12 • Panthersville

Location.....Fairfax, Va.  
 Nickname.....Patriots  
 Enrollment.....29,889  
 Colors.....Green and Gold  
 President.....Dr. Alan G. Merten  
 Athletic Director.....Tom O'Connor  
 Conference.....Colonial  
 Facility.....George Mason Field (500)  
 Head Coach.....Joe Verbanic (SDSU '82)  
 Career Record.....68-145 (4 years)  
 Record at George Mason.....same  
 2008 Record.....19-32  
 SID.....Dan Reisig  
 SID E-mail.....dreisig@gmu.edu  
 SID Office Phone.....703-993-3268  
 SID Fax.....703-993-3259  
 Website.....www.gomason.com



## 2009 OPPONENTS

### Hofstra

April 18-19 • Hempstead, N.Y.

Location.....Hempstead, N.Y.  
 Nickname.....Pride  
 Enrollment.....12,700  
 Colors.....Gold, White, and Blue  
 President.....Stuart Rabinowitz  
 Athletic Director.....Jack Hayes  
 Conference.....Colonial  
 Facility.....Hofstra University Softball Stadium (1,000)  
 Head Coach.....Bill Edwards  
 Career Record.....695-330-3 (19 years)  
 Record at Hofstra.....same  
 2008 Record.....45-13  
 SID.....Jeremy Kniffin  
 SID E-mail.....Jeremy.S.Kniffin@hofstra.edu  
 SID Office Phone.....516-463-6759  
 SID Fax.....516-463-4860  
 Website.....www.hofstra.edu/athletics

### Towson

April 25-26 • Towson, Md.

Location.....Towson, Md.  
 Nickname.....Tigers  
 Enrollment.....18,011  
 Colors.....Gold, Black, and White  
 President.....Robert L. Caret  
 Athletic Director.....Mike Hermann  
 Conference.....Colonial  
 Facility.....Towson Center Softball Complex (200)  
 Head Coach.....Lisa Costello (Trenton State '90)  
 Career Record.....378-348-2 (13 years)  
 Record at Towson.....same  
 2008 Record.....37-26  
 SID.....Megan O'Brien  
 SID E-mail.....mobrien@towson.edu  
 SID Office Phone.....410-704-4972  
 SID Fax.....410-704-3861  
 Website.....www.towsonigers.com

### UNC Wilmington

May 1-2 • Panthersville

Location.....Wilmington, N.C.  
 Nickname.....Seahawks  
 Enrollment.....12,500  
 Colors.....Teal, Navy, and Gold  
 President.....Rosemary DePaolo  
 Athletic Director.....Kelly Mehrtens  
 Conference.....Colonial  
 Facility.....Boseman Field (500)  
 Head Coach.....Kelly Van Houten (Furman '01)  
 Career Record.....first year  
 Record at UNCW.....first year  
 2008 Record.....12-33-1  
 SID.....Jarrett Abelson  
 SID E-mail.....abelsonj@uncw.edu  
 SID Office Phone.....910-962-3252  
 SID Fax.....910-962-7941  
 Website.....www.uncwsports.com



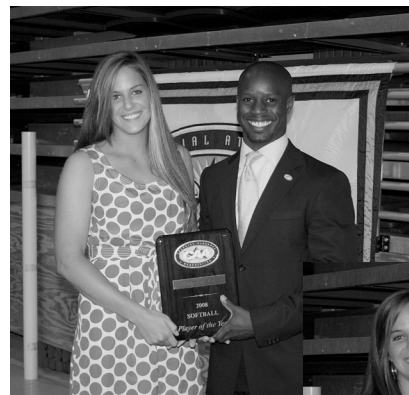
Senior Natasha Berry



Junior  
Danielle Roddy



Junior Rachel Cunningham



**Catherine Lee**  
 2008 CAA Player of the Year  
 2008 CAA Rookie of the Year  
 (pictured with CAA Assistant  
 Commissioner J.P. Williams)





## CONFERENCE HONORS

### 2005 (A-Sun)

Elizabeth Hyman (2nd)

### 2003 (A-Sun)

Katie Blue (2nd)

### 2002 (A-Sun)

Corrie Roberts (1st)  
Andrea McNary (2nd)

### 2001 (TAAC)

Cindy Giles (1st)  
Missy Hall (1st)  
Corrie Roberts (1st)  
Andrea McNary (Freshman)

### 2000 (TAAC)

Missy Hall (1st)  
Crystal Hartman (1st)  
Corrie Roberts (1st)  
Cheryl Bodziony (1st)  
Jaci Davis (3rd)

### 1999 (TAAC)

Cheryl Bodziony (1st)  
Buffie Chournos (1st)  
Corrie Roberts (1st)  
Adrienne Lyman (2nd)  
Angie Buckem (3rd)  
Missy Hall (3rd)

### 1998 (TAAC)

Chrissy Dangler (2nd)  
Danielle Polley (2nd)

### 1997 (TAAC)

Mel Del Gallo (1st)

### 1996 (TAAC)

Mel Del Gallo (1st)  
Michelle Parker (1st)  
Danielle Polley (1st)

### 1995 (TAAC)

Mel Del Gallo (1st)  
Susan Fryer (1st)  
Michelle Parker (1st)  
Missy Smith Radaker (2nd)

### 1994 (TAAC)

Kaci Clark (1st)  
Mel Del Gallo (1st)  
Susan Fryer (1st)  
Michelle Parker (1st)

### 1993 (TAAC)

Kaci Clark  
Charlene Chilton  
Michelle Parker

### 1992 (TAAC)

Ann Baxley (1st)  
Dianne Ewing (1st)  
Kristy Redinger (1st)  
Staci Anderson (2nd)  
Susan Fryer (2nd)  
Tina Miller (2nd)

### 1991 (NSWAC)

Gretchen Gruber (1st)  
Ann Baxley (2nd)  
Debbie Hale (2nd)  
Stacey Peterson (2nd)

### 1990 (NSWAC)

Wendy Evilsizor (1st)  
Lora Lischinsky (1st)  
Jennifer Morgan (1st)  
Jennifer McClendon (2nd)  
Elizabeth Mitchell (2nd)

### 1989 (NSWAC)

Brownie (Vaughn) Caldwell (1st)  
Wendy Evilsizor (1st)  
Paige Elsner (1st)  
Lori Lischninsky (1st)  
Julie Lockwood (2nd)  
Tonya Maxwell (2nd)  
Tina Miller (2nd)

### 1988 (NSWAC)

Brownie (Vaughn) Caldwell (1st)  
Theresa Bredwell (1st)  
Heather Smith (1st)  
Lora Lischninsky (2nd)

### 1987 (NSWAC)

Theresa Bredwell (1st)  
Gina Brooks (1st)  
Kathy Hazinsky (1st)  
Brownie Vaughn (1st)  
Rhonda Griffin (2nd)  
Jennifer Morgan (2nd)  
Frankie Smith (2nd)

### 1986 (NSWAC)

Brownie Vaughn  
Paige Elsner  
Melanie Ramers

## CONFERENCE AWARDS

### PLAYER OF THE YEAR

Brownie Caldwell Vaughn, 1989 (NSWAC)  
Lora Lischinsky, 1990 (NSWAC)  
Kaci Clark, 1993 (TAAC)  
Kaci Clark, 1994 (TAAC)  
Catherine Lee, 2008 (CAA)

### ROOKIE OF THE YEAR

Andrea McNary, 2002 (A-SUN)  
Jackie Jaegle, 2006 (CAA)  
Danielle Roddy, 2007 (CAA)  
Catherine Lee, 2008 (CAA)

### PITCHER OF THE YEAR

Elizabeth Hyman, 2006 (CAA)

### COACH OF THE YEAR

Bob Heck, 2006 (CAA)  
Bob Heck, 1994 (TAAC)

### SCHOLAR-ATHLETE OF THE YEAR

Meghan McCoy, 2006 (CAA)  
Holly Willis, 2008 (CAA)

## COLONIAL ATHLETIC ASSOCIATION

Since 2005

### 2008

Catherine Lee, C (1st)  
Rachel Cunningham, SS (1st)  
Holly Willis, OF (1st)  
Natasha Berry, OF (2nd)  
Jessica Gowin, IB (2nd)  
Madi Gore, P (2nd)  
Alicia Mills, P (2nd)  
Catherine Lee (Rookie)  
Alicia Mills (Rookie)

### 2007

Mary Kathryn Branan, 2B (1st)  
Danielle Roddy, 3B (1st)  
Nichole Griffin, SS (2nd)  
Madi Gore, P (2nd)  
Rachel Cunningham (Rookie)  
Danielle Roddy, (Rookie)

### 2006

Jackie Jaegle, C (1st)  
Meghan McCoy, IB (1st)  
Jamie Cagle, OF (1st)  
Elizabeth Hyman, P (1st)  
Nichole Griffin, SS (2nd)  
Nichole Griffin, (Rookie)  
Jackie Jaegle, (Rookie)

**CATHERINE LEE**  
**Louisville Slugger/NFCA**  
**All-Southeast Region**  
**(first team), 2008**  
**First All-Region Honoree**  
**in Georgia State History**



## ALL-TIME RECORDS

### 1984 (18-19)

Head Coach: Robert Heck

Final Season of Slow-Pitch Softball

3/6	Appalachian State	W	8-3
3/6	Appalachian State	W	1-0
3/7	West Georgia	L	3-5
3/7	West Georgia	L	3-4
3/16	(1)Virginia Wesleyan	W	8-3
3/16	(1)Appalachian State	L	1-6
3/16	(1)Payne College	W	9-3
3/16	(1)Catawba	L	3-4
3/17	(1)St. Augustine	L	5-6
3/17	(1)Lenoir-Rhyne	L	2-5
3/21	Lenoir College	L	5-12
3/21	Columbus College	L	12-14
3/22	Wittenberg	W	13-2
3/22	Wittenberg	W	23-1
3/24	Gardner-Webb	W	6-2
3/24	Hiwassee	L	2-5
3/24	Georgia Tech	W	6-2
3/30	(2)Pensacola JC	L	2-13
3/31	(2)Gulf Coast CC	L	4-6
3/31	(2)West Florida	L	3-5
3/31	(2)Columbus College	L	1-2
3/31	(2)Faulkney State	W	8-1
4/4	Georgia Tech	L	4-6
4/4	Georgia Tech	W	12-1
4/6	(3)South Florida	L	5-9
4/6	(3)Delta State	W	9-8
4/7	(3)Troy State	L	3-9
4/11	North Georgia	W	8-3
4/11	North Georgia	W	9-3
4/18	LaGrange College	W	18-0
4/18	LaGrange College	W	11-0
4/23	LaGrange College	W	9-6
4/23	LaGrange College	W	15-3
4/25	Truitt-McConnell	W	9-3
4/25	Truitt-McConnell	L	6-11
4/27	North Georgia	L	6-9
4/28	Truitt-McConnell	L	7-15

1-Salisbury, N.C. 2-Panama City, Fla. 3-Pensacola, Fla.

### 1985 (15-24)

Head Coach: Robert Heck

First Year Fast-Pitch Softball

3/2	Florida A&M	L	1-5
3/2	Florida A&M	W	3-1
3/6	Mercer CC	L	5-6
3/6	Mercer CC	W	4-2
3/9	Liberty Baptist	L	6-8
3/9	Liberty Baptist	W	9-3
3/14	Onadaga	L	0-4
3/14	Onadaga	W	3-2
3/16	(1)Mississippi State	L	1-17
3/16	(1)Tennessee Tech	W	17-3
3/17	(1)West Georgia	W	4-1
3/17	(1)Mississippi	L	3-7
3/18	DePaul	L	6-8
3/18	DePaul	W	10-4
3/23	(2)South Florida	L	1-3
3/23	(2)Michigan State	L	1-5
3/24	(2)Bradley	L	2-6
3/24	(2)East Carolina	L	4-6
3/24	(2)Southern Miss	W	3-1
3/27	West Georgia	W	7-3
3/27	West Georgia	W	6-1

3/30	(3)Furman	W	4-3
3/30	(3)Winthrop	L	1-9
3/30	(3)Newberry	W	18-2
4/3	Nicholls State	L	3-10
4/3	Nicholls State	L	3-10
4/6	(4)Louisiana Tech	L	0-9
4/6	(4)Adelphi	L	5-11
4/6	(4)Florida State	L	0-7
4/6	(4)Western Illinois	L	0-7
4/13	(5)Sacred Heart	L	1-5
4/13	(5)Virginia	W	8-4
4/13	(5)VCU	L	0-6
4/13	(5)Sacred Heart	L	0-6
4/13	(5)VCU	L	0-2
4/20	(6)Landers	L	3-7
4/20	(6)Tennessee Tech	W	12-4
4/20	(6)West Georgia	W	12-2
4/29	Furman	L	0-2

1-Mississippi State Tournament (Starkville, Miss.)  
 2-Florida State Tournament (Tallahassee, Fla.)  
 3-Winthrop Tournament (Rock Hill, S.C.)  
 4-South Carolina Tournament (Columbia, S.C.)  
 5-Georgia State Round Robin (Atlanta, Ga.)  
 6-Georgia State Round Robin (Atlanta, GA)

### 1986 (26-26)

NSWAC Runnerup

Head Coach: Robert Heck

3/7	Savannah State	W	15-2
3/7	Savannah State	W	11-0
3/8	(1)Lander	L	0-1
3/8	(1)Tennessee Tech	L	2-4
3/8	(1)Georgia Southern	L	2-4
3/9	George Mason	L	2-13
3/9	George Mason	L	1-3
3/10	Mississippi	L	1-5
3/10	Mississippi	L	1-8
3/15	UNC-Charlotte	W	3-2
3/15	UNC-Charlotte	W	6-5
3/16	(2)DePaul	L	3-5
3/16	(2)DePaul	L	1-2
3/21	(3)Miami (Ohio)	W	5-0
3/21	(3)Maine	L	2-4
3/21	(3)South Florida	L	0-7
3/21	(3)Michigan State	L	0-8
3/21	(3)Southern Miss	W	5-4
3/26	Wilmington (Ohio)	W	8-0
3/26	Wilmington (Ohio)	W	10-5
3/27	Ohio State	W	2-1
3/27	Ohio State	L	1-3
3/28	(3)Mississippi State	L	0-2
3/28	(3)St. Mary's	W	5-1
3/28	(3)Southern Miss	L	2-5
3/28	(3)Arkansas State	W	11-5
4/2	Furman	W	8-5
4/2	Furman	W	4-2
4/5	(4)Limestone	L	0-6
4/5	(4)Coastal Carolina	W	6-5
4/5	(4)Winthrop	L	3-6
4/7	Columbus	W	10-0
4/7	Columbus	W	8-1
4/11	(5)Creighton	L	3-5
4/11	(5)Bradley	L	1-3
4/11	(5)Loyola-Chicago	W	4-0
4/11	(5)Western Illinois	L	0-5
4/16	at West Georgia	W	7-1
4/16	at West Georgia	W	1-0
4/19	(6)Georgia Southern	L	1-4

4/19	(6)Mercer	W	6-1
4/19	(6)Stetson	L	2-5
4/19	(6)Georgia Southern	W	10-5
4/19	(6)Stetson	L	4-5
4/21	Augusta	W	5-2
4/21	Augusta	W	9-5
4/23	Mercer	W	11-2
4/23	Mercer	W	11-0
4/25	(7)South Florida	L	0-3
4/25	(7)Virginia	W	4-2
4/25	(7)South Carolina	L	0-6
4/25	(7)East Carolina	L	0-3

1-Georgia State Round Robin (Atlanta, Ga.)  
 2-Florida State Tournament (Tallahassee, Fla.)  
 3-Mississippi State Tournament (Starkville, Miss.)  
 4-Winthrop Tournament (Rock Hill, S.C.)  
 5-Western Illinois Tournament (Macomb, Ill.)  
 6-NSWAC Tournament (Atlanta, Ga.)  
 7-South Carolina Tournament (Columbia, S.C.)

### 1987 (26-22)

NSWAC Runnerup

Head Coach: Robert Heck

Valparasio	W	3-2
Valparasio	W	9-1
(1)Lander	L	0-1
(1)Tennessee Tech	W	7-1
(1)East Carolina	L	4-5
North Carolina	L	0-3
North Carolina	L	1-8
(2)UNC-Charlotte	W	7-0
(2)Limestone	W	3-0
(2)Miami (Ohio)	W	6-1
(3)Bradley	L	3-6
(3)Ohio State	W	6-4
(3)Massachusetts	L	4-7
(3)Furman	L	3-7
(3)Eastern Mich	L	1-9
Winthrop	L	0-2
Winthrop	L	1-4
USC-Spartanburg	W	2-1
USC-Spartanburg	W	4-1
at Furman	L	0-1
at Furman	L	3-7
Nicholls State	L	4-13
Nicholls State	L	0-13
(4)George Mason	W	2-0
(4)South Carolina	L	0-9
(4)Furman	L	5-6
(4)South Florida	W	4-3
(4)Louisiana Tech	L	0-2
(4)Nicholls State	L	2-3
(4)Florida State	L	1-4
at Augusta	W	5-0
at Augusta	W	9-2
at Georgia Tech	W	10-0
at Georgia Tech	W	11-0
West Florida	W	2-0
West Florida	W	5-0
Samford	W	12-1
Samford	W	7-2
at Columbus	W	4-1
at Columbus	W	6-0
(5)Georgia Southern	W	6-1
(5)Mercer	L	5-7
(5)Florida A&M	W	3-0
(5)Stetson	W	2-0
(5)Mercer	W	5-1



## ALL-TIME RECORDS

(5)Stetson.....	L	2-3
(5)Stetson.....	(10) W	2-1
(5)Stetson.....	L	3-5

- 1-Georgia State Round Robin (Atlanta, Ga.) ...
- 2-Georgia State Round Robin (Atlanta, Ga.)
- 3-Florida State Tournament (Tallahassee, Fla.)
- 4-South Carolina Invitational (Columbia, S.C.)
- 5-NSWAC Tournament (DeLand, Fla.)

### 1988 (42-20)

NSWAC Runnerup

Head Coach: Bob Heck

USC-Aiken .....	W	17-2
USC-Aiken .....	W	11-0
Lander .....	W	2-1
Tennessee Tech.....	W	13-0
East Carolina.....	L	5-6
Valparaiso .....	W	3-0
Miami (Ohio).....	L	1-2
UNC-Wilmington.....	W	4-1
Wilmington (Ohio) .....	W	8-4
Wilmington (Ohio) .....	W	19-0
Saginaw Valley State .....	L	1-2
Saginaw Valley State .....	W	7-4
Greensboro .....	W	22-1
UNC-Charlotte .....	W	1-0
UNC-Charlotte .....	W	5-0
George Mason.....	W	4-3
George Mason.....	W	6-2
Bradley .....	L	2-6
Bradley .....	W	3-1
(1)Stetson.....	W	6-0
(1)Virginia.....	W	6-2
(1)Massachusetts.....	L	1-2
(1)Southern Illinois.....	L	1-3
(1)Northern Illinois.....	L	2-3
Winthrop.....	W	3-1
Winthrop.....	W	6-0
Gustavus Adolphus.....	W	5-0
Gustavus Adolphus.....	W	14-0
at Samford .....	W	3-0
at Samford .....	W	8-3
Furman .....	W	4-3
Furman .....	L	1-2
(2)South Carolina.....	L	0-7
(2)North Carolina.....	W	7-3
(2)Georgia Southern.....	W	1-0
(2)Winthrop .....	W	4-1
(2)South Carolina.....	L	3-9
Augusta .....	W	6-3
(3)North Carolina.....	L	1-2
(3)South Carolina.....	L	3-11
(3)Nicholls State.....	L	5-6
(3)SW Louisiana.....	W	1-0
(3)Winthrop .....	W	5-1
(3)South Carolina.....	L	0-9
Mercer.....	W	11-0
Mercer.....	W	5-0
Georgia Tech.....	W	7-1
Georgia Tech.....	W	7-1
at Florida State.....	L	0-5
at Florida State.....	L	1-2
Columbus.....	W	4-0
Columbus.....	L	2-4
USC-Spartanburg.....	W	8-5
USC-Spartanburg.....	W	4-3
4/30 (4)Georgia Southern.....	W	7-2
4/30 (4)Mercer .....	W	11-3

4/30 (4)Samford.....	W	2-0
5/1 (4)Florida A&M.....	W	7-1
5/1 (4)Stetson.....	L	3-4
5/1 (4)Florida A&M.....	W	11-1
5/2 (4)Stetson.....	L	4-5
5/2 (4)Stetson.....	L	0-6

- 1-Florida State Tournament (Tallahassee, Fla.)
- 2-South Carolina Invitational (Columbia, S.C.)
- 3-UTC Tournament (Chattanooga, Tenn.)
- 4-NSWAC Tournament (Statesboro, Ga.)

### 1989 (31-23)

NSWAC Champions (12-2)

Head Coach: Bob Heck

Virginia .....	L	0-5
Virginia .....	L	2-4
Lander .....	W	5-0
Tennessee Tech.....	W	12-10
at Samford.....	W	4-0
at Samford.....	W	5-3
Columbus.....	W	3-1
USC-Spartanburg.....	W	4-0
Baptist .....	W	6-0
Saginaw Valley State.....	W	5-4
Saginaw Valley State.....	L	4-6
Bradley .....	L	2-6
Bradley .....	L	1-2
George Mason.....	L	4-5
George Mason.....	L	3-8
(1)Missouri.....	W	4-3
(1)Illinois State.....	L	1-2
(1)Ohio State.....	W	7-1
(1)North Carolina.....	L	0-3
at Stetson.....	L	8-9
at Stetson .....	W	9-4
(2) North Carolina.....	W	7-4
(2) Winthrop.....	W	1-0
(2)Toledo.....	W	2-0
(2)South Carolina.....	L	1-2
Toledo .....	L	0-5
Toledo .....	L	1-7
at Mercer.....	W	4-1
at Mercer.....	W	2-0
(3)Virginia.....	L	0-7
(3)Temple.....	L	1-3
(3)UNC-Charlotte.....	W	9-0
(3)Delaware.....	L	0-1
(3)Drexel.....	W	1-0
at Furman .....	L	2-6
at Furman .....	W	2-1
(4)Georgia Southern.....	L	2-3
(4)South Carolina.....	L	3-5
(4)East Carolina.....	W	5-4
(4)South Carolina.....	L	0-1
Samford.....	W	4-0
Samford.....	W	4-3
Mercer.....	W	3-1
Mercer.....	W	3-0
Florida A&M.....	W	4-0
Florida A&M.....	L	1-2
Georgia Southern.....	W	3-0
Georgia Southern.....	W	8-1
at Georgia Tech.....	W	4-3
at Georgia Tech.....	L	5-6
(5)Florida A&M.....	W	5-2
(5)Samford.....	W	6-3
(5)Mercer .....	L	0-2
(5)Mercer .....	W	1-0

- 1-Florida State Tournament (Tallahassee, Fla.)
- 2-South Carolina Round Robin (Columbia, S.C.)
- 3-Virginia Invitational (Charlottesville, Va)
- 4-South Carolina Invitational (Columbia, S.C.)
- 5-NSWAC Tournament (Tallahassee, Fla.)

### 1990 (42-23, 11-3 NSWAC/1st)

NSWAC Champions

Head Coach: Bob Heck

2/28 South Carolina .....	L	0-2
2/28 South Carolina .....	L	0-4
3/3 (1)East Carolina.....	W	3-0
3/3 (1)Tennessee Tech.....	W	6-0
3/4 (1)Miami (Ohio).....	L	1-3
3/4 (1)Virginia.....	(12) W	2-1
3/4 (1)UNC-Wilmington.....	W	10-2
3/6 at Mercer*.....	L	0-1
3/6 at Mercer*.....	W	4-0
3/10 (2)Baptist.....	W	1-0
3/10 (2)Columbus.....	W	3-1
3/10 (2)USC-Spartanburg.....	W	5-0
3/12 George Mason.....	W	8-0
3/12 George Mason.....	W	5-1
3/16 (3)Missouri.....	W	1-0
3/16 (3)Northern Iowa.....	(10) W	3-2
3/16 (3)Illinois State.....	L	2-3
3/18 (3)Indiana.....	L	0-3
3/18 (3)Florida A&M.....	(8) W	1-0
3/21 Bradley .....	W	2-1
3/21 Bradley .....	W	3-1
3/24 at Florida State.....	L	0-2
3/24 at Florida State.....	L	0-8
3/25 at Florida A&M*.....	W	8-1
3/25 at Florida A&M*.....	W	5-0
3/27 Samford*.....	W	3-0
3/27 Samford*.....	W	2-0
3/30 (4)South Florida.....	L	0-2
3/30 (4)Samford.....	W	2-1
3/31 (4)Michigan State.....	W	3-1
3/31 (4)Oklahoma State.....	L	0-8
3/31 (4)Southern Miss.....	W	1-0
3/31 (4)Florida State.....	(9) W	1-0
3/31 (4)Oklahoma State.....	L	1-3
4/1 Georgia College.....	W	4-2
4/1 Georgia College.....	W	9-0
4/3 Mercer*.....	W	7-3
4/3 Mercer*.....	W	6-3
4/11 at Georgia Southern*.....	W	2-0
4/11 at Georgia Southern*.....	W	3-2
4/13 (5)Coastal Carolina.....	W	4-2
4/13 (5)UNC-Charlotte.....	L	2-4
4/14 (5)Ga. Southern.....	W	5-0
4/14 (5)South Carolina.....	L	0-3
4/15 Georgia Tech.....	W	7-1
4/15 Georgia Tech.....	(9) W	1-0
4/17 Furman.....	L	2-4
4/17 Furman.....	L	1-2
4/18 at Samford*.....	L	6-7
4/18 at Samford*.....	W	12-3
South Florida.....	L	0-2
South Florida.....	L	0-2
SW Louisiana.....	L	0-4
Stetson .....	W	3-0
Stetson.....	L	3-6
Connecticut.....	L	0-1
Adelphi.....	W	11-4
Penn State.....	L	2-9
Detroit.....	L	2-4
Massachusetts.....	W	3-2



## ALL-TIME RECORDS

Detroit.....	W	2-0
Kent State.....	W	7-2
(6)Georgia Southern.....	W	5-2
(6)Samford.....	W	6-4
(6)Samford.....	W	2-0

\* Conference Game

- 1-Georgia State Tournament
- 2-Georgia State Tournament
- 3-Florida State Tournament (Tallahassee, Fla.)
- 4-Orlando, Fla., Tournament
- 5 - South Carolina Invitational (Columbia, S.C.)
- (6) NSWAC Tournament (Atlanta, GA)

### 1991 (35-32)

Head Coach: Robert Heck

2/17	Georgia Southern.....	W	6-1
2/26	Campbell.....	W	6-1
2/26	Campbell.....	W	6-2
3/1	(1)Louisiana Tech.....	L	5-11
3/2	(1)Tennessee Tech.....	W	8-3
3/2	(1)Ball State.....	W	4-3
3/5	South Carolina.....	W	1-0
3/5	South Carolina.....	L	0-5
3/7	at Georgia Tech.....	L	1-2
3/7	at Georgia Tech.....	L	1-2
3/9	(2)Baptist.....	L	1-5
3/9	(2)USC-Spartanburg.....	L	0-2
3/9	(2)Columbus.....	L	3-5
3/10	(2)Southern Illinois.....	L	2-3
3/10	(2)George Mason.....	W	4-3
3/15	(3)South Carolina.....	L	0-9
3/15	(3)Connecticut.....	L	3-8
3/15	(3)Southern Illinois.....	L	0-1
3/16	(3)South Florida.....	L	2-5
3/16	(3)Nicholls State.....	L	0-8
3/20	Bradley.....	(9) L	1-4
3/20	Bradley.....	W	2-1
3/23	Tennessee Wesleyan.....	W	17-0
3/23	Tennessee Wesleyan.....	W	9-0
3/25	Augusta.....	W	11-1
3/25	Augusta.....	W	5-2
3/26	at Samford.....	W	8-1
3/26	at Samford.....	L	0-1
4/2	at Mercer.....	W	1-0
4/2	at Mercer.....	W	5-2
4/5	(4)Wichita State.....	L	0-3
4/5	(4)Winthrop.....	L	3-4
4/5	(4)SW Louisiana.....	L	0-1
4/6	(4)South Florida.....	(9) W	9-5
4/6	(4)Samford.....	(9) W	4-0
4/6	(4)SW Louisiana.....	L	2-3
4/10	Kennesaw State.....	(10) W	1-0
4/10	Kennesaw State.....	W	3-0
4/12	(5)Georgia Southern.....	W	2-1
4/12	(5)UNC-Charlotte.....	L	0-2
4/12	(5)South Carolina.....	L	0-4
4/13	(5)Coastal Carolina.....	W	5-1
4/13	(5)South Carolina.....	L	0-5
4/15	Mercer.....	W	9-0
4/15	Mercer.....	W	7-0
4/16	at Furman.....	L	0-4
4/16	at Furman.....	L	1-6
4/17	Samford*.....	L	2-5
4/17	Samford*.....	W	4-1
4/19	vs. NW Louisiana.....	L	0-6
4/19	vs. UNC-Charlotte.....	(8) W	2-1
4/21	vs. Louisiana Tech.....	L	0-4
4/23	Florida A&M.....	L	0-5

4/23	Florida A&M.....	W	2-1
4/26	vs. Rutgers.....	W	1-0
4/26	vs. George Mason.....	W	5-1
4/27	vs. Detroit.....	L	3-4
4/27	vs. George Mason.....	W	3-0
4/27	vs. Drexel.....	W	4-0
4/27	vs. Penn State.....	W	4-0
4/28	vs. Rutgers.....	W	3-2
4/28	vs. Detroit.....	L	2-4
4/30	Georgia College.....	(9) W	4-3
4/30	Georgia College.....	W	7-2
5/3	(6)Mercer.....	W	4-1
5/3	(6)Stetson.....	L	0-1
5/3	(6)Georgia Southern.....	L	2-3

\* No conference regular-season schedule

- 1-Georgia State Tournament
- 2-Georgia State Tournament
- 3-South Carolina Invitational (Columbia, S.C.)
- 4-Tournament (Location N/A)
- 5-Tournament (Location N/A)
- 6-New South Tournament (DeLand, Fla.)

### 1992 (35-27-1)

TAAC Champions

Head Coach: Bob Heck

2/16	Army.....	W	8-5
2/16	Army.....	W	4-0
2/23	at Georgia Southern.....	W	2-1
2/23	at Georgia Southern.....	L	0-4
2/26	Georgia College.....	W	9-0
2/26	Georgia College.....	W	4-0
3/3	South Carolina.....	(9) L	0-5
3/3	South Carolina.....	L	1-6
3/6	Centenary.....	L	2-3
3/6	Centenary.....	T	3-3
3/7	vs. Southeast Missouri.....	L	0-1
3/7	vs. N.C.A&T.....	W	18-1
3/7	vs. Charleston Southern.....	W	2-0
3/8	USC-Spartanburg.....	W	3-1
3/8	Georgia Southern*.....	W	5-1
3/8	Austin Peay.....	W	7-0
3/18	vs. Bradley (at Mercer).....	W	9-0
3/20	vs. !Kent State.....	L	3-8
3/20	vs. !Furman.....	W	4-3
3/21	vs. ! Northern Iowa.....	L	3-6
3/21	vs. !South Florida.....	L	3-4
3/22	at *Florida A&M.....	W	14-7
3/22	at *Florida A&M.....	W	3-0
3/27	(1)Samford Southern Invitational, Birmingham, Ala.....	W	8-0
3/27	(1)South Carolina.....	L	2-9
3/27	(1)North Carolina.....	L	2-16
3/28	Georgia Tech.....	L	1-4
3/28	Georgia Tech.....	L	3-7
4/1	Troy State.....	L	6-7
4/1	Troy State.....	W	4-0
4/4	at %South Carolina (USC Round Robin).....	L	0-2
4/4	vs. %Winthrop.....	W	4-0
4/5	at %South Carolina.....	L	0-7
4/5	vs. %Winthrop.....	L	2-3
4/5	vs. %Winthrop.....	W	4-0
4/10	vs. \$Iowa State.....	W	6-5
4/10	vs. \$Kansas.....	L	1-6
4/10	vs. \$Oklahoma State.....	L	0-9
4/11	vs. \$Oklahoma City.....	(11) W	5-4
4/11	vs. \$Oklahoma State.....	L	0-4
4/14	Furman.....	W	4-2

4/14	Furman.....	W	4-2
4/15	Samford.....	W	6-0
4/15	Samford.....	W	5-4
4/17	vs. +Louisiana Tech.....	L	0-11
4/17	vs. +UNCW.....	W	3-1
4/17	vs. +*S.E. Louisiana.....	W	8-4
4/18	vs. +South Florida.....	W	3-2
4/18	vs. +Furman.....	L	1-10
4/18	vs. +Tennessee Tech.....	W	3-0
4/19	vs. +South Florida.....	L	3-8
4/22	Mercer.....	W	10-0
4/22	Mercer.....	W	5-0
4/25	Georgia Tech.....	W	5-2
4/25	Georgia Tech.....	L	2-3
4/26	Stetson.....	L	6-7
4/26	Stetson.....	L	1-6
4/28	Kennesaw State.....	L	4-7
4/28	Kennesaw State.....	L	6-13
5/1	(6)Mercer.....	W	5-3
5/1	(6)Centenary.....	W	8-1
5/1	(6)Stetson.....	W	3-1
5/2	(6)Stetson.....	(10) W	4-3

\* No conference regular-season schedule

- 1-Florida State Tournament (Tallahassee, Fla.)
- 2-Birmingham-Southern Tournament (Birmingham, Ala.)
- 3-South Carolina Tournament (Columbia, S.C.)
- 4-Oklahoma State Tournament (Stillwater, Okla.)
- 5-Chattanooga Tournament (Chattanooga, Tenn.)
- 6-TAAC Tournament (Macon, Ga.)

### 1993 (39-16)

TAAC Champions

Head Coach: Robert Heck

2/21	Georgia Southern.....	hW	14-0
2/21	Georgia Southern.....	hW	3-2
2/28	South Carolina.....	hW	8-0
2/28	South Carolina.....	hW	7-6
3/6	Georgia Southern.....	hW	8-0
3/6	Kennesaw State.....	(8) hW	7-2
3/6	Florida A&M.....	hW	14-0
3/7	Tennessee Tech.....	hW	1-0
3/7	Austin Peay.....	hW	9-1
3/11	Kutztown.....	hW	6-0
3/11	Kutztown.....	hW	2-1
3/19	(1)SW Louisiana.....	nL	0-5
3/19	(1)Rhode Island.....	nW	4-3
3/19	(1)Florida State.....	nL	0-1
3/20	(1)Eastern Illinois.....	nL	0-2
3/20	(1)Drake.....	nW	3-1
3/24	Limestone.....	hW	4-0
3/24	Limestone.....	hW	8-0
3/26	(2)Cambell.....	nW	6-0
3/26	(2)North Carolina.....	nL	0-6
3/28	(2)Toledo.....	nW	3-0
3/28	(2)Winthrop.....	aW	11-4
4/2	(3)North Carolina.....	nW	5-3
4/2	(3)Drexel.....	nW	8-3
4/3	(3)Georgia Tech.....	nW	7-0
4/3	(3)UNC-Charlotte.....	nW	5-2
4/3	(3)Mercer.....	nW	3-1
4/7	Samford.....	aW	4-0
4/7	Samford.....	aW	4-1
4/9	Georgia Southern.....	hW	7-1
4/10	(4)SW Louisiana.....	nW	2-0
4/10	(4)South Carolina.....	aL	0-7
4/10	(4)SW Louisiana.....	nL	0-1
4/10	(4)Georgia Southern.....	nW	3-1
4/14	Georgia Tech.....	aL	1-2



## ALL-TIME RECORDS

4/14	Georgia Tech.....aL	1-2
4/16	(5)Louisiana Tech.....nL	3-4
4/16	(5)Winthrop.....nW	4-2
4/16	(5)Nicholls State.....(18)nW	1-0
4/17	(5)UNC-Wilmington.....nW	3-1
4/17	(5)East Carolina.....nL	0-1
4/18	(5)Texas-Arlington.....nL	0-2
4/20	Georgia Tech.....(17)hW	6-5
4/20	Georgia Tech.....hL	2-3
4/22	Furman.....aW	2-0
4/22	Furman.....aW	6-3
4/24	Virginia.....hL	1-8
4/24	Virginia.....hW	4-3
4/27	Kennesaw State.....aL	0-4
4/27	Kennesaw State.....aL	1-2
4/30	(6)Mercer.....aW	9-0
4/30	(6)Samford.....nW	5-0
5/1	(6)Stetson.....nW	1-0
5/1	(6)Stetson.....nL	2-3
5/1	(6)Stetson.....nW	3-0

\* No conference regular-season schedule

1-Lady Seminole Invitational (Tallahassee, Fla.)

2-Winthrop Invitational (Rock Hill, S.C.)

3-Georgia Tech Buzz Classic (Marietta, Ga.)

4-South Carolina Tournament (Columbia, S.C.)

5-Frost Cutlery Classic

6-TAAC Tournament (Macon, Ga.)

### 1994 (40-27-1, 7-5 TAAC)

TAAC Champions • NCAA  
Tournament

Head Coach: Robert Heck

2/19	*Samford.....hW	3-0
2/19	*Samford.....hW	3-1
2/23	South Carolina (DH).....DNP	
2/27	Louisiana Tech.....hL	1-3
2/27	Louisiana Tech.....hL	0-7
3/05	Georgia Southern.....hW	1-0
3/05	Troy State.....hW	1-0
3/05	Limestone College.....hW	6-0
3/06	Jacksonville State.....hW	8-0
3/06	Tennessee Tech.....hW	6-1
3/06	Georgia Southern.....hL	2-3
3/10	Univ. of Mobile.....hW	1-0
3/10	Univ. of Mobile.....hW	6-3
3/11	Eastern Kentucky.....(8)hW	1-0
3/11	Wisconsin-Oshkosh.....hW	1-0
3/11	Mercer.....hW	8-0
3/12	Eastern Kentucky.....hW	4-0
3/12	USC-Aiken.....hW	3-0
3/12	Troy State.....hW	1-0
3/18	(1)No. 21 UIC.....(8)nL	2-3
3/18	(1)Massachusetts.....nW	7-4
3/18	(1)Western Illinois.....nL	4-5
3/19	(1)Northern Iowa.....(8)nW	1-0
3/19	(1)Miami (OH).....nW	6-1
3/19	(1)No. 14 Texas A&M.....nL	1-2
3/23	(2)No. 18 Utah State.....nL	0-3
3/23	(2)No. 11 Kansas.....nL	1-2
3/23	(2)No. 1 Arizona.....nL	1-14
3/26	(2)No. 6 CS-Northridge.....nW	2-1
3/26	(2)No. 15 Washington.....nL	2-8
3/30	St. Peters.....hW	4-1
3/30	St. Peters.....hW	8-0
4/01	(3)UNC Wilmington.....nW	8-2
4/01	(3)Stetson.....nW	6-4
4/01	(3)Canisius.....nL	1-2
4/02	(3)UT-Chattanooga.....nW	4-2

4/02	(3)Canisius.....nL	1-2
4/02	*Centenary.....hL	1-3
4/04	*Centenary.....hW	3-1
4/09	No. 14 South Carolina.....aL	2-4
4/09	No. 14 South Carolina.....aL	0-5
4/10	*SE Louisiana.....hW	2-0
4/10	*SE Louisiana.....hW	4-0
4/12	Georgia Tech.....aL	2-15
4/12	Georgia Tech.....aL	0-5
4/15	(4)NW Louisiana.....nW	3-2
4/15	(4)Hofstra.....(8)nW	2-1
4/16	(4)UNC-Wilmington.....nW	3-1
4/16	(4)Furman.....nW	4-1
4/17	(4)McNeese State.....(9)nT	2-2
4/17	(4)Tennessee Tech.....nW	3-2
4/17	(4)Texas A&M.....nL	1-2
4/21	*Samford.....aL	0-1
4/21	*Samford.....aW	2-1
4/23	*SE Louisiana.....(9)aL	2-3
4/23	*SE Louisiana.....aL	4-5
4/24	*Centenary.....(8)aW	1-0
4/24	*Centenary.....(8)aL	1-2
4/26	Kennesaw State.....(8)hL	4-5
4/26	Kennesaw State.....hL	2-5
4/29	(5)College of Charleston.....nW	9-0
4/29	(5)Samford.....nL	3-6
4/29	(5)Mercer.....nW	4-1
4/30	(5)SE Louisiana.....(8)nW	3-1
4/30	(5)Samford.....(9)nW	2-1
4/30	(5)Centenary.....nW	2-1
4/30	(5)Centenary.....(9)nW	2-1
5/20	(6)UCLA.....nL	1-2
5/21	(6)South Carolina.....aL	1-6

\* Conference game

1-Lady Seminole Invitational (Tallahassee, Fla.)

2-Pony Tournament (Fullerton, Calif.)

3-Georgia Tech Buzz Classic (Marietta, Ga.)

4-Frost Cutlery Classic (Chattanooga, Tenn.)

5-TAAC Tournament (DeLand, Fla.)

6-NCAA Regional (Columbia, S.C.)

### 1995 (30-19, 11-1 TAAC)

Head Coach: Robert Heck

2/25	South Carolina.....aL	0-2
2/25	South Carolina.....aL	0-3
3/4	Troy State.....hL	0-3
3/4	Middle Tenn. State.....hW	1-0
3/11	Limestone.....hW	15-0
3/11	UT-Chattanooga.....hW	7-0
3/11	Mercer.....hW	11-4
3/17	(1)Iowa State.....nL	2-4
3/17	(1)Southern Illinois.....nL	1-7
3/17	(1)Eastern Michigan.....(12)nW	4-3
3/18	(1)Ohio State.....nW	7-2
3/18	(1)Princeton.....nL	1-8
3/22	(2)Cal State-Fullerton.....aL	0-2
3/24	(2)Bowling Green.....nL	0-6
3/24	(2)Oklahoma State.....nL	4-9
3/25	(2)S.W. Louisiana.....nL	1-4
3/26	(2)Kansas.....nL	2-6
3/29	Furman.....hW	2-0
3/29	Furman.....hW	4-3
3/31	(3)Maryland.....nW	11-3
3/31	(3)Tenn.-Martin.....nW	15-0
3/31	(3)Troy State.....nL	3-4
4/1	(3)Toledo.....(9)nW	2-1
4/1	(3)UNC-Charlotte.....nW	3-2
4/1	(3)Bradley.....nW	5-2

4/1	(3)Toledo.....nL	0-2
4/5	Georgia Tech.....hW	6-2
4/5	Georgia Tech.....hW	5-2
4/12	*S.E. Louisiana.....hW	3-0
4/12	*S.E. Louisiana.....hW	7-4
4/13	*Samford.....hW	3-0
4/13	*Samford.....(9)hW	3-2
4/14	(4)South Florida.....nW	12-7
4/14	(4)No. 16 Nicholls State.....nL	0-7
4/15	(4)Eastern Kentucky.....nW	6-4
4/15	(4)No. 11 South Carolina.....nL	0-3
4/15	(4)Marshall.....nW	5-2
4/15	(4)Virginia.....nL	5-8
4/18	*Centenary.....hW	4-2
4/18	*Centenary.....hW	9-1
4/20	*Samford.....aW	9-0
4/20	*Samford.....aW	5-0
4/23	*S.E. Louisiana.....aW	9-0
4/23	*S.E. Louisiana.....aW	7-6
4/24	*Centenary.....aW	5-1
4/24	*Centenary.....aL	2-3
4/28	(5)Florida Atlantic.....hL	1-2
4/28	(5)Centenary.....hW	5-3
4/29	(5)Campbell.....hL	1-2

\* Conference game

1-Seminole Invitational (Tallahassee, Fla.)

2-Pony Invitational (Fullerton, Calif.)

3-Georgia Tech Buzz Classic (Atlanta, Ga.)

4-Frost Cutlery Classic (Chattanooga, Tenn.)

5-TAAC Tournament (Atlanta, Ga.)

### 1996 (20-24, 8-8 TAAC)

Head Coach: Robert Heck

2/22	Mercer.....hW	7-6
2/22	Mercer.....hW	3-0
2/24	Columbus College.....hW	6-2
2/24	Columbus College.....hL	4-7
2/25	South Carolina.....hL	0-6
2/25	South Carolina.....hL	4-10
3/2	*Samford.....hW	3-0
3/2	*Samford.....hW	7-2
3/3	Troy State.....hL	3-4
3/3	Middle Tenn. State.....hW	8-1
3/5	Western Illinois.....hL	1-3
3/5	Western Illinois.....hW	3-0
3/15	(1)Northern Iowa.....(9)nW	3-1
3/15	(1)Illinois-Chicago.....nW	8-2
3/15	(1)Miami-Ohio.....nL	6-8
3/16	(1)Samford.....(8)nL	0-1
3/16	(1)Michigan.....nL	0-3
3/20	(2)No. 5 CSU-Northridge.....nL	0-6
3/21	(2)No. 2 Washington.....nL	1-7
3/22	(2)No. 8 SW Louisiana.....nL	1-8
3/22	(2)No. 1 Arizona.....nL	1-4
3/23	(2)No. 17 Minnesota.....(9)nL	5-6
3/29	(3)Stetson.....nL	6-7
3/29	(3)Tennessee Tech.....nW	8-5
3/30	(3)Evansville.....nW	8-2
4/1	*SE Louisiana.....hW	6-4
4/1	*SE Louisiana.....hL	3-5
4/3	*Centenary.....hL	1-5
4/3	*Centenary.....hW	10-4
4/6	*Jacksonville State.....aW	5-4
4/6	*Jacksonville State.....aL	1-6
4/9	Georgia Tech.....aW	3-2
4/9	Georgia Tech.....aL	1-3
4/11	*Samford.....aW	3-2
4/11	*Samford.....aW	9-0



## ALL-TIME RECORDS

4/13	*SE Louisiana	aL	2-4
4/13	*SE Louisiana	aL	7-8
4/14	*Centenary	aL	0-1
4/14	*Centenary	aW	3-2
4/15	*Jacksonville State	hL	0-1
4/15	*Jacksonville State	hL	6-7
4/19	(4)Illinois-Chicago	hL	3-12
4/23	Furman	aW	6-0
4/23	Furman	aW	4-3

\* Conference game

- 1-Seminole Invitational (Tallahassee, Fla.)
- 2-Pony Invitational (Fullerton, Calif.)
- 3-Georgia Tech Buzz Classic (Atlanta, Ga)
- 4-Frost Cutlery Classic (Chattanooga, Tenn.)

### 1997 (22-30, 11-5 TAAC)

Head Coach: Robert Heck

2/21	at Mercer	aW	2-0
2/23	*SE Louisiana	hL	0-4
2/23	*SE Louisiana	hW	3-2
3/2	Georgia	hL	1-4
3/3	*Jacksonville State	hL	1-3
3/3	*Jacksonville State	hL	3-5
3/6	at *Jacksonville State	aW	5-2
3/6	at *Jacksonville State	aW	4-2
3/8	(1)Louisiana State	hL	0-5
3/8	(1)Mercer	hL	1-5
3/9	(1)Bradley	hW	1-0
3/9	(1)Alabama	hL	2-4
3/9	(1)Troy State	hL	3-4
3/11	Samford	hW	11-1
3/11	Samford	hW	9-1
3/14	(2)Iowa State	nL	0-4
3/14	(2)Miami-Ohio	nL	1-2
3/14	(2)Florida Atlantic	nW	5-4
3/15	(2)Michigan	nL	3-11
3/15	(2)Southern Illinois	nW	1-0
3/20	(3)Cal State-Fullerton	aL	1-16
3/20	(3)Washington	nL	0-5
3/21	(3)SW Louisiana	nL	0-8
3/22	(3)Fresno State	nL	0-12
3/22	(3)Utah State	nL	3-9
3/25	Minnesota	hL	1-5
3/25	Minnesota	hW	4-2
3/27	Centenary	hW	12-11
3/27	Centenary	hW	10-0
3/28	(4)N. Carolina A&T	nW	9-2
3/28	(4)Alabama	nL	2-11
3/29	(4)Utah	nL	0-8
3/29	(4)Wichita State	nL	1-7
4/2	Limestone	hL	0-4
4/2	Limestone	hW	6-4
4/5	Georgia Tech	hW	4-3
4/5	Georgia Tech	hL	3-6
4/10	at *Samford	aW	5-1
4/10	at *Samford	aW	7-0
4/13	at *SE Louisiana	aW	4-0
4/13	at *SE Louisiana	aL	1-8
4/14	at *Centenary	aW	10-3
4/14	at *Centenary	aL	2-3
4/18	(5)Marshall	nL	0-4
4/18	(5)Nicholls State	nL	0-10
4/19	(5)Georgia Southern	nW	4-1
4/20	(5)Tennessee Tech	nL	0-7
4/22	Furman	hL	1-4
4/24	(6)Stetson	nW	9-5
4/24	(6)Jacksonville State	aL	1-4
4/24	(6)Mercer	nW	5-4

4/25	(6)Jacksonville State	aL	5-8
------	-----------------------	----	-----

\* Conference game

- 1-Georgia State Round Robin (Atlanta, Ga.)
- 2-Seminole Invitational (Tallahassee, Fla.)
- 3-Pony Invitational (Fullerton, Calif.)
- 4-Georgia Tech Buzz Classic (Marietta, Ga)
- 5-Frost Cutlery Classic (Chattanooga, Tenn.)
- 6-TAAC Tournament (Jacksonville, Ala.)

### 1998 (28-23 13-3 TAAC)

Head Coach: Robert Heck

2/21	at South Carolina	aL	0-5
2/21	at South Carolina	aW	4-3
2/25	Limestone	hW	3-1
2/25	Limestone	hW	5-4
2/28	Tennessee Tech	hL	6-8
2/28	St. Louis	hW	8-1
2/28	Mississippi	hL	2-3
3/1	Virginia Tech	hL	1-7
3/3	*Jacksonville State	hW	8-7
3/3	*Jacksonville State	hW	8-0
3/6	*Troy State	hW	3-1
3/6	*Troy State	hL	3-10
3/10	at Georgia Tech	aL	1-2
3/13	(1)Purdue	nW	4-1
3/13	(1)Belmont	nW	12-2
3/13	(1)Mississippi	nL	1-2
3/13	(1)Marshall	nL	3-5
3/13	(1)Hofstra	nL	2-10
3/18	(2)CS-Northridge	nL	0-9
3/19	(2)Nevada Las Vegas	nW	6-4
3/20	(2)Texas	nL	0-8
3/21	(2)Fresno State	nL	0-9
3/21	(2)Southwest Texas	nL	0-6
3/26	Wright State	hW	5-1
3/27	(3)Indiana State	nW	3-1
3/27	(3)Florida State	nL	0-8
3/28	(3)Utah	nL	0-6
3/28	(3)Wright State	nW	5-1
3/28	(3)Nicholls State	nL	0-5
3/30	*Samford	hW	3-2
3/30	*Samford	hW	6-3
4/4	at *Troy State	aL	0-7
4/4	at *Troy State	aL	4-7
4/8	at *Jacksonville State	aW	7-5
4/9	at *Jacksonville State	aW	9-5
4/10	at *Samford	aW	3-0
4/10	at *Samford	aW	6-3
4/12	at *Centenary	aW	1-0
4/12	at *Centenary	aW	5-2
4/16	*Centenary	hW	4-3
4/16	*Centenary	hW	5-3
4/21	at Furman	aW	3-1
4/21	at Furman	aL	1-2
4/26	Belmont	hW	8-0
4/26	Belmont	hL	1-0
4/28	at Georgia Tech	aL	3-6
4/30	(4)Stetson	nL	1-2
4/30	(4)Jacksonville State	nW	3-2
5/1	(4)Stetson	nW	3-1
5/1	(4)Florida International	nW	3-0
5/2	(4)Florida Atlantic	aL	2-3

\* Conference game

- 1-Seminole Invitational (Tallahassee, Fla.)
- 2-Pony Invitational (Fullerton, Calif.)
- 3-Georgia Tech Buzz Classic (Marietta, Ga)
- 4-TAAC Tournament (Boca Raton, FL)

### 1999 (34-26, 12-10 TAAC)

Head Coach: Phyllis Guedry

2/16	at Auburn	aW	8-0
2/16	at Auburn	aL	0-8
2/20	at South Carolina	aW	2-0
2/20	at South Carolina	aL	0-8
2/25	at Kennesaw State	aL	0-2
2/25	at Kennesaw State	aL	0-5
2/27	(1)Indiana State	hW	4-0
2/27	(1)Ohio State	hL	1-3
2/27	(1)Tennessee Tech	hW	2-1
2/28	(1)Kentucky	hW	6-2
3/2	Furman	hW	7-5
3/2	Furman	hW	5-3
3/5	*Troy State	hW	1-0
3/5	*Troy State	hL	1-8
3/7	(2)Pittsburgh	hW	3-1
3/7	(2)Loyola Chicago	hW	4-0
3/7	(2)Virginia Tech	hL	0-3
3/9	at *Jacksonville State	aW	9-2
3/9	at *Jacksonville State	aL	9-10
3/12	(3)Northern Iowa	nL	2-4
3/12	(3)Penn State	nL	3-4
3/13	(3)Princeton	nW	3-0
3/13	(3)Virginia Tech	nL	0-4
3/14	(3)Iowa State	nW	5-2
3/19	(4)Mercer	nW	5-4
3/19	(4)UNC-Wilmington	nL	2-3
3/19	(4)UT-Chattanooga	nL	1-4
3/20	(4)Fordham	nW	8-0
3/23	Limestone	hW	7-0
3/23	Limestone	hW	5-3
3/25	UNC-Charlotte	hW	5-4
3/26	(5)Florida Atlantic	nL	4-5
3/26	(5)Illinois-Chicago	nW	5-4
3/27	(5)Kent State	nW	6-1
3/27	(5)East Carolina	nL	3-4
3/28	(5)Northeast Louisiana	nW	6-0
3/28	(5)Southern Miss	nL	0-4
3/30	Auburn	hW	2-1
3/30	Auburn	hW	7-6
4/1	at *Troy State	aL	2-10
4/1	at *Troy State	aL	2-3
4/4	Centenary	hW	8-0
4/4	Centenary	hW	9-3
4/6	*Jacksonville State	hW	3-2
4/6	*Jacksonville State	hL	3-5
4/11	at Centenary	aL	1-2
4/11	at Centenary	aW	13-2
4/14	at *Mercer	aW	8-1
4/14	at *Mercer	aW	11-6
4/18	at *Samford	aL	0-1
4/18	at *Samford	aL	1-2
4/20	at Tennessee Tech	aL	1-4
4/20	at Tennessee Tech	aW	3-2
4/22	*Samford	hL	0-1
4/22	*Samford	hW	10-5
4/25	at UT-Chattanooga	aL	4-5
4/25	at UT-Chattanooga	aW	4-3
5/6	(6)Troy State	nL	1-7
5/7	(6)Samford	nW	5-4
5/7	(6)Campbell	nL	2-6

\* Conference game

- 1-Georgia State Tournament (Atlanta, Ga.)
- 2-Georgia State Tournament (Atlanta, Ga.)
- 3-Seminole Invitational (Tallahassee, Fla.)
- 4-Winthrop Invitational (Rock Hill, S.C.)
- 5-Georgia Tech Buzz Classic (Marietta, Ga)
- 6-TAAC Tournament (Dothan, AL)



## ALL-TIME RECORDS

### 2000 (33-29 8-6 TAAC)

Head Coach: Phyllis Guedry

2/19	at South Carolina.....aL	0-6
2/19	at South Carolina.....aL	0-8
2/20	at Georgia Southern.....aW	6-1
2/20	at Georgia Southern.....aL	3-4
2/22	at Georgia.....aW	2-0
2/22	at Georgia.....aW	12-0
2/27	Alabama-Birmingham.....hW	6-5
3/2	*Stetson.....hL	0-1
3/2	*Stetson.....hW	6-0
3/3	(1)Marshall.....hW	1-0
3/3	(1)Furman.....hW	5-4
3/4	(1)Troy State.....hL	2-10
3/4	(1)Butler.....hW	11-3
3/4	(1)St. John's.....hW	5-3
3/5	(1)Marshall.....hL	1-4
3/7	at UT-Chattanooga.....aL	2-3
3/7	at UT-Chattanooga.....aL	0-5
3/10	(2)Southern Illinois.....nL	1-2
3/10	(2)Missouri.....aL	2-5
3/11	(2)Northern Iowa.....nW	15-9
3/11	(2)Missouri.....aL	0-1
3/12	(2)Southern Illinois.....nL	1-2
3/12	(2)Northern Iowa.....nW	9-7
3/14	*Jacksonville State.....hL	0-1
3/14	*Jacksonville State.....hW	5-2
3/17	(3)Massachusetts.....nL	0-2
3/17	(3)Florida A&M.....nL	1-2
3/17	(3)Furman.....nW	8-0
3/18	(3)Iowa State.....nW	4-2
3/18	(3)Bethune-Cookman.....nW	4-3
3/19	(3)Virginia Tech.....nW	4-1
3/21	Connecticut State.....hL	1-4
3/21	Connecticut State.....hL	2-4
3/24	(4)Evansville.....nL	0-1
3/24	(4)Virginia Tech.....nW	4-1
3/25	(4)Connecticut.....nL	0-2
3/25	(4)North Carolina.....nL	2-3
3/28	SW Missouri St. (@GT).....nW	5-1
3/20	at UNC-Charlotte.....aW	4-2
3/20	at UNC-Charlotte.....aW	6-0
4/1	Brown.....hW	8-7
4/1	Brown.....hW	9-1
4/3	at *Mercer.....aW	6-1
4/3	at *Mercer.....aL	1-5
4/7	at *Campbell.....aW	4-3
4/7	at *Campbell.....aW	3-0
4/10	*Samford.....hW	1-0
4/10	*Samford.....hW	4-0
4/12	UT-Chattanooga.....hL	2-3
4/12	UT-Chattanooga.....hL	1-4
4/16	at Alabama-Birmingham.....aW	3-2
4/18	at *Troy State.....aL	0-1
4/18	at *Troy State.....aL	1-9
4/22	at *Florida Atlantic.....aL	0-1
4/22	at *Florida Atlantic.....aW	1-0
4/25	at Georgia Tech.....aW	3-1
4/25	at Georgia Tech.....aW	2-0
4/26	at Furman.....aL	0-1
4/26	at Furman.....aW	1-0
4/4	(5)Troy State.....nW	1-0
4/4	(5)Stetson.....nL	0-1
4/5	(5)Jacksonville State.....nL	0-2

- 1-Georgia State Tournament (Atlanta, Ga.)
- 2-Missouri Tournament (Columbia, Mo.)
- 3-Seminole Invitational (Tallahassee, Fla.)
- 4-Georgia Tech Buzz Classic (Marietta, Ga.)
- 5-TAAC Tournament (Boca Raton, Fla.)

### 2001 (33-25, 8-6 TAAC)

Head Coach: Phyllis Guedry

2/13	Georgia Southern.....hW	4-3
2/13	Georgia Southern.....hW	5-3
2/17	(1)Nicholls State.....hW	5-3
2/17	(1)Austin Peay.....hW	15-0
2/17	(1)Mercer.....hW	6-3
2/18	(1)Appalachian State.....hW	5-3
2/18	(1)Nicholls State.....hW	8-0
2/21	Georgia Tech.....hL	0-9
2/21	Georgia Tech.....hL	1-3
2/23	(2)Pittsburgh.....nW	3-2
2/23	(2)South Florida.....(9) aL	1-2
2/24	(2)Florida International.....nL	1-3
2/24	(2)Indiana.....nW	9-3
2/25	(2)Hofstra.....nL	2-5
3/2	(3)Georgia Tech.....hL	7-10
3/2	(3)Eastern Michigan.....hW	9-1
3/6	*Campbell.....hW	7-5
3/6	*Campbell.....(8) hL	1-5
3/9	(4)St. John's.....hW	5-4
3/9	(4)Wichita State.....hW	8-1
3/10	(4)College of Charleston.....hW	6-2
3/10	(4)Mercer.....hW	7-1
3/10	(4)St. John's.....hW	3-0
3/11	(4)Saint Louis.....hW	3-0
3/14	at *Jacksonville State.....aL	1-3
3/14	at *Jacksonville State.....aW	4-0
3/16	(5)Connecticut.....nW	3-0
3/16	(5)Utah.....nL	0-2
3/17	(5)Florida A&M.....nW	3-0
3/17	(5)Bethune-Cookman.....(10) nL	1-2
3/22	Arkansas.....hL	0-7
3/22	Arkansas.....(8) hW	3-2
3/23	(6)Florida A&M.....nW	2-1
3/23	(6)Illinois.....nL	1-3
3/24	(6)Middle Tenn. State.....nL	0-2
3/24	(6)East Carolina.....nW	2-0
3/24	(6)Middle Tenn. State.....nW	7-1
3/25	(6)California.....nL	1-4
3/27	at UAB.....aW	3-0
3/27	at UAB.....aW	3-1
4/1	Florida State.....hL	1-9
4/1	Florida State.....hL	0-10
4/5	Furman.....hL	0-6
4/5	Furman.....hL	3-6
4/7	*Troy State.....hW	8-0
4/7	*Troy State.....hL	0-5
4/9	at *Samford.....aL	6-7
4/9	at *Samford.....(8) aW	1-0
4/10	*Mercer.....hW	8-3
4/10	*Mercer.....hW	3-1
4/13	at *Stetson.....(8) aL	1-2
4/13	at *Stetson.....aW	7-2
4/18	*Florida Atlantic.....hW	6-4
4/18	*Florida Atlantic.....hL	0-7
4/24	Kennesaw State.....hL	10-15
5/3	(7)Stetson.....W	5-2
5/3	(7)Samford.....L	4-6
5/4	(7)Troy State.....L	4-6

- 1-Georgia State Kick-Off Classic (Atlanta, Ga.)
- 2-South Florida Tournament (Tampa, Fla.)
- 3-Georgia State Invitational (Atlanta, Ga.)
- 4-Georgia State Spring Classic (Marietta, Ga.)
- 5-Seminole Invitational (Tallahassee, Fla.)
- 6-Georgia Tech Buzz Classic (Marietta, Ga.)
- 7-TAAC Tournament (Boca Raton, Fla.)

### 2002 (38-27, 10-8 A-Sun)

Head Coach: Robert Heck

2/14	UAB.....hL	4-6
2/14	UAB.....hL	1-3
2/15	(1)Charleston Southern.....hW	6-1
2/15	(1)Gardner-Webb.....hW	2-1
2/15	(1)UCF.....hL	2-5
2/16	(1)Western Kentucky.....hL	0-1
2/16	(1)Wright State.....hW	3-1
2/20	at Georgia Tech.....aL	3-5
2/20	at Georgia Tech.....aL	2-5
2/23	(2)Boston College.....W	6-5
2/23	(2)Tennessee.....(8) hL	3-4
2/23	(2)Ball State.....hW	3-2
2/24	(2)Iowa.....hL	0-4
2/24	(2)Drexel.....hW	7-3
2/27	at Georgia Southern.....aW	8-7
2/27	at Georgia Southern.....aW	7-6
3/1	(3)Birmingham-Southern.....hW	3-0
3/3	(3)Georgia.....hL	6-8
3/5	at *UCF.....aL	1-2
3/5	at *UCF.....aL	0-1
3/7	(4)Michigan State.....(8) nW	1-0
3/7	(4)Florida International.....nW	3-0
3/8	(4)Maryland.....(10) nW	4-3
3/8	(4)Houston.....nL	3-13
3/9	(4)BYU.....nL	3-4
3/10	(4)North Carolina.....nW	3-1
3/10	(4)Virginia Tech.....nL	0-4
3/14	Ball State.....hW	2-0
3/18	Princeton.....hL	4-5
3/18	Princeton.....hW	1-0
3/22	(5)Western Kentucky.....(8) nW	1-0
3/22	(5)Maryland.....nW	4-3
3/23	(5)Elon.....nW	2-1
3/23	(5)North Carolina.....nL	1-5
3/23	(5)Belmont.....nW	8-4
3/24	(5)Ohio State.....nL	1-3
3/29	Virginia.....hW	9-3
3/29	Virginia.....(9) hL	2-3
4/2	at Birmingham Southern.....aW	5-2
4/2	at Birmingham Southern.....(8) aW	3-1
4/5	*Stetson.....hW	2-0
4/5	*Stetson.....hL	2-3
4/7	*Belmont.....hW	10-4
4/7	*Belmont.....hW	8-2
4/10	at *Troy State.....aL	4-6
4/10	at *Troy State.....aL	1-3
4/12	at *Campbell.....(10) aL	1-2
4/12	at *Campbell.....aW	3-2
4/14	at Elon.....aW	3-1
4/16	*Jacksonville State.....hL	2-3
4/16	*Jacksonville State.....hW	4-3
4/19	at *Florida Atlantic.....aW	2-0
4/19	at *Florida Atlantic.....aL	0-6
4/22	*Samford.....hW	3-2
4/22	*Samford.....hW	6-5
4/24	at Furman.....aW	3-0
4/24	at Furman.....aL	2-3
4/27	at *Mercer.....aW	1-0
4/27	at *Mercer.....aW	2-1
5/9	(6)Troy State.....aW	3-0
5/9	(6)UCF.....nW	6-5
5/10	(6)Florida Atlantic.....nL	0-2
5/10	(6)UCF.....nW	4-2
5/11	(6)Florida Atlantic.....nW	3-2
5/11	(6)Florida Atlantic.....nL	0-4



## ALL-TIME RECORDS

- 1-Georgia State Kick-Off Classic (Atlanta, Ga.)
- 2-Georgia State Spring Classic (Marietta, Ga.)
- 3-Georgia State Invitational (Atlanta, Ga.)
- 4-USF Speedline Tournament (Plant City, Fla.)
- 5-Georgia Tech Buzz Classic (Marietta, Ga.)
- 6-Atlantic Sun Tournament (Troy, Ala.)

### 2003 (22-33, 11-11 A-Sun)

Head Coach: Robert Heck

2/15	(1)Tennessee Tech.....	hL	1-2
2/15	(1)Wright State.....	hW	4-2
2/19	at UAB.....	aL	1-2
2/19	at UAB.....	aL	0-3
2/22	(2)Wagner.....	hL	4-6
2/22	(2)Iowa.....	hL	0-4
2/23	(2)Marshall.....	hL	2-6
2/23	(2)Iowa.....	hL	1-4
2/25	Georgia Southern.....	hW	3-2
2/25	Georgia Southern.....	hW	4-2
3/1	(3)Bradley.....	hW	5-1
3/1	(3)Manhattan.....	hL	3-4
3/2	(3)Georgia Tech.....	hW	3-2
3/2	(3)Georgia Tech.....	hL	2-11
3/5	at *Jacksonville.....	aW	2-0
3/5	at *Jacksonville.....	aL	0-1
3/7	(4)Texas A&M.....	nL	0-5
3/8	(4)Iowa.....	nL	1-9
3/8	(4)Florida A&M.....	nL	6-8
3/12	Georgia Tech.....	hL	1-5
3/12	Georgia Tech.....	hL	3-7
3/14	(5)Texas Tech.....	nL	0-10
3/14	(5)North Carolina.....	nL	3-10
3/15	(5)St. Bonaventure.....	nW	5-2
3/15	(5)Virginia Tech.....	aW	3-2
3/21	*Campbell.....	hW	2-0
3/21	*Campbell.....	hW	2-0
3/22	(6)Nicholls State.....	nL	0-4
3/22	(6)Boston.....	nW	6-0
3/22	(6)Middle Tennessee.....	nW	5-3
3/23	(6)Florida State.....	nL	3-4
3/25	Harvard.....	hW	6-0
3/25	Harvard.....	hL	2-4
3/27	at Georgia.....	aL	0-16
3/27	at Georgia.....	aL	1-5
3/29	*UCF.....	hL	0-3
3/29	*UCF.....	hL	1-9
4/3	at *Jacksonville State.....	aL	1-2
4/3	at *Jacksonville State.....	aW	2-0
4/7	at *Belmont.....	aW	3-0
4/7	at *Belmont.....	aW	3-1
4/9	*Troy State.....	hL	1-6
4/11	*Gardner-Webb.....	hW	7-0
4/11	*Gardner-Webb.....	hW	5-1
4/13	*Florida Atlantic.....	hW	2-1
4/13	*Florida Atlantic.....	hL	2-6
4/16	*Mercer.....	hW	5-4
4/16	*Mercer.....	hL	0-1
4/22	at *Samford.....	aL	0-2
4/22	at *Samford.....	aW	4-2
4/24	*Troy State.....	hL	0-2
4/26	at *Stetson.....	aL	0-2
4/26	at *Stetson.....	aL	0-2
4/30	Furman.....	hW	5-0
4/30	Furman.....	hL	1-6

- 1-Georgia State Invitational (Atlanta, Ga.)
- 2-Georgia State Invitational (Atlanta, Ga.)
- 3-Georgia State Classic (Atlanta, Ga.)
- 4-Seminole Invitational (Tallahassee, Fla.)
- 5-Virginia Tech Hokie Classic (Blacksburg, Va.)
- 6-Georgia Tech Buzz Classic (Marietta, Ga.)

### 2004 (18-33, 6-14 A-Sun)

Head Coach: Robert Heck

2/21	(1)Georgia Tech.....	hL	0-6
2/21	(1)Tennessee State.....	hW	9-0
2/22	(1)Eastern Kentucky.....	hW	5-1
2/22	(1)Georgia Tech.....	hL	0-8
2/28	(2)Wright State.....	hL	0-2
2/28	(2)Drexel.....	hL	0-1
2/29	(2)Evansville.....	hL	1-8
2/29	(2)Drexel.....	hW	3-1
3/7	St. Joseph's.....	hW	1-0
3/7	St. Joseph's.....	hW	6-1
3/8	Western Illinois.....	hL	2-3
3/8	Western Illinois.....	hW	8-3
3/12	(3)Maryland.....	nL	1-4
3/12	(3)Michigan.....	nL	1-12
3/13	(3)Notre Dame.....	nL	2-3
3/13	(3)Troy State.....	nL	5-6
3/13	(3)Central Michigan.....	nL	2-4
3/14	(3)Saint Louis.....	nW	5-4
3/17	Iowa State.....	hL	0-1
3/18	Ball State.....	hL	1-5
3/19	(4)Eastern Illinois.....	W	1-0
3/19	(4)Tulsa.....	W	2-1
3/20	(4)NC State.....	L	1-2
3/20	(4)Bowling Green.....	L	0-12
3/24	Ohio.....	hW	4-3
3/26	*Jacksonville.....	hL	0-3
3/26	*Jacksonville.....	hW	2-1
3/27	*Campbell.....	hW	2-1
3/27	*Campbell.....	hL	0-3
3/31	at Georgia Southern.....	aL	0-8
3/31	at Georgia Southern.....	aW	4-3
4/3	*Stetson.....	hL	0-1
4/3	*Stetson.....	hL	2-7
4/7	at Georgia Tech.....	aL	0-3
4/7	at Georgia Tech.....	aL	0-8
4/9	at *Troy State.....	aL	0-1
4/9	at *Troy State.....	aL	0-1
4/17	at *UCF.....	aL	1-4
4/17	at *UCF.....	aL	0-2
4/18	at *Florida Atlantic.....	aL	0-8
4/18	at *Florida Atlantic.....	aL	2-3
4/21	*Mercer.....	hL	1-2
4/21	*Mercer.....	hL	1-3
4/23	at *Gardner-Webb.....	aL	0-1
4/23	at *Gardner-Webb.....	aW	9-1
4/26	at *Lipscomb.....	L	1-4
4/26	at *Lipscomb.....	W	2-0
4/28	at Furman.....	L	3-4
4/28	at Furman.....	W	10-2
5/1	at *Belmont.....	W	4-3
5/1	at *Belmont.....	W	6-0

- 1-Panther Invitational (Atlanta, Ga.)
- 2-Georgia State Spring Showdown (Atlanta, Ga.)
- 3-Seminole Invitational (Tallahassee, Fla.)
- 4-Georgia Tech Buzz Classic (Marietta, Ga.)

### 2005 (19-35, 8-12 A-Sun)

Head Coach: Robert Heck

2/12	(1)Tennessee Tech.....	hW	3-2
2/12	(1)Charleston Southern.....	hW	6-2
2/13	(1)East Carolina.....	hL	2-5
2/13	(1)East Carolina.....	hL	0-1
2/19	(2)Eastern Kentucky.....	hW	3-1
2/19	(2)Evansville.....	hL	0-6
2/19	(2)No. 19 Georgia Tech.....	hL	1-3

2/20	(2)Eastern Kentucky.....	hL	0-7
2/23	Georgia Southern.....	hW	1-0
2/23	Georgia Southern.....	hL	4-5
2/26	(3)Wright State.....	hL	1-2
2/26	(3)Tennessee-Martin.....	hL	0-2
2/27	(3)Drexel.....	hW	4-2
3/1	Jacksonville State.....	aL	0-8
3/2	St. Francis (Pa.).....	hW	10-1
3/4	(4)East Tennessee St.....	nW	8-0
3/4	(4)UNC-Wilmington.....	nW	4-3
3/5	(4)Villanova.....	nL	0-6
3/5	(4)SUNY-Stonybrook.....	nW	2-0
3/5	(4)Furman.....	nL	4-6
3/7	Boston.....	hL	2-7
3/9	Oakland (at Ga.Tech).....	nL	0-2
3/11	(5)Maryland.....	nL	2-3
3/11	(5)Florida A&M.....	nL	2-4
3/12	(5)Troy.....	nL	0-8
3/12	(5)Southern Illinois.....	nL	2-3
3/13	(5)Eastern Kentucky.....	nL	1-2
3/18	UAB.....	hL	4-7
3/18	UAB.....	hL	2-5
3/20	Furman.....	hW	3-2
3/20	Furman.....	hW	6-3
3/29	No. 25 Auburn.....	aL	2-4
3/31	*Campbell.....	aL	0-2
3/31	*Campbell.....	aW	3-2
4/2	*Gardner-Webb.....	aW	4-2
4/2	*Gardner-Webb.....	aW	4-3
4/5	*Troy.....	hL	0-2
4/5	*Troy.....	hL	1-7
4/8	*Stetson.....	aL	1-5
4/8	*Stetson.....	aL	0-2
4/10	*Jacksonville.....	aW	7-1
4/10	*Jacksonville.....	aL	0-1
4/12	*Mercer.....	aL	2-3
4/12	*Mercer.....	aL	1-2
4/15	*UCF.....	hL	0-4
4/15	*UCF.....	hW	6-2
4/17	*Florida Atlantic.....	hW	1-0
4/17	*Florida Atlantic.....	hL	0-2
4/20	No. 18 Georgia Tech.....	hL	0-7
4/23	*Lipscomb.....	hL	0-1
4/23	*Lipscomb.....	hW	1-0
4/24	*Belmont.....	hW	5-4
4/24	*Belmont.....	hL	7-8
4/27	No. 11 Georgia.....	hL	0-6

- 1-Georgia State First Pitch Classic (Atlanta, Ga.)
- 2-Panther Invitational (Atlanta, Ga.)
- 3-Georgia State Spring Classic (Atlanta, Ga.)
- 4-Charleston Southern Tournament (Charleston, S.C.)
- 5-Florida State Invitational (Tallahassee, Fla.)

### 2006 (29-28, 12-6 CAA/1st)

CAA Regular Season Champions

Head Coach: Robert Heck

2/11	(1)Western Carolina.....	hW	3-1
2/11	(1)Mercer.....	hL	0-4
2/14	Auburn.....	hL	2-3
2/18	(2)Eastern Kentucky.....	hW	8-4
2/18	(2)Georgia Tech.....	hL	4-12
2/19	(2)Kennesaw State.....	hW	9-1
2/19	(2)Georgia Tech.....	hL	4-9
2/22	Georgia Southern.....	aL	2-3
2/22	Georgia Southern.....	aL	2-5
2/26	(3)Tennessee State.....	hW	9-1
3/1	Jacksonville State.....	hL	2-3
3/3	(4)UTEP.....	nL	3-7



## ALL-TIME RECORDS

3/3	(4)Wisconsin.....nL	5-7	2/28	Kennesaw.....aL	0-6	2/23	(2)Dayton.....hW	8-2
3/4	(4)Florida A&M.....nW	4-2	3/02	(4)Florida A&M.....nW	6-1	2/23	(2)Tennessee State.....hL	0-3
3/4	(4)Radford.....nW	1-0	3/02	(4)ETSU.....nW	11-1	2/24	(2)Dayton.....hW	8-2
3/4	(4)Syracuse.....nL	5-7	3/03	(4)Wisconsin.....(8)nL	4-5	2/24	(2)Tennessee State.....hW	3-1
3/10	(5)Bradley.....nL	0-2	3/03	(4)Morehead State.....nL	3-4	3/01	(3)Evansville.....hW	3-2
3/10	(5)Utah.....nL	0-2	3/04	(4)Furman.....nW	3-2	3/01	(3)Western Carolina.....hW	16-0
3/11	(5)North Florida.....nL	1-3	3/04	(4)Centenary.....nL	4-10	3/02	(3)Kennesaw State.....hW	2-0
3/11	(5)Florida State.....aL	2-5	3/06	Mercer.....W	5-3	3/02	(3)Kennesaw State.....hL	3-7
3/12	(5)Appalachian State.....nL	3-5	3/06	Mercer.....W	9-0	3/03	NC State.....hL	1-2
3/22	No. 11 Georgia.....aL	1-4	3/09	(5)Appalachian St.....nW	6-1	3/05	Toledo.....hW	9-4
3/22	No. 11 Georgia.....aL	1-9	3/09	(5)Florida St.....aL	2-6	3/05	Toledo.....hW	6-2
3/26	*Drexel.....hW	5-4	3/10	(5)Maine.....nL	3-5	3/08	(4)Connecticut.....nW	3-2
3/26	*Drexel.....(5)hW	10-1	3/10	(5)Syracuse.....nW	5-2	3/08	(4)Appalachian State.....nW	7-1
3/27	*Drexel.....(6)hW	8-0	3/10	(5)Georgia.....nL	0-9	3/09	(4)Florida State.....aL	0-1
3/29	Furman.....(5)aL	2-10	3/11	(5)Western Carolina.....nW	5-4	3/09	(4)Florida State.....aL	0-3
3/29	Furman.....aW	4-1	3/11	(5)Maine.....nW	4-3	3/11	Mercer.....hL	5-6
4/1	*Delaware.....aW	4-1	3/14	Birmingham Southern.....aL	2-5	3/11	Mercer.....hW	12-4
4/1	*Delaware.....aL	1-3	3/21	Furman.....hW	4-1	3/21	*Delaware.....aW	7-0
4/2	*Delaware.....aW	3-2	3/21	Furman.....hL	2-6	3/21	*Delaware.....aW	8-6
4/4	Troy.....hW	5-3	3/24	*George Mason.....aW	5-3	3/22	*Delaware.....aW	10-5
4/4	Troy.....hL	4-8	3/24	*George Mason.....aW	2-1	3/24	Harvard.....hW	10-2
4/6	UAB.....aW	8-4	3/25	*George Mason.....aW	11-5	3/24	Harvard.....hW	6-5
4/6	UAB.....aL	0-1	3/28	Jacksonville State.....aL	0-2	3/29	*James Madison.....hL	0-4
4/8	*James Madison.....hW	5-4	3/31	*James Madison.....aL	1-2	3/30	*James Madison.....hW	8-7
4/8	*James Madison.....hW	7-5	3/31	*James Madison.....aW	4-0	3/30	*James Madison.....hL	0-14
4/9	*James Madison.....hW	7-2	4/01	*James Madison.....aL	0-2	4/05	*George Mason.....aW	14-0
4/11	Mercer.....aW	3-1	4/03	Troy.....hL	3-8	4/05	*George Mason.....aW	8-0
4/11	Mercer.....aW	9-4	4/03	Troy.....hW	6-0	4/09	Auburn.....hL	0-1
4/15	*Hofstra.....aL	2-3	4/06	*Hofstra.....hL	5-10	4/09	Auburn.....hL	0-3
4/15	*Hofstra.....(8)aL	5-6	4/06	*Hofstra.....hW	10-5	4/12	*Hofstra.....hW	1-0
4/16	*Hofstra.....(8)aW	3-2	4/07	*Hofstra.....hL	2-10	4/12	*Hofstra.....hL	2-5
4/22	*UNC-Wilmington.....aL	0-3	4/14	*Drexel.....aL	5-6	4/13	*Hofstra.....hL	2-15
4/22	*UNC-Wilmington.....aL	0-1	4/14	*Drexel.....aL	2-3	4/16	Furman.....aL	0-3
4/23	*UNC-Wilmington.....aW	7-4	4/18	Western Carolina.....(8)aL	4-5	4/16	Furman.....aW	2-1
4/29	*Towson.....hW	5-0	4/18	Western Carolina.....aW	12-4	4/19	*Towson.....hW	2-1
4/29	*Towson.....hL	0-1	4/21	*UNC-Wilmington.....hL	2-8	4/19	*Towson.....hL	4-7
4/30	*Towson.....hW	3-1	4/21	*UNC-Wilmington.....hW	3-0	4/20	*Towson.....hW	5-1
5/6	*George Mason.....(5)hW	9-0	4/22	*UNC-Wilmington.....hW	8-2	4/23	Georgia Tech.....aL	1-9
5/6	*George Mason.....hW	6-2	4/25	Georgia Tech.....hL	2-6	4/23	Georgia Tech.....aL	1-4
5/7	*George Mason.....(6)hW	12-4	4/25	Georgia Tech.....hL	1-4	4/26	*UNC Wilmington.....aW	5-0
5/11	(6)Delaware.....hW	6-5	4/28	*Towson.....aW	6-0	4/26	*UNC Wilmington.....aW	4-0
5/12	(6)Hofstra.....hL	3-5	4/28	*Towson.....aW	10-6	4/27	*UNC Wilmington.....aW	2-1
5/12	(6)UNC-Wilmington.....hL	13-5	4/29	*Towson.....aL	3-4	5/03	*Drexel.....hW	5-4
5/13	(6)Hofstra.....hW	4-3	5/05	*Delaware.....(10)hW	3-2	5/03	*Drexel.....hW	8-5
5/13	(6)Hofstra.....hL	3-7	5/05	*Delaware.....hW	4-3	5/04	*Drexel.....hW	5-3
			5/06	*Delaware.....(8)hL	0-1	5/08	(5)James Madison.....nL	1-2
			5/10	(6)James Madison.....nW	1-0	5/10	(5)Towson.....nL	4-5
			5/11	(6)Hofstra.....aL	0-1			
			5/11	(6)James Madison.....nW	2-1			
			5/12	(6)Hofstra.....aL	1-3			

\* CAA game

- 1-Georgia State First Pitch Classic (Atlanta, Ga.)
- 2-Panther Invitational (Atlanta, Ga.)
- 3-Georgia State Spring Classic (Atlanta, Ga.)
- 4-Georgia Tech Buzz Classic (Marietta, Ga.)
- 5-FSU Invitational (Tallahassee, Fla.)
- 6-CAA Championship (Atlanta, GA)

### 2007 (34-30, 11-9 CAA)

Head Coach: Robert Heck

2/10	(1)Tennessee Tech.....hL	2-4
2/10	(1)UAB.....hW	10-2
2/11	(1)Virginia Tech.....hL	2-6
2/11	(1)Ala. Birmingham.....hL	6-18
2/14	Auburn.....aL	0-8
2/17	(2)Army.....hW	12-0
2/17	(2)Furman.....hW	7-1
2/18	(2)Mercer.....hW	11-1
2/18	(2)Furman.....hW	9-7
2/20	Georgia Southern.....hW	4-2
2/20	Georgia Southern.....hW	5-4
2/24	(3)Jackson State.....hW	15-1
2/24	(3)Nicholls State.....hW	8-2
2/28	Kennesaw.....aL	0-2

### 2008 (37-18, 15-5 CAA)

Head Coach: Robert Heck

2/09	(1)UT Martin.....hW	4-3
2/09	(1)Georgia Tech.....hW	11-3
2/10	(1)Lipscomb.....hW	6-2
2/10	(1)UT Martin.....hW	6-0
2/12	Savannah State.....hW	33-2
2/12	Savannah State.....hW	19-0
2/17	Western Carolina.....hW	21-0
2/17	Western Carolina.....hW	8-0

- 1-Georgia State First Pitch Classic (Atlanta, Ga.)
- 2-Panther Invitational (Atlanta, Ga.)
- 3-Georgia State Spring Showdown (Atlanta, Ga.)
- 4-Florida State Invitational (Tallahassee, Fla.)
- 5-Colonial Athletic Association (Hempstead, N.Y.)



# Georgia State

## University

**F**ounded in 1913, Georgia State University offers educational opportunities at both the graduate and undergraduate levels by blending the best of theoretical and applied inquiry, scholarly and professional pursuits, and scientific and artistic expression. As an urban research university with strong disciplinary-based departments and a wide array of problem-oriented interdisciplinary programs, the goal of the university is to develop, transmit, and utilize knowledge in order to provide access to quality education for diverse groups of students, to educate leaders for the State of Georgia and the nation, and to prepare citizens for lifelong learning in a global society.

Georgia State is one of the nation's leading urban research universities, educating Georgia's most diverse population of students. More than 40,000 students are seeking degrees, with 28,000 on campus each semester. Students arrive from every county in Georgia, every state in the nation and more than 150 countries.

Georgia State has earned the highest Carnegie classification for research institutions with extensive research projects seeking breakthroughs in viral immunology, drug design, microbiology, neuroscience and many other exciting fields.



Nestled in the heart of downtown, Atlanta, Georgia State's location allows students to learn not only in the classroom, but also in the surrounding city, where high-profile companies can provide hands-on experience.

**Georgia State's student body chooses from more than 52 bachelor's, master's, specialist's and doctoral degree programs in 250 fields of study offered through six college-level units:**

**The J. Mack Robinson College of Business:** Prepares students to lead by pursuing ethical, innovative and value-enhancing strategies in a culturally diverse and technologically advanced world. The undergraduate program has been ranked among the nation's top 50 business school programs for six straight years, according to U.S. News & World Report's "America's Best Colleges" guide. Three of the college's departments- Risk Management and Insurance, Computer Information Systems, and Real Estate- also rank among the top 10 in their respective categories, while the college's flex MBA program has been ranked in the top ten in the nation for the past 12 years.

**The Andrew Young School of Policy Studies:** Educates students to analyze, evaluate and design policies addressing economic and social development issues at the local, regional, national and global levels. U.S. News & World Report rankings consistently place the school's public finance and urban management programs among the top ten in the nation.

**The College of Arts and Sciences:**

The largest college at the university, offering undergraduate and graduate majors in the fine arts, humanities, natural computational sciences and social and behavioral sciences.

**The College of Law:**

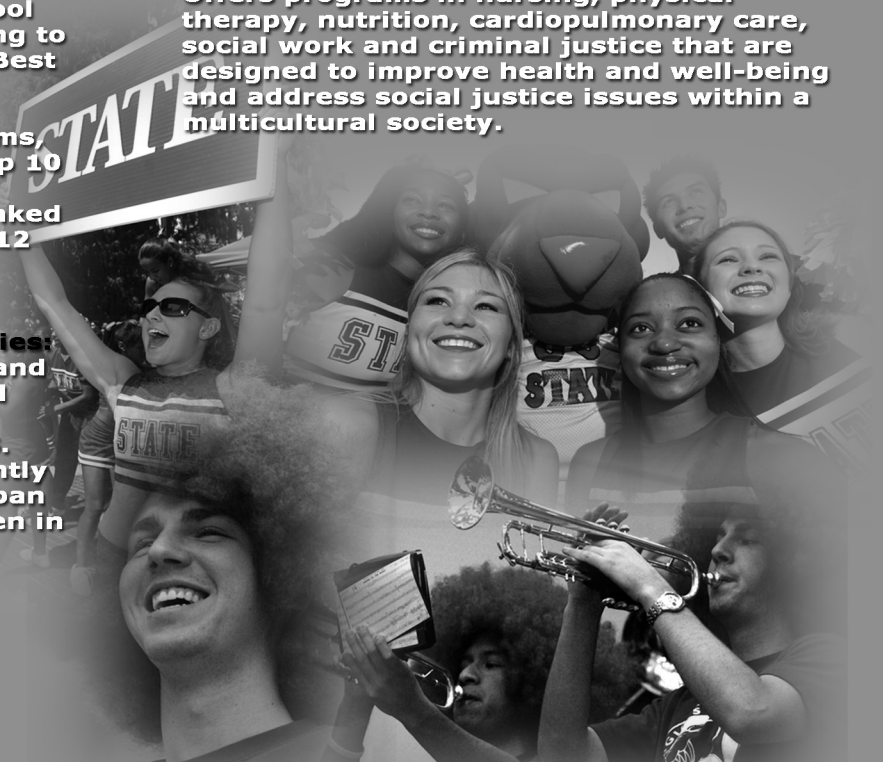
Promotes legal scholarship and service that enriches the legal profession and the community. The college is consistently ranked among the top ten best law schools for the money.

**The College of Education:**

Offers comprehensive programs in all areas of teacher education, counseling and education fields related to sports. Six education alumni have been named Georgia Teacher of the Year.

**The College of Health and Human Services:**

Offers programs in nursing, physical therapy, nutrition, cardiopulmonary care, social work and criminal justice that are designed to improve health and well-being and address social justice issues within a multicultural society.



*This is Georgia State*

# Colonial Athletic Association

The CAA has proven commitment to both athletics and academics, producing five Rhodes Scholars and 21 NCAA post-graduate scholars.



Thomas E. Yeager  
CAA Commissioner

**W**ith more than two decades of success athletically and academically, the Colonial Athletic Association has established a reputation as one of the nation's top collegiate conferences. The CAA encompasses five of the nation's nine largest metropolitan areas with a geographic footprint that stretches from Boston to Atlanta. The conference has produced 16 national team champions in five different sports, 33 individual national champions, 12 national players of the year, 11 national coaches of the year and 12 Honda Award winners. Even more impressive, however, are the honors accumulated away from competition, which include five Rhodes Scholars and 20 NCAA post-graduate scholars. In 2007-08, the CAA had five ESPN the Magazine Academic All-Americans and more than 1,700 of our 4,000 student-athletes received the Commissioner's Academic Award after posting at least a 3.2 grade point average while lettering in a varsity sport.

The landscape of the conference stretches along the majority of the East Coast, and includes six of the nation's top 25 media markets – New York (1), Philadelphia (4), Boston (7), Washington, D.C. (8), Atlanta (9) and Baltimore (24). The CAA currently sponsors 22 sports with the addition of a 12-team football league in 2007. Male athletes compete for championships in baseball, basketball, cross country, football, golf, lacrosse, soccer, swimming & diving, tennis, track & field and wrestling.

Female athletes battle for conference titles in basketball, cross country, field hockey, golf, lacrosse, soccer, softball, swimming & diving, tennis, track & field and volleyball. In 2007-08, 26 teams earned NCAA Tournament berths and 46 student-athletes received All-America honors.

The conference has made its presence known nationally in men's basketball with at least three teams advancing to post-season play for the past five years. The CAA has also had at least three women's basketball teams participate in post-season play for the past three years.

The conference also excels in many other sports. CAA squads have combined to win 10 field hockey national titles since the championship began in 1981. In baseball, the CAA had 23 players chosen in the 2008 Major League draft, which was the second-highest total in league history. Hofstra won its NCAA-record 11th-straight conference title in softball and reached the NCAA regional finals. Individually, the W&M women's tennis duo of Megan Moulton-Levy and Katarina Zoricic reached the quarterfinals of the NCAA Doubles Championship in 2008 to earn All-America status for the second straight season, and Georgia State golfer Joel Sjoholm placed 13th overall at the NCAA Men's Golf Championship.

CAA member institutions are committed to excellence in the classroom. The Colonial Academic Alliance was created in 2002 by the league's presidents with a goal of expanding their partnership to all aspects of university life outside of intercollegiate athletics.

From all-star athletes to Nobel Prize winning faculty, the CAA takes great pride in producing performers who stand out both on the playing field and in the classroom.

DELAWARE

DREXEL

GEORGE MASON

GEORGIA STATE

HOFSTRA

JAMES MADISON



NORTHEASTERN

OLD DOMINION

TOWSON

UNC WILMINGTON

VCU

# ACADEMICS

## Panther Promise

*Georgia State University is committed to providing educational, personal, and community development that will enhance the quality of the student-athlete experience.*

**T**he blueprint for academic and personal success for Georgia State student-athletes is **PANTHER PROMISE**.

Panther Promise was developed in 2005 to assist student-athletes with concerns that are unique to the Division I student-athlete and tailored to fit the unique environment of Georgia State University.

Panther Promise is an extension of the services provided by PASS-Program for Academic Support Services. Through PASS and the Athletic Learning Lab, Georgia State's student-athlete development

staff arranges tutoring in a wide range of courses, offers academic advisement and provides access to computers and a convenient place to study.

Other components of Panther Promise are the NCAA's CHAMPS/Life Skills program and the Panther Den, which offers a variety of services in conjunction with the University's Counseling Center to address the challenges that face the Georgia State student-athlete.

*\*10 Georgia State softball student-athletes, including Tiffany Bess, Lauren Fetters, Madi Gore, Lauren Jones, Catherine Lee, Danielle Roddy, Rebecca Roles, Lily Skelton, Elizabeth Thomas, and Holly Willis received CAA All-Academic Honors in 2008*



*In 2008, outfielder Holly Willis was named the 2008 Colonial Athletic Association Softball Scholar-Athlete of the Year. The CAA honors one Scholar-Athlete in each of its 22 championship sports. Nominees for the award must be a starter or important reserve on their team with a minimum cumulative grade point average of 3.20. The winners were selected by a vote of the sports information directors at each CAA institution.*

*Georgia State student-athletes posted a 2.94 grade point average for the fall 2007 semester and a 2.93 for the spring semester, boosting the cumulative GPA for student-athletes to a new school-record.*

### **ATHLETIC LEARNING LAB**

*Conveniently located in the Sports Arena, the Learning Lab provides student-athletes access to computers, tutors and advisement, as well as a place for individual and group study.*

**CHAMPS/**  
Life Skills is a unique NCAA program of educational opportunities that adds value, knowledge and growth to the lives of Georgia State student-athletes.

# Student Housing

**The Panthers live in Georgia State's outstanding new housing facility, the University Commons as well as The Lofts, which opened in 2002.**



# University Commons



**Opened in 2007, University Commons features two-and-four-bedroom apartment style units. All units come with fully-equipped kitchens and furnished bedrooms and living area spaces. Each individual private bedroom is wired for high speed internet, voice and cable television. Each floor design includes a study/community lounge space, and each building has a fully-equipped laundry facility**

**The Lofts contains 231 apartments, with total occupancy of 435 residents, primarily undergraduate students. The apartments are loft-style with open floor plans, sealed concrete flooring, and exposed ductwork. Complete with a Community Office, laundry room, meeting room, mailboxes, and computer lab, the Lofts blend urban style with modern-day conveniences.**



## The Lofts

**PANTHER**  **SOFTBALL**

# Georgia State Facilities

**G**eorgia State University has several fine athletic facilities that its student-athletes call home. While men's and women's basketball and women's volleyball compete at the Georgia State Sports Arena in downtown Atlanta, most of the Panthers' athletic teams host their competitions at the Georgia State University Panthersville Recreation and Athletics Complex, located about 10 miles from campus in DeKalb County. The complex includes the home facilities for the sports of men's and women's soccer, baseball, softball, and men's and women's cross country.

Most recently, an ambitious long-term development project began on Wednesday, June 28, 2006 with an official ground breaking ceremony for the new Panthersville Athletics Complex. The focus of the project is to bring most of Georgia State's outdoor athletic programs into one full-use facility.

The multi-year project will include two soccer fields and a tennis complex that will have six indoor courts and four outdoor courts and a new locker room facility. Parking lots, walking areas, and lighting will also be added to enhance the newly developed athletic complex.

Men's and Women's tennis programs compete at nearby Piedmont Tennis Center in Piedmont Park. Piedmont Park is a 189 acre stretch of land located in Midtown, north of the city center and just five minutes from Georgia State's campus. The Piedmont Tennis Center boasts 12 lighted hard courts nestled in the backdrop of Atlanta's skyline.



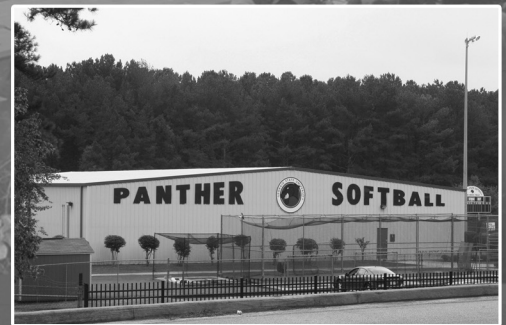


The Georgia State Sports Arena serves as the "Home of the Panthers" for both men's and women's basketball, volleyball and the Athletic Department offices. The Arena is just one block from the State Capitol and Underground Atlanta, as well as just two blocks from Peachtree Street. In 2005, the athletic offices received an uplift to its offices and locker rooms.



Baseball's Reeves Fieldhouse

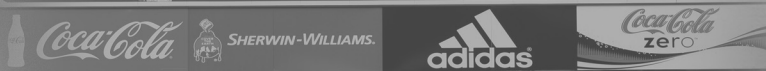
Softball's Robert E. Heck Teamhouse serves as an indoor practice facility complete with batting cages and a weight room

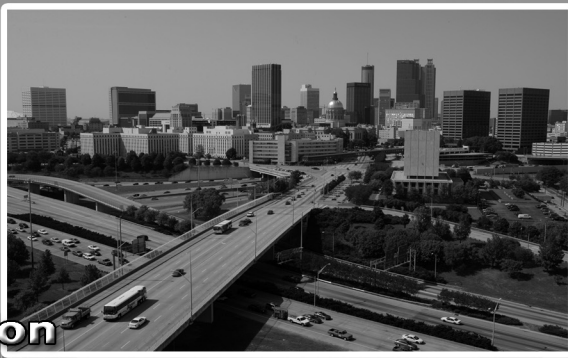


Georgia State Baseball and Softball compete at Panthersville Athletics Complex which has undergone major improvements to make it a premiere sports facility.



Men's and Women's soccer played its first seasons at its new field at Panthersville in 2007, receiving a new scoreboard, stadium seating, lights, and a press box as a part of its renovations and upgrades.





## Location

Metro Atlanta is home to nearly 5 million people and more than 137,000 businesses. Atlanta's vibrant economic growth attracts hundreds of companies annually. The area's low cost of living, high employment and strong, diverse industry base will ensure its continued record setting growth.

## Economic Power

The headquarters of 27 Fortune 1,000 companies are located in Atlanta, including Coca-Cola Company, United Parcel Service, Georgia-Pacific, The Home Depot, Delta Air Lines, SunTrust Banks and Newell Rubbermaid, to name a few.

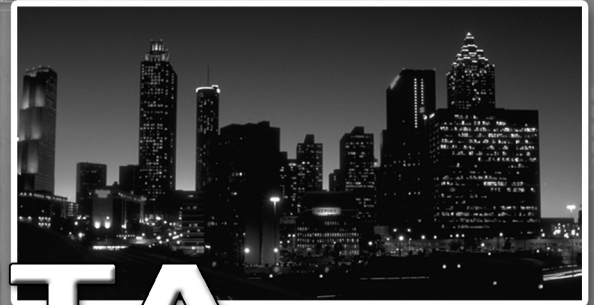
## Getting Around

Atlanta's Hartsfield-Jackson Airport is the world's busiest, with more than 80 percent of U.S. markets reachable within two hours.

## Sports Capital

The Atlanta Hawks, Braves, Falcons & Thrashers play just minutes away from Georgia State's campus.

Atlanta hosts many major sporting events, including the Super Bowl, the NBA All-Star Game and the 1996 Olympic Games.



# ATLANTA

*"Gateway City  
of the  
South"*

