

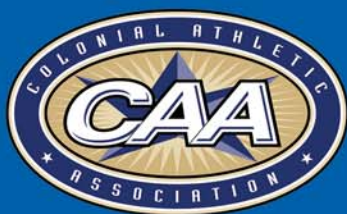
GEORGIA STATE SOFTBALL



Alison Bradford
Senior



Mary Kathryn Branan
Senior



2007 MEDIA GUIDE

Bob Heck

2006 CAA Coach of the Year



- ◆ School record 547 victories
- ◆ 20 seasons at Georgia State
- ◆ Founder of softball at Georgia State
- ◆ 2006 conference Coach of the Year
- ◆ 3 conference Coach of the Year honors
- ◆ 5 conference championships
- ◆ 11 conference championship games
- ◆ 41 First Team All-Conference selections
- ◆ 21 Second Team All-Conference selections
- ◆ 3 conference All-Rookie selections
- ◆ 2005 Sparks Award honoree at Georgia State
- ◆ 40+ win seasons four times
- ◆ Coached a team into Top 25 ranking
- ◆ An NCAA Tournament bid
- ◆ 4 conference Players of the Year
- ◆ A conference Pitcher of the Year
- ◆ 2 conference Rookies of the Year
- ◆ A conference tournament MVP
- ◆ 13 Winning Seasons
- ◆ Average of 27 wins per season over last 6 years



2007 Softball Team

Table of Contents

2007 Roster	2
2007 Outlook	3
Head Coach	4-5
Assistant Coaches	6
Administration	7
Players	8-15
2006 Statistics	16
2006 Season In Review	17-18
2006 Results by Game	19
Category Leaders	20
Records	21
All Time Results	22-29
All Time Roster	30
All Time Opponents	31
Robert E. Heck Teamhouse and Field	32
Georgia State Athletics	33
The University	34
Student Housing	35
Colonial Athletic Association	36
Athletic Facilities	37
Student Recreation	38
Panther Promise	39
Atlanta	40

The University

School:	Georgia State University
City/Zip:	Atlanta, GA 30303
Founded:	1913
Enrollment:	26,000
Nickname:	Panthers
School Colors:	Blue and White
Affiliation:	NCAA Division I
Conference:	Colonial Athletic Association
President:	Dr. Carl V. Patton
Athletic Director:	Mary McElroy
Associate AD/SWA:	Carol Cohen

The Softball Program:

Head Coach:	Bob Heck
Alma Mater/Year:	Georgia/1951
Record at Georgia State/Yrs:	547-488-2/20
Softball Office Phone:	(404)-651-4054
E-mail:	athreh@langate.gsu.edu
Fax:	(404) 651-0842
Assistant Coaches:	Kelly Van Houten Laura McGirr Jennifer Howe
Athletic Trainer:	Jennifer Howe
Year DI Program Began:	1985
All-Time Record:	657-572-2
2006 Overall Record:	29-28
2006 CAA Regular Season Record:	15-6
2006 CAA Regular Season Finish:	1st
2006 Letterwinners Returning/Lost:	8/11
2006 Pitchers Returning/Lost:	1/2
2006 Starters Returning/Lost:	5/4
Home Field:	Bob Heck Field
Location:	Panthersville, GA
Dimensions (LF/CF/RF):	190/220/190

Sports Communications Office

Assoc. AD/Communications:	Charlie Taylor
Office Phone:	(404) 651-2071
Sports Information Director:	Carlton White
Office Phone:	(404) 651-3168
Softball SID:	Myesha Benjamin
Office Phone:	(404) 651-4629
E-mail:	athmnbx@langate.gsu.edu
SID Fax:	(404) 651-3204
Press Box Phone:	(404) 244-2992
Web Address:	www.georgiastatesports.com



Myesha Benjamin
Graduate Assistant
2nd Year

Myesha Benjamin enters her second year as a graduate assistant in the sports communications office at Georgia State University. She will be the primary contact for softball, and men's and women's tennis.

Benjamin previously served as an administrative assistant for compliance and as an intern in the sports information office at Morgan State University where she earned her B.S in physical education in 2004.

An Upper Marlboro, MD native, she is pursuing her master's degree in sport administration.

Credits

The 2007 Georgia State Softball media guide is an official publication of the Georgia State Sports Communications Department. This publication was written, designed, and edited by Myesha Benjamin. Special thanks to Charlie Taylor and Carlton White for their assistance and all previous SIDs for their records. Photographic contributions were made by Myesha Benjamin, Charlie Taylor, Craig Anderson, and Randy Wilson.



Numerical Roster

<u>No.</u>	<u>Name</u>	<u>Pos.</u>	<u>B/T</u>	<u>Ht.</u>	<u>Cl.</u>	<u>Hometown/High School</u>
10	Madi Gore	P	R/R	5'6	SO	Acworth, GA/Kell HS
12	Nikki Bradford	SS/OF	R/R	5'7	FR	McDonough, GA/Henry County HS
13	Holly Willis	P/DP	R/R	5'7	SO	Chesapeake, VA/Great Bridge HS
14	Jessie Harmon	OF	R/R	5'10	SO	Roswell, GA/Roswell HS
15	Nichole Griffin	SS/OF	L/R	5'11	SO	Leesburg, GA/Lee County HS
16	Ashley Cowan	P	R/R	6'1	JR	Covington, GA/Eastside HS
17	Mary Kathryn Branan	2B	R/R	5'6	SR	Alpharetta, GA/Milton HS
18	Alison Bradford	3B/C	R/R	5'5	SR	McDonough, GA/Henry County HS
19	Lauren Feters	OF	R/R	5'2	FR	Canton, GA/Sequoyah HS
20	Elizabeth Thomas	P	R/R	5'4	FR	Watkinsville, GA/Oconee County HS
21	Lacy Carter	1B	R/R	5'7	FR	Watkinsville, GA/Oconee County HS
22	Chelsey Morgan	P	R/R	5'6	SO	Chesterfield, NJ/Northern Burlington HS
23	Jackie Jaegle	C	R/R	5'6	SO	Kennesaw, GA/Kell HS
24	Danielle Roddy	3B/OF	R/R	5'4	FR	Woodstock, GA/Woodstock HS
25	Rachel Cunningham	SS	R/R	5'6	FR	Cumming, GA/South Forsyth HS
26	Jessica Gowin	1B/DP	R/R	5'4	JR	Cohutta, GA/Northwest Whitfield HS
29	Lily Skelton	3B/OF	R/R	5'9	FR	McDonough, GA/Union Grove HS

Head Coach: Bob Heck

Assistant Coach: Kelly Van Houten

Assistant Coach: Laura McGirr

Alphabetical Roster

<u>No.</u>	<u>Name</u>	<u>Pos.</u>	<u>B/T</u>	<u>Ht.</u>	<u>Cl.</u>	<u>Hometown/High School</u>
18	Alison Bradford	3B/C	R/R	5'5	SR	McDonough, GA/Henry County HS
12	Nikki Bradford	SS/OF	R/R	5'7	FR	McDonough, GA/Henry County HS
17	Mary Kathryn Branan	2B	R/R	5'6	SR	Alpharetta, GA/Milton HS
21	Lacy Carter	1B	R/R	5'7	FR	Watkinsville, GA/Oconee County HS
16	Ashley Cowan	P	R/R	6'1	JR	Covington, GA/Eastside HS
25	Rachel Cunningham	SS	R/R	5'6	FR	Cumming, GA/South Forsyth HS
19	Lauren Feters	OF	R/R	5'2	FR	Canton, GA/Sequoyah HS
10	Madi Gore	P	R/R	5'6	SO	Acworth, GA/Kell HS
26	Jessica Gowin	1B/DP	R/R	5'4	JR	Cohutta, GA/Northwest Whitfield HS
15	Nichole Griffin	SS/OF	L/R	5'11	SO	Leesburg, GA/Lee County HS
14	Jessie Harmon	OF	R/R	5'10	SO	Roswell, GA/Roswell HS
23	Jackie Jaegle	C	R/R	5'6	SO	Kennesaw, GA/Kell HS
22	Chelsey Morgan	P	R/R	5'6	SO	Chesterfield, NJ/Northern Burlington HS
24	Danielle Roddy	3B/OF	R/R	5'4	FR	Woodstock, GA/Woodstock HS
29	Lily Skelton	3B/OF	R/R	5'9	FR	McDonough, GA/Union Grove HS
20	Elizabeth Thomas	P	R/R	5'4	FR	Watkinsville, GA/Oconee County HS
13	Holly Willis	P/DP	R/R	5'7	SO	Chesapeake, VA/Great Bridge HS

Head Coach: Bob Heck

Assistant Coach: Kelly Van Houten

Assistant Coach: Laura McGirr

An impressive run in its inaugural season through the Colonial Athletic Association tournament left Georgia State one win short of the title and a berth in the 2006 NCAA Regionals.

A team confident in its performance last season returns eight players in 2007 ready for a taste of glory and heights unforeseen in the program's history.

The Georgia State softball team will have a new look this season. Only eight of the 17 members are returning from last year's Colonial Athletic Association regular season championship team. Five of the returning eight are sophomores, making this year's squad a young team. However, the expectations of a CAA championship are high and attainable.

Battery

After losing of their top two pitchers to graduation, the Panthers are reloading by recruiting three pitchers for the 2007 squad to add to the two returning pitchers for State. The loss of its two top pitchers to graduation created a vacancy in which five pitchers will vie for starting positions.

Returning is sophomore **Chelsey Morgan** (right), who had a 5-6 overall mark and was 4-1 in CAA play. She will provide the pitching core with leadership and experience. Sophomore returnee **Holly Willis** will provide depth to the pitching staff even though she did not pitch last season.

Junior transfer **Ashley Cowan** had an outstanding record at Georgia Perimeter College. She was undefeated in conference action as a sophomore. "I hope she [Cowan] can carry her record over into our level of play," commented head coach Bob Heck.

Sophomore transfer **Madi Gore** was recruited by Heck as a senior in high school, but decided to attend Virginia. Now, she is back home and Heck hopes she will become a dominant pitcher for the Panthers. New-comer **Elizabeth Thomas** had an excellent high school record and shows a lot of promise. "Elizabeth should be able to help us as a freshman," said Heck.

State returns CAA Rookie of the Year and All CAA first-team starting sophomore catcher **Jackie Jaegle**. She led the team and ranked fifth in the CAA with a .344 batting average last season. Jaegle did not allow a passed ball all season until the CAA tournament where she only had one. Providing depth will be senior **Alison Bradford** who was a catcher as a freshman before moving to third base.



Infield



Bradford and senior **Mary Kathryn Branan** will lead the infield in 2007. Bradford will play at third base most of the time, but may see some action as a catcher. She received 24 walks in 2006 placing her just shy of fifth in the Panther record books for walks in a season. Branan, the lead-off hitter last year, will start at second base.

Jessica Gowin (left), a junior designated player, received the starting nod at first base from coach Heck. She made hits in the crucial moments of games and was the number one pinch hitter for State. Gowin drove in 23 runners on 18 hits and produced a .257 batting average.

Coach Heck hopes that three promising freshmen will step up this season and provide needed plays in the infield. **Rachel Cunningham**, **Lily Skelton** and **Nikki Bradford** come from good high school backgrounds and bring additional talent to the infield. Cunningham was a two-time All-State honoree and four year letterwinner at South Forsyth. She led the team in batting average for two years and was in the top three in all offensive categories every year. Skelton produced a .289 batting average in 40 at bats before suffering an injury during her senior year at Union Grove. Bradford, sister of Alison, batted .411 with 11 doubles, 18 RBI, and 22 stolen bases as a senior at Henry County. Freshman **Lacy Carter** will back up Gowin at first base. Carter was selected to the All-Region First Team as a first baseman at Oconee County High School.

Outfield

The outfield will be revamped as the Panthers only return one starter in sophomore **Jessie Harmon** (right). Harmon batted .222 producing 26 hits and five doubles on 117 at bats. She also caught 35 fly balls in right field. The prospect is bright, however, as sophomore **Nichole Griffin** will move from shortstop to outfield. She had a .256 batting average with 44 hits and a team-tying-high nine home runs on 172 at bats. Griffin also had some key home runs during the 2006 season. "Griffin has adjusted and done very well in the outfield," said Heck.

Players vying for other outfield positions include freshmen **Danielle Roddy**, **Lauren Feters**, and Bradford, and sophomore Willis. Roddy was Athlete of the Week, Defensive Player of the Year, and All-Region First-Team as a high school senior at Woodstock. Feters was voted Most Valuable Player and a three year starter at Sequoyah High School.



Schedule

At the Division I level, no schedule is easy as Georgia State will start its schedule hosting three four-team tournaments on consecutive weekends in February at Bob Heck Field in Panthersville, Ga. State will open against Tennessee Tech, Alabama-Birmingham, and Virginia Tech. State will face six teams that participated in the 2006 NCAA Women's College World Series: Tennessee Tech, Virginia Tech, Georgia Southern, Florida A&M, league foe Hofstra, and in-town rival Georgia Tech as part of its schedule. State will participate in two other tournaments, the Buzz Classic and the Florida State Invitational hosted by Atlantic Coast Conference (ACC) schools Georgia Tech and Florida State, respectively.

The Panthers will open CAA play on the road on March 24 against George Mason in Fairfax, Va. They will host defending CAA champion Hofstra during Easter weekend April 6-7. Other league opponents include James Madison, Drexel, UNC Wilmington, Towson and Delaware. Non-conference opponents include Birmingham Southern, Furman, Jacksonville State, Troy, Western Carolina, and Georgia Tech.

The season will wrap up for State May 10-13 at the CAA tournament. The regular season champion will host the top four teams from the regular season for a berth in the NCAA tournament.



Bob Heck Head Coach 21st Year

Unfortunately, there is just one Bob Heck; but fortunately, there is one Bob Heck.

His leadership, dedication, commitment and passion for Georgia State and the sport of softball most likely will never be equaled. But, his commitment will always be remembered.

Before softball and Georgia State had entered into Bob Heck's life, he had a remarkable life that showed some of his dedication, devotion and service. As a young man, World War II interrupted his classroom education for three years of service to his country in the U.S. Navy and an education in the reality of the world.

Coming out of the service in 1946, Bob began an education path that earned a college degree from the University of Georgia, then a master's degree in physical education from Emory, and yet another master's degree in business from Georgia State.

His early jobs included being a high school teacher at Druid Hills High in Atlanta for five years, serving as the head coach of the track team and the assistant coach for the football team.

In 1957, Heck put his master's in business to good use and began that career as a national bank examiner with the Controller of the Currency's office for 10 years. He moved on up to the Federal Reserve, the arm of the government that oversees the nation's banking system and manages the supply of money, credit, and interest rates.

All the while he had his "day job" for 35 years, Bob stayed busy as a high school football referee for 25 years and was a high school basketball official for five years.

Now, for most normal folks, this biography might end with a nice retirement package, a little golf, some travel and "the easy life."

But, for Bob Heck, life was just beginning and this is where Georgia State and softball became the biggest beneficiaries of his remarkable life.

The World War II vet began in 1981 as a volunteer assistant coach with Georgia State's slow pitch softball team. In 1983, he served as the head coach of this slow pitch team, but the NCAA did not recognize this as a sport. Dr. Sherman Day, the athletics director, helped spearhead what was going to be a two-year plan to move to fast pitch, but as usual Bob Heck style, he said he'd do it in one year and sure enough in the spring of 1985, Georgia State was playing NCAA fast pitch softball thanks to Bob Heck's efforts.

All the team had was a rough Recreation Department field, no locker rooms, no practice facilities, no scoreboard. In other words, it was as basic as basic could have been.

Year-by-year, Bob Heck took his theme: "the girls deserve the best place to prepare and play, so I'll do what I can to provide that for them."

For, Bob Heck that meant coming up with the money and providing his own financial support to put in a fence, to move the playing field to a new area and upgrade the playing surface and grounds, to put up a beautiful scoreboard, to put in dugouts with bathrooms, to build a stadium with concrete stands and arm-chair seats, to build a concession stand and press box, and to build a state-of-the-art year round indoor practice facility with batting and pitching cages indoors as well as outdoors. The facility has locker rooms, a training room, a video room, a game room, a weight room, and restroom facilities. It's no wonder the scoreboard, the field itself, and the team house are all named in his honor.



Unlike most softball coaches, he is as good as groundskeeper in maintaining his fields as any professional. He's actually planted, maintained and manicured, cut the grass, painted the lines, and rolled out the tarp. Bob Heck Field is recognized as an excellent facility and was host to last year's CAA Championship. The season traditionally starts in February with three weekend tournaments bringing teams in from all over the country.

Now, let's get to the part of how good a softball coach Bob Heck is.

Remember, he started a college Division I program from scratch, pretty much by himself. He has recruited his student-athletes on his own merits and has scheduled all the top schools and has a philosophy of being willing to play anyone, anywhere, anytime. He has guided the fledging program from the NSWAC (New South) through its growth into the TAAC (Trans America) and then the A-Sun (Atlantic Sun). In 2005-06, the school moved into the Colonial Athletic Association (CAA).

By his fourth year, he had produced his first 40-win team with a 42-20 unit (.677), in 1990 he had yet another 42-win team and in 1993 was in the Top Five in the NCAA South Region rankings. Then in just his 10th year, he had built a team that was ranked in the Top 25 in the nation and earned an NCAA Tournament bid. Ironically, he lost a 2-1 game to UCLA in the tournament and that school lured his top pitcher of two years away. That pitcher, Kaci Clark, went on to an outstanding professional softball pitching career. Coach Heck was named the conference Coach of the Year in that 1994 season.



After 14 successful years as head coach, Bob Heck actually thought he wanted to retire at the age of 71. That worked out for four years, before Georgia State convinced him to come back and coach some more.

In 2005-06, Bob Heck showed he is still as competitive and successful as ever. He led the team into its first year in the Colonial Athletic Association (CAA) and was picked to finish fifth by the league's coaches. It shouldn't have been a surprise when he led the team to the regular season championship and the No. 1 seed on its home field. His team lost the championship game. This team set a record for most home runs at Georgia State and the top pitcher set a new school record for strike outs in leading the CAA. Heck coached the CAA Pitcher of the Year and the CAA Rookie of the Year last year in being named the CAA Coach of the Year. He produced an Academic All-American as well.

Coach Bob Heck has now coached 20 seasons of his "second career" and given his signals from the third base box for 1,037 games with 547 victories. He has won five conference championship tournaments and advanced to six other championship games during his tenure.

During his career at State, Coach Heck has had 41 student-athletes earn First Team All-Conference recognition and 21 more earn Second Team honors.

While Georgia State has just moved into the CAA, Coach Heck has also played, and often won, against some of the NCAA's bigger schools, who have much bigger budgets.. In just the past eight years for example, Heck has built the Georgia State program to a level where they have wins over major schools in major conferences like SEC schools Arkansas, Auburn, Georgia, Kentucky, South Carolina; Big Ten schools Iowa, Michigan State, Purdue; ACC schools Boston College, Georgia Tech, Maryland, North Carolina, Virginia Tech; Big East schools Pitt and St. John's; and the Big 12's Iowa State. He believes in playing anyone who will play him and challenges his team to rise to the competition. He is an avid teacher of the fundamentals of the game.

The ever-generous Heck is also known in other ways. Georgia State honored him in 2005 with its Sparks Award and asked him to serve as the head of the university-wide fundraising campaign. He's even helped other collegiate softball programs in the metro Atlanta area with his donations and his time.

Heck is one of the eight Founding Life Members of the Athletics Association by contributing at least \$100,000 to the athletics department in a three-year pledge. He is respected by his First United Methodist Church and serves on its Board of Stewards among his other lifelong service with that church.

Born in Charleston, S.C., Robert E. Heck's family has proven to be the hundreds of young ladies he has tutored in softball and nurtured in life and the hundreds of lives he has touched in the Georgia State community and the city.

Fortunately, Bob Heck has been Mr. Softball in the southeast and, especially, at Georgia State.





Kelly Van Houten

Assistant Coach

2nd Year

Kelly Van Houten joined Coach Bob Heck's staff just prior to the 2005-06 academic year at Georgia State. A graduate of Furman University in 2001, Van Houten came to Georgia State from former Atlantic Sun Conference foe Campbell University.

Van Houten was a Graduate Assistant Coach at Belmont University for two seasons while pursuing a Masters of Education in Sports Administration. Following her stint at Belmont, Van Houten went from one A-Sun school to another when she joined the Campbell coaching staff. Working under Head Coach



Drew Peterson, Van Houten was primarily responsible for supervising in-field play as well as assisting with hitting and base running.

In addition to her coaching duties, Van Houten has also assisted at numerous camps since her playing career came to a close. Those include summer and winter clinics at North Carolina-Chapel Hill, Furman, and East Carolina.

Van Houten is a native of Raleigh, N.C. She currently resides in Snellville, Ga.



Laura McGirr

Assistant Coach

2nd Year

Laura McGirr joined the coaching staff at Georgia State University prior to the start of the 2005-06 academic year at the university. A native of Warner Robins, Ga., McGirr coached for two years at Columbus (Ga.) State University as a Graduate Assistant Coach under Head Coach Tiffany Tootle.



McGirr played her junior and senior seasons at Columbus State after playing for and attending Abraham Baldwin Agricultural College (ABAC) in Tifton, Ga. McGirr brings a wealth of knowledge to the Panther program, as she played almost every position on the field during her collegiate career.



Mary McElroy Athletics Director 2nd Year

Mary McElroy became Director of Athletics at Georgia State University in July 2005, as Georgia State was joining the Colonial Athletic Association (CAA) a year earlier than planned. University President Dr. Carl Patton hired McElroy as the first female Athletic Director at Georgia State and the first female African-American athletics director at a non-historically black college at the NCAA Division I level.

Dr. Patton's confidence in McElroy has paid off handsomely as Georgia State's teams recorded two CAA championships, five individual conference year-end awards and over 25 all-conference recipients under her guidance. She has been able to fund for assistant coaches for designated sports and increased the athletic department staff, as well as develop and implement a Strategic Plan that established the athletic department's vision and defined the pathways to those objectives.

The first year has also seen record development for financial support with regards to scholarships and increased revenue streams. Facility upgrades have seen improved locker and training rooms in the Sports Arena. New partnerships with ISP Sports (sponsorships), adidas (apparel) and XOS Technologies, Inc. (Web site) have also been reached.

A three-phase plan for the building of the Panthersville Athletics Complex has begun that will result in new practice fields, a soccer stadium, new tennis courts, and locker room facilities for those teams. Upgrades are ongoing for the softball and baseball facilities already there.

The program is working within the framework of NCAA guidelines as student-athletes responded in their first year by posting the highest combined grade point average ever in school history.

The vision of being "the student-athlete's first choice" is beginning to be realized as the recognition of the University's stature and the CAA level of respect rise.

McElroy's accomplishments at Georgia State have not gone unnoticed as she was appointed to the NCAA Management Council in October 2006. In August 2006, she was

named the 2006 NCAA Division I-AAA National Administrator of the Year by the National Association of Collegiate Women Athletic Administrators.

McElroy graduated from the Naval Academy ('87) where she spent four years as a student-athlete and then five years as a Marine Corps supply officer. Her athletic management career began in 1992 as she worked her way up to assistant athletic director at Navy. She was Senior Woman Administrator and oversaw compliance for 29 sports. She also served a stint as Director of Alumni Services at Navy.

Mary McElroy earned a master's degree in Management from Georgia Tech ('00) and a certification from the Executive Management Program from the Sports Management Institute ('04). From 1999-00 to 2004-05, McElroy was on the athletic management team at Georgia Tech as their Senior Associate A.D. and Senior Woman Administrator. During that time, her responsibilities included overseeing five sports, including basketball, and supervising the game day operations for basketball as well as the compliance staff.

Within the NCAA and ACC, McElroy was appointed to the NCAA Management Council in April 2005, and was a member of the NCAA Volleyball Committee. For the ACC, McElroy served as chairperson of the Softball Committee, was on the Women's Basketball Committee, the Head Trainer's Committee, the Senior Woman Administrator's Committee, and an Ad Hoc Committee on student-athlete welfare.

When the NCAA Women's Final Four was played in Atlanta in 2003, McElroy was the tournament manager. She was also on the Atlanta Local Organizing Committee for the Men's Final Four in Atlanta in 2002.

As a student at the Naval Academy, McElroy played varsity basketball in the CAA. She was a captain of the club softball team and still stays active athletically in local Atlanta softball leagues.

A native of Great Mills, Md., she is married to a fellow Naval Academy graduate, Terry ('86), and they have two sons, Darrin and Austin.



Carol Cohen
Associate AD for Student-Athlete Development & SWA/Softball Administrator



Rachel Fineburg
Student-Athlete Development Softball Advisor



Tredell Dorsey
Strength & Conditioning



Jennifer Howe
Athletic Trainer Graduate Assistant



18

ALISON BRADFORD

Senior

5-5 ♦ Third Base/Catcher ♦ R/R
McDonough, GA ♦ Henry County HS

2006: Started 51 of 52 games played...Second on the team in walks with 24...Fourth in doubles (8)...Had a season-high three hits against UNC-Wilmington in the CAA tournament...Smacked a three-run homer against Syracuse (3/4)...Went two for three with a double in series finale against James Madison (4/9)...Tied for fifth in CAA in walks (23)...Had four multiple-RBI games...Tied for sixth in Panther history in walks in a season (24)...Named to the Athletic Director's Honor Roll list in the fall semester.

2005: Tops on team with 11 doubles and third on team with 35 hits...Also tied for team lead in triples and had second-best slugging percentage and total bases on the squad...Had stretch from April 12-24 where she hit safely in nine of 10 A-Sun games...Singled, doubled, and had a pair of RBIs in loss to Furman (3/5)...Went two-for-four with a double in win over Jacksonville (4/10)...Had seven multi-hit games.

2004: Led Georgia State in batting average for freshman season...In first collegiate game, had two singles, a run scored, and three RBI vs. Tennessee State 2/21/04...Singled twice and drove home a run in win over future-CAA opponent Drexel 2/29/04...Had six multi-hit games, all of which were Georgia State wins...All of her RBIs came in wins for Georgia State.

Prep: Graduate of Henry County High School (2003) in McDonough, GA...Played for coach Chuck Campbell and the HCHS Warhawks for four seasons, earning All-Southern Crescent team honors all four years...Was a member of the 2000 National Fast Pitch Championship Henry Angels squad...Also played for the Atlanta Vipers, where she earned honors for Best Attitude, Most Coachable, and the Director's Award.

Personal: Alison is dedicating this season to her grandmother, who passed away last year. "She always gave me the strength to carry on," said Alison...Alison chose Georgia State because she liked the team and the coaching staff, in addition to the education program that the school offers...She was born on February 18, 1985 to Doug and Connie Bradford...Majoring in English.

Bradford's Career Statistics

Year	GP/GS	BA	AB	R	H	RBI	2B	3B	HR	SB/A	BB	SO	SF/SH	Fld%
2006	52/51	.179	140	12	25	18	8	0	5	0/0	24	45	1/2	.941
2005	50/47	.238	147	5	35	9	11	1	1	0/0	7	25	0/4	.950
2004	42/39	.261	115	4	30	10	1	0	0	0/0	8	29	0/6	.984
Totals	144/137	.224	402	21	90	37	20	1	6	0/0	39	99	1/12	.960



Junior



Sophomore



Freshman



17

MARY KATHRYN BRANAN

Senior

5-6 ♦ Second Base ♦ R/R
Alpharetta, GA ♦ Milton HS

2006: Was the lead off hitter in every game...Started and played all 57 games for the Lady Panthers...Fourth on the team in batting (.268)...Second in runs scored (32)...Third in doubles (9)...Smacked her only home run at the Buzz Classic versus Syracuse (3/4)... Tied for 11th in the CAA stats in runs scored (27)...Had 13 multiple-hit games and four multiple-RBI games...Received CAA Commissioner's Academic Award and Athletic Director's Honor Roll in the spring semester.

2005: Team leader in hits, run scored, total bases, slugging percentage, and RBI...Played in every game and started all but one...Had two hits, two RBIs, and a stolen base in win over Tennessee Tech to start season (2/12)...Had five three-hit games on the season, with multiple RBI coming in win over Saint Francis-PA (3/2), and Belmont (4/24)... Also had three hits against nationally-ranked Auburn (3/29)...Homered in back-to-back games against Lipscomb (4/23) and Belmont (4/24), with the homer against Lipscomb providing the only run of the game...Had four stolen bases in five attempts.

2004: Team leader in stolen bases in '04...Led team with 10 multi-hit games...Had six-game hitting streak...Had four hits over two games against Drexel 2/28-29/04...Drove in game-winning RBI in 1-0 win over Saint Joseph's 3/7/04...Doubled home a run against Ball State 3/18/04...Doubled and scored against Tulsa 3/19/04...Singled, doubled, and scored twice against Georgia Southern 3/31/04...Singled twice, scored a run, and had an RBI in win over Lipscomb 4/26/04...Had an RBI in each of her final games of the season.

Prep: A four-year letter winner for the Milton High School Eagles and head coach Gigi Whiteside...Team captain for the 2002 season, Mary Kathryn earned Best Defensive Player honors during that season...Also played for the East Cobb Bullets, where she batted .341 in 2003 with 37 RBI...Her best individual performance came in the 2003 ASA State Tournament when she connected for two home runs in the same inning...She was a member of the 2002 All-Tournament team at the ISA World Series, in addition to being named Roswell/Alpharetta Athlete of the Week in 2002 with Milton and North Fulton Athlete of the Week in 2001...Her East Cobb team placed seventh twice and fourth once in the ASA Nationals.

Personal: Middle child of three sisters...Daughter of Bud and Anne Branan...Sociology major...Enjoys softball, shopping, and hanging out with friends...Favorite athletes are Javi Lopez, Chipper Jones, and Michael Vick... Chose Georgia State so that her friends and family could see her play.

Branan's Career Statistics

Year	GP/GS	BA	AB	R	H	RBI	2B	3B	HR	SB/A	BB	SO	SF/SH	Fld%
2006	57/57	.268	198	32	53	19	9	1	1	7/9	5	29	0/1	.977
2005	54/53	.281	178	22	50	13	10	0	2	4/5	5	17	2/3	.929
2004	48/47	.228	162	12	37	7	6	0	0	7/7	2	16	1/1	.910
Totals	159/157	.260	538	66	140	39	25	1	3	18/21	12	62	3/5	.937



Junior



Sophomore



Freshman



16

ASHLEY COWAN

Junior

6-1 ♦ Pitcher ♦ R/R

Covington, GA ♦ Eastside HS ♦ Georgia Perimeter

2006: Pitched 114 innings fanning 92 batters...Led GPC on the mound...Finished with a 10-0 conference record and was 12-5-2 overall... Named to the All-Region team.

2005: Won seven of 15 games for the Lady Jaguars of Georgia Perimeter College (GPC)...In 117 innings, recorded a 1.63 ERA, 89 strikeouts and 30 earned runs.

Prep: Earned three letters in softball for the Eastside Eagles...Coached by Pete Nattice...Received the Diamond Eagle award...Most memorable moment was breaking Eastside's strikeout record...Was Pitcher of the Year.

Personal: Daughter of Gregg and Evon Cowan...Has a younger sister Brittany...Enjoys playing ball, hanging out with friends and family... Favorite athlete is Jeff Francouer of the Atlanta Braves...Inspired by her parents...Career goals are to be a great physical education teacher and become a coach...Chose Georgia State for a good education and a good softball team...Majoring in physical education.



26

JESSICA GOWIN

Junior

5-4 ♦ First Base/DP ♦ R/R

Cohutta, GA ♦ Northwest Whitfield HS

2006: Started 21 of 36 games played...Received a season high four at bats three times...Had a season high three RBI against Wisconsin on March 3...Blasted three home runs during the season, including a two-run homer lifting State to a 3-1 win over Towson (4/30)...Received nine walks...Produced a RBI in four consecutive games...Was second on the team with 2-out RBI (10)...Had 13 multiple hit games.

2005: Named A-Sun Player-of-the-Week 2/14 after starting collegiate career with six RBIs, one homer, and nine hits in four games...Her homer was a grand slam against Charleston Southern, a game where she had a season-high three hits (2/12)...Drove in a run in State's win over UNC Wilmington (3/4)...Had a double, a single, and an RBI in win over Jacksonville (4/10)...Had two hits and a run scored against Belmont (4/24)...Ranked third on the team in batting average.

Prep: Started all four years of high school for varsity softball squad, primarily at third base or shortstop...Won offensive and defensive awards every year of high school...Was an All-Area selection for two years, and was also named to the Chattanooga Times-Free Press All Area Team II...Batted over .300 each year and set the school record for triples at NW Whitfield...Also played for the Chattanooga Heat, which won the ASA South Atlantic Regional Championship twice, also qualifying for the national tournament...Also was an All-Tournament selection for ASA, ISA, USSSA, and USFA tournaments...Received National Honors Society honors...Part of the Beta Club, Key Club, and Anchor Club.

Personal: Daughter of Mike and Trella Gowin...Born on April 5, 1986...Has a younger sister (Kim - 16)...Enjoys running, swimming, and being outside...Would most like to meet her great grandpa...Career goal is to work in a hospital doing cardiotherapy...Exercise science major.

Gowin's Career Statistics

Year	GP/GS	BA	AB	R	H	RBI	2B	3B	HR	SB/A	BB	SO	SF/SH	Fld%
2006	36/21	.257	70	7	18	23	2	1	3	1/1	9	16	2/3	1.000
2005	45/37	.265	102	4	27	9	1	0	1	0/0	14	20	1/2	.909
Totals	81/58	.262	172	11	45	32	3	1	4	1/1	23	36	3/5	.918



15

NICHOLE GRIFFIN

Sophomore
 5-11 ♦ Shortstop/Outfield ♦ L/R
 Leesburg, GA ♦ Lee County HS
 Second Team All-CAA; CAA All-Rookie

2006: Started 56 of 57 games played...Saw the plate 172 times...Knocked nine home runs on 44 hits...Recorded seven stolen bases...In the top five in batting average, runs scored, total bases, at bats, slugging percentage, hits, walks, and on base percentage...Was 3-7 (.429) at the plate with the bases loaded...Had nine multiple hit games and 10 multiple RBI games...Produced a six game hitting streak...Led the team with 17 2-out RBI...Named to the Colonial Athletic Association All-Rookie team and Second team All-CAA...Earned CAA Rookie of the Week honors twice (3/28 & 5/9)...Received AD Honor Roll in the fall and Dean's List honors in the spring...On the CAA Commissioner's Academic Award list.

Prep: Lettered for three years in softball and two years in basketball for the Lee County High Trojans...Played for coach Lynn Avery in softball...Was named First-Team Region 1-AAAA her junior year with a .408 batting average, following a Second Team selection the year before...Won team's Rookie of the Year award her first year of softball, and later won the award for Team MVP and Best Offensive Player.

Personal: The daughter of Dexter and Cindy Griffin, Ashley Nichole Griffin was born Christmas Eve 1986 in Bainbridge, Ga. She has two older sisters (Laura and Heather)...Nichole did not play softball her senior year of high school, and had already decided to attend Georgia State, when Coach Avery put in a call to Coach Heck and helped Nichole get recruited to the State roster.

Griffin's Career Statistics

Year	GP/GS	BA	AB	R	H	RBI	2B	3B	HR	SB/A	BB	SO	SF/SH	Fld%
2006	57/56	.256	172	35	44	34	5	0	9	7/7	11	42	1/0	.874



10

MADI GORE

Sophomore
 5-6 ♦ Pitcher ♦ R/R
 Acworth, GA ♦ Kell HS ♦ Virginia

2006: (at UVA) Posted a 4-2 record with a 3.55 ERA...Started three games, completed one, and earned a save during her freshman campaign...Pitched 49.1 innings while striking out 35 batters...Recorded eight assists and one error, starting in her only game in the field.

Prep: Four-year letterwinner on the softball team at Kell High School (03-04) and Sequoyah High School (01-02)...Helped Kell to the Georgia 5A State Championship in 2003 and 2004...Threw a nine-inning perfect game with 13 strikeouts in the 2003 state title game...Named 2004 Gatorade Player of the Year for Georgia...Was a 2004 Louisville Slugger/National Fastpitch Coaches Association High School Third Team All-American...Also earned 2004 Louisville Slugger/NFCA High School All-Region South First Team accolades...Named the *Marietta Daily Journal* Pitcher of the Year for Cobb County in 2003 and 2004...Also named to the *Marietta Daily Journal* All-County First Team in 2003 and 2004...As a junior was named the 2003 Georgia 5A Pitcher of the Year and first-team All-State...Was also named the *Atlanta Journal-Constitution* 2003 All-Classification Softball Player of the Year and Cobb County Pitcher of the Year...Named Sequoyah High School team MVP in her freshman and sophomore seasons...Two-time *Cherokee Ledger* All-County First Team pick (2001 and 2002)...*Cherokee Tribune* Pitcher of the Year in 2002 as well as a first-team All-County pick in 2001 and 2002...2004-05 Advanced Placement Scholar...Received the 2003-04 Georgia Certificate of Merit winner for being in the top five percent of her class...A 2003-04 National Science Merit Award Winner...Also a NFCA Academic All-American Scholar Athlete in 2003-04.

Personal: Madison Gore, born February 27, 1987 in Roswell, Ga...Daughter of Kathy and Mitchell Gore...Volunteered at MUST Ministries, a food and clothing pantry for the needy...Interested in traveling and international business...Majoring in history and minoring in German...Enjoys shopping, watching soccer, and hanging out with friends...Favorite athletes are Roy Keane, Zabi Alonzo, and Tom Glavine...Would most like to meet Roy Keane...Career goal is to become an AP History teacher...Chose Georgia State to get a good education and to play softball.

Gore's Career Statistics

Pitching/Batting	ERA	W	L	APP	GS	CG	SHO	SV	IP	H	R	ER	BB	K	Fld%
2006, at UVA	3.55	4	2	23	3	1	0	1	49.1	47	29	25	28	35	.889



14

JESSIE HARMON

Sophomore
5-10 ♦ Outfielder ♦ R/R
Roswell, GA ♦ Roswell HS

2006: Started 42 of 47 games played...Recorded eight walks...Hit two home runs and five doubles...Scored 12 runs and drove in 11 runners...Ended the 2006 season on a nine game hitting streak...Earned Dean's List honors both semesters...CAA Commissioner's Academic Award honoree.

Prep: Lettered in softball for four years for the Roswell High Hornets and Coach Melani Corsi...Her team reached the Class AAAAA semi-finals in 2004, taking a third place finish...Jessie was an All-Alpharetta/Roswell Honorable Mention recipient in 2002 and 2003...She won Roswell's awards for Best Defensive Player in 2001 and 2002, Best Offensive Player in 2003, and the Coaches Award in 2004.

Personal : Jessica Harmon was born January 30, 1987 in Hayward, California...Her parents are Gary and Annette Harmon, and she has a younger brother (Zachary)...Jessie's career goal is to become a fifth grade teacher and coach high school softball...Majoring in Early Childhood Education.

Harmon's Career Statistics

Year	GP/GS	BA	AB	R	H	RBI	2B	3B	HR	SB/A	BB	SO	SF/SH	Fld%
2006	47/42	.222	117	12	26	11	5	1	2	0/0	8	32	0/0	.949



23

JACKIE JAEGLER

Sophomore
5-6 ♦ Catcher ♦ R/R
Kennesaw, GA ♦ Kell HS
CAA Rookie of the Year; CAA All Tournament Team;
All-CAA First Team; CAA All-Rookie Team

2006: Started 44 of 51 games played...Received a season high five at bats in the nightcap against James Madison (4/8)...Hit .583 (7-for-12) against Delaware (4/1-2)... Tied for second in doubles with 10...Produced an 11 and 10-game hit streak...Had hits in 25 of the last 27 games for the Panthers...Had a season-high 14 put outs versus Delaware on May 11 in the CAA Softball Championships...Ranked fifth in the league in batting average (.353)...Earned numerous awards including Colonial Athletic Association Rookie of the Week (4/3), CAA Rookie of the Year, First team All-CAA, CAA All-Rookie Team, and CAA All-Tournament team.

Prep: Member of first state championship team in Kell High School history when her team won the Georgia Class AAAAA state championship in 2003 under Coach Todd Downes...Team also repeated title run in 2004 under Coach Christie Eikoff...Lettered four years in softball...Played at Centennial High, followed by Kell...Earned All-State honors in 2003...Also earned All-County honors in 2003 and 2004... Named team MVP in 2003, a team captain in 2003 and 2004, and earned the team award for Best Defense from 2002-04...Hit .269 with 14 RBIs in her final season.

Personal : Daughter of Marsha and Rick Jaegle, Jacklyn Marie Jaegle was born April 29, 1986 in Reston, Virginia...Has an older sister (Tina -22)...Jackie chose State in part because of her sister, and the team...Favorite athlete is Tom Brady of the New England Patriots... Inspired in athletics by her dad...Career goals are All-CAA first team, CAA Player of the Year, and go to the NCAA Regionals...Criminal Justice major.

Jaegle's Career Statistics

Year	GP/GS	BA	AB	R	H	RBI	2B	3B	HR	SB/A	BB	SO	SF/SH	Fld%
2006	51/44	.344	151	27	52	16	10	1	2	3/4	5	19	1/1	.983



22

CHELSEY MORGAN

Sophomore

5-6 ♦ Pitcher ♦ R/R

Chesterfield, NJ ♦ N. Burlington County Regional HS

2006: Appeared in 19 games...Started 13 games finishing with a 5-6 record...Was 4-1 in CAA play...Pitched 70.1 innings with a 4.18 ERA...Struck out 30 batters...Retired a season high eight players against Wisconsin (3/3)...Helped teammate Elizabeth Hyman with a no-hitter against George Mason (5/6)...Pitched four complete games.

Prep: Lettered for four years for coach Brian Wolverton's North Burlington HS Greyhounds...Her team won the New Jersey State Championship in 2002, and reached the title game in 2005...Had a record of 25-5 in 2004 and 25-4 in 2005...Chelsey was named First Team All-South Jersey in 2004-05, and First Team All-Area in 2005...She was also named First Team Liberty Division in 2003-05.

Personal: Chelsey was born April 17, 1987 in Trenton, New Jersey...Her parents are Bill and Sabine Morgan...Chelsey has an older sister (Stacey) and two younger brothers (Will and Danny)...Chelsey wants to become an elementary school teacher...Early Childhood Education major.

Morgan's Career Statistics

Pitching	ERA	W	L	APP	GS	CG	SHO	SV	IP	H	R	ER	BB	K
2006	4.18	5	6	19	13	4	0	0	70.1	88	50	42	20	30



13

HOLLY WILLIS

Sophomore

5-7 ♦ Pitcher/DP ♦ R/R

Chesapeake, VA ♦ Great Bridge HS

2006: Appeared in 18 games...Primarily as a pinch runner...Scored nine runs...Recorded a stolen base...Was a Faculty Scholar, Dean's List and Athletic Director's Honor Roll honoree in the fall...Earn Dean's List and A.D Honor roll in the spring...Received the CAA Commissioner's Academic Award.

Prep: Lettered for four years in softball and in volleyball for two seasons...Was named Most Valuable Player of her team in 2005...Received First Team All-Region, All-Tidewater, and All-Southeast District in 2005 with the Great Bridge High School Wildcats...Also was named Second-Team All-Southeast District in 2004.

Personal: Born October 6, 1987, in Chesapeake, Virginia...Her parents are Kathy Bryan and Howie Bryan...Has two older brothers (Robert Willis and Casey Bryan), and a younger sister (Leighann Bryan)...Holly chose Georgia State in part because it is a large school in an urban setting...Nursing major.

Willis' Career Statistics

Year	GP/GS	BA	AB	R	H	RBI	2B	3B	HR	SB/A	BB	SO	SF/SH	Fld%
2006	18/0	.000	0	9	0	0	0	0	0	1/3	0	0	0/0	.000



NIKKI BRADFORD

Freshman
5-7 ♦ Shortstop/Outfielder ♦ R/R
McDonough, GA ♦ Henry County HS



12

Prep: Lettered four years in softball for the Warhawks...Named to the 2005 All-State Second Team and First Team All-County for three years...Was the Most Valuable Player during her junior campaign...Was All-Southern Crescent for three years...Batted .411 with 11 doubles, 18 RBI, and 22 stolen bases in 30 games as a senior...Received the Leader Award during her senior year.

Personal: Sister of current teammate Alison...Amber Nicole Bradford was born on April 9, 1988...Daughter of Doug and Connie Bradford...Enjoys softball, racquetball, and basketball...Would like to meet God and President Bush...Career goal is to make All-CAA Rookie team and be a team captain...Chose Georgia State for the great program/school and her sister plays at State...Major is undeclared.

RACHEL CUNNINGHAM

Freshman
5-6 ♦ Shortstop ♦ R/R
Cumming, GA ♦ South Forsyth HS



25

Prep: Lettered and started all four years under the direction of head coach Ronnie Davis...Was All-Forsyth County and All-Region every year as well as a two-time All-State honoree...Led the team in batting for two years and was in the top three in all offensive categories every year...Pitched, played shortstop, and in the outfield at South Forsyth...Awarded Best Defense honor...Received Who's Who is Sports honor...Won the Wendy's Heisman award at South Forsyth.

Personal: Born on November 9, 1987 to Addie and Bonnie...Youngest of three (Jacque 27 and Erica 21)...Enjoys bowling, movies, and hanging out with friends...Favorite sports team is the Atlanta Falcons...Would like to meet Mike Candrea...Career goal is to get her masters or PhD in business...Chose Georgia State for the great program, school, and teammates...Business major and Spanish minor.

LACY CARTER

Freshman
5-7 ♦ First Base ♦ R/R
Watkinsville, GA ♦ Oconee County HS



21

Prep: Was First Team All-State in 2005 with teammate Liz Thomas...Had a .316 batting average with nine doubles and 28 RBI...Selected to the All-Region First-Team as a first baseman...Honor roll student at Oconee County...Lettered four years at Oconee County High...Hit a solo home run in seventh inning in 2005 Georgia State Championship to defeat Harris County.

Personal: Born to Rodney and Jennifer Carter on March 25, 1988...Has a younger brother Rhett...Enjoys playing sports and shopping...Favorite athlete is John Smoltz of the Atlanta Braves...Would like to meet Colin Powell...Inspired by her father...Chose Georgia State because it's in Atlanta...Has overcome a broken nose...Majoring in psychology.

LAUREN FETTERS

Freshman
5-2 ♦ Outfielder ♦ R/R
Canton, GA ♦ Sequoyah HS



19

Prep: Scored 24 times and batted in 12 teammates...Was the MVP and a three year starter as a member of the Sequoyah softball team...Selected to the All-County, All-Region First-Team and All-State team in 2005...Won the Offensive Award in 2005...Lettered one year in track...Sequoyah Chiefs were fifth in Georgia in 5A with a 32-9 record.

Personal: One of four sisters (Lindsay-24, Jamie-22, and Logan-11)...Enjoys hanging out with friends, movies, the computer, and shopping...Favorite athletes are Laura Berg and Jessica Mendoza...Inspired by Karen Baker...Career goal is to get a Ph.D in psychology...Chose Georgia State for the atmosphere and surroundings...Psychology major.

DANIELLE RODDY

Freshman

5-4 ♦ Third Base/Outfielder ♦ R/R
Woodstock, GA ♦ Woodstock HS



24

Prep: Was Athlete of the Week, Defensive Player of the Year, and All-Region First-Team...Received 25 walks, hit seven doubles and had 18 RBI in 36 games...Lettered four years in softball for the Woodstock Wolverines...All-State in 2004 and 2005...Best individual performance was going 5-5 with two doubles, three singles, and four RBIs...Wolverines were state runners-up in 2005 with a 32-4 record.

Personal: Daughter of James and Terri Roddy...Born on November 9, 1987...Has two younger sisters, Nikki and Rachael...Enjoys softball, bowling, putt-putt, and movies...Would most like to meet Andruw Jones of the Atlanta Braves...Career goal is to become a neonatologist...Chose Georgia State for the good nursing program...Nursing major.

LILY SKELTON

Freshman

5-9 ♦ Third Base/Outfielder ♦ R/R
McDonough, GA ♦ Union Grove HS



29

Prep: Had seven runs batted in and one double while batting .289 in 40 at bats...Won the Wolverine Award, an award given to the athlete that represents the best way a Wolverine athlete should portray themselves...Recovered from an ankle injury suffered during her senior year...Won the Coca-Cola Athletic Award...Lettered two years in softball for the Union Grove Wolverines.

Personal: Daughter of Mark and Suzy Skelton...Margaret Lillian Skelton was born on September 14, 1986...Has a twin brother (Jake)...Has one older brother, Josh, and one younger brother, Robbie...Enjoys camping, fishing, being outdoors, and hanging out with friends...Favorite athlete is Brian McCann of the Atlanta Braves...Chose Georgia State for the great physical therapy program and its proximity to home so her family can watch her play...Exercise Science major.

ELIZABETH THOMAS

Freshman

5-4 ♦ Pitcher ♦ R/R
Watkinsville, GA ♦ Oconee County HS



20

Prep: Was First Team All-State and All-Region in 2005 with teammate Lacy Carter...Pitched 196 innings, retiring 204 batters with a 0.50 ERA, posting a 28-3 mark and was named 2005 GACA Pitcher of the Year...Batted .359 with 21 RBI during her senior season...Honor roll student at Oconee County...Earned Most Valuable Defensive Player as a freshman...Lettered three years in softball for the Oconee County Warriors under head coach Brian Dickens...Had a couple of perfect games in 2005 and 2006.

Personal: Born on May 21, 1988 to Donnie and Martha Thomas...Has a younger sister, Alana, who also plays softball...Enjoys a variety of things including shopping, interior decorating, and traveling...Favorite personality is Mickey Mouse...Would most like to meet the President...Inspired by her dad...Chose Georgia State because of the great program and school...Major is undeclared.



Softball fans enjoying a nice day and another Panthers win at the 2006 CAA Softball Championships.



Record: 29-28 Home: 15-7 Away: 8-11 Neutral: 6-10 CAA: 15-6

Player	AVG	GP-GS	AB	R	H	2B	3B	HR	RBI	BB	HBP	SO	SB-ATT	PO	A	E	FLD%
Jaegle, Jackie	.344	51-44	151	27	52	10	1	2	16	5	2	19	3-4	197	30	4	.983
McCoy, Meghan	.342	57-57	152	27	52	4	2	9	32	35	2	37	1-1	247	39	5	.983
Cagle, Jamie	.310	57-57	171	24	53	11	2	6	29	5	2	19	2-3	37	4	4	.911
Branan, Mary Kathryn	.268	57-57	198	32	53	9	1	1	19	5	5	29	7-9	123	85	5	.977
Griffin, Nichole	.256	57-56	172	35	44	5	0	9	34	11	4	42	7-7	45	115	23	.874
Morlock, Lauren	.238	44-35	80	15	19	1	0	2	4	5	1	29	4-6	40	2	3	.933
Harmon, Jessie	.222	47-42	117	12	26	5	1	2	11	8	0	32	0-0	35	2	2	.949
Jones, Candace	.218	45-39	124	9	27	2	0	7	19	8	3	26	0-1	163	34	4	.980
Bradford, Alison	.179	52-51	140	12	25	8	0	5	18	24	1	45	0-0	43	101	9	.941

Gowin, Jessica	.257	36-21	70	7	18	2	1	3	23	9	2	16	1-1	4	1	0	1.000
Berzofsky, Sara	.196	36-26	56	15	11	2	0	1	3	4	1	10	5-8	17	1	1	.947
Miller, Beth	.133	27-12	30	7	4	0	0	0	0	1	0	4	0-0	13	1	0	1.000
Christopher, Laura	.100	5-3	10	0	1	0	0	0	0	1	0	2	0-0	0	0	0	.000
Lanier, Susan	.059	26-24	34	4	2	1	0	0	1	4	1	16	0-0	163	5	2	.988
Hyman, Elizabeth	.000	3-2	2	0	0	0	0	0	0	0	0	2	0-0	4	36	9	.816
Willis, Holly	.000	18-0	0	9	0	0	0	0	0	0	0	0	1-3	0	0	0	.000
Totals.....	.257	57-57	1507	235	387	60	8	47	209	125	24	328	31-43	1133	485	71	.958
Opponents.....	.253	57-57	1491	207	377	42	4	35	179	145	20	381	64-70	1126	422	74	.954

LOB - Team (316), Opp (366). DPs turned - Team (9), Opp (18). IBB - Team (8), McCoy 7, Branan 1.

(All games sorted by earned run avg)

Player	ERA	W-L	APP	GS	CG	SH/CB	SV	IP	H	R	ER	BB	SO	2B	3B	HR	AB	B/avg	WP	HBP	BK	SF/H
Hyman, Elizabeth	2.17	18-11	38	30	25	3/1	3	203.0	158	94	63	95	260	21	3	11	752	.210	19	17	0	2/27
McCoy, Meghan	3.69	6-11	20	14	8	0/0	0	104.1	131	63	55	30	91	10	0	14	443	.296	9	2	0	4/11
Morgan, Chelsey	4.18	5-6	19	13	4	0/1	0	70.1	88	50	42	20	30	11	1	10	296	.297	10	1	1	0/6
Totals.....	2.97	29-28	57	57	37	4/1	3	377.2	377	207	160	145	381	42	4	35	1491	.253	38	20	1	6/44
Opponents.....	3.32	28-29	57	57	25	7/0	1	375.1	387	235	178	125	328	60	8	47	1507	.257	21	24	0	5/16

PB - Team (3), Jones 2, Jaegle 1, Opp (8). Pickoffs - Team (3), Jaegle 2, Jones 1. SBA/ATT - Hyman (41-47), Jaegle (35-39), Jones (23-25), McCoy (13-13), Morgan (10-10), Bradford (6-6).

Overall Team Records

Miscellaneous

Games Played	68 in 1994	Hits Allowed	412 in 1997	Triples	29 in 1992
Wins	42 in 1988	Fewest Hits Allowed	253 in 1987	Home Runs	47 in 2006
Losses	42 in 1990	Runs Allowed	238 in 1997	RBI's	244 in 1988
Consecutive Losses	35 in 2005	Fewest Runs Allowed	99 in 1993	Stolen Bases	94 in 2001
Ties	13 in 2004	Lowest ERA	1.18 in 1990	Sacrifices	38 in 2004
Best W/L Record	1 in 1994	Highest ERA	2.97 in 2006	Walks	176 in 1988
Worst W/L Record	1 in 1992	Walks Allowed	149 in 1992	Strikeouts	329 in 2000
	42-20 (.667) in 1998	Strikeouts	381 in 2006		
	19-35 (.352) in 2005				

Batting

Shutouts	25 in 1992	Batting Average	.306 in 1992	Fielding	
Complete Games	56 in 1991	Runs	324 in 1988	Highest Fielding Pct.	.962 in 2002
Innings Pitched	466 in 1994	At Bats	1,741 in 1991	Lowest Fielding Pct.	.838 in 1987
		Hits	486 in 1992	Total Chances	2,151 in 1991
		Doubles	77 in 2002	Putouts	1,395 in 1991
				Assists	639 in 1991
				Errors	147 in 1986



The Georgia State softball team gave a valiant effort as it vied for the 2006 Colonial Athletic Association tournament title in its inaugural year. Lead by head coach Bob Heck, 2006 CAA Coach of the Year, the team finished the 2006 season with a 29-28 record overall and was 15-6 in conference play to earn the league's regular season title.

The Panthers opened their schedule in February posting a 4-6 mark as they hosted three four-team tournaments on consecutive weekends (Georgia State First Pitch Classic, Lady Panther Invitational, and Georgia State Spring Showdown) from February 11 to February 26. The Panthers competed in the championship game at the Lady Panther Invitational, falling to Georgia Tech 9-4 during the second weekend. The second day at the FPC and the first day of the Spring Showdown were cancelled due to inclement weather and prevented the playing of a championship game in both tournaments.

Georgia State posted a 6-10 mark in March (now 10-16 overall), participating in two away tournaments. At the Buzz Classic, hosted by Georgia Tech, the Panthers defeated Florida A&M and Radford to reach bracket play, where State fell to Syracuse 7-5, the beginning of an eight game losing streak. That streak included a 0-5 mark at the Florida State Invitational from March 10-12. On March 22, the squad traveled to Athens for a doubleheader with No. 11 Georgia. The Panthers dropped both games bringing the streak to eight and leaving Georgia State with a 10-24 record.



CAA Coach of the Year Bob Heck and his assistants (l to r): Kelly Van Houten, Heck, Laura McGirr, and Dickie Hightower.



Jamie Cagle named to All-CAA first team in 2006.

The CAA, playing three-game series, was a boost for the Panthers as they broke the skid with a swept of the Drexel Dragons. State took two of three games from Delaware and during a five game winning streak, swept James Madison and non-conference opponent Mercer, to place State in first place in the league with an 8-1 record. Road trip victories in the CAA became difficult to obtain after the Lady Panther wins in Delaware. State battled Hofstra for first place in the CAA on April 15th then UNC-Wilmington for second place the following weekend. State dropped two of three in both series and fell into a second place tie with the Seahawks, and the Seahawks held the tie-breaker. The Panthers dropped their only CAA home loss to Towson to bring their conference record to 12-6 and 23-26 overall on April 30.

State, based on winning percentages, had to conquer George Mason on May 6-7 in all three games and receive help from Delaware (hosting Hofstra), Towson (hosting UNC-Wilmington) and some weather cooperation in order to host the 2006 CAA Softball Championships. Hofstra and UNC-Wilmington each lost two games in both of their respective series. However, State had to defeat the Patriots after the Pride dropped the Blue Hens in their respective series finale. The Panthers won 9-0, 6-2, and 12-4, respectively, and earned the privilege to host the CAA Championships. State completed the regular season 26-26 overall, 15-6 in conference play and the CAA regular season title. The Panthers also won seven of the last 10 games.

At the CAA tournament on May 11, which was a four-team double elimination event, State opened with a 6-5 win over Delaware. The Panthers fell to Hofstra before defeating UNC-Wilmington and earned a berth into the championship



Elizabeth Hyman receives CAA Pitcher of the Year award from Robert Goodman.



Meghan McCoy earns multiple honors during the 2006 campaign.

game against Hofstra. State needed to drop Hofstra twice to win the championship. The Panthers used a seventh inning rally to defeat the Pride 4-3 to force the deciding game. However, the Pride downed the Panthers 7-3 in the final game to win the tournament title.

State was led by CAA Pitcher of the Year Elizabeth Hyman and CAA Rookie of the Year Jackie Jaegle. Hyman led the conference with 260 K's and posted an 18-11 overall record and a 9-2 CAA mark with a 2.17 ERA. Hyman smashed the single season record for strikeouts by 21 (the old record was 239) and moved to second in the career listings with 492. Jaegle batted a team-high .344 for the season and went .446 in conference play, getting hits when they were most needed, including the game-winning double in the 4-3 victory over the Pride in the CAA tournament.

Hyman received CAA Co-Pitcher of the Week and Nichole Griffin captured Rookie of the Week honors twice. Jaegle was named Rookie of the Week and Meghan McCoy was selected Player of the Week once during the season. Hyman, McCoy, Jaegle and Jamie Cagle earned All-CAA first team honors while Griffin received the CAA Second team award.

Griffin hit .462, recorded six hits and seven RBI in five games including two three-run homers to earn her first honor. Her second honor came after she highlighted the weekend going 2-for-2 with a pair of two-run homers and hit .571 in the 6-2 win over the Patriots in the nightcap. McCoy received her award after going 8-10 (.800) in the George Mason series while hitting a triple in the series finale that gave the Lady Panthers a 2-0 lead in the first inning. She also went 4-for-4 in that game. Cagle finished the season with six home runs, three of the those were game winners over George Mason, James Madison and Troy. She batted a .348 CAA average while collecting a team-second 86 bases and plating 29 batters.



Jackie Jaegle received the CAA Rookie of the Year plaque from Robert Goodman.



(l to r) Meghan McCoy, Jackie Jaegle, and Elizabeth Hyman earn CAA softball All-Tournament honors

The Lady Panthers will return 10 players, including All-CAA First Team and All-Rookie Team member Jaegle and All-CAA Second Team and All-Rookie Team selection Griffin. Mary Kathryn Branan and Alison Bradford will be the only seniors on the squad. Branan was the lead off hitter and led the team in non-conference doubles with nine and a team-high 198 at bats. She was also fourth on the team in batting average (.268). Bradford received 24 walks (second on the team) and drove in 18 runners while putting five balls over the fence.



Georgia State softball team poses for team photo at the 2006 CAA banquet.



Game date	Opposing team	Score	r h e / r h e	Inns	Overall	CAA	Pitcher of record
Feb 11, 2006	vs Western Carolina	W 3-1	3 9 1 / 1 1 1	7	1-0-0	0-0-0	Hyman (W 1-0)
Feb 11, 2006	vs Mercer	0-4 L	0 0 1 / 4 6 1	7	1-1-0	0-0-0	McCoy (L 0-1)
Feb 14, 2006	#17 Auburn University	2-3 L	2 6 2 / 3 9 1	(9)	1-2-0	0-0-0	Hyman (L 1-1)
Feb 18, 2006	vs Eastern Kentucky	W 8-4	8 12 2 / 4 7 4	7	2-2-0	0-0-0	Morgan (W 1-0)
Feb 18, 2006	Georgia Tech	4-12 L	4 6 3 / 12 11 2	5	2-3-0	0-0-0	Hyman (L 1-2)
Feb 19, 2006	vs Kennesaw State	W 9-1	9 11 0 / 1 7 1	5	3-3-0	0-0-0	McCoy (W 1-1)
Feb 19, 2006	vs Georgia Tech	4-9 L	4 9 1 / 9 12 1	7	3-4-0	0-0-0	Morgan (L 1-1)
Feb 22, 2006	at Georgia Southern	2-3 L	2 6 2 / 3 3 1	7	3-5-0	0-0-0	Hyman (L 1-3)
Feb 22, 2006	at Georgia Southern	2-5 L	2 4 1 / 5 9 2	7	3-6-0	0-0-0	Morgan (L 1-2)
Feb 26, 2006	vs Tennessee State	W 7-2	7 10 1 / 2 5 1	7	4-6-0	0-0-0	Hyman (W 2-3)
Mar 01, 2006	Jacksonville State	2-3 L	2 5 0 / 3 7 1	7	4-7-0	0-0-0	Hyman (L 2-4)
Mar 03, 2006	vs Texas-El Paso	3-7 L	3 3 1 / 7 7 2	7	4-8-0	0-0-0	McCoy (L 1-2)
Mar 03, 2006	vs Wisconsin	5-7 L	5 5 1 / 7 7 0	7	4-9-0	0-0-0	McCoy (L 1-3)
Mar 04, 2006	vs Florida A&M	W 4-2	4 11 2 / 2 4 2	7	5-9-0	0-0-0	Hyman (W 3-4)
Mar 04, 2006	vs Radford University	W 1-0	1 1 1 / 0 2 0	7	6-9-0	0-0-0	Hyman (W 4-4)
Mar 04, 2006	vs Syracuse University	5-7 L	5 4 0 / 7 7 2	7	6-10-0	0-0-0	McCoy (L 1-3)
Mar 10, 2006	vs Bradley University	0-2 L	0 0 2 / 2 5 1	7	6-11-0	0-0-0	Hyman (L 4-5)
Mar 10, 2006	vs University of Utah	0-2 L	0 2 3 / 2 8 2	7	6-12-0	0-0-0	McCoy (L 1-4)
Mar 11, 2006	vs North Florida	1-3 L	1 4 1 / 3 7 1	7	6-13-0	0-0-0	Morgan (L 1-3)
Mar 11, 2006	vs Florida State	2-5 L	2 3 0 / 5 13 3	7	6-14-0	0-0-0	McCoy (L 1-6)
Mar 12, 2006	vs Appalachian State	3-5 L	3 8 1 / 5 8 1	7	6-15-0	0-0-0	Hyman (L 4-6)
Mar 22, 2006	at #11 Georgia Bulldogs	1-4 L	1 5 2 / 4 9 0	7	6-16-0	0-0-0	Hyman (L 4-7)
Mar 22, 2006	at #11 Georgia Bulldogs	1-9 L	1 3 1 / 9 10 1	5	6-17-0	0-0-0	Morgan (L 1-4)
*Mar 26, 2006	Drexel University	W 5-4	5 5 1 / 4 5 2	7	7-17-0	1-0-0	Hyman (W 5-7)
*Mar 26, 2006	Drexel University	W 10-1	10 8 0 / 1 4 5	5	8-17-0	2-0-0	McCoy (W 2-5)
*Mar 27, 2006	Drexel University	W 8-0	8 7 1 / 0 3 1	6	9-17-0	3-0-0	Hyman (W 6-7)
Mar 29, 2006	at Furman	2-10 L	2 4 6 / 10 9 0	5	9-18-0	3-0-0	Hyman (L 6-8)
Mar 29, 2006	at Furman	W 4-1	4 5 1 / 1 8 3	7	10-18-0	3-0-0	McCoy (W 3-6)
*Apr 01, 2006	at Delaware	W 4-1	4 10 0 / 1 2 0	7	11-18-0	4-0-0	Hyman (W 7-8)
*Apr 01, 2006	at Delaware	1-3 L	1 6 3 / 3 5 0	7	11-19-0	4-1-0	McCoy (L 3-7)
*Apr 02, 2006	at Delaware	W 3-2	3 7 1 / 2 5 1	7	12-19-0	5-1-0	Morgan (W 2-4)
Apr 04, 2006	Troy University	W 5-3	5 5 1 / 3 6 2	7	13-19-0	5-1-0	Hyman (W 8-8)
Apr 04, 2006	Troy University	4-8 L	4 9 2 / 8 8 2	7	13-20-0	5-1-0	McCoy (L 3-8)
Apr 06, 2006	at Alabama-Birmingham	W 8-5	8 11 1 / 5 8 1	7	14-20-0	5-1-0	Hyman (W 9-8)
Apr 06, 2006	at Alabama-Birmingham	0-1 L	0 2 1 / 1 6 0	7	14-21-0	5-1-0	Morgan (L 2-5)
*Apr 08, 2006	James Madison University	W 5-4	5 7 3 / 4 6 3	7	15-21-0	6-1-0	Hyman (W 9-8)
*Apr 08, 2006	James Madison University	W 7-5	7 15 0 / 5 15 2	(9)	16-21-0	7-1-0	Morgan (W 3-5)
*Apr 09, 2006	James Madison University	W 7-2	7 7 0 / 2 8 2	7	17-21-0	8-1-0	Morgan (W 4-5)
Apr 11, 2006	at Mercer	W 3-1	3 4 0 / 1 3 0	7	18-21-0	8-1-0	Hyman (W 11-8)
Apr 11, 2006	at Mercer	W 9-4	9 12 2 / 4 7 1	7	19-21-0	8-1-0	McCoy (W 4-8)
*Apr 15, 2006	at Hofstra	2-3 L	2 3 1 / 3 6 0	7	19-22-0	8-2-0	Hyman (L 11-9)
*Apr 15, 2006	at Hofstra	5-6 L	5 8 0 / 6 14 3	(8)	19-23-0	8-3-0	Morgan (L 4-6)
*Apr 16, 2006	at Hofstra	W 3-2	3 9 2 / 2 5 1	(8)	20-23-0	9-3-0	Hyman (W 12-9)
*Apr 22, 2006	at UNC Wilmington	0-3 L	0 4 0 / 3 5 1	7	20-24-0	9-4-0	Hyman (L 12-10)
*Apr 23, 2006	at UNC Wilmington	0-1 L	0 4 0 / 1 10 0	(8)	20-25-0	9-5-0	McCoy (L 4-9)
*Apr 23, 2006	at UNC Wilmington	W 7-4	7 10 2 / 4 5 1	7	21-25-0	10-5-0	Morgan (W 5-6)
*Apr 29, 2006	Towson University	W 5-0	5 9 2 / 0 1 1	7	22-25-0	11-5-0	Hyman (W 13-10)
*Apr 29, 2006	Towson University	0-1 L	0 3 1 / 1 5 1	7	22-26-0	11-6-0	McCoy (L 4-10)
*Apr 30, 2006	Towson University	W 3-1	3 6 0 / 1 7 0	7	23-26-0	12-6-0	Hyman (W 14-10)
*May 06, 2006	George Mason	W 9-0	9 11 0 / 0 0 2	5	24-26-0	13-6-0	Hyman (W 15-10)
*May 06, 2006	George Mason	W 6-2	6 8 2 / 2 6 1	7	25-26-0	14-6-0	McCoy (W 5-10)
*May 07, 2006	George Mason	W 12-4	12 15 4 / 4 4 0	6	26-26-0	15-6-0	Hyman (W 16-10)
#May 11, 2006	No. 4 Delaware	W 6-5	6 10 1 / 5 7 3	7	27-26-0	15-6-0	Hyman (W 17-10)
#May 12, 2006	vs No. 2 Hofstra	3-5 L	3 5 1 / 5 7 0	7	27-27-0	15-6-0	Hyman (L 17-11)
#May 12, 2006	vs No. 3 UNC Wilmington	W 13-5	13 16 3 / 5 5 3	7	28-27-0	15-6-0	McCoy (W 6-10)
#May 13, 2006	No. 2 Hofstra	W 4-3	4 9 0 / 3 9 0	7	29-27-0	15-6-0	Hyman (W 18-11)
#May 13, 2006	No. 2 Hofstra	3-7 L	3 6 0 / 7 9 1	7	29-28-0	15-6-0	McCoy (L 6-11)

() extra inning game

*- Colonial Athletic Association game

#- CAA Tournament (Atlanta, Ga.)



Georgia State Softball Batting Leaders for Georgia State (All games)

Hitting minimums - 75% of Games 2 AB 2 TPA
Pitching minimums - 1 Games

Batting avg

1. 23 Jaegle, Jackie...	.344
2. 29 McCoy, Meghan...	.342
3. 20 Cagle, Jamie.....	.310
4. 17 Branan, Mary Kath	.268
5. 15 Griffin, Nichole..	.256

Slugging pct

1. 29 McCoy, Meghan....	.572
2. 20 Cagle, Jamie.....	.503
3. 23 Jaegle, Jackie...	.464
4. 15 Griffin, Nichole..	.442
5. 16 Jones, Candace...	.403

On base pct

1. 29 McCoy, Meghan....	.471
2. 23 Jaegle, Jackie...	.371
3. 20 Cagle, Jamie.....	.337
4. 15 Griffin, Nichole..	.314
5. 17 Branan, Mary Kath	.303

Runs scored

1. 15 Griffin, Nichole..	35
2. 17 Branan, Mary Kath	32
3. 23 Jaegle, Jackie...	27
29 McCoy, Meghan....	27
5. 20 Cagle, Jamie.....	24

Hits

1. 17 Branan, Mary Kath	53
20 Cagle, Jamie.....	53
3. 29 McCoy, Meghan....	52
23 Jaegle, Jackie...	52
5. 15 Griffin, Nichole..	44

Runs batted in

1. 15 Griffin, Nichole..	34
2. 29 McCoy, Meghan....	32
3. 20 Cagle, Jamie.....	29
4. 26 Gowin, Jessica...	23
5. 2 tied at.....	19

Doubles

1. 20 Cagle, Jamie.....	11
2. 23 Jaegle, Jackie...	10
3. 17 Branan, Mary Kath	9
4. 18 Bradford, Alison..	8
5. 2 tied at.....	5

Triples

1. 29 McCoy, Meghan....	2
20 Cagle, Jamie.....	2
3. 4 tied at.....	1

Home runs

1. 15 Griffin, Nichole..	9
29 McCoy, Meghan....	9
3. 16 Jones, Candace...	7
4. 20 Cagle, Jamie.....	6
5. 18 Bradford, Alison..	5

Total bases

1. 29 McCoy, Meghan....	87
2. 20 Cagle, Jamie.....	86
3. 15 Griffin, Nichole..	76
4. 23 Jaegle, Jackie...	70
5. 17 Branan, Mary Kath	67

Walks

1. 29 McCoy, Meghan....	35
2. 18 Bradford, Alison..	24
3. 15 Griffin, Nichole..	11
4. 26 Gowin, Jessica...	9
5. 2 tied at.....	8

Hit by pitch

1. 17 Branan, Mary Kath	5
2. 15 Griffin, Nichole..	4
3. 16 Jones, Candace...	3
4. 4 tied at.....	2

Sac bunts

1. 12 Berzofsky, Sara..	4
2. 26 Gowin, Jessica...	3
3. 20 Cagle, Jamie.....	2
19 Morlock, Lauren..	2
18 Bradford, Alison..	2

Sac flies

1. 26 Gowin, Jessica...	2
2. 23 Jaegle, Jackie...	1
18 Bradford, Alison..	1
15 Griffin, Nichole..	1

Stolen bases

1. 15 Griffin, Nichole..	7
17 Branan, Mary Kath	7
3. 12 Berzofsky, Sara..	5
4. 19 Morlock, Lauren..	4
5. 23 Jaegle, Jackie...	3

Caught stealing

1. 12 Berzofsky, Sara..	3
2. 17 Branan, Mary Kath	2
19 Morlock, Lauren..	2
13 Willis, Holly....	2
5. 3 tied at.....	1

Steal attempts

1. 17 Branan, Mary Kath	9
2. 12 Berzofsky, Sara..	8
3. 15 Griffin, Nichole..	7
4. 19 Morlock, Lauren..	6
5. 23 Jaegle, Jackie...	4

Stolen base pct

1. 15 Griffin, Nichole..	1.000
29 McCoy, Meghan....	1.000
3. 17 Branan, Mary Kath	.778
4. 23 Jaegle, Jackie...	.750
5. 20 Cagle, Jamie.....	.667



As the Panthers celebrate their victory and look forward to their next opponent at the 2006 Colonial Athletic Association Softball Championships.

As the Panthers get ready for the Softball Championship games, they line up for the singing of the national anthem.



Hitting

Batting Average - Season

Michelle Parker, 1995	.433
Michelle Parker, 1996	.406
Theresa Bredwell, 1988	.405
Corrie Roberts, 2001	.387
Brownie Caldwell, 1989	.353

Batting Average - Career

Michelle Parker, 1993-96	.362
Corrie Roberts, 1999-02	.349
Theresa Bredwell, 1987-88	.324
Missy Hall, 1998-01	.319

Pitching

ERA - Season

Kaci Clark, 1993	0.91
Debbie Hale, 1990	0.97
Karen Roy, 1987	1.04
Mel DelGallo, 1995	1.08
Debbie Hale, 1991	1.19

ERA - Career

Kaci Clark, 1993-94	1.14
Elizabeth Hyman, 2005-06	1.69
Andrea McNary, 2001-04	1.89
Jaci Davis, 1997-2000	2.13
Angela Buckem, 1998-01	2.14

Hits - Season

Gretchen Gruber, 1991	77
Corrie Roberts, 1999	73
Theresa Bredwell, 1988	70
Cindy Gillies, 2002	68
Michelle Parker, 1995	68

Hits - Career

Corrie Roberts, 1999-02	271
Michelle Parker, 1993-96	237
Susan Fryer, 1992-95	223
Cheryl Bodziony, 1999-02	212

Wins - Season

Lora Lischinsky, 1990	25
Kaci Clark, 1993	22
Missy Radaker, 1995	20
Andrea McNary, 2002	20
Kaci Clark, 1994	20

Wins - Career

Lora Lischinsky, 1987-90	61
Stacy Peterson, 1991-94	56
Angela Buckem, 1998-01	51
Andrea McNary, 2001-04	50
Kaci Clark, 1993-94	42

Doubles - Season

Corrie Roberts, 1999	20
Corrie Roberts, 2001	18
Cindy Gillies, 2002	17
Katie Blue, 2002	14
Corrie Roberts, 2000	13
Cheryl Bodziony, 2000	13

Doubles - Career

Corrie Roberts, 1999-02	68
Cheryl Bodziony, 1999-02	43
Michelle Parker, 1993-96	39
Danielle Polley, 1995-98	35

Strikeouts - Season

Elizabeth Hyman, 2006	260
Kaci Clark, 1994	239
Elizabeth Hyman, 2005	232
Kaci Clark, 1993	229
Andrea McNary, 2004	183

Strikeouts - Career

Andrea McNary, 2001-04	582
Elizabeth Hyman, 2005-06	492
Kaci Clark, 1993-04	464
Angela Buckem, 1998-01	363
Stacy Peterson, 1991-94	329

Triples - Season

Gretchen Gruber, 1987	9
Gretchen Gruber, 1991	9
Six tied with	8

Triples - Career

Mel DelGallo, 1994-97	26
Heather Smith, 1986-89	22
Corrie Roberts, 1999	18
Brownie Caldwell, 1988-89	13

Innings Pitched - Season

Lora Lischinsky, 1990	248
Jaci Davis, 2000	235.1
Kaci Clark, 1994	228.2
Andrea McNary, 2002	227.2
Elizabeth Hyman, 2005	215.1

Innings Pitched - Career

Andrea McNary, 2001-04	695.0
Lora Lischinsky, 1987-90	674.0
Stacy Peterson, 1991-94	609.1
Angela Buckem, 1998-01	608.1

Home Runs - Season

Katie Blue, 2003	12
Buffie Chournos, 1999	10
Corrie Roberts, 2001	9
Meghan McCoy, 2006	9
Nichole Griffin	9

Home Runs - Career

Corrie Roberts, 1999-02	31
Meghan McCoy, 2003-06	24
Danielle Polley, 1995-98	23
Mel DelGallo, 1994-97	18
Katie Blue, 2000-03	15

Shutouts - Season

Kaci Clark, 1993	15
Debbie Hale 1990	11
Kaci Clark, 1994	8
Andrea McNary, 2002	7
Angela Buckem, 2000	7
Stacy Peterson, 1992	7

Complete Games - Season

Lara Lischinsky, 1990	31
Jaci Davis, 2000	28
Kaci Clark, 1993	27
Kaci Clark, 1994	27
Andrea McNary, 2002	26
Missy Radaker, 1995	26

Runs Batted In - Season

Heather Smith, 1988	49
Corrie Roberts, 2001	48
Corrie Roberts, 1999	38
Corrie Roberts, 2000	37
Adrienne Lyman, 2000	36

Runs Batted In - Career

Corrie Roberts, 1999-02	155
Heather Smith, 1986-89	120
Michelle Parker, 1993-96	98
Mel DelGallo, 1994-97	90
Meghan McCoy, 2003-06	83

Walks - Season

Meghan McCoy, 2006	35
Jennifer Morgan, 1989	29
Cindy Gillies, 2002	27
Corrie Roberts, 2001	27
Jennifer McClendon, 1988	26

Walks - Career

Jennifer Morgan, 1987-90	100
Meghan McCoy, 2003-06	79
Paige Elsner, 1986-89	70
Charlene Chilton, 1991-94	64
Corrie Roberts, 1999-02	57



Players huddle at the 2000 Trans America Athletic Conference tournament



Slow-Pitch Softball

1983 (18-19)

Head Coach: Robert Heck

3/6	Appalachian State	W	8-3
3/6	Appalachian State	W	1-0
3/7	West Georgia	L	3-5
3/7	West Georgia	L	3-4
3/16	vs. !Virginia Wesleyan	W	8-3
3/16	vs. !Appalachian State	L	1-6
3/16	vs. !Payne College	W	9-3
3/16	vs. !Catawba	L	3-4
3/17	vs. !St. Augustine	L	5-6
3/17	vs. !Lenoir-Rhyne	L	2-5
3/21	Columbus College	L	5-12
3/21	Columbus College	L	12-14
3/22	Wittenberg	W	13-2
3/22	Wittenberg	W	23-1
3/24	Gardner-Webb	W	6-2
3/24	Hiwassee	L	2-5
3/24	Georgia Tech	W	6-2
3/30	vs. ^Pensacola JC	L	2-13
3/31	vs. ^Gulf Coast CC	L	4-6
3/31	vs. ^West Florida	L	3-5
3/31	vs. ^Columbus Coll.	L	1-2
3/31	vs. ^Faulkney State	W	8-1
4/4	Georgia Tech	L	4-6
4/4	Georgia Tech	W	12-1
4/6	vs. %South Florida	L	5-9
4/6	vs. %Delta State	W	9-8
4/7	vs. %Troy State	L	3-9
4/11	North Georgia	W	8-3
4/11	North Georgia	W	9-3
4/18	Le Grange College	W	18-0
4/18	Le Grange College	W	11-0
4/23	Le Grange College	W	9-6
4/23	Le Grange College	W	15-3
4/25	Truitt-McConnell	W	9-3
4/25	Truitt-McConnell	L	6-11
4/27	vs. North Georgia	L	6-9
4/28	Truitt-McConnell	L	7-15
! - (Salisbury)			
^ - (Panama City, FL)			
% - (Pensacola, FL)			

1984 (Not Available)

Head Coach: Robert Heck

Fast-Pitch Softball

1985 (15-24) (First Year)

Head Coach: Robert Heck

3/2	Florida A&M	L	1-5
3/2	Florida A&M	W	3-1
3/6	Mercer CC	L	5-6
3/6	Mercer CC	W	4-2
3/9	Liberty Baptist	L	6-8
3/9	Liberty Baptist	W	9-3
3/14	Onadaga	L	0-4
3/14	Onadaga	W	3-2
3/16	at !Mississippi State	L	1-17
3/16	vs. !Tennessee Tech	W	17-3
3/17	vs. !West Georgia	W	4-1
3/17	vs. !Mississippi	L	3-7
3/18	DePaul	L	6-8
3/18	DePaul	W	10-4

3/23	vs. ^South Florida	L	1-3
3/23	vs. ^Michigan State	L	1-5
3/24	vs. ^Bradley	L	2-6
3/24	vs. ^East Carolina	L	4-6
3/24	vs. ^Southern Miss	W	3-1
3/27	West Georgia	W	7-3
3/27	West Georgia	W	6-1
3/30	vs. %Furman	W	4-3
3/30	at %Winthrop	L	1-9
3/30	vs. %Newberry	W	18-2
4/3	Nicholls State	L	3-10
4/3	Nicholls State	L	3-10
4/6	vs. \$Louisiana Tech	L	0-9
4/6	vs. \$Adelphi	L	5-11
4/6	vs. \$Florida State	L	0-7
4/6	vs. \$Western Illinois	L	0-7
4/13	vs. &Sacred Heart	L	1-5
4/13	vs. &Virginia	W	8-4
4/13	vs. &VCU	L	0-6
4/13	vs. &Sacred Heart	L	0-6
4/13	vs. &VCU	L	0-2
4/20	@Landers	L	3-7
4/20	vs. @Tennessee Tech	W	12-4
4/20	vs. @West Georgia	W	12-2
4/29	at Furman	L	0-2

! - Miss. St. Tournament (Mississippi State, MS)

^ - Fla. State Tournament (Tallahassee, FL)

% - Winthrop College Tournament (Rock Hill, SC)

\$ - S.C. Tournament (Columbia, SC)

& - Ga. State Round Robin (Atlanta, GA)

@ - Ga. State Round Robin (Atlanta, GA)

1986 (26-26) NSWAC Runnerup

Head Coach: Robert Heck

3/7	Savannah State	W	15-2
3/7	Savannah State	W	11-0
3/8	!Lander	L	0-1
3/8	!Tennessee Tech	L	2-4
3/8	!Georgia Southern	L	2-4
3/9	George Mason	L	2-13
3/9	George Mason	L	1-3
3/10	Mississippi	L	1-5
3/10	Mississippi	L	1-8
3/15	UNC-Charlotte	W	3-2
3/15	UNC-Charlotte	W	6-5
3/16	vs. ^DePaul	L	3-5
3/16	vs. ^DePaul	L	1-2
3/21	vs. ^Miami (Ohio)	W	5-0
3/21	vs. ^Maine	L	2-4
3/21	vs. ^South Florida	L	0-7
3/21	vs. ^Michigan State	L	0-8
3/21	vs. ^Southern Miss.	W	5-4
3/26	Wilmington (Ohio)	W	8-0
3/26	Wilmington (Ohio)	W	10-5
3/27	Ohio State	W	2-1
3/27	Ohio State	L	1-3
3/28	at %Mississippi State	L	0-2
3/28	vs. %St. Mary's	W	5-1
3/28	vs. %Southern Miss.	L	2-5
3/28	vs. %Arkansas State	W	11-5
4/2	Furman	W	8-5
4/2	Furman	W	4-2
4/5	vs. \$Limestone	L	0-6

4/5	vs. \$Coastal Carolina	W	6-5
4/5	at \$Winthrop	L	3-6
4/7	Columbus	W	10-0
4/7	Columbus	W	8-1
4/11	vs. &Creighton	L	3-5
4/11	vs. &Bradley	L	1-3
4/11	vs. &Loyola-Chicago	W	4-0
4/11	vs. &Western Illinois	L	0-5
4/16	at West Georgia	W	7-1
4/16	at West Georgia	W	1-0
4/19	#Georgia Southern	L	1-4
4/19	#Mercer	W	6-1
4/19	#Stetson	L	2-5
4/19	#Georgia Southern	W	10-5
4/19	#Stetson	L	4-5
4/21	Augusta	W	5-2
4/21	Augusta	W	9-5
4/23	Mercer	W	11-2
4/23	Mercer	W	11-0
4/25	vs. +South Florida	L	0-3
4/25	vs. +Virginia	W	4-2
4/25	at +South Carolina	L	0-6
4/25	vs. +East Carolina	L	0-3

! - Ga. State Round Robin (Atlanta, GA)

^ - Fla. State Tournament (Tallahassee, FL)

% - Miss. St. Tourney (Mississippi State, MS)

\$ - Winthrop College Tourney (Rock Hill, SC)

& - Western Illinois Tournament (Macomb, IL)

- New South Tournament (Atlanta, GA)

+ - South Carolina Tournament (Columbia, SC)

1987 (26-22) NSWAC Runnerup

Head Coach: Robert Heck

Valparasio	W	3-2
Valparasio	W	9-1
!Lander	L	0-1
!Tennessee Tech	W	7-1
!East Carolina	L	4-5
North Carolina	L	0-3
North Carolina	L	1-8
^UNC-Charlotte	W	7-0
^Limestone	W	3-0
^Miami (Ohio)	W	6-1
vs. %Bradley	L	3-6
vs. %Ohio State	W	6-4
vs. %Massachusetts	L	4-7
vs. %Furman	L	3-7
vs. %Eastern Mich.	L	1-9
Winthrop	L	0-2
Winthrop	L	1-4
USC-Spartanburg	W	2-1
USC-Spartanburg	W	4-1
at Furman	L	0-1
at Furman	L	3-7
Nicholls State	L	4-13
Nicholls State	L	0-13
vs. \$George Mason	W	2-0
at \$South Carolina	L	0-9
vs. \$Furman	L	5-6
vs. \$South Florida	W	4-3
vs. \$Louisiana Tech	L	0-2
vs. \$Nicholls State	L	2-3
at \$Florida State	L	1-4



at Augusta	W	5-0
at Augusta	W	9-2
at Georgia Tech	W	10-0
at Georgia Tech	W	11-0
West Florida	W	2-0
West Florida	W	5-0
Samford	W	12-1
Samford	W	7-2
at Columbus	W	4-1
at Columbus	W	6-0
vs. #Georgia Southern	W	6-1
vs. #Mercer	L	5-7
vs. #Florida A&M	W	3-0
vs. #Stetson	W	2-0
vs. #Mercer	W	5-1
vs. #Stetson	L	2-3
vs. #Stetson	W	2-1
vs. #Stetson	L	3-5
! - Ga. State Round Robin (Atlanta, GA)		
^ - Ga. State Round Robin (Atlanta, GA)		
% - Fla. State Tournament (Tallahassee, FL)		
\$ - S.C. Invitational (Columbia, SC)		
# - New South Tournament (DeLand, FL)		

1988 (42-20) NSWAC Runnerup

Head Coach: Robert Heck

USC-Aiken	W	17-2
USC-Aiken	W	11-0
Lander	W	2-1
Tennessee Tech	W	13-0
East Carolina	L	5-6
Valparaiso	W	3-0
Miami (Ohio)	L	1-2
UNC-Wilmington	W	4-1
Wilmington (Ohio)	W	8-4
Wilmington (Ohio)	W	19-0
Saginaw Valley State	L	1-2
Saginaw Valley State	W	7-4
Greensboro	W	22-1
UNC-Charlotte	W	1-0
UNC-Charlotte	W	5-0
George Mason	W	4-3
George Mason	W	6-2
Bradley	L	2-6
Bradley	W	3-1
vs. !Stetson	W	6-0
vs. !Virginia	W	6-2
vs. !Massachusetts	L	1-2
vs. !Southern Illinois	L	1-3
vs. !Northern Illinois	L	2-3
Winthrop	W	3-1
Winthrop	W	6-0
Gustavus Adolphus	W	5-0
Gustavus Adolphus	W	14-0
at Samford	W	3-0
at Samford	W	8-3
Furman	W	4-3
Furman	L	1-2
at ^South Carolina	L	0-7
vs. ^North Carolina	W	7-3
vs. ^Georgia Southern	W	1-0
vs. ^Winthrop	W	4-1
at ^South Carolina	L	3-9

Augusta	W	6-3
vs. %North Carolina	L	1-2
vs. %South Carolina	L	3-11
vs. %Nicholls State	L	5-6
vs. %SW Louisiana	W	1-0
vs. %Winthrop	W	5-1
vs. %South Carolina	L	0-9
Mercer	W	11-0
Mercer	W	5-0
Georgia Tech	W	7-1
Georgia Tech	W	7-1
at Florida State	L	0-5
at Florida State	L	1-2
Columbus	W	4-0
Columbus	L	2-4
USC-Spartanburg	W	8-5
USC-Spartanburg	W	4-3
4/30 at #Georgia Southern	W	7-2
4/30 vs. #Mercer	W	11-3
4/30 vs. #Samford	W	2-0
5/1 vs. #Florida A&M	W	7-1
5/1 vs. #Stetson	L	3-4
5/1 vs. #Florida A&M	W	11-1
5/2 vs. #Stetson	L	4-5
5/2 vs. #Stetson	L	0-6
! - Fla. State Tournament (Tallahassee, FL)		
^ - S.C. Invitational (Columbia, SC)		
% - UTC Tournament (Chattanooga, TN)		
# - New South Tournament (Statesboro, GA)		

1989 (31-23, 12-2 NSWAC) NSWAC Champions

Head Coach: Robert Heck

Virginia	L	0-5
Virginia	L	2-4
Lander	W	5-0
Tennessee Tech	W	12-10
at Samford	W	4-0
at Samford	W	5-3
Columbus	W	3-1
USC-Spartanburg	W	4-0
Baptist	W	6-0
Saginaw Valley State	W	5-4
Saginaw Valley State	L	4-6
Bradley	L	2-6
Bradley	L	1-2
George Mason	L	4-5
George Mason	L	3-8
vs. !Missouri	W	4-3
vs. !Illinois State	L	1-2
vs. !Ohio State	W	7-1
vs. !North Carolina	L	0-3
at Stetson	L	8-9
at Stetson	W	9-4
vs. ^North Carolina	L	0-3
vs. ^Winthrop	W	1-0
vs. ^Toledo	W	2-0
at ^South Carolina	L	1-2
Toledo	L	0-5
Toledo	L	1-7
at Mercer	W	4-1
at Mercer	W	2-0
at %Virginia	L	0-7
vs. %Temple	L	1-3

vs. %UNC-Charlotte	W	9-0
vs. %Delaware	L	0-1
vs. %Drexel	W	1-0
at Furman	L	2-6
at Furman	W	2-1
vs. \$Georgia Southern	L	2-3
at \$South Carolina	L	3-5
vs. \$East Carolina	W	5-4
at \$South Carolina	L	0-1
Samford	W	4-0
Samford	W	4-3
Mercer	W	3-1
Mercer	W	3-0
Florida A&M	W	4-0
Florida A&M	L	1-2
Georgia Southern	W	3-0
Georgia Southern	W	8-1
at Georgia Tech	W	4-3
at Georgia Tech	L	5-6
at #Florida A&M	W	5-2
vs. #Samford	W	6-3
vs. #Mercer	L	0-2
vs. #Mercer	W	1-0
! - Fla. State Tournament (Tallahassee, FL)		
^ - S.C. Round Robin (Columbia, SC)		
% - Va. Invitational (Charlottesville, VA)		
\$ - S.C. Invitational (Columbia, SC)		
# - New South Tournament (Tallahassee, FL)		

1990 (42-23) NSWAC Champions

Head Coach: Robert Heck

2/28 South Carolina	L	0-2
2/28 South Carolina	L	0-4
3/3 !East Carolina	W	3-0
3/3 !Tennessee Tech	W	6-0
3/4 !Miami (Ohio)	L	1-3
3/4 !Virginia	W	2-1 (12)
3/4 !UNC-Wilmington	W	10-2
3/6 at *Mercer	L	0-1
3/6 at *Mercer	W	4-0
3/10 vs. ^Baptist	W	1-0
3/10 vs. ^Columbus	W	3-1
3/10 vs. ^USC-Spartanburg	W	5-0
3/12 George Mason	W	8-0
3/12 George Mason	W	5-1
3/16 vs. %Missouri	W	1-0
3/16 vs. %Northern Iowa	W	3-2 (10)
3/16 vs. %Illinois State	L	2-3
3/18 vs. Indiana	L	0-3
3/18 vs. Florida A&M	W	1-0 (8)
3/21 Bradley	W	2-1
3/21 Bradley	W	3-1
3/24 at Florida State	L	0-2
3/24 at Florida State	L	0-8
3/25 at *Florida A&M	W	8-1
3/25 at *Florida A&M	W	5-0
3/27 *Samford	W	3-0
3/27 *Samford	W	2-0
3/30 vs. \$South Florida	L	0-2
3/30 vs. \$Samford	W	2-1
3/31 vs. \$Michigan State	W	3-1
3/31 vs. \$Oklahoma State	L	0-8
4/1 Georgia College	W	4-2



4/1 Georgia College	W 9-0	3/25 Augusta	W 5-2	3/8 SC-Spartanburg	W 3-1
4/3 *Mercer	W 7-3	3/26 at *Samford	W 8-1	3/8 *Georgia Southern	W 5-1
4/3 *Mercer	W 6-3	3/26 at *Samford	L 0-1	3/8 Austin Peay	W 7-0
4/11 at *Georgia Southern	W 2-0	4/2 at *Mercer	W 1-0	3/18 vs. Bradley (Macon)	W 9-0
4/11 at *Georgia Southern	W 3-2	4/2 at *Mercer	W 5-2	3/20 vs. !Kent State	L 3-8
4/13 vs. &Coastal Carolina	W 4-2	4/5 vs. \$Wichita State	L 0-3	3/21 vs. !South Florida	L 3-4
4/13 vs. &UNC-Charlotte	L 2-4	4/5 vs. \$Winthrop	L 3-4	3/22 at *Florida A&M	W 14-7
4/14 vs. &Ga. Southern	W 5-0	4/5 vs. \$SW Louisiana	L 0-1	3/22 at *Florida A&M	W 3-0
4/14 at &South Carolina	L 0-3	4/6 vs. \$South Florida	W 9-5 (9)	3/27 vs. *Samford	W 8-0
4/15 Georgia Tech	W 7-1	4/6 vs. \$Samford	W 4-0 (9)	3/27 vs. South Carolina	L 2-9
4/15 Georgia Tech	W 1-0 (9)	4/6 vs. \$SW Louisiana	L 2-3	3/27 vs. North Carolina	L 2-16
4/17 Furman	L 2-4	4/10 Kennesaw State	W 1-0 (10)	3/28 Georgia Tech	L 1-4
4/17 Furman	L 1-2	4/10 Kennesaw State	W 3-0	3/28 Georgia Tech	L 3-7
4/18 at *Samford	L 6-7	4/12 vs. Georgia Southern	W 2-1	4/1 Troy State	L 6-7
4/18 at *Samford	W 12-3	4/12 vs. UNC-Charlotte	L 0-2	4/1 Troy State	W 4-0
South Florida	L 0-2	4/12 vs. South Carolina	L 0-4	4/4 at %South Carolina	L 0-2
South Florida	L 0-2	4/12 vs. Coastal Carolina	W 5-1	4/4 vs. %Winthrop	W 4-0
SW Louisiana	L 0-4	4/13 vs. South Carolina	L 0-5	4/5 at %South Carolina	L 0-7
Stetson	W 3-0	4/15 *Mercer	W 9-0	4/5 vs. %Winthrop	L 2-3
Stetson	L 3-6	4/15 *Mercer	W 7-0	4/5 vs. %Winthrop	W 4-0
Connecticut	L 0-1	4/16 at Furman	L 0-4	4/10 vs. \$Iowa State	W 6-5
Adelphi	W 11-4	4/16 at Furman	L 1-6	4/10 vs. \$Kansas	L 1-6
Penn State	L 2-9	4/17 *Samford	L 2-5	4/10 vs. \$Oklahoma State	L 0-9
Detroit	L 2-4	4/17 *Samford	W 4-1	4/11 vs. \$Oklahoma City	W 5-4 (11)
Massachusetts	W 3-2	4/19 vs. NW Louisiana	L 0-6	4/11 vs. \$Oklahoma State	L 0-4
Detroit	W 2-0	4/19 vs. UNC-Charlotte	W 2-1 (8)	4/14 Furman	W 4-2
Kent State	W 7-2	4/21 vs. Louisiana Tech	L 0-4	4/14 Furman	W 4-2
Georgia Southern	W 5-2	4/23 *Florida A&M	L 0-5	4/15 *Samford	W 6-0
Samford	W 6-4	4/23 *Florida A&M	W 2-1	4/15 *Samford	W 5-4
Samford	W 2-0	4/26 vs. Rutgers	W 1-0	4/17 vs. +Louisiana Tech	L 0-11
! - N/A tournament		4/26 vs. George Mason	W 5-1	4/17 vs. +UNCW	W 3-1
^ - N/A tournament		4/27 vs. Detroit	L 3-4	4/17 vs. +*S.E. Louisiana	W 8-4
% - Va. Invitational (Charlottesville, VA)		4/27 vs. George Mason	W 3-0	4/18 vs. +South Florida	W 3-2
\$ - S.C. Invitational (Columbia, SC)		4/27 vs. Drexel	W 4-0	4/18 vs. +Furman	L 1-10
# - New South Tournament (Atlanta, GA)		4/27 vs. Penn State	W 4-0	4/18 vs. +Tennessee Tech	W 3-0
		4/28 vs. Rutgers	W 3-2	4/19 vs. +South Florida	L 3-8
1991 (35-32)		4/28 vs. Detroit	L 2-4	4/22 *Mercer	W 10-0
Head Coach: Robert Heck		4/30 vs. Georgia College	W 4-3 (9)	4/22 *Mercer	W 5-0
2/17 *Georgia Southern	W 6-1	4/30 vs. Georgia College	W 7-2	4/25 Georgia Tech	W 5-2
2/26 Campbell	W 6-1	5/3 vs. #Mercer	W 4-1	4/25 Georgia Tech	L 2-3
2/26 Campbell	W 6-2	5/3 vs. #Stetson	L 0-1	4/26 *Stetson	L 6-7
3/1 !Louisiana Tech	L 5-11	5/3 vs. #Georgia Southern	L 2-3	4/26 *Stetson	L 1-6
3/2 !Tennessee Tech	W 8-3	! - N/A tournament		4/28 Kennesaw State	L 4-7
3/2 !Ball State	W 4-3	^ - N/A tournament		4/28 Kennesaw State	L 6-13
3/5 South Carolina	W 1-0	% - S.C. Invitational (Columbia, SC)		5/1 vs. #Mercer	W 5-3
3/5 South Carolina	L 0-5	\$ - N/A tournament		5/1 vs. #Centenary	W 8-1
3/7 at Georgia Tech	L 1-2	# - New South Tournament (DeLand, FL)		5/1 vs. #Stetson	W 3-1
3/7 at Georgia Tech	L 1-2			5/2 vs. #Stetson	W 4-3 (10)
3/9 ^Baptist	L 1-5	1992 (35-27-1) TAAC Champions		! - Florida State Tourney (Tallahassee, FL)	
3/9 ^USC-Spartanburg	L 0-2	Head Coach: Robert Heck		^ - Birmingham-Southern Tourney (Birmingham, AL)	
3/9 ^Columbus	L 3-5	2/16 Army	W 8-5	% - South Carolina Tournament (Columbia, SC)	
3/10 ^Southern Illinois	L 2-3	2/16 Army	W 4-0	\$ - Oklahoma State Tourney (Stillwater, OK)	
3/10 ^George Mason	W 4-3	2/23 at *Georgia Southern	W 2-1	+ - Chattanooga Tourney (Chattanooga, TN)	
3/15 at %South Carolina	L 0-9	2/23 at *Georgia Southern	L 0-4	# - Trans America Athletic Conference (Macon, GA)	
3/15 vs. %Connecticut	L 3-8	2/26 Georgia College	W 9-0		
3/15 vs. %Southern Illinois	L 0-1	2/26 Georgia College	W 4-0	1993 (39-16) TAAC Champions	
3/16 vs. %South Florida	L 2-5	3/3 South Carolina	L 0-5 (9)	Head Coach: Robert Heck	
3/16 vs. %Nicholls State	L 0-8	3/3 South Carolina	L 1-6	2/21 Georgia Southern	W 14-0
3/20 Bradley	L 1-4 (9)	3/6 *Centenary College	L 2-3	2/21 Georgia Southern	W 3-2
3/20 Bradley	W 2-1	3/6 *Centenary College	T 3-3	2/28 South Carolina	W 8-0
3/23 Tennessee Wesleyan	W 17-0	3/7 vs. Southeast Missouri	L 0-1	2/28 South Carolina	W 7-6
3/23 Tennessee Wesleyan	W 9-0	3/7 vs. N.C. A&T	W 18-1	3/6 Georgia Southern	W 8-0
3/25 Augusta	W 11-1	3/7 vs. Charleston So.	W 2-0	3/6 Kennesaw State	W 7-2 (8)



3/6	Florida A&M	W	14-0
3/7	Tennessee Tech	W	1-0
3/7	Austin Peay	W	9-1
3/11	Kutztown	W	6-0
3/11	Kutztown	W	2-1
3/19	vs. !SW Louisiana	L	0-5
3/19	vs. !Rhode Island	W	4-3
3/19	at !Florida State	L	0-1
3/20	vs. !Eastern Illinois	L	0-2
3/20	vs. !Drake	W	3-1
3/24	Limestone	W	4-0
3/24	Limestone	W	8-0
3/26	vs. ^Cambell	W	6-0
3/26	vs. ^North Carolina	L	0-6
3/28	vs. ^Toledo	W	3-0
3/28	at ^Winthrop	W	11-4
4/2	vs. %North Carolina	W	5-3
4/2	vs. %Drexel	W	8-3
4/3	vs. %Georgia Tech	W	7-0
4/3	vs. %UNC-Charlotte	W	5-2
4/3	vs. %Mercer	W	3-1
4/7	at Samford	W	4-0
4/7	at Samford	W	4-1
4/9	Georgia Southern	W	7-1
4/10	SW Louisiana	W	2-0
4/10	at \$South Carolina	L	0-7
4/10	vs. \$SW Louisiana	L	0-1
4/10	vs. \$Georgia Southern	W	3-1
4/14	at Georgia Tech	L	1-2
4/14	at Georgia Tech	L	1-2
4/16	vs. Louisiana Tech	L	3-4
4/16	vs. Winthrop	W	4-2
4/16	vs. Nicholls State	W	1-0 (18)
4/17	vs. UNC-Wilmington	W	3-1
4/17	vs. East Carolina	L	0-1
4/18	vs. Texas-Arlington	L	0-2
4/20	Georgia Tech	W	6-5 (17)
4/20	Georgia Tech	L	2-3
4/22	at Furman	W	2-0
4/22	at Furman	W	6-3
4/24	Virginia	L	1-8
4/24	Virginia	W	4-3
4/27	at Kennesaw State	L	0-4
4/27	at Kennesaw State	L	1-2
4/30	vs. #Mercer	W	9-0
4/30	vs. #Samford	W	5-0
5/1	vs. #Stetson	W	1-0
5/1	vs. #Stetson	L	2-3
5/1	vs. #Stetson	W	3-0

! - Lady Seminole Invitational (Tallahassee, FL)
 ^ - Winthrop Invitational (Rock Hill, SC)
 % - Buzz Classic (Marietta, GA)
 \$ - S.C. Tournament (Columbia, SC)
 # - TAAC Tournament (Macon, GA)



Kaci Clark

1994 (40-25-1, 7-5 TAAC) TAAC Champions			
Head Coach: Robert Heck			
2/19	*Samford	W	3-0
2/19	*Samford	W	3-1
2/23	South Carolina (DH)	DNP	
2/27	Louisiana Tech	L	1-3
2/27	Louisiana Tech	L	0-7
3/05	Georgia Southern	W	1-0
3/05	Troy State	W	1-0
3/05	Limestone College	W	6-0
3/06	Jacksonville State	W	8-0
3/06	Tennessee Tech	W	6-1
3/06	Georgia Southern	L	2-3
3/10	Univ. of Mobile	W	1-0
3/10	Univ. of Mobile	W	6-3
3/11	Eastern Kentucky	W	1-0 (8)
3/11	Wisconsin-Oshkosh	W	1-0
3/11	Mercer	W	8-0
3/12	Eastern Kentucky	W	4-0
3/12	USC-Aiken	W	3-0
3/12	Troy State	W	1-0
3/18	vs. !No. 21 UIC	L	2-3 (8)
3/18	vs. !Massachusetts	W	7-4
3/18	vs. !Western Illinois	L	4-5
3/19	vs. !Northern Iowa	W	1-0 (8)
3/19	vs. !Miami (OH)	W	6-1
3/19	vs. !No. 14 TX A&M	L	1-2
3/23	vs. ^No. 18 UT State	L	0-3
3/23	vs. ^No. 11 Kansas	L	1-2
3/23	vs. ^No. 1 Arizona	L	1-14
3/26	vs. ^No. 6 CS-Northridge	W	2-1
3/26	vs. ^No. 15 Washington	L	2-3
3/30	St. Peters	W	4-1
3/30	St. Peters	W	8-0
4/01	vs. %UNCW	W	8-2
4/01	vs. %Stetson	W	6-4
4/01	vs. %Canisius	L	1-2
4/02	vs. %UT-Chattanooga	W	4-2
4/02	vs. %Canisius	L	1-2
4/02	*Centenary	L	1-3
4/04	*Centenary	W	3-1
4/09	at No. 14 S. Carolina	L	2-4
4/09	at No. 14 S. Carolina	L	0-5
4/10	*SE Louisiana	W	2-0
4/10	*SE Louisiana	W	4-0
4/12	at Georgia Tech	L	2-15
4/12	at Georgia Tech	L	0-5
4/15	\$ NW Louisiana	W	3-2
4/15	\$ Hofstra	W	2-1 (8)
4/16	\$ UNC-Wilmington	W	3-1
4/16	\$ Furman	W	4-1
4/17	\$ McNeese State	T	2-2 (9)
4/17	\$ Tennessee Tech	W	3-2
4/21	at *Samford	L	0-1
4/21	at *Samford	W	2-1
4/23	at *SE Louisiana	L	2-3 (9)
4/23	at *SE Louisiana	W	4-5
4/24	at *Centenary	W	1-0 (8)
4/24	at *Centenary	L	1-2 (8)
4/26	Kennesaw State	L	4-5 (8)
4/29	vs. #C of Charleston	W	9-0
4/29	vs. #Samford	L	3-6
4/29	vs. #Mercer	W	4-1

4/30	vs. #S.E. Louisiana	W	3-1 (8)
4/30	vs. #Samford	W	2-1 (9)
4/30	vs. #Centenary	W	2-1
4/30	vs. #Centenary	W	2-1 (9)

! - Lady Seminole Invitational (Tallahassee, FL)
 ^ - Pony Tournament (Fullerton, CA)
 % - Buzz Classic (Atlanta, GA)
 \$ - Frost Cutlery Classic (Chattanooga, TN)
 # - TAAC Tournament (DeLand, FL)

1995 (30-19, 11-1 TAAC)			
Head Coach: Robert Heck			
2/25	at South Carolina	L	0-2
2/25	at South Carolina	L	0-3
3/4	Troy State	L	0-3
3/4	Middle Tenn. State	W	1-0
3/11	Limestone	W	15-0
3/11	TN-Chattanooga	W	7-0
3/11	Mercer	W	11-4
3/17	vs. !Iowa State	L	2-4
3/17	vs. !Southern Illinois	L	1-7
3/17	vs. !Eastern Michigan	W	4-3 (12)
3/18	vs. !Ohio State	W	7-2
3/18	vs. !Princeton	L	1-8
3/22	at ^CS- Fullerton	L	0-2
3/24	vs. ^Bowling Green	L	0-6
3/24	vs. ^Oklahoma State	L	4-9
3/25	vs. ^S.W. Louisiana	L	1-4
3/26	vs. ^Kansas	L	2-6
3/29	Furman	W	2-0
3/29	Furman	W	4-3
3/31	vs. %Maryland	W	11-3
3/31	vs. %Tenn.-Martin	W	15-0
3/31	vs. %Troy State	L	3-4
4/1	vs. %Toledo	W	2-1 (9)
4/1	vs. %UNC-Charlotte	W	3-2
4/1	vs. %Bradley	W	5-2
4/1	vs. %Toledo	L	0-2
4/5	Georgia Tech	W	6-2
4/5	Georgia Tech	W	5-2
4/12	*S.E. Louisiana	W	3-0
4/12	*S.E. Louisiana	W	7-4
4/13	*Samford	W	3-0
4/13	*Samford	W	3-2 (9)
4/14	vs. \$South Florida	W	12-7
4/14	vs. \$No. 16 Nicholls St.	L	0-7
4/15	vs. \$Eastern Kentucky	W	6-4
4/15	vs. \$No. 11 S. Carolina	L	0-3
4/15	vs. \$Marshall	W	5-2
4/15	vs. \$Virginia	L	5-8
4/18	*Centenary	W	4-2
4/18	*Centenary	W	9-1
4/20	at *Samford	W	9-0
4/20	at *Samford	W	5-0
4/23	at *S.E. Louisiana	W	9-0
4/23	at *S.E. Louisiana	W	7-6
4/24	at *Centenary	W	5-1
4/24	at *Centenary	L	2-3
4/28	vs. #Florida Atlantic	L	1-2
4/28	vs. #Centenary	W	5-3
4/29	vs. #Campbell	L	1-2

! - Lady Seminole Invitational (Tallahassee, FL)
 ^ - Pony Tournament (Fullerton, CA)

ALL-TIME RESULTS



SOFTBALL

% - Buzz Classic (Atlanta, GA)
 \$ - Frost Cutlery Classic (Chattanooga, TN)
 # - TAAC Tournament (Atlanta, GA)



Michelle Parker

1996 (20-24, 8-8 TAAC)

Head Coach: Robert Heck

2/22	Mercer	W	7-6
2/22	Mercer	W	3-0
2/24	Columbus College	W	6-2
2/24	Columbus College	L	4-7
2/25	South Carolina	L	0-6
2/25	South Carolina	L	4-10
3/2	*Samford	W	3-0
3/2	*Samford	W	7-2
3/3	!Troy State	L	3-4
3/3	!Middle Tennessee State	W	8-1
3/5	Western Illinois	L	1-3
3/5	Western Illinois	W	3-0
3/15	^Northern Iowa	W	3-1 (9)
3/15	^Illinois-Chicago	W	8-2
3/15	^Miami-Ohio	L	6-8
3/16	^Samford	L	0-1 (8)
3/16	^Michigan	L	0-3
3/20	vs. %No. 5 Cal Northridge	L	0-6
3/21	vs. %No. 2 Washington	L	1-7
3/22	vs. %No. 8 SW La.	L	1-8
3/22	vs. %No. 1 Arizona	L	1-4
3/23	vs. %No. 17 Minnesota	L	5-6 (9)
3/29	vs. \$Stetson	L	6-7
3/29	vs. \$Tennessee Tech	W	8-5
3/30	vs. \$Evansville	W	8-2
4/1	*Southeastern Louisiana	W	6-4
4/1	*Southeastern Louisiana	L	3-5
4/3	*Centenary	L	1-5
4/3	*Centenary	W	10-4
4/6	at Jacksonville State	W	5-4
4/6	at Jacksonville State	L	1-6
4/9	at Georgia Tech	W	3-2
4/9	at Georgia Tech	L	1-3
4/11	at *Samford	W	3-2
4/11	at *Samford	W	9-0
4/13	at *SE Louisiana	L	2-4
4/13	at *SE Louisiana	L	7-8
4/14	at *Centenary	L	0-1
4/14	at *Centenary	W	3-2
4/15	Jacksonville State	L	0-1
4/15	Jacksonville State	L	6-7
4/19	vs. &Illinois-Chicago	L	3-12
4/23	at Furman	W	6-0
4/23	at Furman	W	4-3
! - GSU Round Robin Tournament			
^ - Lady Seminole Invitational (Tallahassee, FL)			
% - Pony Tournament (Fullerton, CA)			
\$ - Buzz Classic (Atlanta, GA)			
& - Frost Cutlery Classic (Chattanooga, TN)			
# - TAAC Tournament (Atlanta, GA)			

1997 (22-32, 10-4 TAAC)

Head Coach: Jodie Smith

2/21	at Mercer	W	2-0
2/23	*Southeastern Louisiana	L	0-4
2/23	*Southeastern Louisiana	W	3-2
3/2	at Georgia	L	1-4

3/3	*Jacksonville State	L	1-3
3/3	*Jacksonville State	L	3-5
3/6	at *Jacksonville State	W	5-2
3/6	at *Jacksonville State	W	4-2
3/8	at Louisiana State	L	0-5
3/8	Mercer	L	1-5
3/9	Bradley	W	1-0
3/9	Alabama	L	2-4
3/9	at Troy State	L	3-4
3/11	Samford	W	11-1
3/11	Samford	W	9-1
3/14	vs. !Iowa State	L	0-4
3/14	vs. !Miami-Ohio	L	1-2
3/14	vs. !Florida Atlantic	W	5-4
3/15	vs. !Michigan	L	3-11
3/15	vs. !Southern Illinois	W	1-0
3/20	vs. ^Cal State-Fullerton	L	1-16
3/20	vs. ^Washington	L	0-5
3/21	vs. ^SW Louisiana	L	0-8
3/22	vs. ^Fresno State	L	0-12
3/22	vs. ^Utah State	L	3-9
3/25	Minnesota	L	1-5
3/25	Minnesota	W	4-2
3/27	Centenary	W	12-11
3/27	Centenary	W	10-0
3/28	vs. %N. Carolina A&T	W	9-2
3/28	vs. %Alabama	L	2-11
3/29	vs. %Utah	L	0-8
3/29	vs. %Wichita State	L	1-7
4/2	Limestone	L	0-4
4/2	Limestone	W	6-4
4/5	Georgia Tech	W	4-3
4/5	Georgia Tech	L	3-6
4/10	at *Samford	W	5-1
4/10	at *Samford	W	7-0
4/13	at *SE Louisiana	W	4-0
4/13	at *SE Louisiana	L	1-8
4/14	at *Centenary	W	10-3
4/14	at *Centenary	L	2-3
4/18	vs. \$Marshall	L	0-4
4/18	vs. \$Nicholls State	L	0-10
4/19	vs. \$Georgia Southern	W	4-1
4/20	vs. \$Tennessee Tech	L	0-7
4/22	Furman	L	1-4
4/24	vs. #Stetson	W	9-5
4/24	vs. #Jacksonville State	L	1-4
4/24	vs. #Mercer	W	5-4
4/25	vs. #Jacksonville State	L	5-8
! - Lady Seminole Invitational (Tallahassee, FL)			
^ - Pony Tournament (Fullerton, CA)			
% - Buzz Classic (Atlanta, GA)			
\$ - Frost Cutlery Classic (Chattanooga, TN)			
# - TAAC Tournament (Jacksonville, FL)			

1998 (28-23, 13-3 TAAC)

Head Coach: Phyllis Guedry

2/21	at South Carolina	L	0-5
2/21	at South Carolina	W	4-3
2/25	Limestone	W	3-1
2/25	Limestone	W	5-4
2/28	Tennessee Tech	L	6-8
2/28	St. Louis	W	8-1
2/28	Mississippi	L	2-3
3/1	Virginia Tech	L	1-7
3/3	*Jacksonville State	W	8-7
3/3	*Jacksonville State	W	8-0
3/6	*Troy State	W	3-1
3/6	*Troy State	L	3-10
3/10	at Georgia Tech	L	1-2
3/13	vs. !Purdue	W	4-1
3/13	vs. !Belmont	W	12-2
3/13	vs. !Mississippi	L	1-2
3/13	vs. !Marshall	L	3-5
3/13	vs. !Hofstra	L	2-10
3/18	vs. ^Cal State Northridge	L	0-9
3/19	vs. ^Nevada Las Vegas	W	6-4
3/20	vs. ^Texas	L	0-8
3/21	vs. ^Fresno State	L	0-9
3/21	vs. ^Southwest Texas	L	0-6
3/26	Wright State	W	5-1
3/27	vs. %Indiana State	W	3-1
3/27	vs. %Florida State	L	0-8
3/28	vs. %Wright State	W	5-1
3/28	vs. %Nicholls State	L	0-5
3/30	*Samford	W	3-2
3/30	*Samford	W	6-3
4/4	at *Troy State	L	0-7
4/4	at *Troy State	L	4-7
4/8	at *Jacksonville State	W	7-5
4/9	at *Jacksonville State	W	9-5
4/10	at *Samford	W	3-0
4/10	at *Samford	W	6-3
4/12	at *Centenary	W	1-0
4/12	at *Centenary	W	5-2
4/16	*Centenary	W	4-3
4/16	*Centenary	W	5-3
4/21	at Furman	W	3-1
4/21	at Furman	L	1-2
4/26	Belmont	W	8-0
4/26	Belmont	L	1-0
4/28	at Georgia Tech	L	3-6
4/30	vs. #Stetson	L	1-2
4/30	vs. #Jacksonville State	W	3-2
5/1	vs. #Stetson	W	3-1
5/1	vs. #Florida International	W	3-0
5/2	vs. #Florida Atlantic	L	2-3
! - Lady Seminole Invitational (Tallahassee, FL)			
^ - Pony Tournament (Fullerton, CA)			
% - Buzz Classic (Atlanta, GA)			
\$ - Frost Cutlery Classic (Chattanooga, TN)			
# - TAAC Tournament (Boca Raton, FL)			

1999 (34-26, 12-10 TAAC)

Head Coach: Phyllis Guedry

2/16	at Auburn	W	8-0
2/16	at Auburn	L	0-8
2/20	at South Carolina	W	2-0



2/20	at South Carolina	L	0-8
2/25	at Kennesaw State	L	0-2
2/25	at Kennesaw State	L	0-5
2/27	!Indiana State	W	4-0
2/27	!Ohio State	L	1-3
2/27	Tennessee Tech	W	2-1
2/28	at Kentucky	W	6-2
3/2	Furman	W	7-5
3/2	Furman	W	5-3
3/5	*Troy State	W	1-0
3/5	*Troy State	L	1-8
3/7	^Pittsburg	W	3-1
3/7	^Loyola Chicago	W	4-0
3/7	^Virginia Tech	L	0-3
3/9	at *Jacksonville State	W	9-2
3/9	at *Jacksonville State	L	9-10
3/12	vs. %Northern Iowa	L	2-4
3/12	vs. %Penn State	L	3-4
3/13	vs. %Princeton	W	3-0
3/13	vs. %Virginia Tech	L	0-4
3/14	vs. %Iowa State	W	5-2
3/19	vs. \$Mercer	W	5-4
3/19	vs. \$UNC-Wilmington	L	2-3
3/19	vs. \$Tenn. Chattanooga	L	1-4
3/20	vs. \$Fordham	W	8-0
3/23	Limestone	W	7-0
3/23	Limestone	W	5-3
3/25	UNC-Charlotte	W	5-4
3/26	vs. &Florida Atlantic	L	4-5
3/26	vs. &Illinois-Chicago	W	5-4
3/27	vs. &Kent State	W	6-1
3/27	vs. &East Carolina	L	3-4
3/28	vs. &Northeast Louisiana	W	6-0
3/28	vs. &Southern Miss.	L	0-4
3/30	Auburn	W	2-1
3/30	Auburn	W	7-6
4/1	at *Troy State	L	2-10
4/1	at *Troy State	L	2-3
4/4	Centenary	W	8-0
4/4	Centenary	W	9-3
4/6	*Jacksonville State	W	3-2
4/6	*Jacksonville State	L	3-5
4/11	at Centenary	L	1-2
4/11	at Centenary	W	13-2
4/14	at *Mercer	W	8-1
4/14	at *Mercer	W	11-6
4/18	at *Samford	L	0-1
4/18	at *Samford	L	1-2
4/20	at Tennessee Tech	L	1-4
4/20	at Tennessee Tech	W	3-2
4/22	*Samford	L	0-1
4/22	*Samford	W	10-5
4/25	at Tenn.Chattanooga	L	4-5
4/25	at Tenn. Chattanooga	W	4-3
5/6	vs. #Troy State	L	1-7
5/7	vs. #Samford	W	5-4
5/7	vs. #Campbell	L	2-6

! - Ga. State Tournament (Atlanta, GA)
 ^ - Ga. State Tournament (Atlanta, GA)
 % - Fla. State Tournament (Tallahassee, FL)
 \$ - Winthrop Invitational (Rock Hill, SC)
 & - Buzz Classic (Atlanta, GA)
 # - TAAC Tournament (Dothan, AL)

2000	(33-29, 8-6 TAAC)		
Head Coach:	Phyllis Guedry		
2/19	at South Carolina	L	0-6
2/19	at South Carolina	L	0-8
2/20	at Georgia Southern	W	6-1
2/20	at Georgia Southern	L	3-4
2/22	at Georgia	W	2-0
2/22	at Georgia	W	12-0
2/27	Alabama-Birmingham	W	6-5
3/2	*Stetson	L	0-1
3/2	*Stetson	W	6-0
3/3	!Marshall	W	1-0
3/3	!Furman	W	5-4
3/4	!Troy State	L	2-10
3/4	!Butler	W	11-3
3/4	!St. John's	W	5-3
3/5	!Marshall	L	1-4
3/7	at Tennessee-Chattanooga	L	2-3
3/7	at Tennessee-Chattanooga	L	0-5
3/10	vs. ^Southern Illinois	L	1-2
3/10	at ^Missouri	L	2-5
3/11	vs. ^Northern Iowa	W	15-9
3/11	at ^Missouri	L	0-1
3/12	vs. ^Southern Illinois	L	1-2
3/12	vs. ^Northern Iowa	W	9-7
3/14	*Jacksonville State	L	0-1
3/14	*Jacksonville State	W	5-2
3/17	vs. %Massachusetts	L	0-2
3/17	vs. %Florida A&M	L	1-2
3/17	vs. %Furman	W	8-0
3/18	vs. %Iowa State	W	4-2
3/18	vs. %Bethune-Cookman	W	4-3
3/19	vs. %Virginia Tech	W	4-1
3/21	Connecticut State	L	1-4
3/21	Connecticut State	L	2-4
3/24	vs. \$Evansville	L	0-1
3/24	vs. \$Virginia Tech	W	4-1
3/25	vs. \$Connecticut	L	0-2
3/25	vs. \$North Carolina	L	2-3
3/28	vs. \$W Mo. St. (@GT)	W	5-1
3/20	at UNC-Charlotte	W	4-2
3/20	at UNC-Charlotte	W	6-0
4/1	Brown	W	8-7
4/1	Brown	W	9-1
4/3	at *Mercer	W	6-1
4/3	at *Mercer	L	1-5
4/7	at *Campbell	W	4-3
4/7	at *Campbell	W	3-0
4/10	*Samford	W	1-0
4/10	*Samford	W	4-0
4/12	Tennessee-Chattanooga	L	2-3
4/12	Tennessee-Chattanooga	L	1-4
4/16	at Alabama-Birmingham	W	3-2
4/18	at *Troy State	L	0-1
4/18	at *Troy State	L	1-9
4/22	at *Florida Atlantic	L	0-1
4/22	at *Florida Atlantic	W	1-0
4/25	at Georgia Tech	W	3-1
4/25	at Georgia Tech	W	2-0
4/26	at Furman	L	0-1
4/26	at Furman	W	1-0
4/4	vs. #Troy State	W	1-0
4/4	vs. #Stetson	L	0-1

4/5	vs. #Jacksonville State	L	0-2
! - Georgia State Tournament (Atlanta, GA)			
^ - Missouri Tournament (Columbia, MO)			
% - Florida State Tournament (Tallahassee, FL)			
\$ - Buzz Classic (Atlanta, GA)			
# - TAAC Tournament (Boca Raton, FL)			

2001	(33-25, 8-6 TAAC)		
Head Coach:	Robert Heck		
2/13	Georgia Southern	W	4-3
2/13	Georgia Southern	W	5-3
2/17	!Nicholls State	W	5-3
2/17	!Austin Peay	W	15-0
2/17	!Mercer	W	6-3
2/18	!Appalachian State	W	5-3
2/18	!Nicholls State	W	8-0
2/21	Georgia Tech	L	0-9
2/21	Georgia Tech	L	1-3
2/23	vs. ^Pittsburgh	W	3-2
2/23	at ^South Florida	L	1-2 (9)
2/24	vs. ^Florida International	L	1-3
2/24	vs. ^Indiana	W	9-3
2/25	vs. ^Hofstra	L	2-5
3/2	vs. %Georgia Tech	L	7-10
3/2	vs. %Eastern Michigan	W	9-1
3/6	*Campbell	W	7-5
3/6	*Campbell	L	1-5 (8)
3/9	vs. \$St. John's	W	5-4
3/9	vs. \$Wichita State	W	8-1
3/10	vs. \$C of Charleston	W	6-2
3/10	vs. \$Mercer	W	7-1
3/10	vs. \$St. John's	W	3-0
3/11	vs. \$St. Louis	W	3-0
3/14	at *Jacksonville State	L	1-3
3/14	at *Jacksonville State	W	4-0
3/16	vs. +Connecticut	W	3-0
3/16	vs. +Utah	L	0-2
3/17	vs. +Florida A&M	W	3-0
3/17	vs. +Bethune-Cookman	L	1-2 (10)
3/22	Arkansas	L	0-7
3/22	Arkansas	W	3-2 (8)
3/23	vs. &Florida A&M	W	2-1
3/23	vs. &Illinois	L	1-3
3/24	vs. &Middle Tenn. State	L	0-2
3/24	vs. &East Carolina	W	2-0
3/24	vs. &Middle Tenn. State	W	7-1
3/25	vs. &California	L	1-4
3/27	at UAB	W	3-0
3/27	at UAB	W	3-1
4/1	Florida State	L	1-9
4/1	Florida State	L	0-10
4/5	Furman	L	0-6
4/5	Furman	L	3-6
4/7	*Troy State	W	8-0
4/7	*Troy State	L	0-5
4/9	at *Samford	L	6-7
4/9	at *Samford	W	1-0 (8)
4/10	*Mercer	W	8-3
4/10	*Mercer	W	3-1
4/13	at *Stetson	L	1-2 (8)
4/13	at *Stetson	W	7-2
4/18	*Florida Atlantic	W	6-4
4/18	*Florida Atlantic	L	0-7



4/24	Kennesaw State	L	10-15
5/3	vs. #Stetson	W	5-2
5/3	vs. #Samford	L	4-6
5/4	vs. #Troy State	L	4-6
! - Georgia State Kick-Off Classic (Atlanta, GA)			
^ - South Florida Tournament (Tampa, FL)			
% - Georgia State Invitational (Atlanta, GA)			
\$ - Georgia State Spring Classic (Marietta, GA)			
+ - Florida State Tournament (Tallahassee, FL)			
& - Buzz Classic (Atlanta, GA)			
# - TAAC Tournament (Boca Raton, FL)			

2002 (38-27, 10-8 Atlantic Sun)

Head Coach: Robert Heck

2/14	UAB	L	4-6
2/14	UAB	L	1-3
2/15	!Charleston Southern	W	6-1
2/15	!Gardner-Webb	W	2-1
2/15	!UCF	L	2-5
2/16	!Western Kentucky	L	0-1
2/16	!Wright State	W	3-1
2/20	at Georgia Tech	L	3-5
2/20	at Georgia Tech	L	2-5
2/23	^Boston College	W	6-5
2/23	^Tennessee	L	3-4 (8)
2/23	^Ball State	W	3-2
2/24	^Iowa	L	0-4
2/24	^Drexel	W	7-3
2/27	at Georgia Southern	W	8-7
2/27	at Georgia Southern	W	7-6
3/1	%Birmingham-Southern	W	3-0
3/3	%Georgia	L	6-8
3/5	at *UCF	L	1-2
3/5	at *UCF	L	0-1
3/7	vs. \$Michigan State	W	1-0 (8)
3/7	vs. \$Florida International	W	3-0
3/8	vs. \$Maryland	W	4-3 (10)
3/8	vs. \$Houston	L	3-13
3/9	vs. \$BYU	L	3-4
3/10	vs. \$North Carolina	W	3-1
3/10	vs. Virginia Tech	L	0-4
3/14	Ball State	W	2-0
3/18	Princeton	L	4-5
3/18	Princeton	W	1-0
3/22	vs. &Western Kentucky	W	1-0 (8)
3/22	vs. &Maryland	W	4-3
3/23	vs. &Elon	W	2-1
3/23	vs. &North Carolina	L	1-5
3/23	vs. &Belmont	W	8-4
3/24	vs. &Ohio State	L	1-3
3/29	Virginia	W	9-3
3/29	Virginia	L	2-3 (9)
4/2	at Birmingham Southern	W	5-2
4/2	at Birmingham Southern	W	3-1 (8)
4/5	*Stetson	W	2-0
4/5	*Stetson	L	2-3
4/7	*Belmont	W	10-4
4/7	*Belmont	W	8-2
4/10	at *Troy State	L	4-6
4/10	at *Troy State	L	1-3
4/12	at *Campbell	L	1-2 (10)
4/12	at *Campbell	W	3-2
4/14	at Elon	W	3-1

4/16	*Jacksonville State	L	2-3
4/16	*Jacksonville State	W	4-3
4/19	at *Florida Atlantic	W	2-0
4/19	at *Florida Atlantic	L	0-6
4/22	*Samford	W	3-2
4/22	*Samford	W	6-5
4/24	at Furman	W	3-0
4/24	at Furman	L	2-3
4/27	at *Mercer	W	1-0
4/27	at *Mercer	W	2-1
5/9	vs. #Troy State	W	3-0
5/9	vs. #UCF	W	6-5
5/10	vs. #Florida Atlantic	L	0-2
5/10	vs. #UCF	W	4-2
5/11	vs. #Florida Atlantic	W	3-2
5/11	vs. #Florida Atlantic	L	0-4
! - Ga. State Kick-Off Classic (Atlanta, GA)			
^ - Ga. State Spring Classic (Atlanta, GA)			
% - Georgia State Invitational (Atlanta, GA)			
\$ - USF Speedline Tourney (Plant City, FL)			
& - Buzz Classic (Atlanta, GA)			
# - Atlantic Sun Tournament (Troy, AL)			



Corrie Roberts

2003 (22-33, 11-11 Atlantic Sun)

Head Coach: Robert Heck

2/15	!Tennessee Tech	L	1-2
2/15	!Wright State	W	4-2
2/19	at UAB	L	1-2
2/19	at UAB	L	0-3
2/22	^Wagner	L	4-6
2/22	^Iowa	L	0-4
2/23	^Marshall	L	2-6
2/23	^Iowa	L	1-4
2/25	Georgia Southern	W	3-2
2/25	Georgia Southern	W	4-2
3/1	%Bradley	W	5-1
3/1	%Manhattan	L	3-4
3/2	%Georgia Tech	W	3-2
3/2	%Georgia Tech	L	2-11
3/5	at *Jacksonville	W	2-0
3/5	at *Jacksonville	L	0-1
3/7	vs. \$Texas A&M	L	0-5
3/8	vs. \$Iowa	L	1-9
3/8	vs. \$Florida A&M	L	6-8
3/12	Georgia Tech	L	1-5
3/12	Georgia Tech	L	3-7
3/14	vs. &Texas Tech	L	0-10
3/14	vs. &North Carolina	L	3-10
3/15	vs. &St. Bonaventure	W	5-2
3/15	vs. &Virginia Tech	W	3-2
3/21	*Campbell	W	2-0
3/21	*Campbell	W	2-0
3/22	vs. +Nicholls State	L	0-4
3/22	vs. +Boston	W	6-0

3/22	vs. +Middle Tennessee	W	5-3
3/23	vs. +Florida State	L	3-4
3/25	Harvard	W	6-0
3/25	Harvard	L	2-4
3/27	at Georgia	L	0-16
3/27	at Georgia	L	1-5
3/29	*UCF	L	0-3
3/29	*UCF	L	1-9
4/3	at *Jacksonville State	L	1-2
4/3	at *Jacksonville State	W	2-0
4/7	at *Belmont	W	3-0
4/7	at *Belmont	W	3-1
4/9	*Troy State	L	1-6
4/11	*Gardner-Webb	W	7-0
4/11	*Gardner-Webb	W	5-1
4/13	*Florida Atlantic	W	2-1
4/13	*Florida Atlantic	L	2-6
4/16	*Mercer	W	5-4
4/16	*Mercer	L	0-1
4/22	at *Samford	L	0-2
4/22	at *Samford	W	4-2
4/24	*Troy State	L	0-2
4/26	at *Stetson	L	0-2
4/26	at *Stetson	L	0-2
4/30	Furman	W	5-0
4/30	Furman	L	1-6

! - Georgia State Invitational (Atlanta, GA)
 ^ - Georgia State Invitational (Atlanta, GA)
 % - Georgia State Classic (Atlanta, GA)
 \$ - Florida State Invitational (Tallahassee, FL)
 & - Va. Tech Hokie Classic (Blacksburg, VA)
 + - Georgia Tech Buzz Classic (Marietta, GA)
 # - Atlantic Sun Tournament (Troy, AL)

2004 (18-33, 6-14 Atlantic Sun)

Head Coach: Robert Heck

2/21	^Georgia Tech	L	0-6
2/21	^Tennessee State	W	9-0
2/22	^Eastern Kentucky	W	5-1
2/22	^Georgia Tech	L	0-8
2/28	%Wright State	L	0-2
2/28	%Drexel	L	0-1
2/29	%Evansville	L	1-8
2/29	%Drexel	W	3-1
3/7	St. Joseph's	W	1-0
3/7	St. Joseph's	W	6-1
3/8	Western Illinois	L	2-3
3/8	Western Illinois	W	8-3
3/12	vs. \$Maryland	L	1-4
3/12	vs. \$Michigan	L	1-12
3/13	vs. \$Notre Dame	L	2-3
3/13	vs. \$Troy State	L	5-6
3/13	vs. \$Central Michigan	L	2-4
3/14	vs. \$St. Louis	W	5-4
3/17	Iowa St.	L	0-1
3/18	Ball St.	L	1-5
3/19	vs. &Eastern Illinois	W	1-0
3/19	vs. &Tulsa	W	2-1
3/20	vs. &NC State	L	1-2
3/20	vs. &Bowling Green	L	0-12
3/24	Ohio	W	4-3
3/26	*Jacksonville	L	0-3
3/26	*Jacksonville	W	2-1



3/27	*Campbell	W	2-1
3/27	*Campbell	L	0-3
3/31	at Georgia Southern	L	0-8
3/31	at Georgia Southern	W	4-3
4/3	*Stetson	L	0-1
4/3	*Stetson	L	2-7
4/7	at Georgia Tech	L	0-3
4/7	at Georgia Tech	L	0-8
4/9	at *Troy State	L	0-1
4/9	at *Troy State	L	0-1
4/17	at *UCF	L	1-4
4/17	at *UCF	L	0-2
4/18	at *Florida Atlantic	L	0-8
4/18	at *Florida Atlantic	L	2-3
4/21	*Mercer	L	1-2
4/21	*Mercer	L	1-3
4/23	*Gardner-Webb	L	0-1
4/23	*Gardner-Webb	W	9-1
4/26	at *Lipscomb	L	1-4
4/26	at *Lipscomb	W	2-0
4/28	at Furman	L	3-4
4/28	at Furman	W	10-2
5/1	at *Belmont	W	4-3
5/1	at *Belmont	W	6-0

^ - Lady Panther Invitational (Atlanta, GA)
 % - Georgia State Spring Showdown (Atlanta, GA)
 \$ - Florida State Tournament (Tallahassee, FL)
 & - Buzz Classic (Atlanta, GA)
 # - Atlantic Sun Tournament (Boca Raton, FL)

2005 (19-35, 8-12 Atlantic Sun)

Head Coach: Robert Heck

2/12	!Tennessee Tech	W	3-2
2/12	!Charleston Southern	W	6-2
2/13	!East Carolina	L	2-5
2/13	!East Carolina	L	0-1
2/19	^Eastern Kentucky	W	3-1
2/19	^No. 19 Georgia Tech	L	1-3
2/20	^Eastern Kentucky	L	0-7
2/23	Georgia Southern	W	1-0
2/23	Georgia Southern	L	4-5
2/26	%Wright State	L	1-2
2/26	%Tennessee-Martin	L	0-2
2/27	%Drexel	W	4-2
3/1	at Jacksonville State	L	0-8
3/2	St. Francis (Pa.)	W	10-1
3/4	vs. \$East Tennessee St.	W	8-0
3/4	vs. \$UNC-Wilmington	W	4-3
3/5	vs. \$Villanova	L	0-6
3/5	vs. \$SUNY-Stonybrook	W	2-0
3/7	Boston	L	2-7



Andrea McNary

3/9	vs. Oakland (at Ga. Tech)	L	0-2
3/11	vs. &Maryland	L	2-3
3/11	vs. &Florida A&M	L	2-4
3/12	vs. &Troy	L	0-8
3/12	vs. &Southern Illinois	L	2-3
3/13	vs. &Eastern Kentucky	L	1-2
3/18	UAB	L	4-7
3/18	UAB	L	2-5
3/20	Furman	W	3-2
3/20	Furman	W	6-3
3/29	at No. 25 Auburn	L	2-4
3/31	at *Campbell	L	0-2
3/31	at *Campbell	W	3-2
4/2	at *Gardner-Webb	W	4-2
4/2	at *Gardner-Webb	W	4-3
4/5	*Troy	L	0-2
4/5	*Troy	L	1-7
4/8	at *Stetson	L	1-5
4/8	at *Stetson	L	0-2
4/10	at *Jacksonville	W	7-1
4/10	at *Jacksonville	L	0-1
4/12	at *Mercer	L	2-3
4/12	at *Mercer	L	1-2
4/15	*UCF	L	0-4
4/15	*UCF	W	6-2
4/17	*Florida Atlantic	W	1-0
4/17	*Florida Atlantic	L	0-2
4/20	No. 18 Georgia Tech	L	0-7
4/23	*Lipscomb	L	0-1
4/23	*Lipscomb	W	1-0
4/24	*Belmont	W	5-4
4/24	*Belmont	L	7-8
4/27	No. 11 Georgia	L	0-6

! - Georgia State First Pitch Classic (Atlanta, GA)
 ^ - Lady Panther Invitational (Atlanta, GA)
 % - Georgia State Spring Classic (Atlanta, GA)
 \$ - Charleston Southern Tourney (Charleston, SC)
 & - Florida State Invitational (Tallahassee, FL)
 # - Atlantic Sun Tournament (Boca Raton, FL)

2006 (29-28, 12-6 CAA) Regular Season Champions

Head Coach: Robert Heck

2/11	!Western Carolina	W	3-1
2/11	!Mercer	L	0-4
2/14	Auburn	L	2-3
2/18	^Eastern Kentucky	W	8-4
2/18	^Georgia Tech	L	4-12
2/19	^Kennesaw State	W	9-1
2/19	^Georgia Tech	L	4-9
2/22	at Georgia Southern	L	2-3
2/22	at Georgia Southern	L	2-5
2/26	%Tennessee State	W	9-1
3/1	Jacksonville State	L	2-3
3/3	vs. \$UTEP	L	3-7
3/3	vs. \$Wisconsin	L	5-7
3/4	vs. \$Florida A&M	W	4-2
3/4	vs. \$Radford	W	1-0
3/4	vs. \$Syracuse	L	5-7
3/10	vs. &Bradley	L	0-2
3/10	vs. &Utah	L	0-2
3/11	vs. &North Florida	L	1-3
3/11	at &Florida State	L	2-5
3/12	vs. &Appalachian St.	L	3-5

3/22	at No. 11 Georgia	L	1-4
3/22	at No. 11 Georgia	L	1-9
3/26	*Drexel	W	5-4
3/26	*Drexel	W	10-1 (5)
3/27	*Drexel	W	8-0 (6)
3/29	at Furman	L	2-10 (5)
3/29	at Furman	W	4-1
4/1	at *Delaware	W	4-1
4/1	at *Delaware	L	1-3
4/2	at *Delaware	W	3-2
4/4	Troy	W	5-3
4/4	Troy	L	4-8
4/6	at UAB	W	8-4
4/6	at UAB	L	0-1
4/8	*James Madison	W	5-4
4/8	*James Madison	W	7-5
4/9	*James Madison	W	7-2
4/11	at Mercer	W	3-1
4/11	at Mercer	W	9-4
4/15	at *Hofstra	L	2-3
4/15	at *Hofstra	L	5-6 (8)
4/16	at *Hofstra	W	3-2 (8)
4/22	at *UNC-Wilmington	L	0-3
4/22	at *UNC-Wilmington	L	0-1
4/23	at *UNC-Wilmington	W	7-4
4/29	*Towson	W	5-0
4/29	*Towson	L	0-1
4/30	*Towson	W	3-1
5/6	*George Mason	W	9-0 (5)
5/6	*George Mason	W	6-2
5/7	*George Mason	W	12-4 (6)
5/11	vs. #Delaware	W	6-5
5/12	vs. #Hofstra	L	3-5
5/12	vs. #UNC-Wilmington	W	13-5
5/13	vs. #Hofstra	W	4-3
5/13	vs. #Hofstra	L	3-7

! - Ga. State First Pitch Classic (Atlanta, GA)
 ^ - Lady Panther Invitational (Atlanta, GA)
 % - Ga. State Spring Classic (Atlanta, GA)
 \$ - Buzz Classic (Marietta, GA)
 & - FSU Invitational (Tallahassee, FL)
 # - Colonial Athletic Association (Atlanta, GA)



Elizabeth Hyman



A		H			
Kathryn Abbott	(2002)	Debbie Hale^	(1990-91)	Tonya Pike	(1987-88)
Angela Allgood	(1991)	Kim Hall	(1989)	Candi Pogue	(1987-88)
Jody Anderson	(1985)	Missy Hall*=	(1998-2001)	Danielle Polley*^	(1995-98)
Staci Anderson^	(1991-92)	Jessie Harmon	(2006-	Alexandrea Pratt	(2003-06)
B		Stephanie Harmon	(1986-87)	Emily Pritchett	(2001-04)
Ann Baxley*^	(1989-92)	Shannon Harrell	(1985)	Jenny Pruett	(1991)
Jane Baxter	(1985)	Crystal Hartman*	(1997-2000)	Q	
Heidi Berger	(1994-95)	Nickie Hashley	(1991)	Lee Quattrocchi	(2001)
Sara Berzofsky	(2003-06)	Kathy Hazinski*	(1989-90)	R	
Carol Bishop	(1985)	Jennifer Hester	(2001-03)	Missy Radaker	(1995)
Scarlett Black	(1986)	Claudia Hickey	(1998)	Melanie Ramers	(1986)
Katie Blue^	(2000-03)	Malida Hill	(1994)	Janet Redd	(1985)
Cheryl Bodziony*	(1999-2002)	Lori Hodges	(1987-88)	Kristy Redlinger	(1991-93)
Lauren Booth	(2000-01)	Elizabeth Hyman*	(2005-06)	Candace Respress	(1995-98)
Annie Boyle	(1998-99)	I		Aimee Reszczyński	(1992)
Alison Bradford	(2004-	Jackie Jaegle*+	(2006-	Jan Riddle	(1991)
Mary Kathryn Branam	(2004-	Christy Jameson	(1993-96)	Corrie Roberts****	(1999-2002)
Theresa Bredwell**	(1986-88)	Stacey Jessen	(1995-97)	Kim Rogers	(1992-93)
Kiley Brooks	(2003-04)	Candace Jones	(2004-06)	Karen Roy	(1986-88)
Lindsey Bryant	(2002-03)	Laura Jones	(2005)	Missy Russell	(1993-96)
Angie Buckem=	(1998-2001)	K		S	
Amanda Bush	(1996)	Jeannine Kemme	(1991)	Holly Schilling	(1997)
Gina Byrum	(1986)	Carrie Kirk	(1995-98)	April Sisson	(1991)
C		Melanie Kotlar	(1996-99)	Franki Smith^	(1985-89)
Jamie Cagle*	(2003-06)	L		Heather Smith*	(1986-89)
Malynda Carruth	(1985, 88)	Carrie Laase	(1996-97)	Marissa Smith	(1992-94)
Jacquelyn Cheek	(1991)	Susan Lanier	(2003-06)	Andrea Stratigos	(1986)
Charlene Chilton*	(1991-94)	Lora Lischinsky**	(1987-90)	Janna Stringer	(1985)
Buffie Chournos*	(1999-2002)	Melissa LeComte	(2001-02)	Susan Sweat	(1994)
Kaci Clark**	(1993-94)	Jennifer Loucks	(1996)	T	
Liz Cook	(1985)	Adrienne Lyman^	(1997-2000)	Tracie Taylor	(1990-91)
Amanda Corley	(1997-2000)	Leigh Lynch	(1990-91)	Shannon Tiahur	(2002-05)
Debbie Cotton	(1990)	M		V	
Tracy Crowe	(1985)	Tanya Maxwell^	(1988-91)	Brownine Vaughn***	(1986-89)
D		Shannon McCormick	(2000-03)	W	
Christine Dangler^	(1996-2000)	Meghan McCoy*	(2003-06)	Brandi Watson	(1992-93)
Jaci Davis	(1997-2000)	Jennifer McClendon^	(1987-90)	Elisabeth Watson	(2003-05)
Jennifer Davis	(1987-88)	Andrea McNary+^	(2001-04)	Shauna Whaley	(1995)
Melanie DelGallo****	(1994-97)	Yolanda McRae	(2001)	Karen Whitley	(1986)
Kortney Dempsey	(2001)	Maria Melts	(2005)	Holly Willis	(2006-
Lisa Diamond	(1998)	Beth Miller	(2003-06)	Karen Witcher	(1985)
Cherly Dunmeyer	(1993)	Tina Miller^	(1989-92)	Joy Wright	(1996-97)
Gina Dwomicki	(1986)	Elizabeth Mitchell^	(1989-92)	Y	
Stephanie Dyble	(2002-03)	Tara Mitchell	(1994-97)	Chandra Yorgason	(1999-2001)
E		Chelsey Morgan	(2006-	Lynda Young	(1986)
Paige Elsner*	(1986-89)	Jennifer Morgan*^	(1987-90)		
Wendy Evilsizor**	(1989-90)	Lauren Morlock	(2003-06)	current players in bold	
Dianne Ewing	(1992)	Helen Myers	(1992)	*First-Team All-Conference	
F		N		^Second-Team All-Conference	
Lindsey French	(2002-03)	Alisia Narodowski	(2003)	=Third-Team All-Conference	
Susan Fryer*^	(1992-95)	Mila Nelson	(1998)	+Freshman All-Conference	
Angie Fulkerson	(1993-96)	O		Multiple symbols indicates All-Conference more than one year	
G		Vanessa Ocampo	(2000)	Conference Affiliation:	
Megan Galhouse	(1997)	Pamela O'Neal	(2004-05)	Trans America Athletic/Atlantic Sun	
Cindy Gillies*	(2001-02)	P		Conference	
Sandra Gross	(1985)	Monica Pardo	(1998)	(1985-2005)	
Jessica Gowin	(2005-	Michelle Parker**	(1993-96)	Colonial Athletic Association	
Nichole Griffin^+	(2006-	Carrie Partlowe	(1994)	(2006-present)	
Gretchen Gruber*	(1990-91)	Stephanie Payne	(1999-2000)		
Valerie Guthrie	(1990-91)	Stacey Peterson^	(1991-94)		



Adelphi	0-1	Illinois	0-1	Purdue	1-0
Alabama	0-1	Illinois State	0-2	Radford	1-0
Alabama-Birmingham	5-7	Illinois-Chicago	2-2	Rhode Island	1-0
Appalachian State	1-1	Indiana	1-1	Rutgers	2-0
Arizona	0-1	Indiana State	1-0	Sacred Heart	0-2
Arkansas	1-1	Iowa	0-4	Saginaw Valley State	2-0
Arkansas State	1-0	Iowa State	3-2	Samford	47-11
Army	2-0	Jackson State	First Meeting	Savannah State	2-0
Auburn	3-3	Jacksonville	3-3	South Carolina	5-33
Augusta	7-0	Jacksonville State	13-12	South Carolina-Aiken	3-0
Austin Peay	3-0	James Madison	3-0	South Carolina-Spartanburg	7-1
Ball State	2-1	Kansas	0-3	Southeastern Louisiana	9-5
Baptist	2-1	Kennesaw State	4-9	Southwestern Louisiana	2-7
Belmont	10-2	Kent State	2-0	South Florida	4-9
Bethune-Cookman	0-1	Kentucky	1-0	Southern Illinois	0-7
Birmingham Southern	3-0	Kutztown	1-0	Southern Mississippi	3-2
Boston College	1-0	Lander	2-3	Southwest Missouri St.	1-0
Boston University	1-1	Liberty	1-1	Southwest Texas	0-1
Bowling Green	0-2	Limestone	9-1	St. Bonaventure	1-0
Bradley	7-8	Lipscomb	2-2	St. Francis (PA)	1-0
Brown	2-0	Louisiana State	0-1	St. John's	2-0
Brigham Young	0-1	Louisiana Tech	0-8	St. Joseph's	2-0
California	0-1	Loyola-Chicago	2-0	St. Louis	3-0
Cal St. Fullerton	1-2	Maine	0-1	St. Mary's	1-0
Cal St. Northridge	1-2	Manhattan	0-1	St. Peter's	2-0
Campbell	10-6	Marshall	2-3	Stetson	14-22
Canisius	0-2	Maryland	3-2	SUNY-Stony Brook	1-0
Centenary	18-7	Massachusetts	1-3	Syracuse	0-1
Central Florida	3-8	Mercer	45-10	Temple	0-1
Central Michigan	0-1	Mercer CC	1-1	Tennessee	0-1
Charleston (Coll. of)	2-0	Miami (Ohio)	3-4	Tennessee-Martin	1-1
Charleston Southern	2-0	Michigan	0-2	Tennessee Wesleyan	2-0
Coastal Carolina	3-0	Michigan State	2-2	Tennessee-Chattanooga	3-4
Columbus	8-3	Middle Tennessee State	4-1	Tennessee State	2-0
Connecticut	1-4	Minnesota	0-1	Tennessee Tech	14-4
Creighton	0-1	Mississippi	0-2	Texas	0-1
Delaware	3-3	Mississippi State	0-2	Texas A&M	0-3
DePaul	1-3	Missouri	2-2	Texas-Arlington	0-1
Detroit	0-3	Mobile	2-0	Texas-El Paso	0-1
Drake	1-0	Morehead State	First Meeting	Texas Tech	0-1
Drexel	7-1	Nevada-Las Vegas	1-0	Toledo	2-3
East Carolina	3-8	Newberry	1-0	Towson	2-1
East Tennessee St.	1-0	Nicholls State	3-11	Troy	9-24
Eastern Illinois	1-1	North Carolina	3-9	Tulsa	1-0
Eastern Kentucky	6-3	North Carolina A&T	1-0	Utah	0-3
Eastern Michigan	2-1	North Carolina St.	0-1	Utah State	0-1
Elon	2-0	UNC Charlotte	12-2	Valparasio	3-0
Evansville	0-4	UNC Greensboro	1-0	Villanova	0-1
Florida A&M	16-6	UNC Wilmington	9-3	Virginia	6-6
Florida Atlantic	7-12	North Florida	0-1	Virginia Commonwealth	0-2
Florida International	2-1	Northern Iowa	1-1	Virginia Tech	2-3
Florida State	1-12	Northeast Louisiana	1-1	Wagner	0-1
Fordham	1-0	Northwestern State Louisiana	1-0	Washington	0-2
Fresno State	0-1	Notre Dame	0-1	West Florida	2-0
Furman	27-21	Northern Illinois	0-1	West Georgia	6-0
Gardner-Webb	6-1	Northern Iowa	4-1	Western Carolina	1-0
George Mason	11-4	Oakland	0-1	Western Illinois	2-5
Georgetown	0-1	Ohio	1-0	Western Kentucky	1-1
Georgia	2-7	Ohio State	4-3	Wichita State	0-1
Georgia Southern	28-11	Oklahoma City	1-0	Wilmington (Ohio)	4-0
Georgia Tech	16-30	Oklahoma State	0-5	Winthrop	8-6
Gustavus Adolphus	2-0	Onadaga	1-1	Wisconsin	0-1
Harvard	1-1	Pennsylvania State	2-0	Wisconsin-Oshkosh	1-0
Hofstra	3-6	Pittsburgh	2-0	Wright State	4-0
Houston	0-1	Princeton	2-2		

Teams in **Bold** indicate scheduled opponents for 2007



Sprouting up from a small parcel of land in 1984, **Bob Heck Field** in Panthersville has grown to become one of the finest softball facilities controlled by a university in the southeast. While other schools may have unlighted fields or limited seating, Georgia State softball's well-manicured field features chair-back seating along both base lines for patrons, in-ground dugouts with restrooms for both the home and visiting teams, a full concession stand, and press box. Many of the recent improvements, like the restrooms in the dugouts, have been provided due to the hard work and dedication of former assistant coach Dickey Hightower.

Bob Heck Field was dedicated to Georgia State's founding father on April 16, 1998. The field rests a 10-minute drive from the State campus, near the eastern intersection of Interstates 20 and 285. Formerly called the Georgia State Softball Field, "The Bob" shares acreage with Georgia State's Department of Recreational Services. In addition, the transmitter for WRAS-FM Atlanta, Georgia State's 100,000-watt student-run radio station, sits on a parcel of land.

The field itself measures 190-feet down each line and 220-feet out to dead center. The grassy field is a natural rye, with a red Georgia clay dirt infield. The chair-back seating along the third base side of Bob Heck Field is very special, as that has been provided by supporters of the Georgia State softball program. Those patrons have been honored with their names on those seats.

The building holding the press box and concession stand is named for Bob Ussery. While some have called Coach Heck "Mr. Softball," coach Heck himself has gone on record as saying he feels Bob Ussery is truly "Mr. Softball" due to all of his contributions for softball at all levels.

There is also a secondary field at Bob Heck Field, which has been used to host various softball events.



The **Robert E. Heck Teamhouse** was officially dedicated April 9, 2003, in honor of the man who helped both found and fund the Panther softball program. Georgia State president Dr. Carl V. Patton officially dedicated the Teamhouse, after which he helped Coach Heck with the ribbon cutting.

The Heck Teamhouse is an indoor practice facility for the Panthers. Instead of braving near-freezing temperatures at the start of the season for outdoor practices, the Panthers can instead stay inside in the climate controlled atmosphere, with plenty of indoor space for fielding drills, as well as pitching and batting cages.

The Teamhouse also features a newly added, full-size training room to help injured Panthers get the proper treatment they need. As has been since the Teamhouse was built, there is a locker room for the Panthers, as well as offices for the coaching staff. There is also a lounge for the players to relax in, with a foosball table and DirecTV service.

Immediately outside the main entrance are outdoor batting cages that are used by both the Panthers and visiting teams. Another secondary door opens up directly behind the left field fence to allow the team to see the happenings on Bob Heck Field.



Georgia State has 16 teams for its student-athletes to compete at the NCAA's highest level.

After a 14-year relationship with the Atlantic Sun Conference (formerly the Trans America Athletic Conference), the Panthers made a dramatic move to the Colonial Athletic Association for the 2005-06 season - one year earlier than planned.

Under the guidance of first-year Athletics Director Mary McElroy, a former NCAA student-athlete herself, Georgia State made huge strides in its new league, capturing two league championships and battling for others in several sports.

Over the past eight years, Georgia State has accumulated 22 conference championships, 22 NCAA bids, 19 conference Coaches of the Year, 15 conference Players of the Year and seven All-Americans.



Mark Steeds was an All-CAA selection and the league's Rookie of the Year.

Last year, State's student-athletes hit the books hard as well with 100 earning the CAA Commissioner's Academic Award and one earning Academic All-America recognition. The 2005-06 season also saw State's teams combine for 29 All-Conference picks.

Volleyball led things off in the win column in the fall, posting the school's first-ever CAA victory. The Lady Panthers were also the first team to qualify for any CAA postseason tournament, earning the No. 5 seed in the six-team field.

Men's and women's cross country each finished third in their respective league championship meets, while the soccer teams posted big conference wins in their inaugural seasons.

The basketball teams battled well during the winter in one of the most competitive leagues in the country as the CAA's men's and women's RPIs ranked eighth nationally out of 32 conferences. Both teams won their first-round league championship contests in upset fashion to advance to the quarterfinals. Midway through the season, Lady Panthers' head coach Lea Henry-Manning notched career win No. 250.

Highlighting the spring season were the accomplishments of the men's and women's golf teams as both captured Georgia State's first-ever CAA championships. The victory earned the men's squad their sixth trip in the past seven years to NCAA postseason competition, while the women garnered their third NCAA appearance in four years. Head coaches Cathy Mant and Matt Clark were named CAA Coaches of the Year.



Meghan McCoy was a first-team All-CAA honoree, the CAA softball Student-Athlete of the Year and an Academic All-American.



Men's golf earned its sixth NCAA bid in seven years. Mark Haastrup was a second team All-American and CAA champion.

Freshman men's golfer Mark Haastrup and senior women's golfer Lisbeth Meincke each won individual medalist honors at the CAA Championships. For Meincke, it was her fourth consecutive conference title in as many tries. As a team, the Lady Panthers posted their best-ever regional finish, placing 11th in the West. Sophomore Joanna Klatten tied for fifth at the Regional and became the first Georgia State women's golfer to advance to the NCAA Championships, where she finished tied for 43rd.

Georgia State's softball team also turned a lot of heads at season's end. The Lady Panthers won 20 of their last 29 games en route to a first-place regular season conference finish and became the first State squad to host a CAA championship event. Head coach Bob Heck, the CAA Coach of the Year, led his team to one victory shy of the title and a NCAA berth.

Baseball fielded the CAA's sixth-best squad despite numerous injuries that affected the team. As the No. 6 seed in the tournament, State defeated former top 25 opponent Old Dominion in an elimination game.

Men's and women's tennis continued solid seasons. The Panthers reached the tournament semifinal as the No. 4 seed, while the Lady Panthers earned the No. 5 slot. Junior Martin Stiegwardt was named State's Male Athlete of the Year.

The track and field teams had multiple entrants earn NCAA Region bids for their individual efforts. The women placed sixth, while the men were eighth at the CAA Championships. Junior Sherice Willis, a two-time CAA champion, was named State's Female Athlete of the Year.



Joanna Klatten became the first female golfer to advance to the NCAA Championships.

GEORGIA STATE UNIVERSITY is one of the nation's leading urban research universities, educating Georgia's most diverse population of students. More than 40,000 students are seeking degrees, with 26,000 on campus each semester. Students arrive from every county in Georgia, every state in the nation and more than 150 countries. Georgia State is the second largest institution of the 35 colleges and universities in Georgia.

Nestled in the heart of downtown Atlanta, Georgia State's location allows students to learn not only in the classroom, but also in the surrounding city, where high-profile companies can provide hands-on experience.

Founded in 1913, Georgia State's student body chooses from more than 52 bachelor's, master's, specialist's and doctoral degree programs in 250 fields of study offered through six college-level units:

- The **J. Mack Robinson College of Business** prepares students to lead by pursuing ethical, innovative and value-enhancing strategies in a culturally diverse and technologically advanced world. The college's flex MBA program has been ranked in the top ten for the past 11 years by U.S. News & World Report.

- The **Andrew Young School of Policy Studies** educates students to become analysts, evaluators and designers of policies addressing economic and social development issues at the local, regional, national and global levels. U.S. News & World Report rankings consistently place the school's public finance and urban management programs among the top ten in the nation.

- The **College of Arts and Sciences** is the home for excellence and innovation in instruction, research, creative activity and community service from the classroom to the laboratory to the performance hall. The college offers challenges from one of the world's leading astronomy facilities, to biotechnology and brain sciences, to cartography and digital arts, to languages and neural communications. Arts and Sciences offers undergraduate and graduate majors in the fine arts, humanities, natural and computational sciences and social and behavioral sciences and is the largest college at the university.

- The **College of Law** provides an affordable, and distinctive legal education through full and part time day and evening programs to a diverse student body and promotes legal scholarship and service that enriches the legal profession and the community. The college is consistently ranked among the top ten best schools for the money and most wired law schools by the National Jurist magazine.

- The **College of Education** offers comprehensive programs in all areas of teacher education, counseling and education fields related to sports. Most programs offer degrees at all levels and lead toward certification and licensure. Six education alumni have been named Georgia Teacher of the Year.

- The **College of Health and Human Services** engages in teaching, scholarly endeavors and service activities that are designed to improve health and well-being and address social justice issues within a multi-cultural society. With programs in nursing, physical therapy, nutrition, cardiopulmonary care, social work and criminal justice, this college today prepares society's essential professionals of tomorrow.

State has earned the highest Carnegie classification for research institutions with extensive research projects seeking breakthroughs in viral immunology, drug design, microbiology, neuroscience and many other exciting fields.



The Helen M. Aderhold Center provides modern classroom facilities in the heart of Georgia State's downtown campus.



Students come to Georgia State from every county in Georgia, every state in the nation and more than 150 countries.

Georgia State is Growing

- Georgia State has begun construction at the corner of Piedmont Road and Ellis Street for a development that will house 2000 students in four towers surrounding a central courtyard. University Commons is scheduled for completion by August 2007.
- Georgia State's "Main Street Master Plan" has been updated and continues the exciting vision of a growing and vibrant urban research university with a dynamic campus that fosters student life.
- Projects already in the design or implementation phases include the University Science Park, a Humanities Building, a University Plaza, Wall Street Student Housing, Interest Housing, a Professional Center for business and law and a Convocation Center.
- A 161,000-square foot Student Recreation Center opened in the fall of 2001, featuring fitness centers, weight rooms, a pool, basketball courts, rock-climbing wall, martial arts studios, a jogging track, and much more.
- Georgia State's off-campus resources include class sites at two locations in north metro Atlanta. The Alpharetta Center is in north Atlanta (off Georgia 400 at Old Milton Parkway) and The Gwinnett Center is in Lawrenceville. These campuses offer graduate courses in business and education.
- Georgia State is growing in areas that will change lives on a global scale. The Center of Biotechnology and Drug Design aims to conquer devastating diseases around the world. The Center for Digital Commerce examines tools and trends that enhance Internet-based business. The Center for High Angular Resolution Astronomy array in Mt. Wilson, Calif.—powerful telescopes with resolution 100 times finer than the Hubble Telescope—is already changing the way we see the universe.



The majority of Georgia State University student-athletes are housed in either the University Lofts or the GSU Village. Both facilities provide the student-athletes a safe, comfortable place to call home during the academic year.

Most Georgia State student-athletes live in the Lofts, which opened in August 2002 and are located on campus, just two blocks from the GSU Sports Arena. The fully-furnished, loft-style apartments blend urban style with modern-day conveniences. Unit amenities include direct internet access in each bedroom, basic cable television service, local telephone service, private bedroom accommodations, key-locked bedroom doors, a refrigerator with ice maker, stove, dishwasher and garbage disposal.

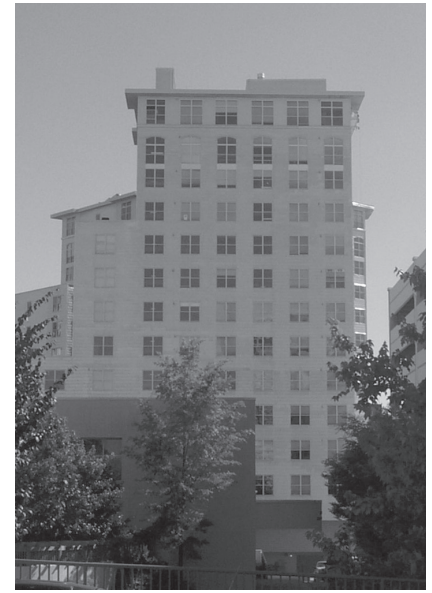
The Lofts also feature a laundry room, 24-hour computer lab, exercise room with cardiovascular equipment and a meeting/community room.

The Village opened in 1996 as the Olympic Village to house athletes from around the world during the Summer Games in Atlanta. Shortly after the Olympics, many students at State moved into the Village. The four-building complex

has apartment-style suites that include wiring for computers, internet access and cable television. The Village also features a gymnasium and meeting rooms.

Scheduled to open in the fall of 2007 is University Commons, a new 2000-bed student housing complex, being built at the intersection of Piedmont Avenue and Ellis Street.

Several options, including a health clinic, are being considered for the four-building complex, as well as a coffee shop, a cafeteria, a 24-hour restaurant or a convenience store. All of the units will also have complete kitchens as well as cable, telephone and internet service.





*Commissioner
Tom Yeager*

Coming off one of the most successful seasons in its 21-year history, the Colonial Athletic Association continues to enhance its reputation as one of the nation's top collegiate conferences.

With a geographic footprint that stretches from Boston to Atlanta, the CAA encompasses five of the nation's nine largest metropolitan areas. On the playing field, the conference has produced 16 national team champions in five different sports, 33 individual national champions, 12 national players of the year, 11 national coaches of the year and 12 Honda Award winners. Even more impressive, however, are the honors accumulated away from competition, which include five Rhodes Scholars and 19 NCAA post-graduate scholars. In 2005-06, the CAA had 11 ESPN the Magazine Academic All-Americans and more than 1,500 of our 4,000 student-athletes posted at least a 3.2 grade point average while lettering in a varsity sport and received the CAA Commissioner's Academic Award. The landscape of the conference stretches along the majority of the East Coast, and includes six of the nation's top 25 media markets – New York (1), Philadelphia (4), Boston (5), Washington, D.C. (8), Atlanta (9) and Baltimore (23). The number of television homes in the CAA market exceeds 19 million.

The CAA conducts championships in 21 sports. Male athletes compete for championships in baseball, basketball, cross country, golf, lacrosse, soccer, swimming & diving, tennis, track & field and wrestling. Female athletes battle for conference titles in basketball, cross country, field hockey, golf, lacrosse, soccer, softball, swimming & diving, tennis, track & field and volleyball. The CAA will also begin sponsorship of a 12-team Division I-AA football league in the fall of 2007.



The conference made its presence known nationally in 2005-06 in men's basketball with four teams, George Mason, UNC Wilmington, Old Dominion and Hofstra, earning post-season bids. Mason became the first mid-major program since 1979 to reach the Final Four and the Patriots were ranked #8 in the final ESPN/USA Today Top 25 poll, which was the highest ever for a CAA team. ODU made the final four the NIT. Drexel was the first CAA squad to make the final four of the NIT Pre-Season Tip-Off Tournament. The CAA was ranked eighth out of 31 conferences in the final RPI with six teams among the top 88 in the country.

In women's basketball, the CAA had a league-record four teams earn post-season berths and was ranked #8 in the final RPI, as Old Dominion made the NCAAs and James Madison, Delaware and Hofstra competed in the WNIT.

The conference also excels in many other sports. In baseball, the league had 28 players chosen in the 2006 Major League Baseball draft. The CAA is annually ranked among the nation's top 10 conferences in men's and women's soccer, and traditionally sends multiple teams to the NCAA Tournament. In 2005-06, 21 league teams earned NCAA Tournament berths in 16 sports. There were 37 CAA student-athletes who earned All-America honors.

CAA member institutions are committed to excellence in the classroom. The Colonial Academic Alliance was created in 2002 by the league's presidents with a goal of expanding their partnership to all aspects of university life outside of intercollegiate athletics. Among the programs already established are an undergraduate research conference, coordination of study abroad programs and granting visiting academic status to student-athletes traveling to an away contest so that they have access to libraries, academic resource centers and computer labs.

In 2002, two faculty members from CAA institutions were awarded academia's most coveted distinction – the Nobel Prize. John B. Fenn, a research professor in the Department of Chemistry at Virginia Commonwealth, received the Nobel Prize for chemistry, and Vernon Smith, a professor of economics and law at George Mason, shared the Nobel Prize in economic sciences.

Commissioner Thomas E. Yeager has guided the CAA since its inception. Long-time members George Mason University, James Madison University, the University of North Carolina at Wilmington, Old Dominion University, Virginia Commonwealth University and the College of William & Mary were

joined by the University of Delaware, Drexel University, Hofstra University and Towson University in 2001. Georgia State University and Northeastern University became members of the conference on July 1, 2005.

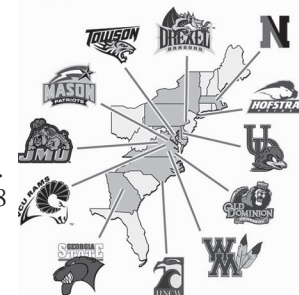
The CAA traces its roots back to 1983 when three of its current members- George Mason, James Madison, and William and Mary - were aligned with East Carolina University, the United States Naval Academy and the University of Richmond as a basketball league (ECAC South). During the next two years, the league added 11 sports, acquired two new members (UNC Wilmington and American Uni-

versity) and decided to form a new association. The transformation from ECAC South to CAA took place on June 6, 1985. Old Dominion became a member of the CAA in 1991-92 and VCU joined the conference prior to the 1995-96 season.

From all-star athletes to Nobel Prize winning faculty, the CAA takes great pride in producing performers who stand out both on the playing field and in the classroom.

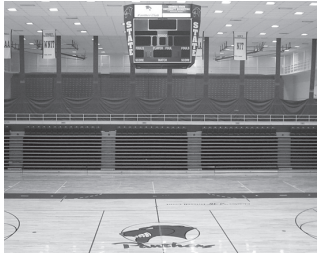
CAA 2005-06 RPIs	
Baseball	11
Men's Basketball	8
Women's Basketball	8
Men's Soccer	16
Women's Soccer	11
Softball	22
Volleyball	18

School	Nickname	Location	Enrollment
University of Delaware	Fightin' Blue Hens	Newark, Delaware	16,000
Drexel University	Dragons	Philadelphia, Pennsylvania	12,357
George Mason University	Patriots	Fairfax, Virginia	28,874
Georgia State University	Panthers	Atlanta, Georgia	28,000
Hofstra University	Pride	Hempstead, New York	13,400
James Madison University	Dukes	Harrisonburg, Virginia	16,200
UNC Wilmington	Seahawks	Wilmington, North Carolina	12,000
Northeastern University	Huskies	Boston, Massachusetts	14,500
Old Dominion University	Monarchs	Norfolk, Virginia	20,802
Towson University	Tigers	Baltimore, Maryland	17,481
Virginia Commonwealth U.	Rams	Richmond, Virginia	29,225
College of William & Mary	Tribe	Williamsburg, Virginia	5,700



Georgia State University has several fine athletic facilities that its student-athletes call home.

While men's and women's basketball and women's volleyball compete at the Georgia State Sports Arena in downtown Atlanta, most of the Panthers' athletic teams host their competitions at the GSU Panthersville Recreation and Athletics Complex, located about 10 miles from campus in DeKalb County. The Panthersville complex includes the home facilities for the sports of men's and women's soccer, baseball, softball, and men's and women's cross country.



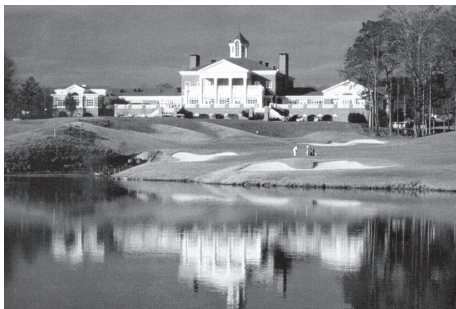
GSU Sports Arena

For baseball, a new building was recently erected that serves as a dressing room for the players and coaches. The Reeves Fieldhouse, officially dedicated in March 2003, also includes office space for coaches. A second building for concessions and public restrooms as well as a renovated press box was opened in 2006.

The softball area has also undergone some major improvements in the past few years. In April 2003, the Robert E. Heck Teamhouse was dedicated in the name of the Panthers' longtime head coach who has eclipsed the prestigious 500-win plateau for his career. The new teamhouse serves as an indoor practice facility for

the Panthers and includes batting cages and a weight room. A recent improvement to Bob Heck Field was the installation of theatre-type, chair-back seating for fans behind the dugouts of both teams.

The cross country courses at Panthersville, on the grounds of the Georgia Regional Hospital, are some of the best in the Southeast. The Georgia State programs have hosted several 5000-, 8000- and 10,000-meter meets over the years, including many conference and regional championships.



Eagle's Landing Country Club, the home for both golf programs.

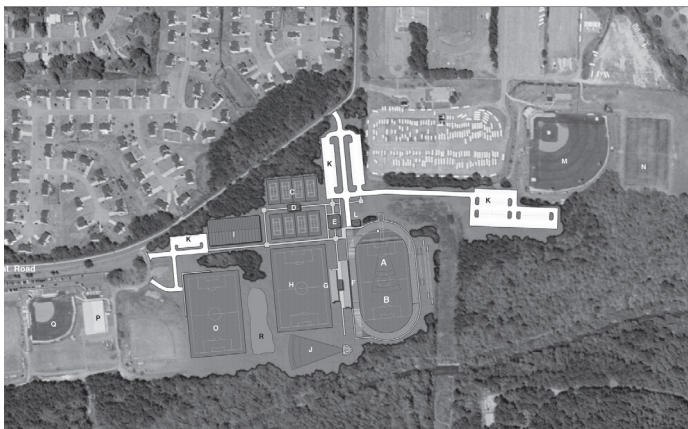
Eagle's Landing Country Club, just south of Atlanta in Stockbridge, Ga., serves as an impressive home course for the Panther golf teams. Eagle's Landing hosts a Ladies Professional Golf Association event, the Chick-fil-A Classic, annually in the spring.

The home for the Georgia State men's tennis squads is the Bitsy Grant Tennis Center off Northside Drive, which is not far from campus, while the women's team competes at nearby Piedmont Park Tennis Center.

An ambitious long-term development project took place on Wednesday, June 28, 2006 with an official ground breaking ceremony

for the new Panthersville Athletics Complex. The focus of the project is to bring most of Georgia State's outdoor athletic programs into one full-use facility.

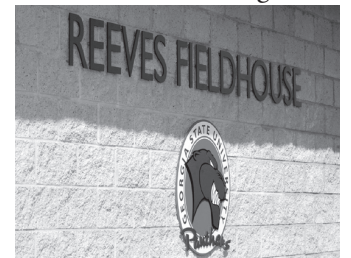
The multi-year project will include two practice soccer fields (synthetic and sodded Bermuda grass), a full grass soccer complex with adjacent field event areas, a six-court tennis complex and a new locker room facility for the soccer and tennis teams. New parking lots, walking areas and lighting will also be addressed.



ChA Panthersville Complex - Phase II Master Plan
Georgia State University - July 06



Bitsy Grant Tennis Center



The Reeves Fieldhouse is located right behind the baseball team's dugout.



The Robert E. Heck Teamhouse is located just beyond the softball facility's left-field fence.

Sports Turf Company, Inc. and a second entity will contract the two soccer fields. The stadium, locker room and tennis facility projects were won by Clough, Harbour & Associates, LLP.

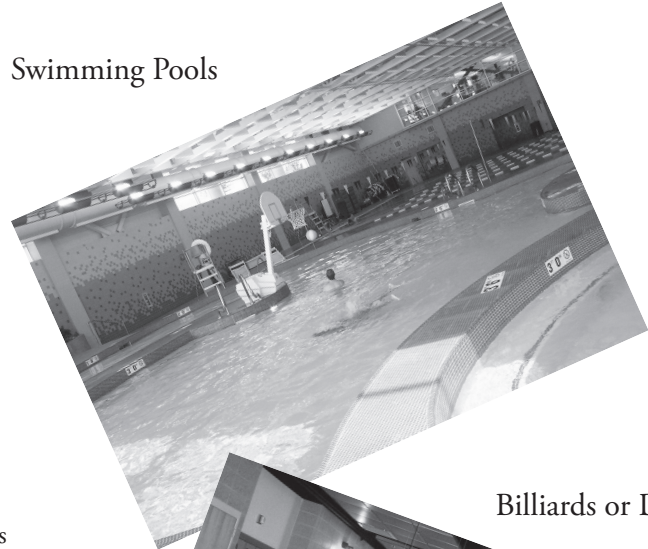
Panthersville is an area of town in DeKalb County located near the intersection of I-20 east and I-285, just off the Candler/Flat Shoals Road exits, Panthersville Road and Clifton Springs Road. This area near the GBI (Georgia Bureau of Investigation), Georgia Regional Hospital, and Georgia Perimeter Junior College has been home to Panther baseball and Panther softball for decades. The previous soccer field was between baseball and the college (beyond the right of the drawing), and the softball field is on the far left side of the drawing. The new fields will now be between the Panther baseball and softball facilities.



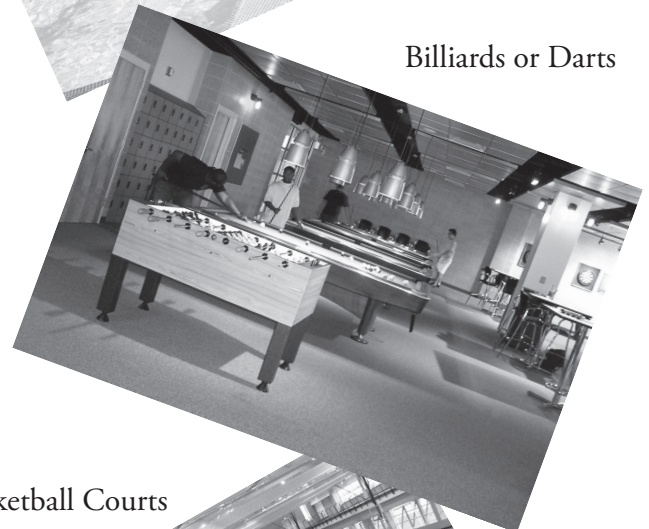
Georgia State's 161,000-square foot, state-of-the-art student recreation center opened in September 2001. The \$29.5 million building is a full city-block long.

One of the newest buildings on the Georgia State University campus is its student recreation center, which opened in the fall of 2001. This 161,000-square foot, state-of-the-art facility operated by the recreational services department includes:

- A 5,000-square foot weight room
- A 9,000-square foot cardiovascular and fitness equipment room
- An eight-lane swimming pool
- An auxiliary gymnasium for indoor soccer, floor hockey, table tennis and fencing
- Four basketball courts
- A three-story climbing wall
- Game room for billiards and video games
- Aerobic/martial arts studios
- A jogging track
- Four racquetball courts
- Whirlpools
- Camping rental equipment area
- Lounge areas with a big-screen television and vending facilities
- Locker rooms and changing areas
- Volleyball/badminton court
- Conference room and classrooms
- RAP-UP publication for all activities and events
- Touch the Earth outdoor recreation program offering one-day or longer excursions for rafting, canoeing, skiing, backpacking, biking, etc.
- Check out current events daily at www.gsu.edu/recreation



Swimming Pools



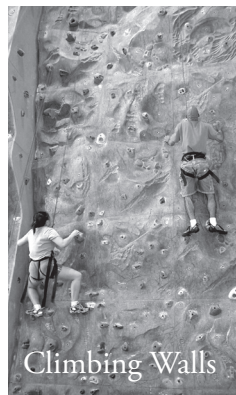
Billiards or Darts



Basketball Courts



Fitness Rooms



Climbing Walls



Treadmills & TV's

Georgia State University has built an academic support program comparable to any NCAA Division I institution in the nation.

For the past 16 years, associate athletic director for student-athlete development and senior woman administrator Carol Cohen has developed a blueprint for success for Georgia State student-athletes in the classroom. That blueprint is called the Panther Promise.

Panther Promise was developed in 2005 as an extension of services provided by the P.A.S.S. (Program for Academic Support Services). Panther Promise was created to assist student-athletes with concerns that are unique to the Division I student-athlete and tailored to fit the unique urban environment of the downtown Atlanta university.

Georgia State University is committed to providing educational, personal, and community development opportunities that will enhance the quality of our student-athlete's university experience. To this end, Cohen set specific objectives and standards to make the program successful.

Joined by Assistant Athletic Director for Academics, Jennifer Santiago, and two Academic Advisors, Georgia State student-athletes succeeded in posting the highest-ever cumulative grade-point average (GPA) in the school's history following the 2006 Spring term.

Steadily increasing graduation rates over the past few years also indicate the concept is reaching its goals and potential. The graduation rate for the student-athletes is consistently higher than the graduation rate of all State students.

More than 90 percent of all student-athletes who have been

through this program and exhausted their eligibility have graduated from the University. The average time for a busy student-athlete to graduate is 5.10 years, lower than the 5.32 rate by the average Georgia State student.

State coaches and student-athletes believe in this program. Its success first showed in 1994 when the first four-year seniors in the program were finishing their careers. At that time, State was recognized for having the highest graduation rate and making the most improvement of any of the state colleges and universities throughout Georgia.

The Panther Promise objectives have not changed since Cohen set up the P.A.S.S. plan in 1990.

In order to accomplish its goals, the Panther Promise includes the following programs and activities:

- P.A.S.S. includes annual New Student-Athlete Orientation, key Learning Lab sessions, Tutorial Assistance, the Bridge Seminar Course, Mandatory Advisement, Academic Monitoring and Fifth-Year Grant-in-Aid to allow student-athletes a chance to continue their work toward a degree after their athletic eligibility has expired.



A learning lab for student-athletes, located on the first floor of the GSU Sports Arena, opened in the fall of 2002.



- CHAMPS/Life Skills is a unique NCAA program of educational opportunities that adds value, knowledge and growth to the demanding lives of our student-athletes. It is a comprehensive program that will provide educational, personal, community, and career development to enhance the overall quality of our student-athletes' university experience.
- Panther DEN offers a variety of services dedicated entirely to addressing the unique challenges that face the Georgia State University student-athlete. These services are offered in conjunction with the Life Skills and Stress Management Office of the University's Counseling Center.

Panther Promise provides these services to aid the student-athlete in their personal life as well as enhance their athletic potential.

"It's all still aimed at instilling crucial focus on academics at Georgia State. Our student-athletes are encouraged and supported to be successful in the classroom. With approximately 225 student-athletes in the program at any one time, it's a continual process to guarantee their success."

Carol Cohen, Associate AD for Student-Athlete Development



Downtown Atlanta features a beautiful skyline as one of the fastest growing cities in America.

ATLANTA is:

- the capital city of Georgia
- the ninth largest metropolitan area in the United States with more than 4.5 million (also the fastest growing of the Top 10 with an average of 502 people moving in everyday)
- one of the youngest cities in America (median age of 31.9) and second in the nation in percentage of population that are college graduates (32 percent)
- home of one of the busiest airports in the United States and the world (Hartsfield-Jackson International)
- a national leader in job creation with more than 100,000 businesses

Atlanta, the “Gateway City of the South” and host of the 1996 Summer Olympics, is nestled in the hills of north central Georgia. The growing metropolitan area and state are both in the Top 10 in the nation in size, but nearer to the top in economic development, jobs and business growth. Atlanta ranks third in the nation among cities with the most Fortune 500 headquarters. Twenty-seven companies headquartered in metro Atlanta are rated among the latest Fortune 1000 companies, with 15 among the Fortune 500. Three-quarters of all Fortune 1000 companies have a presence in metro Atlanta. The city serves as the world headquarters for The Home Depot, United Parcel Service, SunTrust Bank, BellSouth, the Coca-Cola Company and Delta Airlines. Atlanta’s Hartsfield-Jackson International Airport remains one of the world’s busiest travel hubs.

The birthplace of Rev., Dr., Martin Luther King Jr. and the civil rights movement, Atlanta has a reputation as the “city too busy to hate” filled with “openness, opportunity, and optimism.” It is the southeast’s regional capital with a growing population of more than four million people living in a lush, scenic setting known for its dogwoods, azaleas and evergreens. According to the U.S. Forestry Service, Atlanta is the most heavily wooded urban area in the nation.

ALSO KNOWN AS A SPORTS CAPITAL

Events in the metropolitan Atlanta area include:

- ✓ Atlanta Braves baseball games (14 straight division championships and five World Series appearances in the 1990s)
- ✓ Atlanta Falcons football games (their home field, the Georgia Dome, has been the site of two Super Bowls)
- ✓ Atlanta Hawks basketball games
- ✓ Atlanta Thrashers ice hockey games (also hosting the 2008 NHL All-Star game)
- ✓ Georgia Force arena league football games
- ✓ Atlanta Silverbacks men’s soccer games
- ✓ Gwinnett Gladiators (minor league hockey)
- ✓ Chick-fil-A Bowl
- ✓ SEC Football Championship Game
- ✓ NCAA Men’s and Women’s Final Fours
- ✓ Sporting events involving over 20 colleges
- ✓ BellSouth Classic (PGA Tour event)
- ✓ Florida’s Natural Charity Championship (LPGA Tour event)
- ✓ The TOUR Championship (PGA event)
- ✓ NASCAR Nextel Cup races (two each year)
- ✓ Peachtree Road Race 10K Run
- ✓ Foxhall Cup (USA Equestrian event)
- ✓ AVP Atlanta Open (pro beach volleyball)

The Atlanta area is headquarters for media giants Cable News Network (CNN), the Turner Broadcasting System, Turner Network Television, Turner South, the Cartoon Network, FOX Sports Net South and The Weather Channel. Atlanta has 10 local television stations with the five major network affiliates (ABC, CBS, FOX, NBC and the CW). More than 45 radio stations offer a variety of programming. The *Atlanta Journal-Constitution* is published blocks from Georgia State’s campus, and 10 other daily newspapers and 50 weekly papers keep people in the Atlanta region informed.



Philips Arena, located within walking distance of the Georgia State campus, serves as the home of the NBA Atlanta Hawks, the NHL Atlanta Thrashers and the AFL Georgia Force.

Panthers



Alison Bradford, SR,
Third Base/Catcher
McDonough, GA



Nikki Bradford, FR,
Shortstop/Outfield
McDonough, GA



Mary Kathryn Branan
SR, Second Base
Alpharetta, GA



Lacy Carter, FR,
First Base
Watkinsville, GA



Ashley Cowan
Junior, Pitcher
Covington, GA



Rachel Cunningham
Freshman, Shortstop
Cumming, GA



Lauren Fetters
Freshman, Outfield
Canton, GA



Madi Gore
Sophomore, Pitcher
Acworth, GA



Jessica Gowin
Junior, First Base
Cohutta, GA



Nichole Griffin
Sophomore, Outfielder
Leesburg, GA



Jessie Harmon
Sophomore, Outfield
Roswell, GA



Jackie Jaegle
Sophomore, Catcher
Kennesaw, GA



Chelsey Morgan
Sophomore, Pitcher
Chesterfield, NJ



Danielle Roddy, FR
Third Base/Outfield
Woodstock, GA



Lily Skelton
Freshman, Outfield
McDonough, GA



Kelly Van Houten
Assistant Coach



Elizabeth Thomas
Freshman, Pitcher
Watkinsville, GA



Bob Heck
Head Coach



Holly Willis
Sophomore, Pitcher
Chesapeake, VA



Laura McGirr
Assistant Coach

2007 Georgia State Schedule

Date	Opponent	Location	Time
Feb. 10	!Tennessee Tech	Panthersville, GA	2:30 PM
Feb. 10	!Alabama-Birmingham	Panthersville, GA	4:45 PM
Feb. 11	!Virginia Tech	Panthersville, GA	12:15 PM
Feb. 11	!Consolation/Championship	Panthersville, GA	2:30/4:45 PM
Feb. 14	Auburn	Auburn, AL	6:00 PM
Feb. 17	#West Point	Panthersville, GA	10:00 AM
Feb. 17	#Furman	Panthersville, GA	4:45 PM
Feb. 18	#Mercer	Panthersville, GA	12:15 PM
Feb. 18	#Consolation/Championship	Panthersville, GA	2:30/4:45 PM
Feb. 20	Georgia Southern (DH)	Panthersville, GA	3:00 PM
Feb. 24	\$Jackson State	Panthersville, GA	2:30 PM
Feb. 24	\$Nicholls State	Panthersville, GA	4:45 PM
Feb. 25	\$Boston College	Panthersville, GA	10:00 AM
Feb. 25	\$Consolation/Championship	Panthersville, GA	2:30 PM/4:45 PM
Feb. 28	Kennesaw State (DH)	Kennesaw, GA	3:00 PM
Mar. 02	%Florida A&M	Marietta, GA	5:00 PM
Mar. 02	%East Tennessee State	Marietta, GA	7:00 PM
Mar. 03	%Wisconsin	Marietta, GA	5:00 PM
Mar. 03	%Morehead State	Marietta, GA	7:00 PM
Mar. 04	%TBA	Marietta, GA	TBA
Mar. 06	Mercer (DH)	Macon, GA	2:00 PM
Mar. 09	^Appalachian State	Tallahassee, FL	11:00 AM
Mar. 09	^Florida State	Tallahassee, FL	4:00 PM
Mar. 10	^Maine	Tallahassee, FL	10:00 AM
Mar. 10	^Syracuse	Tallahassee, FL	1:30 PM
Mar. 11	^TBA	Tallahassee, FL	TBA
Mar. 14	Birmingham Southern (DH)	Birmingham, AL	5:00 PM
Mar. 21	Furman (DH)	Panthersville, GA	3:00 PM
Mar. 24	*George Mason (DH)	Fairfax, VA	12:00 PM
Mar. 25	*George Mason	Fairfax, VA	11:00 AM
Mar. 28	Jacksonville State	Jacksonville, AL	5:00 PM
Mar. 31	*James Madison (DH)	Harrisonburg, VA	12:00 PM
Apr. 01	*James Madison	Harrisonburg, VA	12:00 PM
Apr. 04	Troy (DH)	Panthersville, GA	2:00 PM
Apr. 06	*Hofstra (DH)	Panthersville, GA	4:00 PM
Apr. 07	*Hofstra	Panthersville, GA	10:00 AM WRAS
Apr. 14	*Drexel (DH)	Philadelphia, PA	11:00 AM
Apr. 15	*Drexel	Philadelphia, PA	11:00 AM
Apr. 18	Western Carolina	Cullowhee, NC	2:00 PM
Apr. 21	*UNC-Wilmington	Panthersville, GA	12:00 PM
Apr. 22	*UNC-Wilmington	Panthersville, GA	12:00 PM WRAS
Apr. 25	Georgia Tech (DH)	Panthersville, GA	4:00 PM WRAS
Apr. 28	*Towson (DH)	Baltimore, MD	12:00 PM
Apr. 29	*Towson	Baltimore, MD	1:00 PM
May 05	*Delaware (DH)	Panthersville, GA	12:00 PM
May 06	*Delaware	Panthersville, GA	12:00 PM
May 10-13	CAA Championships	TBA	TBA

!- Georgia State First Pitch Classic; #- Panther Invitational;
 \$- Georgia State Spring Showdown; %- Buzz Classic; ^ - Florida State Invitational
 * - Colonial Athletic Association game; All Home Games in White
 WRAS- games on 88.5 WRAS-FM Radio
 All home games played at Bob Heck Field in Panthersville



Nichole Griffin
 2006 CAA
 All-Rookie Team;
 Second Team All-CAA



Jackie Jaegle
 2006 CAA
 Rookie of the Year;
 First Team All-CAA;
 All-Rookie Team