



## MATCH 11 CAPSULE

GCU (8-2, 1-0 MPSF) vs USC (2-8, 0-1 MPSF)

DATE:	Saturday, Feb. 8
TIME:	8 p.m. (PHX)
LOCATION:	Los Angeles, Calif.
VENUE:	Galen Center
HISTORY:	3-4
LAST TIME OUT:	L, 3-0 on 4/13/2019



13.1	KILLS PER SET	11.8
.328	HITTING %	.246
12.1	AST PER SET	10.7
2.0	ACES PER SET	1.5
9.0	DIGS PER SET	7.7
1.9	BLOCKS PER SET	1.7

## LOPES IN THE RANKINGS

TEAM (Top 15)		
Aces Per Set	4th	2.00
Assists Per Set	5th	12.09
Kills Per Set	5th	13.06
Hitting %	6th	.328
W/L Percentage	6th	.800

INDIVIDUALS (Top 25)			
Christian Janke	Aces Per Set	4th	.690
Heath Hughes	Assists Per Set	4th	10.39
Camden Gianni	Attacks Per Set	12th	8.46
Camden Gianni	Points Per Set	21st	4.27
Camden Gianni	Kills Per Set	22nd	3.65
Ian McLain	Blocks Per Set	24th	.963

## QUICK HITS

- » Grand Canyon plays its first conference road match of 2020 against USC on Saturday in Los Angeles.
- » GCU is coming off a big win at home against No. 9 Stanford, taking down the Cardinals in straight sets. The win marked the first time the Lopes have defeated Stanford in program history.
- » Sophomores **Christian Janke**, an outside hitter, and **Heath Hughes**, a setter, both rank fourth nationally in one category. Janke in aces per set at .690 and Hughes in assists per set at 10.39.
- » The Lopes finished 2019 ranked fifth in the nation in average attendance with 1,051 fans per match, making GCU one of only five programs to average more than 1,000 fans per match.
- » Head coach **Matt Werle** became the winningest coach in GCU men's volleyball history with his 69th career win over Park on Jan. 17, 2020.
- » Junior middle blocker **Ian McLain** tied the GCU individual match record for hitting percentage against UC San Diego at .857 on Jan. 18, 2020.
- » Redshirt freshman **Camden Gianni** ranks in the top-25 in three categories: attacks per set, kills per set and points per set. In 2019, Gianni down in practice before receiving life-saving treatment from the GCU athletic training staff.
- » The American Volleyball Association Preseason Poll tabbed GCU as Receiving Votes, missing the top-15 by only one point.

## TEAM LEADERS

KILLS	
Camden Gianni	95
Christian Janke	82
Hugo Fischer	59
ASSISTS	
Heath Hughes	291
Onur Cukur	42
Tanner Petchul	18
SERVICE ACES	
Christian Janke	20
Hugo Fischer	14
Camden Gianni	11
DIGS	
Cole Udall	43
Christian Janke	42
Heath Hughes	41
BLOCKS	
Ian McLain	26.0
Kyle Thompson	19.0
Hugo Fischer	16.0

## SCHEDULE / RESULTS

### OVERALL RECORD: 8-2

MPSF: 1-0 | Non-Conference: 7-2

Home: 4-0 | Away: 1-1 | Neutral: 3-1

### JANUARY

	Result/Time (AZ)
9 Harvard &	L, 0-3
10 Emmanuel &	W, 2-0
11 at #1 Hawaii	L, 0-3
17 Park	W, 3-0
18 UC San Diego	W, 3-1
24 McKendree &	W, 3-1
25 at Lindenwood	W, 3-0
26 Quincy &	W, 3-0
29 Benedictine	W, 3-0

### FEBRUARY

1 #9 Stanford*	W, 3-0
8 at USC*	8 p.m.
14 #2 BYU*	6 p.m.
15 Ottawa	4 p.m.
21 #7 UCLA*	6 p.m.
23 #8 Pepperdine*	2 p.m.
27 at #14 Concordia Irvine	8 p.m.
28 at #4 UC Irvine	8 p.m.

### MARCH

6 Vanguard	3:30 p.m.
6 North Greenville	7 p.m.
7 Menlo	Noon
7 #4 UC Irvine	6 p.m.
13 at NJIT	4 p.m.
14 at #12 Princeton	4 p.m.
27 at #8 Pepperdine*	7 p.m.
28 at #7 UCLA*	5 p.m.

### APRIL

2 at #2 BYU*	6 p.m.
4 at #13 Stanford*	6 p.m.
9 USC*	6 p.m.
11 #14 Concordia Irvine	4 p.m.

\* Denotes MPSF games

& Neutral Site

^ MPSF Playoff



## GAME INFORMATION



GCU.tv



@GCU\_MVolleyball



GCUStats.com



GCULopes.com





# SCOUTING USC

## 2020 NOTES

Record	2-8, 0-1 MPSF
Home	1-2
Away	1-4
Neutral	0-2

## 2019 NOTES

Record	18-11, 7-5 MPSF
Conf. Finish	3rd
Postseason	NCAA Championship First Round

## SCHOOL NOTES

Location	Los Angeles, Calif.
Founded	1880
Conference	MPSF

## COACH NOTES

Head Coach	Jeff Nygaard
Season	Fifth
Record at School	47-64

## AT-A-GLANCE

- » USC is 2-8 in 2020 and 0-1 in the MPSF conference.
- » USC opened the season with a win over Princeton at home, taking down the Tigers in five sets.
- » The Trojans then went on a six-match losing streak, including dropping their only MPSF match so far this season against Concordia.
- » USC's next win came against CSUN on the road when the Trojans took the Matadors in five sets.
- » Now on a two-match losing streak, USC fell to UC Irvine at home in four sets on Feb. 1 and to UC San Diego on the road on Thursday.
- » Junior middle blocker/opposite leads the Trojans with 81 kills on the season, averaging 3.00 per set with a .253 percentage.

## LAST TIME OUT

- » USC fell to UC San Diego on Thursday on the road in four sets.
- » The Trojans were led by junior middle blocker/opposite Kyle Gear who recorded 13 kills, 3 digs, one ace and one block assist.

## LAST TIME THEY MET

- » GCU looks to tie up the series, as the Lopes currently trail 3-4 in the series.
- » The Lopes fell in the last matchup between the two teams, falling in three sets on April 13, 2019.

## GCU PROBABLE STARTERS

NO.	PLAYER	POS.	SP	Kills	K/S	Pct	AST	SA	Digs	BS	BA
5	Camden Gianni	OH	26	95	3.65	.264	6	11	30	1	9
8	Heath Hughes	S	28	9	0.32	.333	291	2	41	1	11
10	Ian McLain	MB	27	51	1.88	.550	2	0	5	2	24
11	Christian Janke	OH	29	82	2.82	.288	2	20	42	1	5
13	Cole Udall	L	27	0	0.00	.000	12	0	43	0	0
18	Caleb Blazer	MB	13	13	1.00	.476	1	3	7	0	8
19	Hugo Fischer	OPP	21	59	2.81	.295	0	14	23	1	15

## LAST GAME'S STARTERS

NO.	PLAYER	POS.
5	Camden Gianni	OH
8	Heath Hughes	S
10	Ian McLain	MB
11	Christian Janke	OH
13	Cole Udall	L
18	Caleb Blazer	MB
19	Hugo Fischer	OPP



## INSIDE THE NUMBERS

Overall Record .....	8-2
Non-Conference.....	7-2
MPSF .....	1-0
Home .....	4-0
Away .....	1-1
Neutral .....	3-1
Current Streak .....	W7
Last Win.....	3-0 vs #9 Stanford (2/1)
Last Loss.....	0-3 vs #1 Hawaii (1/11)
Longest Win Streak.....	W7
Longest Losing Streak.....	L1
Current Home Streak.....	W4
Last Win.....	3-0 vs #9 Stanford (2/1)
Last Loss.....	0-3 vs #9 Stanford (4/6/19)
Current Road Streak.....	W1
Last Win.....	3-0 at Lindenwood (1/25)
Last Loss.....	0-3 vs #1 Hawaii (1/11)
Current Neutral Streak.....	W3
Last Win.....	3-0 vs Quincy (1/26)
Last Loss.....	0-3 vs Harvard (1/9)

## GCU Record When.....

Playing at night (local).....	5-1
Playing during the day (local).....	3-1

Winning Set 1.....	8-0
Losing Set 1.....	0-2

Going up 2-0.....	6-0
Down 0-2.....	0-2
Going 1-1.....	2-0

Three-Set Decisions.....	6-2
Four-Set Decisions.....	2-0
Five-Set Decisions.....	0-0

More Kills.....	8-0
Fewer Kills.....	0-2
Same Kills.....	0-0

Better Hit %.....	7-0
Worse Hit %.....	1-2
Same Hit %.....	0-0

More Aces.....	8-1
Fewer Aces.....	0-1
Same Aces.....	0-0

More Digs.....	5-0
Fewer Digs.....	3-2
Same Digs.....	0-0

More Blocks.....	3-1
Fewer Blocks.....	5-1
Same Blocks.....	0-0

Hitting .300 or Better .....	7-0
Hitting Below .300 .....	1-2

## LOPES BRING IN TOP-5 ATTENDANCE

The Havocs have built a reputation as one of the craziest fan bases in college basketball, but have crossed over to become one of the top men's volleyball fan bases in the nation. In 2020, GCU is set to split time between Antelope Gym and GCU Arena. With eight matches in Antelope Gym and six in GCU Arena, the Lopes have the opportunity to build on attendance numbers that ranked fifth nationally in 2019. GCU averaged over 1,000 fans per game last season, making the Lopes one of only five programs to average 1,000 or more fans per match.

The historically dominant men's volleyball programs top the attendance chart but it is GCU that is fighting for best atmosphere. Antelope Gym sits 1,500 fans and with GCU's average over 1,000 the gym becomes loud. In 2019 the Lopes led the country in attendance capacity at 70.07%.

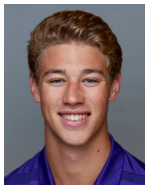
"Our fan support is like non other across the country. It took some getting used to for our own guys because of how loud our gym is!" GCU head coach, Matt Werle after the 2018 home opener.

## 2020 TOP ATTENDANCE (FANS PER MATCH)

Rank	School	Fans	Matches	Average
1	Hawaii	20,978	5	4,196
2	BYU	15,867	4	3,967
3	Long Beach St.	6,612	3	2,204
4	GRAND CANYON	3,593	4	898
5	UC Irvine	5,914	7	845
6	Lincoln Memorial	3,336	4	834
7	Ball State	1,642	2	821
8	Loyola Chicago	4,725	6	788
9	UCLA	735	1	735
10	Penn State	2,550	4	638

## STAYING STRONG

After a tumultuous 2019 season, redshirt freshman **Camden Gianni** came out strong in his first career start at the Raising Cane's Rainbow Warrior Classic. On Friday Dec. 28, 2018, the outside hitter went down at practice and needed immediate medical attention. GCU's athletic training staff was able to administer life-saving procedures and get Gianni into stable condition. He returned home to Carlsbad, Calif. to undergo surgery which was a success. Gianni went through recovery and received treatment at the UCLA hospital. He has been approved to compete for the Lopes in 2020 and has already made an impact in the lineup early in the season.



Gianni

Gianni led the Lopes in kills in the first two matches of the 2020 season with 13 against Harvard in the season opener and eight versus Emmanuel in the Lopes first win. After his first week of competition, the outside hitter ranked 10th in the nation in attacks per set (6) and 18th in kills per set (3.5). He was named to the All-Rainbow Warrior Classic Team for his incredible performance opening weekend.

## IN WERLE WE TRUST



Werle

GCU completed one of its most successful runs ever in 2019, thanks in part to head coach **Matt Werle**.

In just four years, Werle has become the winningest coach in GCU men's volleyball history. The Juniata alumnus earned his 69th win over Park on Jan. 17, 2020, passing Jeremy Price who held the title with 68 total wins in five seasons.

Werle has had challenges during his tenure but continues to roll with the punches. One of the challenges faced came when GCU made the transition from the MIVA conference to the MPSF. Strength of schedule aside, coach had to face another difficult task; recruiting. As recruiting shifted from Midwest focus to more of a west coast focus due to the change in conference, incoming talent has not taken a step back. The talent has been instantly noted with two high school All-Americans (Christian Janke, Camden Gianni) choosing the Lopes. Other top recruits have contributed immediately as well.



## TEAM SUPERLATIVES

## GCU HIGHS

Three-Set Kills.....	43
Three-Set Hit %.....	0.522
Three-Set Assists.....	40
Three-Set Digs.....	37
Three-Set Blocks.....	8
Four-Set Kills.....	54
Four-Set Hit %.....	0.313
Four-Set Assists.....	52
Four-Set Digs.....	48
Four-Set Blocks.....	10
Five-Set Kills.....	--
Five-Set Hit %.....	--
Five-Set Assists.....	--
Five-Set Digs.....	--
Five-Set Blocks.....	--

## GCU LOWS

Three-Set Kills.....	20
Three-Set Hit %.....	0.107
Three-Set Assists.....	27
Three-Set Digs.....	18
Three-Set Blocks.....	2
Four-Set Kills.....	50
Four-Set Hit %.....	0.216
Four-Set Assists.....	51
Four-Set Digs.....	34
Four-Set Blocks.....	7
Five-Set Kills.....	--
Five-Set Hit %.....	--
Five-Set Assists.....	--
Five-Set Digs.....	--
Five-Set Blocks.....	--

## OPPONENT HIGHS

Three-Set Kills.....	42
Three-Set Hit %.....	0.523
Three-Set Assists.....	38
Three-Set Digs.....	40
Three-Set Blocks.....	9
Four-Set Kills.....	50
Four-Set Hit %.....	0.340
Four-Set Assists.....	47
Four-Set Digs.....	40
Four-Set Blocks.....	12
Five-Set Kills.....	--
Five-Set Hit %.....	--
Five-Set Assists.....	--
Five-Set Digs.....	--
Five-Set Blocks.....	--

## OPPONENT LOWS

Three-Set Kills.....	20
Three-Set Hit %.....	0.038
Three-Set Assists.....	20
Three-Set Digs.....	13
Three-Set Blocks.....	1
Four-Set Kills.....	40
Four-Set Hit %.....	0.142
Four-Set Assists.....	36
Four-Set Digs.....	37
Four-Set Blocks.....	8
Five-Set Kills.....	--
Five-Set Hit %.....	--
Five-Set Assists.....	--
Five-Set Digs.....	--
Five-Set Blocks.....	--

## SOS

A program continues to grow by challenging itself. GCU has done just that with the 2020 schedule. This year is set to be one of the toughest yet for the Lopes, facing eight of the preseason Top-15 with one more that received votes.

Of the Lopes' 29 matches last season, 19 were against Top-15 opposition with 14 landing in the top-10. GCU's young team had mixed success against ranked teams going 6-13 in such affairs. The MPSF in itself provides challenges all-season long. The conference is the only one in volleyball that has every team ranked or receiving votes

## 2020 AVCA PRESEASON POLL

Rank	School (First Place Votes)	Total Points	2019 Record	2019 Final Rank
1	Hawaii* (14)	238	28-3	2
2	UCLA* (1)	197	19-9	7
3	BYU*	185	13-12	11
4	Long Beach State (1)	182	28-2	1
5	UC Santa Barbara	170	18-10	6
6	Lewis	160	26-6	4
7	Stanford*	144	15-11	10
8	UC Irvine*	127	18-11	8
9	Pepperdine*	110	23-7	3
10	Princeton*	88	18-13	T-12
11	Loyola-Chicago	78	21-8	9
12	Southern California*	59	18-11	5
13	CSUN	56	13-14	T-12
14	Purdue Fort Wayne	31	17-12	15
15	Penn State	25	15-15	NR

Receiving Votes: **Grand Canyon (24)**, George Mason (22), Concordia Irvine\* (11), Ball State (8)

\*2020 Opponent

## SOPHOMORE STANDOUTS

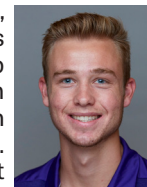
Two Lopes earned MPSF honors in 2019 as outside hitter **Christian Janke** and libero **Cole Udall** were named to the conference's All-Freshman Team.

Janke was an ironman for the Lopes, playing in 109 of the team's 110 sets. He finished second in the nation in sets played behind only Ball State's setter. The Carlsbad, Calif. native started his career off in historic fashion by recording double-digit kills in his first 12 matches. Janke was the only player in the nation to start the season off with more than 10 straight matches of 10+ kills. Thanks to his hot start, Janke was among the first four players in the NCAA to reach 200 kills on the season and was named to two all-tournament teams. Janke led the team in kills by nearly 100 and his 27 aces led the Lopes as well.



Janke

Udall made a name for himself in MPSF play. Since the conference slate started, the Arizona native leads in digs per set. Udall had eight double-digit dig efforts this season and is a main reason for the Lopes success when it comes to opponent hitting percentage. His efforts were on display during Week 10 when he won MPSF Defensive Player of the Week honors after recording 25 digs in two wins over then No. 9 Loyola Chicago including a career-high 15 on March 8. Udall continued his recognition streak in March when he was named a finalist in Off the Block's National Player of the Month voting. The libero finished second in total voting by less than one percent.



Udall





## AROUND THE MPSF

## MPSF PLAYERS OF THE WEEK

	Offensive	Defensive
Jan. 6	Gabi Garcia Fernandez (BYU)	Davide Gardini (BYU)
Jan. 13	Davide Gardini (BYU)	Addison Enriques (CUI)
Jan. 20	Jordan Hoppe (CUI)	Diego Perez (PEPP)
Jan. 27	Gabi Garcia Fernandez (BYU)	Wil Stanley (BYU)
Feb. 3	<b>Christian Janke (GCU)</b>	Wil Stanley (BYU)
Feb. 10		
Feb. 17		
Feb. 24		
Mar. 2		
Mar. 9		
Mar. 16		
Mar. 23		
Mar. 30		
Apr. 6		
Apr. 13		

## PRESEASON COACHES POLL

## 2020 Projected Order of Finish

1	BYU (5)	35
2	UCLA (2)	31
3	Stanford	27
4	Pepperdine	19
T5	<b>Grand Canyon</b>	<b>14</b>
T5	USC	14
7	Concordia	7

## 2019 Order of Finish

1	Pepperdine
2	UCLA
3	USC
T4	Stanford
T4	BYU
T6	<b>Grand Canyon</b>
T6	Concordia

## PAST CHAMPIONS

Year	Champion	NCAA Finish
2019	Pepperdine	Semi Finals
2018	BYU	Semi Finals
2017	Long Beach State	Semi Finals
2016	BYU	Runner Up
2015	UC Irvine	Semi Finals

## CONFERENCE STANDINGS

SCHOOL	MPSF		OVERALL		H	A	N	STRK
	W-L	PCT	W-L	PCT				
BYU	1-0	1.000	11-0	1.000	5-0	6-0	0-0	W11
Grand Canyon	1-0	1.000	8-2	.800	4-0	1-1	3-1	W7
Pepperdine	1-0	1.000	4-2	.667	1-0	2-2	1-0	W1
Concordia	1-0	1.000	5-5	.500	1-1	3-2	1-2	L2
UCLA	0-1	.000	5-4	.556	0-1	4-3	1-0	L1
USC	0-1	.000	2-8	.200	1-2	1-4	0-2	L2
Stanford	0-2	.000	4-5	.444	2-2	1-3	1-0	L4

## INDIVIDUAL LEADERBOARDS

KILLS/PER SET	HITTING %	AST/PER SET	BLOCKS/PER SET
1 <b>4.13</b> G. Garcia Fernandez BYU	1 <b>.550</b> Ian McLain Grand Canyon	1 <b>10.85</b> Wil Stanley BYU	1 <b>1.16</b> F. de Brito Ferreira BYU
2 <b>4.05</b> Davide Gardini BYU	2 <b>.480</b> Austin Wilmot Pepperdine	2 <b>10.59</b> Paul Bsichoff Stanford	2 <b>1.15</b> Kyler Presho Stanford
3 <b>4.00</b> Raymond Barsemian Concordia	3 <b>.471</b> Sam Lewis USC	3 <b>10.39</b> Heath Hughes Grand Canyon	3 <b>0.96</b> Ian McLain GCU
4 <b>3.76</b> Jaylen Jasper Stanford	4 <b>.443</b> Noah Lassandro Concordia	4 <b>9.54</b> Chris Hall USC	4 <b>0.94</b> Austin Wilmot Pepperdine
5 <b>3.65</b> Camden Gianni Grand Canyon	5 <b>.430</b> F. de Brito Ferreira BYU	5 <b>8.60</b> McLain Mott Concordia	5 <b>0.92</b> Davide Gardini BYU

## TEAM LEADERBOARDS

KILLS/PER SET	HITTING %	BLOCKS/PER SET	DIGS/PER SET
1 <b>13.06</b> GCU	1 <b>.343</b> BYU	1 <b>2.65</b> BYU	1 <b>10.09</b> CUI
2 <b>13.03</b> GCU	2 <b>.342</b> UCLA	2 <b>2.54</b> STAN	2 <b>9.62</b> BYU
3 <b>12.11</b> STAN	3 <b>.328</b> GCU	3 <b>2.22</b> PEPP	3 <b>9.39</b> STAN
4 <b>12.07</b> UCLA	4 <b>.299</b> STAN	4 <b>1.90</b> UCLA	4 <b>8.97</b> GCU
5 <b>11.97</b> USC	5 <b>.294</b> PEPP	5 <b>1.88</b> GCU	5 <b>8.89</b> PEPP
6 <b>11.89</b> PEPP	6 <b>.278</b> CUI	6 <b>1.62</b> CUI	6 <b>7.43</b> USC
7 <b>11.88</b> CUI	7 <b>.272</b> USC	7 <b>1.60</b> USC	7 <b>6.90</b> UCLA

## INDIVIDUAL CAREER RECORDS

Kills		
No.	Name	Years Played
1509	Ben Ponnet	2010-14
1034	Gerrard Lipscombe	2012-16
912	Shalev Saada	2014-18
776	Ryan Mather	2011-16
751	Taylor Griffin	2008-12

Attempts		
No.		
3530	Ben Ponnet	2010-14
2466	Gerrard Lipscombe	2012-16
2135	Taylor Griffin	2008-12
1960	Shalev Saada	2014-18
1863	Jordon Tarantino	2015-17

Aces		
No.		
128	Ben Ponnet	2010-14
99	Gerrard Lipscombe	2012-16
74	Ryan Mather	2011-16
68	Michael Milstein	2013-17
67	Shalev Saada	2014-18

Assists		
No.		
4484	Keith Smith	2010-14
2736	Michael Milstein	2013-17
1904	Brad Moore	2009-12
1188	Puna Kaniho	2013-18
529	Onur Cukur	2018-Pres.

Dig		
No.		
1331	Trent Bruns	2009-13
726	Sky Engleman	2014-18
711	Ben Ponnet	2010-14
607	Keith Smith	2010-14
600	Gerrard Lipscombe	2012-16

Blocks		
No.		
420	Ashton King	2014-18
369	Christian Ward	2012-16
289	Keith Smith	2010-14
280	Ryan Mather	2011-16
219	Ben Ponnet	2010-14

## INDIVIDUAL SEASON RECORDS

Kills		
No.	Name	Season
559	Brock Hutchins	2010
442	Ben Ponnet	2014
421	Ben Ponnet	2012
357	Gerrard Lipscombe	2016
354	Ryan Mather	2015

Hitting %	*min 100 attempts	
%		
.436	Drake Silbernagel	2017
.432	Ashton King	2018
.430	Connor Dougherty	2014
.429	Christian Ward	2016
.396	Keaton Berry	2014

Aces		
No.		
39	Chris Lockwood	2010
37	Gerrard Lipscombe	2015
36	Gerrard Lipscombe	2016
35	Ryan Mather	2015
33	Shalev Saada	2016

Assists		
No.		
1547	Brad Moore	2010
1294	Keith Smith	2013
1147	Keith Smith	2012
1095	Keith Smith	2014
1067	Michael Milstein	2017

Dig		
No.		
502	Trent Bruns	2010
297	Trent Bruns	2011
276	Trent Bruns	2013
271	Jared Morrison	2014
256	Trent Bruns	2012

Blocks		
No.		
113	Ashton King	2017
112	Ryan Mather	2013
110	Alex Shmelev	2019
109	Christian Ward	2016
107	Ashton King	2016

## INDIVIDUAL MATCH RECORDS

Kills			
No.	Name	Date	Opp.
31	Ben Ponnet	3/8/14	Quincy
30	Ryan Mather	1/27/15	Saint Francis
29	Ben Ponnet	2/8/14	Lindenwood
<b>28</b>	<b>David Kisiel</b>	<b>2/16/19</b>	<b>Pepperdine</b>
28	Jon Schaefer	4/18/15	IPFW

Hitting %	*min 10 attempts	
%		
<b>.857</b>	<b>Ian McLain</b>	<b>1/18/20 UC San Diego</b>
.857	Ashton King	3/23/18 Concordia
.818	Connor Dougherty	3/8/14 Quincy
.800	Chris Lockwood	2/10/12 King (TN)
.800	Alex Shmelev	3/8/19 Loyola Chicago

Aces			
No.			
7	Michael Milstein	3/13/14	UC Merced
5	Cullen Mosher	1/27/18	Ottawa (AZ)
5	Matt Kinnebrew	4/19/17	Lewis
5	Drake Silbernagel	1/7/17	UCSD
5	Gerrard Lipscombe	4/9/16	Benedictine

Assists			
No.			
64	Michael Milstein	3/18/16	IPFW
63	Keith Smith	3/14/14	Limestone
61	Michael Milstein	4/2/15	Concordia
59	Keith Smith	3/8/14	Quincy
58	Keith Smith	2/8/14	Lindenwood

Dig			
No.			
24	Sky Engleman	4/1/15	Hope Int'l
21	Sky Engleman	1/8/16	Hope Int'l
21	Trent Bruns	1/9/12	UC Santa Cruz
19	Sky Engleman	4/6/18	USC
19	Jared Morrison	3/28/14	NJIT

Blocks			
No.			
<b>12</b>	<b>Caleb Blazer</b>	<b>1/18/19</b>	<b>Barton</b>
12	Ashton King	1/10/15	UCSD
10	Ashton King	1/27/17	Lewis
10	Christian Ward	4/9/16	Benedictine
10	Taylor Galliano	3/10/12	Ball St.



## TEAM SEASON RECORDS

Kills	
No.	Season
1914	2010
1545	2013
1484	2012
1484	2014
1401	2017

Hitting %	
%	
.288	2016
.274	2018
.270	2017
.263	2013
.261	2015

Aces	
No.	
176	2010
161	2015
152	2016
141	2013
130	2017

Assists	
No.	
1760	2010
1442	2013
1394	2014
1393	2012
1315	2017

Dig	
No.	
1506	2010
1198	2012
1165	2013
1129	2014
1040	2015

Blocks	
No.	
327.5	2010
300	2015
288	2013
285	2012
281.5	2017

## TEAM MATCH RECORDS

Kills		
No.	Date	Opp.
74	3/18/17	IPFW
70	3/18/16	IPFW
70	3/14/14	Limestone
69	4/2/15	Concordia
69	3/8/14	Quincy

Hitting %		
%		
.578	1/12/18	North Greenville
.522	1/17/20	Park
.521	1/16/18	UC Merced
.500	2/18/17	Benedictine
.493	3/12/16	McKendree

Aces		
No.		
11	4/15/17	McKendree
11	4/1/15	Hope Int'l
11	3/13/14	UC Merced
10	3/8/18	Menlo College
10	4/19/17	Lewis

Assists		
No.		
69	3/18/16	IPFW
68	4/2/15	Concordia
67	3/18/17	IPFW
67	3/14/14	Limestone
65	3/8/14	Quincy

Dig		
No.		
71	4/1/15	Hope Int'l
60	4/5/12	Ohio State
59	2/9/13	Ball St.
58	3/29/14	NJIT
58	1/17/14	Concordia

Blocks		
No.		
21.5	1/20/19	Barton
20.5	2/24/18	USC
20	2/15/13	Concordia
18.5	3/6/15	Barton
18	3/11/16	McKendree

## ALL-TIME RECORDS VS OPPONENTS

Team	Record	Team	Record
Ball State	5-12	North Greenville*	1-0
Barton	5-1	Ohio State	2-16
Benedictine Mesa*	5-0	Ottawa*	2-0
BYU*	1-3	Pacific	2-5
Cal Baptist	0-6	Park*	2-1
Cal Lutheran	1-0	Pepperdine*	1-4
CSUN	1-1	Princeton*	1-1
Carthage	1-1	Purdue - Fort Wayne	8-8
Charleston	1-0	Quincy*	11-6
Clarke	1-1	Sacred Heart	1-0
Coker	2-0	Saint Ambrose	0-1
Concordia-Irvine*	8-7	Saint Katherine	1-0
Emmanuel*	1-0	Saint Francis	2-3
George Mason	4-6	Siena Heights	1-0
Harvard*	0-1	Springfield	1-1
Hawaii*	0-8	Stanford*	1-6
Holy Names	2-0	Stevens	1-0
Hope International	9-2	UCLA*	0-5
Johnson & Wales	5-2	UC Irvine*	0-3
Juniata	0-3	UC Merced	3-0
King	2-1	UCSD*	5-3
Lees-McRae	5-0	UCSB	0-1
Lewis	3-18	UC Santa Cruz	3-3
Lincoln Memorial	1-0	USC*	3-4
Limestone	5-0	USC*	3-4
Lindenwood*	10-7		
Long Beach State	0-1		
Loyola Chicago	4-16	* 2020 Opponent	
Loyola Maryland	0-2		
McKendree*	9-1		
Menlo*	1-0		
Moody Bible	1-0		
Mount Olive	2-0		
NJIT*	9-0		
NYU	1-0		



## GCU QUICK FACTS

### GRAND CANYON INFORMATION

School ..... Grand Canyon University  
 Location ..... Phoenix, Ariz.  
 Founded ..... 1949  
 Enrollment ..... 20,500  
 President ..... Brian Mueller  
 Interim Vice President of Athletics ..... Jamie Boggs  
 Faculty Representative ..... Timothy Barron  
 Affiliation ..... NCAA Division I  
 Nickname ..... Lopes  
 Mascot ..... Thunder  
 Colors ..... Purple, Black & White  
 Conference ..... Mountain Pacific Sports Federation (MPSF)

### ANTELOPE GYM

Opened ..... 1994  
 Capacity ..... 1,500  
 GCU Record ..... 78-59 (.569)

### PROGRAM HISTORY

First Year of Men's Volleyball at GCU ..... 2008-09  
 All-Time Record ..... 153-191 (.445)  
 All-Time MPSF Record ..... 7-16 (.304)

### COMMUNICATIONS CONTACT



#### Cassidy Mace

Assistant Director of Athletic Communications  
 Cell Phone 641-425-4523  
 Email cassidy.mace2@gcu.edu

## 2020 GRAND CANYON NUMERIC ROSTER

NO.	NAME	YEAR	POS.	HT.	HOMETOWN	HIGH SCHOOL/PREV. SCHOOL
3	Chibuike Obi	Fr.	MB	6-4	Dallas, Texas	Bishop Lynch
4	Trevor Weary	Jr.	OH	6-4	Phoenix, Ariz.	Horizon Honors
5	Camden Gianni	R-Fr.	OH	6-5	Carlsbad, Calif.	La Costa Canyon
6	Avery Enriques	Jr.	L	5-10	Keaau, Hawaii	Kamehameha
7	Jack Burton	R-Jr.	OH	6-4	Bolingbrook, Ill.	Naperville
8	Heath Hughes	So.	S	6-7	Haines City, Fla.	Polk State Chain of Lakes Collegiate
9	Onur Cukur	Jr.	S	6-8	Izmir, Turkey	Arkas
10	Ian McLain	R-Jr.	MB	6-7	Santa Barbara, Calif.	San Marcos
11	Christian Janke	So.	OH	6-5	Carlsbad, Calif.	Sage Creek
12	Grayson Browning	R-Fr.	OH	6-5	Virginia Beach, Va.	Cape Henry Collegiate
13	Cole Udall	So.	L	6-3	San Tan Valley, Ariz.	Chandler
14	Jacob Guerber	R-Fr.	MB	6-10	Mesa, Ariz.	Desert Ridge
16	Parker Broadway	So.	OPP	6-7	Phoenix, Ariz.	Sandra Day O'Connor
18	Caleb Blazer	Sr.	MB	6-7	West Palm Beach, Fla.	Palm Beach Central
19	Hugo Fischer	R-So.	OPP	6-8	Verviers, Belgium	Waremmme
20	Carson Brandt	Fr.	OPP	6-5	Lombard, Ill.	Glenbard East
22	David Kisiel	R-Jr.	OH	6-5	Glendale, Ariz.	Ironwood
23	Kyle Thompson	So.	MB	6-7	Orlando, Fla.	Timber Creek
25	Tanner Petchul	R-So.	S	6-5	Orange, Calif.	Crean Lutheran

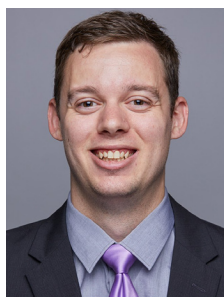
## 2020 GRAND CANYON ALPHABETICAL ROSTER

NO.	NAME	YEAR	POS.	HT.	HOMETOWN	HIGH SCHOOL/PREV. SCHOOL
18	Caleb Blazer	Sr.	MB	6-7	West Palm Beach, Fla.	Palm Beach Central
20	Carson Brandt	Fr.	OPP	6-5	Lombard, Ill.	Glenbard East
16	Parker Broadway	So.	OPP	6-7	Phoenix, Ariz.	Sandra Day O'Connor
12	Grayson Browning	R-Fr.	OH	6-5	Virginia Beach, Va.	Cape Henry Collegiate
7	Jack Burton	R-Jr.	OH	6-4	Bolingbrook, Ill.	Naperville
9	Onur Cukur	Jr.	S	6-8	Izmir, Turkey	Arkas
6	Avery Enriques	Jr.	L	5-10	Keaau, Hawaii	Kamehameha
19	Hugo Fischer	R-So.	OPP	6-8	Verviers, Belgium	Waremmme
5	Camden Gianni	R-Fr.	OH	6-5	Carlsbad, Calif.	La Costa Canyon
14	Jacob Guerber	R-Fr.	MB	6-10	Mesa, Ariz.	Desert Ridge
8	Heath Hughes	So.	S	6-7	Haines City, Fla.	Polk State Chain of Lakes Collegiate
11	Christian Janke	So.	OH	6-5	Carlsbad, Calif.	Sage Creek
22	David Kisiel	R-Jr.	OH	6-5	Glendale, Ariz.	Ironwood
10	Ian McLain	R-Jr.	MB	6-7	Santa Barbara, Calif.	San Marcos
3	Chibuike Obi	Fr.	MB	6-4	Dallas, Texas	Bishop Lynch
25	Tanner Petchul	R-So.	S	6-5	Orange, Calif.	Crean Lutheran
23	Kyle Thompson	So.	MB	6-7	Orlando, Fla.	Timber Creek
13	Cole Udall	So.	L	6-3	San Tan Valley, Ariz.	Chandler
4	Trevor Weary	Jr.	OH	6-4	Phoenix, Ariz.	Horizon Honors

## 2020 GRAND CANYON COACHING STAFF



**MATT WERLE**  
Head Coach



**KEITH SMITH**  
Assistant Coach



**ANDREW MCCALL**  
Graduate Assistant



**DENNIS FLOWERS**  
Special Assistant to the Head Coach







**3 CHIBUIKE OBI**

MB • 6-4  
Freshman  
Dallas, Texas



**4 TREVOR WEARY**

OH • 6-7  
Junior  
Phoenix, Ariz.



**5 CAMDEN GIANNI**

OH • 6-5  
R-Freshman  
Carlsbad, Calif.



**6 AVERY ENRIQUES**

L • 5-10  
Junior  
Keaau, Hawaii



**7 JACK BURTON**

OH • 6-4  
R-Senior  
Bolingbrook, Ill.



**8 HEATH HUGHES**

S • 6-7  
Sophomore  
Haines City, Fla.



**9 ONUR CUKUR**

S • 6-8  
Junior  
Izmir, Turkey



**10 IAN MCCLAIN**

MB • 6-7  
R-Junior  
Santa Barbara, Calif.



**11 CHRISTIAN JANKE**

OH • 6-5  
Sophomore  
Carlsbad, Calif.



**12 GRAYSON BROWNING**

OH • 6-5  
R-Freshman  
Virginia Beach, Va.



**13 COLE UDALL**

L • 6-3  
Sophomore  
San Tan Valley,



**14 JACOB GUERBER**

MB • 6-10  
R-Freshman  
Mesa, Ariz.



**16 PARKER BROADWAY**

OPP • 6-7  
Sophomore  
Phoenix, Ariz.



**18 CALEB BLAZER**

MB • 6-7  
Senior  
West Palm Beach, Fla.



**19 HUGO FISCHER**

OPP • 6-8  
R-Sophomore  
Verviers, Belgium



**20 CARSON BRANDT**

OPP • 6-5  
Freshman  
Lombard, Ill.



**22 DAVID KISIEL**

OH • 6-5  
R-Junior  
Glendale, Ariz.



**23 KYLE THOMPSON**

MB • 6-7  
Sophomore  
Orlando, Fla.



**25 TANNER PETCHUL**

S • 6-5  
R-Sophomore  
Orange, Calif.

## PRONUNCIATION GUIDE

Ryan **Losch** . . . . . LA-SH  
**Chibuike** Obi . . . . . Chi-BK  
 Camden **Gianni** . . . . . GEE-AH-Knee  
 David **Kisiel** . . . . . Key-Shul  
 Christian **Janke** . . . . . Jan-Key  
**Onur Cukur** . . . . . Owe-Ner Seh-Kur  
 Cole **Udall** . . . . . You-Doll  
 Matt **Werle** . . . . . Were-Lee



## HEAD COACH MATT WERLE



### COACH WERLE

#### HEAD COACH

Fifth season at Grand Canyon

Alma Mater: Juniata College, '05

Coaching Record	Overall		Conference	
	W	L	W	L
2016 - GCU	17	12	8	8
2017 - GCU	19	11	11	5
2018 - GCU	18	11	4	8
2019 - GCU	13	16	3	9
2020 - GCU	8	2	1	0
<b>Career Totals</b>	<b>75</b>	<b>52</b>	<b>29</b>	<b>33</b>

#### COACHING LEDGER

2016-19 ..... Grand Canyon (Head Coach)

2014..... Grand Canyon (Assistant Coach)

#### GCU WINNINGEST COACHES

1st .....Matt Werle (75-52)

2nd ..... Jeremy Price (68-91)

3rd.....Chad Speer (18-51)

Matt Werle was named the third head coach in Grand Canyon men's volleyball program history on May 2, 2016. With one season as interim head coach in 2016, Werle is entering his fifth season at the helm of the program in 2020.

Werle guided his first three GCU teams to 17 wins or more each year and an overall 54-34 record (.628). In 2017, the Lopes were ranked in the national top 15 in each week of their 18-11 season and finished at No. 14. It was GCU's first season in the Mountain Pacific Sports Federation, which put six teams in the final national top 15.

In 2017, the Lopes finished with a program-best record of 19-11 with 11 wins in Midwestern Intercollegiate Volleyball Association play. Under Werle's leadership, the team earned a national ranking for the first time in 2017 when it landed at No. 14. The Lopes hosted a home MIVA playoff game for the first time in five years and advanced to the championship with wins over McKendree and Lewis. This was the last season in the MIVA.

GCU started the 2016 season 5-0 and later added three huge wins over nationally ranked opponents. The Lopes knocked off No. 8 Ball State, No. 13 Lewis, and No. 12 Loyola Chicago en route to their first 17-win season since 2013. Outside hitters Gerrard Lipscombe and Shalev Saada were named to the All-MIVA first team.

In addition to serving as the interim coach at GCU in 2016, Werle was also head women's volleyball coach at Mesa Community College. He joined MCC in 2014 following his first three seasons on the GCU men's volleyball staff. Werle served as a graduate assistant for the Lopes in 2012 and 2013, before being added as assistant coach in 2014.

Werle played volleyball at Juniata College, where he helped lead the Eagles to three Division III national titles. A four-year starting setter, Werle was a four-time All-American and the American Volleyball Coaches Association Division III National Player of the Year in 2007.

A native of Meadville, Penn., Werle played two years with the junior national team and was Team USA's starting setter for the 2007 Junior World Championships. He trained one season with the men's national team in 2010.

A 2009 graduate of Juniata, Werle earned a degree in business administration before earning his graduate degree in business administration with an emphasis in leadership from GCU in 2013.

Werle also had success at the club coaching level as he led the top 18-year old club boys team, Arizona Fear Volleyball Club for four years and also assisted with 17UA and 18UA girls teams at Spiral Volleyball Club in Chandler, Ariz., in 2014-15.

## ASSISTANT COACH KEITH SMITH

Keith Smith enters his second season as the Grand Canyon assistant coach, after being hired on June 27, 2018.

Smith is no stranger to GCU. Etched in the record books as GCU's all-time leader in assists, the former Lopes setter returns to the Valley of the Sun for his second stint on the coaching staff. Smith played for GCU from 2011 to 2014 before serving as a volunteer assistant coach during the 2016 season.

During his time with the program, Smith amassed 4,484 assists. In addition to ranking first in assists in the GCU record book, Smith's 1,294 assists in 2013 rank eighth in NCAA history during the 25-point scoring era.

Since leaving Phoenix, Smith has built his coaching resume. Prior to GCU, he served as the assistant coach of the Providence College women's volleyball team for the 2017 season. Smith had an instant impact, helping the Friars post a winning record (17-16) for the first time since 2007. While a part of the staff, the Friars had their best start in program history with 11 straight wins.

Before Providence, Smith served as a volunteer assistant at McKendree with the men's and women's volleyball teams. As part of the Bearcats' staff, Smith worked with setters and made game plans by analyzing game film. In matches, he would help analyze and adjust game plans based off opponent's tendencies.

Smith's playing career came to an end in 2015 after playing for the Orion Top Volley Volleyball Club in Doetinchem, The Netherlands. As setter, Smith helped the team to top-four finishes in the regular season, playoffs and the national club tournament. With Smith's help, the team returned to the CEV Challenge Cup during the 2015-16 season after missing out during the 2014-15 season.







3

**CHIBUIKE  
OBI**Middle Blocker  
Fr. • 6-4  
Dallas, Texas

## 2020 / CAREER STATS

	SP	K	E	%	AST	SA	DIGS	BS	BA	TB
2020	0	0	0	0.000	0	0	0	0	0	0
Career	0	0	0	0.000	0	0	0	0	0	0

## PER GAME/MISC

	K/S	A/S	SA/S	D/S	B/S	Led GCU in 2020 (# of matches)	K	%	AST	SA	DIGS	TB
2020	0.00	0.00	0.00	0.00	0.00							
Career	0.00	0.00	0.00	0.00	0.00		-	-	-	-	-	-

## CAREER HIGHS

Kills	-
AST	-
Aces	-
Digs	-
BLK	-

## NOTES

- » Competed for the Madfrog Volleyball Club, Premiere Volleyball Club, Excel Volleyball Club and Houston Volleyball Academy in high school.
- » Named the Excel Volleyball Club All-Tournament Player as a high school junior.
- » Won the Houston Volleyball Academy's Most Improved Player award in his senior season of high school.



4

**TREVOR  
WEARY**Outside Hitter  
Jr. • 6-7  
Phoenix, Ariz.

## 2020 / CAREER AVERAGES

	SP	K	E	%	AST	SA	DIGS	BS	BA	TB
2020	5	3	0	.375	0	2	7	0	1	1
Career	74	79	38	.165	4	10	63	1	30	31

## PER GAME/MISC

	K/S	A/S	SA/S	D/S	B/S	Led GCU in 2020 (# of matches)	K	%	AST	SA	DIGS	TB
2020	0.60	0.00	0.40	1.40	0.20							
Career	1.07	0.05	0.14	0.85	0.42		-	-	-	-	1	-

## CAREER HIGHS

Kills	11, vs LUC, 3/8/2019
AST	1, 2x last vs Ottawa, 1/12/2019
Aces	2, vs Quincy, 1/26/2020
Digs	10, at Concordia, 2/22/2018
BLK	7, at USC, 2/24/2018

## NOTES

- » Had a career-high 11 kills in a five-set comeback win over No. 9 Loyola Chicago on March 8, 2019.
- » Offers a change of pace outside hitter, showing production off the bench.
- » Made his GCU debut on Feb. 17, 2018 against Stanford netting five kills and two blocks to go along with an impressive .625 hitting percentage.
- » Earned his first career start at Concordia on Feb. 22, 2018 and recorded seven kills, 10 digs and an ace.
- » Considered one of the best outside hitters in the 2018 Arizona recruiting class.



5

**CAMDEN  
GIANNI**Outside Hitter  
R-Fr. • 6-5  
Carlsbad, Calif.

## 2020 / CAREER AVERAGES

	SP	K	E	%	AST	SA	DIGS	BS	BA	TB
2020	26	95	37	.264	6	11	30	1	8	9
Career	26	95	37	.264	6	11	30	1	8	9

## PER GAME/MISC

	K/S	A/S	SA/S	D/S	B/S	Led GCU in 2020 (# of matches)	K	%	AST	SA	DIGS	TB
2020	3.65	0.23	0.42	1.15	0.35							
Career	3.65	0.23	0.42	1.15	0.35		4	1	-	1	2	-

## CAREER HIGHS

Kills	15, vs McKendree, 1/24/2020
AST	1, 3x last vs McKendree, 1/24/2020
Aces	4, vs UC San Diego, 1/18/2020
Digs	7, vs Stanford, 2/18/2020
BLK	2, vs McKendree, 1/24/2020

## NOTES

- » Led the Lopes in kills in his first two collegiate appearances, ranks 10th nationally in attacks per set (8.63) and 17th in kills per set (3.50).
- » Went down with a medical emergency during the team's first practice of 2019. He received life saving support from GCU's athletic training staff and special assistant to the head coach. Was admitted to UCLA hospital to undergo open heart surgery. Redshirted his freshman season to recover.
- » Named high school All-American in 2018.
- » Was named one of Volleymag's Fab 50 in 2018.



6

**AVERY  
ENRIQUES**Libero  
Jr. • 5-10  
Keaau, Hawai'i

## 2020 / CAREER AVERAGES

	SP	K	E	%	AST	SA	DIGS	BS	BA	TB
2020	22	0	0	0.000	8	0	29	0	0	0
Career	56	0	0	0.000	22	0	80	0	0	0

## PER GAME/MISC

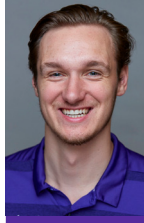
	K/S	A/S	SA/S	D/S	B/S	Led GCU in 2020 (# of matches)	K	%	AST	SA	DIGS	TB
2020	0.00	0.36	0.00	1.32	0.00							
Career	0.00	0.39	0.00	1.43	0.00		-	-	-	-	1	-

## CAREER HIGHS

Kills	-
AST	3, at UCSB, 1/4/2019
Aces	-
Digs	14, at Concordia-Irvine, 2/9/2019
BLK	-

## NOTES

- » Set a career high in digs when he played three sets at Concordia-Irvine on Feb. 9, 2019, out playing his twin brother Addison Enriques (CUI libero).
- » Has four brothers that play Division I volleyball at Hawai'i, Stanford, Cal Baptist and Concordia Irvine. Will play against two of his brothers twice this season in Stanford and Concordia.
- » Moved to Libero last season after playing outside during his career.
- » Attended same high school as alumni, Cullen Mosher and Puna Kaniho.



7

**JACK  
BURTON**Outside Hitter  
R-Sr. • 6-4  
Bolingbrook, Ill.

## 2020 / CAREER AVERAGES

	SP	K	E	%	AST	SA	DIGS	BS	BA	TB
2020	20	19	3	.457	2	5	9	0	2	2
Career	168	104	49	.192	13	15	72	1	33	34

## PER GAME/MISC

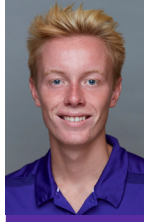
	K/S	A/S	SA/S	D/S	B/S	Led GCU in 2020 (# of matches)	K	%	AST	SA	DIGS	TB
2020	0.95	0.10	0.25	0.45	0.10							
Career	0.62	0.08	0.09	0.43	0.20		1	-	-	-	-	-

## CAREER HIGHS

Kills	10, vs CSUN 1/5/2019
AST	2, vs Limestone, 1/13/2018
Aces	2, 4x last vs UC San Diego, 1/18/2020
Digs	7, vs CSUN 1/5/2019
BLK	8, vs Barton, 1/18/2019

## NOTES

- » Had a career performance at CSUN on Jan. 5, 2019, collecting 10 kills and seven digs, both career highs.
- » Has seen his blocking improve on the season, doubling his block per set total.
- » One of seven upperclassmen on the roster.



8

**HEATH  
HUGHES**Setter  
So. • 6-7  
Haines City, Fla.

## 2020 / CAREER AVERAGES

	SP	K	E	%	AST	SA	DIGS	BS	BA	TB
2020	28	9	1	.333	291	2	41	1	11	12
Career	68	9	1	.320	389	3	64	1	11	12

## PER GAME/MISC

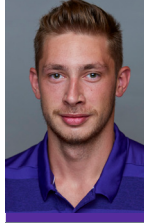
	K/S	A/S	SA/S	D/S	B/S	Led GCU in 2020 (# of matches)	K	%	AST	SA	DIGS	TB
2020	0.32	10.39	0.07	1.46	0.43							
Career	0.13	5.72	0.04	0.94	0.18		-	-	9	-	2	2

## CAREER HIGHS

Kills	3, 2x last vs Benedictine, 1/29/2020
AST	50, vs McKendree, 1/24/2020
Aces	1, 2x last vs Lindenwood, 2/25/2020
Digs	10, vs McKendree, 1/24/2020
BLK	3, at Lindenwood, 1/25/2020

## NOTES

- » Earned his first career start on Feb. 2, 2019 versus Charleston and recorded a match-high 30 assists.
- » Made his setting debut against Lincoln Memorial on 1/20, notching 22 assists, helping GCU hang on to the five set victory.
- » Made his GCU debut on Jan. 18, 2019 against Barton, entering the match to serve.
- » Competed at the Boys Junior National Championships from 2016-18.
- » Played for Team Florida and was a key component of their center court.



9

**ONUR  
CUKUR**Setter  
Jr. • 6-8  
Izmir, Turkey

## 2020 / CAREER AVERAGES

	SP	K	E	%	AST	SA	DIGS	BS	BA	TB
2020	4	4	0	.800	42	0	17	1	3	4
Career	79	24	9	.263	571	6	116	4	40	44

## PER GAME/MISC

	K/S	A/S	SA/S	D/S	B/S	Led GCU in 2019 (# of matches)	K	%	AST	SA	DIGS	TB
2020	1.00	10.50	0.00	4.25	1.00							
Career	0.30	7.23	0.08	1.47	0.56		-	-	1	-	-	2

## CAREER HIGHS

Kills	4, vs CSUN 1/5/2019
AST	52, vs Pepperdine, 2/15/2019
Aces	2, at St. Katherine, 1/25/2019
Digs	12, vs Pepperdine, 2/15/2019
BLK	5, vs UCLA, 3/1/2019

## NOTES

- » Had a career day against Pepperdine on Feb. 19, 2019 setting career high's in assists, digs and blocks while recording his first career double-double.
- » Had back-to-back matches with 35+ assists, recording 39 against Barton on Jan. 18, 2019 and set a new career high the next day with 41 against Lindenwood.
- » Played for the Turkish National Team in the FIVB U19 World Championship.



10

**IAN  
MCLAIN**Middle Blocker  
R-Jr. • 6-7  
Santa Barbara, Calif.

## 2020 / CAREER AVERAGES

	SP	K	E	%	AST	SA	DIGS	BS	BA	TB
2020	27	51	7	.550	2	0	5	2	24	26
Career	88	134	40	.351	8	6	16	6	70	76

## PER GAME/MISC

	K/S	A/S	SA/S	D/S	B/S	Led GCU in 2020 (# of matches)	K	%	AST	SA	DIGS	TB
2020	1.89	0.07	0.00	0.19	0.96							
Career	1.52	0.09	0.07	0.00	0.86		-	4	-	-	-	6

## CAREER HIGHS

Kills	13, vs George Mason, 3/15/2019
AST	1, 7x last vs Benedictine, 1/29/2020
Aces	3, vs USC, 3/14/2019
Digs	3, vs McKendree, 1/24/2020
BLK	8, vs LUC, 3/8/2019

## NOTES

- » Tied the GCU individual match record for hitting percentage vs. UC San Diego on Jan. 18, 2020 at .857.
- » Had a career weekend in two five-set wins over Loyola Chicago (3/8-9) recording 18 kills and 11 blocks on a .419 hitting clip.
- » During the four match win streak for the Lopes, McLain starred on both sides of the ball, setting career highs in every category.
- » Earned a spot in the starting rotation after his performance at Concordia-Irvine on Feb. 9, 2019, recording career highs in every category.





11

**CHRISTIAN JANKE**

Outside Hitter  
So. • 6-5  
Carlsbad, Calif.

**2020 / CAREER AVERAGES**

	SP	K	E	%	AST	SA	DIGS	BS	BA	TB
2020	29	82	31	.288	2	20	42	1	5	6
Career	138	405	193	.238	12	47	206	5	49	54

**PER GAME/MISC**

	K/S	A/S	SA/S	D/S	B/S	Led GCU in 2020 (# of matches)	K	%	AST	SA	DIGS	TB
2020	2.83	0.07	0.69	1.45	0.21							
Career	2.93	0.09	0.34	0.00	0.39		4	1	-	2	3	-

**CAREER HIGHS**

<b>Kills</b>	21, vs Barton College, 1/18/2019
<b>AST</b>	2, 2x, last vs Harvard, 1/9/2020
<b>Aces</b>	4, 2x, last at Hawaii, 1/11/2020
<b>Digs</b>	12, vs LUC, 3/8/2019
<b>BLK</b>	4, 5x, last vs LUC, 3/8/2019

**NOTES**

- » Named to 2019 MPSF All-Freshman Team.
- » Played the second most sets in the nation at 109 his freshman season.
- » Was one of the first four player's in the country to have 200+ kills in 2019.
- » Has played every set for the Lopes in 2019, the only on the team to do so.
- » Named to two all-tournament teams to start his freshman season.
- » Led the team in kills and his top three in digs and aces as a freshman.
- » Named a 2018 high school All-American.



12

**GRAYSON BROWNING**

Outside Hitter  
R-Fr. • 6-5  
Virginia Beach, Va.

**2020 / CAREER AVERAGES**

	SP	K	E	%	AST	SA	DIGS	BS	BA	TB
2020	2	5	1	.571	0	0	0	0	0	0
Career	2	5	1	.571	0	0	0	0	0	0

**PER GAME/MISC**

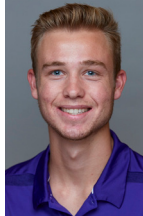
	K/S	A/S	SA/S	D/S	B/S	Led GCU in 2020 (# of matches)	K	%	AST	SA	DIGS	TB
2020	2.50	0.00	0.00	0.00	0.00							
Career	2.50	0.00	0.00	0.00	0.00		-	-	-	-	-	-

**CAREER HIGHS**

<b>Kills</b>	5, vs Quincy, 1/26/2020
<b>AST</b>	-
<b>Aces</b>	-
<b>Digs</b>	-
<b>BLK</b>	-

**NOTES**

- » Redshirted his freshman season at GCU.
- » Two-time all-conference MVP.
- » Three-time team MVP.
- » Earned first team all-area.



13

**COLE UDALL**

Libero  
So. • 6-3  
San Tan Valley, Ariz.

**2020 / CAREER AVERAGES**

	SP	K	E	%	AST	SA	DIGS	BS	BA	TB
2020	27	0	0	0.000	12	0	43	0	0	0
Career	129	0	0	0.000	65	0	249	0	0	0

**PER GAME/MISC**

	K/S	A/S	SA/S	D/S	B/S	Led GCU in 2020 (# of matches)	K	%	AST	SA	DIGS	TB
2020	0.00	0.44	0.00	1.59	0.00							
Career	0.00	0.50	0.00	0.00	0.00		-	-	-	-	2	-

**CAREER HIGHS**

<b>Kills</b>	-
<b>AST</b>	5, vs Lincoln Memorial, 1/20/2019
<b>Aces</b>	-
<b>Digs</b>	15, 2x, vs USC, 3/14/2019
<b>BLK</b>	-

**NOTES**

- » Named to 2019 MPSF All-Freshman Team.
- » Named MPSF Defensive Player of the Week for week 10 after recording 25 digs (2.50 per set) in two matches against No. 9 Loyola Chicago including a career high 15 on March 8, 2019.
- » Is first in the MPSF in digs since MPSF play started.
- » Has had eight 10+ dig matches this season.
- » Earned first team all-region and all-state honors in 2018.
- » Local product, from Chandler high school and played for AZ Fear.



14

**JACOB GUERBER**

Middle Blocker  
R-Fr. • 6-10  
Mesa, Ariz.

**2020 / CAREER AVERAGES**

	SP	K	E	%	AST	SA	DIGS	BS	BA	TB
2020	0	0	0	0.000	0	0	0	0	0	0
Career	0	0	0	0.000	0	0	0	0	0	0

**PER GAME/MISC**

	K/S	A/S	SA/S	D/S	B/S	Led GCU in 2020 (# of matches)	K	%	AST	SA	DIGS	TB
2020	0.00	0.00	0.00	0.00	0.00							
Career	0.00	0.00	0.00	0.00	0.00		-	-	-	-	-	-

**CAREER HIGHS**

<b>Kills</b>	-
<b>AST</b>	-
<b>Aces</b>	-
<b>Digs</b>	-
<b>BLK</b>	-

**NOTES**

- » Redshirted his freshman season.



16

**PARKER BROADWAY**

Outside Hitter  
So. • 6-7  
Phoenix, Ariz.

**2020 / CAREER AVERAGES**

	SP	K	E	%	AST	SA	DIGS	BS	BA	TB
2020	0	0	0	0.000	0	0	0	0	1	1
Career	2	3	3	0.000	0	0	0	0	1	1

**PER GAME/MISC**

	K/S	A/S	SA/S	D/S	B/S	Led GCU in 2020 (# of matches)	K	%	AST	SA	DIGS	TB
2020	0.00	0.00	0.00	0.00	0.00							
Career	1.50	0.00	0.00	0.00	0.50		-	-	-	-	-	-

**CAREER HIGHS**

<b>Kills</b>	3, vs Lincoln Memorial, 1/20/2019
<b>AST</b>	-
<b>Aces</b>	-
<b>Digs</b>	-
<b>BLK</b>	1, vs Ottawa, 1/12/2019

**NOTES**

- » Set a career high in kills with three vs Lincoln Memorial on Jan. 20, 2019.
- » Made his debut on Jan 12, 2019 against Ottawa
- » Was named AZ Central Player of the year in 2018.
- » AIA 6A Conference Player of the Year.
- » 2018 Nationals USA division Bronze Medal and named to All-Tournament team.



18

**CALEB BLAZER**

Middle Blocker  
Sr. • 6-7  
West Palm Beach, Fla.

**2020 / CAREER AVERAGES**

	SP	K	E	%	AST	SA	DIGS	BS	BA	TB
2020	13	13	3	.476	1	3	7	0	8	8
Career	159	158	53	.314	14	14	52	10	141	151

**PER GAME/MISC**

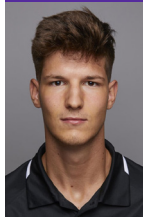
	K/S	A/S	SA/S	D/S	B/S	Led GCU in 2020 (# of matches)	K	%	AST	SA	DIGS	TB
2020	1.00	0.08	0.23	0.54	0.62							
Career	0.99	0.09	0.09	0.00	0.95		-	1	-	-	-	3

**CAREER HIGHS**

<b>Kills</b>	10, vs Concordia, 3/9/2018
<b>AST</b>	1, 13x, last vs Emmanuel, 1/10/2020
<b>Aces</b>	2, 4x last vs Quincy, 1/26/2020
<b>Digs</b>	4, at Barton, 1/4/2018
<b>BLK</b>	12, vs Barton, 1/18/2019

**NOTES**

- » Went down with a lower body injury against Lincoln Memorial on Jan. 20, 2019.
- » Leads the MPSF in blocks per set in 2019.
- » His 12 block performance against Barton is the best single-game blocking performance in the NCAA in 2019.
- » Has topped his career-high in blocks twice this season which included his 12 block performance against Barton on Jan. 18, 2019.



19

**HUGO FISCHER**

Opposite  
R-Fr. • 6-8  
Verviers, Belgium

**2020 / CAREER AVERAGES**

	SP	K	E	%	AST	SA	DIGS	BS	BA	TB
2020	21	59	21	.295	0	14	23	1	15	16
Career	27	59	24	.252	1	14	24	1	16	17

**PER GAME/MISC**

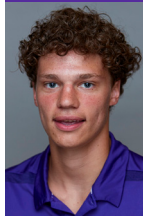
	K/S	A/S	SA/S	D/S	B/S	Led GCU in 2020 (# of matches)	K	%	AST	SA	DIGS	TB
2020	2.81	0.00	0.67	1.10	0.76							
Career	2.19	0.04	0.52	0.00	0.63		1	1	-	2	-	2

**CAREER HIGHS**

<b>Kills</b>	19, vs McKendree, 1/24/2020
<b>AST</b>	1, vs Stanford, 4/6/2019
<b>Aces</b>	4, 2x last vs Park, 1/17/2020
<b>Digs</b>	8, vs McKendree, 1/24/2020
<b>BLK</b>	5, 2x last vs McKendree, 1/24/2020

**NOTES**

- » Made his GCU debut at UCSB on 1/4/2019, playing in two sets.
- » Redshirted last season.
- » Competed for the Belgium National team and helped them to a second place finish in the 2015 West-Europa tournament.
- » Joined the first men's league in Belgium, Waremm.
- » Played for Belgium in the 2017 Youth Olympics Games.



20

**CARSON BRANDT**

Opposite  
Fr. • 6-5  
Lombard, Ill.

**2020 / CAREER AVERAGES**

	SP	K	E	%	AST	SA	DIGS	BS	BA	TB
2020	0	0	0	0.000	0	0	0	0	0	0
Career	0	0	0	0.000	0	0	0	0	0	0

**PER GAME/MISC**

	K/S	A/S	SA/S	D/S	B/S	Led GCU in 2020 (# of matches)	K	%	AST	SA	DIGS	TB
2020	0.00	0.00	0.00	0.00	0.00							
Career	0.00	0.00	0.00	0.00	0.00		-	-	-	-	-	-

**CAREER HIGHS**

<b>Kills</b>	-
<b>AST</b>	-
<b>Aces</b>	-
<b>Digs</b>	-
<b>BLK</b>	-

**NOTES**

- » Illinois All-State selection in his junior and senior seasons of high school.
- » Competed for Future Volleyball Club during his high school career.







22

**DAVID KISIEL**  
Outside Hitter  
R-Jr. • 6-5  
Glendale, Ariz.

## 2020 / CAREER AVERAGES

	SP	K	E	%	AST	SA	DIGS	BS	BA	TB
2020	12	32	13	.226	1	2	14	0	4	4
Career	95	283	132	.216	5	15	99	6	50	56

## PER GAME/MISC

	K/S	A/S	SA/S	D/S	B/S	Led GCU in 2020 (# of matches)
2020	2.67	0.08	0.17	1.17	0.33	K % AST SA DIGS TB
Career	2.98	0.05	0.16	0.00	0.59	1 - - - 1 -

## CAREER HIGHS

<b>Kills</b>	28, vs Pepperdine, 2/15/2019
<b>AST</b>	1, 4x last at Lindenwood, 1/25/2020
<b>Aces</b>	3, at UCLA, 3/31/2019
<b>Digs</b>	7, 2x, last vs Stanford, 4/6/2019
<b>BLK</b>	6, vs Pepperdine, 2/15/2019

## NOTES

- » Recorded 28 kills vs No. 5 Pepperdine which is tied for fourth most in a single match in program history.
- » Finished 2019 ranked fourth in the MPSF in kills per set since conference play started.
- » Had a memorable performance against Concordia-Irvine (2/9) recording 22 kills and six digs.
- » Arizona product out of Ironwood high school.



23

**KYLE THOMPSON**  
Middle Blocker  
So. • 6-7  
Orlando, Fla.

## 2020 / CAREER AVERAGES

	SP	K	E	%	AST	SA	DIGS	BS	BA	TB
2020	26	46	16	.385	2	2	8	5	14	19
Career	44	68	27	.342	2	3	14	5	17	22

## PER GAME/MISC

	K/S	A/S	SA/S	D/S	B/S	Led GCU in 2020 (# of matches)
2020	1.77	0.08	0.08	0.31	0.73	K % AST SA DIGS TB
Career	1.55	0.05	0.07	0.00	0.50	1 2 - - - 1

## CAREER HIGHS

<b>Kills</b>	8, vs UC San Diego, 1/18/2020
<b>AST</b>	2, vs Emmanuel 1/10/2020
<b>Aces</b>	2, vs McKendree, 1/24/2020
<b>Digs</b>	5, vs Emmanuel, 1/10/2020
<b>BLK</b>	4, vs Emmanuel, 1/10/2020

## NOTES

- » Had a career high 7 kills on a .500 hitting percentage vs Charleston on Feb. 2, 2019.
- » Was thrust into the 2019 starting rotation against St. Katherine following Caleb Blazer's injury. Has since served a supporting role.
- » Touches 12 feet on his approach jump.
- » Named All-Central Florida player.
- » Started playing competitively for the first time as a junior in high school.



25

**TANNER PETCHUL**  
Setter  
R-So. • 6-5  
Orange, Calif.

## 2020 / CAREER AVERAGES

	SP	K	E	%	AST	SA	DIGS	BS	BA	TB
2020	21	0	0	0.000	18	3	12	0	1	1
Career	78	16	1	.577	391	11	66	0	17	17

## PER GAME/MISC

	K/S	A/S	SA/S	D/S	B/S	Led GCU in 2020 (# of matches)
2020	0.00	0.86	0.14	0.57	0.05	K % AST SA DIGS TB
Career	0.21	5.01	0.14	0.00	0.22	- - - - 1 -

## CAREER HIGHS

<b>Kills</b>	3, 3x, last vs BYU, 4/4/2019
<b>AST</b>	55, vs BYU, 4/4/2019
<b>Aces</b>	2, vs CUI, 3/22/2019
<b>Digs</b>	11, vs George Mason, 3/15/2019
<b>BLK</b>	3, vs LUC, 3/9/2019

## NOTES

- » Set a new career-high 55 assists against BYU which is also good for the most by a Lope in 2019.
- » Had three 20+ assist performances in 2019 including his career high 33 assist performance against Loyola Chiacgo on March 9, 2019.
- » Saw time in more than half of GCU's 2019 matches.
- » Made his GCU debut at UCSB on Jan. 4, 2019
- » High school All-League MVP in 2016 and 17.
- » Served a redshirt season in 2018.

