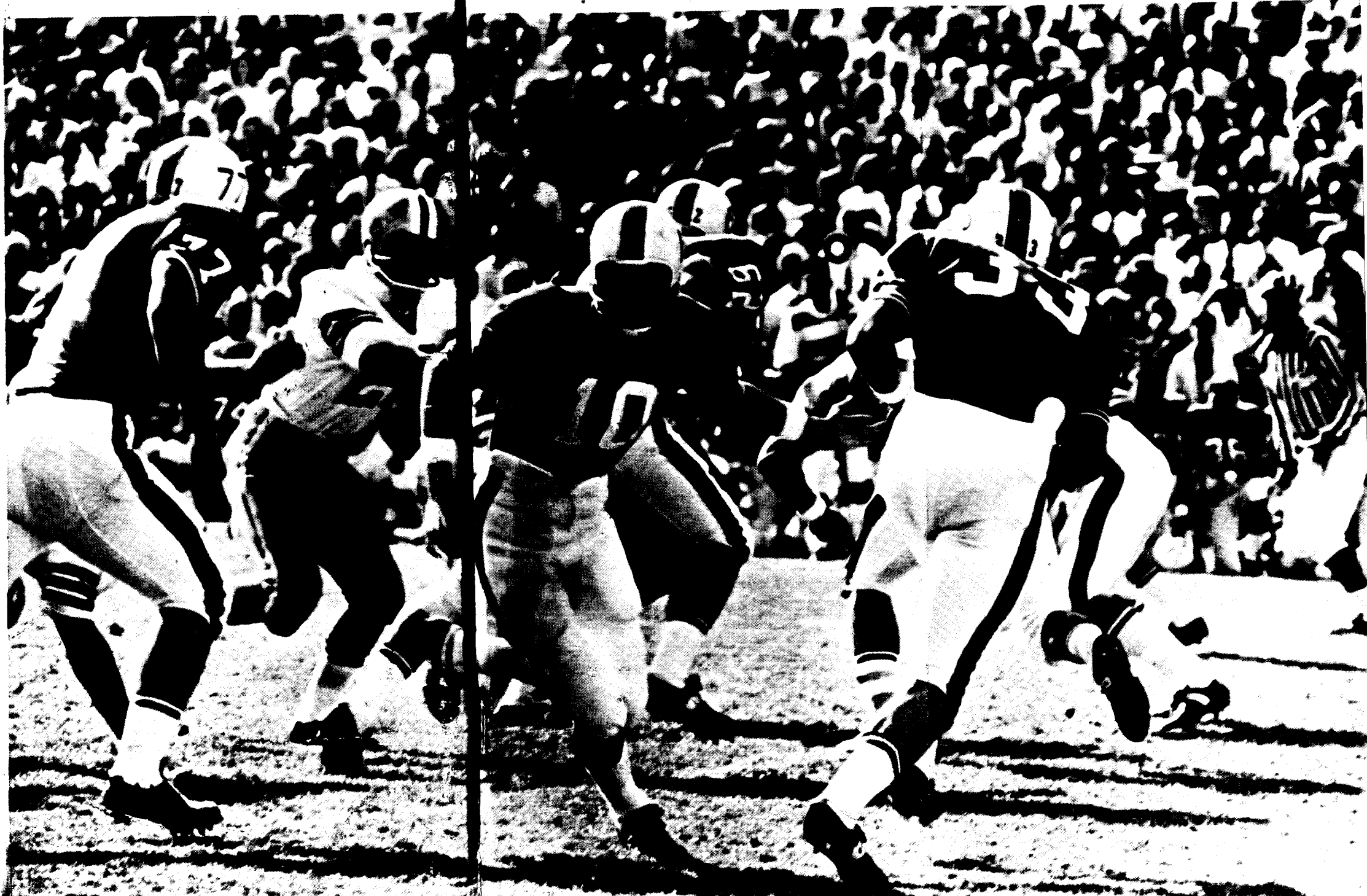


Gators 68



FLORIDA FIELD PRESS BOX

The Florida Field Press Box consists of four decks: Starting from the bottom and going to the top (by elevator) they are (1) Photo Darkroom and Western Union, (2) Radio and Photographers, (3) Press and (4) Photo. Here they are in detail:

PRESS DECK: There are 48 seats on the front row and 47 on the back row. Each reporter has 34 inches of desk space and an adjustable, swivel chair that is bolted to the floor. There are no windows on the press deck. A public address system operated exclusively for the press box gives all official information, including statistics on individual plays. **WOMEN AND CHILDREN NOT ALLOWED.**

RADIO DECK: There are five ample-sized, acoustically tiled radio booths with glass windows that may be opened or closed, depending upon the desire of each announcer. The front row of each radio booth will seat four people very comfortably and five in a slight pinch. The back row seats three and is adapted for engineering equipment. Each radio booth may receive the press box PA announcements via headphones.

PHOTOGRAPHY DECK: This is a large open-front area at the very top of the press box. It has ample table space both in front of the cameraman and behind him. **WOMEN AND CHILDREN NOT ALLOWED.**

NORM CARLSON

Director of Athletic Public Relations

Norm Carlson took over as Sports Publicity Director at Florida in February of 1963 after over four years in the same position at Auburn University. In 1966 he was promoted to Director of Athletic Public Relations and he now supervises the overall public relations and publicity program. A 1956 graduate of the University of Florida, Carlson was born in Omaha, Nebraska, and attended public schools in St. Louis, Missouri. Following college graduation, he worked as a sportswriter for the Atlanta Journal three years prior to going to Auburn. He is past president of the SEC Sports Publicity Association and on the membership committee of COSIDA. He is also Executive Secretary of the Florida Sportswriters Assn. He is married to the former Peetie Maile of Greenville, S. C. and they have five children: Donya Lee (10), Kerri (8), Doug (6), Reese (4) and David (3).



ABOUT THE COVER—Tampa Tribune photographers catch the key to Florida's running game as Larry Rentz (10) has just handed the ball off to Larry Smith (33), who goes off tackle behind Mac Steen (62) and pulling guard Guy Dennis (77). Smith and Dennis are both pre-season all-America choices.

QUICK GATOR FACTS

Numerical Roster

5—Jack Eckdahl, QB-FL
 10—Larry Rentz, QB
 14—Harold Peacock, QB
 20—Guy McTheny, FL
 21—John Flad, FL
 22—Steve Tannen, DHB
 23—Larry Williamson, S
 24—Jerry Vinesett, TB
 25—Bill Gaisford, DHB
 26—Mark Ely, S
 27—Skip Albury, S
 28—Gary Bimson, FL
 30—Paul Maliska, SE
 31—Tom Christian, TB
 32—Bill McBride, TB
 33—Larry Smith, FB
 34—Brian Hipp, FB
 35—Don Gramling, FL
 36—Jack Burns, S
 37—Rocky Doddridge, DHB
 40—Buster Brooke, TB
 41—Dennis Zeleznik, FB
 42—Garry Walker, TB
 43—John Faix, DHB
 44—Ted Hager, SE-DHB
 45—Ben Sellers, FL
 47—Mike Palahach, LB
 50—Mike Kelley, LB
 51—Brad Powell, LB
 52—Bernie Byers, DE
 53—Kim Helton, C
 54—Dave Barnhart, C
 55—David Mann, LB
 56—Nick Sinardi, C
 57—Tom Abdelnour, LB
 58—Wayne Compton, LB
 59—Donnie Williams, LB
 60—Ray Pilcher, OG
 61—Ed Foster, DT
 62—Mac Steen, OG
 63—Gary Duven, OG
 64—Mike Santille, DT
 65—Robbie Rebol, MG
 66—Randy Warbritton, OG
 67—Danny Williams, MG
 68—Alan Cole, DT
 69—Bill Dorsey, MG
 70—Mike Healey, DT
 71—Jim Hadley, DT
 72—Terry Morris, OT
 73—Mike Field, OT
 74—Jack Youngblood, DT
 75—Bob Stephens, OG
 76—Jim Kiley, OT
 77—Guy Dennis, OG
 78—Skip Amelung, OT
 79—Wayne Griffith, OT
 80—Gene Peek, SE
 81—Britt Skrivaneck, DE
 82—David Ghesquire, DE
 83—Ken Ratcliffe, SE
 84—Steve Ely, DE
 86—George Dean, TE
 87—Jim Yancey, TE
 88—Jim Yarbrough, TE
 89—

1968 VARSITY SCHEDULE

Sept. 21—Air Force (0-0) ___ 2:00
 (Tampa)
 Sept. 28—FSU (7-2-1) _____ 2:00
 (Tallahassee)
 Oct. 5—Miss. St. (10-10-1) 2:00
 (Gainesville)
 Oct. 12—Tulane (9-6-2) ___ 2:00
 (Gainesville)
 Oct. 19—N. Carolina (1-4-1) 1:30
 (Chapel Hill)
 Oct. 26—Vanderbilt (10-6-1) 1:30
 (Nashville)
 Nov. 2—Auburn (17-25-2) 2:00
 (Gainesville HC)
 Nov. 9—Georgia (17-27-1) 2:00
 (Jacksonville)
 Nov. 16—Kentucky (12-6) 2:00
 (Lexington)
 Nov. 30—Miami (13-16) ___ 2:00
 (Gainesville)

all local times

FRESHMAN SCHEDULE

Oct. 7—Auburn (Here) ___ 2:00
 Oct. 19—FSU (Here) _____ 2:00
 Oct. 25—Miami (Miami) ___ 8:15
 Nov. 11—Georgia (Athens) 3:00

1967 RECORD 6-4

Florida	Opponent	
14	Illinois	0
24	Mississippi State	7
6	LSU	37
35	Tulane	0
27	Vanderbilt	22
21	Auburn	26
17	Georgia	16
28	Kentucky	12
16	FSU	21
13	Miami	20

OFFICE PHONE NUMBERS

Athletic Department _____ 372-0447
 (After Nov. 15) _____ 392-0664

PUBLICITY

Norm Carlson _____ Office 372-8437
 Home 372-7822
 Richard Giannini _____ Office 372-8437
 Home 378-2261

1968

UNIVERSITY OF FLORIDA FOOTBALL

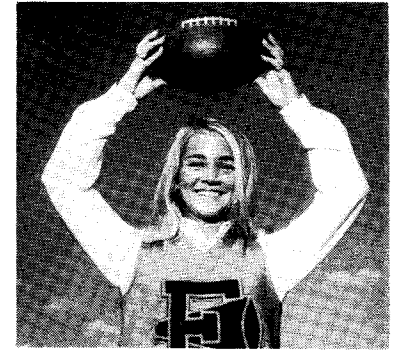


TABLE OF CONTENTS

General Information	2
Meet Ray Graves	4
Attendance Records	7
Coaching Staff	10
Opponents	18
1967 Review	28
1967 Statistics	31
Gator Greats	36
Varsity Roster	42
Varsity Depth Chart	44
Baby Gators	46
Player Sketches	48
Past History	70
Records	79
Press Facts	84

Published by
 UNIVERSITY ATHLETIC ASSOCIATION

Edited by Norm Carlson and
 Richard Giannini

UNIVERSITY OF FLORIDA

Facts About The University

GENERAL INFORMATION

President	Stephen C. O'Connell
Location	Gainesville, Fla. (87,800)
University Founded at Ocala	1853
Moved to Gainesville	1905
Became Co-Educational	1947
Enrollment	19,600
Colors	Orange and Blue
First Year of Football	1906
Nickname	Gators
Conference	Southeastern
Stadium	Florida Field (58,780)

FLORIDA'S ATHLETIC STAFF

Director of Athletics	Ray Graves
Assistant Director of Athletics	Percy Beard
Director of Gator Boosters	John Eibner
Director Athletic Public Relations	Norm Carlson
Assistant Sports Publicity Director	Richard Giannini
Assistant to Athletic Director	Hobe Hooser
Concessions Manager	Bill Squires
Team Physician	Dr. Ed Kissam
Trainer	Brady Greathouse
Assistant Trainer	Ken Lynn

COACHING STAFF

Head Coach	Ray Graves (Tenn. '42)
Assistant Head Coach	Gene Ellenson (Ga. '43)
Assistant Coaches	
Don Brown (Fla. '52)	
Dave Fuller (Wake Forest '40)	
John Eibner (Ky. '41)	
Jimmy Haynes (Western Kentucky '48)	
Lindy Infante (Fla. '64)	
Ed Kensler (Maryland '52)	
Bubba McGowan (Fla. '52)	
Fred Pancoast (Tampa '52)	
Rabbit Smith (Ga. '47)	
Jack Thompson (Fla. '65)	
Jack Westbrook (Fla. '60)	

BOARD OF DIRECTORS

Stephen C. O'Connell, Dr. Frederick Conner, Professor James G. Richardson, Professor Mandell Glicksberg, Dean Dennis K. Stanley, W. Ellis Jones, Dr. W. E. (Ed) Moore, Coach Ray Graves, William Elmore, Percy Beard, Carlos Proctor, Henry Kramer, Professor J. B. Pickard, and Professor W. J. Taylor.

LOCATION

Gainesville is located in north-central Florida, about equi-distant—60 miles—from the Atlantic Ocean and the Gulf of Mexico. It is 72 miles southwest of Jacksonville, 120 miles northwest of Orlando and 150 miles southeast of Tallahassee, capital of Florida.

HISTORICAL STATEMENT

In 1853 the foundation work of the present University of Florida was laid in Ocala when a small private school, East Florida Seminary, was opened. Florida Agricultural College was established at Lake City in 1883, and by 1905 six colleges were at least in part state supported. With the passage of the Buckman Act in 1905, the University of Florida was established in Gainesville. There have been six presidents: Dr. Andrew Sledd (1905-09), Dr. Albert A. Murphree (1909-28), Dr. John J. Tigert (1928-47), Dr. J. Hillis Miller (1947-53), Dr. J. Wayne Reitz (1955-67), and Stephen C. O'Connell (1967-).



O'CONNELL

COLLEGES

The University's colleges are: Agriculture, Architecture and Fine Arts, Arts and Sciences, Business Administration, Dentistry, Education, Engineering, Journalism and Communications, Law Medicine, Health Related Professions, Nursing, Pharmacy, Physical Education and Health, and University College. Schools are: Forestry, Graduate.

GENERAL INFORMATION

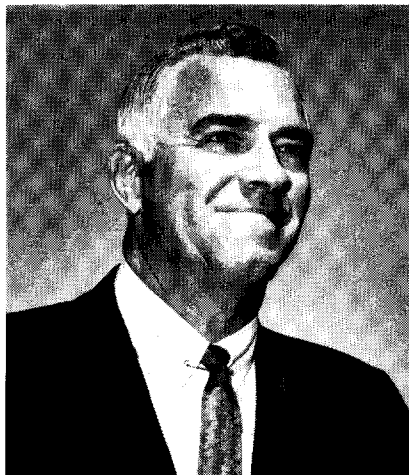
The University of Florida is one of the largest land-grant institutions in the South with a faculty of 1500 and a student body of more than 19,000. Extensive building and modernization in the last ten years has resulted in a physical plant valued at approximately 140 million dollars.

In addition to numerous special research projects in the various schools and departments, the University has established a number of independent laboratories. These agencies carry on continuous basic research in the fields of engineering, nuclear physics, agriculture, forestry, business, economics, public administration, communications, and statistics, making significant contributions to private industry and government research.

A broad program in medical education, research and patient care is being carried out in the University's J. Hillis Miller Health Center. Encompassing the Colleges of Dentistry, Medicine, Nursing, Pharmacy, and Health Related Professions. The Health Center is housed in a 26 million dollar facility.

RAY GRAVES

Director of Athletics, Head Football Coach



RAY GRAVES

Little needs to be said of Ray Graves' football coaching ability other than mere presentation of facts concerning his record at the University of Florida.

(1) Florida finished in the Southeastern Conference first division four times in 27 years prior to Graves take-over in 1960. Graves has fielded eight Gator teams with seven winding up in the first division.

(2) Florida's three highest SEC finishes have come under Graves, second in 1960 and 1966 and tied for second in 1964 while playing the toughest schedule in Gator history.

(3) Graves has compiled the best eight-year record in Florida history, with a 55-27-2 mark.

(4) Florida owns only four wins in history over teams which finished in the nation's top ten, all four under Graves. These came over Penn State (1962), Alabama (1963) and LSU (1964 and 1965).

(5) Since the formation of the SEC in 1933 Florida's five best records have been 8-3 (1952), 9-2 (1960 and 1966), 7-3 (1964) and 8-2 (1966), the latter four by Graves' teams.

(6) Graves' first team at Florida won more games (9) than any in Gator history. His 1966 team matched this.

(7) Under Graves the Gators have played in four bowl games in the past eight seasons. They are 1960 and 1962 Gator Bowl, 1965 Sugar Bowl and 1967 Orange Bowl.

As Athletic Director Graves has seen the Gator's competing in eight intercollegiate sports, total a winning percentage a shade above 70 per cent, winning the SEC all-sports crown the past five years.

Graves is a 1943 graduate of the University of Tennessee.

This energetic, enthusiastic speaker and recruiter came to Florida after 13 years as an assistant football coach at Georgia Tech, where he had been assistant head coach under Bobby Dodd from 1957-60.

Graves has the unusual record of having seen 14 players directly in his charge become all-Americans during his career as an assistant coach.

In addition to coaching at Tech, Graves was line coach at Tennessee from 1944-45 and a scout for the Philadelphia Eagles in 1946.

A star center during his playing days, Graves was named captain of his high school, college and professional (Eagles) teams.

His bowl record as player and coach matches any in the country. He played on Tennessee teams in 1939, 1940 and 1941 which went to the Orange, Sugar and Rose Bowl, respectively.

As an assistant coach at Tennessee and Georgia Tech, he helped guide teams that played in the Orange Bowl twice, Sugar Bowl three times, Gator Bowl twice, and Cotton and Rose Bowls once each.

He is married to the former Opal Richardson of Tazwell, Tenn. and they have three lovely daughters, Becky, 23, Kathy, 20, and Beth, 17.

COACH RAY GRAVES FOOTBALL RECORD

Year	School	Status	W	L	Tied	Pts.	Opp
1939	Tennessee	Player	10	1	0	212	14
1940	Tennessee	Player	10	1	0	332	45
1941	Tennessee	Player	8	2	0	182	73
1942	Phila. Eagles	Player	2	9	0	134	239
1943	Phila. Eagles	Player	5	4	1	225	230
1944	Tennessee	Asst. Coach	7	1	1	173	73
1945	Tennessee	Asst. Coach	8	1	0	238	52
1946	Phila. Eagles	Asst. Coach	6	5	1	231	220
1947	Georgia Tech	Asst. Coach	9	1	0	220	41
1948	Georgia Tech	Asst. Coach	7	3	0	226	69
1949	Georgia Tech	Asst. Coach	7	3	0	197	129
1950	Georgia Tech	Asst. Coach	5	6	0	182	193
1951	Georgia Tech	Asst. Coach	10	0	1	278	76
1952	Georgia Tech	Asst. Coach	11	0	0	301	52
1953	Georgia Tech	Asst. Coach	8	2	1	246	92
1954	Georgia Tech	Asst. Coach	7	3	0	175	91
1955	Georgia Tech	Asst. Coach	8	1	1	182	46
1956	Georgia Tech	Asst. Coach	9	1	0	227	33
1957	Georgia Tech	Asst. Head Coach	4	4	2	75	71
1958	Georgia Tech	Asst. Head Coach	5	4	1	93	83
1959	Georgia Tech	Asst. Head Coach	6	4	0	129	108
1960	Florida	Head Coach	9	2	0	157	86
1961	Florida	Head Coach	4	5	1	97	146
1962	Florida	Head Coach	7	4	0	205	132
1963	Florida	Head Coach	6	3	1	130	119
1964	Florida	Head Coach	7	3	0	181	98
1965	Florida	Head Coach	7	4	0	239	149
1966	Florida	Head Coach	9	2	0	238	135
1967	Florida	Head Coach	6	4	0	201	161
TOTALS			207	83	11	5733	3068

RAY GRAVES ATHLETIC DIRECTOR'S RECORD UNIVERSITY OF FLORIDA (1960-68)

(Includes only dual competition)

(Over-all)	1960-61	1961-62	1962-63	1963-64*	1964-65*	1965-66*	1966-67*	1967-68*
Football (55-27-2)	9- 2 (2)	4-5-1 (4)	7- 4 (5)	6-3-1 (7)	7- 3 (2)	7- 4 (3)	9- 2 (2)	6- 4 (3)
Ray Graves								
Basketball (122-77)	15-11 (3)	12-11 (3)	12-14 (7)	12-10 (5)	18- 7 (3)	16-10 (4)	22- 4 (2)	15-10 (4)
Tommy Bartlett								
Cross Country (32-16)	4- 0 (6)	0- 4 (5)	1- 5 (6)	6- 1 (3)	4- 2 (3)	4- 3 (4)	7- 0 (2)	6- 1 (2)
Jimmy Carnes								
Baseball (192-84)	19- 9 (5)	25- 8 (1)	30- 9 (3)	23-11 (3)	20-13 (3)	23-12 (3)	27- 9 (4)	25-13 (2)
Dave Fuller								
Golf (79-13)	10- 1 (3)	15- 4 (4)	8- 2 (2)	7- 2 (3)	10- 2 (2)	11- 0 (3)	9- 2 (2)	9- 0 (1)
Buster Bishop								
Swimming (72-22)	9- 4 (1)	13- 1 (1)	9- 0 (1)	10- 2 (1)	6- 4 (1)	6- 7 (1)	9- 3 (1)	10- 1 (1)
Bill Harlan								
Tennis (132-37)	18- 2 (1)	20- 1 (3)	14- 5 (5)	11- 4 (5)	9- 9 (5)	18-14 (5)	19- 1 (3)	23- 1 (1)
Bill Potter								
Track (32-18)	2- 2 (6)	0- 5 (5)	2- 5 (3)	0- 4 (4)	6- 1 (2)	5- 1 (4)	8- 0 (2)	9- 1 (2)
Jimmy Carnes								
TOTAL (716-292-2)	86-31-723	89-39-1,692	83-43-659	75-37-1,667	80-41-661	90-51-638	110-21-847	103-28-786

SEC TITLES: 1st-12, 2nd-13, 3rd-17, 4th-8, 5th-9, 6th-3, 7th-2, 8th-0, 9th-0
*SEC all-sports title (Florida has won the title ever since its conception in 1963-64)

GATOR BOOSTERS, INC.

Veteran coach John Eibner is Director of Gator Football Boosters, Inc., an organization designed to promote University of Florida intercollegiate athletics through the alumni and friends of the University.



EIBNER

Eibner, who has been on the Florida staff since 1950, assumed his new duties in January of 1966, replacing the late Col. Everett M. Yon.

The Boosters handle such important duties as distributing films of Gator games, arranging public appearances and supplying ticket information to members of the organization in addition to being a scholarship booster organization for both athletic and academic grants.

Eibner is a graduate of the University of Kentucky (1941), where he majored in history and political science. In 1939 and 1940 he was an all-SEC tackle and captained the Wildcats in his senior year.

He played professional football with the Philadelphia Eagles in 1941, 1942 and 1946. From 1943-45 he was a Gunnery Officer in the South Pacific and Far East with the United States Navy.

Eibner's coaching career began in 1947 at Prestonsburg, Kentucky High. From 1948-50 he was line coach under Andy Gustafson at the University of Miami. Since 1950 he has served as an assistant football coach at the University of Florida.

Eibner is married to the former Katie Oakley of Mount Sterling, Kentucky.

Secretaries in the Gator Booster office are Mrs. Louise Henry and Mrs. Margaret Melton.

Florida Football Network

The voice of the Fighting Gators, Otis Boggs, once again will bring to the listeners of more than sixty Florida stations the exciting play-by-play description of the Florida Football Gators. Otis, who was named the State's outstanding sportscaster in 1960, 1961 and 1962, has been at the microphone for the Gators for more than fifteen years. Assisting Boggs is Ted Covington, Lakeland insurance man and former radio station owner. Bob Leach, assistant director of the University Station, WRUF, is producer for the ten-game broadcasts which are also fed to the Southeast on the "Pick of Dixie" Network.



GATORS

(From THE FLORIDA TIMES-UNION [Jacksonville],
Thursday, August 19, 1948)

"MILLER RECALLS CHRISTENING OF UF TEAMS AS 'ALLIGATORS'"

"A Jacksonville lawyer 'christened' the University of Florida's football team 41 years ago when he gave a pennant-designing firm in Charlottesville, Va., the suggestion of 'The Alligators.'

"Austin Miller, who has practiced law here since shortly after his graduation from the University of Virginia in 1910, yesterday recalled the circumstances surrounding the choice of a name for Florida University's athletic teams. It happened in the fall of 1907, a year after the University of Gainesville had fielded its first team.

"Miller, a native of Gainesville, was enrolled in the University of Virginia at the time and was visited by his father, Phillip Miller, a Gainesville merchant. The elder Miller, who died nine years ago, then owned and operated a combination drug store and stationery store in Gainesville, a popular rendezvous for university students.

"While in Charlottesville the father decided to order some pennants and banners for the University of Florida from the Michie Company, which was engaged in the manufacture of such items. The Millers went to the firm, where they were shown samples of pennants which featured the Yale bulldog, the Princeton tiger and other school emblems. When the manager asked for Florida's emblem, the Millers realized, the new school had none.

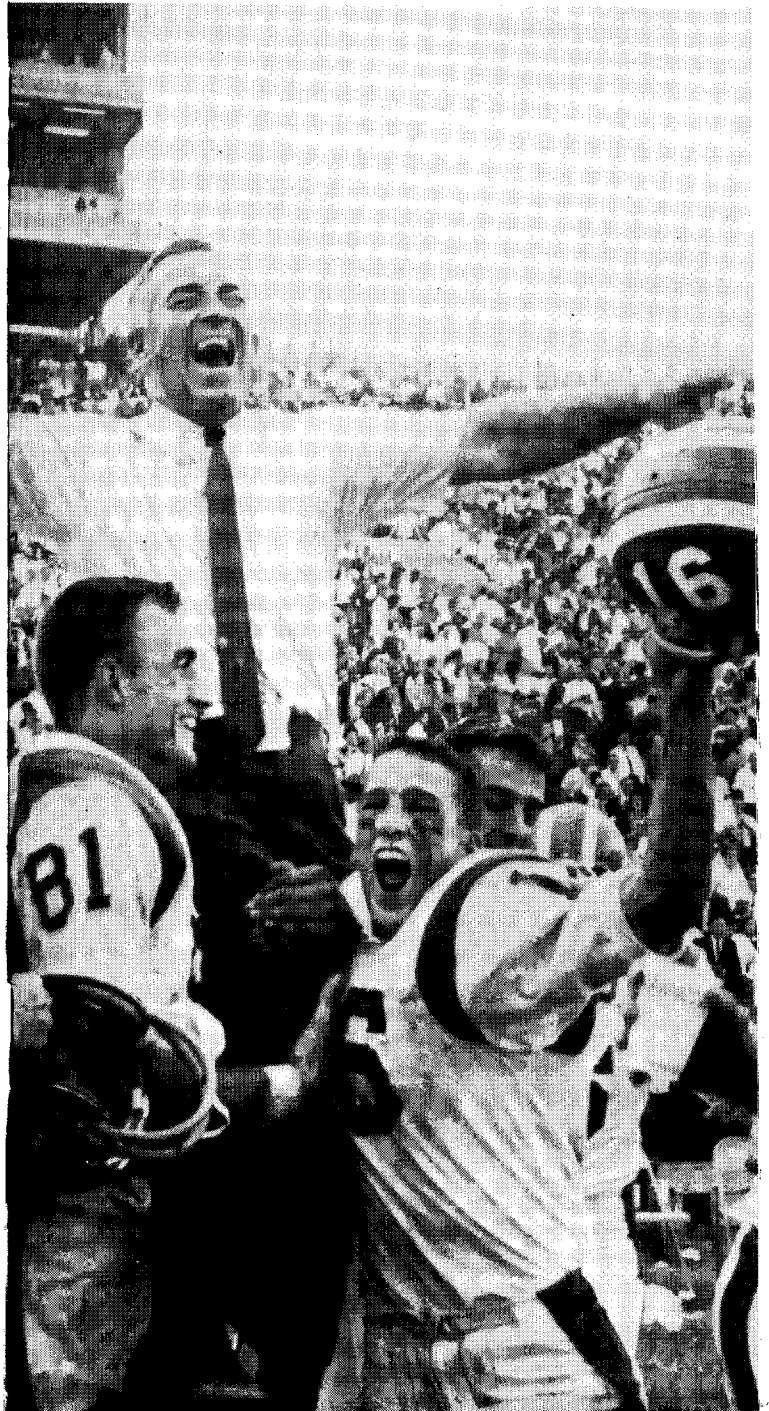
"Austin Miller said the name 'Alligators' occurred to him as a suitable emblem, both because the Michie manager said no other school had adopted it and because the alligator was native to this state. 'I had no idea it would stick, or even be popular with the student body,' Miller said. 'We wanted to get the Michie firm started on the pennants as quickly as possible, though, so they would be available in time for the opening of the 1908 school term.

"The Michie manager complicated the 'christening' when he told young Miller he'd never seen an alligator and didn't believe he could design one. The law student volunteered to find a suitable picture of a 'gator. After much search, he said, he located a picture of one in the library of the University of Virginia.

"The first appearance of the alligator emblem, Miller recalled, was in his father's Gainesville store in 1908. The Michie firm had supplied 'Miller's' with blue banners measuring six by three feet, showing a large orange alligator, and also with several different types of smaller banners and pennants. Some of them showed the alligator lying down, some rampant, while others included only the alligator's head.

"With the first display of the new banners and pennants in Gainesville, the name 'Alligators' to describe the football team 'caught on' Miller recalled and, now contracted to 'Gator.'"

MEET THE COACHES



FOOTBALL STAFF



EUGENE (GENE) ELLENSON

COACHING DUTY: Assistant Head Coach and Head Defensive Coach.

AGE: 47.

COLLEGE DEGREE: University of Georgia (1943).

ATHLETIC BACKGROUND:

First string guard on Georgia's great bowl teams of 1942 (Orange Bowl) and 1943 (Rose Bowl). Played with professional Miami Seahawks during their brief history (1947).

COACHING BACKGROUND: Line coach, Miami High, 1947-49. Assistant line coach, University of Miami, 1950. Head coach, Fort Jackson, S. C., 1951. Assistant line coach, University of Miami, 1952-55. Head Defensive Coach, University of Miami, 1956-58. Head Defensive Coach, University of Florida, 1960. Offensive line coach, University of Florida, 1961-62. Head Defensive Coach, University of Florida, 1962 Gator Bowl and 1963 season. Only twice has an Ellenson-coached defense finished the season out of the nation's top ten, during his years at Miami or Florida.

SERVICE RECORD: Much-decorated hero of World War II who fought in many battles in European Theatre, including Battle of the Bulge. Won Bronze Star and Purple Heart and rose to rank of captain.

MARITAL STATUS: Married to former Jeanne Center of Springfield, Mass., has two children; Donna Sue (17), and Mark (11).

EDWARD (ED) KENSLER

COACHING DUTY: Head Offensive Coach and Offensive Line Coach.

AGE: 40.

COLLEGE DEGREE: University of Maryland (1952).

ATHLETIC BACKGROUND:

Played tackle, guard, center and linebacker for great Jim Tatum-coached teams at Maryland. All Atlantic Coast Conference in 1951 and voted Maryland's most outstanding defensive lineman. Played in 1952 Chicago All-Star football game.

COACHING BACKGROUND: Washington & Lee (1952), VMI (1953), University of Maryland (1954-55), University of North Carolina (1956-60), University of Miami (1961-63), Line coach at each school.

OTHER NOTES ON KENSLER: His defensive coach in the 1952 College All-Star game was Ray Graves, then an assistant coach under Bobby Dodd at Georgia Tech.

MARITAL STATUS: Married to former Judy Speake, of Luray, Virginia. Has two children, Richard (18) and Judith (14).

10



FREDERICK (FRED) PANCOAST

COACHING DUTY: Offensive Backfield Coach.

AGE: 35.

COLLEGE DEGREE: University of Tampa (1952).

ATHLETIC BACKGROUND:

Quarterback regular at Tampa, All-Service Quarterback for Parris Island Marines in 1954, received the honor over several who had earned all-America in college.

COACHING BACKGROUND: Backfield coach at Hillsborough High School in 1957. Backfield coach at Tampa in 1958-59-60-61. Head Football Coach at Tampa from that time until February of 1964 when he joined Gator staff.

OTHER NOTES ON PANCOAST: Veteran of United States Marine Corps, 1953-54-55-56. Stationed at Parris Island and spent good portion of time as Drill Instructor.

MARITAL STATUS: Married to former Carolyn Acton of Tampa, Florida. Has three girls, Karen (11), Susan (10), and Dawn (8).

DONALD (DON) BROWN

COACHING DUTY: Defensive Backfield Coach.

AGE: 39.

COLLEGE DEGREE: University of Florida (1952).

ATHLETIC BACKGROUND:

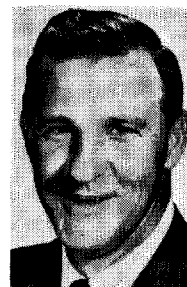
Four-sport letterman at Miami Edison HS from 1944-47. Three year regular for Florida, playing offensive end and defensive halfback. Leading Florida pass receiver as a sophomore in 1949.

COACHING BACKGROUND: Assistant Coach, Gainesville High (1952), Assistant Coach, Lake City (1953), Head Coach, Lake City (1954-61), with an overall record of 44-22-14. Joined Florida staff in 1961 as a Graduate Assistant. Defensive Interior Coach in 1962. Offensive Line Coach in 1962 Gator Bowl and for 1963 season.

OTHER NOTES ON BROWN: One of three brothers to play end for Gators. Ray was co-captain of 1956 team and a three-year regular, as was Russ, who played from 1961-63.

MARITAL STATUS: Married to former Katherine Gatrell of Fairfield, Florida. Has four children, Lynda Kay (17), Trell (12), Bobby (11), Donna (7).

11





WILLIAM (BUBBA) MCGOWAN

COACHING DUTY: Offensive End Coach.

AGE: 39.

COLLEGE DEGREE: University of Florida (1952).

ATHLETIC BACKGROUND: All-State and All-Southern half-back at Dothan (Ala.) High who saw great deal of action as Gator halfback from 1949-51. Played his high school and collegiate football with Haywood Sullivan, former Gator great.

COACHING BACKGROUND: Student Assistant at University of Florida in 1952. Co-Coached Fort Jackson, S. C. Army team with Sullivan in 1953 and 1954. Assistant Coach at Gainesville High School from 1955-58. Assistant Coach at Florida State University, 1959-63.

OTHER NOTES ON MCGOWAN: In 1964 he resigned from coaching to become Administrative Assistant to Attorney General James W. Kynes.

MARITAL STATUS: Married to former June Combs of Arcadia, Florida. They have two children, William (Bam), 9 and Gina, 6.



JACK BERNARD (JACK) THOMPSON

COACHING DUTY: Defensive Interior Line Coach.

AGE: 26.

COLLEGE DEGREE: University of Florida (1964), Masters at Florida (1965).

ATHLETIC BACKGROUND: Product of Benedictine High School in Savannah, Georgia. Tough 180-pound guard who lettered three times for Gators (1961-62-63) and played on 1962 Gator Bowl champions.

COACHING BACKGROUND: Student assistant two seasons while working toward Master's Degree in College of Physical Education and Health. B-Team Coach promoted to defensive interior line coach (1967).

MARITAL STATUS: Married to former Charis Deason of Bristol, Florida, has one daughter, Donna Lynne (2).



DAVID D. (DAVE) FULLER

COACHING DUTY: B-Team Coach.

AGE: 53.

COLLEGE DEGREE: Wake Forest (1940), Master's at North Carolina (1946).

ATHLETIC BACKGROUND: Three-year regular in football, basketball and baseball while at Wake Forest. He was a Deacon star in football, playing fullback and tailback. Following graduation, he played professional football with Portsmouth, Va., of the Dixie League and pro baseball with Wilson and Goldsboro, N. C., of the Coastal Plain League.

COACHING BACKGROUND: Head Coach of football, basketball and baseball at Perquimans Co. High School, Hertford, N. C. (1940-41-42). Backfield coach, Maryville (Mo.) Teachers College (1943—Navy V2 Program). Head Baseball Coach and Assistant Football Coach, University of Florida (1946 to present time). Has had three SEC baseball champion (1952, 1956, 1962) and two Eastern Division champions (1960, 1967).

MARITAL STATUS: Married to former Patricia Stephens of Hertford, N. C. Has four children, David Dowd, Jr. (22), Patricia (20), Len (19), and John (16).



CHARLES H. (RABBIT) SMITH

COACHING DUTY: Head Recruiter

AGE: 45

COLLEGE DEGREE: University of Georgia (1947).

ATHLETIC BACKGROUND: Native of Palatka, Fla., where he played high school sports. Halfback at University of Georgia from 1943-46, member of Bulldog Bowl teams in 1945 (Oil), 1946 (Sugar) and 1947 (Gator). Played in 1947 college All-Star game in Chicago. Halfback for Chicago Cardinals in 1947 and 1948, playing in World Championship game his first season.

COACHING BACKGROUND: Head Coach, Morgan County (Ga.) High School, 1948-49-50. Head Coach, Palatka, Fla., High School, 1951-63. His teams were traditionally ranked among the best and won, overall four conference titles.

MARITAL STATUS: Married to former Virginia Tilton of San Mateo, Fla. Has four children, Fritchey (25), Perschon (23), Rosanne and Vicki (18).



JAMES W. (JIM) HAYNES

COACHING DUTY: Head Freshman Coach.

AGE: 43.

COLLEGE DEGREE: Western Kentucky (1948).

ATHLETIC BACKGROUND: Began his football career at Perkiston Junior College in Mississippi, then later transferred to Western Kentucky, where he was a standout guard. Twice he was picked to the Ohio Valley all-conference squad. Has the distinction of having been the captain on every team he's played on. Also an outstanding college baseball player.

COACHING BACKGROUND: Head Coach, Russellville, (Ky.) High School, 1948, 1949, 1950. Shawnee High School, Louisville, (Ky.), 1951-55, and Pensacola High School from 1956 through 1967. During 11 years as a head coach, Haynes had a tremendous record of 73-22-3. At Pensacola his team was conference champs three of the five years the conference existed. He was named head freshman coach at the University of Florida in the spring of 1967.

MARITAL STATUS: Haynes is married to the former Betty Fernandez of Pensacola. They have three children: Jimmy (19), Ann (17), and Lori (13).

GELINDO (LINDY) INFANTE

COACHING DUTY: B-Team Coach.

AGE: 28

COLLEGE DEGREE: University of Florida (1964).

ATHLETIC BACKGROUND: Star University of Florida halfback in the early 1960's. Played three years for the Gators and was on two championship Gator Bowl clubs (1960 and 1962). Infante is remembered for his great determined touchdown run against Georgia Tech in Graves' first year at Florida. He scored with seconds remaining to put the Gators within one point at 17-16 and set the stage for a dramatic two-point conversion and an 18-17 victory.

COACHING BACKGROUND: Infante was backfield coach at Miami High in 1965, and that club went 12-0 while winning the State AA title and the mythical national prep football title. Infante was Freshman Backfield Coach for the Gators in 1966 while working toward a Master's Degree. He joined the staff full time in the spring of 1967.

MARITAL STATUS: A native of Miami, he is married to the former Stephanie Kitchell.

JACK D. (JACK) WESTBROOK

COACHING DUTY: Freshman backfield, Scouting, Academic Supervisor.

AGE: 30.

COLLEGE DEGREE: University of Florida (1960).

ATHLETIC BACKGROUND: Three year regular for the Gators in 1957-58-59. Played both offensive as a running back and defensive as a halfback. Following graduation he played defensive halfback for the Montreal Allouettes (1960) and the New York Titans (1961).

COACHING BACKGROUND: Offensive backfield coach at Pompano Beach High School, 1962-63-64. Head defensive coach at Miami Palmetto, 1965-66. Graduate assistant coach at the University of Florida, 1967. Joined the Gator staff in the Winter of 1968.

MARITAL STATUS: Married to the former Burma Weller of Jacksonville, Florida. Has two children, Jay (7), and Kim (2).



ATHLETIC STAFF

PERCY BEARD

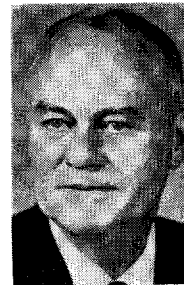
Assistant Director of Athletics



Percy Beard resumed the post of Assistant Director of Athletics in 1960, after holding this same position from 1940-45. He is also Business Manager of Athletics, General Manager of the University Athletic Association, and was Head Track Coach at Florida from 1936-1964, during which time his squads compiled one of the nation's best records. He was recently inducted into the National Track Hall of Fame by the Helms Foundation. Beard was an outstanding track star at Auburn University, from which he graduated in 1929. His brother Jeff, is Athletic Director at Auburn. Beard is married to the former Sara Ratcliffe of Monroeville, Ala. and they have three children: Percy M., Jr. (31), David (28) and Thomas (19).

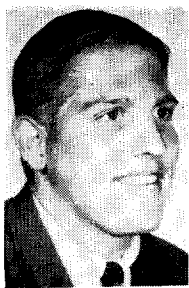
HOBART HOOSER

Assistant to the Athletic Director



Hobart (Hobe) Hooser was born at Haley, Tenn., and was graduated from the University of Tennessee with a bachelors degree in 1928, and earned a master's degree at Peabody in 1942. He was head coach at Johnson City, Tenn., for two years, then guided Lake City, Fla., for eleven years, his teams winning 73, losing 30 and tying 7. He returned to Tennessee as line coach under John Barnhill in 1942. After three years in the Navy. Hooser became football line coach and head coach at Arkansas for four years. He joined the Florida staff in 1950, assisting Bob Woodruff as defensive line coach, before moving up to his present post under Ray Graves. He is married to the former Gertrude Morgan of Richard City, Tenn.

1968 GATOR FOES



RICHARD GIANNINI

Assistant Sports Publicity Director

Richard Giannini, 26, joined the Florida staff in August of 1966 upon graduation from the University's College of Physical Education and Health. While working toward his degree he was a student assistant track coach and worked with the sports publicity department. A native of Winter Park, he attended St. Leo Junior College and Furman University prior to coming to Florida.

BRADY GREATHOUSE, Head Trainer

Brady Greathouse assumed the post of head trainer September 1966 at the University of Florida.

Born in Greenville, Illinois, Greathouse moved to Florida and attended nearby Melrose High School. He was Head Trainer at the University of Tampa from 1958 through 1962. He has served as a trainer in the organizations of the Chicago White Sox, Los Angeles Dodgers and the Philadelphia Phillies. He served as assistant trainer at Florida for a year before he assumed the duties of head trainer.



The likable, cigar chewing trainer received his Master's Degree in Agriculture here in 1965.

Greathouse married the former Elizabeth Danielsen and has four children: Daniel Glen (20), Linda Elizabeth (19), Zane Brady (15) and Anne Marie (14).

KEN LYNN, Assistant Trainer

Lynn became the assistant athletic trainer at the University of Florida during the winter of 1967. The Ohio native served as an assistant trainer for the Gators in 1963-64.



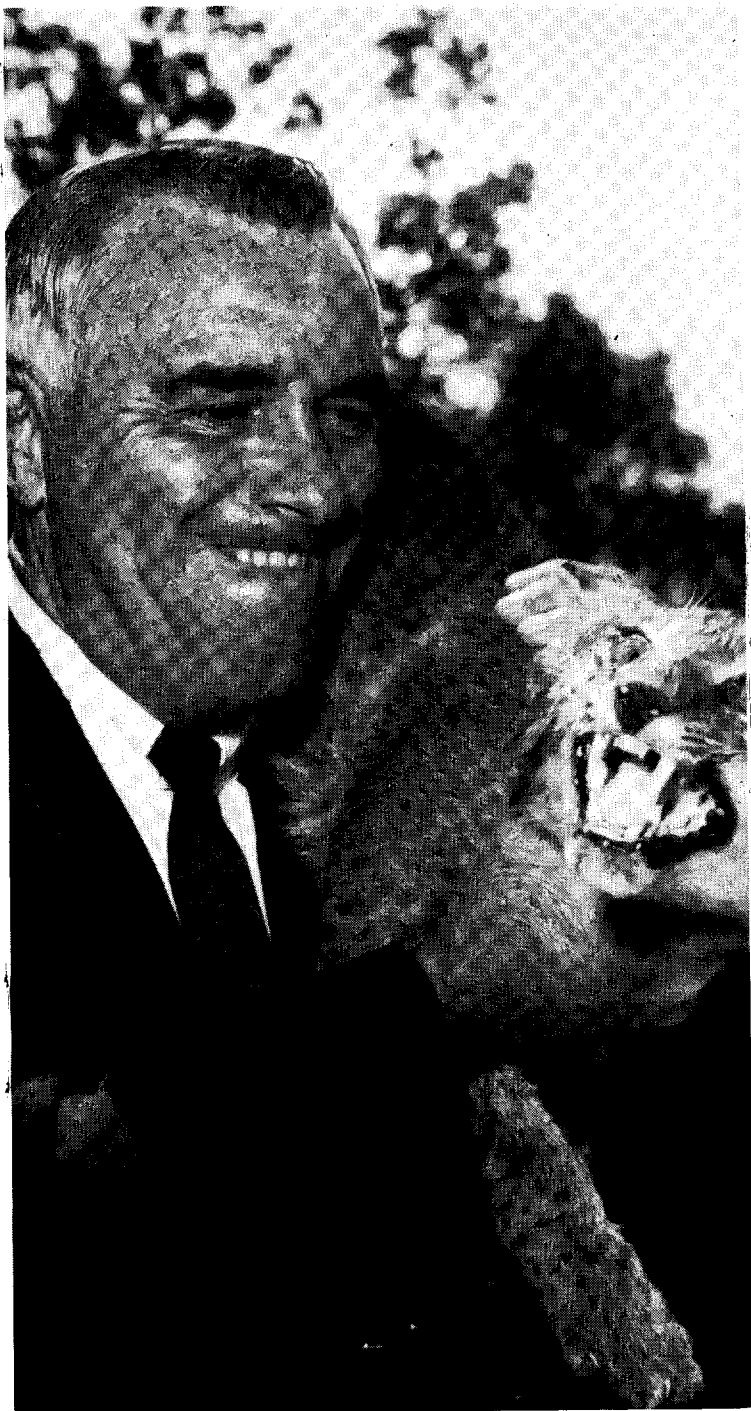
Lynn, 26, was an outstanding high school athlete at Montpelier High School in Ohio, where he excelled in football, basketball and track. After high school he served in the United States Navy and was on the training staff at the U. S. Naval Academy.

He is married to the former Linda Cannington of Green Cove Springs.

They are the parents of a daughter, Linda (2).

SARGE BANISTER, Equipment Manager

Sarge Banister has the immense task of assigning uniforms, keeping them in top-notch condition at all times and making sure the Gator football players have the best equipment available at all times. Born in Belton, South Carolina, and educated in the public schools there, Sarge spent 21 years in the Army, 14 with the University of Florida ROTC program. He retired from the Army in 1949 and took over his present position.



AIR FORCE

1

September 21 — Tampa, Florida — 2:00 EDT

Tampa Stadium
(47,000)

Facts About Air Force

Location —
Colorado Springs, Colo.

Nickname — Falcons

Colors — Silver and Blue

Conference — Independent

Athletic Director —
Colonel Frank Merritt

Coach — Ben Martin

Years — 10 — Record
46-49-7

Enrollment — 3,200

1967 Record — 2-6-2

Sports Publicity — Gordon Crandell — Telephone:

Office AC 303 472-2313, Home AC 303 473-3949



MARTIN

SERIES HISTORY

First Meeting

1967 Results 2-6-2

0	Oklahoma State	C
10	Wyoming	37
7	Washington	30
12	California	14
10	North Carolina	8
13	Tulane	10
17	Colo. State U.	17
7	Army	10
10	Arizona	14
0	Colorado	33

1968 Schedule

Sept. 21	Florida	Tampa
Sept. 28	Wyoming	USAFA
Oct. 5	Stanford	Palo Alto
Oct. 12	Navy	Chicago
Oct. 19	Colo. State U.	
		Ft. Collins
Oct. 26	Pittsburgh	Pittsburgh
Nov. 2	North Car.	USAFA
Nov. 9	Arizona	USAFA
Nov. 16	Tulsa	USAFA
Nov. 23	Colorado	Boulder

18

FLORIDA STATE

2

September 28 — Tallahassee, Florida — 2:00 EDT

Doak Campbell Stadium

ABC Regional TV

(40,500)

Facts About Florida State

Location —
Tallahassee, Fla.

Nickname — Seminoles

Colors — Garnet and Gold

Conference — Independent

Athletic Director —
Vaughn Mancha

Coach — Bill Peterson

Years — 9 — Record
41-32-10

Enrollment — 17,000

1967 Record — 7-2-1

Sports Publicity — Lonnie Burt — Telephone:

Office AC 904 599-2095, Home AC 904 385-4480



PETERSON

SERIES HISTORY

	Fla.	FSU		Fla.	FSU
1958	21	7	1963	7	0
1959	18	8	1964	7	16
1960	3	0	1965	30	17
1961	3	3	1966	22	19
1962	20	7	1967	16	21

(Florida Won 7, FSU 2, Tied 1)

1967 Results 7-2-1

13	Houston	33
37	Alabama	37
10	North Carolina St.	20
19	Texas A&M	18
17	South Carolina	0
28	Texas Tech	12
24	Mississippi St.	12
26	Memphis St.	7
38	Virginia Tech	15
21	Florida	16
17	Penn State	17

1968 Schedule

Sept. 21	Maryland	College Park
Sept. 28	Florida	Tallahassee
Oct. 5	Tex. A&M	Tallahassee*
Oct. 19	Memphis St.	Tallahassee*
Oct. 26	South Car.	Columbia*
Nov. 2	Va. Tech	Tallahassee*
Nov. 9	Miss. St.	State College
Nov. 16	N. C. State	Raleigh
Nov. 23	Wake Forest	Tallahassee
Nov. 29	Houston	Jacksonville*

19

October 5 — Gainesville, Florida — 2:00 EDT

Florida Field

(58,780)

Facts About Mississippi State

Location — Starkville, Miss.

Nickname — Bulldogs

Colors — Maroon and White

Conference — Southeastern

Athletic Director — Charles Shira

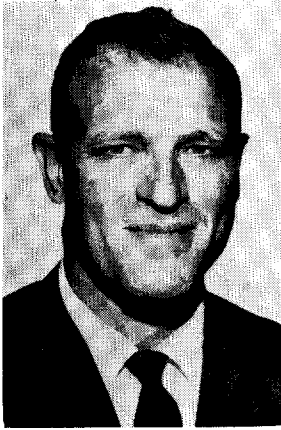
Coach — Charles Shira

Years — 2 — Record 1-9-0

Enrollment — 9,000

SEC Finish — 0-6-0 tie 9th

Sports Publicity — Bob Hartley — Telephone: Office AC 601 323-4321 Ext. 257, Home AC 601 323-3071



SHIRA

October 12 — Gainesville, Florida — 2:00 EDT

Florida Field

(58,780)

Facts About Tulane

Location — New Orleans, La.

Nickname — Green Wave

Colors — Olive Green and Sky Blue

Conference — Independent

Athletic Director — Dr. Rix N. Yard

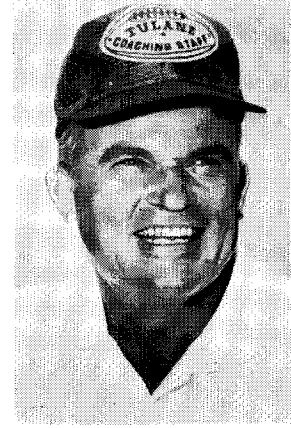
Coach — Jim Pittman

Years — 2 — Record 8-11-1

Enrollment — 8,239

1967 Record — 3-7

Sports Publicity — Bill Curl — Telephone: Office AC 504 865-7711 Ext. 345, Home AC 504 861-8084



PITTMAN

SERIES HISTORY

	Fla.	M. St.		Fla.	M. St.
1923	13	13	1955	20	14
1924	27	0	1956	26	0
1925	12	0	1957	20	29
1936	0	7	1958	7	14
1937	13	14	1959	14	13
1938	0	22	1962	19	9
1939	0	14	1963	9	9
1940	7	27	1964	16	13
1941	0	6	1965	13	18
1942	12	26	1966	28	7
1954	7	0	1967	24	7

(Mississippi State Won 10, Florida 10, Tied 2)

SERIES HISTORY

	Fla.	Tulane		Fla.	Tulane
1915	14	7	1947	7	7
1917	0	52	1958	34	14
1919	2	14	1959	30	0
1920	0	14	1960	21	6
1922	27	6	1961	14	3
1934	12	28	1965	51	13
1936	7	19	1966	31	10
1945	6	6	1967	35	0
1946	13	27			

(Tulane Won 6, Florida 9, Tied 2)

1967 Results 1-9-0

0 Georgia	30
7 Florida	24
7 Texas Tech	3
14 S. Mississippi	21
6 Houston	43
12 Florida State	24
0 Alabama	13
0 Auburn	36
0 LSU	55
3 Ole Miss	10

1968 Schedule

Sept. 21 La. Tech	Starkville
Sept. 28 Auburn	Jackson
Oct. 5 Florida	Gainesville
Oct. 12 S. Miss.	Starkville
Oct. 19 Texas Tech	Jackson*
Oct. 26 Tampa	Tampa*
Nov. 2 Alabama	Tuscaloosa
Nov. 9 Fla. State	Starkville
Nov. 16 LSU	Baton Rouge*
Nov. 30 Ole Miss.	Oxford

*Night Game

1967 Results 3-7

3 Miami of Ohio	14
36 North Carolina	11
14 Miami	34
0 Florida	35
10 Air Force	13
23 Georgia Tech	12
27 Vanderbilt	14
14 Tennessee	35
10 Virginia	14
27 LSU	41

1968 Schedule

Sept. 14 Houston	Houston*
Sept. 28 Tex. A&M	N. Orleans*
Oct. 5 Tampa	New Orleans*
Oct. 12 Florida	Gainesville
Oct. 19 Boston Col.	N. Orleans
Oct. 26 Ga. Tech	Atlanta
Nov. 2 Vanderbilt	Nashville
Nov. 9 Tulsa	New Orleans*
Nov. 16 Virginia	Charlottesville
Nov. 23 La. State	N. Orleans*

*Night Game

NORTH CAROLINA

5

October 19 — Chapel Hill, N. C. — 1:30 EDT

Kenan Stadium

(47,900)

Facts About North Carolina

Location —
Chapel Hill, N. C.

Nickname — Tar Heels

Colors — Carolina Blue
and White

Conference — Atlantic Coast

Athletic Director —
Walter Rabb (acting)

Coach — Bill Dooley

Years — 2 — Record 2-8

Enrollment — 14,700

ACC Finish — 2-5

Sports Publicity — Jack Williams — Telephone:

Office AC 919 933-2120, Home AC 919 929-5557



DOOLEY

SERIES HISTORY

	Fla.	N.C.		Fla.	N.C.
1921	10	14	1933	9	0
1931	0	0	1946	19	40
1932	13	18	1947	7	35

(North Carolina Won 4, Florida 1, Tied 1)

1967 Results 2-8

3	N. C. State	13
10	South Carolina	16
11	Tulane	36
7	Vanderbilt	21
8	Air Force	10
14	Maryland	0
10	Wake Forest	20
0	Clemson	17
17	Virginia	40
20	Duke	9

1968 Schedule

Sept. 21	N.C. State	Chapel Hill
Sept. 28	So. Car.	Chapel Hill
Oct. 5	Vanderbilt	Nashville*
Oct. 12	Maryland	College Park
Oct. 19	Florida	Chapel Hill
Nov. 2	Air Force	USAF
Nov. 9	Virginia	Chapel Hill
Nov. 16	Clemson	Clemson
Nov. 23	Duke	Chapel Hill
		*Night Game

22

VANDERBILT

6

October 26 — Nashville, Tennessee — 1:30 CDT

Dudley Field

(34,000)

Facts About Vanderbilt

Location —
Nashville, Tenn.

Nickname — Commodores

Colors — Gold and Black

Conference — Southeastern

Athletic Director —
Jess Neely

Years — 2 — Record 2-7-1

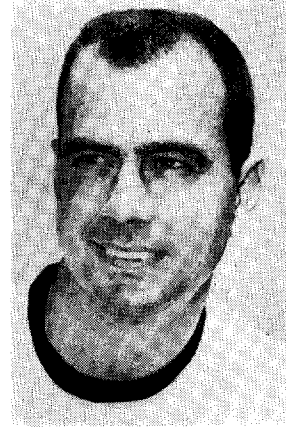
Enrollment — 5,000

Coach — Bill Pace

SEC Finish — 0-6-0 Tie 9th

Sports Publicity — Bill Stewart — Telephone:

Office AC 615 291-1444, Home AC 615 832-9401



PACE

SERIES HISTORY

	Fla.	Vandy		Fla.	Vandy
1945	0	7	1958	6	6
1946	0	20	1959	6	13
1949	17	22	1960	12	0
1950	31	27	1961	7	0
1951	33	13	1962	42	7
1952	13	20	1963	20	3
1955	6	21	1966	13	0
1956	21	7	1967	27	22
1957	14	7			

(Vandy Won 6, Florida 10, Tied 1)

1967 Results 2-7-1

10	Georgia Tech	17
14	William & Mary	12
21	North Carolina	7
21	Alabama	35
22	Florida	27
14	Tulane	27
7	Kentucky	12
35	Navy	35
7	Ole Miss	28
14	Tennessee	41

1968 Schedule

Sept. 21	VMI	Nashville*
Sept. 28	Army	West Point
Oct. 5	N. Carolina	Nashville*
Oct. 12	Alabama	Tuscaloosa
Oct. 19	Georgia	Athens
Oct. 26	Florida	Nashville
Nov. 2	Tulane	Nashville
Nov. 9	Kentucky	Lexington
Nov. 23	Davidson	Charlotte
Nov. 30	Tennessee	Nashville
		*Night Game

23

(HOMECOMING)

November 2 — Gainesville, Florida — 2:00 CST

Florida Field

(58,780)

Facts About Auburn

Location —
Auburn, Alabama

Nickname — Tigers

Colors — Orange and Blue

Conference — Southeastern

Athletic Director —
Jeff Beard

Coach —
Ralph "Shug" Jordan

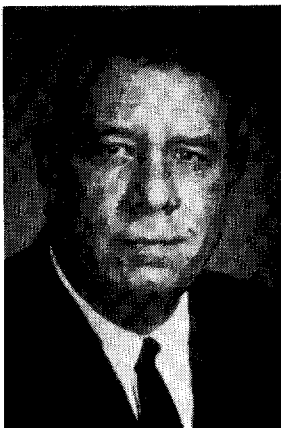
Years — 18 — Record
113-57-5

Enrollment — 13,600

SEC Finish — 3-3 7th

Sports Publicity — Buddy Davidson — Telephone:

Office AC 205 826-4750, Home AC 205 887-9430



JORDAN

SERIES HISTORY

	Fla.	Aub.		Fla.	Aub.
1912	13	27	1946	12	47
1913	0	55	1947	14	20
1914	0	20	1948	16	9
1915	0	7	1949	14	14
1916	0	20	1950	27	7
1917	0	68	1951	13	14
1927	33	6	1952	31	21
1928	27	0	1953	7	16
1929	19	0	1954	19	13
1930	7	0	1955	0	13
1931	13	12	1956	20	0
1932	6	21	1957	0	13
1933	14	7	1958	5	6
1934	14	7	1959	0	6
1935	6	27	1960	7	10
1936	0	13	1961	15	32
1937	0	14	1962	22	3
1938	9	7	1963	0	19
1939	7	7	1964	14	0
1940	7	20	1965	17	28
1942	6	0	1966	30	27
1945	0	19	1967	21	26

(Auburn Won 25, Florida 17, Tied 2)

1967 Results 6-4

40	Chattanooga	6
13	Tennessee	27
48	Kentucky	7
43	Clemson	21
28	Georgia Tech	10
0	Miami	7
26	Florida	21
36	Mississippi St.	0
0	Georgia	17
3	Alabama	7

1968 Schedule

Sept. 21	SMU	Auburn
Sept. 28	Miss. St.	Jackson
Oct. 5	Kentucky	Lexington*
Oct. 12	Clemson	Clemson
Oct. 19	Ga. Tech	Birmingham
Oct. 26	Miami	Auburn
Nov. 2	Florida	Gainesville
Nov. 9	Tenn.	Birmingham*
Nov. 16	Georgia	Auburn
Nov. 30	Alabama	Birmingham

November 9 — Jacksonville, Florida — 2:00 EST

Gator Bowl

(68,000)

Facts About Georgia

Location —
Athens, Georgia

Nickname — Bulldogs

Colors — Red and Black

Conference — Southeastern

Athletic Director —
Joel Eaves

Coach — Vince Dooley

Years — 4 — Record 30-11-1

Enrollment — 16,000

1967 SEC Finish —
4-2 Tie 3rd

Sports Publicity — Dan Magill, Jr. — Telephone:

Office AC 404 542-1621, Home AC 404 546-8086



DOOLEY

SERIES HISTORY

	Fla.	Ga.		Fla.	Ga.
1915	0	39	*1946	14	33
1916	0	21	*1947	6	34
1919	0	16	*1948	12	20
1920	0	56	*1949	28	7
1926	9	32	*1950	0	6
1927	0	28	*1951	6	7
1928	26	6	*1952	30	0
1929	18	6	*1953	21	7
1930	0	0	*1954	13	14
1931	6	33	*1955	19	13
1932	12	33	*1956	28	0
1933	0	14	*1957	22	0
*1934	0	14	*1958	7	6
*1935	0	7	*1959	10	21
*1936	8	26	*1960	22	14
*1937	6	0	*1961	21	14
*1938	6	19	*1962	23	15
*1939	2	6	*1963	21	14
*1940	18	13	*1964	7	14
*1941	3	19	*1965	14	10
*1942	0	75	*1966	10	27
*1944	12	38	*1967	17	16
*1945	0	34	*Played in Jacksonville		

(Georgia Won 27, Florida 17, Tied 1)

1967 Results 7-3

30	Mississippi St.	0
24	Clemson	17
21	South Carolina	0
20	Ole Miss.	29
56	VMI	6
31	Kentucky	7
14	Houston	15
16	Florida	17
17	Auburn	0
21	Georgia Tech	14

1968 Schedule

Sept. 21	Tennessee	Knoxville
Sept. 28	Clemson	Athens
Oct. 5	So. Carolina	Columbia*
Oct. 12	Ole Miss.	Athens
Oct. 19	Vanderbilt	Athens
Oct. 26	Kentucky	Lexington*
Nov. 2	Houston	Athens
Nov. 9	Florida	Jacksonville
Nov. 16	Auburn	Auburn
Nov. 30	Georgia Tech	Athens

*Night Game

November 16 — Lexington, Kentucky — 2:00 EST

McLean Stadium

(38,000)

Facts About Kentucky

Location — Lexington, Ky.

Nickname — Wildcats

Colors — Royal Blue and White

Conference — Southeastern

Athletic Director —

Coach — Charlie Bradshaw

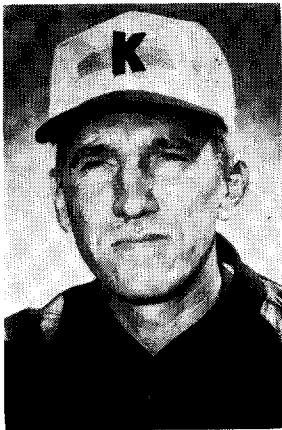
Years — 6 — Record 22-34-4

Enrollment — 21,000

1967 SEC Finish — 1-6-0 8th

Sports Publicity — Ken Kuhn—Telephone: Office AC 606

258-9000 Ext. 2841, Home AC 606-278-2092



BRADSHAW

SERIES HISTORY

	Fla.	Ky.		Fla.	Ky.
1917	0	52	1950	6	40
1926	13	18	1951	6	14
1927	27	6	1952	27	0
1931	2	7	1953	13	26
1935	6	15	1954	21	7
1936	0	7	1955	7	10
1937	6	0	1956	8	17
1948	15	34	1957	14	7
1949	0	35	1967	28	12

(Kentucky Won 12, Florida 6)

1967 Results 2-8-0

10 Indiana	12
13 Mississippi	26
7 Auburn	48
14 Virginia Tech	24
7 LSU	30
7 Georgia	31
22 West Virginia	7
12 Vanderbilt	7
12 Florida	28
7 Tennessee	17

1968 Schedule

Sept. 21 Missouri	Lexington
Sept. 28 Ole Miss	Jackson*
Oct. 5 Auburn	Lexington*
Oct. 12 Oregon St.	Lexington*
Oct. 19 LSU	Baton Rouge*
Oct. 26 Georgia	Lexington*
Nov. 2 W. Va.	Morgantown
Nov. 9 Vanderbilt	Lexington
Nov. 16 Florida	Lexington
Nov. 23 Tennessee	Knoxville
*Night Game	

26

November 30 — Gainesville, Florida — 2:00 EST

Florida Field

(58,780)

Facts About Miami

Location — Miami, Florida

Nickname — Hurricanes

Colors — Orange, Green and White

Conference — Independent

Athletic Director — Charlie Tate

Coach — Charlie Tate

Years — 5 — Record 24-15-13

Enrollment — 14,500

1967 Record — 7-4

Sports Publicity — George Gallet

Telephone: Office AC 305 284-5802 Home AC 305 661-2391



TATE

SERIES HISTORY

	Fla.	Miami		Fla.	Miami
1938	7	19	1954	0	14
1939	13	0	1955	6	7
1940	46	6	1956	7	20
1941	14	0	1957	14	0
1942	0	12	1958	12	9
1944	13	0	1959	23	14
1945	6	7	1960	18	0
1946	13	20	1961	6	15
1947	7	6	1962	15	17
1948	27	13	1963	27	21
1949	13	28	1964	12	10
1950	14	20	1965	13	16
1951	6	21	1966	16	21
1952	43	6	1967	13	20
1953	10	14			

(Florida Won 13, Miami 16)

1967 Results 7-4

7 Northwestern	12
8 Penn State	17
34 Tulane	14
17 LSU	15
58 Pittsburgh	0
7 Auburn	0
14 Virginia Tech	7
49 Georgia Tech	7
22 Notre Dame	24
20 Florida	13
21 Colorado	31

1968 Schedule

Sept. 20 Northwestern	Miami*
Sept. 28 Ga. Tech	Atlanta
Oct. 5 So. Cal.	Los Angeles*
Oct. 11 LSU	Miami*
Oct. 18 Va. Tech	Miami*
Oct. 26 Auburn	Auburn
Nov. 1 Pittsburgh	Miami*
Nov. 9 Penn State	Univ. Park
Nov. 16 Alabama	Miami*
Nov. 30 Florida	Gainesville
*Night Game	

27

MIAMI-FLORIDA SERIES

LEADING PERFORMANCES IN

MIAMI-FLORIDA SERIES

Team

MOST FIRST DOWNS: 25 by Miami (1950)
 MOST RUNS FROM SCRIMMAGE: 70 by Florida (1952)
 MOST YARDS GAINED FROM SCRIMMAGE: 353 by Miami (1949)
 MOST TD'S SINGLE GAME: 7 by Florida (1940)
 MOST PASSES ATTEMPTED: 51 by Florida (1966)
 MOST PASSES COMPLETED: 28 by Florida (1966)
 MOST PENALTIES: 10 on Miami (1967)
 MOST YARDS PENALIZED: 85 on Miami (1950)
 MOST YARDS TOTAL GAIN: 394 by Miami (1949 and 1950)
 MOST INTERCEPTIONS: 5 by Florida (1959), Miami (1967)
 MOST FUMBLES LOST: 4 by Florida (1939, 1948, 1950 and 1967) and by Miami (1952 and 1954)
 MOST POINTS ONE TEAM: 46 by Florida (1940)
 MOST POINTS SINGLE GAME: 52 (1940)
 ATTENDANCE HIGH: 62,944 in Orange Bowl (1967)

Individual

MOST YARDS GAINED RUSHING: 147 by Jim Dooley, Miami (1950)
 MOST YARDS GAINED PASSING: 278 by George Mira, Miami (1963)
 LONGEST RUN FROM SCRIMMAGE: 82 by Harry Ghaul, Miami (1947)
 LONGEST PASS: 74 yards, Tommy Harrison to Forest Ferguson, Florida (1941)
 LONGEST TD PASS: 74 yards, Tommy Harrison to Forest Ferguson, Florida (1941)
 LONGEST PUNT RETURN: 96 yards by Hal Griffin, Florida (1946)
 LONGEST KICKOFF RETURN: 100 yards by Pat Reen, Florida (1940)
 MOST RUNS FROM SCRIMMAGE: 29 by Rick Casares, Florida (1952)
 LONGEST PUNT: 77 yards by Harry Ghaul, Miami (1947)
 MOST TD'S: 3 by Eddie Dunn, Miami (1938)
 MOST FUMBLES RECOVERED: 3 by Otis Mooney, Florida (1945)
 MOST PASSES ATTEMPTED: 49 by Steve Spurrier, Florida (1966)
 MOST PASSES COMPLETED: 26 by Steve Spurrier, Florida (1966)

SEC IN 1967

	SEC		All Games	
	W-L-T	PCT.	W-L-T	
1. Tennessee	6-0-0	1.000	9-2-0	
2. Alabama	5-1-0	.833	8-2-1	
3. FLORIDA	4-2-0	.667	6-4-0	
3. Georgia	4-2-0	.667	7-4-0	
5. Ole Miss	4-2-1	.643	6-4-1	
6. LSU	3-2-1	.583	7-3-1	
7. Auburn	3-3-0	.500	6-4-0	
8. Kentucky	1-6-0	.143	2-8-0	
9. Vanderbilt	0-6-0	.000	2-7-1	
9. Miss. State	0-6-0	.000	1-9-1	

1967 IN REVIEW

Florida 14 Illinois 0

September 23, Gainesville, Florida

	Florida	Illinois
First Downs	20	12
Rushing Yardage	146	121
Passing Yardage	160	88
Punting Average	42.5	31.4
Penalties	5/66	7/93
Fumbles Lost	2	0

BEST INDIVIDUAL STATISTICS

Rushing	Attempt	Complete	Net Gain		
Eckdahl	12	11	74		
Smith	16	3	47		
Passing	Attempt	Complete	Net Gain		
Wages	21	11	134		
Eckdahl	10	3	26		
Scoring by Quarters	1	2	3	4	Total
Florida	0	0	14	0	14
Illinois	0	0	0	0	0

Attendance: 57,391

Florida 24 Mississippi State 7

September 30, Jackson, Mississippi

	Florida	Miss. State
First Downs	24	7
Rushing Yardage	188	102
Passing Yardage	204	55
Punting Average	41.0	39.8
Penalties	3/35	3/40
Fumbles Lost	2	1

BEST INDIVIDUAL STATISTICS

Rushing	Attempt	Complete	Net Gain		
Smith	27	12	78		
McKeel	11	3	87		
Passing	Attempt	Complete	Net Gain		
Eckdahl	24	12	169		
Wages	5	3	35		
Scoring by Quarters	1	2	3	4	Total
Florida	0	3	14	7	24
Mississippi State	0	7	0	0	7

Attendance: 28,000

Florida 6 L.S.U. 37

October 7, Gainesville, Florida

	Florida	L.S.U.
First Downs	10	25
Rushing Yardage	139	259
Passing Yardage	155	102
Punting Average	39.1	33.8
Penalties	9/99	6/50
Fumbles Lost	2	0

BEST INDIVIDUAL STATISTICS

Rushing	Attempt	Complete	Net Gain		
Eckdahl	10	7	64		
Smith	9	2	45		
McKeel	7	2	21		
Passing	Attempt	Complete	Net Gain		
Eckdahl	18	7	138		
Wages	8	2	17		
Scoring by Quarters	1	2	3	4	Total
Florida	0	0	0	6	6
L. S. U.	10	6	14	7	37

Attendance: 59,261

Florida 35 Tulane 0

October 14, New Orleans, Louisiana

	Florida	Tulane
First Downs		
Rushing Yardage	398	106
Passing Yardage	113	34
Punting Average	25.0	41.4
Penalties	7/120	4/86
Fumbles Lost	1	1

BEST INDIVIDUAL STATISTICS

Rushing		Attempt	Net Gain		
Smith		23	115		
Rentz		13	109		
Glenn		4	50		
Passing		Attempt	Complete	Net Gain	
Rentz		12	9	82	
Scoring by Quarters					
Florida	1	2	3	4	Total
Tulane	0	0	0	0	0

Attendance: 24,450

Florida 27 Vanderbilt 22

October 28, Gainesville, Florida

	Florida	Vanderbilt
First Downs	16	16
Rushing Yardage	144	37
Passing Yardage	244	191
Punting Average	34.3	38.0
Penalties	6/57	4/30
Fumbles Lost	2	0

BEST INDIVIDUAL STATISTICS

Rushing		Attempt	Net Gain		
Smith		23	105		
Passing		Attempt	Complete	Net Gain	
Rentz		20	15	244	
Scoring by Quarters					
Florida	1	2	3	4	Total
Vanderbilt	0	14	6	7	27

Attendance: 61,855

Florida 21 Auburn 26

November 4, Auburn, Alabama

	Florida	Auburn
First Downs	20	12
Rushing Yardage	136	81
Passing Yardage	242	145
Punting Average	28.4	81.3
Penalties	4/45	5/38
Fumbles Lost	1	0

BEST INDIVIDUAL STATISTICS

Rushing		Attempt	Net Gain		
Smith		22	97		
Passing		Attempt	Complete	Net Gain	
Rentz		35	22	242	
Scoring by Quarters					
Florida	1	2	3	4	Total
Auburn	0	7	0	14	21

Attendance: 42,000

Florida 17 Georgia 16

November 11, Jacksonville, Florida

	Florida	Georgia
First Downs	20	10
Rushing Yardage	145	135
Passing Yardage	235	59
Punting Average	36.5	38.7
Penalties	4/30	6/71
Fumbles Lost	3	2

BEST INDIVIDUAL STATISTICS

Rushing		Attempt	Net Gain		
Smith		23	78		
McKeel		11	43		
Passing		Attempt	Complete	Net Gain	
Rentz		19	11	180	
Scoring by Quarters					
Florida	1	2	3	4	Total
Georgia	0	7	0	10	17

Attendance: 69,489

Florida 28 Kentucky 12

November 18, Gainesville, Florida

	Florida	Kentucky
First Downs	22	13
Rushing Yardage	138	56
Passing Yardage	195	170
Punting Average	38.7	43.5
Penalties	6/52	3/36
Fumbles Lost	0	0

BEST INDIVIDUAL STATISTICS

Rushing		Attempt	Net Gain		
Smith		24	70		
Wages		17	63		
Passing		Attempt	Complete	Net Gain	
Wages		27	17	195	
Scoring by Quarters					
Florida	1	2	3	4	Total
Kentucky	0	7	14	7	28

Attendance: 50,833

Florida 16 F.S.U. 21

November 25, Gainesville, Florida

	Florida	F.S.U.
First Downs	22	16
Rushing Yardage	157	115
Passing Yardage	146	230
Punting Average	44.8	56.6
Penalties	8/56	6/70
Fumbles Lost	4	0

BEST INDIVIDUAL STATISTICS

Rushing	Attempt	Complete	Net Gain
Smith	22		78
Christian	11		50

Passing	Attempt	Complete	Net Gain
Rentz	29	11	146

Scoring by Quarters	1	2	3	4	Total
Florida	3	0	6	7	16
F. S. U.	7	7	0	7	21

Attendance: 62,944

Florida 13 Miami 20

December 10, Miami, Florida

	Florida	Miami
First Downs	23	11
Rushing Yardage	128	97
Passing Yardage	260	86
Punting Average	43.3	46.0
Penalties	5/55	10/73
Fumbles Lost	2	4

BEST INDIVIDUAL STATISTICS

Rushing	Attempt	Complete	Net Gain
Smith	16		41
Rentz	13		31
Wages	5		29

Passing	Attempt	Complete	Net Gain
Rentz	25	12	137
Wages	16	6	104

Scoring by Quarters	1	2	3	4	Total
Florida	0	0	0	13	13
Miami	7	0	13	0	20

Attendance: 53,229

HOW THE GATORS RANKED STATISTICALLY IN 1967

- TOTAL OFFENSE** — Ranked 1st in the SEC (367.3 yds. per game) 13th in the Nation
- TOTAL DEFENSE** — Ranked 2nd in the SEC (226.9 yds. per game) 16th in the Nation
- PASSING OFFENSE** — Ranked 1st in SEC (195.4 per game) 13th in the Nation
- RUSHING OFFENSE** — Ranked 4th in SEC (171.9 per game)
- PASSING DEFENSE** — Ranked 3rd in SEC (116.0 per game)
- RUSHING DEFENSE** — Ranked 3rd in SEC (110.9 per game)

1967 FLORIDA TEN-GAME FOOTBALL STATISTICS

(6-4 Overall — 4-2 SEC)

GAME RECORD

FLORIDA	OPPONENT
14	Illinois
24	Mississippi State
6	LSU
35	Tulane
27	Vanderbilt
21	Auburn
17	Georgia
28	Kentucky
16	FSU
13	Miami

SCORING-BY-QUARTERS

	1	2	3	4	TOTAL
Florida	10	52	54	85	201
Opponent	36	44	54	27	161

TEAM STATISTICS

FLORIDA	OPPONENT
103	1st down, run
87	1st down, pass
19	1st down, penalty
209	Total 1st downs
515	Runs from scrim.
1719	Net gain scrim.
171.9	Rushing avg. per game
284	Passes attempted
149	Passes completed
15	Passes had Intercep.
1954	Gain passing
195.4	Pass avg. per game
3673	Total Net Gain
367.3	Total Offensive avg.
55	No. of punts
2042	Total yards kicked
37.1	Punting avg.
34	No. of punts ret.
266	Yds. punts ret.
7.7	Avg. punt return
30	No. kickoffs ret.
572	Yds. kickoffs ret.
19.1	KO return avg.
57	No. of penalties
615	Yds. penalized
30-17	Fumbles/lost
21	TDs running
7	TDs passing
0	TDs Intercep. pass
25-24	Ex. pt. att/made (kick)
3-0	Ex. pt. att/made (run)
9-3	Field goals att/made

OPP. FUMBLES RECOVERED BY

Splane, McTheny, Tannen, McCall, Jetter, Giordano (3), Maliska, Hungerbuhler

INDIVIDUAL PASSING

	Att.	Comp.	Pct.	Intr.	Gain	TD
Rentz	140	80	.571	9	1031	3
*Wages	83	40	.482	3	522	2
Eckdahl	52	22	.424	3	343	2
Smith	4	4	1.000	0	41	0
Peacock	2	2	1.000	0	17	0
McIntosh	3	1	.333	0	10	0

TOTAL OFFENSE

	Pass	Rush	TOTAL
Rentz	1031	194	1125
Smith	41	754	795

*Graduating Senior

PUNTING GAME

	Kicks	Yds.	Blocked	Avg.
Rentz	33	1318	0	39.9
*Wages	18	730	0	40.6
Team	4	-6	0	00.0

PUNT RETURNS

	No.	Yds.	Avg.
*Trapp	27	204	7.7
Maliska	3	28	9.3
Downs	2	24	12.0
*Hungerbuhler	2	10	5.0

INDIVIDUAL RUNNING

	Runs	Gains	Lost	Net	Avg.
Smith	205	771	17	754	3.8
*McKeel	71	258	2	256	3.7
Rentz	65	365	171	194	2.3
Eckdahl	33	172	22	150	4.5
Christian	33	133	3	130	3.5
*Wages	28	136	51	85	3.4
Glenn	10	97	1	96	3.7
Hipp	5	38	1	37	3.7
Peacock	2	21	4	17	3.4
*Trapp	2	14	1	13	6.5
McIntosh	2	7	0	7	3.5
*Barfield	1	0	5	-5	0.0

INTERCEPTIONS

	No.	Yds. Ret.	TDS
*Downs	5	97	0
Tannen	4	7	0
Gaisford	2	4	0
Albury	1	3	0
Mann	1	2	0
*McCall	1	0	0
M. Ely	1	0	0
*Giordano	1	0	0

INDIVIDUAL RECEIVING

	No.	Yards	TDS
*Trapp	58	708	1
*McCann	26	301	1
Yarbrough	17	307	2
Smith	14	267	2
*Coons	9	93	0
Rentz	8	107	0
Peek	3	28	0
McThery	3	54	1
*McKeel	3	24	0
Christian	3	19	0
Glenn	2	16	0
Coleman	1	5	0
*Barfield	1	3	0
*Wages	1	2	0

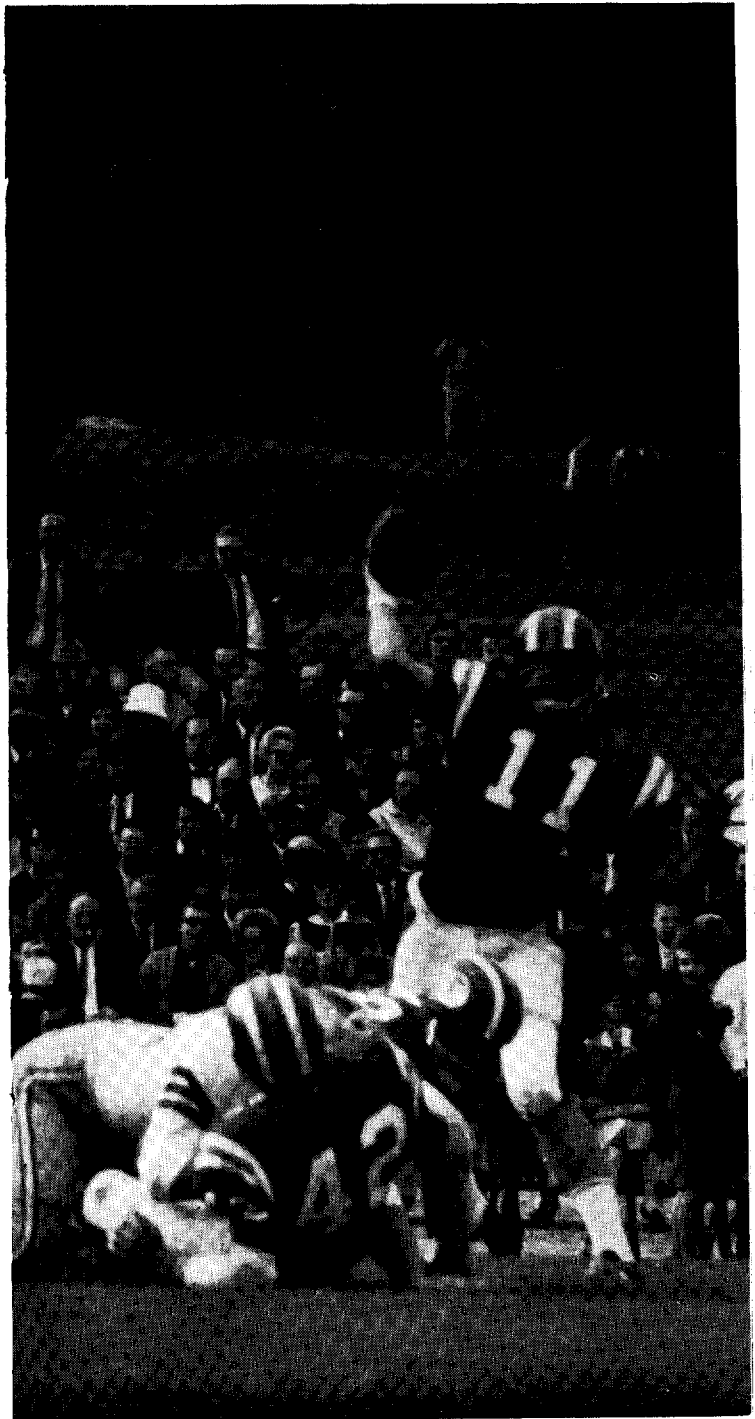
KICKOFF RETURNS

	No.	Yards	Avg.
Glenn	10	225	22.5
McThery	5	87	17.4
Gaisford	4	77	19.3
Barfield	4	43	10.7
*Wages	3	66	22.0
Hipp	2	57	28.5
*Trapp	11	18	18.0
Helton	1	0	0.0

SCORING

	TD	Att. P-R-K	Made P-R-K	FGs	TOTAL
Smith	10	0-0-0	0-0-0	0	60
*Barfield	0	0-0-25	0-0-24	3	33
*McKeel	3	0-0-0	0-0-0	0	18
Glenn	3	0-0-0	0-0-0	0	18
Rentz	3	0-2-0	0-0-0	0	18
Yarbrough	2	0-0-0	0-0-0	0	12
*Wages	2	0-0-0	0-0-0	0	12
Eckdahl	1	0-1-0	0-0-0	0	6
*Trapp	1	0-0-0	0-0-0	0	6
*McCann	1	0-0-0	0-0-0	0	6
Christian	1	0-0-0	0-0-0	0	6
McThery	1	0-0-0	0-0-0	0	6
*Graduating Senior					

GATOR FOOTBALL GREATS



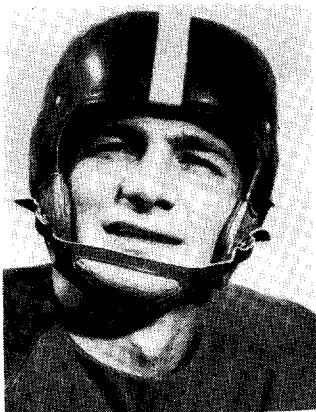
GATOR GRID GREATS

ALL-AMERICA PLAYERS



1928 — DALE VANSICKLE, End.

A spectacular end on a great 1928 team that was the nation's high scoring champions (336 points). He was Florida's first All-American. Now an actor and stuntman in Los Angeles. He is president of The Motion Picture Stuntman's Association.

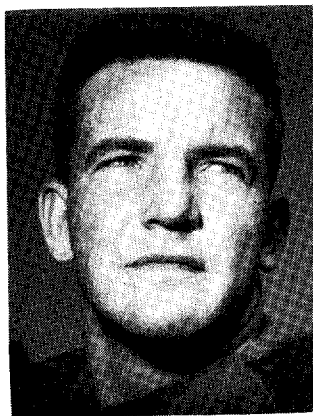


1952 — CHARLIE LaPRADD, Tackle.

He was an outstanding performer on Florida's first bowl team in history. He aided the Gators to a Gator Bowl championship, following the 1952 season. Now President of St. John's River Junior College.

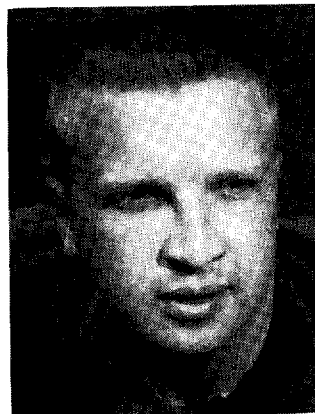
36

ALL-AMERICA PLAYERS



1956 — JOHN BARROW, Guard.

One of Florida's All-time greats. Was selected All-American by Football Writers' Association for Look Magazine. Chosen as SEC lineman of the year by Atlanta Touchdown Club. Made AP and UPI SEC first team. Landed INS All-South first team, plus other honors. Now a star lineman in the Canadian Football League.

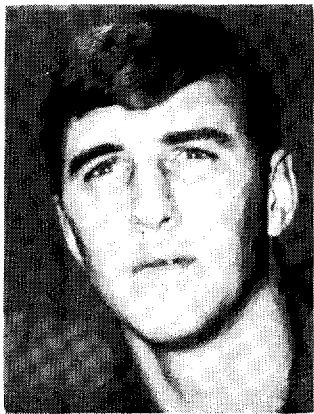


1958 — VEL HECKMAN, Tackle.

One of the greatest tackles in the University of Florida's history. Chosen in 1958 on the All-American team by Football Writers' Association for Look Magazine. Picked on the AP and UPI SEC first team. Also received many other honors. Now Head Football Coach at Lakeview of Winter Garden.

37

ALL-AMERICA PLAYERS



1966 — BILL CARR, Center.

Offensive captain of Gators in 1966, first team choice by Sporting News on team picked by professional head coaches. Unanimous all-SEC and Associated Press second team all-America.

FLORIDA'S 1ST TEAM ALL-SOUTHEASTERN CONFERENCE PLAYERS

Halfback Larry Smith . . . 1967	MG Bill Richbourg . . . 1964
Flanker Richard Trapp . . . 1967	Fullback Larry Dupree . . . 1963
Guard Guy Dennis . . . 1967	Fullback Larry Dupree . . . 1962
Kicker Wayne Barfield . . . 1967	Guard Larry Travis . . . 1962
Quarterback Steve Spurrier 1966	End Pat Patchen . . . 1960
Center Bill Carr . . . 1966	Guard Vic Miranda . . . 1960
Guard Jim Benson . . . 1966	End Dave Hudson . . . 1959
Flanker Richard Trapp . . . 1966	Tackle Vel Heckman . . . 1958
Tailback Larry Smith . . . 1966	End Don Fleming . . . 1958
Tackle Larry Gagner . . . 1965	Halfback Jim Rountree . . . 1957
Quarterback Steve Spurrier 1965	Guard John Barrow . . . 1956
End Charles Casey . . . 1965	Center Steve DeLaTorre . . . 1955
Guard Larry Beckman . . . 1965	Tackle Charlie LaPradd . . . 1952
Safety Bruce Bennett . . . 1965	Guard Joe D'Agostino . . . 1952
Fullback Larry Dupree . . . 1964	Back Charlie Hunsinger . . . 1949
Guard Larry Gagner . . . 1964	Back Charlie Hunsinger . . . 1948
Safetyman Bruce Bennett . . . 1964	Back Walter Mayberry . . . 1937
End Charles Casey . . . 1964	

FLORIDA'S ALL-SOUTHERN (OLD) CONFERENCE PLAYERS

Guard James Steele . . . 1930	Guard Goldy Goldstein . . . 1924
End Dale Vansickle . . . 1928	Guard Goldy Goldstein . . . 1923
QB Clyde Crabtree . . . 1928	HB Ark Newton . . . 1923
Tackle Goldy Goldstein . . . 1925	Tackle Robbie Robinson . . . 1923
QB Edgar Jones . . . 1924	

GATORS ACTIVE ON PRO ROSTERS

John Barrow—Hamilton-Canada	Jack Harper—Miami Dolphins
Bruce Bennett—Regina-Canada	Randy Jackson—Chicago Bears
Barry Brown—Baltimore Colts	Jimmy Jordan—San Francisco 49'ers
Don Chandler—Green Bay Packers	Steve Spurrier—San Francisco 49'ers
Haygood Clarke—Buffalo Bills	Richard Trapp—Buffalo Bills
Larry Gagner—Pittsburgh Steelers	Harmon Wages—Atlanta Falcons
Don Giordano—St. Louis Cards	
Bobby Joe Green—Chicago Bears	

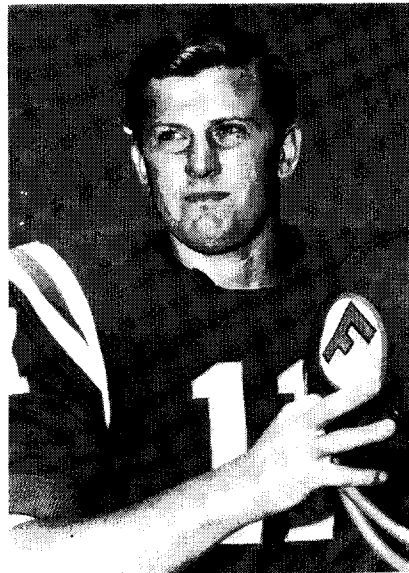
1966

Heisman Trophy Winner

All-America Quarterback

Steve Spurrier

No.
11



STEPHEN ORR SPURRIER . . . Johnson City, Tennessee . . . All-America quarterback on 1965 American Football Writers Association team and every 1966 team picked . . . Broke every school record for game, season and career in passing and total offense . . . Set Southeastern Conference season records in 1966 for most pass attempts (291) completions (179) and passing yardage (2012) . . . First player in history of Sugar Bowl who played for losing team and won Miller-Digby Trophy as most outstanding player in the game. Spurrier set five new Sugar Bowl records—45 pass attempts (old record 27, Davey O'Brien, TCU, in 1939), 27 completions (old record 17, O'Brien, 1939), 352 yards gained passing (old record 242, Glynn Griffing, Ole Miss, 1963), most plays, 52 (old record 43, Eddie Prokop, Georgia Tech, 1944), 344 yards total offense (old record 257, Glynn Griffing, Old Miss, 1963) . . . Great all-around athlete who was all-state in three sports in high school (Science Hill, Johnson City, Tenn.) . . . Son of a Presbyterian minister and secretary of the Fellowship of Christian athletes chapter on campus . . . Gators scored at least one TD in all 32 games Spurrier played and averaged 20 points per contest over this period . . . Won 1966 Heisman Trophy, played in college All-America Game and All-Star Game.

GATOR VARSITY

DEPTH ROSTER

OFFENSE

DEFENSE

Split End

No.	Hgt.	Wgt.	Let- ters	Class	Hometown
80	6-3	185	1	Sr.	Ocala
30	6-2	192	1	Jr.	Winter Park
83	6-3	193	0	So.	Jacksonville

Left Tackle

78	6-2	231	1	Jr.	Ft. Lauderdale
79	6-2	223	1	Jr.	Miami
73	6-3	216	0	So.	Ft. Lauderdale

Left Guard

62	6-3	221	1	Jr.	Melbourne
60	6-2	204	0	So.	Panama City

Center

53	6-2	219	1	Jr.	Gainesville
56	6-2	211	0	Jr.	Tampa
54	6-0	207	0	Sr.	W. Palm Beach

Right Guard

77	6-2	252	2	Sr.	Walnut Hill
75	6-3	219	0	So.	Sarasota

Right Tackle

76	6-3	233	0	So.	Brandon
72	6-2	227	2	Sr.	Panama City

Tight End

88	6-8	258	2	Sr.	Arcadia
86	6-3	219	2	Sr.	Tampa
87	6-4	194	0	So.	Miami

Quarterback

10	6-2	158	2	Sr.	Coral Gables
5	6-1	181	1	Jr.	Gainesville
14	5-11	199	0	Sr.	Pahokee

Tailback

31	6-1	210	2	Sr.	St. Petersburg
42	6-1	198	0	So.	Winter Haven
32	5-11	196	0	Jr.	Clearwater

Flanker

20	6-2	204	1	Jr.	Sarasota
5	6-1	181	1	Jr.	Gainesville
44	6-1	177	0	So.	Homestead
28	6-0	181	0	Jr.	Torrence, Calif.

Fullback

33	6-4	221	2	Sr.	Tampa
34	6-1	199	0	Jr.	Gainesville
24	5-11	198	0	So.	Savannah, Ga.

Left End

No.	Hgt.	Wgt.	Let- ters	Class	Hometown
82	6-2	197	1	Jr.	Pensacola
52	6-2	188	0	Jr.	Pensacola
84	6-0	185	0	Sr.	Tampa

Left Tackle

70	6-2	227	1	Sr.	Jacksonville
74	6-5	228	0	So.	Monticello
64	6-2	219	1	Sr.	Pensacola

Middle Guard

69	5-11	210	2	Sr.	Jacksonville
65	5-9	208	0	Jr.	Ft. Lauderdale
67	6-2	219	0	So.	Valdosta, Ga.

Right Tackle

71	6-6	239	1	Jr.	Tampa
61	6-0	213	1	Sr.	Decatur, Ga.
68	6-2	215	0	So.	Decatur, Ga.

Right End

81	6-1	196	1	Jr.	Panama City
89	6-5	197	0	So.	Melbourne

Strong Linebacker

55	6-2	214	1	Sr.	Pensacola
57	5-9	196	1	Jr.	Miami
58	6-1	207	0	So.	Jacksonville

Weak Linebacker

50	6-2	211	0	So.	Orlando
59	6-1	210	0	So.	Lake City
51	5-11	192	0	So.	W. Palm Beach

Left Cornerback

22	6-2	194	1	Jr.	Miami
25	5-10	181	1	Sr.	Ft. Lauderdale

Right Cornerback

44	6-1	177	0	So.	Homestead
43	6-1	191	0	So.	Miami
37	5-11	179	0	So.	Miami

Left Safety

26	5-11	178	1	Jr.	Tampa
23	6-2	192	0	Jr.	Ft. Walton Beach

Right Safety

27	5-10	176	0	Jr.	Coral Gables
36	5-11	179	0	So.	Tampa

Position by Position Analysis 1968 Gator Squad

Position	Lettermen		Juniors	Sophomores	Lettermen Lost
	Returning	Seniors			
End	Dean, O Ghesquire, D Maliska, O Peek, O Skrivanek, D Yarbrough, O (6)	S. Ely, D Dean Peek Yarbrough (4)	Byers, D Ghesquire Maliska Skrivanek (4)	Hughes, D Ratcliffe, O Yancey, O (3)	Coons, O Jetter, D Trapp, O (3)
Tackle	Amelung, O Foster, D Griffith, O Hadley, D Healey, D Morris, O Santille, D (7)	Foster Healey Morris Santille (4)	Amelung Griffith Hadley (3)	Cole, D Field, O Kiley, O Youngblood, D (4)	Giordano, D Pasteris, O Splane, D (3)
Guard	Dennis, O Dorsey, D Duven, O Steen, O (4)	Dennis Dorsey Duven (3)	Rebol, D (1)	Pilcher, O Stephens, O Warbritton, O Williams, D (4)	None
Centers and LBs	Abdelnour, D Helton, O Mann, D (3)	Mann Barnhart, O (2)	Abdelnour Helton Palahach, D Sinardi, O (4)	Compton, D Kelley, D Williams, D Powell, D (4)	McCall, D (1)
QBs	Eckdahl Rentz (2)	Rentz Peacock (2)	Eckdahl (1)		McIntosh (1)
HBs-FLs	M. Ely, D Christian, TB Gaisford, D McTheny, FL Tannen, D (5)	Christian Gaisford (2)	Albury, D Bimson, O Ely McBride, TB McTheny Tannen Williamson, D (7)	Brooke, TB Burns, D Doddrige, D Faix, D Hager, FL-D Walker, O Vinesett, O (7)	Downs, D Hungerbuhler, D McCann, FL (3)
FB	Smith (1)	Smith (1)	Hipp (1)	Zeleznik (1)	Barfield McKeel (2)

FLORIDA'S BOWL RECORD (4-2)

GATOR BOWL, JACKSONVILLE, FLORIDA

1953—Florida	7	7	0	0—14
Tulsa	0	0	7	6—13
1959—Florida	3	0	0	0—3
Mississippi	7	0	0	0—7
1961—Florida	0	13	0	0—13
Baylor	0	0	0	12—12
1963—Florida	3	7	0	7—17
Penn State	0	7	0	0—7

SUGAR BOWL, NEW ORLEANS, LA.

1966—Florida	0	0	0	18—18
Missouri	0	17	3	0—20

ORANGE BOWL, MIAMI, FLORIDA

1967—Florida	0	7	7	13—27
Georgia Tech	6	0	0	6—12

FERGIE FERGUSON AWARD



The Forest K. (Fergie) Ferguson Award is given in memory of one of Florida's finest athletes, one of the great all-time ends to wear the uniform of the Fighting Gators. The Award is made annually in the form of a beautiful trophy, which remains in the permanent possession of the University of Florida, and is given to the football player selected as the Gator's most valuable senior each year. The winning player is an-

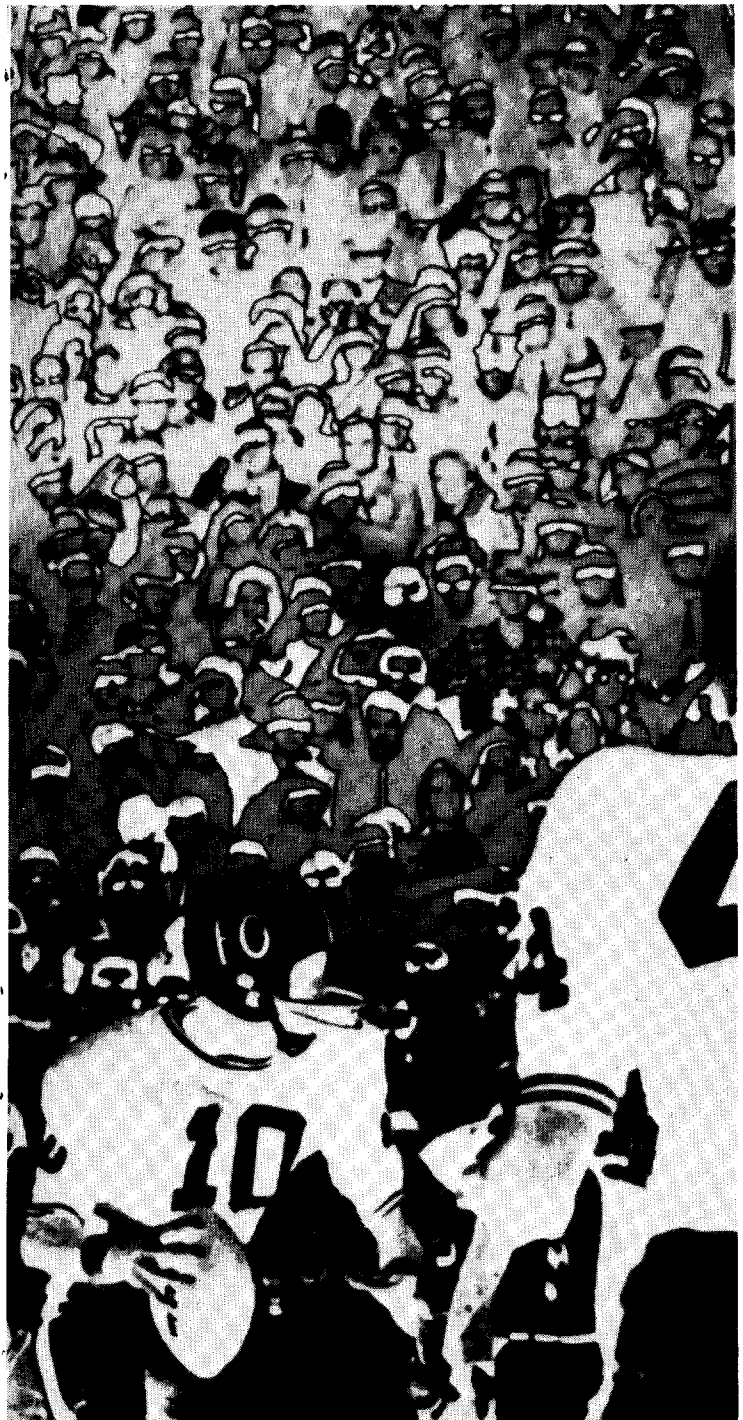
nounced at the annual spring banquet, and he is then invited to return to the campus to receive the award at the following Homecoming.

First to win the award was Malcolm Hammack, outstanding fullback on the 1954 eleven. Others were Center Steve DeLaTorre of the 1955 squad, and Larry Wesley, tackle on the 1956 team, Jim Rountree, 1957 halfback, Jimmy Dunn, 1958 quarterback, Asa Cox, 1959 guard, Pat Patchen and Vic Miranda, 1960, Jim Beaver in 1961, Sam Holland in 1962, Jimmy Morgan and Hagood Clarke in 1963. Larry Dupree in 1964, Charles Casey in 1965, Steve Spurrier in 1966, and Richard Trapp in 1967.

About Fergie Ferguson

Fergie came to Florida in the fall of 1938 after having been a star end for the Stuart (Fla.) High School. He became a starting end for the Gators as a sophomore, and from that time wrote several records into the books. Fergie was also a track and boxing star, and his javelin throw of 203 feet, 6½ inches won him a National AAU championship in 1942. Fergie became a second lieutenant in the U. S. Army, and was severely wounded in the Normandy landing of 1944. He so distinguished himself that he was awarded the nation's second highest medal for gallantry in action. He died of war wounds ten years after the landing.

THE GATOR TEAM



THE GATOR SQUAD



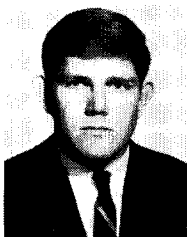
No. 5
Jack Eckdahl

JACK LEE (Jackie) ECKDAHL . . . QB-Flanker . . . 6-1 . . . 181 . . . Junior . . . 20 years old . . . One Letter . . . Gainesville . . . Played two and one-half games last fall at quarterback before breaking leg, dislocating ankle and sitting out remainder of year . . . Was 22x52 passing for 343 yards, two TDs, three interceptions . . . Carried 33 times for 150 yards, one TD . . . Had 493 yards for total offense . . . High school all-America, star of Baby Gator team as a freshman and has ability to be exceptional collegiate player . . . Wound up spring a shade behind Larry Rentz at quarterback but also looked good at flanker . . . Will not be sitting on the bench with Florida coaches in the fall . . . Father is a veteran instructor in College of Physical Education and Health at Florida . . . Left-handed . . . Played at Gainesville High School under Coach Jim Niblack.

No. 10
Larry Rentz



RALPH LARRY (Larry) RENTZ . . . QB . . . 6-2 . . . 158 . . . Senior . . . 21 years old . . . Two letters . . . Coral Gables . . . Has played many positions for Gators, all exceptionally well . . . All-SEC sophomore safetyman, moved to flanker in fall and then suddenly thrust into quarterback job after third game when first two boys went out . . . In six games (missed Kentucky with arch injury) Rentz' total offense was 1225 yards on 1031 passing and 194 running. He completed 80 of 140 passes (.571) for three TDs but had nine picked off . . . He ran for three TDs . . . Rentz was nation's 19th leading punter at 39.9 . . . Caught eight passes for 107 yards . . . Very competitive, spirited leader . . . Played football at Coral Gables under Coach Nick Kotys and led team to two straight Florida state titles.



No. 14
Harold Peacock

HAROLD ELLIOTT (Harold) PEACOCK . . . QB . . . 5-11 . . . 204 . . . Senior . . . 21 years old . . . Pahokee . . . Saw only slight action last year, some at linebacker, some at quarterback . . . Completed 2x2 passes for 17 yards, carried five times for 17 yards . . . Hurt most of spring but had excellent spring game with little work . . . Star at Northeastern Oklahoma JC . . . Played high school football at Pahokee and is now No. 3 Gator quarterback.

No. 20
Guy McTheny



GUY CORBETT (Guy) McTHENY . . . Flanker . . . 6-2 . . . 204 . . . Junior . . . 20 years old . . . One letter . . . Sarasota . . . Saw limited action last year, winding up with three catches for 54 yards and TD (vs. Miami) . . . Ran five kickoffs back 87 yards (17.4 average) . . . Number one flanker going into fall . . . Prep quarterback who has played many positions at Florida . . . Played for Coach Charles Cleland at Sarasota . . . Nickname is "Charlie Brown."



No. 22
Steve Tannen

STEVEN OLSON (Steve) TANNEN . . . Defensive back . . . 6-2 . . . 194 . . . Junior . . . 20 years old . . . One letter . . . Miami . . . Good sophomore year with four interceptions, two more nullified by penalties . . . As season progressed opponents threw less and less in his territory . . . Exceptional athlete with speed (9.7 in 100) and ability to be an outstanding defensive back . . . Likely punt and kickoff return man . . . As freshman hurdler he ran nation's second fastest time in highs . . . Played for Coach Gene Jupin at Miami Southwest.

No. 23

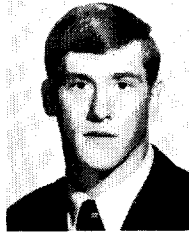
Larry Williamson



LARRY CLINE (Larry) WILLIAMSON . . . Safety . . . 6-2 . . . 192 . . . Junior . . . 20 years old . . . Fort Walton Beach . . . Used in spots last fall, had good spring and figures in Gator secondary plans for 1968 . . . Also got some work as punter in spring and is a candidate for this job . . . Converted from high school position of quarterback . . . Very intelligent, makes few errors . . . Played high school football for Coach Wyman Townsel at Choctawhatchee High.

No. 26

Mark Ely



MARK M. (Mark) ELY . . . Safety . . . 5-11 . . . 178 . . . Junior . . . 20 years old . . . One letter . . . Tampa . . . Excellent defensive backfield prospect whose injury a week before Illinois opener in 1967 was one of worst Gators suffered . . . Returned to action in late season and did good job while intercepting one pass . . . Number one man at safety, or cornerback if need be . . . Good quick-ness, agility and speed (4.7 in 40) . . . Brother, Steve, is defensive end on Gator squad . . . Played high school football at Plant under Coach John Burgess.

No. 24

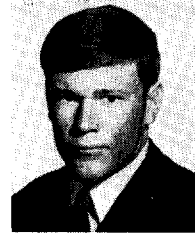
Jerry Vinesett



JERRY DEAN (Jerry) VINESETT . . . Fullback . . . 5-11 . . . 198 . . . Sophomore . . . 19 years old . . . Savannah, Georgia . . . Although plagued with shoulder trouble he had good freshman year and was having excellent spring before injury sidelined him . . . Good speed and moves make him long distance running threat . . . Played high school football at Savannah Jenkins under Coach Richard Attwood.

No. 27

Skip Albury



CHARLES DONALD (Skip) ALBURY . . . Safety . . . 5-10 . . . 176 . . . Junior . . . 20 years old . . . Coral Gables . . . Wound up spring as No. 1 at safety along with Mark Ely . . . Came to Florida without a scholarship . . . Intercepted one pass last year, that the first one for Florida in 1967 against Illinois . . . Good on punt and kickoff returns . . . Played high school football for Coach Nick Kotys at Coral Gables.

No. 25

Bill Gaisford



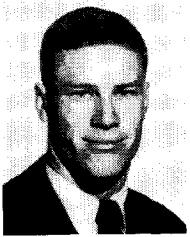
WILLIAM JAMES (Bill) GAISFORD . . . Defensive back . . . 5-10 . . . 181 . . . Senior . . . 21 years old . . . One letter . . . Ft. Lauderdale . . . Started last fall at flanker, wound up in secondary after injuries crippled Gators . . . Started six games at cornerback, intercepting two passes . . . Hurt most of spring, wound up No. 2 behind Steve Tannen and should give experienced depth to secondary in 1968 . . . Played for Coach Duke Maltby at Fort Lauderdale High.

No. 28

Gary Bimson



GARY CARLYLE (Gary) BIMSON . . . Flanker-Split End . . . 6-0 . . . 181 . . . Junior . . . 20 years old . . . Torrence, California . . . Transfer from El Camino Junior College who runs 100 in 9.7 and caught 38 passes last season . . . As a freshman he played end opposite Rick Eber, later to become an all-America flanker at Tulsa . . . Pole vaults over 15-0 . . . Plans to major in physical education.



No. 30

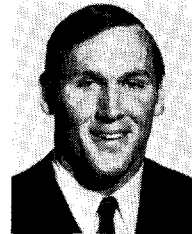
Paul Maliska

PAUL WILLIAM (Paul) MALISKA . . . Split end . . . 6-2 . . . 192 . . . Junior . . . 20 years old . . . One letter . . . Winter Park . . . Worlds of potential but slowed, often to a walk, by injuries thus far . . . Played safety last year, starting fast but getting hurt . . . Switched to wideout receiver role and again started fast in spring before getting hurt . . . Runs 100 in 9.8 . . . Played high school football for Coach Bob Mosher at Winter Park.

ALL-AMERICA
CANDIDATE

No. 33

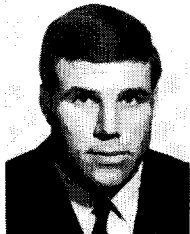
Larry Smith



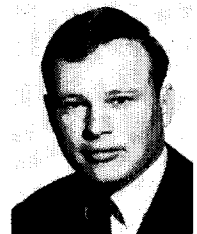
WILLIAM LAWRENCE (Larry) SMITH . . . Fullback . . . 6-4 . . . 221 . . . 21 years old . . . Two letters . . . Tampa . . . Best running back in Florida history, according to his coaches . . . Led SEC in rushing as a sophomore . . . In two seasons he has carried ball 390 times for gain of 1683 yards, 16 TDs and an average gain of 4.1 yards per carry . . . His two-season pass receiving total is 37 catches for 450 yards and five TDs . . . He was thrown seven passes, completed all of them for 95 yards . . . Holds Orange Bowl records for most yards rushing (187), average gain per carry (8.1) and longest TD run (94 yards), all coming in Florida's 27-12 win over Georgia Tech, Jan. 2, 1967 . . . Great blocker who takes as much pride in this area as he does running . . . Twice voted Most Valuable Player in SEC in Birmingham News pre-season poll of coaches. This year he was also named Best Runner and Best Blocker in league . . . Second team all-America tailback last year . . . Twice all-SEC running back . . . "Larry is the complete football player," says his coach, Ray Graves. "He is exceptional at every phase of the game, including kickoff returns, running, passing, faking, receiving and blocking. I believe he will go down as one of the finest all-around football players in SEC history." . . . Smith runs the 40 in 4.6, won the fraternity league 100-yard-dash championship for Alpha Tau Omega this past spring in 9.9, running the race immediately after anchoring a record-setting 440-yard relay team . . . Made 465 out of a possible 495 on the Florida Senior Placement Test while in high school . . . Small-hipped, he has trouble keeping football pants up and has special pants with eight elastic panels in back. Before millions, on his record run against Tech he almost lost his pants . . . Played for Coach Holland Aplin at Tampa Robinson.

No. 31

Tom Christian



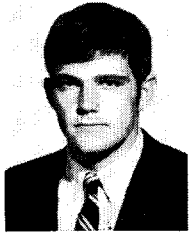
FLOYD THOMAS (Tom) CHRISTIAN . . . Tailback . . . 6-1 . . . 210 . . . Senior . . . 21 years old . . . Two letters . . . St. Petersburg . . . Saw extensive action last year, starting several games and winding up with 130 yards gained on 38 carries, catching three passes for 19 yards . . . Runs 40 in 4.8 . . . Son of Floyd Christian, ex-Gator end and now State Superintendent of Education . . . Played high school football at Boca Ciega in St. Petersburg.



No. 32

Bill McBride

WILLIAM AUGUST (Bill) McBRIDE . . . Tailback . . . 5-11 . . . 196 . . . Junior . . . 21 years old . . . Clearwater . . . Jack-of-all-trades who has played many positions . . . Linebacker who saw some action last fall, moved to running back in spring . . . Could help 1968 varsity, has great attitude and is tough . . . Played for Coach Earle Brown at Clearwater.



No. 34
Brian Hipp

BRIAN EDWARD (Brian) HIPP . . . Fullback . . . 6-1 . . . 199 . . . Junior . . . 20 years old . . . Gainesville . . . Played sparingly last fall, most of the time with harness on right shoulder . . . Plagued by shoulder injury which finally resulted in an operation last spring . . . Carried 10 times for 37 yards, returned two kickoffs 57 yards (28.5 avg.) . . . Having good spring prior to shoulder dislocation . . . Starts fall as No. 2 fullback behind Larry Smith . . . Played high school football at Gainesville High under Coach Jim Niblack.



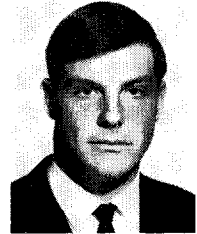
No. 37
Rocky Doddridge

ROCK EDWARD (Rocky) DODDRIDGE . . . Defensive back . . . 5-11 . . . 179 . . . Sophomore . . . 19 years old . . . Miami . . . Good potential for future help to Gator varsity, he concentrated on secondary work in spring after good year as quarterback with frosh . . . Good speed and quickness . . . Played for Coach Gene Gibson at Miami Palmetto.

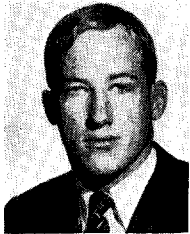
No. 35
Don Gramling

DONALD EUGENE (Don) GRAMLING . . . Flanker . . . 5-11 . . . 174 . . . Junior . . . 20 years old . . . Jacksonville . . . Graduate of Englewood High in Jacksonville, star of prep all-star game following his senior year . . . Played for Northeastern Oklahoma JC last two seasons . . . Caught 71 passes for over 800 yards last season . . . Missed entire spring drills but could be factor in Gator wideout situation in fall . . . Played for Coach Don Jarrett at Englewood.

No. 40
Buster Brooke

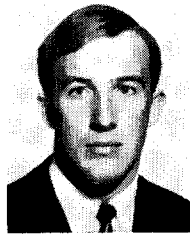


EWART GLADSTONE (Buster) BROOKE, JR. . . . Fullback . . . 5-10 . . . 194 . . . Sophomore . . . 19 years old . . . Sparta, New Jersey . . . Good quickness, sees daylight and has good balance . . . Junior Heisman Trophy winner from New Jersey the year Steve Spurrier won Heisman Trophy . . . Fits into Gator backfield picture for next year at either fullback or tailback . . . Played for Coach Dick Cassels at Sparta.



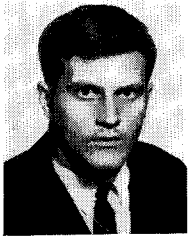
No. 36
Jack Burns

JACK CHARLES (Jack) BURNS . . . Defensive back . . . 5-11 . . . 179 . . . Sophomore . . . 19 years old . . . Tampa . . . High school quarterback converted to secondary as a freshman and showing much promise for future . . . Intercepted four passes as a freshman, had fine spring game with varsity, picking off three passes . . . Can play either cornerback or safety and will see heavy duty this fall . . . Played for his father, Coach Salty Burns, at Tampa Leto.



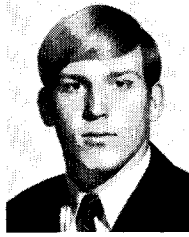
No. 41
Dennis Zeleznik

DENNIS ROGER (Dennis) ZELEZNIK . . . Tailback . . . 6-2 . . . 192 . . . Sophomore . . . 19 years old . . . Chiefland . . . Caught coaches eye with his hard-nosed approach to football and his reckless running . . . Fine speed (4.6 in 40), needs polish but is a player to watch in future . . . Played for Coach Doyle McCall at Chiefland.



No. 42
Garry Walker

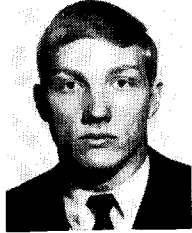
GARRY LADON (Garry) WALKER . . . Tailback . . . 6-1 . . . 198 . . . Sophomore . . . 19 years old . . . Winter Haven . . . Good frosh year (5.4 average per carry, 12 carries per game over four game season) . . . Pushed vet Tom Christian and figures to do so in fall . . . Speed (4.75 in 40) and power are his big assets . . . Played for Coach Calvin Triplett at Winter Haven.



No. 50
Mike Kelley

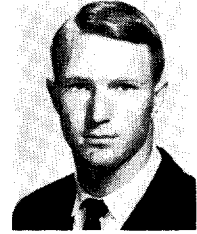
JAMES MICHAEL (Mike) KELLEY . . . Linebacker . . . 6-2 . . . 208 . . . Sophomore . . . 19 years old . . . Orlando . . . Quickly tookover starting linebacker role in spring after great high school background and freshman season . . . Averaged 17 tackles per game for frosh . . . Runs 40 in 4.75, faster than all but four Gator offensive backs . . . Hits like nobody Florida has had except David Mann, his fellow linebacker starter . . . One to watch as future Florida star . . . Exceptional student with almost a perfect academic average (B-plus) . . . Played for Coach Don Blackwelder at Orlando Edgewater.

No. 44
Ted Hager

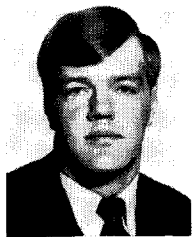


TEDDY CALVIN (Ted) HAGER . . . Split end-defensive back . . . 6-1 . . . 177 . . . Sophomore . . . 19 years old . . . Homestead . . . Wears the "Can't Miss" tag . . . No telling where he'll wind up in fall, it will be where he is needed most and, if present trend continues, he will be a starter at either wideout receiver on offense or corner on defense . . . No Gator has ever run a faster 40 (4.45) . . . Played defense as frosh, intercepting five passes in four games . . . Played for Coach Leo Martin at South Dade in Homestead.

No. 52
Bernie Byers

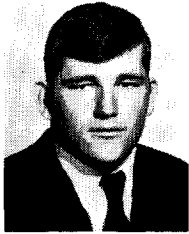


BUNNAR MELTON (Bernie) BYERS, JR. . . . Defensive end-linebacker . . . 6-2 . . . 188 . . . Junior . . . 21 years old . . . Pensacola . . . Good speed and quickness, will hit . . . Appeared to have found a home in spring at defensive end after moving all over the place . . . Runs 40 in 4.9 . . . No. 2 left end on defensive . . . Played for Coach Jimmy Haynes at Pensacola High.



No. 45
Ben Sellers

BENJAMIN LEE (Ben) SELLERS . . . Flanker-end . . . 6-3 . . . 208 . . . Sophomore . . . 19 years old . . . Jacksonville . . . High school quarterback moved during spring drills to offensive end . . . Can play tight end, split end or flanker . . . Tough, competitive boy who will make a place for himself somewhere . . . Brother is Ron Sellers, great FSU all-America flanker . . . Played for Coach Ed Swartz at Jacksonville Paxon.



No. 53
Kim Helton

CHARLES KIMERLIN (Kim) HELTON . . . Center . . . 6-2 . . . 219 . . . 20 years old . . . One letter . . . Gainesville . . . Started all 10 Gator games last fall as a sophomore, had excellent blocking grade average for season . . . Steady, dependable center who Gator coaches have much confidence in . . . Played for Coach Jim Niblack at Gainesville High School.



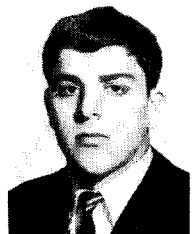
No. 54
Dave Barnhart

DAVID LEE (Dave) BARNHART . . . Center . . . 6-0 . . . Senior . . . 21 years old . . . West Palm Beach . . . Has seen limited action past two seasons, one behind All-American Bill Carr and last year as substitute for Kim Helton . . . Had best spring of his career, pushing Helton, and figures in Florida plans this fall . . . Played for Coach Jim Maynor at Palm Beach Senior.

No. 55
David Mann



THOMAS DAVID (David) MANN . . . Linebacker . . . 6-2 . . . 214 . . . Senior . . . 22 years old . . . One letter . . . Pensacola . . . Best linebacker in Florida history, he led team in tackles last fall with an average of over 10 per game (taken from game film count by coaches) . . . Has speed to cover backs on pass routes deep (runs 40 in 4:85) and the natural diagnostic ability of outstanding linebackers . . . Transferred from Northeast Oklahoma JC, where he was an all-American Junior College Linebacker . . . Tremendous competitive spirit, he plays regardless of injuries . . . "Best linebacker I've had in coaching," says Ray Graves, who coached three all-American linebackers at Georgia Tech . . . Played for Coach Jimmy Haynes at Pensacola High.



No. 56
Nick Sinardi

NICK JOSEPH (Nick) SINARDI . . . Center . . . 6-2 . . . 211 . . . Junior . . . 20 years old . . . Tampa . . . Played center last fall, seeing limited action . . . Worked on defense and at offensive guard in spring prior to returning to center . . . Will give Dave Barnhart battle at number two center and could play guard, if needed . . . Played for Coach Bernie Wilson at Tampa Hillsborough.



No. 57
Tom Abdelnour

THOMAS ALLEN (Tom) ABDELNOUR . . . Linebacker . . . 5-9 . . . 196 . . . Junior . . . 21 years old . . . One letter . . . Miami . . . Came to Florida without scholarship . . . Came into his own last year in Georgia game, starting in place of injured Captain Wayne McCall and making 11 tackles . . . Played for Coach Bobby Carlton at Miami High.

No. 58
Wayne Compton



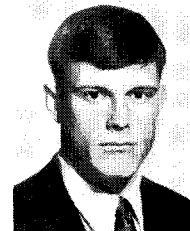
WAYNE ROLAND (Wayne) COMPTON . . . Linebacker . . . 6-1 . . . 207 . . . Sophomore . . . 20 years old . . . Jacksonville . . . Good spring moved him into linebacking picture for fall . . . had highest grade average in the 10th, 11th and 12th grades at his school . . . Played for Coach Max Bass at Bolles.



No. 59
Donnie Williams

DONALD EARNEST (Donnie) WILLIAMS . . . Linebacker . . . 6-1 . . . 210 . . . Sophomore . . . 19 years old . . . Lake City . . . Excellent prospect, had very good spring and expected to see much action in fall . . . Has all the tools, speed (4:85 in 40), size, attitude and natural linebacking talent . . . Good student . . . Played for Coach Paul Quinn at Lake City Columbia.

No. 60
Ray Pilcher



RAY C. (Ray) PILCHER, JR. . . . Offensive guard . . . 6-2 . . . 204 . . . Sophomore . . . 19 years old . . . Panama City . . . Good athlete who was moved from position to position until coming to rest at offensive guard, where he is behind veteran Mac Steen . . . Played for Coach Len Register at Panama City Bay.



No. 61
Ed Foster

ROBERT EDMUNDS (Ed) FOSTER, Jr. . . . Defensive tackle . . . 6-0 . . . 213 . . . Senior . . . 21 years old . . . One letter . . . Decatur, Georgia . . . Has seen considerable action past two seasons, both at defensive guard and tackle . . . Backs up Jim Hadley at right tackle going into fall . . . Average speed, but quick and strong for size . . . Played for Coach Franklin Brooks at Decatur.



No. 67
Danny Williams

DANIEL MARVIN (Danny) WILLIAMS . . . Middle guard . . . 6-2 . . . 219 . . . Sophomore . . . 19 years old . . . Valdosta, Georgia . . . Very quick, makes up for lack of experience with aggressive, quick play in line . . . Reminds Gator coaches of Don Giordano, ex-Florida defensive line star . . . Could move into picture this fall . . . Played for Coach Wright Bazemore at Valdosta High.

No. 62
Mac Steen



MALCOLM EVERETT (Mac) STEEN . . . Offensive guard . . . 6-3 . . . 221 . . . Junior . . . 20 years old . . . One letter . . . Melbourne . . . Solid starter at left guard, started all Gator games last year . . . All-SEC sophomore team pick . . . Good speed and quickness . . . Gives every indication of becoming a truly outstanding offensive lineman . . . Plans to be a dentist . . . Played for Coach Byrd Whigham at Melbourne.

No. 69
Bill Dorsey

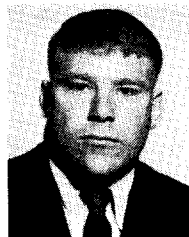


WILLIAM JAMES (Bill) DORSEY . . . Middle guard . . . 5-11 . . . 212 . . . Senior . . . 21 years old . . . Two letters . . . Jacksonville . . . One of the best football players on Florida team past two seasons, consistently grading out high on defense . . . Quick as a cat, tough to block and loves contact . . . Pre-season all-conference choice in many polls . . . Florida's fourth-leading tackler last fall . . . Almost overlooked in high school, he didn't sign scholarship until two days before practice opened prior to his freshman year . . . Played for Coach Virgil Dingman at Robert E. Lee High.



No. 65
Robbie Rebol

RICHARD ROBINSON (Robbie) REBOL . . . Middle guard . . . 5-9 . . . 208 . . . Junior . . . 20 years old . . . Fort Lauderdale . . . Coaches have long felt Robbie was a player and have sought proper spot for him, it appears middle guard is the spot after an outstanding spring . . . High school fullback with good power, speed and quickness, he's tough to block . . . Will see heavy action in fall . . . Played for Coach Duke Maltby at Fort Lauderdale High.



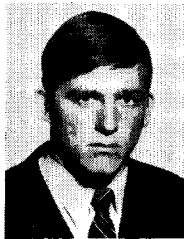
No. 70
Mike Healey

MICHAEL JOSEPH (Mike) HEALEY . . . Defensive tackle . . . 6-2 . . . 227 . . . Senior . . . 21 years old . . . One letter . . . Jacksonville . . . Starting tackle . . . Has grown his way from 6-1, 185-pound high school halfback into a tackle's job . . . Has good speed and quickness and has steadily improved since early last season, seeing much action in 1967 and starting twice.



No. 71
Jim Hadley

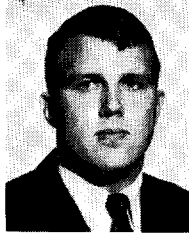
JAMES FREDERICK (Jim) HADLEY . . . Defensive tackle . . . 6-6 . . . 239 . . . Junior . . . 20 years old . . . One letter . . . Tampa . . . Seems to have overcome injury bug which slowed him so much early in career . . . Had excellent spring to follow up strong showing late last season . . . Strongest man on Gator team, has amazing speed for his size, also . . . Could become a stout all-star candidate in fall . . . Hobby is dancing . . . Played for Coach Holland Aplin at Tampa Robinson.



No. 74
Jack Youngblood

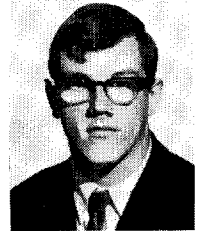
HERBERT JACKSON (Jack) YOUNGBLOOD . . . Defensive tackle . . . 6-5 . . . 228 . . . Sophomore . . . 19 years old . . . Monticello . . . Tried first at offensive tackle and moved in mid-spring to defense . . . Excellent potential and should see much action in fall . . . Strong leg, he can kick 50-yard field goals at times and kicks off into end zone . . . Played linebacker for Coach Brent Hall at Monticello.

No. 72
Terry Morris

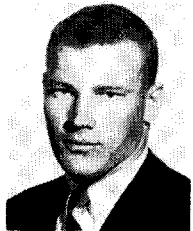


TERRY EUGENE (Terry) MORRIS . . . Offensive tackle . . . 6-2 . . . 227 . . . Senior . . . 21 years old . . . Two letters . . . Panama City . . . After almost two years as a starter he lost job to soph Jim Kiley in spring . . . Should be good battle in fall for starting role . . . Dislocated shoulder was spring problem . . . Average speed, good power . . . Played for Coach Len Register at Panama City Bay.

No. 75
Bob Stephens

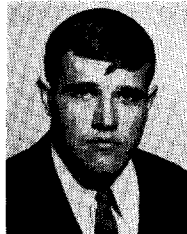


ROBERT LOUIS (Bob) STEPHENS . . . Offensive guard . . . 6-3 . . . 219 . . . Sophomore . . . 19 years old . . . Sarasota . . . Has potential to help Gator offensive line next fall . . . Good speed, needs only experience and maturity to fit into line picture . . . Played for Coach Charles Cleland at Sarasota High.



No. 73
Mike Field

MICHAEL SCOTT (Mike) FIELD . . . Offensive tackle . . . 6-3 . . . 216 . . . Sophomore . . . 19 years old . . . Fort Lauderdale . . . Converted from high school position of end . . . Could see action at tight end, in a pinch, and saw spring work at this spot . . . Good speed for his size and will fit into picture as he gains experience . . . Played for Coach John Lanier at Fort Lauderdale North-east.



No. 76
Jim Kiley

JAMES MICHAEL (Jim) KILEY . . . Offensive tackle . . . 6-3 . . . 233 . . . Sophomore . . . 19 years old . . . Brandon . . . Finest offensive line prospect at Florida in some time, he took starting job away from two-year vet Terry Morris in spring . . . Quickness and strength are his strong suits . . . Faces tough battle for starting spot from Morris, but will see extensive duty regardless . . . Played for ex-Gator quarterback Wayne Williamson at Brandon.



No. 77
Guy Dennis

GUY DURELL (Guy) DENNIS . . . Offensive guard-tackle . . . 6-2 . . . 252 . . . Senior . . . 21 years old . . . Two letters . . . Walnut Hill . . . Pre-season all-America . . . SEC all-soph team two years ago, unanimous all-SEC choice last year and on this year's pre-season all-conference team . . . Voted best offensive lineman in SEC in coaches' poll . . . Finest offensive lineman in Florida history, he combines good speed with strength and quickness . . . Hard-working farm boy who is determined and easy to coach . . . He lives in Walnut Hill, Fla., gets his mail in Atmore, Alabama . . . Played for Coach Joe Latham at Ward High.



No. 80
Gene Peek

EUGENE GOODBRED (Gene) PEEK, III . . . Split end . . . 6-3 . . . 185 . . . Senior . . . 22 years old . . . One letter . . . Ocala . . . Has played tight end, split end and flanker during his career . . . Steady, dependable receiver who has good hands, seldom drops a pass . . . Caught three for 28 yards in 1967, two of these in the clutch against Georgia on late drives last year . . . Starts fall as first team split end . . . Father is chairman of State Board of Health . . . Played for Coach Bill Caton at Ocala, younger brother David is Baby Gator end.

No. 78
Skip Amelung



FRANK ALBERT (Skip) AMELUNG . . . Offensive tackle . . . 6-2 . . . 231 . . . Junior . . . 20 years old . . . One letter . . . starter as soph last year at left tackle, most improved veteran in spring . . . Played end in high school, has good speed . . . Noted prep swimmer, twice named to high school all-America swimming team . . . Played for Coach Duke Maltby at Fort Lauderdale High.

No. 81
Britt Skrivanek



BRITT EDWARD (Britt) SKRIVANEK . . . Defensive end . . . 6-1 . . . 196 . . . Junior . . . 20 years old . . . One letter . . . Panama City . . . All-SEC sophomore team choice after starting 10 straight games last year for Gators . . . Very quick, runs 40 in 4.8 and is a head-hunter . . . Great admirer of Jack Dempsey and other noted boxers . . . Played for Coach Ted Cooper at Panama City Rutherford High.



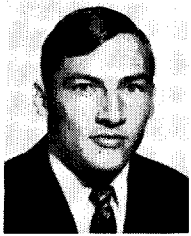
No. 79
Wayne Griffith

TODD WAYNE (Wayne) GRIFFITH . . . Offensive tackle . . . 6-2 . . . 223 . . . Junior . . . 20 years old . . . One letter . . . Miami . . . Started three games last year as sophomore, played extensively . . . Backs up Amelung on left side . . . Average speed but good quickness . . . Played for Coach Gene Jupin at Miami Southwest.



No. 82
David Ghesquire

GEORGE DAVID (David) GHESQUIRE . . . Defensive end . . . 6-2 . . . 197 . . . Junior . . . 20 years old . . . One letter . . . Pensacola . . . Teams with Skrivanek to give Gators best pair of defensive ends they have had in five years . . . Very quick and fast, a most capable end . . . Name is pronounced "GUESS-QUIRE" . . . Played for Coach Jimmy Haynes at Pensacola.



No. 83
Ken Ratcliffe

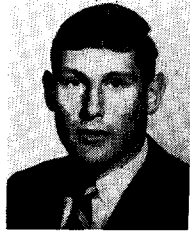
KENNETH DAIR (Ken) RATCLIFFE . . . Split end . . . 6-3 . . . 193 . . . Sophomore . . . 19 years old . . . Jacksonville . . . Impressed coaches with his ability to get open and hang on to the football in spring . . . How much he plays in fall depends on how fast he comes along . . . All-state end in high school . . . Played for Coach Ed Swartz at Jacksonville Paxon.



No. 87
Jim Yancey

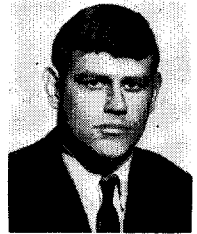
JAMES MITCHELL (Jim) YANCEY, JR. . . . Tight end . . . 6-4 . . . 194 . . . Sophomore . . . 19 years old . . . Miami . . . Rangy, average speed but good hands and runs his routes well . . . Needs experience . . . First son of a member of Florida's famed Golden Era teams to perform for Gators. His father, Monk Yancey, was a defensive back in late 1940s . . . Uncle is pro golfer Bert Yancey . . . Played for Coach Gene Gibson at Miami Palmetto.

No. 84
Steve Ely

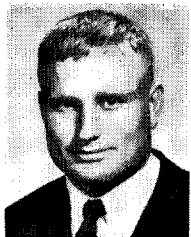


STEVEN A. (Steve) ELY . . . Defensive end . . . 6-0 . . . 185 . . . Senior . . . 21 years old . . . Tampa . . . Has speed and quickness, has been handicapped by lack of size but had fine spring . . . Won Walter J. Matherly Trophy for top scholastic average on team last year, a 3.76 in Engineering . . . Played for Coach John Burgess at Tampa Plant.

No. 88
Jim Yarbrough



JAMES KELLY (Jim) YARBROUGH . . . Tight end . . . 6-8 . . . 258 . . . Senior . . . 21 years old . . . Two letters . . . Arcadia . . . Has blossomed into a truly great tight end, an exceptional pass receiver and a strong, tough inside blocker . . . Caught 17 passes for 307 yards and two TDs last year, caught 10 for 103 yards and a TD as a sophomore . . . Everybody on Gator team calls him "Punjab" . . . Runs 40 in 5.0 flat, that's moving along for a man his size . . . He usually drags two or three tacklers many yards after catching passes . . . Pre-season all-SEC pick in coaches' poll . . . Played for Coach Bob Martin at Arcadia DeSoto.



No. 86
George Dean

GEORGE ROSS (George) DEAN . . . Tight end . . . 6-3 . . . 229 . . . Senior . . . 21 years old . . . Two letters . . . Has been Gator starter at middle guard, defensive end and was moved to tight end in spring, winding up No. 2 and doing a creditable job . . . Has all the assets to do a good job, size, speed and strength . . . Played for Coach Holland Aplin at Tampa Robinson.



No. 89
Paul Hughes

PAUL STEPHEN (Paul) HUGHES . . . Defensive end . . . 6-5 . . . 197 . . . Sophomore . . . 19 years old . . . Melbourne . . . Came along fast in spring, winding up as No. 2 right defensive end despite missing final week with dislocated elbow . . . Could be one of the real sophomore surprises on team, having all the necessary equipment to be a standout end . . . Played for Coach Byrd Whigham at Melbourne.

1968 ADVANCE ALL-SOUTHEASTERN CONFERENCE POLL

(Poll Conducted by the Birmingham News)

	1	2	3	4	5	6	7	8	9	Tot.
1. Alabama	5	—	—	4	—	—	—	—	—	69
2. Florida	4	1	1	2	1	—	—	—	—	68
3. Louisiana State	1	2	4	—	1	1	—	—	—	62
4. Tennessee	—	3	3	2	—	1	—	—	—	61
5. Ole Miss	—	2	—	—	4	3	—	—	—	48
6. Georgia	—	1	1	1	2	2	2	—	—	45
7. Auburn	—	1	1	1	2	2	1	1	—	44
8. Kentucky	—	—	—	—	—	1	5	2	1	24
9. Vanderbilt	—	—	—	—	—	—	1	4	4	15
10. Mississippi State	—	—	—	—	—	—	1	3	5	14

(Points awarded on basis of nine for first place, eight for second, etc. Team could not rate itself.)

ALL-SEC OFFENSE

E—JIM YARBROUGH (FLA.)
 T—GUY DENNIS (FLA.)
 G—Charles Rosenfelder (Tenn.)
 C—Steve Ernst (Vanderbilt)
 G—Alvin Samples (Alabama)
 T—Bill Fortier (LSU)
 E—Tim Christian (Auburn)
 B—Loran Carter (Auburn)
 B—LARRY SMITH (FLA.)
 B—Dickie Lyons (Kentucky)
 B—Steve Hindman (Ole Miss)

ALL-SEC DEFENSE

E—Mike Ford (Alabama)
 T—Bill Stanfill (Georgia)
 G—Bill McDonald (Vanderbilt)
 T—Claude Herard (Ole Miss)
 E—Jeff Van Note (Kentucky)
 LB—Steve Kiner (Tenn.)
 LB—Bob Childs (Alabama)
 SB—Jim Weatherford (Tenn.)
 SB—Jake Scott (Georgia)
 S—Buddy McClinton (Auburn)
 LB—Mike Hall (Alabama)

SEC'S BEST

*Most Valuable—LARRY SMITH (FLA.)
 Offensive End—Tim Christian (Auburn)
 Defensive End—Mike Ford (Ala.)
 Offensive Lineman—GUY DENNIS (FLA.)
 Defensive Lineman—Bill Stanfill (Ga.)
 *Running Back—LARRY SMITH (FLA.)
 Punter—Eddie Ray (LSU)
 Blocking Back—LARRY SMITH (FLA.)
 Passer—Loren Carter (Auburn)
 Placekicker—Karl Kremser
 Sideback—Jim Weatherford (Tenn.)
 Linebacker—Steve Kiner (Tenn.) (Tenn.)
 Safety—Buddy McClinton (Auburn)

ALTERNATE TEAM

E—Tommy Morel (LSU)
 T—Jim Farmer (Ole Miss)
 G—Tony Russell (LSU)
 C—Tom Banks (Auburn)
 G—Skip Jedrigan (Ole Miss)
 T—Howard Bucky (Auburn)
 E—Ken DeLong (Tenn.)
 B—LARRY RENTZ (FLA.)
 B—Richmond Flowers (Tenn.)
 B—Tommy Allen (LSU)
 B—Tommy Wade (Alabama)

ALTERNATE TEAM

E—Vic Dingus (Tenn.)
 T—Dick Palmer (Kentucky)
 G—BILL DORSEY (FLA.)
 T—Carlos Rabb (LSU)
 E—Hap Farber (Ole Miss)
 LB—Mike Kolen (Auburn)
 LB—Chip Healey (Vanderbilt)
 LB—Frank Trapp (Ole Miss)
 SB—STEVE TANNEN (FLA.)
 SB—Glenn Cannon (Ole Miss)
 S—Bill Young (Tenn.)

SECOND BEST

Lyons (Kentucky)
 YARBROUGH (FLA.)
 Jeff Van Note (Kentucky)
 Charles Rosenfelder (Tenn.)
 Frank Trapp (Ole Miss)
 Dickie Lyons (Kentucky)
 Spike Jones (Georgia)
 Richard Pickrens (Tenn.)
 LARRY RENTZ (FLA.)
 John Riley (Auburn)
 Bob Childs (Alabama)
 STEVE TANNEN (FLA.)
 Jake Scott (Georgia)
 *Second Year in a Row.

IT'S HISTORY



Florida's Football History

ALL TIME SOUTHEASTERN CONFERENCE STANDINGS (CONFERENCE GAMES ONLY)

Team	Games	Won-Lost-Tied
1 Alabama	236	151- 66-19
2 Tennessee	207	130- 64-13
3 Mississippi	195	114- 68-13
4 LSU	215	115- 84-16
5 Georgia	204	102- 93- 9
6 Auburn	219	99-108-12
7 FLORIDA	203	79-113-11
8 Mississippi State	206	74-122-10
9 Vanderbilt	215	70-130-15
10 Kentucky	197	66-119-12

RAY GRAVES' SEC CHART (8 years)

1 Alabama	57	49- 6-2
2 Mississippi	53	37-12-4
3 FLORIDA	49	32-16-1
4 LSU	49	30-16-3
5 Auburn	51	29-23-0
6 Tennessee	55	27-24-4
7 Georgia	48	25-22-1
8 Kentucky	50	16-31-3
9 Mississippi State	51	10-38-3
10 Vanderbilt	52	4-45-3

GRAVES VS. CURRENT SEC TEAMS

Alabama 1-1, Mississippi 2-0, LSU 4-4, Auburn 3-5, Georgia 6-2, Mississippi State 4-1-1, Vanderbilt 6-0, Kentucky 1-0, Tennessee 0-0.

GRAVES RECORD 1960-67

	G	W	L	T	PCT.
Conference Games	49	32	16	1	.667
Non Conference Games	31	20	10	1	.667
Bowl Games	4	3	1	0	.750
Total	84	55	27	2	.671

FLORIDA YEAR-BY-YEAR RANK IN SEC STANDINGS

1933-7*	1942-8*	1952-6	1962-5
1934-6	1943-No Team	1953-6	1963-7
1935-10	1944-9	1954-3*	1964-2*
1936-10	1945-8*	1955-8	1965-3
1937-8	1946-11	1956-3	1966-2
1938-6*	1947-9	1957-3*	1967-3*
1939-8	1948-9*	1958-7*	
1940-8*	1949-10*	1959-7	
1941-10	1950-8	1960-2	
—Tie	1951-6	1961-4	

1906
Coach: Jack Forsythe

Fla.	6				
16—Gainesville AC	6				
3—Mercer	27				
6—Rollins	0				
19—Jax AC	0				
2—Savannah AC	27				
10—Athens AC	0				
0—Rollins	6				
39—Jax AC	0				
G	W	L	T	PT	OP
8	5	3	0	95	66

1907
Coach: Jack Forsythe

Fla.	0				
6—Columbia AC	0				
0—Mercer	6				
21—Jax AC	0				
9—Rollins	4				
17—Jax AC	0				
0—Rollins	0				
G	W	L	T	PT	OP
6	4	1	1	53	10

1908
Coach: Jack Forsythe

Fla.	0				
0—Mercer	24				
4—Jax AC	0				
37—Gainesville AC	5				
0—Rollins	6				
6—Columbia College	0				
6—Stetson	5				
37—Jax	0				
0—Stetson	0				
G	W	L	T	PT	OP
8	5	2	1	90	40

1909
Coach: G. E. Pyle

Fla.	0				
5—Gainesville AC	0				
14—Rollins	0				
0—Stetson	26				
28—Rollins	3				
11—Olympics	0				
5—Stetson	5				
28—Olympics	0				
28—Tallahassee AC	0				
G	W	L	T	PT	OP
8	6	1	1	117	34

1910
Coach: G. E. Pyle

Fla.	0				
23—Gainesville Gds.	0				
0—Mercer	13				
52—Georgia A & M	0				
6—Citadel	2				
38—Rollins	0				
34—Col. Charleston	0				
33—Columbia College	0				
G	W	L	T	PT	OP
7	6	1	0	186	15

1911
Coach: G. E. Pyle

Fla.	0				
15—Citadel	3				
6—South Carolina	6				
6—Clemson	5				
9—Columbia College	0				
27—Stetson	0				
21—Col. Charleston	0				
G	W	L	T	PT	OP
6	5	0	1	84	14

1912
Coach: G. E. Pyle

Fla.	27				
13—Auburn	6				
10—South Carolina	6				
7—Georgia Tech	14				
78—Col. Charleston	0				
23—Stetson	7				
0—Mercer	0				
44—Tampa AC	0				
28—Vedado Clb.	0				
G	W	L	T	PT	OP
8	5	2	1	203	54

1913
Coach: G. E. Pyle

Fla.	0				
144—Southern	0				
0—Auburn	55				
39—Maryville	0				
3—Georgia Tech	13				
0—South Carolina	13				
18—Citadel	13				
24—Mercer	0				
G	W	L	T	PT	OP
7	4	3	0	228	94

1914
Coach: Charles McCoy

Fla.	0				
0—Auburn	20				
36—Kings College	0				
0—Sewanee	26				
59—Southern	0				
36—Wolford	0				
7—Citadel	0				
14—Mercer	0				
G	W	L	T	PT	OP
7	5	2	0	152	46

1915
Coach: Charles McCoy

Fla.	7				
0—Auburn	7				
0—Sewanee	0				
45—Southern	0				
0—Georgia	39				
6—Citadel	0				
14—Tulane	7				
34—Mercer	7				
G	W	L	T	PT	OP
7	4	3	0	99	67

1916
Coach: Charles McCoy

Fla.	21				
0—Georgia	16				
0—Alabama	16				
0—Tennessee	24				
0—Auburn	20				
3—Indiana	14				
G	W	L	T	PT	OP
5	0	5	0	3	95

1917
Coach: A. L. Busser

Fla.	13				
21—South Carolina	52				
0—Tulane	7				
19—Southern	68				
0—Auburn	55				
7—Clemson	52				
0—Kentucky	52				
G	W	L	T	PT	OP
6	2	4	0	47	247

1918
Coach: A. L. Busser

Fla.	W	L	T	PT	OP
2—Camp Johnson	14				
G	0	1	0	2	14

1919
Coach: A. L. Busser

Fla.	W	L	T	PT	OP
33—Georgia A & M	2				
48—Mercer	0				
0—Georgia	16				
0—Southern	7				
2—Tulane	14				
54—Stetson	0				
13—South Carolina	0				
14—Oglethorpe	7				
G	5	3	0	174	46

1920
Coach: William Kline

Fla.	W	L	T	PT	OP
21—Newberry	0				
13—Southern	0				
30—Mercer	0				
0—Tulane	14				
26—Stetson	0				
0—Georgia	56				
21—Stetson	0				
0—Oglethorpe	21				
1—Rollins	0				
(Forfeit)					
G	6	3	0	112	91

1921
Coach: William Kline

Fla.	W	L	T	PT	OP
6—U. S. Infantry	0				
33—Rollins	0				
0—Carlsrom Fly.	19				
7—Mercer	0				
0—Tennessee	9				
34—Howard	7				
7—South Carolina	2				
9—Alabama	7				
7—Mississippi College	3				
21—Oglethorpe	14				
10—North Carolina	14				
G	7	3	2	134	61

1922
Coach: William Kline

Fla.	W	L	T	PT	OP
6—Furman	7				
19—Rollins	0				
14—American Legion	0				
57—Howard College	0				
12—Oglethorpe	0				
47—Clemson	14				
0—Harvard	24				
27—Tulane	6				
58—Mississippi College	0				
G	7	2	0	240	51

1923
Coach: J. A. VanFleet

Fla.	W	L	T	PT	OP
0—Army	20				
7—Georgia Tech	7				
28—Rollins	0				
16—Wake Forest	7				
19—Mercer	7				
27—Stetson	0				
53—Southern	0				
13—Mississippi State	13				
16—Alabama	6				
G	6	1	2	179	60

1924
Coach: J. A. VanFleet

Fla.	W	L	T	PT	OP
77—Rollins	0				
7—Georgia Tech	7				
34—Wake Forest	0				
7—Texas	7				
27—Southern	0				
7—Army	14				
0—Mercer	10				
27—Mississippi State	0				
10—Drake	0				
16—Washington and Lee	6				
G	6	2	2	212	44

1925
Coach: H. L. Sebring

Fla.	W	L	T	PT	OP
24—Mercer	0				
9—Southern	0				
22—Hampden-Sydney	6				
7—Georgia Tech	23				
24—Wake Forest	3				
65—Rollins	0				
42—Clemson	0				
0—Alabama	34				
12—Mississippi State	0				
17—Washington and Lee	14				
G	8	2	0	222	80

1926
Coach: H. L. Sebring

Fla.	W	L	T	PT	OP
16—Southern	0				
6—Chicago	12				
7—Mississippi	12				
3—Mercer	7				
13—Kentucky	18				
9—Georgia	32				
33—Clemson	0				
0—Alabama	49				
0—Hampden-Sydney	0				
7—Washington and Lee	7				
G	2	6	2	94	137

1927
Coach: H. L. Sebring

Fla.	W	L	T	PT	OP
26—Southern	7				
0—Davidson	12				
33—Auburn	6				
27—Kentucky	6				
6—N. C. State	12				
32—Mercer	6				
0—Georgia	28				
13—Alabama	6				
20—Washington and Lee	7				
7—Maryland	6				
G	7	3	0	164	96

1928
Coach: Charles Bachman

Fla.	W	L	T	PT	OP
26—Southern	0				
27—Auburn	0				
73—Mercer	0				
14—N. C. State	7				
71—Sewanee	6				
26—Georgia	6				
27—Clemson	6				
60—Washington and Lee	6				
12—Tennessee	13				
G	8	1	0	336	44

1929
Coach: Charles Bachman

Fla.	W	L	T	PT	OP
54—Southern	0				
18—Va. M. I.	7				
19—Auburn	0				
6—Georgia Tech	19				
18—Georgia	6				
0—Harvard	14				
13—Clemson	7				
20—South Carolina	7				
25—Washington and Lee	7				
20—Oregon	6				
G	8	2	0	193	73

1930
Coach: Charles Bachman

Fla.	W	L	T	PT	OP
45—Southern	7				
27—N. C. State	0				
7—Auburn	0				
19—Chicago	14				
13—Furman	0				
0—Georgia	20				
0—Alabama	0				
27—Clemson	7				
55—Georgia Tech	13				
6—Tennessee	13				
G	6	3	1	199	61

1931
Coach: Charles Bachman

Fla.	W	L	T	PT	OP
35—N. C. State	0				
0—North Carolina	33				
12—Syracuse	12				
13—Auburn	33				
6—Georgia	41				
0—Alabama	6				
6—South Carolina	23				
0—Georgia Tech	13				
0—UCLA	7				
2—Kentucky	7				
G	2	6	2	74	168

1932
Coach: Charles Bachman

Fla.	W	L	T	PT	OP
19—Sewanee	0				
27—Citadel	7				
6—N. C. State	17				
12—Georgia	33				
13—North Carolina	18				
6—Auburn	21				
0—Georgia Tech	6				
13—Tennessee	32				
12—UCLA	2				
G	3	6	0	108	136

1933
Coach: D. K. Stanley

Fla.	W	L	T	PT	OP
28—Stetson	0				
31—Sewanee	0				
0—N. C. State	0				
9—North Carolina	0				
5—Tennessee	13				
0—Georgia	14				
7—Georgia Tech	19				
14—Auburn	7				
19—Maryland	0				
G	5	3	1	114	53

1934
Coach: D. K. Stanley

Fla.	W	L	T	PT	OP
13—Rollins	2				
20—VPI	13				
12—Tulane	28				
14—N. C. State	0				
0—Maryland	21				
0—Georgia	14				
13—Mississippi	13				
14—Auburn	7				
13—Georgia Tech	12				
14—Stetson	0				
G	6	3	1	113	110

1935
Coach: D. K. Stanley

Fla.	W	L	T	PT	OP
34—Stetson	0				
7—Tulane	19				
6—Mississippi	27				
6—Maryland	20				
0—Georgia	7				
6—Kentucky	15				
20—Sewanee	0				
6—Georgia Tech	39				
6—Auburn	27				
22—South Carolina	0				
G	3	7	0	113	154

1936
Coach: Josh Cody

Fla.	W	L	T	PT	OP
20—Citadel	14				
0—South Carolina	7				
32—Stetson	0				
0—Kentucky	7				
7—Maryland	6				
8—Georgia	26				
18—Sewanee	7				
14—Georgia Tech	38				
0—Auburn	13				
0—Mississippi State	7				
G	4	6	0	99	125

1937
Coach: Josh Cody

Fla.	W	L	T	PT	OP
0—LSU	19				
18—Stetson	0				
6—Temple	7				
21—Sewanee	0				
13—Mississippi State	14				
7—Maryland	13				
6—Georgia	0				
9—Clemson	10				
0—Georgia Tech	12				
0—Auburn	14				
6—Kentucky	0				
G	4				

1939
Coach: Josh Cody

Fla.					
21--Stetson					0
0--Texas					12
0--Mississippi State					14
7--Boston College					0
7--Tampa					0
14--Maryland					0
0--South Carolina					6
2--Georgia					6
13--Miami					0
7--Georgia Tech					21
7--Auburn					7
G	W	L	T	PT	OP
11	5	5	1	78	66

1945
Coach: Thomas J. Lieb

Fla.					
31--Iniantry, 63rd					2
26--Mississippi					13
6--Tulane					6
0--Vanderbilt					7
6--Miami					7
45--So. Western La.					0
0--Auburn					19
0--Georgia					34
41--Presbyterian					0
0--US Amphibs					12
G	W	L	T	PT	OP
10	4	5	1	155	100

1950
Coach: Bob Woodruff

Fla.					
7--Citadel					3
27--Duquesne					14
13--Georgia Tech					16
27--Auburn					7
31--Vanderbilt					27
19--Furman					7
6--Kentucky					40
0--Georgia					6
14--Miami					20
13--Alabama					41
G	W	L	T	PT	OP
10	5	5	0	157	181

1955
Coach: Bob Woodruff

Fla.					
20--Mississippi State					14
7--Georgia Tech					14
0--Auburn					13
28--George Washington					0
18--L. S. U.					14
7--Kentucky					10
19--Georgia					13
0--Tennessee					20
6--Vanderbilt					21
6--Miami					7
G	W	L	T	PT	OP
10	4	6	0	111	126

1940
Coach: Thomas J. Lieb

Fla.					
7--Mississippi State					27
23--Tampa					0
0--Villanova					28
19--Maryland					0
0--Tennessee					14
18--Georgia					13
46--Miami					6
16--Georgia Tech					7
7--Auburn					20
0--Texas					26
G	W	L	T	PT	OP
10	5	5	0	136	141

1946
Coach: Raymond B. Wolf

Fla.					
7--Mississippi					13
13--Tulane					27
0--Vanderbilt					20
13--Miami					20
19--North Carolina					40
14--Georgia					33
20--Villanova					27
6--N. C. State					37
12--Auburn					47
G	W	L	T	PT	OP
9	0	9	0	104	264

1951
Coach: Bob Woodruff

Fla.					
13--Wyoming					0
27--Citadel					7
0--Georgia Tech					27
40--Loyola					7
13--Auburn					14
33--Vanderbilt					13
6--Kentucky					14
6--Georgia					21
6--Miami					21
30--Alabama					21
G	W	L	T	PT	OP
10	5	5	0	174	131

1956
Coach: Bob Woodruff

Fla.					
26--Mississippi State					0
20--Clemson					20
8--Kentucky					17
7--Rice					0
21--Vanderbilt					7
21--L. S. U.					6
20--Auburn					0
28--Georgia					0
0--Georgia Tech					28
7--Miami					20
G	W	L	T	PT	OP
10	6	3	1	158	98

1941
Coach: Thomas J. Lieb

Fla.					
26--Randolph Macon					0
0--Mississippi State					6
46--Tampa					6
0--Villanova					6
12--Maryland					13
7--LSU					10
3--Georgia					19
14--Miami					0
14--Georgia Tech					7
27--UCLA					30
G	W	L	T	PT	OP
10	4	6	0	149	97

1947
Coach: Raymond B. Wolf

Fla.					
6--Mississippi					14
12--N. Texas State					20
14--Auburn					20
7--N. C. State					6
7--North Carolina					35
34--Furman					7
6--Georgia					34
7--Tulane					7
7--Miami					6
25--Kansas State					7
G	W	L	T	PT	OP
10	4	5	1	125	156

1952
Coach: Bob Woodruff

Fla.					
33--Stetson					6
14--Georgia Tech					17
33--Citadel					0
54--Clemson					13
13--Vanderbilt					20
30--Georgia					0
31--Auburn					21
12--Tennessee					26
43--Miami					6
27--Kentucky					0
14--Tulsa					13
(Gator Bowl)					
G	W	L	T	PT	OP
11	8	3	0	304	122

1957
Coach: Bob Woodruff

Fla.					
27--Wake Forest					0
14--Kentucky					7
20--Mississippi State					29
22--L. S. U.					14
0--Auburn					13
22--Georgia					0
14--Vanderbilt					7
0--Georgia Tech					0
14--Miami					0
G	W	L	T	PT	OP
9	6	2	1	133	70

1942
Coach: Thomas J. Lieb

Fla.					
7--Jax NAS					20
45--Randolph Macon					0
26--Tampa					6
6--Auburn					0
3--Villanova					13
12--Mississippi State					26
0--Maryland					13
0--Georgia					75
0--Miami					12
7--Georgia Tech					20
G	W	L	T	PT	OP
10	3	7	0	106	185

1948
Coach: Raymond B. Wolf

Fla.					
0--Mississippi					14
28--Tulsa					14
16--Auburn					9
41--Rollins					12
7--Georgia Tech					42
39--Furman					14
12--Georgia					20
15--Kentucky					34
27--Miami					13
28--Alabama					34
G	W	L	T	PT	OP
10	5	5	0	213	206

1953
Coach: Bob Woodruff

Fla.					
16--Rice					20
0--Georgia Tech					0
13--Kentucky					26
45--Stetson					0
60--Citadel					0
21--Louisiana State					21
7--Auburn					16
21--Georgia					7
7--Tennessee					9
10--Miami					14
G	W	L	T	PT	OP
10	3	5	2	200	113

1958
Coach: Bob Woodruff

Fla.					
34--Tulane					14
7--Mississippi State					14
21--U. C. L. A.					14
6--Vanderbilt					6
7--L. S. U.					10
5--Auburn					6
7--Georgia					6
51--Arkansas State					7
21--Florida State					7
12--Miami					9
3--Mississippi					7
(Gator Bowl)					
G	W	L	T	PT	OP
11	6	4	1	174	98

1944
Coach: Thomas J. Lieb

Fla.					
36--Mayport NAS					6
6--Mississippi					26
26--Jax NAS					20
0--Tennessee					40
13--Maryland					6
13--Miami					0
12--Georgia					38
G	W	L	T	PT	OP
7	4	3	0	106	136

1949
Coach: Raymond B. Wolf

Fla.					
13--Citadel					0
40--Tulsa					7
14--Auburn					14
17--Vanderbilt					22
14--Georgia Tech					43
28--Furman					27
28--Georgia					7
0--Kentucky					35
13--Miami					28
13--Alabama					35
G	W	L	T	PT	OP
10	4	5	1	180	218

1954
Coach: Bob Woodruff

Fla.					
14--Rice					34
13--Georgia Tech					12
19--Auburn					13
7--Clemson					14
21--Kentucky					7
7--Louisiana State					20
7--Mississippi State					0
13--Georgia					14
14--Tennessee					0
0--Miami					14
G	W	L	T	PT	OP
10	5	5	0	115	128

1959
Coach: Bob Woodruff

Fla.					
30--Tulane					0
14--Mississippi State					13
55--Virginia					10
13--Rice					13
6--Vanderbilt					13
0--L. S. U.					9
0--Auburn					6
10--Georgia					21
18--Florida State					3
23--Miami					14
G	W	L	T	PT	OP
10	5	4	1	169	105

1960
Coach: Ray Graves

Fla.	George Washington	7			
30	Florida State	0			
18	Georgia Tech	17			
0	Rice	10			
12	Vanderbilt	0			
13	L. S. U.	10			
7	Auburn	10			
22	Georgia	14			
21	Tulane	6			
18	Miami	0			
13	Baylor	12			
(Gator Bowl)					
G	W	L	T	PT	OP
11	9	2	0	156	86

1964
Coach: Ray Graves

Fla.	SMU	8			
16	Miss. State	13			
30	Ole Miss	14			
37	South Carolina	0			
14	Alabama	17			
14	Auburn	0			
7	Georgia	14			
7	FSU	16			
12	Miami	10			
20	LSU	6			
G	W	L	T	PT	OP
10	7	3	0	181	98

1961
Coach: Ray Graves

Fla.	Clemson	7			
3	Florida State	3			
14	Tulane	3			
10	Rice	19			
7	Vanderbilt	0			
0	L. S. U.	23			
0	Georgia Tech	20			
21	Georgia	14			
15	Auburn	32			
6	Miami	15			
G	W	L	T	PT	OP
10	4	5	1	97	146

1965
Coach: Ray Graves

Fla.	Northwestern	14			
13	Miss. State	18			
14	LSU	7			
17	Ole Miss	0			
28	N. C. State	6			
17	Auburn	28			
14	Georgia	10			
51	Tulane	13			
13	Miami	16			
30	FSU	17			
18	Missouri	20			
(Sugar Bowl)					
G	W	L	T	PT	OP
11	7	4	0	239	149

1962
Coach: Ray Graves

Fla.	Miss. State	9			
0	Georgia Tech	17			
21	Duke	28			
42	Texas A&M	6			
42	Vanderbilt	7			
0	LSU	23			
22	Auburn	3			
23	Georgia	15			
20	FSU	7			
15	Miami	17			
17	Penn State	7			
(Gator Bowl)					
G	W	L	T	PT	OP
11	7	4	0	205	132

1966
Coach: Ray Graves

Fla.	Northwestern	7			
43	Miss. State	7			
28	Miss. State	0			
13	Vanderbilt	19			
22	F.S.U.	10			
17	N. C. State	7			
28	L.S.U.	27			
30	Auburn	27			
10	Georgia	27			
31	Tulane	10			
16	Miami	21			
27	Georgia Tech	12			
(Orange Bowl)					
G	W	L	T	PT	OP
11	9	2	0	265	147

1963
Coach: Ray Graves

Fla.	Georgia Tech	9			
9	Miss. State	9			
35	Richmond	28			
10	Alabama	6			
21	Vanderbilt	0			
0	LSU	14			
0	Auburn	19			
21	Georgia	14			
27	Miami	21			
7	FSU	0			
G	W	L	T	PT	OP
10	6	3	1	130	119

1967
Coach: Ray Graves

Fla.	Illinois	0			
24	Miss. State	7			
6	L.S.U.	37			
35	Tulane	0			
27	Vanderbilt	22			
21	Auburn	24			
17	Georgia	16			
28	Kentucky	12			
16	F.S.U.	21			
13	Miami	20			
G	W	L	T	PT	OP
10	6	4	0	201	161

ALL-TIME OPPONENTS

Opponent	Games	Fla. W	Fla. L	Tied	First Game
Alabama	14	5	9	0	1916
American Legion	1	1	0	0	1922
Arkansas State	1	1	0	0	1958
Army	2	0	2	0	1923
Athens A. C.	1	1	0	0	1906
Auburn	44	17	25	2	1912
Baylor	1	1	0	0	1960
Boston College	2	1	1	0	1938
Camp Johnson	1	0	1	0	1918
Carlstrom Flyers	1	0	1	0	1921
Chicago	2	1	1	0	1926
The Citadel	12	12	0	0	1910
Clemson	13	9	3	1	1911
College of Charleston	3	3	0	0	1910
Columbia College	3	3	0	0	1907
Davidson	1	0	1	0	1924
Drake	1	1	0	0	1962
Duke	1	0	1	0	1950
Duquesne	1	1	0	0	1950
Florida State	10	7	2	1	1928
Furman	6	4	2	0	1958
Gainesville A. C.	3	3	0	0	1906
Gainesville Guards	1	1	0	0	1910
Georgia Washington	2	2	0	0	1955
Georgia	45	17	27	1	1915
Georgia A&M	2	2	0	0	1910
Georgia Tech	34	7	22	5	1912
Georgia Tech	2	1	0	1	1925
Hamden-Sydney	2	0	2	0	1922
Harvard	2	2	0	0	1921
Howard College	1	1	0	0	1967
Illinois	1	0	1	0	1916
Indiana	6	6	0	0	1906
Jacksonville A. C.	2	1	1	0	1942
Jax Naval Air Station	1	1	0	0	1947
Kansas State	18	6	12	0	1917
Kentucky	1	1	0	0	1914
Kings College	1	1	0	0	1937
LSU	17	7	9	1	1951
Loyola (L. A.)	1	1	0	0	1927
Maryland	12	7	5	0	1913
Maryville	1	1	0	0	1944
Mayport N. Air Station	1	1	0	0	1906
Mercer	17	10	6	1	1938
Miami	29	13	16	0	1926
Mississippi	11	3	7	1	1921
Mississippi College	2	1	0	1	1923
Mississippi State	22	10	10	2	1966
Missouri	1	0	1	0	1920
Newberry	1	1	0	0	1921
North Carolina	6	1	4	1	1927
N. C. State	11	7	3	1	1966
Northwestern	2	2	0	0	1947
North Texas State	1	0	1	0	1919
Oglethorpe	4	3	1	0	1909
Olympics	2	2	0	0	1929
Oregon	1	1	0	0	1962
Penn State	1	1	0	0	1945
Presbyterian	2	2	0	0	1941
Randolph Macon	5	1	4	1	1953
Rice	1	1	0	0	1963
Richmond	16	13	2	1	1906
Rollins	2	1	1	0	1906
Savannah A. C.	9	7	2	0	1914
Sewanee	1	1	0	0	1964
SMU	12	6	3	3	1911
South Carolina	14	13	1	0	1913
Southern	1	1	0	0	1945
Southwestern La.	19	15	2	2	1908
Stetson	1	0	1	0	1931
Syracuse	1	1	0	0	1909
Tallahassee A. C.	5	5	0	0	1938
Tampa	1	1	0	0	1912
Tampa A. C.	2	0	2	0	1937
Temple	1	1	1	0	1916
Tennessee	12	1	0	0	1962
Texas A & M	3	0	2	1	1924
Texas	17	9	6	2	1915
Tulane	3	3	0	0	1948
Tulsa	4	2	2	0	1931
U. C. L. A.	4	0	1	0	1945
U. S. Amphib. Navy	2	2	0	0	1921
U. S. Infantry	17	10	6	1	1945
Vanderbilt	1	1	0	0	1912
Vedada Club (Havana)	1	1	0	0	1940
Villanova	4	0	1	0	1959
Virginia	1	1	0	0	1929
Va. Military Institute	1	1	0	0	1934
V. P. I.	4	4	0	0	1923
Wake Forest	4	5	0	1	1924
Washington & Lee	6	1	0	0	1914
Wofford	1	1	0	0	1951
Wyoming	1	1	0	0	1951
Total	540	292	219	30	

Through The Years

GATOR RECORDS

Year	W	L	T	Pts.	O. Pts.	Coach	Captain
1906	5	3	0	95	66	Jack Forsythe	T. G. Hancock
1907	4	1	1	53	10	Jack Forsythe	Roy W. Corbett
1908	5	2	1	90	40	Jack Forsythe	
1909	6	1	1	117	14	Wm. W. (Gric) Gibbs	
1910	6	1	0	186	35	G. E. Pyle	Ralph Rader
1911	5	0	1	84	15	G. E. Pyle	Dummy Taylor
1912	5	2	1	203	14	G. E. Pyle	N. S. Storter
1913	4	3	0	228	54	G. E. Pyle	Sam Buie
1914	5	2	0	152	46	G. E. Pyle	Louis Tenny
1915	4	3	0	99	67	Charles McCoy	John Sutton
1916	0	5	0	3	95	Charles McCoy	Puss Hancock
1917	2	4	0	47	247	A. L. Busser	A. A. Lotspeich
1918	0	1	0	2	14	A. L. Busser	Rex Farrior
1919	5	3	0	174	46	A. L. Busser	Arthur Fuller
1920	6	3	0	112	91	William Kline	S. A. B. Wilkinson
1921	6	3	2	134	61	William Kline	Gordon Clemons
1922	7	2	0	240	51	William Kline	J. Sparkman
1923	6	2	2	179	60	J. A. VanFleet	Paul Baker
1924	6	2	2	212	44	J. A. VanFleet	"Tootie" Perry
1925	8	2	0	222	80	H. L. Sebring	F. H. Duncan
1926	2	6	2	94	137	H. L. Sebring	Robbie Robinson
1927	7	3	0	164	96	H. L. Sebring	"Ark" Newton
1928	8	1	0	336	44	Charles Bachman	Edgar Jones
1929	8	2	0	193	73	Charles Bachman	Lamar Sarra
1930	6	3	1	199	61	Charles Bachman	Bill Middlekauf
1931	2	6	2	74	168	Charles Bachman	Ernest J. Bowyer
1932	3	6	0	108	136	Charles Bachman	Rainey Cawthon
1933	5	3	1	114	59	D. K. Stanley	L. R. Bethea
1934	6	3	1	113	110	D. K. Stanley	E. N. Barnell
1935	3	7	0	113	154	D. K. Stanley	Joe Jenkins
1936	4	6	0	99	125	Josh Cody	Sam Davis
1937	4	7	0	86	89	Josh Cody	Chuck Rogers
1938	4	6	1	112	149	Josh Cody	W. W. Chase, Jr.
1939	5	5	1	78	66	Josh Cody	Julian Lane
1940	5	5	0	136	141	Thomas J. Lieb	Walter Mayberry
1941	4	6	0	149	97	Thomas J. Lieb	Frank Kosciak
1942	3	7	0	106	185	Thomas J. Lieb	Clark Goff
1943	No Team	No Team	No Team	No Team	No Team	No Team	O'Neal Hill
1944	4	3	0	106	136	Thomas J. Lieb	Joe Graham
1945	4	5	1	155	100	Thomas J. Lieb	Hugo Miller
1946	0	9	0	104	264	Raymond B. Wolf	William Raborn
1947	4	5	1	125	156	Raymond B. Wolf	Charlie Fields
1948	5	5	0	213	206	Raymond B. Wolf	Fletcher Groves
1949	4	5	1	180	218	Raymond B. Wolf	Jimmy Kynes
1950	5	5	0	157	181	Bob Woodruff	Angus Williams
1951	5	5	0	174	131	Bob Woodruff	Jim French
1952	8	3	0	304	122	Bob Woodruff	Carroll McDonald
1953	3	5	2	200	113	Bob Woodruff	Bubba Ware
1954	5	5	0	115	128	Bob Woodruff	Charlie LaPradd
1955	4	6	0	111	126	Bob Woodruff	Jack O'Brien
1956	6	3	1	158	98	Bob Woodruff	Sonny May
1957	6	2	1	133	70	Bob Woodruff	Rick Casares
1958	6	4	1	174	98	Bob Woodruff	Jerry Bilyk
1959	5	4	1	169	105	Bob Woodruff	Larry Scott
1960	9	2	0	157	86	Ray Graves	Steve DeLaTorre
1961	4	5	1	97	145	Ray Graves	Ray Brown
1962	7	4	0	205	132	Ray Graves	John Barrow
1963	6	3	1	130	119	Ray Graves	Charlie Mitchell
1964	7	3	0	181	98	Ray Graves	Don Fleming
1965	7	4	0	239	149	Ray Graves	Dave Hudson
1966	9	2	0	265	147	Ray Graves	Bill Hood
1967	6	4	0	201	161	Ray Graves	Jim Beaver
							Lindy Infante
							Bruce Culpepper
							Jimmy Morgan
							Larry Dupree
							Bruce Bennett
							Larry Beckman
							Bill Carr
							Jerry Anderson
							Graham McKeel
							Wayne McCall
299	222	30		8958	6270		

TEAM RECORDS

SINGLE GAME

Most points: 144 (Florida Southern 0, 1913)
 Greatest victory margin: 144 (Florida Southern 0, 1913)
 Greatest defeat margin: 0-75 (Georgia, 1942)
 Most first downs: 32 (vs. Tulane, 1967)
 Most runs from scrimmage: 73 (Georgia Tech, 1954)
 Most first downs allowed: 28 by Kentucky, 1950
 Fewest first downs allowed: 2 by South Carolina, 1936
 Most yards rushing: 489 (vs. Citadel, 1953)
 Most yards passing: 343 (vs. Northwestern, 1966)
 Most yards net rushing and passing: 651 (484 rushing, 167 passing, vs. Mercer, 1928)
 Most yards allowed rushing: 357 (Georgia, 1942)
 Most yards allowed passing: 372 (Loyola, 1951)
 Most yards allowed rushing and passing: 593 (Georgia, 1942)
 Fewest yards allowed rushing: -1 (vs. Tulane, 1965)
 Fewest yards allowed passing: -1 (vs. Vanderbilt, 1958)
 Most passes attempted: 49 (vs. Miami, 1966)
 Most passes completed: 27 (vs. Auburn, 1966)
 Most passes intercepted by Florida: 6 (Clemson, 1952)
 Most punts by Florida: 23 (vs. Georgia Tech, 1938)

SINGLE SEASON

Highest scoring: 336 (9 games, 1928)
 Lowest scoring: 3 (5 games, 1916)
 Most wins: 9 (1960, 1966)
 Most losses: 9 (1946)
 Most first downs: 209 (1967)
 Most runs from scrimmage: 609 (11 games, 1952)
 Most yards net rushing: 2,388 (11 games, 1952)
 Most yards rushing and passing: 3673 (1967)
 Most passes attempted: 328 (1966)
 Most passes completed: 199 (1966)
 Most yards passing: 2242 (1966)
 Fewest passes had intercepted: 5 (1957)
 Most passes had intercepted: 22 (1940)
 Most TD passes: 17 (1966)
 Most punts by Florida: 110 (1937)

COMPOSITE RECORD OF ALL GATOR FOOTBALL COACHES

Period	Coach	Seasons	W	L	T	Pct.
1906-1908	Jack Forsythe	3	14	6	2	.636
1909-1913	G. E. Pyle	5	26	7	3	.788
1914-1916	Charles McCoy	3	9	10	0	.474
1917-1919	A. L. Busser	3	7	8	0	.467
1920-1922	William Kline	3	19	8	2	.704
1923-1924	Gen. VanFleet	2	12	3	4	.800
1925-1927	H. L. Sebring	3	17	11	2	.607
1928-1932	Charles Bachman	5	27	18	3	.600
1933-1935	D. K. Stanley	3	14	13	2	.519
1936-1939	Josh Cody	4	17	24	2	.415
1940-1955*	Tom Lieb	5	20	26	1	.435
1946-1949	Ray Wolf	4	13	24	2	.351
1950-1959	Bob Woodruff	10	53	42	6	.554
1960-	Ray Graves	8	55	27	2	.663
		61	299	222	30	.568

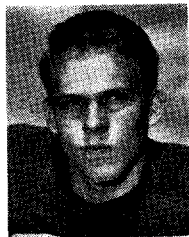
*No team in 1943.



MONTSDEOCA



ALLEN



TRAPP

Individual Career and Season Records

LONG DISTANCES

- Longest run from scrimmage: 91 (Herb McAnly vs. Sewanee, 1932)
- Longest TD pass: 80 (Richard Allen to Ray Brown vs. Tenn., 1954)
- Longest TD punt return: 96 (Hal Griffin vs. Miami, 1946)
- Longest TD kickoff return: 100 (Pat Reen vs. Miami, 1940)
- Longest TD intercepted pass: 100 (Jackie Simpson vs. Mississippi State, 1955 and Joe Brodsky, 1956)
- Longest punt: 92 (Ark Newton vs. Mississippi State, 1924)

SINGLE GAME

- Most runs from scrimmage: 31 (Larry Dupree vs. FSU, 1963)
- Most yards rushing: 218 (Leroy "Red" Bethea vs. Chicago, 1930)
- Most yards rushing and passing: 317 (Steve Spurrier vs. Auburn, 1965)
- Best rushing average (12 or more rushes): 11.5 (Leroy "Red" Bethea vs. Chicago, 1930)
- Most passes attempted: 49 (Steve Spurrier vs. Miami, 1966)
- Most passes completed: 27 (Steve Spurrier vs. Auburn, 1966)
- Most yards passing: 289 (Steve Spurrier vs. Auburn, 1965)
- Most yards returned for intercepted passes: 3 for 162 yards (Joe Brodsky vs. Mississippi State, 1956) good for two TD's*
- Most passes caught: 12 (Richard Trapp vs. Auburn, 1967)
- Most yards caught passes: 172 (Charles Casey vs. N. C. State, 1965)
- Most times punted: 23 (Bud Walton vs. Georgia Tech, 1938)
- Best punting average: (7 or more) 53.0 (Fred Montsdeoca vs. Alabama, 1949)
- Most field goals: 3 (Earle "Dummy" Taylor vs. Columbia College, 1911)

SINGLE SEASON

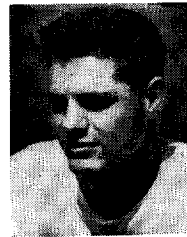
- Most points: 108 (Edgar Jones, 1925)
- Most runs from scrimmage: 217 (Walter Mayberry, 1937)
- Most yards rushing: 842 (Charlie Hunsinger, 1948)
- Most yards passing: 2012 (Steve Spurrier, 1966)
- Most yards running and passing: 2123 (Steve Spurrier, 1965)
- Best rushing average (75 or more runs): 7.3 (Charlie Hunsinger, 1948)
- Most passes attempted: 291 (Spurrier, 1966)
- Most passes completed: 179 (Spurrier, 1966)
- Best pass completion average (25 or more): .616 (Spurrier, 1966)
- Most TD passes thrown: 16 (Spurrier, 1966)
- Most passes caught: 63 (Richard Trapp, 1966)
- Most yards caught passes: 872 (Richard Trapp, 1966)
- Most TD passes caught: 8 (Casey, 1965)
- Most passes intercepted by: 6 (Walter Mayberry, 1937, Jimmy Dunn, 1957, and Bruce Bennett, 1963)
- Most yards returned pass interceptions: 5 for 244 (Joe Brodsky, 1956)*
- Most times punted: 83 (Bud Walton, 1938)
- Best punting average (50 or more): 44.8 (Bobby Joe Green, 54 in 1959)
- Best punting average (50 or more): 44.8 (Bobby Joe Green, 54 in 1959)
- Most punt returns: 41 (Wallace Brown, 1934. Average: 11.2)
- Best punt return average: 26.7 (Hal Griffin, 10 in 1947)** (National record for 10 or more)
- Most field goals: 8 (Earle "Dummy" Taylor, 1911)
- Most extra points: 27 (Wayne Barfield, 1966)
- Most fumbles recovered: 5 (Bob Flowers, 1950; Charles LaPradd, 1951)

*Led Nation.

**National Record.



DUNN



SIMPSON



BARFIELD

CAREER RECORDS

Most runs from scrimmage: 415 (Walter Mayberry, 1935-6-7)
 Most net yards rushing: 2,017 (Charlie Hunsinger, 1946-7-8-9)
 Best rushing average (350 or more runs): 5.8 (Charlie Hunsinger, 1946-7-8-9)
 Most yards rushing and passing: 5290 (Steve Spurrier, 1964-65,66)
 Most passes attempted: 692 (Spurrier, 1964-65-66)
 Most passes completed: 392 (Spurrier)
 Best pass completion average (150 or more): .566 (Spurrier)
 Most touchdown passes: 36 (Spurrier)
 Fewest passes had intercepted (300 or more passes): 15 (Haywood Sullivan, 1950-51)
 Most yards passing: 4848 (Spurrier)
 Most passes caught: 132 (Richard Trapp, 1965-66-67)
 Most yards caught passes: 1,783 (Richard Trapp, 1965-66-67)
 Most times punted: 173 (Fred Montsdeoca, 1948-49-50)
 Best punting average (100 or more): 42.9 (Bobby Joe Green 100, 1958-59)
 Best punt return average (25 or more): 18.6 (26/484) (Hal Griffin, 1946-47-48-49)
 Most field goals: 16 (Earle "Dummy" Taylor, 1908--9-10 11-12)
 Most extra points: 77 (Wayne Barfield, 1965-66-67)
 Most consecutive extra points: 52 (Wayne Barfield, 1965-66-67)*

TOTAL OFFENSE FOR CAREER

	Passing	Rushing	Total
Steve Spurrier (1964-65-66)	4848	442	5290
Tommy Harrison (1939-40-41)	1170	963	2133
Walter Mayberry (1936-37-38)	713	1306	2019
Chuck Hunsinger (1946-47-48-49)	0	2017	2017
Haywood Sullivan (1950-51)	2016	-24	1992
Tom Shannon (1962-64)	1766	137	1903

TOTAL OFFENSE FOR SEASON

	Passing	Rushing	Total
Steve Spurrier (1965)	1893	230	2123
Steve Spurrier (1966)	2012	66	2078
Larry Rentz (1967)	1031	194	1125
Tommy Harrison (1941)	679	428	1107
Haywood Sullivan (1950)	1134	-28	1106
Steve Spurrier (1964)	943	146	1089
Walter Mayberry (1937)	201	818	1019
Tom Shannon (1963)	956	12	968

RUSHING FOR CAREER

	No.	Yards
Chuck Hunsinger	391	2017
Larry Dupree (1962-64)	405	1725
Larry Smith (1966-67)	367	1496
Jackie Simpson (1953-54-55-56)	207	1310
Walter Mayberry	415	1306
Rick Casares (1951-52-53)	361	1163

RUSHING FOR SEASON

	No.	Yards
Chuck Hunsinger (1948)	116	842
Walter Mayberry (1937)	164	818
Chuck Hunsinger (1949)	122	774
Bobby Forbes (1947)	118	766
Larry Smith (1967)	205	754
Larry Dupree (1963)	189	745
Larry Smith (1966)	162	742

*National Record

1968--SOUTHEASTERN CONFERENCE FOOTBALL SCHEDULE--1968

*--Night

*--Friday Night

Weekend	SEPT. 21	SEPT. 28	OCT. 5	OCT. 12	OCT. 19	OCT. 26	NOV. 2	NOV. 9	NOV. 16	NOV. 23	NOV. 30
ALABAMA	VA. TECH * Birmingham	SOU. MISS. Mobile	OLE MISS. Jackson	VANDERBILT Tuscaloosa	TENNESSEE Knoxville	CLEMSON Tuscaloosa	MISS. STATE Tuscaloosa	L.S.U. Birmingham	MIAMI Miami		AUBURN Birmingham
AUBURN	S.M.U. Auburn	MISS. STATE Jackson	KENTUCKY * Lexington	CLEMSON Clemson	GA. TECH Birmingham	MIAMI Auburn	FLORIDA Gainesville	TENNESSEE * Birmingham	GEORGIA Auburn		ALABAMA Birmingham
FLORIDA	AIR FORCE Tampa	FLA. STATE Tallahassee	MISS. STATE Gainesville	TULANE Gainesville	N. CAROLINA Chapel Hill	VANDERBILT Nashville	AUBURN Gainesville	GEORGIA Jacksonville	KENTUCKY Lexington		MIAMI Gainesville
GEORGIA	TENNESSEE Knoxville	CLEMSON Athens	S. CAROLINA * Columbia	OLE MISS Athens	VANDERBILT Athens	KENTUCKY * Lexington	HOUSTON Athens	FLORIDA Jacksonville	AUBURN Auburn		GA. TECH Athens
KENTUCKY	MISSOURI Lexington	OLE MISS * Jackson	AUBURN * Lexington	OREGON ST. * Lexington	L.S.U. * Baton Rouge	GEORGIA * Lexington	W. VIRGINIA Morgantown	VANDERBILT Lexington	FLORIDA Lexington	TENNESSEE Knoxville	
L.S.U.	TEXAS A&M * Baton Rouge	RICE * Houston	BAYLOR * Baton Rouge	MIAMI # Miami	KENTUCKY * Baton Rouge	T.C.U. * Baton Rouge	OLE MISS * Baton Rouge	ALABAMA Birmingham	MISS. STATE * Baton Rouge	TULANE * New Orleans	
MISSISSIPPI	MEMPHIS ST. * Memphis	KENTUCKY * Jackson	ALABAMA Jackson	GEORGIA Athens	SOU. MISS. Oxford	HOUSTON Jackson	L.S.U. * Baton Rouge	CHATTANOOGA Oxford	TENNESSEE Knoxville		MISS. STATE Oxford
MISS. STATE	LA. TECH Starkville	AUBURN Jackson	FLORIDA Gainesville	SOU. MISS. Starkville	TEXAS TECH * Jackson	TAMPA * Tampa	ALABAMA Tuscaloosa	FLA. STATE Starkville	L.S.U. * Baton Rouge		OLE MISS Oxford
TENNESSEE	GEORGIA Knoxville	MEMPHIS ST. Knoxville	RICE * Houston	GA. TECH Atlanta	ALABAMA Knoxville		UCLA Knoxville	AUBURN * Birmingham	OLE MISS Knoxville	KENTUCKY Knoxville	VANDERBILT Nashville
VANDERBILT	V.M.I. * Nashville	ARMY West Point	N. CAROLINA * Nashville	ALABAMA Tuscaloosa	GEORGIA Athens	FLORIDA Nashville	TULANE Nashville	KENTUCKY Lexington		DAVIDSON Charlotte	TENNESSEE Nashville