



## 2015-16 GEORGIA LADY BULLDOGS GAME NOTES

Tray Littlefield, Assistant Sports Communications Director

1 Selig Circle, Athens, GA 30602

O: (706) 542-9342 | C: (205) 504-4566 | E: trayl@sports.uga.edu | @TrayLittlefield

@UGA\_WBB » @UGA\_WBB » GEORGIA WOMEN'S BASKETBALL

#COMMITTOTHEG

## TODAY'S MATCHUP

Stephen C. O'Connell Center | Gainesville, Fla. | 7 p.m. ET | SECN+

FLORIDA

VS

GEORGIA

14-2, 2-1 SEC  
#20 (AP)Amanda Butler  
167-114 (9th yr.)  
207-136 (11th yr.)  
FloridaGators.com15-16 Record  
RankingHead Coach  
Record at School  
Career Record  
Website12-4, 0-3 SEC  
NRJoni Taylor  
12-4 (1st yr.)  
12-4 (1st yr.)  
GeorgiaDogs.com

## INSIDE THE SERIES

Overall: Georgia leads, 51-15

In Athens: Georgia leads, 27-4

In Gainesville: Georgia leads, 22-10

Neutral Sites: Georgia leads, 2-1

Current Streak: Georgia, 1-0

Last Meeting: Georgia won, 52-45 (3/1/15) Gainesville

## #TWEETABLE

@UGA\_WBB has posted 20 wins or more in 32 of the past 36 seasons.

@UGA\_WBB's Tiaria Griffin is the current active career leader in the SEC in 3-pt. FGs made with 185.

@UGA\_WBB's Shacobia Barbee has one triple-double and was three assists and one rebound away from doing it twice more this season.

@UGA\_WBB's Merritt Hempe has four double-doubles this season. She had two in her previous three seasons.

## OPENING TIP

» Georgia plays a ranked opponent for the fourth-straight game when it travels to Gainesville to take on No. 20 Florida. This marks the first time in school history the Lady Bulldogs have opened SEC play with four-straight ranked opponents.

» The Lady Bulldogs rank third in the SEC (13th nationally) in scoring defense, holding opponents to 52.4 ppg. Georgia also ranks third in field-goal percentage defense (33.3 percent) and has held 15 of 16 opponents to 40 percent or below shooting.

» Georgia is one of the most unselfish teams in the nation, averaging 17.5 assists and just 13.3 turnovers per game -- a ratio that ranks first in the SEC and ninth in NCAA women's basketball. Senior point guard Marjorie Butler leads the league in assist-to-turnover ratio with 71 assists and 22 turnovers this season.

» UGA finished non-conference action with a 12-1 record, which tied for the third-best start by an SEC head coach in his or her first season at a program. Pokey Chatman (13-0, LSU in 2004-05) and Tom Collen (13-0, Arkansas in 2007-08) are the only two to have better starts through their first 13 games.

» Senior guard Shacobia Barbee leads the Lady Bulldogs in scoring in conference play, averaging a double-double with 11.7 points and 11.7 rebounds per game. Barbee ranks in the top-5 in the SEC in rebounds (3rd with 9.3 per game), steals (4th with 2.5 per game) and assists (5th with 4.8 per game).

## GEORGIA'S POSSIBLE STARTERS (based on season statistics)

Georgia Lady Bulldogs	Ht.	Yr.	Hometown	PPG	RPG	OTHER
24 Marjorie Butler	5-8	Sr.	Knoxville, Tenn.	4.9	2.7	71 assists
3 Tiaria Griffin	5-7	Sr.	Monticello, Miss.	13.7	3.9	81% FT
20 Shacobia Barbee	5-10	Sr.	Murfreesboro, Tenn.	12.6	9.3	40 steals
11 Pachis Roberts	5-11	R-Jr.	Powder Springs, Ga.	7.3	3.9	47% 3-FG
13 Merritt Hempe	6-3	Sr.	Fredericksburg, Va.	11.6	6.9	15 blocks

## A GEORGIA WIN WOULD ...

- » Be Georgia's first SEC win of the season. The Lady Bulldogs' last SEC victory came in the 2015 SEC Tournament against Missouri.
- » Improve Georgia's record to 13-4 under first-year head coach Joni Taylor.
- » Give the Lady Bulldogs their second win against a ranked opponent this season. UGA defeated then-No. 21 Seton Hall, 70-52, on Dec. 6 at Stegeman Coliseum.
- » Improve Georgia's record to 3-2 on the road this season.

## 2015-16 GEORGIA SCHEDULE/RESULTS

OVERALL: 12-4 » SEC: 0-3  
HOME: 9-2 » ROAD: 2-2 » NEUTRAL: 1-0

Date	Opponent	Time/Result
<b>NOVEMBER</b>		
15	STETSON (SECN+)	W, 76-55
18	#23 Michigan State	L, 66-45
22	GEORGIA TECH (SECN)	W, 78-66
24	GEORGIA SOUTHERN (SECN+)	W, 75-28

## Radisson Chatsworth Thanksgiving Classic

27	BYU	W, 66-58
28	Cal State Northridge	W, 83-58

## DECEMBER

2	MERCER (SECN+)	W, 57-44
3	KENNESAW STATE (SECN+)	W, 89-34
6	#21 SETON HALL (SECN+)	W, 70-52
8	FURMAN (SECN+)	W, 77-39
20	at Wright State	W, 63-57
23	CINCINNATI (SECN+)	W, 60-42
28	TENNESSEE TECH (SECN+)	W, 81-48

## JANUARY

3	at #16 Texas A&M* (SECN)	L, 73-62
7	#20 MISSOURI* (SECN WA)	L, 54-48
10	#10 KENTUCKY* (SECN+)	L, 64-53
14	at Florida* (SECN+)	7 p.m.
17	at Alabama* (SECN)	5 p.m.
21	MISSISSIPPI STATE* (SECN+)	7 p.m.
24	LSU* (SECN+)	2 p.m.
28	AUBURN* (SECN)	7 p.m.
31	at Vanderbilt* (SECN+)	3 p.m.

## FEBRUARY

4	at Missouri* (SECN+)	8 p.m.
7	OLE MISS* (SECN+)	2 p.m.
14	at LSU* (SECN+)	3 p.m.
18	at South Carolina* (SECN+)	7 p.m.
21	FLORIDA* (SECN)	1 p.m.
25	ARKANSAS* (SECN WA)	7 p.m.
28	at Tennessee* (ESPN2/U)	TBA

## MARCH

2-6	SEC Tournament (Jacksonville, Fla.)	TBD
-----	-------------------------------------	-----

## ALL CAPS = Home Games

\* denotes SEC game

rankings reflect team's ranking at the time of the game.

## TELEVISION

Thursday's game will air on SEC Network + with Adam Schick (PxP) & Brittany Davis (analyst) on the call.

## RADIO

Jeff Dantzler is the voice of the Lady Bulldogs. In Athens, the game will be carried on WRFC AM 960 The Ref and WXKT 103.7 FM.



**Returning Starters**

No.	Name	P	Ht.	Cl.	EXP.	Hometown/Previous School
3	Tiaria Griffin	G	5-7	Sr.	3L	Monticello, Miss. / Hattiesburg HS
13	Merritt Hempe	F	6-2	Sr.	3L	Fredericksburg, Va. / Stafford HS
20	Shacobia Barbee	G/F	5-10	Sr.	3L	Murfreesboro, Tenn. / Riverdale HS
24	Marjorie Butler	G	5-8	Sr.	3L	Knoxville, Tenn. / Webb School

**Returning Letterwinners (Non-Starters Only)**

No.	Name	P	Ht.	Cl.	EXP.	Hometown/Previous School
2	Terryuana Godwin	G	5-4	Sr.	1L	Hogansville, Ga. / Butler (Kan.) CC
10	Hannahkohl Almire	G	5-9	Jr.	2L	Atlanta, Ga. / Riverwood Charter
11	Pachis Roberts	G/F	5-11	R-Jr.	1L	Powder Springs, Ga. / Syracuse
12	Haley Clark	G	5-9	So.	1L	Orlando, Fla. / Edgewater HS
23	Halle Washington	F	6-2	Jr.	2L	Bossier City, La. / Parkway HS
33	Mackenzie Ingram	F	6-2	So.	1L	Powder Springs, Ga. / Hillgrove HS

**Newcomers**

No.	Name	P	Ht.	Cl.	EXP.	Hometown/Previous School
1	Shanea Armbrister	G	6-2	Jr.	JC	Nassau, Bahamas / Darton St. (Ga.) College
4	Caliya Robinson	F	6-3	Fr.	HS	Marietta, Ga. / McEachern HS
25	Amber Skidgel	G	6-0	Fr.	HS	Bethlehem, Ga. / Archer HS

**NUMERICAL ROSTER**

No.	Name	Pos.	Ht.	Cl./Exp.	Hometown/Previous School
1	Shanea Armbrister	G	6-2	Jr.-JC	Nassau, Bahamas / Darton St. (Ga.) College
2	Terryuana Godwin	G	5-4	Sr.-1L	Hogansville, Ga. / Butler (Kans) CC
3	Tiaria Griffin	G	5-7	Sr.-3L	Monticello, Miss. / Hattiesburg HS
4	Caliya Robinson	F	6-3	Fr.-HS	Marietta, Ga. / McEachern HS
10	Hannahkohl Almire	G	5-9	Jr.-2L	Atlanta, Ga. / Riverwood Charter School
11	Pachis Roberts	G/F	5-11	R-Jr.-1L	Powder Springs, Ga. / Tr-Syracuse
12	Haley Clark	G	5-9	So.-1L	Orlando, Fla. / Edgewater HS
13	Merritt Hempe	F	6-2	Sr.-3L	Fredericksburg, Va. / Stafford HS
20	Shacobia Barbee	G/F	5-10	Sr.-3L	Murfreesboro, Tenn. / Riverdale HS
23	Halle Washington	F	6-2	Jr.-2L	Bossier City, La. / Parkway HS
24	Marjorie Butler	G	5-8	Sr.-3L	Knoxville, Tenn. / Webb School
25	Amber Skidgel	G	6-0	Fr.-HS	Bethlehem, Ga. / Archer HS
33	Mackenzie Ingram	F	6-2	So.-1L	Powder Springs, Ga. / Hillgrove HS

**ALPHABETICAL ROSTER**

No.	Name	Pos.	Ht.	Cl./Exp.	Hometown/Previous School
10	Hannahkohl Almire	G	5-9	Jr.-2L	Atlanta, Ga. / Riverwood Charter School
1	Shanea Armbrister	G	6-2	Jr.-JC	Nassau, Bahamas / Darton St. (Ga.) College
20	Shacobia Barbee	G/F	5-10	Sr.-3L	Murfreesboro, Tenn. / Riverdale HS
24	Marjorie Butler	G	5-8	Sr.-3L	Knoxville, Tenn. / Webb School
12	Haley Clark	G	5-9	So.-1L	Orlando, Fla. / Edgewater HS
33	Mackenzie Ingram	F	6-2	So.-1L	Powder Springs, Ga. / Hillgrove HS
2	Terryuana Godwin	G	5-4	Sr.-1L	Hogansville, Ga. / Butler (Kan.) CC
3	Tiaria Griffin	G	5-7	Sr.-3L	Monticello, Miss. / Hattiesburg HS
13	Merritt Hempe	F	6-2	Sr.-3L	Fredericksburg, Va. / Stafford HS
11	Pachis Roberts	G/F	5-11	R-Jr.-1L	Powder Springs, Ga. / Tr-Syracuse
4	Caliya Robinson	F	6-3	Fr.-HS	Marietta, Ga. / McEachern HS
25	Amber Skidgel	G	6-0	Fr.-HS	Bethlehem, Ga. / Archer HS
23	Halle Washington	F	6-2	Jr.-2L	Bossier City, La. / Parkway HS

**COACHING STAFF****Head Coach:**

Joni Taylor (Alabama '02, first season at UGA and overall)

**Associate Head Coach:**

Karen Lange (Iowa '96, first season at UGA and 19th overall)

**Assistant Coaches:**

Robert Mosley (Miles '99, fourth season at UGA and sixth overall)

Chelsea Newton (Rutgers '05, first season at UGA and seventh overall)

**PRONUNCIATION GUIDE**

SHANEA (Shuh-nay) ARMBRISTER (Arm-briss-ter)

HANNAHKOHL (Hannah-cole) ALMIRE (All-mire)

SHACOBIA (Sha-co-be-uh) BARBEE (Bar-bee)

TERRYUANA (Terry-ah-nuh) Godwin

TIARIA (Tee-air-uh) Griffin

Merritt HEMPE (Hem-pee)

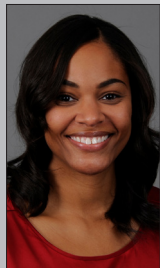
PACHIS (Patches) Roberts

CALIYA (Cuh-lie-uh) Robinson

Amber SKIDGEL (Skid-juhl)

HALLE (Haley) Washington



**Head Coach Joni Taylor**  
(formerly Crenshaw)**Date of Birth:** March 7, 1979**Hometown:** Meridian, Miss.**Family**

Husband: Darius Taylor

**Education**

High School: Meridian ('97)

Bachelor's: Alabama ('02) - Education

**Coaching Experience**

2015 - pres.	Georgia (Head Coach)
2012-15	Georgia (Associate Head Coach)
2011-12	Georgia (Assistant Coach)
2010-11	LSU (Assistant Coach)
2008-10	Alabama (Associate Head Coach)
2007-08	Louisiana Tech (Associate Head Coach)
2005-07	Louisiana Tech (Assistant Coach)
2002-05	Troy (Assistant Coach)

**Postseason Experience**

2014	NCAA First Round	Georgia
2013	NCAA Elite Eight	Georgia
2012	NCAA First Round	Georgia
2006	NCAA First Round	Louisiana Tech
2001	WNIT Second Round*	Alabama
2000	WNIT First Round*	Alabama
1999	NCAA Second Round*	Alabama
1998	NCAA Sweet 16*	Alabama

\*postseason appearances as a player at Alabama

**Playing Experience**

1997-01	Alabama
---------	---------

**Honors**

2001	SEC Community Service Team
2000	SEC Community Service Team
1999	SEC Community Service Team
1997	Mississippi HS Gatorade Player of the Year

Following a thorough search of the women's basketball community, Greg McGarity, the UGA J. Reid Parker Director of Athletics, and Dr. Carla Williams, UGA's Deputy Director of Athletics, realized that the best choice to become the Georgia Lady Bulldogs' next head coach was approximately 300 yards from their offices.

On Sunday, April 12, Joni Taylor, a member of the Georgia Basketball Staff for the past four seasons, including the last three as associate head coach, was appointed just the second full-time head coach in the program's illustrious history.

"After a national search, it became evident that Joni was the perfect person to lead our program," McGarity said. "Joni brings the intangibles that parallel success -- character, experience and a tireless energy to lead our program. We are confident she will do a tremendous job leading Georgia Basketball into the future."

"I am extremely honored to be the next coach at Georgia," Taylor said. "I want to thank President Morehead, Greg and Carla for trusting me with the program. I have been fortunate to have learned under a great coaching tree and have great mentors along the way. I want to thank Coach Landers for all that he has done for me since I have been under his tutelage. The trust and responsibility he gave me definitely prepared me for the next step in my career but more importantly his friendship means the world to me."

Taylor sports 13 seasons of coaching experience at the Division I level, the last seven within the Southeastern Conference. The Meridian, Miss., native joined the Georgia staff in 2011 and spent one season as an assistant coach before being promoted to associate head coach. Prior to arriving in Athens, Crenshaw coached at LSU from 2010-11, at Alabama from 2008-10, at Louisiana Tech from 2005-08 and at Troy from 2002-05.

During each of those coaching stops, Taylor has displayed the ability to both sign premier prospects and then help those recruits develop into highly successful players.

In the Lady Bulldogs' four signing classes since Taylor's arrival, Georgia's 16 scholarship newcomers arrived on campus with a combined 18 high school state titles. That group also featured seven standouts ranked among the nation's top 100 prospects and included a quartet of state Player of the Year honorees.

Taylor helped Alabama and LSU land top-5 individual prospects in the classes of 2010 and 2011, respectively, and also spearheaded the Crimson Tide's recruiting class for 2010 that ranked among the nation's top 10. She helped Louisiana Tech ink the 2006 Miss Basketball for both Alabama and Mississippi and Troy sign two future Atlantic Sun Freshman of the Year honorees.

Taylor succeeds Andy Landers, the only previous full-time women's basketball coach in the program's history. Landers announced his retirement on Monday, March 16 after 36 seasons. Landers compiled a 862-299 record at Georgia, making him one of only seven college basketball coaches -- women's or men's -- to record 850 wins at a single NCAA Division I school. The other coaches on that list are Pat Summitt (Tennessee), Jim Boeheim (Syracuse), Mike Krzyzewski (Duke), Geno Auriemma (Connecticut), Dean Smith (North Carolina) and Adolph Rupp (Kentucky). Landers compiled a career record of 944-320 in 40 seasons as a collegiate head coach, including an 82-21 record in four years at Roane State College from 1975-79.

"Georgia Basketball is in great hands," Landers said. "Coach Crenshaw (now Taylor) is a person who has deep-rooted values and morals, which are two of the cornerstones of Georgia Basketball's success. Her appreciation for the total development of young women is second to none and her past experiences have prepared her for the challenges ahead. I am confident she will do extremely well. Joni has an excellent basketball IQ, is a tremendous recruiter and is a terrific people person, but above all else, she is someone who young people will aspire to play for and enjoy that same experience."

Taylor herself was a highly sought after basketball prospect. She was the 1997 Gatorade Player of the Year for Mississippi after leading Meridian High to a 67-7 record during her junior and senior seasons. She also won three state titles in track and field and was selected as the school's Homecoming Queen.

At Alabama, Taylor was a significant contributor to four teams that reached post-season play -- the 1998 and 1999 NCAA Tournaments and the 2000 and 2001 WNITs. She was a two-year starter and scored 716 points, grabbed 555 rebounds and blocked 103 shots, which is No. 4 among the Tide's career leaders.

Taylor also was a standout off the basketball court. She was recognized as one of the most influential African Americans on the Alabama campus in 2001, was named to the SEC's Community Service team for women's basketball in 1999, 2000 and 2001 and was awarded a post-graduate scholarship from the SEC for her community service record. She received her bachelor's degree in Education from Alabama in 2002.

Taylor married Darius Taylor, a former assistant coach for the South Carolina women's basketball team, on Aug. 1, 2015.



## 2015-16 GEORGIA LADY BULLDOGS QUICK NOTES



### Season Stats (2015-16)

PPG	RPG	Assists	FG%	3FG%	FT%
3.6	1.9	3	.360	.467	.000

### Career Highs

Points	6	Two Times	11/10/16
Rebounds	7	vs. GA Southern	11/24/15
Assists	2	vs. Kentucky	11/10/16
Blocks	--		
Steals	--		

**#1**

**Shanea Armbrister**

### Season Highlights

- \* Recorded a five-point effort against Tennessee Tech on Dec. 28.
- \* Dropped a career-high six points against Furman, hitting two 3-pointers near the end of the game.
- \* Named third-team All-America by the National Junior College Athletics Association in 2013-14.
- \* Ranked 23rd nationally in scoring average and ninth in free throw percentage (84.4) last season at Darton State.
- \* Named MVP after leading the Bahamas to a Caribbean Basketball Federation Championship.



### Season Stats (2015-16)

PPG	RPG	Assists	FG%	3FG%	FT%
0.0	0.0	0	.000	.000	.000

### Career Highs

Points	3	vs. Belmont,	12/22/14
Rebounds	1	vs. Morgan State	11/14/14
Assists	1	Two Times	12/4/14 (Last)
Blocks	--		
Steals	1	vs. Mercer	11/25/14

**#2**

**Terryuana Godwin**

### Season Highlights

- \* Saw action in eight games last year; has yet to play this season.
- \* Saw action last year in Georgia's win over Missouri in the 2015 SEC tournament.
- \* Missed her first season of junior college basketball due to a torn ACL.
- \* Bounced back from the injury to lead her team to the 2013-14 NJCAA National Championship Tournament Quarterfinals.
- \* Her brother, Terry, is a freshman wide receiver on the Georgia football team.



### Season Stats (2015-16)

PPG	RPG	Assists	FG%	3FG%	FT%
13.7	3.9	33	.368	.330	.818

### Career Highs

Points	25	vs. CSUN	11/28/15
Rebounds	10	vs. S.C. State	11/26/13
Assists	9	vs. S.C. State	11/26/13
Blocks	2	vs. Missouri	1/7/16
Steals	6	vs. Furman	11/19/13

**#3**

**Tiaria Griffin**

### Season Highlights

- \* Ranks third in the SEC in 3-pt. FGs made this season with 37.
- \* Became the 36th player in program history to record 1,000 career points, finishing with 10 points against Kennesaw State.
- \* MVP of the 2015 Radisson Chatsworth Thanksgiving Classic; scored a career-high 25 points in win vs. CSUN and led team with 23 points in win vs. BYU.
- \* Her 183 career 3-point field goals made ranks sixth all-time in school history and is the most in a career by any current SEC player.



### Season Stats (2015-16)

PPG	RPG	Blocks	FG%	3FG%	FT%
6.2	4.8	15	.486	.222	.625

### Career Highs

Points	17	vs. Kennesaw St.	12/3/15
Rebounds	10	vs. Two Times	12/23/15
Assists	2	Three Times	12/28/15 (Last)
Blocks	3	Two Times	12/28/15 (Last)
Steals	3	vs. Kennesaw St.	12/3/15

**#4**

**Caliya Robinson**

### Season Highlights

- \* Named SEC Freshman of the Week on Dec. 29, 2015.
- \* Tied for team leader in blocks with 15.
- \* Posted first-career double-double against Kennesaw State with a career-high 17 points and 10 rebounds.
- \* Ranked a top-50 recruit in the nation by Fullcourt.com (No. 19), ESPN Hoopgurlz (No. 33) and Prospect Nation (No. 44).
- \* Missed the vast majority of senior season of high school with a knee injury she suffered early in the year, which also forced her to miss the first three games this season.



### Season Stats (2015-16)

PPG	RPG	Assists	FG%	3FG%	FT%
0.8	1.3	2	.330	1.000	.000

### Career Highs

Points	3	vs. Kennesaw St.	12/3/15
Rebounds	3	vs. GA Southern	11/24/15
Assists	1	Five Times	11/28/15 (Last)
Blocks	--		
Steals	--		

**#10**

**Hannah Kohl Almire**

### Season Highlights

- \* Hit first-career 3-point basket in win against Kennesaw St. on Dec. 3.
- \* Saw two minutes of action vs. Stetson and played 11 minutes vs. GA Southern.
- \* A walk-on who earned playing time in 12 games during her freshman season (2013-14) and eight games last season.
- \* A two-time member of the SEC Academic Honor Roll.



### Season Stats (2015-16)

PPG	RPG	Assists	FG%	3FG%	FT%
7.3	3.9	8	.429	.476	.750

### Career Highs

Points	25	vs. Tenn. Tech	12/28/15
Rebounds	8	vs. Arkansas	2/9/15
Assists	6	vs. LSU	2/19/15
Blocks	1	Seven Times	3/5/15 (Last)
Steals	4	Two Times	2/22/15 (Last)

**#11**

**Pachis Roberts**

### Season Highlights

- \* Started in place of Mackenzie Engram at the four spot against Missouri and Kentucky.
- \* Had a career-high 25-point effort vs. Tennessee Tech, matching a season high for a Lady Bulldog player this season.
- \* Saw first action of the season vs. No. 21 Seton Hall coming off of a thumb injury.
- \* Transferred from Syracuse and sat out the 2013-14 season due to NCAA transfer rules.



### Season Stats (2015-16)

PPG	RPG	Assists	FG%	3FG%	FT%
1.3	1.1	33	.296	.250	.500

### Career Highs

Points	9	vs. Tennessee	2/26/15
Rebounds	4	Five Times	11/24/15 (Last)
Assists	6	Three Times	12/28/15 (Last)
Blocks	1	Six Times	12/28/15 (Last)
Steals	3	Two Times	12/3/15 (Last)

**#12**

**Haley Clark**

### Season Highlights

- \* Serves as team's back-up point guard.
- \* Recorded six assists vs. Tennessee Tech on Dec. 28.
- \* Coming off a solid freshman campaign in which she saw action in 25 games, including three starts.
- \* Saw her playing time dip at the beginning of conference play last year, but played a large part in the final 10-game stretch.
- \* Scored a career-high nine points vs. No. 6 Tennessee. Also recorded career bests in rebounds (4) and blocks (1) against the Lady Vols.



## 2015-16 GEORGIA LADY BULLDOGS QUICK NOTES



### Season Stats (2015-16)

PPG	RPG	Blocks	FG%	3FG%	FT%
11.6	6.9	15	.494	.200	.605

### Career Highs

Points	22	Two Times	11/22/15 (Last)
Rebounds	11	Three Times	11/24/15 (Last)
Assists	3	Four Times	1/10/16 (Last)
Blocks	4	vs. Arkansas	2/21/13
Steals	3	Two Times	12/2/15 (Last)

**#13**

**Merritt Hempe**

### Season Highlights

- \* Has posted four double-doubles this season and six in her career.
- \* 2016 WBCA AllState Good Works Team nominee.
- \* Scored 19 points and hauled in nine rebounds against Wright State.
- \* Recorded a double-double in back-to-back games against Georgia Tech and Georgia Southern.
- \* Has scored in double figures in nine of 16 games this season.
- \* Had started 50-straight games before missing the Florida game due to illness last season. She missed the following five games.



### Season Stats (2015-16)

PPG	RPG	Steals	FG%	3FG%	FT%
12.6	9.3	40	.443	.306	.689

### Career Highs

Points	25	vs. Furman	12/20/14
Rebounds	15	vs. Mercer	11/14/13
Assists	10	vs. Stetson	11/15/15
Blocks	1	16 Times	12/28/15
Steals	7	Two Times	12/1/13 (Last)

**#20**

**Shacobia Barbee**

### Season Highlights

- \* Leads the SEC (active players) in career steals with 251; leads the SEC in total rebounds (148).
- \* Recorded the third triple-double in school history vs. Stetson. Her 10 pts, 13 rbs and 10 assists marked the first time a Lady Bulldog had accomplished the feat since Tracy Henderson in 1995 vs. Louisville.
- \* Became the 37th player in program history to score 1,000 career points in her performance against Wright State where she nearly posted another triple-double with 15 points, nine rebounds and nine assists.
- \* Preseason All-SEC Second Team selection.



### Season Stats (2015-16)

PPG	RPG	Blocks	FG%	3FG%	FT%
3.6	1.9	4	.375	.000	.667

### Career Highs

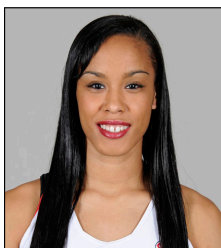
Points	13	vs. Mich. State	11/18/15
Rebounds	8	Three Times	2/12/15 (Last)
Assists	4	vs. Kennesaw St.	12/15/13
Blocks	3	Three Times	2/9/14 (Last)
Steals	4	vs. Florida	2/12/15

**#23**

**Halle Washington**

### Season Highlights

- \* Scored a career-high 13 points on the road vs. No. 23 Michigan State on Nov. 18.
- \* Came off the bench vs. Stetson for 22 minutes. Scored five points and grabbed five rebounds.
- \* Saw 18 minutes of action against Cincinnati. Scored six points and had four rebounds in the contest.
- \* Earned five starts and saw action in 27 games last season.
- \* A solid defender who has recorded 43 blocks in her career and ripped down 3.1 rebounds per game in just 14.6 minutes per game of action.



### Season Stats (2015-16)

PPG	RPG	Assists	FG%	3FG%	FT%
4.9	2.7	71	.306	.171	.687

### Career Highs

Points	18	vs. Georgia Tech	11/22/15
Rebounds	9	vs. Seton Hall	12/6/15
Assists	8	Two Times	12/8/15 (Last)
Blocks	1	vs. Furman	11/28/12
Steals	5	vs. Ga. Southern	11/25/14

**#24**

**Marjorie Butler**

### Season Highlights

- \* First in the SEC and fifth nationally in assist/turnover ratio (3.23).
- \* Ranks seventh in the SEC in total assists with 71.
- \* Poured in a career-high 18 points in win vs. Georgia Tech.
- \* Ripped down a career-high nine rebounds against Seton Hall.
- \* Named to District 4 Capital One CoSIDA Academic All-America team and to the SEC Academic Honor Roll for three consecutive years.
- \* Entered college with 54 credit hours and has already been accepted to medical school at the University of Florida and Meharry College. She will graduate with her second degree this May.



### Season Stats (2015-16)

PPG	RPG	Assists	FG%	3FG%	FT%
4.0	1.7	5	.333	.333	.250

### Career Highs

Points	11	vs. Kennesaw St.	12/3/15
Rebounds	3	Two Times	11/28/15 (Last)
Assists	2	vs. GA Southern	11/24/15
Blocks	1	Two Times	11/28/15 (Last)
Steals	1	Two Times	12/28/15 (Last)

**#25**

**Amber Skidgel**

### Season Highlights

- \* Poured in a career-high 11 points against Kennesaw St. on Dec. 3.
- \* Scored six points in her Georgia debut vs. Stetson. Hit a pair of 3-pointers and grabbed two rebounds in 14 minutes of action.
- \* Sharp shooter who enters her freshman season with the Lady Bulldogs.
- \* Scored a career total of 1,726 points in her high school career - the 10th most in Gwinnett County history.
- \* Drilled 227 3-pointers in high school.
- \* Earned All-State honors from the Georgia Sports Writers Association during her sophomore and junior seasons of high school.



### Season Stats (2015-16)

PPG	RPG	Blocks	FG%	3FG%	FT%
8.2	5.4	8	.382	.267	.563

### Career Highs

Points	20	vs. Coppin St.	12/2/14
Rebounds	11	vs. Stetson	11/15/15
Assists	3	Four Times	12/28/15 (Last)
Blocks	4	vs. Mississippi St.	1/2/15
Steals	2	vs. Six Times	11/24/15 (Last)

**#33**

**Mackenzie Ingram**

### Season Highlights

- \* Registered second career double-double vs. Stetson. Scored 18 rebounds and grabbed 11 rebounds in 31 minutes.
- \* Named to the 2014-15 SEC All-Freshman Team.
- \* Coming off an impressive freshman campaign that saw her post numbers of 7.7 ppg, 4.5 rpg and 20 blocks.
- \* Scored in double-digits 10 times in 2014-15

**QUICK FACTS****GENERAL**

Location	Athens, Ga.
Founded	1785
Enrollment	34,753
Nickname	Bulldogs
School colors	Red and Black
Facility Name	Stegeman Coliseum
All-Time Record at Stegeman	440-93
Capacity	10,523
Affiliation	NCAA D-I
Conference	SEC
President	Jere W. Morehead (Georgia, JD, '80)
Athletics Director	Greg McGarity (Georgia, '76)
Deputy Director of Athletics	Dr. Carla Williams (Georgia, '89)

**2014-15 IN REVIEW**

2014-15 Overall Record	19-12
2014-15 SEC Record/Place	(6-10/10th)
Postseason	None
Letterwinners Returning/Lost	10/4
Starters Returning/Lost	4/1
Newcomers	3

**HISTORY**

First Year of Sport	1973
All-Time Record	911-388 (.702)
NCAA Tournament Appearances	31

**COACHING STAFF**

Head Coach	Joni Taylor (First Season)
Alma Mater	Alabama, '02
Record at Georgia	12-4 (1st season)
Career Record	12-4 (1st season)
Assistant Coaches (Alma Mater)	
	Karen Lange (Iowa, '96)
	Robert Mosley (Miles, '99)
	Chelsea Newton (Rutgers, '05)

Director of Operations	Meredith Mitchell
Director of Player Personnel	Jon Bollier
Graduate Assistant	Tiffany Clarke
GA Social Media	Ryan Leonard
Athletic Trainer	Shannon Dolezal
Operations and Player Dev.	Kelly Mathis

**SPORTS COMMUNICATIONS**

WBB Contact	Tray Littlefield
Littlefield's email	trayl@sports.uga.edu
Littlefield's phone	205-504-4566 (c)
	706-542-9342 (o)
Littlefield's Twitter	@TrayLittlefield

**GEORGIA NOTEBOOK****56-Straight Is Nation's Best**

» The Lady Bulldogs' 56-game home non-conference win streak ranks as the top mark in NCAA DI women's basketball. Georgia's last loss at home vs. a non-conference team came in 2008 -- a 56-44 loss to Xavier on Dec. 30, 2008. Georgia has gone eight-straight seasons with an undefeated home non-conference record.

**Lady Dogs Sharing The Ball**

» The Lady Bulldogs have proved to be one of the most unselfish teams in college basketball this season. Georgia ranks first in the SEC in assist-to-turnover ratio (1.32) -- an average that ranks ninth nationally. The Lady Bulldogs are averaging just 13.3 turnovers per game and have committed fewer turnovers than their opponents in 13 of 16 games.

**Barbee Stealing The Show**

» Lady Bulldog senior guard Shacobia Barbee is the current active career steals leader (6th nationally) in the Southeastern Conference with 251 through three and a half seasons, including 40 so far during the 2015-16 campaign -- a total that is fourth in the SEC. She is averaging 2.5 steals per game (No. 4 in SEC) and has recorded two or more steals in 15 of 16 games this season.

**Griffin Making Her Mark From The Arc**

» Senior Tiaria Griffin, who currently ranks sixth in Georgia history with 183 career 3-point baskets, is third in the SEC in made 3-point field goals this season with 37.

**Hempe Making A Difference**

» Senior forward Merritt Hempe, who has recorded four double-doubles through 16 games this season, is not only making her mark on the court but she is also playing a pivotal role in the community. Hempe has been nominated for the 2016 AllState WBCA Good Works Team for her efforts off the court.

The Fredericksburg, Va., native participates in numerous community service efforts, including Special Olympics Homeruns for Hometown Rivals baseball game, Toys for Tots, writing Holiday cards for deployed soldiers, helping provide safe routes to school by partnering with Barrow Elementary, providing toiletries collection for the homeless, visiting Stroud Elementary throughout the year to encourage and mentor children, is an Alzheimer's Walk Volunteer and Ath-Half Volunteer, and volunteers as an AAU coach and operations staff member. The 2015-16 Good Works Team will be released in February.

**Robinson Named SEC Freshman Of The Week**

» Georgia freshman forward Caliya Robinson has had a strong start to her Lady Bulldog career. Robinson was named the SEC Freshman of the Week on Dec. 29 after averaging nearly a double-double in wins against Cincinnati and Tennessee Tech. The Marietta, Ga., native currently leads the Lady Bulldogs in blocked shots with 14 and is averaging 6.3 points per game to go along with 5.1 boards per contest.

**Dogs Getting Defensive**

» Georgia's strong start to the season is largely due to the team's strong defensive play. The Lady Bulldogs rank near the top of the SEC in scoring defense, field-goal percentage defense and 3-point field goal percentage defense. No. 16 Texas A&M became the first team to shoot 40 percent or better against the Lady Bulldogs this season as Georgia has held 15 of 16 opponents below the 40-percent mark.

**Taylor Era Begins In Style**

» The Joni Taylor era of Georgia Basketball officially commenced on Nov. 15 against Stetson in front of 3,530 fans at Stegeman Coliseum. The Lady Bulldogs won in style, knocking down Stetson, 76-55. UGA outscored the Hatters, 22-6, in the third period and outrebounded them, 49-24, in the win. Georgia players and coaches celebrated the season-opening victory by dancing with popular music artist Silento to his hit song "Watch Me" following the game.

**Win No. 900 For Georgia Basketball**

» Not only was the win against Stetson the first of the Joni Taylor era, it was also the 900th victory in program history. Georgia is one of 13 programs in NCAA Division I women's basketball to reach 900 wins or more. The Lady Bulldogs enter play this week with a 911-388 mark in 43 years as a program.



**Team Comparison**

Georgia		Florida
67.7	<b>Points</b>	85.3
52.4	<b>Pts Allowed</b>	67.6
42.9	<b>Rebounds</b>	47.1
17.5	<b>Assists</b>	16.3
3.8	<b>Blocks</b>	5.5
8.1	<b>Steals</b>	13.7
40.2	<b>FG %</b>	44.8
31.0	<b>3pt %</b>	30.3
66.0	<b>FT %</b>	70.8

**Individual Leaders**

Georgia		Florida
Griffin (13.7)	<b>Points</b>	Williams, Peoples (10.4)
Barbee (9.3)	<b>Rebounds</b>	Williams (7.5)
Barbee (76)	<b>Assists</b>	Christinaki (63)
Robinson, Hempe (15)	<b>Blocks</b>	Fleming (29)
Barbee (40)	<b>Steals</b>	Westbrook (41)
Hempe (49.0)	<b>FG %</b>	Williams (52.8)
Roberts (47.0)	<b>3pt %</b>	Miller (45.0)
Griffin (81.0)	<b>FT %</b>	Peoples (85.4)

**Georgia Career Record Watch Chart***(Where current players rank in the Georgia career records)***3-Point Field Goals Made**

1. Cori Chambers (2003-07)	282
2. Kedra Holland-Corn (1993-97)	253
3. Khaalidah Miller (2010-14)	218
4. Kim Berry (1987-91)	189
5. Kelly Miller (1997-01)	187
<b>6. Tiaria Griffin (2012-pres.)</b>	<b>183</b>
7. Rachel Powell (1993-97)	174
8. Megan Darrah (2004-08)	163
9. Janese Hardrick (2003-07)	149
10. Ashley Houts (2006-10)	145

**3-Point Field Goals Attempted**

1. Cori Chambers (2003-07)	742
2. Khaalidah Miller (2010-14)	702
3. Kedra Holland-Corn (1993-97)	675
<b>4. Tiaria Griffin (2012-pres.)</b>	<b>596</b>
5. Alexis Kendrick (2002-06)	466
6. Megan Darrah (2004-08)	465
7. Kelly Miller (1997-01)	463
8. Ashley Houts (2006-10)	452
9. Kim Berry (1987-91)	442
10. Rachel Powell (1993-97)	440

**Steals**

1. Sherill Baker (2002-06)	426
2. Teresa Edwards (1982-86)	342
3. Ashley Houts (2006-10)	319
4. Adrienne Shuler (1987-91)	308
5. Kedra Holland-Corn (1993-97)	302
6. Kelly Miller (1997-01)	285
7. Janet Harris (1981-85)	279
8. Jasmine James (2009-13)	266
<b>9. Shacobia Barbee (2012-pres.)</b>	<b>251</b>
10. Carla Green (1985-89)	238

*\* current players in ITALICS***GEORGIA NOTEBOOK****Barbee Goes For Triple-Double In Return**

» On Jan. 25, 2015, Georgia's Shacobia Barbee went down with a fractured fibula, forcing the preseason All-SEC performer to miss the last 10 games of the season. Barbee stormed back for the Lady Bulldogs in the first game of the year vs. Stetson, recording a triple-double with 10 points, 13 rebounds and 10 assists against the Hatters -- becoming just the third Lady Bulldog player all-time to reach a triple-double and the first in 20 years (Teresa Edwards, 1986; Tracy Henderson, 1995). The 10 assists by Barbee represented a career high and also marked the first time since 2010 a Lady Bulldog had 10 or more helpers in a single game.

**Thanksgiving Classic Champions**

» Georgia capped off its Thanksgiving with a Championship run in the 2015 Radisson Chatsworth Thanksgiving Classic, downing BYU and Cal State Northridge in consecutive days to claim the title. Tiaria Griffin, who had back-to-back 20-point efforts, was named MVP.

**In-State Dominance**

» Georgia has won 19-straight games against teams from the state of Georgia, including a 4-0 record this season. The Lady Bulldogs' last loss to an in-state team came on Dec. 5, 2010 against Georgia Tech. Georgia is 104-35 all-time against NCAA Division I teams from the Peach State.

**Seasoned Seniors Ready To Lead**

» Looking to lead Georgia this season will be a strong group of seniors, which has a combined 13 seasons of experience on the Lady Bulldogs' roster. UGA returns four of five starters off of last season's team -- all four entering their senior seasons on the Georgia campus. Tiaria Griffin, Merritt Hempe, Shacobia Barbee and Marjorie Butler have combined for 223 starts and have played in over 350 contests during their careers at Georgia entering this season. Joining the four starters is senior Terryuana Godwin, who is entering just her second season on the Lady Bulldogs' roster.

**Lady Bulldogs Faced Strong Non-Conference Slate**

» The Lady Bulldogs faced five 20-win teams and seven schools that advanced to post-season play last season during the 2015-16 non-conference schedule.

» Georgia played five teams that competed in the postseason a year ago -- Stetson (23 wins, NIT) on Nov. 15, Georgia Tech (19 wins, NIT) on Nov. 22, Mercer (20 wins, WBI) on Dec. 2, Seton Hall (28 wins, NCAA) on Dec. 6 and Furman (19 wins, WBI) on Dec. 8.

**Landers' Legendary Mark On Georgia Basketball**

» For the first time in 36 seasons, Andy Landers will not be on the sidelines when the Lady Bulldogs open the 2015-16 non-conference slate against Stetson on Nov. 15 at Stegeman Coliseum. In 36 years, he led the Lady Bulldogs to 31 NCAA Tournaments, 20 Sweet 16s, 11 Elite Eights and five Final Fours. Under Landers' direction, Georgia averaged just over 24 wins per season and recorded 20 or more wins in 32 seasons.

**Barbee Back From Injury**

» The injury-plagued 2014-15 edition of Georgia women's basketball featured a costly injury to preseason All-SEC second-team selection Shacobia Barbee on Jan. 25 against Tennessee. Barbee underwent surgery on her fractured right distal fibula on Jan. 28 and missed the rest of the 2014-15 season.

Barbee is back in 2015 and looks to lead the Lady Bulldogs. The Murfreesboro, Tenn., native has a stellar resume that features a second-team All-SEC selection and SEC All-Defensive Team selection during her sophomore season in 2013-14. Barbee became the first player in program history to lead the Lady Bulldogs in average points (12.2 ppg), rebounds (7.9 rpg), assists (3.6 apg) and steals (2.6 spg). As a rookie in 2012-13, Barbee was voted by the SEC coaches to both the All-Freshman and All-Defensive teams.



**GEORGIA'S 2015-16 INDIVIDUAL MISCELLANEOUS STATS****Double-Figure Scoring Games**

Player	12-13	13-14	14-15	15-16	Career
Shanea Armbrister	--	--	--	--	--
Terryuana Godwin	--	--	--	--	--
Tiaria Griffin	10	13	18	11	52
Caliya Robinson	--	--	--	3	3
Hannahkohl Almire	--	--	--	--	--
Pachis Roberts	--	2	3	2	7
Haley Clark	--	--	--	--	--
Merritt Hempe	2	11	9	9	31
Shacobia Barbee	9	19	12	12	52
Halle Washington	--	2	--	1	3
Marjorie Butler	1	1	5	1	8
Amber Skidgel	--	--	--	1	1
Mackenzie Engram	--	--	10	6	16

**20-Point Plus Scoring Games**

Player	12-13	13-14	14-15	15-16	Career
Shanea Armbrister	--	--	--	--	--
Terryuana Godwin	--	--	--	--	--
Tiaria Griffin	1	2	3	4	10
Caliya Robinson	--	--	--	--	--
Hannahkohl Almire	--	--	--	--	--
Pachis Roberts	--	--	--	1	1
Haley Clark	--	--	--	--	--
Merritt Hempe	--	1	--	2	3
Shacobia Barbee	1	1	2	--	4
Halle Washington	--	--	--	--	--
Marjorie Butler	--	--	--	--	--
Amber Skidgel	--	--	--	--	--
Mackenzie Engram	--	--	1	--	1

**Double-Figure Rebounding Games**

Player	12-13	13-14	14-15	15-16	Career
Shanea Armbrister	--	--	--	--	--
Terryuana Godwin	--	--	--	--	--
Tiaria Griffin	--	1	--	--	1
Caliya Robinson	--	--	--	2	2
Hannahkohl Almire	--	--	--	--	--
Pachis Roberts	--	--	--	--	--
Haley Clark	--	--	--	--	--
Merritt Hempe	--	1	1	4	6
Shacobia Barbee	5	7	5	7	24
Halle Washington	--	--	--	--	--
Marjorie Butler	--	--	--	--	--
Amber Skidgel	--	--	--	--	--
Mackenzie Engram	--	--	1	1	2

**Double-Doubles**

Player	12-13	13-14	14-15	15-16	Career
Shanea Armbrister	--	--	--	--	--
Terryuana Godwin	--	--	--	--	--
Tiaria Griffin	--	1	--	--	1
Caliya Robinson	--	--	--	1	1
Hannahkohl Almire	--	--	--	--	--
Pachis Roberts	--	--	--	--	--
Haley Clark	--	--	--	--	--
Merritt Hempe	--	1	1	4	6
Shacobia Barbee	3	4	4	5	16
Halle Washington	--	--	--	--	--
Marjorie Butler	--	--	--	--	--
Amber Skidgel	--	--	--	--	--
Mackenzie Engram	--	--	--	2	2

**GEORGIA NOTEBOOK****Three New Faces On UGA's Roster**

» Georgia welcomes three newcomers to this season's roster -- guard Shanea Armbrister, forward Caliya Robinson and guard Amber Skidgel. Below are brief bios on each of the newcomers:

**Caliya Robinson**

A native of Marietta, Ga., Robinson was ranked as a top-50 prospect by Fullcourt.com (No. 19), ESPN Hoopgurlz (No. 33) and Prospect Nation (No. 44). She was also named first-team All-State by the Georgia Sports Writers Association and second-team All-State by the Atlanta Journal Constitution at the conclusion of her junior year. Known as a fierce rebounder and shot-blocker, Robinson averaged 11.2 rebounds and 6.6 blocks per contest to go along with 13.0 ppg during her senior season.

**Amber Skidgel**

Skidgel was named honorable mention All-State for Class 6A by the Georgia Sports Writers Association last season. She played at Hebron Christian her first two years of high school. There, Skidgel scored 932 points in and was named second-team All-State for Class A as a sophomore in 2013 after averaging 21.7 points and 5.8 rebounds per game. Skidgel, a native of Bethlehem, Ga., averaged 12.2 points and 3.8 rebounds per game last season while helping Archer to a 29-4 record and a runner-up showing in the Georgia 6A State Tournament. She connected on 74 3-pointers while shooting 43.0 percent from behind the arc.

**Shanea Armbrister**

A 6-2 guard-forward, she was named third-team All-America by the National Junior College Athletic Association (NJCAA) after averaging 18.9 points, 8.4 rebounds and 2.4 assists per game for Darton's Lady Cavaliers in 2013-14. Nationally, she ranked No. 23 in scoring average and No. 9 in free throw percentage (84.4). Armbrister scored in double figures in 29 of 32 games, with 17 20-point games, 10 double-doubles and a triple-double of 21 points, 12 rebounds and 13 assists against Central Georgia Tech. She poured in a season-high 31 points against Southern Crescent Tech and collected a season-best 14 rebounds versus Georgia Perimeter.

**All In The Family For Engram**

» Georgia sophomore forward Mackenzie Engram returns after a solid freshman season, placing on the SEC All-Freshman team a year ago. Engram finished fourth on the team in both scoring and rebounding, averaging 7.7 ppg to go along with 4.5 boards per contest last season. Engram played in all 31 games for the Lady Bulldogs, earning seven starts during her rookie campaign. It's also interesting to note that Engram is the sister of Ole Miss All-SEC tight end Evan Engram, who is in his junior season for the Rebels.

**UGA A Top Women's Hoops Program**

» The Lady Bulldogs have boasted one of the top women's basketball programs in the nation over the last three decades. During head coach Andy Landers' 36-year tenure, Georgia ranked No. 2 nationally in both NCAA Tournament appearances (31) and weeks ranked by the Associated Press (522). Georgia is also one of three DI basketball programs to post a winning record every season since women's athletics became under the auspices of the NCAA with the 1981-82 season.







## THE LAST MEETING



Official Basketball Box Score -- Game Totals -- Final Statistics  
Georgia vs Florida  
03/01/15 3:00 PM ET at O'Connell Center -- Gainesville, Fla.

Georgia 52 • 18-11, 6-10 SEC

#	Player	Total		3-Ptr		Rebounds			PF	TP	A	TO	Blk	Stl	Min
		FG-FGA	FG-FGA	FT-FTA	FT-FTA	Off	Def	Tot							
23	Halle Washington	1	0-3	0-0	1-2	3	3	6	3	1	0	1	0	0	16
23	Mackenzie Ingram	1	1-6	1-4	0-0	3	5	8	4	3	1	1	3	0	30
03	Tiaria Griffin	g	4-12	4-9	5-7	0	6	6	0	17	1	2	0	2	37
12	Haley Clark	g	0-1	0-0	0-0	0	1	1	1	0	0	0	0	0	3
31	Erika Ford	g	4-11	0-2	0-0	3	2	5	3	8	2	0	0	0	31
11	Pachis Roberts	g	1-4	1-4	1-2	1	1	2	1	4	0	2	0	2	12
15	Krista Donald	g	4-13	0-2	0-0	4	7	11	2	8	3	2	1	1	34
24	Marjorie Butler	g	3-9	0-3	5-6	0	1	1	2	11	3	4	0	2	37
Team						1	4	5							
Totals			17-59	6-24	12-17	15	30	45	16	52	10	12	4	7	200
FG % 1st Half: 9-30		30.0%	2nd half: 8-29		27.6%	Game: 17-59		28.8%	Deadball						
3FG % 1st Half: 4-14		28.6%	2nd half: 2-10		20.0%	Game: 6-24		25.0%	Rebounds						
FT % 1st Half: 6-8		75.0%	2nd half: 6-9		66.7%	Game: 12-17		70.6%							

Florida 45 • 13-16, 5-11 SEC

#	Player	Total		3-Ptr		Rebounds			PF	TP	A	TO	Blk	Stl	Min
		FG-FGA	FG-FGA	FT-FTA	FT-FTA	Off	Def	Tot							
22	Lewis, Kayla	1	3-4	0-0	0-0	0	3	3	3	6	0	2	0	0	26
44	Lorenzen, Haley	1	2-6	0-0	1-1	0	4	4	3	5	0	2	0	0	23
04	Needles, Carlisle	g	2-6	2-6	0-0	0	3	3	2	6	1	0	0	2	31
13	Peoples, Cassie	g	6-13	1-5	0-0	0	3	3	3	13	5	4	0	3	35
23	Copeland, Brooke	g	1-5	1-4	3-4	2	6	8	1	6	1	1	1	1	29
01	Williams, Ronni	g	1-12	0-0	5-6	2	5	7	4	7	1	3	0	1	24
03	Miller, January	g	1-4	0-0	0-1	1	2	3	2	2	1	2	0	1	20
11	Anderson, Dyandria	g	0-0	0-0	0-0	0	0	0	1	0	0	0	0	0	5
15	Dimatte, Viktorija	g	0-1	0-0	0-0	0	0	0	1	0	0	1	1	0	2
32	Batchelor, Carla	g	0-1	0-0	0-0	0	2	2	0	0	0	1	0	0	5
Team						3	2	5							
Totals			16-52	4-15	9-12	8	30	38	20	45	9	16	2	8	200
FG % 1st Half: 6-27		22.2%	2nd half: 10-25		40.0%	Game: 16-52		30.8%	Deadball						
3FG % 1st Half: 2-7		28.6%	2nd half: 2-8		25.0%	Game: 4-15		26.7%	Rebounds						
FT % 1st Half: 5-7		71.4%	2nd half: 4-5		80.0%	Game: 9-12		75.0%							

Officials: Denise Brooks, Roy Gulbeyan, Ed Sidlasky  
Technical fouls: Georgia-None, Florida-None.  
Attendance: 2331  
Game Duration: 2:00

Score by periods	1st	2nd	Total
Georgia	28	24	52
Florida	19	26	45

Last FG - UGA 2nd-02:54, UF 2nd-01:17.  
Largest lead - UGA by 12 2nd-14:41, UF by 6 1st-16:14.  
UGA led for 30:52, UF led for 08:43. Game was tied for 00:16.

Points	In	Off	2nd	Fast	Bench
UGA	14	23	6	4	23
UF	18	13	4	4	9

Score tied - 0 times.  
Lead changed - 3 times.

## Taylor's Staff Takes Shape

» Head coach Joni Taylor added two new faces to her coaching staff this season. Karen Lange, who has more than two decades of playing and coaching experience was named the associate head coach, while WNBA veteran and former Rutgers star Chelsea Newton was brought on as an assistant coach. Meanwhile, Robert Mosley, who has spent the past five seasons on Andy Landers' staff will stay on as an assistant coach on Taylor's staff. Rounding out new additions to this year's staff is Jon Bollier, who returns to Georgia after spending the last two seasons as an assistant coach at Belmont. Bollier, who was on Landers' staff. from 2010-13, serves as UGA's Director of Player Personnel.

## Talented Duo Signs With Georgia

» Head coach Joni Taylor announced in November the first two signees of her head coaching career. Taylor and the Lady Bulldogs signed two talented players during the early signing period -- post player Kortney Eisenman and forward Stephanie Paul. Both are entering their senior seasons of high school and will join the Lady Bulldogs as collegiate freshmen at the beginning of the 2016-17 campaign. Below are brief bios on each player:

### Stephanie Paul

Paul is the No. 32-ranked prospect in the country according to Prospects Nation and the No. 20 forward prospect overall according to ESPN.com's Hoopgurlz.

"Stephanie is athletic and gamey," Joni Taylor said. "She is a versatile player who can play a number of positions for us. She can score faced -up, off the bounce, and with her back to the basket. Stephanie is a high energy player that runs the floor well and is an aggressive rebounder. I am looking forward to watching her stretch herself. She has the ability to be an overall really good player for us and in this league."

In addition to her Player of the Year honor this past season, Paul was also named to the Class 3A All-State team by the Florida Association of Basketball Coaches as she tallied her 1,000th career point. She led the Seahawks to a 22-4 overall record and their third-straight appearance in the Florida Class 3A regional final. She averaged a double-double for the year, scoring 17.2 points per game to go with 11.2 rebounds per contest. In all, Paul tallied an impressive 15 double-doubles during her junior campaign.

### Kortney Eisenman

A native of Columbus, Ohio, the 6-foot-3 Eisenman is entering her senior season at Upper Arlington High School.

"I am extremely excited for Kortney to become a Lady Bulldog," Joni Taylor said. "Kortney will give us size and strength at the forward position. She has a high basketball IQ, is a great passer and can step off the block and score as well. There are a lot of things I could say about Kortney and her basketball abilities, but what has impressed me the most is her work ethic and desire to do whatever it takes to be the best she can be."

Eisenman has a long list of accolades which includes an Ohio Division I Associated Press Central All-District Second Team selection this past season after averaging 11.1 points per game to go along with 8.2 rebounds and 3.5 blocks per contest. Her 59.8 percent shooting percentage was the second-highest single season average in school history.

## Lady Bulldogs End 2014-15 Regular Season With Win At Florida

GAINESVILLE, Fla. --- Tiaria Griffin scored a game-high 17 points to lead the Georgia Lady Bulldogs to a 52-45 win over Florida on Sunday, snapping an eight-game losing streak in the process.

Marjorie Butler added 11 points and Krista Donald grabbed 11 rebounds for Georgia in the regular-season finale. Cassie Peoples' 13 points paced the Gators.

In a contest eerily similar to a loss to the Gators two and a half weeks ago in Athens, Georgia led at the half and built a double-digit advantage in the second stanza before Florida surged ahead in the closing minutes. This time, the Lady Bulldogs responded with an 8-0 run to regain control.

The Lady Bulldogs enjoyed their largest lead of the day at 37-25 with 14:41 remaining. Florida methodically chipped away and then used a 9-0 covering just 92 seconds to grab a 43-41 lead, their first since 9-8.

Mackenzie Ingram and Griffin nailed consecutive 3-pointers to put Georgia back on top, and Donald followed a Butler miss with the shot clock running down to put the Lady Bulldogs up 49-43 with 2:54 left.

Florida pulled within 49-45, but Butler canned both ends of a one-and-one with 17 seconds left and another free throw with seven ticks on the clock to secure the victory.



**GEORGIA'S RECORD WHEN...**

Overall Record .....	12-4
Home Games .....	9-2
Road Games .....	2-2
Neutral Site Games .....	1-0
SEC Games .....	0-3
Home Games.....	0-2
Road Games .....	0-1
SEC Tournament Games.....	0-0
Non-Conference Games.....	12-1
Home Games.....	9-0
Road Games .....	2-1
Neutral Site Games .....	1-0
November Games .....	5-1
December Games.....	7-0
January Games.....	0-3
February Games.....	0-0
March Games .....	0-0
Monday Games .....	1-0
Tuesday Games .....	2-0
Wednesday Games .....	2-1
Thursday Games .....	1-1
Friday Games .....	1-0
Saturday Games.....	1-0
Sunday Games.....	4-2
Day Games.....	6-2
Night Games .....	6-2
Overtime Games.....	0-0
Televised Games .....	9-3
Leading at Halftime .....	10-0
Trailing at Halftime .....	2-4
Tied at Halftime.....	0-0
Shot 40% or Better FG .....	8-0
Shot Less Than 40% FG.....	4-4
Opp. Shot 40% or Better FG.....	0-1
Opp. Shot Less Than 40% FG.....	12-3
Led In Rebounds.....	11-0
Trailed In Rebounds.....	1-4
Tied In Rebounds.....	0-0
Committed Fewer Turnovers.....	9-4
Committed More Turnovers .....	3-0
Committed Same Turnovers.....	0-0
Scored 0-49 Points .....	0-1
Scored 50-59 Points.....	1-2
Scored 60-69 Points.....	3-1
Scored 70-79 Points.....	5-0
Scored 80-89 Points.....	3-0
Scored 90+ Points .....	0-0
Allowed 0-49 Points.....	6-0
Allowed 50-59 Points .....	4-1
Allowed 60-69 Points .....	2-2
Allowed 70-79 Points .....	0-1
Allowed 80-89 Points .....	0-0
Allowed 90+ Points.....	0-0

**Scouting Florida**

» No. 20 Florida enters Thursday's game with a 14-2 overall record and have reached the AP top-25 for the first time since the 2008-09 season. The Gators swept SEC Player of the Week honors this past week with Carlie Needles winning Player of the Week and Eleanna Christinaki earning Freshman of the Week honors. Florida is coming off an 85-65 win against Ole Miss and defeated No. 12 Tennessee, 74-66, last week in Knoxville.

**A Changing Identity -- Lady Bulldogs Go Up-Tempo**

» Part of Georgia's success this season depends on the team's ability to embrace its new identity under its new head coach. According to Taylor, the Lady Bulldogs will carry on Landers' hard-work mentality, but look for UGA to step up the tempo a little in the new system, especially with the new four-quarter format and the new timeout rules (each team now has just four timeouts instead of five) in women's college basketball.

"It's going to be more up-tempo," said Taylor. "Where things are going to be the same is that we are going to play extremely hard. We are going to be a really good defensive team. The identity of putting a top-notch brand on the floor and a product that our fans want to come and support, that will remain the same."

**Making A Difference In The Community**

» Giving back to the community has always been a pivotal part of being a Georgia Lady Bulldog. Players and staff members routinely participate in off-campus events ranging from serving at elementary schools to the team's annual Bike Build, which raises funds to purchase bicycles and safety helmets for worthy children. The Lady Bulldogs then assemble those bikes before they are distributed. Close to 300 bikes have been built and given away over the past eight years.

This season, the Georgia Lady Bulldogs have adopted the fifth-grade class at Stroud Elementary in Athens. Players and staff members will visit their fifth-grade class throughout the year. In fact, the Lady Bulldogs greeted Stroud Elementary students this past August and hand delivered backpacks during the school's Meet Your Teacher night.



**UGA assistant coaches Robert Mosley (left) and Chelsea Newton (right) pose with a student at Stroud Elementary on Meet Your Teacher Night.**



**Georgia players pose with a young Lady Bulldog fan during the team's annual Bike Build.**



**SEC STANDINGS****Overall Standings**

Rk.	Team (AP/Coaches)	SEC	Overall
1	South Carolina (2/2)	3-0	15-0
2	Mississippi State (7/6)	3-0	16-1
3	Kentucky (10/9)	2-1	13-1
4	Florida (20/20)	2-1	14-2
5	Texas A&M (15/15)	2-1	12-4
6	Tennessee (13/13)	2-1	11-4
7	Missouri (24/24)	1-2	14-2
8	Vanderbilt	1-2	12-4
9	Alabama	1-2	12-4
10	Auburn	1-2	11-5
11	Ole Miss	1-2	9-7
12	LSU	1-2	7-9
13	Arkansas	1-2	6-10
14	Georgia	0-2	12-3

**IN THE POLLS****AP Poll**

Rk.	Team (1st place votes)	Record	Conf. (Conf.)
1	Connecticut (32)	14-0	4-0 (AAC)
2	South Carolina	15-0	3-0 (SEC)
3	Notre Dame	15-1	4-0 (ACC)
4	Texas	15-0	4-0 (Big 12)
5	Ohio State	12-3	4-0 (Big 10)
6	Baylor	17-1	4-1 (Big 12)
7	Mississippi State	16-1	3-0 (SEC)
8	Maryland	14-2	3-1 (Big 10)
9	Kentucky	13-1	2-1 (SEC)
10	Arizona State	13-3	4-0 (Pac 12)
11	Stanford	13-3	3-1 (Pac 12)
12	Oregon State	12-3	3-1 (Pac 12)
13	Tennessee	11-4	2-1 (SEC)
14	Oklahoma	12-3	3-1 (Big 12)
15	Texas A&M	12-4	2-1 (SEC)
16	Florida State	11-4	2-1 (ACC)
17	UCLA	11-4	3-1 (Pac 12)
18	Michigan State	12-3	3-1 (Big 10)
19	South Florida	10-4	3-1 (AAC)
20	Florida	14-2	2-1 (SEC)
21	Miami	15-2	3-1 (ACC)
22	Duke	12-5	1-2 (ACC)
23	Louisville	12-5	4-0 (ACC)
24	Missouri	14-2	1-2 (SEC)
25	USC	14-2	2-2 (Pac 12)

**USA Today Coaches Poll (As of Jan. 3)**

Rk.	Team (1st place votes)	Record	Conf. (Conf.)
1	Connecticut (32)	11-0	1-0 (AAC)
2	South Carolina	13-0	1-0 (SEC)
3	Notre Dame	13-1	2-0 (ACC)
4	Texas	13-0	4-0 (Big 12)
5	Ohio State	10-3	2-0 (Big 10)
6	Mississippi State	14-1	1-0 (SEC)
7	Baylor	14-1	4-1 (Big 12)
8	Maryland	12-2	1-1 (Big 10)
9	Kentucky	11-1	0-1 (SEC)
10	Texas A&M	11-3	1-0 (SEC)
11	Tennessee	9-3	1-0 (SEC)
12	Oregon State	10-2	1-1 (Pac 12)
13	Stanford	11-2	1-1 (Pac 12)
14	Arizona State	10-3	2-0 (Pac 12)
15	Florida State	10-4	0-1 (ACC)
16	Duke	11-4	0-1 (ACC)
17	Northwestern	12-2	1-1 (Big 10)
18	South Florida	8-3	1-0 (AAC)
19	Oklahoma	10-3	1-1 (Big 12)
20	Seton Hall	13-1	3-0 (Big East)
21	UCLA	11-3	3-0 (Pac 12)
22	Michigan State	10-3	1-1 (Big 10)
23	Iowa	12-2	2-0 (Big 10)
24	DePaul	10-5	2-0 (Big East)
25	Syracuse	11-3	1-0 (ACC)

\*Records reflect the time of Coaches Poll\*

**WHERE THE LADY DOGS RANK IN...**

Category ..... NCAA ..... SEC

Scoring offense (67.7)	123	9
Scoring margin (+15.3)	29	7
FG Percentage (40.2%)	150	11
FT Percentage (66.0%)	245	11
3FG Percentage (31.0%)	157	9
Assist-Turnover Ratio (1.32)	9	1
Assists Per Game (17.5)	18	1

Category ..... NCAA ..... SEC

Scoring defense (52.4)	13	3
FG Percentage defense (33.3%)	13	3
3FG Percentage defense (25.0%)	12	1
Steals Per Game (8.1)	166	13
Turnover Margin (+4.19)	33	4
Blocked Shots Per Game (3.8)	139	8
Rebounding Margin (+7.2)	42	6



**THE LAST TIME GEORGIA...****Scored 100 points or more:**

Dec. 17, 2007 - UGA 102, Mercer 45

**Scored 115 points or more:**

Nov. 22, 1998 - UGA 118, Oral Roberts 64

**Scored less than 50 points:**

Nov. 18, 2015 - Michigan State 66, UGA 45

**Scored 50 points in a half:**

Dec. 28, 2015 - UGA 81, Tenn. Tech 48 (50, 1H)

**Allowed 100 points:**

Jan. 14, 1999 - UGA 69, No. 1 Tennessee 102

**Held opponent to 40 points or less:**

Dec. 8, 2015 - UGA 77, Furman 39

**Held opponent to 20 or less points in a half:**

Dec. 28, 2015 - UGA 81, Tenn. Tech 48 (19, 1H)

**Shot better than 60% from the field:**

March 5, 2009 - UGA vs. Kentucky (63.3%)

**Won an overtime game:**

Feb. 3, 2011 - UGA vs. Oklahoma State (74-71)

**Lost an overtime game:**

Feb. 13, 2014 - UGA at Texas A&M (73-78)

**Played a double-overtime game:**

Jan. 22, 2004 - UGA at Ole Miss (79-90)

**Played a triple-overtime game:**

Never

**Played a quadruple-overtime game:**

Never

**Had at least 20 steals in a game:**

Nov. 25, 2014 - vs. Georgia Southern (23)

**Forced 30 turnovers in a game:**

Nov. 30, 2011 - vs. S.C. State (30)

**Had a player score 30 points:**

Feb. 24, 2008 - Tasha Humphrey (32) vs. Florida

**Had a player score 40 points:**

Dec. 6, 1997 - Coco Miller (45) vs. Charleston Southern

**Had a player grab 15 rebounds:**

Dec. 4, 2012 - Shacobia Barbee (15) vs. Mercer

**Had a player grab 20 rebounds:**

Dec. 4, 1986 - Katrina McClain (22) vs. Valdosta State

**Had a player dish out 10 or more assists:**

Nov. 15, 2015 - Shacobia Barbee (10) vs. Stetson

**Had a player block five shots:**

Feb. 16, 2012 - Anne-Marie Armstrong (5) at South Carolina

**Had a player block 10 shots:**

March 19, 1995 - Tracy Henderson (10) vs. Louisville

**Had a player with seven or more steals in a game:**

Dec. 1, 2013 - Shacobia Barbee (7) vs. Georgia State

**Had two players record a double-double in same game:**

Dec. 3, 2015 vs. Kennesaw State - Shacobia Barbee (11 pts., 11 rebs.) & Caliya Robinson (17 pts., 10 rebs.)

**Had a player record a triple-double:**

Nov. 15, 2015 - Shacobia Barbee vs. Stetson; 10 pts., 13 rebs., 10 assists

**Had a player record a double-double in back-to-back games:**

Shacobia Barbee -- Jan. 3 vs. Texas A7M; Jan. 7 vs. Missouri.

**Had a player record a double-double in three consecutive games:**

Jasmine Hassell - Feb. 7, 2013 vs. Auburn (10 rebs., 15 points), Feb. 10, 2013 vs. LSU (12 rebs., 18 points), Feb. 17, 2013 vs. Florida (16 rebs., 16 points)

**Had two players score 20 points in a game:**

Jan. 10, 2013 - Jasmine Hassell (21) and Tiaria Griffin (20) vs. Alabama

**Had five or more players score in double figures:**

Dec. 3, 2015 vs. Kennesaw State - Tiaria Griffin (10), Merritt Hempe (15), Shacobia Barbee (11), Mackenzie Engram (10), Caliya Robinson (17),

Amber Skidgel (11)

**Played a ranked opponent:**

Jan. 10, 2016 - No. 10 Kentucky 64, Georgia 53

**Beat a ranked opponent:**

Dec. 6, 2015 - Georgia 70, No. 21 Seton Hall 52

**Beat a ranked opponent at home:**

Dec. 6, 2015 - Georgia 70, No. 21 Seton Hall 52

**Beat a ranked opponent on the road:**

Feb. 3, 2013 - UGA 75, No. 8 Kentucky 71

**Beat a ranked opponent on a neutral court:**

March 25, 2013 - UGA 65, No. 23 Iowa State 60 in Spokane, Wash. (Second round of the NCAA Tournament)







## #1 SHANEA ARMBRISTER

Guard • Junior • 6-2 • Nassau, Bahamas/Darton State (Ga.) College

### Armbrister's Highlights

- » Has played in seven games this season.
- » Made her SEC debut against No. 10 Kentucky (1/10), matching her season high of six points.
- » Scored six points in six minutes vs. Furman (12/8).
- » Made her UGA debut vs. GA Southern and had three points and seven rebounds.
- » Missed the first two games of the 2015-16 season recovering from a torn meniscus.
- » Led the Bahamas to a Caribbean Basketball Federation Championship, earning MVP honors this past summer.
- » Coached by Lea Hentry at Darton State before transferring to Georgia.
- » A two-time, third-team All-America selection by the National Junior College Athletic Association (NJCAA).
- » Named the Georgia Collegiate Athletic Association (GCAA) 2015 Player of the Year and the league's 2014 Freshman of the Year.
- » Averaged a team-high 15.4 points (fifth-best in the competition) for the Bahamas and also averaged 5.8 rebounds and 2.4 steals per game.
- » Ranked as the No. 61 overall and No. 9 wing prospect in the nation by ESPN Hoopgurlz as a senior.

### SEASON & CAREER HIGHS

#### POINTS

Season: 6 2X, last vs. Kentucky (1/10/16)  
 Career: 6 2X, last vs. Kentucky (1/10/16)

#### REBOUNDS

Season: 7 GA Southern (11/24/15)  
 Career: 7 GA Southern (11/24/15)

#### ASSISTS

Season: 2 Kentucky (1/10/16)  
 Career: 2 Kentucky (1/10/16)

#### BLOCKS

Season: xx xx  
 Career: xx xx

#### STEALS

Season: xx xx  
 Career: xx xx

#### MINUTES

Season: 13 3X, last vs. Kentucky (1/10/16)  
 Career: 13 3X, last vs. Kentucky (1/10/16)

### MISCELLANEOUS STATS

#### DOUBLE-DIGIT POINTS

Season: xx Career: xx

#### DOUBLE-DIGIT REBOUNDS

Season: xx Career: xx

#### DOUBLE-DOUBLES

Season: xx Career: xx

#### 20-POINT GAMES

Season: xx Career: xx

### 2015-16 GAME-BY-GAME

Opponent	Date	gs	min	Total		3-Pointers		Free throws		Rebounds				pf	a	t/o	blk	stl	pts	avg
				fg-fga	pct	3fg-fga	pct	ft-fa	pct	off	def	tot	avg							
GEORGIA SOUTHER	11/24/		13	1-4	.25	1-1	1.00	0-0	.00	3	4	7	7.0	3	0	2	0	0	3	3.0
at CSUN	11/28/		13	1-5	.20	1-4	.25	0-0	.00	0	2	2	4.5	0	0	1	0	0	3	3.0
FURMAN	12/8/1		6	2-3	.66	2-2	1.00	0-0	.00	0	1	1	3.3	0	0	0	0	0	6	4.0
at Wright State	12/20/		4	0-1	.00	0-1	.00	0-0	.00	0	1	1	2.8	0	0	0	0	0	0	3.0
CINCINNATI	12/23/		3	1-3	.33	0-1	.00	0-0	.00	0	0	0	2.2	0	0	0	0	0	2	2.8
TENNESSEE TECH	12/28/		12	2-4	.50	1-2	.50	0-0	.00	0	0	0	1.8	1	1	1	0	0	5	3.2
#10 KENTUCKY	1/10/1		13	2-5	.40	2-4	.50	0-0	.00	1	1	2	1.9	1	2	1	0	0	6	3.6
Totals		0	64	9-25	.36	7-15	.46	0-0	.00	4	9	13	1.9	5	3	5	0	0	25	3.6

Games played: 7

Minutes/game: 9.1

Points/game: 3.6

FG Pct: 36.0

3FG Pct: 46.7

Rebounds/game: 1.9

Assists/game: 0.4

Turnovers/game: 0.7

Assist/turnover ratio: 0.6

### OVERALL CAREER STATISTICS

Year	GP	GS	Min	Avg	TFG	TFGA	.Pct	3FG	3FGA	.Pct	FT	FTA	.Pct	Rebounds				PF	FO	Ast	TO	Blk	Stl	Pts	Avg
														Off	Def	Tot	Avg								
2015-16	7	0	64	9.1	9	25	.360	7	15	.467	0	0	.000	4	9	13	1.9	5	0	3	5	0	0	25	3.6
<b>TOTAL</b>	<b>7</b>	<b>0</b>	<b>64</b>	<b>9.1</b>	<b>9</b>	<b>25</b>	<b>.360</b>	<b>7</b>	<b>15</b>	<b>.467</b>	<b>0</b>	<b>0</b>	<b>.000</b>	<b>4</b>	<b>9</b>	<b>13</b>	<b>1.9</b>	<b>5</b>	<b>0</b>	<b>3</b>	<b>5</b>	<b>0</b>	<b>0</b>	<b>25</b>	<b>3.6</b>

### SEC CAREER STATISTICS

Year	GP	GS	Min	Avg	TFG	TFGA	.Pct	3FG	3FGA	.Pct	FT	FTA	.Pct	Rebounds				PF	FO	Ast	TO	Blk	Stl	Pts	Avg
														Off	Def	Tot	Avg								
2015-16	1	0	13	13.0	2	5	.400	2	4	.500	0	0	.000	1	1	2	2.0	1	0	2	1	0	0	6	6.0
<b>TOTAL</b>	<b>1</b>	<b>0</b>	<b>13</b>	<b>13.0</b>	<b>2</b>	<b>5</b>	<b>.400</b>	<b>2</b>	<b>4</b>	<b>.500</b>	<b>0</b>	<b>0</b>	<b>.000</b>	<b>1</b>	<b>1</b>	<b>2</b>	<b>2.0</b>	<b>1</b>	<b>0</b>	<b>2</b>	<b>1</b>	<b>0</b>	<b>0</b>	<b>6</b>	<b>6.0</b>





## #2 TERRYUANA GODWIN

Guard • RS-Senior • 5-4 • Hogansville, Ga./Butler (Kan.) CC

### Godwin's Highlights

- » Joined the team last August (2014).
- » Played in eight contests, averaging 0.5 points, 0.1 rebounds and 0.4 assists in 2.0 minutes per game last season.
- » Coached by Mike Helmer at Butler Community College in El Dorado, Kan. Coached by Maurice Smith at Georgia College before that.
- » Redshirted during the 2012-13 season due to a torn anterior cruciate ligament (ACL).
- » Her brother, Terry, is a wide receiver on the UGA football team.

### SEASON & CAREER HIGHS

<b>POINTS</b>			
Season:	XX		XX
Career:	3	Belmont (12/22/14)	
<b>REBOUNDS</b>			
Season:	XX		XX
Career:	1	Morgan St. (11/14/14)	
<b>ASSISTS</b>			
Season:	XX		XX
Career:	1	Mercer (12/4/14)	
	1	Ga. Southern (11/25/14)	
<b>BLOCKS</b>			
Season:	XX		XX
Career:	XX		XX
<b>STEALS</b>			
Season:	XX		XX
Career:	1	Mercer (12/4/14)	
<b>MINUTES</b>			
Season:	XX		XX
Career:	6	Ga. Southern (11/25/14)	

### MISCELLANEOUS STATS

<b>DOUBLE-DIGIT POINTS</b>			
Season:	XX	Career:	XX
<b>DOUBLE-DIGIT REBOUNDS</b>			
Season:	XX	Career:	XX
<b>DOUBLE-DOUBLES</b>			
Season:	XX	Career:	XX
<b>20-POINT GAMES</b>			
Season:	XX	Career:	XX

### 2015-16 GAME-BY-GAME

### OVERALL CAREER STATISTICS

Year	GP	GS	Min	Avg	TFG	TFGA	.Pct	3FG	3FGA	.Pct	FT	FTA	.Pct	Rebounds				PF	FO	Ast	TO	Blk	Stl	Pts	Avg
														Off	Def	Tot	Avg								
2014-15	8	0	16	2.0	1	6	.167	1	2	.500	1	2	.500	1	0	1	0.1	2	0	3	1	0	1	4	0.5
2015-16																									
<b>TOTAL</b>	<b>8</b>	<b>0</b>	<b>16</b>	<b>2.0</b>	<b>1</b>	<b>6</b>	<b>.167</b>	<b>1</b>	<b>2</b>	<b>.500</b>	<b>1</b>	<b>2</b>	<b>.500</b>	<b>1</b>	<b>0</b>	<b>1</b>	<b>0.1</b>	<b>2</b>	<b>0</b>	<b>3</b>	<b>1</b>	<b>0</b>	<b>1</b>	<b>4</b>	<b>0.5</b>

### SEC CAREER STATISTICS

Year	GP	GS	Min	Avg	TFG	TFGA	.Pct	3FG	3FGA	.Pct	FT	FTA	.Pct	Rebounds				PF	FO	Ast	TO	Blk	Stl	Pts	Avg
														Off	Def	Tot	Avg								
2014-15	2	0	3	1.5	0	0	.000	0	0	.000	0	0	.000	0	0	0	0.0	1	0	0	0	0	0	0	0.0
2015-16																									
<b>TOTAL</b>	<b>2</b>	<b>0</b>	<b>3</b>	<b>1.5</b>	<b>0</b>	<b>0</b>	<b>.000</b>	<b>0</b>	<b>0</b>	<b>.000</b>	<b>0</b>	<b>0</b>	<b>.000</b>	<b>0</b>	<b>0</b>	<b>0</b>	<b>0.0</b>	<b>1</b>	<b>0</b>	<b>0</b>	<b>0</b>	<b>0</b>	<b>0</b>	<b>0</b>	<b>0.0</b>





## #3 TIARIA GRIFFIN

Guard • Senior • 5-7 • Monticello, Miss./Hattiesburg HS

### Griffin's Highlights

- » Has hit a 3-point basket in every game played this season.
- » Has scored in double figures in 11 of 16 games and has led UGA in scoring five times this season.
- » Missed the game vs. Tennessee Tech with a sprained right ankle, breaking a string of 44-straight starts.
- » Hit 1,000 career points this season -- the 36th Lady Bulldog all-time to reach 1,000.
- » Her 183 career made 3-point FGs ranks sixth in school history and is the highest for any current active player in the SEC.
- » Georgia's second-leading scorer (11.3 ppg) while also leading the team in playing time (30.6 mpg), 3-pointers (115) and 3-point attempts (185) in 2014-15.
- » The only Lady Bulldog to start all 31 games a year ago.
- » Named to the SEC Academic Honor Roll for the first time in her career last season.

### SEASON & CAREER HIGHS

#### POINTS

Season: 25 CSUN (11/28/15)  
Career: 25 CSUN (11/28/15)

#### REBOUNDS

Season: 8 2X, last - Cincinnati (12/23/15)  
Career: 10 S.C. State (11/26/13)

#### ASSISTS

Season: 5 3X, last - CSUN (11/28/15)  
Career: 9 S.C. State (11/26/13)

#### BLOCKS

Season: 2 Missouri (1/7/16)  
Career: 2 Missouri (1/7/16)

#### STEALS

Season: 3 4X, last - Furman (12/8/15)  
Career: 6 Furman (11/19/13)

#### MINUTES

Season: 39 BYU (11/28/15)  
Career: 40 Tennessee-twice & LSU

### MISCELLANEOUS STATS

#### DOUBLE-DIGIT POINTS

Season: 11 Career: 52

#### DOUBLE-DIGIT REBOUNDS

Season: XX Career: 2

#### DOUBLE-DOUBLES

Season: XX Career: 1

#### 20-POINT GAMES

Season: 4 Career: 10

### 2015-16 GAME-BY-GAME

				Total		3-Pointers		Free throws		Rebounds														
Opponent	Date	gs	min	fg-fga	pct	3fg-fga	pct	ft-fga	pct	off	def	tot	avg	pf	a	t/o	blk	stl	pts	avg				
STETSON	11/15/	*	30	9-16	.56	2-7	.28	1-1	1.00	1	6	7	7.0	2	5	0	0	3	21	21.0				
at #23 Michigan State	11/18/	*	37	2-9	.22	1-4	.25	1-2	.50	0	2	2	4.5	3	0	2	0	0	6	13.5				
GEORGIA TECH	11/22/	*	38	8-17	.47	3-8	.37	2-4	.50	2	1	3	4.0	1	5	3	0	3	21	16.0				
GEORGIA SOUTHER	11/24/	*	21	2-9	.22	1-5	.20	0-0	.00	2	2	4	4.0	0	2	1	0	3	5	13.3				
vs BYU	11/27/	*	39	5-14	.35	4-8	.50	9-10	.90	0	1	1	3.4	1	1	2	1	0	23	15.2				
at CSUN	11/28/	*	25	7-15	.46	3-8	.37	8-8	1.00	5	0	5	3.7	2	5	0	0	2	25	16.8				
MERCER	12/2/	*	34	7-16	.43	5-11	.45	0-0	.00	1	0	1	3.3	1	2	0	1	1	19	17.1				
KENNESAW STATE	12/3/	*	20	4-8	.50	2-3	.66	0-0	.00	2	3	5	3.5	2	4	2	0	1	10	16.3				
#21 SETON HALL	12/6/	*	38	6-13	.46	3-9	.33	0-0	.00	3	5	8	4.0	2	1	2	0	0	15	16.1				
FURMAN	12/8/	*	30	3-11	.27	3-9	.33	1-2	.50	2	3	5	4.1	2	2	0	0	3	10	15.5				
at Wright State	12/20/	*	32	5-16	.31	2-7	.28	0-0	.00	0	6	6	4.3	1	2	2	1	0	12	15.2				
CINCINNATI	12/23/	*	31	3-15	.20	2-12	.16	0-0	.00	2	6	8	4.6	1	2	2	0	2	8	14.6				
at #16 Texas A&M	01/03/	*	38	5-13	.38	2-8	.25	2-2	1.00	1	1	2	4.4	2	1	1	0	1	14	14.5				
#20 MISSOURI	1/7/16	*	40	4-15	.26	3-10	.30	3-4	.75	1	0	1	4.1	2	1	1	2	1	14	14.5				
#10 KENTUCKY	1/10/	*	22	1-6	.16	1-3	.33	0-0	.00	0	0	0	3.9	4	0	3	0	2	3	13.7				
Totals			15	475	71	193	.36	37	112	.33	27	33	.81	22	36	58	3.9	26	33	21	5	22	206	13.7

Games played: 15  
Minutes/game: 31.7  
Points/game: 13.7  
FG Pct: 36.8  
3FG Pct: 33.0  
FT Pct: 81.8

Rebounds/game: 3.9  
Assists/game: 2.2  
Turnovers/game: 1.4  
Assist/turnover ratio: 1.6  
Steals/game: 1.5  
Blocks/game: 0.3

### OVERALL CAREER STATISTICS

Year	GP	GS	Min	Avg	TFG	TFGA	.Pct	3FG	3FGA	.Pct	FT	FTA	.Pct	Off	Def	Tot	Avg	PF	FO	Ast	TO	Blk	Stl	Pts	Avg
2012-13	35	17	653	18.7	87	268	.325	46	155	.297	35	51	.686	30	72	102	2.9	35	0	29	38	3	32	255	7.3
2013-14	29	6	607	20.9	94	258	.364	41	134	.306	35	47	.745	18	50	68	2.3	28	0	49	42	1	42	264	9.1
2014-15	31	31	949	30.6	115	329	.350	59	185	.319	62	80	.775	27	90	117	3.8	37	0	53	52	2	42	351	11.3
2015-16	15	15	475	31.7	71	193	.368	37	112	.330	27	33	.818	22	36	58	3.9	26	0	33	21	5	22	206	13.7
<b>TOTAL</b>	<b>110</b>	<b>69</b>	<b>2684</b>	<b>24.4</b>	<b>367</b>	<b>1048</b>	<b>.350</b>	<b>183</b>	<b>586</b>	<b>.312</b>	<b>159</b>	<b>211</b>	<b>.754</b>	<b>97</b>	<b>248</b>	<b>345</b>	<b>3.1</b>	<b>126</b>	<b>0</b>	<b>164</b>	<b>153</b>	<b>11</b>	<b>138</b>	<b>1076</b>	<b>9.8</b>

### SEC CAREER STATISTICS

Year	GP	GS	Min	Avg	TFG	TFGA	.Pct	3FG	3FGA	.Pct	FT	FTA	.Pct	Off	Def	Tot	Avg	PF	FO	Ast	TO	Blk	Stl	Pts	Avg
2012-13	16	8	279	17.4	37	114	.325	19	63	.302	18	23	.783	13	32	45	2.8	17	0	7	19	2	13	111	6.9
2013-14	16	4	296	18.5	40	118	.339	16	56	.286	11	14	.786	7	20	27	1.7	18	0	17	18	0	17	107	6.7
2014-15	16	16	544	34.0	60	178	.337	30	102	.294	26	38	.684	13	58	71	4.4	19	0	26	24	0	18	176	11.0
2015-16	3	3	100	33.3	10	34	.294	6	21	.286	5	6	.833	2	1	3	1.0	8	0	2	5	2	4	31	10.3
<b>TOTAL</b>	<b>51</b>	<b>31</b>	<b>1219</b>	<b>23.9</b>	<b>147</b>	<b>444</b>	<b>.331</b>	<b>71</b>	<b>242</b>	<b>.293</b>	<b>60</b>	<b>81</b>	<b>.741</b>	<b>35</b>	<b>111</b>	<b>146</b>	<b>2.9</b>	<b>62</b>	<b>0</b>	<b>52</b>	<b>66</b>	<b>4</b>	<b>52</b>	<b>425</b>	<b>8.3</b>





## #4 CALIYA ROBINSON

Forward • Freshman • 6-3 • Marietta, Ga./McEachern HS

### Robinson's Highlights

- » Has played in each of the first three SEC games of her Lady Bulldog career.
- » Named SEC Freshman of the Week on Dec. 29 after averaging nearly a double-double in two games with 10 pts., nine rebs. vs. Cincinnati and six points, 10 rebs. vs. Tennessee Tech.
- » Recorded first career double-double with 17 points and 10 rebounds vs. Kennesaw State (12/3).
- » Tied for the team lead in blocks with 15 this season.
- » Had strong UGA debut with seven points vs. GA Southern and followed with a 13-point effort vs. CSUN.
- » Missed the first three games of the 2015-16 season recovering from a torn ACL she injured in high school.
- » Coached by Phyllis Arthur at McEachern as a junior and senior after playing at Kell High School during her first two seasons of high school.
- » Rated as one of the nation's top-50 prospects by three different recruiting services – No. 19 recruit by Fullcourt.com, No. 33 by ESPN Hoopgurlz and No. 44 by Prospect Nation.
- » Named first-team all-state for Class 6A by the Georgia Sports Writers Association, as well as a second-team selection of the Atlanta Journal-Constitution.
- » Missed the vast majority of her senior season after suffering a knee injury early in the campaign; in five games played in 2014-15, averaged 11.0 points, 8.2 rebounds, 6.6 blocks, 3.6 assists and 3.1 steals per game.
- » As a junior, averaged a double-double of 13.0 points and 11.2 rebounds, as well as 6.6 blocks, 3.8 assists and 3.3 steals per game.

### SEASON & CAREER HIGHS

#### POINTS

Season: 17 Kennesaw St. (12/3/15)  
 Career: 17 Kennesaw St. (12/3/15)

#### REBOUNDS

Season: 10 2X, last - Cincinnati (12/23/15)  
 Career: 10 2X, last - Cincinnati (12/23/15)

#### ASSISTS

Season: 2 6X, last - Tenn. Tech (12/28/15)  
 Career: 2 6X, last - Tenn. Tech (12/28/15)

#### BLOCKS

Season: 3 2X, last - Tenn. Tech (12/28/15)  
 Career: 3 2X, last - Tenn. Tech (12/28/15)

#### STEALS

Season: 3 Kennesaw St. (12/3/15)  
 Career: 3 Kennesaw St. (12/3/15)

#### MINUTES

Season: 24 Kennesaw St. (12/3/15)  
 Career: 24 Kennesaw St. (12/3/15)

### MISCELLANEOUS STATS

#### DOUBLE-DIGIT POINTS

Season: 3 Career: 3

#### DOUBLE-DIGIT REBOUNDS

Season: 2 Career: 2

#### DOUBLE-DOUBLES

Season: 1 Career: 1

#### 20-POINT GAMES

Season: XX Career: XX

### 2015-16 GAME-BY-GAME

Opponent	Date	gs	min	Total		3-Pointers		Free throws		Rebounds				pf	a	t/o	blk	stl	pts	avg
				fg-fga	pct	3fg-fga	pct	ft-fga	pct	off	def	tot	avg							
GEORGIA SOUTHER	11/24/	20	3-6	.50	0-1	.00	1-2	.50	0	1	1	1.0	0	2	2	2	1	7	7.0	
vs BYU	11/27/	6	0-1	.00	0-1	.00	0-0	.00	0	0	0	0.5	1	0	1	0	0	0	3.5	
at CSUN	11/28/	23	5-9	.55	1-3	.33	2-3	.66	1	3	4	1.7	2	1	1	2	0	13	6.7	
MERCER	12/2/1	14	1-6	.16	0-0	.00	0-0	.00	1	4	5	2.5	1	0	1	0	0	2	5.5	
KENNESAW STATE	12/3/1	24	6-9	.66	0-1	.00	5-6	.83	2	8	10	4.0	1	2	3	3	3	17	7.8	
#21 SETON HALL	12/6/1	11	2-5	.40	0-0	.00	0-0	.00	0	1	1	3.5	1	2	0	2	1	4	7.2	
FURMAN	12/8/1	16	4-6	.66	0-0	.00	0-0	.00	4	4	8	4.1	2	2	0	2	1	8	7.3	
at Wright State	12/20/	11	1-3	.33	0-0	.00	0-0	.00	4	3	7	4.5	3	0	2	0	0	2	6.6	
CINCINNATI	12/23/	20	3-7	.42	0-1	.00	0-2	.00	4	6	10	5.1	2	2	0	0	0	6	6.6	
TENNESSEE TECH	12/28/	23	4-7	.57	0-0	.00	2-3	.66	4	5	9	5.5	2	2	1	3	0	10	6.9	
at #16 Texas A&M	01/03/	6	0-1	.00	0-0	.00	0-0	.00	0	1	1	5.1	0	0	0	0	0	0	6.3	
#20 MISSOURI	1/7/16	10	3-5	.60	1-2	.50	0-0	.00	2	0	2	4.8	1	0	1	0	0	7	6.3	
#10 KENTUCKY	1/10/1	22	2-5	.40	0-0	.00	0-0	.00	2	2	4	4.8	1	1	1	1	0	4	6.2	
Totals		0	206	34-70	.48	2-9	.22	10-16	.62	24	38	62	4.8	17	14	13	15	6	80	6.2

Games played: 13

Minutes/game: 15.8

Points/game: 6.2

FG Pct: 48.6

3FG Pct: 22.2

FT Pct: 62.5

Rebounds/game: 4.8

Assists/game: 1.1

Turnovers/game: 1.0

Assist/turnover ratio: 1.1

Steals/game: 0.5

Blocks/game: 1.2

### OVERALL CAREER STATISTICS

Year	GP	GS	Min	Avg	TFG	TFGA	.Pct	3FG	3FGA	.Pct	FT	FTA	.Pct	Rebounds				PF	FO	Ast	TO	Blk	Stl	Pts	Avg
														Off	Def	Tot	Avg								
2015-16	13	0	206	15.8	34	70	.486	2	9	.222	10	16	.625	24	38	62	4.8	17	0	14	13	15	6	80	6.2
<b>TOTAL</b>	<b>13</b>	<b>0</b>	<b>206</b>	<b>15.8</b>	<b>34</b>	<b>70</b>	<b>.486</b>	<b>2</b>	<b>9</b>	<b>.222</b>	<b>10</b>	<b>16</b>	<b>.625</b>	<b>24</b>	<b>38</b>	<b>62</b>	<b>4.8</b>	<b>17</b>	<b>0</b>	<b>14</b>	<b>13</b>	<b>15</b>	<b>6</b>	<b>80</b>	<b>6.2</b>

### SEC CAREER STATISTICS

Year	GP	GS	Min	Avg	TFG	TFGA	.Pct	3FG	3FGA	.Pct	FT	FTA	.Pct	Rebounds				PF	FO	Ast	TO	Blk	Stl	Pts	Avg
														Off	Def	Tot	Avg								
2015-16	3	0	38	12.7	5	11	.455	1	2	.500	0	0	.000	4	3	7	2.3	2	0	1	2	1	0	11	3.7
<b>TOTAL</b>	<b>3</b>	<b>0</b>	<b>38</b>	<b>12.7</b>	<b>5</b>	<b>11</b>	<b>.455</b>	<b>1</b>	<b>2</b>	<b>.500</b>	<b>0</b>	<b>0</b>	<b>.000</b>	<b>4</b>	<b>3</b>	<b>7</b>	<b>2.3</b>	<b>2</b>	<b>0</b>	<b>1</b>	<b>2</b>	<b>1</b>	<b>0</b>	<b>11</b>	<b>3.7</b>







## #10 HANNAH KOHL ALMIRE

Guard • Junior • 5-9 • Atlanta, Ga./Riverwood Charter School

### Almire's Highlights

- » Hit first career 3-pointer in the game against Kennesaw State.
- » Played a career-high 11 minutes vs. GA Southern.
- » Played two minutes in season opener vs. Stetson.
- » Named to the SEC Academic Honor Roll for two-straight seasons.
- » Played in eight games, averaging 0.1 points, 0.4 rebounds and 0.1 assists per contest last season.
- » Logged one more minute of PT in league play in the first three SEC games – 2 versus Alabama and 1 versus Missouri – than she did during the entire 2013-14 campaign – 1 versus both Ole Miss and Mississippi State last

### 2015-16 GAME-BY-GAME

#### SEASON & CAREER HIGHS

##### POINTS

Season: 3 Kennesaw St. (12/3/15)  
 Career: 3 Kennesaw St. (12/3/15)

##### REBOUNDS

Season: 3 GA Southern (11/24/15)  
 Career: 3 GA Southern (11/24/15)

##### ASSISTS

Season: 1 Furman (12/8/15)  
 Career: 1 CSUN (11/28/15)  
 6 times

##### BLOCKS

Season: XX  
 Career: XX

##### STEALS

Season: XX  
 Career: XX

##### MINUTES

Season: 11 GA Southern (11/24/15)  
 Career: 11 GA Southern (11/24/15)

#### MISCELLANEOUS STATS

##### DOUBLE-DIGIT POINTS

Season: XX Career: XX

##### DOUBLE-DIGIT REBOUNDS

Season: XX Career: XX

##### DOUBLE-DOUBLES

Season: XX Career: XX

##### 20-POINT GAMES

Season: XX Career: XX

Opponent	Date	gs	min	Total		3-Pointers		Free throws		Rebounds				pf	a	t/o	blk	stl	pts	avg
				fg-fga	pct	3fg-fga	pct	ft-fga	pct	off	def	tot	avg							
STETSON	11/15/	2	0-1	.00	0-0	.00	0-0	.00	0-0	.00	0	0	0 0.0	2	0	1	0	0	0	0.0
GEORGIA SOUTHER	11/24/	11	1-2	.50	0-0	.00	0-0	.00	0-0	.00	3	0	3 1.5	1	0	1	0	0	2	1.0
at CSUN	11/28/	7	0-1	.00	0-0	.00	0-0	.00	0-0	.00	0	2	2 1.7	0	1	0	0	0	0	0.7
KENNESAW STATE	12/3/1	8	1-2	.50	1-1	1.00	0-0	.00	1	1	2 1.8	2	0	0	0	0	0	3	1.3	
FURMAN	12/8/1	2	0-0	.00	0-0	.00	0-0	.00	0-0	.00	1	0	1 1.6	0	1	0	0	0	0	1.0
TENNESSEE TECH	12/28/	1	0-0	.00	0-0	.00	0-0	.00	0-0	.00	0	0	0 1.3	0	0	1	0	0	0	0.8
Totals		0	31	2-6	.33	1-1	1.00	0-0	.00	5	3	8 1.3	5	2	3	0	0	5	0.8	

Games played: 6

Minutes/game: 5.2

Points/game: 0.8

FG Pct: 33.3

3FG Pct: 100.0

Rebounds/game: 1.3

Assists/game: 0.3

Turnovers/game: 0.5

Assist/turnover ratio: 0.7

### OVERALL CAREER STATISTICS

Year	GP	GS	Min	Avg	TFG	TFGA	.Pct	3FG	3FGA	.Pct	FT	FTA	.Pct	Rebounds				PF	FO	Ast	TO	Blk	Stl	Pts	Avg
														Off	Def	Tot	Avg								
2013-14	12	0	33	2.8	1	7	.143	0	1	.000	1	3	.333	5	1	6	0.5	4	0	3	3	0	0	3	0.3
2014-15	8	0	16	2.0	0	1	.000	0	0	.000	1	2	.500	1	2	3	0.4	1	0	1	3	0	0	1	0.1
2015-16	6	0	31	5.2	2	6	.333	1	1	1.000	0	0	.000	5	3	8	1.3	5	0	2	3	0	0	5	0.8
<b>TOTAL</b>	<b>26</b>	<b>0</b>	<b>80</b>	<b>3.1</b>	<b>3</b>	<b>14</b>	<b>.214</b>	<b>1</b>	<b>2</b>	<b>.500</b>	<b>2</b>	<b>5</b>	<b>.400</b>	<b>11</b>	<b>6</b>	<b>17</b>	<b>0.7</b>	<b>10</b>	<b>0</b>	<b>6</b>	<b>9</b>	<b>0</b>	<b>0</b>	<b>9</b>	<b>0.3</b>

### SEC CAREER STATISTICS

Year	GP	GS	Min	Avg	TFG	TFGA	.Pct	3FG	3FGA	.Pct	FT	FTA	.Pct	Rebounds				PF	FO	Ast	TO	Blk	Stl	Pts	Avg
														Off	Def	Tot	Avg								
2013-14	2	0	2	1.0	0	0	.000	0	0	.000	0	0	.000	0	0	0	0.0	0	0	0	1	0	0	0	0.0
2014-15	2	0	3	1.5	0	1	.000	0	0	.000	0	0	.000	0	1	1	0.5	0	0	0	0	0	0	0	0.0
2015-16																									
<b>TOTAL</b>	<b>4</b>	<b>0</b>	<b>5</b>	<b>1.3</b>	<b>0</b>	<b>1</b>	<b>.000</b>	<b>0</b>	<b>0</b>	<b>.000</b>	<b>0</b>	<b>0</b>	<b>.000</b>	<b>0</b>	<b>1</b>	<b>1</b>	<b>0.3</b>	<b>0</b>	<b>0</b>	<b>0</b>	<b>1</b>	<b>0</b>	<b>0</b>	<b>0</b>	<b>0.0</b>





## #11 PACHIS ROBERTS

Guard/Forward • RS-Junior • 5-11 • Powder Springs, Ga./Syracuse

### Roberts' Highlights

- » Had a career-high 25-point effort vs. Tennessee Tech (12/28) -- it marked the first time she has gone over 20 points in her career and tied a season high in points for a UGA player this season.
- » Picked up first start of the season vs. Tennessee Tech, filling in for senior guard Tiaria Griffin. Picked up another start at the four spot (forward) against No. 20 Missouri and then again against No. 10 Kentucky.
- » Made her 2015-16 debut vs. No. 21 Seton Hall; missed the first eight games of the 2015-16 season recovering from a thumb injury.
- » Logged playing time in 26 games, including a trio of starts, and averaged 4.0 points and 2.5 rebounds per game last season.
- » Notched her first collegiate start against Missouri last season.
- » Saw her minutes and production increase considerably after Barbee's injury a season ago. Saw action in just three of UGA's first seven SEC games and averaged 11.3 mpg, 2.7 ppg & 1.0 rpg. In UGA's last nine SEC regular-season outings, those numbers upped to 18.3 mpg, 5.2 ppg & 3.9 rpg.
- » Transferred to Georgia from Syracuse during the summer of 2013.

### SEASON & CAREER HIGHS

#### POINTS

Season: 25 Tennessee Tech (12/28/15)  
Career: 25 Tennessee Tech (12/28/15)

#### REBOUNDS

Season: 6 Kentucky (1/10/16)  
Career: 8 Arkansas (2/9/15)

#### ASSISTS

Season: 3 Tennessee Tech (12/28/15)  
Career: 6 LSU (2/19/15)

#### BLOCKS

Season: XX  
Career: 1 Six Times in 2014-15 and Ga. Tech (11/23/12)

#### STEALS

Season: 2 Tennessee Tech (12/28/15)  
Career: 4 2X, last - Auburn (2/22/15)

#### MINUTES

Season: 28 Tennessee Tech (12/28/15)  
Career: 35 LSU (2/19/15)

### MISCELLANEOUS STATS

#### DOUBLE-DIGIT POINTS

Season: 2 Career: 6

#### DOUBLE-DIGIT REBOUNDS

Season: XX Career: XX

#### DOUBLE-DOUBLES

Season: XX Career: XX

#### 20-POINT GAMES

Season: 1 Career: 1

2 of Roberts' double-figure games at Syracuse.

### 2015-16 GAME-BY-GAME

Opponent	Date	gs	min	Total		3-Pointers		Free throws		Rebounds				pf	a	t/o	blk	stl	pts	avg
				fg-fga	pct	3fg-fga	pct	ft-fga	pct	off	def	tot	avg							
#21 SETON HALL	12/6/1		14	2-7	.28	1-2	.50	1-2	.50	3	1	4	4.0	0	1	0	0	0	6	6.0
FURMAN	12/8/1		15	0-4	.00	0-2	.00	0-0	.00	1	3	4	4.0	2	1	0	0	1	0	3.0
at Wright State	12/20/		11	0-2	.00	0-1	.00	2-2	1.00	1	2	3	3.7	3	0	1	0	0	2	2.7
CINCINNATI	12/23/		16	1-2	.50	1-1	1.00	0-0	.00	1	1	2	3.3	3	1	2	0	1	3	2.8
TENNESSEE TECH	12/28/	*	28	10-13	.76	5-5	1.00	0-0	.00	1	4	5	3.6	2	3	1	0	2	25	7.2
at #16 Texas A&M	01/03/		16	5-8	.62	2-3	.66	1-1	1.00	1	4	5	3.8	4	0	2	0	1	13	8.2
#20 MISSOURI	1/7/16	*	19	1-4	.25	0-2	.00	0-0	.00	0	2	2	3.6	3	0	4	0	1	2	7.3
#10 KENTUCKY	1/10/1	*	26	2-9	.22	1-5	.20	2-3	.66	3	3	6	3.9	4	2	1	0	1	7	7.3
Totals		3	145	21-49	.42	10-21	.47	6-8	.75	11	20	31	3.9	21	8	11	0	7	58	7.3

Games played: 8

Minutes/game: 18.1

Points/game: 7.3

FG Pct: 42.9

3FG Pct: 47.6

FT Pct: 75.0

Rebounds/game: 3.9

Assists/game: 1.0

Turnovers/game: 1.4

Assist/turnover ratio: 0.7

Steals/game: 0.9

### OVERALL CAREER STATISTICS

Year	GP	GS	Min	Avg	TFG	TFGA	.Pct	3FG	3FGA	.Pct	FT	FTA	.Pct	Rebounds				PF	FO	Ast	TO	Blk	Stl	Pts	Avg
														Off	Def	Tot	Avg								
2012-13*	16	0	155	9.7	18	44	.409	9	28	.231	12	16	.750	7	21	28	1.8	16	0	6	10	1	13	57	3.6
2014-15	26	3	342	13.2	35	100	.350	14	49	.286	21	36	.583	22	43	65	2.5	35	1	23	18	6	26	105	4.0
2015-16	8	3	145	18.1	21	49	.429	10	21	.476	6	8	.750	11	20	31	3.9	21	0	8	11	0	7	58	7.3
<b>TOTAL</b>	<b>50</b>	<b>6</b>	<b>663</b>	<b>13.3</b>	<b>74</b>	<b>193</b>	<b>.383</b>	<b>33</b>	<b>98</b>	<b>.338</b>	<b>39</b>	<b>60</b>	<b>.650</b>	<b>40</b>	<b>84</b>	<b>124</b>	<b>2.5</b>	<b>72</b>	<b>1</b>	<b>37</b>	<b>39</b>	<b>7</b>	<b>46</b>	<b>220</b>	<b>4.4</b>

\*stats from 2012-13 season at Syracuse

### SEC CAREER STATISTICS

Year	GP	GS	Min	Avg	TFG	TFGA	.Pct	3FG	3FGA	.Pct	FT	FTA	.Pct	Rebounds				PF	FO	Ast	TO	Blk	Stl	Pts	Avg
														Off	Def	Tot	Avg								
2014-15	12	3	199	16.6	19	60	.317	11	34	.324	6	13	.462	11	27	38	3.2	19	0	16	13	4	11	55	4.6
2015-16	3	2	61	20.3	8	21	.381	3	10	.300	3	4	.750	4	9	13	4.3	11	0	2	7	0	3	22	7.3
<b>TOTAL</b>	<b>15</b>	<b>5</b>	<b>260</b>	<b>17.3</b>	<b>27</b>	<b>81</b>	<b>.333</b>	<b>14</b>	<b>44</b>	<b>.318</b>	<b>9</b>	<b>17</b>	<b>.529</b>	<b>15</b>	<b>36</b>	<b>51</b>	<b>3.4</b>	<b>30</b>	<b>0</b>	<b>18</b>	<b>20</b>	<b>4</b>	<b>14</b>	<b>77</b>	<b>5.1</b>





## #12 HALEY CLARK

Guard • Sophomore • 5-9 • Orlando, Fla./Edgewater HS

### Clark's Highlights

- » Has played in each of the first 16 games this season.
- » Tied a career high with six assists and three steals vs. Kennesaw State.
- » A solid contributor throughout non-conference action who saw her playing time initially dip during SEC play before a late-season spike in PT and statistical contributions last season.
- » Logged 16.1 minutes per game in 25 appearances, with a trio of starts against Florida (twice) and Tennessee in Athens. in her first year as a Lady Bulldog.

### SEASON & CAREER HIGHS

#### POINTS

Season: 4 3X, last - Tenn. Tech (12/28/15)  
 Career: 9 Tennessee (2/26/15)

#### REBOUNDS

Season: 4 2X, last - GA Southern (11/24/15)  
 Career: 4 5X, last - GA Southern (11/24/15)

#### ASSISTS

Season: 6 2X, last - Tenn. Tech (12/28/15)  
 Career: 6 3X, last - Tenn. Tech (12/28/15)

#### BLOCKS

Season: 1 6X, last - Kentucky (1/10/16)  
 Career: 1 7X, last - Kentucky (1/10/16)

#### STEALS

Season: 3 2X, last - Kennesaw St. (12/3/15)  
 Career: 3 2X, last - Kennesaw St. (12/3/15)

#### MINUTES

Season: 26 Kennesaw St. (12/3/15)  
 Career: 36 Tennessee (2/26/15)

### MISCELLANEOUS STATS

#### DOUBLE-DIGIT POINTS

Season: XX Career: XX

#### DOUBLE-DIGIT REBOUNDS

Season: XX Career: XX

#### DOUBLE-DOUBLES

Season: XX Career: XX

#### 20-POINT GAMES

Season: XX Career: XX

### 2015-16 GAME-BY-GAME

Opponent	Date	gs	min	Total		3-Pointers		Free throws		Rebounds				pf	a	t/o	blk	stl	pts	avg
				fg-fga	pct	3fg-fga	pct	ft-fga	pct	off	def	tot	avg							
STETSON	11/15/		14	0-1	.00	0-0	.00	0-0	.00	0	0	0	0.0	2	2	2	1	0	0	0.0
at #23 Michigan State	11/18/		15	0-2	.00	0-0	.00	0-0	.00	1	3	4	2.0	3	5	1	0	2	0	0.0
GEORGIA TECH	11/22/		14	1-3	.33	0-0	.00	0-0	.00	0	1	1	1.7	2	1	1	0	0	2	0.7
GEORGIA SOUTHER	11/24/		25	2-4	.50	0-0	.00	0-0	.00	0	4	4	2.3	2	5	1	1	1	4	1.5
vs BYU	11/27/		3	0-0	.00	0-0	.00	0-2	.00	0	1	1	2.0	0	0	0	1	0	0	1.2
at CSUN	11/28/		19	0-1	.00	0-0	.00	2-2	1.00	1	1	2	2.0	2	1	0	0	0	2	1.3
MERCER	12/2/1		2	0-1	.00	0-0	.00	0-0	.00	0	0	0	1.7	0	0	2	0	0	0	1.1
KENNESAW STATE	12/3/1		26	1-6	.16	1-3	.33	0-0	.00	0	2	2	1.8	5	6	3	0	3	3	1.4
#21 SETON HALL	12/6/1		2	0-0	.00	0-0	.00	0-0	.00	0	1	1	1.7	0	1	0	1	0	0	1.2
FURMAN	12/8/1		12	0-0	.00	0-0	.00	0-0	.00	0	0	0	1.5	1	2	3	0	1	0	1.1
at Wright State	12/20/		5	0-0	.00	0-0	.00	1-2	.50	0	0	0	1.4	0	1	1	0	0	1	1.1
CINCINNATI	12/23/		18	2-2	1.00	0-0	.00	0-0	.00	0	0	0	1.3	3	2	2	0	1	4	1.3
TENNESSEE TECH	12/28/		24	2-7	.28	0-1	.00	0-0	.00	0	3	3	1.4	4	6	2	1	1	4	1.5
at #16 Texas A&M	01/03/		7	0-0	.00	0-0	.00	0-0	.00	0	0	0	1.3	2	1	0	0	1	0	1.4
#20 MISSOURI	1/7/16		0	0-0	.00	0-0	.00	0-0	.00	0	0	0	1.2	0	0	0	0	0	0	1.3
#10 KENTUCKY	1/10/1		3	0-0	.00	0-0	.00	0-0	.00	0	0	0	1.1	0	0	0	1	0	0	1.3
Totals		0	189	8-27	.29	1-4	.25	3-6	.50	2	16	18	1.1	26	33	18	6	10	20	1.3

Games played: 16

Minutes/game: 11.8

Points/game: 1.3

FG Pct: 29.6

3FG Pct: 25.0

FT Pct: 50.0

Rebounds/game: 1.1

Assists/game: 2.1

Turnovers/game: 1.1

Assist/turnover ratio: 1.8

Steals/game: 0.6

Blocks/game: 0.4

### OVERALL CAREER STATISTICS

Year	GP	GS	Min	Avg	TFG	TFGA	.Pct	3FG	3FGA	.Pct	FT	FTA	.Pct	Rebounds				PF	FO	Ast	TO	Blk	Stl	Pts	Avg
														Off	Def	Tot	Avg								
2014-15	25	3	403	16.1	14	46	.304	0	3	.000	22	27	.815	5	29	34	1.4	47	1	39	57	3	19	50	2.0
2015-16	16	0	189	11.8	8	27	.296	1	4	.250	3	6	.500	2	16	18	1.1	26	1	33	18	6	10	20	1.3
<b>TOTAL</b>	<b>41</b>	<b>3</b>	<b>592</b>	<b>14.4</b>	<b>22</b>	<b>73</b>	<b>.301</b>	<b>1</b>	<b>7</b>	<b>.143</b>	<b>25</b>	<b>33</b>	<b>.758</b>	<b>7</b>	<b>45</b>	<b>52</b>	<b>1.3</b>	<b>73</b>	<b>2</b>	<b>72</b>	<b>75</b>	<b>9</b>	<b>29</b>	<b>70</b>	<b>1.7</b>

### SEC CAREER STATISTICS

Year	GP	GS	Min	Avg	TFG	TFGA	.Pct	3FG	3FGA	.Pct	FT	FTA	.Pct	Rebounds				PF	FO	Ast	TO	Blk	Stl	Pts	Avg
														Off	Def	Tot	Avg								
2014-15	10	3	195	19.5	7	18	.389	0	1	.000	16	20	.800	4	15	19	1.9	21	1	18	29	1	6	30	3.0
2015-16	3	0	10	3.3	0	0	.000	0	0	.000	0	0	.000	0	0	0	0.0	2	0	1	0	1	1	0	0.0
<b>TOTAL</b>	<b>13</b>	<b>3</b>	<b>205</b>	<b>15.8</b>	<b>7</b>	<b>18</b>	<b>.389</b>	<b>0</b>	<b>1</b>	<b>.000</b>	<b>16</b>	<b>20</b>	<b>.800</b>	<b>4</b>	<b>15</b>	<b>19</b>	<b>1.5</b>	<b>23</b>	<b>1</b>	<b>19</b>	<b>29</b>	<b>2</b>	<b>7</b>	<b>30</b>	<b>2.3</b>





## #13 MERRITT HEMPE

Forward • Senior • 6-2 • Fredericksburg, Va./Stafford HS

### Hempe's Highlights

- » Has four double-doubles this season (only had two in her previous three seasons at UGA); recorded a double-double in back-to-back games vs. Georgia Tech and Georgia Southern.
- » Matched her career high with 22 points vs. Ga. Tech (11/22).
- » Named to the SEC Academic Honor Roll for the third time in her three seasons at Georgia a year ago.
- » Started 24 of 26 games played and averaged 7.3 points, 4.6 rebounds and a team-best 0.8 blocks per game last season.
- » Posted nine double-figure scoring outputs and one double-digit rebounding effort last season.
- » Missed the Florida game last season due to mononucleosis, snapping a streak of 50 consecutive games started; eventually forced to sit out Georgia's final five regular-season contests due to illness before returning to action against Missouri in the SEC Tournament a year ago.

### SEASON & CAREER HIGHS

#### POINTS

Season: 22 Georgia Tech (11/22/15)  
 Career: 22 2X, last - Georgia Tech (11/22/15)

#### REBOUNDS

Season: 11 GA Southern (11/24/15)  
 Career: 11 3X, last - GA Southern (11/24/15)

#### ASSISTS

Season: 3 3X, last - Kentucky (1/10/16)  
 Career: 3 6X, last - Kentucky (1/10/16)

#### BLOCKS

Season: 3 Texas A&M (1/3/16)  
 Career: 4 Arkansas (2/21/13)

#### STEALS

Season: 3 Kennesaw St. (12/3/15)  
 Career: 3 Presbyterian (11/14/12)

#### MINUTES

Season: 32 Kennesaw St. (12/3/15)  
 Career: 32 Georgia Tech (11/22/15)  
 37 Florida (2/16/14)  
 37 Vanderbilt (1/2/14)

### MISCELLANEOUS STATS

#### DOUBLE-DIGIT POINTS

Season: 7 Career: 29

#### DOUBLE-DIGIT REBOUNDS

Season: 4 Career: 6

#### DOUBLE-DOUBLES

Season: 4 Career: 6

#### 20-POINT GAMES

Season: 2 Career: 3

### 2015-16 GAME-BY-GAME

				Total		3-Pointers		Free throws		Rebounds											
Opponent	Date	gs	min	fg-fga	pct	3fg-fga	pct	ft-fga	pct	off	def	tot	avg	pf	a	t/o	blk	stl	pts	avg	
STETSON	11/15/	*	25	8-14	.57	0-0	.00	0-0	.00	3	3	6	6.0	2	0	0	1	0	16	16.0	
at #23 Michigan State	11/18/	*	24	2-5	.40	0-0	.00	3-4	.75	1	7	8	7.0	5	1	2	0	0	7	11.5	
GEORGIA TECH	11/22/	*	32	9-13	.69	0-0	.00	4-4	1.00	4	6	10	8.0	4	1	1	2	0	22	15.0	
GEORGIA SOUTHER	11/24/	*	26	9-12	.75	0-0	.00	2-3	.66	3	8	11	8.8	1	0	1	2	1	20	16.3	
vs BYU	11/27/	*	29	6-15	.40	0-1	.00	1-2	.50	4	4	8	8.6	5	0	2	1	2	13	15.6	
at CSUN	11/28/	*	15	2-4	.50	0-0	.00	0-0	.00	0	1	1	7.3	5	1	3	0	2	4	13.7	
MERCER	12/2/1	*	32	7-9	.77	0-0	.00	3-5	.60	3	7	10	7.7	2	1	3	1	3	17	14.1	
KENNESAW STATE	12/3/1	*	26	7-12	.58	0-1	.00	1-4	.25	4	2	6	7.5	3	0	2	0	0	15	14.3	
#21 SETON HALL	12/6/1	*	21	1-7	.14	1-2	.50	0-2	.00	4	3	7	7.4	4	3	1	0	0	3	13.0	
FURMAN	12/8/1	*	25	8-14	.57	0-0	.00	1-2	.50	6	4	10	7.7	4	1	3	0	0	17	13.4	
at Wright State	12/20/	*	31	7-15	.46	0-1	.00	5-5	1.00	4	5	9	7.8	3	1	1	1	0	19	13.9	
CINCINNATI	12/23/	*	17	1-4	.25	0-0	.00	1-2	.50	1	5	6	7.7	2	1	2	1	0	3	13.0	
TENNESSEE TECH	12/28/	*	30	5-13	.38	0-1	.00	2-3	.66	2	3	5	7.5	2	1	3	1	2	12	12.9	
at #16 Texas A&M	01/03/	*	27	4-11	.36	0-1	.00	0-0	.00	3	1	4	7.2	2	1	4	3	0	8	12.6	
#20 MISSOURI	1/7/16	*	29	2-6	.33	0-0	.00	0-2	.00	1	5	6	7.1	4	3	1	0	0	4	12.0	
#10 KENTUCKY	1/10/1	*	18	2-8	.25	1-3	.33	0-0	.00	1	2	3	6.9	5	3	4	2	0	5	11.6	
Totals			16	407	80-162	.49	2-10	.20	23-38	.60	44	66	110	6.9	53	18	33	15	10	185	11.6

Games played: 16

Minutes/game: 25.4

Points/game: 11.6

FG Pct: 49.4

3FG Pct: 20.0

FT Pct: 60.5

Rebounds/game: 6.9

Assists/game: 1.1

Turnovers/game: 2.1

Assist/turnover ratio: 0.5

Steals/game: 0.6

Blocks/game: 0.9

### OVERALL CAREER STATISTICS

Year	GP	GS	Min	Avg	TFG	TFGA	.Pct	3FG	3FGA	.Pct	FT	FTA	.Pct	Rebounds				PF	FO	Ast	TO	Blk	Stl	Pts	Avg
														Off	Def	Tot	Avg								
2012-13	30	4	357	11.9	37	97	.381	3	19	.158	20	29	.690	40	45	85	2.8	57	1	12	25	18	13	97	3.2
2013-14	32	31	807	25.2	106	229	.463	2	18	.111	63	92	.685	67	85	152	4.8	124	11	23	67	27	15	277	8.7
2014-15	26	24	599	23.0	70	177	.395	2	18	.111	48	71	.676	47	73	120	4.6	72	2	16	44	21	21	190	7.3
2015-16	16	16	407	25.4	80	162	.494	2	10	.200	23	38	.605	44	66	110	6.9	53	4	18	33	15	10	185	11.6
<b>TOTAL</b>	<b>104</b>	<b>75</b>	<b>2170</b>	<b>20.9</b>	<b>293</b>	<b>665</b>	<b>.441</b>	<b>9</b>	<b>65</b>	<b>.138</b>	<b>154</b>	<b>230</b>	<b>.670</b>	<b>198</b>	<b>269</b>	<b>467</b>	<b>4.5</b>	<b>306</b>	<b>18</b>	<b>69</b>	<b>169</b>	<b>81</b>	<b>59</b>	<b>749</b>	<b>7.2</b>

### SEC CAREER STATISTICS

Year	GP	GS	Min	Avg	TFG	TFGA	.Pct	3FG	3FGA	.Pct	FT	FTA	.Pct	Rebounds				PF	FO	Ast	TO	Blk	Stl	Pts	Avg
														Off	Def	Tot	Avg								
2012-13	14	1	146	10.4	17	41	.415	2	8	.250	5	11	.455	19	14	33	2.4	27	0	4	9	8	5	41	2.9
2013-14	16	16	449	28.1	54	113	.478	1	11	.091	36	51	.706	34	53	87	5.4	69	8	12	39	16	4	145	9.1
2014-15	11	11	269	24.5	28	65	.431	1	12	.083	13	21	.619	15	34	49	4.5	35	1	7	20	7	6	70	6.4
2015-16	3	3	74	24.7	8	25	.320	1	4	.250	0	2	.000	5	8	13	4.3	11	1	7	9	5	0	17	5.7
<b>TOTAL</b>	<b>44</b>	<b>31</b>	<b>938</b>	<b>21.3</b>	<b>107</b>	<b>244</b>	<b>.439</b>	<b>5</b>	<b>35</b>	<b>.143</b>	<b>54</b>	<b>85</b>	<b>.635</b>	<b>73</b>	<b>109</b>	<b>182</b>	<b>4.1</b>	<b>142</b>	<b>10</b>	<b>30</b>	<b>77</b>	<b>36</b>	<b>15</b>	<b>273</b>	<b>6.2</b>







## #20 SHACOBIA BARBEE

Guard/Forward • Senior • 5-10 • Murfreesboro, Tenn./Riverdale HS

### Barbee's Highlights

- » Currently ranks in the top 5 in the SEC in total rebounds (No. 1 with 148), rebounds per game (No. 3 with 9.3 per game), total steals (No. 4 with 40), steals per game (No. 4 with 2.5 per game), total assists (No. 4 with 76) and assists per game (No. 5 with 4.8 per game).
- » Reached the 1,000-career point mark with her basket in the first quarter against Wright State, becoming the 37th Lady Bulldog to reach the 1,000-point milestone.
- » The SEC's current career active steals leader with 251.
- » Has recorded double-digit points in 12 of 16 games this season and double-digit rebounds in seven games; also has four double-doubles and a triple double.
- » Recorded a triple-double in the season opener vs. Stetson (10 pts., 13 rebs., 10 assists), becoming just the third player in UGA history to record a triple-double (Teresa Edwards and Tracy Henderson).
- » Tabbed second-team All-SEC in preseason balloting of league coaches for the third-straight year.
- » Had an all-star campaign cut short when she suffered a fractured fibula at No. 5 Tennessee on Jan. 25 last season; missed the final 10 contests of the season following that injury.
- » Prior to her injury, ranked among SEC statistical leaders in scoring (No. 14 at 12.0 ppg), rebounding (No. 11 at 7.0 rpg), steals (No. 4 at 2.4 spg) and assists (No. 15 at 3.0 apg).
- » Named second-team All-SEC and also voted to the SEC All-Defensive team by league coaches during the 2012-13 season and the 2013-14 campaign.

### SEASON & CAREER HIGHS

<b>POINTS</b>		
Season:	19	Seton Hall (12/6/15)
Career:	25	Furman (12/20/14)

<b>REBOUNDS</b>		
Season:	14	2X, last - Missouri (1/7/16)
Career:	15	Mercer (11/14/13)

<b>ASSISTS</b>		
Season:	10	Stetson (11/15/15)
Career:	10	Stetson (11/15/15)

<b>BLOCKS</b>		
Season:	2	Furman (12/8/15)
Career:	2	Furman (12/8/15)

<b>STEALS</b>		
Season:	6	Stetson (11/15/15)
Career:	7	2X, last - Ga. State (12/1/13)

<b>MINUTES</b>		
Season:	39	Wright State (12/20/15)
	39	Seton Hall (12/6/15)
Career:	43	Texas A&M (2/13/14)

### MISCELLANEOUS STATS

<b>DOUBLE-DIGIT POINTS</b>		
Season:	12	Career: 52

<b>DOUBLE-DIGIT REBOUNDS</b>		
Season:	7	Career: 24

<b>DOUBLE-DOUBLES</b>		
Season:	5	Career: 16

<b>20-POINT GAMES</b>		
Season:	XX	Career: 5

### 2015-16 GAME-BY-GAME

				Total		3-Pointers		Free throws		Rebounds											
Opponent	Date	gs	min	fg-fga	pct	3fg-fga	pct	ft-fa	pct	off	def	tot	avg	pf	a	t/o	blk	stl	pts	avg	
STETSON	11/15/	*	36	4-10	.40	1-2	.50	1-4	.25	4	9	13	13.0	0	10	4	0	6	10	10.0	
at #23 Michigan State	11/18/	*	37	5-15	.33	0-1	.00	3-10	.30	1	4	5	9.0	1	0	0	1	2	13	11.5	
GEORGIA TECH	11/22/	*	37	3-8	.37	1-2	.50	2-2	1.00	2	11	13	10.3	2	4	5	0	2	9	10.7	
GEORGIA SOUTHER	11/24/	*	24	5-6	.83	0-1	.00	2-2	1.00	5	7	12	10.8	1	7	1	1	3	12	11.0	
vs BYU	11/27/	*	38	6-12	.50	2-4	.50	4-4	1.00	1	3	4	9.4	3	3	2	0	3	18	12.4	
at CSUN	11/28/	*	20	7-9	.77	1-2	.50	3-7	.42	2	6	8	9.2	1	3	1	0	2	18	13.3	
MERCER	12/2/1	*	34	1-9	.11	0-5	.00	2-2	1.00	4	9	13	9.7	4	6	2	0	3	4	12.0	
KENNESAW STATE	12/3/1	*	30	4-8	.50	0-1	.00	3-3	1.00	3	8	11	9.9	1	8	1	0	2	11	11.9	
#21 SETON HALL	12/6/1	*	39	5-14	.35	1-1	1.00	8-10	.80	2	5	7	9.6	0	3	0	0	2	19	12.7	
FURMAN	12/8/1	*	26	8-13	.61	1-4	.25	0-0	.00	4	2	6	9.2	1	4	1	2	3	17	13.1	
at Wright State	12/20/	*	39	5-9	.55	0-1	.00	5-8	.62	4	5	9	9.2	4	9	2	0	3	15	13.3	
CINCINNATI	12/23/	*	27	5-7	.71	1-2	.50	1-2	.50	2	4	6	8.9	1	2	3	0	2	12	13.2	
TENNESSEE TECH	12/28/	*	21	4-5	.80	1-1	1.00	0-0	.00	3	3	6	8.7	0	4	0	1	0	9	12.8	
at #16 Texas A&M	01/03/	*	38	3-14	.21	0-2	.00	11-12	.91	7	7	14	9.1	3	6	1	0	2	17	13.1	
#20 MISSOURI	1/7/16	*	36	2-10	.20	1-4	.25	5-6	.83	5	9	14	9.4	5	2	1	0	2	10	12.9	
#10 KENTUCKY	1/10/1	*	28	3-9	.33	1-3	.33	1-2	.50	2	5	7	9.3	3	5	4	0	3	8	12.6	
Totals			16	510	70-158	.44	11-36	.30	51-74	.68	51	97	148	9.3	30	76	28	5	40	202	12.6

Games played: 16  
 Minutes/game: 31.9  
 Points/game: 12.6  
 FG Pct: 44.3  
 3FG Pct: 30.6  
 FT Pct: 68.9

Rebounds/game: 9.3  
 Assists/game: 4.8  
 Turnovers/game: 1.8  
 Assist/turnover ratio: 2.7  
 Steals/game: 2.5  
 Blocks/game: 0.3

### OVERALL CAREER STATISTICS

Year	GP	GS	Min	Avg	TFG	TFGA	.Pct	3FG	3FGA	.Pct	FT	FTA	.Pct	Rebounds				PF	FO	Ast	TO	Blk	Stl	Pts	Avg
														Off	Def	Tot	Avg								
2012-13	35	34	941	26.9	86	214	.402	20	67	.299	61	103	.592	62	150	212	6.1	61	1	87	70	2	85	253	7.2
2013-14	30	26	941	31.4	137	314	.436	25	91	.275	68	120	.567	82	154	236	7.9	80	3	95	65	9	79	367	12.2
2014-15	21	17	572	27.2	92	207	.444	16	60	.267	43	66	.652	41	103	144	6.9	28	0	61	38	3	47	243	11.6
2015-16	16	16	510	31.9	70	158	.443	11	36	.306	51	74	.689	51	97	148	9.3	30	1	76	28	5	40	202	12.6
<b>TOTAL</b>	<b>102</b>	<b>93</b>	<b>2964</b>	<b>29.1</b>	<b>385</b>	<b>893</b>	<b>.431</b>	<b>72</b>	<b>254</b>	<b>.283</b>	<b>223</b>	<b>363</b>	<b>.614</b>	<b>236</b>	<b>504</b>	<b>740</b>	<b>7.3</b>	<b>199</b>	<b>5</b>	<b>319</b>	<b>201</b>	<b>19</b>	<b>251</b>	<b>1065</b>	<b>10.4</b>

### SEC CAREER STATISTICS

Year	GP	GS	Min	Avg	TFG	TFGA	.Pct	3FG	3FGA	.Pct	FT	FTA	.Pct	Rebounds				PF	FO	Ast	TO	Blk	Stl	Pts	Avg
														Off	Def	Tot	Avg								
2012-13	16	16	438	27.4	38	98	.388	9	30	.300	32	52	.615	22	71	93	5.8	35	1	31	32	0	43	117	7.3
2013-14	16	12	528	33.0	73	171	.427	17	57	.298	48	81	.593	49	79	128	8.0	48	3	42	32	4	42	211	13.2
2014-15	8	4	217	27.1	23	63	.365	2	15	.133	26	36	.722	14	42	56	7.0	10	0	23	20	1	12	74	9.3
2015-16	3	3	102	34.0	8	33	.242	2	9	.222	17	20	.850	14	21	35	11.7	11	1	13	6	0	7	35	11.7
<b>TOTAL</b>	<b>43</b>	<b>35</b>	<b>1285</b>	<b>29.9</b>	<b>142</b>	<b>365</b>	<b>.389</b>	<b>30</b>	<b>111</b>	<b>.270</b>	<b>123</b>	<b>189</b>	<b>.651</b>	<b>99</b>	<b>213</b>	<b>312</b>	<b>7.3</b>	<b>104</b>	<b>5</b>	<b>109</b>	<b>90</b>	<b>5</b>	<b>104</b>	<b>437</b>	<b>10.2</b>





## #23 HALLE WASHINGTON

Forward • Junior • 6-2 • Bossier City, La./Parkway HS

### Washington's Highlights

- » Led the team in scoring with eight points vs. No. 10 Kentucky (1/10).
- » Scored a career-high 13 points vs. Michigan State (11/18).
- » Recipient of the team's Bernadette Locke Award, which annually is "awarded to the player exemplifying integrity through her actions." Bernadette Locke (Mattox) was Lady Bulldog Basketball's first All-American and Academic All-American.
- » Sat out four of the first five games last season due to injury before playing in each of the final 26 contests, including five starts.
- » Averaged 2.4 points and 3.1 points rebounds and finished third on the team in blocks (18) a year ago.

### SEASON & CAREER HIGHS

<b>POINTS</b>		
Season:	13	Michigan State (11/18/15)
Career:	13	Michigan State (11/18/15)
<b>REBOUNDS</b>		
Season:	5	Stetson (11/15/15)
Career:	8	3X, last - Florida (2/12/15)
<b>ASSISTS</b>		
Season:	2	Kentucky (1/10/16)
Career:	4	Kennesaw St. (12/15/13)
<b>BLOCKS</b>		
Season:	1	4X, last - Wright State (12/20/15)
Career:	3	3X, last - Ole Miss (2/9/14)
<b>STEALS</b>		
Season:	2	Cincinnati (12/23/15)
Career:	4	Florida (2/12/15)
<b>MINUTES</b>		
Season:	25	Michigan State (11/18/15)
Career:	37	Kennesaw St. (12/15/13)

### MISCELLANEOUS STATS

<b>DOUBLE-DIGIT POINTS</b>		
Season:	1	Career: 3
<b>DOUBLE-DIGIT REBOUNDS</b>		
Season:	XX	Career: XX
<b>DOUBLE-DOUBLES</b>		
Season:	XX	Career: XX
<b>20-POINT GAMES</b>		
Season:	XX	Career: XX

### 2015-16 GAME-BY-GAME

Opponent	Date	gs	min	Total		3-Pointers		Free throws		Rebounds				pf	a	t/o	blk	stl	pts	avg
				fg	pct	3fg	pct	ft	pct	off	def	tot	avg							
STETSON	11/15/		22	2-7	.28	0-0	.00	1-2	.50	3	2	5	5.0	4	0	1	1	1	5	5.0
at #23 Michigan State	11/18/		25	4-10	.40	0-0	.00	5-5	1.00	0	1	1	3.0	4	0	1	1	0	13	9.0
vs BYU	11/27/		2	0-2	.00	0-1	.00	0-0	.00	0	1	1	2.3	2	0	0	0	0	0	6.0
at CSUN	11/28/		12	0-2	.00	0-0	.00	0-0	.00	0	1	1	2.0	3	0	0	0	0	0	4.5
MERCER	12/2/1		5	0-2	.00	0-0	.00	0-0	.00	0	1	1	1.8	0	0	1	0	0	0	3.6
#21 SETON HALL	12/6/1		13	2-3	.66	0-0	.00	2-5	.40	0	0	0	1.5	2	0	2	0	0	6	4.0
FURMAN	12/8/1		14	1-3	.33	0-0	.00	0-0	.00	0	1	1	1.4	1	0	0	1	0	2	3.7
at Wright State	12/20/		11	2-4	.50	0-0	.00	0-0	.00	0	3	3	1.6	3	0	3	1	0	4	3.8
CINCINNATI	12/23/		18	3-5	.60	0-0	.00	0-0	.00	1	3	4	1.9	3	0	2	0	2	6	4.0
at #16 Texas A&M	01/03/		13	0-5	.00	0-0	.00	0-0	.00	0	1	1	1.8	3	1	1	0	0	0	3.6
#20 MISSOURI	1/7/16		11	0-0	.00	0-0	.00	4-4	1.00	1	1	2	1.8	3	0	0	0	0	4	3.6
#10 KENTUCKY	1/10/1		17	4-5	.80	0-0	.00	0-2	.00	3	0	3	1.9	4	2	1	0	0	8	4.0
Totals		0	163	18-48	.37	0-1	.00	12-18	.66	8	15	23	1.9	32	3	12	4	3	48	4.0

Games played: 12  
 Minutes/game: 13.6  
 Points/game: 4.0  
 FG Pct: 37.5  
 3FG Pct: 0.0  
 FT Pct: 66.7

Rebounds/game: 1.9  
 Assists/game: 0.3  
 Turnovers/game: 1.0  
 Assist/turnover ratio: 0.3  
 Steals/game: 0.3  
 Blocks/game: 0.3

### OVERALL CAREER STATISTICS

Year	GP	GS	Min	Avg	TFG	TGA	.Pct	3FG	3GA	.Pct	FT	FTA	.Pct	Rebounds				PF	FO	Ast	TO	Blk	Stl	Pts	Avg
														Off	Def	Tot	Avg								
2013-14	32	1	502	15.7	51	125	.408	0	0	.000	29	64	.453	42	82	124	3.9	114	8	12	55	25	17	131	4.1
2014-15	27	5	395	14.6	26	86	.302	0	0	.000	14	33	.424	33	51	84	3.1	68	3	12	43	18	16	66	2.4
2015-16	12	0	163	13.6	18	48	.375	0	1	.000	12	18	.667	8	15	23	1.9	32	0	3	12	4	3	48	4.0
<b>TOTAL</b>	<b>71</b>	<b>6</b>	<b>1060</b>	<b>14.9</b>	<b>95</b>	<b>259</b>	<b>.367</b>	<b>0</b>	<b>1</b>	<b>.000</b>	<b>55</b>	<b>115</b>	<b>.478</b>	<b>83</b>	<b>148</b>	<b>231</b>	<b>3.3</b>	<b>214</b>	<b>11</b>	<b>27</b>	<b>110</b>	<b>47</b>	<b>36</b>	<b>245</b>	<b>3.5</b>

### SEC CAREER STATISTICS

Year	GP	GS	Min	Avg	TFG	TGA	.Pct	3FG	3GA	.Pct	FT	FTA	.Pct	Rebounds				PF	FO	Ast	TO	Blk	Stl	Pts	Avg
														Off	Def	Tot	Avg								
2013-14	16	0	224	14.0	20	44	.455	0	0	.000	6	14	.429	11	36	47	2.9	57	4	7	24	12	5	46	2.9
2014-15	16	3	269	16.8	21	58	.362	0	0	.000	10	21	.476	26	31	57	3.6	46	2	7	31	11	9	52	3.3
2015-16	3	0	41	13.7	4	10	.400	0	0	.000	4	6	.667	4	2	6	2.0	10	0	3	2	0	0	12	4.0
<b>TOTAL</b>	<b>35</b>	<b>3</b>	<b>534</b>	<b>15.3</b>	<b>45</b>	<b>112</b>	<b>.402</b>	<b>0</b>	<b>0</b>	<b>.000</b>	<b>20</b>	<b>41</b>	<b>.488</b>	<b>41</b>	<b>69</b>	<b>110</b>	<b>3.1</b>	<b>113</b>	<b>6</b>	<b>17</b>	<b>57</b>	<b>23</b>	<b>14</b>	<b>110</b>	<b>3.1</b>





## #24 MARJORIE BUTLER

Guard • Senior • 5-8 • Knoxville, Tenn./The Webb School

### Butler's Highlights

- » Ranks first in the SEC (5th nationally) in assist turnover ratio (3.23) with 71 assists and 22 turnovers.
- » Scored a career-high 18 points vs. Ga. Tech (11/22)
- » Named to the District 4 Capital One CoSIDA Academic All-America team, therefore becoming one of 47 finalists for the national Academic All-America squad last season.
- » Made the SEC Academic Honor Roll in three-consecutive years.
- » Entered college with 54 credit hours and has already been accepted to medical school at the University of Florida, Meharry College, University of Virginia, Vanderbilt,
- » Ranked among SEC leaders in assists (No. 8 at 3.1 apg) and assist-to-turnover ratio (No. 4 at 1.3) last season.
- » Saw considerably more playing time as a junior, logging 26.0 minutes per game with 28 starts in 31 outings after posting 12.5 mpg with five starts in 52 games played in her first two years at Georgia.

### SEASON & CAREER HIGHS

#### POINTS

Season: 18 Georgia Tech (11/22/15)  
 Career: 18 Georgia Tech (11/22/15)

#### REBOUNDS

Season: 9 Seton Hall (12/6/15)  
 Career: 9 Seton Hall (12/6/15)

#### ASSISTS

Season: 8 Furman (12/8/15)  
 Career: 8 2X, last - Furman (12/8/15)

#### BLOCKS

Season: XX XX  
 Career: 1 Furman (11/28/12)

#### STEALS

Season: 4 Kentucky (11/10/16)  
 Career: 5 Ga. Southern (11/25/14)

#### MINUTES

Season: 39 Georgia Tech (11/22/15)  
 Career: 40 7X, last - Missouri (1/7/16)

### MISCELLANEOUS STATS

#### DOUBLE-DIGIT POINTS

Season: 1 Career: 8

#### DOUBLE-DIGIT REBOUNDS

Season: XX Career: XX

#### DOUBLE-DOUBLES

Season: XX Career: XX

#### 20-POINT GAMES

Season: XX Career: XX

### 2015-16 GAME-BY-GAME

Opponent	Date	gs	min	Total		3-Pointers		Free throws		Rebounds				pf	a	t/o	blk	stl	pts	avg	
				fg-fga	pct	3fg-fga	pct	ft-fga	pct	off	def	tot	avg								
STETSON	11/15/	*	26	0-2	.00	0-2	.00	0-0	.00	2	1	3	3.0	2	4	2	0	0	0	0.0	
at #23 Michigan State	11/18/	*	28	0-6	.00	0-3	.00	0-0	.00	0	2	2	2.5	4	4	1	0	1	0	0.0	
GEORGIA TECH	11/22/	*	39	7-12	.58	2-6	.33	2-4	.50	1	3	4	3.0	2	5	1	0	1	18	6.0	
GEORGIA SOUTHER	11/24/	*	15	0-1	.00	0-0	.00	1-2	.50	0	1	1	2.5	0	3	0	0	0	1	4.8	
vs BYU	11/27/	*	37	0-4	.00	0-1	.00	1-2	.50	1	3	4	2.8	3	7	1	0	0	1	4.0	
at CSUN	11/28/	*	21	2-5	.40	0-1	.00	2-2	1.00	0	0	0	2.3	1	5	0	0	1	6	4.3	
MERCER	12/2/1	*	38	3-7	.42	1-4	.25	0-0	.00	1	3	4	2.6	1	5	3	0	0	7	4.7	
KENNESAW STATE	12/3/1	*	14	4-5	.80	1-2	.50	0-0	.00	0	2	2	2.5	0	2	1	0	3	9	5.3	
#21 SETON HALL	12/6/1	*	38	2-11	.18	1-7	.14	2-2	1.00	2	7	9	3.2	3	4	2	0	2	7	5.4	
FURMAN	12/8/1	*	28	0-4	.00	0-2	.00	0-0	.00	0	4	4	3.3	2	8	2	0	2	0	4.9	
at Wright State	12/20/	*	36	1-8	.12	0-3	.00	0-0	.00	2	4	6	3.5	2	3	1	0	1	2	4.6	
CINCINNATI	12/23/	*	22	2-6	.33	1-3	.33	0-0	.00	0	0	0	3.3	0	5	1	0	0	5	4.7	
TENNESSEE TECH	12/28/	*	16	1-5	.20	0-0	.00	0-0	.00	1	1	2	3.2	1	5	0	0	1	2	4.5	
at #16 Texas A&M	01/03/	*	33	4-8	.50	0-2	.00	0-0	.00	0	0	0	2.9	5	5	1	0	0	8	4.7	
#20 MISSOURI	1/7/16	*	40	1-6	.16	1-3	.33	3-4	.75	0	1	1	2.8	5	3	3	0	1	6	4.8	
#10 KENTUCKY	1/10/1	*	37	3-8	.37	0-2	.00	1-2	.50	1	0	1	2.7	4	3	3	0	4	7	4.9	
Totals			16	468	30-98	.30	7-41	.17	12-18	.66	11	32	43	2.7	35	71	22	0	17	79	4.9

Games played: 16  
 Minutes/game: 29.3  
 Points/game: 4.9  
 FG Pct: 30.6  
 3FG Pct: 17.1  
 FT Pct: 66.7

Rebounds/game: 2.7  
 Assists/game: 4.4  
 Turnovers/game: 1.4  
 Assist/turnover ratio: 3.2  
 Steals/game: 1.1

### OVERALL CAREER STATISTICS

Year	GP	GS	Min	Avg	TFG	TFGA	.Pct	3FG	3FGA	.Pct	FT	FTA	.Pct	Rebounds				PF	FO	Ast	TO	Blk	Stl	Pts	Avg
														Off	Def	Tot	Avg								
2012-13	27	0	295	10.9	21	57	.368	5	16	.313	14	19	.737	13	15	28	1.0	29	1	37	42	1	14	61	2.3
2013-14	25	5	353	14.1	17	57	.298	7	25	.280	12	19	.632	9	24	33	1.3	41	0	38	44	0	15	53	2.1
2014-15	31	28	807	26.0	41	149	.275	9	53	.170	52	66	.788	25	46	71	2.3	55	0	93	70	0	44	143	4.6
2015-16	16	16	468	29.3	30	98	.306	7	41	.171	12	18	.667	11	32	43	2.7	35	2	71	22	0	17	79	4.9
<b>TOTAL</b>	<b>99</b>	<b>49</b>	<b>1923</b>	<b>19.4</b>	<b>109</b>	<b>361</b>	<b>.302</b>	<b>28</b>	<b>135</b>	<b>.207</b>	<b>90</b>	<b>122</b>	<b>.738</b>	<b>58</b>	<b>117</b>	<b>175</b>	<b>1.8</b>	<b>160</b>	<b>3</b>	<b>239</b>	<b>178</b>	<b>1</b>	<b>90</b>	<b>336</b>	<b>3.4</b>

### SEC CAREER STATISTICS

Year	GP	GS	Min	Avg	TFG	TFGA	.Pct	3FG	3FGA	.Pct	FT	FTA	.Pct	Rebounds				PF	FO	Ast	TO	Blk	Stl	Pts	Avg
														Off	Def	Tot	Avg								
2012-13	10	0	87	8.7	6	16	.375	1	3	.333	4	4	1.000	2	6	8	0.8	9	0	6	15	0	2	17	1.7
2013-14	16	4	216	13.5	10	37	.270	7	19	.368	3	8	.375	5	12	17	1.1	25	0	17	28	0	8	30	1.9
2014-15	16	13	445	27.8	26	88	.295	7	33	.212	29	35	.829	10	19	29	1.8	31	0	43	40	0	17	88	5.5
2015-16	3	3	110	36.7	8	22	.364	1	7	.143	4	6	.667	1	1	2	0.7	14	2	11	7	0	5	21	7.0
<b>TOTAL</b>	<b>45</b>	<b>20</b>	<b>858</b>	<b>19.1</b>	<b>50</b>	<b>163</b>	<b>.307</b>	<b>16</b>	<b>62</b>	<b>.258</b>	<b>40</b>	<b>53</b>	<b>.755</b>	<b>18</b>	<b>38</b>	<b>56</b>	<b>1.2</b>	<b>79</b>	<b>2</b>	<b>77</b>	<b>90</b>	<b>0</b>	<b>32</b>	<b>156</b>	<b>3.5</b>





## #25 AMBER SKIDGEL

Guard • Freshman • 6-0 • Bethlehem, Ga./Archer HS

### Skidgel's Highlights

- » Recorded the first double-digit point total of her UGA career with 11 vs. Kennesaw State.
- » Played in each of UGA's first eight games and in 11 games total.
- » Coached by Ryan Lesniak at Archer High as a junior and senior and by Bryan Bartley at Hebron Christian School as a freshman and sophomore.
- » Scored a combined 1,726 points – 932 at Hebron Christian and 794 at Archer – the 10th-most in Gwinnett County history.
- » The most prolific 3-point shooter in Gwinnett County history, connecting on a country-record 227 shots from behind the arc.
- » Among single-season leaders, produced the No. 4 (75 in 2014-15) and No. 5 (74 in 2013-14) tallies ever in Gwinnett County.

### SEASON & CAREER HIGHS

#### POINTS

Season: 11 Kennesaw St. (12/3/15)  
 Career: 11 Kennesaw St. (12/3/15)

#### REBOUNDS

Season: 3 3X, last - Kennesaw St. (12/3/15)  
 Career: 3 3X, last - Kennesaw St. (12/3/15)

#### ASSISTS

Season: 2 2X, last - Kennesaw St. (12/3/15)  
 Career: 2 2X, last - Kennesaw St. (12/3/15)

#### BLOCKS

Season: 1 Michigan State (11/18/15)  
 Career: 1 Michigan State (11/18/15)

#### STEALS

Season: 1 3X, last - Tenn. Tech (12/28/15)  
 Career: 1 3X, last - Tenn. Tech (12/28/15)

#### MINUTES

Season: 23 GA Southern (11/24/15)  
 Career: 23 GA Southern (11/24/15)

### MISCELLANEOUS STATS

#### DOUBLE-DIGIT POINTS

Season: 1 Career: 1

#### DOUBLE-DIGIT REBOUNDS

Season: XX Career: XX

#### DOUBLE-DOUBLES

Season: XX Career: XX

#### 20-POINT GAMES

Season: XX Career: XX

### 2015-16 GAME-BY-GAME

Opponent	Date	gs	min	Total		3-Pointers		Free throws		Rebounds				pf	a	t/o	blk	stl	pts	avg
				fg-fga	pct	3fg-fga	pct	ft-fga	pct	off	def	tot	avg							
STETSON	11/15/	14		2-4	.50	2-4	.50	0-2	.00	0	2	2	2.0	1	0	0	0	1	6	6.0
at #23 Michigan State	11/18/	15		1-5	.20	0-3	.00	0-0	.00	0	2	2	2.0	1	0	1	1	0	2	4.0
GEORGIA TECH	11/22/	7		0-0	.00	0-0	.00	0-0	.00	0	0	0	1.3	0	1	0	0	0	0	2.7
GEORGIA SOUTHER	11/24/	23		2-8	.25	2-6	.33	0-0	.00	1	2	3	1.8	0	2	1	0	1	6	3.5
vs BYU	11/27/	10		0-1	.00	0-1	.00	0-0	.00	0	2	2	1.8	0	0	0	0	0	0	2.8
at CSUN	11/28/	15		2-8	.25	0-4	.00	1-2	.50	3	0	3	2.0	2	0	1	1	0	5	3.2
MERCER	12/2/1	12		2-4	.50	2-3	.66	0-0	.00	1	1	2	2.0	0	0	2	0	0	6	3.6
KENNESAW STATE	12/3/1	22		4-9	.44	3-7	.42	0-0	.00	0	3	3	2.1	2	2	0	0	0	11	4.5
FURMAN	12/8/1	8		1-5	.20	1-3	.33	0-0	.00	0	0	0	1.9	0	0	1	0	0	3	4.3
CINCINNATI	12/23/	7		0-1	.00	0-0	.00	0-0	.00	0	1	1	1.8	0	0	0	0	0	0	3.9
TENNESSEE TECH	12/28/	19		2-3	.66	1-2	.50	0-0	.00	0	1	1	1.7	2	0	3	0	1	5	4.0
Totals		0	152	16-48	.33	11-33	.33	1-4	.25	5	14	19	1.7	8	5	9	2	3	44	4.0

Games played: 11  
 Minutes/game: 13.8  
 Points/game: 4.0  
 FG Pct: 33.3  
 3FG Pct: 33.3  
 FT Pct: 25.0

Rebounds/game: 1.7  
 Assists/game: 0.5  
 Turnovers/game: 0.8  
 Assist/turnover ratio: 0.6  
 Steals/game: 0.3  
 Blocks/game: 0.2

### OVERALL CAREER STATISTICS

Year	GP	GS	Min	Avg	TFG	TFGA	.Pct	3FG	3FGA	.Pct	FT	FTA	.Pct	Rebounds				PF	FO	Ast	TO	Blk	Stl	Pts	Avg
														Off	Def	Tot	Avg								
2015-16	11	0	152	13.8	16	48	.333	11	33	.333	1	4	.250	5	14	19	1.7	8	0	5	9	2	3	44	4.0
<b>TOTAL</b>	<b>11</b>	<b>0</b>	<b>152</b>	<b>13.8</b>	<b>16</b>	<b>48</b>	<b>.333</b>	<b>11</b>	<b>33</b>	<b>.333</b>	<b>1</b>	<b>4</b>	<b>.250</b>	<b>5</b>	<b>14</b>	<b>19</b>	<b>1.7</b>	<b>8</b>	<b>0</b>	<b>5</b>	<b>9</b>	<b>2</b>	<b>3</b>	<b>44</b>	<b>4.0</b>

### SEC CAREER STATISTICS

Year	GP	GS	Min	Avg	TFG	TFGA	.Pct	3FG	3FGA	.Pct	FT	FTA	.Pct	Rebounds				PF	FO	Ast	TO	Blk	Stl	Pts	Avg
														Off	Def	Tot	Avg								
2015-16																									
<b>TOTAL</b>																									







## #33 MACKENZIE INGRAM

Forward • Sophomore • 6-2 • Powder Springs, Ga./Hillgrove HS

### Engram's Highlights

- » Started the first 14 games of the season
- » Had a double-double in the first game of the season vs. Stetson with 18 points and a career-high 11 rebs.
- » Named to 2014-15 SEC All-Freshman Team.
- » Saw action in each of Georgia's 31 games, drawing seven starts last season.
- » Finished fourth on the team in scoring (7.7 ppg) and rebounding (4.5 rpg) a year ago.
- » Took care of a trio of career firsts at Ohio State, reaching double digits in points and rebounds en route to her initial double-double in a Georgia uniform.
- » Named SEC Freshman of the Week on Jan. 26 (last season) after leading UGA offensively against No. 10 Texas A&M (16 points) and No. 5 Tennessee (14 points). Did so while shooting 68.8 percent from the field, 66.7 percent from 3-point range and 100.0 percent from the line.

### SEASON & CAREER HIGHS

#### POINTS

Season: 18 Stetson (11/15/15)  
 Career: 20 Coppin St. (12/2/14)

#### REBOUNDS

Season: 11 Stetson (11/15/15)  
 Career: 11 Stetson (11/15/15)

#### ASSISTS

Season: 3 Tennessee Tech (12/28/15)  
 Career: 3 3X, last Tenn. Tech (12/28/15)

#### BLOCKS

Season: 1 7X, last - Tenn. Tech (12/28/15)  
 Career: 4 Mississippi St. (1/2/15)

#### STEALS

Season: 2 2X, last - CSUN (11/28/15)  
 Career: 2 7 X, last CSUN (11/28/15)

#### MINUTES

Season: 36 BYU (11/27/15)  
 Career: 38 Tennessee (2/26/15)  
 38 S. Carolina (2/5/15)

### MISCELLANEOUS STATS

#### DOUBLE-DIGIT POINTS

Season: 6 Career: 16

#### DOUBLE-DIGIT REBOUNDS

Season: 1 Career: 2

#### DOUBLE-DOUBLES

Season: 1 Career: 2

#### 20-POINT GAMES

Season: XX Career: 1

### 2015-16 GAME-BY-GAME

				Total		3-Pointers		Free throws		Rebounds											
Opponent	Date	gs	min	fg-fga	pct	3fg-fga	pct	ft-fa	pct	off	def	tot	avg	pf	a	t/o	blk	stl	pts	avg	
STETSON	11/15/	*	31	8-15	.53	0-5	.00	2-3	.66	8	3	11	11.0	2	2	2	0	1	18	18.0	
at #23 Michigan State	11/18/	*	19	1-6	.16	0-1	.00	2-2	1.00	1	1	2	6.5	5	0	1	1	1	4	11.0	
GEORGIA TECH	11/22/	*	33	1-4	.25	1-2	.50	3-4	.75	0	7	7	6.7	2	1	0	1	0	6	9.3	
GEORGIA SOUTHER	11/24/	*	22	5-12	.41	1-2	.50	4-5	.80	3	0	3	5.8	2	0	2	1	2	15	10.8	
vs BYU	11/27/	*	36	5-15	.33	1-4	.25	0-0	.00	3	3	6	5.8	2	1	1	0	0	11	10.8	
at CSUN	11/28/	*	30	3-6	.50	0-2	.00	1-2	.50	2	5	7	6.0	5	0	0	1	2	7	10.2	
MERCER	12/2/1	*	29	1-8	.12	0-2	.00	0-0	.00	1	5	6	6.0	2	2	4	0	1	2	9.0	
KENNESAW STATE	12/3/1	*	30	4-11	.36	0-1	.00	2-4	.50	1	5	6	6.0	3	0	1	1	0	10	9.1	
#21 SETON HALL	12/6/1	*	24	4-7	.57	1-1	1.00	1-2	.50	2	5	7	6.1	4	2	4	1	1	10	9.2	
FURMAN	12/8/1	*	18	6-9	.66	2-2	1.00	0-0	.00	4	4	8	6.3	0	0	4	0	1	14	9.7	
at Wright State	12/20/	*	20	3-7	.42	0-0	.00	0-0	.00	1	4	5	6.2	4	0	0	0	0	6	9.4	
CINCINNATI	12/23/	*	21	5-11	.45	1-2	.50	0-0	.00	1	5	6	6.2	1	1	0	1	1	11	9.5	
TENNESSEE TECH	12/28/	*	26	3-10	.30	1-2	.50	2-6	.33	1	8	9	6.4	2	3	2	1	0	9	9.5	
at #16 Texas A&M	01/03/	*	22	1-6	.16	0-2	.00	0-2	.00	0	1	1	6.0	4	0	3	0	1	2	8.9	
#20 MISSOURI	1/7/16		15	0-4	.00	0-2	.00	1-2	.50	0	1	1	5.7	1	2	0	0	1	1	8.4	
#10 KENTUCKY	1/10/1		14	2-7	.28	1-3	.33	0-0	.00	1	1	2	5.4	1	0	2	0	0	5	8.2	
Totals		14	390	52-138	.37	9-33	.27	18-32	.56	29	58	87	5.4	40	14	26	8	12	131	8.2	

Games played: 16  
 Minutes/game: 24.4  
 Points/game: 8.2  
 FG Pct: 37.7  
 3FG Pct: 27.3  
 FT Pct: 56.3

Rebounds/game: 5.4  
 Assists/game: 0.9  
 Turnovers/game: 1.6  
 Assist/turnover ratio: 0.5  
 Steals/game: 0.8  
 Blocks/game: 0.5

### OVERALL CAREER STATISTICS

Year	GP	GS	Min	Avg	TFG	TFGA	.Pct	3FG	3FGA	.Pct	FT	FTA	.Pct	Rebounds				PF	FO	Ast	TO	Blk	Stl	Pts	Avg
														Off	Def	Tot	Avg								
2014-15	31	7	623	20.1	90	204	.441	15	42	.357	43	54	.796	56	82	138	4.5	66	2	18	63	20	22	238	7.7
2015-16	16	14	390	24.4	52	138	.377	9	33	.273	18	32	.563	29	58	87	5.4	40	2	14	26	8	12	131	8.2
<b>TOTAL</b>	<b>47</b>	<b>21</b>	<b>1013</b>	<b>21.6</b>	<b>142</b>	<b>342</b>	<b>.415</b>	<b>24</b>	<b>75</b>	<b>.320</b>	<b>61</b>	<b>86</b>	<b>.709</b>	<b>85</b>	<b>140</b>	<b>225</b>	<b>4.8</b>	<b>106</b>	<b>4</b>	<b>32</b>	<b>89</b>	<b>28</b>	<b>34</b>	<b>369</b>	<b>7.9</b>

### SEC CAREER STATISTICS

Year	GP	GS	Min	Avg	TFG	TFGA	.Pct	3FG	3FGA	.Pct	FT	FTA	.Pct	Rebounds				PF	FO	Ast	TO	Blk	Stl	Pts	Avg
														Off	Def	Tot	Avg								
2014-15	16	5	333	20.8	48	105	.457	11	27	.407	16	22	.727	25	47	72	4.5	39	2	11	38	16	9	123	7.7
2015-16	3	1	51	17.0	3	17	.176	1	7	.143	1	4	.250	1	3	4	1.3	6	0	2	5	0	2	8	2.7
<b>TOTAL</b>	<b>19</b>	<b>6</b>	<b>384</b>	<b>20.2</b>	<b>51</b>	<b>122</b>	<b>.418</b>	<b>12</b>	<b>34</b>	<b>.353</b>	<b>17</b>	<b>26</b>	<b>.654</b>	<b>26</b>	<b>50</b>	<b>76</b>	<b>4.0</b>	<b>45</b>	<b>2</b>	<b>13</b>	<b>43</b>	<b>16</b>	<b>11</b>	<b>131</b>	<b>6.9</b>





**GAME 5**  
**Georgia 66, BYU 58**

Nov. 27, 2015 | The Matadome | Northridge, Calif.

Official Basketball Box Score -- Game Totals -- Final Statistics  
Georgia vs BYU  
11/27/15 5 p.m. at The Matadome (Northridge, CA)**Georgia 66 • 4-1**

#	Player	Total		3-Ptr		Rebounds			PF	TP	A		TO	Blk	Stl	Min
		FG-FGA	FG-FGA	FT-FTA	Off	Def	Tot									
13	Merritt Hempe	6-15	0-1	1-2	4	4	8	5	13	0	2	1	2	29		
33	Mackenzie Engram	5-15	1-4	0-0	3	3	6	2	11	1	1	0	0	36		
03	Tiaria Griffin	5-14	4-8	9-10	0	1	1	1	23	1	2	1	0	39		
20	Shacobia Barbee	6-12	2-4	4-4	1	3	4	3	18	3	2	0	0	38		
24	Marjorie Butler	0-4	0-1	1-2	1	3	4	3	1	7	1	0	0	37		
04	Caliya Robinson	0-1	0-1	0-0	0	0	0	1	0	0	1	0	0	6		
12	Haley Clark	0-0	0-0	0-2	0	1	1	0	0	0	0	1	0	3		
23	Halle Washington	0-2	0-1	0-0	0	1	1	2	0	0	0	0	0	2		
25	Amber Skidgel	0-1	0-1	0-0	0	2	2	0	0	0	0	0	0	10		
Team					3	3	6									
Totals		22-64	7-21	15-20	12	21	33	17	66	12	9	3	5	200		
FG % 1st Half: 9-31		29.0%	2nd half: 13-33	39.4%	Game: 22-64		34.4%	Deadball								
3FG % 1st Half: 2-12		16.7%	2nd half: 5-9	55.6%	Game: 7-21		33.3%	Rebounds								
FT % 1st Half: 9-10		90.0%	2nd half: 6-10	60.0%	Game: 15-20		75.0%	4								

**BYU 58 • 2-3**

#	Player	Total		3-Ptr		Rebounds			PF	TP	A		TO	Blk	Stl	Min
		FG-FGA	FG-FGA	FT-FTA	Off	Def	Tot									
04	WAYMENT, Amanda	1-3	0-0	0-0	2	1	3	4	2	0	3	0	0	20		
32	PURCELL, Kalani	3-11	0-2	1-4	1	9	10	3	7	0	5	2	2	34		
03	MAEDA, Kyle	1-5	1-4	0-0	0	1	1	3	3	1	1	0	0	29		
21	RYDALCH, Lexi	7-12	2-5	0-0	1	9	10	4	16	2	5	0	0	35		
24	PULSIPHER, Makenzi	4-14	2-6	0-0	1	1	2	3	10	2	2	0	4	35		
20	BROADHEAD, Cassie	4-5	1-2	5-7	2	4	6	3	14	2	0	1	1	20		
22	NIELSON, Kristine	2-6	1-2	1-2	3	1	4	2	6	2	1	0	0	16		
33	MOODY, Jasmine	0-0	0-0	0-0	1	1	2	1	0	2	0	0	0	8		
50	HANKS, MaCayla	0-0	0-0	0-0	0	0	0	0	0	0	0	0	0	3		
Team					3	4	7				1					
Totals		22-56	7-21	7-13	14	31	45	23	58	11	20	2	7	200		
FG % 1st Half: 11-31		35.5%	2nd half: 11-25	44.0%	Game: 22-56		39.3%	Deadball								
3FG % 1st Half: 3-10		30.0%	2nd half: 3-10	30.0%	Game: 7-21		33.3%	Rebounds								
FT % 1st Half: 1-2		50.0%	2nd half: 6-11	54.5%	Game: 7-13		53.8%	5								

Officials: Norma Leibfried, Clifford Sims, Kristen Bell  
Technical fouls: Georgia-None. BYU-TEAM.  
Attendance:  
Thanksgiving Classic Game 1

Score by periods	1st	2nd	3rd	4th	Total
Georgia	13	16	16	21	66
BYU	14	13	13	18	58

**GAME 7**  
**Georgia 57, Mercer 44**

Dec. 2, 2015 | Stegeman Coliseum | Athens, Ga.

Official Basketball Box Score -- Game Totals -- Final Statistics  
Mercer vs Georgia  
12/2/15 7 p.m. at Stegeman Coliseum (Athens, Ga.)**Mercer 44 • 4-3**

#	Player	Total		3-Ptr		Rebounds			PF	TP	A		TO	Blk	Stl	Min
		FG-FGA	FG-FGA	FT-FTA	Off	Def	Tot									
01	Sydni Means	7-10	0-0	1-2	1	1	2	1	15	4	5	0	2	31		
02	Amanda Thompson	0-4	0-0	0-0	1	3	4	3	0	1	0	0	1	29		
11	Linnea Rosendal	1-7	1-7	0-0	1	1	2	0	3	1	3	0	0	17		
24	Kahlia Lawrence	3-13	0-3	0-0	1	1	2	1	6	2	1	0	2	34		
34	Rachel Selph	3-10	0-0	0-2	0	8	8	1	6	0	1	1	1	33		
05	Brittnee Broadway	0-1	0-0	0-0	0	1	1	0	1	0	0	0	1	11		
13	Ciarra Edwards	0-1	0-0	0-0	1	1	2	0	0	0	0	0	0	6		
15	Ally Welch	0-0	0-0	0-0	0	0	0	0	0	2	0	0	0	3		
23	Kayla Potts	0-4	0-1	0-0	2	2	4	1	0	3	0	1	0	15		
25	KeKe Calloway	5-10	4-5	0-0	2	4	6	0	14	1	2	0	2	21		
Team					1	3	4									
Totals		19-60	5-19	1-4	10	25	35	8	44	10	17	2	9	200		
FG % 1st Half: 11-30		36.7%	2nd half: 8-30	26.7%	Game: 19-60		31.7%	Deadball								
3FG % 1st Half: 5-12		41.7%	2nd half: 0-7	0.0%	Game: 5-19		26.3%	Rebounds								
FT % 1st Half: 0-0		0.0%	2nd half: 1-4	25.0%	Game: 1-4		25.0%	1.2								

**Georgia 57 • 6-1**

#	Player	Total		3-Ptr		Rebounds			PF	TP	A		TO	Blk	Stl	Min
		FG-FGA	FG-FGA	FT-FTA	Off	Def	Tot									
03	Tiaria Griffin	7-16	5-11	0-0	1	0	1	1	19	2	0	1	1	34		
13	Merritt Hempe	7-9	0-0	3-5	3	7	10	2	17	1	3	1	3	32		
20	Shacobia Barbee	1-9	0-5	2-2	4	9	13	4	4	6	2	0	3	34		
24	Marjorie Butler	3-7	1-4	0-0	1	3	4	1	7	5	3	0	0	38		
33	Mackenzie Engram	1-8	0-2	0-0	1	5	6	2	2	4	0	1	1	29		
04	Caliya Robinson	1-6	0-0	0-0	1	4	5	1	2	0	1	0	0	14		
12	Haley Clark	0-1	0-0	0-0	0	0	0	0	0	2	0	0	0	2		
23	Halle Washington	0-2	0-0	0-0	0	1	1	0	0	1	0	1	0	5		
25	Amber Skidgel	2-4	2-3	0-0	1	1	2	0	6	0	2	0	0	12		
Team					2	3	5									
Totals		22-62	8-25	5-7	14	33	47	11	57	16	18	2	8	200		
FG % 1st Half: 10-29		34.5%	2nd half: 12-33	36.4%	Game: 22-62		35.5%	Deadball								
3FG % 1st Half: 3-12		25.0%	2nd half: 5-13	38.5%	Game: 8-25		32.0%	Rebounds								
FT % 1st Half: 3-5		60.0%	2nd half: 2-2	100.0%	Game: 5-7		71.4%	1								

Officials: Amy Bonner, Jennifer Rezac and Missy Brooks  
Technical fouls: Mercer-None. Georgia-None.  
Attendance: 1653

Score by periods	1st	2nd	3rd	4th	Total
Mercer	10	17	9	8	44
Georgia	9	17	22	9	57

Last FG - MER 4th-00:06, UGA 4th-00:57.  
Largest lead - MER by 5 1st-03:47, UGA by 16 4th-06:53.Score tied - 1 time.  
Lead changed - 10 times.**GAME 6****Georgia 83, Cal State Northridge 58**

Nov. 28, 2015 | The Matadome | Northridge, Calif.

Official Basketball Box Score -- Game Totals -- Final Statistics  
Georgia vs CSUN  
11/28/15 4:30 p.m. at The Matadome (Northridge, CA)**Georgia 83 • 5-1**

#	Player	Total		3-Ptr		Rebounds			PF	TP	A				Min
		FG-FGA	FG-FGA	FT-FTA	Off	Def	Total	TO			Blk	Stl			
13	Merritt Hempe	f	2-4	0-0	0-0	0	1	1	5	4	1	3	0	2	15
33	Mackenzie Engram		3-6	0-2	1-2	2	5	7	5	7	0	0	1	2	30
03	Tiaria Griffin	g	7-15	3-8	8-8	5	0	5	2	25	5	0	0	0	25
20	Shacobia Barbee		7-9	1-2	3-7	2	6	8	1	18	3	1	0	2	20
24	Marjorie Butler	g	2-5	0-1	2-2	0	0	0	1	6	5	0	0	0	21
01	Shanea Armbrister		1-5	1-4	0-0	0	2	2	0	3	0	1	0	0	13
04	Caliya Robinson		5-9	1-3	2-3	1	3	4	2	13	1	1	2	0	23
10	Hannah Kohl Almire		0-1	0-0	0-0	0	2	2	0	1	0	0	0	0	7
12	Haley Clark		0-1	0-0	2-2	0	1	1	2	2	1	0	0	0	19
23	Halle Washington		0-2	0-0	0-0	1	1	3	0	0	0	0	0	0	12
25	Amber Skidgel		2-8	0-4	1-2	3	0	3	2	5	0	1	1	0	15
Team							3	2	5			1			
Totals			29-65	6-24	19-26	17	23	40	23	83	17	8	4	9	200
FG % 1st Half: 16-31			51.6%	2nd half: 13-34		38.2%	Game: 29-65		44.6%						Deadball
3FG % 1st half: 5-13			38.5%	2nd half: 1-11		9.1%	Game: 6-24		25.0%						4
FT % 1st half: 14-16			87.5%	2nd half: 5-10		50.0%	Game: 19-26		73.1%						



## GAME 9

## Georgia 70, No. 21 Seton Hall 52

Dec. 6, 2015 | Stegeman Coliseum | Athens, Ga.

Official Basketball Box Score -- Game Totals -- Final Statistics  
#21 Seton Hall vs Georgia  
12/6/15 2 p.m. ET at Stegeman Coliseum (Athens, Ga.)

## #21 Seton Hall 52 - 7-1

#	Player	Total			3-Ptr			Rebounds			PF	TP	A	TO	Blk	Stl	Min
		FG-FGA	FG-FGA	FT-FTA	Off	Def	Tot	Off	Def	Tot							
01	RICHARDSON-SMITH, T.	5-16	2-8	1-2	1	6	7	1	13	2	4	1	0	32			
02	JONES, Tiffany	2-12	1-5	2-2	2	4	6	4	7	0	3	2	3	38			
15	POWELL, Aleesha	0-2	0-2	4-4	3	1	4	4	4	2	3	0	0	25			
24	RICHARDSON, Shakena	1-9	0-2	4-4	0	0	0	1	6	5	4	0	2	26			
35	GORDON, Lubridia	2-3	0-0	0-0	1	1	2	3	4	0	1	1	0	16			
03	SMITH, LaTecia	0-3	0-0	0-0	3	3	6	0	0	1	0	0	1	12			
10	MOSLEY, Jordan	3-4	1-4	0-0	0	1	1	0	7	1	0	0	1	15			
14	BYRNE, Taylor	3-4	1-1	0-0	1	2	3	3	7	0	0	0	0	12			
35	MOLYNEAUX, Jordan	2-2	0-0	0-0	0	2	2	4	4	0	0	1	0	14			
20	LUNDBERG, Claire	0-1	0-1	0-0	0	1	1	0	0	0	0	0	0	10			
Team					1	4	5										
Totals		18-58	5-23	11-12	12	25	37	20	52	10	17	5	6	200			
FG % 1st Half: 14-33		42.4%	2nd half: 4-25	16.0%	Game: 18-58		31.0%	Deadball		Rebounds		3					
3FG % 1st Half: 3-12		25.0%	2nd half: 2-11	18.2%	Game: 5-23		21.7%										
FT % 1st Half: 2-2		100.0%	2nd half: 9-10	90.0%	Game: 11-12		91.7%										

## Georgia 70 - 8-1

#	Player	Total			3-Ptr			Rebounds			PF	TP	A	TO	Blk	Stl	Min
		FG-FGA	FG-FGA	FT-FTA	Off	Def	Tot	Off	Def	Tot							
03	Tiarra Griffin	6-13	3-9	0-0	3	5	8	2	15	1	2	0	0	31			
13	Merritt Hempe	1-7	1-2	0-2	4	3	7	4	3	3	1	0	0	28			
20	Shacobia Barbee	5-14	1-1	8-10	2	5	7	0	19	3	0	0	2	39			
24	Marjorie Butler	2-11	1-7	2-2	2	7	9	3	7	4	2	0	2	38			
33	MackenzieEngram	4-7	1-1	1-2	2	5	7	4	10	2	4	1	1	24			
04	Caliya Robinson	2-5	0-0	0-0	0	1	1	1	4	2	0	2	1	11			
11	Pachis Roberts	2-7	1-2	1-2	3	1	4	0	6	1	0	0	0	14			
12	Haley Clark	0-0	0-0	0-0	0	1	1	0	0	1	0	1	0	2			
23	Halle Washington	2-3	0-0	2-5	0	0	0	2	6	2	2	0	0	13			
Team					5	0	5										
Totals		24-67	8-22	14-23	21	28	49	16	70	17	13	4	6	200			
FG % 1st Half: 10-29		34.5%	2nd half: 14-38	36.8%	Game: 24-67		35.8%	Deadball		Rebounds		5					
3FG % 1st Half: 3-10		30.0%	2nd half: 5-12	41.7%	Game: 8-22		36.4%										
FT % 1st Half: 7-11		63.6%	2nd half: 7-12	58.3%	Game: 14-23		60.9%										

Officials: Tina Napier, Frank Steratore and Meadow Overstreet  
Technical fouls: #21 Seton Hall-GORDON, Lubridia; RICHARDSON-SMITH, T.  
Georgia-Halle Washington.  
Attendance: 3013

Score by periods	1st	2nd	3rd	4th	Total
#21 Seton Hall	15	18	7	12	52
Georgia	16	14	20	20	70

Last FG - SHU 4th-02:33, UGA 4th-00:22.  
Largest lead - SHU by 5 1st-08:56, UGA by 20 4th-05:04.Score tied - 5 times.  
Lead changed - 9 times.

## GAME 11

## Georgia 63, Georgia 57

Dec. 20, 2015 | The Nutter Center | Dayton, Ohio

Official Basketball Box Score -- Game Totals -- Final Statistics  
Georgia vs Wright State  
12/20/15 2:00 PM EST at Wright State Nutter Center

## Georgia 63 - 10-1

#	Player	Total			3-Ptr			Rebounds			PF	TP	A	TO	Blk	Stl	Min
		FG-FGA	FG-FGA	FT-FTA	Off	Def	Tot	Off	Def	Tot							
13	Merritt Hempe	7-15	0-1	5-5	4	5	9	3	19	1	1	1	0	31			
33	MackenzieEngram	3-7	0-0	0-0	1	4	5	4	6	0	0	0	0	20			
03	Tiarra Griffin	5-16	2-7	0-0	0	6	6	1	12	2	2	1	0	32			
20	Shacobia Barbee	5-9	0-1	5-8	4	5	9	4	15	9	2	0	3	39			
24	Marjorie Butler	1-8	0-3	0-0	2	4	6	2	2	3	3	0	1	36			
01	Shanea Armbrister	0-1	0-1	0-0	0	1	1	0	0	0	0	0	0	4			
04	Caliya Robinson	1-3	0-0	0-0	4	3	7	3	2	0	2	0	0	11			
11	Pachis Roberts	0-2	0-1	2-2	1	2	3	3	2	0	1	0	0	11			
12	Haley Clark	0-0	0-0	1-2	0	0	0	0	1	1	1	0	0	5			
23	Halle Washington	2-4	0-0	0-0	0	3	3	3	4	0	3	1	0	11			
Team					2	1	3										
Totals		24-65	2-14	13-17	18	34	52	23	63	16	14	3	4	200			
FG % 1st Half: 8-33		24.2%	2nd half: 16-32	50.0%	Game: 24-65		36.9%	Deadball		Rebounds		3					
3FG % 1st Half: 0-8		0.0%	2nd half: 2-6	33.3%	Game: 2-14		14.3%										
FT % 1st Half: 3-5		60.0%	2nd half: 10-12	83.3%	Game: 13-17		76.5%										

## Wright State 57 - 10-3

#	Player	Total			3-Ptr			Rebounds			PF	TP	A	TO	Blk	Stl	Min
		FG-FGA	FG-FGA	FT-FTA	Off	Def	Tot	Off	Def	Tot							
02	HAYES, Antania	9-20	0-1	8-15	4	2	6	3	26	3	1	0	0	35			
22	van der KEUL, Riche	1-3	0-0	1-2	5	3	8	3	3	0	1	1	0	38			
03	VOGELPOHL, Emily	3-8	1-4	3-4	0	5	5	4	10	8	3	0	6	40			
04	DEMINGS, Kim	4-21	3-11	1-2	0	3	3	2	12	0	1	0	0	27			
25	DENHAM, Symone	1-4	0-1	0-0	0	2	2	2	2	0	1	0	0	31			
13	SIMMONS, Symone	2-4	0-0	0-0	0	4	4	3	4	1	1	0	0	22			
25	SMITH, Lexi	0-0	0-0	0-0	0	1	1	3	0	0	1	0	0	7			
Team					3	4	7										
Totals		20-60	4-17	13-23	12	24	36	20	57	12	10	1	6	200			
FG % 1st Half: 9-29		31.0%	2nd half: 11-31	35.5%	Game: 20-60		33.3%	Deadball		Rebounds		4					
3FG % 1st Half: 1-8		12.5%	2nd half: 3-9	33.3%	Game: 4-17		23.5%										
FT % 1st Half: 7-11		63.6%	2nd half: 6-12	50.0%	Game: 13-23		56.5%										

Officials: Jeff Cross, David Stewart and Carol Comanita  
Technical fouls: Georgia-None. Wright State-None.  
Attendance: 1563

Score by periods	1st	2nd	3rd	4th	Total
Georgia	12	7	23	21	63
Wright State	12	14	14	17	57

1 and FG - 11GA 4th-00:37 WSU 4th-00:46

Score tied - 8 times

## GAME 10

## Georgia 77, Furman 39

Dec. 8, 2015 | Stegeman Coliseum | Athens, Ga.

Official Basketball Box Score -- Game Totals -- Final Statistics  
Furman vs Georgia  
12/8/15 11 a.m. ET at Stegeman Coliseum (Athens, Ga.)

## Furman 39 - 5-4

#	Player	Total			3-Ptr			Rebounds			PF	TP	A	TO	Blk	Stl	Min
		FG-FGA	FG-FGA	FT-FTA	Off	Def	Total	Off	Def	Total							
05	Allison Beasley	-	1-2	1-2	0-0	0	1	1	2	3	0	1	0	0	1	0	10
20	Whitney Bunn	-	4-12	2-7	0-0	0	1	1	2	10	1	2	0	3	36		
21	Holli Wilkins	-	1-7	0-0	5-6	1	1	2	1	7	2	4	0	0	35		
24	Ciera Carter	-	2-10	0-3	4-4	2	6	8	0	8	1	2	0	1	28		
44	Tiera Wood	-	1-1	0-0	0-0	0	0	0	2	2	0	3	0	2	14		
01	DeAsia Brown	-	1-3	1-2	0-0	0	0	0	1	3	0	0	0	0	11		
12	Kelsey Ellis	-	1-5	0-4	0-0	1	1	2	0	2	0	3	0	1	21		
13	Kaitlyn Duncan	-	0-3	0-0	0-0	2	3	5	0	0	0	0	1	0	16		
23	Taylor Darks	-	0-1	0-0	0-0	0	0	0	0	0	0	0	0	0	4		
25	Sydney Bozeman	-	0-0	0-0	0-0	0	0	0	0	0	0	0	0	0	6		
42	Shianne Goodwin	-	2-5	0-0	0-0	1	0	1	1	4	0	2	1	0	19		
Team						1	2	3									
Totals			13-49	4-18	9-10	8	15	23	9	39		4	19	2	7	200	
FG % 1st Half:		9-26	34.6%	2nd half:	4-23	17.4%	Game:		13-49	26.5%							
3FG % 1st Half:		3-10	30.0%	2nd half:	1-8	12.5%	Game:		4-18	22.2%							
FT % 1st Half:		4-4	100.0%	2nd half:	5-6	83.3%	Game:		9-10	90.0%	Deadball Rebounds 3						





## GAME 13

## Georgia 81, Tennessee Tech 48

Dec. 28, 2015 | Stegeman Coliseum | Athens, Ga.

Official Basketball Box Score -- Game Totals -- Final Statistics  
Tennessee Tech vs Georgia  
12/28/15 7 p.m. ET at Stegeman Coliseum (Athens, Ga.)

## Tennessee Tech 48 - 4-9

#	Player	Total		3-Ptr		Rebounds			PF	TP	A	TO	Bk	Stl	Min	
		FG	FGA	FG	FGA	Off	Def	Total								
25	HARPER, Asia	f	1-1	0-0	0-0	0	1	1	0	2	1	2	1	0	15	
34	SMITH, Ailayah	c	1-2	0-0	0-2	1	3	4	2	2	0	2	1	0	20	
1	JENNINGS, Lindsey	g	1-1	1-1	2-2	1	1	2	2	5	2	3	0	1	19	
24	GOOLSBY, Hannah	g	2-7	0-3	1-2	0	2	2	0	5	0	0	0	1	29	
3	HOWARD, Samaria	g	5-23	0-3	5-8	2	3	5	0	15	0	1	0	3	34	
01	NEWRY, Kandace		0-1	0-1	0-0	1	1	2	0	0	1	1	0	0	7	
02	NICHOLSON, Tia		0-0	0-0	0	0	0	0	0	0	1	0	0	0	6	
05	HICKSON, Yaktavia		3-7	2-5	1-2	1	0	1	3	9	1	3	0	2	24	
10	JORDAN, Takisha		2-3	0-0	2-3	0	1	1	2	6	0	2	0	1	7	
23	BROOKS, Treyvonna		0-0	0-0	0-0	0	0	0	1	0	2	0	0	0	7	
35	DEAN, Mariah		2-6	0-0	0-0	1	0	1	0	4	0	0	3	0	22	
54	COOPER, Brittany		0-2	0-1	0-0	0	2	2	1	0	0	1	0	0	10	
Team						4			2	6						
Totals			17-53	3-14	11-19	11	16	27	11	48	7	16	5	8	200	
FG % 1st Half:		7-22	31.8%	2nd half:	10-31	32.3%	Game:		17-53	32.1%	Deadball					
3FG % 1st Half:		1-5	20.0%	2nd half:	2-9	22.2%	Game:		3-14	21.4%	Rebounds					
FT % 1st Half:		4-6	66.7%	2nd half:	7-13	53.8%	Game:		11-19	57.9%						3.2

## Georgia 81 - 12-1

#	Player	Total		3-Ptr		Rebounds			PF	TP	A			TO	Bk	Stl	Min
		FG-FGA	FG-FGA	FT-FTA	Off	Def	Tot	A			TO						
13	Merritt Hempe	f	5-13	0-1	2-3	2	3	5	2	12	1	3	1	2	30		
33	MackenzieEngram	f	3-10	1-2	2-6	1	8	9	2	9	3	2	1	0	26		
11	Pachis Roberts	g	10-13	5-5	0-0	1	4	5	2	25	3	1	0	2	28		
20	Shacobia Barbee	g	4-5	1-1	0-0	3	3	6	0	9	4	0	1	0	21		
24	Marjorie Butler	g	1-5	0-0	0-0	1	1	2	1	2	5	0	0	1	16		
01	Shanea Armbrister		2-4	1-2	0-0	0	0	0	1	5	1	1	0	0	12		
04	Caliya Robinson		7-0	0-0	2-3	4	5	9	2	10	2	1	0	0	23		
10	Hannahkohl Almire		0-0	0-0	0-0	0	0	0	0	0	1	0	0	1	7		
12	Haley Clark		7-0	1-1	0-0	0	3	3	4	6	2	1	1	24			
25	Amber Skidgel		2-3	1-2	0-0	0	1	1	2	5	0	3	0	1	19		
Team						7	2	9			1						
Totals			33-67	9-14	6-12	19	30	49	16	81	25	15	7	7	200		
FG % 1st Half: 20-38		52.6%	2nd half: 13-29	44.8%	Game: 33-67	49.3%	Deadball										
3FG % 1st Half: 7-9		77.8%	2nd half: 2-5	40.0%	Game: 9-14	64.3%	Rebounds										
FT % 1st Half: 3-7		42.9%	2nd half: 3-5	60.0%	Game: 6-12	50.0%	3										

Officials: Mark Zentz, Pualani Spurlock and Kylie Galloway  
Technical fouls: Tennessee Tech-None. Georgia-None.  
Attendance: 2808

Score by periods	1st	2nd	3rd	4th	Total
Tennessee Tech	3	16	16	13	48
Georgia	21	29	22	9	81

Points	In	Off	2nd	Fast	Bench
TTU	18	9	6	4	19
UGA	36	28	24	10	24

Last FG - TTU 4th-00:34, UGA 4th-01:46  
Largest lead - TTU None, UGA by 40 3rd-00:28  
TTU led for 00:00, UGA led for 39:15. Game was tied for 00:14.Score tied - 0 times.  
Lead changed - 0 times.

## GAME 15

## No. 20 Missouri 54, Georgia 48

Jan. 7, 2016 | Stegeman Coliseum | Athens, Ga.

Official Basketball Box Score -- Game Totals -- Final Statistics  
#20 Missouri vs Georgia  
1/7/16 7 p.m. ET at Stegeman Coliseum (Athens, Ga.)

## #20 Missouri 54 - 14-1, 1-1

#	Player	Total		3-Ptr		Rebounds			PF	TP	A	TO	Bk	Stl	Min
		FG-FGA	FG-FGA	FT-FTA	Off	Def	Tot								
03	CUNNINGHAM, Sophie	1	2-7	1-2	2-6	1	5	6	4	7	1	2	0	1	34
11	CUNNINGHAM, Lindsey	0	0-0	0-0	2-2	0	1	1	0	2	2	2	0	0	12
1	PORTER, Cierra	2	8-8	1-2	6-8	3	5	8	4	11	0	2	0	0	26
22	FREERICKS, Jordan	2	5-8	0-0	1-4	0	6	6	4	11	1	4	1	2	35
2	MACHIELIS, Sierra	2	6-6	2-5	2-2	1	2	3	2	8	2	2	0	1	24
01	DOTY, Liana	1	3-3	0-0	2-4	1	2	3	5	4	2	0	0	1	28
02	STOCK, Morgan	3	9-9	1-6	0-0	3	2	5	1	7	0	1	0	0	17
04	PORTER, Bri	1	2-0	1-1	0-0	0	1	1	2	2	0	0	0	0	14
12	HUDYN, Michelle	1	1-1	0-0	0-0	0	1	1	0	2	0	0	0	0	2
20	McDOWELL, Kayla	0	2-0	0-1	0-0	0	1	1	0	1	1	0	1	0	6
23	ROBINSON, Juanita	0	0-0	0-0	0-0	0	0	0	1	0	0	1	0	0	2
Team						2		2	4						
Totals		17-45	5-17	15-26	11	26	37	24	54	9	16	1	6	200	
FG % 1st Half: 11-20 55.0%		2nd half: 6-25 24.0%		Game: 17-45 37.8%										Deadball	
3FG % 1st Half: 4-8 50.0%		2nd half: 1-9 11.1%		Game: 5-17 29.4%										Rebounds	
FT % 1st Half: 5-10 50.0%		2nd half: 10-16 62.5%		Game: 15-26 57.7%											

## Georgia 48 - 12-3, 0-2

#	Player	Total			3-Ptr			Rebounds			PF	TP	A	TO	Bk	Stl	Min
		FG	FGA	FT	FG	FGA	FT	FTA	Off	Def							
03	Tiarra Griffin	1	4-15	3-10	3-4	1	0	1	2	14	1	1	2	1	40		
11	Pachis Roberts	1	1-4	0-2	0-0	0	2	2	3	2	0	4	0	1	19		
13	Merritt Hempe	2	6-0	0-0	0-2	1	5	6	4	4	3	1	0	0	29		
20	Shacobia Barbee	2	10-14	5-6	5-9	9	14	5	10	2	1	0	2	36			
24	Marjorie Butler	1	1-6	1-3	3-4	0	1	1	5	6	3	3	0	1	40		
04	Caliya Robinson	3	5-5	1-2	0-0	2	0	2	1	7	0	1	0	0	10		
12	Haley Clark	0	0-0	0-0	0-0	0	0	0	0	0	0	0	0	0	0		
23	Halle Washington	0	0-0	0-0	4-4	1	1	2	3	4	0	0	0	0	11		
33	MackenzieEngram	0	4-4	0-2	1-2	0	1	1	1	2	0	0	1	1	15		
	Team					1	1	2									
Totals			13-50	6-23	16-22	11	20	31	24	48	11	13	2	6	200		
FG % 1st Half: 6-23		26.1%	2nd half: 7-27	25.9%	Game: 13-50		26.0%	Deadball									
3FG % 1st Half: 3-8		37.5%	2nd half: 3-15	20.0%	Game: 6-23		26.1%	Rebounds									
FT % 1st Half: 6-8		75.0%	2nd half: 10-14	71.4%	Game: 16-22		72.7%										

Officials: Ed Sidiasky, Eric Koch and Carla Fountain  
Technical fouls: #20 Missouri-None. Georgia-Marjorie Butler; Shacobia Barbee  
Attendance: 1935

Score by periods	1st	2nd	3rd	4th	Total
#20 Missouri	15	16	13	16	54
Georgia	6	15	19	8	48

Points	In	Off	2nd	Fast	Bench
MU-W	20	16	10	0	15
UGA	10	16	4	2	12

Last FG - MU-W 4th-02:50, UGA 4th-00:22  
Largest lead - MU-W by 12 2nd-07:49, UGA by 5 4th-09:12  
MU-W led for 31:14, UGA led for 08:09. Game was tied for 00:37.Score tied - 2 times.  
Lead changed - 2 times.

## GAME 14

## No. 16 Texas A&amp;M 73, Georgia 62

Jan. 3, 2016 | Reed Arena | College Station, Texas

Official Basketball Box Score -- Game Totals -- Final Statistics  
Georgia vs #16 Texas A&M  
01/03/16 4 p.m. at College Station, Texas (Reed Arena)

## Georgia 62 - 12-2, 0-1 SEC

#	Player	Total		3-Ptr		Rebounds			PF	TP	A		TO	Bk	Stl	Min
		FG-FGA	FG-FGA	FT-FTA	FT-FTA	Off	Def	Tot			A	TO				
03	Tiarra Griffin	1	5-13	2-8	2-2	1	1	2	2	14	1	1	0	1	38	
13	Merritt Hempe	1	4-11	0-1	0-0	3	1	4	2	8	1	4	3	0	27	
20	Shacobia Barbee	1	3-14	0-2	11-12	7	7	14	3	17	6	1	0	2	38	
24	Marjorie Butler	1	4-8	0-2	0-0	0	0	0	5	8	5	1	0	0	33	
23	Mackenzie Ingram	1	1-6	0-2	0-2	0	1	1	4	2	0	3	0	1	22	
04	Caliya Robinson	1	0-1	0-0	0-0	0	1	1	0	0	0	0	0	0	6	
11	Pachis Roberts	1	5-8	2-3	1-1	1	4	5	4	13	0	2	0	1	16	
12	Haley Clark	1	0-0	0-0	0-0	0	0	0	2	0	1	0	0	1	7	
23	Halle Washington	1	0-5	0-0	0-0	0	1	1	3	0	1	1	0	0	13	
Team						1	4	5								
Totals			22-66	4-18	14-17	13	20	33	25	62	15	13	3	6	200	
FG % 1st Half: 11-30		36.7%	2nd half: 11-36	30.6%	Game: 22-66		33.3%	Deadball Rebounds: 1.1								
3FG % 1st Half: 2-7		28.6%	2nd half: 2-11	18.2%	Game: 4-18		22.2%									
FT % 1st Half: 2-3		66.7%	2nd half: 12-14	85.7%	Game: 14-17		82.4%									



## 2015-16 OVERALL STATS



**2015-16 Georgia Basketball**  
**Georgia Combined Team Statistics (Jan. 11, 2016)**  
**All games**

RECORD:	OVERALL	HOME	AWAY	NEUTRAL
ALL GAMES	12-4	9-2	2-2	1-0
CONFERENCE	0-3	0-2	0-1	0-0
NON-CONFERENCE	12-1	9-0	2-1	1-0

##	Player	gp-gs	min	avg	Total		3-Point		F-Throw		Rebounds				pf	dq	a	to	blk	stl	pts	avg
					fg-fga	fg%	3fg-fga	3fg%	ft-fta	ft%	off	def	tot	avg								
03	Tiaria Griffin	15-15	475	31.7	71-193	.36	37-112	.33	27-33	.81	22	36	58	3.9	26	0	33	21	5	22	206	13.7
20	Shacobia Barbee	16-16	510	31.9	70-158	.44	11-36	.30	51-74	.68	51	97	148	9.3	30	1	76	28	5	40	202	12.6
13	Merritt Hempe	16-16	407	25.4	80-162	.49	2-10	.20	23-38	.60	44	66	110	6.9	53	4	18	33	15	10	185	11.6
33	MackenzieEngram	16-14	390	24.4	52-138	.37	9-33	.27	18-32	.56	29	58	87	5.4	40	2	14	26	8	12	131	8.2
11	Pachis Roberts	8-3	145	18.1	21-49	.42	10-21	.47	6-8	.75	11	20	31	3.9	21	0	8	11	0	7	58	7.3
04	Caliya Robinson	13-0	206	15.8	34-70	.48	2-9	.22	10-16	.62	24	38	62	4.8	17	0	14	13	15	6	80	6.2
24	Marjorie Butler	16-16	468	29.3	30-98	.30	7-41	.17	12-18	.66	11	32	43	2.7	35	2	71	22	0	17	79	4.9
23	Halle Washington	12-0	163	13.6	18-48	.37	0-1	.00	12-18	.66	8	15	23	1.9	32	0	3	12	4	3	48	4.0
25	Amber Skidgel	11-0	152	13.8	16-48	.33	11-33	.33	1-4	.25	5	14	19	1.7	8	0	5	9	2	3	44	4.0
01	Shanea Armbrister	7-0	64	9.1	9-25	.36	7-15	.46	0-0	.00	4	9	13	1.9	5	0	3	5	0	0	25	3.6
12	Haley Clark	16-0	189	11.8	8-27	.29	1-4	.25	3-6	.50	2	16	18	1.1	26	1	33	18	6	10	20	1.3
10	Hannahkohl Almiré	6-0	31	5.2	2-6	.33	1-1	1.000	0-0	.00	5	3	8	1.3	5	0	2	3	0	0	5	0.8
Team											44	22	66				11					
Total.....		16	3200		411-1022	.40	98-316	.31	163-247	.66	260	426	686	42.9	298	10	280	212	60	130	108	67.7
Opponents.....		16	3200		287-862	.33	71-284	.25	193-284	.68	188	383	571	35.7	278	-	141	279	43	105	838	52.4

TEAM STATISTICS	UGA	OPP
SCORING	1083	838
Points per game	67.7	52.4
Scoring margin	+15.3	-
FIELD GOALS-ATT	411-1022	287-862
Field goal pct	.402	.333
3 POINT FG-ATT	98-316	71-284
3-point FG pct	.310	.250
3-pt FG made per gam	6.1	4.4
FREE THROWS-ATT	163-247	193-284
Free throw pct	.660	.680
F-Throws made per ga	10.2	12.1
REBOUNDS	686	571
Rebounds per game	42.9	35.7
Rebounding margin	+7.2	-
ASSISTS	280	141
Assists per game	17.5	8.8
TURNOVERS	212	279
Turnovers per game	13.3	17.4
Turnover margin	+4.2	-
Assist/turnover ratio	1.3	0.5
STEALS	130	105
Steals per game	8.1	6.6
BLOCKS	60	43
Blocks per game	3.8	2.7
ATTENDANCE	31735	12791
Home games-Avg/Gam	11-2885	4-3051
Neutral site-Avg/Game	-	1-586

Date	Opponent	Score	Att.
11/15/15	STETSON	w 76-55	3530
11/18/15	at #23 Michigan State	L 45-66	5117
11/22/15	GEORGIA TECH	w 78-66	4441
11/24/15	GEORGIA SOUTHERN	w 75-28	1900
11/27/15	vs BYU	w 66-58	586
11/28/15	at CSUN	w 83-58	498
12/2/15	MERCER	w 57-44	1653
12/3/15	KENNESAW STATE	w 89-34	1622
12/6/15	#21 SETON HALL	w 70-52	3013
12/8/15	FURMAN	w 77-39	6002
12/20/15	at Wright State	w 63-57	1563
12/23/15	CINCINNATI	w 60-42	2350
12/28/15	TENNESSEE TECH	w 81-48	2608
* 01/03/16	at #16 Texas A&M	L 62-73	5027
* 1/7/16	#20 MISSOURI	L 48-54	1935
* 1/10/16	#10 KENTUCKY	L 53-64	2681

\* - Conference game

Score by Periods	1st	2nd	3rd	4th	Totals
Georgia	256	270	294	263	1083
Opponents	216	210	190	222	838





## 2015-16 CONFERENCE GAMES ONLY STATS



**2015-16 Georgia Basketball**  
**Georgia Combined Team Statistics (Jan. 11, 2016)**  
**Conference games**

RECORD:	OVERALL	HOME	AWAY	NEUTRAL
ALL GAMES	0-3	0-2	0-1	0-0
CONFERENCE	0-3	0-2	0-1	0-0
NON-CONFERENCE	0-0	0-0	0-0	0-0

#	Player	gp-gs	min	avg	Total		3-Point		F-Throw		Rebounds				pf	dq	a	to	blk	stl	pts	avg
					fg-fga	fg%	3fg-fga	3fg%	ft-fa	ft%	off	def	tot	avg								
20	Shacobia Barbee	3-3	102	34.0	8-33	.24	2-9	.22	17-20	.85	14	21	35	11.7	11	1	13	6	0	7	35	11.7
03	Tiaria Griffin	3-3	100	33.3	10-34	.29	6-21	.28	5-6	.83	2	1	3	1.0	8	0	2	5	2	4	31	10.3
11	Pachis Roberts	3-2	61	20.3	8-21	.38	3-10	.30	3-4	.75	4	9	13	4.3	11	0	2	7	0	3	22	7.3
24	Marjorie Butler	3-3	110	36.7	8-22	.36	1-7	.14	4-6	.66	1	1	2	0.7	14	2	11	7	0	5	21	7.0
01	Shanea Armbrister	1-0	13	13.0	2-5	.40	2-4	.50	0-0	.00	1	1	2	2.0	1	0	2	1	0	0	6	6.0
13	Merritt Hempe	3-3	74	24.7	8-25	.32	1-4	.25	0-2	.00	5	8	13	4.3	11	1	7	9	5	0	17	5.7
23	Halle Washington	3-0	41	13.7	4-10	.40	0-0	.00	4-6	.66	4	2	6	2.0	10	0	3	2	0	0	12	4.0
04	Caliya Robinson	3-0	38	12.7	5-11	.45	1-2	.50	0-0	.00	4	3	7	2.3	2	0	1	2	1	0	11	3.7
33	Mackenzie Engram	3-1	51	17.0	3-17	.17	1-7	.14	1-4	.25	1	3	4	1.3	6	0	2	5	0	2	8	2.7
12	Haley Clark	3-0	10	3.3	0-0	.00	0-0	.00	0-0	.00	0	0	0	0.0	2	0	1	0	1	1	0	0.0
Team											6	8	14					3				
Total.....		3	600		56-178	.31	17-64	.26	34-48	.70	42	57	99	33.0	76	4	44	47	9	22	163	54.3
Opponents.....		3	600		57-142	.40	12-38	.31	65-88	.73	35	87	122	40.7	56	-	35	57	11	21	191	63.7

TEAM STATISTICS	UGA	OPP
SCORING	163	191
Points per game	54.3	63.7
Scoring margin	-9.3	-
FIELD GOALS-ATT	56-178	57-142
Field goal pct	.315	.401
3 POINT FG-ATT	17-64	12-38
3-point FG pct	.266	.316
3-pt FG made per gam	5.7	4.0
FREE THROWS-ATT	34-48	65-88
Free throw pct	.708	.739
F-Throws made per ga	11.3	21.7
REBOUNDS	99	122
Rebounds per game	33.0	40.7
Rebounding margin	-7.7	-
ASSISTS	44	35
Assists per game	14.7	11.7
TURNOVERS	47	57
Turnovers per game	15.7	19.0
Turnover margin	+3.3	-
Assist/turnover ratio	0.9	0.6
STEALS	22	21
Steals per game	7.3	7.0
BLOCKS	9	11
Blocks per game	3.0	3.7
ATTENDANCE	4616	5027
Home games-Avg/Gam	2-2308	1-5027
Neutral site-Avg/Game	-	0-0

Date	Opponent	Score	Att.
* 01/03/16	at #16 Texas A&M	L 62-73	5027
* 1/7/16	#20 MISSOURI	L 48-54	1935
* 1/10/16	#10 KENTUCKY	L 53-64	2681

\* - Conference game

Score by Periods	1st	2nd	3rd	4th	Totals
Georgia	30	38	40	55	163
Opponents	41	54	40	56	191





## GAME-BY-GAME COMPARISON

Opponent	1st	2nd	Score	Mar	Total FG	FG Pct	3-Pointers	3FG Pct	Free Throw	FT Pct	Rebounds	Assist	T/Over	Block	Steal	Fouls
STETSON	39/32	37/23	76-55	+21	33-70/18-47	.471/.383	5-20/9-26	.250/.346	5-12/10-16	.417/.625	49/24 +25	23/9	12/17	3/1	12/7	17/14
#23 Michigan State	23/33	22/33	45-66	(21)	15-58/19-53	.259/.358	1-12/7-21	.083/.333	14-23/21-26	.609/.808	30/51 (21)	10/10	9/18	4/7	6/5	26/28
GEORGIA TECH	48/30	30/36	78-66	+12	29-57/26-66	.509/.394	7-18/6-25	.389/.240	13-18/8-14	.722/.571	40/35 +5	18/12	13/14	3/4	6/8	13/19
GEORGIA SOUTHERN	41/15	34/13	75-28	+47	30-64/12-54	.469/.222	5-16/2-22	.313/.091	10-14/2-4	.714/.500	49/28 +21	21/4	12/17	7/1	12/7	10/14
BYU	29/27	37/31	66-58	+8	22-64/22-56	.344/.393	7-21/7-21	.333/.333	15-20/7-13	.750/.538	33/45 (12)	12/11	9/20	3/2	5/7	17/23
CSUN	51/28	32/30	83-58	+25	29-65/20-56	.446/.357	6-24/3-11	.250/.273	19-26/15-20	.731/.750	40/38 +2	17/10	8/19	4/2	9/3	23/22
MERCER	26/27	31/17	57-44	+13	22-62/19-60	.355/.317	8-25/5-19	.320/.263	5-7/1-4	.714/.250	47/35 +12	16/10	18/17	2/2	8/9	11/8
KENNESAW STATE	42/20	47/14	89-34	+55	35-70/12-50	.500/.240	8-20/1-14	.400/.071	11-17/9-20	.647/.450	51/31 +20	24/1	14/25	4/0	12/6	19/21
#21 SETON HALL	30/33	40/19	70-52	+18	24-67/18-58	.358/.310	8-22/5-23	.364/.217	14-23/11-12	.609/.917	49/37 +12	17/10	13/17	4/5	6/6	16/20
FURMAN	32/25	45/14	77-39	+38	33-72/13-49	.458/.265	9-24/4-18	.375/.222	2-4/9-10	.500/.900	51/23 +28	21/4	14/19	5/2	12/7	15/9
Wright State	19/26	44/31	63-57	+6	24-65/20-60	.369/.333	2-14/4-17	.143/.235	13-17/13-23	.765/.565	52/36 +16	16/12	14/10	3/1	4/6	23/20
CINCINNATI	28/16	32/26	60-42	+18	26-63/14-58	.413/.241	6-22/3-15	.273/.200	2-6/11-15	.333/.733	47/39 +8	16/6	14/13	2/0	9/5	16/13
TENNESSEE TECH	50/19	31/29	81-48	+33	33-67/17-53	.493/.321	9-14/3-14	.643/.214	6-12/11-19	.500/.579	49/27 +22	25/7	15/16	7/5	7/8	16/11
#16 Texas A&M	26/33	36/40	62-73	(11)	22-66/21-46	.333/.457	4-18/3-10	.222/.300	14-17/28-34	.824/.824	33/40 (7)	15/16	13/19	3/7	6/5	25/19
#20 MISSOURI	21/31	27/23	48-54	(6)	13-50/17-45	.260/.378	6-23/5-17	.261/.294	16-22/15-26	.727/.577	31/37 (6)	11/9	13/16	2/1	6/6	24/24
#10 KENTUCKY	21/31	32/33	53-64	(11)	21-62/19-51	.339/.373	7-23/4-11	.304/.364	4-9/22-28	.444/.786	35/45 (10)	18/10	21/22	4/3	10/10	27/13

Note: Game totals are displayed in the format TEAM/OPPONENT for each category

