

# 1991 FURMAN STATISTICS



(Record 7-4-0; Southern Conference 4-3-0)  
NCAA I-AA Final Ranking: T20

Date	Opponent	Score	Crowd
Sept. 7	@ Connecticut	35-24	9,108
Sept. 14	LIBERTY	31-7	14,014
Sept. 21	PRESBYTERIAN	52-7	12,511
Sept. 28	@ Western Carolina	42-14	12,445
Oct. 5	@ VMI	46-28	8,223
Oct. 12	MARSHALL	35-38	16,125
Oct. 19	APPALACHIAN ST. (3ot)	23-26	13,082
Nov. 2	EAST TENNESSEE STATE	52-23	12,922
Nov. 9	@ Georgia Tech	17-19	40,039
Nov. 16	TENN.-CHATTANOOGA	24-21	16,579
Nov. 23	@ The Citadel	6-10	21,623

## ATTENDANCE

Home:	6 games;	85,233 paid;	14,205 per game
Away:	5 games;	91,438 paid;	18,287 per game
Overall:	11 games;	176,671 paid;	16,061 per game

## INDIVIDUAL STATISTICS

RUSHING	G	ATT	NET	TD	LNG	YPC	YPG
Bradley	11	17	41	1	40	2.4	3.7
Brownstead	9	102	384	4	24	3.8	42.7
Burns	7	1	28	0	28	28.0	4.0
Davis	11	69	397	3	30	5.8	36.1
Green	7	28	135	1	23	4.8	19.3
Jones	8	26	96	0	20	3.7	12.0
Lowery	11	0	0	*1	0	0.0	0.0
McClarty	5	9	51	1	11	5.7	10.2
Siffri	11	5	93	1	42	18.6	8.5
Swilling	9	100	302	3	49	3.0	33.5
Tremble	9	159	927	11	65	5.8	103.0
Whitley	11	49	229	1	46	4.7	20.8
Whitmire	9	4	45	1	20	11.3	5.0
<b>Furman</b>	<b>11</b>	<b>569</b>	<b>2728</b>	<b>28</b>	<b>65</b>	<b>4.8</b>	<b>248.0</b>
Opponents	11	473	1539	12	50	3.3	139.9

\* Fumble recovery in end zone vs. E. Tennessee State

PASSING	G	ATT	COM	INT	YDS	TD	LNG	YPG
Bradley	11	16	7	2	100	0	23	9.1
Jones	8	21	15	1	149	0	14	18.6
Swilling	9	153	85	5	1422	14	78	158.0
<b>Furman</b>	<b>11</b>	<b>190</b>	<b>107</b>	<b>8</b>	<b>1671</b>	<b>14</b>	<b>78</b>	<b>151.9</b>
Opponents	11	278	155	13	1900	13	80	172.7

PASS EFF.	G	YPA	COM	TD	INT	RATE
Bradley	11	6.25	43.75	0.00	12.50	71.25
Jones	8	7.09	71.42	0.00	4.76	121.50
Swilling	9	9.29	55.55	9.15	3.26	157.22
<b>Furman</b>	<b>11</b>	<b>8.79</b>	<b>56.31</b>	<b>7.36</b>	<b>4.21</b>	<b>146.04</b>
Opponents	11	6.83	55.75	4.67	4.67	119.21

RECEIVING	G	REC	YDS	TD	LNG	YPC	YPG
Bradley	11	14	222	2	31	15.9	20.1
Brownstead	9	2	39	0	22	19.5	4.3
Burns	7	5	65	1	18	13.0	9.3
Davis	11	3	20	0	9	6.7	1.8
Ford	1	1	5	0	5	5.0	5.0
Green	7	1	5	0	5	5.0	0.7
Lipscomb	11	32	753	5	78	23.5	68.5
Siffri	11	25	312	6	19	12.5	28.4
Tremble	9	7	45	0	14	6.4	5.0
Waters	11	3	28	0	12	9.3	2.5
Whitmire	9	6	74	0	30	12.3	8.2
Whitley	11	6	85	0	43	14.1	7.7
Wild	11	2	18	0	10	9.0	1.6
<b>Furman</b>	<b>11</b>	<b>107</b>	<b>1671</b>	<b>14</b>	<b>78</b>	<b>15.6</b>	<b>151.9</b>
Opponents	11	159	1900	13	80	11.9	172.7

OFFENSE	G	ATT	YDS	TDR	YPA	YPG
Bradley	11	33	141	1	4.3	12.8
Brownstead	9	102	384	4	3.8	42.7
Burns	7	1	28	0	28.0	4.0
Davis	11	69	397	3	5.8	36.1
Green	7	28	135	1	4.8	19.3
Jones	8	47	245	0	5.2	30.6
Lowery	11	0	0	1	0.0	0.0
McClarty	5	9	51	1	5.7	10.2
Siffri	11	5	93	1	18.6	8.5
Swilling	9	253	1724	17	6.8	191.5
Tremble	9	159	927	11	5.8	103.0
Whitley	11	49	229	1	4.7	20.8
Whitmire	9	4	45	1	11.3	5.0
<b>Furman</b>	<b>11</b>	<b>759</b>	<b>4399</b>	<b>42</b>	<b>5.8</b>	<b>399.9</b>
Opponents	11	751	3439	25	4.6	312.6

SCORING	G	TD	XP	FG	PTS	PPG
Bell	11	2	0	0	12	1.1
Bradley	11	3	0	0	18	1.6
Brownstead	9	4	0	0	24	2.6
Burns	7	1	0	0	6	0.9
Burr	11	0	45	14	87	7.9
Davis	11	3	0	0	18	1.6
Ensley	11	1	0	0	6	0.5
Green	7	1	0	0	6	0.9
Lipscomb	11	5	0	0	30	2.7
Lowery	11	1	0	0	6	0.5
McClarty	5	1	0	0	6	1.2
Tremble	9	11	0	0	66	7.3
Siffri	11	7	0	0	42	3.8
Swilling	9	3	0	0	18	2.0
Whitley	11	2	0	0	12	1.1
Whitmire	9	1	0	0	6	0.7
<b>Furman</b>	<b>11</b>	<b>46</b>	<b>45</b>	<b>14</b>	<b>363</b>	<b>33.0</b>
Opponents	11	27	22	10	217	19.7

PUNTING	G	ATT	YDS	LONG	BLK	AVG
Leicht	11	4	139	45	0	34.8
Wade	11	47	1715	53	0	36.4
<b>Furman</b>	<b>11</b>	<b>51</b>	<b>1854</b>	<b>53</b>	<b>0</b>	<b>36.3</b>
Opponents	11	58	2346	68	1	40.4

TURNOVERS	GAINED			LOST			DIFF
	FUM	INT	TOT	FUM	INT	TOT	
Furman	15	13	28	12	8	20	+0.73

FIELD GOALS	20-29		30-39		40-49		50+		TOTAL
	FUM	INT	FUM	INT	FUM	INT	FUM	INT	
Burr	5	6	7	7	1	2	1	1	14-16
Team	0	0	0	2	0	0	0	0	0-2
<b>Furman</b>	<b>5</b>	<b>6</b>	<b>7</b>	<b>9</b>	<b>1</b>	<b>2</b>	<b>1</b>	<b>1</b>	<b>14-18</b>
Opponents	2	2	7	9	1	4	0	0	10-15

XPT CONVERSIONS	KICK		RUSH		PASS		TOTAL
	FUM	INT	FUM	INT	FUM	INT	
Burr	45	46	0	0	0	0	45-46
<b>Furman</b>	<b>45</b>	<b>46</b>	<b>0</b>	<b>0</b>	<b>0</b>	<b>0</b>	<b>45-46</b>
Opponents	19	19	0	2	3	6	22-27

KICKOFF RETURNS	G	RET	YDS	TD	LNG	AVG
	Bradley	11	8	188	0	49
Burns	7	6	115	0	28	19.2
Sterling	11	2	22	0	12	11.0
Whitley	11	10	262	1	98	26.2
Worrell	11	1	13	0	13	13.0
<b>Furman</b>	<b>11</b>	<b>27</b>	<b>600</b>	<b>1</b>	<b>98</b>	<b>22.2</b>
Opponents	11	55	1146	1	94	20.8

PUNT RETURNS	G	RET	YDS	TD	LNG	AVG
	Ensley	11	*1	20	0	20
Lipscomb	11	6	47	0	13	7.8
Whitmire	9	26	152	0	17	5.8
Worrell	11	1	-1	0	-1	-1.0
<b>Furman</b>	<b>11</b>	<b>34</b>	<b>218</b>	<b>0</b>	<b>20</b>	<b>6.4</b>
Opponents	11	25	105	0	27	4.2

\* Blocked punt vs. Liberty

INTERCEPTIONS	G	INT	YDS	TD	LNG	IPG
	Bell	11	3	47	2	19
Ensley	11	4	66	1	24	0.4
Grant	6	3	8	0	9	0.5
Norris	11	1	0	0	0	0.1
Ratcliff	11	1	0	0	0	0.1
Tillman	11	*1	2	0	2	0.1
Worrell	11	1	7	0	7	0.1
<b>Furman</b>	<b>11</b>	<b>14</b>	<b>130</b>	<b>3</b>	<b>19</b>	<b>1.3</b>
Opponents	11	8	74	0	32	0.7

\* Intercepted fumble vs. Western Carolina



Tremble



Swilling



Lipscomb



Burr



Whitley



Ensley

### TEAM STATISTICS

	Furman	Opponents
TOTAL FIRST DOWNS	220	184
Rushing	129	94
Passing	73	82
Penalty	8	8
NET YARDS RUSHING	2728	1539
Attempts	569	473
Yards Gained	3049	1836
Yards Lost	321	297
Attempts Per Game	51.7	43.0
Yards Per Game	248.0	139.9
Average Gain Per Rush	4.8	3.3
NET YARDS PASSING	1671	1900
Attempts	190	278
Completions	107	155
Had Intercepted	8	13
Completion Percentage	56.3	55.7
Attempts Per Game	17.3	25.3
Yards Per Game	151.9	172.7
Average Gain Per Completion	15.6	11.9
TOTAL OFFENSE	4399	3439
Total Plays	759	751
Average Gain Per Play	5.8	4.6
Attempts Per Game	69.0	68.3
Yards Per Game	399.9	312.6
TURNOVERS	20	28
Fumbles-Lost	28-12	32-15
Had Intercepted	8	13
Turnover Ratio	+0.73	-0.73
PENALITIES-YARDS	54-504	52-409
Average Yards Per Game	45.8	37.1
PUNTING YARDS	1854	2346
Attempts	51	58
Average Per Punt	36.3	40.4
Attempts Per Game	4.6	5.3
Had Blocked	0	1
PUNT RETURNS-YARDS	34-218	25-105
Average Per Return	6.4	4.2
NET PUNTING AVERAGE	33.6	36.7
KICKOFF RETURNS-YARDS	27-600	55-1146
Average Per Return	22.2	20.8
THIRD DOWN CONVERSIONS	76-156	60-158
Conversion Percentage	.487	.379
FOURTH DOWN CONVERSIONS	8-11	7-18
Conversion Percentage	.727	.388
SACKS BY-YARDS LOST	24-113	19-117
TIME OF POSSESSION	348:02	311:58
Average Per Game	31:38	27:22

### SCORING BY QUARTERS

	1	2	3	4	OT	TOT	AVG
Furman	58	134	92	73	6	363	33.0
Opponents	59	40	43	66	9	217	19.7

DEFENSIVE STATISTICS	G	PL	PRI	AST	TOT	AVG	TFL	CAU-FUM	FUM-REC	SACKS	INT	PBU
Bill Ballard, LB	11	210	14	27	41	3.7	0	0	0	0	0	0
Robert Beavers, LB	11	386	46	33	79	7.2	3	0	0	0	0	1
Venton Bell, DRE	11	458	36	27	63	5.7	2	1	1	1	3	1
Sedric Borders, CB	8	99	7	4	11	1.4	0	0	0	0	0	1
Craig Campbell, DT	5	69	2	2	4	0.8	0	0	0	0	0	0
Jeff Coleman, SS	10	234	17	12	29	2.9	4	1	0	0	0	0
Rodger Colvin, DT	1	21	1	1	2	2.0	0	0	0	0	0	0
David Cook, RUE	11	96	7	8	15	1.4	0	0	0	0	0	0
Clint Crocker, DT	11	535	30	27	57	5.2	3	1	1	1	0	1
Allen Edwards, NG	11	547	49	30	79	7.2	8	1	0	2	0	1
Jason Ensley, CB	11	443	12	7	19	1.7	1	0	0	0	4	6
Clayton Gibson, RUE	11	204	8	13	21	1.9	1	0	0	1	0	0
Jason Grant, CB	6	262	13	5	18	3.0	1	0	0	0	3	2
Mike Hardy, DT	10	414	21	20	41	4.1	4	3	0	2	0	1
Jason Holland, LB	6	50	6	4	10	1.7	0	0	0	0	0	0
Ryan Livezey, RUE	11	640	43	54	97	8.8	17	3	0	10	0	4
Patrick McGowan, DT	11	188	15	10	25	2.3	6	4	0	2	0	0
Craig Morris, DRE	5	36	2	3	5	1.0	1	0	0	1	0	0
Steve Norris, LB	11	620	59	47	106	9.6	0	0	3	0	1	2
Taylor Quarles, SS	11	564	32	16	48	4.4	4	1	2	0	0	5
Mike Ratcliff, FS	11	489	74	35	109	9.9	0	1	3	0	1	8
Brent Solomon, DRE	8	80	3	4	7	0.9	0	0	0	0	0	0
Milan Sterling, DRE	11	397	48	41	89	8.1	10	1	2	0	0	2
Kota Suttle, LB	11	519	77	62	139	12.6	7	2	2	0	0	1
Frank Sutton, DT	11	276	17	15	32	2.9	6	0	0	4	0	0
Tywaun Tillman, FS	6	66	6	6	12	2.0	0	0	1	0	* 1	2
Lee Tucker, LB	1	4	1	0	1	1.0	0	0	0	0	0	0
Chris Turner, NG	10	136	5	9	14	1.4	1	0	0	0	0	0
Andre Worrell, CB	11	672	31	12	43	3.9	2	0	0	0	1	8

\* Intercepted fumble vs. Western Carolina

Ryan Livezey blocked field goal vs. Liberty (14 miscellaneous yards)

OFFENSIVE LINE STATISTICS	PLAYS	0	1	2	3	4	PTS	AVG	WIN	EXCEPT	HIGH	(OPP)
Brian Anderson, OT	303	0	32	255	16	0	590	1.95	6	2	2.04	LIB
Jason Clevenger, OT	1	0	0	1	0	0	2	2.00	0	0	—	---
Andrew Deese, OG	29	1	3	23	2	0	55	1.90	0	0	—	—
B.J. Estes, C	444	2	84	335	23	0	823	1.85	5	0	1.93	UTC
Tony Glass, OG	38	1	7	28	2	0	69	1.82	0	0	—	—
Tom Griffith, OG	551	1	106	414	28	2	1026	1.86	8	0	1.97	UTC
Jon Heusinger, OG	151	1	24	112	13	1	291	1.93	3	1	2.14	ETS
Mendell Key, C	281	4	38	224	14	0	530	1.89	7	0	1.95	ETS
Kyle Lowery, OT	436	2	47	356	30	1	853	1.96	5	3	2.05	ETS
John Ludwig, OT	90	1	16	65	8	0	170	1.89	1	0	1.94	PRES
Fred Sturgis, OG	228	0	30	182	16	0	442	1.94	3	1	2.00	ETS
Clay Tiedeman, OT	688	1	85	557	45	0	1334	1.94	11	0	1.98	WC & GT
Eric Walter, OG	656	1	61	547	45	2	1298	1.98	7	4	2.07	ETS

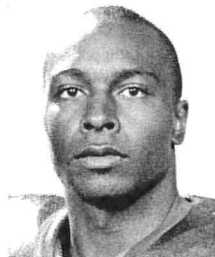
Furman grades individual play execution on a scale of 0-4. "0" represents a blown assignment. "1" represents a poor block. "2" is a good block while a "3" is considered an excellent block. A "4" is a perfect block designation or "rhino" block, where a lineman puts his opponent on his back. The average grade is calculated by multiplying the number of blocks in a category by its point value, then dividing the total number of points accumulated in all five categories by the number of plays participated in. A 1.85-1.99 grade is considered a "winning" performance. A grade of 2.00 or better is considered "exceptional." A player must have at least 20 plays in a game to qualify for a "winning" or "exceptional" performance.



Edwards



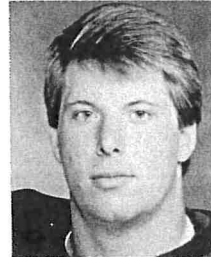
Livezey



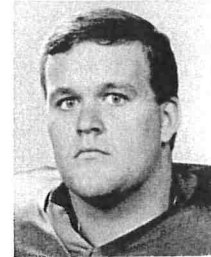
Ratcliff



Walter



Lowery



Tiedeman

## SUPERLATIVES

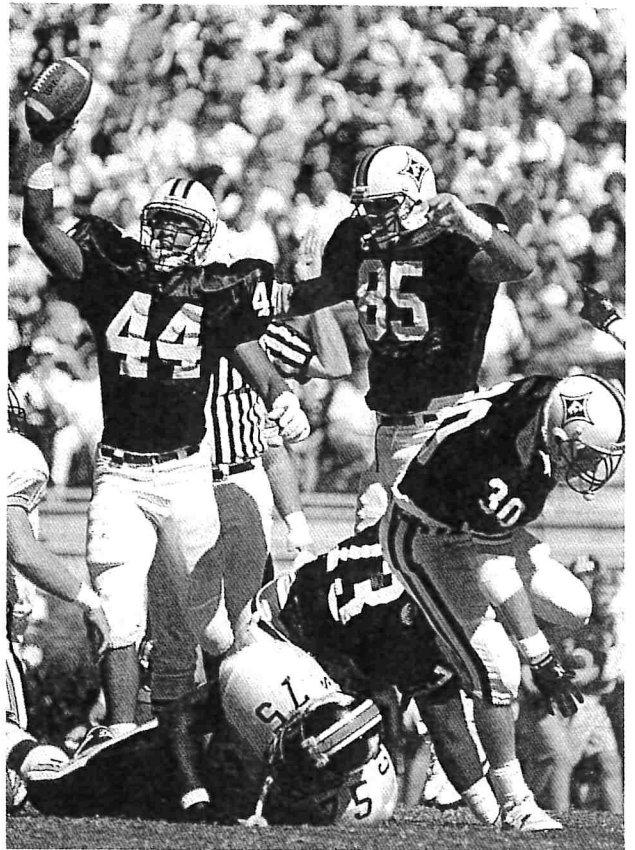
Longest Run From Scrimmage:	65,	Carl Tremble vs. Connecticut
Longest Pass Completion:	78,	Donald Lipscomb from Hugh Swilling vs. East Tennessee State
Longest Punt Return:	20,	Jason Ensley vs. Liberty
Longest Kickoff Return:	98,	Billy Whitley vs. Western Carolina
Longest Interception Return:	19,	Jason Ensley vs. Liberty; Venton Bell vs. Presbyterian
Longest Punt:	53,	Chris Wade vs. VMI
Best Punting Average:	45.0,	Chris Wade vs. VMI
Longest Field Goal:	50,	Andrew Burr vs. Appalachian State
Longest Field Goal Attempt:	50,	Andrew Burr vs. Appalachian State
Most Rushing Attempts:	25,	Carl Tremble vs. Tenn.-Chattanooga
Most Rushing Yards:	147,	Carl Tremble vs. Western Carolina
Most Pass Attempts:	27,	Hugh Swilling vs. VMI
Most Pass Completions:	15,	Hugh Swilling vs. VMI
Most Passing Yards:	270,	Hugh Swilling vs. VMI
Most Touchdown Passes:	5,	Hugh Swilling vs. VMI (School Record)
Most Total Offense Attempts:	39,	Hugh Swilling vs. VMI & Marshall
Most Total Offense Yards:	277,	Hugh Swilling vs. VMI
Most Passes Caught:	6,	Donald Lipscomb vs. Marshall
Most Touchdown Passes Caught:	2,	by three players
Most Pass Reception Yardage:	164,	Donald Lipscomb vs. E. Tenn. St.
Most All-Purpose Yardage:	147,	Carl Tremble vs. Western Carolina
Most Points Scored:	16,	Andrew Burr vs. VMI
Most Touchdown Responsibilities:	5,	Hugh Swilling vs. VMI (School Record)
Most Touchdowns Scored:	2,	by six players
Most PATs:	7,	Andrew Burr vs. Presbyterian & East Tennessee State
Most Field Goals:	4,	Andrew Burr vs. VMI

### Best --- OFFENSE --- Worst

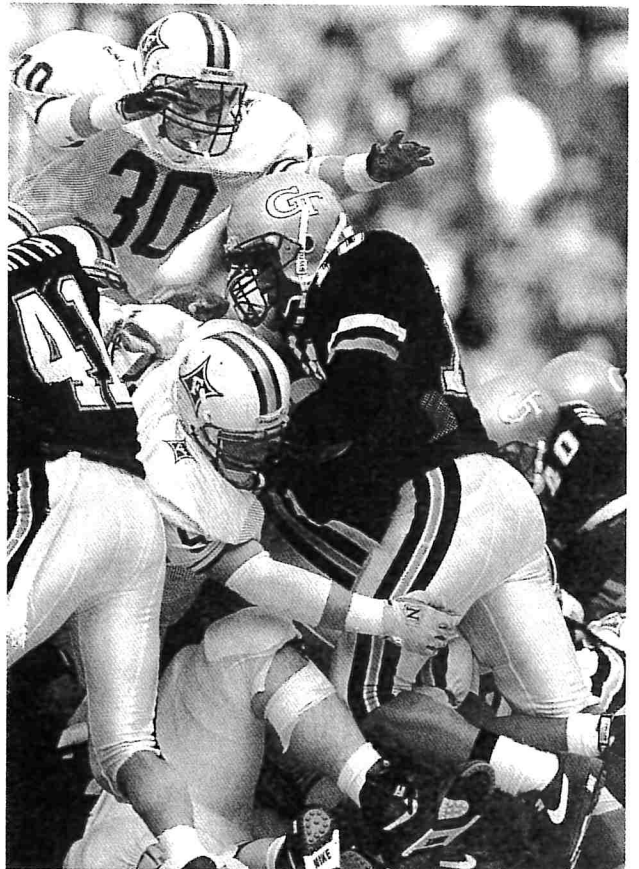
First Downs:	26 vs. Presbyterian	9 vs. Appalachian St.
Total Plays:	77 vs. Presbyterian	59 vs. Ga. Tech
Total Offense:	547 vs. Presbyterian	211 vs. Ga. Tech
Rushing Attempts:	64 vs. Tenn.-Chatt.	44 vs. W. Carolina
		44 vs. Ga. Tech
Rushing Yards:	370 vs. Connecticut	143 vs. Appalachian St.
Pass Attempts:	27 vs. VMI	9 vs. Tenn.-Chatt.
Completions:	16 vs. Presbyterian	5 vs. Ga. Tech
Passing Yards:	272 vs. Presbyterian	45 vs. Ga. Tech
Points Scored:	52 vs. Presbyterian	17 vs. Ga. Tech
	52 vs. E. Tenn. St.	
Touchdowns Scored:	7 vs. Presbyterian	2 vs. Appalachian St.
	7 vs. E. Tenn. St.	2 vs. Ga. Tech
Average Gain:	7.1 vs. Presbyterian	3.2 vs. Appalachian St.
Return Yards:	86 vs. Liberty	5 vs. W. Carolina
Penalty Yards:	5 vs. Ga. Tech	90 vs. Presbyterian
Punting Average:	45.0 vs. VMI	34.6 vs. Tenn.-Chatt.
Possession Time:	35:48 vs. Tenn.-Chatt.	26:26 vs. Ga. Tech
Turnovers:	0 vs. Tenn.-Chatt.	3 vs. Liberty
		3 vs. Ga. Tech
		3 vs. The Citadel
Quarterback Sacks:	0 by Liberty	3 by Marshall
	0 by Western Carolina	
	0 by The Citadel	

### Best --- DEFENSE --- Worst

First Downs:	7 by Presbyterian	23 by Connecticut
Total Plays:	50 by Presbyterian	79 by Connecticut
Total Offense:	197 by Presbyterian	425 by Connecticut
Rushing Attempts:	25 by Liberty	56 by The Citadel
Rushing Yards:	29 by Liberty	233 by Western Carolina
Pass Attempts:	8 by The Citadel	45 by Connecticut
Completions:	4 by The Citadel	24 by Connecticut
		24 by Liberty
		24 by E. Tenn. St.
Passing Yards:	70 by The Citadel	330 by Liberty
Points Scored:	7 by Liberty	35 by Marshall
	7 by Presbyterian	
Touchdowns Scored:	1 by Liberty, The Citadel	5 by Marshall
	1 by Presbyterian	
Average Gain:	2.9 by Appalachian State	5.9 by Tenn.-Chatt.
Return Yards:	0 by Liberty, VMI	43 by Georgia Tech
Possession Time:	24:12 by Tenn.-Chatt.	33:24 by The Citadel
Turnovers:	4 by Georgia Tech	0 by Tenn.-Chatt.
Quarterback Sacks:	4 vs. Tenn.-Chatt.	0 vs. VMI



For the fourth time in the past five seasons, Furman led the Southern Conference in total defense, surrendering only 312.6 yards per game in 1991.



Georgia Tech narrowly avoided Furman's upset bid, edging the Paladins, 19-17, on a field goal in the last minute of play.