

Furman Football



PALADIN FACTS

1967 HANDBOOK

1967 PALADIN GUIDE

The 1967 Furman University football brochure of information is presented as a service to the press, radio and TV along with a cordial invitation by the Athletic Staff to visit with us any time during the season.

Additional information and pictures will be furnished to all news media. All ticket request (working press, scouting, etc.) should be made through the Sports Information Office several days prior to the game date.

For further information, please contact:

BOBBY BATSON
Sports Information Director

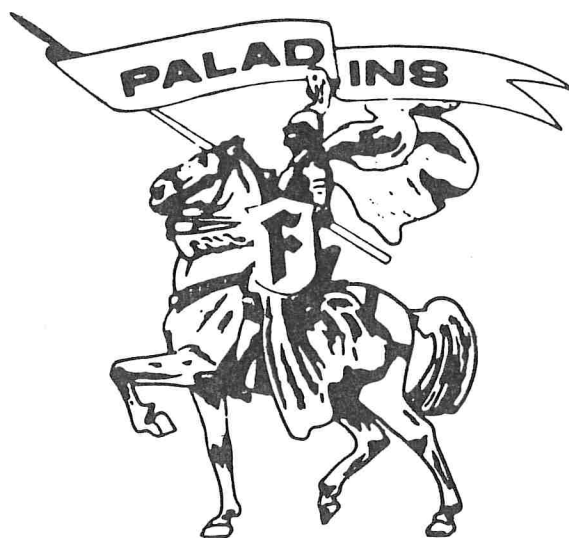
FURMAN FACTS

Location ----- Greenville, S. C.
 Enrollment ----- 1,650 (co-ed)
 Nickname ----- Paladins
 Colors ----- Purple & White
 Stadium ----- Sitrine Stadium
 Denomination ----- Baptist
 President ----- Dr. Gordon W. Blackwell
 Dean of the University ----- Dr. Francis W. Bonner
 Dean of Students ----- Dr. E. E. Harrill
 Faculty Chairman of Athletics ----- Dr. Winston C. Babb
 Director of Athletics ----- J. Lyles Alley
 Sports Information Director ----- Bobby J. Batson
 Football Office ----- 246-3550 (ext. 349)
 Sports Information Office ----- 246-3550 (ext. 357)
 Sports Information Home ----- 244-9208
 Area Code ----- 803
 Zip Code ----- 29613

TABLE OF CONTENTS

The President -----	2
The Athletic Director -----	3
Football Staff -----	4-6
Paladin Outlook -----	8
Paladin Profiles -----	9-17
1967 Varsity Roster -----	18-19
Opponents -----	20-29
Paladin Football Records -----	30
Official Scores -----	31-35
1966 Final Statistics -----	36

THE 1967 FURMAN



YEARBOOK

1967 PALADIN SCHEDULE

Date	Game	Site	Time
Sept. 9	Mars Hill	Greenville, S. C.	8:00 p.m.
Sept. 16	Mississippi College	Greenville, S. C.	8:00 p.m.
Sept. 23	Davidson College	Greenville, S. C.	8:00 p.m.
Sept. 30	Open Date		
Oct. 7	Wofford College	Spartanburg, S. C.	8:00 p.m.
Oct. 14	Richmond	Greenville, S. C.	2:00 p.m.
Oct. 21	Tampa	Tampa, Fla.	8:15 p.m.
Oct. 28	Lehigh University	Greenville, S. C.	8:00 p.m.
Nov. 4	East Carolina	Greenville, N. C.	7:30 p.m.
Nov. 11	Samford University	Birmingham, Ala.	2:00 p.m.
Nov. 18	The Citadel	Charleston, S. C.	2:00 p.m.

The President:

DR. GORDON W. BLACKWELL



Dr. Gordon W. Blackwell, one of the South's most distinguished administrators, educators, authors and social scientists, was elected the eighth president of Furman University July 29, 1964.

Under his leadership, Furman has made gigantic strides in many areas. He has devoted his many talents to the improvement of Furman on the local, state and national scene and his administration strives for excellence in every field of endeavor.

Dr. Blackwell's career as an educator began at Furman, where he graduated summa cum laude in 1932. His record at Furman was one of a brilliant scholar, an outstanding athlete and a student leader. He was captain of the tennis team for three years, president of the band and editor of the student magazine.

Dr. Blackwell's teaching career also started at Furman, where he served as Professor and Chairman of the Sociology Department from 1937 to 1941. He received his M.A. degree from the University of North Carolina and earned his Ph.D. degree at Harvard University.

Before coming to Furman, Dr. Blackwell was president at Florida State University for four and one-half years. He has also served as Chancellor of the Woman's College of the University of North Carolina for three and one-half years.

Dr. Blackwell was born in Timmonsville, S. C., and is married to the former Elizabeth Blair Lyles. His two sons, Gordon and Randy, are Furman graduates and were members of the Furman varsity basketball team.

The Athletic Director:

J. LYLES ALLEY



On November 23, 1966, Furman University lost a basketball coach, but gained a full-time Athletic Director. And it is a name that has brought national recognition to Furman over several years—J. Lyles Alley.

For 20 years, Alley directed the Paladins' basketball fortunes and earned the reputation of "Mr. Basketball" in bringing Furman into national limelight.

Now, he has relinquished his coaching duties to give his full-time attention as Athletic Director and the responsibility of guiding the entire Furman athletic program.

The job of Athletic Director, however, isn't a strange position for Alley. In addition to serving as basketball coach, he has also doubled as AD for the past ten years.

Alley's list of accomplishments are many and the stars he has coached would fill a gymnasium. The names of Frank Selvy, Darrell Floyd, Nield Gordon, Jerry Smith, Gerald Glur, Bryon Pinson, Fred Fraley and Effie Evington are only a few he has helped develop.

From 1953 through 1956, Alley's teams were the national major college scoring champions, setting records each time. For the 1951-52 season, Furman was awarded the U. S. Rubber Company's trophy as the most improved team in the nation.

He also produced Furman's first All-Americans with Frank Selvy earning the award in 1954 and Darrell Floyd in 1955 and 1956.

Alley, himself, was a star athlete at Furman in the early '30's. He won 12 letters in basketball, football, baseball and track. He was voted the most valuable football player during his senior year in 1933.

FOOTBALL STAFF

ROBERT B. KING Head Football Coach



In nine years as head football coach of the Furman Paladins, Bob King has become somewhat of a living legend at the University and is now recognized as the dean of Southern Conference coaches.

As King begins his tenth season, longer than any other conference coach, he still exudes the enthusiasm and warmth that signifies his love for the game.

He has been acclaimed as one of the most popular and accomplished athletic figures ever to graduate from Furman and his eternal optimism rubs off on his assistant coaches and those who are associated with him.

After 11 years as one of the most valued assistants in the Big Ten, King left the University of Illinois and accepted the position as head coach of his alma mater in December of 1957. Since then, he has produced some of the most exciting moments in Furman football history and has long been one of Greenville's most outstanding citizens.

King has twice been named S. C. Coach of The Year, in 1961 and 1963 when his teams compiled 7-3-0 records.

Responsibilities: As head football coach, he is responsible for Furman's intercollegiate football program. *Experience:* Was assistant coach at Furman for five years (1937-41). Coached at Chapel Hill Pre-Flight School while in the Navy. Returned to Furman as assistant in 1947. End coach at the University of Illinois for eleven years (1947-57). *Personal Information:* Born—Ranger, Texas, June 3, 1913. *College—*Furman, '37, graduated with honors. Lettered in football, basketball and track. Was All-State and All-Southern end in 1936. Nominated for All-America. *Service—*Volunteered for U. S. Navy in 1942. Separated as a lieutenant in 1946. *Married—*Gladys Mason of Greenville. *Children—*Mrs. Kenneth Bryant (Karen), of St. Louis, Mo., and Bobby, 21, (Senior end on Furman team).

KING'S NINE-YEAR RECORD

	Games	Wins	Losses	Ties	Pct.
1958	9	2	7	0	.222
1959	10	3	7	0	.300
1960	10	5	4	1	.550
1961	10	7	3	0	.700
1962	10	4	6	0	.400
1963	10	7	3	0	.700
1964	10	3	7	0	.300
1965	10	5	5	0	.500
1966	10	2	7	1	.222
TOTALS	89	38	49	2	.427

BILLY CANTY Backfield Coach

Joined Furman Staff in 1963.

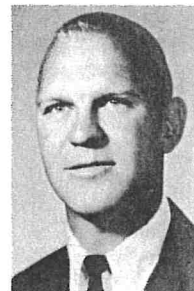
Responsibilities: Assistant varsity coach working with offensive backfield. Responsible for recruiting in South Georgia, Florida, Alabama and Mississippi. *Coaching Experience:* Four years in coaching profession at Furman. *Personal Information:* Born — Pascagoula, Miss., Jan. 20, 1949. *College —* Furman '62. Was one of school's outstanding quarterbacks, who still holds many school and Southern Conference passing records. He was one of six quarterbacks in the country in 1960 who passed for ten or more touchdowns. After graduation, he joined the Furman staff as assistant football coach.



FRED HERREN Line Coach

Joined Furman staff in February, 1965. Came from head coaching position at Gordon Lee High School in Chicamauga, Ga.

Responsibilities: Assistant varsity coach working with linemen. Responsible for recruiting in North Georgia and Tennessee. *Coaching Experience:* Assistant coach at Jefferson High School, Jefferson, Ga., for three years (1958-1960). Head coach at Gordon Lee High School, Chicamauga, Ga., for four years (1961-64). *Personal Information:* Born — Atlanta, Ga., July 4, 1936. *College —* University of Chattanooga, '58. Lettered in football and track, played halfback on football squad and was captain of track.



BOB HITCH Line Coach

Joined Furman staff in February, 1966, after having served as assistant coach at Mississippi State during 1965.

Responsibilities: Assistant varsity coach working with interior linemen on both offense and defense. Also is head varsity golf coach. Responsible for recruiting in Florida. *Coaching Experience:* Assistant coach at East Tallahatchie High School, Charleston, Miss., (1962). Head Coach, 4th Armored Division, U. S. Army (1963-64). Assistant coach, Mississippi State University (1965). *Personal Information:* Born — Clarksdale, Miss., February, 4, 1940. *College:* Mississippi State University, '62. Severe injury prevented football playing career. Served as assistant trainer.



DON KEMP
Backfield Coach



Joined Furman staff in June, 1967. Came from Ridgeland High School, where he served as head coach and athletic director.

Responsibilities: Assistant varsity backfield coach, specializing with defensive backs. Chief recruiter for South Carolina. *Coaching Experience:* Assistant coach at Carolina High, Greenville (1961). Assistant coach at Butler High, Augusta, Ga., (1962-63). Assistant coach at Richmond Academy, Augusta, Ga., (1964-65). Head coach Ridgeland High

(1965-67). *Personal Information:* Born — Swainsboro, Ga., Jan. 20, 1937. *College* — Furman University, '61. Played offense and defense and was co-captain of team during 1960 season.

BOBBY BATSON
Sports Information Director



Joined Furman staff in April, 1967, after serving for three years as sports writer for Columbia State newspaper.

Responsibilities: Coordinates all athletic public relations and serves as liaison between the University and the press. *Background:* Was sports writer for Greenville Piedmont (1961-63). Joined Greenville News sports staff in 1964. Served with Columbia State 1964-67. Member of College Sports Information Directors Association and Southern Conference Sportswriters Association. *Personal In-*

formation: Born — Laurens, S. C., October 12, 1940. *College* — attended North Greenville Junior College and Furman University.

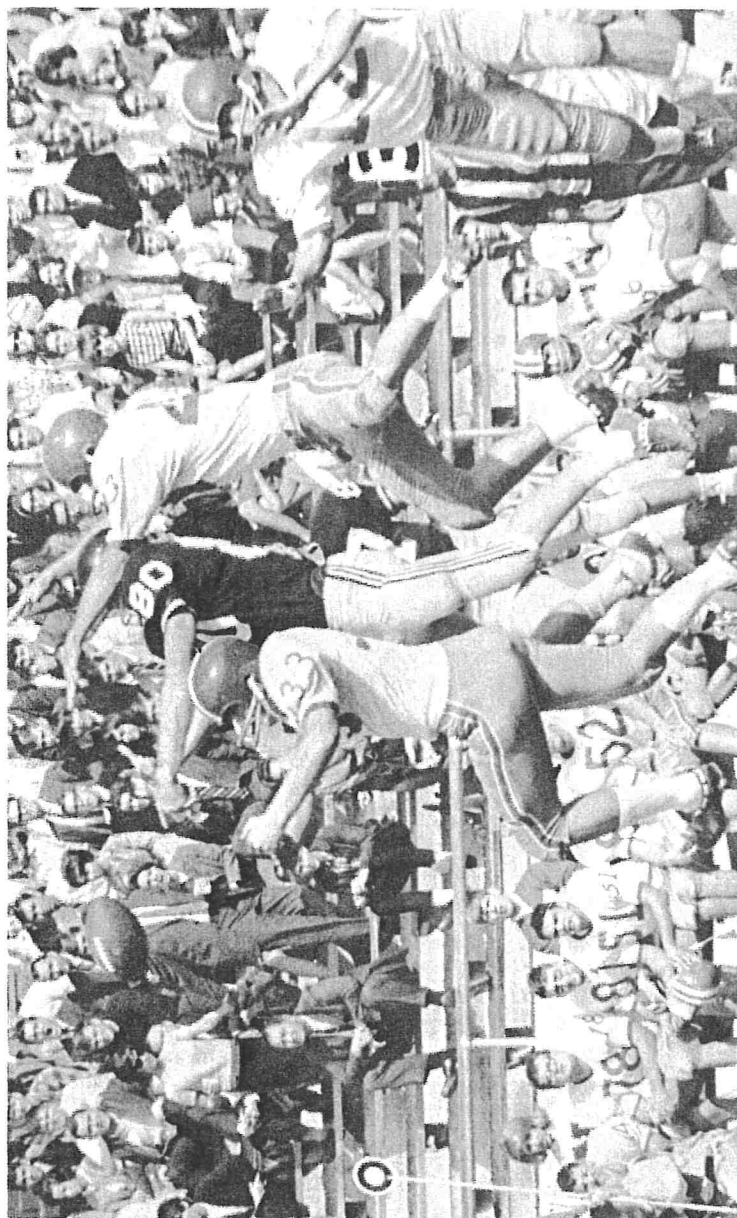
GARY MEREDITH
Head Trainer



Joined Furman staff in August, 1964. Formerly athletic trainer and teacher at Central High School, San Angelo, Tex.

Responsibilities: Head trainer for athletic department. Responsible for student managers and student trainers. Oversees Equipment Manager. *Background:* Trainer at Tennessee Tech for three years (1957-59). Served as trainer and teacher in high schools in El Paso and San Angelo, Texas. Member of the National Athletic Trainers Association. Was a lecturing trainer at the Tennessee Coaching School in 1962 and at the Southwest Trainers Meeting in 1963. *Personal Information:* Born — Knoxville, Tenn., March 13, 1932. *College* — Tennessee Technological Institute, 1959. Played freshman football. Injured knee prevented a football career so decided to become an athletic trainer.

MEET THE PALADINS



PALADIN OUTLOOK

When the Furman Paladins completed their spring football practice sessions, Head Coach Bob King came away with the impression, "There's a possibility that we will be a better team this season."

"It doesn't mean that we will be that much better than last year," added King, who is entering his tenth season with the Paladins, "but there are possibilities."

The Paladins finished the 1966 season with a 2-7-1 record, but from that squad there are 27 lettermen returning with an equal number on offense and defense.

Even with some experience, the Paladins will still have to count on several sophomores to fill gaps left by graduation. The sophomores will also be counted on to give the team much needed depth in several key positions.

There's little doubt that the Paladins will throw the ball quite a bit this season. Returning will be one of the best combinations in the school's history, "The Fly and The Flea."

Clyde Hewell, "The Fly," was a smash hit at quarterback during his sophomore season and bigger things are expected during 1967. In his first year, he broke the record for passing yardage with 1,096 yards on 81 completions in 157 attempts. He also hit for seven touchdowns.

Robbie Hahn, "The Flea," had a sensational sophomore season when he pulled down 26 passes for 535 yards and seven touchdowns in landing first team All-Southern Conference honors at end.

The bright spots don't stop with these two, however, Rick Godsey, last year's No. 2 receiver, returns along with another fine receiver in Jimmy Jordon, who is expected to open the season at flanker.

"I feel real good about our passing attack," said King. "Godsey, Hahn and Jordon are three of the best receivers I've ever seen on one team. We aren't going to be tabbed just as a passing team, however. Hewell can also run plus we have David Nemeth and Johnny Talkington back. We will also be able to move the ball on the ground."

Talkington will open his third season at halfback while Nemeth was the team's leading rusher last year with 453 yards for a 4.3 average.

Up front on offense, the Paladins also have several 1966 starters to count on. Joe Puhl and Bob Sapp are veteran guards while Lee Lipscomb and Van Britt are a pair of strong tackles.

The defensive line also looks stronger with Paul Dickey and George Veal at tackles and Dickie McClellion and Larry Keefer at linebackers. A couple of sophomores, Joe Street and Dick Collins, also figure into things at linebacker. At the end spots, Bobby King and Harvey Baugess were starters a year ago.

The problem spot on defense is expected to be in the secondary where Lavern Barrs leaves a big hole at safety. He will be replaced by junior Andy Hancock, who will also be counted on at quarterback.

"We have a tremendous challenge ahead this year and I only hope the boys respond," said King.

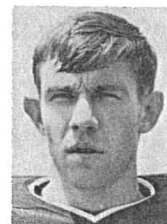
LETTERMEN LOST

Tackles David Davidson, Tyler Hill, Buzz Mathis, Mike Martin; Quarterback Bob Stillwell; Halfbacks Lavern Barrs, Dusty Chichester, Johnny Litchfield, Greg Obenauer; Fullback Jimmy Kerr.

PALADIN PROFILES

ENDS

BUTCH BARNHILL — 6-0, 175, sophomore, Greenville, S. C. Has the potential to develop into an outstanding receiver . . . could also see some defensive action during the season . . . has good speed and desire to play . . . a good investment for the future . . . undecided about future plans.



HARVEY BAUGESS — 6-1, 180, junior, Winston-Salem, N. C. Prepped at North Forsyth High . . . won all-conference honors two years . . . participated in Shrine Bowl . . . lettered as a sophomore and slated to start at defensive end . . . a standout in spring game . . . ran track in high school . . . sociology major.



RICK GODSEY — 5-11, 195, senior, Palmer Park, Md. One of the top candidates on team for post season honors . . . scheduled to open season as offensive tight end . . . second in receiving last year with 19 receptions for 250 yards . . . could possibly see some action on defense . . . Has good size and ability.



ROBBIE HAHN — 5-9, 170, junior, Dublin, Ga. Heralded as one of Furman's best pass receivers in history . . . won All-Southern Conference honors as sophomore . . . top receiver in 1966 with 26 receptions for 535 yards and seven touchdowns . . . won All-Middle Georgia and All-Georgia honors at Dublin High School . . . career plans include Law School.



BOBBY KING — 5-11, 186, senior, Greenville, S. C. Son of Coach Bob King . . . will give valuable help in defensive line at end . . . was starter during junior year . . . very good attitude and desire . . . was honorable mention All-State at Greenville High . . . good all-around athlete . . . business administration major.



DONNIE LISTER — 6-0, 180, junior, Pelzer, S. C. Won twelve varsity letters at Palmetto High School . . . was captain during senior year . . . will see plenty of duty at linebacker . . . played defensive end as sophomore . . . has size and speed to become steady ball player . . . History major and plans career in Army after graduation.





PATRICK WIGGINS — 6-3, 193, sophomore, Orlando, Fla. A top prospect at tight end after very fine freshman season . . . was outstanding player at Lakeview High . . . was regional champion in low and high hurdles in track . . . is expected to see considerable action as sophomore . . . not decided on career plans.

TACKLES



RAY BRANNON — 6-2, 210, junior, Mooresville, N. C. Won All-State and All-Conference at Mooresville High . . . was also most valuable in baseball . . . has good size and ability . . . expected to challenge for starting position at tackle . . . career plans undecided . . . business administration major.



VAN BRITT — 6-3, 255, senior, Lawrenceville, Ga. Biggest man on Furman squad . . . will start at offensive tackle . . . considered one of top blockers on team . . . candidate for post-season honors . . . Served as team captain in high school . . . won greater Atlanta and All-state honors.



BRUCE BYERS — 5-10, 235, sophomore, Augusta, Ga. Another big man who is capable of playing either offense or defense . . . was one of the standouts in the forward wall for last year's freshman team and showed plenty of potential . . . should see a lot of action as a sophomore.



PAUL DICKEY — 6-0, 205, junior, Chamblee, Ga. Earned starting spot as sophomore . . . expected to open season as defensive tackle . . . has size, speed and is an excellent tackler . . . Prepped at Chamblee High where he won six letters in football, soccer and track . . . captured All-City honors . . . in school's Hall of Fame.



EDWARD FASOLD — 6-1, 215, sophomore, Warrenton, Ga. Was outstanding athlete at Warren County High School, where he lettered in football, tennis and track . . . coaches impressed with desire and attitude . . . could become a real standout at tackle . . . plans career in coaching . . . physical education major.

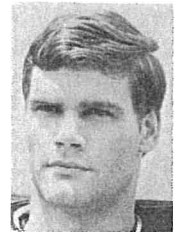
LEE LIPSCOMB — 6-3, 195, junior, Winder, Ga. Had a fine sophomore year when he developed into an outstanding blocker . . . is expected to open season as first team offensive tackle . . . attended Winder-Barrow High School where he earned three letters and was voted lineman award . . . a top vet as a junior . . . career plans undecided.



BERNIE LANIGAN — 6-2, 200, sophomore, Thomasville, Ga. One of the top interior linemen moving up from the freshman team . . . rated by coaches as one of best prospects on team . . . could break into starting lineup . . . attended Central High where he lettered in football, track, baseball and basketball.



ALAN MAXWELL — 6-3, 198, sophomore, Hinsonton, Ga. Joins Lanigan as one of top prospects at offensive tackle . . . has a desire to play regular . . . will help primarily as blocker . . . should develop into fine player and should see plenty of action as a sophomore . . . career plans undecided.



MIKE MONGELLI — 6-0, 205, senior, Hempstead, N. Y. A two-year letterman who will give valuable experience at defensive tackle . . . has good size and speed to become steady player . . . earned seven letters in football and wrestling at Uniondale High in New York . . . plans career in teaching and coaching after graduation.



BOB SOSEBEE — 6-1, 225, sophomore, Toccoa, Ga. Another fine sophomore prospect who could see action on offense or defense . . . great attitude and desire . . . has the potential to develop into outstanding player . . . lettered four years in baseball at Toccoa High School . . . plans career in coaching.



PRESTON SMITH — 6-4, 235, junior, Williamston, S. C. Transferred from Gordon Military College to Furman . . . Prepped at Palmetto High School where he was top lineman . . . will add valuable depth to defensive unit . . . great determination . . . good all-around athlete . . . majoring in business administration.





GEORGE VEAL — 6-2, 188, junior, Decatur, Ga. Earned 2nd team All-Southern Conference honors as a sophomore . . . will open season as defensive tackle and a mighty good one . . . should repeat post-season honors again . . . received all-state honors at Decatur High School . . . plans career in business management.



LESLIE WILSON — 6-3, 208, senior, College Park, Ga. Did not see much action as a junior, but had a tremendous Spring . . . played last season at center, but moved to tackle where he could play either offense or defense . . . also member of varsity golf team . . . majoring in business economics.

GUARDS



BRIAN BEAN — 6-0, 195, sophomore, Clearwater, Fla. Had a fine freshman year and impressed coaches during spring practices with desire and hustle . . . could be a big help at offensive guard or defensive linebacker . . . has the potential to become steady player at either position . . . career plans undecided.



JOHN BRISCOE — 5-10, 215, junior, Windler, Ga. One of the strongest players on team . . . developed into a real standout as sophomore and will start in the defensive line . . . a candidate for All-Conference honors on defense . . . plans career in teaching and coaching . . . mathematics major.



DICK COLLINS — 5-11, 190, sophomore, Tallahassee, Fla. Left a big impression with coaches during spring game . . . an outstanding prospect at defensive linebacker . . . has all the tools to develop into outstanding player . . . an all-around athlete in high school and outstanding lineman . . . career plans undecided.

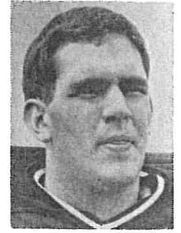


AL GEDDIE — 6-2, 230, senior, Mount Olive, N. C. Lettered four years in football and two years in baseball at Mount Olive High . . . earned letter as junior and will see duty as defensive guard . . . had a fine spring . . . could possibly see some offensive duty . . . plans career in business management.

GERALD HART — 6-0, 190, sophomore, Groveland, Fla. Attended Groveland High School where he lettered four years in track and was All-Conference in baseball . . . An all-star possibility in the future if he develops . . . will see duty as offensive guard . . . plans to enter business with father after graduation.



JERRY McCUMBER — 6-1, 230, sophomore, Decatur, Ga. Earned six letters in track, football and wrestling at Druid Hills High School . . . also earned award as best defensive lineman . . . outstanding as a freshman and should see plenty of duty as a defensive guard . . . plans career in medicine or teaching.



JOE PUHL — 5-10, 190, senior, Green Cove Springs, Fla. Had an outstanding year as junior and won 2nd team All-Southern Conference as guard . . . co-captain this year and will start at offensive guard . . . won both All-Conference honors in football and baseball at Clay High School . . . great desire . . . biology major.



BOB SAPP — 5-10, 210, senior, Winston-Salem, N. C. An old-pro at offensive guard after starting for two seasons . . . a serious All-Conference candidate . . . rated as one of top blockers on team and very quick for size . . . prepped at James A. Gray High School where he played both football and baseball.



FRANK SNIPES — 5-11, 185, junior, Belton, S. C. Earned seven varsity letters in football, basketball and track at Belton High School . . . small for lineman, but one of quickest on team . . . lettered as sophomore . . . scheduled for offensive guard, but could play linebacker . . . English major and plans career in teaching.



CENTERS

GEORGE DUPRE — 5-11, 191, senior, Walhalla, S. C. Has been a regular figure at center since sophomore season . . . chosen co-captain for '67 season and a tremendous team leader . . . easily coached, great desire and determination . . . was limited in spring because of injury . . . majoring in mathematics.





GARY MOORE — 6-1, 193, sophomore, Hialeah, Fla. One of two outstanding prospects at offensive center . . . was a standout as a freshman and should see plenty of action . . . scheduled for alternate unit . . . has plenty of speed and desire to develop into fine player . . . career plans undecided.



ROBERT OLIVER — 6-1, 205, sophomore, Commerce, Ga. The second sophomore who could develop into fine prospect at center . . . big enough to play defense if needed . . . had an outstanding freshman year and spring practice . . . coaches pleased with desire and attitude . . . plans business career.



ROBBIE PATTERSON — 6-0, 215, junior, Griffin, Ga. Will see a lot of action on first team with DuPre . . . started several games last year . . . will give plenty of depth at center with his ability as blocker . . . was a standout at Griffin High School where he was voted best blocker and lettered two years in basketball.

QUARTERBACKS



ANDY HANCOCK — 6-2, 200, junior, Tryon, N. C. Will be one of the key figures in the defensive backfield as replacement for Lavern Barrs . . . in addition to safety duties on defense, will also be counted on as quarterback . . . earned All-Conference awards while in Tryon High School.



CLYDE HEWELL — 5-10, 168, junior, Elberton, Ga. Small as quarterbacks go, but one of the best in Furman history . . . established passing yardage record with 1,096 as sophomore . . . top candidate for Conference honors . . . he's a scrambler and very accurate passer . . . no major.



DICK IMMEL — 6-0, 170, sophomore, Hampton, Va. After a very fine freshman year, moves into the position of alternate quarterback . . . showed potential as passer with quick hands . . . will be the only sophomore quarterback on team . . . will see a lot of action as Hewell's replacement . . . major undecided.

HALFBACKS

GLENN BRYANT — 6-0, 185, sophomore, Folkston, Ga. A promising sophomore half-back with plenty of moves . . . has a lot of speed and ability to become regular . . . one of the top freshman last year . . . he's capable as break away runner . . . physical education major . . . no career plans.

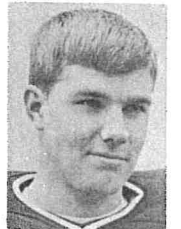
RUSTY DENNIS — 6-0, 180, sophomore, Douglasville, Ga. Had an excellent frosh season . . . is considered good running back prospect . . . will see action on second offensive team . . . can also play slot back . . . also ran track and played basketball at Douglas County High School . . . career plans are undecided.

PHIL DICKERT — 6-2, 170, junior, Belton, S. C. Earned nine varsity letters at Belton High and was All-WEBACH . . . played last season as defensive end, but is expected to land starting spot this season as a defensive halfback . . . outstanding student as well as athlete . . . undecided about career plans.

JIM JOHNSON — 5-11, 170, junior, Stoney Brook, N. Y. Played for his father in high school . . . hoping for a crack as starter in either offensive or defensive backfield . . . spent most of spring as safety on defense . . . majoring in mathematics and plans career in teaching.

JIMMY JORDAN — 6-2, 185, junior, Monticello, Ga. Proved himself as a pass receiver last year . . . will move from end to starting flanker position this season . . . another definite all-star possibility with his all-around ability . . . very fine punter who averaged over 40 yards as a sophomore.

PETE MALONE — 5-10, 165, junior, Monticello, Ga. Starred at Jasper County High School where he earned All-State honors . . . is the fastest player on the team and is destined to see plenty of duty . . . could very well push for starting offensive position . . . Business administration major and plans to attend law school.





EVANS MARTIN — 5-11, 175, sophomore, Honea Path, S. C. Starred at Honea Path High School where he earned 11 letters in football, track and baseball . . . was also all-conference and all-state in football . . . had a fine freshman year . . . will add considerable depth to the offensive backfield.



DICKEY SOWELL — 5-10, 179, junior, Sharon, S. C. An excellent offensive player . . . all-around player who could see some defensive duty . . . has the ability to move into a starting position on offense or defense . . . majoring in biology and plans to enter medical school after graduation.



JOHNNY TALKINGTON — 5-10, 185, senior, Washington, Ga. The real veteran of backfield . . . will open his third season as starting running back . . . should be better this season and another top threat for post season honors . . . rushed for 358 yards last year on 91 carries . . . majoring in mathematics.



HAROLD WARLICK — 6-0, 175, senior, North Augusta, S. C. After missing his sophomore season with injury, has developed into outstanding defensive back . . . will start in the backfield as halfback . . . won seven letters in high school while taking part in four sports . . . plans to enter the ministry.

FULLBACKS



JOE STREET — 6-0, 195, sophomore, Carrollton, Ga. One of the top soph prospects after very fine freshman season . . . scheduled to play linebacker but could see plenty of duty as fullback . . . has a very bright future as a player . . . was most valuable and captain of high school team.



TOMMY BROADWELL — 5-10, 180, sophomore, Forest Park, Ga. Had fine year with freshman squad . . . proved during Spring drills could be fine runner for varsity . . . in addition to football, also played basketball and ran track for Forest Park High School . . . could see a lot of action . . . career plans undecided.

LARRY KEEFER — 5-11, 210, senior, Manchester, Ga. One of the top tacklers on team and loves contact . . . will start his second season at one of the linebacker spots . . . was all-state fullback in high school and also ran track . . . career plans call for teaching and coaching . . . all-star caliber player.



DICK McCLELLION — 5-11, 205, senior, Pelzer, S. C. Earned 10 letters at Palmetto High and was All-Conference fullback . . . will also start his second season as first team linebacker . . . nickname "Jumpback" . . . good speed for a linebacker and loves to hit . . . plans to enter law school after graduation.



STEVE MILLS — 5-11, 190, junior, Avondale, Ga. Considered one of finest blockers on team and will give valuable assistance at fullback . . . slated to open season on alternate team . . . has plenty of power and speed . . . has impressed the coaches with his desire . . . career plans undecided.



DAVID NEMETH — 5-10, 185, junior, Atlanta, Ga. Earned the No. 1 fullback position as a sophomore and led the team in rushing with 453 yards on 105 carries . . . should be even better in 1967 . . . also a leading prospect for All-Conference honors . . . only lost one yard on his 105 carries last year.



SPECIALIST

MARSHALL WILLIAMS — 6-2, 220, junior, Greenville, S. C. Came out on his own to be kickoff and extra point specialist . . . has developed into one of finest in school's history . . . will be used strictly as a specialist . . . coaches are impressed with his ability and desire . . . a tremendous asset to the team.



PRINCE BROWN — Equipment manager, joined Furman staff in January, 1957 . . . responsibilities include issuing and maintaining all athletic equipment . . . he is responsible for getting equipment packed and ready for all football games . . . serves as right-hand man to the athletic trainer.



1967 FURMAN FOOTBALL ROSTER

(As of July 1, 1967)

Ends	Name	Height	Weight	Class	Hometown
86	Barnhill, Butch	6-0	175	Soph.	Greenville, S. C.
83	*Bauguess, Harvey	6-1	180	Jr.	Winston-Salem, N. C.
81	*Godsey, Rick	5-11	195	Sr.	Palmer Park, Md.
87	*Hahn, Robbie	5-9	170	Jr.	Dublin, Ga.
89	*King, Bobby	5-11	186	Sr.	Greenville, S. C.
5	*Lister, Donnie	6-0	180	Jr.	Pelzer, S. C.
80	Wiggins, Pat	6-3	193	Soph.	Orlando, Fla.
Tackles					
76	Brannon, Ray	6-0	210	Jr.	Mooreville, N. C.
71	*Britt, Van	6-3	235	Sr.	Lawrenceville, Ga.
78	Byers, Bruce	5-10	235	Soph.	Augusta, Ga.
73	*Dickey, Paul	5-11	195	Jr.	Chamblee, Ga.
50	Fasold, Ned	6-1	220	Soph.	Warrenton, Ga.
77	Lanigan, Bernie	6-2	193	Soph.	Thomasville, Ga.
74	*Lipscomb, Lee	6-3	195	Jr.	Winder, Ga.
70	Maxwell, Alan	6-3	198	Soph.	Hinsonton, Ga.
79	*Mongelli, Mike	5-10	205	Sr.	Hempstead, N. Y.
56	Sosebee, Bob	6-2	218	Soph.	Toccoa, Ga.
52	Smith, Preston	6-3	240	Jr.	Williamston, S. C.
75	*Veal, George	6-1	188	Jr.	Decatur, Ga.
72	*Wilson, Leslie	6-3	208	Sr.	College Park, Ga.
Guards					
64	Bean, Brian	6-0	195	Soph.	Clearwater, Fla.
60	Briscoe, John	5-10	214	Jr.	Winder, Ga.
62	Collins, Dick	5-11	190	Soph.	Tallahassee, Fla.
66	*Geddie, Al	6-3	226	Sr.	Mount Olive, N. C.
65	Hart, Gerry	6-1	190	Soph.	Groveland, Fla.
69	McCumber, Jerry	6-0	235	Soph.	Decatur, Ga.
63	*Puhl, Joe	5-10	180	Sr.	Green Cove Springs, Fla.
68	*Sapp, Bob	5-10	209	Sr.	Winston-Salem, N. C.
61	*Snipes, Frank	5-11	182	Jr.	Belton, S. C.
Centers					
54	*DuPre, George	5-11	191	Sr.	Walhalla, S. C.
51	Moore, Gary	6-1	193	Soph.	Hialeah, Fla.
55	Oliver, Robert	6-1	205	Soph.	Commerce, Ga.
53	*Patterson, Robbie	6-0	209	Jr.	Griffin, Ga.
Quarterbacks					
15	*Hancock, Andy	6-2	182	Jr.	Tryon, N. C.
10	*Hewell, Clyde	5-10	168	Jr.	Elverton, Ga.
14	Immel, Dick	6-0	170	Soph.	Hampton, Va.
Halfbacks					
28	Bryant, Glenn	6-0	180	Soph.	Folkston, Ga.
43	Dennis, Rusty	5-11	170	Soph.	Douglasville, Ga.
21	Dickert, Phil	6-2	170	Jr.	Belton, S. C.
25	Johnson, Jim	5-10	165	Jr.	Stony Brook, N. Y.
44	*Jordon, Jimmy	6-2	182	Jr.	Monticello, Ga.
24	Malone, Pete	5-10	161	Jr.	Monticello, Ga.
42	Martin, Evans	5-11	180	Soph.	Honea Path, S. C.
40	*Sowell, Dickey	5-10	177	Jr.	Sharon, S. C.
20	Talkington, Johnny	5-9	182	Sr.	Washington, Ga.
26	*Warlick, Fox	5-11	180	Sr.	North Augusta, S. C.
Fullbacks					
3	Street, Joe	6-0	190	Soph.	Carrolton, Ga.
30	Broadwell, Tommy	5-10	175	Soph.	Forest Park, Ga.
2	Keefer, Larry	5-11	210	Sr.	Manchester, Ga.
4	*McClellion, Dick	5-11	186	Sr.	Pelzer, S. C.
31	Mills, Steve	5-11	190	Jr.	Avondale, Ga.
34	*Nemeth, David	5-10	175	Sr.	Atlanta, Ga.
Specialist					
90	*Williams, Marshall	6-2	220	Jr.	Greenville, S. C.

*Lettermen

MARS HILL COLLEGE

September 9th — 8:00 P. M.
At Greenville, S. C.

LOCATION: Mars Hill, N. C.	ENROLLMENT: 1,400
CONFERENCE: None, NAIA	NICKNAME: Lions
PRESIDENT: Dr. Fred Bentley	COLORS: Blue & Gold
ATHLETIC DIRECTOR: Don Henderson	STADIUM: Meares Stadium
SPORTS PUBLICIST: William Deans	CAPACITY: 5,000
TELEPHONE: 704-689-3441	TRAINER: To Be Named

FOOTBALL STAFF

HEAD COACH: Don Henderson, TPI '48, 18th season, 43-80-13
ASSISTANT COACH: Ron Bromley, Mars Hill '64
TYPE OFFENSE: Power-I
LETTERMEN RETURNING: 15; LETTERMEN LOST: 11
CAPTAINS: Rick Dudley, Bill Dyar

1967 OUTLOOK

There is a big question mark concerning the outlook for the Mars Hill Lions since it was announced during the summer that this would be the last season of football at the school. Coach Don Henderson says, "It will be an uphill battle all the way. We are counting on a lot of determination from the boys who we will have back. The biggest problem will be depth as we will be counting on a thin squad." The biggest returnee for the Lions is Bill Dyar, who was the leading rusher last year with a 4.56 average per carry.

1967 SCHEDULE

Sept. 9	Furman University at Greenville, S. C.	-----(N)
Sept. 16	Catawba at Salisbury, N. C.	------(N)
Sept. 30	Maryville at Maryville, Tenn.	------(N)
Oct. 7	Carson-Newman at Mars Hill, N. C.	------(D)
Oct. 14	Concord at Mars Hill, N. C.	------(N)
Oct. 21	Emory & Henry at Mars Hill, N. C.	------(N)
Nov. 4	Western Carolina at Cullowhee, N. C.	------(N)
Nov. 11	Frederick at Portsmouth, Va.	------(N)

FURMAN-MARS HILL

First game played	13	Catawba	28
	0	Maryville	17
	0	Carson-Newman	28
	7	Concord	47
	7	Emory & Henry	21
	0	Georgetown	16
	0	Western Carolina	62
	20	Frederick	19

MISSISSIPPI COLLEGE

September 16th — 8:00 P. M.
At Greenville, S. C.

LOCATION: Clinton, Miss.	ENROLLMENT: 2,365
CONFERENCE: None, NCAA	NICKNAME: Choctaws
PRESIDENT: Dr. R. A. McLemore	COLORS: Blue & Gold
ATHLETIC DIRECTOR: Hartwell McPhail	STADIUM: Robinson Field
SPORTS PUBLICIST: Norman H. Gough	CAPACITY: 6,000
TELEPHONE: 601-924-5131	TRAINER: To Be Named

FOOTBALL STAFF

HEAD COACH: Hartwell McPhail, Mississippi College, '41, 8th year, 40-28-4
ASSISTANT COACHES: James Coleman, MC '50; Leo Jones, S. E. La., '51; Bernard Blackwell, Ole Miss., '48
TYPE OFFENSE: Wing-T
LETTERMEN RETURNING: 23; LETTERMEN LOST: 14
CAPTAINS: Game Captains

1967 OUTLOOK

Mississippi College posted its worst season ever under Coach Hartwell McPhail last year — a dismal 3-7 mark — but a marked improvement is expected this year. A good recruiting year, plus the return of some talented lettermen makes the 1967 outlook promising. The Chocs' running and passing games should be in top shape as Billy Ray Dill, top rusher in 1966, will be back along with the No. 1 quarterback, Larry Suchy. The middle of the line appears pretty well stocked both on offense and defense. Last year's No. 3 rusher, fullback Barry Cotney, also returns.

1967 SCHEDULE

Sept. 16	Furman University at Greenville, S. C.	-----(N)
Sept. 23	Southeastern Oklahoma at Clinton, Miss.	------(N)
Sept. 30	Arkansas A&M at College Heights, Ark.	------(N)
Oct. 7	Florence State at Florence, Ala.	------(D)
Oct. 12	Ouachita University at Clinton, Miss.	------(N)
Oct. 21	Louisiana College at Pineville, La.	------(N)
Oct. 28	Samford University at Clinton, Miss.	------(N)
Nov. 11	Southern State at Clinton, Miss.	------(N)
Nov. 18	Livingston State at Clinton, Miss.	------(D)

FURMAN-MISS. COLL.

Furman leads 3-0	23	Henderson State	13
1960 33-20	7	S. E. Oklahoma	14
1963 41-13	7	Arkansas A&M	14
1964 13-10	7	Florence State	14
	27	Ouachita Univ.	26
	0	Jacksonville St.	17
	21	Samford Univ.	45
	30	Arkansas St.	26
	13	Southern St.	30
	0	Livingston St.	14

DAVIDSON COLLEGE

September 23rd — 8:00 P. M.
At Greenville, S. C.

LOCATION:	Davidson, N. C.	ENROLLMENT:	1,000 men
CONFERENCE:	Southern, NCAA	NICKNAME:	Wildcats
PRESIDENT:	Dr. D. Grier Martin	COLORS:	Red & Black
ATHLETIC DIRECTOR:	Dr. Tom Scott	STADIUM:	Richardson Field
SPORTS PUBLICIST:	John Kilgo	CAPACITY:	11,000
TELEPHONE:	704-892-4511	TRAINER:	Tom Couch

FOOTBALL STAFF

HEAD COACH: Homer Smith, Princeton. '54; third year, 10-9
 ASSISTANT COACHES: Dave Fagg, Davidson, '58; Warner Alford, Ole Miss., '61; Bob Brown, W&M, '59; Johnny Walker, Davidson, '67
 TYPE OFFENSE: Split-T
 LETTERMEN RETURNING: 23; LETTERMEN LOST: 11
 CAPTAINS: To Be Named

1967 OUTLOOK

Davidson should have its best football team in a decade during 1967. The return of Jimmy Poole at quarterback and Pete Glidewell at tight end gives Davidson a great passing combination. Walter Greene, second team All-Conference at offensive center last year, moves to nose guard on defense this season. Also, the Wildcats defense will be strengthened by two big and fast sophomores at defensive ends, Mike Kelly and John Zaharov. Depth is better than it was a year ago, when Davidson finished 4-5.

1967 SCHEDULE

Sept. 16	VMI at Lexington, Va.(N)
Sept. 23	Furman University at Greenville, S. C.(N)
Sept. 30	East Carolina at Davidson, N. C.(D)
Oct. 7	Richmond at Davidson, N. C.(D)
Oct. 14	Presbyterian at Davidson, N. C.(D)
Oct. 21	The Citadel at Charleston, S. C.(N)
Oct. 28	Connecticut at Storrs, Conn.(N)
Nov. 11	Wofford at Davidson, N. C.(D)
Nov. 18	West Virginia at Morgantown, W. Va.(D)

FURMAN-DAVIDSON

Furman leads 26-11	13	Geo. Washington	9
1958 22-20 Furman	26	Furman	28
1959 35-7 Furman	7	East Carolina	40
1960 22-21 Furman	49	Presbyterian	13
1961 45-19 Furman	17	Richmond	23
1962 14-7 Furman	21	Citadel	17
1963 17-0 Furman	34	Lehigh	27
1964 23-0 Davidson	28	Wofford	40
1965 24-0 Davidson	14	Wittenberg	16
1966 28-26 Furman			

WOFFORD COLLEGE

October 7th — 8:00 P. M.
At Spartanburg, S. C.

LOCATION:	Spartanburg, S. C.	ENROLLMENT:	1,000 men
CONFERENCE:	None, NAIA	NICKNAME:	Terriers
PRESIDENT:	Dr. Charles Marsh	COLORS:	Gold & Black
ATHLETIC DIRECTOR:	Conley T. Snidow	STADIUM:	Snyder Field
SPORTS PUBLICISTS:	Steve Baker Doyle Boggs, Jr.	CAPACITY:	8,000
TELEPHONE:	803-585-4821	TRAINER:	Duane Stober

FOOTBALL STAFF

HEAD COACH: Jim Brakefield, Centre '41; first year
 ASSISTANT COACHES: Gene Alexander, South Carolina '40; Todd Heldreth, Wofford '64
 TYPE OFFENSE: Split-T
 LETTERMEN RETURNING: 18; LETTERMEN LOST: 15
 CAPTAINS: Ron Wilson, Ron McGrady

1967 OUTLOOK

Jim Brakefield, who has been the Terriers' line coach for the past 14 years, will face a rebuilding year as he enters his first season as Wofford's head coach. Gone from last year's 6-3-1 squad are 12 seniors, 11 of whom were starters. The key positions for the Terriers to fill are in the line and quarterback. The top running veteran is junior Ted Phelps. Last season, the Spartanburg sensation was All-State, All-District and placed 29th in the nation in rushing. Other very capable halfbacks are veteran Bill Ellis and Chris Hanson.

1967 SCHEDULE

Sept. 16	Lenoir Rhyne at Hickory, N. C.(N)
Sept. 23	The Citadel at Charleston, S. C.(N)
Sept. 30	Presbyterian at Clinton, S. C.(N)
Oct. 7	Furman at Spartanburg, S. C.(N)
Oct. 14	Newberry College at Spartanburg, S. C.(N)
Oct. 21	Frederick College at Spartanburg, S. C.(N)
Oct. 28	Appalachian at Spartanburg, S. C.(N)
Nov. 4	Catawba at Spartanburg, S. C.(D)
Nov. 11	Davidson College at Davidson, N. C.(D)
Nov. 18	Carson-Newman at Spartanburg, S. C.(N)

FURMAN-WOFFORD

Furman leads 28-9-3	20	Lenoir Rhyne	21
1958 40-39 Furman	28	Frederick	17
1959 6-3 Wofford	9	Presbyterian	0
1960 41-26 Furman	15	Furman	15
1961 12-7 Furman	9	Newberry	7
1962 34-21 Furman	6	East Tennessee	42
1963 21-19 Furman	12	Appalachian	14
1964 21-14 Wofford	37	Catawba	3
1965 35-13 Wofford	40	Davidson	28
1966 15-15 Tie	27	Carson-Newman	15

UNIVERSITY OF RICHMOND

October 14th — 2:00 P. M.
At Greenville, S. C.

LOCATION:	ENROLLMENT:
Richmond, Va.	7,580
CONFERENCE:	NICKNAME:
Southern, NCAA	Spiders
PRESIDENT:	COLORS:
Dr. George M. Medlin	Red & Blue
ATHLETIC	STADIUM
DIRECTOR:	Richmond City
Frank Jones	CAPACITY:
SPORTS PUBLICIST:	22,000
Walt Drewry	TRAINER:
TELEPHONE:	Leonard McNeal
703-288-3739	

FOOTBALL STAFF

HEAD COACH: Frank Jones, North Carolina '48; second year, 2-8
ASSISTANT COACHES: Dale Haupt, Wyoming '55; Jim Tait, Miss. State '57; Dick Lage, Lenoir Rhyne '61; Lamar Leachman, Tennessee '56; Ray Tate, Richmond '66
TYPE OFFENSE: I Pro
LETTERMEN RETURNING: 18; LETTERMEN LOST: 14
CAPTAINS: To be named

1967 OUTLOOK

Frank Jones, beginning his second season at Richmond, expects an improved team during 1967. The Spiders will be quicker, faster and more aggressive, but less experienced. Depth is a problem and several players may have to play both ways. The Spiders lost all of the offensive line except guard Terry Crum, who has been switched to tackle and split end Dennis Wiley. Heading the list of 18 returning lettermen is Buster O'Brien, a 6-1 quarterback who established a school passing record with 99 completions in 200 attempts during the 1966 season.

1967 SCHEDULE

Sept. 16	West Virginia at Richmond, Va.	-----	(N)
Sept. 23	East Carolina at Richmond, Va.	-----	(N)
Sept. 30	VMI at Lexington, Va.	-----	(D)
Oct. 7	Davidson at Davidson, N. C.	-----	(D)
Oct. 14	Furman at Greenville, S. C.	-----	(D)
Oct. 21	Virginia Tech at Blacksburg, Va.	-----	(D)
Nov. 4	Southern Mississippi at Hattiesburg, Miss.	---	(D)
Nov. 11	The Citadel at Richmond, Va.	-----	(D)
Nov. 18	William & Mary at Williamsburg, Va.	-----	(D)
Nov. 25	Parsons at Fairfield, Iowa	-----	(D)

FURMAN-RICHMOND

Richmond leads 6-5-0	0	Dayton	23	
1931 34-6	Furman	6	The Citadel	24
1933 14-6	Furman	0	Miss. State	20
1948 7-0	Richmond	20	VMI	34
1949 12-0	Richmond	7	W. Texas State	41
1959 48-14	Richmond	23	Davidson	17
1960 35-28	Richmond	0	Southern Miss.	27
1964 19-18	Furman	24	Furman	14
1965 14-0	Furman	16	East Carolina	28
1966 24-14	Richmond	19	William & Mary	35

TAMPA UNIVERSITY

October 21st — 8:00 P. M.
At Tampa, Fla.

LOCATION:	ENROLLMENT:
Tampa, Fla.	2,500
CONFERENCE:	NICKNAME:
None, NAIA	Spartans
PRESIDENT:	COLORS:
Dr. David M. Dale	Red & Black
ATHLETIC	STADIUM:
DIRECTOR:	Phillips Field
Sam Bailey	CAPACITY:
SPORTS PUBLICIST:	16,000
Mike Moore	TRAINER:
TELEPHONE:	Larry Gable
813-253-8861	

FOOTBALL STAFF

HEAD COACH: Sam Bailey, Georgia '50; fourth year, 14-13-1
ASSISTANT COACHES: Vic Prinzi, Florida State '59; Charles Bailey, Tampa '62; Larry Beckish, Wichita '64
TYPE OFFENSE: Pro-type
LETTERMEN RETURNING: 32; LETTERMEN LOST: 6
CAPTAINS: To be named

1967 OUTLOOK

All the yardsticks used to measure the ability of a football team seem to indicate that Tampa will have a fine squad during 1967. Thirty-two lettermen are returning from last year and 17 of these were starters. The biggest task facing the Spartans is finding someone to replace quarterback Jesse Kaye, who was selected to the AP Little All-America team. The top candidates are Ed Nizwantowski, who missed last year with an injury, and Jim DelGaizo. The defensive unit will have nine starters back and should again be tough.

1967 SCHEDULE

Sept. 16	Virginia Tech at Tampa, Fla.	-----	(N)
Sept. 23	Akron University at Akron, Ohio	-----	(N)
Oct. 7	Miss. Southern at Hattiesburg, Miss.	-----	(N)
Oct. 14	Tulsa at Tulsa, Okla.	-----	(N)
Oct. 21	Furman University at Tampa, Fla.	-----	(N)
Nov. 4	Tennessee at Tampa, Fla.	-----	(D)
Nov. 11	Chattanooga at Tampa, Fla.	-----	(N)
Nov. 18	S. Dakota State at Tampa, Fla.	-----	(N)
Nov. 24	Indiana State at Tampa, Fla.	-----	(N)

FURMAN-TAMPA

Tampa leads 2-0-1	11	Tulsa	57	
1960 7-7	Tie	20	Bowling Green	13
1962 15-14	Tampa	20	Akron	12
1966 41-2	Tampa	6	N. Texas State	41
		41	Furman	2
		9	Houston	48
		0	N. E. Louisiana	17
		27	Buffalo	8
		6	Eastern Kentucky	14

LEHIGH UNIVERSITY

October 28th — 8:00 P. M.
At Greenville, S. C.

LOCATION:	Bethlehem, Pa.	ENROLLMENT:	3,000 men
CONFERENCE:	Middle Atlantic	NICKNAME:	Engineers
PRESIDENT:	Dr. W. Doming Lewis	COLORS:	Brown & White
ATHLETIC DIRECTOR:	William B. Lockenby	STADIUM:	Taylor Stadium
SPORTS PUBLICIST:	Joe Whritenour	CAPACITY:	17,000
TELEPHONE:	215-867-5071	TRAINER:	Fletcher Johnson

FOOTBALL STAFF

HEAD COACH: Fred Dunlap, Colgate '50, third year, 1-17-1
ASSISTANT COACHES: Sam Sanders, Buffalo '60; Bob Chiodi, Maryland, '52; Edward Hudak, Notre Dame, '50; Jim McConlogue, Moravian, '49; John Whitehead, Penn State '49

TYPE OFFENSE: Balanced-T
LETTERMEN RETURNING: 17; LETTERMEN LOST: 13
CAPTAIN: Rich Miller

1967 OUTLOOK

Although Fred Dunlap is moving toward his third season as head football coach at Lehigh, 1967 could understandably be regarded as his first when it comes to winning or losing with players he and his staff selected, screened and found able to comply with the schools entrance requirements. This year, the Engineers will blend a corp of 18 lettermen with several outstanding sophomores in hopes of improving last year's 0-9-0 record. The top returnee is quarterback Rick Laubach, who set several records last season.

1967 SCHEDULE

Sept. 23	Ithaca at Bethlehem, Pa.	-----	(D)
Sept. 30	Penn at Philadelphia, Pa.	-----	(N)
Oct. 7	Rutgers at New Brunswick, N. J.	-----	(D)
Oct. 14	Bucknell at Lewisburg, Pa.	-----	(D)
Oct. 21	Gettysburg at Bethlehem, Pa.	-----	(D)
Oct. 28	Furman University at Greenville, S. C.	-----	(N)
Nov. 4	Colgate at Bethlehem, Pa.	-----	(D)
Nov. 11	Delaware at Newark, Del.	-----	(D)
Nov. 18	Lafayette at Bethlehem, Pa.	-----	(D)

FURMAN-LEHIGH

Furman leads 1-0
1965 27-15 Furman

1966 RESULTS (0-9-0)

28	Pennsylvania	38
9	Drexel	12
14	Rutgers	42
13	Gettysburg	31
0	Delaware	41
15	Colgate	21
27	Davidson	34
0	Bucknell	45
0	Lafayette	16

EAST CAROLINA COLLEGE

November 4th — 7:30 P. M.
At Greenville, N. C.

LOCATION:	Greenville, N. C.	ENROLLMENT:	10,000
CONFERENCE:	Southern, NCAA	NICKNAME:	Pirates
PRESIDENT:	Dr. Lee W. Jenkins	COLORS:	Purple & Gold
ATHLETIC DIRECTOR:	Clarence Stasavich	STADIUM:	Ficklen Memorial
SPORTS PUBLICIST:	Earl Aiken	CAPACITY:	16,000
TELEPHONE:	919-758-3426	TRAINER:	Terry Wills

FOOTBALL STAFF

HEAD COACH: Clarence Stasavich, Lenoir Rhyne '35; sixth season, 36-12-1

ASSISTANT COACHES: Odell Welborn, Elon '59; Bob Gantt, North Carolina '52; Harold Bullard, Lenoir Rhyne '58; Henry Vansant, East Carolina '61

TYPE OFFENSE: Single Wing
LETTERMEN RETURNING: 22; LETTERMEN LOST: 12
CAPTAINS: To be named

1967 OUTLOOK

Lettermen will be available except at offensive center, defensive tackles and safety. Thirty sophomores from last year's undefeated freshman team can be expected to bolster the chances of finding good replacements and depth. The questionable spot in the backfield will be tailback Dennis Young, who played well last year until he was injured, will be back but still must blossom as a regular. The offensive team should be as good as last year's and possibly better because of improved end play and experienced fullbacks.

1967 SCHEDULE

Sept. 16	William and Mary at Williamsburg, Va.	-----	(D)
Sept. 23	Richmond at Richmond, Va.	-----	(N)
Sept. 30	Davidson at Davidson, N. C.	-----	(D)
Oct. 7	Southern Illinois at Greenville, N. C.	-----	(N)
Oct. 14	Louisville University at Greenville, N. C.	---	(N)
Oct. 21	Parsons College at Fairfield, Iowa	-----	(D)
Oct. 28	The Citadel at Greenville, N. C.	-----	(D)
Nov. 4	Furman University at Greenville, N. C.	-----	(N)
Nov. 11	W. Texas State at Greenville, N. C.	-----	(N)
Nov. 18	Marshall University at Huntington, W. Va.	--	(D)

FURMAN-ECC

Series	tied 2-2
1961	20-8 Furman
1964	34-13 ECC
1965	14-7 Furman
1966	17-0 ECC

1966 RESULTS (4-5-1)

7	William & Mary	7
14	N. E. Louisiana	21
17	Furman	0
40	Davidson	7
7	Geo. Washington	20
27	The Citadel	17
13	Southern Illinois	31
28	Richmond	16
14	S. Mississippi	35
7	Louisville	21

SAMFORD UNIVERSITY

November 11th — 2:00 P. M.
At Birmingham, Ala.

LOCATION: Birmingham, Ala.	ENROLLMENT: 2,818
CONFERENCE: None, NAIA	NICKNAME: Bulldogs
PRESIDENT: Dr. Leslie Wright	COLORS: Crimson & Blue
ATHLETIC DIRECTOR: J. E. Sharman	STADIUM: Seibert Stadium
SPORTS PUBLICIST: Bill Nunnelley	CAPACITY: 6,000
TELEPHONE: 205-871-0351	TRAINER: To Be Named

FOOTBALL STAFF

HEAD COACH: John L. Armstrong, Samford '54, second year, 6-3-1
 ASSISTANT COACHES: Wayne Grubb, Tennessee '59; Bill Hyde, Samford '66
 TYPE OFFENSE: Wing-T
 LETTERMEN RETURNING: 28; LETTERMEN LOST: 6
 CAPTAINS: Game Captains

1967 OUTLOOK

Head Coach John Armstrong is all smiles about the 1967 prospects, chiefly because 28 lettermen return from the 1966 team which produced a 6-3-1 record. Leading the charge will be a trio of quarterbacks, Jim Lovetter, Curtis Padgett and Jerry Colvin, who combined for 1,517 yards passing last year. Also returning are ends Jimmy Jackson and John Easley and fullback Jackie Clayton. Top defensive returnees are middle guard Johnny Webb, end Bob Masdon, tackles Gary Fleming and Stan Denham and linebacker Lloyd Heron.

1967 SCHEDULE

Sept. 16	Troy State at Troy, Ala. -----	(N)
Sept. 23	Jacksonville State at Jacksonville, Ala. -----	(N)
Sept. 30	Louisiana College at Birmingham, Ala. -----	(N)
Oct. 14	Delta State at Birmingham, Ala. -----	(D)
Oct. 21	Georgetown College at Georgetown, Ky. ---	(D)
Oct. 28	Mississippi College at Clinton, Miss. -----	(N)
Nov. 4	Chattanooga at Birmingham, Ala. -----	(D)
Nov. 11	Furman at Birmingham, Ala. -----	(D)
Nov. 18	Florence State at Huntsville, Ala. -----	(D)
Dec. 1	Livingston State at Birmingham, Ala. -----	(D)

FURMAN-SAMFORD

Samford leads 2-1
 1961 21-14 Furman
 1962 14-7 Samford
 1965 17-7 Samford

1966 RESULTS (6-3-1)

14	Troy State	13
28	Jacksonville State	14
17	Louisiana College	3
20	Guilford College	7
14	Delta State	31
3	S. W. Louisiana	6
45	Mississippi College	21
13	Carson-Newman	14
17	Furman	7
31	Florence State	31

THE CITADEL

November 18th — 2:00 P. M.
At Charleston, S. C.

LOCATION: Charleston, S. C.	ENROLLMENT: 2,200 men
CONFERENCE: Southern, NCAA	NICKNAME: Bulldogs
PRESIDENT: Gen. Hugh P. Harris	COLORS: Blue & White
ATHLETIC DIRECTOR: Edward L. Teague	STADIUM: Johnston Hagood
SPORTS PUBLICIST: Bill Hallman	CAPACITY: 22,500
TELEPHONE: 803-722-4397	TRAINER: Billy Bostwick

FOOTBALL STAFF

HEAD COACH: Jim (Red) Parker, Ark. A&M '55, second year, 4-6-0
 ASSISTANT COACHES: Harold Steelman, Arkansas '54; Bob Gatling, Arkansas '57; Hank Witt, Newberry '50; Chal Port, North Carolina '54; Dwight Adams, Henderson State, '58; Oval Jaynes, Appalachian '62; Don Murray, Ark. A&M '66
 TYPE OFFENSE: Pro Set with flanker
 LETTERMEN RETURNING: 27; LETTERMEN LOST: 16
 CAPTAINS: Game Captains

1967 OUTLOOK

"We will be improved," says Coach Parker, "but we'll call it a successful year when we win ten games. We have a tough and representative schedule, but we will surprise a few people." Gone from last years team are halfback Cal McCombs, tackle Dan Farley, end Tommy Moore and tackle Larry Latini. However, a couple of top sophomores could make the difference. John Small is rated as a potential All-America and Gay Mayfield is considered a top candidate. The offense has been switched to pro-set with flanker to take advantage of several players.

1967 SCHEDULE

Sept. 16	S. Mississippi at Charleston, S. C. -----	(N)
Sept. 23	Wofford at Charleston, S. C. -----	(N)
Sept. 30	Maine at Portland, Maine -----	(D)
Oct. 7	Arkansas State at Little Rock, Ark. -----	(N)
Oct. 14	Virginia Military at Roanoke, Va. -----	(D)
Oct. 21	Davidson at Charleston, S. C. -----	(N)
Oct. 28	East Carolina at Greenville, N. C. -----	(D)
Nov. 4	William & Mary at Charleston, S. C. -----	(D)
Nov. 11	Richmond at Richmond, Va. -----	(D)
Nov. 18	Furman at Charleston, S. C. -----	(D)

FURMAN-CITADEL

Furman leads 30-13-3
 1958 24-6 Citadel
 1959 18-14 Citadel
 1960 7-6 Citadel
 1961 9-8 Citadel
 1962 33-25 Furman
 1963 34-25 Furman
 1964 17-0 Citadel
 1965 28-0 Citadel
 1966 10-6 Citadel

1966 RESULTS (4-6)

0	Vanderbilt	24
24	Richmond	6
3	East Tennessee	0
13	Geo. Washington	21
6	William & Mary	24
17	East Carolina	27
17	Davidson	21
0	West Virginia	35
30	VMI	14
10	Furman	6

PALADIN FOOTBALL RECORDS

(Records have been kept only in recent years. Thus, should any of these marks be challenged, the Sports Information Director will gladly listen to suggested corrections.)

Single Game — Individual

Most yards rushing—189 (Bob Buzzell vs. Lehigh, 1965).
 Longest kickoff return—103 (John Popson vs. The Citadel, 1954).
 Most yards pass receiving—178 (Robbie Hahn vs. George Washington, 1966).
 Most TD passes thrown—4 (Billy Canty vs. Davidson, 1961), 4 (Sam Wyche vs. Newberry, 1965).
 Longest punt—95 (Roy Stevens vs. Georgia, 1935).
 Longest pass interception return—95 (Sam Pickens vs. G.W., 1963).
 Longest fumble return—27 (Richard Giddings vs. Richmond, 1964).
 Most passes attempted—40 (Billy Baker vs. The Citadel, 1957).
 Most passes completed—27 (Billy Baker vs. The Citadel, 1957).
 Most yards passing—292 (Billy Baker vs. The Citadel, 1957).
 Most yards total offense—295 (Sam Wyche vs. Wm. & Mary, 1964).
 Longest run from scrimmage—64 (Elliott Keller vs. Wofford, 1962), 64 (Bob Buzzell vs. Lehigh, 1965).
 Longest pass completion—81 (Clyde Hewell to Robbie Hahn vs. George Washington, 1966).
 Most yards returning kickoffs—148 (John Popson vs. Miami, 1954).
 Most passes caught—8 (Tony Carmignani vs. Clemson, 1960).
 Most TD passes caught—3 (Tim Crawford vs. Newberry, 1965).

Single Game — Team

Most points—73 (Mercer, 1921).
 Biggest victory margin—73-0 (Mercer, 1921).
 Biggest margin of defeat—0-99 (Clemson, 1915).
 Most yards passing—292 (The Citadel, 1955).
 Most yards rushing—504 (Davidson, 1953).
 Most first downs—32 (Wofford, 1960).
 Most completed passes—27 (The Citadel, 1957).
 Fewest yards rushing by opponent—minus 52 (George Washington, 1959).

Season — Individual

Most passes completed—88 (Billy Baker, 1957).
 Most passes caught—35 (Ray Siminski, 1958).
 Most yards pass receiving—568 (Ray Siminski, 1958).
 Most TD passes—7 (Robbie Hahn, 1966).
 Most pass interceptions—7 (Tony Carmignani, 1961).
 Most TD passes thrown—10 (Billy Canty, 1960).
 Most PAT's kicked—23 (Brownie Cordell, 1963).
 Most yards rushing—767 (Tom Campbell, 1961).
 Best punting average—45.6 (Paul Stombaugh, 1949).
 Most yards total offense—1,072 (Billy Canty, 1960).
 Most yards passing—1,096 (Clyde Hewell, 1966).
 Most passes attempted—168 (Billy Canty, 1960).
 Best passing percentage—.587 (Billy Baker, 1957).

Season — Team

Most victories—10 (1927, 10-1-0).
 Most points—288 (1921).
 Fewest opponents points—16 (1920).
 Most yards passing—1,467 (1966).
 Most pass completions—103 (1966).
 Best rushing defense—145.9 (1961).
 Best rushing offense—226.8 (1962).
 Most tie games—4 (1902, 3-3-4).
 Most losses—9 (1955, 1-9-0).
 Fewest points scored—28 (1902).
 Fewest games lost—1 (1920, 1923, 1926, 1927, 1932, 1933, 1935).
 Most consecutive victories—13 (1932-33).
 Most consecutive losses—11 (1954-55).
 Most games held opponents scoreless—7 (1920, 1921, 1927, 1932).
 Most consecutive shutouts—7 (1932).
 Most consecutive wins over one team—18 (Wofford).
 Most consecutive losses to one team—21 (Clemson).

OFFICIAL SCORES

Furman University had student football teams of a somewhat unorganized nature before 1900. Harold Claassen's Encyclopedia of Football lists an 1891 game in which Duke defeated Furman 96-0. Also, the University of South Carolina football brochure records a game in 1895 in which the Paladins were defeated by a score of 14-10 and Clemson lists its first football victory as a 14-6 win over Furman in 1896. The first schedule (and results) that recent research has revealed was in 1902. Down through the years football has been an important part of the Furman athletic program, and indeed, of the University itself. Of necessity, there have been two periods when football was not played. No inter-collegiate games were played from 1903 through 1912 — because of University administrative action — and no games were played during World War II.

Until 1960, Furman athletic teams were known by different nicknames. The baseball team was "Hornets," the football team "Hurricanes," and the basketball team "Paladins." In 1960 it was decided to consolidate all athletic teams under one name. The popular choice was "Paladins," which a Greenville sportswriter dubbed the basketball team back in the 1930's. "Paladin" is derived from Count Palatine, one of the twelve knights who comprised the bodyguard and inner circle of Emperor Charlemagne.

The following are the official scores of Furman football games which have been gleaned from authoritative sources:

1902 (C. S. Roller, Coach) (Furman)	1915 (W. B. Bible and W. L. Laval, Coaches) (Furman)
12 Bingham 0	0 Clemson 99
0 N. C. State 0	65 Erskine 0
6 Davidson 0	13 Presbyterian 20
0 Univ. of N. C. 10	20 Bingham 6
5 N. C. State 2	38 Presbyterian 7
0 Georgia 12	7 Newberry 0
0 Clemson 28	25 Wofford 0
0 Georgia Tech 0	5 Charleston 0
0 St. Albans 0	
5 Charleston 5	163
	W 5 — L 2 — T 0
28	1916 (W. L. Laval, Coach) (Furman)
W 3 — L 3 — T 4	6 Clemson 7
	60 Erskine 3
1903-1913 No Intercollegiate Games Played	42 Presbyterian 10
1913 (W. C. "Cuppy" Farmer, Coach) (Furman)	14 Davidson 46
7 Clemson "B" 2	0 Georgia 49
6 Riverside 7	14 South Carolina 0
38 Charleston 0	7 Wofford 9
7 Newberry 16	21 Georgia Tech 0
59 Bailey 0	0 Univ. of North Carolina 46
0 Citadel 75	164
30 Charleston 0	W 5 — L 4 — T 0
65 Presbyterian 0	1917 (W. L. Laval, Coach) (Furman)
40 Clemson "B" 0	0 Georgia Tech 25
252	7 Wake Forest 6
W 6 — L 3 — T 0	0 Clemson 38
	20 Newberry 7
1914 (W. B. Bible, Coach) (Furman)	7 Davidson 28
19 Wofford 12	0 South Carolina 26
57 Bailey 0	7 Presbyterian 14
0 Clemson "B" 53	18 Wofford 3
7 Clemson "B" 2	59
6 Newberry 13	W 3 — L 5 — T 0
19 Maryville 27	1918 (W. L. Laval, Coach) (Furman)
2 Presbyterian 39	6 Erskine 6
108	12 South Carolina 20
W 3 — L 4 — T 0	7 Clemson 68
	7 Presbyterian 13

Furman won 3 out of 4 games with Army teams from Camp Sevier, the score of one, 48th Infantry being Furman 20, Infantry 7; the team also lost to Georgia Tech and P. C. Information on these games not available.
W 3 — L 4 — T 1

1919 (W. L. Laval, Coach) (Furman)
0 Georgia Tech 74
13 Oglethorpe 0
7 Wofford 6
6 Presbyterian 0
37 Wake Forest 7
21 Citadel 7
41 Erskine 0
7 Clemson 7
14 Davidson 41
146 142

W 6 — L 2 — T 1

1920 (W. L. Laval, Coach) (Furman)
33 Elon 0
41 Erskine 0
21 Citadel 6
0 Georgia 7
17 Wake Forest 0
42 Newberry 0
42 Oglethorpe 3
69 Wofford 0
14 Clemson 0
7 Davidson 0
286 16

W 9 — L 1 — T 0

1921 (W. L. Laval, Coach) (Furman)
42 Erskine 7
63 Newberry 0
7 Georgia 27
0 Georgia Tech 69
0 Clemson 0
42 Citadel 0
73 Mercer 0
7 South Carolina 0
62 Wofford 0
28 Davidson 0
288 103

W 7 — L 2 — T 1

1922 (W. L. Laval, Coach) (Furman)
33 Newberry 0
7 Florida 6
0 Georgia 6
28 Citadel 0
26 Oglethorpe 0
0 Richmond 13
67 Erskine 6
7 South Carolina 27
41 Wofford 0
20 Clemson 6
13 Davidson 0
242 64

W 8 — L 3 — T 0

1923 (W. L. Laval, Coach) (Furman)
13 Virginia 10
3 Mercer 6
20 Presbyterian 0
30 Citadel 14
30 Davidson 0
22 Richmond 7
29 Oglethorpe 3
23 South Carolina 3
35 Newberry 0
63 Erskine 0
6 Clemson 7
274 47

W 9 — L 2 — T 0

1924 (W. L. Laval, Coach) (Furman)
14 Newberry 0
0 Alabama 20
0 Mercer 23
0 Georgia 23

6 Davidson 6
0 Citadel 6
0 Georgetown 20
10 South Carolina 0
7 Mississippi 2
3 Clemson 0

40 94

W 5 — L 5 — T 0

1925 (W. L. Laval, Coach) (Furman)
27 Newberry 10
20 Washington & Lee 15
7 Citadel 0
0 Georgia 21
7 Davidson 0
27 Presbyterian 3
0 Mercer 17
2 South Carolina 0
0 Wake Forest 9
26 Clemson 0
116 75

W 7 — L 3 — T 0

1926 (W. L. Laval, Coach) (Furman)
30 Newberry 0
31 N. C. State 0
10 Wake Forest 0
14 Georgia 7
13 Presbyterian 7
0 Georgia 12
13 Mercer 13
10 South Carolina 7
7 Citadel 0
30 Clemson 0
169 46

W 8 — L 1 — T 1

1927 (W. L. Laval, Coach) (Furman)
13 Duke 7
20 N. C. State 0
27 Mercer 13
0 Georgia 32
47 Erskine 0
19 Oglethorpe 0
53 Wake Forest 0
34 South Carolina 0
6 Citadel 0
28 Clemson 0
38 Miami 7
285 59

W 10 — L 1 — T 0

1928 (T. B. Amis, Coach) (Furman)
6 Duke 0
0 Chattanooga 15
0 Georgia 7
6 Presbyterian 0
26 Wofford 0
18 Wake Forest 0
12 Citadel 0
0 South Carolina 6
13 Clemson 27
81 55

W 5 — L 4 — T 0

1929 (T. B. Amis, Coach) (Furman)
19 Erskine 6
7 Chattanooga 20
0 Georgia 27
12 Presbyterian 0
45 Newberry 0
25 Wofford 6
12 Wake Forest 0
0 Citadel 0
0 South Carolina 2
6 Clemson 7
126 68

W 5 — L 4 — T 1

1930 (T. B. Amis, Coach) (Furman)
49 Newberry 0
0 Army 54
35 Erskine 0
7 Davis-Elkin 7

14 Florida 13
6 Oglethorpe 12
14 South Carolina 0
14 Wofford 0
31 Citadel 6
7 Clemson 12

177 104

W 6 — L 3 — T 1

1931 (T. B. Amis, Coach) (Furman)
26 Newberry 0
36 Wake Forest 6
0 Erskine 0
34 Richmond 6
0 Oglethorpe 3
20 Wofford 0
0 South Carolina 27
33 Citadel 7
0 Clemson 0
149 49

W 5 — L 2 — T 2

1932 (A. P. McLeod, Coach) (Furman)
25 Newberry 7
0 Army 13
58 Erskine 0
19 Davis-Elkin 0
2 Mercer 0
20 Citadel 0
24 Wofford 0
14 South Carolina 0
7 Clemson 0
169 20

W 8 — L 1 — T 0

1933 (A. P. McLeod, Coach) (Furman)
14 Richmond 6
33 Erskine 0
14 Citadel 0
7 Center 6
6 Mercer 6
38 Wofford 0
0 Bucknell 12
0 South Carolina 0
6 Clemson 0
118 30

W 6 — L 1 — T 2

1934 (A. P. McLeod, Coach) (Furman)
13 Wofford 0
2 Georgia 7
7 Center 6
3 Wake Forest 2
9 Mercer 3
0 Bucknell 18
6 Citadel 0
0 South Carolina 2
0 Clemson 7
40 45

W 5 — L 4 — T 0

1935 (A. P. McLeod, Coach) (Furman)
69 Piedmont 0
23 Presbyterian 0
7 Georgia 31
9 Wake Forest 0
32 Mercer 0
35 Citadel 0
29 Wofford 0
20 South Carolina 7
8 Clemson 6
232 44

W 8 — L 1 — T 0

1936 (A. P. McLeod, Coach) (Furman)
31 Wofford 0
0 Georgia 13
13 Citadel 7
0 N. C. State 27
20 Mercer 9
14 Davidson 13
14 Presbyterian 0

23 South Carolina 6
12 Clemson 0
127 75

W 7 — L 2 — T 0

1937 (A. P. McLeod, Coach) (Furman)
19 Newberry 0
58 Wofford 0
7 N. C. State 7
0 Citadel 8
52 Presbyterian 0
9 Davidson 13
7 Bucknell 20
12 South Carolina 0
0 Clemson 0
164 48

W 4 — L 3 — T 2

1938 (A. P. McLeod, Coach) (Furman)
13 Oglethorpe 7
6 Bucknell 28
0 George Washington 7
7 Georgia 38
6 Citadel 9
7 N. C. State 7
12 Davidson 13
18 Marshall 13
6 South Carolina 27
7 Clemson 10
82 159

W 2 — L 7 — T 1

1939 (A. P. McLeod, Coach) (Furman)
38 Erskine 7
7 Army 16
20 Georgia 0
7 Citadel 0
15 Davidson 0
7 V. P. I. 20
20 South Carolina 0
7 N. C. State 12
3 Clemson 14
124 69

W 5 — L 4 — T 0

1940 (A. P. McLeod, Coach) (Furman)
40 Erskine 0
0 Wake Forest 19
36 Citadel 7
6 Ohio University 15
40 Davidson 7
20 N. C. State 7
21 V. P. I. 38
25 South Carolina 7
7 Clemson 13
195 113

W 5 — L 4 — T 0

1941 (A. P. McLeod, Coach) (Furman)
6 Tennessee 32
40 Wofford 19
13 Wake Forest 52
0 N. C. State 0
13 Citadel 13
31 Davidson 13
13 George Washington 6
7 South Carolina 26
6 Clemson 34
129 195

W 3 — L 4 — T 2

1942 (A. P. McLeod, Coach) (Furman)
6 V. P. I. 7
7 Georgia 40
6 Wake Forest 14
6 George Washington 0
7 Tennessee 52
13 Miami 32
20 Citadel 0
6 South Carolina 0
7 Clemson 12
78 157

W 3 — L 6 — T 0

1943-1945 No Intercollegiate Games Played	
1946 (R. W. Smith, Coach)	
(Furman)	
7 Alabama	26
31 Wofford	0
6 Auburn	26
7 South Carolina	14
14 Citadel	0
7 Georgia	70
7 V. M. I.	26
6 Clemson	20
7 Georgia Tech	41
7 Davidson	13
99	236
W 2 - L 8 - T 0	

1947 (R. W. Smith, Coach)	
(Furman)	
7 Georgia	13
6 V. P. I.	20
8 South Carolina	26
20 Wofford	6
7 Citadel	6
7 Florida	34
7 Clemson	35
0 Georgia Tech	51
6 Davidson	19
68	194
W 2 - L 7 - T 0	

1948 (H. E. Smith, Coach)	
(Furman)	
10 Washington & Lee	7
0 South Carolina	7
0 Richmond	7
7 Wofford	7
9 Citadel	0
14 Florida	39
0 Clemson	41
0 Georgia	33
0 Davidson	7
176	136
W 6 - L 3 - T 1	

1949 (H. E. Smith, Coach)	
(Furman)	
0 Georgia	25
7 Washington & Lee	27
14 U. of South Carolina	7
0 Richmond	12
13 P. C.	20
19 Citadel	7
27 Florida	28
21 Davidson	6
21 Clemson	28
122	160
W 3 - L 6 - T 0	

1950 (Bill Young, Coach)	
(Furman)	
12 Presbyterian	13
6 Washington & Lee	27
32 Davidson	20
6 South Carolina	21
6 Alabama	34
21 Citadel	7
7 Florida	19
13 Wofford	13
7 George Washington	34
7 W. Va.	18
2 Clemson	57
0 Georgia	42
109	305
W 2 - L 9 - T 1	

1951 (Bill Young, Coach)	
(Furman)	
39 P. C.	0
7 Washington & Lee	25
7 West Va.	18
6 South Carolina	21
20 Stetson	21
35 Citadel	14
19 George Washington	19
12 Wofford	14
33 Newberry	13
14 Clemson	34
192	179
W 3 - L 6 - T 1	

1952 (Bill Young, Coach)	
(Furman)	
47 Newberry	6
22 West Virginia	14
7 South Carolina	27
14 Stetson	25
7 Citadel	7
14 Davidson	13
29 Wofford	21
27 Presbyterian	6
9 Florida State	0
0 Wake Forest	28
176	136
W 6 - L 3 - T 1	

1953 (Bill Young, Coach)	
(Furman)	
33 Newberry	0
0 Army	41
27 Citadel	0
13 South Carolina	27
34 Davidson	0
7 Wofford	6
19 Presbyterian	0
14 Florida State	7
21 Wake Forest	19
168	100
W 7 - L 2 - T 0	

1954 (Bill Young, Coach)	
(Furman)	
19 Newberry	0
13 Miami (Fla.)	51
27 Presbyterian	0
7 South Carolina	27
31 Citadel	20
19 Davidson	7
7 N. C. State	6
6 Clemson	27
14 Florida State	33
0 Wofford	19
143	190
W 5 - L 5 - T 0	

1955 (Homer Hobbs, Coach)	
(Furman)	
0 Newberry	14
0 Army	81
6 Wofford	27
0 South Carolina	19
19 Citadel	25
0 Auburn	52
7 N. C. State	33
6 Florida State	19
13 Davidson	9
20 Clemson	41
71	320
W 1 - L 9 - T 0	

1956 (Homer Hobbs, Coach)	
(Furman)	
0 Auburn	41
6 Wofford	18
7 Newberry	13
7 Citadel	0
6 South Carolina	13
7 Florida State	42
0 West Virginia	7
27 Davidson	13
7 Clemson	28
67	185
W 3 - L 6 - T 1	

1957 (Homer Hobbs, Coach)	
(Furman)	
13 E. Tennessee State	7
7 Florida State	27
0 Villanova	20
13 George Washington	12
13 South Carolina	58
12 Wofford	13
14 Citadel	18
0 U. of Chattanooga	34
6 Davidson	2
6 Clemson	45
84	236
W 3 - L 7 - T 0	

1958 (Bob King, Coach)	
(Furman)	
6 Florida State	42
8 George Washington	11
6 Alabama	29
40 Wofford	39
6 Citadel	24
0 Penn State	36
7 South Carolina	32
22 Davidson	20
19 Clemson	36
114	269
W 2 - L 7 - T 0	

1959 (Bob King, Coach)	
(Furman)	
23 Presbyterian	24
0 South Carolina	30
7 Chattanooga	29
8 Wm. & Mary	7
24 George Washington	0
14 Citadel	18
3 Wofford	6
14 Richmond	48
35 Davidson	7
3 Clemson	56
131	216
W 3 - L 7 - T 0	

1960 (Bob King, Coach)	
(Furman)	
20 Presbyterian	12
7 Tampa	7
25 Wm. & Mary	23
41 Wofford	26
6 Citadel	7
33 Miss. College	20
0 Alabama	51
28 Richmond	35
22 Davidson	21
14 Clemson	42
196	244
W 5 - L 4 - T 1	

1961 (Bob King, Coach)	
(Furman)	
27 Presbyterian	19
45 Davidson	6
13 George Washington	9
6 Wm. & Mary	19
21 Howard	14
8 Citadel	9
12 Wofford	7
7 Memphis State	6
20 East Carolina	8
6 Clemson	35
174	132
W 7 - L 3 - T 0	
(Best record since 1953)	

1962 (Bob King, Coach)	
(Furman)	
40 Presbyterian	6
34 Wofford	21
0 Florida State	42
7 George Washington	14
7 Howard	14
7 Wm. & Mary	21
33 Citadel	25
14 Davidson	7
3 Clemson	44
14 Tampa	15
159	209
W 4 - L 6 - T 0	

1963 (Bob King, Coach)	
(Furman)	
17 Davidson	0
14 Vanderbilt	13
29 George Washington	14
17 Wm. & Mary	27
21 Wofford	19
41 Miss. College	13
34 Citadel	25
6 Florida State	49
27 Presbyterian	0
7 Presbyterian	0
7 West Virginia	38
213	198
W 7 - L 3 - T 0	

1964 (Bob King, Coach)	
(Furman)	
13 Miss. College	10
0 Clemson	28
14 Wofford	21
14 George Washington	34
14 Wm. & Mary	21
0 Citadel	17
0 Davidson	23
13 East Carolina	34
19 Richmond	18
87	206
W 3 - L 7 - T 0	

1965 (Bob King, Coach)	
(Furman)	
51 Frederick	14
0 Davidson	24
14 East Carolina	7
13 Wofford	35
7 Presbyterian	14
48 Newberry	12
27 Lehigh	15
7 Geo. Washington	24
14 Richmond	0
0 Citadel	28
181	173
W 5 - L 5 - T 0	

1966 (Bob King, Coach)	
(Furman)	
6 Parson	20
28 Davidson	26
0 East Carolina	17
15 Wofford	15
2 Tampa	41
28 Newberry	7
23 George Washington	49
14 Richmond	24
7 Samford	17
6 The Citadel	10
135	226
W 2 - L 7 - T 1	

1966 FINAL VARSITY STATISTICS

Furman	Team Statistics	Opponents
60	First Downs Rushing	118
71	First Downs Passing	46
7	First Downs Penalty	9
138	Total First Downs	173
915	Rushing Yardage	2006
1467	Passing Yardage	1338
2454	Total Offense	3419
44/753	Penalties/Yards	55/580
206/103	Passes/Completed	204/91
70/38.2	Punts/Average	60/38.5
135	Points Scored	227

INDIVIDUAL STATISTICS (of returning players)

Rushing	TC	Yards	Average
Nemeth	105	453	4.3
Talkington	91	358	3.9
Sowell	18	60	3.3
Hancock	2	-11	-5.5
Jordon	2	-29	-14.5
Hewell	60	-116	-1.9

Receiving	C	Yards	TD
Hahn	26	535	7
Godsey	19	250	1
Jordon	10	126	0
Sowell	8	105	0
Nemeth	4	34	0
Talkington	4	13	0
Warlick	3	38	0

Passing	Att.	Compl.	Yds.	TD
Hewell	157	81	1096	7
Hancock	2	0	0	0

Punt Returns	No.	Yards	TD
Hahn	9	29	0

Scoring	TD	PAT	FG	Points
Hahn	7	1 (r)	0	44
Talkington	4	0	0	24
Williams	0	8 (k)	1	11
Sowell	1	1 (r)	0	8
Godsey	1	0	0	6

Interceptions	No.	Yards	TD
Jordon	2	21	0
Lister	1	10	0
Hahn	1	0	0
McClellion	1	13	0

Kickoff Returns	No.	Yards	TD
Hahn	3	56	0
Sowell	7	109	0
Nemeth	1	11	0
Godsey	1	7	0
King	1	5	0
Jordon	1	3	0

Punting	No.	Yards	Average
Jordon	65	2453	37.7

1967-68 BASKETBALL SCHEDULE

HEAD COACH: Frank Selvy, 1 year

Won 9, Lost 15

Date	Opponent	Site
Dec. 2	Augusta College	Greenville
Dec. 5	Davidson	Davidson, N. C.
Dec. 7	East Carolina	Greenville, N. C.
Dec. 9	Richmond	Richmond, Va.
Dec. 11	Virginia Military	Lexington, Va.
Dec. 13	Mississippi	University, Miss.
Dec. 15	Erskine	Greenville
Dec. 18	Georgia	Athens, Ga.
Dec. 20	South Carolina	Columbia, S. C.
Dec. 29	Poinsettia Classic	Greenville
Dec. 30	Poinsettia Classic	Greenville
Jan. 4	Clemson	Clemson, S. C.
Jan. 6	East Carolina	Greenville
Jan. 10	Wofford	Spartanburg, S. C.
Jan. 13	The Citadel	Charleston, S. C.
Jan. 17	Georgia Tech	Atlanta, Ga.
Jan. 29	Richmond	Greenville
Feb. 3	George Washington	Greenville
Feb. 6	Davidson	Greenville
Feb. 10	Virginia Military	Greenville
Feb. 12	William & Mary	Williamsburg, Va.
Feb. 17	The Citadel	Greenville
Feb. 20	South Carolina	Greenville
Feb. 24	Wofford	Greenville

THE PALADIN CLUB

The continuing growth in Furman athletics is largely responsible because of the rapid growth of the Paladin Club, which just completed a banner year in 1966.

With the Arnold Palmer Golf Exhibition and several other projects, the Paladin Club contributed a record amount of monies to be used exclusively for athletic scholarships.

Plans for the coming year are now underway and president Tom Pitts is confident that this year will be even bigger than 1966.

Paladin Club membership is open to any alumnus or friend of the University; anyone interested in the advancement of the University and its athletic program.

The minimum annual contribution is \$10 (tax deductible) while a contribution from \$25 to \$99 is a Pacesetter membership. A contribution of \$100 or more entitles one to membership in the Century Club. These members are awarded reserved parking spaces for all home football games.

How do you join the Paladin Club? Just make your check and mail to Paladin Club, Furman University, Greenville, S. C. You will receive a membership card, Paladin Club decal and receipt for tax purposes. You will also receive the Paladin Patter, an informative newsletter giving you the "inside information" on Furman athletics.

Join the Paladin Club and help some worthy young man receive an education at Furman University.

1967 FRESHMAN SCHEDULE

Date	Game	Site	Time
Sept. 22	Gardner-Webb Junior College	Boiling Springs, N. C.	8:00 p.m.
Oct. 12	South Carolina	Columbia, S. C.	7:30 p.m.
Oct. 20	Gordon Military Academy	Barnesville, Ga.	8:15 p.m.
Oct. 27	The Citadel	Greenville, S. C.	2:30 p.m.
Nov. 10	Davidson	Greenville, S. C.	2:30 p.m.

SUPPORT FURMAN ATHLETICS . . .
. . . JOIN THE PALADIN CLUB