

FURMAN LETTERMEN



NCAA I-AA National Champion 1988 ▲ Southern Conference Champions 1978, '80, '81, '82, '83, '85, '88, '89, '90

Crislip, Steve (RB) 1969-70-71
 Crocker, Clint (DT) 1989-90-91-92
 Crosby, Ernest (TB) 1995-96-97-98
 Crosby, Walter (HB) 1962-63
 Crosland, Ben (C) 1929-30
 Cross, Brian (DT) 1994-95-96-97
 Cross, Chuck (LB) 1968-69-70
 Crouse, Thomas 1939
 Crowe, Bruce (NG) 1970-71-72
 Cuclasure, Raymond (HB) 1936
 Culbertson, Lynn (G) 1938-39-40
 Cullen, Richard (WR) 1970
 Culp, Barry (OG) 1989
 Culpepper, Brandon (FB) 1994-95
 Cummins, Basil 1946-47

D —

Dailer, Bryan (DE) 1994-95-96-97
 Dameron, Mark (DT) 1979
 Daniel, James 1936-37
 Daugherty, Bobby (TB) 1986-88-89
 David, Robert (DT) 1981-82-83-84
 Davidson, Chuck (OT) 1984-85-86
 Davidson, David (OT) 1964-65-66
 Davidson, Lamar (OT) 1974
 Davies-Venn, Leroy (DT) ... 1994-95-96-97
 Davis, Bennie (G) 1950
 Davis, Bo (WR) 1993-94-95-96
 Davis, C.E. (C) 1928-29
 Davis, Chuck (DT) 1968-69
 Davis, Claude (G) 1959-60-61
 Davis, Frank (HB) 1927-28
 Davis, Hinton (T) 1956
 Davis, John 1960-61-62
 Davis, Kyle (LB) 1983-84-85
 Davis, Mike (NG) 1994-95-96-97
 Davis, O.J. (FB, DT) 1990-91-92-94
 Davis, Sandy (FB) 1977-78-79
 Davis, Stan (DE) 1983-85
 Day, Dave (TE) 1986-87
 DeBeer, Steve (DT) 1998
 DeBusk, Frankie (QB) 1988-89-90
 Deery, Joel (HB) 1928-29-30
 Deese, Andrew (OG) 1991-92-93
 DeLeo, John (QB) 1970-71
 Dellinger, Bob (FB) 1952-53-54-55
 DeLong, Jack 1971
 Dennis, Billy 1942
 Dennis, Rusty (DB) 1968-69
 Despres, Adrian (DT) 1984-85-86-87
 Dickert, Phil (DB) 1967-68
 Dickey, Paul (OG) 1966-67-68
 Dixon, Julius (DB) 1985-86-87-88

Dixon, Mark (OT) 1977-78-79
 Donaldson, Frank (FB) 1950-51-52
 Donovan, Danny (QB) 1962-63
 Dooley, Michael (DE) 1993-94-95
 Dorman, Ray (E) 1937-38-39
 Dorn, Drayton 1932-33-35
 Dowdy, Eric (OG) 1992
 Downey, Keith (LB) 1971-72-73
 Drake, Lee (OT) 1994-95-96-97
 Drinkard, Ed (TE) 1990
 Drye, John (FB) 1982-83-84-85
 Duckwall, Mike (C, OG) 1995-96-97
 Duffy, Eric (OT) 1989-90
 Duggan, Steve (C) 1987-88-89-90
 Duncan, Bill (TE) 1984-85-86-87
 Duncan, Charlie (HB) 1925-26
 Duncan, Orvell (G) 1938-39-40
 DuPre, George (C) 1965-66-67
 Durham, Bernard (OT) 1980-82-83-84
 Durham, Chris (OG) 1987

E —

Eargle, Guy 1946-47
 Earp, Ron (E) 1973
 Eaves, Walter 1956
 Eberhardt, Eric (WR) 1989
 Edens, Charles 1939-40-41
 Edge, John (C) 1956
 Edmondson, Jim (OT) 1982-83-84-85
 Edwards, Allen (NG) 1988-89-90-91
 Edwards, Mack (HB) 1955-56-57-58
 Elder, Kenny (DT) 1982-83-84-85
 Eliades, George (C) 1955-56
 Ellis, Greg (DB) 1978
 Elvington, Charles (QB) 1972-73-74
 Elvington, Jim 1941-46
 Elvington, Randy 1942-46-47
 Engelberg, Willie 1927
 English, Tom 1946
 Ensley, Jason (DB, WR) 1991-92-93
 Epling, Bob (T) 1962
 Espinosa, Joey (DB) 1995-96-97-98
 Estes, B.J. (OT) 1989-90-91
 Esval, Keven (PK) 1983-84-85
 Evans, Parks (FB) 1978
 Evington, Effie 1947-48-49

F —

Fabian, Mike (WR, DB) 1969-70-71
 Fair, Jim (DT) 1970-71
 Fairley, Mack 1926
 Fant, George 1932
 Farry, Lawrence 1939-40-41
 Ferguson, Lewis 1927
 Ferguson, Phillip (NG) 1985-86-87
 Ferguson, Tom (DB) 1973-74
 Fickling, Buck 1946
 Fickling, Ed 1927
 Fisher, Brian (OT, OG) 1992-93-94-95
 Fisher, Harry (HB) 1932-33-34
 Fisher, Mike (DB) 1976
 Fitzer, Robert (HB) 1938-39-40
 Flemming, Sam (T) 1938-39-40
 Fletcher, Jim (C) 1948-49-50
 Fletcher, Kelly (DE) 1987-88-89
 Floyd, Charles (T) 1962-63
 Flowers, Tom 1946-47
 Forbes, John (OG) 1964-75
 Ford, Ric (WR) 1991-92-93-94
 Foster, Beach (DB) 1975-76-77
 Foster, Bill (C) 1987-88-89
 Foster, Joe 1936-37
 Foster, Mark (C) 1995-96-97-98
 Foster, Paul (C) 1980-81-82
 Fouch, Kenya (TE) 1997-98
 Fowler, Bradley (HB) 1959
 Fowler, Bruce (DB) 1979-80
 Fox, Chas (WR) 1982-83-84-85
 Fox, Tim (TE) 1985-86-87



John Cook (1962-63) rushed for a career high 162 yards in a 33-25 win over The Citadel in 1962.

Frederick, Len (DB) 1989
 Freeman, Bill (TE) 1977-78-79-80
 Freeman, Willie (DB, LB) 1975-76-77
 Frey, Mike (DB) 1974-75
 Frierson, Sterling (LB) 1998
 Fuller, Les (T) 1950-51-53
 Furches, Greg (DE) 1975-76-77

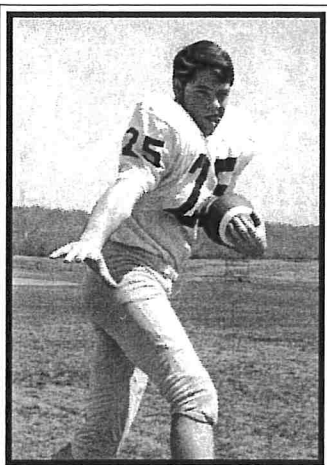
G —

Gaines, Danny (TE) 1981
 Galiga, Palma 1930
 Gambrell, Russell (DB) 1975-76-77-78
 Gandy, Steve (WR) 1986-87
 Gardner, Darryl (LB) 1984-85-86-87
 Gardner, Robbie (TB) 1982-83-84-86
 Garrison, Steve (TB) 1977-79-80-81
 Garner, Emmit (G) 1929-30
 Garner, Patrick (TE) 1998
 Gaskins, A.H. (T) 1928
 Gaskins, J.W. 1936-37
 Gay, Charlie (HB) 1957-58-59
 Geddie, Al (NG) 1966-67
 Geddie, Gray (T) 1963
 George, Charlie (C) 1949-50-51
 Gettys, John (T) 1962-63
 Gheesling, Bruce (LB) 1979-80-81
 Gibbs, Mike (OT) 1973-74-75-76
 Gibson, Clayton (LB) 1991-92-93-94
 Gibson, David (OG) 1993-94-95-97
 Gibson, Ernest (DB) 1980-81-82-83
 Gibson, Mitch (LB) 1982-83-84-86
 Giddings, Richard (OG, NG) 1962-64-65
 Gilliland, Osie 1932-33
 Gilreath, Glenn 1946-47-48
 Gilreath, Joe (T) 1951-52-53
 Gilstrap, Hazel 1939-40-41
 Gilstrap, Rick (TE, DE) 1964-65
 Glass, Tony (OG) 1991-92
 Gleason, Danny (WR) 1979
 Glenn, Mike (TB) 1977-78-79-80
 Glover, David (TE) 1976
 Godsey, Rick (TE) 1966-67
 Goila, Tom (DE, LB) 1993-94-95-96
 Goldsmith, Kennet (FB) 1985-86-87-88
 Good, Matt (OT) 1993
 Goodpaster, Richard (TE) 1974
 Gordon, Mark (DB) 1975-76
 Gordon, William 1948
 Goss, Andy (PK) 1973-74-75-76
 Grady, J.W. (HB) 1928
 Grady, Larry (WR) 1985-87
 Graham, John (C) 1976
 Grainger, Mark (WR) 1978-79-80

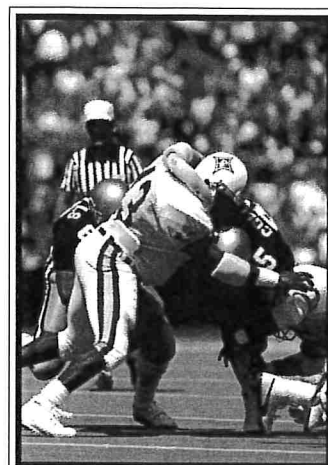
Grant, Jason (DB) 1989-90-91-92
 Grant, Jimmy (FB) 1954-55-56-57
 Graves, Mark (C) 1994-95-96
 Green, Rod (FB) 1990-91-92-93
 Greene, Tommy (OG) 1963-64-65
 Greenleaf, Steve (E) 1980
 Greer Mervyn (G) 1950
 Gregory, Earl (T) 1935
 Gregory, Roger 1942
 Gregory, Wayne (G) 1972
 Greve, Dick 1936
 Griffin, Bob 1930-31-32
 Griffin, Bob 1946-47
 Griffin, Donny (RB) 1971-72-73
 Griffin, Jack 1935
 Griffin, Jimmy (DB) 1973-74
 Griffith, Tom (OG) 1988-89-90-91
 Gwinn, Paul 1935-36

H —

Hagelthorn, Jimmy (DB) 1970-71-72
 Hahn, Robbie (TE) 1966-67
 Hall, Ben (OG) 1996-97-98
 Hall, Billy (LB) 1979-80-81-82
 Hall, Greg (DT) 1982-83-84-85
 Hall, Jesse (HB) 1930
 Hall, Jim 1946
 Hall, Ricky (TB) 1978-80
 Hall, Steve (TE) 1972-73-74
 Hall, William (DB) 1987-88-89
 Hamby, Rodney (G) 1952
 Hamer, Ralph 1940-41-42
 Hamilton, Alston (P) 1984-85-86-87
 Hammet, Flash (HB) 1925
 Hammett, Orion (T) 1950-51-52
 Hancock, Andy (QB) 1966-67
 Hancock, Geary (G) 1961
 Harbin, George (DE) 1970-71-72
 Hardie, John (DT) 1978
 Hardwick, Omari (DB) 1993-94
 Hardy, Mike (DT) 1989-91-92-93
 Harkless, Calvin (DE) 1980
 Harmon, Harry (HB) 1928-29-30
 Harper, Ralph (C) 1984-85-86
 Harper, Richard (OT) 1964-65
 Harrell, Hayden (G) 1930
 Harrell, Spencer (FB) 1925
 Harrelson, Bob (E) 1971
 Harris, Jackie (T) 1951-52-53-54
 Harris, Richie (TB) 1987-88-89
 Harris, Woodham 1934
 Harrison, Adrick (WR) 1992-93-94-95
 Harrison, Charles 1942-46



Steve Crislip (1969-71) became the first Paladin to rush for 1,000 yards in a season when he tallied 1,002 in 1971.

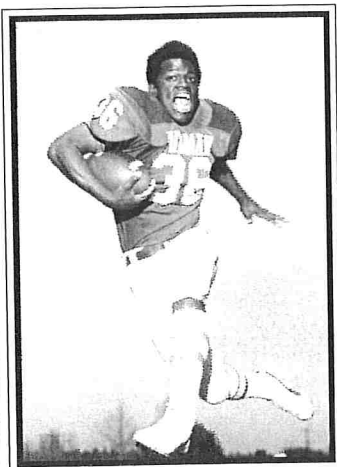


Linebacker Darryl Gardner (1984-87) helped Furman claim a 17-17 tie with Georgia Tech in 1986.



FURMAN LETTERMEN

NCAA-AA National Champion 1988 ▲ Southern Conference Champions 1978, '80, '81, '82, '83, '85, '88, '89, '90



Harry King (1974-76) rushed for 159 yards in Furman's 17-12 win over North Carolina State in 1976.

Harrison, George	1946-48-49
Harrison, George (G)	1955-56-57-58
Hart, Gerry (OG)	1967-68-69
Hartley, Carroll	1960
Hartness, Calvin (G)	1949-50-51
Haynie, Don (DT)	1970-71-72
Hays, Hayden (E)	1962-63
Head, Gene (G)	1955-56
Head, Ken (OG)	1971-72-73
Head, Wayne (OG)	1975
Hecker, Paul (TE)	1993
Heintz, Rodney (DT)	1976-77-78
Heisler, Phil	1955
Henderson, David (QB)	1977-78-79
Hendrix, Clay (OG)	1983-84-85
Henson, Waldo	1940-41
Hentz, Andre (DB)	1993-94
Heres, Bart (OT)	1979-80-81-82
Hesseltine, Brian (LB)	1975-76-77-78
Heusinger, Jon (OG)	1989-90-91-92
Hewell, Clyde (QB)	1966-67-68
Hicks, Bruce (HB)	1972
Hightower, Cleve (QB)	1968-69-70
Hightower, L.G. (E)	1953
Hill, David (G)	1955-56
Hill, Justin (QB)	1997-98
Hill, Olin (T)	1960-61-62
Hill, Tyler (T)	1965-66
Hillhouse, Ted	1946
Hilliard, Fred	1941-42-46
Hilliard, Joe (T)	1938
Hilliard, Roy	1941-42
Hinson, Cecil	1937-38-39
Hodgson, Ralph	1940
Holcomb, Jeff (OT)	1973-74-75-76
Holden, Corey (DE)	1988-89-90
Holland, Jason (LB)	1991-92-93
Holley, Forrest	1942
Holloway, Charlie (G)	1963-64
Holmes, Ernest	1929
Holt, Joe (OT)	1977-79
Horton, Chris (P)	1981
Horton, Hicky (HB, E)	1956-57-58-59
Horton, Sonny (HB)	1949-50-51
Howard, James (C)	1970-71-72
Howell, Danny (LB)	1996
Howes, Paul (TB)	1979
Howle, Phillip (E)	1968-69-70
Hubbard, Bobby (DE)	1996-97-98
Huckabee, Bob (TE)	1965-66
Huggins, Giles	1947-48
Hughes, Herman	1929
Hughes, Milton	1946-47-48-49

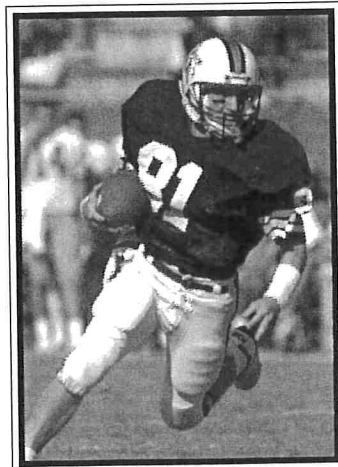
Huguley, Bryant (DB)	1997
Huiett, Gene (G)	1951-52
Huppel, Grover (HB)	1937
Hurley, Joe	1977
Hurst, James	1927
Hurst, Rock (LB)	1981-82-83-84
Hurt, James	1926-27
Hutt, Bill (HB)	1932-33-34

I —

Immel, Dick (HB, DB)	1967-68-69
Ingram, Richard (DB)	1977-78
Ingrum, Jerry (G)	1957
Ivory, Louis (FB)	1998

J —

Jackson, Chad (PK)	1993
Jackson, Darrel (WR)	1981
Jackson, Jason (WR)	1995
Jackson, Kevin (DB)	1995-96-97
Jackson, Richie (DB)	1998
Jackson, Robbie (OL)	1979
Jager, Brian (FB)	1984-85
James, Leon (HB)	1963
Janko, Morris	1942
Jasonek, Ed (HB)	1949-50
Jay, Jerome	1930-31-32
Jeffcoat, Warren (HB)	1938-39
Jenkins, Joe	1936-37-39
Jennings, Bobby (FB)	1952-54-55-56
Jennings, Jim	1956
Jennings, Stanford (TB)	1980-81-82-83
Jepson, Dennis (T)	1962-63-64
Jepson, Larry (C)	1959-60-61
Johannessen, Paul (OT)	1980-81-82-83
Johns, Tommy (LB)	1984
Johnson, Charlie	1946-47-48-49
Johnson, Dick	1955
Johnson, Ivan (DB)	1988-90
Johnson, Jeff (HO)	1979-80-81
Johnson, John (P)	1979-80-81
Johnson, Leon	1942
Johnson, Mike (FB)	1970-71-72
Johnson, Phillip (DB)	1977
Johnson, Rodney (DB)	1998
Jonas, Chris (QB)	1996-97
Jones, Ernest	1930
Jones, John	1973
Jones, Johnnie (E)	1934
Jones, Mike (DB)	1988-89-90
Jones, Philly (QB)	1991-92-93-95
Jones, Tommy (OG, C)	1992-94-95



Brad Stephens (1987-90) was a fine receiver and special teams performer during his Paladin career.

Jones, Whitey	1932
Jordan, Bill (T)	1949-50
Jordan, Jimmy (WR, P)	1966-67-68
Jordan, Mike (C)	1992-93-94

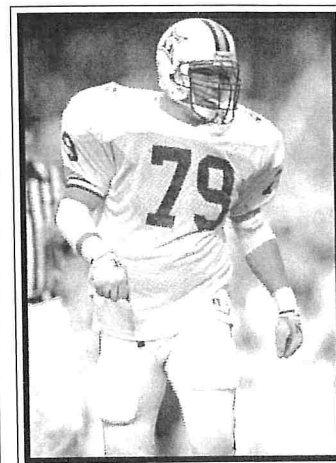
K —

Kamm, Peter (DE)	1997-98
Kapps, Larry (PK)	1964
Kate, Ed (NG)	1968-69-70
Kaufman, Julian (DB)	1992
Kearns, Charlie	1930-31-32
Keck, Corey (DB)	1995
Keefer, Larry (FB)	1965-67
Keenan, Jim (OG)	1975-76
Keisler, Don	1936-38
Keith, John (DB)	1996-97-98
Kelehear, Zach (TE)	1978-79-80
Keller, Elliott (FB)	1962-63
Keller, Gary (DB)	1981-82-83
Kelly, Bobby (C)	1985-86-87
Kelly, David (DB)	1975-76-77-78
Kelly, Frank	1947-48
Kemp, Don (HB)	1959-60
Kendrick, Kevin (LB)	1987-88-89-90
Kenerleber, John (FB, LB)	1965-67-68
Kennedy, Tim (OG)	1973-74-76-76
Kerr, Jimmy (FB)	1963-65-66
Kersey, Butch (OT)	1968-69-70
Key, Greg (TE)	1988-89
Key, Mendell (C)	1991-92
Khadra, Tarick (DB)	1998
Kiernan, Mike (LB)	1986-87-88
Kimball, Walker (TE, DE)	1964-65
Kimche, Scott (DT)	1978-79
Kineard, Ryan (OT)	1996-97-98
King, Bernard (C)	1933-34
King, Bob (E)	1934-35-36
King, Bobby (DE)	1966
King, Harry (TE)	1974-75-76
King, Herbert (E)	1939
King, Jeff (LB)	1996-97
King, Shad (OT)	1995
Kinley, Derrell (DT)	1980-81
Kiser, Jimmy (WR)	1975-76-77-78
Kitchings, Desmond (WR)	1996-97-98
Knight, Dutch (C)	1936-38
Kolans, Dick (QB)	1954-57
Koontz, Owen	1940
Kosman, Luke (NG)	1996-97
Kramer, Todd (DE)	1992-93-94
Kreidler, Phillip (DB)	1987
Kupchinsky, Steve (DT)	1997-98
Kuppens, Tom (TE)	1977

L —

Ladson, Cluade (DB)	1994
Laetsch, Greg (E)	1976-77-78
Lamb, Bobby (QB)	1982-83-84-85
Lammey, Gale (E)	1951-52
Lancaster, Bruce (DE)	1976-77-78
Landy, Mike (FB)	1974
Laney, John	1926-27
Laney, Yates	1925-26
Lanigan, Bernie (DT)	1967-68-69
Laprade, Marty (QB, WR)	1975-76-77
Lark, Don (C)	1987
Lavender, Billy	1942
Lax, Skip (WR)	1977-79
Leathers, Corey (DB)	1993-94
Lee, Byron (TE)	1978-79-80-81
Lee, David (DE)	1969-70-71
Lee, Harry	1936-37
Lee, Jeff (TE)	1982-83-84-85
Leicht, Bruce (P)	1988-89-91
Lemmond, Murray (T)	1933-34
Lemmond, Sam (T)	1926-27-28
Lewis, Lance (QB)	1993
Lezan, Adam (PK)	1984-86
Linder, Charlie (HB)	1956-57-58

Link, Gene (T)	1937-38-39
Lipscomb, C.V. (HB)	1938-39
Lipscomb, Donald (WR)	1988-89-90-91
Lipscomb, Lee (T)	1966-67-68
Lister, Donnie (LB)	1966-67
Litchfield, Johnny (HB)	1964-65-66
Little, John	1946-47-48
Little, Robert (DB)	1984-85-86



Defensive tackle Mike Hardy (1989-93) was an All-Southern Conference selection as a senior.

Littlejohn, Donnie (OT)	1998
Livesay, Hudson (C)	1928
Livezey, Ryan (DE)	1990-91-92-93
Lloyd, Steve (OT)	1978-79-80-81
Loefer, Josh (OG)	1995
Looper, Charles (T)	1938
Loth, Ted (HB)	1959-60-61
Love, Robbie (TE)	1988-89
Lovell, George	1940
Lowery, Kyle (OT)	1988-89-90-91
Ludwig, John (OT)	1990-91-92-93
Luongo, Pete (E)	1962-63
Lusardi, Harry	1942
Lyle, David (DT)	1977-78-80
Lynch, Barney (FB, TE)	1993-94-95-96

M —

MacDonald, Norman (WR)	1972-73-74
Mack, F.B. (LB)	1992-94
Maddox, Ben (OG)	1969
Maddox, Cordell (C)	1951-52-53
Madox, Luther	1936-37
Maddox, Sidney (E)	1955
Mahaffey, Randy (FB)	1973-74
Major, James (E)	1928
Malik, Tom (DB)	1971
Malone, Pete (HB)	1967-68
Mann, Harold	1940
Markofski, Don (T)	1955-56-57-58
Marlowe, Gilbert (C)	1951-52
Marshall, Tommy (DB)	1974-75-76
Martin, Al (E)	1960-61-62
Martin, Dan (HB)	1938-39
Martin, Evans (HB)	1967-68-69
Martin, James (HB)	1938-39-40
Martin, Marion (LB)	1997-98
Martin, Mike (T)	1964-65-66
Mathis, Buzz (T)	1965-66
Mathews, Ansel (DT)	1977-78-79-80
Maxwell, Al (DB)	1987-88
May, Jonathan (TE)	1981-82-83-84
Mazur, Steve (DT)	1979-80-81-82
McCall, Shawn (WR)	1984-86
McCarson, Trask	1932-33-35

FURMAN LETTERMEN



NCAA I-AA National Champion 1988 ▲ Southern Conference Champions 1978, '80, '81, '82, '83, '85, '88, '89, '90

McClarty, Leonardo (TB, FB) 1991-93-94-95
 McClellion, Dick (FB) 1965-66-67
 McClure, Claude (T) 1936
 McCluskey, Brian (DB) 1981-83
 McCorkle, Jim 1946-47-48-49
 McCutchan, Ronnie (P) 1992-93
 McDaniel, Merrill 1940
 McDonald, Larry (HB) 1964
 McDougall, Steve (E) 1977-79
 McEachran, Gib (DB) 1979-80-81-82
 McElveen, Mac (E) 1925
 McEwen, Tappy (C) 1963-64
 McGowan, Patrick (DT) 1991-92-93
 McIntosh, Wayne (OG) 1969-70-71
 McLaughlin, Craig (DB) 1989
 McLaughlin, Warren 1949
 McLaurin, Hugh 1935-36
 McNabb, Mark (DT) 1968-69-70
 McNeil, Michael (DB) 1993-94-95-96
 McQueen, James 1940-46-47
 McTeer, Everett (HB) 1962-63
 Meeks, Zangnel (HB) 1925
 Mellichamp, Elliott (E) 1929-30
 Merkl, Brad (OG) 1981-82-84-85
 Merritt, Gee (HB) 1964-65
 Middleton, David (C) 1978-80
 Middleton, Kenny (WR) 1973-74-75
 Milam, Alden (SN) 1989-90-91
 Miller, Jim (DT) 1993-94
 Mills, Marvin (OG) 1971-72-73
 Mitchell, Bill 1931-32-33
 Mitchell, Mark (OT) 1981-82
 Mitchell, Steve (LB) 1976
 Moates, Lamon (HB) 1947-48-49-50
 Mobley, Bob 1942
 Monferdini, John (E) 1971-72
 Mongelli, Mike (T) 1965-66-67
 Montgomery, Scott (DE) 1977-78-79
 Monti, Joe (T) 1960-61-62
 Moddy, Karl (DE) 1983-84-85
 Moody, Ricky (DT) 1981-82-83
 Moore, Charley (QB) 1955-56
 Moore, Johnson (E) 1938-39
 Moore, Josh (OT) 1997-98
 Moore, Mark (TB) 1994-95-96-97
 Moore, Thomas (T) 1938-39
 Moore, Keith (QB) 1984-85-86-87
 Morgan, Kevin (DT) 1977-78-79-80
 Morgan, Marcus (DB, LB) .. 1992-93-94-95
 Morris, Craig (DE) 1991
 Moore, Mark (TB) 1994
 Morris, Merritt 1940
 Morrish, Tom (OT) 1978-80
 Morton, Beecher 1942

Moses, Frank (NG) 1974-75-76-77
 Mosher, Mark (DB) 1973-74-75
 Motte, Benji (DB) 1983-84-85-86

N —

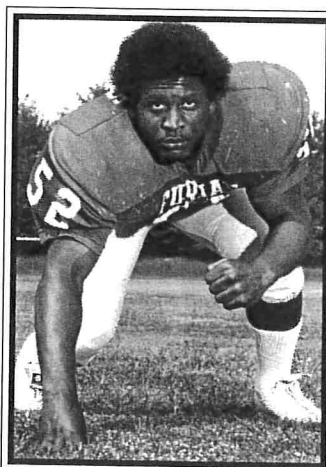
Nation, Rocky (WR) 1991
 Neal, Ernest (E) 1949-50
 Neal, Jimmy (LB) 1974-75-76-77
 Needham, Junie (HB) 1950
 Neel, Bob (FB) 1971-72
 Nemeth, David (FB) 1966
 Nettles, Harold 1941
 Newman, Bill (E) 1959-60-61
 Newman, Chuck 1930
 Newmeyer, Jim (PK) 1969-70
 Nichols, John (QB) 1973-74-75
 Nickles, Roy (HB) 1955-56-57-58
 Nix, Jay (TB) 1983
 Nolan, Carl (E) 1936-37-38
 Nordlinger, Larry (DB) 1974-76
 Norman, Drew (QB) 1982
 Norman, Jeff (LB) 1993-94
 Norris, Jerome (DB) 1983-84-85-86
 Norris, Mike (TE) 1974
 Norris, Steve (LB) 1988-89-90-91
 Norton, Charles 1942
 Nutter, Brian (OT) 1993-94-95-96

O —

Obenaur, Greg (HB) 1964-65-66
 O'Daniel, Clay (DT) 1998
 Ohlsen, Swede 1930-31
 Oliver, Robert (C) 1967-68-69
 Oliff, Joe (OT) 1983-84-85
 Oliff, Joe (T) 1957-58-59-60
 O'Neill, Steve (LB) 1978-79-80-81
 Osborne, Jeremy (DB) 1994-95-96-97
 Outz, Jimmy (DB) 1970-71-72
 Owens, Gerry (C) 1962-63-64
 Owens, Jack (OT) 1991-92-94
 Owens, Jack (E) 1949-50
 Owens, J.B. 1946
 Owings, Michael (TE) 1996-97-98

P —

Pack, Kirby (DE) 1973-74-75-76
 Palmer, Mark (HB) 1968-69
 Partridge, Tim (DE) 1978-79
 Pate, B.J. (DT) 1995-96-97-98
 Patrick, George (HB) 1936-37-38
 Patterson, Ed (OT) 1986-87-88
 Patterson, Robbie (C) 1966-67-68
 Patterson, Verdell (LB) 1983-84-85
 Patton, Steve (DE) 1974-75-76
 Payne, John (FB) 1974
 Peacock, Scott (PK) 1990
 Pearson, Gordon 1929-30-31
 Peavy, Travis (TE, WR) 1980
 Peddicord, Paul (C) 1950-52
 Peden, Ralph 1930-31-32
 Pedrick, Gene (QB) 1951-52-53
 Pedroli, Joe (LB) 1997
 Peevy, Jim (OG) 1992-93-94
 Pendleton, Paul (OG) 1983-84-85-86
 Penland, Jerry (HB) 1954-55-56-57
 Penn, Herbert (HB) 1938-39
 Perkins, Rico (DB) 1995-96-97
 Perone, Jr., Vince (DB) 1972-73-74
 Perone, Sr., Vince (G) 1952-53
 Perry, Garrick (LB) 1975-86-87
 Perry, J.M. (G) 1926-27
 Perry, Rick (DB) 1974-75-76
 Perry, Ted (NG) 1973-74
 Peterson, Al (DT) 1984-85-86-87
 Pfeifer, Dick (E) 1954-55-56-57
 Phillips, Gene 1931-33
 Phillips, Nelson 1942
 Phillips, Terry (OT, P) 1982-83-85



All-Southern Conference nose guard Frank Moses (1974-77) was Furman's leading tackler in 1977 with 163 stops.

Phillips, Troy (NG) 1980-81-82-83
 Pickens, Sam (HB) 1962-63
 Piner, Jim (FB) 1949-50-51
 Pipkins, Lehman (HB) 1927-29-30
 Pipkins, Oscar (HB) 1925-26
 Pittman, Bob 1929-30-31
 Pitts, Brian (DT) 1986-87-88-89
 Pleasant, Hershhal (DT) 1997-98
 Poole, Andy 1930-31
 Poole, Angus (TE) 1975-76
 Popson, John (HB) 1952-53-54-55
 Potter, Keith (TE) 1978-79
 Potter, Ted 1930-31
 Pou, Sam (E) 1951-53
 Pouyer, Tim (OT) 1997-98
 Powell, Allen (T) 1933-34
 Powers, Gordy (E) 1963-64-65
 Powers, Jackie (HB) 1955-56
 Preddy, Mark (WR) 1986
 Preston, Walter (G) 1962-63-64
 Pridmore, Harold (T) 1949-53
 Pringles, Gus (QB) 1952-53-54-55
 Priore, Marty (OG) 1998
 Proctor, Dewey 1940-41-42
 Pruitt, George 1946-47-48-49
 Pruitt, Mike (DT) 1977
 Puhl, Joe (G) 1965-66-67
 Pulley, John (T) 1925-26-27

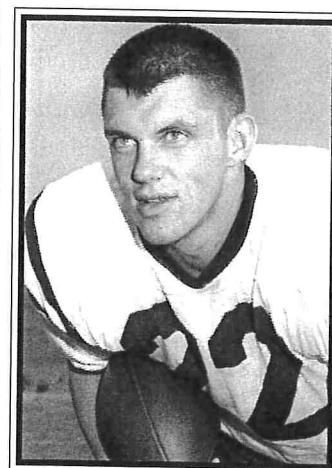
Q —

Quarles, George (WR) 1987-88
 Quarles, Taylor (DB) 1988-89-90-91
 Queen, Jackie (OG) 1968-69-70
 Quinlan, Kevin (DE) 1980-81-82

R —

Raeber, Scott (C) 1988
 Ramaley, Seth (DB) 1993-94-95-96
 Ransbotham, Jim (HB) 1952-53
 Ratcliff, Mike (DB) 1989-90-91
 Rapinchuk, George (FB) 1960-62-63
 Raymond, Jeff (TE) 1989
 Rawl, Fred (QB) 1925-26-27
 Redmond, Brad (LB) 1998
 Reed, Gene (T) 1951-52-53
 Reed, Kavis (DB) 1992-93-94
 Reeder, Gene (C) 1982-83-84-85
 Rentz, Stuart (TB) 1996-97-98
 Reugner, Emil (C) 1955-56-57
 Revels, Buddy (QB) 1959
 Rhoads, Chris (WR) 1991
 Rhoads, Tommy (HB) 1963-64

Rhodes, Verlon (DB) 1980
 Rice, Richard 1931-32
 Richardson, Angelo (TB) 1986-87-88
 Richardson, Darrell (G) 1938-39
 Richter, Jim (PK) 1992-93-94-95
 Rickman, Brent (QB) 1997-98
 Risher, Billy (WR) 1979-80-82-83
 Roach, Bill (C) 1988-89
 Roberson, Daniel (DB) 1998
 Roberts, Scott (LB) 1986-87
 Robinson, Edward (TB) 1986
 Robinson, Eric (DT) 1988
 Robinson, Jimmie 1931
 Robinson, Larry (TB) 1973-74-75-76
 Robinson, Relman 1934
 Roddy, Virgil 1946-49
 Rohr, Ernest 1935
 Roesch, Karl 1940-42
 Rogers, Colin (DB, LB) 1995-96-97-98
 Rogers, Daryl (DB) 1989-90
 Romano, Mike (OG) 1972-73
 Roper, Chris (DE) 1986-86-88-89
 Roper, Cleo (E) 1934
 Ross, Colin (FB) 1994-95-96
 Rucker, Mark (WR) 1998
 Rudder, Mark (WR) 1984-85-86-87
 Ruff, Orlando (LB) 1995-96-97-98

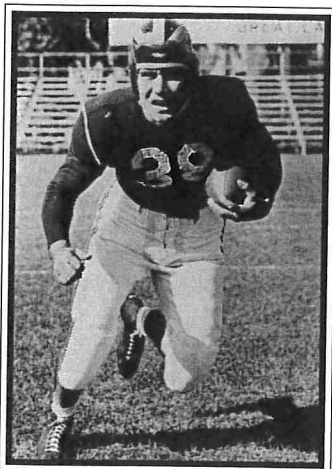


Halfback Sam Pickens (1962-63) returned an interception 95 yards for a touchdown against George Washington in 1963.

Ruffing, Matt (DT) 1979-80-81
 Rush, Russell (DB) 1984-85-86-87
 Russell, Derek (FB) 1997-98
 Russell, Frank (E) 1950-52
 Rutkowski, Jeff (LB) 1974-75

S —

Sander, Greg (OG) 1993-94-95-96
 Sanders, Adam (FB) 1997-98
 Sanders, Brent (DB) 1979-81-82
 Sanders, Jeff (DT) 1987-89-90
 Sanders, Mike (DT) 1974-75-76-77
 Sansbury, Trent (TE) 1998
 Sansom, Randy (DB) 1979
 Sapp, Bob (G) 1965-66-67
 Scarborough, Rivers (HB) 1965
 Schaefer, Norman (DT) 1984
 Scherich, Tom (OT) 1971-72-73
 Schmidt, Mark (OG) 1973-74
 Schmidt, Mike (LB) 1998
 Schnabele, Rick (WR) 1981-82-83
 Schneider, Red (HB) 1926
 Schuyler, Jack 1942-46
 Scott, Bernard (LB) 1993-95-96-97



Dewey Proctor (1940-42), a member of Furman's Hall-of-Fame, was an all-state selection in 1942.



FURMAN LETTERMEN

NCAA I-AA National Champion 1988 ▲ Southern Conference Champions 1978, '80, '81, '82, '83, '85, '88, '89, '90

Scott, Clarence	1933
Scott, Jerry (DT)	1977-78-79-80
Scott, June	1935-36-37
Scott, Olin	1946
Seay, Larry (T)	1955
Seel, William	1939-40-41
Sellers, Scott (OG)	1977-78-79
Senter, Rodger (E)	1960-61-62
Sewell, Tank (G)	1926
Sexton, Wade (DB)	1987-88
Sharp, Jack (C)	1959-60-61
Shattuck, Andy (LB)	1989
Shaw, Doug (E)	1962-63
Shelton, Mike (QB)	1971-72-73
Shepherd, David (DB)	1972-73-75-76
Sherwood, Ron (FB)	1988-89-90
Shetley, Roten (HB)	1937-38-39
Shi, David (DE)	1970-71-72
Shill, Mike	1956
Shivers, Jack	1935-36-37
Shook, Irvin (QB)	1950-51
Siffri, Paul (TE)	1988-89-90-91
Siminski, Ray (E)	1955-56-58
Simmons, Brette (TE)	1974-75-77-78
Simpson, Ike (FB)	1973-74-75-76
Sims, Ed	1946
Sims, Mark (DB)	1983-84
Singletary, Wesley (C)	1934
Sizemore, Paul	1940-41-42
Sleet, Dan (OG)	1979-80-82-83
Smallen, Gary (DB)	1970-71
Smallwood, Dan (DB)	1988-89-90
Smerdzinski, Zach (WR)	1997-98
Smith, Bob	1931-32-33
Smith, Bill	1946
Smith, Daryl (LB)	1993-95-96
Smith, David (OG)	1973
Smith, Frank	1932
Smith, Greg (TB)	1983-84-85-86
Smith, Henry (T)	1927-28-29
Smith, Holman (E)	1950-51-53
Smith, Jerrod (DE)	1981-82-83-84
Smith, J.P. (G)	1929
Smith, Kelly (DE)	1985-86-87
Smith, Kit (LB)	1973
Smith, Mallory (G)	1936-37-38
Smith, Roy	1932-33-35
Smith, Scott (C)	1982
Smith, Shelvis (DB)	1998
Smith, Terry (DB)	1980-81
Smoak, Harold	1935-36-37
Smoak, Ike	1942
Snead, Bob (FB)	1951-52-53
Snipes, Frank (G)	1966-67-68
Snipes, Jeff (DE)	1978-79-80
Snyder, Ben (PK)	1992-93-94

Socha, John (G)	1952-53-54
Solomon, Brent (DE)	1991-92-93-94
Sorrells, John (WR)	1982-83
Sorrells, Paul (DB)	1979-80
Sorrells, Tim (QB)	1977-79-80-81
Southard, Tommy (WR)	1975-76-77
Sowell, Dicky (HB)	1966-67-68
Sowell, Kenny (DB)	1968-69-70
Speaks, Chris (QB)	1984-85-86-87
Speigner, Coley	1938
Spencer, Ryan (DT)	1998
Squire, Steve (DB)	1983-84-85-86
Stacks, Doug (C)	1962-63
Stallard, Dewey	1948-49
Stamas, Peter (OT)	1998
Stamey, David (WR)	1992
Stancil, Tim (FB)	1987
Standiford, Al (PK)	1971-72-73
Stanley, Stan (OG)	1977-78-79
Stephens, Brad (WR)	1987-88-89-90
Stephens, John	1933-34
Stepp, Tim (DE)	1984-85-86-87
Stepp, Wade (G)	1949-50
Sterling, Dwight (LB)	1986-87-88-89
Sterling, Milan (DE, LB)	1990-91-92-93
Stevens, Roy (P)	1934-35-36
Stewart, Chris (C)	1998
Stewart, Ivey (LB)	1970-71-72
Stewart, Kevin (WR)	1996-97-98
Stewart, Larry (OT)	1974-75-76
Stewart, Paul (HB)	1952-53
Stewart, Woody (E)	1956-57-58-59
Stewart, Flucie	1929-30-31
Still, Coye (G)	1948-49-50
Still, Coye (OG)	1984-86
Stillwell, Bob (QB)	1964-65-66
Stockdale, Billy (FB)	1988-89-90
Stombaugh, Paul (P)	1946-47-48-49
Stowers, Mark (TB)	1976-77-78
Strappy, Troy (TB, DB)	1993-94-95-96
Street, Joe (FB)	1967-68-69
Strickland, Ron (OT)	1968-69-70
Stroman, Andre (DB)	1997-98
Stubbs, Marques (LB)	1995
Sturgis, Fred (OG)	1990-91-92
Sumner, Jim (HB)	1960-61-62
Summers, Jack	1941-42-46
Suttle, Kota (LB)	1989-90-91-92
Sutton, Frank (DT)	1989-90-91
Sutton, Russ (HB)	1951-52-53
Sutton, Shelly (HB)	1957-58-59-60
Swicord, Will (LB)	1990
Swilley, Floyd (OG)	1980
Swilling, Hugh (QB)	1990-91-92
Swilling, Keith (TE)	1986-87-88

T—

Taffer, Edward	1949
Talkington, Johnny (HB)	1965-67
Tanguay, Tim (PK)	1980-81-82
Tate, Mark (DB)	1992
Taylor, David (OG)	1982-85
Taylor, Mark (FB)	1977-78-79-80
Taylor, Sam (HB)	1957-58-59-60
Teal, Everett (HB)	1936-38
Terrill, Scott (DE)	1977
Tew, John (T)	1959-60
Tezza, Henry	1947
Theiling, Brent (C)	1969-70-71
Thier, Jay (LB)	1994-95-96-97
Thomas, Carl (HB)	1938
Thomas, Charlie (QB)	1947-48-49-60
Thomas, Jerry (HB)	1960-61-62
Thomas, Kerrick (WR)	1994-95-96
Thomas, Lon (DB)	1986-87
Thomas, Troy (C)	1925-26
Thompson, Rick (DB)	1986
Thornton, Fleming	1947-48
Thrift, John (LB)	1998
Tiedeman, Clay (OT)	1988-89-90-91
Tidwell, Lilius (E)	1928
Tilghman, Joe (E)	1925-26

Tillman, Tywaun (DB)	1991-92
Todd, E.P. (HB)	1928-29-30
Toothaker, Bernie (DT)	1970-71
Trabakino, Ralph	1940
Traweek, Lawrence	1929-30-31
Traylor, Briggs (C)	1980-81-82
Traynham, Earl	1936-37
Traynham, Jim	1933
Tremble, Carl (TB)	1989-90-91-92
Trotta, Rich (QB)	1978-79
Trotter, Byron (E)	1968-69-70
Truesdale, Sonny (G)	1971
Truluck, Charlie	1942-46
Turk, Glenn	1946
Turner, Billy (FB)	1963-64-65
Turner, Bob (E)	1932-33-34
Turner, Chris (NG)	1990-91-92-93
Turner, George	1939-40-41
Turner, Pat (DB)	1987-88-89
Tuten, Wilson (G)	1938-39
Tzouvelekas, Nick (G)	1955-56-57

U—

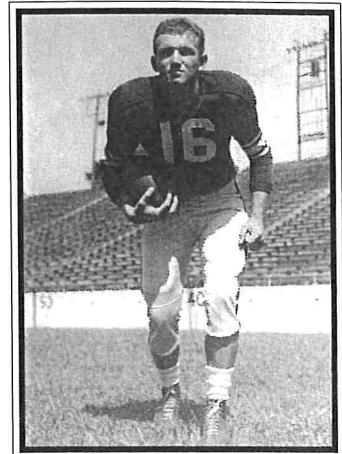
Utley, Danny (DT)	1971-72-73
-------------------	------------

V—

Vallenga, Louis	1940
Vaughn, George (FB)	1969
Veal, George (T)	1966-67-68
Vickers, John	1940

W—

Wade, Brian (HO)	1992-93
Wade, Chris (P)	1990-91
Wade, Jody (P, WR)	1994-95-96-97
Wakefield, Forrest (OG, LB)	1932-33-34
Walburn, Steve (DB)	1979-80-81-82
Waldrep, Alvin (G)	1953
Walker, Johnnie (G)	1925-26
Walker, Sammy (DT)	1987-88-89
Walker, Stan (DT)	1972-73-74
Walker, Todd (DT)	1982-84-85
Walter, Eric (OG)	1988-89-90-91
Walter, Tom (E)	1959-60-61
Walters, Mitch	1987
Walters, Roy (HB)	1938-39-40
Walton, Buddy (C)	1955-56-57-58
Walton, Dan (G)	1963-64-65
Warlick, Fox (HB)	1966-67
Warren, Phil (DT)	1994-95-96-97
Warren, Steve (OG)	1969-70-71
Washington, Frank (E)	1927
Waters, Tate (TE)	1990-91-92
Watkins, Doug (QB)	1963-64
Watson, Joe (HB)	1935-36
Watts, Joe (QB)	1949-50-51
Webber, Cherrod (DB)	1986-87-88
Weigil, Faris (T)	1938-39
Weir, Bill (HB)	1955-56-57
Wells, Bill	1929-30-31
Wells, Jason (PK)	1996-97-98
Wells, Robert (WR)	1989
West, Charlie (QB, HB)	1951-52-53
Westberry, Wayne (LB)	1980
Wester, C.C.	1941-42
Westlake, Hal (OT)	1976-77-78
Wham, Don (E)	1947-49-50
Wham, Tom	1946-47-48
Whitcomb, Stan (DB)	1989
White, Brad (OG)	1985-87
White, Fenton	1936
White, John (LB)	1976-77-78
White, Stephen (TB)	1979-80-81-82
Whitehurst, David (QB)	1973-74-75-76
Whitehurst, Mark (TE)	1977
Whitley, Billy (TB)	1990-91-92-93
Whitmire, John (WR)	1988-89-90-91
Wickswat, Paul (DT)	1970-71-72
Wiggin, Pat (DE)	1967-68
Wild, Scott (TE)	1990-91-92-93



Halfback Ted Yakin (1952-54) helped key wins over West Virginia, Florida State, N.C. State, and Wake Forest during his career.

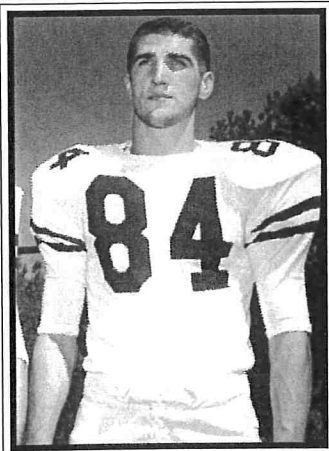
Wilder, Bob	1928-29-30
Wilkins, Rick (LB)	1985
Wilkinson, Lee (FB)	1984-85-86
Will, Chad (OG)	1987-89-90
Williams, Dean (OT, DT)	1988-89
Williams, Dennis (FB)	1981-82-83-84
Williams, Grayson	1946
Williams, Guy	1933-34
Williams, Kent (DT)	1982-83
Williams, Marshall (PK)	1966-67-68
Williams, Reggie (NG)	1994-95-96-97
Williams, Steve (OG)	1976-77-78
Williams, Tommy (HB)	1950-51-52
Williams, Webster (G)	1951-52-53-54
Williamson, Bruce (DT)	1973-74-76
Williamson, David (DB)	1970-71-72
Willis, Chester (NG)	1969-70-71
Willis, Lee (P)	1998
Wilson, Joe (NG)	1992
Wilson, John (G)	1968-69
Wilson, Leslie (T)	1966-67
Wilson, Mike (DB)	1985-86-87
Wilson, Steve (LB)	1973-74-75-76
Wilson, Wayne (DB)	1971-72
Woerner, Kent (DT)	1975-76-77-78
Wofford, Hugh (G)	1937-38-39
Wolfram, John (QB)	1970-71-72
Wood, Dan	1930-31-32
Wood, Terry (C)	1925-26
Wood, Warren (T)	1928-29-31
Wood, Mike (PK)	1986-87-88-89
Woodham, Thomas (C)	1998
Woods, Bobby (C)	1977-78-79
Woodson, Tom (WR, P)	1973-74
Worrell, Andre (DB)	1990-91-92-93
Wrenn, Rick (DE)	1971-73
Wright, Bobby (DB)	1998
Wright, Dennis (WR)	1979-80-81-82
Wyche, Sam (QB)	1963-64-65

Y—

Yakin, Ted (HB)	1952-53-54
Yakin, Dale (DE)	1987
Yates, Tommy (HB)	1957-58-59
Yocke, Rick (DT)	1974
Young, Dave (T)	1952-53-54-55
Young, Rickey (C)	1976-77-78
Young, Steve (LB)	1977

Z—

Zemina, John (DB)	1981-82
Zima, Ray (HB)	1938
Zimmerman, Mike (DT)	1990-92-93
Zuberer, Ernest (FB)	1962-63-64



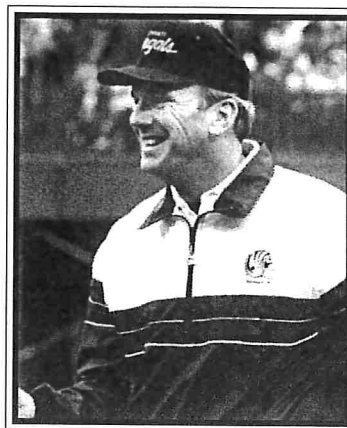
Ed Ray Siminski (1955-58) caught 35 passes for 568 yards and five touchdowns for Furman in 1958.

PALADINS IN THE PROS

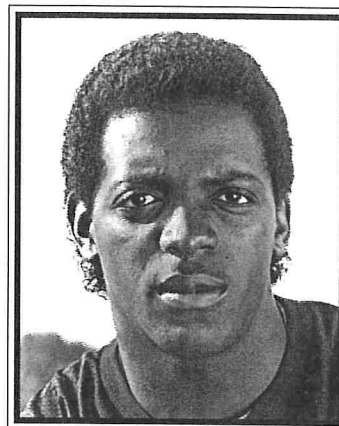


NCAA I-AA National Champion 1988 ▲ Southern Conference Champions 1978, '80, '81, '82, '83, '85, '88, '89, '90

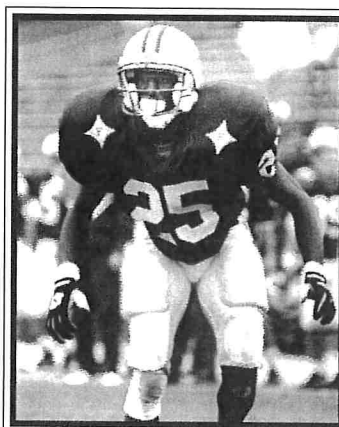
Roten Shetley '39	Brooklyn Dodgers
Dewey Proctor	New York Yankees
	Chicago Rockets
Tom Wham '49	Chicago Cardinals
Harry Bierman '49	Chicago Cardinals
Ed Jasonek '50	Chicago Cardinals
Bobby Jennings '57	Calgary Roughriders (CFL)
Ray Siminski '59	Montreal Alouettes (CFL)
Billy Canty '62	Toronto Argonauts (CFL)
Joe Monti '63	Baltimore Colts
Olin Hill '63	Green Bay Packers
Sam Wyche '66	Cincinnati Bengals
	Washington Redskins
	Detroit Lions
	Buffalo Bills
	San Francisco 49ers (Assistant Coach)
	Cincinnati Bengals (Head Coach)
	Tampa Bay Buccaneers (Head Coach)
Robbie Hahn '69	Orlando Panthers (CFL)
Mike Bartik '74	Philadelphia (WFL)
	Birmingham (WFL)
Vince Perone, Jr. '75	Atlanta Falcons
David Whitehurst '76	Green Bay Packers
Larry Robinson '77	Atlanta Falcons
Tommy Southard '78	St. Louis Cardinals
	Houston Oilers
Greg Laetsch '79	Seattle Seahawks
Brette Simmons '79	Dallas Cowboys
Kent Woerner '79	New York Giants
Chris Buono '79	New York Giants
Terry Smith '81	New England Patriots
Terry Clark '83	Denver Broncos
	Denver Gold (USFL)
Bruce Gheesling '82	Chicago Blitz (USFL)
	Arizona Wranglers (USFL)
Brothel Cole '82	Oklahoma Outlaws (USFL)
Stanford Jennings '84	Cincinnati Bengals
	New Orleans Saints
	Tampa Bay Buccaneers
Ernest Gibson '84	New England Patriots
	Miami Dolphins
Mark Bridgman '84	Cleveland Browns
David Charpia '84	Seattle Seahawks
Rock Hurst '85	Hamilton Tiger Cats (CFL)
	Cleveland Indians
Dinky Williams '85	St. Louis Cardinals
Rick Wilkins '85	Chicago Cubs
Chas Fox '86	Kansas City Chiefs
Kirk Burnett '87	New York Jets
Jerome Norris '87	Atlanta Falcons
Darryl Gardner '88	Winnipeg Bluebombers (CFL)
Phillip Ferguson '88	Cincinnati Bengals
	Orlando Predators (AFL)
Jeff Blankenship '90	Washington Commandos (AFL)
	Albany Firebirds (AFL)
Frankie DeBusk '91	Sacramento Attack (AFL)
Paul Siffri '92	Pittsburgh Steelers
Carl Tremble '93	Phoenix Cardinals
Chris Clamp '95	Scotland Claymores (WFL)
Kavis Reed '95	Edmonton Eskimos (CFL)
	Kansas City Chiefs
Jim Richter '96	San Francisco 49ers
	Green Bay Packers
Luther Broughton '97	Philadelphia Eagles
	Carolina Panthers
Braniff Bonaventure '97	Montreal Alouettes (CFL)
	Orlando Predators (AFL)
Orlando Ruff '99	San Diego Chargers



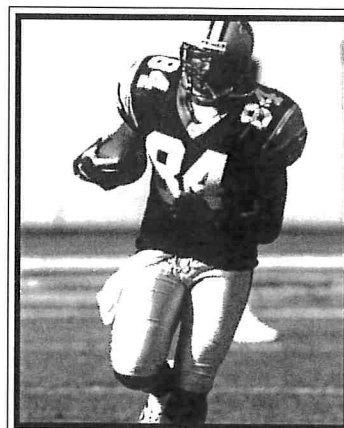
An All-Southern Conference quarterback for Furman in 1965, Sam Wyche played football professionally for nine years before beginning a coaching career that included, among others, stints as head coach of the Cincinnati Bengals and Tampa Bay Buccaneers.



Stanford Jennings, a three-time Southern Conference Player-of-the-Year selection at tailback, played in the NFL for nine years and returned a kickoff 90 yards for a touchdown for the Cincinnati Bengals in Super Bowl XXIII.



Kavis Reed, who started at cornerback for the Paladins in 1993 and '94, finished second in the Canadian Football League in interceptions in 1997, recording seven pickoffs for the Edmonton Eskimos.



Currently a member of the Carolina Panthers, tight end Luther Broughton was the first Furman player to be drafted since 1986, when he was selected in the fifth round by the Philadelphia Eagles.



FURMAN THROUGH THE YEARS

NCAA I-AA National Champion 1988 ▲ Southern Conference Champions 1978, '80, '81, '82, '83, '85, '88, '89, '90

1889 (0-2)
Coach: William Beattie
 D. 14 1-5 L Wofford A
 J. 18 1-2 L Wofford H

1890 (2-0)
Coach: H.C. Granger
 J. 24 12-0 W Wofford A
 M. 21 28-2 W Wofford H

1891 (0-1)
Coach: H.P. Young
 N. 14 0-96 L Trinity N1
 N1 - Columbia, S.C.

1892 (1-0)
Coach: H.P. Young
 D. 24 44-0 W South Carolina N1
 N1 - Charleston, S.C.

1893 (1-1)
Coach: H.P. Young
 N. 30 18-4 W Wofford H
 D. 9 8-22 L Georgia N1
 N1 - Augusta, Ga.

1895 (0-2)
Coach: H.P. Young
 N. 8 10-14 L South Carolina A
 N. 23 0-44 L Wofford A

1896 (2-3)
Coach: Sims
 O. 23 0-12 L Bingham A
 O. 31 6-14 L Clemson H
 N. 6 0-6 L Wofford A
 N. 13 10-0 W Charleston YMCA A
 N. 26 12-0 W South Carolina H

1900 (0-2-1)
Coach: Frank Spencer
 O. 26 0-0 T Wofford A
 N. 17 0-27 L South Carolina H
 N. 29 5-6 L Wofford H

1901 (1-2-1)
Coach: C.S. Roller
 O. 15 0-17 L Georgia Tech A
 O. 22 0-12 L South Carolina A
 O. 26 5-5 T Georgia Tech H
 N. 28 17-0 W Wofford H

1902 (4-3-4)
Coach: C.S. Roller
 O. 3 12-0 W Bingham A
 O. 6 0-0 T North Carolina State H
 O. 10 6-0 W Davidson A
 O. 11 0-10 L North Carolina A
 O. 13 5-2 W North Carolina State A
 O. 18 0-11 L Georgia A
 O. 24 0-28 L Clemson H
 N. 1 0-0 T Georgia Tech H
 N. 10 0-0 T St. Albans H
 N. 14 10-0 W South Carolina A
 N. 27 5-5 T Charleston Ath. Assoc. H

1903 (6-3)
Coach: W.C. Farmer
 S. 27 7-2 W Clemson "B" H
 O. 4 6-7 L Riverside H
 O. 11 38-0 W Charleston H
 O. 22 7-16 L Newberry N1
 O. 25 59-0 W Bailey H

N. 1 0-75 L The Citadel A
 N. 3 30-0 W Charleston A
 N. 21 65-0 W Presbyterian H
 N. 27 40-0 W Clemson "C" H

1914 (2-5)
Coach: W.B. Bible
 O. 10 19-12 W Wofford H
 O. 17 57-0 W Bailey A
 O. 22 0-57 L Clemson H
 O. 31 0-39 L Mercer A
 N. 14 6-13 L Newberry H
 N. 18 2-39 L Presbyterian A
 N. 26 19-26 L Maryville H

1915 (5-3)
Coaches: W.B. Bible and W.L. Laval
 S. 25 0-94 L Clemson H
 O. 2 60-0 W Erskine H
 O. 15 13-20 L Presbyterian H
 O. 23 20-6 W Bingham A
 N. 3 38-7 W Presbyterian H
 N. 6 13-58 L Davidson A
 N. 13 7-0 W Newberry H
 N. 25 25-0 W Wofford H

1916 (4-5)
Coach: W.L. Laval
 S. 30 6-7 L Clemson A
 O. 14 60-3 W Erskine H
 O. 21 21-10 W Georgia Tech "B" H
 O. 27 42-10 W Presbyterian A
 N. 4 14-46 L Davidson H
 N. 11 0-49 L Georgia A
 N. 18 0-46 L North Carolina A
 N. 23 14-0 W South Carolina H
 N. 30 7-9 L Wofford A

1917 (3-5)
Coach: W.L. Laval
 S. 29 0-25 L Georgia Tech A
 O. 6 7-6 W Wake Forest H
 O. 13 0-38 L Clemson H
 O. 20 20-7 W Newberry H
 N. 3 7-28 L Davidson H
 N. 8 0-26 L South Carolina N1
 N. 17 7-14 L Presbyterian H
 N. 29 18-3 W Wofford H
 N1 - Florence, S.C.

1918 (3-5-1)
Coach: W.L. Laval
 O. 12 0-118 L Georgia Tech A
 O. 26 26-0 W 48th Infantry H
 N. 2 20-7 W 48th Infantry H
 N. 9 6-6 T Erskine H
 N. 16 12-20 L South Carolina H
 N. 23 7-67 L Clemson A
 N. 30 7-13 L 2nd Development Reg. A
 D. 4 7-0 W Wofford A
 D. 7 7-13 L Presbyterian H

1919 (6-2-1)
South Carolina Champions
Coach: W.L. Laval
 S. 27 0-74 L Georgia Tech A
 O. 4 13-0 W Oglethorpe H
 O. 11 7-6 W Wofford H
 O. 18 6-0 W Presbyterian H
 O. 25 39-7 W Wake Forest H
 N. 1 21-6 W The Citadel H
 N. 15 41-0 W Erskine H
 N. 21 7-7 T Clemson H

N. 27 14-41 L Davidson H

1920 (9-1)
South Carolina Champions
Coach: W.L. Laval
 S. 25 33-0 W Elon H
 O. 2 41-0 W Erskine H
 O. 9 21-6 W The Citadel A
 O. 16 0-7 L Georgia H
 O. 23 17-0 W Wake Forest H
 O. 29 42-0 W Newberry A
 N. 6 42-3 W Oglethorpe H
 N. 13 69-0 W Wofford A
 N. 20 14-0 W Clemson H
 N. 25 7-0 W Davidson H

1921 (7-2-1)
South Carolina Champions
Coach: W.L. Laval
 S. 24 42-7 W Erskine H
 O. 1 63-0 W Newberry H
 O. 8 7-27 L Georgia A
 O. 15 0-69 L Georgia Tech A
 O. 21 0-0 T Clemson H
 O. 29 42-0 W The Citadel H
 N. 5 37-0 W Mercer H
 N. 12 7-0 W South Carolina H
 N. 19 62-0 W Wofford H
 N. 24 28-0 W Davidson H

1922 (8-3)
Coach: W.L. Laval
 S. 29 33-0 W Newberry H
 O. 7 7-6 W Florida A
 O. 14 0-7 L Georgia H
 O. 19 28-0 W The Citadel N1
 O. 21 26-0 W Oglethorpe A
 O. 28 0-13 L Richmond H
 N. 4 67-6 W Erskine H
 N. 11 7-27 L South Carolina A
 N. 18 41-0 W Wofford A
 N. 25 20-6 W Clemson H
 N. 30 13-10 W Davidson H
 N1 - Florence, S.C.

1923 (9-2)
Coach: W.L. Laval
 S. 29 13-10 W Virginia A
 O. 6 3-6 L Mercer A
 O. 13 20-0 W Presbyterian H
 O. 20 30-14 W The Citadel H
 O. 24 30-0 W Davidson N1
 O. 27 22-7 W Richmond A
 N. 3 29-0 W Oglethorpe H
 N. 10 23-3 W South Carolina H
 N. 16 35-0 W Newberry H
 N. 24 63-0 W Erskine H
 N. 29 6-7 L Clemson H
 N1 - Columbia, S.C.

1924 (5-5)
South Carolina Champions
Coach: W.L. Laval
 S. 27 14-0 W Newberry H
 O. 4 0-20 L Alabama H
 O. 11 0-23 L Mercer H
 O. 18 0-23 L Georgia N1
 O. 22 6-0 W Davidson N2
 O. 25 0-6 L The Citadel A
 N. 1 0-20 L Georgetown H
 N. 8 10-0 W South Carolina H
 N. 14 7-2 W Mississippi H
 N. 27 3-0 W Clemson A

N1 - Augusta, Ga.
 N2 - Columbia, S.C.

1925 (7-3)
South Carolina Champions
Coach: W.L. Laval
 S. 26 27-10 W Newberry H
 O. 3 20-15 W Washington & Lee A
 O. 10 7-0 W The Citadel H
 O. 17 0-21 L Georgia N1
 O. 24 7-0 W Davidson N2
 O. 31 27-3 W Presbyterian H
 N. 7 0-17 L Mercer A
 N. 14 2-0 W South Carolina H
 N. 20 0-9 L Wake Forest N3
 N. 26 26-0 W Clemson H

N1 - Augusta, Ga.
 N2 - Charlotte, N.C.
 N3 - Asheville, N.C.

1926 (8-1-1)
South Carolina Champions
Coach: W.L. Laval
 S. 25 30-0 W Newberry H
 O. 2 31-0 W North Carolina State A
 O. 9 10-0 W Wake Forest H
 O. 16 14-7 W Georgia A
 O. 23 13-7 W Presbyterian H
 O. 30 11-12 L Oglethorpe A
 N. 6 13-13 T Mercer H
 N. 13 10-7 W South Carolina A
 N. 20 7-0 W The Citadel A
 N. 25 30-0 W Clemson H

1927 (10-1)
South Carolina Champions
Coach: W.L. Laval
Captain: Oscar Pipkins
 S. 23 13-7 W Duke A
 S. 30 20-0 W North Carolina State H
 O. 8 27-13 W Mercer A
 O. 15 0-32 L Georgia A
 O. 22 47-0 W Erskine H
 O. 29 19-0 W Oglethorpe A
 N. 5 53-0 W Wake Forest H
 N. 12 34-0 W South Carolina H
 N. 19 6-0 W The Citadel A
 N. 24 28-0 W Clemson H
 J. 2 38-7 W Miami (Fla.) A

1928 (5-4)
Coach: T.B. Amis
Captain: Sam Lemmond
 S. 29 6-0 W Duke H
 O. 6 0-15 L Tenn.-Chattanooga H
 O. 13 6-0 W Presbyterian H
 O. 19 0-7 L Georgia A
 O. 27 26-0 W Wofford H
 N. 3 18-0 W Wake Forest N1
 N. 10 13-0 W The Citadel H
 N. 17 0-6 L South Carolina A
 N. 29 12-27 L Clemson H

1929 (5-4-1)
Coach: T.B. Amis
Captain: H.H. Smith
 S. 21 19-6 W Erskine H
 S. 28 7-20 L Tenn.-Chattanooga A
 O. 5 0-27 L Georgia A
 O. 11 12-0 W Presbyterian H
 O. 19 45-0 W Newberry H
 O. 26 25-6 W Wofford A

FURMAN THROUGH THE YEARS



NCAA I-AA National Champion 1988 ▲ Southern Conference Champions 1978, '80, '81, '82, '83, '85, '88, '89, '90

N. 2 12-0 W Wake Forest H
 N. 9 0-0 T The Citadel A
 N. 16 0-2 L South Carolina H
 N. 28 6-7 L Clemson A

1930 (6-3-1)

Coach: T.B. Amis

Captain: Harry Harmon

S. 25 49-0 W Newberry H
 O. 4 0-54 L Army A
 O. 11 35-0 W Erskine H
 O. 18 7-7 T Davis-Elkins H
 O. 25 14-13 W Florida A
 N. 1 6-13 L Oglethorpe A
 N. 8 14-0 W South Carolina H
 N. 15 14-0 W Wofford A
 N. 22 31-6 W The Citadel H
 N. 27 7-12 L Clemson H

1931 (5-2-2)

Coach: T.B. Amis

Captain: Tom Carson

S. 24 26-0 W Newberry H
 O. 3 36-6 W Wake Forest N1
 O. 9 0-0 T Erskine H
 O. 17 34-6 W Richmond H
 O. 24 0-3 L Oglethorpe A
 O. 31 20-0 W Wofford H
 N. 7 0-27 L South Carolina A
 N. 14 33-7 W The Citadel A
 N. 26 0-0 T Clemson H
 N1 - Gastonia, N.C.



A.P. "Dizzy" McLeod

1932 (8-1)

South Carolina Champions

Coach: A.P. McLeod

Captain: Ralph Peden

S. 24 25-6 W Newberry H
 O. 1 0-13 L Army A
 O. 8 58-0 W Erskine H
 O. 15 19-0 W Davis-Elkins H
 O. 22 2-0 W Mercer A
 O. 27 20-0 W The Citadel N1
 N. 5 24-0 W Wofford A
 N. 12 14-0 W South Carolina H
 N. 24 7-0 W Clemson H
 N1 - Orangeburg, S.C.

1933 (6-1-2)

Coach: A.P. McLeod

Captain: Bob Smith

S. 30 14-6 W Richmond A
 O. 6 33-0 W Erskine H
 O. 14 14-0 W The Citadel H
 O. 21 7-6 W Centre A
 O. 28 6-6 T Mercer H

N. 4 38-0 W Wofford H
 N. 11 0-12 L Bucknell A
 N. 18 0-0 T South Carolina A
 N. 30 6-0 W Clemson H

1934 (5-4)

Coach: A.P. McLeod

Captain: Bob Turner

S. 29 13-0 W Wofford A
 O. 6 2-7 L Georgia H
 O. 11 3-2 W Wake Forest N1
 O. 20 9-3 W Mercer A
 O. 27 7-6 W Centre H
 N. 3 0-19 L Bucknell H
 N. 10 6-0 W The Citadel A
 N. 17 0-2 L South Carolina H
 N. 29 0-7 L Clemson A
 N1 - Florence, S.C.

1935 (8-1)

Coach: A.P. McLeod

Captain: Hubert Blair

S. 28 69-0 W Piedmont H
 O. 5 23-0 W Presbyterian H
 O. 12 7-31 L Georgia A
 O. 18 9-0 W Wake Forest N1
 O. 26 32-0 W Mercer H
 N. 2 35-0 W The Citadel H
 N. 9 29-0 W Wofford H
 N. 16 20-7 W South Carolina A
 N. 28 8-6 W Clemson H
 N1 - Charlotte, N.C.

1936 (7-2, 4-1, 3rd in So. Con.)

South Carolina Champions

Coach: A.P. McLeod

Captain: Bob King

S. 26 31-0 W Wofford A
 O. 3 0-13 L Georgia A
 O. 10 13-7 W The Citadel H
 O. 17 0-27 L North Carolina State A
 O. 23 20-9 W Mercer A
 O. 31 14-13 W Davidson H
 N. 6 14-0 W Presbyterian A
 N. 14 23-6 W South Carolina H
 N. 26 12-0 W Clemson A

1937 (4-3-2, 1-2-2, 11th in SoCon)

Coach: A.P. McLeod

Captains: June Scott, Jack Shivers

S. 17 19-0 W Newberry H
 O. 1 58-0 W Wofford H
 O. 9 7-7 T North Carolina State H
 O. 16 0-8 L The Citadel A
 O. 23 52-0 W Presbyterian H
 O. 30 9-13 L Davidson A
 N. 6 7-20 L Bucknell H
 N. 13 12-0 W South Carolina A
 N. 25 0-0 T Clemson H

1938 (2-7-1, 0-4-1, 14th in SoCon)

Coach: A.P. McLeod

Captain: George Patrick

S. 16 13-6 W Oglethorpe H
 S. 23 6-28 L Bucknell A
 S. 30 0-7 L George Washington A
 O. 7 7-38 L Georgia A
 O. 15 6-9 L The Citadel H
 O. 22 7-7 T North Carolina State A
 O. 29 12-13 L Davidson H
 N. 5 18-13 W Marshall A
 N. 12 6-27 L South Carolina H
 N. 24 7-10 L Clemson A

1939 (5-4, 3-3, 6th in SoCon)

Coach: A.P. McLeod

Captain: Roten Shetley, Lloyd Coley

S. 22 38-7 W Erskine H
 S. 30 7-16 L Army A
 O. 6 20-0 W Georgia H
 O. 14 7-0 W The Citadel A
 O. 28 15-0 W Davidson A
 N. 4 7-20 L Virginia Tech A
 N. 11 20-0 W South Carolina A
 N. 18 7-12 L North Carolina State H
 N. 25 3-14 L Clemson H

1940 (5-4, 4-3, 8th in SoCon)

Coach: A.P. McLeod

Captain: Pepper Martin

S. 27 40-0 W Erskine H
 O. 5 0-19 L Wake Forest A
 O. 11 36-7 W The Citadel H
 O. 19 6-15 L Ohio A
 O. 26 40-7 W Davidson H
 N. 2 20-6 W North Carolina State A
 N. 9 21-38 L Virginia Tech A
 N. 16 25-7 W South Carolina H
 N. 23 7-13 L Clemson H

1941 (3-4-2, 2-3-2, 9th in SoCon)

Coach: A.P. McLeod

S. 20 6-32 L Tennessee A
 S. 26 40-19 W Wofford H
 O. 4 13-52 L Wake Forest H
 O. 11 0-0 T North Carolina State H
 O. 18 13-13 T The Citadel A
 O. 25 31-13 W Davidson N1
 N. 8 13-6 W George Washington H
 N. 15 7-26 L South Carolina A
 N. 22 6-34 L Clemson H
 N1 - Charlotte, N.C.

1942 (3-6, 3-3, 7th in SoCon)

Coach: A.P. McLeod

S. 26 6-7 L Virginia Tech H
 O. 3 7-40 L Georgia A
 O. 10 6-14 L Wake Forest H
 O. 16 6-0 W George Washington A
 O. 24 7-52 L Tennessee A
 O. 31 13-32 L Miami A
 N. 7 20-0 W The Citadel H
 N. 14 6-0 W South Carolina A
 N. 21 7-12 L Clemson A

1946 (2-8, 1-4, 13th in SoCon)

Coach: R.W. Smith

S. 20 7-26 L Alabama N1
 S. 27 31-0 W Wofford H
 O. 5 6-26 L Auburn A
 O. 11 7-14 L South Carolina H
 O. 19 14-0 W The Citadel H
 O. 26 7-70 L Georgia H
 N. 9 7-26 L VMI H
 N. 16 6-20 L Clemson A
 N. 23 7-41 L Georgia Tech A
 N. 28 7-13 L Davidson H
 N1 - Birmingham, Ala.

1947 (2-7, 1-4, 13th in SoCon)

Coach: R.W. Smith

S. 19 7-13 L Georgia A
 S. 27 6-20 L Virginia Tech A
 O. 11 8-26 L South Carolina A
 O. 17 7-0 W The Citadel H
 O. 25 20-6 W Wofford H
 N. 1 7-34 L Florida N1

N. 8 7-35 L Clemson H
 N. 22 0-51 L Georgia Tech A
 N. 27 6-20 L Davidson H
 N1 - Tampa, Fla.

1948 (2-6-1, 2-4, 10th in SoCon)

Coach: H.E. Smith

S. 25 10-8 W Washington & Lee A
 O. 1 0-7 L South Carolina H
 O. 8 0-7 L Richmond H
 O. 16 7-7 T Wofford H
 O. 23 9-0 W The Citadel H
 O. 30 14-39 L Florida H
 N. 6 0-41 L Clemson A
 N. 20 0-33 L Georgia A
 N. 25 0-7 L Davidson N1
 N1 - Charlotte, N.C.

1949 (3-6, 3-3, 9th in SoCon)

Coach: H.E. Smith

S. 16 0-25 L Georgia A
 S. 23 7-27 L Washington & Lee H
 S. 30 14-7 W South Carolina A
 O. 8 0-12 L Richmond A
 O. 14 13-20 L Presbyterian H
 O. 21 19-7 W The Citadel A
 O. 29 27-28 L Florida A
 N. 12 21-6 W Davidson H
 N. 19 21-28 L Clemson H

1950 (2-8-1, 2-4, 12th in SoCon)

Coach: Bill Young

Captain: Charlie Thomas

S. 15 12-13 L Presbyterian H
 S. 23 6-27 L Washington & Lee A
 S. 30 32-20 W Davidson N1
 O. 6 6-21 L South Carolina H
 O. 13 6-34 L Alabama A
 O. 21 21-7 W The Citadel H
 O. 28 7-19 L Florida A
 N. 3 13-13 T Wofford H
 N. 11 7-34 L George Washington H
 N. 18 2-57 L Clemson A
 N. 25 0-40 L Georgia A
 N1 - Charlotte, N.C.

1951 (3-6-1, 1-4-1, 15th in SoCon)

Coach: Bill Young

Captain: Sonny Horton

S. 14 39-0 W Presbyterian H
 S. 21 7-25 L Washington & Lee H
 S. 28 7-18 L West Virginia H
 O. 6 6-21 L South Carolina A
 O. 12 20-21 L Stetson A
 O. 19 35-14 W The Citadel N1
 O. 26 19-19 T George Washington A
 N. 2 12-14 L Wofford A
 N. 9 33-13 A Newberry H
 N. 17 14-34 L Clemson H
 N1 - Orangeburg, S.C.

1952 (6-3-1, 2-2-1, 7th in SoCon)

Coach: Bill Young

S. 19 47-6 W Newberry H
 S. 27 22-14 W West Virginia A
 O. 4 7-27 L South Carolina H
 O. 11 14-25 L Stetson A
 O. 17 7-7 T The Citadel N1
 O. 25 14-13 W Davidson A
 N. 1 29-21 W Wofford H
 N. 8 27-6 W Presbyterian H
 N. 15 9-0 W Florida State A



FURMAN THROUGH THE YEARS

NCAA I-AA National Champion 1988 ▲ Southern Conference Champions 1978, '80, '81, '82, '83, '85, '88, '89, '90

N. 22 0-28 L Wake Forest H
N1 - Orangeburg, S.C.

1953 (7-2, 2-0, 2nd in SoCon)
Coach: **Bill Young**

S. 18 33-0 W Newberry H
S. 26 0-41 L Army A
O. 2 27-0 W The Citadel A
O. 10 13-27 L South Carolina A
O. 24 34-0 W Davidson H
O. 31 7-6 W Wofford A
N. 6 19-0 W Presbyterian H
N. 14 14-7 W Florida State A
N. 21 21-19 W Wake Forest A

1954 (5-5, 2-0, 2nd in SoCon)
Coach: **Bill Young**

Captain: **Ted Yakimowicz**

S. 17 19-6 W Newberry H
S. 24 13-51 L Miami (Fla.) A
O. 1 27-0 W Presbyterian H
O. 9 7-27 L South Carolina H
O. 16 31-20 W The Citadel H
O. 22 19-7 W Davidson N1
O. 30 7-6 W North Carolina State A
N. 6 6-27 L Clemson A
N. 13 14-33 L Florida State A
N. 20 0-19 L Wofford H
N1 - Charlotte, N.C.

1955 (1-9, 1-1, 7th in SoCon)

Coach: **Homer Hobbs**

S. 15 0-14 L Newberry H
S. 24 0-81 L Army A
O. 1 6-27 L Wofford A
O. 8 0-19 L South Carolina A
O. 15 19-25 L The Citadel A
O. 22 0-52 L Auburn A
O. 29 7-33 L North Carolina State H
N. 11 6-19 L Florida State H
N. 19 13-9 W Davidson H
N. 26 20-40 L Clemson H

1956 (2-8, 2-2, 4th in SoCon)

Coach: **Homer Hobbs**

S. 29 0-10 L George Washington H
O. 6 0-41 L Auburn A
O. 13 6-18 L Wofford H
O. 20 7-13 L Newberry H
O. 27 7-0 W The Citadel H
N. 3 6-13 L South Carolina H
N. 10 7-42 L Florida State A
N. 17 0-7 L West Virginia A
N. 23 27-13 W Davidson N1
D. 1 7-28 L Clemson A
N1 - Charlotte, N.C.

1957 (3-7, 2-1, 4th in SoCon)

Coach: **Homer Hobbs**

Captain: **Jerry Penland**

S. 14 13-7 W East Tennessee State H
S. 21 7-27 L Florida State A
S. 28 0-20 L Villanova A
O. 5 13-12 W George Washington H
O. 12 13-58 L South Carolina A
O. 19 12-13 L Wofford A
O. 26 14-18 L The Citadel A
N. 16 0-34 L Tenn.-Chattanooga H
N. 22 6-2 W Davidson H
N. 30 6-45 L Clemson H



Bob King

1958 (2-7, 1-2, 8th in SoCon)

Coach: **Bob King**

S. 20 6-42 L Florida State A
O. 3 8-11 L George Washington A
O. 11 6-29 L Alabama A
O. 18 40-39 W Wofford H
O. 25 6-24 L The Citadel H
N. 1 0-36 L Penn State A
N. 8 7-32 L South Carolina H
N. 22 22-20 W Davidson N1
N. 29 19-36 L Clemson A
N1 - Charlotte, N.C.

1959 (3-7, 3-2, 4th in SoCon)

Coach: **Bob King**

Captain: **Hicky Horton**

S. 19 23-24 L Presbyterian H
S. 26 0-30 L South Carolina A
O. 2 7-20 L Tenn.-Chattanooga A
O. 10 8-7 W William & Mary A
O. 17 24-0 W George Washington H
O. 24 14-18 L The Citadel A
N. 7 3-6 L Wofford A
N. 14 14-48 L Richmond A
N. 20 35-7 W Davidson H
N. 28 3-56 L Clemson H

1960 (5-4-1, 2-2, 5th in SoCon)

Coach: **Bob King**

Captains: **Sam Taylor, Shelly Sutton, Don Kemp, Marvin Behlke, Joe Oliff**

S. 17 20-12 W Presbyterian H
S. 24 7-7 T Tampa A
O. 8 25-23 W William & Mary H
O. 15 41-26 W Wofford H
O. 22 6-7 L The Citadel H
O. 29 33-20 W Mississippi College H
N. 5 0-51 L Alabama A
N. 11 28-35 L Richmond H
N. 19 22-21 W Davidson A
N. 26 14-42 L Clemson A

1961 (7-3, 2-2, 5th in SoCon)

Coach: **Bob King**

Captains: **Billy Canty, John Tew**

S. 16 27-6 W Presbyterian H
S. 23 45-19 W Davidson H
S. 30 13-9 W George Washington H
O. 7 6-19 L William & Mary A
O. 14 21-14 W Samford H
O. 21 8-9 L The Citadel A
O. 28 12-7 W Wofford A
N. 4 7-6 W Memphis State A

N. 11 29-8 W East Carolina H
N. 18 6-35 L Clemson A

1962 (4-6, 2-2, 5th in SoCon)

Coach: **Bob King**

S. 15 40-6 W Presbyterian H
S. 22 34-21 W Wofford H
S. 29 0-42 L Florida State A
O. 5 7-14 L George Washington A
O. 13 7-14 L Samford H
O. 20 7-21 L William & Mary A
O. 27 33-25 W The Citadel H
N. 3 14-7 W Davidson A
N. 10 3-44 L Clemson H
N. 17 14-15 L Tampa A

1963 (7-3, 3-2, 4th in SoCon)

Coach: **Bob King**

Captain: **Doug Stacks**

S. 14 17-0 W Davidson H
S. 21 14-13 W Vanderbilt A
S. 28 29-14 W George Washington H
O. 5 17-27 L William & Mary H
O. 12 21-19 W Wofford A
O. 19 41-13 W Mississippi College H
O. 26 34-25 W The Citadel A
N. 2 6-49 L Florida State A
N. 9 27-0 W Presbyterian H
N. 28 7-38 L West Virginia A

1964 (3-7, 1-4, 8th in SoCon)

Coach: **Bob King**

S. 12 13-10 W Mississippi College H
S. 19 0-28 L Clemson A
S. 26 14-21 L Wofford H
O. 2 14-34 L George Washington A
O. 10 14-21 L William & Mary A
O. 17 28-6 W Presbyterian H
O. 24 0-17 L The Citadel H
O. 31 0-23 L Davidson A
N. 7 13-34 L East Carolina H
N. 14 19-18 W Richmond A

1965 (5-5, 2-3, 6th in SoCon)

Coach: **Bob King**

S. 18 51-14 W Frederick H
S. 25 0-24 L Davidson H
O. 2 14-7 W East Carolina A
O. 9 13-35 L Wofford H
O. 16 7-14 L Presbyterian A
O. 23 48-12 W Newberry A
O. 30 27-15 W Lehigh A
N. 6 7-24 L George Washington H
N. 13 14-0 W Richmond H
N. 20 0-28 L The Citadel A

1966 (2-7-1, 1-4, 8th in SoCon)

Coach: **Bob King**

S. 17 6-20 L Parsons H
S. 24 28-26 W Davidson N1
O. 1 0-17 L East Carolina A
O. 8 15-15 T Wofford H
O. 15 2-41 L Tampa A
O. 22 29-7 W Newberry H
O. 29 28-49 L George Washington A
N. 5 14-24 L Richmond A
N. 12 7-17 L Samford H
N. 19 6-10 L The Citadel H
N1 - Charlotte, N.C.

1967 (5-5, 2-3, 5th in SoCon)

Coach: **Bob King**

S. 9 42-0 W Mars Hill H
S. 16 15-6 W Mississippi College H
S. 23 22-45 L Davidson H
O. 7 21-20 W Wofford A
O. 14 14-42 L Richmond H
O. 21 13-39 L Tampa A
O. 28 38-15 W Lehigh H
N. 4 29-34 L East Carolina A
N. 11 28-42 L Samford A
N. 18 14-6 W The Citadel A

1968 (1-9, 0-4, 7th in SoCon)

Coach: **Bob King**

S. 14 12-21 L Mississippi College A
S. 21 13-9 W Presbyterian H
S. 28 7-13 L Wofford A
O. 5 12-31 L The Citadel H
O. 19 0-34 L Richmond A
O. 26 7-28 L Davidson A
N. 2 13-24 L East Carolina H
N. 9 12-17 L Samford H
N. 16 14-31 L Tenn.-Chattanooga A
N. 28 7-21 L Wofford H

1969 (1-8-1, 0-4, 6th in SoCon)

Coach: **Bob King**

Captains: **Tommy Broadwell, Dick Immel**

S. 20 14-12 W Presbyterian A
S. 27 14-77 L Davidson H
O. 4 21-21 T Carson-Newman H
O. 11 7-49 L Wofford A
O. 18 14-34 L Samford A
N. 1 21-24 L East Carolina A
N. 8 0-37 L Richmond A
N. 15 21-37 L The Citadel A
N. 22 19-21 L Mississippi College H
N. 27 21-31 L Wofford H

1970 (8-3, 3-2, 3rd in SoCon)

Coach: **Bob King**

Captains: **Don Calhoun, Cleve Hightower, Byron Trotter**

S. 12 0-13 L VMI A
S. 19 19-7 W Presbyterian H
S. 26 13-28 L Wofford H
O. 3 42-34 W Carson-Newman A
O. 10 23-9 W Richmond H
O. 17 31-24 W Davidson A
O. 24 18-16 W Tenn.-Chattanooga H
O. 31 0-7 L East Carolina H
N. 7 49-28 W Guilford A
N. 14 28-21 W The Citadel H
N. 21 38-17 W Mississippi College A

1971 (5-5-1, 2-3, 5th in SoCon)

Coach: **Bob King**

Captains: **Ron Boozer, Steve Crislip**

S. 11 0-0 T Appalachian State H
S. 18 14-35 L Presbyterian A
S. 25 0-27 L Wofford A
O. 2 14-0 W VMI H
O. 9 21-14 W Western Carolina H
O. 16 41-6 W Davidson H
O. 23 0-20 L Richmond A
O. 30 13-26 L East Carolina A
N. 6 42-14 W Guilford H
N. 13 33-35 L The Citadel A
N. 20 23-10 W Carson-Newman H

FURMAN THROUGH THE YEARS

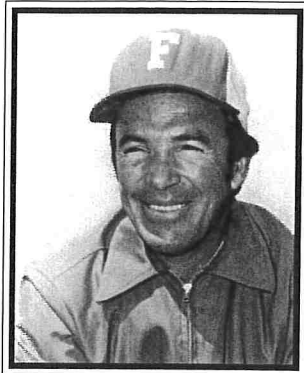


NCAA I-AA National Champion 1988 ▲ Southern Conference Champions 1978, '80, '81, '82, '83, '85, '88, '89, '90

1972 (2-9, 1-6, 7th in SoCon)

Coach: Bob King

S. 9	7-31	L	William & Mary	A
S. 16	7-10	L	Presbyterian	H
S. 23	24-7	W	Wofford	H
S. 30	20-17	W	Appalachian State	A
O. 7	15-24	L	Western Carolina	A
O. 14	35-51	L	Davidson	A
O. 21	0-37	L	Richmond	H
O. 28	21-27	L	East Carolina	H
N. 4	7-31	L	VMI	A
N. 11	13-19	L	The Citadel	H
N. 18	7-57	L	Carson-Newman	A



Art Baker

1973 (7-4, 3-3, 4th in SoCon)

Coach: Art Baker

Captains: Mike Bartik, Keith Downey, Tom Scherich

S. 8	13-6	W	Presbyterian	A
S. 15	17-0	W	Appalachian State	H
S. 22	21-19	W	Wofford	A
S. 29	3-14	L	East Carolina	A
O. 6	17-20	L	Richmond	H
O. 13	38-7	W	Davidson	H
O. 20	19-13	W	VMI	H
O. 27	40-21	W	East Tennessee State	H
N. 3	52-20	W	Lenoir-Rhyne	A
N. 10	21-26	L	The Citadel	A
N. 17	14-35	L	Louisville	A

1974 (5-6, 2-4, 7th in SoCon)

Coach: Art Baker

Captains: Vincer Perone, Jr., Charles Elvington, Bill Anderson

S. 14	0-7	L	VMI	A
S. 21	22-19	W	Presbyterian	H
S. 28	10-0	W	William & Mary	H
O. 5	24-14	W	Richmond	A
O. 12	12-15	L	East Carolina	H
O. 19	13-24	L	East Tennessee State	A
O. 26	21-10	W	Wofford	H
N. 2	3-27	L	Appalachian State	A
N. 9	14-10	W	Lenoir-Rhyne	H
N. 16	0-24	L	The Citadel	H
N. 23	10-16	L	Wake Forest	A

1975 (5-5-1, 2-4, 6th in SoCon)

Coach: Art Baker

Captains: Robbie Caldwell, Mark Mosher

S. 13	5-17	L	Tennessee Tech	H
S. 20	21-27	L	Richmond	A
S. 27	30-23	W	Appalachian State	H
O. 4	10-13	L	VMI	H
O. 11	35-7	W	Presbyterian	A

O. 18	21-14	W	Holy Cross	H
O. 25	21-6	W	William & Mary	A
N. 1	10-21	L	East Carolina	A
N. 8	34-0	W	Western Carolina	H
N. 15	9-13	L	The Citadel	A
N. 22	14-14	T	Wofford	A

1976 (6-4-1, 2-2-1, 3rd in SoCon)

Coach: Art Baker

Captains: David Whitehurst, Tommy Marshall, Larry Anderson

S. 4	17-12	W	North Carolina State	A
S. 11	17-7	W	Tennessee Tech	A
S. 18	38-21	W	Presbyterian	H
S. 25	16-17	L	The Citadel	H
O. 2	3-17	L	VMI	A
O. 9	14-14	T	Appalachian State	A
O. 16	16-27	L	Southwest Louisiana	A
O. 23	9-13	L	Richmond	H
O. 30	23-7	W	William & Mary	H
N. 13	17-10	W	East Carolina	H
N. 20	56-14	W	Wofford	H

1977 (4-5-2, 3-2-1, 3rd in SoCon)

Coach: Art Baker

Captains: Jimmy Neal, Oliver Cooper, Bobby Church

S. 10	13-24	L	Wake Forest	A
S. 17	42-12	W	East Tennessee State	H
S. 24	17-17	W	Tenn.-Chattanooga	A
O. 1	24-24	T	Western Carolina	H
O. 8	7-13	L	Wofford	A
O. 15	42-24	W	Marshall	H
O. 22	28-20	W	Appalachian State	H
O. 29	13-13	T	Presbyterian	H
N. 5	13-19	L	Richmond	A
N. 12	28-31	L	VMI	H
N. 19	3-10	L	The Citadel	A



Dick Sheridan

1978 (8-3, 4-1)

Southern Conference Champions

Coach: Dick Sheridan

Captains: Russell Gambrell, Brette Simmons, Greg Laetsch

S. 9	10-45	L	South Carolina	A
S. 16	31-14	W	Carson-Newman	H
S. 23	10-17	L	Vanderbilt	A
S. 30	52-34	W	Appalachian State	A
O. 7	36-12	W	Wofford	H
O. 14	35-14	W	East Tennessee State	A
O. 21	9-13	L	Tenn.-Chattanooga	H
O. 28	42-12	W	Marshall	A
N. 4	56-14	W	Davidson	H

N. 11	24-7	W	Western Carolina	A
N. 18	17-13	W	The Citadel	H

1979 (5-6, 4-3, 4th in SoCon)

Coach: Dick Sheridan

Captains: David Henderson, David Lyle, Jay Cory

S. 8	0-21	L	Clemson	A
S. 15	10-17	L	Presbyterian	H
S. 22	14-45	L	Tenn.-Chattanooga	H
S. 29	24-28	L	East Tennessee State	H
O. 6	17-27	L	Wofford	A
O. 13	34-24	W	Marshall	H
O. 20	31-17	W	Appalachian State	H
O. 27	20-21	L	VMI	A
N. 3	63-55	W	Davidson	A
N. 10	23-14	W	Western Carolina	H
N. 17	45-44	W	The Citadel	A

1980 (9-1-1, 7-0)

Southern Conference Champions

Coach: Dick Sheridan

Captains: Jeff Snipes, Kevin Morgan, Steve Bishop

S. 6	13-35	L	North Carolina	A
S. 13	28-7	W	Presbyterian	H
S. 20	28-14	W	Western Carolina	A
S. 27	21-16	W	VMI	H
O. 4	42-28	W	Tenn.-Chattanooga	A
O. 11	33-21	W	East Tennessee State	A
O. 25	21-20	W	Appalachian State	A
N. 1	35-0	W	Marshall	N1
N. 8	21-7	W	Davidson	H
N. 15	14-14	T	Wofford	H
N. 22	28-15	W	The Citadel	H

N1 - Charleston, W.Va.

1981 (8-3, 5-2)

Southern Conference Champions

Coach: Dick Sheridan

Captains: Tim Sorrells, Charlie Anderson, Bruce Gheesling, Steve O'Neill

S. 12	7-35	L	Florida	A
S. 19	21-0	W	East Tennessee State	H
S. 26	31-27	W	Western Carolina	A
O. 3	28-31	L	Tenn.-Chattanooga	H
O. 10	22-18	W	Appalachian State	H
O. 17	30-14	W	James Madison	A
O. 24	38-14	W	Liberty Baptist	H
O. 31	35-3	W	Marshall	H
N. 7	30-12	W	Davidson	A
N. 14	33-21	W	VMI	A
N. 21	18-35	L	The Citadel	A

1982 (9-3, 6-1)

Southern Conference Champions

Coach: Dick Sheridan

Captains: Mike Coleman, Gib McEachran, Briggs Traylor, Billy Hall, Hollis Barton

S. 4	0-26	L	North Carolina State	A
S. 18	27-21	W	Appalachian State	A
S. 25	13-16	L	Tenn.-Chattanooga	A
O. 2	38-3	W	VMI	H
O. 9	12-6	W	Western Carolina	H
O. 16	28-23	W	South Carolina	A
O. 23	20-15	W	East Tennessee State	A
O. 30	63-14	W	Davidson	H
N. 6	17-10	W	James Madison	H
N. 13	45-7	W	Marshall	A
N. 20	27-0	W	The Citadel	H
N. 27	0-17	L	South Carolina State	H

1983 (10-2-1, 6-0-1)

Southern Conference Champions

Coach: Dick Sheridan

Captains: David Charpia, Ernest Gibson

S. 3	3-13	L	South Carolina State	A
S. 10	52-7	W	Carson-Newman	H
S. 17	17-14	W	Georgia Tech	A
S. 24	31-7	W	Marshall	H
O. 1	49-0	W	VMI	A
O. 15	17-17	T	Western Carolina	A
O. 22	49-0	W	Appalachian State	H
O. 29	55-7	W	Davidson	A
N. 5	28-7	W	East Tennessee State	H
N. 12	28-14	W	Tenn.-Chattanooga	H
N. 19	49-21	W	The Citadel	A
D. 3	35-16	W	Boston University	H
D. 10	7-14	L	Western Carolina	H

1984 (8-3, 3-3, 4th in SoCon)

Coach: Dick Sheridan

Captains: Rock Hurst, Chas Fox, Bernard Durham

S. 1	28-10	W	South Carolina State	H
S. 8	49-7	W	Newberry	H
S. 15	34-30	W	North Carolina State	A
S. 22	38-28	W	Marshall	A
S. 29	7-14	L	Tenn.-Chattanooga	A
O. 13	28-16	W	East Tennessee State	A
O. 20	14-21	L	Appalachian State	A
O. 27	19-20	L	Western Carolina	H
N. 3	55-7	W	Davidson	H
N. 10	42-6	W	Central Florida	H
N. 17	42-14	W	The Citadel	H

1985 (12-2, 6-0)

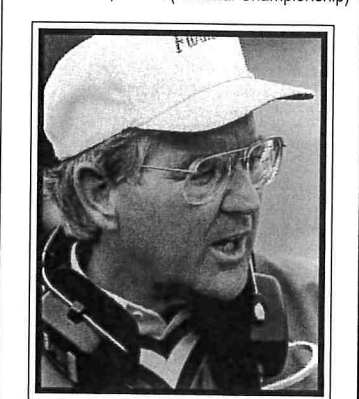
Southern Conference Champions

NCAA I-AA National Runner-Up

Coach: Dick Sheridan

Captains: Gene Reeder, Chas Fox, Bobby Lamb

S. 7	38-31	W	South Carolina State	A
S. 14	21-24	L	Newberry	H
S. 21	31-27	W	Western Carolina	A
S. 28	42-20	W	North Carolina State	A
O. 5	58-7	W	Davidson	A
O. 12	34-3	W	Marshall	H
O. 19	35-31	W	East Tennessee State	H
O. 26	21-7	W	Appalachian State	H
N. 2	34-10	W	Mars Hill	H
N. 16	42-0	W	The Citadel	A
N. 23	28-0	W	Tenn.-Chattanooga	H
D. 7	59-15	W	Rhode Island	H
D. 14	35-12	W	Nevada-Reno	H
D. 21	42-44	L	Georgia Southern	N1



Jimmy Satterfield



FURMAN THROUGH THE YEARS

NCAA I-AA National Champion 1988 ▲ Southern Conference Champions 1978, '80, '81, '82, '83, '85, '88, '89, '90

1986 (7-3-2, 4-2-1, 3rd in SoCon)

Coach: Jimmy Satterfield

Captains: Jerome Norris, Steve Squire, Tim Stepp, Robbie Gardner

S. 6	34-7	W	South Carolina State	H
S. 13	17-17	T	Georgia Tech	A
S. 20	34-3	W	VMI	A
S. 27	38-10	W	Marshall	A
O. 4	13-25	L	East Tennessee State	A
O. 18	13-19	L	Western Carolina	H
O. 25	17-17	T	Appalachian State	A
N. 1	45-31	W	Presbyterian	H
N. 8	59-0	W	Davidson	H
N. 15	21-10	W	Tenn.-Chattanooga	A
N. 22	37-14	W	The Citadel	H
N. 29	10-23	L	Eastern Kentucky	H

1987 (7-4, 4-3, 3rd in SoCon)

Coach: Jimmy Satterfield

Captains: Chris Speaks, Darryl Gardner, Phillip Ferguson, Tim Stepp

S. 5	25-7	W	South Carolina State	A
S. 12	23-3	W	Presbyterian	H
S. 19	14-20	L	Western Carolina	A
S. 26	14-16	L	Tenn.-Chattanooga	H
O. 3	42-36	W	Marshall	H
O. 10	24-13	W	East Tennessee State	H
O. 17	8-16	L	Appalachian State	H
O. 31	58-3	W	Davidson	H
N. 7	38-0	W	VMI	H
N. 14	10-41	L	Florida State	A
N. 21	58-13	W	The Citadel	A

1988 (13-2, 6-1)

Southern Conference Champions
NCAA I-AA National Champions

Coach: Jimmy Satterfield

Captains: Jeff Blankenship, Kennet Goldsmith, Julius Dixon

S. 3	38-0	W	South Carolina State	H
S. 10	3-23	L	Clemson	A
S. 17	21-0	W	Presbyterian	H
S. 24	42-0	W	Newberry	H
O. 1	31-13	W	VMI	H
O. 8	10-24	L	Marshall	A
O. 15	24-9	W	Appalachian State	A
O. 29	31-0	W	Western Carolina	H
N. 5	10-7	W	Tenn.-Chattanooga	A
N. 12	31-14	W	East Tennessee State	A
N. 19	30-17	W	The Citadel	H
N. 26	21-7	W	Delaware	H
D. 3	13-9	W	Marshall	A
D. 10	38-7	W	Idaho	H
D. 17	17-12	W	Georgia Southern	N1
N1	-	-	Pocatello, ID (National Championship)	

1989 (12-2, 7-0)

Southern Conference Champions

Coach: Jimmy Satterfield

Captains: David Adams, Brian Pitts, Pat Turner

S. 2	0-30	L	Clemson	A
S. 9	17-7	W	South Carolina State	A
S. 16	59-17	W	Presbyterian	H
S. 30	30-6	W	VMI	A
O. 7	34-13	W	Marshall	H
O. 14	31-6	W	Appalachian State	H
O. 21	42-7	W	Wofford	H
O. 28	17-3	W	Western Carolina	A
N. 4	27-17	W	Tenn.-Chattanooga	A
N. 11	44-20	W	East Tennessee State	H
N. 18	44-9	W	The Citadel	A
N. 25	24-10	W	William & Mary	H

D. 2	42-23	W	Youngstown State	H
D. 9	19-21	L	Stephen F. Austin	H

1990 (9-4, 6-1)

Southern Conference Champions

Coach: Jimmy Satterfield

Captains: Frankie DeBusk, Steve Duggan, Kevin Kendrick

S. 1	24-7	W	South Carolina State	H
S. 8	63-7	W	Presbyterian	H
S. 15	38-21	W	Tenn.-Chattanooga	A
S. 22	3-27	L	Florida	A
S. 29	7-10	L	Marshall	A
O. 6	51-22	W	VMI	H
O. 13	30-7	W	Appalachian State	A
O. 27	42-9	W	Western Carolina	H
N. 3	28-38	L	William & Mary	A
N. 10	29-13	W	East Tennessee State	A
N. 17	30-17	W	The Citadel	H
N. 24	45-17	W	Eastern Kentucky	A
D. 1	35-42	L	Nevada-Reno (3OT)	A

1991 (7-4, 4-3, 4th in SoCon)

Coach: Jimmy Satterfield

Captains: Eric Walter, Allen Edwards, Venton Bell, Taylor Quarles

S. 7	35-24	W	Connecticut	A
S. 14	31-7	W	Liberty	H
S. 21	52-7	W	Presbyterian	H
S. 28	42-14	W	Western Carolina	H
O. 5	46-28	W	VMI	H
O. 12	35-38	L	Marshall	H
O. 19	23-26	L	Appalachian State (3OT)	H
N. 2	52-23	W	East Tennessee State	H
N. 9	17-19	L	Georgia Tech	A
N. 16	24-21	W	Tenn.-Chattanooga	A
N. 16	6-10	L	The Citadel	A

1992 (6-5, 4-3, 5th in SoCon)

Coach: Jimmy Satterfield

Captains: Kota Suttle, Carl Tremble, Tate Waters

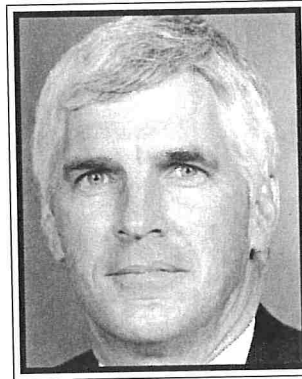
S. 5	31-13	W	Liberty	H
S. 12	0-28	L	North Carolina	A
S. 19	43-7	W	Presbyterian	H
S. 26	0-21	L	Georgia Southern	H
O. 3	41-13	W	VMI	H
O. 10	6-48	L	Marshall	A
O. 24	16-13	W	Appalachian State	A
O. 31	45-14	W	East Tennessee State	A
N. 7	27-29	L	Western Carolina	H
N. 14	35-7	W	Tenn.-Chattanooga	A
N. 21	14-20	L	The Citadel	H

1993 (5-5-1, 4-4, 4th in SoCon)

Coach: Jimmy Satterfield

Captains: Ryan Livezey, Milan Sterling, Billy Whitley

S. 4	26-17	W	Connecticut	H
S. 11	3-37	L	Georgia Tech	A
S. 18	14-14	T	Wofford	H
S. 25	45-21	W	East Tennessee State	H
O. 2	20-23	L	Western Carolina	A
O. 9	27-21	W	Appalachian State	H
O. 16	10-20	L	The Citadel	A
O. 30	24-0	W	VMI	H
N. 6	19-31	L	Georgia Southern	A
N. 13	17-3	W	Marshall	H
N. 20	42-45	L	Tenn.-Chattanooga	A



Bobby Johnson

1994 (3-8, 2-6, 6th in SoCon)

Head Coach: Bobby Johnson

Captains: Kavis Reed, Philly Jones, Braniff Bonaventure

S. 3	6-27	L	Clemson	A
S. 10	26-21	W	South Carolina State	H
S. 17	26-28	L	William & Mary	H
O. 1	24-35	L	Western Carolina	H
O. 8	6-30	L	Appalachian State	A
O. 15	44-52	L	The Citadel	H
O. 22	28-11	W	VMI	A
O. 29	33-21	W	East Tennessee State	A
N. 5	26-31	L	Georgia Southern	H
N. 12	14-35	L	Marshall	A
N. 19	20-34	L	Tenn.-Chattanooga	H

1995 (6-5, 5-3, 3rd SoCon)

Coach: Bobby Johnson

Captains: Leonardo McClarty, Tommy Jones, Brandon Culpepper, Philly Jones, Marcus Morgan, Brian Fisher, Adrick Harrison, Jim Richter

S. 2	7-51	L	Georgia Tech	A
S. 9	21-27	L	South Carolina State	A
S. 16	38-0	W	Wofford	H
S. 23	55-24	W	VMI	H
S. 30	31-21	W	Western Carolina	A
O. 7	28-41	L	Appalachian State	H
O. 14	24-3	W	The Citadel	A
O. 21	21-15	W	East Tennessee State	H
N. 4	20-27	L	Georgia Southern	H
N. 11	6-31	L	Marshall	H
N. 18	23-21	W	Tenn.-Chattanooga	A

1996 (9-4, 6-2, 3rd in SoCon)

Coach: Bobby Johnson

Captains: Braniff Bonaventure, Luther Broughton, Troy Strappy, Greg Sander

S. 7	3-19	L	Clemson	A
S. 14	27-13	W	South Carolina State	H
S. 21	33-3	W	Wofford	H
S. 28	31-14	W	VMI	A
O. 5	45-30	W	Western Carolina	H
O. 12	20-14	W	Appalachian State	A
O. 19	35-25	W	The Citadel	H
O. 26	19-21	L	East Tennessee State	A
N. 9	21-14	W	Georgia Southern	H
N. 16	17-42	L	Marshall	A
N. 23	42-21	W	Tenn.-Chattanooga	H
N. 30	42-31	W	Northern Arizona	A
D. 7	0-54	L	Marshall	A

1997 (7-4, 5-3, 3rd in SoCon)

Coach: Bobby Johnson

Captains: Orlando Ruff, Jeremy Osborne, Jay Thier, Jody Wade

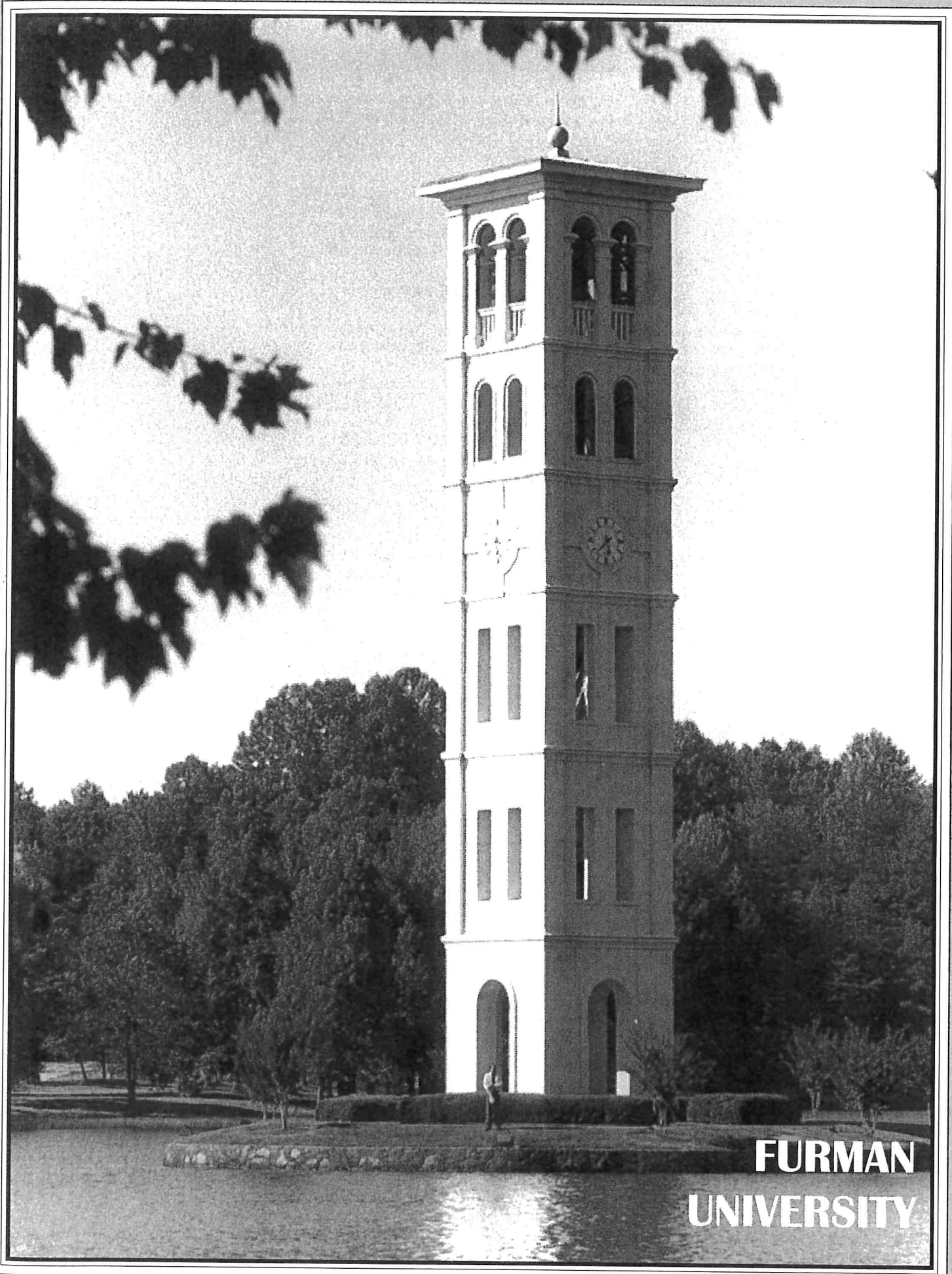
S. 4	29-10	W	Samford	A
S. 13	6-17	L	South Carolina State	A
S. 27	35-14	W	VMI	H
O. 4	16-17	L	Western Carolina	A
O. 11	24-22	W	Appalachian State	H
O. 18	21-7	W	The Citadel	A
O. 25	28-58	L	East Tennessee State	H
N. 1	38-20	W	Elon	H
N. 8	13-30	L	Georgia Southern	A
N. 15	28-7	W	Wofford	H
N. 22	43-21	W	Chattanooga	A

1998 (5-6, 3-5, 6th in SoCon)

Coach: Bobby Johnson

Captains: Orlando Ruff, Rocco Adrian, John Keith, Mark Foster

S. 5	0-33	L	Clemson	A
S. 12	27-19	W	South Carolina State	H
S. 19	34-24	W	Samford	H
S. 26	51-14	W	VMI	A
O. 3	31-7	W	Western Carolina	H
O. 10	13-26	L	Appalachian State	A
O. 17	24-25	L	The Citadel	H
O. 24	19-22	L	E. Tenn. St. (2OT)	A
N. 7	17-42	L	Georgia Southern	H
N. 14	20-40	L	Wofford	A
N. 21	31-28	W	Chattanooga	H



**FURMAN
UNIVERSITY**



FURMAN UNIVERSITY

NCAA I-AA National Champion 1988 ▲ Southern Conference Champions 1978, '80, '81, '82, '83, '85, '88, '89, '90

FOUNDED IN 1826, FURMAN UNIVERSITY, A private coeducational college with 2,500 students, has established a reputation as one of the finest liberal arts colleges in the nation.

Furman actually traces its origins to The Furman Academy and Theological Institution, authorized in 1825 by the South Carolina Baptist State Convention and opened at Edgefield, South Carolina. In 1850, it was chartered as Furman University, making it one of America's 64 oldest colleges.

Inspiration for the establishment of the school came primarily from Dr. Richard Furman, under whose leadership the State Baptist Convention was organized in 1821 with a seminary as a major objective. Dr. James C. Furman, son of Richard, became the first man to hold the title of president of the University in 1859.

The 750-acre wooded campus, located just north of Greenville, South Carolina, and the University's home since moving from downtown Greenville in 1958, is rightfully acclaimed as one of the most beautiful in the nation.

There is so much more to the Furman experience, however, than the beautiful campus and modified Williamsburg colonial architecture. Facilities for study and research for the student body are outstanding.

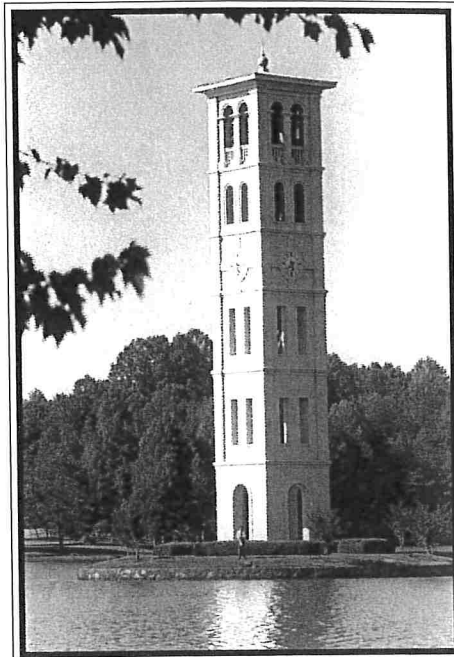
Within the past three years the University has dedicated the Charles E. Daniel Chapel, John E. Johns Hall for the social sciences, Nan Trammell Herring Music Pavilion, Irwin Belk Complex for Track & Field, and Timmons Arena, the 5,000-seat home of Furman's basketball, football, volleyball, and strength and conditioning programs. In addition, the school has completed the first of two new apartment-style dormitory complexes for upperclassmen, as well as the expan-

sion of the scenic student center that overlooks the university's beautiful 30-acre lake. Richard W. Riley Hall, which houses the department of mathematics and computer science, opened in 1994, and the centerpiece of the Furman campus, the James B. Duke Library, features more than 450,000 volumes. The school's academic program is based on a distinctive three-term system, and Furman students regularly participate in a variety of internships and travel experiences.

Furman's excellence in academics is recognized across the nation. The University is one of 234 in the country with a chapter of Phi Beta Kappa, and the faculty, 93 percent of whom hold doctoral degrees, includes scholars in many fields.

Furman offers 41 majors in a wide variety of fields, including the Bachelor of Arts, Bachelor of Music, Bachelor of General Studies, and Bachelor of Science. The graduate division awards the Masters of Arts degree with a major in education and Master of Science with majors in chemistry and physical education.

The University also features a strong 17-sport intercollegiate athletic program, including eight sports for men and nine for women. In 1991, the strength of men's intercollegiate athletics at Furman showed as the school captured its first ever Commissioner's Cup — an award given annually by the Southern Conference to the member institution with the strongest overall men's athletic program. Last year, for the sixth straight year, Furman's women's teams combined to capture the Germann Cup, which is also given annually by the Southern Conference to the institution with the best overall female athletic program. The recipient of the league's D.S. McAlister Sportsmanship Award for 1996-97, Furman has also been recognized at both



Bell Tower

the conference and national levels for its outstanding graduation rates — a testament to the school's uncompromising commitment to academic and athletic integrity.

Men's sports include football, basketball, soccer, baseball, cross-country, outdoor track, golf, and tennis. Sports for women include volleyball, soccer, basketball, cross-country, tennis, golf, indoor track, outdoor track, and softball.

Furman graduates have excelled in many fields. Among just a few of the notables are John Broadus Watson, the "father of behavioral psychology"; Charles Hard Townes, Nobel Prize-winning inventor of the laser and maser; Betsy King, Ladies Professional Golf Association (LPGA) Hall-of-Fame member; Richard W. Riley, current United States Department of Education Secretary; and Keith Lockhart, the 36-year-old conductor of the Boston Pops.

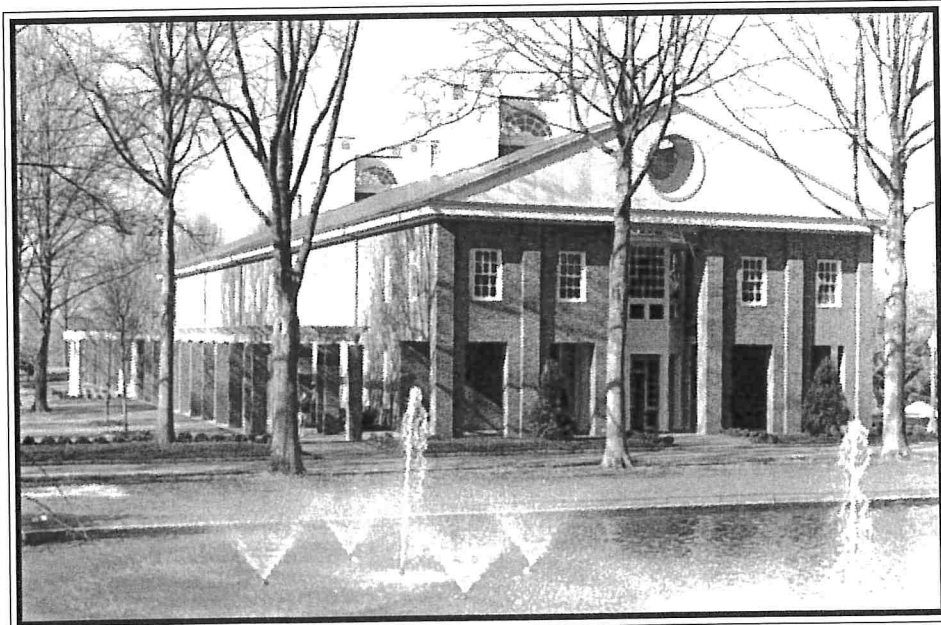
A proud heritage, strong academics, exceptional facilities, and excellence in athletics are all part of one of the nation's top liberal arts colleges — Furman University.

ORIGIN OF THE PALADIN

Furman University athletic teams were known by different names until the 1961 school year. The baseball team was "Hornets," the football team "Hurricanes," and the basketball team, "Paladins."

The basketball team was dubbed "Paladins" by a Greenville sportswriter in the 1930s, and the name stuck. By vote of the student body, all Furman athletic teams became the "Paladins" on September 15, 1961.

A Paladin is a knight on a horse and the recognized athletic mascot of Furman University.



Housing the departments of mathematics and computer science, the 34,000 square-foot Richard W. Riley Hall is one of several new buildings on Furman University's scenic campus.



Beautiful Campus

Furman's 750-acre campus, located at the foothills of the Blue Ridge Mountains, has been described as the most beautiful campus in America. It was built and landscaped according to a master plan by the firms that reconstructed Colonial Williamsburg and the Washington, D.C. Mall, and the master plan is still being followed. Furman's "modified Williamsburg" buildings are consistent in style, designed to last, and noted for their beauty and function.

Outstanding Alumni

Furman makes a major contribution to society through her alumni. Furman has produced:

- ✓ six Rhodes Scholars, including Robert W. Johnson '95
- ✓ a Nobel Prize-winning physicist
- ✓ the chairman of the board and CEO's of such international businesses as PepsiCo, Delta Airlines, Frito-Lay, Computer Associates, Eastman Kodak and the Liberty Corporation
- ✓ more than 6,000 alumni currently in business and finance (one-third of whom are executives)
- ✓ 3,600 educators, 1,100 in medicine and health fields, and 1,000 ministers
- ✓ the conductor of the Boston Pops Orchestra, six Metropolitan Opera performers, six European operatic performers, and the Dean of the School of Music at Yale University
- ✓ the United States Secretary of Education
- ✓ two state governors, one U.S. Congressman, and the director of the National Security Agency
- ✓ a deputy Head of the Naval Research Laboratory
- ✓ an internationally acclaimed geneticist
- ✓ the leading single game scorer in NCAA basketball history
- ✓ five Ladies' Professional Golf Association (LPGA) Players-of-the-Year
- ✓ a two-time PGA Ryder Cup participant

High Rankings

Recently *U.S. News and World Report* ranked Furman in the top one third of national liberal arts universities. The acceptance rate for Furman graduates into law school regularly exceeds 80 percent, and the acceptance rate for medical school is almost twice the national average.

Faculty, Student Excellence

Furman attracts students from forty-one states and twenty-two foreign countries and is one of only eight percent of colleges and universities granted a campus chapter of Phi Beta Kappa. Furman students are taught by outstanding teachers, 93 percent of whom hold doctoral degrees. Among national liberal arts colleges, Furman is a national leader in the number of Harry Truman Scholars, one of the top awards for college graduates going into public service. Recent Truman Scholars from Furman have pursued graduate work at Yale, Duke, Johns Hopkins, Princeton, and Northwestern.

Undergraduate Student/Faculty Research

Furman is a national leader in undergraduate student/faculty research. Each year, approximately 150 students work with faculty in all divisions of the university to do original research which frequently leads to presentations at national meetings or publications in scholarly journals. Furman annually sends one of the largest student delegations to the National Conference on Undergraduate Research.

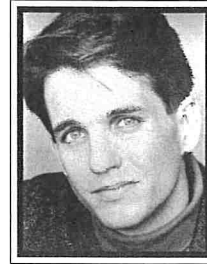
Community Involvement

Over 60 percent of Furman students participate each year in Collegiate Education Service Crops (CESC), a volunteer organization that works with the underprivileged in the Greenville community. Students assist in over 70 agencies, among them nursing homes, schools, mini-parks, and hospitals.

Notable Furman Alumni



Richard Riley '54
U.S. Secretary of Education



Keith Lockhart '81
Conductor, Boston Pops



Betsy King '77
LPGA Hall-of-Fame Golfer



Roger Stevenson '62
World Renowned Geneticist



Angel Myers-Martino '90
Olympic Gold Medal Swimmer



Marshall Frady '63
Critically Acclaimed Biographer

The Furman University Alumni Association consists of approximately 25,000 active and loyal alumni residing all over the world. Leaders in their professions and communities, Furman's alumni base includes:

- Over 1,300 Chairmen, CEO's, Presidents, and top executives of national and international businesses

David Garrett '42, recently retired Chairman and CEO of Delta Air Lines
 Carl Kohrt '65, Executive VP and COO of Eastman Kodak Co.
 Paul Stroup '73, CEO of Lance, Inc., Snack Foods
 Bob Lutz '71, CEO of Amresco

- Over 1,400 in Law or Government, including 750 practicing attorneys

Richard Riley '54, U.S. Secretary of Education
 Mark Sanford '83, U.S. Congressman
 Richard Cullen '71, Attorney General in Virginia

- Over 1,300 Physicians or Health Practitioners

Roger Stevenson '62, world renowned geneticist

- Over 170 Professional Athletes, Athletic Administrators, and Coaches

Sam Wyche '66 — Former NFL coach, current NFL broadcaster on NBC
 Brad Faxon '83 — PGA golfer, 1997 Ryder Cup Team member
 Betsy King '77 — LPGA Hall-of-Fame golfer
 Dottie Pepper '87 — LPGA golfer, top 10 on money list
 Angel Myers-Martino '90 — Four-time Olympic gold medal swimmer

- Over 375 working in the Fine Arts

Keith Lockhart '81 — Conductor of the Boston Pops Orchestra
 Sarah Reese '71 — World renowned opera singer
 Amy Grant '82 — Country and pop singer
 Don Todd '81 — Hollywood Television Producer/Writer
 Marshall Frady '63 — Author of critically acclaimed biographies



DR. DAVID SHI President

INAUGURATED AS FURMAN'S 10TH PRESIDENT on April 19th, 1995, Dr. David Emory Shi has a better understanding of the school's football program than probably anyone who has ever occupied Furman's highest office. That's because Shi starred as a defensive end for the Paladins under head coach Bob King in the early 1970s, and was an All-Southern Conference first team and All-South Carolina selection in 1971.

In his young tenure as president of Furman, Shi has demonstrated bold new leadership in many areas, including the university's intercollegiate athletics pro-

gram. Over the past four years the school has constructed a new soccer stadium, modern tennis facility, state-of-the-art golf practice complex, and ultra-modern track & field facility. In December of 1997, the university opened Timmons Arena, a 5,000-seat, multipurpose complex that now serves as the home of Furman's football, basketball, and volleyball programs. In addition, Shi named Dr. John Block as the school's first vice president for intercollegiate athletics — a new position that underscores the 47-year-old president's understanding of -- and commitment to — the school's 17-sport athletics program.

A native of Atlanta, Ga., Shi served as cadet battalion commander of Furman's ROTC program and was inducted into the school's chapters of Phi Beta Kappa and Quaternion prior to graduating magna cum laude in 1973 with a B.A. degree in political science. He went on to earn M.A. and Ph.D. degrees in history at the University of Virginia before accepting a teaching position as assistant professor of history at Davidson College in 1976. From 1987, until his departure for Furman in 1993, Shi served as chair of Davidson's Department of History. Upon his return to his alma mater, he assumed the position of vice-president for academic affairs and dean, a position he occupied for

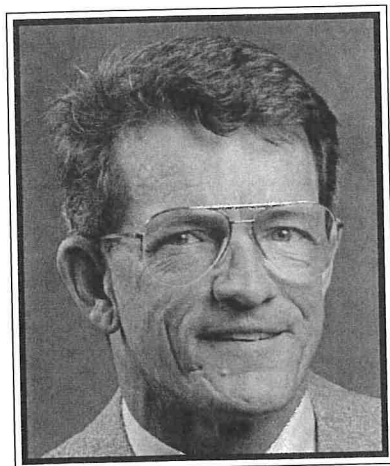
one year prior to being named Furman's president on June 1, 1994, succeeding the retiring Dr. John E. Johns.

In the course of his professional career, Shi has been awarded several National Endowment for the Humanities (NEH) Fellowships and has authored numerous articles and five books. His first book, *Matthew Josephson, Bourgeois Bohemian*, was nominated for the Pulitzer Prize in 1981, and his second, *The Simple Life: Plain Living and High Thinking in American Culture*, was a History Book Club selection. He is also the co-author with George B. Tindall of the popular textbook, *America: A Narrative History*.

His most recent book is *Facing Facts: Realism in American Thought and Culture, 1850-1920*, which was released in 1995.

Shi is married to the former Susan Thomson of Jacksonville, Fla., a 1971 honors graduate of Furman who has spent most of her career working as a teacher and administrator in public schools. She earned an M.A. degree from Furman and later was awarded a Ph.D. from the University of North Carolina at Chapel Hill.

The Shis have two children, Jason, 21, and Jessica, 19.



DR. JOHN BLOCK

Vice President For Intercollegiate Athletics/Director of Athletics

ON JUNE, 12, 1996, DR. JOHN BLOCK WAS named Furman University's vice president for intercollegiate athletics by school president Dr. David Shi. The appointment, which marked a somewhat unexpected career move for Block, who had been serving as the school's William Montgomery Burnett Professor of History and department chairman, was widely praised due to his extensive working experience — and knowledge of — Furman's athletics program.

A native of Chicago Heights, Ill., Block came to Furman in 1959 and was a member of the school's

basketball program for two years. Self-described as "short but slow," Block, according to Furman's 1960-61 basketball media guide, scored 35 points against South Carolina in junior varsity action.

Following graduation in 1963 Block went on to earn M.A. and Ph.D. degrees in history from the University of Wisconsin before returning to join his alma mater's faculty in 1968. Selected to serve on Furman's Faculty Athletics Committee shortly thereafter, he witnessed the school's basketball revival in the 1970s while serving as a color commentator on the Paladins' radio network.

Awarded the University's Meritorious Teaching Award in 1984, Block, whose teaching specialities at Furman included modern German history, was named to succeed Dr. Francis Bonner as the school's NCAA Faculty Athletics Representative in 1990. He served as interim director of athletics for four months prior to his appointment as vice president.

Also active in representing Furman's athletics interests within the Southern Conference, Block most recently served as chairman of the Southern Conference's Schools and Colleges Committee.

Block's appointment as vice president for intercollegiate athletics was, in the words of President Dr.

David Shi, "to recognize the financial and institutional importance of Furman's athletics program, as well as to recognize John Block's outstanding qualifications and stature.

Married to the former Barbara Stone of Greenville, the Blocks have two daughters, Julie Block Tollison, and Kara Block Harrelson.



NCAA Faculty Athletics Representative

DR. CHARLES ALFORD

A member the Furman University faculty since 1971, Dr. Charles Alford, the school's James E. Self Professor of Business Administration, assumed the position of NCAA Faculty Athletics Representative in 1996 following Dr. John Block's appointment as the school's vice president for intercollegiate athletics.

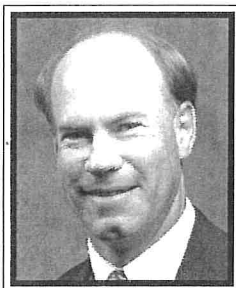
Alford, a Greenville native, earned a B.A. in economics from Wofford College in 1968 and was awarded a Ph.D. in economics and business

administration from the University of Alabama in 1972.

Since coming to Furman, Alford has served as chair of Furman's Department of Economics and Business Administration (1976-85) and chair of the Furman University Faculty (1993-95).

The author of several articles and a frequent lecturer to business organizations, he is a noted consultant and court expert in business affairs and in the area of corporate valuation.

Married to the former Tish McColl of Clio, S.C., Alford has a daughter, Kasey, and a son, Lang.



Associate Paladin Club Director

MARSHALL BETTENDORF

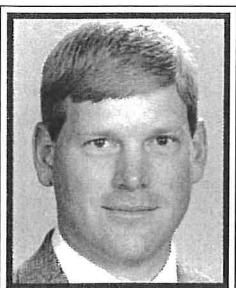
Marshall Bettendorf is now in his fourth year as associate director of the Furman University Paladin Club, the school's athletics fund-raising group.

A native of Coral Gables, Fla., and 1982 Furman graduate with a degree in business, Bettendorf has been an active supporter of Furman athletics over the past 19 years. As a student, he worked as a manager with Furman's basketball teams for two years, and since 1988 he has served as a member

of the Paladin Club Board of Directors, including a one-year stint as president (1994-95). In addition, Bettendorf has worked diligently with the school's highly successful Furman LPGA Pro-Am, serving as a member of the steering committee since 1990.

Employed as a sales representative and manager in the environmental services industry for nine years following graduation, Bettendorf joined the Furman athletics department in 1995 as an assistant in the marketing and promotions office before assuming his present position with the Paladin Club in 1996.

Bettendorf is married to the former Blaise Buczkowski, a 1984 Furman graduate. The couple has two daughters, Caitlin Marie, 8, and Grace Claire, 1.



Athletic Academic Advisor

DAN BRINKMAN

A member of Furman's athletics department since 1991, Dan Brinkman is beginning his ninth year as Furman's athletics academic advisor and sixth year as assistant athletics director for academics.

In his current position, Brinkman serves as liaison between the university faculty and the athletics department and monitors the progress of student-athletes towards graduation, assisting them in balancing the demands of school and their respective

sports. In addition, Brinkman also assists with Furman's home game operations for football.

A native of Celina, Ohio, who grew up in Fremont, Calif., Brinkman graduated from UCLA in 1989 with a bachelor's degree in sociology. He later earned a master's degree in education from Mississippi State University, where he also served as an athletic academic counselor.

Brinkman, 33, is married to Furman assistant sports information director Teri Smith Brinkman.



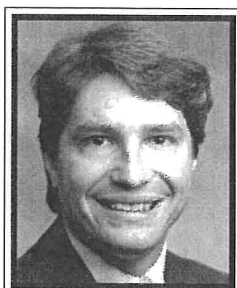
Director of Sports Medicine, A.T.C., SWA

ELAINE BAKER

For the past 14 years Elaine Baker has served Furman student-athletes in a variety of roles, including assistant athletic trainer, associate director of sports medicine, and, since 1994, director of Furman's sports medicine operation. In 1997, Baker added a new role, when she was named the department's senior women's administrator.

A full-time member of Furman's athletic staff since 1985, Baker actually got her start with Furman athletics in 1981 when, following graduation from Winthrop College with a degree in physical education, she joined the Paladin program as a graduate assistant trainer — a position she held for two years while pursuing a master's degree in health and physical education, which she received from Furman in 1983. A two-year stint as athletic trainer at North Greenville College followed prior to her return to Furman as an assistant trainer in 1985. In 1994 she was promoted to director of sports medicine, succeeding Bruce Getz.

A Greenville native and product of Wade Hampton High School, Baker is active in the South Carolina Athletic Trainers Association.



Director of Marketing & Promotions

TERRY BRADLEY

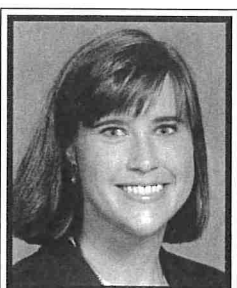
Terry Bradley, who in all counts 12 years of service to Furman University, is now entering his eighth year as the athletics department's director of marketing and promotions.

Prior to assuming his current position, which carries the title of assistant athletics director, Bradley served three years as associate director of the Paladin Club, Furman's athletics fund-raising group.

A fine collegiate football and baseball player, Bradley graduated from Fairmont (W.Va.) State College in 1980 with a bachelor of science degree in accounting. Three years of work in private and government accounting followed before he returned to school and earned a master's degree in sports administration from Ohio University in 1984.

In 1985 Bradley interned at Cal-State Fullerton University and served as interim executive director of the Titan Athletic Foundation. A year later he assumed the position of director of sales and special events at the University of Miami (Fla.), where he remained for two years prior to coming to Furman in 1988.

A native of Montcoal, W.Va., Bradley, 41, is single.



Assistant Sports Information Director

TERI BRINKMAN

A popular member of Furman's athletics department, Teri Brinkman is now in her ninth year as assistant sports information director after joining the program in 1991.

As Furman's assistant SID, Brinkman handles publicity efforts for 11 of the department's 17 sports, including all nine Furman women's programs.

Brinkman earned a bachelor of arts degree in communications from Mississippi State University in 1990, and this past spring was awarded a B.A. in music from Furman.

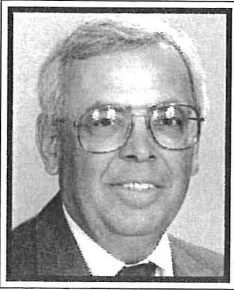
Prior to coming to Furman, she served as an intern in the Mississippi State sports information office. In addition, she served as a staff writer and part-time sports editor with the Starkville Daily News. As an undergraduate, Brinkman also headed up Mississippi State's Diamond Girl program, assisting the Bulldogs' nationally recognized baseball program with recruiting and promotions.

A native of Tupelo, Miss., Brinkman is married to Furman athletics academic advisor Dan Brinkman.



FURMAN ATHLETIC STAFF

NCAA I-AA National Champion 1988 ▲ Southern Conference Champions 1978, '80, '81, '82, '83, '85, '88, '89, '90



Director of Compliance & Eligibility

JOHN BURNS

A familiar face at Furman University, John Burns is now entering his ninth year as the department's director of compliance and eligibility.

Burns, who for four years served as Furman's director of financial aid before joining the athletic staff in 1990, was named associate athletics director in 1992. In his current position, he works directly with the Southern Conference and NCAA on compliance and eligibility matters.

A native of Lyons, Kan., Burns played collegiate football and basketball at McPherson (Kan.) College before graduating with a degree in business administration in 1961. Following a four-year stint in the Air Force, he completed work on his master's degree at the University of Colorado in 1969 before returning to his alma mater, where he served as director of financial aid until 1972. From there, he moved on to a similar position at the College of Charleston (S.C.) before coming to Furman in 1984 as associate director of financial aid.

Burns is married to the former Claudia Potter of Winfield, Kan., and is the father of two children: a daughter, Cassie Burns Therrell, and a son, Mike.



Paladin Club Director

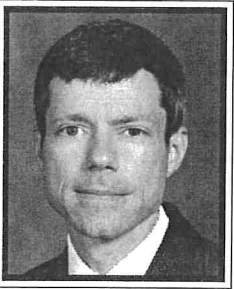
GARY CLARK

The newest member of the Furman athletics department, Gary Clark is now in his second year as director of the Paladin Club and first year as the department's associate athletic director of external affairs.

A 1974 Furman graduate with a B.A. degree in history, Clark lettered three times and played on two Southern Conference championship basketball teams during his Paladin career, including Furman's 1973-74 squad that went 22-9 and defeated South Carolina in the NCAA Tournament.

Prior to returning to Furman, Clark spent 23 years at Spartanburg Day School as a teacher, coach, and, most recently, headmaster. As headmaster, he spearheaded successful enrollment and fund-raising campaigns and oversaw the implementation of a \$1 million technology plan over a three-year period.

A native of Chicago Heights, Ill., and holder of M.Ed. and Ph.D. degrees from the University of South Carolina, Clark is married to the former Merrie McCullough '75 of Honea Path and has two sons: Ryan, 16, and John Stewart, 12.



Assistant Athletic Trainer, A.T.C.

JOE FARMER

Joe Farmer is entering his fifth year as assistant athletic trainer on Furman University's sports medicine staff.

Farmer's current tenure actually marks his second stint with Furman's athletics program, as his first experience came from 1987-89, when he served as a graduate assistant trainer while completing requirements on his master's degree in education, which he received in 1989. That followed his work as

a student assistant trainer at Limestone (S.C.) College, where he received his undergraduate degree in physical education in 1986.

Upon completion of his master's degree, Farmer took a position with the Greenville Hospital System as an athletic trainer, working with outpatient physical therapy for three years.

In 1992, he was appointed as head athletic trainer at Northwestern (S.C.) High School, where he served for two years prior to his return to Furman in 1994.

A native of Greer, S.C., and immediate past president of the South Carolina Athletic Trainer's Association, Farmer, 34, is single.



Assistant Athletic Trainer, A.T.C.

CASSANDRA PHILLIPS

The most recent addition to Furman's expansive sports medicine operation, Cassandra Phillips is now entering her second year as an assistant athletic trainer.

A Greenville native, Phillips graduated from Southside High School in 1978 and attended Winthrop (S.C.) University, where she earned a bachelor of science degree in business administration in 1983. An 11-year stint in business followed

before she entered the sports medicine field, returning to Furman to work as a graduate assistant trainer while earning her master's degree in health and exercise science in 1997.

After receiving her master's, Phillips accepted an athletic trainer's position with Greenville physical therapy clinic Vaughan, Buchanan, and Shelley, where, among others, she worked one year with local high schools prior to returning to Furman in 1999.

Phillips is single.



Head Athletic Trainer, A.T.C.

BRIAN REESE

Brian Reese is beginning his fifth year as Furman's head athletic trainer after joining the program in 1995.

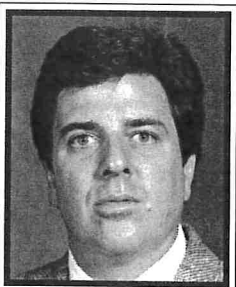
Charged with overseeing the physical well-being of Furman's 17-sport program, Reese came to Furman after six years as assistant athletic trainer at The Citadel.

Reese, a native of Brook Park, Ohio, got his start as a student trainer at Grand Valley (Mich.) State

College, where he served for four years prior to receiving his bachelor's degree in physical education in 1986.

After gaining his certification as an athletic trainer, he worked two summers with the NFL's Detroit Lions before assuming the position of graduate assistant trainer at the University of Tulsa while completing work on his master's degree in athletic administration, which he received in 1989.

A former president of the South Carolina Athletic Trainer's Association, Reese, 34, is married to the former Tricia Bolchoz of Charleston. The couple has a daughter, Maureen, 4.



Physical Therapist, A.T.C.

BRETT RUSSELL

Brett Russell is entering his sixth year as Furman University's sports medicine center's registered physical therapist.

In his position as a full-time member of the Furman athletics staff, Russell contributes greatly to the overall outstanding care afforded Furman student-athletes, student body, and patients of the school's sports medicine center.

A native of McGraw, N.Y., Russell graduated from the University of Buffalo in 1991 with a degree in physical therapy. In the two years following his undergraduate work, he served as a traveling rehabilitation therapist in private business. In 1993, he moved to Greenwood, S.C., where he served as an outpatient therapist in sports medicine and industrial rehabilitation for one year.

Russell, who came to Furman in 1994, is married to the former Betty Jo Roskos, a native of Onalaska, Wisconsin. The couple has three children: girl, Haley Jo, 6, and two boys — Lucas, 4, and Marcus, 2.

SOUTHERN CONFERENCE COMPOSITE SCHEDULE



NCAA I-AA National Champion 1988 ▲ Southern Conference Champions 1978, '80, '81, '82, '83, '85, '88, '89, '90

THURSDAY, SEPTEMBER 2

*The Citadel at East Tennessee State, 7:00
Chattanooga at Samford, 8:00 (ET)
Mars Hill at Western Carolina, 7:00

SATURDAY, SEPTEMBER 4

Appalachian State at Auburn, 6:00
Elon at Furman, 7:00
Fayetteville State at Georgia Southern, 7:00
VMI at Richmond, 7:00

SATURDAY, SEPTEMBER 11

Eastern Kentucky at Appalachian State, 7:00
Delaware at The Citadel, 7:00
West Virginia Tech at East Tennessee State, 6:00
*Georgia Southern at Wofford, 7:00
Chattanooga at Louisville, 7:00
Concord at VMI, 1:00
Western Carolina at Maryland, TBA

SATURDAY, SEPTEMBER 18

*The Citadel at Western Carolina, 6:00
*East Tennessee State at VMI, 1:00
Furman at William & Mary, 1:00
Georgia Southern at Oregon State, 6:30 (ET)
Savannah State at Chattanooga, 3:30
Wofford at Middle Tennessee State, 5:00 (ET)

SATURDAY, SEPTEMBER 25

*Appalachian State at The Citadel, 7:00
*Western Carolina at East Tennessee State, 12:30
*VMI at Furman, 7:00
*Chattanooga at Georgia Southern, 1:00
Charleston Southern at Wofford, 1:30

SATURDAY, OCTOBER 2

*East Tennessee State at Appalachian State, 2:00
S.C. State at The Citadel, 4:00
*Furman at Western Carolina, 6:00
*Georgia Southern at VMI, 1:00
*Wofford at Chattanooga, 7:00

SATURDAY, OCTOBER 9

*Appalachian State at Furman, 2:00
The Citadel at Vanderbilt, 1:00
*Western Carolina at Georgia Southern, 1:00
*VMI at Wofford, 1:30

SATURDAY, OCTOBER 16

*Georgia Southern at Appalachian State, 12:30
*Furman at The Citadel, 2:00
Liberty at East Tennessee State, 2:00
*Chattanooga at VMI, 1:00
*Wofford at Western Carolina, 6:00

SATURDAY, OCTOBER 23

*Appalachian State at Wofford, 1:30
*The Citadel at Georgia Southern, 1:00
*East Tennessee State at Furman, 2:00
*Western Carolina at Chattanooga, 7:00
William & Mary at VMI, 1:00

SATURDAY, OCTOBER 30

*Chattanooga at Appalachian State, 2:00
*Wofford at The Citadel, 12:30
*Georgia Southern at East Tennessee State, 2:00
Furman at North Carolina, TBA
*VMI at Western Carolina, 2:00

SATURDAY, NOVEMBER 6

*Appalachian State at VMI, 1:00
*The Citadel at Chattanooga, 7:00
*East Tennessee State at Wofford, 1:30
*Furman at Georgia Southern, 1:00
Samford at Western Carolina, 2:00

SATURDAY, NOVEMBER 13

*Western Carolina at Appalachian State, 1:00
*VMI at The Citadel, 1:00
*Chattanooga at East Tennessee State, 2:00
*Wofford at Furman, 2:00
Georgia Southern at Jacksonville State, 3:00 (ET)

SATURDAY, NOVEMBER 20

Appalachian State at Liberty, 1:30
East Tennessee State at Middle Tennessee State, 7:00
*Furman at Chattanooga, Noon
Wofford at S.W. Louisiana, 5:00 (ET)

*Southern Conference Game
All Times Subject To Change



FURMAN

PALADINS



FURMAN FOOTBALL SCHEDULE 1999

Sept. 4	ELON	GREENVILLE	7:00
Sept. 18	@ William & Mary	Williamsburg, Va.	1:00
Sept. 25	VMI*	GREENVILLE	7:00
Oct. 2	@ Western Carolina*	Cullowhee, N.C.	6:00
Oct. 9	APPALACHIAN STATE*	GREENVILLE	2:00
Oct. 16	@ The Citadel*	Charleston, S.C.	2:00
Oct. 23	EAST TENNESSEE STATE (Homecoming)*	GREENVILLE	2:00
Oct. 30	@ North Carolina	Chapel Hill, N.C.	TBA
Nov. 6	@ Georgia Southern*	Statesboro, Ga.	1:00
Nov. 13	WOFFORD*	GREENVILLE	2:00
Nov. 20	@ Chattanooga*	Chattanooga, Tenn.	NOON

* Southern Conference Game