

FURMAN LETTERMEN

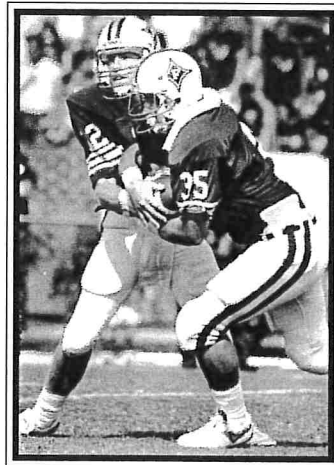
A —

Abernathy, Frank (E)	1952
Abercrombie, David (G)	1960-61-62
Acker, Rodney (WR)	1970-71-72
Acosta-Rua, Fernando (PK)	1985
Adair, Spec	1930-32
Adams, David (OG)	1987-88-89
Adkins, Mark (C)	1973
Adrian, Rocco (DB)	1995-96
Agee, Scott (FB)	1993
Aiken, Bobby (T)	1957-58-59
Akin, George (G)	1948-49-50
Albert, Alex (OG)	1985-86-87
Alley, Lyles	1931-32
Allison, Brian (DT)	1984-85-86-87
Allred, Homer	1930-31
Allsopp, Eddie (DE)	1977-78-79-80
Almond, Matt (TE)	1994
Anders, Robert (DE)	1979-82-83
Anderson, Andy	1948
Anderson, Bill (DE)	1972-73-74
Anderson, Brian (OT)	1989-90-91
Anderson, Charlie (OT)	1978-79-80-81
Anderson, Jeff (QB)	1981
Anderson, Larry (LB)	1973-74-75-76
Anderson, Neal (DE)	1981-82-83
Anderson, Taft (T)	1951-52
Anderson, William	1949
Andrews, Felix (DE)	1979-80-81-82
Angelica, George (FB)	1959-60-61
Armstrong, Bo (OG, DT)	1972-73-74
Armstrong, Bob (HB)	1951
Ashworth, Harry	1949
Askew, Jack	1946-47
Atkinson, Lee	1946-47
Austin, Greer (TE)	1971
Avery, Tom (E)	1955-56-57-58

B —

Babb, J.W. (G)	1935-36-38
Baber, Fred (DB)	1983-85
Bagwell, John (TB)	1984-85-87-88
Bailey, Bill	1946
Bailey, Elton (OG)	1986-87-88
Bailey, Frazier (G)	1950-51
Baker, Billy (QB)	1956-57-58-59
Baker, John (OG)	1975-76-77
Baker, Steve (E)	1976
Ballard, Bill (LB)	1988-89-90-91
Barefoot, Roland (E)	1951-52-53-54
Barfield, Cliff (DB)	1984-85
Barker, Gates (C)	1938-39-40
Barnett, Jim	1940-41-42
Barnett, Jim (RB)	1970-71-72
Barnett, Luther	1947-48
Barnhill, Butch (TE, DE)	1967-68-69
Barrineau, Curtis (WR)	1989
Barrs, Lavern (HB, DB)	1964-65-66
Barry, Bo (FB)	1952-53
Bartik, Mike (WR)	1971-72-73
Barton, Hollis (OG)	1979-81-82
Barton, Peyton (OT)	1970-71
Battle, Andre (DE)	1995
Bauguess, Harvey (DE)	1966-67-68
Baumgardner, Harry (G)	1936-38
Baynes, Patrick (QB)	1986-87-89
Beaird, Bobby (OT)	1973-74
Beasley, Hugh (E)	1925
Beasley, Percy	1937
Beattie, Fox	1934
Beaty, Mac (OT)	1971-72-73
Beavers, Robert (LB)	1990-91-92
Becker, Andy (NG)	1993-95
Beddingfield, Jim (DB)	1980-81-82
Behlke, Marvin (T)	1958-59-60
Behr, Bobby (PK, DB)	1974-75-77
Bell, Lemar (FB)	1986-87

Bell, Venton (DE)	1988-89-90-91
Belskis, Wayne (G)	1959
Bench, Dan (NG)	1972
Bennett, Steve (FB)	1981-82-83
Bernstein, Andrew (OT)	1981-83-84-85
Berrian, Tyron (WR)	1996
Berry, Ken (NG)	1986-87-88-89
Bert, Adam (LB)	1992-93
Bielecki, Andy (G)	1952-53-54-55
Bierman, Harry	1948-49
Biggers, Wayne	1972
Biggestaff, Blair (PK)	1981-82-83
Biles, Bayless	1973
Bishop, Steve (FB)	1978-79-80
Blair, Hubert (HB)	1933-34-35
Bland, Leo (T)	1957-58-59
Blanken, Harry	1946-47
Blankenship, Jeff (LB)	1985-86-87-88
Blount, Jimmie (FB)	1926-27
Bobrovsky, Mike (DE)	1988-89-90
Boles, Junior	1940
Bonaventure, Braniff (QB) ..	1993-94-95-96
Boney, Harold (HB)	1934
Bonnette, Thomas (T)	1928-29
Booker, Jerry (DB)	1987-89-90
Booth, Walter (DB)	1996
Boozer, Ron (OT)	1970-71
Bopp, Eddie (NG)	1981-83-84-85
Borders, Jack (TE)	1981-82-83
Borders, Pete	1935-36-37



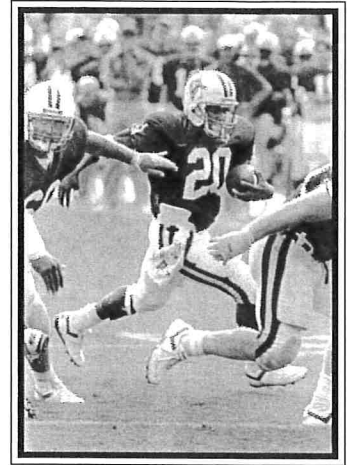
Fullback Kennet Goldsmith (1985-88) was the Southern Conference's Jacobs Blocking Award recipient in 1988.

Borders, Sedic (DB)	1991-92-93
Boroff, Bill (C)	1983
Boroff, Jim (T)	1956-57-58-59
Bossolina, Charlie (G)	1950
Botkin, Steve (DT)	1978
Bowers, Mark (DB)	1975-76-77
Bowers, Scott (DB)	1977
Boyd, Curtis (DB)	1973-74
Boyd, Dale (C)	1964-65
Boyle, Jim (QB)	1952-53-54-55
Bradley, Damon (WR, QB) ..	1990-91-92-93
Brannon, Ray (OT)	1967-68
Braschler, David (OG)	1978-80-81
Braun, Charlie	1946
Braziel, James	1939-40-41
Breazeale, James	1948-49
Brice, Jim (E)	1925-26
Bridgman, Mark (DB)	1980-81-82-83
Bridwell, Ansel	1946-47
Brinson, Homer (OG)	1956
Britt, Van (OT)	1965-66

Broadwell, Tommy (LB)	1967-68-69
Brocard, John (DB)	1973-74
Brodie, Marvin (G)	1934
Brookshire, Joe (DT)	1981
Broomfield, Richard (DE) ..	1975-76-77-78
Broughton, Luther (TE)	1993-94-95-96
Browder, Ben (LB)	1981-82-83-84
Brown, James (WR)	1984-85-86-87
Brown, Kenny (WR)	1974
Brown, Mark (OT)	1984-85-86-87
Brown, Michael (OG, DT) ...	1992-93-95-96
Brown, Mike	1931
Brown, Ronnie (OG)	1955-56
Brownstead, Heath (FB)	1990-91-92-93
Brubeck, Bill	1939-40-41
Brunty, Elton (QB)	1960-61-62
Bryan, Billy (DT)	1982
Bryan, Gary (LB)	1970-71
Buffamoyer, Dave (T)	1951-52-53
Bull, Ernest (C)	1927-28
Buono, Chris (DB)	1977-78-79-80
Burke, Jeff (DB)	1978-79-80-81
Burnett, Dick	1929-30-31
Burnett, Kirk (WR)	1983-84-85-86
Burnette, Rick (OT)	1970-71
Burns, Bryan (DB)	1982
Burns, Freddie (WR)	1989-90-91
Burr, Andrew (PK)	1991
Burr, Wayne (NG)	1987-88
Burrell, Greg (OG)	1996
Burrell, Johnny (HB, DB)	1964-65
Burrell, Leo (T)	1934-35
Burton, David (PK)	1995-96
Burton, Quinton (TB)	1996
Burts, Jim	1942
Buzzell, Bob (FB)	1964-65
Byars, Robin (TB)	1973-74
Byerly, Don (OG)	1974-75-76
Byers, Bruce (NG)	1967-68
Byrd, Eddie (DT)	1975
Byrd, George	1946-47-48
Byrd, Ronnie (C)	1952-53
Byrd, Ronnie (DB)	1973-74
Byrne, Mike (E)	1926-27

C —

Cadle, Ken (OG, OT)	1974-75-76-77
Cagle, Mark (DE)	1983-84-85-86
Cain, Ted (TE)	1971-72-73
Caldwell, Robbie (C)	1973-74-75
Calhoun, Don (DB)	1968-69-70
Calkins, Keifer (C)	1972
Campbell, Craig (NG)	1990-91-92
Campbell, Tom (FB)	1959-60-61
Canty, Billy (QB)	1959-60-61
Caparas, Rally (DB)	1981
Capers, Robert (WR)	1980-82
Capps, Harvey (QB)	1927-28
Carapellotti, Paul (WR)	1973-74-75
Cardell, Owen (QB)	1965
Carder, Chuck (WR)	1990
Carlyle, Blake (WR)	1971
Carmignani, Tony (HB)	1959-60-61
Carnes, Julian (G)	1962-63-64
Carroll, Pat (FB, WR)	1968-69-70
Carson, Earle (E)	1928-29-30
Carson, M. A. (G)	1926-27
Carson, Tom (T)	1929-30-31
Carter, Dolphus (DE)	1973-74-75-76
Carter, LeQuarmie (FB)	1992-93
Cass, Kenneth (B)	1927-28-29
Cato, Billy (OT)	1983-84-85-86
Cerqua, Marq (FB)	1996
Chapin, Jim (G)	1959-60-61
Charpia, David (QB)	1980-81-82-83
Chastain, Bill (HB)	1963-64
Cheagle, Chris (LB)	1989
Chichester, Dusty (TE, WR) ..	1964-65-66



Tailback Bobby Daugherty (1986-89) bounced back from injury in 1987 to rush for 807 yards and seven TDs in 1988.

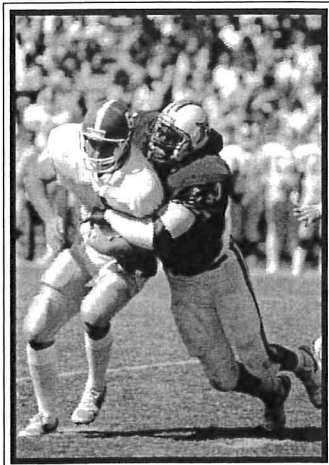
Christner, Sam (FB)	1972-73-74
Christy, Jim (HB)	1955
Church, Bobby (DT)	1974-75-76-77
Clamp, Chris (PK)	1994
Clardy, Cecil (C, T)	1950
Clardy, Don (WR)	1988-89-90
Clark, Ikey	1927-28
Clark, Parrish (FB)	1994-95-96
Clark, Terry (TE)	1979-80-81
Clary, Basil (HB)	1927-28
Clayton, Ed (HB)	1938
Clevenger, Jason (OT)	1992
Coatney, Buck (LB)	1980-81-82-83
Cobb, David (OT)	1988-89
Cobb, J.R. (C)	1952
Coble, Wesley (E)	1926-27-28
Cofer, Jerry (DE)	1972-73
Cole, Brothel (TB)	1978-79-80-81
Cole, Josh (WR)	1993-94-95-96
Coleman, Jeff (DB)	1989-90-91-92
Coleman, Mike (OG)	1979-80-81-82
Coley, Lloyd (E)	1937-38-39
Collins, Dick (LB)	1967-68-69
Colvin, Rodger (DT)	1992-93-94
Connally, Glen (PK)	1987-88-89-90
Conner, Brian (DT)	1996
Contestabile, Mark (QB)	1992
Coogler, Lamar	1931-33
Cook, David (DE)	1991-92
Cook, John (HB)	1962-63
Cooper, Oliver (OT, DT)	1975-76-77
Cooper, Sammy (DE)	1986-87
Copeland, Luther	1942
Coppenger, Steve (TE)	1982-83-84-85
Cordell, Brownie (E)	1963-64
Corder, Lucius	1930-32
Corley, Duroc	1925-26-27
Cornwell, William (T)	1938-39-40-41
Cory, Jay (OG)	1975-77-79
Cosnahan, Robert	1942
Couch, David (OT)	1970-71-72
Cowan, Fe (OT)	1986-87-88
Cox, Gilbert (G)	1926-27-28
Cox, Jimmy (PK)	1977-78
Cox, Joe (G)	1934
Cox, Pete (HB)	1956
Cox, Ronnie (LB)	1977-78-79
Cox, Tony (DT)	1973-74-75-76
Coyle, Wilbur	1941-42-46
Craven, Paul (DT)	1986-87-88
Craver, Dee (HB)	1952
Crawford, Claude (HB)	1926-27
Crawford, Tim (TE)	1963-64-65

FURMAN LETTERMEN

Creed, Floyd (QB) 1980
 Crislip, Gene (FB) 1968-69-70
 Crislip, Steve (RB) 1969-70-71
 Crocker, Clint (DT) 1989-90-91-92
 Crosby, Ernest (TB) 1995-96
 Crosby, Walter (HB) 1962-63
 Crosland, Ben (C) 1929-30
 Cross, Brian (DT) 1994-95-96
 Cross, Chuck (LB) 1968-69-70
 Crouse, Thomas 1939
 Crowe, Bruce (NG) 1970-71-72
 Culclasure, Raymond (HB) 1936
 Culbertson, Lynn (G) 1938-39-40
 Cullen, Richard (WR) 1970
 Culp, Barry (OG) 1989
 Culpepper, Brandon (FB) 1994-95
 Cummins, Basil 1946-47

D —

Dailer, Bryan (DE) 1994-95-96
 Dameron, Mark (DT) 1979
 Daniel, James 1936-37
 Daugherty, Bobby (TB) 1986-88-89
 David, Robert (DT) 1981-82-83-84
 Davidson, Chuck (OT) 1984-85-86
 Davidson, David (OT) 1964-65-66
 Davidson, Lamar (OT) 1974
 Davies-Venn, Leroy (DT) 1994-95-96
 Davis, Bennie (G) 1950
 Davis, Bo (WR) 1993-94-95-96
 Davis, C.E. (C) 1928-29
 Davis, Chuck (DT) 1968-69
 Davis, Claude (G) 1959-60-61
 Davis, Frank (HB) 1927-28
 Davis, Hinton (T) 1956
 Davis, John 1960-61-62
 Davis, Kyle (LB) 1983-84-85
 Davis, Mike (NG) 1994-95-96
 Davis, O.J. (FB, DT) 1990-91-92-94
 Davis, Sandy (FB) 1977-78-79
 Davis, Stan (DE) 1983-85
 Day, Dave (TE) 1986-87
 DeBusk, Frankie (QB) 1988-89-90
 Deery, Joel (HB) 1928-29-30
 Deese, Andrew (OG) 1991-92-93
 DeLeo, John (QB) 1970-71
 Dellinger, Bob (FB) 1952-53-54-55
 DeLong, Jack 1971
 Dennis, Billy 1942
 Dennis, Rusty (DB) 1968-69
 Despres, Adrian (DT) 1984-85-86-87



Linebacker Darryl Gardner (1984-87), a two-time All-Southern Conference pick, totaled 360 tackles in his career.

Dickert, Phil (DB) 1967-68
 Dickey, Paul (OG) 1966-67-68
 Dixon, Julius (DB) 1985-86-87-88
 Dixon, Mark (OT) 1977-78-79
 Donaldson, Frank (FB) 1950-51-52
 Donovan, Danny (QB) 1962-63
 Dooley, Michael (DE) 1993-94-95
 Dorman, Ray (E) 1937-38-39
 Dorn, Drayton 1932-33-35
 Dowdy, Eric (OG) 1992
 Downey, Keith (LB) 1971-72-73
 Drake, Lee (OT) 1994-95-96
 Drinkard, Ed (TE) 1990
 Drye, John (FB) 1982-83-84-85
 Duckwall, Mike (C, OG) 1995-96
 Duffy, Eric (OT) 1989-90
 Duggan, Steve (C) 1987-88-89-90
 Duncan, Bill (TE) 1984-85-86-87
 Duncan, Charlie (HB) 1925-26
 Duncan, Orvell (G) 1938-39-40
 DuPre, George (C) 1965-66-67
 Durham, Bernard (OT) 1980-82-83-84
 Durham, Chris (OG) 1987

E —

Eargle, Guy 1946-47
 Earp, Ron (E) 1973
 Eaves, Walter 1956
 Eberhardt, Eric (WR) 1989
 Edens, Charles 1939-40-41
 Edge, John (C) 1956
 Edmondson, Jim (OT) 1982-83-84-85
 Edwards, Allen (NG) 1988-89-90-91
 Edwards, Mack (HB) 1955-56-57-58
 Elder, Kenny (DT) 1982-83-84-85
 Eliades, George (C) 1955-56
 Ellis, Greg (DB) 1978
 Elvington, Charles (QB) 1972-73-74
 Elvington, Jim 1941-46
 Elvington, Randy 1942-46-47
 Engelberg, Willie 1927
 English, Tom 1946
 Ensley, Jason (DB, WR) 1991-92-93
 Epling, Bob (T) 1962
 Espinosa, Joey (DB) 1995-96
 Estes, B.J. (OT) 1989-90-91
 Esval, Keven (PK) 1983-84-85
 Evans, Parks (FB) 1978
 Evington, Effie 1947-48-49

F —

Fabian, Mike (WR, DB) 1969-70-71
 Fair, Jim (DT) 1970-71
 Fairley, Mack 1926
 Fant, George 1932
 Farry, Lawrence 1939-40-41
 Ferguson, Lewis 1927
 Ferguson, Phillip (NG) 1985-86-87
 Ferguson, Tom (DB) 1973-74
 Fickling, Buck 1946
 Fickling, Ed 1927
 Fisher, Brian (OT, OG) 1992-93-94-95
 Fisher, Harry (HB) 1932-33-34
 Fisher, Mike (DB) 1976
 Fitzer, Robert (HB) 1938-39-40
 Flemming, Sam (T) 1938-39-40
 Fletcher, Jim (C) 1948-49-50
 Fletcher, Kelly (DE) 1987-88-89
 Floyd, Charles (T) 1962-63
 Flowers, Tom 1946-47
 Forbes, John (OG) 1964-75
 Ford, Ric (WR) 1991-92-93-94
 Foster, Beach (DB) 1975-76-77
 Foster, Bill (C) 1987-88-89
 Foster, Joe 1936-37
 Foster, Mark (C) 1995-96
 Foster, Paul (C) 1980-81-82



Dewey Proctor (1940-42), a member of Furman's Hall-of-Fame, was an all-state selection in 1942.

Fowler, Bradley (HB) 1959
 Fowler, Bruce (DB) 1979-80
 Fox, Chas (WR) 1982-83-84-85
 Fox, Tim (TE) 1985-86-87
 Frederick, Len (DB) 1989
 Freeman, Bill (TE) 1977-78-79-80
 Freeman, Willie (DB, LB) 1975-76-77
 Frey, Mike (DB) 1974-75
 Fuller, Les (T) 1950-51-53
 Furches, Greg (DE) 1975-76-77

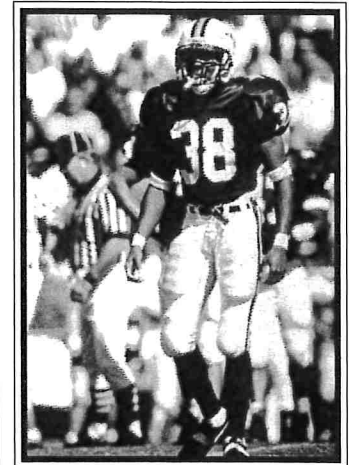
G —

Gaines, Danny (TE) 1981
 Galiga, Palma 1930
 Gambrell, Russell (DB) 1975-76-77-78
 Gandy, Steve (WR) 1986-87
 Gardner, Darryl (LB) 1984-85-86-87
 Gardner, Robbie (TB) 1982-83-84-86
 Garrison, Steve (TB) 1977-79-80-81
 Garner, Emmitt (G) 1929-30
 Gaskins, A.H. (T) 1928
 Gaskins, J.W. 1936-37
 Gay, Charlie (HB) 1957-58-59
 Geddie, Al (NG) 1966-67
 Geddie, Gray (T) 1963
 George, Charlie (C) 1949-50-51
 Gettys, John (T) 1962-63
 Gheesling, Bruce (LB) 1979-80-81
 Gibbs, Mike (OT) 1973-74-75-76
 Gibson, Clayton (LB) 1991-92-93-94
 Gibson, David (OG) 1993-94-95
 Gibson, Ernest (DB) 1980-81-82-83
 Gibson, Mitch (LB) 1982-83-84-86
 Giddings, Richard (OG, NG) 1962-64-65
 Gilliland, Osie 1932-33
 Gilreath, Glenn 1946-47-48
 Gilreath, Joe (T) 1951-52-53
 Gilstrap, Hazel 1939-40-41
 Gilstrap, Rick (TE, DE) 1964-65
 Glass, Tony (OG) 1991-92
 Gleason, Danny (WR) 1979
 Glenn, Mike (TB) 1977-78-79-80
 Glover, David (TE) 1976
 Godsey, Rick (TE) 1966-67
 Goila, Tom (DE, LB) 1993-94-95-96
 Goldsmith, Kennet (FB) 1985-86-87-88
 Good, Matt (OT) 1993
 Goodpaster, Richard (TE) 1974
 Gordon, Mark (DB) 1975-76
 Gordon, William 1948
 Goss, Andy (PK) 1973-74-75-76

Grady, J.W. (HB) 1928
 Grady, Larry (WR) 1985-87
 Graham, John (C) 1976
 Grainger, Mark (WR) 1978-79-80
 Grant, Jason (DB) 1989-90-91-92
 Grant, Jimmy (FB) 1954-55-56-57
 Graves, Mark (C) 1994-95-96
 Green, Rod (FB) 1990-91-92-93
 Greene, Tommy (OG) 1963-64-65
 Greenleaf, Steve (E) 1980
 Greer Mervyn (G) 1950
 Gregory, Earl (T) 1935
 Gregory, Roger 1942
 Gregory, Wayne (G) 1972
 Greve, Dick 1936
 Griffin, Bob 1930-31-32
 Griffin, Bob 1946-47
 Griffin, Donny (RB) 1971-72-73
 Griffin, Jack 1935
 Griffin, Jimmy (DB) 1973-74
 Griffith, Tom (OG) 1988-89-90-91
 Gwinn, Paul 1935-36

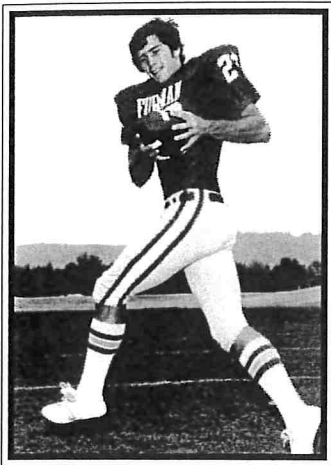
H —

Hagelthorn, Jimmy (DB) 1970-71-72
 Hahn, Robbie (TE) 1966-67
 Hall, Ben (OG) 1996
 Hall, Billy (LB) 1979-80-81-82
 Hall, Greg (DT) 1982-83-84-85
 Hall, Jesse (HB) 1930
 Hall, Jim 1946
 Hall, Ricky (TB) 1978-80
 Hall, Steve (TE) 1972-73-74
 Hall, William (DB) 1987-88-89
 Hamby, Rodney (G) 1952
 Hamer, Ralph 1940-41-42
 Hamilton, Alston (P) 1984-85-86-87
 Hammet, Flash (HB) 1925
 Hammett, Orion (T) 1950-51-52
 Hancock, Andy (QB) 1966-67
 Hancock, Geary (G) 1961
 Harbin, George (DE) 1970-71-72
 Hardie, John (DT) 1978
 Hardwick, Omari (DB) 1993-94
 Hardy, Mike (DT) 1989-91-92-93
 Harkless, Calvin (DE) 1980
 Harmon, Harry (HB) 1928-29-30
 Harper, Ralph (C) 1984-85-86
 Harper, Richard (OT) 1964-65
 Harrell, Hayden (G) 1930
 Harrell, Spencer (FB) 1925
 Harrelson, Bob (E) 1971



All-Southern Conference cornerback Michael McNeil (1993-96) led Furman with 15 pass deflections in 1996.

FURMAN LETTERMEN



Two-time All-Southern Conference wide receiver Tommy Southard (1975-77) caught 103 passes for 1,443 yards and eight TDs in his career.

Harris, Jackie (T)	1951-52-53-54
Harris, Richie (TB)	1987-88-89
Harris, Woodham	1934
Harrison, Adrick (WR)	1992-93-94-95
Harrison, Charles	1942-46
Harrison, George	1946-48-49
Harrison, George (G)	1955-56-57-58
Hart, Gerry (OG)	1967-68-69
Hartley, Carroll	1960
Hartness, Calvin (G)	1949-50-51
Haynie, Don (DT)	1970-71-72
Hays, Hayden (E)	1962-63
Head, Gene (G)	1955-56
Head, Ken (OG)	1971-72-73
Head, Wayne (OG)	1975
Hecker, Paul (TE)	1993
Heintz, Rodney (DT)	1976-77-78
Heisler, Phil	1955
Henderson, David (QB)	1977-78-79
Hendrix, Clay (OG)	1983-84-85
Henson, Waldo	1940-41
Hentz, Andre (DB)	1993-94
Heres, Bart (OT)	1979-80-81-82
Hesseltine, Brian (LB)	1975-76-77-78
Heusinger, Jon (OG)	1989-90-91-92
Hewell, Clyde (QB)	1966-67-68
Hicks, Bruce (HB)	1972
Hightower, Cleve (QB)	1968-69-70
Hightower, L.G. (E)	1953
Hill, David (G)	1955-56
Hill, Olin (T)	1960-61-62
Hill, Tyler (T)	1965-66
Hillhouse, Ted	1946
Hilliard, Fred	1941-42-46
Hilliard, Joe (T)	1938
Hilliard, Roy	1941-42
Hinson, Cecil	1937-38-39
Hodgson, Ralph	1940
Holcomb, Jeff (OT)	1973-74-75-76
Holden, Corey (DE)	1988-89-90
Holland, Jason (LB)	1991-92-93
Holley, Forrest	1942
Holloway, Charlie (G)	1963-64
Holmes, Ernest	1929
Holt, Joe (OT)	1977-79
Horton, Chris (P)	1981
Horton, Hicky (HB, E)	1956-57-58-59
Horton, Sonny (HB)	1949-50-51
Howard, James (C)	1970-71-72
Howell, Danny (LB)	1996
Howes, Paul (TB)	1979

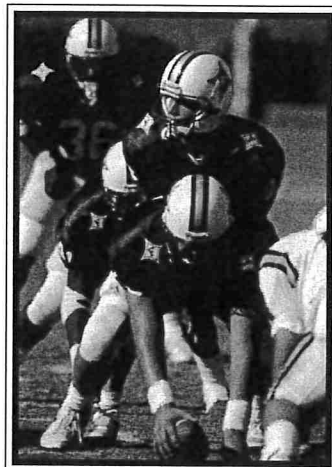
Howle, Phillip (E)	1968-69-70
Hubbard, Bobby (DE)	1996
Huckabee, Bob (TE)	1965-66
Huggins, Giles	1947-48
Hughes, Herman	1929
Hughes, Milton	1946-47-48-49
Huiett, Gene (G)	1951-52
Huppel, Grover (HB)	1937
Hurley, Joe	1977
Hurst, James	1927
Hurst, Rock (LB)	1981-82-83-84
Hurt, James	1926-27
Hutt, Bill (HB)	1932-33-34

I —

Immel, Dick (HB, DB)	1967-68-69
Ingram, Richard (DB)	1977-78
Ingrum, Jerry (G)	1957

J —

Jackson, Chad (PK)	1993
Jackson, Darrel (WR)	1981
Jackson, Jason (WR)	1995
Jackson, Kevin (DB)	1995-96
Jackson, Robbie (OL)	1979
Jager, Brian (FB)	1984-85
James, Leon (HB)	1963
Janko, Morris	1942
Jasonek, Ed (HB)	1949-50
Jay, Jerome	1930-31-32
Jeffcoat, Warren (HB)	1938-39
Jenkins, Joe	1936-37-39
Jennings, Bobby (FB)	1952-54-55-56
Jennings, Jim	1956
Jennings, Stanford (TB)	1980-81-82-83
Jepson, Dennis (T)	1962-63-64
Jepson, Larry (C)	1959-60-61
Johannessen, Paul (OT)	1980-81-82-83
Johns, Tommy (LB)	1984
Johnson, Charlie	1946-47-48-49
Johnson, Dick	1955
Johnson, Ivan (DB)	1988-90
Johnson, Jeff (HO)	1979-80-81
Johnson, John (P)	1979-80-81
Johnson, Leon	1942
Johnson, Mike (FB)	1970-71-72
Johnson, Phillip (DB)	1977
Jonas, Chris (QB)	1996
Jones, Ernest	1930
Jones, John	1973



Quarterback Philly Jones (1991-95) was the recipient of an NCAA Post-Graduate Scholarship in 1995.

Jones, Johnnie (E)	1934
Jones, Mike (DB)	1988-89-90
Jones, Philly (QB)	1991-92-93-95
Jones, Tommy (OG, C)	1992-94-95
Jones, Whitey	1932
Jordan, Bill (T)	1949-50
Jordan, Jimmy (WR, P)	1966-67-68
Jordan, Mike (C)	1992-93-94

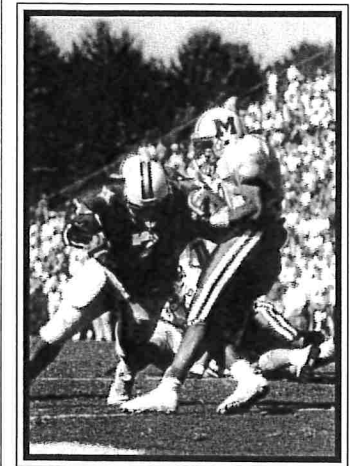
K —

Kapps, Larry (PK)	1964
Kate, Ed (NG)	1968-69-70
Kaufman, Julian (DB)	1992
Kearns, Charlie	1930-31-32
Keck, Corey (DB)	1995
Keefe, Larry (FB)	1965-67
Keenan, Jim (OG)	1975-76
Keisler, Don	1936-38
Keith, John (DB)	1996
Kelehear, Zach (TE)	1978-79-80
Keller, Elliott (FB)	1962-63
Keller, Gary (DB)	1981-82-83
Kelly, Bobby (C)	1985-86-87
Kelly, David (DB)	1975-76-77-78
Kelly, Frank	1947-48
Kemp, Don (HB)	1959-60
Kendrick, Kevin (LB)	1987-88-89-90
Kenerleber, John (FB, LB)	1965-67-68
Kennedy, Tim (OG)	1973-74-76-76
Kerr, Jimmy (FB)	1963-65-66
Kersey, Butch (OT)	1968-69-70
Key, Greg (TE)	1988-89
Key, Mendell (C)	1991-92
Kiernan, Mike (LB)	1986-87-88
Kimbell, Walker (TE, DE)	1964-65
Kimche, Scott (DT)	1978-79
Kineard, Ryan (OT)	1996
King, Bernard (C)	1933-34
King, Bob (E)	1934-35-36
King, Bobby (DE)	1966
King, Harry (TB)	1974-75-76
King, Herbert (E)	1939
King, Jeff (LB)	1996
King, Shad (OT)	1995
Kinley, Derrell (DT)	1980-81
Kiser, Jimmy (WR)	1975-76-77-78
Kitchings, Desmond (WR)	1996
Knight, Dutch (C)	1936-38
Kolans, Dick (QB)	1954-57
Koontz, Owen	1940
Kosman, Luke (NG)	1996
Kramer, Todd (DE)	1992-93-94
Kreidler, Phillip (DB)	1987
Kuppens, Tom (TE)	1977

L —

Ladson, Cluade (DB)	1994
Laetsch, Greg (E)	1976-77-78
Lamb, Bobby (QB)	1982-83-84-85
Lammey, Gale (E)	1951-52
Lancaster, Bruce (DE)	1976-77-78
Landy, Mike (FB)	1974
Laney, John	1926-27
Laney, Yates	1925-26
Lanigan, Bernie (DT)	1967-68-69
Laprade, Marty (QB, WR)	1975-76-77
Lark, Don (C)	1987
Lavender, Billy	1942
Lax, Skip (WR)	1977-79
Leathers, Corey (DB)	1993-94
Lee, Byron (TE)	1978-79-80-81
Lee, David (DE)	1969-70-71
Lee, Harry	1936-37
Lee, Jeff (TE)	1982-83-84-85
Leicht, Bruce (P)	1988-89-91
Lemmond, Murray (T)	1933-34
Lemmond, Sam (T)	1926-27-28

Lewis, Lance (QB)	1993
Lezan, Adam (PK)	1984-86
Linder, Charlie (HB)	1956-57-58
Link, Gene (T)	1937-38-39
Lipscomb, C.V. (HB)	1938-39
Lipscomb, Donald (WR)	1988-89-90-91
Lipscomb, Lee (T)	1966-67-68
Lister, Donnie (LB)	1966-67



Not much got by All-American nose guard Allen Edwards (1988-91), including this unlucky player from Marshall.

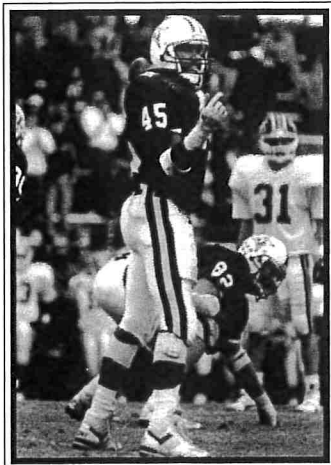
Litchfield, Johnny (HB)	1964-65-66
Little, John	1946-47-48
Little, Robert (DB)	1984-85-86
Livesay, Hudson (C)	1928
Livezey, Ryan (DE)	1990-91-92-93
Lloyd, Steve (OT)	1978-79-80-81
Loefer, Josh (OG)	1995
Looper, Charles (T)	1938
Loth, Ted (HB)	1959-60-61
Love, Robbie (TE)	1988-89
Lovell, George	1940
Lowery, Kyle (OT)	1988-89-90-91
Ludwig, John (OT)	1990-91-92-93
Luongo, Pete (E)	1962-63
Lusardi, Harry	1942
Lyde, David (DT)	1977-78-80
Lynch, Barney (FB, TE)	1993-94-95-96

M —

MacDonald, Norman (WR)	1972-73-74
Mack, F.B. (LB)	1992-94
Maddox, Ben (OG)	1969
Maddox, Cordell (C)	1951-52-53
Madox, Luther	1936-37
Maddox, Sidney (E)	1955
Mahaffey, Randy (FB)	1973-74
Major, James (E)	1928
Malik, Tom (DB)	1971
Malone, Pete (HB)	1967-68
Mann, Harold	1940
Markofski, Don (T)	1955-56-57-58
Marlowe, Gilbert (C)	1951-52
Marshall, Tommy (DB)	1974-75-76
Martin, Al (E)	1960-61-62
Martin, Dan (HB)	1938-39
Martin, Evans (HB)	1967-68-69
Martin, James (HB)	1938-39-40
Martin, Mike (T)	1964-65-66
Mathis, Buzz (T)	1965-66
Mathews, Ansel (DT)	1977-78-79-80
Maxwell, Al (DB)	1987-88
May, Jonathan (TE)	1981-82-83-84
Mazur, Steve (DT)	1979-80-81-82

FURMAN LETTERMEN

McCall, Shawn (WR)	1984-86
McCarson, Trask	1932-33-35
McClarty, Leonardo (TB, FB)	1991-93-94-95
McClellion, Dick (FB)	1965-66-67
McClure, Claude (T)	1936
McCluskey, Brian (DB)	1981-83
McCorkle, Jim	1946-47-48-49
McCutchan, Ronnie (P)	1992-93
McDaniel, Merrill	1940
McDonald, Larry (HB)	1964
McDougall, Steve (E)	1977-79
McEachran, Gib (DB)	1979-80-81-82
McElveen, Mac (E)	1925
McEwen, Tappy (C)	1963-64
McGowan, Patrick (DT)	1991-92-93
McIntosh, Wayne (OG)	1969-70-71
McLaughlin, Craig (DB)	1989
McLaughlin, Warren	1949
McLaurin, Hugh	1935-36
McNabb, Mark (DT)	1968-69-70
McNeil, Michael (DB)	1993-94-95-96
McQueen, James	1940-46-47
McTeer, Everett (HB)	1962-63
Meeeks, Zangnel (HB)	1925
Mellichamp, Elliott (E)	1929-30
Merkel, Brad (OG)	1981-82-84-85
Merritt, Gee (HB)	1964-65
Middleton, David (C)	1978-80
Middleton, Kenny (WR)	1973-74-75
Milam, Alden (SN)	1989-90-91
Miller, Jim (DT)	1993-94
Mills, Marvin (OG)	1971-72-73
Mitchell, Bill	1931-32-33
Mitchell, Mark (OT)	1981-82
Mitchell, Steve (LB)	1976
Moates, Lamorn (HB)	1947-48-49-50
Mobley, Bob	1942
Monferdini, John (E)	1971-72
Mongelli, Mike (T)	1965-66-67
Montgomery, Scott (DE)	1977-78-79
Monti, Joe (T)	1960-61-62
Moddy, Karl (DE)	1983-84-85
Moody, Ricky (DT)	1981-82-83
Moore, Charley (QB)	1955-56
Moore, Johnson (E)	1938-39
Moore, Mark (TB)	1994-95-96
Moore, Thomas (T)	1938-39
Moore, Keith (QB)	1984-85-86-87
Morgan, Kevin (DT)	1977-78-79-80
Morgan, Marcus (DB, LB)	1992-93-94-95
Morris, Craig (DE)	1991
Moore, Mark (TB)	1994



Linebacker Kota Suttle (1989-92) earned Kodak All-America honors in 1992 after leading Furman with 151 tackles.

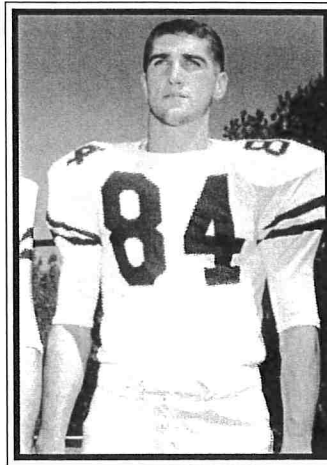
Morris, Merritt	1940
Morrish, Tom (OT)	1978-80
Morton, Beecher	1942
Moses, Frank (NG)	1974-75-76-77
Mosher, Mark (DB)	1973-74-75
Motte, Benji (DB)	1983-84-85-86
N —	
Nation, Rocky (WR)	1991
Neal, Ernest (E)	1949-50
Neal, Jimmy (LB)	1974-75-76-77
Needham, Junie (HB)	1950
Neel, Bob (FB)	1971-72
Nemeth, David (FB)	1966
Nettles, Harold	1941
Newman, Bill (E)	1959-60-61
Newman, Chuck	1930
Newmeyer, Jim (PK)	1969-70
Nichols, John (QB)	1973-74-75
Nickles, Roy (HB)	1955-56-57-58
Nix, Jay (TB)	1983
Nolan, Carl (E)	1936-37-38
Nordlinger, Larry (DB)	1974-76
Norman, Drew (QB)	1982
Norman, Jeff (LB)	1993-94
Norris, Jerome (DB)	1983-84-85-86
Norris, Mike (TE)	1974
Norris, Steve (LB)	1988-89-90-91
Norton, Charles	1942
Nutter, Brian (OT)	1993-94-95-96

O —

Obenaur, Greg (HB)	1964-65-66
Ohlsen, Swede	1930-31
Oliver, Robert (C)	1967-68-69
Oloff, Joe (OT)	1983-84-85
Oloff, Joe (T)	1957-58-59-60
O'Neill, Steve (LB)	1978-79-80-81
Osborne, Jeremy (DB)	1994-95-96
Outz, Jimmy (DB)	1970-71-72
Owens, Gerry (C)	1962-63-64
Owens, Jack (OT)	1991-92-94
Owens, Jack (E)	1949-50
Owens, J.B.	1946
Owings, Michael (TE)	1996

P —

Pack, Kirby (DE)	1973-74-75-76
Palmer, Mark (HB)	1968-69
Partridge, Tim (DE)	1978-79
Pate, B.J. (DT)	1995-96
Patrick, George (HB)	1936-37-38
Patterson, Ed (OT)	1986-87-88
Patterson, Robbie (C)	1966-67-68
Patterson, Verdell (LB)	1983-84-85
Patton, Steve (DE)	1974-75-76
Payne, John (FB)	1974
Peacock, Scott (PK)	1990
Pearson, Gordon	1929-30-31
Peavy, Travis (TE, WR)	1980
Peddicord, Paul (C)	1950-52
Peden, Ralph	1930-31-32
Pedrick, Gene (QB)	1951-52-53
Peevy, Jim (OG)	1992-93-94
Penleton, Paul (OG)	1983-84-85-86
Penland, Jerry (HB)	1954-55-56-57
Penn, Herbert (HB)	1938-39
Perkins, Rico (DB)	1995-96
Perone, Jr., Vince (DB)	1972-73-74
Perone, Sr., Vince (G)	1952-53
Perry, Garrick (LB)	1975-86-87
Perry, J.M. (G)	1926-27
Perry, Rick (DB)	1974-75-76
Perry, Ted (NG)	1973-74
Peterson, Al (DT)	1984-85-86-87
Pfeifer, Dick (E)	1954-55-56-57



End Ray Siminski caught 35 passes for 568 yards and five touchdowns for Furman in 1958.

Phillips, Gene	1931-33
Phillips, Nelson	1942
Phillips, Terry (OT, P)	1982-83-85
Phillips, Troy (NG)	1980-81-82-83
Pickens, Sam (HB)	1962-63
Piner, Jim (FB)	1949-50-51
Pipkins, Lehman (HB)	1927-29-30
Pipkins, Oscar (HB)	1925-26
Pittman, Bob	1929-30-31
Pitts, Brian (DT)	1986-87-88-89
Poole, Andy	1930-31
Poole, Angus (TE)	1975-76
Popson, John (HB)	1952-53-54-55
Potter, Keith (TE)	1978-79
Potter, Ted	1930-31
Pou, Sam (E)	1951-53
Powell, Allen (T)	1933-34
Powers, Gordy (E)	1963-64-65
Powers, Jackie (HB)	1955-56
Preddy, Mark (WR)	1986
Preston, Walter (G)	1962-63-64
Pridmore, Harold (T)	1949-53
Pringles, Gus (QB)	1952-53-54-55
Proctor, Dewey	1940-41-42
Pruitt, George	1946-47-48-49
Pruitt, Mike (DT)	1977
Puhl, Joe (G)	1965-66-67
Pulley, John (T)	1925-26-27

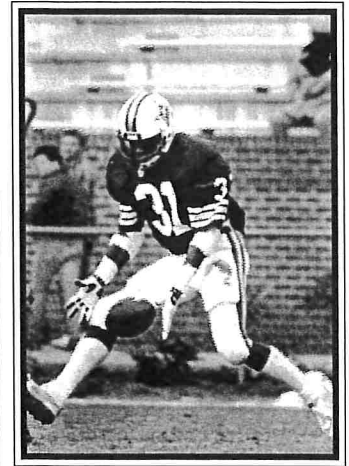
Q —

Quarles, George (WR)	1987-88
Quarles, Taylor (DB)	1988-89-90-91
Queen, Jackie (OG)	1968-69-70
Quinlan, Kevin (DE)	1980-81-82

R —

Raeber, Scott (C)	1988
Ramaley, Seth (DB)	1993-94-95-96
Ransbotham, Jim (HB)	1952-53
Ratcliff, Mike (DB)	1989-90-91
Rapinchuk, George (FB)	1960-62-63
Raymond, Jeff (TE)	1989
Rawl, Fred (QB)	1925-26-27
Reed, Gene (T)	1951-52-53
Reed, Kavis (DB)	1992-93-94
Reeder, Gene (C)	1982-83-84-85
Rentz, Stuart (TB)	1996
Reugner, Emil (C)	1955-56-57
Revels, Buddy (QB)	1959
Rhoads, Chris (WR)	1991

Rhoads, Tommy (HB)	1963-64
Rhodes, Verlon (DB)	1980
Rice, Richard	1931-32
Richardson, Angelo (TB)	1986-87-88
Richardson, Darrell (G)	1938-39
Richter, Jim (PK)	1992-93-94-95
Risher, Billy (WR)	1979-80-82-83
Roach, Bill (C)	1988-89
Roberts, Scott (LB)	1986-87
Robinson, Edward (TB)	1986
Robinson, Eric (DT)	1988
Robinson, Jimmie	1931
Robinson, Larry (TB)	1973-74-75-76
Robinson, Relman	1934
Roddy, Virgil	1946-49
Rohr, Ernest	1935
Roesch, Karl	1940-42
Rogers, Colin (DB, LB)	1995-96
Rogers, Daryl (DB)	1989-90
Romano, Mike (OG)	1972-73
Roper, Chris (DE)	1986-86-88-89
Roper, Cleo (E)	1934
Ross, Colin (FB)	1994-95-96
Rudder, Mark (WR)	1984-85-86-87
Ruff, Orlando (LB)	1995-96
Ruffing, Matt (DT)	1979-80-81
Rush, Russell (DB)	1984-85-86-87



Cornerback Jerome Norris (1983-86) is Furman's all-time interceptions leaders with 18.

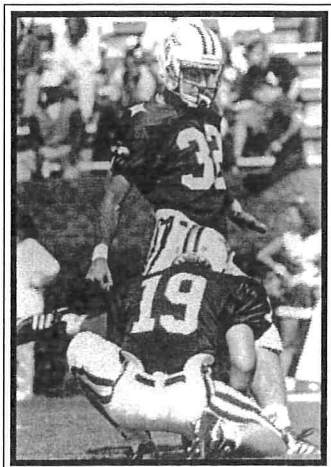
Russell, Frank (E)	1950-52
Rutkowski, Jeff (LB)	1974-75

S —

Sander, Greg (OG)	1993-94-95-96
Sanders, Brent (DB)	1979-81-82
Sanders, Jeff (DT)	1987-89-90
Sanders, Mike (DT)	1974-75-76-77
Sansom, Randy (DB)	1979
Sapp, Bob (G)	1965-66-67
Scarborough, Rivers (HB)	1965
Schaefer, Norman (DT)	1984
Scherich, Tom (OT)	1971-72-73
Schmidt, Mark (OG)	1973-74
Schnabele, Rick (WR)	1981-82-83
Schneider, Red (HB)	1926
Schuyler, Jack	1942-46
Scott, Bernard (LB)	1993-95-96
Scott, Clarence	1933
Scott, Jerry (DT)	1977-78-79-80
Scott, June	1935-36-37
Scott, Olin	1946
Seay, Larry (T)	1955
Seel, William	1939-40-41

FURMAN LETTERMEN

Sellers, Scott (OG)	1977-78-79
Senter, Rodger (E)	1960-61-62
Sewell, Tank (G)	1926
Sexton, Wade (DB)	1987-88
Sharp, Jack (C)	1959-60-61
Shattuck, Andy (LB)	1989
Shaw, Doug (E)	1962-63
Shelton, Mike (QB)	1971-72-73
Shepherd, David (DB)	1972-73-75-76
Sherwood, Ron (FB)	1988-89-90
Shetley, Roten (HB)	1937-38-39
Shi, David (DE)	1970-71-72
Shill, Mike	1956
Shivers, Jack	1935-36-37
Shook, Irvin (QB)	1950-51
Siffrit, Paul (TE)	1988-89-90-91
Siminski, Ray (E)	1955-56-58
Simmons, Brette (TE)	1974-75-77-78
Simpson, Ike (FB)	1973-74-75-76
Sims, Ed	1946
Sims, Mark (DB)	1983-84
Singletary, Wesley (C)	1934
Sizemore, Paul	1940-41-42
Sleet, Dan (OG)	1979-80-82-83
Smallen, Gary (DB)	1970-71
Smallwood, Dan (DB)	1988-89-90
Smith, Bob	1931-32-33
Smith, Bill	1946
Smith, Daryl (LB)	1993-95-96
Smith, David (OG)	1973
Smith, Frank	1932
Smith, Greg (TB)	1983-84-85-86
Smith, Henry (T)	1927-28-29
Smith, Holman (E)	1950-51-53
Smith, Jerrod (DE)	1981-82-83-84
Smith, J.P. (G)	1929
Smith, Kelly (DE)	1985-86-87
Smith, Kit (LB)	1973
Smith, Mallory (G)	1936-37-38
Smith, Roy	1932-33-35
Smith, Scott (C)	1982
Smith, Terry (DB)	1980-81
Smoak, Harold	1935-36-37
Smoak, Ike	1942
Snead, Bob (FB)	1951-52-53
Snipes, Frank (G)	1966-67-68
Snipes, Jeff (DE)	1978-79-80
Snyder, Ben (PK)	1992-93-94
Socha, John (G)	1952-53-54
Solomon, Brent (DE)	1991-92-93-94
Sorrells, John (WR)	1982-83
Sorrells, Paul (DB)	1979-80



Kodak All-American Jim Richter connected on 16-of-19 field goals in 1994, including 7-of-8 from 40 yards and beyond.

Sorrells, Tim (QB)	1977-79-80-81
Southard, Tommy (WR)	1975-76-77
Sowell, Dicky (HB)	1966-67-68
Sowell, Kenny (DB)	1968-69-70
Speaks, Chris (QB)	1984-85-86-87
Speigner, Coley	1938
Squire, Steve (DB)	1983-84-85-86
Stacks, Doug (C)	1962-63
Stallard, Dewey	1948-49
Stamey, David (WR)	1992
Stancil, Tim (FB)	1987
Standiford, Al (PK)	1971-72-73
Stanley, Stan (OG)	1977-78-79
Stephens, Brad (WR)	1987-88-89-90
Stephens, John	1933-34
Stepp, Tim (DE)	1984-85-86-87
Stepp, Wade (G)	1949-50
Sterling, Dwight (LB)	1986-87-88-89
Sterling, Milan (DE, LB)	1990-91-92-93
Stevens, Roy (P)	1934-35-36
Stewart, Ivey (LB)	1970-71-72
Stewart, Kevin (WR)	1996
Stewart, Larry (OT)	1974-75-76
Stewart, Paul (HB)	1952-53
Stewart, Woody (E)	1956-57-58-59
Stewart, Flucie	1929-30-31
Still, Coye (G)	1948-49-50
Still, Coye (OG)	1984-86
Stillwell, Bob (QB)	1964-65-66
Stockdale, Billy (FB)	1988-89-90
Stombaugh, Paul (P)	1946-47-48-49
Stowers, Mark (TB)	1976-77-78
Strappy, Troy (TB, DB)	1993-94-95-96
Street, Joe (FB)	1967-68-69
Strickland, Ron (OT)	1968-69-70
Stubbs, Marquies (LB)	1995
Sturgis, Fred (OG)	1990-91-92
Sumner, Jim (HB)	1960-61-62
Summers, Jack	1941-42-46
Suttle, Kota (LB)	1989-90-91-92
Sutton, Frank (DT)	1989-90-91
Sutton, Russ (HB)	1951-52-53
Sutton, Shelly (HB)	1957-58-59-60
Swicord, Will (LB)	1990
Swilley, Floyd (OG)	1980
Swilling, Hugh (QB)	1990-91-92
Swilling, Keith (TE)	1986-87-88

T —

Taffer, Edward	1949
Talkington, Johnny (HB)	1965-67
Tanguay, Tim (PK)	1980-81-82
Tate, Mark (DB)	1992
Taylor, David (OG)	1982-85
Taylor, Mark (FB)	1977-78-79-80
Taylor, Sam (HB)	1957-58-59-60
Teal, Everett (HB)	1936-38
Terrill, Scott (DE)	1977
Tew, John (T)	1959-60
Tezza, Henry	1947
Theiling, Brent (C)	1969-70-71
Thier, Jay (LB)	1994-95-96
Thomas, Carl (HB)	1938
Thomas, Charlie (QB)	1947-48-49-60
Thomas, Jerry (HB)	1960-61-62
Thomas, Kerrick (WR)	1994-95-96
Thomas, Lon (DB)	1986-87
Thomas, Troy (C)	1925-26
Thompson, Rick (DB)	1986
Thornton, Fleming	1947-48
Tiedeman, Clay (OT)	1988-89-90-91
Tidwell, Lilius (E)	1928
Tilghman, Joe (E)	1925-26
Tillman, Tywaun (DB)	1991-92
Todd, E.P. (HB)	1928-29-30
Toothaker, Bernie (DT)	1970-71
Trabakino, Ralph	1940
Traweek, Lawrence	1929-30-31

Traylor, Briggs (C)	1980-81-82
Traynham, Earl	1936-37
Traynham, Jim	1933
Tremble, Carl (TB)	1989-90-91-92
Trotta, Rich (QB)	1978-79
Trotter, Byron (E)	1968-69-70
Truesdale, Sonny (G)	1971
Truluck, Charlie	1942-46
Turk, Glenn	1946
Turner, Billy (FB)	1963-64-65
Turner, Bob (E)	1932-33-34
Turner, Chris (NG)	1990-91-92-93
Turner, George	1939-40-41
Turner, Pat (DB)	1987-88-89
Tuten, Wilson (G)	1938-39
Tzouvelekas, Nick (G)	1955-56-57

U —

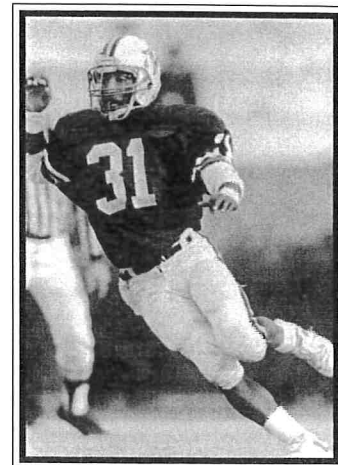
Utley, Danny (DT)	1971-72-73
-------------------------	------------

V —

Vallenga, Louis	1940
Vaughn, George (FB)	1969
Veal, George (T)	1966-67-68
Vickers, John	1940

W —

Wade, Brian (HO)	1992-93
Wade, Chris (P)	1990-91
Wade, Jody (P, WR)	1994-95-96
Wakefield, Forrest (P, WR)	1934
Walburn, Steve (DB)	1979-80-81-82
Waldrep, Alvin (G)	1953
Walker, Johnnie (G)	1925-26
Walker, Sammy (DT)	1987-88-89
Walker, Stan (DT)	1972-73-74
Walker, Todd (DT)	1982-84-85
Walter, Eric (OG)	1988-89-90-91
Walter, Tom (E)	1959-60-61
Walters, Mitch	1987
Walters, Roy (HB)	1938-39-40
Walton, Buddy (C)	1955-56-57-58
Walton, Dan (G)	1963-64-65
Warlick, Fox (HB)	1966-67
Warren, Phil (DT)	1994-95-96
Warren, Steve (OG)	1969-70-71
Washington, Frank (E)	1927
Waters, Tate (TE)	1990-91-92
Watkins, Doug (QB)	1963-64
Watson, Joe (HB)	1935-36
Watts, Joe (QB)	1949-50-51
Webber, Cherrrod (DB)	1986-87-88
Weigil, Faris (T)	1938-39
Weir, Bill (HB)	1955-56-57
Wells, Bill	1929-30-31
Wells, Jason (PK)	1996
Wells, Robert (WR)	1989
West, Charlie (QB, HB)	1951-52-53
Westberry, Wayne (LB)	1980
Wester, C.C.	1941-42
Westlake, Hal (OT)	1976-77-78
Wham, Don (E)	1947-49-50
Wham, Tom	1946-47-48
Whitcomb, Stan (DB)	1989
White, Brad (OG)	1985-87
White, Fenton	1936
White, John (LB)	1976-77-78
White, Stephen (TB)	1979-80-81-82
Whitehurst, David (QB)	1973-74-75-76
Whitehurst, Mark (TE)	1977
Whitley, Billy (TB)	1990-91-92-93
Whitmire, John (WR)	1988-89-90-91
Wickswat, Paul (DT)	1970-71-72
Wiggin, Pat (DE)	1967-68
Wild, Scott (TE)	1990-91-92-93
Wilder, Bob	1928-29-30



Cornerback Pat Turner (1987-89) was a stalwart on a pair of Southern Conference championship teams in 1988 and '89.

Wilkins, Rick (LB)	1985
Wilkinson, Lee (FB)	1984-85-86
Will, Chad (OG)	1987-89-90
Williams, Dean (OT, DT)	1988-89
Williams, Dennis (FB)	1981-82-83-84
Williams, Grayson	1946
Williams, Guy	1933-34
Williams, Kent (DT)	1982-83
Williams, Marshall (PK)	1966-67-68
Williams, Reggie (NG)	1994-95-96
Williams, Steve (OG)	1976-77-78
Williams, Tommy (HB)	1950-51-52
Williams, Webster (G)	1951-52-53-54
Williamson, Bruce (DT)	1973-74-76
Williamson, David (DB)	1970-71-72
Willis, Chester (NG)	1969-70-71
Wilson, Joe (NG)	1992
Wilson, John (G)	1968-69
Wilson, Leslie (T)	1966-67
Wilson, Mike (DB)	1985-86-87
Wilson, Steve (LB)	1973-74-75-76
Wilson, Wayne (DB)	1971-72
Woerner, Kent (DT)	1975-76-77-78
Wofford, Hugh (G)	1937-38-39
Wolfram, John (QB)	1970-71-72
Wood, Dan	1930-31-32
Wood, Terry (C)	1925-26
Wood, Warren (T)	1928-29-31
Wood, Mike (PK)	1986-87-88-89
Woods, Bobby (C)	1977-78-79
Woodson, Tom (WR, P)	1973-74
Worrell, Andre (DB)	1990-91-92-93
Wrenn, Rick (DE)	1971-73
Wright, Dennis (WR)	1979-80-81-82
Wyche, Sam (QB)	1963-64-65

Y —

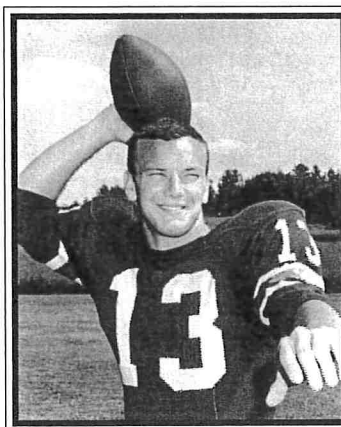
Yakin, Ted (HB)	1952-53-54
Yakin, Dale (DE)	1987
Yates, Tommy (HB)	1957-58-59
Yocke, Rick (DT)	1974
Young, Dave (T)	1952-53-54-55
Young, Rickey (C)	1976-77-78
Young, Steve (LB)	1977

Z —

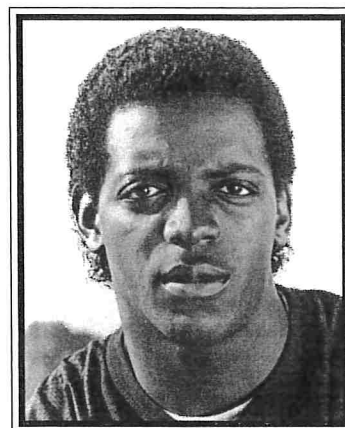
Zemina, John (DB)	1981-82
Zima, Ray (HB)	1938
Zimmerman, Mike (DT)	1990-92-93
Zuberer, Ernest (FB)	1962-63-64

FURMAN IN THE PROS

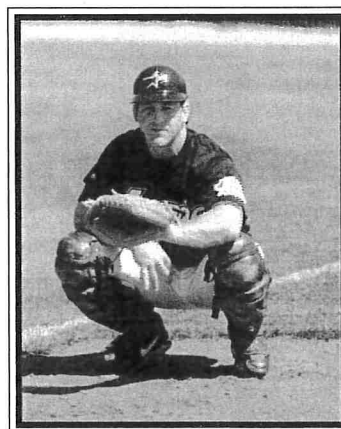
Roten Shetley '39	Brooklyn Dodgers
Dewey Proctor	New York Yankees
	Chicago Rockets
Tom Wham '49	Chicago Cardinals
Harry Bierman '49	Chicago Cardinals
Ed Jasonek '50	Chicago Cardinals
Bobby Jennings '57	Calgary Roughriders (CFL)
Ray Siminski '59	Montreal Alouettes (CFL)
Billy Canty '62	Toronto Argonauts (CFL)
Joe Monti '63	Baltimore Colts
Olin Hill '63	Green Bay Packers
Sam Wyche '66	Cincinnati Bengals
	Washington Redskins
	Detroit Lions
	Buffalo Bills
	San Francisco 49ers (Assistant Coach)
	Cincinnati Bengals (Head Coach)
	Tampa Bay Buccaneers (Head Coach)
Robbie Hahn '69	Orlando Panthers (CFL)
Mike Bartik '74	Philadelphia (WFL)
	Birmingham (WFL)
Vince Perone, Jr. '75	Atlanta Falcons
David Whitehurst '76	Green Bay Packers
Larry Robinson '77	Atlanta Falcons
Tommy Southard '78	St. Louis Cardinals
	Houston Oilers
Greg Laetsch '79	Seattle Seahawks
Brette Simmons '79	Dallas Cowboys
Kent Woerner '79	New York Giants
Chris Buono '79	New York Giants
Terry Smith '81	New England Patriots
Terry Clark '83	Denver Broncos
	Denver Gold (USFL)
Bruce Gheesling '82	Chicago Blitz (USFL)
	Arizona Wranglers (USFL)
Brothel Cole '82	Oklahoma Outlaws (USFL)
Stanford Jennings '84	Cincinnati Bengals
	New Orleans Saints
	Tampa Bay Buccaneers
Ernest Gibson '84	New England Patriots
	Miami Dolphins
Mark Bridgman '84	Cleveland Browns
David Charpia '84	Seattle Seahawks
Rock Hurst '85	Hamilton Tiger Cats (CFL)
	Cleveland Indians
Dinky Williams '85	St. Louis Cardinals
Rick Wilkins '85	Chicago Cubs
Chas Fox '86	Kansas City Chiefs
Kirk Burnett '87	New York Jets
Jerome Norris '87	Atlanta Falcons
Darryl Gardner '88	Winnipeg Bluebombers (CFL)
Phillip Ferguson '88	Cincinnati Bengals
	Orlando Predators (AFL)
Jeff Blankenship '90	Washington Commandos (AFL)
	Albany Firebirds (AFL)
Frankie DeBusk '91	Sacramento Attack (AFL)
Paul Siffri '92	Pittsburgh Steelers
Carl Tremble '93	Phoenix Cardinals
Jim Richter '96	San Francisco 49ers
	Green Bay Packers
Luther Broughton '97	Philadelphia Eagles
Braniff Bonaventure '97	Montreal Alouettes (CFL)



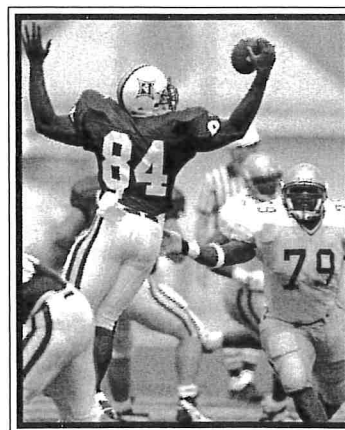
An All-Southern Conference quarterback for Furman in 1965, Sam Wyche played football professionally for nine years before beginning a coaching career that included, among others, stints as head coach of the Cincinnati Bengals and Tampa Bay Buccaneers.



Stanford Jennings, a three-time Southern Conference Player-of-the-Year selection at tailback, played in the NFL for nine years and returned a kickoff 90 yards for a touchdown for the Cincinnati Bengals in Super Bowl XXIII.



Rick Wilkins, who has starred as a catcher with the Chicago Cubs, Houston Astros, and, most recently, with the San Francisco Giants, played linebacker on Furman's 1985 NCAA I-AA national runner-up football team.



Tight end Luther Broughton was the first Furman player to be drafted by the NFL since 1986, when he was selected in the fifth round by the Philadelphia Eagles this past spring.

FURMAN THROUGH THE YEARS

1889 (0-2)		N. 1	0-75	L	The Citadel	A	N. 27	14-41	L	Davidson	H	N1 - Augusta, Ga.				
<i>Coach: William Beattie</i>		N. 3	30-0	W	Charleston	A	1920 (9-1)					N2 - Columbia, S.C.				
D. 14	1-5	L	Wofford	A	N. 21	65-0	W	Presbyterian	H	South Carolina Champions						
J. 18	1-2	L	Wofford	H	N. 27	40-0	W	Clemson "C"	H	<i>Coach: W.L. Laval</i>						
1890 (2-0)		1914 (2-5)		1915 (5-3)		1916 (4-5)		1917 (3-5)		1918 (3-5-1)		1919 (6-2-1)				
<i>Coach: H.C. Granger</i>		<i>Coach: W.B. Bible</i>		<i>Coaches: W.B. Bible and W.L. Laval</i>		<i>Coach: W.L. Laval</i>		<i>Coach: W.L. Laval</i>		<i>Coach: W.L. Laval</i>		<i>Coach: W.L. Laval</i>				
J. 24	12-0	W	Wofford	A	O. 10	19-12	W	Wofford	H	S. 25	0-94	L	Clemson			
M. 21	28-2	W	Wofford	H	O. 17	57-0	W	Bailey	A	O. 2	60-0	W	Erskine			
1891 (0-1)		1892 (1-0)		1893 (1-1)		1895 (0-2)		1896 (2-3)		1900 (0-2-1)		1901 (1-2-1)				
<i>Coach: H.P. Young</i>		<i>Coach: H.P. Young</i>		<i>Coach: H.P. Young</i>		<i>Coach: H.P. Young</i>		<i>Coach: Sims</i>		<i>Coach: Frank Spencer</i>		<i>Coach: C.S. Roller</i>				
N. 14	0-96	L	Trinity	N1	N. 30	18-4	W	Wofford	H	N. 8	10-14	L	South Carolina			
N1 - Columbia, S.C.				N. 9	8-22	L	Georgia	N1	N. 13	10-0	W	Charleston YMCA	A			
1892 (1-0)		1893 (1-1)		1895 (0-2)		1896 (2-3)		1900 (0-2-1)		1901 (1-2-1)		1902 (4-3-4)				
<i>Coach: H.P. Young</i>		<i>Coach: H.P. Young</i>		<i>Coach: H.P. Young</i>		<i>Coach: Sims</i>		<i>Coach: Frank Spencer</i>		<i>Coach: C.S. Roller</i>		<i>Coach: C.S. Roller</i>				
D. 24	44-0	W	South Carolina	N1	N. 30	18-4	W	Wofford	H	N. 8	10-14	L	South Carolina			
N1 - Charleston, S.C.				D. 9	8-22	L	Georgia	N1	N. 13	10-0	W	Charleston YMCA	A			
1893 (1-1)		1895 (0-2)		1896 (2-3)		1900 (0-2-1)		1901 (1-2-1)		1902 (4-3-4)		1913 (6-3)				
<i>Coach: H.P. Young</i>		<i>Coach: H.P. Young</i>		<i>Coach: Sims</i>		<i>Coach: Frank Spencer</i>		<i>Coach: C.S. Roller</i>		<i>Coach: C.S. Roller</i>		<i>Coach: W.C. Farmer</i>				
N. 30	18-4	W	Wofford	H	N. 8	10-14	L	South Carolina	A	N. 23	7-67	L	Clemson			
D. 9	8-22	L	Georgia	N1	N. 23	10-0	W	Charleston YMCA	A	N. 30	7-13	L	2nd Development Reg.			
N1 - Augusta, Ga.				N. 26	12-0	W	South Carolina	H	N. 27	5-5	T	Charleston Ath. Assoc.	A			
1895 (0-2)		1896 (2-3)		1900 (0-2-1)		1901 (1-2-1)		1902 (4-3-4)		1913 (6-3)		1919 (6-2-1)				
<i>Coach: H.P. Young</i>		<i>Coach: Sims</i>		<i>Coach: Frank Spencer</i>		<i>Coach: C.S. Roller</i>		<i>Coach: C.S. Roller</i>		<i>Coach: W.C. Farmer</i>		<i>Coach: W.L. Laval</i>				
N. 8	10-14	L	South Carolina	A	O. 26	0-0	T	Wofford	A	O. 3	12-0	W	Bingham	A		
N. 23	0-44	L	Wofford	A	N. 17	0-27	L	South Carolina	H	O. 6	0-0	T	North Carolina State	H		
1896 (2-3)		1900 (0-2-1)		1901 (1-2-1)		1902 (4-3-4)		1913 (6-3)		1919 (6-2-1)		1920 (9-1)				
<i>Coach: Sims</i>		<i>Coach: Frank Spencer</i>		<i>Coach: C.S. Roller</i>		<i>Coach: C.S. Roller</i>		<i>Coach: W.C. Farmer</i>		<i>Coach: W.L. Laval</i>		<i>Coach: W.L. Laval</i>				
O. 23	0-12	L	Bingham	A	N. 29	5-6	L	Wofford	H	O. 10	19-12	W	Wofford	H		
O. 31	6-14	L	Clemson	H	N. 17	0-27	L	South Carolina	H	O. 17	57-0	W	Bailey	A		
N. 6	0-6	L	Wofford	A	N. 29	5-6	L	Wofford	H	O. 22	0-57	L	Clemson	H		
N. 13	10-0	W	Charleston YMCA	A	N. 3	7-28	L	Davidson	H	O. 31	0-39	L	Mercer	A		
N. 26	12-0	W	South Carolina	H	N. 8	0-26	L	South Carolina	N1	N. 14	6-13	L	Newberry	A		
1900 (0-2-1)		1901 (1-2-1)		1902 (4-3-4)		1913 (6-3)		1919 (6-2-1)		1920 (9-1)		1921 (7-2-1)				
<i>Coach: Frank Spencer</i>		<i>Coach: C.S. Roller</i>		<i>Coach: C.S. Roller</i>		<i>Coach: W.C. Farmer</i>		<i>Coach: W.L. Laval</i>		<i>Coach: W.L. Laval</i>		<i>Coach: W.L. Laval</i>				
O. 26	0-0	T	Wofford	A	O. 15	0-17	L	Georgia Tech	A	O. 22	0-57	L	Clemson	H		
N. 17	0-27	L	South Carolina	H	O. 22	0-12	L	South Carolina	A	O. 29	42-0	W	Newberry	A		
N. 29	5-6	L	Wofford	H	O. 26	5-5	T	Georgia Tech	H	N. 6	42-3	W	Oglethorpe	H		
1901 (1-2-1)		1902 (4-3-4)		1913 (6-3)		1919 (6-2-1)		1920 (9-1)		1921 (7-2-1)		1922 (8-3)				
<i>Coach: C.S. Roller</i>		<i>Coach: C.S. Roller</i>		<i>Coach: W.C. Farmer</i>		<i>Coach: W.L. Laval</i>		<i>Coach: W.L. Laval</i>		<i>Coach: W.L. Laval</i>		<i>Coach: W.L. Laval</i>				
O. 15	0-17	L	Georgia Tech	A	O. 3	12-0	W	Bingham	A	O. 7	7-6	W	Florida	A		
O. 22	0-12	L	South Carolina	A	O. 6	0-0	T	North Carolina State	H	O. 14	0-7	L	Georgia	H		
O. 26	5-5	T	Georgia Tech	H	O. 10	6-0	W	Davidson	A	O. 19	28-0	W	The Citadel	N1		
N. 28	17-0	W	Wofford	H	O. 11	0-10	L	North Carolina	A	O. 21	26-0	W	Oglethorpe	A		
1902 (4-3-4)		1913 (6-3)		1919 (6-2-1)		1920 (9-1)		1921 (7-2-1)		1922 (8-3)		1923 (9-2)				
<i>Coach: C.S. Roller</i>		<i>Coach: W.C. Farmer</i>		<i>Coach: W.L. Laval</i>		<i>Coach: W.L. Laval</i>		<i>Coach: W.L. Laval</i>		<i>Coach: W.L. Laval</i>		<i>Coach: W.L. Laval</i>				
O. 3	12-0	W	Bingham	A	O. 15	0-17	L	Georgia Tech	A	O. 28	0-13	L	Richmond	H		
O. 6	0-0	T	North Carolina State	H	O. 22	0-12	L	South Carolina	A	N. 4	67-6	W	Erskine	H		
O. 10	6-0	W	Davidson	A	O. 26	5-5	T	Georgia Tech	H	N. 11	7-27	L	South Carolina	A		
O. 11	0-10	L	North Carolina	A	O. 29	5-6	L	Wofford	H	N. 18	41-0	W	Wofford	A		
O. 13	5-2	W	North Carolina State	A	N. 1	0-0	L	Georgia Tech	H	N. 25	20-6	W	Clemson	H		
O. 18	0-11	L	Georgia	A	N. 10	0-0	T	St. Albans	H	N. 30	13-10	W	Davidson	H		
O. 24	0-28	L	Clemson	H	N. 14	10-0	W	South Carolina	H	N1 - Florence, S.C.						
N. 1	0-0	L	Georgia Tech	H	N. 27	5-5	T	Charleston Ath. Assoc.	A	1923 (9-2)						
N. 10	0-0	T	St. Albans	H	1913 (6-3)				<i>Coach: W.L. Laval</i>							
N. 14	10-0	W	South Carolina	H	O. 12	0-118	L	Georgia Tech	A	O. 13	20-0	W	Presbyterian	H		
N. 27	5-5	T	Charleston Ath. Assoc.	A	O. 26	26-0	W	48th Infantry	H	O. 20	30-14	W	The Citadel	H		
1913 (6-3)		1919 (6-2-1)		1920 (9-1)		1921 (7-2-1)		1922 (8-3)		1923 (9-2)		1924 (5-5)				
<i>Coach: W.C. Farmer</i>		<i>Coach: W.L. Laval</i>		<i>Coach: W.L. Laval</i>		<i>Coach: W.L. Laval</i>		<i>Coach: W.L. Laval</i>		<i>Coach: W.L. Laval</i>		<i>Coach: W.L. Laval</i>				
S. 27	7-2	W	Clemson "B"	H	O. 12	0-118	L	Georgia Tech	A	O. 27	22-7	W	Richmond	A		
O. 4	6-7	L	Riverside	H	O. 26	26-0	W	48th Infantry	H	N. 3	29-0	W	Oglethorpe	H		
O. 11	38-0	W	Charleston	H	N. 2	20-7	W	48th Infantry	H	N. 10	23-3	W	South Carolina	H		
O. 22	7-16	L	Newberry	N1	N. 9	6-6	T	Erskine	H	N. 16	35-0	W	Newberry	H		
O. 25	59-0	W	Bailey	H	N. 16	12-20	L	South Carolina	H	N. 24	63-0	W	Erskine	H		
1919 (6-2-1)		1920 (9-1)		1921 (7-2-1)		1922 (8-3)		1923 (9-2)		1924 (5-5)		1925 (7-3)				
<i>Coach: W.L. Laval</i>		<i>Coach: W.L. Laval</i>		<i>Coach: W.L. Laval</i>		<i>Coach: W.L. Laval</i>		<i>Coach: W.L. Laval</i>		<i>Coach: W.L. Laval</i>		<i>Coach: W.L. Laval</i>				
S. 27	0-74	L	Georgia Tech	A	O. 10	19-12	W	Wofford	H	S. 25	33-0	W	Elon	H		
O. 4	13-0	W	Oglethorpe	H	O. 17	57-0	W	Bailey	A	O. 2	41-0	W	Erskine	H		
O. 11	7-6	W	Wofford	H	O. 22	0-57	L	Clemson	H	O. 9	21-6	W	The Citadel	A		
O. 18	6-0	W	Presbyterian	H	O. 31	0-39	L	Mercer	A	O. 16	0-7	L	Georgia	H		
O. 25	39-7	W	Wake Forest	H	N. 14	6-13	L	Newberry	A	O. 23	17-0	W	Wake Forest	H		
N. 1	21-6	W	The Citadel	H	N. 18	2-39	L	Presbyterian	A	O. 29	42-0	W	Newberry	A		
N. 15	41-0	W	Erskine	H	N. 26	19-26	L	Maryville	H	N. 6	42-3	W	Oglethorpe	H		
N. 21	7-7	T	Clemson	H	1915 (5-3)				1916 (4-5)				1917 (3-5)			
South Carolina Champions				South Carolina Champions				South Carolina Champions				South Carolina Champions				
<i>Coach: W.L. Laval</i>				<i>Coach: W.L. Laval</i>				<i>Coach: W.L. Laval</i>				<i>Coach: W.L. Laval</i>				
O. 11	7-6	W	Wofford	H	S. 25	0-94	L	Clemson	H	S. 24	42-7	W	Erskine	H		
O. 18	6-0	W	Presbyterian	H	O. 2	60-0	W	Erskine	H	O. 1	63-0	W	Newberry	H		
O. 25	39-7	W	Wake Forest	H	O. 15	13-20	L	Presbyterian	H	O. 8	7-27	L	Georgia	A		
N. 1	21-6	W	The Citadel	H	O. 23	20-6	W	Bingham	A	O. 15	0-69	L	Georgia Tech	A		
N. 15	41-0	W	Erskine	H	N. 3	38-7	W	Presbyterian	H	O. 21	0-0	T	Clemson	H		
N. 21	7-7	T	Clemson	H	N. 6	13-58	L	Davidson	A	O. 29	42-0	W	The Citadel	H		
1920 (9-1)				1921 (7-2-1)				1922 (8-3)				1923 (9-2)				
<i>Coach: W.L. Laval</i>				<i>Coach: W.L. Laval</i>				<i>Coach: W.L. Laval</i>				<i>Coach: W.L. Laval</i>				
S. 27	0-74	L	Georgia Tech	A	N. 5	37-0	W	Mercer	H	O. 29	42-0	W	The Citadel	H		
O. 4	13-0	W	Oglethorpe	H	N. 12	7-0	W	South Carolina	H	N. 12	7-0	W	South Carolina	H		
O. 11	7-6	W	Wofford	H	N. 19	62-0	W	Wofford	H	N. 19	62-0	W	Wofford	H		
O. 18	6-0	W	Presbyterian	H	N. 24	28-0	W	Davidson	H	N. 24	28-0	W	Davidson	H		
O. 25	39-7	W	Wake Forest	H	1924 (5-5)				1925 (7-3)				1926 (8-1-1)			
N. 1	21-6	W	The Citadel	H	<i>Coach: W.L. Laval</i>				<i>Coach: W.L. Laval</i>				<i>Coach: W.L. Laval</i>			
N. 15	41-0	W	Erskine	H	South Carolina Champions				South Carolina Champions				South Carolina Champions			
N. 21	7-7	T	Clemson	H	<i>Coach: W.L. Laval</i>				<i>Coach: W.L. Laval</i>				<i>Coach: W.L. Laval</i>			
1921 (7-2-1)				1922 (8-3)				1923 (9-2)				1924 (5-5)				
<i>Coach: W.L. Laval</i>				<i>Coach: W.L. Laval</i>				<i>Coach: W.L. Laval</i>				<i>Coach: W.L. Laval</i>				
S. 24	42-7	W	Erskine	H	S. 29	33-0	W	Newberry	H	O. 13	20-0	W	Presbyterian	H		
O. 1	63-0	W	Newberry	H	O. 7	7-6	W	Florida	A	O. 20	30-14	W	The Citadel	H		
O. 8	7-27	L	Georgia	A	O. 14	0-7	L	Georgia	H	O. 27	42-10	W	Presbyterian	A		
O. 15	0-69	L	Georgia Tech	A	O. 19	28-0	W	The Citadel	N1	O. 28	30-0	W	Davidson	N1		

FURMAN THROUGH THE YEARS

N. 2 12-0 W Wake Forest
 N. 9 0-0 T The Citadel
 N. 16 0-2 L South Carolina
 N. 28 6-7 L Clemson

1930 (6-3-1)

Coach: T.B. Amis
Captain: Harry Harmon

S. 25 49-0 W Newberry
 O. 4 0-54 L Army
 O. 11 35-0 W Erskine
 O. 18 7-7 T Davis-Elkins
 O. 25 14-13 W Florida
 N. 1 6-13 L Oglethorpe
 N. 8 14-0 W South Carolina
 N. 15 14-0 W Wofford
 N. 22 31-6 W The Citadel
 N. 27 7-12 L Clemson

1931 (5-2-2)

Coach: T.B. Amis
Captain: Tom Carson

S. 24 26-0 W Newberry
 O. 3 36-6 W Wake Forest
 O. 9 0-0 T Erskine
 O. 17 34-6 W Richmond
 O. 24 0-3 L Oglethorpe
 O. 31 20-0 W Wofford
 N. 7 0-27 L South Carolina
 N. 14 33-7 W The Citadel
 N. 26 0-0 T Clemson
 N1 - Gastonia, N.C.



A.P. "Dizzy" McLeod

1932 (8-1)

South Carolina Champions
Coach: A.P. McLeod
Captain: Ralph Peden

S. 24 25-6 W Newberry
 O. 1 0-13 L Army
 O. 8 58-0 W Erskine
 O. 15 19-0 W Davis-Elkins
 O. 22 2-0 W Mercer
 O. 27 20-0 W The Citadel
 N. 5 24-0 W Wofford
 N. 12 14-0 W South Carolina
 N. 24 7-0 W Clemson
 N1 - Orangeburg, S.C.

1933 (6-1-2)

Coach: A.P. McLeod
Captain: Bob Smith

S. 30 14-6 W Richmond
 O. 6 33-0 W Erskine
 O. 14 14-0 W The Citadel
 O. 21 7-6 W Centre
 O. 28 6-6 T Mercer

H. N. 4 38-0 W Wofford
 A. N. 11 0-12 L Bucknell
 H. N. 18 0-0 T South Carolina
 A. N. 30 6-0 W Clemson

1934 (5-4)

Coach: A.P. McLeod
Captain: Bob Turner

H. S. 29 13-0 W Wofford
 A. O. 6 2-7 L Georgia
 H. O. 11 3-2 W Wake Forest
 H. O. 20 9-3 W Mercer
 A. O. 27 7-6 W Centre
 H. N. 3 0-19 L Bucknell
 H. N. 10 6-0 W The Citadel
 A. N. 17 0-2 L South Carolina
 H. N. 29 0-7 L Clemson
 N1 - Florence, S.C.

1935 (8-1)

Coach: A.P. McLeod
Captain: Hubert Blair

H. S. 28 69-0 W Piedmont
 N1 O. 5 23-0 W Presbyterian
 H. O. 12 7-31 L Georgia
 H. O. 18 9-0 W Wake Forest
 N1 O. 26 32-0 W Mercer
 H. N. 2 35-0 W The Citadel
 H. N. 9 29-0 W Wofford
 A. N. 16 20-7 W South Carolina
 H. N. 28 8-6 W Clemson
 N1 - Charlotte, N.C.

1936 (7-2, 4-1, 3rd in So. Con.)

South Carolina Champions
Coach: A.P. McLeod
Captain: Bob King

S. 26 31-0 W Wofford
 O. 3 0-13 L Georgia
 O. 10 13-7 W The Citadel
 O. 17 0-27 L North Carolina State
 O. 23 20-9 W Mercer
 O. 31 14-13 W Davidson
 N. 6 14-0 W Presbyterian
 H. N. 14 23-6 W South Carolina
 A. N. 26 12-0 W Clemson

1937 (4-3-2, 1-2-2, 11th in SoCon)

Coach: A.P. McLeod
Captains: June Scott, Jack Shivers

H. S. 17 19-0 W Newberry
 H. O. 1 58-0 W Wofford
 H. O. 9 7-7 T North Carolina State
 A. O. 16 0-8 L The Citadel
 H. O. 23 52-0 W Presbyterian
 A. O. 30 9-13 L Davidson
 H. N. 6 7-20 L Bucknell
 A. N. 13 12-0 W South Carolina
 H. N. 25 0-0 T Clemson

1938 (2-7-1, 0-4-1, 14th in SoCon)

Coach: A.P. McLeod
Captain: George Patrick

H. S. 16 13-6 W Oglethorpe
 A. S. 23 6-28 L Bucknell
 A. S. 30 0-7 L George Washington
 A. O. 7 7-38 L Georgia
 H. O. 15 6-9 L The Citadel
 A. O. 22 7-7 T North Carolina State
 H. O. 29 12-13 L Davidson
 A. N. 5 18-13 W Marshall
 H. N. 12 6-27 L South Carolina
 A. N. 24 7-10 L Clemson

1939 (5-4, 3-3, 6th in SoCon)

Coach: A.P. McLeod

Captain: Roten Shetley, Lloyd Coley

S. 22 38-7 W Erskine
 S. 30 7-16 L Army
 O. 6 20-0 W Georgia
 O. 14 7-0 W The Citadel
 O. 28 15-0 W Davidson
 N. 4 7-20 L Virginia Tech
 N. 11 20-0 W South Carolina
 N. 18 7-12 L North Carolina State
 N. 25 3-14 L Clemson

1940 (5-4, 4-3, 8th in SoCon)

Coach: A.P. McLeod

Captain: Pepper Martin

S. 27 40-0 W Erskine
 O. 5 0-19 L Wake Forest
 O. 11 36-7 W The Citadel
 O. 19 6-15 L Ohio
 O. 26 40-7 W Davidson
 N. 2 20-6 W North Carolina State
 N. 9 21-38 L Virginia Tech
 N. 16 25-7 W South Carolina
 N. 23 7-13 L Clemson

1941 (3-4-2, 2-3-2, 9th in SoCon)

Coach: A.P. McLeod

S. 20 6-32 L Tennessee
 S. 26 40-19 W Wofford
 O. 4 13-52 L Wake Forest
 O. 11 0-0 T North Carolina State
 O. 18 13-13 T The Citadel
 O. 25 31-13 W Davidson
 N. 8 13-6 W George Washington
 N. 15 7-26 L South Carolina
 N. 22 6-34 L Clemson
 N1 - Charlotte, N.C.

1942 (3-6, 3-3, 7th in SoCon)

Coach: A.P. McLeod

S. 26 6-7 L Virginia Tech
 O. 3 7-40 L Georgia
 O. 10 6-14 L Wake Forest
 O. 16 6-0 W George Washington
 O. 24 7-52 L Tennessee
 O. 31 13-32 L Miami
 N. 7 20-0 W The Citadel
 N. 14 6-0 W South Carolina
 N. 21 7-12 L Clemson

1946 (2-8, 1-4, 13th in SoCon)

Coach: R.W. Smith

S. 20 7-26 L Alabama
 S. 27 31-0 W Wofford
 O. 5 6-26 L Auburn
 O. 11 7-14 L South Carolina
 O. 19 14-0 W The Citadel
 O. 26 7-70 L Georgia
 N. 9 7-26 L VMI
 N. 16 6-20 L Clemson
 N. 23 7-41 L Georgia Tech
 N. 28 7-13 L Davidson
 N1 - Birmingham, Ala.

1947 (2-7, 1-4, 13th in SoCon)

Coach: R.W. Smith

S. 19 7-13 L Georgia
 S. 27 6-20 L Virginia Tech
 O. 11 8-26 L South Carolina
 O. 17 7-0 W The Citadel
 O. 25 20-6 W Wofford
 N. 1 7-34 L Florida

N. 8 7-35 L Clemson
 N. 22 0-51 L Georgia Tech
 N. 27 6-20 L Davidson
 N1 - Tampa, Fla.

1948 (2-6-1, 2-4, 10th in SoCon)

Coach: H.E. Smith

S. 25 10-8 W Washington & Lee
 O. 1 0-7 L South Carolina
 O. 8 0-7 L Richmond
 O. 16 7-7 T Wofford
 O. 23 9-0 W The Citadel
 O. 30 14-39 L Florida
 N. 6 0-41 L Clemson
 N. 20 0-33 L Georgia
 N. 25 0-7 L Davidson
 N1 - Charlotte, N.C.

1949 (3-6, 3-3, 9th in SoCon)

Coach: H.E. Smith

S. 16 0-25 L Georgia
 S. 23 7-27 L Washington & Lee
 A. S. 30 14-7 W South Carolina
 A. O. 8 0-12 L Richmond
 H. O. 14 13-20 L Presbyterian
 H. O. 21 19-7 W The Citadel
 A. O. 29 27-18 L Florida
 H. N. 12 21-6 W Davidson
 H. N. 19 21-28 L Clemson

1950 (2-8-1, 2-4, 12th in SoCon)

Coach: Bill Young

Captain: Charlie Thomas

S. 15 12-13 L Presbyterian
 S. 23 6-27 L Washington & Lee
 N1 S. 30 32-20 W Davidson
 H. O. 6 6-21 L South Carolina
 A. O. 13 6-34 L Alabama
 H. O. 21 21-7 W The Citadel
 A. O. 28 7-19 L Florida
 H. N. 3 13-13 T Wofford
 H. A. N. 11 7-34 L George Washington
 A. N. 18 2-57 L Clemson
 A. N. 25 0-40 L Georgia
 N1 - Charlotte, N.C.

1951 (3-6-1, 1-4-1, 15th in SoCon)

Coach: Bill Young

Captain: Sonny Horton

S. 14 39-0 W Presbyterian
 S. 21 7-25 L Washington & Lee
 H. S. 28 7-18 L West Virginia
 H. O. 6 6-21 L South Carolina
 A. O. 12 20-21 L Stetson
 H. O. 19 35-14 W The Citadel
 N1 O. 26 19-19 T George Washington
 A. N. 2 12-14 L Wofford
 A. N. 9 33-13 A Newberry
 H. N. 17 14-34 L Clemson
 N1 - Orangeburg, S.C.

1952 (6-3-1, 2-2-1, 7th in SoCon)

Coach: Bill Young

S. 19 47-6 W Newberry
 H. S. 27 22-14 W West Virginia
 A. O. 4 7-27 L South Carolina
 H. O. 11 14-25 L Stetson
 A. O. 17 7-7 T The Citadel
 N1 O. 25 14-13 W Davidson
 A. N. 1 29-21 W Wofford
 H. N. 8 27-6 W Presbyterian
 H. N. 15 9-0 W Florida State
 A.

FURMAN THROUGH THE YEARS

N. 22 0-28 L Wake Forest H
N1 - Orangeburg, S.C.

1953 (7-2, 2-0, 2nd in SoCon)
Coach: Bill Young

S. 18 33-0 W Newberry H
S. 26 0-41 L Army A
O. 2 27-0 W The Citadel A
O. 10 13-27 L South Carolina A
O. 24 34-0 W Davidson H
O. 31 7-6 W Wofford A
N. 6 19-0 W Presbyterian H
N. 14 14-7 W Florida State A
N. 21 21-19 W Wake Forest A

1954 (5-5, 2-0, 2nd in SoCon)
Coach: Bill Young

Captain: Ted Yakimowicz
S. 17 19-6 W Newberry H
S. 24 13-51 L Miami (Fla.) A
O. 1 27-0 W Presbyterian H
O. 9 7-27 L South Carolina H
O. 16 31-20 W The Citadel H
O. 22 19-7 W Davidson N1
O. 30 7-6 W North Carolina State A
N. 6 6-27 L Clemson A
N. 13 14-33 L Florida State A
N. 20 0-19 L Wofford H
N1 - Charlotte, N.C.

1955 (1-9, 1-1, 7th in SoCon)
Coach: Homer Hobbs

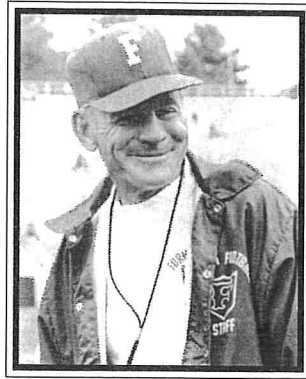
S. 15 0-14 L Newberry H
S. 24 0-81 L Army A
O. 1 6-27 L Wofford A
O. 8 0-19 L South Carolina A
O. 15 19-25 L The Citadel A
O. 22 0-52 L Auburn A
O. 29 7-33 L North Carolina State H
N. 11 6-19 L Florida State H
N. 19 13-9 W Davidson H
N. 26 20-40 L Clemson H

1956 (2-8, 2-2, 4th in SoCon)
Coach: Homer Hobbs

S. 29 0-10 L George Washington H
O. 6 0-41 L Auburn A
O. 13 6-18 L Wofford H
O. 20 7-13 L Newberry H
O. 27 7-0 W The Citadel H
N. 3 6-13 L South Carolina H
N. 10 7-42 L Florida State A
N. 17 0-7 L West Virginia A
N. 23 27-13 W Davidson N1
D. 1 7-28 L Clemson A
N1 - Charlotte, N.C.

1957 (3-7, 2-1, 4th in SoCon)
Coach: Homer Hobbs

Captain: Jerry Penland
S. 14 13-7 W East Tennessee State H
S. 21 7-27 L Florida State A
S. 28 0-20 L Villanova A
O. 5 13-12 W George Washington H
O. 12 13-58 L South Carolina A
O. 19 12-13 L Wofford A
O. 26 14-18 L The Citadel A
N. 16 0-34 L Tenn.-Chattanooga H
N. 22 6-2 W Davidson H
N. 30 6-45 L Clemson H



Bob King

1958 (2-7, 1-2, 8th in SoCon)
Coach: Bob King

S. 20 6-42 L Florida State A
O. 3 8-11 L George Washington A
O. 11 6-29 L Alabama A
O. 18 40-39 W Wofford H
O. 25 6-24 L The Citadel H
N. 1 0-36 L Penn State A
N. 8 7-32 L South Carolina H
N. 22 22-20 W Davidson N1
N. 29 19-36 L Clemson A
N1 - Charlotte, N.C.

1959 (3-7, 3-2, 4th in SoCon)
Coach: Bob King

Captain: Hicky Horton
S. 19 23-24 L Presbyterian H
S. 26 0-30 L South Carolina A
O. 2 7-20 L Tenn.-Chattanooga A
O. 10 8-7 W William & Mary A
O. 17 24-0 W George Washington H
O. 24 14-18 L The Citadel A
N. 7 3-6 L Wofford A
N. 14 14-48 L Richmond A
N. 20 35-7 W Davidson H
N. 28 3-56 L Clemson H

1960 (5-4-1, 2-2, 5th in SoCon)
Coach: Bob King

Captains: Sam Taylor, Shelly Sutton, Don Kemp, Marvin Behlke, Joe Oliff
S. 17 20-12 W Presbyterian H
S. 24 7-7 T Tampa A
O. 8 25-23 W William & Mary H
O. 15 41-26 W Wofford H
O. 22 6-7 L The Citadel H
O. 29 33-20 W Mississippi College H
N. 5 0-51 L Alabama A
N. 11 28-35 L Richmond H
N. 19 22-21 W Davidson A
N. 26 14-42 L Clemson A

1961 (7-3, 2-2, 5th in SoCon)
Coach: Bob King

Captains: Billy Canty, John Tew
S. 16 27-6 W Presbyterian H
S. 23 45-19 W Davidson H
S. 30 13-9 W George Washington H
O. 7 6-19 L William & Mary A
O. 14 21-14 W Samford H
O. 21 8-9 L The Citadel A
O. 28 12-7 W Wofford A
N. 4 7-6 W Memphis State A

N. 11 29-8 W East Carolina H
N. 18 6-35 L Clemson A

1962 (4-6, 2-2, 5th in SoCon)
Coach: Bob King

S. 15 40-6 W Presbyterian H
S. 22 34-21 W Wofford H
S. 29 0-42 L Florida State A
O. 5 7-14 L George Washington A
O. 13 7-14 L Samford H
O. 20 7-21 L William & Mary A
O. 27 33-25 W The Citadel H
N. 3 14-7 W Davidson A
N. 10 3-44 L Clemson H
N. 17 14-15 L Tampa A

1963 (7-3, 3-2, 4th in SoCon)
Coach: Bob King

Captain: Doug Stacks
S. 14 17-0 W Davidson H
S. 21 14-13 W Vanderbilt A
S. 28 29-14 W George Washington H
O. 5 17-27 L William & Mary H
O. 12 21-19 W Wofford A
O. 19 41-13 W Mississippi College H
O. 26 34-25 W The Citadel A
N. 2 6-49 L Florida State A
N. 9 27-0 W Presbyterian H
N. 28 7-38 L West Virginia A

1964 (3-7, 1-4, 8th in SoCon)
Coach: Bob King

S. 12 13-10 W Mississippi College H
S. 19 0-28 L Clemson A
S. 26 14-21 L Wofford H
O. 2 14-34 L George Washington A
O. 10 14-21 L William & Mary A
O. 17 28-6 W Presbyterian H
O. 24 0-17 L The Citadel H
O. 31 0-23 L Davidson A
N. 7 13-34 L East Carolina H
N. 14 19-18 W Richmond A

1965 (5-5, 2-3, 6th in SoCon)
Coach: Bob King

S. 18 51-14 W Frederick H
S. 25 0-24 L Davidson H
O. 2 14-7 W East Carolina H
O. 9 13-35 L Wofford A
O. 16 7-14 L Presbyterian A
O. 23 48-12 W Newberry A
O. 30 27-15 W Lehigh A
N. 6 7-24 L George Washington H
N. 13 14-0 W Richmond H
N. 20 0-28 L The Citadel A

1966 (2-7-1, 1-4, 8th in SoCon)
Coach: Bob King

S. 17 6-20 L Parsons H
S. 24 28-26 W Davidson N1
O. 1 0-17 L East Carolina A
O. 8 15-15 T Wofford H
O. 15 2-41 L Tampa A
O. 22 29-7 W Newberry H
O. 29 28-49 L George Washington A
N. 5 14-24 L Richmond A
N. 12 7-17 L Samford H
N. 19 6-10 L The Citadel H
N1 - Charlotte, N.C.

1967 (5-5, 2-3, 5th in SoCon)
Coach: Bob King

S. 9 42-0 W Mars Hill H
S. 16 15-6 W Mississippi College H
S. 23 22-45 L Davidson H
O. 7 21-20 W Wofford A
O. 14 14-42 L Richmond H
O. 21 13-39 L Tampa A
O. 28 38-15 W Lehigh H
N. 4 29-34 L East Carolina A
N. 11 28-42 L Samford A
N. 18 14-6 W The Citadel A

1968 (1-9, 0-4, 7th in SoCon)
Coach: Bob King

S. 14 12-21 L Mississippi College A
S. 21 13-9 W Presbyterian H
S. 28 7-13 L Wofford A
O. 5 12-31 L The Citadel H
O. 19 0-34 L Richmond A
O. 26 7-28 L Davidson A
N. 2 13-24 L East Carolina H
N. 9 12-17 L Samford H
N. 16 14-31 L Tenn.-Chattanooga A
N. 28 7-21 L Wofford H

1969 (1-8-1, 0-4, 6th in SoCon)
Coach: Bob King

Captains: Tommy Broadwell, Dick Immel
S. 20 14-12 W Presbyterian A
S. 27 14-77 L Davidson H
O. 4 21-21 T Carson-Newman H
O. 11 7-49 L Wofford A
O. 18 14-34 L Samford A
N. 1 21-24 L East Carolina A
N. 8 0-37 L Richmond A
N. 15 21-37 L The Citadel A
N. 22 19-21 L Mississippi College H
N. 27 21-31 L Wofford H

1970 (8-3, 3-2, 3rd in SoCon)
Coach: Bob King

Captains: Don Calhoun, Cleve Hightower, Byron Trotter
S. 12 0-13 L VMI A
S. 19 19-7 W Presbyterian H
S. 26 13-28 L Wofford H
O. 3 42-34 W Carson-Newman A
O. 10 23-9 W Richmond H
O. 17 31-24 W Davidson A
O. 24 18-16 W Tenn.-Chattanooga H
O. 31 0-7 L East Carolina H
N. 7 49-28 W Guilford A
N. 14 28-21 W The Citadel H
N. 21 38-17 W Mississippi College A

1971 (5-5-1, 2-3, 5th in SoCon)
Coach: Bob King

Captains: Ron Boozer, Steve Crisp
S. 11 0-0 T Appalachian State H
S. 18 14-35 L Presbyterian A
S. 25 0-27 L Wofford A
O. 2 14-0 W VMI H
O. 9 21-14 W Western Carolina H
O. 16 41-6 W Davidson H
O. 23 0-20 L Richmond A
O. 30 13-26 L East Carolina A
N. 6 42-14 W Guilford H
N. 13 33-35 L The Citadel A
N. 20 23-10 W Carson-Newman H

FURMAN THROUGH THE YEARS

1972 (2-9, 1-6, 7th in SoCon)

Coach: **Bob King**

S. 9	7-31	L	William & Mary	A
S. 16	7-10	L	Presbyterian	H
S. 23	24-7	W	Wofford	H
S. 30	20-17	W	Appalachian State	A
O. 7	15-24	L	Western Carolina	A
O. 14	35-51	L	Davidson	A
O. 21	0-37	L	Richmond	H
O. 28	21-27	L	East Carolina	H
N. 4	7-31	L	VMI	A
N. 11	13-19	L	The Citadel	H
N. 18	7-57	L	Carson-Newman	A



Art Baker

1973 (7-4, 3-3, 4th in SoCon)

Coach: **Art Baker**

Captains: **Mike Bartik, Keith Downey, Tom Scherch**

S. 8	13-6	W	Presbyterian	A
S. 15	17-0	W	Appalachian State	H
S. 22	21-19	W	Wofford	A
S. 29	3-14	L	East Carolina	A
O. 6	17-20	L	Richmond	H
O. 13	38-7	W	Davidson	H
O. 20	19-13	W	VMI	H
O. 27	40-21	W	East Tennessee State	H
N. 3	52-20	W	Lenoir-Rhyne	A
N. 10	21-26	L	The Citadel	A
N. 17	14-35	L	Louisville	A

1974 (5-6, 2-4, 7th in SoCon)

Coach: **Art Baker**

Captains: **Vincer Perone, Jr., Charles Elvington, Bill Anderson**

S. 14	0-7	L	VMI	A
S. 21	22-19	W	Presbyterian	H
S. 28	10-0	W	William & Mary	H
O. 5	24-14	W	Richmond	A
O. 12	12-15	L	East Carolina	H
O. 19	13-24	L	East Tennessee State	A
O. 26	21-10	W	Wofford	H
N. 2	3-27	L	Appalachian State	A
N. 9	14-10	W	Lenoir-Rhyne	H
N. 16	0-24	L	The Citadel	H
N. 23	10-16	L	Wake Forest	A

1975 (5-5-1, 2-4, 6th in SoCon)

Coach: **Art Baker**

Captains: **Robbie Caldwell, Mark Mosher**

S. 13	5-17	L	Tennessee Tech	H
S. 20	21-27	L	Richmond	A
S. 27	30-23	W	Appalachian State	H
O. 4	10-13	L	VMI	H
O. 11	35-7	W	Presbyterian	A

O. 18	21-14	W	Holy Cross	H
O. 25	21-6	W	William & Mary	A
N. 1	10-21	L	East Carolina	A
N. 8	34-0	W	Western Carolina	H
N. 15	9-13	L	The Citadel	A
N. 22	14-14	T	Wofford	A

1976 (6-4-1, 2-2-1, 3rd in SoCon)

Coach: **Art Baker**

Captains: **David Whitehurst, Tommy Marshall, Larry Anderson**

S. 4	17-12	W	North Carolina State	A
S. 11	17-7	W	Tennessee Tech	A
S. 18	38-21	W	Presbyterian	H
S. 25	16-17	L	The Citadel	H
O. 2	3-17	L	VMI	A
O. 9	14-14	T	Appalachian State	A
O. 16	16-27	L	Southwest Louisiana	A
O. 23	9-13	L	Richmond	H
O. 30	23-7	W	William & Mary	H
N. 13	17-10	W	East Carolina	H
N. 20	56-14	W	Wofford	H

1977 (4-5-2, 3-2-1, 3rd in SoCon)

Coach: **Art Baker**

Captains: **Jimmy Neal, Oliver Cooper, Bobby Church**

S. 10	13-24	L	Wake Forest	A
S. 17	42-12	W	East Tennessee State	H
S. 24	17-17	W	Tenn.-Chattanooga	A
O. 1	24-24	T	Western Carolina	A
O. 8	7-13	L	Wofford	H
O. 15	42-24	W	Marshall	H
O. 22	28-20	W	Appalachian State	H
O. 29	13-13	T	Presbyterian	H
N. 5	13-19	L	Richmond	A
N. 12	28-31	L	VMI	H
N. 19	3-10	L	The Citadel	A



Dick Sheridan

1978 (8-3, 4-1)

Southern Conference Champions

Coach: **Dick Sheridan**

Captains: **Russell Gambrell, Brette Simmons, Greg Laetsch**

S. 9	10-45	L	South Carolina	A
S. 16	31-14	W	Carson-Newman	H
S. 23	10-17	L	Vanderbilt	A
S. 30	52-34	W	Appalachian State	A
O. 7	36-12	W	Wofford	H
O. 14	35-14	W	East Tennessee State	A
O. 21	9-13	L	Tenn.-Chattanooga	H
O. 28	42-12	W	Marshall	A
N. 4	56-14	W	Davidson	H

N. 11	24-7	W	Western Carolina	A
N. 18	17-13	W	The Citadel	H

1979 (5-6, 4-3, 4th in SoCon)

Coach: **Dick Sheridan**

Captains: **David Henderson, David Lyle, Jay Cory**

S. 8	0-21	L	Clemson	A
S. 15	10-17	L	Presbyterian	H
S. 22	14-45	L	Tenn.-Chattanooga	H
S. 29	24-28	L	East Tennessee State	H
O. 6	17-27	L	Wofford	A
O. 13	34-24	W	Marshall	H
O. 20	31-17	W	Appalachian State	H
O. 27	20-21	L	VMI	A
N. 3	63-55	W	Davidson	A
N. 10	23-14	W	Western Carolina	H
N. 17	45-44	W	The Citadel	A

1980 (9-1-1, 7-0)

Southern Conference Champions

Coach: **Dick Sheridan**

Captains: **Jeff Snipes, Kevin Morgan, Steve Bishop**

S. 6	13-35	L	North Carolina	A
S. 13	28-7	W	Presbyterian	H
S. 20	28-14	W	Western Carolina	A
S. 27	21-16	W	VMI	H
O. 4	42-28	W	Tenn.-Chattanooga	A
O. 11	33-21	W	East Tennessee State	A
O. 25	21-20	W	Appalachian State	A
N. 1	35-0	W	Marshall	N1
N. 8	21-7	W	Davidson	H
N. 15	14-14	T	Wofford	H
N. 22	28-15	W	The Citadel	H
				N1 - Charleston, W.Va.

1981 (8-3, 5-2)

Southern Conference Champions

Coach: **Dick Sheridan**

Captains: **Tim Sorrells, Charlie Anderson, Bruce Ghesling, Steve O'Neill**

S. 12	7-35	L	Florida	A
S. 19	21-0	W	East Tennessee State	H
S. 26	31-27	W	Western Carolina	A
O. 3	28-31	L	Tenn.-Chattanooga	H
O. 10	22-18	W	Appalachian State	H
O. 17	30-14	W	James Madison	A
O. 24	38-14	W	Liberty Baptist	H
O. 31	35-3	W	Marshall	H
N. 7	30-12	W	Davidson	A
N. 14	33-21	W	VMI	A
N. 21	18-35	L	The Citadel	A

1982 (9-3, 6-1)

Southern Conference Champions

Coach: **Dick Sheridan**

Captains: **Mike Coleman, Gib McEachran, Briggs Traylor, Billy Hall, Hollis Barton**

S. 4	0-26	L	North Carolina State	A
S. 18	27-21	W	Appalachian State	A
S. 25	13-16	L	Tenn.-Chattanooga	A
O. 2	38-3	W	VMI	H
O. 9	12-6	W	Western Carolina	H
O. 16	28-23	W	South Carolina	A
O. 23	20-15	W	East Tennessee State	A
O. 30	63-14	W	Davidson	H
N. 6	17-10	W	James Madison	H
N. 13	45-7	W	Marshall	A
N. 20	27-0	W	The Citadel	H
N. 27	0-17	L	South Carolina State	H

1983 (10-2-1, 6-0-1)

Southern Conference Champions

Coach: **Dick Sheridan**

Captains: **David Charpia, Ernest Gibson**

S. 3	3-13	L	South Carolina State	A
S. 10	52-7	W	Carson-Newman	H
S. 17	17-14	W	Georgia Tech	A
S. 24	31-7	W	Marshall	H
O. 1	49-0	W	VMI	A
O. 15	17-17	T	Western Carolina	A
O. 22	49-0	W	Appalachian State	H
O. 29	55-7	W	Davidson	A
N. 5	28-7	W	East Tennessee State	H
N. 12	28-14	W	Tenn.-Chattanooga	H
N. 19	49-21	W	The Citadel	A
D. 3	35-16	W	Boston University	H
D. 10	7-14	L	Western Carolina	H

1984 (8-3, 3-3, 4th in SoCon)

Coach: **Dick Sheridan**

Captains: **Rock Hurst, Chas Fox, Bernard Durham**

S. 1	28-10	W	South Carolina State	H
S. 8	49-7	W	Newberry	H
S. 15	34-30	W	North Carolina State	A
S. 22	38-28	W	Marshall	A
S. 29	7-14	L	Tenn.-Chattanooga	A
O. 13	28-16	W	East Tennessee State	A
O. 20	14-21	L	Appalachian State	A
O. 27	19-20	L	Western Carolina	H
N. 3	55-7	W	Davidson	H
N. 10	42-6	W	Central Florida	H
N. 17	42-14	W	The Citadel	H

1985 (12-2, 6-0)

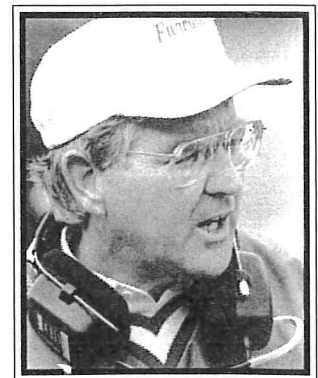
Southern Conference Champions

NCAA I-AA National Runner-Up

Coach: **Dick Sheridan**

Captains: **Gene Reeder, Chas Fox, Bobby Lamb**

S. 7	38-31	W	South Carolina State	A
S. 14	21-24	L	Newberry	H
S. 21	31-27	W	Western Carolina	A
S. 28	42-20	W	North Carolina State	A
O. 5	58-7	W	Davidson	A
O. 12	34-3	W	Marshall	H
O. 19	35-31	W	East Tennessee State	H
O. 26	21-7	W	Appalachian State	H
N. 2	34-10	W	Mars Hill	H
N. 16	42-0	W	The Citadel	A
N. 23	28-0	W	Tenn.-Chattanooga	H
D. 7	59-15	W	Rhode Island	H
D. 14	35-12	W	Nevada-Reno	H
D. 21	42-44	L	Georgia Southern	N1
				N1 - Tacoma, Wash. (National Championship)



Jimmy Satterfield

FURMAN THROUGH THE YEARS

1986 (7-3-2, 4-2-1, 3rd in SoCon)

Coach: Jimmy Satterfield

Captains: Jerome Norris, Steve Squire, Tim Stepp, Robbie Gardner

S. 6	34-7	W	South Carolina State	H
S. 13	17-17	T	Georgia Tech	A
S. 20	34-3	W	VMI	A
S. 27	38-10	W	Marshall	A
O. 4	13-25	L	East Tennessee State	A
O. 18	13-19	L	Western Carolina	H
O. 25	17-17	T	Appalachian State	A
N. 1	45-31	W	Presbyterian	H
N. 8	59-0	W	Davidson	H
N. 15	21-10	W	Tenn.-Chattanooga	A
N. 22	37-14	W	The Citadel	H
N. 29	10-23	L	Eastern Kentucky	H

1987 (7-4, 4-3, 3rd in SoCon)

Coach: Jimmy Satterfield

Captains: Chris Speaks, Darryl Gardner, Phillip Ferguson, Tim Stepp

S. 5	25-7	W	South Carolina State	A
S. 12	23-3	W	Presbyterian	H
S. 19	14-20	L	Western Carolina	A
S. 26	14-16	L	Tenn.-Chattanooga	H
O. 3	42-36	W	Marshall	H
O. 10	24-13	W	East Tennessee State	H
O. 17	8-16	L	Appalachian State	H
O. 31	58-3	W	Davidson	H
N. 7	38-0	W	VMI	H
N. 14	10-41	L	Florida State	A
N. 21	58-13	W	The Citadel	A

1988 (13-2, 6-1)

Southern Conference Champions

NCAA I-AA National Champions

Coach: Jimmy Satterfield

Captains: Jeff Blankenship, Kennet Goldsmith, Julius Dixon

S. 3	38-0	W	South Carolina State	H
S. 10	3-23	L	Clemson	A
S. 17	21-0	W	Presbyterian	H
S. 24	42-0	W	Newberry	H
O. 1	31-13	W	VMI	H
O. 8	10-24	L	Marshall	A
O. 15	24-9	W	Appalachian State	A
O. 29	31-0	W	Western Carolina	H
N. 5	10-7	W	Tenn.-Chattanooga	A
N. 12	31-14	W	East Tennessee State	A
N. 19	30-17	W	The Citadel	H
N. 26	21-7	W	Delaware	H
D. 3	13-9	W	Marshall	A
D. 10	38-7	W	Idaho	H
D. 17	17-12	W	Georgia Southern	N1

N1 - Pocatello, ID (National Championship)

1989 (12-2, 7-0)

Southern Conference Champions

Coach: Jimmy Satterfield

Captains: David Adams, Brian Pitts, Pat Turner

S. 2	0-30	L	Clemson	A
S. 9	17-7	W	South Carolina State	A
S. 16	59-17	W	Presbyterian	H
S. 30	30-6	W	VMI	A
O. 7	34-13	W	Marshall	H
O. 14	31-6	W	Appalachian State	H
O. 21	42-7	W	Wofford	H
O. 28	17-3	W	Western Carolina	A
N. 4	27-17	W	Tenn.-Chattanooga	H
N. 11	44-20	W	East Tennessee State	H
N. 18	44-9	W	The Citadel	A
N. 25	24-10	W	William & Mary	H

D. 2	42-23	W	Youngstown State	H
D. 9	19-21	L	Stephen F. Austin	H

1990 (9-4, 6-1)

Southern Conference Champions

Coach: Jimmy Satterfield

Captains: Frankie DeBusk, Steve Duggan, Kevin Kendrick

S. 1	24-7	W	South Carolina State	H
S. 8	63-7	W	Presbyterian	H
S. 15	38-21	W	Tenn.-Chattanooga	A
S. 22	3-27	L	Florida	A
S. 29	7-10	L	Marshall	A
O. 6	51-22	W	VMI	H
O. 13	30-7	W	Appalachian State	A
O. 27	42-9	W	Western Carolina	H
N. 3	28-38	L	William & Mary	A
N. 10	29-13	W	East Tennessee State	A
N. 17	30-17	W	The Citadel	H
N. 24	45-17	W	Eastern Kentucky	A
D. 1	35-42	L	Nevada-Reno (3OT)	A

1991 (7-4, 4-3, 4th in SoCon)

Coach: Jimmy Satterfield

Captains: Eric Walter, Allen Edwards, Venton Bell, Taylor Quarles

S. 7	35-24	W	Connecticut	A
S. 14	31-7	W	Liberty	H
S. 21	52-7	W	Presbyterian	H
S. 28	42-14	W	Western Carolina	H
O. 5	46-28	W	VMI	A
O. 12	35-38	L	Marshall	H
O. 19	23-26	L	Appalachian State (3OT)	H
N. 2	52-23	W	East Tennessee State	H
N. 9	17-19	L	Georgia Tech	A
N. 16	24-21	W	Tenn.-Chattanooga	H
N. 16	6-10	L	The Citadel	A

1992 (6-5, 4-3, 5th in SoCon)

Coach: Jimmy Satterfield

Captains: Kota Suttle, Carl Tremble, Tate Waters

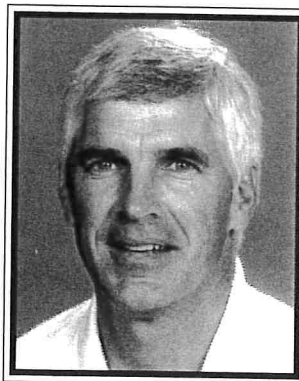
S. 5	31-13	W	Liberty	H
S. 12	0-28	L	North Carolina	A
S. 19	43-7	W	Presbyterian	H
S. 26	0-21	L	Georgia Southern	H
O. 3	41-13	W	VMI	H
O. 10	6-48	L	Marshall	A
O. 24	16-13	W	Appalachian State	A
O. 31	45-14	W	East Tennessee State	A
N. 7	27-29	L	Western Carolina	H
N. 14	35-7	W	Tenn.-Chattanooga	A
N. 21	14-20	L	The Citadel	H

1993 (5-5-1, 4-4, 4th in SoCon)

Coach: Jimmy Satterfield

Captains: Ryan Livezey, Milan Sterling, Billy Whitley

S. 4	26-17	W	Connecticut	H
S. 11	3-37	L	Georgia Tech	A
S. 18	14-14	T	Wofford	H
S. 25	45-21	W	East Tennessee State	H
O. 2	20-23	L	Western Carolina	A
O. 9	27-21	W	Appalachian State	H
O. 16	10-20	L	The Citadel	A
O. 30	24-0	W	VMI	H
N. 6	19-31	L	Georgia Southern	A
N. 13	17-3	W	Marshall	H
N. 20	42-45	L	Tenn.-Chattanooga	A



Bobby Johnson

1994 (3-8, 2-5, 6th in SoCon)

Head Coach: Bobby Johnson

Captains: Kavis Reed, Philly Jones, Braniff Bonaventure

S. 3	6-27	L	Clemson	A
S. 10	26-21	W	South Carolina State	H
S. 17	26-28	L	William & Mary	H
O. 1	24-35	L	Western Carolina	H
O. 8	6-30	L	Appalachian State	A
O. 15	44-52	L	The Citadel	H
O. 22	28-11	W	VMI	A
O. 29	33-21	W	East Tennessee State	A
N. 5	26-31	L	Georgia Southern	H
N. 12	14-35	L	Marshall	A
N. 19	20-34	L	Tenn.-Chattanooga	H

1995 (6-5, 5-2, 3rd SoCon)

Coach: Bobby Johnson

Captains: Leonardo McClarty, Tommy Jones, Brandon Culpepper, Philly Jones, Marcus Morgan, Brian Fisher, Adrick Harrison, Jim Richter

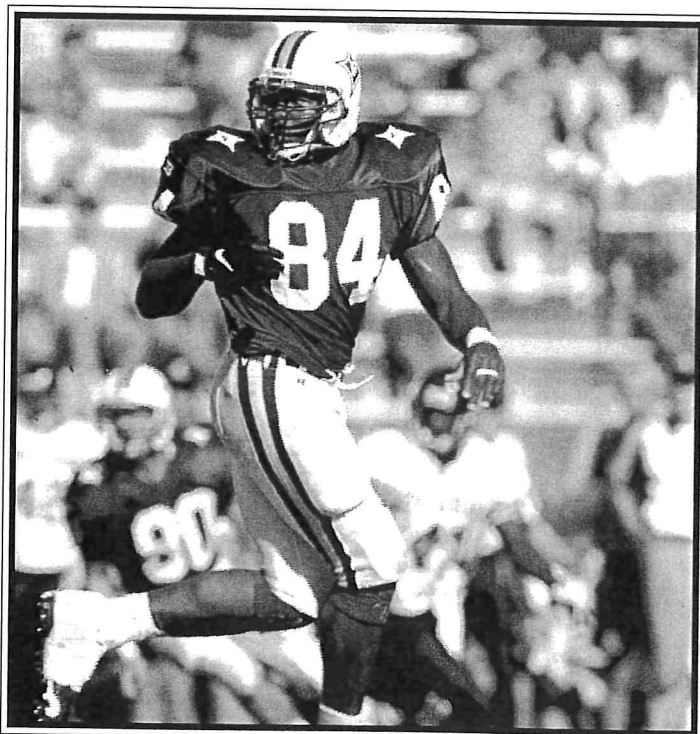
S. 2	7-51	L	Georgia Tech	A
S. 9	21-27	L	South Carolina State	A
S. 16	38-0	W	Wofford	H
S. 23	55-24	W	VMI	H
S. 30	31-21	W	Western Carolina	A
O. 7	28-41	L	Appalachian State	H
O. 14	24-3	W	The Citadel	A
O. 21	21-15	W	East Tennessee State	H
N. 4	20-27	L	Georgia Southern	H
N. 11	6-31	L	Marshall	H
N. 18	23-21	W	Tenn.-Chattanooga	A

1996 (9-4, 6-2, 3rd in SoCon)

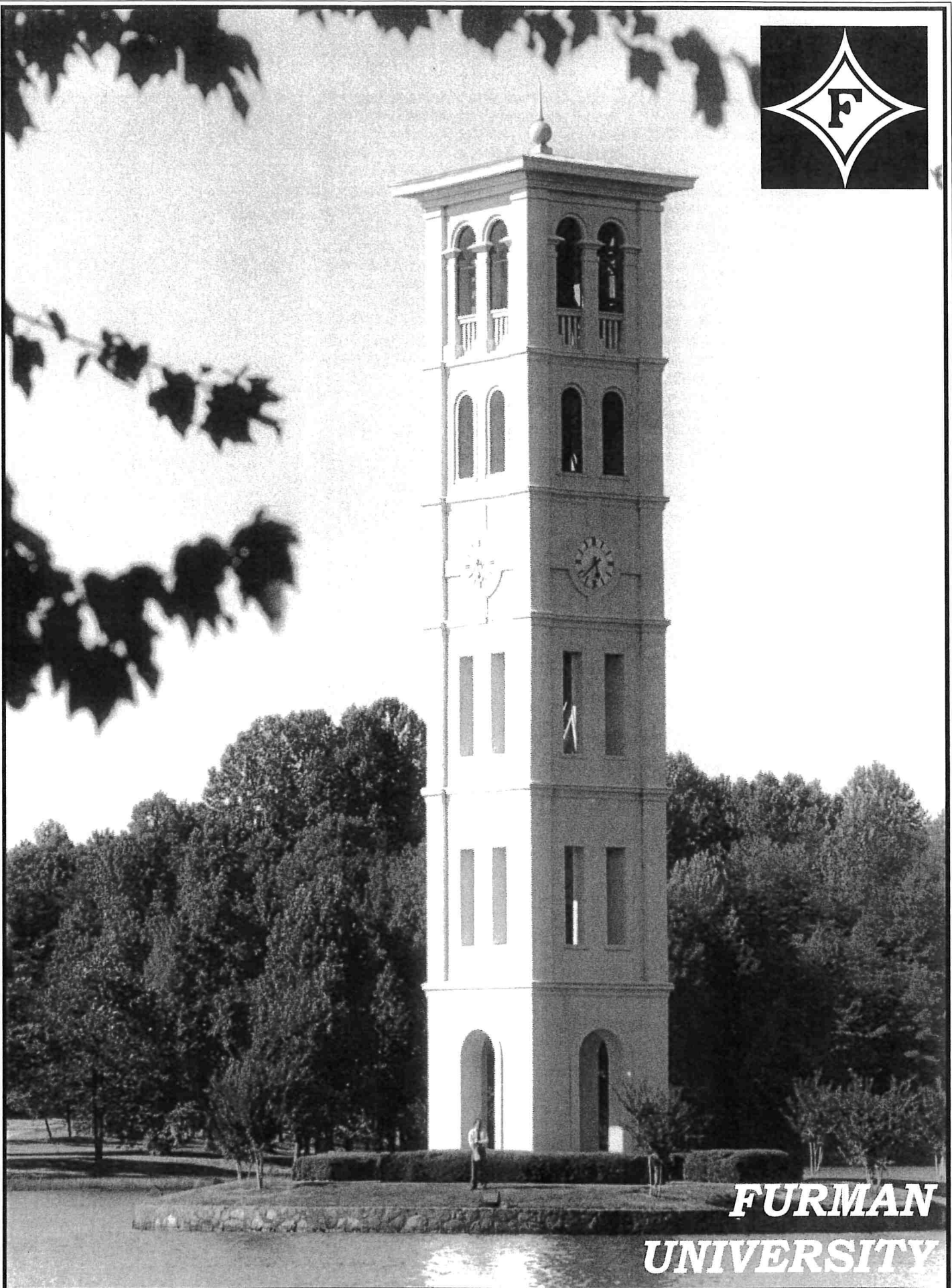
Coach: Bobby Johnson

Captains: Braniff Bonaventure, Luther Broughton, Troy Strappy, Greg Sander

S. 7	3-19	L	Clemson	A
S. 14	27-13	W	South Carolina State	H
S. 21	33-3	W	Wofford	H
S. 28	31-14	W	VMI	A
O. 5	45-30	W	Western Carolina	H
O. 12	20-14	W	Appalachian State	A
O. 19	35-25	W	The Citadel	H
O. 26	19-21	L	East Tennessee State	A
N. 9	21-14	W	Georgia Southern	H
N. 16	17-42	L	Marshall	A
N. 23	42-21	W	Tenn.-Chattanooga	H
N. 30	42-31	W	Northern Arizona	A
D. 7	0-54	L	Marshall	A



All-America tight end Luther Broughton fashioned a solid 1996 campaign, catching 52 passes for 583 yards and three touchdowns en route to becoming Furman's all-time receptions leader (135).



FURMAN
UNIVERSITY

FURMAN UNIVERSITY

FOUNDED IN 1826, FURMAN UNIVERSITY, A private coeducational college with 2,500 students, has established a reputation as one of the finest liberal arts colleges in the nation.

Furman actually traces its origins to The Furman Academy and Theological Institution, authorized in 1825 by the South Carolina Baptist State Convention and opened at Edgefield, South Carolina. In 1850, it was chartered as Furman University, making it one of America's 64 oldest colleges.

Inspiration for the establishment of the school came primarily from Dr. Richard Furman, under whose leadership the State Baptist Convention was organized in 1821 with a seminary as a major objective. Dr. James C. Furman, son of Richard, became the first man to hold the title of president of the University in 1859.

The campus, located just north of Greenville, South Carolina, is rightfully acclaimed as one of the most beautiful in the nation. The university moved into its present location from downtown Greenville in 1958.

The 750-acre wooded campus includes a 30-acre lake, an 18-hole golf course, new tennis and soccer complexes, a playhouse for experimental drama, a 2,000 seat auditorium and physical activities center, as well as a 16,000-seat football stadium. In the spring of 1997, the university dedicated the Charles Ezra Daniel Chapel and initiated work on a new apartment-style dormitory complex for upperclassmen, as well as expansion of the scenic student center. Timmons Arena, a 5,000-seat multipurpose facility that will serve as the home of the school's football, volleyball, and basketball programs, is scheduled to open in December of 1997.

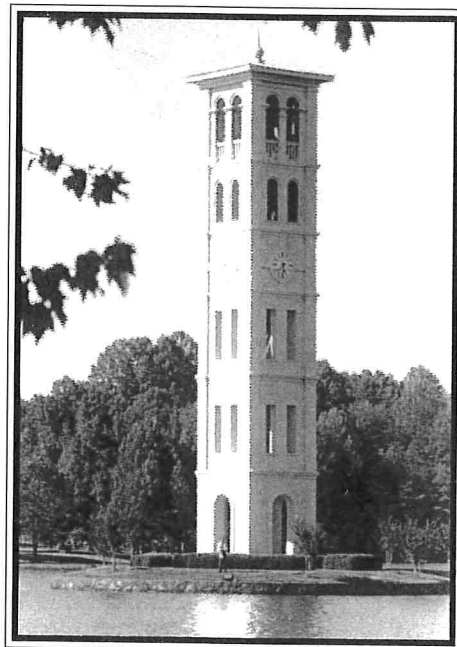
There is so much more to the Furman experience, however, than the beautiful campus and the Williamsburg colonial architecture. Facilities for study and research for the student body of 2,500 are out-

standing. The school recently completed Richard W. Riley Hall, which houses the department of mathematics and computer science. Construction of John E. Johns Hall, which will serve as the academic building for the social sciences, is well underway, as is the Nan Trammell Herring Music Pavilion. The centerpiece of the Furman campus, the James B. Duke Library, features more than 450,000 volumes, and the school's academic program is based on a distinctive three-term system. In addition, Furman students regularly participate in a variety of internships and travel experiences.

Furman's excellence in academics is recognized across the nation. The University is one of 234 in the country with a chapter of Phi Beta Kappa, and the faculty, 92 percent of whom hold doctoral degrees, includes scholars in many fields.

Degrees are offered in a wide variety of fields, including the Bachelor of Arts, Bachelor of Music, Bachelor of General Studies, and Bachelor of Science. The graduate division awards the Masters of Arts degree with a major in education and Master of Science with majors in chemistry and physical education.

The university also features a strong 17-sport intercollegiate athletic program, including eight sports for men and nine for women. In 1991, the strength of men's intercollegiate athletics at Furman showed as the school captured its first ever Commissioner's Cup — an award given annually by the Southern Conference to the member institution with the strongest overall men's athletic program. Last year, for the fifth straight year, Furman's women's teams combined to capture the Germann Cup, which is also given annually by the Southern Conference to the institution with the best overall female athletic program. The recipient of the league's D.S. McAlister Sportsmanship Award for 1996-97, Furman has also been recognized at both the conference and national levels for its outstanding graduation rates — a testament to the school's uncom-



Bell Tower

promising commitment to academic and athletic integrity.

Men's sports include football, basketball, soccer, baseball, cross-country, outdoor track, golf, and tennis. Sports for women include volleyball, soccer, basketball, cross-country, tennis, golf, indoor track, outdoor track, and softball.

Furman graduates have excelled in many fields. Among just a few of the notables are John Broadus Watson, the "father of behavioral psychology"; Charles Hard Townes, Nobel Prize-winning inventor of the laser and maser; Betsy King, Ladies Professional Golf Association (LPGA) Hall-of-Fame member; Richard W. Riley, current United States Department of Education Secretary; and Keith Lockhart, the 36-year-old conductor of the Boston Pops.

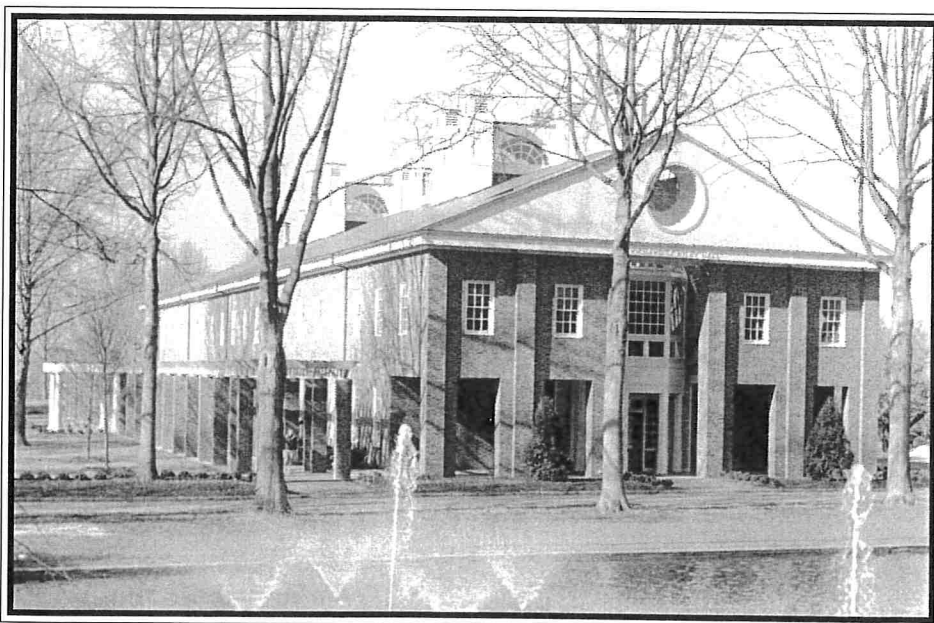
A proud heritage, strong academics, exceptional facilities, and excellence in athletics are all part of one of the nation's top liberal arts colleges — Furman University.

ORIGIN OF THE PALADIN

Furman University athletic teams were known by different names until the 1961 school year. The baseball team was "Hornets," the football team "Hurricanes," and the basketball team, "Paladins."

The basketball team was dubbed "Paladins" by a Greenville sportswriter in the 1930s, and the name stuck. By vote of the student body, all Furman athletic teams became the "Paladins" on September 15, 1961.

A Paladin is a knight on a horse and the recognized athletic mascot of Furman University.



Housing the departments of mathematics and computer science, the 34,000 square-foot Richard W. Riley Hall is one of several new buildings on Furman University's scenic campus.



DR. DAVID SHI
President

INAUGURATED AS FURMAN'S 10TH PRESIDENT on April 19th, 1995, Dr. David Emory Shi has a better understanding of the school's football program than probably anyone who has ever occupied Furman's highest office. That is because Shi starred as a defensive end for the Paladins under head coach Bob King in the early 1970s, and was an All-Southern Conference first team and All-South Carolina selection in 1971.

In his brief tenure as president of Furman, Shi has demonstrated bold new leadership in many areas, including the university's intercollegiate athletics pro-

gram. Over the past two years the school has constructed a new soccer stadium, modern tennis facility, and state-of-the-art golf practice complex. In the fall of 1996 construction began on Timmons Arena, a 5,000-seat, multipurpose complex that will serve as the home of Furman's football, basketball, and volleyball programs. In addition, Shi named Dr. John Block as the school's first vice president for intercollegiate athletics — a new position that underscores the 45-year-old president's understanding of — and commitment to — the school's 17-sport athletics program.

A native of Atlanta, Ga., Shi served as cadet battalion commander of Furman's ROTC program and was inducted into the school's chapters of Phi Beta Kappa and Quaternion prior to graduating magna cum laude in 1973 with a B.A. degree in political science. He went on to earn M.A. and Ph.D. degrees in history at the University of Virginia before accepting a teaching position as assistant professor of history at Davidson College in 1976. From 1987, until his departure for Furman in 1993, Shi served as chair of Davidson's Department of History. Upon his return to his alma mater, he assumed the position of vice-president for academic affairs and dean, a position he occupied for one year prior to being named Furman's president on

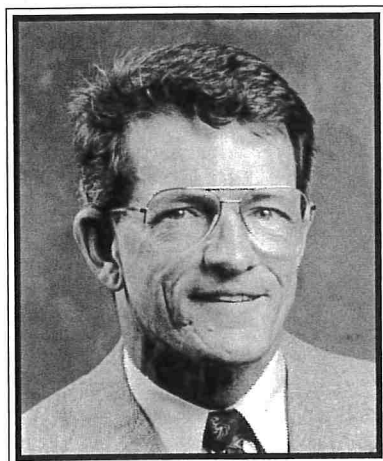
June 1, 1994, succeeding the retiring Dr. John E. Johns.

In the course of his professional career, Shi has been awarded several National Endowment for the Humanities (NEH) Fellowships and has authored numerous articles and five books. His first book, **Matthew Josephson, Bourgeois Bohemian**, was nominated for the Pulitzer Prize in 1981, and his second, **The Simple Life: Plain Living and High Thinking in American Culture**, was a History Book Club selection. He is also the co-author with George B. Tindall of the popular textbook, **America: A Narrative History**.

His most recent book is **Facing Facts: Realism in American Thought and Culture, 1850-1920**, which was released in 1995.

Shi is married to the former Susan Thomson of Jacksonville, Fla., a 1971 honors graduate of Furman who has spent most of her career working as a teacher and administrator in public schools. She earned an M.A. degree from Furman and later was awarded a Ph.D. from the University of North Carolina at Chapel Hill.

The Shis have two children, Jason, 19, and Jessica, 17.



DR. JOHN BLOCK
Vice President For Intercollegiate Athletics/Director of Athletics

who knows Furman athletics better than John Block. That's what brought him to Furman to begin with, and he's worked with the athletics program in nearly every capacity since. In going through the process and evaluating candidates, I'm convinced we found the most qualified person."

"I am honored that President Shi has shown such confidence in me," Block said the day of his selection. "It wasn't an easy decision for me to change course, but the more I thought about the position the more interested I became. This is an exciting time to be at Furman. Our program has a great deal of momentum at the moment, and I look forward to helping enhance Furman's rich tradition of a high quality program operated within pristine integrity."

A native of Chicago Heights, Ill., Block came to Furman in 1959 and was a member of the school's basketball program for two years. Self-described as "short but slow," Block, according to Furman's 1960-61 basketball media guide, scored 35 points against South Carolina in junior varsity action.

Following graduation in 1963 Block went on to earn M.A. and Ph.D. degrees in history from the University of Wisconsin before returning to join his alma mater's faculty in 1968. Selected to serve on Furman's Faculty Athletics Committee shortly thereaf-

ter, he witnessed the school's basketball revival in the 1970s while serving as a color commentator on the Paladins' radio network.

Awarded the University's Meritorious Teaching Award in 1984, Block, whose teaching specialties at Furman included modern German history, was named to succeed Dr. Francis Bonner as the school's NCAA Faculty Athletics Representative in 1990. He served as interim director of athletics for four months prior to his appointment as vice president.

Also active in representing Furman's athletics interests within the Southern Conference, Block most recently served as chairman of the Southern Conference's Schools and Colleges Committee.

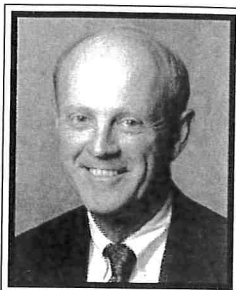
Block's appointment as vice president for intercollegiate athletics was, in the words of President Dr. David Shi, "to recognize the financial and institutional importance of Furman's athletics program, as well as to recognize John Block's outstanding qualifications and stature. He knows Furman and its values, its coaches and student-athletes, and its supporters. John will lose no time moving the program forward."

Married to the former Barbara Stone of Greenville, the Blocks have two daughters, Julie Block Tollison, and Kara Block Harrelson.

ON JUNE, 12, 1996, DR. JOHN BLOCK WAS named Furman University's vice president for intercollegiate athletics by school president Dr. David Shi. The appointment, which marked a somewhat unexpected career move for Block, who had been serving as the school's William Montgomery Burnett Professor of History and department chairman, was widely praised due to his extensive working experience — and knowledge of — Furman's athletics program.

Furman head football coach Bobby Johnson, a 20-year member of the Paladin football staff, said at the time, "I don't think we could have selected anyone

FURMAN ATHLETIC STAFF



NCAA Faculty Athletics Representative

DR. CHARLES ALFORD

A member the Furman University faculty since 1971, Dr. Charles Alford, the school's James E. Self Professor of Business Administration, assumed the position of NCAA Faculty Athletics Representative in 1996 following Dr. John Block's appointment as the school's vice president for intercollegiate athletics.

Alford, a Greenville native, earned a B.A. in economics from Wofford College in 1968 and was awarded a Ph.D. in economics and business

administration from the University of Alabama in 1972.

Since coming to Furman, Alford has served as chair of Furman's Department of Economics and Business Administration (1976-85) and chair of the Furman University Faculty (1993-95).

The author of several articles and a frequent lecturer to business organizations, he is a noted consultant and court expert in business affairs and in the area of corporate valuation.

Married to the former Tish McColl of Clio, S.C., Alford has a daughter, Kasey, and a son, Lang.



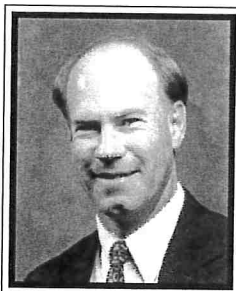
Director of Sports Medicine, A.T.C., SWA

ELAINE BAKER

For the past 13 years Elaine Baker has served Furman student-athletes in a variety of roles, including assistant athletic trainer, associate director of sports medicine, and, since 1994, director of Furman's sports medicine operation. Earlier this year, Baker added a new role, when she was named the department's senior women's administrator.

A full-time member of Furman's athletic staff since 1985, Baker actually got her start with Furman athletics in 1981 when, following graduation from Winthrop College with a degree in physical education, she joined the Paladin program as a graduate assistant trainer — a position she held for two years while pursuing a master's degree in health and physical education, which she received from Furman in 1983. A two-year stint as athletic trainer at North Greenville College followed prior to her return to Furman as an assistant trainer in 1985. In 1994 she was promoted to director of sports medicine, succeeding Bruce Getz.

A Greenville native and product of Wade Hampton High School, Baker is active in the South Carolina Athletic Trainers Association.



Associate Paladin Club Director

MARSHALL BETTENDORF

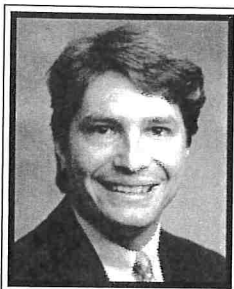
Marshall Bettendorf is now in his second year as associate director of the Furman University Paladin Club, the school's athletics fund-raising group.

A native of Coral Gables, Fla., and 1982 Furman graduate with a degree in business, Bettendorf has been an active supporter of Furman athletics over the past 18 years. As a student, he worked as a manager with Furman's basketball teams for two years, and since 1988 he has served as a member

of the Paladin Club Board of Directors, including a one-year stint as president (1994-95). In addition, Bettendorf has worked diligently with the school's highly successful Furman LPGA Pro-Am, serving as a member of the steering committee since 1990.

Employed as a sales representative and manager in the environmental services industry for nine years following graduation, Bettendorf joined the Furman athletics department in 1995 as an assistant in the marketing and promotions office before assuming his present position with the Paladin Club in 1996.

Bettendorf is married to the former Blaise Buczkowski, a 1984 Furman graduate and native of St. Petersburg, Fla. The couple has a daughter, Caitlin Marie, 6.



Director of Marketing & Promotions

TERRY BRADLEY

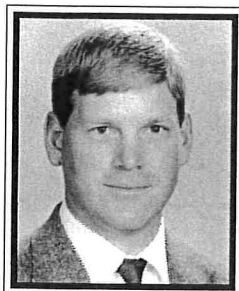
Terry Bradley, who in all counts 10 years of service to Furman University, is now entering his seventh year as the athletics department's director of marketing and promotions.

Prior to assuming his current position, which carries the title of assistant athletics director, Bradley served three years as associate director of the Paladin Club, Furman's athletics fund-raising group.

A fine collegiate football and baseball player, Bradley graduated from Fairmont (W.Va.) State College in 1980 with a bachelor of science degree in accounting. Three years of work in private and government accounting followed before he returned to school and earned a master's degree in sports administration from Ohio University in 1984.

In 1985 Bradley interned at Cal-State Fullerton University and served as interim executive director of the Titan Athletic Foundation. A year later he assumed the position of director of sales and special events at the University of Miami (Fla.), where he remained for two years prior to coming to Furman in 1988.

A native of Montcoal, W.Va., Bradley, 38, is single.



Athletic Academic Advisor

DAN BRINKMAN

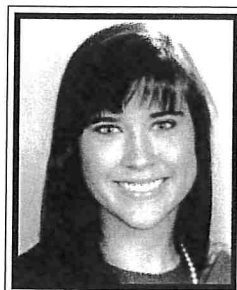
A member of Furman's athletics department since 1991, Dan Brinkman is beginning his seventh year as Furman's athletics academic advisor and fifth year as assistant athletics director for academics.

In his current position, Brinkman serves as liaison between the university faculty and the athletics department and monitors the progress of student-athletes towards graduation, assisting them in balancing the demands of school and their respective

sports. In addition, Brinkman also assists with Furman's home game operations for football and women's basketball.

A native of Celina, Ohio, who grew up in Fremont, Calif., Brinkman graduated from UCLA in 1989 with a bachelor's degree in sociology. He later earned a master's degree in education from Mississippi State University, where he also served as an athletic academic counselor.

Brinkman, 31, is married to Furman assistant sports information director Teri Smith Brinkman.



Assistant Sports Information Director

TERI BRINKMAN

A popular member of Furman's athletics department, Teri Brinkman is now in her seventh year as assistant sports information director after joining the program in 1991.

As Furman's assistant SID, Brinkman handles publicity efforts for 11 of the department's 17 sports, including all nine Furman women's programs.

Brinkman earned a bachelor of arts degree in communications from Mississippi State University in 1990, and this past spring was awarded a B.A. in music from Furman.

Prior to coming to Furman, she served as an intern in the Mississippi State sports information office. In addition, she served as a staff writer and part-time sports editor with the Starkville Daily News. As an undergraduate, Brinkman also headed up Mississippi State's Diamond Girl program, assisting the Bulldogs' nationally recognized baseball program with recruiting and promotions.

A native of Tupelo, Miss., Brinkman is married to Furman athletics academic advisor Dan Brinkman.

FURMAN ATHLETIC STAFF



Director of Compliance & Eligibility

JOHN BURNS

A familiar face at Furman University, John Burns is now entering his eighth year as the department's director of compliance and eligibility.

Burns, who for four years served as Furman's director of financial aid before joining the athletic staff in 1990, was named associate athletics director in 1992. In his current position, he works directly with the Southern Conference and NCAA on compliance and eligibility matters.

A native of Lyons, Kan., Burns played collegiate football and basketball at McPherson (Kan.) College before graduating with a degree in business administration in 1961. Following a four-year stint in the Air Force, he completed work on his master's degree at the University of Colorado in 1969 before returning to his alma mater, where he served as director of financial aid until 1972. From there, he moved on to a similar position at the College of Charleston (S.C.) before coming to Furman in 1984 as associate director of financial aid.

Burns is married to the former Claudia Potter of Winfield, Kan., and is the father of two children: a daughter, Cassie Burns Therrell, and a son, Mike.



Paladin Club Director

DR. ZACH KELEHEAR

The newest member of the Furman athletics department, Dr. Zach Kelehear, a 1981 Furman graduate, was named director of the Paladin Club in June of 1996 after serving as an assistant professor in the school's education department since 1991.

A native of Dalton, Ga., Kelehear earned three letters as a tight end in Furman's football program and was a member of the school's first Southern Conference championship football team in 1978.

Following graduation he served as a graduate assistant coach on Dick Sheridan's Furman staff for one year while completing work on a master's degree in education, which he received in 1982. A five-year stint as a teacher and coach at Dunwoody (Ga.) High School ensued before Kelehear returned to the collegiate ranks as an academic advisor and teaching assistant at North Carolina State University. While at N.C. State, he earned his Ph.D. in education.

As a member of Furman's faculty, Kelehear was awarded the school's prestigious Meritorious Teaching Award in 1994. He is married to the former Lisa Grubbs '82 and is the father of a daughter, Hannah Anise, born December 5, 1996.



Sports Information Director

HUNTER REID

A member of the Furman athletics staff since 1985, Hunter Reid is now entering his 12th year as sports information director.

As Furman's SID, Reid oversees publicity efforts for the school's 17 intercollegiate sports, with direct responsibility for football, men's basketball, baseball, men's soccer, and men's tennis.

Hired by Dick Sheridan as an assistant in 1985, Reid was named SID in 1986 by athletics director

George Bennett, and added the title of assistant athletics director in 1989.

Reid graduated from Presbyterian (S.C.) College in 1983 with a degree in history and business administration after serving as PC's SID for four years. In addition, he served as sports editor of the school's newspaper, **The Blue Stocking**, and served as color commentator on PC's football radio broadcasts for one season. A one-year stint as a graduate assistant at Winthrop (S.C.) College followed before he joined the Furman staff.

Reid, 35, a native of Madison, Ga., is married to the former Jeanne Symmes, also of Madison.



Assistant Athletic Trainer, A.T.C.

JOE FARMER

Joe Farmer is entering his fourth year as assistant athletic trainer on Furman University's sports medicine staff.

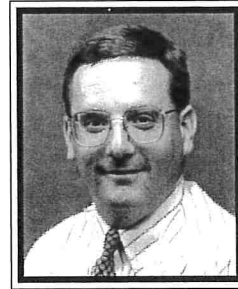
Farmer's current tenure actually marks his second stint with Furman's athletics program, as his first experience came from 1987-89, when he served as a graduate assistant trainer while completing requirements on his master's degree in education, which he received in 1989. That followed his work as

a student assistant trainer at Limestone (S.C.) College, where he received his undergraduate degree in physical education in 1986.

Upon completion of his master's degree, Farmer took a position with the Greenville Hospital System as an athletic trainer, working with outpatient physical therapy for three years.

In 1992, he was appointed as head athletic trainer at Northwestern (S.C.) High School, where he served for two years prior to his return to Furman in 1994.

A native of Greer, S.C., Farmer, 32, is single.



Head Athletic Trainer, A.T.C.

BRIAN REESE

Brian Reese is beginning his third year as Furman's head athletic trainer after joining the program in 1995.

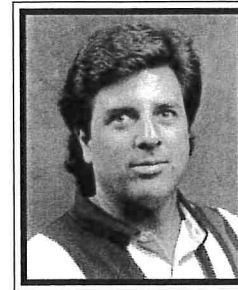
Charged with overseeing the physical well-being of Furman's 17-sport program, Reese came to Furman after six years as assistant athletic trainer at The Citadel.

Reese, a native of Brook Park, Ohio, got his start as a student trainer at Grand Valley (Mich.) State

College, where he served for four years prior to receiving his bachelor's degree in physical education in 1986.

After gaining his certification as an athletic trainer, he worked two summers with the NFL's Detroit Lions before assuming the position of graduate assistant trainer at the University of Tulsa while completing work on his master's degree in athletic administration, which he received in 1989.

Currently serving a two-year term as president of the South Carolina Athletic Trainer's Association, Reese, 32, is married to the former Tricia Bolchoz of Charleston. The couple has a daughter, Maureen, 3.



Physical Therapist, A.T.C.

BRETT RUSSELL

Brett Russell is entering his fourth year as Furman University's sports medicine center's registered physical therapist.

In his position as a full-time member of the Furman athletics staff, Russell contributes greatly to the overall outstanding care afforded Furman student-athletes, student body, and patients of the school's sports medicine center.

A native of McGraw, N.Y., Russell graduated from the University of Buffalo in 1991 with a degree in physical therapy. In the two years following his undergraduate work, he served as a traveling rehabilitation therapist in private business. In 1993, he moved to Greenwood, S.C., where he served as an outpatient therapist in sports medicine and industrial rehabilitation for one year.

Russell, who came to Furman in 1994, is married to the former Betty Jo Roskos, a native of Onalaska, Wisconsin. The couple has two children: a girl, Haley Jo, 4, and a boy, Lucas, 2.

1996-97 ATHLETIC YEAR IN REVIEW

THE 1996-97 SCHOOL YEAR PROVED TO BE another banner campaign for Furman University's 17-sport intercollegiate athletics program.

Furman's men and women student-athletes, besides combining to claim Southern Conference championships in five sports and making four appearances in NCAA Tournaments, were honored for exemplary sportsmanship and overall excellence, thereby adding to the school's solid reputation as one of the conference's and the region's most successful athletics programs.

The highlight of the year was attained by Furman's nine women's sports, who captured the program's fifth straight Germann Cup, which is awarded annually by the Southern Conference to the school with the best overall female sports program. In winning league championships in women's basketball and golf, Furman's women only reinforced the school's reputation as the conference's preeminent female sports institution.

Furman's men's program, meanwhile, enjoyed a strong year, finishing fourth in competition for the Commissioner's Cup after winning league championships in soccer, tennis, and golf, and posting solid seasons in football and baseball.

Of significant note was Furman's selection as the recipient of the D.S. McAlister Sportsmanship Award. The award is given annually by the Southern Conference to the institution "judged to have exhibited the highest degree of sportsmanship, ethics, and courtesy among its players, coaches, and spectators in the conduct of its athletics programs."

As much as the 1996-97 sports year was punctuated by championship play, it also featured the continuing bold effort by the university to modernize its

athletics facilities. In August of 1996, construction began on Timmons Arena, a 5,000-seat, multipurpose facility that will serve as home of the school's football, volleyball, and basketball programs.

Included below are brief highlights from Furman University's 1996-97 athletic year.

FOOTBALL

Furman University's football team took a giant leap in its return to prominence in 1996 by going 9-4 and making the program's first appearance in the NCAA I-AA playoffs since 1990.

A third place finisher in the Southern Conference with a 6-2 mark, Furman opened the season with a 19-3 loss to Peach Bowl participant Clemson, but then rallied for six straight wins, including a 20-14 decision over nationally 14th-ranked Appalachian State in Boone, N.C. The victory over the Mountaineers was the Paladins' first road victory over a nationally-ranked opponent since 1990.

The Paladins returned home the following week and disposed of arch-rival The Citadel, 35-25. After dropping a 21-19 verdict to East Tennessee State, Furman bounced back to down Georgia Southern, 21-14, in Greenville, in a contest that saw Paladin senior quarterback Braniff Bonaventure establish a pair of NCAA I-AA national records for consecutive pass attempts without an interception. Before throwing his first interception of the year the following week in a loss to Marshall, Furman's strong-armed signal caller would attempt 203 passes in 1996 without a pickoff and 215 consecutive attempts without an interception dating back to the final game of the 1995 campaign.

A decisive 42-21 victory over Tennessee-Chat-

tanooga in the regular season finale gave the Paladins an 8-3 record, the program's best record since 1990, and earned the school its first bid to the NCAA I-AA playoffs in six years.

Furman traveled to Flagstaff, Ariz., to take on the Northern Arizona Lumberjacks, the second place finisher in the Big Sky Conference, in the first round of the NCAA I-AA playoffs.

Played at an altitude of 7,000 feet, the game looked like a certain win for Northern Arizona, as the Lumberjacks held a 31-21 lead late in the game before Furman scored to make it 31-28 with 4:24 left. From that point Northern Arizona took the ensuing kickoff and appeared to be in position to put Furman away after picking up a pair of first downs, but, on a first-and-10 play at the Lumberjack 35, quarterback Travis Brown fumbled the snap, and Furman junior linebacker Jay Thier pounced on the loose ball with 2:37 remaining. Using six plays to cover 35 yards, the Paladins stunned their host when quarterback Braniff Bonaventure hit flanker Jody Wade with a 10-yard touchdown pass to give Furman an improbable 35-31 lead with only 31 seconds left. The Paladins added a final score a scant 16 seconds later when linebacker Bernard Scott returned an interception 34 yards for a score to complete Furman's miraculous, 42-31 comeback win.

Furman's victory over Northern Arizona was the only win by a road team in the 1996 NCAA I-AA playoffs, and it gave the Paladins their most wins in a season since 1990. Although a loss to Marshall the following week ended Furman's season, the Paladins' success, which garnered the program a No. 9 ranking in the final polls, was also recognized by head coach Bobby Johnson's selection as Kodak NCAA I-AA Region II Coach-of-the-Year. In addition, seven Paladins earned All-Southern Conference honors, led by tight end Luther Broughton, who earned Sports Network All-American honors following a fine career that saw him finish as Furman's all-time leading receiver (135 rec., 1,659 yds., 6 TDs). In April, Broughton was selected by the Philadelphia Eagles in the fifth round of the National Football League draft, and thus became the first Paladin to be drafted since 1986 when wide receiver Chas Fox was taken in the fourth round by the Kansas City Chiefs. Quarterback Braniff Bonaventure, meanwhile, signed a free agent contract with the Montreal Alouettes of the Canadian Football League.

MEN'S SOCCER

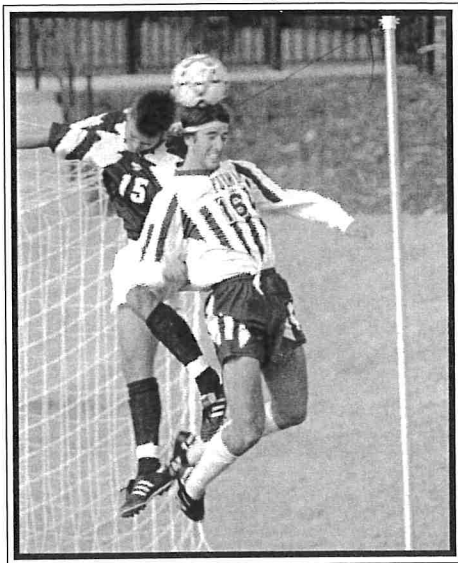
1996 was a record breaking season for Furman's men's soccer team as the Paladins posted a 16-4-1 record enroute to an unprecedented seventh straight Southern Conference regular season title and No. 16 national ranking in the final Soccer America poll.

After opening the season with a loss, the Paladins rebounded to win 16 of their final 19 matches. The 16 victories were the most in Furman history, and among the notable contests were a 2-1 win over then-12th ranked South Carolina, a 1-1 tie with 17th-ranked California, a 3-2 victory over 20th-ranked and eventual



Furman softball standouts Cari Williams (left) and Julie Glasser display the 1996-97 Germann Cup. Awarded annually by the Southern Conference to the league's top women's sports program, Furman claimed the award for the fifth straight year.

1996-97 ATHLETIC YEAR IN REVIEW



Junior defender Pete Santora earned first team All-America honors in 1996 after helping Furman's soccer team to a 16-4-1 record and No. 16 national ranking.

national runner-up Florida International, and a 1-0 decision over Wake Forest.

A 4-0 shut out of Davidson and a 4-2 win over Georgia Southern at Eugene Stone III Soccer Stadium gave Furman the 1996 Southern Conference Tournament championship.

Furman's team success was reflected in the number of individual honors reaped by the Paladins in 1996. Leading the way was junior forward Ryan Higginbotham, who was named Southern Conference Player-of-the-Year after scoring 44 points on 19 goals and six assists. Higginbotham, who was joined by five teammates on the all-conference team, was also named league tournament MVP and All-South. Midfielder Peter Slobodyan earned league freshman-of-the-year honors, and Doug Allison captured his second consecutive conference coach-of-the-year tab. Junior defender Pete Santora, meanwhile, became Furman's first soccer first team All-American, and senior Brian Nickerson was selected as a 1997 National Soccer Coaches Association of America (NSCAA) Men's Scholar-Athlete All-American.

VOLLEYBALL

Furman's Lady Paladin volleyball team overcame the graduation of several talented performers to post a 26-13 overall mark and 10-4 record in the Southern Conference. In addition, the Lady Paladins won a pair of regular season tournaments, the Davidson Invitational and the Paladin Classic, and earned numerous conference honors over the course of the season.

Senior Tammy Kerr, a first team all-conference and all-tournament selection, paced Furman's strong season by setting new school and conference career records for kills with 1,714.

Senior middle hitter Kristin Kiessler, however,

was the most decorated member of the volleyball squad, as she earned all-tournament honors twice during the regular season and was the league's player-of-the-week honoree three times prior to being named league player-of-the-year. To cap an outstanding season, Kiessler became Furman's first-ever, first team GTE Academic All-American for volleyball and earned a Southern Conference Graduate Scholarship. In addition, the senior accounting major with a 4.0 grade point average took home Furman's Edna Hartness Female Athlete-of-the-Year Award.

CROSS COUNTRY

Though the Lady Paladin cross country team did not claim a fourth straight Southern Conference team title in 1996, junior Lynn Kepper-Hudson won the individual championship to extend Furman's streak to four.

In 1990, Cate Pichon was the first Lady Paladin to win the conference championship, but it was Heather VandeBrake who won in 1993, '94, and '95 to lay the foundation for the current streak. Kepper-Hudson's crown was Furman's sixth individual title in seven years.

The big news on the cross country front, however, was the NCAA's decision to award Furman the 1997 NCAA Division I Cross Country Championship. Furman, which has hosted its own cross country invitational for 24 years and the NCAA District III Qualifying Meet in 14 of the last 15 years, will welcome the nation's top runners to Greenville for the championship on November 24.

MEN'S BASKETBALL

After posting its third consecutive 10-17 season, Furman's basketball program assumed a new look on April 9, when the school named Larry Davis as its new head basketball coach.

Davis, 40, came to Furman from the University of Minnesota, where he had served as an assistant coach for three seasons under Clem Haskins. During his tenure with the Gophers, Davis played a key role in recruiting, helping Minnesota sign players who would propel the Gophers to two trips to the NCAA Tournament, including a school record 31-4 mark and appearance in the Final Four this past year. Prior to his stint at Minnesota, he served as an assistant at Ball State (1993-94), Wake Forest (1989-93), and Delaware (1985-89). Prior to going to Delaware, he served as head coach for two seasons at Oak Hill Academy (Va.) after serving three seasons (1989-92) as a graduate assistant coach at East Tennessee State University (1979-82). A native of Mount Sterling, Ky., Davis graduated from Wapahani High School in Selma, Ind. He later earned his undergraduate degree in education at Asbury College in Wilmore, Ky.

WOMEN'S BASKETBALL

Although sporting a squad that included seven freshmen and picked to finish seventh in a pre-season

poll of Southern Conference head coaches, the Furman Lady Paladins' basketball team turned in one of the year's most surprising seasons by posting a 19-8 overall record and 10-4 league mark on the way to the 1996-97 Southern Conference regular season championship.

Following a slow start, which included losses to nationally 20th-ranked Clemson and 8th-ranked Penn State, the Lady Paladins turned the corner with a 79-63 win over Yale at the St. Peter's Invitational and proceeded to win 14 of the last 18 regular season games, including 11 straight at home.

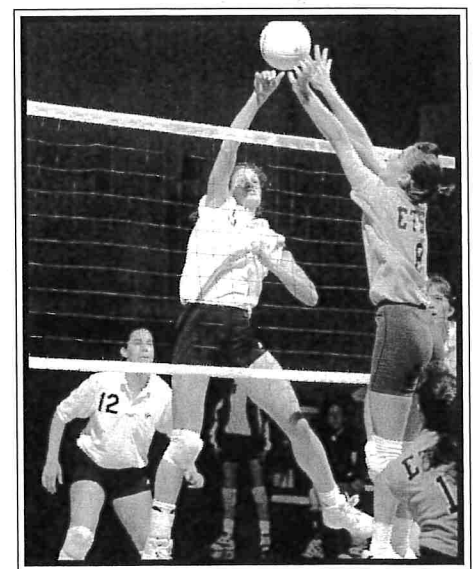
Heading up Furman's surprising season was junior forward Tonya Bristow, who earned first-team all-conference honors, and senior guard Natasha Jackson, who garnered second team accolades. Freshman forward Jackie Smith was named to the league's all-tournament team, and head coach Sherry Carter was selected as league coach-of-the-year.

TRACK

Several outstanding performances were recorded by members of Furman's men's and women's track teams at the 1997 Southern Conference Championships.

Leading the way for the Lady Paladins were senior sprinter Salima Fountain and junior Lynn Kepper-Hudson, who each won a pair of all-conference scrolls. Sophomores Jake Johnson and Tyler Milliken, meanwhile, recorded all-conference performances for the Paladin squad.

Fountain finished second in both the 200 and 400 meters, while Hudson won the 10,000 meter run and finished third in the 5,000. Johnson's championship performance included a third place finish in the 3,000 meters, while Milliken earned all-conference after plac-



Volleyball standout Kristin Kiessler was named Southern Conference Player-of-the-Year, GTE Academic All-American, and Furman Female Athlete-of-the-Year in 1996-97.

1996-97 ATHLETIC YEAR IN REVIEW

ing second in the javelin.

In addition to strong showings at the Southern Conference Championships, a number of school records were set during the course of the outdoor season. Lynn Kepper-Hudson broke a one-year old school standard in the 5,000 meters with a time of 17:08.53 at the Duke Invitational, and Katie Condon set a new mark in the high jump with a 5'6" showing at the Winthrop Invitational. Freshman Angela Highbaugh rounded out the record run with a 17'11" leap in the long jump at the Emory Track Classic.

BASEBALL

Furman's baseball team fashioned the best season in over 20 years by going 29-23-1 under fourth year head coach Ron Smith.

The Paladins, who posted the program's first winning season since 1976 and winningest campaign ever, placed fourth in the Southern Conference regular season race prior to a near miraculous showing in the league's annual tournament in Charleston, S.C., where they finished as runner-up. The Paladins, who in successive games knocked No. 2 seed Georgia Southern and No. 3 seed The Citadel out of the double elimination tournament, held an 8-3 lead over Western Carolina before falling 11-10 in extra innings in the tournament championship game.

Five Paladins were named to the Southern Conference All-Tournament team. Left-handed pitcher David Noyce, shortstop Eric Boehmer, third baseman Dan Martz, and outfielders Jody Wade and Brandon Hollier represented Furman on the squad.

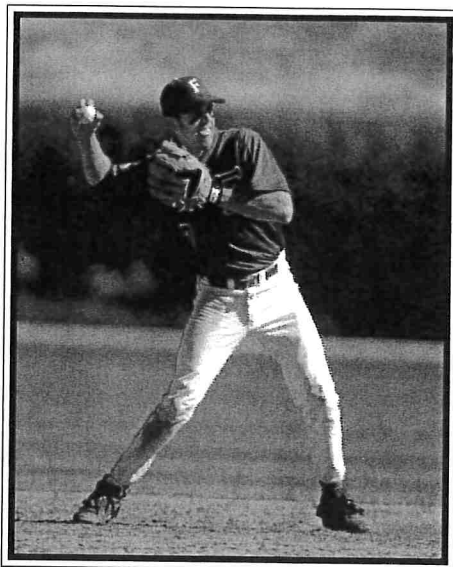
The Paladins hit a school record 47 home runs over the course of the year with first baseman Jim Morrill leading the way with nine round trippers. The Furman pitching staff, meanwhile, finished the season with a 5.34 ERA, the lowest since 1992. The staff was led by junior right-hander Seth Rhine, who finished the season with a 7-2 record and a 4.26 ERA. Freshman right-hander Tommy John began the season 5-1 and finished with a 6-2 record and a 5.65 ERA.

Senior right-hander Matt Dickson set a new Furman career record for appearances with 74 after leading the team with 23 in 1997.

SOFTBALL

Shaking off a slow start, Furman's Lady Paladin softball squad, led by three-time Southern Conference Player-of-the-Year Julie Glasser, rallied to post an 18-9 record over the final 27 games and finish as Southern Conference Tournament runner-up.

Glasser, a four-year starter at catcher who finished her career with Furman career records for home runs (25), runs (158), and hits (266), led the conference and finished 14th nationally in hitting in 1997 with a .435 average. Selected as a second team GTE Academic All-American, Glasser concluded her brilliant career by receiving Furman University's Student-Athlete Achievement Award — the highest honor bestowed on an athlete by the university.



Senior shortstop Eric Boehmer, a Southern Conference All-Tournament choice, started in all 51 games and batted .310 in helping Furman baseball to its best record in 20 years.

MEN'S AND WOMEN'S GOLF

Furman University's Paladin and Lady Paladin golf teams ruled the Southern Conference in 1997, recording a sweep of both championships for the first time in league history.

While the Furman women, led by senior medalist Diana D'Alessio, scored an easy 75-stroke victory at the league tournament, the Furman men, behind the play of junior medalist Jordan Byrd, defeated 14th-ranked East Tennessee State on the second hole of a sudden death playoff to take the conference team championship. The tournament victories by the Paladins and Lady Paladins earned Southern Conference Coach-of-the-Year laurels for women's coach Mic Potter and new men's coach Todd Satterfield. Satterfield, in his first season, later added the department's prestigious J. Lyles Alley Coach-of-the-Year honor.

The conference tournament title and other wins at the Pirate Fall Invitational, the Davidson College Invitational, and the Old Dominion/Seascape Collegiate propelled the Paladins into the program's first appearance in the NCAA East Regionals since regional play was introduced in 1989. Although the Paladins failed to qualify for nationals, a 14th place finish in a field of 23 teams was an impressive showing for a program that had finished a disappointing third in the Southern Conference the year before.

Furman's Lady Paladins, meanwhile, were nationally ranked all year. Though the Southern Conference Tournament championship was the team's only victory, top 10 finishes in all nine regular season tournaments and a fourth-place showing at the NCAA East Regional garnered the program its sixth consecutive bid to the NCAA Tournament and 12th invitation since 1982, when the NCAA began sponsoring a women's golf championship. At nationals, the Lady

Paladins finished 16th.

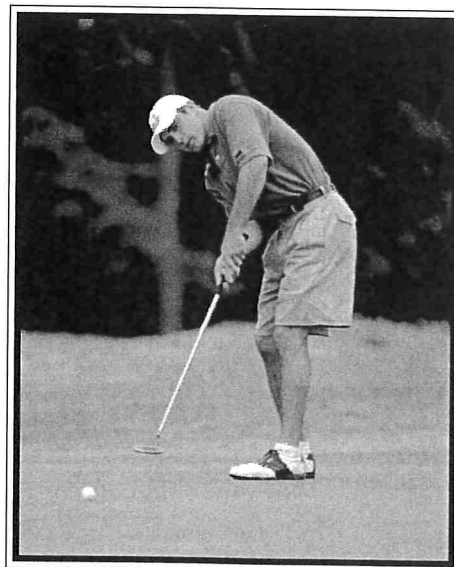
In addition to strong play turned in by the Paladin and Lady Paladin linksters in 1996-97, work on the REK Center for Intercollegiate Golf neared completion. The state-of-the-art practice facility includes greens for chipping and putting, greenside and fairway bunkers, and a covered, heated tee area. In addition, the clubhouse features locker rooms for both teams, coaches' offices, a lounge area, and a lobby dedicated to the memory of Connie Timmons — a longtime Furman golf supporter.

MEN'S TENNIS

The Furman men's tennis team, under the direction of veteran head coach Paul Scarpa, posted a 16-10 record and captured its 10th Southern Conference Tournament championship in dramatic fashion.

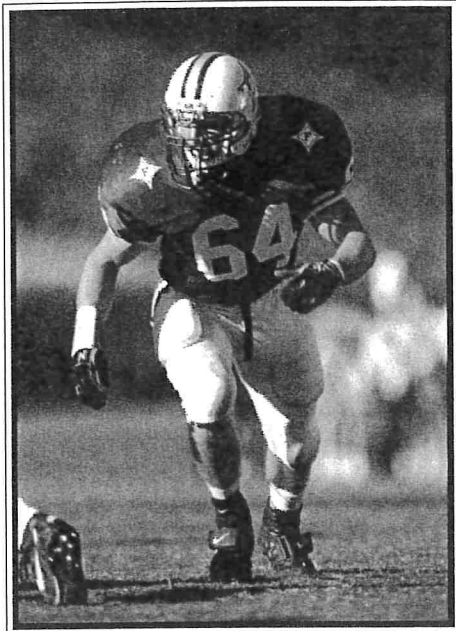
The Paladins, who finished second in the conference regular season, overcame a one-point deficit on the tournament's final day to edge both Davidson and East Tennessee State for the title. With only two doubles matches remaining, Furman found itself in a three-way tie for the lead, but that's when the junior doubles tandem of Sam Schroerlucke and Adam Abney came through, beating East Tennessee State's Juan DeAngulo and Dean Houlzet to secure the win for the Paladins.

Schroerlucke left the tournament as the conference's most decorated performer. Along with his championship at No. 1 doubles, Schroerlucke claimed the No. 1 singles flight championship by beating Davidson's Jon Pastel 3-6, 6-4, 6-3, en route to earning tournament most outstanding player honors. Adam Abney, meanwhile, won his first conference singles championship at No. 2 singles, cruising past Appalachian State's Frank Conner, 6-4, 6-3.



Jordan Byrd claimed medalist honors and helped Furman win the 1997 Southern Conference Golf Championship.

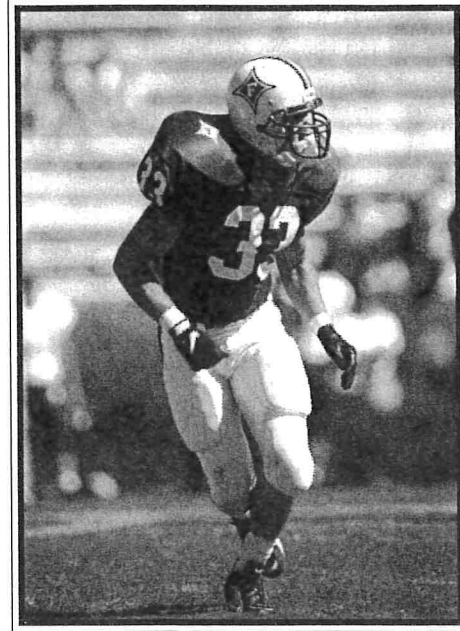
1997 PALADIN HEADLINERS



BRYAN DAILER
 Rush End
 6-3, 220, Senior
 Three-Year Starter
 1996 All-Southern Conference
 SoCon Sacks Leader in '96 (14)



ORLANDO RUFF
 Linebacker
 6-2, 255, Junior
 Two-Year Starter
 1996 All-Southern Conference
 Furman's Leading Tackler in '96 (164)

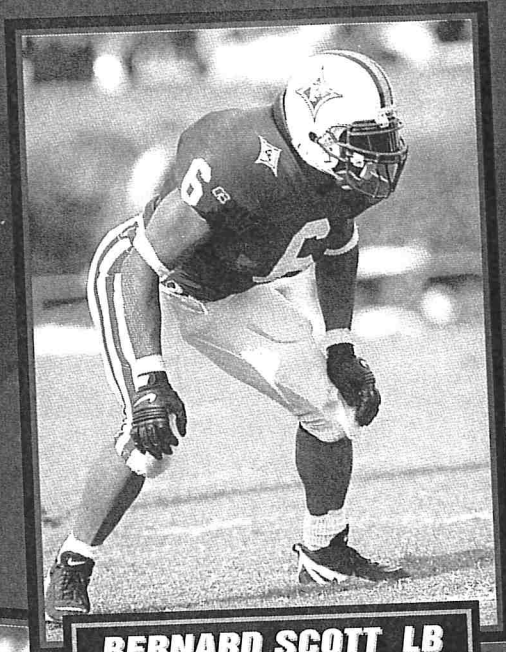


JEREMY OSBORNE
 Free Safety
 5-10, 200, Senior
 Two-Year Starter
 1995 & '96 All-Southern Conference
 87 Tackles in '96

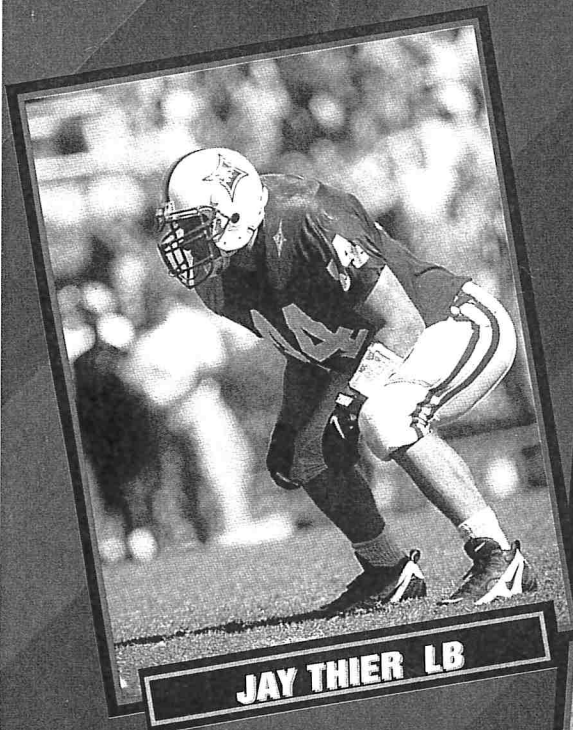


FURMAN

PALADINS



BERNARD SCOTT LB



JAY THIER LB



MARK MOORE TB



PHIL WARREN DT

1997 SCHEDULE

September	4	@ Samford	8:00	October	25	East Tennessee State	1:30
September	13	@ S.C. State	1:30	November	1	Elon	1:30
September	27	VMI	1:30	November	8	@ Georgia Southern	1:00
October	4	@ Western Carolina	2:00	November	15	Wofford	1:30
October	11	Appalachian State	1:30	November	22	@ Chattanooga	12:30
October	18	@ The Citadel	2:00	All Times Eastern			