



Officials: AJ Desai, Jeffery Clark, Earl Walton

Wake Forest - 68

Record: 19-5 (9-4)

NO.	Name	F	Min	FG			3P			FT			Rebounds			Fouls		TP	AS	TO	ST	Blocks		+/-
				M-A	M-A	M-A	OR	DR	TOT	PF	FD	BS	BA											
1	Isaiah Mucius	F	26:08	4-7	2-5	0-0	1	0	1	2	0	10	0	3	1	0	0	3	1	0	0	0	9	
13	Dallas Walton	C	24:24	1-1	0-0	1-2	0	5	5	3	1	3	0	2	1	1	0	2	1	1	0	18		
0	Jake LaRavia	G	39:35	7-10	1-1	3-4	6	7	13	2	4	18	9	6	1	1	1	1	1	1	8			
4	Daivien Williamson	G	26:23	1-6	1-5	0-1	0	1	1	2	2	3	1	1	0	0	1	0	0	1	-1			
31	Alondes Williams	G	39:06	9-21	1-5	4-5	3	5	8	2	4	23	4	7	2	0	1	8	0	1	8			
20	Khadim Sy		18:19	1-3	0-0	0-3	1	5	6	1	5	2	0	1	1	0	0	0	0	-8				
30	Damari Monsanto		17:26	3-9	3-6	0-0	2	5	7	1	0	9	1	3	0	0	2	4	0	2	4			
11	Carter Whitt		06:41	0-0	0-0	0-0	0	1	1	1	0	0	0	2	0	0	0	4	0	0	4			
2	Cameron Hildreth		01:58	0-0	0-0	0-0	0	1	1	1	1	0	0	1	0	0	0	0	0	-2				
Team							1	1	2			0		0										
<b>Totals</b>				26-57	8-22	8-15	14	31	45	15	17	68	15	26	6	2	5	8						

Shooting By Period		
1 <sup>st</sup> FG%	10-25	40.0%
3PT%	2-10	20.0%
FT%	3-7	42.9%
2 <sup>nd</sup> FG%	16-32	50.0%
3PT%	6-12	50.0%
FT%	5-8	62.5%
GM FG%	26-57	45.6%
3PT%	8-22	36.4%
FT%	8-15	53.3%

Dead Ball Rebounds: 2, 0

Technical Fouls: Williams 2<sup>nd</sup> 4:30

Florida State - 60

Record: 13-9 (6-6)

NO.	Name	F	Min	FG			3P			FT			Rebounds			Fouls		TP	AS	TO	ST	Blocks		+/-
				M-A	M-A	M-A	OR	DR	TOT	PF	FD	BS	BA											
22	John Butler	F	07:45	0-4	0-2	0-2	0	0	0	0	1	0	0	0	1	0	0	1	2	0	0	0		
11	Tanor Ngom	C	12:38	1-1	0-0	0-0	0	3	3	1	0	2	0	2	0	1	0	2	0	1	0	-3		
0	RayQuan Evans	G	29:54	3-11	1-3	2-2	1	3	4	0	2	9	1	1	0	0	1	-11						
4	Caleb Mills	G	29:42	6-16	1-4	2-3	0	1	1	4	2	15	4	4	3	3	0	-7						
35	Matthew Cleveland	G	38:26	4-15	0-3	3-5	4	5	9	4	4	11	2	3	3	1	1	-8						
30	Harrison Prieto		25:36	5-9	1-3	2-2	8	5	13	2	2	13	1	0	2	0	0	-2						
1	Jalen Warley		19:11	1-4	1-1	2-2	0	0	0	3	2	5	1	1	2	0	0	0						
21	Cam'Ron Fletcher		11:55	2-3	0-0	1-2	1	2	3	2	1	5	2	1	1	0	0	1						
31	Wyatt Wilkes		22:08	0-4	0-3	0-0	0	1	1	1	0	0	1	2	2	0	0	-8						
15	Quincy Ballard		01:29	0-0	0-0	0-0	0	0	0	0	0	0	0	0	0	0	0	-2						
12	Justin Lindner		01:16	0-0	0-0	0-0	0	0	0	0	0	0	0	1	0	0	0	0						
Team							2	2	4			0		0										
<b>Totals</b>				22-67	4-19	12-18	16	22	38	17	14	60	12	16	15	5	2	-8						

Shooting By Period		
1 <sup>st</sup> FG%	7-34	20.6%
3PT%	2-11	18.2%
FT%	5-8	62.5%
2 <sup>nd</sup> FG%	15-33	45.5%
3PT%	2-8	25.0%
FT%	7-10	70%
GM FG%	22-67	32.8%
3PT%	4-19	21.1%
FT%	12-18	66.7%

Dead Ball Rebounds: 4, 0

Technical Fouls: NONE

	WFU	FSU
Biggest lead	11 (2 <sup>nd</sup> 11:58)	4 (1 <sup>st</sup> 13:08)
Best Scoring Run	11 (1 <sup>st</sup> 7:22)	8 (2 <sup>nd</sup> 9:35)
Lead Changes	2	
Times Tied	3	
Time with Lead	34:27	04:07

Points from	WFU	FSU
Turnovers	14	19
Paint	36	28
Second Chance	16	15
Fast Breaks	9	12
Bench	11	23

	Period by Period Scoring		
	1st	2nd	TOT
WFU	25	43	68
FSU	21	39	60



**Period 1**

**Quarter Starters:**

<b>FSU</b>	0 Evans R	4 Mills C	11 Ngom T	22 Butler J	35 Cleveland M
<b>WFU</b>	0 LaRavia J	1 Mucius I	4 Williamson D	13 Walton D	31 Williams A

Game Time	FSU	Score	Diff	WFU
20:00	22 BUTLER J jumpball lost			13 WALTON D jumpball won
19:42	11 NGOM T foul shooting (1 - 1)			13 WALTON D foul drawn (1)
19:42				13 WALTON D free throw 1 - 2 missed
19:42				offensive dead ball rebound (1)
19:42		<b>0-1</b>	<b>-1</b>	13 WALTON D free throw 2 - 2 made (1)
19:21	22 BUTLER J 3pt FG , jump shot missed			
19:17				13 WALTON D defensive rebound (1)
18:51				31 WILLIAMS A 3pt FG , jump shot blocked
18:51	4 MILLS C block (1)			
18:51				offensive rebound (2)
18:46				31 WILLIAMS A 3pt FG second chance, jump shot missed
18:44	4 MILLS C defensive rebound (1)			
18:27	11 NGOM T turnover lost ball (1)			
18:16		<b>0-3</b>	<b>-3</b>	0 LARAVIA J 2pt FG from turnover in the paint, turnaround jump shot made (2)
17:56	11 NGOM T substitution out			
17:56	30 PRIETO H substitution in			
17:46	30 PRIETO H 2pt FG outside the paint, pull up jump shot missed			
17:44	0 EVANS R offensive rebound (1)			
17:35	4 MILLS C turnover lost ball (1)			
17:28		<b>0-5</b>	<b>-5</b>	31 WILLIAMS A 2pt FG fast break from turnover in the paint, layup made (2)
17:28				0 LARAVIA J assist (1)
17:09	4 MILLS C 2pt FG in the paint, jump shot missed			
17:07				31 WILLIAMS A defensive rebound (1)
17:02	4 MILLS C steal (1)			31 WILLIAMS A turnover lost ball (1)
16:59	4 MILLS C 2pt FG from turnover in the paint, layup missed			
16:57	30 PRIETO H offensive rebound (1)			
16:55	22 BUTLER J 2pt FG from turnover second chance in the paint, dunk, missed			
16:52	30 PRIETO H offensive rebound (2)			
16:52	30 PRIETO H 2pt FG from turnover second chance in the paint, layup made (2)	<b>2-5</b>	<b>-3</b>	
16:30				4 WILLIAMSON D 3pt FG , jump shot missed
16:26	30 PRIETO H defensive rebound (3)			
16:22	4 MILLS C 2pt FG in the paint, driving layup missed			
16:20	35 CLEVELAND M offensive rebound (1)			
16:20	35 CLEVELAND M foul drawn (1)			13 WALTON D foul shooting (1 - 1)
16:20	35 CLEVELAND M free throw 1 - 2 made (1)	<b>3-5</b>	<b>-2</b>	
16:20				13 WALTON D substitution out
16:20				20 SY K substitution in
16:20	35 CLEVELAND M free throw 2 - 2 made (2)	<b>4-5</b>	<b>-1</b>	
16:12				4 WILLIAMSON D turnover (1)
16:02	30 PRIETO H 3pt FG from turnover, jump shot made (5)	<b>7-5</b>	<b>2</b>	



**Officials:** AJ Desai, Jeffery Clark, Earl Walton

Game Time	FSU	Score	Diff	WFU
16:02	4 MILLS C assist (1)			
15:44	22 BUTLER J steal (1)			1 MUCIUS I turnover lost ball (1)
15:23	0 EVANS R 3pt FG from turnover, jump shot missed			
15:20	30 PRIETO H offensive rebound (4)			
15:18	0 EVANS R 2pt FG from turnover second chance outside the paint, jump shot missed			
15:16				20 SY K defensive rebound (1)
14:59	22 BUTLER J steal (2)			0 LARAVIA J turnover lost ball (1)
14:58	0 EVANS R foul drawn (1)			1 MUCIUS I foul personal (1 - 2)
14:58	0 EVANS R substitution out			
14:58	22 BUTLER J substitution out			
14:58	1 WARLEY J substitution in			
14:58	21 FLETCHER C substitution in			
14:41	35 CLEVELAND M 2pt FG from turnover in the paint, driving layup missed			
14:39	30 PRIETO H offensive rebound (5)			
14:39	jump ball situation			
14:35	21 FLETCHER C foul offensive (1 - 2)			4 WILLIAMSON D foul drawn (1)
14:35	21 FLETCHER C turnover offensive (1)			
14:13	21 FLETCHER C foul shooting (2 - 3)			0 LARAVIA J foul drawn (1)
14:13	21 FLETCHER C substitution out			
14:13	31 WILKES W substitution in			
14:13		<b>7-6</b>	<b>1</b>	0 LARAVIA J free throw 1 - 2 made (3)
14:13		<b>7-7</b>	<b>0</b>	0 LARAVIA J free throw 2 - 2 made (4)
14:03				1 MUCIUS I substitution out
14:03				30 MONSANTO D substitution in
13:46	4 MILLS C 2pt FG outside the paint, pull up jump shot missed			
13:43				30 MONSANTO D defensive rebound (1)
13:41	30 PRIETO H steal (1)			30 MONSANTO D turnover lost ball (1)
13:38	4 MILLS C 2pt FG fast break from turnover in the paint, driving layup made (2)	<b>9-7</b>	<b>2</b>	
13:22				4 WILLIAMSON D 3pt FG , jump shot missed
13:19	35 CLEVELAND M defensive rebound (2)			
13:15	35 CLEVELAND M 2pt FG in the paint, driving layup missed			
13:12	30 PRIETO H offensive rebound (6)			
13:11	31 WILKES W 3pt FG second chance, jump shot missed			
13:08	30 PRIETO H offensive rebound (7)			
13:08	30 PRIETO H 2pt FG second chance in the paint, layup made (7)	<b>11-7</b>	<b>4</b>	
13:08				Timeout 30 Sec
13:08	30 PRIETO H substitution out			
13:08	15 BALLARD Q substitution in			
12:57				30 MONSANTO D 3pt FG , jump shot missed
12:55				20 SY K offensive rebound (2)
12:44				31 WILLIAMS A 2pt FG second chance in the paint, jump shot missed
12:41				30 MONSANTO D offensive rebound (2)
12:41				30 MONSANTO D 2pt FG second chance in the paint, layup blocked
12:41	35 CLEVELAND M block (1)			
12:41				30 MONSANTO D offensive rebound (3)



**Officials:** AJ Desai, Jeffery Clark, Earl Walton

Game Time	FSU	Score	Diff	WFU
12:34				30 MONSANTO D 2pt FG second chance in the paint, layup missed
12:34				31 WILLIAMS A offensive rebound (2)
12:30		<b>11-9</b>	<b>2</b>	31 WILLIAMS A 2pt FG second chance in the paint, layup made (4)
12:18	4 MILLS C turnover bad pass (2)			
12:18	1 WARLEY J substitution out			
12:18	0 EVANS R substitution in			
12:18				4 WILLIAMSON D substitution out
12:18				11 WHITT C substitution in
12:06				31 WILLIAMS A turnover bad pass (2)
12:06				20 SY K substitution out
12:06				13 WALTON D substitution in
11:49	35 CLEVELAND M 2pt FG from turnover in the paint, driving layup missed			
11:47				13 WALTON D defensive rebound (2)
11:39	Timeout media			
11:39	15 BALLARD Q substitution out			
11:39	11 NGOM T substitution in			
11:33				0 LARAVIA J 2pt FG in the paint, jump shot blocked
11:33	11 NGOM T block (1)			
11:29				0 LARAVIA J offensive rebound (1)
11:20		<b>11-11</b>	<b>0</b>	31 WILLIAMS A 2pt FG second chance in the paint, driving layup made (6)
11:03	0 EVANS R 3pt FG , jump shot missed			
11:01				31 WILLIAMS A defensive rebound (3)
10:57		<b>11-13</b>	<b>-2</b>	31 WILLIAMS A 2pt FG fast break in the paint, layup made (8)
10:32	0 EVANS R 2pt FG in the paint, pull up jump shot missed			
10:30				0 LARAVIA J defensive rebound (2)
10:27				31 WILLIAMS A turnover lost ball (3)
10:15	4 MILLS C 2pt FG from turnover outside the paint, jump shot missed			
10:13				13 WALTON D defensive rebound (3)
09:57	4 MILLS C steal (2)			13 WALTON D turnover bad pass (1)
09:39	35 CLEVELAND M 2pt FG from turnover in the paint, jump shot blocked			
09:39				13 WALTON D block (1)
09:34				30 MONSANTO D defensive rebound (4)
09:32				31 WILLIAMS A 2pt FG in the paint, layup missed
09:29				0 LARAVIA J offensive rebound (3)
09:29		<b>11-16</b>	<b>-5</b>	30 MONSANTO D 3pt FG second chance, jump shot made (3)
09:29				0 LARAVIA J assist (2)
09:22	Timeout 30 Sec			
09:22	11 NGOM T substitution out			
09:22	31 WILKES W substitution out			
09:22	35 CLEVELAND M substitution out			
09:22	1 WARLEY J substitution in			
09:22	22 BUTLER J substitution in			
09:22	30 PRIETO H substitution in			
09:22				31 WILLIAMS A substitution out
09:22				1 MUCIUS I substitution in



**Officials:** AJ Desai, Jeffery Clark, Earl Walton

Game Time	FSU	Score	Diff	WFU
08:57	22 BUTLER J foul drawn (1)			30 MONSANTO D foul shooting (1 - 3)
08:57	22 BUTLER J free throw 1 - 2 missed			
08:57	offensive dead ball rebound (1)			
08:56	22 BUTLER J free throw 2 - 2 missed			
08:55	30 PRIETO H offensive rebound (8)			
08:49				11 WHITT C turnover bad pass (1)
08:34	22 BUTLER J 2pt FG from turnover in the paint, driving layup missed			
08:32				30 MONSANTO D defensive rebound (5)
08:28				30 MONSANTO D turnover dribbling violation (2)
08:28				30 MONSANTO D substitution out
08:28				31 WILLIAMS A substitution in
08:12	22 BUTLER J turnover bad pass (1)			1 MUCIUS I steal (1)
08:04				1 MUCIUS I 3pt FG from turnover, jump shot missed
08:01	0 EVANS R defensive rebound (2)			
07:55	4 MILLS C 3pt FG , jump shot missed			
07:53				11 WHITT C defensive rebound (1)
07:48	4 MILLS C steal (3)			1 MUCIUS I turnover lost ball (2)
07:48	Timeout media			
07:48	4 MILLS C substitution out			
07:48	35 CLEVELAND M substitution in			
07:48				11 WHITT C substitution out
07:48				20 SY K substitution in
07:31	1 WARLEY J 2pt FG from turnover in the paint, jump shot missed			
07:28				20 SY K defensive rebound (3)
07:22		<b>11-18</b>	<b>-7</b>	1 MUCIUS I 2pt FG in the paint, layup made (2)
07:22				31 WILLIAMS A assist (1)
06:57	22 BUTLER J 3pt FG , jump shot missed			
06:54				20 SY K defensive rebound (4)
06:39	30 PRIETO H foul drawn (1)			20 SY K foul offensive (1 - 4)
06:39				20 SY K turnover offensive (1)
06:39	22 BUTLER J substitution out			
06:39	31 WILKES W substitution in			
06:39	1 WARLEY J substitution out			
06:39	4 MILLS C substitution in			
06:22	30 PRIETO H 3pt FG from turnover, jump shot missed			
06:20	35 CLEVELAND M offensive rebound (3)			
06:19	35 CLEVELAND M 2pt FG from turnover second chance in the paint, layup made (4)	<b>13-18</b>	<b>-5</b>	
05:57		<b>13-20</b>	<b>-7</b>	31 WILLIAMS A 2pt FG in the paint, layup made (10)
05:57				0 LARAVIA J assist (3)
05:40	0 EVANS R 3pt FG , jump shot made (3)	<b>16-20</b>	<b>-4</b>	
05:40	30 PRIETO H assist (1)			
05:21		<b>16-23</b>	<b>-7</b>	31 WILLIAMS A 3pt FG , jump shot made (13)
05:21				0 LARAVIA J assist (4)
05:00	0 EVANS R substitution out			
05:00	12 LINDNER J substitution in			
05:00				13 WALTON D substitution out
05:00				4 WILLIAMSON D substitution in



**Officials:** AJ Desai, Jeffery Clark, Earl Walton

Game Time	FSU	Score	Diff	WFU
04:53	4 MILLS C foul drawn (1)			4 WILLIAMSON D foul personal (1 - 5)
04:43	31 WILKES W 3pt FG , jump shot missed			
04:40				4 WILLIAMSON D defensive rebound (1)
04:30				0 LARAVIA J turnover travel (2)
04:01	12 LINDNER J turnover travel (1)			
03:56	31 WILKES W steal (1)			31 WILLIAMS A turnover bad pass (4)
03:45	4 MILLS C turnover lost ball (3)			
03:45	Timeout media			
03:44	30 PRIETO H substitution out			
03:44	12 LINDNER J substitution out			
03:44	1 WARLEY J substitution in			
03:44	11 NGOM T substitution in			
03:31	4 MILLS C foul personal (1 - 4)			0 LARAVIA J foul drawn (2)
03:23				31 WILLIAMS A 3pt FG from turnover, jump shot missed
03:23	35 CLEVELAND M defensive rebound (4)			
03:13	11 NGOM T turnover bad pass (2)			20 SY K steal (1)
03:01				1 MUCIUS I turnover lost ball (3)
02:59				1 MUCIUS I substitution out
02:59				30 MONSANTO D substitution in
02:39	31 WILKES W 2pt FG from turnover in the paint, driving layup missed			
02:37				0 LARAVIA J defensive rebound (4)
02:31	35 CLEVELAND M steal (1)			30 MONSANTO D turnover bad pass (3)
02:26	35 CLEVELAND M foul offensive (1 - 5)			20 SY K foul drawn (1)
02:26	35 CLEVELAND M turnover offensive (1)			
02:04				30 MONSANTO D 2pt FG from turnover in the paint, jump shot blocked
02:04	4 MILLS C block (2)			
02:00	11 NGOM T defensive rebound (1)			
01:58	1 WARLEY J foul drawn (1)			0 LARAVIA J foul shooting (1 - 6)
01:58	1 WARLEY J free throw 1 - 2 made (1)	<b>17-23</b>	<b>-6</b>	
01:58	11 NGOM T substitution out			
01:58	30 PRIETO H substitution in			
01:58				30 MONSANTO D substitution out
01:58				2 HILDRETH C substitution in
01:58	1 WARLEY J free throw 2 - 2 made (2)	<b>18-23</b>	<b>-5</b>	
01:50	1 WARLEY J foul personal (1 - 6)			2 HILDRETH C foul drawn (1)
01:42	jump ball situation			
01:42		<b>18-25</b>	<b>-7</b>	20 SY K 2pt FG in the paint, layup made (2)
01:42				0 LARAVIA J assist (5)
01:42	30 PRIETO H foul shooting (1 - 7)			20 SY K foul drawn (2)
01:42				20 SY K free throw 1 - 1 missed
01:40	35 CLEVELAND M defensive rebound (5)			
01:35	35 CLEVELAND M foul drawn (2)			0 LARAVIA J foul personal (2 - 7)
01:35	35 CLEVELAND M 1&1 free throw 1 missed			
01:34				20 SY K defensive rebound (5)
01:22				4 WILLIAMSON D 2pt FG outside the paint, turnaround jump shot missed
01:20	30 PRIETO H defensive rebound (9)			
01:06	1 WARLEY J 2pt FG in the paint, driving layup missed			



**Officials:** AJ Desai, Jeffery Clark, Earl Walton

Game Time	FSU	Score	Diff	WFU
01:03				31 WILLIAMS A defensive rebound (4)
00:55				4 WILLIAMSON D 3pt FG , jump shot blocked
00:55	4 MILLS C block (3)			
00:51				31 WILLIAMS A offensive rebound (5)
00:46	31 WILKES W steal (2)			31 WILLIAMS A turnover lost ball (5)
00:43	4 MILLS C 2pt FG fast break from turnover in the paint, driving layup made (4)	<b>20-25</b>	<b>-5</b>	
00:43	35 CLEVELAND M assist (1)			
00:43	4 MILLS C foul drawn (2)			2 HILDRETH C foul shooting (1 - 8)
00:43	4 MILLS C free throw fast break 1 - 1 made (5)	<b>21-25</b>	<b>-4</b>	
00:24	30 PRIETO H foul shooting (2 - 8)			20 SY K foul drawn (3)
00:24				20 SY K free throw 1 - 2 missed
00:24				offensive dead ball rebound (2)
00:24				0 LARAVIA J substitution out
00:24				1 MUCIUS I substitution in
00:24				20 SY K free throw 2 - 2 missed
00:23	30 PRIETO H defensive rebound (10)			
00:04	4 MILLS C 3pt FG , jump shot missed			
00:02				2 HILDRETH C defensive rebound (1)
00:03	35 CLEVELAND M steal (2)			2 HILDRETH C turnover lost ball (1)
00:01	30 PRIETO H 2pt FG from turnover outside the paint, turnaround jump shot missed			
00:00	offensive dead ball rebound (2)			
<b>END OF PERIOD</b>				
<b>FSU 21-25 WFU</b>				



Officials: AJ Desai, Jeffery Clark, Earl Walton

Wake Forest - 25

NO.	Name	F	Min	FG			3P			FT			Rebounds			Fouls		TP	AS	TO	ST	Blocks		+/-
				M-A	M-A	M-A	OR	DR	TOT	PF	FD	BS	BA											
1	Isaiah Mucius	F	12:45	1-2	0-1	0-0	0	0	0	1	0	2	0	3	1	0	0	3	1	0	0	2		
13	Dallas Walton	C	10:46	0-0	0-0	1-2	0	3	3	1	1	1	0	1	0	1	0	1	0	1	0	11		
0	Jake LaRavia	G	19:35	1-2	0-0	2-2	2	2	4	2	2	4	5	2	0	0	1	0	0	1	4			
4	Daivien Williamson	G	12:42	0-4	0-3	0-0	0	1	1	1	1	0	0	1	0	0	1	0	0	1	-5			
31	Alondes Williams	G	19:06	6-11	1-4	0-0	2	3	5	0	0	13	1	5	0	0	1	0	1	4				
20	Khadim Sy		12:02	1-1	0-0	0-3	1	4	5	1	3	2	0	1	1	0	0	0	0	-5				
30	Damari Monsanto		06:36	1-5	1-2	0-0	2	3	5	1	0	3	0	3	0	0	0	0	2	4				
11	Carter Whitt		04:30	0-0	0-0	0-0	0	1	1	0	0	0	0	1	0	0	0	0	7					
2	Cameron Hildreth		01:58	0-0	0-0	0-0	0	1	1	1	1	0	0	1	0	0	0	0	-2					
Team							1	0	1			0		0										
<b>Totals</b>				10-25	2-10	3-7	8	18	26	8	8	25	6	18	2	1	5	4						

Shooting By Period		
1st FG%	10-25	40.0%
3PT%	2-10	20.0%
FT%	3-7	42.9%
GM FG%	10-25	40.0%
3PT%	2-10	20.0%
FT%	3-7	42.9%

Dead Ball Rebounds: 2, 0

Technical Fouls::NONE

Florida State - 21

NO.	Name	F	Min	FG			3P			FT			Rebounds			Fouls		TP	AS	TO	ST	Blocks		+/-
				M-A	M-A	M-A	OR	DR	TOT	PF	FD	BS	BA											
22	John Butler	F	07:45	0-4	0-2	0-2	0	0	0	0	1	0	0	0	1	2	0	0	1	2	0	0	0	
11	Tanor Ngom	C	06:07	0-0	0-0	0-0	0	1	1	1	0	0	0	2	0	1	0	0	0	1	0	-9		
0	RayQuan Evans	G	12:20	1-5	1-3	0-0	1	1	2	0	1	3	0	0	0	0	0	0	0	0	-7			
4	Caleb Mills	G	18:51	2-9	0-2	1-1	0	1	1	1	2	5	1	3	3	3	0	0	0	-2				
35	Matthew Cleveland	G	18:26	1-5	0-0	2-3	2	3	5	1	2	4	1	1	2	1	1	1	1	-4				
30	Harrison Prieto		12:24	3-6	1-2	0-0	7	3	10	2	1	7	1	0	1	0	0	0	7					
1	Jalen Warley		09:07	0-2	0-0	2-2	0	0	0	1	1	2	0	0	0	0	0	0	1					
21	Cam'Ron Fletcher		00:45	0-0	0-0	0-0	0	0	0	2	0	0	0	1	0	0	0	0	0					
31	Wyatt Wilkes		11:30	0-3	0-2	0-0	0	0	0	0	0	0	0	0	2	0	0	-4						
15	Quincy Ballard		01:29	0-0	0-0	0-0	0	0	0	0	0	0	0	0	0	0	0	-2						
12	Justin Lindner		01:16	0-0	0-0	0-0	0	0	0	0	0	0	0	1	0	0	0	0						
Team							0	0	0			0		0										
<b>Totals</b>				7-34	2-11	5-8	10	9	19	8	8	21	3	9	10	5	1	-4						

Shooting By Period		
1st FG%	7-34	20.6%
3PT%	2-11	18.2%
FT%	5-8	62.5%
GM FG%	7-34	20.6%
3PT%	2-11	18.2%
FT%	5-8	62.5%

Dead Ball Rebounds: 2, 0

Technical Fouls::NONE

	WFU	FSU
Biggest lead	7 (1st 7:22)	4 (1st 13:08)
Best Scoring Run	11 (1st 7:22)	7 (1st 16:02)
Lead Changes	2	
Times Tied	2	
Time with Lead	14:37	04:07

Points from	WFU	FSU
Turnovers	6	12
Paint	16	10
Second Chance	7	8
Fast Breaks	4	5
Bench	5	9

	Period by Period Scoring		
	1st	2nd	TOT
WFU	25	43	68
FSU	21	39	60



**Period 2**

**Quarter Starters:**

<b>FSU</b>	0 Evans R	4 Mills C	11 Ngom T	21 Fletcher C	35 Cleveland M
<b>WFU</b>	0 LaRavia J	1 Mucius I	4 Williamson D	13 Walton D	31 Williams A

Game Time	FSU	Score	Diff	WFU
20:00	1 WARLEY J substitution out			
20:00	30 PRIETO H substitution out			
20:00	31 WILKES W substitution out			
20:00	0 EVANS R substitution in			
20:00	11 NGOM T substitution in			
20:00	21 FLETCHER C substitution in			
20:00				2 HILDRETH C substitution out
20:00				20 SY K substitution out
20:00				0 LARAVIA J substitution in
20:00				13 WALTON D substitution in
19:42	4 MILLS C 2pt FG in the paint, jump shot made (7)	<b>23-25</b>	<b>-2</b>	
19:28				31 WILLIAMS A 2pt FG outside the paint, turnaround jump shot missed
19:26	21 FLETCHER C defensive rebound (1)			
19:18	0 EVANS R 2pt FG outside the paint, jump shot missed			
19:16				0 LARAVIA J defensive rebound (5)
19:09				31 WILLIAMS A turnover lost ball (6)
19:03	21 FLETCHER C 2pt FG fast break from turnover in the paint, layup made (2)	<b>25-25</b>	<b>0</b>	
19:03	4 MILLS C assist (2)			
19:03	11 NGOM T substitution out			
19:03	30 PRIETO H substitution in			
18:53	35 CLEVELAND M foul shooting (2 - 1)			0 LARAVIA J foul drawn (3)
18:53		<b>25-26</b>	<b>-1</b>	0 LARAVIA J free throw 1 - 2 made (5)
18:51				0 LARAVIA J free throw 2 - 2 missed
18:49	21 FLETCHER C defensive rebound (2)			
18:40	0 EVANS R 2pt FG in the paint, layup blocked			
18:40				0 LARAVIA J block (1)
18:36				0 LARAVIA J defensive rebound (6)
18:29		<b>25-29</b>	<b>-4</b>	1 MUCIUS I 3pt FG , jump shot made (5)
18:29				0 LARAVIA J assist (6)
18:13	4 MILLS C 2pt FG outside the paint, turnaround jump shot made (9)	<b>27-29</b>	<b>-2</b>	
18:01				0 LARAVIA J 2pt FG in the paint, jump shot missed
17:59				0 LARAVIA J offensive rebound (7)
17:58		<b>27-31</b>	<b>-4</b>	31 WILLIAMS A 2pt FG second chance in the paint, dunk, made (15)
17:58				0 LARAVIA J assist (7)
17:40	30 PRIETO H 3pt FG , jump shot missed			
17:37				31 WILLIAMS A defensive rebound (6)
17:19		<b>27-33</b>	<b>-6</b>	0 LARAVIA J 2pt FG in the paint, driving layup made (7)
17:08	35 CLEVELAND M 2pt FG in the paint, driving layup missed			
17:07	30 PRIETO H offensive rebound (11)			
17:07	30 PRIETO H foul drawn (2)			31 WILLIAMS A foul shooting (1 - 1)



**Wake Forest at Florida State**

02/05/22 Donald L. Tucker Center, Tallahassee  
2021-22 ACC Men's Basketball

Game Time: 12:00 PM

Game Duration: 2:05

Attendance: 10,089

Officials: AJ Desai, Jeffery Clark, Earl Walton

Game Time	FSU	Score	Diff	WFU
17:07	30 PRIETO H free throw 1 - 2 made (8)	<b>28-33</b>	<b>-5</b>	
17:07	0 EVANS R substitution out			
17:07	1 WARLEY J substitution in			
17:07	30 PRIETO H free throw 2 - 2 made (9)	<b>29-33</b>	<b>-4</b>	
16:54		<b>29-36</b>	<b>-7</b>	0 LARAVIA J 3pt FG , jump shot made (10)
16:54				4 WILLIAMSON D assist (1)
16:37	21 FLETCHER C foul drawn (1)			13 WALTON D foul shooting (2 - 2)
16:37	21 FLETCHER C free throw 1 - 2 missed			
16:37	offensive dead ball rebound (3)			
16:37	21 FLETCHER C free throw 2 - 2 made (3)	<b>30-36</b>	<b>-6</b>	
16:32	4 MILLS C foul personal (2 - 2)			31 WILLIAMS A foul drawn (1)
16:29	4 MILLS C foul personal (3 - 3)			0 LARAVIA J foul drawn (4)
16:29	4 MILLS C substitution out			
16:29	31 WILKES W substitution in			
16:25				31 WILLIAMS A 3pt FG , jump shot missed
16:21				0 LARAVIA J offensive rebound (8)
16:18		<b>30-38</b>	<b>-8</b>	0 LARAVIA J 2pt FG second chance in the paint, jump shot made (12)
16:09	1 WARLEY J foul drawn (2)			13 WALTON D foul personal (3 - 3)
16:09				13 WALTON D substitution out
16:09				20 SY K substitution in
16:02	1 WARLEY J 2pt FG outside the paint, step back jump shot missed			
15:59	offensive rebound (23)			
16:00	Timeout media			
15:38	35 CLEVELAND M 3pt FG second chance, jump shot missed			
15:35	21 FLETCHER C offensive rebound (3)			
15:32	1 WARLEY J 3pt FG second chance, jump shot made (5)	<b>33-38</b>	<b>-5</b>	
15:32	21 FLETCHER C assist (1)			
15:11	21 FLETCHER C steal (1)			0 LARAVIA J turnover bad pass (3)
14:46	31 WILKES W 3pt FG from turnover, jump shot missed			
14:43	35 CLEVELAND M offensive rebound (6)			
14:41	35 CLEVELAND M foul offensive (3 - 4)			20 SY K foul drawn (4)
14:41	35 CLEVELAND M turnover offensive (2)			
14:41	21 FLETCHER C substitution out			
14:41	0 EVANS R substitution in			
14:26		<b>33-40</b>	<b>-7</b>	0 LARAVIA J 2pt FG from turnover in the paint, alleyoop made (14)
14:26				31 WILLIAMS A assist (2)
14:15	35 CLEVELAND M turnover bad pass (3)			0 LARAVIA J steal (1)
14:08		<b>33-42</b>	<b>-9</b>	0 LARAVIA J 2pt FG fast break from turnover in the paint, dunk, made (16)
14:06	Timeout 30 Sec			
14:06	1 WARLEY J substitution out			
14:06	4 MILLS C substitution in			
13:58	30 PRIETO H 2pt FG in the paint, layup made (11)	<b>35-42</b>	<b>-7</b>	
13:58	4 MILLS C assist (3)			
13:27	4 MILLS C foul shooting (4 - 5)			31 WILLIAMS A foul drawn (2)
13:27		<b>35-43</b>	<b>-8</b>	31 WILLIAMS A free throw 1 - 2 made (16)
13:27	4 MILLS C substitution out			



**Wake Forest at Florida State**

02/05/22 Donald L. Tucker Center, Tallahassee  
2021-22 ACC Men's Basketball

**Game Time:** 12:00 PM  
**Game Duration:** 2:05  
**Attendance:** 10,089

**Officials:** AJ Desai, Jeffery Clark, Earl Walton

Game Time	FSU	Score	Diff	WFU
13:27	1 WARLEY J substitution in			
13:27		<b>35-44</b>	<b>-9</b>	31 WILLIAMS A free throw 2 - 2 made (17)
13:01	35 CLEVELAND M foul drawn (3)			1 MUCIUS I foul shooting (2 - 4)
13:01	35 CLEVELAND M free throw 1 - 2 made (5)	<b>36-44</b>	<b>-8</b>	
13:01				1 MUCIUS I substitution out
13:01				30 MONSANTO D substitution in
13:01	35 CLEVELAND M free throw 2 - 2 missed			
12:59				20 SY K defensive rebound (6)
12:52		<b>36-46</b>	<b>-10</b>	0 LARAVIA J 2pt FG in the paint, pull up jump shot made (18)
12:41	35 CLEVELAND M 2pt FG in the paint, dunk, made (7)	<b>38-46</b>	<b>-8</b>	
12:19				30 MONSANTO D 3pt FG , jump shot missed
12:17	30 PRIETO H defensive rebound (12)			
12:04	31 WILKES W turnover bad pass (1)			31 WILLIAMS A steal (1)
12:03				4 WILLIAMSON D substitution out
12:03				11 WHITT C substitution in
12:03	31 WILKES W substitution out			
12:03	21 FLETCHER C substitution in			
11:58		<b>38-49</b>	<b>-11</b>	30 MONSANTO D 3pt FG fast break from turnover, jump shot made (6)
11:58				0 LARAVIA J assist (8)
11:42	1 WARLEY J turnover bad pass (1)			
11:42	Timeout media			
11:20	1 WARLEY J foul personal (2 - 6)			20 SY K foul drawn (5)
11:19				0 LARAVIA J turnover bad pass (4)
10:59	0 EVANS R foul drawn (2)			11 WHITT C foul shooting (1 - 5)
10:59	0 EVANS R free throw 1 - 2 made (4)	<b>39-49</b>	<b>-10</b>	
10:59	0 EVANS R free throw 2 - 2 made (5)	<b>40-49</b>	<b>-9</b>	
10:45	30 PRIETO H steal (2)			11 WHITT C turnover lost ball (2)
10:40	21 FLETCHER C 2pt FG from turnover in the paint, layup missed			
10:05				31 WILLIAMS A defensive rebound (7)
10:29				20 SY K 2pt FG in the paint, turnaround jump shot missed
10:28	0 EVANS R defensive rebound (3)			
10:20	0 EVANS R 2pt FG outside the paint, jump shot made (7)	<b>42-49</b>	<b>-7</b>	
10:04				20 SY K 2pt FG in the paint, jump shot missed
10:04	35 CLEVELAND M defensive rebound (7)			
09:55	35 CLEVELAND M 2pt FG in the paint, dunk, made (9)	<b>44-49</b>	<b>-5</b>	
09:55	1 WARLEY J assist (1)			
09:52				Timeout 30 Sec
09:52	30 PRIETO H substitution out			
09:52	11 NGOM T substitution in			
09:52				11 WHITT C substitution out
09:52				20 SY K substitution out
09:52				4 WILLIAMSON D substitution in
09:52				13 WALTON D substitution in
09:39				31 WILLIAMS A 2pt FG in the paint, layup missed
09:37	11 NGOM T defensive rebound (2)			
09:35	35 CLEVELAND M 2pt FG fast break in the paint, dunk, made (11)	<b>46-49</b>	<b>-3</b>	
09:35	21 FLETCHER C assist (2)			



**Wake Forest at Florida State**

02/05/22 Donald L. Tucker Center, Tallahassee  
2021-22 ACC Men's Basketball

**Game Time:** 12:00 PM  
**Game Duration:** 2:05  
**Attendance:** 10,089

**Officials:** AJ Desai, Jeffery Clark, Earl Walton

Game Time	FSU	Score	Diff	WFU
09:06		<b>46-52</b>	<b>-6</b>	4 WILLIAMSON D 3pt FG , jump shot made (3)
09:06				31 WILLIAMS A assist (3)
08:35	0 EVANS R 2pt FG outside the paint, pull up jump shot made (9)	<b>48-52</b>	<b>-4</b>	
08:13				30 MONSANTO D 3pt FG , jump shot missed
08:11				0 LARAVIA J offensive rebound (9)
08:08				0 LARAVIA J 2pt FG second chance in the paint, jump shot missed
08:04				0 LARAVIA J offensive rebound (10)
08:04	jump ball situation			
08:02	Timeout media			
08:01	21 FLETCHER C substitution out			
08:01	31 WILKES W substitution in			
07:56	1 WARLEY J steal (1)			13 WALTON D turnover lost ball (2)
07:48	0 EVANS R 2pt FG from turnover in the paint, layup missed			
07:46				13 WALTON D defensive rebound (4)
07:36				4 WILLIAMSON D 3pt FG , jump shot missed
07:32	defensive rebound (30)			
07:15	31 WILKES W turnover bad pass (2)			31 WILLIAMS A steal (2)
07:10				31 WILLIAMS A 2pt FG from turnover in the paint, layup missed
07:10	defensive rebound (31)			
06:51	0 EVANS R turnover lost ball (1)			13 WALTON D steal (1)
06:41	1 WARLEY J steal (2)			0 LARAVIA J turnover lost ball (5)
06:41	1 WARLEY J substitution out			
06:41	4 MILLS C substitution in			
06:41				30 MONSANTO D substitution out
06:41				1 MUCIUS I substitution in
06:29	35 CLEVELAND M foul drawn (4)			4 WILLIAMSON D foul personal (2 - 6)
06:16	11 NGOM T 2pt FG from turnover in the paint, dunk, made (2)	<b>50-52</b>	<b>-2</b>	
06:16	35 CLEVELAND M assist (2)			
05:50	11 NGOM T substitution out			
05:50	30 PRIETO H substitution in			
05:46		<b>50-54</b>	<b>-4</b>	31 WILLIAMS A 2pt FG in the paint, driving layup made (19)
05:35	4 MILLS C 3pt FG , jump shot missed			
05:33	35 CLEVELAND M offensive rebound (8)			
05:21	4 MILLS C 2pt FG second chance outside the paint, step back jump shot made (11)	<b>52-54</b>	<b>-2</b>	
04:59	31 WILKES W foul personal (1 - 7)			4 WILLIAMSON D foul drawn (2)
04:58				4 WILLIAMSON D 1&1 free throw 1 missed
04:57	35 CLEVELAND M defensive rebound (9)			
04:52	35 CLEVELAND M 2pt FG in the paint, driving layup missed			
04:48				0 LARAVIA J defensive rebound (11)
04:30				31 WILLIAMS A 2pt FG in the paint, layup missed
04:30				31 WILLIAMS A offensive rebound (8)
04:30		<b>52-56</b>	<b>-4</b>	31 WILLIAMS A 2pt FG second chance in the paint, layup made (21)
04:30	35 CLEVELAND M foul shooting (4 - 8)			31 WILLIAMS A foul drawn (3)
04:30				31 WILLIAMS A foul class A technical (2 - 7)
04:30				31 WILLIAMS A turnover offensive (7)
04:30				4 WILLIAMSON D substitution out
04:30				30 MONSANTO D substitution in



**Wake Forest at Florida State**

02/05/22 Donald L. Tucker Center, Tallahassee  
2021-22 ACC Men's Basketball

**Game Time:** 12:00 PM  
**Game Duration:** 2:05  
**Attendance:** 10,089

**Officials:** AJ Desai, Jeffery Clark, Earl Walton

Game Time	FSU	Score	Diff	WFU
04:30	4 MILLS C free throw 1 - 2 made (12)	<b>53-56</b>	<b>-3</b>	
04:30	4 MILLS C free throw 2 - 2 missed			
04:30	offensive dead ball rebound (4)			
04:30		<b>53-57</b>	<b>-4</b>	31 WILLIAMS A free throw 1 - 1 made (22)
04:14	35 CLEVELAND M 2pt FG outside the paint, jump shot missed			
04:11				0 LARAVIA J defensive rebound (12)
03:58				31 WILLIAMS A 2pt FG in the paint, driving layup missed
03:52	31 WILKES W defensive rebound (1)			
03:51	4 MILLS C 3pt FG fast break, jump shot made (15)	<b>56-57</b>	<b>-1</b>	
03:51	31 WILKES W assist (1)			
03:26		<b>56-60</b>	<b>-4</b>	1 MUCIUS I 3pt FG , jump shot made (8)
03:26				0 LARAVIA J assist (9)
03:08	0 EVANS R 2pt FG outside the paint, jump shot missed			
03:06				0 LARAVIA J defensive rebound (13)
03:00				1 MUCIUS I 3pt FG , jump shot missed
02:57	30 PRIETO H defensive rebound (13)			
02:47	30 PRIETO H 2pt FG in the paint, layup made (13)	<b>58-60</b>	<b>-2</b>	
02:47	4 MILLS C assist (4)			
02:29		<b>58-62</b>	<b>-4</b>	13 WALTON D 2pt FG in the paint, dunk, made (3)
02:29				30 MONSANTO D assist (1)
02:10	35 CLEVELAND M 2pt FG outside the paint, jump shot missed			
02:07				30 MONSANTO D defensive rebound (6)
02:01				31 WILLIAMS A 2pt FG in the paint, driving layup missed
01:58				1 MUCIUS I offensive rebound (1)
01:58		<b>58-64</b>	<b>-6</b>	1 MUCIUS I 2pt FG second chance in the paint, layup made (10)
01:49	Timeout 30 Sec			
01:49	Timeout media			
01:49	30 PRIETO H substitution out			
01:49	31 WILKES W substitution out			
01:49	11 NGOM T substitution in			
01:49	21 FLETCHER C substitution in			
01:43	4 MILLS C 2pt FG outside the paint, jump shot missed			
01:41	offensive rebound (36)			
01:32	4 MILLS C 2pt FG second chance outside the paint, step back jump shot missed			
01:30				30 MONSANTO D defensive rebound (7)
01:09				1 MUCIUS I 3pt FG , jump shot missed
01:06	11 NGOM T defensive rebound (3)			
00:53	21 FLETCHER C 2pt FG in the paint, layup made (5)	<b>60-64</b>	<b>-4</b>	
00:53	0 EVANS R assist (1)			
00:38		<b>60-67</b>	<b>-7</b>	30 MONSANTO D 3pt FG , jump shot made (9)
00:38				31 WILLIAMS A assist (4)
00:29	35 CLEVELAND M 3pt FG , jump shot missed			
00:27				defensive rebound (44)
00:22	35 CLEVELAND M steal (3)			0 LARAVIA J turnover bad pass (6)
00:22	4 MILLS C turnover out of bounds (4)			
00:22				13 WALTON D substitution out
00:22				4 WILLIAMSON D substitution in
00:17				Timeout 30 Sec



Official Basketball Play by Play - Second Half

### Wake Forest at Florida State

02/05/22 Donald L. Tucker Center, Tallahassee  
2021-22 ACC Men's Basketball

Game Time: 12:00 PM

Game Duration: 2:05

Attendance: 10,089

Officials: AJ Desai, Jeffery Clark, Earl Walton

Game Time	FSU	Score	Diff	WFU
00:17	11 NGOM T substitution out			
00:17	1 WARLEY J substitution in			
00:16	1 WARLEY J foul personal (3 - 9)			31 WILLIAMS A foul drawn (4)
00:16				1 MUCIUS I substitution out
00:16				13 WALTON D substitution in
00:16		60-68	-8	31 WILLIAMS A 1&1 free throw 1 made (23)
00:15				31 WILLIAMS A 1&1 free throw 2 missed
00:15	0 EVANS R defensive rebound (4)			
00:08	35 CLEVELAND M 3pt FG , pull up jump shot missed			
00:05				13 WALTON D defensive rebound (5)
<b>END OF GAME</b>				
<b>FSU 60-68 WFU</b>				



**Officials:** AJ Desai, Jeffery Clark, Earl Walton

**Wake Forest - 43**

NO.	Name	Min	FG			Rebounds			Fouls		TP	AS	TO	ST	Blocks		+/-
			M-A	M-A	M-A	OR	DR	TOT	PF	FD					BS	BA	
1	Isaiah Mucius	F 13:23	3-5	2-4	0-0	1	0	1	1	0	8	0	0	0	0	0	7
13	Dallas Walton	C 13:38	1-1	0-0	0-0	0	2	2	2	0	2	0	1	1	0	0	7
0	Jake LaRavia	G 20:00	6-8	1-1	1-2	4	5	9	0	2	14	4	4	1	1	0	4
4	Daivien Williamson	G 13:41	1-2	1-2	0-1	0	0	0	1	1	3	1	0	0	0	0	4
31	Alondes Williams	G 20:00	3-10	0-1	4-5	1	2	3	2	4	10	3	2	2	0	0	4
2	Cameron Hildreth	00:00	0-0	0-0	0-0	0	0	0	0	0	0	0	0	0	0	0	0
20	Khadim Sy	06:17	0-2	0-0	0-0	0	1	1	0	2	0	0	0	0	0	0	-3
30	Damari Monsanto	10:50	2-4	2-4	0-0	0	2	2	0	0	6	1	0	0	0	0	0
11	Carter Whitt	02:11	0-0	0-0	0-0	0	0	0	1	0	0	0	1	0	0	0	-3
Team						0	1	1			0		0				
<b>Totals</b>			16-32	6-12	5-8	6	13	19	7	9	43	9	8	4	1	0	4

Shooting By Period		
2 <sup>nd</sup> FG%	16-32	50.0%
3PT%	6-12	50.0%
FT%	5-8	62.5%
GM FG%	16-32	50.0%
3PT%	6-12	50.0%
FT%	5-8	62.5%

Dead Ball Rebounds: 0, 0

Technical Fouls: Williams 2<sup>nd</sup> 4:30

**Florida State - 39**

NO.	Name	Min	FG			Rebounds			Fouls		TP	AS	TO	ST	Blocks		+/-
			M-A	M-A	M-A	OR	DR	TOT	PF	FD					BS	BA	
22	John Butler	F 00:00	0-0	0-0	0-0	0	0	0	0	0	0	0	0	0	0	0	0
11	Tanor Ngom	C 06:31	1-1	0-0	0-0	0	2	2	0	0	2	0	0	0	0	0	6
0	RayQuan Evans	G 17:34	2-6	0-0	2-2	0	2	2	0	1	6	1	1	0	0	1	-4
4	Caleb Mills	G 10:51	4-7	1-2	1-2	0	0	0	3	0	10	3	1	0	0	0	-5
35	Matthew Cleveland	G 20:00	3-10	0-3	1-2	2	2	4	3	2	7	1	2	1	0	0	-4
21	Cam'Ron Fletcher	11:10	2-3	0-0	1-2	1	2	3	0	1	5	2	0	1	0	0	1
30	Harrison Prieto	13:12	2-3	0-1	2-2	1	2	3	0	1	6	0	0	1	0	0	-9
1	Jalen Warley	10:04	1-2	1-1	0-0	0	0	0	2	1	3	1	1	2	0	0	-1
31	Wyatt Wilkes	10:38	0-1	0-1	0-0	0	1	1	1	0	0	1	2	0	0	0	-4
Team						2	2	4			0		0				
<b>Totals</b>			15-33	2-8	7-10	6	13	19	9	6	39	9	7	5	0	1	-4

Shooting By Period		
2 <sup>nd</sup> FG%	15-33	45.5%
3PT%	2-8	25.0%
FT%	7-10	70%
GM FG%	15-33	45.5%
3PT%	2-8	25.0%
FT%	7-10	70.0%

Dead Ball Rebounds: 2, 0

Technical Fouls: NONE

	WFU	FSU
<b>Biggest lead</b>	11 (2 <sup>nd</sup> 11:58)	0 (1 <sup>st</sup> 20:00)
<b>Best Scoring Run</b>	4 (2 <sup>nd</sup> 18:29)	8 (2 <sup>nd</sup> 9:35)
<b>Lead Changes</b>	0	
<b>Times Tied</b>	1	
<b>Time with Lead</b>	19:32	00:00

Points from	WFU	FSU
<b>Turnovers</b>	8	7
<b>Paint</b>	20	18
<b>Second Chance</b>	9	7
<b>Fast Breaks</b>	5	7
<b>Bench</b>	6	14

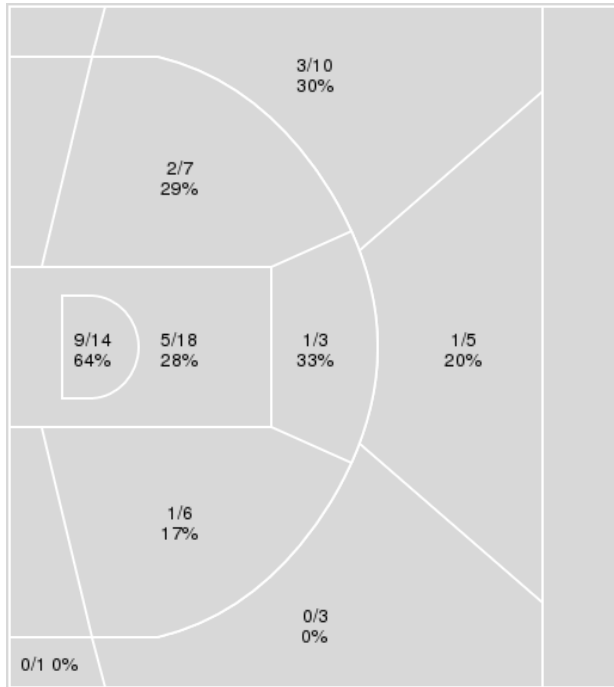
	Period by Period Scoring		
	1st	2nd	TOT
<b>WFU</b>	25	43	68
<b>FSU</b>	21	39	60



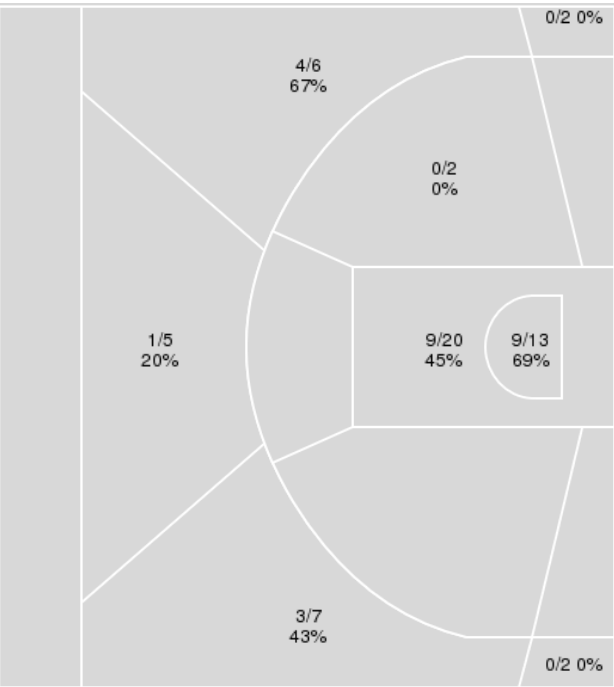
**Officials:** AJ Desai, Jeffery Clark, Earl Walton

{ Players => 0, 1, 2, 4, 5, 10, 11, 12, 15, 21, 22, 24, 25, 30, 31, 34, 35, 40, 42, 44;} FG Types => All; Results => All;

**Florida State**



**Wake Forest**



Florida State	M/A	%
Field Goals	22/67	33
2 Points	18/48	38
3 Points	4/19	21
Free Throws	12/18	67

Wake Forest	M/A	%
Field Goals	26/57	46
2 Points	18/35	51
3 Points	8/22	36
Free Throws	8/15	53



**Wake Forest at Florida State**

02/05/22 Donald L. Tucker Center, Tallahassee  
2021-22 ACC Men's Basketball

Game Time: 12:00 PM

Game Duration: 2:05

Attendance: 10,089

Officials: AJ Desai, Jeffery Clark, Earl Walton

**Wake Forest**

No	Name	Mins		Score		Points Diff		Points per Min		Assists		Rebounds		Steals		Turnovers	
		On	Off	On	Off	On	Off	On	Off	On	Off	On	Off	On	Off	On	Off
0	Jake LaRavia	39:35	00:25	68 - 60	0 - 0	8	0	1.72	0.00	15	0	44	1	6	0	25	1
1	Isaiah Mucius	26:08	13:52	48 - 39	20 - 21	9	-1	1.84	1.44	11	4	23	22	3	3	16	10
2	Cameron Hildreth	01:58	38:02	2 - 4	66 - 56	-2	10	1.02	1.74	1	14	4	41	0	6	2	24
4	Daivien Williamson	26:23	13:37	40 - 41	28 - 19	-1	9	1.52	2.06	7	8	27	18	5	1	16	10
11	Carter Whitt	06:41	33:19	10 - 6	58 - 54	4	4	1.50	1.74	2	13	10	35	1	5	8	18
13	Dallas Walton	24:24	15:36	51 - 33	17 - 27	18	-10	2.09	1.09	12	3	31	14	3	3	12	14
20	Khadim Sy	18:19	21:41	24 - 32	44 - 28	-8	16	1.31	2.03	6	9	16	29	3	3	15	11
30	Damari Monsanto	17:26	22:34	29 - 25	39 - 35	4	4	1.66	1.73	6	9	26	19	3	3	12	14
31	Alondes Williams	39:06	00:54	68 - 60	0 - 0	8	0	1.74	0.00	15	0	44	1	6	0	24	2

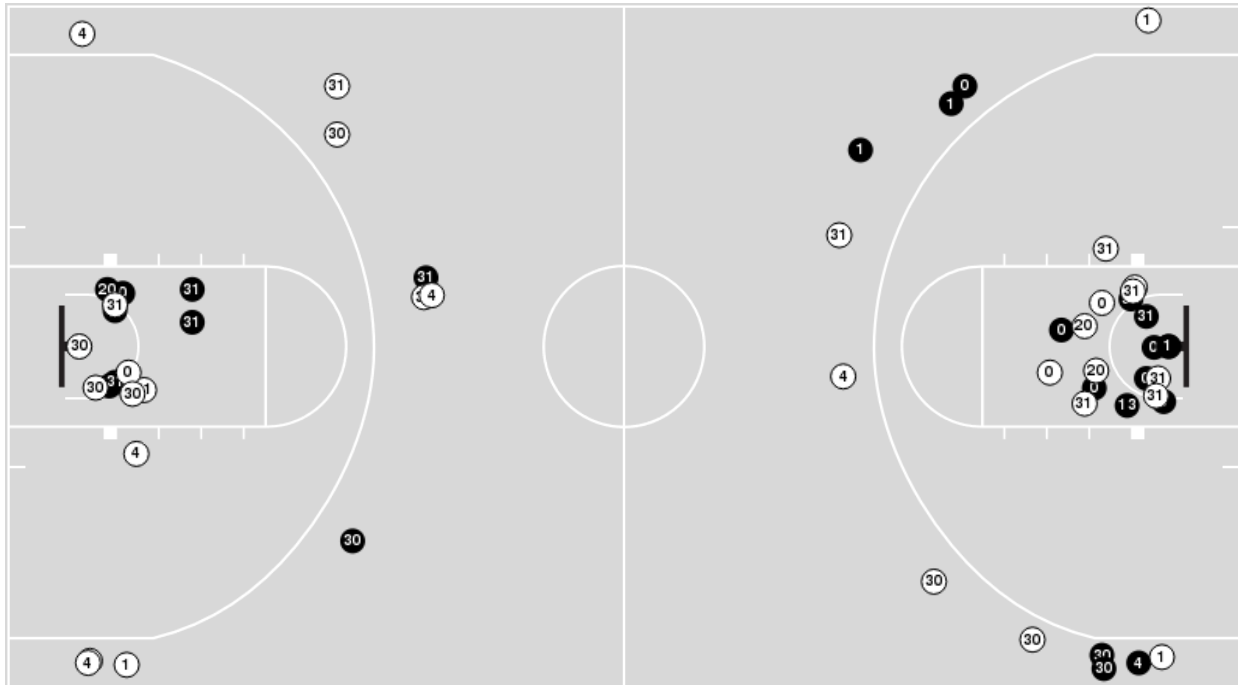
**Florida State**

No	Name	Mins		Score		Points Diff		Points per Min		Assists		Rebounds		Steals		Turnovers	
		On	Off	On	Off	On	Off	On	Off	On	Off	On	Off	On	Off	On	Off
0	RayQuan Evans	29:54	10:06	46 - 57	14 - 11	-11	3	1.54	1.39	10	2	26	12	9	6	9	7
1	Jalen Warley	19:11	20:49	27 - 27	33 - 41	0	-8	1.41	1.59	4	8	21	17	9	6	11	5
4	Caleb Mills	29:42	10:18	44 - 51	16 - 17	-7	-1	1.48	1.55	9	3	29	9	11	4	10	6
11	Tanor Ngom	12:38	27:22	13 - 16	47 - 52	-3	-5	1.03	1.72	4	8	9	29	5	10	6	10
12	Justin Lindner	01:16	38:44	0 - 0	60 - 68	0	-8	0.00	1.55	0	12	0	38	1	14	2	14
15	Quincy Ballard	01:29	38:31	0 - 2	60 - 66	-2	-6	0.00	1.56	0	12	0	38	0	15	1	15
21	Cam'Ron Fletcher	11:55	28:05	24 - 23	36 - 45	1	-9	2.01	1.28	5	7	13	25	3	12	4	12
22	John Butler	07:45	32:15	7 - 7	53 - 61	0	-8	0.90	1.64	1	11	9	29	4	11	3	13
30	Harrison Prieto	25:36	14:24	47 - 49	13 - 19	-2	-6	1.84	0.90	8	4	28	10	10	5	9	7
31	Wyatt Wilkes	22:08	17:52	32 - 40	28 - 28	-8	0	1.45	1.57	7	5	19	19	9	6	10	6
35	Matthew Cleveland	38:26	01:34	60 - 68	0 - 0	-8	0	1.56	0.00	12	0	36	2	14	1	15	1

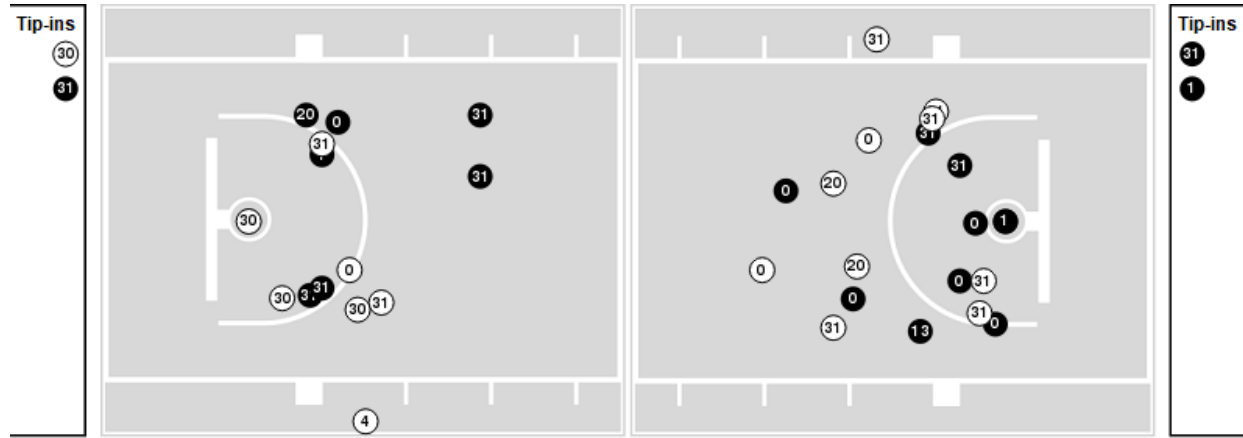


Players => AllFG Types=>AllResults=>All  
**Wake Forest**

**All Field Goals**



**Blow Up Chart**



**N** Made    **O** Missed    N - Player Number

Wake Forest	M/A	%
Field Goals	26/57	46
2 Points	18/35	51
3 Points	8/22	36
Free Throws	8/15	53

Wake Forest	M/A	%
Points in the Paint	36 (18 / 33)	55
Fast Break Points	9 (4/4)	100
Second Chance Points	16 (8/13)	62
Effective FG%	53	

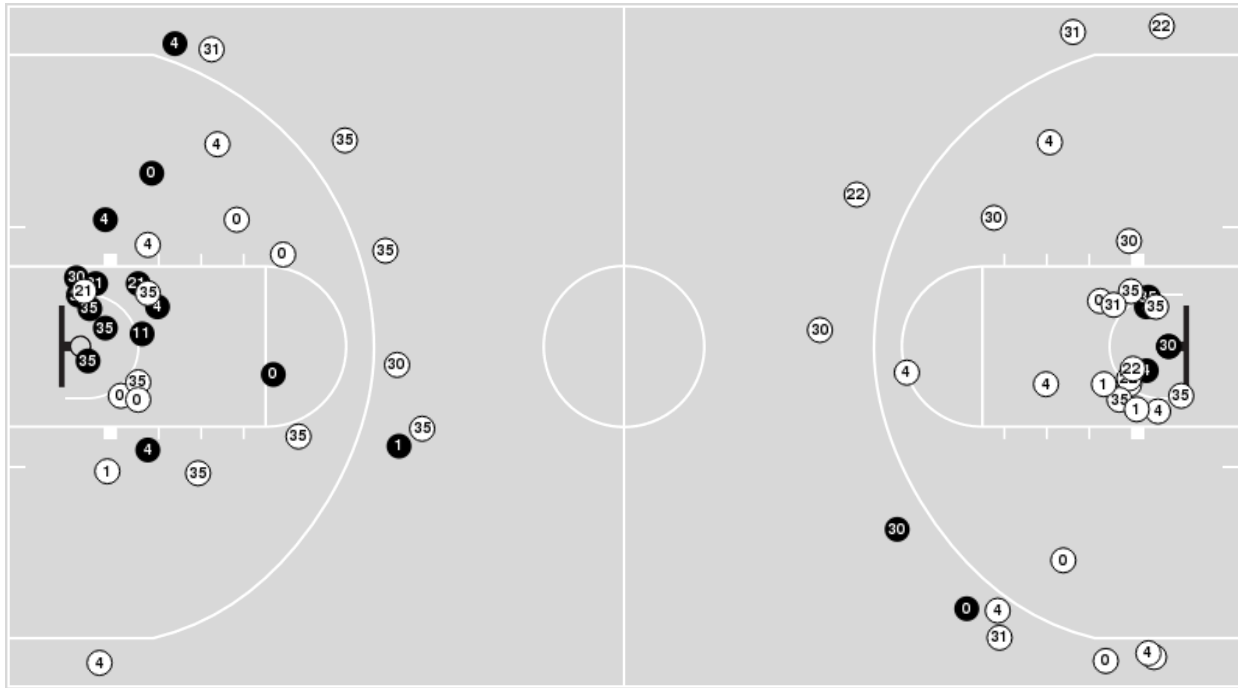


**Officials:** AJ Desai, Jeffery Clark, Earl Walton

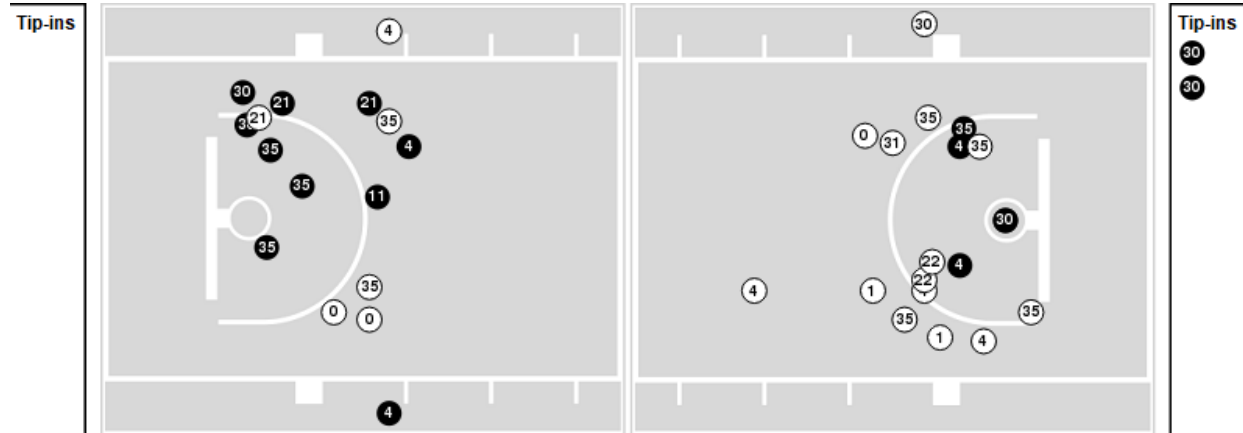
Players => 0, 1, 2, 4, 5, 10, 11, 12, 15, 21, 22, 24, 25, 30, 31, 34, 35, 40, 42, 44FG Types=>AllResults=>All

### Florida State

#### All Field Goals



#### Blow Up Chart



● Made    ○ Missed    N - Player Number

Florida State	M/A	%
Field Goals	22/67	33
2 Points	18/48	38
3 Points	4/19	21
Free Throws	12/18	67

Florida State	M/A	%
Points in the Paint	28 (14 / 32)	44
Fast Break Points	12 (6/6)	100
Second Chance Points	15 (9/14)	64
Effective FG%	36	



**Officials:** AJ Desai, Jeffery Clark, Earl Walton

**Wake Forest**

Lineup	Quarter On	Time On	Quarter Off	Time Off	Time on Court	Score	Score Diff	Reb	Stl	Tov	Ass	PPP
0- LaRavia J/ 1- Mucius I/ 4- Williamson D/ 13- Walton D/ 31- Williams A/	1	20:00	1	16:20	03:40	5-3	2	3	0	1	1	0.8503
0- LaRavia J/ 1- Mucius I/ 4- Williamson D/ 20- Sy K/ 31- Williams A/	1	16:20	1	14:03	02:17	2-4	-2	1	0	3	0	0.5155
0- LaRavia J/ 4- Williamson D/ 20- Sy K/ 30- Monsanto D/ 31- Williams A/	1	14:03	1	12:18	01:45	2-4	-2	5	0	1	0	0.6667
0- LaRavia J/ 11- Whitt C/ 20- Sy K/ 30- Monsanto D/ 31- Williams A/	1	12:18	1	12:06	00:12	0-0	0	0	0	1	0	0.0000
0- LaRavia J/ 11- Whitt C/ 13- Walton D/ 30- Monsanto D/ 31- Williams A/	1	12:06	1	09:22	02:44	7-0	7	7	0	2	1	1.4000
0- LaRavia J/ 1- Mucius I/ 11- Whitt C/ 13- Walton D/ 30- Monsanto D/	1	09:22	1	08:28	00:54	0-0	0	1	0	2	0	0.0000
0- LaRavia J/ 1- Mucius I/ 11- Whitt C/ 13- Walton D/ 31- Williams A/	1	08:28	1	07:48	00:40	0-0	0	1	1	1	0	0.0000
0- LaRavia J/ 1- Mucius I/ 13- Walton D/ 20- Sy K/ 31- Williams A/	1	07:48	1	05:00	02:48	7-5	2	2	0	1	3	1.7500
0- LaRavia J/ 1- Mucius I/ 4- Williamson D/ 20- Sy K/ 31- Williams A/	1	05:00	1	02:59	02:01	0-0	0	1	1	3	0	0.0000
0- LaRavia J/ 4- Williamson D/ 20- Sy K/ 30- Monsanto D/ 31- Williams A/	1	02:59	1	01:58	01:01	0-1	-1	1	0	1	0	0.0000
0- LaRavia J/ 2- Hildreth C/ 4- Williamson D/ 20- Sy K/ 31- Williams A/	1	01:58	1	00:24	01:33	2-4	-2	3	0	1	1	0.5155
1- Mucius I/ 2- Hildreth C/ 4- Williamson D/ 20- Sy K/ 31- Williams A/	1	00:24	2	20:00	00:25	0-0	0	1	0	1	0	0.0000
0- LaRavia J/ 1- Mucius I/ 4- Williamson D/ 13- Walton D/ 31- Williams A/	2	20:00	2	16:09	03:51	13-9	4	5	0	1	3	1.6497
0- LaRavia J/ 1- Mucius I/ 4- Williamson D/ 20- Sy K/ 31- Williams A/	2	16:09	2	13:01	03:08	6-6	0	0	1	1	1	1.5464
0- LaRavia J/ 4- Williamson D/ 20- Sy K/ 30- Monsanto D/ 31- Williams A/	2	13:01	2	12:03	00:58	2-2	0	1	1	0	0	1.0000
0- LaRavia J/ 11- Whitt C/ 20- Sy K/ 30- Monsanto D/ 31- Williams A/	2	12:03	2	09:52	02:11	3-6	-3	1	0	2	1	0.6000
0- LaRavia J/ 4- Williamson D/ 13- Walton D/ 30- Monsanto D/ 31- Williams A/	2	09:52	2	06:41	03:11	3-4	-1	3	2	2	1	0.5000
0- LaRavia J/ 1- Mucius I/ 4- Williamson D/ 13- Walton D/ 31- Williams A/	2	06:41	2	04:30	02:11	4-4	0	2	0	1	0	1.1628
0- LaRavia J/ 1- Mucius I/ 13- Walton D/ 30- Monsanto D/ 31- Williams A/	2	04:30	2	00:22	04:08	11-8	3	6	0	1	3	1.3033
0- LaRavia J/ 1- Mucius I/ 4- Williamson D/ 30- Monsanto D/ 31- Williams A/	2	00:22	2	00:16	00:05	0-0	0	0	0	0	0	0.0000
0- LaRavia J/ 4- Williamson D/ 13- Walton D/ 30- Monsanto D/ 31- Williams A/	2	00:16	2	00:00	00:17	1-0	1	1	0	0	0	1.1364



**Wake Forest at Florida State**

02/05/22 Donald L. Tucker Center, Tallahassee  
2021-22 ACC Men's Basketball

Game Time: 12:00 PM

Game Duration: 2:05

Attendance: 10,089

Officials: AJ Desai, Jeffery Clark, Earl Walton

**Florida State**

Lineup	Quarter On	Time On	Quarter Off	Time Off	Time on Court	Score	Score Diff	Reb	Stl	Tov	Ass	PPP
0- Evans R/ 4- Mills C/ 11- Ngom T/ 22- Butler J/ 35- Cleveland M/	1	20:00	1	17:56	02:04	0-3	-3	1	0	1	0	0.0000
0- Evans R/ 4- Mills C/ 22- Butler J/ 30- Prieto H/ 35- Cleveland M/	1	17:56	1	14:58	02:58	7-2	5	6	3	1	1	1.1905
1- Warley J/ 4- Mills C/ 21- Fletcher C/ 30- Prieto H/ 35- Cleveland M/	1	14:58	1	14:13	00:45	0-0	0	1	0	1	0	0.0000
1- Warley J/ 4- Mills C/ 30- Prieto H/ 31- Wilkes W/ 35- Cleveland M/	1	14:13	1	13:08	01:05	4-2	2	3	1	0	0	1.3333
1- Warley J/ 4- Mills C/ 15- Ballard Q/ 31- Wilkes W/ 35- Cleveland M/	1	13:08	1	12:18	00:50	0-2	-2	0	0	1	0	0.0000
0- Evans R/ 4- Mills C/ 15- Ballard Q/ 31- Wilkes W/ 35- Cleveland M/	1	12:18	1	11:39	00:39	0-0	0	0	0	0	0	0.0000
0- Evans R/ 4- Mills C/ 11- Ngom T/ 31- Wilkes W/ 35- Cleveland M/	1	11:39	1	09:22	02:17	0-7	-7	0	1	0	0	0.0000
0- Evans R/ 1- Warley J/ 4- Mills C/ 22- Butler J/ 30- Prieto H/	1	09:22	1	07:48	01:34	0-0	0	2	1	1	0	0.0000
0- Evans R/ 1- Warley J/ 22- Butler J/ 30- Prieto H/ 35- Cleveland M/	1	07:48	1	06:39	01:09	0-2	-2	0	0	0	0	0.0000
0- Evans R/ 4- Mills C/ 30- Prieto H/ 31- Wilkes W/ 35- Cleveland M/	1	06:39	1	05:00	01:39	5-5	0	1	0	0	1	2.5000
4- Mills C/ 12- Lindner J/ 30- Prieto H/ 31- Wilkes W/ 35- Cleveland M/	1	05:00	1	03:44	01:16	0-0	0	0	1	2	0	0.0000
1- Warley J/ 4- Mills C/ 11- Ngom T/ 31- Wilkes W/ 35- Cleveland M/	1	03:44	1	01:58	01:46	1-0	1	2	1	2	0	0.2907
1- Warley J/ 4- Mills C/ 30- Prieto H/ 31- Wilkes W/ 35- Cleveland M/	1	01:58	2	20:00	01:58	4-2	2	3	2	0	1	0.7519
0- Evans R/ 4- Mills C/ 11- Ngom T/ 21- Fletcher C/ 35- Cleveland M/	2	20:00	2	19:03	00:57	4-0	4	1	0	0	1	1.3333
0- Evans R/ 4- Mills C/ 21- Fletcher C/ 30- Prieto H/ 35- Cleveland M/	2	19:03	2	17:07	01:56	3-8	-5	2	0	0	0	0.8721
1- Warley J/ 4- Mills C/ 21- Fletcher C/ 30- Prieto H/ 35- Cleveland M/	2	17:07	2	16:29	00:38	2-3	-1	0	0	0	0	1.5152
1- Warley J/ 21- Fletcher C/ 30- Prieto H/ 31- Wilkes W/ 35- Cleveland M/	2	16:29	2	14:41	01:48	3-2	1	3	1	1	1	1.5000
0- Evans R/ 1- Warley J/ 30- Prieto H/ 31- Wilkes W/ 35- Cleveland M/	2	14:41	2	14:06	00:35	0-4	-4	0	0	1	0	0.0000
0- Evans R/ 4- Mills C/ 30- Prieto H/ 31- Wilkes W/ 35- Cleveland M/	2	14:06	2	13:27	00:39	2-1	1	0	0	0	1	2.0000
0- Evans R/ 1- Warley J/ 30- Prieto H/ 31- Wilkes W/ 35- Cleveland M/	2	13:27	2	12:03	01:24	3-3	0	1	0	1	0	1.0417
0- Evans R/ 1- Warley J/ 21- Fletcher C/ 30- Prieto H/ 35- Cleveland M/	2	12:03	2	09:52	02:11	6-3	3	2	1	1	1	1.2295
0- Evans R/ 1- Warley J/ 11- Ngom T/ 21- Fletcher C/ 35- Cleveland M/	2	09:52	2	08:01	01:51	4-3	1	1	0	0	1	2.0000
0- Evans R/ 1- Warley J/ 11- Ngom T/ 31- Wilkes W/ 35- Cleveland M/	2	08:01	2	06:41	01:20	0-0	0	2	2	2	0	0.0000
0- Evans R/ 4- Mills C/ 11- Ngom T/ 31- Wilkes W/ 35- Cleveland M/	2	06:41	2	05:50	00:51	2-0	2	0	0	0	1	2.0000
0- Evans R/ 4- Mills C/ 30- Prieto H/ 31- Wilkes W/ 35- Cleveland M/	2	05:50	2	01:49	04:01	8-12	-4	4	0	0	2	1.0152
0- Evans R/ 4- Mills C/ 11- Ngom T/ 21- Fletcher C/ 35- Cleveland M/	2	01:49	2	00:17	01:32	2-3	-1	2	1	1	1	0.5000
0- Evans R/ 1- Warley J/ 4- Mills C/ 21- Fletcher C/ 35- Cleveland M/	2	00:17	2	00:00	00:17	0-1	-1	1	0	0	0	0.0000



**Officials:** AJ Desai, Jeffery Clark, Earl Walton

**Wake Forest**

Lineup	Time	Score	Score Diff	Pts/Min	Reb	Stl	Tov	Ass	PPP
0- LaRavia J/ 1- Mucius I/ 4- Williamson D/ 13- Walton D/ 31- Williams A/	09:42	22-16	6	2.2680	10	0	3	4	1.2791
0- LaRavia J/ 1- Mucius I/ 4- Williamson D/ 20- Sy K/ 31- Williams A/	07:26	8-10	-2	1.0762	2	2	7	1	0.6803
0- LaRavia J/ 1- Mucius I/ 13- Walton D/ 30- Monsanto D/ 31- Williams A/	04:08	11-8	3	2.6613	6	0	1	3	1.3033
0- LaRavia J/ 4- Williamson D/ 20- Sy K/ 30- Monsanto D/ 31- Williams A/	03:44	4-7	-3	1.0714	7	1	2	0	0.5714
0- LaRavia J/ 4- Williamson D/ 13- Walton D/ 30- Monsanto D/ 31- Williams A/	03:28	4-4	0	1.1538	4	2	2	1	0.5814
0- LaRavia J/ 1- Mucius I/ 13- Walton D/ 20- Sy K/ 31- Williams A/	02:48	7-5	2	2.5000	2	0	1	3	1.7500
0- LaRavia J/ 11- Whitt C/ 13- Walton D/ 30- Monsanto D/ 31- Williams A/	02:44	7-0	7	2.5610	7	0	2	1	1.4000
0- LaRavia J/ 11- Whitt C/ 20- Sy K/ 30- Monsanto D/ 31- Williams A/	02:23	3-6	-3	1.2587	1	0	3	1	0.5000
0- LaRavia J/ 2- Hildreth C/ 4- Williamson D/ 20- Sy K/ 31- Williams A/	01:33	2-4	-2	1.2903	3	0	1	1	0.5155
0- LaRavia J/ 1- Mucius I/ 11- Whitt C/ 13- Walton D/ 30- Monsanto D/	00:54	0-0	0	0.0000	1	0	2	0	0.0000
0- LaRavia J/ 1- Mucius I/ 11- Whitt C/ 13- Walton D/ 31- Williams A/	00:40	0-0	0	0.0000	1	1	1	0	0.0000
1- Mucius I/ 2- Hildreth C/ 4- Williamson D/ 20- Sy K/ 31- Williams A/	00:25	0-0	0	0.0000	1	0	1	0	0.0000
0- LaRavia J/ 1- Mucius I/ 4- Williamson D/ 30- Monsanto D/ 31- Williams A/	00:05	0-0	0	0.0000	0	0	0	0	0.0000



**Florida State**

Lineup	Time	Score	Score Diff	Pts/Min	Reb	Stl	Tov	Ass	PPP
0- Evans R/ 4- Mills C/ 30- Prieto H/ 31- Wilkes W/ 35- Cleveland M/	06:19	15-18	-3	2.3747	5	0	0	4	1.3787
0- Evans R/ 4- Mills C/ 11- Ngom T/ 31- Wilkes W/ 35- Cleveland M/	03:08	2-7	-5	0.6383	0	1	0	1	0.4000
1- Warley J/ 4- Mills C/ 30- Prieto H/ 31- Wilkes W/ 35- Cleveland M/	03:03	8-4	4	2.6230	6	3	0	1	0.9615
0- Evans R/ 4- Mills C/ 22- Butler J/ 30- Prieto H/ 35- Cleveland M/	02:58	7-2	5	2.3596	6	3	1	1	1.1905
0- Evans R/ 4- Mills C/ 11- Ngom T/ 21- Fletcher C/ 35- Cleveland M/	02:29	6-3	3	2.4161	3	1	1	2	0.8571
0- Evans R/ 1- Warley J/ 21- Fletcher C/ 30- Prieto H/ 35- Cleveland M/	02:11	6-3	3	2.7481	2	1	1	1	1.2295
0- Evans R/ 4- Mills C/ 11- Ngom T/ 22- Butler J/ 35- Cleveland M/	02:04	0-3	-3	0.0000	1	0	1	0	0.0000
0- Evans R/ 1- Warley J/ 30- Prieto H/ 31- Wilkes W/ 35- Cleveland M/	01:59	3-7	-4	1.5126	1	0	2	0	0.7732
0- Evans R/ 4- Mills C/ 21- Fletcher C/ 30- Prieto H/ 35- Cleveland M/	01:56	3-8	-5	1.5517	2	0	0	0	0.8721
0- Evans R/ 1- Warley J/ 11- Ngom T/ 21- Fletcher C/ 35- Cleveland M/	01:51	4-3	1	2.1622	1	0	0	1	2.0000
1- Warley J/ 21- Fletcher C/ 30- Prieto H/ 31- Wilkes W/ 35- Cleveland M/	01:48	3-2	1	1.6667	3	1	1	1	1.5000
1- Warley J/ 4- Mills C/ 11- Ngom T/ 31- Wilkes W/ 35- Cleveland M/	01:46	1-0	1	0.5660	2	1	2	0	0.2907
0- Evans R/ 1- Warley J/ 4- Mills C/ 22- Butler J/ 30- Prieto H/	01:34	0-0	0	0.0000	2	1	1	0	0.0000
1- Warley J/ 4- Mills C/ 21- Fletcher C/ 30- Prieto H/ 35- Cleveland M/	01:23	2-3	-1	1.4458	1	0	1	0	0.8621
0- Evans R/ 1- Warley J/ 11- Ngom T/ 31- Wilkes W/ 35- Cleveland M/	01:20	0-0	0	0.0000	2	2	2	0	0.0000
4- Mills C/ 12- Lindner J/ 30- Prieto H/ 31- Wilkes W/ 35- Cleveland M/	01:16	0-0	0	0.0000	0	1	2	0	0.0000
0- Evans R/ 1- Warley J/ 22- Butler J/ 30- Prieto H/ 35- Cleveland M/	01:09	0-2	-2	0.0000	0	0	0	0	0.0000
1- Warley J/ 4- Mills C/ 15- Ballard Q/ 31- Wilkes W/ 35- Cleveland M/	00:50	0-2	-2	0.0000	0	0	1	0	0.0000
0- Evans R/ 4- Mills C/ 15- Ballard Q/ 31- Wilkes W/ 35- Cleveland M/	00:39	0-0	0	0.0000	0	0	0	0	0.0000
0- Evans R/ 1- Warley J/ 4- Mills C/ 21- Fletcher C/ 35- Cleveland M/	00:17	0-1	-1	0.0000	1	0	0	0	0.0000