

# 2022-23 PROVIDENCE COLLEGE FRIARS WOMEN'S BASKETBALL

vs. IONA GAELS | NOV. 17 | HYNES ATHLETICS CENTER | NEW ROCHELLE, N.Y. | 7 PM



## COLLEGE INFORMATION

Location: ..... Providence, R.I. 02918  
 Enrollment: ..... 4,775  
 President: ..... Reverend Kenneth Sicard, O.P.  
 Associate VP/Athletics Director ..... Steve Napolillo  
 Conference: ..... BIG EAST  
 Nickname: ..... Friars  
 School Colors: ..... Black and White with Silver (PMS 877)  
 Facility: ..... Alumni Hall/Mullaney Gymnasium (1,854)

## TEAM INFORMATION

2022-23 Overall Record: ..... 2-1  
 2022-23 BIG EAST Record: ..... 0-0  
 Letterwinners Returning/Lost: ..... 9/3  
 Starters Returning/Lost: ..... 3/2  
 Newcomers: ..... 3

## COACHES/STAFF

Head Coach: ..... Jim Crowley (Keuka College '93)  
 Record at Providence (seasons): ..... 74-108 (7th season)  
 Career Record (seasons): ..... 371-375 (26th season)  
 Assistant Coach: ..... Tiara Johnson (St. Bonaventure '10)  
 Assistant Coach: ..... Jessica Jenkins (St. Bonaventure '12)  
 Assistant Coach ..... Kelcie Rombach (St. Bonaventure '15, '16G)  
 Coord. of Women's Basketball Operations: ..... Jennifer Nabrizny  
 Graduate Assistant: ..... Laryn Edwards  
 Administrative Assistant: ..... Lisa Vieira  
 Office Phone: ..... (401) 865-2529

## ATHLETIC MEDIA RELATIONS

Associate AD / Media Relations: ..... Jennifer Rynearson  
 Office Phone/Cell Phone: ..... (401) 865-2208 / (401) 575-7370  
 Email Address: ..... jrynears@providence.edu

## GAME #4 vs. IONA UNIVERSITY GAELS

Broadcast: ESPN+

Talent: David Resnick, Nyala Pendergrass

Live Stats: [www.IonaGaels.com](http://www.IonaGaels.com)

Twitter: @ProvidenceWBB



## PROVIDENCE COLLEGE FRIARS • 2022-23 ROSTER

No.	Name	Yr.	Pos.	Ht.	Hometown
1	Kylee Sheppard	So.	G	5-9	Cincinnati, Ohio
2	Grace Efosa	Jr.	G	5-11	Lawrence, Mass.
3	Meghan Huerter	So.	G	5-11	Clifton Park, N.Y.
5	Janai Crooms	Sr.	G	5-10	Cranston, R.I.
11	Nariah Scott	So.	G	5-10	Holden, Mass.
12	Logan Cook	Grad.	F	6-1	Iowa City, Iowa
15	Lauren Sampson	Sr.	G/F	6-0	Waltham, Mass.
22	Brynn Farrell	Jr.	G	6-0	Ortley Beach, N.J.
24	Audrey Koch	So.	G	5-10	Iowa City, Iowa
30	Kammie Ludwig	Fr.	G	5-10	Geneseo, Ill.
31	Olivia Olsen	So.	F	6-3	Niskayuna, N.Y.
33	Emily Archibald	So.	F	6-0	Kennebunk, Maine

**Head Coach:** Jim Crowley (Keuka College '93, 7th Season)

**Assistant Coach:** Tiara Johnson (St. Bonaventure '10)

**Assistant Coach:** Jessica Jenkins (St. Bonaventure '12)

**Assistant Coach:** Kelcie Rombach (St. Bonaventure '15, '16G)

## Pronunciation Guide

Kylee Sheppard (KYE - Lee)

Grace Efosa (ee-FO-Sa)

Meghan Huerter (Hurt-er)

Janai Crooms (Juh-NAY)

Nariah Scott (Nuh-RYE-uh)

Brynn Farrell (Brin FAIR-el)

Audrey Koch (Cook)

Tiara Johnson (Tee-Air-Uh)

Kelcie Rombach (ROM-bock)

## 2022-23 PROVIDENCE COLLEGE BASKETBALL 2-1 OVERALL (0-0 BIG EAST)

### NOVEMBER

7	Mon.		DAYTON	W, 69-60
11	Fri.		STONEHILL	W, 56-32
14	Mon.	at	Rhode Island	L, 72-74
17	Thur.	at	Iona	7:00 p.m.
20	Sun.	at	Boston College	12:00 p.m.
25	Fri.		HARTFORD %	1:00 p.m.
26	Sat.		WEBER STATE %	3:00 p.m.
27	Sun.		BRYANT %	2:00 p.m.

### DECEMBER

2	Fri.	at	Connecticut *	7:00 p.m.
4	Sun.		VILLANOVA *	1:00 p.m.
7	Wed.		BROWN	7:00 p.m.
10	Sat.		CENTRAL CONNECTICUT	1:00 p.m.
18	Sun.	at	St. John's *	4:30 p.m.
20	Tues.	at	Sacred Heart	11:00 a.m.
28	Wed.	at	DePaul *	7:00 p.m. (ET)

### JANUARY

4	Wed.	at	Creighton *	7:00 p.m. (ET)
8	Sun.		SETON HALL *	1:00 p.m.
11	Wed.		XAVIER *	11:00 a.m.
14	Sat.	at	Marquette *	3:00 p.m. (ET)
18	Wed.	at	Butler *	7:00 p.m.
21	Sat.		GEORGETOWN *	5:00 p.m.
24	Tues.		CREIGHTON *	7:00 p.m.
28	Sat.	at	Xavier *	2:00 p.m.

### FEBRUARY

1	Wed.		CONNECTICUT *	7:00 p.m.
4	Sat.	at	Seton Hall *	1:00 p.m.
11	Sat.		BUTLER *	1:00 p.m.
15	Wed.		MARQUETTE *	7:00 p.m.
18	Sat.		DE PAUL *	12:00 p.m.
21	Tues.	at	Georgetown *	7:00 p.m.
24	Fri.	at	Villanova *	7:00 p.m.
27	Mon.		ST. JOHN'S *	7:00 p.m.

### MARCH

3-6 Fri.-Mon. at BIG EAST Tournament #

All home games in **BOLD CAPS**; All times are Eastern (ET)

\* BIG EAST Conference game

% Friar Thanksgiving Classic (Providence, R.I.)

# Mohegan Sun Arena (Uncasville, Conn.)

## GAME NOTES

**FRIARS TO FACE IONA IN NON-CONFERENCE ACTION...** Providence College will travel to New Rochelle, N.Y. to face Iona in non-conference play on Thursday, Nov. 17. The game will be played at the Hynes Athletics Center and is scheduled to tip-off at 7:00 p.m. on ESPN+.

**PROVIDENCE VS. IONA ALL-TIME...** The Friars and Gaels have met four times in the history of the two programs and Providence leads the series,

## FOLLOW US ON SOCIAL



Instagram  
@ProvidenceWBB



Twitter  
@ProvidenceWBB

4-0. The Friars are 3-0 vs. the Gaels at Alumni Hall in Providence, R.I. and 1-0 in the series on Iona's home court.

**LONE MEETING IN NEW ROCHELLE, N.Y. ...** Providence and Iona first met on Jan. 15, 1990. That meeting marks the only game played between the two programs in New Rochelle, N.Y. The Friars earned an 84-64 victory on that day. Each of the next three meetings in the series were played at Alumni Hall in Providence, R.I.

#### **ALL-TIME VS. IONA | GAME-BY-GAME FRIARS LEAD THE SERIES, 4-0**

Date	Site	Score	Record
1/15/90	New Rochelle, N.Y.	82-64 (W)	1-0
1/28/91	Providence, R.I.	91-46 (W)	2-0
11/17/07	Providence, R.I.	73-64 (W)	3-0
11/28/12	Providence, R.I.	70-58 (W)	4-0

**PROVIDENCE / IONA CONNECTION...** Iona men's basketball assistant coach Bob Walsh spent the last three seasons with the Providence College men's basketball program as the team's Associate Director of Player Development, Scouting and Recruiting Coordination. Walsh also served as an Assistant Coach at Providence from 1998-2005. Walsh began his career as a graduate assistant with Iona athletics and the men's basketball program in 1994.

**PROVIDENCE DROPS 74-72 DECISION AT RHODE ISLAND...** The Friars dropped their first game of the season on Nov. 14 to Rhode Island, 74-72, at the Ryan Center in Kingston, R.I. The Friars led by as many as 13 midway through the second quarter and carried a 10-point advantage into halftime (50-40). With 5:41 remaining in the fourth quarter, URI used a 9-0 run to gain a 72-68 lead. The Friars responded with four-straight points to tie the game, 72-72, with 1:46 on the clock. The Rams' Maye Toure scored the go-ahead bucket with just under a minute to play and the Friars were unable to convert on the offensive end to tie or go ahead. The Friars got the ball back with three-seconds left after a defensive stop and called a timeout. Janai Crooms received the inbounds pass and had to put up a running three-point attempt as the clock expired, but the effort was off the mark and URI held on for the two-point victory. Providence shot a season-best 58-percent from the field (29-50), including a 7-10 performance from beyond the arc (.700). The Friars gave away nine points at the free throw line after going 7-16 in the game (.438). The Rams also benefited from a 24-14 advantage in points off of turnovers.

**JANAI CROOMS NETS SEASON-BEST 24 POINTS AT URI...** Senior guard Janai Crooms scored a season-best 24 points in the Friars' most recent game against URI on Nov. 14. It marked her second 20+ point effort of the season through three games. She shot 11-16 from the field and also recorded five assists and four rebounds.

**GRACE EFOSA NETS CAREER-HIGH 13 VS. RHODE ISLAND...** Junior guard Grace Efosa scored a career-high 13 points on Nov. 14 against Rhode Island. She shot 5-9 from the field, including 1-1 from three-point territory, marking the first made three of her career. Efosa also added three assists, two rebounds and one steal.

**EMILY ARCHIBALD PROVIDES A SPARK OFF THE BENCH...** Sophomore forward Emily Archibald provided a spark off the bench against Rhode Island on Nov. 14. In 22 minutes of action, she recorded a season-high six points, eight rebounds, three assists and one blocked shot. Her eight boards marked a team high vs. the Rams. Archibald hit 2-3 attempts from the field, including 1-1 from three-point territory. She also led the team in plus/minus rating (+11).

**THREE-POINT THREATS...** Junior Brynn Farrell and sophomore Meghan Huerter are tied for the team lead in three-point percentage this season, as both players have converted 5-11 attempts from deep (.455). Huerter recently scored a career-high nine points on 3-4 shooting from deep

against URI on Nov. 14. For the season, all 11 of Huerter's field-goal attempts have been from three.

**BRYNN FARRELL FITTING IN JUST FINE WITH THE FRIARS...** Junior transfer Brynn Farrell is fitting in just fine with the Friars in her first season with the program. She has started all three games and is averaging 25.3 minutes per contest. Farrell has reached double figures in the scoring column in two games and ranks third on the team in scoring overall (9.7 ppg). She ranks second on the team in field-goal percentage (.500, 10-20) and is tied for the team lead in three-point percentage (.455, 5-11). She also contributes 3.7 rebounds per game and ranks second in steals (1.3 spg).

**PLAYER MAKER ON OFFENSE...** Janai Crooms leads the team in scoring (17.7 ppg) and assists (3.3 apg) through three games. As a team, Providence has made 74 field goals this season and Crooms has scored or assisted 43-percent of those makes (32).

**FRIARS' DEFENSE STIFLES STONEHILL IN 56-32 WIN...** Providence defeated Stonehill, 56-32, on Nov. 11 in Providence, R.I. After a competitive battle in the first quarter, the Friars' defense kicked in to hold the Skyhawks to 17 points over the course of the final three quarter, including just eight points in the second half. Providence held Stonehill to 23.5-percent from the field (12-51). The Skyhawks showed signs of life in the first quarter, shooting 4-8 from three-point territory, but Providence held them to 1-21 shooting from three-point land the rest of the game.

**PROVIDENCE CLAIMS WIN IN SEASON OPENER...** The Friars defeated Dayton, 69-60, in its season opener at Alumni Hall on Nov. 7. The Friars improved to 29-20 all-time in season openers and 33-16 all-time in home openers.

**LOOKING BACK AT THE WIN OVER DAYTON...** Providence opened the season with a 69-60 victory over Dayton. The Friars led wire-to-wire in the victory and held a its biggest margin of the night (14 points) with 4:01 remaining in the third quarter. Providence outscored Dayton 20-6 in points off of turnovers and 9-2 in fast-break points. Janai Crooms paced four Friars in double figures with 20 points and also added a team-high nine rebounds. Olivia Olsen scored 11 of her 15 points in the second half and completed the night with seven boards. Grace Efosa and Brynn Farrell each recorded 10 points in the victory. Efosa matched her career-high in scoring, while Farrell made her debut with the Friars hit double digits for just the second time in her career.

**FOUR FRIARS IN DOUBLE FIGURES...** Four Friars reached double figures in the scoring column vs. Dayton on Nov. 7, including Janai Crooms (20), Olivia Olsen (15), Brynn Farrell (10) and Grace Efosa (10). The last time Providence had four or more players in double figures dates back to the 2020-21 season (Jan. 7, 2021 vs. Butler). On that day Chanell Williams (16), Mary Baskerville (13), Alyssa Geary (10) and Kyra Spiwak (10) all tallied double-digits in the scoring column.

**1,000-POINT MILESTONE...** Janai Crooms scored her 1,000th point in the Friars' season opener vs. Dayton on Nov. 7. She entered the game 14 points shy of the milestone and hit the mark with 7:41 left in the third quarter. Crooms heads into Thursday's game tied for 32nd all-time in career scoring at Providence with 1,039 points. She is joined by Doreen Ferguson '88 and Julie Wheeler '98.

**CLIMBING THE LADDER...** Janai Crooms ranks 11th place on the Friars' all-time career assist list (348). Crooms dished 171 of her 343 assists during her two seasons at Ohio State (2018-20), added 65 at Michigan State (2020-21) and has registered 112 dimes with the Friars (2021-present). Through 115 career games, Crooms has averaged 3.0 assists per contest.

**ALL GROWN UP...** Last season, the Friars featured one of the youngest rosters in the BIG EAST Conference with six freshmen. Those six players

are entering the 2022-23 season having earned a wealth of experience, with each player seeing action in 20-or-more games as a rookie. Audrey Koch and Olivia Olsen were two of just three players on the roster to compete in all 30 games last season. Additionally, Emily Archibald, Kylee Sheppard and Koch each started 15-or-more games.

**NEWCOMERS...** The Friars added two transfers and one freshman to the roster in 2022-23. Graduate student Logan Cook played four seasons at Iowa, during which time the Hawkeyes won two Big Ten titles (2019, 2022) and advanced to the Elite 8 of the NCAA Tournament (2022) and Sweet 16 (2019). She played 53 career games and averaged 1.5 points and 1.5 rebounds per game. Junior Brynn Farrell played two seasons at Florida, where she played 28 games for the Gators after being slowed by an injury. She averaged 2.9 points and 1.0 rebound per game and connected on 22-28 free throw attempts in two seasons (.786). Kammie Ludwig is the lone true freshman on the squad and attended Geneseo High School prior to arriving on campus. The 3A All-State selection and IBCA All-State honoree averaged 24.6 points per game as a senior and finished her career as Geneseo's all-time leading scorer (1,881 points).

**JANAI CROOMS NAMED TO PRESEASON ALL-BIG EAST TEAM...** Senior guard Janai Crooms was among the list of 11 student-athletes named to the Preseason All-BIG EAST Team, released at the league's annual media day on Oct. 18 at Madison Square Garden in New York, N.Y. Crooms is entering her second season with the Friars and her final season of NCAA Division I basketball. In addition to her time at Providence (2021-present), she also played two seasons at Ohio State (2018-20) and one season at Michigan State (2020-21). A year ago, Crooms was named All-BIG EAST Honorable Mention after leading the Friars in scoring (13.8 ppg), rebounding (7.2 rpg) and assists (3.5 apg).

**2021-22 UNANIMOUS BIG EAST ALL-FRESHMAN TEAM HONOREE KYLEE SHEPPARD RETURNS FOR SOPHOMORE CAMPAIGN...** Kylee Sheppard missed a third of her rookie season with injuries, but still found a way to make a significant impact during her time on the court. She appeared in 20 of the Friars' 30 games and averaged 9.6 points, 3.2 rebounds, 2.1 assists and 1.5 steals per game. Sheppard finished the year ranked third on the team in scoring and second in assists and steals. She shot 40.2-percent from the field (68-169), including 24-68 from three-point territory (.353), and recorded eight double-digit scoring games. Sheppard notched 20+ points in two games as a rookie, and both came during BIG EAST regular-season play, including a career-best 22 points against DePaul (Jan. 7) on 9-12 shooting from the field.

**BIG EAST PRESEASON COACHES' POLL...** The Friars were picked to finish eighth in the BIG EAST Preseason Coaches' Poll, with 34 points. Connecticut is picked to win the league, having collected 10 first place votes and 100 points overall. Creighton (89 points) and Villanova (83 points; 1 first-place votes) round out the top three spots. Last season, the Friars finished eighth in the 2022 regular-season standings with an 11-19 overall record and a 6-14 mark in the BIG EAST.

**FRIARS IN THE POSTSEASON...** The Friars' last appeared in the post-season during the 2018-19 campaign. Providence's 2019 WNIT selection marked the program's 15th post-season appearance overall and first since

**PROVIDENCE COLLEGE WOMEN'S BASKETBALL INDIVIDUAL SINGLE-GAME RECORDS...**

**Points:** 45 .....Tracy Lis vs. Bowling Green (12/8/91)  
**Field Goals:** 19 .....Kathy Finn vs. Syracuse (2/11/84)  
**3-Point Field Goals:** 10 .....Tori Rule vs. Georgetown (3/8/13)  
**Free Throws:** 19 .....Many Saunders vs. Pittsburgh (2/26/94)  
**Rebounds:** 22 .....Britt King vs. Pittsburgh (1/2/85)  
**Assists:** 17 .....Shanya Evans vs. DePaul (12/29/89)  
**Steals:** 10 .....Sarah Beal vs. Bryant (12/29/15)

**THE LAST TIME...**

**SCORING**  
**Player scored 45+ pts** .....Tracy Lis (45) vs. Bowling Green, 12/8/91  
**Player scored 40+ pts** .....Nadine Malcolm (40) vs. Pitt, 12/9/95  
**Player scored 35+ pts** .....Tori Rule (35) vs. Georgetown, 3/8/13  
**Player scored 30+ pts** .....Jovana Nagic (31) at Northeastern, 11/14/17  
**Player scored 25+ pts** .....Janai Crooms (27) vs. UConn, 1/30/22  
**Player scored 20+ pts** .....**Janai Crooms (24) at Rhode Island, 11/14/22**  
**Player off bench to score 20+ pts** .....Emily Archibald (21) vs. Georgetown, 3/4/22  
**2 players scored 20+ points** .....Jovana Nagic (27) & Mary Baskerville (22) vs. Hartford, 3/21/19  
**3 players scored 20+ points** .....Sarah Beal (23), Jovana Nagic (23), Aliyah Miller (20) vs. Bryant, 12/9/15  
**7 players in double figures** .....Tori Rule (27), Miranda Simpson (15), Karin Robinson (12), Danielle Pearson (11), Sarah Beal (10), Evi Iiskola (10), Alexis Harris (10) vs. Bryant, 11/12/13  
**6 players in double figures** .....Evi Iiskola (14), Tori Rule (14), Sarah Beal (12), Alexis Harris (12), Karin Robinson (11), Aliyah Miller (10) vs. Hartford, 11/20/13  
**5 players in double figures** .....Maddie Jolin (15), Kaela Webb (10), Kyra Spiwak (10), Olivia Orlando (10), Mary Baskerville (10) vs. Creighton, 2/23/19  
**4 players in double figures** .....**Janai Crooms (20), Olivia Olsen (15), Grace Efosa (10), Brynn Farrell (10) vs. Dayton, 11/7/22**  
**None in double figures** .....vs. Maine, 12/10/20  
**Team scored 100+ points in victory** .....104 vs. Bryant (104-67), 11/12/13  
**Team scored 100+ points in a loss** .....106 vs. Georgetown (115-106), 1/5/92  
**Team scored 100+ points in back-to-back games** .....vs. UMass Lowell (109-74), 11/9/13 and vs. Bryant (104-67), 11/12/13

**DOUBLE-DOUBLES**  
**Player recorded double-double** .....Olivia Olsen (13pts/11rebs) vs. Butler, 2/11/22  
**2 players record double-doubles** .....Alexis Harris (15pt/11reb) & Chanise Baldwin (14pt/12reb) vs. Seton Hall, 1/11/15  
**Double-double with points/assists** .....Sarah Beal (13pt/13a) vs. Butler, 1/28/14  
**Double-double with points/steals** .....Sarah Beal (23pt/10stl) vs. Bryant, 12/9/15

**REBOUNDS**  
**Player had 15+ rebounds** .....Janai Crooms (15) vs. Monmouth, 11/28/21  
**Player had 10+ rebounds** .....Olivia Olsen (11) at St. John's, 2/20/22  
**2 players had double-figure rebounds** .....Janai Crooms (11) and Mary Baskerville (11) at Xavier, 1/11/22  
**3 players had double-figure rebounds** .....Danielle Pearson (16), Evi Iiskola (10), Alexis Harris (10) vs. UMass Lowell, 11/9/13  
**PC had 65+ rebounds** .....65 vs. UMass Lowell, 11/9/13  
**PC had 60+ rebounds** .....65 vs. UMass Lowell, 11/9/13  
**PC had 55+ rebounds** .....65 vs. UMass Lowell, 11/9/13  
**PC had 50+ rebounds** .....53 at St. John's, 2/20/22  
**PC had 45+ rebounds** .....**46 vs. Stonehill, 11/11/22**  
**PC had 40+ rebounds** .....**46 vs. Stonehill, 11/11/22**

**ASSISTS**  
**Player had 5+ assists** .....**Janai Crooms (5) at Rhode Island, 11/14/22**  
**Player had 10+ assists** .....Sarah Beal (13) vs. Butler, 1/28/14  
**PC had 20+ assists** .....22 vs. DePaul, 1/7/22  
**PC had 25+ assists** .....28 vs. Bryant, 11/12/13

**BLOCKED SHOTS**  
**Player had 5+ blocked shots** .....Mary Baskerville (6) at Georgetown, 1/23/22  
**PC had 10+ blocked shots** .....11 at Xavier, 1/11/22

**STEALS**  
**Player had 5+ steals** .....Mary Baskerville (5) vs. Marquette, 2/25/22  
**PC had 15+ steals** .....16 at Georgetown, 1/23/22

**RANKED OPPONENTS**  
**Defeated a ranked opponent** .....vs. #RV/25 Villanova (W, 65-60, OT), 1/23/13  
**Defeated an opponent receiving votes** .....vs. #RV/RV Butler (W, 74-68, 3OT), 1/18/18

**OVERTIME**  
**PC played an overtime game** .....at St. John's (L, 68-62, OT), 2/20/22  
**PC played double-overtime game** .....vs. Creighton (L, 87-84, OT), 2/10/18  
**PC played triple-overtime game** .....vs. #RV/RV Butler (W, 74-68, 3OT), 1/18/19  
**PC won an overtime game** .....at Georgetown (W, 66-58, OT), 1/23/22  
**PC lost an overtime game** .....at St. John's (L, 68-62, OT), 2/20/22

## 2022-23 TRENDS...

### DAY OF THE WEEK

Sunday	0-0
Monday	1-1
Tuesday	0-0
Wednesday	0-0
Thursday	0-0
Friday	1-0
Saturday	0-0

### LOCATION

Home games	2-0
Road games	0-1
Neutral site games	0-0

### HALFTIME

Leading at the half	2-1
Tied at the half	0-0
Trailing at the half	0-0

### INDIVIDUAL SCORING

2 or fewer double-figure scorers	1-1
3 double-figure scorers	0-0
4 double-figure scorers	1-0
5 or more double-figure scorers	0-0

### REBOUNDING MARGIN

Out-rebound opponents	2-1
Same number of rebounds as opponents	0-0
Fewer rebounds than opponents	0-0

### FIELD-GOAL SHOOTING

Higher pct. than opponent	2-1
Lower pct. than opponent	0-0
Same pct. as opponent	0-0
Shoot 45% or better	0-1
Shoot less than 45%	2-0
Hold opponent under 40%	2-0

### FREE THROWS

Make more free throws than opponent	2-1
Make same number of free throws	0-0
Make fewer free throws than opponent	0-0

### TURNOVERS

Commit fewer turnovers than opponent	2-0
Commit same number of turnovers	0-0
Commit more turnovers than opponent	0-1

### SCORING MARGIN

1-5 points	0-1
6-10 points	1-0
11-15 points	0-0
16-20 points	0-0
21+ points	1-0
In overtime games	0-0

2010. In 2019-20, NCAA and WNIT Championships were canceled to the COVID-19 pandemic, and Friars did not qualify for postseason during the abbreviated 2020-21 campaign. Complete post-season breakdown follows (records in parentheses):

2018-19 WNIT Round of 16 (2-1)  
2009-10 WNIT Quarterfinal Round (3-1)  
1991-92 NCAA Tournament First Round (0-1)  
1990-91 NCAA Tournament Second Round (1-1)  
1989-90 NCAA Tournament East Regional (1-1)  
1988-89 NCAA Tournament First Round (0-1)  
1986-87 National Women's Invitational Tournament (1-2)  
1985-86 NCAA Tournament First Round (0-1)  
1981-82 EIAIW Regional Tournament (0-1)  
1980-81 EIAIW Regional Tournament (0-1)  
1979-80 EIAIW National Tournament (3-1)  
1978-79 EIAIW Regional Tournament (0-1)  
1977-78 EIAIW Regional Tournament (1-1)  
1976-77 EIAIW Regional Tournament (2-2)  
1975-76 EIAIW Regional Tournament (1-2)

**WHAT'S NEXT...** The Friars will remain on the road to face Boston College on Sunday, Nov. 20 in Chestnut Hill, Mass. Tip-off is set for 12:00 p.m. at Conte Forum.

### 2022-2023 SCORING / SHOOTING BREAKDOWN

Most points in a game ..... 72 vs. Rhode Island  
Fewest points in a game ..... 56 vs. Stonehill  
Most points in a half ..... 50 vs. Rhode Island (1st half)  
Fewest points in a half ..... 22 vs. Rhode Island (2nd half)  
Highest scoring total in a quarter ..... 29 vs. Rhode Island (2nd)  
Highest scoring total in 1st quarter ..... 21 vs. Rhode Island  
Highest scoring total in 2nd quarter ..... 29 vs. Rhode Island  
Highest scoring total in 3rd quarter ..... 18 vs. Dayton  
Highest scoring total in 4th quarter ..... 22 vs. Dayton  
Largest lead in a game ..... 24 (4th qtr: 2:56) vs. Stonehill  
Largest deficit in a game ..... 5 (1st qtr: 7:58) vs. Rhode Island  
Largest lead at halftime ..... 10 vs. Rhode Island  
Largest deficit at halftime ..... n/a  
Largest margin of victory ..... 24 vs. Stonehill  
Largest margin of defeat ..... 2 vs. Rhode Island  
Smallest margin of victory ..... 9 vs. Dayton  
Smallest margin of defeat ..... 2 vs. Rhode Island  
Most points in a victory ..... 69 vs. Dayton  
Most points in a defeat ..... 72 vs. Rhode Island  
Fewest points in a victory ..... 56 vs. Stonehill  
Fewest points in a defeat ..... 72 vs. Rhode Island

Highest FG% in a game ..... 0.580 (29-50) vs. Rhode Island  
Lowest FG% in a game ..... 0.339 (21-62) vs. Stonehill

Highest 3pt% in game ..... 0.700 (7-10) vs. Rhode Island  
Lowest 3pt% in a game ..... 0.188 (3-16) vs. Stonehill

Highest FT% in a game ..... 0.783 (18-23) vs. Dayton  
Lowest FT% in a game ..... 0.438 (7-16) vs. Rhode Island

2022-23 BIG EAST PRESEASON INFORMATION

BIG EAST Preseason Player of the Year

Maddy Siegrist, Villanova, Sr., F\*

BIG EAST Preseason Freshman of the Year

Ayanna Patterson, UConn, Fr., F

Preseason All-BIG EAST Team^

Caroline Ducharme, UConn, So., G

Aaliyah Edwards, UConn, Jr., F

Azzi Fudd, UConn, So., G\*

Lauren Jensen, Creighton, Jr., G

Emma Ronsiek, Creighton, Jr., F\*

Aneesah Morrow, DePaul, So., F\*

Jordan King, Marquette, Sr., G

Janai Crooms, Providence, Sr., G

Kadaja Bailey, St. John's, Fifth Year, G

Sidney Cooks, Seton Hall, Grad., F/C

Lauren Park-Lane, Seton Hall, Sr., G\*

Preseason Honorable Mention

Dorka Juhász, UConn, Grad., F

Morgan Maly, Creighton, Jr., G/F

\*unanimous selection

^extra player added due to a tie in voting

BIG EAST Preseason Coaches' Poll

(first-place votes)

1. Connecticut (10) - 100

2. Creighton - 89

3. Villanova (1) - 83

t4. DePaul - 68

t4. Seton Hall - 68

6. Marquette - 56

7. St. John's - 47

8. Providence - 34

t9. Butler - 21

t9. Georgetown - 21

11. Xavier - 18

PROVIDENCE COLLEGE VS. IONA  
BY THE NUMBERS

Providence	.....	Ion
2-1	.....	RECORD
65.7	.....	SCORING
+10.3	.....	SCORING MARGIN
0.428 (74-173)	.....	FIELD-GOAL PERCENTAGE
0.361 (13-36)	.....	3-PT PERCENTAGE
0.643 (36-56)	.....	FREE-THROW PERCENTAGE
12.0	.....	FREE THROWS MADE PER GAME
40.0	.....	REBOUNDING
+4.0	.....	REBOUNDING MARGIN
11.0	.....	ASSISTS
12.7	.....	TURNOVERS
8.0	.....	STEALS
3.3	.....	BLOCKS

CAREER SCORING LEADERS / 1,000-POINT CLUB

	Player	Years	GP	Pts.	Avg.
1	Tracy Lis '92	1988-92	127	2,534	19.9
2	Kathy Finn '84	1980-84	119	1,942	18.2
3	Chelsea Marandola '10	2005-10	119	1,795	15.1
4	Jovana Nogic '19	2015-19	125	1,724	13.8
5	Andrea Mangum '90	1986-90	123	1,679	13.7
6	Mary Burke '87	1983-87	115	1,672	14.5
7	Nadine Malcolm '97	1993-97	85	1,649	19.4
8	Britt King '86	1982-86	114	1,531	13.4
9	Lucie Fontanella '94	1990-94	120	1,446	12.1
10	Kerri Chatten '98	1994-98	88	1,378	15.7
11	Doris Sable '87	1983-87	113	1,372	12.1
12	Stephanie Cole '92	1988-92	126	1,321	10.5
13	Tori Rule '15	2011-15	106	1,271	12.0
14	Kerry Phayre '83	1980-83	93	1,269	13.6
15	Dottie Van Gheem '90	1986-90	122	1,267	9.6
16	Lynn Sheedy '80	1976-80	109	1,261	11.5
17	Mandy Saunders '98	1993-98	111	1,256	11.3
18	Shanya Evans '91	1987-91	121	1,246	10.3
t-19	Mary Ann McCoy '80	1976-80	109	1,224	11.2
t-19	Helen Jessie-Mency '91	1986-91	117	1,224	10.5
21	Mi-Khida Hankins '11	2007-11	115	1,190	10.3
22	Sarah Beal '17	2013-17	102	1,188	11.6
23	Monika Roberts '01	1997-01	102	1,126	11.0
t-24	Jen Gombotz '01	1997-01	107	1,116	10.4
t-24	Meghan Hinds '00	1996-00	99	1,116	11.3
26	Stefanie Goettsche '94	1990-94	120	1,104	9.2
27	Maddie Jolin '19	2015-19	120	1,093	9.1
28	Mary Baskerville '22	2018-22	106	1,077	10.2
29	Symone Roberts '13	2009-13	117	1,074	9.2
30	Mary Ellen Buchanan '79	1975-79	97	1,055	10.9
31	Shauna Snyder '07	2003-07	94	1,043	11.1
t-32	Janai Crooms '23 *	2018-pres.	115	1,039	9.0
t-32	Doreen Ferguson '88	1984-88	116	1,039	8.9
t-32	Julie Wheeler '98	1994-98	101	1,039	10.2
35	Sonya Lewis '94	1990-94	93	1,028	11.1
36	Laurie St. Jean '84	1980-84	107	1,005	9.4
37	Joanie Powers '86	1982-86	107	1,002	9.4

\*played two seasons at Ohio State (2018-20) and one season at Michigan State (2020-21)

CAREER ASSISTS LEADERS

	Player	Years	GP	Assists	Avg.
1	Shanya Evans '91	1987-91	121	978	8.1
2	Doris Sable '87	1983-87	113	602	5.3
3	Lynn Sheedy '80	1976-80	109	571	5.2
4	Mandy Saunders '98	1993-98	111	491	4.4
5	Kerry Phayre '83	1980-83	93	432	4.6
6	Stephanie Cole '92	1988-92	126	412	3.3
7	Kathy Finn '84	1980-84	119	407	3.4
8	Julie Wheeler '98	1994-98	101	393	3.8
9	Sarah Beal '17	2013-17	102	385	3.8
10	Symone Roberts '13	2009-13	117	351	3.0
11	Janai Crooms '23 *	2018-pres.	115	348	3.0
12	Chrissy Vozab '02	1998-02	109	338	3.1
13	Mary Ann McCoy '80	1976-80	109	324	2.9
14	Chanell Williams	2017-21	118	313	2.7
15	Diann Reynolds '88	1984-88	115	299	2.6
16	Paulette Hassett '78	1975-78	69	291	2.3
17	Sonya Lewis '94	1990-94	93	290	3.1

\*played two seasons at Ohio State (2018-20) and one season at Michigan State (2020-21)

CAREER REBOUNDING LEADERS

	Player	Years	GP	Reb	Avg.
1	Britt King '86	1982-86	114	1,205	10.6
2	Andrea Mangum '90	1986-90	123	1,063	8.6
3	Mary Ann McCoy '80	1976-80	115	1,056	6.9
4	Teya Wright '12 ^	2007-12*	117	867	7.4
5	Tracy Lis '92	1988-92	127	821	6.5
6	Madeline McCoy '82	1978-82	115	798	6.9
7	Mary Ellen Buchanan '79	1975-79	97	784	8.0
8	Kathy Finn '84	1980-84	119	754	6.4
9	Mary Burke '87	1983-87	115	740	6.4
10	Lucie Fontanella '94	1990-94	120	735	6.1
11	Stefanie Goettsche '94	1990-94	120	733	6.1
12	Kerri Chatten '98	1994-95	88	726	8.3
13	Mary Baskerville '22	2018-22	106	723	6.8
14	Mary Casey '79	1975-79	89	710	7.1
15	Nadine Malcolm '97	1993-97	85	688	8.0
16	Shantee Darrian '09	2005-09	81	664	8.2
17	Doreen Ferguson '88	1984-88	116	660	5.7
18	Chelsea Marandola '10	2005-10	119	651	5.5
19	Monika Roberts '01	1997-01	102	636	6.2
20	Alexis Harris '15	2011-15	108	635	5.9
21	Mi-Khida Hankins '11	2007-11	115	602	5.2
22	Jen Gombotz '01	1997-01	107	583	5.4
23	Dottie Van Gheem '88	1986-90	122	581	4.8
24	Joanie Powers '86	1982-86	107	566	5.3

^played two seasons at the University of Massachusetts (2007-09)

## 2022-2023 PROVIDENCE COLLEGE WOMEN'S BASKETBALL - NUMERICAL ROSTER



**#1 KYLEE SHEPPARD**  
So., G, 5-9  
Cincinnati, Ohio



**#2 GRACE EFOSA**  
Jr., G, 5-11  
Lawrence, Mass.



**#3 MEGHAN HUERTER**  
So., G, 5-11  
Clifton Park, N.Y.



**#5 JANAI CROOMS**  
Sr., G, 5-10  
Cranston, R.I.



**#11 NARIAH SCOTT**  
So., G, 5-10  
Holden, Mass.



**#12 LOGAN COOK**  
Grad., F, 6-1  
Iowa City, Iowa



**#15 LAUREN SAMPSON**  
Sr., G/F, 6-0  
Waltham, Mass.



**#22 BRYNN FARRELL**  
Jr., G, 6-0  
Ortley Beach, N.J.



**#24 AUDREY KOCH**  
So., G, 5-10  
Iowa City, Iowa



**#30 KAMMIE LUDWIG**  
Fr., G, 5-10  
Geneseo, Ill.



**#31 OLIVIA OLSEN**  
So., F, 6-3  
Niskayuna, N.Y.



**#33 EMILY ARCHIBALD**  
So., F, 6-0  
Kennebunk, Maine



**JIM CROWLEY**  
Head Coach

### Pronunciation Guide

#1 Kylee Sheppard (KYE - Lee)  
#2 Grace Efosa (ee-FO-Sa)  
#3 Meghan Huerter (Hurt-er)  
#5 Janai Crooms (Juh-NAY)  
#11 Nariah Scott (Nuh-RYE-uh)  
#22 Brynn Farrell (Brin FAIR-el)  
#24 Audrey Koch (Cook)

## 2022-2023 PROVIDENCE COLLEGE WOMEN'S BASKETBALL - NUMERICAL ROSTER

No.	Name	Yr.	Pos.	Ht.	Hometown / Previous School
1	Kylee Sheppard	So.	G	5-9	Cincinnati, Ohio/Roger Bacon
2	Grace Efosa	Jr.	G	5-11	Lawrence, Mass. / Whittier Tech
3	Meghan Huerter	So.	G	5-11	Clifton Park, N.Y. / Shenendehowa
5	Janai Crooms	Sr.	G	5-10	Cranston, R.I. / St. Andrew's / Ohio St. / Michigan St.
11	Nariah Scott	So.	G	5-10	Holden, Mass. / Tabor Academy
12	Logan Cook	Grad.	F	6-1	Iowa City, Iowa / Iowa City West / Iowa
15	Lauren Sampson	Sr.	G/F	6-0	Waltham, Mass. / Waltham
22	Brynn Farrell	Jr.	G	6-0	Ortley Beach, N.J. / St. Rose / Florida
24	Audrey Koch	So.	G	5-10	Iowa City, Iowa / Iowa City West
30	Kammie Ludwig	Fr.	G	5-10	Geneseo, Ill. / Geneseo
31	Olivia Olsen	So.	F	6-3	Niskayuna, N.Y. / Niskayuna
33	Emily Archibald	So.	F	6-0	Kennebunk, Maine / Kennebunk

**Head Coach:** Jim Crowley (Keuka College '93, 7th Season)

**Assistant Coach:** Tiara Johnson (St. Bonaventure '10)

**Assistant Coach:** Jessica Jenkins (St. Bonaventure '12)

**Assistant Coach:** Kelcie Rombach (St. Bonaventure '15)

## 2022-2023 PROVIDENCE COLLEGE WOMEN'S BASKETBALL - ALPHABETICAL ROSTER

No.	Name	Yr.	Pos.	Ht.	Hometown / Previous School
33	Emily Archibald	So.	F	6-0	Kennebunk, Maine / Kennebunk
23	Logan Cook	Grad.	F	6-1	Iowa City, Iowa / Iowa City West / Iowa
5	Janai Crooms	Sr.	G	5-10	Cranston, R.I. / St. Andrew's / Ohio St. / Michigan St.
2	Grace Efosa	Jr.	G	5-11	Lawrence, Mass. / Whittier Tech
22	Brynn Farrell	Jr.	G	6-0	Ortley Beach, N.J. / St. Rose / Florida
3	Meghan Huerter	So.	G	5-11	Clifton Park, N.Y. / Shenendehowa
24	Audrey Koch	So.	G	5-10	Iowa City, Iowa / Iowa City West
30	Kammie Ludwig	Fr.	G	5-10	Geneseo, Ill. / Geneseo
31	Olivia Olsen	So.	F	6-3	Niskayuna, N.Y. / Niskayuna
15	Lauren Sampson	Sr.	G/F	6-0	Waltham, Mass. / Waltham
11	Nariah Scott	So.	G	5-10	Holden, Mass. / Tabor Academy
1	Kylee Sheppard	So.	G	5-9	Cincinnati, Ohio/Roger Bacon

**Head Coach:** Jim Crowley (Keuka College '93, 7th Season)

**Assistant Coach:** Tiara Johnson (St. Bonaventure '10)

**Assistant Coach:** Jessica Jenkins (St. Bonaventure '12)

**Assistant Coach:** Kelcie Rombach (St. Bonaventure '15)

# LOGAN COOK #12

GRADUATE STUDENT / FORWARD / 6-1

IOWA CITY, IOWA

IOWA CITY WEST / IOWA



## 2022-23 SEASON HIGHLIGHTS:

- Has appeared in two of the Friars' three games to start the season.
- Averaging 2.0 points and 2.5 rebounds per game.
- Played 11 minutes off the bench in her debut with the Friars on Nov. 7 against Dayton.
- Recorded two rebounds and both came off the offensive glass. Also collected one steal against the Flyers.
- Notched four points and three rebounds against Stonehill (Nov. 11).

## BEFORE PROVIDENCE:

- Attended Iowa City West and guided her team to a State Championship as a senior.
- Also guided West to State Tournament Semifinal appearances during her career.
- Two-time All-State selection (2017, 2018).
- Averaged 13.5 points, 6.9 rebounds and 2.0 assists during her senior campaign (2017-18).
- Averaged 15.0 points and 6.2 rebounds per game and led West to a Regional Championship as a junior (2017)
- Played four seasons at the University of Iowa
- Won two Big Ten titles at Iowa (2019, 2022) and advanced to the Elite 8 of the NCAA Tournament and in 2022 her team reached the Sweet 16 in 2019.
- Played 53 games during her career with the Hawkeyes and averaged 1.5 points and 1.5 rebounds per game
- Recorded a career-high 12 points and nine rebounds against Western Illinois (Dec. 22, 2020). Shot 5-5 from the field in the game.
- Played AAU for the Iowa Barnstormers.

## MISCELLANEOUS CAREER

Double-Digit Scoring Games .....	1
20+ Point Games .....	0
Double-Digit Rebounding Games .....	0
Double-Digit Assist Games .....	0
5+ Assist Games .....	0
5+ Steal Games .....	0
5+ Block Game .....	0
Double-Doubles .....	0

## HONORS / AWARDS

- Academic All-Big Ten • 2020, 2021, 2022
- Distinguished Scholar Athlete • 2020

## PERSONAL

- Daughter of Marv and Tracy Cook
- Father played football at Iowa and seven years in the NFL. He was a two-time All-Pro Selection with the New England Patriots and also played for the Chicago Bears and St. Louis Rams.
- Has two brothers, Drew and Ashton.
- Drew played football at Iowa and Ashton plays football at Iowa State.
- High school teammates for one season with current Providence sophomore Audrey Koch at Iowa City West.
- Pursuing her MBA as a graduate student

## COOK, Logan

				Field Goals		3-Point		F-Throws		Rebounds									Scoring	
SEASON	TEAM	GP-GS	MIN/AVG	FG-FGA	FG%	3FG-3FGA	3FG%	FT-FTA	FT%	OFF	DEF	TOT	AVG	PF-FO	A	TO	BLK	STL	PTS	AVG
2018-19	Iowa	17-0	66/3.9	4-8	.500	4-7	.571	1-2	.500	5	9	14	0.8	5-0	7	12	0	1	13	0.8
2019-20	Iowa	14-0	63/4.5	8-17	.471	0-2	.000	9-12	.750	5	17	22	1.6	11-0	5	4	2	3	25	1.8
2020-21	Iowa	22-0	177/8.0	17-27	.630	0-3	.000	9-15	.600	18	23	41	1.9	17-0	8	7	0	4	43	2.0
2021-22	Iowa	13-1	95/7.3	4-12	.333	0-3	.000	3-4	.750	3	24	27	2.1	11-0	7	10	1	1	11	0.8
2022-23	PROV	2-0	24/11.8	2-8	.250	0-0	.000	0-0	.000	3	2	5	2.5	2-0	0	1	0	1	4	2.0
TOTAL FOR PROV		2-0	24/11.8	2-8	.250	0-0	.000	0-0	.000	3	2	5	2.5	2-0	0	1	0	1	4	2.0
TOTAL		68-1	424/6.2	35-72	.486	4-15	.267	22-33	.667	34	75	109	1.6	46-0	27	34	3	10	96	1.4

## Single Game Highs

Statistic	Value	
Points	12	vs Western Ill. 12/22/20
Rebounds	9	vs Western Ill. 12/22/20
Assists	3	vs N.C. Central 11/17/18
Steals	2	at Penn St. 01/30/20
Blocks	1	vs Washington 11/30/19, vs N.C. Central 12/14/19, at UNI 11/14/21
FG Made	5	vs Western Ill. 12/22/20
FG Attempts	6	vs Stonehill 11/11/22
3FG Made	3	vs N.C. Central 11/17/18
3FG Attempts	4	vs N.C. Central 11/17/18
FT Made	3	vs Wisconsin 02/16/20
FT Attempts	4	vs Wisconsin 02/16/20

## #12 COOK, Logan

				Total		3-Pointers		Free throws		Rebounds										
Opponent	Date	GS	MIN	FG-FGA	PCT	3FG-3FGA	PCT	FT-FTA	PCT	OFF	DEF	TOT	AVG	PF	A	TO	BLK	STL	PTS	AVG
Dayton	11/07/2022		10:53	0-2	.000	0-0	.000	0-0	.000	2	0	2	2.0	0	0	1	0	1	0	0.0
Stonehill	11/11/2022		12:45	2-6	.333	0-0	.000	0-0	.000	1	2	3	2.5	2	0	0	0	0	4	2.0
Totals		0	23:38	2-8	.250	0-0	.000	0-0	.000	3	2	5	2.5	2	0	1	0	1	4	2.0

## Player Averages

Games Played	Minutes/game	Points/game	FG Pct	3FG Pct	FT Pct	Rebounds/game	Assists/game	Turnovers/game	Assist/Turnover ratio	Steals/game	Blocks/game
2	11.8	2.0	25.0	0.0	0.0	2.5	0.0	0.5	0.0	0.5	0.0

# JANAI CROOMS #5

**SENIOR / GUARD / 5-10**

**CRANSTON, RHODE ISLAND**

**ST. ANDREW'S / OHIO STATE / MICHIGAN STATE**



## 2022-23 SEASON HIGHLIGHTS:

- Member of the starting line-up in all three games this season.
- Averaging a team-best 17.7 points, 3.3 assists and 1.0 blocked shot and ranks second in rebounding (5.3 rpg).
- Shooting 60-percent from the field (22-37).
- Has recorded 20+ points in two of the Friars' three games and owns seven 20-point games in her career.
- Paced the Friars with 20 points and nine rebounds in the season opener vs. Dayton (Nov. 7).
- Notched nine points, three rebounds and a game-high three assists and two blocked shots against Stonehill (Nov. 11).
- Netted a game-high 24 points on 11-16 shooting vs. URI (Nov. 14) and also contributed five assists and four rebounds.
- Scored her 1,000th career points with 7:41 remaining in the third quarter during the Friars' season opener vs. Dayton (Nov. 7) and became the 37th player in program history to reach the milestone.
- Currently owns 1,039 career points and is in a three-way tie for 32nd all-time in scoring at Providence, joining Doreen Ferguson '88 and Julie Wheeler '98.
- Currently ranks 11th all-time at Providence in career assist list (348).
- Preseason All-BIG EAST selection.

## 2021-22 SEASON HIGHLIGHTS:

- Played 29 games and appeared in the starting line-up each time.
- Averaged a team-best 13.8 points, 7.2 rebounds and 3.5 assists per game.
- Finished second on the team in blocked shots (1.1 bpg) and third steals (1.4 spg).
- Recorded three 20+ point games
- Scored a career-high 27 points against UConn Jan. 30. Shot 8-11 from the field (3-4 from beyond the arc) and 8-10 at the free-throw line.
- Also scored 20+ points against Hartford (25) on Dec. 1 and Quinnipiac (24) on Dec. 11.
- Led the team in double-digit scoring games (24) and double-doubles (six).
- Recorded double-digit rebounds in nine games, including two games with 15+ boards.
- Notched a career-high 19 rebounds at Maine (Nov. 13) and added 18 points, five assists, four blocked shots and two steals.
- Paced the Friars in scoring during 14 of the 29 games she played. Also led the team in rebounding during 10 games.
- Dished a season-best nine assists against Boston College (Nov. 20) and dished 5+ assists in 11 games overall.
- For her career, she owns 986 points, 504 rebounds, 338 assists, 124 steals and 94 blocked shots.
- With one season of eligibility remaining (2022-23), is one pace to become the 37th player in program history to eclipse the 1,000-point milestone.
- Ranked in a tie for 11th place on the Friars' all-time career assist list (338), joining Chrissy Vozab '02, who dished 338 assists for PC from 1998-2002.
- A three-time selection to the BIG EAST Weekly Honor Roll (11/15/21, 12/13/31, 1/31/22).
- All-BIG EAST Honorable Mention selection.

## BEFORE PROVIDENCE:

- Spent first two seasons of her college career at Ohio State (2018-20), before transferring to Michigan State (2020-21).
- Appeared in 22 games and averaged 5.1 points, 3.2 rebounds, 3.0 assists and 1.0 steal per game for the Spartans.
- Played 83 games and appeared in the starting line-up 41 times in two seasons with the Buckeyes.
- Averaged 7.1 points, 3.6 rebounds, 2.8 assists and 1.0 steal per game, while shooting 47.3-percent from the floor (235-497).
- Attended high school at St. Andrew's (Barrington, R.I.).
- A four-star recruit and ranked No. 36 in the 2018 class by Prospect Nation.
- Named to the American Family Insurance ALL-USA Rhode Island Girls Basketball Team Player of the Year as a senior.
- Averaged 12.3 points, 10.2 rebounds and 6.5 assists per game as a senior.
- A four-time New England All-Star.
- First female to have her number retired at St. Andrew's.

## MISCELLANEOUS CAREER

Double-Digit Scoring Games .....	52
20+ Point Games .....	7
Double-Digit Rebounding Games .....	11
Double-Digit Assist Games .....	1
5+ Assist Games .....	19
5+ Steal Games .....	2
5+ Block Game .....	0
Double-Doubles .....	8

## HONORS / AWARDS

- Preseason All-BIG EAST (2022-23)
- All-BIG EAST Honorable Mention (2022)
- 3x - BIG EAST Weekly Honor Roll (11/15/21, 12/13/31, 1/31/22)

## PERSONAL

- Daughter of John Crooms and Lisa Robertson
- Social science major

## CROOMS, Janai

SEASON	TEAM	GP-GS	MIN/AVG	Field Goals		3-Point		F-Throws		Rebounds											Scoring	
				FG-FGA	FG%	3FG-3FGA	3FG%	FT-FTA	FT%	OFF	DEF	TOT	AVG	PF-FO	A	TO	BLK	STL			PTS	AVG
2018-19	OSU	29-19	764/26.4	98-204	.480	20-43	.465	38-80	.475	9	92	101	3.5	62-0	64	93	16	31			254	8.8
2019-20	OSU	32-10	757/23.7	91-195	.467	10-48	.208	27-53	.509	26	98	124	3.9	65-1	107	89	29	31			219	6.8
2020-21	MSU	22-12	452/20.5	46-98	.469	3-15	.200	17-34	.500	11	59	70	3.2	41-1	65	49	17	21			112	5.1
2021-22	PROV	29-29	999/34.4	149-342	.436	17-44	.386	86-137	.628	65	144	209	7.2	51-0	102	127	32	41			401	13.8
2022-23	PROV	3-3	94/31.3	22-37	.595	0-0	.000	9-16	.563	6	10	16	5.3	6-0	10	7	3	1			53	17.7
<b>TOTAL FOR PROV</b>		<b>32-32</b>	<b>1092/34.1</b>	<b>171-379</b>	<b>.451</b>	<b>17-44</b>	<b>.386</b>	<b>95-153</b>	<b>.621</b>	<b>71</b>	<b>154</b>	<b>225</b>	<b>7.0</b>	<b>57-0</b>	<b>112</b>	<b>134</b>	<b>35</b>	<b>42</b>			<b>454</b>	<b>14.2</b>
<b>TOTAL</b>		<b>115-73</b>	<b>3066/26.7</b>	<b>406-876</b>	<b>.463</b>	<b>50-150</b>	<b>.333</b>	<b>177-320</b>	<b>.553</b>	<b>117</b>	<b>403</b>	<b>520</b>	<b>4.5</b>	<b>225-2</b>	<b>348</b>	<b>365</b>	<b>97</b>	<b>125</b>			<b>1039</b>	<b>9.0</b>

## Single Game Highs

Statistic	Value	
Points	27	at Penn St. 01/17/19, vs UConn 01/30/22
Rebounds	19	at Maine 11/13/21
Assists	12	at Cincinnati 11/13/19
Steals	6	at Rutgers 02/14/19
Blocks	4	at Maine 11/13/21
FG Made	12	at Penn St. 01/17/19
FG Attempts	20	at Maine 11/13/21
3FG Made	3	vs UConn 01/30/22
3FG Attempts	8	vs Georgetown 03/04/22
FT Made	11	vs Hartford 12/01/21
FT Attempts	13	vs Hartford 12/01/21

## #5 CROOMS, Janai

Opponent	Date	GS	MIN	Total		3-Pointers		Free throws		Rebounds												
				FG-FGA	PCT	3FG-3FGA	PCT	FT-FTA	PCT	OFF	DEF	TOT	AVG	PF	A	TO	BLK	STL	PTS	AVG		
Dayton	11/07/2022	*	35:31	7-13	.538	0-0	.000	6-9	.667	3	6	9	9.0	1	2	4	1	1	20	20.0		
Stonehill	11/11/2022	*	23:42	4-8	.500	0-0	.000	1-3	.333	1	2	3	6.0	3	3	1	2	0	9	14.5		
at Rhode Island	11/14/2022	*	34:36	11-16	.688	0-0	.000	2-4	.500	2	2	4	5.3	2	5	2	0	0	24	17.7		
Totals		3	93:49	22-37	.595	0-0	.000	9-16	.563	6	10	16	5.3	6	10	7	3	1	53	17.7		

## Player Averages

Games Played	Minutes/game	Points/game	FG Pct	3FG Pct	FT Pct	Rebounds/game	Assists/game	Turnovers/game	Assist/Turnover ratio	Steals/game	Blocks/game
3	31.3	17.7	59.5	0.0	56.3	5.3	3.3	2.3	1.4	0.3	1.0

# LAUREN SAMPSON #15

**SENIOR / GUARD/FORWARD / 6-0**

**WALTHAM, MASSACHUSETTS**

**WALTHAM**



## 2022-23 SEASON HIGHLIGHTS:

- Has appeared in two of the Friars' three games to start the season.
- Played nine minutes off the bench against Dayton (Nov. 7) and recorded one rebound.
- Logged 12 minutes against Stonehill (Nov. 11) and recorded one point, two rebounds, one assist, one steal and one blocked shot.

## 2021-22 SEASON HIGHLIGHTS:

- Played 26 games with 11 appearances in the starting line-up.
- Averaged 4.7 points and 2.2 rebounds per game.
- Reached double figures in the scoring column four times.
- Recorded double-digits in the scoring column in back-to-back game for the first time in her career, with 12 points against St. John's (Feb. 20) and 10 points against Marquette (Feb. 25).
- Her 12 points against St. John's (Feb. 20) marked a career high.
- Dished a career-high two assists in five games during the season.
- Grabbed a career-high six rebounds against DePaul (Jan. 7) and added eight points and one assist.
- Collected a career-high two steals in three games and also recorded a career-high two blocked shots on three different occasions.

## 2020-21 SEASON HIGHLIGHTS:

- Appeared in 20 of the Friars' 21 games.
- Averaged 2.8 points and 0.7 rebounds per game.
- Scored a career-high 10 points in a win over Butler during the regular season (Dec. 5).
- Shot 3-6 from the field vs. the Bulldogs, including 2-5 from three-point territory.
- Played a critical role in the Friars' BIG EAST Tournament First-Round victory over Butler on March 5 at Mohegan Sun Arena.
- She scored nine points in the win against Butler and made a career-high three, three-point field goals (Mar. 5).
- Hit multiple three-point baskets in five games during the season.
- Registered three blocked shots on the season, including a career-high two rejections against URI (Nov 28).

## 2019-20 SEASON HIGHLIGHTS:

- Played nine games in her rookie season with the Friars.
- Averaged 1.7 points per game.
- Recorded a season-best six points and two assists against Seton Hall on Jan. 19.
- Shot .417 from three-point territory on the year (5-12), including a 2-4 performance against Seton Hall (Jan. 19).

## BEFORE PROVIDENCE:

- Attended Waltham High School, where she was a three-year captain.
- Averaged 20.4 points, 8.5 rebounds and 1.3 assists per game as a senior in 2018-19.
- Averaged 16.6 points per game during her career and scored more than 1,300 points.
- Two-time Boston Herald All-Scholastic (2017-18, 2018-19).
- Boston Herald Dream Team selection (2018-19).
- Boston Globe All-Scholastic and Super Team selection (2018-19).
- Three-time Dual County All-Star (2016-17, 2017-18, 2018-19).
- Dual County League Co-Most Valuable Player (2018-19).
- Helped team qualify for Massachusetts State Tournament in three of her four years, and claimed one Dual County League Championship.
- Played AAU basketball for the Bay State Jaguars.

## MISCELLANEOUS

Double-Digit Scoring Games .....	5
20+ Point Games .....	0
Double-Digit Rebounding Games .....	0
5+ Assist Games .....	0
5+ Steal Games .....	0
Double-Doubles .....	0

## HONORS / AWARDS

- BIG EAST All-Academic Team • 2020, 2021

## PERSONAL

- Daughter of David & Lisa Sampson
- Has one sister, Julia
- History/secondary education major

## SAMPSON, Lauren

				Field Goals		3-Point		F-Throws		Rebounds										Scoring	
SEASON	TEAM	GP-GS	MIN/AVG	FG-FGA	FG%	3FG-3FGA	3FG%	FT-FTA	FT%	OFF	DEF	TOT	AVG	PF-FO	A	TO	BLK	STL		PTS	AVG
2019-20	PROV	9-0	37/4.1	5-15	.333	5-12	.417	0-0	.000	1	3	4	0.4	4-0	2	5	0	0		15	1.7
2020-21	PROV	20-0	210/10.5	17-67	.254	14-58	.241	7-11	.636	5	8	13	0.7	8-0	4	12	3	2		55	2.8
2021-22	PROV	26-11	564/21.7	41-135	.304	28-102	.275	11-15	.733	7	51	58	2.2	20-0	19	26	7	7		121	4.7
2022-23	PROV	2-0	21/10.5	0-4	.000	0-3	.000	1-2	.500	0	3	3	1.5	0-0	1	1	1	1		1	0.5
TOTAL		57-11	832/14.6	63-221	.285	47-175	.269	19-28	.679	13	65	78	1.4	32-0	26	44	11	10		192	3.4

## Single Game Highs

Statistic	Value	
Points	12	at St. John's (NY) 02/20/22
Rebounds	6	vs DePaul 01/07/22
Assists	2	6 times
Steals	2	vs Bryant 11/29/20, at Xavier 01/11/22, vs St. John's (NY) 01/14/22
Blocks	2	at Rhode Island 11/28/20, at St. John's (NY) 02/20/22, vs Hartford 12/01/21
FG Made	4	vs Marquette 02/25/22
FG Attempts	10	vs Massachusetts 11/23/21, vs Georgetown 12/05/21
3FG Made	3	vs Butler 03/05/21, vs Georgetown 12/05/21
3FG Attempts	8	vs Butler 03/05/21, vs Georgetown 12/05/21
FT Made	4	at St. John's (NY) 02/20/22
FT Attempts	6	at Marquette 12/04/20

## #15 SAMPSON, Lauren

				Total		3-Pointers		Free throws		Rebounds											
Opponent	Date	GS	MIN	FG-FGA	PCT	3FG-3FGA	PCT	FT-FTA	PCT	OFF	DEF	TOT	AVG	PF	A	TO	BLK	STL	PTS	AVG	
Dayton	11/07/2022		08:45	0-0	.000	0-0	.000	0-0	.000	0	1	1	1.0	0	0	0	0	0	0	0.0	
Stonehill	11/11/2022		12:14	0-4	.000	0-3	.000	1-2	.500	0	2	2	1.5	0	1	1	1	1	1	0.5	
Totals		0	20:59	0-4	.000	0-3	.000	1-2	.500	0	3	3	1.5	0	1	1	1	1	1	0.5	

## Player Averages

Games Played	Minutes/game	Points/game	FG Pct	3FG Pct	FT Pct	Rebounds/game	Assists/game	Turnovers/game	Assist/Turnover ratio	Steals/game	Blocks/game
2	10.5	0.5	0.0	0.0	50.0	1.5	0.5	0.5	1.0	0.5	0.5

# GRACE EFOSA #2

**JUNIOR / GUARD / 5-11**

**LAWRENCE, MASSACHUSETTS**

**WHITTIER TECH**



## 2022-23 SEASON HIGHLIGHTS:

- Started all three games for the Friars this season.
- Averaging 9.0 points, 4.0 rebounds, 2.0 assists and 1.0 steal per game.
- Ranks second on the team in assists.
- Has recorded double digits in the scoring column in two of the Friars' three games.
- Entered the season with just one double-digit game in 27 career games.
- Netted 10 points in the season opener vs. Dayton and added three rebounds, three assists and one steal.
- Eight of her 10 points against Dayton came in the second half, including six points in the final 3:41 of regulation.
- Recorded four points, one steal and a career-best seven rebounds against Stonehill (Nov. 11).
- Scored a career-high 13 points against Rhode Island (Nov. 14) on 5-9 shooting, including 1-1 from beyond the arc. It marked the first three-point bucket of her career and was her first attempt of the season (second of her career).

## 2021-22 SEASON HIGHLIGHTS:

- Played 17 games and appeared in the starting line-up in two games.
- Averaged 2.8 points and 2.1 rebounds per game.
- Missed the Friars' first 12 games while rehabbing an injury she sustained at the end of the 2020-21 season.
- Made her season debut on Jan. 7 against DePaul.
- Scored a career-high 10 points against Butler (Feb. 16) on 4-6 shooting from the field. Also grabbed a season-high five rebounds.
- Dished a career-high four assists against Marquette (Feb. 25) and added nine points on 4-4 shooting from the field.
- Matched her season high of five rebounds in two additional games vs. St. John's (Feb. 20) and Georgetown in the First Round of the 2022 BIG EAST Tournament (March 4).
- Added three assists and two steals vs. the Hoyas in the BIG EAST Tournament (March 4).

## 2020-21 SEASON HIGHLIGHTS:

- Played 20 of the Friars' 21 games, with one appearance in the starting line-up.
- Her first collegiate start with the Friars came during a 60-48 win at Creighton (Feb. 10).
- Averaged 2.4 points and 2.4 rebounds per game.
- Shot 44.7-percent from the field (21-47).
- Scored a career-high six points in games against Rhode Island (Nov. 28) and St. John's (Dec. 19).
- In the game against Rhode Island, she shot 3-3 from the field and grabbed three boards.
- Hauled in a career-high six rebounds against Seton Hall (Jan. 3).

## BEFORE PROVIDENCE:

- Attended Whittier Tech, where she played three seasons of basketball.
- A three-time Eagle-Tribune All-Star.
- Eagle-Tribune Most Valuable Player.
- Averaged 24.5 points, 8.0 rebounds and 6.0 assists per game in 2019-20.
- Averaged 23.4 points per game as a sophomore and 14.8 points per contest as a rookie.
- Missed the 2018-20 season due to injury.
- Helped guide her team to two league championships (2017, 2020).
- Four-time All-Scholastic Honor Roll selection.
- All-State performer in the triple-jump.
- Played AAU for Evolution Basketball.

## MISCELLANEOUS CAREER

Double-Digit Scoring Games .....	3
20+ Point Games .....	0
Double-Digit Rebounding Games .....	0
5+ Assist Games .....	0
5+ Steal Games .....	0
Double-Doubles .....	0

## PERSONAL

- Daughter of Esosa Omoridion & Efosa Aguebor
- Has three brothers, Junior, Osayuki and Ebe
- Has one sister, Omosede
- Social science major

## EFOSA, Grace

				Field Goals		3-Point		F-Throws		Rebounds										Scoring	
SEASON	TEAM	GP-GS	MIN/AVG	FG-FGA	FG%	3FG-3FGA	3FG%	FT-FTA	FT%	OFF	DEF	TOT	AVG	PF-FO	A	TO	BLK	STL		PTS	AVG
2020-21	PROV	20-1	300/15.0	21-47	.447	0-1	.000	6-13	.462	21	27	48	2.4	19-0	17	41	0	6		48	2.4
2021-22	PROV	17-2	223/13.1	17-48	.354	0-0	.000	14-18	.778	7	28	35	2.1	17-0	11	19	2	7		48	2.8
2022-23	PROV	3-3	75/24.9	9-26	.346	1-1	1.000	8-12	.667	3	9	12	4.0	5-0	6	5	0	3		27	9.0
TOTAL		40-6	597/14.9	47-121	.388	1-2	.500	28-43	.651	31	64	95	2.4	41-0	34	65	2	16		123	3.1

## Single Game Highs

Statistic	Value	
Points	13	at Rhode Island 11/14/22
Rebounds	7	vs Stonehill 11/11/22
Assists	4	vs Marquette 02/25/22
Steals	2	5 times
Blocks	2	at Seton Hall 02/18/22
FG Made	5	at Rhode Island 11/14/22
FG Attempts	9	vs Dayton 11/07/22, at Rhode Island 11/14/22
3FG Made	1	at Rhode Island 11/14/22
3FG Attempts	1	at UConn 01/09/21, at Rhode Island 11/14/22
FT Made	4	vs Dayton 11/07/22
FT Attempts	4	5 times

## #2 EFOSA, Grace

				Total		3-Pointers		Free throws		Rebounds											
Opponent	Date	GS	MIN	FG-FGA	PCT	3FG-3FGA	PCT	FT-FTA	PCT	OFF	DEF	TOT	AVG	PF	A	TO	BLK	STL		PTS	AVG
Dayton	11/07/2022	*	23:50	3-9	.333	0-0	.000	4-4	1.000	0	3	3	3.0	2	3	2	0	1		10	10.0
Stonehill	11/11/2022	*	21:39	1-8	.125	0-0	.000	2-4	.500	2	5	7	5.0	0	0	0	0	1		4	7.0
at Rhode Island	11/14/2022	*	29:11	5-9	.556	1-1	1.000	2-4	.500	1	1	2	4.0	3	3	3	0	1		13	9.0
Totals		3	74:40	9-26	.346	1-1	1.000	8-12	.667	3	9	12	4.0	5	6	5	0	3		27	9.0

## Player Averages

Games Played	Minutes/game	Points/game	FG Pct	3FG Pct	FT Pct	Rebounds/game	Assists/game	Turnovers/game	Assist/Turnover ratio	Steals/game	Blocks/game
3	24.9	9.0	34.6	100.0	66.7	4.0	2.0	1.7	1.2	1.0	0.0

# BRYNN FARRELL #22

**JUNIOR / GUARD / 6-0**

**ORTLEY BEACH, NEW JERSEY**

**ST. ROSE / FLORIDA**



## 2022-23 SEASON HIGHLIGHTS:

- Has started all three of the Friars' games this season.
- Averaging 9.7 points, 3.7 rebounds and 1.3 steals per game.
- Ranks second on the team in field-goal percentage (.500, 10-20).
- Tied for first on the team in three-point percentage (.455, 5-11).
- Has tallied double digits in the scoring column in two of the Friars' three games.
- Made her debut with the Friars in the season opener vs. Dayton (Nov. 7) and recorded 10 points, two rebounds and one steal.
- Scored a season-high 12 points against Stonehill (Nov. 11) and recorded career highs in rebounds (seven) and steals (three).
- Recorded seven points on 3-4 shooting from the field (1-1 from three) and added two rebounds against Rhode Island (Nov. 14).

## BEFORE PROVIDENCE:

- Played two seasons of NCAA Division I Basketball at Florida (2020-22).
- Played 28 games for the Gators after being slowed by an injury.
- Averaged 2.9 points and 1.0 rebound per game and connected on 22-28 free throw attempts in two seasons (.786).
- Scored a career-high 17 points against Grambling on Nov. 19, 2021.
- Played two seasons of high school hoops at Metuchen before transferring to St. Rose for her final two seasons.
- Earned a four-star grade from ProspectsNation and was assigned an 89 overall scouts grade via espnW
- Ranked No. 28 overall at the wing position (espnW).
- Ranked No. 123 overall in the class of 2020 by ProspectsNation.
- Scored over 2,000 points during her high school career.
- 2020 McDonald's All-American Game nominee.
- Earned NJ.com First Team All-State and First Team All-Non-Public honors.
- A three-time All-State selection overall and also was named First Team All-Shore.
- Averaged 18 points per game and led her St. Rose squad to its second-straight Non-Public A title as a junior.
- Eclipsed the 1,000 point scoring mark just seven games into her junior season.
- As a freshman, led the state of New Jersey in scoring, averaging 28.1 points to go with 12.8 rebounds per game.
- Played AAU ball for Exodus.
- MVP of the Battle of the Boro Sophomore Showcase Championship and led her team to a Silver Bracket title at the Nike Championships in Atlanta.

## MISCELLANEOUS CAREER

Double-Digit Scoring Games .....	3
20+ Point Games .....	0
Double-Digit Rebounding Games .....	0
5+ Assist Games .....	0
5+ Steal Games .....	0
Double-Doubles .....	0

## HONORS / AWARDS

- SEC Winter Academic Honor Roll • 2021-22
- SEC Community Service Team • 2021-22

## PERSONAL

- Daughter of Christine and Michael Farrell
- Father played basketball at Montclair State
- Has one sister, Kerri
- Has one brother, Luke
- Management major

## FARRELL, Brynn

				Field Goals		3-Point		F-Throws		Rebounds									Scoring	
SEASON	TEAM	GP-GS	MIN/AVG	FG-FGA	FG%	3FG-3FGA	3FG%	FT-FTA	FT%	OFF	DEF	TOT	AVG	PF-FO	A	TO	BLK	STL	PTS	AVG
2020-21	UF	15-1	171/11.4	15-43	.349	7-24	.292	14-20	.700	6	10	16	1.1	20-0	4	7	0	1	51	3.4
2021-22	UF	13-0	70/5.4	8-28	.286	5-21	.238	8-8	1.000	4	4	8	0.6	9-0	0	1	0	0	29	2.2
2022-23	PROV	3-3	76/25.3	10-20	.500	5-11	.455	4-6	.667	0	11	11	3.7	5-0	0	3	1	4	29	9.7
TOTAL FOR PROV		3-3	76/25.3	10-20	.500	5-11	.455	4-6	.667	0	11	11	3.7	5-0	0	3	1	4	29	9.7
TOTAL		31-4	317/10.2	33-91	.363	17-56	.304	26-34	.765	10	25	35	1.1	34-0	4	11	1	5	109	3.5

## Single Game Highs

Statistic	Value	
Points	17	vs Grambling 11/19/21
Rebounds	7	vs Stonehill 11/11/22
Assists	2	at Missouri 02/21/21
Steals	3	vs Stonehill 11/11/22
Blocks	1	vs Stonehill 11/11/22
FG Made	5	vs Grambling 11/19/21
FG Attempts	9	at Missouri 02/21/21, vs Stonehill 11/11/22
3FG Made	3	vs Grambling 11/19/21
3FG Attempts	6	at Missouri 02/21/21
FT Made	4	vs Charlotte 03/19/21, vs Grambling 11/19/21
FT Attempts	5	at LSU 02/11/21, vs Charlotte 03/19/21

## #22 FARRELL, Brynn

Opponent	Date	GS	MIN	Total		3-Pointers		Free throws		Rebounds				PF	A	TO	BLK	STL	PTS	AVG
				FG-FGA	PCT	3FG-3FGA	PCT	FT-FTA	PCT	OFF	DEF	TOT	AVG							
Dayton	11/07/2022	*	30:35	3-7	.429	2-5	.400	2-2	1.000	0	2	2	2.0	2	0	1	0	1	10	10.0
Stonehill	11/11/2022	*	24:07	4-9	.444	2-5	.400	2-2	1.000	0	7	7	4.5	0	0	0	1	3	12	11.0
at Rhode Island	11/14/2022	*	21:05	3-4	.750	1-1	1.000	0-2	.000	0	2	2	3.7	3	0	2	0	0	7	9.7
Totals		3	75:47	10-20	.500	5-11	.455	4-6	.667	0	11	11	3.7	5	0	3	1	4	29	9.7

## Player Averages

Games Played	Minutes/ game	Points/ game	FG Pct	3FG Pct	FT Pct	Rebounds/ game	Assists/ game	Turnovers/ game	Assist/Turnover ratio	Steals/ game	Blocks/ game
3	25.3	9.7	50.0	45.5	66.7	3.7	0.0	1.0	0.0	1.3	0.3

# KYLEE SHEPPARD #1

**SOPHOMORE / GUARD / 5-9**

**CINCINNATI, OHIO**

**ROGER BACON**



## 2022-23 SEASON HIGHLIGHTS:

- Has played in one of the Friars' three games to start season, missing each of the last two with an injury.
- Appeared in the starting line-up and played 16 minutes in the season opener vs. Dayton (Nov. 7).
- Recorded six points, two rebounds, one assist and one steal vs. the Flyers.

## 2021-22 SEASON HIGHLIGHTS:

- Played in 20 games with 19 appearances in the starting line-up.
- Missed 10 games with an injury, including a stretch of seven-straight in the early portion of the season.
- Averaged 9.6 points, 3.2 rebounds, 2.1 assists and 1.5 steals per game.
- Finished the year ranked third on the team in scoring and second in assists and steals.
- Recorded eight double-digit scoring games, including seven double-digit games in BIG EAST play.
- Registered two 20+ point games, both of which came during BIG EAST regular-season action.
- Shot 40.2-percent from the field (68-169), including 24-68 from three-point land (.353).
- Hit double figures for the first time in her career with 18 points against Boston College (Nov. 20) and added seven rebounds and three steals.
- Recorded a career-best 22 points and six assists against DePaul (Jan. 7) on 9-12 shooting from the field.
- Paced the Friars with 13 points in a win against Xavier during her return home to Cincinnati. Also added four rebounds, three assists and three steals. Hit a pair of free throws [her only foul shots of the game] with 22-seconds left in regulation to give the Friars a three-point cushion en route to the 54-49 win.
- Recorded 21 points, seven rebounds, four assists and three steals in the Friars win over Georgetown (Jan. 23). Seven of her 21 points came during over-time to help clinch victory (66-58 OT).
- Named to BIG EAST Weekly Honor Roll on Jan. 24.
- A unanimous selection to the BIG EAST All-Freshman Team, which was released prior to the BIG EAST Tournament on March 3, 2022.

## BEFORE PROVIDENCE:

- Attended Roger Bacon High School.
- As a senior, averaged 13.9 points, 4.1 rebounds, 3.0 assists and 2.5 steals.
- Finished her career ranked sixth all-time in scoring at Roger Bacon, with 938 points (3 seasons).
- Completed high school career ranked third all-time in assists (304), steals (221) and fourth in three-point field goals made (87).
- All-State honoree as a senior and two-time All-District selection.
- Three-time First-Team All-GCL COED, All-District and All-City selection.
- Helped guide her team to two GCL COED Championships (2019, 2020).
- Also helped lead Roger Bacon to its first District Championship in 15 years and its first regional appearance since 2005 (2020).
- Recipient of the Bron Bachevich Award which honors a two-sport athlete that excels in the classroom.
- Played AAU for the Cincinnati Angels.

## MISCELLANEOUS CAREER

Double-Digit Scoring Games .....	8
20+ Point Games .....	0
Double-Digit Rebounding Games .....	0
5+ Assist Games .....	2
5+ Steal Games .....	0
Double-Doubles .....	0

## PERSONAL

- Daughter of Mindy and Mark Sheppard
- Has one sister, Maddy
- Planned major of study is engineering

# SHEPPARD, Kylee

				Field Goals		3-Point		F-Throws		Rebounds										Scoring	
SEASON	TEAM	GP-GS	MIN/AVG	FG-FGA	FG%	3FG-3FGA	3FG%	FT-FTA	FT%	OFF	DEF	TOT	AVG	PF-FO	A	TO	BLK	STL		PTS	AVG
2021-22	PROV	20-19	583/29.2	68-169	.402	24-68	.353	27-36	.750	15	49	64	3.2	39-0	41	55	4	30		187	9.4
2022-23	PROV	1-1	16/16.2	3-7	.429	0-1	.000	0-1	.000	0	2	2	2.0	1-0	1	0	0	1		6	6.0
TOTAL		21-20	599/28.5	71-176	.403	24-69	.348	27-37	.730	15	51	66	3.1	40-0	42	55	4	31		193	9.2

## Single Game Highs

Statistic	Value	
Points	22	vs DePaul 01/07/22
Rebounds	7	at Georgetown 01/23/22, vs Boston College 11/20/21
Assists	6	vs DePaul 01/07/22, at DePaul 02/06/22
Steals	3	at Xavier 01/11/22, at Georgetown 01/23/22, vs Boston College 11/20/21
Blocks	1	4 times
FG Made	9	vs DePaul 01/07/22
FG Attempts	17	vs UConn 01/30/22
3FG Made	3	4 times
3FG Attempts	7	at Georgetown 01/23/22
FT Made	8	at Georgetown 01/23/22
FT Attempts	10	at Georgetown 01/23/22

## #1 SHEPPARD, Kylee

Opponent	Date			Total		3-Pointers		Free throws		Rebounds											
		GS	MIN	FG-FGA	PCT	3FG-3FGA	PCT	FT-FTA	PCT	OFF	DEF	TOT	AVG	PF	A	TO	BLK	STL		PTS	AVG
Dayton	11/07/2022	*	16:09	3-7	.429	0-1	.000	0-1	.000	0	2	2	2.0	1	1	0	0	1		6	6.0
Totals		1	16:09	3-7	.429	0-1	.000	0-1	.000	0	2	2	2.0	1	1	0	0	1		6	6.0

## Player Averages

Games Played	Minutes/ game	Points/ game	FG Pct	3FG Pct	FT Pct	Rebounds/ game	Assists/ game	Turnovers/ game	Assist/Turnover ratio	Steals/ game	Blocks/ game
1	16.2	6.0	42.9	0.0	0.0	2.0	1.0	0.0	1.0	1.0	0.0

# MEGHAN HUERTER #3

**SOPHOMORE / GUARD / 5-11**

**CLIFTON PARK, NEW YORK**

**SHENENDEHOWA**



## 2022-23 SEASON HIGHLIGHTS:

- Has played in all three games for the Friars.
- Averaging 5.3 points and 1.7 assists per game.
- Tied for the team lead in three-point field goal percentage (.455, 5-11).
- All 11 of her shot attempts overall have come from beyond the three-point arc.
- Played nine minutes in the season opener vs. Dayton (Nov. 7) and recorded four points and one rebound.
- Netted three points and dished a career-best two assists vs. Stonehill (Nov. 11).
- Scored a career-high nine points on 3-4 shooting from three-point territory vs. URI (Nov. 14) and dished a career-high three assists.

## 2021-22 SEASON HIGHLIGHTS:

- Played 23 games with one appearance in the starting line-up.
- Her first career start for the Friars came against UMass on Nov. 23.
- Averaged 2.0 points and 1.2 rebounds per game.
- Scored a season-high six points in her BIG EAST debut vs. Villanova (Dec. 3) and added two rebounds and one assist.
- Grabbed a season-best three rebounds in three games vs. Rhode Island (Nov. 17), Boston College (Nov. 20) and Brown (Dec. 8).
- Matched her season highs in scoring (six) and rebounding (three) against DePaul (Feb. 6). Shot 2-2 from the field, with both of her attempts from beyond the arc.

## BEFORE PROVIDENCE:

- Attended Shenendehowa High School, where she was a two-time team captain.
- Tied the record for most three pointers in a single game (seven) in four times during her career.
- As a senior, averaged 19.9 points, 8.2 rebounds, 3.9 assists, 2.4 steals and 1.8 blocked shots per game.
- Scored 1,048 points during her career and is the all-time leader at Shenendehowa in three-point field goals made (193).
- In 85 career games, averaged 12.3 points, 5.0 rebounds, 3.0 assists and 1.6 steals per game.
- Second-Team All-State and Suburban Council First-Team selection.
- Section 2 All-Star and was named Sectional Championship Most Valuable Player.
- Shenendehowa Trophy Award recipient (2021).
- Named 2020-21 Times Union Girls Winter Athlete of the Year
- Guided team to two Suburban Council Championships and two Section 2 Championships.
- Played AAU for Albany City Rocks.

## MISCELLANEOUS CAREER

Double-Digit Scoring Games .....	0
20+ Point Games .....	0
Double-Digit Rebounding Games .....	0
5+ Assist Games.....	0
5+ Steal Games .....	0
Double-Doubles .....	0

## PERSONAL

- Daughter of Tom and Erin Huarter
- Has one sister, Jillian
- Has two brothers, Thomas and Kevin
- Kevin was a first-round pick in the 2018 NBA Draft and currently plays for the Atlanta Hawks
- Played AAU ball with fellow Friar classmate Olivia Olsen
- Management major

## HUERTER, Meghan

				Field Goals		3-Point		F-Throws		Rebounds								Scoring		
SEASON	TEAM	GP-GS	MIN/AVG	FG-FGA	FG%	3FG-3FGA	3FG%	FT-FTA	FT%	OFF	DEF	TOT	AVG	PF-FO	A	TO	BLK	STL	PTS	AVG
2021-22	PROV	23-1	261/11.3	15-60	.250	13-45	.289	2-2	1.000	2	25	27	1.2	21-0	9	16	3	6	45	2.0
2022-23	PROV	3-0	44/14.7	5-11	.455	5-11	.455	1-2	.500	0	1	1	0.3	3-0	5	0	0	0	16	5.3
TOTAL		26-1	305/11.7	20-71	.282	18-56	.321	3-4	.750	2	26	28	1.1	24-0	14	16	3	6	61	2.3

## Single Game Highs

Statistic	Value	
Points	9	at Rhode Island 11/14/22
Rebounds	3	4 times
Assists	3	at Rhode Island 11/14/22
Steals	1	6 times
Blocks	1	vs Rhode Island 11/17/21, vs Monmouth 11/28/21, vs Creighton 12/19/21
FG Made	3	at Rhode Island 11/14/22
FG Attempts	7	vs Boston College 11/20/21
3FG Made	3	at Rhode Island 11/14/22
3FG Attempts	6	vs Boston College 11/20/21
FT Made	2	vs Monmouth 11/28/21
FT Attempts	2	vs Monmouth 11/28/21, vs Dayton 11/07/22

## #3 HUERTER, Meghan

				Total		3-Pointers		Free throws		Rebounds											
Opponent	Date	GS	MIN	FG-FGA	PCT	3FG-3FGA	PCT	FT-FTA	PCT	OFF	DEF	TOT	AVG	PF	A	TO	BLK	STL	PTS	AVG	
Dayton	11/07/2022		09:15	1-3	.333	1-3	.333	1-2	.500	0	1	1	1.0	0	0	0	0	0	4	4.0	
Stonehill	11/11/2022		15:53	1-4	.250	1-4	.250	0-0	.000	0	0	0	0.5	0	2	0	0	0	3	3.5	
at Rhode Island	11/14/2022		19:02	3-4	.750	3-4	.750	0-0	.000	0	0	0	0.3	3	3	0	0	0	9	5.3	
Totals		0	44:10	5-11	.455	5-11	.455	1-2	.500	0	1	1	0.3	3	5	0	0	0	16	5.3	

## Player Averages

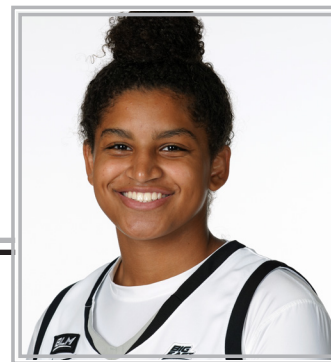
Games Played	Minutes/ game	Points/ game	FG Pct	3FG Pct	FT Pct	Rebounds/ game	Assists/ game	Turnovers/ game	Assist/Turnover ratio	Steals/ game	Blocks/ game
3	14.7	5.3	45.5	45.5	50.0	0.3	1.7	0.0	5.0	0.0	0.0

# NARIAH SCOTT #11

**SOPHOMORE / GUARD / 5-10**

**HOLDEN, MASSACHUSETTS**

**TABOR ACADEMY**



## 2022-23 SEASON HIGHLIGHTS:

- Has played three games with two appearances in the starting line-up.
- Averaging 4.7 points, 4.7 rebounds, 1.7 assists and a team-best 2.3 steals per game.
- Recorded four points, five rebounds and game-high three steals vs. Dayton in the season opener (Nov. 7).
- She also dished a game-high three assists against Dayton, which matched her career high as a Friar.
- Recorded two points, six rebounds and two steals against Stonehill (Nov. 11).
- Netted a season-high eight points against Rhode Island (Nov. 14) and also contributed three rebounds, two assists, two steals and a career-high two blocked shots.

## 2021-22 SEASON HIGHLIGHTS:

- Missed the Friars' first seven games with an injury.
- Played 22 games with five appearances in the starting line-up.
- Averaged 3.5 points and 2.9 rebounds per game.
- Recorded career highs in points (nine), rebounds (six) and assists (three) against Creighton on Jan. 28.
- Appeared in the starting line-up for the first time as a Friar on Jan. 30 against No. 10 Connecticut.
- Played a career-high 33 minutes against UConn and matched her career high with nine points and added five rebounds and a personal-best three steals.
- Collected a career high four steals against Butler (Feb. 11) and added three points and four rebounds.
- Matched her career high with three assists vs. Xavier (Feb. 13) and added three rebounds and two steals.
- Matched her career high in scoring against Seton Hall (Feb. 18) with nine points.

## BEFORE PROVIDENCE:

- Attended Tabor Academy for each of the last three years (2018-21).
- Attended Wachusett Regional High School for one year (2017-18).
- Two-time ISL Honorable Mention selection.
- Rose Classic All-Star Game MVP (2018).
- Two-time Rose Classic All-Tournament Team selection.
- Served as team captain during her senior year.
- Averaged 11.5 points and 4.0 rebounds in two games as a senior (2020-21).
- Averaged a career-best 11.7 points and 8.1 rebounds per game during her junior campaign (2019-20).
- Helped Tabor Academy claim the ISL Championship in 2019.
- Played AAU for the Bay State Jaguars.

## MISCELLANEOUS CAREER

Double-Digit Scoring Games .....	0
20+ Point Games .....	0
Double-Digit Rebounding Games .....	0
5+ Assist Games .....	0
5+ Steal Games .....	0
Double-Doubles .....	0

## PERSONAL

- Daughter of Jesse Scott
- Has two sisters, Kianna and Jaelynn
- Planned major of study is undecided

## SCOTT, Nariah

				Field Goals		3-Point		F-Throws		Rebounds										Scoring	
SEASON	TEAM	GP-GS	MIN/AVG	FG-FGA	FG%	3FG-3FGA	3FG%	FT-FTA	FT%	OFF	DEF	TOT	AVG	PF-FO	A	TO	BLK	STL		PTS	AVG
2021-22	PROV	22-5	349/15.8	28-94	.298	9-45	.200	12-19	.632	12	51	63	2.9	34-1	17	33	4	20		77	3.5
2022-23	PROV	3-2	80/26.6	6-22	.273	1-6	.167	1-2	.500	1	13	14	4.7	2-0	5	8	2	7		14	4.7
TOTAL		25-7	429/17.1	34-116	.293	10-51	.196	13-21	.619	13	64	77	3.1	36-1	22	41	6	27		91	3.6

## Single Game Highs

Statistic	Value	
Points	9	at Creighton 01/28/22, vs UConn 01/30/22, at Seton Hall 02/18/22
Rebounds	6	4 times
Assists	3	at Creighton 01/28/22, vs Xavier 02/13/22, vs Dayton 11/07/22
Steals	4	vs Butler 02/11/22
Blocks	2	at Rhode Island 11/14/22
FG Made	4	at Creighton 01/28/22
FG Attempts	10	vs Butler 02/11/22
3FG Made	1	10 times
3FG Attempts	7	vs Butler 02/11/22
FT Made	3	vs DePaul 01/07/22
FT Attempts	4	vs DePaul 01/07/22, at Seton Hall 02/18/22

## #11 SCOTT, Nariah

			Total			3-Pointers		Free throws		Rebounds											
Opponent	Date	GS	MIN	FG-FGA	PCT	3FG-3FGA	PCT	FT-FTA	PCT	OFF	DEF	TOT	AVG	PF	A	TO	BLK	STL	PTS	AVG	
Dayton	11/07/2022		26:06	2-9	.222	0-1	.000	0-0	.000	0	5	5	5.0	2	3	1	0	3	4	4.0	
Stonehill	11/11/2022	*	23:01	1-5	.200	0-2	.000	0-0	.000	1	5	6	5.5	0	0	2	0	2	2	3.0	
at Rhode Island	11/14/2022	*	30:46	3-8	.375	1-3	.333	1-2	.500	0	3	3	4.7	0	2	5	2	2	8	4.7	
Totals		2	79:53	6-22	.273	1-6	.167	1-2	.500	1	13	14	4.7	2	5	8	2	7	14	4.7	

## Player Averages

Games Played	Minutes/game	Points/game	FG Pct	3FG Pct	FT Pct	Rebounds/game	Assists/game	Turnovers/game	Assist/Turnover ratio	Steals/game	Blocks/game
3	26.6	4.7	27.3	16.7	50.0	4.7	1.7	2.7	0.6	2.3	0.7

# AUDREY KOCH #24

**SOPHOMORE / GUARD / 5-10**

**IOWA CITY, IOWA**

**IOWA CITY WEST**



## 2022-23 SEASON HIGHLIGHTS:

- Has appeared in three games and is averaging 2.0 points and 2.5 rebounds per game.
- Logged three minutes in the Friars' season opener vs. Dayton (Nov. 7) and grabbed one rebound.
- Played 25 minutes against Stonehill (Nov. 11) and recorded six points, seven rebounds, one assist and one block.
- She was one of three players to lead the team in rebounding with seven boards against the Skyhawks, joining Grace Efosa and Brynn Farrell.
- Registered three rebounds, one assist and one steal vs. Rhode Island (Nov. 14).

## 2021-22 SEASON HIGHLIGHTS:

- Played all 30 games and appeared in the starting line-up 16 times.
- One of only three players on the roster to appear in every game this season.
- Averaged 2.8 points and 2.3 rebounds per game.
- Dished a season-high three assists in her collegiate debut vs. Yale (Nov. 9).
- Collected a season-best four steals against Hartford (Dec. 1) and added five points, two rebounds and two blocked shots.
- Scored a career-best 13 points on 5-7 shooting from the field, including a 2-3 effort from beyond the arc against Creighton (Jan. 28).
- Pulled down a career-high eight rebounds against St. John's (Feb. 20) and added two assists and one steal.

## BEFORE PROVIDENCE:

- Attended Iowa City West, where she was a two-year captain.
- Averaged 18.9 points, 5.6 rebounds, 1.2 assists per game as a senior (2021).
- Tallied 18.5 points per game as a junior and 16.3 points per contest as a sophomore.
- Scored 1,250 career points at Iowa City West.
- First-Team All-State (2021), Second-Team All-State (2020), Third-Team All-State (2019).
- Two-time Missouri Valley Conference Player of the Year (2020, 2021)
- Three-time First-Team All-Conference selection (2019-20) and Honorable Mention pick in 2018).
- McDonald's All-American Nominee (2020).
- Also earned All-State and All-Conference honors in tennis.
- Played AAU basketball for IA Martin Brothers and IA Barnstormers.

## MISCELLANEOUS CAREER

Double-Digit Scoring Games .....	1
20+ Point Games .....	0
Double-Digit Rebounding Games .....	0
5+ Assist Games .....	0
5+ Steal Games .....	0
Double-Doubles .....	0

## PERSONAL

- Daughter of Bethany and Nathan Koch
- Has one sister, Emma
- Has one brother, Jacob
- High school teammates for one season with current Providence grad student Logan Cook at Iowa City West.
- Planned major of study is undecided

## KOCH, Audrey

				Field Goals		3-Point		F-Throws		Rebounds										Scoring	
SEASON	TEAM	GP-GS	MIN/AVG	FG-FGA	FG%	3FG-3FGA	3FG%	FT-FTA	FT%	OFF	DEF	TOT	AVG	PF-FO	A	TO	BLK	STL		PTS	AVG
2021-22	PROV	30-16	640/21.3	29-86	.337	9-29	.310	18-24	.750	24	44	68	2.3	59-1	23	35	7	19		85	2.8
2022-23	PROV	3-0	44/14.6	3-5	.600	0-0	.000	0-0	.000	4	7	11	3.7	3-0	2	3	1	1		6	2.0
<b>TOTAL</b>		<b>33-16</b>	<b>684/20.7</b>	<b>32-91</b>	<b>.352</b>	<b>9-29</b>	<b>.310</b>	<b>18-24</b>	<b>.750</b>	<b>28</b>	<b>51</b>	<b>79</b>	<b>2.4</b>	<b>62-1</b>	<b>25</b>	<b>38</b>	<b>8</b>	<b>20</b>		<b>91</b>	<b>2.8</b>

## Single Game Highs

Statistic	Value	
Points	13	at Creighton 01/28/22
Rebounds	8	at St. John's (NY) 02/20/22
Assists	3	vs Yale 11/09/21, vs DePaul 01/07/22
Steals	4	vs Hartford 12/01/21
Blocks	2	vs Monmouth 11/28/21, vs Hartford 12/01/21
FG Made	5	at Creighton 01/28/22
FG Attempts	8	vs Seton Hall 01/16/22
3FG Made	2	at Butler 02/16/22, at Creighton 01/28/22
3FG Attempts	4	at Butler 02/16/22
FT Made	5	vs Hartford 12/01/21
FT Attempts	6	vs Hartford 12/01/21

## #24 KOCH, Audrey

				Total		3-Pointers		Free throws		Rebounds											
Opponent	Date	GS	MIN	FG-FGA	PCT	3FG-3FGA	PCT	FT-FTA	PCT	OFF	DEF	TOT	AVG	PF	A	TO	BLK	STL	PTS	AVG	
Dayton	11/07/2022		02:52	0-0	.000	0-0	.000	0-0	.000	0	1	1	1.0	0	0	1	0	0	0	0.0	
Stonehill	11/11/2022		24:15	3-5	.600	0-0	.000	0-0	.000	3	4	7	4.0	3	1	2	1	0	6	3.0	
at Rhode Island	11/14/2022		16:33	0-0	.000	0-0	.000	0-0	.000	1	2	3	3.7	0	1	0	0	1	0	2.0	
Totals		0	43:40	3-5	.600	0-0	.000	0-0	.000	4	7	11	3.7	3	2	3	1	1	6	2.0	

## Player Averages

Games Played	Minutes/ game	Points/ game	FG Pct	3FG Pct	FT Pct	Rebounds/ game	Assists/ game	Turnovers/ game	Assist/Turnover ratio	Steals/ game	Blocks/ game
3	14.6	2.0	60.0	0.0	0.0	3.7	0.7	1.0	0.7	0.3	0.3

# OLIVIA OLSEN #31

**SOPHOMORE / FORWARD / 6-3**

**NISKAYUNA, NEW YORK**

**NISKAYUNA**



## **2022-23 SEASON HIGHLIGHTS:**

- Has started all three games for the Friars.
- Averaging 11.0 points and a team-best 6.3 rebounds per game.
- Averaging a team-best 2.3 offensive rebounds per game.
- Has reached double figures in the scoring column during two of the Friars' three games.
- Shooting .480 from the field (12-25), which is the third best percentage on the team.
- Shooting a team-best 0.818 from the foul line (9-11).
- Scored 15 points in the Friars' season opener vs. Dayton (Nov. 7) on 5-11 shooting from the field and 5-5 performance from the foul line.
- Also added seven rebounds and one blocked shot vs. Dayton.
- Recorded a team-high 13 points and added five boards and one steal against Stonehill on Nov. 11.
- Notched five points, seven rebounds and one steal against URI (Nov. 14).

## **2021-22 SEASON HIGHLIGHTS:**

- Played 30 games for the Friars and appeared in the starting line-up five times.
- One of only three players on the roster to play in all 30 games.
- Finished fifth on the team in scoring (6.8 ppg) and second in rebounding (5.6 rpg).
- Recorded two double-doubles during her rookie season.
- Compiled eight double-digit scoring games and three double-digit rebounding games.
- Shot a team-best .529 from the field (83-157).
- Led the team in rebounding 11 times on the season, including eight of the last nine games to finish the year.
- Ranked second on the team in offensive rebounds (60) and recorded a total of 169 rebounds on the year.
- Swatted a season-best five shots against Hartford (Dec. 1).
- Registered her first career double-double on Jan. 16 against Seton Hall with 10 points and a career-high 12 rebounds.
- Notched her second career double-double on Feb. 11 against Butler with 13 points and 11 boards.
- Registered a career-high 17 points against Xavier (Feb. 13) on 7-9 shooting. Also recorded nine rebounds and four blocked shots.
- Led the team in rebounding (six) in her BIG EAST Tournament debut against Georgetown (March 4).

## **BEFORE PROVIDENCE:**

- Attended Niskayuna High School, where she was a three-time team MVP.
- Served as team captain during her senior year.
- First-Team All-State selection and two-time First-Team All-Area.
- Two-time News Channel 13 All-Star
- Averaged 21.0 points, 12.0 rebounds, 8.0 blocks and 3.0 steals per game during her three-year varsity career.
- Scored 1,114 points in three seasons and ranks second all-time in scoring at Niskayuna for both girls' and boys' basketball.
- Averaged a triple-double in points, rebounds and blocks during each of her final two seasons.
- Earned distinguished athlete award her senior year
- Earned suburban council excellent athletic leadership award
- Played AAU for Albany City Rocks.

## **MISCELLANEOUS CAREER**

Double-Digit Scoring Games .....	10
20+ Point Games .....	0
Double-Digit Rebounding Games .....	3
5+ Assist Games .....	0
5+ Steal Games .....	0
5+ Block Games .....	1
Double-Doubles .....	2

## **PERSONAL**

- Daughter of Kelly and James Olsen
- Has two brothers, Gavin and Brady
- Played AAU ball with fellow Friar classmate Meghan Huerter
- Marketing major

## OLSEN, Olivia

				Field Goals		3-Point		F-Throws		Rebounds										Scoring	
SEASON	TEAM	GP-GS	MIN/AVG	FG-FGA	FG%	3FG-3FGA	3FG%	FT-FTA	FT%	OFF	DEF	TOT	AVG	PF-FO	A	TO	BLK	STL		PTS	AVG
2021-22	PROV	30-5	600/20.0	83-157	.529	0-0	.000	39-60	.650	60	109	169	5.6	30-0	15	36	28	11		205	6.8
2022-23	PROV	3-3	77/25.7	12-25	.480	0-0	.000	9-11	.818	7	12	19	6.3	3-0	0	5	1	2		33	11.0
TOTAL		33-8	678/20.5	95-182	.522	0-0	.000	48-71	.676	67	121	188	5.7	33-0	15	41	29	13		238	7.2

## Single Game Highs

Statistic	Value	
Points	17	vs Xavier 02/13/22
Rebounds	12	vs Seton Hall 01/16/22
Assists	2	vs Seton Hall 01/16/22, at DePaul 02/06/22, at St. John's (NY) 02/20/22
Steals	1	13 times
Blocks	5	vs Hartford 12/01/21
FG Made	7	vs Xavier 02/13/22
FG Attempts	12	vs Butler 02/11/22
FT Made	5	vs Dayton 11/07/22
FT Attempts	6	at Villanova 01/21/22

## #31 OLSEN, Olivia

				Total		3-Pointers		Free throws		Rebounds											
Opponent	Date	GS	MIN	FG-FGA	PCT	3FG-3FGA	PCT	FT-FTA	PCT	OFF	DEF	TOT	AVG	PF	A	TO	BLK	STL		PTS	AVG
Dayton	11/07/2022	*	27:46	5-11	.455	0-0	.000	5-5	1.000	3	4	7	7.0	2	0	1	1	0		15	15.0
Stonehill	11/11/2022	*	22:57	5-8	.625	0-0	.000	3-4	.750	2	3	5	6.0	0	0	1	0	1		13	14.0
at Rhode Island	11/14/2022	*	26:30	2-6	.333	0-0	.000	1-2	.500	2	5	7	6.3	1	0	3	0	1		5	11.0
Totals		3	77:13	12-25	.480	0-0	.000	9-11	.818	7	12	19	6.3	3	0	5	1	2		33	11.0

## Player Averages

Games Played	Minutes/game	Points/game	FG Pct	3FG Pct	FT Pct	Rebounds/game	Assists/game	Turnovers/game	Assist/Turnover ratio	Steals/game	Blocks/game
3	25.7	11.0	48.0	0.0	81.8	6.3	0.0	1.7	0.0	0.7	0.3

# EMILY ARCHIBALD #33

**SOPHOMORE / FORWARD / 6-0**

**KENNEBUNK, MAINE**

**KENNEBUNK**



## 2022-23 SEASON HIGHLIGHTS:

- Has appeared in all three games for the Friars.
- Averaging 2.7 points, 3.7 rebounds, 1.0 assist and 1.0 steal per game.
- Played nine minutes in the Friars' season opener vs. Dayton (Nov. 7) and recorded two rebounds and two steals.
- Logged 17 minutes against Stonehill (Nov. 11) and recorded two points, one rebound and one steal.
- Stuffed the stat sheet against URI on Nov. 14 with six points, a team-best eight rebounds, three assists and one blocked shot. Each of her totals marked season highs.

## 2021-22 SEASON HIGHLIGHTS:

- Played in 24 games with 16 appearances in the starting line-up.
- Averaged 6.3 points and 3.0 rebounds per game.
- Shot 44.5-percent from the floor (57-128), including 47.7-percent from three-point range (21-44).
- Also shot 81-percent from the free-throw line (17-21).
- Reached double figures in the scoring column five times, including two games with 20+ points.
- In her collegiate debut against Yale (Nov. 9), recorded 10 points, five rebounds and two assists.
- The two-time Maine Gatorade Player of the Year dropped 20 points on the Maine Black Bears (Nov. 13), marking her first 20-point game. She shot 8-14 from the field and added six rebounds and two steals against Maine.
- Scored 18 points and added three assists, two rebounds and two steals against Hartford (Dec. 1).
- Scored five of her eight points during the fourth quarter in a 54-49 victory over Xavier on Jan. 11. She helped seal the victory by sinking a pair of free throws with two-seconds left in regulation to give the Friars a five-point cushion.
- Recorded a career-high 21 points in the Friars' BIG EAST Tournament First Round game against Georgetown (March 4). She shot 7-9 from the floor, including an impressive 6-8 performance from beyond the three-point arc.
- Her 21 points marked the most by a Providence College freshman and also the most by a Friar off the bench in a BIG EAST Tournament game since Jennifer Davis '97 scored 23 points on March 5, 1994 against Boston College in the BIG EAST Tournament Quarterfinals.
- Became the first player since the 2016-17 season to come off the bench to score 20+ points in a game. Maddie Jolin '19 scored 22 points off the bench vs. Villanova on Jan. 8, 2017.

## BEFORE PROVIDENCE:

- Averaged 24.6 points, 20.7 rebounds, 3.2 assists, 3.5 steals and 3.7 blocked shots as a senior.
- Set single-game records at Kennebunk points (37), rebounds (27), blocks (10) and three-pointers (six).
- Set career record at Kennebunk for scoring average (17.4 ppg).
- Set season records at Kennebunk for rebounds (327), free throws (105), free-throw percentage (.802) and field-goal percentage (.601).
- Only player in school history to record more than 1,000 points, 1,000 rebounds, 200 assists, 200 steals and 200 blocked shots.
- Attended Kennebunk High School.
- Two-time Maine Gatorade Player of the Year (2020, 2021).
- Miss Maine Basketball (2021).
- Three-time All-State honoree (2019, 2020, 2021).
- Two-time SMAA Player of the Year (2019, 2020).
- Two-time SMAA All-Defensive Team selection (2019, 2020).
- SMAA All-Rookie Team (2018).
- Kennebunk High School Betsy Ross Class of 2021 Best Female Athlete Award recipient.
- First-Team SMAA All-Conference selection in lacrosse and soccer.
- Played AAU basketball for the Southern Maine Shock.

## MISCELLANEOUS CAREER

Double-Digit Scoring Games .....	5
20+ Point Games .....	1
Double-Digit Rebounding Games .....	0
5+ Assist Games .....	0
5+ Steal Games .....	0
Double-Doubles .....	0

## PERSONAL

- Daughter of Michelle and Keith Archibald
- Has one brother, Connor
- Planned major of study is undecided

## ARCHIBALD, Emily

				Field Goals		3-Point		F-Throws		Rebounds									Scoring	
SEASON	TEAM	GP-GS	MIN/AVG	FG-FGA	FG%	3FG-3FGA	3FG%	FT-FTA	FT%	OFF	DEF	TOT	AVG	PF-FO	A	TO	BLK	STL	PTS	AVG
2021-22	PROV	24-16	547/22.8	57-128	.445	21-44	.477	17-21	.810	15	57	72	3.0	50-1	17	30	11	18	152	6.3
2022-23	PROV	3-0	47/15.8	2-8	.250	1-3	.333	3-4	.750	4	7	11	3.7	3-0	3	3	1	3	8	2.7
<b>TOTAL</b>		<b>27-16</b>	<b>595/22.0</b>	<b>59-136</b>	<b>.434</b>	<b>22-47</b>	<b>.468</b>	<b>20-25</b>	<b>.800</b>	<b>19</b>	<b>64</b>	<b>83</b>	<b>3.1</b>	<b>53-1</b>	<b>20</b>	<b>33</b>	<b>12</b>	<b>21</b>	<b>160</b>	<b>5.9</b>

## Single Game Highs

Statistic	Value	
Points	21	vs Georgetown 03/04/22
Rebounds	9	vs Monmouth 11/28/21
Assists	4	vs DePaul 01/07/22
Steals	3	vs Quinnipiac 12/11/21, vs St. John's (NY) 01/14/22
Blocks	2	vs Rhode Island 11/17/21, vs Quinnipiac 12/11/21
FG Made	8	at Maine 11/13/21
FG Attempts	14	at Maine 11/13/21
3FG Made	6	vs Georgetown 03/04/22
3FG Attempts	8	vs Georgetown 03/04/22
FT Made	4	vs Hartford 12/01/21
FT Attempts	6	vs Hartford 12/01/21

## #33 ARCHIBALD, Emily

				Total		3-Pointers		Free throws		Rebounds										
Opponent	Date	GS	MIN	FG-FGA	PCT	3FG-3FGA	PCT	FT-FTA	PCT	OFF	DEF	TOT	AVG	PF	A	TO	BLK	STL	PTS	AVG
Dayton	11/07/2022		08:18	0-0	.000	0-0	.000	0-0	.000	2	0	2	2.0	2	0	0	0	2	0	0.0
Stonehill	11/11/2022		16:51	0-5	.000	0-2	.000	2-2	1.000	0	1	1	1.5	0	0	1	0	1	2	1.0
at Rhode Island	11/14/2022		22:17	2-3	.667	1-1	1.000	1-2	.500	2	6	8	3.7	1	3	2	1	0	6	2.7
<b>Totals</b>		<b>0</b>	<b>47:26</b>	<b>2-8</b>	<b>.250</b>	<b>1-3</b>	<b>.333</b>	<b>3-4</b>	<b>.750</b>	<b>4</b>	<b>7</b>	<b>11</b>	<b>3.7</b>	<b>3</b>	<b>3</b>	<b>3</b>	<b>1</b>	<b>3</b>	<b>8</b>	<b>2.7</b>

## Player Averages

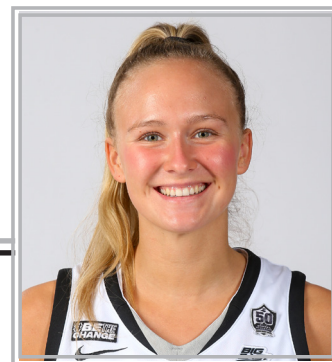
Games Played	Minutes/game	Points/game	FG Pct	3FG Pct	FT Pct	Rebounds/game	Assists/game	Turnovers/game	Assist/Turnover ratio	Steals/game	Blocks/game
3	15.8	2.7	25.0	33.3	75.0	3.7	1.0	1.0	1.0	1.0	0.3

# KAMMIE LUDWIG #30

**FRESHMAN / GUARD / 5-10**

**GENESEO, ILLINOIS**

**GENESEO**



## 2022-23 SEASON HIGHLIGHTS:

- Has appeared in one of the Friars' three games to start the season.
- Made her collegiate debut with the Friars on Nov. 11 against Stonehill and logged three minutes of action.

## BEFORE PROVIDENCE:

- Attended Geneseo High School.
- Two-time team captain during her junior and senior seasons (2020-22).
- Three-time Quad Cities All-Metro Player of the Year and Western Big 6 First-Team selection.
- Named to the 3A All-State Team and Illinois IBCA All-State Team.
- Averaged 24.6 points per game as a senior (2021-22) and 21.2 points per contest as a junior (2020-21).
- Surpassed the 1,000-point career milestone as a junior (2020-21).
- Finished her career as Geneseo's all-time leading scorer with 1,881 points.
- Also set Geneseo's single-season points record (791) and three point field goals in a single season (73).
- Played AAU basketball for All Iowa Attack.

## MISCELLANEOUS CAREER

Double-Digit Scoring Games .....	0
20+ Point Games .....	0
Double-Digit Rebounding Games .....	0
5+ Assist Games.....	0
5+ Steal Games .....	0
Double-Doubles .....	0

## PERSONAL

- Daughter of Jennifer and Justin Ludwig
- Has one sister, Keyaira
- Has one brother, Kruiz
- Planned major of study is biology

**LUDWIG, Kammie**

				Field Goals		3-Point		F-Throws		Rebounds									Scoring	
SEASON	TEAM	GP-GS	MIN/AVG	FG-FGA	FG%	3FG-3FGA	3FG%	FT-FTA	FT%	OFF	DEF	TOT	AVG	PF-FO	A	TO	BLK	STL	PTS	AVG
2022-23	PROV	1-0	3/2.6	0-0	.000	0-0	.000	0-0	.000	0	0	0	0.0	0-0	0	0	0	0	0	0.0
TOTAL		1-0	3/2.6	0-0	.000	0-0	.000	0-0	.000	0	0	0	0.0	0-0	0	0	0	0	0	0.0

**#30 LUDWIG, Kammie**

				Total		3-Pointers		Free throws		Rebounds										
Opponent	Date	GS	MIN	FG-FGA	PCT	3FG-3FGA	PCT	FT-FTA	PCT	OFF	DEF	TOT	AVG	PF	A	TO	BLK	STL	PTS	AVG
Stonehill	11/11/2022		02:36	0-0	.000	0-0	.000	0-0	.000	0	0	0	0.0	0	0	0	0	0	0	0.0
Totals		0	02:36	0-0	.000	0-0	.000	0-0	.000	0	0	0	0.0	0	0	0	0	0	0	0.0

### Player Averages

[illegible]



# 2022-23 Providence Women's Basketball Combined Team Statistics All games

Page 1/1  
as of Nov 15, 2022

## Game Records

Record	Overall	Home	Away	Neutral
ALL GAMES	2-1	2-0	0-1	0-0
CONFERENCE	0-0	0-0	0-0	0-0
NON-CONFERENCE	2-1	2-0	0-1	0-0

## Score by Periods

Team	1st	2nd	3rd	4th	OT	TOT
Providence	59	51	41	46	0	197
Opponents	47	38	37	44	0	166

## Team Box Score

No.	Player				Total		3-Point		F-Throw		Rebounds													
		GP-GS	MIN	AVG	FG-FGA	FG%	3FG-3FGA	3FG%	FT-FTA	FT%	OFF	DEF	TOT	AVG	PF	DQ	A	TO	BLK	STL	PTS	AVG		
5	CROOMS, Janai	3-3	93:49	31.3	22-37	.595	0-0	.000	9-16	.563	6	10	16	5.3	6	0	10	7	3	1	53	17.7		
31	OLSEN, Olivia	3-3	77:13	25.7	12-25	.480	0-0	.000	9-11	.818	7	12	19	6.3	3	0	0	5	1	2	33	11.0		
22	FARRELL, Brynn	3-3	75:47	25.3	10-20	.500	5-11	.455	4-6	.667	0	11	11	3.7	5	0	0	3	1	4	29	9.7		
2	EFOSA, Grace	3-3	74:40	24.9	9-26	.346	1-1	1.000	8-12	.667	3	9	12	4.0	5	0	6	5	0	3	27	9.0		
1	SHEPPARD, Kylee	1-1	16:09	16.2	3-7	.429	0-1	.000	0-1	.000	0	2	2	2.0	1	0	1	0	0	1	6	6.0		
3	HUERTER, Meghan	3-0	44:10	14.7	5-11	.455	5-11	.455	1-2	.500	0	1	1	0.3	3	0	5	0	0	0	16	5.3		
11	SCOTT, Nariah	3-2	79:53	26.6	6-22	.273	1-6	.167	1-2	.500	1	13	14	4.7	2	0	5	8	2	7	14	4.7		
33	ARCHIBALD, Emily	3-0	47:26	15.8	2-8	.250	1-3	.333	3-4	.750	4	7	11	3.7	3	0	3	3	1	3	8	2.7		
24	KOCH, Audrey	3-0	43:40	14.6	3-5	.600	0-0	.000	0-0	.000	4	7	11	3.7	3	0	2	3	1	1	6	2.0		
12	COOK, Logan	2-0	23:38	11.8	2-8	.250	0-0	.000	0-0	.000	3	2	5	2.5	2	0	0	1	0	1	4	2.0		
15	SAMPSON, Lauren	2-0	20:59	10.5	0-4	.000	0-3	.000	1-2	.500	0	3	3	1.5	0	0	1	1	1	1	1	0.5		
30	LUDWIG, Kammie	1-0	02:36	2.6	0-0	.000	0-0	.000	0-0	.000	0	0	0	0.0	0	0	0	0	0	0	0	0.0		
Team											3	12	15				2							
Total		3	600		74-173	.428	13-36	.361	36-56	.643	31	89	120	40.0	33	0	33	38	10	24	197	65.7		
Opponents		3	600		66-180	.367	19-70	.271	15-23	.652	29	79	108	36.0	48	0	29	45	7	21	166	55.3		

## Team Statistics

	PROV	OPP
<b>Scoring</b>	<b>197</b>	<b>166</b>
Points per game	65.7	55.3
Scoring margin	+10.3	-
<b>Field goals-att</b>	<b>74-173</b>	<b>66-180</b>
Field goal pct	.428	.367
<b>3 point fg-att</b>	<b>13-36</b>	<b>19-70</b>
3-point FG pct	.361	.271
3-pt FG made per game	4.3	6.3
<b>Free throws-att</b>	<b>36-56</b>	<b>15-23</b>
Free throw pct	.643	.652
F-Throws made per game	12.0	5.0
<b>Rebounds</b>	<b>120</b>	<b>108</b>
Rebounds per game	40.0	36.0
Rebounding margin	+4.0	-
<b>Assists</b>	<b>33</b>	<b>29</b>
Assists per game	11.0	9.7
<b>Turnovers</b>	<b>38</b>	<b>45</b>
Turnovers per game	12.7	15.0
Turnover margin	+2.3	-
Assist/turnover ratio	0.9	0.6
<b>Steals</b>	<b>24</b>	<b>21</b>
Steals per game	8.0	7.0
<b>Blocks</b>	<b>10</b>	<b>7</b>
Blocks per game	3.3	2.3
<b>Winning streak</b>	<b>0</b>	<b>-</b>
Home win streak	2	-
<b>Attendance</b>	<b>697</b>	<b>1065</b>
Home games-Avg/Game	2-349	1-1065
Neutral site-Avg/Game	-	0-0

## Team Results

Date	Opponent		Score	Att.
11/07/2022	Dayton	W	69-60	367
11/11/2022	Stonehill	W	56-32	330
11/14/2022	at Rhode Island	L	72-74	1065