



SAINT FRANCIS WOMEN'S BASKETBALL

• NEC-BEST 11 NEC TOURNAMENT TITLES

2017-18 GAME NOTES



Schedule/Results

November

Thurs. 2		UP-J (ex)	W, 94-60
Fri. 10		at Toledo	L, 74-66
Fri. 17		vs SEMO (at GMU-WNIT)	L 82-50
Sat. 18		vs Old Dominion (WNIT)	W, 79-68
Tue. 22		SETON HILL	W, 103-71
Mon. 27		at Cincinnati	7 P.M.
Thurs. 30		at Duquesne	7 P.M.

WBB CONTACT: DAN GRIFFIN | EMAIL: DGRIFIN@FRANCIS.EDU | (O) 814-472-3180

2-2 overall	0-0 NEC
Head Coach-6th year Joe Haigh	51-40 NEC 71-90 Overall
2-2 last 10	W2 Streak

Game
5

4-2 overall	0-0 AAC
Jamelle Elliott Ninth Season	97-151 at UC
4-2 last 10	W2 Streak

Saint Francis U at Cincinnati(Cincinnati State CC) Cincinnati, OH
Monday, November 27, 2017 (7PM)

December

Sat. 2		WILLIAM and MARY	2 P.M.
Wed. 6		at Columbia	TBA
Sat. 9		YOUNGSTOWN ST.	2 P.M.
Sun. 17		at Gonzaga	2 P.M. (PT)/5P.M. (ET)
Wed. 20		at Portland	1 P.M. (PT)/ 4 P.M. (ET)
Thurs. 2		at Boise State	5:30 P.M. (MT)/7:30P.M. (ET)
Fri. 29		at Sacred Heart*	1 P.M.
Sun. 31		at Fairleigh Dickinson*	2 P.M.

Tale of the Tape (2017-18)

74.5 PPG 73.8 opp. PPG	72.6 PPG 62 opp. PPG
33.7fg % 43.9opp. fg. %	47.1 fg % 35.4 opp. fg. %
25.4 3pt fg % 27.5 opp.3pt fg%	33.3 3pt fg % .33.3 opp.3pt fg%
75.3 FT % 62.4 opp. FT %	65.8 FT % 79.2 opp. FT %
45.8 RPG 41 opp RPG	39.4 RPG 31.0 opp RPG
14 APG 15 opp APG	15.4 APG 14.2 opp APG
20.5 TO PG 21.7 opp TO PG	18.2 TO PG 17.4 opp TO PG
5.8 Blocks PG 3.0 opp Blocks PG	2.2 Blocks PG 3.6 opp Blocks PG

Series Notes

Overall: Cincinnati 5-0

Streak: SFU L5

Last Red Flash Win: N/A

Game Coverage

Video: Bearcats TV

Radio: N/A

Live Stats: GoBearcats.com

January

Sat. 6		St. FRANCIS BROOKLYN*	1 P.M.
Mon. 8		LIU BROOKLYN*	6 P.M.
Sat. 13		at Robert Morris*	TBA
Sat. 20		MOUNT ST. MARY'S*	2 P.M.
Mon. 2		at Wagner*	7 P.M.
Sat. 27		CENTRAL CT. STATE*	2 P.M.
Mon. 29		BRYANT*	6 P.M.

February

Sat. 3		ROBERT MORRIS*	2 P.M.
Sat. 10		at St. Francis Brooklyn*	1 P.M.
Mon. 12		at LIU Brooklyn*	7 P.M.
Sat. 17		SACRED HEART*	4 P.M.
Mon. 19		FAIRLEIGH DICKINSON*	6 P.M.
Sat. 24		at Central Conn. State*	1 P.M.
Mon. 26		at Bryant*	7 P.M.

March

Fri. 2		at Mount St. Mary's	7 P.M.
Sun. 4		WAGNER	2 P.M.
Wed. 7		NEC Quarter Finals	

PROBABLE STARTERS



#24 Kyasiah Duling

Sr. Forward
5.5 PPG
8.0 RPG
2 APG



#34 Ace Harrison

Gr. Forward
14.0 PPG
7.0 RPG
2 SPG



#23 Jessica Kovatch

Jr. Guard
16 PPG
3.0 RPG
2 APG



#2 Caitlyn Kroll

Fr. Guard
11.3 PPG
5.3 RPG
3 APG



#10 Leah Morrow

Fr. Guard
4.3 PPG
3.0 RPG
2 APG



2017-18 Saint Francis U Basketball Roster

Numerical Roster

No.	Name	Yr.	Pos.	Ht.	Hometown / High School
2	Caitlyn Kroll	So.	G	5-10	Bridgeport, Ohio / Bridgeport
3	Karson Swogger	Fr.	G	5-8	Bellwood, PA / BellwoodAntis
4	Allison Shuke	Fr.	G/F	5-11	Bedford, PA / Bedford
10	Leah Morrow	Fr.	G/F	5-9	Columbus, Ohio / Columbus Africentric
12	Jenna Mastellone	Fr.	G	5-10	New York City / Archbishop Molloy
13	Sam Sabino	R-So.	G	5-9	Rumson, N.J. / Rumson Fair Haven (New Hampshire)
15	Maya Wynn	Sr.	G	5-11	Reisterstown, Md. / McDonogh
20	Caitlin Carroll	So.	G	5-9	Middletown, New Jersey / Red Bank Catholic
21	AJ Timbers	R-So.	G/F	6-0	Philadelphia, PA / Neumann Gorretti (Towson)
22	Jillian Scott	So.	F	5-11	Summerhill, Pa. / Forest Hills
23	Jessica Kovatch	Jr.	G	5-9	Phillipsburg, N.J. / Phillipsburg
24	Kyasia Duling	R-Sr.	F	6-3	Zanesville, Ohio / New Albany (Duquesne)
30	Jill Falvey	Jr.	F	6-0	Lincroft, N.J. / Middletown South
32	Courtney Zezza	Jr.	F/C	6-4	Plum, Pa. / Plum
33	Cydney Smith	R-Sr.	F/C	6-3	Port Tobacco, Md. / St. Mary's Ryken
34	Ace Harrison	Gr.	F	6-2	Baltimore, MD / Digital Harbor (Maryland)
51	Haley Thomas	Fr.	G/F	5-11	Hooversville, PA / Bishop McCort

Alphabetical Roster

No.	Name	Yr.	Pos.	Ht.	Hometown / High School
20	Caitlin Carroll	So.	G	5-9	Middletown, New Jersey / Red Bank Catholic
24	Kyasia Duling	R-Sr.	F	6-3	Zanesville, Ohio / New Albany (Duquesne)
30	Jill Falvey	Jr.	F	6-0	Lincroft, N.J. / Middletown South
34	Ace Harrison	Gr.	F	6-2	Baltimore, MD / Digital Harbor (Maryland)
23	Jessica Kovatch	Jr.	G	5-9	Phillipsburg, N.J. / Phillipsburg
2	Caitlyn Kroll	So.	G	5-10	Bridgeport, Ohio / Bridgeport
12	Jenna Mastellone	Fr.	G	5-10	New York City / Archbishop Molloy
10	Leah Morrow	Fr.	G/F	5-9	Columbus, Ohio / Columbus Africentric
13	Sam Sabino	R-So.	G	5-9	Rumson, N.J. / Rumson Fair Haven (New Hampshire)
22	Jillian Scott	So.	F	5-11	Summerhill, Pa. / Forest Hills
4	Allison Shuke	Fr.	G/F	5-11	Bedford, PA / Bedford
33	Cydney Smith	R-Sr.	F/C	6-3	Port Tobacco, Md. / St. Mary's Ryken
3	Karson Swogger	Fr.	G	5-8	Bellwood, PA / BellwoodAntis
51	Haley Thomas	Fr.	G/F	5-11	Hooversville, PA / Bishop McCort
21	AJ Timbers	R-So.	G/F	6-0	Philadelphia, PA / Neumann Gorretti (Towson)
15	Maya Wynn	Sr.	G	5-11	Reisterstown, Md. / McDonogh
32	Courtney Zezza	Jr.	F/C	6-4	Plum, Pa. / Plum
51	Haley Thomas	Fr.	G/F	5-11	Hooversville, PA / Bishop McCort

Pronunciation Guide

#4 Shuke (Shook)

#24 Kyasia Duling (Ky-A-Zuh Dooling)

Joe Haigh (hay-guh)

Kyle Hejmowski (Hedge-mowski)

Rachel Halaszynski (Hal-uh-zin-ski)

Janicia-(Juh-knee-she-uh)

Head Coach: Joe Haigh (Notre Dame '95)

Assistant Coaches: Kyle Hejmowski (Canisius '03)

Vanessa Abel (Duquesne '10)

Janicia Anderson (Wilberforce '10)

Director of Operations: Rachel Halaszynski (PSU- McKeesport '12)



OPPONENT NOTES

- The Bearcats were picked to finish 8th in the American Athletic Conference
- UC's home arena, 5/3, is under construction, Monday's game will be played at Cincinnati State
- liMar'i Thomas leads the team in scoring, coming off the bench to average over 13 points per game
- The Bearcats are a balanced team with four players averaging at least 9 points and six averaging at least six
- Cincinnati is 1-0 so far this season at Cincinnati State, a 85-52 win over Slippery Rock, all other home games this season have been at Saint Ursula Academy

Cincinnati (0-5)

Home: 0-0; Away: 0-5; Neutral: 0-0

Year	W/L	SFU	Opp	Site
2001-02	L	49	76	A
2005-06	L	39	74	A
2006-07	L	51	83	A
2008-09	L	65	75	A
2015-16	L	86	93	A

LAST TIME OUT

- The Bearcats got by Eastern Kentucky 64-53
- UC used a 16-0 second-quarter run to put the game out of reach
- Cincinnati put three players in double figures, led by Shanice Johnson who had 15
- UC turned 13 ECU miscues into 19 points and only turned it over 9 times

CINCINNATI BEARCATS

2	NIKIRA GOINGS	G	5-8	JR	MARIETTA, GA./OSBORNE
3	ANA OWENS	G	5-6	SR	INDIANAPOLIS, IND./LAWRENCE NORTH
4	ANGEL RIZOR	F	6-1	SO	ZEBULON, N.C./EAST WAKE
5	GENESIS PARKER	G	5-8	SO	BRISTOW, VA./STONEWALL JACKSON/VIRGINIA TECH
10	MICHAELA PORTER	G	5-10	FR	PITTSBURGH, PA./OBAMA ACADEMY
11	SAM RODGERS	G	5-11	SO	CINCINNATI, OHIO/LAKOTA EAST
12	ANTOINETTE MILLER	G	5-6	SO	DETROIT, MICH./SOUTHFIELD-LATHRUP
13	BRIANNA LIVINGSTON	G	5-10	FR	SCARBOROUGH, ONTARIO/WILFRED LAURIER
20	MAYA BENHAM	F	5-10	JR	DOUGLASVILLE, GA./OSBORNE
21	SHANICE JOHNSON	F	6-0	SR	PHILADELPHIA, PA./CARDINAL O'HARA/MONROE CC
22	liMAR'I THOMAS	F	5-11	FR	OAKLAND, CALIF./SACRED HEART CATHEDRAL PREP
25	CHELSEA WARREN	F	5-11	JR	RED OAK, TEXAS/RED OAK
35	li'LYAH GREEN	C	6-2	R-FR	LOUISVILLE, KY./MALE
40	ANDEIJA PUCKETT	C	6-3	FR	GRIFFIN, GA./GRIFFIN

ABOUT Cincinnati

Previous Game Starters

2	NIKIRA GOINGS	G High Scorer
3	ANA OWENS	G High Rebounder
4	ANGEL RIZOR	F Assists Leader
10	MICHAELA PORTER	G
21	SHANICE JOHNSON	C

Head Coach Jamelle Elliott (UCONN '95)
97-151 at UC

Last Time Out:



FLASH POINTS

SFU'S RECORD WHEN (2017-18)...

ALL 17-18 NEC

playing at HOME	1-0	0-0
playing on the ROAD	0-1	0-0
Neutral Site	1-1	N/A
Leading or tied at halftime	2-1	0-0
trailing at halftime	0-1	0-0
the SAINT FRANCIS offense...		
shoots 50% or higher	0-0	0-0
shoots less than 50%	2-2	0-0
shoots higher than opponent	0-0	0-0
shoots lower than opponent	1-2	0-0
hits 8 or more three-pointers	2-1	0-0
hits 7 or fewer three-pointers	0-1	0-0
the OPPOSING offense...		
shoots less than 50%	2-1	0-0
shoots 50% or higher	0-1	0-0
the RED FLASH score...		
60 points or fewer	0-1	0-0
61-70 points	0-1	0-0
71-80 points	1-0	0-0
81-90 points	0-0	0-0
91 or more points	1-0	0-0
more points in paint than opp.	1-0	0-0
fewer or same points in paint	1-2	0-0
more than opponent	2-0	0-0
fewer than opponent	0-2	0-0
more bench pts than opp.	2-0	0-0
fewer or same bench pts than opp.	0-2	0-0
more 2nd chance pts than opp.	1-0	0-0
fewer or same 2nd chance pts	1-2	0-0
out-REBOUNDING an opponent	1-0	0-0
same REBOUNDS as opponent	0-0	0-0
being out-REBOUNDED by an opponent	1-2	0-0
committing...		
fewer turnovers than an opponent	2-0	0-0
more turnovers than an opponent	0-2	0-0
same turnovers as opponent	0-0	0-0
playing in games...		
decided by 3 points or less	0-0	0-0
decided by 4-to-10 points	0-1	0-0
decided in OVERTIME	0-0	N/A
against RANKED opponents	0-0	N/A
following a LOSS	1-1	0-0
following a WIN	1-0	0-0
playing in the month of...		
November	2-2	N/A
December	0-0	0-0
January	0-0	0-0
February	0-0	0-0
March	0-0	N/A
tipping off...		
before 5 p.m.	2-1	0-0
at 5 p.m.	0-0	0-0
after 5 p.m.	0-1	0-0

- Saint Francis makes its sixth trip to Cincinnati, searching for its first win
- SFU defeated Seton Hill 103-71 on education day
- The Red Flash led the nation in threes made in the regular season at 10.8 threes per game
- This season, SFU is averaging nine threes per game
- Jess Kovatch led the Red Flash and was #2 in the nation in threes making 107 and 3.5/game
- Kovatch was named to the Lieberman Award watch list for the second-straight year
- Caitlyn Kroll led the Red Flash in scoring at the WNIT, averaging 16 points per game
- The Red Flash currently have three players averaging double figures: Kovatch, Kroll and Harrison
- Courtney Zezza was fourth in the NCAA in blocks at 3.5 per game
- Zezza is currently is averaging 3.3 blocks per game this season
- The Red Flash are averaging over 12 steals per game
- Backed by their high steal number, SFU finished #16 in the NCAA forcing nearly 21 turnovers per game, SFU averaged 20 points off turnovers per game

LAST TIME OUT

- Saint Francis defeated Seton Hill 103-71
- SFU topped the century mark for the first time since their season opening win over Wisconsin last year
- The Red Flash welcomed in nearly 600 elementary school students for their second education day game
- Jessica Kovatch led a balanced offense with 25
- Four players scored in double figures with a fifth recording nine points
- Both Ace Harrison and Kyasia Duling recorded double-doubles
- SFU ripped down 65 rebounds, the most the Red Flash have had in a game since 1991

MEDIA INFORMATION

CREDENTIALS

Requests for media credentials should be made directly to Assistant Director of Athletics Communications Dan Griffin. Credentials will be available at the Will Call window at the Stokes Center.

GAME DAY SERVICES

Pregame notes, halftime and final statistics plus a play-by-play account of the game will be available to all members of the working media. Saint Francis head coach Joe Haigh and student-athletes will be available for interviews following a brief cooling-off period and a radio post-game interview.

INTERVIEWS

Interviews with head coach Joe Haigh, his staff and players can be arranged through Assistant Director of Athletics Communications Dan Griffin. Players and coaches will be available after the game either in the media room or on-court after a short cooling-off period. Players and coaches during the week are available for both in-person and telephone interviews.

RADIO INFORMATION

Permission to broadcast games is granted through the Saint Francis Office of Athletics Communications. Arrangements for a line should be made at least two weeks in advance of the game (when possible).

SFU Women's Basketball | 5

SAINT FRANCIS

JOE HAIGH

Head Coach

Fifth Season

Ninth at SFU

NOTING HAIGH...

► Coached freshman Jessica Kovatch to one of the finest freshman seasons in the NCAA. The Phillipsburg, New Jersey native led the NCAA in freshman scoring at 20.9 points per game and set an NEC freshman scoring record with 615 points in the regular season

► Coached four new starters to an 11-win NEC campaign and an NEC-best 17th trip to the NEC semi-finals. Additionally, SFU became the first school to 300 NEC wins with a 62-54 win over Robert Morris.

► Coached Alex Hayward to a 22.3 points per game average, a mark that was tops in the NEC and fourth in the NCAA...Hayward set the Saint Francis record with 300 made three pointers in her career and was invited to the WNBA combine, the second straight season where a Red Flash has been invited to the combine.

► Led Saint Francis U to its second consecutive Northeast Conference Championship game in 2013-14. SFU has now made it to 16 conference title games in the past 21 seasons. The mark ranks second in the nation to only the University of Connecticut.

► Coached Alli Williams to one of the most impressive seasons in Northeast Conference history. The Altoona, Pa. native set an NEC record for points per game in a single season at 25.3 and is now playing professionally in Germany.

► Guided the best one-two punch in the entire Northeast Conference in 2013-14 with Alexa Hayward combining with

Williams for 42.6 points per game last season. Hayward graduated after last season and set the SFU record for career three-pointers with 300.

► Led Saint Francis U to its first-ever Non-NCAA postseason tournament appearance as SFU was invited to play in the Women's Basketball Invitational (WBI).

► Has compiled 38 wins in three seasons at the helm of the Red Flash women's basketball program. That number includes a 26-28 mark in league play.

► Was named the seventh head coach in program history by former President Rev. Gabriel Zeis, T.O.R., on April 26, 2012.

HAIGH'S YEARLY RECORDS

Year	School	Record	Conf.	Postseason
2012-13	Saint Francis U	17-16	10-8	NEC Final
2013-14	Saint Francis U	15-17	11-7	NEC Final
2014-15	Saint Francis U	6-23	5-13	N/A
2015-16	Saint Francis U	14-17	11-7	NEC Semis



HOMETOWN: Puyallup, Wash.

ALMA MATER: Notre Dame '95

FAMILY: Wife: Sherri; Children (5): Anna, Teresa, Patrick, Daniel, and Mary

BASKETBALL RÉSUMÉ

COACHING

Saint Francis University

Head Coach 2012-Present
Assistant Coach 2008-12

Virginia Commonwealth University

Director of Basketball Operations. 2006-08

Benedictine High School

Head Coach 2005-06

Randolph-Macon College

Assistant Coach 2004-05

Thomas Jefferson High School

Assistant Coach 2003-04

PLAYING

Green River Community College. 1991-1992

EDUCATION

Notre Dame. . . . Bachelor's Degree in Accounting ('95)
VCU Master's Degree in Sport Leadership ('05)





INDIVIDUAL SUPERLATIVES

Date	Opponent	Points	Rebounds	Assists	Steals	Blocks
Nov. 10	Toledo (WNIT)	Kovatch (21)	Zezza (7)	Kroll (3)	Three (3)	Zezza (5)
Nov 17	SEMO (WNIT)	Kroll (16)	Kroll (10)	Harrison (4)	Harrison (5)	Zezza (2)
Nov 18	ODU or GMU	Kroll (16)	Duling (11)	Three (3)	Zezza (3)	Zezza (3)
Nov 21	Seton Hill	Kovatch (25)	Duling (13)	Kroll (6)	Two (3)	Two (2)
Nov 27	Cincinnati					
Nov 30	Duquesne					
Dec 2	WILLIAM AND MARY					
Dec 6	Columbia					
Dec 9	YOUNGSTOWN ST					
Dec 17	Gonzaga					
Dec 20	Portland					
Dec 21	Boise State					
Dec 29	Sacred Heart					
Dec 31	Fairleigh Dickinson					
Jan 6	ST FRANCIS BROOKLYN					
Jan 8	LIU BROOKLYN					
Jan 13	Robert Morris					
Jan 20	MOUNT ST MARY'S					
Jan 22	at Wagner					
Jan 27	CENTRAL CONNECTICUT ST					
Jan 29	BRYANT					
Feb 3	ROBERT MORRIS					
Feb 10	St. Francis Brooklyn					
Feb 12	LIU Brooklyn					
Feb 17	SACRED HEART					
Feb 19	FAIRLEIGH DICKINSON					
Feb 24	Central Connecticut State					
Feb 26	Bryant					
Mar 2	Mount St. Mary's					
Mar 4	WAGNER					



STARTING LINEUPS

Date	Opponent	G	G	F	F	F
Nov. 3	PITT JOHNSTOWN (Exh)	Kovatch	Kroll	Zezza	Falvey	Harrison
Nov 10	Toledo	Kovatch	Kroll	Wynn	Harrison	Zezza
Nov 17	SEMO (WNIT)	Kovatch	Kroll	Wynn	Harrison	Zezza
Nov 18	Old Dominion	Kovatch	Kroll	Morrow	Harrison	Duling
Nov 21	Seton Hill	Kovatch	Kroll	Morrow	Harrison	Duling
Nov 27	Cincinnati					
Nov 30	Duquesne					
Dec 2	WILLIAM AND MARY					
Dec 6	Columbia					
Dec 9	YOUNGSTOWN ST					
Dec 17	Gonzaga					
Dec 20	Portland					
Dec 21	Boise State					
Dec 29	Sacred Heart					
Dec 31	Fairleigh Dickinson					
Jan 6	ST FRANCIS BROOKLYN					
Jan 8	LIU BROOKLYN					
Jan 13	Robert Morris					
Jan 20	MOUNT ST MARY'S					
Jan 22	at Wagner					
Jan 27	CENTRAL CONNECTICUT ST					
Jan 29	BRYANT					
Feb 3	ROBERT MORRIS					
Feb 10	St. Francis Brooklyn					
Feb 12	LIU Brooklyn					
Feb 17	SACRED HEART					
Feb 19	FAIRLEIGH DICKINSON					
Feb 24	Central Connecticut State					
Feb 26	Bryant					
Mar 2	Mount St. Mary's					
Mar 4	WAGNER					

SAINT FRANCIS



**20 Caitlin
Carroll**

Guard | SO | 5-8
Red Bank, NJ | Red Bank Catholic

FRESHMAN (2016-17) Played in 21 games for the Red Flash off the bench as a freshman...Had a career high 11 points in SFU's win at Mount St. Mary's and scored six points on a pair of threes at #19 South Florida

BEFORE SFU - Two-year captain and two-sport athlete at Red Bank Catholic (basketball, track)...Helped lead Red Bank to two Shore Conference championships and a state title.

PERSONAL - Daughter of Susanne and Terence Carroll...Plans to major in business administration.

GAME-BY-GAME STATS

SFU-W Individual Game-by-Game (as of Nov 22, 2017)
All games

#20 CARROLL, Caitlin

Opponent	Date	gs	min	Total		3-Pointers		Free throws		Rebounds				pf	a	t/o	blk	stl	pts	avg
				fg	fga	pct	3fg	3fga	pct	ft	fta	pct	off							
vs Old Dominion	11/18/	1		0	1	.00	0	1	.00	0	0	0	0	0	0	0	0	0	0	0.0
SETON HILL	11/21/	4		0	2	.00	0	2	.00	0	0	0	0	0	1	0	0	0	0	0.0
Totals		0	5	0	3	.00	0	3	.00	0	0	0	0	0	1	0	0	0	0	0.0

Games played: 2
Minutes/game: 2.5
FG Pct: 0.0
3FG Pct: 0.0

Assists/game: 0.5
Assist/turnover ratio: 99.9

CAREER STATS

Season	GP-GS	PTS-AVG	REB-AVG	A	BLK	STL
2016-17	21-0	24-1.1	14-0.7	6	0	2
TOTALS	21-0	24-1.1	14-0.7	6	0	2

CAREER HIGHS

PTS	11 at Mt Saint Mary's
REB	3 at Mt Saint Mary's
AST	2 at Mt Saint Mary's
STEALS	1, Twice

SEASON HIGHS

PTS	N/A
REB	N/A
AST	N/A
STEALS	N/A



SAINT FRANCIS



24 Kyasia Duling

Forward | SR | 6-3
Zanesville, OH | New Albany (Duquesne)

R-Junior (2016-17): Injured foot/ankle prior to being eligible in December...missed entire season due to injury

Junior (2015-16): Transferred to Saint Francis from Duquesne in December, will be eligible to play for the Flash after the first semester

Sophomore (2014-15) Played in 28 games ... career-high with 11 points against Saint Francis U ... career-high seven rebounds off the bench against Kent State.

Freshman (2013-14) Played in 17 games ... missed eight games to due injury ... scored season-high eight points and four rebounds at Morehead State.

High School :Ohio Girls Basketball Report Top 25 Seniors ... Associated Press Division I Central All-District Special Mention ... led New Albany High School to 17 wins while averaging a double-double of 11.2 points per game and 10.3 rebounds per game as a junior ... led the Eagles to a third place finish in Ohio Capital Conference Capital Division with a 10-4 league record ... named to the Ohio Capital Conference Capital Division First-Team ... before moving to New Albany, she attended Licking Heights High School where she was named Division II All-Central Honorable Mention by The Columbus Dispatch in 2010 ... ranked the 282nd best player in the country by Blue Star Basketball, the 290th best player in the country by All Star Girls Report and All-Ohio Honorable Mention by JHuddle.com ... played AAU ball for the Cincy Angels..

Personal Full name is Kyasia Rae Duling ... majoring in marketing and digital media.

GAME-BY-GAME STATS

SFU-W Individual Game-by-Game (as of Nov 22, 2017)
All games

#24 DULING, Kyasia

Opponent	Date	gs	min	Total		3-Pointers		Free throws		Rebounds				pf	a	t/o	blk	stl	pts	avg
				fg-fga	pct	3fg-fga	pct	ft-fa	pct	off	def	tot	avg							
at Toledo Rockets	11/10/	16	1-3	.33	0-0	.00	3-4	.75	4	0	4	4.0	4	0	3	0	2	5	5.0	
vs Southeast Missouri	11/17/	19	2-9	.22	0-2	.00	0-0	.00	1	3	4	4.0	3	1	2	0	1	4	4.5	
vs Old Dominion	11/18/	* 17	1-1	1.00	0-0	.00	1-2	.50	5	6	11	6.3	1	3	1	1	0	3	4.0	
SETON HILL	11/21/	* 16	4-7	.57	0-2	.00	2-2	1.00	5	8	13	8.0	2	1	3	0	0	10	5.5	
Totals		2 68	8-20	.40	0-4	.00	6-8	.75	15	17	32	8.0	10	5	9	1	3	22	5.5	

Games played: 4
Minutes/game: 17.0
Points/game: 5.5
FG Pct: 40.0
3FG Pct: 0.0
FT Pct: 75.0

Rebounds/game: 8.0
Assists/game: 1.3
Turnovers/game: 2.3
Assist/turnover ratio: 0.6
Steals/game: 0.8
Blocks/game: 0.3

CAREER STATS (SFU)

YEAR	GP-GS	PTS-AVG	REB-AVG	A	BLK	STL
2017-18						

CAREER HIGHS

PTS	N/A
REB	N/A
AST	N/A
STEALS	N/A

SEASON HIGHS

PTS	5 vs Toledo
REB	11, vs ODU
AST	3 vs ODU
STEALS	2 vs Toledo



SAINT FRANCIS



30 Jill Falvey

Forward | JR | 6-0
Lincroft, NJ | Middletown South

SOPHOMORE (2016-17) Saw action for the Red Flash in 28 games with two starts as a sophomore. Scored a career-best five points on four different occasions. Tallied a season-high four rebounds against LIU Brooklyn.

FRESHMAN (2015-16) - Saw action in 14 games off the bench for the Red Flash... Scored four points on the season including hitting a three in the win over Coastal Carolina... Recorded three rebounds on the year including two against Pitt and recorded two steals on the season.

BEFORE SFU - A four-year varsity basketball player at Middletown South High School, Falvey comes to Loretto from a very successful basketball background ... Captain of her team and helped lead them to a 2014 State Sectional Championship, as well as, semifinalist appearances in 2012 and 2013 ... Also won two State Championships in 2007 and 2010 for head coach Joe Whalen with her AAU team, NJ Shoreshots Select, in addition to a Junior National Championship in 2011.

PERSONAL - The daughter of Debbie and Jim Falvey, Jill was a member of the National Honor Society and the Spanish National Honor Society in high school ... Majors in business.

GAME-BY-GAME STATS

SFU-W Individual Game-by-Game (as of Nov 22, 2017) All games

#30 FALVEY, JILL

Opponent	Date	gs	min	Total		3-Pointers		Free throws		Rebounds				pf	a	t/o	blk	stl	pts	avg
				fg	pct	3fg	pct	ft	pct	off	def	tot	avg							
at Toledo Rockets	11/10/	3	0-0	.00	0-0	.00	0-0	.00	0-0	0	0	0	0.0	0	0	0	0	0	0	0.0
vs Southeast Missouri	11/17/	3	0-1	.00	0-1	.00	0-0	.00	0-0	0	0	0	0.0	0	0	0	0	0	0	0.0
vs Old Dominion	11/18/	7	0-2	.00	0-2	.00	0-0	.00	0-0	0	1	1	0.3	0	1	0	0	0	0	0.0
SETON HILL	11/21/	7	0-1	.00	0-1	.00	0-0	.00	0-0	3	0	3	1.0	0	0	1	0	0	0	0.0
Totals		0	20	0-4	.00	0-4	.00	0-0	.00	3	1	4	1.0	0	1	1	0	0	0	0.0

Games played: 4
Minutes/game: 5.0
FG Pct: 0.0
3FG Pct: 0.0

Rebounds/game: 1.0
Assists/game: 0.3
Turnovers/game: 0.3
Assist/turnover ratio: 1.0

CAREER STATS

Season	GP-GS	PTS-AVG	REB-AVG	A	BLK	STL
2015-16	14-0	3-0.1	2-0.1	0	0	2
2016-17	27-2	24-.9	27-1.0	5	1	2
TOTALS	41-2	27-0.7	29-0.7	0	1	4

CAREER HIGHS

PTS	5 vs Three Teams
REB	4 vs LIU Brooklyn (1/7/17)
AST	1 vs Two Teams
STEALS	1 vs Three Teams

SEASON HIGHS

PTS	N/A
REB	N/A
AST	1, vs ODU
STEALS	N/A



SAINT FRANCIS



34 Ace

Harrison

Forward | GR | 6-3

Baltimore, MD | Digital Harbor

JUNIOR (2016-17)-Named Northeast Conference (NEC) Defensive Player of the Year and First-Team All-NEC....Played in 28 games with 22 starts, averaged 12.8 points and 8.8 rebounds. Her 3.53 steals per game ranked sixth in the NCAA. Had a career high 26 against Columbia and pulled down 17 rebounds in a win over Coastal Carolina.

BEFORE SFU: Played three seasons at Maryland, including one redshirt season... Averaged 1.5 points and two rebounds as a redshirt sophomore in 2015-16...A part of Maryland's Final Four run as a redshirt freshman and won 67 games in her two playing seasons in College Park...She totaled over 1400 points and 1300 rebounds as a four-year starter at Digital Harbor, leading Digital Harbor to the Baltimore City Division I title as a senior. Harrison also totaled over 500 assists and 250 steals in high school and was ranked as high as 28 (Blue Star Report) and 70 (ESPN) in their top-100 recruit rankings.

PERSONAL: Graduated in three years from Maryland with a degree in American Studies...Enrolled in Graduate School at SFU, this is her final year of eligibility

GAME-BY-GAME STATS

SFU-W Individual Game-by-Game (as of Nov 22, 2017)
All games

#34 HARRISON, Ace

Opponent	Date	gs	min	Total		3-Pointers		Free throws		Rebounds				pf	a	t/o	blk	stl	pts	avg				
				fg	fga	pct	3fg	3fga	pct	ft	fta	pct	off								def	tot	avg	
at Toledo Rockets	11/10/	*	31	5	9	.55	2	2	1.00	4	4	1.00	1	4	5	5.0	1	1	6	1	16	16.0		
vs Southeast Missouri	11/17/	*	27	2	9	.22	1	6	.16	6	8	.75	3	3	6	5.5	4	4	2	1	5	11.3		
vs Old Dominion	11/18/	*	21	4	7	.57	1	3	.33	1	3	.33	2	2	4	5.0	4	2	0	0	2	10	12.3	
SETON HILL	11/21/	*	22	7	11	.63	2	6	.33	3	4	.75	5	6	11	6.5	3	2	0	0	1	19	14.0	
Totals			4	101	18	36	.50	6	17	.35	14	19	.73	11	15	26	6.5	12	9	8	2	9	56	14.0

Games played: 4
Minutes/game: 25.3
Points/game: 14.0
FG Pct: 50.0
3FG Pct: 35.3
FT Pct: 73.7

Rebounds/game: 6.5
Assists/game: 2.3
Turnovers/game: 2.0
Assist/turnover ratio: 1.1
Steals/game: 2.3
Blocks/game: 0.5

CAREER STATS

Season	GP-GS	PTS-AVG	REB-AVG	A	BLK	STL
2016-17	27-21	343-12.7	233-8.6	64	26	95
TOTALS	27-21	343-12.7	233-8.6	64	26	95

CAREER HIGHS

PTS	26 Vs Columbia (11/19/16)
REB	17 at Coastal Carolina (12/12/16)
AST	7 at Marquette (11/16/15)
STEALS	11 at Central Connecticut (2/20/17)

SEASON HIGHS

PTS	16 vs Toledo
REB	5 vs Toledo
AST	1 vs Toledo
STEALS	1 vs Toledo



SAINT FRANCIS



23 Jessica

Kovatch

Guard | JR | 5-9

Phillipsburg, NJ | Phillipsburg

SOPHOMORE (2015-16)-Named Northeast Conference First Team and ECAC-All Star... Won three NEC Player of the Week Awards...Named to Nancy Liebermann Watch List for nation's top point guard...Became 25th player to reach 1000 points in 47 games or fewer doing so at Robert Morris.... 11th in the NCAA in scoring at 21.2 points per game... Broke the Saint Francis single-season record for made threes with 110, seventh in NCAA...Topped 30 points three times including a career-high 45 vs Central Connecticut

FRESHMAN (2015-16) - The Northeast Conference and ECAC Rookie of the Year... Named NEC Second-Team All-Conference...Won a NEC-Record 13 NEC Rookie of the Week Awards including a record 11 straight...Named a "Face in the Crowd" in the February 29th edition of Sports Illustrated...Set SFU and NEC freshman scoring record with 649 points...Led all NCAA Freshmen in scoring at 20.9 ppg...Became the first SFU freshman to score 30 points in a game (Coastal Carolina), topped the 30 point mark four times... Led the Red Flash in scoring and steals (61), third on the team in rebounds (112)

BEFORE SFU - The 2014 West Jersey Player of the Year and Warren County All-First Team and Player of the Year. Kovatch joins the Red Flash women's basketball program out of Phillipsburg, N.J. A two-sport athlete for the Bobcats in basketball and lacrosse ... She was the first underclassmen to score 1,000 points and had the highest total after three seasons at 1,176 ... Kovatch's team in 2013 and 2014 won the Skyland Conference Raritan Division Championship.

PERSONAL - The daughter of Becky and Edward Kovatch ... is majoring in business

GAME-BY-GAME STATS

SFU-W Individual Game-by-Game (as of Nov 22, 2017)
All games

#23 KOVATCH, Jessica

Opponent	Date	gs	min	Total		3-Pointers		Free throws		Rebounds		pf	a	t/o	blk	stl	pts	avg		
				fg	pct	3fg	pct	ft	pct	off	def								tot	avg
at Toledo Rockets	11/10/	*	35	6-17	.35	4-12	.33	5-7	.71	2	3	5	5.0	2	2	8	1	3	21.0	
vs Southeast Missouri	11/17/	*	30	4-14	.28	2-6	.33	0-0	.00	0	1	1	3.0	2	1	2	1	1	10.5	
vs Old Dominion	11/18/	*	27	3-10	.30	1-6	.16	1-2	.50	1	1	2	2.7	3	3	1	0	8	13.0	
SETON HILL	11/21/	*	21	7-19	.36	2-9	.22	9-12	.75	1	3	4	3.0	1	3	2	0	3	25.0	
Totals			4	113	20-60	.33	9-33	.27	15-21	.71	4	8	12	3.0	8	9	13	2	7	64.0

Games played: 4
Minutes/game: 28.3
Points/game: 16.0
FG Pct: 33.3
3FG Pct: 27.3
FT Pct: 71.4

Rebounds/game: 3.0
Assists/game: 2.3
Turnovers/game: 3.3
Assist/turnover ratio: 0.7
Steals/game: 1.8
Blocks/game: 0.5

CAREER STATS

Season	GP-GS	PTS-AVG	REB-AVG	A	BLK	STL
2015-16	31-31	649-20.8	112-3.6	46	8	61
2016-17	31-31	661-21.3	108-3.5	60	8	73
TOTALS	62-62	1310-21.1	220-3.55	106	16	134

CAREER HIGHS

PTS	45 vs CCSU (1/21/17)
REB	8 vs Two Teams
AST	4 vs Five Teams
STEALS	8 Vs two teams

SEASON HIGHS

PTS	21 vs Toledo
REB	5 vs Toledo
AST	3 vs ODU
STEALS	3 vs Toledo



SAINT FRANCIS



2 Caitlyn
Kroll

Guard | So | 5-10
Bridgeport, OH | Bridgeport

FRESHMAN (2016-17) - Missed the 2016-17 season due to knee injury suffered during senior year of high school

BEFORE SFU - Kroll was named the District 12 Player of the Year as a senior en route to being named Third Team All-Ohio. Kroll was named First Team OVAC her final three years at Bridgeport as well as All-Valley by the Wheeling News Register. Averaged over 20 points per game in each of her final three seasons.

PERSONAL: Caitlyn is the daughter of Rick Ray and Julie Kroll and plans on majoring in pre-med at Saint Francis.

GAME-BY-GAME STATS

SFU-W Individual Game-by-Game (as of Nov 22, 2017)
All games

#02 KROLL, Caitlyn

Opponent	Date	gs	min	Total	3-Pointers	Free throws	Rebounds												
				fg-fga	pct	3fg-fga	pct	ft-fa	pct	off	def	tot	avg	pf	a	t/o	blk	stl	pts
at Toledo Rockets	11/10/	*	32	2-10	.20	1-1	1.00	2-2	1.00	0	5	5	5.0	4	3	5	0	3	7
vs Southeast Missouri	11/17/	*	33	6-17	.35	2-5	.40	2-2	1.00	7	3	10	7.5	2	3	5	0	0	16
vs Old Dominion	11/18/	*	28	6-15	.40	2-8	.25	3-4	.75	0	3	3	6.0	4	1	2	0	1	17
SETON HILL	11/21/	*	24	2-7	.28	1-4	.25	0-2	.00	1	2	3	5.3	3	6	6	0	1	5
Totals			4	117	16-49	.32	6-18	.33	7-10	.70	8	13	21	5.3	13	13	18	0	45

Games played: 4
Minutes/game: 29.3
Points/game: 11.3
FG Pct: 32.7
3FG Pct: 33.3
FT Pct: 70.0

Rebounds/game: 5.3
Assists/game: 3.3
Turnovers/game: 4.5
Assist/turnover ratio: 0.7
Steals/game: 1.3

CAREER STATS

YEAR	GP-GS	PTS-AVG	REB-AVG	A	BLK	STL
2016-17	Missed Season due to injury					

CAREER HIGHS

PTS	16 Twice
REB	10 vs SE MO
AST	3 Twice
STEALS	3 vs Toledo

SEASON HIGHS

PTS	16 Twice
REB	10 vs SE MO
AST	3 Twice
STEALS	3 vs Toledo



SAINT FRANCIS



12 Jenna Mastellone

Guard | FR/S-10
New York City, NY | Archbishop Molloy

BEFORE SFU: Two-Time All-Queens Player...Named All New York City senior season...
Named Second Team All Brooklyn/Queens during senior season...Helped Archbishop
Molloy reached #6 in the nation during sophomore season

PERSONAL: Daughter of Patricia and Robert Mastellone...Has a twin sister Nicole...
Undecided on a major

GAME-BY-GAME STATS

SFU-W Individual Game-by-Game (as of Nov 22, 2017)
All games

#12 MASTELLONE, Jenna

Opponent	Date	gs	min	Total		3-Pointers		Free throws		Rebounds			pf	a	t/o	blk	stl	pts	avg	
				fg-fg	pct	3fg-3fg	pct	ft-ft	pct	off	def	tot								
at Toledo Rockets	11/10/	2	0-0	.00	0-0	.00	0-0	.00	0	0	0	0.0	1	0	1	0	0	0	0.0	
vs Southeast Missouri	11/17/	5	0-0	.00	0-0	.00	0-0	.00	0	0	0	0.0	1	1	1	0	1	0	0.0	
vs Old Dominion	11/18/	2	0-0	.00	0-0	.00	0-0	.00	0	0	0	0.0	2	0	0	0	0	0	0.0	
SETON HILL	11/21/	9	0-2	.00	0-1	.00	4-6	.66	0	2	2	0.5	2	0	2	0	1	4	1.0	
Totals		0	18	0-2	.00	0-1	.00	4-6	.66	0	2	2	0.5	6	1	4	0	2	4	1.0

Games played: 4
Minutes/game: 4.5
Points/game: 1.0
FG Pct: 0.0
3FG Pct: 0.0
FT Pct: 66.7

Rebounds/game: 0.5
Assists/game: 0.3
Turnovers/game: 1.0
Assist/turnover ratio: 0.3
Steals/game: 0.5

CAREER HIGHS

PTS N/A
REB N/A
AST N/A
STEALS N/A

SEASON HIGHS

PTS N/A
REB N/A
AST N/A
STEALS N/A



SAINT FRANCIS



10 Leah

Morrow

Guard/Forward | FR | 5-9
Columbus, OH | Africentric

BEFORE SFU: Named All-State honorable mention and All-Columbus District in junior and senior seasons by Associated Press...Helped lead the Nubians to the Division-III state title as a junior...Named state tournament MVP

GAME-BY-GAME STATS

SFU-W Individual Game-by-Game (as of Nov 22, 2017)
All games

#10 MORROW, Leah

Opponent	Date	gs	min	Total		3-Pointers		Free throws		Rebounds		pf	a	t/o	blk	stl	pts	avg
				fg	pct	3fg	pct	ft	pct	off	def							
at Toledo Rockets	11/10/	19		0-4	.00	0-1	.00	0-0	.00	0	1	1	1.0	2	2	0	0	0.0
vs Southeast Missouri	11/17/	18		0-2	.00	0-1	.00	2-2	1.00	0	1	1	1.0	3	0	3	0	1.0
vs Old Dominion	11/18/	19		3-7	.42	1-1	1.00	2-2	1.00	3	5	8	3.3	3	3	2	0	9.3
SETON HILL	11/21/	16		2-6	.33	0-2	.00	2-2	1.00	2	0	2	3.0	3	0	3	0	4.3
Totals		2	72	5-19	.26	1-5	.20	6-6	1.00	5	7	12	3.0	11	5	10	0	17.4

Games played: 4
Minutes/game: 18.0
Points/game: 4.3
FG Pct: 26.3
3FG Pct: 20.0
FT Pct: 100.0

Rebounds/game: 3.0
Assists/game: 1.3
Turnovers/game: 2.5
Assist/turnover ratio: 0.5
Steals/game: 0.8

CAREER HIGHS

PTS 9 vs ODU
REB 8 vs ODU
AST 3 vs ODU
STEALS 1, vs SeMO

SEASON HIGHS

PTS 9 vs ODU
REB 8 vs ODU
AST 3 vs ODU
STEALS 1, vs SeMO



SAINT FRANCIS



13 Sam

Sabino

Guard | R-So | 5-9

Rumson, NJ | Rumson Fair Lawn

GAME-BY-GAME STATS

BEFORE SFU: Played two seasons at the University of New Hampshire...Appeared in eight games as a sophomore and 17 as a freshman...Played high school ball at Rumson Fair Haven, helping them win two state titles

PERSONAL: Daughter of Tracey and Pat Sabino...Mother was a four-year letter-winner at Monmouth University playing basketball...Her grandfather (Mickey Radigan) played basketball at Wagner College

CAREER STATS

YEAR	GP-GS	PTS-AVG	REB-AVG	A	BLK	STL
------	-------	---------	---------	---	-----	-----

CAREER HIGHS

PTS	N/A
REB	N/A
AST	N/A
STEALS	N/A

SEASON HIGHS

PTS	N/A
REB	N/A
AST	N/A
STEALS	N/A



SAINT FRANCIS



22 Jill

Scott

Guard | SO | 5-10
Summerhill, PA | Forest Hills

FRESHMAN (2016-17) Played in 25 games for the Red Flash off the bench as a freshman...Scored a career-best five points in win over Saint Francis Brooklyn...Grabbed a couple of boards in three games for the Red Flash...Used as a defensive stopper, recorded two steals in win over SFBK

BEFORE SFU: Scott comes to Saint Francis from nearby Summerhill, Pennsylvania where she starred for Forest Hills High School, scoring over 1000 points in her career. She served as co-captain her senior season and led basketball team in scoring, blocked shots, defensive rebounds, and field goal shooting percentage. She helped lead the Rangers three PIAA District 6 championships.

PERSONAL: Jill is the daughter of Bill and Kate Scott and is majoring in business at Saint Francis.

GAME-BY-GAME STATS

SFU-W Individual Game-by-Game (as of Nov 22, 2017)
All games

#22 SCOTT, Jillian

				Total		3-Pointers		Free throws		Rebounds										
Opponent	Date	gs	min	fg	pct	3fg	pct	ft	pct	off	def	tot	avg	pf	a	t/o	blk	stl	pts	avg
vs Southeast Missouri	11/17/	2	0-0	.00	0-0	.00	0-0	.00	0-0	0	0	0	0.0	0	0	0	0	0	0	0.0
vs Old Dominion	11/18/	3	0-1	.00	0-1	.00	1-2	.50	1	0	1	0.5	1	0	0	0	0	0	1	0.5
SETON HILL	11/21/	7	1-1	1.00	0-0	.00	0-0	.00	1	1	2	1.0	1	0	2	0	1	2	1.0	
Totals		0	12	1-2	.50	0-1	.00	1-2	.50	2	1	3	1.0	2	0	2	0	1	3	1.0

Games played: 3
Minutes/game: 4.0
Points/game: 1.0
FG Pct: 50.0
3FG Pct: 0.0
FT Pct: 50.0

Rebounds/game: 1.0
Turnovers/game: 0.7
Steals/game: 0.3

CAREER STATS

YEAR	GP-GS	PTS-AVG	REB-AVG	A	BLK	STL
2016-17	24-0	12-0.5	11-0.5	3	1	6

CAREER HIGHS

PTS	5 vs St. Francis Brooklyn (1/7/17)
REB	2 Vs Cornell (11/28/16)
AST	1 vs Three Teams
STEALS	2 vs St. Francis Brooklyn (1/7/17)

SEASON HIGHS

PTS	5 vs St. Francis Brooklyn (1/7/17)
REB	2 Vs Cornell (11/28/16)
AST	1 vs Three Teams
STEALS	2 vs St. Francis Brooklyn (1/7/17)



SAINT FRANCIS



4 Allison
Shuke

Guard | FR | 5-10
Bedford, PA | Bedford

BEFORE SFU: Named Third-Team All-State as a senior...Four-Time All-Bedford County, All-Laurel Highlands Conference and All-Altoona Mirror...Bedford High School's all-time leading scorer...Four-sport athlete (basketball, soccer, tennis, track)...Was high school valedictorian

PERSONAL: Daughter of Melody and Blake Shuke...Oldest of four children...studying to be a physician's assistant

GAME-BY-GAME STATS

SFU-W Individual Game-by-Game (as of Nov 19, 2017)
All games

#04 SHUKE, Allison

Opponent	Date	gs	min	Total		3-Pointers		Free throws		Rebounds				pf	a	t/o	blk	stl	pts	avg
				fg	fga	pct	3fg	3fga	pct	ft	fta	pct	off							
vs Old Dominion	11/18/	1		0-0	.00	0-0	.00	0-0	.00	0	0	0	0.0	0	0	0	0	0	0.0	
Totals		0	1	0-0	.00	0-0	.00	0-0	.00	0	0	0	0.0	0	0	0	0	0	0.0	

Games played: 1
Minutes/game: 1.0

CAREER STATS

YEAR	GP-GS	PTS-AVG	REB-AVG	A	BLK	STL
------	-------	---------	---------	---	-----	-----

CAREER HIGHS

PTS	N/A
REB	N/A
AST	N/A
STEALS	N/A

SEASON HIGHS

PTS	N/A
REB	N/A
AST	N/A
STEALS	N/A



SAINT FRANCIS



**33 Cydney
Smith**

Center | R-SR | 6-3
Port Tobacco, MD | St. Mary's Ryken

R-JUNIOR (2016-17)- Played in 12 games for the Red Flash with two starts before a shoulder injury against William and Mary ended her season...Still ranked third on the team in blocks...Scored a season-high 13 against Maryland-Eastern Shore and tied a career high with 10 rebounds versus Jackson State.

R-SOPHOMORE (2015-16)- Played in all 31 games for the Red Flash including one start...Led SFU and ranked second in NEC with 54 blocks on the season, a mark that is third-most in SFU history...Scored a career-high 25 in victory over Bryant...Fourth on the team with 105 rebounds (3.5 per game).

R-FRESHMAN (2014-15) - Appeared in 26 games for Saint Francis during redshirt freshman season, including eight starts ... Scored 74 points, good for a 2.8 per game average ... Pulled down 111 rebounds, which was a 4.3 per game average ... Grabbed 10 rebounds against Mount St. Mary's (1/24) and Fairleigh Dickinson (1/31) ... Led team in blocks with 25.

BEFORE SFU - The 6-3 center lettered in basketball for three seasons at St. Mary's Ryken High School, playing for head coach Kris Grazzini-Sandberg ... Averaged nearly 11 points per game and eight rebounds per game during her senior season of high school, her rebounding average led the team ... Led her squad in blocks per game and total blocks during her senior season ... St. Mary's Ryken plays in the WCAC, which is one of the most competitive high school conferences in the country ... Received All-WCAC Second Team honors in 2013 and was named to the First Team All-County in St. Mary's County ... Played for the Fairfax Stars and coach Aggie McCormick-Dix.

PERSONAL - Is the daughter of John and Errin Smith ... physical therapy/exercise physiology major ... Played volleyball for SFU as a freshman

CAREER STATS

Season	GP-GS	PTS-AVG	REB-AVG	A	BLK	STL
2014-15	26-8	74-2.8	111-4.3	5	25	7
2015-16	31-1	131-4.5	105-3.5	12	54	14
2016-17	12-2	53-4.4	43-3.6	8	23	9
TOTAL	69-11	258-3.7	259-3.8	25	102	30

CAREER HIGHS

PTS	25 vs Bryant (2/18/16)
REB	10 vs Three Different Teams
AST	3 at South Florida (12/14/16)
BLOCKS	7 vs Pitt-Johnstown (12/12/15)

SEASON HIGHS

PTS	9 vs ODU
REB	4 vs ODU
AST	N/A
BLOCKS	3 vs Toledo

GAME-BY-GAME STATS

SFU-W Individual Game-by-Game (as of Nov 22, 2017) All games

#33 SMITH, Cydney

Opponent	Date	gs	min	Total	fg-fga	pct	3fg-fga	pct	Free throws	ft-fa	pct	Rebounds	off	def	tot	avg	pf	a	t/o	blk	stl	pts	avg
at Toledo Rockets	11/10/	9	0-0	.00	0-0	.00	1-2	.50	1	2	3	3.0	4	0	1	0	3	1	1.0				
vs Southeast Missouri	11/17/	9	0-3	.00	0-0	.00	0-0	.00	0	0	0	1.5	2	0	0	0	0	0	0	0	0	0.5	
vs Old Dominion	11/18/	13	4-7	.57	1-2	.50	0-0	.00	1	3	4	2.3	1	0	2	2	0	9	3.3				
SETON HILL	11/21/	6	1-4	.25	0-2	.00	0-1	.00	0	0	0	1.8	2	0	0	2	0	2	3.0				
Totals		0	37	5-14	.35	1-4	.25	1-3	.33	2	5	7	1.8	9	0	3	4	3	12	3.0			

Games played: 4
Minutes/game: 9.3
Points/game: 3.0
FG Pct: 35.7
3FG Pct: 25.0
FT Pct: 33.3

Rebounds/game: 1.8
Turnovers/game: 0.8
Steals/game: 0.8
Blocks/game: 1.0



SAINT FRANCIS



3 Karson Swogger

Guard | FR | 5-9
Bellwood, PA | Bellwood-Antis

BEFORE SFU: Named All-State as a senior...Named 2016 Altoona Mirror Player of the Year...Three-Time First-Team All-Conference...Broke Bellwood-Antis all-time scoring record during junior season...Broke the Blair County scoring record as a senior... Averaged over 28 points per game during senior season...Finished career with over 2500 career points scored...Re-wrote Bellwood-Antis' record book setting the mark in: points in a season (722), points in a game (42), steals in a season (127), career threes made (177)...Helped Bellwood-Antis to three conference championships and a district championship...Helped her AAU team (Central PA Elite) to a 2016 Hershey National Championship

PERSONAL: Daughter of Aubrey and Jimmy Swogger...Second of four children...Majoring in nursing

GAME-BY-GAME STATS

SFU-W Individual Game-by-Game (as of Nov 22, 2017)
All games

#03 SWOGGER, Karson

Opponent	Date	gs	min	Total	3-Pointers	Free throws	Rebounds												
at Toledo Rockets	11/10/	1	0-0	.00	0-0	.00	0-0	.00	0	0	0	0.0	0	0	0	0	0	0	0.0
vs Southeast Missouri	11/17/	2	0-0	.00	0-0	.00	0-0	.00	0	1	1	0.5	0	0	1	0	0	0	0.0
vs Old Dominion	11/18/	3	0-2	.00	0-2	.00	2-2	1.00	0	0	0	0.3	1	0	0	0	0	2	0.7
SETON HILL	11/21/	12	3-5	.60	2-3	.66	2-3	.66	2	0	2	0.8	3	0	0	0	0	10	3.0
Totals		0	18	3-7	.42	2-5	.40	4-5	.80	2	1	3	0.8	4	0	1	0	12	3.0

Games played: 4
Minutes/game: 4.5
Points/game: 3.0
FG Pct: 42.9
3FG Pct: 40.0
FT Pct: 80.0

Rebounds/game: 0.8
Turnovers/game: 0.3

CAREER STATS

Season	GP-GS	PTS-AVG	REB-AVG	A	BLK	STL
--------	-------	---------	---------	---	-----	-----

CAREER HIGHS

PTS	2 vs ODU
REB	N/A
AST	N/A
BLOCKS	N/A

SEASON HIGHS

PTS	2 vs ODU
REB	N/A
AST	N/A
BLOCKS	N/A



SAINT FRANCIS



51 Haley Thomas

Guard | FR | 5-11
Hooversville, PA | Bishop McCort

BEFORE SFU: All-Time leading scorer at Bishop McCort...Helped McCort to three District Titles (Soph-Senior seasons)...Three-Time All-State Player (Soph-3rd Team, Jr.-2nd Team, Sr-1st Team)...AA Player of the Year

PERSONAL: Daughter of Mary and Tim Thomas...Youngest of three children...Majoring in environmental engineering

GAME-BY-GAME STATS

SFU-W Individual Game-by-Game (as of Nov 22, 2017)
All games

#51 THOMAS, Haley

Opponent	Date	gs	min	Total		3-Pointers		Free throws		Rebounds				pf	a	t/o	blk	stl	pts	avg
				fg	fga	pct	3fg	3fga	pct	ft	fta	pct	off	def	tot	avg				
at Toledo Rockets	11/10/	14	1-2	.50	1-1	1.00	2-2	1.00	1	3	4	4.0	3	1	2	0	0	5	5.0	
vs Southeast Missouri	11/17/	17	0-4	.00	0-3	.00	0-0	.00	0	3	3	3.5	4	0	4	0	1	0	2.5	
vs Old Dominion	11/18/	14	1-4	.25	1-4	.25	4-4	1.00	1	0	1	2.7	2	1	1	1	0	7	4.0	
SETON HILL	11/21/	19	4-9	.44	1-3	.33	0-0	.00	5	5	10	4.5	3	5	0	1	3	9	5.3	
Totals		0	64	6-19	.31	3-11	27	6-6	1.00	7	11	18	4.5	12	7	7	2	4	21	5.3

Games played: 4
Minutes/game: 16.0
Points/game: 5.3
FG Pct: 31.6
3FG Pct: 27.3
FT Pct: 100.0

Rebounds/game: 4.5
Assists/game: 1.8
Turnovers/game: 1.8
Assist/turnover ratio: 1.0
Steals/game: 1.0
Blocks/game: 0.5

CAREER STATS

Season	GP-GS	PTS-AVG	REB-AVG	A	BLK	STL
--------	-------	---------	---------	---	-----	-----

CAREER HIGHS

PTS	N/A
REB	N/A
AST	N/A
BLOCKS	N/A

SEASON HIGHS

PTS	7 vs ODU
REB	4 vs Toledo
AST	1 vs Toledo
BLOCKS	N/A



SAINT FRANCIS



21 AJ

Timbers

Guard | R-So | 5-11
Philadelphia, PA | Neumann Gorretti

GAME-BY-GAME STATS

Will sit out this season due to NCAA transfer rules

BEFORE SFU: Played two seasons at Towson appearing in 25 games including one start...Limited to just four games as a sophomore due to injury...Scored a career-best 16 against Drexel as a freshman...Helped Neumann Gorretti to a #1 ranking in the nation and a state title as a senior and was named MVP of state tournament

PERSONAL: Daughter of Amire and Yolanda Timbers...Has one older sister...Majoring in psychology

CAREER STATS

Season	GP-GS	PTS-AVG	REB-AVG	A	BLK	STL
--------	-------	---------	---------	---	-----	-----

CAREER HIGHS

PTS	N/A
REB	N/A
AST	N/A
BLOCKS	N/A

SEASON HIGHS

PTS	N/A
REB	N/A
AST	N/A
BLOCKS	N/A



SAINT FRANCIS



15 Maya Wynn

Guard | JR | 5-11
Reisterstown, MD | McDonogh

JUNIOR (2016-17)- Played in 28 games for the Red Flash with 25 starts... Finished fourth on the team in scoring with 249 points, an average of 8.9 points per game. Her 54 three pointers were third on the team... Had a career-high 23 points against Canisius

SOPHOMORE (2015-16)- Played in 30 games for the Red Flash including 24 starts... Third on the team with 290 points scored, an average of 9.7 per game... Third on the team with 63 assists and fifth on the team with 97 rebounds... Scored a career high 21 points on two occasions (at Mount St. Marys, vs SFBK).

FRESHMAN (2014-15) - Started in 28 of 29 games during freshman season for Saint Francis U ... 2x Northeast Conference Rookie of the Week ... 1x ECAC Rookie of the Week ... All-NEC Rookie Team Selection ... Third on team in points with 203 scored and a 7.0 average ... Made 40 three-pointers, which ranked third on the team ... Grabbed 76 rebounds and added 40 steals on the year ... Scored 15 points on two occasions.

BEFORE SFU - A four-year player at McDonogh High School in Maryland, Wynn joins the Red Flash as a complete all-around wing ready to contribute right away ... Was a three-sport athlete in high school, also played four years of volleyball and ran four years of track ... Played for head coach Brad Rees in Maryland and won IAAM A-Conference Championships in 2012 and 2014 ... Wynn totaled over 355 points in three years and is a two-time team captain.

PERSONAL - The daughter of Kalin and Stacy Wynn ... Is currently an Undeclared Major at Saint Francis U.

GAME-BY-GAME STATS

SFU-W Individual Game-by-Game (as of Nov 22, 2017) All games

#15 WYNN, Maya

Opponent	Date	gs	min	Total		3-Pointers		Free throws		Rebounds				pf	a	t/o	blk	stl	pts	avg
				fg-fga	pct	3fg-3fga	pct	ft-fta	pct	off	def	tot	avg							
at Toledo Rockets	11/10/	*	15	1-4	.25	1-2	.50	0-0	.00	0	0	0	0.0	3	0	2	0	1	3	3.0
vs Southeast Missouri	11/17/	*	21	1-5	.20	1-5	.20	0-0	.00	1	1	2	1.0	0	0	0	0	2	3	3.0
vs Old Dominion	11/18/		19	2-6	.33	2-6	.33	0-0	.00	0	1	1	1.0	1	1	1	0	0	6	4.0
SETON HILL	11/21/		16	2-6	.33	1-4	.25	0-0	.00	1	1	2	1.3	2	1	0	0	1	5	4.3
Totals		2	71	6-21	.28	5-17	.29	0-0	.00	2	3	5	1.3	6	2	3	0	4	17	4.3

Games played: 4
Minutes/game: 17.8
Points/game: 4.3
FG Pct: 28.6
3FG Pct: 29.4

Rebounds/game: 1.3
Assists/game: 0.5
Turnovers/game: 0.8
Assist/turnover ratio: 0.7
Steals/game: 1.0

CAREER STATS

Season	GP-GS	PTS-AVG	REB-AVG	A	BLK	STL
2014-15	29-28	203-7.0	76-2.6	28	8	40
2015-16	30-24	290-9.7	97-3.6	63	10	31
2016-17	28-25	242-9.0	93-3.4	49	6	43
TOTALS	87-77	735-8.5	266-3.1	140	24	114

CAREER HIGHS

PTS	23 Vs Canisius (11/22/16)
REB	9 at Mount Saint Mary's (2/13/16)
AST	6 vs Two Different Teams
STEALS	5 vs two teams

SEASON HIGHS

PTS	6 vs ODU
REB	2 vs SeMO
AST	1 vs ODU
STEALS	1 vs Toledo



SAINT FRANCIS



32 Courtney Zezza

Center | JR | 6-3
Plum, PA | Plum

SOPHOMORE(2016-17) Played in all 32 games for the Red Flash including eight starts. Set SFU record for blocks in a season with 110, good for fourth in NCAA...Currently sits third on SFU all-time block list with 146...Recorded a pair of eight block games...Posted a career-high 19 points against Jackson State...Posted a 12p-12r-8b game in win over Bryant

FRESHMAN (2015-16)- Played in all 31 games off the bench for the Red Flash as a freshman...Second on the team with 36 blocks...Averaged 4.1 points and 2.6 rebounds per game...Had career-high 17 at Sacred Heart...Recorded a double-double of 16 points and 12 rebounds in a win at Wagner.

BEFORE SFU - An All-WPIAL Section for her junior season, Zezza comes to Loretto from Plum High School in the Pittsburgh area ... A two-sport athlete for the Mustangs she was also an All-WPIAL selection for volleyball in three consecutive years.

PERSONAL - Courtney is the daughter of Liza and Jason Zezza and is undecided on her major.

GAME-BY-GAME STATS

SFU-W Individual Game-by-Game (as of Nov 22, 2017) All games

#32 ZEZZA, Courtney

Opponent	Date	gs	min	Total		3-Pointers		Free throws		Rebounds			pf	a	t/o	blk	stl	pts	avg		
				fg-fga	pct	3fg-fga	pct	ft-ftr	pct	off	def	tot								avg	
at Toledo Rockets	11/10/	*	23	3-8	.37	1-5	.20	1-1	1.00	2	5	7	7.0	1	1	0	5	2	8	8.0	
vs Southeast Missouri	11/17/	*	14	1-4	.25	0-2	.00	2-2	1.00	0	1	1	4.0	0	0	1	2	2	4	6.0	
vs Old Dominion	11/18/		23	2-11	.18	2-9	.22	1-2	.50	1	3	4	4.0	2	1	2	3	3	7	6.3	
SETON HILL	11/21/		19	2-5	.40	0-2	.00	2-2	1.00	1	3	4	4.0	1	1	0	2	1	6	6.3	
Totals			2	79	8-28	.28	3-18	.16	6-7	.85	4	12	16	4.0	4	3	3	12	8	25	6.3

Games played: 4
Minutes/game: 19.8
Points/game: 6.3
FG Pct: 28.6
3FG Pct: 16.7
FT Pct: 85.7

Rebounds/game: 4.0
Assists/game: 0.8
Turnovers/game: 0.8
Assist/turnover ratio: 1.0
Steals/game: 2.0
Blocks/game: 3.0

CAREER STATS

YEAR	GP-GS	PTS-AVG	REB-AVG	A	BLK	STL
2015-16	31-0	127-4.1	78-2.6	2	36	12
2016-17	32-8	240-7.7	164-5.5	27	106	19
TOTAL	63-8	367-5.8	242-3.8	29	142	31

CAREER HIGHS

PTS	17 vs Two Teams
REB	12 vs Four Teams
AST	4 vs CCSU (1/21/17)
BLOCKS	8 vs Two Teams

SEASON HIGHS

PTS	8 vs Toledo
REB	7 vs Toledo
AST	1 vs Toledo
BLK	5 vs Toledo





EXH | Nov. 2, 2017
Pitt-Johnstown-60
Saint Francis-94
DeGol Arena | Loretto, Pa.

Official Basketball Box Score -- Game Totals -- Final Statistics

UPJ-W vs SFU-W
11/2/17 7P at Loretto, PA (SFU)

UPJ-W 60 • 0-0

#	Player	Total		3-Ptr		Rebounds		PF	TP	A	TO	Blk	Stl	Min
		FG-FGA	FT-FTA	FG-FGA	FT-FTA	Off	Def							
03	SMITH, Gabrielle	r	4-14	1-3	3-8	6	2	8	4	12	0	6	0	22
31	MORELAND, Tori	f	4-12	2-10	3-4	3	2	5	2	13	2	3	0	30
33	OLKOSKY, Nicole	f	3-6	0-0	0-0	4	8	12	2	6	2	7	2	29
02	HARRIS, Alexis	g	2-12	2-6	6-9	5	8	13	2	12	4	9	0	23
20	O'BARTO, Laurel	g	0-6	0-1	0-2	2	2	4	3	0	1	2	0	18
01	NUNN, Maurina	g	1-3	0-2	3-4	0	1	1	0	5	1	3	0	20
04	DEAN, Ashley	g	0-1	0-1	0-0	0	1	1	0	0	0	0	0	3
10	KETTERER, Karington	g	2-7	0-0	0-1	2	1	3	1	4	0	3	0	1
23	HARTWICK, Alexis	g	2-9	2-6	2-4	2	0	2	1	8	1	3	0	22
30	SHANAHAN, Maddie	g	0-0	0-0	0-0	0	1	1	0	0	0	0	0	3
Team						3	2	5						
Totals			18-70	7-29	17-32	27	28	55	15	60	11	36	2	160

1st - FG %: 4-17 23.5% 2nd: 6-19 31.6% 3rd: 5-22 22.7% 4th: 3-12 25.0% Game: 18-70 25.7% Deadball Rebounds 10
3FG %: 2-5 40.0% 2-9 22.2% 3-10 30.0% 0-5 0.0% 7-29 24.1% 17-32 53.1%
FT %: 1-3 33.3% 2-9 22.2% 3-10 30.0% 0-5 0.0% 7-29 24.1% 17-32 53.1%

SFU-W 94 • 0-0

#	Player	Total		3-Ptr		Rebounds		PF	TP	A	TO	Blk	Stl	Min
		FG-FGA	FT-FTA	FG-FGA	FT-FTA	Off	Def							
30	FALVEY, Jill	f	1-1	0-0	0-0	0	0	0	1	2	1	1	0	10
32	ZEZZA, Courtney	f	3-6	2-3	2-2	1	2	3	1	10	0	2	1	16
34	HARRISON, Ace	c	4-10	0-1	3-4	2	4	6	3	11	6	3	1	21
02	KROLL, Caitlyn	g	3-6	0-1	2-4	1	3	4	2	8	5	4	0	23
23	KOVATCH, Jessica	g	8-20	3-11	0-0	0	1	1	3	19	2	2	1	23
03	SWOGER, Karson	g	1-3	0-2	0-0	0	0	0	1	2	0	2	0	5
04	SHUKE, Allison	g	0-0	0-0	0-0	0	1	1	0	0	0	0	0	2
10	MORROW, Leah	g	3-8	0-0	4-7	3	2	5	2	10	1	0	1	15
12	MASTELLONE, Jenna	g	1-2	0-1	0-0	0	0	0	3	2	1	3	0	1
15	WYNN, Maya	g	5-9	3-7	0-0	1	3	4	2	13	3	1	0	19
20	CARROLL, Caitlin	g	0-1	0-1	0-0	0	0	0	2	0	0	0	0	4
22	SCOTT, Jillian	g	0-0	0-0	0-0	1	0	1	0	0	0	0	0	6
24	DULING, Kyasia	g	3-5	0-1	0-0	1	3	4	3	6	1	4	0	17
33	SMITH, Cydney	g	0-2	0-1	0-0	0	5	5	2	0	1	1	4	15
51	THOMAS, Haley	g	4-5	2-2	1-2	4	3	7	3	11	0	2	0	15
Team						3	3	6						
Totals			36-78	10-31	12-19	17	30	47	29	94	21	25	8	200

1st - FG %: 11-20 55.0% 2nd: 8-23 34.8% 3rd: 9-21 42.9% 4th: 8-14 57.1% Game: 36-78 46.2% Deadball Rebounds 4
3FG %: 2-9 22.2% 1-8 12.5% 2-5 40.0% 0-5 0.0% 10-19 52.4%
FT %: 1-3 33.3% 2-5 40.0% 0-9 0.0% 1-2 50.0% 10-19 52.4%

Officials: Technical fouls: UPJ-W-None. SFU-W-None.
Attendance: 700
Exhibition

Score by periods	1st	2nd	3rd	4th	Total
UPJ-W	16	16	18	10	60
SFU-W	25	19	28	22	94



Game #2 | Nov. 18, 2017
Saint Francis-50
SEMO-82
George Mason | Fairfax, VA

Official Basketball Box Score -- Game Totals -- Final Statistics

SFU-W vs Southeast Missouri S
11/17/17 12 p.m. at EagleBank Arena (Fairfax, Va.)

SFU-W 50 • (0-2)

#	Player	Total		3-Ptr		Rebounds		PF	TP	A	TO	Blk	Stl	Min
		FG-FGA	FT-FTA	FG-FGA	FT-FTA	Off	Def							
32	ZEZZA, Courtney	f	1-4	0-2	2-2	0	1	1	0	4	0	1	2	14
34	HARRISON, Ace	f	2-9	1-6	6-8	3	3	6	4	11	4	2	1	27
02	KROLL, Caitlyn	g	6-17	2-5	2-2	7	3	10	2	16	3	5	0	33
15	WYNN, Maya	g	1-5	1-5	0-0	1	1	2	0	3	0	0	0	21
23	KOVATCH, Jessica	g	4-14	2-6	0-0	0	1	1	2	10	1	2	1	30
03	SWOGER, Karson	g	0-0	0-0	0-0	0	1	1	0	0	0	1	0	2
10	MORROW, Leah	g	0-2	0-1	2-2	0	1	1	3	2	0	3	0	18
12	MASTELLONE, Jenna	g	0-0	0-0	0-0	0	0	0	1	0	1	1	0	5
22	SCOTT, Jillian	g	0-0	0-0	0-0	0	0	0	0	0	0	0	0	2
24	DULING, Kyasia	g	2-9	0-2	0-0	1	3	4	3	4	1	2	0	19
30	FALVEY, Jill	g	0-1	0-1	0-0	0	0	0	0	0	0	0	0	3
33	SMITH, Cydney	g	3-3	0-0	0-0	0	3	3	0	2	0	0	0	9
51	THOMAS, Haley	g	0-4	0-3	0-0	0	3	3	4	0	0	4	0	1
Team						4	4	8						
Totals			16-68	6-31	12-14	16	21	37	21	50	10	21	4	140

FG % 1st Half: 6-34 17.6% 2nd half: 10-34 29.4% Game: 16-68 23.5% Deadball Rebounds 1
3FG % 1st Half: 0-13 0.0% 2nd half: 6-18 33.3% Game: 6-31 19.4%
FT % 1st Half: 11-12 91.7% 2nd half: 1-2 50.0% Game: 12-14 85.7%

Southeast Missouri S 82 • (2-1)

#	Player	Total		3-Ptr		Rebounds		PF	TP	A	TO	Blk	Stl	Min
		FG-FGA	FT-FTA	FG-FGA	FT-FTA	Off	Def							
22	JONES, Deja	r	3-4	0-0	2-4	3	2	5	4	8	3	1	1	27
40	SAINE, LaTrese	r	2-3	0-0	1-1	0	3	3	4	5	0	1	2	11
03	MURPHY, Adrianna	g	5-9	0-1	0-0	0	6	6	2	15	3	8	0	32
13	HARSHBERGER, Jessie	g	3-3	0-0	0-0	0	3	3	0	6	0	2	0	15
24	THOMPSON, Tessie	g	5-12	0-0	8-10	3	8	11	1	18	6	3	0	30
01	ALLEN, Kennedi	g	0-1	0-0	0-0	0	1	1	2	0	0	1	0	8
10	LUTTRULL, Ashton	g	5-10	2-6	6-6	1	1	2	0	18	4	0	0	28
11	MADDEN, Mandy	g	3-8	0-0	0-2	0	8	8	2	6	0	3	1	23
15	LEVHUE, Kaley	g	4-7	3-6	0-0	0	2	2	1	11	0	2	0	21
32	LUTAYA, Losmie	g	0-0	0-0	0-0	0	1	1	1	0	0	0	1	5
Team						1	2	3						
Totals			30-57	5-13	17-23	8	37	45	17	82	16	21	7	200

FG % 1st Half: 15-28 53.6% 2nd half: 15-29 51.7% Game: 30-57 52.6% Deadball Rebounds 4
3FG % 1st Half: 3-6 50.0% 2nd half: 2-7 28.6% Game: 5-13 38.5%
FT % 1st Half: 9-12 75.0% 2nd half: 8-11 72.7% Game: 17-23 73.9%

Officials: Warren Harding, Ashley Moyer-Gleich, Starr Jefferson
Technical fouls: SFU-W-None. Southeast Missouri S-None.
Attendance: 134
Preseason WNIT Consolation Round

Score by periods	1st	2nd	3rd	4th	Total
SFU-W	4	19	12	15	50
Southeast Missouri S	23	19	21	21	82



Game #1 | Nov. 10, 2017
Saint Francis-66
Toledo-74
Savage Arena | Toledo, Ohio

Official Basketball Box Score -- Game Totals -- Final Statistics

Saint Francis (PA) vs Toledo Rockets
11/10/17 7:00 p.m. at Toledo, Ohio (Savage Arena)

Saint Francis (PA) 66 • 0-1

#	Player	Total		3-Ptr		Rebounds		PF	TP	A	TO	Blk	Stl	Min
		FG-FGA	FT-FTA	FG-FGA	FT-FTA	Off	Def							
34	HARRISON, Ace	r	5-9	2-2	4-4	1	4	5	1	16	1	6	1	31
32	ZEZZA, Courtney	c	3-8	1-5	1-1	2	5	7	1	8	1	0	5	23
02	KROLL, Caitlyn	g	2-10	1-1	2-2	0	5	5	4	7	3	5	0	32
15	WYNN, Maya	g	1-4	1-2	0-0	0	0	0	3	3	0	2	0	15
23	KOVATCH, Jessica	g	6-17	4-12	5-7	2	3	5	2	21	2	8	1	35
03	SWOGER, Karson	g	0-0	0-0	0-0	0	0	0	0	0	0	0	0	3
10	MORROW, Leah	g	0-4	0-1	0-0	0	1	1	2	0	2	2	0	19
12	MASTELLONE, Jenna	g	0-0	0-0	0-0	0	0	0	1	0	0	1	0	2
24	DULING, Kyasia	g	1-3	0-0	3-4	4	0	4	5	0	3	0	2	16
30	FALVEY, Jill	g	0-0	0-0	0-0	0	0	0	0	0	0	0	0	3
33	SMITH, Cydney	g	0-0	0-0	1-2	1	2	3	4	1	0	1	0	3
51	THOMAS, Haley	g	1-2	1-1	2-2	1	3	4	3	5	1	2	0	14
Team						0	1	1						
Totals			19-57	10-24	18-22	11	24	35	25	66	10	30	7	200

1st - FG %: 6-16 37.5% 2nd: 4-13 30.8% 3rd: 3-14 21.4% 4th: 6-14 42.9% Game: 19-57 33.3% Deadball Rebounds 4
3FG %: 4-8 50.0% 2-4 50.0% 0-4 0.0% 4-8 50.0%
FT %: 6-8 75.0% 4-5 80.0% 2-2 100.0%

Toledo Rockets 74 • 1-0

#	Player	Total	3-Ptr	Rebounds	PF	TP	A	TO	Blk	Stl	Min				
		FG-FGA	FG-FGA	FT-FTA	Off	Def	Total								
35	WOODY, Jada	f	2-4	2-3	0-0	0	0	0	3	6	0	2	0	18	
25	MCINTYRE, Kaayla	f	8-10	0-0	1-2	3	9	12	2	17	2	0	3	0	29
02	BOYD, Mikaela	g	4-9	0-0	3-8	0	7	7	2	11	3	6	0	7	32
03	SANTUCCI, Mariella	g	1-5	0-1	2-4	1	0	1	3	4	7	5	0	3	23
11	BRAVO-HARRIOTT, Jay	g	4-12	0-3	6-6	1	1	2	3	14	2	4	0	1	31
00	CUNNINGHAM, Olivia	f	4-8	0-0	0-0	1	1	2	0	8	3	6	0	0	26
03	KENAN, Sarena	f	0-4	0-3	0-2	1	1	2	1	1	0	0	1	9	9
01	ST-FORET, Sarah	f	1-2	0-0	0-4	2	2	4	3	2	0	1	0	0	1
13	COPELAND, Mariah	g	0-0	0-0	1-2	0	0	0	0	1	0	0	0	0	1
23	BEACHAM, Tanaya	f	3-4	0-0	0-0	2	1	3	1	6	0	0	0	0	6
24	RASMUSSEN, Michaela	f	2-4	0-0	0-0	1	1	2	2	4	0	1	0	0	4
	Team						2	4	6						
	Totals		29-60	2-10	14-28	13	27	40	20	74	21	25	3	14	200

SAINT FRANCIS



Game 4 | Nov. 21, 2017

Seton Hill-71

Saint Francis-103

DeGol Arena | Loretto, Pa.

Official Basketball Box Score -- Game Totals -- Final Statistics**Seton Hill vs SFU-W****11/21/17 11 a.m. at Loretto, Pa. - DeGol Arena****Seton Hill 71 • 2-3**

#	Player		Total	3-Ptr	Rebounds												
			FG	FGA	FG	FTA	Off	Def	TP	PF	TP	A	TO	Blk	Stl	Min	
01	KAUFMAN, Jenna	f	1-4	1-1	3-4	0	1	1	1	6	0	4	0	0	0	14	
33	LASLO, Hannah	f	2-6	0-0	3-4	1	1	2	4	7	0	2	1	3	20		
04	HAY, Alexandra	g	3-5	1-3	2-2	0	1	1	3	9	2	2	0	1	15		
05	MIFSUD, Lindsey	g	0-1	0-1	2-2	1	2	3	2	2	2	2	0	0	14		
20	TREST, Cheyenne	g	3-6	0-2	2-2	0	2	2	2	8	4	0	0	1	25		
02	RABOLD, Sydney		1-5	1-4	0-0	2	2	4	1	3	3	2	0	0	24		
13	TORRIS, Halie		3-10	2-7	0-0	1	3	4	2	8	2	1	0	0	22		
14	WEEKS, Kelly		3-10	2-3	2-2	0	3	3	3	10	0	1	0	0	22		
23	CECERE, Courtney		2-5	2-5	2-6	1	4	5	1	8	1	6	0	1	24		
32	NOLAN, Katie		4-7	0-0	2-4	1	5	6	2	10	1	1	0	3	20		
	Team					0	1	1									
Totals			22-59	9-26	18-26	7	25	32	21	71	15	21	1	9	200		
1st - FG %:			4-19	21.1%	2nd:	7-14	50.0%	3rd:	5-15	33.3%	4th:	6-11	54.5%	Game:	22-59	37.3%	Deadball
3FG %:			1-8	12.5%		3-7	42.9%		3-7	42.9%		2-4	50.0%		9-26	34.6%	Rebounds
FT %:			5-6	83.3%		5-6	83.3%		5-6	83.3%		3-8	37.5%		18-26	69.2%	5

SFU-W 103 • 2-2

#	Player		FG	Total	3-Ptr	Rebounds												
				FGA	FT-FTA	Off	Def	TO	PF	TP	A	TO	Blk	Stl			Min	
24	DULING, Kyasia	f	4-7	0-2	2-2	5	8	13	2	10	1	3	0	0			16	
34	HARRISON, Ace	f	7-11	2-6	3-4	5	6	11	3	19	2	0	0	1			22	
02	KROLL, Caitlyn	g	2-7	1-4	0-2	1	2	3	3	5	6	6	0	1			24	
10	MORROW, Leah	g	2-6	0-2	2-2	2	0	2	3	6	0	3	0	2			16	
23	KOVATCH, Jessica	g	7-19	2-9	9-12	1	3	4	1	25	3	2	0	3			21	
03	SWOGGER, Karson		3-5	2-3	2-3	2	0	2	3	10	0	0	0	0			12	
04	SHUKE, Allison		0-1	0-1	0-0	0	1	1	0	0	0	0	0	0			3	
12	MASTELLONE, Jenna		0-2	0-1	4-6	0	2	2	2	4	0	2	0	1			9	
15	WYNN, Maya		2-6	1-4	0-0	1	1	2	2	5	1	0	0	1			16	
20	CARROLL, Caitlin		0-2	0-2	0-0	0	0	0	0	0	1	0	0	0			4	
22	SCOTT, Jillian		1-1	0-0	1	1	2	1	2	0	2	0	1	1			7	
30	FALVEY, Jill		0-1	0-1	0-0	3	0	3	0	0	0	1	0	0			7	
32	ZEZZA, Courtney		2-5	0-2	2-2	1	3	4	1	6	1	0	2	1			19	
33	SMITH, Sydney		1-4	0-2	0-1	0	0	0	2	2	0	0	2	0			6	
51	THOMAS, Haley		4-9	1-3	0-0	5	5	10	3	9	5	0	1	3			19	
Team				35-86	9-42	24-34	32	33	65	26	103	20	19	5	14		201	
Totals																		
1st - FG %:		11-24	45.8%	2nd:	9-20	45.0%	3rd:	10-23	43.5%	4th:	5-19	26.3%	Game:	35-86	40.7%	Deadball		
3FG %:		2-12	16.7%		1-7	14.3%		5-14	35.7%		1-9	11.1%		9-42	21.4%	Rebounds		
FT %:		4-7	57.1%		6-6	100.0%		7-10	70.0%		7-11	63.6%		24-34	70.6%	4		

Officials: Dirk Link, Katlyn Tortorice, Warren Harding

Technical fouls: Seton Hill-None. SFU-W-None.

Attendance: 1012

Score by periods	1st	2nd	3rd	4th	Total
Seton Hill	14	22	18	17	71
SFU-W	20	25	32	18	103

Points	In	Off	2nd	Fast	Bench
Paint	Paint	T/O	Chance	Break	
SHU-W	0	0	0	0	0
SFU-W	0	0	0	0	0

SAINT FRANCIS

INDIVIDUAL GAME RECORDS

POINTS

1. 47	Alli Williams vs. Wagner	March 3, 2014
^47	Alli Williams vs. Sacred Heart	March 9, 2014
3. *46	Jess Zinobile vs. LIU Brooklyn	March 4, 2000
4. 45	Jessica Kovatch vs CCSU	January 21, 2017
5. ^43	Alexa Hayward vs. Sacred Heart	March 9, 2014
6. ^40	Beth Swink vs. St. Francis Brooklyn	March 5, 2005
40	Bonnie Kleinschuter vs. Carlow	1976-77
8. 39	Jess Zinobile at UMBC	Jan. 13, 2000
39	Lois Langenegger vs. LaRoche	1974-75
10. 38	Erin Murphy vs. St. Francis Brooklyn	Jan. 25, 1992
38	Colleen Joyce vs. Marshall	Dec. 20, 1993
38	Colleen Joyce vs. Robert Morris	March 3, 1994

REBOUNDS

1. 24	Jess Zinobile at Fairleigh Dickinson	Jan. 5, 1998
24	Colleen Curley vs. Carlow	1980-81
24	Colleen Curley vs. Pitt-Johnstown	1978-79
24	Colleen Curley vs. Washington & Jefferson	1979-80
5. 23	Cheril Meier vs. Carnegie Mellon	1983-84
6. 22	Jess Zinobile at UMBC	Jan. 13, 2000
22	Jess Zinobile at LIU Brooklyn	Feb. 12, 1998
8. 21	Jess Zinobile at Fairleigh Dickinson	Feb. 5, 2000

ASSISTS

1. 16	Karen Hewitt vs. St. Francis Brooklyn	Jan. 10, 2004
2. 15	Maureen Logan at Dayton	Dec. 20, 1992
15	Brittany Lilley vs. Kent State	Dec. 4, 2010
15	Alexa Hayward vs. Buffalo	Nov. 18, 2014
5. 14	Mary Ann Wilwohl vs. LIU Brooklyn	Feb. 22, 1986
14	Jess Zinobile at Bucknell	Dec. 19, 1999

STEALS

1. 12	Alli Williams vs. Quinnipiac	Feb. 27, 2012
2. 11	Ace Harrison at Central Connecticut	Feb 20, 2017
3. 10	Maureen Logan vs. Duquesne	Nov. 28, 1989
4. 9	Aisha Brock vs. Mount Saint Mary's	Mar. 2, 2015
9	Alli Williams at Fairleigh Dickinson	Jan. 12, 2013
6. 8	Ace Harrison vs Wagner	Feb 13, 2017
8	Ace Harrison Vs Columbia	Nov. 19, 2016
8	Jessica Kovatch at Columbia	Dec 1, 2015
8	Tonjee Ward vs. Monmouth	Feb. 23, 2002
8	Tonjee Ward vs. Central Conn. St.	Jan. 24, 2002
8	Maureen Logan vs. Navy	Dec. 1, 1992
8	Maureen Logan vs. Robert Morris	Jan. 9, 1990
8	Diane Carey vs. Indiana (Pa.)	Feb. 2, 1985

BLOCKS

1. 9	Cheril Meier at Washington & Jefferson	Feb. 16, 1984
2. 8	Courtney Zezza vs Mount St. Mary's	Feb. 11, 2017
8	Courtney Zezza vs Bryant	Jan. 23, 2017
8	Vesna Drazetic at Monmouth	Jan. 12, 1991
8	Cheril Meier vs. Delaware State	Jan. 29, 1985
8	Cheril Meier at Wagner	Feb. 25, 1985
8	Cheril Meier vs. Carlow	Feb. 23, 1984

FIELD GOALS ATTEMPTED

1. 35	Alexa Hayward vs. Sacred Heart	Jan. 17, 2015
2. 34	Alexa Hayward at Ohio State	Nov. 16, 2014
3. 33	Jessica Kovatch vs CCSU	Jan 21, 2017
4. 32	Alexa Hayward vs. Buffalo	Nov. 18, 2014
5. 31	Alexa Hayward vs. East Tennessee State	Nov. 21, 2014
6. 30	Alexa Hayward at Pittsburgh	Dec. 28, 2014
30	Alexa Hayward at Sacred Heart	Jan. 10, 2015
30	Alexa Hayward vs. Mount St. Mary's	March 2, 2015

FIELD GOALS MADE

1. 16	Jessica Kovatch	Jan. 21, 2017
2. 15	Jess Zinobile at Monmouth	Feb. 22, 1999
15	Colleen Joyce vs. Marshall	Dec. 20, 1993
15	Alli Williams vs. Wagner	March 3, 2014
15	Alexa Hayward vs. Mount St. Mary's	March 2, 2015
7. 14	Beth Swink vs. Mount St. Mary's	Feb. 2, 2005
^14	Jess Zinobile vs. LIU Brooklyn	March 4, 2000
14	Colleen Joyce vs. Penn State	Nov. 27, 1995
14	Sue Leberfinger at LIU Brooklyn	Feb. 21, 1987

THREE-POINT FIELD GOALS ATTEMPTED

1. 21	Jessica Kovatch at #19 South Florida	Dec. 14, 2016
2. 20	Jessica Kovatch vs CCSU	Jan. 21, 2017
3. 19	Alexa Hayward at #14 Tennessee	Dec. 3, 2014
19	Alexa Hayward vs. George Mason	Dec. 6, 2014
4. 18	Alexa Hayward at Ohio State	Nov. 16, 2014
5. ^17	Allison Daly vs. Robert Morris	March 7, 2010
6. 16	Sami Allison at Robert Morris	Dec. 1, 2001
7. 15	Alexa Hayward at Coastal Carolina	Dec. 21, 2014
15	Alexa Hayward vs. Mount St. Mary's	March 2, 2015
9. 15	Jessica Kovatch at FDU	Feb. 1, 2016

THREE-POINT FIELD GOALS MADE

1. 9	Jessica Kovatch at #19 South Florida	Dec. 14, 2016
1. 9	Jessica Kovatch vs CCSU	Jan. 21, 2017
3. 8	Sami Allison vs. Miami (Ohio)	Dec. 21, 2001
^8	Allison Daly vs. Robert Morris	March 7, 2010
8	Kelley Doogan vs. Fairleigh Dickinson	Feb. 25, 2013
8	Jessica Kovatch at Canisius	Nov. 21, 2015
4. 7	Stacy Alexander vs. LIU Brooklyn	Jan. 29, 1996
7	Sami Allison vs. UMBC	Jan. 9, 2003
7	Tonjee Ward vs. Delaware	Dec. 20, 2000
7	Alexa Hayward vs. Robert Morris	Jan. 28, 2013
7	Alexa Hayward vs. Fairleigh Dickinson	Jan. 11, 2014
7	Alexa Hayward at Coastal Carolina	Dec. 21, 2014
7	Alexa Hayward vs. Mount St. Mary's	March 2, 2015
7	Jessica Kovatch at Fairleigh Dickinson	Dec 29, 2016

FREE THROWS ATTEMPTED

1. 25	Alli Williams at Wagner	Feb. 1, 2014
2. 23	Jess Zinobile vs. Cornell	Nov. 21, 1999
3. 21	Alli Williams at Central Conn. St.	Jan. 6, 2014
^21	Alli Williams vs. Sacred Heart	March 9, 2014
5. 19	Alli Williams vs. Central Conn. St.	Feb. 20, 2012

FREE THROWS MADE

1. 22	Jess Zinobile vs. Cornell	Nov. 21, 1999
2. 19	Alli Williams at Wagner	Feb. 1, 2014
3. 16	Jess Zinobile vs. James Madison	Dec. 11, 1999
16	Jess Zinobile vs. Robert Morris	Feb. 20, 1999
5. ^15	Jess Zinobile vs. LIU Brooklyn	March 4, 2000
15	Jess Zinobile vs. Quinnipiac	Jan. 16, 1999
15	Alli Williams vs. Central Conn. St.	Feb. 20, 2012
^15	Alli Williams vs. Sacred Heart	March 9, 2014

* - NEC Championship Game

^ - NEC Tournament Game

\$ - NCAA Tournament Game#

- Scored school-record 35 points in one half

SAINT FRANCIS

SFU Single Game Records

Most Points Scored

1.	132	vs. Sacred Heart (20T)	03/09/14
2.	111	vs. Fairleigh Dickinson	01/11/14
3.	110	at Fairleigh Dickinson	01/25/14
4.	109	vs. St. Francis Brooklyn	01/25/92
5.	106	at Central Conn. St.	01/06/14
5.	106	vs Coastal Carolina	11/18/15

Fewest Points Scored

1.	19	vs. Slippery Rock	03/05/69
2.	21	vs. Seton Hill	01/24/74
3.	23	vs. Duquesne	02/23/74
3.	23	vs. Duquesne	02/17/73
5.	24	vs. Juniata	02/08/72
5.	24	vs. Shippensburg	01/25/69

Most Points by an Opponent

1.	129	South Florida	12/14/16
2.	128	Notre Dame	12/31/12
3.	124	Sacred Heart	03/09/14
4.	122	Florida	12/20/15
5.	117	Penn State	11/8/13

Fewest Points by an Opponent

1.	15	Juniata	02/22/69
2.	16	LaRoche	02/22/75
3.	16	Duquesne	01/28/73
3.	16	Duquesne	02/15/71
5.	16	Juniata	02/07/70

Largest Margin of Victory

1.	59	LaRoche (75-16)	02/22/76
2.	57	Carlow (87-30)	01/19/77
3.	55	St. Francis Brooklyn (92-37)	01/19/89
4.	53	Carlow (75-23)	02/04/78

Largest Margin of Defeat

1.	73	Notre Dame (128-55)	12/31/12
2.	72	Pitt-Johnstown (102-30)	01/19/78
3.	67	at #14 Tennessee (111-44)	12/3/14
4.	62	Colorado (114-52)	11/28/95
5.	60	South Carolina (93-33)	11/09/07

Most FGs Attempted

1.	102	at Ohio State	11/16/14
2.	92	at Fairleigh Dickinson	01/25/14
3.	92	vs. Sacred Heart	03/09/14
4.	90	vs. Buffalo	11/18/14
5.	84	vs. Georgetown	12/08/90

Fewest FGs Attempted

1.	40	vs. Pittsburgh	11/23/90
2.	40	at Loyola	02/04/89
3.	40	at Cincinnati	11/19/05
4.	41	at West Virginia	12/30/06
5.	43	at Virginia	12/21/04
5.	43	at Robert Morris	02/20/05
5.	43	vs. Robert Morris	03/12/05

Highest FG%

1.	67	vs. Robert Morris	01/26/04
2.	63	vs. Monmouth	01/10/98
3.	61	at Miami (Ohio)	12/18/02
4.	60	at LIU Brooklyn	02/21/87
5.	59	vs. Quinnipiac	02/28/04
5.	59	at Bucknell	12/19/99
5.	59	vs. Juniata	02/10/86

Lowest FG%

1.	21.0	at George Mason	11/20/00
2.	22.0	at North Carolina	11/21/03
3.	23.0	vs. Texas Tech (Cancun, Mexico)	11/28/97
3.	23.0	vs. Monmouth	02/28/87
5.	23.4	at George Mason	11/21/13

Most 3FGs Attempted

1.	54	at South Florida	12/14/16
2.	51	at FDU	2/1/16
3.	49	vs. Wagner	2/13/17
4.	47	at Ohio State	11/16/14
5.	45	vs. George Mason	12/6/14

Most 3FGs Made

1.	19	at South Florida	12/14/16
2.	17	vs Fairleigh Dickinson	1/18/16
2.	17	vs EKU (at Florida)	12/21/15
2.	17	vs Fairleigh Dickinson	2/25/13
5.	15	vs Cornell	11/23/15
5.	15	at Wisconsin	11/13/16

Most FTs Attempted

1.	62	at Central Conn. St.	01/06/14
2.	46	vs. Monmouth	03/09/95
3.	45	at Central Conn. St.	02/20/12
4.	43	vs. St. Francis Brooklyn	02/19/94
5.	41	at Marist	01/04/96
5.	41	at Wagner	02/06/12

Fewest FTs Attempted

1.	0	at Bucknell	01/09/86
2.	2	vs. LIU Brooklyn	02/28/05
3.	3	at Cincinnati	11/28/01
4.	4	Six times	

Highest FT% [min. 10 attempts]

1.	100.0	at Mount St. Mary's	02/24/05
2.	94.0	vs. St. Francis Brooklyn	03/05/05
3.	93.0	Seven times	

Lowest FT% [min. 10 attempts]

1.	20	at Dayton	02/20/92
2.	30	at East Carolina	01/01/92
3.	32	at Fairleigh Dickinson	01/30/93

Most Rebounds

1.	66	at Rider	12/01/90
2.	65	vs Seton Hill	11/21/17
3.	62	at Cleveland State	12/18/91
4.	61	vs. Rider	01/07/95
5.	60	at Fairleigh Dickinson	01/12/95

Fewest Rebounds

1.	20	at Cincinnati	11/19/05
2.	20	at Minnesota	03/19/05
3.	20	at Cincinnati	11/28/01
4.	21	at Oregon	11/11/05
5.	22	at Louisville	12/30/05
5.	22	at Long Island	01/06/05
5.	22	at Xavier	12/31/03
5.	22	vs. George Mason	11/24/91

Most Assists

1.	35	Fairleigh Dickinson	02/11/95
2.	30	vs. LIU Brooklyn	01/24/98
3.	30	vs. LIU Brooklyn	01/29/96
3.	30	vs. Robert Morris	03/03/94
3.	30	at St. Francis Brooklyn	01/19/02
3.	30	at Wright State	12/21/12

Fewest Assists

1.	0	at Ohio	12/19/85
2.	2	at Loyola	12/12/87
3.	4	at Georgetown	12/09/89
4.	4	at Pittsburgh	11/15/11
4.	4	vs. CCSU	2/6/16
4.	5	at South Carolina	11/09/07
5.	5	at Oregon	11/11/05
5.	5	at Alabama	03/14/97
5.	5	at Fairleigh Dickinson	01/30/93

Most Steals

1.	23	vs. Mount St. Mary's	3/2/15
2.	22	vs. Marist	01/31/88
3.	21	vs. Wagner	02/09/04
3.	21	vs. Robert Morris	01/09/90
3.	21	vs. Monmouth	02/23/13
6.	20	vs St. Francis Brooklyn	1/7/17

Fewest Steals

1.	1	vs. LIU Brooklyn	01/16/06
2.	1	at Delaware	12/29/99
3.	2	Seven times	

Most Blocks

1.	13	Vs Jackson State	12/17/16
2.	12	vs LIU Brooklyn	2/20/16
3.	11	Vs. Columbia	11/19/16
3.	11	vs. Robert Morris	02/15/97
5.	10	vs Fairleigh Dickinson	2/25/17
6.	9	Vs Mount St. Mary's	2/11/17
6.	9	Vs Canisius	11/22/16
9.	9	vs. William & Mary	12/21/98
9.	9	vs. Monmouth	02/15/97
7.	8	vs. Robert Morris	12/09/00
8.	8	at Monmouth	01/18/97
8.	8	vs. Maryland Eastern Shore	11/29/96
8.	8	at St. Francis Brooklyn	02/24/96

Most Turnovers

1.	43	at Florida	12/17/13
2.	41	vs. Pittsburgh	11/23/90
3.	41	at Cleveland State	12/18/91
3.	40	at Florida	12/20/15
4.	36	at St. Francis Brooklyn	02/29/92
4.	36	at Virginia	12/19/90
4.	36	at Rider	12/01/90

Fewest Turnovers

1.	4	vs. Wagner	03/03/14
2.	7	at Sacred Heart	02/17/05
3.	7	at Iowa State	03/17/00
4.	8	vs. Quinnipiac	03/07/04
5.	8	at Fairleigh Dickinson	01/27/01
5.	8	at Mount St. Mary's	03/09/96



THE LAST TIME... SFU (TEAM)

Scored 100 or more:

103 vs Seton Hill (11/21/17)

Scored 90 or more:

97 at Mount St. Mary's (1/14/17)

Scored 80 or more:

83 vs SHU (2/27/17)

Scored 70 or more:

79 vs ODU (11/18/17)

Scored 49 or less:

43 at Robert Morris (2/29/16)

Scored 39 or less:

38, at Duquesne (12/5/12)

Shot 50 percent or better:

52, vs SHU (2/27/17)

Shot 50 percent or better in each half:

62/51, at Wright State (12/21/12)

Shot 35 percent or worse:

23 vs SEMO (At GMU 11/17/17)

Shot 30 percent or worse:

23 vs SEMO (At GMU 11/17/17)

Made 35 or more field goals:

35 vs Seton Hill (11/21/17)

Made 20 or more free throws:

24 vs Seton Hill (11/21/17)

Attempted 35 or more free throws:

35, vs Robert Morris (1/30/16)

Shot 50 percent or better from 3-point:

50.0 (12-24), at Florida (12/17/13)

Made 10 or more from 3-point:

10 vs Toledo (11/10/17)

Had 50 or more rebounds:

65, vs Seton Hill (11/21/17)

Had 15 or more offensive rebounds:

32, vs Seton Hill (11/21/17)

Had 20 or more assists:

20 vs Seton Hill (11/21/17)

Had 10 or more steals:

14 vs Seton Hill (11/21/17)

Had 8 or more blocked shots:

9 vs CCSU (3/5/17)

Won five or more consecutive games:

7 (1/7/17 to 1/28/17)

Lost five or more consecutive games:

5 (1/10/15-1/24/15)

Defeated a power conference team:

103-100, at Wisconsin (11/13/16)

Played in overtime:

L, 74-64 at Mount Saint Mary's (1/24/15)

Played in double overtime or later:

W, 132-124 2 OT vs Sacred Heart (3/9/14)

Won when trailing at halftime:

66-52 vs LIU Brooklyn (1/7/17) (Trailed 30-29)

Won when trailing by 10 points or more:

76-59 at St. Francis Brooklyn (2/6/17) (Down 17-5)

OPPONENT (TEAM)

Scored 100 or more:

129 at South Florida (12/14/16)

Scored 90 or more:

90 at MD-ES (at FAU) (12/16/16)

Scored 80 or more:

82 vs SEMO (At GMU 11/17/17)

Scored 70 or more:

71 vs Seton Hill (11/21/17)

Scored 49 or less:

30 at LIU Brooklyn (2/4/17)

Shot 60 percent or better:

65.8 at South Florida (12/14/16)

Shot 50 percent or better:

52 vs SEMO (At GMU 11/17/17)

Shot 50 percent or better in each half:

66/64 at South Florida (12/14/16)

Shot 35 percent or worse:

34, at Wagner (1/27/17)

Shot 30 percent or worse:

30, vs FDU (2/25/17)

Made 35 or more field goals:

48 at South Florida (12/14/16)

Made 25 or more free throws:

27, at Jackson State (at FAU) (12/17/16)

Attempted 35 or more free throws:

37, at Jackson State (at FAU) (12/17/16)

Shot 50 percent or better from 3-point:

52.6 MD-ES (at FAU) (12/16/16)

Made 10 or more from 3-point:

10, vs SHU (2/27/17)

Had 50 or more rebounds:

56 vs Campbell (3/16/17)

Had 15 or more offensive rebounds:

15, ODU (11/18/17)

Had 20 or more assists:

21 at Toledo (11/10/17)

Had 10 or more steals:

14, at Toledo (11/17/10)

Had 10 or more blocked shots:

10, at Robert Morris (2/11/13)

INDIVIDUAL

SFU (PLAYER)

Scored 30 or more:

35, Jessica Kovatch, vs SHU (2/27/17)

Scored 25 or more:

25 Jessica Kovatch, vs Seton Hill (11/21/17)

Scored 20 or more:

21, Jess Kovatch at Toledo (11/10/17)

Made 10 or more field goals:

12 Jessica Kovatch vs SHU (2/27/17)

Made 10 or more free throws:

12, Jessica Kovatch vs RMU (1/30/16)

Made 5 or more from 3-point:

6 Maya Wynn, vs Campbell (3/16/17)

Had 20 or more rebounds:

21 Jess Zinoble at FDU (2/5/2000)

Had 15 or more rebounds:

16, Ace Harrison vs Wagner (2/13/17)

Had 10 or more rebounds:

13, Kyasia Duling vs Seton Hill (11/21/17)

Had 10 or more assists:

10, Alexa Heyward at Mt St. Marys (01/24/15)

Had 5 or more steals:

5 Ace Harrison, vs SEMO (At GMU 11/17/17)

Had 5 or more blocked shots:

5 Courtney Zezza vs Toledo (11/10/17)

OPPONENT (PLAYER)

Scored 30 or more:

32 Amina Markovic, at Fairleigh Dickinson (12/29/16)

Scored 25 or more:

27, Anna Niki Stamolamprou, vs Robert Morris (1/30/17)

Scored 20 or more:

22 Summer Price, vs Campbell (3/16/17)

Made 10 or more field goals:

10 Summer Price, vs Campbell (3/16/17)

Made 10 or more free throws:

10, Chelsea Causey at Jackson State (at FAU) (12/17/16)

Made 5 or more from 3-point:

5, Shelby Hickey, vs SHU (2/27/17)

Had 15 or more rebounds:

16 Brianna Cribb, vs Campbell (3/16/17)

Had 10 or more rebounds:

11, Tesia Thompson, vs SEMO (At GMU 11/17/17)

Had 10 or more assists:

14, Kierra Palmer, at Bryant (2/18/17)

Had 5 or more steals:

7, Mikaela Boyd vs Toledo (11/10/17)

Had 5 or more blocked shots:

5, Giocelis Reynoso, vs CCSU (1/21/17)



NCAA Statistics

Saint Francis (PA) - 2017-18 Women's Basketball Ranking Summary thru games 11/23/2017

Statistic	National Rank	Conference Rank	Value	National Leader	Value	Conference Leader	Value
Assist Turnover Ratio (345 ranked)	256	4	0.68	Baylor	2.03	Fairleigh Dickinson	0.81
Assists (344 ranked)	165	3	56	Iowa	146	Fairleigh Dickinson	61
Assists Per Game (345 ranked)	150	1	14.0	Baylor	26.0	Saint Francis (PA)	14.0
Blocked Shots (341 ranked)	34	1	23	Binghamton	47	Saint Francis (PA)	23
Blocked Shots Per Game (345 ranked)	34	1	5.8	Norfolk St.	12.0	Saint Francis (PA)	5.8
Defensive Rebounds per Game (30 ranked)				Iowa	36		
Fewest Fouls (345 ranked)	308	8	97	Dartmouth	22	St. Francis Brooklyn	49
Fewest Turnovers (345 ranked)	272	9	82	Mississippi Val.	23	St. Francis Brooklyn Sacred Heart	56 56
Field-Goal Percentage (345 ranked)	323	8	33.7	Baylor	56.6	Fairleigh Dickinson	43.3
Field-Goal Percentage Defense (345 ranked)	287	7	43.9	Green Bay	27.0	LIU Brooklyn	36.1
Free Throw Attempts (345 ranked)	74	3	93	Western Ill.	148	Wagner	101
Free Throws Made (345 ranked)	50	1	70	Western Ill.	111	Saint Francis (PA)	70
Free-Throw Percentage (345 ranked)	50	1	75.3	Central Mich.	90.6	Saint Francis (PA)	75.3
Offensive Rebounds per Game (30 ranked)	16	1	19	Michigan St.	26	Saint Francis (PA)	19
Personal Fouls Per Game (345 ranked)	334	9	24.3	Dartmouth	11.0	Sacred Heart	15.3
Rebound Margin (345 ranked)	118	1	4.8	Michigan St.	28.0	Saint Francis (PA)	4.8
Rebounds (345 ranked)	92	2	183	Ohio St.	292	Wagner	191
Rebounds Per Game (344 ranked)	42	1	45.75	Michigan St.	57.00	Saint Francis (PA)	45.75
Scoring Defense (345 ranked)	292	7	73.8	Green Bay	37.0	Fairleigh Dickinson	54.6
Scoring Margin (345 ranked)	190	2	0.8	Texas	50.7	Fairleigh Dickinson	9.4
Scoring Offense (345 ranked)	88	1	74.5	Texas	105.0	Saint Francis (PA)	74.5
Steals (345 ranked)	39	2	49	Lamar University	100	Wagner	51
Steals Per Game (345 ranked)	23	1	12.3	Lamar University	20.0	Saint Francis (PA)	12.3
Three Pt FG Defense (345 ranked)	86	3	27.5	Green Bay	13.4	Robert Morris	23.0
Three-Point Field Goals Attempted (150 ranked)	10	1	142	DePaul	198	Saint Francis (PA)	142
Three-Point Field Goals Made (345 ranked)	46	1	36	Western Ill.	73	Saint Francis (PA)	36
Three-Point Field Goals Per Game (345 ranked)	28	1	9.0	DePaul	13.4	Saint Francis (PA)	9.0
Three-Point Field-Goal Percentage (345 ranked)	293	8	25.4	Saint Joseph's	64.1	St. Francis Brooklyn	43.2
Turnover Margin (345 ranked)	147	2	1.00	Ohio	20.33	LIU Brooklyn	1.25
Turnovers Forced (345 ranked)	46	1	21.50	Jackson St.	32.50	Saint Francis (PA)	21.50
Turnovers Per Game (344 ranked)	310	9	20.5	Arkansas	8.5	Sacred Heart	14.0
Won-Lost Percentage (318 ranked)	166	2	50.0	52 teams tied	100.0	Fairleigh Dickinson	80.0

NCAA Individual Leaders

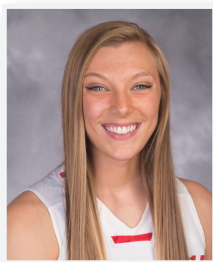
Statistic	Player	National Rank	Conference Rank	Value	National Leader	Value	Conference Leader	Value
Assist Turnover Ratio (249 ranked)					Morgan William, Mississippi St.	14.00	Natalie Zamora, Fairleigh Dickinson	1.73
Assists (140 ranked)					Emily Clemens, Western Ill.	55	Kierra Palmer, Bryant Drew Winter, LIU Brooklyn	20 20
Assists Per Game (249 ranked)					Tiana Mangakahia, Syracuse	11.0	Kierra Palmer, Bryant Drew Winter, LIU Brooklyn	5.0 5.0
Blocked Shots (136 ranked)	Courtney Zezza	21	1	12	Alyssa James, Binghamton	24	Courtney Zezza, Saint Francis (PA)	12
Blocked Shots Per Game (211 ranked)	Courtney Zezza	13	1	3.00	Alyssa James, Binghamton	4.80	Courtney Zezza, Saint Francis (PA)	3.00
Defensive Rebounds per Game (26 ranked)					G'mrice Davis, Fordham	11		
Double Doubles (28 ranked)					Megan Gustafson, Iowa	6	Sierra Clark, Wagner Katherine Haines, Sacred Heart	2 2
Field Goal Attempts (137 ranked)	Jessica Kovatch	120	3	60	Nicole Cardano-Hillary, George Mason	101	Sierra Clark, Wagner	75
Field Goals Made (148 ranked)					Megan Gustafson, Iowa	54	Sierra Clark, Wagner	32
Field-Goal Percentage (250 ranked)					Ariel Atkins, Texas	78.3	Katherine Haines, Sacred Heart	50.0
Final Points (198 ranked)					Kelsey Mitchell, Ohio St.	151	Sierra Clark, Wagner	90
Free Throw Attempts (144 ranked)					Tanaya Atkinson, Temple	54	Sierra Clark, Wagner	36
Free Throws Made (150 ranked)					Chelsea Welch, Wright St.	43	Sierra Clark, Wagner	22
Free-Throw Percentage (240 ranked)					21 players tied	100.0		
Minutes Played (148 ranked)					Loren Cagle, Lipscomb	222:00	Morgan Lenahan, Wagner	191:00
Minutes Played Per Game (147 ranked)					Lauren Holden, Fordham	41.33	Candice Leatherwood, Sacred Heart	36.00
Offensive Rebounds per Game (29 ranked)					Tierra McGOWAN, Morehead St.	8		
Points Per Game (243 ranked)	Jessica Kovatch	192	2	16.0	Ke'Shunan James, Murray St.	26.8	Denisha Petty-Evans, LIU Brooklyn	17.0
Rebounds (145 ranked)					Stephanie Mavunga, Ohio St.	85	Sierra Clark, Wagner	46
Rebounds Per Game (245 ranked)	Kyasia Duling	181	3	8.0	Tierra McGOWAN, Morehead St.	14.4	Katherine Haines, Sacred Heart	9.7
Steals (129 ranked)					Chastadie Barrs, Lamar University	37	Morgan Lenahan, Wagner Natalie Zamora, Fairleigh Dickinson	12 12
Steals Per Game (229 ranked)	A'Lexus Harrison Courtney Zezza	175 229	4 7	2.25 2.00	Chastadie Barrs, Lamar University	7.40	Jocelynn Jones, Robert Morris	3.67
Three-Point Field Goals Attempted (136 ranked)	Jessica Kovatch	63	2	33	Kelsey Mitchell, Ohio St.	59	Morgan Lenahan, Wagner	38
Three-Point Field Goals Made (116 ranked)					Kelsey Mitchell, Ohio St.	27	Jeydah Johnson, LIU Brooklyn Kiana Patterson, Central Conn. St. Kamrin Weimer, Fairleigh Dickinson	12 12 12
Three-Point Field Goals Per Game (230 ranked)	Jessica Kovatch	189	6	2.25	Rachael Childress, UAB	5.67	Jeydah Johnson, LIU Brooklyn Kiana Patterson, Central Conn. St. Megan Callahan, Robert Morris	3.00 3.00 3.00
Three-Point Field-Goal Percentage (250 ranked)					Cy Lippold, Dartmouth	83.3	Kayla Agentowicz, Mt. St. Mary's	57.1
Triple Doubles (3 ranked)					Chastadie Barrs, Lamar University Sabrina Ionescu, Oregon	2 2		



2 Caitlyn Kroll
5-10 ■ FR ■ G
Bridgeport, Ohio.
Bridgeport



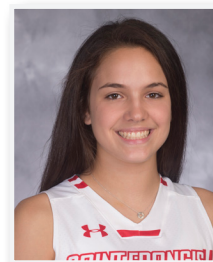
3 Karson Swogger
5-8 ■ FR ■ G
Bellwood, PA
Bellwood-Antis



4 Allison Shuke
5-11 ■ FR ■ G/F
Bedford, PA
Bedford



10 Leah Morrow
5-8 ■ FR ■ G/F
Columbus, OH
Columbus Africentric



12 Jenna Mastellone
5-10 ■ FR ■ G
New York City, NY
Archbishop Molloy



13 Sam Sabino
5-9 ■ R-SO ■ G
Rumson, NJ
Fair Haven



15 Maya Wynn
5-11 ■ SR ■ G-F
Reisterstown, MD
McDonogh



20 Caitlin Carroll
5-9 ■ SO ■ G/F
Middletown, NJ
Red Bank Catholic



21 AJ Timbers
6-0 ■ R-SO ■ G/F
Philadelphia, PA
Neumann Gorretti



22 Jill Scott
5-11 ■ SO ■ F
Summerhill, PA
Forest Hills



23 Jessica Kovatch
5-9 ■ JR ■ G
Phillipsburg, N.J.
Phillipsburg



24 Kyasia Duling
6-3 ■ SR ■ C
Zanesville, OH
Zanesville



30 Jill Falvey
6-0 ■ JR ■ F
Lincroft, NJ
Middletown South



32 Courtney Zezza
6-4 ■ JR ■ C
Plum, PA
Plum



33 Cydney Smith
6-3 ■ SR ■ C
Port Tobacco, MD
St. Mary's Ryken



34 Ace Harrison
6-2 ■ GR-2 ■ F
Baltimore, MD
Digital Harbor (Maryland)



51 Haley Thomas
5-11 ■ FR ■ F
Hooversville, PA
Bishop McCort



GA Christina Floyd
Philadelphia, PA
PSU-McKeesport
First Season



GA Joe Rutigliano
Genesco, NY
Canisius
First Season



HC Joe Haigh
Head Coach
Sixth Season



AC Kyle Hejmowski
First Season
Women's Basketball



AC Vanessa Abel
Second Season
Basketball



AC Janicia Anderson
Assistant Coach
Second Season



OP Rachel Halaszynski
Director of
Operations
Third Season