



SAINT FRANCIS WOMEN'S BASKETBALL

- NEC-BEST 11 NEC TOURNAMENT TITLES
- 11 NCAA TOURNAMENT APPEARANCES

2016-17 GAME NOTES



Schedule/Results

November

WBB CONTACT: DAN GRIFFIN | EMAIL: DGRIFIN@FRANCIS.EDU | (O) 814-472-3180

Wed. 2		Vs Pitt-Johnstown (ex) W, 110-79
Sun. 13		at Wisconsin W, 103-100
Tue. 15		at Marquette L, 104-91
Sat. 19		COLUMBIA L, 84-77
Tue. 22		CANISIUS W, 95-74
Mon 28		CORNELL L, 78-72

3-4 overall	0-0 NEC
Head Coach-5th year Joe Haigh	37-35 NEC 54-77 Overall
3-4 last 10	W1 Streak

Game

8

7-0 overall	0-0 AAC
Head Coach-17th year Jose Fernandez	292-226 Overall
7-0 last 10	W7 Streak

SFU at South Florida | Sun Dome | Tampa, FL
Wednesday, December 14, 2016 | 7PM

December

Sat. 3		at Youngstown State L, 69-68
Mon. 12		at Coastal Carolina W, 70-59
Wed. 14		at South Florida
Fri. 16		vs UMES (at FAU)
Sat. 17		FAU or Jackson State
Tue. 20		at William and Mary
Thu. 29		at Fairleigh Dickinson*
Sat. 31		at Sacred Heart*

Tale of the Tape

82.3 PPG 81.1 opp. PPG	78.4 PPG 53.3 opp. PPG
43.1 fg % 40.9 opp. fg. %	44.7 fg % 33.1 opp. fg. %
33.3 3pt fg % 23.5 opp.3pt	41.4 3pt fg % 29.9 opp.3pt
79.8 FT % 71.0 opp. FT	80.5 FT % 71.1 opp. FT
37.4 RPG 46.1 opp RPG	44.6 RPG 30.7 opp RPG
15.7 APG 16.1 opp APG	16.7 APG 10.4 opp APG
20.9 TO PG 20.3 opp TO	14.1 TO PG 13.7 opp TO PG
6.1 Blocks PG 1.7 opp Blocks	3.0 Blocks PG 3.1 opp Blocks

Series Notes

Overall: 2nd Meeting

Streak: USF W1

Last Red Flash Win:N/A

Game Coverage

Video: GoUSFBulls.com

Radio: GoUSFBulls.com

Live Stats: GoUSFBulls.com

January

Sat. 7		LIU BROOKLYN*
Mon. 9		St. FRANCIS BROOKLYN*
Sat. 14		at Mount St. Mary's*
Mon. 16		at Robert Morris*
Sat. 21		BRYANT*
Mon. 23		CENTRAL CONN. STATE*
Sat. 28		at Wagner*
Mon. 30		ROBERT MORRIS*

February

Sat. 4		at LIU Brooklyn*
Mon. 6		at St. Francis Brooklyn*
Sat. 11		MOUNT ST. MARY'S*
Mon. 13		WAGNER*
Sat. 18		at Bryant*
Mon. 20		at Central Conn. State*
Sat. 25		FAIRLEIGH DICKINSON*
Mon. 27		SACRED HEART*

* NEC Contest

HOME GAMES IN CAPS

PROBABLE STARTERS



#44 Halee Adams

JR. Guard
5.8 PPG
5.0 RPG
2.6 APG



#34 Ace Harrison

JR. Forward
17.3 PPG
10.0 RPG
3.5 APG



#23 Jessica Kovatch

So. Guard
18.7 PPG
2.7 RPG
1.2 APG



#5 Katie Reese

SR. Guard
14.7 PPG
1.7 RPG
4.1 APG



#15 Maya Wynn

JR. Guard
11.0 PPG
2.8 RPG
1.6 APG



2016-17 Saint Francis U Basketball Roster

Numerical Roster

No.	Name	Yr.	Pos.	Ht.	Hometown / High School
1	Madison Johnson	So.	G	5-7	Knox, Pa. / Keystone
2	Caitlyn Kroll	Fr.	G	5-10	Bridgeport, Ohio / Bridgeport
5	Katie Reese	R-Sr.	G	5-8	Boonton Township, N.J. / Mountain Lakes (Manhattan)
11	Kayla Meador	So.	G	5-6	Burke, Va. / Paul VI
13	Sam Marino	Jr.	G	5-5	Camp Hill, Pennsylvania / East Pennsboro High School
14	Taylor Allison	Sr.	G	5-7	State College, Pa. / State College
15	Maya Wynn	Jr.	G	5-11	Reisterstown, Md. / McDonogh
20	Caitlin Carroll	Fr.	G	5-9	Middletown, New Jersey / Red Bank Catholic
22	Jillian Scott	Fr.	G/F	5-11	Summerhill, Pa. / Forest Hills
23	Jessica Kovatch	So.	G	5-9	Phillipsburg, N.J. / Phillipsburg
24	Kyasias Duling	R-Jr.	F	6-3	Zanesville, Ohio / New Albany (Duquesne)
30	Jill Falvey	So.	F	6-0	Lincroft, N.J. / Middletown South
32	Courtney Zezza	So.	F/C	6-4	Plum, Pa. / Plum
33	Cydney Smith	R-Jr.	F/C	6-3	Port Tobacco, Md. / St. Mary's Ryken
34	Ace Harrison	Gr.	F	6-2	Baltimore, MD / Digital Harbor (Maryland)
44	Halee Adams	R-Jr.	G	5-8	Hollidaysburg, Pa. / Bishop Guilfoyle (Sienna)
50	Samiah Bethel	Sr.	G	5-9	Jacksonville, Fla. / Potter's House Christian Academy

Alphabetical Roster

44	Halee Adams	R-Jr.	G	5-8	Hollidaysburg, Pa. / Bishop Guilfoyle (Sienna)
14	Taylor Allison	Sr.	G	5-7	State College, Pa. / State College
50	Samiah Bethel	Sr.	G	5-9	Jacksonville, Fla. / Potter's House Christian Academy
20	Caitlin Carroll	Fr.	G	5-9	Middletown, New Jersey / Red Bank Catholic
24	Kyasias Duling	R-Jr.	F	6-3	Zanesville, Ohio / New Albany (Duquesne)
30	Jill Falvey	So.	F	6-0	Lincroft, N.J. / Middletown South
34	Ace Harrison	Gr.	F	6-2	Baltimore, MD / Digital Harbor (Maryland)
1	Madison Johnson	So.	G	5-7	Knox, Pa. / Keystone
23	Jessica Kovatch	So.	G	5-9	Phillipsburg, N.J. / Phillipsburg
2	Caitlyn Kroll	Fr.	G	5-10	Bridgeport, Ohio / Bridgeport
13	Sam Marino	Jr.	G	5-5	Camp Hill, Pennsylvania / East Pennsboro High School
11	Kayla Meador	So.	G	5-6	Burke, Va. / Paul VI
5	Katie Reese	R-Sr.	G	5-8	Boonton Township, N.J. / Mountain Lakes (Manhattan)
22	Jillian Scott	Fr.	G/F	5-11	Summerhill, Pa. / Forest Hills
33	Cydney Smith	R-Jr.	F/C	6-3	Port Tobacco, Md. / St. Mary's Ryken
15	Maya Wynn	Jr.	G	5-11	Reisterstown, Md. / McDonogh
32	Courtney Zezza	So.	F/C	6-4	Plum, Pa. / Plum

Head Coach: Joe Haigh (Notre Dame '95)

Assistant Coaches: Kyle Hejmowski (Canisius '03)

Vanessa Abel (Duquesne '10)

Janicia Anderson (Wilberforce '10)

Director of Operations: Rachel Halaszynski (PSU- McKeesport '12)

Pronunciation Guide

#24 Kyasias Duling....(Kai-A-Juh)

#50 Samiah Bethel.....(sa-MY-a)

Joe Haigh (hayg)

Kyle Hejmowski (Hedge-mowski)

Janicia Anderson (Juh-knee-C-uh)

Rachel Halaszynski (Hal-uh-zin-ski)



OPPONENT NOTES

- South Florida improved to 7-0 on the season with a 78-59 win at Arkansas St.
- The Bulls moved up to #19 in the latest coaches' poll
- As it stands, USF is the only ranked opponent on the Red Flash schedule
- The Bulls are one of just 12 remaining unbeaten teams remaining in D-1
- Kitija Laska led the Bulls with 20 points against Ark. St. and leads three players in double figures at 22 points per game
- The Bulls are a solid rebounding team, at 43 boards per game, Tamara Henshaw leads with 8 rpg but seven players average at least three boards per game.

SERIES HISTORY

USF Leads 1-0

1. 12/31/09 @USF 86 SFU 74

LAST TIME OUT

- USF out scored Ark. State 48-27 in the second half in a 78-59 road win
- The Bulls went to work inside, out scoring ASU 36-18 in the paint
- The Bulls put four players in double figures, led by Laska's 20
- USF turned 13 turnovers into 12 points and had a 12-0 edge on the fast break

2016-17 South Florida Bulls

#	NAME	POS	HT	YR	HOMETOWN / PREVIOUS SCHOOL
3	JAZZ BOND	F	6-4	FR.	MURFREESBORO, TENN. (BLACKMAN HS)
10	LAURA FERREIRA	F	5-11	JR.	LISBOA, PORTUGAL
11	ARIADNA PUJOL	G/F	6-1	SR.	MATARO, SPAIN (GEM)
12	MARIA JESPERSEN	F	6-0	JR.	ARHUS, DENMARK (MARSELISBORG)
13	DOROTTYA NAGY	F	6-2	FR.	PECS, HUNGARY (PINKK-PECSI)
14	PAIGE CASHIN	F	6-4	SR.	NEWARK, OHIO (NEWARK HS)
20	NACHALIE DE JESUS	G	5-7	JR.	LUQUILLO, PUERTO RICO/MIAMI DADE
21	SHAE LEVERETT	F	6-2	FR.	RINCON, GA. (SOUTH EFFINGHAM HS)
22	LAIA FLORES	PG	5-7	JR.	MATARO, SPAIN (IES MIQUEL BIADA)
23	TAMARA HENSHAW	F	6-1	FR.	PALM COAST, FLA. FLAGLER PALM
24	ENNA PEHADZIC	G	5-9	FR.	HORSENS, DENMARK
32	NANCY WARIOBA	C	6-3	SR.	KISUMU, KENYA (BLINN COLLEGE)
33	KITIJA LAKSA	F	6-0	SO.	RIGA, LATVIA (RIGAS FRANCU LICEJS)
45	KATELYN WEBER	C	6-5	SR.	LITTLE ROCK, ARK. (HALL HS)
54	ALYSSA RADER	C	6-2	SO.	THORNTON, COLO. (HORIZON)

ABOUT USF

Previous Game Starters

Last Time Out: (W, at Arkansas St., 78-59)

11	ARIADNA PUJOL	G	
12	MARIA JESPERSEN	F	High Scorer Laska, 20
22	LAIA FLORES	G	High Rebounder Henshaw, 10
33	KITIJA LAKSA	F	Assists Leader Flores, 7
45	KATELYN WEBER	C	

Head Coach Jose Fernandez (FIU-1994)
292-226, 17th season



FLASH POINTS

- This game marks the start of a five-game in eight days, 10-day road trip to wrap up the non-conference season. SFU will play: CCU, USE, UMES, FAU/Jackson State, and William and Mary.
- Saint Francis was picked third in the pre-season NEC coaches' poll earning one first place vote
- Sophomore Jessica Kovatch was named to the pre-season All-NEC team
- Kovatch was also named to the Nancy Lieberman Award watch list, which goes to the best point guard in the nation
- Saint Francis returns four starters from last year's NEC semi-final team
- The Red Flash welcome five newcomers to the fold this season including two transfers, A'Lexus Harrison (Maryland) and Kyasia Duling (Duquesne). Harrison is a graduate transfer and is immediately eligible,
- Duling sat out the spring semester last season and is now eligible after fall semester finals have been completed
- The November 18th game against Canisius was the first-ever "Education Day" where over 300 students from around the area attended. There was a "career fair" prior to the game where the students heard about various professions and completed an activity book from education day.

LAST TIME OUT

- Saint Francis defeated Coastal Carolina 70-59
- SFU held Coastal to just five second quarter points
- Maya Wynn led three in double figures with 18
- Ace Harrison recorded her third double-double in four games with 16 points and 17 rebounds
- The 17 boards are a career-high and were the most by an SFU player since Brielle Ward grabbed 15 last season
- SFU won the rebounding battle 47-43 and improved to 2-0 when out rebounding the opposition
- Cydney Smith had a career-best four steals to lead the Flash on the defensive end

MEDIA INFORMATION

CREDENTIALS

Requests for media credentials should be made directly to Assistant Director of Athletics Communications Dan Griffin. Credentials will be available at the Will Call window at the Stokes Center.

GAME DAY SERVICES

Pregame notes, halftime and final statistics plus a play-by-play account of the game will be available to all members of the working media. Saint Francis head coach Joe Haigh and student-athletes will be available for interviews following a brief cooling-off period and a radio post-game interview.

INTERVIEWS

Interviews with head coach Joe Haigh, his staff and players can be arranged through Assistant Director of Athletics Communications Dan Griffin. Players and coaches will be available after the game either in the media room or on-court after a short cooling-off period. Players and coaches during the week are available for both in-person and telephone interviews.

RADIO INFORMATION

Permission to broadcast games is granted through the Saint Francis Office of Athletics Communications. Arrangements for a line should be made at least two weeks in advance of the game (when possible).

SFU'S RECORD WHEN...

ALL 16-17 NEC

playing at HOME	1-2	N/A
playing on the ROAD	1-2	N/A
leading or tied at halftime	2-2	N/A
trailing at halftime	0-2	N/A

the SAINT FRANCIS offense...

shoots 50% or higher	0-0	N/A
shoots less than 50%	2-4	N/A
shoots higher than opponent	2-0	N/A
shoots lower than opponent	0-4	N/A
hits 8 or more three-pointers	2-2	N/A
hits 7 or fewer three-pointers	0-2	N/A

the OPPOSING offense...

shoots less than 50%	2-4	N/A
shoots 50% or higher	0-0	N/A

the RED FLASH score...

60 points or fewer	0-0	N/A
61-70 points	0-1	N/A
71-80 points	0-2	N/A
81-90 points	0-0	N/A
91 or more points	2-1	N/A
more points in paint than opp.	0-0	N/A
fewer or same points in paint	2-4	N/A
more than opponent	2-0	N/A
fewer than opponent	0-4	N/A
more bench pts than opp.	1-1	N/A
fewer or same bench pts than opp.	1-3	N/A
more 2nd chance pts than opp.	1-1	N/A
fewer or same 2nd chance pts	1-3	N/A
out-REBOUNDING an opponent	1-0	N/A
same REBOUNDS as opponent	0-0	N/A
being out-REBOUNDED by an opponent	1-4	N/A

committing...

fewer turnovers than an opponent	1-3	N/A
more turnovers than an opponent	0-1	N/A
same turnovers as opponent	1-1	N/A

playing in games...

decided by 3 points or less	1-1	N/A
decided by 4-to-10 points	0-2	N/A
decided in OVERTIME	0-0	N/A
against RANKED opponents	0-0	N/A
following a LOSS	1-2	N/A
following a WIN	0-2	N/A

playing in the month of...

November	2-3	N/A
December	0-1	N/A
January	0-0	N/A
February	0-0	N/A
March	0-0	N/A

tipping off...

before 5 p.m.	1-1	N/A
at 5 p.m.	1-0	N/A
after 5 p.m.	0-1	N/A



School	NEC	Pct.	Overall	Pct	Streak
Bryant	0-0	0.000	4-4	0.500	L1
Robert Morris	0-0	0.000	4-5	0.444	W1
Saint Francis U	0-0	0.000	2-4	0.333	L2
Sacred Heart	0-0	0.000	2-5	0.286	L3
Fairleigh Dickinson	0-0	0.000	2-6	0.250	L5
Mount St. Mary's	0-0	0.000	2-6	0.250	L2
Central Connecticut	0-0	0.000	1-7	0.125	L5
LIU Brooklyn	0-0	0.000	1-7	0.125	L1
St. Francis Brooklyn	0-0	0.000	1-7	0.125	L6
Wagner	0-0	0.000	1-7	0.125	L6

Week	Player	School	Stats
1	Katie Reese	SFU	27 points 7 assists
2	Alex Klein	Bryant	22 points 14 rebounds
3	Ace Harrison	SFU	12 points 14 rebounds
4	Niki Stamolamprou	RMU	15.5 points/game 8.5 rebounds

Week	Player	School	Stats
1	Sydney Holloway	Bryant	9 points 8 rebounds
2	Sydney Holloway	Bryant	9.5points 4 rebounds
3	Cebria Outlaw	CCSU	8.7 ppg, 4.0 rpq
4	Nneka Ezeibqo	RMU	11 ppg, 4.5 rpq

LIU Brooklyn at Columbia	7 p.m.
Sienna at Sacred Heart	7 p.m.
Tuesday, December 13	
Fairleigh Dickinson at St. Peter's	7 p.m.
Saturday, December 17	
Maine at Bryant	1 p.m.
Wagner at St. John's	2 p.m.
St. Francis Brooklyn at Iona	TBA
Sunday, December 18	
Robert Morris at Morgan State	2 p.m.
Mount St. Mary's at William and Mary	2 p.m.
Central Connecticut at Boston College	4 p.m.

## Player-Team	G	FG	3FG	FT	Pts	Avg/G
1.KOVATCH, Jessica-SFPA....	6	38	15	21	112	18.7
2.HARRISON, Ace-SFPA.....	6	38	3	25	104	17.3
3.Klein, Alex-BRY.....	7	43	0	33	119	17.0
Rebounds						
## Player-Team	G	OFF	DEF	TOT	Avg/G	
1.HARRISON, Ace-SFPA.....	6	11	49	60	10.0	
2.GIOCELIS, Reynoso-CCSU...	7	27	38	65	9.3	
3.Klein, Alex-BRY.....	7	18	43	61	8.7	
Assists						
	G	Ast	A/PG			
1.Palmer, Kierra-BRY.....	7	32	4.57			
2.REESE, Katie-SFPA.....	6	25	4.17			
3.BROWN, Janee-RMU.....	9	35	3.89			

SAINT FRANCIS

JOE HAIGH

Head Coach

Fifth Season

Ninth at SFU

NOTING HAIGH...

► Coached freshman Jessica Kovatch to one of the finest freshman seasons in the NCAA. The Phillipsburg, New Jersey native led the NCAA in freshman scoring at 20.9 points per game and set an NEC freshman scoring record with 615 points in the regular season

► Coached four new starters to an 11-win NEC campaign and an NEC-best 17th trip to the NEC semi-finals. Additionally, SFU became the first school to 300 NEC wins with a 62-54 win over Robert Morris.

► Coached Alex Hayward to a 22.3 points per game average, a mark that was tops in the NEC and fourth in the NCAA...Hayward set the Saint Francis record with 300 made three pointers in her career and was invited to the WNBA combine, the second straight season where a Red Flash has been invited to the combine.

► Led Saint Francis U to its second consecutive Northeast Conference Championship game in 2013-14. SFU has now made it to 16 conference title games in the past 21 seasons. The mark ranks second in the nation to only the University of Connecticut.

► Coached Alli Williams to one of the most impressive seasons in Northeast Conference history. The Altoona, Pa. native set an NEC record for points per game in a single season at 25.3 and is now playing professionally in Germany.

► Guided the best one-two punch in the entire Northeast Conference in 2013-14 with Alexa Hayward combining with

Williams for 42.6 points per game last season. Hayward graduated after last season and set the SFU record for career three-pointers with 300.

► Led Saint Francis U to its first-ever Non-NCAA postseason tournament appearance as SFU was invited to play in the Women's Basketball Invitational (WBI).

► Has compiled 38 wins in three seasons at the helm of the Red Flash women's basketball program. That number includes a 26-28 mark in league play.

► Was named the seventh head coach in program history by former President Rev. Gabriel Zeis, T.O.R., on April 26, 2012.

HAIGH'S YEARLY RECORDS

Year	School	Record	Conf.	Postseason
2012-13	Saint Francis U	17-16	10-8	NEC Final
2013-14	Saint Francis U	15-17	11-7	NEC Final
2014-15	Saint Francis U	6-23	5-13	N/A
2015-16	Saint Francis U	14-17	11-7	NEC Semis



HOMETOWN: Puyallup, Wash.

ALMA MATER: Notre Dame '95

FAMILY: Wife: Sherri; Children (5): Anna, Teresa, Patrick, Daniel, and Mary

BASKETBALL RÉSUMÉ

COACHING

Saint Francis University

Head Coach 2012-Present
Assistant Coach 2008-12

Virginia Commonwealth University

Director of Basketball Operations. 2006-08

Benedictine High School

Head Coach 2005-06

Randolph-Macon College

Assistant Coach 2004-05

Thomas Jefferson High School

Assistant Coach 2003-04

PLAYING

Green River Community College. 1991-1992

EDUCATION

Notre Dame. . . . Bachelor's Degree in Accounting ('95)
VCU Master's Degree in Sport Leadership ('05)





INDIVIDUAL SUPERLATIVES

Date	Opponent	Points	Rebounds	Assists	Steals	Blocks
Nov. 2	Pitt-Johnstown (Exh)	Reese (27)	Two players (5)	Reese (6)	Adams (5)	<i>Zezza</i> (4)
Nov 13	Wisconsin	Kovatch (29)	Harrison (9)	Reese (7)	Wynn (3)	<i>Zezza</i> (4)
Nov 15	Marquette	Kovatch (20)	Harrison (9)	Harrison (7)	Harrison (3)	<i>Zezza</i> (2)
Nov 19	COLUMBIA	Harrison (26)	Harrison (9)	Harrison (4)	Harrison (8)	<i>Zezza</i> (6)
Nov 22	CANISIUS	Wynn (23)	Harrison (14)	Two Players (4)	Harrison (4)	Two Players (3)
Nov 28	CORNELL	Kovatch (25)	Harrison (9)	Reese (5)	Harrison (6)	<i>Zezza</i> (3)
Dec						
Dec 3	Youngstown State	Harrison (18)	Harrison (10)	Two Players (3)	Harrison (4)	Smith (2)
Dec 12	Coastal Carolina	Wynn (18)	Harrison (17)	Wynn (4)	Smith (3)	Smith (2)
Dec 14	South Florida					
Dec 16	UMES (AT FAU)					
Dec 17	Jackson St./FAU					
Dec 20	William and Mary					
Dec 29	Fairleigh Dickinson					
Dec 31	Sacred Heart					
Jan						
Jan 7	LIU BROOKLYN					
Jan 9	ST FRANCIS-BROOKLYN					
Jan 14	Mount Saint Mary's					
Jan 16	Robert Morris					
Jan 21	BRYANT					
Jan 23	CENTRAL CONN. STATE					
Jan 28	Wagner					
Jan 30	ROBERT MORRIS					
Feb						
Feb 4	LIU Brooklyn					
Feb 6	St. Francis-Brooklyn					
Feb 11	MOUNT SAINT MARY'S					
Feb 13	WAGNER					
Feb 18	Bryant					
Feb 20	Central Conn. State					
Feb 25	FAIRLEIGH DICKINSON					
Feb 27	SACRED HEART					



STARTING LINEUPS

Date	Opponent	G	G	G	F	F
Nov.						
Nov 2	Pitt-Johnstown (Exh.)	Reese	Kovatch	Wynn	Harrison	Adams
Nov 13	Wisconsin	Reese	Kovatch	Wynn	Harrison	Adams
Nov 15	Marquette	Reese	Kovatch	Wynn	Harrison	Adams
Nov 19	COLUMBIA	Reese	Kovatch	Wynn	Harrison	Adams
Nov 22	CANISIUS	Reese	Kovatch	Wynn	Harrison	Adams
Nov 28	CORNELL	Reese	Kovatch	Wynn	Harrison	Zezza
Dec						
Dec 3	Youngstown State	Reese	Kovatch	Wynn	Harrison	Adams
Dec 12	Coastal Carolina	Reese	Kovatch	Wynn	Harrison	Adams
Dec 14	South Florida					
Dec 16	FAU Tournament					
Dec 17	FAU Tournament					
Dec 20	William and Mary					
Dec 29	Fairleigh Dickinson					
Dec 31	Sacred Heart					
Jan						
Jan 7	LIU BROOKLYN					
Jan 9	ST FRANCIS-BROOKLYN					
Jan 14	Mount Saint Mary's					
Jan 16	Robert Morris					
Jan 21	BRYANT					
Jan 23	CENTRAL CONN. STATE					
Jan 28	Wagner					
Jan 30	ROBERT MORRIS					
Feb						
Feb 4	LIU Brooklyn					
Feb 6	St. Francis-Brooklyn					
Feb 11	MOUNT SAINT MARY'S					
Feb 13	WAGNER					
Feb 18	Bryant					
Feb 20	Central Conn. State					
Feb 25	FAIRLEIGH DICKINSON					
Feb 27	SACRED HEART					

SAINT FRANCIS



44 Halee

Adams

Guard | R-JR | 5-8

Holidaysburg, PA | Bishop Guilfoyle

R-SOPHOMORE (2015-16)- Saw action in 31 games including 29 starts for the Red Flash after missing the previous season with an injury...Fifth on the team in scoring at 7.1 points per game including a career-high 16 at Cornell...Second on the team in rebounding at 4.0 per game...Led the Red Flash in overall shooting (44 percent) and three-point shooting at 39 percent for the season.

R-FRESHMAN (2014-15) - Missed the entire 2014-15 season with an injury.

FRESHMAN (2013-14) - Transferred after one semester from Siena ... Did not see any action.

BEFORE SFU - Averaged 16.1 points in leading Bishop Guilfoyle to the District 6 Championship as a senior...2012-13 3A All-State First Team and Laurel Highlands Athletic Conference All-Conference selection...First player in Bishop Guilfoyle history to eclipse 1,000 career points before the end of her sophomore season...

First-ever high school sophomore to be named the Altoona Mirror Player of the Year after averaging 20.7 points and was also named a First Team All-State selection...Led the Lady Marauders to the PIAA Class A State Title and was named Third Team All-State after averaging 14 points per game as a freshman...Led Bishop Guilfoyle to the State Title game as a sophomore.

PERSONAL - Born November 8, 1994...The daughter of Gene and Lynn Adams...Elementary Education major at Saint Francis U.

GAME-BY-GAME STATS

All games

#44 ADAMS, Halee

Opponent	Date	gs	min	Total		3-Pointers		Free throws		Rebounds			pf	a	t/o	blk	stl	pts	avg	
				fg	fga	pct	3fg	3fga	ft	fta	off	def								tot
at Wisconsin	11/13/16	*	22	1-6	.167	1-5	.200	0-0	.000	2	3	5	5.0	3	3	0	0	2	3.0	
at Youngstown State	12/3/16	*	23	3-8	.375	1-5	.200	0-0	.000	2	4	6	5.5	1	3	2	0	2	7.0	
COL	11/19/16	*	21	3-7	.429	1-3	.333	0-0	.000	2	2	4	5.0	5	1	0	0	1	7.7	
CAN	11/22/16	*	21	1-5	.200	0-4	.000	0-0	.000	1	3	4	4.8	3	1	1	0	0	2.4	
CORNELL	11/28/16	dnp	-	-	-	-	-	-	-	-	-	-	-	-	-	-	-	-	-	
at Marquette	11/15/16	*	23	3-7	.429	2-5	.400	2-2	1.000	2	4	6	5.0	4	5	1	1	1	10.8	
at Coastal Carolina	12/12/16	*	24	0-2	.000	0-2	.000	0-0	.000	0	3	3	4.7	0	2	0	0	2	0.8	
Totals			6	134	11.35	.314	5.24	.208	2.2	1.000	9	19	28	4.7	16	15	4	1	8	29.4

Games played: 6
Minutes/game: 22.3
Points/game: 4.8
FG Pct: 31.4
3FG Pct: 20.8
FT Pct: 100.0

Rebounds/game: 4.7
Assists/game: 2.5
Turnovers/game: 0.7
Assist/turnover ratio: 3.8
Steals/game: 1.3
Blocks/game: 0.2

CAREER STATS

Season	GP-GS	PTS-AVG	REB-AVG	A	BLK	STL
2013-14	-	-	-	-	-	-
2014-15	-	-	-	-	-	-
2015-16	31-29	221-7.1	124-4.0	38	3	29

TOTALS 31-29 221-7.1 124-4.0 38 3 29

CAREER HIGHS

PTS 16 at Saint Francis Brooklyn (1/11/16)

REB 10 vs Wagner (1/2/16)

AST 4 vs Coastal Carolina (11/18/16)

STEALS 3 Three Times

SEASON HIGHS

PTS 10 at Marquette (11/15/16)

REB 6 Vs Two Teams

AST 5 at Marquette (11/15/16)

STEALS 2 at Wisconsin (11/13/16)



SAINT FRANCIS



14 Taylor

Allison

Guard | SR | 5-7

State College, PA | State College

JUNIOR (2015-16)- Saw action in 27 games for the Red Flash on the season...Scored a season-high eight points in the win over Pitt-Johnstown...Recorded 25 rebounds, 15 assists and 10 steals on the season.

SOPHOMORE (2014-15) - Saw action in 25 of 29 games for Saint Francis during sophomore season, including one start against Buffalo (11/18) ... Scored 25 points on the year ... Added 15 assists and seven steals during the season.

FRESHMAN (2013-14) - Saw action in 21 games for Saint Francis during freshman season ... Scored 17 points on the year ... Scored a career-high nine points at Fairleigh Dickinson (1/25) ... Logged a season-high 14 minutes at Bowling Green (12/29).

BEFORE SFU - A co-captain of the Lady Little Lions as a senior, Allison averaged 6.3 points per game while posting five double-digit scoring totals ... Scored a season-high 20 points against Cumberland Valley in January, making four three pointers ... Holds a 4.6 GPA and is a member of the National Honor Society ... Her combination of athletics and academics earned her the James Snyder Award, sponsored by the Centre Daily Times ... Left behind a legacy at State College as the "Taylor Allison Above and Beyond Award" was created ... Established to honor the senior girls' basketball player who does more than average on and off the court.

CAREER STATS

YEAR	GP-GS	PTS-AVG	REB-AVG	A	BLK	STL
2013-14	21-0	17-0.8	9-0.4	3	1	1
2014-15	25-1	25-1.0	15-0.6	15	0	7
2015-16	27-0	29-1.1	25-0.9	15	0	10
TOTALS	73-1	69-0.9	49-0.5	33	1	18

CAREER HIGHS

PTS	9 vs Fairleigh Dickinson (1/25/14)
REB	4 vs Pitt-Johnstown (12/12/15)
AST	3 vs Bryant (2/3/15)
STEALS	2 vs Two Teams

SEASON HIGHS

PTS	3 at Wisconsin (11/13/16)
REB	Two Times
AST	2 Vs Canisius (11/22/16)
STEALS	1 Vs Two Teams

GAME-BY-GAME

All games

#14 ALLISON, Taylor

Opponent	Date	gs	min	Total		3-Pointers		Free throws		Rebounds												
				fg-fga	pct	3fg-fga	pct	ft-fa	pct	off	def	tot	avg	pf	a	t/o	blk	stl	pts	avg		
at Wisconsin	11/13/16	7		1-1	1.000	1-1	1.000	0-0	.000			0	0	0	0.0	2	0	1	0	0	3	3.0
at Youngstown State	12/3/16	dnp																				
COL	11/19/16	6	0	.000	.000	0-0	.000	0-0	.000	0	1	0.5	2	0	1	0	0	0	0	0	1.5	
CAN	11/22/16	11	0	.000	.000	0-0	.000	0-0	.000	0	1	1.0	0.7	0	2	1	0	1	0	1	1.0	
CORNELL	11/28/16	12	0	.000	.000	0-1	.000	0-0	.000	0	1	1.0	0.8	2	0	0	0	1	0	0	0.8	
at Marquette	11/15/16	5	0	.000	.000	0-0	.000	0-0	.000	0	0	0.6	0	0	0	0	0	0	0	0	0.6	
at Coastal Carolina	12/12/16	8	0	.000	.000	0-0	.000	0-0	.000	1	1	2	0.8	1	0	1	0	0	0	0	0.5	
Totals		0	49	1-3	.333	1-2	.500	0-0	.000	1	4	5	0.8	7	2	4	0	2	3	0	0.5	

Games played: 6
Minutes/game: 8.2
Points/game: 0.5
FG Pct: 33.3
3FG Pct: 50.0

Rebounds/game: 0.8
Assists/game: 0.3
Turnovers/game: 0.7
Assist/turnover ratio: 0.5
Steals/game: 0.3



SAINT FRANCIS



50 Samiah Bethel

Guard | SR | 5-9

Jacksonville, FL | Potter's House Christian

JUNIOR (2015-16) - Appeared in 29 games for the Red Flash including nine starts...Scored 101 points including a career-high 15 in the opener against Cincinnati...Fifth on the team in steals with 41 including a pair of four-steal games (RMU/LIU)...Grabbed 78 rebounds while dishing out 45 assists.

SOPHOMORE (2014-15) - Appeared in 16 games for Saint Francis U during sophomore season, including two starts ... Scored 46 points and grabbed 49 rebounds ... Added 16 assists and 14 steals ... Scored 10 points at Robert Morris (2/28).

FRESHMAN (2013-14) - Saw action in 22 games for Saint Francis during freshman season, including eight starts ... Scored 48 points on the year, which averaged 2.2 points per game ... Scored career-high 12 points in season opener ... Logged season-high 27 minutes against Bowling Green (12/29).

BEFORE SFU - The native of Jacksonville, Fla. comes to Loretto from Potter's House Christian Academy where she played for head coach Tony Bannister ... Bethel, who played with current SFU guard, Aisha Brock, in high school, helped Potter's House Christian to a 24-7 record in 2011-12 and guided the Lions to being the sixth ranked team in the state of Florida according to MaxPreps.com ... Potter's House Christian also ranked No. 4 in the USA Today Super 25 in 2011 and played in the Christian Schools National Championship game.

PERSONAL - The daughter of Sammy and Arlene Bethel ... Samiah also ran track in high school ... Member of the National Honor Society. Majors in social work.

CAREER STAT'S

YEAR	GP-GS	PTS-AVG	REB-AVG	A	BLK	STL
2013-14	22-8	48-2.2	32-1.5	16	4	14
2014-15	16-2	46-2.9	49-3.1	16	5	14
2015-16	29-9	101-3.1	78-2.7	45	15	41
TOTAL	68-19	195-2.8	159-2.3	77	24	69

CAREER HIGHS

PTS	15 at Cincinnati (11/16/15)
REB	7 at Robert Morris (2/28/15)
AST	5 vs Two Different Teams
STEALS	4 vs Two Different Teams

SEASON HIGHS

PTS	11 Vs Cornell (11/29/16)
REB	6 at Wisconsin (11/13/16)
AST	3 Vs Two Teams
STEALS	3 Vs Cornell (11/29/16)

GAME-BY-GAME

All games

#50 BETHEL, Samiah

Opponent	Date	gs	min	Total		3-Pointers		Free throws		Rebounds											
				fg-fga	pct	3fg-fga	pct	ft-fa	pct	off	def	tot	avg	pf	a	t/o	blk	stl	pts	avg	
at Wisconsin	11/13/16	21	2-5	400	0-1	.000	2-4	.500	3	3	6	6.0	3	3	5	0	2	6	6.0		
at Youngstown State	12/3/16	22	2-4	500	1-1	1.000	0-0	.000	0	3	3	4.5	0	3	2	0	1	5	5.5		
COL	11/19/16	20	1-3	333	0-0	.000	2-2	1.000	1	2	3	4.0	1	0	3	0	1	4	5.0		
CAN	11/22/16	20	1-1	1,000	0-0	.000	0-0	.000	0	5	5	4.3	3	1	4	0	0	2	4.3		
CORNELL	11/28/16	22	4-6	667	0-0	.000	3-3	1.000	1	3	4	4.2	2	1	1	0	3	11	5.6		
at Marquette	11/15/16	19	2-5	400	0-1	.000	2-2	1.000	0	4	4	4.2	5	1	3	1	0	6	5.7		
at Coastal Carolina	12/12/16	17	1-2	500	0-0	.000	0-0	.000	0	3	3	4.0	4	1	5	0	1	2	5.1		
Totals		0	141	13-26	.500	1-3	.333	9-11	.818	5	23	28	4.0	18	20	1	8	36	5.1		

Games played: 7
Minutes/game: 20.1
Points/game: 5.1
FG Pct: 50.0
3FG Pct: 33.3
FT Pct: 81.8

Rebounds/game: 4.0
Assists/game: 1.4
Turnovers/game: 3.3
Assist/turnover ratio: 0.4
Steals/game: 1.1
Blocks/game: 0.1



SAINT FRANCIS



20 Caitlin Carroll

Guard | FR | 5-9
Middletown, NJ | Red Bank Catholic

BEFORE SFU: Two-year captain and two-sport athlete at Red Bank Catholic (basketball, track)...Helped lead Red Bank to two Shore Conference championships and a state title.

PERSONAL: Daughter of Susanne and Terence Carroll...Plans to major in business administration.

GAME-BY-GAME

All games

#20 CARROLL, Caitlin

Opponent	Date	gs	min	Total		3-Pointers		Free throws		Rebounds			pf	a	to	blk	stl	pts	avg
				fg	pct	3fg	pct	ft	pct	off	def	tot							
at Wisconsin	11/13/16		dnp	-	-	-	-	-	-	-	-	-	-	-	-	-	-	-	-
at Youngstown State	12/3/16	4		2-2	1,000	1-1	1,000	0-0	.000	0	1	1	1.0	0	0	0	0	0	5.0
COL	11/19/16	4		0-1	.000	0-0	.000	0-0	.000	1	1	2	1.5	0	2	0	0	0	2.5
CAN	11/22/16	3		1-1	1,000	0-0	.000	0-0	.000	0	0	0	1.0	0	0	0	0	2.3	
CORNELL	11/28/16	2		0-0	.000	0-0	.000	0-0	.000	0	0	0	0.8	0	1	0	0	1.8	
at Marquette	11/15/16	3		0-0	.000	0-0	.000	0-0	.000	0	1	1	0.8	0	1	0	0	1.4	
at Coastal Carolina	12/12/16	0		0-0	.000	0-0	.000	0-0	.000	0	0	0	0.7	0	0	0	0	1.2	
Totals		0	16	3-4	.750	1-1	1,000	0-0	.000	1	3	4	0.7	0	4	0	0	7	1.2

Games played: 6
Minutes/game: 2.7
Points/game: 1.2
FG Pct: 75.0
3FG Pct: 100.0

Rebounds/game: 0.7
Turnovers/game: 0.7

CAREER HIGHS

PTS 5 at Youngstown State (12/3/16)

REB 2 Vs Columbia (11/19/16)

AST N/A

STEALS N/A

SEASON HIGHS

PTS 5 at Youngstown State (12/3/16)

REB 2 Vs Columbia (11/19/16)

AST

STEALS



SAINT FRANCIS



24 Kyasia Duling

Forward | JR | 6-3
Zanesville, Ohio | New Albany

GAME-BY-GAME

BEFORE SFU - Transferred mid-season in 2015-16, will be eligible after first semester.

Played at Duquesne where she averaged 1.5 points and 1.5 rebounds per game in six minutes... Ohio Girls Basketball Report Top 25 Seniors ... Associated Press Division I Central All-District Special Mention... Ranked the 282nd best player in the country by Blue Star Basketball, the 290th best player in the country by All Star Girls Repor

PERSONAL - Majoring in digital media

CAREER STATS

Season	GP-GS	PTS-AVG	REB-AVG	A	BLK	STL
PLAYED AT DUQUESNE						

CAREER HIGHS (At Duquesne)

PTS	8 (last) at Howard - (11/25/14)
REB	4 at Morehead State - (11/24/13)
AST	1 (last) vs Jackson State - (11/29/14)
STEALS	1 (last) at Howard - (11/25/14)

SEASON HIGHS

PTS
REB
AST
STEALS



SAINT FRANCIS



30 Jill Falvey

Forward | SO | 6-0
Lincroft, NJ | Middletown South

FRESHMAN (2015-16)- Saw action in 14 games off the bench for the Red Flash...Scored four points on the season including hitting a three in the win over Coastal Carolina...Recorded three rebounds on the year including two against Pitt and recorded two steals on the season.

BEFORE SFU - A four-year varsity basketball player at Middletown South High School, Falvey comes to Loretto from a very successful basketball background ... Captain of her team and helped lead them to a 2014 State Sectional Championship, as well as, semifinalist appearances in 2012 and 2013 ... Also won two State Championships in 2007 and 2010 for head coach Joe Whalen with her AAU team, NJ Shoreshots Select, in addition to a Junior National Championship in 2011.

PERSONAL - The daughter of Debbie and Jim Falvey, Jill was a member of the National Honor Society and the Spanish National Honor Society in high school ...Majors in business.

GAME-BY-GAME

All games

#30 FALVEY, Jill

Opponent	Date	gs	min	Total		3-Pointers		Free throws		Rebounds			pf	a	t/o	blk	stl	pts	avg
				fg-fga	pct	3fg-fga	pct	ft-fa	pct	off	def	tot							
at Wisconsin	11/13/16	dnp		-	-	-	-	-	-	-	-	-	-	-	-	-	-	-	-
at Youngstown State	12/3/16	dnp		-	-	-	-	-	-	-	-	-	-	-	-	-	-	-	-
COL	11/19/16	4	0-0	.000	0-0	.000	0-0	.000	0	0	0	0	0	0	0	0	0	0	0.0
CAN	11/22/16	3	0-0	.000	0-0	.000	0-0	.000	0	0	0	0	0	0	0	0	0	0	0.0
CORNELL	11/28/16	2	0-0	.000	0-0	.000	0-0	.000	0	0	0	0	0	0	0	0	0	0	0.0
at Marquette	11/15/16	2	0-0	.000	0-0	.000	0-0	.000	0	0	0	0	0	0	0	1	0	0	0.0
at Coastal Carolina	12/12/16	dnp		-	-	-	-	-	-	-	-	-	-	-	-	-	-	-	-
Totals		0	11	0-0	.000	0-0	.000	0-0	.000	0	0	0	0	0	0	1	0	0	0.0

Games played: 4
Minutes/game: 2.8

Assists/game: 0.3
Assist/turnover ratio: 99.9

CAREER STATS

Season	GP-GS	PTS-AVG	REB-AVG	A	BLK	STL
2015-16	14-0	3-0.1	2-0.1	0	0	2
TOTALS	14-0	3-0.1	2-0.1	0	0	2

CAREER HIGHS

PTS	3 vs Coastal Carolina (11/18/15)
REB	2 vs Pittsburgh (11/16/15)
AST	1 at Marquette (11/15/16)
STEALS	1 vs Two Different Teams

SEASON HIGHS

PTS	
REB	
AST	1 at Marquette (11/15/16)
STEALS	



SAINT FRANCIS



34 A'Lexus Harrison

Forward | R-JR | 6-0
Baltimore, MD | Digital Harbor

BEFORE SFU - Transfer from Maryland...Graduated in three years and can play immediately with two years of eligibility...Averaged two points and two rebounds and five minutes in 20 games last year for the Terrapins...Was ranked 70th in the 2013 recruiting class

PERSONAL - The daughter of Kim and Quann Harrison.

GAME-BY-GAME

All games

#34 HARRISON, Ace

Opponent	Date	gs	min	Total		3-Pointers		Free throws		Rebounds		pf	a	t/o	blk	stl	pts	avg		
				fg-fga	pct	3fg-3fga	pct	ft-fa	pct	off	def								tot	avg
at Wisconsin	11/13/16	*	22	6-9	.667	0-2	.000	1-2	.500	3	6	9	9.0	5	1	2	0	13	13.0	
at Youngstown State	12/3/16	*	29	6-11	.545	2-4	.500	4-5	.800	1	9	10	9.5	4	1	2	1	4	18	15.5
COL	11/19/16	*	26	10-17	.588	0-1	.000	6-7	.857	2	7	9	9.3	4	4	2	2	8	26	19.0
CAN	11/22/16	*	24	4-7	.571	0-0	.000	4-4	1.000	4	10	14	10.5	4	4	3	3	4	12	17.3
CORNELL	11/28/16	*	35	7-11	.636	0-1	.000	4-6	.667	0	9	9	10.2	4	4	4	1	6	18	17.4
at Marquette	11/15/16	*	28	5-13	.385	1-3	.333	6-6	1.000	1	8	9	10.0	4	7	3	0	3	17	17.3
at Coastal Carolina	12/12/16	*	26	6-9	.667	3-5	.600	1-2	.500	3	14	17	11.0	5	4	7	0	2	16	17.1
Totals		7	190	44-77	.571	6-16	.375	26-32	.813	14	63	77	11.0	30	25	23	7	28	120	17.1

Games played: 7
Minutes/game: 27.1
Points/game: 17.1
FG Pct: 57.1
3FG Pct: 37.5
FT Pct: 81.3

Rebounds/game: 11.0
Assists/game: 3.6
Turnovers/game: 3.3
Assist/turnover ratio: 1.1
Steals/game: 4.0
Blocks/game: 1.0

CAREER STATS

Season	GP-GS	PTS-AVG	REB-AVG	A	BLK
2015-16					

PLAYED AT MARYLAND

CAREER HIGHS (At Maryland)

PTS	26 Vs Columbia (11/19/16)
REB	17 at Coastal Carolina (12/12/16)
AST	7 at Marquette (11/16/15)
STEALS	8 Vs Columbia (11/19/16)

SEASON HIGHS

PTS	26 Vs Columbia (11/19/16)
REB	17 at Coastal Carolina (12/12/16)
AST	7 at Marquette (11/15/16)
STEALS	8 Vs Columbia (11/19/16)



SAINT FRANCIS



1 Madison

Johnson

Guard | SO | 5-7

Knox, PA | Keystone

GAME-BY-GAME

FRESHMAN (2015-16)- Saw action in 22 games for the Red Flash off the bench as a freshman...Earned NEC Rookie of the Week in week one after a career-high 18 against Cincinnati...Shot 38 percent from the field for the season...Grabbed five rebounds and six assists on the year

BEFORE SFU - The district 9 player of the year out of Keystone High School, Johnson hails from Knox, Pa ... A two-sport athlete in basketball and volleyball for the Panthers, she helped lead her team to a District 9 Championship in basketball ... Was named to the All-Conference First Team in both sports in 2013-14 and the All-State Second Team for basketball.

PERSONAL - The daughter of Bonnie and A.J. Johnson ... Madison was a member of the National Honor Society in high school and plans to major in physical therapy at Saint Francis U.

CAREER STATS

Season	GP-GS	PTS-AVG	REB-AVG	A	BLK	STL
2015-16	22-0	45-2.1	5-0.2	6	2	3
TOTALS	22-0	45-2.1	5-0.2	6	2	3

CAREER HIGHS

PTS 18 at Cincinnati (11/13/15)

REB 1 vs Five Different Teams

AST 1 vs Six Different Teams

STEALS 1 vs Three Different Teams

SEASON HIGHS

PTS

REB

AST

STEALS



SAINT FRANCIS



23 Jessica Kovatch

Guard | SO | 5-9
Phillipsburg, NJ | Phillipsburg

FRESHMAN (2015-16) - The Northeast Conference and ECAC Rookie of the Year...Named NEC Second-Team All-Conference... Won a NEC-Record 13 NEC Rookie of the Week Awards including a record 11 straight...Named a "Face in the Crowd" in the February 29th edition of Sports Illustrated...Set SFU and NEC freshman scoring record with 649 points...Led all NCAA Freshmen in scoring at 20.9 ppg...Became the first SFU freshman to score 30 points in a game (Coastal Carolina), topped the 30 point mark four times... Led the Red Flash in scoring and steals (61), third on the team in rebounds (112)

BEFORE SFU - The 2014 West Jersey Player of the Year and Warren County All-First Team and Player of the Year, Kovatch joins the Red Flash women's basketball program out of Phillipsburg, N.J. A two-sport athlete for the Bobcats in basketball and lacrosse ... She was the first underclassmen to score 1,000 points and had the highest total after three seasons at 1,176 ... Kovatch's team in 2013 and 2014 won the Skyland Conference Raritan Division Championship.

PERSONAL - The daughter of Becky and Edward Kovatch ... Is undecided in her major plans at the current time.

GAME-BY-GAME

Saint Francis Individual Game-by-Game (as of Jan 04, 1980)
All games

#23 KOVATCH, Jessica

Opponent	Date	gs	min	Total		3-Pointers		Free throws		Rebounds				pf	a	t/o	blk	stl	pts	avg	
				fg-fga	pct	3fg-fga	pct	ft-fa	pct	off	def	tot	avg								
at Wisconsin	11/13/16	*	33	9-20	.450	4-11	.364	7-9	.778	0	1	1	1.0	2	0	4	0	1	29	29.0	
at Youngstown State	12/3/16	*	27	4-12	.333	1-7	.143	2-3	.667	1	1	2	1.5	5	1	2	0	2	11	20.0	
COL	11/19/16	*	29	4-15	.267	1-9	.111	3-3	1.000	0	1	1	1.3	2	0	1	2	3	12	17.3	
CAN	11/22/16	*	26	7-19	.368	1-8	.125	0-0	.000	2	3	5	2.3	2	3	0	1	2	15	16.8	
CORNELL	11/28/16	*	32	8-15	.533	5-11	.455	4-6	.667	2	1	3	2.4	4	2	6	1	4	25	18.4	
at Marquette	11/15/16	*	29	6-12	.500	3-7	.429	5-5	1.000	3	1	4	2.7	3	1	2	0	0	20	18.7	
at Coastal Carolina	12/12/16	*	31	6-14	.429	1-7	.143	4-4	1.000	0	2	2	2.6	2	1	5	0	1	17	18.4	
Totals			7	207	44-107	411	16-60	.267	25-30	.833	8	10	18	2.6	20	8	20	4	13	129	18.4

Games played: 7
Minutes/game: 29.6
Points/game: 18.4
FG Pct: 41.1
3FG Pct: 26.7
FT Pct: 83.3

Rebounds/game: 2.6
Assists/game: 1.1
Turnovers/game: 2.9
Assist/turnover ratio: 0.4
Steals/game: 1.9
Blocks/game: 0.6

CAREER STATS

Season	GP-GS	PTS-AVG	REB-AVG	A	BLK	STL
2015-16	31-31	649-20.8	112-3.6	46	8	61
TOTALS	31-31	649-20.8	112-3.6	46	8	61

CAREER HIGHS

PTS	35 vs Wagner (1/2/16)
REB	8 vs Robert Morris (1/30/16)
AST	4 vs Coastal Carolina (11/18/15)
STEALS	8 at Columbia (12/1/15)

SEASON HIGHS

PTS	29 at Wisconsin (11/13/16)
REB	5 Vs Canisius (11/22/16)
AST	3 Vs Canisius (11/22/16)
STEALS	4 Vs Cornell (11/29/16)



SAINT FRANCIS



2 Caitlyn Kroll

Guard | FR | 5-10
Bridgeport, OH | Bridgeport

GAME-BY-GAME

BEFORE SFU - Named third-team All-Ohio...averaged 24 points per game during the season....Became Bridgeport's all-time leading scorer with over 1800 career points... She also possesses a great ability to get to the free throw line, making 213 free throws during the season, fourth most in Ohio high school history.

PERSONAL-Daughter of Julie Kroll and Rick Ray...Plans on majoring in pre-med at Saint Francis.

CAREER STATS

YEAR	GP-GS	PTS-AVG	REB-AVG	A	BLK	STL
<hr/>						

CAREER HIGHS

PTS	<hr/>
REB	<hr/>
AST	<hr/>
STEALS	N/A

SEASON HIGHS

PTS	<hr/>
REB	<hr/>
AST	<hr/>
STEALS	<hr/>



SAINT FRANCIS



13 Sam Marino

Guard | JR | 5-5
Camp Hill, PA | East Pennsboro

GAME-BY-GAME

BEFORE SFU: Marino starred at East Pennsboro High School and was named Mid Penn Capital All-Star Second Team as a senior. She set the school-record for three pointers in a season.

PERSONAL: Daughter of Frank and Tonya Marino...Worked with the women's basketball team for two seasons...Is enrolled in physician's assistant program at SFU.

CAREER STATS

YEAR	GP-GS	PTS-AVG	REB-AVG	A	BLK	STL

CAREER HIGHS

PTS	
REB	
AST	
STEALS	N/A

SEASON HIGHS

PTS	
REB	
AST	
STEALS	



SAINT FRANCIS



5 Katie Reese

Guard | R-SR | 5-8
Boonton Township, NJ | Mountain Lakes

R-JUNIOR (2015-16)- Started all 31 games at point guard for the Red Flash as a junior...Second on the team in scoring at 9.8 points per game and led the team in assists 110, 3.5 per game...Top-3 in NEC in assists...Career-high eight assists in win over UPJ...Scored career-high 21 in win over Fairleigh Dickinson...Second on the team with 51 steals.

JUNIOR (2014-15) - Sat out the 2014-15 due to the NCAA Transfer Rule.

BEFORE SFU - Reese comes to Loretto as a transfer after playing two seasons at Manhattan College ... Played in 55 games over the past two seasons for the Jaspers ... At Mountain Lakes High School, Reese was the all-time leading scorer and a three-time First Team All-Conference and All-County selection ... Led Mountain Lakes to the Conference Championship as a senior and she won the three-point contest at the New Jersey North/South All-Star Game ... Became first player in her high school's history to reach the 1,000-point plateau as a junior.

PERSONAL - Katie is the daughter of Mike and Doris Reese ... She is enrolled in the Exercise Physiology program at Saint Francis U.

GAME-BY-GAME

All games

#05 REESE, Katie

Opponent	Date	gs	min	Total		3-Pointers		Free throws		Rebounds		pts	avg								
				fg/fga	pct	ft/fta	pct	off	def	tot											
at Wisconsin	11/13/16	*	32	9-16	.563	2-8	.250	5-6	.833	0	2	2	1	7	1	27	27.0				
at Youngstown State	12/3/16	*	31	3-12	.250	2-8	.250	3-4	.750	0	1	1	1.5	5	2	1	11	19.0			
COL	11/19/16	*	25	6-11	.545	3-4	.750	4-4	1.000	1	2	3	2.0	1	2	5	0	3	19.0		
CAN	11/22/16	*	23	7-11	.636	4-6	.667	0-0	.000	1	1	2	2.0	4	4	0	1	18	18.8		
CORNELL	11/28/16	*	29	1-6	.167	0-2	.000	0-1	.000	0	1	1	1.8	1	5	6	0	1	2	15.4	
at Marquette	11/15/16	*	22	4-12	.333	3-6	.500	0-0	.000	0	1	1	1.7	0	5	6	0	0	11	14.7	
at Coastal Carolina	12/12/16	*	28	2-6	.333	1-2	.500	4-4	1.000	1	3	4	2.0	1	3	5	0	1	9	13.9	
Totals			7	190	32-74	.432	17-35	.486	16-19	.842	3	11	14	2.0	13	28	32	1	7	97	13.9

Games played: 7
Minutes/game: 27.1
Points/game: 13.9
FG Pct: 43.2
3FG Pct: 48.6
FT Pct: 84.2

Rebounds/game: 2.0
Assists/game: 4.0
Turnovers/game: 4.6
Assist/turnover ratio: 0.9
Steals/game: 1.0
Blocks/game: 0.1

CAREER STATS

Season	GP-GS	PTS-AVG	REB-AVG	A	BLK	STL
2014-15	-	-	-	-	-	-
2015-16	31-31	305-9.8	79-2.5	110	4	51
TOTALS	31-31	305-9.8	79-2.5	110	4	51

CAREER HIGHS

PTS	27 at Wisconsin (11/13/16)
REB	7 vs Central Connecticut State (3/6/16)
AST	7 vs Four Different Teams
STEALS	4 vs Two Different Teams

SEASON HIGHS

PTS	27 at Wisconsin (11/13/16)
REB	4 at Coastal Carolina (12/12/16)
AST	7 at Wisconsin (11/13/16)
STEALS	3 Vs Columbia (11/19/16)



SAINT FRANCIS



22 Jill

Scott

Guard | FR | 5-10

Summerhill, PA | Forest Hills

GAME-BY-GAME

All games

#22 SCOTT, Jillian

Opponent	Date	gs	min	Total fg-fga	pct	3-Pointers 3fg-fga	pct	Free throws ft-fa	pct	Rebounds off def tot	avg	pf	a	t/o	blk	stl	pts	avg
at Wisconsin	11/13/16		dnp															
at Youngstown State	12/3/16	6		0-1	.000	0-1	.000	0-0	.000	0	1	1	1	0	1	0	0	0.0
COL	11/19/16	4		0-0	.000	0-0	.000	0-0	.000	0	0	0	0.5	1	0	0	0	0.0
CAN	11/22/16	4		0-0	.000	0-0	.000	0-0	.000	0	0	0	0.3	1	0	0	0	0.0
CORNELL	11/28/16	7		0-3	.000	0-2	.000	0-0	.000	1	1	2	0.8	2	0	0	1	0.0
at Marquette	11/15/16	3		0-0	.000	0-0	.000	0-0	.000	0	0	0	0.6	0	0	0	1	0.0
at Coastal Carolina	12/12/16	5		0-0	.000	0-0	.000	0-0	.000	0	1	1	0.7	2	1	0	0	0.0
Totals		0	29	0-4	.000	0-3	.000	0-0	.000	1	3	4	0.7	7	1	1	0	0.0

Games played: 6
Minutes/game: 4.8
FG Pct: 0.0
3FG Pct: 0.0

Rebounds/game: 0.7
Assists/game: 0.2
Turnovers/game: 0.2
Assist/turnover ratio: 1.0
Steals/game: 0.3

CAREER STATS

YEAR	GP-GS	PTS-AVG	REB-AVG	A	BLK	STL
------	-------	---------	---------	---	-----	-----

CAREER HIGHS

PTS	
REB	
AST	1 at Coastal Carolina (12/12/16)
STEALS	1 at Marquette (11/15/16)

SEASON HIGHS

PTS	
REB	
AST	1 at Coastal Carolina (12/12/16)
STEALS	1 Vs Two Teams



SAINT FRANCIS



33 Cydney Smith

Center | R-JR | 6-3
Port Tobacco, MD | St. Mary's Ryken

R-SOPHOMORE (2015-16)- Played in all 31 games for the Red Flash including one start...Led SFU and ranked second in NEC with 54 blocks on the season, a mark that is third-most in SFU history...Scored a career-high 25 in victory over Bryant...Fourth on the team with 105 rebounds (3.5 per game).

R-FRESHMAN (2014-15) – Appeared in 26 games for Saint Francis during redshirt freshman season, including eight starts ... Scored 74 points, good for a 2.8 per game average ... Pulled down 111 rebounds, which was a 4.3 per game average ... Grabbed 10 rebounds against Mount St. Mary's (1/24) and Fairleigh Dickinson (1/31) ... Led team in blocks with 25.

BEFORE SFU - The 6-3 center lettered in basketball for three seasons at St. Mary's Ryken High School, playing for head coach Kris Grazzini-Sandberg ... Averaged nearly 11 points per game and eight rebounds per game during her senior season of high school, her rebounding average led the team ... Led her squad in blocks per game and total blocks during her senior season ... St. Mary's Ryken plays in the WCAC, which is one of the most competitive high school conferences in the country ... Received All-WCAC Second Team honors in 2013 and was named to the First Team All-County in St. Mary's County ... Played for the Fairfax Stars and coach Aggie McCormick-Dix.

PERSONAL - Is the daughter of John and Errin Smith ... physical therapy/exercise physiology major ... Played volleyball for SFU as a freshman

CAREER STATS

Season	GP-GS	PTS-AVG	REB-AVG	A	BLK	STL
2014-15	26-8	74-2.8	111-4.3	5	25	7
2015-16	31-1	131-4.5	105-3.5	12	54	14
TOTAL	57-9	205-3.6	216-4.0	17	79	21

CAREER HIGHS

PTS	25 vs Bryant (2/18/16)
REB	10 vs Two Different Teams
AST	1 vs Eight Different Teams
BLOCKS	7 vs Pitt-Johnstown (12/12/15)

SEASON HIGHS

PTS	6 Vs Canisius (11/22/16)
REB	5 at Wisconsin (11/13/16)
AST	1 at Wisconsin (11/13/16)
BLOCKS	3 Vs Canisius (11/22/16)

GAME-BY-GAME

All games

#33 SMITH, Cydney

Opponent	Date	gs	min	Total	fg-fga	pct	3fg-fga	pct	Free throws	ft-fa	pct	Rebounds	off	def	tot	avg	pf	a	t/o	blk	stl	pts	avg
at Wisconsin	11/13/16	13	2-4	.500	1-2	.500	0-0	.000	1	4	5	5.0	5	1	2	1	0	5	5.0				
at Youngstown State	12/3/16	12	0-1	.000	0-1	.000	0-0	.000	0	0	0	2.5	1	0	1	2	1	0	2.5				
COL	11/19/16	13	1-3	.333	0-1	.000	0-0	.000	0	1	1	2.0	3	0	2	1	0	2	2.3				
CAN	11/22/16	16	3-8	.375	0-1	.000	0-0	.000	2	2	4	2.5	1	1	1	3	0	6	3.3				
CORNELL	11/28/16	14	1-2	.500	0-0	.000	2-2	1.000	0	1	1	2.2	2	0	1	2	0	4	3.4				
at Marquette	11/15/16	13	2-3	.667	1-2	.500	0-0	.000	0	2	2	2.2	4	0	1	0	0	5	3.7				
at Coastal Carolina	12/12/16	18	4-11	.364	0-0	.000	0-2	.000	4	2	6	2.7	5	1	3	2	4	8	4.3				
Totals		0	99	13-32	.406	2-7	.286	2-4	.500	7	12	19	2.7	21	3	11	5	30	4.3				

Games played: 7
Minutes/game: 14.1
Points/game: 4.3
FG Pct: 40.6
3FG Pct: 28.6
FT Pct: 50.0

Rebounds/game: 2.7
Assists/game: 0.4
Turnovers/game: 1.6
Assist/turnover ratio: 0.3
Steals/game: 0.7
Blocks/game: 1.6



SAINT FRANCIS



15 Maya Wynn

Guard | JR | 5-11
Reisterstown, MD | McDonogh

SOPHOMORE (2015-16)- Played in 30 games for the Red Flash including 24 starts...Third on the team with 290 points scored, an average of 9.7 per game...Third on the team with 63 assists and fifth on the team with 97 rebounds...Scored a career high 21 points on two occasions (at Mount St. Marys, vs SFBK).

FRESHMAN (2014-15) - Started in 28 of 29 games during freshman season for Saint Francis U ... 2x Northeast Conference Rookie of the Week ... 1x ECAC Rookie of the Week ... All-NEC Rookie Team Selection ... Third on team in points with 203 scored and a 7.0 average ... Made 40 three-pointers, which ranked third on the team ... Grabbed 76 rebounds and added 40 steals on the year ... Scored 15 points on two occasions.

BEFORE SFU - A four-year player at McDonogh High School in Maryland, Wynn joins the Red Flash as a complete all-around wing ready to contribute right away ... Was a three-sport athlete in high school, also played four years of volleyball and ran four years of track ... Played for head coach Brad Rees in Maryland and won IAAM A-Conference Championships in 2012 and 2014 ... Wynn totaled over 355 points in three years and is a two-time team captain.

PERSONAL - The daughter of Kalin and Stacy Wynn ... Is currently an Undeclared Major at Saint Francis U.

GAME-BY-GAME

Saint Francis Individual Game-by-Game (as of Jan 04, 1980)
All games

#15 WYNN, Maya

Opponent	Date	gs	min	Total	3-Pointers	Free throws	Rebounds												
				fg-fga	pt	3fg-fga	pt	ft-fa	pt	off	def	tot	avg	pf	a	to	blk	stl	pts
at Wisconsin	11/13/16	*	29	4-13	.308	4-12	.333	0-0	.000	4	2	6	6.0	5	2	2	0	3	12
at Youngstown State	12/3/16	*	31	2-12	.167	2-10	.200	0-0	.000	1	2	3	4.5	4	0	1	0	2	6
COL	11/19/16	*	28	2-9	.222	1-6	.167	0-0	.000	1	1	2	3.7	2	1	1	0	0	5
CAN	11/22/16	*	30	9-14	.643	5-9	.556	0-0	.000	1	1	2	3.3	2	2	1	0	1	23
CORNELL	11/28/16	*	27	4-8	.500	1-5	.200	0-0	.000	0	2	2	3.0	1	3	2	0	0	9
at Marquette	11/19/16	*	33	4-11	.364	3-8	.375	0-2	.000	1	1	2	2.8	2	2	3	0	0	11
at Coastal Carolina	12/12/16	*	32	7-12	.583	4-7	.571	0-0	.000	1	2	3	2.9	4	4	1	1	2	18
Totals			7	210	32-79	.405	20-57	.351	0-2	.000	9	11	20	2.9	20	14	11	1	84

Games played: 7
Minutes/game: 30.0
Points/game: 12.0
FG Pct: 40.5
3FG Pct: 35.1
FT Pct: 0.0

Rebounds/game: 2.9
Assists/game: 2.0
Turnovers/game: 1.6
Assist/turnover ratio: 1.3
Steals/game: 1.1
Blocks/game: 0.1

CAREER STATS

Season	GP-GS	PTS-AVG	REB-AVG	A	BLK	STL
2014-15	29-28	203-7.0	76-2.6	28	8	40
2015-16	30-24	290-9.7	97-3.6	63	10	31
TOTALS	59-28	493-8.6	173-2.9	28	18	71

CAREER HIGHS

PTS	23 Vs Canisius (11/22/16)
REB	9 at Mount Saint Mary's (2/13/16)
AST	6 vs Two Different Teams
STEALS	5 at Buffalo (11/18/14)

SEASON HIGHS

PTS	23 Vs Canisius (11/22/16)
REB	6 at Wisconsin (11/13/16)
AST	2 Twice
STEALS	3 at Wisconsin (11/13/16)



SAINT FRANCIS



32 Courtney

Zeza

Center | SO | 6-3

Plum, PA | Plum

FRESHMAN (2015-16)- Played in all 31 games off the bench for the Red Flash as a freshman...Second on the team with 36 blocks... Averaged 4.1 points and 2.6 rebounds per game...Had career-high 17 at Sacred Heart...Recorded a double-double of 16 points and 12 rebounds in a win at Wagner.

BEFORE SFU - An All-WPIAL Section for her junior season, Zezza comes to Loretto from Plum High School in the Pittsburgh area ... A two-sport athlete for the Mustangs she was also an All-WPIAL selection for volleyball in three consecutive years.

PERSONAL - Courtney is the daughter of Liza and Jason Zezza and is undecided on her major.

GAME-BY-GAME

All games

#32 ZEZZA, Courtney

Opponent	Date	gs	min	Total		3-Pointers		Free throws		Rebounds				pf	a	t/o	blk	stl	pts	avg
				fg	fga	3fg	3fga	ft	fta	off	def	tot	avg							
at Wisconsin	11/13/16	21	2-8	.250	0-3	.000	1-3	.333	2	4	6	6.0	4	1	2	4	1	5	5.0	
at Youngstown State	12/3/16	15	2-3	.667	1-2	.500	0-0	.000	0	2	2	4.0	1	1	0	0	1	5	5.0	
COL	11/19/16	18	1-5	.200	0-2	.000	0-0	.000	0	0	0	2.7	4	0	1	6	0	2	4.0	
CAN	11/22/16	19	5-11	.455	3-6	.500	2-2	1.000	2	3	5	3.3	3	1	1	2	0	15	6.8	
CORNELL	11/28/16	*	1-2	.500	1-1	1.000	0-0	.000	0	0	0	2.6	1	0	2	3	0	3	6.0	
at Marquette	11/15/16	20	3-6	.500	1-2	.500	4-4	1.000	2	2	4	2.8	0	0	3	2	2	11	6.8	
at Coastal Carolina	12/12/16	11	0-4	.000	0-1	.000	0-0	.000	0	3	3	2.9	4	0	2	0	0	0	5.9	
Totals		1	122	14-39	.359	6-17	.353	7-9	.778	6	14	20	2.9	17	3	11	17	4	41	5.9

Games played: 7
Minutes/game: 17.4
Points/game: 5.9
FG Pct: 35.9
3FG Pct: 35.3
FT Pct: 77.8

Rebounds/game: 2.9
Assists/game: 0.4
Turnovers/game: 1.6
Assist/turnover ratio: 0.3
Steals/game: 0.6
Blocks/game: 2.4

CAREER STATS

YEAR	GP-GS	PTS-AVG	REB-AVG	A	BLK	STL
2015-16	31-0	127-4.1	78-2.6	2	36	12

TOTAL	31-0	127-4.1	78-2.6	2	36	12
-------	------	---------	--------	---	----	----

CAREER HIGHS

PTS 17 at Sacred Heart (2/27/16)

REB 12 at Wagner (2/15/16)

AST 1 vs Three Different Teams

BLOCKS 6 vs Columbia (11/19/16)

SEASON HIGHS

PTS 15 Vs Canisius (11/22/16)

REB 6 at Wisconsin (11/13/16)

AST 1 Twice

BLK 6 vs Columbia (11/19/16)





Saint Francis Combined Team Statistics (as of Jan 04, 1980) All games

RECORD:	OVERALL	HOME	AWAY	NEUTRAL
ALL GAMES	3-4	1-2	2-2	0-0
CONFERENCE	0-0	0-0	0-0	0-0
NON-CONFERENCE	3-4	1-2	2-2	0-0

#	Player	gp-gs	min	avg	Total		3-Point		F-Throw		Rebounds				pf	dq	a	to	blk	stl	pts	avg
					fg-fga	fg%	3fg-fga	3fg%	ft-fa	ft%	off	def	tot	avg								
05	REESE, Katie	7-7	190	27.1	32-74	.432	17-35	.486	16-19	.842	3	11	14	2.0	13	1	28	32	1	7	97	13.9
14	ALLISON, Taylor	6-0	49	8.2	1-3	.333	1-2	.500	0-0	.000	1	4	5	0.8	7	0	2	4	0	2	3	0.5
15	WYNN, Maya	7-7	210	30.0	32-79	.405	20-57	.351	0-2	.000	9	11	20	2.9	20	1	14	11	1	8	84	12.0
20	CARROLL, Caitlin	6-0	16	2.7	3-4	.750	1-1	1.000	0-0	.000	1	3	4	0.7	0	0	0	4	0	0	7	1.2
22	SCOTT, Jillian	6-0	29	4.8	0-4	.000	0-3	.000	0-0	.000	1	3	4	0.7	7	0	1	1	0	2	0	0.0
23	KOVATCH, Jessica	7-7	207	29.6	44-107	.411	16-60	.267	25-30	.833	8	10	18	2.6	20	1	8	20	4	13	129	18.4
30	FALVEY, Jill	4-0	11	2.8	0-0	.000	0-0	.000	0-0	.000	0	0	0	0.0	0	0	1	0	0	0	0	0.0
32	ZEZZA, Courtney	7-1	122	17.4	14-39	.359	6-17	.353	7-9	.778	6	14	20	2.9	17	0	3	11	17	4	41	5.9
33	SMITH, Cydney	7-0	99	14.1	13-32	.406	2-7	.286	2-4	.500	7	12	19	2.7	21	2	3	11	11	5	30	4.3
34	HARRISON, Ace	7-7	190	27.1	44-77	.571	6-16	.375	26-32	.813	14	63	77	11.0	30	2	25	23	7	28	120	17.1
44	ADAMS, Halee	6-6	134	22.3	11-35	.314	5-24	.208	2-2	1.000	9	19	28	4.7	16	1	15	4	1	8	29	4.8
50	BETHEL, Samiah	7-0	141	20.1	13-26	.500	1-3	.333	9-11	.818	5	23	28	4.0	18	1	10	23	1	8	36	5.1
Team											9	16	25					2				
Total.....		7	1398		207-480	.431	75-225	.333	87-109	.798	73	189	262	37.4	169	9	110	146	43	85	576	82.3
Opponents.....		7	1399		208-508	.409	27-115	.235	125-176	.710	123	200	323	46.1	118	-	113	142	12	82	568	81.1

TEAM STATISTICS	SFU	OPP
SCORING	576	568
Points per game	82.3	81.1
Scoring margin	+1.1	-
FIELD GOALS-ATT	207-480	208-508
Field goal pct	.431	.409
3 POINT FG-ATT	75-225	27-115
3-point FG pct	.333	.235
3-pt FG made per game	10.7	3.9
FREE THROWS-ATT	87-109	125-176
Free throw pct	.798	.710
F-Throws made per game	12.4	17.9
REBOUNDS	262	323
Rebounds per game	37.4	46.1
Rebounding margin	-8.7	-
ASSISTS	110	113
Assists per game	15.7	16.1
TURNOVERS	146	142
Turnovers per game	20.9	20.3
Turnover margin	-0.6	-
Assist/turnover ratio	0.8	0.8
STEALS	85	82
Steals per game	12.1	11.7
BLOCKS	43	12
Blocks per game	6.1	1.7
ATTENDANCE	1562	5740
Home games-Avg/Game	3-521	4-1435
Neutral site-Avg/Game	-	0-0

Date	Opponent		Score	Att.
11/13/16	at Wisconsin	W	103-100	3013
12/3/16	at Youngstown State	L	68-69	1584
11/19/16	COL	L	77-84	505
11/22/16	CAN	W	95-74	651
11/28/16	CORNELL	L	72-78	406
11/15/16	at Marquette	L	91-104	841
12/12/16	at Coastal Carolina	W	70-59	302

* - Conference game

Score by Periods	1st	2nd	3rd	4th	Totals
Saint Francis	151	141	136	148	576
Opponents	141	125	149	153	568

SAINT FRANCIS

INDIVIDUAL GAME RECORDS

POINTS

1. 47	Alli Williams vs. Wagner	March 3, 2014
^47	Alli Williams vs. Sacred Heart	March 9, 2014
3. *46	Jess Zinobile vs. LIU Brooklyn	March 4, 2000
4. ^43	Alexa Hayward vs. Sacred Heart	March 9, 2014
5. ^40	Beth Swink vs. St. Francis Brooklyn	March 5, 2005
40	Bonnie Kleinschuter vs. Carlow	1976-77
7. 39	Jess Zinobile at UMBC	Jan. 13, 2000
39	Lois Langenegger vs. LaRoche	1974-75
9. 38	Erin Murphy vs. St. Francis Brooklyn	Jan. 25, 1992
38	Colleen Joyce vs. Marshall	Dec. 20, 1993
38	Colleen Joyce vs. Robert Morris	March 3, 1994

REBOUNDS

1. 24	Jess Zinobile at Fairleigh Dickinson	Jan. 5, 1998
24	Colleen Curley vs. Carlow	1980-81
24	Colleen Curley vs. Pitt-Johnstown	1978-79
24	Colleen Curley vs. Washington & Jefferson	1979-80
5. 23	Cheril Meier vs. Carnegie Mellon	1983-84
6. 22	Jess Zinobile at UMBC	Jan. 13, 2000
22	Jess Zinobile at LIU Brooklyn	Feb. 12, 1998
8. 21	Jess Zinobile at Fairleigh Dickinson	Feb. 5, 2000

ASSISTS

1. 16	Karen Hewitt vs. St. Francis Brooklyn	Jan. 10, 2004
2. 15	Maureen Logan at Dayton	Dec. 20, 1992
15	Brittany Lilley vs. Kent State	Dec. 4, 2010
15	Alexa Hayward vs. Buffalo	Nov. 18, 2014
5. 14	Mary Ann Wilwohl vs. LIU Brooklyn	Feb. 22, 1986
14	Jess Zinobile at Bucknell	Dec. 19, 1999

STEALS

1. 12	Alli Williams vs. Quinnipiac	Feb. 27, 2012
2. 10	Maureen Logan vs. Duquesne	Nov. 28, 1989
3. 9	Alli Williams at Fairleigh Dickinson	Jan. 12, 2013
9	Aisha Brock vs. Mount Saint Mary's	Mar. 2, 2015
4. 8	Maureen Logan vs. Navy	Dec. 1, 1992
8	Maureen Logan vs. Robert Morris	Jan. 9, 1990
8	Diane Carey vs. Indiana (Pa.)	Feb. 2, 1985
8	Gale Rhodes vs. Juniata	Jan. 12, 1984
8	Tonjee Ward vs. Central Conn. St.	Jan. 24, 2002
8	Tonjee Ward vs. Monmouth	Feb. 23, 2002
8	Jessica Kovatch at Columbia	Dec 1, 2015
8	Ace Harrison Vs Columbia	Nov. 19, 2016

BLOCKS

1. 9	Cheril Meier at Washington & Jefferson	Feb. 16, 1984
2. 8	Vesna Drazetic at Monmouth	Jan. 12, 1991
8	Cheril Meier vs. Delaware State	Jan. 29, 1985
8	Cheril Meier at Wagner	Feb. 25, 1985
8	Cheril Meier vs. Carlow	Feb. 23, 1984

FIELD GOALS ATTEMPTED

1. 35	Alexa Hayward vs. Sacred Heart	Jan. 17, 2015
2. 34	Alexa Hayward at Ohio State	Nov. 16, 2014
3. 32	Alexa Hayward vs. Buffalo	Nov. 18, 2014
4. 31	Alexa Hayward vs. East Tennessee State	Nov. 21, 2014
5. 30	Alexa Hayward at Pittsburgh	Dec. 28, 2014
30	Alexa Hayward at Sacred Heart	Jan. 10, 2015
30	Alexa Hayward vs. Mount St. Mary's	March 2, 2015
8. 29	Alexa Hayward vs. St. Francis Brooklyn	Jan. 19, 2015
29	Alexa Hayward at St. Francis Brooklyn	Feb. 21, 2015
10. 27	Mary Markey at Rider	Feb. 24, 1997
27	Colleen Joyce vs. Wagner	Jan. 6, 1994

FIELD GOALS MADE

1. 15	Jess Zinobile at Monmouth	Feb. 22, 1999
15	Colleen Joyce vs. Marshall	Dec. 20, 1993
15	Alli Williams vs. Wagner	March 3, 2014
15	Alexa Hayward vs. Mount St. Mary's	March 2, 2015
5. 14	Beth Swink vs. Mount St. Mary's	Feb. 2, 2005
^14	Jess Zinobile vs. LIU Brooklyn	March 4, 2000
14	Colleen Joyce vs. Penn State	Nov. 27, 1995
14	Sue Leberfinger at LIU Brooklyn	Feb. 21, 1987

THREE-POINT FIELD GOALS ATTEMPTED

1. 19	Alexa Hayward at #14 Tennessee	Dec. 3, 2014
19	Alexa Hayward vs. George Mason	Dec. 6, 2014
3. 18	Alexa Hayward at Ohio State	Nov. 16, 2014
4. ^17	Allison Daly vs. Robert Morris	March 7, 2010
5. 16	Sami Allison at Robert Morris	Dec. 1, 2001
6. 15	Alexa Hayward at Coastal Carolina	Dec. 21, 2014
15	Alexa Hayward vs. Mount St. Mary's	March 2, 2015
6. 15	Jessica Kovatch at FDU	Feb. 1, 2016

THREE-POINT FIELD GOALS MADE

1. 8	Sami Allison vs. Miami (Ohio)	Dec. 21, 2001
^8	Allison Daly vs. Robert Morris	March 7, 2010
8	Kelley Doogan vs. Fairleigh Dickinson	Feb. 25, 2013
8	Jessica Kovatch at Canisius	Nov. 21, 2015
4. 7	Stacy Alexander vs. LIU Brooklyn	Jan. 29, 1996
7	Sami Allison vs. UMBC	Jan. 9, 2003
7	Tonjee Ward vs. Delaware	Dec. 20, 2000
7	Alexa Hayward vs. Robert Morris	Jan. 28, 2013
7	Alexa Hayward vs. Fairleigh Dickinson	Jan. 11, 2014
7	Alexa Hayward at Coastal Carolina	Dec. 21, 2014
7	Alexa Hayward vs. Mount St. Mary's	March 2, 2015

FREE THROWS ATTEMPTED

1. 25	Alli Williams at Wagner	Feb. 1, 2014
2. 23	Jess Zinobile vs. Cornell	Nov. 21, 1999
3. 21	Alli Williams at Central Conn. St.	Jan. 6, 2014
^21	Alli Williams vs. Sacred Heart	March 9, 2014
5. 19	Alli Williams vs. Central Conn. St.	Feb. 20, 2012

FREE THROWS MADE

1. 22	Jess Zinobile vs. Cornell	Nov. 21, 1999
2. 19	Alli Williams at Wagner	Feb. 1, 2014
3. 16	Jess Zinobile vs. James Madison	Dec. 11, 1999
16	Jess Zinobile vs. Robert Morris	Feb. 20, 1999
5. ^15	Jess Zinobile vs. LIU Brooklyn	March 4, 2000
15	Jess Zinobile vs. Quinnipiac	Jan. 16, 1999
15	Alli Williams vs. Central Conn. St.	Feb. 20, 2012
^15	Alli Williams vs. Sacred Heart	March 9, 2014

* - NEC Championship Game

^ - NEC Tournament Game

\$ - NCAA Tournament Game#

- Scored school-record 35 points in one half

SAINT FRANCIS

SFU Single Game Records

Most Points Scored

1.	132	vs. Sacred Heart (20T)	03/09/14
2.	111	vs. Fairleigh Dickinson	01/11/14
3.	110	at Fairleigh Dickinson	01/25/14
4.	109	vs. St. Francis Brooklyn	01/25/92
5.	106	at Central Conn. St.	01/06/14
5.	106	vs Coastal Carolina	11/18/15

Fewest Points Scored

1.	19	vs. Slippery Rock	03/05/69
2.	21	vs. Seton Hill	01/24/74
3.	23	vs. Duquesne	02/23/74
	23	vs. Duquesne	02/17/73
5.	24	vs. Juniata	02/08/72
	24	vs. Shippensburg	01/25/69

Most Points by an Opponent

1.	128	Notre Dame	12/31/12
2.	124	Sacred Heart	03/09/14
3.	122	Florida	12/20/15
4.	117	Penn State	11/8/13
5.	116	Virginia	11/27/00

Fewest Points by an Opponent

1.	15	Juniata	02/22/69
2.	16	LaRoche	02/22/75
	16	Duquesne	01/28/73
	16	Duquesne	02/15/71
	16	Juniata	02/07/70

Largest Margin of Victory

1.	59	LaRoche (75-16)	02/22/76
2.	57	Carlow (87-30)	01/19/77
3.	55	St. Francis Brooklyn (92-37)	01/19/89
4.	53	Carlow (75-23)	02/04/78

Largest Margin of Defeat

1.	73	Notre Dame (128-55)	12/31/12
2.	72	Pitt-Johnstown (102-30)	01/19/78
3.	67	at #14 Tennessee (111-44)	12/3/14
4.	62	Colorado (114-52)	11/28/95
5.	60	South Carolina (93-33)	11/09/07

Most FGs Attempted

1.	102	at Ohio State	11/16/14
2.	92	at Fairleigh Dickinson	01/25/14
3.	92	vs. Sacred Heart	03/09/14
4.	90	vs. Buffalo	11/18/14
5.	84	vs. Georgetown	12/08/90

Fewest FGs Attempted

1.	40	vs. Pittsburgh	11/23/90
	40	at Loyola	02/04/89
	40	at Cincinnati	11/19/05
4.	41	at West Virginia	12/30/06
5.	43	at Virginia	12/21/04
	43	at Robert Morris	02/20/05
	43	vs. Robert Morris	03/12/05

Highest FG%

1.	67	vs. Robert Morris	01/26/04
2.	63	vs. Monmouth	01/10/98
3.	61	at Miami (Ohio)	12/18/02
4.	60	at LIU Brooklyn	02/21/87
5.	59	vs. Quinnipiac	02/28/04
	59	at Bucknell	12/19/99
	59	vs. Juniata	02/10/86

Lowest FG%

1.	21.0	at George Mason	11/20/00
2.	22.0	at North Carolina	11/21/03
3.	23.0	vs. Texas Tech (Cancun, Mexico)	11/28/97
	23.0	vs. Monmouth	02/28/87
5.	23.4	at George Mason	11/21/13

Most 3FGs Attempted

1.	51	at FDU	2/1/16
2.	47	at Ohio State	11/16/14
3.	45	vs. George Mason	12/6/14
4.	44	at Wisconsin	11/13/16
5.	41	at Marshall	12/17/15

Most 3FGs Made

1.	17	vs Fairleigh Dickinson	1/18/16
1.	17	vs ECU (at Florida)	12/21/15
1.	17	vs Fairleigh Dickinson	2/25/13
3.	15	vs Cornell	11/23/15
3.	15	at Wisconsin	11/13/16

Most FTs Attempted

1.	62	at Central Conn. St.	01/06/14
2.	46	vs. Monmouth	03/09/95
3.	45	at Central Conn. St.	02/20/12
4.	43	vs. St. Francis Brooklyn	02/19/94
5.	41	at Marist	01/04/96
	41	at Wagner	02/06/12

Fewest FTs Attempted

1.	0	at Bucknell	01/09/86
2.	2	vs. LIU Brooklyn	02/28/05
3.	3	at Cincinnati	11/28/01
4.	4	Six times	

Highest FT% [min. 10 attempts]

1.	100.0	at Mount St. Mary's	02/24/05
2.	94.0	vs. St. Francis Brooklyn	03/05/05
3.	93.0	Seven times	

Lowest FT% [min. 10 attempts]

1.	20	at Dayton	02/20/92
2.	30	at East Carolina	01/01/92
3.	32	at Fairleigh Dickinson	01/30/93

Most Rebounds

1.	66	at Rider	12/01/90
2.	62	at Cleveland State	12/18/91
3.	61	vs. Rider	01/07/95
4.	60	at Fairleigh Dickinson	01/12/95

Fewest Rebounds

1.	20	at Cincinnati	11/19/05
----	----	---------------	----------

20	at Minnesota	03/19/05
20	at Cincinnati	11/28/01
21	at Oregon	11/11/05
22	at Louisville	12/30/05
22	at Long Island	01/06/05
22	at Xavier	12/31/03
22	vs. George Mason	11/24/91

Most Assists

1.	35	Fairleigh Dickinson	02/11/95
2.	30	vs. LIU Brooklyn	01/24/98
	30	vs. LIU Brooklyn	01/29/96
	30	vs. Robert Morris	03/03/94
	30	at St. Francis Brooklyn	01/19/02
	30	at Wright State	12/21/12

Fewest Assists

1.	0	at Ohio	12/19/85
2.	2	at Loyola	12/12/87
3.	4	at Georgetown	12/09/89
	4	at Pittsburgh	11/15/11
4.	5	vs. CCSU	2/6/16
	5	at South Carolina	11/09/07
	5	at Oregon	11/11/05
	5	at Alabama	03/14/97
	5	at Fairleigh Dickinson	01/30/93

Most Steals

1.	23	vs. Mount St. Mary's	3/2/15
2.	22	vs. Marist	01/31/88
3.	21	vs. Wagner	02/09/04
	21	vs. Robert Morris	01/09/90
	21	vs. Monmouth	02/23/13

Fewest Steals

1.	1	vs. LIU Brooklyn	01/16/06
	1	at Delaware	12/29/99
3.	2	Seven times	

Most Blocks

1.	12	vs LIU Brooklyn	2/20/16
2.	11	vs. Columbia	11/19/16
	11	vs. Robert Morris	02/15/97
3.	9	vs Canisius	11/22/16
	9	vs. William & Mary	12/21/98
	9	vs. Monmouth	02/15/97
5.	8	vs. Robert Morris	12/09/00
	8	at Monmouth	01/18/97
	8	vs. Maryland Eastern Shore	11/29/96
	8	at St. Francis Brooklyn	02/24/96

Most Turnovers

1.	43	at Florida	12/17/13
2.	41	vs. Pittsburgh	11/23/90
	41	at Cleveland State	12/18/91
3.	40	at Florida	12/20/15
4.	36	at St. Francis Brooklyn	02/29/92
	36	at Virginia	12/19/90
	36	at Rider	12/01/90

Fewest Turnovers

1.	4	vs. Wagner	03/03/14
2.	7	at Sacred Heart	02/17/05
	7	at Iowa State	03/17/00



THE LAST TIME...

SFU (TEAM)

Scored 100 or more:

103 at Wisconsin (11/13/16)

Scored 90 or more:

95 Vs Canisius (11/22/16)

Scored 80 or more:

83 vs Central Connecticut (3/6/16)

Scored 70 or more:

70 vs at Coastal Carolina (12/12/16)

Scored 49 or less:

43 at Robert Morris (2/29/16)

Scored 39 or less:

38, at Duquesne (12/5/12)

Shot 50 percent or better:

50, at Fairleigh Dickinson (02/25/13)

Shot 50 percent or better in each half:

62/51, at Wright State (12/21/12)

Shot 35 percent or worse:

27, at Robert Morris (2/29/16)

Shot 30 percent or worse:

27, at Robert Morris (2/29/16)

Made 35 or more field goals:

38, Vs Canisius (11/22/16)

Made 20 or more free throws:

27, vs Robert Morris (1/30/16)

Attempted 35 or more free throws:

35, vs Robert Morris (1/30/16)

Shot 50 percent or better from 3-point:

50.0 (12-24), at Florida (12/17/13)

Made 10 or more from 3-point:

14 at Marquette (11/15/16)

Had 50 or more rebounds:

54, at Wagner (2/15/16)

Had 15 or more offensive rebounds:

27 at Wagner (2/15/16)

Had 20 or more assists:

22, at Marquette (11/15/16)

Had 10 or more steals:

13, at Youngstown State (12/3/16)

Had 8 or more blocked shots:

9 Vs Canisius (11/22/16)

Won five or more consecutive games:

5 (2/8/16-2/22/16)

Lost five or more consecutive games:

5 (1/10/15-1/24/15)

Defeated a power conference team:

103-100, at Wisconsin (11/13/16)

Played in overtime:

L, 74-64 at Mount Saint Mary's (1/24/15)

Played in double overtime or later:

W, 132-124 2 OT vs Sacred Heart (3/9/14)

Won when trailing at halftime:

87-74 at Wagner (2/15/16)

Won when trailing by 10 points or more:

103-100, at Wisconsin (11/13/16), down 19-9

OPPONENT (TEAM)

Scored 100 or more:

104, at Marquette (11/15/16)

Scored 90 or more:

91 at Ohio (12/6/15)

Scored 80 or more:

84, Columbia(11/19/16)

Scored 70 or more:

78,vs Cornell (11/28/16)

Scored 49 or less:

48, by Central Connecticut (2/16/15)

Shot 60 percent or better:

61.8, at Notre Dame (12/31/12)

Shot 50 percent or better:

51,at Sacred Heart (2/27/16)

Shot 50 percent or better in each half:

57/53 vs ECU at Florida (12/21/15)

Shot 35 percent or worse:

29.0, at Coastal Carolina (12/12/16)

Shot 30 percent or worse:

28.8,vs Wagner (1/26/13)

Made 35 or more field goals:

40, at Marquette (11/15/16)

Made 25 or more free throws:

28, at Robert Morris (2/28/15)

Attempted 35 or more free throws:

36, at Wisconsin (11/13/16)

Shot 50 percent or better from 3-point:

53, vs ECU at Florida (12/21/15)

Made 10 or more from 3-point:

10, Sacred Heart (2/27/16)

Had 50 or more rebounds:

51 vs Columbia(11/19/16)

Had 15 or more offensive rebounds:

17, vs Cornell (11/28/16)

Had 20 or more assists:

26, at Marquette (11/15/16)

Had 10 or more steals:

17, at Coastal Carolina (12/12/16)

Had 10 or more blocked shots:

10, at Robert Morris (2/11/13)

INDIVIDUAL

SFU (PLAYER)

Scored 30 or more:

30, Jessica Kovatch at LIU Brooklyn(1/9/16)

Scored 25 or more:

25, Jessica Kovatch vs Cornell (11/28/16)

Scored 20 or more:

23, Maya Wynn, Vs Canisius (11/22/16)

Made 10 or more field goals:

10, Ace Harrison vs Columbia(11/19/16)

Made 10 or more free throws:

12, Jessica Kovatch vs RMU (1/30/16)

Made 5 or more from 3-point:

5, Jessica Kovatch vs Cornell (11/28/16)

Had 20 or more rebounds:

21 Jess Zinoble at FDU (2/5/2000)

Had 15 or more rebounds:

17, Ace Harrison at Coastal Carolina (12/12/16)

Had 10 or more rebounds:

10, Ace Harrison, at Youngstown St (12/3/16)

Had 10 or more assists:

10,Alexa Heyward at Mt St. Marys (01/24/15)

Had 5 or more steals:

6, Ace Harrison vs Cornell (11/28/16)

Had 5 or more blocked shots:

6, Courtney Zezza Vs Columbia (11/19/16)

OPPONENT (PLAYER)

Scored 30 or more:

31, Cayla McMorris Wisconsin (11/13/16)

Scored 25 or more:

28, Hannah Kimmel, SHU (2/27/16)

Scored 20 or more:

21,Indiya Benjamin, YSU (12/3/16)

Made 10 or more field goals:

10, Two Players at Marquette (11/15/16)

Made 10 or more free throws:

14, Leah Fechko, SFBK (2/22/16)

Made 5 or more from 3-point:

5, Hannah Kimmel, SHU (2/27/16)

Had 15 or more rebounds:

17 Camille Zimmerman Columbia(11/19/16)

Had 10 or more rebounds:

11 Erika Davenport, at Marquette (11/15/16)

Had 10 or more assists:

12,Linda Stepney at West Virginia (12/29/14)

Had 5 or more steals:

7, Kennedy Archer at Coastal Carolina (12/12/16)

Had 5 or more blocked shots:

8,Alexa Hart at Ohio State (11/16/14)



NCAA Statistics

Saint Francis (PA) - 2016-17 Women's Basketball Ranking Summary thru games 12/12/2016

Statistic	National Rank	Conference Rank	Value	National Leader	Value	Conference Leader	Value
Assist Turnover Ratio (344 ranked)	211	3	0.75	Central Ark.	1.74	Sacred Heart	0.87
Assists (344 ranked)	219	5	110	Baylor	254	Robert Morris	133
Assists Per Game (343 ranked)	78	1	15.7	Baylor	23.1	Saint Francis (PA)	15.7
Blocked Shots (344 ranked)	52	1	43	Baylor	86	Saint Francis (PA)	43
Blocked Shots Per Game (344 ranked)	16	1	6.1	Baylor	7.8	Saint Francis (PA)	6.1
Defensive Rebounds per Game (27 ranked)				New Mexico	34		
Fewest Fouls (344 ranked)	205	7	169	Central Ark.	89	St. Francis Brooklyn	143
Fewest Turnovers (344 ranked)	158	3	146	Drexel	82	Sacred Heart	135
Field-Goal Percentage (344 ranked)	78	1	43.1	California	52.0	Saint Francis (PA)	43.1
Field-Goal Percentage Defense (344 ranked)	246	8	40.9	West Virginia	28.7	Robert Morris	39.0
Free Throw Attempts (344 ranked)	320	9	109	Wisconsin	295	Bryant	174
Free Throws Made (344 ranked)	279	8	87	Washington	190	Bryant	127
Free-Throw Percentage (344 ranked)	7	1	79.8	Iowa St.	84.7	Saint Francis (PA)	79.8
Offensive Rebounds per Game (30 ranked)				Liberty	20		
Personal Fouls Per Game (344 ranked)	342	10	24.1	Chattanooga	10.2	St. Francis Brooklyn	15.9
Rebound Margin (344 ranked)	323	7	-8.7	Baylor	24.0	Bryant	8.8
Rebounds (344 ranked)	321	10	262	Baylor	565	Bryant	382
Rebounds Per Game (344 ranked)	218	4	37.43	Baylor	51.36	Bryant	42.44
Scoring Defense (344 ranked)	342	10	81.1	Central Ark.	46.4	Robert Morris	62.9
Scoring Margin (344 ranked)	178	1	1.1	Baylor	39.8	Saint Francis (PA)	1.1
Scoring Offense (344 ranked)	17	1	82.3	Northern Ill.	92.6	Saint Francis (PA)	82.3
Steals (343 ranked)	93	1	85	Maryland	153	Saint Francis (PA)	85
Steals Per Game (344 ranked)	20	1	12.1	Nicholls St.	15.3	Saint Francis (PA)	12.1
Three Pt FG Defense (344 ranked)	8	1	23.5	Arizona St.	19.8	Saint Francis (PA)	23.5
Three-Point Field Goals Attempted (147 ranked)	38	1	225	Sacramento St.	394	Saint Francis (PA)	225
Three-Point Field Goals Made (344 ranked)	34	1	75	Washington	123	Saint Francis (PA)	75
Three-Point Field Goals Per Game (344 ranked)	4	1	10.7	Sacramento St.	12.0	Saint Francis (PA)	10.7
Three-Point Field-Goal Percentage (344 ranked)	116	2	33.3	Michigan	43.8	Robert Morris	34.7
Turnover Margin (344 ranked)	206	3	-0.57	Nicholls St.	11.75	Sacred Heart	1.22
Turnovers Forced (344 ranked)	56	2	20.29	Auburn	26.44	Fairleigh Dickinson	20.56
Turnovers Per Game (344 ranked)	325	9	20.9	Villanova	9.6	Sacred Heart	15.0
Won-Lost Percentage (340 ranked)	221	2	42.9	12 teams tied	100.0	Bryant	44.4

NCAA Individual Leaders

Statistic	Player	National Rank	Conference Rank	Value	National Leader	Value	Conference Leader	Value
Assist Turnover Ratio (247 ranked)					Asha Thomas, California	4.30	Janee Brown, Robert Morris	1.89
Assists (142 ranked)					Curtlyce Knox, Texas A&M	83	Kierra Palmer, Bryant	40
Assists Per Game (248 ranked)	Katie Reese A'Lexus Harrison	154 214	2 4	4.0 3.6	Curtlyce Knox, Texas A&M	9.2	Kierra Palmer, Bryant	4.4
Blocked Shots (146 ranked)	Courtney Zezza	57	1	17	Bego Faz Davalos, Fresno St.	44	Courtney Zezza, Saint Francis (PA)	17
Blocked Shots Per Game (247 ranked)	Courtney Zezza Cydney Smith A'Lexus Harrison	33 103 247	1 3 6	2.43 1.57 1.00	Bego Faz Davalos, Fresno St.	4.89	Courtney Zezza, Saint Francis (PA)	2.43
Defensive Rebounds per Game (30 ranked)	A'Lexus Harrison	4	1	9	Chantel Osahor, Washington	12	A'Lexus Harrison, Saint Francis (PA)	9
Double Doubles (32 ranked)					Chantel Osahor, Washington	9		
Field Goal Attempts (148 ranked)					Kelsey Plum, Washington	208	Shanovia Dove, LIU Brooklyn	148
Field Goals Made (143 ranked)					Kelsey Plum, Washington	113	Hannah Kimmel, Sacred Heart Brianna Thomas, Fairleigh Dickinson	53 53
Field-Goal Percentage (250 ranked)	A'Lexus Harrison Jessica Kovatch	33 223	1 6	57.1 41.1	Caira Washington, George Washington	70.5	A'Lexus Harrison, Saint Francis (PA)	57.1
Final Points (191 ranked)					Kelsey Plum, Washington	341	Alexandria Klein, Bryant	150
Free Throw Attempts (146 ranked)					Larissa Lurkin, Kent St.	105	Alexandria Klein, Bryant	65
Free Throws Made (131 ranked)					Larissa Lurkin, Kent St.	84	Alexandria Klein, Bryant	52
Free-Throw Percentage (249 ranked)	Jessica Kovatch A'Lexus Harrison	101 134	4 6	83.3 81.3	Rishonda Napier, Southern Ill.	100.0	Aleah Epps, Central Conn. St.	88.2
Minutes Played (147 ranked)					Ashley Morrisette, Purdue	405:00	Rebecca Navarro, Robert Morris	330:00
Minutes Played Per Game (150 ranked)					Ty Petty, Middle Tenn.	39.67	Anna Niki Stamolamprou, Robert Morris	36.56
Offensive Rebounds per Game (30 ranked)					Ashunae Durant, Hofstra	6		
Points Per Game (248 ranked)	Jessica Kovatch A'Lexus Harrison	51 82	1 2	18.4 17.1	Kelsey Plum, Washington	31.0	Jessica Kovatch, Saint Francis (PA)	18.4
Rebounds (150 ranked)	A'Lexus Harrison	104	3	77	Chantel Osahor, Washington	156	Megan Smith, Robert Morris	79
Rebounds Per Game (247 ranked)	A'Lexus Harrison	14	1	11.0	Chantel Osahor, Washington	14.2	A'Lexus Harrison, Saint Francis (PA)	11.0
Steals (149 ranked)	A'Lexus Harrison	28	1	28	Chanette Hicks, Virginia Tech	47	A'Lexus Harrison, Saint Francis (PA)	28
Steals Per Game (236 ranked)	A'Lexus Harrison	5	1	4.00	Camary Williams, Evansville	5.00	A'Lexus Harrison, Saint Francis (PA)	4.00
Three-Point Field Goals Attempted (138 ranked)	Jessica Kovatch Maya Wynn	89 118	2 5	60 57	Maranne Johnson, Sacramento St.	111	Hannah Kimmel, Sacred Heart	66
Three-Point Field Goals Made (124 ranked)	Maya Wynn	124	2	20	Taylor Thunstedt, North Dakota St.	42	Hannah Kimmel, Sacred Heart	21
Three-Point Field Goals Per Game (235 ranked)	Maya Wynn Katie Reese Jessica Kovatch	43 91 120	1 2 4	2.86 2.43 2.29	Kitija Laksa, South Fla.	4.71	Maya Wynn, Saint Francis (PA)	2.86
Three-Point Field-Goal Percentage (224 ranked)	Katie Reese Maya Wynn Jessica Kovatch	22 157 222	1 3 6	48.6 35.1 26.7	Baileigh O'Dell, Lamar University	62.1	Katie Reese, Saint Francis (PA)	48.6
Triple Doubles (3 ranked)					Sabrina Ionescu, Oregon Ally Lehman, Northern Ill.	2 2		



1 Madison Johnson
5-7 ■ SO ■ G
Knox, Pa
Keystone



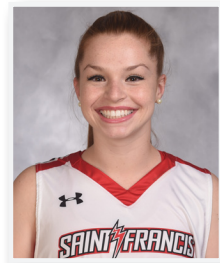
2 Caitlyn Kroll
5-10 ■ FR ■ G
Bridgeport, Ohio.
Bridgeport



5 Katie Reese
5-8 ■ SR ■ G
Boonton Township, NJ
Mountain Lakes



11 Kayla Meador
5-6 ■ SO ■ G
Burke, Va
Paul VI



13 Sam Marino
5-5 ■ JR ■ G
Camp Hill, Pa.
East Pennsboro



14 Taylor Allison
5-7 ■ SR ■ G
State College, Pa.
State College



15 Maya Wynn
5-11 ■ JR ■ G
Reisterstown, Md.
McDonogh



20 Caitlin Carroll
5-9 ■ FR ■ G
Middletown, N.J.
Red Bank Catholic



22 Jill Scott
5-11 ■ FR ■ G/F
Summerhill, Pa.
Forrest Hills



23 Jessica Kovatch
5-9 ■ SO ■ G
Phillipsburg, N.J.
Phillipsburg



24 Kyasia Duling
6-3 ■ JR ■ F
Zanesville, Ohio
New Albany



30 Jill Falvey
6-0 ■ SO ■ F
Lincroft, N.J.
Middletown South



32 Courtney Zezza
6-4 ■ SO ■ C
Plum, Pa.
Plum



33 Cydney Smith
6-3 ■ R-JR ■ F/C
Port Tobacco, Md.
St. Mary's Ryken



34 A'Lexus Harrison
6-2 ■ GR-1 ■ F
Baltimore, Md.
Digital Harbor (Mary-



44 Halee Adams
5-8 ■ SR ■ G
Holidaysburg, PA
Bishop Guilfoyle



WOMEN'S BASKETBALL



50 Samiah Bethel
5-9 ■ SR ■ G
Jacksonville, Fla.
Potter's House Christian



HC Joe Haigh
Head Coach
Fifth Season



AC Kyle Hejmowski
Assistant Coach
Second Season



AC Vanessa Abel
Assistant Coach
First Season



AC Janicia Anderson
Assistant Coach
First Season



OP Rachel Halaszynski
Director of
Operations
Second Season