



SAINT FRANCIS RED FLASH



Primary Contact: Paul Marboe • pmarboe@francis.edu • (o) 814-472-3916 • (c) 814-777-7604



at



SAINT FRANCIS (0-2) vs. Chatham (0-1)

Saturday, November 19 | 7 P.M.

Loretto, Pa. | DeGol Arena

Online Video: NEC Front Row

Live Stats: www.sidearmstats.com/francis/mbball/

2016-17 SCHEDULE/RESULTS

NOVEMBER

Sat. 12	Saint Bonaventure.....	L, 92-82
Wed. 16	Duquesne.....	L, 89-75
Sat. 19	CHATHAM	7 p.m.
Wed. 23	LONGWOOD	7 p.m.
Sat. 26	American.....	2 p.m.
Wed. 30	NJIT.....	7 p.m.

DECEMBER

Sat. 3	BINGHAMTON	7 p.m.
Mon. 12	Lehigh.....	7 p.m.
Sat. 17	STONY BROOK	1 p.m.
Mon. 19	Marquette.....	7 p.m.
Wed. 21	Texas A & M.....	7 p.m.
Thu. 29	* Fairleigh Dickinson.....	7:30 p.m.
Sat. 31	* Sacred Heart.....	4 p.m.

JANUARY

Thu. 5	* ST. FRANCIS BROOKLYN	7 p.m.
Sat. 7	* LIU BROOKLYN	4 p.m.
Thu. 12	* Robert Morris.....	7 p.m.
Sat. 14	* Mount St. Mary's.....	4 p.m.
Thu. 19	* BRYANT	7 p.m.
Sat. 21	* CENTRAL CONNECTICUT STATE	4 p.m.
Thu. 26	* Wagner.....	7 p.m.
Sat. 28	* ROBERT MORRIS	7 p.m.

FEBRUARY

Thu. 2	* St. Francis Brooklyn.....	7 p.m.
Sat. 4	* LIU Brooklyn.....	4:30 p.m.
Thu. 9	* WAGNER	7 p.m.
Sat. 11	* MOUNT ST MARY'S	1 p.m.
Thu. 16	* Central Connecticut State.....	7 p.m.
Sat. 18	* Bryant.....	4 p.m.
Thu. 23	* SACRED HEART	7 p.m.
Sat. 25	* FAIRLEIGH DICKINSON	1 p.m.

* Northeast Conference game Home games in **BOLD CAPS**

The Saint Francis men's basketball team hosts Chatham University for its home opener of the 2016-17. The Red Flash returns to DeGol Arena looking for its first win of the season after two tough road games to open the year.

NOTES FROM DUQUESNE

- Josh Nebo recorded his second career double-double with 17 points and 16 rebounds. He shot six-of-nine from the field and added two blocks.
- Nebo led four SFU players in double-figures.
- Randall Gaskins Jr. reached double-digit points for the second straight game to start his career. He had 12 points.
- Isaiah Blackmon and Georgios Angelou each contributed 11 points, with nine of Blackmon's 11 coming in the second half and both players hitting three times from three-point range.
- SFU held four different 10-point leads in the first half, but a 12-1 run by Duquesne gave them a 38-36 halftime lead and the Dukes carried their hot shooting into the second half (62%).

RECENT GRADS PLAYING OVERSEAS

Recent SFU graduates Greg Brown and Ben Millaud-Meunier signed professional contracts over the summer. Brown signed on to play for Campo Mourao in the top professional league of Brazil. Millaud-Meunier signed to play in Spain for Agustinos Leclerc. Millaud-Meunier is currently averaging 9.1 points per game on 44 percent shooting from three. Brown and Millaud-Meunier join Earl Brown as SFU grads that have gone pro. Brown has played in Iceland and is currently playing for the Cheshire Phoenix of the British Basketball League. Brown, a 2014 grad of Saint Francis is averaging 18 points and 8 rebounds per game.

(Allowed in parentheses)

SFU	0-2	W-L	CHATHAM	0-1
	78.5 (90.5)	PPG	77 (64)	
	44.7 (52.0)	FG%	45.9 (48.0)	
	45.2 (41.7)	3FG%	32.0 (23.5)	
	65.5 (71.7)	FT%	68.4 (57.1)	
	34.5 (35.5)	RPG	40.0 (28.0)	
	16.5 (17.5)	APG	9 (13)	
	2.0 (6.5)	BLK	0 (4)	
	5.0 (9.0)	STL	8 (3)	

PROBABLE STARTERS



Jamaal King

5-10 · SO · G
Salisbury, Md.



Randall Gaskins Jr.

6-3 · FR · G
Woodbridge, Va.



Georgios Angelou

6-1 · SR · G
Halkida, Greece



Josh Nebo

6-8 · SO · F
Katy, Texas



Patrick Wrencher

6-8 · SR · F
Cincinnati, Ohio

SERIES HISTORY

Series: First Meeting

Streak: N/A

Last Meeting: N/A

Krimmel vs. Chatham: N/A

HEAD COACH ROB KRIMMEL



*Fifth Season
Saint Francis '00
44-82 Overall*
Rob Krimmel enters his fifth season as the Saint Francis men's basketball coach in 2016-17. He was named the 21st coach in program history on

April 19, 2012.

In 2015-16, Saint Francis had several key moments including sweeping Robert Morris for the first time since the 2000-01 season. Ronnie Drinnon was just one of two players and seventh all-time to record a 20-point 20-rebound 5-assist game, doing so against CCSU on February 6th. The Flash also completed one of the biggest comebacks of the season last year when they erased a 17-point halftime deficit in a 73-65 triumph at Bryant.

Krimmel led the Red Flash to its most successful season in a decade in 2014-15 as the Red Flash had its first winning regular season since 2004-05. The Red Flash finished 16-16 overall as it appeared in its second consecutive NEC Tournament semifinals for the first time in program history. The Flash also hosted its first postseason game since 1991 when SFU hosted Bowling Green in the CollegeInsiders.com Postseason Tournament (CIT) in March.

COACHING HISTORY

Saint Francis University

Head Coach 2012-Present
Associate Head Coach 2011-12
Assistant Coach 2000-11

PLAYING CAREER

Saint Francis University 1996-2000
▶ Three-year starter 1997-2000
▶ Two-year captain 1998-2000
▶ NEC Men's Basketball
Scholar-Athlete of the Year 2000
▶ NCAA Post-Graduate Scholarship ... 2000
▶ Fifth on SFU's career 3FG% list (39.8)

YEAR-BY-YEAR RECORD AT SAINT FRANCIS UNIVERSITY

Year	Overall Record	NEC Record	Notes/Postseason
2012-13	5-24	5-13	First Season
2013-14	10-21	7-9	NEC Semifinals
2014-15	16-16	9-9	NEC Semis/CIT bid
2015-16	13-17	9-9	NEC QF
Totals	44-78	30-40	2-3 in NEC Tourn.

NEBO'S BLOCK PARTY

Sophomore forward Josh Nebo has become a force when it comes to protecting the rim. After posting 59 blocks as a freshman, Nebo added two more against Duquesne. His 61 career blocks are already tied for eighth all-time at Saint Francis with Tom Bennetch (1987-91). Nebo is three away from tying Will Felder (2009-11) for seventh place.

Nebo has also been a force on the glass this year, including a career-high 16 against the Dukes. He is 17th in the nation in rebounds per game, averaging 12.5.

BOMBS AWAY

Saint Francis hit on 9 of 17 three point attempts against Saint Bonaventure and then followed that by hitting 10-of-25 threes at Duquesne. In this short season so far, Saint Francis is shooting 45.2 percent from three, good for 24th in the nation. Senior Georgios Angelou leads SFU with six threes made, with Jamaal King (4) and Isaiah Blackmon (3) right behind.

BALANCED ATTACK

Saint Francis put five players in double figures in last Saturday's 92-82 loss at Saint Bonaventure. It marked the first time the Flash put five players in double figures since their win at LIU Brooklyn on January 9th last season. SFU had five players reach double figures in four different games last season.

SFU then put four guys in double-figures against Duquesne, with Nebo's 17 leading the way.

KING FOR A DAY

Sophomore guard Jamaal King had a career-high 21 points in Saturday's game against Saint Bonaventure. King was an efficient 7-of-15 from the field and 4-of-8 from three. The sophomore made the most of his second career start, also dishing out three assists and grabbing two rebounds.

YOUTH MOVEMENT

Eleven of the eighteen players on the Saint Francis roster are freshman or sophomore eligibility. Of the 13 players who have appeared a game this year, nine are freshmen or sophomores. Through two games, Isaiah Blackmon, Keith Braxton, Randall Gaskins Jr., Jamaal King, Michael Klebon, Deivydas Kuzavas, Scott Meredith, Josh Nebo and Andre Wolford have combined for 130 of the team's 157 points (82.8 percent) and 312 of 400 minutes (78 percent).

2016-17 RED FLASH RECORD WHEN...

	Overall	NEC		Overall	NEC
Playing at Home	0-0	0-0	SFU Scores...		
Playing on the Road	0-2	0-0	59 Points or Fewer	0-0	0-0
Leading at Halftime	0-0	0-0	60-69 Points	0-0	0-0
Tied at Halftime	0-0	0-0	70-79 Points	0-1	0-0
Losing at Halftime	0-2	0-0	80-89 Points	0-1	0-0
			90 Points or More	0-0	0-0
SFU Offense			Miscellaneous Stats		
Shoots 50% or Higher	0-0	0-0	More or Same Pts in Paint	0-0	0-0
Shoots Less than 50%	0-2	0-0	Fewer Pts in Paint	0-2	0-0
Shoots Higher than Opp.	0-0	0-0	More or Same Bench Pts	0-1	0-0
Shoots Same/Lower than Opp.	0-2	0-0	Fewer Bench Pts	0-1	0-0
Hits 8 or more 3-pointers	0-2	0-0	More or Same 2nd Chance Pts	0-2	0-0
Hits 7 or fewer 3-pointers	0-0	0-0	Fewer 2nd Chance Pts	0-0	0-0
Opponent Offense					
Shoots 50% or Higher	0-2	0-0	More or Tied Rebounds	0-0	0-0
Shoots Less than 50%	0-0	0-0	Fewer Rebounds	0-2	0-0
Hits 8 or more 3-pointers	0-1	0-0			
Hits 7 or fewer 3-pointers	0-1	0-0	One-Possession Games	0-0	0-0
			Overtime	0-0	0-0
			Following a Win	0-0	0-0
			Following a Loss	0-1	0-0

MEDIA INFORMATION

Primary Contact: Paul Marboe
Office: 814-472-3916
Email: PMarboe@francis.edu
Press Row Phone: 814-472-3145
Mailing Address: 140 Lakeview Drive
Loretto, PA 15940

CREDENTIALS

Requests for media credentials should be made directly to Men's Basketball Primary Contact Paul Marboe. Credentials will be available at Will Call at the Stokes Center.

GAME DAY SERVICES

Pregame notes, halftime and final statistics plus a play-by-play account of the game will be available to all members of the working media.

INTERVIEWS

Interviews with head coach Rob Krimmel, his staff and players can be arranged through Men's Basketball Primary Contact Paul Marboe. Players and coaches will be available for in-person and telephone interviews. Freshmen student-athletes will not be made available to the media postgame.

RADIO INFORMATION

Permission to broadcast games is granted through the Saint Francis Office of Athletics Communications. Arrangements for a line should be made at least two weeks in advance of the game (when possible).

QUICK FACTS

Location.....Loretto, Pa.
Founded 1847
Enrollment 2,400
Nickname.....Red Flash
Colors Red, White & Black
PMS Colors Red (PMS 1805)
Arena DeGol Arena
Opened..... 1971
Capacity..... 3,500
Press Row Phone 814-472-3145
Affiliation NCAA Division I
Conference Northeast (NEC)
President ... Rev. Malachi Van Tassell, T.O.R.
Athletics Director Susan Robinson-Frucht
SWA Erika Renwick
Senior Associate AD (MBB) Jim Brazill
Ticket Office Phone 814-472-3286
Athletics Website www.sfuathletics.com

First Season 1905-06
All-Time Record 944-1,071
All-Time Record vs. NEC 253-354
NEC Tournament Championships 1
NCAA Tournament Appearances 1
Last Appearance 1991
Last Opponent Arizona
Result L, 93-80
NIT Appearances 3 (1954, 1955, 1958)
Last Appearance 1958
Last Opponent Fordham
Result L, 83-59
CIT Appearances 1
Last Appearance 2015
Last Opponent Bowling Green
Result L, 67-64

TEAM CAPTAINS

Senior guard Georgios Angelou, sophomore guard Jamaal King and sophomore forward Josh Nebo were selected Team Captains for the 2016-17 season. Angelou, one of three seniors on the roster, moves into a bigger role this year after being a key contributor off the bench last season, leading SFU with a 47.4 three-point percentage. King will provide leadership at the point guard spot, while Nebo made a big impact in his freshman campaign, starting 29 games.

BIG SHOES TO FILL

- Saint Francis graduated three key players from their 2015-16 team in Greg Brown, Ronnie Drinnon and Ben Millaud-Meunier
- Those three seniors combined for 53 percent of the teams points (1,132 of 2,110), 46 percent of the team's rebounds (504 of 1,093) and 55 percent of the team's assists (196 of 356)
- The Red Flash will look to Georgios Angelou (47 percent from three), Josh Nebo (2.0 blocks per game), and Isaiah Blackmon (10 ppg) to shoulder the load to start the 2016-17 season

KRIMMEL NINTH PLACE ON WINS LIST

Head coach Rob Krimmel moved into ninth place on the Saint Francis wins list with his 43rd career victory over Central Connecticut on Feb. 6. Krimmel surpassed Kevin Porter with that win. Porter came back to coach the Flash from 1983-87 following an outstanding playing career in Loretto and in the NBA. John Loughran (1920-24) holds eighth place with 51 wins. Dr. Skip Hughes (1945-66) is the school's all-time wins leader with 293. He's the only Saint Francis coach to reach the 100-win plateau.

HISTORY IN THE MAKING

History will be made when the Red Flash travel to Milwaukee to take on the Marquette Golden Eagles. Saint Francis is taking part in Marquette's 100 years of basketball celebration and their meeting on December 19th will be 59 years to the day from their last meeting. Saint Francis defeated Marquette 79-72 on December 19th, 1956.

FIRST MEETINGS

Red Flash basketball dates back all the way to the 1905-06 season. In those 111 seasons, Saint Francis has never matched up with either Stony Brook or Texas A&M. That will change this season when the Sea Wolves come to Loretto on December 17th and SFU makes the trip to College Station on December 21st.

DOUBLE-DIGIT PERFORMANCES

	16-17	Career		16-17	Career
Double-Doubles			Rebounding		
Josh Nebo	1	2	Josh Nebo	1	4
Scoring			20-Point Games	16-17	Career
Malik Harmon	-	32	Malik Harmon	-	6
Basil Thompson	-	12	Jamaal King	1	1
Isaiah Blackmon	1	10	Isaiah Blackmon	-	1
Josh Nebo	2	8			
Georgios Angelou	2	4			
Randall Gaskins, Jr.	2	2			
Keith Braxton	1	1			
Jamaal King	1	1			

ASSOCIATED PRESS TOP 25

RK TEAM.....	RECORD	PTS
1 Duke (58).....	2-0	1,613
2 Kentucky (1).....	2-0	1,508
3 Villanova (5).....	1-0	1,492
4 Oregon.....	1-0	1,349
5 North Carolina.....	2-0	1,347
6 Indiana (1).....	1-0	1,322
7 Kansas.....	0-1	1,206
8 Virginia.....	1-0	1,121
9 Wisconsin	1-0	1,097
10 Arizona.....	1-0	1,092
11 Xavier.....	1-0	1,025
12 Louisville.....	1-0	811
13 Michigan State.....	0-1	729
14 Gonzaga	1-0	725
15 Purdue	1-0	700
16 UCLA.....	2-0	622
17 Saint Mary's.....	1-0	593
18 Syracuse.....	1-0	551
19 West Virginia.....	1-0	392
20 Iowa State.....	1-0	254
21 Rhode Island.....	1-0	250
22 Creighton	1-0	232
23 Texas	1-0	230
24 Cincinnati.....	1-0	120

USA TODAY COACHES TOP 25

RK TEAM.....	RECORD	PTS
1 Duke (27).....	2-0	786
2 Kentucky (2).....	2-0	747
3 Villanova (2).....	1-0	729
4 Oregon (1).....	1-0	655
5 Indiana.....	1-0	630
6 North Carolina.....	2-0	621
7 Virginia.....	1-0	592
8 Kansas.....	0-1	548
9 Arizona.....	1-0	528
10 Xavier.....	1-0	507
11 Wisconsin	1-0	477
12 Louisville.....	1-0	419
13 Michigan State.....	0-1	413
14 Gonzaga	1-0	401
15 Purdue	1-0	363
16 UCLA.....	2-0	275
17 Saint Mary's.....	1-0	273
18 Syracuse.....	1-0	257
19 West Virginia.....	1-0	254
20 Creighton	1-0	137
21 Texas	1-0	124
22 Rhode Island.....	1-0	93
23 Iowa State.....	1-0	92
24 Maryland.....	1-0	90
25 Cincinnati.....	1-0	73

NEC COACHES POLL

Preseason

1. Fairleigh Dickinson (6)
2. Wagner (4)
3. Bryant
4. LIU Brooklyn
Mount St. Mary's
6. Robert Morris
7. St. Francis Brooklyn
8. Sacred Heart
9. Saint Francis U
10. Central Connecticut

ABOUT CHATHAM

The Cougars are off to a 1-0 start this season, with a 77-64 win over Franciscan University. Chatham will take on Capital University on Friday night before facing the Red Flash.

Chatham placed five players in double-figures in its season opener. Sophomore forward Alex Schopen and sophomore guard Isaiah Brown led the team with 12 points each, with both going four-of-eight from the field. Brown also grabbed six boards. Sophomore guard Anthony Bomar, sophomore guard Josh Randall and junior guard Reggie Rogers had 10 points a piece.

The Cougars shot 45.9 percent (28-of-61) from the field and 32 percent (8-of-25) from three, while out-rebounding Franciscan University, 40-28. Chatham forced 15 turnovers and recording eight steals, with Randall collecting three steals.

SERIES HISTORY

This is the first meeting between Saint Francis and Chatham, a Division III program located in Pittsburgh.

LOOKING AHEAD

The Red Flash hosts Longwood on Wednesday, November 23. Tipoff is set for 7 p.m. at DeGol Arena. The Lancers are 0-2 this year with losses to Maine and Stephen F. Austin.

NEC PLAYERS OF THE WEEK

	PLAYER	ROOKIE
11/14	MIKE AAMAN (WAGNER)	SEBASTIAN TOWNES (BRYANT)

FINAL 2015-16 NEC STANDINGS

School	NEC	Pct.	Overall	Pct.	Streak
1. Wagner *	13-5	0.722	20-9	0.690	W5
2. Fairleigh Dickinson *	11-7	0.611	15-14	0.517	W2
St. Francis Brooklyn *	11-7	0.611	15-16	0.484	W4
Sacred Heart *	11-7	0.611	12-17	0.414	W1
5. Mount St. Mary's *	10-8	0.556	13-18	0.419	L2
6. LIU Brooklyn *	9-9	0.500	15-14	0.517	L1
Saint Francis U *	9-9	0.500	13-16	0.448	L5
8. Robert Morris *	8-10	0.444	10-21	0.323	L1
9. Bryant	5-13	0.278	8-23	0.258	W1
10. Central Connecticut	3-15	0.167	4-25	0.138	L3

THIS WEEK IN THE NEC

WEDNESDAY NOVEMBER 16

CCSU at Binghamton-7pm
Robert Morris at Bucknell-7pm
Loyola (MD) at LIU Brooklyn-7pm
Mount St. Mary's at Minnesota-8pm

FRIDAY NOVEMBER 18

Fairleigh Dickinson at Fordham-6pm
Mount Saint Mary's at George Mason-730pm
Bryant at Gonzaga-830 PM
Sacred Heart at Arizona-10pm

ROSTER

No.	Name	Cl	Pos	Ht.	Wt.	Hometown/High School
0	Ifeanyi Umezurike	So.	F/C	6-10	240	Uturu, Abia State, Nigeria / Montverde Academy (Fla.)
1	Malik Harmon	Sr.	G	6-0	194	Queens, N.Y. / Christ the King
2	Scott Meredith	So.	G	6-2	180	Pilot Mountain, N.C. / Hargrave Military Academy (Va.)
3	Jamaal King	So.	G	5-10	170	Salisbury, Md. / Bishop O'Connell (Va.)
4	Randall Gaskins, Jr.	Fr.	G	6-3	180	Woodbridge, Va. / Bishop O'Connell (Va.)
5	Daniel Wallace	Jr.	C/F	6-8	215	Suffolk, Va. / Nansemond River
11	Isaiah Blackmon	So.	G	6-1	170	Charlotte, N.C. / West Charlotte
13	Keith Braxton	Fr.	G	6-4	208	Glassboro, N.J. / The Lawrenceville School
14	Andre Wolford	So.	G	6-2	175	Willowick, Ohio / Saint Ignatius
15	Deon Baker	Jr.	G	6-5	220	Pittsburgh, Pa / Gateway
21	Tre McKeithen	Jr.	G	6-1		Pittsburgh, Pa. / Taylor Alderdice
22	Michael Klebon	So.	G	6-2	175	Paxinos, Pa. / Southern Columbia
23	Georgios Angelou	Sr.	G	6-1	185	Halkida, Greece / Lykeio Kanithou
24	Jordan Forehand	So.	G	6-0	180	Bridgewater, N.J. / IMG Academy (Fla.)
30	Deivydas Kuzavas	Fr.	F/C	6-10	210	Kretinga, Lithuania / St. Mary's Ryken (Md.)
32	Josh Nebo	So.	F/C	6-8	215	Houston, Texas / Cypress Lakes
33	Patrick Wrencher	Sr.	F	6-6	250	West Chester, Ohio / Archbishop Moeller
35	Basil Thompson	Jr.	F	6-6	200	Philadelphia, Pa. / Imhotep Charter

Coaching Staff

Name	Position	Years at SFU	Alma Mater (Year)
Rob Krimmel	Head Coach	Fifth	Saint Francis '00
Andrew Helton	Associate Head Coach	Second	Miami (Ohio) '92
Eric Taylor	Assistant Coach	Fifth	Saint Francis '98
Umar Shannon	Assistant Coach	First	Saint Francis '12
Luke McConnell	Director of Operations	Fourth	Saint Francis '12

Pronunciations

No.	Name	Pronunciation
0	Ifeanyi Umezurike	"lffy" oo-may-ZOO-ree-kay
22	Michael Klebon	CLAY-bon
23	Georgios Angelou	YOR-goes AN-jah-lew
30	Deivydas Kuzavas	Day-V-Das Koo-Zah-Vus
35	Basil Thompson	bah-SIL

Roster Breakdowns

By Class

Seniors	3
Juniors	4
Sophomores	8
Freshmen	3

By Position

Forwards	5
Guards	12
Centers	4

By State

Maryland	1
New York	1
North Carolina	2
Ohio	2
Pennsylvania	4
Texas	1
Virginia	2
New Jersey	2
International	3

TV/RADIO ROSTER



Ifeanyi Umezurike
6-10 · SO · F/C
Uturu, Abia State, Nigeria
Montverde Academy



Malik Harmon
6-0 · SR · G
Queens, N.Y.
Christ the King



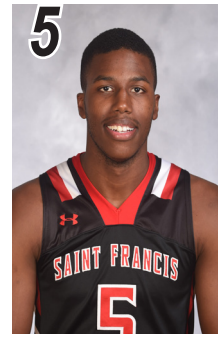
Scott Meredith
6-2 · SO · G
Pilot Mountain, N.C.
Hargrave Military Academy



Jamaal King
5-10 · SO · G
Salisbury, Md.
Bishop O'Connell



Randall Gaskins Jr.
6-3 · FR · G
Woodbridge, Va.
Bishop O'Connell



Daniel Wallace
6-8 · JR · C/F
Suffolk, Va.
Nansemond River



Isaiah Blackmon
6-1 · SO · G
Charlotte, N.C.
West Charlotte



Keith Braxton
6-4 · FR · G
Glassboro, N.J..
Lawrenceville School



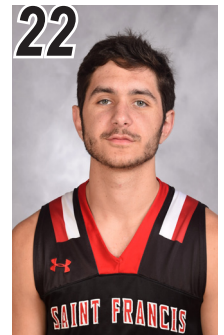
Andre Wolford
6-2 · SO · G
Willowick, Ohio
Saint Ignatius



Deon Baker
6-5 · JR · G/F
Pittsburgh, Pa.
Gateway



Thurston McKeithen
6-1 · JR · G
Pittsburgh, PA



Michael Klebon
6-2 · SO · G
Paxinos, Pa.
Southern Columbia



Georgios Angelou
6-1 · SR · G
Halkida, Greece
Lykeio Kanithou



Jordan Forehand
6-0 · SO · G
Bridgewater, N.J.
IMG Academy (Fla.)



Deivydas Kuzavas
6-10 · FR · F/C
Kretinga, Lithuania
St. Mary's Ryken (Md.)



Josh Nebo
6-8 · SO · F
Houston, Texas
Cypress Lakes



Patrick Wrencher
6-6 · SR · F
West Chester, Ohio
Archbishop Moeller



Basil Thompson
6-6 · JR · F
Philadelphia, Pa.
Imhotep Charter



Jorden McClure
"J-Money"
Altoona, Pa.
Altoona Junior High



Rob Krimmel
Head Coach
Fifth Season
Saint Francis '00



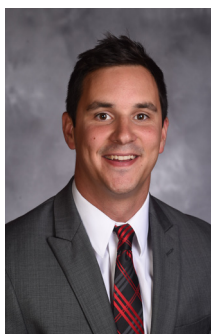
Andrew Helton
Associate Head Coach
Second Season
Miami (Ohio) '92



Eric Taylor
Assistant Coach
Fifth Season
Saint Francis '98



Umar Shannon
Assistant Coach
First Season
Saint Francis '13



Luke McConnell
Director of Operations
Fourth Season
Saint Francis '12

SAINT FRANCIS TEAM STAT RANKINGS

NCAA Statistics

Saint Francis (PA) - 2016-17 Men's Basketball Ranking Summary thru games 11/16/2016

Statistic	National Rank	Conference Rank	Value	National Leader	Value	Conference Leader	Value
3-pt Field Goal Attempts (347 ranked)	203	6	42	The Citadel	131	Mt. St. Mary's	71
Assist Turnover Ratio (347 ranked)	248	5	0.83	St. Mary's (CA)	3.92	Central Conn. St.	1.55
Assists Per Game (347 ranked)	82	2	16.5	UTEP	29.0	Central Conn. St.	17.0
Blocked Shots Per Game (340 ranked)	260	7	2.0	Washington	15.0	Fairleigh Dickinson	6.5
Defensive Rebounds per Game (347 ranked)	316	9	21.00	Utah	44.50	LIU Brooklyn Fairleigh Dickinson	31.00 31.00
Fewest Fouls (347 ranked)	188	4	43	UNI	11	Sacred Heart	36
Fewest Turnovers (347 ranked)	286	8	40	Yale	7	Bryant	22
Field-Goal Percentage (347 ranked)	177	3	44.7	ETSU	66.1	Fairleigh Dickinson	46.5
Field-Goal Percentage Defense (347 ranked)	330	9	52.0	Utah	24.3	LIU Brooklyn	26.6
Free Throw Attempts (346 ranked)	119	4	55	Oklahoma St.	108	Wagner	60
Free Throws Made (347 ranked)	128	3	36	The Citadel	86	Wagner	43
Free-Throw Percentage (347 ranked)	230	8	65.5	Michigan	88.6	Sacred Heart	77.1
Offensive Rebounds Per Game (346 ranked)	95	4	13.50	The Citadel	24.67	Wagner	18.00
Personal Fouls Per Game (347 ranked)	216	7	21.5	UNI	11.0	Sacred Heart	18.0
Rebound Margin (347 ranked)	221	8	-1.0	Troy	23.5	LIU Brooklyn Wagner	13.0 13.0
Scoring Defense (347 ranked)	330	10	90.5	UNI	37.0	LIU Brooklyn	50.5
Scoring Margin (347 ranked)	298	7	-12.0	Missouri	55.0	LIU Brooklyn	21.0
Scoring Offense (347 ranked)	151	2	78.5	The Citadel	111.0	Fairleigh Dickinson	83.0
Steals Per Game (347 ranked)	248	7	5.0	The Citadel	15.7	Wagner	8.0
Three Pt FG Defense (347 ranked)	305	9	41.7	St. Francis Brooklyn	5.9	St. Francis Brooklyn	5.9
Three-Point Field Goals Per Game (346 ranked)	54	1	9.5	Missouri St.	13.5	Saint Francis (PA)	9.5
Three-Point Field-Goal Percentage (347 ranked)	24	1	45.2	Weber St.	56.1	Saint Francis (PA)	45.2
Total 3-point FGM (347 ranked)	85	2	19	The Citadel	39	Mt. St. Mary's	22
Total Assists (347 ranked)	118	2	33	North Carolina	69	Central Conn. St.	51
Total Blocks (331 ranked)	264	8	4	Oregon St.	26	Fairleigh Dickinson	13
Total Rebounds (347 ranked)	256	9	69	The Citadel	159	Robert Morris	118
Total Rebounds Per Game (347 ranked)	259	8	34.50	UCF	59.00	LIU Brooklyn	46.50
Total Steals (345 ranked)	245	8	10	The Citadel	47	Robert Morris	20
Turnover Margin (332 ranked)	299	10	-5.0	Lamar University	15.0	Central Conn. St.	1.7
Turnovers Forced (345 ranked)	142	1	15.00	The Citadel	26.67	Robert Morris Saint Francis (PA)	15.00 15.00
Turnovers Per Game (347 ranked)	333	10	20.0	Notre Dame	5.5	Bryant Central Conn. St.	11.0 11.0
Won-Lost Percentage (280 ranked)	280	7	0.0	127 teams tied	100.0	LIU Brooklyn	100.0

SAINT FRANCIS PLAYER STAT RANKINGS

Statistic	Player	National Rank	Conference Rank	Value	National Leader	Value	Conference Leader	Value
3-pt Field Goal Attempts (203 ranked)					Antonio Green, UTRGV	29	Greg Alexander, Mt. St. Mary's	21
Assist Turnover Ratio (249 ranked)					John Gillon, Syracuse J.R. Lynch, Hartford	15.00 15.00	Eric Bowles, Central Conn. St.	14.00
Assists Per Game (191 ranked)					Dominic Artis, UTEP	13.0	Eric Bowles, Central Conn. St.	4.7
Blocked Shots Per Game (172 ranked)					Ben Lammers, Georgia Tech	7.00	Tafari Whittingham, Central Conn. St. Malk Miller, Fairleigh Dickinson Tyrone O'Garra, Fairleigh Dickinson	2.00 2.00 2.00
Defensive Rebounds per Game (215 ranked)	Josh Nebo	17	1	9.00	Steve Taylor Jr., Toledo	13.00	Josh Nebo, Saint Francis (PA)	9.00
Double Doubles (19 ranked)	Josh Nebo	19	1	1	18 players tied	2	Michael Carey, Wagner Jerome Frink, LIU Brooklyn Josh Nebo, Saint Francis (PA)	1 1 1
Field-Goal Percentage (247 ranked)					4 players tied	100.0	Darian Anderson, Fairleigh Dickinson	72.0
Free Throw Attempts (223 ranked)	Josh Nebo	59	1	19	Tres Tinkle, Oregon St.	38	Josh Nebo, Saint Francis (PA) Kavon Stewart, Robert Morris Sebastian Townes, Bryant	19 19 19
Free Throws Made (245 ranked)	Josh Nebo	105	1	12	Tres Tinkle, Oregon St.	28	6 players tied	12
Free-Throw Percentage (230 ranked)					113 players tied	100.0	Quincy McKnight, Sacred Heart Iverson Fleming, LIU Brooklyn Gus Riley, Bryant	100.0 100.0 100.0
Minutes Per Game (236 ranked)					Peyton Aldridge, Davidson	40:00	Michael Carey, Wagner	36:30
Offensive Rebounds Per Game (155 ranked)	Josh Nebo	96	5	3.50	Eric Mka, BYU	9.00	Michael Carey, Wagner	4.50
Points Per Game (231 ranked)					Cameron Morse, Youngstown St.	33.5	Quincy McKnight, Sacred Heart	26.5
Rebounds Per Game (228 ranked)	Josh Nebo	17	1	12.5	Rokas Gustys, Hofstra Eric Mka, BYU	18.0 18.0	Josh Nebo, Saint Francis (PA)	12.5
Steals Per Game (137 ranked)	Keith Braxton	137	3	2.00	Luwane Ppkins, Massachusetts	6.00	Michael Carey, Wagner	2.50
Three-Point Field Goals Per Game (191 ranked)	Georgios Angelou	85	2	3.00	Joe Rosga, Denver	9.00	Darian Anderson, Fairleigh Dickinson	3.50
Three-Point Field-Goal Percentage (250 ranked)	Georgios Angelou	108	3	50.0	Jon Davis, Charlotte Charles Jackson, Ark.-Pine Bluff	100.0 100.0	Darian Anderson, Fairleigh Dickinson	63.6
Total 3-point FGM (210 ranked)	Georgios Angelou	120	5	6	Antonio Green, UTRGV Tyler Hall, Montana St.	13 13	Greg Alexander, Mt. St. Mary's	9
Total Assists (233 ranked)					De'Aaron Fox, Kentucky	21	Eric Bowles, Central Conn. St.	14
Total Blocks (176 ranked)					Hassan Martin, Rhode Island	15	Tafari Whittingham, Central Conn. St.	6
Total Field Goal Attempts (244 ranked)					Alec Peters, Valparaiso	63	Isaiah Still, Robert Morris	43
Total Field Goals Made (230 ranked)					Cameron Morse, Youngstown St.	27	Quincy McKnight, Sacred Heart	20
Total Minutes (231 ranked)					Jalen Ross, Hartford	118:00	Austin Nehls, Central Conn. St.	102:00
Total Points (220 ranked)					Alec Peters, Valparaiso	79	Quincy McKnight, Sacred Heart	53
Total Rebounds (211 ranked)	Josh Nebo	33	1	25	Aubrey Williams, Kennesaw St.	43	Josh Nebo, Saint Francis (PA)	25
Total Steals (181 ranked)	Keith Braxton	181	4	4	Luwane Ppkins, Massachusetts	12	Dachon Burke, Robert Morris	7
Triple Doubles (1 ranked)					Jaleen Smith, New Hampshire Ethan Telfair, Idaho St.	1 1		

THE LAST TIME...

SFU

Scored 100 or more:

103, vs. Westminster (11/17/15)

Scored 90 or more:

91, vs. Central Connecticut (2/6/16)

Scored 80 or more:

82, at. Saint Bonaventure (11/12/16)

Scored 49 or less:

48, at St. Francis Brooklyn (3/7/15)

Scored 39 or less:

37, at Cincinnati (11/14/14)

Shot 60 percent or better:

65.4, at Navy (11/29/14)

Shot 50 percent or better:

50.8, at Fairleigh Dickinson (1/28/16)

Shot 50 percent or better in each half:

52.0/51.6, at Fairleigh Dickinson (1/28/16)

Shot 35 percent or worse:

34.6, at Wagner (2/25/16)

Shot 30 percent or worse:

30.0, at Mount St. Mary's (2/13/16)

Made 35 or more field goals:

37, vs. Keystone (11/20/14)

Made 25 or more free throws:

26, at Sacred Heart (1/10/15)

Attempted 35 or more free throws:

36, vs. Westminster (11/17/15)

Shot 50 percent or better from 3-point:

52.9 (9-17), at. Saint Bonaventure (11/12/16)

Made 10 or more from 3-point:

10, at Duquesne (11/16/16)

Had 50 or more rebounds:

53, vs. Westminster (11/17/15)

Had 15 or more offensive rebounds:

15, at Duquesne (11/16/16)

Had 20 or more assists:

22, at Navy (11/29/14)

Had 15 or more assists:

18, at Duquesne (11/16/16)

Had 10 or more steals:

13, vs. Westminster (11/17/15)

Had 10 or more blocked shots:

10, vs. LIU Brooklyn (1/22/11)

Won five or more consecutive games:

5 (1/13/11-1/27/11)

Lost five or more consecutive games:

6 (2/13/16-3/2/16)

Defeated a power five conference team:

73-68 at Rutgers (12/20/14)

Played in overtime:

L, 94-89 vs. LIU Brooklyn (2/20/16)

Played in double overtime or later:

L, 84-81 at Central Connecticut (2/28/13)

Won when trailing at halftime:

63-57 vs. Bryant (2/4/16)

**trailed 31-21 at halftime

Won when trailing by 10 points or more:

63-57 vs. Bryant (2/4/16)

**trailed by as many as 15 points in second half (18:35 remaining)

OPPONENT

Scored 100 or more:

103, at North Carolina (1/2/11)

Scored 90 or more:

92, at. Saint Bonaventure (11/12/16)

Scored 80 or more:

89, at Duquesne (11/16/16)

Scored 49 or less:

48, vs. American (11/21/15)

Scored 39 or less:

34, at Bryant (2/11/10)

Shot 60 percent or better:

67.4, at Maryland (12/4/15)

Shot 50 percent or better:

52.5, at Duquesne (11/16/16)

Shot 50 percent or better in each half:

51.7/57.1, at Fairleigh Dickinson (1/28/16)

Shot 35 percent or worse:

34.0, vs. American (11/21/15)

Shot 30 percent or worse:

28.0, at Bryant (2/11/10)

Made 35 or more field goals:

37, vs. LIU Brooklyn (1/28/12)

Made 25 or more free throws:

25-29, at Maryland (12/4/15)

Attempted 35 or more free throws:

45, at LIU Brooklyn (12/4/10)

Shot 50 percent or better from 3-point:

52.0 (13-25), at Duquesne (11/16/16)

Made 10 or more from 3-point:

13, at Duquesne (11/16/16)

Had 50 or more rebounds:

53, at Notre Dame (11/13/15)

Had 15 or more offensive rebounds:

15, vs. St. Francis Brooklyn (2/18/16)

Had 20 or more assists:

21, at Duquesne (11/16/16)

Had 15 or more assists:

21, at Duquesne (11/16/16)

Had 10 or more steals:

11, at. Saint Bonaventure (11/12/16)

Had 10 or more blocked shots:

10, vs. Duquesne (12/12/15)

INDIVIDUAL

SFU

Scored 30 or more:

32, Ben Millaud-Meunier vs. Westminster (11/17/15)

Scored 25 or more:

28, Ronnie Drinnon vs. LIU Brooklyn (2/20/16)

Scored 20 or more:

21, Jamaal King at. Saint Bonaventure (11/12/16)

Made 10 or more field goals:

10, Ronnie Drinnon vs. LIU Brooklyn (2/20/16)

Made 10 or more free throws:

10, Ben Millaud-Meunier vs. Westminster (11/17/15)

Made 5 or more from 3-point:

8, Ben Millaud-Meunier vs. Central Conn. (2/6/16)

Had 20 or more rebounds:

20, Ronnie Drinnon at Mount St. Mary's (2/13/16)

Had 15 or more rebounds:

16, Josh Nebo at Duquesne (11/16/16)

Had 10 or more rebounds:

16, Josh Nebo at Duquesne (11/16/16)

Had 10 or more assists:

10, Chris Johnson vs. Bryant (2/5/11)

Had 5 or more steals:

5, Ben Millaud-Meunier vs. Westminster (11/17/15)

Had 5 or more blocked shots:

6, Josh Nebo vs. LIU Brooklyn (2/20/16)

OPPONENT

Scored 30 or more:

31, Sidney Sanders vs. Fairleigh Dickinson (2/15/14)

Scored 25 or more:

26, Rene Castro at Duquesne (11/16/16)

Scored 20 or more:

26/23, Rene Castro/Tarin Smith at Duquesne (11/16/16)

Made 10 or more field goals:

10, Martin Hermannsson vs. LIU Brooklyn (2/20/16)

Made 10 or more free throws:

10, Tevin Falzon at Sacred Heart (2/27/16)

Made 5 or more from 3-point:

6, Rene Castro at Duquesne (11/16/16)

Had 15 or more rebounds:

15, Jalen Cannon at St. Francis Brooklyn (2/21/15)

Had 10 or more rebounds:

10, Nakye Sanders

Had 10 or more assists:

11, Brent Jones vs. St. Francis Brooklyn (2/20/14)

Had 5 or more steals:

5, Earl Potts, Jr., at Fairleigh Dickinson (1/28/16)

Had 5 or more blocked shots:

5, Amdy Fall vs. St. Francis Brooklyn (2/18/16)

SEASON STATS

RECORD:	OVERALL	HOME	AWAY	NEUTRAL
ALL GAMES	0-2	0-0	0-2	0-0
CONFERENCE	0-0	0-0	0-0	0-0
NON-CONFERENCE	0-2	0-0	0-2	0-0

##	Player	gp-gs	min	avg	Total		3-Point		F-Throw		Rebounds				pf	dq	a	to	blk	stl	pts	avg		
					fg-fga	fg%	3fg-fga	3fg%	ft-fga	ft%	off	def	tot	avg										
02	MEREDITH, Scott	2-0	25	12.5	2-5	.400	1-4	.250	2-2	1.000	0	1	1	0.5	2	0	1	1	0	1	7	3.5		
03	KING, Jamaal	2-2	55	27.5	8-20	.400	4-11	.364	3-6	.500	0	3	3	1.5	6	0	7	8	0	1	23	11.5		
04	GASKINS, JR.,Randall	2-2	55	27.5	8-17	.471	2-5	.400	6-8	.750	2	2	4	2.0	6	0	2	6	0	2	24	12.0		
05	WALLACE, Daniel	2-0	12	6.0	0-0	.000	0-0	.000	0-0	.000	0	2	2	1.0	3	0	4	2	1	0	0	0.0		
11	BLACKMON, Isaiah	2-0	36	18.0	7-18	.389	3-5	.600	2-4	.500	3	2	5	2.5	4	0	1	2	0	0	19	9.5		
13	BRAXTON, Keith	2-0	56	28.0	6-16	.375	2-4	.500	5-7	.714	3	6	9	4.5	7	0	4	6	0	4	19	9.5		
14	WOLFORD, Andre	1-0	2	2.0	2-2	1.000	1-1	1.000	0-0	.000	0	0	0	0.0	0	0	0	0	0	0	5	5.0		
15	BAKER, Deon	1-0	1	1.0	0-0	.000	0-0	.000	0-0	.000	0	0	0	0.0	0	0	0	0	0	0	0	0.0		
22	KLEBON, Michael	1-0	1	1.0	0-0	.000	0-0	.000	0-0	.000	0	0	0	0.0	0	0	0	0	0	0	0	0.0		
23	ANGELOU, Georgios	2-2	56	28.0	7-14	.500	6-12	.500	2-2	1.000	0	2	2	1.0	2	0	6	5	1	2	22	11.0		
30	KUZAVAS, Deivydas	2-0	27	13.5	2-5	.400	0-0	.000	1-3	.333	0	1	1	0.5	4	0	4	3	0	0	5	2.5		
32	NEBO, Josh	2-2	55	27.5	8-13	.615	0-0	.000	12-19	.632	7	18	25	12.5	6	1	3	5	2	0	28	14.0		
33	WRENCHER, Patrick	2-2	19	9.5	1-4	.250	0-0	.000	3-4	.750	3	3	6	3.0	3	0	1	2	0	0	5	2.5		
Team											9	2	11											
Total.....		0	400		51-114	.447	19-42	.452	36-55	.655	27	42	69	0.0	43	1	33	40	4	10	157	0.0		
Opponents.....		0	400		64-123	.520	20-48	.417	33-46	.717	23	48	71	0.0	47	-	35	30	13	18	181	0.0		

TEAM STATISTICS	SFU-M	OPP	Date	Opponent	Score	Att.
SCORING	157	181	11/12/16	at St. Bonaventure	L 82-92	4322
Points per game	78.5	90.5	11/16/16	at Duquesne	L 75-89	1025
Scoring margin	-12.0	-	* - Conference game			
FIELD GOALS-ATT	51-114	64-123				
Field goal pct	.447	.520				
3 POINT FG-ATT	19-42	20-48				
3-point FG pct	.452	.417				
3-pt FG made per game	9.5	10.0				
FREE THROWS-ATT	36-55	33-46				
Free throw pct	.655	.717				
F-Throws made per game	18.0	16.5				
REBOUNDS	69	71				
Rebounds per game	34.5	35.5				
Rebounding margin	-1.0	-				
ASSISTS	33	35				
Assists per game	16.5	17.5				
TURNOVERS	40	30				
Turnovers per game	20.0	15.0				
Turnover margin	-5.0	-				
Assist/turnover ratio	0.8	1.2				
STEALS	10	18				
Steals per game	5.0	9.0				
BLOCKS	4	13				
Blocks per game	2.0	6.5				
ATTENDANCE	0	5347				
Home games-Avg/Game	0-0	2-2674				
Neutral site-Avg/Game	-	0-0				

Score by Periods	1st	2nd	Totals
Saint Francis	75	82	157
Opponents	89	92	181

RESULTS

RECORD:	OVERALL	HOME	AWAY	NEUTRAL
ALL GAMES	0-2	0-0	0-2	0-0
CONFERENCE	0-0	0-0	0-0	0-0
NON-CONFERENCE	0-2	0-0	0-2	0-0

Date	Opponent	Score	Att.	High Points	High Rebounds
11/12/16	at St. Bonaventure	82-92 L	4322	(21)KING, Jamaal	(9)NEBO, Josh
11/16/16	at Duquesne	75-89 L	1025	(17)NEBO, Josh	(16)NEBO, Josh

* - Conference game

Attendance Summary	Games	Attend	Avg/Game
Home	0	0	0
Away	2	5347	2674
Neutral	0	0	0
Total	2	5347	2674

COMPARISON

Opponent	1st	2nd	Score	Mar	Total FG	FG Pct	3-Pointers	3FG Pct	Free Throws	FT Pct	Rebounds	Assist	T/Over	Block	Steal	Fouls
St. Bonaventure	39/51	43/41	82-92	(10)	25-53/32-62	.472/.516	9-17/7-23	.529/.304	23-31/21-30	.742/.700	32/33 (1)	15/14	21/13	0/6	4/11	25/26
Duquesne	36/38	39/51	75-89	(14)	26-61/32-61	.426/.525	10-25/13-25	.400/.520	13-24/12-16	.542/.750	37/38 (1)	18/21	19/17	4/7	6/7	18/21

Note: Game totals are displayed in the format TEAM/OPPONENT for each category

TEAM GAME-BY-GAME

Opponent	Date	Score		Total		3-Pointers		Free throws		Rebounds				pf	a	t/o	blk	stl	pts	avg
				fg-fga	pct	3fg-fga	pct	ft-fta	pct	off	def	tot	avg							
at St. Bonaventure	11/12/16	82-92	L	25-53	.472	9-17	.529	23-31	.742	12	20	32	32.0	25	15	21	0	4	82	82.0
at Duquesne	11/16/16	75-89	L	26-61	.426	10-25	.400	13-24	.542	15	22	37	34.5	18	18	19	4	6	75	78.5
Saint Francis		157		51-114	.447	19-42	.452	36-55	.655	27	42	69	34.5	43	33	40	4	10	157	78.5
Opponents		181		64-123	.520	20-48	.417	33-46	.717	23	48	71	35.5	47	35	30	13	18	181	90.5

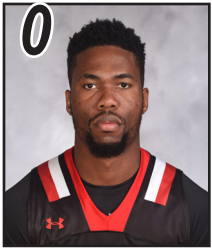
Games played: 2
Points/game: 78.5
FG Pct: 44.7
3FG Pct: 45.2
FT Pct: 65.5

Rebounds/game: 34.5
Assists/game: 16.5
Turnovers/game: 20.0
Assist/turnover ratio: 0.8
Steals/game: 5.0
Blocks/game: 2.0

GAME-BY-GAME LEADERS

Saint Francis Game-by-Game Highs (as of Nov 17, 2016) All games

Opponent	Date	Score	Points	Rebounds	Assists	Steals	Blocked shots
at St. Bonaventure	11/12/16	82-92	21-KING, Jamaal	9-NEBO, Josh	4-ANGELOU, Georgi	2-BRAXTON, Keith	None
at Duquesne	11/16/16	75-89	17-NEBO, Josh	16-NEBO, Josh	4-KING, Jamaal	2-GASKINS, JR.,Ran BRAXTON, Keith	2-NEBO, Josh



Ifeanyi
UMEZURIKE

6-10 · FR · F/C
Uturu, Abia State, Nigeria
Montverde Academy

	SEASON HIGH	CAREER HIGH
Points	9	Same
..... American (11/21)		
Rebounds.....	7	Same
..... American (11/21)		
Assists	N/A	N/A
.....		
Blocks.....	1	Same
..... Kent State (11/24)		
Steals	N/A	N/A
.....		
Three Pointers	N/A	N/A
.....		



Malik
HARMON

6-0 · JR · G
Queens, N.Y.
Christ the King

	SEASON HIGH	CAREER HIGH
Points	22	25
..... Robert Morris (1/30)		Sacred Heart (1/10/15)
Rebounds.....	6	6
..... Kent State (11/24)		three times
Assists	9	Same
..... Westminster (11/17)		
Blocks.....	N/A	1
.....		five times
Steals	3	4
..... NJIT (12/30)		Navy (11/11/13)
Three Pointers	4	4
..... twice, last vs. Robert Morris (1/30)		six times



Scott MEREDITH

6-2 · FR · G
Pilot Mountain, N.C.
Hargrave Military Academy

SEASON HIGH CAREER HIGH

Points03
.....twice, last vs. Westminster (11/17)
Rebounds.....13
.....Vs Saint Bonaventure (11/12).....Westminster (11/17)
Assists.....01
.....twice, last vs. Lehigh (12/2)
Blocks.....N/AN/A
Steals1Same
.....twice, last at Wagner (2/25)
Three Pointers01
.....twice, last vs. Westminster (11/17)

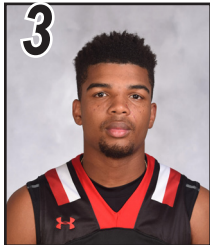
Saint Francis Individual Game-by-Game (as of Nov 17, 2016) All games

#02 MEREDITH, Scott

Opponent	Date	gs	min	Total		3-Pointers		Free throws		Rebounds				pf	a	t/o	blk	stl	pts	avg
				fg-fga	pct	3fg-fga	pct	ft-fa	pct	off	def	tot	avg							
at St. Bonaventure	11/12/16		10	0-1	.000	0-1	.000	0-0	.000	0	1	1	1.0	0	0	0	0	1	0	0.0
at Duquesne	11/16/16		15	2-4	.500	1-3	.333	2-2	1.000	0	0	0	0.5	2	1	1	0	0	7	3.5
Totals		0	25	2-5	.400	1-4	.250	2-2	1.000	0	1	1	0.5	2	1	1	0	1	7	3.5

Games played: 2
Minutes/game: 12.5
Points/game: 3.5
FG Pct: 40.0
3FG Pct: 25.0
FT Pct: 100.0

Rebounds/game: 0.5
Assists/game: 0.5
Turnovers/game: 0.5
Assist/turnover ratio: 1.0
Steals/game: 0.5



Jamaal KING

5-10 · FR · G
Salisbury, Md.
Bishop O'Connell

SEASON HIGH CAREER HIGH

Points21Same
.....Vs Saint Bonaventure (11/12/16)
Rebounds.....2Same
.....twice, last at Sacred Heart (2/27)
Assists.....3Same
.....At Saint Bonaventure (11/12)
Blocks.....01
.....CCSU (2/6)
Steals02
.....St. Francis Brooklyn (2/18)
Three Pointers4Same
At Saint Bonaventure 11/12/16

Saint Francis Individual Game-by-Game (as of Nov 17, 2016) All games

#03 KING, Jamaal

Opponent	Date	gs	min	Total		3-Pointers		Free throws		Rebounds				pf	a	t/o	blk	stl	pts	avg
				fg-fga	pct	3fg-fga	pct	ft-fa	pct	off	def	tot	avg							
at St. Bonaventure	11/12/16	*	28	7-15	.467	4-8	.500	3-6	.500	0	2	2	2.0	2	3	3	0	0	21	21.0
at Duquesne	11/16/16	*	27	1-5	.200	0-3	.000	0-0	.000	0	1	1	1.5	4	4	5	0	1	2	11.5
Totals		2	55	8-20	.400	4-11	.364	3-6	.500	0	3	3	1.5	6	7	8	0	1	23	11.5

Games played: 2
Minutes/game: 27.5
Points/game: 11.5
FG Pct: 40.0
3FG Pct: 36.4
FT Pct: 50.0

Rebounds/game: 1.5
Assists/game: 3.5
Turnovers/game: 4.0
Assist/turnover ratio: 0.9
Steals/game: 0.5



Randall Gaskins, JR

6-3 · FR · G
Woodbridge, VA
Bishop O'Connell

SEASON HIGH CAREER HIGH

Points12Same
.....AT Saint Bonaventure (11/12/16).....
Rebounds.....2Same
.....AT Saint Bonaventure (11/12/16)
Assists.....1Same
.....AT Saint Bonaventure (11/12/16)
Blocks.....N/AN/A
.....
StealsN/AN/A
.....
Three Pointers1Same
.....AT Saint Bonaventure (11/12/16)

Saint Francis Individual Game-by-Game (as of Nov 17, 2016) All games

#04 GASKINS, JR., Randall

Opponent	Date	gs	min	Total		3-Pointers		Free throws		Rebounds				pf	a	t/o	blk	stl	pts	avg
				fg-fga	pct	3fg-fga	pct	ft-fa	pct	off	def	tot	avg							
at St. Bonaventure	11/12/16	*	29	4-7	.571	1-1	1.000	3-4	.750	1	1	2	2.0	4	1	4	0	0	12	12.0
at Duquesne	11/16/16	*	26	4-10	.400	1-4	.250	3-4	.750	1	1	2	2.0	2	1	2	0	2	12	12.0
Totals			2	55	8-17	.471	2-5	.400	6-8	.750	2	2	4	2.0	6	2	6	0	24	12.0

Games played: 2
Minutes/game: 27.5
Points/game: 12.0
FG Pct: 47.1
3FG Pct: 40.0
FT Pct: 75.0

Rebounds/game: 2.0
Assists/game: 1.0
Turnovers/game: 3.0
Assist/turnover ratio: 0.3
Steals/game: 1.0



Daniel WALLACE

6-8 · SO · C/F
Suffolk, Va.
Nansemond River

SEASON HIGH CAREER HIGH

PointsN/A2
.....Bryant (1/8/15)
Rebounds.....N/A2
.....Keystone (11/20/14)
Assists.....11
.....At Saint Bonaventure (11/12)..... Same
Blocks.....N/A1
.....Keystone (11/20/14)
StealsN/AN/A
.....
Three PointersN/AN/A
.....

Saint Francis Individual Game-by-Game (as of Nov 17, 2016) All games

#05 WALLACE, Daniel

Opponent	Date	gs	min	Total		3-Pointers		Free throws		Rebounds				pf	a	t/o	blk	stl	pts	avg
				fg-fga	pct	3fg-fga	pct	ft-fa	pct	off	def	tot	avg							
at St. Bonaventure	11/12/16		6	0-0	.000	0-0	.000	0-0	.000	0	0	0	0.0	3	1	2	0	0	0	0.0
at Duquesne	11/16/16		6	0-0	.000	0-0	.000	0-0	.000	0	2	2	1.0	0	3	0	1	0	0	0.0
Totals			0	12	0-0	.000	0-0	.000	0-0	0	2	2	1.0	3	4	2	1	0	0	0.0

Games played: 2
Minutes/game: 6.0

Rebounds/game: 1.0
Assists/game: 2.0
Turnovers/game: 1.0
Assist/turnover ratio: 2.0
Blocks/game: 0.5



Isaiah BLACKMON

6-1 · SO · G
Charlotte, N.C.
West Charlotte

SEASON HIGH CAREER HIGH

Points 7 20
..... at Saint Bonaventure (11/12/16) at CCSU (1/23)
Rebounds 1 7
..... at Saint Bonaventure (11/12/16) twice, last at CCSU (1/23)
Assists 1 3
..... at Saint Bonaventure (11/12/16) three times, last at CCSU (1/23)
Blocks N/A 2
..... at St. Francis Brooklyn (1/7)
Steals N/A 4
..... vs. Lehigh (12/2)
Three Pointers N/A 3
..... at UMES (11/27)

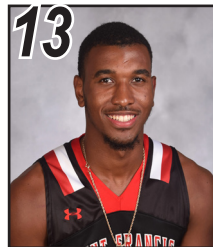
Saint Francis Individual Game-by-Game (as of Nov 17, 2016) All games

#11 BLACKMON, Isaiah

Opponent	Date	gs	min	Total		3-Pointers		Free throws		Rebounds				pf	a	t/o	blk	stl	pts	avg
				fg-fga	pct	3fg-fga	pct	ft-fa	pct	off	def	tot	avg							
at St. Bonaventure	11/12/16		15	3-7	.429	0-1	.000	1-2	.500	0	1	1	1.0	3	1	1	0	0	7	7.0
at Duquesne	11/16/16		21	4-11	.364	3-4	.750	1-2	.500	3	1	4	2.5	1	0	1	0	0	12	9.5
Totals		0	36	7-18	.389	3-5	.600	2-4	.500	3	2	5	2.5	4	1	2	0	0	19	9.5

Games played: 2
Minutes/game: 18.0
Points/game: 9.5
FG Pct: 38.9
3FG Pct: 60.0
FT Pct: 50.0

Rebounds/game: 2.5
Assists/game: 0.5
Turnovers/game: 1.0
Assist/turnover ratio: 0.5



Keith BRAXTON

6-4 · SR · G
Glassboro, N.J.
Lawrenceville School

SEASON HIGH CAREER HIGH

Points 11 Same
..... At Saint Bonaventure (11/12)
Rebounds 5 Same
..... At Saint Bonaventure (11/12)
Assists 1 Same
..... At Saint Bonaventure (11/12)
Blocks N/A N/A
Steals 2 Same
..... At Saint Bonaventure (11/12)
Three Pointers 1 Same
..... At Saint Bonaventure (11/12)

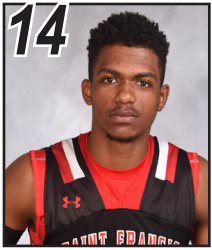
Saint Francis Individual Game-by-Game (as of Nov 17, 2016) All games

#13 BRAXTON, Keith

Opponent	Date	gs	min	Total		3-Pointers		Free throws		Rebounds				pf	a	t/o	blk	stl	pts	avg
				fg-fga	pct	3fg-fga	pct	ft-fa	pct	off	def	tot	avg							
at St. Bonaventure	11/12/16		27	3-7	.429	1-1	1.000	4-5	.800	1	4	5	5.0	3	1	4	0	2	11	11.0
at Duquesne	11/16/16		29	3-9	.333	1-3	.333	1-2	.500	2	2	4	4.5	4	3	2	0	2	8	9.5
Totals		0	56	6-16	.375	2-4	.500	5-7	.714	3	6	9	4.5	7	4	6	0	4	19	9.5

Games played: 2
Minutes/game: 28.0
Points/game: 9.5
FG Pct: 37.5
3FG Pct: 50.0
FT Pct: 71.4

Rebounds/game: 4.5
Assists/game: 2.0
Turnovers/game: 3.0
Assist/turnover ratio: 0.7
Steals/game: 2.0



Andre WOLFORD

6-2 · FR · G
Willowick, Ohio
Saint Ignatius

SEASON HIGH CAREER HIGH

Points3 Same
.....twice, last vs. St. Francis Brooklyn (2/18).....
Rebounds.....1 Same
.....twice, last vs. St. Francis Brooklyn (2/18).....
Assists N/A N/A
.....
Blocks..... N/A N/A
.....
Steals N/A N/A
.....
Three Pointers 1 Same
.....twice, last vs. St. Francis Brooklyn (2/18).....

Saint Francis Individual Game-by-Game (as of Nov 17, 2016) All games

#14 WOLFORD, Andre

Opponent	Date	gs	min	Total		3-Pointers		Free throws		Rebounds				pf	a	t/o	blk	stl	pts	avg
				fg-fga	pct	3fg-fga	pct	ft-fa	pct	off	def	tot	avg							
at Duquesne	11/16/16		2	2-2	1.000	1-1	1.000	0-0	.000	0	0	0	0.0	0	0	0	0	0	5	5.0
Totals		0	2	2-2	1.000	1-1	1.000	0-0	.000	0	0	0	0.0	0	0	0	0	0	5	5.0

Games played: 1
Minutes/game: 2.0
Points/game: 5.0
FG Pct: 100.0
3FG Pct: 100.0



Deon BAKER

6-5 · JR · G
Pittsburgh, Pa.
Gateway

SEASON HIGH CAREER HIGH

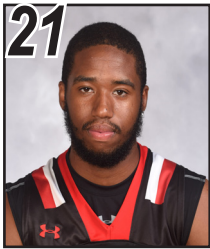
Points N/A N/A
.....
Rebounds..... N/A N/A
.....
Assists N/A N/A
.....
Blocks..... N/A N/A
.....
Steals N/A N/A
.....
Three Pointers N/A N/A
.....

Saint Francis Individual Game-by-Game (as of Nov 17, 2016) All games

#15 BAKER, Deon

Opponent	Date	gs	min	Total		3-Pointers		Free throws		Rebounds				pf	a	t/o	blk	stl	pts	avg
				fg-fga	pct	3fg-fga	pct	ft-fa	pct	off	def	tot	avg							
at Duquesne	11/16/16		1	0-0	.000	0-0	.000	0-0	.000	0	0	0	0.0	0	0	0	0	0	0	0.0
Totals		0	1	0-0	.000	0-0	.000	0-0	.000	0	0	0	0.0	0	0	0	0	0	0	0.0

Games played: 1
Minutes/game: 1.0



Tre
McKeithen

6-2 · JR · G
Pittsburgh, Pa.
Taylor Allderdice

SEASON HIGH CAREER HIGH

Points N/A N/A
Rebounds..... N/A N/A
Assists N/A N/A
Blocks..... N/A N/A
Steals N/A N/A
Three Pointers N/A N/A



Michael
KLEBON

6-2 · SO · G
Paxinos, Pa.
Southern Columbia

SEASON HIGH CAREER HIGH

Points 2 N/A
..... St. Francis Brooklyn (2/18)
Rebounds..... 1 Same
..... three times, last at Wagner (2/25)
Assists N/A N/A
Blocks..... N/A N/A
Steals 1 Same
..... Kent State (11/24)
Three Pointers N/A N/A

Saint Francis Individual Game-by-Game (as of Nov 17, 2016)
All games

#22 KLEBON, Michael

Opponent	Date	gs	min	Total		3-Pointers		Free throws		Rebounds				pf	a	t/o	blk	stl	pts	avg
				fg-fga	pct	3fg-fga	pct	ft-fa	pct	off	def	tot	avg							
at Duquesne	11/16/16	1		0-0	.000	0-0	.000	0-0	.000	0	0	0	0.0	0	0	0	0	0	0	0.0
Totals		0	1	0-0	.000	0-0	.000	0-0	.000	0	0	0	0.0	0	0	0	0	0	0	0.0

Games played: 1
Minutes/game: 1.0



Georgios ANGELOU

6-1 · JR · G
Halkida, Greece
Lykeio Kanithou

SEASON HIGH

CAREER HIGH

Points11Same
..... Twice, last at Saint Bonaventure (11/12)
Rebounds.....1 4
..... at Saint Bonaventure (11/12) Kent State (11/24)
Assists.....4Same
..... at Saint Bonaventure (11/12)
Blocks..... N/A 1
..... St. Francis Brooklyn (2/18)
Steals1 1
.....six times, last at Saint Bonaventure (11/12)six times
Three Pointers3Same
..... Twice, last at Saint Bonaventure (11/12)

Saint Francis Individual Game-by-Game (as of Nov 17, 2016) All games

#23 ANGELOU, Georgios

Opponent	Date	gs	min	Total		3-Pointers		Free throws		Rebounds				pf	a	t/o	blk	stl	pts	avg
				fg-fga	pct	3fg-fga	pct	ft-fita	pct	off	def	tot	avg							
at St. Bonaventure	11/12/16	*	29	3-6	.500	3-5	.600	2-2	1.000	0	1	1	1.0	1	4	1	0	1	11	11.0
at Duquesne	11/16/16	*	27	4-8	.500	3-7	.429	0-0	.000	0	1	1	1.0	1	2	4	1	1	11	11.0
Totals		2	56	7-14	.500	6-12	.500	2-2	1.000	0	2	2	1.0	2	6	5	1	2	22	11.0

Games played: 2
Minutes/game: 28.0
Points/game: 11.0
FG Pct: 50.0
3FG Pct: 50.0
FT Pct: 100.0

Rebounds/game: 1.0
Assists/game: 3.0
Turnovers/game: 2.5
Assist/turnover ratio: 1.2
Steals/game: 1.0
Blocks/game: 0.5



Jordan FOREHAND

6-1 · SO · G
Bridgewater, N.J
IMG Academy (Fla.)

SEASON HIGH

CAREER HIGH

Points N/A N/A
.....
Rebounds..... N/A N/A
.....
Assists..... N/A N/A
.....
Blocks..... N/A N/A
.....
Steals N/A N/A
.....
Three Pointers N/A N/A
.....



Deivydas KUZAVAS

6-10 · FR · C
Kretinga, Lithuania
St. Mary's Ryken (MD)

SEASON HIGH CAREER HIGH

Points4Same
..... At Saint Bonaventure (11/12)
Rebounds..... N/A N/A
..... At Saint Bonaventure (11/12)
Assists1Same
.....
Blocks..... N/A N/A
.....
Steals N/A N/A
.....
Three Pointers N/A N/A
.....

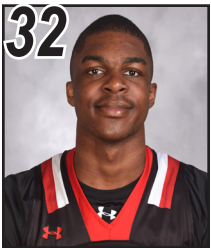
Saint Francis Individual Game-by-Game (as of Nov 17, 2016) All games

#30 KUZAVAS, Deivydas

Opponent	Date	gs	min	Total		3-Pointers		Free throws		Rebounds				pf	a	t/o	blk	stl	pts	avg
				fg-fga	pct	3fg-fga	pct	ft-fa	pct	off	def	tot	avg							
at St. Bonaventure	11/12/16		18	2-3	.667	0-0	.000	0-1	.000	0	0	0	0.0	2	1	0	0	0	4	4.0
at Duquesne	11/16/16		9	0-2	.000	0-0	.000	1-2	.500	0	1	1	0.5	2	3	3	0	0	1	2.5
Totals		0	27	2-5	.400	0-0	.000	1-3	.333	0	1	1	0.5	4	4	3	0	0	5	2.5

Games played: 2
Minutes/game: 13.5
Points/game: 2.5
FG Pct: 40.0
FT Pct: 33.3

Rebounds/game: 0.5
Assists/game: 2.0
Turnovers/game: 1.5
Assist/turnover ratio: 1.3



Josh NEBO

6-8 · FR · F/C
Katy, Texas
Cypress Lakes

SEASON HIGH CAREER HIGH

Points1113
..... at Saint Bonaventure (11/12/16) ... at Binghamton (12/15/15)
Rebounds.....911
..... at Saint Bonaventure (11/12/16) at Fairleigh Dickinson (1/28)
Assists2Same
..... Twice, last at Saint Bonaventure (11/12)
Blocks..... N/A6
..... LIU Brooklyn (2/20)
Steals N/A1
..... six times, last vs. CCSU (2/6)
Three Pointers N/A N/A
.....

Saint Francis Individual Game-by-Game (as of Nov 17, 2016) All games

#32 NEBO, Josh

Opponent	Date	gs	min	Total		3-Pointers		Free throws		Rebounds				pf	a	t/o	blk	stl	pts	avg
				fg-fga	pct	3fg-fga	pct	ft-fa	pct	off	def	tot	avg							
at St. Bonaventure	11/12/16	*	22	2-4	.500	0-0	.000	7-7	1.000	3	6	9	9.0	5	2	5	0	0	11	11.0
at Duquesne	11/16/16	*	33	6-9	.667	0-0	.000	5-12	.417	4	12	16	12.5	1	1	0	2	0	17	14.0
Totals		2	55	8-13	.615	0-0	.000	12-19	.632	7	18	25	12.5	6	3	5	2	0	28	14.0

Games played: 2
Minutes/game: 27.5
Points/game: 14.0
FG Pct: 61.5
FT Pct: 63.2

Rebounds/game: 12.5
Assists/game: 1.5
Turnovers/game: 2.5
Assist/turnover ratio: 0.6
Blocks/game: 1.0



Patrick WRENCHER

6-6 · JR · F
West Chester, Ohio
Archbishop Moeller

SEASON HIGH CAREER HIGH

Points5 7
.....at Saint Bonaventure (11/12/16)..... Wagner (1/3/15)
Rebounds.....5 5
.....at Saint Bonaventure (11/12/16).....four times
Assists.....12
.....at Saint Bonaventure (11/12/16) at FDU (1/28).....
Blocks..... N/A 2
.....twice
Steals N/A 1
.....four times
Three Pointers N/A N/A
.....

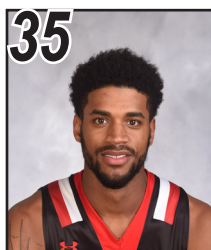
Saint Francis Individual Game-by-Game (as of Nov 17, 2016) All games

#33 WRENCHER, Patrick

Opponent	Date	gs	min	Total		3-Pointers		Free throws		Rebounds				pf	a	t/o	blk	stl	pts	avg
				fg-fga	pct	3fg-fga	pct	ft-fga	pct	off	def	tot	avg							
at St. Bonaventure	11/12/16	*	16	1-3	.333	0-0	.000	3-4	.750	2	3	5	5.0	2	1	1	0	0	5	5.0
at Duquesne	11/16/16	*	3	0-1	.000	0-0	.000	0-0	.000	1	0	1	3.0	1	0	1	0	0	0	2.5
Totals			2	1-4	.250	0-0	.000	3-4	.750	3	3	6	3.0	3	1	2	0	0	5	2.5

Games played: 2
Minutes/game: 9.5
Points/game: 2.5
FG Pct: 25.0
FT Pct: 75.0

Rebounds/game: 3.0
Assists/game: 0.5
Turnovers/game: 1.0
Assist/turnover ratio: 0.5



Basil THOMPSON

6-6 · SO · F
Philadelphia, Pa.
Imhotep Charter

SEASON HIGH CAREER HIGH

Points16Same
.....twice, last at Mount St. Mary's (2/13).....
Rebounds.....9Same
.....at LIU Brooklyn (1/9).....
Assists.....2Same
.....twice, last vs. CCSU (2/6).....
Blocks.....4Same
.....Westminster (11/17).....
Steals1 2
five times, last vs. St. Francis Brooklyn (2/18)..... twice
Three Pointers1 1
.....twice, last at Robert Morris (2/11)..... five times

SEASON BOX SCORES

Official Basketball Box Score -- Game Totals -- Final Statistics
Saint Francis (PA) vs St. Bonaventure
11/12/16 4:00 PM at Reilly Center at St. Bonaventure, NY



Official Basketball Box Score -- Game Totals -- Final Statistics
Saint Francis vs Duquesne
11/16/16 7:00pm at Pittsburgh, PA



Saint Francis (PA) 82 • 0-1

#	Player		Total		3-Ptr		Rebounds			PF	TP	A TO Blk Stl				Min
			FG-FGA	FG-FGA	FT-FTA	Off	Def	Tot								
32	NEBO, Josh	f	2-4	0-0	7-7	3	6	9	5	11	2	5	0	0	22	
33	WRENCHER, Patrick	f	1-3	0-0	3-4	2	3	5	2	5	1	1	0	0	16	
23	ANGELOU, Georgios	g	3-6	3-5	2-2	0	1	1	1	11	4	1	0	1	29	
3	KING, Jamaal	g	7-15	4-8	3-6	0	2	2	2	21	3	3	0	0	28	
4	GASKINS, JR.,Randall	g	4-7	1-1	3-4	1	1	2	4	12	1	4	0	0	29	
11	BLACKMON, Isaiah		3-7	0-1	1-2	0	1	1	3	7	1	1	0	0	15	
13	BRAXTON, Keith		3-7	1-1	4-5	1	4	5	3	11	1	4	0	2	27	
2	MEREDITH, Scott		0-1	0-1	0-0	0	1	1	0	0	0	0	0	1	10	
30	KUZAVAS, Deivyd		2-3	0-0	0-1	0	0	0	2	4	1	0	0	0	18	
5	WALLACE, Daniel		0-0	0-0	0-0	0	0	0	3	0	1	2	0	0	6	
Team						5	1	6								
Totals			25-53	9-17	23-31	12	20	32	25	82	15	21	0	4	200	
FG % 1st Half: 12-28 42.9%			2nd half: 13-25 52.0%	Game: 25-53 47.2%		Deadball Rebounds 4										
3FG % 1st Half: 5-10 50.0%			2nd half: 4-7 57.1%	Game: 9-17 52.9%												
FT % 1st Half: 10-13 76.9%			2nd half: 13-18 72.2%	Game: 23-31 74.2%												

St. Bonaventure 92 • 1-0

#	Player		Total		3-Ptr		Rebounds			PF	TP	A TO Blk Stl				Min
			FG-FGA	FG-FGA	FT-FTA	Off	Def	Tot								
12	GREGG, Denzel	f	11-16	1-3	0-0	2	1	3	2	23	0	3	3	1	32	
	OBOKOH, Chinonso	c	1-3	0-0	0-0	1	2	3	4	2	0	1	1	1	13	
01	TAQQEE, Idris	g	1-5	0-2	3-3	6	6	12	4	5	1	3	1	1	37	
02	MOBLEY, Matt	g	6-13	5-10	4-5	1	1	2	1	21	3	2	1	1	36	
10	ADAMS, Jaylen	g	7-15	1-7	8-12	1	1	2	4	23	8	3	0	4	32	
00	ANDOH, David		2-3	0-1	1-2	1	2	3	1	5	1	1	0	0	12	
03	COBURN, Tareq		0-0	0-0	0-0	0	0	0	0	0	0	0	0	0	4	
15	GRIFFIN, LaDarren		1-2	0-0	1-2	0	1	1	5	3	0	0	0	0	10	
32	IKPEZE, Amadi		0-0	0-0	0-0	0	1	1	1	0	0	0	0	0	1	
33	AYENI, Josh		3-5	0-0	4-6	1	2	3	4	10	1	0	0	3	23	
	Team					0	3	3								
Totals			32-62	7-23	21-30	13	20	33	26	92	14	13	6	11	200	
FG % 1st Half: 19-34 55.9%			2nd half: 13-28 46.4%	Game: 32-62 51.6%		Deadball Rebounds 6										
3FG % 1st Half: 3-9 33.3%			2nd half: 4-14 28.6%	Game: 7-23 30.4%												
FT % 1st Half: 10-13 76.9%			2nd half: 11-17 64.7%	Game: 21-30 70.0%												

Officials: Brian Dorsey, Tim Kelly, Tim Ebersole
Technical fouls: Saint Francis (PA)-None. St. Bonaventure-None.
Attendance: 4322

Score by periods	1st	2nd	Total
Saint Francis (PA)	39	43	82
St. Bonaventure	51	41	92

Last FG - SFU-M 2nd-00:53, SBU 2nd-01:33.
Largest lead - SFU-M by 6 1st-15:34, SBU by 18 2nd-12:33.
SFU-M led for 05:26, SBU led for 33:27. Game was tied for 00:48.

Points	In	Off	2nd	Fast	Bench
SFU-M	28	9	15	2	22
SBU	38	19	13	13	18

Score tied - 2 times.
Lead changed - 3 times.

Saint Francis 75 • 0-2

#	Player		Total		3-Ptr		Rebounds			PF	TP	A TO Blk Stl				Min
			FG-FGA	FG-FGA	FT-FTA	Off	Def	Tot								
32	NEBO, Josh	f	6-9	0-0	5-12	4	12	16	1	17	1	0	2	0	33	
33	WRENCHER, Patrick	f	0-1	0-0	0-0	1	0	1	1	0	0	1	0	0	3	
03	KING, Jamaal	g	1-5	0-3	0-0	0	1	1	4	2	4	5	0	1	27	
04	GASKINS, JR.,Randall	g	4-10	1-4	3-4	1	1	2	2	12	1	2	0	2	26	
23	ANGELOU, Georgios	g	4-8	3-7	0-0	0	1	1	1	11	2	4	1	1	27	
02	MEREDITH, Scott		2-4	1-3	2-2	0	0	0	2	7	1	1	0	0	15	
05	WALLACE, Daniel		0-0	0-0	0-0	0	2	2	0	0	3	0	1	0	6	
11	BLACKMON, Isaiah		4-11	3-4	1-2	3	1	4	1	12	0	1	0	0	21	
13	BRAXTON, Keith		3-9	1-3	1-2	2	2	4	4	8	3	2	0	2	29	
14	WOLFORD, Andre		2-2	1-1	0-0	0	0	0	0	5	0	0	0	0	2	
15	BAKER, Deon		0-0	0-0	0-0	0	0	0	0	0	0	0	0	0	1	
22	KLEBON, Michael		0-0	0-0	0-0	0	0	0	0	0	0	0	0	0	1	
30	KUZAVAS, Deivyd		0-2	0-0	1-2	0	1	1	2	1	3	3	0	0	9	
Team						4	1	5								
Totals				26-61	10-25	13-24	15	22	37	18	75	18	19	4	6	200
FG % 1st Half: 12-29 41.4%			2nd half: 14-32 43.8%	Game: 26-61 42.6%		Deadball Rebounds 3										
3FG % 1st Half: 6-15 40.0%			2nd half: 4-10 40.0%	Game: 10-25 40.0%												
FT % 1st Half: 6-10 60.0%			2nd half: 7-14 50.0%	Game: 13-24 54.2%												

Duquesne 89 • 2-1

#	Player		Total		3-Ptr		Rebounds			PF	TP	A TO Blk Stl				Min
			FG-FGA	FG-FGA	FT-FTA	Off	Def	Tot								
45	MIKE, Isiaha	f	6-9	4-5	0-0	0	6	6	3	16	1	5	2	0	32	
00	LEWIS, Darius	c	1-7	0-0	1-2	3	1	4	3	3	3	2	1	0	13	
01	LEWIS II, Mike	g	0-1	0-1	0-0	0	0	0	2	0	1	4	1	1	11	
03	SMITH, Tarin	g	8-11	1-3	6-7	1	3	4	2	23	3	1	0	3	35	
05	BLACKMAN, Emile	g	3-6	1-2	0-1	1	3	4	3	7	2	0	0	0	24	
02	JAMES, Eric		0-1	0-0	0-0	0	1	1	1	0	1	1	0	0	6	
04	CASTRO, Rene		8-14	6-9	4-4	1	3	4	3	26	2	3	0	0	27	
20	SANDERS, Nakye		4-6	0-0	0-0	1	9	10	3	8	4	1	3	0	26	
21	HAUS, David		0-0	0-0	0-0	0	0	0	0	0	0	0	0	0	1	
25	LITTLESON, Spencer		2-6	1-5	1-2	0	1	1	0	6	4	0	0	3	25	
Team						3	1	4	1							
Totals				32-61	13-25	12-16	10	28	38	21	89	21	17	7	7	200
FG % 1st Half: 14-32 43.8%			2nd half: 18-29 62.1%		Game: 32-61 52.5%		Deadball Rebounds 1									
3FG % 1st Half: 6-12 50.0%			2nd half: 7-13 53.8%		Game: 13-25 52.0%											
FT % 1st Half: 4-6 66.7%			2nd half: 8-10 80.0%		Game: 12-16 75.0%											

Officials: James Breeding, Michael Roberts, Greg Evans
Technical fouls: Saint Francis-None. Duquesne-TEAM.
Attendance: 1025
Next Up: Duquesne vs. Canisius 11/18; Saint Francis vs. Chatham 11/19

Score by periods	1st	2nd	Total
Saint Francis	36	39	75
Duquesne	38	51	89

