



FIGHTING ILLINI

WOMEN'S BASKETBALL GAME NOTES



I FIGHTINGILLINI.COM
#ILLINI

@IlliniWBB
@IlliniAthletics

@IlliniWBB
@IlliniAthletics

facebook.com/IlliniWBBasketball
facebook.com/IlliniAthletics

Thursday, Feb. 4, 2021 // 5 p.m. CT // Big Ten Network+
East Lansing, Michigan // Breslin Center (14,797)



ILLINOIS (2-10, 0-9 B1G)



MICHIGAN STATE (9-4, 4-4 B1G)

TELEVISION | Big Ten Network +

» btnplus.com

RADIO | Fighting Illini Sports Network

» Mike Koon (play-by-play)
» WDWS 1400-AM / FightingIllini.com/watch

LIVE STATS

» MSUSpartans.com/sidearmstats/wball/summary

ILLINOIS SCHEDULE

Date	Opponent	Time/Score
Nov. 25	Indiana State +	W, 68-49
Dec. 2	Valparaiso +	L, 59-62
Dec. 6	Omaha +	W, 53-50
Dec. 10	at Nebraska * #	L, 72-78
Dec. 19	19/19 Michigan * #	Postponed
Dec. 22	Southern Illinois +	Postponed
Dec. 31	at 20/18 Indiana * +	L, 79-56
Jan. 3	RV/RV Iowa * +	L, 68-107
Jan. 7	16/16 Ohio State * #	L, 55-78
Jan. 10	at 15/14 Michigan * +	L, 50-70
Jan. 14	RV/RV Michigan State * +	Postponed
Jan. 21	at 21/22 Northwestern * +	L, 54-73
Jan. 25	--/RV Nebraska * #	L, 53-57
Jan. 28	Penn State * +	L, 76-80
Jan. 31	at Wisconsin * +	L, 57-69
Feb. 4	at Michigan State * +	5 p.m. CT
Feb. 7	Purdue * +	2 p.m. CT
Feb. 10	at Minnesota *	TBD
Feb. 14	17/17 Indiana *	TBD
Feb. 17	at 10/10 Maryland *	TBD
Feb. 20	at Rutgers *	TBD
Feb. 25	22/20 Northwestern *	TBD
Feb. 28	at Purdue *	TBD
March 5 or 6	Minnesota *	TBD
March 9-13	Big Ten Tournament	TBA

* Big Ten Conference game
+ Streamed on Big Ten Network Plus
Televised on Big Ten Network
Home games in **BOLD**
All times Central and subject to change

ILLINI WOMEN'S BASKETBALL MEDIA BOX

The Illini women's basketball media box will be updated with information and assets throughout the course of the 2020-21 season. To access the content, including photos, video, and media zoom recordings, visit: uofi.box.com/v/2020-21WBBMedia

Pos.	No.	Name	Ht.	Yr.	GP/GS	PPG	RPG	Other	Notes
G	0	J-Naya Ephraim	5-9	JR	12/11	5.8	2.8	2.3 ast/gm	Tied career high with 11 points at Neb. (12/10)
F	1	Nancy Panagiotopoulou	6-3	R-JR	10/0	0.0	0.6	1 blk	Recorded first-career block vs. Ohio State (1/7/21)
F	2	Lyric Robins	5-11	SR	12/1	1.9	1.8	6 steals	Sixth in minutes played (152:59) this season
F	3	Solape Amusan	6-1	SO	12/0	4.1	1.8	7 3FGM	4.8 points per game in Big Ten play
G	10	Jeanae Terry	5-11	SO	12/12	12.6	9.2	3.8 ast/gm	24.5 PTS, 13.5 REB, 5.0 AST in last 2 games
G	11	Jada Peebles	5-10	SO	12/12	10.5	1.9	2.0 ast/gm	Career-high 19 points (5 3FGM) vs. PSU (1/28)
G	13	Tara O'Malley	5-6	JR	4/0	0.5	0.3	1 steal	Scored first-career points, two free-throws, vs. Iowa
F/C	14	Geovana Lopes	6-3	JR	4/1	5.0	3.0	4 assists	First start as an Illini vs. Valparaiso
F	20	Erika Porter	6-3	FR	6/0	1.2	0.7	3-3 FGs	3 pts, 1 blk in career-high 13 mins. vs. Iowa (1/3)
G	21	Aaliyah McQueen	5-9	FR	8/0	1.1	3.1	6 assists	Career-high 6 points, 6 rebs vs. Penn State (1/28)
C	22	Eva Rubin	6-5	R-JR	11/11	8.6	3.8	16 blocks	Career-high 17 points (7-10 FGs, 3-5 FTs) vs. Iowa
G	32	Aaliyah Nye	5-11	FR	7/0	6.9	1.7	8 3FGM	Career-high 15 points, 3 three-pointers vs. Neb. (1/25)
F	44	Kennedi Myles	6-2	SO	12/12	10.2	8.0	14 steals	8+ rebounds in eight of 12 games played this season

HEAD COACHES

ILLINOIS: Nancy Fahey // 32-71 at Illinois (4th year) // 769-204 overall (35th year)
MICHIGAN STATE: Suzy Merchant // 290-152 at Michigan State (14th year) // 491-272 overall (25th year)

Bold indicates previous game's starter.

SERIES VS. MICHIGAN STATE

Series Record: Michigan State leads, 44-28
Last Meeting: Michigan State 72, Illinois 58 // Feb. 26, 2020 // Champaign, Illinois
Series Streak: Michigan State W8
in Champaign: Michigan State leads, 18-15
in East Lansing: Michigan State leads, 23-10
Neutral Site: Tied, 3-3
Fahey vs Michigan State: 0-3

• **OPENING TIP:** Illinois (2-10, 0-9 B1G) travels to East Lansing, Mich., for a Thursday evening showdown with Michigan State (9-4, 4-4 B1G). Tipoff between the Illini and the Spartans is set for 6 p.m. ET/5 p.m. CT from MSU's Breslin Center. The game will be streamed live on Big Ten Network+. **Mike Koon** will call the action for the Illini on WDWS 1400 AM. Streaming audio and live stats are also available at FightingIllini.com.

• **ABOUT MICHIGAN STATE:** Michigan State enters Thursday's game with an 9-4 overall record, including 4-4 start to Big Ten play. Most recently, the Spartans, who have had four games postponed in the last three weeks, suffered back-to-back conference losses at then-No. 7/10 Maryland (92-52) and at then No. 16/15 Indiana (79-67). Junior G **Nia Clouden**, who has tallied more than 1,000 points in her MSU career, paces the Spartans' offensive attack at 19.1 points per game. Clouden is one of four MSU players averaging better than 9.5 points per game alongside sophomore G **Alysa Winston** (11.4 ppg), junior F **Alisia Smith** (9.7 ppg) and sophomore G **Julia Ayrault** (9.5 ppg). Sophomore F **Taiyier Parks** is the team's top rebounder at 5.6 boards per contest, just ahead of Ayrault (5.0 rpg). The Spartans average 78.2 points per game, while holding opponents to 68.7 per contest. Michigan State ranks among the NCAA leaders in several categories including No. 7 in assists per game (19.2), No. 9 in assist-to-turnover ratio (1.45), No. 26 in scoring offense (78.2 ppg), No. 28 in field-goal percentage (.459), and No. 33 in both turnover margin (+4.38) and turnovers per game (13.3).

• **SERIES VS. MICHIGAN STATE:** Thursday's matchup is the 73rd in the series between the Illini and the Spartans. Michigan State leads the all-time series, 44-28, including a 23-10 advantage in games played in East Lansing. The Illini are looking to snap an eight-game MSU win streak in the series. The last Illini win the series was Jan. 23, 2014, a 61-51 victory at the Breslin Center.

• **LAST TIME VS. MICHIGAN STATE:** The first matchup between Illinois and Michigan State, scheduled for Jan. 14 at State Farm Center, was postponed due to COVID-related concerns within the MSU program. The most recent meeting between the two programs came Feb. 26, 2020 in the Illini's regular-season home finale. Michigan State grabbed the 72-58 win, using a 10-0 run to close out the second quarter to pull away. **Jeanae Terry** tallied 10 points and six rebounds for the Orange and Blue, while **Kennedi Myles** finished just shy of a double-double with nine points and 10 rebounds.

• **UP NEXT:** The Fighting Illini welcome the Purdue Boilermakers to State Farm Center for a Super Bowl Sunday showdown. Tipoff between the Illini and the Boilermakers (6-7, 3-6 B1G) - who host Penn State on Sunday - is set for 2 p.m. CT. The game will be streamed live on Big Ten Network+. **Mike Koon** will call the action for the Illini on WDWS 1400 AM. Streaming audio and live stats are also available at FightingIllini.com.



QUICK FACTS

UNIVERSITY INFORMATION

Location	Urbana-Champaign, Ill.
Enrollment	52,331
Nickname	Fighting Illini
Founded	1867
Colors	Orange & Blue
Affiliation	NCAA Division I
Conference	Big Ten
Home Court (capacity)	State Farm Center (15,544)
President	Timothy L. Killeen
Chancellor	Robert J. Jones
Athletic Director	Josh Whitman
Senior Woman Administrator (SWA)	Sara Burton
Ticket Office	217-333-3470

TEAM HISTORY

First Year	1974-75
Overall Record	636-712 (.472), 47th year
Big Ten Record	240-415 (.366), 38th year
State Farm Center Record	287-211 (.576), 34th year
Years in NCAA (8)	1982, '86, '87, '97, '98, '99, '00, '03
Years in WNIT (8)	2001, '02, '05, '06, '07, '08, '10, '13
Big Ten Titles (1)	1997

2019-20 AT A GLANCE

2019-20 Overall Record	11-29
2019-20 Big Ten Record/Place	2-16/13th
2019-20 Postseason	None

2020-21 RETURNING/LOST

Starters Returning/Lost	2/3
Letterwinners Returning/Lost	6/8
Newcomers in 2020-21	7

COACHING STAFF

Head Coach	Nancy Fahey (Wisconsin '81)
Career Record	769-204 (35th seasons)
Record at Illinois	32-71 (4th seasons)
Assistant Coach	John Patterson (Fontbonne '07)
Assistant Coach	Scott Merritt (Marquette '04)
Assistant Coach	Vernette Skeete (Alcorn State '05)
Head Coordinator of Recruiting &...	Tianna Kirkland (9th season)
Director of Student-Athlete Development	
Director of Scouting and Video	Jenn Dynis (4th season)
Director of Operations	Dianna Pasley (4th season)
Director of Player Personnel	Steve Cochran (4th season)
Athletic Trainer	Autumn Taylor (2nd season)
Strength & Conditioning	Kilee Fletcher (4th season)
Basketball Office Phone	217-333-8612

ATHLETICS COMMUNICATION

Women's Basketball SID	Danny Mattie
Office Phone / Cell Phone	217-300-4067 / 970-217-3140
Email	mattie2@illinois.edu
Press Row Phone	217-333-1227
Mailing Address	Bielfeldt Athletic Building 1700 South Fourth Street, Champaign, IL 61820
Website	www.fightingillini.com
Twitter	@IlliniWBB
Facebook	www.facebook.com/IlliniWBBasketball
Instagram	IlliniWBB

RADIO INFORMATION

Flagship Station	WDWS-AM 1400
Play-By-Play	Mike Koon

• THE FAHEY ERA CONTINUES:

The Illini enter their fourth season under the direction of head coach **Nancy Fahey** in 2020-21. > In Fahey's first season, she led the Illini to a 9-5 non-conference record, which marked the best start to the season since Illinois also earned nine non-conference victories in the 2014-15 campaign (9-3). Illinois won four of its last five games leading up to league play, with the streak marking the most consecutive victories for the program since the start of the 2015-16 season. Junior Alex Wittinger garnered All-Big Ten Second Team, and also matched the school record for single-season offensive rebounds (125). Wittinger earned the program's second-ever triple double during the 2017-18 campaign, and set a new single-game record for blocked shots (11).

> In her second season at the helm of the Illini, Fahey's squad opened the year with a 7-0 record on Lou Henson Court for the first time since the 2006-07 season. The Illini opened the 2018-19 campaign with at 8-3 (.727) in non-conference play, the best for an Illini squad since starting the 2014-15 campaign with a 9-5 non-conference record (.750). Fahey's squad improved statistically in several categories under her leadership. The Illini averaged seven more points per game than in 2017-18, and improved their field goal percentage by more than four percent.

> Year 3 saw continued growth under Fahey's leadership. The Illini finished the year with an overall record of 11-9, the third straight year with an improved win total. The 11 wins also marked the most by the Illini since the 2014-15 season (15 wins). Illinois finished its non-conference schedule with a 9-2 record. It marked the best 11-game start for Illinois since the 2006-07 season. The non-conference was capped by a 58-51 Braggins' Rights win over rival Missouri on Dec. 20 in Columbia, the first win over the Tigers since the 2008-09 season, and the first road win in the series since 2007-08.

• ONE OF THE GREATS:

Entering 2020-21 with a career record of 767-194 (.798), Illinois head coach **Nancy Fahey** ranks among the greatest coaches in NCAA history. Among active NCAA coaches at all levels (Divisions I, II, and III), she is ninth in total victories and 21st in win percentage; all-time she is 21st by percentage and 20th in victories. And during her accomplished career she has become the fourth-fastest to reach 600 victories (706 games) - trailing only **Brian Morehouse** of DIII Hope College (690), **Mark Campbell** of DII Union (TN) University (691), and Baylor's **Kim Mulkey** (700) - and the second-fastest coach to 700 victories (826 games), trailing only UConn's **Geno Auriemma** (822).

• MORE HONORS FOR FAHEY:

Illini head coach **Nancy Fahey** added another honor this offseason when she was selected for induction into the Missouri Basketball Coaches Association Hall of Fame as part of the Class of 2020. It is the fifth Hall of Fame honor for Fahey, who became the first NCAA Division III representative to be inducted into the Women's Basketball Hall of Fame in 2012, and is also a member of the WashU Sports Hall of Fame (2012), Missouri Sports Hall of Fame (2014), and St. Louis Sports Hall of Fame (2016).



NANCY FAHEY

Head Coach // 35th season overall // Fourth season at Illinois

Washington University (1986-2017)

Year	Record	Pct.	UAA	Postseason
1986-87	16-5	.762	-	-
1987-88	21-5	.808	1st	2nd Round
1988-89	19-6	.760	1st	-
1989-90	25-3	.893	1st	1st Round
1990-91	24-7	.774	2nd	4th Place
1991-92	22-5	.815	1st	1st Round
1992-93	22-4	.846	1st	1st Round
1993-94	26-4	.867	1st	Runner-Up
1994-95	20-7	.741	1st	1st Round
1995-96	22-6	.786	2nd	1st Round
1996-97	19-7	.731	3rd	1st Round
1997-98	28-2	.933	1st	National Champion
1998-99	30-0	1.000	1st	National Champion
1999-00	30-0	1.000	1st	National Champion
2000-01	28-2	.933	1st	National Champion
2001-02	25-1	.962	1st	2nd Round
2002-03	26-2	.929	1st	Quarterfinal
2003-04	22-5	.815	1st	Sweet 16
2004-05	22-5	.815	1st	2nd Round
2005-06	25-3	.893	1st	Sweet 16
2006-07	25-6	.806	1st	Runner-Up
2007-08	19-8	.704	2nd	2nd Round
2008-09	26-5	.839	1st	Runner-Up
2009-10	29-2	.935	1st	National Champion
2010-11	25-6	.778	2nd	Runner-Up
2011-12	21-6	.778	2nd	2nd Round
2012-13	22-6	.786	3rd	Sweet 16
2013-14	24-3	.889	1st	2nd Round
2014-15	25-3	.893	1st	Sweet 16
2015-16	23-6	.793	1st	Quarterfinal
2016-17	26-3	.897	1st	Quarterfinal
Total	737-133	.847	23 UAAs	29 NCAAAs

University of Illinois (2017-Present)

Year	Record	Pct.	B1G	Postseason
2017-18	9-22	.290	14th	-
2018-19	10-20	.333	14th	-
2019-20	11-19	.367	13th	-
2020-21	2-10	.167	-	-
Total	32-71	.311	-	-
Career	769-204	.790	23 UAAs	29 NCAAAs

Nancy Fahey was named Illinois' head women's basketball coach on 3/22, 2017. A member of the Women's Basketball Hall of Fame, Fahey is in her fourth season at the helm of the Fighting Illini women's basketball program in 2020-21. Prior to her time in Champaign, Fahey spent 31 years at Washington University in St. Louis, where she guided the Bears to an NCAA record five Division III National Championships.

COACHING HONORS

Washington University Sports Hall of Fame, Class of 2011
Women's Basketball Hall of Fame, Class of 2012
Missouri Sports Hall of Fame, Class of 2014
St. Louis Sports Hall of Fame, Class of 2016
Missouri Basketball Coaches Hall of Fame, Class of 2020
20-time University Athletic Association Coach of the Year
14-time NCAA Division III Central Region Coach of the Year
Four-time NCAA Division III National Coach of the Year
Two-time WBCA National Division III Coach of the Year

COACHING EXPERIENCE

2017- University of Illinois
1986-2017 Washington University in St. Louis
1982-1986 Johnsburg High School

EDUCATION

College: University of Wisconsin — B.S., education



• **LAST TIME OUT:** The Fighting Illini fell 69-57 at Wisconsin Sunday afternoon despite a **Jeanae Terry's** double-double effort. Terry recorded a career-high in scoring and her second straight double-double, finishing with a 28-point, 11-rebound performance. **Jada Peebles** scored 15 points, while **Aaliyah Nye** chipped in with nine points off the bench. Defensively, the Illini (2-10, 0-9 BIG) recorded season-highs in steals (12) and forced turnovers (20) against the Badgers (4-11, 1-11 BIG). Illinois led 17-16 after one period, but the Badgers used a 24-5 run spanning from the end of the first quarter to the end of the first half to take control of the game. Illinois missed 16 consecutive field goals during that stretch. Terry's 28 points were the most by an Illini this season, and she becomes the first Illinois player to record back-to-back 20-point games since Petra Holesinska did so last year with 25 points against Evansville (12/15/19) and 22 at Missouri (12/20/19).

• **TERRY'S TEAR:** In the Illini's game vs. Penn State (1/28), **Jeanae Terry** became only the 24th player in NCAA Division I women's college basketball since 1999-00 to record a line of at least 21 points, 16 rebounds, and 8 assists. She is the first player this season to reach those totals, and is also just the third Big Ten player to accomplish the feat during that time frame, joining Iowa's Kachine Alexander - 26 points, 21 rebounds, and 10 assists - vs. Penn State (Feb. 1, 2009), and Michigan State's Aerial Powers - 23 points, 16 rebounds, and 9 assists - vs. Ohio State (Feb. 27, 2016).

Terry followed up her performance against Penn State, with another 20-point double-double at Wisconsin, tallying a career-high 28 points to go along with 11 rebounds against the Badgers. The 28-point effort is the most by an Illini this season. Terry also became the first Illinois player with back-to-back 20-point games since Petra Holesinska last year with 25 points against Evansville (12/15/19) and 22 at Missouri (12/20/19).

• **HOMECOMING FOR NYE:** When the Fighting Illini travel to East Lansing, Mich., for Thursday's matchup vs. Michigan State, it will be a homecoming for freshman G Aaliyah Nye. Nye, joined the Orange and Blue after a standout high school career competing for the East Lansing High School Trojans. Nye was the 2020 Ms. Basketball runner-up in the state, and earned AP Division I Player of the Year honors as a senior, her second of back-to-back first-team All-Michigan honors. Nye was also named the 2020 Player of the Year by the East Lansing State Journal. During her prep career, Nye scored 1,370 points and led the Trojans to a 90-8 overall record, including a state runner-up finish her sophomore season. Nye is one of three Michigan's on the Illini roster, joined by sophomore G Jeanae Terry (Detroit, Mich. / Wayne Memorial H.S.), and fellow freshman G Aaliyah McQueen (Flint, Mich. / Carman-Ainsworth H.S.).

• **CLOSING IN ON 400/400:** Fighting Illini sophomore F **Kennedi Myles** ranks as the team's active career leader in both scoring and rebounding. Through her first 41 games as an Illini, she has accumulated 381 points (9.3 per game) and 347 rebound (8.5 per game). At her current season averages of 10.2 points and 8.0 rebounds per contest, she is on pace to eclipse 400 point and 400 rebounds by the end of the 2020-21 season.

• **TERRY TOP REBOUNDER:** Fighting Illini sophomore G **Jeanae Terry** averages a team-leading 9.2 rebounds per game, which ranks 66th nationally and fourth in the Big Ten overall through games played Feb. 1. Among guards, Terry's rebounding average is seventh nationally and first in the Big Ten. And at 5 feet, 11 inches, she ranks third nationally among players listed shorter than 6 feet tall. Furthermore, Terry is one of just four underclassmen to rank among the top-15 rebounding guards (see below).

Overall Rank	Name, School	Year	Ht.	Games	O-Reb.	D-Reb.	Total	Avg.
18	Aijha Blackwell, Missouri (SEC)	So.	6-0	12	27	108	135	11.2
20	Iggy Allen, Fla. Atlantic (C-USA)	Sr.	5-11	10	24	86	110	11.0
22	Kierstan Bell, FGCU (ASUN)	So.	6-1	12	24	106	130	10.8
32	Emily Engstler, Syracuse (ACC)	Jr.	6-1	10	22	80	102	10.2
60	Chanin Scott, N.C. A&T (MEAC)	Sr.	6-0	7	31	34	65	9.3
61	Ajah Wayne, Old Dominion (C-USA)	Jr.	5-10	8	31	43	74	9.2
66	Jeanae Terry, Illinois (Big Ten)	So.	5-11	12	31	79	110	9.2
70	Kendall Bresee, Mount St. Mary's (NEC)	Sr.	5-10	11	20	80	100	9.1
70	Liz Graves, Southern Utah (Big Sky)	Sr.	5-9	11	34	66	100	9.1
76	Ashley Joens, Iowa St. (Big 12)	Jr.	6-0	17	44	108	152	8.9
83	Mya Hollingshed, Colorado (Pac-12)	Sr.	6-4	14	32	92	124	8.9
90	Brianna Simonich, Saint Mary's (CA) (WCC)	Sr.	5-10	17	34	115	149	8.8
94	Johanna Muzet, Rhode Island (Atlantic 10)	Sr.	6-0	12	25	79	104	8.7
98	Valerie Higgins, Pacific (WCC)	Sr.	6-1	12	23	80	103	8.6
102	Callie Bourne, Idaho St. (Big Sky)	Jr.	5-9	14	29	90	119	8.5

• **PEEBLES POURING IT IN:** Fighting Illini sophomore G **Jada Peebles** ranks as the most improved scorer on the Illini roster in 2020-21. As a true freshman last season, Peebles averaged 5.4 points per game and reached double-figures scoring three times. She enters Thursday's matchup at Michigan State averaging 10.6 points per game, an improvement of 5.2 points per contest. Peebles scored 10 or more points in six consecutive from Dec. 2 (vs. Valpo) through Jan. 7 vs. Ohio State, including a then-season-high 16 points at Nebraska (Dec. 10), a mark which she passed with her 19-point effort vs. Penn State (Jan. 28).

• **BIG START FOR NYE:** Fighting Illini freshman G **Aaliyah Nye** made her Big Ten debut on Dec. 10, scoring a then-career-high 10 points vs. the Huskers before missing the next five games with a foot injury. In her return to action, Jan. 25 in the Illini's home rematch vs. Nebraska, the East Lansing, Mich., native once again led the Illini again, pouring in a new career-best mark with 15 points, including a trio of three-pointers. Through her first four Big Ten games, Nye is averaging 9.3 points per game, fourth on the team in league play.

• **BENCH BREAKS OUT:** The Illini reserves broke out in a big way in the Big Ten Opener at Nebraska (Dec. 10). Through the opening three games of the season, Illinois reserves averaged just 10 points per game. But the group found its stride vs. the Huskers with 25 points thanks to then-career-high figures from sophomore F **Solape Amusan** (13) and freshman G **Aaliyah Nye** (10). Entering Thursday's game at Michigan State, the Illini are averaging 12.4 points per game off the bench.

WOMEN'S BASKETBALL TOP 25

ASSOCIATED PRESS POLL // FEB. 1

#	SCHOOL	RECORD	POINTS	PREV
1	Louisville (26)	16-0	746	1
2	South Carolina (4)	14-1	721	4
3	Connecticut	11-1	648	3
4	North Carolina State	11-1	646	2
5	UCLA	10-2	642	5
6	Stanford	15-2	597	6
7	Texas A&M	16-1	593	8
8	Baylor	12-2	535	9
9	Arizona	11-2	488	10
10	Maryland	12-2	478	7
11	Ohio State	10-1	462	14
12	Oregon	11-3	412	11
13	Michigan	10-1	388	12
14	South Florida	10-1	340	13
15	Kentucky	13-4	312	15
16	Arkansas	13-6	258	19
17	Indiana	10-4	257	16
18	Tennessee	12-3	221	20
19	Gonzaga	15-2	218	18
20	DePaul	9-4	160	17
21	West Virginia	13-2	144	24
22	Northwestern	9-3	106	23
23	South Dakota State	13-2	86	25
24	Mississippi State	8-5	85	21
25	Georgia	13-4	73	22

Others receiving votes: Missouri State 64, Georgia Tech 25, Syracuse 20, Iowa State 9, Rice 5, South Dakota 3, Stephen F. Austin 3, Texas 2, LSU 2, Virginia Tech 1.

USA TODAY/WBCA COACHES POLL // FEB. 2

#	SCHOOL	RECORD	POINTS	PREV
1	South Carolina (20)	14-1	781	3
2	North Carolina State (7)	12-1	759	2
3	Louisville (5)	16-1	743	1
4	UCLA	10-2	671	5
5	Connecticut	11-1	659	4
6	Stanford	15-2	658	6
7	Texas A&M	16-1	642	7
8	Baylor	12-2	574	8
9	Arizona	11-2	541	9
10	Maryland	12-2	518	10
11	Oregon	11-3	452	12
12	Michigan	10-1	418	13
13	Ohio State	10-2	412	11
14	Kentucky	13-4	400	14
15	Arkansas	13-6	314	18
16	South Florida	10-1	305	16
17	Indiana	10-4	277	15
18	Gonzaga	15-2	268	17
19	Tennessee	12-3	189	22
20	Northwestern	10-3	178	23
21	DePaul	9-4	121	20
22	Mississippi State	8-5	109	19
23	Missouri State	11-2	101	25
24	West Virginia	13-2	79	NR
25	Georgia	13-4	61	21

Others receiving votes: Texas 50, Syracuse 45, South Dakota State 37, Florida Gulf Coast 19, Iowa 8, USC 3, Dayton 3, Oklahoma State 2, Iowa State 1, Georgia Tech 1, Alabama 1.



• **YOUTH MOVEMENT:** Through 12 games, the Fighting Illini underclassmen - including four sophomores (**Solape Amusan**, **Kennedi Myles**, **Jada Peebles** and **Jeanae Terry**) and three freshmen (**Aaliyah McQueen**, **Aaliyah Nye** and **Erika Porter**) - have combined to play 1,521 of 2,400 (63.4 percent) of the team's available minutes. That young core has accounted for 71 percent of the team's scoring, 63 percent of rebounds, 73 percent of assists, 71 percent of steals and 53 percent of blocks.

Category	Underclass		Team Total	Percentage
	Total	Total		
Minutes	1521	2400		0.633
Points	512	721		0.710
Rebounds	291	462		0.629
Assists	98	134		0.731
Steals	59	83		0.711
Blocks	21	40		0.525

• **THREE POSTPONED:** The Fighting Illini women's basketball team has had three contests postponed this season due to COVID-19 related concerns within their opponents' programs. The first two happened in back-to-back contests, Dec. 19 vs. then-No. 19 Michigan and Dec. 22 vs. Southern Illinois, followed by the postponement of the team's Jan. 14 home game vs. Michigan State. Illinois is working with the institutions, and with the Big Ten related to the Michigan and Michigan State games, to identify potential rescheduling options later this season.

• **ILLINI VS. RANKED FOES:** With an expanded 20-game conference schedule this season, and nine of the Big Ten's 14 teams having received top-25 votes this year, the Fighting Illini's 2020-21 schedule is shaping up to be one of the most difficult in program history. The Illinois record for most matchups vs. top-25 opponents is 10, which occurred four times - 2013-14, 2003-04, 1999-2000, and 1995-96. The Orange and Blue enter play this week having faced four ranked foes. All-time, the Illini boast 46 victories over team ranked in the Associated Press Top-25 poll. Illinois last defeated an AP Top-25 opponent on Jan. 6, 2019, when Nancy Fahey led the Orange and Blue to a 66-62 road upset of then-No. 12 Minnesota. Illinois' last home victory over a ranked foe came on Jan. 8, 2015 vs. No. 17 Iowa (73-61). The Illini have lost 13 consecutive to ranked opponents overall since the win at Minnesota, and 10 straight at home when hosting a top-25 team since the victory over Iowa.

• **BACK ON THE COURT:** When the Illini returned to the court at Indiana on Thursday, Dec. 31, it had been exactly three weeks since the program's previous competitive matchup, Thursday, Dec. 10 at Nebraska. The hiatus, due to back-to-back COVID-19-related postponements for scheduled games vs. Michigan (Dec. 19) and Southern Illinois (Dec. 22), is the longest mid-season break for the Fighting Illini since a 24-day gap between the holidays and new year during the 1978-79 season (Dec. 12, 1978 - Jan. 5, 1979). During the program's first five seasons, a mid-year break was common. In the inaugural campaign (1974-75) the gap stretched 44 days (12/7/74 to 1/20/75). The following is a listing of the longest mid-season gaps between games in program history.

Year	From	Opponent (Result)	To Date	Opponent (Result)	Span
1974-75	12/7/74	vs. Minnesota (L, 50-53)	1/20/75	at Illinois-Central (L, 45-60)	44 days
1975-76	12/11/75	at Danville JC (W, 76-43)	1/23/76	vs. Illinois-Central (W, 67-63)	43 days
1976-77	12/13/76	vs. Purdue (L, 61-63)	1/13/77	vs. Chicago (W, 70-37)	31 days
1977-78	12/13/77	vs. Indiana State (L, 53-71)	1/12/78	vs. W. Illinois (W, 65-49)	30 days
1978-79	12/12/78	at Indiana St. (L, 74-86)	1/5/79	at W. Illinois (L, 69-84)	24 days
2020-21	12/10/20	at Nebraska (L, 72-78)	12/31/20	at #20 Indiana (L, 56-79)	21 days
1991-92	12/22/91	at Cincinnati (L, 63-72)	1/5/92	at #6 Penn St. (L, 60-86)	14 days
1983-84	12/23/83	at San Diego (W, 60-58)	1/3/84	vs. S. Illinois (L, 48-65)	11 days
1993-94	12/21/93	at Missouri (W, 96-84)	1/2/94	vs. Kent St. (L, 91-97)	12 days

• **BALANCED ATTACK:** Through nine Big Ten Conference games, the Fighting Illini have featured a balanced scoring attack with four players averaging greater than 8.9 points per game with action in each league contest: Sophomore G **Jeanae Terry** (12.1 ppg.), sophomore G **Jada Peebles** (10.6 ppg), sophomore F **Kennedi Myles** (10.1 ppg), and redshirt-junior C **Eva Rubin** (8.9 ppg). At Nebraska (Dec. 10), Illinois saw five players reach double-digit scoring against a Big Ten foe for the first time since Feb. 1, 2017 against Michigan. That group included freshman G **Aaliyah Nye** who tallied a then-career-high 10 points, but suffered a foot injury in the contest an has missed the next five games. In her return to the court, Jan. 25 at home vs. Nebraska, Nye led the Illini with a new career-high mark of 15 points. Through her first four Big Ten games, Nye ranks fourth on the team in scoring at 9.3 points per game.

• **KEY ILLINI RETURNERS:** Illinois enters the 2020-21 with six returning letterwinners, including four players - junior J-Naya Ephraim (16 starts) and sophomores **Jeanae Terry** (11), **Jada Peebles** (11) and **Kennedi Myles** (29) - that started at least 10 games in 2019-20. Myles, who recorded freshman records with eight double-doubles and 251 rebounds last year, ranks as the Illini's returning leader in scoring (8.9 points per game), rebounding (8.7 rpg), blocks (21) and steals (61). Terry led the Illini with 91 assists.

• **SEVEN NEWCOMERS:** The 2020-21 Illini roster also includes seven newcomers. The 2020 recruiting class is ranked 27th by BlueStar Basketball. Mid-year transfer **Eva Rubin**, a 6-5 redshirt junior center who returned to her home state after two seasons at Arizona State, gives the Illini a boost in the paint. The Illini also added size with 6-3 junior college forward/center **Geovana Lopes**, 6-1 sophomore forward **Solape Amusan**, and 6-3 freshman forward **Erika Porter**. Illinois signed a pair of all-state guards from Michigan in **Aaliyah McQueen** and **Aaliyah Nye**, plus walk-on junior guard **Tara O'Malley**, who starred as a prep at Chicago's Mother McAuley High School.

• **WINNING THE BATTLE OF THE BOARDS:** The Fighting Illini have been a tough rebounding team in 2020-21. The Orange and Blue have finished with the rebounding edge in five of 12 games, out-rebounding Indiana State 42-40 in the opener, securing a 14-rebound edge, 47-33, vs. Valpo, notching a 45-28 (+17) advantage against Omaha, edging then-No. 16/16 Ohio State (Jan. 7) 37-36 on the boards and capturing a 41-36 edge vs. Nebraska (Jan. 25). At then-No. 20/18 Indiana (Dec. 31), the Illini and Hoosiers battled to a 35-35 rebounding deadlock. The Illini have also been outrebounded six times, in losses at Nebraska (47-35), vs. Iowa (48-31), at then-No. 15/14 Michigan (44-34), at then-No. 21/22 Northwestern (38-33), vs. Penn State (43-42), and at Wisconsin (50-40).

• **GUARDS GETTING TO THE LINE:** The Fighting Illini's primary guard trio of J-Naya Ephraim, **Jeanae Terry**, and **Jada Peebles**, have been excellent at getting to the free-throw line, and converting. Through 12 games, the backcourt mates have combined to shoot 70-for-99 (.707) from the charity stripe. Ephraim is averaging 2.9 attempts per game and shooting 22-for-35 (.629) while Terry has connected on 70 percent (30-for-43), and Peebles has hit 86 percent (18-for-21), including a pair of clutch free-throws to seal the Omaha victory with four seconds left in the contest.

• **DOUBLE-DOUBLE VISION:** Sophomore F **Kennedi Myles**, who entered the season as the Illini's leading returning scorer and rebounder, set an Illini freshman record with eight double-doubles in 2019-20. Following her 13 point, 14 rebound performance vs. Omaha (Dec. 6), she now has 10 for her career.

Opponent	Points	Rebounds
Chicago State (11/5/19)	17	15
Arkansas-Pine Bluff (11/21/19)	12	14
Presbyterian (11/30/19)	12	12
Merrimack (12/10/19)	23	12
at Missouri (12/20/19)	13	10
at Ohio State (1/19/20)	12	11
at Nebraska (2/22/20)	12	10
vs. Wisconsin (3/4/20) - BTT	13	11
Valparaiso (12/2/20)	14	11
Omaha (12/6/20)	13	14

• **DOUBLE-DOUBLE PART 2:** Sophomore G **Jeanae Terry** has notched three double-doubles in 2020-21. She posted her first in Illinois' game vs. Valparaiso (Dec. 2), finishing with 16 points, and 13 rebounds. With teammate **Kennedi Myles** notching a 14-point, 11-rebound double-double vs. the Crusaders, the sophomore duo became the first Illini teammates to record double-doubles in the same game since Nov. 24, 2018 when Alex Wittinger (32 points, 10 rebounds) and Brandi Beasley (10 points, 12 assists) accomplished the feat against Sacramento State. Terry has also recorded double-doubles vs. No. 16/16 Ohio State (12 points, 10 rebounds), vs. Penn State (21 points, 16 rebounds), and at Wisconsin (28 points, 11 rebounds).

• **POST PRESENCE:** A pair of Illini post players - **Eva Rubin** and **Geovana Lopes** - made their Orange and Blue debuts in the Illini's season-opening win over Indiana State. Rubin tallied then career-high marks in minutes (23), rebounds (6) and blocks (4), eclipsing marks established during her time at Arizona State. Lopes impressed in a reserve role, posting 12 points, six boards, two assists and a pair of steals in 15 minutes off the bench. Lopes started Game 2 vs. Valparaiso in place of the injured Rubin, and posted six points and five rebounds. And after returning to the lineup, Rubin posted back-to-back career-scoring highs with 11 vs. Omaha and 13 at Nebraska, before again establishing a career-best scoring mark with 17 vs. Iowa (Jan. 3). Rubin also recorded a personal-best seven rebounds vs. the Huskers. At No. 20/18 Indiana freshman F **Erika Porter** made her collegiate debut, tallying two points and two rebounds in six minutes of action.

• **HOME SWEET HOME:** Under head coach **Nancy Fahey** the Illini have found great success against non-conference opponents at State Farm Center. With a 2-1 mark in such games to open the 2020-21 season, the Illini are now 23-5 at home against non-conference foes under Fahey, following the team's win over the Omaha Mavericks. The Illini were slated to host one more non-conference game, Dec. 22 vs. Southern Illinois, but the game was postponed due to COVID-19 related concerns within the Salukis program.

• **MOVING UP:** The Illini added significant size to their roster for 2020-21. The 2019-20 roster averaged 70.7 inches - or 5 feet, 11 inches - with four players listed at 6 feet or above. This year, the average height of the team jumped by nearly 1.5 inches to 72.0 inches - or 6-feet - with six Illini listed at or above 6 feet: **Eva Rubin** (6-5), **Geovana Lopes** (6-3), **Nancy Panagiotopoulou** (6-3), **Erika Porter** (6-3), **Kennedi Myles** (6-2), and **Solape Amusan** (6-1).



• **PERSISTENCE OF PANAGIOTOPOULOU:** After battling through injury for her first two-plus seasons at Illinois, redshirt-junior forward **Nancy Panagiotopoulou** entered the 2020-21 season in a position to contribute right away for the Illini, and is averaging 4.8 minutes per game. Panagiotopoulou, who made her Illini debut Jan. 23, 2020 vs. No. 20 Maryland, saw action in eight of the Illini's final 12 games last season, and now played in 14 of the team's last 16 contests dating back to last season. Her 11 minutes vs. Valpo (Dec. 2) matched a career-high initially set during her Illini debut vs. Maryland last year.

• **RETURNING PRODUCTION:** Despite graduating six seniors who left their mark on the Illini record book, Illinois returns almost 60 percent of its production in nearly every major statistical category, except for scoring (41%).

Category	Returning	Lost	% Returning
Points	763	1,098	41%
Rebounds	539	373	59%
Assists	216	150	59%
Blocks	54	27	67%
Steals	163	98	62%

• **VALUING POSSESSIONS:** The Illini continued a trend of minimizing turnovers under head coach **Nancy Fahey** in 2019-20. The Orange and Blue averaged 14.6 turnovers per contest, the fifth-best mark in program history. In Fahey's three seasons, the Illini have posted three of the top-five marks in the program record book including the fewest turnovers per game in a season (12.97) in 2018-19. At 14.6 turnovers per game, the Illini finished the season ranked sixth in the Big Ten and 102nd nationally.

• **TERRY TAKIN' CARE:** Sophomore guard **Jeanae Terry** recorded a team-leading 91 assists (3.1 per game) as a freshman for the Illini in 2019-20. With only 50 turnovers, she also paced the team with an assist-to-turnover ratio of 1.82, seventh in the Big Ten and 81st nationally. Her assist-to-turnover ratio ranked sixth in the nation among freshmen. Terry's 91 assists ranked sixth in a single-season by a freshman at Illinois. Through three games to open the 2020-21 season, Terry has dished out a team-leading eight assists, 2.7 per contest.

• **YEAR 4 UNDER FAHEY:** The 2020-21 campaign marks the fourth under **Nancy Fahey**, whose offseason contract extension ensures that the five-time national champion and Women's Basketball Hall of Famer will remain on the sideline for the Illini through at least the 2024-25 season. Under Fahey's guidance, the Fighting Illini have improved their win total each year, culminating with last season's 11-win campaign, the most for the program since 2014-15. The Illini opened the year with a 9-2 record against non-conference opponents, also the best mark for the program in 13 years, culminating with a 58-51 Braggin' Rights win over Missouri in Columbia.

• **NEW FACES ON STAFF:** **Nancy Fahey** added two veteran assistant coaches to the Fighting Illini coaching staff in the offseason, bringing **Scott Merritt** and **Vernette Skeete** from Marquette to Illinois where they complete the coaching staff along with John Patterson who returns for his second season as an assistant with the Illini. Merritt and Skeete each spent the previous six seasons with the Golden Eagles, helping build the program into a national power. Merritt, who helped lead MU to a 2003 Final Four as a player, returned to coaching at his alma mater following a nine-year professional playing career. Skeete, a native of Florida, who played at Alcorn State and Gulf Coast State College, joined Marquette after two seasons as the head coach at GCSC. Prior to that, she also served as an assistant at Miami, helping to build the Hurricanes into a top-25 program.



NUMERICAL ROSTER

NO	PLAYER	POS	HT	ELIG	HOMETOWN/HIGH SCHOOL/PREVIOUS COLLEGE	PRONUNCIATION
0	J-Naya Ephraim	G	5-9	Jr.	St. Croix, U.S. Virgin Islands / Southern Durham (N.C.) H.S.	juh-NY-uh EH-from
1	Nancy Panagiotopoulou	F	6-3	r-Jr.	Athens, Greece / American Community Schools of Athens	pan-uh-yo-TOE-poo-loo
2	Lyric Robins	F	5-11	Sr.	Plano, Texas / Plano West H.S.	lee-ruhk
3	Solape Amusan	F	6-1	So.	Woodbury, Minnesota / Woodbury H.S. / Iowa Western C.C.	suh-LAW-pay AM-you-sin
10	Jeanae Terry	G	5-11	So.	Detroit, Michigan / Wayne Memorial H.S.	juh-NAY
11	Jada Peebles	G	5-10	So.	Raleigh, North Carolina / Wakefield H.S.	JAY-duh
13	Tara O'Malley	G	5-6	Jr.	Chicago, Illinois / Mother McAuley H.S.	TARE-uh OH-MELL-ee
14	Geovana Lopes	F/C	6-3	Jr.	Bataguassu, Brazil / Escola Estadual Paulo Mendes Silva / Odessa College	geo-VONN-uh LOW-peh
20	Erika Porter	F	6-3	Fr.	Lawrenceville, New Jersey / Notre Dame H.S.	
21	Aaliyah McQueen	G	5-9	Fr.	Flint, Michigan / Carman-Ainsworth H.S.	uh-LEE-yah
22	Eva Rubin	C	6-5	r-Jr.	Flossmoor, Illinois / Homewood Flossmoor H.S. / Arizona State Univ.	EE-vuh ROO-bin
32	Aaliyah Nye	G	5-11	Fr.	East Lansing, Mich. / East Lansing H.S.	uh-LEE-yah
44	Kennedi Myles	F	6-2	So.	Cincinnati, Ohio / Walnut Hills H.S.	

ALPHABETICAL ROSTER

NO	PLAYER	POS	HT	ELIG	HOMETOWN/HIGH SCHOOL/PREVIOUS COLLEGE	PRONUNCIATION
3	Solape Amusan	F	6-1	So.	Woodbury, Minnesota / Woodbury H.S. / Iowa Western C.C.	suh-LAW-pay AM-you-sin
0	J-Naya Ephraim	G	5-9	Jr.	St. Croix, U.S. Virgin Islands / Southern Durham (N.C.) H.S.	juh-NY-uh EH-from
14	Geovana Lopes	F/C	6-3	Jr.	Bataguassu, Brazil / Escola Estadual Paulo Mendes Silva / Odessa College	geo-VONN-uh LOW-peh
21	Aaliyah McQueen	G	5-9	Fr.	Flint, Michigan / Carman-Ainsworth H.S.	uh-LEE-yah
44	Kennedi Myles	F	6-2	So.	Cincinnati, Ohio / Walnut Hills H.S.	
32	Aaliyah Nye	G	5-11	Fr.	East Lansing, Mich. / East Lansing H.S.	uh-LEE-yah
13	Tara O'Malley	G	5-6	Jr.	Chicago, Illinois / Mother McAuley H.S.	TARE-uh OH-MELL-ee
1	Nancy Panagiotopoulou	F	6-3	r-Jr.	Athens, Greece / American Community Schools of Athens	pan-uh-yo-TOE-poo-loo
11	Jada Peebles	G	5-10	So.	Raleigh, North Carolina / Wakefield H.S.	JAY-duh
20	Erika Porter	F	6-3	Fr.	Lawrenceville, New Jersey / Notre Dame H.S.	
2	Lyric Robins	F	5-11	Sr.	Plano, Texas / Plano West H.S.	lee-ruhk
22	Eva Rubin	C	6-5	r-Jr.	Flossmoor, Illinois / Homewood Flossmoor H.S. / Arizona State Univ.	EE-vuh ROO-bin
10	Jeanae Terry	G	5-11	So.	Detroit, Michigan / Wayne Memorial H.S.	juh-NAY

Head Coach:	Nancy Fahey (fourth season at Illinois, 35th overall)	FAY
Assistant Coach:	John Patterson (fourth session)	
Assistant Coach:	Scott Merritt (first season)	
Assistant Coach:	Vernette Skeete (first season)	ver-NET
Director of Operations:	Dianna Pasley (fourth season)	
Director of Player Personnel:	Steve Cochran (fourth season)	
Head Coordinator of Recruiting and Director of Student-Athlete Development:	Tianna Kirkland (ninth season)	tee-AW-nuh
Director of Scouting and Video:	Jenn Dynis (fourth season)	
Athletic Trainer:	Autumn Taylor (second season)	
Strength & Conditioning Coach:	Kilee Fletcher (fourth season)	

RETURNING/LOST BREAKDOWN

STARTERS RETURNING (2)					2019-20 STATISTICS					
NO	PLAYER	POS	HT	ELIG	PNTS/G	REB/GAME	ASSISTS	TRNOVR	BLOCKS	STEALS
0	J-Naya Ephraim	G	5-9	Jr.	2.9	2.5	47	50	3	26
44	Kennedi Myles	F	6-2	So.	8.9	8.7	33	68	21	61

STARTERS LOST (3)					2019-20 STATISTICS					
NO	PLAYER	POS	HT	ELIG	PNTS/G	REB/GAME	ASSISTS	TRNOVR	BLOCKS	STEALS
1	Brandi Beasley	G	5-6	Grad	8.5	2.2	62	64	2	29
13	Petra Holesinska	G	5-10	Sr.^	12.6	2.7	43	60	2	29
50	Ali Andrews	F	6-2	Grad	8.9	3.7	19	31	20	21

OTHER LETTERWINNERS RETURNING (4)					2019-20 STATISTICS					
NO	PLAYER	POS	HT	ELIG	PNTS/G	REB/GAME	ASSISTS	TRNOVR	BLOCKS	STEALS
1	Nancy Panagiotopoulou	F	6-3	r-Jr.	1.0	0.7	0	2	0	0
2	Lyric Robins	F	5-11	Sr.	0.8	0.8	0	6	3	3
10	Jeanae Terry	G	5-11	So.	6.2	3.8	91	50	17	35
11	Jada Peebles	G	5-10	So.	5.4	1.0	38	28	2	31

OTHER LETTERWINNERS LOST (5)					2019-20 STATISTICS					
NO	PLAYER	POS	HT	ELIG	PNTS/G	REB/GAME	ASSISTS	TRNOVR	BLOCKS	STEALS
5	Sierra Rice	G	5-9	Grad	2.9	0.7	15	23	0	3
4	Carolyn Waleski	G	5-10	Jr.	0.4	0.4	0	0	0	1
12	Taylor Edwards	G	5-7	Grad	0.3	0.0	1	2	0	2
23	Mackenzie Blazek	F	6-3	Jr.	4.6	4.1	11	17	8	6
30	Courtney Joens	G	5-10	Grad	3.5	3.3	10	19	3	14

NEWCOMERS (7)					HOMETOWN/HIGH SCHOOL/PREVIOUS COLLEGE					
NO	PLAYER	POS	HT	ELIG						
3	Solape Amusan	F	6-1	So.	Woodbury, Minnesota / Woodbury H.S. / Iowa Western C.C.					
13	Tara O'Malley	G	5-7	Jr.	Chicago, Illinois / Mother McAuley H.S.					
14	Geovana Lopes	F/C	6-3	Jr.	Bataguassu, Brazil / Escola Estadual Paulo Mendes Silva / Odessa College					
20	Erika Porter	F	6-3	Fr.	Lawrenceville, New Jersey / Notre Dame H.S.					
21	Aaliyah McQueen	G	5-9	Fr.	Flint, Michigan / Carman-Ainsworth H.S.					
22	Eva Rubin*	C	6-5	r-Jr.	Flossmoor, Illinois / Homewood Flossmoor H.S. / Arizona State Univ.					
32	Aaliyah Nye	G	5-11	Fr.	East Lansing, Mich. / East Lansing H.S.					

* Sat out the 2019-20 season as a mid-year transfer to Illinois and granted NCAA waiver for immediate eligibility
^ Graduated from Illinois before transferring for final season of collegiate eligibility

ROSTER BREAKDOWN

BY ELIGIBILITY

SENIORS (1)	Lyric Robins
JUNIORS (5)	J-Naya Ephraim
.....	Geovana Lopes
.....	Tara O'Malley
.....	Nancy Panagiotopoulou
.....	Eva Rubin

SOPHOMORES (4)	Solape Amusan
.....	Kennedi Myles
.....	Jada Peebles
.....	Jeanae Terry

FRESHMEN (3)	Aaliyah McQueen
.....	Aaliyah Nye
.....	Erika Porter

BY POSITION

GUARD (6)	J-Naya Ephraim
.....	Aaliyah McQueen
.....	Aaliyah Nye
.....	Tara O'Malley
.....	Jada Peebles
.....	Jeanae Terry

FORWARD (5)	Amusan
.....	Myles
.....	Panagiotopoulou
.....	Porter
.....	Robins

CENTER (2)	Geovana Lopes
.....	Eva Rubin

BY STATE/COUNTRY

Brazil (1)	Geovana Lopes
Greece (1)	Nancy Panagiotopoulou
Illinois (2)	Tara O'Malley
.....	Eva Rubin
Michigan (3)	Aaliyah McQueen
.....	Aaliyah Nye
.....	Jeanae Terry
Minnesota (1)	Solape Amusan
New Jersey (1)	Erika Porter
North Carolina (1)	Jada Peebles
Ohio (1)	Kennedi Myles
Texas (1)	Lyric Robins
U.S. Virgin Islands (1)	J-Naya Ephraim



EXPANDED SCHEDULE/RESULTS

DATE	OPPONENT	RESULT	SCORE	RECORD	BIG RECORD	ATTENDANCE	HIGH POINTS	HIGH REBOUNDS	HIGH ASSISTS
11/25	Indiana State	W	68-49	1-0	--	103*	Jeanae Terry (24)	Jeanae Terry (8)	Jada Peebles (5)
12/2	Valparaiso	L	59-62	1-1	--	101*	Jeanae Terry (16)	Jeanae Terry (11)	Jeanae Terry (3)
12/6	Omaha	W	53-50	2-1	--	106*	Jada Peebles (15)	Kennedi Myles (14)	Jeanae Terry (4)
12/10	at Nebraska	L	72-78	2-2	0-1	0*	Jada Peebles (16)	Jeanae Terry (7)	Jada Peebles (5)
12/19	Michigan (PPD)							Eva Rubin (7)	
12/22	Southern Illinois (PPD)								
12/31	at Indiana	L	56-79	2-3	0-2	0*	Kennedi Myles (15)	Jeanae Terry (11)	Jeanae Terry (3)
1/3	Iowa	L	68-107	2-4	0-3	0*	Eva Rubin (17)	Jeanae Terry (8)	Jeanae Terry (3)
1/7	Ohio State	L	55-78	2-5	0-4	0*	Kennedi Myles (15)	Jeanae Terry (10)	Jeanae Terry (3)
									J-Naya Ephraim (3)
1/10	at Michigan	L	50-70	2-6	0-5	50*	Jeanae Terry (17)	Kennedi Myles (7)	Jeanae Terry (5)
1/14	Michigan State (PPD)								
1/21	at Northwestern	L	54-73	2-7	0-6	0*	Kennedi Myles (16)	Kennedi Myles (8)	J-Naya Ephraim (4)
								Jeanae Terry (8)	Aaliyah McQueen (4)
1/25	Nebraska	L	53-57	2-8	0-7	0*	Aaliyah Nye (15)	Kennedi Myles (9)	Jeanae Terry (3)
1/28	Penn State	L	76-80	2-9	0-8	0*	Jeanae Terry (21)	Jeanae Terry (16)	Jeanae Terry (8)
1/31	at Wisconsin	L	57-69	2-10	0-9	0*	Jeanae Terry (28)	Jeanae Terry (11)	Jeanae Terry (2)
2/4	at Michigan State								
2/7	Purdue								
2/10	at Minnesota								
2/14	Indiana								
2/17	at Maryland								
2/20	at Rutgers								
2/25	Northwestern								
2/28	at Purdue								
3/5 or 6	Minnesota								

* Due to COVID-19 protocols, no tickets were sold for this game.

SPECIALTY STATS

	OPPONENT	PTS IN PAINT (ILL / OPP)	PTS OFF TO (ILL / OPP)	2ND CHANCE PTS (ILL / OPP)	FAST BREAK PTS (ILL / OPP)	BENCH PTS (ILL / OPP)	LARGEST LEAD	LARGEST DEFICIT	LEAD CHANGES	TIES
11/25	Indiana State	24 / 22	17 / 13	7 / 8	17 / 4	21 / 33	27	--	0	0
12/2	Valparaiso	40 / 22	19 / 12	16 / 2	7 / 2	6 / 16	9	4	4	8
12/6	Omaha	22 / 24	11 / 13	14 / 6	6 / 2	3 / 6	10	5	6	1
12/10	at Nebraska	20 / 32	8 / 7	8 / 8	11 / 14	25 / 12	6	9	14	12
12/19	Michigan (PPD)									
12/22	Southern Illinois (PPD)									
12/31	at Indiana	28 / 42	12 / 23	10 / 11	6 / 18	13 / 27	0	31	0	0
1/3	Iowa	32 / 46	8 / 15	12 / 27	4 / 6	21 / 35	3	45	1	0
1/7	Ohio State	24 / 34	16 / 29	6 / 6	9 / 11	7 / 21	0	29	0	1
1/10	at Michigan	22 / 38	13 / 9	10 / 14	2 / 4	7 / 7	4	22	4	4
1/14	Michigan State (PPD)									
1/21	at Northwestern	32 / 30	14 / 25	11 / 17	8 / 16	7 / 12	0	28	0	0
1/25	Nebraska	22 / 12	8 / 12	4 / 8	8 / 3	19 / 15	6	5	9	5
1/28	Penn State	34 / 46	7 / 13	7 / 10	12 / 11	11 / 20	9	14	6	6
1/31	at Wisconsin	22 / 36	20 / 17	12 / 15	3 / 9	9 / 9	5	22	1	1
2/4	at Michigan State									
2/7	Purdue									
2/10	at Minnesota									
2/14	Indiana									
2/17	at Maryland									
2/20	at Rutgers									
2/25	Northwestern									
2/28	at Purdue									
3/5 or 6	Minnesota									
Totals		322 / 384	153 / 188	117 / 127	93 / 100	149 / 201				
Average		26.8 / 32.0	12.8 / 15.7	9.8 / 10.6	7.8 / 8.3	12.4 / 16.8				
Average Margin		-5.2	-2.9	-0.8	-0.5	-4.4				



2020-21 GAME-BY-GAME TEAM COMPARISON

Opponent	1st	2nd	3rd	4th	OT	Score	Margin	Tot. FG	FG%	3-PT FG	3-FG %	Free Throws	FT %	Rebs.	Assists	TO	Blocks	Steals	Fouls
Indiana State	15 / 10	15 / 11	20 / 11	18 / 17	--	68 / 49	+19	22-55 / 18-63	.400 / .286	5-15 / 1-12	.333 / .083	19-27 / 12-17	.704 / .706	42 / 40	14 / 5	18 / 21	7 / 1	10 / 10	17 / 19
Valparaiso	13 / 6	16 / 25	21 / 14	9 / 17	--	59 / 62	-3	24-64 / 21-55	.375 / .382	1-16 / 10-25	.006 / .385	10-22 / 10-15	.455 / .667	47 / 33	6 / 13	15 / 15	4 / 2	4 / 9	15 / 20
Omaha	12 / 11	12 / 11	19 / 11	10 / 17	--	53 / 50	+3	18-62 / 17-50	.290 / .340	4-23 / 5-20	.174 / .250	13-16 / 11-12	.813 / .917	45 / 28	10 / 10	19 / 19	3 / 2	7 / 5	16 / 17
at Nebraska	21 / 21	19 / 18	14 / 16	18 / 23	--	72 / 78	-6	25-71 / 23-57	.352 / .404	9-23 / 5-15	.391 / .333	13-20 / 27-32	.650 / .844	35 / 47	16 / 10	8 / 17	4 / 6	8 / 4	24 / 15
Michigan (PPD)																			
Southern Ill. (PPD)																			
at Indiana	9 / 23	11 / 19	11 / 16	25 / 21	--	56 / 79	-23	22-57 / 29-60	.386 / .483	2-12 / 6-19	.167 / .316	10-14 / 15-20	.714 / .750	35 / 35	7 / 19	25 / 16	0 / 3	7 / 13	20 / 18
Iowa	10 / 35	15 / 17	20 / 31	23 / 24	--	68 / 107	-39	23-62 / 40-74	.371 / .541	3-19 / 14-33	.158 / .424	19-29 / 13-20	.655 / .650	31 / 48	13 / 23	13 / 12	1 / 0	7 / 6	17 / 19
Ohio State	8 / 18	15 / 20	15 / 25	17 / 15	--	55 / 78	-23	20-58 / 29-64	.345 / .453	5-19 / 10-25	.263 / .400	10-13 / 10-12	.769 / .833	37 / 36	10 / 18	25 / 16	4 / 3	7 / 12	19 / 18
at Michigan	14 / 17	3 / 11	13 / 15	20 / 27	--	50 / 70	-20	19-59 / 25-58	.322 / .431	3-19 / 4-16	.158 / .250	9-13 / 16-22	.692 / .727	34 / 44	10 / 14	14 / 16	5 / 0	7 / 5	19 / 13
Michigan State (PPD)																			
at Northwestern	5 / 14	10 / 16	20 / 26	19 / 17	--	54 / 73	-19	22-53 / 28-65	.415 / .431	3-13 / 6-16	.231 / .375	7-12 / 11-16	.583 / .688	33 / 38	13 / 15	22 / 13	3 / 3	4 / 12	18 / 14
Nebraska	13 / 14	14 / 10	13 / 14	19 / 13	--	53 / 57	-3	23-62 / 16-54	.371 / .296	4-16 / 9-29	.250 / .321	3-6 / 16-22	.500 / .727	41 / 36	11 / 8	13 / 14	3 / 6	6 / 5	24 / 9
Penn State	18 / 18	14 / 15	20 / 28	24 / 19	--	76 / 80	-4	30-73 / 30-70	.411 / .429	10-21 / 8-23	.476 / .261	6-9 / 14-18	.667 / .778	42 / 43	18 / 15	12 / 10	4 / 2	4 / 6	16 / 13
at Wisconsin	17 / 16	5 / 20	16 / 21	19 / 12	--	57 / 69	-12	19-66 / 27-67	.288 / .403	4-16 / 7-18	.250 / .389	15-23 / 8-13	.652 / .615	40 / 50	6 / 16	14 / 20	4 / 2	12 / 7	18 / 20
at Michigan State																			
Purdue																			
at Minnesota																			
Indiana																			
at Maryland																			
at Rutgers																			
Northwestern																			
at Purdue																			
Minnesota																			



THE LAST TIME

Illinois scored 100 points or more	Nov. 24, 2018 vs. Sacramento State (Sacramento St. 109, Illinois 107)
Illinois scored 90 points or more	Nov. 24, 2015 vs. Tennessee State (Illinois 98, TSU 43)
Illinois scored 50 points or less	Jan. 10, 2021, 50 at No. 15 Michigan (Michigan 70, Illinois 50)
Illinois scored 40 points or less	Jan. 3, 2018, 37, at Rutgers (Rutgers 76, Illinois 37)
Illinois gave up 100 points or more	Jan. 3, 2021, 107, Iowa (Iowa 107, Illinois 68)
Illinois gave up 90 points or more	Jan. 20, 2019, 95, Iowa (Iowa 95, Illinois 74)
Illinois gave up 40 points or less	Dec. 2, 2016 vs. Fort Wayne (Illinois 56, Fort Wayne 33)
Illinois won by 40+ points	Nov. 24, 2015 vs. Tennessee State (Illinois 98, TSU 43)
Illinois won an overtime game	Nov. 9, 2019 vs. Holy Cross (Illinois 78, Holy Cross 75)
Illinois lost an overtime game	Dec. 28, 2018 vs. Indiana (Indiana 85, Illinois 83)
Illinois made 10 or more three-pointers	Jan. 28, 2021, 10, vs. Penn State (Penn State 80, Illinois 76)
An Illinois opponent made 10 or more three-pointers	Jan. 7, 2021, 10, Ohio State (Ohio State 78, Illinois 55)
An Illinois player scored 20+ points	Jan. 31, 2021, Jeanae Terry, 28 at Wisconsin (Wisconsin 69, Illinois 57)
An Illinois player scored 30+ points	Nov. 24, 2018, Alex Wittinger, 32 vs. Sacramento State (Sacramento St. 109, Illinois 107)
An Illinois player scored 40+ points	Jan. 14, 1996, Ashley Berggren, 43 at Minnesota (Illinois 87, Minnesota 76)
An opposing player scored 30+ points	Dec. 10, 2020, Sam Haiby, 33, at Nebraska (Nebraska 78, Illinois 72)
An opposing player scored 40+ points	Dec. 16, 1989, Carol Owens, 41 at Northern Illinois (Northern Illinois 110, Illinois 93)
An Illinois player had a triple-double	Jan. 23, 2018, Alex Wittinger at Penn State, 18 p, 10 r, 11 b (Penn State 68, Illinois 59)
An opposing player had a triple-double	Dec. 2, 2006, Armentie Price, Ole Miss, 34 p, 15 r, 12 st (Ole Miss 75, Illinois 50)
No Illini scored double figures	3/2, 2007, vs. Penn State at Big Ten Tournament (Penn State 61, Illinois 49 - Rebecca Harris had 8)
No opposing player scored double figures	Nov. 25, 2011, vs. Arizona State (Arizona State 51, Illinois 50)
Two Illini players had a double-double in the same game	Dec. 2, 2020, vs. Valparaiso, Jeanae Terry (16 pts, 13 rbs) & Kennedy Myles (14 pts, 11 rbs) (Valparaiso 62, Illinois 59)
An Illini had 15+ rebounds	Jan. 28, 2021, Jeanae Terry, 16, vs. Penn State (Penn State 80, Illinois 76)
An Illini had 20+ rebounds	Dec. 15, 2019, Kennedy Myles, 20, vs. Evansville (Illinois 59, Evansville 44)
An Illini had 25+ rebounds	Jan. 23, 1975, Betty Anderson, 30, vs. Eastern Illinois (Illinois 57, Eastern Illinois 51 (OT))
An opposing player had 15+ rebounds	Jan. 31, 2021, Imani Lewis, 16, at Wisconsin (Wisconsin 69, Illinois 57)
An opposing player had 20+ rebounds	Nov. 9, 2019, Lauren Manis, 21, Holy Cross (Illinois 78, Holy Cross 78 (OT))
An opposing player had 25+ rebounds	Never
An Illini had 10+ assists	Jan. 9, 2019, Brandi Beasley, 10 vs. Rutgers (Rutgers 71, Illinois 60)
An Illini had 15+ assists	Jan. 15, 2006, Maggie Acuna, 16, at Wisconsin (Illinois 84, Wisconsin 54)
An opposing player had 10+ assists	Dec. 5, 2019, Shayla Bennett, 10, North Carolina (North Carolina 85, Illinois 60)
An opposing player had 15+ assists	3/12, 1983, Debbie Hunter, 15, vs. Minnesota (Minnesota 89, Illinois 65)
An Illini player made 5+ three-pointers	Jan. 28, 2020, Jada Peebles, 5, vs. Penn State (Penn State 80, Illinois 76)
An Illini player made 8+ three-pointers	Nov. 29, 1997, Katie Coleman, 9, vs. Providence, at Puerto Rico (Illinois 106, Providence 74)
An Illini player made 10+ three-pointers	Never
An opposing player made 5+ threes	Dec. 31, 2019, 5, Makenzie Meyer, Iowa (Iowa 108, Iowa 72)
An opposing player made 8+ threes	Feb. 21, 2016, K. Mitchell, 8, at #5 Ohio State (Ohio State 117, Illinois 74)
Illinois shot 60 pct. FG or better	Nov. 22, 2010, .616 (45-73) vs. Cal Poly (Illinois 104, Cal Poly 63)
Illinois shot 30 pct. FG or lower	Jan. 31, 2021, .288 (19-66), at Wisconsin (Wisconsin 69, Illinois 57)
An opponent shot 60 pct. FG or better	Dec. 31, 2019, .650 (39-60), at Iowa (Iowa 108, Illinois 72)
An opponent shot 30 pct. FG or lower	Jan. 25, 2021, .296 (16-54) Nebraska (Nebraska 57, Illinois 53)
An opponent shot 25 pct. FG or lower	Nov. 21, 2013, .226 (14-62), Southern Illinois (SIU 43, Illinois 78)
An opponent shot 20 pct. FG or lower	Nov. 17, 2013, .152 (7-46), vs. Alcorn State (Illinois 112, Alcorn State 28)
Illinois forced 20 or more turnovers	Jan. 31, 2021, 20, at Wisconsin (Wisconsin 69, Illinois 57)
Illinois forced 30 or more turnovers	Feb. 25, 2015, 34, Michigan State (Michigan State 67, Illinois 65)
Illinois committed 30 or more turnovers	Dec. 2, 2006, 34, at Ole Miss (Ole Miss 75, Illinois 50)
Illinois had 20 or more steals	Nov. 14, 2014, 21, vs. IPFW (Illinois 70, IPFW 63)
An Illinois opponent had 20 or more steals	Dec. 2, 2006, 26, at Ole Miss (Ole Miss 75, Illinois 50)
Illinois blocked 10 or more shots	Jan. 23, 2018, 13, at Penn State (Penn State 68, Illinois 59)
Illinois won 5+ games in a row	Nov. 14, 2014-Nov. 27, 2014, 5-game streak
Illinois won 10+ games in a row	Nov. 20, 1981-Jan. 2, 1982, 10-game streak
Illinois lost 5+ games in a row	Dec. 10, 2020-Jan. 31, 2021, 9-game streak (current)
Illinois lost 10+ games in a row	Dec. 22, 2017-Feb. 28, 2018, 18-game streak
Illinois won 5+ in a row at home	Nov. 21, 2019-Dec. 15, 2019, 5-game streak
Illinois won 10+ in a row at home	Dec. 20, 1997-Jan. 5, 1999, 18-game streak
Illinois won 15+ in a row at home	Dec. 20, 1997-Jan. 5, 1999, 18-game streak
Illinois lost 5+ in a row at home	Jan. 23, 2020-Feb. 26, 2020, 6-game streak
Illinois lost 10+ in a row at home	Never
Illinois won 5+ in a row away from home	Dec. 9, 2012-Feb. 3, 2013, 6-game streak
Illinois won 10+ in a row away from home	Never





2020-21 Illinois Women's Basketball Combined Team Statistics All games

Page 1/1
as of Jan 31, 2021

Game Records

Record	Overall	Home	Away	Neutral
ALL GAMES	2-10	2-5	0-5	0-0
CONFERENCE	0-9	0-4	0-5	0-0
NON-CONFERENCE	2-1	2-1	0-0	0-0

Score by Periods

Team	1st	2nd	3rd	4th	OT	TOT
Illinois	155	149	202	215	0	721
Opponents	203	193	228	228	0	852

Team Box Score

No.	Player				Total		3-Point		F-Throw		Rebounds													
		GP-GS	MIN	AVG	FG-FGA	FG%	3FG-FGA	3FG%	FT-FTA	FT%	OFF	DEF	TOT	AVG	PF	DQ	A	TO	BLK	STL	PTS	AVG		
10	TERRY, Jeanae	12-12	352:42	29.4	55-130	.423	11-35	.314	30-43	.698	31	79	110	9.2	27	1	45	47	5	24	151	12.6		
11	PEEBLES, Jada	12-12	412:21	34.4	46-135	.341	16-58	.276	18-21	.857	2	21	23	1.9	19	0	24	22	5	12	126	10.5		
44	MYLES, Kennedy	12-12	359:35	30.0	48-136	.353	1-7	.143	25-42	.595	32	64	96	8.0	42	3	15	29	4	14	122	10.2		
22	RUBIN, Eva	11-11	261:56	23.8	37-74	.500	0-0	.000	21-31	.677	15	27	42	3.8	28	1	1	17	16	5	95	8.6		
32	NYE, Aaliyah	7-0	123:20	17.6	18-42	.429	8-23	.348	4-6	.667	5	7	12	1.7	15	0	3	5	2	3	48	6.9		
0	EPHRAIM, J-Naya	12-11	343:26	28.6	21-76	.276	5-26	.192	22-35	.629	2	31	33	2.8	24	2	27	40	1	9	69	5.8		
14	LOPES, Geovana	4-1	63:31	15.9	9-22	.409	0-0	.000	2-7	.286	6	6	12	3.0	9	0	4	6	0	3	20	5.0		
3	AMUSAN, Solape	12-0	149:39	12.5	18-51	.353	7-28	.250	6-10	.600	8	13	21	1.8	22	0	5	7	4	4	49	4.1		
2	ROBINS, Lyric	12-1	152:59	12.7	9-43	.209	2-21	.095	3-5	.600	9	12	21	1.8	20	0	4	10	1	6	23	1.9		
20	PORTER, Erika	6-0	33:04	5.5	3-3	1.000	0-0	.000	1-2	.500	0	4	4	0.7	2	0	0	3	1	0	7	1.2		
21	MCQUEEN, Aaliyah	8-0	86:18	10.8	3-26	.115	3-12	.250	0-0	.000	4	21	25	3.1	7	0	6	7	0	2	9	1.1		
13	O'MALLEY, Tara	4-0	12:58	3.2	0-1	.000	0-0	.000	2-2	1.000	0	1	1	0.3	4	0	0	0	0	1	2	0.5		
1	PANAGIOTOPOULOU, Nancy	10-0	48:10	4.8	0-3	.000	0-2	.000	0-0	.000	1	5	6	0.6	4	0	0	1	1	0	0	0.0		
Team											27	29	56					4						
Total		12	2400		267-742	.360	53-212	.250	134-204	.657	142	320	462	38.5	223	7	134	198	40	83	721	60.1		
Opponents		12	2400		303-737	.411	83-251	.331	163-219	.744	136	342	478	39.8	195	2	167	189	32	94	852	71.0		

Team Statistics

	ILLINI	OPP
Scoring	721	852
Points per game	60.1	71.0
Scoring margin	-10.9	-
Field goals-att	267-742	303-737
Field goal pct	.360	.411
3 point fg-att	53-212	83-251
3-point FG pct	.250	.331
3-pt FG made per game	4.4	6.9
Free throws-att	134-204	163-219
Free throw pct	.657	.744
F-Throws made per game	11.2	13.6
Rebounds	462	478
Rebounds per game	38.5	39.8
Rebounding margin	-1.3	-
Assists	134	167
Assists per game	11.2	13.9
Turnovers	198	189
Turnovers per game	16.5	15.8
Turnover margin	-0.8	-
Assist/turnover ratio	0.7	0.9
Steals	83	94
Steals per game	6.9	7.8
Blocks	40	32
Blocks per game	3.3	2.7
Winning streak	0	-
Home win streak	0	-
Attendance	209	50
Home games-Avg/Game	7-30	5-10
Neutral site-Avg/Game	-	0-0

Team Results

Date	Opponent		Score	Att.
11/25/2020	Indiana St.	W	68-49	103
12/02/2020	Valparaiso	L	59-62	0
12/06/2020	Omaha	W	53-50	106
12/10/2020	at Nebraska	L	72-78	0
12/31/2020	at Indiana	L	56-79	0
01/03/2021	Iowa	L	68-107	0
01/07/2021	Ohio St.	L	55-78	0
01/10/2021	at Michigan	L	50-70	50
01/21/2021	at Northwestern	L	54-73	0
01/25/2021	Nebraska	L	53-57	0
01/28/2021	Penn St.	L	76-80	0
01/31/2021	at Wisconsin	L	57-69	0





2020-21 Illinois Women's Basketball Combined Team Statistics In Conference games

Page 1/1
as of Jan 31, 2021

Game Records

Record	Overall	Home	Away	Neutral
ALL GAMES	0-9	0-4	0-5	0-0
CONFERENCE	0-9	0-4	0-5	0-0
NON-CONFERENCE	0-0	0-0	0-0	0-0

Score by Periods

Team	1st	2nd	3rd	4th	OT	TOT
Illinois	115	106	142	178	0	541
Opponents	176	146	192	177	0	691

Team Box Score

No.	Player				Total		3-Point		F-Throw		Rebounds											
		GP-GS	MIN	AVG	FG-FGA	FG%	3FG-FGA	3FG%	FT-FTA	FT%	OFF	DEF	TOT	AVG	PF	DQ	A	TO	BLK	STL	PTS	AVG
10	TERRY, Jeanae	9-9	26:43	29.4	40-95	.421	7-23	.304	22-33	.667	20	62	82	9.1	23	1	37	37	4	19	109	12.1
11	PEEBLES, Jada	9-9	31:06	35.3	35-108	.324	13-47	.277	12-15	.800	2	16	18	2.0	16	0	17	15	2	8	95	10.6
44	MYLES, Kennedi	9-9	27:42	30.5	36-104	.346	1-4	.250	18-29	.621	19	46	65	7.2	33	3	9	23	2	9	91	10.1
32	NYE, Aaliyah	4-0	83:31	20.9	14-31	.452	7-18	.389	2-2	1.000	2	3	5	1.3	9	0	3	5	1	3	37	9.3
22	RUBIN, Eva	9-9	21:26	24.3	32-63	.508	0-0	.000	16-26	.615	14	17	31	3.4	22	1	1	11	12	3	80	8.9
0	EPHRAIM, J-Naya	9-8	24:18	27.5	14-53	.264	3-17	.176	13-21	.619	0	24	24	2.7	21	2	22	32	0	6	44	4.9
3	AMUSAN, Solape	9-0	11:53	13.1	16-40	.400	7-21	.333	4-4	1.000	7	9	16	1.8	18	0	5	5	2	4	43	4.8
2	ROBINS, Lyric	9-1	11:37	13.3	9-36	.250	2-17	.118	2-3	.667	7	10	17	1.9	16	0	4	9	1	6	22	2.4
14	LOPES, Geovana	1-0	15:52	15.9	1-3	.333	0-0	.000	0-2	.000	1	0	1	1.0	3	0	0	0	0	1	2	2.0
21	MCQUEEN, Aaliyah	5-0	66:38	13.3	3-22	.136	3-10	.300	0-0	.000	4	17	21	4.2	4	0	6	4	0	2	9	1.8
20	PORTER, Erika	6-0	33:04	5.5	3-3	1.000	0-0	.000	1-2	.500	0	4	4	0.7	2	0	0	3	1	0	7	1.2
13	O'MALLEY, Tara	3-0	11:30	3.8	0-1	.000	0-0	.000	2-2	1.000	0	1	1	0.3	4	0	0	0	0	1	2	0.7
1	PANAGIOTOPOULOU, Nancy	7-0	28:20	4.0	0-2	.000	0-1	.000	0-0	.000	0	4	4	0.6	4	0	0	1	1	0	0	0.0
Team											20	19	39					1				
Total		9	1800		203-561	.362	43-158	.272	92-139	.662	96	232	328	36.4	175	7	104	146	26	62	541	60.1
Opponents		9	1800		247-569	.434	67-193	.347	130-175	.743	110	267	377	41.9	139	2	139	134	27	70	691	76.8

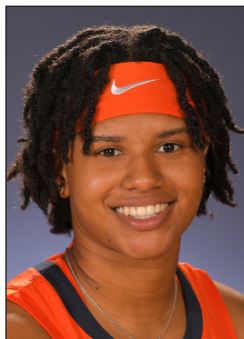
Team Statistics

	ILLINI	OPP
Scoring	541	691
Points per game	60.1	76.8
Scoring margin	-16.7	-
Field goals-att	203-561	247-569
Field goal pct	.362	.434
3 point fg-att	43-158	67-193
3-point FG pct	.272	.347
3-pt FG made per game	4.8	7.4
Free throws-att	92-139	130-175
Free throw pct	.662	.743
F-Throws made per game	10.2	14.4
Rebounds	328	377
Rebounds per game	36.4	41.9
Rebounding margin	-5.4	-
Assists	104	139
Assists per game	11.6	15.4
Turnovers	146	134
Turnovers per game	16.2	14.9
Turnover margin	-1.3	-
Assist/turnover ratio	0.7	1.0
Steals	62	70
Steals per game	6.9	7.8
Blocks	26	27
Blocks per game	2.9	3.0
Winning streak	0	-
Home win streak	0	-
Attendance	0	50
Home games-Avg/Game	4-0	5-10
Neutral site-Avg/Game	-	0-0

Team Results

Date	Opponent		Score	Att.
12/10/2020	at Nebraska	L	72-78	0
12/31/2020	at Indiana	L	56-79	0
01/03/2021	Iowa	L	68-107	0
01/07/2021	Ohio St.	L	55-78	0
01/10/2021	at Michigan	L	50-70	50
01/21/2021	at Northwestern	L	54-73	0
01/25/2021	Nebraska	L	53-57	0
01/28/2021	Penn St.	L	76-80	0
01/31/2021	at Wisconsin	L	57-69	0





J-NAYA EPHRAIM

0

5-9 // SOPHOMORE // GUARD

ST. CROIX, U.S. VIRGIN ISLANDS

SOUTHERN DURHAM

CAREER STATISTICS

CAREER STATISTICS																											
	Total														3-Point				F-Throw				Rebounds				
Year	GP	GS	Min	Avg	FG	FGA	Pct	FG	FGA	Pct	FT	FTA	Pct	Off	Def	Tot	Avg	PF	FO	Ast	TO	Blk	Stl	Pts	Avg		
2018-19	28	4	522	18.6	34	96	.354	3	18	.167	25	35	.714	10	63	73	2.6	44	1	37	42	3	15	96	3.4		
2019-20	30	16	539	18.0	29	97	.299	3	19	.158	27	45	.600	7	67	74	2.5	40	0	47	50	3	26	88	2.9		
2020-21	12	11	340	28.3	21	76	.276	5	26	.192	22	35	.629	2	31	33	2.8	24	2	27	40	1	9	69	5.8		
Total	70	31	1401	20.0	84	269	.312	11	63	.175	74	115	.643	19	161	180	2.6	108	3	111	132	7	50	253	3.6		

AT ILLINOIS

2019-20 SOPHOMORE

- Recorded a career-high 11 points at Nebraska (12/10).

2019-20 SOPHOMORE

- Appeared in all 30 games for Illinois, earning 16 starts
- Averaged 17.9 minutes played and 2.9 points per game
- Pulled down 2.5 boards per game and ranked third on the team with 1.6 assists per game
- Scored a season-most 10 points in a win over Austin Peay (Nov. 13), hitting 2-of-2 FGs and connecting on a career-best six free throws
- Notched career-highs with nine rebounds and six assists vs. Merrimack (Dec. 10)

2018-19 FRESHMAN

- Appeared in 28 games for Illinois, earning four starts on the season
- Averaged 18.7 minutes played and 3.4 points per game
- Grabbed eight rebounds against Alabama A&M (Nov. 7) in her debut
- Career-best 11 points and three steals at Northwestern 12/31/18
- First career start and career-high five assists in road win at No. 12 Minnesota 11/6/19

HIGH SCHOOL

- Four-time All-Big Eighth Conference
- Two-time All-State
- NCBCA 2017 First Team All-District
- 2017 Big Eight Conference Player of the Year
- RDU All-Star Game
- Represented the Virgin Islands on the U16 and U17 National Teams
- Four-year member of the A/B Honor Roll
- Chose Illinois over Temple and James Madison

PERSONAL

- Daughter of Rodney Ephraim and Vanessa Richardson-Fieulleateau
- Born January 7, 2000
- Has three siblings, J-Meka, John and Rasidi
- Lists Russell Westbrook as her favorite professional athlete
- Major: Undeclared

2020-21 GAME-BY-GAME STATISTICS

Opponent	Date	MIN	FG	FG%	3FG	3%	FT	FT%	OR	DR	REB	AVG	PF	A	T/O	BLK	STL	PTS	AVG	
Indiana State	11/25/20 *	28	2-4	.500	1-1	1.000	4-4	1.000	0	3	3	3.0	0	3	2	1	1	9	9.0	
Valparaiso	12/2/20 *	34	2-8	.250	0-1	.000	3-7	.429	1	2	3	3.0	1	0	2	1	2	7	8.0	
Omaha	12/6/20 *	35	3-11	.273	1-7	.143	2-3	.667	1	2	3	3.0	2	2	4	0	0	9	8.3	
at Nebraska	12/10/20 *	33	4-12	.333	1-2	.500	2-3	.667	0	4	4	3.3	5	4	2	0	2	11	9.0	
Michigan	12/19/20	PPD																		
S. Illinois	12/22/210	PPD																		
at Indiana	12/31/20	13	1-4	.250	0-0	.000	2-2	1.000	0	0	0	2.6	5	1	4	0	0	4	8.0	
Iowa	1/3/21 *	21	0-3	.000	0-2	.000	3-6	.500	0	1	1	2.3	0	2	4	0	0	3	7.2	
Ohio State	1/7/21 *	28	2-4	.500	0-1	.000	0-0	.000	0	3	3	2.4	2	3	6	0	0	4	6.7	
at Michigan	1/10/21 *	32	1-8	.125	1-3	.333	1-2	.500	0	3	3	2.5	2	3	4	0	1	4	6.4	
Michigan St.	1/14/21	PPD																		
at Northwestern	1/21/21 *	28	1-4	.250	0-3	.000	2-2	1.000	0	3	3	2.6	2	4	3	0	0	4	6.1	
Nebraska	1/25/21 *	31	3-5	.600	1-2	.500	1-2	.500	0	5	5	2.8	3	2	3	0	0	8	6.3	
Penn State	1/28/21 *	23	1-5	.200	0-2	.000	2-2	1.000	0	2	2	2.7	1	2	2	0	1	4	6.1	
at Wisconsin	1/31/21 *	34	1-8	.125	0-2	.000	0-2	.000	0	3	3	2.8	1	1	4	0	2	2	5.8	
at Michigan St.	2/4/21																			
Purdue	2/7/21																			
at Minnesota	2/10/21																			
Indiana	2/14/21																			
at Maryland	2/17/21																			
at Rutgers	2/20/21																			
Northwestern	2/25/21																			
at Purdue	2/28/21																			
Minnesota	3/5/21																			
Total		11	340	21-76	.276	5-26	.192	22-35	.629	2	31	33	2.8	24	27	40	1	9	69	5.8

CAREER HIGHS

Pts: 11 (2x, last at Nebraska 12/10/20)
Rebs: 9 (vs. Merrimack, 12/10/19)
FGM: 5 (at Northwestern, 12/31/18)
FGA: 12 (at Nebraska 12/10/20)
3FGM: 1 (11x, last vs. Nebraska, 1/25/21)
3FGA: 7 (vs. Omaha, 12/6/20)
FTM: 6 (vs. Austin Peay, 11/13/19)
FTA: 8 (vs. Austin Peay, 11/13/19)
Ast: 6 (vs. Merrimack, 12/10/19)
Blk: 1 (6x, last vs. Valparaiso, 12/2/20)
Stl: 3 (2x, last vs. Bryant, 11/24/19)
Min: 35 (vs. Omaha, 12/6/20)





NANCY PANAGIOTOPOULOU

6-3 // REDSHIRT JUNIOR // FORWARD

ATHENS, GREECE

AMERICAN COMMUNITY SCHOOLS OF ATHENS

CAREER STATISTICS

Year	GP	GS	Min	Avg	FG	Total FGA	Pct	3-Point FG	3-Point FGA	Pct	FT	F-Throw FTA	Pct	Off	Def	Tot	Avg	PF	FO	Ast	TO	Blk	Stl	Pts	Avg
2017-18	-	-	-	-	-	-	-	-	-	-	-	-	-	-	-	-	-	-	-	-	-	-	-	-	-
2018-19	-	-	-	-	-	-	-	-	-	-	-	-	-	-	-	-	-	-	-	-	-	-	-	-	-
2019-20	8	0	45	5.6	4	6	.667	0	0	.000	1	2	.500	0	6	6	0.8	7	0	0	2	0	0	9	1.1
2020-21	10	0	49	5.9	0	3	.000	0	2	.000	0	0	.000	1	5	6	0.6	4	0	0	1	1	0	0	0.0
Total	17	0	94	5.8	4	9	.444	0	2	.000	1	2	.500	1	11	12	0.7	11	0	0	3	1	0	9	0.5

HONORS

- 2019 Academic All-Big Ten
- 2020 Academic All-Big Ten

AT ILLINOIS

2020-21 – REDSHIRT-JUNIOR

- Played in nine of the team's first 11 games this season after missing.

2019-20 – REDSHIRT-SOPHOMORE

- Appeared in nine games for the Orange and Blue
- Averaged 5.1 minutes per contest
- Made Illini debut vs. No. 20 Maryland (Jan. 23), tallying season-bests with four points and four rebounds in 11 minutes
- Missed first 17 games of the season due to injury suffered during the preseason

2018-19 – REDSHIRT-FRESHMAN

- Did not appear in a game
- Missed season due to injury

2017-18 – FRESHMAN

- Did not appear in a game

HIGH SCHOOL

- Represented Greece in the 2015 FIBA U16 Women's European Championship
- Represented Greece in the 2016 FIBA U18 Women's European Championship
- 2016 American Community Schools of Athens Player of the Year
- Played club basketball in Kallitheas, Greece for team Ikaros and for Kronos Agios Dimitriou
- Led Kronos to the Pan-hellenic Final Four twice
- Two-time Regional Champion with Kronos
- High school team MVP in 2016
- Earned High Honor Roll and Honor Roll status in all semesters of high school

PERSONAL

- Full name is Athanasia Panagiotopoulou-Andritsopoulou
- Pronounced Ah-tha-NA-see-uh Pa-na-yo-toe-pou-lou Ahn-dreet-so-pou-lou
- Daughter of Athanasios Panagiotopoulos and Vasiliki Andritsopoulou
- Born February 9, 1999
- One brother, Dimitris-Theodore
- Major: Recreation, Sport & Tourism

2020-21 GAME-BY-GAME STATISTICS

Opponent	Date	MIN	FG	FG%	3FG	3%	FT	FT%	OR	DR	REB	AVG	PF	A	T/O	BLK	STL	PTS	AVG
Indiana State	11/25/20	7	0-1	.000	0-1	.000	0-0	.000	0	0	0	0.0	0	0	0	0	0	0	0.0
Valparaiso	12/2/20	11	0-0	.000	0-0	.000	0-0	.000	0	1	1	0.5	0	0	0	0	0	0	0.0
Omaha	12/6/20	2	0-0	.000	0-0	.000	0-0	.000	1	0	1	0.7	0	0	0	0	0	0	0.0
at Nebraska	12/10/20	3	0-0	.000	0-0	.000	0-0	.000	0	0	0	0.5	0	0	0	0	0	0	0.0
Michigan	12/19/20	PPD																	
S. Illinois	12/22/20	PPD																	
at Indiana	12/31/20	7	0-0	.000	0-0	.000	0-0	.000	0	1	1	0.6	1	0	0	0	0	0	0.0
Iowa	1/3/21	DNP																	
Ohio State	1/7/21	9	0-2	.000	0-1	.000	0-0	.000	0	1	1	0.7	1	0	1	1	0	0	0.0
at Michigan	1/10/21	2	0-0	.000	0-0	.000	0-0	.000	0	0	0	0.6	2	0	0	0	0	0	0.0
Michigan St.	1/14/21	PPD																	
at Northwestern	1/21/21	6	0-0	.000	0-0	.000	0-0	.000	0	2	2	0.8	0	0	0	0	0	0	0.0
Nebraska	1/25/21	1	0-0	.000	0-0	.000	0-0	.000	0	0	0	0.7	0	0	0	0	0	0	0.0
Penn State	1/28/21	DNP																	
at Wisconsin	1/31/21	1	0-0	.000	0-0	.000	0-0	.000	0	0	0	0.6	0	0	0	0	0	0	0.0
at Michigan St.	2/4/21																		
Purdue	2/7/21																		
at Minnesota	2/10/21																		
Indiana	2/14/21																		
at Maryland	2/17/21																		
at Rutgers	2/20/21																		
Northwestern	2/25/21																		
at Purdue	2/28/21																		
Minnesota	3/5/21																		
Total		49	0-3	.000	0-2	.000	0-0	.000	1	5	6	0.6	4	0	1	1	0	0	0.0

CAREER HIGHS

Pts:	4 (vs. #20 Maryland, 1/23/20)
Rebs:	4 (vs. #20 Maryland, 1/23/20)
FGM:	2 (vs. #20 Maryland, 1/23/20)
FGA:	2 (2x, last vs. Ohio State, 1/7/21)
3FGM:	--
3FGA:	1 (2x, last vs. Ohio State, 1/7/21)
FTM:	1 (at #14 Northwestern, 2/29/20)
FTA:	2 (at #14 Northwestern, 2/29/20)
Ast:	--
Blk:	1 (vs. Ohio State, 1/7/21)
Stl:	--
Min:	11 (2x, last vs.. Valparaiso, 12/2/20)





LYRIC ROBINS

2

5-11 // SENIOR // FORWARD

PLANO, TEXAS

PLANO WEST

CAREER STATISTICS

Year	GP	GS	Min	Avg	FG	Total FGA	Pct	FG	3-Point FGA	Pct	FT	F-Throw FTA	Pct	Rebounds Off	Def	Tot	Avg	PF	F0	Ast	TO	Blk	Stl	Pts	Avg
2017-18	23	0	190	8.3	18	66	.273	1	10	.100	11	16	.688	10	25	35	1.5	26	1	6	17	0	8	48	2.1
2018-19	26	0	101	3.9	10	27	.370	2	8	.250	4	5	.800	7	8	15	0.6	17	0	5	8	0	0	26	1.0
2019-20	12	0	57	4.8	4	11	.364	1	5	.200	1	6	.167	3	6	9	0.8	10	0	0	6	3	3	10	0.8
2020-21	12	1	154	12.8	9	43	.209	2	21	.095	3	5	.600	9	12	21	20	0	4	0.3	10	1	6	23	1.9
Total	73	1	502	6.9	41	147	.279	6	44	.136	19	32	.594	29	51	80	73	1	15	0.2	41	4	17	107	1.5

HONORS

- 2019 Academic All-Big Ten

AT ILLINOIS

2020-21— SENIOR

- Made first-career start and tallied seven points and two rebounds in 26 minutes at Indiana (12/31).

2019-20— JUNIOR

- Appeared in 12 games for the Illini
- Averaged 0.8 points, 0.8 rebounds while playing 4.8 minutes per contest
- Played a season-high 13 minutes in the Illini's season-opening win over Chicago State (Nov. 5)
- Notched a season-best five points at Iowa (Dec. 31)

2018-19— SOPHOMORE

- Appeared in 26 games
- Played a season-high 17 minutes against Penn State 2/24/19
- Career-high eight points at Iowa 2/14/19

2017-18— FRESHMAN

- Made 23 appearances
- Career-high eight points against Iowa 1/7/18
- Career-high five rebounds against Nebraska 1/10/18

HIGH SCHOOL

- 2017 McDonald's All-American Nominee
- Averaged 11.3 points and 7.0 rebounds per game as a senior
- Led Plano West to a 25-9 record as senior
- 2016 and 2017 All-Conference Small Forward
- 2017 6-6A All-District First Team selection
- Played in the Nike Elite Youth Basketball League for DFW Elite

PERSONAL

- Born February 18, 1999
- Daughter of George and Tanisha Robins
- Three siblings, Sariah, Mykah and Ellyan
- Lists Kawhi Leonard as her favorite athlete
- Major: Community Psychology

2020-21 GAME-BY-GAME STATISTICS

Opponent	Date	MIN	FG	FG%	3FG	3%	FT	FT%	OR	DR	REB	AVG	PF	A	T/O	BLK	STL	PTS	AVG	
Indiana State	11/25/20	8	0-0	.000	0-0	.000	1-2	.500	0	1	1	1.0	2	0	1	0	0	1	1.0	
Valparaiso	12/2/20	16	0-5	.000	0-2	.000	0-0	.000	1	0	1	1.0	2	0	0	0	0	0	0.5	
Omaha	12/6/20	10	0-2	.000	0-2	.000	0-0	.000	1	1	2	1.3	0	0	0	0	0	0	0.3	
at Nebraska	12/10/20	9	0-1	.000	0-1	.000	0-0	.000	0	1	1	1.3	1	1	0	0	0	0	0.3	
Michigan	12/19/20	PPD																		
S. Illinois	12/22/210	PPD																		
at Indiana	12/31/20 *	26	3-10	.300	0-2	.000	1-1	1.000	2	0	2	1.4	1	0	2	0	0	7	1.6	
Iowa	1/3/21	27	2-9	.222	1-5	.200	1-2	.500	1	4	5	2.0	4	1	3	0	0	6	2.3	
Ohio State	1/7/21	13	0-3	.000	0-2	.000	0-0	.000	1	1	2	2.0	2	0	1	0	1	0	2.0	
at Michigan	1/10/21	11	3-6	.500	1-4	.250	0-0	.000	0	2	2	2.0	2	0	0	0	2	7	2.6	
Michigan St.	1/14/21	PPD																		
at Northwestern	1/21/21	3	0-1	.000	0-0	.000	0-0	.000	1	0	1	1.9	1	0	1	0	0	0	2.3	
Nebraska	1/25/21	13	1-2	.500	0-1	.000	0-0	.000	0	2	2	1.9	2	1	1	0	1	2	2.3	
Penn State	1/28/21	4	0-0	.000	0-0	.000	0-0	.000	0	0	0	1.7	1	0	1	0	0	0	2.1	
at Wisconsin	1/31/21	13	0-4	.000	0-2	.000	0-0	.000	2	0	2	1.8	2	1	0	1	2	0	1.9	
at Michigan St.	2/4/21																			
Purdue	2/7/21																			
at Minnesota	2/10/21																			
Indiana	2/14/21																			
at Maryland	2/17/21																			
at Rutgers	2/20/21																			
Northwestern	2/25/21																			
at Purdue	2/28/21																			
Minnesota	3/5/21																			
Total		1	153	9-43	.209	2-21	.095	3-5	.600	9	12	21	1.8	20	4	10	1	6	23	1.9

CAREER HIGHS

Pts: 8 (2x, last at Iowa, 2/14/19)
Rebs: 5 (vs. Iowa, 1/3/21)
FGM: 4 (at Iowa, 2/14/19)
FGA: 10 (at Indiana, 12/31/20)
3FGM: 1 (6x, last at No. 15 Michigan 1/10/21)
3FGA: 5 (vs. Iowa, 1/3/21)
FTM: 2 (5x, last vs. Eastern Michigan, 12/1/18)
FTA: 4 (vs. Michigan State, 1/16/18)
Ast: 1 (15x, last at Wisconsin, 1/31/21)
Blk: 1 (4x, last at Wisconsin, 1/31/21)
Stl: 2 (3x, last at Wisconsin, 1/31/21)
Min: 27 (vs. Iowa, 1/3/21)





SOLAPE AMUSAN

3

6-1 // SOPHOMORE // FORWARD

WOODBURY, MINNESOTA

WOODBURY H.S. / IOWA WESTERN C.C.

CAREER STATISTICS

CAREER STATISTICS																										
					Total			3-Point			F-Throw			Rebounds												
Year	GP	GS	Min	Avg	FG	FGA	Pct	FG	FGA	Pct	FT	FTA	Pct	Off	Def	Tot	Avg	PF	FO	Ast	TO	Blk	Stl	Pts	Avg	
2020-21	12	0	150	12.5	18	51	.353	7	28	.250	6	10	.600	8	13	21	1.8	22	0	5	7	4	4	49	4.1	
Total	12	0	150	12.5	18	51	.353	7	28	.250	6	10	.600	8	13	21	1.8	22	0	5	7	4	4	49	4.1	

ILLINOIS

2020-21 – SOPHOMORE

- Had a breakout game with 13 points at Nebraska (12/10), and notched her second-career double-digit scoring game with 10 points against Iowa (1/3).

IOWA WESTERN

2019-20 – FRESHMAN

- Played in 27 games with eight starts as a freshman for the Reivers
- Averaged 8.3 points and 4.4 rebounds on .372 shooting from the floor, including nearly 31% from three-point range
- Scored in double-figures eight times
- Posted a career-high 18 points in a 73-56 win at Cloud County C.C. (2/2/20)
- Recorded one double-double with 15 points and a career-high 12 rebounds in a win at Mineral Area College (12/14/19)

HIGH SCHOOL

- Averaged 12.4 points and 8.0 rebounds per game in her senior season at Woodbury
- Two-time Suburban East All-Conference honoree
- Was ranked among the top 100 players in the class of 2019 by Prep Girls Hoops
- Played for the Minnesota Fury for two seasons

PERSONAL

- Daughter of Kolawole and Patricia Amusan
- Born December 3, 2000
- Has three brothers: Korede, Kolade, and Kayode.
- Has three brothers: Korede, Kolade, and Kayode.
- Brother Kolade Amusan plays linebacker for the Davenport University football
- Lists Maya Moore as her favorite athlete
- Majoring in kinesiology with a minor in business

2020-21 GAME-BY-GAME STATISTICS

Opponent	Date	MIN	FG	FG%	3FG	3%	FT	FT%	OR	DR	REB	AVG	PF	A	T/O	BLK	STL	PTS	AVG
Indiana State	11/25/20	10	1-5	.200	0-3	.000	0-0	.000	1	0	1	1.0	3	0	0	1	0	2	2.0
Valparaiso	12/2/20	16	1-5	.200	0-3	.000	2-6	.333	0	3	3	2.0	0	0	2	1	0	4	3.0
Omaha	12/6/20	5	0-1	.000	0-1	.000	0-0	.000	0	1	1	1.7	1	0	0	0	0	0	2.0
at Nebraska	12/10/20	14	5-8	.625	3-5	.600	0-0	.000	1	0	1	1.5	3	1	0	1	0	13	4.8
Michigan	12/19/20	PPD																	
S. Illinois	12/22/210	PPD																	
at Indiana	12/31/20	23	2-8	.250	1-3	.333	2-2	1.000	2	4	6	2.4	4	3	2	0	3	7	5.2
Iowa	1/3/21	14	3-7	.429	2-4	.500	2-2	1.000	2	3	5	2.8	1	0	0	0	0	10	6.0
Ohio State	1/7/21	21	3-8	.375	1-4	.250	0-0	.000	0	1	1	2.6	2	0	1	0	1	7	6.1
at Michigan	1/10/21	11	0-0	.000	0-0	.000	0-0	.000	1	0	1	2.4	2	0	1	0	0	0	5.4
Michigan St.	1/14/21	PPD																	
at Northwestern	1/21/21	14	1-3	.333	0-1	.000	0-0	.000	0	0	0	2.1	3	0	1	1	0	2	5.0
Nebraska	1/25/21	14	1-5	.200	0-4	.000	0-0	.000	1	1	2	2.1	2	1	0	0	0	2	4.7
Penn State	1/28/21	6	1-1	1.000	0-0	.000	0-0	.000	0	0	0	1.9	0	0	0	0	0	2	4.5
at Wisconsin	1/31/21	2	0-0	.000	0-0	.000	0-0	.000	0	0	0	1.8	1	0	0	0	0	0	4.1
at Michigan St.	2/4/21																		
Purdue	2/7/21																		
at Minnesota	2/10/21																		
Indiana	2/14/21																		
at Maryland	2/17/21																		
at Rutgers	2/20/21																		
Northwestern	2/25/21																		
at Purdue	2/28/21																		
Minnesota	3/5/21																		
Total		150	18-51	.353	7-28	.250	6-10	.600	8	13	21	1.8	22	5	7	4	4	49	4.1

CAREER HIGHS

- Pts:** 13 (at Nebraska, 12/10/20)
- Rebs:** 6 (at Indiana, 12/31/20)
- FGM:** 5 (at Nebraska, 12/10/20)
- FGA:** 8 (3x, last vs. Ohio State, 1/7/21)
- 3FGM:** 3 (at Nebraska, 12/10/20)
- 3FGA:** 5 (at Nebraska, 12/10/20)
- FTM:** 2 (3x, last vs. Iowa, 1/3/21)
- FTA:** 6 (vs. Valparaiso, 12/2/20)
- Ast:** 3 (at Indiana, 12/31/20)
- Blk:** 1 (4x, last at Northwestern, 1/21/21)
- Stl:** 3 (at Indiana, 12/31/20)
- Min:** 23 (at Indiana, 12/31/20)





JEANAE TERRY

10

5-11 // SOPHOMORE // GUARD

DETROIT, MICHIGAN

WAYNE MEMORIAL

CAREER STATISTICS

Year	GP	GS	Min	Avg	FG	Total FGA	Pct	3-Point FG	3-Point FGA	3-Point Pct	FT	F-Throw FTA	Pct	Off	Def	Rebounds Tot	Avg	PF	F0	Ast	TO	Blk	Stl	Pts	Avg
2019-20	30	11	691	23.0	65	225	.289	15	57	.263	40	66	.606	34	79	113	3.8	55	1	91	50	17	35	185	6.2
2020-21	12	12	358	29.8	55	130	.423	11	35	.314	30	43	.698	31	79	110	9.2	27	1	45	47	5	24	151	12.6
Total	42	23	1049	25.0	120	355	.338	26	92	.283	70	109	.642	65	158	223	5.3	82	2	136	97	22	59	336	8.0

AT ILLINOIS

2020-21 – SOPHOMORE

- Opened season with career-high 24 points, and matched a personal best with eight rebounds, vs. Indiana State (11/25).
- Became only the 24th player in NCAA Division I women's college basketball since 1999-00, the first this season to record a line of at least 21 points, 16 rebounds, and 8 assists, vs. Penn State (1/28).
- Recorded her second-consecutive 20-point double-double with a career-best 28 points, to go with 11 rebounds at Wisconsin (1/31).

2019-20 – FRESHMAN

- Played in all 30 games, earning starts in the final 11 contest
- Recorded a team-leading 91 assists (3.03 per game)
- With only 50 turnovers, she also paced the team with an assist-to-turnover ratio of 1.82, sixth in the Big Ten and 81st nationally
- Her assist-to-turnover ratio ranked sixth among NCAA Division I freshmen
- Ranked second on the team with 113 rebounds (3.8 rpg), posting five games as the team's top rebounder
- Her seven assists at Penn State (Feb. 9) marked the most by an Illini in 2019-20...Notched career highs with 15 points, five steals, and three three-pointers vs. #20 Indiana (Feb. 13)
- Blocked four shots in her Illinois debut against Chicago State (Nov. 5), the highest single-game block total on the team
- Tallied seven games in double-figures scoring

HIGH SCHOOL-

- Ranked as the No. 18 guard in Class of 2019 by ESPN Hoopgurlz
- Two-time Class A All-State
- Led Wayne Memorial to its first Regional Championship in 2018 and a Class A Final Four appearance
- Averaged 17.1 points, 7.0 rebounds and 5.8 assists as a senior
- Recipient of the the BGCSM Entrepreneurship Award

PERSONAL

- Daughter of Tomilia Terry
- Born October 11, 2001
- One brother, James
- Lists Maya Moore as her favorite athlete because of her aggressiveness
- Major: Community Health

2020-21 GAME-BY-GAME STATISTICS

Opponent	Date	MIN	FG	FG%	3FG	3%	FT	FT%	OR	DR	REB	AVG	PF	A	T/O	BLK	STL	PTS	AVG	
Indiana State	11/25/20 *	28	8-10	.800	3-4	.750	5-6	.833	2	6	8	8.0	2	1	2	1	3	24	24.0	
Valparaiso	12/2/20 *	32	6-18	.333	1-6	.167	3-4	.750	5	8	13	10.5	1	3	3	0	0	16	20.0	
Omaha	12/6/20 *	28	1-7	.143	0-2	.000	0-0	.000	4	3	7	9.3	1	4	5	0	2	2	14.0	
at Nebraska	12/10/20 *	15	1-4	.250	0-1	.000	1-2	.500	1	6	7	8.8	0	2	0	1	3	3	11.3	
Michigan	12/19/20	PPD																		
S. Illinois	12/22/210	PPD																		
at Indiana	12/31/20 *	29	0-4	.000	0-1	.000	2-4	.500	3	8	11	9.2	1	3	5	0	0	2	9.4	
Iowa	1/3/21 *	32	4-6	.667	0-1	.000	1-4	.250	2	6	8	9.0	3	8	2	0	2	9	9.3	
Ohio State	1/7/21 *	35	4-12	.333	3-6	.500	1-1	1.000	0	10	10	9.1	2	3	8	1	3	12	9.7	
at Michigan	1/10/21 *	38	6-16	.375	1-6	.167	4-4	1.000	3	3	6	8.8	2	5	7	0	3	17	10.6	
Michigan St.	1/14/21	PPD																		
at Northwestern	1/21/21 *	28	5-10	.500	0-2	.000	1-4	.250	3	5	8	8.7	2	3	7	1	2	11	10.7	
Nebraska	1/25/21 *	25	3-7	.429	0-0	.000	0-0	.000	0	5	5	8.3	4	3	3	0	1	6	10.2	
Penn State	1/28/21 *	34	9-18	.500	2-5	.400	1-1	1.000	5	11	16	9.0	5	8	2	1	0	21	11.2	
at Wisconsin	1/31/21 *	34	8-18	.444	1-1	1.000	11-13	.846	3	8	11	9.2	4	2	3	0	5	28	12.6	
at Michigan St.	2/4/21																			
Purdue	2/7/21																			
at Minnesota	2/10/21																			
Indiana	2/14/21																			
at Maryland	2/17/21																			
at Rutgers	2/20/21																			
Northwestern	2/25/21																			
at Purdue	2/28/21																			
Minnesota	3/5/21																			
Total		12	358	55-130	.423	11-35	.314	30-43	.698	31	79	110	9.2	27	45	47	5	24	151	12.6

CAREER HIGHS

Pts: 28 (at Wisconsin, 1/31/21)
Rebs: 16 (vs. Penn State, 1/28/21)
FGM: 9 (vs. Penn State, 1/28/21)
FGA: 18 (3x, last at Wisconsin, 1/31/21)
3FGM: 3 (3x, last vs. Ohio State, 1/7/21)
3FGA: 6 (3x, last vs. Ohio State, 1/7/21)
FTM: 11 (at Wisconsin, 1/31/21)
FTA: 13 (at Wisconsin, 1/31/21)
Ast: 8 (vs. Penn State, 1/28/21)
Blk: 4 (vs. Chicago State, 11/05/19)
Stl: 5 (2x, last at Wisconsin, 1/31/21)
Min: 38 (at No. 15 Michigan 1/10/21)





JADA PEEBLES

11

5-10 // SOPHOMORE // GUARD

RALEIGH, NORTH CAROLINA

WAKEFIELD

CAREER STATISTICS

Year	GP	GS	Min	Avg	FG	Total		FG	3-Point		FT	F-Throw		Off	Def	Rebounds		PF	FO	Ast	TO	Blk	Stl	Pts	Avg
						FGA	Pct		FGA	Pct		FTA	Pct			Tot	Avg								
2019-20	27	11	541	20.0	52	145	.359	13	37	.351	29	43	.674	4	23	27	1.0	19	0	34	28	2	31	146	5.4
2020-21	12	12	412	34.3	46	135	.341	16	58	.276	18	21	.857	2	21	23	1.9	19	0	24	22	5	12	126	10.5
Total	39	23	953	24.4	98	280	.350	29	95	.305	47	64	.734	6	44	50	1.3	38	0	58	50	7	43	272	7.0

AT ILLINOIS

2020-21 – SOPHOMORE

- Led the team with five assists in a season-opening win over Indiana State.
- Recorded a career-high 19 points, including a personal-best five three-pointers vs. Penn State (1/28).

2019-20 – FRESHMAN

- Played in 27 of Illinois' games, earning 11 starts
- Averaged 5.4 points and 1.0 rebounds in 20 minutes per game
- Notched five games in double-figures scoring
- Tallied 17 points, including a season-most three three-pointers in an Illini win vs. Holy Cross (Nov. 9)
- Recorded season-best totals with 18 points and five rebounds in 38 minutes vs Austin Peay (Nov. 13)
- Dished out a personal-best six assists vs. Merrimack (Dec. 10)
- Ranked fourth on the team in three-point shooting (.351, 13-for-37) and free-throw shooting (.674, 29-for-43)
- Third on the team with 1.1 steals and fifth with 1.3 assists per game

HIGH SCHOOL

- Ranked the No. 104 player in the country by Prospects Nation
- Northern Atlantic Defensive Player of the Year
- North Carolina vs. South Carolina All-Star Game
- Three-time Northern Atlantic All-Conference Selection
- 2017-18 All-Metro Team
- Scored 1000th career point during her junior season at Wakefield High School
- Averaged 16.0 points, 4.0 rebounds, 3.0 assists and 3.0 steals as a junior

PERSONAL

- Daughter of Danny and Monique Peebles
- Born October 27, 2000
- Three siblings, Dylan, Mia and DJ
- Brother, Dylan, is on the track and field team at LSU
- Father, Danny, played football at N.C. State and in the NFL for the Tampa Bay Buccaneers and Cleveland Browns
- Major: Undeclared

2020-21 GAME-BY-GAME STATISTICS

Opponent	Date	MIN	FG	FG%	3FG	3%	FT	FT%	OR	DR	REB	AVG	PF	A	T/O	BLK	STL	PTS	AVG	
Indiana State	11/25/20 *	30	1-7	.143	0-2	.000	4-4	1.000	0	2	2	2.0	0	5	3	0	1	6	6.0	
Valparaiso	12/2/20 *	31	5-9	.556	0-3	.000	0-0	.000	0	1	1	1.5	2	1	3	1	0	10	8.0	
Omaha	12/6/20 *	33	5-11	.455	3-6	.500	2-2	1.000	0	2	2	1.7	1	1	1	2	3	15	10.3	
at Nebraska	12/10/20 *	37	4-13	.308	3-8	.375	5-7	.714	0	1	1	1.5	3	5	0	0	0	16	11.8	
Michigan	12/19/20	PPD																		
S. Illinois	12/22/210	PPD																		
at Indiana	12/31/20 *	36	5-12	.417	1-5	.200	0-0	.000	0	1	1	1.4	2	0	4	0	2	11	11.6	
Iowa	1/3/21 *	37	4-18	.222	0-6	.000	2-2	1.000	0	2	2	1.5	1	2	2	0	3	10	11.3	
Ohio State	1/7/21 *	35	4-13	.308	1-5	.200	2-3	.667	1	2	3	1.7	2	2	1	0	0	11	11.3	
at Michigan	1/10/21 *	40	2-11	.182	0-5	.000	0-0	.000	0	3	3	1.9	2	1	0	1	0	4	10.4	
Michigan St.	1/14/21	PPD																		
at Northwestern	1/21/21 *	31	2-7	.286	1-3	.333	2-2	1.000	1	1	2	1.9	2	1	2	0	0	7	10.0	
Nebraska	1/25/21 *	26	1-4	.250	0-1	.000	0-0	.000	0	2	2	1.9	4	2	0	0	1	2	9.2	
Penn State	1/28/21 *	38	7-15	.467	5-8	.625	0-0	.000	0	3	3	2.0	0	3	4	1	2	19	10.1	
at Wisconsin	1/31/21 *	38	6-15	.400	2-6	.333	1-1	1.000	0	1	1	1.9	0	1	2	0	0	15	10.5	
at Michigan St.	2/4/21																			
Purdue	2/7/21																			
at Minnesota	2/10/21																			
Indiana	2/14/21																			
at Maryland	2/17/21																			
at Rutgers	2/20/21																			
Northwestern	2/25/21																			
at Purdue	2/28/21																			
Minnesota	3/5/21																			
Total		12	412	46-135	34.1	16-58	27.6	18-21	.857	2	21	23	1.9	19	24	22	5	12	126	10.5

CAREER HIGHS

Pts:	19 (vs. Penn State, 1/28/21)
Rebs:	5 (vs. Austin Peay, 11/13/19)
FGM:	7 (2x, last vs. Penn State, 1/28/21)
FGA:	18 (vs. Iowa, 1/3/21)
3FGM:	5 (vs. Penn State, 1/28/21)
3FGA:	8 (2x, last vs. Penn State, 1/28/21)
FTM:	5 (2x, last at Nebraska 12/10/20)
FTA:	7 (at Nebraska 12/10/20)
Ast:	6 (vs. Merrimack, 12/10/19)
Blk:	2 (vs. Omaha, 12/6/20)
Stl:	4 (vs. Illinois St., 11/16/19)
Min:	40 (at No. 15 Michigan 1/10/21)





TARA O'MALLEY 13

5-6 // JUNIOR // GUARD

CHICAGO, ILLINOIS

MOTHER McAULEY HIGH SCHOOL

CAREER STATISTICS

Year	GP	GS	Min	Avg	FG	Total FGA	Pct	FG	3-Point FGA	Pct	FT	F-Throw FTA	Pct	Off	Def	Rebounds Tot	Avg	PF	F0	Ast	TO	Blk	Stl	Pts	Avg
2020-21	4	0	13	3.3	0	1	.000	0	0	.000	2	2	1.000	0	1	1	0.3	4	0	0	0	0	1	2	0.5
Total	4	0	13	3.3	0	1	.000	0	0	.000	2	2	1.000	0	1	1	0.3	4	0	0	0	0	1	2	0.5

AT ILLINOIS

2020-21 – JUNIOR

- Joined the team as a walk-on after previously serving as a team manager.
- Made collegiate debut with six minutes of action at Indiana (12/31) and scored first collegiate points vs. Iowa (1/3).

HIGH SCHOOL

- A four-sport standout at Mother McAuley, lettering 11 times in basketball (4), lacrosse (3), cross country (3) and golf (1)
- Member of the 1,000-point club
- Averaged 15 points and five assists per game while shooting 90 percent from the free-throw line
- Four-time all-conference honoree
- Earned all-state second team honors and Southtown Star Player of the Year in 2018
- Led the Mighty Macs to the 2018 sectional title.
- Four-year honor roll member
- Member of the National Honors Society, National English Honors Society and National Spanish Honors Society
- Graduated from the Live Like John Service and Leadership Institute
- Played for AAU club Mac Irvin Lady Fire from 2008-17

PERSONAL

- Born August 21, 2000
- Daughter of Tom and Katie O'Malley
- Is the fifth of eight children
- Her seven siblings include: brothers Ryan and Brennan, and sisters Courtney, Molly, Shea, Annie and Megan
- Is studying community recreation, sport and tourism
- Lists golfing, running, and spending time with family and friends as her hobbies
- Recipient of the Chick Evans Caddie Scholarship, a full tuition and housing scholarship for golf caddies provided annually to approximately 1,000 scholars at universities across the country

2020-21 GAME-BY-GAME STATISTICS

Opponent	Date	MIN	FG	FG%	3FG	3%	FT	FT%	OR	DR	REB	AVG	PF	A	T/O	BLK	STL	PTS	AVG
Indiana State	11/25/20	1	0-0	.000	0-0	.000	0-0	.000	0	0	0	0.0	0	0	0	0	0	0	0.0
Valparaiso	12/2/20	DNP																	
Omaha	12/6/20	DNP																	
at Nebraska	12/10/20	DNP																	
Michigan	12/19/20	PPD																	
S. Illinois	12/22/210	PPD																	
at Indiana	12/31/20	6	0-0	.000	0-0	.000	0-0	.000	0	0	0	0.0	1	0	0	0	1	0	0.0
Iowa	1/3/21	3	0-0	.000	0-0	.000	2-2	1.000	0	1	1	0.3	1	0	0	0	0	2	0.7
Ohio State	1/7/21	3	0-1	.000	0-0	.000	0-0	.000	0	0	0	0.3	2	0	0	0	0	0	0.5
at Michigan	1/10/21	PPD																	
Michigan St.	1/14/21	DNP																	
at Northwestern	1/21/21	DNP																	
Nebraska	1/25/21	DNP																	
Penn State	1/28/21	DNP																	
at Wisconsin	1/31/21	DNP																	
at Michigan St.	2/4/21																		
Purdue	2/7/21																		
at Minnesota	2/10/21																		
Indiana	2/14/21																		
at Maryland	2/17/21																		
at Rutgers	2/20/21																		
Northwestern	2/25/21																		
at Purdue	2/28/21																		
Minnesota	3/5/21																		
Total		13	0-1	.000	0-0	.000	2-2	1.000	0	1	1	0.3	4	0	0	0	1	2	0.5

CAREER HIGHS

Pts: 2 (vs. Iowa, 1/3/21)
Rebs: 1 (vs. Iowa, 1/3/21)
FGM: --
FGA: --
3FGM: --
3FGA: --
FTM: 2 (vs. Iowa, 1/3/21)
FTA: 2 (vs. Iowa, 1/3/21)
Ast: --
Blk: --
Stl: 1 (at Indiana, 12/31/20)
Min: 6 (at Indiana, 12/31/20)





GEOVANA LOPES

14

6-3 // JUNIOR // FORWARD/CENTER

BATAGUASSU, BRAZIL

ESCOLA ESTADUAL PAULO MENDES SILVA / ODESSA COLLEGE

CAREER STATISTICS

Year	GP	GS	Min	Avg	FG	Total FGA	Pct	FG	3-Point FGA	Pct	FT	F-Throw FTA	Pct	Off	Def	Rebounds Tot	Avg	PF	F0	Ast	TO	Blk	Stl	Pts	Avg
2020-21	4	1	64	16.0	9	22	.409	0	0	.000	2	7	.286	6	6	12	3.0	9	0	4	6	0	3	20	5.0
Total	4	1	64	16.0	9	22	.409	0	0	.000	2	7	.286	6	6	12	3.0	9	0	4	6	0	3	20	5.0

AT ILLINOIS

2020-21 – JUNIOR

- Impressed in Illini debut, posting 12 points, six boards, two assists and a pair of steals in 15 minutes off the bench.

ODESSA COLLEGE

- Helped Odessa (Texas) College to back-to-back NJCAA Tournament berths including an Elite Eight appearance in 2018-19 and an at-large bid in 2019-20 prior to the tournament's cancellation
- Earned 2020 All-Western Junior College Athletic Conference honorable mention honors
- As a sophomore in 2019-20, started 18 of 29 games for the Wranglers and averaged 7.3 points, 6.4 rebounds and 1.1 assists
- Played in 29 game with eight starts as a freshman in 2018-19, averaging 3.9 points and 3.2 rebounds
- Recorded four career double-doubles including career highs of 16 points and 17 rebounds in a victory over Howard College (2/13/20)

HIGH SCHOOL/INTERNATIONAL

- Graduated from Escola Estadual Paulo Mendes Silva
- Competed for club team Presidente Venceslau
- Played for the Brazil National Team in five FIBA/FIBA Zones events
- Won gold medals at both the 2014 South American U15 Championship for Women and the 2015 South American U17 Championship for Women
- Earned silver at the 2015 FIBA Americas U16 Championship for Women
- Took home bronze at the 2016 FIBA Americas U18 Championship for Women
- Finished 13th at the 2016 FIBA U17 World Championship
- Pulled down a game-high 13 rebounds in Brazil's 72-63 semifinal victory over Team USA at the 2015 FIBA Americas U16 Championship, the first loss in U16 history for the U.S.

PERSONAL

- Daughter of Luciano Dias Lopes and Adriana Cristina F. Lopes
- Born Jan. 1, 1999
- Has a younger brother, Felipe
- Lists Brazilian soccer superstar Marta as her favorite athlete
- Hobbies include cooking, traveling and fishing
- Studying psychology at Illinois.

2020-21 GAME-BY-GAME STATISTICS

Opponent	Date	MIN	FG	FG%	3FG	3%	FT	FT%	OR	DR	REB	AVG	PF	A	T/O	BLK	STL	PTS	AVG	
Indiana State	11/25/20	15	5-12	.417	0-0	.000	2-5	.400	2	4	6	6.0	2	2	2	0	2	12	12.0	
Valparaiso	12/2/20 *	24	3-6	.500	0-0	.000	0-0	.000	3	2	5	5.5	1	1	2	0	0	6	9.0	
Omaha	12/6/20	8	0-1	.000	0-0	.000	0-0	.000	0	0	0	3.7	3	1	2	0	0	0	6.0	
at Nebraska	12/10/20	17	1-3	.333	0-0	.000	0-2	.000	1	0	1	3.0	3	0	0	0	1	2	5.0	
Michigan	12/19/20	PPD																		
S. Illinois	12/22/210	PPD																		
at Indiana	12/31/20	DNP																		
Iowa	1/3/21	DNP																		
Ohio State	1/7/21	DNP																		
at Michigan	1/10/21	DNP																		
Michigan St.	1/14/21	PPD																		
at Northwestern	1/21/21	DNP																		
Nebraska	1/25/21	DNP																		
Penn State	1/28/21	DNP																		
at Wisconsin	1/31/21	DNP																		
at Michigan St.	2/4/21																			
Purdue	2/7/21																			
at Minnesota	2/10/21																			
Indiana	2/14/21																			
at Maryland	2/17/21																			
at Rutgers	2/20/21																			
Northwestern	2/25/21																			
at Purdue	2/28/21																			
Minnesota	3/5/21																			
Total		1	64	9-22	.409	0-0	.000	2-7	.286	6	6	12	3.0	9	4	6	0	3	20	5.0

CAREER HIGHS

Pts:	12 (vs. Indiana State, 11/25/20)
Rebs:	6 (vs. Indiana State, 11/25/20)
FGM:	5 (vs. Indiana State, 11/25/20)
FGA:	12 (vs. Indiana State, 11/25/20)
3FGM:	--
3FGA:	--
FTM:	2 (vs. Indiana State, 11/25/20)
FTA:	5 (vs. Indiana State, 11/25/20)
Ast:	2 (vs. Indiana State, 11/25/20)
Blk:	--
Stl:	2 (vs. Indiana State, 11/25/20)
Min:	24 (vs. Valparaiso, 12/2/20)





ERIKA PORTER

20

6-3 // FRESHMAN // FORWARD

LAWRENCEVILLE, NEW JERSEY

NOTRE DAME H.S.

CAREER STATISTICS

Year	GP	GS	Min	Avg	FG	Total FGA	Pct	FG	3-Point FGA	Pct	FT	F-Throw FTA	Pct	Off	Rebounds Def	Tot	Avg	PF	FO	Ast	TO	Blk	Stl	Pts	Avg
2020-21	6	0	33	5.5	3	3	1.000	0	0	.000	1	2	.500	0	4	4	0.7	2	0	0	3	1	0	7	1.2
Total	6	0	33	5.5	3	3	1.000	0	0	.000	1	2	.500	0	4	4	0.7	2	0	0	3	1	0	7	1.2

AT ILLINOIS

2020-21 – FRESHMAN

- Made Illini debut with two points in six minutes at Indiana (12/31) and followed that up a three points in a season-most 13 minutes vs. Iowa (1/3).

HIGH SCHOOL

- Four-year varsity player at Notre Dame (N.J.) High School where she helped lead the Irish to four consecutive Colonial Valley Conference (CVC) titles and a 76-30 record.
- Named CVC first-team all-conference and won back-to-back CVC Player of the Year honors during her junior (2018-19) and senior seasons (2019-20).
- Also earned 2019 and 2020 Trentonian All-Area first-team honors.
- Opened her senior season by scoring her 1,000th career point in NDHS's victory over Allentown, and closed her career with 1,405 points (13.3 ppg) for the Irish.
- Notched 792 career rebounds, an average of 7.5 boards per contest.
- As a junior in 2018-19, averaged 18.1 points, 9.8 rebounds, and 1.6 blocks per game, and followed that up her senior season with averages of 15.2 points, 8.4 rebounds and 2.3 blocks per contest.
- Scored a career-best 34 points in a victory over Robbinsville (1/17/20).
- Posted 31 career double-doubles, reached double-figures scoring 72 times, and pulled down 10 or more rebounds in 34 games.

PERSONAL

- Daughter of Joseph C. Porter III and Janice L. Porter
- Born May 24, 2002
- Has an older sister, Alexis
- Major is undecided
- Likes eating sushi, hanging with friends, day trips, cooking, and hiking as hobbies.
- Favorite athlete is Breanna Stewart

2020-21 GAME-BY-GAME STATISTICS

Opponent	Date	MIN	FG	FG%	3FG	3%	FT	FT%	OR	DR	REB	AVG	PF	A	T/O	BLK	STL	PTS	AVG
Indiana State	11/25/20	DNP																	
Valparaiso	12/2/20	DNP																	
Omaha	12/6/20	DNP																	
at Nebraska	12/10/20	DNP																	
Michigan	12/19/20	PPD																	
S. Illinois	12/22/210	PPD																	
at Indiana	12/31/20	6	1-1	1.000	0-0	.000	0-0	.000	0	2	2	2.0	0	0	0	0	0	2	2.0
Iowa	1/3/21	13	1-1	1.000	0-0	.000	1-2	.500	0	0	0	1.0	1	0	1	1	0	3	2.5
Ohio State	1/7/21	2	0-0	.000	0-0	.000	0-0	.000	0	0	0	0.7	0	0	0	0	0	0	1.7
at Michigan	1/10/21	2	0-0	.000	0-0	.000	0-0	.000	0	1	1	0.8	0	0	1	0	0	0	1.3
Michigan St.	1/14/21	PPD																	
at Northwestern	1/21/21	9	1-1	1.000	0-0	.000	0-0	.000	0	1	1	0.8	1	0	1	0	0	2	1.4
Nebraska	1/25/21	DNP																	
Penn State	1/28/21	DNP																	
at Wisconsin	1/31/21	1	0-0	.000	0-0	.000	0-0	.000	0	0	0	0.7	0	0	0	0	0	0	1.2
at Michigan St.	2/4/21																		
Purdue	2/7/21																		
at Minnesota	2/10/21																		
Indiana	2/14/21																		
at Maryland	2/17/21																		
at Rutgers	2/20/21																		
Northwestern	2/25/21																		
at Purdue	2/28/21																		
Minnesota	3/5/21																		
Total		33	3-3	1.000	0-0	.000	1-2	.500	0	4	4	0.7	2	0	3	1	0	7	1.2

CAREER HIGHS

Pts:	3 (vs. Iowa, 1/3/21)
Rebs:	2 (at Indiana, 12/31/20)
FGM:	1 (3x, last at Northwestern, 1/21/21)
FGA:	1 (3x, last at Northwestern, 1/21/21)
3FGM:	--
3FGA:	--
FTM:	1 (vs. Iowa, 1/3/21)
FTA:	2 (vs. Iowa, 1/3/21)
Ast:	--
Blk:	1 (vs. Iowa, 1/3/21)
Stl:	--
Min:	13 (vs. Iowa, 1/3/21)





AALIYAH McQUEEN 21

5-9 // FRESHMAN // GUARD

FLINT, MICHIGAN

CARMAN-AINSWORTH HIGH SCHOOL

CAREER STATISTICS

					Total			3-Point			F-Throw			Rebounds											
Year	GP	GS	Min	Avg	FG	FGA	Pct	FG	FGA	Pct	FT	FTA	Pct	Off	Def	Tot	Avg	PF	FO	Ast	TO	Blk	Stl	Pts	Avg
2020-21	8	0	85	10.6	3	26	.115	3	12	.250	0	0	.000	4	21	25	3.1	7	0	6	7	0	2	9	1.1
Total	8	0	85	10.6	3	26	.115	3	12	.250	0	0	.000	4	21	25	3.1	7	0	6	7	0	2	9	1.1

AT ILLINOIS

2020-21 – FRESHMAN

- Played 7 minutes and grabbed two rebounds in a reserve roll in her Illini debut vs. Indiana State (11/25)
- Set career-best marks with six points and six rebounds vs. Penn State (1/28).

HIGH SCHOOL

- Ranked as the No. 22 wing in the class of 2020 according to Prospects Nation
- Named Associated Press Division I Girls Basketball All-Michigan first team as a senior, and honorable mention as a junior
- Earned 2019 and 2020 All-Saginaw Valley South first team recognition
- Averaged 15.8 points, 8.1 rebounds, 3.6 assists and 3.4 steals per game as a senior
- Led the 2019-20 Cavaliers to a 19-5 record en route to district and league championships
- Played AAU basketball, alongside Illini teammate Aaliyah Nye, for the Michigan Storm.

PERSONAL

- Daughter of the late Ramone McQueen and Marcia McQueen
- Born February 27, 2002
- Has two older brothers, Ramone McQueen and Rayvon McQueen, an older sister, Raquisha McQueen, and two younger sisters, Mahogany Jones and Rayven McQueen
- Hobbies include listening to music, playing Xbox, and eating

2020-21 GAME-BY-GAME STATISTICS

Opponent	Date	MIN	FG	FG%	3FG	3%	FT	FT%	OR	DR	REB	AVG	PF	A	T/O	BLK	STL	PTS	AVG
Indiana State	11/25/20	7	0-1	.000	0-0	.000	0-0	.000	0	2	2	2.0	0	0	2	0	0	0	0.0
Valparaiso	12/2/20	2	0-0	.000	0-0	.000	0-0	.000	0	1	1	1.5	1	0	1	0	0	0	0.0
Omaha	12/6/20	10	0-3	.000	0-2	.000	0-0	.000	0	1	1	1.3	2	0	0	0	0	0	0.0
at Nebraska	12/10/20	5	0-1	.000	0-0	.000	0-0	.000	0	2	2	1.5	0	0	1	0	0	0	0.0
Michigan	12/19/20	PPD																	
S. Illinois	12/22/20	PPD																	
at Indiana	12/31/20	DNP																	
Iowa	1/3/21	DNP																	
Ohio State	1/7/21	DNP																	
at Michigan	1/10/21	DNP																	
Michigan St.	1/14/21	PPD																	
at Northwestern	1/21/21	22	1-5	.200	1-3	.333	0-0	.000	2	4	6	2.4	1	4	1	0	0	3	0.6
Nebraska	1/25/21	2	0-2	.000	0-1	.000	0-0	.000	0	2	2	2.3	0	0	0	0	0	0	0.5
Penn State	1/28/21	23	2-6	.333	2-3	.667	0-0	.000	0	6	6	2.9	2	1	1	0	0	6	1.3
at Wisconsin	1/31/21	14	0-8	.000	0-3	.000	0-0	.000	2	3	5	3.1	1	1	1	0	2	0	1.1
at Michigan St.	2/4/21																		
Purdue	2/7/21																		
at Minnesota	2/10/21																		
Indiana	2/14/21																		
at Maryland	2/17/21																		
at Rutgers	2/20/21																		
Northwestern	2/25/21																		
at Purdue	2/28/21																		
Minnesota	3/5/21																		
Total		85	3-26	.115	3-12	.250	0-0	.000	4	21	25	3.1	7	6	7	0	2	9	1.1

CAREER HIGHS

Pts: 6 (vs. Penn State, 1/28/21)
Rebs: 6 (2x, last vs. Penn State, 1/28/21)
FGM: 2 (vs. Penn State, 1/28/21)
FGA: 6 (vs. Penn State, 1/28/21)
3FGM: 2 (vs. Penn State, 1/28/21)
3FGA: 3 (2x, last vs. Penn State, 1/28/21)
FTM: --
FTA: --
Ast: 4 (at Northwestern, 1/21/21)
Blk: --
Stl: --
Min: 23 (vs. Penn State, 1/28/21)





EVA RUBIN

22

6-5 // SENIOR // CENTER

FLOSSMOOR, ILLINOIS

HOMEWOOD-FLOSSMOOR HIGH SCHOOL / ARIZONA STATE

CAREER STATISTICS

Year	GP	GS	Min	Avg	FG	Total FGA	Pct	FG	3-Point FGA	Pct	FT	F-Throw FTA	Pct	Off	Def	Tot	Avg	PF	F0	Ast	T0	Blk	Stl	Pts	Avg
2017-18 (ASU)	13	0	56	4.3	12	24	.500	0	0	.000	6	8	.750	2	4	6	0.5	6	0	1	4	2	1	30	2.3
2018-19 (ASU)	9	0	39	4.3	3	11	.273	0	0	.000	4	8	.500	3	1	4	0.4	6	0	0	3	3	2	10	1.1
ASU Total	22	0	95	4.3	15	35	.429	0	0	.000	10	16	.625	5	5	10	0.5	12	0	1	7	5	3	40	1.8
2020-21 (ILL)	11	11	260	23.6	37	74	.500	0	0	.000	21	31	.677	15	27	42	3.8	28	1	1	17	16	5	95	8.6
ILL Total	11	11	260	23.6	37	74	.500	0	0	.000	21	31	.677	15	27	42	3.8	28	1	1	17	16	5	95	8.6
D1 Total	33	11	355	10.8	52	109	.477	0	0	.000	31	47	.659	20	32	52	1.6	40	1	2	24	21	8	135	4.1

AT ILLINOIS

2020-21 – REDSHIRT JUNIOR

- Tallied then-career-high marks in minutes (23), rebounds (6) and blocks (4), in Illini debut vs. Indiana State (11/25), eclipsing marks established during her time at Arizona State.
- Set a new career-high with 17 points on 7-for-10 shooting vs. Iowa (1/3).

2019-20 – REDSHIRT

- Did not compete per NCAA rules after transferring to Illinois in December

AT ARIZONA STATE

2018-19 – SOPHOMORE

- Played in nine games (4.3 mpg)
- Tied career highs in minutes (11) and points (5) in win over SIU (Nov. 24)
- Came up with career-high 2 steals in win over Louisiana Tech (Dec. 1)

2017-18 – FRESHMAN

- Played in 13 games (4.3 mpg)
- Connected on 50 percent of her field goal attempts (12-24).
- Got into the scoring column in 10 of her 13 appearances, including a season-high 5 points in win over Sacramento State (Nov. 18).
- Closed the season by making 5 of her final 6 shots

HIGH SCHOOL

- A 2017 graduate of Homewood-Flossmoor High School in Flossmoor, Ill.
- Received a four-star grade and was ranked No. 12 at her position by ESPN.com
- Earned Class 3A/4A All-State recognition from the Illinois Basketball Coaches Association and was named to the All-Area and
- All-Conference teams as a senior in 2017. Also earned second-team recognition on the News-Gazette All-States te Girls' Basketball Team
- One of nine players from the state of Illinois nominated for the 2017 McDonald's All-American Game
- Averaged 11 points, nine rebounds and four blocks as a senior in 2017
- Averaged 15 points, eight rebounds and four blocks as a junior in 2016
- Helped lead her squad to a fourth-place finish in the IHSA 4A state tournament in 2015 while tying a Class 4A single-game record with five blocked shots

PERSONAL

- Full name is Eva Julia Rubin
- Born July 10, 1998 in Chicago, Ill.
- Parents are Minson & Nancy Rubin
- Has two siblings (twins): Wesley (13) and Miles (13)
- Has had type 1 diabetes since she was 13
- Is studying community health at Illinois
- Plans to pursue a career in nursing
- Active in several Illini Athletics student-athlete initiatives including the Green Bandana Project, which promotes a supportive environment for student-athletes experiencing mental health stressors
- Also serves as the programming chair for EMPOWER, a group formed at Illinois in the Fall of 2019 with a mission to provide a family oriented-safe space and support personal development for student-athletes of color as a community

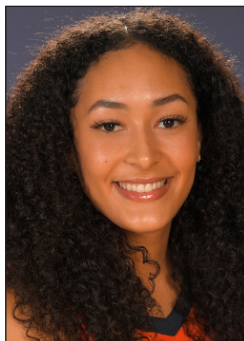
2020-21 GAME-BY-GAME STATISTICS

Opponent	Date	MIN	FG	FG%	3FG	3%	FT	FT%	OR	DR	REB	AVG	PF	A	T/O	BLK	STL	PTS	AVG	
Indiana State	11/25/20 *	23	1-3	.333	0-0	.000	2-2	1.000	0	6	6	6.0	2	0	2	4	1	4	4.0	
Valparaiso	12/2/20	DNP																		
Omaha	12/6/20 *	22	4-8	.500	0-0	.000	3-3	1.000	1	4	5	5.5	4	0	4	0	1	11	7.5	
at Nebraska	12/10/20 *	25	5-11	.455	0-0	.000	3-4	.750	2	5	7	6.0	2	0	3	2	0	13	9.3	
Michigan	12/19/20	PPD																		
S. Illinois	12/22/20	PPD																		
at Indiana	12/31/20 *	23	4-8	.500	0-0	.000	0-0	.000	1	1	2	5.0	2	0	1	0	0	8	9.0	
Iowa	1/3/21 *	29	7-10	.700	0-0	.000	3-5	.600	0	2	2	4.4	1	0	0	0	1	17	10.6	
Ohio State	1/7/21 *	28	1-3	.333	0-0	.000	4-6	.667	3	0	3	4.2	3	0	3	2	0	6	9.8	
at Michigan	1/10/21 *	25	2-5	.400	0-0	.000	2-3	.667	2	2	4	4.1	5	0	0	3	0	6	9.3	
Michigan St.	1/14/21	PPD																		
at Northwestern	1/21/21 *	26	4-6	.667	0-0	.000	1-2	.500	1	1	2	3.9	1	0	1	1	1	9	9.3	
Nebraska	1/25/21 *	27	4-9	.444	0-0	.000	1-2	.500	2	4	6	4.1	2	0	1	2	1	9	9.2	
Penn State	1/28/21 *	24	4-8	.500	0-0	.000	2-4	.500	2	1	3	4.0	2	1	0	1	0	10	9.3	
at Wisconsin	1/31/21 *	8	1-3	.333	0-0	.000	0-0	.000	1	1	2	3.8	4	0	2	1	0	2	8.6	
at Michigan St.	2/4/21																			
Purdue	2/7/21																			
at Minnesota	2/10/21																			
Indiana	2/14/21																			
at Maryland	2/17/21																			
at Rutgers	2/20/21																			
Northwestern	2/25/21																			
at Purdue	2/28/21																			
Minnesota	3/5/21																			
Total		11	260	37-74	.500	0-0	.000	21-31	.677	15	27	42	3.8	28	1	17	16	5	95	8.6

CAREER HIGHS

Pts: 17 (vs. Iowa, 1/3/21)
 Rebs: 7 (at Nebraska 12/10/20)
 FGM: 7 (vs. Iowa, 1/3/21)
 FGA: 11 (at Nebraska 12/10/20)
 3FGM: --
 3FGA: --
 FTM: 3 (vs. Ohio State, 1/7/21)
 FTA: 6 (vs. Ohio State, 1/7/21)
 Ast: 1 (2x, last vs. Penn State, 1/28/21) [1x at ASU]
 Blk: 4 (vs. Indiana State, 11/25/20)
 Stl: 2 (vs. La. Tech [at ASU], 12/1/18)
 Min: 29 (vs. Iowa, 1/3/21)





AALIYAH NYE

32

5-11 // SOPHOMORE // GUARD

EAST LANSING, MICHIGAN

EAST LANSING HIGH SCHOOL

CAREER STATISTICS

Year	GP	GS	Min	Avg	FG	Total FGA	Pct	FG	3-Point FGA	Pct	FT	F-Throw FTA	Pct	Off	Def	Total Rebounds	Avg	PF	F0	Ast	T0	Blk	Stl	Pts	Avg
2020-21	11	11	260	23.6	37	74	.500	0	0	.000	21	31	.677	15	27	42	3.8	28	1	1	17	16	5	95	8.6
Total	11	11	260	23.6	37	74	.500	0	0	.000	21	31	.677	15	27	42	3.8	28	1	1	17	16	5	95	8.6

AT ILLINOIS

2020-21- FRESHMAN

- Tallied six points, including one three-pointer, and three rebounds in 17 minutes as a reserve in collegiate debut vs. Indiana State (11/25)
- Scored 10 points and notched two steals at Nebraska (12/10), but missed the next five games with a foot injury.
- Returned to the court to score a career-high 15 points, including 3-for-7 from three-point range in the Illini's home game vs. Nebraska (1/25)

HIGH SCHOOL

- 2020 Ms. Basketball runner-up
- Named AP Division 1 Player of the Year, earning back-to-back first-team All-Michigan honors
- Also selected as 2020 Player of the Year by the Lansing State Journal
- Helped East Lansing High School to a Class A state runner-up finish as a sophomore
- Hit a state-record six three-pointers in her high school state championship game
- Averaged 16.1 points and 5.2 rebounds per game to lead the Trojans to a 23-1 mark in her COVID-19-shortened senior season (2019-20)
- Detroit Free Press, Lansing State Journal and Detroit News Dream Team honoree
- Scored 1,370 career points at East Lansing High School, leading the Trojans to a 90-8 overall record
- Played AAU basketball, alongside Illini teammate Aaliyah McQueen, for the Michigan Storm.

PERSONAL

- Daughter of James Nye and LaQueen Douglas
- Born Aug. 14, 2002
- Has two sisters, older sister, Aazhenii, and a twin sister Aashawnti
- Father played football at Albion College
- Lists her hobbies as biking and swimming as hobbies
- Plans to major in engineering
- A proud tribal citizen of the Match-E-Be-Nash-She-Wish Band of Pottawatomi Indians (Gun Lake Tribe)

2020-21 GAME-BY-GAME STATISTICS

Opponent	Date	MIN	FG	FG%	3FG	3%	FT	FT%	OR	DR	REB	AVG	PF	A	T/O	BLK	STL	PTS	AVG
Indiana State	11/25/20	17	2-4	.500	1-2	.500	1-2	.500	2	1	3	3.0	3	0	0	0	0	6	6.0
Valparaiso	12/2/20	8	1-2	.500	0-1	.000	0-0	.000	0	1	1	2.0	3	0	0	1	0	2	4.0
Omaha	12/6/20	14	1-5	.200	0-2	.000	1-2	.500	1	2	3	2.3	0	0	0	0	0	3	3.7
at Nebraska	12/10/20	20	4-10	.400	2-6	.333	0-0	.000	2	0	2	2.3	4	1	0	0	2	10	5.3
Michigan	12/19/20	PPD																	
S. Illinois	12/22/210	PPD																	
at Indiana	12/31/20	DNP																	
Iowa	1/3/21	DNP																	
Ohio State	1/7/21	DNP																	
at Michigan	1/10/21	DNP																	
Michigan St.	1/14/21	PPD																	
at Northwestern	1/21/21	DNP																	
Nebraska	1/25/21	23	6-11	.545	3-7	.429	0-0	.000	0	2	2	2.2	3	1	3	1	1	15	7.2
Penn State	1/28/21	20	1-5	.200	1-3	.333	0-0	.000	0	0	0	1.8	2	1	2	0	0	3	6.5
at Wisconsin	1/31/21	21	3-5	.600	1-2	.500	2-2	1.000	0	1	1	1.7	0	0	0	0	0	9	6.9
at Michigan St.	2/4/21																		
Purdue	2/7/21																		
at Minnesota	2/10/21																		
Indiana	2/14/21																		
at Maryland	2/17/21																		
at Rutgers	2/20/21																		
Northwestern	2/25/21																		
at Purdue	2/28/21																		
Minnesota	3/5/21																		
Total		123	18-42	.429	8-23	.348	4-6	.667	5	7	12	1.7	15	3	5	2	3	48	6.9

CAREER HIGHS

- Pts:** 15 (vs. Nebraska 1/25/21)
- Rebs:** 3 (2x, last vs. Omaha, 12/6/20)
- FGM:** 6 (vs. Nebraska 1/25/21)
- FGA:** 11 (vs. Nebraska 1/25/21)
- 3FGM:** 3 (vs. Nebraska 1/25/21)
- 3FGA:** 7 (vs. Nebraska 1/25/21)
- FTM:** 2 (at Wisconsin, 1/31/21)
- FTA:** 2 (3x, last at Wisconsin, 1/31/21)
- Ast:** 3 (vs. Nebraska 1/25/21)
- Blk:** 1 (2x, last vs. Nebraska 1/25/21)
- Stl:** 2 (at Nebraska 12/10/20)
- Min:** 23 (vs. Nebraska 1/25/21)





KENNEDY MYLES

44

6-2 // JUNIOR // FORWARD

CINCINNATI, OHIO

WALNUT HILLS HIGH SCHOOL

CAREER STATISTICS

CAREER STATISTICS																										
Year	GP	GS	Min	Avg	FG	Total		FG	3-Point		FT	F-Throw		Rebounds				PF	FO	Ast	TO	Blk	Stl	Pts	Avg	
						FGA	Pct		FGA	Pct		FTA	Pct	Off	Def	Tot	Avg									
2019-20	29	29	812	28.0	110	288	.382	3	17	.176	36	75	.480	94	157	251	8.7	66	1	33	68	21	61	259	8.9	
2020-21	12	12	360	30.0	48	136	.353	1	7	.143	25	42	.595	32	64	96	8.0	42	3	15	29	4	14	122	10.2	
Total	41	41	1172	28.6	158	424	.373	4	24	.167	61	117	.521	126	221	347	8.5	108	4	48	97	25	75	381	9.3	

HONORS

- Big Ten Freshman of the Week (Dec. 16, 2019)

AT ILLINOIS

2020-21 – SOPHOMORE

- Tied a career-high with three assists in opener vs. Indiana State (11/25)
- Recorded double-doubles vs. Valparaiso (14 points, 11 rebounds) and Omaha (13 p, 14 r).
- Knocked down her first three-pointer of the season as part of a 16-point showing at Northwestern (1/21).

2019-20 – FRESHMAN

- Played and started in 29 of 30 games as a freshman for Illinois
- Ranked second on the team in scoring (8.9 ppg) and minutes (28.0 mpg) and led the team in rebounding (8.7 rpg), steals (61) and blocks (21)
- Established Illinois freshman records with eight double-doubles
- Also established a freshman record with 251 rebounds, eclipsing the mark set by all-time leading rebounder Jenna Smith (233) as a freshman in 2006-07
- Her 61 steals ranked third all-time among Illini freshmen...Recorded 20 rebounds vs. Evansville (Dec. 15), tied for fifth all-time in Illini history
- Tallied 94 offensive rebounds, tied for 15th all-time for the Orange & Blue
- Tallied double-digits scoring in 14 contests, and pulled down 10+ rebbs on 10 occasions
- Ranked in the top 100 in NCAA Division I in four categories: rebounds per game (8.7, 83rd), steals per game (2.1, 88th), total rebounds (251, 95th), and total steals (61, 91st)
- Led or tied for the team lead in rebounding in 23 contests

HIGH SCHOOL

- Two-year captain at Walnut Hills
- Two-time Eastern Cincinnati Conference Player of the Year (2016-17, 2017-18)
- Four-time All-Eastern Cincinnati Conference
- Led Walnut Hills to three-straight Eastern Cincinnati Conference titles
- Led Walnut Hills to the third round of the OHSAA tournament as a senior
- Averaged 13.6 points, 10.6 rebounds, 1.5 blocked shots and 3.0 steals per game during her senior season
- Led the Eastern Cincinnati Conference in rebounding as a senior
- McDonalds All-American nominee
- 2019 OHSAA North-South All-Star Game
- Honorable mention all-state
- 2018-19 Cincinnati Enquirer Greater Cincinnati/Northern Kentucky second team

PERSONAL

- Daughter of Bill and Janet Myles
- Born July 24, 2001 in Nashville, Tennessee
- Major: Recreation, Sport & Tourism

2020-21 GAME-BY-GAME STATISTICS

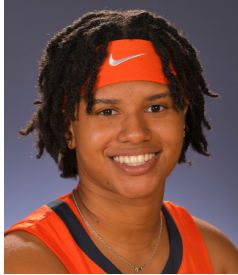
Opponent	Date	MIN	FG	FG%	3FG	3%	FT	FT%	OR	DR	REB	AVG	PF	A	T/O	BLK	STL	PTS	AVG	
Indiana State	11/25/20 *	26	2-8	.250	0-2	.000	0-2	.000	2	4	6	6.0	3	3	3	1	2	4	4.0	
Valparaiso	12/2/20 *	26	6-11	.545	0-0	.000	2-5	.400	4	7	11	8.5	4	1	1	0	2	14	9.0	
Omaha	12/6/20 *	33	4-13	.308	0-1	.000	5-6	.833	7	7	14	10.3	2	2	2	1	1	13	10.3	
at Nebraska	12/10/20 *	22	1-8	.125	0-0	.000	2-2	1.000	3	1	4	8.8	3	2	2	0	0	4	8.8	
Michigan	12/19/20	PPD																		
S. Illinois	12/22/210	PPD																		
at Indiana	12/31/20 *	31	6-10	.600	0-1	.000	3-5	.600	2	7	9	8.8	3	0	7	0	1	15	10.0	
Iowa	1/3/21 *	24	2-8	.250	0-1	.000	4-4	1.000	3	0	3	7.8	5	0	1	0	1	8	9.7	
Ohio State	1/7/21 *	27	6-12	.500	0-0	.000	3-3	1.000	1	7	8	7.9	3	2	4	0	2	15	10.4	
at Michigan	1/10/21 *	38	5-13	.385	0-1	.000	2-4	.500	3	4	7	7.8	2	1	1	1	1	12	10.6	
Michigan St.	1/14/21	PPD																		
at Northwestern	1/21/21 *	33	7-16	.438	1-1	1.000	1-2	.500	3	5	8	7.8	5	1	5	0	1	16	11.2	
Nebraska	1/25/21 *	38	4-17	.235	0-0	.000	1-2	.500	2	7	9	7.9	4	1	2	0	1	9	11.0	
Penn State	1/28/21 *	28	5-15	.333	0-0	.000	1-2	.500	1	7	8	7.9	3	2	0	1	1	11	11.0	
at Wisconsin	1/31/21 *	34	0-5	.000	0-0	.000	1-5	.200	1	8	9	8.0	5	0	1	0	1	1	10.2	
at Michigan St.	2/4/21																			
Purdue	2/7/21																			
at Minnesota	2/10/21																			
Indiana	2/14/21																			
at Maryland	2/17/21																			
at Rutgers	2/20/21																			
Northwestern	2/25/21																			
at Purdue	2/28/21																			
Minnesota	3/5/21																			
Total		12	360	48-136	.353	1-7	.143	25-42	.595	32	64	96	8.0	42	15	29	4	14	122	10.2

CAREER HIGHS

Pts:	23 (vs. Merrimack, 12/10/19)
Rebs:	20 (vs. Evansville, 12/15/19)
FGM:	11 (vs. Merrimack, 12/10/19)
FGA:	20 (vs. Merrimack, 12/10/19)
3FGM:	1 (4x, last at Northwestern, 1/21/21)
3FGA:	3 (at Iowa, 12/31/19)
FTM:	7 (vs. Chicago State, 11/5/19)
FTA:	9 (vs. Chicago State, 11/5/19)
Ast:	3 (5x, last vs. Indiana State, 11/25/20)
Blk:	3 (vs. Wisconsin 3/4/20)
Stl:	6 (at North Carolina, 12/05/19)
Min:	38 (3x, last vs. Nebraska 1/25/21)



2020-21 FIGHTING ILLINI



0 **J-Naya
Ephraim**
5-9 // Jr. // G



1 **Nancy
Panagiotopoulou**
6-3 // R-Jr. // F



2 **Lyric
Robins**
5-11 // Sr. // F



3 **Solape
Amusan**
6-1 // So. // F



10 **Jeanae
Terry**
5-11 // So. // G



11 **Jada
Peebles**
5-10 // So. // G



13 **Tara
O'Malley**
5-6 // Jr. // G



14 **Geovana
Lopes**
6-3 // Jr. // F/C



20 **Erika
Porter**
6-3 // Fr. // F



21 **Aaliyah
McQueen**
5-9 // Fr. // G



22 **Eva
Rubin**
6-5 // R-Jr. // C



32 **Aaliyah
Nye**
5-11 // Fr. // G



44 **Kennedi
Myles**
6-2 // So. // F



Nancy Fahey
Head Coach



John Patterson
Assistant Coach



Scott Merritt
Assistant Coach



Vernetta Skeete
Assistant Coach