



# FIGHTING ILLINI

## WOMEN'S BASKETBALL GAME NOTES



**FIGHTINGILLINI.COM**  
#ILLINI

**@IlliniWBB**  
@IlliniAthletics

**@IlliniWBB**  
@IlliniAthletics

**facebook.com/IlliniWBBasketball**  
facebook.com/IlliniAthletics

### SCHEDULE/RESULTS (4-4, 0-0 B1G)

Date	Opponent (TV/Stream)	Time (CT)/Result
Nov. 9	North Carolina Central (B1G+)	W, 76-53
Nov. 14	Miami (OH) (B1G+)	W, 72-65
Nov. 18	SIUE (B1G+)	L, 62-71
Nov. 21	UC Riverside (B1G+)	W, 86-82
Nov. 26	! vs. Dayton (FloHoops)	L, 53-67
Nov. 27	! vs. Middle Tennessee (FloHoops)	L, 52-62
Dec. 2	^ #25/RV Florida State (B1G+)	L, 58-67
Dec. 5	Eastern Kentucky (B1G+)	W, 71-57
<b>Dec. 9</b>	<b>* at Michigan State (B1G+)</b>	<b>6 p.m.</b>
Dec. 12	Butler (B1G+)	2 p.m.
Dec. 19	at Southern Illinois	2 p.m.
Dec. 22	% RV/NR Missouri (B1G+)	12 p.m.
Dec. 30	* #8/7 Maryland (B1G+)	7 p.m.
Jan. 2	* at #12/13 Iowa (B1G+)	2 p.m.
Jan. 6	* at #20/21 Ohio State (B1G+)	6 p.m.
Jan. 9	* Wisconsin (B1G+)	2 p.m.
Jan. 13	* Northwestern (Big Ten Network)	7 p.m.
Jan. 16	* at Penn State (B1G+)	1 p.m.
Jan. 20	* Purdue (B1G+)	7 p.m.
Jan. 23	* RV/RV Nebraska (B1G+)	2 p.m.
Jan. 27	* at #10/8 Indiana (B1G+)	6 p.m.
Jan. 30	* at Northwestern (B1G+)	2 p.m.
Feb. 3	* #13/11 Michigan (B1G+)	7 p.m.
Feb. 6	* at Wisconsin (Big Ten Network)	1 p.m.
Feb. 10	* #10/8 Indiana (B1G+)	7 p.m.
Feb. 14	* #20/21 Ohio State (BTN)	8 p.m.
Feb. 17	* at Purdue (B1G+)	6 p.m.
Feb. 24	* at Minnesota (B1G+)	7 p.m.
Feb. 27	* Rutgers * (Big Ten Network or B1G+)	TBA
March 2-6	Big Ten Tournament	TBD

! - Daytona Beach Invitational - Daytona, Fla. (Ocean Center)

\* - Big Ten Conference

^ - Big Ten/ACC Challenge

% - McBride Homes Braggins' Rights

& - Big Ten Tournament - Indianapolis, Ind. (Gainbridge Fieldhouse)

### GAME 9 | ILLINOIS AT MICHIGAN STATE DEC. 9, 2021 | 6 P.M. CT | EAST LANSING, MICH. | BRESLIN CENTER (14,797)

#### ILLINOIS FIGHTING ILLINI



##### Team Information

Record..... 4-4 (0-0 B1G)  
Last Game..... Dec. 5 vs. Eastern Kentucky (W, 71-57)  
Rankings (AP | Coaches)..... -- | --  
Head Coach..... Nancy Fahey (Wisconsin, 1981)  
Overall Record..... 776-216 (36th Season)  
Record at Illinois..... 39-83 (5th Season)

##### Statistical Leaders

Minutes/Game..... Kendall Bostic (30.8)  
Points/Game..... Aaliyah Nye (13.3)  
Rebounds/Game..... Kendall Bostic (11.5)  
Three-Pointers..... Aaliyah Nye (21)  
Assists..... Jada Peebles (24)  
Blocks..... Kendall Bostic (10)  
Steals..... Aaliyah Nye (16)  
Field-Goal %..... Eva Rubin (.636)  
Three-Point %..... Jada Peebles (.462)  
Free-Throw %..... Geovana Lopes (.875)

#### MICHIGAN STATE SPARTANS



##### Team Information

Record..... 6-4 (0-1 B1G)  
Last Game..... Dec. 5 at 9/11 Iowa (L, 61-88)  
Rankings (AP | Coaches)..... -- | --  
Head Coach..... Suzy Merchant (Central Michigan, 1991)  
Overall Record..... 503-281 (27th Season)  
Record at Michigan State..... 302-160 (15th Season)

##### Statistical Leaders

Minutes/Game..... Nia Clouden (31.3)  
Points/Game..... Nia Clouden (19.4)  
Rebounds/Game..... Taiyier Parks (5.2)  
Three-Pointers..... Nia Clouden (18)  
Assists..... Nia Clouden (52)  
Blocks..... Nia Clouden (9)  
Steals..... Alyza Winston (14)  
Field-Goal %..... Alisia Smith (.574)  
Three-Point %..... Laurel Jacqumain (.500)  
Free-Throw %..... Tamara Farquhar (1.000)

#### TEAM STATISTICAL COMPARISON

CATEGORY	ILL	MSU
Points Per Game	65.9	78.7
Points Allowed Per Game	65.9	66.5
Field-Goal Percentage	.412	.479
Opponent Field-Goal Percentage	.368	.407
Three-Point Field-Goal Percentage	.344	.366
Opponent Three-Point Field-Goal Percentage	.295	.315
Free-Throw Percentage	.620	.778
Rebounds Per Game	38.9	36.1
Rebounding Margin	-1.7	+3.5
Assists Per Game	12.9	19.6
Turnovers Per Game	20.1	15.9
Opponent Turnovers Per Game	18.0	17.9
Steals Per Game	8.3	8.3
Blocks Per Game	4.1	4.5

#### BROADCAST INFO

##### VIDEO: B1G+

Play-by-Play..... Kevin McCormick  
Analyst..... Zach Surdenik  
Sideline..... Katlyn Holtvluwer  
» BigTenPlus.com  
» B1G+ app

##### AUDIO: Busey Bank Illini Sports Network

Play-by-Play:..... Mike Koon  
» 1400 AM  
» 93.9 FM  
» FightingIllini.com/watch

##### LIVE STATS: Sidearm Stats

» SidearmStats.com/michstate/wbbal

#### 2021-22 ILLINOIS WOMEN'S BASKETBALL ROSTER

No.	Name	Pos.	Ht.	Yr.	Hometown / High School / Previous College	GP-GS	PPG	RPG	AST	BLK	STL
0	Sara Anastasieska	G	5-11	Gr.	Sydney, Australia / Monte Sant' Angelo Mercy / Duke Univ.	8-2	5.6	2.1	11	0	5
2	Lyric Robins	F	5-11	R-Sr.	Plano, Texas / Plano West H.S.	5-0	1.4	1.6	3	1	0
3	Solape Amusan	F	6-1	Jr.	Woodbury, Minn. / Woodbury H.S. / Iowa Western C.C.	5-0	0.0	0.6	0	0	1
5	De'Myla Brown	G	5-7	Jr.	North Little Rock, Ark. / North Little Rock H.S. / Chipola College	8-6	8.3	1.6	15	0	11
* 11	Jada Peebles	G	5-10	Jr.	Raleigh, N.C. / Wakefield H.S.	8-6	9.5	2.5	24	2	9
12	Jayla Oden	G	5-9	Fr.	Baltimore, Md. / McDonogh H.S.	4-0	7.5	2.8	10	0	9
14	Geovana Lopes	F/C	6-3	Sr.	Bataguassu, Brazil / E.E. Paulo Mendes Silva / Odessa College	8-2	3.9	3.6	8	2	7
15	Keanna Rembert	F	6-2	Fr.	Raleigh, N.C. / Millbrook H.S.	2-0	0.0	0.0	0	0	1
20	Erika Porter	F	6-3	So.	West Windsor, N.J. / Notre Dame H.S.	7-3	2.9	2.4	1	9	0
* 22	Eva Rubin	C	6-5	R-Sr.	Flossmoor, Ill. / Homewood Flossmoor H.S. / Arizona State Univ.	8-3	4.5	1.9	3	5	0
* 24	Adalia McKenzie	G	5-10	Fr.	Brooklyn Park, Minn. / Park Center H.S.	8-3	6.8	3.9	6	1	3
* 32	Aaliyah Nye	G	5-11	So.	East Lansing, Mich. / East Lansing H.S.	8-7	13.3	3.6	11	3	16
* 44	Kendall Bostic	F	6-2	So.	Kokomo, Ind. / Northwestern H.S. / Michigan State Univ.	8-8	7.0	11.5	11	10	4

Head Coach: Nancy Fahey (Fifth season at Illinois, 36th overall)

Associate Head Coach: John Patterson (Fifth season at Illinois)

Assistant Coach: Corry Irvin (First season at Illinois)

Assistant Coach: Hernando Planells (First season at Illinois)

\* - Denotes previous game starter

Pronunciation guide on **Page 8**

**ILLINI WBB MEDIA BOX: . . . . . Uofl.Box.com/v/2021-22WBBMEDIA**

The Illini women's basketball media box will be updated with information, including photos, statistics, game notes, and more, throughout the course of the 2021-22 season.



## QUICK FACTS

## UNIVERSITY INFORMATION

Location	Urbana-Champaign, Ill.
Enrollment	56,299
Nickname	Fighting Illini
Founded	1867
Colors	Orange & Blue
Affiliation	NCAA Division I
Conference	Big Ten
Home Court (capacity)	State Farm Center (15,544)
President	Timothy L. Killeen
Chancellor	Robert J. Jones
Athletic Director	Josh Whitman
Senior Woman Administrator (SWA)	Sara Burton
Ticket Office	217-333-3470

## TEAM HISTORY

First Year	1974-75
Overall Record	643-724 (.469); 48th year
Big Ten Record	242-422 (.364); 40th year
State Farm Center Record	293-215 (.576); 36th year
Years in NCAA (8)	1982, '86, '87, '97, '98, '99, '00, '03
Years in WNIT (8)	2001, '02, '05, '06, '07, '08, '10, '13
Big Ten Titles (1)	1997

## 2020-21 AT A GLANCE

2020-21 Overall Record	5-18
2020-21 Big Ten Record/Place	2-16/13th
2020-21 Postseason	None

## 2021-22 RETURNING/LOST

Starters Returning/Lost	3/2
Letterwinners Returning/Lost	7/6
Newcomers in 2021-22	6

## COACHING STAFF

Head Coach	Nancy Fahey (Wisconsin '81)
Career Record	776-216 (36th seasons)
Record at Illinois	39-83 (5th seasons)
Associate Head Coach	John Patterson (Fontbonne '07)
Assistant Coach	Corry Irvin (Fresno State '96)
Assistant Coach	Hernando Planells (Regis '12)
Head Coord. of Recruiting	Tianna Kirkland (10th season)
& Dir. of Student-Athlete Development	
Director of Operations	Dianna Pasley (5th season)
Director of Player Personnel	Steve Cochran (5th season)
Video & Scouting Ops. Coord.	Justin Peak (1st season)
Strength & Conditioning Coach	Kilee Fletcher (5th season)
Athletic Trainer	Autumn Taylor (3rd season)
Graduate Assistant	Isabelle Spingola (1st season)
Basketball Office Phone	217-333-8612

## ATHLETICS COMMUNICATION

Women's Basketball SID	Danny Mattie
Cell Phone	970-217-3140
Email	mattie2@illinois.edu
Press Row Phone	217-333-1227
Mailing Address	Bielfeldt Athletic Building
	1700 South Fourth Street, Champaign, IL 61820
Website	www.fightingillini.com
Twitter	@IlliniWBB
Facebook	www.facebook.com/IlliniWBBasketball
Instagram	IlliniWBB

## RADIO INFORMATION

Flagship Station	WDWS-AM 1400 / WHMS-FM 93.9
Play-By-Play	Mike Koon

## GAME NOTES

## OPENING TIP

Fighting Illini women's basketball is set to open Big Ten play this week, traveling to East Lansing, Mich., for a showdown with the Michigan State Spartans at the Breslin Center.

» Tipoff between the Fighting Illini (4-4, 0-0 B1G) and the Spartans (6-4, 0-1 B1G) is set for 7 p.m. ET/6 p.m. CT.

» The game will be streamed live on B1G+ with **Kevin McCormick** (play-by-play), **Zach Surdenik** (analyst), and **Katlyn Holtvluwer** (sideline).

» **Mike Koon** will call the action for the Illini on the Busey Bank Illini Sports Network (1400 AM / 93.9 FM).

» Streaming audio and live stats is also available at FightingIllini.com.

## ABOUT THE ILLINI

Illinois enters Thursday's Big Ten Conference opener at Michigan State with an overall record of 4-4 and are looking for their first win of the season away from State Farm Center.

» The Illini are 4-2 at home, and are coming off of a 71-57 victory over Eastern Kentucky at State Farm Center on Sunday.

» The team is 0-2 away from State Farm Center - both neutral site losses to Dayton and Middle Tennessee at the Daytona Beach Invitational - heading into Thursday's road matchup to open Big Ten Play.

» Offensively, the new-look Illini have opened the season with a much-improved scoring average from last season. Through eight games, the Illini are averaging 65.9 points per game, an improvement of 6.3 points per game over last year's season average of 59.6 ppg.

» Leading scorer, sophomore **G Aaliyah Nye**, is averaging 13.3 ppg, an improvement of more than 5 points per game from her freshman campaign (8.1 ppg).

» Behind Nye, the Illini's offensive attack has been balanced with eight other players tallying at least one double-digit scoring game so far this season, and four others - **Jada Peebles** (9.5), **De'Myla Brown** (8.3), **Jayla Oden** (7.5), and **Kendall Bostic** (7.0) - entering action at MSU averaging better than 7.0 ppg.

» Sophomore **F Kendall Bostic** ranks as the top rebounder in the conference, averaging 11.5 rebounds per game, which ranks 13th nationally.

## INDIVIDUAL TRENDS

Double-Digit Scoring	2021-22	Career
Jada Peebles	3 (2-1)	24
Aaliyah Nye	5 (3-2)	12
Eva Rubin	1 (1-0)	7
De'Myla Brown	4 (1-3)	4
Solape Amusan	--	4
Kendall Bostic	3 (3-0)	3
Geovana Lopes	1 (1-0)	3
Sara Anastasieskaa	2 (2-0)	2
Adalia McKenzie	2 (1-1)	2
Jayla Oden	1 (1-0)	1

20+ Point	2021-22	Career
Jada Peebles	--	1
Aaliyah Nye	1 (1-0)	1

Double-Doubles	2021-22	Career
Kendall Bostic	2 (2-0)	2

Double-Digit Rebound	2021-22	Career
Kendall Bostic	5 (2-3)	5

Double-Digit Assist	2021-22	Career
--	--	--

Games Played	2021-22	Career
Lyric Robins	5 (2-3)	88
Jada Peebles	8 (4-4)	58
Eva Rubin	8 (4-4)	30
Solape Amusan	5 (2-3)	27
Aaliyah Nye	8 (4-4)	26
Erika Porter	7 (4-3)	24
Geovana Lopes	8 (4-4)	23
Sara Anastasieskaa	8 (4-4)	8
Kendall Bostic	8 (4-4)	8
De'Myla Brown	8 (4-4)	8
Adalia McKenzie	8 (4-4)	8
Jayla Oden	4 (3-1)	4
Keanna Rembert	2 (1-1)	2

Games Started	2021-22	Career
Jada Peebles	6 (3-3)	40
Eva Rubin	3 (1-2)	23
Aaliyah Nye	7 (4-3)	17
Kendall Bostic	8 (4-4)	8
Erika Porter	3 (2-1)	5
De'Myla Brown	6 (3-3)	6
Adalia McKenzie	3 (1-2)	3
Geovana Lopes	2 (1-1)	3
Sara Anastasieskaa	2 (1-1)	2
Lyric Robins	--	1

## BIG TEN STANDINGS

STANDINGS	CONF	PCT.	H	A	STRK	OVERALL	PCT.	H	A	N	L10	STRK
Ohio State	1-0	1.000	0-0	1-0	W1	6-1	0.857	5-0	1-1	0-0	6-1	W1
Iowa	1-0	1.000	1-0	0-0	W1	5-1	0.833	4-0	1-1	0-0	5-1	W1
Maryland	1-0	1.000	0-0	1-0	W1	8-2	0.800	6-0	2-0	0-2	8-2	W2
Northwestern	1-0	1.000	1-0	0-0	W1	6-3	0.667	4-0	1-1	1-2	6-3	W2
Nebraska	0-0	0.000	0-0	0-0	---	8-0	1.000	5-0	2-0	1-0	8-0	W8
Michigan	0-0	0.000	0-0	0-0	---	8-1	0.889	5-0	1-1	2-0	8-1	W1
Indiana	0-0	0.000	0-0	0-0	---	5-2	0.714	2-1	2-0	1-1	5-2	L1
Minnesota	0-0	0.000	0-0	0-0	---	6-4	0.600	4-2	1-0	1-2	6-4	L1
<b>Illinois</b>	<b>0-0</b>	<b>0.000</b>	<b>0-0</b>	<b>0-0</b>	<b>---</b>	<b>4-4</b>	<b>0.500</b>	<b>4-2</b>	<b>0-0</b>	<b>0-2</b>	<b>4-4</b>	<b>W1</b>
Penn State	0-0	0.000	0-0	0-0	---	4-4	0.500	3-0	0-2	1-2	4-4	L3
Purdue	0-1	0.000	0-1	0-0	L1	6-3	0.667	3-2	2-0	1-1	6-3	L1
Michigan State	0-1	0.000	0-0	0-1	L1	6-4	0.600	5-1	1-3	0-0	6-4	L2
Rutgers	0-1	0.000	0-1	0-0	L1	4-6	0.400	4-2	0-1	0-3	4-6	L5
Wisconsin	0-1	0.000	0-0	0-1	L1	2-7	0.222	1-3	0-4	1-0	2-7	L3

Through games played Dec. 5, 2021



## FIGHTING ILLINI RECORD WHEN...

Record at home.....	4-2
Record on road.....	0-0
Record in neutral-site games.....	0-2
Record vs. AP-ranked teams.....	0-1
Record when on TV.....	0-0
Coming off a win.....	1-2
Coming off a loss.....	3-2
Scoring 80+ points.....	1-0
Scoring 70-79 points.....	3-0
Scoring 60-69 points.....	0-1
Scoring less than 60 points.....	0-3
Giving up 80+ points.....	1-0
Giving up 70-79 points.....	0-1
Giving up 60-69 points.....	1-3
Giving up 50-59 points.....	2-0
Giving up less than 50 points.....	0-0
Shooting 55% FGs or better.....	0-0
Shooting 50-54% FGs.....	1-0
Shooting 45-49% FGs.....	1-0
Shooting 40-44% FGs.....	1-1
Shooting 30-39% FGs.....	1-3
Shooting below 30% FGs.....	0-0
Opp. shoot 50% FGs or better.....	0-0
Opp. shoot 45-49% FGs.....	0-0
Opp. shoot 40-44% FGs.....	2-1
Opp. shoot 35-39% FGs.....	0-2
Opp. shoot under 35% FGs.....	2-1
Shoots better than opponent.....	4-2
Shoots worse than opponent.....	0-2
Out-rebound opponent.....	2-1
Equal rebounds.....	1-0
Opponents out-rebound Illinois.....	1-3
Fewer turnovers than opponent.....	2-0
Equal turnovers.....	0-0
More turnovers than opponent.....	2-4
Wearing white uniforms.....	3-3
Wearing gray uniforms.....	1-0
Wearing blue uniforms.....	0-1
Wearing orange uniforms.....	0-0
Wearing pink uniforms.....	0-0
Leading after 1st Quarter.....	3-1
Tied after 1st Quarter.....	0-1
Trailing after 1st Quarter.....	1-2
Leading at halftime.....	4-0
Tied at halftime.....	0-0
Trailing at halftime.....	0-4
Leading after 3rd Quarter.....	4-0
Tied after 3rd Quarter.....	0-0
Trailing after 3rd Quarter.....	0-4
Shoot more FTs than opponent.....	3-2
Shoot fewer FTs than opponent.....	0-3
Equal FT attempts.....	0-0
Game goes to overtime.....	0-0
Margin is five points or less.....	1-0
Margin is 6-10 points.....	1-3
Margin is 11-15 points.....	1-1
Margin is 16-20 points.....	1-0
Margin is 21+ points.....	0-0
Playing in November.....	3-3
Playing in December.....	1-1
Playing in January.....	0-0
Playing in February.....	0-0
Playing in March.....	0-0
In day games (before 5 p.m.).....	4-2
In night games (after 5 p.m.).....	0-2

## GAME NOTES (CONT.)

## ABOUT MICHIGAN STATE

Michigan State comes into Thursday's game with a 6-4 overall record. The Spartans opened Big Ten play Sunday with an 88-61 road loss at No. 9/11 Iowa.

» MSU is 5-1 at home, overall, but suffered their first loss at Breslin Center vs. No. 24/25 Notre Dame (76-71) in the Big Ten/ACC Challenge.

» MSU's other home victories include wins over Morehead State (93-31), Niagara (89-65), Valparaiso (73-62), Bryant (100-60) and Marshall (85-75).

» Senior G **Nia Clouden**, a 2021 first-team All-Big Ten selection, leads the Spartans in scoring at 19.4 points per game, fourth in the Big Ten and 33rd nationally. Clouden also ranks among the national leaders in assists at 5.2 per game - fifth in the B1G and 37th in the nation.

» Junior F **Taiyier Parks** leads the MSU roster in rebounding at 5.2 boards per contest.

## SERIES VS. MICHIGAN STATE

Thursday's matchup at Michigan State marks the 74th in the series between the Illini and the Spartans.

» Michigan State leads the all-time series, 45-28,

» The Spartans hold a 24-10 advantage in games played in East Lansing.

» The Illini are looking to snap a nine-game MSU win streak in the series. The last Illini win the series was Jan. 23, 2014, a 61-51 victory at the Breslin Center.

## LAST TIME VS. THE SPARTANS

The Fighting Illini faced Michigan State just once in 2020-21 with the Spartans coming away with an 81-60 win at the Breslin Center on Feb. 4, 2021.

» **Jada Peebles** led the Illini offense with 17 points in the matchup vs. the Spartans, while then-freshman **Aaliyah Nye**, who signed with the Illini out of East Lansing High School, knocked down a trio of three-pointers to finish with nine points in her first collegiate game in her hometown.

## UP NEXT

The Fighting Illini begin a three-game stretch to close out the non-conference schedule, starting with a home matchup against Butler.

» Tipoff between the Illini and the Bulldogs is set for 7 p.m. CT with a live stream available on Big Ten+.

» Butler is 0-8 to start the 2021-22 season, and is scheduled to host Denver on Friday evening before making the trip to State Farm Center on Sunday.

## UPCOMING PROMOTIONAL SCHEDULE

## Dec. 22 vs. Missouri - 12 p.m.

» Faculty/Staff Break - Free concessions vouchers to the first 100 faculty and staff in attendance.

» Holiday Game - Holiday-themed music and on-court activities during the game.

## Jan. 9 vs. Wisconsin - 2 p.m.

» Pack the House Game - Featuring \$1 tickets, \$2 hot dogs, and free t-shirts for the first 250 fans.

For more information, please contact Elaina Rhoades, Assistant Director of Marketing and Fan Development, at [erhoades@illinois.edu](mailto:erhoades@illinois.edu).

## TOP-25 RANKINGS

## ASSOCIATED PRESS POLL // DEC. 28

#	SCHOOL	RECORD	POINTS	PREV
1	South Carolina (30)	9-0	750	1
2	NC State	8-1	708	2
3	UConn	5-1	700	2
4	Stanford	5-2	624	4
5	Baylor	8-1	600	5
6	Arizona	7-0	587	7
7	Louisville	7-1	551	10
8	Maryland	8-2	541	8
9	Tennessee	8-0	529	11
10	Indiana	5-2	526	6
11	Texas	6-1	450	15
12	Iowa	5-1	380	9
13	Michigan	8-1	377	12
14	Kentucky	6-1	350	16
15	Iowa State	8-1	309	14
16	BYU	8-0	275	21
17	South Florida	5-3	230	13
18	Texas A&M	8-1	229	17
19	Duke	8-0	203	NR
20	Ohio State	6-1	150	18
21	Georgia	7-1	112	20
22	Notre Dame	7-2	90	24
23	Oregon State	4-2	76	23
24	LSU	6-1	64	NR
25	Colorado	8-0	52	NR

Others receiving votes: Florida Gulf Coast 51, Oregon 48, **Florida State 40**, North Carolina 32, Georgia Tech 29, UCLA 26, Gonzaga 15, Virginia Tech 11, **Nebraska 11**, West Virginia 7, Oklahoma 6, DePaul 4, Washington State 4, **Missouri 3**.

## USA TODAY/WBCA COACHES POLL // DEC. 7

#	SCHOOL	RECORD	POINTS	PREV
1	South Carolina (32)	9-0	800	1
2	Connecticut	5-1	752	2
3	NC State	8-1	748	3
4	Stanford	5-2	688	4
5	Louisville	7-1	669	5
6	Baylor	8-1	611	7
7	Maryland	8-2	574	8
8	Indiana	6-2	572	6
9	Tennessee	8-0	549	10
10	Arizona	7-0	541	11
11	Michigan	8-1	484	9
12	Texas	6-1	451	14
13	Iowa	5-1	383	12
14	Kentucky	6-1	348	18
15	Texas A&M	8-1	329	15
16	Iowa State	8-1	316	13
17	Georgia	7-1	219	19
18	BYU	8-0	219	23
19	South Florida	5-3	158	17
20	Oregon State	4-2	144	21
21	Ohio State	6-1	131	20
22	Oregon	4-3	122	16
23	Notre Dame	7-2	100	25
24	North Carolina	8-0	88	NR
25	UCLA	5-2	66	24

Others receiving votes: Florida Gulf Coast 59, Gonzaga 54, Duke 50, Georgia Tech 39, Colorado 32, Central Florida 20, **Florida State 18**, Oklahoma 14, Virginia Tech 13, Washington State 9, West Virginia 6, **Nebraska 6**, Kansas State 6, LSU 5, Long Beach State 3, Coastal Carolina 2, Princeton 1, Missouri State 1.



## ILLINI STATISTICAL RANKINGS

## TEAM

CATEGORY	STAT	B1G*	NCAA^
Scoring Offense	65.9	11	164
Scoring Defense	65.9	11	227
Scoring Margin	+0.0	12	216
Free-Throw %	62.0%	14	309
Field-Goal %	41.2%	9	148
Field-Goal % Defense	36.8%	4	100
3-Point %	34.4%	6	70
3-Point % Defense	29.5%	7	162
Rebounding Offense	38.88	7	129
Rebounding Margin	-1.5	11	216
Blocked Shots/Game	4.1	7	73
Assists/Game	12.9	11	188
Steals/Game	8.2	7	171
Turnover Margin	-2.25	13	285
Assists/Turnover Ratio	0.64	13	270
Offensive Rebounds/Game	11.1	7	213
Defensive Rebounds/Game	27.8	6	76
3-Pointers/Game	6.5	8	120

## INDIVIDUAL

## KENDALL BOSTIC

CATEGORY	STAT	B1G*	NCAA^
Rebounds/Game	11.5	1	13
Blocks/Game	1.25	6	160
Offensive Rebounds/Game	3.50	4	69
Defensive Rebounds/Game	8.0	1	13

## ADALIA MCKENZIE

CATEGORY	STAT	B1G*	NCAA^
Offensive Rebounds/Game	2.00	13	231

## AALIYAH NYE

CATEGORY	STAT	B1G*	NCAA^
Points/Game	13.25	18	--
Steals/Game	2.00	3	173
Three-Pointers/Game	2.62	4	48
Three-Point %	42.0%	5	64

## ERIKI PORTER

CATEGORY	STAT	B1G*	NCAA^
Blocks/Game	1.29	5	148

ILL statistics through games played Dec. 6, 2021

B1G rankings through games played Dec. 6, 2021

NCAA rankings through games played Dec. 6, 2021

\* 15 Individuals ranked (20 for scoring and rebounds)

^ 348 teams and 250 individuals ranked

## GAME NOTES (CONT.)

## BIG TEN OPENERS

Illinois opens its 40th season of Big Ten women's basketball on Thursday. The Illini are 14-25 all-time in conference openers, and are looking to snap a four-game skid in league openers.

- » Illinois last began Big Ten Play 1-0 after a 70-65 home win over Iowa to open the 2016-17 Big Ten schedule.
- » The Illini will begin conference play on the road for the second straight season, after opening last year at Nebraska in mid-December - years - 2017-18 at Maryland (L, 100-65) - and are in search of their first conference-opening road win since 2007-08 at Northwestern (W, 58-44).

## BOSTIC ON THE BOARDS

Fighting Illini sophomore F **Kendall Bostic** enters play this week as the Big Ten leader in both overall rebounding (11.5 rebounds per game) and defensive rebounding (8.0 rpg). Nationally, Bostic ranks 13th in both categories.

- » Bostic opened the season with 17 rebounds in a double-double effort vs. NC Central (11/25).
- » In the Illini's Dec. 5 win over Eastern Kentucky, she took her rebounding game to another level, posting one of the top performance in Illinois program history. Bostic finished with 22 rebounds vs. the Colonels, the third-highest single-game total in program history, and the most since Martha Hutchinson tallied 23 boards in an Illinois win over Indiana State (1/24/80) almost 42 years ago.

## ODEN RETURNS FROM INJURY

Freshman G **Jayla Oden** returned to action for the Fighting Illini in Sunday's win over Eastern Kentucky after missing the previous four games due to injury.

- » Oden tallied just two points in her return, but helped spark the Illini win with four rebounds, an assist and two steals in just 11 minutes of action.
- » Prior to missing time, Oden had impressed to the tune of 9.3 points, 2.3 rebounds 3.0 assists and 2.3 steals per game in her first three collegiate contests.

## ILLINI IN FAMILIAR TERRITORY

The Fighting Illini roster features a pair of key contributors with strong ties to East Lansing, Mich., and the Michigan State women's basketball program.

- » For sophomore G **Aaliyah Nye**, Thursday's matchup will mark her second collegiate game in her hometown of East Lansing, Mich. Nye, joined the Orange and Blue after a standout career competing for the East Lansing High School Trojans. She was the 2020 Ms. Basketball runner-up in the state, and earned AP Division I Player of the Year honors as a senior, her second of back-to-back first-team All-Michigan honors. Nye was also named the 2020 Player of the Year by the Lansing State Journal. During her prep career, Nye scored 1,370 points and led the Trojans to a 90-8 overall record, including a state runner-up finish her sophomore season.
- » Sophomore F **Kendall Bostic**, is in her first season with the Fighting Illini after beginning her collegiate career as a member of the MSU team in 2020-21. Bostic, from Kokomo, Ind., signed with Michigan State out of high school and played in 22 games as a true freshman. She averaged 4.2 points and 2.9 rebound in 12.4 minutes per game, while helping MSU to an NCAA Tournament berth before transferring to Illinois. Bostic was one of three transfers to sign with the Illini in the spring, along with graduate transfer G **Sara Anastasieska**, and JUCO All-American **De'Myla Brown**.

## FOR STARTERS

The Fighting Illini have used five different starting lineups through the team's first eight games of the year entering Thursday's matchup at Michigan State.

- » Nine different players have started at least two games this season
- » Sophomore F **Kendall Bostic** is the only Illini to have every game.
- » Senior G **Jada Peebles** missed the start in the first game of the year while coming back from an illness during preseason practice, and was held out of the starting lineup, along with **Aaliyah Nye**, in Illini's second game at the Daytona Beach Invitational while both battled back from an illness.
- » Junior G **De'Myla Brown** started the first six games of her Illini career, but has provided an offensive spark off the bench in each of the Illini's two most recent games vs. No. 25 Florida State and Eastern Kentucky.
- » Freshman G **Adalia McKenzie** has started each of the last three games, the first starts of her Illini career.

## BENCH SCORING KEY FOR ILLINI

The Fighting Illini are averaging nearly 26.9 points per game off the bench, while allowing opponent reserves to score at a clip of 18.6 points per game.

- » The Illini reserves poured in a season-most 44 points in the team's 86-82 victory over UC Riverside on Nov. 21.
- » Per game, the Illini reserves are outscoring the opponent's bench players by 8.6 points per game.
- » The Illini bench has outscored opponents in six of eight games this season.

## BLOCK PARTY

The Fighting Illini enter play this week ranking among the top 100 team's nationally in blocked shots per game.

- » The Illini defense has averaged 4.1 blocks per game, which ranks seventh in the Big Ten and 73rd nationally.
- » Individually, sophomore forwards **Erika Porter** (1.29 bpg) and **Kendall Bostic** (1.25 bpg) rank fifth and sixth, respectively, in the Big Ten in blocks per game.



## KEY ILLINI RETURNERS

Illinois enters the 2021-22 with seven returning letterwinners, including three players - junior **Jada Peebles** (23 starts), redshirt senior **Eva Rubin** (20), and sophomore **Aaliyah Nye** (10) - that started at least 10 games in 2020-21. In addition, the Illini also return redshirt-senior forward **Lyric Robins** for a fifth year, along with senior post **Geovana Lopes**, junior forward **Solape Amusan**, and sophomore forward **Erika Porter**.

- » Peebles had a breakout sophomore campaign, closing the year as the Illini's leading scorer at 11.6 points per game. Peebles also led the team in minutes (35.4 per game) while knocking down a team-leading 34 three-pointers.
- » Rubin started 20 of 22 games played at center for the Illini, and ranks the team's leading returning rebounder at 3.5 rebounds per game, and also pace the roster with 21 blocks in 2020-21.
- » Nye started the final 10 games of the season for the Illini and ranks as the team's second-leading returning scorer (behind Peebles) at 8.1 points per game. Nye was the team's most efficient three-point threat, connecting on 35.1 percent (27/77) of her shots from distance.

## SIX NEWCOMERS

The 2021-22 Illini roster includes six newcomers with an opportunity to make an immediate impact for the Orange and Blue. The class is made up of three true freshmen - **Adalia McKenzie**, **Jayla Oden**, and **Keanna Rembert** - and a trio of transfers with Division I experience in graduate transfer guard **Sara Anastasieska** (Duke), sophomore forward **Kendall Bostic** (Michigan State) and junior guard **De'Myla Brown** (Chipola College).

## NEWCOMERS POURING IT IN

The 2021-22 Fighting Illini roster is a mix with seven returning letterwinners and six newcomers. So far, through eight games, the Illini's new faces are off to a strong start and fueling the Orange and Blue's offensive surge that has seen the team eclipse 70 points in each of their four wins, including an 86-point outburst vs. UC Riverside.

- » Entering Thursday's game at Michigan State, 12 of Illinois' 22 double-digit scoring games have come from newcomers to the Illini roster. And five of the remaining 10 have come from leading scorer **Aaliyah Nye**, who entered the season with just 18 collegiate games to her credit.
- » Junior G **De'Myla Brown** has reached double-figures scoring four times, one behind Nye for the team lead. Sophomore F **Kendall Bostic** has scored 10+ on three occasions, while graduate G **Sara Anastasieska**, and freshman G **Adalia McKenzie** have each notched a pair of double-figures scoring games. Illini's freshman G **Jayla Oden** has also eclipsed 10 points in one game this season.

## HOME NON-CONFERENCE SUCCESS UNDER FAHEY

Under head coach **Nancy Fahey** the Illini have found great success against non-conference opponents at State Farm Center. Overall, the Illini are 27-6, including a 6-1 mark in 2017-18, 7-1 in 2018-19, 8-1 in 2019-20, 2-1 in 2020-21, and 4-2 in 2021-22.

- » This season, the Illini are slated to host eight non-conference foes.
- » The team posted a 3-1 mark in its season-opening four-game home stand.
- » Following a home loss to No. 25 Florida State on Dec. 2, as part of the Big Ten/ACC Challenge, the Illini defeated Eastern Kentucky on Dec. 5, and next host Butler on Sunday, Dec. 12.
- » The non-conference schedule closes Dec. 22 with the McBride Homes Braggin' Rights Matchup vs. Mizzou.

## DOUBLE-DOUBLE DEBUT

Sophomore F **Kendall Bostic**, who transferred to Illinois from Michigan State in the offseason, had a monster debut in Orange and Blue, posting a double-double of 14 points and a then-career-high 17 rebounds in Illinois' season-opening victory over NC Central (11/9/21).

- » It marked just the ninth time that an Illini player posted a double-double that included at least 17 rebounds since the 2009-10 season.
- » The feat has been accomplished by some of the most accomplished players in program history. **Jenna Smith** and **Karisma Penn** each did it three times, while **Amber Moore** and **Chatrice White** join Bostic on the list with one such game to their credit.
- » White was the most recent Illini to accomplish the feat prior to Bostic, recording 10 points and 18 rebounds vs. Penn State in Jan. 2016, six seasons ago.
- » Bostic is also the only player on that list to do so in a season-opener.

## YEAR 5 UNDER FAHEY

The 2021-22 campaign marks the fifth under the direction of Hall of Fame head coach **Nancy Fahey**. Under Fahey's guidance, the Fighting Illini improved their win total in each of their first three seasons, and closed last season with wins over three Big Ten foes, including regular-season victories over Purdue and Minnesota. The Illini also closed the 2020-21 season with a win over Wisconsin in the opening round of the Big Ten Tournament, the program's first under Fahey's guidance.

## INFORMATION FOR STATE FARM CENTER

The following are important updates about the game day fan experience and reminders of what attendees can expect when returning to State Farm Center.

## MASK POLICY &amp; COVID-19 PRECAUTIONS

In accordance with State of Illinois, local, and University of Illinois guidance, ALL fans over age two attending Illini women's basketball home games are currently required to wear a face covering, regardless of vaccination status. Coverings may be temporarily removed while actively eating or drinking. This policy will be enforced by State Farm Center staff in the spirit of protecting the safety and wellbeing of all attendees. Cooperation is greatly appreciated as it will allow everyone to enjoy Illini women's basketball games in person.

Additional information regarding University of Illinois policy can be found at: [COVID19.Illinois.edu](https://COVID19.Illinois.edu)

In addition to the mask guidelines outlined above, all fans are asked to:

- » Stay home experiencing any signs or symptoms of COVID-19
- » Wash and/or sanitize hands frequently
- » Respect the safety and wellbeing of others in attendance
- » Report concerns to a member of State Farm Center staff

## CASHLESS CONCESSIONS

Following successful implementation at Illini football and men's basketball home games, food service partner, Spectra, has announced that all concessions transactions at State Farm Center will now be cashless. Under the new procedure, fans will use a tablet screen to input their order and pay using a credit or debit card. NFC-enabled devices may also be used to pay with credit card, Apple Pay, or Google Pay at most permanent concessions stands. Cashless transactions are expected to result in quicker, more efficient service throughout State Farm Center.

## SECURITY SCREENING &amp; CLEAR BAG POLICY

Fans attending Illini home games this season can expect the same security screening procedures and clear bag policy enforcement as previous years.

As a reminder, all patrons will be asked to pass through metal detectors or be hand screened at State Farm Center entrances. Cell phones, cameras, eyeglass cases, and any other large metal objects should be removed from pockets. Keys, coins, jewelry, watches, wallets, belts, and shoes do not need to be removed unless requested by a member of the State Farm Center security team.

The Clear Bag Policy, implemented in 2018, is still in effect. Non-clear bags larger than 4.5"x7" (including purses, binocular cases, etc.) are NOT permitted. Additionally, containers (except empty clear plastic water bottles under 32 oz.), food and drink, laptops/large electronic devices, flags/banners/blankets, noisemakers, and weapons are all prohibited from entering State Farm Center.

Additional information regarding these policies can be found on [StateFarmCenter.com](https://StateFarmCenter.com).



**APPROACHING COACHING MILESTONES**

Fighting Illini Hall of Fame head coach **Nancy Fahey** comes into Thursday's matchup at Michigan State at 776-216 in her 36th season as a collegiate head coach.

- » Fahey is now eight games away from coaching in her 1,000th collegiate tilt, and is slated to hit that mark on Jan. 9 when the Illini host her alma mater, Wisconsin, at State Farm Center.
- » Fahey led WashU in 870 contests, including a record five national championships, in her 31 years at the helm of the Bears' program. She has now coached in 121 games at Illinois entering Sunday.
- » Fahey is 24 victories away from reaching 800 wins as a collegiate head coach. Entering the 2021-22 season only 16 coaches have reached that figure across all NCAA divisions.

**NEW FACES ON STAFF**

**Nancy Fahey** added two veteran assistant coaches to the Fighting Illini coaching staff in the offseason with the additions of **Corry Irvin** and **Hernando Planells**. The duo joins the staff along with **John Patterson**, who enters his fifth season overall with the Illini, and his third as an on-court coach. Patterson was also promoted to Associate Head Coach in the offseason.

- » Irvin joins the Illini with a wealth of basketball knowledge and deep-rooted recruiting ties – in Chicago and nationally – which she built over 22 years as a coach at the NCAA Division I, high school and NAIA levels. She comes to the Illinois after most recently serving as the head coach at St. Xavier University in Chicago for two seasons. Prior to that, Irvin coached 18 seasons at Chicago's Whitney Young High School where she turned the Dolphins into a powerhouse that produced three state championships.
- » Planells boasts an extensive résumé that includes more than 20 years of experience at the professional, collegiate, and high school levels across the men's and women's game. He has coached domestically and internationally, developing a reputation for strengthening individuals and teams. Most recently, Planells served as the head coach at William Jessup University. From 2012-19, Planells was an integral part of Duke's women's program, including his last three seasons as the Blue Devils' associate head coach.

**ILLINI IN OPENERS**

Following the Fighting Illini's season-opening win over vs. North Carolina Central, the program is now 5-0 in regular-season openers under head coach **Nancy Fahey**.

- » Prior to this season, Fahey had led the Illini to a 64-50 win over Fort Wayne in her Illinois debut in 2017-18. The team then opened the 2018-19 season with a home win over Alabama A&M (88-60), before defeating Chicago State (96-66) and Indiana State (68-49) to open the 2019-20 and 2020-21 seasons, respectively.
- » All-time, the Illini program is now 30-18 in season-openers.

**SMITH JOINS HALL OF FAME**

Fighting Illini women's basketball legend **Jenna Smith**, who starred in the Orange and Blue from 2006-07 to 2009-10, was inducted into the Illinois Athletics Hall of Fame as a member of the Class of 2020, though the ceremony took place Sept. 15, 2021 following a delay due to the ongoing COVID-19 pandemic.

- » Smith becomes the second Fighting Illini women's basketball player to earn enshrinement, joining **Ashley Berggren** who was inducted as part of the Class of 2019.
- » Smith finished her Fighting Illini career, and continues to stand, as the program's all-time leader in scoring (2,160 points) and rebounding (1,217 boards). She was a three-time First-Team All-Big Ten honoree in 2008, 2009 and 2010 while also earning Associated Press honorable-mention All-American recognition.
- » Smith holds several other Illinois scoring records, including career double-doubles with 53 and the most double-doubles in a season with 21 in 2010. During her Illini career, Smith averaged 16.6 points and 9.4 rebounds per game, and was a three-time team MVP.
- » Smith was drafted in second round as the 14th overall choice of the 2010 WNBA Draft by the Washington Mystics and spent time with the Indiana Fever. She continues to play professionally.

**UBBEN UPGRADES**

Construction began during the summer on the \$40 million renovation and expansion of the Ubben Basketball Practice Facility. The project will add approximately 40,000 square feet to the existing structure, while remodeling large portions of the existing building. Two new half courts will be added to both the men's and women's current gym space, giving the two programs additional areas to work on development while not disrupting full-court action. The project will feature a new strength and conditioning addition, significantly increase the size of the locker rooms and players lounges, and include a state-of-the-art sports medicine area. New coaches' office spaces and a grand entry lobby also are included in the project.

During the renovation, the women's program has relocated its day-to-day operations to State Farm Center, while the men's program continues to work primarily out of Ubben. The project is expected to be completed in time for the 2022-23 season.



## ILLINI WOMEN'S BASKETBALL INKS FOUR

**CHAMPAIGN, Ill.** – Fighting Illini women's basketball and head coach Nancy Fahey announced Wednesday (Nov. 10) the signing of four student-athletes to the Illinois women's basketball program. Samantha Dewey (North Andover, Massachusetts), Camille Jackson (Chicago, Illinois), Hana Mühl (Zagreb, Croatia), and Liisa Taponen (Tampere, Finland) will join the Orange and Blue for the 2022-23 season.

"We are extremely excited to announce the addition of four outstanding young women to our Illini family in the class of 2022," Fahey said. "Sam, Camille, Hana and Liisa add another layer of size, speed and versatility to our roster. Each member of this class comes to our program with a strong belief in - and desire to be a part of - the vision we have for the Illini women's basketball program. These are four remarkable young women that will be wonderful assets not only on the court and in the classroom, but also to our sisterhood and community."



**SIGNED SIGNED SIGNED SIGNED SIGNED SIGNED SIGNED**

**SAMANTHA DEWEY | NORTH ANDOVER, MASSACHUSETTS | BROOKS SCHOOL**

### DEWEY'S HIGHLIGHTS:

- » Prep Girls Hoops ranked as the No. 2 player in Massachusetts for the class of 2022.
- » Team co-captain of the Brooks School girls basketball team
- » Helped lead the Books School to the 2020 New England Prep School Athletic Council (NEPSAC) Class B Championship
- » Named NEPSAC tournament MVP after recording 16 points and 15 rebounds in the championship game.
- » Chose Illinois among offers from 14 Division I programs

**FAHEY'S TAKE:** "We are overjoyed at the addition of Samantha "Sam" Dewey to our Illini family. Sam is a hard-nosed and physical post player from Massachusetts, with an extremely high motor and great work ethic. She has very good back-to-the-basket skills and is an excellent rebounder at both ends of the floor. She is good passer with impressive shooting range and the ability to attack from the elbow, and has great defensive skills both on and off the block. Sam's passion and enthusiasm for the game are contagious, she brings an energy to the court that spreads to her teammates!"



**SIGNED SIGNED SIGNED SIGNED SIGNED SIGNED SIGNED**

### MÜHL'S HIGHLIGHTS:

- » Competes for Club ZKK Tresnjevka 2009
- » Averaged 11.0 points, 4.6 rebounds, 4.1 assists, and 2.3 steals per game for Tresnjevka during the 2020-21 season.
- » Competed for Croatia in the 2021 U18 European Championships, averaging 13.4 points, 3.6 rebounds, 3.8 assists and 1.4 steals per contest.
- » Also competed for Croatia at the 2018 U16 European Championships, averaging 9.9 points, 2.9 rebounds, 3.9 assists, and 1.9 steals per game.

**FAHEY'S TAKE:** "Hana Mühl is a tough competitor with a high IQ, coming to us from Croatia. She has very good court vision and makes great decisions with the ball in her hands whether scoring or finding open teammates. Her ability to attack the rim and stretch the defense from the perimeter make her a consistent scoring threat from multiple areas. Her experience playing on the international stage has led to a competitive maturity that will help her make the transition to a talented college player. We are extremely excited about Hana's future with our program!"

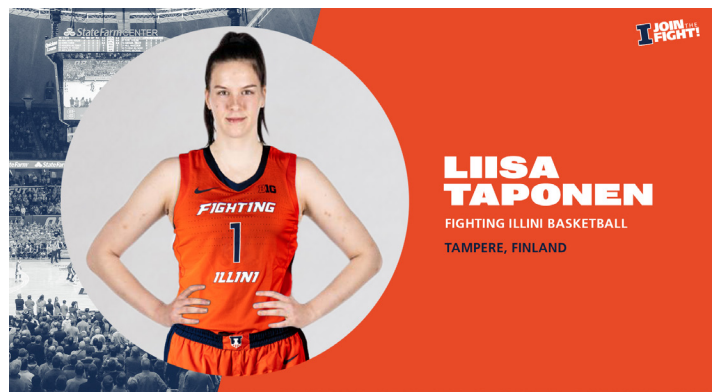


**CAMILLE JACKSON | CHICAGO, ILLINOIS | BUTLER COLLEGE PREP**

### JACKSON'S HIGHLIGHTS:

- » Rated as a four-star recruit by ESPN and ProspectsNation.com
- » ESPN ranked as the No. 65 player overall and the No. 17 guard in the Class of 2022
- » Prep Girls Hoops ranked as the No. 48 nationally prospect, and the No. 2 player in Illinois for the class of 2022.
- » Led Butler College Prep to back-to-back Noble League Championships
- » Has averaged 14.9 points, 7.7 rebounds, 4.7 assists, 3.1 steals, and 1.2 blocks per game throughout her high school career.

**FAHEY'S TAKE:** "We are ecstatic to add one of the top-rated 2022 players in the state of Illinois to our Illini Family! Camille Jackson is an unbelievably athletic and strong guard; she can score multiple ways and has the ability to play at an extremely fast pace. Her hard work and dedication show in her continued improvement over the last year. She is a defensive stopper, passer and scorer, and is exactly the type of player we need to continue to build this into a championship program. Camille believes in what we are building here at Illinois and her energy and enthusiasm are great additions to our team!"



LIISA TAPONEN | TAMPERE, FINLAND | MÄKELÄNRINTEEN UPPER SECONDARY SCHOOL

### TAPONEN'S HIGHLIGHTS:

- » Competes for Club HBA-Marsky Helsinki
- » Averaged 11.4 points and 9.5 rebounds, and 1.2 assists per game during the 2020-21 season
- » Helped Finland to the 2019 FIBA U18 Women's European Championship (Division B)
- » Also competed for Finland in both the 2017 and 2018 U16 European Championships

**FAHEY'S TAKE:** "A talented 6-5 post player from Finland, Liisa Taponen is very comfortable and effective operating with her back to the basket. She knows how to maneuver the defense and is able to get deep touches in the paint that make her a talented post scorer. Liisa has worked hard to become an inside-outside threat and has developed the ability to score on the move and find open teammates; she is a post that will be able to stretch the floor within our offense. We are thrilled she is joining the Fighting Illini family!"



## 2021-22 ILLINOIS WOMEN'S BASKETBALL ROSTER

No.	Player	Pos.	Ht.	Elig.	Hometown/High School/Prev. College
0	Sara Anastasieska	G	5-11	Gr.	Sydney, Australia / Monte Sant' Angelo Mercy / Duke Univ.
2	Lyric Robins	F	5-11	R-Sr.	Plano, Texas / Plano West H.S.
3	Solape Amusan	F	6-1	Jr.	Woodbury, Minnesota / Woodbury H.S. / Iowa Western C.C.
5	De'Myla Brown	G	5-7	Jr.	North Little Rock, Arkansas / North Little Rock H.S. / Chipola College
11	Jada Peebles	G	5-10	Jr.	Raleigh, North Carolina / Wakefield H.S.
12	Jayla Oden	G	5-9	Fr.	Baltimore, Maryland / McDonogh H.S.
14	Geovana Lopes	F/C	6-3	Sr.	Bataguassu, Brazil / E.E. Paulo Mendes Silva / Odessa College
15	Keanna Rembert	F	6-2	Fr.	Raleigh, North Carolina / Millbrook H.S.
20	Erika Porter	F	6-3	So.	West Windsor, New Jersey / Notre Dame H.S.
22	Eva Rubin	C	6-5	R-Sr.	Flossmoor, Illinois / Homewood Flossmoor H.S. / Arizona State Univ.
24	Adalia McKenzie	G	5-10	Fr.	Brooklyn Park, Minnesota / Park Center H.S.
32	Aaliyah Nye	G	5-11	So.	East Lansing, Michigan / East Lansing H.S.
44	Kendall Bostic	F	6-2	So.	Kokomo, Indiana / Northwestern H.S. / Michigan State Univ.

## COACHING STAFF

Head Coach:	Nancy Fahey (5th season at Illinois, 36th overall)
Associate Head Coach:	John Patterson (5th season)
Assistant Coach:	Corry Irvin (1st season)
Assistant Coach:	Hernando Planells (1st season)
Director of Operations:	Dianna Pasley (5th season)
Director of Player Personnel:	Steve Cochran (5th season)
Head Coordinator of Recruiting & Director of Student-Athlete Development:	Tianna Kirkland (10th season)
Video & Scouting Operations Coordinator:	Justin Peak (1st season)
Graduate Assistant:	Isabelle Spingola (1st season)
Strength & Conditioning Coach:	Kilee Fletcher (5th season)
Athletic Trainer:	Autumn Taylor (3rd season)

## 2021-22 RETURNING/LOST BREAKDOWN

STARTERS RETURNING (3)					2020-21 STATISTICS					
NO	PLAYER	POS	HT	ELIG	PTS/G	REB/GAME	ASSISTS	TRNOVR	BLOCKS	STEALS
11	Jada Peebles	G	5-10	Jr.	11.6	2.1	46	48	7	26
32	Aaliyah Nye	G	5-11	So.	8.1	2.2	18	13	6	7
22	Eva Rubin	C	6-5	R-Sr.	7.3	3.5	5	57	21	11

STARTERS LOST (2)					2020-21 STATISTICS					
NO	PLAYER	POS	HT	ELIG	PTS/G	REB/GAME	ASSISTS	TRNOVR	BLOCKS	STEALS
10	Jeanae Terry	G	5-11	Jr.	10.7	7.8	101	96	6	41
44	Kennedi Myles	F	6-2	Jr.	8.7	8.0	37	62	6	35

OTHER LETTERWINNERS RETURNING (4)					2020-21 STATISTICS					
NO	PLAYER	POS	HT	ELIG	PTS/G	REB/GAME	ASSISTS	TRNOVR	BLOCKS	STEALS
3	Solape Amusan	F	6-1	Jr.	3.9	1.9	6	15	4	7
14	Geovana Lopes	C	6-3	Sr.	3.3	3.1	12	18	2	5
20	Erika Porter	F	6-3	So.	2.1	1.1	1	8	9	3
2	Lyric Robins	F	5-11	Sr.	1.8	1.6	8	16	1	12

OTHER LETTERWINNERS LOST (4)					2020-21 STATISTICS					
NO	PLAYER	POS	HT	ELIG	PTS/G	REB/GAME	ASSISTS	TRNOVR	BLOCKS	STEALS
0	J-Naya Ephraim	G	5-10	Sr.	4.3	2.0	37	63	4	16
21	Aaliyah McQueen	G	5-9	So.	2.0	2.6	8	16	1	12
1	Nancy Panagiotopoulou	F	6-3	Gr.^	0.0	0.4	0	3	1	0
13	Tara O'Malley	G	5-6	Sr.	0.4	0.2	0	0	0	1

## NEWCOMERS (6)

NO	PLAYER	POS	HT	ELIG	HOMETOWN/HIGH SCHOOL/PREVIOUS COLLEGE
0	Sara Anastasieska	G	5-11	Gr.	Sydney, Australia / Monte Sant' Angelo Mercy / Duke Univ.
5	De'Myla Brown	G	5-7	Jr.	North Little Rock, Arkansas / North Little Rock H.S. / Chipola College
12	Jayla Oden	G	5-9	Fr.	Baltimore, Maryland / McDonogh H.S.
15	Keanna Rembert	F	6-2	Fr.	Raleigh, North Carolina / Millbrook H.S.
24	Adalia McKenzie	G	5-10	Fr.	Brooklyn Park, Minnesota / Park Center H.S.
44	Kendall Bostic	F	6-2	So.	Kokomo, Indiana / Northwestern H.S. / Michigan State Univ.

^ Graduated from Illinois before transferring for final season of collegiate eligibility

## ROSTER BREAKDOWN

## BY ELIGIBILITY

Graduate Transfer (1):	Sara Anastasieska
Seniors (3):	Geovana Lopes
	Lyric Robins
	Eva Rubin
Juniors (3):	Solape Amusan
	De'Myla Brown
	Jada Peebles
Sophomore (3):	Kendall Bostic
	Aaliyah Nye
	Erika Porter
Freshmen (3):	Adalia McKenzie
	Jayla Oden
	Keanna Rembert

## BY POSITION

Guards (6):	Sara Anastasieska
	De'Myla Brown
	Adalia McKenzie
	Aaliyah Nye
	Jayla Oden
	Jayda Peebles
Forwards (6):	Solape Amusan
	Kendall Bostic
	Geovana Lopes
	Erika Porter
	Keanna Rembert
	Lyric Robins
Centers (2):	Geovana Lopes
	Eva Rubin

## BY STATE/COUNTRY

Arkansas (1):	De'Myla Brown
Australia (1):	Sara Anastasieska
Brazil (1):	Geovana Lopes
Illinois (1):	Eva Rubin
Indiana (1):	Kendall Bostic
Maryland (1):	Jayla Oden
Michigan (1):	Aaliyah Nye
Minnesota (2):	Solape Amusan
	Adalia McKenzie
New Jersey (1):	Erika Porter
North Carolina (2):	Jada Peebles
	Keanna Rembert
Texas (1):	Lyric Robins

## PRONUNCIATION GUIDE

## PLAYERS

Solape Amusan	..... suh-LAW-pay AM-you-sun
Sara Anastasieska	..... SAR-uh AH-nah-STAW-see-ESK-uh
Kendall Bostic	..... BOSS-tick
De'Myla Brown	..... de-MY-luh
Geovana Lopes	..... geo-VONN-uh LO-peh
Adalia McKenzie	..... uh-DELL-ee-ah
Aaliyah Nye	..... uh-LEE-yah
Jayla Oden	..... JAY-luh
Jada Peebles	..... JAY-duh
Keanna Rembert	..... kee-YAW-nuh
Lyric Robins	..... lear-ick
Eva Rubin	..... EE-vuh ROO-bin

## STAFF

Nancy Fahey	..... FAY
Hernando Planells	..... pluh-NELLS



## EXPANDED SCHEDULE/RESULTS

DATE	OPPONENT	RESULT	SCORE	RECORD	B1G RECORD	ATTENDANCE	HIGH POINTS	HIGH REBOUNDS	HIGH ASSISTS
11/9	North Carolina Central	W	73-56	1-0	--	1,983	Aaliyah Nye (23)	Kendall Bostic (17)	Jayla Oden (5)
11/14	Miami (OH)	W	72-65	2-0	--	1,121	Jayla Oden (14)	Kendall Bostic (6)	Jayla Oden (3)
								Geovana Lopes (6)	De'Myla Brown (3)
11/18	SIUE	L	61-72	2-1	--	1,008	Aaliyah Nye (17)	Kendall Bostic (13)	Jada Peebles (4)
11/21	UC Riverside	W	86-82	3-1	--	1,053	Jada Peebles (17)	Sara Anastasieska (6)	Sara Anastasieska (5)
								Aaliyah Nye (6)	
								Adalia McKenzie (6)	
11/26	vs. Dayton	L	53-67	3-2	--	--	De'Myla Brown (12)	Kendall Bostic (8)	Jada Peebles (2)
11/27	vs. Middle Tennessee	L	52-62	3-3	--	--	Adalia McKenzie (11)	Kendall Bostic (11)	Jada Peebles (3)
12/2	Florida State	L	58-67	3-4	--	1,027	Aaliyah Nye (17)	Kendall Bostic (10)	De'Myla Brown (3)
12/5	Eastern Kentucky	W	71-57	4-4	--	1,227	Aaliyah Nye (16)	Kendall Bostic (22)	Jada Peebles (6)
12/9	at Michigan State								
12/12	Butler								
12/19	at Southern Illinois								
12/22	Missouri								
12/30	Maryland								
1/2	at Iowa								
1/6	at Ohio State								
1/9	Wisconsin								
1/13	Northwestern								
1/16	at Penn State								
1/20	Purdue								
1/23	Nebraska								
1/27	at Indiana								
1/30	at Northwestern								
2/3	Michigan								
2/6	at Wisconsin								
2/10	Indiana								
2/14	Ohio State								
2/17	at Purdue								
2/24	at Minnesota								
2/27	Rutgers								

## SPECIALTY STATISTICS BREAKDOWN

	OPPONENT	PTS IN PAINT (ILL-OPP.)	PTS OFF TO (ILL-OPP.)	2ND CHANCE PTS (ILL-OPP.)	FAST BREAK PTS (ILL-OPP.)	BENCH PTS (ILL-OPP.)	LARGEST LEAD	LARGEST DEFICIT	LEAD CHANGES	TIES
11/9	North Carolina Central	30 / 26	24 / 19	11 / 6	11 / 6	27 / 23	20	2	1	1
11/14	Miami (OH)	36 / 44	25 / 14	8 / 13	9 / 7	31 / 6	18	--	0	0
11/18	SIUE	22 / 24	14 / 23	13 / 10	2 / 6	22 / 14	9	13	5	2
11/21	UC Riverside	32 / 30	11 / 11	9 / 9	24 / 8	44 / 22	16	2	8	4
11/26	vs. Dayton	22 / 16	11 / 10	7 / 12	2 / 5	29 / 8	2	16	2	3
11/27	vs. Middle Tennessee	26 / 20	13 / 23	17 / 15	2 / 6	25 / 13	--	19	0	2
12/2	Florida State	14 / 34	13 / 18	9 / 9	4 / 22	15 / 39	2	14	7	5
12/5	Eastern Kentucky	22 / 16	20 / 23	15 / 16	0 / 2	22 / 24	21	7	3	1
12/9	at Michigan State									
12/12	Butler									
12/19	at Southern Illinois									
12/22	Missouri									
12/30	Maryland									
1/2	at Iowa									
1/6	at Ohio State									
1/9	Wisconsin									
1/13	Northwestern									
1/16	at Penn State									
1/20	Purdue									
1/23	Nebraska									
1/27	at Indiana									
1/30	at Northwestern									
2/3	Michigan									
2/6	at Wisconsin									
2/10	Indiana									
2/14	Ohio State									
2/17	at Purdue									
2/24	at Minnesota									
2/27	Rutgers									
Totals		214 / 210	131 / 141	89 / 90	54 / 62	215 / 149				
Average		26.8 / 26.3	16.4 / 17.6	11.1 / 11.3	6.8 / 7.8	26.9 / 18.6				
Average Margin		+0.5	-1.2	-0.2	-1.0	+8.3				



## GAME-BY-GAME TEAM COMPARISON

OPPONENT	1ST	2ND	3RD	4TH	OT	SCORE	MARGIN	FG	FG%	3FG	3FG %	FT	FT %	REBS	ASTS	TOS	BLKS	STLS	FLS
N.C. Central	18 / 13	19 / 11	18 / 14	18 / 18	--	73 / 56	+17	26-67 / 21-64	.388 / .328	6-21 / 3-14	.286 / .214	15-24 / 11-21	.625 / .524	48 / 48	15 / 11	25 / 28	1 / 3	14 / 10	20 / 24
Miami (OH)	18 / 12	22 / 10	11 / 22	21 / 21	--	72 / 65	+7	25-59 / 26-64	.424 / .400	4-16 / 2-21	.250 / .095	18-25 / 11-17	.720 / .647	33 / 47	12 / 12	15 / 22	4 / 1	14 / 5	18 / 17
SIUE	17 / 10	9 / 19	18 / 25	18 / 17	--	62 / 71	-9	21-53 / 23-63	.398 / .365	6-14 / 6-17	.429 / .353	14-24 / 19-26	.583 / .731	38 / 39	11 / 11	24 / 21	9 / 1	9 / 9	23 / 15
UC Riverside	18 / 14	25 / 26	18 / 23	25 / 29	--	86 / 82	+4	30-55 / 31-69	.545 / .449	9-19 / 12-28	.474 / .429	17-24 / 8-11	.708 / .727	36 / 32	19 / 17	16 / 12	4 / 0	2 / 7	10 / 21
vs. Dayton	14 / 22	16 / 10	12 / 20	11 / 15	--	53 / 67	-14	20-57 / 21-55	.351 / .382	6-16 / 12-23	.375 / .522	7-14 / 13-20	.500 / .650	36 / 38	8 / 13	14 / 12	6 / 3	3 / 6	22 / 15
vs. Middle Tenn.	6 / 12	12 / 14	13 / 22	21 / 14	--	52 / 62	-10	21-52 / 22-67	.404 / .328	3-13 / 8-41	.231 / .195	7-21 / 10-10	.333 / 1.000	42 / 42	11 / 13	19 / 13	3 / 3	7 / 9	14 / 17
Florida State	15 / 15	13 / 18	16 / 16	14 / 18	--	58 / 67	-9	18-53 / 28-65	.340 / .431	7-24 / 6-21	.292 / .286	15-20 / 5-9	.750 / .556	35 / 40	9 / 15	23 / 17	1 / 1	9 / 12	13 / 15
Eastern Kentucky	17 / 23	22 / 9	23 / 11	9 / 14	--	71 / 57	+14	25-55 / 18-68	.455 / .265	11-28 / 7-25	.393 / .280	10-14 / 14-21	.714 / .667	43 / 39	18 / 9	25 / 19	5 / 0	8 / 14	22 / 14
at Michigan St.																			
Butler																			
at S. Illinois																			
Missouri																			
Maryland																			
at Iowa																			
at Ohio State																			
Wisconsin																			
Northwestern																			
at Penn State																			
Purdue																			
Nebraska																			
at Indiana																			
at Northwestern																			
Michigan																			
at Wisconsin																			
Indiana																			
Ohio State																			
at Purdue																			
at Minnesota																			
Rutgers																			

## STARTING LINEUPS

DATE	OPPONENT	GUARD	GUARD	GUARD/FORWARD	FORWARD	FORWARD/CENTER	RECORD	#
11/9	North Carolina Central	De'Myla Brown	Aaliyah Nye	Sara Anastasieska	Kendall Bostic	Erika Porter	1-0	1
11/14	Miami (OH)	De'Myla Brown	Aaliyah Nye	Jada Peebles	Kendall Bostic	Geovana Lopes	1-0	2
11/18	SIUE	De'Myla Brown	Aaliyah Nye	Jada Peebles	Kendall Bostic	Geovana Lopes	1-1	2
11/21	UC Riverside	De'Myla Brown	Aaliyah Nye	Jada Peebles	Kendall Bostic	Erika Porter	1-0	3
11/26	vs. Dayton	De'Myla Brown	Aaliyah Nye	Jada Peebles	Kendall Bostic	Erika Porter	1-1	3
11/27	vs. Middle Tennessee	De'Myla Brown	Adalia McKenzie	Sara Anastasieska	Kendall Bostic	Eva Rubin	0-1	4
12/2	Florida State	Jada Peebles	Aaliyah Nye	Adalia McKenzie	Kendall Bostic	Eva Rubin	0-1	5
12/5	Eastern Kentucky	Jada Peebles	Aaliyah Nye	Adalia McKenzie	Kendall Bostic	Eva Rubin	1-1	5
12/9	at Michigan State							
12/12	Butler							
12/19	at Southern Illinois							
12/22	Missouri							
12/30	Maryland							
1/2	at Iowa							
1/6	at Ohio State							
1/9	Wisconsin							
1/13	Northwestern							
1/16	at Penn State							
1/20	Purdue							
1/23	Nebraska							
1/27	at Indiana							
1/30	at Northwestern							
2/3	Michigan							
2/6	at Wisconsin							
2/10	Indiana							
2/14	Ohio State							
2/17	at Purdue							
2/24	at Minnesota							
2/27	Rutgers							



## THE LAST TIME...

Illinois scored 100 points or more	Nov. 24, 2018 vs. Sacramento State (Sacramento St. 109, Illinois 107)
Illinois scored 90 points or more	Nov. 24, 2015 vs. Tennessee State (Illinois 98, TSU 43)
Illinois scored 50 points or less	Feb. 14, 2021, 50 vs. No. 15 Indiana (Indiana 58, Illinois 50)
Illinois scored 40 points or less	Jan. 3, 2018, 37, at Rutgers (Rutgers 76, Illinois 37)
Illinois gave up 100 points or more	Feb. 17, 2021, 103, No. 9/10 Maryland (Maryland 103, Illinois 58)
Illinois gave up 90 points or more	Jan. 20, 2019, 95, Iowa (Iowa 95, Illinois 74)
Illinois gave up 40 points or less	Dec. 2, 2016 vs. Fort Wayne (Illinois 56, Fort Wayne 33)
Illinois won by 40+ points	Nov. 24, 2015 vs. Tennessee State (Illinois 98, TSU 43)
Illinois won an overtime game	Nov. 9, 2019 vs. Holy Cross (Illinois 78, Holy Cross 75)
Illinois lost an overtime game	Dec. 28, 2018 vs. Indiana (Indiana 85, Illinois 83)
Illinois made 10 or more three-pointers	Dec. 5, 2021, 11, vs. Eastern Kentucky (Illinois 71, Eastern Kentucky 57)
An Illinois opponent made 10 or more three-pointers	Nov. 26, 2021, 12, vs. Dayton (Dayton 67, Illinois 53)
An Illinois player scored 20+ points	Nov. 9, 2021, Aaliyah Nye, 23 vs. North Carolina Central (Illinois 73, NCCU 56)
An Illinois player scored 30+ points	Nov. 24, 2018, Alex Wittinger, 32 vs. Sacramento State (Sacramento St. 109, Illinois 107)
An Illinois player scored 40+ points	Jan. 14, 1996, Ashley Berggren, 43 at Minnesota (Illinois 87, Minnesota 76)
An opposing player scored 30+ points	Dec. 10, 2020, Sam Haiby, 33, at Nebraska (Nebraska 78, Illinois 72)
An opposing player scored 40+ points	Dec. 16, 1989, Carol Owens, 41 at Northern Illinois (Northern Illinois 110, Illinois 93)
An Illinois player had a triple-double	Jan. 23, 2018, Alex Wittinger at Penn State, 18 p, 10 r, 11 b (Penn State 68, Illinois 59)
An opposing player had a triple-double	Dec. 2, 2006, Arminie Price, Ole Miss, 34 p, 15 r, 12 st (Ole Miss 75, Illinois 50)
No Illini scored double figures	3/2, 2007, vs. Penn State at Big Ten Tournament (Penn State 61, Illinois 49 - Rebecca Harris had 8)
No opposing player scored double figures	Nov. 25, 2011, vs. Arizona State (Arizona State 51, Illinois 50)
Two Illini players had a double-double in the same game	Dec. 2, 2020, vs. Valparaiso, Jeanae Terry (16 pts, 13 rbs) & Kennedy Myles (14 pts, 11 rbs) (Valparaiso 62, Illinois 59)
An Illini had 15+ rebounds	Nov. 9, 2021, Kendall Bostic, 17, vs. North Carolina Central (Illinois 73, NCCU 56)
An Illini had 20+ rebounds	Dec. 5, 2021, Kendall Bostic, 22, vs. Eastern Kentucky (Illinois 71, Eastern Kentucky 57)
An Illini had 25+ rebounds	Jan. 23, 1975, Betty Anderson, 30, vs. Eastern Illinois (Illinois 57, Eastern Illinois 51 [OT])
An opposing player had 15+ rebounds	Jan. 31, 2021, Imani Lewis, 16, at Wisconsin (Wisconsin 69, Illinois 57)
An opposing player had 20+ rebounds	Nov. 9, 2019, Lauren Manis, 21, Holy Cross (Illinois 78, Holy Cross 78 [OT])
An opposing player had 25+ rebounds	Never
An Illini had 10+ assists	Feb. 10, 2021, Jeanae Terry, 10 at Minnesota (Minnesota 83, Illinois 73)
An Illini had 15+ assists	Jan. 15, 2006, Maggie Acuna, 16, at Wisconsin (Illinois 84, Wisconsin 54)
An opposing player had 10+ assists	Dec. 5, 2019, Shayla Bennett, 10, North Carolina (North Carolina 85, Illinois 60)
An opposing player had 15+ assists	3/12, 1983, Debbie Hunter, 15, vs. Minnesota (Minnesota 89, Illinois 65)
An Illini player made 5+ three-pointers	Dec. 5, 2021, Aaliyah Nye, 5, vs. Eastern Kentucky (Illinois 71, Eastern Kentucky 57)
An Illini player made 8+ three-pointers	Nov. 29, 1997, Katie Coleman, 9, vs. Providence, at Puerto Rico (Illinois 106, Providence 74)
An Illini player made 10+ three-pointers	Never
An opposing player made 5+ threes	Nov. 29, 2021, Jenna Giaccone, 5, vs. Dayton (Dayton 67, Illinois 53)
An opposing player made 8+ threes	Feb. 21, 2016, K. Mitchell, 8, at #5 Ohio State (Ohio State 117, Illinois 74)
Illinois shot 60 pct. FG or better	Nov. 22, 2010, .616 (45-73) vs. Cal Poly (Illinois 104, Cal Poly 63)
Illinois shot 30 pct. FG or lower	March 10, 2021 .232 (13-56), vs. Northwestern (BTT) (Northwestern 67, Illinois 42)
An opponent shot 60 pct. FG or better	Dec. 31, 2019, .650 (39-60), at Iowa (Iowa 108, Illinois 72)
An opponent shot 30 pct. FG or lower	Jan. 25, 2021, .296 (16-54) Nebraska (Nebraska 57, Illinois 53)
An opponent shot 25 pct. FG or lower	March 9, 2021, .250 (16-64), Wisconsin (BTT) (Illinois 67, Wisconsin 42)
An opponent shot 20 pct. FG or lower	Nov. 17, 2013, .152 (7-46), vs. Alcorn State (Illinois 112, Alcorn State 28)
Illinois forced 20 or more turnovers	Nov. 18, 2021, 21, SIUE (SIUE 71, Illinois 62)
Illinois forced 30 or more turnovers	Feb. 25, 2015, 34, Michigan State (Michigan State 67, Illinois 65)
Illinois committed 30 or more turnovers	Dec. 2, 2006, 34, at Ole Miss (Ole Miss 75, Illinois 50)
Illinois had 20 or more steals	Nov. 14, 2014, 21, vs. IPFW (Illinois 70, IPFW 63)
An Illinois opponent had 20 or more steals	Dec. 2, 2006, 26, at Ole Miss (Ole Miss 75, Illinois 50)
Illinois blocked 10 or more shots	Jan. 23, 2018, 13, at Penn State (Penn State 68, Illinois 59)
Illinois won 5+ games in a row	Nov. 14, 2014-Nov. 27, 2014, 5-game streak
Illinois won 10+ games in a row	Nov. 20, 1981-Jan. 2, 1982, 10-game streak
Illinois lost 5+ games in a row	Feb. 7 2021-Feb. 28, 2021, 6-game streak
Illinois lost 10+ games in a row	Dec. 10, 2020-Feb. 4, 2021, 10-game streak
Illinois won 5+ in a row at home	Nov. 21, 2019-Dec. 15, 2019, 5-game streak
Illinois won 10+ in a row at home	Dec. 20, 1997-Jan. 5, 1999, 18-game streak
Illinois won 15+ in a row at home	Dec. 20, 1997-Jan. 5, 1999, 18-game streak
Illinois lost 5+ in a row at home	Jan. 23, 2020-Feb. 26, 2020, 6-game streak
Illinois lost 10+ in a row at home	Never
Illinois won 5+ in a row away from home	Dec. 9, 2012-Feb. 3, 2013, 6-game streak
Illinois won 10+ in a row away from home	Never





# 2021-22 Illinois Women's Basketball Combined Team Statistics All games

Page 1/1  
as of Dec 06, 2021

## Game Records

Record	Overall	Home	Away	Neutral
ALL GAMES	4-4	4-2	0-0	0-2
CONFERENCE	0-0	0-0	0-0	0-0
NON-CONFERENCE	4-4	4-2	0-0	0-2

## Score by Periods

Team	1st	2nd	3rd	4th	OT	TOT
Illinois	123	138	129	137	0	527
Opponents	121	107	153	146	0	527

## Team Box Score

No.	Player				Total		3-Point		F-Throw		Rebounds											
		GP-GS	MIN	AVG	FG-FGA	FG%	3FG-3FGA	3FG%	FT-FTA	FT%	OFF	DEF	TOT	AVG	PF	DQ	A	TO	BLK	STL	PTS	AVG
32	NYE, Aaliyah	8-7	243:08	30.4	38-84	.452	21-50	.420	9-14	.643	6	23	29	3.6	12	0	11	24	3	16	106	13.3
11	PEEBLES, Jada	8-6	238:14	29.8	24-59	.407	12-26	.462	16-22	.727	1	19	20	2.5	12	0	24	25	2	9	76	9.5
5	BROWN, De'Myla	8-6	188:13	23.5	19-68	.279	10-33	.303	18-23	.783	0	13	13	1.6	22	0	15	11	0	11	66	8.3
12	ODEN, Jayla	4-0	70:29	17.6	9-26	.346	4-7	.571	8-15	.533	2	9	11	2.8	10	0	10	16	0	9	30	7.5
44	BOSTIC, Kendall	8-8	245:46	30.7	24-55	.436	0-13	.000	8-12	.667	28	64	92	11.5	10	0	11	17	10	4	56	7.0
24	MCKENZIE, Adalia	8-3	131:59	16.5	20-44	.455	0-4	.000	14-26	.538	16	15	31	3.9	11	0	6	12	1	3	54	6.8
0	ANASTASIESKA, Sara	8-2	139:35	17.4	16-44	.364	5-13	.385	8-14	.571	4	13	17	2.1	17	0	11	17	0	5	45	5.6
22	RUBIN, Eva	8-3	117:16	14.7	14-22	.636	0-0	.000	8-20	.400	4	11	15	1.9	16	0	3	11	5	0	36	4.5
14	LOPES, Geovana	8-2	107:13	13.4	12-26	.462	0-0	.000	7-8	.875	9	20	29	3.6	10	0	8	10	2	7	31	3.9
20	PORTER, Erika	7-3	71:01	10.1	7-14	.500	0-0	.000	6-10	.600	5	12	17	2.4	13	0	1	8	9	0	20	2.9
2	ROBINS, Lyric	5-0	33:12	6.6	3-6	.500	0-2	.000	1-2	.500	2	6	8	1.6	4	0	3	3	1	0	7	1.4
3	AMUSAN, Solape	5-0	09:29	1.9	0-3	.000	0-3	.000	0-0	.000	0	3	3	0.6	3	0	0	1	0	1	0	0.0
15	REMBEERT, Keanna	2-0	04:24	2.2	0-0	.000	0-0	.000	0-0	.000	0	0	0	0.0	2	0	0	4	0	1	0	0.0
Team											12	14	26					2				
Total		8	1600		186-451	.412	52-151	.344	103-166	.620	89	222	311	38.9	142	0	103	161	33	66	527	65.9
Opponents		8	1600		190-516	.368	56-190	.295	91-135	.674	117	206	323	40.4	138	3	101	143	12	72	527	65.9

## Team Statistics

	ILLINI	OPP
<b>Scoring</b>	<b>527</b>	<b>527</b>
Points per game	65.9	65.9
Scoring margin	0.0	-
<b>Field goals-att</b>	<b>186-451</b>	<b>190-516</b>
Field goal pct	.412	.368
<b>3 point fg-att</b>	<b>52-151</b>	<b>56-190</b>
3-point FG pct	.344	.295
3-pt FG made per game	6.5	7.0
<b>Free throws-att</b>	<b>103-166</b>	<b>91-135</b>
Free throw pct	.620	.674
F-Throws made per game	12.9	11.4
<b>Rebounds</b>	<b>311</b>	<b>323</b>
Rebounds per game	38.9	40.4
Rebounding margin	-1.5	-
<b>Assists</b>	<b>103</b>	<b>101</b>
Assists per game	12.9	12.6
<b>Turnovers</b>	<b>161</b>	<b>143</b>
Turnovers per game	20.1	17.9
Turnover margin	-2.3	-
Assist/turnover ratio	0.6	0.7
<b>Steals</b>	<b>66</b>	<b>72</b>
Steals per game	8.3	9.0
<b>Blocks</b>	<b>33</b>	<b>12</b>
Blocks per game	4.1	1.5
<b>Winning streak</b>	<b>1</b>	<b>-</b>
Home win streak	1	-
<b>Attendance</b>	<b>7419</b>	<b>0</b>
Home games-Avg/Game	6-1237	0-0
Neutral site-Avg/Game	-	2-0

## Team Results

Date	Opponent		Score	Att.
11/09/2021	N.C. Central	W	73-56	1983
11/14/2021	Miami (OH)	W	72-65	1121
11/18/2021	SIUE	L	62-71	1008
11/21/2021	UC Riverside	W	86-82	1053
11/26/2021	vs Dayton	L	53-67	0
11/27/2021	vs Middle Tenn.	L	52-62	0
12/02/2021	Florida St.	L	58-67	1027
12/05/2021	Eastern Ky.	W	71-57	1227



# 2021-22 ILLINI WOMEN'S BASKETBALL



Official Basketball Box Score - Final  
N.C. Central at Illinois  
11/09/21 State Farm Center, Champaign  
2021-22 Women's Basketball

Game Time: 1:00 AM  
Game Duration: 2:07  
Attendance: 1,983

N.C. Central - 56

Record: 0-1

Officials: Brad Masey, Lauren Niemera, Jeff Cross

NO. Name	Min	FG M-A	3P M-A	FT M-A	Rebounds OR DR TOT	Fouls PF FD	TP	AS	TO	ST	Blocks BS BA	+/-
22 Tianna Carter	F 16:28	3-8	0-2	1-3	2 8 10	5 2	7	0	3	0	1 0	-1
44 Ashlyn Lockard	F 30:18	4-7	0-0	3-6	2 6 8	2 4	11	2	3	1	0 0	-19
0 Paris McBride	G 21:38	0-5	0-1	1-2	1 4 5	2 4	1	4	5	2	0 0	1
4 Nicole Hope	G 23:46	2-7	1-2	3-4	0 3 3	4 5	8	0	2	0	0 0	-12
12 Kira Lowery	G 30:59	3-8	0-1	0-0	0 3 3	2 1	6	1	2	1	1 1	-23
3 Morgan Callahan	14:39	2-6	0-0	2-4	1 1 2	3 2	6	0	4	0	0 0	-17
5 Nia Ford	18:50	1-8	0-3	0-0	2 0 2	3 0	2	3	3	1	1 0	-3
2 Taylor Williams	18:14	3-8	0-1	1-2	0 1 1	2 2	7	0	2	5	0 0	-14
32 Simone Edmundson	05:24	1-1	0-0	0-0	1 1 2	0 0	2	0	1	0	0 0	1
11 Madalyn Anderson	13:54	2-5	2-4	0-0	1 2 3	0 0	6	1	0	0	0 0	1
21 Breonna Mayfield	05:50	0-1	0-0	0-0	1 0 1	1 0	0	0	2	0	0 0	2
Team					4 4 8		0	1				
Totals		21-64	3-14	11-21	15 33 48	24 20	56	11	28	10	3 1	-17

Technical Fouls: NONE

Shooting By Period	1st FG%	2nd FG%	3rd FG%	4th FG%	GM FG%
1st FG%	4-20 20.0%				
2nd FG%	3-16 18.8%				
3rd FG%	4-8 50.0%				
4th FG%	5-16 31.3%				
GM FG%	21-64 32.8%				
3PT%	3-14 21.4%				
FT%	11-21 52.4%				

Dead Ball Rebounds: 5, 1

Illinois - 73

Record: 1-0

NO. Name	Min	FG M-A	3P M-A	FT M-A	Rebounds OR DR TOT	Fouls PF FD	TP	AS	TO	ST	Blocks BS BA	+/-
20 Erika Porter	F 04:15	0-1	0-0	1-2	1 2 3	2 1	1	0	1	0	0 0	-4
44 Kendall Bostic	F 35:07	6-9	0-2	2-2	6 11 17	0 3	14	2	2	0	0 0	20
0 Sara Anastasieska	G 10:15	0-4	0-1	1-2	0 0 0	2 3	1	1	3	0	0 0	-9
5 De'Myla Brown	G 26:27	1-13	1-7	4-4	0 1 1	1 2	7	0	1	1	0 1	6
32 Aaliyah Nye	G 34:19	9-16	3-7	2-3	1 6 7	3 3	23	3	4	7	0 0	27
14 Geovana Lopes	19:00	4-4	0-0	0-1	3 6 9	4 3	8	2	4	2	0 0	18
11 Jada Peebles	27:58	2-7	1-2	2-4	0 3 3	1 3	7	2	3	1	0 1	9
12 Jayla Oden	25:19	3-10	1-2	2-4	0 0 2	4 5	9	5	2	0	1 14	
22 Eva Rubin	15:03	1-3	0-0	1-2	2 2 4	2 1	3	0	1	0	1 0	2
3 Solape Amusan	01:19	0-0	0-0	0-0	0 0 0	1 0	0	0	0	1	0 0	
24 Adalia McKenzie	00:58	0-0	0-0	0-0	0 0 0	0 0	0	0	0	0	0 0	
Team					0 2 2		0	1				
Totals		26-67	6-21	15-24	15 33 48	20 24	73	15	25	14	1 3	17

Technical Fouls: NONE

Shooting By Period	1st FG%	2nd FG%	3rd FG%	4th FG%	GM FG%
1st FG%	6-15 40.0%				
2nd FG%	1-7 14.3%				
3rd FG%	5-8 62.5%				
4th FG%	7-20 35.0%				
GM FG%	26-67 38.8%				
3PT%	1-6 16.7%				
FT%	4-5 80%				
GM 3PT%	6-18 33.3%				
GM FT%	3-5 60.0%				
GM FG%	26-67 38.8%				
3PT%	6-21 28.6%				
FT%	15-24 62.5%				

Dead Ball Rebounds: 1, 0

	NCC	ILL
Biggest lead	2 (1 <sup>st</sup> 8:04)	20 (3 <sup>rd</sup> 3:57)
Best Scoring Run	7 (3 <sup>rd</sup> 7:07)	10 (1 <sup>st</sup> 5:39)
Lead Changes	1	
Times Tied	1	
Time with Lead	00:38	36:58

Points from Turnovers	NCC	ILL
Paint	26	30
Second Chance	6	11
Fast Breaks	1	6
Bench	23	27

Period by Period Scoring	1st	2nd	3rd	4th	TOT
NCC	13	11	14	18	56
ILL	18	19	18	18	73



Official Basketball Box Score - Final  
Miami (OH) at Illinois  
11/14/21 State Farm Center, Champaign  
2021-22 Women's Basketball

Game Time: 3:00 PM  
Game Duration: 1:52  
Attendance: 1,121

Miami (OH) - 65

Record: 1-1

Officials: Beverly Roberts, Timothy Greene, Xiomara Cruz

NO. Name	Min	FG M-A	3P M-A	FT M-A	Rebounds OR DR TOT	Fouls PF FD	TP	AS	TO	ST	Blocks BS BA	+/-
3 Tajah Foster-Walker	F 21:26	4-6	0-0	0-0	0 4 4	1 0	8	1	6	0	1 0	-6
34 Amani Freeman	F 23:13	3-4	0-0	0-0	2 3 5	4 2	6	0	1	0	1 0	-1
1 Maddi Cluse	G 33:38	5-14	0-5	2-4	4 6 10	3 3	12	3	0	3	0 1	0
13 Ivy Wolf	G 32:06	4-9	1-5	2-2	1 5 6	2 1	11	1	5	2	0 0	-8
24 Peyton Scott	G 40:00	7-16	1-5	7-9	4 5 9	1 9	22	6	7	0	0 1	-7
10 Edlyn Battle	21:15	2-10	0-4	0-0	1 1 2	2 2	4	1	1	0	0 1	0
25 Jada Duckett	15:26	1-2	0-0	0-2	1 3 4	4 1	2	0	1	0	0 0	-6
4 Vannessa Garretts	09:40	0-3	0-2	0-0	0 0 0	0 0	0	0	0	0	0 0	-1
21 Jordan Tuff	03:16	0-1	0-0	0-0	1 0 1	0 0	0	0	0	0	0 0	-6
Team					3 3 6		0	1				
Totals		26-65	2-21	11-17	17 30 47	17 18	65	12	22	5	1 4	-7

Technical Fouls: Team 1<sup>st</sup> 10:00

Shooting By Period	1st FG%	2nd FG%	3rd FG%	4th FG%	GM FG%
1st FG%	6-14 42.9%				
2nd FG%	3-10 30.0%				
3rd FG%	4-14 28.6%				
4th FG%	1-8 12.5%				
GM FG%	26-65 39.8%				
3PT%	1-5 20.0%				
FT%	0-0 0%				
GM 3PT%	1-11 9.1%				
GM FT%	11-17 64.7%				

Dead Ball Rebounds: 3, 0

Illinois - 72

Record: 2-0

NO. Name	Min	FG M-A	3P M-A	FT M-A	Rebounds OR DR TOT	Fouls PF FD	TP	AS	TO	ST	Blocks BS BA	+/-
44 Kendall Bostic	F 33:51	5-8	0-1	1-2	4 2 6	1 3	11	1	0	0	1 1	0
14 Geovana Lopes	C 24:52	2-5	0-0	1-1	1 5 6	1 4	5	1	2	1	1 0	-2
5 De'Myla Brown	G 29:28	4-10	1-5	3-4	0 4 4	4 2	12	3	2	4	0 0	15
11 Jada Peebles	G 20:54	2-4	0-0	4-4	0 3 3	3 2	8	2	5	1	0 0	3
32 Aaliyah Nye	G 22:48	2-8	0-4	1-2	2 1 3	2 0	5	1	0	3	0 0	-8
12 Jayla Oden	21:21	4-9	3-3	3-5	2 2 2	1 2	14	3	3	2	0 0	0
20 Erika Porter	10:18	0-1	0-0	1-2	0 2 2	3 1	1	0	1	0	2 0	8
24 Adalia McKenzie	12:38	1-4	0-2	0-0	0 2 2	0 0	2	0	0	0	0 0	11
0 Sara Anastasieska	21:14	4-8	0-1	4-5	1 0 1	3 3	12	1	2	3	0 0	10
22 Eva Rubin	02:36	1-2	0-0	0-0	0 1 1	0 0	2	0	0	0	0 0	-2
Team					1 2 3		0	0				
Totals		25-59	4-16	18-25	9 24 33	18 17	72	12	15	14	4 1	7

Technical Fouls: NONE

Shooting By Period	1st FG%	2nd FG%	3rd FG%	4th FG%	GM FG%
1st FG%	7-16 43.8%				
2nd FG%	1-5 20.0%				
3rd FG%	3-5 60%				
4th FG%	9-13 69.2%				
GM FG%	25-59 42.4%				
3PT%	1-1 100.0%				
FT%	3-5 60%				
GM 3PT%	1-5 20.0%				
GM FT%	4-6 66.7%				
GM FG%	25-59 42.4%				
3PT%	1-16 6.3%				
FT%	18-25 72.0%				

Dead Ball Rebounds: 2, 1

	MOH	ILL
Biggest lead	0 (1 <sup>st</sup> 10:00)	18 (2 <sup>nd</sup> 2:25)
Best Scoring Run	8 (3 <sup>rd</sup> 7:33)	8 (1 <sup>st</sup> 6:59)
Lead Changes	0	
Times Tied	0	
Time with Lead	00:00	40:00

Points from Turnovers	MOH	ILL
Paint	14	25
Second Chance	13	8
Fast Breaks	7	9
Bench	6	31

Period by Period Scoring	1st	2nd	3rd	4th	TOT
MOH	12	10	22	21	65
ILL	18	22	11	21	72

CHAMPAIGN, ILL. – The Fighting Illini women's basketball team opened up the 2021-22 season on Tuesday with a 73-56 victory over North Carolina Central at State Farm Center. The Illini (1-0) were led by guard **Aaliyah Nye** who opened her sophomore campaign right where she left off as a freshman last season, pouring in a career-high 23 points and pulling down seven rebounds to match her career-best total.

Sophomore forward **Kendall Bostic**, making her Illini debut after transferring from Michigan State in the offseason, posted the first double-double of her collegiate career. Bostic pulled down a career-most 17 rebounds and matched her career-high in scoring with 14 points.

The Illini trailed for just 38 seconds in the contest, and used a 10-2 run following NCCU's opening bucket to stake to a 10-2 lead they would not relinquish for the remainder of the game.

## TEAM NOTES

- » The Fighting Illini improved to 1-0 to open the season and are now 5-0 in regular-season openers under head coach **Nancy Fahey**
- » Illinois is now 1-0 all-time vs. North Carolina Central. The game was the first in the series between Illinois and the Eagles.
- » The Illini welcomed 1,983 fans to State Farm Center for Tuesday's opener. It marked the team's first game with fans at State Farm Center since Feb. 26, 2020, a span of 622 days.
- » Illinois' 73 points marked the most for the team in a victory since a 74-71 home win over Minnesota on Jan. 12, 2020.
- » The Illini trailed for just 38 seconds in the contest, and led by as many as 20 points at the 3:57 mark of the third quarter.
- » Illinois' longest scoring run of the game was a 10-0 stretch that began with an **Aaliyah Nye** layup for the team's first basket of the game, and ended with a **Geovana Lopes** layup at the 5:39 mark of the first quarter to give the Illini a 10-2 lead they would never relinquish.

## INDIVIDUAL NOTES

- » Sophomore **G Aaliyah Nye** recorded a career-high in points (23) and matched a career-best mark in rebounds (7). Defensively, Nye also tallied a career-high with seven of the team's 14 steals.
- » Sophomore **F Kendall Bostic** posted the first double-double of her collegiate debut finishing with a career-high tying 14 points, and setting a new career best with 17 rebounds. Bostic's 17 rebounds are the most by an Illini player in a single game since former Illini Kennedy Myles pulled down 20 vs. Evansville on Dec. 15, 2019.
- » Freshman **G Jayla Oden** led the Illini with a game-high five assists in her Illini debut. Oden also finished with nine points (including a pair of three-pointers), two rebounds, and two steals.
- » Senior **F Geovana Lopes** finished with a career-high nine rebounds, eclipsing her previous mark of six, which she did four times as a junior in 2020-21. Lopes also matched her career-best totals with two assists and two steals.
- » Junior **G De'Myla Brown**, who played at Western Kentucky as a freshman in 2019-20 before joining the Illini as a JuCo All-American out of Chipola College in the offseason, recorded seven points, her career-best mark vs. an NCAA Division I opponent.

CHAMPAIGN, ILL. – The Fighting Illini used a balanced scoring attack to move past the Miami (OH) RedHawks, 72-66, at State Farm Center. All 10 Illini to see action in the contest scored as Illinois eclipsed the 70-point mark for the second-consecutive victory. Thirty-one points came from contributions off the bench with freshman guard Jayla Oden leading the way with a team-high 14 points in just her second collegiate contest. Oden also tied for the team lead with three assists and was a bright spot from three-point range for the Illini, hitting all three of her attempts from deep.

Sara Anastasieska and De'Myla Brown each posted 12 points, their first double-figure scoring games as Illini. Anastasieska shot 4-of-8 from the field and added four free-throws. Brown's 12 points, four rebounds, three assists and four steals all marked career-best totals. Sophomore Kendall Bostic followed her 14-point, 17-rebound debut with another solid all-around performance, finishing with 11 points and tying Geovana Lopes for the team lead with six rebounds.

The Illini led for all 40 minute of the contest. Illinois' lead reached as many as 18 points at halftime, 40-22, but the RedHawks stormed back in the opening minutes of the third quarter to pull to within striking distance for much of the second half. The Illini answered, however, and never allow MU to pull closer than four points before combining to connect on 7-of-8 free-throw attempts in the final 72 seconds to close out the win.

## TEAM NOTES

- » The Fighting Illini improved to 2-0 to open the season and push their homecourt win streak to three games dating back to last season.
- » Illinois is now 4-2 all-time vs. Miami (OH), including 4-1 in games played in Champaign.
- » The Illini offense eclipsed 70 points in back-to-back victories for the first time since a three-game stretch to open up the 2019-20 season vs. Chicago State (W, 96-66), vs. Holy Cross (W, 78-75 OT), and vs. Austin Peay (W, 76-62).
- » The Illini opened the game with a 1-0 lead, and led for all 40 minutes of game time. Miami (OH) was penalized with an administrative technical foul prior to the start of the game for failing to designate starters in the official scorebook.
- » After committing 25 turnovers in their season-opening win over NC Central on Tuesday, the Illini were much improved with just 15 on Sunday vs. Miami (OH). Defensively, the Illini still forced 22 RedHawks' turnovers and converted those into 25 points.

## INDIVIDUAL NOTES

- » Freshman **G Jayla Oden** led the

# 2021-22 ILLINI WOMEN'S BASKETBALL



Official Basketball Box Score - Final  
**SIUE at Illinois**  
 11/18/21 State Farm Center, Champaign  
 2021-22 Women's Basketball

Game Time: 7:00 PM  
 Game Duration: 2:14  
 Attendance: 1,008

Officials: Mark Zentz, Jamie Brodick, Mark Berger

SIUE - 71		Record: 1-2																				
NO. Name	Min	FG M-A	3P M-A	FT M-A	Rebounds OR DR TOT	Fouls PF FD	TP	AS	TO	ST	Blocks BS BA	+/-	Shooting By Period									
5 Ajulu Thatha	F 28:29	4-9	2-2	4-4	2 4 6	3 4	14	2	4	1	0	3	6	1st FG	4-14	28.6%	3PT%	0-5	0.0%	FT%	2-2	100%
12 Mikayla Kinnard	F 34:04	5-18	0-3	4-8	6 2 8	3 5	14	2	5	0	0	3	2	2nd FG	7-18	38.9%	3PT%	3-5	60.0%	FT%	2-4	50%
0 Gabby Nikitinaite	G 34:09	5-13	3-7	2-2	1 4 5	2 2	15	2	4	1	0	0	12	3rd FG	8-16	50.0%	3PT%	1-3	33.3%	FT%	8-10	80%
11 Mikia Keith	G 33:20	1-3	0-1	1-2	0 1 1	4 3	3	1	0	1	0	0	10	4th FG	4-15	26.7%	3PT%	2-4	50.0%	FT%	7-10	70%
23 Allie Troeckler	G 32:35	3-6	0-0	5-6	1 4 5	2 5	11	1	2	5	1	1	6	GM FG	23-63	36.5%	3PT%	6-17	35.3%	FT%	19-26	73.1%
10 Sara Majorosova	01:29	0-1	0-1	0-0	0 0 0	0 0	0	0	1	0	0	0	0	Dead Ball Rebounds: 5, 1								
32 Madison Webb	06:30	0-0	0-0	0-0	0 1 1	0 0	0	0	0	0	0	0	0									
35 Mikia Hall	11:30	2-5	1-3	0-0	0 1 1	0 0	5	0	2	0	0	0	6									
1 Jada Hampton	03:55	0-1	0-0	0-0	0 0 0	0 0	0	1	0	0	0	0	1									
2 Prima Chellis	13:59	3-7	0-0	3-4	1 1 5	1 4	9	2	2	1	0	2	9									
Team					1 6 7	0 0	0	1														
Totals		23-63	6-17	19-26	15 24 39	15 23	71	11	21	9	1	9	9									
Technical Fouls: NONE																						

Illinois - 62		Record: 2-1																Dead Ball Rebounds: 6, 0						
NO. Name	Min	FG	3P	FT	Rebounds	Fouls	TP	AS	TO	ST	Blocks					Shooting By Period								
		M-A	M-A	M-A	OR DR TOT	PF FD					BS BA					1st FG%	2nd FG%	3rd FG%	4th FG%	GM FG%	FT%			
44 Kendall Bostic	F 38:05	1-6	0-0	2-2	5 8 13	2 2	4	2	2	2	4	0	-1			1st FG%	7-17	41.2%	3PT%	3-5	60.0%	FT%	0-0	0%
14 Geovana Lopes	C 10:32	0-1	0-0	2-2	1 3 4	0 1	2	1	1	1	1	0	2			2nd FG%	2-11	18.2%	3PT%	0-2	0.0%	FT%	5-10	50%
5 De'Myia Brown	G 23:34	3-7	2-4	3-4	0 0 0	3 3	11	1	1	0	0	0	-3			3rd FG%	5-15	33.3%	3PT%	2-4	50.0%	FT%	6-8	75%
11 Jada Peebles	G 29:36	3-6	0-1	0-0	1 3 4	1 0	6	4	4	0	0	0	-5			4th FG%	7-10	70.0%	3PT%	1-3	33.3%	FT%	14-24	58.3%
32 Aaliyah Nye	G 34:01	6-11	3-6	2-4	0 3 3	1 2	17	0	3	2	2	1	-2			Dead Ball Rebounds: 6, 0								
20 Erika Porter	17:55	2-4	0-0	3-4	2 3 5	3 2	7	1	1	0	1	0	-1											
12 Javla Odon	12:41	2-4	0-1	1-4	0 3 3	3 2	5	1	5	3	0	0	-11											
24 Adalia McKenzie	17:09	2-8	0-0	1-4	2 2 4	4 3	5	0	0	1	0	0	-10											
0 Sara Anastasieska	08:22	1-3	1-1	0-0	0 0 0	4 0	3	0	5	0	0	0	-8											
22 Eva Rubin	02:25	0-0	0-0	0-0	0 0 0	0 0	0	0	0	0	0	0	-8											
2 Lyric Robins	05:40	1-3	0-1	0-0	0 0 0	2 0	2	1	2	0	1	0	0											
Team					0 2 2	0 0	0	0																
Totals		21-53	6-14	14-24	11 27 38	23 15	62	11	24	9	9	1	-9											
Technical Fouls: NONE																								

	SIUE	ILL	Points from	SIUE	ILL	Period by Period Scoring
Biggest lead	13 (3rd 1:00)	9 (2nd 8:42)	Turnovers	23	14	1st 2nd 3rd 4th TOT
Best Scoring Run	10 (2nd 3:10)	10 (4th 1:59)	Paint	24	22	SIUE 10 19 25 17 71
Lead Changes	5	2	Second Chance	6	2	ILL 17 9 18 18 62
Times Tied	2	0	Fast Breaks	6	2	
Time with Lead	26:42	11:46	Bench	14	22	



Official Basketball Box Score - Final  
**UC Riverside at Illinois**  
 11/21/21 State Farm Center, Champaign  
 2021-22 Women's Basketball

Game Time: 2:00 PM  
 Game Duration: 1:57  
 Attendance: 1,053

Officials: Frank Steratore, Dawn Marsh, Kylie Galloway

UC Riverside - 82		Record: 2-2																					
NO. Name	Min	FG M-A	3P M-A	FT M-A	Rebounds OR DR TOT	Fouls PF FD	TP	AS	TO	ST	Blocks BS BA	+/-				Shooting By Period							
20 Matehya Bryant	F 21:10	0-4	0-0	0-0	2 0 2	5 0	0	0	1	1	0	0	1	-1	1st FG%	5-19	26.3%	3PT%	3-7	42.9%	FT%	1-2	50%
3 Olivia West	G 30:45	3-11	3-9	3-3	2 3 5	1 3	12	2	1	0	0	1	0	-7	2nd FG%	6-11	54.5%	3PT%	2-6	33.3%	FT%	2-2	100%
4 Jada Holland	G 34:20	8-17	3-6	0-0	1 3 4	3 1	19	5	2	1	0	0	0	1	3rd FG%	10-17	58.8%	3PT%	3-6	50.0%	FT%	0-2	0%
10 Kellane Cooper	G 33:03	9-17	5-9	2-2	0 8 8	3 1	25	5	2	1	0	1	0	-5	4th FG%	10-22	45.5%	3PT%	4-9	44.4%	FT%	5-5	100%
14 Male Finau	G 24:08	2-5	0-1	0-2	0 0 0	1 1	4	1	4	0	0	0	0	-19	GM FG%	31-69	44.9%	3PT%	12-28	42.9%	FT%	8-11	72.7%
15 Anna Blount	24:20	4-6	0-0	3-4	2 0 2	2 4	11	1	1	0	0	0	0	14	Dead Ball Rebounds: 3, 0								
2 Ryenne Walters	22:38	5-9	1-3	0-0	0 4 4	4 0	11	2	0	3	0	0	0	9									
30 Rose Morse	02:22	0-0	0-0	0-0	0 1 1	1 0	0	0	0	0	0	0	0	-4									
11 Esther Mataranz	07:14	0-0	0-0	0-0	0 1 1	1 0	0	1	0	0	0	0	0	-7									
Team					3 2 5	0 0	0	0															
Totals		31-69	12-28	8-11	10 22 32	21 10	82	17	12	7	0	4	-4		Technical Fouls: NONE								

Illinois - 86		Record: 3-1																Dead Ball Rebounds: 3, 0, 0, 0			
NO. Name	Min	FG M-A	3P M-A	FT M-A	Rebounds OR DR TOT	Fouls PF FD	TP	AS	TO	ST	Blocks BS BA	Shooting By Period									
20 Erika Porter	F 13:55	1-2	0-0	1-2	1 3 4	3 1	3	0	2	0	3	0	0	1	1st FG%	8-15	53.3%				
44 Kendall Bostic	F 19:27	2-4	0-1	0-0	1 4 5	1 1	4	1	1	0	0	0	1	0	3PT%	2-4	50.0%				
5 De'Myia Brown	G 19:44	1-8	0-4	1-2	0 1 1	1 4	3	4	1	0	0	0	-3	0	FT%	0-0	0%				
11 Jada Peebles	G 37:21	4-7	1-2	8-9	0 4 4	2 7	17	4	3	1	0	0	2	0	2nd FG%	9-15	60.0%				
32 Aaliyah Nye	G 35:12	5-10	5-6	0-0	1 5 6	0 1	15	2	5	0	1	0	2	0	3PT%	2-5	40.0%				
24 Adalia McKenzie	24:06	6-10	0-1	3-4	3 3 6	1 2	15	2	3	0	0	0	5	0	FT%	5-7	71.4%				
14 Geovana Lopes	08:50	1-2	0-0	0-0	0 1 1	0 0	2	1	0	0	0	0	2	0	3rd FG%	7-15	46.7%				
0 Sara Anastasieska	24:10	5-7	3-5	3-6	1 5 6	0 3	16	5	0	1	0	0	9	0	3PT%	4-7	57.1%				
22 Eva Rubin	17:07	5-5	0-0	1-1	0 0 0	2 2	11	0	1	0	0	0	3	0	FT%	0-0	0%				
2 Lyric Robins	00:08	0-0	0-0	0-0	0 0 0	0 0	0	0	0	0	0	0	-1	0	4th FG%	6-10	60.0%				
Team					1 2 3	0 0	0	0							3PT%	12-17	70.6%				
Totals		30-55	9-19	17-24	8 28 36	10 21	86	19	16	2	4	0	4		GM FG%	30-55	54.5%				
Technical Fouls: NONE																					
FT%																		9-19	47.4%		
3PT%																		17-24	70.8%		

Official Basketball Box Score -- Game Totals -- Final Statistics  
Illinois vs Dayton  
11/26/21 02:15 PM at Ocean Center/Daytona Beach, Fla.

Illinois 53 • 3-2

#	Player	Total		3-Ptr		Rebounds			PF	TP	A	TO	Blk	Stl	Min						
		FG-FGA	FG-FGA	FT-FTA	Off	Def	Tot														
11	PEEBLES, Jada	* 2-4	2-2	0-0	0	0	0	1	6	2	1	1	0	22							
20	PORTER, Erika	* 0-1	0-0	0-0	0	0	0	1	0	0	2	1	0	7							
32	NYE, Aaliyah	* 2-10	0-4	0-0	2	3	5	2	4	1	3	0	0	26							
44	BOSTIC, Kendall	* 1-5	0-2	0-0	0	8	8	2	2	0	2	2	0	33							
5	De'Myla Brown	* 3-10	3-4	3-4	0	1	1	3	12	1	0	0	2	25							
00	ANASTASIESKA, Sara	4-11	1-2	0-0	2	1	3	2	9	1	0	0	1	22							
14	LOPES, Geovana	2-3	0-0	0-0	0	2	2	2	4	0	1	0	0	7							
15	REMBERT, Keanna	0-0	0-0	0-0	0	0	0	0	0	0	0	0	0	2							
2	Lytic Robins	1-2	0-1	1-2	1	3	4	2	3	1	0	0	0	15							
22	RUBIN, Eva	1-3	0-0	3-8	1	1	2	4	5	1	2	2	0	19							
8	MCKENZIE, Adalia	4-7	0-0	0-0	3	3	6	3	8	1	3	0	0	21							
3	Solape Amusan	0-1	0-1	0-0	0	1	1	0	0	0	0	0	0	1							
Team								3													
Totals		20-57			6-16			7-14			12 24 36			22 53			8 14 6 3			200	
1st - FG %:		6-16 37.5%			2nd: 7-15 46.7%			3rd: 2-11 18.2%			4th: 5-15 33.3%			Game: 20-57 35.1%			Deadball			Rebounds	
3FG %:		2-5 40.0%			2-4 50.0%			1-3 33.3%			1-4 25.0%			6-16 37.5%			7-14 50.0%			5,1	
FT %:		0-0 0.0%			0-0 0.0%			7-12 58.3%			0-2 0.0%										

Dayton 67 • 4-1

#	Player	Total			3-Ptr			Rebounds			PF	TP	A	TO	Blk	Stl	Min
		FG-FGA	FG-FGA	FT-FTA	FG-FGA	FG-FGA	FT-FTA	Off	Def	Tot							
01	Bradshaw,Araion	*	1-2	1-1	2-4	0	1	1	3	5	0	0	0	2	3	33	
03	Cook,Makira	*	7-16	3-7	4-4	0	2	2	0	21	3	0	0	2	34		
05	Whitehead,Kyla	*	2-4	0-0	3-4	5	2	7	2	7	1	1	0	0	25		
12	Glacone,Jenna	*	5-12	5-9	2-2	0	3	3	0	17	1	2	0	1	32		
21	Whalen,Erin	*	3-10	3-5	0-0	1	6	7	4	9	1	2	0	1	35		
04	Brown,Capria		0-4	0-1	1-2	0	1	1	0	1	0	0	0	0	6		
23	Perez,Mariah		1-4	0-0	0-0	0	4	4	2	2	0	2	1	0	15		
24	Perry,Maliya		0-0	0-0	0-0	1	2	3	1	0	1	1	0	0	7		
34	Magassa,Tenin		2-3	0-0	1-4	0	3	3	3	5	1	3	2	0	13		
Team																	
			21-55	12-23	13-20	11	27	38	15	67	13	12	3	6	200		
Totals			FG %: 6-10 60.0%	2nd: 3-13 23.1%	3rd: 7-14 50.0%	4th: 4-10 40.0%	Game: 21-55 38.2%			Deadball			Rebounds				
			3FG %: 2-4 50.0%	1-5 20.0%	3-4 75.0%	2-4 50.0%	12-23 52.2%			13-20 65.0%			5,1				
			FT %: 2-4 50.0%	3-4 75.0%	3-4 75.0%	5-8 62.5%											

Officials: Josh Howell, Stephanie Barksdale, Trey Miles  
Technical fouls: Illinois-None. Dayton-None.  
Attendance:

Score by periods	1st	2nd	3rd	4th	Total
Illinois	14	16	12	11	53
Dayton	22	10	20	15	67

Last FG - ILL 4th-01:33, DAY 4th-03:20.  
Largest lead - ILL by 2 3rd-08:31, DAY by 16 4th-01:50.  
ILL led for 00:32. DAY led for 36:41. Game was tied for 02:26.

	Points	In Paint	Off T/O	2nd Chance	Fast Break	Bench
ILL	22	11	7	2	29	8
DAY	16	10	12	5		

Score tied - 3 times.  
Lead changed - 2 times.

DAYTONA BEACH, Fla. — The Fighting Illini women's basketball team dropped a 67-53 decision vs. the Dayton Flyers in the team's opening matchup of the Daytona Beach Invitational at the Ocean Center on Friday afternoon.

Illinois (3-2) trailed by as many as 14 points in the first half thanks to a red-hot shooting performance from beyond the arc by the Flyers (4-2). UD led 22-14 after connecting on six three-pointers in the first quarter. The deficit reached 30-16 with 4:42 to play in the half, before momentum began to swing.

The Orange and Blue closed the half on a 14-2 run that included a pair of De'Myla Brown three-pointers, and Illinois went into the locker room trailing by just two points, 32-30. The Illinois surge continued out of the intermission with two Eva Rubin free-throws followed by a Sara Anastasieska layup that gave the Illini their first lead, 34-32, at the 8:31 mark of the third.

After a back-and-forth battle for the next few possessions, Brown sank a pair of free-throws at the 5:37 mark to tie the game, 38-38, but Dayton closed the quarter on a 14-4 run to push the Illinois deficit back to double-figures, 52-42, heading into the final period.

The Illini were unable to get closer than eight in the fourth quarter the flyers closed out the win.

TEAM NOTES

- » The Fighting Illini moved to 3-2 overall and 0-4 all-time in the series vs. Dayton.
- » Illinois' 14 turnovers marked a season-low total.
- » Illinois was held to a season-low eight assists.
- » Illinois shot a season-low 20-of-57 (.351) from the field.
- » The Illini recorded a 29-8 edge in bench scoring.

INDIVIDUAL NOTES

- » Junior G De'Myla Brown led the team in scoring for the first time as an Illini, matching her career high with 12 points set earlier this season vs. Miami (OH).
- » Brown's three three-pointers also marked a career-high, eclipsing the two triples she hit vs. SIUE.
- » Junior F Kendall Bostic pulled down a game-high eight rebounds, the fourth time she has led the team in rebounding in her first five games as an Illini.
- » Redshirt senior C Eva Rubin played a season-high 19 minutes, tallying five points, four rebounds and two blocks off the bench.
- » Freshman G Adalia McKenzie played 21 minute off the bench, scoring eight points and adding six rebounds (three offensive).

Official Basketball Box Score -- Game Totals -- Final Statistics  
Middle Tenn. vs Illinois  
11/27/21 12:00 PM at Ocean Center/Daytona Beach, Fla.


Middle Tenn. 62 • 5-1

#	Player	Total		3-Ptr		Rebounds			PF	TP	A	TO	Blk	Stl	Min						
		FG-FGA	FG-FGA	FT-FTA	Off	Def	Tot														
02	Boldyreva, Anastasia	* 3-3	0-0	0-0	1	0	1	2	6	0	0	0	0	0	8						
10	Gregory, Jalynn	* 3-10	2-8	0-0	0	1	1	3	8	0	1	0	1	30							
15	Saar, Dor	* 2-13	0-10	6-6	1	4	5	3	10	5	4	0	0	27							
23	Whittington, Alexis	* 3-7	2-5	0-0	3	5	8	1	8	3	0	0	3	40							
33	Whitson, Courtney	* 7-18	3-10	0-0	5	5	10	2	17	0	2	0	1	40							
01	Blakely, Courtney	2-6	1-4	2-2	0	0	0	0	7	4	2	0	2	15							
05	Malashka, Kseniya	1-9	0-4	2-2	1	6	7	1	4	1	1	3	1	20							
11	Latorre, Anabel	0-0	0-0	0-0	1	0	1	0	0	0	0	0	0	0							
22	Grannum, Jada	1-1	0-0	0-0	1	4	5	5	2	0	0	0	1	20							
24	Whittington, Amanda	0-0	0-0	0-0	1	0	1	0	0	0	1	0	0	0							
Team								2			1			2							
Totals		22-67			8-41			10-10			16 26 42			17 62			13 13 3 9			200	
1st - FG %:		5-21 23.8%			2nd: 5-15 33.3%			3rd: 7-19 36.8%			4th: 5-12 41.7%			Game: 22-67 32.8%			Deadball			Rebounds	
3FG %:		2-15 13.3%			4-10 40.0%			2-12 16.7%			0-4 0.0%			8-41 19.5%			10-10 100.0%			0	
FT %:		0-0 0.0%			0-0 0.0%			6-6 100.0%			4-4 100.0%										

Illinois 52 • 3-3

#	Player	Total		3-Ptr		Rebounds			PF	TP	A	TO	Blk	Stl	Min
		FG-FGA	FG-FGA	FT-FTA	Off	Def	Tot								
00	ANASTASIESKA, Sara	* 0-4	0-2	0-0	0	3	3	3	0	0	4	0	0	25	
05	BROWN, De'Myla	* 1-2	0-0	0-1	0	4	4	3	2	1	3	0	0	13	
22	RUBIN, Eva	* 2-4	0-0	1-6	0	3	3	2	5	1	0	0	0	19	
24	MCKENZIE, Adalia	* 4-7	0-0	3-8	3	2	5	0	11	2	2	0	1	23	
44	BOSTIC, Kendall	* 4-10	0-3	1-2	5	6	11	1	9	2	3	1	0	29	
02	ROBINS, Lyric	1-1	0-0	0-0	1	2	3	0	2	1	1	0	0	9	
03	AMUSAN, Solape	0-1	0-1	0-0	0	1	1	0	0	0	0	0	0	2	
11	PEEBLES, Jada	3-9	1-3	1-3	0	1	1	2	8	3	2	1	5	30	
14	LOPES, Geovana	0-3	0-0	0-0	0	0	0	1	0	0	0	0	0	7	
20	PORTER, Erika	3-4	0-0	0-0	1	2	3	0	6	0	0	1	0	13	
32	NYE, Aaliyah	3-7	2-4	1-1	0	2	2	2	9	1	4	0	1	30	
Team								3	3	6					
Totals		51-52		3-13	7-21	13	29	42	14	52	11	19	3	7	200
1st FG FG% 3-12 25.0%		2nd 5-10 50.0%		3rd 5-12 41.7%	4th 8-18 44.4%		Game 21-52 40.4%		Deadball 3-13 33.3%		Rebounds 3-13 33.3%		6		
3FG FG% 0-2 0.0%		1-2 50.0%		1-5 20.0%	1-3 33.3%		4-7 57.1%		7-21 33.3%		3-13 33.3%				
FT FT% 0-3 0.0%		1-2 50.0%		2-9 22.2%	4-7 57.1%		7-21 33.3%		3-13 33.3%		3-13 33.3%				

2021-22 ILLINI WOMEN'S BASKETBALL



Official Basketball Box Score - Final

Florida St. at Illinois

12/02/21 State Farm Center, Champaign

2021-22 Women's Basketball

Game Time: 7:00 PM

Game Duration: 1:46

Attendance: 1,027

Florida St. - 67

Record: 5-2

Officials: Beverly Roberts, Kevin Pettit, Kelsey Reynolds

NO. Name	Min	FG		3P		FT	Rebounds		Fouls		TP	AS	TO	Blocks		+/-	Shooting By Period																																																																																																																																																																																																																																																																																																																																																																																																																																																																																																																																																																																																																																																																																																																																																																																																																																																																																																																																																																																																																																			
		M-A	P-A	M-A	P-A		OR	DR	PF	FD				BS	BA		1st FG%	3PT%	FT%	2nd FG%	3PT%	FT%	3rd FG%	3PT%	FT%	4th FG%	3PT%	FT%	GM FG%	3PT%	FT%																																																																																																																																																																																																																																																																																																																																																																																																																																																																																																																																																																																																																																																																																																																																																																																																																																																																																																																																																																																																																					
32 Valencia Myers	F 16:31	1-5	0-1	0-0	2	1	3	4	1	2	0	1	1	0	0	8		1st FG%	6-15	40.0%	3PT%	1-5	20.0%	FT%	0-0		2nd FG%	7-16	43.8%	3PT%	2-4	50%	FT%	0-0		3rd FG%	2-6	33.3%	3PT%	2-6	33.3%	FT%	0-0		4th FG%	8-17	47.1%	3PT%	2-6	33.3%	FT%	0-0		GM FG%	28-65	43.1%	3PT%	6-21	28.6%	FT%	5-9	55.6%																																																																																																																																																																																																																																																																																																																																																																																																																																																																																																																																																																																																																																																																																																																																																																																																																																																																																																																																																																																						
1 River Baldwin	C 19:15	2-3	0-0	1-2	1	5	6	4	2	5	0	2	2	0	0	13																																																																																																																																																																																																																																																																																																																																																																																																																																																																																																																																																																																																																																																																																																																																																																																																																																																																																																																																																																																																																																				

Illinois - 58										Record: 3-4										Score: 58-59									
NO. Name	Min	FG M-A	3P M-A	FT M-A	Rebounds OR DR TOT	Fouls PF FD	TP	AS	TO	ST	Blocks BS BA	+/-	Shooting By Period																
44 Kendall Bostic	F 24:17	0-3	0-2	0-0	2 8 10	2 0 0	7	0	2	2	0 0 1	-4	1st FG%	6-14	42.9%	3PT%	0-5	0.0%	FT%	0-0									
22 Eva Rubin	C 28:40	3-4	0-0	1-1	0 2 2	3 4 7	0	4	0	4	0 1	-8	1st FG%	7-14	50%	3PT%	3-8	37.5%	FT%	0-0									
11 Jada Peebles	G 36:56	4-13	3-8	1-2	0 3 3	0 2 12	1	7	0	0	0 0	-4	2nd FG%	4-18	22.2%	3PT%	3-8	37.5%	FT%	0-0									
24 Adalia McKenzie	G 17:22	0-5	0-1	7-10	3 2 5	1 5 7	0	2	1	0	0 0	-8	2nd FG%	2-4	50%	3PT%	3-8	37.5%	FT%	0-0									
32 Aaliyah Nye	G 31:22	6-11	3-8	2-2	0 3 3	0 1 17	1	5	2	0	0	-11	3rd FG%	2-4	50%	3PT%	3-8	37.5%	FT%	0-0									
5 De'Myia Brown	30:47	3-10	1-5	4-4	0 1 1	4 2 11	3	2	4	0	0	-4	3rd FG%	4-11	36.4%	3PT%	1-4	25.0%	FT%	0-0									
14 Geovana Lopes	11:20	0-2	0-0	0-0	2 1 3	0 0 0	0	0	0	2	0	-1	3rd FG%	1-4	25.0%	3PT%	1-4	25.0%	FT%	0-0									
0 Sara Anastasieska	17:30	2-5	0-0	0-1	0 2 2	1 4 2	1	4	2	1	0	-5	4th FG%	7-7	100%	3PT%	7-7	100%	FT%	0-0									
3 Solape Amusan	01:46	0-0	0-0	0-0	0 1 1	1 0 0	0	0	0	0	0	0	4th FG%	10-10	40.0%	3PT%	3-7	42.9%	FT%	0-0									
Team					3 2 5	0 0 0	0	0	0	0	0		3PT%	3-4	75%	3PT%	3-4	75%	FT%	0-0									
Totals		18-53	7-24	15-20	10 25 35	13 15 58	9	23	9	1	1	-9	Technical Fouls: NONE																
													GM FG%	18-53	34.0%	3PT%	7-24	29.2%	FT%	15-20	75.0%	Dead Ball Rebounds: 4 0							

	FSU	ILL
Biggest lead	14 (4th 7:25)	2 (1st 8:59)
Best Scoring Run	10 (4th 7:25)	7 (3rd 5:20)
Lead Changes	7	
Times Tied	5	
Time with Lead	31:51	02:35
Points from Turnovers	FSU 18	ILL 13
Paint	FSU 34	ILL 14
Second Chance	FSU 9	ILL 9
Fast Breaks	FSU 22	ILL 4
Bench	FSU 39	ILL 15

- INDIVIDUAL NOTES**
- Sophomore G Aaliyah Nye scored 17 points, her fourth game of the season (11th career) in double-figures scoring.
  - Junior G Jada Peebles, the Illini's leading scorer from last season, tallied 12 points to reach double-figures scoring for just the second time this season.
  - Junior G De'Myia Brown tallied 11 points, her fourth double-digit scoring game in her first seven as an Illini.
  - Brown recorded four steals in the game, tying her career-high set earlier this season vs. Miami (OH).
  - Sophomore F Kendall Bostic pulled down 10 rebounds, her fourth game of the season with double-digit rebounds. Bostic entered the game ranked fourth in the Big Ten and 37th nationally at 10.0 rebounds per game.



Official Basketball Box Score - Final															Game Time: 2:00 PM Game Duration: 1:59 Attendance: 1,227														
Eastern Ky. at Illinois															Officials: Tim Daly, Kalei Entinrino, Adrienne Glimore														
12/05/21 State Farm Center, Champaign															2021-22 Women's Basketball														
Eastern Ky. - 57															Record: 2-4														
NO. Name	Min	FG		3P		FT		Rebounds		Fouls		TP	AS	TO	ST	Blocks		+/-	Shooting By Period										
		M-A	M-A	M-A	M-A	OR	DR	TO	PF	FD	BS					BA	1 <sup>st</sup> FG%		1 <sup>st</sup> 3PT%	1 <sup>st</sup> FT%									
00 Jayla Johnson	F 29:52	8-19	2-5	2-6	7	0	7	3	6	20	1	1	2	0	1	-6			1 <sup>st</sup> FG%	7-18	38.9%								
20 Emma Hacker	F 16:15	0-4	0-1	0-0	0	0	0	0	1	0	0	1	2	0	0	-13			1 <sup>st</sup> 3PT%	3-6	50.0%								
11 Ariel Kirkwood	G 27:26	3-8	1-1	3-5	4	3	7	4	5	10	4	5	0	1	0	-8			1 <sup>st</sup> FT%	6-7	85.7%								
15 Briia Bass	G 28:25	2-8	0-4	4-4	4	4	8	3	5	8	0	1	0	0	0	-4			2 <sup>nd</sup> FG%	2-13	15.4%								
30 Alice Recanat	G 29:50	0-9	0-2	5-6	1	2	3	0	5	5	2	2	1	0	2	-15			2 <sup>nd</sup> 3PT%	2-7	28.6%								
22 Kalissa Lucy	09:30	2-7	2-6	0-0	0	0	0	0	0	6	0	1	1	0	1	-1			3 <sup>rd</sup> FG%	3-4	75%								
2 Kayra Freeman	11:33	0-1	0-0	0-0	0	1	1	2	0	0	0	2	0	0	1	-1			3 <sup>rd</sup> 3PT%	5-18	27.8%								
3 Brie Crittendon	04:30	0-0	0-0	0-0	0	0	0	0	0	0	0	2	0	0	0	-8			3 <sup>rd</sup> FT%	0-3	0.0%								
53 Bridgit Fox	17:38	1-4	0-0	0-0	2	1	3	2	0	2	1	2	1	0	0	-19			4 <sup>th</sup> FG%	1-2	50.0%								
5 Ally Collett	17:44	2-6	2-6	0-0	0	0	0	0	0	6	1	2	2	0	0	-6			4 <sup>th</sup> 3PT%	4-19	21.1%								
35 L'lyah Green	07:14	0-2	0-0	0-0	0	1	1	0	0	0	0	0	0	0	0	1			4 <sup>th</sup> FT%	2-9	22.2%								
Team					2	6	8	0	0	0	0	0	0	0	0	1					50.0%								
Totals		18-68	7-25	14-21	21	18	39	14	22	57	9	19	14	0	5	-14			GM FG%	18-68	26.5%								
															Technical Fouls: NONE					3PT%					7-25	28.0%			
																				FT%					14-21	66.7%			
																				Dead Ball Rebounds: 4									

Illinois - 71				Record: 4-4																	
NO. Name	Min	FG		3P		FT	Rebounds		Fouls		TP	AS	TO	ST	Blocks		+/-	Shooting By Period			
		M-A	M-A	M-A	OR		DR	PF	FD	BS					BA	1st		2nd	3rd		
44 Kendall Bostic	F 32:59	5-10	0-2	2-4	5	17	22	1	2	12	1	5	2	2	0	30		1st	FG%	6-12	50.0%
22 Eva Rubin	C 13:25	1-1	0-0	1-2	1	2	3	3	2	3	1	3	0	1	0	2		1st	FG%	3-8	37.5%
11 Jada Peebles	G 33:30	4-9	4-8	0-0	0	2	2	2	2	12	6	0	1	0	1	0	2nd	FG%	7-19	36.8%	
24 Adalia McKenzie	G 15:46	3-3	0-0	0-0	2	1	3	2	1	6	1	2	0	1	0	5		3rd	FG%	3-8	37.5%
32 Aaliyah Nye	G 29:26	5-11	5-11	1-2	0	0	0	2	3	16	2	0	1	0	1	19		3rd	FG%	5-6	83.3%
14 Geovana Lopes	18:39	3-6	0-0	4-4	2	2	4	2	3	10	3	2	1	0	0	21		3rd	FG%	9-16	56.3%
5 De'Myia Brown	20:13	3-8	2-4	0-0	0	1	1	3	0	8	2	1	0	0	0	6		3rd	FG%	3-7	42.9%
20 Erika Porter	04:38	1-1	0-0	0-0	0	0	0	1	0	2	0	1	0	1	0	-3		4th	FG%	2-4	50%
0 Sara Anastasieska	11:04	0-2	0-1	0-0	0	2	2	1	0	0	1	2	0	0	0	-8		4th	FG%	3-8	37.5%
12 Jayla Oden	11:08	0-3	0-1	2-2	0	4	4	2	1	2	1	3	2	0	0	-3		3PT%	2-5	40.0%	
2 Lyric Robins	03:24	0-0	0-0	0-0	0	1	1	0	0	0	0	0	0	0	0	-7		FT%	1-2	50%	
3 Solape Amusan	03:24	0-1	0-1	0-0	0	0	0	1	0	0	0	1	0	0	0	-7		GM FG%	25-55	45.5%	
15 Keanna Rembeert	02:24	0-0	0-0	0-0	0	0	0	2	0	0	0	4	1	0	0	-4		3PT%	11-28	39.3%	
Team					1	0	1			0	1							FT%	10-14	71.4%	
Totals		25-55	11-28	10-14	11	32	43	22	14	71	18	25	8	5	0	14		Dead Ball Rebounds: 4, 0			
Technical Fouls: NONE																					



# NANCY FAHEY

HEAD COACH

FIFTH SEASON AT ILLINOIS

36TH SEASON OVERALL

WISCONSIN (1981)

## THE FAHEY ERA AT ILLINOIS

The Illini enter their fifth season under the direction of Hall of Fame head coach **Nancy Fahey** in 2020-21.

- » In Fahey's first season, she led the Illini to a 9-5 non-conference record, which marked the best start to the season since Illinois also earned nine non-conference victories in the 2014-15 campaign (9-3). Illinois won four of its last five games leading up to league play, with the streak marking the most consecutive victories for the program since the start of the 2015-16 season. Junior Alex Wittinger garnered All-Big Ten Second Team, and also matched the school record for single-season offensive rebounds (125). Wittinger earned the program's second-ever triple double during the 2017-18 campaign, and set a new single-game record for blocked shots (11).
- » In her second season at the helm of the Illini, Fahey's squad opened the year with a 7-0 record on Lou Henson Court for the first time since the 2006-07 season. The Illini opened the 2018-19 campaign with at 8-3 (.727) in non-conference play, the best for an Illini squad since starting the 2014-15 campaign with a 9-5 non-conference record (.750). Fahey's squad improved statistically in several categories under her leadership. The Illini averaged seven more points per game than in 2017-18, and improved their field goal percentage by more than four percent.
- » Year 3 saw continued growth under Fahey's leadership. The Illini finished the year with an overall record of 11-9, the third straight year with an improved win total. The 11 wins also marked the most by the Illini since the 2014-15 season (15 wins). Illinois finished its non-conference schedule with a 9-2 record. It marked the best 11-game start for Illinois since the 2006-07 season. The non-conference was capped by a 58-51 Braggan' Rights win over rival Missouri on Dec. 20 in Columbia, the first win over the Tigers since the 2008-09 season, and the first road win in the series since 2007-08.
- » The 2020-21 season brought a new set of challenges as the Fighting Illini played a shortened non-conference slate to lead into an expanded Big Ten schedule due to the ongoing COVID-19 pandemic. The Illini found success early with wins in two of three non-conference games to open the year. And after battling through some midseason injuries and the growing pains that come along with a relatively youthful roster, the Orange and Blue captured wins over three Big Ten foes coming down the stretch, including the first Big Ten Tournament victory of Fahey's tenure, a 67-42 win over Wisconsin in Round 1. The Illini's BIG Tournament win over the Badgers came four days after a 72-64 win over Minnesota on Senior Day at State Farm Center. The Illini also captured a thrilling home win over Purdue on Feb. 9, behind freshman guard Aaliyah Nye's dagger three-pointer to give the Illini their final lead with less than a minute to play.

## ONE OF THE GREATS

Illinois head coach Nancy Fahey, a five-time national champion at WashU is in the midst of a storied career. She has accumulated 772 career victories, which ranks among the top totals in the NCAA. Entering the 2021-22 season, Fahey's win total checks in at No. 20 all-time among NCAA head coaches, a category that's led by Stanford's Tara VanDerveer (1125). Fahey's 772 wins rank seventh among current NCAA Division I head coaches and ninth among all active NCAA head coaches. She has racked up the third-most career victories among active Big Ten head coaches as well. Of active head coaches with more than 700 victories, Fahey's winning percentage ranks third only to Geno Auriemma (.886) and VanDerveer (.815).

## FAHEY'S CAREER COACHING RECORD

### Washington University (1986-2017)

YEAR	RECORD	PCT.	UAA	POSTSEASON
1986-87	16-5	.762	-	--
1987-88	21-5	.808	1st	2nd Round
1988-89	19-6	.760	1st	--
1989-90	25-3	.893	1st	1st Round
1990-91	24-7	.774	2nd	4th Place
1991-92	22-5	.815	1st	1st Round
1992-93	22-4	.846	1st	1st Round
1993-94	26-4	.867	1st	Runner-Up
1994-95	20-7	.741	1st	1st Round
1995-96	22-6	.786	2nd	1st Round
1996-97	19-7	.731	3rd	1st Round
1997-98	28-2	.933	1st	National Champion
1998-99	30-0	1.000	1st	National Champion
1999-2000	30-0	1.000	1st	National Champion
2000-01	28-2	.933	1st	National Champion
2001-02	25-1	.962	1st	2nd Round
2002-03	26-2	.929	1st	Quarterfinal
2003-04	22-5	.815	1st	Sweet 16
2004-05	22-5	.815	1st	2nd Round
2005-06	25-3	.893	1st	Sweet 16
2006-07	25-6	.806	1st	Runner-Up
2007-08	19-8	.704	2nd	2nd Round
2008-09	26-5	.839	1st	Runner-Up
2009-10	29-2	.935	1st	National Champion
2010-11	25-6	.778	2nd	Runner-Up
2011-12	21-6	.778	2nd	2nd Round
2012-13	22-6	.786	3rd	Sweet 16
2013-14	24-3	.889	1st	2nd Round
2014-15	25-3	.893	1st	Sweet 16
2015-16	23-6	.793	1st	Quarterfinal
2016-17	26-3	.897	1st	Quarterfinal
<b>Total</b>	<b>737-133</b>	<b>.847</b>	<b>23 UAAs</b>	<b>29 NCAAAs</b>

### University of Illinois (2017-Present)

YEAR	RECORD	PCT.	BIG	POSTSEASON
2017-18	9-22	.290	14th	--
2018-19	10-20	.333	14th	--
2019-20	11-19	.333	13th	--
2020-21	5-18	.217	13th	--
2021-22	4-4	.500		
<b>Total</b>	<b>39-83</b>	<b>.319</b>	<b>--</b>	<b>--</b>
<b>Career</b>	<b>776-216</b>	<b>.782</b>	<b>23 UAAs</b>	<b>29 NCAAAs</b>

## THE FAHEY FILE

### PERSONAL

**Born:** November 3, 1958

**Hired:** March 22, 2017

**Hometown:** Belleville, Wisconsin

### EDUCATION

**College:** University of Wisconsin – B.S., education

### COLLEGE COACHING EXPERIENCE

2017- University of Illinois

1986-2017 Washington University

### HIGH SCHOOL COACHING EXPERIENCE

1982-1986 Johnsbury High School

### COACHING HONORS

Washington University Sports Hall of Fame, Class of 2011

Women's Basketball Hall of Fame, Class of 2012

Missouri Sports Hall of Fame, Class of 2014

St. Louis Sports Hall of Fame, Class of 2016

Missouri Basketball Coaches Hall of Fame, Class of 2020

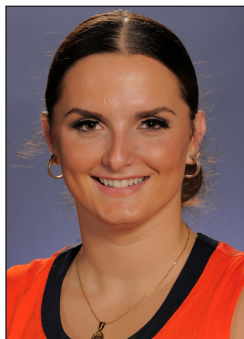
20-time University Athletic Association Coach of the Year

14-time NCAA Division III Central Region Coach of the Year

Four-time NCAA Division III National Coach of the Year

Two-time WBCA National Division III Coach of the Year





# SARA ANASTASIESKA 0

5-11 // GRADUATE // GUARD

SYDNEY, AUSTRALIA

MONTE SANT ANGELO MERCY COLLEGE // DUKE UNIVERSITY

## CAREER STATISTICS

THREE SHOTS																										
Year	GP	GS	Min	Avg	Total			3-Point			F-Throw			Rebounds					PF	FO	Ast	TO	Blk	Stl	Pts	Avg
					FG	FGA	Pct	FG	FGA	Pct	FT	FTA	Pct	Off	Def	Tot	Avg									
2015-16 (UTSA)	24	0	332	13.8	44	115	.383	13	40	.325	20	30	.667	5	36	41	1.7	33	0	17	38	2	8	121	5.0	
UTSA Total	24	0	332	13.8	44	115	.383	13	40	.325	20	30	.667	5	36	41	1.7	33	0	17	38	2	8	121	5.0	
2017-18 (Cal)	10	0	79	7.9	10	23	.435	6	16	.375	2	3	.667	2	7	9	0.9	7	0	6	10	1	2	28	2.8	
2019-20 (Cal)	29	25	723	24.9	83	229	.362	27	96	.281	32	39	.821	9	30	39	1.3	60	0	52	89	3	25	225	7.8	
CAL Total	39	25	802	20.6	93	252	.369	33	112	.295	34	42	.810	11	37	48	1.2	67	0	58	99	4	27	253	6.5	
2020-21 (Duke)	4	0	98	24.5	16	33	.485	6	18	.333	2	4	.500	1	6	7	1.8	5	0	4	10	2	4	40	10.0	
DUKE Total	4	0	98	24.5	16	33	.485	6	18	.333	2	4	.500	1	6	7	1.8	5	0	4	10	2	4	40	10.0	
2021-22 (ILL)	8	2	140	17.5	16	44	.364	5	13	.385	8	14	.571	4	13	17	2.1	17	0	11	17	0	5	45	5.6	
ILL TOTAL	8	2	140	17.5	16	44	.364	5	13	.385	8	14	.571	4	13	17	2.1	17	0	11	17	0	5	45	5.6	
D1 Total	75	27	1,372	18.3	169	444	.381	57	183	.311	64	90	.711	21	92	113	1.5	122	0	90	164	8	44	459	6.1	

## ILLINOIS

### 2021-22 – GRADUATE

- Tallied first double-digit scoring game as an Illini with 12 points vs. Miami (OH) (11/14/21)
- Recorded a season-high 16 points, hitting 3-of-5 from three-point range, in Illinois' win over UC Riverside (11/21/21)

### 2020-21 – GRADUATE (AT DUKE)

- Competed in four contests, while averaging 10.0 points, 1.8 rebounds, 1.0 assists and 1.0 steals
- Scored a season-high 23 points to go with three steals, two blocks, two assists and two rebounds against Western Carolina
- Duke opted out, due to COVID-19, after four contests

### 2019-20 – REDSHIRT SENIOR (AT CAL)

- Saw action in 29 games, while starting 25
- Averaged 7.8 points, 1.3 rebounds and 1.8 assists
- Drained 27-of-96 attempts from three-point
- Hit 82.1 percent from the free-throw line
- Turned in a career-high 25 points on the road at No. 5 UConn, hitting 5-of-10 three-pointers.
- Collected 22 points versus Utah, including 4-of-10 from three-point
- Tallied 17 points against UC Riverside, hitting 7-of-9 field goals and 3-of-4 three-pointers
- Scored double-digits in eight contests
- Started the first 25 games of the season
- Drained two or more three-pointers in seven games

### 2018-19 – REDSHIRT JUNIOR (AT CAL)

- Missed season due to injury (back)

### 2017-18 – REDSHIRT SOPHOMORE (AT CAL)

- Appeared in 10 games before missing the remainder of the season due to injury
- Averaged 2.8 points per game in 7.9 minutes per game for the Bears
- Made her Golden Bear debut on November 17 against UConn, going 2-for-3 from beyond the arc
- Added a season-high four rebounds against Santa Clara to go with six points on 2-for-3 shooting from three-point range
- Matched her season-high again in Cal's win over San Diego, scoring six points while hitting all three field-goal attempts
- Made her Pac-12 debut on December 31 against UCLA, knocking down two free throws

### 2016-17 – SOPHOMORE (AT CAL)

- Sat out the 2016-17 season per NCAA transfer rules

### 2015-16 – FRESHMAN (AT UTSA)

- Conference USA Academic Medal Winner
- Named to the C-USA Commissioner's Honor Roll with a

cumulative grade-point average of 3.0 or higher

- Appeared in 25 of UTSA's 29 contests and averaged 13.5 minutes per game
- Chipped in 4.8 points and 1.7 rebounds per game
- Shot 66.7 percent at the free-throw line
- Ranked second on the Roadrunners squad with a 31.0 percent (13-for-42) clip from downtown
- Scored in double figures five times
- Went 7-for-9 with a team-best 19 points against UAB
- Led all Roadrunner scorers in the regular-season finale against UTEP, posting 14 points to help UTSA to the second win in program history over a nationally ranked opponent

## HIGH SCHOOL

- Selected to represent her Australian National teams, including the U19 (2015) and U17 (2014) teams
- Helped Australia qualify to the 2014 U17 World Championships after defeating New Zealand in three games at the 2013 FIBA Oceania Championships
- Toured the U.S. with her Australian National High School team, winning MVP awards of both the finals and Pflugerville Tournament (Dec. 2014)
- Named MVP of her New South Wales squad at the U20 National Championships (Feb. 2015), starting each game and averaging 15.0 points and 8.0 rebounds
- Won U18 State Championships title with her Northern Suburbs Basketball Association squad (Aug. 2014)
- Went undefeated in the Waratah Metro Junior League in 2014 after starting all 18 games, averaging 15.0 points and 9.0 rebounds
- Averaged 11.0 points and 7.0 rebounds through nine games at the U18 National Championships (April 2014)
- Selected to the Australian Development Camp squad by Australian Opals coach Brendan Joyce (Jan. 2014)
- Earned the NSW Combined Catholic Colleges Sports Association's prestigious Blue award for her achievement in basketball and academics – the lone recipient among all 60 Catholic Colleges in New South Wales (Feb. 2015)
- A five-time recipient of the National Intensive Training Program Basketball Australia scholarship.

## PERSONAL

- Full name is Sara Anastasieska
- Born on Jan. 11, 1997 in Skopje, Macedonia
- Daughter of Sasho and Jenny Anastasieski
- Has one older sister, Stefani
- Completed a master's degree in Business from Duke University in 2021
- Graduated with a bachelor's degree in Sociology from Cal-Berkeley in 2020
- Major - Master's: Recreation, Sport & Tourism

## 2021-22 GAME-BY-GAME STATISTICS

Opponent	Date	MIN	FG	FG%	3FG	3%	FT	FT%	OR	DR	REB	AVG	PF	A	T/O	BLK	STL	PTS	AVG
NC Central	11/9/21	* 11	0-4	.000	0-1	.000	1-2	.500	0	0	0	0.0	2	1	3	0	0	1	1.0
Miami (OH)	11/14/21	21	4-8	.500	0-1	.000	4-5	.800	1	0	1	0.5	3	1	2	0	3	12	6.5
SIUE	11/18/21	9	1-3	.333	1-1	1.000	0-0	.000	0	0	0	0.3	4	0	5	0	0	3	5.3
UC Riverside	11/21/21	24	5-7	.714	3-5	.600	3-6	.500	1	5	6	1.8	0	5	0	0	1	16	8.0
vs. Dayton	11/26/21	22	4-11	.364	1-2	.500	0-0	.000	2	1	3	2.0	2	1	0	0	1	9	8.2
vs. Mid. Tenn.	11/27/21	* 25	0-4	.000	0-2	.000	0-0	.000	0	3	3	2.2	3	0	4	0	0	0	6.8
Florida State	12/2/21	17	2-5	.400	0-0	.000	0-1	.000	0	2	2	2.1	2	2	1	0	0	4	6.4
E. Kentucky	12/5/21	11	0-2	.000	0-1	.000	0-0	.000	0	2	2	2.1	1	1	2	0	0	0	5.6
at Mich. St.	12/9/21																		
Butler	12/12/21																		
at S. Illinois	12/19/21																		
Missouri	12/22/21																		
Maryland	12/30/21																		
at Iowa	1/2/22																		
at Ohio St.	1/6/22																		
Wisconsin	1/9/22																		
Northwestern	1/13/22																		
at Penn St.	1/16/22																		
Purdue	1/20/22																		
Nebraska	1/23/22																		
at Indiana	1/27/22																		
at Northwestern	1/30/22																		
Michigan	2/3/22																		
at Wisconsin	2/6/22																		
Indiana	2/10/22																		
Ohio St.	2/14/22																		
at Purdue	2/17/22																		
at Minnesota	2/24/22																		
Rutgers	2/27/22																		
Total		2 140	16-44	.364	5-13	.385	8-14	.571	4	13	17	2.1	17	11	17	0	5	45	5.6

## CAREER HIGHS

- Pts:** 25 (at #5 Uconn, 11/10/19 [at Cal])
- Rebs:** 8 (Tx A&M-Kingsville, 12/19/15 [at UTSA])
- FGM:** 9 (2x, last vs. Utah, 1/24/19 [at Cal])
- FGA:** 21 (at #5 Uconn, 11/10/19 [at Cal])
- 3FGM:** 5 (3x, last vs. W. Car., 11/29/20 [at Duke])
- 3FGA:** 13 (vs. W. Carolina, 11/29/20 [at Duke])
- FTM:** 5 (2x, last vs. Washington, 1/3/20 [at Cal])
- FTA:** 6 (2x, last vs. UC Riverside, 11/21/21 [1x at UTSA])
- Ast:** 8 (vs. N.C. Central, 11/29/19 [at Cal])
- Blk:** 2 (2x, last vs. W. Car., 11/29/20 [at Duke])
- Stl:** 3 (3x, last vs. Miami (OH), 11/14/21 [1x at ILL])
- Min:** 40 (2x, last vs. Colo., 1/26/20 [at Cal])





# LYRIC ROBINS

# 2

5-11 // REDSHIRT SENIOR // FORWARD

PLANO, TEXAS

PLANO WEST HIGH SCHOOL

## CAREER STATISTICS

Year	GP	GS	Min	Avg	FG	Total FGA	Pct	3-Point FG	3-Point FGA	3-Point Pct	FT	F-Throw FTA	Pct	Rebounds Off	Rebounds Def	Tot	Avg	PF	F0	Ast	TO	Blk	Stl	Pts	Avg
2017-18	23	0	190	8.3	18	66	.273	1	10	.100	11	16	.688	10	25	35	1.5	26	1	6	17	0	8	48	2.1
2018-19	26	0	101	3.9	10	27	.370	2	8	.250	4	5	.800	7	8	15	0.6	17	0	5	8	0	0	26	1.0
2019-20	12	0	57	4.8	4	11	.364	1	5	.200	1	6	.167	3	6	9	0.8	10	0	0	6	3	3	10	0.8
2020-21	22	1	241	11.0	13	60	.217	5	30	.167	8	13	.615	13	23	36	1.6	41	0	8	16	1	12	39	1.8
2021-22	5	0	33	6.6	3	6	.500	0	2	.000	1	2	.500	2	6	8	1.6	4	0	3	3	1	0	7	1.4
<b>Total</b>	<b>88</b>	<b>1</b>	<b>622</b>	<b>7.1</b>	<b>48</b>	<b>170</b>	<b>.282</b>	<b>9</b>	<b>55</b>	<b>.164</b>	<b>25</b>	<b>42</b>	<b>.595</b>	<b>35</b>	<b>68</b>	<b>103</b>	<b>1.2</b>	<b>98</b>	<b>1</b>	<b>22</b>	<b>50</b>	<b>5</b>	<b>23</b>	<b>130</b>	<b>1.5</b>

## HONORS

- 2019 Winter Academic All-Big Ten

## AT ILLINOIS

### 2021-22 – REDSHIRT SENIOR

- Played a season-high 15 minutes vs. Dayton.

### 2020-21 – SENIOR

- Appeared in 22 of 23 games with one start.
- Averaged 1.8 points, 1.6 rebounds while playing 11.0 minutes per contest
- Made first-career start and tallied season-most seven points in 26 minutes at No. 20/18 Indiana (12/31/20)
- Tied season scoring high with seven points at No. 15/14 Michigan (1/10/21)
- Pulled down a career-high 5 rebounds vs. Iowa (1/3/21)
- Notched career-high 3 steals at Minnesota (2/10/21)

### 2019-20 – JUNIOR

- Appeared in 12 games for the Illini
- Averaged 0.8 points, 0.8 rebounds while playing 4.8 minutes per contest
- Played a season-high 13 minutes in season-opening win over Chicago State (Nov. 5)
- Notched a season-best five points at Iowa (Dec. 31)

### 2018-19 – SOPHOMORE

- Appeared in 26 games
- Played a season-high 17 minutes against Penn State 2/24/19
- Career-high eight points at Iowa 2/14/19

### 2017-18 – FRESHMAN

- Made 23 appearances
- Career-high eight points against Iowa 1/7/18
- Career-high five rebounds against Nebraska 1/10/18

## HIGH SCHOOL

- 2017 McDonald's All-American Nominee
- Averaged 11.3 points and 7.0 rebounds per game as a senior
- Led Plano West to a 25-9 record as senior
- 2016 and 2017 All-Conference Small Forward
- 2017 6-6A All-District First Team selection
- Played in the Nike Elite Youth Basketball League for DFW Elite

## PERSONAL

- Born February 18, 1999
- Daughter of George and Tanisha Robins
- Three siblings, Sariah, Mykah and Ellyan
- Lists Kawhi Leonard as her favorite athlete
- Major - Master's: Business Management

## 2021-22 GAME-BY-GAME STATISTICS

Opponent	Date	MIN	FG	FG%	3FG	3%	FT	FT%	OR	DR	REB	AVG	PF	A	T/O	BLK	STL	PTS	AVG	
NC Central	11/9/21	DNP																		
Miami (OH)	11/14/21	DNP																		
SIUE	11/18/21	5	1-3	.333	0-1	.000	0-0	.000	0	0	0	0.0	2	1	2	1	0	2	2.0	
UC Riverside	11/21/21	0	0-0	.000	0-0	.000	0-0	.000	0	0	0	0.0	0	0	0	0	0	0	1.0	
vs. Dayton	11/26/21	15	1-2	.500	0-1	.000	1-2	.500	1	3	4	1.3	2	1	0	0	0	3	1.7	
vs. Mid. Tenn.	11/27/21	9	1-1	1.000	0-0	.000	0-0	.000	1	2	3	1.8	0	1	1	0	0	2	1.8	
Florida State	12/2/21	DNP																		
E. Kentucky	12/5/21	4	0-0	.000	0-0	.000	0-0	.000	0	1	1	1.6	0	0	0	0	0	0	1.4	
at Mich. St.	12/9/21																			
Butler	12/12/21																			
at S. Illinois	12/19/21																			
Missouri	12/22/21																			
Maryland	12/30/21																			
at Iowa	1/2/22																			
at Ohio St.	1/6/22																			
Wisconsin	1/9/22																			
Northwestern	1/13/22																			
at Penn St.	1/16/22																			
Purdue	1/20/22																			
Nebraska	1/23/22																			
at Indiana	1/27/22																			
at Northwestern	1/30/22																			
Michigan	2/3/22																			
at Wisconsin	2/6/22																			
Indiana	2/10/22																			
Ohio St.	2/14/22																			
at Purdue	2/17/22																			
at Minnesota	2/24/22																			
Rutgers	2/27/22																			
Total		0	33	3-6	.500	0-2	.000	1-2	.500	2	6	8	1.6	4	3	3	1	0	7	1.4

## CAREER HIGHS

**Pts:** 8 (2x, last at Iowa, 2/14/19)  
**Rebs:** 5 (vs. Iowa, 1/3/21)  
**FGM:** 4 (at Iowa, 2/14/19)  
**FGA:** 10 (at Indiana, 12/31/20)  
**3FGM:** 1 (9x, last vs. Wisconsin, 3/9/21)  
**3FGA:** 5 (vs. Iowa, 1/3/21)  
**FTM:** 2 (7x, last vs. Minnesota, 3/5/21)  
**FTA:** 4 (vs. Michigan State, 1/16/18)  
**Ast:** 2 (vs. Wisconsin, 3/9/21)  
**Blk:** 1 (5, last vs. SIUE, 11/18/21)  
**Stl:** 3 (at Minnesota, 2/10/21)  
**Min:** 27 (vs. Iowa, 1/3/21)





# SOLAPE AMUSAN

# 3

6-1 // JUNIOR // FORWARD

WOODBURY, MINNESOTA

WOODBURY HIGH SCHOOL // IOWA WESTERN COMMUNITY COLLEGE

## CAREER STATISTICS

SEASON SUMMARY																											
					Total			3-Point			F-Throw			Rebounds													
Year	GP	GS	Min	Avg	FG	FGA	Pct	FG	FGA	Pct	FT	FTA	Pct	Off	Def	Tot	Avg	PF	FO	Ast	TO	Blk	Stl	Pts	Avg		
2020-21	22	0	259	11.8	31	85	.365	14	49	.286	10	16	.625	14	28	42	1.9	41	0	6	15	4	7	86	3.9		
2021-22	5	0	9	1.8	0	3	.000	0	3	.000	0	0	.000	0	3	3	0.6	3	0	0	1	0	1	0	0.0		
Total	27	0	268	9.9	31	88	.352	14	52	.269	10	16	.625	14	31	45	1.7	44	0	6	16	4	8	86	3.2		

## ILLINOIS

### 2020-21 – SOPHOMORE

- Played in 22 games, averaging 11.8 minutes per contest in first season at Illinois
- Averaged 3.9 points and 1.9 rebounds per contest
- Ranked first in scoring among players with fewer than 10 starts
- Set career-high with 15 points, including 4-for-6 from three-point range against Northwestern (2/24/21)
- Scored in double-figures four times
- Pulled down three or more rebounds in seven games

## IOWA WESTERN

### 2019-20 – FRESHMAN

- Played in 27 games with eight starts as a freshman for the Reivers
- Averaged 8.3 points and 4.4 rebounds on .372 shooting from the floor, including nearly 31% from three-point range
- Scored in double-figures eight times
- Posted a career-high 18 points in a 73-56 win at Cloud County C.C. (2/2/20)
- Recorded one double-double with 15 points and a career-high 12 rebounds in a win at Mineral Area College (12/14/19)

## HIGH SCHOOL

- Averaged 12.4 points and 8.0 rebounds per game in her senior season at Woodbury
- Two-time Suburban East All-Conference honoree
- Was ranked among the top 100 players in the class of 2019 by Prep Girls Hoops
- Played for the Minnesota Fury for two seasons

## PERSONAL

- Daughter of Kolawole and Patricia Amusan
- Born December 3, 2000
- Has three brothers: Korede, Kolade, and Kayode.
- Brother Kolade Amusan plays linebacker for the Davenport University football team
- Lists Maya Moore as her favorite athlete
- Major: Kinesiology with a minor in business

## 2021-22 GAME-BY-GAME STATISTICS

Opponent	Date	MIN	FG	FG%	3FG	3%	FT	FT%	OR	DR	REB	AVG	PF	A	T/O	BLK	STL	PTS	AVG
NC Central	11/9/21	1	0-0	.000	0-0	.000	0-0	.000	0	0	0	0.0	1	0	0	0	0	0	0.0
Miami (OH)	11/14/21	DNP																	
SIUE	11/18/21	DNP																	
UC Riverside	11/21/21	DNP																	
vs. Dayton	11/26/21	1	0-1	.000	0-1	.000	0-0	.000	0	1	1	0.5	0	0	0	0	0	0	0.0
vs. Mid. Tenn.	11/27/21	2	0-1	.000	0-1	.000	0-0	.000	0	1	1	0.7	0	0	0	0	0	0	0.0
Florida State	12/2/21	2	0-0	.000	0-0	.000	0-0	.000	0	1	1	0.8	1	0	0	0	0	0	0.0
E. Kentucky	12/5/21	3	0-1	.000	0-1	.000	0-0	.000	0	0	0	0.6	1	0	1	0	0	0	0.0
at Mich. St.	12/9/21																		
Butler	12/12/21																		
at S. Illinois	12/19/21																		
Missouri	12/22/21																		
Maryland	12/30/21																		
at Iowa	1/2/22																		
at Ohio St.	1/6/22																		
Wisconsin	1/9/22																		
Northwestern	1/13/22																		
at Penn St.	1/16/22																		
Purdue	1/20/22																		
Nebraska	1/23/22																		
at Indiana	1/27/22																		
at Northwestern	1/30/22																		
Michigan	2/3/22																		
at Wisconsin	2/6/22																		
Indiana	2/10/22																		
Ohio St.	2/14/22																		
at Purdue	2/17/22																		
at Minnesota	2/24/22																		
Rutgers	2/27/22																		
Total		0	9	0-3	.000	0-3	.000	0-0	.000	0	3	3	0.6	3	0	1	0	1	0.0

## CAREER HIGHS

**Pts:** 15 (vs. Northwestern, 2/24/21)  
**Rebs:** 6 (2x, last vs. Wisconsin, 3/9/21)  
**FGM:** 5 (2x, last vs. Northwestern, 2/24/21)  
**FGA:** 8 (5x, last vs. Northwestern, 2/24/21)  
**3FGM:** 4 (vs. Northwestern, 2/24/21)  
**3FGA:** 6 (vs. Northwestern, 2/24/21)  
**FTM:** 2 (4x, last vs. Minnesota, 3/5/21)  
**FTA:** 6 (vs. Valparaiso, 12/2/20)  
**Ast:** 3 (at Indiana, 12/31/20)  
**Blk:** 1 (4x, last at Northwestern, 1/21/21)  
**Stl:** 3 (at Indiana, 12/31/20)  
**Min:** 27 (vs. Northwestern, 2/24/21)





# DE'MYLA BROWN

# 5

5-7 // JUNIOR // GUARD

NORTH LITTLE ROCK, ARKANSAS

NORTH LITTLE ROCK HIGH SCHOOL // CHIPOLA COLLEGE

## CAREER STATISTICS

Year	GP	GS	Min	Avg	FG	Total FGA	Pct	3-Point FGA	Pct	F-Throw FT	F-Throw FTA	Pct	Off	Def	Total	Avg	PF	FO	Ast	TO	Blk	Stl	Pts	Avg	
2019-20 (WKU)	14	0	72	5.1	7	20	.350	3	10	.300	7	8	.875	1	7	8	0.6	5	0	6	7	1	8	24	1.7
WKU Total	14	0	72	5.1	7	20	.350	3	10	.300	7	8	.875	1	7	8	0.6	5	0	6	7	1	8	24	1.7
2021-22 (ILL)	8	6	188	23.5	19	68	.279	10	33	.303	18	23	.783	0	13	13	1.6	22	0	15	11	0	11	66	8.3
ILL Total	8	6	188	23.5	19	68	.279	10	33	.303	18	23	.783	0	13	13	1.6	22	0	15	11	0	11	66	8.3
D1 Total	22	6	260	11.8	26	88	.295	13	43	.302	25	31	.806	1	20	21	1.0	27	0	21	18	1	19	90	4.1

## HONORS

- 2021 NJCAA First-Team All-American (at Chipola College)
- 2021 Dean's List (at Chipola College)
- 2020 C-USA Commissioner's Honor Roll (at WKU)

## AT ILLINOIS

### 2021-22 – JUNIOR

- Tallied a career-high 12 points points in win over Miami (OH) (11/14/21)
- Matched her career-high with 12 points vs. Dayton (11/26/21)
- Tied a career high with four rebounds vs. Middle Tennessee (11/27/21)
- Recorded career-highs in FTs made and attempted (4), and steals (4) vs. No. 25 Florida State (12/2/21)

## AT CHIPOLA COLLEGE

### 2020-21 – SOPHOMORE

- Earned NJCAA Division I first team All-America honors in 2020-21
- Led Chipola to a Final Four appearance in the 2021 NJCAA Division I Championship Tournament after capturing the FCSAA State/NJCAA District VIII Championship as tournament MVP.
- Averaged 20.2 points per game and drained 73 three-pointers, marks that ranked seventh and fourth, respectively, in the NJCAA
- Also averaged 3.4 rebounds and 2.0 assist per game for the Indians

## AT WESTERN KENTUCKY

### 2019-20 – FRESHMAN

- Helped Western Kentucky to a 22-7 record as a freshman in 2019-20
- Appeared in 14 games for the Hilltoppers
- Averaged 1.7 points, 0.6 rebounds and 0.4 assists
- Recorded a season-most six points, including a 4-for-4 showing at the FT line, in a 93-58 win over Central Michigan (11/17/19)
- Played a season-high 13 minutes and recorded bests with three assists and three steals, to go along with five points, in an 85-57 home win over UTSA (2/15/20)

## HIGH SCHOOL

- Led North Little Rock High School to two Arkansas Class 7A state championships in 2016 and 2018
- Earned all-state honors as a junior in 2018 and a senior in 2019
- Nominated as a McDonald's All-American in 2019
- Named the Class 7A State Tournament MVP as a junior in 2018 after averaging 13.9 points, 4.6 rebounds, 2.2 assists and 1.7 steals per game for the season
- Graduated with honors
- Played club basketball for the Arkansas Banshees in 2018

## PERSONAL

- Full name is De'Myla Shundré Brown
- Nickname is Dee
- Daughter of LeAubrey Brown and Shea McFadden
- Born February 27, 2001 in North Little Rock, Ark.
- Has an older brother, De'Marik, and a younger brother, Daxson
- Brother De'Marik also played college basketball
- Hobbies include watching scary movies
- Lists Devin Bookers as her favorite athlete
- Major: Broadcast Journalism

## 2021-22 GAME-BY-GAME STATISTICS

Opponent	Date	MIN	FG	FG%	3FG	3%	FT	FT%	OR	DR	REB	AVG	PF	A	T/O	BLK	STL	PTS	AVG
NC Central	11/9/21	* 26	1-13	.077	1-7	.143	4-4	1.000	0	1	1	1.0	1	0	1	0	1	7	7.0
Miami (OH)	11/14/21	* 29	4-10	.400	1-5	.200	3-4	.750	0	4	4	2.5	4	3	2	0	4	12	9.5
SIUE	11/18/21	* 23	3-7	.429	2-4	.500	3-4	.750	0	0	0	1.7	3	1	1	0	0	11	10.0
UC Riverside	11/21/21	* 20	1-8	.125	0-4	.000	1-2	.500	0	1	1	1.5	1	4	1	0	0	3	8.3
vs. Dayton	11/26/21	* 25	3-10	.300	3-4	.750	3-4	.750	0	1	1	1.4	3	1	0	0	2	12	9.0
vs. Mid. Tenn.	11/27/21	* 13	1-2	.500	0-0	.000	0-1	.000	0	4	4	1.8	3	1	3	0	0	2	7.8
Florida State	12/2/21	31	3-10	.300	1-5	.200	4-4	1.000	0	1	1	1.7	4	3	2	0	4	11	8.3
E. Kentucky	12/5/21	21	3-8	.375	2-4	.500	0-0	.000	0	1	1	1.6	3	2	1	0	0	8	8.3
at Mich. St.	12/9/21																		
Butler	12/12/21																		
at S. Illinois	12/19/21																		
Missouri	12/22/21																		
Maryland	12/30/21																		
at Iowa	1/2/22																		
at Ohio St.	1/6/22																		
Wisconsin	1/9/22																		
Northwestern	1/13/22																		
at Penn St.	1/16/22																		
Purdue	1/20/22																		
Nebraska	1/23/22																		
at Indiana	1/27/22																		
at Northwestern	1/30/22																		
Michigan	2/3/22																		
at Wisconsin	2/6/22																		
Indiana	2/10/22																		
Ohio St.	2/14/22																		
at Purdue	2/17/22																		
at Minnesota	2/24/22																		
Rutgers	2/27/22																		
Total		6 188	19-68	.279	10-33	.303	18-23	.783	0	13	13	1.6	22	15	11	0	11	66	8.3

## CAREER HIGHS

**Pts:** 12 (2x, last vs. Dayton, 11/26/21)  
**Rebs:** 4 (2x, last vs. Middle Tennessee, 11/27/21)  
**FGM:** 4 (vs. Miami (OH), 11/14/21)  
**FGA:** 13 (vs. NC Central, 11/9/21)  
**3FGM:** 3 (vs. Dayton, 11/26/21)  
**3FGA:** 7 (vs. NC Central, 11/9/21)  
**FTM:** 4 (2x, last vs. Florida State, 12/2/21)  
**FTA:** 4 (4x, last vs. Florida State, 12/2/21)  
**Ast:** 4 (vs. UC Riverside, 11/21/21)  
**Blk:** --  
**Stl:** 4 (2x, last vs. Florida State, 12/2/21)  
**Min:** 31 (vs. Florida State, 12/2/21)





# JADA PEEBLES 11

5-10 // JUNIOR // GUARD

RALEIGH, NORTH CAROLINA

WAKEFIELD HIGH SCHOOL

## CAREER STATISTICS

Year	GP	GS	Min	Avg	Total		Pct	3-Point		Pct	F-Throw		Pct	Rebounds			Avg	PF	FO	Ast	TO	Blk	Stl	Pts	Avg
					FGA	FG		FGA	FG		FTA	FT		Off	Def	Tot									
2019-20	27	11	541	20.0	52	145	.359	13	37	.351	29	43	.674	4	23	27	1.0	19	0	34	28	2	31	146	5.4
2020-21	23	23	814	35.4	101	277	.365	34	110	.309	30	38	.789	6	42	48	2.1	28	0	46	48	7	26	266	11.6
2021-22	8	6	237	29.6	24	59	.407	12	26	.462	16	22	.727	1	19	20	2.5	12	0	24	25	2	9	76	9.5
Total	58	40	1592	27.4	177	481	.368	59	173	.341	75	103	.728	11	84	95	1.6	59	0	104	101	11	66	488	8.4

## AT ILLINOIS

### 2021-22 – JUNIOR

- Led the Illini with a season-high 17 points, hitting a career-high eight free throws, in the win over UC Riverside (11/21/21)
- Knocked down a season-most four three-pointers, and tied a career high with six assists in Illinois' win over Eastern Kentucky (12/5/21)

### 2020-21 – SOPHOMORE

- One of three Illini to play at start in all 23 games
- Led the team in scoring at 11.6 ppg, reaching double-figures in 16 games including 14 of 18 Big Ten regular-season contests
- Played 35.4 minutes per game, third in the Big Ten and 88th nationally
- Knocked down a team-leading 34 three-pointers, shooting .309 from beyond the arc
- Led the team with a .789 free-throw percentage (30-for-38)
- Tallied eight games as the leading scorer, and five contests as the team leader in assists
- Recorded a then-career-high 19 points, including a personal-best five three-pointers vs. Penn State (1/28/21)
- Established a new career-high with 21 points, including a career-high-tying five three-pointers at Minnesota (2/10/21)

### 2019-20 – FRESHMAN

- Played in 27 of Illinois' games, earning 11 starts
- Averaged 5.4 points and 1.0 rebounds in 20 minutes per game
- Notched five games in double-figures scoring
- Tallied 17 points, including a season-most three three-pointers in an Illini win vs. Holy Cross (Nov. 9)
- Recorded season-best totals with 18 points and five rebounds in 38 minutes vs Austin Peay (Nov. 13)
- Dished out a personal-best six assists vs. Merrimack (Dec. 10)
- Ranked fourth on the team in three-point shooting (.351, 13-for-37) and free-throw shooting (.674, 29-for-43)
- Third on the team with 1.1 steals and fifth with 1.3 assists per game

## HIGH SCHOOL

- Ranked the No. 104 player in the country by Prospects Nation
- Northern Atlantic Defensive Player of the Year
- North Carolina vs. South Carolina All-Star Game
- Three-time Northern Atlantic All-Conference Selection
- 2017-18 All-Metro Team
- Scored 1000th career point during her junior season at Wakefield High School
- Averaged 16.0 points, 4.0 rebounds, 3.0 assists and 3.0 steals as a junior

## PERSONAL

- Daughter of Danny and Monique Peebles
- Born October 27, 2000
- Three siblings, Dylan, Mia and DJ
- Brother, Dylan, is on the track and field team at LSU
- Father, Danny, played football at N.C. State and in the NFL for the Tampa Bay Buccaneers and Cleveland Browns
- Major: Animal Science

## 2021-22 GAME-BY-GAME STATISTICS

Opponent	Date	MIN	FG	FG%	3FG	3%	FT	FT%	OR	DR	REB	AVG	PF	A	T/O	BLK	STL	PTS	AVG	
NC Central	11/9/21	27	2-7	.286	1-2	.500	2-4	.500	0	3	3	3.0	1	2	3	0	1	7	7.0	
Miami (OH)	11/14/21	* 20	2-4	.500	0-0	.000	4-4	1.000	0	3	3	3.0	3	2	5	0	1	8	7.5	
SIUE	11/18/21	* 30	3-6	.500	0-1	.000	0-0	.000	1	3	4	3.3	1	4	4	0	0	6	7.0	
UC Riverside	11/21/21	* 37	4-7	.571	1-2	.500	8-9	.889	0	4	4	3.5	2	4	3	0	1	17	9.5	
vs. Dayton	11/26/21	* 22	2-4	.500	2-2	1.000	0-0	.000	0	0	0	2.8	1	2	1	1	0	6	8.8	
vs. Mid. Tenn.	11/27/21	30	3-9	.333	1-3	.333	1-3	.333	0	1	1	2.5	2	3	2	1	5	8	8.7	
Florida State	12/2/21	* 37	4-13	.308	3-8	.375	1-2	.500	0	3	3	2.6	0	1	7	0	0	12	9.1	
E. Kentucky	12/5/21	* 34	4-9	.444	4-8	.500	0-0	.000	0	2	2	2.5	2	6	0	0	1	12	9.5	
at Mich. St.	12/9/21																			
Butler	12/12/21																			
at S. Illinois	12/19/21																			
Missouri	12/22/21																			
Maryland	12/30/21																			
at Iowa	1/2/22																			
at Ohio St.	1/6/22																			
Wisconsin	1/9/22																			
Northwestern	1/13/22																			
at Penn St.	1/16/22																			
Purdue	1/20/22																			
Nebraska	1/23/22																			
at Indiana	1/27/22																			
at Northwestern	1/30/22																			
Michigan	2/3/22																			
at Wisconsin	2/6/22																			
Indiana	2/10/22																			
Ohio St.	2/14/22																			
at Purdue	2/17/22																			
at Minnesota	2/24/22																			
Rutgers	2/27/22																			
Total		6	237	24-59	.407	12-26	.462	16-22	.727	1	19	20	2.5	12	24	25	2	9	76	9.5

## CAREER HIGHS

- Pts:** 21 (at Minnesota, 2/10/21)
- Rebs:** 5 (vs. Austin Peay, 11/13/19)
- FGM:** 7 (5x, last at No. 9 Maryland, 2/17/21)
- FGA:** 18 (2x, last vs. No. 15 Indiana, 2/14/21)
- 3FGM:** 5 (2x, last at Minnesota, 2/10/21)
- 3FGA:** 12 (at Minnesota, 2/10/21)
- FTM:** 8 (vs. UC Riverside, 11/21/21)
- FTA:** 9 (vs. UC Riverside, 11/21/21)
- Ast:** 6 (3x, last vs. Eastern Kentucky, 12/5/21)
- Blk:** 2 (vs. Omaha, 12/6/20)
- Stl:** 5 (vs Middle Tennessee, 11/27/21)
- Min:** 40 (4x, last vs. Minnesota, 3/5/21)





# JAYLA ODEN

# 12

5-9 // FRESHMAN // GUARD

BALTIMORE, MARYLAND

MCDONOGH HIGH SCHOOL

## CAREER STATISTICS

Year	GP	GS	Min	Avg	FG	Total FGA	Pct	FG	3-Point FGA	Pct	FT	F-Throw FTA	Pct	Off	Def	Tot	Avg	PF	F0	Ast	TO	Blk	Stl	Pts	Avg
2021-22	4	0	71	17.8	9	26	.346	4	7	.571	8	15	.533	2	9	11	2.8	10	0	10	16	0	9	30	7.5
Total	4	0	71	17.8	9	26	.346	4	7	.571	8	15	.533	2	9	11	2.8	10	0	10	16	0	9	30	7.5

## AT ILLINOIS

### 2021-22 – FRESHMAN

- Recorded a game-high five assists to go along with nine points in Illini debut vs NC Central (11/9/21)
- Notched first double-digit scoring game with a team-high 14 points in win vs. Miami (OH) (11/14/21)
- Missed four games due to injury before returning with two points, and a career-high four rebounds and two steals, vs. Eastern Kentucky (12/5/21).

## HIGH SCHOOL

- Two-sport athlete at the McDonogh School in Baltimore, Md.
- Lettered in three years in basketball (2018-21) and once in track & field (2019)
- Averaged 15.3 points, 3.3 rebounds, 2.0 assists and 2.1 steals per game during her prep career
- Rated as a three-star recruit by ESPN
- ESPN ranked as the No. 33 point guard in the class of 2021
- PrepGirlHoops.com rated as the No. 6 recruit in the state of Maryland, including the state's top point guard prospect
- Earned the USA Today High School Sports Award as the 2021 Maryland Girls Basketball Player of the Year
- Nominated as a 2021 McDonald's All-American
- Nominated for the 2021 Gatorade Maryland Player of the Year award
- Three-year team captain as a sophomore (2018-19), junior (2019-20) and senior (2020-21)
- Earned first-team IAAM All-Conference honors in 2019-20
- IAAM conference scoring champion in 2019-20
- Named to the McDonogh Honor Roll
- Played one season with Team Takeover out of Washington, D.C., in the Nike Elite Youth Basketball League (EYBL) in 2020

## PERSONAL

- Full name is Jayla Shanell Oden
- Daughter of Steven and Rosa Oden
- Born Sept. 23, 2002 in Towson, Md.
- Has one older sister, Charmaine
- Lists her hobbies as shopping, track & field, dancing, painting and drawing
- Intended major: Kinesiology
- Plans to become sports medicine physician

## 2021-22 GAME-BY-GAME STATISTICS

Opponent	Date	MIN	FG	FG%	3FG	3%	FT	FT%	OR	DR	REB	AVG	PF	A	T/O	BLK	STL	PTS	AVG
NC Central	11/9/21	26	3-10	.300	1-2	.500	2-4	.500	2	0	2	2.0	4	5	5	0	2	9	9.0
Miami (OH)	11/14/21	22	4-9	.444	3-3	1.000	3-5	.600	0	2	2	2.0	1	3	3	0	2	14	11.5
SIUE	11/18/21	12	2-4	.500	0-1	.000	1-4	.250	0	3	3	2.3	3	1	5	0	3	5	9.3
UC Riverside	11/21/21	DNP																	
vs. Dayton	11/26/21	DNP																	
vs. Mid. Tenn.	11/27/21	DNP																	
Florida State	12/2/21	DNP																	
E. Kentucky	12/5/21	11	0-3	.000	0-1	.000	2-2	1.000	0	4	4	2.8	2	1	3	0	2	2	7.5
at Mich. St.	12/9/21																		
Butler	12/12/21																		
at S. Illinois	12/19/21																		
Missouri	12/22/21																		
Maryland	12/30/21																		
at Iowa	1/2/22																		
at Ohio St.	1/6/22																		
Wisconsin	1/9/22																		
Northwestern	1/13/22																		
at Penn St.	1/16/22																		
Purdue	1/20/22																		
Nebraska	1/23/22																		
at Indiana	1/27/22																		
at Northwestern	1/30/22																		
Michigan	2/3/22																		
at Wisconsin	2/6/22																		
Indiana	2/10/22																		
Ohio St.	2/14/22																		
at Purdue	2/17/22																		
at Minnesota	2/24/22																		
Rutgers	2/27/22																		
Total		71	9-26	.346	4-7	.571	8-15	.533	2	9	11	2.8	10	10	16	0	9	30	7.5

## CAREER HIGHS

**Pts:** 14 (vs. Miami (OH), 11/14/21)  
**Rebs:** 4 (vs. Eastern Kentucky, 12/5/21)  
**FGM:** 4 (vs. Miami (OH), 11/14/21)  
**FGA:** 10 (vs. NC Central, 11/9/21)  
**3FGM:** 3 (vs. Miami (OH), 11/14/21)  
**3FGA:** 3 (vs. Miami (OH), 11/14/21)  
**FTM:** 3 (vs. Miami (OH), 11/14/21)  
**FTA:** 5 (vs. Miami (OH), 11/14/21)  
**Ast:** 5 (vs. NC Central, 11/9/21)  
**Blk:** --  
**Stl:** 3 (vs. SIUE, 11/18/21)  
**Min:** 26 (vs. NC Central, 11/9/21)





# GEOVANA LOPES 14

6-3 // SENIOR // FORWARD/CENTER

BATAGUASSU, BRAZIL

ESCOLA ESTADUAL PAULO MENDES SILVA

## CAREER STATISTICS

SENIOR SEASONS																										
					Total	3-Point			F-Throw			Rebounds														
Year	GP	GS	Min	Avg	FG	FGA	Pct	FG	FGA	Pct	FT	FTA	Pct	Off	Def	Tot	Avg	PF	FO	Ast	TO	Blk	Stl	Pts	Avg	
2020-21	15	1	177	11.8	21	46	.457	0	0	.000	8	13	.615	27	20	47	3.1	24	0	12	18	2	5	50	3.3	
2021-22	8	2	108	13.5	12	26	.462	0	0	.000	7	8	.875	9	20	29	3.6	10	0	8	10	2	7	31	3.9	
Total	23	3	285	12.4	33	72	.458	0	0	.000	15	21	.714	36	40	76	3.3	34	0	20	28	4	12	81	3.5	

## AT ILLINOIS

### 2020-21 – JUNIOR

- Tallied a career-high nine points in opener vs. NC Central (11/9/21)
- Tied a career-high with three steals vs. No. 25 Florida State (12/2/21)
- Recorded a season-high 10 points, including a career-most four free-throws and dishing out a career-high three assists vs. Eastern Kentucky (12/5/21)

### 2020-21 – JUNIOR

- Appeared in 15 games with one start in first season with the Illini
- Averaged 3.3 points and 3.1 rebounds per game.
- Missed eight games in December and January with knee injury and returned at Michigan State (2/4/21), following mid-season surgery, to play final 11 games of the season
- Posted 12 points, six boards, two assists and a pair of steals in 15 minutes off the bench in debut vs. Indiana State (11/25/20).
- Earned first start vs. Valparaiso (12/2/20) and recorded six points and five rebound vs. the Crusaders
- Tied a career-high with 12 points, all in the fourth-quarter, at Purdue (2/28). Also matched a personal-best with 6 rebounds vs. the Boilermakers.

## ODESSA COLLEGE

- Helped Odessa (Texas) College to back-to-back NJCAA Tournament berths including an Elite Eight appearance in 2018-19 and an at-large bid in 2019-20 prior to the tournament's cancellation
- Earned 2020 All-Western Junior College Athletic Conference honorable mention honors
- As a sophomore in 2019-20, started 18 of 29 games for the Wranglers and averaged 7.3 points, 6.4 rebounds and 1.1 assists
- Played in 29 game with eight starts as a freshman in 2018-19, averaging 3.9 points and 3.2 rebounds
- Recorded four career double-doubles including career highs of 16 points and 17 rebounds in a victory over Howard College (2/13/20)

## HIGH SCHOOL/INTERNATIONAL

- Graduated from Escola Estadual Paulo Mendes Silva
- Competed for club team Presidente Venceslau • Played for the Brazil National Team in five FIBA/FIBA Zones events
- Won gold medals at both the 2014 South American U15 Championship for Women and the 2015 South American U17 Championship for Women
- Earned silver at the 2015 FIBA Americas U16 Championship for Women
- Took home bronze at the 2016 FIBA Americas U18 Championship for Women
- Finished 13th at the 2016 FIBA U17 World Championship
- Pulled down a game-high 13 rebounds in Brazil's 72-63 semifinal victory over Team USA at the 2015 FIBA Americas U16 Championship, the first loss in U16 history for the U.S.

## PERSONAL

- Daughter of Luciano Dias Lopes and Adriana Cristina F. Lopes
- Born Jan. 1, 1999
- Has a younger brother, Felipe
- Lists Brazilian soccer superstar Marta as her favorite athlete
- Hobbies include cooking, traveling and fishing
- Major: Communications with a minor in Public Relations

## 2021-22 GAME-BY-GAME STATISTICS

Opponent	Date	MIN	FG	FG%	3FG	3%	FT	FT%	OR	DR	REB	AVG	PF	A	T/O	BLK	STL	PTS	AVG	
NC Central	11/9/21	19	4-4	1.000	0-0	.000	0-1	.000	3	6	9	9.0	4	2	4	0	2	8	8.0	
Miami (OH)	11/14/21	* 25	2-5	.400	0-0	.000	1-1	1.000	1	5	6	7.5	1	1	2	1	1	5	6.5	
SIUE	11/18/21	* 11	0-1	.000	0-0	.000	2-2	1.000	1	3	4	6.3	0	1	1	1	1	2	5.0	
UC Riverside	11/21/21	9	1-2	.500	0-0	.000	0-0	.000	0	1	1	5.0	0	1	0	0	0	2	4.3	
vs. Dayton	11/26/21	7	2-3	.667	0-0	.000	0-0	.000	0	2	2	4.4	2	0	1	0	0	4	4.2	
vs. Mid. Tenn.	11/27/21	7	0-3	.000	0-0	.000	0-0	.000	0	0	0	3.7	1	0	0	0	0	0	3.5	
Florida State	12/2/21	11	0-2	.000	0-0	.000	0-0	.000	2	1	3	3.6	0	0	0	0	2	0	3.0	
E. Kentucky	12/5/21	19	3-6	.500	0-0	.000	4-4	1.000	2	2	4	3.6	2	3	2	0	1	10	3.9	
at Mich. St.	12/9/21																			
Butler	12/12/21																			
at S. Illinois	12/19/21																			
Missouri	12/22/21																			
Maryland	12/30/21																			
at Iowa	1/2/22																			
at Ohio St.	1/6/22																			
Wisconsin	1/9/22																			
Northwestern	1/13/22																			
at Penn St.	1/16/22																			
Purdue	1/20/22																			
Nebraska	1/23/22																			
at Indiana	1/27/22																			
at Northwestern	1/30/22																			
Michigan	2/3/22																			
at Wisconsin	2/6/22																			
Indiana	2/10/22																			
Ohio St.	2/14/22																			
at Purdue	2/17/22																			
at Minnesota	2/24/22																			
Rutgers	2/27/22																			
Total		2	108	12-26	.462	0-0	.000	7-8	.875	9	20	29	3.6	10	8	10	2	7	31	3.9

## CAREER HIGHS

- Pts:** 12 (2x, last at Purdue, 2/28/21)
- Rebs:** 9 (vs. NC Central, 11/9/21)
- FGM:** 5 (2x, last at Purdue, 2/28/21)
- FGA:** 12 (vs. Indiana State, 11/25/20)
- 3FGM:** --
- 3FGA:** --
- FTM:** 4 (vs. Eastern Kentucky, 12/5/21)
- FTA:** 5 (vs. Indiana State, 11/25/20)
- Ast:** 3 (vs. Eastern Kentucky, 12/5/21)
- Blk:** 1 (4x, last vs. SIUE, 11/18/21)
- Stl:** 2 (3x, last vs. Florida State, 12/2/21)
- Min:** 25 (vs. Miami (OH), 11/14/21)





# KEANNA REMBERT 15

6-2 // FRESHMAN // FORWARD

RALEIGH, NORTH CAROLINA

MILLBROOK HIGH SCHOOL

## CAREER STATISTICS

Year	GP	GS	Min	Avg	FG	Total FGA	Pct	FG	3-Point FGA	Pct	FT	F-Throw FTA	Pct	Off	Def	Total	Avg	PF	FO	Ast	TO	Blk	Stl	Pts	Avg
2021-22	2	0	4	2.0	0	0	.000	0	0	.000	0	0	.000	0	0	0	0.0	2	0	0	4	0	1	0	0.0
Total	2	0	4	2.0	0	0	.000	0	0	.000	0	0	.000	0	0	0	0.0	2	0	0	4	0	1	0	0.0

## AT ILLINOIS

### 2021-22 – FRESHMAN

- Saw first action of her collegiate career, logging two minutes for the Illini vs. Dayton (11/26/21)
- Recorded first-career steal vs. Eastern Kentucky (12/5/21)

## HIGH SCHOOL

- Multi-sport athlete graduated from Millbrook High School in Raleigh, N.C. in 2021
- Lettered in all four years in basketball, three years in volleyball, and also competed in track & field.
- Ranked No. 91 overall recruit by BlueStar, and No. 130 overall by ASGR, in the Class of 2021
- Led Millbrook to a 13-2 record, a CAP7 4A conference title, and an Elite Eight appearance in the 4A state tournament, averaging 20.3 points, 9.9 rebounds, 1.7 assists, 1.8 steals and 2.1 blocks per game as a senior in 2021
- Led Millbrook to 24-7 record and an appearance in the 2020 4A East Regional Finals during her junior season, averaging 14.3 points, 8.9 rebounds and 2.2 blocks per game
- Three-time first-team all-conference and academic all-conference performer
- Selected to the 2020 All-District 5 second team by the North Carolina Basketball Association
- First-team all-conference selection as a freshman at Enloe High School in 2017-18, averaging 14 points and 7.2 rebounds per game
- Played two seasons with the Carolina Flames out of Raleigh, N.C.

## PERSONAL

- Full name is Keanna Amore Rembert
- Nickname is Key
- Daughter of Henri Rembert and Shanda Williams
- Born Sept. 18, 2003 in Raleigh, N.C.
- Has one younger brother, Ian Rembert
- Lists her hobbies as cooking and crafts, and also enjoys volleyball and learning sign language
- Intended major: Health Sciences
- Plans to become a pediatrician

## 2021-22 GAME-BY-GAME STATISTICS

Opponent	Date	MIN	FG	FG%	3FG	3%	FT	FT%	OR	DR	REB	AVG	PF	A	T/O	BLK	STL	PTS	AVG
NC Central	11/9/21	DNP																	
Miami (OH)	11/14/21	DNP																	
SIUE	11/18/21	DNP																	
UC Riverside	11/21/21	DNP																	
vs. Dayton	11/26/21	2	0-0	.000	0-0	.000	0-0	.000	0	0	0	0.0	0	0	0	0	0	0	0.0
vs. Mid. Tenn.	11/27/21	DNP																	
Florida State	12/2/21	DNP																	
E. Kentucky	12/5/21	2	0-0	.000	0-0	.000	0-0	.000	0	0	0	0.0	2	0	4	0	1	0	0.0
at Mich. St.	12/9/21																		
Butler	12/12/21																		
at S. Illinois	12/19/21																		
Missouri	12/22/21																		
Maryland	12/30/21																		
at Iowa	1/2/22																		
at Ohio St.	1/6/22																		
Wisconsin	1/9/22																		
Northwestern	1/13/22																		
at Penn St.	1/16/22																		
Purdue	1/20/22																		
Nebraska	1/23/22																		
at Indiana	1/27/22																		
at Northwestern	1/30/22																		
Michigan	2/3/22																		
at Wisconsin	2/6/22																		
Indiana	2/10/22																		
Ohio St.	2/14/22																		
at Purdue	2/17/22																		
at Minnesota	2/24/22																		
Rutgers	2/27/22																		
Total		0	4	0-0	.000	0-0	.000	0-0	.000	0	0	0	0.0	0	0	0	0	0	0.0

## CAREER HIGHS

**Pts:** --  
**Rebs:** --  
**FGM:** --  
**FGA:** --  
**3FGM:** --  
**3FGA:** --  
**FTM:** --  
**FTA:** --  
**Ast:** --  
**Blk:** --  
**Stl:** --  
**Min:** 2 (2x, last vs. Eastern Kentucky, 12/5/21)





# ERIKA PORTER 20

6-2 // SOPHOMORE // FORWARD

WEST WINDSOR, NEW JERSEY

NOTRE DAME HIGH SCHOOL

## CAREER STATISTICS

Year	GP	GS	Min	Avg	FG	Total FGA	Pct	FG	3-Point FGA	Pct	FT	F-Throw FTA	Pct	Off	Def	Tot	Avg	PF	F0	Ast	TO	Blk	Stl	Pts	Avg
2020-21	17	2	142	8.4	11	21	.524	0	0	.000	14	19	.737	4	15	19	1.1	10	0	1	8	9	3	36	2.1
2021-22	7	3	69	9.9	7	14	.500	0	0	.000	6	10	.600	5	12	17	2.4	13	0	1	8	9	0	20	2.9
<b>Total</b>	<b>24</b>	<b>5</b>	<b>211</b>	<b>8.8</b>	<b>18</b>	<b>35</b>	<b>.514</b>	<b>0</b>	<b>0</b>	<b>.000</b>	<b>20</b>	<b>29</b>	<b>.690</b>	<b>9</b>	<b>27</b>	<b>36</b>	<b>1.5</b>	<b>23</b>	<b>0</b>	<b>2</b>	<b>16</b>	<b>18</b>	<b>3</b>	<b>56</b>	<b>2.3</b>

## AT ILLINOIS

### 2021-22 – FRESHMAN

- Blocked a career-most three shots in Illinois' win over UC Riverside (11/21/21)

### 2020-21 – FRESHMAN

- Played in 17 of final 19 games, including two starts
- Averaged 2.1 points and 1.1 rebounds per game
- Ranked second on the team with nine blocks
- Led the team with a field goal percentage of 52.4 percent (11-for-21)
- Made Illini debut with two points in six minutes at Indiana (12/31/20)
- Scored career-best 4 points at Michigan State (2/4) and matched it in each of the final three games of the season vs. Minnesota (3/5/21), vs. Wisconsin (3/9/21) and vs. Northwestern (3/10/21)
- Set career-highs with four rebounds and two blocks vs. No. 15/14 Indiana (2/14/21)

## HIGH SCHOOL

- Four-year varsity player at Notre Dame (N.J.) High School where she helped lead the Irish to four consecutive Colonial Valley Conference (CVC) titles and a 76-30 record.
- Named CVC first-team all-conference and won back-to-back CVC Player of the Year honors during her junior (2018-19) and senior seasons (2019-20).
- Also earned 2019 and 2020 Trentonian All-Area first-team honors.
- Opened her senior season by scoring her 1,000th career point in NDHS's victory over Allentown, and closed her career with 1,405 points (13.3 ppg) for the Irish.
- Notched 792 career rebounds, an average of 7.5 boards per contest.
- As a junior in 2018-19, averaged 18.1 points, 9.8 rebounds, and 1.6 blocks per game, and followed that up her senior season with averages of 15.2 points, 8.4 rebounds and 2.3 blocks per contest.
- Scored a career-best 34 points in a victory over Robbinsville (1/17/20).
- Posted 31 career double-doubles, reached double-figures scoring 72 times, and pulled down 10 or more rebounds in 34 games.

## PERSONAL

- Daughter of Joseph C. Porter III and Janice L. Porter
- Born May 24, 2002
- Has an older sister, Alexis
- Lisits eating sushi, hanging with friends, day trips, cooking, and hiking as hobbies.
- Favorite athlete is Breanna Stewart
- Major: Political Science

## 2021-22 GAME-BY-GAME STATISTICS

Opponent	Date		MIN	FG	FG%	3FG	3%	FT	FT%	OR	DR	REB	AVG	PF	A	T/O	BLK	STL	PTS	AVG	
NC Central	11/9/21	*	4	0-1	.000	0-0	.000	1-2	.500	1	2	3	3.0	2	0	1	0	0	1	1.0	
Miami (OH)	11/14/21		10	0-1	.000	0-0	.000	1-2	.500	0	2	2	2.5	3	0	1	2	0	1	1.0	
SIUE	11/18/21		18	2-4	.500	0-0	.000	3-4	.750	2	3	5	3.3	3	1	1	1	0	7	3.0	
UC Riverside	11/21/21	*	13	1-2	.500	0-0	.000	1-2	.500	1	3	4	3.5	3	0	2	3	0	3	3.0	
vs. Dayton	11/26/21	*	7	0-1	.000	0-0	.000	0-0	.000	0	0	0	2.8	1	0	2	1	0	0	2.4	
vs. Mid. Tenn.	11/27/21		13	3-4	.750	0-0	.000	0-0	.000	1	2	3	2.8	0	0	0	1	0	6	3.0	
Florida State	12/2/21		DNP																		
E. Kentucky	12/5/21		4	1-1	1.000	0-0	.000	0-0	.000	0	0	0	2.4	1	0	1	1	0	2	2.9	
at Mich. St.	12/9/21																				
Butler	12/12/21																				
at S. Illinois	12/19/21																				
Missouri	12/22/21																				
Maryland	12/30/21																				
at Iowa	1/2/22																				
at Ohio St.	1/6/22																				
Wisconsin	1/9/22																				
Northwestern	1/13/22																				
at Penn St.	1/16/22																				
Purdue	1/20/22																				
Nebraska	1/23/22																				
at Indiana	1/27/22																				
at Northwestern	1/30/22																				
Michigan	2/3/22																				
at Wisconsin	2/6/22																				
Indiana	2/10/22																				
Ohio St.	2/14/22																				
at Purdue	2/17/22																				
at Minnesota	2/24/22																				
Rutgers	2/27/22																				
Total			3	69	7-14	.500	0-0	.000	6-10	.600	5	12	17	2.4	13	1	8	9	0	20	2.9

## CAREER HIGHS

**Pts:** 7 (vs. SIUE, 11/18/21)  
**Rebs:** 5 (vs. SIUE, 11/18/21)  
**FGM:** 2 (3x, last vs. SIUE, 11/18/21)  
**FGA:** 4 (2x, last vs. Middle Tennessee, 11/27/21)  
**3FGM:** --  
**3FGA:** --  
**FTM:** 4 (vs. Wisconsin, 3/9/21)  
**FTA:** 4 (2x, last vs. SIUE, 11/18/21)  
**Ast:** 1 (2x, las vs. SIUE, 11/18/21)  
**Blk:** 3 (vs. UC Riverside, 11/21/21)  
**Stl:** 1 (3x, last at Rutgers, 2/20/21)  
**Min:** 18 (vs. SIUE, 11/18/21)





# EVA RUBIN

# 22

6-5 // REDSHIRT-SENIOR // CENTER

FLOSSMOOR, ILLINOIS

HOMWOOD-FLOSSMOOR HIGH SCHOOL

## CAREER STATISTICS

CAREER STATISTICS																											
Year	GP	GS	Min	Avg	Total			3-Point			F-Throw			Rebounds			PF	FO	Ast	TO	Blk	Stl	Pts	Avg			
					FG	FGA	Pct	FG	FGA	Pct	FT	FTA	Pct	Off	Def	Tot									Avg		
2017-18 (ASU)	13	0	56	4.3	12	24	.500	0	0	.000	6	8	.750	2	4	6	0.5	6	0	1	4	2	1	30	2.3		
2018-19 (ASU)	9	0	39	4.3	3	11	.273	0	0	.000	4	8	.500	3	1	4	0.4	6	0	0	3	3	2	10	1.1		
ASU Total	22	0	95	4.3	15	35	.429	0	0	.000	10	16	.625	5	5	10	0.5	12	0	1	7	5	3	40	1.8		
2020-21 (ILL)	22	20	441	20.0	59	132	.447	0	0	.000	42	63	.667	33	45	78	3.5	50	2	3	37	21	11	160	7.3		
2021-22 (ILL)	8	3	118	14.8	14	22	.636	0	0	.000	8	20	.400	4	11	15	1.9	16	0	3	11	5	0	36	4.5		
ILL Total	30	23	559	18.6	73	154	.474	0	0	.000	50	83	.602	37	56	93	3.1	66	2	6	48	26	11	196	6.5		
D1 Total	52	23	654	12.6	88	189	.466	0	0	.000	60	99	.606	42	61	103	2.0	78	2	7	55	31	14	236	4.5		

## HONORS

- 2020-21 Big Ten Sportsmanship Award
- 2021 Winter Academic All-Big Ten

## AT ILLINOIS

### 2020-21 — REDSHIRT JUNIOR

- Scored a season-high 11 points on a perfect 5-for-5 shooting performance in Illinois' win over UC Riverside (11/21/21)

### 2020-21 — REDSHIRT JUNIOR

- Played in 22 games with 20 starts in her first season with the Illini
- Averaged career-bests with 7.3 points, 3.5 rebounds per game
- Led the team with 21 blocked shots
- Recorded 6 rebounds and a career-high 4 blocks in Illini debut vs. Indiana State (11/25/20)
- Notched 13 points and a career-high 7 rebounds in Big Ten debut at Nebraska (12/10/20)
- Set a new career-high with 17 points on 7-for-10 shooting vs. Iowa (1/3/21)
- Tallied 16 points on 8-for-13 FGs in win over Minnesota (3/5/21)
- Matched her career-best total with 7 rebounds in Big Ten Tournament vs. Northwestern (3/10/21)

### 2019-20 — REDSHIRT

- Did not compete per NCAA rules after transferring to Illinois in December

## AT ARIZONA STATE

### 2018-19 — SOPHOMORE

- Played in nine games (4.3 mpg)
- Tied career highs in minutes (11) and points (5) in win over SIU (Nov. 24)
- Came up with career-high 2 steals in win over Louisiana Tech (Dec. 1)

### 2017-18 — FRESHMAN

- Played in 13 games (4.3 mpg)
- Connected on 50 percent of her field goal attempts (12-24)
- Got into the scoring column in 10 of her 13 appearances, including a season-high 5 points in win over Sacramento State (Nov. 18)
- Closed the season by making 5 of her final 6 shots

## HIGH SCHOOL

- A 2017 graduate of Homewood-Flossmoor High School in Flossmoor, Ill.
- Received a four-star grade and was ranked No. 12 at her position by ESPN.com
- Earned Class 3A/4A All-State recognition from the Illinois Basketball Coaches Association and was named to the All-Area and
- All-Conference teams as a senior in 2017. Also earned second-team recognition on the News-Gazette All-States to Girls' Basketball Team
- One of nine players from the state of Illinois nominated for the 2017 McDonald's All-American Game
- Averaged 11 points, nine rebounds and four blocks as a senior in 2017
- Averaged 15 points, eight rebounds and four blocks as a junior in 2016
- Helped lead her squad to a fourth-place finish in the IHSA 4A state tournament in 2015 while tying a Class 4A single-game record with five blocked shots

## PERSONAL

- Full name is Eva Julia Rubin
- Born July 10, 1998 in Chicago, Ill.
- Parents are Minson & Nancy Rubin
- Has two siblings (twins): Wesley (13) and Miles (13)
- Has had type 1 diabetes since she was 13
- Major: Community Health
- Plans to pursue a career in nursing
- Active in several Illini Athletics student-athlete initiatives including the Green Bandana Project, which promotes a supportive environment for student-athletes experiencing mental health stressors
- Serves as the programming chair for EMPOWER, a group formed at Illinois in the Fall of 2019 with a mission to provide a family oriented-safe space and support personal development for student-athletes of color as a community

## 2021-22 GAME-BY-GAME STATISTICS

Opponent	Date	MIN	FG	FG%	3FG	3%	FT	FT%	OR	DR	REB	AVG	PF	A	T/O	BLK	STL	PTS	AVG	
NC Central	11/9/21	15	1-3	.333	0-0	.000	1-2	.500	2	2	4	4.0	2	0	1	1	0	3	3.0	
Miami (OH)	11/14/21	3	1-2	.500	0-0	.000	0-0	.000	0	1	1	2.5	0	0	0	0	0	2	2.5	
SIUE	11/18/21	2	0-0	.000	0-0	.000	0-0	.000	0	0	0	1.7	0	0	0	0	0	0	1.7	
UC Riverside	11/21/21	18	5-5	1.000	0-0	.000	1-1	1.000	0	0	0	1.3	2	0	1	0	0	11	4.0	
vs. Dayton	11/26/21	19	1-3	.333	0-0	.000	3-8	.375	1	1	2	1.4	4	1	2	2	0	5	4.2	
vs. Mid. Tenn.	11/27/21	* 19	2-4	.500	0-0	.000	1-6	.167	0	3	3	1.7	2	1	0	0	0	5	4.3	
Florida State	12/2/21	* 29	3-4	.750	0-0	.000	1-1	1.000	0	2	2	1.7	3	0	4	1	0	7	4.7	
E. Kentucky	12/5/21	* 13	1-1	1.000	0-0	.000	1-2	.500	1	2	3	1.9	3	1	3	1	0	3	4.5	
at Mich. St.	12/9/21																			
Butler	12/12/21																			
at S. Illinois	12/19/21																			
Missouri	12/22/21																			
Maryland	12/30/21																			
at Iowa	1/2/22																			
at Ohio St.	1/6/22																			
Wisconsin	1/9/22																			
Northwestern	1/13/22																			
at Penn St.	1/16/22																			
Purdue	1/20/22																			
Nebraska	1/23/22																			
at Indiana	1/27/22																			
at Northwestern	1/30/22																			
Michigan	2/3/22																			
at Wisconsin	2/6/22																			
Indiana	2/10/22																			
Ohio St.	2/14/22																			
at Purdue	2/17/22																			
at Minnesota	2/24/22																			
Rutgers	2/27/22																			
Total		3	118	14-22	.636	0-0	.000	8-20	.400	4	11	15	1.9	16	3	11	5	0	36	4.5

## CAREER HIGHS

- Pts:** 17 (vs. Iowa, 1/3/21)
- Rebs:** 7 (2x, last vs. Northwestern, 3/10/21)
- FGM:** 8 (vs. Minnesota, 3/5/21)
- FGA:** 13 (vs. Minnesota, 3/5/21)
- 3FGM:** --
- 3FGA:** --
- FTM:** 6 (at Purdue, 2/28/21)
- FTA:** 9 (at Purdue, 2/28/21)
- Ast:** 1 (7x, last vs. Eastern Kentucky, 12/5/21) [1x at ASU]
- Blk:** 4 (vs. Indiana State, 11/25/20)
- Stl:** 3 (vs. Purdue, 2/7/21)
- Min:** 29 (3x, last vs. Florida State, 12/2/21)





# ADALIA MCKENZIE 24

5-10 // FRESHMAN // GUARD

BROOKLYN PARK, MINNESOTA

PARK CENTER HIGH SCHOOL

## CAREER STATISTICS

Year	GP	GS	Min	Avg	FG	Total FGA	Pct	FG	3-Point FGA	Pct	FT	F-Throw FTA	Pct	Off	Def	Rebounds Tot	Avg	PF	F0	Ast	T0	Blk	Stl	Pts	Avg
2021-22	8	3	133	16.6	20	44	.455	0	4	.000	14	26	.538	16	15	31	3.9	11	0	6	12	1	3	54	6.8
Total	8	3	133	16.6	20	44	.455	0	4	.000	14	26	.538	16	15	31	3.9	11	0	6	12	1	3	54	6.8

## AT ILLINOIS

### 2021-22 – FRESHMAN

- Played 13 minutes and scored first points of collegiate career in win over Miami (OH) (11/14/21)
- Had a breakout game with 15 points, six rebounds and two assists in Illinois' win over UC Riverside (11/21/21)
- Earned first-career start and led the team with 11 points vs. Middle Tennessee (11/27/21)
- Knocked down a career-most 7-of-10 free-throws in second-career start vs. Florida State (12/2/21)

## HIGH SCHOOL

- Rated as a four-star recruit by ESPN and ProspectsNation.com
- ESPN ranked as the No. 53 player overall and the No. 20 guard in the Class of 2021
- ProspectsNation.com ranked as the No. 111 player overall, and the No. 35 guard in the Class of 2021
- PrepHoop.com rated as the No. 39 overall player, No. 4 nationally among combo guards, and the No. 1 prospect in the state of Minnesota
- ASGR rated as the No. 44 overall prospect in the Class of 2021
- Four-year letterwinner at Park Center High School
- Named 2020-21 Minnesota Miss Basketball
- Three-time All-Minnesota honoree
- Three-time NWSC all-conference performer
- McDonald's All-American nominee
- Scored a school-record 2,573 career points for the Park Center Pirates
- Recorded more than 1,000 rebounds during her prep career
- Averaged 28 points, 10 rebounds, four assists and four steals per game during her high school career
- Led her team in points, steals and rebounds in each of her four seasons at Park Center
- As a junior in 2019-20, Led Park Center to conference and section championships and a berth in the state tournament with a 24-5 record
- Graduated with honors and was named to the Park Center High School Honor Roll .

## PERSONAL

- Full name is Adalia McKenzie
- Nickname is Dal
- Born Feb. 18, 2003 in Minneapolis, Minn.
- Lists her hobbies as painting, drawing, writing, reading, and playing Fortnite and Mario Kart
- Lists her favorite athlete as Kobe Bryant
- Intended major: Sports Management

## 2021-22 GAME-BY-GAME STATISTICS

Opponent	Date	MIN	FG	FG%	3FG	3%	FT	FT%	OR	DR	REB	AVG	PF	A	T/O	BLK	STL	PTS	AVG	
NC Central	11/9/21	1	0-0	.000	0-0	.000	0-0	.000	0	0	0	0.0	0	0	0	0	0	0	0.0	
Miami (OH)	11/14/21	13	1-4	.250	0-2	.000	0-0	.000	0	2	2	1.0	0	0	0	0	0	2	1.0	
SIUE	11/18/21	18	2-8	.250	0-0	.000	1-4	.250	2	2	4	2.0	4	0	0	0	1	5	2.3	
UC Riverside	11/21/21	25	6-10	.600	0-1	.000	3-4	.750	3	3	6	3.0	1	2	3	0	0	15	5.5	
vs. Dayton	11/26/21	21	4-7	.571	0-0	.000	0-0	.000	3	3	6	3.6	3	1	3	0	0	8	6.0	
vs. Mid. Tenn.	11/27/21	* 23	4-7	.571	0-0	.000	3-8	.375	3	2	5	3.8	0	2	2	0	1	11	6.8	
Florida State	12/2/21	* 17	0-5	.000	0-1	.000	7-10	.700	3	2	5	4.0	1	0	2	0	1	7	6.9	
E. Kentucky	12/5/21	* 15	3-3	1.000	0-0	.000	0-0	.000	2	1	3	3.9	2	1	2	1	0	6	6.8	
at Mich. St.	12/9/21																			
Butler	12/12/21																			
at S. Illinois	12/19/21																			
Missouri	12/22/21																			
Maryland	12/30/21																			
at Iowa	1/2/22																			
at Ohio St.	1/6/22																			
Wisconsin	1/9/22																			
Northwestern	1/13/22																			
at Penn St.	1/16/22																			
Purdue	1/20/22																			
Nebraska	1/23/22																			
at Indiana	1/27/22																			
at Northwestern	1/30/22																			
Michigan	2/3/22																			
at Wisconsin	2/6/22																			
Indiana	2/10/22																			
Ohio St.	2/14/22																			
at Purdue	2/17/22																			
at Minnesota	2/24/22																			
Rutgers	2/27/22																			
Total		3	133	20-44	.455	0-4	.000	14-26	.538	16	15	31	3.9	11	6	12	1	3	54	6.8

## CAREER HIGHS

**Pts:** 15 (vs. UC Riverside, 11/21/21)  
**Rebs:** 6 (2x, last vs. Dayton, 11/26/21)  
**FGM:** 6 (vs. UC Riverside, 11/21/21)  
**FGA:** 10 (vs. UC Riverside, 11/21/21)  
**3FGM:** --  
**3FGA:** 2 (vs. Miami (OH), 11/14/21)  
**FTM:** 7 (vs. Florida State, 12/2/21)  
**FTA:** 10 (vs. Florida State, 12/2/21)  
**Ast:** 2 (2x, last vs. Middle Tennessee, 11/27/21)  
**Blk:** 1 (vs. Eastern Kentucky, 12/5/21)  
**Stl:** 1 (3x, last vs. Florida State, 12/2/21)  
**Min:** 25 (vs. UC Riverside, 11/21/21)





# AALIYAH NYE

# 32

5-10 // SOPHOMORE // GUARD

EAST LANSING, MICHIGAN

EAST LANSING HIGH SCHOOL

## CAREER STATISTICS

Year	GP	GS	Min	Avg	FG	Total FGA	Pct	FG	3-Point FGA	Pct	FT	F-Throw FTA	Pct	Off	Def	Tot	Avg	PF	F0	Ast	TO	Blk	Stl	Pts	Avg
2020-21	18	10	414	23.0	54	137	.394	27	77	.351	10	17	.588	11	28	39	2.2	29	0	18	13	6	7	145	8.1
2021-22	8	7	244	30.5	38	84	.452	21	50	.420	9	14	.643	6	23	29	3.6	12	0	11	24	3	16	106	13.3
<b>Total</b>	<b>26</b>	<b>17</b>	<b>658</b>	<b>25.3</b>	<b>92</b>	<b>221</b>	<b>.416</b>	<b>48</b>	<b>127</b>	<b>.378</b>	<b>19</b>	<b>31</b>	<b>.613</b>	<b>17</b>	<b>51</b>	<b>68</b>	<b>2.6</b>	<b>41</b>	<b>0</b>	<b>29</b>	<b>37</b>	<b>9</b>	<b>23</b>	<b>251</b>	<b>9.7</b>

## AT ILLINOIS

### 2021-22- SOPHOMORE

- Recorded career-high totals in scoring (23), rebounds (7), and steals (7) in opener vs. NC Central (11/9/21)
- Hit a career-most five three-pointers (on six attempts) to finish with 15 points, six reboundds, two assists and a block in Illinois' win over UC Riverside (11/21/21)

### 2020-21- FRESHMAN

- Played in 18 games, including starts in the final 10 games of the season
- Averaged 8.1 points and 2.2 rebounds over 23.0 minutes per contest
- Missed five games with a broken toe
- Led the team in three-point shooting (.351) hitting 27 of 77 attempts from distance
- Ranked first on the team with an assist-to-turnover ratio of 1.38 (18-13)
- Tallied six points, including one three-pointer, and three rebounds in 17 minutes as a reserve in collegiate debut vs. Indiana State (11/25/20)
- Scored 10 points and notched two steals in her Big Ten debut at Nebraska (12/10/20)
- Returned to the court to score a career-high 15 points, including 3-for-7 from three-point range in the Illini's home game vs. Nebraska (1/25/21)
- Posted four consecutive double-digit scoring games with 12 points vs. No. 15/14 Indiana (2/14/21) and 11 points at No. 9/10 Maryland (2/17/21), at RV/RV Rutgers (2/20/21) and vs. RV/25 Northwestern (2/24/21)
- Scored a career-high 17 points, including 4-for-10 3FGs, in Illinois' Big Ten Tournament victory over Wisconsin (3/9/21)

## HIGH SCHOOL

- 2020 Ms. Basketball runner-up
- Named AP Division 1 Player of the Year, earning back-to-back first-team All-Michigan honors
- Also selected as 2020 Player of the Year by the Lansing State Journal
- Helped East Lansing High School to a Class A state runner-up finish as a sophomore
- Hit a state-record six three-pointers in her high school state championship game
- Averaged 16.1 points and 5.2 rebounds per game to lead the Trojans to a 23-1 mark in her COVID-19-shortened senior season (2019-20)
- Detroit Free Press, Lansing State Journal and Detroit News Dream Team honoree
- Scored 1,370 career points at East Lansing High School, leading the Trojans to a 90-8 overall record
- Played AAU basketball, alongside Illini teammate Aaliyah McQueen, for the Michigan Storm.

## PERSONAL

- Daughter of James Nye and LaQueen Douglas
- Born Aug. 14, 2002
- Has two sisters, older sister, Aazhenii, and a twin sister Aashawnti
- Father played football at Albion College
- Lists her hobbies as biking and swimming as hobbies
- A proud tribal citizen of the Match-E-Be-Nash-She-Wish Band of Pottawatomi Indians (Gun Lake Tribe)
- Major: Technical Systems Management

## 2021-22 GAME-BY-GAME STATISTICS

Opponent	Date	MIN	FG	FG%	3FG	3%	FT	FT%	OR	DR	REB	AVG	PF	A	T/O	BLK	STL	PTS	AVG	
NC Central	11/9/21	* 35	9-16	.563	3-7	.429	2-3	.667	1	6	7	7.0	3	3	4	0	7	23	23.0	
Miami (OH)	11/14/21	* 23	2-8	.250	0-4	.000	1-2	.500	2	1	3	5.0	2	1	0	0	3	5	14.0	
SIUE	11/18/21	* 34	6-11	.545	3-6	.500	2-4	.500	0	3	3	4.3	1	0	3	2	2	17	15.0	
UC Riverside	11/21/21	* 35	5-10	.500	5-6	.833	0-0	.000	1	5	6	4.8	0	2	5	1	0	15	15.0	
vs. Dayton	11/26/21	* 26	2-10	.200	0-4	.000	0-0	.000	2	3	5	4.8	2	1	3	0	0	4	12.8	
vs. Mid. Tenn.	11/27/21	30	3-7	.429	2-4	.500	1-1	1.000	0	2	2	4.3	2	1	4	0	1	9	12.2	
Florida State	12/2/21	* 31	6-11	.545	3-8	.375	2-2	1.000	0	3	3	4.1	0	1	5	0	2	17	12.9	
E. Kentucky	12/5/21	* 30	5-11	.455	5-11	.455	1-2	.500	0	0	0	3.6	2	2	0	0	1	16	13.3	
at Mich. St.	12/9/21																			
Butler	12/12/21																			
at S. Illinois	12/19/21																			
Missouri	12/22/21																			
Maryland	12/30/21																			
at Iowa	1/2/22																			
at Ohio St.	1/6/22																			
Wisconsin	1/9/22																			
Northwestern	1/13/22																			
at Penn St.	1/16/22																			
Purdue	1/20/22																			
Nebraska	1/23/22																			
at Indiana	1/27/22																			
at Northwestern	1/30/22																			
Michigan	2/3/22																			
at Wisconsin	2/6/22																			
Indiana	2/10/22																			
Ohio St.	2/14/22																			
at Purdue	2/17/22																			
at Minnesota	2/24/22																			
Rutgers	2/27/22																			
Total		7	244	38-84	.452	21-50	.420	9-14	.643	6	23	29	3.6	12	11	24	3	16	106	13.3

## CAREER HIGHS

**Pts:** 23 (vs. NC Central, 11/9/21)  
**Rebs:** 7 (2x, last vs. NC Central, 11/9/21)  
**FGM:** 9 (vs. NC Central, 11/9/21)  
**FGA:** 16 (vs. NC Central, 11/9/21)  
**3FGM:** 5 (2x, last vs. Eastern Kentucky, 12/5/21)  
**3FGA:** 11 (vs. Eastern Kentucky, 12/5/21)  
**FTM:** 2 (4x, last vs. Florida State, 12/2/21)  
**FTA:** 4 (vs. SIUE, 11/18/21)  
**Ast:** 5 (vs. Northwestern, 2/24/21)  
**Blk:** 2 (vs. SIUE, 11/18/21)  
**Stl:** 7 (vs. NC Central, 11/9/21)  
**Min:** 35 (2x, last vs. UC Riverside, 11/21/21)





# KENDALL BOSTIC 44

6-2 // SOPHOMORE // FORWARD

KOKOMO, INDIANA

NORTHWESTERN HIGH SCHOOL / MICHIGAN STATE UNIVERSITY

## CAREER STATISTICS

Year	GP	GS	Min	Avg	FG	Total FGA	Pct	FG	3-Point FGA	Pct	FT	F-Throw FTA	Pct	Off	Def	Total	Avg	PF	F0	Ast	T0	Blk	Stl	Pts	Avg
2020-21 (MSU)	22	0	273	12.4	41	76	.539	6	22	.273	5	8	.625	16	48	64	2.9	17	0	15	19	7	11	93	4.2
<b>MSU Total</b>	<b>22</b>	<b>0</b>	<b>273</b>	<b>12.4</b>	<b>41</b>	<b>76</b>	<b>.539</b>	<b>6</b>	<b>22</b>	<b>.273</b>	<b>5</b>	<b>8</b>	<b>.625</b>	<b>16</b>	<b>48</b>	<b>64</b>	<b>2.9</b>	<b>17</b>	<b>0</b>	<b>15</b>	<b>19</b>	<b>7</b>	<b>11</b>	<b>93</b>	<b>4.2</b>
2021-22 (ILL)	8	8	246	30.8	24	55	.436	0	13	.000	8	12	.667	28	64	92	11.5	10	0	11	17	10	4	56	7.0
<b>ILL Total</b>	<b>8</b>	<b>8</b>	<b>246</b>	<b>30.8</b>	<b>24</b>	<b>55</b>	<b>.436</b>	<b>0</b>	<b>13</b>	<b>.000</b>	<b>8</b>	<b>12</b>	<b>.667</b>	<b>28</b>	<b>64</b>	<b>92</b>	<b>11.5</b>	<b>10</b>	<b>0</b>	<b>11</b>	<b>17</b>	<b>10</b>	<b>4</b>	<b>56</b>	<b>7.0</b>
<b>D1 Total</b>	<b>30</b>	<b>8</b>	<b>519</b>	<b>17.3</b>	<b>65</b>	<b>131</b>	<b>.496</b>	<b>6</b>	<b>35</b>	<b>.171</b>	<b>13</b>	<b>20</b>	<b>.650</b>	<b>44</b>	<b>112</b>	<b>156</b>	<b>5.2</b>	<b>27</b>	<b>0</b>	<b>26</b>	<b>36</b>	<b>17</b>	<b>15</b>	<b>149</b>	<b>5.0</b>

## AT ILLINOIS

### 2021-22 – SOPHOMORE

- Tallied first-career double-double with 14 points and a career-high 17 rebounds in her Illini debut vs. NC Central (11/9/21)
- Recorded second-consecutive game in double-figures scoring (11 points) and tied for the team lead with six rebounds in win over Miami (OH) (11/14/21)
- Notched her second double-double of the year vs. Eastern Kentucky, tallying 12 points and pulling down 22 rebounds, the third-most in program history and the highest single-game rebounding total by an Illini since Jan. 24, 1980, a span of nearly 42 years.

## AT MICHIGAN STATE

### 2020-21 – FRESHMAN

- Played in 22 games as a freshman at Michigan State, helping the Spartans to an appearance in the 2021 NCAA Tournament
- Averaged 4.2 points and 2.9 rebounds over 12.4 minutes per contest
- Posted three double-digit scoring games and eight games with four or more rebounds
- Scored 15 points with six boards in her Spartan debut against Saint Francis (11/27/20)
- Scored eight points and added a season-high nine rebounds against Iowa (12/12/20)
- Strong showing against Oakland (12/22/20) with six points, four rebounds and a season-high three assists
- Ranked second on the team with six rebounds against Nebraska (1/10/21)
- Scored 13 points against Iowa in the Big Ten Tournament semifinal (3/12/21)

## HIGH SCHOOL

- Played for head coach Katie Layden at Northwestern High School in Kokomo, Ind., and AAU basketball for Tony Marlin and the Indiana Flight/Elite
- Ranked No. 16 at her position and No. 67 overall by ESPN HoopGurlz
- As a senior, earned Indiana All-Star honors and was a Miss Basketball Finalist for Indiana
- McDonald's All-American Nominee
- The seventh player in Indiana history to score over 2000 points (2032 points) and and grab over 1000 rebounds (1040)
- Ended her high school career as a two-time Indiana State champion
- As a senior averaged 20.5 pts, 10.2 rbs, earning AP First-team all-state honors
- As a junior, averaged 18.7 points, 9.2 rebounds and 3.1 assists per game on 68 percent shooting from the field
- As a junior, Northwestern captured its second consecutive state championship, as Bostic earned State Championship Player of the Game accolades, along with AP First-Team All-State and Co-Player of the Year honors

## PERSONAL

- Full name is Kendall Grace Bostic
- Born Aug. 1, 2001 in Muncie, Indiana
- Daughter of Kevin and Angie Bostic
- Her mom, Angie (Cree) Bostic, played basketball at Indiana (1991-92), and her dad, Kevin Bostic, played college basketball at Manchester (Ind.) University.
- Has one younger brother, Connor
- Lists her hobbies as swimming, biking, hiking and drawing
- Major: Speech Language Pathology

## 2021-22 GAME-BY-GAME STATISTICS

Opponent	Date	MIN	FG	FG%	3FG	3%	FT	FT%	OR	DR	REB	AVG	PF	A	T/O	BLK	STL	PTS	AVG
NC Central	11/9/21	* 35	6-9	.667	0-2	.000	2-2	1.000	6	11	17	17.0	0	2	2	0	0	14	14.0
Miami (OH)	11/14/21	* 34	5-8	.625	0-1	.000	1-2	.500	4	2	6	11.5	1	1	0	1	0	11	12.5
SIUE	11/18/21	* 38	1-6	.167	0-0	.000	2-2	1.000	5	8	13	12.0	2	2	2	4	2	4	9.7
UC Riverside	11/21/21	* 19	2-4	.500	0-1	.000	0-0	.000	1	4	5	10.3	1	1	1	0	0	4	8.3
vs. Dayton	11/26/21	* 33	1-5	.200	0-2	.000	0-0	.000	0	8	8	9.8	2	0	2	2	0	2	7.0
vs. Mid. Tenn.	11/27/21	* 29	4-10	.400	0-3	.000	1-2	.500	5	6	11	10.0	1	2	3	1	0	9	7.3
Florida State	12/2/21	* 25	0-3	.000	0-2	.000	0-0	.000	2	8	10	10.0	2	2	2	0	0	0	6.3
E. Kentucky	12/5/21	* 33	5-10	.500	0-2	.000	2-4	.500	5	17	22	11.5	1	1	5	2	2	12	7.0
at Mich. St.	12/9/21																		
Butler	12/12/21																		
at S. Illinois	12/19/21																		
Missouri	12/22/21																		
Maryland	12/30/21																		
at Iowa	1/2/22																		
at Ohio St.	1/6/22																		
Wisconsin	1/9/22																		
Northwestern	1/13/22																		
at Penn St.	1/16/22																		
Purdue	1/20/22																		
Nebraska	1/23/22																		
at Indiana	1/27/22																		
at Northwestern	1/30/22																		
Michigan	2/3/22																		
at Wisconsin	2/6/22																		
Indiana	2/10/22																		
Ohio St.	2/14/22																		
at Purdue	2/17/22																		
at Minnesota	2/24/22																		
Rutgers	2/27/22																		
Total		8 246	24-55	.436	0-13	.000	8-12	.667	28	64	92	11.5	10	11	17	10	4	56	7.0

## CAREER HIGHS

- Pts:** 15 (vs. St. Francis (PA), 11/27/20 [at MSU])
- Rebs:** 22 (vs. NC Central, 11/9/21)
- FGM:** 6 (2x, last vs. NC Central, 11/9/21 [1x at MSU])
- FGA:** 10 (2x, last vs. Eastern Kentucky, 12/5/21)
- 3FGM:** 1 (vs. Iowa, 3/12/21 [at MSU])
- 3FGA:** 3 (2x, last vs. Middle Tennessee, 11/27/21) [1x at MSU])
- FTM:** 2 (4x, last vs. Eastern Kentucky, 12/5/21 [1x at MSU])
- FTA:** 4 (2x, last vs. Eastern Kentucky, 12/5/21 [1x at MSU])
- Ast:** 3 (vs. Oakland, 12/22/20 [at MSU])
- Blk:** 4 (vs. SIUE, 11/18/21)
- Stl:** 2 (3x, last vs. Eastern Kentucky, 12/5/21 [1x at MSU])
- Min:** 38 (vs. SIUE, 11/18/21)



## 2021-22 FIGHTING ILLINI



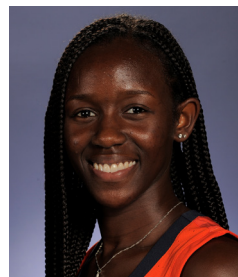
**0** Sara  
Anastasieska  
5-11 // Gr. // G



**2** Lyric  
Robins  
5-11 // R-Sr. // F



**3** Solape  
Amusan  
6-1 // Jr. // F



**5** De'Myla  
Brown  
5-7 // Jr. // G



**11** Jada  
Peebles  
5-10 // Jr. // G



**12** Jayla  
Oden  
5-9 // Fr. // G



**14** Geovana  
Lopes  
6-3 // Sr. // F/C



**15** Keanna  
Rembert  
6-2 // Fr. // F



**20** Erika  
Porter  
6-3 // So. // F



**22** Eva  
Rubin  
6-5 // R-Sr. // C



**24** Adalia  
McKenzie  
5-10 // Fr. // G



**32** Aaliyah  
Nye  
5-11 // So. // G



**44** Kendall  
Bostic  
6-2 // So. // F



**Nancy Fahey**  
Head Coach



**John Patterson**  
Associate Head Coach



**Corry Irvin**  
Assistant Coach



**Hernando Planells**  
Assistant Coach