



FIGHTING ILLINI

WOMEN'S BASKETBALL GAME NOTES



I FIGHTINGILLINI.COM
#ILLINI

@IlliniWBB
@IlliniAthletics

@IlliniWBB
@IlliniAthletics

facebook.com/IlliniWBBasketball
facebook.com/IlliniAthletics

Thursday, Jan. 14, 2021 // 6 p.m. CT // Big Ten Network Plus
Champaign, Illinois // State Farm Center (15,544)



ILLINOIS (2-6, 0-5 B1G)



#RV/RV MICHIGAN ST. (8-2, 3-2 B1G)

TELEVISION | Big Ten Network Plus

» Scott Sudikoff (play-by-play) / Scott Beatty (analyst)
» btenplus.com

RADIO | Fighting Illini Sports Network

» Mike Koon (play-by-play)
» WDWS 1400-AM / fightingillini.com/watch

LIVE STATS

» <https://fightingillini.com/sidearmstats/wbball/summary>

ILLINOIS SCHEDULE

Date	Opponent	Time/Score
Nov. 25	Indiana State +	W, 68-49
Dec. 2	Valparaiso +	L, 59-62
Dec. 6	Omaha +	W, 53-50
Dec. 10	at Nebraska * #	L, 72-78
Dec. 19	19/19 Michigan * #	Postponed
Dec. 22	Southern Illinois +	Postponed
Dec. 31	at 20/18 Indiana * +	L, 79-56
Jan. 3	RV/RV Iowa * +	L, 68-107
Jan. 7	16/16 Ohio State * #	L, 55-78
Jan. 10	at 15/14 Michigan * +	L, 50-70
Jan. 14	RV/RV Michigan State * +	6 p.m. CT
Jan. 21	at 22/23 Northwestern * +	6 p.m. CT
Jan. 25	Nebraska * #	7 p.m. CT
Jan. 28	Penn State *	TBD
Jan. 31	at Wisconsin *	TBD
Feb. 4	at RV/RV Michigan State *	TBD
Feb. 7	Purdue *	TBD
Feb. 10	at Minnesota *	TBD
Feb. 14	18/18 Indiana *	TBD
Feb. 17	at 9/9 Maryland *	TBD
Feb. 20	at Rutgers *	TBD
Feb. 25	22/23 Northwestern *	TBD
Feb. 28	at Purdue *	TBD
March 5 or 6	Minnesota *	TBD
March 9-13	Big Ten Tournament	TBA

* Big Ten Conference game

+ Streamed on Big Ten Network Plus

Televised on Big Ten Network

Home games in **BOLD**

All times Central and subject to change

ILLINI WOMEN'S BASKETBALL MEDIA BOX

The Illini women's basketball media box will be updated with information and assets throughout the course of the 2020-21 season. To access the content, including photos, video, and media zoom recordings, visit: uofi.box.com/v/2020-21WBBMedia

Pos.	No.	Name	Ht.	Yr.	GP/GS	PPG	RPG	Other	Notes
G	0	J-Naya Ephraim	5-9	JR	8/7	6.4	2.5	2.3 ast/gm	Tied career high with 11 points at Nebraska
F	1	Nancy Panagiotopoulou	6-3	R-JR	7/0	0.0	0.6	1 blk	Recorded first-career block vs. Ohio State (1/7/21)
F	2	Lyric Robins	5-11	SR	8/1	2.6	2.0	3 steals	Sixth in total minutes played (118:47) this season
F	3	Solape Amusan	6-1	SO	8/0	5.4	2.4	7 3-pointers	7.4 ppg, 2.8 rpg in Big Ten play
G	10	Jeanae Terry	5-11	SO	8/8	10.6	8.8	3.6 ast/gm	Team-most 85 pnts, 70 rebs, 29 asts, & 16 steals
G	11	Jada Peebles	5-10	SO	8/8	10.4	1.9	2.1 ast/gm	Played all 40 minutes at Michigan (1/10/21)
G	13	Tara O'Malley	5-6	JR	4/0	0.5	0.3	1 steal	Scored first-career points, two free-throws, vs. Iowa
F/C	14	Geovana Lopes	6-3	JR	4/1	5.0	3.0	4 assists	First start as an Illini vs. Valparaiso
F	20	Erika Porter	6-3	FR	4/0	1.3	0.8	2-2 FGs	3 pts, 1 blk in career-high 13 mins. vs. Iowa (1/3/21)
G	21	Aaliyah McQueen	5-9	FR	4/0	0.0	1.5	--	Tied personal best with 2 rebounds at Nebraska
C	22	Eva Rubin	6-5	R-JR	7/7	9.3	4.1	11 blocks	Career-high 17 points (7-10 FGs, 3-5 FTs) vs. Iowa
G	32	Aaliyah Nye	5-11	FR	4/0	5.3	2.3	2 steals	Career-highs of 10 pts, 1 ast, 2 stls, 20 mins at Nebr.
F	44	Kennedi Myles	6-2	SO	8/8	10.6	7.8	10 steals	12.5 ppg in last 4 (at Ind, vs. Iowa, vs. OSU, at Mich)

HEAD COACHES

ILLINOIS: Nancy Fahey // 32-67 at Illinois (4th year) // 769-200 overall (35th year)

MICHIGAN STATE: Suzy Merchant // 289-150 at Michigan State (14th year) // 490-270 overall (25th year)

Bold indicates previous game's starter.

SERIES VS. MICHIGAN STATE

Series Record:	Michigan State leads, 44-28
Last Meeting:	Michigan State 72, Illinois 58 // Feb. 26, 2020 // Champaign, Illinois
Series Streak:	Michigan State W8
in Champaign:	Michigan State leads, 18-15
in East Lansing:	Michigan State leads, 23-10
Neutral Site:	Tied, 3-3
Fahey vs Michigan State:	0-3

• **OPENING TIP:** Illinois (2-6, 0-5 B1G) continues Big Ten Play on Thursday, hosting RV/RV Michigan State (8-2, 3-2 B1G) at State Farm Center. Tipoff between the Illini and the Spartans is set for 6 p.m. CT. The game will be streamed live on Big Ten Network Plus with **Scott Sudikoff** (play-by-play) and **Scott Beatty** (analyst) **Mike Koon** will call the action for the Illini on WDWS 1400 AM. Streaming audio and live stats are also available at [FightingIllini.com](https://fightingillini.com).

• **ABOUT MICHIGAN STATE:** Michigan State enters Thursday's game with an 8-2 overall record, including 3-2 start to Big Ten play. Most recently, the Spartans, who are receiving top-25 votes, lost back-to-back home games vs. then-No. 12/12 Maryland (93-87) and Nebraska (68-64). Junior G **Nia Clouden**, who has tallied more than 1,000 points in her MSU career, paces the Spartans' offensive attack at 19.9 points per game. Clouden is one of three MSU players averaging double-figures scoring alongside the sophomore guard duo of **Alysa Winston** (13.4 ppg) **Julia Ayrault** (11.2 ppg). Sophomore F **Taiyier Parks** is the team's top rebounder at boards per contest, just ahead of Ayrault (6.0 rpg). The Spartans average 80.3 points per game, while holding opponents to 66.0 per contest. Michigan State ranks among the NCAA leaders in several categories including No. 3 in assists per game (21.0), No. 5 in assist-to-turnover ratio (1.62), No. 27 in turnovers per game (13.0) and turnover margin (+5.5), No. 28 in scoring offense (80.3 ppg) and No. 33 in field-goal percentage (.460).

• **SERIES VS. MICHIGAN STATE:** Sunday's matchup is the 73rd in the series between the Illini and the Spartans. Michigan State leads the all-time series, 44-28, including an 18-15 advantage in games played in Champaign. The Illini are looking to snap an eight-game MSU win streak in the series. The last Illini win the series was Jan. 23, 2014, a 61-51 victory at in East Lansing. Illinois' last home win in the series came Feb. 2, 2007 (56-46).

• **UP NEXT:** The Fighting Illini travel north to Evanston, Illinois, for a Thursday-night matchup at No. 22/23-ranked Northwestern at Welsh-Ryan Arena on Jan. 21. Tipoff between the Illini and the Wildcats (6-2, 4-1 B1G) - who play at Rutgers (Jan. 14) and at Penn State (Jan. 17) - is set for 6 p.m. CT. The game will be streamed live on Big Ten Network Plus. **Mike Koon** will call the action for the Illini on WDWS 1400 AM. Streaming audio and live stats are also available at [FightingIllini.com](https://fightingillini.com).

• **LAST TIME OUT:** The Fighting Illini fell to No. 15/14 Michigan, 70-50, Sunday at Crisler Center in Ann Arbor, Mich. The Illini were led by Michigan native **Jeanae Terry** who tallied 17 points and six rebounds. Sophomore **Kennedi Myles** added 12 points and seven rebounds for the Illini. Junior Naz Hillmon (24 points, 13 rebounds) led U-M. Illinois started fast and trailed by just three, 17-14, entering the second quarter, but the offense added just three points in the period. Despite the second-quarter scoring drought, the Illini defense stumped the Wolverines and Michigan led 28-17 at the half. The Illini again played stellar defense in the third quarter, holding the Wolverines to five field goals, but the deficit proved too much to overcome Michigan pulled away for the league win.



QUICK FACTS

UNIVERSITY INFORMATION

Location	Urbana-Champaign, Ill.
Enrollment	52,331
Nickname	Fighting Illini
Founded	1867
Colors	Orange & Blue
Affiliation	NCAA Division I
Conference	Big Ten
Home Court (capacity)	State Farm Center (15,544)
President	Timothy L. Killeen
Chancellor	Robert J. Jones
Athletic Director	Josh Whitman
Senior Woman Administrator (SWA)	Sara Burton
Ticket Office	217-333-3470

TEAM HISTORY

First Year	1974-75
Overall Record	636-708 (.473), 47th year
Big Ten Record	240-411 (.369), 38th year
State Farm Center Record	287-209 (.579), 34th year
Years in NCAA (8)	1982, '86, '87, '97, '98, '99, '00, '03
Years in WNIT (8)	2001, '02, '05, '06, '07, '08, '10, '13
Big Ten Titles (1)	1997

2019-20 AT A GLANCE

2019-20 Overall Record	11-29
2019-20 Big Ten Record/Place	2-16/13th
2019-20 Postseason	None

2020-21 RETURNING/LOST

Starters Returning/Lost	2/3
Letterwinners Returning/Lost	6/8
Newcomers in 2020-21	7

COACHING STAFF

Head Coach	Nancy Fahey (Wisconsin '81)
Career Record	769-200 (35th seasons)
Record at Illinois	32-67 (4th seasons)
Assistant Coach	John Patterson (Fontbonne '07)
Assistant Coach	Scott Merritt (Marquette '04)
Assistant Coach	Vernette Skeete (Alcorn State '05)
Head Coordinator of Recruiting &...	Tianna Kirkland (9th season)
Director of Student-Athlete Development	
Director of Scouting and Video	Jenn Dynis (4th season)
Director of Operations	Dianna Pasley (4th season)
Director of Player Personnel	Steve Cochran (4th season)
Athletic Trainer	Autumn Taylor (2nd season)
Strength & Conditioning	Kilee Fletcher (4th season)
Basketball Office Phone	217-333-8612

ATHLETICS COMMUNICATION

Women's Basketball SID	Danny Mattie
Office Phone / Cell Phone	217-300-4067 / 970-217-3140
Email	mattie2@illinois.edu
Press Row Phone	217-333-1227
Mailing Address	Bielfeldt Athletic Building 1700 South Fourth Street, Champaign, IL 61820
Website	www.fightingillini.com
Twitter	@IlliniWBB
Facebook	www.facebook.com/IlliniWBBasketball
Instagram	IlliniWBB

RADIO INFORMATION

Flagship Station	WDWS-AM 1400
Play-By-Play	Mike Koon

• THE FAHEY ERA CONTINUES:

The Illini enter their fourth season under the direction of head coach **Nancy Fahey** in 2020-21. > In Fahey's first season, she led the Illini to a 9-5 non-conference record, which marked the best start to the season since Illinois also earned nine non-conference victories in the 2014-15 campaign (9-3). Illinois won four of its last five games leading up to league play, with the streak marking the most consecutive victories for the program since the start of the 2015-16 season. Junior Alex Wittinger garnered All-Big Ten Second Team, and also matched the school record for single-season offensive rebounds (125). Wittinger earned the program's second-ever triple double during the 2017-18 campaign, and set a new single-game record for blocked shots (11).

> In her second season at the helm of the Illini, Fahey's squad opened the year with a 7-0 record on Lou Henson Court for the first time since the 2006-07 season. The Illini opened the 2018-19 campaign with at 8-3 (.727) in non-conference play, the best for an Illini squad since starting the 2014-15 campaign with a 9-5 non-conference record (.750). Fahey's squad improved statistically in several categories under her leadership. The Illini averaged seven more points per game than in 2017-18, and improved their field goal percentage by more than four percent.

> Year 3 saw continued growth under Fahey's leadership. The Illini finished the year with an overall record of 11-9, the third straight year with an improved win total. The 11 wins also marked the most by the Illini since the 2014-15 season (15 wins). Illinois finished its non-conference schedule with a 9-2 record. It marked the best 11-game start for Illinois since the 2006-07 season. The non-conference was capped by a 58-51 Braggins' Rights win over rival Missouri on Dec. 20 in Columbia, the first win over the Tigers since the 2008-09 season, and the first road win in the series since 2007-08.

• ONE OF THE GREATS:

Entering 2020-21 with a career record of 767-194 (.798), Illinois head coach **Nancy Fahey** ranks among the greatest coaches in NCAA history. Among active NCAA coaches at all levels (Divisions I, II, and III), she is ninth in total victories and 21st in win percentage; all-time she is 21st by percentage and 20th in victories. And during her accomplished career she has become the fourth-fastest to reach 600 victories (706 games) - trailing only **Brian Morehouse** of DIII Hope College (690), **Mark Campbell** of DII Union (TN) University (691), and Baylor's **Kim Mulkey** (700) - and the second-fastest coach to 700 victories (826 games), trailing only UConn's **Geno Auriemma** (822).

• MORE HONORS FOR FAHEY:

Illini head coach **Nancy Fahey** added another honor this offseason when she was selected for induction into the Missouri Basketball Coaches Association Hall of Fame as part of the Class of 2020. It is the fifth Hall of Fame honor for Fahey, who became the first NCAA Division III representative to be inducted into the Women's Basketball Hall of Fame in 2012, and is also a member of the WashU Sports Hall of Fame (2012), Missouri Sports Hall of Fame (2014), and St. Louis Sports Hall of Fame (2016).



NANCY FAHEY

Head Coach // 35th season overall // Fourth season at Illinois

Washington University (1986-2017)

Year	Record	Pct.	UAA	Postseason
1986-87	16-5	.762	-	-
1987-88	21-5	.808	1st	2nd Round
1988-89	19-6	.760	1st	-
1989-90	25-3	.893	1st	1st Round
1990-91	24-7	.774	2nd	4th Place
1991-92	22-5	.815	1st	1st Round
1992-93	22-4	.846	1st	1st Round
1993-94	26-4	.867	1st	Runner-Up
1994-95	20-7	.741	1st	1st Round
1995-96	22-6	.786	2nd	1st Round
1996-97	19-7	.731	3rd	1st Round
1997-98	28-2	.933	1st	National Champion
1998-99	30-0	1.000	1st	National Champion
1999-00	30-0	1.000	1st	National Champion
2000-01	28-2	.933	1st	National Champion
2001-02	25-1	.962	1st	2nd Round
2002-03	26-2	.929	1st	Quarterfinal
2003-04	22-5	.815	1st	Sweet 16
2004-05	22-5	.815	1st	2nd Round
2005-06	25-3	.893	1st	Sweet 16
2006-07	25-6	.806	1st	Runner-Up
2007-08	19-8	.704	2nd	2nd Round
2008-09	26-5	.839	1st	Runner-Up
2009-10	29-2	.935	1st	National Champion
2010-11	25-6	.778	2nd	Runner-Up
2011-12	21-6	.778	2nd	2nd Round
2012-13	22-6	.786	3rd	Sweet 16
2013-14	24-3	.889	1st	2nd Round
2014-15	25-3	.893	1st	Sweet 16
2015-16	23-6	.793	1st	Quarterfinal
2016-17	26-3	.897	1st	Quarterfinal
Total	737-133	.847	23 UAAs	29 NCAAAs

University of Illinois (2017-Present)

Year	Record	Pct.	B1G	Postseason
2017-18	9-22	.290	14th	-
2018-19	10-20	.333	14th	-
2019-20	11-19	.367	13th	-
2020-21	2-6	.250	-	-
Total	32-67	.323	-	-
Career	769-200	.794	23 UAAs	29 NCAAAs

Nancy Fahey was named Illinois' head women's basketball coach on 3/22, 2017. A member of the Women's Basketball Hall of Fame, Fahey is in her fourth season at the helm of the Fighting Illini women's basketball program in 2020-21. Prior to her time in Champaign, Fahey spent 31 years at Washington University in St. Louis, where she guided the Bears to an NCAA record five Division III National Championships.

COACHING HONORS

Washington University Sports Hall of Fame, Class of 2011
Women's Basketball Hall of Fame, Class of 2012
Missouri Sports Hall of Fame, Class of 2014
St. Louis Sports Hall of Fame, Class of 2016
Missouri Basketball Coaches Hall of Fame, Class of 2020
20-time University Athletic Association Coach of the Year
14-time NCAA Division III Central Region Coach of the Year
Four-time NCAA Division III National Coach of the Year
Two-time WBCA National Division III Coach of the Year

COACHING EXPERIENCE

2017- University of Illinois
1986-2017 Washington University in St. Louis
1982-1986 Johnsburg High School

EDUCATION

College: University of Wisconsin — B.S., education



- **TERRY TOP REBOUNDER:** Fighting Illini sophomore G **Jeanae Terry** averages a team-leading 8.8 rebounds per game, which ranks 87th nationally and third in the Big Ten overall through games played Jan. 10. Among guards, Terry's rebounding average is tied for eighth nationally and first in the Big Ten. And at 5 feet, 11 inches, she ranks fifth nationally among players listed shorter than 6 feet tall. Furthermore, Terry is one of just three underclassmen to rank among the top-10 rebounding guards.

Overall Rank	Name, School	Year	Ht.	Games	O-Reb.	D-Reb.	Total	Avg.
25	Ajah Wayne, Old Dominion (C-USA)	Jr.	5-10	6	27	36	63	10.5
41	Iggy Allen, Fla. Atlantic (C-USA)	Sr.	5-11	8	18	61	79	9.9
50	Aijha Blackwell, Missouri (SEC)	So.	6-0	7	13	54	67	9.6
58	Haley Jones, Stanford (Pac-12)	So.	6-1	10	24	70	94	9.4
70	Meral Abdelgawad, Western Ky. (C-USA)	Jr.	5-11	8	19	53	72	9.0
77	Callie Bourne, Idaho St. (Big Sky)	Jr.	5-9	9	18	62	80	8.9
85	Blanca Millan, Maine (America East)	Sr.	5-11	9	16	63	79	8.8
87	Jeanae Terry, Illinois (Big Ten)	So.	5-11	8	20	50	70	8.8
87	Chanin Scott, N.C. A&T (MEAC)	Sr.	6-0	4	20	15	35	8.8
89	Liz Graves, Southern Utah (Big Sky)	Sr.	5-9	7	18	43	61	8.7

- **PEEBLES POURING IT IN:** Fighting Illini sophomore G **Jada Peebles** ranks as the most improved scorer on the Illini roster in 2020-21. As a true freshman last season, Peebles averaged 5.4 points per game and reached double-figures scoring three times. She enters Thursday's matchup vs. Michigan State averaging 10.4 points per game, an improvement of 5.0 points per contest. Peebles scored 10 or more points in six consecutive from Dec. 2 (vs. Valpo) through Jan. 7 vs. Ohio State, including a season-high 16 points at Nebraska (Dec. 10).

- **BENCH BREAKS OUT:** The Illini reserves broke out in a big way in the Big Ten Opener at Nebraska (Dec. 10). Through the opening three games of the season, Illinois reserves averaged 10 points per game, including combining for just six points vs. Valpo (Dec. 2) and three vs. Omaha (Dec. 6), after scoring 21 in Game 1 vs. Indiana State (Nov. 25). But the group found its stride vs. the Huskers with 25 points thanks to career-high figures from sophomore F **Solape Amusan** (13) and freshman guard **Aaliyah Nye** (10). Against Indiana, the Illini reserves netted 13 points, chipped in with 21 vs. Iowa, and tallied seven vs. Ohio State and at Michigan to move the team average to 12.9 bench points per game.

- **BALANCED ATTACK:** Through five Big Ten Conference games, the Fighting Illini have featured a balanced scoring attack with four players averaging double-figures scoring. Sophomore F **Kennedi Myles** paces the team at 10.8 points per game, followed by sophomore guard **Jada Peebles** (10.4 ppg), redshirt-junior C **Eva Rubin** (10.0), and freshman G **Aaliyah Nye** (10.0). Sophomore G **Jeanae Terry** and sophomore F **Solape Amusan** are just shy of the threshold at 8.6 and 7.4 points per game, respectively, against conference foes. At Nebraska (Dec. 10), Illinois saw five players reach double-digit scoring against a Big Ten foe for the first time since Feb. 1, 2017 against Michigan.

- **ILLINI VS. RANKED FOES:** With an expanded 20-game conference schedule this season, and eight of the Big Ten's 14 teams having received top-25 votes already this year, the Fighting Illini's 2020-21 schedule is shaping up to be one of the most difficult in program history. The Illinois record for most matchups vs. top-25 opponents is 10, accomplished four times - 2013-14, 2003-04, 1999-2000, and 1995-96. Though the Dec. 19 matchup vs. Michigan has already been postponed, the Orange and Blue enter play this week having faced three ranked foes. With Thursday's opponent, Michigan State, receiving top-25 votes, the Illini will play five consecutive games against teams earning votes in the national polls, a stretch that could reach six-straight with No. 22 Northwestern on tap following the matchup with the Spartans. All-time, the Illini boast 46 victories over team ranked in the Associated Press Top-25 poll. Illinois last defeated a top-25 ranked opponent on Jan. 6, 2019, when Nancy Fahey led the Orange and Blue to a 66-62 road upset of then-No. 12 Minnesota. Illinois' last home victory over a ranked foe came on Jan. 8, 2015 vs. No. 17 Iowa (73-61). The Illini have lost 11 consecutive to ranked opponents overall since the win at Minnesota, and 10 straight at home when hosting a top-25 team since the victory over Iowa.

- **MICHIGAN, SOUTHERN ILLINOIS POSTPONED:** The Fighting Illini women's basketball team had back-to-back contests, Dec. 19 vs. then-No. 19 Michigan and Dec. 22 vs. Southern Illinois, postponed due to COVID-19-related concerns within the Wolverines and Salukis programs, respectively. Illinois is working with both institutions, and with the Big Ten related to the Michigan game, to identify potential rescheduling options later this season.

- **BACK ON THE COURT:** When the Illini returned to the court at Indiana on Thursday, Dec. 31, it had been exactly three weeks since the program's previous competitive matchup, Thursday, Dec. 10 at Nebraska. The hiatus, due to back-to-back COVID-19-related postponements for scheduled games vs. Michigan (Dec. 19) and Southern Illinois (Dec. 22), is the longest mid-season break for the Fighting Illini since a 24-day gap between the holidays and new year during the 1978-79 season (Dec. 12, 1978-Jan. 5, 1979). During the program's first five seasons, a mid-year break was common. In the inaugural campaign (1974-75) the gap stretched 44 days (12/7/74 to 1/20/75). The following is a listing of the longest mid-season gaps between games in program history.

Year	From Date	Opponent (Result)	To Date	Opponent (Result)	Span
1974-75	12/7/74	vs. Minnesota (L, 50-53)	1/20/75	at Illinois-Central (L, 45-60)	44 days
1975-76	12/11/75	at Danville JC (W, 76-43)	1/23/76	vs. Illinois-Central (W, 67-63)	43 days
1976-77	12/13/76	vs. Purdue (L, 61-63)	1/13/77	vs. Chicago (W, 70-37)	31 days
1977-78	12/13/77	vs. Indiana State (L, 53-71)	1/12/78	vs. Western Illinois (W, 65-49)	30 days
1978-79	12/12/78	at Indiana State (L, 74-86)	1/5/79	at Western Illinois (L, 69-84)	24 days
2020-21	12/10/20	at Nebraska (L, 72-78)	12/31/20	at #20 Indiana (L, 56-79)	21 days
1991-92	12/22/91	at Cincinnati (L, 63-72)	1/5/92	at #6 Penn State (L, 60-86)	14 days
1983-84	12/23/83	at San Diego (W, 60-58)	1/3/84	vs. Southern Illinois (L, 48-65)	11 days
1993-94	12/21/93	at Missouri (W, 96-84)	1/2/94	vs. Kent State (L, 91-97)	12 days

WOMEN'S BASKETBALL TOP 25

ASSOCIATED PRESS POLL // JAN. 11

#	SCHOOL	RECORD	POINTS	PREV
1	Stanford (29)	10-0	747	1
2	Louisville	10-0	696	2
3	NC State (1)	10-0	680	T-3
4	UConn	7-0	678	T-3
5	South Carolina	8-1	647	5
6	Baylor	8-1	589	6
7	Texas A&M	12-0	580	8
8	UCLA	7-2	532	9
9	Maryland	9-1	479	12
10	Oregon	9-2	454	11
11	Arizona	8-2	437	7
12	Kentucky	9-3	417	10
13	Michigan	9-0	400	15
14	Mississippi State	8-2	386	14
15	Ohio State	6-0	297	16
16	South Florida	9-1	270	18
17	Arkansas	10-4	253	13
18	Indiana	7-3	192	19
19	DePaul	6-3	190	20
20	Gonzaga	10-2	139	21
21	Texas	8-2	125	17
22	Northwestern	6-2	108	22
23	Tennessee	8-1	90	NR
24	Syracuse	5-1	77	24
25	Washington State	7-1	73	NR

Others receiving votes: Missouri State 61, Georgia 51, South Dakota State 39, West Virginia 15, **Michigan State 15**, Alabama 14, Arizona State 7, Rice 5, **Iowa 5**, North Carolina 1, IUPUI 1.

USA TODAY/WBCA COACHES POLL // JAN. 12

#	SCHOOL	RECORD	POINTS	PREV
1	Stanford (31)	10-0	799	1
2	Louisville (1)	10-0	761	2
3	NC State	10-0	731	3
4	South Carolina	8-1	697	4
5	Connecticut	7-0	658	5
6	Baylor	8-1	628	6
7	Texas A&M	12-0	606	7
8	UCLA	7-2	563	9
9	Maryland	9-1	523	12
10	Oregon	9-2	488	11
11	Kentucky	9-3	448	8
12	Michigan	9-0	446	14
13	Arizona	8-2	415	10
14	Mississippi State	8-2	397	15
15	Ohio State	6-0	349	16
16	Arkansas	10-4	289	13
17	South Florida	9-1	254	19
18	Indiana	7-3	240	18
19	Gonzaga	10-2	197	21
20	Texas	8-2	170	17
21	Syracuse	5-1	154	20
22	DePaul	6-3	136	22
23	Northwestern	6-2	116	23
24	Tennessee	8-1	63	NR
25	Missouri State	4-2	61	25

Others receiving votes: South Dakota State 49, Georgia 41, Washington State 40, **Iowa 25**, Florida State 15, **Michigan State 14**, IUPUI 7, West Virginia 6, Clemson 5, Dayton 4, Florida Gulf Coast 2, Wake Forest 1, Delaware 1, Arizona State 1.



• **KEY ILLINI RETURNERS:** Illinois enters the 2020-21 with six returning letterwinners, including four players - junior **J-Naya Ephraim** (16 starts) and sophomores **Jeanae Terry** (11), **Jada Peebles** (11) and **Kennedi Myles** (29) - that started at least 10 games in 2019-20. Myles, who recorded freshman records with eight double-doubles and 251 rebounds last year, ranks as the Illini's returning leader in scoring (8.9 points per game), rebounding (8.7 rpg), blocks (21) and steals (61). Terry led the Illini with 91 assists.

• **SEVEN NEWCOMERS:** The 2020-21 Illini roster also includes seven newcomers. The 2020 recruiting class is ranked 27th by BlueStar Basketball. Mid-year transfer **Eva Rubin**, a 6-5 redshirt junior center who returned to her home state after two seasons at Arizona State, gives the Illini a boost in the paint. The Illini also added size with 6-3 junior college forward/center **Geovana Lopes**, 6-1 sophomore forward **Solape Amusan**, and 6-3 freshman forward **Erika Porter**. Illinois signed a pair of all-state guards from Michigan in **Aaliyah McQueen** and **Aaliyah Nye**, plus walk-on junior guard **Tara O'Malley**, who starred as a prep at Chicago's Mother McAuley High School.

• **WINNING THE BATTLE OF THE BOARDS:** The Fighting Illini have been an excellent rebounding team to open 2020-21. The Orange and Blue have finished with the rebounding edge in four of eight games, out-boarding Indiana State 42-40 in the opener, securing a 14-rebound edge, 47-33, vs. Valpo, notching a 45-28 (+17) advantage against Omaha, and edging Ohio State (Jan. 7) 37-36 on the boards. At No. 20/18 Indiana (Dec. 31), the Illini and Hoosiers battled to a 35-35 rebounding deadlock. The Illini have only been outrebounded three times, in losses at Nebraska (47-35), vs. Iowa (48-31) and at No. 15/14 Michigan (44-34).

• **EMERGING POST PRESENCE:** A pair of Illini post players - **Eva Rubin** and **Geovana Lopes** - made their Orange and Blue debuts in the Illini's season-opening win over Indiana State. Rubin tallied then career-high marks in minutes (23), rebounds (6) and blocks (4), eclipsing marks established during her time at Arizona State. Lopes Impressed in a reserve role, posting 12 points, six boards, two assists and a pair of steals in 15 minutes off the bench. Lopes started Game 2 vs. Valparaiso in place of the injured Rubin, and posted six points and five rebounds. And after returning to the lineup, Rubin posted back-to-back career-scoring highs with 11 vs. Omaha and 13 at Nebraska, before again establishing a career-best scoring mark with 17 vs. Iowa (Jan. 3). Rubin also recorded a personal-best seven rebounds vs. the Huskers. At No. 20/18 Indiana freshman **F Erika Porter** made her collegiate debut, tallying two points and two rebounds in six minutes of action.

• **GUARDS GETTING TO THE LINE:** The Fighting Illini's primary guard trio of **J-Naya Ephraim**, **Jeanae Terry**, and **Jada Peebles**, have been excellent at getting to the free-throw line, and converting. Through eight games, the backcourt mates have combined to shoot 49-for-70 (.700) from the charity stripe. Ephraim is averaging 3.4 attempts per game and shooting 17-for-27 (.630) while Terry has connected on 68 percent (17-for-25), and Peebles has hit 83 percent (15-for-18), including a pair of clutch free-throws to seal the Omaha victory with four seconds left in the contest.

• **YOUTH MOVEMENT:** Through seven games, the Fighting Illini underclassmen - including four sophomores (**Solape Amusan**, **Kennedi Myles**, **Jada Peebles** and **Jeanae Terry**) and three freshmen (**Aaliyah McQueen**, **Aaliyah Nye** and **Erika Porter**) - have combined to play 963 of 1600 (60.2 percent) of the team's available minutes. That young core has accounted 67 percent of the team's scoring, 60 percent of rebounds, 72 percent of assists, 72 percent of steals and 54 percent of blocks.

Category	Underclass	Team	Percentage
	Total	Total	
Minutes	963	1600	0.596
Points	322	481	0.669
Rebounds	184	306	0.601
Assists	62	86	0.721
Steals	41	57	0.719
Blocks	15	28	0.536

• **DOUBLE-DOUBLE VISION:** Sophomore **F Kennedi Myles**, who entered the season as the Illini's leading returning scorer and rebounder, set an Illini freshman record with eight double-doubles in 2019-20. Following her 13 point, 14 rebound performance vs. Omaha (Dec. 6), she now has 10 for her career.

Opponent	Points	Rebounds
Chicago State (11/5/19)	17	15
Arkansas-Pine Bluff (11/21/19)	12	14
Presbyterian (11/30/19)	12	12
Merrimack (12/10/19)	23	12
at Missouri (12/20/19)	13	10
at Ohio State (1/19/20)	12	11
at Nebraska (2/22/20)	12	10
vs. Wisconsin (3/4/20) - BTT	13	11
Valparaiso (12/2/20)	14	11
Omaha (12/6/20)	13	14

• **DOUBLE-DOUBLE PART 2:** Sophomore **G Jeanae Terry** has notched two double-doubles in 2020-21. She posted her first in Illinois' game vs. Valparaiso (Dec. 2), finishing with 16 points, and a career-best 13 rebounds. With teammate **Kennedi Myles** notching a 14-point, 11-rebound double-double vs. the Crusaders, the sophomore duo became the first Illini teammates to record double-doubles in the same game since Nov. 24, 2018 when Alex Wittinger (32 points, 10 rebounds) and Brandi Beasley (10 points, 12 assists) accomplished the feat against Sacramento State.

• **HOME SWEET HOME:** Under head coach **Nancy Fahey** the Illini have found great success against non-conference opponents at State Farm Center. With a 2-1 mark in such games to open the 2020-21 season, the Illini are now 23-5 at home against non-conference foes under Fahey, following the team's win over the Omaha Mavericks. The Illini were slated to host one more non-conference game, Dec. 22 vs. Southern Illinois, but the game was postponed due to COVID-19 related concerns within the Salukis program.

• **PERSISTENCE OF PANAGIOTOPOULOU:** After battling through injury for her first two-plus seasons at Illinois, redshirt-junior forward **Nancy Panagiotopoulou** entered the 2020-21 season in a position to contribute right away for the Illini, and is averaging 5.1 minutes per game. Panagiotopoulou, who made her Illini debut Jan. 23, 2020 vs. No. 20 Maryland, saw action in eight of the Illini's final 12 games last season, and now played in 11 of the team's last 12 contests dating back to last season. Her 11 minutes vs. Valpo (Dec. 2) matched a career-high initially set during her Illini debut vs. Maryland last year.

• **MOVING UP:** The Illini added significant size to their roster for 2020-21. The 2019-20 roster averaged 70.7 inches - or 5 feet, 11 inches - with four players listed at 6 feet or above. This year, the average height of the team jumped by nearly 1.5 inches to 72.0 inches - or 6-feet - with six Illini listed at or above 6 feet: **Eva Rubin** (6-5), **Geovana Lopes** (6-3), **Nancy Panagiotopoulou** (6-3), **Erika Porter** (6-3), **Kennedi Myles** (6-2), and **Solape Amusan** (6-1).

• **RETURNING PRODUCTION:** Despite graduating six seniors who left their mark on the Illini record book, Illinois returns almost 60 percent of its production in nearly every major statistical category, except for scoring (41%).

Category	Returning	Lost	% Returning
Points	763	1,098	41%
Rebounds	539	373	59%
Assists	216	150	59%
Blocks	54	27	67%
Steals	163	98	62%

• **VALUING POSSESSIONS:** The Illini continued a trend of minimizing turnovers under head coach **Nancy Fahey** in 2019-20. The Orange and Blue averaged 14.6 turnovers per contest, the fifth-best mark in program history. In Fahey's three seasons, the Illini have posted three of the top-five marks in the program record book including the fewest turnovers per game in a season (12.97) in 2018-19. At 14.6 turnovers per game, the Illini finished the season ranked sixth in the Big Ten and 102nd nationally.

• **TERRY TAKIN' CARE:** Sophomore guard **Jeanae Terry** recorded a team-leading 91 assists (3.1 per game) as a freshman for the Illini in 2019-20. With only 50 turnovers, she also paced the team with an assist-to-turnover ratio of 1.82, seventh in the Big Ten and 81st nationally. Her assist-to-turnover ratio ranked sixth in the nation among freshmen. Terry's 91 assists ranked sixth in a single-season by a freshman at Illinois. Through three games to open the 2020-21 season, Terry has dished out a team-leading eight assists, 2.7 per contest.

• **YEAR 4 UNDER FAHEY:** The 2020-21 campaign marks the fourth under **Nancy Fahey**, whose offseason contract extension ensures that the five-time national champion and Women's Basketball Hall of Famer will remain on the sideline for the Illini through at least the 2024-25 season. Under Fahey's guidance, the Fighting Illini have improved their win total each year, culminating with last season's 11-win campaign, the most for the program since 2014-15. The Illini opened the year with a 9-2 record against non-conference opponents, also the best mark for the program in 13 years, culminating with a 58-51 Braggins' Rights win over Missouri in Columbia.

• **NEW FACES ON STAFF:** **Nancy Fahey** added two veteran assistant coaches to the Fighting Illini coaching staff in the offseason, bringing **Scott Merritt** and **Vernette Skeete** from Marquette to Illinois where they complete the coaching staff along with John Patterson who returns for his second season as an assistant with the Illini. Merritt and Skeete each spent the previous six seasons with the Golden Eagles, helping build the program into a national power. Merritt, who helped lead MU to a 2003 Final Four as a player, returned to coaching at his alma mater following a nine-year professional playing career. Skeete, a native of Florida, who played at Alcorn State and Gulf Coast State College, joined Marquette after two seasons as the head coach at GCSC. Prior to that, she also served as an assistant at Miami, helping to build the Hurricanes into a top-25 program.



NUMERICAL ROSTER

NO	PLAYER	POS	HT	ELIG	HOMETOWN/HIGH SCHOOL/PREVIOUS COLLEGE	PRONUNCIATION
0	J-Naya Ephraim	G	5-9	Jr.	St. Croix, U.S. Virgin Islands / Southern Durham (N.C.) H.S.	juh-NY-uh EH-from
1	Nancy Panagiotopoulou	F	6-3	r-Jr.	Athens, Greece / American Community Schools of Athens	pan-uh-YO-toe-poo-loo
2	Lyric Robins	F	5-11	Sr.	Plano, Texas / Plano West H.S.	lee-ruhk
3	Solape Amusan	F	6-1	So.	Woodbury, Minnesota / Woodbury H.S. / Iowa Western C.C.	suh-LAW-pay AM-you-sin
10	Jeanae Terry	G	5-11	So.	Detroit, Michigan / Wayne Memorial H.S.	juh-NAY
11	Jada Peebles	G	5-10	So.	Raleigh, North Carolina / Wakefield H.S.	JAY-duh
13	Tara O'Malley	G	5-6	Jr.	Chicago, Illinois / Mother McAuley H.S.	TARE-uh OH-MELL-ee
14	Geovana Lopes	F/C	6-3	Jr.	Bataguassu, Brazil / Escola Estadual Paulo Mendes Silva / Odessa College	geo-VONN-uh LOW-peh
20	Erika Porter	F	6-3	Fr.	Lawrenceville, New Jersey / Notre Dame H.S.	
21	Aaliyah McQueen	G	5-9	Fr.	Flint, Michigan / Carman-Ainsworth H.S.	uh-LEE-yah
22	Eva Rubin	C	6-5	r-Jr.	Flossmoor, Illinois / Homewood Flossmoor H.S. / Arizona State Univ.	EE-vuh ROO-bin
32	Aaliyah Nye	G	5-11	Fr.	East Lansing, Mich. / East Lansing H.S.	uh-LEE-yah
44	Kennedi Myles	F	6-2	So.	Cincinnati, Ohio / Walnut Hills H.S.	

ALPHABETICAL ROSTER

NO	PLAYER	POS	HT	ELIG	HOMETOWN/HIGH SCHOOL/PREVIOUS COLLEGE	PRONUNCIATION
3	Solape Amusan	F	6-1	So.	Woodbury, Minnesota / Woodbury H.S. / Iowa Western C.C.	suh-LAW-pay AM-you-sin
0	J-Naya Ephraim	G	5-9	Jr.	St. Croix, U.S. Virgin Islands / Southern Durham (N.C.) H.S.	juh-NY-uh EH-from
14	Geovana Lopes	F/C	6-3	Jr.	Bataguassu, Brazil / Escola Estadual Paulo Mendes Silva / Odessa College	geo-VONN-uh LOW-peh
21	Aaliyah McQueen	G	5-9	Fr.	Flint, Michigan / Carman-Ainsworth H.S.	uh-LEE-yah
44	Kennedi Myles	F	6-2	So.	Cincinnati, Ohio / Walnut Hills H.S.	
32	Aaliyah Nye	G	5-11	Fr.	East Lansing, Mich. / East Lansing H.S.	uh-LEE-yah
13	Tara O'Malley	G	5-6	Jr.	Chicago, Illinois / Mother McAuley H.S.	TARE-uh OH-MELL-ee
1	Nancy Panagiotopoulou	F	6-3	r-Jr.	Athens, Greece / American Community Schools of Athens	pan-uh-YO-toe-poo-loo
11	Jada Peebles	G	5-10	So.	Raleigh, North Carolina / Wakefield H.S.	JAY-duh
20	Erika Porter	F	6-3	Fr.	Lawrenceville, New Jersey / Notre Dame H.S.	
2	Lyric Robins	F	5-11	Sr.	Plano, Texas / Plano West H.S.	lee-ruhk
22	Eva Rubin	C	6-5	r-Jr.	Flossmoor, Illinois / Homewood Flossmoor H.S. / Arizona State Univ.	EE-vuh ROO-bin
10	Jeanae Terry	G	5-11	So.	Detroit, Michigan / Wayne Memorial H.S.	juh-NAY

Head Coach:	Nancy Fahey (fourth season at Illinois, 35th overall)	FAY
Assistant Coach:	John Patterson (fourth session)	
Assistant Coach:	Scott Merritt (first season)	
Assistant Coach:	Vernette Skeete (first season)	ver-NET
Director of Operations:	Dianna Pasley (fourth season)	
Director of Player Personnel:	Steve Cochran (fourth season)	
Head Coordinator of Recruiting and Director of Student-Athlete Development:	Tianna Kirkland (ninth season)	tee-AW-nuh
Director of Scouting and Video:	Jenn Dynis (fourth season)	
Athletic Trainer:	Autumn Taylor (second season)	
Strength & Conditioning Coach:	Kilee Fletcher (fourth season)	

RETURNING/LOST BREAKDOWN

STARTERS RETURNING (2)					2019-20 STATISTICS					
NO	PLAYER	POS	HT	ELIG	PNTS/G	REB/GAME	ASSISTS	TRNOVR	BLOCKS	STEALS
0	J-Naya Ephraim	G	5-9	Jr.	2.9	2.5	47	50	3	26
44	Kennedi Myles	F	6-2	So.	8.9	8.7	33	68	21	61

STARTERS LOST (3)					2019-20 STATISTICS					
NO	PLAYER	POS	HT	ELIG	PNTS/G	REB/GAME	ASSISTS	TRNOVR	BLOCKS	STEALS
1	Brandi Beasley	G	5-6	Grad	8.5	2.2	62	64	2	29
13	Petra Holesinska	G	5-10	Sr.^	12.6	2.7	43	60	2	29
50	Ali Andrews	F	6-2	Grad	8.9	3.7	19	31	20	21

OTHER LETTERWINNERS RETURNING (4)					2019-20 STATISTICS					
NO	PLAYER	POS	HT	ELIG	PNTS/G	REB/GAME	ASSISTS	TRNOVR	BLOCKS	STEALS
1	Nancy Panagiotopoulou	F	6-3	r-Jr.	1.0	0.7	0	2	0	0
2	Lyric Robins	F	5-11	Sr.	0.8	0.8	0	6	3	3
10	Jeanae Terry	G	5-11	So.	6.2	3.8	91	50	17	35
11	Jada Peebles	G	5-10	So.	5.4	1.0	38	28	2	31

OTHER LETTERWINNERS LOST (5)					2019-20 STATISTICS					
NO	PLAYER	POS	HT	ELIG	PNTS/G	REB/GAME	ASSISTS	TRNOVR	BLOCKS	STEALS
5	Sierra Rice	G	5-9	Grad	2.9	0.7	15	23	0	3
4	Carolyn Waleski	G	5-10	Jr.	0.4	0.4	0	0	0	1
12	Taylor Edwards	G	5-7	Grad	0.3	0.0	1	2	0	2
23	Mackenzie Blazek	F	6-3	Jr.	4.6	4.1	11	17	8	6
30	Courtney Joens	G	5-10	Grad	3.5	3.3	10	19	3	14

NEWCOMERS (7)					HOMETOWN/HIGH SCHOOL/PREVIOUS COLLEGE					
NO	PLAYER	POS	HT	ELIG						
3	Solape Amusan	F	6-1	So.	Woodbury, Minnesota / Woodbury H.S. / Iowa Western C.C.					
13	Tara O'Malley	G	5-7	Jr.	Chicago, Illinois / Mother McAuley H.S.					
14	Geovana Lopes	F/C	6-3	Jr.	Bataguassu, Brazil / Escola Estadual Paulo Mendes Silva / Odessa College					
20	Erika Porter	F	6-3	Fr.	Lawrenceville, New Jersey / Notre Dame H.S.					
21	Aaliyah McQueen	G	5-9	Fr.	Flint, Michigan / Carman-Ainsworth H.S.					
22	Eva Rubin*	C	6-5	r-Jr.	Flossmoor, Illinois / Homewood Flossmoor H.S. / Arizona State Univ.					
32	Aaliyah Nye	G	5-11	Fr.	East Lansing, Mich. / East Lansing H.S.					

* Sat out the 2019-20 season as a mid-year transfer to Illinois and granted NCAA waiver for immediate eligibility
^ Graduated from Illinois before transferring for final season of collegiate eligibility

ROSTER BREAKDOWN

BY ELIGIBILITY

SENIORS (1)	Lyric Robins
JUNIORS (5)	J-Naya Ephraim
.....	Geovana Lopes
.....	Tara O'Malley
.....	Nancy Panagiotopoulou
.....	Eva Rubin

SOPHOMORES (4)	Solape Amusan
.....	Kennedi Myles
.....	Jada Peebles
.....	Jeanae Terry

FRESHMEN (3)	Aaliyah McQueen
.....	Aaliyah Nye
.....	Erika Porter

BY POSITION

GUARD (6)	J-Naya Ephraim
.....	Aaliyah McQueen
.....	Aaliyah Nye
.....	Tara O'Malley
.....	Jada Peebles
.....	Jeanae Terry

FORWARD (5)	Amusan
.....	Myles
.....	Panagiotopoulou
.....	Porter
.....	Robins

CENTER (2)	Geovana Lopes
.....	Eva Rubin

BY STATE/COUNTRY

Brazil (1)	Geovana Lopes
Greece (1)	Nancy Panagiotopoulou
Illinois (2)	Tara O'Malley
.....	Eva Rubin
Michigan (3)	Aaliyah McQueen
.....	Aaliyah Nye
.....	Jeanae Terry
Minnesota (1)	Solape Amusan
New Jersey (1)	Erika Porter
North Carolina (1)	Jada Peebles
Ohio (1)	Kennedi Myles
Texas (1)	Lyric Robins
U.S. Virgin Islands (1)	J-Naya Ephraim



INSIDE THE NUMBERS

	ILL	MSU
Points Per Game	60.1	80.3
Points Allowed Per Game	71.6	66.0
Scoring Margin	-11.5	+14.3
Field Goals Made-Att.	173-488	306-665
Field Goal %	.355	.460
3-Pointers Made-Att.	32-146	63-210
3-Point %	.219	.300
Free Throws Made-Att.	103-154	128-185
Free Throw %	.669	.692
Rebounds Per Game	38.3	38.8
Rebounding Margin	-0.6	+4.1
Fouls Per Game	18.4	18.5
Assists Per Game	10.8	21.0
Turnovers Per Game	17.1	13.0
Turnover Margin	-0.6	+5.5
Steals Per Game	7.1	9.8
Blocks Per Game	3.5	4.4

RECORD WHEN

Overall record	2-6
Big Ten record	0-5
Record at home	2-3
Record on road	0-3
Record in neutral-site games	0-0
Record vs. AP-ranked teams	0-3
Record when on TV	0-2
Coming off a win	0-2
Coming off a loss	2-4
Scoring 80+ points	0-0
Scoring 70-79 points	0-1
Scoring 60-69 points	1-1
Scoring less than 60 points	1-4
Giving up 80+ points	0-1
Giving up 70-79 points	0-4
Giving up 60-69 points	0-1
Giving up 50-59 points	1-0
Giving up less than 50 points	1-0
Shooting 55% FGs or better	0-0
Shooting 50-54% FGs	0-0
Shooting 45-49% FGs	0-0
Shooting 40-44% FGs	1-0
Shooting 30-39% FGs	0-6
Shooting below 30% FGs	1-0

Opp. shoot 50% FGs or better	0-1
Opp. shoot 45-49% FGs	0-2
Opp. shoot 40-44% FGs	0-2
Opp. shoot 35-39% FGs	0-1
Opp. shoot under 35% FGs	2-0
Shoots better than opponent	1-0
Shoots worse than opponent	1-6
Out-rebound opponent	2-2
Equal rebounds	0-1
Opponents out-rebound Illinois	0-3
Fewer turnovers than opponent	1-2
Equal turnovers	0-1
More turnovers than opponent	1-3
When leading after 1st Quarter	2-1
When tied after 1st Quarter	0-1
When trailing after 1st Quarter	0-4
When leading at halftime	2-1
When tied at halftime	0-0
When trailing at halftime	0-5
When leading after 3rd Quarter	2-1
When tied after 3rd Quarter	0-0
When trailing after 3rd Quarter	0-5

Shoot more FTs than opponent	2-3
Shoot fewer FTs than opponent	0-3
Equal FT attempts	0-0
Game goes to overtime	0-0
Margin is five points or less	1-1
Margin is 6-10 points	0-1
Margin is 11-15 points	0-0
Margin is 16-20 points	1-1
Margin is 21+ points	0-3
Playing in November	1-0
Playing in December	1-3
Playing in January	0-3
Playing in February	0-0
Playing in March	0-0
In day games (before 5 p.m.)	1-3
In night games (after 5 p.m.)	1-3
Wearing white uniforms	1-3
Wearing gray uniforms	0-0
Wearing blue uniforms	0-3
Wearing orange uniforms	1-0
Wearing pink uniforms	0-0

SUPERLATIVES

Double-Doubles	2020-21 (Record)	Career
Kennedi Myles	2 (1-1)	10
Jeanae Terry	2 (0-2)	2
Double-Digit Scoring	2020-21	Career
Jada Peebles	6 (1-5)	11
Kennedi Myles	5 (1-4)	19
Jeanae Terry	3 (1-3)	11
Eva Rubin	3 (1-2)	3
Solape Amusan	2 (0-2)	2
Geovana Lopes	1 (1-0)	1
J-Naya Ephraim	1 (0-1)	2
Aaliyah Nye	1 (0-1)	1
20+ Point	2020-21 (Record)	Career
Jeanae Terry	1 (1-0)	1
Kennedi Myles	--	1
Double-Digit Rebound	2020-21 (Record)	Career
Jeanae Terry	3 (0-3)	3
Kennedi Myles	2 (1-1)	12
Double-Digit Assist	2019-20	Career

2020-21 STARTING LINEUPS

Opponent	G	G	G/F	F	C	Record
Indiana State	Ephraim	Terry	Peebles	Myles	Rubin	1-0
Valparaiso	Ephraim	Terry	Peebles	Myles	Lopes	0-1
Omaha	Ephraim	Terry	Peebles	Myles	Rubin	2-0
at Nebraska	Ephraim	Terry	Peebles	Myles	Rubin	2-1
Michigan (PPD)						
Southern Illinois (PPD)						
at Indiana	Terry	Peebles	Robins	Myles	Rubin	0-1
Iowa	Ephraim	Terry	Peebles	Myles	Rubin	2-2
Ohio State	Ephraim	Terry	Peebles	Myles	Rubin	2-3
at Michigan	Ephraim	Terry	Peebles	Myles	Rubin	2-4
Michigan State						
at Northwestern						
Nebraska						
Penn State						
at Wisconsin						
at Michigan State						
Purdue						
at Minnesota						
Indiana						
at Maryland						
at Rutgers						
Northwestern						
at Purdue						
Minnesota						

BIG TEN STANDINGS // THROUGH JAN. 12

TEAM	CONFERENCE GAMES						ALL GAMES						TOP		LAST	
	W-L	PCT	H	A	STREAK		W-L	PCT	H	A	N		25	10	STREAK	
Maryland	5-0	1.000	2-0	3-0	W5		9-1	.900	4-0	3-0	2-1	3-1	9-1	W8		
Michigan	4-0	1.000	3-0	1-0	W4		9-0	1.000	6-0	3-0	0-0	2-0	9-0	W9		
Ohio State	2-0	1.000	1-0	1-0	W2		6-0	1.000	5-0	1-0	0-0	0-0	6-0	W6		
Indiana	5-1	.833	3-0	2-1	W2		7-3	.700	5-1	2-2	0-0	0-3	7-3	W2		
Iowa	4-2	.667	3-0	1-2	L1		8-2	.800	6-0	2-2	0-0	1-1	8-2	L1		
Northwestern	4-2	.667	2-1	2-1	W2		6-2	.750	4-1	2-1	0-0	0-1	6-2	W2		
Michigan State	3-2	.600	1-2	2-0	L2		8-2	.800	6-2	2-0	0-0	0-1	8-2	L2		
Nebraska	4-3	.571	3-0	1-3	W1		6-4	.600	5-0	1-4	0-0	2-2	6-4	W1		
Purdue	2-3	.400	1-2	1-1	L2		5-4	.556	4-3	1-1	0-0	0-3	5-4	L2		
Rutgers	1-3	.250	0-1	1-2	L3		5-3	.625	4-1	1-2	0-0	0-1	5-3	L2		
Penn State	1-4	.200	0-3	1-1	W1		4-5	.444	3-3	1-2	0-0	0-4	4-5	W1		
Minnesota	1-5	.167	0-3	1-2	L2		2-6	.250	1-4	1-2	0-0	0-2	2-6	L2		
Illinois	0-5	.000	0-2	0-3	L5		2-6	.250	2-3	0-3	0-0	0-3	2-6	L5		
Wisconsin	0-6	.000	0-3	0-3	L6		3-6	.333	3-3	0-3	0-0	0-3	3-6	L4		



EXPANDED SCHEDULE/RESULTS

DATE	OPPONENT	RESULT	SCORE	RECORD	BIG RECORD	ATTENDANCE	HIGH POINTS	HIGH REBOUNDS	HIGH ASSISTS
11/25	Indiana State	W	68-49	1-0	--	103*	Jeanae Terry (24)	Jeanae Terry (8)	Jada Peebles (5)
12/2	Valparaiso	L	59-62	1-1	--	101*	Jeanae Terry (16)	Jeanae Terry (11)	Jeanae Terry (3)
12/6	Omaha	W	53-50	2-1	--	106*	Jada Peebles (15)	Kennedi Myles (14)	Jeanae Terry (4)
12/10	at Nebraska	L	72-78	2-2	0-1	0*	Jada Peebles (16)	Jeanae Terry (7)	Jada Peebles (5)
12/19	Michigan (PPD)							Eva Rubin (7)	
12/22	Southern Illinois (PPD)								
12/31	at Indiana	L	56-79	2-3	0-2	0*	Kennedi Myles (15)	Jeanae Terry (11)	Jeanae Terry (3)
1/3	Iowa	L	68-107	2-4	0-3	0*	Eva Rubin (17)	Jeanae Terry (8)	Jeanae Terry (3)
1/7	Ohio State	L	55-78	2-5	0-4	0*	Kennedi Myles (15)	Jeanae Terry (10)	Jeanae Terry (3)
1/10	at Michigan	L	50-70	2-6	0-5	50*	Jeanae Terry (17)	Kennedi Myles (7)	J-Naya Ephraim (3)
1/14	Michigan State								Jeanae Terry (5)
1/21	at Northwestern								
1/25	Nebraska								
1/28	Penn State								
1/31	at Wisconsin								
2/4	at Michigan State								
2/7	Purdue								
2/10	at Minnesota								
2/14	Indiana								
2/17	at Maryland								
2/20	at Rutgers								
2/25	Northwestern								
2/28	at Purdue								
3/5 or 6	Minnesota								

* Due to COVID-19 protocols, no tickets were sold for this game.

SPECIALTY STATS

	OPPONENT	PTS IN PAINT (ILL / OPP)	PTS OFF TO (ILL / OPP)	2ND CHANCE PTS (ILL / OPP)	FAST BREAK PTS (ILL / OPP)	BENCH PTS (ILL / OPP)	LARGEST LEAD	LARGEST DEFICIT	LEAD CHANGES	TIES
11/25	Indiana State	24 / 22	17 / 13	7 / 8	17 / 4	21 / 33	27	--	0	0
12/2	Valparaiso	40 / 22	19 / 12	16 / 2	7 / 2	6 / 16	9	4	4	8
12/6	Omaha	22 / 24	11 / 13	14 / 6	6 / 2	3 / 6	10	5	6	1
12/10	at Nebraska	20 / 32	8 / 7	8 / 8	11 / 14	25 / 12	6	9	14	12
12/19	Michigan (PPD)									
12/22	Southern Illinois (PPD)									
12/31	at Indiana	28 / 42	12 / 23	10 / 11	6 / 18	13 / 27	0	31	0	0
1/3	Iowa	32 / 46	8 / 15	12 / 27	4 / 6	21 / 35	3	45	1	0
1/7	Ohio State	24 / 34	16 / 29	6 / 6	9 / 11	7 / 21	0	29	0	1
1/10	at Michigan	22 / 38	13 / 9	10 / 14	2 / 4	7 / 7	4	22	4	4
1/14	Michigan State									
1/21	at Northwestern									
1/25	Nebraska									
1/28	Penn State									
1/31	at Wisconsin									
2/4	at Michigan State									
2/7	Purdue									
2/10	at Minnesota									
2/14	Indiana									
2/17	at Maryland									
2/20	at Rutgers									
2/25	Northwestern									
2/28	at Purdue									
3/5 or 6	Minnesota									
Totals		212 / 260	104 / 121	83 / 82	62 / 61	103 / 145				
Average		26.5 / 32.5	13.0 / 15.1	10.4 / 10.3	7.8 / 7.6	12.9 / 18.1				
Average Margin		-6.0	-2.1	+0.1	+0.2	-5.2				



2020-21 GAME-BY-GAME TEAM COMPARISON

Opponent	1st	2nd	3rd	4th	OT	Score	Margin	Tot. FG	FG%	3-PT FG	3-FG %	Free Throws	FT %	Rebs.	Assists	TO	Blocks	Steals	Fouls
Indiana State	15 / 10	15 / 11	20 / 11	18 / 17	--	68 / 49	+19	22-55 / 18-63	.400 / .286	5-15 / 1-12	.333 / .083	19-27 / 12-17	.704 / .706	42 / 40	14 / 5	18 / 21	7 / 1	10 / 10	17 / 19
Valparaiso	13 / 6	16 / 25	21 / 14	9 / 17	--	59 / 62	-3	24-64 / 21-55	.375 / .382	1-16 / 10-25	.006 / .385	10-22 / 10-15	.455 / .667	47 / 33	6 / 13	15 / 15	4 / 2	4 / 9	15 / 20
Omaha	12 / 11	12 / 11	19 / 11	10 / 17	--	53 / 52	+3	18-62 / 17-50	.290 / .340	4-23 / 5-20	.174 / .250	13-16 / 11-12	.813 / .917	45 / 28	10 / 10	19 / 19	3 / 2	7 / 5	16 / 17
at Nebraska	21 / 21	19 / 18	14 / 16	18 / 23	--	72 / 78	-6	25-71 / 23-57	.352 / .404	9-23 / 5-15	.391 / .333	13-20 / 27-32	.650 / .844	35 / 47	16 / 10	8 / 17	4 / 6	8 / 4	24 / 15
Michigan (PPD)																			
Southern Ill. (PPD)																			
at Indiana	9 / 23	11 / 19	11 / 16	25 / 21	--	56 / 79	-23	22-57 / 29-60	.386 / .483	2-12 / 6-19	.167 / .316	10-14 / 15-20	.714 / .750	35 / 35	7 / 19	25 / 16	0 / 3	7 / 13	20 / 18
Iowa	10 / 35	15 / 17	20 / 31	23 / 24	--	68 / 107	-39	23-62 / 40-74	.371 / .541	3-19 / 14-33	.158 / .424	19-29 / 13-20	.655 / .650	31 / 48	13 / 23	13 / 12	1 / 0	7 / 6	17 / 19
Ohio State	8 / 18	15 / 20	15 / 25	17 / 15	--	55 / 78	-23	20-58 / 29-64	.345 / .453	5-19 / 10-25	.263 / .400	10-13 / 10-12	.769 / .833	37 / 36	10 / 18	25 / 16	4 / 3	7 / 12	19 / 18
at Michigan	14 / 17	3 / 11	13 / 15	20 / 27	--	50 / 70	-20	19-59 / 25-58	.322 / .431	3-19 / 4-16	.158 / .250	9-13 / 16-22	.692 / .727	34 / 44	10 / 14	14 / 16	5 / 0	7 / 5	19 / 13
Michigan State																			
at Northwestern																			
Nebraska																			
Penn State																			
at Wisconsin																			
at Michigan State																			
Purdue																			
at Minnesota																			
Indiana																			
at Maryland																			
at Rutgers																			
Northwestern																			
at Purdue																			
Minnesota																			



THE LAST TIME

Illinois scored 100 points or more	Nov. 24, 2018 vs. Sacramento State (Sacramento St. 109, Illinois 107)
Illinois scored 90 points or more	Nov. 24, 2015 vs. Tennessee State (Illinois 98, TSU 43)
Illinois scored 50 points or less	Jan. 10, 2021, 50 at No. 15 Michigan (Michigan 70, Illinois 50)
Illinois scored 40 points or less	Jan. 3, 2018, 37, at Rutgers (Rutgers 76, Illinois 37)
Illinois gave up 100 points or more	Jan. 3, 2021, 107, Iowa (Iowa 107, Illinois 68)
Illinois gave up 90 points or more	Jan. 20, 2019, 95, Iowa (Iowa 95, Illinois 74)
Illinois gave up 40 points or less	Dec. 2, 2016 vs. Fort Wayne (Illinois 56, Fort Wayne 33)
Illinois won by 40+ points	Nov. 24, 2015 vs. Tennessee State (Illinois 98, TSU 43)
Illinois won an overtime game	Nov. 9, 2019 vs. Holy Cross (Illinois 78, Holy Cross 75)
Illinois lost an overtime game	Dec. 28, 2018 vs. Indiana (Indiana 85, Illinois 83)
Illinois made 10 or more three-pointers	Dec. 15, 2019, 10, vs. Evansville (Illinois 59, Evansville 44)
An Illinois opponent made 10 or more three-pointers	Jan. 7, 2021, 10, Ohio State (Ohio State 78, Illinois 55)
An Illinois player scored 20+ points	Nov. 25, 2020, Jeanae Terry, 24 vs. Indiana State (Illinois 68, Indiana State 49)
An Illinois player scored 30+ points	Nov. 24, 2018, Alex Wittinger, 32 vs. Sacramento State (Sacramento St. 109, Illinois 107)
An Illinois player scored 40+ points	Jan. 14, 1996, Ashley Berggren, 43 at Minnesota (Illinois 87, Minnesota 76)
An opposing player scored 30+ points	Dec. 10, 2020, Sam Haiby, 33, at Nebraska (Nebraska 78, Illinois 72)
An opposing player scored 40+ points	Dec. 16, 1989, Carol Owens, 41 at Northern Illinois (Northern Illinois 110, Illinois 93)
An Illinois player had a triple-double	Jan. 23, 2018, Alex Wittinger at Penn State, 18 p, 10 r, 11 b (Penn State 68, Illinois 59)
An opposing player had a triple-double	Dec. 2, 2006, Armentie Price, Ole Miss, 34 p, 15 r, 12 st (Ole Miss 75, Illinois 50)
No Illini scored double figures	3/2, 2007, vs. Penn State at Big Ten Tournament (Penn State 61, Illinois 49 - Rebecca Harris had 8)
No opposing player scored double figures	Nov. 25, 2011, vs. Arizona State (Arizona State 51, Illinois 50)
Two Illini players had a double-double in the same game	Dec. 2, 2020, vs. Valparaiso, Jeanae Terry (16 pts, 13 rbs) & Kennedy Myles (14 pts, 11 rbs) (Valparaiso 62, Illinois 59)
An Illini had 15+ rebounds	Dec. 15, 2019, Kennedy Myles, 20, vs. Evansville (Illinois 59, Evansville 44)
An Illini had 20+ rebounds	Dec. 15, 2019, Kennedy Myles, 20, vs. Evansville (Illinois 59, Evansville 44)
An Illini had 25+ rebounds	Jan. 23, 1975, Betty Anderson, 30, vs. Eastern Illinois (Illinois 57, Eastern Illinois 51 [OT])
An opposing player had 15+ rebounds	Dec. 10, 2020, Bella Cravens, 16, at Nebraska (Nebraska 78, Illinois 72)
An opposing player had 20+ rebounds	Nov. 9, 2019, Lauren Manis, 21, Holy Cross (Illinois 78, Holy Cross 78 [OT])
An opposing player had 25+ rebounds	Never
An Illini had 10+ assists	Jan. 9, 2019, Brandi Beasley, 10 vs. Rutgers (Rutgers 71, Illinois 60)
An Illini had 15+ assists	Jan. 15, 2006, Maggie Acuna, 16, at Wisconsin (Illinois 84, Wisconsin 54)
An opposing player had 10+ assists	Dec. 5, 2019, Shayla Bennett, 10, North Carolina (North Carolina 85, Illinois 60)
An opposing player had 15+ assists	3/12, 1983, Debbie Hunter, 15, vs. Minnesota (Minnesota 89, Illinois 65)
An Illini player made 5+ three-pointers	Dec. 15, 2019, Petra Holesinska, 7, vs. Evansville (Illinois 59, Evansville 44)
An Illini player made 8+ three-pointers	Nov. 29, 1997, Katie Coleman, 9, vs. Providence, at Puerto Rico (Illinois 106, Providence 74)
An Illini player made 10+ three-pointers	Never
An opposing player made 5+ threes	Dec. 31, 2019, 5, Makenzie Meyer, Iowa (Iowa 108, Iowa 72)
An opposing player made 8+ threes	Feb. 21, 2016, K. Mitchell, 8, at #5 Ohio State (Ohio State 117, Illinois 74)
Illinois shot 60 pct. FG or better	Nov. 22, 2010, .616 (45-73) vs. Cal Poly (Illinois 104, Cal Poly 63)
Illinois shot 30 pct. FG or lower	Dec. 6, 2020 .290 (18-62), vs. Omaha (Illinois 53, Omaha 50)
An opponent shot 60 pct. FG or better	Dec. 31, 2019, .650 (39-60), at Iowa (Iowa 108, Illinois 72)
An opponent shot 30 pct. FG or lower	Nov. 25, 2020, .286 (18-63) Indiana State (Illinois 68, Indiana State 49)
An opponent shot 25 pct. FG or lower	Nov. 21, 2013, .226 (14-62), Southern Illinois (SIU 43, Illinois 78)
An opponent shot 20 pct. FG or lower	Nov. 17, 2013, .152 (7-46), vs. Alcorn State (Illinois 112, Alcorn State 28)
Illinois forced 30 or more turnovers	Feb. 25, 2015, 34, Michigan State (Michigan State 67, Illinois 65)
Illinois committed 30 or more turnovers	Dec. 2, 2006, 34, at Ole Miss (Ole Miss 75, Illinois 50)
Illinois had 20 or more steals	Nov. 14, 2014, 21, vs. IPFW (Illinois 70, IPFW 63)
An Illinois opponent had 20 or more steals	Dec. 2, 2006, 26, at Ole Miss (Ole Miss 75, Illinois 50)
Illinois blocked 10 or more shots	Jan. 23, 2018, 13, at Penn State (Penn State 68, Illinois 59)
Illinois won 5+ games in a row	Nov. 14, 2014-Nov. 27, 2014, 5-game streak
Illinois won 10+ games in a row	Nov. 20, 1981-Jan. 2, 1982, 10-game streak
Illinois lost 5+ games in a row	Dec. 10, 2020-Jan. 10, 2021, 5-game streak (current)
Illinois lost 10+ games in a row	Dec. 22, 2017-Feb. 28, 2018, 18-game streak
Illinois won 5+ in a row at home	Nov. 21, 2019-Dec. 15, 2019, 5-game streak
Illinois won 10+ in a row at home	Dec. 20, 1997-Jan. 5, 1999, 18-game streak
Illinois won 15+ in a row at home	Dec. 20, 1997-Jan. 5, 1999, 18-game streak
Illinois lost 5+ in a row at home	Jan. 23, 2020-Feb. 26, 2020, 6-game streak
Illinois lost 10+ in a row at home	Never
Illinois won 5+ in a row away from home	Dec. 9, 2012-Feb. 3, 2013, 6-game streak
Illinois won 10+ in a row away from home	Never





2020-21 Illinois Women's Basketball Combined Team Statistics All games

Page 1/1
as of Jan 10, 2021

Game Records

Record	Overall	Home	Away	Neutral
ALL GAMES	2-6	2-3	0-3	0-0
CONFERENCE	0-5	0-2	0-3	0-0
NON-CONFERENCE	2-1	2-1	0-0	0-0

Score by Periods

Team	1st	2nd	3rd	4th	OT	TOT
Illinois	102	106	133	140	0	481
Opponents	141	132	139	161	0	573

Team Box Score

No.	Player				Total		3-Point		F-Throw		Rebounds											
		GP-GS	MIN	AVG	FG-FGA	FG%	3FG-FGA	3FG%	FT-FTA	FT%	OFF	DEF	TOT	AVG	PF	DQ	A	TO	BLK	STL	PTS	AVG
10	TERRY, Jeanae	8-8	234:13	29.3	30-77	.390	8-27	.296	17-25	.680	20	50	70	8.8	12	0	29	32	3	16	85	10.6
44	MYLES, Kennedi	8-8	227:26	28.4	32-83	.386	0-6	.000	21-31	.677	25	37	62	7.8	25	1	11	21	3	10	85	10.6
11	PEEBLES, Jada	8-8	278:53	34.9	30-94	.319	8-40	.200	15-18	.833	1	14	15	1.9	13	0	17	14	4	9	83	10.4
22	RUBIN, Eva	7-7	174:43	25.0	24-48	.500	0-0	.000	17-23	.739	9	20	29	4.1	19	1	0	13	11	3	65	9.3
0	EPHRAIM, J-Naya	8-7	226:49	28.4	15-54	.278	4-17	.235	17-27	.630	2	18	20	2.5	17	2	18	28	1	6	51	6.4
3	AMUSAN, Solape	8-0	113:17	14.2	15-42	.357	7-23	.304	6-10	.600	7	12	19	2.4	16	0	4	6	3	4	43	5.4
32	NYE, Aaliyah	4-0	60:36	15.1	8-21	.381	3-11	.273	2-4	.500	5	4	9	2.3	10	0	1	0	1	2	21	5.3
14	LOPES, Geovana	4-1	63:31	15.9	9-22	.409	0-0	.000	2-7	.286	6	6	12	3.0	9	0	4	6	0	3	20	5.0
2	ROBINS, Lyric	8-1	118:47	14.8	8-36	.222	2-18	.111	3-5	.600	6	10	16	2.0	14	0	2	7	0	3	21	2.6
20	PORTER, Erika	4-0	23:18	5.8	2-2	1.000	0-0	.000	1-2	.500	0	3	3	0.8	1	0	0	2	1	0	5	1.3
13	O'MALLEY, Tara	4-0	12:58	3.2	0-1	.000	0-0	.000	2-2	1.000	0	1	1	0.3	4	0	0	0	0	1	2	0.5
1	PANAGIOTOPOULOU, Nancy	7-0	40:19	5.8	0-3	.000	0-2	.000	0-0	.000	1	3	4	0.6	4	0	0	1	1	0	0	0.0
21	MCQUEEN, Aaliyah	4-0	25:11	6.3	0-5	.000	0-2	.000	0-0	.000	0	6	6	1.5	3	0	0	4	0	0	0	0.0
Team											21	19	40					3				
Total		8	1600		173-488	.355	32-146	.219	103-154	.669	103	203	306	38.3	147	4	86	137	28	57	481	60.1
Opponents		8	1600		202-481	.420	55-166	.331	114-150	.760	90	221	311	38.9	139	0	112	132	17	64	573	71.6

Team Statistics

	ILLINI	OPP
Scoring	481	573
Points per game	60.1	71.6
Scoring margin	-11.5	-
Field goals-att	173-488	202-481
Field goal pct	.355	.420
3 point fg-att	32-146	55-166
3-point FG pct	.219	.331
3-pt FG made per game	4.0	6.9
Free throws-att	103-154	114-150
Free throw pct	.669	.760
F-Throws made per game	12.9	14.3
Rebounds	306	311
Rebounds per game	38.3	38.9
Rebounding margin	-0.6	-
Assists	86	112
Assists per game	10.8	14.0
Turnovers	137	132
Turnovers per game	17.1	16.5
Turnover margin	-0.6	-
Assist/turnover ratio	0.6	0.8
Steals	57	64
Steals per game	7.1	8.0
Blocks	28	17
Blocks per game	3.5	2.1
Winning streak	0	-
Home win streak	0	-
Attendance	209	50
Home games-Avg/Game	5-42	3-17
Neutral site-Avg/Game	-	0-0

Team Results

Date	Opponent		Score	Att.
11/25/2020	Indiana St.	W	68-49	103
12/02/2020	Valparaiso	L	59-62	0
12/06/2020	Omaha	W	53-50	106
12/10/2020	at Nebraska	L	72-78	0
12/31/2020	at Indiana	L	56-79	0
01/03/2021	Iowa	L	68-107	0
01/07/2021	Ohio St.	L	55-78	0
01/10/2021	at Michigan	L	50-70	50





2020-21 Illinois Women's Basketball Combined Team Statistics In Conference games

Page 1/1
as of Jan 10, 2021

Game Records

Record	Overall	Home	Away	Neutral
ALL GAMES	0-5	0-2	0-3	0-0
CONFERENCE	0-5	0-2	0-3	0-0
NON-CONFERENCE	0-0	0-0	0-0	0-0

Score by Periods

Team	1st	2nd	3rd	4th	OT	TOT
Illinois	62	63	73	103	0	301
Opponents	114	85	103	110	0	412

Team Box Score

No.	Player				Total		3-Point		F-Throw		Rebounds											
		GP-GS	MIN	AVG	FG-FGA	FG%	3FG-FGA	3FG%	FT-FTA	FT%	OFF	DEF	TOT	AVG	PF	DQ	A	TO	BLK	STL	PTS	AVG
44	MYLES, Kennedi	5-5	142:43	28.5	20-51	.392	0-3	.000	14-18	.778	12	19	31	6.2	16	1	5	15	1	5	54	10.8
11	PEEBLES, Jada	5-5	184:38	36.9	19-67	.284	5-29	.172	9-12	.750	1	9	10	2.0	10	0	10	7	1	5	52	10.4
22	RUBIN, Eva	5-5	131:13	26.2	19-37	.514	0-0	.000	12-18	.667	8	10	18	3.6	13	1	0	7	7	1	50	10.0
32	NYE, Aaliyah	1-0	20:47	20.8	4-10	.400	2-6	.333	0-0	.000	2	0	2	2.0	4	0	1	0	0	2	10	10.0
10	TERRY, Jeanae	5-5	146:24	29.3	15-42	.357	4-15	.267	9-15	.600	9	33	42	8.4	8	0	21	22	2	11	43	8.6
3	AMUSAN, Solape	5-0	81:30	16.3	13-31	.419	7-16	.438	4-4	1.000	6	8	14	2.8	12	0	4	4	1	4	37	7.4
0	EPHRAIM, J-Naya	5-4	130:40	26.1	8-31	.258	2-8	.250	8-13	.615	0	11	11	2.2	14	2	13	20	0	3	26	5.2
2	ROBINS, Lyric	5-1	85:25	17.1	8-29	.276	2-14	.143	2-3	.667	4	8	12	2.4	10	0	2	6	0	3	20	4.0
14	LOPES, Geovana	1-0	15:52	15.9	1-3	.333	0-0	.000	0-2	.000	1	0	1	1.0	3	0	0	0	0	1	2	2.0
20	PORTER, Erika	4-0	23:18	5.8	2-2	1.000	0-0	.000	1-2	.500	0	3	3	0.8	1	0	0	2	1	0	5	1.3
13	O'MALLEY, Tara	3-0	11:30	3.8	0-1	.000	0-0	.000	2-2	1.000	0	1	1	0.3	4	0	0	0	0	1	2	0.7
1	PANAGIOTOPOULOU, Nancy	4-0	20:29	5.1	0-2	.000	0-1	.000	0-0	.000	0	2	2	0.5	4	0	0	1	1	0	0	0.0
21	MCQUEEN, Aaliyah	1-0	05:31	5.5	0-1	.000	0-0	.000	0-0	.000	0	2	2	2.0	0	0	0	1	0	0	0	0.0
Team											14	9	23									
Total		5	1000		109-307	.355	22-92	.239	61-89	.685	57	115	172	34.4	99	4	56	85	14	36	301	60.2
Opponents		5	1000		146-313	.466	39-108	.361	81-106	.764	64	146	210	42.0	83	0	84	77	12	40	412	82.4

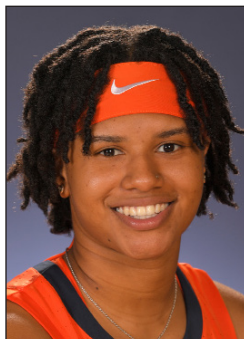
Team Statistics

	ILLINI	OPP
Scoring	301	412
Points per game	60.2	82.4
Scoring margin	-22.2	-
Field goals-att	109-307	146-313
Field goal pct	.355	.466
3 point fg-att	22-92	39-108
3-point FG pct	.239	.361
3-pt FG made per game	4.4	7.8
Free throws-att	61-89	81-106
Free throw pct	.685	.764
F-Throws made per game	12.2	16.2
Rebounds	172	210
Rebounds per game	34.4	42.0
Rebounding margin	-7.6	-
Assists	56	84
Assists per game	11.2	16.8
Turnovers	85	77
Turnovers per game	17.0	15.4
Turnover margin	-1.6	-
Assist/turnover ratio	0.7	1.1
Steals	36	40
Steals per game	7.2	8.0
Blocks	14	12
Blocks per game	2.8	2.4
Winning streak	0	-
Home win streak	0	-
Attendance	0	50
Home games-Avg/Game	2-0	3-17
Neutral site-Avg/Game	-	0-0

Team Results

Date	Opponent		Score	Att.
12/10/2020	at Nebraska	L	72-78	0
12/31/2020	at Indiana	L	56-79	0
01/03/2021	Iowa	L	68-107	0
01/07/2021	Ohio St.	L	55-78	0
01/10/2021	at Michigan	L	50-70	50





J-NAYA EPHRAIM

0

5-9 // SOPHOMORE // GUARD

ST. CROIX, U.S. VIRGIN ISLANDS

SOUTHERN DURHAM

CAREER STATISTICS

CAREER STATISTICS																									
	Total												3-Point			F-Throw			Rebounds						
Year	GP	GS	Min	Avg	FG	FGA	Pct	FG	FGA	Pct	FT	FTA	Pct	Off	Def	Tot	Avg	PF	FO	Ast	TO	Blk	Stl	Pts	Avg
2018-19	28	4	522	18.6	34	96	.354	3	18	.167	25	35	.714	10	63	73	2.6	44	1	37	42	3	15	96	3.4
2019-20	30	16	539	18.0	29	97	.299	3	19	.158	27	45	.600	7	67	74	2.5	40	0	47	50	3	26	88	2.9
2020-21	8	7	224	28.0	15	54	.278	4	17	.235	17	27	.630	2	18	20	2.5	17	2	18	28	1	6	51	6.4
Total	66	27	1285	19.5	78	247	.316	10	54	.185	69	107	.645	19	148	167	2.5	101	3	102	120	7	47	235	3.6

AT ILLINOIS

2019-20 SOPHOMORE

- Appeared in all 30 games for Illinois, earning 16 starts
- Averaged 17.9 minutes played and 2.9 points per game
- Pulled down 2.5 boards per game and ranked third on the team with 1.6 assists per game
- Scored a season-most 10 points in a win over Austin Peay (Nov. 13), hitting 2-of-2 FGs and connecting on a career-best six free throws
- Notched career-highs with nine rebounds and six assists vs. Merrimack (Dec. 10)

2018-19 FRESHMAN

- Appeared in 28 games for Illinois, earning four starts on the season
- Averaged 18.7 minutes played and 3.4 points per game
- Grabbed eight rebounds against Alabama A&M (Nov. 7) in her debut
- Career-best 11 points and three steals at Northwestern 12/31/18
- First career start and career-high five assists in road win at No. 12 Minnesota 11/6/19

HIGH SCHOOL

- Four-time All-Big Eighth Conference
- Two-time All-State
- NCBCA 2017 First Team All-District
- 2017 Big Eight Conference Player of the Year
- RDU All-Star Game
- Represented the Virgin Islands on the U16 and U17 National Teams
- Four-year member of the A/B Honor Roll
- Chose Illinois over Temple and James Madison

PERSONAL

- Daughter of Rodney Ephraim and Vanessa Richardson-Fieulleateau
- Born January 7, 2000
- Has three siblings, J-Meka, John and Rasidi
- Lists Russell Westbrook as her favorite professional athlete
- Major: Undeclared

2020-21 GAME-BY-GAME STATISTICS

Opponent	Date	MIN	FG	FG%	3FG	3%	FT	FT%	OR	DR	REB	AVG	PF	A	T/O	BLK	STL	PTS	AVG	
Indiana State	11/25/20	* 28	2-4	.500	1-1	1.000	4-4	1.000	0	3	3	3.0	0	3	2	1	1	9	9.0	
Valparaiso	12/2/20	* 34	2-8	.250	0-1	.000	3-7	.429	1	2	3	3.0	1	0	2	1	2	7	8.0	
Omaha	12/6/20	* 35	3-11	.273	1-7	.143	2-3	.667	1	2	3	3.0	2	2	4	0	0	9	8.3	
at Nebraska	12/10/20	* 33	4-12	.333	1-2	.500	2-3	.667	0	4	4	3.3	5	4	2	0	2	11	9.0	
Michigan	12/19/20	PPD																		
S. Illinois	12/22/210	PPD																		
at Indiana	12/31/20	13	1-4	.250	0-0	.000	2-2	1.000	0	0	0	2.6	5	1	4	0	0	4	8.0	
Iowa	1/3/21	* 21	0-3	.000	0-2	.000	3-6	.500	0	1	1	2.3	0	2	4	0	0	3	7.2	
Ohio State	1/7/21	* 28	2-4	.500	0-1	.000	0-0	.000	0	3	3	2.4	2	3	6	0	0	4	6.7	
at Michigan	1/10/21	* 32	1-8	.125	1-3	.333	1-2	.500	0	3	3	2.5	2	3	4	0	1	4	6.4	
Michigan St.	1/14/21																			
at Northwestern	1/21/21																			
Nebraska	1/25/21																			
Penn State	1/28/21																			
at Wisconsin	1/31/21																			
at Michigan St.	2/4/21																			
Purdue	2/7/21																			
at Minnesota	2/10/21																			
Indiana	2/14/21																			
at Maryland	2/17/21																			
at Rutgers	2/20/21																			
Northwestern	2/25/21																			
at Purdue	2/28/21																			
Minnesota	3/5/21																			
Total		7	224	15-54	.278	4-17	.235	17-27	.630	2	18	20	2.5	17	18	28	1	6	51	6.4

CAREER HIGHS

Pts:	11 (2x, last at Nebraska 12/10/20)
Rebs:	9 (vs. Merrimack, 12/10/19)
FGM:	5 (at Northwestern, 12/31/18)
FGA:	12 (at Nebraska 12/10/20)
3FGM:	1 (9x, last at Nebraska, 12/10/20)
3FGA:	7 (vs. Omaha, 12/6/20)
FTM:	6 (vs. Austin Peay, 11/13/19)
FTA:	8 (vs. Austin Peay, 11/13/19)
Ast:	6 (vs. Merrimack, 12/10/19)
Blk:	1 (6x, last vs. Valparaiso, 12/2/20)
Stl:	3 (2x, last vs. Bryant, 11/24/19)
Min:	35 (vs. Omaha, 12/6/20)





NANCY PANAGIOTOPOULOU

6-3 // REDSHIRT JUNIOR // FORWARD

ATHENS, GREECE

AMERICAN COMMUNITY SCHOOLS OF ATHENS

CAREER STATISTICS

Year	GP	GS	Min	Avg	FG	Total FGA	Pct	3-Point FG	3-Point FGA	Pct	FT	F-Throw FTA	Pct	Off	Def	Tot	Avg	PF	F0	Ast	TO	Blk	Stl	Pts	Avg
2017-18	-	-	-	-	-	-	-	-	-	-	-	-	-	-	-	-	-	-	-	-	-	-	-	-	-
2018-19	-	-	-	-	-	-	-	-	-	-	-	-	-	-	-	-	-	-	-	-	-	-	-	-	-
2019-20	8	0	45	5.6	4	6	.667	0	0	.000	1	2	.500	0	6	6	0.8	7	0	0	2	0	0	9	1.1
2020-21	7	0	41	6.3	0	3	.000	0	2	.000	0	0	.000	1	3	4	0.6	4	0	0	1	1	0	0	0.0
Total	15	0	86	5.7	4	9	.444	0	2	.000	1	2	.500	1	9	10	0.7	11	0	0	3	1	0	9	0.6

HONORS

- 2019 Academic All-Big Ten
- 2020 Academic All-Big Ten

AT ILLINOIS

2019-20 – REDSHIRT-SOPHOMORE

- Appeared in nine games for the Orange and Blue
- Averaged 5.1 minutes per contest
- Made Illini debut vs. No. 20 Maryland (Jan. 23), tallying season-bests with four points and four rebounds in 11 minutes
- Missed first 17 games of the season due to injury suffered during the preseason

2018-19 – REDSHIRT-FRESHMAN

- Did not appear in a game
- Missed season due to injury

2017-18 – FRESHMAN

- Did not appear in a game

HIGH SCHOOL

- Represented Greece in the 2015 FIBA U16 Women's European Championship
- Represented Greece in the 2016 FIBA U18 Women's European Championship
- 2016 American Community Schools of Athens Player of the Year
- Played club basketball in Kallitheas, Greece for team Ikaros and for Kronos Agios Dimitriou
- Led Kronos to the Pan-hellenic Final Four twice
- Two-time Regional Champion with Kronos
- High school team MVP in 2016
- Earned High Honor Roll and Honor Roll status in all semesters of high school

PERSONAL

- Full name is Athanasia Panagiotopoulou-Andritsopoulou
- Pronounced Ah-tha-NA-see-uh Pa-na-yo-toe-pou-lou Ahn-dreet-so-pou-lou
- Daughter of Athanasios Panagiotopoulos and Vasiliki Andritsopoulou
- Born February 9, 1999
- One brother, Dimitris-Theodore
- Major: Recreation, Sport & Tourism

2020-21 GAME-BY-GAME STATISTICS

Opponent	Date	MIN	FG	FG%	3FG	3%	FT	FT%	OR	DR	REB	AVG	PF	A	T/O	BLK	STL	PTS	AVG
Indiana State	11/25/20	7	0-1	.000	0-1	.000	0-0	.000	0	0	0	0.0	0	0	0	0	0	0	0.0
Valparaiso	12/2/20	11	0-0	.000	0-0	.000	0-0	.000	0	1	1	0.5	0	0	0	0	0	0	0.0
Omaha	12/6/20	2	0-0	.000	0-0	.000	0-0	.000	1	0	1	0.7	0	0	0	0	0	0	0.0
at Nebraska	12/10/20	3A	0-0	.000	0-0	.000	0-0	.000	0	0	0	0.5	0	0	0	0	0	0	0.0
Michigan	12/19/20	PPD																	
S. Illinois	12/22/20	PPD																	
at Indiana	12/31/20	7	0-0	.000	0-0	.000	0-0	.000	0	1	1	0.6	1	0	0	0	0	0	0.0
Iowa	1/3/21	DNP																	
Ohio State	1/7/21	9	0-2	.000	0-1	.000	0-0	.000	0	1	1	0.7	1	0	1	1	0	0	0.0
at Michigan	1/10/21	2	0-0	.000	0-0	.000	0-0	.000	0	0	0	0.6	2	0	0	0	0	0	0.0
Michigan St.	1/14/21																		
at Northwestern	1/21/21																		
Nebraska	1/25/21																		
Penn State	1/28/21																		
at Wisconsin	1/31/21																		
at Michigan St.	2/4/21																		
Purdue	2/7/21																		
at Minnesota	2/10/21																		
Indiana	2/14/21																		
at Maryland	2/17/21																		
at Rutgers	2/20/21																		
Northwestern	2/25/21																		
at Purdue	2/28/21																		
Minnesota	3/5/21																		
Total		41	0-3	.000	0-2	.000	0-0	.000	1	3	4	0.6	4	0	1	1	0	0	0.0

CAREER HIGHS

Pts:	4 (vs. #20 Maryland, 1/23/20)
Rebs:	4 (vs. #20 Maryland, 1/23/20)
FGM:	2 (vs. #20 Maryland, 1/23/20)
FGA:	2 (2x, last vs. Ohio State, 1/7/21)
3FGM:	--
3FGA:	1 (2x, last vs. Ohio State, 1/7/21)
FTM:	1 (at #14 Northwestern, 2/29/20)
FTA:	2 (at #14 Northwestern, 2/29/20)
Ast:	--
Blk:	1 (vs. Ohio State, 1/7/21)
Stl:	--
Min:	11 (2x, last vs.. Valparaiso, 12/2/20)





LYRIC ROBINS

2

5-11 // SENIOR // FORWARD

PLANO, TEXAS

PLANO WEST

CAREER STATISTICS

Year	GP	GS	Min	Avg	FG	Total FGA	Pct	FG	3-Point FGA	Pct	FT	F-Throw FTA	Pct	Off	Def	Tot	Avg	PF	F0	Ast	TO	Blk	Stl	Pts	Avg
2017-18	23	0	190	8.3	18	66	.273	1	10	.100	11	16	.688	10	25	35	1.5	26	1	6	17	0	8	48	2.1
2018-19	26	0	101	3.9	10	27	.370	2	8	.250	4	5	.800	7	8	15	0.6	17	0	5	8	0	0	26	1.0
2019-20	12	0	57	4.8	4	11	.364	1	5	.200	1	6	.167	3	6	9	0.8	10	0	0	6	3	3	10	0.8
2020-21	8	1	121	15.1	8	36	.222	2	18	.111	3	5	.600	6	10	16	2.0	14	0	2	7	0	3	21	2.6
Total	69	1	469	6.8	40	140	.286	6	41	.146	19	32	.594	26	49	75	1.1	67	1	13	38	3	14	105	1.5

HONORS

- 2019 Academic All-Big Ten

AT ILLINOIS

2019-20—JUNIOR

- Appeared in 12 games for the Illini
- Averaged 0.8 points, 0.8 rebounds while playing 4.8 minutes per contest
- Played a season-high 13 minutes in the Illini's season-opening win over Chicago State (Nov. 5)
- Notched a season-best five points at Iowa (Dec. 31)

2018-19—SOPHOMORE

- Appeared in 26 games
- Played a season-high 17 minutes against Penn State 2/24/19
- Career-high eight points at Iowa 2/14/19

2017-18—FRESHMAN

- Made 23 appearances
- Career-high eight points against Iowa 1/7/18
- Career-high five rebounds against Nebraska 1/10/18

HIGH SCHOOL

- 2017 McDonald's All-American Nominee
- Averaged 11.3 points and 7.0 rebounds per game as a senior
- Led Plano West to a 25-9 record as senior
- 2016 and 2017 All-Conference Small Forward
- 2017 6-6A All-District First Team selection
- Played in the Nike Elite Youth Basketball League for DFW Elite

PERSONAL

- Born February 18, 1999
- Daughter of George and Tanisha Robins
- Three siblings, Sariah, Mykah and Elyan
- Lists Kawhi Leonard as her favorite athlete
- Major: Community Psychology

2020-21 GAME-BY-GAME STATISTICS

Opponent	Date	MIN	FG	FG%	3FG	3%	FT	FT%	OR	DR	REB	AVG	PF	A	T/O	BLK	STL	PTS	AVG	
Indiana State	11/25/20	8	0-0	.000	0-0	.000	1-2	.500	0	1	1	1.0	2	0	1	0	0	1	1.0	
Valparaiso	12/2/20	16	0-5	.000	0-2	.000	0-0	.000	1	0	1	1.0	2	0	0	0	0	0	0.5	
Omaha	12/6/20	10	0-2	.000	0-2	.000	0-0	.000	1	1	2	1.3	0	0	0	0	0	0	0.3	
at Nebraska	12/10/20	9	0-1	.000	0-1	.000	0-0	.000	0	1	1	1.3	1	1	0	0	0	0	0.3	
Michigan	12/19/20	PPD																		
S. Illinois	12/22/210	PPD																		
at Indiana	12/31/20 *	26	3-10	.300	0-2	.000	1-1	1.000	2	0	2	1.4	1	0	2	0	0	7	1.6	
Iowa	1/3/21	27	2-9	.222	1-5	.200	1-2	.500	1	4	5	2.0	4	1	3	0	0	6	2.3	
Ohio State	1/7/21	13	0-3	.000	0-2	.000	0-0	.000	1	1	2	2.0	2	0	1	0	1	0	2.0	
at Michigan	1/10/21	11	3-6	.500	1-4	.250	0-0	.000	0	2	2	2.0	2	0	0	0	2	7	2.6	
Michigan St.	1/14/21																			
at Northwestern	1/21/21																			
Nebraska	1/25/21																			
Penn State	1/28/21																			
at Wisconsin	1/31/21																			
at Michigan St.	2/4/21																			
Purdue	2/7/21																			
at Minnesota	2/10/21																			
Indiana	2/14/21																			
at Maryland	2/17/21																			
at Rutgers	2/20/21																			
Northwestern	2/25/21																			
at Purdue	2/28/21																			
Minnesota	3/5/21																			
Total		1	120	8-36	.222	2-18	.111	3-5	.600	6	10	16	2.0	14	2	7	0	3	21	2.6

CAREER HIGHS

Pts: 8 (2x, last at Iowa, 2/14/19)
Rebs: 5 (vs. Iowa, 1/3/21)
FGM: 4 (at Iowa, 2/14/19)
FGA: 10 (at Indiana, 12/31/20)
3FGM: 1 (6x, last at No. 15 Michigan 1/10/21)
3FGA: 5 (vs. Iowa, 1/3/21)
FTM: 2 (5x, last vs. Eastern Michigan, 12/1/18)
FTA: 4 (vs. Michigan State, 1/16/18)
Ast: 1 (13x, last vs. Iowa, 1/3/21)
Blk: 1 (3x, last at Iowa, 12/31/19)
Stl: 2 (2x, last at No. 15 Michigan 1/10/21)
Min: 27 (vs. Iowa, 1/3/21)





SOLAPE AMUSAN

3

6-1 // SOPHOMORE // FORWARD

WOODBURY, MINNESOTA

WOODBURY H.S. / IOWA WESTERN C.C.

CAREER STATISTICS

Year	GP	GS	Min	Avg	FG	Total FGA	Pct	FG	3-Point FGA	Pct	FT	F-Throw FTA	Pct	Off	Def	Rebounds Tot	Avg	PF	F0	Ast	TO	Blk	Stl	Pts	Avg
2020-21	8	0	114	14.3	15	42	.357	7	23	.304	6	10	.600	7	12	19	2.4	16	0	4	6	3	4	43	5.4
Total	8	0	114	14.3	15	42	.357	7	23	.304	6	10	.600	7	12	19	2.4	16	0	4	6	3	4	43	5.4

IOWA WESTERN

2019-20 – FRESHMAN

- Played in 27 games with eight starts as a freshman for the Reivers
- Averaged 8.3 points and 4.4 rebounds on .372 shooting from the floor, including nearly 31% from three-point range
- Scored in double-figures eight times
- Posted a career-high 18 points in a 73-56 win at Cloud County C.C. (2/2/20)
- Recorded one double-double with 15 points and a career-high 12 rebounds in a win at Mineral Area College (12/14/19)

HIGH SCHOOL

- Averaged 12.4 points and 8.0 rebounds per game in her senior season at Woodbury
- Two-time Suburban East All-Conference honoree
- Was ranked among the top 100 players in the class of 2019 by Prep Girls Hoops
- Played for the Minnesota Fury for two seasons

PERSONAL

- Daughter of Kolawole and Patricia Amusan
- Born December 3, 2000
- Has three brothers: Korede, Kolade, and Kayode.
- Has three brothers: Korede, Kolade, and Kayode.
- Brother Kolade Amusan plays linebacker for the Davenport University football
- Lists Maya Moore as her favorite athlete
- Majoring in kinesiology with a minor in business

2020-21 GAME-BY-GAME STATISTICS

Opponent	Date	MIN	FG	FG%	3FG	3%	FT	FT%	OR	DR	REB	AVG	PF	A	T/O	BLK	STL	PTS	AVG
Indiana State	11/25/20	10	1-5	.200	0-3	.000	0-0	.000	1	0	1	1.0	3	0	0	1	0	2	2.0
Valparaiso	12/2/20	16	1-5	.200	0-3	.000	2-6	.333	0	3	3	2.0	0	0	2	1	0	4	3.0
Omaha	12/6/20	5	0-1	.000	0-1	.000	0-0	.000	0	1	1	1.7	1	0	0	0	0	0	2.0
at Nebraska	12/10/20	14	5-8	.625	3-5	.600	0-0	.000	1	0	1	1.5	3	1	0	1	0	13	4.8
Michigan	12/19/20	PPD																	
S. Illinois	12/22/210	PPD																	
at Indiana	12/31/20	23	2-8	.250	1-3	.333	2-2	1.000	2	4	6	2.4	4	3	2	0	3	7	5.2
Iowa	1/3/21	14	3-7	.429	2-4	.500	2-2	1.000	2	3	5	2.8	1	0	0	0	0	10	6.0
Ohio State	1/7/21	21	3-8	.375	1-4	.250	0-0	.000	0	1	1	2.6	2	0	1	0	1	7	6.1
at Michigan	1/10/21	11	0-0	.000	0-0	.000	0-0	.000	1	0	1	2.4	2	0	1	0	0	0	5.4
Michigan St.	1/14/21																		
at Northwestern	1/21/21																		
Nebraska	1/25/21																		
Penn State	1/28/21																		
at Wisconsin	1/31/21																		
at Michigan St.	2/4/21																		
Purdue	2/7/21																		
at Minnesota	2/10/21																		
Indiana	2/14/21																		
at Maryland	2/17/21																		
at Rutgers	2/20/21																		
Northwestern	2/25/21																		
at Purdue	2/28/21																		
Minnesota	3/5/21																		
Total		114	15-42	.357	7-23	.304	6-10	.600	7	12	19	2.4	16	4	6	3	4	43	5.4

CAREER HIGHS

Pts: 13 (at Nebraska 12/10/20)

Rebs: 6 (at Indiana, 12/31/20)

FGM: 5 (at Nebraska 12/10/20)

FGA: 8 (3x, last vs. Ohio State, 1/7/21)

3FGM: 3 (at Nebraska 12/10/20)

3FGA: 5 (at Nebraska 12/10/20)

FTM: 2 (3x, last vs. Iowa, 1/3/21)

FTA: 6 (vs. Valparaiso, 12/2/20)

Ast: 3 (at Indiana, 12/31/20)

Blk: 1 (3x, last at Nebraska 12/10/20)

Stl: 3 (at Indiana, 12/31/20)

Min: 23 (at Indiana, 12/31/20)





JEANAE TERRY

10

5-11 // SOPHOMORE // GUARD

DETROIT, MICHIGAN

WAYNE MEMORIAL

CAREER STATISTICS

Year	GP	GS	Min	Avg	FG	Total			3-Point			F-Throw		Rebounds										Pts	Avg
						FGA	Pct	FT	FG	FGA	Pct	FTA	Pct	Off	Def	Tot	Avg	PF	FO	Ast	TO	Blk	Stl		
2019-20	30	11	691	23.0	65	225	.289	40	15	57	.263	66	.606	34	79	113	3.8	55	1	91	50	17	35	185	6.2
2020-21	8	8	237	29.6	30	77	.390	17	8	27	.296	25	.680	20	50	70	8.8	12	0	29	32	3	16	85	10.6
Total	38	19	928	24.4	95	302	.315	57	23	84	.274	91	.626	54	129	183	4.8	67	1	120	82	20	51	270	7.1

AT ILLINOIS

2020-21 – SOPHOMORE

- Opened season with career-high 24 points, and matched a personal best with eight rebounds, vs. Indiana State (11/25).

2019-20 – FRESHMAN

- Played in all 30 games, earning starts in the final 11 contest
- Recorded a team-leading 91 assists (3.03 per game)
- With only 50 turnovers, she also paced the team with an assist-to-turnover ratio of 1.82, sixth in the Big Ten and 81st nationally
- Her assist-to-turnover ratio ranked sixth among NCAA Division I freshmen
- Ranked second on the team with 113 rebounds (3.8 rpg), posting five games as the team's top rebounder
- Her seven assists at Penn State (Feb. 9) marked the most by an Illini in 2019-20...Notched career highs with 15 points, five steals, and three three-pointers vs. #20 Indiana (Feb. 13)
- Blocked four shots in her Illinois debut against Chicago State (Nov. 5), the highest single-game block total on the team
- Tallied seven games in double-figures scoring

HIGH SCHOOL

- Ranked as the No. 18 guard in Class of 2019 by ESPN Hoopgurlz
- Two-time Class A All-State
- Led Wayne Memorial to its first Regional Championship in 2018 and a Class A Final Four appearance
- Averaged 17.1 points, 7.0 rebounds and 5.8 assists as a senior
- Recipient of the the BGCSM Entrepreneurship Award

PERSONAL

- Daughter of Tomilia Terry
- Born October 11, 2001
- One brother, James
- Lists Maya Moore as her favorite athlete because of her aggressiveness
- Major: Community Health

2020-21 GAME-BY-GAME STATISTICS

Opponent	Date	MIN	FG	FG%	3FG	3%	FT	FT%	OR	DR	REB	AVG	PF	A	T/O	BLK	STL	PTS	AVG	
Indiana State	11/25/20	* 28	8-10	.800	3-4	.750	5-6	.833	2	6	8	8.0	2	1	2	1	3	24	24.0	
Valparaiso	12/2/20	* 32	6-18	.333	1-6	.167	3-4	.750	5	8	13	10.5	1	3	3	0	0	16	20.0	
Omaha	12/6/20	* 28	1-7	.143	0-2	.000	0-0	.000	4	3	7	9.3	1	4	5	0	2	2	14.0	
at Nebraska	12/10/20	* 15	1-4	.250	0-1	.000	1-2	.500	1	6	7	8.8	0	2	0	1	3	3	11.3	
Michigan	12/19/20	PPD																		
S. Illinois	12/22/210	PPD																		
at Indiana	12/31/20	* 29	0-4	.000	0-1	.000	2-4	.500	3	8	11	9.2	1	3	5	0	0	2	9.4	
Iowa	1/3/21	* 32	4-6	.667	0-1	.000	1-4	.250	2	6	8	9.0	3	8	2	0	2	9	9.3	
Ohio State	1/7/21	* 35	4-12	.333	3-6	.500	1-1	1.000	0	10	10	9.1	2	3	8	1	3	12	9.7	
at Michigan	1/10/21	* 38	6-16	.375	1-6	.167	4-4	1.000	3	3	6	8.8	2	5	7	0	3	17	10.6	
Michigan St.	1/14/21																			
at Northwestern	1/21/21																			
Nebraska	1/25/21																			
Penn State	1/28/21																			
at Wisconsin	1/31/21																			
at Michigan St.	2/4/21																			
Purdue	2/7/21																			
at Minnesota	2/10/21																			
Indiana	2/14/21																			
at Maryland	2/17/21																			
at Rutgers	2/20/21																			
Northwestern	2/25/21																			
at Purdue	2/28/21																			
Minnesota	3/5/21																			
Total		8	237	30-77	.390	8-27	.296	17-25	.680	20	50	70	8.8	12	29	32	3	16	85	10.6

CAREER HIGHS

Pts:	24 (vs. Indiana State, 11/25/20)
Rebs:	13 (vs. Valparaiso, 12/2/20)
FGM:	8 (vs. Indiana State, 11/25/20)
FGA:	18 (vs. Valparaiso, 12/2/20)
3FGM:	3 (3x, last vs. Ohio State, 1/7/21)
3FGA:	6 (3x, last vs. Ohio State, 1/7/21)
FTM:	5 (vs. Indiana State, 11/25/20)
FTA:	7 (vs. #20 Maryland, 1/23/20)
Ast:	8 (vs. Iowa, 1/3/21)
Blk:	4 (vs. Chicago State, 11/05/19)
Stl:	5 (vs. #20 Indiana, 02/13/20)
Min:	38 (at No. 15 Michigan 1/10/21)





JADA PEEBLES

11

5-10 // SOPHOMORE // GUARD

RALEIGH, NORTH CAROLINA

WAKEFIELD

CAREER STATISTICS

					Total		3-Point			F-Throw			Rebounds													
Year	GP	GS	Min	Avg	FG	FGA	Pct	FG	FGA	Pct	FT	FTA	Pct	Off	Def	Tot	Avg	PF	FO	Ast	TO	Blk	Stl	Pts	Avg	
2019-20	27	11	541	20.0	52	145	.359	13	37	.351	29	43	.674	4	23	27	1.0	19	0	34	28	2	31	146	5.4	
2020-21	8	8	279	34.9	30	94	.319	8	40	.200	15	18	.833	1	14	15	1.9	13	0	17	14	4	9	83	10.4	
Total	35	19	820	23.4	82	239	.343	21	77	.273	44	61	.721	5	37	42	1.2	32	0	51	42	6	40	229	6.5	

AT ILLINOIS

2020-21 – SOPHOMORE

- Led the team with five assists in a season-opening win over Indiana State.

2019-20 – FRESHMAN

- Played in 27 of Illinois' games, earning 11 starts
- Averaged 5.4 points and 1.0 rebounds in 20 minutes per game
- Notched five games in double-figures scoring
- Tallied 17 points, including a season-most three three-pointers in an Illini win vs. Holy Cross (Nov. 9)
- Recorded season-best totals with 18 points and five rebounds in 38 minutes vs Austin Peay (Nov. 13)
- Dished out a personal-best six assists vs. Merrimack (Dec. 10)
- Ranked fourth on the team in three-point shooting (.351, 13-for-37) and free-throw shooting (.674, 29-for-43)
- Third on the team with 1.1 steals and fifth with 1.3 assists per game

HIGH SCHOOL

- Ranked the No. 104 player in the country by Prospects Nation
- Northern Atlantic Defensive Player of the Year
- North Carolina vs. South Carolina All-Star Game
- Three-time Northern Atlantic All-Conference Selection
- 2017-18 All-Metro Team
- Scored 1000th career point during her junior season at Wakefield High School
- Averaged 16.0 points, 4.0 rebounds, 3.0 assists and 3.0 steals as a junior

PERSONAL

- Daughter of Danny and Monique Peebles
- Born October 27, 2000
- Three siblings, Dylan, Mia and DJ
- Brother, Dylan, is on the track and field team at LSU
- Father, Danny, played football at N.C. State and in the NFL for the Tampa Bay Buccaneers and Cleveland Browns
- Major: Undeclared

2020-21 GAME-BY-GAME STATISTICS

Opponent	Date	MIN	FG	FG%	3FG	3%	FT	FT%	OR	DR	REB	AVG	PF	A	T/O	BLK	STL	PTS	AVG
Indiana State	11/25/20	* 30	1-7	.143	0-2	.000	4-4	1.000	0	2	2	2.0	0	5	3	0	1	6	6.0
Valparaiso	12/2/20	* 31	5-9	.556	0-3	.000	0-0	.000	0	1	1	1.5	2	1	3	1	0	10	8.0
Omaha	12/6/20	* 33	5-11	.455	3-6	.500	2-2	1.000	0	2	2	1.7	1	1	1	2	3	15	10.3
at Nebraska	12/10/20	* 37	4-13	.308	3-8	.375	5-7	.714	0	1	1	1.5	3	5	0	0	0	16	11.8
Michigan	12/19/20	PPD																	
S. Illinois	12/22/210	PPD																	
at Indiana	12/31/20	* 36	5-12	.417	1-5	.200	0-0	.000	0	1	1	1.4	2	0	4	0	2	11	11.6
Iowa	1/3/21	* 37	4-18	.222	0-6	.000	2-2	1.000	0	2	2	1.5	1	2	2	0	3	10	11.3
Ohio State	1/7/21	* 35	4-13	.308	1-5	.200	2-3	.667	1	2	3	1.7	2	2	1	0	0	11	11.3
at Michigan	1/10/21	* 40	2-11	.182	0-5	.000	0-0	.000	0	3	3	1.9	2	1	0	1	0	4	10.4
Michigan St.	1/14/21																		
at Northwestern	1/21/21																		
Nebraska	1/25/21																		
Penn State	1/28/21																		
at Wisconsin	1/31/21																		
at Michigan St.	2/4/21																		
Purdue	2/7/21																		
at Minnesota	2/10/21																		
Indiana	2/14/21																		
at Maryland	2/17/21																		
at Rutgers	2/20/21																		
Northwestern	2/25/21																		
at Purdue	2/28/21																		
Minnesota	3/5/21																		
Total		8	279	30-94	.319	8-40	.200	15-18	.833	1	14	15	1.9	13	17	4	9	83	10.4

CAREER HIGHS

Pts:	18 (vs. Austin Peay, 11/13/19)
Rebs:	5 (vs. Austin Peay, 11/13/19)
FGM:	7 (vs. Austin Peay, 11/13/19)
FGA:	18 (vs. Iowa, 1/3/21)
3FGM:	3 (3x, last vs. Omaha, 12/6/20)
3FGA:	8 (at Nebraska 12/10/20)
FTM:	5 (2x, last at Nebraska 12/10/20)
FTA:	7 (at Nebraska 12/10/20)
Ast:	6 (vs. Merrimack, 12/10/19)
Blk:	2 (vs. Omaha, 12/6/20)
Stl:	4 (vs Illinois St., 11/16/19)
Min:	40 (at No. 15 Michigan 1/10/21)





TARA O'MALLEY 13

5-6 // JUNIOR // GUARD

CHICAGO, ILLINOIS

MOTHER McAULEY HIGH SCHOOL

CAREER STATISTICS

Year	GP	GS	Min	Avg	FG	Total FGA	Pct	FG	3-Point FGA	Pct	FT	F-Throw FTA	Pct	Off	Def	Tot	Avg	PF	F0	Ast	TO	Blk	Stl	Pts	Avg
2020-21	4	0	13	3.3	0	1	.000	0	0	.000	2	2	1.000	0	1	1	0.3	4	0	0	0	0	1	2	0.5
Total	4	0	13	3.3	0	1	.000	0	0	.000	2	2	1.000	0	1	1	0.3	4	0	0	0	0	1	2	0.5

HIGH SCHOOL

- A four-sport standout at Mother McAuley, lettering 11 times in basketball (4), lacrosse (3), cross country (3) and golf (1)
- Member of the 1,000-point club
- Averaged 15 points and five assists per game while shooting 90 percent from the free-throw line
- Four-time all-conference honoree
- Earned all-state second team honors and Southtown Star Player of the Year in 2018
- Led the Mighty Macs to the 2018 sectional title.
- Four-year honor roll member
- Member of the National Honors Society, National English Honors Society and National Spanish Honors Society
- Graduated from the Live Like John Service and Leadership Institute
- Played for AAU club Mac Irvin Lady Fire from 2008-17

PERSONAL

- Born August 21, 2000
- Daughter of Tom and Katie O'Malley
- Is the fifth of eight children
- Her seven siblings include: brothers Ryan and Brennan, and sisters Courtney, Molly, Shea, Annie and Megan
- Is studying community recreation, sport and tourism
- Lists golfing, running, and spending time with family and friends as her hobbies
- Recipient of the Chick Evans Caddie Scholarship, a full tuition and housing scholarship for golf caddies provided annually to approximately 1,000 scholars at universities across the country

2020-21 GAME-BY-GAME STATISTICS

Opponent	Date	MIN	FG	FG%	3FG	3%	FT	FT%	OR	DR	REB	AVG	PF	A	T/O	BLK	STL	PTS	AVG
Indiana State	11/25/20	1	0-0	.000	0-0	.000	0-0	.000	0	0	0	0.0	0	0	0	0	0	0	0.0
Valparaiso	12/2/20	DNP																	
Omaha	12/6/20	DNP																	
at Nebraska	12/10/20	DNP																	
Michigan	12/19/20	PPD																	
S. Illinois	12/22/210	PPD																	
at Indiana	12/31/20	6	0-0	.000	0-0	.000	0-0	.000	0	0	0	0.0	1	0	0	0	1	0	0.0
Iowa	1/3/21	3	0-0	.000	0-0	.000	2-2	1.000	0	1	1	0.3	1	0	0	0	0	2	0.7
Ohio State	1/7/21	3	0-1	.000	0-0	.000	0-0	.000	0	0	0	0.3	2	0	0	0	0	0	0.5
at Michigan	1/10/21																		
Michigan St.	1/14/21																		
at Northwestern	1/21/21																		
Nebraska	1/25/21																		
Penn State	1/28/21																		
at Wisconsin	1/31/21																		
at Michigan St.	2/4/21																		
Purdue	2/7/21																		
at Minnesota	2/10/21																		
Indiana	2/14/21																		
at Maryland	2/17/21																		
at Rutgers	2/20/21																		
Northwestern	2/25/21																		
at Purdue	2/28/21																		
Minnesota	3/5/21																		
Total		13	0-1	.000	0-0	.000	2-2	1.000	0	1	1	0.3	4	0	0	0	1	2	0.5

CAREER HIGHS

Pts: 2 (vs. Iowa, 1/3/21)

Rebs: 1 (vs. Iowa, 1/3/21)

FGM: --

FGA: --

3FGM: --

3FGA: --

FTM: 2 (vs. Iowa, 1/3/21)

FTA: 2 (vs. Iowa, 1/3/21)

Ast: --

Blk: --

Stl: 1 (at Indiana, 12/31/20)

Min: 6 (at Indiana, 12/31/20)





GEOVANA LOPES

14

6-3 // JUNIOR // FORWARD/CENTER

BATAGUASSU, BRAZIL

ESCOLA ESTADUAL PAULO MENDES SILVA / ODESSA COLLEGE

CAREER STATISTICS

Year	GP	GS	Min	Avg	FG	Total FGA	Pct	FG	3-Point FGA	Pct	FT	F-Throw FTA	Pct	Off	Def	Rebounds Tot	Avg	PF	F0	Ast	TO	Blk	Stl	Pts	Avg
2020-21	4	1	64	16.0	9	22	.409	0	0	.000	2	7	.286	6	6	12	3.0	9	0	4	6	0	3	20	5.0
Total	4	1	64	16.0	9	22	.409	0	0	.000	2	7	.286	6	6	12	3.0	9	0	4	6	0	3	20	5.0

AT ILLINOIS

2020-21 – JUNIOR

- Impressed in Illini debut, posting 12 points, six boards, two assists and a pair of steals in 15 minutes off the bench.

ODESSA COLLEGE

- Helped Odessa (Texas) College to back-to-back NJCAA Tournament berths including an Elite Eight appearance in 2018-19 and an at-large bid in 2019-20 prior to the tournament's cancellation
- Earned 2020 All-Western Junior College Athletic Conference honorable mention honors
- As a sophomore in 2019-20, started 18 of 29 games for the Wranglers and averaged 7.3 points, 6.4 rebounds and 1.1 assists
- Played in 29 game with eight starts as a freshman in 2018-19, averaging 3.9 points and 3.2 rebounds
- Recorded four career double-doubles including career highs of 16 points and 17 rebounds in a victory over Howard College (2/13/20)

HIGH SCHOOL/INTERNATIONAL

- Graduated from Escola Estadual Paulo Mendes Silva
- Competed for club team Presidente Venceslau
- Played for the Brazil National Team in five FIBA/FIBA Zones events
- Won gold medals at both the 2014 South American U15 Championship for Women and the 2015 South American U17 Championship for Women
- Earned silver at the 2015 FIBA Americas U16 Championship for Women
- Took home bronze at the 2016 FIBA Americas U18 Championship for Women
- Finished 13th at the 2016 FIBA U17 World Championship
- Pulled down a game-high 13 rebounds in Brazil's 72-63 semifinal victory over Team USA at the 2015 FIBA Americas U16 Championship, the first loss in U16 history for the U.S.

PERSONAL

- Daughter of Luciano Dias Lopes and Adriana Cristina F. Lopes
- Born Jan. 1, 1999
- Has a younger brother, Felipe
- Lists Brazilian soccer superstar Marta as her favorite athlete
- Hobbies include cooking, traveling and fishing
- Studying psychology at Illinois.

2020-21 GAME-BY-GAME STATISTICS

Opponent	Date	MIN	FG	FG%	3FG	3%	FT	FT%	OR	DR	REB	AVG	PF	A	T/O	BLK	STL	PTS	AVG	
Indiana State	11/25/20	15	5-12	.417	0-0	.000	2-5	.400	2	4	6	6.0	2	2	2	0	2	12	12.0	
Valparaiso	12/2/20	* 24	3-6	.500	0-0	.000	0-0	.000	3	2	5	5.5	1	1	2	0	0	6	9.0	
Omaha	12/6/20	8	0-1	.000	0-0	.000	0-0	.000	0	0	0	3.7	3	1	2	0	0	0	6.0	
at Nebraska	12/10/20	17	1-3	.333	0-0	.000	0-2	.000	1	0	1	3.0	3	0	0	0	1	2	5.0	
Michigan	12/19/20	PPD																		
S. Illinois	12/22/210	PPD																		
at Indiana	12/31/20	DNP																		
Iowa	1/3/21	DNP																		
Ohio State	1/7/21	DNP																		
at Michigan	1/10/21	DNP																		
Michigan St.	1/14/21																			
at Northwestern	1/21/21																			
Nebraska	1/25/21																			
Penn State	1/28/21																			
at Wisconsin	1/31/21																			
at Michigan St.	2/4/21																			
Purdue	2/7/21																			
at Minnesota	2/10/21																			
Indiana	2/14/21																			
at Maryland	2/17/21																			
at Rutgers	2/20/21																			
Northwestern	2/25/21																			
at Purdue	2/28/21																			
Minnesota	3/5/21																			
Total		1	64	9-22	.409	0-0	.000	2-7	.286	6	6	12	3.0	9	4	6	0	3	20	5.0

CAREER HIGHS

Pts:	12 (vs. Indiana State, 11/25/20)
Rebs:	6 (vs. Indiana State, 11/25/20)
FGM:	5 (vs. Indiana State, 11/25/20)
FGA:	12 (vs. Indiana State, 11/25/20)
3FGM:	--
3FGA:	--
FTM:	2 (vs. Indiana State, 11/25/20)
FTA:	5 (vs. Indiana State, 11/25/20)
Ast:	2 (vs. Indiana State, 11/25/20)
Blk:	--
Stl:	2 (vs. Indiana State, 11/25/20)
Min:	24 (vs. Valparaiso, 12/2/20)





ERIKA PORTER

20

6-3 // FRESHMAN // FORWARD

LAWRENCEVILLE, NEW JERSEY

NOTRE DAME H.S.

CAREER STATISTICS

Year	GP	GS	Min	Avg	FG	Total FGA	Pct	FG	3-Point FGA	Pct	FT	F-Throw FTA	Pct	Off	Def	Tot	Avg	PF	FO	Ast	TO	Blk	Stl	Pts	Avg
2020-21	4	0	23	5.8	2	2	1.000	0	0	.000	1	2	.500	0	3	3	0.8	1	0	0	2	1	0	5	1.3
Total	4	0	23	5.8	2	2	1.000	0	0	.000	1	2	.500	0	3	3	0.8	1	0	0	2	1	0	5	1.3

HIGH SCHOOL

- Four-year varsity player at Notre Dame (N.J.) High School where she helped lead the Irish to four consecutive Colonial Valley Conference (CVC) titles and a 76-30 record.
- Named CVC first-team all-conference and won back-to-back CVC Player of the Year honors during her junior (2018-19) and senior seasons (2019-20).
- Also earned 2019 and 2020 Trentonian All-Area first-team honors.
- Opened her senior season by scoring her 1,000th career point in NDHS's victory over Allentown, and closed her career with 1,405 points (13.3 ppg) for the Irish.
- Notched 792 career rebounds, an average of 7.5 boards per contest.
- As a junior in 2018-19, averaged 18.1 points, 9.8 rebounds, and 1.6 blocks per game, and followed that up her senior season with averages of 15.2 points, 8.4 rebounds and 2.3 blocks per contest.
- Scored a career-best 34 points in a victory over Robbinsville (1/17/20).
- Posted 31 career double-doubles, reached double-figures scoring 72 times, and pulled down 10 or more rebounds in 34 games.

PERSONAL

- Daughter of Joseph C. Porter III and Janice L. Porter
- Born May 24, 2002
- Has an older sister, Alexis
- Major is undecided
- Likes eating sushi, hanging with friends, day trips, cooking, and hiking as hobbies.
- Favorite athlete is Breanna Stewart

2020-21 GAME-BY-GAME STATISTICS

Opponent	Date	MIN	FG	FG%	3FG	3%	FT	FT%	OR	DR	REB	AVG	PF	A	T/O	BLK	STL	PTS	AVG
Indiana State	11/25/20	DNP																	
Valparaiso	12/2/20	DNP																	
Omaha	12/6/20	DNP																	
at Nebraska	12/10/20	DNP																	
Michigan	12/19/20	PPD																	
S. Illinois	12/22/210	PPD																	
at Indiana	12/31/20	6	1-1	1.000	0-0	.000	0-0	.000	0	2	2	2.0	0	0	0	0	0	2	2.0
Iowa	1/3/21	13	1-1	1.000	0-0	.000	1-2	.500	0	0	0	1.0	1	0	1	1	0	3	2.5
Ohio State	1/7/21	2	0-0	.000	0-0	.000	0-0	.000	0	0	0	0.7	0	0	0	0	0	0	1.7
at Michigan	1/10/21	2	0-0	.000	0-0	.000	0-0	.000	0	1	1	0.8	0	0	1	0	0	0	1.3
Michigan St.	1/14/21																		
at Northwestern	1/21/21																		
Nebraska	1/25/21																		
Penn State	1/28/21																		
at Wisconsin	1/31/21																		
at Michigan St.	2/4/21																		
Purdue	2/7/21																		
at Minnesota	2/10/21																		
Indiana	2/14/21																		
at Maryland	2/17/21																		
at Rutgers	2/20/21																		
Northwestern	2/25/21																		
at Purdue	2/28/21																		
Minnesota	3/5/21																		
Total		23	2-2	1.000	0-0	.000	1-2	.500	0	3	3	0.8	1	0	2	1	0	5	1.3

CAREER HIGHS

Pts: 3 (vs. Iowa, 1/3/21)
Rebs: 2 (at Indiana, 12/31/20)
FGM: 1 (2x, last vs. Iowa, 1/3/21)
FGA: 1 (2x, last vs. Iowa, 1/3/21)
3FGM: --
3FGA: --
FTM: 1 (vs. Iowa, 1/3/21)
FTA: 2 (vs. Iowa, 1/3/21)
Ast: --
Blk: 1 (vs. Iowa, 1/3/21)
Stl: --
Min: 13 (vs. Iowa, 1/3/21)





AALIYAH McQUEEN

21

5-9 // FRESHMAN // GUARD

FLINT, MICHIGAN

CARMAN-AINSWORTH HIGH SCHOOL

CAREER STATISTICS

Year	GP	GS	Min	Avg	Total		Pct	3-Point		Pct	F-Throw		Pct	Rebounds				PF	FO	Ast	TO	Blk	Stl	Pts	Avg
					FG	FGA		FG	FGA		FT	FTA		Off	Def	Tot	Avg								
2020-21	4	0	24	6.0	0	5	.000	0	2	.000	0	0	.000	0	6	6	1.5	3	0	0	4	0	0	0	0.0
Total	4	0	24	6.0	0	5	.000	0	2	.000	0	0	.000	0	6	6	1.5	3	0	0	4	0	0	0	0.0

AT ILLINOIS

2020-21 – FRESHMAN

- Played 7 minutes and grabbed two rebounds in a reserve roll in her Illini debut vs. Indiana State (11/25)

HIGH SCHOOL

- Ranked as the No. 22 wing in the class of 2020 according to Prospects Nation
- Named Associated Press Division I Girls Basketball All-Michigan first team as a senior, and honorable mention as a junior
- Earned 2019 and 2020 All-Saginaw Valley South first team recognition
- Averaged 15.8 points, 8.1 rebounds, 3.6 assists and 3.4 steals per game as a senior
- Led the 2019-20 Cavaliers to a 19-5 record en route to district and league championships
- Played AAU basketball, alongside Illini teammate Aaliyah Nye, for the Michigan Storm.

PERSONAL

- Daughter of the late Ramone McQueen and Marcia McQueen
- Born February 27, 2002
- Has two older brothers, Ramone McQueen and Rayvon McQueen, an older sister, Raquisha McQueen, and two younger sisters, Mahogany Jones and Rayven McQueen
- Hobbies include listening to music, playing Xbox, and eating

2020-21 GAME-BY-GAME STATISTICS

Opponent	Date	MIN	FG	FG%	3FG	3%	FT	FT%	OR	DR	REB	AVG	PF	A	T/O	BLK	STL	PTS	AVG
Indiana State	11/25/20	7	0-1	.000	0-0	.000	0-0	.000	0	2	2	2.0	0	0	2	0	0	0	0.0
Valparaiso	12/2/20	2	0-0	.000	0-0	.000	0-0	.000	0	1	1	1.5	1	0	1	0	0	0	0.0
Omaha	12/6/20	10	0-3	.000	0-2	.000	0-0	.000	0	1	1	1.3	2	0	0	0	0	0	0.0
at Nebraska	12/10/20	5	0-1	.000	0-0	.000	0-0	.000	0	2	2	1.5	0	0	1	0	0	0	0.0
Michigan	12/19/20	PPD																	
S. Illinois	12/22/210	PPD																	
at Indiana	12/31/20	DNP																	
Iowa	1/3/21	DNP																	
Ohio State	1/7/21	DNP																	
at Michigan	1/10/21	DNP																	
Michigan St.	1/14/21																		
at Northwestern	1/21/21																		
Nebraska	1/25/21																		
Penn State	1/28/21																		
at Wisconsin	1/31/21																		
at Michigan St.	2/4/21																		
Purdue	2/7/21																		
at Minnesota	2/10/21																		
Indiana	2/14/21																		
at Maryland	2/17/21																		
at Rutgers	2/20/21																		
Northwestern	2/25/21																		
at Purdue	2/28/21																		
Minnesota	3/5/21																		
Total		24	0-5	.000	0-2	.000	0-0	.000	0	6	6	1.5	3	0	4	0	0	0	0.0

CAREER HIGHS

Pts: --
Rebs: 2 (2x, last at Nebraska 12/10/20)
FGM: --
FGA: 3 (vs. Omaha, 12/6/20)
3FGM: --
3FGA: 2 (vs. Omaha, 12/6/20)
FTM: --
FTA: --
Ast: --
Blk: --
Stl: --
Min: 10 (vs. Omaha, 12/720)





EVA RUBIN

22

6-5 // SENIOR // CENTER

FLOSSMOOR, ILLINOIS

HOMEWOOD-FLOSSMOOR HIGH SCHOOL / ARIZONA STATE

CAREER STATISTICS

Year	GP	GS	Min	Avg	FG	Total FGA	Pct	3-Point FGA	Pct	FT	F-Throw FTA	Pct	Off	Def	Rebounds Tot	Avg	PF	F0	Ast	TO	Blk	Stl	Pts	Avg
2017-18 (ASU)	13	0	56	4.3	12	24	.500	0	0	6	8	.750	2	4	6	0.5	6	0	1	4	2	1	30	2.3
2018-19 (ASU)	9	0	39	4.3	3	11	.273	0	0	4	8	.500	3	1	4	0.4	6	0	0	3	3	2	10	1.1
ASU Total	22	0	95	4.3	15	35	.429	0	0	10	16	.625	5	5	10	0.5	12	0	1	7	5	3	40	1.8
2020-21 (ILL)	7	7	175	25.0	24	48	.500	0	0	17	23	.739	9	20	29	4.1	19	1	0	13	11	3	65	9.3
ILL Total	7	7	175	25.0	24	48	.500	0	0	17	23	.739	9	20	29	4.1	19	1	0	13	11	3	65	9.3
D1 Total	29	7	270	9.3	39	83	.469	0	0	27	39	.692	14	25	39	1.3	31	1	1	20	16	9	105	3.6

AT ILLINOIS

2020-21 – REDSHIRT JUNIOR

- Tallied career-high marks in minutes (23), rebounds (6) and blocks (4), in Illini debut vs. Indiana State (11/25), eclipsing marks established during her time at Arizona State.

2019-20 – REDSHIRT

- Did not compete per NCAA rules after transferring to Illinois in December

AT ARIZONA STATE

2018-19 – SOPHOMORE

- Played in nine games (4.3 mpg)
- Tied career highs in minutes (11) and points (5) in win over SIU (Nov. 24)
- Came up with career-high 2 steals in win over Louisiana Tech (Dec. 1)

2017-18 – FRESHMAN

- Played in 13 games (4.3 mpg)
- Connected on 50 percent of her field goal attempts (12-24).
- Got into the scoring column in 10 of her 13 appearances, including a season-high 5 points in win over Sacramento State (Nov. 18).
- Closed the season by making 5 of her final 6 shots

HIGH SCHOOL

- A 2017 graduate of Homewood-Flossmoor High School in Flossmoor, Ill.
- Received a four-star grade and was ranked No. 12 at her position by ESPN.com
- Earned Class 3A/4A All-State recognition from the Illinois Basketball Coaches Association and was named to the All-Area and
- All-Conference teams as a senior in 2017. Also earned second-team recognition on the News-Gazette All-States to Girls' Basketball Team
- One of nine players from the state of Illinois nominated for the 2017 McDonald's All-American Game
- Averaged 11 points, nine rebounds and four blocks as a senior in 2017
- Averaged 15 points, eight rebounds and four blocks as a junior in 2016
- Helped lead her squad to a fourth-place finish in the IHSA 4A state tournament in 2015 while tying a Class 4A single-game record with five blocked shots

PERSONAL

- Full name is Eva Julia Rubin
- Born July 10, 1998 in Chicago, Ill.
- Parents are Minson & Nancy Rubin
- Has two siblings (twins): Wesley (13) and Miles (13)
- Has had type 1 diabetes since she was 13
- Is studying community health at Illinois
- Plans to pursue a career in nursing
- Active in several Illini Athletics student-athlete initiatives including the Green Bandana Project, which promotes a supportive environment for student-athletes experiencing mental health stressors
- Also serves as the programming chair for EMPOWER, a group formed at Illinois in the Fall of 2019 with a mission to provide a family oriented-safe space and support personal development for student-athletes of color as a community

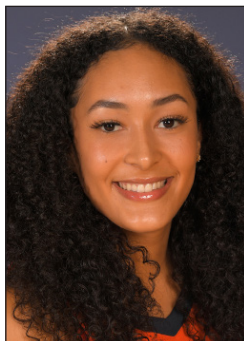
2020-21 GAME-BY-GAME STATISTICS

Opponent	Date	MIN	FG	FG%	3FG	3%	FT	FT%	OR	DR	REB	AVG	PF	A	T/O	BLK	STL	PTS	AVG	
Indiana State	11/25/20	* 23	1-3	.333	0-0	.000	2-2	1.000	0	6	6	6.0	2	0	2	4	1	4	4.0	
Valparaiso	12/2/20	DNP																		
Omaha	12/6/20	* 22	4-8	.500	0-0	.000	3-3	1.000	1	4	5	5.5	4	0	4	0	1	11	7.5	
at Nebraska	12/10/20	* 25	5-11	.455	0-0	.000	3-4	.750	2	5	7	6.0	2	0	3	2	0	13	9.3	
Michigan	12/19/20	PPD																		
S. Illinois	12/22/210	PPD																		
at Indiana	12/31/20	* 23	4-8	.500	0-0	.000	0-0	.000	1	1	2	5.0	2	0	1	0	0	8	9.0	
Iowa	1/3/21	* 29	7-10	.700	0-0	.000	3-5	.600	0	2	2	4.4	1	0	0	0	1	17	10.6	
Ohio State	1/7/21	* 28	1-3	.333	0-0	.000	4-6	.667	3	0	3	4.2	3	0	3	2	0	6	9.8	
at Michigan	1/10/21	* 25	2-5	.400	0-0	.000	2-3	.667	2	2	4	4.1	5	0	0	3	0	6	9.3	
Michigan St.	1/14/21																			
at Northwestern	1/21/21																			
Nebraska	1/25/21																			
Penn State	1/28/21																			
at Wisconsin	1/31/21																			
at Michigan St.	2/4/21																			
Purdue	2/7/21																			
at Minnesota	2/10/21																			
Indiana	2/14/21																			
at Maryland	2/17/21																			
at Rutgers	2/20/21																			
Northwestern	2/25/21																			
at Purdue	2/28/21																			
Minnesota	3/5/21																			
Total		7	175	24-48	.500	0-0	.000	17-23	.739	9	20	29	4.1	19	0	13	11	3	65	9.3

CAREER HIGHS

Pts:	17 (vs. Iowa, 1/3/21)
Rebs:	7 (at Nebraska 12/10/20)
FGM:	7 (vs. Iowa, 1/3/21)
FGA:	11 (at Nebraska 12/10/20)
3FGM:	--
3FGA:	--
FTM:	3 (vs. Ohio State, 1/7/21)
FTA:	6 (vs. Ohio State, 1/7/21)
Ast:	1 (vs. Sac. St [at ASU], 11/18/17)
Blk:	4 (vs. Indiana State, 11/25/20)
Stl:	2 (vs. La. Tech [at ASU], 12/1/18)
Min:	29 (vs. Iowa, 1/3/21)





AALIYAH NYE

32

5-11 // SOPHOMORE // GUARD

EAST LANSING, MICHIGAN

EAST LANSING HIGH SCHOOL

CAREER STATISTICS

Year	GP	GS	Min	Avg	FG	Total FGA	Pct	FG	3-Point FGA	Pct	FT	F-Throw FTA	Pct	Off	Def	Tot	Avg	PF	F0	Ast	TO	Blk	Stl	Pts	Avg
2020-21	4	0	59	14.8	8	21	.381	3	11	.273	2	4	.500	5	4	9	2.3	10	0	1	0	1	2	21	5.3
Total	4	0	59	14.8	8	21	.381	3	11	.273	2	4	.500	5	4	9	2.3	10	0	1	0	1	2	21	5.3

AT ILLINOIS

2020-21- FRESHMAN

- Tallied six points, including one three-pointer, and three rebounds in 17 minutes as a reserve in collegiate debut vs. Indiana State (11/25)

HIGH SCHOOL

- 2020 Ms. Basketball runner-up
- Named AP Division 1 Player of the Year, earning back-to-back first-team All-Michigan honors
- Also selected as 2020 Player of the Year by the Lansing State Journal
- Helped East Lansing High School to a Class A state runner-up finish as a sophomore
- Hit a state-record six three-pointers in her high school state championship game
- Averaged 16.1 points and 5.2 rebounds per game to lead the Trojans to a 23-1 mark in her COVID-19-shortened senior season (2019-20)
- Detroit Free Press, Lansing State Journal and Detroit News Dream Team honoree
- Scored 1,370 career points at East Lansing High School, leading the Trojans to a 90-8 overall record
- Played AAU basketball, alongside Illini teammate Aaliyah McQueen, for the Michigan Storm.

PERSONAL

- Daughter of James Nye and LaQueena Douglas
- Born Aug. 14, 2002
- Has two sisters, older sister, Aazhenii, and a twin sister Aashawnti
- Father played football at Albion College
- Lists her hobbies as biking and swimming as hobbies
- Plans to major in engineering
- A proud tribal citizen of the Match-E-Be-Nash-She-Wish Band of Pottawatomi Indians (Gun Lake Tribe)

2020-21 GAME-BY-GAME STATISTICS

Opponent	Date	MIN	FG	FG%	3FG	3%	FT	FT%	OR	DR	REB	AVG	PF	A	T/O	BLK	STL	PTS	AVG
Indiana State	11/25/20	17	2-4	.500	1-2	.500	1-2	.500	2	1	3	3.0	3	0	0	0	0	6	6.0
Valparaiso	12/2/20	8	1-2	.500	0-1	.000	0-0	.000	0	1	1	2.0	3	0	0	1	0	2	4.0
Omaha	12/6/20	14	1-5	.200	0-2	.000	1-2	.500	1	2	3	2.3	0	0	0	0	0	3	3.7
at Nebraska	12/10/20	20	4-10	.400	2-6	.333	0-0	.000	2	0	2	2.3	4	1	0	0	2	10	5.3
Michigan	12/19/20	PPD																	
S. Illinois	12/22/210	PPD																	
at Indiana	12/31/20	DNP																	
Iowa	1/3/21	DNP																	
Ohio State	1/7/21	DNP																	
at Michigan	1/10/21	DNP																	
Michigan St.	1/14/21																		
at Northwestern	1/21/21																		
Nebraska	1/25/21																		
Penn State	1/28/21																		
at Wisconsin	1/31/21																		
at Michigan St.	2/4/21																		
Purdue	2/7/21																		
at Minnesota	2/10/21																		
Indiana	2/14/21																		
at Maryland	2/17/21																		
at Rutgers	2/20/21																		
Northwestern	2/25/21																		
at Purdue	2/28/21																		
Minnesota	3/5/21																		
Total		59	8-21	.381	3-11	.273	2-4	.500	5	4	9	2.3	10	1	0	1	2	21	5.3

CAREER HIGHS

Pts: 10 (at Nebraska 12/10/20)
Rebs: 3 (2x, last vs. Omaha, 12/6/20)
FGM: 4 (at Nebraska 12/10/20)
FGA: 10 (at Nebraska 12/10/20)
3FGM: 2 (at Nebraska 12/10/20)
3FGA: 6 (at Nebraska 12/10/20)
FTM: 1 (vs. Indiana State, 11/25/20)
FTA: 2 (2x, last vs. Omaha, 12/6/20)
Ast: 1 (at Nebraska 12/10/20)
Blk: 1 (vs. Valparaiso, 12/2/20)
Stl: 2 (at Nebraska 12/10/20)
Min: 20 (at Nebraska 12/10/20)





KENNEDY MYLES 44

6-2 // JUNIOR // FORWARD

CINCINNATI, OHIO

WALNUT HILLS HIGH SCHOOL

CAREER STATISTICS

Year	GP	GS	Min	Avg	FG	Total FGA	Pct	FG	3-Point FGA	Pct	FT	F-Throw FTA	Pct	Off	Def	Rebounds Tot	Avg	PF	F0	Ast	TO	Blk	Stl	Pts	Avg
2019-20	29	29	812	28.0	110	288	.382	3	17	.176	36	75	.480	94	157	251	8.7	66	1	33	68	21	61	259	8.9
2020-21	8	8	227	28.4	32	83	.386	0	6	.000	21	31	.677	25	37	62	7.8	25	1	11	21	3	10	85	10.6
Total	37	37	1039	28.1	142	371	.383	3	23	.130	57	106	.538	119	194	313	8.5	91	2	44	89	24	71	344	9.3

HONORS

- Big Ten Freshman of the Week (Dec. 16, 2019)

AT ILLINOIS

2019-20— FRESHMAN

- Tied a career-high with three assists in opener vs. Indiana State (11/25)

2019-20— FRESHMAN

- Played and started in 29 of 30 games as a freshman for Illinois
- Ranked second on the team in scoring (8.9 ppg) and minutes (28.0 mpg) and led the team in rebounding (8.7 rpg), steals (61) and blocks (21)
- Established Illinois freshman records with eight double-doubles
- Also established a freshman record with 251 rebounds, eclipsing the mark set by all-time leading rebounder Jenna Smith (233) as a freshman in 2006-07
- Her 61 steals ranked third all-time among Illini freshmen...Recorded 20 rebounds vs. Evansville (Dec. 15), tied for fifth all-time in Illini history
- Tallied 94 offensive rebounds, tied for 15th all-time for the Orange & Blue
- Tallied double-digits scoring in 14 contests, and pulled down 10+ rebbs on 10 occasions
- Ranked in the top 100 in NCAA Division I in four categories: rebounds per game (8.7, 83rd), steals per game (2.1, 88th), total rebounds (251, 95th), and total steals (61, 91st)
- Led or tied for the team lead in rebounding in 23 contests

HIGH SCHOOL

- Two-year captain at Walnut Hills
- Two-time Eastern Cincinnati Conference Player of the Year (2016-17, 2017-18)
- Four-time All-Eastern Cincinnati Conference
- Led Walnut Hills to three-straight Eastern Cincinnati Conference titles
- Led Walnut Hills to the third round of the OHSAA tournament as a senior
- Averaged 13.6 points, 10.6 rebounds, 1.5 blocked shots and 3.0 steals per game during her senior season
- Led the Eastern Cincinnati Conference in rebounding as a senior
- McDonalds All-American nominee
- 2019 OHSAA North-South All-Star Game
- Honorable mention all-state
- 2018-19 Cincinnati Enquirer Greater Cincinnati/Northern Kentucky second team

PERSONAL

- Daughter of Bill and Janet Myles
- Born July 24, 2001 in Nashville, Tennessee
- Major: Recreation, Sport & Tourism

2020-21 GAME-BY-GAME STATISTICS

Opponent	Date	MIN	FG	FG%	3FG	3%	FT	FT%	OR	DR	REB	AVG	PF	A	T/O	BLK	STL	PTS	AVG
Indiana State	11/25/20	* 26	2-8	.250	0-2	.000	0-2	.000	2	4	6	6.0	3	3	3	1	2	4	4.0
Valparaiso	12/2/20	* 26	6-11	.545	0-0	.000	2-5	.400	4	7	11	8.5	4	1	1	0	2	14	9.0
Omaha	12/6/20	* 33	4-13	.308	0-1	.000	5-6	.833	7	7	14	10.3	2	2	2	1	1	13	10.3
at Nebraska	12/10/20	* 22	1-8	.125	0-0	.000	2-2	1.000	3	1	4	8.8	3	2	2	0	0	4	8.8
Michigan	12/19/20	PPD																	
S. Illinois	12/22/210	PPD																	
at Indiana	12/31/20	* 31	6-10	.600	0-1	.000	3-5	.600	2	7	9	8.8	3	0	7	0	1	15	10.0
Iowa	1/3/21	* 24	2-8	.250	0-1	.000	4-4	1.000	3	0	3	7.8	5	0	1	0	1	8	9.7
Ohio State	1/7/21	* 27	6-12	.500	0-0	.000	3-3	1.000	1	7	8	7.9	3	2	4	0	2	15	10.4
at Michigan	1/10/21	* 38	5-13	.385	0-1	.000	2-4	.500	3	4	7	7.8	2	1	1	1	1	12	10.6
Michigan St.	1/14/21																		
at Northwestern	1/21/21																		
Nebraska	1/25/21																		
Penn State	1/28/21																		
at Wisconsin	1/31/21																		
at Michigan St.	2/4/21																		
Purdue	2/7/21																		
at Minnesota	2/10/21																		
Indiana	2/14/21																		
at Maryland	2/17/21																		
at Rutgers	2/20/21																		
Northwestern	2/25/21																		
at Purdue	2/28/21																		
Minnesota	3/5/21																		
Total		8 227	32-83	.386	0-6	.000	21-31	.677	25	37	62	7.8	25	11	21	3	10	85	10.6

CAREER HIGHS

Pts:	23 (vs. Merrimack, 12/10/19)
Rebs:	20 (vs. Evansville, 12/15/19)
FGM:	11 (vs. Merrimack, 12/10/19)
FGA:	20 (vs. Merrimack, 12/10/19)
3FGM:	1 (3x, last vs. Wisconsin, 3/4/20)
3FGA:	3 (at Iowa, 12/31/19)
FTM:	7 (vs. Chicago State, 11/5/19)
FTA:	9 (vs. Chicago State, 11/5/19)
Ast:	3 (5x, last vs. Indiana State, 11/25/20)
Blk:	3 (vs. Wisconsin 3/4/20)
Stl:	6 (at North Carolina, 12/05/19)
Min:	38 (2x, last at No. 15 Michigan 1/10/21)



2020-21 FIGHTING ILLINI



**0 J-Naya
Ephraim**
5-9 // Jr. // G



**1 Nancy
Panagiotopoulou**
6-3 // R-Jr. // F



**2 Lyric
Robins**
5-11 // Sr. // F



**3 Solape
Amusan**
6-1 // So. // F



**10 Jeanae
Terry**
5-11 // So. // G



**11 Jada
Peebles**
5-10 // So. // G



**13 Tara
O'Malley**
5-6 // Jr. // G



**14 Geovana
Lopes**
6-3 // Jr. // F/C



**20 Erika
Porter**
6-3 // Fr. // F



**21 Aaliyah
McQueen**
5-9 // Fr. // G



**22 Eva
Rubin**
6-5 // R-Jr. // C



**32 Aaliyah
Nye**
5-11 // Fr. // G



**44 Kennedy
Myles**
6-2 // So. // F



Nancy Fahey
Head Coach



John Patterson
Assistant Coach



Scott Merritt
Assistant Coach



Vernetta Skeete
Assistant Coach