

FIGHTING ILLINI



WOMEN'S BASKETBALL GAME NOTES



Athletics Communication // 1700 South Fourth Street // Champaign, IL 61820

WBB Contact: Jenny Dewar // Office: 217-300-1148 // Cell: 847-567-2487 // jdewar2@illinois.edu // fightingillini.com

I FIGHTINGILLINI.com

@IlliniWBB

@IlliniWBB

@IlliniWBBasketball



GAME 19: Illinois (9-9, 1-6) at #23/21 Michigan State (13-5, 3-4)

Jan. 24, 2019 // 6 PM CT // East Lansing, Mich. // Breslin Center (14,759)

Live Stream: www.BTN2Go.com

Live Stats: <https://msuspartans.com/sidearmstats/wbball/>

Live Audio: <http://www.fightingillini.com/watch>

Radio: Illini Sports Network (WDWS-AM 1400) – Dave Loane, Mike Koon



2018-19 SCHEDULE & RESULTS

9-9 Overall, 1-6 Big Ten

Home: 7-5; Away: 2-3; Neutral: 0-1

DATE	OPPONENT	TIME/SCORE
November 7	Alabama A&M	W, 88-60
November 14	Valparaiso	W, 73-54
November 18	Columbia	W, 76-69
November 23	at Cal Poly &	W, 74-51
November 24	vs. Sacramento State &	L, 107-109
November 28	Clemson ^	L, 67-69 (OT)
December 1	Eastern Michigan	W, 72-66 (OT)
December 5	Indiana State	W, 75-57
December 11	Murray State	W, 84-52
December 15	SIUE	W, 74-57
December 21	Missouri	L, 45-67
December 28	Indiana *	L, 83-85 (OT)
December 31	at Northwestern *#	L, 45-68
January 6	at Minnesota *	W, 66-62
January 9	Rutgers *	L, 60-71
January 12	at Penn State *	L, 48-62
January 17	Nebraska *	L, 77-67
January 20	Iowa *	L, 75-94
January 24	at Michigan State *	6 PM
January 27	Northwestern *	2 PM
January 31	at Ohio State *	6 PM
February 4	Maryland *#	6:30 PM
February 7	at Purdue *	6 PM
February 10	Wisconsin *	2 PM
February 14	at Iowa *	7 PM
February 17	Michigan *	2 PM
February 20	at Wisconsin *	7 PM
February 24	Penn State *#	3 PM
March 2	at Maryland *	1 PM
March 6-10	Big Ten Championship (Bankers Life Fieldhouse)	TBA

& Cal Poly ShareSLO Holiday Beach Classic

^ ACC/Big Challenge

* Big Ten Conference game

Televised on the Big Ten Network

Home games in **BOLD**

All times Central and subject to change

2018-19 FIGHTING ILLINI

Pos.	No.	Name	Ht.	Yr.	GP/GS	PPG	RPG	Other	Notes/Highlights
G	1	Brandi Beasley	5-7	Jr.	18/18	10.7	4.1	93 AST	4 points away from 1,000 career points
G	5	Cierra Rice	5-9	R-Jr.	18/17	7.3	3.6	28-37 FT	Scored a career-high 23 points vs. Columbia
G	0	J-Naya Ephraim	5-9	Fr.	18/4	3.9	3.0	12 STL	Career-best 11 pts. & 3 steals at Northwestern
F	35	Alex Wittinger	6-1	Jr.	18/18	15.9	7.9	48 BLK	24 blocks away from Illinois all-time record
F	50	Ali Andrews	6-2	So.	17/14	7.6	3.8	23 3FG	Hit two clutch threes in OT vs. EMU
G	3	Ariael Scott	5-9	Fr.	15/2	10.0	2.5	32 3FG	Leads Illinois in 3FGs made
F	31	Sarah Shewan	6-2	Gr.	18/0	5.0	2.9	9 BLK	Career-best 17 points vs. Indiana State
G	30	Courtney Joens	5-10	Jr.	18/11	6.3	3.2	16 STL	Career-high 19 points vs. Cal Poly
F	4	Mackenzie Blazek	6-3	Fr.	18/3	3.2	2.8	12 BLK	Career-best 10 rebounds and first start vs. Indiana
G	23	Jaelyne Kirkpatrick	5-7	Sr.	6/2	4.0	1.2	12 AST	Earned her first start of the year against Indiana
F	2	Lyric Robins	5-11	So.	15/0	0.6	0.4	6 RBS	Made 23 appearances last season
G	11	Carolyn Waleski	5-10	Fr.	6/0	0.7	0.5	1 STL	2018 All-State Third Team honoree
G	13	Petra Holešinská	5-9	So.	—/—	—	—	—	Netted 36 three-pointers last season
F	21	Nancy Panagiotopoulou	6-3	Fr.	—/—	—	—	—	Greek National Team member

THE COACHES

ILLINOIS: Nancy Fahey // 18-31 at Illinois (2nd year) // 755-164 overall (33rd year)

MICHIGAN STATE: Suzy Merchant // 258-127 at Michigan State (12th year) // 458-247 overall (24th year)

SERIES NOTES VS. MICHIGAN STATE

Series Record: Illinois trails, 28-42

Last Meeting: January 16, 2018 | Michigan State 67, Illinois 55 | Champaign, Ill.

Series Streak: L-6

Series in Champaign: Illinois trails, 15-17

Series in East Lansing: Illinois trails, 10-22

Fahey vs. Michigan State: 0-1

ILLINOIS...

...is in search of Brandi Beasley's 1,000th point
...ranks 4th in the BIG and 24th in the nation for its 5.1 blocks per game
...ranks 4th in the BIG for its 7.6 steals per game in league play
...shooting 43.7-percent from the field to rank 6th in the Big Ten
...junior Brandi Beasley is 2nd in the BIG with 5.2 assists per game
...senior Alex Wittinger ranks 9th in the country for her 48 blocks
...Alex Wittinger ranks 7th in the BIG for her 15.9 points per game
...freshman Ariael Scott ranks 5th in the BIG for her 2.1 3FG per game

QUICK HITS

• **THURSDAY'S GAME:** Illinois travels to Michigan State on Thursday for a 6 p.m. CT matchup against the Spartans. The game will be streamed via BTN Plus, and fans can listen live on WDWS AM-1400.

• **COMING UP:** UI returns to the State Farm Center on January 27, hosting Northwestern for Pride Night. The game will celebrate the LGBTQ+ community and its supporters. Fans will have the opportunity to sign Illinois' Diversity and Inclusion banner at the West entrance of State Farm Center and fans can receive a Diversity and Inclusion trucker hat. The Illini will then hit the road once more to take on the Buckeyes of Ohio State January 31.

• **LAST TIME OUT:** Fighting Illini women's basketball hosted the Iowa Hawkeyes for the annual Pack the House game on Sunday. The Orange and Blue fought on their home court as four players scored in double-figures led by Brandi Beasley (21) and Alex Wittinger (20). It wasn't enough, however, as the Hawkeyes took home the win, 94-75. Beasley dished a team-leading six assists and added four steals to her tally, while Wittinger closed play with four blocked shots. Freshman Ariael Scott was among Illini scoring leaders for her 15 points, and redshirt junior Cierra Rice added 11 of her own.

• **SCOUTING THE SPARTANS:** Ranked at No. 23 in the latest Associated Press Poll, Michigan State is 13-5 on the season and boasts a 3-4 mark in league play. The Spartans are coming off of a loss to No. 20 Rutgers, after earning the win over No. 9 Maryland on their home court. Michigan State is averaging 79.6 points per game this season, the second-most in the Big Ten. Jenna Allen leads Michigan State with her 14.8 points per game, and Shay Colley joins her among team leaders for her 13.3 points per game. Allen also leads the Spartan swish with her 7.2 rebounds per contest. As a team, Michigan State is averaging 14.2 turnovers per game this season while forcing 18.1 from its opponents.

QUICK FACTS

UNIVERSITY INFORMATION

Location Urbana-Champaign, Ill.
 Enrollment..... 47,826
 Nickname Fighting Illini
 Founded 1867
 Colors Orange and Blue
 Affiliation NCAA Division I
 Conference Big Ten
 Home Court (capacity) State Farm Center (15,544)
 President..... Timothy L. Killen
 Chancellor..... Robert J. Jones
 Athletic Director Josh Whitman
 Senior Woman Administrator (SWA) . Maria Ochoa Woods
 Ticket Office 217-333-3470

TEAM HISTORY

First Year 1974-75
 Overall Record..... 622-672 (43 years)
 Big Ten Record 237-412 (34 years)
 State Farm Center Record..... 275-193 (31 years)
 Years in NCAA (8) .. 1982, '86, '87, '97, '98, '99, '00, '03
 Years in WNIT (8) .. 2001, '02, '05, '06, '07, '08, '10, '13
 Big Ten Titles (1) 1997

2017-18 AT A GLANCE

2017-18 Overall Record 9-22
 2017-18 Big Ten Record/Place 0-16/14th
 2017-18 Postseason None

2019-19 AT A GLANCE

Starters Returning/Lost..... 4/1
 Letterwinners Returning/Lost 8/5
 Newcomers in 2018-19..... 5

COACHING STAFF

Head Coach..... Nancy Fahey (Wisconsin '81)
 Career Record 755-164 (32 seasons)
 Record at Illinois 18-31 (2nd season)
 Associate Head Coach..... LaKale Malone (Indiana '99)
 Assistant Coach..... Tianna Kirkland (Ferris State '02)
 Assistant Coach . Steve Cochran (Missouri-St. Louis '90)
 Video Coordinator Mark Uitermarkt (4th Season)
 Athletic Trainer Sam Laingen (6th Season)
 Strength & Conditioning ... Kilee Taflinger (2nd Season)
 Basketball Office Phone 217-333-8612

ATHLETICS COMMUNICATION

Women's Basketball SID..... Jenny Dewar
 Office Phone / Cell Phone.... 217-300-1148 / 847-567-2487
 Email jdewar2@illinois.edu
 Press Row Phone..... 217-333-1227
 Mailing Address Bielfeldt Athletic Building
 1700 South Fourth Street, Champaign, IL 61820
 Website www.fightingillini.com
 Twitter..... @IlliniWBB
 Facebook www.facebook.com/IlliniWBBasketball
 Instagram IlliniWBB

RADIO INFORMATION

Flagship Station WDWS-AM 1400
 Play-By-Play Dave Loane
 Analyst Mike Koon

ILLINI WOMEN'S HOOPS BY THE NUMBERS

- 2** Head Coach Nancy Fahey's .822 winning percentage ranks 2nd among active head coaches with more than 700 victories
- 4** Points needed by Brandi Beasley to reach the 1,000 point mark
- 9** Alex Wittinger's national ranking for her 48 blocked shots this year
- 32** Three-pointers made by Arieal Scott this season to lead Illinois
- 122** Field goals made by Alex Wittinger this season, which ranks second in the Big Ten
- 755** Career victories by head coach Nancy Fahey

THE FAHEY ERA CONTINUES

The Illini are in their second season under the direction of head coach **Nancy Fahey**. In her first season at Illinois, Fahey coached the Orange and Blue to a 9-5 nonconference record, which marked the best start to the season since Illinois also earned nine non-conference victories in the 2014-15 campaign (9-3). Illinois won four of its last five games leading up to league play, with the streak marking the most consecutive victories for the Orange and Blue since the start of the 2015-16 season. Under Fahey's guidance, Illini junior Alex Wittinger garnered All-Big Ten Second Team honors, and also matched the school record for single-season offensive rebounds (125). Wittinger earned the program's second-ever triple double during the 2017-18 campaign, and set a new single-game record for blocked shots (11).

ONE OF THE GREATS

Illinois head coach **Nancy Fahey** is in the midst of quite the storied career. She has accumulated 755 career victories, a number that ranks among the top totals in the NCAA. Her win total currently checks in at No. 19 among all NCAA head coaches, a category that's led by Pat Summitt (1098). Fahey's 750 career victories also ranks eighth among current active NCAA Division I head coaches and 12th among all active NCAA head coaches. She has racked up the second-most career victories among active Big Ten head coaches as well. Of active head coaches with more than 700 victories, Fahey's .822 winning percentage ranks second only to Geno Auriemma (.884).

TAKING DOWN THE TOP 25

The Fighting Illini earned their first Big Ten victory of the season and the first of head coach Nancy Fahey's tenure at Illinois on Sunday, January 6, defeating 12th-ranked Minnesota, 66-62. The win marked Illinois' first victory over a ranked opponent since defeating No. 17 Iowa (73-61) on January 8, 2015. The win over Minnesota also marks Illinois' first victory over a top-15 opponent since a 77-71 win over No. 9 Kentucky on Nov. 27, 2014. Illinois also overcame a 17-point deficit to earn the win, which marks the fifth-largest deficit overcome by any team in a victory this season.

ON THE HUNT FOR 1K

Illini junior Brandi Beasley is on the hunt for her 1,000th career point this season. She has racked up 996 career points, and needs just four points to reach the millennium mark. Beasley will be the 30th Illini to reach 1,000 career points in Illinois history. Senior Alex Wittinger is also a member of the 1,000 point club as she has tallied 1,448 career points so far.

2018-19 ILLINOIS BASKETBALL ROSTER

No.	Player	Pos.	Ht.	Elig.	Hometown/High School/Prev. College	Pronunciation
0	J-Naya Ephraim	G	5-9	Fr.	St. Croix, U.S. Virgin Islands/Southern Durham	Juh-NY-uh Eh-From
1	Brandi Beasley	G	5-7	Jr.	Memphis, Tenn./Ridgeway	
2	Lyric Robins	F	5-11	So.	Plano, Texas/Plano West	Lyric, like words to a song pronounced like aerial
3	Arieal Scott	G	5-9	Fr.	Danville, Illinois/Danville	
4	Mackenzie Blazek	F	6-3	Fr.	Franklin, Indiana/Whiteland Community	
5	Cierra Rice	G	5-9	r-Jr.	Grosse Pointe, Mich./Grosse Pointe	SEE-air-uh
11	Carolyn Waleski	G	5-10	Fr.	Frankfort, Illinois/Lincoln-Way East	
13	Petra Holešinská	G	5-9	Jr.	Vracov, Czech Republic/ Sportovni Ludvika Danka	Pet-RUH HOLE-eh-SHIN-ska
21	Nancy Panagiotopoulou	F	6-3	r-Fr.	Athens, Greece/American Community Schools of Athens	Pa-na-yo-toe-poo-loo
23	Jaelyne Kirkpatrick	G	5-7	Sr.	Oakville, Ontario/St. Ignatius of Loyola	JAY-lynn
30	Courtney Joens	G	5-10	Jr.	Iowa City, Iowa/City High	Jones
31	Sarah Shewan	F	6-2	Gr.	Russell, Ontario/St. Thomas Aquinas Catholic/Quinnipiac	Shoe-in
35	Alex Wittinger	F	6-1	Sr.	Delano, Minn./Delano	Witt-in-gr
50	Ali Andrews	F	6-2	Jr.	Lake in the Hills, Ill./Huntley	

COACHING STAFF

Head Coach: Nancy Fahey (second season at Illinois, 32nd overall)
Associate Head Coach: LaKale Malone (seventh season)
Assistant Coach: Tianna Kirkland (seventh season)
Assistant Coach: Steve Cochran (second season)
Director of Operations: Dianna Pasley (second season)
Director of Player Personnel: John Patterson (second season)
Video Coordinator: Mark Uitermarkt (fourth season)

FAY

FIGHTING ILLINI WOMEN'S BASKETBALL NOTES

ON THE BOARDS

The Fighting Illini posted quite the rebounding performance against Valparaiso, outrebounding the Crusaders, 51-23. The 28-rebound margin marks the largest rebounding advantage posted by an Illinois squad since outrebounding Fort Wayne (then IPFW), 51-22, on February 22, 2005. Illinois followed that up with a season-best 56 rebounds against Sacramento State. The Illini have outrebounded three opponents by 10 or more boards this season, and have outrebounded 10 opponents overall.

The Orange and Blue are averaging 38.4 boards per game this season, grabbing 27.2 defensive boards per game. The Illini rank **seventh** in the Big Ten for their defensive rebounds per contest this season.

STEALING AWAY

Illinois has snatched 118 steals this season with 53 of those coming in Big Ten play. UI ranks **fourth** in the league for its **7.6 steals per game** in conference play. Junior **Brandi Beasley** is a major contributor to those numbers as she leads the team with 15 steals in Big Ten games (2.1 per game). Beasley comes in **fifth** in the league for her steals in conference play, and senior **Alex Wittinger** is close behind in a tie for **seventh** in the league. Wittinger has accumulated 12 steals in Big Ten play, averaging 1.7 per game.

IT'S FOR FREE

Illinois has taken advantage from the charity stripe since starting league play, knocking down 63-of-85 opportunities. UI's **74.1-percent** free throw shooting in conference play ranks **third** in the league. Three Illini are perfect from the line in league play, and junior Courtney Joens is also among team leaders as she is 9-for-10 from the line.

THE BIG 2-0-0

Fighting Illini senior forward **Alex Wittinger** earned her 200th career block on Nov. 7 in Illinois' season opener against Alabama A&M. Wittinger is just the third Illini in school history to reach the 200 blocked shots mark, and she needs just 25 more blocks to take sole ownership of Illinois' career blocked shots record.

Wittinger has totaled 48 blocks this season, which ranks **third** in the **Big Ten** and **ninth** in the country. She is averaging 2.7 blocks per game this year, which comes in at **12th** in the country. Her 17 blocks in league play (2.4 per game) rank second in the league.

GOING THE DISTANCE

The Orange and Blue have knocked down 111 three-pointers this season, with 47 of those coming during Big Ten play. UI is averaging 6.7 treys per game in league play to rank **second** in the Big Ten. Junior **Courtney Joens** ranks 15th in the Big Ten for her nine treys (1.3 per game) in conference play. Freshman **Ariel Scott** ranks **fifth** in the league for her 2.1 treys per game this season and **sixth** for her 31.1-percent shooting from beyond the arc.

BENCH POINTS

Illinois' bench has been strong this season, contributing 34.5-percent of Illinois' scoring. Freshman **Ariel Scott** leads the Orange and Blue when coming off the pine, averaging 11.2 points per game. She's leads the team with her 32 three-pointers on the year as well. Graduate transfer **Sarah Shewan** is averaging 5.0 points per game off the bench, and freshman **J-Naya Ephraim** leads Illinois on the glass when coming off the pine, grabbing 3.2 rebounds per game.

The Illini bench has contributed 30 or more points in five games this season, led by a season-best 39 points against Alabama A&M and Nebraska.

BEASLEY'S BACK

The Illini return junior point guard **Brandi Beasley** for her junior season in 2018-19. After a standout freshman season, Beasley returned in her sophomore year to appear in all 31 of Illinois' matchups. She was among Illinois scoring leaders last season as she averaged 12.3 points per game. She led Illinois in assists, dishing 3.6 per game and totaling 111 on the year. Beasley has racked up 324 assists so far in her career in the Orange and Blue, and ranks eighth all-time for that number.

Beasley is averaging 5.2 assists per game this year, a number which leads Illinois and ranks among the nation's best. Beasley ranks **second** in the Big Ten for her 5.2 dimes per game, and ranks **43rd** in the country for that number. Her 93 assists rank 30th in the nation. Beasley's 1.90 assist turnover ratio ranks **ninth** in the league as well. Beasley has dished at least one assist in every game of her career thus far (80), and has passed out five or more dimes in 27 contests. She's passed out 10 dimes in two games this year.

WHAT A START

The Orange and Blue opened the 2018-19 campaign with an 8-3 start in nonconference play. UI won four consecutive games to start the season, and also went on a four-game winning streak inside the State Farm Center from Dec. 1 to Dec. 15. Illinois' .727 nonconference winning percentage this

INSIDE THE NUMBERS

	ILL	MSU
Points Per Game	71.1	79.6
Points Allowed Per Game	68.3	65.9
Scoring Margin	+2.7	+13.7
Field Goal %	.437	.465
3-pt Field Goals Made-Att.	111-357	133-335
3-pt Field Goal %	.311	.397
Free Throws Made-Att.	204-304	231-337
Free Throw %	.671	.685
Rebounds Per Game	38.4	39.2
Rebounding Margin	+0.5	+4.1
Fouls Per Game	15.8	17.7
Assists Per Game	13.7	20.1
Turnovers Per Game	14.0	14.2
Turnover Margin	-0.5	+3.9
Steals Per Game	6.6	9.1
Blocks Per Game	5.1	3.7

BIG TEN STANDINGS

Team	Big Ten	Pct.	Overall	Pct.
Rutgers	7-0	1.000	15-3	.833
Maryland	5-2	.714	16-2	.889
Iowa	5-2	.714	14-4	.778
Purdue	5-2	.714	14-6	.700
Indiana	4-3	.571	15-4	.789
Northwestern	4-3	.571	11-7	.611
Nebraska	4-3	.571	9-9	.500
Michigan State	3-4	.429	13-5	.722
Michigan	3-4	.429	12-7	.632
Ohio State	3-4	.429	7-9	.438
Minnesota	2-5	.286	13-5	.722
Penn State	2-5	.286	9-9	.500
Wisconsin	1-6	.143	10-9	.526
Illinois	1-6	.143	9-9	.500

THIS WEEK IN THE BIG TEN

SUNDAY, JANUARY 20

Maryland 79, Penn State 67
Purdue 56, Indiana 53
Rutgers 76, Michigan State 62
Iowa 94, Illinois 75
Michigan 62, Ohio State 58
Northwestern 72, Wisconsin 46
Nebraska 63, Minnesota 57

WEDNESDAY, JANUARY 23

Rutgers at Iowa 7 PM

THURSDAY, JANUARY 24

Michigan at Indiana 5 PM
Illinois at Michigan State 6 PM
Purdue at Minnesota 7 PM
Northwestern at Nebraska 7 PM
Maryland at Ohio State 7 PM
Penn State at Wisconsin 7 PM

SUNDAY, JANUARY 27

Maryland at Indiana 11 AM
Michigan State at Michigan 1 PM
Rutgers at Penn State 1 PM
Northwestern at Illinois 2 PM
Purdue at Iowa 2 PM
Nebraska at Wisconsin 2 PM

MONDAY, JANUARY 28

Ohio State at Minnesota 6:30 PM

2018-19 STARTING LINEUPS

Opponent	G	G	G	F	F	Record
Alabama A&M	Beasley	Rice	Joens	Wittinger	Andrews	1-0
Valparaiso	Beasley	Rice	Joens	Wittinger	Andrews	2-0
Columbia	Beasley	Rice	Joens	Wittinger	Andrews	3-0
at Cal Poly	Beasley	Rice	Joens	Wittinger	Andrews	4-0
vs. Sacramento State	Beasley	Rice	Joens	Wittinger	Andrews	4-1
at Clemson	Beasley	Rice	Joens	Wittinger	Andrews	4-2
Eastern Michigan	Beasley	Rice	Scott	Wittinger	Andrews	1-0
Indiana State	Beasley	Rice	Scott	Wittinger	Andrews	2-0
Murray State	Beasley	Rice	Joens	Wittinger	Andrews	5-2
SIUE	Beasley	Rice	Joens	Wittinger	Andrews	6-2
Missouri	Beasley	Rice	Joens	Wittinger	Andrews	6-3
Indiana	Beasley	Rice	Kirkpatrick	Wittinger	Blazek	0-1
at Northwestern	Beasley	Rice	Kirkpatrick	Wittinger	Blazek	0-2
at Minnesota	Beasley	Rice	Ephraim	Wittinger	Blazek	1-0
Rutgers	Beasley	Rice	Ephraim	Wittinger	Andrews	0-1
at Penn State	Beasley	Rice	Ephraim	Wittinger	Andrews	0-2
Nebraska	Beasley	Joens	Ephraim	Wittinger	Andrews	0-1
Iowa	Beasley	Joens	Rice	Wittinger	Andrews	0-1
at Michigan State						
Northwestern						
at Ohio State						
Maryland						
at Purdue						
Wisconsin						
at Iowa						
Michigan						
at Wisconsin						
Penn State						
at Maryland						
Big Ten Championship						

FIGHTING ILLINI WOMEN'S BASKETBALL NOTES

ASSOCIATED PRESS POLL (Jan. 20)

No.	School	Record	Prev.
1	Notre Dame (22)	735	1
2	Baylor (7)	713	T-2
3	Connecticut (1)	703	T-2
4	Louisville	651	4
5	Oregon	623	5
6	Stanford	608	6
7	Mississippi State	578	7
8	North Carolina State	549	8
9	Oregon State	472	10
10	Marquette	460	14
11	Maryland	442	9
12	Texas	376	11
13	Syracuse	358	12
14	Rutgers	343	T-20
15	Kentucky	331	16
16	Arizona State	265	19
17	Iowa	261	22
18	Gonzaga	258	13
19	South Carolina	245	15
20	Iowa State	145	18
21	Utah	138	NR
22	Florida State	134	NR
23	Michigan State	109	17
24	Texas A&M	45	NR
25	Missouri	43	NR

Others receiving votes: BYU 32; Tennessee 23; Minnesota 21; Drake 20; UCF 20; South Dakota 11; Clemson 11; California 9; DePaul 8; Miami 6; Boise State 3; Indiana 1.

USA TODAY COACHES POLL (Jan. 14)

No.	School	Record	Pts.
1.	Notre Dame	(18-1)	791
2.	Connecticut	(16-1)	760
3.	Baylor	(15-1)	739
4.	Louisville	(17-1)	694
5.	Oregon	(17-1)	676
6.	Mississippi State	(17-1)	635
7.	Stanford	(16-1)	617
8.	NC State	(18-0)	590
9.	Marquette	(16-3)	513
10.	Maryland	(16-2)	469
11.	Oregon State	(15-3)	468
12.	Kentucky	(16-3)	398
13.	Texas	(15-3)	385
14.	Syracuse	(15-3)	361
15.	Iowa	(14-4)	342
16.	Arizona State	(13-5)	332
17.	Gonzaga	(17-2)	284
18.	Rutgers	(15-3)	241
19.	Florida State	(16-2)	237
20.	South Carolina	(13-5)	210
21.	Michigan State	(13-5)	153
22.	Iowa State	(14-4)	148
23.	Miami (Fla.)	(16-4)	52
24.	Utah	(16-1)	51
25.	Texas A&M	(14-4)	43

Others receiving votes: California (12-5) 35; Drake (13-4) 35; Central Florida (16-2) 31; Missouri (15-5) 26; Tennessee (12-6) 24; DePaul (13-6) 16; New Mexico (15-2) 10; Alabama- Birmingham (17-2) 9; South Dakota (17-3) 7; Purdue (14-6) 6; Minnesota (13-5) 4; Central Michigan (13-4) 3; Alabama (10-9) 1; Boise State (14-2) 1; Butler (16-2) 1; Clemson (14-5) 1; Troy (14-3) 1.

season marks the highest for an Illini squad since starting the 2014-15 campaign with a 9-5 nonconference record (.750).

BLOCKING UP THE RECORD BOOKS

Now in her senior season, **Alex Wittinger** has already had quite the career for the Illini. She tallied 75 rejections through 31 games last season, a number that ranked 18th in the country and is just three shy of Illinois' single season record. She tallied 74 blocks in the 2016-17 season, which sits in the No. 3 single-game spot all-time at Illinois. Wittinger has recorded five or more blocks in five career games and reset her own Illinois single-game blocks record with 11 rejections at Penn State. That number also reset the Bryce Jordan Center blocked shots record.

Wittinger became just the eighth player in Illinois history to record 100 career blocks on Thursday, Jan. 26, 2017 and also set a new single-game record with her eight rejections against Wright State during the 2016-17 season. She currently ranks second all-time with her 247 career blocked shots and will chase the No. 1 spot this season. Wittinger is 24 rejections away from tying the top spot and will need to average 2.0 blocks per game throughout the regular season to own the record.

Illinois Career Blocked Shots List

1.	271	Karisma Penn	2009-13
2.	247	Alex Wittinger	2016-
3.	231	Jenna Smith	2006-10
4.	163	Lacey Simpson	2005-10
5.	156	Kendra Gantt	1981-85

WITTINGER ON THE GLASS

Illini senior **Alex Wittinger** crashed the boards last season as she closed the year tied at No. 9 all-time at Illinois for her 278 total rebounds on the year. Wittinger had a monster performance against Ohio State (Feb. 13, 2018) as she grabbed a season-high 16 rebounds. Her 11 offensive boards in the matchup mark the third-most for an Illini in a single-game in program history, and she is joined in that spot by Jonelle Polk who also grabbed 11 at Indiana in 1987. Wittinger recorded 125 offensive rebounds last season, which matches Illinois' single-season record set by Karisma Penn (2013-13). She currently ranks fourth all-time for her 370 career offensive boards, and is at No. 7 on the all-time total rebounding list (865).

Wittinger is averaging 3.3 offensive boards per game this year, which puts her fifth in the Big Ten. Her 7.9 total rebounds per game rank eighth in the Big Ten.

ANDREWS ON POINT

Illinois junior **Ali Andrews** is among Illini returners this season. Last season, Andrews matched Illinois' single-season three-point field goal percentage record with her 41.2-percent shooting from distance (40-97). Andrews recorded a career-high 26 points against Wichita State at the New Mexico Thanksgiving Tournament last season, highlighted by another career-best six three-pointers (6-of-8) and 81.8-percent shooting from the floor. In her freshman season, Andrews netted 37-of-94 three-pointers. Her 100 career treys made currently rank 9th all-time at Illinois.

THE CENTURY MARK

Illinois posted a season-best 107 points in a loss to Sacramento State in San Luis Obispo, California. Illinois' 107 points mark the fourth-most in a game in Illinois history and

the first time since Nov. 17, 2014 that an Illini squad has put up more than 100 points in a game.

HOME SWEET HOME

The Illini have been strong inside the State Farm this season, after starting out the season with a 7-0 record on Lou Henson Court. The last time an Illinois squad started the year with a 7-0 record at the State Farm Center was the 2006-07 season. Illinois went 7-0 at home to start the 2015-16 campaign, but the first four games were played at Parkland College due to arena renovations.

The Illini are shooting 45.7-percent from the floor and out-scoring opponents by more than five points per game inside State Farm Center this season. Alex Wittinger leads the Illini at home, averaging 16.5 points and 7.6 rebounds per game this season while also shooting 56-percent from the floor. Brandi Beasley is also among scoring leaders at the State Farm Center, averaging 120.9 points per game. She's dished 61 of her 93 dimes at home. Ali Andrews is strong from distance at home. She's made 18 of her 23 treys at home. Freshman Ariel Scott has also knocked down 18 treys on Lou Henson Court so far this year.

DOUBLE-DOUBLE THE FUN

Senior Alex Wittinger (32 pts, 14 rebs) and junior Brandi Beasley (12 pts, 10 ast) combined for two double-doubles in Illinois' loss to Sacramento State. The two double-doubles in the contest mark the first time the Illini have seen two players record double-doubles since November 30, 2016 in a 76-70 loss to Wake Forest, when both Wittinger and Beasley also combined for a pair of double-doubles. Wittinger finished with 14 points and 10 rebounds in that contest, and Beasley tallied 14 points and 11 boards.

OVERTIME EXTRAVAGANZA

The Fighting Illini entered into new territory against Eastern Michigan on Dec. 1, playing their second-consecutive overtime contest. Illinois' pair of games (Clemson, EMU) marks the first time in program history that an Illini squad has played back-to-back overtime games. Including this season, Illinois has played two or more overtime games in nine seasons all-time.

The Illini continued to set new trends in December, taking on Indiana in their third overtime matchup of the season. The contest marks the first time in program history that the Orange and Blue have played three extra frames in one season.

Illinois Overtime Games

2018-19	12/28/18	Indiana 85, Illinois 83
	11/28/18	Clemson 69, Illinois 67
	12/1/18	Illinois 72, Eastern Michigan 66
2011-12	1/5/11	Iowa 69, Illinois 62
	1/26/12	Illinois 71, Michigan State 62
2009-10	11/13/09	Temple 82, Illinois 78
	3/22/10	Illinois 74, Marquette 72 (WNIT)
2001-02	12/8/01	Illinois 77, Pepperdine 71
	1/31/02	#22 Minnesota 79, Illinois 76
1998-99	1/5/99	Illinois 75, Michigan 65
	2/19/99	Wisconsin 82, Illinois 78
1996-97	11/23/96	Arkansas State 95, Illinois 8
	1/10/97	Illinois 89, Minnesota 85
1994-95	2/5/94	Illinois 82, Louisville 76
	2/12/95	Illinois 85, Indiana 79
1979-80	1/28/80	Purdue 73, Illinois 69;
	2/8/80	Illinois 85, Purdue 76
1974-75	1/23/75	Illinois 57, Eastern Illinois 51
	3/1/75	SIU 66, Illinois 56 (IAIAW Tournament)

WOMEN'S BASKETBALL MEDIA AVAILABILITY SCHEDULE

Date	Time	Location
January 25	3:30 p.m.	State Farm Center
January 30	12 p.m.	Ubben
February 9	11:30 a.m.	Ubben
February 13	12 p.m.	Ubben
February 22	3:30 p.m.	State Farm Center
February 27	3:30 p.m.	State Farm Center
March 4	4:45 p.m.	Ubben

Fighting Illini Women's Basketball welcomes members of the media for interviews with players and head coach Nancy Fahey prior to practice on the days listed above. Please player send interview requests to JDewar2@illinois.edu by 10 a.m. on the scheduled media day to ensure their availability.

FIGHTING ILLINI WOMEN'S BASKETBALL NOTES

RACING AHEAD

Illinois earned a 32-point victory over the Murray State Racers on Dec. 11, which marked the largest margin of victory for Illinois this season and the widest since earning a 37-point win over Rutgers on January 7, 2017. Illinois has won three games by 20 or more points this season, and the Orange and Blue have earned four 20+-point victories under head coach Nancy Fahey in the last two seasons.

NEWCOMERS IN ACTION

All five Illini newcomers made their debut in the Orange and Blue against Alabama A&M, each tallying at least two points. Freshman **Arieal Scott** led the way with 10 points for the Illini, and freshman **J-Naya Ephraim** added eight rebounds on the day. Freshman **Mackenzie Blazek** was also a standout performer as she recorded seven points and three boards.

TRIPLE-DOUBLE TROUBLE

Illini senior **Alex Wittinger** reached several milestones on January 23, 2018 at Penn State. In addition to recording her 1,000th career point, she carded the second triple-double in Illinois' history with 18 points, 10 rebounds and 11 blocked shots. The last Illini player to record a triple-double was Kim Brombolich on Jan. 22, 1982. Wittinger is just second player in the Big Ten Conference to record a triple-double this season and 17th player in the nation. She recorded the fifth points-rebounds-blocks triple-double in the nation this season. Wittinger is the first Illini in program history to earn a triple-double with points, rebounds and blocked shots.

PRESEASON ALL-BIG TEN HONORS

Fighting Illini senior forward **Alex Wittinger** was honored by the Big Ten Conference as she was named to the 2018-19 Preseason All-Big Ten Team as chosen by both the league's coaches and media. Wittinger led Illinois in several statistical categories last season, including scoring (15.0 ppg.), rebounding (9.0 rpg.), blocked shots (75) and field goal percentage (48.8). She ranked among the top five in the Big Ten for her total rebounding, offensive rebounding and blocked shots numbers.

LISA LESLIE AWARD WATCH LIST

Fighting Illini senior **Alex Wittinger** was named to the 2019 Lisa Leslie Award Watch List, as announced by the Naismith Memorial Basketball Hall of Fame and the Women's Basketball Coaches Association. Named after the three-time All-American and 1994 National Player of the Year, the annual award in its second year recognizes the top centers in women's NCAA Division I college basketball. Wittinger is one of 20 candidates named to the watch list. By mid-February, the watch list of 20 players for the 2019 Lisa Leslie Award will be narrowed to just 10. In March, five finalists will be presented to Ms. Leslie and the Hall of Fame's selection committee. The Selection Committee for the Lisa Leslie Award is composed of top women's college basketball personnel including media members, head coaches, sports information directors and Hall of Famers. Fans will also have the opportunity to vote for their favorite finalist at www.hoophallawards.com. The winner of the 2019 Lisa Leslie Center Award will be revealed on an ESPN platform during the 2019 Women's Final Four in Tampa, Florida.

CLEAR BAG POLICY

Beginning with the 2018-19 season, fans attending events at State Farm Center will be permitted to carry one clear plastic or vinyl bag that does not exceed 12"x6"x12", or one clear drawstring bag not to exceed 12"x12", or one, one-gallon clear plastic or zip-lock bag. A small clutch no larger than 4.5" x 7" may also be carried in addition to one clear bag. Diaper bags (with child) and bags approved for medical needs will be permitted after search by security personnel. All other bags, backpacks, totes and coolers are strictly prohibited. To present a safe event for everyone, jackets may be searched upon entry. If prohibited items are found, the item will be confiscated OR the guest may personally return it to their vehicle or otherwise dispose of the item away from the facility. State Farm Center does not check or otherwise safeguard personal belongings. This bag policy is subject to change. Please check the event details for any additional specific event restrictions.

ILLINI ON THE NETWORK

Three of Illinois' games will air live on the Big Ten Network, and the remaining conference games will be streamed on BTN Plus. The Illini will make their Big Ten Network debut on December 31 at Northwestern, with a tip time set for 2 p.m. CT. Illinois will have two home games televised live on the network, beginning February 4 against Maryland. Illinois will also host Penn State on BTN at 6:30 p.m. February 24. The 2019 Big Ten Tournament will also be aired on the Big Ten Network, with games beginning at 12:30 p.m. CT on Wednesday, March 6 and continuing through Game 12 on Saturday, March 9. The Big Ten Tournament Championship Game will air on ESPN2 on Sunday, March 10 at 5 p.m. CT. All BTN basketball programming can be streamed via the web, smartphones, tablets and connected devices on BTN2Go and the Fox Sports app.

ILLINI WBB TICKETS

Season and single-game tickets for the 2018-19 Fighting Illini women's basketball season are available now. Fans can renew, upgrade or purchase new season tickets online, at the Illinois ticket office located inside the West Main entrance of State Farm Center, or by phone at 1-866-ILLINI-1. General admission women's basketball season tickets are available for \$40 each, while reserved season tickets are available for \$75. Single-game general admission, reserved tickets and floor seating are available for as low as \$5 per game.

ILLINI RECORD BOOK

CAREER REBOUNDING

1.	1,217	Jenna Smith	2006-10
2.	1,043	Karisma Penn	2009-13
3.	1,014	Cindy Dallas	1998-04
4.	933	Jonelle Polk	1983-87
5.	900	Lacey Simpson	2005-10
6.	896	Lynnette Robinson	1978-82
7.	865	Alex Wittinger	2016-present
8.	825	Tauja Catchings	1997-00
9.	823	Kris Dupps	1991-95
10.	803	Kendra Gantt	1981-85

CAREER OFFENSIVE REBOUNDING

1.	410	Cindy Dallas	1998-04
2.	380	Jenna Smith	2006-10
3.	373	Tauja Catchings	1996-00
4.	370	Alex Wittinger	2016-present
5.	364	Karisma Penn	2009-13
	364	Ashley Berggren	1994-98

SINGLE SEASON BLOCKED SHOTS

1.	78	Karisma Penn	2010-11
2.	75	Alex Wittinger	2017-18
3.	74	Alex Wittinger	2016-17
4.	72	Karisma Penn	2012-13
5.	70	Jenna Smith	2009-10

CAREER BLOCKED SHOTS

1.	271	Karisma Penn	2009-13
2.	243	Alex Wittinger	2016-present
3.	231	Jenna Smith	2006-10
4.	163	Lacey Simpson	2005-10
5.	156	Kendra Gantt	1981-85

CAREER DOUBLE DOUBLES

1.	53	Jenna Smith	2006-10
2.	42	Karisma Penn	2009-13
3.	40	Jonelle Polk	1984-87
4.	38	Lynnette Robinson	1978-82
5.	35	Cindy Dallas	2000-04
6.	31	Alex Wittinger	2016-present
7.	26	Ashley Berggren	1995-98
8.	24	Chatrice White	2014-16
9.	23	Kris Dupps	1992-95
	23	Kendra Gantt	1981-85
	23	Mary Pat Travník	1975-79

CAREER FG MADE

1.	815	Jonelle Polk	1983-87
2.	813	Jenna Smith	2006-10
3.	748	Ashley Berggren	1994-98
	748	Lisa Robinson	1978-82
5.	736	Karisma Penn	2009-13
6.	669	Angelina Williams	2001-05
7.	648	Kendra Gantt	1981-85
8.	640	Alex Wittinger	2016-Present
9.	564	Tauja Catchings	1996-00
10.	559	Sarah Sharp	1987-91
11.	539	Allison Curtin	1998-01

CAREER 3FG MADE

1.	295	Amber Moore	2009-14
2.	214	Lori Bjork	2005-08
3.	194	Krista Reinking	1994-98
4.	168	Mandy Cunningham	1990-94
5.	149	Kyley Simmons	2015-16
6.	133	Melissa Parker	1996-00
7.	114	Allison Curtin	1998-01
8.	103	Ivory Crawford	2011-15
9.	100	Ali Andrews	2017-Present
10.	99	Aminata Yanni	2000-04
11.	96	Jeré Isenmann	2001-05
12.	90	Petra Holesinska	2017-Present
13.	87	Angelina Williams	2001-05

CAREER ASSISTS

1.	550	Jill Estey	1989-93
2.	507	Jenny Johnson	1984-88
3.	451	Lacey Simpson	2005-10
4.	391	Michelle Vossen	1980-84
5.	384	Lydia McCully	2008-12
6.	342	Tauja Catchings	1996-00
7.	328	Ashley Berggren	1994-98
8.	324	Brandi Beasley	2017-present
9.	323	Cindy Stein	1981-83
10.	322	Kristen Haynes	1986-90

FIGHTING ILLINI WOMEN'S BASKETBALL NOTES

2018-19 SEASON STATISTICS

RECORD:	OVERALL	HOME	AWAY	NEUTRAL
ALL GAMES	9-9	7-5	2-3	0-1
CONFERENCE	1-6	0-4	1-2	0-0
NON-CONFERENCE	8-3	7-1	1-1	0-1

##	Player	gp-gs	min	avg	Total		3-Point		F-Throw		Rebounds								a	to	blk	stl	pts	avg
					fg-fga	fg%	3fg-fga	3fg%	ft-fga	ft%	off	def	tot	avg	pf	dq								
35	Alex Wittinger	18-18	590	32.8	122-225	.542	4-8	.500	38-47	.809	59	83	142	7.9	47	1	22	36	48	23	286	15.9		
01	Brandi Beasley	18-18	608	33.8	80-187	.428	8-36	.222	25-49	.510	11	62	73	4.1	36	1	93	50	3	27	193	10.7		
03	Ariael Scott	15-2	279	18.6	47-134	.351	32-103	.311	24-41	.585	5	32	37	2.5	17	0	5	14	0	9	150	10.0		
05	Cierra Rice	18-17	473	26.3	52-121	.430	17-52	.327	28-37	.757	17	47	64	3.6	33	0	23	30	3	6	149	8.3		
50	Ali Andrews	18-15	412	22.9	46-110	.418	23-55	.418	16-22	.727	22	42	64	3.6	48	1	18	21	12	10	131	7.3		
30	Courtney Joens	18-11	359	19.9	39-101	.386	17-52	.327	18-23	.783	13	45	58	3.2	22	0	23	14	2	16	113	6.3		
31	Sarah Shewan	18-0	254	14.1	30-72	.417	5-26	.192	25-34	.735	14	39	53	2.9	16	0	8	23	9	7	90	5.0		
00	J-Naya Ephraim	18-4	368	20.4	27-73	.370	2-13	.154	15-25	.600	5	49	54	3.0	26	0	25	38	2	12	71	3.9		
04	Mackenzie Blazek	18-3	188	10.4	26-47	.553	0-0	.000	5-16	.313	14	37	51	2.8	21	0	12	7	12	5	57	3.2		
23	Jaelyne Kirkpatrick	6-2	78	13.0	9-20	.450	3-11	.273	3-3	1.000	2	5	7	1.2	11	0	12	5	0	2	24	4.0		
02	Lyric Robins	15-0	42	2.8	3-12	.250	0-1	.000	3-3	1.000	4	2	6	0.4	6	0	2	5	0	0	9	0.6		
11	Carolyn Waleski	6-0	12	2.0	1-1	1.000	0-0	.000	2-2	1.000	0	2	2	0.3	0	0	3	0	0	1	4	0.7		
33	Meagan McNicholas	6-0	12	2.0	0-0	.000	0-0	.000	2-2	1.000	1	0	1	0.2	2	0	1	1	0	0	2	0.3		
Team											34	45	79				8							
Total.....		18	3675		482-1103	.437	111-357	.311	204-304	.671	201	490	691	38.4	285	3	247	252	91	118	1279	71.1		
Opponents.....		18	3674		450-1152	.391	139-440	.316	191-276	.692	228	454	682	37.9	297	-	247	243	39	127	1230	68.3		

TEAM STATISTICS

	ILL	OPP
SCORING	1279	1230
Points per game	71.1	68.3
Scoring margin	+2.7	-
FIELD GOALS-ATT	482-1103	450-1152
Field goal pct	.437	.391
3 POINT FG-ATT	111-357	139-440
3-point FG pct	.311	.316
3-pt FG made per game	6.2	7.7
FREE THROWS-ATT	204-304	191-276
Free throw pct	.671	.692
F-Throws made per game	11.3	10.6
REBOUNDS	691	682
Rebounds per game	38.4	37.9
Rebounding margin	+0.5	-
ASSISTS	247	247
Assists per game	13.7	13.7
TURNOVERS	252	243
Turnovers per game	14.0	13.5
Turnover margin	-0.5	-
Assist/turnover ratio	1.0	1.0
STEALS	118	127
Steals per game	6.6	7.1
BLOCKS	91	39
Blocks per game	5.1	2.2
ATTENDANCE	18079	11335
Home games-Avg/Game	12-1507	5-2237
Neutral site-Avg/Game	-	1-152

Date	Opponent		Score	Att.
11/07/18	ALABAMA A&M	W	88-60	2364
11/14/18	VALPARAISO	W	73-54	1163
11/18/18	COLUMBIA	W	76-69	1439
11/23/18	at Cal Poly	W	74-51	548
11/24/18	vs Sacramento State	L	107-109	152
11/28/18	at Clemson	Lot	67-69	412
12/01/18	EASTERN MICH.	Wot	72-66	1383
12/05/18	INDIANA ST.	W	75-57	981
12/11/18	MURRAY STATE	W	84-52	986
12/15/18	SIUE	W	74-57	1335
12/21/18	MISSOURI	L	45-67	1288
* 12/28/18	INDIANA	Lot	83-85	1622
* 12/31/18	at Northwestern	L	45-68	1129
* 01/06/19	at Minnesota	W	66-62	6622
* 01/09/19	RUTGERS	L	60-71	1150
* 1/12/19	at Penn State	L	48-62	2472
* 01/17/19	NEBRASKA	L	67-77	1349
* 01/20/19	IOWA	L	75-94	3019

* = Conference game

Score by Periods	1st	2nd	3rd	4th	OT	Totals
Illinois	298	308	335	315	23	1279
Opponents	317	297	307	288	21	1230

FIGHTING ILLINI WOMEN'S BASKETBALL NOTES

2018-19 BIG TEN STATISTICS

RECORD:	OVERALL	HOME	AWAY	NEUTRAL
ALL GAMES	1-6	0-4	1-2	0-0
CONFERENCE	1-6	0-4	1-2	0-0
NON-CONFERENCE	0-0	0-0	0-0	0-0

#	Player	gp-gs	min	avg	Total		3-Point		F-Throw		Rebounds										pts	avg			
					fg-fga	fg%	3fg-fga	3fg%	ft-fa	ft%	off	def	tot	avg	pf	dq	a	to	blk	stl					
35	Alex Wittinger	7-7	241	34.4	41-80	.513	2-5	.400	14-18	.778	17	27	44	6.3	22	0	10	12	17	12	98	14.0			
01	Brandi Beasley	7-7	247	35.3	35-85	.412	5-19	.263	7-14	.500	5	14	19	2.7	19	1	27	21	1	15	82	11.7			
03	Arieal Scott	5-0	101	20.2	19-45	.422	16-39	.410	9-12	.750	1	12	13	2.6	6	0	1	2	0	2	63	12.6			
05	Cierra Rice	7-6	164	23.4	19-48	.396	6-18	.333	10-15	.667	5	12	17	2.4	14	0	6	9	0	4	54	7.7			
30	Courtney Joens	7-2	143	20.4	17-44	.386	9-22	.409	9-10	.900	5	14	19	2.7	11	0	4	8	2	7	52	7.4			
00	J-Naya Ephraim	7-4	157	22.4	11-32	.344	2-8	.250	5-6	.833	3	15	18	2.6	11	0	9	20	2	6	29	4.1			
50	Ali Andrews	7-4	133	19.0	10-35	.286	4-18	.222	3-4	.750	8	12	20	2.9	17	0	5	7	3	3	27	3.9			
31	Sarah Shewan	7-0	97	13.9	5-22	.227	2-14	.143	4-4	1.000	2	13	15	2.1	8	0	4	6	2	2	16	2.3			
04	Mackenzie Blazek	7-3	89	12.7	6-17	.353	0-0	.000	0-0	.000	6	15	21	3.0	9	0	4	3	4	1	12	1.7			
23	Jaelyne Kirkpatrick	2-2	35	17.5	3-10	.300	1-5	.200	1-1	1.000	1	2	3	1.5	5	0	4	3	0	1	8	4.0			
02	Lyric Robins	6-0	18	3.0	1-5	.200	0-1	.000	1-1	1.000	2	0	2	0.3	3	0	0	1	0	0	3	0.5			
Team											15	19	34											4	
Total.....		7	1425		167-423	.395	47-149	.315	63-85	.741	70	155	225	32.1	125	1	74	96	31	53	444	63.4			
Opponents.....		7	1425		189-419	.451	49-136	.360	92-131	.702	82	193	275	39.3	104	-	115	92	23	52	519	74.1			

TEAM STATISTICS

	ILL	OPP
SCORING	444	519
Points per game	63.4	74.1
Scoring margin	-10.7	-
FIELD GOALS-ATT	167-423	189-419
Field goal pct	.395	.451
3 POINT FG-ATT	47-149	49-136
3-point FG pct	.315	.360
3-pt FG made per game	6.7	7.0
FREE THROWS-ATT	63-85	92-131
Free throw pct	.741	.702
F-Throws made per game	9.0	13.1
REBOUNDS	225	275
Rebounds per game	32.1	39.3
Rebounding margin	-7.1	-
ASSISTS	74	115
Assists per game	10.6	16.4
TURNOVERS	96	92
Turnovers per game	13.7	13.1
Turnover margin	-0.6	-
Assist/turnover ratio	0.8	1.3
STEALS	53	52
Steals per game	7.6	7.4
BLOCKS	31	23
Blocks per game	4.4	3.3
ATTENDANCE	7140	10223
Home games-Avg/Game	4-1785	3-3408
Neutral site-Avg/Game	-	0-0

Date	Opponent	Score	Att.
* 12/28/18	INDIANA	Lot 83-85	1622
* 12/31/18	at Northwestern	L 45-68	1129
* 01/06/19	at Minnesota	W 66-62	6622
* 01/09/19	RUTGERS	L 60-71	1150
* 1/12/19	at Penn State	L 48-62	2472
* 01/17/19	NEBRASKA	L 67-77	1349
* 01/20/19	IOWA	L 75-94	3019

* = Conference game

Score by Periods	1st	2nd	3rd	4th	OT	Totals
Illinois	104	101	123	110	6	444
Opponents	146	133	125	107	8	519

2018-19 GAME-BY-GAME TEAM COMPARISON

Opponent	1st	2nd	3rd	4th	OT	Score	Margin	Tot. FG	FG%	3-PT FG	3-FG %	Free Throws	FT %	Rebs.	Assists	TO	Blocks	Steals	Fouls
Alabama A&M	16 / 16	13 / 8	26 / 16	20 / 33		88 / 60	+28	29-61 / 21-63	.475 / .333	11-22 / 6-23	.500 / .261	19-26 / 12-20	.731 / .600	42 / 38	18 / 10	7 / 10	4 / 0	5 / 5	14 / 19
Valparaiso	21 / 14	19 / 17	22 / 10	11 / 13		73 / 54	+19	26-56 / 20-59	.464 / .339	2-12 / 9-34	.167 / .265	19-33 / 5-7	.576 / .714	51 / 23	11 / 9	15 / 11	7 / 1	5 / 6	15 / 25
Columbia	21 / 10	17 / 24	22 / 15	16 / 20		76 / 69	+7	27-62 / 27-68	.435 / .397	9-24 / 9-32	.375 / .281	13-25 / 6-8	.520 / .750	44 / 34	13 / 12	11 / 10	3 / 0	1 / 2	15 / 22
at Cal Poly	15 / 7	24 / 11	13 / 15	22 / 18		74 / 51	+23	24-50 / 19-61	.480 / .311	7-16 / 3-13	.438 / .231	19-30 / 10-11	.633 / .909	43 / 29	13 / 10	21 / 21	2 / 1	11 / 12	13 / 22
vs. Sacramento State	23 / 34	25 / 28	37 / 18	22 / 29		107 / 109	-2	43-79 / 38-101	.544 / .376	5-20 / 21-57	.250 / .368	16-20 / 12-18	.800 / .667	56 / 48	23 / 21	21 / 11	6 / 2	3 / 14	15 / 19
at Clemson	10 / 16	16 / 11	19 / 23	18 / 13	4 / 6	67 / 69	-2	26-82 / 26-61	.317 / .426	6-29 / 1-7	.207 / .143	9-18 / 16-25	.500 / .640	43 / 56	13 / 11	13 / 24	7 / 4	15 / 6	21 / 16
Eastern Michigan	19 / 12	12 / 13	21 / 20	7 / 14	13 / 7	72 / 66	+6	24-65 / 22-69	.369 / .319	4-17 / 11-36	.235 / .306	20-25 / 11-20	.800 / .550	49 / 41	14 / 13	16 / 15	5 / 5	5 / 3	22 / 24
Indiana State	20 / 19	21 / 13	13 / 15	21 / 10		75 / 57	+18	31-52 / 21-56	.596 / .375	5-13 / 6-26	.385 / .231	8-14 / 9-12	.571 / .750	31 / 29	14 / 9	13 / 13	7 / 0	5 / 5	12 / 16
Murray State	14 / 6	28 / 13	16 / 18	26 / 15		84 / 52	+32	35-62 / 19-70	.565 / .271	8-24 / 5-23	.333 / .217	6-10 / 9-12	.600 / .750	40 / 38	23 / 10	11 / 12	8 / 1	4 / 6	12 / 9
SIUE	22 / 21	19 / 15	18 / 8	15 / 13		74 / 57	+17	30-64 / 21-65	.469 / .323	5-17 / 9-23	.294 / .391	9-15 / 6-8	.600 / .750	41 / 36	21 / 12	12 / 13	8 / 1	7 / 9	14 / 13
Missouri	13 / 1	13 / 11	5 / 24	14 / 16		45 / 67	-22	20-47 / 27-60	.426 / .450	2-14 / 10-30	.143 / .333	3-3 / 3-4	1.00 / .750	26 / 35	10 / 15	16 / 11	3 / 1	4 / 7	7 / 8
Indiana	20 / 26	18 / 21	30 / 14	9 / 16	6 / 8	83 / 85	-2	28-61 / 31-78	.459 / .397	5-14 / 8-17	.357 / .471	22-25 / 15-19	.880 / .789	39 / 43	9 / 13	17 / 18	7 / 2	6 / 6	20 / 23
at Northwestern	5 / 14	13 / 22	16 / 21	11 / 11		45 / 68	-23	19-61 / 22-52	.311 / .423	4-22 / 6-17	.182 / .353	3-6 / 18-25	.500 / .720	31 / 38	10 / 17	16 / 15	1 / 7	10 / 12	20 / 10
at Minnesota	13 / 12	8 / 23	22 / 18	23 / 9		66 / 62	+4	27-65 / 23-64	.415 / .359	9-17 / 4-16	.529 / .250	3-5 / 12-17	.600 / .706	37 / 46	15 / 13	14 / 16	9 / 5	8 / 5	18 / 13
Rutgers	11 / 28	18 / 16	12 / 15	19 / 12		60 / 71	-11	20-54 / 26-52	.370 / .500	8-23 / 8-22	.348 / .364	12 / 15 / 11-19	.800 / .579	21 / 42	12 / 20	10 / 15	4 / 4	10 / 7	16 / 16
at Penn State	17 / 10	8 / 16	11 / 15	12 / 21		48 / 62	-14	18-55 / 23-57	.372 / .404	4-21 / 5-20	.190 / .250	8-12 / 11-14	.667 / .786	36 / 36	9 / 15	17 / 12	4 / 3	8 / 9	16 / 11
Nebraska	17 / 25	12 / 11	15 / 21	23 / 20		67 / 77	-10	25-64 / 25-53	.391 / .472	7-24 / 7-22	.292 / .318	10-17 / 20-28	.588 / .714	40 / 32	8 / 13	17 / 12	1 / 1	3 / 11	24 / 20
Iowa	21 / 31	24 / 24	17 / 21	13 / 18		75 / 94	-19	30-63 / 39-63	.476 / .619	10-28 / 11-22	.357 / .500	5-5 / 5-9	1.00 / .556	21 / 38	11 / 24	5 / 11	5 / 1	8 / 2	11 / 11

Double-Doubles	2018-19	Career
Alex Wittinger	5	31
Brandi Beasley	0	3
Petra Holesinska	0	2
Triple-Doubles	2018-19	Career
Alex Wittinger	0	1
Double-Digit Scoring Games	2018-19	Career
Alex Wittinger	15	79
Brandi Beasley	8	52
Cierra Rice	8	22
Ariael Scott	7	7
Ali Andrews	6	20
Courtney Joens	5	11
Sarah Shewan	3	3
Jaelyne Kirkpatrick	1	6
Mackenzie Blazek	1	1
J-Naya Ephraim	1	1
Petra Holesinska	0	23
20+ Point Games	2018-19	Career
Alex Wittinger	5	20
Brandi Beasley	1	10
Cierra Rice	1	3
Ariael Scott	1	1
Ali Andrews	0	2
Petra Holesinska	0	3
30+ Point Games	2018-19	Career
Alex Wittinger	1	2
Double-Digit Rebound Games	2018-19	Career
Alex Wittinger	5	35
Mackenzie Blazek	1	1
Petra Holesinska	0	2
Brandi Beasley	0	1
Double-Digit Assist Games	2018-19	Career
Brandi Beasley	2	4
Double-Digit Block Games	2018-19	Career
Alex Wittinger	0	1

2018-19 ILLINOIS' RECORD WHEN...

Overall record	9-9	Illini out-rebound opponent	8-2
Big Ten record	1-6	Teams have equal number of rebounds	0-1
Record at home	7-5	Opponents out-rebound Illini	1-6
Record on road	2-3	Illini have fewer turnovers than opponent	4-3
Record in neutral-site games	0-1	Teams have same number of turnovers	2-0
Record vs. AP-ranked teams	1-1	Illini have more turnovers than opponent	3-6
Record when on TV	0-1	Wearing white uniforms	6-6
Coming off a win	6-3	Wearing gray uniforms	0-0
Coming off a loss	2-5	Wearing blue uniforms	1-3
Scoring 80+ points	2-2	Wearing orange uniforms	2-0
Scoring 70-79 points	6-1	Wearing pink uniforms	0-0
Scoring 60-69 points	1-3	When leading at halftime	8-0
Scoring less than 60 points	0-3	When tied at halftime	0-0
Giving up 80+ points	0-3	When trailing at halftime	1-9
Giving up 70-79 points	0-2	When Illini shoot more FTs than opponent	7-2
Giving up 60-69 points	4-4	When Illini shoot fewer FTs than opponent	2-7
Giving up 50-59 points	5-0	When teams shoot same number of FTs	0-0
Giving up less than 50 points	0-0	Game goes to overtime	1-2
Shooting 55% FGs or better	2-0	Margin is five points or less	1-3
Shooting 50-54% FGs	0-1	Margin is 6-10 points	2-1
Shooting 45-49% FGs	4-2	Margin is 11-15 points	0-2
Shooting 40-44% FGs	2-1	Margin is 16-20 points	3-1
Shooting 30-39% FGs	1-5	Margin is 21+ points	3-2
Shooting below 30% FGs	0-0	Playing in November	4-2
Opponents shoot 50% FGs or better	0-2	Playing in December	4-3
Opponents shoot 45-49% FGs	0-2	Playing in January	1-4
Opponents shoot 40-44% FGs	0-3	Playing in February	0-0
Opponents shoot 35-39% FGs	4-2	Playing in March	0-0
Opponents shoot under 35% FGs	5-0	In day games (start before 5 PM)	6-5
Shoots better than opponent	9-2	In night games (start 5 PM or later)	2-4
Shoots worse than opponent	0-7		

2018-19 EXPANDED SCHEDULE/RESULTS

DATE	OPPONENT	RESULT	SCORE	RECORD	BIG RECORD	ATTENDANCE	HIGH POINTS	HIGH REBOUNDS	HIGH ASSISTS
11/7	Alabama A&M	W	88-60	1-0	0-0	2,364	Andrews (17)	Ephraim (8)	Beasley (9)
11/14	Valparaiso	W	73-54	2-0	0-0	1,163	Beasley (18)	Wittinger (12)	Beasley (5)
11/18	Columbia	W	76-69	3-0	0-0	1,439	Rice (23)	Wittinger (10)	Beasley (4)
11/23	Cal Poly	W	74-51	4-0	0-0	548	Joens (19)	Wittinger (8)	Beasley (7)
11/24	Sacramento State	L	107-109	4-1	0-0	152	Wittinger (32)	Wittinger (14)	Beasley (10)
11/28	Clemson	L	67-69	4-2	0-0	412	Scott (15)	Wittinger (11)	Beasley (7)
12/1	Eastern Michigan	W	72-66	5-2	0-0	1,383	Wittinger (22)	Wittinger (11)	Beasley (7)
12/5	Indiana State	W	75-57	6-2	0-0	981	Wittinger (18)	Wittinger (8)	Beasley (5)
12/11	Murray State	W	84-52	7-2	0-0	986	Wittinger (22)	Wittinger (7)	Beasley (4)
12/15	SIUE	W	74-57	8-2	0-0	1,335	Wittinger (19)	Wittinger (8)	Beasley (5)
12/21	Missouri	L	45-67	8-3	0-0	1,288	Wittinger (15)	Blazek (4)	Beasley (3)
12/28	Indiana	L	83-85	8-4	0-1	1,622	Wittinger, Beasley (19)	Blazek (10)	Kirkpatrick (3)
12/31	Northwestern	L	45-68	8-5	0-2	1,129	Joens (16)	Wittinger (7)	Andrews (3)
1/6	#12 Minnesota	W	66-62	9-5	1-2	6,622	Beasley (18)	Wittinger (8)	Beasley (6)
1/9	Rutgers	L	60-71	9-6	1-3	1,150	Joens (13)	Wittinger (6)	Beasley (10)
1/12	at Penn State	L	48-62	9-7	1-4	2,472	Wittinger (19)	Beasley (5)	Joens/Andrews (2)
1/17	Nebraska	L	67-77	9-8	1-5	1,349	Scott (23)	Wittinger (13)	Three Players (2)
1/20	Iowa	L	75-94	9-9	1-6	3,019	Beasley (21)	Scott (5)	Beasley (6)

2017-18 SPECIALTY STATS

	OPPONENT	Pts in Paint (ILL-Opp.)	Pts off TO (ILL-Opp.)	2nd Chance Pts (ILL-Opp.)	Fast Break Pts (ILL-Opp.)	Bench Pts (ILL-Opp.)	Largest Lead	Largest Deficit	Lead Changes	Ties
11/7	Alabama A&M	28 - 20	22 - 2	12 - 9	11 - 4	39 - 29	28	6	3	4
11/14	Valparaiso	44 - 18	10 - 11	12 - 2	9 - 0	23 - 16	26	4	2	1
11/18	Columbia	26 - 24	8 - 13	15 - 10	3 - 5	15 - 29	16	-	0	0
11/23	Cal Poly	6 - 4	11 - 0	4 - 2	2 - 0	6 - 0	12	-	0	1
11/24	Sacramento State	62 - 31	10 - 26	16 - 23	18 - 11	36 - 28	8	18	9	5
11/28	Clemson	24 - 36	14 - 9	12 - 9	4 - 12	23 - 12	2	16	5	3
12/1	Eastern Michigan	30 - 18	14 - 14	12 - 13	4 - 4	19 - 10	11	3	6	10
12/5	Indiana State	20 - 22	20 - 12	2 - 13	12 - 4	25 - 14	18	5	8	3
12/11	Murray State	32 - 16	13 - 6	6 - 10	6 - 0	34 - 10	34	-	0	0
12/15	SIUE	38 - 16	18 - 11	14 - 15	12 - 12	22 - 19	18	5	12	4
12/21	Missouri	18 - 30	8 - 17	9 - 17	2 - 15	10 - 25	2	28	8	8
12/28	Indiana	34 - 34	16 - 16	8 - 11	13 - 15	11 - 15	11	15	6	10
12/31	Northwestern	20 - 22	10 - 14	7 - 20	4 - 18	27 - 7	-	27	0	0
1/6	Minnesota	22 - 26	17 - 11	1 - 13	4 - 14	30 - 2	4	17	9	4
1/9	Rutgers	12 - 32	22 - 18	4 - 15	5 - 13	27 - 27	4	20	1	0
1/12	at Penn State	20 - 26	4 - 14	13 - 7	5 - 10	15 - 9	3	16	3	1
1/17	Nebraska	24 - 26	8 - 15	13 - 7	2 - 14	39 - 40	-	14	0	0
1/20	Iowa	28 - 46	12 - 8	2 - 10	2 - 7	19 - 9	2	22	2	0
Totals		468 - 447	238 - 217	162 - 196	218 - 158	421 - 301	34	28	12	5
Average		26.0 - 24.8	13.2 - 12.1	9.0 - 10.8	12.1 - 8.8	23.4 - 16.7				
Margin		+1.2	+1.1	-1.8	+3.3	+6.7				

THE LAST TIME...

Illinois scored 100 points or more	Nov. 24, 2018 vs. Sacramento State (Sacramento St. 109, Illinois 107)
Illinois scored 90 points or more	Nov. 24, 2015 vs. Tennessee State (Illinois 98, TSU 43)
Illinois scored 50 points or less	Feb. 1, 2018, 47 at Nebraska (Nebraska 62, Illinois 47)
Illinois scored 40 points or less	Jan. 3, 2018, 37, at Rutgers (Rutgers 76, Illinois 37)
Illinois gave up 100 points or more	Nov. 24, 2018, 109, Sacramento State (Sacramento St. 109, Illinois 107)
Illinois gave up 90 points or more	Jan. 20, 2019, 95, Iowa (Iowa 95, Illinois 74)
Illinois gave up 40 points or less	Dec. 2, 2016 vs. Fort Wayne (Illinois 56, Fort Wayne 33)
Illinois won by 40+ points	Nov. 24, 2015 vs. Tennessee State (Illinois 98, TSU 43)
Illinois won an overtime game	Dec. 1, 2018 vs. Eastern Michigan (Illinois 72, Eastern Michigan 66)
Illinois lost an overtime game	Dec. 28, 2018 vs. Indiana (Indiana 85, Illinois 83)
Illinois made 10 or more three-pointers	Jan. 20, 2019, 10, vs. Iowa (Iowa 95, Illinois 74)
An Illinois opponent made 10 or more three-pointers	Jan. 20, 2019, 11, Iowa (Iowa 95, Illinois 74)
An Illinois player scored 30+ points	Nov. 24, 2018, Alex Wittinger, 32 vs. Sacramento State (Sacramento St. 109, Illinois 107)
An Illinois player scored 40+ points	Jan. 14, 1996, Ashley Berggren, 43 at Minnesota (Illinois 87, Minnesota 76)
An opposing player scored 30+ points	Nov. 24, 2018, Hannah Friend, 33, Sacramento State (Sacramento St. 109, Illinois 107)
An opposing player scored 40+ points	Dec. 16, 1989, Carol Owens, 41 at Northern Illinois (Northern Illinois 110, Illinois 93)
An Illinois player had a triple-double	Jan. 23, 2018, Alex Wittinger at Penn State, 18 p, 10 r, 11 b (Penn State 68, Illinois 59)
An opposing player had a triple-double	Dec. 2, 2006, Armentie Price, Ole Miss, 34 p, 15 r, 12 st (Ole Miss 75, Illinois 50)
No Illini scored double figures	March 2, 2007, vs. Penn State at Big Ten Tournament (Penn State 61, Illinois 49 - Rebecca Harris had 8)
No opposing player scored double figures	Nov. 25, 2011, vs. Arizona State (Arizona State 51, Illinois 50)
Two Illini players had a double-double in the same game	Nov. 24, 2018, vs Sacramento State, Alex Wittinger 32 pts, 14 rbs, Brandi Beasley 10 pts, 12 ast (Sacramento St. 109, Illinois 107)
An Illini had 15+ rebounds	Feb. 13, 2018, Alex Wittinger, 16, Ohio State (Ohio State 88, Illinois 69)
An Illini had 20+ rebounds	Feb. 7, 2010, Jenna Smith, 20, vs. Indiana (Indiana 67, Illinois 54)
An Illini had 25+ rebounds	Jan. 23, 1975, Betty Anderson, 30, vs. Eastern Illinois (Illinois 57, Eastern Illinois 51 (OT))
An opposing player had 15+ rebounds	Nov. 28, 2018, Tylar Bennett, 17, Clemson (Clemson 69, Illinois 67)
An opposing player had 20+ rebounds	Dec. 19, 2016, Reyna Frost, Central Michigan, 21 (Central Michigan 82, Illinois 51)
An opposing player had 25+ rebounds	Never
An Illini had 10+ assists	Jan. 9, 2019, Brandi Beasley, 10 vs. Rutgers (Rutgers 71, Illinois 60)
An Illini had 15+ assists	Jan. 15, 2006, Maggie Acuna, 16, at Wisconsin (Illinois 84, Wisconsin 54)
An opposing player had 10+ assists	Jan. 9, 2019, Ciani Cryor, 13, Rutgers (Rutgers 71, Illinois 60)
An opposing player had 15+ assists	March 12, 1983, Debbie Hunter, 15, vs. Minnesota (Minnesota 89, Illinois 65)
An Illini player made 5+ three-pointers	Nov. 18, 2018, Cierra Rice, 5, vs. Columbia (Illinois 76, Columbia 69)
An Illini player made 8+ three-pointers	Nov. 29, 1997, Katie Coleman, 9, vs. Providence, at Puerto Rico (Illinois 106, Providence 74)
An Illini player made 10+ three-pointers	Never
An opposing player made 5+ threes	Dec. 28, 2018, 5, Jaleynn Penn, Indiana (Indiana 85, Illinois 83)
An opposing player made 8+ threes	Feb. 21, 2016, K. Mitchell, 8, at #5 Ohio State (Ohio State 117, Illinois 74)
Illinois shot 60 pct. FG or better	Nov. 22, 2010, .616 (45-73) vs. Cal Poly (Illinois 104, Cal Poly 63)
Illinois shot 30 pct. FG or lower	Feb. 1, 2018, .271 (16-59), at Nebraska (Nebraska 62, Illinois 74)
An opponent shot 60 pct. FG or better	Jan. 20, 2019, .619 (39-63), vs. Iowa (Iowa 95, Illinois 74)
An opponent shot 30 pct. FG or lower	Dec. 11, 2018, .271 (19-70) Murray State (Illinois 84, Murray State 52)
An opponent shot 25 pct. FG or lower	Nov. 21, 2013, .226 (14-62), Southern Illinois (SIU 43, Illinois 78)
An opponent shot 20 pct. FG or lower	Nov. 17, 2013, .152 (7-46), vs. Alcorn State (Illinois 112, Alcorn State 28)
Illinois forced 30 or more turnovers	Feb. 25, 2015, 34, Michigan State (Michigan State 67, Illinois 65)
Illinois committed 30 or more turnovers	Dec. 2, 2006, 34, at Ole Miss (Ole Miss 75, Illinois 50)
Illinois had 20 or more steals	Nov. 14, 2014, 21, vs. IPFW (Illinois 70, IPFW 63)
An Illinois opponent had 20 or more steals	Dec. 2, 2006, 26, at Ole Miss (Ole Miss 75, Illinois 50)
Illinois blocked 10 or more shots	Jan. 23, 2018, 13, at Penn State (Penn State 68, Illinois 59)
Illinois won 5+ games in a row	Nov. 14, 2014-Nov. 27, 2014, 5-game streak
Illinois won 10+ games in a row	Nov. 20, 1981-Jan. 2, 1982, 10-game streak
Illinois lost 5+ games in a row	Dec. 22, 2017-Feb. 28, 2018, 18-game streak
Illinois lost 10+ games in a row	Dec. 22, 2017-Feb. 28, 2018, 18-game streak
Illinois won 5+ in a row at home	Nov. 7, 2018-Dec. 15, 2018, 7-game streak
Illinois won 10+ in a row at home	Dec. 20, 1997-Jan. 5, 1999, 18-game streak
Illinois won 15+ in a row at home	Dec. 20, 1997-Jan. 5, 1999, 18-game streak
Illinois lost 5+ in a row at home	Dec. 31, 2017-Feb. 25, 2018, 8-game streak
Illinois lost 10+ in a row at home	Never
Illinois won 5+ in a row away from home	Dec. 9, 2012-Feb. 3, 2013, 6-game streak
Illinois won 10+ in a row away from home	Never

FIGHTING ILLINI WOMEN'S BASKETBALL NOTES

2018-19 ILLINOIS TEAM HIGHS

Points	107	vs. Sacramento State (11/24/18)
Field Goals Made	43	vs. Sacramento State (11/24/18)
Field Goals Attempted	82	at Clemson (11/28/18)
Field Goal %	.596 (31-52)	vs. Indiana State (12/5/18)
3-Pt. Field Goals Made	11	vs. Alabama A&M (11/7/18)
3-Pt. Field Goals Attempted	29	at Clemson (11/24/18)
3-Pt. Field Goal Percentage	.529 (9-17)	at Minnesota (1/6/19)
Free Throws Made	22	vs. Indiana (12/28/18)
Free Throws Attempted	33	vs. Valparaiso (11/14/18)
Free Throw Percentage	1.000 (5-5)	2x, last vs. Iowa (1/20/19)
Rebounds	56	vs. Sacramento State (11/24/18)
Assists	23	2x, last vs. Murray State (12/11/18)
Steals	15	at Clemson (11/28/18)
Blocked Shots	8	2x, last vs. SIUE (12/15/18)
Turnovers	21	2x, last vs. Sacramento State (11/24/18)
Fouls	24	vs. Nebraska (1/17/19)

2018-19 ILLINOIS TEAM LOWS

Points	45	2x, last at Northwestern (12/31/18)
Field Goals Made	18	at Penn State (1/12/19)
Field Goals Attempted	47	vs. Missouri (12/21/18)
Field Goal %	.311 (19-61)	at Northwestern (12/31/18)
3-Pt. Field Goals Made	2	2x, last vs. Missouri (12/21/18)
3-Pt. Field Goals Attempted	12	vs. Valparaiso (11/14/18)
3-Pt. Field Goal Percentage	.167 (2-12)	vs. Valparaiso (11/14/18)
Free Throws Made	3	3x, last at Minnesota (1/6/19)
Free Throws Attempted	3	vs. Missouri (12/21/18)
Free Throw Percentage	.500 (3-6)	2x, last at Northwestern (12/31/18)
Rebounds	21	vs. Iowa (1/20/19)
Assists	9	vs. Indiana (12/28/18)
Steals	1	vs. Columbia (11/18/18)
Blocked Shots	1	2x, last vs. Nebraska (1/17/19)
Turnovers	5	vs. Iowa (1/20/19)
Fouls	7	vs. Missouri (12/21/18)

2018-19 OPPONENT TEAM HIGHS

Points	109	Sacramento State (11/24/18)
Field Goals Made	39	Iowa (1/20/19)
Field Goals Attempted	101	Sacramento State (11/24/18)
Field Goal %	.619 (39-63)	Iowa (1/20/19)
3-Pt. Field Goals Made	21	Sacramento State (11/24/18)
3-Pt. Field Goals Attempted	57	Sacramento State (11/24/18)
3-Pt. Field Goal Percentage	.500 (11-22)	Iowa (1/20/19)
Free Throws Made	20	Nebraska (1/17/19)
Free Throws Attempted	28	Nebraska (1/17/19)
Free Throw Percentage	.909 (10-11)	Cal Poly (11/23/18)
Rebounds	56	Clemson (11/28/18)
Assists	24	Iowa (1/20/19)
Steals	14	Sacramento State (11/24/18)
Blocked Shots	7	Northwestern (12/31/18)
Turnovers	24	Clemson (11/28/18)
Fouls	25	Valparaiso (11/14/18)

2017-18 OPPONENT TEAM LOWS

Points	51	Cal Poly (11/23/18)
Field Goals Made	19	2x, last vs. Murray State (12/11/18)
Field Goals Attempted	52	2x, last Rutgers (1/9/19)
Field Goal %	.271 (19-70)	Murray State (12/11/18)
3-Pt. Field Goals Made	1	Clemson (11/28/18)
3-Pt. Field Goals Attempted	7	Clemson (11/28/18)
3-Pt. Field Goal Percentage	.143 (1-7)	Clemson (11/28/18)
Free Throws Made	3	Missouri (12/21/18)
Free Throws Attempted	4	Missouri (12/21/18)
Free Throw Percentage	.550 (11-20)	vs. Eastern Michigan (12/1/18)
Rebounds	23	Valparaiso (11/14/18)
Assists	9	2x, last Indiana State (12/5/18)
Steals	2	Iowa (1/20/19)
Blocked Shots	0	3x, last, Indiana State (12/5/18)
Turnovers	10	2x, last, Columbia (11/18/18)
Fouls	8	Missouri (12/21/18)

2018-19 ILLINOIS INDIVIDUAL GAME HIGHS

Points	32	Alex Wittinger vs. Sacramento State (11/24/18)
Field Goals Made	15	Alex Wittinger vs. Sacramento State (11/24/18)
Field Goals Attempted	27	Alex Wittinger vs. Sacramento State (11/24/18)
Field Goal % (Min. 5 made)	.900 (9-10)	Alex Wittinger at Penn State (1/12/19)
3-Pt. Field Goals Made	5	Cierra Rice vs. Columbia (11/18/18)
3-Pt. Field Goals Attempted	11	2x, last Arieal Scott vs. Nebraska (1/17/19)
3-Pt. Field Goal % (Min. 3 made)	.833 (5-6)	Cierra Rice vs. Columbia (11/18/18)
Free Throws Made	8	Brandi Beasley vs. Valparaiso (11/14/18)
Free Throws Attempted	13	Brandi Beasley vs. Valparaiso (11/14/18)
Free Throw % (Min. 5 made)	1.000 (6-6)	2 Players vs. Indiana (12/28/18)
Rebounds	14	Alex Wittinger vs. Sacramento State (11/24/18)
Assists	10	2x, last Brandi Beasley vs. Rutgers (1/9/19)
Steals	5	2x, last Alex Wittinger vs. Rutgers (1/9/19)
Blocked Shots	6	2x, last Alex Wittinger at Minnesota (1/6/19)
Turnovers	6	2x, last vs. Nebraska (1/17/19)
Fouls	5	23x, last Brandi Beasley vs. Nebraska (1/17/19)
Minutes	43	Alex Wittinger vs. Indiana (12/28/18)

2018-19 OPPONENT INDIVIDUAL GAME HIGHS

Points	33	Hannah Friend, Sacramento State (11/24/18)
Field Goals Made	12	Megan Gustafson, Iowa (1/20/19)
Field Goals Attempted	28	Danielle Minott, Eastern Michigan (12/1/18)
Field Goal % (Min. 5 made)	.857 (12-14)	Megan Gustafson, Iowa (1/20/19)
3-Pt. Field Goals Made	7	2 players, Sacramento State (11/24/18)
3-Pt. Field Goals Attempted	16	2x, last Danielle Minott, EMU (12/1/18)
3-Pt. Field Goal % (Min. 3 made)	.750 (3-4)	Tania Davis, Iowa (1/20/19)
Free Throws Made	9	2x, last Kobi Thornton, Clemson (11/28/18)
Free Throws Attempted	13	Lindsey Pulliam, Northwestern (12/31/18)
Free Throw % (Min. 5 made)	1.000 (6-6)	Evelyn Adebayo, Murray State (12/11/18)
Rebounds	17	Tylar Bennett, Clemson (11/28/18)
Assists	13	Ciani Cryor, Rutgers (1/19/19)
Steals	5	P. Kunaiyi-Akpanah, Northwestern (12/31/18)
Blocked Shots	2	4x, last Lauren Ebo, Penn State (1/12/19)
Turnovers	7	Kenisha Bell, Minnesota (1/6/19)
Fouls	5	Alexa Gulbe, Indiana (12/28/18)
Minutes	44	2x, last Brenna Wise, Indiana (12/28/18)

FIGHTING ILLINI WOMEN'S BASKETBALL NOTES

GAME 1: Illinois 88, Alabama A&M 60

November 7, 2018 // Champaign, Illinois

Fighting Illini women's basketball opened the 2018-19 campaign with an 88-60 victory over the Alabama A&M Bulldogs. Illini junior Ali Andrews led Illinois with 17 points on the day, posting nine first-half points to give Illinois a spark to start the game. In total, five Illini scored in double-figures, including freshman Ariel Scott who tallied 10 points in her collegiate debut. Senior Alex Wittinger also tallied 10 points on the day, adding six rebounds and one blocked shot to her tally. The block marks the 200th of Wittinger's career and she is just the third Illini to tally 200 career blocks in school history. Illinois saw great production from the bench, as the Illini tallied 39 points off the pine, the most for the squad since recording 44 against Indiana State (12/7/17) last season.

Alabama A&M 60 • 0-1

#	Player	Total		3-Ptr		Rebounds		PF	TP	A	TO	Blk	Stl	Min									
		FG-FGA	FG-PtR	FT-FTA	Off Def Tot																		
12	Chinelo Lucy Ibeh	f	3-5	0-0	1-1	2	8	10	1	7	0	1	0	28									
32	Ellexis Evans	f	2-4	0-0	5-6	2	4	4	9	0	2	0	1	18									
4	Jameica Cobb	g	4-9	0-0	3-5	0	1	1	3	11	3	0	0	1	26								
24	Tierra Dark	g	1-4	0-0	0-2	0	1	1	1	2	0	2	0	0	8								
1	Kenya Pye	*	1-5	0-2	0-0	1	2	3	2	2	0	1	0	0	51								
2	Natalie Collins	g	0-2	0-2	0-0	2	1	3	0	0	0	0	0	0	12								
05	Nigeria Jones	g	0-8	0-4	1-2	1	2	1	1	4	3	0	0	0	28								
10	Lauren McKee	g	1-3	1-2	0-0	0	0	0	0	3	0	0	0	0	2								
20	Lazurea Saunders	g	2-4	0-0	0-2	2	5	7	2	4	0	0	0	0	22								
21	Carneitha Brown	g	1-5	1-5	0-0	0	0	0	1	3	1	0	0	0	9								
23	Deshawna Harper	g	6-14	4-8	2-2	0	2	2	3	18	2	1	0	3	22								
Team																							
Totals		21-63		6-23		12-20		13		25		38		19									
1st FG %:		7-19		36.8%		2nd: 3-16		18.8%		3rd: 6-14		42.9%		4th: 5-14		35.7%		Game: 21-63		33.3%		Deadball Rebound	
3FG %:		1-5		20.0%		0-4		0.0%		2-6		33.3%		2-3		37.5%		6-23		26.1%		Rebound	
FT %:		1-1		100.0%		2-5		40.0%		3-4		75.0%		7-10		70.0%		12-20		60.0%		Rebound	

Illinois 88 • 1-0

#	Player		Total	3-Ptr	Rebounds										
			FG-FGA	FG-FGA	FT-FTA	Off	Def	Tot	PF	TP	A	To	Blk	Stl	Min
35	Alex Wittinger	f	4-14	0-0	2-2	3	3	6	2	10	1	2	3	0	29
50	Ali Andrews	f	6-9	3-4	2-2	0	0	0	3	17	0	0	0	0	24
01	Brandi Beasley	g	2-8	0-2	2-3	0	3	3	1	6	9	1	1	1	31
05	Cierra Rice	g	3-5	1-2	3-3	2	4	6	1	10	1	0	0	0	20
30	Courtney Joens	g	2-4	2-3	0-0	0	4	4	1	6	0	1	0	0	18
00	J-Naya Ephraim	g	1-2	0-0	0-2	1	7	8	0	2	0	0	0	0	17
02	Lyric Robins	g	1-1	0-0	0-0	1	0	1	0	2	1	1	0	0	4
03	Ariel Scott	g	3-7	1-2	0	2	2	1	10	0	1	0	0	0	14
04	Mackenzie Blazek	g	3-5	0-0	1-2	1	2	3	1	7	2	0	0	0	11
11	Carolyn Waleski	g	0-0	0-0	2-2	0	0	0	0	2	1	0	0	1	2
23	Jaelyne Kirkpatrick	g	4-5	2-3	0-0	0	2	2	3	10	3	0	0	1	14
31	Sarah Shewan	g	0-1	0-1	0-0	1	1	1	0	1	1	0	1	1	14
33	Meagan McNicholas	g	0-0	0-0	0-0	0	0	0	0	0	0	0	0	0	2
Team						4	2	6							
Totals			29-61	11-22	19-26	12	30	42	14	88	18	7	4	5	200
1st FG %: 4-13 30.8% 2nd: 3-6 50.0% 3rd: 9-19 47.4% 4th: 12-16 75.0% Game: 29-61 47.5% Deadball															
3FG %: 1-5 20.0% 2-6 33.3% 5-8 62.5% 3-3 100.0% 11-22 50.0% Rebound															
FT %: 2-8 25.0% 3-4 75.0% 3-7 42.9% 19-26 73.1%															

Officials: Technical fouls: Alabama A&M-None, Illinois-None. Attendance: 2364
2018-19 Women's Basketball. Round: 0. Alabama A&M vs Illinois. Played at .

Score by periods		1st	2nd	3rd	4th	Total
Alabama A&M		16	8	16	20	60
Illinois		16	13	26	33	88

Last FG - UAAM 4th-01:31, ILL 4th-00:54.
Largest lead - UAAM by 6 1st-07:17, ILL by 28 4th-02:40.
UAAM led for 09:13, ILL led for 28:32. Game was tied for 02:15.

Off	2nd	Fast	
T/O	Chance	Break	Bench
2	9	4	29

Score tied - 4 times.
Lead changed - 3 times.

GAME 2: Illinois 73, Valparaiso 54

November 14, 2018 // Champaign, Illinois

Fighting Illini women's basketball defeated the Valparaiso Crusaders, 73-54 on Nov. 14. Junior Brandi Beasley and senior Alex Wittinger led the Orange and Blue with 18 and 17 points, respectively. Wittinger added 12 rebounds and two blocked shots on the night to earn her first double-double of the season and the 28th of her career. Beasley also contributed five assists and one steal on the night. In all, ten Illini contributed to Illinois' scoring and rebounding efforts against Valparaiso. UI outrebounded Valpo 51-23, overall, also holding the visitors to 34-percent shooting. The Illini also scored a season-best 44 points in the paint, the most for the Orange and Blue since recording 46 against Michigan on February 28, 2016.

Valparaiso 54 • 2-5

#	Player	Total			3-Ptr		Rebounds			PF	TP	A	TO	Blk	Stl	Min	
		FG-FGA	FG-FGA	FT-FTA	Off	Def	Tot	Off	Def								Tot
13	Ella Ellenson	f	0-2	0-0	0-0	0	2	2	4	0	0	1	0	0	0	16	
33	Allison Schofield	f	6-15	4-11	0-0	1	2	3	4	16	2	3	0	0	0	35	
02	Meredith Hamlet	g	4-11	1-7	1-1	0	3	3	0	10	1	1	1	1	1	35	
03	Hannah Schaub	g	0-4	0-1	0-0	0	1	1	1	0	5	0	0	0	0	24	
12	Addison Stoller	g	5-10	2-4	0-0	0	3	3	5	12	0	2	0	2	2	25	
00	Maya Meredith	g	0-3	0-3	0-0	0	0	0	3	0	0	1	0	0	0	8	
04	Ilyse Pitts	g	0-0	0-0	0-0	0	1	1	0	1	0	1	0	1	0	10	
05	Shay Frederick	g	1-5	1-4	1-2	0	2	2	3	4	1	0	0	0	0	24	
25	Grace Hales	g	4-9	1-4	3-4	1	0	1	4	12	0	2	0	0	0	23	
Team																	
Totals		20-59		9-34		5-7		4		19		23		25		61	200
1st FG %:		6-14		42.9%		2nd: 6-14		42.9%		3rd: 4-18		22.2%		4th: 4-13		30.8%	
3FG %:		2-8		25.0%		5-10		50.0%		1-8		12.5%		9-34		26.5%	
FT %:		0-0		0.0%		0-0		0.0%		2-2		100.0%		5-7		71.4%	
Rebounds																1,1	

Illinois 73 • 4-2

#	Player	FG-FGA	FG-FGA	FT-FTA	Off Def Tot	PF	TP	A	T	Blk	Stl						
35	Alex Wittinger	f	7-13	0-1	3-3	6	6	12	1	17	0	1	2	0	29		
50	Ali Andrews	f	1-3	1-2	0-0	0	1	1	2	3	2	1	1	1	21		
01	Brandi Beasley	g	5-10	0-0	8-13	1	4	5	2	18	5	5	0	0	28		
05	Cierra Rice	g	2-6	0-2	4-6	3	4	7	0	8	0	2	0	0	27		
30	Courtney Joens	g	2-5	0-3	0-1	1	2	3	0	4	1	0	0	2	14		
00	J-Naya Ephraim	g	1-5	0-0	0-0	0	3	3	4	2	1	0	0	1	18		
02	Lyric Robins	g	0-3	0-0	0-0	1	0	1	1	0	1	0	0	0	5		
03	Ariel Scott	g	2-5	1-4	1-4	0	6	6	1	6	0	1	0	0	18		
04	Mackenzie Blazek	g	2-2	0-0	1-2	1	3	4	2	5	0	0	3	0	11		
11	Carolyn Waleski	g	0-0	0-0	0-0	0	0	0	0	0	0	0	0	0	3		
23	Jaelyne Kirkpatrick	g	0-0	0-0	2-2	0	0	0	1	2	2	1	0	0	7		
31	Sarah Shewan	g	4-4	0-0	0-2	4	4	1	8	0	3	1	0	1	16		
33	Meagan McNicholas	g	0-0	0-0	0-0	0	0	0	0	0	0	0	0	0	3		
Team						3		2									
Totals		26-56		2-12		19-33		16		35		51		15			
1st FG %:		7-14		50.0%		2nd: 9-15		60.0%		3rd: 5-11		45.5%		4th: 5-16		31.3%	
3FG %:		1-5		20.0%		2nd: 0-2		0.0%		3rd: 0-1		0%		4th: 1-3		33.3%	
Reb %:		85.7%		60.0%		60.0%		60.0%		Game: 26-56		26.4%		Deadball		Rebounds	

FIGHTING ILLINI WOMEN'S BASKETBALL NOTES

GAME 5: Sacramento State 109, Illinois 107 November 24, 2018 // San Luis Obispo, California

The Illini dropped a hard-fought battle to the Sacramento State Hornets, 109-107, at the Cal Poly ShareSLO Holiday Beach Classic. After trailing early on, the Orange and Blue used a 37-point third-quarter effort to close the gap and pull ahead of Sacramento State. Freshman Arieal Scott netted a late three-pointer to keep the game tied with six seconds to play, but the Hornets clinched the victory with a last-second layup. Five Illini scored in double-figures in the matchup, led by Alex Wittinger who knocked down a career-best 32 points and added 14 rebounds on the day. Junior Brandi Beasley also recorded a double-double in the contest, dishing 10 assists and closing the game with 12 points. Senior Alex Wittinger also recorded a double-double in the contest, dishing 10 assists and closing the game with 12 points. Senior Alex Wittinger and junior Brandi Beasley's two double-doubles in the contest mark the first time the Illini have seen two players record double-doubles since November 30, 2016 in a 76-70 loss to Wake Forest. Illinois' 107 points mark the fourth-most in a game in Illinois history and the first time since Nov. 17, 2014 that an Illini squad has put up more than 100 points in a contest.

Sacramento State 109 • 2-1

#	Player	Total		3-Ptr		Rebounds		PF	TP	A	TO	Blk	Stl	Min	
		FG-FGA	FG-FGA	FT-FTA	Off	Def	Total								
11	MENKE, Summer	f	1-7	1-4	1-2	1	1	2	1	4	1	4	0	3	21
15	RIX, Maesyn	f	1-1	0-0	1-2	2	1	3	3	0	1	0	0	0	7
30	NICHOLAS, Kennedy	f	4-13	0-1	4-4	11	4	15	4	12	1	2	1	1	23
03	SCOTT, Tiara	g	11-19	7-13	0-0	1	1	2	1	29	5	0	0	2	24
32	FRIEND, Hannah	g	11-25	7-16	4-6	2	3	5	3	33	2	0	0	3	24
01	ENGER, Millee	f	1-4	1-4	2-2	1	1	2	3	5	6	2	0	0	18
12	WEIBEL, Anna	f	1-2	0-0	0-2	0	1	1	0	2	1	0	0	0	9
14	HARRIS, Quayonna	f	0-5	0-3	0-0	1	1	2	1	0	3	0	0	1	22
20	ROHN, Raegen	f	1-7	0-3	0-0	2	0	2	1	2	2	0	0	2	16
24	JOHNSON, Tiana	f	5-11	4-8	0-0	0	3	3	1	14	0	0	0	0	16
33	ABNEY, Sarah	f	2-7	1-5	0-0	2	2	4	1	5	0	0	1	2	20
Team						4	3	7				2			
Totals			38-10		21-57		12-18		27		21		11		2
1st - FG %: 12-32		37.5%	2nd: 11-28		39.3%	3rd: 7-21		33.3%	4th: 8-20		40.0%	Game: 38-10		37.6%	Deadball
JFG %: 8-20		40.0%	6-16		37.5%	3-12		25.0%	4-9		44.4%	21-57		36.8%	Rebounds
JFT %: 0-0		0.0%	0-0		0.0%	1-4		25.0%	1-1		100%	11-19		57.9%	

1st - FG %:	12-32	37.5%	2nd: 11-28	39.3%	3rd: 7-21	33.3%	4th: 8-20	40.0%	Game: 38-10	37.6%	Deadball	
3FG %:	8-20	40.0%	6-16	37.5%	3-12	25.0%	4-9	44.4%	21-57	36.8%	Rebounds	
FT %:	2-4	50.0%	0-0	0.0%	1-4	25.0%	9-10	90.0%	12-18	66.7%	2	

Illinois 107 • 4-1

#	Player	Total			3-Ptr			Rebounds			PF	TP	A	TO	Blk	Stl	Min
		FG-FGA	FG-FGA	FT-FTA	Off	Def	Tot										
35	Alex Wittinger	f	15-27	0-0	2-2	7	7	14	1	32	2	2	3	0	35		
50	Ali Andrews	f	3-5	1-2	2-2	1	2	3	5	9	3	1	1	0	20		
01	Brandi Beasley	g	4-8	0-1	4-4	1	4	5	2	12	10	5	1	1	35		
05	Cierra Rice	g	4-9	0-2	2-2	1	5	6	2	10	2	3	0	0	31		
20	Courtney Joens	g	4-6	0-2	0-0	1	7	8	1	8	3	2	0	0	24		
00	J-Naya Ephraim	f	1-4	0-1	1-2	0	2	2	0	3	3	3	0	0	20		
03	Arieal Scott	f	6-13	3-10	3-4	0	1	1	3	18	0	2	0	1	18		
04	Mackenzie Blazek	f	0-0	0-0	0-0	0	1	1	1	0	0	0	0	0	2		
31	Sarah Shewan	f	6-7	1-2	2-4	3	4	7	0	15	0	2	1	1	15		
Team						2	7	9				1					
Totals			43-79		5-20		16-20		16	40	56	15	107	23	21	6	3 200
1st: FG %: 10-17		58.8%	2nd: 11-19	57.9%	3rd: 12-24	50.0%	4th: 10-19	52.6%	Game: 43-79				54.0%	Deadball Rebounds			
3FG %: 0-4		0.0%	2-4	50.0%	1-6	16.7%	2-6	33.3%	5-20				25.0%				
FT %: 3-4		75.0%	0-0	0.0%	12-12	100.0%	0-0	0.0%	10-10				100.0%				

1st - FG %:	10-17	58.8%	2nd: 11-19	57.9%	3rd: 12-24	50.0%	4th: 10-19	52.6%	Game: 43-79	54.4%	Deadball	
3FG %:	0-4	0.0%	2-4	50.0%	1-6	16.7%	2-6	33.3%	5-20	25.0%	Rebounds	
FT %:	3-4	75.0%	1-4	25.0%	12-12	100.0%	0-0	0.0%	16-20	80.0%	3	

Officials: Andy Wolf (R), Gorrdon Torioque (U1), Katrina Lynes (U2)
Technical fouls: Sacramento State-TEAM, Illinois-None.
Attendance: 152
Game Three of ShareSLO Holiday Beach Classic

Score by periods	1st	2nd	3rd	4th	OT	Total
Sacramento State	34	28	18	29		109
Illinois	23	25	37	22		107

Last FG - SAC 4th-00:02, ILL 4th-00:07.
Largest lead - SAC by 18 2nd-04:42, ILL by 8 3rd-01:55.
SAC led for 29:45, ILL led for 07:58. Game was tied for 02:17.

Score tied - 5 times.
Lead changed - 9 times.

GAME 6: Clemson 69, Illinois 67 (OT) November 28, 2018 // Clemson, South Carolina

Fighting Illini women's basketball fell to Clemson, 69-67, in a gritty ACC/Big Ten Challenge matchup. Illini freshman Arieal Scott led Illinois with 15 points on the day, and she was joined in double-figure scoring numbers by junior Brandi Beasley (13) and redshirt junior Cierra Rice (13). Beasley also added seven assists on the day, and netted a three-pointer for the Orange and Blue to tie the game with just seconds left to play and send the two teams into overtime. The last time the Illini played overtime and overtime game was Nov. 29, 2014 in a 78-76 loss to Oklahoma at the Paradise Jam in St. Thomas, Virgin Islands. The Illini held the Tigers to a season-low one three-pointer. The Tigers were scoreless from three-point range until the fourth quarter.

Illinois 67 • 4-2

#	Player	FG	Total	3-Ftr	FG-FGA	FT	FTA	Rebounds	Off	Def	Tot	PF	TP	A	TO	Blk	Stl	Min
35	Alex Wittinger	f	4-8	0-0	1-2	6	5	11	5	9		4	4	6	4			40-
50	Ali Andrews	f	3-11	1-4	2-2	3	4	7	4	9		2	0	1	2			36
01	Brandi Beasley	g	6-14	1-2	0-2	3	4	7	4	13		7	3	0	2			39
05	Cierra Rice	g	5-14	1-6	2-3	1	4	5	2	13		1	2	0	1			32
20	Courtney Joens	g	0-5	0-3	0-0	0	1	1	0	0		1	0	0	3			17
00	J-Naya Ephraim	f	2-5	0-1	0-2	0	2	2	3	4		1	1	0	0			17
03	Arieal Scott	f	5-17	3-11	2-3	2	2	4	1	15		0	1	0	1			30
04	Mackenzie Blazek	f	1-2	0-0	1-2	0	2	2	2	3		0	0	0	2			5
31	Sarah Shewan	f	0-6	0-2	1-2	1	0	1	0	1		0	1	0	0			9
Team						3	4	3							1			
Totals			26-82	6-29	9-18	19	24	43	21	67		13	13	7	15			225
1st FG %: 5-20		25.0%	2nd: 6-14		42.9%	3rd: 7-23		30.4%	4th: 7-11		63.6%	Game: 26-82		31.7%	Deadball			
3FG %: 0-7		0.0%	4-14		25.0%	1-5		20.0%	1-1		100.0%	26-29		90.0%	Rebounds			

1st - FG %:	5-20	25.0%	2nd: 6-14	42.9%	3rd: 7-23	30.4%	4th: 7-17	41.2%	Game: 26-82	31.7%	Deadball	
3FG %:	0-7	0.0%	1-4	25.0%	1-5	20.0%	4-11	36.4%	6-29	20.7%	Rebounds	
FT %:	0-0	0.0%	3-7	42.9%	4-6	66.7%	0-1	0.0%	9-18	50.0%	5	

Clemson 69 • 4-3

#	Player		Total		3-Ptr		Rebounds			PF	TP	A	TO	Blk	Stl	Min													
			FG-FGA	FG-FGA	FT-FTA	Off	Def	Tot																					
44	Kobi Thornton	f	9-18	0-0	5-9	5	9	14	1	23	0	4	2	0	41														
55	Tyler Bennett	c	4-11	0-0	3-4	4	13	17	4	11	0	3	2	1	44														
01	Destiny Thomas	g	0-1	0-1	0-0	0	1	1	1	0	1	2	0	1	18														
02	Danielle Edwards	g	7-14	1-4	3-3	2	7	9	5	18	6	4	0	3	37														
32	Chyna Cotton	g	2-8	0-0	1-2	3	3	6	2	5	0	5	0	0	28														
10	Camree Clegg	f	0-2	0-2	1-2	0	0	0	0	1	0	1	0	0	8														
11	Taylor Hosendove	f	4-7	0-0	3-5	1	5	6	2	11	4	0	0	1	35														
22	Keniece Purvis	f	0-0	0-0	0-0	0	0	0	1	0	0	1	0	0	14														
Team							1		2																				
Totals			26-61		1-7		16-25		16		40		56		16		69		11		24		4		6		225		
1st FG %: 7-11			63.6%		2nd: 5-15			33.3%		3rd: 9-16			56.3%		4th: 1-5			20.0%		Game: 26-61			42.6%		Deadbea			Rebound	
3FG %: 0-1			0.0%		5-10			0.0%		0-1			0.0%		4-14			28.6%		1-7			14.3%						

1st - FG %:	7-11	63.6%	2nd: 5-15	33.3%	3rd: 9-16	56.3%	4th: 4-15	26.7%	Game: 26-61	42.6%	Deadball	
3FG %:	0-1	0.0%	0-0	0.0%	0-1	0.0%	1-4	25.0%	1-7	14.3%	Rebounds	
FT %:	2-2	100.0%	1-5	20.0%	5-6	83.3%	4-6	66.7%	16-25	64.0%	4,1	

Officials: Dee Kanter, Bruce Morris, Nykesha Thompson
Technical fouls: Illinois-None, Clemson-None.
Attendance: 412

Score by periods	1st	2nd	3rd	4th	OT	Total
Illinois	10	16	19	18	4	67
Clemson	16	11	23	13	6	69

Last FG - ILL OT-01:22, CU OT-03:59.
Largest lead - ILL by 2 1st-09:41, CU by 16 3rd-02:42.
ILL led for 03:10, CU led for 39:17. Game was tied for 02:27.

Score tied - 3 times.
Lead changed - 5 times.

GAME 7: Illinois 72, Eastern Michigan 66 December 1, 2018 // Champaign, Illinois

Fighting Illini women's basketball kicked off a six-game home stretch with a 72-66 overtime victory over the Eastern Michigan Eagles. The Illini were led by senior Alex Wittinger who earned her 30th career double-double with a 22 points and 11 rebounds. Junior Ali Andrews closed play with a season-high 19 points and seven rebounds, also knocking down 4-of-4 from three-point range. She netted two treys in the overtime period to help Illinois secure the victory. This was the first time in program history Illinois has played back-to-back overtime games, and the Illini have had multiple overtime games now in 9 seasons. Prior to Illinois' Dec. 1 victory, the Illini last won an overtime game in 2012 (Jan. 26, 2012 at Michigan State (Illinois 71, Michigan State 62 (OT)).

Eastern Mich. 66 • 3-2

#	Player	Total		3-Ptr		Rebounds			PF	TP	A	TO	Blk	Stl	Min
		FG-FGA	FG-FGA	FT-FTA	Off	Def	Tot								
31	Lorraine Enabulele	f	0-2	0-0	0-0	2	3	5	5	0	0	1	1	0	23
04	Courtne Lewis	g	3-15	3-9	4-4	2	3	5	1	13	1	3	0	1	36
13	Jenna Annechiarico	g	4-8	1-4	0-1	1	2	3	4	9	7	2	0	1	43
20	Cornione Cardwell	g	2-7	1-3	0-2	2	0	2	5	5	1	3	0	0	33
23	Danielle Minott	g	10-28	5-16	4-6	0	10	10	3	29	3	4	1	1	40
14	Natalia Pineda	f	2-6	1-3	3-4	1	2	3	0	8	1	1	0	0	21
22	Autumn Hudson	f	1-2	0-0	0-3	0	5	5	2	2	0	1	2	0	22
24	Emoni Jackson	f	0-1	0-1	0-0	0	3	3	4	0	0	0	1	0	7
Team						3	2	5							
			22-69	11-36	11-20	11	30	41	24	66	13	5	5	3	225
1st FG %		4-19	21.1%	2nd: 1-4	20.0%	3rd: 7-15	46.7%	4th: 5-14	35.7%	Game: 22-69		31.9%	Debut: 1-5		20.0%
FT %		2-2	100.0%	4-4	66.7%	0-1	0.0%	3-7	42.9%	11-20		55.0%	Rebounds		

FIGHTING ILLINI WOMEN'S BASKETBALL NOTES

GAME 9: Illinois 84, Murray State 52

December 11, 2018 // Champaign, Illinois

The Illini defeated the Murray State Racers on Dec. 11, 84-52. Senior Alex Wittinger led Illinois with 22 points on 11-of-13 shooting from the field, also pulling down a team-leading seven rebounds. She was joined in double-figures by freshman Mackenzie Blazek, who recorded a season-best 10 points on 5-for-5 shooting. Freshman Ariel Scott and junior Ali Andrews also added 11 and 10 points each, respectively. Illinois assisted on 66-percent of its field goals on the night as 11 different players dished one or more times in the game. Junior Brandi Beasley led the way for Illinois with four assists on the night, while redshirt junior Cierra Rice contributed three dimes to Illinois' season-high total of 23. Ul's 32-point margin of victory marks the largest for the Orange and Blue this season, and since earning a 78-41 victory over Rutgers in 2017.

Murray State 52 • 3-4

#	Player	Total		3-Ptr		Rebounds		PF	TP	A	TO	Bk	Stl	Min
		FG-FGA	FG-FGA	FT-FTA	FT-FTA	Off	Def							
00	Griffith-Wallace, J.	* 1-11	0-3	0-0	0 0 0	0	0	0	2	1	3	0	0	27
04	Mayes, Lex	* 0-5	0-4	2-2	0 0 1	2	2	1	2	2	0	2	2	29
05	Turley, Macey	* 6-12	1-5	0-0	0 0 0	2	13	4	2	0	1	1	1	34
14	Adebayo, Evelyn	* 7-22	3-6	6-6	4 9 13	1	23	0	1	0	2	36		
32	Burpo, Alexis	* 1-4	0-0	0-2	4 4 8	0	2	2	0	0	0	23		
01	Blackburn, Raegan	* 1-2	1-1	0-0	0 0 0	0	0	0	0	0	0	5		
02	Hill, Sadie	* 0-1	0-0	0-0	0 0 0	0	0	0	1	0	0	2		
03	Outlaw, DeAsia	* 0-1	0-1	0-0	0 0 0	0	0	0	0	0	0	0		
11	Barrett, Paige	* 0-0	0-0	0-0	0 0 0	0	0	0	1	0	0	2		
20	Mack, Cekeya	* 2-5	0-0	1-2	2 3 5	4	5	0	1	0	0	16		
31	Crane, Brianna	* 1-4	0-0	0-0	2 2 4	0	2	1	1	0	0	15		
33	Manley, Michaela	* 0-3	0-3	0-0	1 1 0	0	1	1	1	1	1	11		
Team						4		2		6		2		
Totals		19-70	5-23	9-12	16 22 38	9	52	10	12	1	6	200		

1st - FG %: 3-19 15.8%	2nd: 5-17 29.4%	3rd: 6-20 30.0%	4th: 5-14 35.7%	Game: 19-70 27.1%	Deadball Rebounds 3
3FG %: 0-7 0.0%	3-9 33.3%	1-2 50.0%	1-5 20.0%	5-23 21.7%	
FT %: 0-2 0.0%	0-0 0.0%	5-6 83.3%	4-4 100.0%	9-12 75.0%	

Illinois 84 • 7-2

#	Player	Total		3-Ptr		Rebounds		PF	TP	A	TO	Bk	Stl	Min
		FG-FGA	FG-FGA	FT-FTA	FT-FTA	Off	Def							
01	Brandi Beasley	* 1-3	0-2	0-0	0 2 2	0	2	4	2	0	1	25		
05	Cierra Rice	* 3-6	1-4	0-0	1 3 4	3	7	3	3	2	0	27		
30	Courtney Joens	* 3-9	2-5	1-1	3 3 6	1	9	2	1	0	1	24		
35	Alex Wittinger	* 11-13	0-0	0-2	5 7 12	2	22	0	1	3	1	24		
50	Ali Andrews	* 4-7	2-4	0-0	1 3 3	2	10	2	0	1	0	17		
00	J-Naya Ephraim	* 2-3	0-0	2-2	0 5 5	2	6	2	1	0	0	22		
02	Lyrice Robins	* 1-1	0-0	0-0	0 1 1	0	2	0	0	0	0	4		
03	Ariel Scott	* 3-10	2-6	3-3	0 4 4	0	11	2	2	0	0	16		
04	Mackenzie Blazek	* 5-5	0-0	0-2	0 4 4	1	10	2	2	1	0	20		
11	Carolyn Waleski	* 0-0	0-0	0-0	0 0 0	0	0	0	1	0	0	2		
31	Sarah Shewan	* 2-5	1-3	0-0	0 0 2	1	5	2	1	1	0	17		
33	Meagan McNicholas	* 0-0	0-0	0-0	0 0 0	0	0	0	1	0	0	0		
Team						1		2		8		4		
Totals		35-62	8-24	6-10	8 32 40	12	84	23	11	8	4	200		

1st - FG %: 7-19 36.8%	2nd: 11-14 78.6%	3rd: 6-11 54.5%	4th: 11-18 61.1%	Game: 35-62 56.3%	Deadball Rebounds 1
3FG %: 0-7 0.0%	3-9 33.3%	1-4 25.0%	4-8 50.0%	8-24 33.3%	
FT %: 0-0 0.0%	3-3 100.0%	3-3 100.0%	0-4 0.0%	6-10 60.0%	

Officials: Brian Hall, Angie Enlund, Jamie Broderick
Technical fouls: Murray State-None, Illinois-None.
Attendance: 986

Score by periods	1st	2nd	3rd	4th	Total
Murray State	6	13	18	15	52
Illinois	14	28	16	26	84

Last FG - MUR 4th-00:12, ILL 4th-00:57.
Largest lead - MUR None, ILL by 34 4th-00:57.
MUR led for 00:00, ILL led for 39:39. Game was tied for 00:20.

Score tied - 0 times.
Lead changed - 0 times.

GAME 10: Illinois 74, SIUE 57

December 15, 2018 // Champaign, Illinois

Three Illini scored in double-figures led by senior Alex Wittinger who closed play with 19 points and eight rebounds. Junior Brandi Beasley knocked down 13 points while also dishing five of Illinois' 21 assists on the night. Ali Andrews tallied 12 points and five rebounds as well. Freshman Mackenzie Blazek was perfect from the floor for the second consecutive game on Saturday evening as she followed up a 5-for-5 performance against Murray State with a 3-for-3 shooting performance on Saturday evening. Blazek also tallied three blocks on the night, as did graduate transfer Sarah Shewan. The rejections mark a career-best for both players. The Illini freshmen were strong on Saturday as J-Naya Ephraim tallied a career-best eight points, also contributing a career-best three assists. Ariel Scott added a career best three steals as well.

SIUE 57 • 4-4

#	Player	Total		3-Ptr		Rebounds		PF	TP	A	TO	Bk	Stl	Min
		FG-FGA	FG-FGA	FT-FTA	FT-FTA	Off	Def							
14	Micah Jones	f 1-9	0-0	2-2	3 4 7	1	4	3	3	1	0	22		
21	Alek Akuen	f 1-2	0-0	0-0	2 2 4	2	2	1	1	0	1	18		
02	Nakiah Bell	f 6-15	5-11	0-0	0 2 2	1	17	4	2	0	2	34		
05	Jay'Nee Alston	g 3-9	3-3	0-0	0 3 3	9	0	2	0	1	26			
23	Allie Troeckler	g 2-5	0-0	2-2	2 3 5	2	6	2	3	0	2	34		
01	Christen King	g 1-3	0-0	0-0	1 2 3	0	2	1	1	0	0	5		
11	Mikia Keith	g 3-7	1-3	0-0	0 0 0	0	1	7	0	1	0	19		
12	Kai Koehler	g 0-0	0-0	0-0	0 0 0	0	0	0	0	0	0	0+		
15	Cloe Churchill	g 0-0	0-0	0-0	0 0 0	0	0	0	0	0	0	0+		
34	Sydney Bauman	g 1-6	0-1	1-2	1 3 4	2	3	1	0	0	0	26		
35	Mikala Hall	g 2-4	0-0	1-2	1 0 1	0	5	0	0	0	2	9		
50	Kelsie Williams	g 1-5	0-0	0-0	1 0 1	1	2	0	0	0	0	7		
Team						5		1		6		2		
Totals		21-65	9-23	6-8	16 20 36	13	57	12	13	1	9	200		

1st - FG %: 7-16 43.8%	2nd: 7-16 43.8%	3rd: 3-17 17.6%	4th: 4-16 25.0%	Game: 21-65 32.3%	Deadball Rebounds 2,2
3FG %: 2-7 28.6%	1-4 25.0%	1-5 20.0%	2-6 33.3%	9-23 39.1%	
FT %: 2-2 100.0%	0-0 0.0%	1-2 50.0%	3-4 75.0%	6-8 75.0%	

Illinois 74 • 8-2

#	Player	Total		3-Ptr		Rebounds		PF	TP	A	TO	Bk	Stl	Min
		FG-FGA	FG-FGA	FT-FTA	FT-FTA	Off	Def							
35	Alex Wittinger	f 7-11	2-2	3-3	5 3 8	3	19	1	2	1	2	30		
50	Ali Andrews	f 5-13	2-5	0-0	4 1 5	2	12	1	1	1	0	24		
01	Brandi Beasley	g 6-10	0-1	1-3	1 5 3	0	13	1	0	1	2	31		
05	Cierra Rice	g 0-2	0-1	3-4	3 1 4	2	3	2	3	0	0	22		
30	Courtney Joens	g 2-6	1-2	0-0	1 2 3	0	5	1	0	0	0	16		
00	J-Naya Ephraim	g 0-0	0-0	2-3	0 4 4	1	8	3	2	0	0	27		
02	Lyrice Robins	g 0-0	0-0	0-0	0 0 0	0	0	0	1	0	0	1		
03	Ariel Scott	g 1-7	0-5	0-0	0 1 1	0	2	2	1	0	3	13		
04	Mackenzie Blazek	g 3-3	0-0	0-0	0 3 3	1	6	1	0	3	0	9		
11	Carolyn Waleski	g 0-0	0-0	0-0	0 1 1	0	1	0	0	0	0	2		
23	Jaelynne Kirkpatrick	g 0-2	0-2	0-0	0 1 1	1	0	2	0	0	0	9		
31	Sarah Shewan	g 3-3	0-0	0-2	0 2 3	6	2	1	3	0	14			
33	Meagan McNicholas	g 0-0	0-0	0-0	0 0 0	1	0	0	0	0	0	2		
Team						1		2		8		4		
Totals		30-64	5-17	9-15	15 26 41	14	74	21	12	8	7	200		

1st - FG %: 7-17 41.2%	2nd: 9-19 47.4%	3rd: 8-14 57.1%	4th: 6-14 42.9%	Game: 30-64 46.9%	Deadball Rebounds 3,2
3FG %: 2-7 28.6%	1-5 20.0%	0-1 0.0%	2-4 50.0%	5-17 29.4%	
FT %: 0-0 0.0%	0-0 0.0%	2-6 33.3%	1-3 33.3%	9-15 60.0%	

Officials: Brad Maxey, Cameron Inouye, Felicia Grinter
Technical fouls: SIUE-None, Illinois-None.
Attendance: 1335
2018-19 Women's Basketball. Round: 0. Illinois vs SIUE. Played at .

Score by periods	1st	2nd	3rd	4th	Total
SIUE	16	11	15	12	57
Illinois	22	19	18	15	74

Last FG - SIUE 4th-02:06, ILL 4th-01:08.
Largest lead - SIUE by 5 1st-02:55, ILL by 18 4th-01:08.
SIUE led for 06:40, ILL led for 31:20. Game was tied for 00:20.

Score tied - 4 times.
Lead changed - 12 times.

GAME 10: Illinois 74, SIUE 57

December 15, 2018 // Champaign, Illinois

The Illini defeated the Murray State Racers on Dec. 11, 84-52. Senior Alex Wittinger led Illinois with 22 points on 11-of-13 shooting from the field, also pulling down a team-leading seven rebounds. She was joined in double-figures by freshman Mackenzie Blazek, who recorded a season-best 10 points on 5-for-5 shooting. Freshman Ariel Scott and junior Ali Andrews also added 11 and 10 points each, respectively. Illinois assisted on 66-percent of its field goals on the night as 11 different players dished one or more times in the game. Junior Brandi Beasley led the way for Illinois with four assists on the night, while redshirt junior Cierra Rice contributed three dimes to Illinois' season-high total of 23. Ul's 32-point margin of victory marks the largest for the Orange and Blue this season, and since earning a 78-41 victory over Rutgers in 2017.

SIUE 57 • 4-4

#	Player	Total			3-Ptr		Rebounds		PF	TP	A	TO	Bk	Stl	Min
		FG-FGA	FG-FGA	FT-FTA	Off	Def									
14	Micah Jones	f	1-9	0-0	2-2	3	4	7	1	4	3	3	1	0	22
21	Alek Akuen	f	1-2	0-0	0-0	2	2	4	2	2	1	1	0	1	18
02	Nakiah Bell	f	6-15	5-11	0-0	0	2	2	1	17	4	2	0	2	34
05	Jay'Nee Alston	g	3-9	3-8	0-0	0	3	3	9	0	2	0	1	2	26
23	Allie Troeckler	g	2-5	0-0	2-2	2	3	5	2	6	2	3	0	2	34
01	Christina King	f	1-3	0-0	0-0	1	2	3	0	2	1	1	0	0	5
11	Mike Keith	f	3-7	1-3	0-0	0	0	0	1	7	0	1	0	1	19
12	Kai Koehler	f	0-0	0-0	0-0	0	0	0	0	0	0	0	0	0	0
15	Cloe Churchill	f	0-0	0-0	0-0	0	0	0	0	0	0	0	0	0	0
34	Stephan Bauman	f	1-6	0-1	1-2	1	3	4	2	3	1	0	0	0	26
35	Mikala Hall	f	2-4	0-0	1-2	1	0	1	0	5	0	0	0	2	9
50	Kelsie Williams	f	1-5	0-0	0-0	1	0	1	1	2	0	0	0	0	7
						5	1	6							
	Total		21-65	9-23	6-8	16	20	36	13	57	12	13	1	9	200
1st	FG %: 7-16	43.8%	3rd:	3-17	17.6%	4th:	4-16	25.0%	Garne:	21-65	32.3%	Deadball			
2nd	FG %: 3-8	37.5%	2nd:	7-16	43.8%	3rd:	2-6	33.3%	Rebounds:	16-20	80.0%	2nd:			
3rd	FT %: 2-2	100.0%	4th:	1-2	50.0%	5th:	3-4	75.0%	6th:	8	75.0%	2nd:			

FIGHTING ILLINI WOMEN'S BASKETBALL NOTES

GAME 12: INDIANA 85, ILLINOIS 83 (OT)

December 28, 2018 // Champaign, Illinois

Fighting Illini women's basketball opened Big Ten play, falling to the Indiana Hoosiers in an overtime heartbreaker. The Orange and Blue used a strong third-quarter effort to even the score and pull ahead of visiting Indiana. The Hoosiers fought back to force overtime and earn their first conference victory of the season. Senior Alex Wittinger and junior Brandi Beasley led the Illini with 19 points each, and freshman Mackenzie Blazek grabbed a career-best 10 rebounds on the night. Friday's game marks the first time in program history that an Illini squad has played three overtime contests in one campaign and the second overtime game against the Indiana Hoosiers. Illinois is 1-1 in overtime against Indiana.

Indiana 85 • 12-1

#	Player	Total		3-Ptr		Rebounds			PF	TP	A	TO	Blk	Stl	Min	
		FG-FTA	FG-FGA	FT-FTA	Off	Def	Total									
11	Kym Royster	f	2-5	0-0	3-3	4	2	6	4	7	0	0	0	0	15	
50	Brenna Wise	f	5-13	2-5	0-0	4	1	5	3	12	2	1	0	0	44	
01	Bendu Yeaney	g	4-11	0-0	4-6	2	4	6	2	12	3	2	1	3	40	
14	Jaelynn Penn	g	7-17	5-9	0-1	0	5	5	3	19	2	0	1	1	37	
10	Ali Patberg	g	8-19	1-2	3-3	0	7	7	2	20	6	4	0	2	43	
13	Aleksa Gulbe	g	2-7	0-0	5-6	4	0	4	5	9	0	3	0	0	20	
12	Linsey Marchese	g	1-1	0-0	0-0	0	0	0	2	2	0	0	0	0	11	
34	Grace Berger	g	2-5	0-1	0-0	0	4	4	2	4	0	1	0	0	15	
Team						3	3	6								
Totals			31-78	8-17	15-19	17	26	43	23	85	13	11	2	6	225	
1st - FG %:		9-14	64.3%	2nd:	9-17	52.9%	3rd:	6-18	33.3%	4th:	5-8	27.8%	Game:	31-78	39.7%	Deadball
3FG %:		3-3	100.0%	2-5	40.0%	2-4	50.0%	1-4	25.0%	8-17	47.1%	15-19	78.9%	Rebounds		
FT %:		5-6	83.3%	1-1	100.0%	0-0	0.0%	0-0	0.0%					1,1		

Illinois 83 • 8-4

#	Player	Total		3-Ptr		Rebounds			PF	TP	A	TO	Blk	Stl	Min	
		FG-FGA	FG-FGA	FT-FTA	Off	Def	Tot									
04	Mackenzie Blazek	f	4-7	0-0	0-0	3	7	10	4	8	1	1	2	0	33	
35	Alex Wittinger	f	6-9	1-1	6-6	2	2	4	4	19	2	6	3	1	43	
01	Brandi Beasley	g	8-16	1-4	2-3	0	3	3	3	19	2	1	0	2	40	
05	Cierra Rice	g	5-15	2-6	6-7	0	5	5	4	18	0	2	0	2	37	
23	Jaelyne Kirkpatrick	g	3-4	1-2	1-1	0	1	1	3	8	3	1	0	0	18	
00	J-Naya Ephraim	g	1-5	0-0	0-0	1	6	7	1	2	1	5	1	1	32	
30	Courtney Joens	g	1-2	0-0	2-2	1	2	3	0	4	0	0	0	0	8	
31	Sarah Shewan	g	0-2	0-1	4-4	0	2	2	1	4	0	0	0	0	8	
50	Ali Andrews	g	0-1	0-0	1-2	0	1	1	0	1	0	1	1	0	6	
Team						1	2	3								
Totals			28-61	5-14	22-25	8	31	39	20	83	9	17	7	6	225	
1st - FG %:		7-14	50.0%	2nd:	7-17	41.2%	3rd:	8-11	72.7%	4th:	4-13	30.8%	Game:	28-61	45.9%	Deadball
3FG %:		2-8	25.0%	2-2	100.0%	1-2	50.0%	13-14	92.9%	1-2	50.0%	22-25	88.0%	Rebounds		
FT %:		4-4	100.0%	2-2	100.0%	0-0	0.0%							1,2		

Officials: Dawn Marsh, Bryan Enterline, Gina Cross

Technical fouls: Indiana-None. Illinois-None.

Attendance: 1622

2018-19 Women's Basketball. Round: 0. Illinois vs Indiana. Played at .

Score by periods		1st	2nd	3rd	4th	OT	Total	Points	In Paint	Off T/O	2nd Chance	Fast Break	Bench
		26	21	14	16	8	85						
Indiana		26	21	14	16	8	85						
Illinois		20	18	30	9	6	83						

Last FG - IU OT-01:22, ILL OT-01:04.

Largest lead - IU by 15 2nd-06:16, ILL by 11 4th-08:20.

IU led for 26:23. ILL led for 11:11. Game was tied for 07:00.

Score tied - 10 times.

Lead changed - 6 times.

GAME 13: NORTHWESTERN 68, ILLINOIS 45

December 31, 2018 // Evanston, Illinois

Fighting Illini women's basketball opened its conference road slate on Monday, taking on the Northwestern Wildcats inside Welsh-Ryan Arena. Despite a hard-fought battle, the Orange and Blue fell to Northwestern, 68-45. Junior Courtney Joens led Illinois with 16 points, and freshman J-Naya Ephraim improved upon her career-best with 11 points. The Illini bench contributed 60-percent of the team's scoring on the day, led by Joens and Ephraim, and UI tallied 20 points in the paint. The Wildcats capitalized from the free throw line, making 18-of-25 attempts, and also scored 14 second-chance points in the contest. Wittinger led Illinois with seven rebounds on the day, and Ephraim finished with three steals overall.

Illinois 45 • 8-5

#	Player		Total			3-Ptr			Rebounds			PF	TP	A	TO	Blk	Stl	Min
			FG-FGA	FG-FGA	FT-FTA	Off	Def	Tot										
04	Mackenzie Blazek	f	1-3	0-0	0-0	0	1	1	3	2	1	0	0	1	14			
35	Alex Wittinger	f	3-11	0-1	1-2	1	6	7	3	7	2	2	0	0	35			
01	Brandi Beasley	g	2-11	0-2	0-0	2	2	4	2	4	1	4	0	2	29			
05	Cierra Rice	g	2-6	0-2	1-3	0	1	1	1	5	1	2	0	1	22			
23	Jaelyne Kirkpatrick	g	0-6	0-3	0-0	0	1	1	2	0	1	2	0	1	17			
00	J-Naya Ephraim	g	5-7	1-3	0-0	0	1	1	3	11	1	4	0	3	22			
02	Lyric Robins	g	0-0	0-0	0-0	1	0	1	0	0	0	0	0	0	5			
30	Courtney Joens	g	6-10	3-7	1-1	0	2	2	3	16	0	1	0	2	22			
31	Sarah Shewan	g	0-3	0-2	0-0	0	1	1	0	4	0	0	1	0	15			
50	Ali Andrews	g	0-4	0-2	0-0	3	1	4	3	0	3	1	0	0	19			
Team						3	4	7										
Totals			19-61	4-22	3-6	11	20	31	20	45	10	16	1	10	200			
1st - FG %:			2-15	13.3%	2nd: 6-15	40.0%	3rd: 7-19	36.8%	4th: 4-12	33.3%	Game: 19-61			31.1%	Deadball			
3FG %:			1-8	12.5%	1-4	25.0%	1-6	16.7%	1-4	25.0%	4-22			18.2%	Rebounds			
FT %:			0-0	0.0%	0-0	0.0%	1-2	50.0%	1-2	50.0%	3-6			50.0%	2,2			

Northwestern 68 • 8-5

#	Player		Total		3-Ptr		Rebounds			PF	TP	A	TO	Blk	Stl	Min
			FG-FGA	FG-FGA	FT-FTA	Off	Def	Tot								
14	Pallas Kunalayi-Akpan	f	3-8	0-0	6-8	2	6	8	2	12	0	5	2	5	26	
44	Abi Scheid	c	10-15	4-6	1-2	1	9	10	1	25	3	0	0	2	30	
10	Lindsey Pulliam	g	4-10	0-2	9-13	1	1	2	1	17	0	4	0	2	31	
12	Veronica Burton	g	1-3	1-3	0-0	0	5	5	2	3	7	0	0	0	32	
24	Jordan Hamilton	g	2-9	0-3	0-0	0	1	1	3	4	4	2	1	1	30	
00	Jess Sancataldo	g	0-1	0-1	0-0	1	0	1	1	0	0	0	1	1	8	
02	Lauryn Satterwhite	g	0-0	0-0	0-0	0	0	0	0	0	0	0	1	0	0	
03	Sydney Wood	g	0-1	0-0	0-0	0	1	1	0	0	1	2	0	0	0	
04	Bryana Hopkins	g	0-1	0-0	0-0	1	1	2	0	0	0	0	0	0	10	
15	Courtney Shaw	g	0-0	0-0	0-0	0	1	1	0	0	0	0	1	0	1	
21	Abbie Wolf	g	1-2	0-0	0-0	1	2	3	0	2	0	0	2	1	13	
22	Bryd Galernik	g	0-0	0-0	2-2	0	1	1	0	2	2	1	0	0	4	
32	Amber Jamison	g	1-2	1-2	0-0	0	0	0	3	0	0	0	0	0	5	
	Team					0	3	3								
	Totals		22-52	6-17	18-25	7	31	38	10	68	17	15	7	12	200	
1st - FG %: 5-12 41.7% 2nd: 9-16 56.3% 3rd: 6-12 50.0% 4th: 2-12 16.7% Game: 22-52 42.3% Deadball																
3FG %: 0-4 0.0% 1-4 25.0% 1-5 20.0% 6-17 35.3% Rebounds																
FT %: 4-5 80.0% 3-6 50.0% 5-6 83.3% 6-8 75.0% 18-25 72.0% 8,1																

Officials: Tiara Cruise, Cameron Inouye, Felicia Grinter

Technical fouls: Illinois-None. Northwestern-None.

Attendance: 1129

2018-19 Women's Basketball. Round: 0. Illinois vs Northwestern. Played at .

Illinois	5	13	16	11	45	Points	Paint	T/O	Chance	Break	Bench
						ILL	20	10	7	4	27
Northwestern	14	22	21	11	68	NU	22	14	10	18	7

Last FG - ILL 4th-01:03, NU 4th-01:47.

Largest lead - ILL None, NU by 27 3rd-03:16.

ILL led for 00:00. NU led for 38:46. Game was tied for 00:53.

Score tied - 0 times.

Lead changed - 0 times.

GAME 14: ILLINOIS 66, NO. 12 MINNESOTA 62

January 6, 2019 // Minneapolis, Minnesota

Fighting Illini women's basketball earned its first Big Ten victory of the season on Sunday, defeating the 12th-ranked Minnesota Golden Gophers in an afternoon thriller. The Orange and Blue used a strong second half to stay close to the Gophers, taking the lead with just over two minutes to play. Freshman Arieal Scott sealed the, 66-62, Illini victory with a late three-pointer, marking her third of the day. Junior Brandi Beasley led Illinois with 18 points and five steals, and Minnesota native, Alex Wittinger contributed a season-best six blocks in the victory.

Illinois 66 • 9-5

#	Player		Total	3-Ptr		Rebounds													
			FG-FGA	FG-FGA	FT-FTA	Off	Def	Tot	PF	TP	A	TO	Blk	Stl					
04	Mackenzie Blazek	f	0-1	0-0	0-0	1	0	1	0	0	1	0	0	0					
35	Alex Wittinger	f	5-13	1-1	0-1	2	6	8	3	11	2	1	6	0					
00	J-Naya Ephraim	g	3-7	1-1	0-0	0	4	4	4	7	5	2	0	1					
01	Brandi Beasley	g	8-14	1-2	1-2	1	2	3	3	18	6	1	0	5					
05	Cierra Rice	g	0-5	0-1	0-0	3	0	3	1	0	0	1	0	0					
02	Lyrice Robins		0-1	0-0	0-0	0	0	0	1	0	0	1	0	0					
03	Ariel Scott		3-4	3-4	0-0	0	1	1	0	9	0	0	0	0					
30	Courtney Joens		4-7	2-3	0-0	0	3	3	1	10	1	2	1	0					
31	Sarah Shewan		0-3	0-0	0-0	0	0	0	1	0	5	1	0	1					
50	Ali Andrews		2-6	1-2	2-2	3	1	4	4	7	0	2	1	1					
	Team					3	3	6			2								
	Totals		27-65	9-17	3-5	14	23	37	18	66	15	9	8	200					
1st	FG %:	5-17	29.4%		2nd:	4-10	30.8%		3rd:	9-18	40.0%		4th:	9-17	52.9%	Game:	27-65	41.5%	Deadball
	3P %:	1-1	50.0%			0-2	0.0%			2-2	4-10	40.0%		1-2	50.0%		3-5	60.0%	Rebounds
	FT %:	0-0	0.0%			0-0	0.0%			2-3	66.7%			4-4	100.0%				

FIGHTING ILLINI WOMEN'S BASKETBALL NOTES

GAME 16: PENN STATE 62, ILLINOIS 48

January 12, 2019 // University Park, Pa.

Fighting Illini women's basketball fell to the Penn State Lady Lions on Saturday afternoon, 62-48. Led by senior Alex Wittinger, the Orange and Blue got off to a strong start at the Bryce Jordan Center, but could not outlast Penn State. Wittinger led all scorers with 19 points on 9-of-10 shooting, also swiping four steals. Freshman Arieal Scott added 10 points for Illinois, contributing three treys on the day.

Indiana 85 • 12-1

##	Player	Total		3-Ptr		Rebounds			PF	TP	A		TO	Blk	Stl	Min
		FG-FGA	FG-FGA	FT-FTA	Off	Def	Tot									
11	Kym Royster	f	2-5	0-0	3-3	4	2	6	4	7	0	0	0	0	0	15
50	Brenna Wise	f	5-13	2-5	0-0	4	1	5	3	12	2	1	0	0	0	44
01	Bendu Yeeney	g	4-11	0-0	4-6	2	4	6	2	12	3	2	1	3	0	40
13	Jaelynn Penn	g	7-17	5-9	0-1	0	5	5	3	19	2	0	1	1	1	37
14	Ali Pabberg	g	8-19	1-2	3-3	0	7	7	2	20	6	4	0	2	4	43
10	Aleksa Gulbe	g	2-7	0-0	5-6	4	0	4	5	9	0	3	0	0	0	20
12	Linsey Marchese	g	1-1	0-0	0-0	0	0	0	2	2	0	0	0	0	0	11
34	Grace Berger	g	2-5	0-1	0-0	0	4	4	2	4	0	1	0	0	0	15
Team						3	3	6								
Totals			31-78	8-17	15-19	17	26	43	23	85	13	11	2	6	225	

1st - FG %:	9-14	64.3%	2nd: 9-17	52.9%	3rd: 6-18	33.3%	4th: 5-18	27.8%	Game: 31-78	39.7%	Deadball	
3FG %:	3-5	60.0%	2-5	40.0%	2-4	50.0%	2-9	22.2%	8-17	47.1%	Rebounds	
FT %:	5-6	83.3%	1-1	100.0%	0-0	0.0%	5-7	71.4%	15-19	78.9%	1,1	

Illinois 83 • 8-4

##	Player	Total		3-Ptr		Rebounds			PF	TP	A		TO	Blk	Stl	Min
		FG-FGA	FG-FGA	FT-FTA	Off	Def	Tot									
04	Mackenzie Blazek	f	4-7	0-0	0-0	3	7	10	4	8	1	1	2	0	33	
35	Alex Wittinger	f	6-9	1-1	6-6	2	2	4	4	19	2	6	3	1	43	
01	Brandi Beasley	g	8-16	1-4	2-3	0	3	3	3	19	2	1	0	2	40	
05	Cierra Rice	g	5-15	2-6	6-7	0	5	5	4	18	0	2	0	2	37	
23	Jaelyne Kirkpatrick	g	3-4	1-2	1-1	0	1	1	3	8	3	1	0	0	18	
00	J-Naya Ephraim	g	1-5	0-0	0-0	1	6	7	1	2	1	5	1	1	32	
30	Courtney Joens	g	1-2	0-0	2-2	1	2	3	0	4	0	0	0	0	8	
31	Sarah Shewan	g	0-2	0-1	4-4	0	2	2	1	4	0	0	0	0	8	
50	Ali Andrews	g	0-1	0-0	1-2	0	1	1	0	1	0	1	1	0	6	
Team						1	2	3								
Totals			28-61	5-14	22-25	8	31	39	20	83	9	17	7	6	225	

1st - FG %:	7-14	50.0%	2nd: 7-17	41.2%	3rd: 8-11	72.7%	4th: 4-13	30.8%	Game: 28-61	45.9%	Deadball	
3FG %:	2-8	25.0%	2-2	100.0%	1-2	50.0%	0-2	0.0%	5-14	35.7%	Rebounds	
FT %:	4-4	100.0%	2-2	100.0%	13-14	92.9%	1-2	50.0%	22-25	88.0%	1,2	

Officials: Dawn Marsh, Bryan Enterline, Gina Cross
Technical fouls: Indiana-None, Illinois-None.
Attendance: 1622
2018-19 Women's Basketball. Round: 0. Illinois vs Indiana. Played at .

Score by periods		1st	2nd	3rd	4th	OT	Total		
Indiana		26	21	14	16		85		
Illinois		20	18	30	9	6	83		

Last FG - IU OT-01:22, ILL OT-01:04.
Largest lead - IU by 15 2nd-06:16, ILL by 11 4th-08:20.
IU led for 26:23, ILL led for 11:11. Game was tied for 07:00.

Score tied - 10 times.
Lead changed - 6 times.

GAME 17: NEBRASKA 77, ILLINOIS 67

January 17, 2019 // Champaign, Ill.

Freshman Arieal Scott scored a career-high 23 points for Illinois on Thursday evening at the State Farm Center, but the Orange and Blue could not overcome the Nebraska Cornhuskers. Senior Alex Wittinger was also among Illini leaders with her 14 points and 13 rebounds on the night, marking her fifth double-double of the season and the 31st of her career, and redshirt junior Cierra Rice added 11 points as well. The Illini outrebounded the Huskers, 40-32, on Thursday night, led by Wittinger's double-digit boards. Junior Ali Andrews was also among team leaders as she registered six boards on the night. Graduate transfer Sarah Shewan added five rebounds of her own.

Nebraska 77 • 8-9, 3-3 B1G

##	Player	Total		3-Ptr		Rebounds			PF	TP	A		TO	Blk	Stl	Min
		FG-FGA	FG-FGA	FT-FTA	Off	Def	Tot									
44	Kayla Mershon	f	1-2	1-2	2-2	0	1	1	4	5	1	2	0	1	25	
31	Kate Cain	c	4-5	0-0	0-0	1	6	7	2	8	1	1	0	0	1	17
03	Hannah Whitish	g	3-9	2-6	4-6	0	3	3	1	12	7	0	0	2	32	
05	Nicea Eliely	g	1-3	0-1	0-0	0	4	4	3	2	0	5	0	1	25	
33	Taylor Kissinger	g	3-6	3-5	1-2	1	2	3	2	10	1	0	0	1	22	
04	Sam Haiby	g	1-5	0-2	5-5	1	1	2	7	2	0	0	0	3	21	
13	Ashtyn Veerbeek	g	6-9	1-3	6-9	1	7	8	3	19	0	2	1	0	22	
14	Grace Mitchell	g	0-0	0-0	0-0	0	0	0	0	0	0	0	0	0	0	0
24	Maddie Simon	g	2-3	0-0	0-0	0	1	1	2	4	0	0	0	0	1	16
32	Leigha Brown	g	4-11	0-3	2-4	0	1	1	1	10	1	1	0	1	20	
Team						1	1	2								
Totals			25-53	7-22	20-28	5	27	32	20	77	13	12	1	11	200	

1st - FG %:	10-16	62.5%	2nd: 4-13	30.8%	3rd: 6-11	54.5%	4th: 5-13	38.5%	Game: 25-53	47.2%	Deadball	
3FG %:	4-6	66.7%	1-8	12.5%	0-4	0.0%	2-4	50.0%	7-22	31.8%	Rebounds	
FT %:	1-2	50.0%	2-4	50.0%	9-11	81.8%	8-11	72.7%	20-28	71.4%	6,1	

Illinois 67 • 9-8, 1-5 B1G

##	Player	Total		3-Ptr		Rebounds			PF	TP	A		TO	Blk	Stl	Min
		FG-FGA	FG-FGA	FT-FTA	Off	Def	Tot									
35	Alex Wittinger	f	6-14	0-2	2-4	7	6	13	2	14	2	2	1	0	39	
50	Ali Andrews	f	2-6	1-2	0-0	1	5	6	4	5	0	0	0	0	19	
00	J-Naya Ephraim	g	1-4	0-1	0-0	0	1	1	2	1	2	1	0	0	16	
01	Brandi Beasley	g	2-4	0-0	1-2	0	1	1	5	5	1	6	0	0	30	
30	Courtney Joens	g	1-8	0-3	0-0	1	1	2	2	2	0	1	0	1	22	
02	Lyric Robins	g	0-0	0-0	0-0	0	0	0	0	0	0	0	0	0	0	0
03	Arieal Scott	g	6-14	4-11	7-9	0	2	2	3	23	0	0	0	0	1	29
04	Mackenzie Blazek	g	0-0	0-0	0-0	0	2	2	0	0	0	0	0	0	0	4
05	Cierra Rice	g	5-10	1-2	0-2	1	1	2	4	11	2	4	0	1	23	
31	Sarah Shewan	g	2-4	1-3	0-0	1	4	5	3	5	2	2	0	0	18	
Team						3	2	5								
Totals			25-64	7-24	10-17	15	25	40	24	67	8	17	1	3	200	

1st - FG %:	7-19	36.8%	2nd: 5-15	33.3%	3rd: 5-14	35.7%	4th: 8-16	50.0%	Game: 25-64	39.1%	Deadball	
3FG %:	2-6	33.3%	1-7	14.3%	2-5	40.0%	2-6	33.3%	7-24	29.2%	Rebounds	
FT %:	1-3	33.3%	1-3	33.3%	3-5	60.0%	5-6	83.3%	10-17	58.8%	3	

Officials: Talisa Green, Tiffany Bird, Cameron Inouye
Technical fouls: Nebraska-None, Illinois-None.
Attendance: 1349
2018-19 Women's Basketball. Round: 0. Illinois vs Nebraska. Played at .

Score by periods		1st	2nd	3rd	4th	Total		
Nebraska		25	11	21	20	77		
Illinois		17	12	15	23	67		

Points In Off 2nd Fast
NEB 26 Paint T/O Chance Break Bench
ILL 24 8 13 2 39

GAME 18: #22 IOWA 94, ILLINOIS 75

January 20, 2019 // Champaign, Ill.

Fighting Illini women's basketball hosted the Iowa Hawkeyes for the annual Pack the House game on Sunday. The Orange and Blue fought on their home court as four players scored in double-figures led by Brandi Beasley (21) and Alex Wittinger (20). It wasn't enough, however, as the Hawkeyes took home the win, 94-75. Beasley dished a team-leading six assists and added four steals to her tally, while Wittinger closed play with four blocked shots. Freshman Arieal Scott was among Illini scoring leaders for her 15 points, and redshirt junior Cierra Rice added 11 of her own. Illinois was a perfect 5-for-5 from the free throw line on Sunday afternoon, and also knocked down 10 three-point shots. IU forced 11 Hawkeye turnovers in the contest, committing just five of its own.

Iowa 94 • 14-4

#	Player	Total		3-Ptr		Rebounds			PF	TP	A		TO	Blk	Stl	Min
		FG-FGA	FG-FGA	FT-FTA	Off	Def	Tot									
21	Hannah Stewart	f	6-10	0-0	1-2	5	1	6	2	13	3	2	0	0	0	24
10	Megan Gustafson	c	12-14	1-1	2-5	1	11	12	1	27	1	1	0	0	34	
03	Mackenzie Meyer	g	3-7	3-6	0-0	0	2	2	2	9	5	1	0	0	25	
11	Tania Davis	g	8-11	3-4	0-0	0	3	3	0	19	4	1	0	1	32	
22	Kathleen Doyle	g	7-12	3-7	0-0	0	2	2	2	17	5	3	1	1	34	
01	Tomi Taiwo	g	0-0	0-0	2-2	0	0	0	0	2	0	0	0	0	4	
05	Alexis Sevilian	g	1-3	1-3	0-0	0	4	4	2	3	4	1	0	0	23	
23	Logan Cook	g	0-0	0-0	0-0	0	0	0	0	0	0	0	0	0	1	
24	Zion Sanders	g	0-1	0-1	0-0	0	0	0	0	0	0	0	0	0	1	
25	Monika Czinano	g	0-1	0-0	0-0	1	0	1	0	1	1	0	0	0	6	
31	Paula Valino Ramos	g	0-0	0-0	0-0	0	1	1	0	0	0	0	0	0	1	
43	Amanda Ollinger	g	2-4	0-0	0-0	2	1	3	1	4	1	1	0	0	15	
	Team					3	1	4								
			20-62	11-22	5-9	13	76	29	11	94	34	11	1	2	20	



NANCY FAHEY

HEAD COACH

SECOND SEASON AT ILLINOIS

33RD SEASON OVERALL

18-31 AT ILLINOIS

Nancy Fahey was named Illinois' head women's basketball coach on March 22, 2017. A member of the Women's Basketball Hall of Fame, Nancy Fahey begins her second season at the helm of the Fighting Illini women's basketball program in 2018. Prior to her time in Champaign, Fahey spent 31 years at Washington University in St. Louis, where she guided the Bears to an NCAA record five Division III National Championships.

In her first season at Illinois, Fahey (pronounced: FAY) coached the Orange and Blue to a 9-5 nonconference record, which marked the best start to the season since Illinois also earned nine non-conference victories in the 2014-15 campaign (9-3). Illinois won four of its last five games leading up to league play, with the streak marking the most consecutive victories for the Orange and Blue since the start of the 2015-16 season. Under Fahey's guidance, Illini junior Alex Wittinger garnered All-Big Ten Second Team honors, and also matched the school record for single-season offensive rebounds (125). Wittinger earned the program's second-ever triple double during the 2017-18 campaign, and set a new single-game record for blocked shots (11).

During her tenure in St. Louis, Fahey led the Washington University Bears to 737 victories and is the only coach in NCAA Division III history to win five national championships. Fahey led the Bears to four-straight NCAA Division III titles from 1998-2001, with the most recent title coming in 2010. Her teams have advanced to the NCAA Tournament in 29 of her 31 years, and have won at least 19 games in each of the last 30 seasons, including two 30-win campaigns. Fahey guided WashU to an 81-game winning streak from the 1997-98 season to 2001, which stands as the second-longest winning streak in NCAA women's basketball history.

Under Fahey's direction, Washington University has garnered 23 University Athletic Association titles, including each of the last four seasons. Her squads have made 10 Final Four appearances, and finished as the NCAA Division III Runner-Up four times (1994, 2007, 2009 and 2011).

Fahey is the fastest coach in NCAA women's basketball history to reach 600 wins, doing so in her 706th game during the 2011-12 season, and she ranks sixth among all active NCAA coaches with an .847 (737-133) career winning percentage. Fahey has been named UAA Coach of the Year 20 times during her career and was recognized as the NCAA Division III Central Region Coach of the year 14 times. She has been named NCAA Division III National Coach of the Year four times.

Fahey's student-athletes have been successful not only on the court but also in the classroom. She has coached 20 All-Americans and 10 Academic All-Americans.

The first NCAA Division III representative to be inducted into the Women's Basketball Hall of Fame in Knoxville, Tenn., Fahey was also inducted into the Washington University Sports Hall of Fame in 2012, the Missouri Sports Hall of Fame in 2014 and the St. Louis Sports Hall of Fame in 2016.

Fahey has served three assignments with USA Basketball, most recently working as the lead clinician for the 2016 USA Basketball Women's U17 World Championship Team Trials. Fahey was the lead clinician at the 2015 USA Women's U16 National Team Trials and an assistant coach for the 1995 U.S. Olympic Festival South Team.

At Washington University, Fahey also held the position of Assistant Director of Athletics, and she is a member of the Women's Basketball Hall of Fame Board of Directors.

THE FAHEY FILE

Born: November 3, 1958

Hired: March 22, 2017

Hometown: Belleville, Wisconsin

EDUCATION

College: University of Wisconsin — B.S., education

COLLEGE COACHING EXPERIENCE

1986-2017 Washington University

HIGH SCHOOL COACHING EXPERIENCE

1982-1986 Johnsburg High School

COACHING HONORS

Washington University Sports Hall of Fame, Class of 2012
 Women's Basketball Hall of Fame, Class of 2012
 Missouri Sports Hall of Fame, Class of 2014
 St. Louis Sports Hall of Fame, Class of 2016
 20-time University Athletic Association Coach of the Year
 14-time NCAA Division III Central Region Coach of the Year
 Four-time NCAA Division III National Coach of the Year
 Two-time WBCA National Division III Coach of the Year



J-NAYA EPHRAIM

O

5-9 // FRESHMAN // GUARD

ST. CROIX, U.S. VIRGIN ISLANDS

SOUTHERN DURHAM

SEASON BESTS

Pts: 11 (at Northwestern, 12/31/18)
Rebs: 8 (vs. Alabama A&M, 11/7/18)
FGM: 5 (at Northwestern, 12/31/18)
FGA: 7 (2x, last at Northwestern, 12/31/18)
FTM: 3 (vs. Rutgers, 1/9/19)
FTA: 4 (2x, last vs. Rutgers, 1/9/19)
3FGM: 1 (at Northwestern, 12/31/18)
3FGA: 3 (at Northwestern, 12/31/18)
Ass: 3 (2x, last vs. SIUE, 12/15/18)
Blk: 1 (2x, last vs. Iowa, 1/20/19)
Stl: 3 (at Northwestern, 12/31/18)
Min: 32 (vs. Indiana, 12/28/18)

CAREER BESTS

Pts: 11 (at Northwestern, 12/31/18)
Rebs: 8 (vs. Alabama A&M, 11/7/18)
FGM: 5 (at Northwestern, 12/31/18)
FGA: 7 (2x, last at Northwestern, 12/31/18)
FTM: 3 (vs. Rutgers, 1/9/19)
FTA: 4 (2x, last vs. Rutgers, 1/9/19)
3FGM: 1 (at Northwestern, 12/31/18)
3FGA: 3 (at Northwestern, 12/31/18)
Ass: 3 (2x, last vs. SIUE, 12/15/18)
Blk: 1 (2x, last vs. Iowa, 1/20/19)
Stl: 3 (at Northwestern, 12/31/18)
Min: 32 (vs. Indiana, 12/28/18)

2018-19

- Posted eight rebounds in her career debut vs. Alabama A&M
- Recorded her first-career steal against Valparaiso
- Put up a career-high eight points against SIUE, while also playing a career-best 27 minutes
- Registered her first career block in Illinois' Big Ten opener against Indiana
- Posted another career performance at Northwestern, knocking down her first career three-pointer to finish with a career-best 11 points and a career-best three steals
- Earned her first career start in a victory over No. 12 Minnesota, dishing a career-best five assists in the game

HIGH SCHOOL

- Four-time Big Eight All-Conference honoree
- Two-time All-State honoree
- NCBCA 2017 First Team All-District
- 2017 Big Eight Conference Player of the Year
- Participated in the RDU All-Star game
- Represented the Virgin Islands on both the U16 and U17 National Teams
- Four-year member of the A/B Honor Roll
- Chose Illinois over Temple and James Madison

PERSONAL

- Daughter of Rodney Ephraim and Vanessa Richardson-Fieulleateau
- Born January 7, 2000
- Has three siblings, J-Meka, John and Rasidi
- Lists Russell Westbrook as her favorite professional athlete

2018-19 GAME-BY-GAME STATISTICS

Date	Opponent	GS	MIN	FG-A	3P-A	FT-A	REB	PF	A	TO	BL	ST	PTS
11/7	Alabama A&M	17	1-2	0-0	0-2	8	0	0	0	0	0	2	
11/14	Valparaiso	18	1-5	0-0	0-0	3	4	1	0	0	1	2	
11/18	Columbia	16	0-2	0-1	2-4	1	1	2	1	0	1	2	
11/23	at Cal Poly	16	3-6	0-1	1-2	0	1	0	2	0	2	7	
11/24	vs. Sacramento State	20	1-4	0-1	1-2	2	0	3	3	0	0	3	
11/28	at Clemson	17	2-5	0-1	0-2	2	3	1	1	0	0	4	
12/1	Eastern Michigan	18	0-0	0-0	2-2	3	2	1	2	0	0	2	
12/5	Indiana State	23	3-6	0-1	0-0	5	1	2	2	0	1	6	
12/11	Murray State	22	2-3	0-0	2-2	5	2	2	1	0	0	6	
12/15	SIUE	27	3-7	0-0	2-3	4	1	3	2	0	0	8	
12/21	Missouri	17	0-1	0-0	0-0	3	0	1	4	0	1	0	
12/28	Indiana	32	1-5	0-0	0-0	7	1	1	5	1	1	2	
12/31	Northwestern	22	5-7	1-3	0-0	1	3	1	4	0	3	11	
1/6	at Minnesota	*	34	3-7	1-1	0-0	4	4	5	2	0	1	7
1/9	Rutgers	*	21	0-1	0-0	3-4	2	0	0	4	0	1	3
1/12	at Penn State	*	17	0-6	0-2	0-0	1	1	0	2	0	0	0
1/17	Nebraska	*	16	1-4	0-1	0-0	2	1	1	1	0	0	2
1/20	Iowa		15	1-2	0-1	2-2	1	1	1	2	1	0	4

EPHRAIM'S CAREER STATISTICS

	Total				3-Point			F-Throw			Rebounds														
Year	GP	GS	Min	Avg	FG	FGA	Pct	FG	FGA	Pct	FT	FTA	Pct	Off	Def	Tot	Avg	PF	FO	Ast	TO	Blk	Stl	Pts	Avg
2018-19	18	4	368	20.4	27	73	.370	2	13	.154	15	25	.600	5	49	54	3.0	26	0	25	38	2	12	71	3.9
Total	18	4	368	20.4	27	73	.370	2	13	.154	15	25	.600	5	49	54	3.0	26	0	25	38	2	12	71	3.9

EPHRAIM'S CAREER BIG TEN STATISTICS

Year	GP	GS	Min	Total		3-Point		F-Throw			Rebounds				PF	FO	Ast	TO	Blk	Stl	Pts	Avg			
				Avg	FG	FGA	Pct	FG	FGA	Pct	FT	FTA	Pct	Off									Def	Tot	Avg
2018-19	7	4	157	22.4	11	32	.344	2	8	.250	5	6	.833	3	15	18	2.6	11	0	9	20	2	6	29	4.1
Total	7	4	157	22.4	11	32	.344	2	8	.250	5	6	.833	3	15	18	2.6	11	0	9	20	2	6	29	4.1



BRANDI BEASLEY

1

5-7 // JUNIOR // GUARD

MEMPHIS, TENN.

RIDGWAY

SEASON BESTS

Pts: 21 (vs. Iowa 1/20/19)
Rebs: 9 (vs. Columbia, 11/18/18)
FGM: 9 (vs. Iowa 1/20/19)
FGA: 17 (vs. Iowa 1/20/19)
FTM: 8 (vs. Valparaiso, 11/14/18)
FTA: 13 (vs. Valparaiso, 11/14/18)
3FGM: 3 (vs. Iowa 1/20/19)
3FGA: 8 (vs. Iowa 1/20/19)
Ast: 10 (2x, last vs. Rutgers, 1/9/19)
Blk: 1 (3x, last at Penn State, 1/12/19)
Stl: 5 (at Minnesota, 1/6/19)
Min: 40 (vs. Indiana 12/28/18)

CAREER BESTS

Pts: 28 (at Penn State, 1/29/17)
Rebs: 11 (vs. Wake Forest, 11/30/16)
FGM: 10 (2x, last vs. Purdue, 2/5/17)
FGA: 24 (at Northwestern, 2/18/18)
FTM: 8 (vs. Valparaiso, 11/14/18)
FTA: 13 (vs. Valparaiso, 11/14/18)
3FGM: 6 (at South Dakota, 12/7/16)
3FGA: 8 (3x, last vs. Iowa 1/20/19)
Ast: 11 (vs. Nebraska, 1/10/18)
Blk: 2 (vs. Penn State, 2/28/18)
Stl: 5 (at Minnesota, 1/6/19)
Min: 40 (7x, last vs. Indiana 12/28/18)

CAREER HONORS

2017 New Mexico Thanksgiving Tournament All-Tournament Team
 2017 Big Ten All-Freshman Team
 2017 All-Big Ten Honorable Mention (media)

2018-19 SEASON HIGHLIGHTS

- Dished nine assists in Illinois' season-opening victory over Alabama A&M
- Knocked down a career-best eight free throws against Valparaiso
- Grabbed a season-best nine rebounds against Columbia
- Dished a season-best 10 dimes to earn her first double-double of the year against Sacramento State. Matched that number with 10 assists against Rutgers.
- Knocked down a last-minute three-pointer to send Illinois and Clemson into overtime on Nov. 28
- Led Illinois with 18 points in an upset over No. 12 Minnesota, also grabbing a career-best five steals in the game
- Knocked down a season-best 21 points to lead Illinois against No. 22 Iowa in the annual Pack the House game.
- Is averaging 5.4 assists per game to sit at No. 1 in the Big Ten and rank 35th in the country

2018-19 GAME-BY-GAME STATISTICS

Date	Opponent	GS	MIN	FG-A	3P-A	FT-A	REB	PF	A	TO	BL	ST	PTS
11/7	Alabama A&M	*	21	2-8	0-2	2-3	3	1	9	1	1	1	6
11/14	Valparaiso	*	28	5-10	0-0	8-13	5	2	5	5	0	1	18
11/18	Columbia	*	32	4-10	0-2	0-2	9	3	4	2	0	0	8
11/23	at Cal Poly	*	34	4-8	0-1	0-0	3	1	7	1	0	1	8
11/24	vs. Sacramento St	*	35	4-8	0-1	4-4	5	2	10	5	1	1	12
11/28	Clemson	*	39	6-14	1-2	0-2	7	4	7	3	0	2	13
12/1	Eastern Michigan	*	39	4-15	0-1	0-2	7	3	7	2	0	2	8
12/5	Indiana State	*	35	6-8	1-2	1-4	5	0	5	3	0	1	14
12/11	Murray State	*	25	1-3	0-2	0-0	2	0	4	2	0	1	2
12/15	SIUE	*	31	6-10	0-0	1-3	6	0	5	1	0	2	13
12/21	Missouri	*	32	3-8	1-4	2-2	2	1	3	4	0	0	9
12/28	Indiana	*	40	8-16	1-4	2-3	3	3	2	1	0	2	19
12/31	Northwestern	*	29	2-11	0-2	0-0	4	2	1	4	0	2	4
1/6	at Minnesota	*	37	8-14	1-2	1-2	3	3	6	1	0	5	18
1/9	Rutgers	*	39	4-12	0-2	0-1	0	3	10	3	0	1	8
1/12	at Penn State	*	36	2-11	0-1	3-6	5	3	1	5	1	1	7
1/17	Nebraska	*	30	2-4	0-0	1-2	1	5	1	6	0	0	5
1/20	Iowa	*	36	9-17	3-8	0-0	3	0	6	1	0	4	21

BEASLEY'S CAREER STATISTICS

Year	GP	GS	Min	Avg	FG	FGA	Pct	FG	FGA	Pct	FT	FTA	Pct	Off	Def	Tot	Avg	PF	F0	Ast	TO	Blk	Stl	Pts	Avg
2016-17	31	31	1121	36.2	174	442	.394	25	97	.258	50	70	.714	22	143	165	5.3	57	0	120	99	2	53	423	13.6
2017-18	31	29	1007	32.5	144	403	.357	25	96	.260	67	82	.817	13	108	121	3.9	64	1	111	90	5	42	380	12.3
2018-19	18	18	608	33.8	80	187	.428	8	36	.222	25	49	.510	11	62	73	4.1	36	1	93	50	3	27	193	10.7
TOTAL	80	78	2736	34.2	398	1032	.386	58	229	.253	142	201	.706	46	313	359	4.5	157	2	324	239	10	122	996	12.5

BEASLEY'S CAREER BIG TEN STATISTICS

Year	GP	GS	Min	Avg	FG	FGA	Pct	FG	FGA	Pct	FT	FTA	Pct	Off	Def	Tot	Avg	PF	F0	Ast	TO	Blk	Stl	Pts	Avg
2016-17	16	16	585	36.6	102	256	.398	6	45	.133	34	51	.667	10	69	79	4.9	27	0	63	49	1	31	244	15.3
2017-18	16	14	510	31.9	74	209	.354	13	54	.241	25	31	.806	5	49	54	3.4	35	0	57	45	2	20	186	11.6
2018-19	7	7	247	35.3	35	85	.412	5	19	.263	7	14	.500	5	14	19	2.7	19	1	27	21	1	15	82	11.7
TOTAL	39	37	1342	34.4	211	550	.384	24	118	.203	66	96	.688	20	132	152	3.9	81	1	147	115	4	66	512	13.1



LYRIC ROBINS

2

5-11 // SOPHOMORE // FORWARD

PLANO, TEXAS

PLANO WEST

SEASON BESTS

Pts: 3 (vs. Rutgers, 1/9/19)
Rebs: 1 (6x, last vs. Iowa, 1/20/19)
FGM: 1 (3x, last vs. Rutgers, 1/9/19)
FGA: 3 (vs. Valparaiso, 11/14/18)
FTM: 2 (vs. Eastern Michigan, 12/1/18)
FTA: 2 (vs. Eastern Michigan, 12/1/18)
3FGM: --
3FGA: 1 (vs. Iowa, 1/20/19)
Ast: 1 (2x, last at Cal Poly, 11/24/18)
Blk: --
Stl: --
Min: 5 (2x, last at Northwestern, 12/31/18)

CAREER BESTS

Pts: 8 (vs. Iowa, 1/7/18)
Rebs: 4 (vs. Nebraska, 1/10/18)
FGM: 3 (vs. Iowa, 1/7/18)
FGA: 8 (vs. Iowa, 1/7/18)
FTM: 2 (4x, last vs. Ohio State, 2/12/18)
FTA: 4 (vs. Michigan State, 1/16/18)
3FGM: 1 (at New Mexico, 11/26/17)
3FGA: 3 (vs. Bradley, 11/18/17)
Ast: 1 (8x, last at Cal Poly, 11/24/18)
Blk: --
Stl: 2 (vs. Iowa, 1/7/18)
Min: 26 (vs. Iowa, 1/7/18)

2018-19 SEASON HIGHLIGHTS

- Knocked down two free throws against Eastern Michigan

2018-19 GAME-BY-GAME STATISTICS

Date	Opponent	GS	MIN	FG-A	3P-A	FT-A	REB	PF	A	TO	BL	ST	PTS
11/7	Alabama A&M		4	1-1	0-0	0-0	1	0	1	1	0	0	2
11/14	Valpraiso		5	0-3	0-0	0-0	1	1	0	1	0	0	0
11/18	Columbia		0+	0-0	0-0	0-0	0	0	0	0	0	0	0
11/23	at Cal Poly		2	0-0	0-0	0-0	0	1	1	0	0	0	0
11/24	vs. Sacramento St.						DNP						
11/28	at Clemson						DNP						
12/1	Eastern Michigan		4	0-1	0-0	2-2	0	1	0	1	0	0	2
12/5	Indiana State		1	0-0	0-0	0-0	0	0	0	0	0	0	0
12/11	Murray State		4	1-1	0-0	0-0	1	0	0	0	0	0	2
12/15	SIUE		1	0-0	0-0	0-0	0	0	0	1	0	0	0
12/21	Missouri		3	0-1	0-0	0-0	1	0	0	0	0	0	0
12/28	Indiana						DNP						
12/31	Northwestern		5	0-0	0-0	0-0	1	0	0	0	0	0	0
1/6	at Minnesota		3	0-1	0-0	0-0	0	1	0	1	0	0	0
1/9	Rutgers		3	1-1	0-0	1-1	0	2	0	0	0	0	3
1/12	at Penn State		4	0-1	0-0	0-0	0	0	0	0	0	0	0
1/17	Nebraska		0	0-0	0-0	0-0	0	0	0	0	0	0	0
1/20	Iowa		3	0-2	0-1	0-0	1	0	0	0	0	0	0

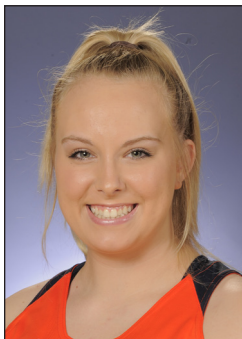
ROBINS' CAREER STATISTICS

ROBINSON CAREER STATISTICS																											
Year	GP	GS	Min	Avg	Total			3-Point			F-Throw			Rebounds			PF	FO	Ast	TO	Blk	Stl	Pts	Avg			
					FG	FGA	Pct	FG	FGA	Pct	FT	FTA	Pct	Off	Def	Tot											
2017-18	23	0	190	8.3	18	66	.273	1	10	.100	11	16	.688	10	25	35	1.5	26	1	6	17	0	8	48	2.1		
2018-19	15	0	42	2.8	3	12	.250	0	1	.000	3	3	1.000	4	2	6	0.4	6	0	2	5	0	0	9	0.6		
TOTAL	38	0	232	6.1	21	78	.269	1	11	.091	14	19	.737	14	27	41	1.1	32	1	8	22	0	8	57	1.5		

ROBINS' CAREER BIG TEN STATISTICS

ROBINSON CAREER DATA PER SEASON																											
Year	GP	GS	Min	Avg	Total			3-Point			F-Throw			Rebounds			PF	FO	Ast	TO	Blk	Stl	Pts	Avg			
					FG	FGA	Pct	FG	FGA	Pct	FT	FTA	Pct	Off	Def	Tot											
2017-18	13	0	112	8.6	9	33	.273	0	3	.000	9	12	.750	4	16	20	1.5	11	0	2	15	0	4	27	2.1		
2018-19	6	0	18	3.0	1	5	.200	0	1	.000	1	1	1.000	2	0	2	0.3	3	0	0	1	0	0	3	0.5		
TOTAL	19	0	130	6.8	10	38	.263	0	4	.000	10	13	.769	6	16	22	1.2	14	0	2	16	0	4	30	1.6		

FIGHTING ILLINI WOMEN'S BASKETBALL NOTES



ARIEAL SCOTT

3

5-9 // FRESHMAN // GUARD

DANVILLE, ILLINOIS

DANVILLE

SEASON BESTS

Pts: 23 (vs. Nebraska, 1/17/19)
Rebs: 6 (vs. Valparaiso, 11/14/18)
FGM: 6 (2x, last vs. Nebraska, 1/17/19)
FGA: 17 (at Clemson, 11/24/18)
FTM: 7 (vs. Nebraska, 1/17/19)
FTA: 9 (vs. Nebraska, 1/17/19)
3FGM: 4 (2x, last vs. Iowa, 1/20/19)
3FGA: 11 (3x, last vs. Nebraska, 1/17/19)
Ast: 2 (2x, last vs. SIUE, 12/15/18)
Blk: --
Stl: 3 (vs. SIUE, 12/15/18)
Min: 30 (at Clemson, 11/24/18)

CAREER BESTS

Pts: 23 (vs. Nebraska, 1/17/19)
Rebs: 6 (vs. Valparaiso, 11/14/18)
FGM: 6 (2x, last vs. Nebraska, 1/17/19)
FGA: 17 (at Clemson, 11/24/18)
FTM: 7 (vs. Nebraska, 1/17/19)
FTA: 9 (vs. Nebraska, 1/17/19)
3FGM: 4 (2x, last vs. Iowa, 1/20/19)
3FGA: 11 (3x, last vs. Nebraska, 1/17/19)
Ast: 2 (2x, last vs. SIUE, 12/15/18)
Blk: --
Stl: 3 (vs. SIUE, 12/15/18)
Min: 30 (at Clemson, 11/24/18)

2018-19 SEASON HIGHLIGHTS

- Tallied 10 points in 14 minutes on the court during her career debut vs. Alabama A&M
- Hit a clutch three-pointer with six seconds on the clock to tie the game at 107 vs. Sacramento State
- Earned her first career start against Eastern Michigan
- Grabbed a career-best three steals against SIUE
- Reset her career-best and recorded her first 20+ point game against Nebraska
- Has knocked down a career-bets four three-pointers twice this season

HIGH SCHOOL

- 2016 IBCA First Team 1A/2A All-State
- No. 39-ranked recruit in the country according to Prospects Nation
- Ranked among the top 100 players in the country by ESPN Hoopgurlz
- Two-time News Gazette All-Area First Team honoree
- Chose Illinois over Missouri, USC and Washington, among others

2018-19 GAME-BY-GAME STATISTICS

Date	Opponent	GS	MIN	FG-A	3P-A	FT-A	REB	PF	A	TO	BL	ST	PTS
11/7	Alabama A&M	14	3-7	3-7	1-2	2	1	0	1	0	0	10	
11/14	Valpraiso	17	2-5	1-4	1-4	6	1	0	1	0	0	6	
11/18	Columbia	24	3-10	2-6	3-7	2	1	0	4	0	0	11	
11/23	at Cal Poly	14	3-9	2-6	1-4	2	0	0	0	0	1	9	
11/24	vs. Sacramento St	18	6-13	3-10	3-4	1	3	0	2	0	1	18	
11/28	at Clemson	30	5-17	3-11	2-3	4	1	0	1	0	1	15	
12/1	Eastern Michigan *	22	1-8	0-7	0-0	0	2	0	1	0	0	2	
12/5	Indiana State *	9	1-3	0-2	1-2	2	2	0	1	0	0	3	
12/11	Murray State	16	3-10	2-6	3-3	4	0	2	0	0	1	11	
12/15	SIUE	13	1-7	0-5	0-0	1	0	2	1	0	3	2	
12/21	Missouri						DNP						
12/28	Indiana						DNP						
12/31	Northwestern						DNP						
1/6	at Minnesota	12	3-4	3-4	0-0	1	0	0	0	0	0	9	
1/9	Rutgers	10	2-6	2-6	0-0	1	0	0	1	0	0	6	
1/12	at Penn State	24	3-11	3-11	1-2	4	2	1	1	0	1	10	
1/17	Nebraska	29	6-14	4-11	7-9	2	3	0	0	0	1	23	
1/20	Iowa	26	5-10	4-7	1-1	5	1	0	0	0	0	15	

SCOTT'S CAREER STATISTICS

Year	GP	GS	Min	Total		3-Point		F-Throw		Rebounds		PF	FO	Ast	TO	Blk	Stl	Pts	Avg
				Avg	FG	FGA	Pct	FG	FGA	Pct	FT								
2018-19	15	2	279	18.6	47	134	.351	32	103	.311	24	41	.585	5	32	37	2.5	17	10.0
Total	15	2	279	18.6	47	134	.351	32	103	.311	24	41	.585	5	32	37	2.5	17	10.0

SCOTT'S CAREER BIG TEN STATISTICS

Year	GP	GS	Min	Total		3-Point		F-Throw		Rebounds		PF	FO	Ast	TO	Blk	Stl	Pts	Avg
				Avg	FG	FGA	Pct	FG	FGA	Pct	FT								
2018-19	5	0	101	20.2	19	45	.422	16	39	.410	9	12	.750	1	12	13	2.6	6	12.6
Total	5	0	101	20.2	19	45	.422	16	39	.410	9	12	.750	1	12	13	2.6	6	12.6



MACKENZIE BLAZEK

4

6-3 // FRESHMAN // FORWARD

FRANKLIN, INDIANA

WHITELAND COMMUNITY

SEASON BESTS

Pts: 10 (vs. Murray State, 12/11/18)
Rebs: 10 (vs. Indiana 12/28/18)
FGM: 5 (2vs. Murray State, 12/11/18)
FGA: 7 (vs. Indiana 12/28/18)
FTM: 2 (at Cal Poly, 11/23/18)
FTA: 6 (at Cal Poly, 11/23/18)
3FGM: --
3FGA: --
Ast: 2 (2x, last vs. Murray State, 12/11/18)
Blk: 3 (2x, last vs. SIUE, 12/15/18)
Stl: 2 (2x, last at Clemson, 11/28/18)
Min: 33 (vs. Indiana 12/28/18)

CAREER BESTS

Pts: 10 (vs. Murray State, 12/11/18)
Rebs: 10 (vs. Indiana 12/28/18)
FGM: 5 (2vs. Murray State, 12/11/18)
FGA: 7 (vs. Indiana 12/28/18)
FTM: 2 (at Cal Poly, 11/23/18)
FTA: 6 (at Cal Poly, 11/23/18)
3FGM: --
3FGA: --
Ast: 2 (2x, last vs. Murray State, 12/11/18)
Blk: 3 (2x, last vs. SIUE, 12/15/18)
Stl: 2 (2x, last at Clemson, 11/28/18)
Min: 33 (vs. Indiana 12/28/18)

2018-19 SEASON HIGHLIGHTS

- Tallied seven points and three boards in her career debut vs. Alabama A&M
- Swatted her first career block against Valparaiso and recorded three on the night, matched that number with three blocks against SIUE
- Posted a career-night at Cal Poly, recording personal bests of eight points, two steals and six rebounds
- Earned her first career start against Indiana to open the Big Ten slate, also posting a career-best 10 rebounds in the contest

HIGH SCHOOL

- Four-time All-Conference honoree
- Three-time IBCA All-State honoree
- Two-time-All-State Super Team member
- Four-time All-County player
- Participated in the Junior and Senior Indiana All-Star games
- Ranked No. 90 overall by ESPN Hoopgurlz
- Daily Journal 2016-17 Player of the Year
- Concluded her high school career with 1,165 rebounds, which ranks fourth in the state
- Racked up 1,536 points during her high school career
- Also played volleyball at Whiteland Community High School
- Member of the National Honor Society

PERSONAL

- Daughter of Phil and Jen Blazek
- Born October 7, 1999
- Has one brother, Colton

2018-19 GAME-BY-GAME STATISTICS

Date	Opponent	GS	MIN	FG-A	3P-A	FT-A	REB	PF	A	TO	BL	ST	PTS
11/7	Alabama A&M		11	3-5	0-0	1-2	3	1	2	0	0	0	7
11/14	Valparaiso		11	2-2	0-0	1-2	4	2	0	0	3	0	5
11/18	Columbia		5	0-0	0-0	0-2	3	2	0	0	0	0	0
11/23	at Cal Poly		15	3-5	0-0	2-6	6	1	1	1	0	2	8
11/24	vs. Sacramento St		2	0-0	0-0	0-0	1	1	0	0	0	0	0
11/28	at Clemson		5	1-2	0-0	1-2	2	2	0	0	0	2	3
12/1	Eastern Michigan		6	0-3	0-0	0-0	0	0	0	0	0	0	0
12/5	Indiana State		2	0-0	0-0	0-0	0	1	1	1	0	0	0
12/11	Murray State		20	5-5	0-0	0-2	4	1	2	2	1	0	10
12/15	SIUE		9	3-3	0-0	0-0	3	1	1	0	3	0	6
12/21	Missouri		13	3-5	0-0	0-0	4	0	1	0	1	0	6
12/28	Indiana	*	33	4-7	0-0	0-0	10	4	1	1	2	0	8
12/31	Northwestern	*	14	1-3	0-0	0-0	1	3	1	0	0	1	2
1/6	at Minnesota	*	9	0-1	0-0	0-0	1	0	1	0	0	0	0
1/9	Rutgers		11	1-4	0-0	0-0	4	0	0	0	2	0	2
1/12	at Penn State		12	0-2	0-0	0-0	3	1	1	2	0	0	0
1/17	Nebraska		4	0-0	0-0	0-0	2	0	0	0	0	0	0
1/20	Iowa		6	0-0	0-0	0-0	0	1	0	0	0	0	0

BLAZEK'S CAREER STATISTICS

	Total				3-Point			F-Throw			Rebounds														
Year	GP	GS	Min	Avg	FG	FGA	Pct	FG	FGA	Pct	FT	FTA	Pct	Off	Def	Tot	Avg	PF	FO	Ast	TO	Blk	Stl	Pts	Avg
2018-19	18	3	188	10.4	26	47	.553	0	0	.000	5	16	.313	14	37	51	2.8	21	0	12	7	12	5	57	3.2
Totals	18	3	188	10.4	26	47	.553	0	0	.000	5	16	.313	14	37	51	2.8	21	0	12	7	12	5	57	3.2

BLAZEK'S CAREER BIG TEN STATISTICS

Year	GP	GS	Min	Total		3-Point			F-Throw			Rebounds				PF	FO	Ast	TO	Blk	Stl	Pts	Avg		
				Avg	FG	FGA	Pct	FG	FGA	Pct	FT	FTA	Pct	Off	Def									Tot	Avg
2018-19	7	3	89	12.7	6	17	.353	0	0	.000	0	0	.000	6	15	21	3.0	9	0	4	3	4	1	12	1.7
Total	7	3	89	12.7	6	17	.353	0	0	.000	0	0	.000	6	15	21	3.0	9	0	4	3	4	1	12	1.7

FIGHTING ILLINI WOMEN'S BASKETBALL NOTES



CIERRA RICE

5

5-9 // REDSHIRT JUNIOR // GUARD

GROSSE POINTE, MICH.

GROSSE POINT

SEASON BESTS

Pts: 23 (vs. Columbia, 11/18/18)
Rebs: 7 (vs. Valparaiso, 11/14/18)
FGM: 8 (vs. Columbia, 11/18/18)
FGA: 15 (vs. Indiana, 12/28/18)
FTM: 6 (vs. Indiana, 12/28/18)
FTA: 7 (vs. Indiana, 12/28/18)
3FGM: 5 (vs. Columbia, 11/18/18)
3FGA: 6 (3x, last vs. Indiana, 12/28/18)
Ast: 3 (2x, last vs. Murray State, 12/11/18)
Blk: 2 (vs. Murray State, 12/11/18)
Stl: 2 (vs. Indiana, 12/28/18)
Min: 37 (vs. Indiana, 12/28/18)

CAREER BESTS

Pts: 23 (vs. Columbia, 11/18/18)
Rebs: 8 (vs. Tennessee State, 11/24/15)
FGM: 8 (2x, last vs. Columbia, 11/18/18)
FGA: 15 (vs. Indiana, 12/28/18)
FTM: 6 (2x, last vs. Indiana, 12/28/18)
FTA: 9 (2x, last vs. Southern Illinois, 12/8/15)
3FGM: 5 (vs. Columbia, 11/18/18)
3FGA: 6 (3x, last vs. Indiana, 12/28/18)
Ast: 5 (2x, last vs. Ohio State, 2/13/18)
Blk: 2 (vs. Murray State, 12/11/18)
Stl: 4 (vs. Chicago State, 11/13/15)
Min: 40 (vs. Marshall, 11/11/16)

2018-19 HIGHLIGHTS

- Dished one assist and tallied 10 points in Illinois' season-opening win over Alabama A&M
- Netted a career-best five treys on her way to a career-high 23 points against Columbia

2018-19 GAME-BY-GAME STATISTICS

Date	Opponent	GS	MIN	FG-A	3P-A	FT-A	REB	PF	A	TO	BL	ST	PTS
11/7	Alabama A&M	*	20	3-5	1-2	3-3	6	1	1	0	0	0	10
11/14	Valparaiso	*	27	2-6	0-2	4-6	7	0	0	2	0	0	8
11/18	Columbia	*	35	8-9	5-6	2-2	4	1	1	1	0	0	23
11/23	at Cal Poly	*	19	0-1	0-1	0-0	6	4	2	6	0	1	0
11/24	vs. Sacramento St	*	31	4-9	0-2	2-2	6	2	2	3	0	0	10
11/28	at Clemson	*	32	5-14	1-6	2-3	5	2	1	2	0	1	13
12/1	Eastern Michigan	*	31	1-5	0-3	0-0	2	4	3	1	0	0	2
12/5	Indiana State	*	34	3-6	2-3	2-2	1	0	2	0	1	0	10
12/11	Murray State	*	28	3-6	1-4	0-0	4	3	3	3	2	0	7
12/15	SIUE	*	22	0-2	0-1	3-4	4	2	2	3	0	0	3
12/21	Missouri	*	31	4-10	1-4	0-0	2	0	0	0	0	0	9
12/28	Indiana	*	37	5-15	2-6	6-7	5	4	0	2	0	2	18
12/31	Northwestern	*	22	2-6	0-2	1-3	1	1	1	2	0	1	5
1/6	at Minnesota	*	12	0-5	0-1	0-0	3	1	0	1	0	0	0
1/9	Rutgers	*	21	1-3	0-2	2-2	0	3	0	0	0	0	4
1/12	at Penn State	*	20	2-4	0-1	1-1	3	1	1	0	0	0	5
1/17	Nebraska	*	23	5-10	1-2	0-2	2	4	2	4	0	1	11
1/20	Iowa	*	29	4-5	3-4	0-0	3	0	2	0	0	0	11

RICE'S CAREER STATISTICS

					Total			3-Point			F-Throw			Rebounds														
Year	GP	GS	Min	Avg	FG	FGA	Pct	FG	FGA	Pct	FT	FTA	Pct	Off	Def	Tot	Avg	PF	FO	Ast	TO	Blk	Stl	Pts	Avg			
2015-16	10	9	305	30.5	47	89	.528	10	22	.455	32	47	.681	12	33	45	4.5	21	0	24	21	2	11	136	13.6			
2016-17	3	3	79	26.3	6	28	.214	1	11	.091	5	5	1.000	3	9	12	4.0	6	0	4	7	1	1	18	6.0			
2017-18	29	16	679	23.4	54	161	.335	20	68	.294	39	57	.684	28	51	79	2.7	49	0	35	42	2	9	167	5.8			
2018-19	18	17	473	26.3	52	121	.430	17	52	.327	28	37	.757	17	47	64	3.6	33	0	23	30	3	6	149	8.3			
TOTAL	60	45	1536	25.6	159	399	.398	48	153	.314	104	146	.712	60	140	200	3.3	109	0	86	100	8	27	470	7.8			

RICE'S CAREER BIG TEN STATISTICS

	Total					3-Point			F-Throw			Rebounds														
Year	GP	GS	Min	Avg	FG	FGA	Pct	FG	FGA	Pct	FT	FTA	Pct	Off	Def	Tot	Avg	PF	FO	Ast	TO	Blk	Stl	Pts	Avg	
2017-18	16	14	423	26.4	35	111	.315	16	49	.327	26	36	.722	21	27	48	3.0	29	0	24	36	1	6	112	7.0	
2018-19	7	6	164	23.4	19	48	.396	6	18	.333	10	15	.667	5	12	17	2.4	14	0	6	9	0	4	54	7.7	
TOTAL	23	20	587	25.5	54	159	.340	22	67	.328	36	51	.706	26	39	65	2.8	43	0	30	45	1	10	166	7.2	

FIGHTING ILLINI WOMEN'S BASKETBALL NOTES



CAROLYN WALESKI 11

5-10 // FRESHMAN // GUARD

FRANKFORT, ILLINOIS

LINCOLN-WAY EAST

SEASON BESTS

Pts: 2 (2x, last vs. Indiana State, 12/5/18)
Rebs: 1 (vs. Indiana State, 12/5/18)
FGM: --
FGA: --
FTM: 2 (vs. Alabama A&M, 11/7/18)
FTA: 2 (vs. Alabama A&M, 11/7/18)
3FGM: --
3FGA: --
Ast: 1 (2x, last vs. Murray State, 12/11/18)
Blk: --
Stl: 1 (vs. Alabama A&M, 11/7/18)
Min: 3 (vs. Valparaiso, 11/14/18)

CAREER BESTS

Pts: 2 (2x, last vs. Indiana State, 12/5/18)
Rebs: 1 (vs. Indiana State, 12/5/18)
FGM: --
FGA: --
FTM: 2 (vs. Alabama A&M, 11/7/18)
FTA: 2 (vs. Alabama A&M, 11/7/18)
3FGM: --
3FGA: --
Ast: 1 (2x, last vs. Murray State, 12/11/18)
Blk: --
Stl: 1 (vs. Alabama A&M, 11/7/18)
Min: 3 (vs. Valparaiso, 11/14/18)

HIGH SCHOOL

- 2018 All-State Third Team honoree
- 2018 IBCA All-Star Team
- Two-time All-State Honorable Mention
- Three-time All-Conference honoree
- Three-time Century 22 Media All-Area First Team honoree
- Played in the 2018 IBCA All-Star Game
- Helped Lincoln-Way East to a 2016 Conference and Regional title
- 2018 Lincoln-Way East Girls Basketball MVP
- Two-year Varsity Girls' Basketball Team Captain
- Broke three school records at Lincoln-Way East, recording 13 steals in a game, 132 steals in a season and 357 career steals
- Also played soccer and golf at Lincoln-Way East
- AP Scholar
- National Honor Society Member
- Spanish National Honor Society member
- Illinois State Scholar

2018-19 GAME-BY-GAME STATISTICS

Date	Opponent	GS	MIN	FG-A	3P-A	FT-A	REB	PF	A	TO	BL	ST	PTS
11/7	Alabama A&M	2	0-0	0-0	2-2	0	0	0	1	0	0	1	2
11/14	Valparaiso	3	0-0	0-0	0-0	0	0	0	0	0	0	0	0
11/23	at Cal Poly	2	0-0	0-0	0-0	0	0	0	0	0	0	0	0
11/24	vs. Sacramento St						DNP						
11/28	Clemson						DNP						
12/1	Eastern Michigan						DNP						
12/5	Indiana State	1	1-1	0-0	0-0	1	0	0	0	0	0	0	2
12/11	Murray State	2	0-0	0-0	0-0	0	0	0	1	0	0	0	0
12/15	SIUE	2	0-0	0-0	0-0	1	0	1	0	0	0	0	0
12/21	Missouri						DNP						
12/28	Indiana						DNP						
12/31	Northwestern						DNP						
1/6	at Minnesota						DNP						
1/9	Rutgers						DNP						
1/12	at Penn State						DNP						
1/17	Nebraska						DNP						
1/20	Iowa						DNP						

PERSONAL

- Daughter of Mike and Robin Waleski
- Born March 9, 2000
- Plans to study Civil and Environmental Engineering at Illinois
- Plays guitar and enjoys painting and drawing in her spare time

WALESKI'S CAREER STATISTICS

Year	GP	GS	Min	Total Avg	FG	3-Point FGA Pct	FG	F-Throw FGA Pct	FT	FTA	Rebounds Pct	Off	Def	Tot	Avg	PF	FO	Ast	TO	Blk	Stl	Pts	Avg
2018-19	6	0	12	2.0	1	1 1.000	0	0 .000	2	2	1.000	0	2	2	0.3	0	0	3	0	0	1	4	0.7
Totals	6	0	12	2.0	1	1 1.000	0	0 .000	2	2	1.000	0	2	2	0.3	0	0	3	0	0	1	4	0.7

WALESKI'S CAREER BIG TEN STATISTICS

Year	GP	GS	Min	Total Avg	FG	3-Point FGA Pct	FG	F-Throw FGA Pct	FT	FTA	Rebounds Pct	Off	Def	Tot	Avg	PF	FO	Ast	TO	Blk	Stl	Pts	Avg
2018-19	--	--	--	--	--	-- --	--	-- --	--	--	--	--	--	--	--	--	--	--	--	--	--	--	--



PETRA HOLEŠÍNSKÁ 13

5-9 // JUNIOR // GUARD

VRACOV, CZECH REPUBLIC

SPORTOVNI LUDVIKA DANKA

SEASON BESTS

Pts: --
Rebs: --
FGM: --
FGA: --
FTM: --
FTA: --
3FGM: --
3FGA: --
Ast: --
Blk: --
Stl: --
Min: --

CAREER BESTS

Pts: 21 (3x, last vs. Nebraska, 3/1/17)
Rebs: 11 (vs. Wright State, 12/11/16)
FGM: 7 (3x, last vs. Purdue, 2/5/17)
FGA: 14 (5x, last vs. Wisconsin, 1/28/18)
FTM: 9 (vs. Nebraska, 3/1/17)
FTA: 12 (vs. Nebraska, 3/1/17)
3FGM: 5 (4x, last vs. Penn State, 2/14/17)
3FGA: 11 (vs. Wisconsin, 1/28/18)
Ast: 4 (4x, last vs. Nebraska, 3/1/17)
Blk: 2 (4x, last at Northwestern, 2/18/18)
Stl: 4 (vs. Memphis, 11/17/16)
Min: 38 (vs. Purdue, 2/5/17)

2017-18 SEASON HIGHLIGHTS

- Carded her first double-double of the season against Bradley, also marking the second of her career
- Made 12 starts for the Illini this season
- Has netted four or more three-pointers in eight career games
- Posted a season-best 18 points against Wisconsin, including making four three-pointers

2018-19 GAME-BY-GAME STATISTICS

Date Opponent GS MIN FG-A 3P-A FT-A REB PF A TO BL ST PTS

HOLESINSKA'S CAREER STATISTICS

					Total		3-Point			F-Throw		Rebounds																
Year	GP	GS	Min	Avg	FG	FGA	Pct	FG	FGA	Pct	FT	FTA	Pct	Off	Def	Tot	Avg	PF	FO	Ast	TO	Blk	Stl	Pts	Avg			
2016-17	31	29	875	28.2	111	295	.376	54	152	.355	48	56	.857	17	102	119	3.8	88	3	37	53	7	24	324	10.5			
2017-18	27	12	609	22.6	62	212	.292	36	117	.308	20	30	.667	23	86	109	4.0	57	0	31	43	9	16	180	6.7			
TOTAL	58	41	1484	25.6	173	507	.341	90	269	.335	68	86	.791	40	188	228	3.9	145	3	68	96	16	40	504	8.7			

HOLESINSKA'S CAREER BIG TEN STATISTICS

					Total			3-Point			F-Throw			Rebounds													
Year	GP	GS	Min	Avg	FG	FGA	Pct	FG	FGA	Pct	FT	FTA	Pct	Off	Def	Tot	Avg	PF	FO	Ast	TO	Blk	Stl	Pts	Avg		
2016-17	16	16	497	31.1	66	163	.405	36	79	.456	19	20	.950	10	58	68	4.3	48	1	24	35	1	11	187	11.7		
2017-18	16	8	360	22.5	31	117	.265	20	63	.317	7	14	.500	15	49	64	4.0	37	0	19	26	5	7	89	5.6		
TOTAL	32	24	857	26.8	97	280	.346	56	142	.394	26	34	.765	25	107	132	4.1	85	1	43	61	6	18	276	8.6		

FIGHTING ILLINI WOMEN'S BASKETBALL NOTES



NANCY

PANAGIOTOPOULOU

6-3 // REDSHIRT FRESHMAN // FORWARD

ATHENS, GREECE

AMERICAN COMMUNITY SCHOOLS OF ATHENS

21

SEASON BESTS

Pts: --
Rebs: --
FGM: --
FGA: --
FTM: --
FTA: --
3FGM: --
3FGA: --
Ast: --
Blk: --
Stl: --
Min: --

CAREER BESTS

Pts: --
Rebs: --
FGM: --
FGA: --
FTM: --
FTA: --
3FGM: --
3FGA: --
Ast: --
Blk: --
Stl: --
Min: --

HIGH SCHOOL

- Appeared for the Greek National team in the 2015 FIBA U16 Women's European Championship

- Represented her native country of Greece in the 2016 FIBA U18 Women's European Championship

- Was named 2016 American Community Schools of Athens Player of the Year

- Played club basketball in Kallitheas, Greece for team Ikaros and for Kronos Agious Dimitriou

- Took Kronos to the Pan-hellenic Final Four twice

- Two-time Regional Champion with Kronos

- Helped her high school team earn first place in the International Tournament

- Was named her high school MVP in 2016

- Earned High Honor Roll and Honor Roll status in all semesters of high school

PERSONAL

- Full name is Athanasia Panagiotopoulou-Andritsopoulou

(Ah-tha-NA-see-uh Pa-na-yo-toe-pou-lou Ahn-dreet-so-pou-lou)

- Daughter of Athanasios Panagiotopoulos and Vasiliki Andritsopoulou

- Has a brother, Dimitris-Theodore

- Born February 9, 1999

- Enjoys reading in her spare time

2018-19 GAME-BY-GAME STATISTICS

Date	Opponent	GS	MIN	FG-A	3P-A	FT-A	REB	PF	A	TO	BL	ST	PTS
------	----------	----	-----	------	------	------	-----	----	---	----	----	----	-----

PANAGIOTOPOULOU'S CAREER STATISTICS

Year	GP	GS	Min	Total Avg	FG	FGA	3-Point Pct	FG	FGA	F-Throw Pct	FT	FTA	Rebounds Pct	Off	Def	Tot	Avg	PF	F0	Ast	TO	Blk	Stl	Pts	Avg
2018-19	--	--	--	--	--	--	--	--	--	--	--	--	--	--	--	--	--	--	--	--	--	--	--	--	

PANAGIOTOPOULOU'S CAREER BIG TEN STATISTICS

Year	GP	GS	Min	Total Avg	FG	FGA	3-Point Pct	FG	FGA	F-Throw Pct	FT	FTA	Rebounds Pct	Off	Def	Tot	Avg	PF	F0	Ast	TO	Blk	Stl	Pts	Avg
2018-19	--	--	--	--	--	--	--	--	--	--	--	--	--	--	--	--	--	--	--	--	--	--	--	--	



JAELYNE KIRKPATRICK 23

5-7 // SENIOR // GUARD

OAKVILLE, ONTARIO

ST. IGNATIUS OF LOYOLA

SEASON BESTS

Pts: 10 (vs. Alabama A&M, 11/7/18)
Rebs: 2 (2x, last at Northwestern, 12/31/18)
FGM: 4 (vs. Alabama A&M, 11/7/18)
FGA: 6 (at Northwestern, 12/31/18)
FTM: 2 (vs. Valparaiso, 11/14/18)
FTA: 2 (vs. Valparaiso, 11/14/18)
3FGM: 2 (vs. Alabama A&M, 11/7/18)
3FGA: 3 (vs. Alabama A&M, 11/7/18)
As: 3 (2x, last vs. Indiana, 12/28/18)
Blk: --
Stl: 1 (2x, last at Northwestern, 12/31/18)
Min: 18 (vs. Indiana, 12/28/18)

CAREER BESTS

Pts: 13 (2x, last at #3 Maryland, 2/9/17)
Rebs: 7 (2x, last at Michigan State, 1/1/17)
FGM: 5 (at #3 Maryland, 2/9/17)
FGA: 10 (5x, last at Michigan State, 1/1/17)
FTM: 4 (5x, last vs. Iowa, 12/28/16)
FTA: 5 (vs. #20 Michigan State, 2/24/16)
3FGM: 3 (3x, last at #3 Maryland, 2/9/17)
3FGA: 8 (vs. Mercer, 11/22/16)
As: 8 (2x, last vs. Nebraska, 3/1/17)
Blk: 1 (3x, last Western Illinois, 11/21/17)
Stl: 3 (9x, last vs. Indiana State, 12/7/17)
Min: 39 (Fort Wayne, 12/2/16)

2018-19 HIGHLIGHTS

- Dished three assists in Illinois' season-opening win over Alabama A&M
- Returned to action against SIUE following an injury suffered against Valparaiso
- Earned her first start of the season against Indiana in Illinois' Big Ten opener

2018-19 GAME-BY-GAME STATISTICS

Date	Opponent	GS	MIN	FG-A	3P-A	FT-A	REB	PF	A	TO	BL	ST	PTS
11/7	Alabama A&M		14	4-5	2-3	0-0	2	3	3	0	0	1	10
11/14	Valparaiso		7	0-0	0-0	2-2	0	1	2	1	0	0	2
11/18	Columbia						DNP						
11/23	at Cal Poly						DNP						
11/24	vs. Sacramento St						DNP						
11/28	Clemson						DNP						
12/1	Eastern Michigan						DNP						
12/5	Indiana State						DNP						
12/11	Murray State						DNP						
12/15	SIUE		9	0-2	0-2	0-0	1	1	2	0	0	0	0
12/21	Missouri		13	2-3	0-1	0-0	1	1	1	1	0	0	4
12/28	Indiana	*	18	3-4	1-2	1-1	1	3	3	1	0	0	8
12/31	Northwestern	*	17	0-6	0-3	0-0	2	2	1	2	0	1	0
1/6	at Minnesota						DNP						
1/9	Rutgers						DNP						
1/12	at Penn State						DNP						
1/17	Nebraska						DNP						
1/20	Iowa						DNP						

KIRKPATRICK'S CAREER STATISTICS

					Total	3-Point				F-Throw				Rebounds													
Year	GP	GS	Min	Avg	FG	FGA	Pct	FG	FGA	Pct	FT	FTA	Pct	Off	Def	Tot	Avg	PF	FO	Ast	TO	Blk	Stl	Pts	Avg		
2015-16	29	2	505	17.4	36	115	.313	17	58	.293	18	27	.667	16	37	53	1.8	85	8	42	41	0	24	107	3.7		
2016-17	31	28	953	30.7	49	161	.304	19	72	.264	29	35	.829	18	72	90	2.9	83	3	80	68	3	32	146	4.7		
2017-18	24	14	417	17.4	25	77	.325	10	32	.313	6	11	.545	10	40	50	2.1	49	0	42	37	2	21	66	2.8		
2018-19	6	2	78	13.0	9	20	.450	3	11	.273	3	3	1.000	2	5	7	1.2	11	0	12	5	0	2	24	4.0		
TOTAL	90	46	1953	21.7	119	373	.319	49	173	.283	56	76	.737	46	154	200	2.2	228	11	176	151	5	79	343	3.8		

KIRKPATRICK'S CAREER BIG TEN STATISTICS

					Total	3-Point			F-Throw			Rebounds													
Year	GP	GS	Min	Avg	FG	FGA	Pct	FG	FGA	Pct	FT	FTA	Pct	Off	Def	Tot	Avg	PF	FO	Ast	TO	Blk	Stl	Pts	Avg
2015-16	18	1	339	18.8	22	75	.293	10	34	.294	14	19	.737	9	20	29	1.6	57	5	25	21	0	12	68	3.8
2016-17	16	15	472	29.5	25	76	.329	10	31	.323	7	7	1.000	10	38	48	3.0	41	2	33	38	1	12	67	4.2
2017-18	10	2	121	12.1	5	19	.263	2	10	.200	0	1	.000	2	10	12	1.2	19	0	7	14	1	6	12	1.2
2018-19	2	2	35	17.5	3	10	.300	1	5	.200	1	1	1.000	1	2	3	1.5	5	0	4	3	0	1	8	4.0
TOTAL	46	20	967	21.0	55	180	.306	23	80	.288	22	28	.786	22	70	92	2.0	122	7	69	76	2	31	155	3.4



COURTNEY JOENS 30

5-10 // JUNIOR // GUARD

IOWA CITY, IOWA

CITY HIGH

SEASON BESTS

Pts: 19 (at Cal Poly, 11/23/18)
Rebs: 8 (vs. Sacramento St, 11/24/18)
FGM: 6 (2x, last at Northwestern, 12/31/18)
FGA: 10 (3x, last vs. Rutgers, 1/9/19)
FTM: 3 (vs. Columbia, 11/18/18)
FTA: 4 (vs. Columbia, 11/18/18)
3FGM: 3 (3x, last vs. Rutgers, 1/9/19)
3FGA: 7 (at Northwestern, 12/31/18)
Ast: 3 (3x, last vs. Indiana State, 12/5/18)
Blk: 1 (2x, last at Penn State, 1/12/19)
Stl: 3 (2x, last vs. Rutgers, 1/9/19)
Min: 31 (2x, last at Minnesota, 1/6/19)

CAREER BESTS

Pts: 19 (at Cal Poly, 11/23/18)
Rebs: 8 (2x, last vs. Sacramento St, 11/24/18)
FGM: 6 (2x, last at Northwestern, 12/31/18)
FGA: 10 (4x, last vs. Rutgers, 1/9/19)
FTM: 4 (2x, last at George Washington, 12/4/16)
FTA: 4 (3x, last vs. Columbia, 11/18/18)
3FGM: 3 (10x, last vs. Rutgers, 1/9/19)
3FGA: 8 (vs. Penn State, 2/14/17)
Ast: 3 (3x, last vs. Indiana State, 12/5/18)
Blk: 1 (6x, last at Penn State, 1/12/19)
Stl: 3 (4x, last vs. Rutgers, 1/9/19)
Min: 31 (2x, last at Minnesota, 1/6/19)

CAREER HONORS

12th annual #ShareSLO Holiday Beach Classic All-Tournament Team

2018-19 SEASON HIGHLIGHTS

- Earned the start in Illinois' season-opening win over Alabama A&M
- Posted a career-high 19 points on 6-for-10 shooting at Cal Poly
- Matched her career-best with eight rebounds against Sacramento State
- Matched her career-best with three steals at Clemson
- Knocked down consecutive three-pointers in a pivotal momentum swing in Illinois' win over No. 12 Minnesota

2018-19 GAME-BY-GAME STATISTICS

Date	Opponent	GS	MIN	FG-A	3P-A	FT-A	REB	PF	A	TO	BL	ST	PTS
11/7	Alabama A&M	*	18	2-4	2-3	0-0	4	1	0	1	0	0	6
11/14	Valparaiso	*	14	2-5	0-3	0-1	3	0	1	0	0	2	4
11/18	Columbia	*	13	1-4	0-3	3-4	2	3	2	0	0	0	5
11/23	at Cal Poly	*	31	6-10	3-5	4-4	4	0	1	1	0	1	19
11/24	vs. Sacramento St	*	24	4-6	0-2	0-0	8	1	3	2	0	0	8
11/28	at Clemson	*	17	0-5	0-3	0-0	1	0	1	0	0	3	0
12/1	Eastern Michigan	*	21	1-3	0-1	1-1	5	2	3	1	0	0	3
12/5	Indiana State	*	17	0-1	0-1	0-2	1	1	3	0	0	0	0
12/11	Murray State	*	24	3-9	2-5	1-1	6	1	2	1	0	1	9
12/15	SIUE	*	16	2-6	1-2	0-0	3	0	1	0	0	0	5
12/21	Missouri	*	21	1-4	0-2	0-0	2	2	2	0	0	2	2
12/28	Indiana	*	8	1-2	0-0	2-2	3	0	0	0	0	0	4
12/31	Northwestern	*	22	6-10	3-7	1-1	2	3	0	1	0	2	16
1/6	at Minnesota	*	31	4-7	2-3	0-0	3	1	1	2	1	0	10
1/9	Rutgers	*	27	3-10	3-6	4-5	3	2	1	1	0	3	13
1/12	at Penn State	*	20	1-4	1-2	2-2	3	2	2	2	1	1	5
1/17	Nebraska	*	22	1-8	0-3	0-0	2	2	0	1	0	1	2
1/20	Iowa	*	13	1-3	0-1	0-0	3	1	0	1	0	0	2

JOENS' CAREER STATISTICS

					Total	3-Point			F-Throw			Rebounds													
Year	GP	GS	Min	Avg	FG	FGA	Pct	FG	FGA	Pct	FT	FTA	Pct	Off	Def	Tot	Avg	PF	FO	Ast	TO	Blk	Stl	Pts	Avg
2016-17	31	0	458	14.8	52	141	.369	35	98	.357	21	29	.724	15	56	71	2.3	61	0	18	23	5	15	160	5.2
2017-18	31	9	392	12.6	33	115	.287	20	73	.274	13	18	.722	17	34	51	1.6	41	0	14	19	3	16	99	3.2
2018-19	18	11	359	19.9	39	101	.386	17	52	.327	18	23	.783	13	45	58	3.2	22	0	23	14	2	16	113	6.3
TOTAL	80	20	1209	15.1	124	357	.347	72	223	.323	52	70	.743	45	135	180	2.3	124	0	55	56	10	47	372	4.7

JOENS' CAREER BIG TEN STATISTICS

					Total	3-Point			F-Throw			Rebounds													
Year	GP	GS	Min	Avg	FG	FGA	Pct	FG	FGA	Pct	FT	FTA	Pct	Off	Def	Tot	Avg	PF	FO	Ast	TO	Blk	Stl	Pts	Avg
2016-17	16	0	239	14.9	22	69	.319	16	53	.302	11	15	.733	4	28	32	2.0	32	0	10	12	4	7	71	4.4
2017-18	16	9	254	15.9	18	64	.281	13	38	.342	9	13	.692	11	16	27	1.7	23	0	9	11	3	12	58	3.6
2018-19	7	2	143	20.4	17	44	.386	9	22	.409	9	10	.900	5	14	19	2.7	11	0	4	8	2	7	52	7.4
TOTAL	39	11	636	16.3	57	177	.322	38	113	.336	29	38	.763	20	58	78	2.0	66	0	23	31	9	26	181	4.6



SARAH SHEWAN

31

6-2 // GRADUATE // FORWARD

RUSSELL, ONTARIO

ST. THOMAS AQUINAS CATHOLIC

QUINNIPIAC

SEASON BESTS

Pts: 17 (vs. Indiana State, 12/5/18)
Rebs: 7 (3x, last vs. Eastern Michigan, 12/1/18)
FGM: 6 (2x, last vs. Indiana State, 12/5/18)
FGA: 11 (vs. Indiana State, 12/5/18)
FTM: 6 (2x, last vs. Eastern Michigan, 12/1/18)
FTA: 8 (vs. Alabama A&M, 11/7/18)
3FGM: 1 (3x, last vs. Rutgers, 1/9/19)
3FGA: 3 (3x, last vs. Nebraska, 1/17/19)
Ast: 2 (3x, last vs. Nebraska, 1/17/19)
Blk: 3 (vs. SIUE, 12/15/18)
Stl: 2 (at Cal Poly, 11/23/18)
Min: 21 (vs. Indiana State, 12/5/18)

CAREER BESTS

Pts: 17 (vs. Indiana State, 12/5/18)
Rebs: 7 (3x, last vs. Eastern Michigan, 12/1/18)
FGM: 6 (2x, last vs. Indiana State, 12/5/18)
FGA: 11 (vs. Indiana State, 12/5/18)
FTM: 6 (2x, last vs. Eastern Michigan, 12/1/18)
FTA: 8 (vs. Alabama A&M, 11/7/18)
3FGM: 1 (3x, last vs. Rutgers, 1/9/19)
3FGA: 3 (3x, last vs. Nebraska, 1/17/19)
Ast: 2 (3x, last vs. Nebraska, 1/17/19)
Blk: 3 (vs. SIUE, 12/15/18)
Stl: 2 (at Cal Poly, 11/23/18)
Min: 21 (vs. Indiana State, 12/5/18)

2018-19 SEASON HIGHLIGHTS

- Knocked down 6-of-8 free throws in Illinois' season opener vs. Alabama A&M
- Made 4-of-4 from the floor against Valparaiso
- Set a new Illinois career best with 17 points in a win over Indiana State
- Posted an Illinois career best with three blocked shots against SIUE

AT QUINNIPIAC: 2014-2018

- Two-time MAAC All-Academic Team honoree
- Played in 110 games for Quinnipiac and racked up 781 career points and 450 career boards
- Averaged 13.1 points and 6.2 rebounds per game for the Bobcats in her senior season
- Helped Quinnipiac to two NCAA Tournament appearances and a WNIT appearance
- Posted a career-best 24 points for the Bobcats in two games

HIGH SCHOOL

- Was the No. 16-ranked Canadian player according to Girls Basketball Report during her high school career
- Was the team MVP at St. Thomas Aquinas Catholic High School in four consecutive seasons (2010-14)
- Helped lead St. Thomas Aquinas to two league championships and four Eastern Ontario Secondary School Athletic Association (EOSSAA) tournament appearances
- Four-year honor roll member
- Played with the Russell Rockets, Ottawa Guardmen and Ottawa Nationals developmental leagues prior to attending Quinnipiac

PERSONAL

- Born in Ottawa and raised in Russell, Ontario
- Birthday is December 10, 1996
- Daughter of Gerald and Monica Shewan
- Has two younger siblings, Maxwell and Petrina

2018-19 GAME-BY-GAME STATISTICS

Date	Opponent	GS	MIN	FG-A	3P-A	FT-A	REB	PF	A	TO	BL	ST	PTS
11/7	Alabama A&M	14	0-1	0-1	6-8	1	1	0	1	0	1	6	
11/14	Valparaiso	16	4-4	0-0	0-2	4	1	0	3	1	0	8	
11/18	Columbia	9	0-2	0-0	2-2	1	0	0	0	0	0	2	
11/23	at Cal Poly	14	1-1	0-0	0-0	7	0	0	6	0	2	2	
11/23	vs. Sacramento St	15	6-7	1-2	2-4	7	0	0	2	1	1	15	
11/28	at Clemson	9	0-6	0-2	1-2	1	0	0	1	0	0	1	
12/1	Eastern Michigan	18	3-7	0-1	6-6	7	0	0	1	1	0	12	
12/5	Indiana State	21	6-11	1-2	4-4	4	2	0	0	0	1	17	
12/11	Murray State	17	2-5	1-3	0-0	2	1	2	1	1	0	5	
12/15	SIUE	14	3-3	0-0	0-2	2	3	2	1	3	0	6	
12/21	Missouri	10	0-3	0-1	0-0	2	0	0	1	0	0	0	
12/28	Indiana	8	0-2	0-1	4-4	2	1	0	0	0	0	4	
12/31	Northwestern	15	0-3	0-2	0-0	1	0	0	0	1	0	0	
1/6	at Minnesota	17	2-7	0-3	0-0	4	1	0	2	1	1	4	
1/9	Rutgers	11	1-1	1-1	0-0	0	0	0	1	0	0	3	
1/12	at Penn State	17	0-3	0-2	0-0	3	2	1	1	0	1	0	
1/17	Nebraska	18	2-4	1-3	0-0	5	3	2	2	0	0	5	
1/20	Iowa	11	0-2	0-2	0-0	0	1	1	0	0	0	0	

SHEWAN'S CAREER STATISTICS AT ILLINOIS

				Total		3-Point			F-Throw			Rebounds													
Year	GP	GS	Min	Avg	FG	FGA	Pct	FG	FGA	Pct	FT	FTA	Pct	Off	Def	Tot	Avg	PF	FO	Ast	TO	Blk	Stl	Pts	Avg
2018-19	18	0	254	14.1	30	72	.417	5	26	.192	25	34	.735	14	39	53	2.9	16	0	8	23	9	7	90	5.0
Totals	18	0	254	14.1	30	72	.417	5	26	.192	25	34	.735	14	39	53	2.9	16	0	8	23	9	7	90	5.0

SHEWAN'S CAREER BIG TEN STATISTICS

BRENNAN'S CAREER BIG TEN STATISTICS																										
Year	GP	GS	Min	Total		3-Point		F-Throw			Rebounds					Def	Tot	Avg	PF	FO	Ast	TO	Blk	Stl	Pts	Avg
				FG	FGA	Pct	FG	FGA	Pct	FT	FTA	Pct	Off													
2018-19	7	0	97	13.9	5	22	.227	2	14	.143	4	4	1.000	2	13	15	2.1	8	0	4	6	2	2	16	2.3	
Total	7	0	97	13.9	5	22	.227	2	14	.143	4	4	1.000	2	13	15	2.1	8	0	4	6	2	2	16	2.3	

FIGHTING ILLINI WOMEN'S BASKETBALL NOTES



ALEX WITTINGER 35

6-1 // SENIOR // FORWARD

DELANO, MINN.

DELANO

SEASON BESTS

Pts: 32 (vs. Sacramento St, 11/24/18)
Rebs: 14 (vs. Sacramento St, 11/24/18)
FGM: 15 (vs. Sacramento St, 11/24/18)
FGA: 27 (vs. Sacramento St, 11/24/18)
FTM: 6 (3x, last vs. Indiana, 12/28/18)
FTA: 8 (at Cal Poly, 11/23/18)
3FGM: 2 (vs. SIUE, 12/15/18)
3FGA: 2 (2x, last vs. Nebraska, 1/17/19)
Ast: 3 (vs. Columbia, 11/18/18)
Blk: 6 (2x, last at Minnesota, 1/6/19)
Stl: 5 (vs. Rutgers, 1/9/19)
Min: 43 (vs. Indiana, 12/28/18)

CAREER BESTS

Pts: 32 (vs. Sacramento St, 11/24/18)
Rebs: 16 (2x, last vs. Ohio State, 2/13/18)
FGM: 15 (vs. Sacramento St, 11/24/18)
FGA: 27 (vs. Sacramento St, 11/24/18)
FTM: 6 (3x, last vs. Eastern Michigan, 12/1/18)
FTA: 8 (at Cal Poly, 11/23/18)
3FGM: 2 (vs. SIUE, 12/15/18)
3FGA: 3 (vs. #3 Maryland, 1/26/17)
Ast: 3 (5x, last vs. Columbia, 11/18/18)
Blk: 11 (at Penn State, 1/23/18)
Stl: 6 (vs. Iowa, 12/28/16)
Min: 43 (vs. Indiana, 12/28/18)

CAREER HONORS

2016 Big Ten All Freshman Team
 2017 All-Big Ten Honorable Mention
 2018 All-Big Ten Second Team
 2018 Preseason All-Big Ten
 2019 Lisa Leslie Award Watch List
 12th annual #ShareSLO Holiday Beach Classic All-Tournament Team

2018-19 SEASON HIGHLIGHTS

- Notched her 200th career blocked shot in Illinois' season-opener vs. Alabama A&M
- Recorded back-to-back double-doubles against Valparaiso and Columbia
- Had a career performance against Sacramento State knocking down 32 points and netting 15 field goals
- Named to the Big Ten Weekly Honor Roll on Nov. 26 after her performance at the ShareSLO Holiday Beach Classic
- Registered a season-best four steals and six blocks at Clemson on Nov. 28
- Earned her 30th career double-double in a 22-point, 11-rebound performance against Eastern Michigan
- Knocked down 9-of-19 from the floor at Penn State to post a career-best 90-percent shooting performance
- Snatched a season-best five steals against Rutgers
- Named the Big Ten Player of the Week by College Sports Madness on December 17 and also earned Big Ten Weekly Honor Roll recognition after she veraged 20.5 points, 7.5 rebounds and 2.0 blocks per game with a .750 field goal percentage last week in Illinois' wins over Murray State and SIUE
- Ranks fourth in the country and second in the Big Ten for her 40 blocked shots this season. Her 2.8 blocks per game also rank second in the league and come in at No. 7 in the nation
- Ranks eighth in the Big Ten for her 8.4 rebounds per game and fifth for her 16.1 points per game

2018-19 GAME-BY-GAME STATISTICS

Date	Opponent	GS	MIN	FG-A	3P-A	FT-A	REB	PF	A	TO	BL	ST	PTS
11/7	Alabama A&M	*	29	4-14	0-0	2-2	6	2	1	2	3	0	10
11/14	Valparaiso	*	29	7-13	0-1	3-3	12	1	0	1	2	0	17
11/18	Columbia	*	35	7-14	0-0	0-0	10	2	3	2	3	0	14
11/23	at Cal Poly	*	25	2-6	0-0	6-8	8	3	1	2	0	1	10
11/24	vs. Sacramento St	*	35	15-27	0-0	2-2	14	1	2	2	3	0	32
11/28	at Clemson	*	40	4-8	0-0	1-2	11	5	1	4	6	4	9
12/1	Eastern Michigan	*	31	8-16	0-0	6-6	11	4	0	3	3	2	22
12/5	Indiana State	*	34	9-13	0-0	0-0	8	2	0	4	5	0	18
12/11	Murray State	*	24	11-13	0-0	0-2	7	2	2	1	3	1	22
12/15	SIUE	*	30	7-11	2-2	3-3	8	3	1	2	1	2	19
12/21	Missouri	*	37	7-10	0-0	1-1	3	0	1	1	2	1	15
12/28	Indiana	*	43	6-9	1-1	6-6	4	4	2	6	3	1	19
12/31	Northwestern	*	35	3-11	0-1	1-2	7	3	2	2	0	0	7
1/6	Minnesota	*	28	5-13	1-1	0-1	8	3	2	1	6	0	11
1/9	Rutgers	*	34	3-6	0-0	2-2	6	4	1	0	2	5	8
1/12	at Penn State	*	27	9-10	0-0	1-1	3	3	0	1	1	4	19
1/17	Nebraska	*	39	6-14	0-2	2-4	13	2	2	2	1	0	14
1/20	Iowa	*	35	9-17	0-0	2-2	3	3	1	0	4	2	20

WITTINGER'S CAREER STATISTICS

					Total	3-Point			F-Throw			Rebounds													
Year	GP	GS	Min	Avg	FG	FGA	Pct	FG	FGA	Pct	FT	FTA	Pct	Off	Def	Tot	Avg	PF	FO	Ast	TO	Blk	Stl	Pts	Avg
2015-16	28	18	759	27.1	130	258	.504	2	10	.200	17	28	.607	91	102	193	6.9	67	3	15	38	50	14	279	10.0
2016-17	29	29	919	31.7	183	395	.463	7	24	.292	45	55	.818	95	157	252	8.7	71	2	23	52	74	36	418	14.4
2017-18	31	31	1015	32.7	205	420	.488	5	13	.385	50	62	.806	125	153	278	9.0	69	3	24	51	75	28	465	15.0
2018-19	18	18	590	32.8	122	225	.542	4	8	.500	38	47	.809	59	83	142	7.9	47	1	22	36	48	23	286	15.9
TOTAL	106	96	3283	31.0	640	1298	.493	18	55	.327	150	192	.781	370	495	865	8.2	254	9	84	177	247	101	1448	13.7

WITTINGER'S CAREER BIG TEN STATISTICS

WITTENBERG'S CAREER BIG TEN STATISTICS																										
					Total			3-Point			F-Throw			Rebounds												
Year	GP	GS	Min	Avg	FG	FGA	Pct	FG	FGA	Pct	FT	FTA	Pct	Off	Def	Tot	Avg	PF	FO	Ast	TO	Blk	Stl	Pts	Avg	
2015-16	16	16	499	31.2	81	161	.503	2	6	.333	14	22	.636	56	65	121	7.6	42	2	9	26	30	8	178	11.1	
2016-17	16	16	508	31.8	96	220	.436	5	19	.263	28	32	.875	44	89	133	8.3	42	1	13	26	39	25	225	14.1	
2017-18	16	16	554	34.6	118	240	.492	3	7	.429	23	29	.793	68	74	142	8.9	35	2	15	25	38	13	262	16.4	
2018-19	7	7	241	34.4	41	80	.513	2	5	.400	14	18	.778	17	27	44	6.3	22	0	10	12	17	12	98	14.0	
TOTAL	55	55	1802	32.8	336	701	.479	12	37	.324	79	101	.782	185	255	440	8.0	141	5	47	89	124	58	763	13.9	



ALI ANDREWS 50

6-2 // JUNIOR // FORWARD

LAKE IN THE HILLS, ILL.

HUNTLEY

SEASON BESTS

Pts: 19 (vs. Eastern Michigan, 12/1/18)
Rebs: 9 (vs. Eastern Michigan, 12/1/18)
FGM: 6 (2x, last vs. Eastern Michigan, 12/1/18)
FGA: 13 (vs. SIUE, 12/15/18)
FTM: 3 (2x, last vs. Eastern Michigan, 12/1/18)
FTA: 6 (vs. Eastern Michigan, 12/1/18)
3FGM: 4 (vs. Eastern Michigan, 12/1/18)
3FGA: 6 (2x, last vs. Rutgers, 1/9/19)
Ast: 3 (2x, last at Northwestern, 12/31/18)
Blk: 2 (at Cal Poly, 11/23/18)
Stl: 2 (vs. Indiana State, 12/5/18)
Min: 36 (at Clemson, 11/24/18)

CAREER BESTS

Pts: 26 (vs. Wichita State, 11/25/17)
Rebs: 9 (vs. Eastern Michigan, 12/1/18)
FGM: 9 (vs. Wichita State, 11/25/17)
FGA: 14 (vs. Nebraska, 3/1/17)
FTM: 7 (vs. UAPB, 11/13/16)
FTA: 8 (vs. UAPB, 11/13/16)
3FGM: 6 (2x, last (vs. Wichita State, 11/25/17)
3FGA: 10 (vs. Nebraska, 3/1/17)
Ast: 3 (4x, last at Northwestern, 12/31/18)
Blk: 5 (vs. Chicago State, 11/15/17)
Stl: 4 (vs. Nebraska, 3/1/17)
Min: 37 (vs. Chicago State, 11/15/17)

2018-19 SEASON HIGHLIGHTS

- Led Illinois with 17 points in the squad's season-opening win over Alabama A&M
- Matched her career-best with eight boards against Columbia
- Knocked down 4-of-4 three-pointers to post a season-high 19 points and help Illinois to an overtime victory against Eastern Michigan
- Ranks ninth in the Big Ten for her 17 three-pointers made this season

2018-19 GAME-BY-GAME STATISTICS

Date	Opponent	GS	MIN	FG-A	3P-A	FT-A	REB	PF	A	TO	BL	ST	PTS
11/7	Alabama A&M	*	24	6-9	3-4	2-2	0	3	0	0	0	1	17
11/14	Valparaiso	*	21	1-3	1-2	0-0	1	2	2	1	1	1	3
11/18	Columbia	*	31	4-11	2-6	1-2	8	2	1	1	0	0	11
11/23	at Cal Poly	*	26	2-4	2-2	3-4	4	2	0	1	2	0	9
11/23	vs. Sacramento St	*	20	3-5	1-2	2-2	3	5	3	1	1	0	9
11/28	at Clemson	*	36	3-11	1-4	2-2	7	4	2	0	1	2	9
12/1	Eastern Michigan	*	35	6-7	4-4	3-6	9	4	0	4	1	1	19
12/5	Indiana State	*	22	2-3	1-2	0-0	3	2	1	1	1	2	5
12/11	Murray State	*	18	4-7	2-4	0-0	3	2	2	0	1	0	10
12/15	SIUE	*	24	5-13	2-5	0-0	5	2	1	1	1	0	12
12/21	Missouri	*	23	0-2	0-2	0-0	1	3	1	4	0	0	0
12/28	Indiana	*	6	0-1	0-0	1-2	1	0	0	1	1	0	1
12/31	Northwestern	*	19	0-4	0-2	0-0	4	3	3	1	0	0	0
1/6	at Minnesota	*	17	2-6	1-2	2-2	4	4	0	2	1	1	7
1/9	Rutgers	*	23	4-10	2-6	0-0	1	2	0	0	0	0	10
1/12	at Penn State	*	23	1-3	0-2	0-0	4	1	2	2	1	0	2
1/17	Nebraska	*	19	2-6	1-2	0-0	6	4	0	0	0	0	5
1/20	Iowa	*	26	1-5	0-4	0-0	0	3	0	1	0	2	2

ANDREWS' CAREER STATISTICS

Year	GP	GS	Min	Avg	Total		Pct	3-Point		Pct	F-Throw		Pct	Rebounds				PF	FO	Ast	TO	Blk	Stl	Pts	Avg
					FG	FGA		FG	FGA		FT	FTA		Off	Def	Tot	Avg								
2016-17	31	8	627	20.2	59	179	.330	37	93	.398	40	44	.909	32	46	78	2.5	88	2	16	33	12	17	195	6.3
2017-18	31	22	771	24.9	78	186	.419	40	97	.412	19	25	.760	33	51	84	2.7	94	3	22	45	24	20	215	6.9
2018-19	18	15	412	22.9	46	110	.418	23	55	.418	16	22	.727	22	42	64	3.6	48	1	18	21	12	10	131	7.3
TOTAL	80	45	1810	22.6	183	475	.385	100	245	.408	75	91	.824	87	139	226	2.8	230	6	56	99	48	47	541	6.8

ANDREWS' CAREER BIG TEN STATISTICS

Year	GP	GS	Min	Avg	Total		Pct	3-Point		Pct	F-Throw		Pct	Rebounds				PF	FO	Ast	TO	Blk	Stl	Pts	Avg
					FG	FGA		FG	FGA		FT	FTA		Off	Def	Tot	Avg								
2016-17	16	1	327	20.4	34	94	.362	24	57	.421	9	9	1.000	12	18	30	1.9	52	2	6	19	3	7	101	6.3
2017-18	16	8	365	22.8	32	85	.376	20	47	.426	5	8	.625	12	21	33	2.1	55	3	9	16	11	6	89	5.6
2018-19	7	4	133	19.0	10	35	.286	4	18	.222	3	4	.750	8	12	20	2.9	17	0	5	7	3	3	27	3.9
TOTAL	39	13	825	21.2	76	214	.355	48	122	.393	17	21	.810	32	51	83	2.1	124	5	20	42	17	16	217	5.6

2018-19 RADIO/TV ROSTER



0 J-Naya Ephraim
5-9 // Fr. // G



1 Brandi Beasley
5-6 // Jr. // G



2 Lyric Robins
5-11 // So. // F



3 Arieal Scott
5-9 // Fr. // G



4 Mackenzie Blazek
6-3 // Fr. // F



5 Cierra Rice
5-9 // R-Jr. // G



11 Carolyn Waleski
5-10 // Fr. // G



13 Petra Holešinská
5-9 // Jr. // G



21 Nancy Panagiotopoulou
6-3 // R-Fr. // F



23 Jaelyne Kirkpatrick
5-7 // Sr. // G



30 Courtney Joens
5-10 // Jr. // G



31 Sarah Shewan
6-2 // Gr. // G



35 Alex Wittinger
6-1 // Sr. // F



50 Ali Andrews
6-2 // Jr. // F



Nancy Fahey
Head Coach



LaKale Malone
Associate Head Coach



Tianna Kirkland
Assistant Coach



Steve Cochran
Assistant Coach