

2013 WOMEN'S GYMNASTICS



TABLE OF CONTENTS

Season Preview 2-3

COACHING STAFF

Head Coach Kim Landrus 4-5
 Associate Head Coach Jay Santos 6
 Assistant Coach Rodney Gust 7
 Volunteer Assistant Coach Jess Santos 7

MEET THE FIGHTING ILLINI

2013 Roster 8
 The Illini by Class 9
 Senior Elise Gill 10-11
 Senior Macy Hyatt 12-13
 Senior Jaclyn Kantecki 14-15
 Senior Alina Weinstein 16-17
 Junior Sarah Fiedler 18-19
 Junior Elizabeth McNabb 20-21
 Junior Amber See 22-23
 Sophomore Kelsi Eberly 24-25
 Sophomore Sunny Kato 26-27
 Sophomore Nikki McGarel 28-29
 Sophomore Jordan Naleway 30-31
 Sophomore Gabriella Nguyen 32-33
 Freshman Heather Foley 34-35
 Freshman Tori Fujinami 36-37
 Freshman Giana O'Connor 38-39
 Illini Meet-By-Meet Career Scores 40-42

GYMNASTICS FACILITIES

Huff Hall 43
 Kenney Gym 44
 Irwin Academic Center 45-46

THE RECORD BOOK

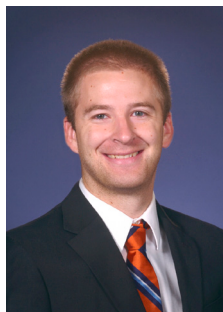
2012 Season In Review 47-48
 Big Ten Conference Results / Honors 49
 2012 NCAA Champaign Regional Results 50
 Individual / Team Records 51
 All-Time Results 52-54
 All-Time Team Records 55
 All-Time All-Americans 56
 National and Regional Honors 57
 Big Ten Honors 58
 Academic Honors 58-59
 Team Honors / Event Title Leaders 60
 All-Time Letterwinners 61
 Media Information 62
 TV Headshot Roster 63

CREDITS: The 2013 Illinois Women's Gymnastics record book is a publication of the Athletic Public Relations Office written to assist the media in their coverage of Illinois athletics. The guide was written and edited by Josh Bates with editorial assistance from Kim Landrus. Photos by Mark Jones, Mark Cowan, Tom Schaeffges, Derek Neal, Mina Moradi, Amy Pyle, Holly Stalcup and Getty Images.

FIGHTING ILLINI QUICK FACTS

Location Urbana-Champaign, Ill.	Letterwinners Returning / Lost 9/2
Founded 1867	Routines Returning / Lost 17/6
Enrollment 42,605	All-Americans Returning / Lost 1/1
Nickname Fighting Illini	Newcomers 3
Colors Orange and Blue	First Year of Women's Gymnastics 1974
Conference Big Ten	
President Robert Easter	Head Coach Kim Landrus, 2nd season
Chancellor Phyllis Wise	Years at Illinois 11th season
Athletic Director Mike Thomas	Alma Mater Iowa State, '97
Home Gym Huff Hall	Office Number 217-333-7974
Seating Capacity 3,800	Associate Head Coach Jay Santos, 3rd season
	Alma Mater Massachusetts '95
2012 Record 12-9-2	Assistant Coach Rodney Gust, 2nd season
2012 Big Ten Finish 5th (195.850)	Alma Mater Missouri '09
2012 Champaign Regional Finish 3rd (195.725)	Volunteer Asst. Coach Jess Santos, 2nd season
2012 Final Rank 18th	Alma Mater West Virginia '05
2013 Preseason Rank 18th	Gymnastics Address 1700 S. Fourth Street
 Champaign, IL 61820

ATHLETIC PUBLIC RELATIONS



Gymnastics Contact Josh Bates
E-mail Address jbbates2@illinois.edu
Office Phone 217-244-4982
Cell Phone 618-558-7556
Sports Information Director Kent Brown
Associate Director Derrick Burson
Assistant Directors Derek Neal, Ben Taylor, Marla Glasser, Matt Wille
Graduate Assistant Nicole Mechling
Intern Taylor Thomas
New Media/Creative Services Will Wyss, Heidi Rivers, Adam Marantz
Office Manager Jen Funderburk
Office Phone / Fax 217-333-1391 / 217-333-5540
Websites www.fightingillini.com / www.IlliniWomensGym.com
Twitter www.twitter.com/IlliniGym
Facebook www.facebook.com/IlliniGymnastics
Mailing Address Bielfeldt Athletic Administration Building
 1700 South Fourth St., Champaign, IL 61820

2013 SEASON PREVIEW

The University of Illinois women's gymnastics team will kick-off their 2013 season right where they concluded their 2012 campaign, ranked No. 18 in the nation. The ranking marks the sixth consecutive year and seventh overall that the Illini have achieved a Top-25 spot heading into the season. The squad will look to build upon the successes from last year, in which they sent a representative to the NCAA Championships for the fifth year in a row via winning the NCAA Regional All-Around and Beam title, produced a Big Ten Beam Champion and claimed 51 individual titles throughout the year.

"As a team and coaching staff, we are very excited to begin the 2013 season," said Head Coach Kim Landrus. "We will look at each meet as another step in achieving our end goal of qualifying to the evening session of the Big Ten Championship meet and earning a seeded spot for the NCAA Regional competition. We feel that if we are able to accomplish both of these, we will put ourselves in position to be Big Ten Champions and qualify to the NCAA National competition."

The Illini lost two decorated gymnasts following the graduation of standouts Kelsey Joannides and Hannah Welker. Joannides, who won the Big Ten title on vault as a freshman, capped off her collegiate career with a Big Ten Beam title and became the first two-time Big Ten Champion at Illinois since the championships were officially recognized by the conference in 1982-83. In honor of her stellar senior season, Joannides was awarded First Team All-Big Ten accolades. Welker competed on bars and floor last season in which she set career highs of 9.850 and 9.775, respectively. The Illini will also be without vault and floor standout Elise Gill, as she is out for the season with an injury. Despite the loss of Joannides, Welker and Gill, the Illini return 16 of 24 routines, including All-Big Ten honorees Alina Weinstein and Amber See.

"It's always hard to replace your graduating class, but it creates a chance for others to step up and rise to the challenge," continues Landrus. "Kelsey Joannides was a staple in our lineups for four years. Her confidence and reliability will definitely be missed; however, our younger ones had the opportunity to learn from her and I am confident that they will carry on those lessons throughout the season. Welker's senior season was the best of her four years which is how you want each athlete to end their career. Our team understands our 'continue to learn' philosophy and has worked hard in the preseason to fill the void left by Joannides and Welker. We will look to 2012 All-Big Ten honorees, Alina Weinstein and Amber See, along with Junior Sarah Fiedler to lead the Illini squad. Sophomore, Sunny Kato and freshmen, Giana O'Connor will be two newcomers to watch."

Landrus will begin her 11th overall year with the Illini and second at the helm of the program. Last season, Landrus coached the squad to a final ranking of 18, while three out of the four events finished in the Top-25. In the gym, Landrus primarily coaches the balance beam along with structuring day to day practices. Landrus will be surrounded by familiar faces as the coaching support staff returns fully in tact. Associate Head Coach Jay Santos returns to once again mentor the bar team. Assistant Coach Rodney Gust, will continue his role as the vault and floor coach along with Volunteer Assistant Coach, Jess Santos. Santos will also resume her role of coordinating floor music and choreography; in addition to coaching.

"The 2013 chapter of the record book will have a somewhat new look than last year. The newcomers bring a combination of power and grace that will be eye catching. Their routines, combined with those of the returnees, should give us a solid foundation that we can continue to build on throughout the season. Our success will be dependent on how they accept each challenge that arises. As a team, we have talked a great deal about controlling what they can control and using each day as an opportunity to prepare for the next opportunity. If they embrace that concept, the season will be memorable."

This year's squad, which has a nice blend of youth and experience, will have to be proven road warriors for the 2013 season as the Illini only enjoy four meets inside the comfort confines of Huff Hall. The season kicks off Jan. 12 at Arizona against the host, Stanford and San Jose State. Illinois welcomes Michigan State for their first home meet Jan. 26 in their annual Pink Meet

followed by Gym Jam on Feb. 16 against Iowa. The Illini wrap up their home schedule with two meets in March, including a March 2 showdown vs. Penn State and March 10 against Ball State and in-state foe UIC.

"Our schedule this year is great preparation for our Big Ten Championship meet and post season competitions. Getting the opportunity to compete in a quad meet against #6 Stanford, #19 Arizona and San Jose State is invaluable experience. Additionally, we compete against every team in the Big Ten during the regular season which is a first since I have been at Illinois. With six of the eight teams ranked in the top 25, it is sure to be a showdown every week."

"Our return to Huff Hall on Jan. 26 will be a much anticipated event. In addition to our Pink meet, the rival trophy with Michigan State is something that excites us. It's a one of its kind, as Illinois Gymnastics does not have a rivalry trophy with any other school. It's our goal to bring the VICTORY PLANK back to Champaign after sharing the trophy last year when the competition ended in a tie. The other three home meets will be ones to watch at Huff Hall. Both Iowa and Penn State are double duals with the men's program, while our tri-meet with Ball State and UIC will also mark the last home meet for our senior class."

SENIORS

The senior class includes Alina Weinstein, Jaclyn Kantecki, Macy Hyatt and Elise Gill. Weinstein returns after becoming the second ever Illini to win a NCAA Regional All-Around Title and in doing so, became the 10th individual NCAA Championship qualifier in school history. Weinstein, a former All-American, also won the Regional beam title, becoming the second Illini ever to win multiple regional titles. She posted two Top-10 scores in school history in the All-Around last year and was voted the team's Most Outstanding Gymnast.

"Alina is a true competitor. Good just isn't enough for Alina...she wants to be great and dedicates each day to making sure she is. Her experience last year should provide her with the foundation to make her senior season her best yet. It will be rewarding to watch her on her quest to excellence."

Kantecki ranked fourth on the team last season with three event titles. The Bridgeview native competed on vault, bars and beam in which she hit 30-of-35 routines. Hyatt competed on bars in her junior season in which she won her first individual title with a 9.775 against Minnesota.

"Jaclyn and Macy will both bring experience to their respective events. Jaclyn was a nice surprise last year when she broke into the beam lineup for the last two thirds of the season. I not only expect her to make an impact on vault and bars again this year, but also challenge for a lineup spot on beam and floor. Macy has broken into the bar lineup the past two years and I don't expect anything different in 2013. We will look to her to bring in a consistent, solid score for the bar team. Additionally, she will provide depth to our beam lineup."

JUNIORS

All three members of the junior class, Amber See, Sarah Fiedler and Elizabeth McNabb, have seen time in the lineup and will be highly relied upon during the season. The class will provide key contributions and is expected to take another step this season.

See, who was a Big Ten vault champion her freshman year, is coming off a season in which she was named Second Team All-Big Ten. See won a team-high six floor titles and hit all 13 routines on the event as well, scoring a 9.850 or better 11 times. See ranked third on the team with 11 individual titles, produced 24 top-five finishes and tied the second best vault score in school history with a personal best 9.925 at UIC.

"Amber lives to compete. Every time she salutes, you know she will have her game face on. She is known for her quickness and high level of difficulty on both vault and floor. Look for her to "wow" the judges and the audience with her floor routine, along with the rest of her gymnastics."

Fiedler competed on bars, beam and floor last season and hit 35-of-39 routines. Fiedler won her first title on bars and totaled 10 top-five finishes.

2013 SEASON PREVIEW

Fiedler also notched career highs on all three of her events. Meanwhile, McNabb competed on beam at every meet and won her first title with a career best 9.850 vs Ohio State. McNabb hit 29-of-32 routines and was named the team's Most Improved Gymnast.

"Sarah has done a phenomenal job in the off-season to add difficulty on vault, beam and floor. Her hard work is evident as she is determined to make every turn count. She will not settle for anything less than excellent and has a work ethic that breeds success. Her lead by example attitude is very influential throughout the entire team."

"Liz was slowed in the preseason with a nagging hand injury. Over the last several weeks, she has turned the corner and is ready to go on both vault and beam. Look for her to regain her bar routine in the near future. She is a team player that will not only make sure that she is prepared, but will continue to help her teammates in order to elevate where we are at today."

SOPHOMORES

Next up are the sophomores, who make up the largest class of the squad. Those returning sophomores who saw action and gained experience last season include Kelsi Eberly and Jordan Naleway. Joining them is Sunny Kato and Gaby Nguyen who did not compete last year and will make their Illini debuts this January. Fellow teammate, Nikki McGarel will not be in action this year.

Eberly's main event was the floor exercise in which she competed in 10 meets last season, recording a career high 9.800 at UIC. Eberly also saw action on vault and beam. Naleway made her debut on the uneven bars towards the tail end of last season, posting a career high 9.775 and placing fourth vs. Kentucky. Naleway also saw time on the 'big stage' when she was placed in the bar lineup at the NCAA Regional.

"Kelsi Eberly has a heart of gold. She pushes herself every day because she was not satisfied with her freshmen campaign. She wants to compete on multiple events and be a main contributor to the team. I truly believe she will do anything to accomplish that goal. Jordan Naleway has worked on the little details throughout preseason and her hard work should pay off. Watch for her to make an impact right from the start on bars and floor. She will also add much needed depth to our vault and beam lineups."

"Sunny and Gaby will be exciting as they officially begin their Illini careers in January. Sunny is beautiful to watch and has nice lines and extension throughout her body that will pull the audience in. Her bar routine is packed with difficulty which will further strengthen our lineup. Gaby has worked hard to bounce back from her injury sustained last year. Over the next couple months, she will add depth to every event. She is on a mission to compete in an Illinois leotard and will do everything in her power to ensure that happens."

FRESHMEN

Kim Landrus and Illini nation welcomed three newcomers in Giana O'Connor (Streamwood, Ill./Streamwood), Heather Foley (Pewaukee, Wis./Waukesha) and Tori Fujinami (San Jose, Calif./Los Gatos). O'Connor has already received praise before the season started, as she, along with Alina Weinstein, were named to the Big Ten Women's Gymnasts to Watch List.

"Giana has a great deal of potential that will be fun to watch develop as the season unfolds. She is a true competitor and will be looked upon to compete in the all-around. Her high level of difficulty, coupled with consistent routines will make her standout in her first season as an Illini."

"Heather and Tori will be eager to crack into the lineup through the season. Heather's vault, beam and floor continues to improve and as a coaching staff we will look for her to provide depth on these events. Tori has refined her gymnastics a great deal since August. She has a true love for the sport that makes her want to excel every day she is in the gym. I think she is motivated to earn a spot in the lineup and goes about her assignments very diligently to enable her to be at her best."

Coach Landrus' Event-by-Event Breakdown: VAULT

"Similar to 2012, expect vault to make marked improvements throughout the year. With the departure of Kelsey Joannides and Gill out due to injury, both 10.0 vaults, we have once again had to place a lot of emphasis on developing our vaults. As a team, we have been working very hard in preseason to increase our start values on this event. Over the course of the season, we expect to be able to showcase more 10.0 vaults. Look for Giana and Alina to lead the pack with two very powerful yurchenko fulls. Additionally, we will count on Heather, Amber, Sarah, and Jaclyn to round out our vault lineup."

UNEVEN BARS

"Bars is an event that truly excites me heading into the season. Our high level of difficulty coupled with our consistency, could make this the strongest event in 2013. Seven returnees saw action in 2012 which will bring a wealth of experience to the lineup. Additionally, Giana and Sunny are two newcomers who are true bar workers and have the potential to score very high."

BALANCE BEAM

"We return the core of our beam lineup from 2012 which should bode well from an experience factor. Additionally, we add standout beam worker, Sunny Kato, and a solid powerful routine from Giana. We pride ourselves on the little details that make a big difference. If we stick to the mental approach that we use every day in the gym, expect beam to be a strong event for us. The potential is there, now we just have to go out and perform."

FLOOR EXERCISE

"Once again, we lost half of our floor lineup from 2012, so we will look to the returnees to step into a new role and lead a somewhat inexperienced group. Alina, Amber, and Sarah will be counted on for their showmanship, level of difficulty and consistency. Look for sophomores Kelsi Eberly and Jordan Naleway, along with senior, Jaclyn Kantecki to battle for line up spots. Giana will make a big impact with her amplitude and crowd pleasing routine. Additionally, both Heather and Tori have the potential to earn a floor spot. If we are going to be successful, it will be very important to make sure that our amplitude, execution, and style pull the judges in."

ALL-AROUND

"On any given day, five different individuals could vie for an all-around spot. Giana and Alina will be standouts on all four events, while Sarah Fiedler is expected to make her all-around debut with much improved performances from 2012. She is at her best gymnastically and it will be exciting to see her take the floor on all four events. Others that could be seen in the all-around are Jaclyn Kantecki and Amber See."

2013 SCHEDULE

DATE	OPPONENT	TIME (CT)
Jan. 12	@ Arizona w/ Stanford, San Jose St.	6 p.m.
Jan. 19	@ Michigan [^]	3 p.m.
JAN. 26	MICHIGAN ST. (Pink Meet)	4 p.m.
Feb. 1	@ Nebraska	6 p.m.
Feb. 9	@ Minnesota	4 p.m.
FEB. 16	IOWA (GYM JAM)	4 p.m.
Feb. 23	@ Ohio State	3 p.m.
MARCH 2	PENN ST.	4 p.m.
March 8	@ Missouri	6:30 p.m.
March 10	Ball St. & UIC	2 p.m.
March 16	@ State of Illinois Classic (Chicago)	5 p.m.
March 23	@ Big Ten Championships [^] (East Lansing)	TBA
April 6	@ NCAA Regionals	TBA
April 19-21	@ NCAA Championships (Los Angeles)	TBA

• All home meets in **BOLD CAPS** and held at Huff Hall

[^] Big Ten Network

KIM LANDRUS

HEAD COACH // SECOND SEASON (11TH SEASON OVERALL)



Kim Landrus enters her 11th year with the Illini and second as head coach. Landrus started out as assistant coach in 2006 before being promoted to associate head coach from 2006-10. In the gym, she primarily coaches the balance beam, in addition to choreographing the beam routines and structuring day-to-day practices. Outside the gym, she serves as recruiting coordinator, playing a vital role in both on- and off-campus recruiting.

In her first season as head coach, Landrus inspired the Illini to a No. 18 national ranking. The Orange and Blue finished fifth in the Big Ten with senior Kelsey Joannides

winning her second career Big Ten title, tying for first on beam with a score of 9.900. Illinois, which hosted its first-ever regional at the Assembly Hall, placed in the top three at the regional meet for the fifth year in a row after never finishing above fourth before 2008. Junior Alina Weinstein, who also won the NCAA regional on beam, earned a trip to the NCAA Championships after winning the all-around title at the NCAA Champaign Regional with a career-high score of 39.450. Weinstein became the second gymnast in Illinois history to become a NCAA regional champ. Furthermore, it was the fifth year in a row, Illinois was represented at the NCAA National Championships and Weinstein was the 10th individual NCAA National qualifier in program history. In addition, Landrus coached three gymnasts to All Big Ten awards as Joannides was named to the first team while Weinstein and Amber See garnered second-team All-Big Ten honors.

In her first season as interim head coach, Landrus led Illinois to its highest national ranking in school history, as the Illini wrapped up the year ranked No. 11 following their second-ever appearance at the NCAA Championships. The Orange and Blue matched their highest regional finish ever, tying for second at the NCAA Tuscaloosa Regional, and placed third at the Big Ten Championships, reaching the podium for the fourth time in five years. The Illini also broke the school record for team score (196.975) and balance beam (49.375) during the 2011 season.

Individually, six Illini garnered All-America honors with Landrus at the helm, marking the most accolades in a single season in school history. Senior Melissa Fernandez turned in the best individual season in school history, picking up three All-America honors and twice earned a spot on the awards podium at the national meet. The Illini also boasted three All-Big Ten selections and a freshman Big Ten champion on vault in Amber See.

In 2010, Landrus helped the Illini finish in the Top 25 for the fifth-consecutive year with a No. 16 final national ranking. Her beam team ranked among the top 10 in the nation and turned in four of the top-10 beam scores in school history, including tying the second-best mark of 49.175. The Illini took third at the NCAA Central Regional and boasted two individual national qualifiers in Sarah Schmidt (all-around) and Allison Buckley, who became just the second first-team All-American in school history with her performance on vault. The Orange and Blue also led the conference with four All-Big Ten selections, with Buckley, Schmidt and Fernandez on the first team and Nicole Cowart on the second team.

In 2009, Landrus played a big part in leading Illinois to one of its best seasons in school history. She was named co-National Assistant Coach of the Year by the NACGC after guiding the Illini to their first-ever NCAA Championship appearance. The Illini finished the season ranked 12th in the nation, the program's highest ever final ranking, and produced two All-Americans in the same season for the first time in school history. The Orange



HEAD COACH KIM LANDRUS

and Blue also took runner-up finishes at the Big Ten Championships and NCAA West Regional. In addition, Landrus helped the 2009 Illini put up four of the top six team scores in Illinois history.

Landrus' 2009 beam squad was among the nation's elite, ranking in the top 15 nationally all season while re-writing the school record book. She helped Melissa Fernandez earn first-team All-America honors on the balance beam, Illinois' first NCAA first-team All-American, giving the Illini a beam All-American in two straight seasons for the first time ever. Landrus also guided the Illini to the top-three beam scores in school history, including the school record score of 49.200 at the NCAA West Regional, and coached Allison Buckley to the 2009 West Regional Beam title with an individual school record-tying 9.950, making her Illinois' first regional champion on the event in over 30 years.

Landrus has had much success during her ten-year tenure on the Illinois staff, playing a big role in Illinois' gradual rise to national prominence. She has helped lead the Illini to nine straight NCAA Regional appearances from 2004-12, and has made the Illini a regular in the weekly top-25 polls, peaking at No. 11 heading into the 2009 and 2011 NCAA Championships.

Since Landrus' arrival, the Illini beam squads have recorded the top eight scores in school history. In addition, Fernandez became the first Illini to twice advance to the NCAA individual event finals and notched the best individual finish in school history, tying for fifth on beam in 2011. She has coached two Big Ten Balance Beam Champions in Kelsey Joannides (2012) and Julie Crall (2008). Additionally, Allison Buckley became a second-team All-American on beam in 2008 under Landrus' tutelage, marking the program's first All-American at the NCAA Championships.

Landrus garnered the NCAA South Central Regional Assistant Coach of the Year honors in 2005, and helped qualify two University of Illinois individuals to the NCAA Championships in both 2004, 2008 and 2010, something that hadn't been done at Illinois since 1987.

Prior to coming to Illinois for the 2002-03 season, Landrus spent two years as an assistant coach for Iowa State University. At ISU, her beam team finished in the top 10 nationally in 2002 with a season-high ranking of fourth. Before her coaching career, Landrus was one of the most decorated gymnasts in Cyclone history. She was ISU's first-ever national qualifier in 1997, a two-time All Big XII Conference pick, the school's Most Valuable Gymnast in 1996 and '97, and she recorded the first 10.0 in school history with a perfect performance on the floor exercise at the 1997 Big XII Championships. The four-year letterwinner was named ISU's Woman Athlete of the Year in 1997.

In addition to her stellar athletic career, Landrus also excelled in the classroom. She was a four-time Academic All-Conference selection, a two-time GTE/CoSIDA Academic All-American and was in the top two percent of her class when she earned a Bachelor of Science in Finance in 1997. Landrus received the Big XII Postgraduate Scholarship and the NCAA Women's Enhancement Program Postgraduate Scholarship after earning her undergraduate degree.

From 1998-2000, Landrus earned an MBA degree, while serving as a graduate assistant in compliance for the university. She also was the Iowa State gymnastics meet director, and coached at Cardinal Gymnastics Academy in Ames, Iowa. She completed her master's degree in business administration in May 2000.

Landrus and her husband Steve reside in Champaign and have one son, Zachary Steven (four years) and one daughter, Madelyn Ann (newborn).



THE LANDRUS FILE

PERSONAL

Maiden Name: Mazza

Education: Iowa State University
Bachelor of Science in Finance, 1997
Master's in Business Administration, 2000

Family: Husband: Steve, Son: Zachary, Daughter: Madelyn

COACHING EXPERIENCE

- Head Coach, University of Illinois - 2011-present
- Interim Head Coach, University of Illinois - 2010-2011
- Associate Head Coach, University of Illinois - 2006-2010
- Assistant Coach, University of Illinois - 2002-2006
- Assistant Coach, Iowa State University - 2000-2002
- Coach, Cardinal Gymnastics Academy (Ames, Iowa) - 1998-2002

COACHING HONORS, EVENT RECORDS, EVENT CHAMPIONS

- National Assistant Coach of the Year - 2009
- South Central Regional Assistant Coach of the Year - 2005
- Team Score School Record - 196.975 (at State of Illinois Classic, 2011)
- Beam School Record - Team (49.375, at State of Illinois Classic, 2011)
- Beam School Record - Individual (Allison Buckley, 9.95, 2009)
- Big Ten Beam Champion - Individual (Kelsey Joannides, 2012 ; Julie Crall, 2008)
- NCAA Regional Beam Champion - Individual (Alina Weinstein, 2012 ; Allison Buckley, 2009)

ALL-AMERICANS: 6

- All-Around All-American - Melissa Fernandez, 2011 First Team
- Beam All-American - Melissa Fernandez, 2011 First Team
- Vault All-American - Kelsey Joannides, 2011 Second Team
- Floor Exercise All-American - Alina Weinstein, 2011 Second Team
- Beam All-American - Melissa Fernandez, 2009 First Team
- Beam All-American - Allison Buckley, 2008 Second Team

JAY SANTOS

ASSOCIATE HEAD COACH // THIRD SEASON



Jay Santos enters his second season as Associate Head Coach and third year overall at Illinois. Santos, who now owns 12 years experience of coaching and competing at the Division I level, came to Illinois in 2010 following a four-year stint with Iowa State. In the gym, he serves as the head bars coach while assisting and spotting on the other events. He also has an integral role in on- and off-campus recruiting, along with overseeing all equipment-related matters.

In 2011-12, Santos helped mentor junior Alina Weinstein and senior Kelsey Joannides to top-25 national rankings in the all-around. All together, Santos coached five different Illini to uneven bar titles for a total of 10 individual bars titles, which ranked as the second most for an event on the team. The highest bars score of the season by the team came at the Big Ten Championships when the Orange and Blue tallied a 49.100.

In his first season at Illinois, the Illini notched their highest final ranking in school history, as they concluded the season No. 11 in the country following the squad's second-ever appearance at the NCAA Championships. After arriving to Champaign in the midst of preseason training, Santos made an immediate impact on the Orange and Blue. Santos' bar team tallied two of the top-10 scores in school history while two gymnasts placed in the top three on the event at the Big Ten Championships under his guidance. The Illini also broke the school record for team score in his first year on staff.

At Iowa State, Santos served as the recruiting coordinator and bars coach for the Cyclones. He helped guide the Cyclones to four-consecutive NCAA Regional appearances, a co-runner up finish at the 2007 Central Regional and second-place showing at the 2008 Big 12 Championships. Santos tutored two Big 12 bar champions and six top-four conference finishers on the apparatus during his tenure at Iowa State.

Before his arrival in Ames, Santos spent two seasons as an assistant coach at Ohio State. While at OSU, he coached bars and floor and was a major factor in recruiting. He also coached five Buckeyes to All-Big Ten honors.

Prior to Ohio State, Santos spent eight years coaching at Somersault Gymnastics Center in Stoughton, Mass., serving as the women's team director and head coach for his last four years. At Somersault Gymnastics, he was responsible for all facets of the women's program and produced several Junior Olympic national and regional qualifiers, and many state champions. Santos served as a nationally rated men's gymnastics judge from 1997-2001, working numerous college dual meets as well as Junior Olympic state and regional championships.

Santos graduated from the University of Massachusetts at Amherst in 1995, earning a business degree in operations management. He competed for the men's gymnastics team for four seasons and during his stay at UMass the Minutemen won the Eastern Collegiate Athletic Conference (ECAC) team championship in 1995, and the New England regional championship from 1992-95. Individually, Santos was a three-time co-captain for UMass.



THE SANTOS FILE

PERSONAL

Education: University of Massachusetts
Bachelor of Business Administration in Operations Management, 1995

COACHING EXPERIENCE

- Associate Head Coach, University of Illinois - 2011-present
- Visiting Assistant Coach, University of Illinois - 2010-2011
- Assistant Coach, Iowa State University - 2006-2010
- Assistant Coach, Ohio State University - 2004-2006
- Women's Team Director and Head Coach, Somersault Gymnastics Center - 2001-2004
- Women's and Men's Team Assistant Coach, Somersault Gymnastics Center - 1996-2001

RODNEY GUST

ASSISTANT COACH // SECOND SEASON



Rodney Gust, who owns 17 years of coaching experience, came to Illinois in 2011, following a two-year stint as an assistant coach at Yale University. In the gym, he serves as the vault and floor coach for the Illini.

In the 2011-12 season, Gust mentored sophomore Amber See to a No. 22 national ranking on floor with a RQS of 9.885, including six individual crowns in the event. In addition, See achieved the second highest vault score in Illini history

when she posted a 9.925. As a team, Illinois finished ranked No. 20 in floor and No. 28 in vault with a combined 17 individual titles in those events.

At Yale, Gust coached the 2010 ECAC Gymnast of the Year along with the vault school-record holder during his tenure. Gust also spent 14 years coaching at the club level in Missouri, spending the majority of the time at Great American Gymnastics Express followed by one year at Flipz USA. Many gymnasts, under his direction, went on to compete successfully at Division I level collegiate programs throughout the country.

Gust's efforts as an elite level coach have helped produce two Silver Medalists at the 2004 Olympic Games in Athens, Greece. He has also coached a member of the 2007 World Championship Gold Medal Team. In addition, his mentoring and coaching skills have helped produce Regional, State and National champions.

THE GUST FILE

PERSONAL

Education: University of Missouri
Bachelor of General Studies, 2009

COACHING EXPERIENCE

- Assistant Coach, University of Illinois - 2011-present
- Assistant Coach, Yale University - 2009-2011
- Assistant Coach, Flipz USA - 2008-2009
- Assistant Coach, Great American Gymnastics Express - 1995-2008



JESS SANTOS

VOLUNTEER ASSISTANT COACH // SECOND SEASON



Former Pittsburgh and Iowa State assistant coach Jess Santos is now in her second year as a volunteer assistant coach at Illinois. Her duties with the Illini include coordinating floor music and choreography along with assisting on vault and floor in the gym.

In her first year at Iowa State Santos' beam squad was ranked as high as No. 8 nationally and Ashley Kent was the ninth-ranked beam worker in the country for a period of time. Kent

went on to place sixth and seventh at the Big 12 Championship and NCAA West Regional, respectively. Santos' first season also saw the Cyclones earn their highest team score (196.225) and team national ranking (No. 13) since 2007.

Santos joined Iowa State after a three-year (2006-09) stint at Pittsburgh where she was named the 2007 NCAA Northeast Regional Co-Assistant Coach of the Year. She focused on vault and floor at Pitt and oversaw Dani Bryan, who won the league vault crown in 2007. Santos had four other gymnasts earn all-league recognition on vault during her tenure at Pittsburgh. Santos was additionally the co-recruiting coordinator for the Panthers.

Before joining the Pittsburgh staff, Santos was a volunteer assistant at her alma mater, West Virginia (2005-06). In one season coaching for the Mountaineers, she saw WVU take third in the East Atlantic Gymnastics League (EAGL) and place fifth at the NCAA Southeast Regional competition.

While competing at West Virginia, Santos put together the third-highest all-around score (39.625) in program history. Additionally, she was a first-team All-EAGL honoree in the all-around and on bars in 2005. In 2004, she tied for the league vault crown and was a second-team all-league recipient in the all-around and vault. Santos is the last Mountaineer to score a 10.0, a feat she accomplished on vault in 2004.





THE 2013 FIGHTING ILLINI:

*(L-R) Front Row: Kelsi Eberly, Gabriella Nguyen, Alina Weinstein, Sarah Fiedler, Sunny Kato, Tori Fujinami, Giana O'Connor
Back Row: Macy Hyatt, Heather Foley, Jordan Naleway, Amber See, Elizabeth McNabb, Jaclyn Kantecki, Nikki McGarel, Elise Gill*

2013 ILLINOIS WOMEN'S GYMNASTICS ROSTER

NAME	YR.	HT.	EVENT(S)	HOMETOWN/HIGH SCHOOL	CLUB TEAM
Kelsi Eberly	So.	5-2	AA	Landisville, Pa./Hempfield	Prestige Gymnastics
Sarah Fiedler	Jr.	5-0	AA	Lake Zurich, Ill./Lake Zurich	Libertyville Gymnastics Academy
Heather Foley	Fr.	5-5	AA	Pewaukee, Wis./Waukesha	Salto/M&M Gymnastics
Tori Fujinami	Fr.	5-1	AA	San Jose, Calif./Los Gatos	Pacific West Gymnastics
Elise Gill	Sr.	5-7	AA	Afton, Minn./Concordia Academy Roseville	Perpetual Motion
Macy Hyatt	Sr.	5-7	UB, BB	Atlanta, Ga./Kennesaw Mountain	Gymnastics Academy of Atlanta
Jaclyn Kantecki	Sr.	5-5	AA	Bridgeview, Ill./Queen of Peace	Naperville Gymnastics
Sunny Kato	So.	5-1	UB, BB	Chino Hills, Calif./Newport Harbor	Team OC Gymnastics
Nikki McGarel	So.	5-6	AA	Naperville, Ill./Naperville Central	Phenom Gymnastics
Elizabeth McNabb	Jr.	5-2	AA	Fortville, Ind./Cathedral	DeVeau's School of Gymnastics
Jordan Naleway	So.	5-6	AA	Vernon Hills, Ill./Vernon Hills	Aerial Gymnastics
Gabriella Nguyen	So.	5-1	AA	Goshen, Ind./Lincoln Park	Legacy Elite
Giana O'Connor	Fr.	5-2	AA	Streamwood, Ill./Streamwood	Gymkhana/Gymnasti
Amber See	Jr.	5-2	AA	Minnetonka, Minn./Hopkins	TAGS South
Alina Weinstein	Sr.	5-2	AA	Plainsboro, N.J./W. Windsor Plainsboro South	Arena Gymnastics

Head Coach: Kim Landrus (2nd season, 11th overall)
Associate Head Coach: Jay Santos (3rd season)
Assistant Coach: Rodney Gust (2nd season)
Volunteer Assistant Coach: Jess Santos (2nd season)

PRONUNCIATION GUIDE

Kelsi Eberly	EB-er-lee	Sunny Kato	KATE-oh
Sarah Fiedler	FEED-ler	Gabriella Nguyen	WIN
Tori Fujinami	FOO-gee-nam-EE	Alina Weinstein	uh-LEE-nuh wine-STEEN

SENIORS

Jaclyn Kantecki, Alina Weinstein, Macy Hyatt, Elise Gill



JUNIORS

Sarah Fiedler, Elizabeth McNabb, Amber See



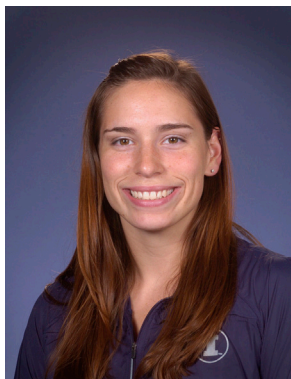
SOPHOMORES

Sunny Kato, Nikki McGarel, Jordan Naleway, Gabriella Nguyen, Kelsi Eberly



FRESHMEN

Giana O'Connor, Tori Fujinami, Heather Foley



ELISE GILL

5-7 // SENIOR // AFTON, MINN. // CONCORDIA ACADEMY ROSEVILLE // CLUB: PERPETUAL MOTION

2012 - JUNIOR: Competed on vault and floor at every meet, hitting 24-of-26 routines ... Won her first career event title with a 9.825 on floor vs. Michigan State and had 14 top-five finishes ... Set career highs on vault (9.850) and floor (9.825) ... Academic All-Big Ten... Made the engineering dean's list for the Spring semester.

2011 - SOPHOMORE: Competed on vault in the first four meets and had her score counted three times, including a career-high 9.700 ... Also exhibited on vault six times and on floor nine times ... Was Illinois' Big Ten Sportsmanship honoree ... Academic All-Big Ten and Scholastic All-American selection.

2010 - FRESHMAN: Exhibited on vault 10 times ... Named a Scholastic All-American by the NACGC/W.

HIGH SCHOOL/CLUB: Five-time Regional Qualifier ... Took second place honors on vault at Region IV Championships in 2009 ... Was the Region IV and State of Minnesota vault champion in 2007 and 2008 ... Qualified for the 2009 Minnesota state track meet, placing second in the triple jump and 4x100 ... Club team was Perpetual Motion ... Coached by Stephanie Larsen and Garrett Gibbs.

PERSONAL: Born Aug. 1, 1990 ... Daughter of Charles and Kathryn Gill ... Says she chose Illinois because of "it's wonderful academics and gymnastics program." ... Member of the National Honor Society and finished in the top ten percent of her graduating class ... Majoring in Engineering.

ELISE'S CAREER HIGHS

VAULT: 9.850 (vs. Ohio State, 2/4/12)
FLOOR: 9.825 (6x, last at State of Illinois Classic, 3/17/12)

INDIVIDUAL TITLES

FLOOR: 1
TOTAL: 1

THE GILL FILE

My best memory as an Illini: The snow battle outside of the dorms my sophomore year

What I've learned from Coach Landrus: Every skill has a drill

Being a Fighting Illini means: Being there for your teammates no matter what

Unique/quirky habit of one of your teammates: Alina loves to Meow, but hates cats

Which teammate would you want with you if you were stranded on an island: Jaclyn

Craziest/most outgoing teammate: Sunny

First impression when you met your team, has it changed: What a crazy bunch of girls, now we're just crazy in different ways

Favorite event: Vault

Favorite floor music: Lizzy Lou's

Favorite athlete: Joe Mauer (Minnesota Twins)

Favorite Illini athlete (not on your team): Steph Panozzo (Soccer)

Favorite post-meet meal: Pasta

Favorite activity outside gymnastics: Baking

Favorite thing to do on the quad: Frisbee

Favorite road trip item/activity: Playing MBS with Jay and the girls

Favorite Fierce Five Gymnast: Gabby Douglas

Favorite all-time gymnast: Mary Lou Retton

Favorite sports team: Green Bay Packers

Favorite movie: Little Women with Katharine Hepburn

Favorite TV show: Game of Thrones

Favorite place to travel to for a meet: Georgia

Pre-meet superstitions: Macy has to do my hair

Plans after Illinois: To get a job in a big city

Met anyone famous?: The youngest girl from the Sound of Music

One thing you've dreamt about doing: Traveling Europe by train

If the gymnastics team were to get their own reality show, what would be the name of it: Flip to the Finish

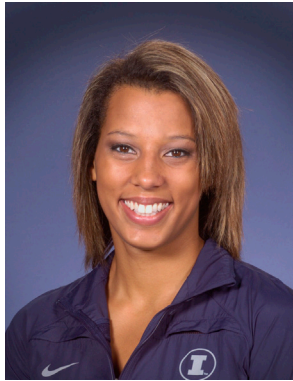
If you could perform one of your routines anywhere on campus, where would you go?: Morrow Plots

What movie role would you like to act in: Keira Knightly in the Pirates of the Caribbean movies

Actress I would want to play me in a movie about my life: Scarlett Johansson

Name something most people don't know about you: I used to live across the lake from Bill Cosby





MACY HYATT

5-7 // SENIOR // ATLANTA, GA. // KENNESAW MOUNTAIN HS // CLUB: GYMNASTICS ACADEMY OF ATLANTA

2012 - JUNIOR: Competed twice in the lineup on bars ... Tied for first on bars at the season-opening meet vs. Minnesota with a 9.775 to earn her first career event title ... Matched season-high 9.775 on bars at the Big Ten Championships ... Academic All-Big Ten selection.

2011 - SOPHOMORE: Competed on bars at seven meets and counted her score each time ... Earned a runner-up finish at Michigan State with a career-high 9.850 on bars ... Posted a 9.800 on bars at the Big Ten Championships,

helping Illinois notch its top event score.

2010 - FRESHMAN: Competed on vault once before suffering a season-ending elbow injury.

HIGH SCHOOL/CLUB: Two-time Junior Olympic National Qualifier ... Five-time Region VIII qualifier ... Was the Georgia state champion on floor in 2008 ... Placed fourth on uneven bars and ninth on vault at the 2007 JO National Championships ... Took first place on vault and uneven bars and third in the all-around at the 2007 Regional Championships ... 2007 Georgia state champion on uneven bars and vault ... Competed for Gymnastics Academy of Atlanta ... Club coaches were Jacobo Giron and Irina Podgornaya.

PERSONAL: Born May 27, 1991 ... Daughter of Greg and Judy Hyatt ... Says she chose Illinois because "it is the perfect home away from home with outstanding academics and a terrific coaching staff." ... Was the Algebra III Student of the Year and won her high school's physics award for the highest grade in all physics classes of the semester ... Majoring in Community Health.

MACY'S CAREER HIGHS

VAULT: 9.600 - (at Nebraska, 1/15/10)
BAR: 9.850 - (at Michigan State, 2/25/11)

INDIVIDUAL TITLES

BAR: 1
TOTAL: 1

THE HYATT FILE

My best memory as an Illini: Making nationals

What I've learned from Coach Landrus: It is all about the process.

Being a Fighting Illini means: Being apart of a program that continuously makes history by dedicating all of my hard work and time, along with my surrounding Fighting Illini, in and out of the gym into bettering ourselves

Unique/quirky habit of one of your teammates: Sarah has to lock her car until it beeps three times.

Which teammate would you want with you if you were stranded on an island: Jaclyn

Craziest/most outgoing teammate: Amber

First impression when you met your team, has it changed: Fun, Caring and Loving, No

Favorite event: Bars

Favorite Illini athlete (not on your team): Austin Tiestma (Football)

Favorite activity outside gymnastics: Homework!

Favorite thing to do on the quad: Watch the squirrels

Favorite road trip item/activity: Playing games with my teammates

Favorite Fierce Five Gymnast: Gabby Douglas

Favorite all-time gymnast: Alicia Sacramone

Favorite sports team: Atlanta Braves

Favorite movie: What to Expect When You're Expecting

Favorite movie quote: "You can't sit with us!" Mean Girls

Favorite TV show: So You Think You Can Dance

Favorite place to travel to for a meet: Down South

Pre-meet superstitions: Must braid Elise's hair

Plans after Illinois: Coach gymnastics and attend PA school

Met anyone famous?: Usher

One thing you've dreamt about doing: Singing

If the gymnastics team were to get their own reality show, what would be the name of it: Real World/ Kenney Gym

If you could perform one of your routines anywhere on campus, where would you go? The quad

What movie role would you like to act in: Burlesque

Actress I would want to play me in a movie about my life: Jessica Alba

One thing I can't go a day without: Coffee

Name something most people don't know about you: I can sing.





JACLYN KANTECKI

5-5 // SENIOR // BRIDGEVIEW, ILL. // QUEEN OF PEACE HS // CLUB: NAPERVILLE GYMNASTICS

2012 - JUNIOR: Competed on vault and bars at every meet and on beam in the final nine ... Ranked fourth on the team with three event titles and had 13 top-five finishes ... Hit 30-of-35 routines and set career highs on bars (9.875) and beam (9.800) ... Academic All-Big Ten selection.

2011 - SOPHOMORE: Competed on vault and bars at all 14 meets and recorded season-bests of 9.800 and 9.825, respectively... Hit 27-of-28 routines.. Won her first career individual title on bars with a season-high 9.825 at the first

meet of the season ... Academic All-Big Ten and Scholastic All-American selection.

2010 - FRESHMAN: Won her first career individual title on vault with a career-high 9.850 against Michigan State ... Counted her score on both vault and uneven bars at nine of 14 meets ... Notched a career-high 9.850 on bars to place third at the State of Illinois Classic ... Tallied a 9.750 or higher on vault at 11 meets ... Hit 25-of-29 routines and recorded seven top-five finishes.

HIGH SCHOOL/CLUB: Three-time Junior Olympic National Qualifier ... Finished fifth in the all-around, tied for third on the vault, seventh on uneven bars and ninth on beam at the 2009 JO National Championships ... Notched three runner-up finishes at the 2009 Region V Championships, placing second on vault, beam and in the all-around ... 2009 Illinois state champion on vault and floor exercise ... Also took third on uneven bars and in the all-around at the 2009 state meet ... Placed eighth in the all-around, tied for ninth on the uneven bars and fifth on floor exercise at the 2008 JO National Championships ... Tied for first on floor exercise at the 2008 state meet ... Club team was Naperville Gymnastics ... Club coach was Jiani Wu.

PERSONAL: Born April 1, 1991 ... Daughter of Ron and Lynne Kantecki ... Says she chose Illinois because "it is highly ranked among the best in the nation and is a place where I knew I could continue to grow as a scholar and an athlete. All of the girls were very welcoming and made me feel like part of their Illini family." ... Member of the A honor roll in high school all four years and graduated with a 4.0 GPA ... Majoring in psychology.

JACLYN'S CAREER HIGHS

VAULT:	9.850 - (vs. Michigan State, 2/14/10)
BARS:	9.875 - (State of Illinois Classic, 3/17/12)
BEAM:	9.800 - (at UIC, 2/25/12)
FLOOR:	9.325 - (at Nebraska, 1/15/10)

INDIVIDUAL TITLES

VAULT:	1
BARS:	4
TOTAL:	5

THE KANTECKI FILE

My best memory as an Illini: The moment we found out we qualified to nationals my sophomore year

What I've learned from Coach Landrus: Sometimes it's best to focus on the process, not the immediate outcome.

Being a Fighting Illini means: I saw a poster in Bielfeldt that said something along the lines of "There's no 'I' in team unless you're sitting in a stadium flooded with orange." The poster then showed people in the football stadium all wearing orange and in the shape of a Block I. To me, this is what it means to be a Fighting Illini. You give everything for your team or teammate and are there to have their backs no matter what.

Unique/quirky habit of one of your teammates: Sarah loves speaking in a British accent.

Which teammate would you want with you if you were stranded on an island: Elise Gill - I think we'd have the most fun climbing trees and building forts and she'd be my best chance at survival.

First impression when you met your team, has it changed: This goes back to my unofficial recruiting trip, but I thought that the Illinois girls were the goofiest bunch of girls out of any others I had met and had so many different personalities. Even though girls have graduated and new freshmen have joined, this hasn't changed a bit.

Favorite event: Floor

Favorite Illini athlete (not on your team): I think all Illini athletes are pretty cool.

Favorite activity outside gymnastics: Anything where I can be outside and in the sunshine

Favorite thing to do on the quad: People watch

Favorite road trip item/activity: I always have to bring the rubber chicken to meets.

Favorite Fierce Five Gymnast: Gabby Douglas

Favorite all-time gymnast: Courtney Kupets

Favorite sports team: Chicago White Sox

Favorite movie: Elf

Favorite TV show: That 70s show

Favorite place to travel to for a meet: Alabama

Pre-meet superstitions: Eating multi-grain cheerios and banana for breakfast

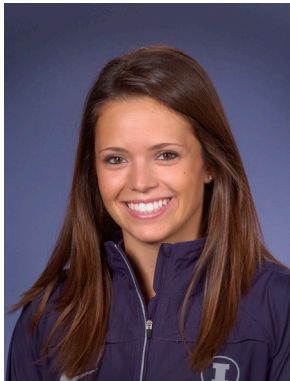
Plans after Illinois: Nursing school

Met anyone famous?: Mickey Mouse

One thing you've dreamt about doing: I want to sleep in an igloo for a night.

If you could perform one of your routines anywhere on campus, where would you go?: Assembly Hall





ALINA WEINSTEIN

5-2 // SENIOR // PLAINSBORO, N.J. // WEST WINDSOR PLAINSBORO SOUTH HS // CLUB: ARENA GYMNASTICS

2012 - JUNIOR: Competed at the NCAA National Championships in the all-around, becoming the 10th individual NCAA qualifier in school history ... Advanced to the national meet by winning the all-around at the NCAA Champaign Regional with a career-high 39.450, making her just the second all-around regional champion in school history ... Also tied for first on beam at the regional with a career-high 9.900, becoming just the second Illini ever to win multiple regional titles, sharing that honor with Nancy Thies, who won a combined seven crowns from 1976-77

... Second-team All-Big Ten selection ... Tallied nine scores over 39 in the all-around, which included two of the top-10 scores in school history with a personal-best 39.450 (No. 5) and a 39.425 (No. 8) ... Was named Big Ten Gymnast of the Week (Jan. 30)... Ranked second on the team with 14 individual titles and 42 top-five finishes ... Hit 48-of-53 routines, including all 13 on vault and beam ... Also set career highs on vault (9.875) and floor (9.900) ... Was named the team's Most Outstanding Gymnast and co-Most Consistent Beam ... Academic All-Big Ten selection.

2011 - SOPHOMORE: Earned second-team All-America honors on floor after tying for eighth at the NCAA Championships ... Competed in the all-around at 13 meets, including at nationals, and tallied a career-best 39.250 at the State of Illinois Classic ... Hit 47-of-52 routines ... Won the first three event titles of her career, with two on bars and one in the all-around ... Posted a career-best 9.800 on vault at nationals and tallied career highs on beam (9.850) and floor (9.875) ... Hit all four routines at the NCAA Tuscaloosa Regional, helping the squad earn its second national bid ... Named the team's Most Improved Gymnast ... Academic All-Big Ten selection.

2010 - FRESHMAN: Competed in the all-around for the first time in her career at the NCAA Central Regional, scoring a 39.050 and placing seventh overall ... Tied for fourth on beam at the NCAA Central Regional by tying her season high with a 9.800 ... Stepped in as a replacement for the injured Melissa Fernandez on balance beam at the Big Ten Championships and set a season-high 9.800 on the event ... Posted a career-best 9.925 on uneven bars at the State of Illinois Classic, which tied the sixth-best mark in school history ... Competed on uneven bars in the final 11 meets of the season, scoring over 9.700 eight times ... Exhibited nine times on beam and eight times on floor exercise.

HIGH SCHOOL/CLUB: Five-time Junior Olympic National Qualifier ... Placed 13th in the all-around and tied for seventh on floor at JO Nationals in 2009 ... Three-time Region VII bar champion and two-time Regional all-around and floor champion, both most recently in 2009 ... 2009 New Jersey State bar and beam champion ... Finished 11th in the all-around at 2008 JO Nationals ... JO National Team member in 2005 ... 2004 Elite National qualifier ... Competed for Arena Gymnastics ... Club coaches were Valdi and Ann Kolasa.

PERSONAL: Born Jan. 9, 1991 ... Daughter of Elena Weinstein ... Says she chose Illinois because "it was the perfect combination of academics and athletics and when I visited it felt like it was home." ... Sister, Lili, was a member of the swim team at Brandeis University ... Majoring in Communications.

ALINA'S CAREER HIGHS

VAULT: 9.875 - (vs. Kentucky, 3/2/12)
BARS: 9.925 - (at State of Illinois Classic, 3/20/10)
BEAM: 9.900 - (NCAA Champaign Regional, 4/7/12)
FLOOR: 9.900 - (at Arizona State, 2/19/12)
ALL-AROUND: 39.450 - (NCAA Champaign Regional, 4/7/12)

INDIVIDUAL TITLES

VAULT: 3
BARS: 5
BEAM: 2
FLOOR: 1
ALL-AROUND: 6
TOTAL: 17

THE WEINSTEIN FILE

My best memory as an Illini: Making it to Nationals with my team my sophomore year

What I've learned from Coach Landrus: "Swagger", "Every skill has a drill" and "Five good lines"

Being a Fighting Illini means: Bleeding orange and blue

Unique/quirky habit of one of your teammates: Jac snorts when she laughs.

Which teammate would you want with you if you were stranded on an island: Elise, I feel like together we would be able to rope turtles and make rafts out of them. We would also be able to survive because we would find outrageous things to cook for food.

Favorite event: Beam

Favorite Illini athlete (not on your team): Nicole Denenberg (Soccer)

Favorite post-meet meal: Steak and mashed potatoes

Favorite activity outside gymnastics: Cooking

Favorite thing to do on the quad: Playing with my dog Lucy

Favorite Fierce Five Gymnast: Aly Raisman

Favorite all-time gymnast: Morgan Dennis

Favorite sports team: Chelsea F.C.

Favorite movie: Anchorman

Favorite place to travel to for a meet: Cancun

Pre-meet superstitions: Eating salmon the night before

Plans after Illinois: Joining Cirque du Soleil and traveling the world

Met anyone famous?: Beyonce and Ryan Sheckler

One thing you've dreamt about doing: Opening a restaurant or a clothing boutique

If the gymnastics team were to get their own reality show, what would be the name of it?: Real World Kenney Gym

If you could perform one of your routines anywhere on campus, where would you go?: The football field in Memorial Stadium

What movie role would you like to act in?: Anything where I play Mark Wahlberg's love interest

Actress I would want to play me in a movie about my life: Mila Kunis

One thing I can't go a day without: Coffee

Name something most people don't know about you: I speak Russian



SARAH FIEDLER

5-0 // JUNIOR // LAKE ZURICH, ILL. // LAKE ZURICH HS // CLUB: LIBERTYVILLE GYMNASTICS ACADEMY



2012 - SOPHOMORE: Competed on bars, beam and floor at every meet ... Hit 35-of-39 routines ... Won her first title on bars in the season opener vs. Minnesota and totaled 10 top-five finishes ... Notched career highs on bars (9.825), beam (9.850) and floor (9.775) ... Academic All-Big Ten selection.

2011 - FRESHMAN: Competed on bars at 13 meets and on beam at 10 meets, hitting 21-of-23 routines ... Counted her bars score at 11 meets, including a career high 9.825

at the State of Illinois Classic and the Big Ten Championships ... Twice posted a season-best beam performance with a 9.725 against Missouri and at the NCAA Tuscaloosa Regional.

HIGH SCHOOL/CLUB: Six-time JO Level 10 National Qualifier ... Two-time Region V All-Star team member ... Took eighth in the all-around at the 2010 JO National Championships ... Was second in the all-around, third on vault and fifth on bars at the 2010 Region V meet ... Finished first in the all-around, bars and beam at the 2010 Illinois state meet ... Placed fourth on beam, fifth on uneven bars and sixth in the all-around at the 2009 JO National Championships ... Took eighth on uneven bars and 10th in the all-around at the 2008 JO National Championships ... Finished third on beam at the 2006 JO National Championships ... Member of the 2000 TOPS National team ... Competed for Libertyville Gymnastics... Club coaches were Dave and Angi Rawles.

PERSONAL: Born Oct. 18, 1991 ... Daughter of George and Ruth Fiedler ... Mother was a gymnast at Indiana ... Says she chose Illinois because of "the great academics, stellar gymnastics, and team unity." ... Was on the high honor roll every semester in high school and is among the top 10 percent of her class ... Majoring in Accounting.

SARAH'S CAREER HIGHS

BARS: 9.825 - (4x, last at Big Ten Championships, 3/24/12)
BEAM: 9.850 - (vs. Michigan State, 2/17/12)
FLOOR: 9.775 - (2x, last at UIC, 2/25/12)

INDIVIDUAL TITLES

BARS: 1
TOTAL: 1

THE FIEDLER FILE

My best memory as an Illini: Making it as a team to nationals my freshman year

What I've learned from Coach Landrus: Every skill has a drill.

Being a Fighting Illini means: To bleed orange and blue!

Unique/quirky habit of one of your teammates: Liz may or may not be narcoleptic...she can fall asleep anywhere.

Which teammate would you want with you if you were stranded on an island: Elise because she could cook some fabulous food!

First impression when you met your team, has it changed: The girls have such great chemistry and there are no cliques between classes. No.

Favorite event: Bars/Beam

Favorite floor music: Salsa/Latina

Favorite Illini athlete (not on your team): Austin Teitsma (Football)

Favorite post-meet meal: Salmon

Favorite activity outside gymnastics: Crafts and Reading

Favorite thing to do on the quad: Playing capture the flag with the girls

Favorite road trip item/activity: Making some beats with the girls in the back of the bus

Favorite Fierce Five Gymnast: Aly Raisman

Favorite all-time gymnast: Shannon Miller

Favorite sports team: St. Louis Cardinals

Favorite TV show: The Bachelorette

Favorite place to travel to for a meet: My favorite place we've traveled since I have been here is Arizona.

Pre-meet superstitions: Eat pasta the night before

Plans after Illinois: Get a job in downtown Chicago

Met anyone famous?: Some famous gymnasts, but no movie stars unfortunately

One thing you've dreamt about doing: Starting my own business

If the gymnastics team were to get their own reality show, what would be the name of it: The Kids of Kenney Gym

If you could perform one of your routines anywhere on campus, where would you go? The quad

What movie role would you like to act in: A romance with Ryan Gosling

Actress I would want to play me in a movie about my life: Reese Witherspoon

Name something most people don't know about you: My singing voice is often confused with Christina Aguilera's voice



ELIZABETH MCNABB

5-2 // JUNIOR // FORTVILLE, IND. // CATHEDRAL HS // CLUB: DEVEAU'S SCHOOL OF GYMNASTICS



2012 - SOPHOMORE: Competed on beam at every meet and won her first title with a career-best 9.850 vs. Ohio State ... Hit 29-of-32 routines and recorded seven top-five finishes ... Tallied career highs on vault (9.600) and bars (9.775) ... Made Illini debut in the lineup in the season opener vs. Minnesota ... Named the team's Most Improved Gymnast.

2011 - FRESHMAN: Exhibited twice on vault, bars and beam.

HIGH SCHOOL/CLUB: Two-time JO Level 10 National Qualifier ... Four-time Regional Qualifier ... Two-time Region V All-Star team member ... Finished fifth on bars at the 2010 Region V meet ... Swept the 2010 Indiana state meet, taking first on every event and in the all-around ... Placed second on the uneven bars and 13th all-around at the 2009 JO National Championships ... Took fourth on vault, third on uneven bars, sixth on beam and in the all-around at the 2005 JO National Championships ... Qualified International Elite in 2005 ... Finished 18th in the all-around at the 2005 U.S. VISA Championships and 14th at U.S. Classics, respectively ... Member of the National Honor Society, High Honor Roll and Math League in high school ... Volunteered over 200 hours during high school ... Club team was Deveau's... Club coaches were Tom Strange, Amy Scales and Don Gibson.

PERSONAL: Born June 13, 1991 ... Daughter of Brad and Julie McNabb ... Says she chose Illinois because of "the strong academics, talented coaching staff, and the enthusiasms of the girls on the team." ... Majoring in Community Health.

ELIZABETH'S CAREER HIGHS

VAULT: 9.600 (at Navy Pier, 2/10/12)
BARS: 9.775 (vs. Michigan State, 2/17/12)
BEAM: 9.850 (vs. Ohio State, 2/4/12)

INDIVIDUAL TITLES

BEAM: 1
TOTAL: 1

THE MCNABB FILE

My best memory as an Illini: Coming back at Regionals in 2011 and qualifying to NCAA as a team!

What I've learned from Coach Landrus: To trust the system even when you are having an off day

Being a Fighting Illini means: STRIVING to be the best you can be

Unique/quirky habit of one of your teammates: Sarah has to lock her car until it beeps 3 times to make sure that it is locked.

Which teammate would you want with you if you were stranded on an island: Sarah

First impression when you met your team, has it changed: Really fun and outgoing and it hasn't changed at all

Favorite event: Beam

Favorite floor music: Hip Hop

Favorite Illini athlete (not on your team): Austin Teitsma (Football)

Favorite post-meet meal: BBQ Chicken

Favorite activity outside gymnastics: Boating

Favorite thing to do on the quad: Playing with our teammate's dog

Favorite road trip item/activity: Movies

Favorite Fierce Five Gymnast: Jordan Wieber

Favorite all-time gymnast: Samantha Peszek

Favorite sports team: Indianapolis Colts

Favorite TV show: Friends

Favorite place to travel to for a meet: West Coast

Pre-meet superstitions: Listen to music while getting ready with my roomies

Plans after Illinois: Nursing school in Chicago

Met anyone famous?: Peyton Manning

One thing you've dreamt about doing: Traveling the world

If the gymnastics team were to get their own reality show, what would be the name of it: Fear Factor: Kenney Gym

If you could perform one of your routines anywhere on campus, where would you go? The quad

What movie role would you like to act in: Rachel McAdams in The Notebook

Actress I would want to play me in a movie about my life: Reese Witherspoon

One thing I can't go a day without: A nap

Name something most people don't know about you: I have naturally curly hair



AMBER SEE

5-2 // JUNIOR // MINNETONKA, MINN. // HOPKINS HS // CLUB: TAGS SOUTH



2012 - SOPHOMORE: Placed fourth on floor and sixth on vault at the NCAA Champaign Regional ... Second-team All-Big Ten selection ... Tied for sixth on vault at the Big Ten Championships ... Won a team-high six floor titles and hit all 13 routines on the event while scoring a 9.850 or better 11 times ... Ranked third on the team with 11 individual titles and had 24 top-five finishes ... Tied the second-best vault score in school history with a personal-best 9.925 at UIC ... Turned in career highs on bars (9.825) and beam (9.850) ... Competed in the all-around five times,

highlighted by a career-best 39.175 ... Earned the team's Scholar-Athlete award ... Scholastic All-American... Academic All-Big Ten selection.

2011 - FRESHMAN: Big Ten vault champion, tying for the top spot with a career-high 9.900 ... Also tied for fourth on floor at the Big Ten Championships with a 9.900 ... Was twice named Big Ten Freshman of the Week (Feb. 21 & March 7) ... Won four event titles on vault and one on floor along with earning four other runner-up finishes ... Competed on vault, beam and floor at the NCAA Championships ... Led the Illini on vault and recorded a career-best 9.850 on beam at the NCAA Tuscaloosa Regional, helping the squad earn its second national bid ... Competed on floor at every meet and tallied a career-high 9.925, which tied the sixth-best mark in school history ... Hit 11-of-11 vaults and 7-of-7 beam routines.

HIGH SCHOOL/CLUB: Was named the 2010 Minnesota JO Senior of the Year ... Six-time JO Level 10 National Qualifier ... Four-time Level 10 Regional champion in the all-around ... Won two individual titles at the 2010 JO National Championships, taking first on vault and floor while also finishing fourth in the all-around ... Finished first on vault, second in the all-around and third on bars at the 2010 Region IV meet ... Won the floor title at the 2010 Minnesota state meet along with tallying runner-up finishes on vault, bars and in the all-around ... Placed second on vault and uneven bars, seventh on floor and ninth in the all-around at the 2009 JO National Championships ... 2009 Minnesota Junior Olympic Athlete of the Year ... Took sixth on beam at the 2005 JO National Championships ... Club team was Tags South... Coached by Bryon Hough and Mindy Kiff.

PERSONAL: Born May 31, 1991 ... Daughter of Gary and Shari See ... Says she chose Illinois because "the university not only provides a great education, but also has a successful gymnastics team." ... Majoring in Broadcast Journalism.

AMBER'S CAREER HIGHS

VAULT: 9.925 - (at UIC, 2/25/12)
BARS: 9.825 (vs. Michigan State, 2/17/12)
BEAM: 9.850 - (at NCAA Tuscaloosa Regional, 4/2/11)
FLOOR: 9.925 - (vs. Western Michigan, 3/6/11)
ALL-AROUND: 39.175 (vs. Ohio State, 2/4/12)

INDIVIDUAL TITLES

VAULT: 6
BEAM: 1
FLOOR: 7
ALL-AROUND: 2
TOTAL: 16

THE SEE FILE

My best memory as an Illini: Qualifying for NCAA Nationals as a team my freshman year

What I've learned from Coach Landrus: Consistency is more valuable than difficulty.

Being a Fighting Illini means: Bleeding orange and blue till the day you die

Unique/quirky habit of one of your teammates: Liz can fall asleep at anytime, anywhere.

Which teammate would you want with you if you were stranded on an island: Elise because she can cook well and is outdoorsy being from Minnesota.

Craziest/most outgoing teammate: Sarah

First impression when you met your team, has it changed: No, they are still super loud and outgoing.

Favorite event: Floor

Favorite Illini athlete (not on your team): Jon Langan (Hockey)

Favorite post-meet meal: Steak and mash potatoes

Favorite thing to do on the quad: Look at the stars

Favorite Fierce Five Gymnast: Makayla Maroney

Favorite all-time gymnast: Shawn Johnson

Favorite sports team: The Minnesota Twins

Favorite movie: Inception

Favorite TV show: Friends

Favorite place to travel to for a meet: University of Alabama

Pre-meet superstitions: I don't believe in superstition

Song you're embarrassed to liking right now: I get embarrassed sometimes to blast Broadway songs in my car.

One thing you've dreamt about doing: Skydiving and bungee jumping

If you could perform one of your routines anywhere on campus, where would you go?: Somewhere no one would see me because tumbling on the grass is not what I am best at.

What movie role would you like to act in: Sandy in Grease!

Actress I would want to play me in a movie about my life: Reese Witherspoon

One thing I can't go a day without: My cell phone

Name something most people don't know about you: I have been to the World Series





KELSI EBERLY

5-2 // SOPHOMORE // LANDISVILLE, PA. // HEMPFIELD HS // CLUB: PRESTIGE GYMNASTICS

2012 - FRESHMAN: Competed on floor at 10 meets, notching a career-high 9.800 at UIC ... Saw action on beam at five meets, including a runner-up finish at UIC with a career-best 9.800 ... Performed three vaults on the year and notched a career-high 9.650 at UIC.

HIGH SCHOOL/CLUB: Three-time JO Level 10 National Qualifier ... Took fourth on vault and seventh in the all-around at the 2009 Region VII Championships ... Posted top-20 national finishes on vault, beam and in the all-

around at the 2008 JO National Championships ... Placed third on vault, fifth on bars, sixth on floor and fifth in the all-around at the 2008 Region VII Championships ... Won a state title on bars, beam and in the all-around in 2008 ... Was on the superior honor roll her first three years of high school ... Competed for Prestige Gymnastics... Club coaches were Tony and Jen Fatta, Kevin Pope and Colleen Mazreku.

PERSONAL: Born Sept. 22, 1992 ... Daughter of Kevin and Karen Eberly ... Has one brother, Kody ... Says she chose Illinois because "the accounting program is one of the best in the nation, and I enjoyed the atmosphere of the gymnastics program including all the gymnasts and coaches." ... Majoring in accounting.

KELSI'S CAREER HIGHS

VAULT: 9.650 (at UIC, 2/25/12)
BEAM: 9.800 (at UIC, 2/25/12)
FLOOR: 9.800 (at UIC, 2/25/12)

THE EBERLY FILE

My best memory as an Illini: Being at home for regionals in Assembly Hall. It was such an exciting feeling to be in that arena at such an important competition.

What I've learned from Coach Landrus: Academically to be one step ahead in school. Athletically to be confident in everything you do.

Being a Fighting Illini means: Pushing through the battles that you face inside and outside of the gym while representing your school as best you can

Unique/quirky habit of one of your teammates: Jordan almost always waking up in a panic.

Which teammate would you want with you if you were stranded on an island: Elise

First impression when you met your team, has it changed: Silly and it hasn't changed at all!

Favorite event: Beam

Favorite floor music: Country

Favorite Illini athlete (not on your team): Michael Hurwitz (Baseball)

Favorite post-meet meal: Fettuccini alfredo

Favorite activity outside gymnastics: Shooting basketball

Favorite thing to do on the quad: Lay out

Favorite road trip item/activity: iPod

Favorite Fierce Five Gymnast: Jordan Wieber

Favorite all-time gymnast: Courtney Kupets

Favorite sports team: Steelers

Favorite movie: A Walk to Remember

Favorite place to travel to for a meet: Anywhere warm

Pre-meet superstitions: Listen to music

Plans after Illinois: Work in Chicago as an Accountant

One thing you've dreamt about doing: Moving to California

If the gymnastics team were to get their own reality show, what would be the name of it: Real World

If you could perform one of your routines anywhere on campus, where would you go?: Assembly Hall

What movie role would you like to act in: Dancer

Actress I would want to play me in a movie about my life: Sandra Bullock

One thing I can't go a day without: Talking to my mom

Name something most people don't know about you: I am extremely competitive



SUNNY KATO

5-1 // SOPHOMORE // CHINO HILLS, CALIF. // NEWPORT HARBOR HS // CLUB: TEAM OC GYMNASTICS



2012 - FRESHMAN: Did not compete ... Was awarded Scholastic All-America.

HIGH SCHOOL/CLUB: Two-time JO Level 10 National Qualifier ... Five-time JO Level 10 Regional Qualifier ... 2010 JO Level 10 State bar champion ... 2007 JO Level 10 National bar champion ... All-Around champion at the 2006 Pre-Elite US Challenge ... Received her high school's Academic Excellence Award for earning a GPA over 4.0 ... Was part of her high school's College Prep and Veterinarian Mentor Program ... Competed for Team OC... Coached by Brent Gohres and Gaby Shirazi.

PERSONAL: Born Dec. 23, 1992 ... Daughter of Sami and Joe Kato ... Has one sister, Milky ... Says she chose Illinois because "The team chemistry is amazing and we aren't just a team, we're a family. On top of that, the campus is beautiful, the education is one of the best, and the gymnastics program just keeps on growing and improving. Illinois has the potential to be in the top 12 spots every year, and the fight and drive to be in the top spots is the reason why I chose Illinois." ... Majoring in Communications.

THE KATO FILE

My best memory as an Illini: It was at Big Ten's, last event and Kelsey was the last person to go up. The energy and vibe was just amazing and she stuck her dismount and it was the greatest moment in my life. I was so ecstatic!

What I've learned from Coach Landrus: Everyone has a place on the team. No matter if you compete every meet or if you don't you still have a tremendous impact on the entire team. Everyone is needed and if one person is missing, it's just not the same.

Being a Fighting Illini means: Being a part of something bigger than just myself. It means always being there for the fourteen other girls on my team. It's safe to say that being a Fighting Illini means everything to me.

Which teammate would you want with you if you were stranded on an island: Sarah

Favorite event: Beam

Favorite floor music: Run the World

Favorite Illini athlete (not on your team): Austin Teitsma (Football)

Favorite post-meet meal: Pineapples and Grapes

Favorite activity outside gymnastics: Shopping

Favorite thing to do on the quad: Sing the Oskee Wow Wow

Favorite road trip item/activity: My pillow pet

Favorite Fierce Five Gymnast: Gabby Douglas

Favorite all-time gymnast: Nastia Liukin

Favorite sports team: Los Angeles Lakers

Favorite movie: The Notebook

Favorite place to travel to for a meet: Travel right across the street to Huff Hall

Pre-meet superstitions: Eat pasta the night before

Plans after Illinois: Find a job that I enjoy doing

Met anyone famous?: Kobe Bryant

One thing you've dreamt about doing: Living in Africa with all the wild animals

If you could perform one of your routines anywhere on campus, where would you go? In front of Foellinger, facing the quad

What movie role would you like to act in: Regina George in Mean Girls

Actress I would want to play me in a movie about my life: Brenda Song

Name something most people don't know about you: I take my penguin pillow pet everywhere



NIKKI MCGAREL

5-6 // SOPHOMORE // NAPERVILLE, ILL. // NAPERVILLE CENTRAL HS // CLUB: PHENOM GYMNASTICS



2012 - FRESHMAN: Did not compete.

HIGH SCHOOL/CLUB: Four-time JO Level 10 National Qualifier ... Placed first on vault, fourth on bars, second on beam and second in the all-around at the 2010 Region V Championships ... Was second on vault and fifth on floor at the 2010 Illinois state championships ... Posted top-20 finishes on vault, bars, floor and in the all-around at the 2009 JO National Championships ... Was a 2009 Region V All-Star team member ... Took third on vault, seventh on

beam and fourth in the all-around at the 2009 Region V Championships ... Club team was Phenom Gymnastics ... Club coaches were Marco Bravo, Jessica Holtz, and Sharon Barbato.

PERSONAL: Born April 21, 1993 ... Daughter of Jack and Denise McGarel ... Has two brothers, Chris and Jordan ... Says she chose Illinois because "of the quality of academics and the overall positive environment. Also, the reputation of the gymnastics program is one of the best in the country. I felt it would be a great opportunity to help me achieve my personal goals as a collegiate gymnast." ... Major is undecided.

THE MCGAREL FILE

My best memory as an Illini: Anything with my teammates

What I've learned from Coach Landrus: It's not about the end result but the process.

Being a Fighting Illini means: That you will work your hardest to represent this university the best you can

Favorite event: Vault

Favorite floor music: Upbeat

Favorite athlete: Bethany Hamilton (Surfing)

Favorite Illini athlete (not on your team): Austin Teitsma (Football)

Favorite post-meet meal: Anything Italian

Favorite activity outside gymnastics: Hanging out with family and friends

Favorite thing to do on the quad: Sing the Oskee Wow Wow

Favorite road trip item/activity: Singing on the bus.

Favorite place to eat on campus: Panera

Favorite tailgating activity: The actual game

Favorite Fierce Five Gymnast: Jordyn Wieber

Favorite all-time gymnast: Nastia Liukin

Favorite sports team: Chicago Blackhawks

Favorite movie: The Last Song

Favorite movie quote: "She doesn't even go here!!" - Mean Girls

Favorite TV show: Friends

Favorite place to travel to for a meet: Anywhere warm

Pre-meet superstitions: whatever my favorite song is at that time I have to listen to it on repeat that morning

Plans after Illinois: I would love to live in Chicago for awhile.

One thing you've dreamt about doing: Traveling the world

If you could perform one of your routines anywhere on campus, where would you go?: In the middle of the quad

What movie role would you like to act in: Miley Cyrus in the Last Song

Actress I would want to play me in a movie about my life: Emma Stone only because I love her acting

One thing I can't go a day without: My iPhone

Name something most people don't know about you: My family raises alpacas



JORDAN NALEWAY

5-6 // SOPHOMORE // VERNON HILLS, ILL. // VERNON HILLS HS // CLUB: AERIAL GYMNASTICS



2012 - FRESHMAN: Competed at four meets on uneven bars and hit all four routines ... Made Illini debut in the lineup vs. Kentucky, recording a career-high 9.775 and placing fourth ... Was in the bar lineup at the NCAA Champaign Regional.

HIGH SCHOOL/CLUB: Four-time JO Level 10 National Qualifier ... Finished fourth on bars and 14th in the all-around at the 2011 JO National Championships ... Improved in the all-around each year from 2008-10 at the

JO National Championships, coming in 37th in 2008, 18th in 2009 and 11th in 2010 ... Finished sixth on bars at the 2010 JO National Championships and eighth in 2009 ... Was the Region V floor champion in 2010 and placed in the top six in the all-around at the past three Region V Championships ... Was the 2009 Illinois state bar champion ... Followed a runner-up finish in the all-around at the 2008 Illinois state meet with back-to-back third-place finishes in 2009 and 2010 ... Member of the honor roll and completed over 100 hours of community service in high school ... Competed for Aerial Gymnastics ... Coached by Don and Patrice McPherson and Jeanne Johnson.

PERSONAL: Born Dec. 10, 1992 ... Daughter of Lynn and Joel Naleway ... Has two brothers, Patrick and Jack ... Says she chose Illinois because "it is the perfect balance of an excellent education and an outstanding gymnastics program. The university is highly ranked, and I immediately felt like I was part of the Illini family with such welcoming girls and talented coaches." ... Majoring in Elementary Education.

JORDAN'S CAREER HIGHS

BAR: 9.775 (vs. Kentucky, 3/2/12)

THE NALEWAY FILE

My best memory as an Illini: Hosting Regionals and competing in Assembly Hall

What I've learned from Coach Landrus: How to push through adversity

Being a Fighting Illini means: Being a part of a great tradition while being surrounded by talented and dedicated people who bleed Blue and Orange

Favorite event: Bars

Favorite floor music: Wolf Jump

Favorite athlete: Ryan Lochte (Swimming)

Favorite Illini athlete (not on your team): Pim Thirati (Women's Golf)

Favorite post-meet meal: Italian

Favorite activity outside gymnastics: Making Pinterest crafts

Favorite thing to do on the quad: Taking pictures

Favorite road trip item/activity: Watching movies on the bus with the girls

Favorite Fierce Five Gymnast: Kyla Ross

Favorite all-time gymnast: Nastia Liukin

Favorite sports team: Chicago Blackhawks

Favorite movie: 16 Candles

Favorite TV show: Modern Family

Favorite place to travel to for a meet: It doesn't get better than Huff Hall!

Pre-meet superstitions: My hair has to be held back super tight

Plans after Illinois: Teach elementary students while getting my masters to be a high school guidance counselor and judge gymnastics

One thing you've dreamt about doing: Meeting Josh Turner

If you could perform one of your routines anywhere on campus, where would you go? The football field

What movie role would you like to act in: Regina George, because she's so mean it's funny

Actress I would want to play me in a movie about my life: Dakota Fanning

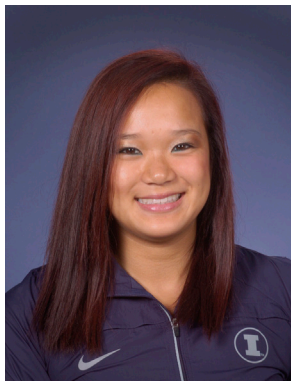
One thing I can't go a day without: Mascara

Name something most people don't know about you: I love inspirational quotes.



GABRIELLA NGUYEN

5-1 // SOPHOMORE // GOSHEN, IND. // LINCOLN PARK HS // CLUB: LEGACY ELITE



2012 - FRESHMAN: Did not compete.

HIGH SCHOOL/CLUB: Placed eighth on bars, 10th on floor and 14th in the all-around at the 2011 JO Level 10 Regional Championships ... Took third in the all-around and on vault, fifth on beam, sixth on bars and eighth on floor at the 2009 Level 9 Eastern National Championships ... Finished sixth in the all-around and on bars and beam at the 2009 Level 9 Regional Championships ... Won the all-around and came in second on beam, fifth on floor and

sixth on vault and bars at the 2009 Level 9 Indiana State Championships ... Was an Illinois State Scholar and Presidential Scholar along with earning academic honors ... Competed for Legacy Elite ... Club coaches were Jiani Wu and Yuejiu Li.

PERSONAL: Born July 12, 1993 ... Daughter of Dzung and Françoise Nguyen ... Has one brother, Michael ... Says she chose Illinois because "of the reputation for academic excellence, the team unity, and the comfort of being close to home." ... Majoring in Kinesiology.

THE NGUYEN FILE

My best memory as an Illini: Big Ten Championships. The excitement, energy, and school spirit was indescribable

What I've learned from Coach Landrus: I've learned that it is about the process, not the goal. We have to focus on the process: the hard work, focus, positive energy, and everything else that leads up to the goal and not completely on the goal itself. Without the process, the goal will never be accomplished.

Being a Fighting Illini means: Always bleeding orange and blue, and being proud to be a part of such an incredible school and family.

Favorite event: Bars

Favorite floor music: Upbeat and dramatic

Favorite athlete: Missy Franklin (Swimming)

Favorite Illini athlete (not on your team): Pimploy Thirati (Women's Golf)

Favorite post-meet meal: Steak or Salmon

Favorite activity outside gymnastics: Spending time with my family and friends

Favorite thing to do on the quad: Take naps or study

Favorite road trip item/activity: Playing games on the bus

Favorite Fierce Five Gymnast: Aly Raisman

Favorite all-time gymnast: Shannon Miller

Favorite sports team: Denver Broncos

Favorite movie: The Proposal or The Greatest Game Ever Played

Favorite movie quote: "The flower that blooms in adversity is the most rare and beautiful of all." - The Emperor (Mulan)

Favorite TV show: Friends or Pretty Little Liars

Favorite place to travel to for a meet: Anywhere with warm weather!

Pre-meet superstitions: I always pray and visualize my routines

Plans after Illinois: PA School

Met anyone famous?: Shannon Miller

One thing you've dreamt about doing: Traveling the world

If you could perform one of your routines anywhere on campus, where would you go? The quad

What movie role would you like to act in: The leading actress in a romantic comedy

Actress I would want to play me in a movie about my life: Brenda Song

One thing I can't go a day without: Talking to my mom

Name something most people don't know about you: I used to play the harp





HEATHER FOLEY

5-5 // FRESHMAN // PEWAUKEE, WIS. // WAUKESHA NORTH HS // CLUB: SALTO GYMNASTICS/M&M GYMNASTICS

HIGH SCHOOL/CLUB: Five-time National qualifier ... Took third on beam in 2012 at Nationals ... Competed at State 2007, 2009, 2010 and 2012 ... Won first on beam and vault and second on bars at State in 2012 ... Took first on vault and second on beam at State in 2010 ... Made high honor roll two times and won student of the month ... Club team was Salto Gymnastics and M&M Gymnastics ... Club coaches were Jim Melcarek and Kristin Kremer.

PERSONAL: Daughter of Dave and Marie Foley ... Father, Dave, played golf at Ole Miss ... Has one brother, Dave, who plays golf at Northern Illinois University ... Majoring in Advertising ... Chose Illinois because, "the campus and the school's traditions as well as the spirit of the students who attend it. I also loved the team and coaches and how they made me feel welcome as soon as I set foot in the gym."

THE FOLEY FILE

Being a Fighting Illini means: Being ready to compete and defeat!

First impression when you met your team, has it changed: My first impression was that everyone was hilarious and very outgoing. No.

Favorite event: Beam

Favorite floor music: A mix of the songs 'hotel room service' 'g6' and 'when I grow up'

Favorite athlete: Aaron Rodgers (NFL)

Favorite post-meet meal: Chicken and frozen yogurt

Favorite activity outside gymnastics: Scrapbooking

Favorite road trip item/activity: iPod

Favorite place to eat on campus: Flattop

Favorite tailgating activity: Bag toss

Favorite Fierce Five Gymnast: Aly Raisman

Favorite all-time gymnast: Morgan Hamm

Favorite sports team: The Packers

Favorite movie: Just Go With It

Favorite movie quote: "The people, they go online to buy the sheep and say, 'oh I want that one that's a stylish one' or they say, 'I want the shy one that doesn't want to bah' or they buy the sassy one that's like, 'oh I see you. Bahh! Bahh!'" (Just Go With It)

Favorite TV show: Bones and Friends

Favorite place to travel to for a meet: California

Pre-meet superstitions: I have to listen to one song over and over again for hours.

Plans after Illinois: To move somewhere warm and become a public relations manager.

Met anyone famous?: I met Brett Favre and Tiger Woods.

A word that describes you that starts with the same letter as your first name: Happy

Song you're embarrassed to like right now: As long as you love me by Justin Bieber

One thing you've dreamt about doing: Skydiving!

What movie role would you like to act in: Sandra Bullock in "The Proposal"

Actress I would want to play me in a movie about my life: Amanda Seyfried

One thing I can't go a day without: My laptop

Name something most people don't know about you: My eyes change from blue to green.





TORI FUJINAMI

5-1 // FRESHMAN // SAN JOSE, CALIF. // LOS GATOS HS // CLUB: PACIFIC WEST GYMNASTICS

HIGH SCHOOL/CLUB: State and Regional qualifier in 2011 ... Recorded a personal best 9.425 on floor at 2011 Regionals ... California Scholarship Federation Member ... Scholar of Distinction ... Principle Scholar ... Awarded Los Gatos High School Science Department Award ... Club team was Pacific West Gymnastics ... Coached by Maria Traggio-Rivera and Leviv Mazilu.

PERSONAL: Daughter of Alan and Marrian Fujinami ... Says she chose Illinois because of the great engineering program and for a chance to extend her gymnastics career.

THE FUJINAMI FILE

First impression when you met your team, has it changed: Crazy, outgoing, enthusiastic, friendly. No.

Favorite event: Floor

Favorite floor music: Le Grand Tango

Favorite athlete: Oscar Pistorius (I think what he did in the 2012 summer Olympics was really inspiring.)

Favorite post-meet meal: Steak and rice

Favorite activity outside gymnastics: Hiking in the summer, skiing in the winter

Favorite thing to do on the quad: Walk through the middle on a sunny day and enjoy the pretty trees against the blue sky.

Favorite Fierce Five Gymnast: Gabby Douglas

Favorite all-time gymnast: Amy Chow

Favorite sports team: I usually don't follow sports teams, professional or otherwise, but a cousin of one of my best friends plays with the Milwaukee Brewers, so I would say them.

Favorite movie: Facing the Giants

Favorite movie quote: "All we have to decide is what to do with the time that is given to us." (Gandalf in Lord of the Rings)

Favorite place to travel to for a meet: Hawaii

Plans after Illinois: Probably grad school

A word that describes you that starts with the same letter as your first name: Thoughtful

Song you're embarrassed to like right now: Gavotte from Claude Bolling's Suite for Violin and Jazz Piano

One thing you've dreamt about doing: Flying (too bad that's not possible), but skydiving sounds fun

If the gymnastics team were to get their own reality show, what would be the name of it: Life of the not so Average College Student

If you could perform one of your routines anywhere on campus, where would you go? The engineering quad

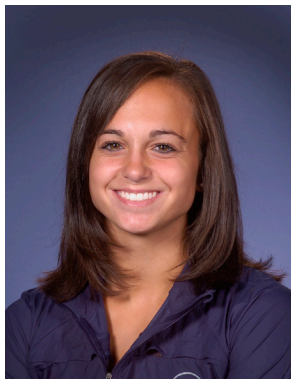
What movie role would you like to act in: Stunt double of some action movie

Actress I would want to play me in a movie about my life: I honestly really would not want my life acted out in a movie, but if I have to choose, I would probably choose Julia Ling

One thing I can't go a day without: Food...A nice juicy watermelon!

Name something most people don't know about you: 1. I am Christian. 2. I generally love the outdoors and would rather spend the day hiking or canoeing over staying inside watching TV or movies.





GIANA O'CONNOR

5-2 // FRESHMAN // STREAMWOOD, ILL. // STREAMWOOD HS // CLUB: GYMKHANA/GYMNASTI

HIGH SCHOOL/CLUB: Won first on bars in 2011 at State ... Won first on floor, second on bars and the all-around and third on beam at State in 2010 ... Three-time National qualifier (2006, 2007, 2010)... Took third on beam in Nationals in 2010 ... Took third on floor in Nationals in 2007... Made A honor roll all four years and graduated in top ten percent of her class ... Was awarded the Gold National Career Readiness Certificate ... Competed or Gymkhana/GymNasti ... Coached by Ron Nasti.

PERSONAL: Daughter of Gina and Mike O'Connor ... has one sister Genna, 17 ... Majoring in Business Finance ... Chose Illinois because, "It has one of the best business schools in the Big Ten, it was close to home and has a great athletic program."

THE O'CONNOR FILE

My best memory as an Illini: My official visit during homecoming weekend!

Being a Fighting Illini means: Being part of a great tradition

First impression when you met your team, has it changed: Very nice, helpful and a lot of fun. No it has not changed.

Favorite event: Floor

Favorite floor music: 300 violin Orchestra

Favorite athlete: Michael Phelps (Swimming)

Favorite activity outside gymnastics: Cheerleading

Favorite road trip item/activity: Watching movies or reading books

Favorite place to eat on campus: Panera

Favorite tailgating activity: Playing bags

Favorite Fierce Five Gymnast: Jordyn Weiber

Favorite all-time gymnast: Shawn Johnson

Favorite sports team: Chicago Bears

Favorite movie: Benchwarmers

Favorite movie quote: "Let's capture the dream." -Blades of Glory

Favorite TV show: CSI: Miami

Favorite place to travel to for a meet: Florida

Pre-meet superstitions: Listen to music

Plans after Illinois: Get a job in business finance

Met anyone famous?: Jonathan Horton

A word that describes you that starts with the same letter as your first name: Giggly

Song you're embarrassed to liking right now: Heisman Part Two

One thing you've dreamt about doing: Owning a speed boat and a lake house

If the gymnastics team were to get their own reality show, what would be the name of it: Chalk Talk

If you could perform one of your routines anywhere on campus, where would you go? Memorial Stadium

What movie role would you like to act in: Dancer

Actress I would want to play me in a movie about my life: Sandra Bullock

One thing I can't go a day without: Gum



ILLINI MEET-BY-MEET CAREER SCORES

KELSI EBERLY // SOPHOMORE

2012	Vault	Bars	Beam	Floor	AA
Minnesota	--	--	9.725	9.600	--
at Iowa	--	--	9.575	9.575	--
at Michigan	--	--	9.050	9.675	--
Ohio State	--	--	9.100	9.625	--
vs Missouri, UCLA, BSU	--	--	--	9.675	--
Michigan State	9.175	--	--	9.700	--
at Arizona State	--	--	--	9.675	--
at UIC	9.650	--	9.800(2)	9.800	--
Kentucky	9.100	--	--	9.675	--
at Western Michigan	--	--	--	9.425	--
Illinois Classic	--	--	--	--	--
at Big Tens	--	--	--	--	--
Regional	--	--	--	--	--
Season Avg.	9.308	--	9.450	9.643	--

SARAH FIEDLER // JUNIOR

2012	Vault	Bars	Beam	Floor	AA
Minnesota	--	9.775(1)	9.725	9.675	--
at Iowa	--	9.800(4)	9.750	9.700	--
at Michigan	--	9.800(5)	9.700	9.700	--
Ohio State	--	9.825(3)	9.700	9.575	--
vs Missouri, UCLA, BSU	--	9.800	9.775	9.750	--
Michigan State	--	8.750	9.850(2)	9.775(3)	--
at Arizona State	--	9.800(4)	9.750	9.750	--
at UIC	--	9.075	9.700	9.775	--
Kentucky	--	9.750	9.350	9.700	--
at Western Michigan	--	9.775(3)	9.725(5)	9.400	--
Illinois Classic	--	9.700	9.750(4)	9.725	--
at Big Tens	--	9.825	9.800	9.625	--
Regional	--	9.525	9.750	9.725	--
Season Avg.	--	9.631	9.717	9.683	--

2011	Vault	Bars	Beam	Floor	AA
at Kentucky	--	8.975	9.500	--	--
at Michigan	--	9.650	9.700	--	--
at Ohio State	--	9.650	9.700	--	--
Iowa	--	9.725	9.050	--	--
Minnesota, CMU	--	9.700	9.675	--	--
at Missouri	--	9.800	9.725	--	--
UIC	--	9.700	9.600	--	--
at Michigan State	--	9.750	--	--	--
at Oklahoma	--	--	--	--	--
Western Michigan	--	9.725	--	--	--
at Illinois Classic	--	9.825	--	--	--
at Big Tens	--	9.825	9.625	--	--
at Regional	--	9.725	9.725	--	--
at NCAAs	--	9.700	9.600	--	--
Season Avg.	--	9.673	9.590	--	--

ELISE GILL // SENIOR

2012	Vault	Bars	Beam	Floor	AA
Minnesota	9.750(4)	--	--	9.825(2)	--
at Iowa	9.725(5)	--	--	9.825(2)	--
at Michigan	9.725	--	--	9.775	--
Ohio State	9.850(2)	--	--	9.800(4)	--
vs Missouri, UCLA, BSU	9.750	--	--	9.150	--
Michigan State	9.700	--	--	9.825(1)	--
at Arizona State	9.750	--	--	9.825	--
at UIC	9.800(5)	--	--	9.825(4)	--
Kentucky	9.825(4)	--	--	8.900	--
at Western Michigan	9.800(4)	--	--	9.800(2)	--
Illinois Classic	9.775(4)	--	--	9.825(5)	--
at Big Tens	9.800	--	--	9.700	--
Regional	9.800	--	--	9.800	--
Season Avg.	9.773	--	--	9.683	--

2011	Vault	Bars	Beam	Floor	AA
at Kentucky	9.675	--	--	--	--
at Michigan	9.675	--	--	--	--
at Ohio State	9.700	--	--	--	--
Iowa	9.650	--	--	--	--
Season Avg.	9.675	--	--	--	--

MACY HYATT // SENIOR

2012	Vault	Bars	Beam	Floor	AA
Minnesota	--	9.775(1)	--	--	--
at Iowa	--	--	--	--	--
at Michigan	--	--	--	--	--
Ohio State	--	--	--	--	--
vs Missouri, UCLA, BSU	--	--	--	--	--
Michigan State	--	--	--	--	--
at Arizona State	--	--	--	--	--
at UIC	--	--	--	--	--
Kentucky	--	--	--	--	--
at Western Michigan	--	--	--	--	--
Illinois Classic	--	--	--	--	--
at Big Tens	--	9.775	--	--	--
Regional	--	--	--	--	--
Season Avg.	--	9.775	--	--	--

2011	Vault	Bars	Beam	Floor	AA
at Missouri	--	9.725	--	--	--
UIC	--	9.725 (3)	--	--	--
at Michigan State	--	9.850 (2)	--	--	--
at Oklahoma	--	9.825	--	--	--
Western Michigan	--	9.750	--	--	--
at Illinois Classic	--	9.825	--	--	--
at Big Tens	--	9.800	--	--	--
Season Avg.	--	9.786	--	--	--

2010	Vault	Bars	Beam	Floor	AA
at Nebraska	9.600	--	--	--	--
Season Avg.	9.600	--	--	--	--

ILLINI MEET-BY-MEET CAREER SCORES

JACLYN KANTECKI // SENIOR

<u>2012</u>	<u>Vault</u>	<u>Bars</u>	<u>Beam</u>	<u>Floor</u>	<u>AA</u>
Minnesota	9.500	9.775(1)	--	--	--
at Iowa	9.550	8.625	--	--	--
at Michigan	9.425	9.800(5)	--	--	--
Ohio State	9.775(5)	9.775(5)	--	--	--
vs Missouri, UCLA, BSU	9.725	9.700	9.725	--	--
Michigan State	9.700	9.850(2)	9.775	--	--
at Arizona State	9.650	9.825(2)	9.175	--	--
at UIC	9.700	9.775(2)	9.800(2)	--	--
Kentucky	9.750	9.800(3)	9.750	--	--
at Western Michigan	9.775(5)	9.825(1)	9.725(5)	--	--
Illinois Classic	9.725	9.875(1)	9.725	--	--
at Big Tens	9.525	9.800	9.175	--	--
Regional	9.700	9.825(8)	9.225	--	--
Season Avg.	9.654	9.712	9.564	--	--

<u>2011</u>	<u>Vault</u>	<u>Bars</u>	<u>Beam</u>	<u>Floor</u>	<u>AA</u>
at Kentucky	9.650	9.825 (1)	--	--	--
at Michigan	9.625	9.725	--	--	--
at Ohio State	9.550	9.600	--	--	--
Iowa	9.750	9.775	--	--	--
Minnesota, CMU	9.675	9.800	--	--	--
at Missouri	9.675	9.725	--	--	--
UIC	9.700	9.750 (2)	--	--	--
at Michigan State	9.700	9.550	--	--	--
at Oklahoma	9.800	9.775	--	--	--
Western Michigan	9.700	9.775	--	--	--
at Illinois Classic	9.725	9.825	--	--	--
at Big Tens	9.750	9.825	--	--	--
at Regional	9.650	9.150	--	--	--
at NCAAs	9.700	9.750	--	--	--
Season Avg.	9.689	9.704	--	--	--

<u>2010</u>	<u>Vault</u>	<u>Bars</u>	<u>Beam</u>	<u>Floor</u>	<u>AA</u>
at Oregon State Quad	9.700	9.675	--	--	--
at Nebraska	9.800	9.650	--	9.325	--
Oklahoma	9.500	9.725	--	--	--
at Iowa	9.750 (3)	9.675	--	--	--
at Penn State	9.750	9.675	--	--	--
at Chicago Style	9.750	9.025	--	--	--
Michigan State	9.850 (1)	9.775 (5)	--	--	--
at Minnesota	9.750 (5)	9.725	--	--	--
Michigan	9.750	9.750	--	--	--
Ohio State	9.775 (3)	9.775	--	--	--
Missouri	9.025	9.825 (4)	--	--	--
at Illinois Classic	9.750	9.850 (3)	--	--	--
at Big Tens	9.775	8.725	--	--	--
at Regional	9.800	9.650	--	--	--
Season Avg.	9.695	9.607	--	9.325	--

ELIZABETH MCNABB // JUNIOR

<u>2012</u>	<u>Vault</u>	<u>Bars</u>	<u>Beam</u>	<u>Floor</u>	<u>AA</u>
Minnesota	9.550	--	9.675	--	--
at Iowa	9.525	9.575	9.775(4)	--	--
at Michigan	9.525	--	8.600	--	--
Ohio State	9.525	--	9.850(1)	--	--
vs Missouri, UCLA, BSU	9.600	9.750	9.750	--	--
Michigan State	--	9.775(5)	9.725	--	--
at Arizona State	9.575	9.750(5)	9.775	--	--
at UIC	9.575	--	9.775	--	--
Kentucky	--	9.725	9.825(3)	--	--
at Western Michigan	9.575	9.750	9.775(4)	--	--
Illinois Classic	9.525	8.550	9.800(3)	--	--
at Big Tens	9.550	--	9.725	--	--
Regional	9.450	9.600	9.750	--	--
Season Avg.	9.543	9.559	9.677	--	--

JORDAN NALEWAY // SOPHOMORE

<u>2012</u>	<u>Vault</u>	<u>Bars</u>	<u>Beam</u>	<u>Floor</u>	<u>AA</u>
Minnesota	--	--	--	--	--
at Iowa	--	--	--	--	--
at Michigan	--	--	--	--	--
Ohio State	--	--	--	--	--
vs Missouri, UCLA, BSU	--	--	--	--	--
Michigan State	--	--	--	--	--
at Arizona State	--	--	--	--	--
at UIC	--	---	--	--	--
Kentucky	--	9.775(4)	--	--	--
at Western Michigan	--	9.675	--	--	--
Illinois Classic	--	9.750	--	--	--
at Big Tens	--	--	--	--	--
Regional	--	9.725	--	--	--
Season Avg.	--	9.731	--	--	--

ILLINI MEET-BY-MEET CAREER SCORES

AMBER SEE // JUNIOR

<u>2012</u>	<u>Vault</u>	<u>Bars</u>	<u>Beam</u>	<u>Floor</u>	<u>AA</u>
Minnesota	9.100	--	9.800(4)	9.850(1)	--
at Iowa	9.675	9.725	9.800(2)	9.900(1)	39.100(2)
at Michigan	9.700	8.900	8.650	9.900(1)	37.150
Ohio State	9.750	9.675	9.850(1)	9.900(1)	39.175(1)
vs Missouri, UCLA, BSU	9.125	--	9.775	9.875(2)	--
Michigan State	9.650	9.825(3)	9.325	9.825(1)	38.625(1)
at Arizona State	9.725	--	9.725	9.875(3)	--
at UIC	9.925(1)	9.050	9.800(2)	9.875(2)	38.650(2)
Kentucky	9.750	--	9.800	9.850(1)	--
at Western Michigan	9.750	--	9.800(3)	9.775(4)	--
Illinois Classic	9.825(1)	--	9.275	9.875(3)	--
at Big Tens	9.900(6)	--	9.275	9.850	--
Regional	9.825(6)	--	9.725	9.875(4)	--
Season Avg.	9.669	9.435	9.619	9.863	38.540

<u>2011</u>	<u>Vault</u>	<u>Bars</u>	<u>Beam</u>	<u>Floor</u>	<u>AA</u>
at Kentucky	--	--	--	9.350	--
at Michigan	--	--	--	9.800	--
at Ohio State	--	--	--	9.850 (2)	--
Iowa	9.675	--	--	9.775	--
Minnesota, CMU	9.825 (1)	--	--	9.825 (2)	--
at Missouri	9.750	--	--	9.775	--
UIC	9.875 (1)	--	--	9.900 (2)	--
at Michigan State	9.825 (2)	--	9.775	9.250	--
at Oklahoma	9.800	--	9.650	9.825 (5)	--
Western Michigan	9.900 (1)	--	9.725	9.925 (1)	--
at Illinois Classic	9.825	--	9.825	9.825 (3)	--
at Big Tens	9.900 (1)	--	9.600	9.900 (4)	--
at Regional	9.850 (4)	--	9.850	9.800	--
at NCAAs	9.825	--	9.725	9.825	--
Season Avg.	9.823	--	9.736	9.759	--

ALINA WEINSTEIN // SENIOR

<u>2012</u>	<u>Vault</u>	<u>Bars</u>	<u>Beam</u>	<u>Floor</u>	<u>AA</u>
Minnesota	9.725	9.675	9.825(2)	9.175	38.400
at Iowa	9.775(4)	9.700	9.775(4)	9.825(2)	39.075(3)
at Michigan	9.825(3)	9.875(1)	9.825(1)	9.875(3)	39.400(1)
Ohio State	9.775(5)	8.650	9.700	9.825(2)	37.950(5)
vs Missouri, UCLA, BSU	9.825	9.825(5)	9.800(3)	9.725	39.175(4)
Michigan State	9.750(4)	9.475	9.775	9.600	38.600(2)
at Arizona State	9.775(3)	9.750(5)	9.800(2)	9.900(1)	39.225(2)
at UIC	--	9.175	--	--	--
Kentucky	9.875(1)	9.850(1)	9.875(2)	9.650	39.250(1)
at Western Michigan	9.850(1)	9.775(3)	9.825(2)	9.800(2)	39.250(1)
Illinois Classic	9.825(1)	9.875(1)	9.850(2)	9.875(3)	39.425(1)
at Big Tens	9.850	9.875(4)	9.750	9.850	39.325(6)
Regional	9.850(3)	9.825(8)	9.900(1)	9.875(4)	39.450(1)
at NCAAs	9.850	9.000	9.850	9.850	38.550
Season Avg.	9.812	9.595	9.812	9.756	39.006

<u>2011</u>	<u>Vault</u>	<u>Bars</u>	<u>Beam</u>	<u>Floor</u>	<u>AA</u>
at Kentucky	9.550	9.600	9.600	9.050	37.800
at Michigan	9.625	9.700	9.600	9.775	38.700
at Ohio State	9.525	9.725	9.225	9.825	38.300
Iowa	--	9.750	9.675	9.800 (2)	--
Minnesota, CMU	9.725	9.675	9.775	9.825 (2)	39.000
at Missouri	9.725	9.750	9.725	9.700	38.900
UIC	9.775	9.800 (1)	9.775 (3)	9.800	39.150 (1)
at Michigan State	9.750	8.350	9.700	9.250	37.050
at Oklahoma	9.775	9.900 (3)	9.675	9.750	39.100 (5)
Western Michigan	9.750	9.800 (3)	9.625	9.875 (3)	39.050
at Illinois Classic	9.650	9.875 (1)	9.850 (3)	9.875 (2)	39.250 (3)
at Big Tens	9.750	9.775	9.650	9.850	39.025
at Regional	9.750	9.800	9.800	9.775	39.125
at NCAAs	9.800	9.725	9.000	9.850 (8)	38.375
Season Avg.	9.704	9.659	9.620	9.714	38.679

<u>2010</u>	<u>Vault</u>	<u>Bars</u>	<u>Beam</u>	<u>Floor</u>	<u>AA</u>
at Oregon State Quad	--	--	9.475	--	--
at Nebraska	--	--	9.125	--	--
Oklahoma	--	--	--	--	--
at Iowa	--	9.675	--	--	--
at Penn State	--	9.700	--	--	--
at Chicago Style	--	9.750	--	--	--
Michigan State	--	9.775 (5)	--	--	--
at Minnesota	--	9.750	--	--	--
Michigan	--	9.775	--	--	--
Ohio State	--	9.850 (3)	--	--	--
Missouri	--	9.250	--	--	--
at Illinois Classic	--	9.925 (2)	--	--	--
at Big Tens	--	9.625	9.800	--	--
at Regional	9.725	9.750	9.800 (4)	9.775	39.050
Season Avg.	9.725	9.711	9.550	9.775	39.050

HUFF HALL

Huff Hall is a versatile, multi-use facility that serves as the home for the Illini men's and women's gymnastics, wrestling and volleyball squads. It has a seating capacity of 3,800 for gymnastics meets. Huff Hall, the longtime home of the Illinois State High School Association state basketball tournament, is known for creating the circus-like atmosphere that fostered the term "March Madness." This historical building on the U of I campus continues to make lasting memories in the hearts of all Fighting Illini fans.

Illinois athletics enjoy a proud tradition in Huff Hall. Huff served as the host venue for the 2009 Big Ten Women's Gymnastics Championships and previously served as host for the 1991, 1995 and 2003 Big Ten Women's Gymnastics Championships. The historic building also hosted the 1992, 1995, 2004 and 2011 Big Ten Men's Gymnastics Championships, and was the site of the 1993 and 1999 NCAA Men's Gymnastics East Regional. It has also been the site of a 1994 NCAA first-round volleyball match, a 1995 NCAA second-round volleyball match, the first and second rounds of the 1997 NCAA Women's Basketball Tournament and the first and second rounds of the 1998, 2001, and 2008-11 NCAA Volleyball Tournaments.

Huff Hall is named for longtime Illinois athletic director and coach George Huff. Huff was Illinois' athletic director from 1901 to 1935, during a time in which Fighting Illini athletic programs enjoyed unparalleled success. Huff was the driving force behind the construction of Memorial Stadium. He also served as football coach from 1895 to 1899, and baseball skipper from 1896 to 1919. Known by many of his close friends and business associates as "G," Huff served as manager of the Boston Red Sox in 1907.

In the past, the University of Illinois honored Huff's hard work and success with the George Huff Award. Every year, this award was given to student-athletes who earn a 3.0 GPA for a full academic year and a varsity letter.

Huff Hall contains two volleyball practice courts and the volleyball game facility, as well as four basketball courts and a main court. In addition, the building contains spacious locker and squad rooms which were completely renovated in 2004.

Huff Hall also houses a weight room, equipment rooms, locker rooms, a training room, a wrestling room and one squash court, as well as many offices and classrooms. In 2004, Huff received several enhancements with the renovation of its training room and weight room. Within the last decade, Illinois has made multiple improvements to Huff Hall with the addition of a new scoreboard, a new sound system, new bleachers and new lighting.



KENNEY GYM

Historic Kenney Gym, one of the university's oldest and most revered buildings, houses a unique training atmosphere and represents nearly a century of exercise tradition at the University of Illinois.

The upper level of Kenney Gym houses the Illinois gymnastics workout facilities. In this extensive facility, both the men's and women's gymnastics teams practice in a harmonious environment.

Kenney Gym accommodates Illinois gymnasts with its large variety of FIG specification equipment. Women's equipment includes four balance beams, two sets of ELITE uneven bars, two vaulting horses, a Palmer spring floor and a 40-foot long Tumble Trak. The historic building also features a weight room, running track, locker facilities and basketball and volleyball courts.

Named after former wrestling coach H.E. Kenney, Kenney Gym has long been a focus of innovative techniques and equipment in gymnastics training. The world's first foam-lined, in-ground "pit," developed for added safety in the instruction of tumbling and vaulting, was built here in 1963. Since then, another pit has been installed for vaulting, tumbling, high bar and beam work. The Kenney Gym pit structure provides dismounting capabilities for most men and women's apparatus events, as well as tumbling and vaulting.



IRWIN ACADEMIC CENTER



PAGE 45 – Top: The Irwin Academic Center is a facility dedicated to the academic endeavors of Illinois' student-athletes. It houses the academic staff, computer labs and study lounges; **Above left:** The lounge in the front room of Irwin; **Above:** Another Irwin study lounge; **Left:** The Irwin presentation room.

PAGE 46 – **Left:** The 2007 Irwin expansion as seen from the outside; **Top Right:** A study area view from above; **Middle Right:** Athletes studying in the renovated computer lab; **Bottom Right:** The main computer lab.

IRWIN ACADEMIC CENTER



KRISTIN KANE

DIRECTOR OF ACADEMIC SERVICES

In 1998, the Irwin Academic Services Center was opened for use to the student-athletes at the University of Illinois. In a very short time, the 8,000 square foot building had reached its capacity for use. What a great problem to have, not having enough room for our student-athletes to work in an environment that is supportive to getting their studies completed. The solution became clear that expanding the Irwin Center was a necessity. The student-athletes have found the

Irwin Center to be a common meeting place on campus. Expanding the building at its current location was very important in order to maintain the centralized feeling that the student-athletes have come to appreciate.

In August of 2007, the Division of Intercollegiate Athletics completed an expansion of the Irwin Academic Services Center. With the great continued support from the Irwin Family Foundation, this project assists student-athletes in many academic areas. The \$4.6 million expansion of the Irwin Center added 11,400 square feet, allowing more opportunities for student-athletes to achieve their academic goals. Student resource areas comprised of a presentation room, a new general study area, individual tutoring and study rooms, and a computer lab allow this all to happen. Student-athletes now have more access to computers, better environments to meet with tutors, and the opportunity to have more space to concentrate on their academic endeavors.

Everyone was excited with the project's completion as it has allowed us to provide resources for our student-athletes to be successful in their careers at the University of Illinois.



THE \$4.6 MILLION EXPANSION OF THE IRWIN CENTER ADDED 11,400 SQUARE FEET, ALLOWING MORE OPPORTUNITIES FOR THE STUDENT-ATHLETES TO ACHIEVE THEIR ACADEMIC GOALS.



SEASON-IN-REVIEW

In her first full season as head coach of the Illini women's gymnastics team, Kim Landrus finished the year ranked No. 18 in the nation after going 12-9-2, finishing in the top-25 for the seventh year in a row. Illinois achieved a fifth place finish at the Big Ten Championships in Iowa City and then finished third in the NCAA Champaign Regional.

For the fifth year in a row, Illinois was represented at the NCAA National Championships, as junior Alina Weinstein competed at nationals to wrap up the year for the Illini. Weinstein was the 10th individual NCAA National qualifier in program history. After scoring a 9.000 on the uneven bars, Weinstein closed out the competition strong with three consecutive 9.850's and finished in the top-14 on vault, beam and floor. Weinstein missed second-team All-America honors on floor by just .025.

Weinstein advanced to the national meet by winning the all-around at the NCAA Champaign Regional with a career-high 39.450, making her just the second all-around regional champion in school history. She also tied for first on beam at the regional, becoming just the second Illini ever to win multiple regional titles, as she shares that honor with Nancy Thies, who won a combined seven crowns from 1976-77. Weinstein hit all four routines on vault (9.850), bars (9.825), beam (9.900) and floor (9.875) to equal the fifth best all-around score in school history.

Illinois, which hosted an NCAA Regional at the Assembly Hall for the first time in school history, secured their fifth straight top-three regional finish. The Illini scored a 195.725 and placed behind No. 2 Oklahoma (197.025) and No. 11 Stanford (196.675), while besting Denver (194.875), No. 24 Kentucky (194.750) and UIC (194.150). Thus, Illinois came up one spot short of advancing to Nationals for the second straight year.

The Illini secured a fifth place finish at the Big Ten Championships and finished second in the afternoon session with their second best score of the season, a 195.850, which was just .025 behind Michigan for the top spot. Individually, senior Kelsey Joannides shined in her final conference meet, winning her second career Big Ten Title by tying for first on beam with a 9.900. Joannides, who won the Big Ten Title on vault as a freshman, earned the 13th individual crown in school history and became the first two-time Big Ten champion at Illinois since the championships were officially recognized by the Big Ten in 1982-83. Furthermore, Joannides shined throughout the entire competition, posting a career high in the all-around with a 39.400 to tie for third overall. For her performance, Joannides was named to the inaugural Big Ten All-Championship Team.

Both Kelsey Joannides and Alina Weinstein finished the season ranked in the top-25 amongst all-arounders in the nation. Joannides finished ranked 20th and recorded 10 scores over 39. Weinstein, who finished ranked 24th, posted two of the top-10 scores in school history. Both girls recorded a team high of five all-around titles on the year.

Amber See, who wrapped up the year tied for 22nd on the floor, won the event crown six times. See did not finish outside the top four during the regular season and notched a score of 9.850 or higher at 11 meets. See also made history on the vault during the 2012 season, when she tied the second best score in school history with a 9.925.

Three Illini earned All-Big Ten honors, as Joannides was named to the first team, and Weinstein and See garnered second-team honors.

In terms of post-season team awards, Joannides also picked up Team MVP honors. Alina Weinstein was named Most Outstanding while Elizabeth McNabb was named Most Improved. Both Joannides and Weinstein split the Most Consistent beam award with Amber See earning the Scholar-Athlete Award.

2012 HONORS, AWARDS AND RECORDS

REGIONAL CHAMPION

Alina Weinstein (All-Around - 39.450)

Alina Weinstein (Beam - 9.900)

BIG TEN CHAMPION

Kelsey Joannides (Balance Beam - 9.900)

ALL-BIG TEN

Kelsey Joannides (First Team)

Alina Weinstein (Second Team)

Amber See (Second Team)

TEAM RECORDS SET

Total Score on Beam: 49.175 (T-4th best)

INDIVIDUAL RECORDS SET

All-Around: Alina Weinstein - 39.450 (T-5th)

All-Around: Alina Weinstein - 39.425 (T-8th)

Vault: Amber See - 9.925 (T-2nd)

Beam: Kelsey Joannides - 9.925 (T-4th)

ACADEMIC ALL-BIG TEN

Sarah Fiedler - Business

Elise Gill - Industrial Engineering

Kelsey Joannides - Business

Jaclyn Kantecki - Psychology

Amber See - News-Editorial Journalism

Alina Weinstein - Communications

Hannah Welker - Broadcast Journalism

TEAM AWARDS

MVP: Kelsey Joannides

Most Outstanding: Alina Weinstein

Most Improved: Elizabeth McNabb

Most Consistent Beam: Kelsey Joannides, Alina Weinstein

Scholar-Athlete Award: Amber See

TEAM (As of end of Regular Season)

EVENT	RQS	NAT'L RK
Vault	48.935	28
Bars	48.955	23
Beam	49.005	13
Floor	49.070	20
Team Total	195.695	22

2012 RESULTS (12-9-2 overall / 3rd at NCAA Regional / 2nd in Session, 5th Overall at Big Tens)

Date	Opponent	Result	Score
Jan. 14	#22 MINNESOTA	W	194.725-192.800
Jan. 21	at Iowa	Tie	195.075-195.075
Jan. 27	at #19 Michigan	L	193.700-194.225
Feb. 4	#11 OHIO STATE	W	195.700-195.575
Feb. 10	vs #18 Missouri, #7 UCLA, #15 Boise State	4th of 4	UCLA 196.850, Boise State 196.025, Missouri 195.525, Illinois 195.100
Feb. 17	Michigan State	Tie	195.175-195.175
Feb. 19	AT #25 ARIZONA STATE	W	195.775-195.525
Feb. 25	at UIC	L	193.975-195.250
March 2	Kentucky	L	195.750-195.950
March 11	AT WESTERN MICHIGAN	W	195.400-194.025
March 17	STATE OF ILLINOIS CLASSIC	1ST OF 4	ILLINOIS 196.150, UIC 194.550, Illinois State 194.350, Northern Illinois 193.050
March 24	at Big Ten Championships <i>Iowa City, Iowa</i>	5th of 8	Nebraska 197.100, Ohio State 196.225, Minnesota 195.950, Michigan 195.875 Illinois 195.850 , Penn State 195.700, Iowa 195.425, Michigan State 194.675
April 7	NCAA Champaign Regional <i>Champaign, Illinois</i>	3rd of 6	Oklahoma 197.025, Stanford 196.675, Illinois 195.725 , Denver 194.875 Kentucky 194.750, UIC 194.150
April 20	at NCAA Championships (Ind.) <i>Duluth, Georgia</i>	20th in AA	Alina Weinstein 38.550 Vault 9.850 (T-14); Bars 9.000 (42); Beam 9.850 (T-12); Floor 9.850 (T-11)

2012 SEASON SCORES

Meet	Team	Vault	Bars	Beam	Floor
#22 Minnesota	194.725	48.300	48.750	48.900	48.775
at Iowa	195.075	48.575	48.675	49.000	48.825
at #19 Michigan	193.700	48.600	48.950	47.050	49.100
#11 Ohio State	195.700	48.925	49.025	48.775	48.975
vs #18 Missouri, #7 UCLA, #15 Boise State	195.100	48.500	48.850	48.875	48.875
Michigan State	195.175	48.575	48.750	48.950	48.900
at #25 Arizona State	195.775	48.750	48.875	48.950	49.200
at UIC	193.975	48.900	46.850	49.050	49.175
Kentucky	195.750	48.975	48.900	49.175	48.700
at Western Michigan	195.400	49.000	48.825	49.000	48.575
State of Illinois Classic	196.150	48.900	49.025	49.025	49.200
at Big Ten Championships	195.850	48.975	49.100	48.900	48.875
NCAA Champaign Regional	195.725	49.000	48.775	48.975	48.975
Season Average	195.238	48.767	48.719	48.817	48.935
Season High Scores	196.150	49.000	49.100	49.175	49.200
Regional Qualifying Score (March 28)	195.695	48.935	48.955	49.005	49.070

2012 TEAM AND INDIVIDUAL BESTS

TEAM SCORE

196.150	at State of Illinois Classic (3/17/12)
195.850	at Big Ten Championships (3/24/12)
195.775	at Arizona State (2/19/12)
195.750	vs. Kentucky (3/2/12)
195.725	at NCAA Champaign Regional (4/7/12)

ALL-AROUND

39.450	Alina Weinstein	at NCAA Regional (4/7/12)
39.425	Alina Weinstein	at State of Illinois Classic (3/17/12)
39.400	Kelsey Joannides	at Big Ten Championships (3/24/12)
	Alina Weinstein	at Michigan (1/27/12)
39.375	Kelsey Joannides	at State of Illinois Classic (3/17/12)
	Kelsey Joannides	at UIC (2/25/12)

VAULT

9.925	Amber See	at UIC (2/25/12)
9.900	Amber See	at Big Ten Championships (3/24/12)
9.875	Kelsey Joannides	at Big Ten Championships (3/24/12)
	Alina Weinstein	vs. Kentucky (3/2/12)

UNEVEN BARS

9.900	Kelsey Joannides	vs. Ohio State (2/4/12)
9.875	Alina Weinstein, 3x	last at Big Ten Championships (3/24/12)
	Jaclyn Kantecki	at State of Illinois Classic (3/17/12)
	Kelsey Joannides	at Iowa (1/21/12)

BALANCE BEAM

9.925	Kelsey Joannides	vs. Kentucky (3/2/12)
9.900	Alina Weinstein	at NCAA Regional (4/7/12)
	Kelsey Joannides, 4x	last at Big Ten Championships (3/24/12)

FLOOR EXERCISE

9.900	Kelsey Joannides, 2x	last at State of Illinois Classic (3/17/12)
	Amber See, 3x	last vs. Ohio State (2/4/12)
	Alina Weinstein	at Arizona State (2/19/12)

ALL-TIME CHAMPIONS

2012	Nebraska	197.100
2011	Michigan	196.600
2010	Michigan	196.900
2009	Michigan	197.075
2008	Michigan	196.750
2007	Michigan	196.575
2006	Minnesota	195.150
2005	Michigan	196.250
2004	Michigan	197.800
2003	Michigan	197.450
2002	Michigan	196.475
2001	Michigan	197.150
2000	Michigan	197.850
1999	Michigan	196.300
1998	Minnesota	195.400
1997	Michigan	197.150
1996	Michigan	194.600
1995	Michigan	196.500
1994	Michigan	194.850
1993	Michigan	192.925
1992	Michigan	191.700
1991	Minnesota	189.000
1990	ILLINOIS	188.750
1989	Minnesota	187.450
1988	Minnesota	186.100
1987	Ohio State	184.350
1986	Ohio State	181.800
1985	Ohio State	180.850
1984	Ohio State	180.900
1983	Ohio State	178.000
1982	Michigan	140.950



CHAMPIONSHIP HISTORY

Team	Titles	Last	Ind.*
Michigan	19	2011	77
Ohio State	5	1987	21
Minnesota	5	2006	31
ILLINOIS	1	1990	13
Nebraska	1	2012	6
Iowa	0	-	12
Michigan State	0	-	9
Penn State	0	-	23
Wisconsin#	0	-	3
Indiana@	0	-	0

* Total Individual Champions
 # Program discontinued in 1991
 @ Program discontinued in 1983

CHAMPIONSHIP RECORDS

<u>Vault</u>		
10.0	Katie Rowland, PSU	2003
	Beth Wymer, Mich.	1995
	Heather Kabnick, Mich	1995
	Beth Wymer, Mich.	1994
<u>Uneven Bars</u>		
10.0	Elise Ray, Mich.	2004
	Nikki Peters, Mich.	1999
	Nikki Peters, Mich.	1998
	Nikki Peters, Mich.	1996
<u>Balance Beam</u>		
10.0	Nikki Smith, PSU	2000
<u>Floor Exercise</u>		
9.975	Sarah Cain, Mich.	2000
	Sarah Cain, Mich.	1999
	Nikki Peters, Mich.	1997
	Heather Kabnick, Mich.	1997
<u>All-Around</u>		
39.800	Elise Ray, Mich.	2004
<u>Team Score</u>		
197.850	Michigan	2000

2012 BIG TEN CHAMPIONSHIPS

MARCH 24, 2012 // CARVER-HAWKEYE ARENA // IOWA CITY, IA

Pl.	Team	Vault	Bars	Beam	Floor	Total
1.	Nebraska	49.475	49.425	48.850	49.350	197.100
2.	Ohio State	49.250	49.100	48.725	49.150	196.225
3.	Minnesota	49.300	48.750	48.750	49.150	195.950
4.	Michigan	49.375	49.025	48.725	48.750	195.875
5.	Illinois	48.975	49.100	48.900	48.875	195.850
6.	Penn State	49.100	48.925	48.850	48.825	195.700
7.	Iowa	49.275	48.825	48.325	49.000	195.425
8.	Michigan State	48.800	48.700	48.375	48.800	194.675

2012 INDIVIDUAL CHAMPIONS

Vault:	Sachi Sugiyama, Michigan	9.950
Bars:	Lora Evenstad, Nebraska	9.925
Beam:	Kelsey Joannides, Illinois	9.900
	Emily Wong, Nebraska	
Floor:	Emily Wong, Nebraska	9.900
	Jessie DeZiel, Nebraska	
	Lora Evenstad, Nebraska	
AA:	Emily Wong, Nebraska	39.600

Gymnast of the Year

Sharaya Musser, Penn State

Freshman of the Year

Jessie DeZiel, Nebraska

Coach of the Year

Dan Kendig, Nebraska

2012 ALL-BIG TEN TEAMS

FIRST TEAM

Kelsey Joannides, Illinois
 Jessie DeZiel, Nebraska
 Lora Evenstad, Nebraska
 Janelle Giblin, Nebraska
 Emily Wong, Nebraska
 Sarah Miller, Ohio State
 Sharaya Musser, Penn State

SECOND TEAM

Amber See, Illinois
Alina Weinstein, Illinois
 Tesla Cox, Iowa
 Katie Zurales, Michigan
 Taira Neal, Michigan State
 Jamie Schleppebach, Nebraska
 Whitney Bencsko, Penn State
 Madison Merriam, Penn State



Kelsey Joannides (right) was named First Team All-Big Ten and was the 2012 Big Ten Beam Champion, while Alina Weinstein (left) was named Second Team All-Big Ten.

2012 NCAA CHAMPAIGN REGIONAL

APRIL 7, 2012 // ASSEMBLY HALL // CHAMPAIGN, IL

TEAM RESULTS

Pl.	Team	Vault	Bars	Beam	Floor	Total
1.	Oklahoma**	49.100	49.150	49.325	49.450	197.025
2.	Stanford**	48.950	49.400	49.250	49.075	196.675
3.	ILLINOIS	49.000	48.775	48.975	48.975	195.725
4.	Denver	48.725	48.625	48.450	49.075	194.875
5.	Kentucky	48.750	48.950	48.550	48.500	194.750
6.	UIC	48.375	48.650	48.500	48.625	194.150

**Advanced to NCAA Championships



Illinois, which hosted an NCAA Regional at the Assembly Hall for the first time in school history, placed third at the meet, marking its fifth straight top-3 regional finish.

EVENT CHAMPIONS

Vault:	Alyssa Brown, Stanford	9.900
Bars:	Nicole Pechanec, Stanford	9.925
Beam:	Alina Weinstein, Illinois	9.900
	Taylor Westrick, SEMO	
	Megan Ferguson, Oklahoma	
	Amanda Spinner, Stanford	
Floor:	Megan Ferguson, Oklahoma	9.925

ALL-AROUND RESULTS

1.	Alina Weinstein, Illinois	39.450
2.	Brie Olson, Oklahoma	39.400
3.	Taylor Spears, Oklahoma	39.225
4.	Moriah Martin, Denver	39.200
5.	Erica Brewer, Oklahoma	39.125
6.	Kelsey Joannides, Illinois	39.100
7.	Melodie Pulgarin Linero, Denver	38.850
8.	Audrey Harrison, Kentucky	38.750
9.	Andrea Skala, UIC	38.725
10.	Rashonda Cannie, Texas Woman's	38.700



Alina Weinstein became the second ever NCAA Regional All-Around Champion and also the second Illini to win multiple regional titles, claiming first on beam as well.

TEAM RECORDS

TOTAL SCORE

1.	196.975	at State of Illinois Classic	3/12/11
2.	196.750	Big Ten Championships	3/21/09
3.	196.700	at NCAA West Regional	4/4/09
	196.700	vs. Ohio State	2/15/09
5.	196.650	at State of Illinois Classic	3/20/10
6.	196.450	at State of Illinois Classic	3/12/09
7.	196.425	vs. Western Michigan	3/6/11
8.	196.325	at Minnesota	2/20/10
9.	196.300	vs. Ohio State	3/6/10
	196.300	State of Illinois Classic	3/13/04

VAULT

1.	49.375	Big Ten Championships	3/21/09
2.	49.225	vs. Ohio State	2/15/09
3.	49.175	at NCAA Championships	4/15/11
	49.175	at Big Ten Championships	3/19/11
	49.175	at State of Illinois Classic	3/12/11
	49.175	at NCAA West Regional	4/4/09
	49.175	at Missouri	2/13/09
8.	49.150	vs. Western Michigan	3/6/11
	49.150	at IGI Chicago Style Invite	2/12/10
	49.150	at Washington	2/21/09
	49.150	at Illinois-Chicago	3/15/08

BARS

1.	49.475	at NCAA Regionals	4/3/04
2.	49.450	at State of Illinois Classic	3/20/10
3.	49.300	at Big Ten Championships	3/31/07
4.	49.250	vs. Ohio State	2/15/09
	49.250	at State of Illinois Classic	3/25/07
6.	49.225	at State of Illinois Classic	3/12/11
	49.225	vs. Ohio State	3/6/10
	49.225	vs. Penn State	1/13/01
9.	49.200	at Big Ten Championships	3/19/11
	49.200	vs. Iowa State and NIU	2/25/07

BEAM

1.	49.375	at State of Illinois Classic	3/12/11
2.	49.325	at Michigan State	2/25/11
3.	49.200	at NCAA West Regional	4/4/09
4.	49.175	vs. Kentucky	3/2/12
	49.175	vs. Ohio State	3/6/10
	49.175	at State of Illinois Classic	3/14/09
	49.175	at Washington	2/21/09
	49.175	at Big Ten Championships	3/20/04
9.	49.150	vs. Michigan	2/27/10
	49.150	at State of Illinois Classic	3/23/03
	49.150	vs. Ohio State	2/3/01

FLOOR

1.	49.500	Big Ten Championships	3/21/09
2.	49.450	at State of Illinois Classic	3/20/10
	49.450	at State of Illinois Classic	3/16/01
4.	49.425	vs. Western Michigan	3/6/11
	49.425	vs. Iowa	3/8/03
6.	49.325	vs. UIC	2/19/11
	49.325	at State of Illinois Classic	3/14/09
8.	49.300	vs. Ohio State	3/6/99
9.	49.275	vs. Ball State	2/21/04
	49.275	vs. Iowa State	2/14/04

INDIVIDUAL RECORDS

ALL-AROUND

1.	39.550	Allison Buckley	at State of Illinois Classic, 2011
2.	39.525	Allison Buckley	at Penn State, 2010
3.	39.475	Allison Buckley	at Michigan State, 2011
		Ashley Williams	vs. Ball State, 2004
5.	39.450	Alina Weinstein	NCAA Champaign Regional, 2012
		Allison Buckley	vs. Western Michigan, 2011
		Allison Buckley	at Illinois-Chicago, 2008
8.	39.425	Alina Weinstein	State of Illinois Classic, 2012
		Sarah Schmidt	vs. Missouri, 2010
		Allison Buckley	at NCAA West Regional, 2009

VAULT

1.	9.950	Marijka Botterman	vs. Ohio State, 2009
2.	9.925	Amber See	at UIC, 2012
		Kelsey Joannides	at State of Illinois Classic, 2011
		Kelsey Joannides	Big Ten Championships, 2009
		Marijka Botterman	Chicago Style, 2009
		Jessica Cole	at State of Illinois Classic, 2003
		Nicole Viernes	vs. Florida & Iowa State, 1996
7.	9.900	Amber See (2x in 2011)	last at Big Ten Championships, 2011
		Allison Buckley (5x in 2010)	last at NCAA Championships, 2010
		Allison Buckley	at NCAA West Regional, 2009
		Nicole Cowart	Big Ten Championships, 2009
		Marijka Botterman	vs. Iowa, 2009
		Allison Buckley (2x in 2008)	last at Illinois-Chicago, 2008
		Marijka Botterman	vs. Auburn, 2007
		Carissa Ericson	vs. Iowa, 2001

BARS

1.	10.0	Cara Pomeroy	at NCAA South Central Regional, 2004
2.	9.975	Sarah Schmidt	at State of Illinois Classic, 2010
3.	9.950	Cara Pomeroy (2x in 2007)	last at Big Ten Championships, 2007
		Cara Pomeroy	at Texas Women's Quad, 2005
6.	9.925	Alina Weinstein	at State of Illinois Classic, 2010
		Melissa Fernandez (2x in 2010)	last vs. Ohio State, 2010
		Sarah Schmidt	at Penn State, 2010
		Cara Pomeroy (2x in 2007)	last vs. Auburn, 2007
		Cara Pomeroy	at State of Illinois Classic, 2005
		Ashley Williams	at NCAA South Central Regional, 2004
		Cara Pomeroy (2x in 2004)	last at State of Illinois Classic, 2004
		Kelli Farrar (2x in 1997)	last at State of Illinois Classic, 1997
		Natalie Forsthoefel	at NIT, 1996

BEAM

1.	9.950	Allison Buckley	at State of Illinois Classic, 2011
		Allison Buckley	at NCAA West Regional, 2009
		Stacy Redmond	vs. SEMO, 1995
4.	9.925	Kelsey Joannides	vs. Kentucky, 2012
		Allison Buckley	at Penn State, 2010
		Melissa Fernandez	at Penn State, 2010
		Allison Buckley (2x in 2009)	last vs. Illinois-Chicago, 2009
		Melissa Fernandez	at Missouri, 2009
		Allison Buckley	at Illinois-Chicago, 2008
		Kara Kapernekas (2x in 2003)	at State of Illinois Classic, 2003
		Jana Gallagher (4x in 2001)	last vs. Illinois State, 2001
		Kim Berres	at Big Ten Championships, 1997

FLOOR

1.	9.950	Sarah Schmidt	vs. Michigan, 2010
		Sarah Schmidt	Big Ten Championships, 2009
		Kara Kapernekas	vs. Ball State, 2004
		Kara Kapernekas	vs. Iowa, 2003
		Amanda Kaufman	vs. Iowa, 2003
		Phaedra Dixon	at State of Illinois Classic, 2000
7.	9.925	Amber See	vs. Western Michigan, 2011
		Allison Buckley (3x in 2011)	last at State of Illinois Classic, 2011
		Sarah Schmidt (5x in 2010)	last at NCAA Central Regional, 2010
		Allison Buckley	at State of Illinois Classic, 2010
		Allison Buckley	Big Ten Championships, 2009
		Sarah Schmidt	at State of Illinois Classic, 2009
		Allison Buckley	vs. Denver, 2008
		Lauren Newcomb	State of Illinois Classic, 2004
		Kara Kapernekas	vs. Iowa State, 2004
		Carissa Ericson	at State of Illinois Classic, 2000
		Carissa Ericson	vs. Penn State, 1999

ALL-TIME RESULTS

*Women's championships were not officially recognized by the Big Ten until 1982-83.
 **Results incomplete for 1974 and 1975 seasons.

1975-76 Head Coach: Allison Milburn
Record: 6-2 *Big Ten Finish: 1st Regional Finish: 7th

12/4	at Big Ten Championships	1st of 8, 102.55
1/17	at Michigan State	L, 98.30-90.65
1/24	Illinois Triangular	1st of 3, 95.55
1/28	Illinois State	W, 89.70-78.75
1/31	Southern Illinois	L, 103.65-94.45
2/14	Illinois Triangular	1st of 3, 94.00
2/21	Southern Illinois	W, 97.02-78.74
2/27	IAIAW	L, 96.80-95.25
3/12	MAIAW	7th of 7, 98.15

1976-77 Head Coach: Allison Milburn
Record: 5-3 *Big Ten Finish: 1st Regional Finish: 5th

11/20	Indiana Triangular	1st of 3, 123.91
12/7	McKinley YMCA	W, 100.51-90.21
1/21	Indiana State	L, 135.1-131.16
2/5	Illinois Triangular	1st of 3, 135.1
2/12	at Big Ten Championships	1st of 8, 138.04
2/19	SIU Triangular	3rd of 3, 109.70
2/25	IAIAW	3rd of 5, 129.325
3/4	AIW	5th of 5, 137.15

1977-78 Head Coach: Bev Mackes
Record: 3-5 *Big Ten Finish: 3rd Regional Finish: 9th

11/19	at Grandview College	2nd of 3, 125.76
12/2	at Indiana State	L, 142.50-138.05
1/20	at Wisconsin	W, 120.30-115.60
1/21	at Minnesota	L, 135.35-133.70
1/22	Southeast Missouri	W, 136.20-121.55
2/10-11	at Big Ten Championships	3rd of 8, 130.08
2/18	at Michigan State	L, 136.10-123.85
2/21	at Southern Illinois	L, 137.45-135.1
2/25	IAIAW	4th of 5, 133.35
3/10-11	MAIAW	9th of 15, 130.15

1978-79 Head Coach: Bev Mackes
Record: 6-5 *Big Ten Finish: 2nd Regional Finish: 8th

12/1	Grandview College	L, 125.40-121.10
12/5	at Southern Illinois	L, 129.00-117.50
12/9	Indiana	W, 119.90-119.65
1/11	at Memphis State	L, 120.50-118.40
1/30	at Indiana State	L, 129.70-125.60
2/2	at Illinois-Chicago	W, 128.40-127.65
2/9-10	at Big Ten Championships	2nd of 8, 131.10
2/17	SW Missouri	L, 135.70-129.00
2/23-24	IAIAW	1st of 6, 130.95
2/25	SE Missouri	W, 129.10
3/3	ISU Quadrangular	1st of 4, 130.95
3/17-19	MAIAW	6th

1979-80 Head Coach: Bev Mackes
Record: 14-4 *Big Ten Finish: 2nd Regional Finish: 4th

12/2	Missouri	W, 130.25-128.00
1/15	Indiana State	W, 133.45-109.50
1/20	Michigan	L, 125.70-125.65
1/26	Windy City Invite	3rd of 11, 130.55
1/27	Wisconsin	W, 137.40-120.45
2/2	Southern Illinois	L, 138.35-134.90
2/8-9	at Big Ten Championships	2nd of 9, 138.25
2/12	Indiana State	W, 127.10-96.90
2/24	Illinois Triangular	1st of 3, 134.10
3/7-8	IAIAW	2nd of 8, 136.10
3/21-22	MAIAW	4th of 11, 137.00

1980-81 Head Coach: Bev Mackes
Record: 7-12 *Big Ten Finish: 4th Regional Finish: 6th

12/5	Illini Quadrangular	1st of 4, 137.40
1/13	Michigan	W, 131.20-130.05
1/30-31	Windy City Invite	6th of 8, 129.25
2/5	at Utah State	L, 137.85-131.20
2/7	Utah Quadrangular	4th of 4, 134.65
2/13	Indiana St. Quadrangular	2nd of 3, 130.05
2/20-21	at Big Ten Championships	4th of 8, 133.90
2/28	at UI-Chicago Circle	L, 137.50-134.65
3/7	Southern Illinois	L, 134.20-132.20
3/13	IAIAW	3rd of 7, 127.50
3/27-28	MAIAW	6th of 10, 137.75

1981-82 Head Coach: Bev Mackes
Record: 8-8 *Big Ten Finish: 6th Regional Finish: 5th

12/6	Missouri Invitational	4th of 5, 128.10
12/11	Illini Quadrangular	1st of 4, 133.20
1/16	at Michigan	L, 137.55-126.80
1/17	at Michigan State	L, 133.00-124.65
1/22	at Indiana State	L, 137.55-135.65
1/24	Iowa	W, 133.25-123.60
2/12-13	at Big Ten Championships	6th of 8, 130.55
2/18	SIU Triangular	3rd of 3, 132.15
2/26	IAIAW	2nd of 5, 137.25
2/28	UI-Chicago Circle	W, 140.20-139.50
3/7	Illini Triangular	1st of 3, 140.20
3/19-20	MAIAW	5th of 7, 135.00

1982-83 Head Coach: Bev Mackes
Record: 8-7 Big Ten Finish: 3rd Regional Finish: 4th

12/4	Missouri	L, 170.35-166.65
12/10	ISU Triangular	1st of 3, 173.00
1/7	at Auburn	W, 168.90-168.05
1/9	at Jacksonville St.	L, 169.70-166.40
1/15	at Indiana St.	L, 168.00-166.90
1/22	Michigan	W, 171.90-168.20
1/28	OSU Triangular	2nd of 3, 169.95
1/30	at Bowling Green	L, 168.15-165.40
2/10	Southern Illinois	L, 171.60-170.85
2/17	at UI-Chicago	W, 173.25-171.15
2/20	Michigan State	L, 174.20-172.85
3/6	Indiana State	W, 177.40-170.75
3/11-12	at Big Ten Championships	3rd of 8, 174.05
3/20	UI-Chicago	W, 179.10-165.60
3/26	at NCAA Central Regional	4th of 7, 171.75

1983-84 Head Coach: Bev Mackes
Record: 12-11 Big Ten Finish: T-4th Regional Finish: 4th

12/4	Missouri Triangular	3rd of 3, 165.85
12/10	Illini Quadrangular	3rd of 4, 170.70
1/13	at Michigan State	L, 176.75-162.70
1/14	at Michigan	L, 169.10-161.65
1/21	Illini Quadrangular	2nd of 4, 172.75
1/28	Ohio State	L, 176.00-173.95
2/1	Centenary Triangular	2nd of 3, 171.50
2/9	at Iowa	L, 169.25-167.30
2/17	UI-Chicago	W, 177.75-175.40
2/19	Ill. College Classic	2nd of 4, 178.70
3/3	Southern Illinois	W, 178.75-178.15
3/9-10	at Big Ten Championships	T-4th of 8, 169.60
3/16	Chicagoland Classic	1st of 5, 175.75
3/24	at NCAA Central Regional	4th of 6, 173.00

1984-85 Head Coach: Bev Mackes
Record: 7-8 Big Ten Finish: 5th Regional Finish: 4th

12/7	Missouri	L, 182.35-176.10
1/19	Michigan	L, 175.40-174.35
1/31	ISU Triangular	3rd of 3, 173.80
2/2	Wisconsin	W, 175.30-174.90
2/9	New Mexico	L, 179.45-175.15
2/16	Ill. Intercollegiate	1st of 4, 179.75
3/2	at SE Missouri	W, 183.15-182.30
3/3	at Southern Illinois	L, 179.70-179.35
3/9	Chicagoland Classic	2nd of 4, 177.25
3/15-16	at Big Ten Championships	5th of 8, 172.05
3/23	Illinois State	L, 187.25-186.65
3/30	at NCAA Central Regional	4th of 6, 177.80

1985-86 Head Coach: Bev Mackes
Record: 11-7 Big Ten Finish: 5th Regional Finish: --

1/1	Washington	W, 162.60-111.45
1/17	at Michigan State	L, 179.00-173.35
1/18	at Michigan	L, 174.75-174.30
1/25	at Wisconsin	L, 175.60-173.20
2/1	Illini Triangular	1st of 3, 178.05
2/7	Missouri Triangular	2nd of 3, 176.15
2/15	Illinois Classic	1st of 5, 177.40
2/16	Oklahoma State	L, 178.25-174.50
2/22	New Mexico Triangular	3rd of 3, 175.00
3/1	UI-Chicago	W, 178.40-154.05
3/6	Southern Illinois	W, 176.30-170.90
3/13	SE Missouri	W, 177.60-175.15
3/21	at Big Ten Championships	5th of 7, 174.55

1986-87 Head Coach: Bev Mackes
Record: 11-6 Big Ten Finish: 4th Regional Finish: 4th

12/7	Japan All-Stars	W, 179.45-179.40
1/23	Michigan State	L, 182.85-180.70
1/31	Illini Triangular	1st of 3, 178.95
2/7	Wisconsin Invite	4th of 4, 176.05
2/14	Illinois Classic	2nd of 4, 178.45
2/15	at UI-Chicago	W, 177.45-164.85
2/27	New Mexico	W, 182.10-180.20
2/28	Wisconsin	W, 185.50-182.20
3/5	at Illinois State	L, 182.85-179.50
3/7	at SE Missouri	W, 183.50-183.05
3/20	at Iowa	W, 182.00-176.00
3/27	at Big Ten Championships	4th of 7, 180.20
4/4	Missouri	W, 183.90-179.95
4/11	at NCAA Central Regional	4th of 7, 183.30

1987-88 Head Coach: Bev Mackes
Record: 9-3 Big Ten Finish: 3rd Regional Finish: 7th

1/23	at Michigan	L, 176.60-172.30
1/24	at Michigan State	L, 182.85-179.50
2/5	SE Missouri St.	W, 182.10-171.00
2/13	Illinois Classic	1st of 4, 182.20
2/20	at Wisconsin	L, 180.85-178.60
2/26	Illinois State	W, 182.70-175.25
3/5	at New Mexico	W, 184.55-184.05
3/10	SEMO	W, 185.25-179.55
3/12	Iowa	W, 182.60-175.95
3/24-25	at Big Ten Championships	3rd of 7, 182.75
4/1	at Missouri	W, 184.55-184.45
4/9	at NCAA Central Regional	6th of 6, 181.70

1988-89 Head Coach: Bev Mackes
Record: 9-5 Big Ten Finish: 4th Regional Finish: 5th

1/14	at Iowa	L, 180.65-178.20
1/22	Oklahoma Triangular	2nd of 3, 186.40
1/27	Michigan State	L, 186.00-185.70
2/4	Illinois Triangular	1st of 3, 184.85
2/10	at Illinois State Meet	1st of 4, 183.10
2/16	at SE Missouri State	L, 183.70-181.85
2/18	at Houston Baptist	W, 185.65-183.00
2/25	New Mexico	W, 185.05-180.25
3/4	SE Missouri State	W, 184.00-180.80
3/11	Oklahoma	L, 190.25-186.60
3/19-20	at Big Ten Championships	4th of 6, 183.95
4/1	at NCAA Central Regional	7th of 7, 181.85

1989-90 Head Coach: Bev Mackes
Record: 7-2 Big Ten Finish: 1st Regional Finish: 5th

1/19	Illinois State	W, 182.95-173.50
2/3	Houston Baptist	W, 184.10-181.30
2/10	at Wisconsin	W, 187.00-185.25
2/24	Iowa	W, 187.15-180.25
3/2	at Nebraska	L, 190.50-184.40
3/4	at Northern Illinois	W, 187.15-184.45
3/14	SE Missouri	W, 189.25-184.55
3/18	at New Mexico Triangular	2nd of 3, 185.80
3/23-24	at Big Ten Championships	1st of 7, 188.75
4/7	at NCAA Central Regional	5th of 7, 186.425

1990-91 Head Coach: Bev Mackes
Record: 3-8 Big Ten Finish: T-4th Regional Finish: --

1/19	Nebraska	L, 183.10-181.30
1/25	at Michigan State	L, 182.95-179.40
1/27	at Michigan	L, 185.10-182.80
2/2	Wisconsin	L, 185.50-184.80
2/16	New Mexico	W, 186.40-182.25
2/21	at SE Missouri State	L, 187.15-184.35
2/23	at Houston Baptist	L, 185.70-182.50
3/2	at State of Illinois Classic	2nd of 4, 182.90
3/16	Missouri	L, 187.30-187.20
3/22-23	at Big Ten Championships	T-4th of 7, 187.10

1991-92 Head Coach: Bev Mackes
Record: 2-14 Big Ten Finish: 6th Regional Finish: --

1/19	Shakespeare's Fest	5th of 5, 180.25
1/25	Michigan State	L, 184.85-182.55
2/1	Georgia Triangular	3rd of 3, 183.95
2/8	Michigan	L, 184.95-184.15
2/14	at Illinois State	L, 185.95-185.70
2/22	SE Missouri	L, 183.65-182.55
2/28	at Iowa	L, 187.60-184.30
3/1	at Nebraska	L, 189.05-187.95
3/14	at New Mexico	L, 188.50-185.65
3/20	at State of Illinois Classic	2nd of 4, 187.05
3/27-28	at Big Ten Championships	6th of 7, 185.50

ALL-TIME RESULTS

1992-93		Head Coach: Bev Mackes	
Record: 2-14	Big Ten Finish: 7th	Regional Finish: --	
1/15	at SE Missouri State	L, 187.75-184.90	
1/29	at Michigan State	L, 186.60-182.20	
1/30	at Michigan	L, 191.75-181.15	
2/6	UI-Chicago	W, 184.60-183.90	
2/7	at Northern Illinois	L, 189.75-183.50	
2/13	Iowa	L, 186.35-183.70	
2/20	at UCLA Invite	5th of 5, 183.55	
2/26	Illinois State	W, 186.45-184.75	
3/1	Nebraska Triangular	3rd of 3, 181.55	
3/14	at State of Illinois Classic	4th of 4, 185.55	
3/20	at Big Ten Championships	7th of 7, 184.00	

1993-94		Head Coach: Lynn Brueckman	
Record: 4-14	Big Ten Finish: 7th	Regional Finish: --	
1/15	Nebraska	L, 185.20-181.275	
1/22	Michigan State	W, 180.80-180.00	
2/4	at Illinois State	L, 186.88-182.60	
2/12	SE Missouri State	W, 187.90-183.55	
2/19	UCLA Invite	6th of 6, 181.275	
2/27	at Iowa	L, 188.90-183.475	
3/4	at UI-Chicago	L, 188.70-155.750	
3/7	Northern Illinois	L, 185.15-180.475	
3/11	at California	2nd of 4, 182.475	
3/19	at State of Illinois Classic	4th of 4, 183.175	
3/26	at Big Ten Championships	7th of 7, 185.30	

1994-95		Head Coach: Lynn Brueckman	
Record: 6-12	Big Ten Finish: 5th	Regional Finish: --	
1/14	at Penn State	L, 191.475-187.050	
1/22	Iowa	W, 189.575-185.30	
1/27	at Michigan Invite	3rd of 3, 186.650	
1/29	at Michigan State	L, 187.775-187.600	
2/5	at SE Missouri State	W, 192.550-191.250	
2/10	UI-Chicago	W, 189.35-188.525	
2/16	Seattle-Pacific	W, 187.35-184.275	
2/18	Minnesota Invite	3rd of 3, 190.275	
2/25	Ohio State	W, 191.90-190.625	
3/4	Northern Illinois	L, 193.15-188.775	
3/10	at Stanford Invite	4th of 4, 188.800	
3/19	at State of Illinois Classic	3rd of 4, 192.800	
3/25	at Big Ten Championships	5th of 7, 190.425	

1995-96		Head Coach: Lynn Brueckman	
Record: 13-5	Big Ten Finish: 5th	Regional Finish: --	
1/14	at UI-Chicago	L, 189.600-187.125	
1/19	at Bahamas Invite	1st of 4, 189.925	
1/27	Michigan State	L, 192.250-190.525	
2/3	at Ohio State	2nd of 3, 190.275	
2/8	Northern Illinois	W, 192.700-190.525	
2/17	at Iowa	W, 193.925-193.375	
2/23	Illini Triangular	1st of 3, 192.175	
2/25	at Illinois State	W, 190.900-187.675	
3/2	SE Missouri State	W, 193.625-192.525	
3/8	at Florida	3rd of 3, 189.825	
3/22	at State of Illinois Classic	1st of 4, 192.70	
3/30	at Big Ten Championships	5th of 7, 192.275	
4/21	NIT Tournament	6th of 8, 191.40	

1996-97		Head Coach: Lynn Brueckman	
Record: 8-10	Big Ten Finish: 6th	Regional Finish: --	
1/12	at Northern Illinois	1st of 4, 187.475	
1/25	at Michigan State	L, 194.900-189.075	
2/1	UI-Chicago	W, 191.525-189.475	
2/8	at Captain Crunch Invite	2nd of 5, 191.650	
2/14	at Kentucky	3rd of 3, 190.850	
2/22	Iowa	L, 193.325-193.125	
3/1	at Minnesota	3rd of 3, 188.775	
3/8	Ohio State	L, 195.300-191.900	
3/15	at State of Illinois Classic	3rd of 4, 191.300	
3/22	at Big Ten Championships	6th of 7, 194.075	

1997-98		Head Coach: Lynn Brueckman	
Record: 12-5	Big Ten Finish: 6th	Regional Finish: 6th	
1/11	at Bowling Green	W, 190.350-186.600	
1/17	at Penn State	L, 194.900-191.925	
1/24	Illinois Triangular	1st of 3, 191.800	
1/30	at Illinois State	W, 192.625-190.925	
2/7	at Ohio State	2nd of 3, 193.650	
2/14	SE Missouri State	W, 194.250-191.200	
2/20	at Uno's Invite	4th of 4, 192.825	
2/28	Illinois State	W, 194.300-191.700	
3/6	at Iowa	W, 193.975-193.300	
3/10	at UI-Chicago	W, 193.525-192.400	
3/14	at State of Illinois Classic	1st of 4, 194.100	
3/21	at Big Ten Championships	6th of 7, 192.850	
4/4	at NCAA Central Regional	6th of 7, 191.575	

1998-99		Head Coach: Lynn Brueckman	
Record: 10-7-1	Big Ten Finish: 5th	Regional Finish: 5th	
1/8	at Florida	3rd of 3, 188.750	
1/23	Illinois Dual Meet	2nd of 4, 190.775	
1/31	at Michigan State	W, 193.225-191.375	
2/5	at Illinois State	W, 192.575-186.175	
2/13	Penn State	L, 195.175-193.750	
2/21	at SE Missouri State	1st of 3, 194.300	
2/27	Minnesota	L, 194.900-194.475	
3/6	Ohio State	W, 195.800-195.175	
3/13	at LSU	3rd of 4, 194.350	
3/20	at State of Illinois Classic	T-1st of 4, 194.300	
3/27	at Big Ten Championships	5th of 6, 193.800	
4/10	at NCAA Region 3 Championship	5th of 6, 193.100	

1999-2000		Head Coach: Bob Starkell	
Record: 7-10	Big Ten Finish: 6th	Regional Finish: --	
1/8	at UI-Chicago	W, 190.450-187.850	
1/14	Cardinal Classic	4th of 5, 188.300	
1/22	at Penn State	L, 194.325-190.575	
1/29	Michigan State	W, 193.475-190.775	
2/5	at Ohio State	L, 192.600-191.325	
2/11	at Kentucky	3rd of 4, 194.500	
2/19	at Iowa	W, 194.375-193.575	
2/27	Illinois State	L, 194.225, 193.300	
3/5	at Denver	L, 194.925-194.475	
3/11	at State of Illinois Classic	2nd of 4, 194.125	
3/18	at Big Ten Championships	6th of 7, 193.750	

2000-01		Head Coach: Bob Starkell	
Record: 3-10	Big Ten Finish: 7th	Regional Finish: --	
1/13	Penn State	L, 194.825-194.650	
1/20	at Illinois State	L, 196.000-192.225	
1/27	at Michigan State	L, 194.800-192.900	
2/3	Ohio State	L, 195.850-195.700	
2/10	at Kentucky	L, 195.875-193.525	
2/16	UI-Chicago	L, 194.150-192.775	
2/24	at Pittsburgh	W, 192.975-189.650	
3/3	Iowa	L, 196.675-196.150	
3/10	at Cal State Fullerton	2nd of 3, 193.925	
3/16	at State of Illinois Classic	3rd of 4, 193.475	
3/24	at Big Ten Championships	7th of 7, 193.375	

2001-02		Head Coach: Bob Starkell	
Record: 5-11	Big Ten Finish: 6th	Regional Finish: --	
1/5	at Minnesota	L, 193.750-190.550	
1/12	at Auburn	2nd of 4, 191.575	
1/19	Illinois State	L, 193.650-190.375	
1/26	Michigan State	W, 193.025-192.850	
2/2	at Penn State	L, 195.200, 191.850	
2/8	at Denver	L, 195.200-191.975	
2/10	at UI-Chicago	L, 193.950-193.700	
2/15	at Ohio State	L, 195.850-193.675	
2/23	Pittsburgh	W, 194.000-193.500	
3/2	at Iowa	L, 195.375-193.750	
3/9	SE Missouri State	W, 194.800-191.775	
3/16	at State of Illinois Classic	4th of 4, 193.150	
3/23	at Big Ten Championships	6th of 7, 192.825	

2002-03		Head Coach: Bob Starkell	
Record: 7-12	Big Ten Finish: 6th	Regional Finish: --	
1/10	at Bahama Breeze	4th of 4, 190.125	
1/17	Illini Quadrangular	1st of 4, 194.925	
1/25	at Illinois State	W, 193.675	
2/1	Ohio State	L, 195.175-193.450	
2/8	at SE Missouri State	L, 194.375-192.425	
2/15	Illini Triangular	3rd of 3, 192.525	
2/22	at Michigan State	L, 194.900-193.600	
3/1	at Denver	3rd of 4, 192.700	
3/8	Iowa	L, 196.800-195.750	
3/23	at State of Illinois Classic	2nd of 4, 195.750	
3/28-29	at Big Ten Championships	6th of 7, 193.575	

2003-04		Head Coach: Bob Starkell	
Record: 10-7	Big Ten Finish: 6th	Regional Finish: 5th	
1/11	at Northern Illinois	W, 193.675-193.150	
1/17	at UI-Chicago	W, 193.025-192.750	
1/25	Michigan State	W, 195.700-195.425	
1/31	at Ohio State Triangular	1st of 3, 194.850	
2/6	at Cardinal Classic	3rd of 3, 192.875	
2/14	Iowa State	L, 196.100-194.925	
2/21	Ball State	W, 195.450-192.250	
2/27	Illinois State	W, 194.225-192.925	
2/29	at Master's Classic	4th of 4, 194.025	
3/5	at Auburn	L, 196.250-194.825	
3/13	at State of Illinois Classic	1st of 4, 196.300	
3/20	at Big Ten Championships	6th of 7, 195.400	
4/3	at NCAA South Central Regional	5th of 6, 195.400	

2004-05		Head Coach: Bob Starkell	
Record: 17-5	Big Ten Finish: 5th	Regional Finish: 6th	
1/8	at ISU	1st of 3, 193.825	
1/15	at Penn State	2nd of 3, 193.200	
1/21	at Cardinal Classic	1st of 5, 192.325	
1/29	Denver	L, 195.025-194.150	
2/5	Illini Quad	2nd of 4, 193.475	
2/11	at Missouri	L, 196.225-193.775	
2/19	at Michigan State	W, 194.200-193.275	
2/26	at Texas Quad	1st of 4, 195.750	
3/6	Northern Illinois	W, 193.875-191.525	
3/12	Ohio State	W, 195.425-194.625	
3/19	at State of Illinois Classic	2nd of 4, 194.000	
3/26	at Big Ten Championships	5th of 7, 193.725	
4/9	at NCAA South Central Regional	6th of 6, 193.850	

2005-06		Head Coach: Bob Starkell	
Record: 11-4	Big Ten Finish: 7th	Regional Finish: 4th	
1/6	at Florida	L, 195.900-190.800	
1/13	at Iowa State	L, 194.100-191.650	
1/21	Maryland	W, 195.425-190.400	
1/29	at Northern Illinois	1st of 4, 192.825	
2/4	Illinois State	W, 194.175-187.875	
2/11	Missouri	L, 195.500-195.125	
2/18	at Iowa	W, 193.850-193.025	
2/25	at UI-Chicago	W, 195.300-190.775	
3/5	at Ohio State	L, 193.375-192.875	
3/11	Michigan State	W, 194.275-193.775	
3/18	at State of Illinois Classic	1st of 4, 191.850	
3/25	at Big Ten Championships	7th of 7, 192.500	
4/8	at NCAA South Central Regional	4th of 6, 193.125	

2006-07		Head Coach: Bob Starkell	
Record: 9-8	Big Ten Finish: 3rd	Regional Finish: 4th	
1/12	at Missouri	L, 194.025-191.025	
1/19	at LSU	L, 193.850-193.300	
1/27	Iowa	W, 194.750-193.350	
2/3	Ohio State	W, 194.950-194.000	
2/9	at Michigan	3rd of 3, 192.525	
2/17	at Michigan State	W, 194.700-193.925	
2/25	Illini Triangular	2nd of 3, 195.925,	
3/4	at Illinois State	1st of 3, 194.675	
3/9	at Auburn	W, 195.975-195.775	
3/11	at Denver	L, 194.750-194.525	
3/17	UI-Chicago	W, 195.625-193.975	
3/25	at State of Illinois Classic	3rd of 4, 193.725	
3/31	at Big Ten Championships	3rd of 7, 195.250	
4/14	at NCAA South Central Regional	4th of 6, 194.625	

2007-08		Head Coach: Bob Starkell	
Record: 6-10	Big Ten Finish: 2nd	Regional Finish: 3rd	
1/11	at Alabama	L, 196.300-192.775	
1/19	Ohio State	L, 193.450-193.125	
1/25	at Iowa	W, 193.650-192.975	
2/2	Denver	L, 195.850-194.975	
2/8	at IGI Chicago Style Invite	3rd of 4, 194.775	
2/16	Michigan State	L, 194.750-194.425	
2/24	at Iowa	3rd of 3, 194.150	
2/29	at Auburn	L, 195.825-193.225	
3/8	Missouri	L, 195.400-195.325	
3/15	at UI-Chicago	W, 195.725-193.850	
3/22	at State of Illinois Classic	1st of 4, 194.825	
3/29	at Big Ten Championships	2nd of 7, 195.750	
4/6	at NCAA South Central Regional	3rd of 6, 195.425	

2008-09		Head Coach: Bob Starkell	
Record: 17-7	Big Ten: 2nd	Regional: 2nd	NCAA: 12th
1/9	at Michigan State	2nd of 4, 193.950	
1/17	Penn State	W, 195.500-192.925	
1/24	Iowa	L, 194.950-194.400	
1/31	at Ohio State	2nd of 4, 194.575	
2/6	at IGI Chicago Style Invite	1st of 4, 195.100	
2/13	at Missouri	L, 196.825-195.000	
2/15	Ohio State	W, 196.700-195.675	
2/22	at Washington	2nd of 4, 195.900	
2/27	at Kentucky	3rd of 5, 194.200	
3/7	UI-Chicago	W, 195.925-193.725	
3/14	at State of Illinois Classic	1st of 4, 196.450	
3/21	Big Ten Championships	2nd of 7, 196.750	
4/4	at NCAA West Regional	2nd of 6, 196.700	
4/16	at NCAA Championships	6th of 6, 195.050	

2009-10 Head Coach: Bob Starkell

Record: 12-7 Big Ten Finish: 6th Regional Finish: 3rd

1/8	at Oregon State	2nd of 4, 192.850
1/15	at Nebraska	2nd of 3, 193.375
1/23	Oklahoma	L, 196.650-194.425
1/30	at Iowa	W, 195.225-192.950
2/6	at Penn State	L, 196.425-196.275
2/12	at IGI Chicago Style Invite	3rd of 4, 194.225
2/14	Michigan State	W, 195.600-195.500
2/20	at Minnesota	W, 196.325-195.325
2/27	Michigan	L, 196.775-196.175
3/6	Ohio State	W, 196.300-194.700
3/13	Missouri	W, 196.200-195.500
3/20	at State of Illinois Classic	1st of 4, 196.650
3/27	at Big Ten Championships	6th of 7, 195.025
4/10	at NCAA Central Regional	3rd of 6, 195.425

2010-11 Interim Head Coach: Kim Landrus

Record: 21-7-1 Big Ten: 3rd Regional: 2nd NCAA: 11th

1/8	at Kentucky	2nd of 3, 193.650
1/14	at Michigan	2nd of 3, 194.475
1/22	at Ohio State	Tie, 195.350-195.350
1/29	Iowa	W, 194.775-193.475
2/5	Minnesota	1st of 3, 195.750
2/11	at Missouri	W, 195.400-195.000
2/19	Illinois-Chicago	W, 195.975-192.150
2/25	at Michigan State	W, 195.225-195.000
3/4	at Oklahoma	3rd of 4, 195.400
3/6	Western Michigan	W, 196.425-193.925
3/12	at State of Illinois Classic	1st of 4, 196.975
3/19	at Big Ten Championships	3rd of 7, 196.075
4/2	at NCAA Tuscaloosa Regional	2nd of 6, 195.925
4/15	at NCAA Championships (Session 1)	6th of 6, 195.100

2011-12 Head Coach: Kim Landrus

Record: 12-9-2 Big Ten Finish: 5th Regional Finish: 3rd

1/14	Minnesota	W, 194.725-192.800
1/21	at Iowa	Tie, 195.075-195.075
1/27	at Michigan	L, 193.700-194.225
2/4	Ohio State	W, 195.700-195.575
2/10	at IGI Chicago Style Invite	4th of 4, 195.100
2/17	Michigan State	Tie, 195.175-195.175
2/19	at Arizona State	W, 195.775-195.525
2/25	at UIC	L, 193.975-195.250
3/2	Kentucky	L, 195.750-195.950
3/11	at Western Michigan	W, 195.400-194.025
3/17	State of Illinois Classic	1st of 4, 196.150
3/24	at Big Ten Championships	2nd of 4 in Session 5th of 8 Overall, 195.850
4/7	NCAA Champaign Regional (Session 1)	3rd of 6, 195.725



ALL-TIME TEAM RECORDS

<u>Year</u>	<u>Preseason Rank</u>	<u>Reg. Season</u>	<u>Big Ten (Score)</u>	<u>Regional (Score)</u>	<u>NCAA (Score)</u>	<u>Final Ranking</u>	<u>Head Coach</u>
2012	15th	12-9-2	5th (195.850)	3rd (195.725)	--	18th	Kim Landrus
2011	17th	21-7-1	3rd (196.075)	2nd (195.925)	11th (195.100)	11th	Kim Landrus (interim)
2010	13th	12-7	6th (195.025)	3rd (195.425)	--	16th	Bob Starkell
2009	16th	17-7	2nd (196.750)	2nd (196.700)	12th (195.050)	12th	Bob Starkell
2008	23rd	6-10	2nd (195.750)	3rd (195.425)	--	15th	Bob Starkell
2007	RV	9-8	3rd (195.250)	4th (194.625)	--	20th	Bob Starkell
2006	RV	11-4	7th (192.500)	4th (193.125)	--	25th	Bob Starkell
2005	RV	17-5	5th (193.725)	6th (193.850)	--	27th	Bob Starkell
2004	RV	10-7	6th (195.400)	5th (195.400)	--	22nd	Bob Starkell
2003	--	7-12	6th (193.575)	--	--	47th	Bob Starkell
2002	--	5-11	6th (192.825)	--	--	46th	Bob Starkell
2001	RV	3-10	7th (193.375)	--	--	45th	Bob Starkell
2000	RV	7-10	6th (193.750)	--	--	39th	Bob Starkell
1999	25th	10-7-1	5th (193.800)	5th (193.100)	--	26th	Lynn Brueckman
1998	RV	12-5	6th (192.850)	6th (191.575)	--	23rd	Lynn Brueckman
1997	--	8-10	6th (194.075)	--	--	47th	Lynn Brueckman
1996	--	13-5	5th (192.275)	--	--	25th	Lynn Brueckman
1995	n/a	6-12	5th (190.425)	--	--	n/a	Lynn Brueckman
1994	n/a	4-14	7th (185.30)	--	--	n/a	Lynn Brueckman
1993	n/a	2-14	7th (184.00)	--	--	n/a	Bev Mackes
1992	n/a	2-14	6th (185.50)	--	--	n/a	Bev Mackes
1991	n/a	3-8	T-4th (187.10)	--	--	n/a	Bev Mackes
1990	n/a	7-2	1st (188.75)	7th (186.425)	--	n/a	Bev Mackes
1989	n/a	9-5	4th (183.95)	6th (181.85)	--	n/a	Bev Mackes
1988	n/a	9-3	3rd (182.75)	7th (181.70)	--	n/a	Bev Mackes
1987	n/a	11-6	4th (180.20)	4th (183.30)	--	n/a	Bev Mackes
1986	n/a	11-7	5th (174.55)	--	--	n/a	Bev Mackes
1985	n/a	7-8	5th (172.05)	4th (177.80)	--	n/a	Bev Mackes
1984	n/a	12-11	T-4th (169.60)	4th (173.00)	--	n/a	Bev Mackes
1983	n/a	8-7	3rd (174.05)	4th (171.75)	--	n/a	Bev Mackes
1982	n/a	8-8	6th* (130.55)	5th (135.00)	--	n/a	Bev Mackes
1981	n/a	7-12	4th* (133.90)	6th (137.75)	--	n/a	Bev Mackes
1980	n/a	14-4	2nd* (138.25)	4th (137.00)	--	n/a	Bev Mackes
1979	n/a	6-5	2nd* (131.10)	6th	--	n/a	Bev Mackes
1978	n/a	3-5	3rd* (130.08)	9th (130.15)	--	n/a	Bev Mackes
1977	n/a	5-3	1st* (138.04)	5th (137.15)	--	n/a	Allison Milburn
1976	n/a	6-2	1st* (102.55)	7th (98.15)	--	n/a	Allison Milburn
1975	n/a	n/a	4th*	--	--	n/a	Kim Musgrave
1974	n/a	n/a	n/a*	--	--	n/a	Kim Musgrave

*Women's championships were not officially recognized by the Big Ten until 1982-83

**Troester Preseason and Final Rankings were recorded beginning in 1996

ALL-AMERICA PERFORMERS: 11 TOTAL HONORS



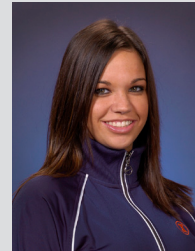
Nancy Thies
Uneven Bars
AIAW
1976



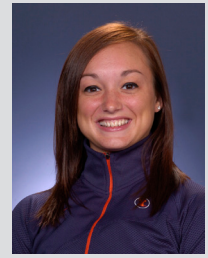
Allison Buckley
Balance Beam
2nd Team
2008



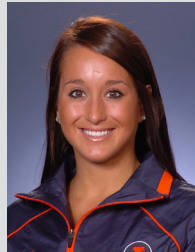
Melissa Fernandez
Balance Beam
1st Team
2009



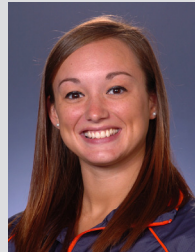
Sarah Schmidt
Floor Exercise
2nd Team
2009



Allison Buckley
Vault
1st Team
2010



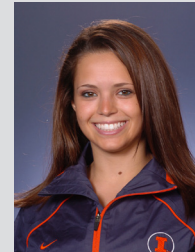
Melissa Fernandez
All-Around - 1st Team
Balance Beam - 1st Team
Floor Exercise - 2nd Team
2011



Allison Buckley
Floor Exercise
2nd Team
2011



Kelsey Joannides
Vault
2nd Team
2011



Alina Weinstein
Floor Exercise
2nd Team
2011

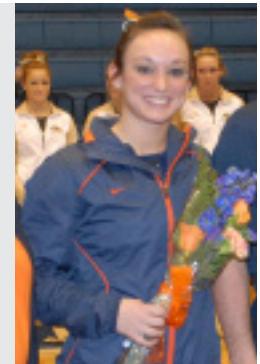
ALLISON BUCKLEY, 2008-11

THREE-TIME ALL-AMERICAN // ILLINOIS CAREER EVENT TITLES RECORD HOLDER

Allison Buckley cemented her name throughout the UI record book in her final season as an Orange and Blue gymnast. The Schaumburg, Ill., native broke the career event titles record with 62 crowns, eclipsed her own record-setting mark in the all-around with a 39.550 and equaled her own score of 9.950 on beam, which is tops in program history. She also earned her third career All-America honor with a second-team accolade on floor, which is the second-most in school history.

Buckley excelled immediately at Illinois, being named the UI Newcomer and Big Ten Freshman of the Year along with garnering the first NCAA All-America accolades by an Illinois gymnast with second-team honors on beam in 2008. She followed that up by winning the regional crown on beam and helping lead the team to its first-ever appearance at the NCAA Championships in 2009. She then nabbed first-team All-America honors and her second regional title in 2010, with both coming on vault.

Buckley ended her career as the only Illinois gymnast to compete at nationals all four years and was a four-time All-Big Ten selection, which included three first-team nods. She also excelled in the classroom as a Kinesiology major, twice being named Academic All-District and picking up three Academic All-Big Ten and Scholastic All-American awards.



Allison Buckley broke the UI record for career event titles on Senior Day at Huff Hall and finished with 62.

MELISSA FERNANDEZ, 2008-11

FOUR-TIME ALL-AMERICAN // DIKE EDDLEMAN WINNER // ACADEMIC ALL-AMERICAN

Melissa Fernandez accomplished several firsts for the Illini in her final competition at the University of Illinois. The Eudora, Kan., native earned three All-America honors to become Illinois' first-ever multiple All-American at the NCAA Championships, placed fifth in the nation in the all-around to become the first Illini to earn an NCAA trophy in the all-around and reached the podium at event finals by tying for fifth on beam to notch the highest individual finish in school history. She became the first Illini to make the podium twice in her career at event finals and now owns the UI program's most career All-America accolades with four. She was named a second-team Academic All-American and was honored as the UI Dike Eddleman Female Athlete of the Year following her stellar senior season in 2011.

Fernandez also owns the honor of becoming Illinois' first-ever first-team All-American, doing so on beam in 2009. She earned back-to-back first-team All-Big Ten accolades in 2010-11 and was voted team MVP and Most Outstanding. As a Kinesiology major, she was a four-time Scholastic All-American and three-time Academic All-Big Ten selection along with twice earning the team's Scholar-Athlete award.

Fernandez, who graduated in May 2011, was accepted into Cirque du Soleil following her illustrious career at Illinois.



Melissa Fernandez became the third Illini gymnast to earn the UI Dike Eddleman Female Athlete of the Year award.

NANCY THIES, '79

OLYMPIAN // NINE-TIME BIG TEN CHAMPION // ALL-AMERICAN

Nancy Thies (Marshall) is without a doubt the most decorated gymnast in Illinois history. Born in Urbana, Thies competed just two seasons for the U of I, winning nine Big Ten titles, seven regional titles and earning All-America status on the uneven bars. She was named Big Ten Gymnast of the Year in 1976 and '77, in addition to being named the U of I Female Athlete of the Year in '77. In 1979, she earned a bachelor's degree from the university in History and Journalism.

Prior to attending Illinois, Thies competed at the 1972 Munich Olympic games and helped the United States to a fourth-place finish, the highest a U.S. team had finished in modern gymnastics history. At those Olympics, Thies became the first person to perform the back somersault on the beam in Olympic competition. During her international career, she won seven medals and two national titles, one on vault and beam.

Following her gymnastics career, Thies worked as a gymnastics commentator for NBC sports for seven years, while also working as a journalist and author. Additionally, she was an active member of the United States Gymnastics Federation (USGF) as both a member for the Executive Committee and Vice-Chairman for Women.



UI grad Nancy Thies was a member of the 1972 U.S. Olympic Team and later became a broadcaster for NBC sports.

NATIONAL & REGIONAL HONORS

TEAM AT NCAA CHAMPIONSHIPS

Year	Team Finish	Place in Session (Score)
2009	12th overall	6th in Session 2 (195.050)
2011	11th overall	6th in Session 1 (195.100)

ALL-AMERICANS

Year	Gymnast	Place in Session (Score)
1976	Nancy Thies, UB (AIAW)	T-6th (9.15)
2008	Allison Buckley, BB (2nd Team)	T-6th (9.825)
2009	Melissa Fernandez, BB (1st Team)	T-1st (9.900)
	Sarah Schmidt, FX (2nd Team)	T-6th (9.850)
2010	Allison Buckley, VT (1st Team)	T-3rd (9.900)
2011	Melissa Fernandez, AA (1st Team)	T-3rd (39.375)
	Melissa Fernandez, BB (1st Team)	T-4th (9.850)
	Melissa Fernandez, FX (2nd Team)	T-8th (9.850)
	Allison Buckley, FX (2nd Team)	T-6th (9.875)
	Kelsey Joannides, VT (2nd Team)	T-7th (9.875)
	Alina Weinstein, FX (2nd Team)	T-8th (9.850)

INDIVIDUAL EVENT FINALISTS

Year	Gymnast	Place in Session (Score)
2009	Melissa Fernandez, BB	T-7th (9.8375)
2010	Allison Buckley, VT	16th (9.5063)
2011	Melissa Fernandez, BB	T-5th (9.8375)

INDIVIDUAL NATIONAL QUALIFIERS

Year	Gymnast	Place in Session (Score)
1976	Nancy Thies, AA	8th (35.55)
1977	Patty Carmichael, AA	32nd (33.23)
	Nancy Thies, AA	Did not compete
1979	Gayle Fleischmann, AA	31st (33.85)
1981	Heidi Helmke, AA	T-71st (32.45)
1982	Heidi Helmke, AA	T-40th (34.30)
	Karen Brems, AA	T-40th (34.30)
1987	Denise Lamborn, AA	T-42nd (34.95)
2004	Ashley Williams, AA	T-19th (38.450)
	Cara Pomeroy, UB	T-28th (9.800)
2008	Nicole Cowart, AA	15th (38.925)
	Allison Buckley, AA	18th (38.525)
2010	Allison Buckley, VT	T-3rd (9.900)
	Sarah Schmidt, AA	15th (38.425)
2012	Alina Weinstein, AA	20th (38.550)

INDIVIDUAL ALL-AROUND NATIONAL FINISHES WHEN TEAM QUALIFIES

Year	Gymnast	Place in Session (Score)
2009	Allison Buckley	14th (39.300)
	Nicole Cowart	18th (38.775)
	Kelsey Joannides	23rd (38.500)
2011	Melissa Fernandez	T-3rd (39.375)
	Allison Buckley	14th (38.525)
	Kelsey Joannides	15th (38.475)
	Alina Weinstein	16th (38.375)

REGIONAL CHAMPIONS

1976	Nancy Thies, BB, FX, AA
1977	Nancy Thies, V, FX, BB, AA
2004	Cara Pomeroy, UB
2009	Allison Buckley, BB
2010	Allison Buckley, VT
2012	Alina Weinstein, BB, AA

REGIONAL GYMNAST OF THE YEAR

2008	Allison Buckley
------	-----------------

ALL-REGIONAL SELECTIONS

1976	Nancy Thies
1977	Nancy Thies
1979	Gayle Fleischmann
1980	Mary Charpentier
1983	Heidi Helmke
	Luann Roberts
1984	Allison Garrity
1986	Luann Roberts

INDIVIDUAL REGIONAL QUALIFIERS

1986	Laura Hicks, AA
	Allison Garrity, AA
1995	Kelli Farrar, AA
	Stacy Redmond, AA
	Nicole Ward, AA
2000	Phaedra Dixon, AA
	Karen Hawley, AA
	Carissa Ericson, FX
	Jana Gallagher, BB
2001	Jana Gallagher, AA
	Carissa Ericson, V, FX
2002	Jana Gallagher, AA
	Ashley Williams, AA
2003	Kara Kapernekas, AA
	Ashley Williams, AA

NIT CHAMPIONS

1996	Kim Berres, BB
1996	Natalie Forsthoefel, UB

COLLEGIATE NATIONAL TEAM

1996	Tracey Althans, BB, FX
1996	Kim Berres, V, BB, AA
1996	Kelli Farrar, UB
1996	Natalie Forsthoefel, UB
1996	Kari Karubas, FX

AMERICAN AWARD FINALIST

(senior female gymnast who has shown competitive, leadership, academic and community skills during career)

2007	Cara Pomeroy
------	--------------

NATIONAL COACH OF THE YEAR

2009	Bob Starkell
------	--------------

NATIONAL ASSISTANT COACH OF THE YEAR

2009	Kim Landrus
	Amy Kruse

REGIONAL COACH OF THE YEAR

2005	Bob Starkell
2007	Bob Starkell

REGIONAL ASSISTANT COACH OF THE YEAR

1998	Bob Starkell
2005	Kim Landrus
2008	Amy Kruse

BIG TEN CONFERENCE HONORS

INDIVIDUAL BIG TEN CHAMPIONS

1976* Nancy Thies, V, BB, UB, FX, AA
 1977* Nancy Thies, V, UB, FX, AA
 1978* Mary Charpentier, BB
 1980* Mimi Eberle, V
 1988 Heather Singalewitch, AA
 1990 Laura Knutson, tied BB
 Denise Lamborn, V
 Peggy Pullman, tied BB
 Heather Singalewitch, FX
 1991 Lynn Devers, tied UB
 1999 Gina Wiechmann, tied BB
 2007 Cara Pomeroy, UB
 2008 Julie Crall, BB
 2009 Kelsey Joannides, V
 Sarah Schmidt, FX
2011 Amber See, V
 2012 Kelsey Joannides, BB

BIG TEN GYMNAST OF THE YEAR

1976* Nancy Thies
 1977* Nancy Thies
 1988 Heather Singalewitch

BIG TEN FRESHMAN OF THE YEAR

2002 Ashley Williams
 2008 Allison Buckley

BIG TEN COACH OF THE YEAR

1990 Bev Mackes
 2005 Bob Starkell
 2009 Bob Starkell
 2010 Bob Starkell

BIG TEN MEDAL OF HONOR

1984 Karen Brems
 1991 Lynn Devers

ALL-BIG TEN

1976* Nancy Thies
 1977* Nancy Thies
 1978* Mary Charpentier
 1980* Mimi Eberle
 1987 Denise Lamborn
 1988 Denise Lamborn
 1990 Laura Knutson
 Denise Lamborn
 Peggy Pullman
 Heather Singalewitch
 1991 Lynn Devers
 1998 Kim Berres
 1999 Gina Wiechmann
 2002 Ashley Williams
 2003 Ashley Williams (2nd)
 Kara Kapernekas (2nd)
 Cara Pomeroy (2nd)
 Ashley Williams (2nd)
 2004 Kara Pomeroy
 Kara Kapernekas (2nd)
 Cara Pomeroy
 Julie Crall (2nd)
 2007 Nicole Cowart
 Julie Crall (2nd)
 Cara Pomeroy (2nd)
 Allison Buckley
 2008 Allison Buckley
 2009 Marijka Botterman (2nd)
 Allison Buckley (2nd)
 Nicole Cowart (2nd)
Kelsey Joannides (2nd)
 Sarah Schmidt (2nd)
 2010 Allison Buckley
 Sarah Schmidt
 Melissa Fernandez
 Nicole Cowart (2nd)
 2011 Allison Buckley

2012 Melissa Fernandez
 Kelsey Joannides (2nd)
 Kelsey Joannides
Amber See (2nd)
Alina Weinstein (2nd)

BIG TEN TEAM TITLES

1976 102.550 points
 1977 138.040 points
 1990 188.750 points

BIG TEN GYMNAST OF THE WEEK

1/27/99 Gina Wiechmann
 3/3/99 Phaedra Dixon
 3/1/00 Karen Hawley
 1/9/02 Ashley Williams
 3/1/05 Cara Pomeroy
 2/8/06 Cara Pomeroy
 3/19/08 Allison Buckley
 1/19/09 Sarah Schmidt
 1/10/10 Allison Buckley
 1/24/11 Allison Buckley
 3/14/11 Allison Buckley
1/30/12 Alina Weinstein

BIG TEN FRESHMAN OF THE WEEK

2/21/11 Amber See
3/7/11 Amber See

BIG TEN ALL-DECADE TEAM

1980's Heather Singalewitch
 1980's Denise Lamborn

ACADEMIC HONORS

COSIDA ACADEMIC ALL-AMERICAN

2011 Melissa Fernandez
 (At-Large Second Team)

COSIDA ACADEMIC ALL-DISTRICT

2007 Cara Pomeroy
 (At-Large Second Team)
 2010 Allison Buckley
 (At-Large Second Team)
 2011 Melissa Fernandez
 (At-Large First Team)
 Allison Buckley
 (At-Large Second Team)

SCHOLASTIC ALL-AMERICANS

1983 Karen Brems
 1984 Karen Brems
 1989 Lynn Devers
 Shari Smith
 1990 Lynn Devers
 Becky Gaa
 Denise Lamborn
 Shari Smith
 1991 Kara Corso
 Lynn Devers
 Becky Gaa
 1992 Becky Gaa
 1993 Becky Gaa
 1994 Tracey Althans
 Kimberly Bathke
 Natalie Forsthoefel
 1995 Tracey Althans
 Natalie Forsthoefel
 Kelly Hogan
 Karla Peterson
 Dina Slomski
 1996 Tracey Althans
 Natalie Forsthoefel
 Kelly Hogan
 1997 Kelly Hogan
 1998 Gena Gruss
 Carmella Fernandez
 Melanie Dorwart



Melissa Fernandez was Illinois' first Academic All-American.

1999 Lisa Pellegrinetti
 Allison Berg
 Carissa Ericson
 Carmella Fernandez
 Gena Gruss
 Michele Mesik
 Mina Moradi
 2001 Lisa Pellegrinetti
 Jennifer Barrett
 Allison Berg
 Carissa Ericson
 Jana Gallagher
 Karen Hawley
 Lisa Pellegrinetti
 Lindsay Ransom
 2002 Allison Berg
 Sara Dumich
 Jana Gallagher
 Karen Hawley
 Amanda Kaufman
 Lindsay Ransom
 2003 Sara Dumich
 Emily Earle
 Jana Gallagher
 Karen Hawley

2004 Amanda Kaufman
 Lauren Petric
 Margaret Dann
 Sara Dumich
 Emily Earle
 Kim Kirzow
 Lauren Newcomb
 Lindsay Ransom
 Katie Wild
 Ashley Williams
 2005 Sara Dumich
 Emily Earle
 Cara Pomeroy
 Melissa Singer
 Katie Wild
 Ashley Williams
 2006 Cara Pomeroy
 Melissa Singer
 2008 Melissa Fernandez
 Michelle McGrady
 Lindsey Smith
 2009 Allison Buckley
 Melissa Fernandez
 Lori Hamilton
 Samantha Perino
 Lindsey Smith
 2010 Allison Buckley
 Nicole Cowart
 Melissa Fernandez
Elise Gill
 Lori Hamilton
 Kelsey Joannides
 Samantha Perino
 Sarah Schmidt
 2011 Allison Buckley
 Melissa Fernandez
Elise Gill
Jaclyn Kantecki
 Samantha Perino
 2012 Kelsey Joannides
Sunny Kato
Amber See
 Hannah Welker

ACADEMIC ALL-BIG TEN

1984 Karen Brems
 1988 Laura Knutson
 1989 Shari Smith
 Lynn Devers
 Laura Knutson
 1990 Lynn Devers
 Laura Knutson
 Jennifer Durdil
 Denise Lamborn
 Shari Smith
 1991 Kara Corso
 Lynn Devers
 Jennifer Durdil
 Becky Gaa
 1992 Kara Corso
 Mary Beth Clisham
 Becky Gaa
 1993 Becky Gaa
 Kimberly Bathke
 Mary Beth Clisham
 Kara Corso
 Pam Swan
 1994 Tracey Althans
 Kimberly Bathke
 Mary Beth Clisham
 Dina Slomski
 Natalie Forsthoefel
 Tracey Althans
 1995 Natalie Forsthoefel
 Kelly Hogan
 Dina Slomski
 1996 Tracey Althans
 Nicki Ciccarelli
 Kelli Farrar
 Natalie Forsthoefel
 Kelly Hogan
 1997 Becky Ashton
 Kim Berres
 Nicki Ciccarelli
 Melanie Dorwart
 Kelly Hogan
 1998 Becky Ashton

- Kim Berres
- Melanie Dorwart
- Carmella Fernandez
- Gena Gruss
- Becky Ashton
- 1999 Kim Berres
- Melanie Dorwart
- Carissa Ericson
- Carmella Fernandez
- Gena Gruss
- Lisa Pellegrinetti
- 2000 Allison Berg
- Phaedra Dixon
- Carissa Ericson
- Carmella Fernandez
- Gena Gruss
- Michelle Mesik
- Mina Moradi
- Lisa Pellegrinetti
- 2001 Jennifer Barrett
- Allison Berg
- Michelle Buranich
- Phaedra Dixon
- Carissa Ericson
- Jana Gallagher
- Karen Hawley
- Amanda Kaufman
- Michelle Mesik
- Mina Moradi
- Lisa Pellegrinetti
- Gina Wiechmann
- 2002 Allison Berg
- Michelle Buranich
- Sara Dumich
- Jana Gallagher
- Karen Hawley
- Amanda Kaufman
- Michelle Mesik
- Mina Moradi
- 2003 Michelle Buranich
- Jessica Cole
- Sara Dumich
- Jana Gallagher
- Karen Hawley
- Amanda Kaufman
- Lauren Newcomb
- Lindsay Ransom
- Ashley Williams



Katie Wild earned Academic All-Big Ten honors from 2004-06.

- 2004 Margaret Dann
- Sara Dumich
- Emily Earle
- Kim Kirzow
- Lauren Newcomb
- Lindsay Ransom
- Katie Wild
- Ashley Williams
- 2005 Margaret Dann
- Sara Dumich
- Emily Earle
- Lauren Newcomb
- Cara Pomeroy



Cara Pomeroy garnered the George Huff Award from 2004-07.

- Melissa Singer
- Katie Wild
- Ashley Williams
- 2006 Emily Earle
- Michelle McGrady
- Cara Pomeroy
- Melissa Singer
- Katie Wild
- 2007 Marijka Botterman
- Julie Crall
- Kim Kruk
- Michelle McGrady
- Cara Pomeroy
- Lindsey Smith
- 2008 Marijka Botterman
- Nicole Cowart
- Julie Crall
- Kim Kruk
- Michelle McGrady
- Lindsey Smith
- 2009 Marijka Botterman
- Allison Buckley
- Nicole Cowart
- Julie Crall
- Melissa Fernandez
- Kim Kruk
- Lashlee Morris
- Samantha Perino
- Sarah Schmidt
- Lindsey Smith
- Laura Woolf
- 2010 Allison Buckley
- Nicole Cowart
- Melissa Fernandez
- Lori Hamilton
- Kelsey Joannides
- Lashlee Morris
- Samantha Perino
- Sarah Schmidt
- Hannah Welker
- Laura Woolf
- 2011 Allison Buckley
- Melissa Fernandez
- Elise Gill**
- Kelsey Joannides
- Jaclyn Kantecki**
- Samantha Perino
- Alina Weinstein**
- Sarah Fiedler**
- Elise Gill**
- 2012 Kelsey Joannides
- Jaclyn Kantecki**
- Amber See**
- Alina Weinstein**
- Hannah Welker

GEORGE HUFF AWARDS

- 1977 Sarah Ausich
- Jean Bagel
- 1978 Tammy Bedrosian
- Joan Delast

- Sarah MacAdams
- Cynthia Weber
- Elizabeth LaPlante
- 1979 Sarah MacAdams
- Jan Osowski
- 1980 Joyce Pontious
- 1981 Joyce Pontious
- Jan Osowski
- 1982 Karen Brems
- Ann Pollack
- 1983 Karen Brems
- 1984 Karen Brems
- 1985 Heidi Helmke
- Luan Roberts
- 1986 Emily Collins
- Natacha Yonezuka
- Luan Roberts
- 1987 Michelle Maart
- 1988 Lynn Devers
- 1989 Laura Knutson
- Michelle Ruf
- Shari Smith
- Lynn Devers
- 1990 Jennifer Durdil
- Laura Knutson
- Heather Singalewitch
- Shari Smith
- 1991 Kara Corso
- Lynn Devers
- Jennifer Durdil
- Rebecca Gaa
- Laura Knutson
- Denise Lamborn
- Heather Singalewitch
- 1992 Susan Adams
- Mary Clisham
- Lynn Devers
- Rebecca Gaa
- 1993 Kim Bathke
- Mary Beth Clisham
- Kara Corso
- Jennifer Durdil
- Rebecca Gaa
- Dina Slomski
- 1994 Tracy Althans
- Kimberly Bathke
- Kara Corso
- Natalie Forsthoefel
- 1995 Tracey Althans
- Kimberly Bathke
- Becky Drummond
- Natalie Forsthoefel
- Dina Slomski
- 1996 Tracey Althans
- Nicole Ciccarelli
- Kelli Farrar
- Natalie Forsthoefel
- Kelly Hogan
- Karla Peterson
- Dina Slomski
- Nicole Vierness



Kelsey Joannides was a two-time scholastic All-American and three-time Academic All-Big Ten

- 1997 Rebecca Ashton
- Kelly Hogan
- Katherine Karubas
- 1998 Rebecca Ashton
- Kim Berres
- Nicole Ciccarelli
- Carmella Fernandez
- Kelly Hogan
- Katherine Karubas
- Nicole Vierness
- 1999 Rebecca Ashton
- Kim Berres
- Melanie Dorwart
- Carmella Fernandez
- Carissa Ericson
- Gena Gruss
- Kristen Montero
- Lisa Pellegrinetti
- 2000 Rebecca Ashton
- Phaedra Dixon
- Melanie Dorwart
- Carissa Ericson
- Carmella Fernandez
- Gena Gruss
- Mina Moradi
- Lisa Pellegrinetti
- Allison Berg
- 2001 Michelle Buranich
- Phaedra Dixon
- Carissa Ericson
- Carmella Fernandez
- Jana Gallagher
- Gena Gruss
- Karen Hawley
- Amanda Kaufman
- Lisa Pellegrinetti
- Jennifer Barrett
- 2002 Allison Berg
- Phaedra Dixon
- Carissa Ericson
- Jana Gallagher
- Karen Hawley
- Michelle Mesik
- Emily Earle
- 2003 Jana Gallagher
- Karen Hawley
- Amanda Kaufman
- Lauren Newcomb
- Katie Wild
- 2004 Margaret Dann
- Sara Dumich
- Emily Earle
- Kimberly Kirzow
- Kathryn Kopren
- Cara Pomeroy
- Lindsay Ransom
- Melissa Singer
- Katie Wild
- Ashley Williams
- 2005 Margaret Dann
- Sara Dumich
- Emily Earle
- Michelle McGrady
- Lauren Newcomb
- Cara Pomeroy
- Melissa Singer
- Katie Wild
- Ashley Williams
- 2006 Marijka Botterman
- Julie Crall
- Emily Earle
- Michelle McGrady
- Cara Pomeroy
- Melissa Singer
- Lindsey Smith
- Katie Wild
- 2007 Danye Botterman
- Lori Hamilton
- Kim Kruk
- Michelle McGrady
- Krystal Melcarek
- Cara Pomeroy
- Melissa Singer
- Lindsey Smith

TEAM HONORS

MOST OUTSTANDING

1994	Puni Viernes
1995	Stacy Redmond
1996	Kim Berres
1997	Kim Berres
1998	Kim Berres
1999	Phaedra Dixon
2000	Phaedra Dixon
2001	Jana Gallagher
2002	Jana Gallagher
	Ashley Williams
2003	Kara Kapernekas
2004	Cara Pomeroy
	Ashley Williams
2005	Cara Pomeroy
2006	Julie Crall
	Cara Pomeroy
2007	Nicole Cowart
2008	Allison Buckley
2009	Marijka Botterman
2010	Melissa Fernandez
	Sarah Schmidt
2011	Allison Buckley
	Melissa Fernandez
2012	Alina Weinstein

MOST VALUABLE

1994	Mary Beth Clisham
1995	Dina Slomski
1996	Becky Ashton
1997	Kelly Hogan
1998	Kristin Montero
1999	Kim Berres
2000	Gena Gruss
2001	Jennifer Barrett
2002	Mina Moradi
2003	Karen Hawley
2004	Kara Kapernekas
2005	Lauren Newcomb
2006	Cara Pomeroy
	Melissa Singer
2007	Cara Pomeroy
2008	Nicole Cowart
2009	Marijka Botterman
2010	Melissa Fernandez
2011	Melissa Fernandez
2012	Kelsey Joannides

MOST IMPROVED

1996	Kelly Hogan
1997	Michelle Lacki
1998	Michelle Lacki
1999	Melanie Dowart
2000	Allison Berg
2001	Jennifer Barrett
	Phaedra Dixon
2002	Amanda Kaufman
2003	Sara Dumich
2004	Melissa Singer
2005	Krystal Melcarek
2006	Urslal Orozco
2007	Sarah Schmidt
2008	Lashlee Morris
2009	Melissa Fernandez
2010	Samantha Perino
2011	Alina Weinstein
2012	Elizabeth McNabb

MOST CONSISTENT BEAM

1994	Kari Karubas
1995	Nicole Ward
1996	Kim Berres
1997	C. Fernandez
1998	Kim Berres
1999	Gina Wiechmann
2000	Phaedra Dixon
2001	Jana Gallagher
2002	Jana Gallagher
2003	Kara Kapernekas
2004	Margaret Dann
2005	Margaret Dann
2006	Cara Pomeroy
	Katie Wild
2007	Nicole Cowart
2008	Allison Buckley
2009	Melissa Fernandez
2010	Nicole Cowart
2011	Melissa Fernandez
2012	Kelsey Joannides
	Alina Weinstein

SCHOLAR-ATHLETE

1995	Tracey Althans
	Dina Slomski
1996	Tracey Althans
	Natalie Forsthoefel
1997	Kelly Hogan
1998	Melanie Dorwart
1999	Lisa Pellegrinetti
2000	C. Fernandez
2001	Lisa Pellegrinetti
2002	Allison Berg
2003	Emily Earle
2004	Katie Wild
2005	Katie Wild
2006	Katie Wild & Emily Earle
2007	Cara Pomeroy
2008	Melissa Fernandez
2009	Lindsey Smith
2010	Allison Buckley
2011	Melissa Fernandez
	Samantha Perino
2012	Amber See

UNIVERSITY OF ILLINOIS HONORS

UI DIKE EDDLEMAN FEMALE ATHLETE OF THE YEAR

1977	Nancy Thies
1984	Karen Brems
2011	Melissa Fernandez

UI FEMALE NEWCOMER OF THE YEAR

1994	Nicole Viernes
1996	Kim Berres
2002	Ashley Williams
2006	Julie Crall
2008	Allison Buckley

UI OUTSTANDING FEMALE SCHOLAR-ATHLETE

(Highest GPA for each class)

1992	Becky Gaa (Jr.)
1994	Natalie Forsthoefel (So.)
1996	Natalie Forsthoefel (Sr.)
2006	Emily Earle (Sr.)

FIGHTING ILLINI OUTSTANDING TEAM GPA AWARD

(Highest GPA for a team)

1998	3.32 Cumulative GPA
------	---------------------

FIGHTING ILLINI SPIRIT AWARD

(UI student-athlete who best represents Fighting Illini spirit)

1995	Dina Slomski
------	--------------

YEAR-BY-YEAR EVENT TITLE LEADERS *(includes All-Around)*

1975	Maria Salinas	7
1976	Nancy Thies	34
1977	Nancy Thies	24
1978	Gayle Fleischmann	6
1979	Gayle Fleischmann	13
1980	Mimi Eberle	10
1981	Karen Brems	6
	Heidi Helmke	6
1982	Karen Brems	4
	Heidi Helmke	4
1983	Heidi Helmke	11
1984	Heidi Helmke	2
	Luann Roberts	2
	Karen Brems	2
	Laura Hicks	4
1985	Laura Hicks	10
1986	Denise Lamborn	16
1987	Heather Singalewitch	17
1988	Heather Singalewitch	14
1989	Denise Lamborn	14
1990	Sarah Wasserman	6
1991	Kara Corso	6
	Kara Corso	12
1992	Natalie Forsthoefel	5
1993	Nicole Viernes	5
1994	Nicole Ward	5
	Stacy Redmond	11
1995	Kim Berres	11
1996	Kim Berres	5
1997	Gina Wiechmann	11
1998	Phaedra Dixon	12
1999	Phaedra Dixon	9
2000	Jana Gallagher	5
2001	Ashley Williams	12
2002	Ashley Williams	6
2003	Cara Pomeroy	10
2004	Cara Pomeroy	11
2005	Cara Pomeroy	10
2006	Cara Pomeroy	10
2007	Nicole Cowart	10
	Allison Buckley	19
2008	Sarah Schmidt	9
2009	Allison Buckley	15
2010	Allison Buckley	20
2011	Allison Buckley	19
2012	Kelsey Joannides	19

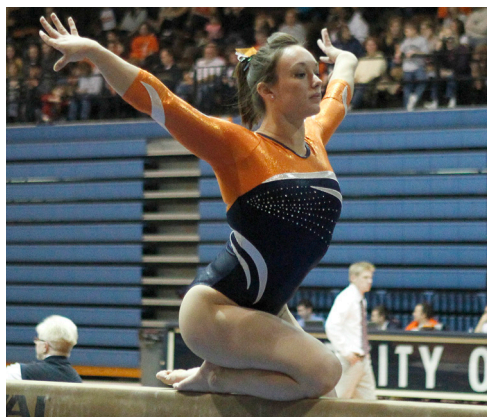
ILLINOIS EVENT TITLE LEADERS

CAREER EVENT TITLES *(includes All-Around)*

1.	62	Allison Buckley	2008-11
2.	58	Nancy Thies	1976-77
3.	41	Cara Pomeroy	2004-07
4.	38	Denise Lamborn	1987-90
5.	34	Heather Singalewitch	1987-90
6.	33	Kelsey Joannides	2009-12
	32	Kim Berres	1996-99
8.	29	Sarah Schmidt	2007-10
9.	26	Ashley Williams	2002-05
10.	25	Phaedra Dixon	1998-2001

SINGLE SEASON EVENT TITLES *(includes All-Around)*

1.	34	Nancy Thies	1976
2.	24	Nancy Thies	1977
3.	20	Allison Buckley	2011
4.	19	Kelsey Joannides	2012
	19	Allison Buckley	2008
6.	17	Heather Singalewitch	1989
7.	16	Denise Lamborn	1987
8.	15	Allison Buckley	2010
9.	14	Alina Weinstein	2012
	14	Denise Lamborn	1990
	14	Heather Singalewitch	1989



Above: Allison Buckley won an Illinois record 62 event titles in her career. Below: Melissa Fernandez was named the UI DIke Eddleman Female Athlete of the Year in 2011.



ALL-TIME LETTERWINNERS

A // B // C

Adams, Susan - 1988, 89, 90, 91
 Althans, Tracey - 1993, 94, 95, 96
 Amico, Mary - 1981
 Ashton, Becky - 1996, 97, 98, 99
 Baffes, Kathy - 1978, 79, 80
 Bagel, Jean - 1976
 Barrett, Jennifer - 2000
 Barrow, Christine - 1984
 Bathke, Kimberly - 1991, 92, 93, 94
 Bedrosian, Tammy - 1977
 Berg, Allison - 2000, 01, 02
 Berres, Kim - 1996, 97, 98, 99
 Botterman, Danye - 2004, 05, 06, 07
 Botterman, Marijka - 2006, 07, 08, 09
 Brems, Karen - 1981, 82, 83, 84
 Buckley, Allison - 2008, 09, 10, 11
 Buranich, Michelle - 2000, 01, 02, 03
 Carmicheal, Patty - 1977
 Carr, Bridget - 1980, 81, 82
 Castle, Jennifer - 1978
 Charpentier, Mary - 1978, 79, 80, 81
 Ciccarella, Nicki - 1994, 95, 96, 97
 Ciccarella, Tracey - 1996, 97
 Clisham, Mary Beth - 1991, 92, 93, 94
 Cole, Jessica - 2003, 04, 05
 Collias, Emily - 1984, 85, 86
 Corso, Kara - 1990, 91, 92, 93
 Cowart, Nicole - 2007, 08, 09, 10
 Crall, Julie - 2006, 07, 08, 09

D // E // F // G

Danke, Cheryl - 1985
 Dann, Margaret - 2002, 03, 04, 05
 Delact, Joan - 1977
 Devers, Lynn - 1988, 89, 90, 91
 Dixon, Phaedra - 1998, 99, 00, 01
 Dorwart, Melanie - 1996, 97, 98, 99
 Drummond, Becky - 1994
 Dumich, Sara - 2003, 04, 05
 Durdil, Jennifer - 1989, 90, 92
 Earle, Emily - 2003, 04, 05, 06
 Eberle, Mimi - 1980
Eherly, Kelsi - 2012
 Ericson, Carissa - 1998, 99, 00, 01
 Farrar, Kelli - 1995, 96, 97, 98



Nicole Cowart lettered from 2007-10.

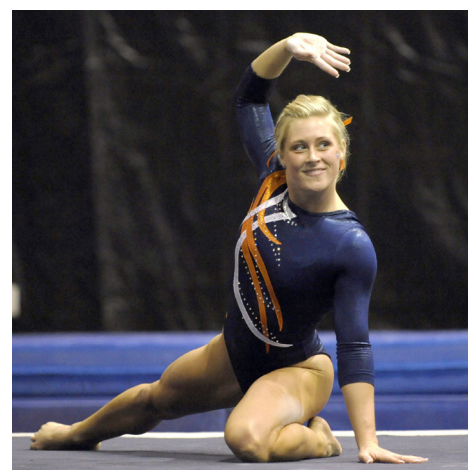
Fernandez, Carmella - 1997, 98, 99, 00
 Fernandez, Melissa - 2008, 09, 10, 11
Fiedler, Sarah - 2011, 12
 Fleischmann, Gayle - 1977, 78, 79, 80
 Forsthoefel, Natalie - 1993, 94, 95, 96
 Gaa, Becky - 1990, 91, 92, 93
 Gallagher, Jana - 2000, 01, 02, 03
 Gardner, Laura - 1978
 Garrity, Allison - 1984, 85, 86, 87
Gill, Elise - 2011, 12
 Greathouse, Teresa - 1975, 76
 Gruss, Gena - 1997, 98, 99, 2000

H // I // J // K // L

Hamilton, Gail - 1989
 Hawley, Karen - 2000, 01, 02, 03
 Helmke, Heidi - 1981, 82, 83, 84
 Hicks, Laura - 1985, 86
 Hogan, Kelly - 1994, 95, 96, 97
 Howell, Lisa - 1979
Hyatt, Macy - 2010, 11, 12
 Joannides, Kelsey - 2009, 10, 11, 12
 Johnson, Gaye - 1978, 79, 80
 Kalal, Randy - 1975
Kantecki, Jaclyn - 2010, 11, 12
 Kapernekas, Kara - 2002, 03, 04, 05
 Karubas, Kari - 1994, 95, 96, 97
 Kaufman, Amanda - 2000, 01, 02, 03
 Kirzow, Kim - 2004
 Knutson, Laura - 1987, 88, 89, 90
 Kontur, Tracy - 1987, 88, 89, 90
 Kruk, Kim - 2006, 07, 08, 09
 Lacki, Michelle - 1998
 Lamborn, Denise - 1987, 88, 90
 LaPlante, Liz - 1978
 Lunquist, Debra - 1977

M // N // O // P

Maart, Michelle - 1985, 86, 87, 88
 MacAdams, Maggie - 1976, 77, 78
 Matiya, Joellyn - 1980, 81, 82
 McGee, Cindy - 1983
 Mesik, Michelle - 2000, 01, 02
 McGrady, Michelle - 2005, 06, 07, 08
McNabb, Elizabeth - 2012
 Melcarek, Krystal - 2005, 06, 07, 08
 Montero, Kristin - 1995, 97, 98
 Montgomery, Lisa - 1982
 Moore, Cindy - 1982, 83
 Moradi, Mina - 1999, 01, 02
 Morris, Lashlee - 2008, 09, 10
 Murin, Laura - 1981
Naleway, Jordan - 2012
 Neilson, Dotty - 1983
 Newcomb, Lauren - 2002, 03, 04, 05
 Numrych, Charlene - 1981, 82, 83, 84
 Orozco, Ursula - 2007
 Osowski, Jan - 1979, 80, 81
 Pedregal, Marianne - 1984, 85, 86, 87
 Pellegrinetti, Lisa - 1998, 99, 00, 01
 Perino, Samantha - 2008, 10, 11
 Peterson, Anne - 1978, 79, 80
 Peterson, Karla - 1992, 93, 95
 Pollack, Allyson - 1981, 82
 Polz, Laura - 1990, 91, 92
 Pomeroy, Cara - 2004, 05, 06, 07
 Pontious, Joyce - 1978, 79, 80, 81
 Powers, Terri - 1978, 79, 80
 Pullman, Peggy - 1990, 92



Marijka Botterman was a four-time letterwinner from 2006-09.

Q // R // S

Rechenmacher, Jayne - 1978, 79, 80, 81
 Rechenmacher, Jill - 1986
 Redmond, Stacy - 1995, 96
 Reid, Connie - 1983
 Roberts, Luann - 1983, 84, 85, 86
 Robinson, Deborah - 1975
 Rosenwinkel, Pam - 1975
 Roska, Sarah - 1976
 Rossetto, Karen - 1989, 90, 91
 Rudnicki, Patsy - 1982, 83, 84, 85
 Ruf, Michelle - 1985, 86, 87, 88
 Ruffolo, Laura - 2002
 Salinas, Maria - 1975, 76
 Schmidt, Sarah - 2007, 08, 09, 10
See, Amber - 2011, 12
 Segers, Alicia - 1976
 Semeniuk, Tanya - 1993
 Sheppard, Sarah - 1978, 79, 80
 Shively, Debbie - 1987, 88
 Simpson, Faith - 1991
 Singalewitch, Heather - 1987, 88, 89, 90
 Singer, Melissa - 2004, 05, 06, 07
 Slomski, Dina - 1992, 94, 95
 Smith, Karen - 1975
 Smith, Lindsey - 2006, 07, 08, 09
 Smith, Shari - 1988, 89
 Sullivan, Kelcey - 1991

T // U // V // W // X // Y // Z

Tex, Cathy - 1975
 Thies, Nancy - 1976, 77
 Travis, Lee - 1975, 77
 Viernes, Nicole - 1994, 95, 96, 97
 Ward, Nicole - 1992, 93, 94, 95
 Wasserman, Sarah - 1991, 92
 Weber, Cynthia - 1975, 76, 77, 78
 Webster, Julie - 1980
Weinstein, Alina - 2010, 11, 12
 Welker, Hannah - 2010, 12
 Wild, Katie - 2003, 04, 05, 06
 Wiechmann, Gina - 1998, 99, 00, 01
 Williams, Ashley - 2002, 03, 04, 05
 Woolf, Laura - 2008, 09
 Wurtzel, Melissa - 1997
 Yonezuka, Natacha - 1984, 85

MEDIA INFORMATION

MEET CREDENTIALS

All home meets are held at Huff Hall and are free to the public. Olympic sport credentials are available by request for media and photographer admittance. Please contact **Josh Bates**, (217-244-4982 or jbbates2@illinois.edu) in the Athletic Public Relations office in advance to request credentials. Media credential requests for road meets should be made through the host SID office.

COACH/GYMNAST INTERVIEWS

Please schedule all interviews through the Athletic Public Relations office. For interviews with head coach Kim Landrus or any Illinois coach or student-athlete, please contact Josh Bates. Coach Landrus is usually available for interviews before or following afternoon workouts on Monday, Tuesday and Thursday. Interviews with athletes will be conducted according to class and practice schedules.

POST-MEET INTERVIEWS

Coach Kim Landrus and gymnasts will be available after meets following a short cool-down period. Please make all requests for interviews to Josh Bates at the scorer's table.

WORKOUT TIMES

The Illini work out during the week on the third floor of Kenney Gym on the corner of Wright St. and Springfield Ave. Parking for Kenney is located along Wright St. in metered areas. Practices start at 1:15 p.m. daily and usually run about three hours.

MEET RESULTS

Results will be available following the conclusion of the meet and also will be sent to the opposing team's sports information office. A story, complete with results, will be sent to selected media outlets and will be available on fightingillini.com. Results will be updated on the website following each meet. If you wish to have your media agency added to the e-mail list, please contact Josh Bates in the Athletic Public Relations office.

ILLINI ON THE WEB

Live results and athlete information is also kept up-to-date at www.fightingillini.com. The women's gymnastics page features athlete biographies, schedules, results, statistics, feature stories, blogs, news, releases and live meet stats and video.

GYMNASTICS MEDIA OUTLETS

PRINT

Champaign News-Gazette
 Jeff Huth
 P.O. Box 677
 Champaign, IL 61820
 Ph: (217) 351-5232/5604
 Fax: (217) 351-5374

The Daily Illini
 512 East Green St.
 Champaign, IL 61820
 Ph: (217) 337-8363
 Fax: (217) 337-8328
 sports@dailyillini.com

Gatehouse News Service
 John Supinie
 Ph: (217) 377-1977 (cell)
 johnsupinie@aol.com
Covering the Peoria Journal Star and Springfield State Journal-Register

RADIO

WDWS Radio
 Dave Loane, Sports Director
 P.O. Box 3939
 Champaign, IL 61826
 Ph: (217) 351-5300
 Fax: (217) 351-5385
 dloane@wdws.com

WKIO/WLRW/WIXY, Illini Radio Group
 Mike Cation, Sports Director
 2603 West Bradley Ave.
 Champaign, IL 61820
 Ph: (217) 352-4141
 FAX: (217) 298-9000
 mike.cation@gmail.com

WDAN Radio
 Eric Loy, Sports Director
 1501 N. Washington
 Danville, IL 61832
 Ph: (217) 442-1700

WPGU Radio

24 East Green St.
 Champaign, IL 61820
 Ph: (217) 244-3000
 Fax: (217) 244-3001

TELEVISION

Big Ten Network
 600 W. Chicago Ave.
 Suite 875
 Chicago, IL 60610
 Phone: (312) 665-0700
 Fax: (312) 665-0740
 www.bigtennetwork.com

WAND-TV

John Nilles, Noah Newman
 904 Southside Drive
 Decatur, IL 62522
 Ph: (800) 252-1601 -or- (217) 424-2500
 Fax: (217) 422-8203

WCIA-TV

Aaron Bennett, Matt Wettersten and Austin Kim
 509 South Neil St.
 Champaign, IL 61820
 Ph: (217) 356-8333
 Fax: (217) 373-3663

WICD-TV

Jed DeMuesy
 250 County Fair Drive
 Champaign, IL 61821
 Phone: (217) 351-8538

INTERNET

www.fightingillini.com
 www.illiniwomensgym.com
 www.facebook.com/IlliniGymnastics
 www.twitter.com/IlliniGym
 www.bigten.org
 www.bigtennetwork.com
 www.troester.com/gym
 www.insidegymnastics.com
 www.collegegymfans.com

FIGHTINGILLINI.COM

Fightingillini.com, the official website of the University of Illinois Athletic Department, is the fastest and easiest way for fans, alumni, students and parents to follow Illinois athletics.

Maintained by the UI Athletic Public Relations office, fightingillini.com provides viewers with not only the latest scores, game stories, photos and statistics from all Illinois varsity sports, but also feature stories and blogs on student-athletes and coaches who shape the headlines. Live radio broadcasts of volleyball, football, men's and women's basketball, softball and baseball, as well as selected audio interviews, video highlight clips and live video of home gymnastics meets are available at the click of the computer's mouse.

FIGHTINGILLINI.COM FEATURES:

- The latest news on Illinois' 19 varsity sports
- Live streaming video of home gymnastics meets
- Up-to-date results, schedules, statistics and game notes
- Feature stories on Illini student-athletes and coaches
- Student-athlete and coach biographies and blogs
- Photo galleries
- Audio and video clips



THE 2013 FIGHTING ILLINI TV ROSTER



Kelsi Eberly - So.



Sarah Fiedler - Jr.



Heather Foley - Fr.



Tori Fujinami - Fr.



Elise Gill - Sr.



Macy Hyatt - Sr.



Jaclyn Kantecki - Sr.



Sunny Kato - So.



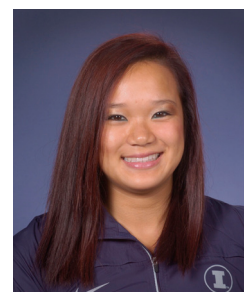
Nikki McGarel - So.



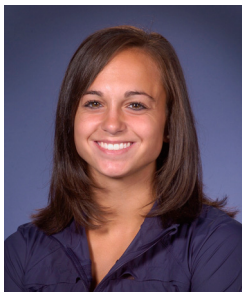
Elizabeth McNabb - Jr.



Jordan Naleway - So.



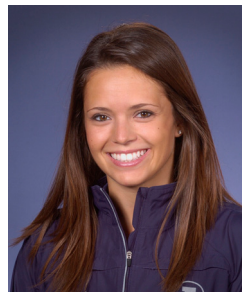
Gabriella Nguyen - So.



Giana O'Connor - Fr.



Amber See - Jr.



Alina Weinstein - Sr.



**Kim Landrus
Head Coach**



**Jay Santos
Associate Head Coach**



**Rodney Gust
Assistant Coach**



**Jess Santos
Volunteer Assistant Coach**