

FIGHTING ILLINI

WOMEN'S BASKETBALL GAME NOTES



Athletics Communication // 1700 South Fourth Street // Champaign, IL 61820

WBB Contact: Jenny Dewar // Office: 217-300-1148 // Cell: 847-567-2487 // jdewar2@illinois.edu // fightingillini.com

I FIGHTINGILLINI.com

@IlliniWBB

@IlliniWBB

@IlliniWBasketball



Illinois (3-5) at South Dakota (6-2)
Dec. 7, 2016 // 6 PM CT // Vermillion, S.D. // Sanford Coyote Sports Center



Live Stream: <http://www.goyotes.com/watch/>

Live Stats: <http://www.sidearmstats.com/usd/wbball/>

Live Audio: <http://www.fightingillini.com/watch>

Radio: Illini Sports Network (WDWS-AM 1400) – Dave Loane (Play-by-Play); Mike Koon (Analyst)

2016-17 SCHEDULE & RESULTS

3-5 Overall, 0-0 Big Ten

Home: 3-4; Away: 0-1; Neutral: 0-0

DATE	OPPONENT	TIME/SCORE
Nov. 6	Drury (Exh.)	L, 66-60
Nov. 11	Marshall ~	L, 55-53
Nov. 13	UAPB ~	W, 70-58
Nov. 17	Memphis ~	L, 64-54
Nov. 20	USC Upstate ~	W, 77-57
Nov. 22	Mercer ~	L, 51-33
Nov. 30	Wake Forest ~^	L, 79-70
Dec. 2	Fort Wayne ~	W, 56-33
Dec. 4	at George Washington	L, 72-56
Dec. 7	at South Dakota	6 PM
Dec. 11	Wright State ~	2 PM
Dec. 17	Florida Gulf Coast ~	2 PM
Dec. 19	at Central Michigan	6 PM
Dec. 22	at Ohio	6 PM
Dec. 28	Iowa *%	3 PM
Jan. 1	at Michigan State *~	2 PM
Jan. 7	Rutgers *%	3 PM
Jan. 11	at Iowa *~	7 PM
Jan. 15	Nebraska *~	2 PM
Jan. 18	at Minnesota *~	7 PM
Jan. 22	at Ohio State *~	4 PM
Jan. 26	Maryland *~	7 PM
Jan. 29	at Penn State *~	1 PM
Feb. 1	Michigan *~	7 PM
Feb. 5	Purdue *~	2 PM
Feb. 9	at Maryland *~	6 PM
Feb. 14	Penn State *~	7 PM
Feb. 19	at Northwestern *~	2 PM
Feb. 22	at Wisconsin *~	7 PM
Feb. 25	Indiana *%	TBA
March 1-5	Big Ten Champ. % Indianapolis, Ind. (Bankers Life Fieldhouse)	

^ACC/Big Challenge

* Big Ten Conference Game

% Televised on Big Ten Network

~ Streamed via BTN +

PROBABLE ILLINI STARTERS

Pos.	No.	Name	Ht.	Yr.	GP/GS	PPG	RPG	Other	Notes/Highlights
G	1	Brandi Beasley	5-7	Fr.	8 / 8	8.3	6.5	3.6 APG	Led Illinois in scoring at George Washington
G	13	Petra Holešinská	5-9	Fr.	8 / 6	8.1	3.3	7 STL	Made 5 treys against Fort Wayne
G	23	Jaelyne Kirkpatrick	5-7	So.	8 / 7	5.0	2.1	3.25 APG	Put up a career-high 13 points against UAPB
G	25	Kennedy Cattenhead	5-10	r-Jr.	8 / 3	8.1	4.5	6 STL	Led Illinois with 16 points vs. Wake Forest
F	35	Alex Wittinger	6-1	So.	8 / 8	13.0	10.4	19 BLK	Posted 5 consecutive double-doubles

OFF THE BENCH

G	12	Ashley McConnell	5-9	Sr.	8 / 0	0.8	0.1	1 AST	Hit two threes at George Washington
F	20	Sarah Overcash	6-1	Fr.	8 / 0	1.3	1.5	1 BLK	2016 High School State Championship team
G	30	Courtney Joens	5-10	Fr.	8 / 0	5.8	1.8	4 ASST	Put up a career-high 11 points twice this season
G	45	Meagan McNicholas	5-10	Fr.	1 / 0	0.0	0.0	--	Joined the squad prior to Illinois vs. Fort Wayne
F	50	Ali Andrews	6-2	Fr.	8 / 5	6.3	4.1	5 STL	Put up a career-high 15 points against USC Upstate
G	5	Cierra Rice	5-9	So.	3 / 3	6.0	4.0	1.3 APG	Is sidelined by injury suffered against Memphis
F	11	Cyndee Kinslow	6-2	r-Fr.	--/--	--	--	--	Transferred from Pepperdine

THE COACHES

ILLINOIS: Matt Bollant // 55-77 at Illinois (5th year) // 337-132 overall (15th year)

SOUTH DAKOTA: Dawn Plitzuweit // 6-2 at South Dakota (1st year) // 194-95 overall (10th year)

SERIES NOTES VS. SOUTH DAKOTA

Series Record: South Dakota leads, 1-0

Last Meeting: Dec. 22, 2015 // South Dakota 85, Illinois 76 // Champaign, Ill.

Series Streak: L-1

Series in Champaign: South Dakota leads, 1-0

Series at South Dakota: First Meeting

ILLINOIS...

...will travel to South Dakota for the first time
...leads the Big Ten in free throw percentage (.755)
...is fifth in the Big Ten with 4.3 blocks per game
...is holding opponents to 25.7% shooting from distance
...freshman are combining for 50% of Illinois' scoring
...freshman Ali Andrews is 3rd in the BIG in FT percentage
...soph. Alex Wittinger leads the BIG in offensive rebounding

QUICK HITS

• **WEDNESDAY'S GAME:** The squad will continue its road swing at South Dakota on Wed., Dec. 7. Illinois is 0-1 against South Dakota, falling 76-85 to the Coyotes last season. The contest will be live streamed at GoYotes.com, and fans can listen on WDWS AM-1400.

• **COMING UP:** The Illini are back at home on Sunday, hosting Wright State at 2 p.m. Illinois will be hosting an Ugly Sweater Party, and fans are encouraged to wear their "ugly" sweaters to the game. Students in attendance will receive a free "ugly" sweater t-shirt. It will also mark the final day of the Toys for Tots toy drive, and fans who donate a new toy will receive admission for just \$2.

• **LAST TIME OUT:** Fighting Illini women's basketball fell to George Washington, 72-56, Sunday afternoon in the first road contest of the season. Freshman Brandi Beasley led Illinois with a career-high 16 points and matched her career-best with five assists. She also grabbed two rebounds and recorded one steal. Freshman Courtney Joens also stepped up, matching her career-best with 11 points on 3-for-5 shooting from beyond the arc.

• **SCOUTING SOUTH DAKOTA:** The Coyotes are 6-2 on the season, coming off of an overtime loss at Wyoming. South Dakota's other loss came to Arkansas in early November. The 2017 WNIT Champions, South Dakota returns seven letterwinners from that squad. The Coyotes' Allison Arens ranks 18th in the nation for her 21.1 points per game. Jaycee Bradley and Ciara Duffy also average double-digit scoring this season. South Dakota is averaging just 35.4 rebounds per game this season, and the Coyotes commit almost 16 turnovers per game.

FIGHTING ILLINI WOMEN'S BASKETBALL NOTES

QUICK FACTS

UNIVERSITY INFORMATION

Location	Urbana-Champaign, Ill.
Enrollment	44,942
Nickname	Fighting Illini
Founded	1867
Colors	Orange and Blue
Affiliation	NCAA Division I
Conference	Big Ten
Home Court (capacity)	State Farm Center (15,544)
President	Timothy L. Killeen
Chancellor	Robert J. Jones
Athletic Director	Josh Whitman
Senior Woman Administrator (SWA)	Maria Ochoa Woods
Ticket Office	217-333-3470

TEAM HISTORY

First Year	1974-75
Overall Record	598-624 (42 years)
Big Ten Record	233-377 (33 years)
State Farm Center Record	257-173 (30 years)
Years in NCAA (8)	1982, '86, '87, '97, '98, '99, '00, '03
Years in WNIT (8)	2001, '02, '05, '06, '07, '08, '10, '13
Big Ten Titles (1)	1997

2015-16 AT A GLANCE

2015-16 Overall Record	9-21
2015-16 Big Ten Record/Place	2-16/14th
2015-16 Postseason	None

2016-17 AT A GLANCE

Starters Returning/Lost	2/3
Letterwinners Returning/Lost	5/7
Newcomers in 2016-17	6

COACHING STAFF

Head Coach	Matt Bollant (Winona State '94)
Career Record	337-132 (14 seasons)
Record at Illinois	55-77 (4 seasons)
Assoc. Head Coach	LaKale Malone (Indiana '99)
Assistant Coach	Jody Martinez (Bethel '90)
Assistant Coach	Tianna Kirkland (Ferris State '02)
Video Coordinator	Mark Uitermarkt (2nd Season)
Athletic Trainer	Sam Laingen (4th Season)
Strength & Conditioning	Emily Esselman (1st Season)
Basketball Office Phone	217-333-8612

ATHLETICS COMMUNICATION

Women's Basketball SID	Jenny Dewar
Office Phone / Cell Phone	217-300-1148
	847-567-2487
Email	jdewar2@illinois.edu
Asst. Women's Basketball SID	Grace Duggan
Office Phone	217-300-1569
Email	gracedad@illinois.edu
Press Row Phone	217-333-1227
Mailing Address	Bielfeldt Athletic Building
	1700 South Fourth Street, Champaign, IL 61820
Website	www.fightingillini.com
Twitter	@IlliniWBB
Facebook	www.facebook.com/IlliniWBBasketball
Instagram	IlliniWBB

RADIO INFORMATION

Flagship Station	WDWS-AM 1400
Play-By-Play	Dave Loane
Analyst	Mike Koon

#ILLINI ON THE RUN

Illinois has seen several different trends pop up over the last few games.

- **Alex Wittinger** recorded five consecutive double-doubles in the first six games, a number that leads the Big Ten and is fifth in the nation.

- Wittinger is averaging 2.4 blocks per game this season, and recorded all of Illinois' rejections against Wake Forest. She has led the team in blocked shots in five games.

- As a team, the Illini have made all but two free throws in five of the last seven games. Illinois leads the Big Ten with a 75.5 free throw percentage, which is good for 32nd in the nation.

- Freshman **Brandi Beasley** and sophomore **Jaelyne Kirkpatrick** have each dished two or more assists in each of Illinois' last seven games.

- Illinois has had two or more players score in double-figures in six games this season, including a season-high five players in double-digits against both USC Upstate and Wake Forest. The performance against USC Upstate marks the first time five players have registered double-figures in a single game since Jan. 20, 2016 against Indiana.

- Illinois made a season-high eight three-pointers against USC Upstate this season. The Illini have knocked down four or more treys in all but one game this year.

- Illinois leads the Big Ten in three-point field goal percentage defense so far this year. The Illini have held five opponents to less than 27-percent shooting from beyond the arc, and allowed just one triple from Mercer in the contest.

BEASLEY IS KEY

Freshman **Brandi Beasley** has become a consistent force on the court for the Illini this season. Beasley has dished three or more assists in seven games this year, leading the team in dimes in five games. She currently has a team-leading 29 assists on the year.

She was the leading scorer for the Illini against George Washington, scoring 10 of Illinois' 15 points in the second quarter. She has reset her career-high scoring number in three games, and is among team leaders for her 8.3 points per game this year. Beasley has scored in double-digits in three games and earned her first career double-double against Wake Forest.

Beasley is also strong on the boards, she's second on the squad only to **Alex Wittinger** as she averages 6.5 rebounds per game.

JOENS FOR THREE

Freshman **Courtney Joens** has developed a habit of hitting three-pointers at just the right time this season. She has come hit two or more three-pointers in three games, and leads Illinois with 10 made this year. Joens has scored in double-figures off the bench three times this season.

CHART TOPPING

The Illini can be spotted at the top of the list in several categories this season, individually and as a team.

Category	National Rank	Big Rank
Blocked Shots (34)	70th	7th
Blocks per game (4.3)	83rd	5th
Fewest Fouls (137)	174th	4th
Fewest Turnovers (118)	138th	4th
FG Percentage Defense (.347)	43rd	4th
Free Throw Percentage (.755)	32nd	1st

Scoring Defense (58.6)	74th	4th
3FG Defense (.257)	33rd	1st
Turnovers per game (14.8)	91st	7th

Alex Wittinger		
Blocked Shots (19)	26th	2nd
Blocks per game (2.38)	35th	2nd
Double Doubles (5)	5th	1st
FG Made (49)	88th	11th
Rebounds (83)	21st	2nd
Rebounds per game (10.4)	23rd	2nd
Defensive Rebounds (50 / 6.3)		4th
Offensive Rebounds (33 / 4.1)		1st

Ali Andrews		
Free Throw Percentage (.857)	67th	3rd

Brandi Beasley		
Minutes Played (275:00)	111th	9th
Minutes per game (34.38)	105th	6th
Assists per game (3.6)	202nd	12th

GOING STREAKING

Sophomore **Alex Wittinger** opened the season posting five straight double-doubles in the first six games of the year. Wittinger's streak marks the second season in a row that Illinois has had a player record five consecutive double-doubles as Chatrice White also matched that number last season. Prior to White, the last time an Illini had recorded five in a row was during the 2010-11 campaign (Karisma Penn). Jenna Smith recorded seven-straight double-doubles at the end of the 2009-10 season.

2016-17 ILLINOIS BASKETBALL ROSTER

No.	Player	Pos.	Ht.	Elig.	Hometown/High School/Prev. College	Pronunciation
1	Brandi Beasley	G	5-7	Fr.	Memphis, Tenn./Ridgeway	
5	Cierra Rice	G	5-9	So.	Grosse Pointe, Mich./Grosse Point	SEE-air-uh
11	Cydnee Kinslow	F	6-2	r-Fr.	Oakley, Calif./Freedom/Pepperdine	sid-knee
12	Ashley McConnell	G	5-9	Sr.	Palatine, Ill./Fremd	
13	Petra Holešinská	G	5-9	Fr.	Vracov, Czech Republic/ Sportovní Ludvika Danká	Pet-RUH HOLE-eh-SHIN-ska
20	Sarah Overcash	F	6-1	Fr.	Chevy Chase, Md./St. John's College	
23	Jaelyne Kirkpatrick	G	5-7	So.	Oakville, Ontario/St. Ignatius of Loyola	JAY-lynn
25	Kennedy Cattenhead	G	5-10	r-Jr.	Bolingbrook, Ill./Bolingbrook	
30	Courtney Joens	G	5-10	Fr.	Iowa City, Iowa/City High	Jones
34	Alex Wittinger	F	6-1	So.	Delano, Minn./Delano	Witt-in-grr
45	Meagan McNicholas	G	5-10	Fr.	Rochester, Ill./Rochester	
50	Ali Andrews	F	6-2	Fr.	Lake in the Hills, Ill./Huntley	

Head Coach:	Matt Bollant (fifth season)
Associate Head Coach:	LaKale Malone (fifth season)
Assistant Coach:	Tianna Kirkland (fifth season)
Assistant Coach:	Jody Martinez (second season)
Director of Operations:	Tommy Brown (first season)
Video Coordinator:	Mark Uitermarkt (second season)
Athletic Trainer:	Sam Laingen (fifth season)
Strength Coach:	Emily Esselman (first season)

FIGHTING ILLINI WOMEN'S BASKETBALL NOTES

FIGHTING FRESHMEN

As expected, Illinois has seen major contributions from its freshmen to open the season. **Brandi Beasley**, **Ali Andrews** and **Petra Holešinská** have all played significant roles in the Illini starting lineup this year. **Sarah Overcash** and **Courtney Joens** have also made contributions on the court for the Illini so far.

The Illini freshmen are accounting for 29.5 points per game so far this year, good for more than 50-percent (50.3) of Illinois' scoring, led by Beasley and Holesinska who average 8.3 points per game.

Illinois has seen three freshmen score in double-digits in two games this season, against both Wake Forest and USC Upstate. Prior to this year, the last time an Illinois squad saw that kind of production from its freshmen was Nov. 17, 2013 in a 112-28 victory over Alcorn State.

D-FENSE

The Illini have held four opponents to less than 30-percent shooting from the floor this year, including Fort Wayne who shot just 25.6-percent. The last time an Illinois team held four or more opponents to worse than 30-percent shooting was during the 2009-10 campaign when the Orange and Blue held eight opponents shot below 30-percent.

Illinois held both Marshall and UAPB to less than 30-percent shooting from the floor in consecutive games to start the season. The Illini have not held consecutive opponents to less than 30-percent shooting since the 2013-14 season when the Orange and Blue held Alcorn State to 15.3-percent shooting (11/17/13) and followed that up by holding SIU to 22.6-percent from the floor (11/21/13).

Illinois held just one opponent to less than 30-percent shooting last season (Tennessee State, .221), and two opponents to less than 30-percent during the 2014-15 campaign (Southern, .269; Murray State, .275).

The Illini are holding opponents to just 34.6-percent shooting this season, which ranks fourth in the Big Ten and 43rd in the country.

ILLINI OFF THE BENCH

Illinois has seen impressive productions from its players off the bench so far this year. Redshirt junior **Kennedy Cattenhead** started the trend, coming off the bench to score 10 points in Illinois' season opener against Marshall. So far the Illini have seen double-digit production from at least one player off the pine in six of eight contests.

Illinois' bench is outscoring opponents by six points per game this year, averaging 17.9 points per game. Freshman **Petra Holešinská** is leading that charge, averaging 12 points per game when coming off the pine. Jaelyne Kirkpatrick posted 13 points off the bench against UAPB, but is a consistent part of the Illini starting lineup.

ON THE BOARDS

Illinois has been aggressive on the glass as of late, as the squad has grabbed 117 offensive rebounds through the first eight games. At this point last season, the Illini had tallied just 95 offensive boards.

Illinois tallied a season-high 20 offensive rebounds against Wake Forest, the most for an Illini team since grabbing 21 against Rutgers on Feb. 21, 2015.

PERFECT START

The Illini started the season strong from the foul line this season, as six players are shooting 70-percent or better so far. Freshman **Ali Andrews** has been the most impressive as she is 24-for-28 (.857) from the line this year, which ranks third in the Big Ten.

The Illini were on fire from the free throw line against UAPB, making 18-of-19 shots good for 94.7 percent shooting. The last time the Illini shot better than that from the charity stripe was Jan. 3, 2014 against Wisconsin, going 4-for-4. The Illini made 21-of-22 attempts (95.5-percent) at Wisconsin (2/14/08).

The Orange and Blue have shot 85-percent or better in four games this season, and lead the Big Ten with their .755 free throw shooting percentage, a number that sits 32nd in the nation.

WITTINGER'S HOT START

Illinois' leading scorer, sophomore **Alex Wittinger**, is off to a strong start to the season. She leads the Illini averaging 13.0 points per game, and posted a Big Ten leading five-straight double-doubles in Illinois' first six games this year. Wittinger has recorded a double-double in three of her four career 20+ point games and was just one rebound away from a double-double when she dropped 21 points at No. 5 Ohio State last season (2/21/16).

Wittinger has recorded multiple blocks in five of Illinois' games this season, and has carded multiple blocks and multiple steals in two of those five matchups. She has posted multiple blocks and multiple steals in four career games.

INSIDE THE NUMBERS

	ILL	SD
Points Per Game	58.6	71.8
Points Allowed Per Game	58.6	65.2
Scoring Margin	+0.0	+6.5
Field Goal %	.360	.453
3-pt Field Goals Made-Att.	44-164	68-192
3-pt Field Goal %	.268	.354
Free Throws Made-Att.	71-94	108-138
Free Throw %	.755	.783
Rebounds Per Game	39.9	35.4
Rebounding Margin	+2.4	+5.8
Fouls Per Game	17.9	21.25
Assists Per Game	10.6	14.4
Turnovers Per Game	14.8	15.9
Turnover Margin	+0.0	-1.6
Steals Per Game	6.4	7.6
Blocks Per Game	4.3	1.0

2016-17 BIG TEN STANDINGS

Pl.	Team	Big Ten	Pct.	Overall	Pct.
1.	Maryland	0-0	.000	8-0	1.000
2.	Michigan	0-0	.000	7-1	.875
	Northwestern	0-0	.000	7-1	.875
4.	Michigan State	0-0	.000	7-2	.778
5.	Penn State	0-0	.000	6-2	.750
6.	Iowa	0-0	.000	6-3	.667
	Ohio State	0-0	.000	6-3	.667
8.	Minnesota	0-0	.000	5-3	.625
9.	Indiana	0-0	.000	4-3	.571
10.	Purdue	0-0	.000	5-4	.556
11.	Illinois	0-0	.000	3-5	.375
	Nebraska	0-0	.000	3-5	.375
13.	Wisconsin	0-0	.000	3-6	.333
14.	Rutgers	0-0	.000	2-6	.250

THIS WEEK IN THE BIG TEN

TUESDAY, DEC. 6

Indiana at North Texas, 11:30 AM
 Towson at Maryland, 6 PM
 Central Michigan at Purdue, 6 PM
 Michigan State at Quinnipiac, 6 PM
 Drake at Nebraska, 7 PM
 Idaho State at Wisconsin, 7 PM
 Minnesota at New Mexico, 8 PM

WEDNESDAY, DEC. 7

Penn State at Holy Cross, 6 PM
 Southern at Ohio State, 6 PM
 Rutgers at St. John's, 6 PM
 Illinois at South Dakota, 6 PM
 Iowa State at Iowa, 7 PM

THURSDAY, DEC. 8

Saint Peter's at Maryland, 5:30 PM
 Purdue at Ball State, 6 PM
 Northern Kentucky at Indiana, 6 PM
 Michigan State at Rhode Island, 6 PM
 Mississippi Valley St. at Wisconsin, 7 PM
 Army West Point at Minnesota, 8 PM

FRIDAY, DEC. 9

Michigan at San Diego State, 11 AM
 Robert Morris at Iowa, 7 PM
 San Jose State at Nebraska, 7 PM

SATURDAY, DEC. 10

Pittsburgh at Penn State, 1 PM
 Rutgers at Houston, 5 PM

All times Central

2016-17 STARTING LINEUPS

Opponent	G	G	G	F	F	Record
Drury #	Beasley	Kirkpatrick	Rice	Andrews	Wittinger	---
Marshall	Beasley	Kirkpatrick	Rice	Andrews	Wittinger	0-1
UAPB	Beasley	Holešinská	Rice	Andrews	Wittinger	1-0
Memphis	Beasley	Kirkpatrick	Rice	Andrews	Wittinger	1-1
USC Upstate	Beasley	Kirkpatrick	Holešinská	Andrews	Wittinger	1-0
Mercer	Beasley	Kirkpatrick	Holešinská	Andrews	Wittinger	1-1
Wake Forest	Beasley	Kirkpatrick	Holešinská	Cattenhead	Wittinger	0-1
Fort Wayne	Beasley	Kirkpatrick	Holešinská	Cattenhead	Wittinger	1-1
George Washington	Beasley	Kirkpatrick	Holešinská	Cattenhead	Wittinger	1-2
South Dakota						
Wright State						
FGCU						
Central Michigan						
Ohio						
Iowa						
Michigan State						
Rutgers						
Iowa						
Nebraska						
Minnesota						
Ohio State						
Maryland						
Penn State						
Michigan						
Purdue						
Maryland						
Penn State						
Northwestern						
Wisconsin						
Indiana						

FIGHTING ILLINI WOMEN'S BASKETBALL NOTES



HEAD COACH MATT BOLLANT 52-72 // Fifth Season

Now entering his fifth season as head coach of the University of Illinois, Matt Bollant has continued to revive a dormant Illini program after being a part of the best seasons in program history at each of his other four collegiate coaching stops. In just his first season with the program, Bollant led the Orange and Blue to the postseason for the first time in three years in 2013 and Illinois finished with a winning Big Ten record for the first time in 10 seasons. He also has spearheaded the composition of back-to-back top-25 recruiting classes during his first two recruiting years in Champaign.

Despite taking a step back in wins and losses, the Illini program began to change its culture in the 2013-14 season. The values of hard work, fundamentals, attention to detail and team unity began to pay off as Illinois was much more competitive down the stretch, including a 61-51 win at Michigan State. The Orange and Blue also broke the school record for three-pointers made with 202 and finished eighth and 13th nationally in steals and turnover margin, respectively. On the recruiting front, two Illini commits earned All-America honors, as Chatrice White became only the second McDonald's All American in Illinois program history and Amarah Coleman earned honorable mention WBCA All-America honors.

The 2014-15 season saw the Illini post a 9-3 non-conference record, starting the season with a 5-0 record to mark the best non-conference record to start a season that the program has seen in 12 years. Freshman Chatrice White proved to be a weapon on the floor as she broke the Illinois Freshman All-Time Scoring and Blocked Shots records. With Bollant's coaching, the Illini earned a win over No. 9-ranked Kentucky at the Paradise Jam, and continued to upset No. 17 Iowa later in the season. Defensively, Illinois ranked among the top-15 in the nation, averaging more than 11 steals per game. Seniors Ivory Crawford and Brittany Carter played a major role in those numbers as they each ranked among the top-40 in the nation, individually. Bollant saw seven of his student-athletes earn All-Big Ten Academic honors following the season, proving that the program is headed in the right direction both on and off the court. Additionally, Bollant was recognized as the 2015 Kay Yow Heart of a Coach Award recipient following the season.

In 2012-13, the Illini reached the Women's NIT quarterfinals and saw attendance at the Assembly Hall increase 80 percent from 2011-12 to an average of 1,926, the third-highest average attendance increase in Division I women's basketball. Illinois also defeated three ranked opponents: No. 6 Georgia, No. 24 Iowa and No. 24 Ohio State, with the win over the Buckeyes snapping their 31-game home winning streak. The win over the Hawkeyes also broke an eight-game skid against Iowa.

The Illini shattered the Big Ten record for steals, steals per game and turnovers forced in a conference season, and also broke school records for steals, turnovers forced and three-pointers made in a season. Senior forward Karisma Penn became one of the country's most dominant post players, averaging 19.2 points, 9.6 rebounds, 2.9 steals and 2.2 blocked shots per game with 50.6 percent field-goal shooting, all of which ranked in the top five in the Big Ten. She was named an Associated Press honorable mention All-American and also earned two national player of the week honors. Senior guard Adrienne Godbold earned Big Ten Defensive Player of the Year honors after posting 55 steals in 16 conference games and routinely guarding opponents' top offensive players.

Bollant's team continued to shatter school records during the 2015-16 season as the Illini made 224 three-point field goals to reset the school record for the fourth consecutive season. Senior Kyle Simmons was among Big Ten Conference leaders for her 77 threes on the year. Bollant continued to work with Chatrice White, helping her to an outstanding sophomore season in which she became the second-fastest Illini to score 1,000 career points (61 games). White led the Big Ten and was among the top-15 in the country for her 18 double-doubles on the year, and also earned Second Team All-Big Ten honors. Bollant's recruiting talents were once again on display as freshmen Cierra Rice and Alex Wittinger came in with a bang. The two combined for four Big Ten Freshman of the Week honors throughout the season, and both earned spots in the Illini starting five. Although Rice was sidelined by injury prior to conference play, Wittinger went on to earn Big Ten All-Freshman recognition at the conclusion of the year. As a team, Bollant guided the Illini to a 4-0 start to the season for the

second-straight year. In that stretch, his team earned back-to-back 90-point victories over UT Martin and Tennessee State, the first time an Illinois team has done so since 2013-14. Illinois' 55-point victory over Tennessee State marks the fourth largest margin of victory for an Illini team in program history. The Orange and Blue also handed Bollant his 50th win at Illinois in a 74-69 defeat of Central Michigan. Prior to the 2015-16 season, Bollant ranked 10th among active head coaches in the country for his career winning percentage. Not only that, but Bollant has a 100-percent graduation rate in his 14 years of head coaching.

Bollant came to Illinois after a successful five-year stint at Green Bay, where he guided the Phoenix to five straight Horizon League titles and four straight trips to the NCAA Tournament. He led Green Bay to a 148-19 record (.886 winning percentage) in five years, including an 85-5 mark in the Horizon League. The Phoenix were a combined 65-4 in his final two seasons in Green Bay, going 34-2 in 2010-11. Green Bay was ranked as high as No. 9 in the national polls in both 2010-11 and 2011-12, finishing the 2011 season with that ranking. In 2010-11, Green Bay went 4-0 against the Big Ten, defeating Minnesota, Wisconsin, Penn State and Michigan State. In 2011-12, the Phoenix downed Illinois 82-62 at the San Juan Shootout and had triumphs over No. 25 Georgia Tech - a team that reached the Sweet 16 - Marquette and Wisconsin.

Green Bay had four wins over ranked opponents in the last four seasons, including a 65-56 victory over No. 12/13 Michigan State in the 2011 NCAA second round. The Phoenix entered the tournament as a No. 5 seed, defeating the No. 4 Spartans to reach the Sweet 16 for the first time school history. Green Bay also defeated No. 21 Virginia 69-67 in the first round of the 2010 tournament.

Green Bay lost to Iowa State in Ames by just four points (60-56) in the NCAA second round in 2010. In 2012, Green Bay returned to the site for NCAA first and second round play. Entering the tournament as the No. 10 seed, the Phoenix defeated the No. 7 seed Cyclones on the their home floor, 71-57, before seeing a comeback fall short against No. 2 seed Kentucky (65-62) in the second round.

Bollant was named the Horizon League Coach of the Year for the fourth time in 2012, guiding Green Bay to a 31-2 record despite losing Horizon League co-Players of the Year Kayla Tetschlag and Celeste Hoewisch. Senior Julie Wojta was a finalist for the Wade Trophy and earned WBCA Second Team All-America honors.

Bollant has an .837 winning percentage as a collegiate coach, including a 134-36 record at Bryan (Tenn.) College from the NAIA level. He guided the Lady Lions to four straight NAIA Tournaments, reaching the Sweet 16 in 2005-06. Bryan reached the top 25 rankings each of his last four years, reaching as high as No. 11 at the end of the 2006-07 season. Bollant coached four Appalachian Athletic Conference Players of the Year.

Bollant was as an assistant coach under Kathi Bennett, the daughter of former Wisconsin men's coach Dick Bennett, for five seasons before becoming a collegiate head coach. He served three years under Bennett at Evansville, helping the Purple Aces to the 1999 NCAA Tournament, then followed her to Indiana, where the Hoosiers became the lowest seed (5) to win the Big Ten Tournament in 2002.

A 1994 graduate of Winona State University with a degree in business education, Bollant received a master's degree in education from American Intercontinental University. He served as both the varsity and junior varsity head coach of Depper Life Academy in the Philippines and spent three years as the head coach at Tigerton (Wis.) High School, guiding the Tigers to a 63-10 record and to three Central Wisconsin Conference Small School titles from 1994-97.

ASSOCIATED PRESS POLL (Dec. 5)

No.	School	Record	Pts	Prev.
1.	UConn (18)	7-0	809	2
2.	Notre Dame (15)	8-0	807	1
3.	Baylor	9-1	750	4
4.	Maryland	8-0	732	5
5.	Mississippi St.	8-0	668	6
6.	South Carolina	6-1	660	3
7.	Florida St.	8-1	613	8
8.	Louisville	7-2	574	7
9.	UCLA	6-1	564	10
10.	Stanford	8-1	525	11
11.	Washington	8-1	487	13
12.	Ohio St.	6-3	403	9
13.	West Virginia	9-0	401	16
14.	Miami	7-1	398	18
15.	Kentucky	6-2	338	17
16.	DePaul	5-2	252	15
17.	Texas	2-4	249	14
18.	Colorado	8-0	231	21
19.	Oklahoma	5-2	87	12
20.	Syracuse	6-3	161	20
21.	Duke	9-1	158	NR
22.	South Florida	6-0	109	NR
23.	Florida	6-2	105	19
24.	Oregon St.	5-1	70	24
25.	Virginia Tech	7-0	66	NR

Others receiving votes: South Florida (4-0) 77; Michigan (6-1) 74; California (6-0) 55; Georgia Tech (6-0) 34; Virginia Tech (6-0) 32; Wisconsin-Green Bay (4-1) 28; South Dakota State (4-1) 20; Oregon (6-1) 14; Auburn (6-1) 10; Oklahoma State (6-0) 9; Colorado (6-0) 8; Duke (7-1) 6; Temple (3-1) 6; Marquette (5-1) 5; Missouri (4-2) 3; Gonzaga (4-2) 2; Pittsburgh (6-0) 2; Texas-Arlington (5-0) 1; Tulane (4-1) 1; Virginia (5-1) 1.

USA TODAY COACHES POLL (Nov. 29)

No.	School	Record	Pts	Prev.
1	Notre Dame (18)	6-0	779	1
2	Connecticut (11)	4-0	770	2
3	South Carolina (3)	5-0	751	3
4	Baylor	7-1	680	6
5	Maryland	6-0	679	5
6	Mississippi State	7-0	624	7
7	Louisville	6-1	614	4
8	Florida State	6-1	570	9
9	UCLA	5-1	520	10
10	Ohio State	5-2	517	8
11	Stanford	6-1	469	11
12	Oklahoms	5-0	452	12
13	Washington	6-1	412	13
14	DePaul	5-1	334	17
15	Texas	2-2	326	14
16	Miami (Fla.)	5-1	255	22
17	West Virginia	7-0	244	23
18	Oregon State	3-1	191	15
19	Texas A&M	5-0	156	25
20	Kentucky	5-1	140	24
21	Syracuse	4-3	126	18
22	Michigan State	6-1	120	19
23	Florida	4-1	105	20
24	Arizona State	3-2	90	21
25	Tennessee	3-2	88	16

Others receiving votes: South Florida 77, Michigan 74, California 55, Georgia Tech 34, Virginia Tech 32, Green Bay 28, South Dakota State 20, Oregon 14, Auburn 10, Oklahoma State 9, Colorado 8, Duke 6, Temple 6, Marquette 5, Missouri 3, Gonzaga 2, Pittsburgh 2, UT-Arlington 1, Virginia 1, Tulane 1

FIGHTING ILLINI WOMEN'S BASKETBALL NOTES

HOLEŠINSKÁ'S CAREER DAYS

Illini freshman **Petra Holešinská** had a breakout performance against Memphis, contributing 18 points on 6-of-12 shooting, including 3-for-6 from three-point range, in a season-high 23 minutes. Holešinská recorded more points in the first half against Memphis (13) than she did in her first two games combined (8). She also grabbed a career-best four steals in the contest.

She saw even more success in Illinois' victory over Fort Wayne as the Czech Republic, native, knocked down a career-best five three-pointers on 5-of-7 shooting from distance. She led the squad with 17 points in the contest, one short of her career high.

RICE'S RETURN

Sophomore **Cierra Rice** returned this season after being sidelined just before Big Ten play last year. Rice was off to a strong start last year as she had record two 20-point games in just 10 appearances. Rice averaged 13.6 points per game, dished 24 assists and swiped 11 steals last year. She played a career-high 40 minutes in her 2016-17 debut, contributing five points, four rebounds, an assist and two steals.

She put up double-figures in Illinois' victory over UAPB, knocking down nine of her 11 points in the fourth quarter to lift Illinois to victory. She also grabbed six rebounds and dished an assist in the matchup. Rice's return was short-lived, however, as she suffered a foot injury against Memphis that currently has her sidelined.

MCCONNELL'S SENIOR SEASON

Senior **Ashley McConnell** is Illinois' only senior this season. In her time wearing the Orange and Blue, McConnell has made 67 appearances and earned eight starts. She has dished 37 assists and grabbed 24 steals while scoring 102 points.

WITTINGER'S WAYS

Now in her sophomore season, **Alex Wittinger** had quite the freshman debut. The Delano, Minnesota, native closed the season among Big Ten leaders for her 3.3 offensive rebounds and her 1.8 blocks per game. Wittinger was named Big Ten Freshman of the Week twice last season, and was named to the Big Ten All-Freshman team following the year. Wittinger grabbed 193 rebounds last season, good for fifth all-time among Illinois freshmen, and her 50 rejections rank third on Illinois' all-time freshman records list. Wittinger averaged 10 points and 6.9 rebounds per game last season, scoring a career-high 27 points and grabbing a personal-best 15 rebounds at Minnesota. She posted four double-doubles on the season, and is looking to improve on those numbers this year.

EXHIBITION RECAP

Several Illini saw their first action in the State Farm Center as freshmen **Ali Andrews** and **Brandi Beasley** both earned spots among the starting lineup. It was a young group as the freshmen were joined in the lineup by sophomores **Alex Wittinger**, **Jaelyne Kirkpatrick** and **Cierra Rice**. Freshmen **Petra Holešinská**, **Sarah Overcash** and **Courtney Joens** also made their first appearances for the Illini in a 66-60 loss to Drury University. Wittinger was in double-figures before the end of the game as she put up 15 points and 13 rebounds before the final period. She also finished with two blocks and three steals. Beasley totaled 10 points, eight rebounds and four assists, while Andrews was also in double-figures, racking up 13 points. She added two blocks and three steals to her line. Rice tallied 10 points in her return for the Illini, and Kirkpatrick finished with eight points and four assists.

NEW LOOK FOR THE ILLINI

Coming off of a 9-21 season in 2015-16, the 2016-17 Illini squad will have a new look as the team welcomes six new players in **Ali Andrews**, **Brandi Beasley**, **Petra Holešinská**, **Courtney Joens**, **Cydnee Kinslow** and **Sarah Overcash**. Senior **Ashley McConnell** and redshirt junior **Kennedy Cattenhead** will look to lead the young squad, also composed of sophomores **Jaelyne Kirkpatrick**, **Cierra Rice** and **Alex Wittinger**.

CATTENHEAD STEPPING UP

Redshirt junior **Kennedy Cattenhead** will look to continue her improvements from last season. After averaging just 1.1 points per game in her freshman year, Cattenhead showed major improvements last season. She averaged almost seven

points per game and earned 27 starts for the Orange and Blue. Cattenhead was an important asset for the Illini as she also recorded 28 steals. After recording just seven assists in her freshman year, Cattenhead dished out 57 dimes last year.

BTN APPEARANCES

The Big Ten Conference announced game times and television information for the conference portion of the 2016-17 women's basketball season on Monday, Sept. 26, completing Illinois' 2016-17 schedule. All of Illinois' Big Ten contests will be available on the Big Ten Network or BTN Plus. Illinois will open conference play live on BTN Wednesday, Dec. 28, against Iowa at 3 p.m. CT at State Farm Center. The Illini will have two other televised home contests: Saturday, Jan. 7 against Rutgers, and Saturday, Feb. 25 against Indiana. Illinois will appear on BTN Plus for the remainder of the conference schedule.

SET FOR A CHALLENGING SCHEDULE

The 2016-17 season will be an exciting one as the Illini are set to face a challenging slate of non-conference opponents before opening conference play in late December. Illinois will face 19 opponents who are coming off of postseason appearances, including 2016 WNIT Champion South Dakota. The Illini will take on three opponents for the first time in program history, beginning with Marshall (Nov. 11). The Orange and Blue also matched up against USC Upstate (Nov. 20) and Mercer (Nov. 22) for the first time. Meeting both teams for just the second time in program history, Illinois will travel to the 2016 Atlantic 10 Conference Tournament Champion George Washington (Dec. 4) and WNIT Champion South Dakota (Dec. 7). The nonconference slate will conclude with another set of road games as UI will head to Central Michigan (Dec. 19) and Ohio (Dec. 22) before opening Big Ten play.

Illinois will host a competitive slate of Big Ten opponents this season, including Iowa, (Dec. 28), Rutgers (Jan. 7), Nebraska (Jan. 15) and 2016 Big Ten Tournament Champion, Maryland (Jan. 26). The Orange and Blue will have several road contests during the month of January, including trips to Michigan State (Jan. 1), Iowa (Jan. 11), Minnesota (Jan. 18), Ohio State (Jan. 22) and Penn State (Jan. 29). The squad will return home in the month of February, with back-to-back games against Michigan (Feb. 1) and Purdue (Feb. 5). After a road game at Maryland (Feb. 9), the Illini will host Penn State on Feb. 14. Illinois will conclude regular season travel with games at Northwestern (Feb. 19) and Wisconsin (Feb. 22) before hosting Indiana in the regular season finale on Feb. 25.

BOLLANT SIGNS THREE FOR 2017-18

The Illini signed three highly-ranked recruits to the 2017-18 roster this week. Illinois will welcome the following players to the Illini family next season.

Channise Lewis // 5-8 // G // Miami, Fla. // Miami Country Day School

- Ranked the No. 16 guard in the country and No. 77 overall by ESPN
- Two-time FABC 3A All-State first team honoree
- 2016 Miami Herald All-Dade 4A-2A Player of the Year
- Led Miami Country Day to three consecutive Florida Class 3A State Championship titles
- Led her high school to the 2015 Dick's Girls High School Basketball National Championship
- 2015-16 USA Today American Family Insurance ALL-USA Florida Girls Basketball Team
- Chose Illinois over Virginia Tech and Purdue, among others

Addaya Moore // 6-0 // G // Granite City, Ill. // Granite City High School

- Led Granite City averaging 19 points, 6.8 rebounds and 2.7 blocks per game in her junior season
- Earned all-tournament honors at Orchard Farm, Jerseyville and Carrollton
- Chose Illinois over Clemson, Columbia and Marquette, among others

Jnaya Walker // 6-1 // F // Bolingbrook, Ill. // Bolingbrook

- No. 19 ranked forward by ESPN
- 2016 IBCA 3A/4A All-State honoree
- Averaged almost 14 points per game and five rebounds for Bolingbrook in her junior year
- Chose Illinois over Nebraska and Wisconsin, among others

WOMEN'S BASKETBALL MEDIA AVAILABILITY SCHEDULE

Date	Time
Fighting Illini Women's Basketball welcomes members of the media to the Ubben Practice Facility for interviews with players and head coach Matt Bollant prior to practice on the days listed above.	
Please player send interview requests to JDewar2@illinois.edu by noon on the scheduled media day to ensure their availability.	
Practice will be open following media availability on the days listed above.	
In addition to media days listed above, Coach Bollant and selected players will hold a press conference following each contest.	

FIGHTING ILLINI WOMEN'S BASKETBALL NOTES

2016-17 Illini Women's Basketball Illinois Combined Team Statistics (as of Dec 04, 2016) All games

RECORD:	OVERALL	HOME	AWAY	NEUTRAL
ALL GAMES	3-5	3-4	0-1	0-0
CONFERENCE	0-0	0-0	0-0	0-0
NON-CONFERENCE	3-5	3-4	0-1	0-0

#	Player	gp-gs	min	avg	Total	3-Point	F-Throw	Rebounds		pf	dq	a	to	blk	stl	pts	avg
					fg-fga	fg%	3fg-fga	3fg%	ft-fga	ft%	off	def	tot	avg			
35	Alex Wittinger	8-8	252	31.5	49-103	.476	1-3	.333	5-7	.714	33	50	83	10.4	20	1	7
01	Brandi Beasley	8-8	275	34.4	29-83	.349	5-22	.227	3-4	.750	9	43	52	6.5	18	0	29
13	Petra Holesinska	8-6	185	23.1	25-67	.373	9-33	.273	7-8	.875	1	25	26	3.3	20	0	2
25	Kennedy Cattenhead	8-3	191	23.9	25-57	.439	6-18	.333	9-17	.529	14	22	36	4.5	15	0	6
50	Ali Andrews	8-5	170	21.3	10-51	.196	4-17	.235	24-28	.857	13	18	31	3.9	19	0	5
30	Courtney Joens	8-0	94	11.8	16-41	.390	10-26	.385	4-6	.667	8	5	13	1.6	14	0	4
23	Jaelyne Kirkpatrick	8-7	264	33.0	12-43	.279	6-25	.240	10-12	.833	3	14	17	2.1	19	0	26
05	Cierra Rice	3-3	79	26.3	6-28	.214	1-11	.091	5-5	1.000	3	9	12	4.0	6	0	4
20	Sarah Overcash	8-0	45	5.6	3-10	.300	0-0	.000	4-7	.571	6	6	12	1.5	3	0	1
12	Ashley McConnell	8-0	44	5.5	2-9	.222	2-9	.222	0-0	.000	0	1	1	0.1	3	0	1
45	Meagan McNicholas	1-0	1	1.0	0-0	.000	0-0	.000	0-0	.000	0	0	0	0.0	0	0	0
Team											24	12	36				4
Total.....		8	1600		177-492	.360	44-164	.268	71-94	.755	114	205	319	39.9	137	1	85
Opponents.....		8	1600		159-460	.346	36-140	.257	115-152	.757	105	195	300	37.5	114	-	60

TEAM STATISTICS

	ILL	OPP
SCORING	469	469
Points per game	58.6	58.6
Scoring margin	+0.0	-
FIELD GOALS-ATT	177-492	159-460
Field goal pct	.360	.346
3 POINT FG-ATT	44-164	36-140
3-point FG pct	.268	.257
3-pt FG made per game	5.5	4.5
FREE THROWS-ATT	71-94	115-152
Free throw pct	.755	.757
F-Throws made per game	8.9	14.4
REBOUNDS	319	300
Rebounds per game	39.9	37.5
Rebounding margin	+2.4	-
ASSISTS	85	60
Assists per game	10.6	7.5
TURNOVERS	118	118
Turnovers per game	14.8	14.8
Turnover margin	+0.0	-
Assist/turnover ratio	0.7	0.5
STEALS	51	54
Steals per game	6.4	6.8
BLOCKS	34	30
Blocks per game	4.3	3.8
ATTENDANCE	9107	466
Home games-Avg/Game	7-1301	1-466
Neutral site-Avg/Game	-	0-0

Date	Opponent		Score	Att.
11/11/16	MARSHALL	L	53-55	969
11/13/16	UAPB	W	70-58	1180
11/17/16	MEMPHIS	L	54-64	2358
11/20/16	USC UPSTATE	W	77-57	1133
11/22/16	MERCER	L	33-51	1051
11/30/16	WAKE FOREST	L	70-79	1243
12/2/16	FORT WAYNE	W	56-33	1173
12/4/16	at GW	L	56-72	466

* = Conference game

Score by Periods	1st	2nd	3rd	4th	Totals
Illinois	126	107	96	140	469
Opponents	111	128	118	112	469

2016-17 GAME-BY-GAME TEAM COMPARISON

Opponent	1st	2nd	3rd	4th	OT	Score	Margin	Tot. FG	FG%	3-PT FG	3-FG %	Free Throws	FT %	Rebs.	Assists	TO	Blocks	Steals	Fouls
Marshall	17 / 4	10 / 23	14 / 16	12 / 12		53 / 55	-2	19-60 / 16-55	.317 / .291	4-16 / 5-24	.250 / .208	11-16 / 18-29	.688 / .621	39 / 42	6 / 3	17 / 21	4 / 10	10 / 8	23 / 18
UAPB	19 / 18	14 / 17	16 / 16	21 / 7		70 / 58	+12	24-59 / 20-71	.407 / .282	4-18 / 8-23	.222 / .348	18-19 / 10-16	.947 / .625	45 / 38	11 / 5	21 / 17	6 / 3	10 / 12	15 / 21
Memphis	18 / 21	9 / 14	8 / 8	19 / 21		54 / 64	-10	21-60 / 19-51	.350 / .373	5-18 / 5-13	.278 / .385	7-8 / 21-24	.875 / .875	36 / 34	12 / 10	16 / 14	7 / 2	8 / 8	18 / 13
USC Upstate	16 / 11	20 / 16	19 / 14	22 / 16		77 / 57	+20	30-71 / 22-57	.423 / .386	8-25 / 2-13	.320 / .154	9-10 / 11-16	.900 / .688	49 / 28	17 / 8	9 / 11	4 / 0	4 / 2	14 / 14
Mercer	5 / 13	11 / 10	10 / 15	7 / 13		33 / 51	-18	13-57 / 19-66	.228 / .288	3-31 / 1-16	.097 / .063	4-6 / 12-18	.667 / .667	47 / 42	6 / 9	21 / 6	3 / 1	0 / 10	20 / 11
Wake Forest	25 / 16	16 / 18	11 / 23	18 / 22		70 / 79	-9	26-67 / 29-62	.388 / .468	6-20 / 5-18	.300 / .278	12-14 / 16-18	.857 / .889	43 / 31	10 / 10	13 / 8	4 / 5	4 / 6	16 / 13
Fort Wayne	16 / 5	12 / 12	11 / 7	17 / 9		56 / 33	+23	22-60 / 10-39	.367 / .256	7-20 / 2-11	.350 / .182	5-10 / 11-15	.500 / .733	35 / 37	13 / 4	8 / 23	4 / 2	8 / 3	17 / 13
George Washington	10 / 23	15 / 18	7 / 19	24 / 12		56 / 72	-16	22-58 / 24 - 59	.379 / .407	7-16 / 8-22	.438 / .364	5-11 / 16-16	.455 / 1.00	25 / 48	10 / 11	13 / 18	2 / 7	7 / 6	14 / 11

Rankings are AP/Coaches on date of game // Totals are displayed in the ILLINOIS / OPPONENT format

Double-Doubles	2016-17	Career
Alex Wittinger	5	9
Brandi Beasley	1	1
Double-Digit Scoring Games	2016-17	Career
Alex Wittinger	6	19
Cierra Rice	1	10
Kenedy Cattenhead	4	13
Petra Holesinska	3	3
Brandi Beasley	3	3
Courtney Joens	3	3
Jaelyne Kirkpatrick	1	2
Ali Andrews	1	1
Ashley McConnell	0	1
20+ Point Games	2016-17	Career
Cierra Rice	0	2
Alex Wittinger	1	4
30+ Point Games	2016-17	Career
Double-Digit Rebound Games	2016-17	Career
Alex Wittinger	5	11
Brandi Beasley	1	1

2016-17 ILLINOIS' RECORD WHEN...

Overall record	3-5	Illini out-rebound opponent	2-3
Big Ten record	0-0	Teams have equal number of rebounds	0-0
Record at home	3-4	Opponents out-rebound Illini	1-2
Record on road	0-1	Illini have fewer turnovers than opponent	2-2
Record in neutral-site games	0-0	Teams have same number of turnovers	0-0
Record vs. AP-ranked teams	0-0	Illini have more turnovers than opponent	1-3
Record when on TV	0-0	Wearing white uniforms	3-3
Coming off a win	0-3	Wearing gray uniforms	0-1
Coming off a loss	3-1	Wearing blue uniforms	0-1
Scoring 80+ points	0-0	Wearing orange uniforms	0-0
Scoring 70-79 points	2-1	Wearing pink uniforms	0-0
Scoring 60-69 points	0-0	When leading at halftime	2-1
Scoring less than 60 points	1-4	When tied at halftime	0-1
Giving up 80+ points	0-0	When trailing at halftime	1-3
Giving up 70-79 points	0-2	When Illini shoot more FTs than opponent	1-0
Giving up 60-69 points	0-1	When Illini shoot fewer FTs than opponent	2-5
Giving up 50-59 points	2-2	When teams shoot same number of FTs	0-0
Giving up less than 50 points	1-0	Game goes to overtime	0-0
Shooting 55% FGs or better	0-0	Margin is five points or less	0-1
Shooting 50-54% FGs	0-0	Margin is 6-10 points	0-2
Shooting 45-49% FGs	0-0	Margin is 11-15 points	1-0
Shooting 40-44% FGs	2-0	Margin is 16-20 points	1-2
Shooting 30-39% FGs	1-4	Margin is 21+ points	1-0
Shooting below 30% FGs	0-1	Playing in November	2-4
Opponents shoot 50% FGs or better	0-0	Playing in December	1-1
Opponents shoot 45-49% FGs	0-2	Playing in January	0-0
Opponents shoot 40-44% FGs	0-1	Playing in February	0-0
Opponents shoot 35-39% FGs	1-1	Playing in March	0-0
Opponents shoot under 35% FGs	2-2	In day games (start before 5 PM)	2-3
Shoots better than opponent	3-1	In night games (start 5 PM or later)	1-2
Shoots worse than opponent	0-4		

2016-17 EXPANDED SCHEDULE/RESULTS

DATE	OPPONENT	RESULT	SCORE	RECORD	BIG RECORD	ATTENDANCE	HIGH POINTS	HIGH REBOUNDS	HIGH ASSISTS
11/11	Marshall	L	55-53	0-1		969	Wittinger (15)	Wittinger (8)	Wittinger/Rice (2)
11/13	UAPB	W	70-58	1-1		1180	Wittinger (23)	Wittinger (12)	Kirkpatrick/Beasley (3)
11/17	Memphis	L	64-54	1-2		2358	Holesinska (18)	Wittinger (12)	Beasley (5)
11/20	USC Upstate	W	77-57	2-2		1133	Andrews (15)	Wittinger(13)	Kirkpatrick (6)
11/22	Mercer	L	51-33	2-3		1051	Wittinger (12)	Wittinger (16)	Beasley (3)
11/30	Wake Forest	L	79-70	2-4		1243	Cattenhead (16)	Beasley (11)	Kirkpatrick (5)
12/2	Fort Wayne	W	56-33	3-4		1173	Holesinska (17)	Wittinger (9)	Beasley (5)
12/4	George Washington	L	72-56	3-5		466	Beasley (16)	3 Players (3)	Beasley (5)

2016-17 SPECIALTY STATS

	OPPONENT	Pts in Paint (ILL-Opp.)	Pts off TO (ILL-Opp.)	2nd Chance Pts (ILL-Opp.)	Fast Break Pts (ILL-Opp.)	Bench Pts (ILL-Opp.)	Largest Lead	Largest Deficit	Lead Changes	Ties
11/11	Marshall	22 - 18	17 - 22	13 - 8	2 - 2	17 - 9	13	6	7	5
11/13	UAPB	26 - 12	13 - 10	19 - 10	4 - 0	17 - 16	12	6	9	8
11/17	Memphis	30 - 28	17 - 19	13 - 6	6 - 8	29 - 12	N/A	18	0	2
11/20	USC Upstate	32 - 20	17 - 13	22 - 9	2 - 0	26 - 20	23	N/A	0	0
11/22	Mercer	8 - 14	5 - 19	10 - 12	0 - 6	7 - 5	N/A	18	0	0
11/30	Wake Forest	20 - 36	8 - 22	13 - 16	4 - 0	13 - 2	13	9	1	3
12/2	Fort Wayne	24 - 14	24 - 2	10 - 9	2 - 0	10 - 9	26	N/A	0	0
12/4	George Washington	14 - 24	13 - 10	3 - 19	4 - 6	24 - 22	2	29	1	0
Totals		176 - 166	114 - 117	93 - 77	24 - 22	143 - 95	23	18	9	8
Average		22 - 20.75	14.25 - 14.63	11.63 - 9.63	3.0 - 2.75	17.875 - 11.875				
Margin		+1.25	-0.38	+2.0	+0.25	+6.0				

THE LAST TIME...

Illinois scored 100 points or more	Nov. 17 2013 vs. Alcorn State (Illinois 112, Alcorn State 28)
Illinois scored 90 points or more	Nov. 24, 2015 vs. Tennessee State (Illinois 98, TSU 43)
Illinois scored 50 points or less	Feb. 24, 2016 vs. #20 Michigan State (Michigan State 71, Illinois 43)
Illinois scored 40 points or less	Jan. 12, 2009 vs. Ohio State (Ohio State 67, Illinois 35)
Illinois gave up 100 points or more	Feb. 21, 2016, 117, #5 Ohio State (Ohio State 117, Illinois 74)
Illinois gave up 90 points or more	Jan. 20, 2014 at Ohio State (Illinois 64, Ohio State 90)
Illinois gave up 40 points or less	Nov. 13, 2015 vs. Chicago State (Illinois 67, Chicago State 36)
Illinois won by 40+ points	Nov. 24, 2015 vs. Tennessee State (Illinois 98, TSU 43)
Illinois won an overtime game	Jan. 26, 2012 at Michigan State (Illinois 71, Michigan State 62 [OT])
Illinois lost an overtime game	Nov. 29, 2014 vs. Oklahoma (Oklahoma 78, Illinois 76 [OT])
Illinois made 10 or more three-pointers	Feb. 17, 2016 at Wisconsin (Illinois 76, Wisconsin 56)
An Illinois opponent made 10 or more three-pointers	Feb. 21, 2016, 16, #5 Ohio State (Ohio State 117, Illinois 74)
An Illinois player scored 30+ points	Feb. 7, 2016, Chatrice White, 35, at Michigan (Michigan 96, Illinois 83)
An Illinois player scored 40+ points	Jan. 14, 1996, Ashley Berggren, 43 at Minnesota (Illinois 87, Minnesota 76)
An opposing player scored 30+ points	Feb. 21, 2016, 2 Players (39, 35) #5 Ohio State (Ohio State 117, Illinois 74)
An opposing player scored 40+ points	Dec. 16, 1989, Carol Owens, 41 at Northern Illinois (Northern Illinois 110, Illinois 93)
An Illinois player had a triple-double	Jan. 22, 1982, Kim Brombolich vs. Eastern Michigan, 13 p, 11 r, 15 a (Illinois 107, Eastern Michigan 73)
An opposing player had a triple-double	Dec. 2, 2006, Armentie Price, Ole Miss, 34 p, 15 r, 12 st (Ole Miss 75, Illinois 50)
No Illini scored double figures	March 2, 2007, vs. Penn State at Big Ten Tournament (Penn State 61, Illinois 49 - Rebecca Harris had 8)
No opposing player scored double figures	Nov. 25, 2011, vs. Arizona State (Arizona State 51, Illinois 50)
Two Illini players had a double-double in the same game	Nov. 30, 2016 vs. Wake Forest, Alex Wittinger 14 p, 10 r and Brandi Beasley 14 p, 11 r (Wake Forest 79, Illinois 70)
An Illini had 15+ rebounds	Nov. 22, 2016, Alex Wittinger, 16, vs. Mercer (Mercer 51, Illinois 33)
An Illini had 20+ rebounds	Feb. 7, 2010, Jenna Smith, 20, vs. Indiana (Indiana 67, Illinois 54)
An Illini had 25+ rebounds	Jan. 23, 1975, Betty Anderson, 30, vs. Eastern Illinois (Illinois 57, Eastern Illinois 51 [OT])
An opposing player had 15+ rebounds	Jan. 10 2016, Jessica Shepard, 19, at Nebraska (Nebraska 73, Illinois 57)
An opposing player had 20+ rebounds	Jan. 4, 1985, Laura Coener, Minnesota, 21 (Minnesota 77, Illinois 61)
An opposing player had 25+ rebounds	Never
An Illini had 10+ assists	Jan. 26, 2016, Sarah Hartwell, 10 at Minnesota (Minnesota 82, Illinois 77)
An Illini had 15+ assists	Jan. 15, 2006, Maggie Acuna, 16, at Wisconsin (Illinois 84, Wisconsin 54)
An opposing player had 10+ assists	Jan. 8, 2015, Samantha Logic, 14, vs. #17 Iowa (Illinois 73, #17 Iowa 61)
An opposing player had 15+ assists	March 12, 1983, Debbie Hunter, 15, vs. Minnesota (Minnesota 89, Illinois 65)
An Illini player made 5+ three-pointers	Dec. 2, 2016, P. Holesinska, 5, vs. Fort Wayne (Illinois 56, Fort Wayne 33)
An Illini player made 8+ three-pointers	Nov. 29, 1997, Katie Coleman, 9, vs. Providence, at Puerto Rico (Illinois 106, Providence 74)
An Illini player made 10+ three-pointers	Never
An opposing player made 5+ threes	Feb. 7, 2016, K. Flaherty, 6, at Michigan (Michigan 96, Illinois 83)
An opposing player made 8+ threes	Feb. 21, 2016, K. Mitchell, 8, at #5 Ohio State (Ohio State 117, Illinois 74)
Illinois shot 60 pct. FG or better	Nov. 22, 2010, .616 (45-73) vs. Cal Poly (Illinois 104, Cal Poly 63)
Illinois shot 30 pct. FG or lower	Nov. 22, 2016, .228 (13-57) vs. Mercer (Mercer 51, Illinois 33)
An opponent shot 60 pct. FG or better	Feb. 21, 2016, .618 (42-68), at #5 Ohio State (Ohio State 117, Illinois 74)
An opponent shot 30 pct. FG or lower	Dec. 2, 2016, .256 (10-39) Fort Wayne (Illinois 56, Fort Wayne 33)
An opponent shot 25 pct. FG or lower	Nov. 21, 2013, .226 (14-62), Southern Illinois (SIU 43, Illinois 78)
An opponent shot 20 pct. FG or lower	Nov. 17, 2013, .152 (7-46), vs. Alcorn State (Illinois 112, Alcorn State 28)
Illinois forced 30 or more turnovers	Feb. 25, 2015, 34, Michigan State (Michigan State 67, Illinois 65)
Illinois committed 30 or more turnovers	Dec. 2, 2006, 34, at Ole Miss (Ole Miss 75, Illinois 50)
Illinois had 20 or more steals	Nov. 14, 2014, 21, vs. IPFW (Illinois 70, IPFW 63)
An Illinois opponent had 20 or more steals	Dec. 2, 2006, 26, at Ole Miss (Ole Miss 75, Illinois 50)
Illinois blocked 10 or more shots	Dec. 28, 2011, 10, vs. Alabama A&M (Illinois 83, Alabama A&M 65)
Illinois won 5+ games in a row	Nov. 14, 2014-Nov. 27, 2014, 5-game streak
Illinois won 10+ games in a row	Nov. 20, 1981-Jan. 2, 1982, 10-game streak
Illinois lost 5+ games in a row	Jan. 2, 2016-Feb. 13, 2016, 8-game streak
Illinois lost 10+ games in a row	Jan. 27, 2014-March 6, 2014, 11-game streak
Illinois won 5+ in a row at home	Feb. 28, 2015-Dec. 12, 2015, 8-game streak
Illinois won 10+ in a row at home	Dec. 20, 1997-Jan. 5, 1999, 18-game streak
Illinois won 15+ in a row at home	Dec. 20, 1997-Jan. 5, 1999, 18-game streak
Illinois lost 5+ in a row at home	Jan. 23, 2016-Nov. 11, 2016, 7-game streak
Illinois lost 10+ in a row at home	Never
Illinois won 5+ in a row away from home	Dec. 9, 2012-Feb. 3, 2013, 6-game streak
Illinois won 10+ in a row away from home	Never

FIGHTING ILLINI WOMEN'S BASKETBALL NOTES

2016-17 ILLINOIS TEAM HIGHS

Points	77	vs. USC Upstate (11/20/16)
Field Goals Made	30	vs. USC Upstate (11/20/16)
Field Goals Attempted	71	vs. USC Upstate (11/20/16)
Field Goal %	.423 (30-71)	vs. USC Upstate (11/20/16)
3-Pt. Field Goals Made	8	vs. USC Upstate (11/20/16)
3-Pt. Field Goals Attempted	31	vs. Mercer (11/22/16)
3-Pt. Field Goal Percentage	.438 (7-16)	at George Washington (12/4/16)
Free Throws Made	18	vs. UAPB (11/13/16)
Free Throws Attempted	19	vs. UAPB (11/13/16)
Free Throw Percentage	.947 (18-19)	vs. UAPB (11/13/16)
Rebounds	49	vs. USC Upstate (11/20/16)
Assists	17	vs. USC Upstate (11/20/16)
Steals	10	2x, last vs. UAPB (11/13/16)
Blocked Shots	6	UAPB (11/13/16)
Turnovers	21	2x, last vs. Mercer (11/22/16)
Fouls	23	vs. Marshall (11/11/16)

2016-17 ILLINOIS TEAM LOWS

Points	33	vs. Mercer (11/22/16)
Field Goals Made	13	vs. Mercer (11/22/16)
Field Goals Attempted	59	vs. UAPB (11/13/16)
Field Goal %	.228 (13-57)	vs. Mercer (11/22/16)
3-Pt. Field Goals Made	3	vs. Mercer (11/22/16)
3-Pt. Field Goals Attempted	16	vs. Marshall (11/11/16)
3-Pt. Field Goal Percentage	.097 (3-31)	vs. Mercer (11/22/16)
Free Throws Made	4	vs. Mercer (11/22/16)
Free Throws Attempted	6	vs. Mercer (11/22/16)
Free Throw Percentage	.455 (5-11)	at George Washington (12/4/16)
Rebounds	35	vs. Fort Wayne (12/2/16)
Assists	6	2x, last vs. Mercer (11/22/16)
Steals	0	vs. Mercer (11/22/16)
Blocked Shots	2	at George Washington (12/4/16)
Turnovers	8	vs. Fort Wayne (12/2/16)
Fouls	14	2x, last at George Washington (12/4/16)

2016-17 OPPONENT TEAM HIGHS

Points	79	Wake Forest (11/30/16)
Field Goals Made	29	Wake Forest (11/30/16)
Field Goals Attempted	71	UAPB (11/13/16)
Field Goal %	.468 (29-62)	Wake Forest (11/30/16)
3-Pt. Field Goals Made	8	2x, last George Washington (12/4/16)
3-Pt. Field Goals Attempted	24	Marshall (11/11/16)
3-Pt. Field Goal Percentage	.385 (5-13)	Memphis (11/17/16)
Free Throws Made	21	Memphis (11/17/16)
Free Throws Attempted	29	Marshall (11/11/16)
Free Throw Percentage	.1000 (16-16)	George Washington (12/4/16)
Rebounds	48	George Washington (12/4/16)
Assists	11	George Washington (12/4/16)
Steals	12	UAPB (11/13/16)
Blocked Shots	10	Marshall (11/11/16)
Turnovers	23	Fort Wayne (12/2/16)
Fouls	21	UAPB (11/13/16)

2016-17 OPPONENT TEAM LOWS

Points	33	Fort Wayne (12/2/16)
Field Goals Made	10	Fort Wayne (12/2/16)
Field Goals Attempted	39	Fort Wayne (12/2/16)
Field Goal %	.256 (10-39)	Fort Wayne (12/2/16)
3-Pt. Field Goals Made	1	Mercer (11/22/16)
3-Pt. Field Goals Attempted	13	2x, last USC Upstate (11/20/16)
3-Pt. Field Goal Percentage	.063 (1-16)	Mercer (11/22/16)
Free Throws Made	10	UAPB (11/13/16)
Free Throws Attempted	16	UAPB (11/13/16)
Free Throw Percentage	.621 (18-29)	Marshall (11/11/16)
Rebounds	28	USC Upstate (11/20/16)
Assists	3	Marshall (11/11/16)
Steals	2	USC Upstate (11/20/16)
Blocked Shots	0	USC Upstate (11/20/16)
Turnovers	6	Mercer (11/22/16)
Fouls	11	Mercer (11/22/16)

2016-17 ILLINOIS INDIVIDUAL GAME HIGHS

Points	18	2x, last P. Holesinska vs. Memphis (11/17/16)
Field Goals Made	11	Alex Wittinger vs. UAPB (11/13/16)
Field Goals Attempted	17	B. Beasley vs. Wake Forest (11/30/16)
Field Goal % (Min. 5 made)	.687 (11-16)	Alex Wittinger UAPB (11/13/16)
3-Pt. Field Goals Made	5	P. Holesinska vs. Fort Wayne (12/2/16)
3-Pt. Field Goals Attempted	7	P. Holesinska vs. Fort Wayne (12/2/16)
3-Pt. Field Goal % (Min. 3 made)	.714 (5-7)	P. Holesinska vs. Fort Wayne (12/2/16)
Free Throws Made	7	Ali Andrews vs. UAPB (11/13/16)
Free Throws Attempted	8	Ali Andrews vs. UAPB (11/13/16)
Free Throw % (Min. 5 made)	1.000 (6-6)	4 players, last K. Cottenhead vs. Wake Forest (11/30/16)
Rebounds	16	A. Wittinger vs. Mercer (11/22/16)
Assists	6	Jaelyne Kirkpatrick vs. USC Upstate (11/20/16)
Steals	4	Petra Holesinska vs. Memphis (11/17/16)
Blocked Shots	4	3x, last A. Wittinger vs. Wake Forest (11/30/16)
Turnovers	6	3x, last B. Beasley vs. Wake Forest (11/30/16)
Fouls	5	A. Wittinger vs. Mercer (11/22/16)
Minutes	40	2x, last B. Beasley vs. Mercer (11/22/16)

2016-17 OPPONENT INDIVIDUAL GAME HIGHS

Points	29	Shayna Gore, Marshall (11/11/16)
Field Goals Made	9	Shayna Gore, Marshall (11/11/16)
Field Goals Attempted	21	3x, last A. Stephenson, Wake Forest (11/30/16)
Field Goal % (Min. 5 made)	.700 (7-10)	Amber Campbell, Wake Forest (11/30/16)
3-Pt. Field Goals Made	3	Shayna Gore, Marshall (11/11/16)
3-Pt. Field Goals Attempted	10	Malaik Muhammad, UAPB (11/13/16)
3-Pt. Field Goal % (Min. 3 made)	.600 (3-5)	Erin Boothe, UAPB (11/13/16)
Free Throws Made	8	2x, last B. Wilder-Chochran, Memphis (11/17/16)
Free Throws Attempted	9	Shayna Gore, Marshall (11/11/16)
Free Throw % (Min. 5 made)	1.000 (8-8)	B. Wilder-Chochran, Memphis (11/17/16)
Rebounds	12	Ashley Santigiene, Marshall (11/11/16)
Assists	4	2x, last M. Bautista, George Washington (12/4/16)
Steals	4	A. Thompson, Mercer (11/22/16)
Blocked Shots	5	Talequia Hamilton, Marshall (11/11/16)
Turnovers	5	Destiny Brewton, UAPB (11/13/16)
Fouls	4	5x, last 2 players, Wake Forest (11/30/16)
Minutes	38	2x, last Alex Sharp, Wake Forest (11/30/16)

FIGHTING ILLINI WOMEN'S BASKETBALL NOTES

MARSHALL 55, ILLINOIS 53 NOV. 11, 2016 // STATE FARM CENTER

Marshall 55 • 1-0

#	Player	Total		3-Ptr		Rebounds			PF	TP	A TO Blk Stl					Min
		FG-FGA	FT-FTA	FG-FGA	FT-FTA	Off	Def	Tot			A	TO	Blk	Stl		
00	HAMILTON, Talequia	* 0-3	0-1	1-4		0	4	4	2	1	0	2	5	2		24
02	FRALEY, Logan	* 1-3	1-3	0-0		0	1	1	1	3	1	0	0	0		27
04	BROOKS, Khadaijia	* 2-8	0-4	1-2		2	6	8	1	5	0	1	0	0		34
14	GORE, Shayna	* 9-17	3-6	8-9		2	4	6	1	29	0	4	1	3		35
22	EVANS, Kiana	* 2-9	0-2	4-6		0	2	2	3	8	0	4	0	1		27
03	ALEXANDER, Asheika	0-1	0-1	1-2		0	2	2	2	1	0	3	1	1		8
05	AKERS, McKenzie	0-3	0-3	0-0		0	1	1	0	0	2	1	0	0		7
10	SAINTIGENE, Ashley	1-4	0-0	3-6		7	5	12	2	5	0	3	3	0		15
11	PORTER, Taylor	1-6	1-3	0-0		0	1	1	4	3	0	1	0	1		7
15	DRIVER, Tana	0-1	0-1	0-0		1	1	2	2	0	0	2	0	0		16
Team						3	0	3								
Totals		16-55	5-24	18-29		15	27	42	18	55	3	21	10	8		200

1st - FG %:	1-17	5.9%	2nd: 5-9	55.6%	3rd: 6-16	37.5%	4th: 4-13	30.8%	Game: 16-55	29.1%	Deadball
3FG %:	0-7	0.0%	3-5	60.0%	1-7	14.3%	1-5	20.0%	5-24	20.8%	Rebounds
FT %:	2-3	66.7%	10-12	83.3%	3-8	37.5%	3-3	100.0%	18-29	62.1%	9,1

Illinois 53 • 0-1

#	Player	Total		3-Ptr		Rebounds			PF	TP	A TO Blk Stl					Min
		FG-FGA	FT-FTA	FG-FGA	FT-FTA	Off	Def	Tot			A	TO	Blk	Stl		
01	Brandi Beasley	* 3-10	1-3	1-2		2	5	7	4	8	1	1	0	1		27
05	Cierra Rice	* 2-11	1-5	0-0		1	3	4	3	5	2	2	0	1		40-
23	Jaelyne Kirkpatrick	* 1-3	0-0	2-2		0	3	3	4		1	2	0	0		27
35	Alex Wittinger	* 7-12	0-1	1-1		3	5	8	2	15	2	3	2	3		33
50	Ali Andrews	* 1-9	0-2	2-2		1	2	3	4	4	0	5	1	1		22
12	Ashley McConnell	0-0	0-0	0-0		0	0	0	0	0	0	0	0	0		2
13	Petra Holesinska	2-5	0-3	2-2		0	4	4	2	6	0	2	1	0		20
20	Sarah Overcash	0-0	0-0	1-2		1	0	1	0	1	0	0	0	0		1
25	Kennedy Cattenhead	3-9	2-2	2-5		2	3	5	4	10	0	2	0	1		26
30	Courtney Joens	0-1	0-0	0-0		0	0	0	1	0	0	0	0	0		2
Team						4	0	4								
Totals		19-60	4-16	11-16		14	25	39	23	53	6	17	4	10		200

1st - FG %:	7-12	58.3%	2nd: 4-15	26.7%	3rd: 3-17	17.6%	4th: 5-16	31.3%	Game: 19-60	31.7%	Deadball
3FG %:	1-3	33.3%	1-4	25.0%	2-5	40.0%	0-4	0.0%	4-16	25.0%	Rebounds
FT %:	2-3	66.7%	1-4	25.0%	6-6	100.0%	2-3	66.7%	11-16	68.8%	3,2

Officials: Mark Zentz, Rachelle Jones, Nykessa Thompson
Technical fouls: Marshall-None. Illinois-None.
Attendance: 969

Score by periods	1st	2nd	3rd	4th	Total
Marshall	4	23	16	12	55
Illinois	17	10	14	12	53

ILLINOIS 70, UAPB 58 NOV. 13, 2016 // STATE FARM CENTER

UAPB 58 • 0-2

#	Player	Total		3-Ptr		Rebounds			PF	TP	A TO Blk Stl					Min
		FG-FGA	FT-FTA	FG-FGA	FT-FTA	Off	Def	Tot			A	TO	Blk	Stl		
01	Destiny Brewton	* 4-13	1-1	1-2		2	4	6	2	10	1	5	0	3		35
13	Malaik Muhammad	* 3-15	2-10	1-2		2	2	4	2	9	2	3	0	1		37
21	Aiya El Hassan	* 0-2	0-1	1-2		0	1	1	1	1	0	2	0	0		11
25	Niya Head	* 7-21	2-5	2-2		4	2	6	4	18	1	1	0	1		31
35	Shawntayla Harris	* 2-3	0-0	0-0		0	3	3	3	4	0	2	1	0		20
05	Tyja McGe	1-2	0-0	0-0		1	0	1	1	2	0	1	0	2		10
11	Faith Ohanta	0-7	0-1	5-8		2	1	3	3	5	1	1	2	0		20
12	Erin Boothe	3-6	3-5	0-0		1	1	2	3	9	0	1	0	3		23
23	Mercy Blanco	0-0	0-0	0-0		0	1	1	0	0	0	0	0	0		3
24	Noe'll Taylor	0-2	0-0	0-0		0	2	2	2	0	0	1	0	2		10
Team						6	3	9								
Totals		20-71	8-23	10-16		18	20	38	21	58	5	17	3	12		200

1st - FG %:	7-18	38.9%	2nd: 7-20	35.0%	3rd: 4-14	28.6%	4th: 2-19	10.5%	Game: 20-71	28.2%	Deadball
3FG %:	1-6	16.7%	1-5	20.0%	2-3	66.7%	1-5	20.0%	8-23	34.8%	Rebounds
FT %:	2-4	50.0%	0-0	0.0%	6-8	75.0%	2-4	50.0%	10-16	62.5%	5,3

Illinois 70 • 1-1

#	Player	Total		3-Ptr		Rebounds			PF	TP	A TO Blk Stl					Min
		FG-FGA	FT-FTA	FG-FGA	FT-FTA	Off	Def	Tot			A	TO	Blk	Stl		
01	Brandi Beasley	* 3-6	0-0	2-2		1	7	8	1	8	3	6	0	1		33
05	Cierra Rice	* 3-11	0-5	5-5		2	6	8	2	11	1	5	0	0		33
13	Petra Holesinska	* 1-6	0-1	0-0		1	2	3	1	2	0	0	0	0		16
35	Alex Wittinger	* 11-16	1-1	0-0		2	10	12	3	23	2	2	4	3		38
50	Ali Andrews	* 1-8	0-3	7-8		3	3	6	2	9	2	1	1	3		24
12	Ashley McConnell	0-0	0-0	0-0		0	0	0	0	0	0	0	0	0		1
20	Sarah Overcash	0-0	0-0	0-0		0	0	0	0	0	0	1	0	0		2
23	Jaelyne Kirkpatrick	3-6	3-5	4-4		1	3	4	2	13	3	2	0	2		33
25	Kennedy Cattenhead	2-5	0-2	0-0		1	0	1	4	4	0	3	1	1		17
30	Courtney Joens	0-1	0-1	0-0		0	0	0	0	0	0	1	0	0		3
Team						1	2	3								
Totals		24-59	4-18	18-19		12	33	45	15	70	11	21	6	10		200

1st - FG %:	7-15	46.7%	2nd: 4-15	26.7%	3rd: 6-17	35.3%	4th: 7-12	58.3%	Game: 24-59	40.7%	Deadball
3FG %:	1-6	16.7%	1-5	20.0%	2-3	66.7%	0-4	0.0%	4-18	22.2%	Rebounds
FT %:	4-4	100.0%	5-6	83.3%	2-2	100.0%	7-7	100.0%	18-19	94.7%	1,1

Officials: Lisa Mattingly, Erika Herriman-Camarota, Talisa Green
Technical fouls: UAPB-None. Illinois-None.
Attendance: 1180

Score by periods	1st	2nd	3rd	4th	Total
UAPB	18	17	16	7	58
Illinois	19	14	16	21	70

Last FG - UAPBW 4th-02:57, ILL 4th-01:30.
Largest lead - UAPBW by 6 2nd-06:59, ILL by 12 4th-00:37.
UAPBW led for 23:22, ILL led for 12:37, Game was tied for 04:01.

Points	In	Off	2nd	Fast	Bench
UAPBW	12	10	10	0	16
ILL	26	13	19	4	17

Score tied - 8 times.
Lead changed - 9 times.

MEMPHIS 64, ILLINOIS 54 NOV. 17, 2016 // STATE FARM CENTER

Memphis 64 • 2-1

#	Player	Total		3-Ptr		Rebounds			PF	TP	A TO Blk Stl					Min
		FG-FGA	FT-FTA	FG-FGA	FT-FTA	Off	Def	Tot			A	TO	Blk	Stl		
01	WILDER-COCHRAN, B.	* 1-7	1-2	8-8		1	1	2	1	11	3	4	1	0		28
03	WILLIAMS, Taylor	* 2-7	1-3	2-2		2	6	8	3	7	2	3	0	3		33
08	CRIGHTON, Cheyenne	* 5-10	0-0	2-2		1	6	7	0	12	0	2	1	1		35
15	BARNES, Taylor	* 3-8	1-5	3-4		2	3	5	1	10	2	1	0	1		31
25	PORTER, Brianna	* 4-10	0-0	4-6		2	2	4	1	12	0	1	0	0		26
02	MORRIS, Loysha	1-2	1-2	2-2		0	0	0	1	5	0	0	0	0		5
05	ELMORE, Brea	3-6	1-1	0-0		0	3	3	3	7	3	1	0	2		24
04	MILLER, Damonique	0-1	0-0	0-0		0	0	0	2	0	0	1	0	0		13
44	BAJIC, Milena	0-0	0-0	0-0		0	0	0	1	0	0	1	0	0		5
Team						3	2	5								
Totals		19-51	5-13	21-24		11	23	34	13	64	10	14	2	7		200

1st - FG %:	6-12	50.0%	2nd: 4-10	40.0%	3rd: 4-16	25.0%	4th: 5-13	38.5%	Game: 19-51	37.3%	Deadball
3FG %:	2-3	66.7%	0-1	0.0%	1-4	25.0%	1-4	25.0%	5-13	38.5%	Rebounds
FT %:	7-8	87.5%	4-6	66.7%	0-0	0.0%	10-10	100.0%	21-24	87.5%	2

Illinois 54 • 1-2

#	Player	Total		3-Ptr		Rebounds			PF	TP	A	TO	Blk	Stl	Min
		FG-FGA	FT-FTA	FG-FGA	FT-FTA	Off	Def	Tot							
01	Brandi Beasley	* 1-6	0-1	0-0	1	5	6	1	2	5	2	1	1	36	
03	Cierra Beasley	* 1-6	0-1	0-0	0	0	0	1	2	1	0	1	0	6	
25	Jaelynne Kirkpatrick	* 0-3	0-3	0-0	0	2	2	4	0	2	5	0	1	31	
35	Alex Wittinger	* 6-10	0-0	0-0	5	7	12	1	12	1	0	4	0	35	
50	Ali Andrews	* 2-13	1-3	4-4	3	1	4	3	9	1	0	1	1	28	
12	Ashley McConnell	0-2	0-2	0-0	0	0	0	0	0	0	2	0	0	6	
13	Petra Holesinska	6-12	3-6	3-4	0	3	3	4	18	0	2	0	4	23	
20	Sarah Overcash	0-0	0-0	0-0	0	1	1	1	0	0	1	0	0	5	
25	Kennedy Cattenhead	3-5	0-1	0-0	2	1	3	1	6	2	2	0	1	20	
30	Courtney Joens	2-3	1-1	0-0	1	0	1	2	5	0	0	0	0	10	
	Team				3	1	4				2				
Totals		21-60	5-18	7-8	15	21	36	18	54	12	16	7	8	200	

FIGHTING ILLINI WOMEN'S BASKETBALL NOTES

MERCER 51, ILLINOIS 33 NOV. 22, 2016 // STATE FARM CENTER

Mercer 51 • 4-1

#	Player	Total		3-Ptr		Rebounds			PF	TP	A TO Blk Stl				Min
		FG-FGA	FT-FTA	FG-FGA	FT-FTA	Off	Def	Tot			A	TO	Blk	Stl	
02	Amanda Thompson	f	4-8	0-0	3-4	3	6	9	2	11	1	1	0	4	34
01	Sydni Means	g	1-7	0-0	2-4	0	6	6	1	4	4	0	0	3	38
11	Linnea Rosendal	g	2-10	1-7	0-0	1	3	4	2	5	0	3	0	0	23
24	Kahlia Lawrence	g	7-15	0-0	3-4	1	4	5	1	17	2	1	0	1	38
25	KeKe Calloway	g	3-21	0-8	3-4	1	6	7	1	9	0	0	0	1	30
13	Ciarra Edwards		0-0	0-0	1-2	0	0	0	1	1	0	0	0	0	6
20	Shon Kitchens		0-0	0-0	0-0	0	0	0	0	0	0	0	0	0	1
23	Kayla Potts		2-5	0-1	0-0	5	1	6	3	4	2	1	0	1	30
Team						3	2	5							
Totals		19-66	1-16	12-18	14	28	42	11	51	9	6	1	10	200	
1st - FG %:		5-19	26.3%	2nd: 5-18	27.8%	3rd: 5-16	31.3%	4th: 4-13	30.8%	Game: 19-66	28.8%	Deadball			
3FG %:		0-5	0.0%	1-8	12.5%	0-5	0.0%	1-2	50.0%	1-16	6.3%	Rebounds			
FT %:		3-4	75.0%	0-0	0.0%	5-6	83.3%	4-8	50.0%	12-18	66.7%	3,3			

Illinois 33 • 2-3

#	Player	Total		3-Ptr		Rebounds			PF	TP	A TO Blk Stl				Min
		FG-FGA	FT-FTA	FG-FGA	FT-FTA	Off	Def	Tot			A	TO	Blk	Stl	
35	Alex Wittinger	f	5-11	0-0	2-2	6	10	16	5	12	0	4	2	0	27
50	Ali Andrews	f	0-3	0-1	1-2	0	6	6	2	1	0	2	0	0	28
01	Brandi Beasley	g	2-9	1-5	0-0	2	6	8	3	5	3	6	0	0	40
13	Petra Holesinska	g	0-7	0-6	0-0	0	3	3	1	0	0	1	1	0	38
23	Jaelyne Kirkpatrick	g	3-10	2-8	0-0	0	1	1	3	8	2	3	0	0	17
12	Ashley McConnell		0-2	0-2	0-0	0	0	0	1	0	0	0	0	0	6
20	Sarah Overcash		0-1	0-0	0-0	0	0	0	0	0	0	0	0	0	2
25	Kennedy Cattenhead		1-5	0-3	1-2	1	7	8	3	3	0	4	0	0	23
30	Courtney Joens		2-9	0-6	0-0	2	1	3	2	4	1	1	0	0	19
Team						0	2	2							
Totals		13-57	3-31	4-6	11	36	47	20	33	6	21	3	0	200	
1st - FG %:		2-13	15.4%	2nd: 5-16	31.3%	3rd: 4-16	25.0%	4th: 2-12	16.7%	Game: 13-57	22.8%	Deadball			
3FG %:		1-7	14.3%	1-8	12.5%	0-8	0.0%	1-6	16.7%	3-31	9.7%	Rebounds			
FT %:		0-0	0.0%	0-0	0.0%	2-2	100.0%	2-4	50.0%	4-6	66.7%	4			

Officials: Beverly Roberts, Laura Morris, Kevin Pethetel
Technical fouls: Mercer-None, Illinois-None.
Attendance: 1051

Score by periods	1st	2nd	3rd	4th	Total
Mercer	13	10	15	13	51
Illinois	5	11	10	7	33

Last FG - MER 4th-01:13, ILL 4th-02:10.
Largest lead - MER by 18 4th-00:48, ILL None.
MER led for 38:56. ILL led for 00:00. Game was tied for 01:04.

Points	In	Off	2nd	Fast	Bench
MER	14	19	12	7	7
ILL	8	5	10	0	7

Score tied - 0 times.
Lead changed - 0 times.

WAKE FOREST 79, ILLINOIS 70 NOV. 30, 2016 // STATE FARM CENTER

Wake Forest 79 • 6-1

#	Player	Total		3-Ptr		Rebounds			PF	TP	A TO Blk Stl				Min
		FG-FGA	FT-FTA	FG-FGA	FT-FTA	Off	Def	Tot			A	TO	Blk	Stl	
32	Milan Quinn	f	5-8	0-0	2-4	6	4	10	4	12	0	2	3	2	37
41	Elisa Penna	f	6-11	1-3	2-2	1	6	7	4	15	1	2	1	1	36
02	Amber Campbell	g	7-10	2-4	5-5	0	1	1	1	21	3	1	0	1	35
14	Alex Sharp	g	3-9	1-4	0-0	1	6	7	1	7	3	1	1	0	38
25	Ariel Stephenson	g	7-21	1-7	7-7	1	3	4	2	22	2	0	0	1	40
42	Tyra Whitehead		1-2	0-0	0-0	0	1	1	1	2	1	2	0	1	11
44	Ona Udoh		0-1	0-0	0-0	0	0	0	0	0	0	0	0	0	3
Team						0	1	1							
Totals		29-62	5-18	16-18	9	22	31	13	79	10	8	5	6	200	
1st - FG %:		7-17	41.2%	2nd: 7-16	43.8%	3rd: 9-16	56.3%	4th: 6-13	46.2%	Game: 29-62	46.8%	Deadball			
3FG %:		1-7	14.3%	2-4	50.0%	1-4	25.0%	1-3	33.3%	5-18	27.8%	Rebounds			
FT %:		1-1	100.0%	2-3	66.7%	4-4	100.0%	9-10	90.0%	16-18	88.9%	2			

Illinois 70 • 2-4

#	Player	Total		3-Ptr		Rebounds			PF	TP	A TO Blk Stl				Min
		FG-FGA	FT-FTA	FG-FGA	FT-FTA	Off	Def	Tot			A	TO	Blk	Stl	
35	Alex Wittinger	f	7-16	0-0	0-2	4	6	10	1	14	0	2	4	1	37
01	Brandi Beasley	g	7-17	0-3	0-0	2	9	11	3	14	3	6	0	0	38
13	Petra Holesinska	g	4-14	1-6	2-2	0	2	2	3	11	1	1	0	1	32
23	Jaelyne Kirkpatrick	g	1-5	0-2	0-0	0	0	0	4	2	5	2	0	2	32
25	Kennedy Cattenhead	g	4-8	2-3	6-6	2	2	4	1	16	0	1	0	0	32
12	Ashley McConnell		0-1	0-1	0-0	0	0	0	0	0	0	0	0	0	6
20	Sarah Overcash		0-0	0-0	0-0	1	1	2	1	0	0	0	0	0	3
30	Courtney Joens		2-4	2-3	4-4	4	1	5	3	10	1	1	0	0	14
50	Ali Andrews		1-2	1-2	0-0	0	0	0	0	3	0	0	0	0	6
Team						7	2	9							
Totals		26-67	6-20	12-14	20	23	43	16	70	10	13	4	4	200	
1st - FG %:		11-17	64.7%	2nd: 5-17	29.4%	3rd: 5-15	33.3%	4th: 5-18	27.8%	Game: 26-67	38.8%	Deadball			
3FG %:		3-6	50.0%	2-8	25.0%	0-3	0.0%	0-3	30.0%	6-20	30.0%	Rebounds			
FT %:		0-0	0.0%	0-0	0.0%	4-4	100.0%	8-10	80.0%	12-14	85.7%	1,1			

Officials: Cameron Inouye, Barb Smith, Roy Gulbeyan
Technical fouls: Wake Forest-None, Illinois-None.
Attendance: 1243

Score by periods	1st	2nd	3rd	4th	Total
Wake Forest	16	18	23	22	79
Illinois	25	16	11	18	70

Last FG - WF 4th-01:03, ILL 4th-00:14.
Largest lead - WF by 9 4th-05:20, ILL by 13 2nd-07:40.
WF led for 10:54. ILL led for 26:38. Game was tied for 02:22.

Points	In	Off	2nd	Fast	Bench
WF	36	22	16	0	2
ILL	20	8	13	4	13

Score tied - 3 times.
Lead changed - 1 time.

ILLINOIS 56, FORT WAYNE 33 DEC. 2, 2016 // STATE FARM CENTER

Fort Wayne 33 • 1-7

#	Player	Total		3-Ptr		Rebounds			PF	TP	A TO Blk Stl				Min
		FG-FGA	FT-FTA	FG-FGA	FT-FTA	Off	Def	Tot			A	TO	Blk	Stl	
03	KeShyra McCarver	*	2-5	1-2	1-1	4	2	6	3	6	1	1	0	1	30
13	De'Jour Young	*	3-12	0-4	5-6	2	3	5	1	11	2	3	0	0	34
15	Selena Lozada	*	0-3	0-1	0-0	1	1	2	2	0	0	2	1	0	25
22	Zaria Atkins	*	0-5	0-2	5-8	1	3	4	1	5	1	1	0	1	30
31	Rachel Rinehart	*	1-3	0-0	0-0	1	9	10	2	2	0	1	0	0	24
01	Y. Ramirez-Tejeda		0-0	0-0	0-0	0	2	2	0	0	0	1	0	0	4
02	Nia Thomas		0-0	0-0	0-0	0	0	0	0	0	0	0	0	1	3
12	Anna Lappenkuper		3-6	1-2	0-0	0	1	1	0	7	0	5	0	0	25
21	Isis Parker		1-3	0-0	0-0	1	0	1	3	2	0	3	1	0	21
23	Peyton Fallis		0-2	0-0	0-0	0	1	1	1	0	0	2	0	0	4
Team						2	3	5							
Totals		10-39	2-11	11-15	12	25	37	13	33	4	23	2	3	200	
1st - FG %:		2-11	18.2%	2nd: 5-11	45.5%	3rd: 1-8	12.5%	4th: 2-9	22.2%	Game: 10-39	25.6%	Deadball			
3FG %:		0-2	0.0%	1-3	33.3%	1-2	50.0%	0-4	0.0%	2-11	18.2%	Rebounds			
FT %:		1-4	25.0%	1-1	100.0%	4-4	100.0%	5-6	83.3%	11-15	73.3%	1			

Illinois 56 • 3-4

		Total		3-Ptr		Rebounds									
#	Player	FG-FGA	FG-FGA	FT-FTA	Off	Def	Tot	PF	TP	A	TO	Blk	Stl	Min	
11	Brandi Beasley	* 1-6	0-1	0-0	0	3	3	3	2	5	2	0	2	31	
13	Petra Holieskina	* 6-11	5-7	0-0	0	4	4	3	17	0	2	3	1	29	
23	Jalayne Kirkpatrick	* 1-3	0-1	2-4	1	2	3	0	4	4	0	0	3	39	
25	Kennedy Cattenhead	* 7-10	1-3	0-2	3	2	5	0	15	2	4	0	1	29	
35	Alex Wittinger	* 4-13	0-0	0-0	5	4	9	4	8	1	0	1	1	23	
12	Ashley McConnell	0-2	0-2	0-0	0	0	0	2	0	0	0	0	0	5	
20	Sarah Overcash	1-2	0-0	0-0	0	2	2	0	2	0	0	0	0	10	
30	Courtney Joens	2-7	1-4	0-0	0	0	0	2	5	0	0	0	0	15	
45	Meagan McNicholas	0-0	0-0	0-0	0	0	0	0	0	0	0	0	0	1	
50	Ali Andrews	0-6	0-2	3-4	3	1	4	3	3	1	0	0	0	18	
Team					4	1	5								
Totals		22-60	7-20	5-10	16	19	35	17	56	13	8	4	8	200	
1st: FG %: 7.1%		41.2%	2nd: 3-16	18.8%	3rd: 5-13	38.5%	4th: 7-14	50.0%	Game: 22-60	36.7%	Deadball Rebounds		4.1		
3FG %: 2-3		66.7%	5-10	16.7%	1-5	20.0%	3-6	50.0%	7-20	35.0%					
FT %: 0-0		0.0%	5-10	50.0%	1-0	0.0%	0-0	0.0%	5-10	50.0%					

FIGHTING ILLINI WOMEN'S BASKETBALL NOTES



BRANDI BEASLEY

1

5-7 // FRESHMAN // GUARD

MEMPHIS, TENN.

RIDGEWAY

SEASON BESTS

Pts: 16 (George Washington, 12/4/16)
Rebs: 11 (Wake Forest, 11/30/16)
FGM: 7 (2x, last at George Washington, 12/4/16)
FGA: 17 (Wake Forest, 11/30/16)
FTM: 2 (UAPB, 11/13/16)
FTA: 2 (2x, last vs. UAPB, 11/13/16)
3FGM: 2 (at George Washington, 12/4/16)
3FGA: 5 (3x, last at George Washington, 12/4/16)
Ast: 5 (3x, last George Washington, 12/4/16)
Blk: 1 (Memphis, 11/17/16)
Stl: 3 (USC Upstate, 11/20/16)
Min: 40 (Mercer, 11/22/16)

CAREER BESTS

Pts: 16 (George Washington, 12/4/16)
Rebs: 11 (Wake Forest, 11/30/16)
FGM: 7 (2x, last at George Washington, 12/4/16)
FGA: 17 (Wake Forest, 11/30/16)
FTM: 2 (UAPB, 11/13/16)
FTA: 2 (2x, last vs. UAPB, 11/13/16)
3FGM: 1 (2x, last vs. USC Upstate, 11/20/16)
3FGA: 5 (3x, last at George Washington, 12/4/16)
Ast: 5 (3x, last George Washington, 12/4/16)
Blk: 1 (Memphis, 11/17/16)
Stl: 3 (USC Upstate, 11/20/16)
Min: 40 (Mercer, 11/22/16)

2016-17 SEASON HIGHLIGHTS

- Put up eight points and grabbed seven rebounds in her Illini debut
- Earned her first career start against Marshall
- Carded her first career rejection against Memphis
- Had a strong game, carding 11 points and three steals in Illinois' victory against USC Upstate
- Played a full 40 minutes against Mercer, matching her career-best with eight boards
- Earned her first double-double against Wake Forest with 14 points and 11 rebounds
- Matched her career-best with five assists in Illinois' victory over Fort Wayne
- Led Illinois with a career-high 16 points at George Washington, scoring 10 of Illinois' 15 points in the second quarter of the game

2016-17 GAME-BY-GAME STATISTICS

Date	Opponent	GS	MIN	FG-A	3P-A	FT-A	REB	PF	A	TO	BL	ST	PTS
11/11	Marshall	*	27	3-10	1-3	1-2	7	4	1	1	0	1	8
11/13	UAPB	*	33	3-6	0-0	2-2	8	1	3	6	0	1	8
11/17	Memphis	*	36	1-6	0-1	0-0	6	1	5	2	1	1	2
11/20	USC Upstate	*	34	5-13	1-4	0-0	7	3	4	2	0	3	11
11/22	Mercer	*	40	2-9	1-5	0-0	8	3	3	6	0	0	5
11/30	Wake Forest	*	38	7-17	0-3	0-0	11	3	3	6	0	0	14
12/2	Fort Wayne	*	31	1-6	0-1	0-0	3	3	5	2	0	2	2
12/4	GW	*	36	7-16	2-5	0-0	2	0	5	2	0	1	16

HIGH SCHOOL

Recruited as the No. 2-ranked recruit from the state of Tennessee and the No. 27-ranked point guard in the nation by ESPN HoopGurlz...AAA Miss Basketball Finalist...four-time All-Tournament point guard...was named Most Valuable Player at her high school All-Star game...chose Illinois over Florida, MTSU, UT Martin, Vanderbilt and Memphis

PERSONAL

Daughter of Robert Beasley and Lavonzella Redmond...born June 17, 1997...has one brother, Brandon...lists Derrick Rose as her favorite athlete because he is a humble player...aspires to become a coach or a physical therapist in the future

BEASLEY'S CAREER STATISTICS

YEAR	G-GS	MIN/AVG	FGM-FGA/%	3PM-3PA/%	FTM-FTA/%	REB/AVG	PF/DQ	A	TO	B	ST	PTS/AVG
2016-17	8-8	27.5 / 34.4	29-83 / .349	5-22 / .227	3-4 / .750	9-43-52 / 6.5	18 / 0	29	27	1	9	66 / 8.3
TOTAL	8-8	27.5 / 34.4	29-83 / .349	5-22 / .227	3-4 / .750	9-43-52 / 6.5	18 / 0	29	27	1	9	66 / 8.3

FIGHTING ILLINI WOMEN'S BASKETBALL NOTES



CIERRA RICE

5

5-9 // SOPHOMORE // GUARD

GROSSE POINTE, MICH.

GROSSE POINT

SEASON BESTS

Pts: 11 (UAPB, 11/13/16)
Rebs: 8 (UAPB, 11/13/16)
FGM: 3 (UAPB, 11/13/16)
FGA: 11 (2x last vs. UAPB, 11/13/16)
FTM: 5 (UAPB, 11/13/16)
FTA: 5 (UAPB, 11/13/16)
3FGM: 1 (Marshall, 11/11/16)
3FGA: 5 (2x, last vs. UAPB, 11/13/16)
Ast: 2 (Marshall, 11/11/16)
Blk: 1 (Memphis, 11/17/16)
Stl: 1 (Marshall, 11/11/16)
Min: 40 (Marshall, 11/11/16)

CAREER BESTS

Pts: 22 (at Miami, 12/2/15)
Rebs: 8 (vs. Tennessee State, 11/24/15)
FGM: 8 (at Miami, 12/2/15)
FGA: 14 (at Miami, 12/2/15)
FTM: 6 (vs. UT Martin, 11/21/15)
FTA: 9 (2x, last vs. Southern Illinois, 12/8/15)
3FGM: 3 (vs. UT Martin, 11/21/15)
3FGA: 6 (at Memphis, 12/19/15)
Ast: 5 (vs. UT Martin, 11/21/15)
Blk: 1 (3x, last vs. Memphis, 11/17/16)
Stl: 4 (vs. Chicago State, 11/13/15)
Min: 40 (Marshall, 11/11/16)

2016-17 HIGHLIGHTS

- Returned from injury in the 2016-17 season, earning the start against Marshall
- Scored nine of her 11 points against UAPB in the fourth quarter, helping to lift the Illini to victory
- Is currently sidelined due to an injury suffered against Memphis

2016-17 GAME-BY-GAME STATISTICS

Date	Opponent	GS	MIN	FG-A	3P-A	FT-A	REB	PF	A	TO	BL	ST	PTS
11/11	Marshall	*	40	2-11	1-5	0-0	4	3	2	2	0	1	5
11/13	UAPB	*	33	3-11	0-5	5-5	8	2	1	5	0	0	11
11/17	Memphis	*	6	1-6	0-1	0-0	0	1	1	0	1	0	2
11/20	USC Upstate						DNP						
11/22	Mercer						DNP						
11/30	Wake Forest						DNP						
12/2	Fort Wayne						DNP						
12/4	GW						DNP						

RICE'S CAREER STATISTICS

YEAR	G-GS	MIN/AVG	FGM-FGA/%	3PM-3PA/%	FTM-FTA/%	REB/AVG	PF/DQ	A	TO	B	ST	PTS/AVG
2015-16	10-9	305 / 30.5	47-89 / .528	10-22 / .455	32-47 / .681	12-33-45 / 4.5	21 / 0	24	21	2	11	136 / 13.6
2016-17	3-3	79 / 26.3	6-28 / .214	1-11 / .091	5-5 / 1.000	2-6-8 / 4.0	6 / 0	4	7	1	1	18 / 6.0
TOTAL	13-12	384 / 29.5	53-117 / .453	11-33 / .333	37-52 / .712	15-42-57 / 4.4	27 / 0	28	28	3	12	154 / 11.8

FIGHTING ILLINI WOMEN'S BASKETBALL NOTES



**CYDNEE
KINSLOW**

11

6-2 // REDSHIRT FRESHMAN // FORWARD

OAKLEY, CALIF.

FREEDOM HIGH SCHOOL // PEPPERDINE

SEASON BESTS

Pts: --
Rebs: --
FGM: --
FGA: --
FTM: --
FTA: --
3FGM: --
3FGA: --
Ast: --
Blk: --
Stl: --
Min: --

CAREER BESTS

Pts: --
Rebs: --
FGM: --
FGA: --
FTM: --
FTA: --
3FGM: --
3FGA: --
Ast: --
Blk: --
Stl: --
Min: --

2016-17 SEASON HIGHLIGHTS

•

2016-17 GAME-BY-GAME STATISTICS

Date Opponent GS MIN FG-A 3P-A FT-A REB PF A TO BL ST PTS

AT PEPPERDINE

2015-16: Graduated high school early to attend Pepperdine for the spring semester...did not see any action.

HIGH SCHOOL

Four-year Team Captain at Freedom High School...helped her club team, the Cal Stars to a 56-1 record during her career...led the Cal Stars to a Nike National Championship...2014-15 Freedom Girls Basketball Player of the Year...averaged a triple-double every game for the Freedom through the 2014-15 season...Three-time team MVP...Twice named Second Team All-League...member of the National Honor Society...earned Principal's Honor Roll recognition.. volunteered with Special Olympics helping to bring the Unified Sports program to the west coast...started a special needs basketball and bowling league in her school district

PERSONAL

Daughter of Rob and Rosalie Kinslow...Born Aug. 7, 1998...has two sisters, Chelbe and Cassidee...is studying in the College of Business...enjoys surfing in her spare time...aspires to work in the sports field after graduation

FIGHTING ILLINI WOMEN'S BASKETBALL NOTES



ASHLEY MCCONNELL 12

5-9 // SENIOR // GUARD

PALATINE, ILL.

FREMD HIGH SCHOOL

SEASON BESTS

Pts: 6 (at George Washington, 12/4/16)
Rebs: 1 (at George Washington, 12/4/16)
FGM: 2 (at George Washington, 12/4/16)
FGA: 2 (4x, last George Washington, 12/4/16)
FTM: --
FTA: --
3FGM: 2 (at George Washington, 12/4/16)
3FGA: 2 (4x, last George Washington, 12/4/16)
Ast: 1 (USC Upstate, 11/20/16)
Blk: --
Stl: --
Min: 11 (at George Washington, 12/4/16)

CAREER BESTS

Pts: 13 (at Iowa, 2/13/14)
Rebs: 5 (at Michigan, 1/26/15)
FGM: 4 (at Iowa, 2/13/14)
FGA: 8 (vs. Michigan State, 2/5/14)
FTM: 3 (vs. Michigan State, 2/5/14)
FTA: 4 (2x, last at Iowa, 2/13/14)
3FGM: 3 (2x, last vs. Wisconsin, 2/1/15)
3FGA: 6 (vs. Michigan State, 2/5/14)
Ast: 4 (3x, last vs. Iowa, 3/6/14)
Blk: 1 (vs. Michigan State, 2/5/14)
Stl: 4 (vs Iowa, 3/6/14)
Min: 36 (vs. Michigan State, 2/5/14)

CAREER HONORS

2015 Winter Academic All-Big Ten

2016-17 HIGHLIGHTS

- Made her first appearance of her senior season against Marshall
- Saw nine minutes of action against Memphis, firing two shots from distance
- Recorded her first points of the season at George Washington, netting two triples in the contest

2016-17 GAME-BY-GAME STATISTICS

Date	Opponent	GS	MIN	FG-A	3P-A	FT-A	REB	PF	A	TO	BL	ST	PTS
11/11	Marshall		2	0-0	0-0	0-0	0	0	0	0	0	0	0
11/13	UAPB		1	0-0	0-0	0-0	0	0	0	0	0	0	0
11/17	Memphis		9	0-2	0-2	0-0	0	0	0	2	0	0	0
11/20	USC Upstate		7	0-0	0-0	0-0	0	0	1	0	0	0	0
1/22	Mercer		6	0-2	0-2	0-0	0	1	0	0	0	0	0
11/30	Wake Forest		6	0-0	0-0	0-0	0	0	0	0	0	0	0
12/2	Fort Wayne		5	0-2	0-2	0-0	0	2	0	0	0	0	0
12/4	GW		11	2-2	2-2	0-0	1	0	0	0	0	0	6

MCCONNELL'S CAREER STATISTICS

YEAR	G-GS	MIN/AVG	FGM-FGA/%	3PM-3PA/%	FTM-FTA/%	REB/AVG	PF/DQ	A	TO	B	ST	PTS/AVG
2013-14	20-8	291 / 14.6	15-51 / .294	12-41 / .293	8-15 / .533	14 / 0.7	20 / 1	20	8	1	16	50 / 2.5
2014-15	22-0	196 / 8.9	9-18 / .500	8-12 / .667	1-4 / .250	16 / 0.7	8 / 0	7	8	0	5	27 / 1.2
2015-16	23-0	143 / 6.2	8-20 / .400	7-19 / .368	2-2 / 1.000	4-7-11 / 0.5	8 / 0	10	4	0	3	25 / 1.1
2016-17	78-0	44 / 5.5	2-9 / .222	2-9 / .222	0-0 / .000	0-1-1 / 0.1	3 / 0	1	2	0	0	6 / 0.8
TOTAL	73-8	674 / 9.2	34-98 / .347	29-81 / .358	11-21 / .524	10-32-42 / 0.6	39 / 1	38	22	1	24	108 / 1.5

MCCONNELL'S CAREER BIG TEN STATISTICS

YEAR	G-GS	MIN/AVG	FGM-FGA/%	3PM-3PA/%	FTM-FTA/%	REB/AVG	PF/DQ	A	TO	B	ST	PTS/AVG
2013-14	10-7	225/22.5	13-42/.310	10-32/.313	7-13/.538	9/0.9	19/1	13	8	1	11	43/4.3
2014-15	11-0	123/11.2	6-12/.500	6-8/.750	0-0/.000	12/1.1	3/0	5	5	0	4	18/1.6
2015-16	16-0	90/5.6	4-11/.364	4-11/.364	2-2/1.000	1-4-5/0.4	4/0	5	1	0	3	14/1.0
TOTAL	37-7	438/11.8	23-65/.354	20-51/.392	9-15/.600	3-23-26/0.7	26/1	23	14	1	18	75/2.1

FIGHTING ILLINI WOMEN'S BASKETBALL NOTES



PETRA HOLEŠÍNKOVÁ 13

5-9 // FRESHMAN // GUARD

VRACOV, CZECH REPUBLIC

SPORTOVNI LUDVIKA DANKA

SEASON BESTS

Pts: 18 (Memphis, 11/17/16)
Rebs: 4 (3x, last vs. Fort Wayne, 12/2/16)
FGM: 6 (2x, last vs. Fort Wayne, 12/2/16)
FGA: 14 (Wake Forest, 11/30/16)
FTM: 3 (Memphis, 11/17/16)
FTA: 4 (Memphis, 11/17/16)
3FGM: 5 (Fort Wayne, 12/2/16)
3FGA: 7 (Fort Wayne, 12/2/16)
Ast: 1 (2x, last vs. Wake Forest, 11/30/16)
Blk: 2 (Fort Wayne, 12/2/16)
Stl: 4 (Memphis, 11/17/16)
Min: 32 (Wake Forest, 11/30/16)

CAREER BESTS

Pts: 18 (Memphis, 11/17/16)
Rebs: 4 (3x, last vs. Fort Wayne, 12/2/16)
FGM: 6 (2x, last vs. Fort Wayne, 12/2/16)
FGA: 14 (Wake Forest, 11/30/16)
FTM: 3 (Memphis, 11/17/16)
FTA: 4 (Memphis, 11/17/16)
3FGM: 5 (Fort Wayne, 12/2/16)
3FGA: 7 (Fort Wayne, 12/2/16)
Ast: 1 (2x, last vs. Wake Forest, 11/30/16)
Blk: 2 (Fort Wayne, 12/2/16)
Stl: 4 (Memphis, 11/17/16)
Min: 32 (Wake Forest, 11/30/16)

2016-17 SEASON HIGHLIGHTS

- Made her first career appearance for the Illini against Marshall, putting up six points and grabbing four rebounds and a block
- Earned her first start in the Orange and Blue against UAPB, finishing with two points and three rebounds
- Had a breakout game against Memphis, knocking down 6-of-12 shots from the field to score 18 points and grab four steals and three rebounds
- Led Illinois over Fort Wayne, knocking down five treys on 5-for-7 shooting from distance. Also tallied a career-best two rejections in the game

2016-17 GAME-BY-GAME STATISTICS

Date	Opponent	GS	MIN	FG-A	3P-A	FT-A	REB	PF	A	TO	BL	ST	PTS
11/11	Marshall		20	2-5	0-3	2-2	4	2	0	2	1	0	6
11/13	UAPB	*	16	1-6	0-1	0-0	3	1	0	0	0	0	2
11/17	Memphis		23	6-12	3-6	3-4	3	4	0	2	0	4	18
11/20	USC Upstate	*	21	3-7	0-3	0-0	4	3	1	0	0	1	6
11/22	Mercer	*	18	0-7	0-6	0-0	3	1	0	1	1	0	0
11/30	Wake Forest	*	32	4-14	1-6	2-2	2	3	1	1	0	1	11
12/2	Fort Wayne	*	29	6-11	5-7	0-0	4	3	0	2	2	1	17
12/4	GW	*	26	3-5	0-1	0-0	3	3	0	1	0	0	6

HIGH SCHOOL

Veteran player for the Czech Republic National team...helped the Czech Republic to three National Championships and a second place finish at the European Champion's Cup...won the Gold Medal at the 2014 U-17 World Championships with the Czech Republic team...named MVP of the 2014 World Championship Gold Medal team...averaged 12.5 points, 5.0 rebounds and 2.6 assists per game in the Czech Republic women's second division...named to the 2016 European Championship U20 All-Tournament team...averaged 17 points and 5.2 rebounds for the Czech Republic in the 2016 European Championship

PERSONAL

Daughter of Petr Holešínký and Markéta Holešínková...born March 12, 1997...has one sister, Michaela...aspires to play professional basketball in Europe following graduation...lists Stephen Curry as her favorite athlete because of his ability to shoot

HOLEŠINSKA'S CAREER STATISTICS

YEAR	G-GS	MIN/AVG	FGM-FGA/%	3PM-3PA/%	FTM-FTA/%	REB/AVG	PF/DQ	A	TO	B	ST	PTS/AVG
2016-17	8-6	185 / 23.1	25-67 / .373	9-33 / .273	7-8 / .875	1-25-26 / 3.3	20 / 0	2	9	5	7	66 / 8.3
TOTAL	8-6	185 / 23.1	25-67 / .373	9-33 / .273	7-8 / .875	1-25-26 / 3.3	20 / 0	2	9	5	7	66 / 8.3



SARAH OVERCASH 20

6-1 // FRESHMAN // FORWARD

CHEVY CHASE, M.D.

ST. JOHN'S COLLEGE

SEASON BESTS

Pts: 4 (USC Upstate, 11/20/16)
Rebs: 5 (USC Upstate, 11/20/16)
FGM: 1 (3x, last at George Washington, 12/4/16)
FGA: 6 (USC Upstate, 11/20/16)
FTM: 2 (USC Upstate, 11/20/16)
FTA: 2 (2x, last vs. USC Upstate, 11/20/16)
3FGM: --
3FGA: --
Ast: 1 (at George Washington, 12/4/16)
Blk: 1 (USC Upstate, 11/20/16)
Stl: 1 (at George Washington, 12/4/16)
Min: 14 (George Washington, 12/4/16)

CAREER BESTS

Pts: 4 (USC Upstate, 11/20/16)
Rebs: 5 (USC Upstate, 11/20/16)
FGM: 1 (3x, last at George Washington, 12/4/16)
FGA: 6 (USC Upstate, 11/20/16)
FTM: 2 (USC Upstate, 11/20/16)
FTA: 2 (2x, last vs. USC Upstate, 11/20/16)
3FGM: --
3FGA: --
Ast: 1 (at George Washington, 12/4/16)
Blk: 1 (USC Upstate, 11/20/16)
Stl: 1 (at George Washington, 12/4/16)
Min: 14 (George Washington, 12/4/16)

2016-17 SEASON HIGHLIGHTS

- Made her first career appearance for the Illini against Marshall
- Had a career performance, putting up four points and grabbing five rebounds in eight minutes against USC Upstate

HIGH SCHOOL

The top-ranked recruit out of the District of Columbia...named DCSAA First Team All-State in 2015...played with Penn State's Amari Carter and Michigan signee Kayla Robbins...chose Illinois over Penn and Princeton...First-Team All-WCAC selection...helped lead St. John's to the 2016 DCSAA Championship title

PERSONAL

Daughter of Tim and Bridget Overcash...born Aug. 27, 1997...has three brothers, Jimmy, Danny and Timmy

2016-17 GAME-BY-GAME STATISTICS

Date	Opponent	GS	MIN	FG-A	3P-A	FT-A	REB	PF	A	TO	BL	ST	PTS
11/11	Marshall	1	0-0	0-0	1-2	1	0	0	0	0	0	0	1
11/13	UAPB	2	0-0	0-0	0-0	0	0	0	1	0	0	0	0
11/17	Memphis	5	0-0	0-0	0-0	1	1	0	1	0	0	0	0
11/20	USC Upstate	8	1-6	0-0	2-2	5	0	0	0	1	0	4	4
11/22	Mercer	2	0-1	0-0	0-0	0	0	0	0	0	0	0	0
11/30	Wake Forest	3	0-0	0-0	0-0	2	1	0	0	0	0	0	0
12/2	Fort Wayne	10	1-2	0-0	0-0	2	0	0	0	0	0	2	2
12/4	GW	14	1-1	0-0	1-3	1	1	1	0	0	1	3	3

OVERCASH'S CAREER STATISTICS

YEAR	G-GS	MIN/AVG	FGM-FGA/%	3PM-3PA/%	FTM-FTA/%	REB/AVG	PF/DQ	A	TO	B	ST	PTS/AVG
2016-17	8-0	45 / 5.6	3-10 / .300	0-0 / .000	4-7 / .571	6-6-12 / 1.5	3 / 0	1	2	1	1	10 / 1.3
TOTAL	8-0	45 / 5.6	3-10 / .300	0-0 / .000	4-7 / .571	6-6-12 / 1.5	3 / 0	1	2	1	1	10 / 1.3

FIGHTING ILLINI WOMEN'S BASKETBALL NOTES



JAELYNE KIRKPATRICK 23

5-7 // SOPHOMORE // GUARD

OAKVILLE, ONTARIO

ST. IGNATIUS OF LOYOLA

SEASON BESTS

Pts: 13 (UAPB, 11/13/16)
Rebs: 4 (UAPB, 11/13/16)
FGM: 3 (2x, last vs. Mercer, 11/22/16)
FGA: 10 (Mercer, 11/22/16)
FTM: 4 (UAPB, 11/13/16)
FTA: 4 (2x, last vs. Fort Wayne, 12/2/16)
3FGM: 3 (UAPB, 11/13/16)
3FGA: 8 (vs. Mercer, 11/22/16)
Ast: 6 (USC Upstate, 11/20/16)
Blk: --
Stl: 3 (2x, last vs. Fort Wayne, 12/2/16)
Min: 39 (Fort Wayne, 12/2/16)

CAREER BESTS

Pts: 13 (UAPB, 11/13/16)
Rebs: 7 (vs. Tennessee State, 11/24/15)
FGM: 3 (6x, last vs. Mercer, 11/22/16)
FGA: 10 (3x, last vs. Mercer, 11/22/16)
FTM: 4 (3x, last vs. UAPB, 11/13/16)
FTA: 5 (vs. #20 Michigan State, 2/24/16)
3FGM: 3 (2x, last vs. UAPB, 11/13/16)
3FGA: 8 (vs. Mercer, 11/22/16)
Ast: 8 (vs. Penn State, 3/2/16)
Blk: --
Stl: 3 (4x, last vs. Fort Wayne, 12/2/16)
Min: 39 (Fort Wayne, 12/2/16)

2016-17 HIGHLIGHTS

- Got the start for Illinois in the 2016-17 season opener against Marshall
- Put up a career-high 13 points off the bench against UAPB
- Played a career-best 37 minutes against Mercer, knocking down two three-pointers, and totaling eight points
- Dished five of Illinois' 10 assists against Wake Forest

2016-17 GAME-BY-GAME STATISTICS

Date	Opponent	GS	MIN	FG-A	3P-A	FT-A	REB	PF	A	TO	BL	ST	PTS
11/11	Marshall	*	27	1-3	0-0	2-2	3	3	1	2	0	3	4
11/13	UAPB		33	3-6	3-5	4-4	4	2	3	2	0	2	13
11/17	Memphis	*	31	0-3	0-3	0-0	2	4	2	5	0	1	0
11/20	USC Upstate	*	35	2-6	1-5	0-0	2	1	6	2	0	0	5
11/22	Mercer	*	37	3-10	2-8	0-0	1	3	2	3	0	0	8
11/30	Wake Forest	*	32	1-5	0-2	0-0	0	4	5	2	0	2	2
12/2	Fort Wayne	*	39	1-3	0-1	2-4	3	0	4	0	0	3	4
12/4	GW	*	30	1-7	0-1	2-2	2	2	3	2	0	1	4

KIRKPATRICK'S CAREER STATISTICS

YEAR	G-GS	MIN/AVG	FGM-FGA/%	3PM-3PA/%	FTM-FTA/%	REB/AVG	PF/DQ	A	TO	B	ST	PTS/AVG
2015-16	29-2	505 / 17.4	36-115 / .313	17-58 / .293	18-27 / .667	16-37-53 / 1.8	85 / 8	42	41	0	24	107 / 3.7
2016-17	8-7	264 / 33.0	12-43 / .279	6-15 / .240	10-12 / .833	3-14-17 / 2.1	19 / 0	26	18	0	12	40 / 5.0
TOTAL	37-9	769 / 20.8	48-158 / .304	23-83 / .277	28-29 / .718	19-51-70 / 1.9	104 / 8	68	59	0	36	147 / 4.0

KIRKPATRICK'S CAREER BIG TEN STATISTICS

YEAR	G-GS	MIN/AVG	FGM-FGA/%	3PM-3PA/%	FTM-FTA/%	REB/AVG	PF/DQ	A	TO	B	ST	PTS/AVG
2015-16	18-1	339/18.8	22-75/.293	10-34/.294	14-19/.737	9-20-29/1.6	57/5	25	21	0	12	68/3.8
TOTAL	18-1	339/18.8	22-75/.293	10-34/.294	14-19/.737	9-20-29/1.6	57/5	25	21	0	12	68/3.8

FIGHTING ILLINI WOMEN'S BASKETBALL NOTES



KENNEDY CATTENHEAD 25

5-10 // REDSHIRT-JUNIOR // GUARD

BOLINGBROOK, ILL.

BOLINGBROOK H.S.

SEASON BESTS

Pts: 16 (Wake Forest, 11/30/16)
Rebs: 9 (Mercer, 11/22/16)
FGM: 7 (Fort Wayne, 12/2/16)
FGA: 10 (Fort Wayne, 12/2/16)
FTM: 6 (Wake Forest, 11/30/16)
FTA: 6 (Wake Forest, 11/30/16)
3FGM: 2 (2x, last vs. Wake Forest, 11/30/16)
3FGA: 3 (4x, last vs. Fort Wayne, 12/2/16)
Ast: 2 (3x, last vs. Fort Wayne, 12/2/16)
Blk: 1 (2x, last vs. USC Upstate, 11/20/16)
Stl: 2 (at George Washington, 12/4/16)
Min: 32 (Wake Forest, 11/30/16)

CAREER BESTS

Pts: 17 (at Nebraska, 1/10/16)
Rebs: 9 (Mercer, 11/22/16)
FGM: 7 (2x, last vs. Fort Wayne, 12/2/16)
FGA: 17 (at Nebraska, 1/10/16)
FTM: 7 (vs. Tennessee State, 11/24/15)
FTA: 8 (2x, last vs. Maryland 12/31/15)
3FGM: 2 (3x, last vs. Wake Forest, 11/30/16)
3FGA: 7 (at Nebraska, 1/10/16)
Ast: 5 (at Minnesota, 1/26/16)
Blk: 1 (5x, last vs. USC Upstate, 11/20/16)
Stl: 5 (Nebraska, 3/5/15)
Min: 34 (2x, last at Wisconsin, 2/17/16)

CAREER HONORS

2015 Winter Academic Honor Roll

2016-17 HIGHLIGHTS

- Led Illinois off the bench with 10 points in the season opener against Marshall
- Grabbed a season-high seven rebounds against USC Upstate
- Led Illinois in scoring with 16 points against Wake Forest, also earning her first start of the season in the matchup

2016-17 GAME-BY-GAME STATISTICS

Date	Opponent	GS	MIN	FG-A	3P-A	FT-A	REB	PF	A	TO	BL	ST	PTS
11/11	Marshall		26	3-9	2-2	2-5	5	4	0	2	0	1	10
11/13	UAPB		17	2-5	0-2	0-0	1	4	0	3	1	1	4
11/17	Memphis		20	3-5	0-1	0-0	3	1	2	2	0	1	6
11/20	USC Upstate		21	5-9	1-3	0-0	7	0	2	3	1	0	11
11/22	Mercer		23	1-5	0-3	1-2	8	3	0	4	0	0	3
11/20	Wake Forest	*	32	4-8	2-3	6-6	4	1	0	1	0	0	16
12/2	Fort Wayne	*	29	7-10	1-3	0-2	5	0	2	4	0	1	15
12/4	GW	*	23	0-6	0-1	0-2	3	2	0	1	0	2	0

CATTENHEAD'S CAREER STATISTICS

YEAR	G-GS	MIN/AVG	FGM-FGA/%	3PM-3PA/%	FTM-FTA/%	REB/AVG	PF/DQ	A	TO	B	ST	PTS/AVG
2014-15	22-0	129 / 5.9	9-27 / .333	2-7 / .286	4-10 / .400	7-16-23 / 1.0	8/0	7	15	1	9	24 / 1.1
2015-16	30-27	780 / 26.0	69-202 / .342	13-56 / .232	49-76 / .645	30-95-125 / 4.2	56/1	57	75	2	19	200 / 6.7
2016-17	8-3	191 / 23.9	25-57 / .439	6-18 / .333	9-17 / .529	14-22-36 / 4.5	15 / 0	6	20	2	6	65 / 8.1
TOTAL	60-30	1100 / 18.3	103-286 / .360	21-81 / .259	62-103 / .602	51-133-184 / 3.1	79 / 1	70	110	5	34	289 / 4.8

CATTENHEAD'S CAREER BIG TEN STATISTICS

YEAR	G-GS	MIN/AVG	FGM-FGA/%	3PM-3PA/%	FTM-FTA/%	REB/AVG	PF/DQ	A	TO	B	ST	PTS/AVG
2014-15	10-0	27/2.7	3-6/.500	0-1/.000	0-0/.000	6/0.6	1/0	2	6	0	0	6/0.6
2015-16	18-16	483/26.8	49-135/.363	9-39/.231	24-39/.615	19-53-72/4.0	36/1	37	47	0	13	131/7.3
TOTAL	28-16	510/18.2	52-141/.369	9-40/.225	24-39/.615	21-57-78/2.8	37/1	39	53	0	13	137/4.9

FIGHTING ILLINI WOMEN'S BASKETBALL NOTES



COURTNEY JOENS

30

5-10 // FRESHMAN // GUARD

IOWA CITY, IOWA

CITY HIGH

SEASON BESTS

Pts: 11 (2x, last at George Washington, 12/4/16)
Rebs: 5 (Wake Forest, 11/30/16)
FGM: 4 (USC Upstate, 11/20/16)
FGA: 9 (Mercer, 11/22/16)
FTM: 4 (2x, last at George Washington, 12/4/16)
FTA: 4 (Wake Forest, 11/30/16)
3FGM: 3 (2x, last at George Washington, 12/4/16)
3FGA: 6 (2x, last vs. Mercer, 11/22/16)
Ast: 1 (3x, last vs. Wake Forest, 11/30/16)
Blk: --
Stl: 2 (at George Washington, 12/4/16)
Min: 20 (at George Washington, 12/4/16)

CAREER BESTS

Pts: 11 (2x, last at George Washington, 12/4/16)
Rebs: 5 (Wake Forest, 11/30/16)
FGM: 4 (USC Upstate, 11/20/16)
FGA: 9 (Mercer, 11/22/16)
FTM: 4 (2x, last at George Washington, 12/4/16)
FTA: 4 (Wake Forest, 11/30/16)
3FGM: 3 (2x, last at George Washington, 12/4/16)
3FGA: 6 (2x, last vs. Mercer, 11/22/16)
Ast: 1 (3x, last vs. Wake Forest, 11/30/16)
Blk: --
Stl: 2 (at George Washington, 12/4/16)
Min: 20 (at George Washington, 12/4/16)

2016-17 SEASON HIGHLIGHTS

- Made her first appearance for Illinois against Marshall
- Netted her first career field goal and a three-pointer for the Illini against Memphis to finish with five points total
- Had a career day against USC Upstate, going 3-for-6 from distance, good for 11 points
- Went to the foul line for the first time against Wake Forest, knocking down all four of her free throws
- Matched her career-best with 11 points at George Washington on 3-for-5 shooting from distance

2016-17 GAME-BY-GAME STATISTICS

Date	Opponent	GS	MIN	FG-A	3P-A	FT-A	REB	PF	A	TO	BL	ST	PTS
11/11	Marshall	2	0-0	0-0	0-0	0	0	0	0	0	0	0	0
11/13	UAPB	3	0-1	0-1	0-0	0	0	0	1	0	0	0	0
11/17	Memphis	10	2-3	1-1	0-0	1	2	0	0	0	0	0	5
11/20	USC Upstate	11	4-8	3-6	0-0	3	3	1	0	0	0	0	11
11/22	Mercer	19	2-9	0-6	0-0	3	2	1	1	0	0	4	4
11/30	Wake Forest	14	2-4	2-3	4-4	5	3	1	1	0	0	10	10
12/2	Fort Wayne	15	2-7	1-4	0-0	0	2	0	0	0	0	5	5
12/4	GW	20	4-8	3-5	0-2	1	1	1	0	0	2	11	11

HIGH SCHOOL

Ranked the No. 27 point guard in the country by ESPN HoopGurlz, and the top out of the state of Iowa...ranked among the top-5 guards in Iowa by IowaPreps.com...holds City High's single-game records for points (42) and three-pointers (8)...chose Illinois over Creighton, Drake, South Dakota, Nebraska, Minnesota and DePaul...made 41 three-pointers in her sophomore season while averaging 14.6 points per game...took City High to the 2013 state semifinals... First Team All-Conference selection...two-time Second Team All-Conference honoree...received Second Team All-State recognition following her junior and senior seasons...volunteers at her local elementary school and at her church...consistently appeared on the Iowa City High School Honor Roll...was a member of her high school FCA

PERSONAL

Daughter of Brian and Lisa Joens...has four younger sisters...mother played basketball at Wright State and her uncle played basketball at Wayne State...lists Steph Curry as her favorite athlete because of the hard work and dedication he showed to become the player he is today...enjoys reading in her spare time...aspires to become an elementary school teacher and basketball coach

JOENS' CAREER STATISTICS

YEAR	G-GS	MIN/AVG	FGM-FGA/%	3PM-3PA/%	FTM-FTA/%	REB/AVG	PF/DQ	A	TO	B	ST	PTS/AVG
2016-17	8-0	94 / 11.8	16-41 / .390	10-26 / .385	4-6 / .667	8-5-13 / 1.6	14 / 0	4	3	0	2	46 / 5.8
TOTAL	8-0	94 / 11.8	16-41 / .390	10-26 / .385	4-6 / .667	8-5-13 / 1.6	14 / 0	4	3	0	2	46 / 5.8

FIGHTING ILLINI WOMEN'S BASKETBALL NOTES



ALEX WITTINGER 35

6-1 // SOPHOMORE // FORWARD

DELANO, MINN.

DELANO

SEASON BESTS

Pts: 23 (UAPB, 11/13/16)
Rebs: 16 (Mercer, 11/22/16)
FGM: 11 (UAPB, 11/13/16)
FGA: 16 (2x, last vs. Wake Forest, 11/30/16)
FTM: 2 (2x, last vs. Mercer, 11/22/16)
FTA: 2 (3x, last vs. Wake Forest, 11/30/16)
3FGM: 1 (UAPB, 11/13/16)
3FGA: 1 (3x, last vs. USC Upstate, 11/20/16)
Ast: 2 (UAPB, 11/13/16)
Blk: 4 (2x, last vs. Memphis, 11/17/16)
Stl: 3 (2x, last vs. UAPB, 11/13/16)
Min: 38 (UAPB, 11/13/16)

CAREER BESTS

Pts: 27 (at Minnesota, 1/26/16)
Rebs: 16 (Mercer, 11/22/16)
FGM: 12 (at Minnesota, 1/26/16)
FGA: 18 (at Minnesota, 1/26/16)
FTM: 5 (vs. Penn State, 1/23/16)
FTA: 6 (2x, last vs. #7 Ohio State, 2/1/16)
3FGM: 1 (3x, last vs. UAPB, 11/13/16)
3FGA: 2 (at Minnesota, 1/26/16)
Ast: 3 (vs. CMU, 12/12/16)
Blk: 6 (vs. Lehigh, 12/6/15)
Stl: 4 (vs. George Washington, 12/28/15)
Min: 38 (3x, last vs UAPB, 11/13/16)

CAREER HONORS

2015 Big Ten All Freshman Team

2016-17 HIGHLIGHTS

- Led Illinois against Marshall with 15 points, eight rebounds, two blocks and three steals
- Earned her first double-double of the year in a 23-point, 12-rebound performance that led Illinois over UAPB
- Has recorded multiple blocks and steals in two of Illinois' games this season
- Is riding a five-game double-double streak into Friday's game against Fort Wayne

2016-17 GAME-BY-GAME STATISTICS

Date	Opponent	GS	MIN	FG-A	3P-A	FT-A	REB	PF	A	TO	BL	ST	PTS
11/11	Marshall	*	33	7-12	0-1	1-1	8	2	2	3	2	3	15
11/13	UAPB	*	38	11-16	1-1	0-0	12	3	2	2	4	3	23
11/17	Memphis	*	35	6-10	0-0	0-0	12	1	1	0	4	0	12
11/20	USC Upstate	*	32	6-14	0-1	2-2	13	1	1	3	1	0	14
1/22	Mercer	*	27	5-11	0-0	2-2	16	5	0	4	2	0	12
11/30	Wake Forest	*	37	7-16	0-0	0-2	10	1	0	2	4	1	14
12/2	Fort Wayne	*	23	4-13	0-0	0-0	9	4	1	0	1	1	8
12/4	GW	*	27	3-11	0-0	0-0	3	3	0	4	1	0	6

WITTINGER'S CAREER STATISTICS

YEAR	G-GS	MIN/AVG	FGM-FGA/%	3PM-3PA/%	FTM-FTA/%	REB/AVG	PF/DQ	A	TO	B	ST	PTS/AVG
2015-16	28-18	759 / 27.1	130-258 / .504	2-10 / .200	17-28 / .607	91-102-193 / 6.9	67 / 3	15	38	50	14	279 / 10.0
2016-17	8-8	252 / 31.5	49-103 / .476	1-3 / .333	5-7 / .714	33-50-83 / 10.4	20 / 1	7	17	19	8	104 / 13.0
TOTAL	36-26	1011 / 28.1	179-361 / .496	3-13 / .231	22-35 / .629	124-152-276 / 7.7	87 / 4	22	55	69	22	383 / 10.6

WITTINGER'S CAREER BIG TEN STATISTICS

YEAR	G-GS	MIN/AVG	FGM-FGA/%	3PM-3PA/%	FTM-FTA/%	REB/AVG	PF/DQ	A	TO	B	ST	PTS/AVG
2015-16	16-16	499/31.2	81-161/.503	2-6/.333	14-22/.636	56-65-121/7.6	42/2	9	26	30	8	178/11.1
TOTAL	16-16	499/31.2	81-161/.503	2-6/.333	14-22/.636	56-65-121/7.6	42/2	9	26	30	8	178/11.1

FIGHTING ILLINI WOMEN'S BASKETBALL NOTES

**MEAGAN
McNICHOLAS 45**

5-10 // FRESHMAN // GUARD

ROCHESTER, ILL.

ROCHESTER

SEASON BESTS

Pts: --
Rebs: --
FGM: --
FGA: --
FTM: --
FTA: --
3FGM: --
3FGA: --
Ast: --
Blk: --
Stl: --
Min: 1 (Fort Wayne, 12/2/16)

CAREER BESTS

Pts: --
Rebs: --
FGM: --
FGA: --
FTM: --
FTA: --
3FGM: --
3FGA: --
Ast: --
Blk: --
Stl: --
Min: 1 (Fort Wayne, 12/2/16)

2016-17 SEASON HIGHLIGHTS

- Walked on to the Illini squad in late December
- Suited up and entered her first game for the Illini against Fort Wayne

HIGH SCHOOL

PERSONAL

2016-17 GAME-BY-GAME STATISTICS

Date	Opponent	GS	MIN	FG-A	3P-A	FT-A	REB	PF	A	TO	BL	ST	PTS
11/11	Marshall						N/A						
11/13	UAPB						N/A						
11/17	Memphis						N/A						
11/20	USC Upstate						N/A						
11/22	Mercer						N/A						
11/30	Wake Forest						N/A						
12/2	Fort Wayne		1	0-0	0-0	0-0	0	0	0	0	0	0	0
12/4	GW						DNP						

McNICHOLAS' CAREER STATISTICS

YEAR	G-GS	MIN/AVG	FGM-FGA/%	3PM-3PA/%	FTM-FTA/%	REB/AVG	PF/DQ	A	TO	B	ST	PTS/AVG
2016-17	1-0	1 / 1.0	0-0 / .000	0-0 / .000	0-0 / .000	0-0-0 / 0.0	0 / 0	0	0	0	0	0 / 0.0
TOTAL	1-0	1 / 1.0	0-0 / .000	0-0 / .000	0-0 / .000	0-0-0 / 0.0	0 / 0	0	0	0	0	0 / 0.0

FIGHTING ILLINI WOMEN'S BASKETBALL NOTES



ALI ANDREWS 50

6-2 // FRESHMAN // FORWARD

LAKE IN THE HILLS, ILL.

HUNTLEY

SEASON BESTS

Pts: 15 (USC Upstate, 11/20/16)
Rebs: 6 (3x, last vs. Mercer, 11/22/16)
FGM: 4 (USC Upstate, 11/20/16)
FGA: 9 (Marshall, 11/11/16)
FTM: 7 (UAPB, 11/13/16)
FTA: 8 (UAPB, 11/13/16)
3FGM: 2 (USC Upstate, 11/20/16)
3FGA: 3 (3x, last vs. USC Upstate, 11/20/16)
Ast: 2 (UAPB, 11/13/16)
Blk: 1 (4x, last vs. USC Upstate, 11/20/16)
Stl: 3 (UAPB, 11/13/16)
Min: 31 (USC Upstate, 11/20/16)

CAREER BESTS

Pts: 15 (USC Upstate, 11/20/16)
Rebs: 6 (3x, last vs. Mercer, 11/22/16)
FGM: 4 (USC Upstate, 11/20/16)
FGA: 9 (Marshall, 11/11/16)
FTM: 7 (UAPB, 11/13/16)
FTA: 8 (UAPB, 11/13/16)
3FGM: 2 (USC Upstate, 11/20/16)
3FGA: 3 (3x, last vs. USC Upstate, 11/20/16)
Ast: 2 (UAPB, 11/13/16)
Blk: 1 (4x, last vs. USC Upstate, 11/20/16)
Stl: 3 (UAPB, 11/13/16)
Min: 31 (USC Upstate, 11/20/16)

2016-17 SEASON HIGHLIGHTS

- Earned the start in her first career appearance for the Illini against Marshall
- Put up nine points and grabbed six rebounds against Arkansas-Pine Bluff
- Led Illinois with a career-best 15 points against USC Upstate in a career-best 31 minutes on the court

2016-17 GAME-BY-GAME STATISTICS

Date	Opponent	GS	MIN	FG-A	3P-A	FT-A	REB	PF	A	TO	BL	ST	PTS
11/11	Marshall	*	22	1-9	0-2	2-2	3	4	0	5	1	1	4
11/13	UAPB	*	24	1-8	0-3	7-8	6	2	2	1	1	3	9
11/17	Memphis	*	28	2-13	1-3	4-4	4	3	1	0	1	1	9
11/20	USC Upstate	*	31	4-8	2-3	5-6	6	3	1	0	1	0	15
11/22	Mercer	*	28	0-3	0-1	1-2	6	2	0	2	0	0	1
11/30	Wake Forest		6	1-2	1-2	0-0	0	0	0	0	0	0	3
12/2	Fort Wayne		18	0-6	0-2	3-4	4	3	1	0	0	0	3
12/4	GW		13	1-2	0-1	2-2	2	2	0	1	1	0	4

HIGH SCHOOL

Unanimous Associated Press First-Team All-State selection...ranked the No. 14 forward in the country and No. 1 in Illinois by ESPN HoopGurlz...ranked as the No. 79 recruit in the nation...class 4A All-State Team...helped Huntley to two-straight Fox Valley Conference Valley Division titles...has scored more than 1,800 points in her high school career so far...Daily Herald Fox Valley All-Area Team Co-Captain...Associated Press First Team All-State selection...has earned Huntley three consecutive regional titles and two straight sectional titles.

PERSONAL

Daughter of Chet and Pam Andrews...has two brothers, Chet and Tony, and her sister, Sam, plays basketball at Truman State...plans to study Journalism...lists Skylar Diggins as her favorite athlete because she is a great player who represents women's basketball very well

ANDREWS' CAREER STATISTICS

YEAR	G-GS	MIN/AVG	FGM-FGA/%	3PM-3PA/%	FTM-FTA/%	REB/AVG	PF/DQ	A	TO	B	ST	PTS/AVG
2016-17	8-5	170 / 21.3	10-51 / .196	4-17 / .235	24-28 / .857	13-18-31 / 3.9	19 / 0	5	9	5	5	48 / 6.0
TOTAL	8-5	170 / 21.3	10-51 / .196	4-17 / .235	24-28 / .857	13-18-31 / 3.9	19 / 0	5	9	5	5	48 / 6.0

2016-17 RADIO/TV ROSTER



1 **Brandi Beasley**
5-6 // Fr. // G



5 **Cierra Rice**
5-9 // So. // G



11 **Cydnee Kinslow**
6-2 // Fr. // F



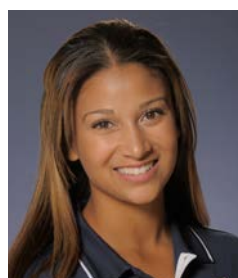
12 **Ashley McConnell**
5-9 // Sr. // G



13 **Petra Holešinská**
5-9 // Fr. // G



20 **Sarah Overcash**
6-1 // Fr. // F



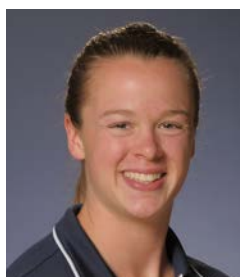
23 **Jaelyne Kirkpatrick**
5-7 // So. // G



25 **Kennedy Cattenhead**
5-10 // RJr. // G



30 **Courtney Joens**
5-10 // Fr. // G



35 **Alex Wittinger**
6-1 // So. // F



45 **Meagan McNicholas**
5-10 // Fr. // G



50 **Ali Andrews**
6-2 // Fr. // F



Matt Bollant
Head Coach



LaKale Malone
Associate Head Coach/
Recruiting Coordinator



Tianna Kirkland
Assistant Coach



Jody Martinez
Assistant Coach