

I L L I N O I S

WOMEN'S TENNIS



UNIVERSITY OF ILLINOIS 2014 WOMEN'S TENNIS



FIGHTING ILLINI QUICK FACTS

UNIVERSITY	
Location	Urbana-Champaign
Enrollment	43,398
Nickname	Fighting Illini
Colors	Orange and Blue
Conference	Big Ten
President	Robert Easter
Chancellor	Phillis Wise
Athletic Director	Mike Thomas
Home Facility	Atkins / Khan Tennis Center

COACHING STAFF	
Head Coach	Michelle Dasso
Alma Mater	Notre Dame, '01
Record at Illinois (Years)	94-78 (7)
Overall Record (Years)	94-78 (7)
Big Ten Record (Years)	44-27 (7)
Assistant Coach	Ric Mortera
Alma Mater	Oregon, '10

TENNIS OFFICE	
Office Manager	Sheila Armstrong
Tennis Office Phone	217-244-6471
Tennis Office Fax	217-244-5112

2012-13 RECAP	
2012-13 Record	14-11
Record at Home/Away/Neutral	8-5/5-2/1-4
Big Ten Record/Finish	6-5/t-5th
Big Ten Tournament	1-1
	L, 4-1 vs. Purdue (Quarterfinals)
Final ITA National Ranking	45

2013-14 PREVIEW	
Letterwinners Returning/Lost	6/2
Newcomers	3

HISTORY	
First Year of Women's Tennis	1975
Years in NCAA Tournament/Last	11/2012

TABLE OF CONTENTS

2013 Roster / Schedule / Pronunciation Guide	2
Head Coach Michelle Dasso	3
Assistant Coach Ric Mortera	4
Support Staff	5
2014 Season Preview	6-7
Senior Allison Falkin	8
Senior Misia Kedzierski	9
Junior Julia Jamieson	10
Junior Melissa Kopinski	11
Sophomore Emily Barretta	12
Sophomore Audrey O'Connor	13
Freshman Jerricka Boone	14
Freshman Alexis Casati	15
Freshman Louise Kwong	16
2013 Season Review	17
2013 Big Ten / ITA Review	18
NCAA Team Results / Singles & Doubles Results	19-20
All-Time Letterwinners	21
All-Time Results	22-28
Coaching Records / All-Time Series Records	29
Singles, Doubles Records / Regional, National Honors	30
Home Court Records / Team Records / Big Ten Honors	31
University, Team, Academic Awards	32
2014 Fighting Illini TV Roster	33

The 2014 Illinois women's tennis record book is a publication of the Athletic Public Relations Office, written to assist the media in their coverage of Illinois athletics.

Photos by Mark Cowan

ATHLETIC COMMUNICATIONS



Women's Tennis Contact	John Lock
E-mail Address	jtlock2@illinois.edu
Office Phone	217-244-3645
Cell Phone	309-333-0132
Sports Information Director	Kent Brown
Associate Director	Derrick Burson
Assistant Directors	Derek Neal, Ben Taylor, Marla Glasser, Matt Wille
Graduate Assistant	Josh Bates
Intern	Paige Thompson
Creative Design/New Media	Adam Marantz, Heidi Rivers, Will Wyss
Office Manager	Jen Funderburk
Office Phone	217-333-1391
Office Fax	217-333-5540
Website	www.fightingillini.com
Facebook	www.facebook.com/IlliniWTennis
Twitter	www.twitter.com/IlliniTennis
Mailing Address	Bielfeldt Athletic Administration Building 1700 South Fourth St., Champaign, IL 61820

2013-14 FIGHTING ILLINI ROSTER / SCHEDULE



2013-14 ILLINOIS WOMEN'S TENNIS

(L-R): Assistant Coach Ric Mortera, Alexis Casati, Emily Barretta, Melissa Kopinski, Audrey O'Connor, Misia Kedzierski, Julia Jamieson, Allison Falkin, Louise Kwong, Jerricka Boone, Head Coach Michelle Dasso

ILLINOIS ALPHABETICAL ROSTER

NAME	HT.	YR.	HOMETOWN / HIGH SCHOOL
Emily Barretta	5-4	So.	Winnetka, Ill. (New Trier)
Jerricka Boone	5-2	Fr.	Country Club Hills, Ill. (Morgan Park Academy)
Alexis Casati	5-2	Fr.	Deerfield, Ill. (Deerfield)
Allison Falkin	5-6	Sr.	Roswell, Ga. (Centennial High School)
Julia Jamieson	5-8	Jr.	Wilmette, Ill. (Loyola Academy)
Misia Kedzierski	5-8	Sr.	St. Louis, Mo. (St. Joseph's Academy)
Melissa Kopinski	5-7	Jr.	Palos Hills, Ill. (Amos Alonzo Stagg)
Louise Kwong	5-4	Fr.	Toronto, Ontario (Earl Haig)
Audrey O'Connor	5-7	So.	Park Ridge, Ill. (Maine South)

Head Coach: Michelle Dasso (Eighth Season)
Assistant Coaches: Ric Mortera (First Season)

PRONUNCIATION GUIDE

Misia Kedzierski	MEE-shuh Keh-JER-ski
Julia Jamieson	JAME-eh-son
Louise Kwong	Lou-EESE

2014 ILLINOIS SPRING SCHEDULE

DATE	OPPONENT	LOCATION	TIME (CT)
J 16-19	Hawaii Tournament	Maui, Hawaii	All Day
J 24	St. Louis	Urbana, Ill.	2 p.m.
	Chicago	Urbana, Ill.	6 p.m.
J 26	UIC	Urbana, Ill.	11 a.m.
	Illinois State	Urbana, Ill.	4 p.m.
J 31	at Notre Dame	South Bend, Ind.	2:30 p.m.
F 2	TCU	Urbana, Ill.	1 p.m.
F 8	at Oklahoma	Norman, Okla.	11 a.m.
F 9	at Wichita State	Wichita, Kan.	11 a.m.
F 15	Wake Forest	Urbana, Ill.	Noon
F 21-23	Blue Gray National Tennis Classic	Montgomery, Ala.	All Day
M 8	Northwestern*	Urbana, Ill.	Noon
M 9	at Purdue*	West Lafayette, ind.	11 a.m.
M 23	Indiana*	Urbana, Ill.	11 a.m.
M 29	Penn State*	Urbana, Ill.	11 a.m.
M 30	Ohio State*	Urbana, Ill.	Noon
A 5	at Michigan State*	East Lansing, Mich.	11 a.m.
A 6	at Michigan*	Ann Arbor, Mich	11 a.m.
A 12	Iowa*	Urbana, Ill.	Noon
A 13	Nebraska*	Urbana, Ill.	Noon
A 18	at Minnesota*	Minneapolis, Minn.	3 p.m.
A 20	at Wisconsin*	Madison, Wis.	11 a.m.
A 24-27	Big Ten Championships	Evanston, Ill.	TBA
M 9-11	NCAA First and Second Rounds	TBA	TBA
M 16-26	NCAA Championships	Atlanta, Ga.	TBA

All home matches are in **bold** and held at Atkins / Khan Tennis Center depending on weather
 *Big Ten Opponent

MICHELLE DASSO

HEAD COACH - EIGHTH SEASON



Head coach Michelle Dasso enters her eighth season at the helm of the Illinois women's tennis program. Dasso became the seventh coach of the Fighting Illini after a tremendous playing and coaching career at the University of Notre Dame.

In 2012-13, Dasso coached Melissa Kopinski and Rachael White to All-America honors as a doubles team. The duo advanced to the quarterfinals of the NCAA Championships hosted at the Khan Outdoor Tennis Complex in Urbana, Ill. White and Kopinski were the second and third All-Americans in program history and first in 20 years.

Dasso's 2011-12 squad produced three All-Big Ten honorees, the most in program history. Kopinski and Allison Falkin were named first-team, while Marisa Lambropoulos was named second-team. The Orange and Blue took down No. 9 Texas, marking Illinois' first win over a top-10 team since 2003, and finished the year 18-8 overall with a No. 21 ranking.

The 2010-11 Illini boasted two All-Big Ten honorees, including Rachael White (first team) and Amy Allin (second team).

In the previous season, the Illini were rewarded with their first top-25 finish in the final Campbell's/ITA rankings since 2004, after making their third straight NCAA tournament appearance. The Orange and Blue finished 15-10 overall, including nine wins over nationally ranked opponents and placed third in the Big Ten with an 8-2 mark. Dasso also showed her recruiting prowess, signing the fourth-ranked recruiting class in the nation, which was the highest-ranked class in Illinois history.

In addition to her Illinois coaching duties, Dasso also served as coach for the fourth annual Master'U BNP Paribas for the second straight year. The international competition features the top collegiate players from around the world. Working alongside Boise State head coach Greg Patton, the duo guided the U.S. to a first-place finish with a 4-3 victory over France. It was the first-ever championship for the U.S. in only its second appearance in the tournament.

In 2008-09, the Illini advanced to the second round of the NCAA tournament for the first time since 2003 with a 4-3 victory over No. 19 Vanderbilt, which also marked their first win over a top-20 opponent in five years. The squad took home Illinois' Outstanding Team GPA Award with a cumulative GPA of 3.475.

After battling through an injury plagued first season as head coach, Dasso turned the program around in 2007-08. In only her second year at the helm, Dasso helped lead the Orange and Blue to a fourth-place finish in the Big Ten and its first NCAA tournament appearance in four years.

Dasso is a native of Long Grove, Ill., and a 1997 graduate of Stevenson High School. She spent three years as an assistant coach for the University of Notre Dame (2003-06) women's tennis program under head coach Jay Louderback. Her primary responsibilities in South Bend, Ind., were recruiting, on-court coaching, budgeting, travel arrangement and managing the strength and conditioning program.

With the Fighting Irish, Dasso garnered ITA National Assistant Coach of the Year honors after leading Notre Dame to unprecedented success in 2005-06. Notre Dame finished 27-2 on the season and was ranked No. 2 in the country for eight weeks before falling in the quarterfinals of the NCAA Championships. In the fall of 2005, she coached the doubles tandem of Catrina and Christian Thompson to the ITA

THE DASSO FILE

PERSONAL:

Born: Feb. 12, 1979
Hometown: Long Grove, Ill.
Hired: June 13, 2006

EDUCATION:

Notre Dame, 2001
Bachelor's Degree in Business Administration-Marketing

COACHING EXPERIENCE:

2006-Present: Head Coach, University of Illinois
2003-06: Assistant Coach, University of Notre Dame

PLAYING EXPERIENCE:

2001-03: USTA Professional Circuit
1998-2001: University of Notre Dame

PLAYING ACCOLADES:

ITA National Senior Player of the Year (2001)
Four-time ITA All-American (Singles and Doubles, 1999 and 2001)
Two-time Big East Championship Most Outstanding Player (2000-01)
Four-time Team MVP (1998-2001)
Winningest Player in Notre Dame history - Singles (140 wins)
Notre Dame Athletics Francis Patrick O'Connor Award winner (2001)
Notre Dame Gladys Heldman Award winner (2001)

All-American Championships doubles title, becoming the first Notre Dame women's tennis players to capture a collegiate grand slam tournament.

In only her third season with Notre Dame, Dasso made a name for herself as a recruiter. She helped recruit the 2006-07's Irish signing class that ranked No. 1 in the country by tennisrecruiting.net, while previously being involved in recruiting two All-Americans. In addition, the women's tennis team was annually in contention for the highest team GPA honors among all Notre Dame athletic teams.

As a player, Dasso is the most decorated women's tennis player in Notre Dame history. She grabbed the ITA's National Senior Player of the Year accolade in 2001, and is the program's first four-time All-American. She still tops the Irish record books in several statistical categories, including career singles victories (140), most career wins at No. 1 singles (67), season singles victories (40) and combined season victories (74).

In 2001, she received the Francis Patrick O'Connor Award, presented annually by the University to one male and one female student-athlete who best displayed the total embodiment of the true spirit of Notre Dame.

After earning a bachelor's degree in business administration-marketing from Notre Dame in 2001, Dasso played professionally for two years, before returning to South Bend to join the Irish staff.

RIC MORTERA

ASSISTANT COACH - FIRST SEASON



Ric Mortera joined the Illini staff as assistant coach in July 2013 after serving as assistant coach at Purdue, where he helped lead the 2012-13 Boilermakers to the second round of the NCAA Tennis Championships for only the second time in Purdue history.

During his season at Purdue, Mortera helped the Boilermakers reach No. 14 in the ITA rankings, marking the team's highest ranking in program history. He also helped lead the squad to 18 wins, matching an all-time high at Purdue, and was instrumental in Purdue's first NCAA Doubles Championship berth since 2000, coaching Krisztina Kapitan and Mara Schmidt to the Boilermakers'

fourth doubles tournament appearance in school history.

Prior to Purdue, Mortera spent two years as Illinois' volunteer assistant coach, helping the team reach No. 18 in the national rankings. With his guidance, five Illini earned All-Big Ten recognition, while six players earned ITA rankings in singles or doubles.

While working at Illinois, Mortera also worked on the Women's Tennis Association Tour, coaching former United States Fed Cup player Alexa Glatch and 2009 Orange Bowl champion Julia Boserup. He helped Glatch reach the main draw of both the U.S. Open and Wimbledon and helped improve her ranking from No. 302 to No. 139 in the world. He also helped Boserup achieve a career-high ranking of No. 174.

THE MORTERA FILE

PERSONAL:

Hometown: Portland, Ore.
Hired: July 2013

EDUCATION:

Oregon, 2010

COACHING EXPERIENCE:

First Season

PLAYING EXPERIENCE:

2006-10: Oregon

PLAYING ACCOLADES:

Four-year letterwinner

Mortera was a four-year letterwinner at the University of Oregon, where he reached No. 45 in the ITA rankings his senior year and led the squad in dual singles wins as a sophomore. He graduated from Oregon in 2010 with degrees in both economics and political science.

As a junior tennis player, Mortera was consistently ranked in the top 20 nationally, reaching as high as No. 6, and was the top-ranked player from the Pacific Northwest.



SUPPORT STAFF



KATIE HEINRICHS **STRENGTH & CONDITIONING**

Katie Heinrichs is in her fifth season as strength and conditioning coach for the Illinois women's tennis program. A 2000 graduate of the University of Illinois, Heinrichs is currently in the process of earning her M.S. in exercise physiology.

A registered dietician, Heinrichs is developing her career in exercise background to become a more well-rounded nutritionist. Heinrichs is involved in every aspect of the conditioning process, from weight training to nutritional assistance.



JIM TRESSLER **DIRECTOR OF ATKINS TENNIS CENTER**

Jim Tressler was named Director of Atkins Tennis Center in April, 2000. Since his graduation from the University of Cincinnati in 1986, Tressler has experienced many facets of college athletics and the tennis industry. After receiving his B.S. in Management and Marketing, he coached women's college tennis as an assistant coach at Indiana and Florida, where his 1992 team went undefeated and won the NCAA Championships. In 1994, he was named the

head coach at Alabama and his teams consistently finished among the top 20 in the country.

Tressler then accepted a position at Nike where he worked in the Tennis Sports Marketing Department and signed James Blake to his first professional contract. He currently oversees all aspects of the Atkins Tennis Center, including day-to-day operations, instructional and league programs and serves as Tournament Director of the \$50,000 USTA Champaign Challenger professional tennis tournament. The facility will host the 2013 NCAA Championships.

A native of Cincinnati, he and his wife, Julie, have two children (Travis and Delaney) and reside in Champaign.



MEAGHAN NAAS **ATHLETIC TRAINING**

Meaghan Naas joined the University of Illinois Sports Medicine staff in January 2012, working with the men's and women's tennis programs. Before coming to Illinois, Naas worked with the men's soccer, women's lacrosse, and track and field programs at the University of Maryland, Baltimore County.

A native of Laurel, Md., Naas attended Salisbury University on the Eastern Shore of Maryland and received a bachelor's degree in athletic training. She worked with football, women's soccer, women's basketball, and a Div. I men's lacrosse program while at Salisbury. Naas then received a Master of Science degree in education from Virginia Tech. While at Virginia Tech she was assigned to the men's and women's tennis programs.

Naas currently resides in Champaign with her husband, Jake.



Shari Clapp
Academic Counselor



Paul Kowalczyk
Associate Athletics
Director



Sheila Armstrong
Office Manager



Christine Stromburg
Atkins Tennis Center



Stacy Dally
Marketing



Atkins Tennis Center

The Fighting Illini women's tennis team is looking to make another push at an NCAA Championships bid after a successful spring. The lineup features ranked veterans at the top of the lineup and a trio of talented freshmen that look to make an instant impact on the team. The Illini wrapped up a successful spring that saw two players qualify for the All-American Championships and three players reach the quarterfinals of the ITA Midwest Regionals.

The team loses two seniors from last year's 14-11 squad, Rachael White and Breanne Smutko. The duo combined for 38 doubles wins last year, 28 of which came from White, who earned All-America honors with Melissa Kopinski. Head coach **Michelle Dasso** is entering her eighth season as the head coach and is six wins away from 100 career wins, all of which have been at Illinois. Her Big Ten winning percentage (.611) is best in school history.

Dasso added assistant coach **Ric Mortera** in the offseason. Mortera came to Illinois from Purdue, where he spent one year as an assistant. Prior to joining the Boilermakers' staff, Mortera was Illinois' volunteer assistant coach for two years, helping the Illini reach as high as No. 18 in the national rankings.

"Ric bleeds orange and blue, and his loyalty to the University and this program speaks for itself," Dasso said. "We have thoroughly enjoyed working with each other in the past, so there is already a foundation of trust, belief in each other and loyalty. I believe these elements are key to any program's progress and future."

The Seniors

Allison Falkin and **Misia Kedzierski** each enter their final year of eligibility in Orange and Blue. Falkin is a two-time first-team All-Big Ten selection and led the Illini last year with an 19-11 singles record and a 6-2 mark at No. 1 singles.

"Allison can beat anyone in the country," head coach Michelle Dasso said. "She is a crafty player and tough competitor, and she can get a lot of wins for us at the top of our lineup."

Kedzierski has seen increased playing time in each of her three seasons in Urbana-Champaign and picked up a career-best 14 singles wins last year. Falkin and Kedzierski teamed up in in doubles and went 11-5 overall and 10-4 in the dual season.

"Misia's improvement from year-to-year has been outstanding," Dasso said. "As a freshman, she really struggled in doubles. This year, she's going to be an important part of our doubles play. Her improvement is a testament to her work ethic and the time she has put in over her career."

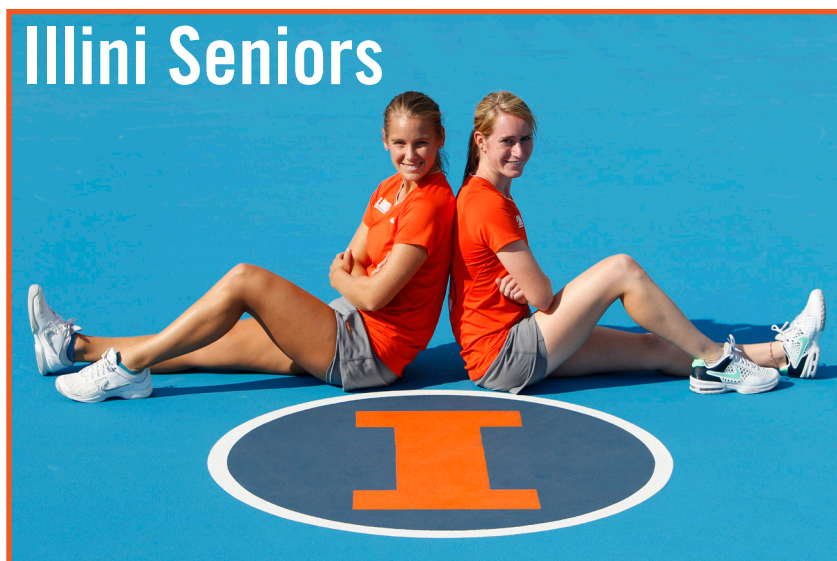
In the 2013 fall season, Falkin was the top-ranked Illini player, checking in at No. 89 nationally. She played in the qualifying round at the All-American Championships in both singles and doubles. Kedzierski only saw limited playing time due to an injury, but she went 3-1 in doubles play, all with freshman Louise Kwong.

"This year, we're not just relying on our two seniors for leadership; we're relying on them for production," Dasso said. "They've been model four-year players for us and blessings to have in our program. I have confidence that they will finish their careers strong and lead us to our goals this year."

The Juniors

Julia Jamieson and **Melissa Kopinski** start their junior campaigns for the Illini in 2013-14. Kopinski and doubles partner Rachael White became the program's second and third All-Americans last spring after making a run to the quarterfinals of the NCAA Championships. Kopinski has already picked up 51 doubles wins in just two seasons at Illinois, and her 28 doubles wins with White in 2012-13 tied for the seventh-most in school history.

"We've had high expectations for Melissa from the day she got here, and she's living up to them," Dasso said. "She's going to be a big piece for us at the top of both our singles and doubles lineups. If she has the type of year we think she can have, she has the ability to make the NCAA Championships in both singles and doubles."



Julia Jamieson nearly matched her 2012-13 production in the already in the fall season. After picking up eight singles wins last year, Jamieson already has four this year, and she has already eclipsed her 2012-13 doubles wins total (five) with six doubles win in the fall, including a 3-0 mark with Kwong at the Midwest Blast.

"Julia gives us some great depth in both our doubles and singles lineups," Dasso said. "She played some great matches in the fall, and we're thrilled to have her depth and versatility this spring."

The Sophomores

Emily Barretta and Audrey O'Connor return to the team for their sophomore campaigns. Barretta joined the team for the spring season in 2013 and went 2-0 in singles action

and 1-0 in doubles action. This fall, Barretta went 5-5 in singles action and 3-3 in doubles play.

“Emily is tough as nails,” Dasso said. “She’s a fighter. At the Midwest Blast, she faced five match points and came back to win. She’s also a great teammate, and she’ll do anything to help Fighting Illini tennis succeed.”

Audrey O’Connor won 15 doubles matches last year and nine singles matches. She played in 19 matches at No. 2 or 3 doubles and picked up eight wins in the dual season. She battled injury in the fall 2013 season and looks to rebound strong in the spring.

“Audrey has improved every single day she’s been able to since she got here,” Dasso said “Unfortunately, she hit a snag with her injury this fall, but she’s the type of competitor that’s going to come back harder and stronger than ever.”

The Freshmen

The Illini welcome a talented trio of freshmen that all look to contribute right away in the lineup. **Alexis Casati, Jerricka Boone and Louise Kwong** all saw significant action in the fall and all played well in their first look at collegiate competition.

“These freshmen may be small (all three are 5-4 or shorter), but they play big,” Dasso said. “They attack aggressively when they have an opportunity, and that is really going to translate well into our lineup behind Melissa (Kopinski) and Allison (Falkin). This freshmen class makes us competitive with every team in the Big Ten right away.”

Alexis Casati got off to the hottest start, winning her first six singles matches, including the No. 1 singles title at the West Point Invitational. She led the Illini in singles wins this fall and also went 5-3 in doubles action.

“Alexis has been living and breathing tennis since she was a toddler,” Dasso said. “We knew she could be successful right away at this level, but she even surprised us with how successful she was in the fall. Not only did she lead our team in singles wins, but she also played some great doubles late in the fall with Melissa (Kopinski), which is exciting.”

Jerricka Boone came to Illinois after winning two Illinois individual state championships in high school. She picked up three singles wins in her first five matches for the Illini and saw time at Illinois’ top doubles tandem with Allison Falkin.

“Jerricka has a huge amount of potential,” Dasso said. “She will continue to work on her forehand, and she could be a dangerous weapon for us this year and in her Illini career. She has the raw strength and athleticism to beat anyone.”

Louise Kwong, a left-handed Canadian, stands as the tallest of the three incoming freshmen at just 5-4. Kwong proved to be a doubles specialist in the fall, leading the team with seven doubles wins. She also showed promise in singles, winning four matches.



“We are looking forward to Louise’s continued growth, as she will be a key factor to our success and depth this season,” Dasso said. “She is a pleasure to work with on a daily basis and has made a commitment to work hard in the weight room and on her fitness.”

The Schedule

The Illini start the spring in Hawaii for a tournament hosted by the University of Georgia. They come home for four matches in one weekend, facing Saint Louis and Chicago on Jan. 24 and UIC and Illinois State on Jan. 26.

After another match in Urbana vs. TCU on Feb. 2, the Illini only have one home match (Wake Forest, Feb. 15) until Big Ten play starts on March 8 at Northwestern. Four of the first five conference matchups are at home before closing with four of six on the road.

Dasso has a chance to hit a number of milestones in dual play. The Illini coach is six wins away from 100 career victories, all of which have come in her seven years at Illinois. With five more wins, Dasso will pass Mary Tredennick and move into third place on Illinois all-time wins list with 99. Dasso is also six Big Ten wins away from 50 career Big Ten wins. She already holds Illinois best Big Ten winning percentage (.611).



ALLISON FALKIN

5-6 // SENIOR

ROSWELL, GA.

CENTENNIAL HIGH SCHOOL

MAJOR: INDUSTRIAL ENGINEERING

FALKIN'S CAREER STATISTICS

SEASON	SINGLES		DOUBLES	
	OVERALL	BIG TEN	OVERALL	BIG TEN
2010-11	17-16	4-5	22-15	4-5
2011-12	18-17	6-5	19-12	7-4
2012-13	19-11	7-3	11-8	6-3
TOTAL	54-45	17-13	52-35	17-12

JUNIOR 2012-13

First-team All-Big Ten selection ... Led the team win 19 singles wins overall and 15 in the dual season ... Went 6-2 at No. 1 singles ... Also led the team in conference wins, going 7-3 in the Big Ten ... Went 10-4 with Misia Kedzierski in dual-meet doubles, going 5-2 on courts Nos. 2 and 3 ... Ended the season ranked No. 6 in the Midwest Region in singles ... Advanced to the semifinals of the USTA/ITA Midwest Regional singles championship in the fall season.

SOPHOMORE 2011-2012

Garnered first-team All-Big Ten recognition ... Ranked second on the team in singles wins with 18, including 13 in conference play, playing at Nos. 1 and 2 ... Earned a spot in the national singles rankings for the first time in her career, climbing as high as No. 92 before ending the year at No. 123 ... Reached No. 40 with junior Rachael White in the national doubles rankings and No. 8 in the Midwest Region ... Ended the year at No. 9 in the regional singles rankings ... Voted Most Improved by her teammates.

FRESHMAN 2010-11

Ranked third on the team in singles wins (17) and second in doubles (22) ... Peaked at No. 9 in the national doubles rankings with teammate Rachael White ... Alongside White, defeated seven nationally ranked doubles teams, six of which were ranked in the top 40 ... Finished runner-up in doubles with White at the USTA/ITA Midwest Regional Championships ... her teammates.

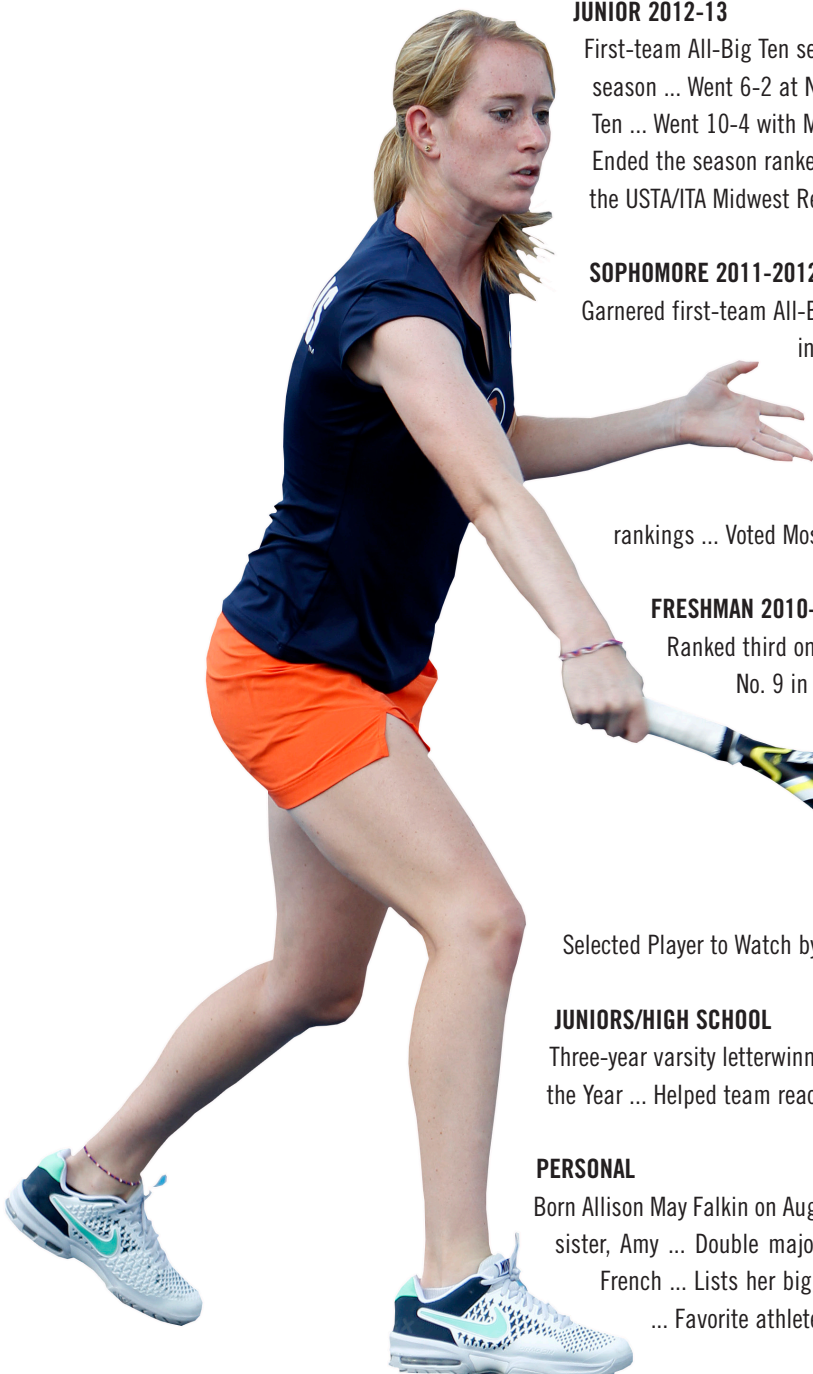
Selected Player to Watch by

JUNIORS/HIGH SCHOOL

Three-year varsity letterwinner at Centennial High School ... 2010 Georgia High School Tennis Player of the Year ... Helped team reach the state finals in 2009 and 2010 ... Finished 45-5 for her career.

PERSONAL

Born Allison May Falkin on August 14, 1992 ... Daughter of Mitch and Annemarie Falkin ... Has one younger sister, Amy ... Double majoring in psychology and linguistics ... Hobbies include soccer, puzzles and French ... Lists her biggest thrill in sports as the feeling of coming through in pressure situations ... Favorite athlete is Justine Henin because of her attitude on the court.





MISIA KEDZIERSKI

5-8 // SENIOR

ST. LOUIS, MO.

ST. JOSEPH'S ACADEMY

MAJOR: BUSINESS MANAGEMENT

KEDZIERSKI'S CAREER STATISTICS

SEASON	SINGLES		DOUBLES	
	OVERALL	BIG TEN	OVERALL	BIG TEN
2010-11	6-10	2-4	7-5	1-0
2011-12	11-4	3-2	9-8	0-2
2012-13	14-13	6-3	12-8	6-2
TOTAL	31-27	11-9	21-16	7-4

JUNIOR 2012-13

Won 14 singles matches, including eight in dual play ... Had the second-most conference wins on the team, going 6-3 in the Big Ten ... Posted an 8-3 record at No. 5 singles ... Also won 12 doubles matches, good for third on the team ... Went 11-4 in doubles play during the dual-meet season, all but one of which was with Allison Falkin.

SOPHOMORE 2011-12

Tallied a career-best 11-4 mark in singles action ... Won two doubles matches ... Posted a strong comeback from injury in the fall season, picking up five wins over two tournaments ... Played primarily at No. 6 singles.

FRESHMAN 2010-11

Played in limited matches due to injury ... Recorded six wins in singles and seven in doubles ... Reached the semifinal round of the Florida Gulf Coast Invitational.

JUNIORS/HIGH SCHOOL

Four-year varsity letterwinner at St. Joseph's Academy ... Helped lead team to three state titles from 2007-09 ... Three-time state singles champion ... Four-time All-Metro state team ... Two-time Player of the Year ... Ranked as high as No. 41 nationally for the class of 2010.

PERSONAL

Born Michelle Allison Kedzierski (ked-JER-ski) on August 28, 1992 ... Goes by Misia (pronounced MEE-sha) ... Daughter of Jacek, who was a tennis pro in Italy and Urszula Kedzierski ... Has an older sister, Jennifer, who played tennis at St. Joseph's University ... Majoring in business management ... Hobbies include dance, painting and reading ... Her biggest thrill in sports is pressure and having a lot of people watch ... Lists Roger Federer as her favorite athlete because he is extremely humble and very gifted ... Names her parents as most influencing her athletic career because they started her in tennis and always pushed her to be the best ... Plans to attend grad school after graduation.





JULIA JAMIESON

5-8 // JUNIOR

WILMETTE, ILL.

LOYOLA ACADEMY

MAJOR: BIOLOGY

JAMIESON'S CAREER STATISTICS

SEASON	SINGLES		DOUBLES	
	OVERALL	BIG TEN	OVERALL	BIG TEN
2011-12	7-2	0-0	8-4	0-0
2012-13	8-11	1-2	6-8	0-1
TOTAL	15-13	1-2	13-12	0-1

SOPHOMORE 2012-2013

Picked up eight singles wins on the year, including three in dual-meet play

... Also won five

doubles

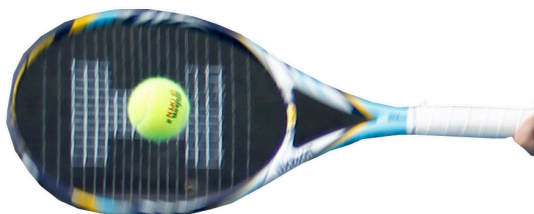
matches,

all in the fall season

... Went 5-2

with Audrey

O'Connor in doubles play in the fall season.



FRESHMAN 2011-2012

Went 7-2 in singles and 8-4 in doubles ... Was a perfect 2-0 in dual singles play, seeing action at the No. 5 spot against Western Illinois and No. 6 spot against Illinois State.

JUNIORS/HIGH SCHOOL

Graduated from Loyola Academy ... Five-star recruit by TennisRecruiting.net ... Catholic Athletic Conference Athlete of the Year (2008-09) ... Advanced to the state tournament in tennis as a freshman and sophomore and in track as a senior.

PERSONAL

Born March 12, 1993 ... Daughter of Mike and Lisa Jamieson ... Majoring in biology ... Has three siblings, Michael, William and Patrick ... Lists the most influential person on her athletic career as coach Rob Budacsek for believing in her and pushing her to do her best.





MELISSA KOPINSKI

5-7 // JUNIOR

PALOS HILLS, ILL.

AMOS ALONZO STAGG

MAJOR: HUMAN NUTRITION

KOPINSKI'S CAREER STATISTICS

SEASON	SINGLES		DOUBLES	
	OVERALL	BIG TEN	OVERALL	BIG TEN
2011-12	23-9	7-2	23-8	9-2
2012-13	13-16	5-5	28-13	5-4
TOTAL	36-25	12-7	51-21	14-6



SOPHOMORE 2012-13

Earned All-America honors in doubles for advancing to the NCAA Championships quarterfinals with Rachael White ... Along with doubles partner Rachael White became the first Illini All-American since Lindsey Nimmo in 1993 ... Second-team All-Big Ten selection ... Collected 28 doubles wins on the year, the seventh-most in school history ... Ended the season ranked No. 15 in the nation and No. 2 in the Midwest Region in doubles with partner Rachael White ... Ended the year ranked No. 11 in the Midwest Region in singles ... Won the USTA/ITA Midwest Regional doubles crown, along with partner Rachael White, in the fall season ... Along with White, beat four nationally ranked doubles opponents on the way to the quarterfinals at the Riviera/ITA All-American Championships.

FRESHMAN 2011-2012

Garnered first-team All-Big Ten recognition ... Voted Advantage Illinois Most Valuable Player and Player to Watch by her teammates ... Led the squad with a 23-9 mark overall in singles, including a team-best 17-6 dual record, while playing primarily at Nos. 2 and 3 ... Cracked the national singles rankings, ending the year at a career-high No. 121 ... Led the team in doubles wins, going 23-8 overall and 15-4 alongside Lambropoulos with whom she reached as high as No. 42 in the nation ... Finished the year ranked seventh in the Midwest Region and fifth alongside Lambropoulos ... Made her debut at the No. 1 singles spot at the Big Ten Tournament.

JUNIORS/HIGH SCHOOL

Graduated from Amos Alonzo Stagg High School ... Selected to all-conference, all-section and All-State teams as a freshman ... Captured the 2010 USTA National Open Girl's 18 singles title in St. Louis ... Coached by Tom Lockhart.

PERSONAL

Born June 2, 1993 ... Daughter of Jan and Zofia Kopinski ... Majoring in community health: health planning and administration ... Twin brother Tim plays for the Illini men's tennis team, marking the first time in Illinois history that twins have played on both tennis squads ... Lists her biggest thrill in sports as winning the 2001-02 Peewee Hockey title in the Oak Lawn House League Championship.



EMILY BARRETTA

5-4 // SOPHOMORE

WINNETKA, ILL.

NEW TRIER

BARRETTA'S CAREER STATISTICS

SEASON	SINGLES		DOUBLES	
	OVERALL	BIG TEN	OVERALL	BIG TEN
2012-13	2-0	0-0	1-0	0-0
TOTAL	2-0	0-0	1-0	0-0

2012-13 FRESHMAN

Joined the team in the spring semester ... Went 2-0, picking up wins at the No. 4 and No. 6 spots in the lineup ... Also went 1-0 in doubles, picking up a win with Misia Kedzierski on court 3.

JUNIORS/HIGH SCHOOL

Listed as a four-star recruit on TennisRecruiting.net ... Three-time All-State honoree in doubles ... Three-time All-Conference honoree in doubles ... Played at the State Championships three years ... Placed fourth in the State of Illinois in doubles in 2010 ... Graduated from New Trier High School one semester early (December 2012) ... Four-year honor roll member.

PERSONAL

Born Emily Alexandria Barretta on June 30, 1995 ... Daughter of Elizabeth and Barry Barretta ... Has one brother ... Majoring in business.





AUDREY O'CONNOR

5-7 // SOPHOMORE

PARK RIDGE, ILL.

MAINE SOUTH

MAJOR: BUSINESS

O'CONNOR'S CAREER STATISTICS

SEASON	SINGLES		DOUBLES	
	OVERALL	BIG TEN	OVERALL	BIG TEN
2012-13	9-16	0-6	15-15	3-6
TOTAL	9-16	0-6	15-15	3-6

2012-13 FRESHMAN

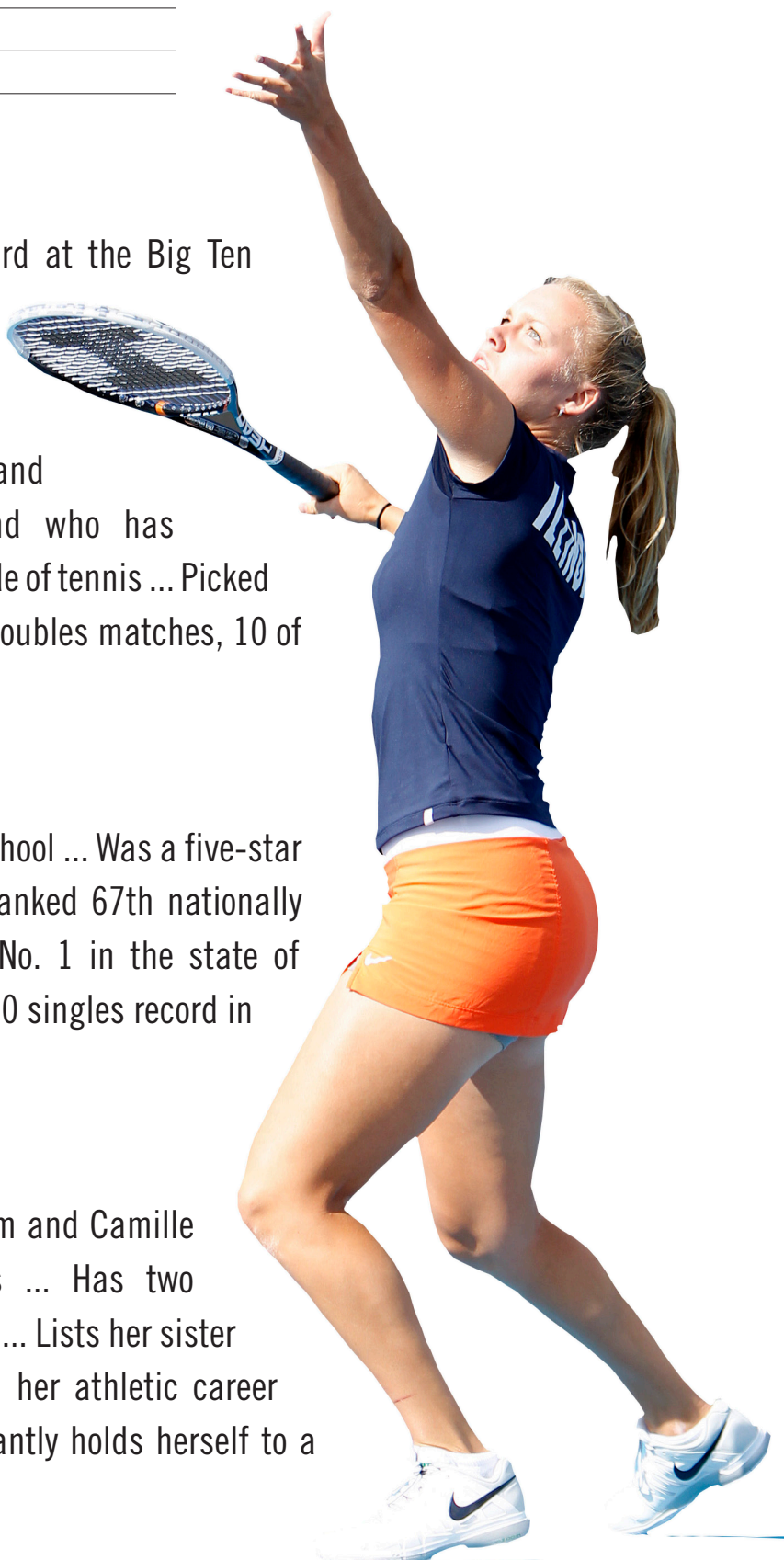
Earned Illinois' Sportsmanship Award at the Big Ten Tournament banquet, given to the athlete from each school who distinguishes herself through sportsmanship, ethical behavior and strong academic performance and who has demonstrated good citizenship outside of tennis ... Picked up nine wins on the year ... Won 15 doubles matches, 10 of which were with Breanne Smutko.

JUNIORS/HIGH SCHOOL

Graduated from Maine South High School ... Was a five-star recruit by TennisRecruiting.net ... Ranked 67th nationally by TennisRecruiting.net ... Ranked No. 1 in the state of Illinois her senior year ... Held a 46-30 singles record in her last year in juniors.

PERSONAL

Born Jan. 6, 1994 ... Daughter of Tom and Camille O'Connor ... Majoring in business ... Has two siblings, twin sister, Haley and Jesse ... Lists her sister as the person who most influenced her athletic career because she is someone who constantly holds herself to a high standard.





JERRICKA BOONE

5-4 // FRESHMAN

COUNTRY CLUB HILLS, ILL.

MORGAN PARK ACADEMY

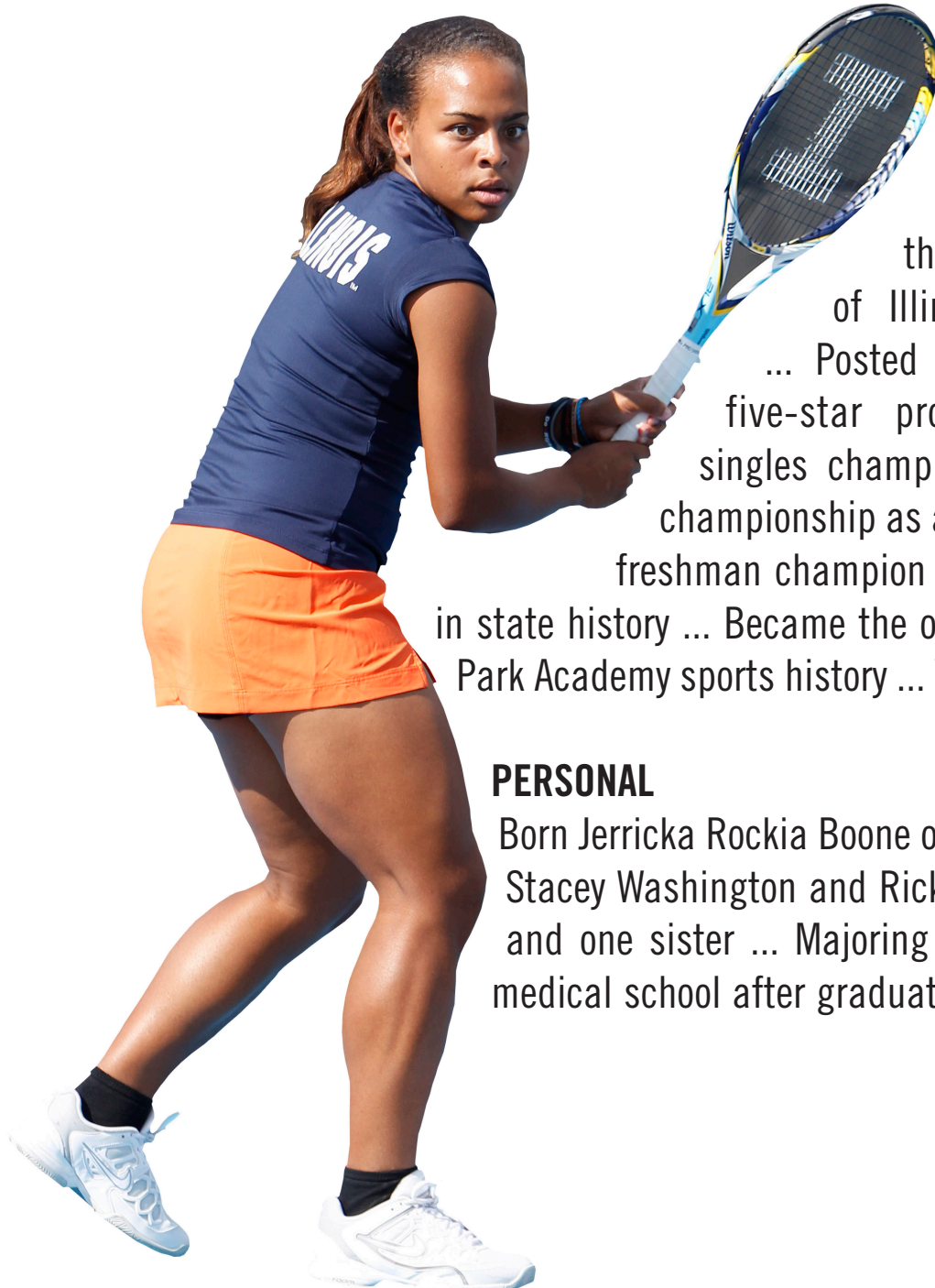
MAJOR: BIOLOGY

JUNIORS/HIGH SCHOOL

Five-star prospect by TennisRecruiting.net ... Ranked as the 47th-best prospect nationally and the third-best prospect in the state of Illinois by TennisRecruiting.net ... Posted a 6-4 record against fellow five-star prospects ... Two-time State singles champion ... Won the state singles championship as a freshman, becoming the first freshman champion since 2000 and only the sixth in state history ... Became the only state champion in Morgan Park Academy sports history ... Was a perfect 29-0 as a junior.

PERSONAL

Born Jerricka Rockia Boone on Jan. 16, 1995 ... Daughter of Stacey Washington and Ricky Boone ... Has three brothers and one sister ... Majoring in biology ... Plans to attend medical school after graduating.





ALEXIS CASATI

5-2 // FRESHMAN

DEERFIELD, ILL.

DEERFIELD HIGH SCHOOL

MAJOR: JOURNALISM

JUNIORS/HIGH SCHOOL

Five-star recruit by TennisRecruiting.net ... First-team All-State honoree in 2011 ... Second-team All-State honoree in 2009 and 2010 ... Three-time All-Conference player ... Placed fifth in the State Championships in 2011 ... Three-time conference champion and two-time sectional champion ... Led team to a second-place team finish in 2009 ... Won the consolation bracket and placed fifth in the state tournament in 2011 ... Four-year honor roll member.

PERSONAL

Born Alexis Christine Casati on July 24, 1995 ... Daughter of Michelle and Stephen Casati ... Both parents played tennis professionally ... Has one brother and one sister ... Majoring in journalism.





LOUISE KWONG

5-4 // FRESHMAN

TORONTO, ONTARIO

EARL HAIG HIGH SCHOOL

MAJOR: KINESIOLOGY



JUNIORS/HIGH SCHOOL

Was a finalist at the U18 All-Canadian Nationals ... Held a top-five U18 ranking in Canada ... Won U18 provincial doubles championship ... Four-year MVP at Earl Haig ... Won the Ontario Federation of School Athletic Associations championships all four years in high school.

PERSONAL

Daughter of Nina Dong and Eddie Kwong ... Has one brother ... Undecided on a major ... Born Jan. 5, 1995 ... Lists her mother as most influential in her athletic career because “she started me into the game and was my biggest supporter.” ... Hobbies include volleyball and squash.

2012-13 SEASON REVIEW

By Lexi Shurilla, *FightingIllini.com* Staff Writer

Coming off of a strong 2011-12 season, the Fighting Illini showed they had national ranking potential and finished 14-11 overall and 6-5 in the Big Ten. The Orange and Blue made an impressive run in doubles at the NCAA Championships, hosted on Illinois' home turf in Urbana for the first time in school history.

Senior Rachael White and sophomore Melissa Kopinski led the Illini in the fall season with 12 doubles wins, including five over ranked opponents. The tandem played its way to the quarterfinals of the Riviera/ITA All-American Championships and won the USTA/ITA Midwest Regional doubles title in Urbana to earn a bid to the USTA/ITA National Indoor Intercollegiate Championships in Flushing, N.Y.

White and Kopinski took down four nationally ranked opponents in their run to the quarterfinals before falling 8-4 to USC, then the No. 1 tandem in the country. Their doubles title marked Illinois' first since Jennifer McGaffigan and Michelle Webb in 2002.

Seventeen of Illinois' 22 regular season opponents were nationally ranked to start the spring, with six in the top 25. The Fighting Illini started the season ranked No. 24 in the nation, marking the second time in the last three years the program opened the spring in the top 25. Illinois opened with the nation's 11th-ranked doubles team - White and Kopinski - and two nationally ranked singles players, including then-No. 59 junior Allison Falkin and then-No. 106 Kopinski.

Illinois opened the dual season with a 7-0 loss at then-No. 9 Miami. The Illini played their next three matches at home, racking up two wins against Illinois State and Western Illinois, and then losing 4-3 in a thriller to the 23rd-ranked Fighting Irish of Notre Dame.

The Illini were able to win four out of their next six contests before entering Big Ten play, including wins against Georgia State, Furman, Syracuse and Oklahoma.

Illinois head coach Michelle Dasso added two assistant coaches to her staff mid-season - Mark Denenfeld and Kelly Anderson - aiding Illinois for the remainder of its 2013 campaign.

The Orange and Blue kicked off conference play in Evanston, Ill., against Northwestern (12), and opened up a four-match losing streak, beginning with a 5-2 loss to the Wildcats. Following its opening loss, Illinois fell to Nebraska (16), Iowa and non-conference foe Oklahoma State.

Illinois was able to pull off a quick turnaround with a 5-2 win over the Wisconsin Badgers to mark its first Big Ten win of the season. The Illini continued to improve their performance and won seven of their last nine regular season matches with their only losses coming to Michigan (10) and Purdue.

The Orange and Blue traveled to Bloomington, Ind., for the Big Ten Tournament. Illinois was able to make it past Michigan State, 4-1, but cut the trip short with a second-round loss to Purdue, marking the Illini's second loss to the Boilermakers in 2013.

White and Kopinski received an at-large bid to the 2013 NCAA Championships, with the Illini team as a whole just missing the cut. The duo was the fourth-ever Illinois doubles team to earn a trip to the NCAA Championships, and first to earn an NCAA Doubles Championship bid since McGaffigan and Webb in 2003.

The then-No. 25-ranked pair had just under a month to prepare for the NCAA Championships at the end of May. The tournament took place at the Khan Outdoor Tennis Complex at the Atkins Tennis Center. The first six days of competition (May 16-21) included the team championships, while the final six days (May 22-27) featured the men's and women's 64-player singles and 32-tandem doubles championships.

In the opening round of the tournament, White and Kopinski easily took down their No. 29-ranked South Carolina opponents - Jaklin Alawi and Dominika Kanakova - in a 6-0 win.

White and Kopinski became the first-ever Illinois doubles team to reach the quarterfinals of the NCAA Championships and, with the win, gained All-America recog-

2013 DUAL MATCH RESULTS

Overall 14-11, 6-5 (Home 8-5, Away 5-2, Neutral 1-4)

DATE	OPPONENT	RESULT
Jan. 13	at Miami	L, 7-0
Jan. 18	Illinois State	W, 5-1
	Western Illinois	W, 7-0
Jan. 20	Notre Dame	L, 4-3
Jan. 27	vs. Vanderbilt (Oxford, Miss.)*	L, 4-1
Jan. 28	at Ole Miss*	L, 4-0
Feb. 2	at Georgia State	W, 4-3
Feb. 3	at Furman	W, 4-3
Feb. 22	Syracuse	W, 6-1
Feb. 24	Oklahoma	W, 5-2
March 2	at Northwestern	L, 5-2
March 8	at Nebraska	L, 6-1
March 10	at Iowa	L, 5-2
March 19	vs. Oklahoma State	L, 4-3
March 29	Wisconsin	W, 5-2
March 31	Minnesota	W, 5-2
	Chicago State	W, 6-0
April 6	Michigan	L, 6-1
April 7	Michigan State	W, 6-1
April 12	at Ohio State	W, 5-2
April 14	at Penn State	W, 5-2
April 19	at Indiana	W, 4-3
April 21	Purdue	L, 5-2
	Big Ten Tournament (Bloomington, Ind.)	
April 25	vs. Michigan State	W, 4-1
April 26	vs. Purdue	L, 4-1

Home matches in **BOLD**.

* ITA Kick-Off Weekend

inition for the first time for Illinois since Lindsey Nimmo in 1993. The 22nd-ranked duo in the nation then upset ninth-ranked Whitney Ritchie and Hermon Brhane of Oklahoma in a 6-4, 7-6(5) battle.

The Illini tandem could not get past the second-seeded USC pair of Kaitlyn Christian and Sabrina Santamaria in the quarterfinals - the same duo White and Kopinski lost to in October in the quarters of the Riviera/ITA All-American Championships.

White and Kopinski finished ranked at No. 15 and with a 28-13 overall record, matching the seventh-most doubles wins in a single season in program history. They are only the second and third women's tennis All-Americans in school history and are the fourth Illini doubles team to play in the NCAA Championships.

Individually, Falkin earned first-team All-Big Ten recognition, while Kopinski was named second-team, and freshman Audrey O'Connor was Illinois' Sportsmanship Award recipient.

The Fighting Illini ended the season ranked 45th in the nation and fourth in the region.

2013 BIG TEN / NCAA REVIEW

2013 ALL-BIG TEN

FIRST TEAM

Allison Falkin, ILL
 LESLIE HUREAU, IND
 Katie Klyczek, IND
 Ruth Seaborne, IOWA
 EMINA BEKTAS, MICH
 Brooke Bolender, MICH
 RONIT YUROVSKY, MICH
 Patricia Veresova, NEB
 MARY WEATHERHOLT, NEB
 Belinda Niu, NW
 Kate Turvy, NW
 PETRA JANUSKOVA, PSU

SECOND TEAM

Melissa Kopinski, ILL
 Sarah Lee, MICH
 Natallia Pintusava, MINN
 Stefanie Weinstein, NEB
 Veronica Corning, NW
 Mara Schmidt, PUR

2013 INDIVIDUAL HONORS

Athlete of the Year: Mary Weatherhold, NEB
Freshman of the Year: RONIT YUROVSKY, MICH
Co-Coach of the Year: Ronni Bernstein, MICH
 (Unanimous selections in all CAPS)

2013 Big Ten Tournament April 25-28, 2013 • Indiana University • Bloomington, Ind.

April 25 - First Round

#8 Iowa 4, #9 Ohio State 2
 #5 Illinois 4, #12 Michigan State 1
 #10 Minnesota 4, #7 Penn State 1
 #6 Indiana 4, #11 Wisconsin 0

April 26 - Quarterfinals

#1 Michigan 4, #8 Iowa 2
 #4 Purdue 4, #5 Illinois 1
 #2 Nebraska 2, #10 Minnesota 0
 #3 Northwestern 4, #6 Indiana 0

April 27 - Semifinals

#1 Michigan 4, #4 Purdue 0
 #3 Northwestern 4, #2 Nebraska 1

April 28 - Finals

#3 Northwestern 4, #1 Michigan 1

2013 DUAL MATCH STANDINGS

	Team	BIG TEN		OVERALL	
		Record	Pct.	Record	Pct.
1.	Nebraska*	10-1	.909	24-6	.800
	Michigan*	10-1	.909	23-6	.791
3.	Northwestern #	9-2	.818	20-9	.690
4.	Purdue	8-3	.727	18-6	.750
5.	Indiana	6-5	.545	18-10	.643
	Illinois	6-5	.545	14-11	.560
7.	Penn State	4-7	.364	14-8	.636
8.	Iowa	3-8	.273	11-13	.458
	Ohio State	3-8	.273	10-14	.417
	Minnesota	3-8	.273	10-15	.400
	Wisconsin	3-8	.273	5-18	.217
12.	Michigan State	1-10	.091	11-16	.407

* Big Ten regular season winner (Co-Champions)
 # Big Ten Tournament winner

2013 FINAL CAMPBELL/ITA TEAM RANKINGS

1	Stanford	16	Nebraska
2	Florida	17	Texas
3	Texas A&M	18	Texas Tech
4	North Carolina	19	Vanderbilt
5	Georgia	20	Baylor
6	USC	21	Georgia Tech
7	UCLA	22	Rice
8	Miami (FL)	23	Notre Dame
9	California	24	Florida State
10	Michigan	25	Auburn
11	Alabama		
12	Northwestern	45	Illinois
13	Clemson		
14	Duke		
15	Virginia		

FINAL CAMPBELL'S/ITA SINGLES & DOUBLES RANKINGS

16. Melissa Kopinski/Rachael White

NCAA TEAM TOURNAMENT RESULTS

1996

Round of 64: May 3, 1996 • Atkins Tennis Center, University of Illinois, Urbana, Ill.
Northwestern 5, Illinois 1

SINGLES:

1. Siri Eklund (NW) def. Susanne Land (ILL) 6-2, 6-0
2. Marjorie Gantman (NW) def. Stacy Schapiro (ILL) 6-4, 6-4
3. Elissa Kim (NW) def. Jessica Klapper (ILL) 5-7, 6-3, 6-3
4. Laura Guignon (NW) def. Natalie Adusar (ILL) 3-6, 7-6(8), 6-3
5. Mary Beth Novak (NW) def. Kara Loffelmacher (ILL) 6-4, 6-0
6. Laura Rydberg (ILL) def. Robyn Porter (NW) 6-2, 5-7, 6-3

DOUBLES:

1. Klapper/Land (ILL) vs. Klapper/Gantman (NW) inc.
2. Schapiro/ Loffelmacher (ILL) vs. Kim/Guignon (NW)
3. Rydberg/Adusar (ILL) vs. Novak/Porter (NW)

1997

Round of 64: May 9, 1997 • Courtney Tennis Center, University of Notre Dame, South Bend, Ind.
#23 Notre Dame 5, Illinois 3

SINGLES:

1. #38 Jennifer Hall (ND) def. Susanne Land (ILL) 6-2, 6-1
2. Marisa Velasco (ND) def. Stacy Schapiro (ILL) 6-2, 3-6, 6-4
3. Tiffany Gates (ND) def. Kara Loffelmacher (ILL) 6-2, 3-6, 6-2
4. Kelly Zalinski (ND) def. Allison Gottlieb (ILL) 6-0, 6-1
5. Jessica Klapper (ILL) def. Kelley Olson (ND) 7-5, 4-6, 6-2
6. Lindsey Bruce (ILL) def. Darcie Sweet (ND) 6-3, 0-6, 7-5

DOUBLES:

1. Klapper/Land (ILL) def. Gates/Sarah Scaringe (ND) 8-1
2. Velasco/Zalinski (ND) def. Bruce/Gottlieb (ILL) 8-3
3. Schapiro/Loffelmacher (ILL) vs. Olson/Courtney Haskell (ND) sus. 5-5

1999

Round of 64: May 15, 1999 • Whitemann Tennis Center, Arizona State University, Tempe, Ariz.
#22 Northwestern 5, #44 Illinois 3

SINGLES:

1. Simone Kung (ILL) def. Katherine Nasser (NU) 0-6, 6-3, 6-1
2. Laura Guignon (NU) def. Stacy Schapiro (ILL) 6-3, 0-6, 6-4
3. Shannon Duffy (NU) def. Brooke Ferney (ILL) 6-3, 6-2
4. Carla Rosenberg (ILL) def. Colleen Cheng (NU) 3-6, 7-5, 6-1
5. Lia Jackson (NU) def. Megan Wise (ILL) 6-4, 6-0
6. Jennifer Lutgert (NU) def. Natalia Manasova (ILL) 6-1, 4-6, 6-2

DOUBLES:

1. Guignon/Nasser (NU) def. Ferney/Rosenberg (ILL) 8-1
2. Kung/Schapiro (ILL) def. Cheng/Jackson (NU) 8-6
3. Duffy/Lutgert (NU) vs. Manasova/Allison Gottlieb (ILL) sus. 4-1

2000

Round of 64: May 12, 2000 • University of Florida, Gainesville, Fla.
#22 Florida State 5, #34 Illinois 3

SINGLES:

1. Alida Gallovits (FSU) def. Eldina Fazlic (ILL) 6-3, 6-2
2. Nanette Duxin (FSU) def. Simone Kung (ILL) 6-2, 7-6(5)
3. Kia Ashberg (FSU) def. Brooke Ferney (ILL) 6-3, 6-4
4. Natascha Loebnitz (ILL) def. Jessica Bulbuena (FSU) 6-2, 6-3
5. Carla Rosenberg (ILL) def. Marina Raic (FSU) 6-2, 6-0
6. Natalia Manasova (ILL) def. Ali Weber (FSU) 7-6, 5-7, 7-5

DOUBLES:

1. Duxin/Gallovits (FSU) def. Ferney/Loebnitz (ILL) 8-4
2. Bulbuena/Weber (FSU) def. Manasova/Rosenberg (ILL) 8-3
3. Not Contested

2001

Round of 64: May 12, 2001 • Quillian Stadium, University of Washington, Seattle, Wash.
#31 Illinois 4, #45 Virginia Commonwealth 2

SINGLES:

1. #12 Martina Nedelkova (VCU) def. Jennifer McGaffigan (ILL) 6-1, 6-4
2. Anca Dumitrescu (VCU) def. Eldina Fazlic (ILL) 7-6, 6-4
3. Simone Kung (ILL) vs. Raluca Ciulei (VCU) Abandoned
4. Eva Choe (ILL) def. Silvia Urickova (VCU) 6-2, 5-7, 6-1
5. Michelle Webb (ILL) def. Yana Carollo (VCU) 6-3, 7-5
6. Carla Rosenberg (ILL) def. Wendy Hsu (VCU) 6-1, 6-0

DOUBLES:

1. Kung/Webb (ILL) vs. Ciulei/Nedelkova (VCU) Abandoned
2. Choe/Rosenberg (ILL) def. Urickova/Carollo (VCU) 8-3
3. McGaffigan/Fazlic (ILL) def. Hsu/Dumitrescu (VCU) 9-7

Round of 32: May 13, 2001

Quillian Stadium, University of Washington, Seattle, Wash.

#12 Washington 4, #31 Illinois 0

SINGLES:

1. #11 Kristina Kraszewski (UW) def. Jennifer McGaffigan (ILL) 6-2, 6-3
2. #43 Claire Carter (UW) def. Eldina Fazlic (ILL) 6-0, 6-0
3. Iлона Kordonskaya (UW) vs. Simone Kung (ILL) Abandoned
4. Erin Boisclair (UW) vs. def. Eva Choe (ILL) 6-1, 6-3
5. #92 Darija Klaić (UW) vs. Michelle Webb Abandoned
6. Colleen Gray (UW) vs. Carla Rosenberg (ILL) Abandoned

DOUBLES:

1. #10 Klaić/Kraszewski (UW) def. Kung/Webb (ILL) 8-4
2. #26 Carter/Kordonskaya (UW) vs. Choe/Rosenberg (ILL) Abandoned
3. Boisclair/Erin Hoe (UW) def. McGaffigan/Fazlic (ILL) 8-4

2003

Round of 64: May 11, 2003 • Quillian Stadium, University of Washington, Seattle, Wash.
#25 Illinois 4, #30 UNLV 0

SINGLES:

1. Jennifer McGaffigan (ILL) def. Gyorgyi Zsiros (UNLV) 6-1, 2-6, 6-2
2. Paulina Janus (UNLV) vs. Tiffany Eklov (ILL) Abandoned
3. Eldina Fazlic (ILL) def. Agnieszka Abram (UNLV) 6-0, 6-4
4. #120 Tracie Chong (UNLV) def. Brianna Knue (ILL) 6-4, 7-5
5. Michelle Webb (ILL) def. Cindy Treber (UNLV) 6-2, 6-4
6. Amy Hadziosmanovic (UNLV) vs. Leila Cehajic (ILL) Abandoned

DOUBLES:

1. McGaffigan/Webb (ILL) def. Janus/Abram (UNLV) 8-1
2. Eklov/Fazlic (ILL) def. Chong/Treber (UNLV) 8-3
3. Zsiros/Hadziosmanovic (UNLV) vs. Knue/Cehajic (ILL) Abandoned

Round of 32: May 12, 2003

Quillian Stadium, University of Washington, Seattle, Wash.

#6 Washington 4, #25 Illinois 0

SINGLES:

1. #76 Jennifer McGaffigan (ILL) vs. #34 Dea Sumantri (WASH) 5-7, 3-0 Abandoned
2. #88 Tiffany Eklov (ILL) vs. #48 Claire Carter (WASH) 3-6, 2-3 Abandoned
3. Eldina Fazlic (ILL) vs. #84 Darija Klaić (WASH) 3-6, 4-4 Abandoned
4. #81 Erin Boisclair (WASH) def. Brianna Knue (ILL) 6-2, 6-0
5. Colleen Gray (WASH) def. Michelle Webb (ILL) 6-1, 6-1
6. Erin Hoe (WASH) def. Leila Cehajic (ILL) 6-2, 6-2

DOUBLES:

1. #11 Carter/Klaić (WASH) def. #25 McGaffigan/Webb (ILL) 8-4
2. Eklov/Fazlic (ILL) vs. Gray/Sumantri (WASH) 5-7 Abandoned
3. Boisclair/Hoe (WASH) def. Cehajic/Knue (ILL) 8-3

2004

Round of 64: May 14, 2004 • Ambler Stadium, Duke University, Durham, N.C.
#36 William & Mary 4, #22 Illinois 2

SINGLES:

1. #38 Jennifer McGaffigan (ILL) def. Megan Muth (W&M) 6-4, 6-3
2. Tiffany Eklov (ILL) vs. Lena Sherbakov (W&M) Abandoned
3. Cynthia Goulet (ILL) def. Amy Wei (W&M) 6-3, 6-0
4. Lingda Yang (W&M) def. Isabel Jarosz (ILL) 6-3, 6-2
5. Emily Mowrey (W&M) def. Eva Choe (ILL) 6-4, 6-2
6. Kristen Dunbar (W&M) def. Pavlina Akritas (ILL) 6-4, 6-1

DOUBLES:

1. Muth/Wei (W&M) def. #15 McGaffigan/Goulet (ILL) 8-5
2. Kate Boomershine/Sherbakov (W&M) def. Eklov/Choe (ILL) 8-5
3. Emily Wang/Jarosz (ILL) def. Alex DeGuzman/Mowrey (W&M) 8-0

NCAA TEAM TOURNAMENT RESULTS

2008

Round of 64: May 9, 2008 • Bill Moore Tennis Center, Georgia Tech University, Atlanta, Ga.
#25 University of Tennessee 4, #36 Illinois 0

SINGLES:

1. Caitlin Whoriskey (TENN) vs. Megan Fudge (ILL) 6-4, 4-6, 1-0, unf.
2. Ghizela Schutte (TENN) vs. Leigh Finnegan (ILL) 3-6, 6-1, 3-1, unf.
3. Samantha Orlin (TENN) def. Marisa Lambropoulos (ILL) 6-0, 6-1
4. Connor Vogel (TENN) def. Shivani Dave (ILL) 6-4, 6-2
5. Zsofia Zubor (TENN) vs. Kristina Minor (ILL) 3-6, 6-4, 0-1, unf.
6. Rosalia Alda (TENN) def. Annie McCarthy (ILL) 7-6 (7-2), 6-3

DOUBLES:

1. Caitlin Whoriskey/Zsofia Zubor (TENN) vs. Megan Fudge/Shivani Dave (ILL) 6-3, unf.
2. Ghizela Schutte/Rosalia Alda (TENN) def. Leigh Finnegan/Marisa Lambropoulos (ILL) 8-2
3. Connor Vogel/Jennifer Meredith (TENN) def. Annie McCarthy/Kristina Minor (ILL) 8-4

2009

Round of 64: May 9, 2009 • Khan Outdoor Tennis Complex, University of Illinois, Urbana, Ill.
#34 Illinois 4, #19 Vanderbilt 3

SINGLES:

1. #75 Megan Fudge (ILL) def. #52 Jackie Wu (VAND) 6-0, 4-6, 6-4
2. #64 Catherine Newman (VAND) def. #103 Leigh Finnegan (ILL) 6-2, 6-4
3. Keily Utery (VAND) def. Chelcie Abajian (ILL) 6-4, 7-6 (8-6)
4. Marisa Lambropoulos (ILL) def. Chelsea Preeg (VAND) 6-3, 6-2
5. Amy Allin (ILL) def. Heather Steinbauer (VAND) 6-3, 6-2
6. Kristina Minor (ILL) def. Courtney Utery (VAND) 6-4, 3-6, 7-6 (7-5)

DOUBLES:

1. Catherine Newman/Jackie Wu (VAND) def. Leigh Finnegan/Chelcie Abajian (ILL) 8-4
2. Marisa Lambropoulos/Megan Fudge (ILL) vs. Chelsea Preeg/Heather Steinbauer (VAND) 7-6, unf.
3. Courtney Utery/Keily Utery (VAND) def. Amy Allin/Annie McCarthy (ILL) 9-8 (7-3)

Round of 32: May 10, 2009

Khan Outdoor Tennis Complex, University of Illinois, Urbana, Ill.
#16 Fresno State 4, #34 Illinois 3

SINGLES:

1. #75 Megan Fudge (ILL) def. #18 Melanie Gloria (FS) 6-1, 6-0
2. #27 Anastasia Petukhova (FS) def. #103 Leigh Finnegan (ILL) 6-1, 6-1
3. #67 Renata Kucerkova (FS) def. Chelcie Abajian (ILL) 4-6, 6-1, 7-6 (7-3)
4. Marisa Lambropoulos (ILL) def. Tinesta Rowe (FS) 6-4, 3-6, 6-3
5. Amy Allin (ILL) def. Laura Pola (FS) 6-1, 7-6 (7-4)
6. Bruna Paes (FS) def. Kristina Minor (ILL) 2-6, 6-0, 6-3

DOUBLES:

1. #1 Anastasia Petukhova/Renata Kucerkova (FS) def. Leigh Finnegan/Chelcie Abajian (ILL) 8-2
2. Megan Fudge/Marisa Lambropoulos (ILL) vs. #15 Melanie Gloria/Tinesta Rowe (FS) 4-7, unf.
3. Danon Beatty/Laura Pola (FS) def. Annie McCarthy/Amy Allin (ILL) 8-6

2010

Round of 64: May 14, 2010 • Vandy Christie Tennis Center
#37 Nebraska 4, #22 Illinois 2

SINGLES:

1. #77 Mary Weatherholt (NEB) def. #85 Megan Fudge (ILL) 0-6, 6-3, 7-5
2. Madeleine Geibert (NEB) def. Leigh Finnegan (ILL) 6-3, 6-2
3. Rachael White (ILL) def. Wiveca Swarting (NEB) 5-7, 6-0, 6-2
4. Stefanie Weinstein (NEB) def. Chelcie Abajian (ILL) 2-6, 6-4, 7-6 (3)
5. Breanne Smutko (ILL) vs. Janine Weinreich (NEB) 6-7 (7), 6-4, 0-1, unf.
6. Jennifer Holmberg (NEB) def. Marisa Lambropoulos (ILL) 7-6 (3), 6-2

DOUBLES:

1. Madeleine Geibert/Stefanie Weinstein (NEB) def. Leigh Finnegan/Rachael White (ILL) 8-4
2. Megan Fudge/Chelcie Abajian (ILL) def. Wiveca Swarting/Janine Weinreich (NEB) 8-0
3. Marisa Lambropoulos/Breanne Smutko (ILL) def. Jennifer Holmberg/Mary Weatherholt (NEB) 8-5

2012

Round of 64: May 11, 2012 • Palmer/Salloum Tennis Center
#39 Rice 4, #18 Illinois 3

SINGLES:

1. #36 Natalie Beazant (RICE) def. #111 Allison Falkin (ILL) 6-2, 6-2
2. Dominique Harmath (RICE) def. Melissa Kopinski (ILL) 7-6, 6-3
3. Katie Gater (RICE) def. Marisa Lambropoulos (ILL) 6-4, 6-1
4. Amy Allin (ILL) def. Ana Guzman (RICE) 6-1, 6-2
5. Kim Anicete (RICE) def. Rachael White (ILL) 7-5, 7-6(6)
6. Chelcie Abajian (ILL) def. Daniela Trigo (RICE) 6-0, 6-0

DOUBLES:

1. #69 Marisa Lambropoulos/Melissa Kopinski (ILL) def. #26 Natalie Beazant/ Dominique Harmath (RICE) 8-5
2. Katie Gater/Ana Guzman (RICE) def. Rachael White/Amy Allin (ILL) 8-1
3. Chelcie Abajian/Allison Falkin (ILL) def. Kim Anicete/Stephanie Nguyen (RICE) 8-2

NCAA SINGLES & DOUBLES RESULTS

1988

(UCLA, LOS ANGELES)

DOUBLES:

- Round of 32
Lisa Apaney/Stacey Schefflin (Georgia) def.
Kathy Neil/Cynthia Chambers (ILL) 7-5, 6-7(6), 7-6 (4)

1991

(STANFORD UNIVERSITY, PALO ALTO, CALIF.)

SINGLES:

- Round of 64
Lindsey Nimmo (ILL) def. Erica Adams (PUR) 6-4, 6-1
Round of 32
Emilie Viquerira (CAL) def. Lindsey Nimmo, (ILL) 6-4, 6-1

1993

(UNIVERSITY OF FLORIDA, GAINESVILLE, FLA.)

SINGLES:

- Round of 64
Lindsey Nimmo (ILL) def. Jen Callen (VA) 4-6, 6-1, 6-1
Round of 32
Melissa Mazzotta (Miami) def. Lindsey Nimmo (ILL) 6-1, 6-4

1995

(PEPPERDINE UNIVERSITY, MALIBU, CALIF.)

DOUBLES:

- Round of 32
Camille Baldrich/Kristen Jones (ILL) def. Astrid Copano/Marianne Vallin (UNLV) 6-1, 6-2
Round of 16
Wendy Lyons/Monica Mraz (Duke) def. Camille Baldrich/Kristen Jones (ILL) 6-1, 6-2

2002

(TAUB TENNIS CENTER, STANFORD UNIVERSITY, PALO ALTO, CALIF.)

SINGLES:

- Round of 64
#38 Andrea Ondrisova (Virginia Commonwealth) def. #61 Jennifer McGaffigan (ILL) 6-3, 6-4

2003

(UNIVERSITY OF FLORIDA, GAINESVILLE, FLA.)

DOUBLES:

- Round of 32
#25 Jennifer McGaffigan/Michelle Webb (ILL) def.
#5 Vilmarie Castellvi/Melissa Schaub (TENN) 6-3, 6-4
Round of 16
#20 Silvia Urickova/Barbora Zahnova (Virginia Commonwealth) def.
#25 Jennifer McGaffigan/Michelle Webb (ILL) 7-6(2), 6-4

2004

(DAN MAGILL TENNIS CENTER, UNIVERSITY OF GEORGIA, ATHENS, GA.)

SINGLES:

- Round of 64
#1 Raquel Kops-Jones (CAL) def. #38 Jennifer McGaffigan (ILL) 6-1, 6-3

DOUBLES:

- Round of 32
Catrina Thompson/Christian Thompson (ND) def.
#15 Jennifer McGaffigan/Cynthia Goulet (ILL) 2-6, 6-2, 6-2

2005

(DAN MAGILL TENNIS CENTER, UNIVERSITY OF GEORGIA, ATHENS, GA.)

SINGLES:

- Round of 64
#33 Karen Coetzee (Wake Forest) def. #39 Cynthia Goulet (ILL) 3-6, 6-1, 7-5

2013

(KHAN OUTDOOR TENNIS COMPLEX, UNIVERSITY OF ILLINOIS, URBANA, ILL.)

DOUBLES:

- Round of 32
#22 Melissa Kopinski/Rachael White (ILL) def. #29 Jaklin Alwai/Dominika Kanakova (S. CAR.) 6-0, 7-6(5)
Round of 16
#22 Melissa Kopinski/Rachael White (ILL) def. #9 Hermond Brhane/Whitney Ritchie (OKLA) 6-4, 7-6(5)
#2 Sabrina Santamaria/Kaitlyn Christian (USC) def. #22 Melissa Kopinski/Rachael White (ILL) 6-2, 6-0

ALL-TIME LETTERWINNERS

-A-

Abajian, Chelcie • 2009, 10, 11, 12
 Adsuar, Natalie • 1995, 96
 Agüero, Liana • 1997
 Akritas, Pavlina • 2004, 05, 06
 Allin, Amy • 2009, 10, 11, 12
 Arildsen, Sue • 1982, 83, 84, 85

-B-

Baldrich, Camille • 1992, 93, 94, 95
 Bareis, Barb • 1982, 84, 85
 Barki, Jessica • 2003
Barretta, Emily • 2013
 Basolo, Peggy • 1977, 78, 79
 Batt, Jaclyn • 1994, 96
 Bjercknes, Lisa • 1980
 Boomershine, Kate • 2002
 Brouder, Cynthia • 1978, 79
 Bruce, Lindsey • 1997
 Buchanan, Lisa • 1980, 81
 Burgess, Sandy • 1980, 81
 Burgess, Sherry • 1978, 79, 80
 Burns, Sheila • 1984, 85, 86, 87
 Buwick, Cynthia • 1977, 78, 79

-C-

Cathrall, Jodi • 1989
 Cehajic, Leila • 2002, 03, 04, 05
 Chambers, Cynthia • 1988, 90, 91
 Choe, Eva • 2001, 02, 03, 04
 Clery, Colleen • 1976, 77
 Corcoran, Maura • 1986, 87, 88, 89
 Costigan, Carrie • 1986, 87, 88, 89
 Crane, Donna • 1980
 Cuadra, Alejandra Meza • 2005, 06, 07, 08

-D-

Davé, Shivani • 2006, 07, 08, 09
 Davis, Barb • 1975, 76
 Daw, Jessie • 1984, 85, 87, 88
 DeSilva, Gayathri • 1980, 81, 82, 83

-E-

Eichner, Astrid • 1987, 88, 90
 Eklov, Tiffany • 2001, 02, 03, 04
 Ensslin, Sabine • 1989, 90

-F-

Fafors, Ann • 1976, 77, 78
Falkin, Allison • 2011, 12, 13
 Fazlic, Eldina • 2000, 01, 02, 03
 Ferney, Brooke • 1999, 00
 Finnegan, Leigh • 2008, 09, 10, 11
 Flesvig, Christy • 1983, 84, 85, 86
 Fraker, Elizabeth • 2002
 Fudge, Megan • 2007, 08, 09, 10

-G-

Gates, Linda • 1989, 88, 90, 92
 Goecke, Michelle • 1992
 Goern, Sandra • 1985, 86, 87, 88
 Gottlieb, Allison • 1996, 97, 98, 99
 Goulet, Cynthia • 2002, 04, 05

-H-

Harkins, Macall • 2005, 06
 Harris, Jean • 1975
 Haubold, Lois • 1977, 78, 79
 Hogan, Dorothy • 1979, 80
 Holmes, Kam • 1976, 77
 Hoppmann, Rita • 1981, 82, 83, 84
 Hutchinson, Sue • 1981, 82, 83, 84

-J-

Jackson, Nicole • 1996
Jamieson, Julie • 2012, 13
 Jarosz, Isabel • 2004
 Johnson, Cathryn • 1976, 77
 Jones, Kristen • 1992, 93, 94, 95

-K-

Kane, Laurie • 1990, 91
 Kazarian, Stacy • 1985, 86
Kedzierski, Misia • 2011, 12, 13
 Kestly, Christie • 1991
 Kewney, Kathy • 1981, 82
 Kimmel, Lissa • 1992, 93, 94, 95
 Klapper, Jessica • 1994, 95, 96, 97
 Knowles, Stacey • 1986, 87, 88
 Knue, Brianna • 2003, 04, 05, 06
 Kole, Kathy • 1975, 76, 77, 78
Kopinski, Melissa • 2012, 13
 Kung, Simone • 1998, 99, 00, 01

-L-

Lambropoulos, Marisa • 2008, 09, 10, 12
 Land, Susanne • 1994, 95, 96, 97
 Loebnitz, Natascha • 2000
 Loffelmacher, Kara • 1996, 97, 98

-M-

Manasova, Natalia • 1999, 00
 Marshack, Sara • 1993, 94, 95
 Matz, Jenny • 1982
 McCarthy, Annie • 2008, 09, 10, 11
 McGaffigan, Jennifer • 2001, 02, 03, 04
 McNamara, Colleen • 1975, 76, 77
 McNamara, Maura • 1981, 82, 83, 84
 Mehlman, Romy • 1996
 Meola, Kristi • 1991, 92, 03, 94
 Minor, Kristina • 2007, 08, 09, 10

-N-

Neil, Kathy • 1975-78
 Nelson, Maureen • 1981-84
 Nimmo, Lindsey • 1991-93

-O-

Olson, Sara • 1981
O'Connor, Audrey • 2013

-P-

Panique, Lisa • 1998
 Pratt, Margaret • 1975
 Pullman, Cheri • 1993, 95

-Q-

Qu, Momei • 2005-08

-R-

Rickard, Kelley • 1982
 Roberts, Jennifer • 1982
 Rosenberg, Carla • 1998-01
 Rydberg, Laura • 1994-97

-S-

Salamone, Tina • 1975-78
 Schapiro, Stacey • 1996-99
 Schlerschligt, Barb • 1985-86
 Smolensky, Loren • 1987-88, 90
 Smutko, Breanne • 2010, 11, 12, 13
 Sokolova, Anastasia • 2005-06
 Stromberg, Christine • 2008, 09, 10
 Strout, Susie • 1985-88
 Straus, Debbie • 1978

-W-

Wang, Emily • 2004-07
 Webb, Michelle • 2000-03
 Welsh, Barb • 1978
 Wentink, Nancy • 1975
 White, Rachael • 2010, 11, 12, 13
 Wickiser, Jo • 1983
 Willey, Kristin • 1990-91
 Williams, Mary • 1990-92
 Wise, Megan • 1998-00
 Wujek, Katharine • 1975

-Y-

Young, Amy • 1978-80

**Note: Women's tennis was not recognized as an official Big Ten sport until 1982. Results are based on the Big Ten Championships for those years, which are not officially recognized by the Big Ten Conference.*

1974-75

Head Coach: Peggy Pruitt
Season Record: 6-0
Big Ten Record: N/A (5th)*
NCAA Finish: N/A

Sept. 14	vs. Purdue	W, 7-5
Sept. 14	vs. Northern Illinois	W, 10-0
Sept. 19	at Eastern Illinois	W, 11-0
Sept. 23	vs. Illinois State	W, 8-4
Oct. 9	vs. Indiana State	W, 8-0
Oct. 14	vs. Millikin University	W, 9-0

1975-76

Head Coach: Carla Thompson
Season Record: 5-3-1
Big Ten Record: N/A (9th)*
NCAA Finish: N/A

Sept. 13	Wisconsin-LaCrosse (DeKalb, Ill.)	W, 8-4
Sept. 13	at Northern Illinois	W, 10-2
Sept. 18	vs. Eastern Illinois	W, 12-0
Sept. 20	at Purdue	L, 4-5
Sept. 20	Kentucky (West Lafayette, Ind.)	Tie, 4-4
Oct. 18	at Illinois State	L, 4-5
Oct. 18	Wisconsin (Normal, Ill.)	L, 4-5
Oct. 27	vs. Northwestern	W, 11-1
Apr. 17	at Principia	W, 8-4

1976-77

Head Coach: Carla Thompson
Season Record: 5-7
Big Ten Record: N/A (9th)*
NCAA Finish: N/A

Sept. 18	vs. Purdue	L, 4-5
Sept. 18	vs. Augustana	L, 3-6
Sept. 25	at Illinois State	L, 3-6
Sept. 25	Southern Illinois (Normal, Ill.)	L, 1-8
Sept. 28	vs. Eastern Illinois	W, 6-3
Oct. 16	vs. Washington of St. Louis	W, 10-1
Apr. 8	vs. Lake Forest	W, 8-1
Apr. 8	vs. Kentucky	L, 4-5
Apr. 9	vs. Southern Illinois	L, 4-5
Apr. 16	vs. Principia	W, 9-0
Apr. 16	vs. SIUE	W, 5-4
Apr. 23	at Northwestern	L, 3-6

1977-78

Head Coach: Carla Thompson
Season Record: 6-6
Big Ten Record: N/A*
NCAA Finish: N/A

Sept. 10	at Purdue	L, 4-5
Sept. 10	Indiana (West Lafayette, Ind.)	L, 2-7
Sept. 17	vs. Missouri	W, 5-4
Sept. 22	at St. Francis	W, 7-2
Sept. 27	vs. Eastern Illinois	W, 5-3
Oct. 21	Iowa State (Iowa City, Iowa)	W, 9-0
Oct. 21	at Iowa	W, 5-4
Oct. 21	Minnesota (Iowa City, Iowa)	L, 2-7

Apr. 8	vs. Illinois State	L, 4-5
Apr. 8	vs. SIUE	W, 8-1
Apr. 15	vs. Indiana	L, 1-8
Apr. 15	vs. Purdue	L, 3-6

1978-79

Head Coach: Linda Pecore
Season Record: 5-11
Big Ten Record: N/A (10th)*
NCAA Finish: N/A

Sept. 15	vs. Augustana	L, 3-6
Sept. 20	at Eastern Illinois	L, 3-5 (darkness)
Sept. 22	vs. Southern Illinois	L, 3-6
Sept. 23	vs. Memphis State	W, 5-4
Sept. 23	vs. Iowa	L, 0-9
Sept. 29	at Purdue	L, 4-5
Oct. 20	Iowa State (Iowa City, Iowa)	W, 8-1
Oct. 21	Minnesota (Iowa City, Iowa)	L, 0-9
Oct. 21	at Iowa	L, 0-9
Mar. 12	at Kansas State	W, 9-0
Apr. 6	at UI-Chicago Circle	W, 9-0
Apr. 7	at Northwestern	L, 2-7
Apr. 17	at Illinois State	L, 0-9
Apr. 20	vs. Purdue	L, 0-9
Apr. 21	vs. Miami (OH)	L, 3-6
May 5	at Western Illinois	W, 8-1

1979-80

Head Coach: Linda Pecore
Season Record: 18-9
Big Ten Record: N/A (10th)*
NCAA Finish: N/A

Sept. 7	at Illinois State	L, 2-7
Sept. 7	Southern Illinois (Normal, Ill.)	W, 5-4
Sept. 8	Western Illinois (Normal, Ill.)	W, 8-1
Sept. 11	vs. Wisconsin-Oshkosh	W, 9-0
Sept. 14	UI-Chicago Circle	W, 9-0
Sept. 14	Sangamon State	W, 8-1
Sept. 15	Wheaton	W, 8-1
Sept. 18	vs. Eastern Illinois	W, 5-4
Sept. 21	Northwestern	L, 1-8
Sept. 22	Augustana	L, 4-5
Sept. 22	Wisconsin-LaCrosse	W, 6-3
Sept. 25	Sangamon State	L, 4-5
Sept. 28	vs. Purdue	L, 1-8
Sept. 29	vs. Illinois State	L, 4-5
Oct. 5	vs. Northern Illinois	W, 7-2
Oct. 5	Indiana State	W, 6-2 (darkness)
Oct. 6	St. Francis	W, 9-0
Oct. 6	UI-Chicago Circle	W, 7-2
Oct. 6	Northern Kentucky	W, 5-3
Oct. 18-20	IAIAW State Championship (3rd)	
	at Northern Illinois	W, 7-2
	Illinois State (DeKalb, Ill.)	L, 4-5
Mar. 22	Indiana State	W, 7-2
Apr. 11	at Indiana State	W, 8-1
Apr. 12	at DePauw	W, 7-2
Apr. 16	vs. SIUE	W, 1-0 (forfeit)
Apr. 19	vs. Southern Illinois	L, 1-8
Apr. 21	Eastern Illinois	L, 4-5

1980-81

Head Coach: Linda Pecore
Season Record: 21-21
Big Ten Record: N/A (10th)*
NCAA Finish: N/A

Sept. 5	Southern Illinois (Macomb, Ill.)	W, 6-3
Sept. 5	Illinois State (Macomb, Ill.)	W, 6-3
Sept. 6	at Western Illinois	W, 7-2
Sept. 12	vs. St. Ambrose	W, 8-1
Sept. 13	vs. Wheaton	W, 7-2
Sept. 19	at Wisconsin-Oshkosh	W, 9-0
Sept. 20	Wisconsin-EauClaire (Oshkosh, Wis.)	W, 8-1
Sept. 20	Wisconsin-Whitewater (Oshkosh, Wis.)	W, 9-0
Sept. 21	at Wisconsin-Milwaukee	W, 9-0
Sept. 23	at Eastern Illinois	L, 4-5
Sept. 23	vs. Minnesota	W, 7-2
Sept. 27	vs. Sangamon State	W, 9-0
Sept. 27	vs. SIUE	W, 5-4
Sept. 28	vs. Southern Illinois	L, 4-5
Oct. 3	Northern Illinois (Chicago, Ill.)	W, 9-0
Oct. 3	Notre Dame (Chicago, Ill.)	L, 4-5
Oct. 4	Northern Iowa (Chicago, Ill.)	W, 7-2
Oct. 4	at UI-Chicago Circle	W, 9-0
Oct. 5	at Northwestern	L, 1-8
	IAIAW State Championship (3rd)	
Oct. 16-18	at Illinois State	L, 4-5
Mar. 7	at Michigan State	L, 1-8
Mar. 8	at Michigan	L, 0-9
Mar. 14	Oklahoma (Baton Rouge, La.)	L, 1-8
Mar. 14	Oral Roberts (Baton Rouge, La.)	L, 1-8
Mar. 15	at LSU	L, 0-9
Mar. 16	SW Louisiana (New Orleans, La.)	W, 9-0
Mar. 17	Houston (New Orleans, La.)	L, 2-7
Mar. 18	at Tulane	L, 2-5
Mar. 20	Vanderbilt (Oxford, Miss.)	L, 2-7
Mar. 21	at Mississippi	L, 0-9
Mar. 24	at Purdue	L, 2-7
Apr. 3	vs. Indiana State	W, 8-1
Apr. 4	vs. Illinois State	W, 8-1
Apr. 4	vs. UI-Chicago Circle	W, 9-0
Apr. 10	Morehead State (Oxford, Ohio)	L, 2-7
Apr. 11	at Miami (OH)	L, 1-8
Apr. 14	vs. Eastern Illinois	L, 4-5
Apr. 17	vs. Bradley	W, 9-0
Apr. 18	vs. Augustana	W, 9-0
Apr. 24-26	Big Ten Championships (Columbus, Ohio)	
	Minnesota	L, 0-9
	Iowa	L, 2-7
	Purdue	L, 3-6

1981-82

Head Coach: Mary Tredennick
Assistant Coach: Russ Morris
Season Record: 22-16
Big Ten Record: 0-6 (8th)
NCAA Finish: N/A

Sept. 9	at Sangamon State	W, 9-0
Sept. 11	vs. Western Illinois	W, 9-0
Sept. 12	vs. Illinois State	W, 6-3
Sept. 19	at Augustana	W, 9-0
Sept. 19	Iowa State (Rock Island, Ill.)	W, 8-1
Sept. 21	at Eastern Illinois	W, 7-2
Sept. 25	vs. SIUE	W, 6-3
Oct. 1	vs. Southern Illinois	W, 6-3
Oct. 23	at Purdue	L, 4-5

Mar. 5	Drake (Columbia, Mo.)	W, 8-1
Mar. 6	at Missouri	W, 7-2
Mar. 13	at Emporia State	W, 6-0
Mar. 14	at North Texas State	L, 4-5
Mar. 16	at Baylor	W, 8-1
Mar. 17	at Texas-San Antonio	W, 9-0
Mar. 18	Trinity (San Antonio, Texas)	L, 0-9
Mar. 19	at Oklahoma State	L, 0-9
Mar. 20	Tyler JC (Stillwater, Okla.)	L, 4-5
Mar. 21	Iowa State (Stillwater, Okla.)	W, 8-1
Mar. 26	at Western Illinois	W, 7-2
Mar. 27	Notre Dame (Macomb, Ill.)	W, 7-2
Apr. 4	at Indiana	L, 0-9
Apr. 9	at Minnesota	L, 2-7
Apr. 10	Iowa (Minneapolis, Minn.)	L, 1-8
Apr. 13	vs. Purdue	L, 4-5
Apr. 16	vs. Miami (OH)	L, 4-5
Apr. 17	vs. Drake	W, 5-4
Apr. 17	vs. Michigan	L, 2-7
Apr. 18	vs. Michigan State	L, 4-5

Big Ten Championships (Madison, Wis.)

Apr. 23	Purdue	W, 5-4
Apr. 24	Indiana	L, 0-9
Apr. 24	Wisconsin	L, 1-8
Apr. 25	Iowa	L, 2-7

IAIAW State Championships (Champaign, Ill.)

Apr. 29	vs. Bradley	W, 9-0
Apr. 30	vs. Southern Illinois	W, 6-3
May 6	vs. Eastern Illinois	W, 6-2

MAIAW Regional Championships (Normal, Ill.)

May 14	Ohio State	L, 3-6
May 15	Southern Illinois	W, 6-3

Note: From 1982 on, Illinois-Chicago Circle became known as Illinois-Chicago after the main and medical campuses combined into one.

1981-82

Head Coach: Mary Tredennick
Assistant Coach: Russ Morris
Season Record: 22-16
Big Ten Record: 0-6 (8th)
NCAA Finish: N/A

Sept. 9	at Sangamon State	W, 9-0
Sept. 11	vs. Western Illinois	W, 9-0
Sept. 12	vs. Illinois State	W, 6-3
Sept. 19	at Augustana	W, 9-0
Sept. 19	Iowa State (Rock Island, Ill.)	W, 8-1
Sept. 21	at Eastern Illinois	W, 7-2
Sept. 25	vs. SIUE	W, 6-3
Oct. 1	vs. Southern Illinois	W, 6-3
Oct. 23	at Purdue	L, 4-5
Mar. 5	Drake (Columbia, Mo.)	W, 8-1
Mar. 6	at Missouri	W, 7-2
Mar. 13	at Emporia State	W, 6-0
Mar. 14	at North Texas State	L, 4-5
Mar. 16	at Baylor	W, 8-1
Mar. 17	at Texas-San Antonio	W, 9-0
Mar. 18	Trinity (San Antonio, Texas)	L, 0-9
Mar. 19	at Oklahoma State	L, 0-9
Mar. 20	Tyler JC (Stillwater, Okla.)	L, 4-5
Mar. 21	Iowa State (Stillwater, Okla.)	W, 8-1
Mar. 26	at Western Illinois	W, 7-2
Mar. 27	Notre Dame (Macomb, Ill.)	W, 7-2
Apr. 4	at Indiana	L, 0-9
Apr. 9	at Minnesota	L, 2-7

Apr. 10	Iowa (Minneapolis, Minn.)	L, 1-8
Apr. 13	vs. Purdue	L, 4-5
Apr. 16	vs. Miami (OH)	L, 4-5
Apr. 17	vs. Drake	W, 5-4
Apr. 17	vs. Michigan	L, 2-7
Apr. 18	vs. Michigan State	L, 4-5

Big Ten Championships (Madison, Wis.)

Apr. 23	Purdue	W, 5-4
Apr. 24	Indiana	L, 0-9
Apr. 24	Wisconsin	L, 1-8
Apr. 25	Iowa	L, 2-7

IAIAW State Championships (Champaign, Ill.)

Apr. 29	vs. Bradley	W, 9-0
Apr. 30	vs. Southern Illinois	W, 6-3
May 6	vs. Eastern Illinois	W, 6-2

MAIAW Regional Championships (Normal, Ill.)

May 14	Ohio State	L, 3-6
May 15	Southern Illinois	W, 6-3

Note: From 1982 on, Illinois-Chicago Circle became known as Illinois-Chicago after the main and medical campuses combined into one.

1982-83

Head Coach: Mary Tredennick
Assistant Coach: Russ Morris
Season Record: 16-21
Big Ten Record: 1-9 (8th)
NCAA Finish: N/A

Sept. 3	vs. Rosary College	W, 9-0
Sept. 10	vs. Eastern Illinois	W, 9-0
Sept. 11	vs. Notre Dame	W, 5-4
Sept. 12	at Indiana	L, 0-9
Sept. 15	vs. Sangamon State	W, 9-0
Sept. 17	at SIUE	W, 5-4
Sept. 18	Murray State (Edwardsville, Ill.)	W, 6-3
Sept. 24	Miami (OH) (Bowling Green, Ky.)	L, 2-7
Sept. 24	at Western Kentucky	W, 8-1
Sept. 25	Indiana (Bowling Green, Ky.)	L, 0-9
Oct. 5	at Illinois State	W, 7-2
Oct. 13	vs. Northwestern	L, 1-8
Nov. 13	at Bradley	W, 8-1
Feb. 25	Nebraska (Edwardsville, Ill.)	L, 2-7
Mar. 5	at Michigan State	L, 0-9
Mar. 6	at Michigan	L, 1-8
Mar. 25	at Southern Illinois	L, 4-5
Mar. 28	at Texas	L, 0-9
Mar. 29	at Trinity	L, 0-9
Mar. 31	at Oklahoma	L, 1-8
Apr. 1	at Oklahoma State	L, 0-9
Apr. 2	Wichita State (Stillwater, Okla.)	W, 6-3
Apr. 8	vs. SIUE	W, 6-2
Apr. 9	vs. Ohio State	L, 4-5
Apr. 10	vs. Western Michigan	W, 5-4
Apr. 12	vs. Illinois State	W, 9-0
Apr. 15	at Iowa	L, 4-5
Apr. 16	at Northwestern	L, 0-6
Apr. 19	vs. Purdue	L, 4-5
Apr. 21	vs. Indiana	L, 1-8
Apr. 23	vs. Bradley	W, 9-0
Apr. 29	vs. Minnesota	W, 5-4
Apr. 30	vs. Wisconsin	L, 3-6
May 6-8	Big Ten Championships (Evanston, Ill.)	
	Ohio State	L, 4-5
	Minnesota	W, 5-4
	Iowa	L, 1-5
	Ohio State	L, 2-5

1983-84

Head Coach: Mary Tredennick
Assistant Coach: Russ Morris
Season Record: 15-18
Big Ten Record: 7-9 (7th)
NCAA Finish: N/A

Sept. 3	vs. Indiana	L, 0-9
Sept. 10	vs. Wheaton College	W, 9-0
Sept. 11	at Notre Dame	L, 4-5
Sept. 16	Western Michigan (Bloomington, Ind.)	L, 4-5
Sept. 16	Southern Illinois (Bloomington, Ind.)	W, 7-2
Sept. 17	Louisville (Bloomington, Ind.)	W, 7-1
Sept. 23	SW Missouri (Macomb, Ill.)	W, 8-1
Sept. 23	at Western Illinois	W, 8-1
Sept. 24	Iowa (Macomb, Ill.)	W, 6-3
Sept. 28	vs. Illinois State	W, 8-0
Oct. 9	Minnesota (Edwardsville, Ill.)	W, 6-2
Oct. 11	at Northwestern	L, 0-9
Feb. 24	at SIUE	L, 3-5
Feb. 25	Wichita State (Edwardsville, Ill.)	L, 4-5
Mar. 4	vs. Northwestern	L, 1-8
Mar. 9	at San Diego	L, 4-5
Mar. 12	Oklahoma (Malibu, Calif.)	L, 2-7
Mar. 13	at Pepperdine	L, 0-9
Mar. 15	at UC-Irvine	L, 0-9
Mar. 16	at U.S. International	L, 3-6
Mar. 31	vs. Michigan State	W, 5-4
Apr. 1	vs. Michigan	L, 3-6
Apr. 7	at Ohio State	W, 5-4
Apr. 11	at Illinois State	W, 9-0
Apr. 13	vs. Iowa	W, 8-1
Apr. 16	at Purdue	L, 3-6
Apr. 19	at Indiana	L, 0-9
Apr. 24	vs. SIUE	W, 5-4
Apr. 28	at Wisconsin	L, 3-6
Big Ten Championships (Madison, Wis.)		
May 4	Michigan State	W, 6-2
May 4	Indiana	L, 1-8
May 5	Purdue	L, 4-5
May 6	Ohio State	W,
5-4		

1984-85

Head Coach: Mary Tredennick
Assistant Coach: Russ Morris
Season Record: 17-20
Big Ten Record: 8-7 (5th)
NCAA Finish: N/A

Sept. 9	vs. Indiana	L, 0-9
Sept. 13	at Bradley	W, 8-1
Sept. 15	vs. Notre Dame	L, 4-5
Sept. 21-23	Midwest Fall Invitational (Bloomington, Ind.)	
Sept. 12	Miami (OH)	L, 2-6
Sept. 22	Louisville	W, 9-0
Sept. 23	Western Michigan	L, 3-6
Sept. 25	vs. Western Illinois	W, 8-1
Oct. 9	vs. Northwestern	L, 1-8
Oct. 10	at Illinois State	W, 9-0
Feb. 15-17	Indiana Invitational (Bloomington, Ind.)	
	North Carolina	L, 0-9
	Miami (OH)	L, 4-5
	Iowa	L, 4-5
Mar. 1	Wichita State (Edwardsville, Ill.)	W, 5-4
Mar. 2	Kansas (Edwardsville, Ill.)	L, 0-9
May 9-10	Clemson Invitational (Clemson, S.C.)	
	Miami (FL)	L, 0-9

	Duke	L, 0-8
	Georgia	L, 0-9
Mar. 22	at Iowa	W, 5-4
Mar. 26	vs. Bradley	W, 8-1
Apr. 1	at Dallas	W, 9-0
Apr. 3	at Texas	L, 0-9
Apr. 4	at Trinity	L, 0-9
Apr. 5	at North Texas State	W, 9-0
Apr. 6	at TCU	L, 1-8
Apr. 12	at Michigan	W, 5-4
Apr. 13	at Michigan State	W, 6-3
Apr. 17	vs. Purdue	W, 5-4
Apr. 20	vs. Ohio State	W, 8-1
Apr. 21	at Indiana	L, 0-9
Apr. 23	vs. Illinois State	W, 8-1
Apr. 24	at Northwestern	L, 1-8
Apr. 26	vs. Wisconsin	L, 0-6
Apr. 27	vs. SIUE	L, 4-5
May 3-5	Big Ten Championships (Iowa City, Iowa)	
	Minnesota	L, 3-6
	Iowa	W, 6-3
	Michigan	W, 6-3
	Purdue	W, 5-4

1985-86

Head Coach: Mary Tredennick
Assistant Coach: Russ Morris
Season Record: 16-16
Big Ten Record: 4-11 (7th)
NCAA Finish: N/A

Sept. 16	vs. Illinois State	W, 9-0
Sept. 20	at Western Illinois	L, 4-5
Sept. 21	Iowa (Macomb, Ill.)	W, 6-3
Sept. 22	Notre Dame (Macomb, Ill.)	W, 5-4
Sept. 25	at Bradley	W, 7-1
Sept. 28	vs. Indiana	L, 0-9
Jan. 31	Vanderbilt (Bloomington, Ind.)	L, 2-7
Feb. 1	Western Michigan (Bloomington, Ind.)	L, 3-6
Feb. 2	at Indiana	L, 0-9
Feb. 21	vs. Bradley	W, 8-1
Feb. 22	vs. SIUE	W, 5-4
Feb. 28	Kansas (Edwardsville, Ill.)	L, 4-5
Mar. 19	at Illinois State	W, 9-0
Mar. 20	vs. Northern Illinois	W, 9-0
Mar. 24	Tennessee (Delray Beach, Fla.)	W, 6-3
Mar. 25	Ohio State (Delray Beach, Fla.)	W, 7-2
Mar. 26	Bowling Green (Delray Beach, Fla.)	W, 8-1
Mar. 27	Toledo (Delray Beach, Fla.)	W, 6-0
Mar. 28	Notre Dame (Delray Beach, Fla.)	W, 5-4
Apr. 5	at Wisconsin	L, 1-8
Apr. 6	at Minnesota	L, 2-7
Apr. 11	at Ohio State	L, 4-5
Apr. 13	vs. Iowa	L, 3-6
Apr. 17	at Purdue	L, 3-6
Apr. 19	vs. Michigan	W, 5-4
Apr. 20	vs. Michigan State	L, 4-5
Apr. 25	vs. Northwestern	L, 2-7
Apr. 26	vs. Indiana	L, 2-7
May 2-4	Big Ten Championships (Champaign, Ill.)	
May 2	vs. Ohio State	W, 6-3
	vs. Wisconsin	L, 2-7
	vs. Purdue	L, 4-5
	vs. Ohio State	W, 5-4

1986-87
Head Coach: Mary Tredennick
Assistant Coach: Doug Dawson
Season Record: 12-18
Big Ten Record: 5-8 (7th)
NCAA Finish: N/A

Sept. 12	at Notre Dame	W, 5-3
Sept. 13	Miami (OH) (South Bend, Ind.)	L, 2-7
Sept. 18	vs. Western Illinois	L, 4-5
Nov. 2	vs. Indiana	L, 1-8
Jan. 24	Western Michigan (Bloomington, Ind.)	L, 2-7
Jan. 25	North Carolina (Bloomington, Ind.)	L, 2-7
Feb. 27	William & Mary (Lexington, Ky.)	L, 1-8
Feb. 28	Alabama (Lexington, Ky.)	L, 1-8
Mar. 7	vs. SIUE	L, 4-5
Mar. 17	Arkansas (Hilton Head, S.C.)	L, 2-7
Mar. 18	Louisville (Hilton Head, S.C.)	W, 7-2
Mar. 20	Auburn (Hilton Head, S.C.)	L, 2-7
Mar. 21	Tennessee (Hilton Head, S.C.)	L, 1-8
Mar. 25	vs. Illinois State	W, 8-1
Mar. 26	vs. Northern Illinois	W, 9-0
Mar. 28	vs. Eastern Michigan	W, 6-3
Mar. 29	vs. Purdue	W, 7-2
Mar. 31	vs. Bradley	W, 9-0
Apr. 3	vs. Wisconsin	L, 2-7
Apr. 4	vs. Minnesota	L, 4-5
Apr. 8	at Illinois State	W, 7-2
Apr. 17	at Michigan	W, 5-4
Apr. 18	at Michigan State	L, 3-6
Apr. 24	Iowa (Evanston, Ill.)	L, 4-5
Apr. 25	at Northwestern	L, 0-9
Apr. 26	Ohio State (Evanston, Ill.)	W, 5-4
May 1-3	Big Ten Championships (Columbus, Ohio)	
May 1	Purdue	W, 5-4
May 1	Indiana	L, 1-8
May 2	Michigan State	L, 4-5
May 3	Ohio State	W, 5-2

1987-88

Head Coach: Jennifer Roberts-Rudd
Season Record: 10-17
Big Ten Record: 1-11 (10th)
NCAA Finish: N/A

Oct. 14	at Bradley	W, 9-0
Oct. 16	vs. Northwestern	L, 3-6
Nov. 20	at Tyler JC	L, 1-5
Feb. 11	U.S. International (at Chicago, Ill.)	L, 2-7
Feb. 26	vs. Miami (OH)	L, 2-7
Feb. 28	vs. Notre Dame	W, 8-1
Mar. 2	vs. Bradley	W, 8-1
Mar. 4	at SIUE	L, 4-5
Mar. 4	Southern Illinois (Edwardsville, Ill.)	W, 7-2
Mar. 5	Iowa State (Edwardsville, Ill.)	W, 6-3
Mar. 12	at Ohio State	L, 4-5
Mar. 17	at Western Illinois	W, 7-2
Mar. 24	vs. Northern Illinois	W, 8-1
Mar. 26	vs. Kansas	L, 4-5
Mar. 31	Marquette (Madison, Wis.)	W, 9-0
Apr. 1	Northwestern (Madison, Wis.)	L, 1-8
Apr. 2	at Wisconsin	L, 1-8
Apr. 10	at Indiana	L, 1-8
Apr. 13	at Illinois State	W, 7-2
Apr. 16	vs. Michigan State	L, 4-5
Apr. 17	vs. Michigan	L, 3-6
Apr. 19	at Purdue	L, 4-5

Apr. 23	vs. Iowa	W, 5-4
Apr. 24	vs. Minnesota	L, 3-6
Apr. 29-May 1	Big Ten Champs. (East Lansing, Mich.)	
Apr. 29	Iowa	L, 2-5
Apr. 30	Michigan	L, 4-5
May 1	Minnesota	L, 4-5

1988-89

Head Coach: Jennifer Roberts-Rudd
Season Record: 6-22
Big Ten Record: 3-10 (7th)
NCAA Finish: N/A

Sept. 20	vs. Odessa	W, 6-3
Jan. 21	vs. Western Michigan	L, 4-5
Jan. 27	at Oklahoma State	L, 0-9
Jan. 28	TCU (Stillwater, Okla.)	L, 2-7
Jan. 29	Southern Alabama (Stillwater, Okla.)	L, 2-7
Feb. 14	vs. Illinois State	W, 6-3
Feb. 18	at Houston	L, 2-7
Feb. 19	at Rice	L, 0-9
Feb. 24	at Miami (OH)	L, 3-6
Feb. 25	Notre Dame (Oxford, Ohio)	L, 2-7
Mar. 11	vs. Wisconsin	L, 0-9
Mar. 20	at Arizona State	L, 0-9
Mar. 21	at Northern Colorado	W, 9-0
Mar. 22	at Arizona	L, 0-9
Mar. 23	Marquette (Tucson, Ariz.)	L, 3-6
Mar. 23	at Northern Colorado	L, 4-5
Mar. 30	vs. Purdue	L, 4-5
Apr. 8	vs. Indiana	L, 0-9
Apr. 9	vs. Ohio State	W, 6-3
Apr. 14	at Minnesota	L, 2-7
Apr. 16	at Iowa	L, 3-6
Apr. 19	vs. Northwestern	L, 2-7
Apr. 22	at Michigan State	L, 2-7
Apr. 23	at Michigan	L, 3-6
Big Ten Championships (Bloomington, Ind.)		
Apr. 28	Ohio State	W, 5-3
Apr. 28	Indiana	L, 0-6
Apr. 29	Purdue	L, 3-5
Apr. 30	Iowa	W, 5-1

1989-90

Head Coach: Jennifer Roberts-Rudd
Season Record: 15-14
Big Ten Record: 4-9 (8th)
NCAA Finish: N/A

Oct. 15	vs. Northern Illinois	W, 7-2
Jan. 26	at Oklahoma State	L, 0-9
Jan. 27	Wichita State (Stillwater, Okla.)	W, 8-1
Jan. 28	Southern Missouri State (Stillwater, Okla.)	W, 5-2
Feb. 23	at Notre Dame	L, 2-7
Feb. 24	at Miami (OH)	L, 3-6
Mar. 2	at East Tennessee State	W, 9-0
Mar. 3	at Alabama	L, 2-7
Mar. 4	at LSU	L, 2-7
Mar. 9	vs. Indiana State	W, 7-2
Mar. 19	at Southern Florida	W, 5-4
Mar. 20	at Rollins College	W, 6-3
Mar. 21	at Drake	W, 5-4
Mar. 21	at Georgia State	W, 8-1
Mar. 22	at Rutgers	W, 7-2
Mar. 31	at Indiana	L, 3-6
Apr. 1	at Ohio State	W, 8-1
Apr. 7	vs. Minnesota	L, 0-9

Apr. 8	vs. Iowa	L, 2-7
Apr. 11	at Purdue	W, 8-1
Apr. 14	vs. Michigan	L, 2-7
Apr. 15	vs. Michigan State	W, 7-2
Apr. 18	at Illinois State	W, 5-2
Apr. 21	at Wisconsin	L, 0-9
Apr. 22	at Northwestern	L, 0-9
Big Ten Championships (Champaign, Ill.)		
Apr. 27	Michigan State	W, 5-1
Apr. 27	Iowa	L, 3-5
Apr. 28	Michigan	L, 1-5
Apr. 29	Purdue	L,
4-5		

1990-91

Head Coach: Jennifer Roberts
Season Record: 19-9
Big Ten Record: 8-5 (5th)
NCAA Finish: N/A

Sept. 21	vs. Northern Illinois	W, 8-1
Nov. 8	at Marquette	W, 6-3
Feb. 1	at Kansas State	W, 9-0
Feb. 2	at Kansas	L, 2-7
Feb. 3	Arkansas	L, 4-5
Feb. 8	vs. Iowa State	W, 8-1
Feb. 10	vs. Southern Illinois	W, 8-1
Feb. 16	at Western Michigan	L, 4-5
Feb. 17	Eastern Michigan	W, 6-3
Feb. 22	vs. Miami (OH)	W, 7-2
Feb. 24	vs. Drake	W, 9-0
Mar. 1	at Iowa	W, 6-3
Mar. 3	at Minnesota	W, 8-1
Mar. 14	vs. Illinois State	W, 8-1
Mar. 20	vs. Hawaii	W, 5-1
Mar. 22	vs. Ohio State	W, 5-4
Mar. 23	vs. Indiana	L, 4-5
Mar. 25	at South Florida	L, 1-8
Mar. 28	at Florida Southern	W, 6-3
Apr. 6	at Michigan	L, 2-7
Apr. 7	at Michigan State	L, 3-6
Apr. 13	vs. Northwestern	W, 5-4
Apr. 14	vs. Wisconsin	L, 2-7
Apr. 19	vs. Purdue	W, 7-2
Apr. 26-28 Big Ten Championships (Madison Wis.)		
Apr. 26	Northwestern	L, 2-5
Apr. 27	Minnesota	W, 5-0
Apr. 27	Purdue	W, 5-1
Apr. 28	Michigan State	W, 5-2

1991-92

Head Coach: Jennifer Roberts
Season Record: 16-8
Big Ten Record: 9-4 (4th)
NCAA Finish: N/A

Feb. 1	vs. Notre Dame	W, 5-4
Feb. 13	vs. Northern Illinois	W, 9-0
Feb. 15	at Drake	W, 6-3
Feb. 22	vs. Iowa	W, 5-4
Feb. 23	vs. Minnesota	W, 7-2
Mar. 6	at Arizona	L, 1-8
Mar. 10	Kansas (Tempe, Ariz.)	L, 1-8
Mar. 11	at Arizona State	L, 1-8
Mar. 14	SE Louisiana (Houston, Texas)	W, 5-4
Mar. 15	at Rice	W, 5-4
Mar. 20	at Wisconsin	L, 3-6

Mar. 22	vs. Western Michigan	W, 7-2
Mar. 28	vs. Michigan	W, 8-1
Mar. 29	Michigan State	W, 8-1
Apr. 3	at Florida State	W, 5-4
Apr. 4	Florida International (Tallahassee, Fla.)	L, 3-6
Apr. 9	at Northwestern	W, 5-4
Apr. 11	vs. Penn State	W, 9-0
Apr. 15	at Purdue	W, 9-0
Apr. 18	at Ohio State	W, 6-1
Apr. 19	at Indiana	L, 0-9
Apr. 24-26 Big Ten Championships (Evanston Ill.)		
Apr. 24	Minnesota	W, 5-1
Apr. 25	Wisconsin	L, 1-5
Apr. 26	Northwestern	L, 4-5

1992-93

Head Coach: Jennifer Roberts
Season Record: 14-6
Big Ten Record: 11-2 (2nd)
NCAA Finish: N/A

Feb. 6	South Florida (Tuscaloosa, Ala.)	L, 1-8
Feb. 7	at Alabama	L, 2-7
Feb. 17	vs. Northwestern	W, 6-3
Feb. 20	at Michigan State	W, 6-3
Feb. 26	vs. Illinois State	W, 8-1
Feb. 28	vs. Miami (OH)	W, 8-1
Mar. 7	UNLV (Tempe, Ariz.)	L, 4-5
Mar. 18	at Notre Dame	L, 2-7
Mar. 19	at Michigan	W, 6-3
Mar. 24	vs. Northern Illinois	W, 6-1
Mar. 28	vs. Wisconsin	W, 5-4
Apr. 11	at Penn State	W, 1-8
Apr. 14	vs. Purdue	W, 8-1
Apr. 17	at Iowa	W, 7-2
Apr. 18	at Minnesota	W, 8-1
Apr. 24	vs. Ohio State	W, 7-2
Apr. 25	vs. Indiana	L, 1-8
Apr. 30-May 1 Big Ten Champs. (Bloomington, Ind.)		
Apr. 30	Michigan State	W, 5-3
May 1	Wisconsin	L, 1-5
May 2	Northwestern	W, 5-4

1993-94

Head Coach: Jennifer Roberts
Season Record: 13-9
Big Ten Record: 8-5 (5th)
NCAA Finish: N/A

Feb. 4	vs. Illinois State	W, 9-0
Feb. 5	vs. Western Michigan	W, 5-4
Feb. 6	vs. Drake	W, 7-2
Feb. 19	at Wisconsin	L, 0-9
Mar. 5	at #26 San Diego	L, 0-8
Mar. 8	at #25 San Diego State	W, 5-4
Mar. 9	at #44 William & Mary	L, 2-7
Mar. 11	at #7 Pepperdine	L, 0-8
Mar. 17	vs. # 17 Notre Dame	L, 3-6
Mar. 19	vs. Penn State	W, 9-0
Mar. 20	vs. Michigan	L, 4-5
Mar. 28	vs. Northern Illinois	W, 9-0
Mar. 30	at Northwestern	L, 3-6
Apr. 6	at Purdue	W, 8-1
Apr. 9	at #9 Indiana	W, 7-2
Apr. 10	at Ohio State	W, 9-0
Apr. 16	vs. Minnesota	W, 8-1
Apr. 17	vs. Iowa	L, 4-5

Apr. 23	vs. Michigan State	W, 8-1
Apr. 29-May 1 Big Ten Championships (Iowa City, Iowa)		
Apr. 29	Northwestern	L, 3-5
Apr. 30	Minnesota	W, 5-1
May 1	Iowa	W, 5-2

1994-95

Head Coach: Jennifer Roberts
Graduate Assistant Coach: Lindsey Nimmo
Season Record: 14-10
Big Ten Record: 8-5 (6th)
NCAA Finish: N/A

Feb. 3	vs. #32 Oklahoma	L, 3-6
Feb. 5	vs. #21 South Alabama	L, 1-8
Feb. 12	at Penn State	W, 9-0
Feb. 24	vs. Drake	W, 9-0
Mar. 10	at Chaminade	W, 9-0
Mar. 11	Boston College (Hawaii)	W, 6-0
Mar. 13	at Hawaii-Pacific	W, 8-0
Mar. 14	at Hawaii	W, 8-1
Mar. 17	#50 Fresno State (San Diego, Calif.)	W, 8-1
Mar. 18	at #21 San Diego	L, 1-8
Mar. 19	Pacific (San Diego, Calif.)	L, 4-5
Mar. 25	vs. #12 Indiana	L, 2-7
Mar. 26	vs. Ohio State	W, 6-3
Mar. 30	at #22 Notre Dame	L, 1-8
Apr. 4	vs. Purdue	W, 6-3
Apr. 7	at Minnesota	W, 5-4
Apr. 9	at Iowa	W, 6-3
Apr. 15	at #35 Michigan	L, 3-6
Apr. 16	at Michigan State	W, 7-2
Apr. 22	vs. Northwestern	L, 3-6
Apr. 23	vs. Wisconsin	W, 8-1
Apr. 28-30 Big Ten Championships (Champaign, Ill.)		
Apr. 28	Purdue	L, 1-5
Apr. 29	Minnesota	W, 5-1
Apr. 30	Michigan	L, 0-5

1995-96

Head Coach: Jennifer Roberts
Graduate Assistant: Lora Suttle
Undergraduate Assistant: Lissa Kimmel
Season Record: 12-14
Big Ten Record: 5-5 (7th)
NCAA Finish: 1st round

Jan. 28	vs. #16 Notre Dame	L, 0-7
Jan. 28	vs. Western Michigan	W, 7-0
Feb. 3	vs. Miami (OH)	W, 5-2
Feb. 3	vs. Ball State	W, 6-1
Feb. 17	at North Carolina	L, 3-6
Feb. 18	at Virginia	W, 4-3
Feb. 23	at #27 South Alabama	L, 0-7
Feb. 24	#36 South Florida (Mobile, Ala.)	L, 2-5
Mar. 1	at Ohio State	W, 6-1
Mar. 3	at Indiana	W, 4-3
Mar. 10	at #32 UC-Santa Barbara	L, 4-5
Mar. 14	at #36 San Diego State	L, 2-7
Mar. 15	Pacific (San Diego, Calif.)	L, 4-5
Mar. 16	Yale (San Diego, Calif.)	W, 8-1
Mar. 17	Ohio State (San Diego, Calif.)	W, 7-1
Mar. 30	vs. Iowa	W, 6-1
Mar. 31	vs. Minnesota	L, 2-5
Apr. 5	vs. Michigan	L, 3-4
Apr. 6	vs. Michigan State	W, 6-1
Apr. 13	at #7 Wisconsin	L, 0-7

Apr. 14	at #23 Northwestern	L, 1-6
Apr. 19	at Purdue	L, 3-4
Apr. 21	vs. Penn State	W, 4-3
Apr. 25-27	Big Ten Championships (Madison, Wis.)	
Apr. 25	Iowa	W, 4-2
Apr. 26	#23 Northwestern	L, 2-4
NCAA Regional Championships (Champaign, Ill.)		
May 3-5	#21 Northwestern	L, 1-5

1996-97

Head Coach: Jennifer Roberts

Season Record: 11-14

Big Ten Record: 5-5 (5th)

NCAA Finish: 1st round

Jan. 24	at #5 Arizona	L, 4-5
Jan. 25	#56 TCU (Tucson, Ariz.)	W, 5-4
Jan. 26	Mississippi State (Tucson, Ariz.)	W, 5-1
Jan. 30	at #11 Notre Dame	L, 2-5
Feb. 2	vs. #61 Marquette	W, 4-3
Feb. 2	vs. Drake	W, 7-0
Feb. 9	at #13 Tennessee	L, 0-9
Feb. 14	at Iowa	W, 1-6
Feb. 16	at #39 Minnesota	L, 1-6
Feb. 22	vs. #43 North Carolina	W, 6-3
Mar. 9	vs. #40 Alabama	L, 3-6
Mar. 15	at Michigan State	W, 7-0
Mar. 16	at #17 Michigan	L, 1-6
Mar. 23	at #49 South Florida	L, 1-8
Mar. 26	Maryland (Tallahassee, Fla.)	L, 2-7
Mar. 28	at #46 Florida State	L, 2-7
Apr. 5	vs. #20 Wisconsin	L, 1-6
Apr. 6	vs. #45 Northwestern	L, 2-5
Apr. 12	at #54 Penn State	W, 6-1
Apr. 16	vs. Purdue	W, 4-3
Apr. 19	vs. Ohio State	W, 4-3
Apr. 20	vs. #44 Indiana	L, 2-5
Apr. 24-27	Big Ten Championships (West Lafayette, Ind.)	
Apr. 24	Michigan State	W, 4-3
Apr. 25	#19 Wisconsin	L, 0-4
May 9-11	NCAA Midwest Regional (South Bend, Ind.)	
May 9	#19 Notre Dame	L, 3-5

1997-98

Head Coach: Jennifer Roberts
Assistant Coach: Christine Neuman

Season Record: 8-13

Big Ten Record: 4-6 (8th)

NCAA Finish: N/A

Jan. 19	vs. Illinois-Chicago	W, 8-1
Jan. 23	at #12 Tennessee	L, 0-9
Jan. 25	at Louisville	W, 5-4
Feb. 13	at #42 Virginia	W, 5-4
Feb. 15	at #48 North Carolina	L, 3-6
Feb. 28	at #22 Northwestern	L, 2-5
Mar. 1	at #25 Wisconsin	L, 1-6
Mar. 6	at #51 TCU	L, 3-6
Mar. 7	at SMU	W, 7-2
Mar. 20	vs. #28 Michigan	L, 1-6
Mar. 21	vs. Michigan State	W, 4-3
Mar. 24	at #41 Florida State	L, 3-6
Mar. 26	at #25 South Alabama	L, 1-5
Mar. 28	#36 South Florida (Mobile, Ala.)	L, 3-5
Apr. 9	at #49 Purdue	L, 2-5
Apr. 11	vs. Penn State	W, 5-2
Apr. 18	at #50 Indiana	L, 1-6
Apr. 19	at Ohio State	W, 4-3

Apr. 25	vs. #55 Minnesota	W, 4-3
Apr. 26	vs. #48 Iowa	L, 2-5
Apr. 30-May 2	Big Ten Championships (Madison, Wis.)	
Apr. 30	Ohio State	L, 1-4

1998-99

Head Coach: Sujay Lama
Assistant Coach: JoAnne Russell

Season Record: 13-11

Big Ten Record: 7-3 (4th)

NCAA Finish: N/A

Jan. 30	at #22 Miami (FL) (62)	L, 1-8
Jan. 31	at #48 Florida State (62)	L, 1-5
Feb. 3	vs. Middle Tennessee State (62)	W, 8-1
Feb. 13	at #61 Iowa (62)	L, 1-6
Feb. 14	at #29 Wisconsin (62)	L, 3-4
Feb. 20	at Minnesota (62)	L, 2-5
Feb. 27	vs. SMU (62)	W, 9-0
Feb. 28	vs. #32 Northwestern (62)	W, 4-3
Mar. 6	vs. #53 North Carolina (62)	L, 4-5
Mar. 7	vs. #26 Tennessee (62)	L, 2-7
Mar. 11	vs. #44 Baylor (60)	W, 7-2
Mar. 16	#17 Arkansas (Lajolla, Calif.)	L, 0-9
Mar. 18	at #75 UC-Santa Barbara (60)	W, 6-0
Mar. 19	Boise State (60) (Irvine, Calif.)	W, 8-1
Mar. 31	at #13 Notre Dame (62)	L, 2-7
Apr. 10	vs. #31 Ohio State (51)	W, 4-3
Apr. 11	vs. Penn State (51)	W, 7-0
Apr. 17	at #65 Indiana (51)	W, 5-2
Apr. 18	at Purdue (51)	W, 6-1
Apr. 24	vs. Michigan (45)	W, 7-0
Apr. 25	vs. Michigan State (45)	W, 7-0
Apr. 30-May 2	Big Ten Championships (East Lansing, Mich.)	
Apr. 30	#40 Ohio State (45)	W, 5-2
May 1	#23 Northwestern (45)	L, 1-4
NCAA Regional Championships (Tempe, Ariz.)		
May 15	#22 Northwestern (44)	L, 3-5

1999-2000

Head Coach: Sujay Lama
Assistant Coach: JoAnne Russell

Season Record: 12-13

Big Ten Record: 8-3 (4th)

NCAA Finish: 1st round

Jan. 22	vs. Illinois-Chicago (40)	W, 7-2
Jan. 22	vs. DePaul (40)	L, 3-6
Jan. 29	at #43 South Florida (40)	L, 3-6
Jan. 30	at #2 Florida (40)	L, 0-9
Feb. 5	at #14 Tennessee (47)	L, 1-6
Feb. 12	#39 Maryland (47) (South Bend, Ind.)	W, 6-3
Feb. 13	at #17 Notre Dame (47)	L, 1-8
Feb. 26	at Michigan State (44)	W, 7-0
Feb. 27	at #59 Michigan (44)	W, 5-2
Mar. 4	at #28 North Carolina (44)	L, 2-7
Mar. 5	at #7 Duke (44)	L, 3-6
Mar. 14	SMU (58) (Santa Barbara, Calif.)	W, 6-3
Mar. 15	at #6 USC (58)	L, 3-6
Mar. 17	at #7 UCLA (58)	L, 2-7
Mar. 25	vs. #64 Purdue (67)	W, 5-2
Mar. 26	vs. #33 Indiana (67)	W, 4-3
Apr. 1	at #13 Northwestern (51)	W, 4-3
Apr. 8	at #63 Penn State (28)	L, 2-5
Apr. 9	at #40 Ohio State (28)	L, 2-5
Apr. 16	vs. #33 Minnesota (37)	W, 4-3
Apr. 22	vs. Wisconsin (31)	W, 4-3

Apr. 23	vs. #42 Iowa (31)	L, 3-4
Apr. 28-30	Big Ten Championships (Ann Arbor, Mich.)	
Apr. 28	#55 Purdue (36)	W, 4-2
Apr. 29	#17 Northwestern (36)	L, 1-4
May 12-14	NCAA Regional (Gainesville, Fla.)	
May 12	#22 Florida State (34)	L, 3-5

2000-01

Head Coach: Sujay Lama
Assistant Coach: JoAnne Russell

Season Record: 18-8

Big Ten Record: 9-1 (2nd)

NCAA Finish: 2nd round

Jan. 27	vs. Illinois State (33)	W, 7-0
Jan. 27	vs. Illinois-Chicago (33)	W, 7-0
Feb. 3	vs. Louisville (34)	W, 7-0
Feb. 4	vs. #17 Tennessee (34)	L, 2-5
Feb. 11	vs. #8 Wake Forest (33)	W, 5-2
Feb. 16	vs. #59 Western Michigan (27)	W, 6-1
Feb. 17	vs. #22 North Carolina (27)	L, 2-5
Feb. 24	at #56 Michigan (26)	W, 5-2
Feb. 25	at Michigan State (26)	W, 7-0
Feb. 28	vs. #3 Duke (25)	L, 0-7
Mar. 3	vs. #11 Northwestern (25)	L, 3-4
Mar. 10	vs. #67 Purdue (24)	W, 6-1
Mar. 11	vs. #43 Indiana (24)	W, 5-2
Mar. 16	at #4 Florida (23)	L, 0-7
Mar. 31	at Marquette (28)	W, 6-1
Apr. 5	vs. #8 Notre Dame (36)	L, 3-4
Apr. 7	at #32 Iowa (36)	W, 5-2
Apr. 14	at Wisconsin (29)	W, 6-1
Apr. 15	at #66 Minnesota (29)	W, 6-1
Apr. 21	vs. #33 Ohio State (34)	W, 4-3
Apr. 22	vs. #48 Penn State (34)	W, 6-1
Apr. 27-29	Big Ten Championships (Columbus, Ohio)	
Apr. 27	Wisconsin (29)	W, 5-0
Apr. 28	#54 Penn State (29)	W, 4-1
Apr. 29	#9 Northwestern (29)	L, 2-4
May 12-13	NCAA Regional Championships (Seattle, Wash.)	
May 12	#41 Va. Commonwealth (29)	W, 4-2
May 13	#12 Washington (29)	L, 0-4

2001-02

Head Coach: Sujay Lama
Assistant Coach: JoAnne Russell

Season Record: 11-12

Big Ten Record: 6-4 (4th)

NCAA Finish: N/A

Jan. 19	vs. #59 Illinois State (29)	W, 6-1
Jan. 19	vs. Illinois-Chicago (29)	W, 6-1
Jan. 27	at #6 Tennessee (29)	L, 0-7
Feb. 1	vs. #75 Western Michigan (30)	W, 7-0
Feb. 3	vs. Colorado (30)	W, 7-0
Feb. 10	vs. Marquette (30)	W, 6-1
Feb. 16	at #6 Wake Forest (34)	L, 2-5
Feb. 17	at #2 Vanderbilt (34)	L, 0-7
Feb. 23	vs. #75 Michigan State (34)	W, 4-3
Feb. 24	vs. #70 Michigan (34)	W, 5-2
Mar. 2	at #13 North Carolina (35)	L, 1-6
Mar. 3	at #3 Duke (35)	L, 1-6
Mar. 9	at #59 Purdue (35)	L, 2-5
Mar. 10	at #32 Indiana (35)	L, 3-4
Mar. 16	at #14 Northwestern (46)	L, 0-7
Mar. 23	at #30 Arizona (65)	L, 2-5
Mar. 27	at #23 Notre Dame	L, 3-4

Apr. 6 vs. #61 Iowa (72) W, 4-3
 Apr. 13 vs. #73 Minnesota (67) W, 6-1
 Apr. 14 #37 Wisconsin (67) W, 4-3
 Apr. 20 at Ohio State (46) L, 2-5
 Apr. 21 at Penn State (46) W, 4-3
Apr. 28-30 Big Ten Championships (Bloomington, Ind.)
 Apr. 28 #60 Iowa (50) L, 1-4

2002-03

Head Coach: Sujay Lama
Assistant Coach: JoAnne Russell
Season Record: 17-8
Big Ten Record: 8-2 (3rd)
NCAA Finish: 2nd round

Jan. 17 at Florida Atlantic (45) W, 7-0
 Jan. 18 at #24 Miami (FL) (45) L, 1-6
 Jan. 25 #34 Oregon (Boulder, Colo.) (45) L, 3-4
 Jan. 26 at Colorado (45) W, 4-3
 Feb. 1 vs. Western Michigan (45) W, 4-3
 Feb. 2 vs. #1 Tennessee (45) L, 2-5
 Feb. 15 at Iowa (49) W, 6-1
 Feb. 16 at #50 Minnesota (49) W, 4-3
 Feb. 23 vs. #1 Duke (49) W, 4-3
 Mar. 2 vs. #50 Wake Forest (25) W, 5-2
 Mar. 8 at Marquette (25) W, 6-1
 Mar. 16 at #42 Baylor (19) W, 4-3
 Mar. 29 at #26 Northwestern (17) L, 0-7
 Mar. 30 at Wisconsin (17) W, 4-3
 Apr. 2 vs. #27 Notre Dame (24) L, 1-6
 Apr. 5 vs. Penn State (24) W, 6-1
 Apr. 6 vs. #47 Ohio State (24) W, 6-1
 Apr. 12 at #48 Michigan (22) L, 2-5
 Apr. 13 at Michigan State (22) W, 6-1
 Apr. 17 vs. #45 Purdue (26) W, 4-3
 Apr. 19 vs. Indiana (26) W, 7-0
Apr. 24-27 Big Ten Championships (Urbana, Ill.)
 Wisconsin (25) W, 4-1
 #19 Northwestern (25) L, 2-4
May 9-11 NCAA Regional Championships (Seattle, Wash.)
 #30 UNLV (25) W, 4-0
 #6 Washington (25) L, 0-4

2003-04

Head Coach: Sujay Lama
Assistant Coach: JoAnne Russell
Season Record: 17-6
Big Ten Record: 8-2 (3rd)
NCAA Finish: 1st round

Jan. 25 vs. Marquette (23) W, 6-1
 Jan. 25 vs. Illinois State (23) W, 7-0
 Feb. 1 at #23 Tennessee (24) L, 2-5
 Feb. 14 vs. Harvard (24) W, 5-2
 Feb. 21 at #58 Wake Forest (24) W, 4-3
 Feb. 27 vs. #4 Washington (18) L, 2-5
 Feb. 28 vs. Western Michigan (18) W, 6-1
 Mar. 4 at #19 Notre Dame (17) W, 5-2
 Mar. 7 at #57 Purdue (17) L, 3-4
 Mar. 13 vs. Illinois-Chicago (22) W, 6-1
 Mar. 13 vs. DePaul (22) W, 7-0
 Mar. 24 at South Florida (28) W, 6-1
 Mar. 27 vs. Minnesota (28) W, 6-1
 Mar. 28 vs. #38 Iowa (28) W, 6-1
 Apr. 3 vs. Wisconsin (24) W, 4-3
 Apr. 4 vs. #7 Northwestern (24) W, 4-3
 Apr. 10 at Penn State (17) W, 4-3

Apr. 11 at #38 Ohio State (17) W, 4-3
 Apr. 17 vs. #27 Michigan (17) W, 5-2
 Apr. 18 vs. Michigan State (17) W, 7-0
 Apr. 24 at #25 Indiana (16) L, 3-4
Apr. 29-May 2 Big Ten Championships (Evanston, Ill.)
 Apr. 30 Ohio State (20) L, 2-4
May 14-15 NCAA Regional Championships (Durham, N.C.)
 May 14 #36 William & Mary (22) L, 2-4

2004-05

Head Coach: Sujay Lama
Assistant Coach: JoAnne Russell
Season Record: 12-11
Big Ten Record: 5-5 (5th)
NCAA Finish: N/A

Jan. 15 at Hawaii (33) W, 6-1
 Jan. 22 at Marquette (33) W, 7-0
 Jan. 28 vs. #30 Wake Forest (33) L, 2-5
 Jan. 30 vs. #18 Tennessee (33) L, 3-4
 Feb. 6 vs. Illinois State (33) W, 7-0
 Feb. 6 vs. Illinois-Chicago (33) W, 4-3
 Feb. 12 at #17 Harvard (33) L, 1-6
 Feb. 18 vs. #59 Colorado (35) W, 4-3
 Feb. 20 vs. #48 Western Michigan (35) L, 3-4
 Feb. 25 at Portland (45) W, 7-0
 Feb. 26 at #8 Washington (45) L, 1-6
 Mar. 5 vs. #42 Purdue (45) W, 4-3
 Mar. 26 vs. Penn State (51) W, 5-2
 Mar. 27 vs. #43 Indiana (51) L, 3-4
 Apr. 2 at #68 Ohio State (53) W, 5-2
 Apr. 9 vs. #62 Michigan State (53) W, 5-2
 Apr. 10 vs. #38 Michigan (53) L, 3-4
 Apr. 13 vs. #26 Notre Dame (54) L, 3-4
 Apr. 16 at #33 Wisconsin (54) W, 4-3
 Apr. 17 at #3 Northwestern (54) L, 0-7
 Apr. 23 vs. #49 Iowa (50) L, 1-6
 Apr. 24 vs. Minnesota (50) W, 7-0
Apr. 28-May 1 Big Ten Championships (East Lansing, Mich.)
 Apr. 29 #38 Wisconsin (53) L, 2-4

2005-06

Head Coach: Sujay Lama
Assistant Coach: JoAnne Russell
Season Record: 8-15
Big Ten Record: 2-8 (8th)
NCAA Finish: N/A

Jan. 20 vs. Marquette (53) W, 6-1
 Jan. 22 vs. #54 Western Michigan (53) W, 5-2
 Jan. 28 at #19 Tennessee (53) L, 1-6
 Feb. 4 vs. Illinois State (48) W, 6-1
 Feb. 4 vs. Illinois-Chicago (48) W, 7-0
 Feb. 10 at #19 William & Mary (49) L, 0-7
 Feb. 12 at #23 Wake Forest (49) L, 0-7
 Feb. 18 vs. #35 Mississippi (48) L, 3-4
 Feb. 22 at #32 Purdue (49) L, 1-6
 Mar. 5 at #5 Notre Dame (49) L, 0-7
 Mar. 10 vs. #50 Louisville (55) W, 5-2
 Mar. 22 at #3 USC (59) L, 1-6
 Mar. 24 at Penn State (59) L, 3-4
 Mar. 26 at #35 Indiana (59) L, 1-6
 Apr. 2 vs. #69 Ohio State (70) L, 2-5
 Apr. 8 at Michigan State W, 4-3
 Apr. 9 at #36 Michigan L, 1-6
 Apr. 15 vs. #9 Northwestern L, 1-6
 Apr. 16 vs. Wisconsin W, 4-3

Apr. 22 at Minnesota L, 2-5
 Apr. 23 at #30 Iowa L, 2-5
Apr. 27-30 Big Ten Championships (Urbana, Ill.)
 Apr. 27 Ohio State W, 4-2
 Apr. 28 #30 Iowa L, 0-4

2006-07

Head Coach: Michelle Dasso
Assistant Coach: David Emery
Season Record: 5-17
Big Ten Record: 1-9 (10th)
NCAA Finish: N/A

Jan. 20 at Marquette W, 4-3
 Jan. 26 vs. #4 Notre Dame L, 0-7
 Jan. 28 vs. #31 Tennessee L, 0-7
 Feb. 4 vs. Illinois-Chicago W, 7-0
 Feb. 9 vs. #25 William & Mary L, 1-6
 Feb. 11 vs. #1 Georgia Tech L, 0-7
 Feb. 23 vs. #36 Purdue L, 1-6
 Feb. 24 vs. Washington L, 3-4
 Mar. 7 vs. Illinois State W, 6-1
 Mar. 19 at Houston L, 3-4
 Mar. 20 at #40 Texas L, 0-7
 Mar. 22 at Texas-San Antonio W, 4-2
 Mar. 25 vs. Michigan State L, 2-5
 Mar. 31 at #10 Northwestern L, 0-7
 Apr. 1 at Wisconsin W, 4-3
 Apr. 7 vs. Penn State L, 3-4
 Apr. 8 vs. #23 Michigan L, 0-7
 Apr. 14 vs. #33 Indiana L, 2-5
 Apr. 15 vs. #50 Ohio State L, 3-4
 Apr. 21 at #59 Iowa L, 1-6
 Apr. 22 at #56 Minnesota L, 1-5
Apr. 26-28 Big Ten Championships (Minneapolis, Minn.)
 Apr. 26 #60 Minnesota L, 0-4

2007-08

Head Coach: Michelle Dasso
Assistant Coach: David Emery
Season Record: 12-11
Big Ten Record: 7-3 (4th)
NCAA Finish: 1st round

Jan. 12 at Florida Atlantic W, 7-0
 Jan. 19 vs. Marquette W, 5-2
 Jan. 21 vs. #62 Western Michigan L, 3-4
 Jan. 26 at #22 Tennessee L, 1-6
 Feb. 4 at #21 Florida State L, 0-7
 Feb. 8 vs. #60 DePaul W, 6-1
 Feb. 10 at Kansas W, 5-2
 Feb. 17 at #48 Washington (68) L, 3-4
 Mar. 8 at Purdue (65) W, 4-3
 Mar. 12 at #23 Notre Dame (61) L, 1-6
 Mar. 19 Princeton (Puerto Rico) (55) L, 3-4
 Mar. 23 at Michigan State (55) W, 4-3
 Mar. 29 vs. Wisconsin (70) W, 6-1
 Mar. 30 vs. #1 Northwestern (70) L, 0-7
 Apr. 4 at #22 Michigan (62) L, 2-5
 Apr. 6 at Penn State (62) W, 4-3
 Apr. 12 at #29 Indiana (58) L, 3-4
 Apr. 13 at #31 Ohio State (58) W, 5-2
 Apr. 19 vs. #69 Minnesota (54) W, 4-3
 Apr. 20 vs. #56 Iowa (54) W, 6-1
Apr. 24-29 Big Ten Championships (West Lafayette, Ind.)
 Apr. 24 #34 Ohio State (43) W, 4-3
 Apr. 26 #1 Northwestern (43) L, 0-4
May 9-11 NCAA Regional Championships (Atlanta, Ga.)
 May 9 #25 Tennessee (36) L, 0-4

2008-09

Head Coach: Michelle Dasso
Assistant Coach: David Emery
Season Record: 19-8
Big Ten Record: 8-2 (3rd)
NCAA Finish: 2nd round

Jan. 24	vs. #24 Tennessee (37)	L, 3-4
Jan. 25	vs. Miami (OH) (37)	W, 5-2
Jan. 30	#38 UNLV (Palo Alto, Calif.) (36)	W, 4-3
Jan. 31	at #5 Stanford (36)	L, 1-6
Feb. 6	vs. #75 Kansas (36)	W, 7-0
Feb. 8	vs. Illinois-Chicago (36)	W, 7-0
Feb. 8	vs. Illinois State (36)	W, 7-0
Feb. 21	at Harvard (33)	W, 5-2
Feb. 22	at Boston College (33)	W, 6-1
Feb. 28	at Marquette (33)	W, 6-1
Mar. 7	vs. #36 Indiana (51)	W, 5-2
Mar. 8	at Purdue (51)	W, 4-3
Mar. 13	at #1 Northwestern (33)	L, 1-6
Mar. 15	at #72 Wisconsin (33)	W, 6-1
Mar. 27	#36 Washington (Honolulu, Hawaii) (32)	L, 3-4
Mar. 28	at Hawaii (33)	W, 5-2
Apr. 4	#65 Minnesota (40)	W, 7-0
Apr. 5	vs. #69 Iowa (40)	W, 5-2
Apr. 7	vs. #4 Notre Dame (36)	L, 1-6
Apr. 10	at #43 Ohio State (36)	W, 5-2
Apr. 12	at Penn State (36)	W, 7-0
Apr. 18	vs. Michigan State (33)	W, 7-0
Apr. 19	vs. #18 Michigan (33)	L, 1-6
Apr. 24-26	Big Ten Championships (Madison, Wis.)	
Apr. 24	Purdue (34)	W, 4-1
Apr. 25	#18 Michigan (34)	L, 3-4
May 9-10	NCAA Regional Championships (Urbana, Ill.)	
May 9	#19 Vanderbilt (34)	W, 4-3
May 10	#16 Fresno State (34)	L, 3-4

2009-10

Head Coach: Michelle Dasso
Assistant Coach: Georgia Rose
Season Record: 15-10
Big Ten Record: 8-2 (3rd)
NCAA Finish: 1st round

Jan. 22	at #11 Tennessee (33)	L, 3-4
Jan. 24	at #26 Virginia (33)	L, 3-4
Jan. 30	vs. #20 Mississippi (Clemson, S.C.) (32)	L, 2-4
Jan. 31	vs. #37 Texas A&M (Clemson, S.C.) (32)	W, 4-2
Feb. 5	vs. #21 Florida State (32)	L, 3-4
Feb. 7	vs. Marquette (32)	W, 6-1
	vs. Western Illinois (32)	W, 7-0
Feb. 20	at #17 Notre Dame (31)	L, 2-5
Feb. 26	vs. #2 Northwestern (39)	L, 2-5
Feb. 28	vs. #53 Harvard (39)	W, 5-2
Mar. 7	at #62 TCU (43)	W, 4-3
Mar. 12	at #28 Indiana (44)	W, 6-1
Mar. 19	vs. Wisconsin (31)	W, 5-2
Mar. 24	at #20 South Carolina (39)	L, 3-4
Mar. 26	at College of Charleston (39)	W, 7-0
Apr. 4	vs. #42 Purdue (37)	W, 6-1
Apr. 10	at #22 Iowa (36)	W, 6-1
Apr. 11	at #60 Minnesota (36)	W, 6-1
Apr. 17	vs. #33 Ohio State (26)	W, 4-3
Apr. 18	vs. Penn State (26)	W, 7-0
Apr. 24	at #4 Michigan (21)	L, 2-5
Apr. 25	at Michigan State (21)	W, 5-2

Big Ten Championships (Iowa City, Iowa)

Apr. 30	vs. #49 Purdue (21)	W, 4-2
May 1	vs. #5 Northwestern (21)	L, 2-4
NCAA Regional Championships (Evanston, Ill.)		
May 14	vs. #37 Nebraska (22)	L, 2-4

2010-11

Head Coach: Michelle Dasso
Assistant Coach: Georgia Rose
Season Record: 11-13
Big Ten Record: 5-5 (T-5th)
NCAA Finish: N/A

Jan. 22	vs. #4 Notre Dame (25)	L, 2-5
Jan. 23	vs. #13 Tennessee (25)	L, 3-4
Jan. 29	vs. #28 South Florida (25) (Atlanta, Ga.)	L, 3-4
Jan. 30	vs. #30 Iowa (25)	W, 5-2
Feb. 4	vs. #35 DePaul (28)	W, 5-2
Feb. 6	vs. #26 Virginia (28)	L, 2-5
Feb. 13	vs. #26 South Carolina (29)	L, 2-5
Mar. 4	at Penn State (51)	W, 4-3
Mar. 6	vs. #24 Texas (51)	L, 3-4
Mar. 18	Western Michigan	W, 5-2
Mar. 23	at #23 San Diego	L, 0-7
Mar. 27	at #71 Ohio State	L, 3-4
Apr. 2	vs. #58 Purdue	W, 4-3
Apr. 3	vs. Indiana	W, 4-3
Apr. 6	vs. Illinois State	W, 7-0
Apr. 8	vs. Iowa	W, 5-2
Apr. 10	at #16 Northwestern	L, 2-5
Apr. 15	vs. #10 Michigan	L, 0-7
Apr. 17	vs. Michigan State	W, 6-1
Apr. 22	at Minnesota	L, 3-4
Apr. 24	at Wisconsin	L, 3-4
Big Ten Championships (Ann Arbor, Mich.)		
Apr. 28	vs. Michigan State	W, 4-0
Apr. 29	vs. #61 Purdue	W, 4-1
Apr. 30	vs. #19 Northwestern	L, 0-4

Results Key

*() - Indicates Illinois' rank at the time of the match.
 Illinois began receiving regular season rankings in 1998.*

2011-12

Head Coach: Michelle Dasso
Assistant Coach: Georgia Rose
Season Record: 18-8
Big Ten Record: 9-2 (T-3rd)
NCAA Finish: 1st round

Jan. 13	vs. Stephen F. Austin (69)	W, 5-2
Jan. 21	vs. Western Illinois (69)	W, 7-0
Jan. 21	vs. Illinois State (69)	W, 7-0
Jan. 27	vs. #67 Winthrop/ITA Kick-Off (68)	W, 7-0
Jan. 28	vs. #3 Duke/ITA Kick-Off (68)	L, 1-6
Feb. 3	vs. #36 SMU (63)	W, 6-1
Feb. 19	at #23 Notre Dame (57)	L, 3-4
Feb. 25	vs. #40 Princeton (58)	W, 4-0
Feb. 25	vs. #20 Alabama (58)	L, 3-4
Feb. 26	vs. #33 Arizona (58)	L, 0-4
Mar. 10	vs. #14 Northwestern (45)	L, 2-5
Mar. 19	at #29 Rice (46)	W, 5-1
Mar. 21	at #9 Texas (50)	W, 4-3
Mar. 24	vs. #25 Nebraska (50)	W, 4-3
Mar. 25	vs. Iowa (50)	W, 6-1

Mar. 30	at Wisconsin (21)	W, 7-0
Apr. 1	at #32 Minnesota (21)	W, 6-1
Apr. 7	at #15 Michigan (19)	L, 1-6
Apr. 8	at Michigan State (19)	W, 7-0
Apr. 13	vs. #61 Ohio State (23)	W, 4-3
Apr. 15	vs. #52 Penn State (23)	W, 5-2
Apr. 20	vs. #47 Indiana (21)	W, 4-3
Apr. 22	at #29 Purdue (21)	W, 5-2

Big Ten Championships (Columbus, Ohio)

Apr. 27	vs. #34 Minnesota (20)	W, 4-0
Apr. 28	vs. #15 Michigan (20)	L, 0-4
NCAA Regional Championships (Oxford, Miss.)		
May 11	vs. #39 Rice (18)	L, 3-4

2012-13

Head Coach: Michelle Dasso
Assistant Coach: Kelly Anderson
Assistant Coach: Mark Denenfeld
Season Record: 14-11
Big Ten Record: 6-5 (T-5th)

Date	Opponent (ILL Rank)	Result
Jan. 13	at #9 Miami (24)	L, 0-7
Jan. 18	Illinois State (24)	W, 5-1
	Western Illinois (24)	W, 7-0
Jan. 20	#19 Notre Dame (24)	L, 3-4
ITA Kick-Off Weekend (Oxford, Miss.)		
Jan. 27	#25 Vanderbilt (27)	L, 1-4
Jan. 28	at #19 Ole Miss (27)	L, 0-4
Feb. 2	at #62 Georgia State (31)	W, 4-3
Feb. 3	at Furman (31)	W, 4-3
Feb. 22	Syracuse (34)	W, 6-1
Feb. 24	#36 Oklahoma (34)	W, 5-2
March 2	at #8 Northwestern (33)	L, 2-5
March 8	at #10 Nebraska (37)	L, 1-6
March 10	at Iowa (37)	L, 2-5
March 19	vs. #35 Oklahoma State (San Diego) (47)	L, 3-4
March 29	Wisconsin (52)	W, 5-2
March 31	Minnesota (52)	W, 5-2
	Chicago State (52)	W, 6-0
April 6	#8 Michigan (54)	L, 1-6
April 7	Michigan State (54)	W, 6-1
April 12	at #62 Ohio State (59)	W, 5-2
April 14	at #38 Penn State (59)	W, 5-2
April 19	at #34 Indiana (47)	W, 4-3
April 21	#27 Purdue (47)	L, 2-5
Big Ten Championships (Bloomington, Ind.)		
April 25	Michigan State (43)	W, 4-1
April 26	#28 Purdue (43)	L, 1-4

Final Season Ranking: 45

COACHING RECORDS

ALL-TIME RECORDS

Coach	Tenure	Seasons	Overall Record		Big Ten Record	
			W-L	Pct.	W-L	Pct.
Peggy Pruitt	1974-75	1	6-0	1.000	----	----
Carla Thompson	1976-78	3	18-17	.514	----	----
Linda Pecore	1979-81	3	44-41	.518	----	----
Mary Tredennick	1982-87	6	98-109	.473	28-60	.318
Jennifer Roberts	1988-98	11	138-136	.504	68-70	.493
Sujay Lama	1999-2006	8	108-84	.562	59-34	.580
Michelle Dasso	2007-Present	7	94-78	.547	44-28	.611
Illinois History		39	506-465	.521	199-192	.509

YEAR-BY-YEAR

Year	Coach	Overall	Big Ten	Place
1975	Peggy Pruitt	6-0	----	----
1976	Carla Thompson	5-3	----	----
1977	Carla Thompson	7-8	----	----
1978	Carla Thompson	6-6	----	----
1979	Linda Pecore	5-11	----	----
1980	Linda Pecore	18-9	----	----
1981	Linda Pecore	21-21	----	----
1982	Mary Tredennick	22-16	1-10	8th
1983	Mary Tredennick	16-21	2-14	8th
1984	Mary Tredennick	15-18	7-9	7th
1985	Mary Tredennick	17-20	8-7	5th
1986	Mary Tredennick	16-16	5-12	7th
1987	Mary Tredennick	12-18	5-8	7th
1988	Jennifer Roberts	10-17	1-11	10th
1989	Jennifer Roberts	6-22	3-10	7th
1990	Jennifer Roberts	15-14	4-9	8th
1991	Jennifer Roberts	19-9	8-5	5th
1992	Jennifer Roberts	16-8	9-4	4th
1993	Jennifer Roberts	14-6	11-2	3rd
1994	Jennifer Roberts	13-9	8-5	5th
1995	Jennifer Roberts	14-10	8-5	6th
1996	Jennifer Roberts	12-14	6-6	7th
1997	Jennifer Roberts	11-14	6-6	6th
1998	Jennifer Roberts	8-13	4-7	9th
1999	Sujay Lama	13-11	8-4	3rd
2000	Sujay Lama	12-13	9-3	T-2nd
2001	Sujay Lama	18-8	11-2	2nd
2002	Sujay Lama	11-12	6-5	T-4th
2003	Sujay Lama	17-8	9-3	3rd
2004	Sujay Lama	17-6	8-3	3rd
2005	Sujay Lama	12-11	6-6	6th
2006	Sujay Lama	8-15	2-8	10th
2007	Michelle Dasso	5-17	1-9	10th
2008	Michelle Dasso	12-11	7-3	4th
2009	Michelle Dasso	19-8	8-2	3rd
2010	Michelle Dasso	15-10	8-2	3rd
2011	Michelle Dasso	11-13	5-5	T-5th
2012	Michelle Dasso	18-8	9-2	T-3rd
2013	Michelle Dasso	14-11	6-5	t-5th

ALL-TIME SERIES RECORDS

Alabama	0-5	Notre Dame	8-25
Arizona	0-5	Odessa College	1-0
Arizona State	0-2	Ohio State	33-13
Arkansas	0-3	Oklahoma	1-4
Auburn	0-1	Oklahoma State	0-5
Augustana	2-3	Oral Roberts	0-1
Ball State	1-0	Oregon	0-1
Baylor	3-0	Pacific	0-2
Boise State	1-0	Penn State	21-2
Boston College	2-0	Pepperdine	0-2
Bowling Green	1-0	Portland	1-0
Bradley	11-0	Princeton	1-1
Chaminade	1-0	Principia	2-0
Chicago State	1-0	Purdue	28-29
College of Charleston	1-0	Rice	2-2
Colorado	3-0	Rollins College	1-0
Dallas	1-0	Rosary College	1-0
DePaul	3-1	Rutgers	1-0
DePauw	1-0	San Diego	0-4
Drake	8-0	San Diego State	1-1
Duke	1-5	Sangamon State	4-1
Eastern Illinois	8-4	SE Louisiana	1-0
Eastern Michigan	2-0	SIUE	10-3
Eastern Tennessee State	1-0	SMU	4-0
Emporia State	1-0	South Alabama	0-4
Florida	0-2	South Carolina	0-2
Florida Atlantic	2-0	South Florida	2-7
Florida International	0-1	Southern Illinois	9-5
Florida Southern	1-0	Southern Missouri St.	1-0
Florida State	1-6	St. Ambrose	1-0
Furman	1-0	St. Francis	2-0
Fresno State	1-1	Stanford	0-1
Georgia	0-1	Stephen F. Austin	1-0
Georgia State	2-0	SW Louisiana	1-0
Georgia Tech	0-1	SW Missouri	1-0
Harvard	3-1	Syracuse	1-0
Hawaii	4-0	TCU	2-3
Hawaii-Pacific	1-0	Tennessee	1-17
Houston	0-3	Texas	1-4
Illinois State	29-8	Texas A&M	1-0
Illinois-Chicago	9-0	Texas-San Antonio	2-0
Indiana	11-33	Toledo	1-0
Indiana State	7-0	Trinity	0-3
Iowa	26-24	Tulane	0-1
Iowa State	6-0	Tyler JC	0-2
Kansas	2-5	U.S. International U	0-2
Kansas State	2-0	UC-Irvine	0-1
Kentucky	0-1-1	UC-Santa Barbara	1-1
Lake Forest	1-0	UCLA	0-1
Louisville	6-0	UI-Chicago Circle	5-0
LSU	0-2	UNLV	2-1
Marquette	13-1	USC	0-2
Maryland	1-1	Vanderbilt	1-4
Memphis State	1-0	Virginia	2-2
Miami (FL)	0-4	Virginia Commonwealth	1-0
Miami (OH)	4-10	Wake Forest	1-0
Michigan	11-28	Washington	0-7
Michigan State	31-10	Washington (St. Louis)	1-0
Middle Tennessee State	1-0	Western Illinois	2-2
Millikin	1-0	Western Kentucky	1-0
Minnesota	26-18	Western Michigan	10-8
Mississippi	0-4	Wheaton	3-0
Mississippi State	1-0	Wichita State	3-1
Missouri	2-0	William & Mary	0-5
Morehead State	0-1	Winthrop	1-0
Murray State	1-0	Wisconsin	17-23
Nebraska	1-3	Wisconsin (EauClaire)	1-0
North Carolina	1-8	Wisconsin (LaCrosse)	2-0
North Kentucky	1-0	Wisconsin (Oshkosh)	2-0
North Texas State	1-1	Wisconsin (Whitewater)	1-0
Northern Colorado	1-1	Wisconsin-Milwaukee	1-0
Northern Illinois	13-0	Yale	1-0
Northern Iowa	1-0		
Northwestern	8-46	2014 opponents in BOLD	

SINGLES & DOUBLES RECORDS

SINGLES RECORDS

MOST SINGLES WINS - CAREER

	Player	Record	Years
1.	Jennifer McGaffigan	105-58	2000-04
2.	Lindsey Nimmo	103-33	1990-93
3.	Megan Fudge	97-44	2006-10
4.	Maureen McNamara	89-60	1980-84
5.	Tiffany Eklov	87-55	2000-04
6.	Marisa Lambropoulos	84-64	2007-12
7.	Stacy Schapiro	83-79	1995-99
	Carla Rosenberg	83-37	1997-01
9.	Gayathri DeSilva	82-68	1979-83
	Sue Hutchinson	82-63	1980-84

MOST SINGLES WINS - SEASON

	Player	Record	Year
1.	Lindsey Nimmo	48-7	1992-93
2.	Simone Kung	32-12	2000-01
3.	Lindsey Nimmo	31-11	1990-91
4.	Megan Fudge	30-7	2008-09
	Jennifer McGaffigan	30-18	2000-01
	Jennifer McGaffigan	30-10	2003-04
7.	Kristi Meola	29-8	1990-91
	Cynthia Goulet	29-7	2004-05
9.	Sue Hutchinson	28-11	1981-82
	Maureen McNamara	28-16	1981-82

DOUBLES RECORDS

MOST DOUBLES WINS - CAREER

	Player	Record	Years
1.	Jennifer McGaffigan	104-49	2000-04
2.	Rachael White	89-59	2009-13
3.	Marisa Lambropoulos	87-60	2007-12
	Kathy Neil	87-66	1984-88
5.	Carrie Costigan	81-66	1985-89
6.	Sheila Burns	79-68	1983-87
7.	Kristen Jones	78-38	1991-95
8.	Carla Rosenberg	76-51	1997-01
	Brianna Knue	76-70	2003-06
10.	Megan Fudge	73-60	2006-10

MOST DOUBLES WINS - SEASON

	Player	Record	Year
1.	Michelle Webb	32-10	2002-03
2.	Jennifer McGaffigan	31-8	2002-03
3.	Kathy Neil	30-16	1985-86
4.	Macall Harkins	29-9	2004-05
	Jennifer McGaffigan	29-10	2003-04
	Sheila Burns	29-14	1985-86
7.	Carrie Costigan	28-10	1987-88
	Brianna Knue	28-11	2004-05
	Melisa Kopinski	28-13	2012-13
	Rachael White	28-13	2012-13

NATIONAL // REGIONAL HONORS

ALL-AMERICAN

Year	Player
1992-93	Lindsey Nimmo
2012-13	Melissa Kopinski
2012-13	Rachael White

ASSISTANT COACH OF THE YEAR

Year	Coach
2011-12	Georgia Rose

WILSON / ITA PROMOTER STUDENT-ATHLETE OF THE YEAR

Year	Player
2010-11	Annie McCarthy

ITA MIDWEST REGION

SENIOR PLAYER OF THE YEAR

Year	Player
2004-05	Cynthia Goulet

ARTHUR ASHE AWARD

Year	Player
2004-05	Cynthia Goulet
2011-12	Marisa Lambropoulos

ITA/CISSIE LEARY SPORTSMANSHIP AWARD

Year	Player
2009-10	Megan Fudge

HOME COURT RECORDS

Home Record since 1985: 190-106 (.642) // Record at Atkins (22 years): 153-73 (.677)

1985..... 5-5*	2005..... 7-7
1986..... 6-6* (2-2 hosting Big Ten)	2006..... 6-5 (1-1 hosting Big Ten)
1987..... 5-5*	2007..... 2-11
1988..... 4-6*	2008..... 5-2
1989..... 3-4*	2009..... 9-4 (1-1 hosting NCAA Regional)
1990..... 4-5* (1-3 hosting Big Ten)	2010..... 7-2
1991..... 10-2*	2011..... 7-6
1992..... 8-0	2012..... 8-1
1993..... 7-1	2013..... 8-3
1994..... 7-3	
1995..... 5-6 (1-2 hosting Big Ten)	* at Huff Courts
1996..... 4-4 (0-1 hosting NCAA Regional)	
1997..... 5-4	
1998..... 4-2	
1999..... 8-2	
2000..... 5-2	
2001..... 9-5	
2002..... 10-0	
2003..... 10-2 (1-1 hosting Big Ten)	
2004..... 12-1	

ILLINOIS TEAM RECORDS

Most Wins

1..... 22-16 (1981-82)
2..... 21-21 (1980-81)
3..... 19-8 (2008-09)
..... 19-9 (1990-91)
5..... 18-8 (2011-12)
..... 18-8 (2000-01)
..... 18-9 (1979-80)

Highest ITA National Ranking (Excludes final rankings)

No. 16..... 2004
No. 17..... 2004, 2003
No. 18..... 2004, 2012
No. 19..... 2003, 2012
No. 20..... 2004, 2012
No. 21..... 2010, 2012
No. 22..... 2010, 2004, 2003
No. 23..... 2004, 2001, 2012
No. 24..... 2013, 2004, 2003, 2001
No. 25..... 2011, 2003, 2001

Longest Overall Winning Streak

1. 11 matches..... 3/13/04 - 4/18/04
2. 9 matches..... 9/5/80 - 9/21/80
..... 10/5/79 - 4/19/80
4. 8 matches..... 2/6/09 - 3/8/09
..... 3/19/93 - 4/24/93
..... 2/17/91 - 3/22/91
..... 9/9/81 - 10/1/81

Longest Home Winning Streak

1. 10 matches..... 1/19/02 - 4/14/02
2. 9 matches..... 1/19/02 - 4/14/02
3. 8 matches..... 2/1/92 - 4/18/92
..... 2/8/91 - 3/22/91
5. 7 matches..... 2/17/93 - 4/24/93

Longest Big Ten Winning Streak

1. 9 matches..... 2/17/93 - 4/24/93
2. 8 matches..... 3/27/04 - 4/18/04
3. 7 matches..... 3/12/10 - 4/18/10
..... 3/10/01 - 4/22/01
..... 2/28/99 - 4/25/99

BIG TEN HONORS

BIG TEN CONFERENCE

Big Ten Player of the Year

Year	Player
1992-93	Lindsey Nimmo

Big Ten Coach of the Year

Year	Coach
1986-87	Mary Tredennick

Big Ten Athlete of the Month/Week

Month, Year	Player
May 1991	Lindsey Nimmo
April 1994	Kristen Jones
Feb. 13, 2008	Megan Fudge
April 16, 2008	Megan Fudge
April 14, 2009	Megan Fudge
Jan. 19, 2010	Megan Fudge
April 13, 2010	Megan Fudge
Feb. 21, 2012	Rachael White

Big Ten Freshman of the Year

Year	Player
2000-01	Jennifer McGaffigan

All-Big Ten

Year	Player
1984-85	Jessie Daw & Kathy Neil (2nd Team Doubles)
1987-88	Cynthia Chambers & Kathy Neil (1st Team Doubles)
1989-90	Mary Williams (2nd Team Singles)
1990-91	Lindsey Nimmo*
1991-92	Lindsey Nimmo
1992-93	Lindsey Nimmo
1993-94	Kristen Jones, Kristi Meola
1994-95	Camille Baldrich, Kristen Jones
1998-99	Simone Kung, Stacy Schapiro
2000-01	Jennifer McGaffigan
2001-02	Jennifer McGaffigan
2002-03	Jennifer McGaffigan, Tiffany Eklov

2003-04	Jennifer McGaffigan, Cynthia Goulet
2004-05	Cynthia Goulet
2005-06	Macall Harkins
2006-07	Megan Fudge
2007-08	Megan Fudge
2008-09	Megan Fudge, Leigh Finnegan
2009-10	Megan Fudge
2010-11	Rachael White (1st Team), Amy Allin (2nd Team)
2011-12	Allison Falkin (1st Team), Melissa Kopinski (1st Team), Marisa Lambropoulos (2nd Team)
2012-13	Allison Falkin (1st Team), Melissa Kopinski (2nd Team)

* Beginning in 1991, the first and second team singles and doubles format was abandoned for a 12-member All-Big Ten team.

Academic All-Big Ten

Year	Player
1986-87	Carrie Costigan, Kathy Neil
1988-89	Carrie Costigan, Astrid Eichner, Kathy Neil, Lauren Smolensky
1989-90	Astrid Eichner, Sabine Ensslin, Linda Gates, Laurie Kane
1990-91	Cynthia Chambers, Linda Gates, Lindsey Nimmo
1991-92	Linda Gates, Lindsey Nimmo
1992-93	Linda Gates, Lissa Kimmel, Sara Marshack
1993-94	Lindsey Nimmo, Lissa Kimmel
1994-95	Sara Marshack, Lissa Kimmel, Jessica Klapper, Sara Marshack, Laura Rydberg

1995-96	Jessica Klapper
1996-97	Jessica Klapper, Kara Loffelmacher, Laura Rydberg
1997-98	Stacy Schapiro, Allison Gottlieb, Kara Loffelmacher, Stacy Schapiro, Megan Wise
1998-99	Allison Gottlieb, Simone Kung, Carla Rosenberg, Stacy Schapiro, Megan Wise
1999-00	Simone Kung, Natalia Manasova, Carla Rosenberg, Megan Wise
2000-01	Eldina Fazlic, Simone Kung, Carla Rosenberg, Michelle Webb
2001-02	Eva Choe, Tiffany Eklov, Eldina Fazlic, Liz Fraker
2002-03	Jennifer McGaffigan, Michelle Webb, Eva Choe, Leila Cehajic, Tiffany Eklov, Eldina Fazlic
2003-04	Jennifer McGaffigan, Michelle Webb, Leila Cehajic, Eva Choe, Tiffany Eklov, Cynthia Goulet, Brianna Knue
2004-05	Jennifer McGaffigan, Pavlina Akritas, Leila Cehajic, Cynthia Goulet, Brianna Knue
2005-06	Alejandra Meza Cuadra, Momei Qu, Brianna Knue
2006-07	Alejandra Meza Cuadra, Momei Qu
2007-08	Leigh Finnegan, Megan Fudge

2008-09	Kristina Minor, Christine Stromberg, Momei Qu, Alejandra Meza Cuadra, Leigh Finnegan, Megan Fudge, Annie McCarthy, Kristina Minor, Christine Stromberg
2009-10	Chelcie Abajian, Leigh Finnegan, Megan Fudge, Annie McCarthy, Kristina Minor, Christine Stromberg
2010-11	Chelcie Abajian, Amy Allin, Leigh Finnegan, Annie McCarthy, Breanne Smutko
2011-12	Chelcie Abajian, Amy Allin, Breanne Smutko
2012-13	Breanne Smutko

Big Ten Medal of Honor

In 1982, the conference endowed a medal of honor to be awarded annually at each institution to a female student in the graduating class that has demonstrated proficiency in scholarship and athletics. Since the inception of the award, seven women's tennis players have received the award.

Year	Player
1985	Sue Arildsen
1986	Christy Flesvig
1993	Lindsey Nimmo
1999	Stacy Schapiro
2003	Michelle Webb
2004	Jennifer McGaffigan
2005	Cynthia Goulet

UNIVERSITY // TEAM // ACADEMIC AWARDS

DIA AWARDS

FIGHTING ILLINI SPIRIT AWARD

Year	Player
1994-95	Lissa Kimmel
2009-10	Megan Fudge
2011-12	Amy Allin

FEMALE NEWCOMER OF THE YEAR

Year	Player
1991-92	Camille Baldrich
2000-01	Jennifer McGaffigan

INDIVIDUAL GPA AWARDS

(Top GPA among female student-athletes in her class)

Year	Player
1994-95	Jessica Klapper (Sophomore)
1995-96	Jessica Klapper (Junior)
1996-97	Stacy Schapiro (Sophomore)
	Jessica Klapper (Senior)
1997-98	Stacy Schapiro (Junior)
2002-03	Michelle Webb (Senior)
2003-04	Cynthia Goulet (Junior)
2004-05	Cynthia Goulet (Senior)
2005-06	Momei Qu (Sophomore)
2006-07	Momei Qu (Junior)
2007-08	Momei Qu (Senior)

2010-11	Amy Allin, Rachael White
2011-12	Melissa Kopinski
2012-13	Allison Falkin

BRIANNA KNUE FIGHTING ILLINI SPIRIT AWARD

Year	Player
1989-90	Linda Gates
1993-94	Sara Marshack
1994-95	Lissa Kimmel
1995-96	Laura Rydberg
1996-97	Laura Rydberg
1997-98	Allison Gottlieb
1998-99	Simone Kung
1999-00	Simone Kung
2000-01	Michelle Webb
2001-02	Liz Fraker, Eldina Fazlic
2002-03	Jennifer McGaffigan
2003-04	Brianna Knue
2004-05	Leila Cehajic
2005-06	Brianna Knue
2006-07	Kristina Minor
2007-08	Annie McCarthy
2008-09	Kristina Minor
2009-10	Kristina Minor
2010-11	Amy Allin
2011-12	Amy Allin
2012-13	Misia Kedzierski

MOST IMPROVED PLAYER

Year	Player
1980-81	Jenny Roberts
1981-82	Sue Hutchinson
1982-83	Sue Arildsen
1983-84	Sheila Burns
1984-85	Sandra Goern
1985-86	Carrie Costigan
1986-87	Sandra Goern
1987-88	Astrid Eichner
1988-89	Sabine Ensslin
1989-90	Astrid Eichner, Laurie Kane
1990-91	Kristi Meola
1991-92	Kristen Jones
1992-93	Sara Marshack, Camille Baldrich
1993-94	Susanne Land
1994-95	Jessica Klapper
1995-96	Stacy Schapiro
1996-97	Allison Gottlieb
1997-98	Lisa Panique
1998-99	Brooke Ferney
1999-00	Carla Rosenberg
2000-01	Michelle Webb
2001-02	Tiffany Eklov
2002-03	Pavlina Akritas
2003-04	Cynthia Goulet
2004-05	Macall Harkins

ILLINOIS TENNIS TEAM AWARDS

Most Valuable Player

Year	Player
1980-81	Gayathri DeSilva
1981-82	Sue Arildsen
1982-83	Maureen McNamara
1983-84	Maureen McNamara
1984-85	Christy Flesvig
1985-86	Kathy Neil
1986-87	Sandra Goern, Loren Smolensky
1987-88	Carrie Costigan
1988-89	Linda Gates
1989-90	Kristin Willey
1990-91	Lindsey Nimmo
1991-92	Kristi Meola, Lindsey Nimmo
1992-93	Lindsey Nimmo
1993-94	Kristi Meola
1994-95	Camille Baldrich, Kristen Jones
1995-96	Natalie Adsuar
1996-97	Susanne Land
1997-98	Simone Kung
1998-99	Stacy Schapiro
1999-00	Megan Wise
2000-01	Jennifer McGaffigan
2001-02	Jennifer McGaffigan
2002-03	Tiffany Eklov
2003-04	Jennifer McGaffigan
2004-05	Cynthia Goulet
2005-06	Macall Harkins
2006-07	Megan Fudge
2007-08	Megan Fudge
2008-09	Megan Fudge, Leigh Finnegan
2009-10	Megan Fudge



Senior Allison Falkin is the returning Team MVP after posting a team-best 18-6 dual-match singles record last year.

TEAM // ACADEMIC AWARDS

2005-06	Macall Harkins, Alejandra Meza Cuadra
2006-07	Shivani Davé
2007-08	Marisa Lambropoulos
2008-09	Amy Allin
2009-10	Marisa Lambropoulos
2010-11	Amy Allin
2011-12	Allison Falkin
2012-13	Emily Barretta

STRENGTH & CONDITIONING

Year	Player
1989-90	Sabine Ensslin
1990-91	Laurie Kane
1991-92	Lissa Kimmel
1993-94	Lissa Kimmel
1994-95	Laura Rydberg
1995-96	Jennifer Shu
1996-97	Jennifer Shu
1997-98	Stacy Schapiro
1998-99	Natasha Loebnitz
1999-00	Carla Rosenberg
2000-01	Michelle Webb, Simone Kung
2001-02	Jennifer McGaffigan
2002-03	Michelle Webb
2003-04	Jennifer McGaffigan
2004-05	Momei Qu
2005-06	Brianna Knue
2006-07	Alejandra Meza Cuadra
2007-08	Christine Stromberg
2008-09	Christine Stromberg
2009-10	Christine Stromberg
2010-11	Amy Allin
2011-12	Rachael White, Marisa Lambropoulos
2012-13	Rachael White

PLAYER TO WATCH AWARD

Year	Player
1996-97	Liana Aguero
1997-98	Simone Kung
1998-99	Brooke Ferney
1999-00	Natasha Loebnitz
2000-01	Jennifer McGaffigan
2001-02	Cynthia Goulet
2002-03	Brianna Knue
2003-04	Brianna Knue
2004-05	Momei Qu
2005-06	Macall Harkins
2006-07	Megan Fudge
2007-08	Leigh Finnegan
2008-09	Chelcie Abajian
2009-10	Breanne Smutko
2010-11	Allison Falkin
2011-12	Melissa Kopinski
2012-13	Melissa Kopinski

SCHOLAR-ATHLETE AWARD

Year	Player
1984-85	Christy Flesvig
1985-86	Christy Flesvig
1986-87	Carrie Costigan
1989-90	Astrid Eichner
1990-91	Cynthia Chambers, Laurie Kane
1991-92	Lindsey Nimmo



Lindsey Nimmo was not only Illinois' first All-American; she was also the first Illini Academic All-American.

1992-93	Lindsey Nimmo
1993-94	Sara Marshack
1994-95	Jessica Klapper
1995-96	Jessica Klapper
1996-97	Jessica Klapper
1997-98	Stacy Schapiro
1998-99	Stacy Schapiro
1999-00	Michelle Webb
2000-01	Michelle Webb
2001-02	Michelle Webb
2002-03	Cynthia Goulet
2003-04	Cynthia Goulet
2004-05	Cynthia Goulet
2005-06	Momei Qu
2006-07	Momei Qu
2007-08	Momei Qu
2008-09	Christine Stromberg
2009-10	Christine Stromberg
2010-11	Leigh Finnegan
2011-12	Chelcie Abajian
2012-13	Breanne Smutko

ITA SCHOLAR-ATHLETES

(Since 2002)

Year	Player
2002	Michelle Webb
2003	Michelle Webb, Jessica Barki
2005	Pavlina Akritas, Leila Cehajic, Cynthia Goulet
2007	Kristina Minor, Momei Qu
2008	Leigh Finnegan, Megan Fudge, Momei Qu, Christine Stromberg, Alejandra Meza Cuadra
2009	Leigh Finnegan, Megan Fudge, Kristina Minor, Christine Stromberg
2010	Leigh Finnegan, Megan Fudge, Annie McCarthy, Christine Stromberg
2011	Amy Allin, Leigh Finnegan, Annie McCarthy
2012	Marisa Lambropoulos
2013	Breanne Smutko

ARTHUR ASHE JR. TOP FEMALE SCHOLAR ATHLETE

Year	Player
2008	Momei Qu

ACADEMIC AWARDS

NATIONAL AWARDS

COSIDA ACADEMIC ALL-AMERICAN

Year	Player
1992-93	Lindsey Nimmo
2003-04	Cynthia Goulet (Second Team)
2004-05	Cynthia Goulet (Second Team)

2014 FIGHTING ILLINI TV ROSTER



Emily
Barretta
Sophomore
Winnetka, Ill.



Jerricka
Boone
Freshman
Country Club Hills, Ill.



Alexis
Casati
Freshman
Deerfield, Ill.



Allison
Falkin
Senior
Roswell, Ga.



Julia
Jamieson
Junior
Wilmette, Ill.



Misia
Kedzierski
Senior
St. Louis, Mo.



Melissa
Kopinski
Junior
Palos Hills, Ill.



Louise
Kwong
Freshman
Toronto, Ontario, Canada



Audrey
O'Connor
Senior
Park Ridge, Ill.



Michelle
Dasso
Head Coach
Eighth Season



Ric
Mortera
Assistant Coach
First Season

20 **I** 14

HOME SCHEDULE



JAN. 24	ST. LOUIS	2 PM
	CHICAGO	6 PM
JAN. 26	UIC	11 AM
	ILLINOIS STATE	4 PM
FEB. 2	ST. LOUIS	1 PM
FEB. 15	WAKE FOREST	12 PM
MARCH 8	NORTHWESTERN	12 PM
MARCH 23	INDIANA	11 AM
MARCH 29	PENN STATE	11 AM
MARCH 30	OHIO STATE	12 PM
APRIL 12	IOWA	12 PM
APRIL 13	NEBRASKA	12 PM