

2013 UNIVERSITY OF ILLINOIS WOMEN'S TENNIS



FIGHTING ILLINI QUICK FACTS

UNIVERSITY	
Location.....	Urbana-Champaign
Enrollment.....	42,605
Nickname.....	Fighting Illini
Colors.....	Orange and Blue
Conference.....	Big Ten
President.....	Robert Easter
Chancellor.....	Phillis Wise
Athletic Director.....	Mike Thomas
Home Facility.....	Atkins / Khan Tennis Center

COACHING STAFF	
Head Coach.....	Michelle Dasso
Alma Mater.....	Notre Dame, '01
Record at Illinois (Years).....	80-67 (6)
Overall Record (Years).....	80-67 (6)
Big Ten Record (Years).....	38-23 (6)
Assistant Coach.....	Kelly Anderson
Alma Mater.....	Georgia Tech, '06
Assistant Coach.....	Mark Denenfeld
Alma Mater.....	Kalamazoo College '12

TENNIS OFFICE	
Office Manager.....	Sheila Armstrong
Tennis Office Phone.....	217-244-6471
Tennis Office Fax.....	217-244-5112

2011-12 RECAP	
2011-12 Record.....	18-8
Record at Home/Away/Neutral.....	.8-1/6-2/4-5
Big Ten Record/Finish.....	.9-2/T-3rd Regular Season
Big Ten Tournament.....	1-1
.....L, 4-0 vs. Michigan (Semifinals)	
NCAA Tournament Results.....	0-1
.....L, 4-3 vs. Rice (First Round)	
Final ITA National Ranking.....	21

2012-13 PREVIEW	
Letterwinners Returning/Lost.....	6/3
Newcomers.....	2

HISTORY	
First Year of Women's Tennis.....	1975
Years in NCAA Tournament/Last.....	11/2012

ATHLETIC PUBLIC RELATIONS



Women's Tennis Contact/Graduate Assistant.....	Nicole Mechling
E-mail Address.....	nmechli2@illinois.edu
Office Phone.....	217-265-0170
Cell Phone.....	217-821-3146
Sports Information Director.....	Kent Brown
Associate Director.....	Derrick Burson
Assistant Directors.....	Derek Neal, Ben Taylor, Marla Glasser, Matt Wille
Graduate Assistant.....	Josh Bates
Intern.....	Taylor Thomas
Creative Design/New Media.....	Adam Marantz, Heidi Rivers, Will Wyss
Office Manager.....	Jen Funderburk
Office Phone.....	217-333-1391
Office Fax.....	217-333-5540
Website.....	www.fightingillini.com
Facebook.....	www.facebook.com/illinitennis
Twitter.....	www.twitter.com/illinitennis
Mailing Address.....	Bielfeldt Athletic Administration Building
.....	1700 South Fourth St., Champaign, IL 61820

TABLE OF CONTENTS

2013 Roster / Schedule / Pronunciation Guide.....	2
Head Coach Michelle Dasso.....	3
Assistant Coach Mark Denenfeld.....	4
Assistant Coach Kelly Anderson.....	4
Support Staff.....	5
2013 Season Preview.....	6-7
Senior Breanne Smutko.....	8
Senior Rachael White.....	8
Junior Allison Falkin.....	9
Junior Misia Kedzierski.....	9
Sophomore Julia Jamieson.....	10
Sophomore Melissa Kopinski.....	10
Freshman Emily Barretta.....	11
Freshman Audrey O'Connor.....	11
2011-12 Season Review.....	12
2012 Big Ten / ITA Review.....	13
NCAA Team Results / Singles & Doubles Results.....	14-15
All-Time Letterwinners.....	16
All-Time Results.....	17-22
All-Time Series Records.....	23
Coaching Records / Illinois Winning Streaks / Home Court Records.....	23
Singles & Doubles Records / Awards.....	24
University & Team Awards / Academic Honors.....	25
2013 Fighting Illini TV Roster.....	26

The 2013 Illinois women's tennis record book is a publication of the Athletic Public Relations Office, written to assist the media in their coverage of Illinois athletics.

Photos by Mark Jones, Mark Cowan, Cary Frye and Kenny Kim.

2012-13 FIGHTING ILLINI ROSTER / SCHEDULE



2012-13 ILLINOIS WOMEN'S TENNIS

Front (L-R): Allison Falkin, Breanne Smutko, Melissa Kopinski, Audrey O'Connor

Back (L-R): (Former) Assistant Coach Georgia Rose, Misia Kedzierski, Rachael White, Julia Jamieson, Head Coach Michelle Dasso

Not Pictured: Emily Barretta

ILLINOIS ALPHABETICAL ROSTER

NAME	HT.	YEAR	HOMETOWN / HIGH SCHOOL
Emily Barretta	5-4	Fr.	Winnetka, Ill. / New Trier
Allison Falkin	5-6	Jr.	Roswell, Ga. / Centennial
Julia Jamieson	5-8	So.	Wilmette, Ill. / Loyola Academy
Misia Kedzierski	5-8	Jr.	St. Louis, Mo. / St. Joseph's Academy
Melissa Kopinski	5-7	So.	Palos Hills, Ill. / Amos Alonzo Stagg
Audrey O'Connor	5-7	Fr.	Park Ridge, Ill. / Maine South
Breanne Smutko	5-3	Sr.	Alpharetta, Ga. / Northview
Rachael White	5-10	Sr.	Valrico, Fla. / Deerfield

Head Coach: Michelle Dasso

Assistant Coaches: Mark Denenfeld, Kelly Anderson

PRONUNCIATION GUIDE

Misia Kedzierski Mee-sha Keh-JER-ski

ILLINOIS SPRING SCHEDULE

DATE	OPPONENT	LOCATION	TIME (CT)
J 13	at Miami	Coral Gables, Fla.	11 a.m.
J 18	Illinois State	Atkins Tennis Center	3 p.m.
	Western Illinois	Atkins Tennis Center	7 p.m.
J 20	Notre Dame	Atkins Tennis Center	Noon
J 27	vs. Vanderbilt #	Oxford, Miss.	9 a.m.
J 28	vs. Ole Miss or Yale #	Oxford, Miss.	TBA
F 2	at Georgia State	Atlanta, Ga.	9 a.m.
F 3	at Furman	Greenville, S.C.	9 a.m.
F 22	Syracuse	Atkins Tennis Center	5 p.m.
F 24	Oklahoma	Atkins Tennis Center	Noon
M 2	at Northwestern*	Evanston, Ill.	11 a.m.
M 8	at Nebraska*	Lincoln, Neb.	5 p.m.
M 10	at Iowa*	Iowa City, Iowa	Noon
M 19	vs. Oklahoma State	San Diego, Calif.	2 p.m.
M 29	Wisconsin*	Atkins Tennis Center	4 p.m.
M 31	Minnesota*	Atkins Tennis Center	11 a.m.
A 6	Michigan*	Atkins Tennis Center	Noon
A 7	Michigan State*	Atkins Tennis Center	11 a.m.
A 12	at Ohio State*	Columbus, Ohio	1:30 p.m.
A 14	at Penn State*	University Park, Pa.	9 a.m.
A 19	at Indiana*	Bloomington, Ind.	3 p.m.
A 21	Purdue*	Atkins Tennis Center	Noon
A 25-A 28	Big Ten Tournament	Bloomington, Ind.	TBA
M 10-11	NCAA First & Second Rounds	TBA	TBA
M 16-27	NCAA Championships	Khan Outdoor Complex	TBA

All home matches are in **bold** and held at Atkins / Khan Tennis Center depending on weather

ITA Kick-Off Weekend

*Big Ten Opponent

MICHELLE DASSO

HEAD COACH - SEVENTH SEASON



Head coach Michelle Dasso enters her seventh season at the helm of the Illinois women's tennis program. Dasso became the seventh coach of the Fighting Illini after a tremendous playing and coaching career at the University of Notre Dame.

In just six short years, Dasso has made huge strides with the women's tennis program.

Dasso's 2011-12 squad produced three All-Big Ten honorees, the most in program history. Melissa Kopinski and Allison Falkin were named first-team, while Marisa Lambropoulos was named second-team. The Orange and Blue took down No. 9 Texas, marking Illinois' first

win over a top-10 team since 2003, and finished the year 18-8 overall with a No. 21 ranking.

The 2010-11 Illini boasted two All-Big Ten honorees, including Rachael White (first team) and Amy Allin (second team).

In the previous season, the Illini were rewarded with their first top-25 finish in the final Campbell's/ITA rankings since 2004, after making their third straight NCAA tournament appearance. The Orange and Blue finished 15-10 overall, including nine wins over nationally ranked opponents, and placed third in the Big Ten with an 8-2 mark. Dasso also showed her recruiting prowess, signing the fourth-ranked recruiting class in the nation, which was the highest-ranked class in Illinois history.

In addition to her Illinois coaching duties, Dasso also served as coach for the fourth annual Master'U BNP Paribas for the second straight year. The international competition features the top collegiate players from around the world. Working alongside Boise State head coach Greg Patton, the duo guided the U.S. to a first-place finish with a 4-3 victory over France. It was the first-ever championship for the U.S. in only its second appearance in the tournament.

In 2008-09, the Illini advanced to the second round of the NCAA tournament for the first time since 2003 with a 4-3 victory over No. 19 Vanderbilt, which also marked their first win over a top-20 opponent in five years. The squad took home Illinois' Outstanding Team GPA Award with a cumulative GPA of 3.475.

After battling through an injury plagued first season as head coach, Dasso turned the program around in 2007-08. In only her second year at the helm, Dasso helped lead the Orange and Blue to a fourth-place finish in the Big Ten and its first NCAA tournament appearance in four years.

Dasso is a native of Long Grove, Ill., and a 1997 graduate of Stevenson High School. She spent three years (2003-06) as an assistant coach for the University of Notre Dame women's tennis program under head coach Jay Louderback. Her primary responsibilities in South Bend, Ind., were recruiting, on-court coaching, budgeting, travel arrangement and managing the strength and conditioning program.

With the Fighting Irish, Dasso garnered ITA National Assistant Coach of the Year honors after leading Notre Dame to unprecedented success in 2005-06. Notre Dame finished 27-2 on the season and was ranked No. 2 in the country for eight weeks before falling in the quarterfinals of the NCAA Championships. In the fall of 2005, she coached the doubles tandem of Catrina and Christian Thompson to the ITA All-American Championships doubles title, becoming the first Notre Dame women's tennis players to capture a collegiate grand slam tournament.

THE DASSO FILE

PERSONAL:

Born: Feb. 12, 1979
Hometown: Long Grove, Ill.
Hired: June 13, 2006

EDUCATION:

Notre Dame, 2001
Bachelor's Degree in Business Administration-Marketing

COACHING EXPERIENCE:

2006-Present: Head Coach, University of Illinois
2003-06: Assistant Coach, University of Notre Dame

PLAYING EXPERIENCE:

2001-03: USTA Professional Circuit
1998-2001: University of Notre Dame

PLAYING ACCOLADES:

ITA National Senior Player of the Year (2001)
Four-time ITA All-American (Singles and Doubles, 1999 and 2001)
Two-time Big East Championship Most Outstanding Player (2000-01)
Four-time Team MVP (1998-2001)
Winningest Player in Notre Dame history - Singles (140 wins)
Notre Dame Athletics Francis Patrick O'Connor Award winner (2001)
Notre Dame Gladys Heldman Award winner (2001)

In only her third season with Notre Dame, Dasso made a name for herself as a recruiter. She helped recruit the 2006-07's Irish signing class that ranked No. 1 in the country by tennisrecruiting.net, while previously being involved in recruiting two All-Americans. In addition, the women's tennis team was annually in contention for the highest team GPA honors among all Notre Dame athletic teams.

As a player, Dasso is the most decorated women's tennis player in Notre Dame history. She grabbed the ITA's National Senior Player of the Year accolade in 2001 and is the program's first four-time All-American. She still tops the Irish record books in nearly every statistical category, including career singles victories (140), most wins at No. 1 singles (67), season singles victories (40) and combined season victories (74).

In 2001, she received the Francis Patrick O'Connor Award, presented annually by the University to one male and one female student-athlete who best displayed the total embodiment of the true spirit of Notre Dame.

After earning a bachelor's degree in business administration-marketing from Notre Dame in 2001, Dasso played professionally for two years, before returning to South Bend to join the Irish staff.

MARK DENENFELD

ASSISTANT COACH - FIRST SEASON



Assistant coach Mark Denenfeld joined the Illinois staff in January 2013. Denenfeld played at Kalamazoo College from 2009-12 and earned all-Michigan Intercollegiate Athletic Association honors in three of his four years.

THE DENENFELD FILE

PERSONAL:

Hometown: Kalamazoo, Mich
Hired: January 2013

EDUCATION:

Kalamazoo College '12

COACHING EXPERIENCE:

First Season

PLAYING EXPERIENCE:

2009-12: Kalamazoo College

PLAYING ACCOLADES:

Three-time All-Michigan Intercollegiate Athletic Association

KELLY ANDERSON

ASSISTANT COACH - FIRST SEASON

Kelly Anderson joined the Fighting Illini women's tennis staff in February 2013. Anderson wrapped up a stellar four-year playing career at Georgia Tech in 2006. The South Africa native was named ACC Rookie of the Year in 2003 and garnered all-ACC honors in 2004. She reached as high as No. 135 in the world doubles rankings in 2008. In December 2012, Anderson earned an MBA from Campbellsville University, where she served as the assistant coach for both the men's and women's tennis teams.

THE ANDERSON FILE

PERSONAL:

Born: April 20, 1985
Hometown: Pietermaritzburg, South Africa
Hired: February 2013

EDUCATION:

Georgia Tech, 2006
Bachelor's Degree in Business Administration-Management

Campbellsville University, 2012
Masters in Business Administration

COACHING EXPERIENCE:

2012: Assistant Coach, Mens & Women's teams, Campbellsville University

PLAYING EXPERIENCE:

2002-06: Georgia Tech University

PLAYING ACCOLADES:

2003: ACC Rookie of the Year
2004: all-ACC honors
2008: No. 135 world doubles ranking

SUPPORT STAFF



KATIE HEINRICHS

STRENGTH & CONDITIONING

Katie Heinrichs is in her fourth season as strength and conditioning coach for the Illinois women's tennis program. A 2000 graduate of the University of Illinois, Heinrichs is currently in the process of earning her M.S. in exercise physiology.

A registered dietitian, Heinrichs is developing her career in exercise background to become a more well-rounded nutritionist. Heinrichs is involved in every aspect of the conditioning process, from weight training to nutritional assistance.



JIM TRESSLER

DIRECTOR OF ATKINS TENNIS CENTER

Jim Tressler has been the Director of the Atkins Tennis Center since October 2000 after having served since April 2000 as its program director. Tressler not only oversees the non-varsity tennis programs but also is in charge of the pro shop, leagues, tournaments, special events and all day-to-day operations of the Atkins Tennis Center.

Tressler coached at Alabama, Florida and Indiana at the collegiate level and also has worked with players on the WTA tour. Immediately before coming to the University of Illinois, he spent three years as the primary talent scout in the United States for Nike Tennis Sports Marketing. Tressler played collegiate tennis at the University of Cincinnati.

Tressler and his wife, Julie, live in Champaign with their two children, Travis and Delaney.



MEAGHAN NAAS

ATHLETIC TRAINING

Meaghan Naas joined the University of Illinois Sports Medicine staff in January 2012, working with the men's and women's tennis programs. Before coming to Illinois, Naas worked with the men's soccer, women's lacrosse and track and field programs at the University of Maryland, Baltimore County.

A native of Laurel, Md., Naas attended Salisbury University on the Eastern Shore of Maryland and received a bachelor's degree in athletic training. She worked with football, women's soccer, women's basketball and a Div. I men's lacrosse program while at Salisbury. Naas then received a Master of Science degree in education from Virginia Tech. While at Virginia Tech she was assigned to the men's and women's tennis programs.

Naas currently resides in Champaign with her husband, Jake.



Paul Kowalczyk
Associate Athletics
Director



Sheila Armstrong
Office Manager



Shari Clapp
Academic Counselor



Stacy Dally
Marketing



Seniors Rachael White and Breanne Smutko

The Fighting Illini women's tennis team will start the season ranked 24th in the nation, marking the second time in the last three years the program has opened the spring in the top 25. Illinois will look to capitalize on its returning talent to earn a chance to play in front of its home crowd at the NCAA Championships, which will take place in May at the Khan Outdoor Tennis Complex in Urbana.

"This is going to be a unique year," Illini head coach Michelle Dasso said. "We have a lot of experience up top and maybe not as much experience down low. We have passionate players. We have girls who are really driven and have great work ethics. I'm excited to see who steps up and takes over. We have set a standard, and being part of Illinois women's tennis and Illinois tennis in general requires a very high standard."

The 2013 squad returns six players from last year's team, which earned the program's first win over a top-10 opponent (No. 9 Texas) since 2003 and reached as high as No. 18 in the nation, marking its highest ranking in the past nine years. The roster features two 2012 first-team All-Big Ten honorees -- junior Allison Falkin and sophomore Melissa Kopinski --- and 2011 selection, senior Rachael White.

Illinois also boasts the nation's 11th-ranked doubles team -- White and Kopinski -- and two nationally ranked singles players, including No. 59 Falkin and No. 106 Kopinski. Together, the trio, along with senior standout Breanne Smutko, will look to lead the Illini to the Big Ten title and another NCAA berth.

"I'm hoping Breanne and Rachael use their experience to take the helm," Dasso said. "We've really gotten better each year they've been here. They've had a taste of what it takes to succeed and can use that to lead the team."

White is coming off a stellar fall during which she and Kopinski led the team with 12 doubles wins, including five over ranked opponents. The tandem played its way to the quarterfinals of the Riviera/ITA All-American Championships and won the USTA/ITA Midwest Regional doubles title in Urbana to earn a bid to the USTA/ITA National Indoor Intercollegiate Championships in Flushing, N.Y. Their doubles title marked Illinois' first since 2002. Last year, White notched her first career Big Ten Tennis Athlete of the Week honor after knocking off the nation's third-ranked doubles team.

Fellow senior Smutko spent parts of the last two seasons in the national doubles rankings, reaching as high as No. 27 in 2012 with former Illini Chelcie Abajian. Smutko played in one tournament over the fall, going 2-1 in singles at the Midwest Blast.

Falkin earned All-Big Ten honors for the first time in her career last season and compiled a career-high 18 singles wins, playing at Nos. 1 and 2. She cracked the national singles rankings for the first time in her career in 2012 and jumped to No. 59 to start the 2013 spring season. Falkin also had doubles success last year, reaching No. 40 in the rankings with partner White.

"Allison is such a fighter," Dasso said. "She is fun to watch and is one of the best competitors I've had. She proved herself last year and did very well at the top spot. She is a very smart player and finds a way to break down her opponents. She has gotten better, and her composure has improved."



Juniors Misia Kedzierski and Allison Falkin



Sophomores Melissa Kopinski and Julia Jamieson

Along with her incredible fall playing alongside White, Kopinski returns as one of Illinois' top singles players. The Palos Hills, Ill., native led the team last season with a 23-9 mark in singles, playing primarily at Nos. 2 and 3. She made her debut in the national rankings in 2012 and will start the season at a career-high No. 106.

"Melissa certainly had a great freshman year," Dasso said. "And Melissa and Rachael had a great fall in doubles, but it's not really where you start here. It's about where you end. We're starting from scratch. Their goal is to be playing in the NCAA doubles tournament on our home courts this May. Obviously, they have a long way to go. It's a long season, and we need to keep getting better. The confidence that they've picked up is good, but we should never be satisfied."

Junior Misia Kedzierski also returns for 2013 after posting a career-best 11-4 singles mark last season. Her first two seasons were plagued by injuries, but she remained healthy last fall and played in three tournaments, going 3-5.

"Misia had the most consistent fall she has ever had since she's been here," Dasso said. "In the past, she has battled some injuries. Hopefully, we can keep her healthy. If she is consistently able to practice and compete, it is going to help the team down the road."

Sophomore Julia Jamieson went 7-2 in singles and 8-4 in doubles last season. She and freshman Audrey O'Connor lack some on-court experience but will be instrumental in Illinois' fate throughout 2013. O'Connor saw her first collegiate action last fall, going 4-6 in singles.

"Julia and Audrey haven't had as much experience but are ready to go," Dasso said. "The work ethic that they demonstrate on a daily basis is inspiring. It's fun to work with them as a coach, and that's the character and passion that you want on a team."

The Illini recently added an eighth player, freshman Emily Barretta. The four-star recruit joined the team in December after graduating a semester early from New Trier High School.

"Emily will help with depth," Dasso said. "She will definitely be someone to turn to if needed and shows great desire to improve and compete."

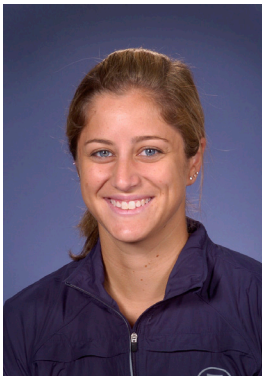
Assistant coach Mark Denenfeld joined the Illinois staff in January after former assistant coach Georgia Rose became the assistant at South Carolina in December. Denenfeld played at Kalamazoo College from 2009-12 and earned all-Michigan Intercollegiate Athletic Association honors in three of his four years.

The Illini will face a tough schedule in 2013, beginning with No. 9 Miami on Jan. 13. Seventeen of Illinois' 22 regular season opponents are nationally ranked to start the season, and six are in the top 25. Nine other Big Ten teams cracked the rankings, including No. 13 Northwestern, No. 16 Michigan, No. 17 Nebraska, No. 27 Purdue, No. 41 Minnesota, No. 49 Indiana, No. 50 Penn State, No. 57 Ohio State and No. 75 Wisconsin.

"There are no easy matches," Dasso said. "But that's how growth occurs. If you want to be the best, you've got to play the best. We need to take it one match at a time and remember that every match is an opportunity."



Freshman Audrey O'Connor



BREANNE SMUTKO

5-3 SENIOR

ALPHARETTA, GA.

NORTHVIEW

MAJOR: GENERAL ENGINEERING

JUNIOR 2011-12

Tallied 10 singles wins at Nos. 4-6 ... Reached as high as No. 27 alongside Chelcie Abajian in the national doubles rankings ... Captured seven doubles wins ... Academic All-Big Ten.

SOPHOMORE 2010-11

Ranked third on the team with 20 doubles wins, including 10 with teammate Chelcie Abajian ... Duo reached as high as No. 55 in the national rankings ... Recorded 12 singles victories, with seven coming in dual play ... Academic All-Big Ten.

FRESHMAN 2009-10

In her debut season, tallied the second-best mark on the team with 22 wins overall, including 14 in dual matches ... Went 7-3 in Big Ten play ... Tied for the team lead with 24 doubles victories overall ... Teamed up with Marisa Lambropoulos to go 18-5 ... Finished 15-6 in doubles at the No. 3 spot ... Named Player to Watch by her teammates.



RACHAEL WHITE

5-10 SENIOR

VALRICO, FLA.

DEERFIELD

MAJOR: SPORT MANAGEMENT

JUNIOR 2011-12

Started the season ranked 67th in singles and climbed to No. 40 with Allison Falkin in doubles in early March ... Tallied a career-high eight doubles wins in conference play and went 20-13 overall, including 16 wins in dual action, while playing primarily at No. 2 ... Claimed 17 wins in singles, playing Nos. 4-6 ... Earned her first career Big Ten Tennis Athlete of Week honor on Feb. 21 after knocking off the nation's third-ranked doubles tandem alongside Falkin ... Finished the season ranked eighth regionally with Falkin.

SOPHOMORE 2010-11

First-team All-Big Ten selection ... Voted co-Advantage Illinois Most Valuable Player with Amy Allin ... Led the team with a career-high 23 doubles wins, including 18 with Allison Falkin ... Alongside Falkin, defeated seven nationally ranked doubles teams, six of which were ranked in the top 40 ... Ranked second on the team with a career-best 18 singles wins ... Peaked at No. 92 in singles and at No. 9 in doubles with Falkin ... Big Ten Sportsmanship Award honoree.

FRESHMAN 2009-10

Tallied 14 wins on the year, playing primarily at the Nos. 1 and 2 positions ... Debuted at No. 33 in the first national rankings of the spring ... Secured three wins over nationally ranked opponents ... Posted 18 doubles wins, including a

SMUTKO'S CAREER STATISTICS

SEASON	SINGLES		DOUBLES	
	OVERALL	BIG TEN	OVERALL	BIG TEN
2009-10	22-13	7-3	24-11	7-3
2010-11	12-17	4-6	20-9	5-3
2011-12	10-8	1-3	7-6	1-1
TOTAL	44-38	12-12	51-26	12-6

JUNIORS/HIGH SCHOOL

Coached by Gery Groslimond ... Four-year varsity letterwinner and four-time most valuable player selection for tennis ... Placed first in the Copperbowl in 2008 ... Was on the super honor roll and principal's list all four years of high school ... Graduated in the top four percent of her class.

PERSONAL

Born Breanne Claire Smutko on May 31, 1991 ... Daughter of Jack and Karen Smutko ... Has an older brother, Jack ... Her biggest thrill in tennis is being the last one playing on the court in the deciding match when all her teammates and friends are watching and cheering her on ... Favorite athlete is Rafael Nadal because, "He is very crafty, quick and smart on the court and is willing to be out there all day, every day" ... Credits her parents with influencing her athletic career by supporting each and every one of her athletic decisions ... Also credits her coach, Gery Groslimond, for teaching her how to better herself on and off the court and teaching her to appreciate life and to present herself to the world in a positive light ... Plans after college include designing attractions or machines for a big-name company such as Disney.

WHITE'S CAREER STATISTICS

SEASON	SINGLES		DOUBLES	
	OVERALL	BIG TEN	OVERALL	BIG TEN
2009-10	14-19	4-5	18-16	7-3
2010-11	18-16	6-4	23-17	6-4
2011-12	17-15	8-3	20-13	8-3
TOTAL	49-50	18-12	61-46	21-10

7-3 mark in Big Ten play ... Teamed up with Chelcie Abajian to record 10 wins, with six coming at the No. 2 spot ... Fighting Illini Female Newcomer of the Year finalist.

JUNIORS/HIGH SCHOOL

Coached by Geoff Gluck and Jeff Daube ... Claimed the state title in singles in 2006 and helped Deerfield to the team state title in 2005 and second-place finishes in 2006 and 2008 ... Member of the National High School All-American tennis team ... Selected all-state, all-conference, WGN News Athlete of the Week and *Pioneer Press* Athlete of the Year in 2006 ... Won the 2006 USTA Winter Super Nationals doubles championship and 2008 K-Swiss national tournament and National Cincinnati Open in USTA 18 and Under singles.

PERSONAL

Born Rachael Zita White on April 27, 1991 ... Daughter of Tom and Barb White ... Has one younger sister, Lucy ... Her favorite athlete is Texas Rangers infielder and family friend Ian Kinsler ... Hobbies include playing all sports, hanging out with friends, shopping and going to the beach ... Names her parents for most influencing her athletic career because they always got her involved in playing many different sports ... Would possibly like to play pro tennis after college.



ALLISON FALKIN

5-6 JUNIOR

ROSWELL, GA.

CENTENNIAL HIGH SCHOOL

MAJOR: INDUSTRIAL ENGINEERING

SOPHOMORE 2011-2012

Garnered first-team All-Big Ten recognition ... Ranked second on the team in singles wins with 18, including 13 in conference play, playing at Nos. 1 and 2 ... Earned a spot in the national singles rankings for the first time in her career, climbing as high as No. 92 before ending the year at No. 123 ... Reached No. 40 with junior Rachael White in the national doubles rankings and No. 8 in the Midwest Region ... Ended the year at No. 9 in the regional singles rankings ... Voted Most Improved by her teammates.

FRESHMAN 2010-11

Ranked third on the team in singles wins (17) and second in doubles (22) ... Peaked at No. 9 in the national doubles rankings with teammate Rachael White ... Alongside White, defeated seven nationally ranked doubles teams, six of which were ranked in the top 40 ... Finished runner-up in doubles with White at the USTA/ITA Midwest Regional Championships ... Selected Player to Watch by her teammates.



MISIA KEDZIERSKI

5-8 JUNIOR

ST. LOUIS, MO.

ST. JOSEPH'S ACADEMY

MAJOR: BUSINESS

SOPHOMORE 2011-12

Tallied a career-best 11-4 mark in singles action ... Won two doubles matches ... Posted a strong comeback from injury in the fall season, picking up five wins over two tournaments ... Played primarily at No. 6 singles.

FRESHMAN 2010-11

Played in limited matches due to injury ... Recorded six wins in singles and seven in doubles ... Reached the semifinal round of the Florida Gulf Coast Invitational.

JUNIORS/HIGH SCHOOL

Four-year varsity letterwinner at St. Joseph's Academy ... Helped lead team to three state titles from 2007-09 ... Three-time state singles champion ... Four-time All-Metro state team ... Two-time Player of the Year ... Ranked as high as No. 41 nationally for the class of 2010.

PERSONAL

FALKIN'S CAREER STATISTICS

SEASON	SINGLES		DOUBLES	
	OVERALL	BIG TEN	OVERALL	BIG TEN
2010-11	17-16	4-5	22-15	4-5
2011-12	18-17	6-5	19-12	7-4
TOTAL	35-33	10-10	41-27	11-9

JUNIORS/HIGH SCHOOL

Three-year varsity letterwinner at Centennial High School ... 2010 Georgia High School Tennis Player of the Year ... Helped team reach the state finals in 2009 and 2010 ... Finished 45-5 for her career.

PERSONAL

Born Allison May Falkin on August 14, 1992 ... Daughter of Mitch and Annemarie Falkin ... Has one younger sister, Amy ... Hobbies include soccer, puzzles and French ... Lists her biggest thrill in sports as the feeling of coming through in pressure situations ... Favorite athlete is Justine Henin because of her attitude on the court.

KEDZIERSKI'S CAREER STATISTICS

SEASON	SINGLES		DOUBLES	
	OVERALL	BIG TEN	OVERALL	BIG TEN
2010-11	6-10	2-4	7-5	1-0
2011-12	11-4	3-2	9-8	0-2
TOTAL	17-14	5-6	9-8	1-2

Born Michelle Allison Kedzierski on August 28, 1992 ... Goes by Misia ... Daughter of Jacek, who was a tennis pro in Italy and Urszula Kedzierski ... Has an older sister, Jennifer, who played tennis at St. Joseph's University ... Majoring in business ... Hobbies include dance, painting and reading ... Her biggest thrill in sports is pressure and having a lot of people watch ... Lists Roger Federer as her favorite athlete because he is extremely humble and very gifted ... Names her parents as most influencing her athletic career because they started her in tennis and always pushed her to be the best ... Plans to attend grad school after graduation.



JULIA JAMIESON

5-8 SOPHOMORE

WILMETTE, ILL.

LOYOLA ACADEMY

MAJOR: BIOLOGY

JAMIESON'S CAREER STATISTICS

SEASON	SINGLES		DOUBLES	
	OVERALL	BIG TEN	OVERALL	BIG TEN
2011-12	7-2	0-0	8-4	0-0
TOTAL	7-2	0-0	8-4	0-0

FRESHMAN 2011-2012

Went 7-2 in singles and 8-4 in doubles ... Was a perfect 2-0 in dual singles play, seeing action at the No. 5 spot against Western Illinois and No. 6 spot against Illinois State.

JUNIORS/HIGH SCHOOL

Graduated from Loyola Academy ... Five-star recruit by tennisrecruiting.net ... Catholic Athletic Conference Athlete of the Year (2008-09) ... Advanced to the state tournament in tennis as a freshman and sophomore and in track as a senior.

PERSONAL

Born March 12, 1993 ... Daughter of Mike and Lisa Jamieson ... Majoring in biology ... Has three siblings, Michael, William and Patrick ... Lists the most influential person on her athletic career as coach Rob Budacsek for believing in her and pushing her to do her best.



MELISSA KOPINSKI

5-7 SOPHOMORE

PALOS HILLS, ILL.

AMOS ALONZO STAGG

MAJOR: HUMAN NUTRITION

KOPINSKI'S CAREER STATISTICS

SEASON	SINGLES		DOUBLES	
	OVERALL	BIG TEN	OVERALL	BIG TEN
2011-12	23-9	7-2	23-8	9-2
TOTAL	23-9	7-2	23-8	9-2

FRESHMAN 2011-2012

Garnered first-team All-Big Ten recognition ... Voted Advantage Illinois Most Valuable Player and Player to Watch by her teammates ... Led the squad with a 23-9 mark overall in singles, including a team-best 17-6 dual record, while playing primarily at Nos. 2 and 3 ... Cracked the national singles rankings, ending the year at a career-high No. 121 ... Led the team in doubles wins, going 23-8 overall and 15-4 alongside Lambropoulos with whom she reached as high as No. 42 in the nation ... Finished the year ranked seventh in the Midwest Region and fifth alongside Lambropoulos ... Made her debut at the No. 1 singles spot at the Big Ten Tournament.

JUNIORS/HIGH SCHOOL

Graduated from Amos Alonzo Stagg High School ... Selected to all-conference, all-section and All-State teams as a freshman ... Captured the 2010 USTA National Open Girl's 18 singles title in St. Louis ... Coached by Tom Lockhart.

PERSONAL

Born June 2, 1993 ... Daughter of Jan and Zofia Kopinski ... Majoring in human nutrition ... Twin brother Tim plays for the Illini men's tennis team, marking the first time in Illinois history that twins have played on both tennis squads ... Lists her biggest thrill in sports as winning the 2001-02 Peewee Hockey title in the Oak Lawn House League Championship.



EMILY BARRETTA

5-4 FRESHMAN

WINNETKA, ILL.

NEW TRIER

JUNIORS/HIGH SCHOOL

Listed as a four-star recruit on TennisRecruiting.net ... Graduated from New Trier High School one semester early (December 2012) to help solidify the 2012-13 Illini.



AUDREY O'CONNOR

5-7 FRESHMAN

PARK RIDGE, ILL.

MAINE SOUTH

MAJOR: BUSINESS

JUNIORS/HIGH SCHOOL

Graduated from Maine South High School ... Was a five-star recruit by TennisRecruiting.net ... Ranked 67th nationally by TennisRecruiting.net ... Ranked No. 1 in the state of Illinois her senior year ... Held a 46-30 singles record over the past year.

PERSONAL

Born Jan. 6, 1994 ... Daughter of Tom and Camille O'Connor ... Majoring in business ... Has two siblings, twin sister, Haley, and Jesse ... Lists her sister as the person who most influenced her athletic career because she is someone who constantly holds herself to a high standard.

2011-12 SEASON REVIEW

The Fighting Illini put together a solid 2011-12 campaign, going on a mid-season 12-1 run that included two six-match winning streaks to finish 18-8 overall and 9-2 in the Big Ten. The Orange and Blue highlighted the season with a victory at No. 9 Texas, marking Illinois' first win over a top-10 team since 2003 and over a top-25 program since 2010. The Illini reached as high as No. 18 in the nation, their highest ranking in nine years and best under head coach Michelle Dasso.

Freshman Melissa Kopinski had a breakout fall, leading the team with a 6-3 singles mark and a 7-3 doubles record throughout tournament play. Meanwhile, sophomore Misia Kedzierski posted a strong comeback from an injury, picking up five wins over two tournaments throughout the fall schedule.

Illinois opened the dual season ranked 69th in the nation and started off with four straight wins, including a streak of 7-0 victories over Western Illinois, Illinois State and Winthrop. The Illini faltered over their next stretch, however, going 2-5 with losses to No. 3 Duke, No. 23 Notre Dame, No. 20 Alabama, No. 33 Arizona and No. 14 Northwestern.

After the early-season hiccup, the Orange and Blue turned the year around during a spring break road trip, beginning with a 5-1 win over No. 29 Rice. The Illini followed that up two days later with a dramatic 4-3 win at No. 9 Texas, defeating a top-10 opponent for the first time since downing No. 1 Duke in 2003.

Following a short two-day break, No. 50 Illinois extended its streak with a 4-3 comeback over No. 25 Nebraska at home. Fifth-year senior Marisa Lambropoulos clinched the Orange and Blue victory for the third straight match.

The squad then took down Iowa in a home contest and shot to No. 21 in the rankings, jumping 29 spots. As a top-25 team, the Illini breezed past Wisconsin and No. 32 Minnesota on the road the next weekend and climbed to No. 19, their highest ranking since 2003, when they were ranked 17th.

With a six-match winning streak on the line, the Orange and Blue traveled to Michigan for a pair of conference clashes with the No. 15 Wolverines and Michigan State. Illinois did not continue its stretch, stumbling in a 6-1 loss to Michigan. The squad returned to its winning ways the following day with a 7-0 shutout over the Spartans.

The Illini did not lose again in the regular season and opened Big Ten Tournament play with a quick 4-0 win over No. 34 Minnesota to match their season-high streak of six wins. But the Orange and Blue met No. 15 Michigan in the conference semifinals, and the Wolverines proved to be too much to handle once again for the Illini, who fell 4-0.

Despite the disappointing finish to their Big Ten Tournament run, the Illini moved to No. 18 in the national rankings going into the NCAA Championships, just missing the opportunity to host first- and second-round action by two spots.

The Orange and Blue traveled to the Oxford Regional, hosted by Ole Miss. There, the Illini took on familiar foe No. 39 Rice. This time, the Illini came up short in a heart-breaking 4-3 loss, putting a premature ending on an otherwise incredible season.

Individually, sophomore Allison Falkin and Kopinski earned first-team All-Big Ten recognition, while Lambropoulos was named second-team, marking the first time Illinois produced three All-Big Ten honorees in the same season in program history.

Kopinski led the squad with a 23-9 mark overall in singles, including a team-best 17-6 dual record, while playing primarily on courts two and three. The Palos Hills, Ill., native went 7-2 in the conference and cracked the national singles rankings, ending the year at a career-high No. 121. The newcomer also led the team in doubles wins, going 23-8 overall and 15-4 alongside Lambropoulos with whom she reached as high as No. 42 in the nation. Kopinski finished the year ranked seventh in the Midwest Region and fifth alongside Lambropoulos. For her efforts, Kopinski was voted Advantage Illinois Most Valuable Player and Player to Watch by her teammates.

Falkin tallied the second-highest win total of the season with 18, including 13 in conference play, playing at Nos. 1 and 2. The Roswell, Ga., native earned a spot in the national singles rankings for the first time in her career, climbing as high as

2012 DUAL MATCH RESULTS

Overall 18-8, 9-2 (Home 8-1, Away 6-2, Neutral 4-5)

DATE	OPPONENT	RESULT
Jan. 13	vs. Stephen F. Austin (Fort Myers, Fla.)	W, 5-2
Jan. 21	Western Illinois	W, 7-0
	Illinois State	W, 7-0
Jan. 27	vs. Winthrop/ITA Kick-Off (Durham, N.C.)	W, 7-0
Jan. 28	vs. Duke/ITA Kick-Off (Durham, N.C.)	L, 6-1
Feb. 3	SMU	W, 6-1
Feb. 19	at Notre Dame	L, 4-3
Feb. 25	vs. Princeton/Blue-Gray Invite (Montgomery, Ala.)	W, 4-0
	vs. Alabama/Blue-Gray Invite (Montgomery, Ala.)	L, 4-3
Feb. 26	vs. Arizona/Blue-Gray Invite (Montgomery, Ala.)	L, 4-0
March 10	Northwestern	L, 5-2
March 19	at Rice	W, 5-1
March 21	at Texas	W, 4-3
March 24	Nebraska	W, 4-3
March 25	Iowa	W, 6-1
March 30	at Wisconsin	W, 7-0
April 1	at Minnesota	W, 6-1
April 7	at Michigan	L, 6-1
April 8	at Michigan State	W, 7-0
April 13	Ohio State	W, 4-3
April 15	Penn State	W, 5-2
April 20	Indiana	W, 4-3
April 22	at Purdue	W, 5-2
April 26-April 29	Big Ten Tournament (Columbus, Ohio)	
April 27	vs. Minnesota	W, 4-0
April 28	vs. Michigan	L, 4-0
May 11-12	NCAA First & Second Rounds (Oxford, Miss)	
May 11	vs. Rice	L, 4-3

No. 92 before ending the year at No. 123. In doubles, she reached No. 40 with junior Rachael White and No. 8 in the Midwest Region. Falkin ended the year at No. 9 in the regional singles rankings.

Lambropoulos finished second on the team with 20 doubles victories and a team-high 15-4 mark when paired with Kopinski, playing mostly No. 1 doubles to end the season ranked 42nd. The Lake Forest, Ill., native matched a career-high 17 singles wins, playing primarily at Nos. 1 and 3. Lambropoulos received the Midwest Region Arthur Ashe Leadership and Sportsmanship Award and finished the season ranked 13th regionally in singles.

White started the season ranked 67th in singles and climbed to No. 40 with Falkin in doubles in early March. The Deerfield, Ill., native amassed a career-high eight doubles wins in conference play and went 20-13 overall, including 16 wins in dual action, playing primarily at No. 2. She tallied 17 wins in singles, playing Nos. 4-6. White earned her first career Big Ten Tennis Athlete of Week honor on Feb. 21 after knocking off the nation's third-ranked doubles tandem alongside Falkin.

Senior Amy Allin tied for first on the team with eight conference singles wins and went on a 7-1 stretch from March 24 through April 15 to help the Illini to a 7-1 mark over that time. Fellow senior Chelcie Abajian secured 17 doubles wins, including 13 in dual action, along with eight singles victories. The Commack, N.Y., native reached as high as No. 27 in the nation alongside junior Breanne Smutko, who tallied 10 singles wins at Nos. 4-6.

Kedzierski ended the year with a career-best 11-4 mark in singles action, while Jamieson went 7-2 in singles and 8-4 in doubles.

The Orange and Blue squad ended the season ranked 21st in the nation and fourth in the region.

2012 BIG TEN / NCAA REVIEW

2012 ALL-BIG TEN

FIRST TEAM

Allison Falkin, ILL
 Melissa Kopinski, ILL
 Leslie Hureau, IND
 SONJA MOLNAR, IOWA
 EMINA BEKTAS, MICH
 BROOKE BOLENDER, MICH
 Natalia Pintusava, MINN
 MARY WEATHERHOLT, NEB
 Belinda Niu, Northwestern
 KATE TURVY, NU
 PETRA JANUSKOVA, PSU
 Jennifer Rabot

SECOND TEAM

Marisa Lambropoulos, ILL
 Sarah Lee, MICH
 Patricia Veresova, NEB
 Brittany Wowchuck, NU
 Chelsea Utting, PSU
 Alaina Trgovich, WIS

2012 INDIVIDUAL HONORS

Athlete of the Year: Mary Weatherhold, NEB

Freshman of the Year: EMINA BEKTAS, MICH

Co-Coach of the Year: Ronni Bernstein, MICH/Scott Jacobson, NEB
 (Unanimous selections in all CAPS)

2012 DUAL MATCH STANDINGS

Team	BIG TEN		OVERALL*	
	Record	Pct.	Record	Pct.
1. Michigan*	10-1	.909	21-8	.724
Northwestern *	10-1	.909	20-10	.667
3. Illinois	9-2	.818	18-8	.692
Nebraska	9-2	.818	24-5	.828
5. Purdue #	6-5	.545	18-7	.720
6. Minnesota	5-6	.455	16-9	.640
7. Indiana	4-7	.364	16-11	.593
Ohio State	4-7	.364	10-16	.385
Penn State	4-7	.364	12-11	.522
10. Wisconsin	3-8	.273	12-12	.500
11. Iowa	2-9	.182	8-15	.348
12. Michigan State	0-11	.000	8-15	.348

* Big Ten regular season winner (Co-Champions)
 # Big Ten Tournament winner

2012 Big Ten Tournament

April 26 - April 29 • Ohio State University • Columbus, Ohio

April 26 - First Round

No. 9 Ohio State 4, No. 8 Penn State 2
 No. 5 Purdue 4, No. 12 Michigan State 0
 No. 7 Indiana 4, No. 10 Wisconsin 0
 No. 6 Minnesota 4, No. 11 Iowa 2

April 27 - Quarterfinals

No. 3 Illinois 4, No. 6 Minnesota 0
 No. 2 Michigan 4, No. 7 Indiana 2
 No. 5 Purdue 4, No. 4 Nebraska 2
 No. 1 Northwestern 4, No. 9 Ohio State 0

April 28 - Semifinals

No. 5 Purdue 4, No. 1 Northwestern 2
 No. 2 Michigan 4, No. 3 Illinois 0

April 29 - Finals

No. 5 Purdue 4, No. 2 Michigan 3

2012 FINAL CAMPBELL/ITA TEAM RANKINGS

1	Florida	16	Nebraska
2	UCLA	17	Texas A&M
3	Duke	18	Mississippi
4	USC	19	Notre Dame
5	Stanford	20	Georgia Tech
6	Georgia	21	ILLINOIS
7	California	22	Texas Tech
8	North Carolina	23	Tulsa
9	Miami (Fla.)	24	Tennessee
10	Texas	25	Clemson
11	Alabama		
12	Northwestern		
13	Baylor		
14	Michigan		
15	Virginia		

FINAL CAMPBELL'S/ITA SINGLES & DOUBLES RANKINGS

42. Marisa Lambropoulos/Melissa Kopinski, ILL
 78. Rachael White/Allison Falkin, ILL
 121. Melissa Kopinski, ILL
 123. Allison Falkin, ILL

NCAA TEAM TOURNAMENT RESULTS

1996

Round of 64: May 3, 1996 • Atkins Tennis Center, University of Illinois, Urbana, Ill.
Northwestern 5, Illinois 1

SINGLES:

1. Siri Eklund (NW) def. Susanne Land (ILL) 6-2, 6-0
2. Marjorie Gantman (NW) def. Stacy Schapiro (ILL) 6-4, 6-4
3. Elissa Kim (NW) def. Jessica Klapper (ILL) 5-7, 6-3, 6-3
4. Laura Guigon (NW) def. Natalie Adusar (ILL) 3-6, 7-6(8), 6-3
5. Mary Beth Novak (NW) def. Kara Loffelmacher (ILL) 6-4, 6-0
6. Laura Rydberg (ILL) def. Robyn Porter (NW) 6-2, 5-7, 6-3

DOUBLES:

1. Klapper/Land (ILL) vs. Klapper/Gantman (NW) inc.
2. Schapiro/ Loffelmacher (ILL) vs. Kim/Guignon (NW)
3. Rydberg/Adusar (ILL) vs. Novak/Porter (NW)

1997

Round of 64: May 9, 1997 • Courtney Tennis Center, University of Notre Dame, South Bend, Ind.
#23 Notre Dame 5, Illinois 3

SINGLES:

1. #38 Jennifer Hall (ND) def. Susanne Land (ILL) 6-2, 6-1
2. Marisa Velasco (ND) def. Stacy Schapiro (ILL) 6-2, 3-6, 6-4
3. Tiffany Gates (ND) def. Kara Loffelmacher (ILL) 6-2, 3-6, 6-2
4. Kelly Zalinski (ND) def. Allison Gottlieb (ILL) 6-0, 6-1
5. Jessica Klapper (ILL) def. Kelley Olson (ND) 7-5, 4-6, 6-2
6. Lindsey Bruce (ILL) def. Darcie Sweet (ND) 6-3, 0-6, 7-5

DOUBLES:

1. Klapper/Land (ILL) def. Gates/Sarah Scaringe (ND) 8-1
2. Velasco/Zalinski (ND) def. Bruce/Gottlieb (ILL) 8-3
3. Schapiro/Loffelmacher (ILL) vs. Olson/Courtney Haskell (ND) sus. 5-5

1999

Round of 64: May 15, 1999 • Whitemann Tennis Center, Arizona State University, Tempe, Ariz.
#22 Northwestern 5, #44 Illinois 3

SINGLES:

1. Simone Kung (ILL) def. Katherine Nasser (NU) 0-6, 6-3, 6-1
2. Laura Guignon (NU) def. Stacy Schapiro (ILL) 6-3, 0-6, 6-4
3. Shannon Duffy (NU) def. Brooke Ferney (ILL) 6-3, 6-2
4. Carla Rosenberg (ILL) def. Colleen Cheng (NU) 3-6, 7-5, 6-1
5. Lia Jackson (NU) def. Megan Wise (ILL) 6-4, 6-0
6. Jennifer Lutgert (NU) def. Natalia Manasova (ILL) 6-1, 4-6, 6-2

DOUBLES:

1. Guignon/Nasser (NU) def. Ferney/Rosenberg (ILL) 8-1
2. Kung/Schapiro (ILL) def. Cheng/Jackson (NU) 8-6
3. Duffy/Lutgert (NU) vs. Manasova/Allison Gottlieb (ILL) sus. 4-1

2000

Round of 64: May 12, 2000 • University of Florida, Gainesville, Fla.
#22 Florida State 5, #34 Illinois 3

SINGLES:

1. Alida Gallovits (FSU) def. Eldina Fazlic (ILL) 6-3, 6-2
2. Nanette Duxin (FSU) def. Simone Kung (ILL) 6-2, 7-6(5)
3. Kia Ashberg (FSU) def. Brooke Ferney (ILL) 6-3, 6-4
4. Natascha Loebnitz (ILL) def. Jessica Bulbuena (FSU) 6-2, 6-3
5. Carla Rosenberg (ILL) def. Marina Raic (FSU) 6-2, 6-0
6. Natalia Manasova (ILL) def. Ali Weber (FSU) 7-6, 5-7, 7-5

DOUBLES:

1. Duxin/Gallovits (FSU) def. Ferney/Loebnitz (ILL) 8-4
2. Bulbuena/Weber (FSU) def. Manasova/Rosenberg (ILL) 8-3
3. Not Contested

2001

Round of 64: May 12, 2001 • Quillian Stadium, University of Washington, Seattle, Wash.
#31 Illinois 4, #45 Virginia Commonwealth 2

SINGLES:

1. #12 Martina Nedelkova (VCU) def. Jennifer McGaffigan (ILL) 6-1, 6-4
2. Anca Dumitrescu (VCU) def. Eldina Fazlic (ILL) 7-6, 6-4
3. Simone Kung (ILL) vs. Raluca Ciulei (VCU) Abandoned
4. Eva Choe (ILL) def. Silvia Urickova (VCU) 6-2, 5-7, 6-1
5. Michelle Webb (ILL) def. Yana Carollo (VCU) 6-3, 7-5
6. Carla Rosenberg (ILL) def. Wendy Hsu (VCU) 6-1, 6-0

DOUBLES:

1. Kung/Webb (ILL) vs. Ciulei/Nedelkova (VCU) Abandoned
2. Choe/Rosenberg (ILL) def. Urickova/Carollo (VCU) 8-3
3. McGaffigan/Fazlic (ILL) def. Hsu/Dumitrescu (VCU) 9-7

Round of 32: May 13, 2001

Quillian Stadium, University of Washington, Seattle, Wash.
#12 Washington 4, #31 Illinois 0

SINGLES:

1. #11 Kristina Kraszewski (UW) def. Jennifer McGaffigan (ILL) 6-2, 6-3
2. #43 Claire Carter (UW) def. Eldina Fazlic (ILL) 6-0, 6-0
3. Ilna Kordonskaya (UW) vs. Simone Kung (ILL) Abandoned
4. Erin Boisclair (UW) vs. def. Eva Choe (ILL) 6-1, 6-3
5. #92 Darija Klaic (UW) vs. Michelle Webb Abandoned
6. Colleen Gray (UW) vs. Carla Rosenberg (ILL) Abandoned

DOUBLES:

1. #10 Klaic/Kraszewski (UW) def. Kung/Webb (ILL) 8-4
2. #26 Carter/Kordonskaya (UW) vs. Choe/Rosenberg (ILL) Abandoned
3. Boisclair/Erin Hoe (UW) def. McGaffigan/Fazlic (ILL) 8-4

2003

Round of 64: May 11, 2003 • Quillian Stadium, University of Washington, Seattle, Wash.
#25 Illinois 4, #30 UNLV 0

SINGLES:

1. Jennifer McGaffigan (ILL) def. Gyorgyi Zsiros (UNLV) 6-1, 2-6, 6-2
2. Paulina Janus (UNLV) vs. Tiffany Eklov (ILL) Abandoned
3. Eldina Fazlic (ILL) def. Agnieszka Abram (UNLV) 6-0, 6-4
4. #120 Tracie Chong (UNLV) def. Brianna Knue (ILL) 6-4, 7-5
5. Michelle Webb (ILL) def. Cindy Treber (UNLV) 6-2, 6-4
6. Amy Hadziosmanovic (UNLV) vs. Leila Cehajic (ILL) Abandoned

DOUBLES:

1. McGaffigan/Webb (ILL) def. Janus/Abram (UNLV) 8-1
2. Eklov/Fazlic (ILL) def. Chong/Treber (UNLV) 8-3
3. Zsiros/Hadziosmanovic (UNLV) vs. Knue/Cehajic (ILL) Abandoned

Round of 32: May 12, 2003

Quillian Stadium, University of Washington, Seattle, Wash.
#6 Washington 4, #25 Illinois 0

SINGLES:

1. #76 Jennifer McGaffigan (ILL) vs. #34 Dea Sumantri (WASH) 5-7, 3-0 Abandoned
2. #88 Tiffany Eklov (ILL) vs. #48 Claire Carter (WASH) 3-6, 2-3 Abandoned
3. Eldina Fazlic (ILL) vs. #84 Darija Klaic (WASH) 3-6, 4-4 Abandoned
4. #81 Erin Boisclair (WASH) def. Brianna Knue (ILL) 6-2, 6-0
5. Colleen Gray (WASH) def. Michelle Webb (ILL) 6-1, 6-1
6. Erin Hoe (WASH) def. Leila Cehajic (ILL) 6-2, 6-2

DOUBLES:

1. #11 Carter/Klaic (WASH) def. #25 McGaffigan/Webb (ILL) 8-4
2. Eklov/Fazlic (ILL) vs. Gray/Sumantri (WASH) 5-7 Abandoned
3. Boisclair/Hoe (WASH) def. Cehajic/Knue (ILL) 8-3

2004

Round of 64: May 14, 2004 • Ambler Stadium, Duke University, Durham, N.C.
#36 William & Mary 4, #22 Illinois 2

SINGLES:

1. #38 Jennifer McGaffigan (ILL) def. Megan Muth (W&M) 6-4, 6-3
2. Tiffany Eklov (ILL) vs. Lena Sherbakov (W&M) Abandoned
3. Cynthia Goulet (ILL) def. Amy Wei (W&M) 6-3, 6-0
4. Lingda Yang (W&M) def. Isabel Jarosz (ILL) 6-3, 6-2
5. Emily Mowrey (W&M) def. Eva Choe (ILL) 6-4, 6-2
6. Kristen Dunbar (W&M) def. Pavlina Akritas (ILL) 6-4, 6-1

DOUBLES:

1. Muth/Wei (W&M) def. #15 McGaffigan/Goulet (ILL) 8-5
2. Kate Boomershine/Sherbakov (W&M) def. Eklov/Choe (ILL) 8-5
3. Emily Wang/Jarosz (ILL) def. Alex DeGuzman/Mowrey (W&M) 8-0

NCAA TEAM TOURNAMENT RESULTS

2008

Round of 64: May 9, 2008 • Bill Moore Tennis Center, Georgia Tech University, Atlanta, Ga.
#25 University of Tennessee 4, #36 Illinois 0

SINGLES:

1. Caitlin Whoriskey (TENN) vs. Megan Fudge (ILL) 6-4, 4-6, 1-0, unf.
2. Ghizela Schutte (TENN) vs. Leigh Finnegan (ILL) 3-6, 6-1, 3-1, unf.
3. Samantha Orlin (TENN) def. Marisa Lambropoulos (ILL) 6-0, 6-1
4. Connor Vogel (TENN) def. Shivani Dave (ILL) 6-4, 6-2
5. Zsafia Zubor (TENN) vs. Kristina Minor (ILL) 3-6, 6-4, 0-1, unf.
6. Rosalia Alda (TENN) def. Annie McCarthy (ILL) 7-6 (7-2), 6-3

DOUBLES:

1. Caitlin Whoriskey/Zsafia Zubor (TENN) vs. Megan Fudge/Shivani Dave (ILL) 6-3, unf.
2. Ghizela Schutte/Rosalia Alda (TENN) def. Leigh Finnegan/Marisa Lambropoulos (ILL) 8-2
3. Connor Vogel/Jennifer Meredith (TENN) def. Annie McCarthy/Kristina Minor (ILL) 8-4

2009

Round of 64: May 9, 2009 • Khan Outdoor Tennis Complex, University of Illinois, Urbana, Ill.
#34 Illinois 4, #19 Vanderbilt 3

SINGLES:

1. #75 Megan Fudge (ILL) def. #52 Jackie Wu (VAND) 6-0, 4-6, 6-4
2. #64 Catherine Newman (VAND) def. #103 Leigh Finnegan (ILL) 6-2, 6-4
3. Keilly Ulery (VAND) def. Chelcie Abajian (ILL) 6-4, 7-6 (8-6)
4. Marisa Lambropoulos (ILL) def. Chelsea Preeg (VAND) 6-3, 6-2
5. Amy Allin (ILL) def. Heather Steinbauer (VAND) 6-3, 6-2
6. Kristina Minor (ILL) def. Courtney Ulery (VAND) 6-4, 3-6, 7-6 (7-5)

DOUBLES:

1. Catherine Newman/Jackie Wu (VAND) def. Leigh Finnegan/Chelcie Abajian (ILL) 8-4
2. Marisa Lambropoulos/Megan Fudge (ILL) vs. Chelsea Preeg/Heather Steinbauer (VAND) 7-6, unf.
3. Courtney Ulery/Keilly Ulery (VAND) def. Amy Allin/Annie McCarthy (ILL) 9-8 (7-3)

Round of 32: May 10, 2009

Khan Outdoor Tennis Complex, University of Illinois, Urbana, Ill.
#16 Fresno State 4, #34 Illinois 3

SINGLES:

1. #75 Megan Fudge (ILL) def. #18 Melanie Gloria (FS) 6-1, 6-0
2. #27 Anastasia Petukhova (FS) def. #103 Leigh Finnegan (ILL) 6-1, 6-1
3. #67 Renata Kucerkova (FS) def. Chelcie Abajian (ILL) 4-6, 6-1, 7-6 (7-3)
4. Marisa Lambropoulos (ILL) def. Tinesta Rowe (FS) 6-4, 3-6, 6-3
5. Amy Allin (ILL) def. Laura Pola (FS) 6-1, 7-6 (7-4)
6. Bruna Paes (FS) def. Kristina Minor (ILL) 2-6, 6-0, 6-3

DOUBLES:

1. #1 Anastasia Petukhova/Renata Kucerkova (FS) def. Leigh Finnegan/Chelcie Abajian (ILL) 8-2
2. Megan Fudge/Marisa Lambropoulos (ILL) vs. #15 Melanie Gloria/Tinesta Rowe (FS) 4-7, unf.
3. Danon Beatty/Laura Pola (FS) def. Annie McCarthy/Amy Allin (ILL) 8-6

2010

Round of 64: May 14, 2010 • Vandy Christie Tennis Center
#37 Nebraska 4, #22 Illinois 2

SINGLES:

1. #77 Mary Weatherholt (NEB) def. #85 Megan Fudge (ILL) 0-6, 6-3, 7-5
2. Madeleine Geibert (NEB) def. Leigh Finnegan (ILL) 6-3, 6-2
3. Rachael White (ILL) def. Wiveca Swarting (NEB) 5-7, 6-0, 6-2
4. Stefanie Weinstein (NEB) def. Chelcie Abajian (ILL) 2-6, 6-4, 7-6 (3)
5. Breanne Smutko (ILL) vs. Janine Weinreich (NEB) 6-7 (7), 6-4, 0-1, unf.
6. Jennifer Holmberg (NEB) def. Marisa Lambropoulos (ILL) 7-6 (3), 6-2

DOUBLES:

1. Madeleine Geibert/Stefanie Weinstein (NEB) def. Leigh Finnegan/Rachael White (ILL) 8-4
2. Megan Fudge/Chelcie Abajian (ILL) def. Wiveca Swarting/Janine Weinreich (NEB) 8-0
3. Marisa Lambropoulos/Breanne Smutko (ILL) def. Jennifer Holmberg/Mary Weatherholt (NEB) 8-5

2012

Round of 64: May 11, 2012 • Palmer/Salloum Tennis Center
#39 Rice 4, #18 Illinois 3

SINGLES:

1. #36 Natalie Beazant (RICE) def. #111 Allison Falkin (ILL) 6-2, 6-2
2. Dominique Harmath (RICE) def. Melissa Kopinski (ILL) 7-6, 6-3
3. Katie Gater (RICE) def. Marisa Lambropoulos (ILL) 6-4, 6-1
4. Amy Allin (ILL) def. Ana Guzman (RICE) 6-1, 6-2
5. Kim Anicete (RICE) def. Rachael White (ILL) 7-5, 7-6(6)
6. Chelcie Abajian (ILL) def. Daniela Trigo (RICE) 6-0, 6-0

DOUBLES:

1. #69 Marisa Lambropoulos/Melissa Kopinski (ILL) def. #26 Natalie Beazant/ Dominique Harmath (RICE) 8-5
2. Katie Gater/Ana Guzman (RICE) def. Rachael White/Amy Allin (ILL) 8-1
3. Chelcie Abajian/Allison Falkin (ILL) def. Kim Anicete/Stephanie Nguyen (RICE) 8-2

NCAA SINGLES & DOUBLES RESULTS

1988

(UCLA, LOS ANGELES)

DOUBLES:

- Round of 32
Lisa Apaney/Stacey Schefflin (Georgia) def.
Kathy Neil/Cynthia Chambers (ILL) 7-5, 6-7(6), 7-6 (4)

1991

(STANFORD UNIVERSITY, PALO ALTO, CALIF.)

SINGLES:

- Round of 64
Lindsey Nimmo (ILL) def. Erica Adams (PUR) 6-4, 6-1
Round of 32
Emilie Viquerira (CAL) def. Lindsey Nimmo, (ILL) 6-4, 6-1

1993

(UNIVERSITY OF FLORIDA, GAINESVILLE, FLA.)

SINGLES:

- Round of 64
Lindsey Nimmo (ILL) def. Jen Callen (VA) 4-6, 6-1, 6-1
Round of 32
Melissa Mazzotta (Miami) def. Lindsey Nimmo (ILL) 6-1, 6-4

1995

(PEPPERDINE UNIVERSITY, MALIBU, CALIF.)

DOUBLES:

- Round of 32
Camille Baldrich/Kristen Jones (ILL) def. Astrid Copano/Marianne Vallin (UNLV) 6-1, 6-2
Round of 16
Wendy Lyons/Monica Mraz (Duke) def. Camille Baldrich/Kristen Jones (ILL) 6-1, 6-2

2002

(TAUB TENNIS CENTER, STANFORD UNIVERSITY, PALO ALTO, CALIF.)

SINGLES:

- Round of 64
#38 Andrea Ondrisova (Virginia Commonwealth) def. #61 Jennifer McGaffigan (ILL) 6-3, 6-4

2003

(UNIVERSITY OF FLORIDA, GAINESVILLE, FLA.)

DOUBLES:

- Round of 32
#25 Jennifer McGaffigan/Michelle Webb (ILL) def.
#5 Vilmarie Castellvi/Melissa Schaub (TENN) 6-3, 6-4
Round of 16
#20 Silvia Urickova/Barbora Zahnova (Virginia Commonwealth) def.
#25 Jennifer McGaffigan/Michelle Webb (ILL) 7-6(2), 6-4

2004

(DAN MAGILL TENNIS CENTER, UNIVERSITY OF GEORGIA, ATHENS, GA.)

SINGLES:

- Round of 64
#1 Raquel Kops-Jones (CAL) def. #38 Jennifer McGaffigan (ILL) 6-1, 6-3

DOUBLES:

- Round of 32
Catrina Thompson/Christian Thompson (ND) def.
#15 Jennifer McGaffigan/Cynthia Goulet (ILL) 2-6, 6-2, 6-2

2005

(DAN MAGILL TENNIS CENTER, UNIVERSITY OF GEORGIA, ATHENS, GA.)

SINGLES:

- Round of 64
#33 Karen Coetzee (Wake Forest) def. #39 Cynthia Goulet (ILL) 3-6, 6-1, 7-5

ALL-TIME LETTERWINNERS

-A-

Abajian, Chelcie • 2009, 10, 11, 12
 Adsuar, Natalie • 1995, 96
 Agüero, Liana • 1997
 Akritas, Pavlina • 2004, 05, 06
 Allin, Amy • 2009, 10, 11, 12
 Arildsen, Sue • 1982, 83, 84, 85

-B-

Baldrich, Camille • 1992, 93, 94, 95
 Bareis, Barb • 1982, 84, 85
 Barki, Jessica • 2003
 Basolo, Peggy • 1977, 78, 79
 Batt, Jaclyn • 1994, 96
 Bjerknes, Lisa • 1980
 Boomershine, Kate • 2002
 Brouder, Cynthia • 1978, 79
 Bruce, Lindsey • 1997
 Buchanan, Lisa • 1980, 81
 Burgess, Sandy • 1980, 81
 Burgess, Sherry • 1978, 79, 80
 Burns, Sheila • 1984, 85, 86, 87
 Buwick, Cynthia • 1977, 78, 79

-C-

Cathrall, Jodi • 1989
 Cehajic, Leila • 2002, 03, 04, 05
 Chambers, Cynthia • 1988, 90, 91
 Choe, Eva • 2001, 02, 03, 04
 Clery, Colleen • 1976, 77
 Corcoran, Maura • 1986, 87, 88, 89
 Costigan, Carrie • 1986, 87, 88, 89
 Crane, Donna • 1980
 Cuadra, Alejandra Meza • 2005, 06, 07, 08

-D-

Davé, Shivani • 2006, 07, 08, 09
 Davis, Barb • 1975, 76
 Daw, Jessie • 1984, 85, 87, 88
 DeSilva, Gayathri • 1980, 81, 82, 83

-E-

Eichner, Astrid • 1987, 88, 90
 Eklov, Tiffany • 2001, 02, 03, 04
 Ensslin, Sabine • 1989, 90

-F-

Fafors, Ann • 1976, 77, 78
Falkin, Allison • 2011, 12
 Fazlic, Eldina • 2000, 01, 02, 03
 Ferny, Brooke • 1999, 00
 Finnegan, Leigh • 2008, 09, 10, 11
 Flesvig, Christy • 1983, 84, 85, 86
 Fraker, Elizabeth • 2002
 Fudge, Megan • 2007, 08, 09, 10

-G-

Gates, Linda • 1989, 88, 90, 92
 Goecke, Michelle • 1992
 Goern, Sandra • 1985, 86, 87, 88
 Gottlieb, Allison • 1996, 97, 98, 99
 Goulet, Cynthia • 2002, 04, 05

-H-

Harkins, Macall • 2005, 06
 Harris, Jean • 1975
 Haubold, Lois • 1977, 78, 79
 Hogan, Dorothy • 1979, 80
 Holmes, Kam • 1976, 77
 Hoppmann, Rita • 1981, 82, 83, 84
 Hutchinson, Sue • 1981, 82, 83, 84

-J-

Jackson, Nicole • 1996
Jamieson, Julie • 2012
 Jarosz, Isabel • 2004
 Johnson, Cathryn • 1976, 77
 Jones, Kristen • 1992, 93, 94, 95

-K-

Kane, Laurie • 1990, 91
 Kazarian, Stacy • 1985, 86
Kedzierski, Misia • 2011, 12
 Kestly, Christie • 1991
 Kewney, Kathy • 1981, 82
 Kimmel, Lissa • 1992, 93, 94, 95
 Klapper, Jessica • 1994, 95, 96, 97
 Knowles, Stacey • 1986, 87, 88
 Knue, Brianna • 2003, 04, 05, 06
 Kole, Kathy • 1975, 76, 77, 78
Kopinski, Melissa • 2012
 Kung, Simone • 1998, 99, 00, 01

-L-

Lambropoulos, Marisa • 2008, 09, 10, 12
 Land, Susanne • 1994, 95, 96, 97
 Loebnitz, Natascha • 2000
 Loffelmacher, Kara • 1996, 97, 98

-M-

Manasova, Natalia • 1999, 00
 Marshack, Sara • 1993, 94, 95
 Matz, Jenny • 1982
 McCarthy, Annie • 2008, 09, 10, 11
 McGaffigan, Jennifer • 2001, 02, 03, 04
 McNamara, Colleen • 1975, 76, 77
 McNamara, Maura • 1981, 82, 83, 84
 Mehlman, Romy • 1996
 Meola, Kristi • 1991, 92, 03, 94
 Minor, Kristina • 2007, 08, 09, 10

-N-

Neil, Kathy • 1975-78
 Nelson, Maureen • 1981-84
 Nimmo, Lindsey • 1991-93

-O-

Olson, Sara • 1981

-P-

Panique, Lisa • 1998
 Pratt, Margaret • 1975
 Pullman, Cheri • 1993, 95

-Q-

Qu, Momei • 2005-08

-R-

Rickard, Kelley • 1982
 Roberts, Jennifer • 1982
 Rosenberg, Carla • 1998-01
 Rydberg, Laura • 1994-97

-S-

Salamone, Tina • 1975-78
 Schapiro, Stacey • 1996-99
 Schlerschlicht, Barb • 1985-86
 Smolensky, Loren • 1987-88, 90
Smutko, Breanne • 2010, 11, 12
 Sokolova, Anastasia • 2005-06
 Stromberg, Christine • 2008, 09, 10
 Strout, Susie • 1985-88
 Straus, Debbie • 1978

-W-

Wang, Emily • 2004-07
 Webb, Michelle • 2000-03
 Welsh, Barb • 1978
 Wentink, Nancy • 1975
White, Rachael • 2010, 11, 12
 Wickiser, Jo • 1983
 Willey, Kristin • 1990-91
 Williams, Mary • 1990-92
 Wise, Megan • 1998-00
 Wujek, Katharine • 1975

-Y-

Young, Amy • 1978-80

**Note: Women's tennis was not recognized as an official Big Ten sport until 1982. Results are based on the Big Ten Championships for those years, which are not officially recognized by the Big Ten Conference.*

1974-75

Head Coach: Peggy Pruitt
Season Record: 6-0
Big Ten Record: N/A (5th)*
NCAA Finish: N/A

Sept. 14	vs. Purdue	W, 7-5
Sept. 14	vs. Northern Illinois	W, 10-0
Sept. 19	at Eastern Illinois	W, 11-0
Sept. 23	vs. Illinois State	W, 8-4
Oct. 9	vs. Indiana State	W, 8-0
Oct. 14	vs. Millikin University	W, 9-0

1975-76

Head Coach: Carla Thompson
Season Record: 5-3-1
Big Ten Record: N/A (9th)*
NCAA Finish: N/A

Sept. 13	Wisconsin at LaCrosse (DeKalb, Ill.)	W, 8-4
Sept. 13	at Northern Illinois	W, 10-2
Sept. 18	vs. Eastern Illinois	W, 12-0
Sept. 20	at Purdue	L, 4-5
Sept. 20	Kentucky (West Lafayette, Ind.)	Tie, 4-4
Oct. 18	at Illinois State	L, 4-5
Oct. 18	Wisconsin (Normal, Ill.)	L, 4-5
Oct. 27	vs. Northwestern	W, 11-1
Apr. 17	at Principia	W, 8-4

1976-77

Head Coach: Carla Thompson
Season Record: 5-7
Big Ten Record: N/A (9th)*
NCAA Finish: N/A

Sept. 18	vs. Purdue	L, 4-5
Sept. 18	vs. Augustana	L, 3-6
Sept. 25	at Illinois State	L, 3-6
Sept. 25	Southern Illinois (Normal, Ill.)	L, 1-8
Sept. 28	vs. Eastern Illinois	W, 6-3
Oct. 16	vs. Washington of St. Louis	W, 10-1
Apr. 8	vs. Lake Forest	W, 8-1
Apr. 8	vs. Kentucky	L, 4-5
Apr. 9	vs. Southern Illinois	L, 4-5
Apr. 16	vs. Principia	W, 9-0
Apr. 16	vs. SIUE	W, 5-4
Apr. 23	at Northwestern	L, 3-6

1977-78

Head Coach: Carla Thompson
Season Record: 6-6
Big Ten Record: N/A*
NCAA Finish: N/A

Sept. 10	at Purdue	L, 4-5
Sept. 10	Indiana (West Lafayette, Ind.)	L, 2-7
Sept. 17	vs. Missouri	W, 5-4
Sept. 22	at St. Francis	W, 7-2
Sept. 27	vs. Eastern Illinois	W, 5-3
Oct. 21	Iowa State (Iowa City, Iowa)	W, 9-0
Oct. 21	at Iowa	W, 5-4
Oct. 21	Minnesota (Iowa City, Iowa)	L, 2-7
Apr. 8	vs. Illinois State	L, 4-5
Apr. 8	vs. SIUE	W, 8-1
Apr. 15	vs. Indiana	L, 1-8
Apr. 15	vs. Purdue	L, 3-6

1978-79

Head Coach: Linda Pecore
Season Record: 5-11
Big Ten Record: N/A (10th)*
NCAA Finish: N/A

Sept. 15	vs. Augustana	L, 3-6
Sept. 20	at Eastern Illinois	L, 3-5 (darkness)
Sept. 22	vs. Southern Illinois	L, 3-6
Sept. 23	vs. Memphis State	W, 5-4
Sept. 23	vs. Iowa	L, 0-9
Sept. 29	at Purdue	L, 4-5
Oct. 20	Iowa State (Iowa City, Iowa)	W, 8-1
Oct. 21	Minnesota (Iowa City, Iowa)	L, 0-9
Oct. 21	at Iowa	L, 0-9
Mar. 12	at Kansas State	W, 9-0
Apr. 6	at UI-Chicago Circle	W, 9-0
Apr. 7	at Northwestern	L, 2-7
Apr. 17	at Illinois State	L, 0-9
Apr. 20	vs. Purdue	L, 0-9
Apr. 21	vs. Miami (OH)	L, 3-6
May 5	at Western Illinois	W, 8-1

1979-80

Head Coach: Linda Pecore
Season Record: 18-9
Big Ten Record: N/A (10th)*
NCAA Finish: N/A

Sept. 7	at Illinois State	L, 2-7
Sept. 7	Southern Illinois (Normal, Ill.)	W, 5-4
Sept. 8	Western Illinois (Normal, Ill.)	W, 8-1
Sept. 11	vs. Wisconsin-Oshkosh	W, 9-0
Sept. 14	UI-Chicago Circle	W, 9-0
Sept. 14	Sangamon State	W, 8-1
Sept. 15	Wheaton	W, 8-1
Sept. 18	vs. Eastern Illinois	W, 5-4
Sept. 21	Northwestern	L, 1-8
Sept. 22	Augustana	L, 4-5
Sept. 22	Wisconsin-LaCrosse	W, 6-3
Sept. 25	Sangamon State	L, 4-5
Sept. 28	vs. Purdue	L, 1-8
Sept. 29	vs. Illinois State	L, 4-5
Oct. 5	vs. Northern Illinois	W, 7-2
Oct. 5	Indiana State	W, 6-2 (darkness)
Oct. 6	St. Francis	W, 9-0
Oct. 6	UI-Chicago Circle	W, 7-2
Oct. 6	Northern Kentucky	W, 5-3
Oct. 18-20	IAIAW State Championship (3rd)	
	at Northern Illinois	W, 7-2
	Illinois State (DeKalb, Ill.)	L, 4-5
Mar. 22	Indiana State	W, 7-2
Apr. 11	at Indiana State	W, 8-1
Apr. 12	at DePauw	W, 7-2
Apr. 16	vs. SIUE	W, 1-0 (forfeit)
Apr. 19	vs. Southern Illinois	L, 1-8
Apr. 21	Eastern Illinois	L, 4-5

1980-81

Head Coach: Linda Pecore
Season Record: 21-21
Big Ten Record: N/A (10th)*
NCAA Finish: N/A

Sept. 5	Southern Illinois (Macomb, Ill.)	W, 6-3
Sept. 5	Illinois State (Macomb, Ill.)	W, 6-3
Sept. 6	at Western Illinois	W, 7-2
Sept. 12	vs. St. Ambrose	W, 8-1
Sept. 13	vs. Wheaton	W, 7-2
Sept. 19	at Wisconsin-Oshkosh	W, 9-0
Sept. 20	Wisconsin-EauClaire (Oshkosh, Wis.)	W, 8-1
Sept. 20	Wisconsin-Whitewater (Oshkosh, Wis.)	W, 9-0
Sept. 21	at Wisconsin-Milwaukee	W, 9-0
Sept. 23	at Eastern Illinois	L, 4-5
Sept. 23	vs. Minnesota	W, 7-2
Sept. 27	vs. Sangamon State	W, 9-0
Sept. 27	vs. SIUE	W, 5-4
Sept. 28	vs. Southern Illinois	L, 4-5
Oct. 3	Northern Illinois (Chicago, Ill.)	W, 9-0
Oct. 3	Notre Dame (Chicago, Ill.)	L, 4-5

Oct. 4	Northern Iowa (Chicago, Ill.)	W, 7-2
Oct. 4	at UI-Chicago Circle	W, 9-0
Oct. 5	at Northwestern	L, 1-8
	IAIAW State Championship (3rd)	
Oct. 16-18	at Illinois State	L, 4-5
Mar. 7	at Michigan State	L, 1-8
Mar. 8	at Michigan	L, 0-9
Mar. 14	Oklahoma (Baton Rouge, La.)	L, 1-8
Mar. 14	Oral Roberts (Baton Rouge, La.)	L, 1-8
Mar. 15	at LSU	L, 0-9
Mar. 16	SW Louisiana (New Orleans, La.)	W, 9-0
Mar. 17	Houston (New Orleans, La.)	L, 2-7
Mar. 18	at Tulane	L, 2-5
Mar. 20	Vanderbilt (Oxford, Miss.)	L, 2-7
Mar. 21	at Mississippi	L, 0-9
Mar. 24	at Purdue	L, 2-7
Apr. 3	vs. Indiana State	W, 8-1
Apr. 4	vs. Illinois State	W, 8-1
Apr. 4	vs. UI-Chicago Circle	W, 9-0
Apr. 10	Morehead State (Oxford, Ohio)	L, 2-7
Apr. 11	at Miami (OH)	L, 1-8
Apr. 14	vs. Eastern Illinois	L, 4-5
Apr. 17	vs. Bradley	W, 9-0
Apr. 18	vs. Augustana	W, 9-0
Apr. 24-26	Big Ten Championships (Columbus, Ohio)	
	Minnesota	L, 0-9
	Iowa	L, 2-7
	Purdue	L, 3-6

1981-82

Head Coach: Mary Tredennick
Assistant Coach: Russ Morris
Season Record: 22-16
Big Ten Record: 0-6 (8th)
NCAA Finish: N/A

Sept. 9	at Sangamon State	W, 9-0
Sept. 11	vs. Western Illinois	W, 9-0
Sept. 12	vs. Illinois State	W, 6-3
Sept. 19	at Augustana	W, 9-0
Sept. 19	Iowa State (Rock Island, Ill.)	W, 8-1
Sept. 21	at Eastern Illinois	W, 7-2
Sept. 25	vs. SIUE	W, 6-3
Oct. 1	vs. Southern Illinois	W, 6-3
Oct. 23	at Purdue	L, 4-5
Mar. 5	Drake (Columbia, Mo.)	W, 8-1
Mar. 6	at Missouri	W, 7-2
Mar. 13	at Emporia State	W, 6-0
Mar. 14	at North Texas State	L, 4-5
Mar. 16	at Baylor	W, 8-1
Mar. 17	at Texas-San Antonio	W, 9-0
Mar. 18	Trinity (San Antonio, Texas)	L, 0-9
Mar. 19	at Oklahoma State	L, 0-9
Mar. 20	Tyler JC (Stillwater, Okla.)	L, 4-5
Mar. 21	Iowa State (Stillwater, Okla.)	W, 8-1
Mar. 26	at Western Illinois	W, 7-2
Mar. 27	Notre Dame (Macomb, Ill.)	W, 7-2
Apr. 4	at Indiana	L, 0-9
Apr. 9	at Minnesota	L, 2-7
Apr. 10	Iowa (Minneapolis, Minn.)	L, 1-8
Apr. 13	vs. Purdue	L, 4-5
Apr. 16	vs. Miami (OH)	L, 4-5
Apr. 17	vs. Drake	W, 5-4
Apr. 17	vs. Michigan	L, 2-7
Apr. 18	vs. Michigan State	L, 4-5
	Big Ten Championships (Madison, Wis.)	
Apr. 23	Purdue	W, 5-4
Apr. 24	Indiana	L, 0-9
Apr. 24	Wisconsin	L, 1-8
Apr. 25	Iowa	L, 2-7
	IAIAW State Championships (Champaign, Ill.)	
Apr. 29	vs. Bradley	W, 9-0
Apr. 30	vs. Southern Illinois	W, 6-3
May 6	vs. Eastern Illinois	W, 6-2
	MAIAW Regional Championships (Normal, Ill.)	
May 14	Ohio State	L, 3-6
May 15	Southern Illinois	W, 6-3

Note: From 1982 on, Illinois-Chicago Circle became known as Illinois-Chicago after the main and medical campuses combined into one.

1981-82
Head Coach: Mary Tredennick
Assistant Coach: Russ Morris
Season Record: 22-16
Big Ten Record: 0-6 (8th)
NCAA Finish: N/A

Sept. 9	at Sangamon State	W, 9-0
Sept. 11	vs. Western Illinois	W, 9-0
Sept. 12	vs. Illinois State	W, 6-3
Sept. 19	at Augustana	W, 9-0
Sept. 19	Iowa State (Rock Island, Ill.)	W, 8-1
Sept. 21	at Eastern Illinois	W, 7-2
Sept. 25	vs. SIUE	W, 6-3
Oct. 1	vs. Southern Illinois	W, 6-3
Oct. 23	at Purdue	L, 4-5
Mar. 5	Drake (Columbia, Mo.)	W, 8-1
Mar. 6	at Missouri	W, 7-2
Mar. 13	at Emporia State	W, 6-0
Mar. 14	at North Texas State	L, 4-5
Mar. 16	at Baylor	W, 8-1
Mar. 17	at Texas-San Antonio	W, 9-0
Mar. 18	Trinity (San Antonio, Texas)	L, 0-9
Mar. 19	at Oklahoma State	L, 0-9
Mar. 20	Tyler JC (Stillwater, Okla.)	L, 4-5
Mar. 21	Iowa State (Stillwater, Okla.)	W, 8-1
Mar. 26	at Western Illinois	W, 7-2
Mar. 27	Notre Dame (Macomb, Ill.)	W, 7-2
Apr. 4	at Indiana	L, 0-9
Apr. 9	at Minnesota	L, 2-7
Apr. 10	Iowa (Minneapolis, Minn.)	L, 1-8
Apr. 13	vs. Purdue	L, 4-5
Apr. 16	vs. Miami (OH)	L, 4-5
Apr. 17	vs. Drake	W, 5-4
Apr. 17	vs. Michigan	L, 2-7
Apr. 18	vs. Michigan State	L, 4-5
Big Ten Championships (Madison, Wis.)		
Apr. 23	Purdue	W, 5-4
Apr. 24	Indiana	L, 0-9
Apr. 24	Wisconsin	L, 1-8
Apr. 25	Iowa	L, 2-7
IAIAW State Championships (Champaign, Ill.)		
Apr. 29	vs. Bradley	W, 9-0
Apr. 30	vs. Southern Illinois	W, 6-3
May 6	vs. Eastern Illinois	W, 6-2
MAIAW Regional Championships (Normal, Ill.)		
May 14	Ohio State	L, 3-6
May 15	Southern Illinois	W, 6-3

Note: From 1982 on, Illinois-Chicago Circle became known as Illinois-Chicago after the main and medical campuses combined into one.

1982-83
Head Coach: Mary Tredennick
Assistant Coach: Russ Morris
Season Record: 16-21
Big Ten Record: 1-9 (8th)
NCAA Finish: N/A

Sept. 3	vs. Rosary College	W, 9-0
Sept. 10	vs. Eastern Illinois	W, 9-0
Sept. 11	vs. Notre Dame	W, 5-4
Sept. 12	at Indiana	L, 0-9
Sept. 15	vs. Sangamon State	W, 9-0
Sept. 17	at SIUE	W, 5-4
Sept. 18	Murray State (Edwardsville, Ill.)	W, 6-3
Sept. 24	Miami (OH) (Bowling Green, Ky.)	L, 2-7
Sept. 24	at Western Kentucky	W, 8-1
Sept. 25	Indiana (Bowling Green, Ky.)	L, 0-9
Oct. 5	at Illinois State	W, 7-2
Oct. 13	vs. Northwestern	L, 1-8
Nov. 13	at Bradley	W, 8-1
Feb. 25	Nebraska (Edwardsville, Ill.)	L, 2-7
Mar. 5	at Michigan State	L, 0-9
Mar. 6	at Michigan	L, 1-8
Mar. 25	at Southern Illinois	L, 4-5

Mar. 28	at Texas	L, 0-9
Mar. 29	at Trinity	L, 0-9
Mar. 31	at Oklahoma	L, 1-8
Apr. 1	at Oklahoma State	L, 0-9
Apr. 2	Wichita State (Stillwater, Okla.)	W, 6-3
Apr. 8	vs. SIUE	W, 6-2
Apr. 9	vs. Ohio State	L, 4-5
Apr. 10	vs. Western Michigan	W, 5-4
Apr. 12	vs. Illinois State	W, 9-0
Apr. 15	at Iowa	L, 4-5
Apr. 16	at Northwestern	L, 0-6
Apr. 19	vs. Purdue	L, 4-5
Apr. 21	vs. Indiana	L, 1-8
Apr. 23	vs. Bradley	W, 9-0
Apr. 29	vs. Minnesota	W, 5-4
Apr. 30	vs. Wisconsin	L, 3-6
May 6-8 Big Ten Championships (Evanston, Ill.)		
	Ohio State	L, 4-5
	Minnesota	W, 5-4
	Iowa	L, 1-5
	Ohio State	L, 2-5

1983-84
Head Coach: Mary Tredennick
Assistant Coach: Russ Morris
Season Record: 15-18
Big Ten Record: 7-9 (7th)
NCAA Finish: N/A

Sept. 3	vs. Indiana	L, 0-9
Sept. 10	vs. Wheaton College	W, 9-0
Sept. 11	at Notre Dame	L, 4-5
Sept. 16	Western Michigan (Bloomington, Ind.)	L, 4-5
Sept. 16	Southern Illinois (Bloomington, Ind.)	W, 7-2
Sept. 17	Louisville (Bloomington, Ind.)	W, 7-1
Sept. 23	SW Missouri (Macomb, Ill.)	W, 8-1
Sept. 23	at Western Illinois	W, 8-1
Sept. 24	Iowa (Macomb, Ill.)	W, 6-3
Sept. 28	vs. Illinois State	W, 8-0
Oct. 9	Minnesota (Edwardsville, Ill.)	W, 6-2
Oct. 11	at Northwestern	L, 0-9
Feb. 24	at SIUE	L, 3-5
Feb. 25	Wichita State (Edwardsville, Ill.)	L, 4-5
Mar. 4	vs. Northwestern	L, 1-8
Mar. 9	at San Diego	L, 4-5
Mar. 12	Oklahoma (Malibu, Calif.)	L, 2-7
Mar. 13	at Pepperdine	L, 0-9
Mar. 15	at UC-Irvine	L, 0-9
Mar. 16	at U.S. International	L, 3-6
Mar. 31	vs. Michigan State	W, 5-4
Apr. 1	vs. Michigan	L, 3-6
Apr. 7	at Ohio State	W, 5-4
Apr. 11	at Illinois State	W, 9-0
Apr. 13	vs. Iowa	W, 8-1
Apr. 16	at Purdue	L, 3-6
Apr. 19	at Indiana	L, 0-9
Apr. 24	vs. SIUE	W, 5-4
Apr. 28	at Wisconsin	L, 3-6
Big Ten Championships (Madison, Wis.)		
May 4	Michigan State	W, 6-2
May 4	Indiana	L, 1-8
May 5	Purdue	L, 4-5
May 6	Ohio State	W,

1984-85
Head Coach: Mary Tredennick
Assistant Coach: Russ Morris
Season Record: 17-20
Big Ten Record: 8-7 (5th)
NCAA Finish: N/A

Sept. 9	vs. Indiana	L, 0-9
Sept. 13	at Bradley	W, 8-1
Sept. 15	vs. Notre Dame	L, 4-5
Sept. 21-23	Midwest Fall Invitational (Bloomington, Ind.)	
Sept. 12	Miami (OH)	L, 2-6
Sept. 22	Louisville	W, 9-0

Sept. 23	Western Michigan	L, 3-6
Sept. 25	vs. Western Illinois	W, 8-1
Oct. 9	vs. Northwestern	L, 1-8
Oct. 10	at Illinois State	W, 9-0
Feb. 15-17	Indiana Invitational (Bloomington, Ind.)	
	North Carolina	L, 0-9
	Miami (OH)	L, 4-5
	Iowa	L, 4-5
Mar. 1	Wichita State (Edwardsville, Ill.)	W, 5-4
Mar. 2	Kansas (Edwardsville, Ill.)	L, 0-9
May 9-10	Clemson Invitational (Clemson, S.C.)	
	Miami (FL)	L, 0-9
	Duke	L, 0-8
	Georgia	L, 0-9
Mar. 22	at Iowa	W, 5-4
Mar. 26	vs. Bradley	W, 8-1
Apr. 1	at Dallas	W, 9-0
Apr. 3	at Texas	L, 0-9
Apr. 4	at Trinity	L, 0-9
Apr. 5	at North Texas State	W, 9-0
Apr. 6	at TCU	L, 1-8
Apr. 12	at Michigan	W, 5-4
Apr. 13	at Michigan State	W, 6-3
Apr. 17	vs. Purdue	W, 5-4
Apr. 20	vs. Ohio State	W, 8-1
Apr. 21	at Indiana	L, 0-9
Apr. 23	vs. Illinois State	W, 8-1
Apr. 24	at Northwestern	L, 1-8
Apr. 26	vs. Wisconsin	L, 0-6
Apr. 27	vs. SIUE	L, 4-5
May 3-5	Big Ten Championships (Iowa City, Iowa)	
	Minnesota	L, 3-6
	Iowa	W, 6-3
	Michigan	W, 6-3
	Purdue	W, 5-4

1985-86
Head Coach: Mary Tredennick
Assistant Coach: Russ Morris
Season Record: 16-16
Big Ten Record: 4-11 (7th)
NCAA Finish: N/A

Sept. 16	vs. Illinois State	W, 9-0
Sept. 20	at Western Illinois	L, 4-5
Sept. 21	Iowa (Macomb, Ill.)	W, 6-3
Sept. 22	Notre Dame (Macomb, Ill.)	W, 5-4
Sept. 25	at Bradley	W, 7-1
Sept. 28	vs. Indiana	L, 0-9
Jan. 31	Vanderbilt (Bloomington, Ind.)	L, 2-7
Feb. 1	Western Michigan (Bloomington, Ind.)	L, 3-6
Feb. 2	at Indiana	L, 0-9
Feb. 21	vs. Bradley	W, 8-1
Feb. 22	vs. SIUE	W, 5-4
Feb. 28	Kansas (Edwardsville, Ill.)	L, 4-5
Mar. 19	at Illinois State	W, 9-0
Mar. 20	vs. Northern Illinois	W, 9-0
Mar. 24	Tennessee (Delray Beach, Fla.)	W, 6-3
Mar. 25	Ohio State (Delray Beach, Fla.)	W, 7-2
Mar. 26	Bowling Green (Delray Beach, Fla.)	W, 8-1
Mar. 27	Toledo (Delray Beach, Fla.)	W, 6-0
Mar. 28	Notre Dame (Delray Beach, Fla.)	W, 5-4
Apr. 5	at Wisconsin	L, 1-8
Apr. 6	at Minnesota	L, 2-7
Apr. 11	at Ohio State	L, 4-5
Apr. 13	vs. Iowa	L, 3-6
Apr. 17	at Purdue	L, 3-6
Apr. 19	vs. Michigan	W, 5-4
Apr. 20	vs. Michigan State	L, 4-5
Apr. 25	vs. Northwestern	L, 2-7
Apr. 26	vs. Indiana	L, 2-7
May 2-4	Big Ten Championships (Champaign, Ill.)	
May 2	vs. Ohio State	W, 6-3
	vs. Wisconsin	L, 2-7
	vs. Purdue	L, 4-5
	vs. Ohio State	W, 5-4

1986-87

Head Coach: Mary Tredennick
Assistant Coach: Doug Dawson
Season Record: 12-18
Big Ten Record: 5-8 (7th)
NCAA Finish: N/A

Sept. 12	at Notre Dame	W, 5-3
Sept. 13	Miami (OH) (South Bend, Ind.)	L, 2-7
Sept. 18	vs. Western Illinois	L, 4-5
Nov. 2	vs. Indiana	L, 1-8
Jan. 24	Western Michigan (Bloomington, Ind.)	L, 2-7
Jan. 25	North Carolina (Bloomington, Ind.)	L, 2-7
Feb. 27	William & Mary (Lexington, Ky.)	L, 1-8
Feb. 28	Alabama (Lexington, Ky.)	L, 1-8
Mar. 7	vs. SIUE	L, 4-5
Mar. 17	Arkansas (Hilton Head, S.C.)	L, 2-7
Mar. 18	Louisville (Hilton Head, S.C.)	W, 7-2
Mar. 20	Auburn (Hilton Head, S.C.)	L, 2-7
Mar. 21	Tennessee (Hilton Head, S.C.)	L, 1-8
Mar. 25	vs. Illinois State	W, 8-1
Mar. 26	vs. Northern Illinois	W, 9-0
Mar. 28	vs. Eastern Michigan	W, 6-3
Mar. 29	vs. Purdue	W, 7-2
Mar. 31	vs. Bradley	W, 9-0
Apr. 3	vs. Wisconsin	L, 2-7
Apr. 4	vs. Minnesota	L, 4-5
Apr. 8	at Illinois State	W, 7-2
Apr. 17	at Michigan	W, 5-4
Apr. 18	at Michigan State	L, 3-6
Apr. 24	Iowa (Evanston, Ill.)	L, 4-5
Apr. 25	at Northwestern	L, 0-9
Apr. 26	Ohio State (Evanston, Ill.)	W, 5-4
May 1-3	Big Ten Championships (Columbus, Ohio)	
May 1	Purdue	W, 5-4
May 1	Indiana	L, 1-8
May 2	Michigan State	L, 4-5
May 3	Ohio State	W, 5-2

1987-88

Head Coach: Jennifer Roberts-Rudd
Season Record: 10-17
Big Ten Record: 1-11 (10th)
NCAA Finish: N/A

Oct. 14	at Bradley	W, 9-0
Oct. 16	vs. Northwestern	L, 3-6
Nov. 20	at Tyler JC	L, 1-5
Feb. 11	U.S. International (at Chicago, Ill.)	L, 2-7
Feb. 26	vs. Miami (OH)	L, 2-7
Feb. 28	vs. Notre Dame	W, 8-1
Mar. 2	vs. Bradley	W, 8-1
Mar. 4	at SIUE	L, 4-5
Mar. 4	Southern Illinois (Edwardsville, Ill.)	W, 7-2
Mar. 5	Iowa State (Edwardsville, Ill.)	W, 6-3
Mar. 12	at Ohio State	L, 4-5
Mar. 17	at Western Illinois	W, 7-2
Mar. 24	vs. Northern Illinois	W, 8-1
Mar. 26	vs. Kansas	L, 4-5
Mar. 31	Marquette (Madison, Wis.)	W, 9-0
Apr. 1	Northwestern (Madison, Wis.)	L, 1-8
Apr. 2	at Wisconsin	L, 1-8
Apr. 10	at Indiana	L, 1-8
Apr. 13	at Illinois State	W, 7-2
Apr. 16	vs. Michigan State	L, 4-5
Apr. 17	vs. Michigan	L, 3-6
Apr. 19	at Purdue	L, 4-5
Apr. 23	vs. Iowa	W, 5-4
Apr. 24	vs. Minnesota	L, 3-6
Apr. 29-May 1	Big Ten Champs. (East Lansing, Mich.)	
Apr. 29	Iowa	L, 2-5
Apr. 30	Michigan	L, 4-5
May 1	Minnesota	L, 4-5

1988-89

Head Coach: Jennifer Roberts-Rudd
Season Record: 6-22
Big Ten Record: 3-10 (7th)
NCAA Finish: N/A

Sept. 20	vs. Odessa	W, 6-3
Jan. 21	vs. Western Michigan	L, 4-5
Jan. 27	at Oklahoma State	L, 0-9
Jan. 28	TCU (Stillwater, Okla.)	L, 2-7
Jan. 29	Southern Alabama (Stillwater, Okla.)	L, 2-7
Feb. 14	vs. Illinois State	W, 6-3
Feb. 18	at Houston	L, 2-7
Feb. 19	at Rice	L, 0-9
Feb. 24	at Miami (OH)	L, 3-6
Feb. 25	Notre Dame (Oxford, Ohio)	L, 2-7
Mar. 11	vs. Wisconsin	L, 0-9
Mar. 20	at Arizona State	L, 0-9
Mar. 21	at Northern Colorado	W, 9-0
Mar. 22	at Arizona	L, 0-9
Mar. 23	Marquette (Tucson, Ariz.)	L, 3-6
Mar. 23	at Northern Colorado	L, 4-5
Mar. 30	vs. Purdue	L, 4-5
Apr. 8	vs. Indiana	L, 0-9
Apr. 9	vs. Ohio State	W, 6-3
Apr. 14	at Minnesota	L, 2-7
Apr. 16	at Iowa	L, 3-6
Apr. 19	vs. Northwestern	L, 2-7
Apr. 22	at Michigan State	L, 2-7
Apr. 23	at Michigan	L, 3-6
Big Ten Championships (Bloomington, Ind.)		
Apr. 28	Ohio State	W, 5-3
Apr. 28	Indiana	L, 0-6
Apr. 29	Purdue	L, 3-5
Apr. 30	Iowa	W, 5-1

1989-90

Head Coach: Jennifer Roberts-Rudd
Season Record: 15-14
Big Ten Record: 4-9 (8th)
NCAA Finish: N/A

Oct. 15	vs. Northern Illinois	W, 7-2
Jan. 26	at Oklahoma State	L, 0-9
Jan. 27	Wichita State (Stillwater, Okla.)	W, 8-1
Jan. 28	Southern Missouri State (Stillwater, Okla.)	W, 5-2
Feb. 23	at Notre Dame	L, 2-7
Feb. 24	at Miami (OH)	L, 3-6
Mar. 2	at East Tennessee State	W, 9-0
Mar. 3	at Alabama	L, 2-7
Mar. 4	at LSU	L, 2-7
Mar. 9	vs. Indiana State	W, 7-2
Mar. 19	at Southern Florida	W, 5-4
Mar. 20	at Rollins College	W, 6-3
Mar. 21	at Drake	W, 5-4
Mar. 21	at Georgia State	W, 8-1
Mar. 22	at Rutgers	W, 7-2
Mar. 31	at Indiana	L, 3-6
Apr. 1	at Ohio State	W, 8-1
Apr. 7	vs. Minnesota	L, 0-9
Apr. 8	vs. Iowa	L, 2-7
Apr. 11	at Purdue	W, 8-1
Apr. 14	vs. Michigan	L, 2-7
Apr. 15	vs. Michigan State	W, 7-2
Apr. 18	at Illinois State	W, 5-2
Apr. 21	at Wisconsin	L, 0-9
Apr. 22	at Northwestern	L, 0-9
Big Ten Championships (Champaign, Ill.)		
Apr. 27	Michigan State	W, 5-1
Apr. 27	Iowa	L, 3-5
Apr. 28	Michigan	L, 1-5
Apr. 29	Purdue	L,

1990-91

Head Coach: Jennifer Roberts
Season Record: 19-9
Big Ten Record: 8-5 (5th)
NCAA Finish: N/A

Sept. 21	vs. Northern Illinois	W, 8-1
Nov. 8	at Marquette	W, 6-3
Feb. 1	at Kansas State	W, 9-0
Feb. 2	at Kansas	L, 2-7
Feb. 3	Arkansas	L, 4-5
Feb. 8	vs. Iowa State	W, 8-1
Feb. 10	vs. Southern Illinois	W, 8-1
Feb. 16	at Western Michigan	L, 4-5
Feb. 17	Eastern Michigan	W, 6-3
Feb. 22	vs. Miami (OH)	W, 7-2
Feb. 24	vs. Drake	W, 9-0
Mar. 1	at Iowa	W, 6-3
Mar. 3	at Minnesota	W, 8-1
Mar. 14	vs. Illinois State	W, 8-1
Mar. 20	vs. Hawaii	W, 5-1
Mar. 22	vs. Ohio State	W, 5-4
Mar. 23	vs. Indiana	L, 4-5
Mar. 25	at South Florida	L, 1-8
Mar. 28	at Florida Southern	W, 6-3
Apr. 6	at Michigan	L, 2-7
Apr. 7	at Michigan State	L, 3-6
Apr. 13	vs. Northwestern	W, 5-4
Apr. 14	vs. Wisconsin	L, 2-7
Apr. 19	vs. Purdue	W, 7-2
Apr. 26-28 Big Ten Championships (Madison Wis.)		
Apr. 26	Northwestern	L, 2-5
Apr. 27	Minnesota	W, 5-0
Apr. 27	Purdue	W, 5-1
Apr. 28	Michigan State	W, 5-2

1991-92

Head Coach: Jennifer Roberts
Season Record: 16-8
Big Ten Record: 9-4 (4th)
NCAA Finish: N/A

Feb. 1	vs. Notre Dame	W, 5-4
Feb. 13	vs. Northern Illinois	W, 9-0
Feb. 15	at Drake	W, 6-3
Feb. 22	vs. Iowa	W, 5-4
Feb. 23	vs. Minnesota	W, 7-2
Mar. 6	at Arizona	L, 1-8
Mar. 10	Kansas (Tempe, Ariz.)	L, 1-8
Mar. 11	at Arizona State	L, 1-8
Mar. 14	SE Louisiana (Houston, Texas)	W, 5-4
Mar. 15	at Rice	W, 5-4
Mar. 20	at Wisconsin	L, 3-6
Mar. 22	vs. Western Michigan	W, 7-2
Mar. 28	vs. Michigan	W, 8-1
Mar. 29	Michigan State	W, 8-1
Apr. 3	at Florida State	W, 5-4
Apr. 4	Florida International (Tallahassee, Fla.)	L, 3-6
Apr. 9	at Northwestern	W, 5-4
Apr. 11	vs. Penn State	W, 9-0
Apr. 15	at Purdue	W, 9-0
Apr. 18	at Ohio State	W, 6-1
Apr. 19	at Indiana	L, 0-9
Apr. 24-26 Big Ten Championships (Evanston Ill.)		
Apr. 24	Minnesota	W, 5-1
Apr. 25	Wisconsin	L, 1-5
Apr. 26	Northwestern	L, 4-5

1992-93
Head Coach: Jennifer Roberts
Season Record: 14-6
Big Ten Record: 11-2 (2nd)
NCAA Finish: N/A

Feb. 6	South Florida (Tuscaloosa, Ala.)	L, 1-8
Feb. 7	at Alabama	L, 2-7
Feb. 17	vs. Northwestern	W, 6-3
Feb. 20	at Michigan State	W, 6-3
Feb. 26	vs. Illinois State	W, 8-1
Feb. 28	vs. Miami (OH)	W, 8-1
Mar. 7	UNLV (Tempe, Ariz.)	L, 4-5
Mar. 18	at Notre Dame	L, 2-7
Mar. 19	at Michigan	W, 6-3
Mar. 24	vs. Northern Illinois	W, 6-1
Mar. 28	vs. Wisconsin	W, 5-4
Apr. 11	at Penn State	W, 1-8
Apr. 14	vs. Purdue	W, 8-1
Apr. 17	at Iowa	W, 7-2
Apr. 18	at Minnesota	W, 8-1
Apr. 24	vs. Ohio State	W, 7-2
Apr. 25	vs. Indiana	L, 1-8
Apr. 30-May 1	Big Ten Champs. (Bloomington, Ind.)	
Apr. 30	Michigan State	W, 5-3
May 1	Wisconsin	L, 1-5
May 2	Northwestern	W, 5-4

1993-94
Head Coach: Jennifer Roberts
Season Record: 13-9
Big Ten Record: 8-5 (5th)
NCAA Finish: N/A

Feb. 4	vs. Illinois State	W, 9-0
Feb. 5	vs. Western Michigan	W, 5-4
Feb. 6	vs. Drake	W, 7-2
Feb. 19	at Wisconsin	L, 0-9
Mar. 5	at #26 San Diego	L, 0-8
Mar. 8	at #25 San Diego State	W, 5-4
Mar. 9	at #44 William & Mary	L, 2-7
Mar. 11	at #7 Pepperdine	L, 0-8
Mar. 17	vs. #17 Notre Dame	L, 3-6
Mar. 19	vs. Penn State	W, 9-0
Mar. 20	vs. Michigan	L, 4-5
Mar. 28	vs. Northern Illinois	W, 9-0
Mar. 30	at Northwestern	L, 3-6
Apr. 6	at Purdue	W, 8-1
Apr. 9	at #9 Indiana	W, 7-2
Apr. 10	at Ohio State	W, 9-0
Apr. 16	vs. Minnesota	W, 8-1
Apr. 17	vs. Iowa	L, 4-5
Apr. 23	vs. Michigan State	W, 8-1
Apr. 29-May 1	Big Ten Championships (Iowa City, Iowa)	
Apr. 29	Northwestern	L, 3-5
Apr. 30	Minnesota	W, 5-1
May 1	Iowa	W, 5-2

1994-95
Head Coach: Jennifer Roberts
Graduate Assistant Coach: Lindsey Nimmo
Season Record: 14-10
Big Ten Record: 8-5 (6th)
NCAA Finish: N/A

Feb. 3	vs. #32 Oklahoma	L, 3-6
Feb. 5	vs. #21 South Alabama	L, 1-8
Feb. 12	at Penn State	W, 9-0
Feb. 24	vs. Drake	W, 9-0
Mar. 10	at Chaminade	W, 9-0
Mar. 11	Boston College (Hawaii)	W, 6-0
Mar. 13	at Hawaii-Pacific	W, 8-0
Mar. 14	at Hawaii	W, 8-1
Mar. 17	#50 Fresno State (San Diego, Calif.)	W, 8-1
Mar. 18	at #21 San Diego	L, 1-8
Mar. 19	Pacific (San Diego, Calif.)	L, 4-5
Mar. 25	vs. #12 Indiana	L, 2-7

Mar. 26	vs. Ohio State	W, 6-3
Mar. 30	at #22 Notre Dame	L, 1-8
Apr. 4	vs. Purdue	W, 6-3
Apr. 7	at Minnesota	W, 5-4
Apr. 9	at Iowa	W, 6-3
Apr. 15	at #35 Michigan	L, 3-6
Apr. 16	at Michigan State	W, 7-2
Apr. 22	vs. Northwestern	L, 3-6
Apr. 23	vs. Wisconsin	W, 8-1
Apr. 28-30	Big Ten Championships (Champaign, Ill.)	
Apr. 28	Purdue	L, 1-5
Apr. 29	Minnesota	W, 5-1
Apr. 30	Michigan	L, 0-5

1995-96
Head Coach: Jennifer Roberts
Graduate Assistant: Lora Suttile
Undergraduate Assistant: Lissa Kimmel
Season Record: 12-14
Big Ten Record: 5-5 (7th)
NCAA Finish: 1st round

Jan. 28	vs. #16 Notre Dame	L, 0-7
Jan. 28	vs. Western Michigan	W, 7-0
Feb. 3	vs. Miami (OH)	W, 5-2
Feb. 3	vs. Ball State	W, 6-1
Feb. 17	at North Carolina	L, 3-6
Feb. 18	at Virginia	W, 4-3
Feb. 23	at #27 South Alabama	L, 0-7
Feb. 24	#36 South Florida (Mobile, Ala.)	L, 2-5
Mar. 1	at Ohio State	W, 6-1
Mar. 3	at Indiana	W, 4-3
Mar. 10	at #32 UC-Santa Barbara	L, 4-5
Mar. 14	at #36 San Diego State	L, 2-7
Mar. 15	Pacific (San Diego, Calif.)	L, 4-5
Mar. 16	Yale (San Diego, Calif.)	W, 8-1
Mar. 17	Ohio State (San Diego, Calif.)	W, 7-1
Mar. 30	vs. Iowa	W, 6-1
Mar. 31	vs. Minnesota	L, 2-5
Apr. 5	vs. Michigan	L, 3-4
Apr. 6	vs. Michigan State	W, 6-1
Apr. 13	at #7 Wisconsin	L, 0-7
Apr. 14	at #23 Northwestern	L, 1-6
Apr. 19	at Purdue	L, 3-4
Apr. 21	vs. Penn State	W, 4-3
Apr. 25-27	Big Ten Championships (Madison, Wis.)	
Apr. 25	Iowa	W, 4-2
Apr. 26	#23 Northwestern	L, 2-4
Apr. 26	NCAA Regional Championships (Champaign, Ill.)	
May 3-5	#21 Northwestern	L, 1-5

1996-97
Head Coach: Jennifer Roberts
Season Record: 11-14
Big Ten Record: 5-5 (5th)
NCAA Finish: 1st round

Jan. 24	at #5 Arizona	L, 4-5
Jan. 25	#56 TCU (Tucson, Ariz.)	W, 5-4
Jan. 26	Mississippi State (Tucson, Ariz.)	W, 5-1
Jan. 30	at #11 Notre Dame	L, 2-5
Feb. 2	vs. #61 Marquette	W, 4-3
Feb. 2	vs. Drake	W, 7-0
Feb. 9	at #13 Tennessee	L, 0-9
Feb. 14	at Iowa	W, 1-6
Feb. 16	at #39 Minnesota	L, 1-6
Feb. 22	vs. #43 North Carolina	W, 6-3
Mar. 9	vs. #40 Alabama	L, 3-6
Mar. 15	at Michigan State	W, 7-0
Mar. 16	at #17 Michigan	L, 1-6
Mar. 23	at #49 South Florida	L, 1-8
Mar. 26	Maryland (Tallahassee, Fla.)	L, 2-7
Mar. 28	at #46 Florida State	L, 2-7
Apr. 5	vs. #20 Wisconsin	L, 1-6
Apr. 6	vs. #45 Northwestern	L, 2-5
Apr. 12	at #54 Penn State	W, 6-1
Apr. 16	vs. Purdue	W, 4-3

Apr. 19	vs. Ohio State	W, 4-3
Apr. 20	vs. #44 Indiana	L, 2-5
Apr. 24-27	Big Ten Championships (West Lafayette, Ind.)	
Apr. 24	Michigan State	W, 4-3
Apr. 25	#19 Wisconsin	L, 0-4
May 9-11	NCAA Midwest Regional (South Bend, Ind.)	
May 9	#19 Notre Dame	L, 3-5

1997-98
Head Coach: Jennifer Roberts
Assistant Coach: Christine Neuman
Season Record: 8-13
Big Ten Record: 4-6 (8th)
NCAA Finish: N/A

Jan. 19	vs. Illinois-Chicago	W, 8-1
Jan. 23	at #12 Tennessee	L, 0-9
Jan. 25	at Louisville	W, 5-4
Feb. 13	at #42 Virginia	W, 5-4
Feb. 15	at #48 North Carolina	L, 3-6
Feb. 28	at #22 Northwestern	L, 2-5
Mar. 1	at #25 Wisconsin	L, 1-6
Mar. 6	at #51 TCU	L, 3-6
Mar. 7	at SMU	W, 7-2
Mar. 20	vs. #28 Michigan	L, 1-6
Mar. 21	vs. Michigan State	W, 4-3
Mar. 24	at #41 Florida State	L, 3-6
Mar. 26	at #25 South Alabama	L, 1-5
Mar. 28	#36 South Florida (Mobile, Ala.)	L, 3-5
Apr. 9	at #49 Purdue	L, 2-5
Apr. 11	vs. Penn State	W, 5-2
Apr. 18	at #50 Indiana	L, 1-6
Apr. 19	at Ohio State	W, 4-3
Apr. 25	vs. #55 Minnesota	W, 4-3
Apr. 26	vs. #48 Iowa	L, 2-5
Apr. 30-May 2	Big Ten Championships (Madison, Wis.)	
Apr. 30	Ohio State	L, 1-4

1998-99
Head Coach: Sujay Lama
Assistant Coach: JoAnne Russell
Season Record: 13-11
Big Ten Record: 7-3 (4th)
NCAA Finish: N/A

Jan. 30	at #22 Miami (FL) (62)	L, 1-8
Jan. 31	at #48 Florida State (62)	L, 1-5
Feb. 3	vs. Middle Tennessee State (62)	W, 8-1
Feb. 13	at #61 Iowa (62)	L, 1-6
Feb. 14	at #29 Wisconsin (62)	L, 3-4
Feb. 20	at Minnesota (62)	L, 2-5
Feb. 27	vs. SMU (62)	W, 9-0
Feb. 28	vs. #32 Northwestern (62)	W, 4-3
Mar. 6	vs. #53 North Carolina (62)	L, 4-5
Mar. 7	vs. #26 Tennessee (62)	L, 2-7
Mar. 11	vs. #44 Baylor (60)	W, 7-2
Mar. 16	#17 Arkansas (LaJolla, Calif.)	L, 0-9
Mar. 18	at #75 UC-Santa Barbara (60)	W, 6-0
Mar. 19	Boise State (60) (Irvine, Calif.)	W, 8-1
Mar. 31	at #13 Notre Dame (62)	L, 2-7
Apr. 10	vs. #31 Ohio State (51)	W, 4-3
Apr. 11	vs. Penn State (51)	W, 7-0
Apr. 17	at #65 Indiana (51)	W, 5-2
Apr. 18	at Purdue (51)	W, 6-1
Apr. 24	vs. Michigan (45)	W, 7-0
Apr. 25	vs. Michigan State (45)	W, 7-0
Apr. 30-May 2	Big Ten Championships (East Lansing, Mich.)	
Apr. 30	#40 Ohio State (45)	W, 5-2
May 1	#23 Northwestern (45)	L, 1-4
May 15	NCAA Regional Championships (Tempe, Ariz.)	
May 15	#22 Northwestern (44)	L, 3-5

1999-2000

Head Coach: Sujay Lama
Assistant Coach: JoAnne Russell
Season Record: 12-13
Big Ten Record: 8-3 (4th)
NCAA Finish: 1st round

Jan. 22	vs. Illinois-Chicago (40)	W, 7-2
Jan. 22	vs. DePaul (40)	L, 3-6
Jan. 29	at #43 South Florida (40)	L, 3-6
Jan. 30	at #2 Florida (40)	L, 0-9
Feb. 5	at #14 Tennessee (47)	L, 1-6
Feb. 12	#39 Maryland (47) (South Bend, Ind.)	W, 6-3
Feb. 13	at #17 Notre Dame (47)	L, 1-8
Feb. 26	at Michigan State (44)	W, 7-0
Feb. 27	at #59 Michigan (44)	W, 5-2
Mar. 4	at #28 North Carolina (44)	L, 2-7
Mar. 5	at #7 Duke (44)	L, 3-6
Mar. 14	SMU (58) (Santa Barbara, Calif.)	W, 6-3
Mar. 15	at #6 USC (58)	L, 3-6
Mar. 17	at #7 UCLA (58)	L, 2-7
Mar. 25	vs. #64 Purdue (67)	W, 5-2
Mar. 26	vs. #33 Indiana (67)	W, 4-3
Apr. 1	at #13 Northwestern (51)	W, 4-3
Apr. 8	at #63 Penn State (28)	W, 5-2
Apr. 9	at #40 Ohio State (28)	L, 2-5
Apr. 16	vs. #33 Minnesota (37)	W, 4-3
Apr. 22	vs. Wisconsin (31)	W, 4-3
Apr. 23	vs. #42 Iowa (31)	L, 3-4
Apr. 28-30	Big Ten Championships (Ann Arbor, Mich.)	
Apr. 28	#55 Purdue (36)	W, 4-2
Apr. 29	#17 Northwestern (36)	L, 1-4
May 12-14	NCAA Regional (Gainesville, Fla.)	
May 12	#22 Florida State (34)	L, 3-5

2000-01

Head Coach: Sujay Lama
Assistant Coach: JoAnne Russell
Season Record: 18-8
Big Ten Record: 9-1 (2nd)
NCAA Finish: 2nd round

Jan. 27	vs. Illinois State (33)	W, 7-0
Jan. 27	vs. Illinois-Chicago (33)	W, 7-0
Feb. 3	vs. Louisville (34)	W, 7-0
Feb. 4	vs. #17 Tennessee (34)	L, 2-5
Feb. 11	vs. #8 Wake Forest (33)	W, 5-2
Feb. 16	vs. #59 Western Michigan (27)	W, 6-1
Feb. 17	vs. #22 North Carolina (27)	L, 2-5
Feb. 24	at #56 Michigan (26)	W, 5-2
Feb. 25	at Michigan State (26)	W, 7-0
Feb. 28	vs. #3 Duke (25)	L, 0-7
Mar. 3	vs. #11 Northwestern (25)	L, 3-4
Mar. 10	vs. #67 Purdue (24)	W, 6-1
Mar. 11	vs. #43 Indiana (24)	W, 5-2
Mar. 16	at #4 Florida (23)	L, 0-7
Mar. 31	at Marquette (28)	W, 6-1
Apr. 5	vs. #8 Notre Dame (36)	L, 3-4
Apr. 7	at #32 Iowa (36)	W, 5-2
Apr. 14	at Wisconsin (29)	W, 6-1
Apr. 15	at #66 Minnesota (29)	W, 6-1
Apr. 21	vs. #33 Ohio State (34)	W, 4-3
Apr. 22	vs. #48 Penn State (34)	W, 6-1
Apr. 27-29	Big Ten Championships (Columbus, Ohio)	
Apr. 27	Wisconsin (29)	W, 5-0
Apr. 28	#54 Penn State (29)	W, 4-1
Apr. 29	#9 Northwestern (29)	L, 2-4
May 12-13	NCAA Regional Championships (Seattle, Wash.)	
May 12	#41 Va. Commonwealth (29)	W, 4-2
May 13	#12 Washington (29)	L, 0-4

2001-02

Head Coach: Sujay Lama
Assistant Coach: JoAnne Russell
Season Record: 11-12
Big Ten Record: 6-4 (4th)
NCAA Finish: N/A

Jan. 19	vs. #59 Illinois State (29)	W, 6-1
Jan. 19	vs. Illinois-Chicago (29)	W, 6-1
Jan. 27	at #6 Tennessee (29)	L, 0-7
Feb. 1	vs. #75 Western Michigan (30)	W, 7-0
Feb. 3	vs. Colorado (30)	W, 7-0
Feb. 10	vs. Marquette (30)	W, 6-1
Feb. 16	at #6 Wake Forest (34)	L, 2-5
Feb. 17	at #20 Vanderbilt (34)	L, 0-7
Feb. 23	vs. #75 Michigan State (34)	W, 4-3
Feb. 24	vs. #70 Michigan (34)	W, 5-2
Mar. 2	at #13 North Carolina (35)	L, 1-6
Mar. 3	at #3 Duke (35)	L, 1-6
Mar. 9	at #59 Purdue (35)	L, 2-5
Mar. 10	at #32 Indiana (35)	L, 3-4
Mar. 16	at #14 Northwestern (46)	L, 0-7
Mar. 23	at #30 Arizona (65)	L, 2-5
Mar. 27	at #23 Notre Dame	L, 3-4
Apr. 6	vs. #61 Iowa (72)	W, 4-3
Apr. 13	vs. #73 Minnesota (67)	W, 6-1
Apr. 14	#37 Wisconsin (67)	W, 4-3
Apr. 20	at Ohio State (46)	L, 2-5
Apr. 21	at Penn State (46)	W, 4-3
Apr. 28-30	Big Ten Championships (Bloomington, Ind.)	
Apr. 28	#60 Iowa (50)	L, 1-4

2002-03

Head Coach: Sujay Lama
Assistant Coach: JoAnne Russell
Season Record: 17-8
Big Ten Record: 8-2 (3rd)
NCAA Finish: 2nd round

Jan. 17	at Florida Atlantic (45)	W, 7-0
Jan. 18	at #24 Miami (FL) (45)	L, 1-6
Jan. 25	#34 Oregon (Boulder, Colo.) (45)	L, 3-4
Jan. 26	at Colorado (45)	W, 4-3
Feb. 1	vs. Western Michigan (45)	W, 4-3
Feb. 2	vs. #1 Tennessee (45)	L, 2-5
Feb. 15	at Iowa (49)	W, 6-1
Feb. 16	at #50 Minnesota (49)	W, 4-3
Feb. 23	vs. #1 Duke (49)	W, 4-3
Mar. 2	vs. #50 Wake Forest (25)	W, 5-2
Mar. 8	at Marquette (25)	W, 6-1
Mar. 16	at #42 Baylor (19)	W, 4-3
Mar. 29	at #26 Northwestern (17)	L, 0-7
Mar. 30	at Wisconsin (17)	W, 4-3
Apr. 2	vs. #27 Notre Dame (24)	L, 1-6
Apr. 5	vs. Penn State (24)	W, 6-1
Apr. 6	vs. #47 Ohio State (24)	W, 6-1
Apr. 12	at #48 Michigan (22)	L, 2-5
Apr. 13	at Michigan State (22)	W, 6-1
Apr. 17	vs. #45 Purdue (26)	W, 4-3
Apr. 19	vs. Indiana (26)	W, 7-0
Apr. 24-27	Big Ten Championships (Urbana, Ill.)	
	Wisconsin (25)	W, 4-1
	#19 Northwestern (25)	L, 2-4
May 9-11	NCAA Regional Championships (Seattle, Wash.)	
	#30 UNLV (25)	W, 4-0
	#6 Washington (25)	L, 0-4

2003-04

Head Coach: Sujay Lama
Assistant Coach: JoAnne Russell
Season Record: 17-6
Big Ten Record: 8-2 (3rd)
NCAA Finish: 1st round

Jan. 25	vs. Marquette (23)	W, 6-1
Jan. 25	vs. Illinois State (23)	W, 7-0
Feb. 1	at #23 Tennessee (24)	L, 2-5
Feb. 14	vs. Harvard (24)	W, 5-2
Feb. 21	at #58 Wake Forest (24)	W, 4-3
Feb. 27	vs. #4 Washington (18)	L, 2-5
Feb. 28	vs. Western Michigan (18)	W, 6-1
Mar. 4	at #19 Notre Dame (17)	W, 5-2
Mar. 7	at #57 Purdue (17)	L, 3-4
Mar. 13	vs. Illinois-Chicago (22)	W, 6-1
Mar. 13	vs. DePaul (22)	W, 7-0
Mar. 24	at South Florida (28)	W, 6-1
Mar. 27	vs. Minnesota (28)	W, 6-1
Mar. 28	vs. #38 Iowa (28)	W, 6-1
Apr. 3	vs. Wisconsin (24)	W, 4-3
Apr. 4	vs. #7 Northwestern (24)	W, 4-3
Apr. 10	at Penn State (17)	W, 4-3
Apr. 11	at #38 Ohio State (17)	W, 4-3
Apr. 17	vs. #27 Michigan (17)	W, 5-2
Apr. 18	vs. Michigan State (17)	W, 7-0
Apr. 24	at #25 Indiana (16)	L, 3-4
Apr. 29-May 2	Big Ten Championships (Evanston, Ill.)	
Apr. 30	Ohio State (20)	L, 2-4
May 14-15	NCAA Regional Championships (Durham, N.C.)	
May 14	#36 William & Mary (22)	L, 2-4

2004-05

Head Coach: Sujay Lama
Assistant Coach: JoAnne Russell
Season Record: 12-11
Big Ten Record: 5-5 (5th)
NCAA Finish: N/A

Jan. 15	at Hawaii (33)	W, 6-1
Jan. 22	at Marquette (33)	W, 7-0
Jan. 28	vs. #30 Wake Forest (33)	L, 2-5
Jan. 30	vs. #18 Tennessee (33)	L, 3-4
Feb. 6	vs. Illinois State (33)	W, 7-0
Feb. 6	vs. Illinois-Chicago (33)	W, 4-3
Feb. 12	at #17 Harvard (33)	L, 1-6
Feb. 18	vs. #59 Colorado (35)	W, 4-3
Feb. 20	vs. #48 Western Michigan (35)	L, 3-4
Feb. 25	at Portland (45)	W, 7-0
Feb. 26	at #8 Washington (45)	L, 1-6
Mar. 5	vs. #42 Purdue (45)	W, 4-3
Mar. 26	vs. Penn State (51)	W, 5-2
Mar. 27	vs. #43 Indiana (51)	L, 3-4
Apr. 2	at #68 Ohio State (53)	W, 5-2
Apr. 9	vs. #62 Michigan State (53)	W, 5-2
Apr. 10	vs. #38 Michigan (53)	L, 3-4
Apr. 13	vs. #26 Notre Dame (54)	L, 3-4
Apr. 16	at #33 Wisconsin (54)	W, 4-3
Apr. 17	at #3 Northwestern (54)	L, 0-7
Apr. 23	vs. #49 Iowa (50)	L, 1-6
Apr. 24	vs. Minnesota (50)	W, 7-0
Apr. 28-May 1	Big Ten Championships (East Lansing, Mich.)	
Apr. 29	#38 Wisconsin (53)	L, 2-4

2005-06
Head Coach: Sujay Lama
Assistant Coach: JoAnne Russell
Season Record: 8-15
Big Ten Record: 2-8 (8th)
NCAA Finish: N/A

Jan. 20	vs. Marquette (53)	W, 6-1
Jan. 22	vs. #54 Western Michigan (53)	W, 5-2
Jan. 28	at #19 Tennessee (53)	L, 1-6
Feb. 4	vs. Illinois State (48)	W, 6-1
Feb. 4	vs. Illinois-Chicago (48)	W, 7-0
Feb. 10	at #19 William & Mary (49)	L, 0-7
Feb. 12	at #23 Wake Forest (49)	L, 0-7
Feb. 18	vs. #35 Mississippi (48)	L, 3-4
Feb. 22	at #32 Purdue (49)	L, 1-6
Mar. 5	at #5 Notre Dame (49)	L, 0-7
Mar. 10	vs. #50 Louisville (55)	W, 5-2
Mar. 22	at #3 USC (59)	L, 1-6
Mar. 24	at Penn State (59)	L, 3-4
Mar. 26	at #35 Indiana (59)	L, 1-6
Apr. 2	vs. #69 Ohio State (70)	L, 2-5
Apr. 8	at Michigan State	W, 4-3
Apr. 9	at #36 Michigan	L, 1-6
Apr. 15	vs. #9 Northwestern	L, 1-6
Apr. 16	vs. Wisconsin	W, 4-3
Apr. 22	at Minnesota	L, 2-5
Apr. 23	at #30 Iowa	L, 2-5
Apr. 27-30	Big Ten Championships (Urbana, Ill.)	
Apr. 27	Ohio State	W, 4-2
Apr. 28	#30 Iowa	L, 0-4

2006-07
Head Coach: Michelle Dasso
Assistant Coach: David Emery
Season Record: 5-17
Big Ten Record: 1-9 (10th)
NCAA Finish: N/A

Jan. 20	at Marquette	W, 4-3
Jan. 26	vs. #4 Notre Dame	L, 0-7
Jan. 28	vs. #31 Tennessee	L, 0-7
Feb. 4	vs. Illinois-Chicago	W, 7-0
Feb. 9	vs. #25 William & Mary	L, 1-6
Feb. 11	vs. #1 Georgia Tech	L, 0-7
Feb. 23	vs. #36 Purdue	L, 1-6
Feb. 24	vs. Washington	L, 3-4
Mar. 7	vs. Illinois State	W, 6-1
Mar. 19	at Houston	L, 3-4
Mar. 20	at #40 Texas	L, 0-7
Mar. 22	at Texas-San Antonio	W, 4-2
Mar. 25	vs. Michigan State	L, 2-5
Mar. 31	at #10 Northwestern	L, 0-7
Apr. 1	at Wisconsin	W, 4-3
Apr. 7	vs. Penn State	L, 3-4
Apr. 8	vs. #23 Michigan	L, 0-7
Apr. 14	vs. #33 Indiana	L, 2-5
Apr. 15	vs. #50 Ohio State	L, 3-4
Apr. 21	at #59 Iowa	L, 1-6
Apr. 22	at #56 Minnesota	L, 1-5
Apr. 26-28	Big Ten Championships (Minneapolis, Minn.)	
Apr. 26	#60 Minnesota	L, 0-4

2007-08
Head Coach: Michelle Dasso
Assistant Coach: David Emery
Season Record: 12-11
Big Ten Record: 7-3 (4th)
NCAA Finish: 1st round

Jan. 12	at Florida Atlantic	W, 7-0
Jan. 19	vs. Marquette	W, 5-2
Jan. 21	vs. #62 Western Michigan	L, 3-4
Jan. 26	at #22 Tennessee	L, 1-6
Feb. 4	at #21 Florida State	L, 0-7
Feb. 8	vs. #60 DePaul	W, 6-1
Feb. 10	at Kansas	W, 5-2
Feb. 17	at #48 Washington (68)	L, 3-4
Mar. 8	at Purdue (65)	W, 4-3
Mar. 12	at #23 Notre Dame (61)	L, 1-6
Mar. 19	Princeton (Puerto Rico) (55)	L, 3-4
Mar. 23	at Michigan State (55)	W, 4-3
Mar. 29	vs. Wisconsin (70)	W, 6-1

Mar. 30	vs. #1 Northwestern (70)	L, 0-7
Apr. 4	at #22 Michigan (62)	L, 2-5
Apr. 6	at Penn State (62)	W, 4-3
Apr. 12	at #29 Indiana (58)	L, 3-4
Apr. 13	at #31 Ohio State (58)	W, 5-2
Apr. 19	vs. #69 Minnesota (54)	W, 4-3
Apr. 20	vs. #56 Iowa (54)	W, 6-1
Apr. 24-29	Big Ten Championships (West Lafayette, Ind.)	
Apr. 24	#34 Ohio State (43)	W, 4-3
Apr. 26	#1 Northwestern (43)	L, 0-4
May 9-11	NCAA Regional Championships (Atlanta, Ga.)	
May 9	#25 Tennessee (36)	L, 0-4

2008-09
Head Coach: Michelle Dasso
Assistant Coach: David Emery
Season Record: 19-8
Big Ten Record: 8-2 (3rd)
NCAA Finish: 2nd round

Jan. 24	vs. #24 Tennessee (37)	L, 3-4
Jan. 25	vs. Miami (OH) (37)	W, 5-2
Jan. 30	#38 UNLV (Palo Alto, Calif.) (36)	W, 4-3
Jan. 31	at #5 Stanford (36)	L, 1-6
Feb. 6	vs. #75 Kansas (36)	W, 7-0
Feb. 8	vs. Illinois-Chicago (36)	W, 7-0
Feb. 8	vs. Illinois State (36)	W, 7-0
Feb. 21	at Harvard (33)	W, 5-2
Feb. 22	at Boston College (33)	W, 6-1
Feb. 28	at Marquette (33)	W, 6-1
Mar. 7	vs. #36 Indiana (51)	W, 5-2
Mar. 8	at Purdue (51)	W, 4-3
Mar. 13	at #1 Northwestern (33)	L, 1-6
Mar. 15	at #72 Wisconsin (33)	W, 6-1
Mar. 27	#36 Washington (Honolulu, Hawaii) (32)	L, 3-4
Mar. 28	at Hawaii (33)	W, 5-2
Apr. 4	#65 Minnesota (40)	W, 7-0
Apr. 5	vs. #69 Iowa (40)	W, 5-2
Apr. 7	vs. #4 Notre Dame (36)	L, 1-6
Apr. 10	at #43 Ohio State (36)	W, 5-2
Apr. 12	at Penn State (36)	W, 7-0
Apr. 18	vs. Michigan State (33)	W, 7-0
Apr. 19	vs. #18 Michigan (33)	L, 1-6
Apr. 24-26	Big Ten Championships (Madison, Wis.)	
Apr. 24	Purdue (34)	W, 4-1
Apr. 25	#18 Michigan (34)	L, 3-4
May 9-10	NCAA Regional Championships (Urbana, Ill.)	
May 9	#19 Vanderbilt (34)	W, 4-3
May 10	#16 Fresno State (34)	L, 3-4

2009-10
Head Coach: Michelle Dasso
Assistant Coach: Georgia Rose
Season Record: 15-10
Big Ten Record: 8-2 (3rd)
NCAA Finish: 1st round

Jan. 22	at #11 Tennessee (33)	L, 3-4
Jan. 24	at #26 Virginia (33)	L, 3-4
Jan. 30	vs. #20 Mississippi (Clemson, S.C.) (32)	L, 2-4
Jan. 31	vs. #37 Texas A&M (Clemson, S.C.) (32)	W, 4-2
Feb. 5	vs. #21 Florida State (32)	L, 3-4
Feb. 7	vs. Marquette (32)	W, 6-1
Feb. 20	vs. Western Illinois (32)	W, 7-0
Feb. 26	at #17 Notre Dame (31)	L, 2-5
Feb. 28	vs. #2 Northwestern (39)	L, 2-5
Mar. 7	vs. #53 Harvard (39)	W, 5-2
Mar. 12	at #62 TCU (43)	W, 4-3
Mar. 19	at #28 Indiana (44)	W, 6-1
Mar. 26	vs. Wisconsin (31)	W, 5-2
Apr. 4	at #20 South Carolina (39)	L, 3-4
Apr. 10	at College of Charleston (39)	W, 7-0
Apr. 11	vs. #42 Purdue (37)	W, 6-1
Apr. 17	at #22 Iowa (36)	W, 6-1
Apr. 18	vs. #33 Ohio State (26)	W, 4-3
Apr. 24	vs. Penn State (26)	W, 7-0
Apr. 25	at #4 Michigan (21)	L, 2-5
Apr. 25	at Michigan State (21)	W, 5-2
Apr. 30	Big Ten Championships (Iowa City, Iowa)	
Apr. 30	vs. #49 Purdue (21)	W, 4-2
May 1	vs. #5 Northwestern (21)	L, 2-4
May 14	NCAA Regional Championships (Evanston, Ill.)	
May 14	vs. #37 Nebraska (22)	L, 2-4

2010-11
Head Coach: Michelle Dasso
Assistant Coach: Georgia Rose
Season Record: 11-13
Big Ten Record: 5-5 (5th)
NCAA Finish: N/A

Jan. 22	vs. #4 Notre Dame (25)	L, 2-5
Jan. 23	vs. #13 Tennessee (25)	L, 3-4
Jan. 29	vs. #28 South Florida (25) (Atlanta, Ga.)	L, 3-4
Jan. 30	vs. #30 Iowa (25)	W, 5-2
Feb. 4	vs. #35 DePaul (28)	W, 5-2
Feb. 6	vs. #26 Virginia (28)	L, 2-5
Feb. 13	vs. #26 South Carolina (29)	L, 2-5
Mar. 4	at Penn State (51)	W, 4-3
Mar. 6	vs. #24 Texas (51)	L, 3-4
Mar. 18	Western Michigan	W, 5-2
Mar. 23	at #23 San Diego	L, 0-7
Mar. 27	at #71 Ohio State	L, 3-4
Apr. 2	vs. #58 Purdue	W, 4-3
Apr. 3	vs. Indiana	W, 4-3
Apr. 6	vs. Illinois State	W, 7-0
Apr. 8	vs. Iowa	W, 5-2
Apr. 10	at #16 Northwestern	L, 2-5
Apr. 15	vs. #10 Michigan	L, 0-7
Apr. 17	vs. Michigan State	W, 6-1
Apr. 22	at Minnesota	L, 3-4
Apr. 24	at Wisconsin	L, 3-4
Apr. 24-29	Big Ten Championships (Ann Arbor, Mich.)	
Apr. 28	vs. Michigan State	W, 4-0
Apr. 29	vs. #61 Purdue	W, 4-1
Apr. 30	vs. #19 Northwestern	L, 0-4

Results Key
 () - Indicates Illinois' rank at the time of the match.
 Illinois began receiving regular season rankings in 1998.

2011-12
Head Coach: Michelle Dasso
Assistant Coach: Georgia Rose
Season Record: 18-8
Big Ten Record: 9-2 (T-3rd)
NCAA Finish: 1st round

Jan. 13	vs. Stephen F. Austin (69)	W, 5-2
Jan. 21	vs. Western Illinois (69)	W, 7-0
Jan. 21	vs. Illinois State (69)	W, 7-0
Jan. 27	vs. #67 Winthrop/ITA Kick-Off (68)	W, 7-0
Jan. 28	vs. #3 Duke/ITA Kick-Off (68)	L, 1-6
Feb. 3	vs. #36 SMU (63)	W, 6-1
Feb. 19	at #23 Notre Dame (57)	L, 3-4
Feb. 25	vs. #40 Princeton (58)	W, 4-0
Feb. 25	vs. #20 Alabama (58)	L, 3-4
Feb. 26	vs. #33 Arizona (58)	L, 0-4
Mar. 10	vs. #14 Northwestern (45)	L, 2-5
Mar. 19	at #29 Rice (46)	W, 5-1
Mar. 21	at #9 Texas (50)	W, 4-3
Mar. 24	vs. #25 Nebraska (50)	W, 4-3
Mar. 25	vs. Iowa (50)	W, 6-1
Mar. 30	at Wisconsin (21)	W, 7-0
Apr. 1	at #32 Minnesota (21)	W, 6-1
Apr. 7	at #15 Michigan (19)	L, 1-6
Apr. 8	at Michigan State (19)	W, 7-0
Apr. 13	vs. #61 Ohio State (23)	W, 4-3
Apr. 15	vs. #52 Penn State (23)	W, 5-2
Apr. 20	vs. #47 Indiana (21)	W, 4-3
Apr. 22	at #29 Purdue (21)	W, 5-2
Apr. 27-28	Big Ten Championships (Columbus, Ohio)	
Apr. 27	vs. #34 Minnesota (20)	W, 4-0
Apr. 28	vs. #15 Michigan (20)	L, 0-4
May 11	NCAA Regional Championships (Oxford, Miss.)	
May 11	vs. #39 Rice (18)	L, 3-4

ALL-TIME SERIES RECORDS

Alabama	0-5	Fresno State	1-1	Minnesota	25-18	Rollins College	1-0	U.S. International U	0-2
Arizona	0-5	Georgia	0-1	Mississippi	0-3	Rosary College	1-0	UC-Irvine	0-1
Arizona State	0-2	Georgia State	1-0	Mississippi State	1-0	Rutgers	1-0	UC-Santa Barbara	1-1
Arkansas	0-3	Georgia Tech	0-1	Missouri	2-0	San Diego	0-4	UCLA	0-1
Auburn	0-1	Harvard	3-1	Morehead State	0-1	San Diego State	1-1	UI-Chicago Circle	5-0
Augustana	2-3	Hawaii	4-0	Murray State	1-0	Sangamon State	4-1	UNLV	2-1
Ball State	1-0	Hawaii-Pacific	1-0	Nebraska	1-2	SE Louisiana	1-0	USC	0-2
Baylor	3-0	Houston	0-3	North Carolina	1-8	SIUE	10-3	Vanderbilt	1-3
Boise State	1-0	Illinois State	29-8	North Kentucky	1-0	SMU	4-0	Virginia	2-2
Boston College	2-0	Illinois-Chicago	9-0	North Texas State	1-1	South Alabama	0-4	Virginia Commonwealth	1-0
Bowling Green	1-0	Indiana	10-33	Northern Colorado	1-1	South Carolina	0-2	Wake Forest	1-0
Bradley	11-0	Indiana State	6-0	Northern Illinois	13-0	South Florida	2-7	Washington	0-7
Chaminade	1-0	Iowa	26-23	Northern Iowa	1-0	Southern Illinois	9-5	Washington (St. Louis)	1-0
College of Charleston	1-0	Iowa State	6-0	Northwestern	8-45	Southern Missouri St.	1-0	Western Illinois	1-2
Colorado	3-0	Kansas	2-5	Notre Dame	8-24	St. Ambrose	1-0	Western Kentucky	1-0
Dallas	1-0	Kansas State	2-0	Odessa College	1-0	St. Francis	2-0	Western Michigan	10-8
DePaul	3-1	Kentucky	0-1-1	Ohio State	32-13	Stanford	0-1	Wheaton	3-0
DePauw	1-0	Lake Forest	1-0	Oklahoma	0-4	Stephen F. Austin	1-0	Wichita State	3-1
Drake	8-0	Louisville	6-0	Oklahoma State	0-4	SW Louisiana	1-0	William & Mary	0-5
Duke	1-5	LSU	0-2	Oral Roberts	0-1	SW Missouri	1-0	Winthrop	1-0
Eastern Illinois	8-4	Marquette	13-1	Oregon	0-1	TCU	2-3	Wisconsin	16-23
Eastern Michigan	2-0	Maryland	1-1	Pacific	0-2	Tennessee	1-17	Wisconsin (EauClaire)	1-0
Eastern Tennessee State	1-0	Memphis State	1-0	Penn State	20-2	Texas	1-4	Wisconsin (LaCrosse)	2-0
Emporia State	1-0	Miami (FL)	0-3	Pepperdine	0-2	Texas A&M	1-0	Wisconsin (Oshkosh)	2-0
Florida	0-2	Miami (OH)	4-10	Portland	1-0	Texas-San Antonio	2-0	Wisconsin (Whitewater)	1-0
Florida Atlantic	2-0	Michigan	11-27	Princeton	1-1	Toledo	1-0	Wisconsin-Milwaukee	1-0
Florida International	0-1	Michigan State	29-10	Principia	2-0	Trinity	0-3	Yale	1-0
Florida Southern	1-0	Middle Tennessee State	1-0	Purdue	28-27	Tulane	0-1		
Florida State	1-6	Millikin	1-0	Rice	2-2	Tyler JC	0-2		

2013 opponents in bold

COACHING RECORDS

ALL-TIME RECORDS

Coach	Tenure	Seasons	Overall Record		Big Ten Record	
			W-L	Pct.	W-L	Pct.
Peggy Pruitt	1974-75	1	6-0	1.000	----	----
Carla Thompson	1976-78	3	18-17	.514	----	----
Linda Pecore	1979-81	3	44-41	.518	----	----
Mary Tredennick	1982-87	6	98-109	.473	28-60	.318
Jennifer Roberts	1988-98	11	138-136	.504	68-70	.493
Sujay Lama	1999-2006	8	108-84	.562	59-34	.580
Michelle Dasso	2007-Present	6	80-67	.544	38-23	.623
Illinois History		38	492-454	.520	193-187	.508

YEAR-BY-YEAR

Year	Coach	Overall	Big Ten	Place
1975	Peggy Pruitt	6-0	----	----
1976	Carla Thompson	5-3	----	----
1977	Carla Thompson	7-8	----	----
1978	Carla Thompson	6-6	----	----
1979	Linda Pecore	5-11	----	----
1980	Linda Pecore	18-9	----	----
1981	Linda Pecore	21-21	----	----
1982	Mary Tredennick	22-16	1-10	8th
1983	Mary Tredennick	16-21	2-14	8th
1984	Mary Tredennick	15-18	7-9	7th
1985	Mary Tredennick	17-20	8-7	5th
1986	Mary Tredennick	16-16	5-12	7th
1987	Mary Tredennick	12-18	5-8	7th
1988	Jennifer Roberts	10-17	1-11	10th
1989	Jennifer Roberts	6-22	3-10	7th
1990	Jennifer Roberts	15-14	4-9	8th
1991	Jennifer Roberts	19-9	8-5	5th
1992	Jennifer Roberts	16-8	9-4	4th
1993	Jennifer Roberts	14-6	11-2	3rd
1994	Jennifer Roberts	13-9	8-5	5th
1995	Jennifer Roberts	14-10	8-5	6th
1996	Jennifer Roberts	12-14	6-6	7th
1997	Jennifer Roberts	11-14	6-6	6th
1998	Jennifer Roberts	8-13	4-7	9th
1999	Sujay Lama	13-11	8-4	3rd
2000	Sujay Lama	12-13	9-3	T-2nd
2001	Sujay Lama	18-8	11-2	2nd
2002	Sujay Lama	11-12	6-5	T-4th
2003	Sujay Lama	17-8	9-3	3rd
2004	Sujay Lama	17-6	8-3	3rd
2005	Sujay Lama	12-11	6-6	6th
2006	Sujay Lama	8-15	2-8	10th
2007	Michelle Dasso	5-17	1-9	10th
2008	Michelle Dasso	12-11	7-3	4th
2009	Michelle Dasso	19-8	8-2	3rd
2010	Michelle Dasso	15-10	8-2	3rd
2011	Michelle Dasso	11-13	5-5	T-5th
2012	Michelle Dasso	18-8	9-2	T-3rd

ILLINOIS TEAM RECORDS

Most Wins

1	22-16 (1981-82)
2	21-21 (1980-81)
3	19-8 (2008-09)
	19-9 (1990-91)
5	18-8 (2011-12)
	18-8 (2000-01)
	18-9 (1979-80)

Highest ITA National Ranking
(Excludes final rankings)

No. 16	2004
No. 17	2004, 2003
No. 18	2004, 2012
No. 19	2003, 2012
No. 20	2004, 2012
No. 21	2010, 2012
No. 22	2010, 2004, 2003
No. 23	2004, 2001, 2012
No. 24	2004, 2003, 2001
No. 25	2011, 2003, 2001

Longest Overall Winning Streak

1. 11 matches	3/13/04 - 4/18/04
2. 9 matches	9/5/80 - 9/21/80
	10/5/79 - 4/19/80
4. 8 matches	2/6/09 - 3/8/09
	3/19/93 - 4/24/93
	2/17/91 - 3/22/91
	9/9/81 - 10/1/81

Longest Home Winning Streak

1. 10 matches	1/19/02 - 4/14/02
2. 9 matches	1/19/02 - 4/14/02
3. 8 matches	2/1/92 - 4/18/92
	2/8/91 - 3/22/91
5. 7 matches	2/17/93 - 4/24/93

Longest Big Ten Winning Streak

1. 9 matches	2/17/93 - 4/24/93
2. 8 matches	3/27/04 - 4/18/04
3. 7 matches	3/12/10 - 4/18/10
	3/10/01 - 4/22/01
	2/28/99 - 4/25/99

HOME COURT RECORDS

Home Record since 1985: 174-102 (.630)
Record at Atkins (20 years): 140-74 (.654)

2002	10-0
2003	10-2 (1-1 hosting Big Ten)
2004	12-1
2005	7-7
2006	6-5 (1-1 hosting Big Ten)
2007	2-11
2008	5-2
2009	9-4 (1-1 hosting NCAA Regional)
2010	7-2
2011	7-6
2012	8-1
1985	5-5*
1986	6-6* (2-2 hosting Big Ten)
1987	5-5*
1988	4-6*
1989	3-4*
1990	4-5* (1-3 hosting Big Ten)
1991	10-2*
1992	8-0
1993	7-1
1994	7-3
1995	5-6 (1-2 hosting Big Ten)
1996	4-4 (0-1 hosting NCAA Regional)
1997	5-4
1998	4-2
1999	8-2
2000	5-2
2001	9-5

* at Huff Courts

SINGLES & DOUBLES RECORDS

SINGLES RECORDS

MOST SINGLES WINS - CAREER

	Player	Record	Years
1.	Jennifer McGaffigan	105-58	2000-04
2.	Lindsey Nimmo	103-33	1990-93
3.	Megan Fudge	97-44	2006-10
4.	Maureen McNamara	89-60	1980-84
5.	Tiffany Eklov	87-55	2000-04
6.	Marisa Lambropoulos	84-64	2007-12
7.	Stacy Schapiro	83-79	1995-99
	Carla Rosenberg	83-37	1997-01
9.	Gayathri DeSilva	82-68	1979-83
	Sue Hutchinson	82-63	1980-84
11	Amy Allin	81-51	2008-12
	Simone Kung	81-62	1997-01
13.	Kristi Meola	78-58	1990-94
14.	Camille Baldrich	73-39	1991-95

MOST SINGLES WINS - SEASON

	Player	Record	Year
1.	Lindsey Nimmo	48-7	1992-93
2.	Simone Kung	32-12	2000-01
3.	Lindsey Nimmo	31-11	1990-91
4.	Megan Fudge	30-7	2008-09
	Jennifer McGaffigan	30-18	2000-01
	Jennifer McGaffigan	30-10	2003-04
7.	Kristi Meola	29-8	1990-91
	Cynthia Goulet	29-7	2004-05
9.	Sue Hutchinson	28-11	1981-82
	Maureen McNamara	28-16	1981-82
11.	Kathy Neil	27-16	1995-96
	Simone Kung	27-20	1998-99
13.	Carla Rosenberg	26-7	2000-01
	Cynthia Goulet	26-9	2003-04
	Tiffany Eklov	26-10	2002-03
	Natalie Adsuar	26-13	1995-96
	Stacy Schapiro	26-14	1998-99
	Chelcie Abajian	26-19	2008-09
	Amy Allin	26-14	2008-09

DOUBLES RECORDS

MOST DOUBLES WINS - CAREER

	Player	Record	Years
1.	Jennifer McGaffigan	104-49	2000-04
2.	Marisa Lambropoulos	87-60	2007-12
	Kathy Neil	87-66	1984-88
4.	Carrie Costigan	81-66	1985-89
5.	Sheila Burns	79-68	1983-87
6.	Kristen Jones	78-38	1991-95
7.	Carla Rosenberg	76-51	1997-01
	Brianna Knue	76-70	2003-06
9.	Megan Fudge	73-60	2006-10
10.	Amy Allin	72-40	2008-12
	Chelcie Abajian	72-48	2008-12
	Sandra Goern	72-69	1984-88
13.	Gayathri DeSilva	70-33	1979-83
14.	Jessie Daw	69-49	1983-88

MOST DOUBLES WINS - SEASON

	Player	Record	Year
1.	Michelle Webb	32-10	2002-03
2.	Jennifer McGaffigan	31-8	2002-03
3.	Kathy Neil	30-16	1985-86
4.	Macall Harkins	29-9	2004-05
	Jennifer McGaffigan	29-10	2003-04
	Sheila Burns	29-14	1985-86
7.	Carrie Costigan	28-10	1987-88
	Brianna Knue	28-11	2004-05
9.	Jennifer McGaffigan	27-15	2000-01
	Carrie Costigan	27-15	1985-86
	Kristen Jones	27-11	1994-95
	Cynthia Goulet	27-11	2004-05
13.	Camille Baldrich	26-10	1994-95
	Carla Rosenberg	26-10	2000-01
	Emily Wang	26-10	2004-05

NATIONAL // BIG TEN HONORS

NATIONAL
ALL-AMERICAN

Year	Player
1992-93	Lindsey Nimmo

ITA MIDWEST REGION

SENIOR PLAYER OF THE YEAR

Year	Player
2004-05	Cynthia Goulet

ARTHUR ASHE AWARD

Year	Player
2004-05	Cynthia Goulet
2011-12	Marisa Lambropoulos

ITA/CISSIE LEARY SPORTSMANSHIP
AWARD

Year	Player
2009-10	Megan Fudge

ASSISTANT COACH OF THE YEAR

Year	Coach
2011-12	Georgia Rose

BIG TEN CONFERENCE

Big Ten Player of the Year

Year	Player
1992-93	Lindsey Nimmo

BIG TEN COACH OF THE YEAR

Year	Coach
1986-87	Mary Tredennick

BIG TEN ATHLETE OF THE MONTH/WEEK

Month, Year	Player
May 1991	Lindsey Nimmo
April 1994	Kristen Jones
Feb. 13, 2008	Megan Fudge
April 16, 2008	Megan Fudge
April 14, 2009	Megan Fudge
Jan. 19, 2010	Megan Fudge
April 13, 2010	Megan Fudge
Feb. 21, 2012	Rachael White

BIG TEN FRESHMAN OF THE YEAR

Year	Player
2000-01	Jennifer McGaffigan

ALL-BIG TEN

Year	Player	
1984-85	Jessie Daw & Kathy Neil (2nd Team Doubles)	
1987-88	Cynthia Chambers & Kathy Neil (1st Team Doubles)	2003-04
1989-90	Mary Williams (2nd Team Singles)	
1990-91	Lindsey Nimmo*	
1991-92	Lindsey Nimmo	
1992-93	Lindsey Nimmo	2004-05
1993-94	Kristen Jones, Kristi Meola	
1994-95	Camille Baldrich, Kristen Jones	2005-06
1998-99	Simone Kung, Stacy Schapiro	
2000-01	Jennifer McGaffigan	2006-07
2001-02	Jennifer McGaffigan	
2002-03	Jennifer McGaffigan, Tiffany Eklov	2007-08
2003-04	Jennifer McGaffigan, Cynthia Goulet	
2004-05	Cynthia Goulet	
2005-06	Macall Harkins	2008-09
2006-07	Megan Fudge	
2007-08	Megan Fudge	
2008-09	Megan Fudge, Leigh Finnegan	
2009-10	Megan Fudge	2009-10
2010-11	Rachael White (1st Team), Amy Allin (2nd Team)	
2011-12	Allison Falkin (1st Team), Melissa Kopinski (1st Team), Marisa Lambropoulos (2nd Team)	2010-11
		2011-12

* Beginning in 1991, the first and second team singles and doubles format was abandoned for a 12-member All-Big Ten team.

ACADEMIC ALL-BIG TEN

Year	Player
1986-87	Carrie Costigan
1988-89	Kathy Neil
	Carrie Costigan
	Astrid Eichner
	Kathy Neil
1989-90	Lauren Smolensky
	Astrid Eichner
	Sabine Ensslin
	Linda Gates
	Laurie Kane
1990-91	Cynthia Chambers
	Linda Gates
1991-92	Lindsey Nimmo
	Linda Gates
1992-93	Lindsey Nimmo
	Linda Gates
	Lissa Kimmel
	Sara Marshack
1993-94	Lindsey Nimmo
	Lissa Kimmel
	Sara Marshack
1994-95	Lissa Kimmel
	Jessica Klapper
	Sara Marshack
	Laura Rydberg
1995-96	Jessica Klapper
1996-97	Jessica Klapper
	Kara Loffelmacher
	Laura Rydberg
	Stacy Schapiro
1997-98	Allison Gottlieb
	Kara Loffelmacher
	Stacy Schapiro
	Megan Wise
1998-99	Allison Gottlieb
	Simone Kung
	Carla Rosenberg
	Stacy Schapiro
	Megan Wise
1999-00	Simone Kung
	Natalia Manasova
	Carla Rosenberg
	Megan Wise
2000-01	Eldina Fazlic
	Simone Kung
	Carla Rosenberg
	Michelle Webb
2001-02	Eva Choe
	Tiffany Eklov
	Eldina Fazlic
	Liz Fraker
	Jennifer McGaffigan
	Michelle Webb
2002-03	Eva Choe
	Leila Cehajic
	Tiffany Eklov
	Eldina Fazlic
	Jennifer McGaffigan
	Michelle Webb
2003-04	Leila Cehajic
	Eva Choe
	Tiffany Eklov
	Cynthia Goulet
	Brianna Knue
	Jennifer McGaffigan
2004-05	Pavlina Akritas
	Leila Cehajic
	Cynthia Goulet
	Brianna Knue
2005-06	Alejandra Meza Cuadra
	Momei Qu
	Brianna Knue
2006-07	Alejandra Meza Cuadra
	Momei Qu
2007-08	Leigh Finnegan
	Megan Fudge
	Kristina Minor
	Christine Stromberg
	Momei Qu
2008-09	Alejandra Meza Cuadra
	Leigh Finnegan
	Megan Fudge
	Annie McCarthy
	Kristina Minor
2009-10	Christine Stromberg
	Chelcie Abajian
	Leigh Finnegan
	Megan Fudge
	Annie McCarthy
	Kristina Minor
	Christine Stromberg
2010-11	Chelcie Abajian
	Amy Allin
	Leigh Finnegan
	Annie McCarthy
	Breanne Smutko
2011-12	Chelcie Abajian
	Amy Allin
	Breanne Smutko

UNIVERSITY // TEAM // ACADEMIC AWARDS

FIGHTING ILLINI SPIRIT AWARD

Year	Player
1994-95	Lissa Kimmel
2009-10	Megan Fudge
2011-12	Amy Allin

FEMALE NEWCOMER OF THE YEAR

Year	Player
1991-92	Camille Baldrich
2000-01	Jennifer McGaffigan

INDIVIDUAL GPA AWARDS

(Top GPA among female student-athletes in her class)

Year	Player
1994-95	Jessica Klapper (Sophomore)
1995-96	Jessica Klapper (Junior)
1996-97	Stacy Schapiro (Sophomore)
	Jessica Klapper (Senior)
1997-98	Stacy Schapiro (Junior)
2002-03	Michelle Webb (Senior)
2003-04	Cynthia Goulet (Junior)
2004-05	Cynthia Goulet (Senior)
2005-06	Momei Qu (Sophomore)
2006-07	Momei Qu (Junior)
2007-08	Momei Qu (Senior)

ILLINOIS TENNIS TEAM AWARDS

Most Valuable Player

Year	Player
1980-81	Gayathri DeSilva
1981-82	Sue Arildsen
1982-83	Maureen McNamara
1983-84	Maureen McNamara
1984-85	Christy Flesvig
1985-86	Kathy Neil
1986-87	Sandra Goern, Loren Smolensky
1987-88	Carrie Costigan
1988-89	Linda Gates
1989-90	Kristin Willey
1990-91	Lindsey Nimmo
1991-92	Kristi Meola, Lindsey Nimmo
1992-93	Lindsey Nimmo
1993-94	Kristi Meola
1994-95	Camille Baldrich, Kristen Jones
1995-96	Natalie Adsuar
1996-97	Susanne Land
1997-98	Simone Kung
1998-99	Stacy Schapiro
1999-00	Megan Wise
2000-01	Jennifer McGaffigan
2001-02	Jennifer McGaffigan
2002-03	Tiffany Eklov
2003-04	Jennifer McGaffigan
2004-05	Cynthia Goulet
2005-06	Macall Harkins
2006-07	Megan Fudge
2007-08	Megan Fudge
2008-09	Megan Fudge, Leigh Finnegan
2009-10	Megan Fudge
2010-11	Amy Allin, Rachael White
2011-12	Melissa Kopinski

BRIANNA KNUE FIGHTING ILLINI SPIRIT AWARD

Year	Player
1989-90	Linda Gates
1993-94	Sara Marshack
1994-95	Lissa Kimmel
1995-96	Laura Rydberg
1996-97	Laura Rydberg
1997-98	Allison Gottlieb
1998-99	Simone Kung
1999-00	Simone Kung
2000-01	Michelle Webb
2001-02	Liz Fraker, Eldina Fazlic
2002-03	Jennifer McGaffigan
2003-04	Brianna Knue
2004-05	Leila Cehajic
2005-06	Brianna Knue
2006-07	Kristina Minor
2007-08	Annie McCarthy
2008-09	Kristina Minor
2009-10	Kristina Minor
2010-11	Amy Allin

2011-12 Amy Allin

MOST IMPROVED PLAYER

Year	Player
1980-81	Jenny Roberts
1981-82	Sue Hutchinson
1982-83	Sue Arildsen
1983-84	Sheila Burns
1984-85	Sandra Goern
1985-86	Carrie Costigan
1986-87	Sandra Goern
1987-88	Astrid Eichner
1988-89	Sabine Ensslin
1989-90	Astrid Eichner, Laurie Kane
1990-91	Kristi Meola
1991-92	Kristen Jones
1992-93	Sara Marshack, Camille Baldrich
1993-94	Susanne Land
1994-95	Jessica Klapper
1995-96	Stacy Schapiro
1996-97	Allison Gottlieb
1997-98	Lisa Panique
1998-99	Brooke Ferney
1999-00	Carla Rosenberg
2000-01	Michelle Webb
2001-02	Tiffany Eklov
2002-03	Pavlina Akritas
2003-04	Cynthia Goulet
2004-05	Macall Harkins
2005-06	Macall Harkins, Alejandra Meza Cuadra
2006-07	Shivani Davé
2007-08	Marisa Lambropoulos
2008-09	Amy Allin
2009-10	Marisa Lambropoulos
2010-11	Amy Allin
2011-12	Allison Falkin

STRENGTH & CONDITIONING

Year	Player
1989-90	Sabine Ensslin
1990-91	Laurie Kane
1991-92	Lissa Kimmel
1993-94	Lissa Kimmel
1994-95	Laura Rydberg
1995-96	Jennifer Shu
1996-97	Jennifer Shu
1997-98	Stacy Schapiro
1998-99	Natasha Loebnitz
1999-00	Carla Rosenberg
2000-01	Michelle Webb, Simone Kung
2001-02	Jennifer McGaffigan
2002-03	Michelle Webb
2003-04	Jennifer McGaffigan
2004-05	Momei Qu
2005-06	Brianna Knue
2006-07	Alejandra Meza Cuadra
2007-08	Christine Stromberg
2008-09	Christine Stromberg
2009-10	Christine Stromberg
2010-11	Amy Allin
2011-12	Rachael White, Marisa Lambropoulos

PLAYER TO WATCH AWARD

Year	Player
1996-97	Liana Aguero
1997-98	Simone Kung
1998-99	Brooke Ferney
1999-00	Natasha Loebnitz
2000-01	Jennifer McGaffigan
2001-02	Cynthia Goulet
2002-03	Brianna Knue
2003-04	Brianna Knue
2004-05	Momei Qu
2005-06	Macall Harkins
2006-07	Megan Fudge
2007-08	Leigh Finnegan
2008-09	Chelcie Abajian
2009-10	Breanne Smutko
2010-11	Allison Falkin
2011-12	Melissa Kopinski

SCHOLAR-ATHLETE AWARD

Year	Player
1984-85	Christy Flesvig
1985-86	Christy Flesvig

1986-87	Carrie Costigan
1989-90	Astrid Eichner
1990-91	Cynthia Chambers, Laurie Kane
1991-92	Lindsey Nimmo
1992-93	Lindsey Nimmo
1993-94	Sara Marshack
1994-95	Jessica Klapper
1995-96	Jessica Klapper
1996-97	Jessica Klapper
1997-98	Stacy Schapiro
1998-99	Stacy Schapiro
1999-00	Michelle Webb
2000-01	Michelle Webb
2001-02	Michelle Webb
2002-03	Cynthia Goulet
2003-04	Cynthia Goulet
2004-05	Cynthia Goulet
2005-06	Momei Qu
2006-07	Momei Qu
2007-08	Momei Qu
2008-09	Christine Stromberg
2009-10	Christine Stromberg
2010-11	Leigh Finnegan
2011-12	Chelcie Abajian

ACADEMIC AWARDS

NATIONAL AWARDS

COSIDA ACADEMIC ALL-AMERICAN

Year	Player
1992-93	Lindsey Nimmo
2003-04	Cynthia Goulet (Second Team)
2004-05	Cynthia Goulet (Second Team)

ITA SCHOLAR-ATHLETES

(Since 2002)

Year	Player
2002	Michelle Webb
2003	Michelle Webb, Jessica Barki
2005	Pavlina Akritas, Leila Cehajic, Cynthia Goulet
2007	Kristina Minor, Momei Qu
2008	Leigh Finnegan, Megan Fudge, Momei Qu
	Christine Stromberg, Alejandra Meza Cuadra
2009	Leigh Finnegan, Megan Fudge, Kristina Minor, Christine Stromberg
2010	Leigh Finnegan, Megan Fudge, Annie McCarthy, Christine Stromberg
2011	Amy Allin, Leigh Finnegan, Annie McCarthy
2012	Marisa Lambropoulos

ARTHUR ASHE JR. TOP FEMALE SCHOLAR ATHLETE

Year	Player
2008	Momei Qu

BIG TEN CONFERENCE AWARDS

BIG TEN MEDAL OF HONOR

In 1982, the conference endowed a medal of honor to be awarded annually at each institution to a female student in the graduating class that has demonstrated proficiency in scholarship and athletics. Since the inception of the award, seven women's tennis players have received the award.

Year	Player
1985	Sue Arildsen
1986	Christy Flesvig
1993	Lindsey Nimmo
1999	Stacy Schapiro
2003	Michelle Webb
2004	Jennifer McGaffigan
2005	Cynthia Goulet

2013 FIGHTING ILLINI TV ROSTER



Emily Barretta, Fr.



Allison Falkin, Jr.



Julia Jamieson, So.



Misia Kedzierski, Jr.



Melissa Kopinski, So.



Audrey O'Connor, Fr.



Breanne Smutko, Sr.



Rachael White, Sr.



Michelle Dasso
Head Coach



Mark Denenfeld
Assistant Coach

Not Pictured: Assistant Coach Kelly Anderson