

2015-16 ILLINOIS WOMEN'S BASKETBALL

Game #10 // Illinois (7-2) vs. South Dakota (8-4)

Dec. 22, 2015 // 7 PM CT // Champaign, Ill. // State Farm Center (15,000)

Live Stream: <http://www.fightingillini.com/showcase>

Live Stats: <http://www.sidearmstats.com/Illinois/wbball/>

Live Audio: <http://www.fightingillini.com/showcase>

Radio: Illini Sports Network (WDWS-AM 1400) – Dave Loane (play-by-play), Mike Koon (analyst)

2015-16 ILLINOIS SCHEDULE

7-2 OVERALL

DATE	OPPONENT	TIME/SCORE
Nov. 4	Indianapolis (exh.) #	W, 95-36
Nov. 13	Chicago State #	W, 67-36
Nov. 15	Ohio #	W, 62-53
Nov. 21	UT Martin #	W, 94-74
Nov. 24	Tennessee State #	W, 98-43
Dec. 2	at Miami	L, 64-73
Dec. 6	Lehigh	W, 76-67
Dec. 8	Southern Illinois	W, 78-64
Dec. 12	Central Michigan	W, 74-69
Dec. 19	at Memphis	L, 75-81
Dec. 22	South Dakota	7 PM
Dec. 28	George Washington	2 PM
Dec. 31	Maryland *	2 PM
Jan. 3	at Purdue *	1 PM
Jan. 7	Minnesota %*	8 PM
Jan. 10	at Nebraska *	2 PM
Jan. 13	at Rutgers *	6 PM
Jan. 17	Wisconsin *	2 PM
Jan. 20	at Indiana *	6 PM
Jan. 23	Penn State *	2 PM
Jan. 26	at Minnesota *	8 PM
Feb. 1	Ohio State %*	6 PM
Feb. 4	Northwestern *	7 PM
Feb. 7	at Michigan *	1 PM
Feb. 10	Indiana *	7 PM
Feb. 13	Rutgers %*	5 PM
Feb. 17	at Wisconsin *	7 PM
Feb. 21	at Ohio State %*	7 PM
Feb. 24	Michigan State *	7 PM
Feb. 27	at Iowa %*	5 PM
March 2-6	at Big Ten Tournament ^	TBA

bold = State Farm Center

= Parkland College, Champaign, Ill.

* = Big Ten Game

% = Televised on BTN

ILLINOIS ATHLETICS COMMUNICATION

Address: 1700 S. Fourth St., Champaign, IL 61820

Office: 217-333-1391

Women's Basketball SID: Jenny Dewar

Email: jdewar2@illinois.edu

Office: 217-300-1148 // Cell: 847-567-2487

Assistant Women's Basketball SID: Dan Longo

Email: longo1@illinois.edu

Office: 217-300-1569 // Cell: 847-361-8735

Twitter: @IlliniWBB

Facebook: <http://www.facebook.com/IlliniWBBasketball>

Website: www.FIGHTINGILLINI.com

PROBABLE STARTERS

Pos.	No.	Name	Ht.	Yr.	GP/GS	PPG	RPG	Other	Notes/Highlights
G	15	Kyley Simmons	5-7	R-Sr.	9 / 9	12.7	2.9	4.1 APG	Hit an SFC record 7 threes vs. Lehigh
G	0	Sarah Hartwell	5-10	R-Sr.	9 / 9	7.3	5.2	2.8 APG	Matched career-best 4 steals vs. CSU
G	25	Kennedy Cattenhead	5-10	r-So.	9 / 9	5.9	4.1	71.4% FT	Has almost tripled scoring from last year
G	5	Cierra Rice	5-9	Fr.	9 / 9	13.7	4.4	2.4 APG	Two 20+ point scoring games
C	32	Chatrice White	6-3	So.	9 / 9	18.7	9.8	90.6% FT	Has recorded three-straight double-doubles

OFF THE BENCH

Pos.	No.	Name	Ht.	Yr.	GP/GS	PPG	RPG	Other	Notes/Highlights
F	4	Simone Law*	6-0	R-Sr.	8/11	12.5	6.2	-	Transfer from Loyola (Ill.)
G	12	Ashley McConnell	5-9	Jr.	4 / 0	2.0	1.3	5 Asst.	Played 8.9 minutes per game last year
G	13	Eriel Davis ^	5-6	Sr.	8 / 0	0.3	0.1	-	Was not a member of the 2014-15 squad
G	21	Brooke Kissinger	5-7	Fr.	9 / 0	5.6	1.0	14-33 3FG	Scored a career-high 12 pts. against TSU
G	23	Jaelyne Kirkpatrick	5-7	Fr.	8 / 0	3.4	2.1	0.9 APG	No. 1 guard out of Canada
F	35	Alex Wittinger	6-1	Fr.	9 / 0	8.8	5.9	16 Blk.	Earned first double-double vs. UTM

* Law's 2014-15 stats are from Loyola

^ Davis' stats are from the 2012-13 season

THE COACHES

Illinois: Matt Bollant // 50-53 at Illinois (4th year) // 332-108 overall (14th year)

South Dakota: Amy Williams // 65-38 at USD (4th year) // 162-103 overall (9th year)

SERIES NOTES VS. SOUTH DAKOTA

Series Record: First Meeting

Last Meeting: First Meeting

Series Streak: N/A

Series in Champaign: 0-0

Series Streak at South Dakota: 0-0

Bollant vs. South Dakota: 2-0

ILLINOIS IS...

...off to the best start under head coach Matt Bollant

...7-0 at home this season

...meeting South Dakota for the first time in program history

...the only BIG school to make 8 or more threes in seven games

...currently ranked at No. 33 in the RPI

...seeing it's freshman contribute 34% of its scoring

QUICK HITS

• **TUESDAY'S GAME:** The Illini are back in the State Farm Center on Dec. 22, hosting South Dakota in a 7 p.m. matchup. The game will be the team's Ugly Sweater Party, and fans who wear an "ugly" sweater to the game will receive a free Fighting Illini scarf. The game will mark the first time that the Illini will meet South Dakota in program history.

• **LAST TIME OUT:** Fighting Illini women's basketball fell to 7-2 on the season Saturday, Dec. 19, with an 81-75 loss at Memphis. Sophomore Chatrice White led the Orange and Blue with 28 points and 12 rebounds, earning her third-consecutive double-double and scoring more than 20 points for the fifth time this season. The Illini knocked down a season-best 12 three-pointers in the game, but it wasn't enough to overcome the Tigers.

• **SCOUTING SOUTH DAKOTA:** With an 8-4 record on the season, South Dakota will see Illinois after a close matchup against North Dakota. Three Coyotes are averaging more than 10 points per game this season, led by Nicole Seekamp who averages 14 points per contest. South Dakota averages eight three-pointers a game, similar to the Illini, who average just over eight as well.

• **COMING UP:** Illinois will have a few days off before opening Big Ten Play against Maryland. The Illini host the Terps on New Year's Eve, and will give away free New Year's hats to fans at the door.

GO THE DISTANCE

The Illini have found success from beyond the arc to start the season, as they currently rank 22nd in the country and second in the Big Ten in three-point field goals per game (8.4). Illinois has netted at least eight triples in seven games this season, and is the only Big Ten team to do so. Illinois has knocked down 10 triples in four games this season, one of only three teams to do so. Minnesota and Michigan have also made at least 10 threes in four games.

FIGHTING ILLINI WOMEN'S BASKETBALL NOTES

WHITE'S WAYS

Sophomore Chatrice White has been making waves this season, starting the year off with back-to-back double-doubles. She didn't stop there, however, as she has put up 20 or more points in five games so far this season. White currently has 10 career 20+ point games and 11 career double-doubles.

- She has recorded a double-double in her last three games, which has not been done since Karisma Penn earned three-straight double-doubles in the 2012-13 season.
- Should White continue her streak, her four consecutive double-doubles will be the most since Karisma Penn earned six consecutive double-doubles in the 2010-11 season.
- The last Illini to start the season with consecutive double-doubles was **Karisma Penn** in the 2012-13 season (11 pts., 12 rbs. vs. Evansville; 29 pts., 16 rbs. vs. Bradley). Penn also recorded a double-double in three of the first four games of the year.
- Prior to Penn, **Jenna Smith** started the 2009-10 season out with four-straight double-doubles, and continued on to record a double-double in six of the first seven games.

RPI WATCH

Illinois has been making waves in the RPI this season, after spending several weeks ranked among the top-10. The Illini currently sit at No. 33 in the latest NCAA RPI. The Ratings Percentage Index (RPI), is used to rank teams based upon wins and losses and strength of schedule. There are several factors that determine the number, including winning percentage, opponents' winning percentages and opponents' opponents' winning percentage.

TOP OF THE LINE

Illinois' hot start has paid off as the Illini are ranked among the nation's best in several categories this season.

Category	National Rank	B1G rank
Fewest Turnovers - 132	34th	4th
Fewest Fouls - 140	26th	3rd
3FG Made per game - 8.4	22nd	2nd
3FG Percentage - 36.9	32nd	5th

FIGHTING FRESHMEN

The Illini freshman class is proving to be a major tool this season, as the three newcomers combine to average more than 26 points per game, just about a third of UI's total scoring (34%). **Cierra Rice** leads all freshmen averaging more than 13 points per game, while **Alex Wittinger** is crucial on the boards for the Illini, grabbing 6.5 per game. Illinois is one of just four Big Ten schools to see that type of production out of its incoming class. Only Nebraska and Michigan see more scoring from their freshmen (42% and 39%, respectively), while Penn State's freshman class contributes 30-percent of its scoring numbers.

FIRST-HALF PRODUCTION

The Illini are keeping with the hot start trend this season as the team is proving to be most productive in the first half of games so far. Illinois averages more than 20 points per game in just the first quarter of play, allowing opponents just over 15 points. The Orange and Blue pick up defensively in the second quarter, holding opponents to just 13 points in the period this season. Illinois has held opponents to just 116 points in the second quarter this season. The Illini average almost 40 points in the first half of games.

2015-16 ILLINOIS BASKETBALL ROSTER

No.	Player	Pos.	Ht.	Elig.	Hometown/High School/Prev. College
0	Sarah Hartwell	G	5-10	Jr.	Tacoma, Wash./Bellarmine Prep/Georgia Tech
4	Simone Law	F	6-0	R-Sr.	South Holland, Ill./Marion Catholic/Loyola (Ill.)
5	Cierra Rice	G	5-9	Fr.	Grosse Pointe, Mich./Grosse Pointe
12	Ashley McConnell	G	5-9	Jr.	Palatine, Ill./Fremd
13	Eriel Davis	G	5-7	Sr.	Danville, Ill./Danville
15	Kyle Simmons	G	5-7	Sr.	Council Bluffs, Iowa/Lewis Central/Missouri
21	Brooke Kissinger	G	5-7	So.	Minden, Neb./Minden
23	Jaelyne Kirkpatrick	G	5-7	Fr.	Oakville, Ontario/St. Ignatius of Loyola
25	Kennedy Cattenhead	G	5-10	R-So.	Bolingbrook, Ill./Bolingbrook
32	Chatrice White	C	6-3	Fr.	Shelby, Neb./Shelby-Rising City
35	Alex Wittinger	F	6-1	Fr.	Delano, Minn./Delano

Head Coach:	Matt Bollant (fourth season)
Associate Head Coach:	LaKale Malone (fourth season)
Assistant Coach:	Tianna Kirkland (fourth season)
Assistant Coach:	Jody Martinez (first season)
Director of Operations:	Hannah Quilling (second season)
Video Coordinator:	Mark Uitermarkt (first season)
Athletic Trainer:	Sam Laingen (fourth season)
Strength Coach:	Zack Zillner (second season)

PRONUNCIATION GUIDE

Chatrice Whiteshuh-TREECE
Eriel DavisAIR-ee-el
Jaelyne KirkpatrickJAY-Lyn
Alex WittingerWitt-in-GUR
Matt BollantBOWL-ahnt

QUICK FACTS

UNIVERSITY INFORMATION

Location	Urbana-Champaign, Ill.
Enrollment	44,942
Nickname	Fighting Illini
Founded	1867
Colors	Orange and Blue
Affiliation	NCAA Division I
Conference	Big Ten
Home Court (capacity)	State Farm Center (15,544)
President	Timothy L. Killeen
Chancellor (Interim)	Barbara Wilson
Athletic Director (Interim)	Paul Kowalczyk
Senior Woman Administrator (SWA)	Maria Ochoa Woods
Ticket Office	217-333-3470

TEAM HISTORY

First Year	1974-75
Overall Record	592-600 (41 years)
Big Ten Record	231-329 (32 years)
State Farm Center Record	253-159 (29 years)
Years in NCAA (8)	1982, '86, '87, '97, '98, '99, '00, '03
Years in WNIT (8)	2001, '02, '05, '06, '07, '08, '10, '13
Big Ten Titles (1)	1997

2014-15 AT A GLANCE

2014-15 Overall Record	15-16
2014-15 Big Ten Record/Place	6-12/10th
2014-15 Postseason	None

2015-16 AT A GLANCE

Starters Returning/Lost	2/3
Letterwinners Returning/Lost	6/7
Newcomers in 2015-16	5

COACHING STAFF

Head Coach	Matt Bollant (Winona State '94)
Career Record	332-108 (13 seasons)
Rec. at Illinois	50-53 (3 seasons)
Assoc. Head Coach/Recr. Coord.	LaKale Malone (Indiana '99)
Assistant Coach	Tianna Kirkland (Ferris State '02)
Assistant Coach	Jody Martinez (Bethel '90)
Dir. of Basketball Ops.	Hannah Quilling (Green Bay '12)
Video Coordinator	Mark Uitermarkt (Calvin College '96)
Athletic Trainer	Sam Laingen (4th Season)
Basketball Office Phone	217-333-8612

ATHLETICS COMMUNICATION

Women's Basketball SID	Jenny Dewar
Office Phone	217-300-1148
Cell Phone	847-567-2487
Email	jdewar2@illinois.edu
Asst. Women's Basketball SID	Dan Longo
Office Phone	217-244-3645
Email	longo1@illinois.edu
Press Row Phone	217-333-1227
Mailing Address	Bielfeldt Athletics Admin. Building 1700 South Fourth Street, Champaign, IL 61820
Website	www.fightingillini.com
Twitter/Instagram	@IlliniWBB
Facebook	www.facebook.com/IlliniWBBasketball

RADIO INFORMATION

Flagship Station	WDWS-AM 1400
Play-By-Play	Dave Loane
Analyst	Mike Koon

FIGHTING ILLINI WOMEN'S BASKETBALL NOTES

ASSOCIATED PRESS POLL (Dec. 21)

No.	School	2015-16 Record	Pts
1	Connecticut (32)	8-0	800
2	South Carolina	11-0	763
3	Notre Dame	9-1	725
4	Baylor	12-0	712
5	Texas	10-0	662
6	Maryland	11-0	653
7	Kentucky	10-0	595
8	Mississippi State	10-1	560
9	Ohio State	7-3	531
10	Florida State	9-2	474
11	Oregon State	8-1	461
12	Stanford	8-2	442
13	Duke	9-3	386
14	Tennessee	8-3	383
15	Northwestern	10-1	319
16	Texas A&M	8-3	312
17	DePaul	8-4	277
18	Oklahoma	9-2	211
19	UCLA	7-2	200
20	South Florida	7-2	163
21	California	7-2	140
22	Arizona State	7-3	133
23	Miami (FL)	11-1	124
24	Michigan State	8-2	99
25	Missouri	11-0	79

Others receiving votes: Seton Hall 39, USC 33, Georgia 32, Virginia Tech 22, Syracuse 20, Iowa 15, Oregon 10, St John's 8, Florida 5, Princeton 4, Nebraska 3, Oklahoma State 2, UTEP 2, Washington 1

USA TODAY COACHES POLL (Dec. 15)

No.	School	2015-16 Record	Pts
1	Connecticut (32)	8-0	800
2	South Carolina	9-0	763
3	Notre Dame	9-1	725
4	Baylor	10-0	704
5	Maryland	10-0	676
6	Texas	8-0	643
7	Oregon State	7-0	600
8	Kentucky	9-0	560
9	Mississippi State	7-1	479
10	Florida State	7-2	475
11	Duke	8-2	456
12	Ohio State	6-3	434
13	Northwestern	9-0	412
14	Stanford	6-2	393
15	DePaul	7-3	324
16	Tennessee	7-2	320
17	Oklahoma	9-1	276
18	Texas A&M	7-3	243
19	South Florida	6-2	214
20	California	7-2	165
21	Miami (FL)	10-0	138
22	Michigan State	7-2	101
23	Arizona State	6-3	92
24	Iowa	8-2	79
25	Seton Hall	9-1	60

Others receiving votes: Princeton 51, UCLA 50, Missouri 28, Georgia 27, St John's 21, Florida 20, Oregon 14, Syracuse 13, Nebraska 8, George Washington 6, Oklahoma State 6, Virginia Tech 6, USC 5, Washington 4, Dayton 3, Army 2, BYU 2, Albany 1, Auburn 1

GOING STREAKING

Speaking of double-digits, several Illini have been on a scoring streak with back-to-back double-figure scoring games. Chatrice White started the season with four consecutive double-digit scoring games, including three 20-point performances, while Kyle Simmons was previously on a five-game streak as well.

Name	Current Double-digit scoring streak
Cierra Rice	7 games
Chatrice White	4 games

BOLLANT'S 50TH

Head coach Matt Bollant earned his 50th victory at Illinois in a 74-69 defeat of Central Michigan. Bollant is currently 332-107 in his career. He has taken his teams to 12 postseason appearances in his head coaching career, including four NCAA Tournament appearances and a Sweet 16 appearance in 2011. The Illini earned a 7-1 start to the season, the best during Bollant's tenure at the helm of Illinois Women's Basketball.

TOP 10 WINNINGEST

Now in his 14th season of head coaching, Matt Bollant came into the year with a .754 winning percentage. That number puts him 10th among all active head coaches in the country. Not only that, but Bollant has a 100-percent graduation rate during his 19 years of head coaching.

RECORDS FALL

Redshirt senior **Kyley Simmons** knocked down seven three-pointers, helping to lead Illinois over Lehigh on Dec. 6. She shot 70-percent from distance in the game, and her seven treys matched the State Farm Center single-game record set by Amber Moore in 2011. Simmons is currently shooting 48.2-percent from distance, good for first in the Big Ten and 17th in the nation.

DEFENSE IS KEY

Illinois' defense has largely contributed to its hot start to the year. The Illini have held opponents to a 35.9 field-goal percentage, which ranks 56th in the nation and fourth in the Big Ten. UI has held three opponents to less than 32-percent shooting from the field, including holding Tennessee State to just 21.7-percent. Four Illini opponents have shot 25-percent or worse from distance as well this season as the Orange and Blue rank fifth in the Big Ten for their three-point field goal percentage defense. Illinois has also kept opponents away from the free-throw line as their 140 total fouls ranks 26th in the nation and third-best in conference.

DOUBLING UP

Six Illini reached double-figure scoring numbers in two games this season. The Illini first spread the production out against Tennessee State, seeing career-bests from Kennedy Cattenhead and Brooke Kissinger as well. The Illini again spread out the scoring against SIU on Dec. 8, seeing six players hit double-digits once again. Prior to Tennessee State, Illinois last saw six or more players reach double-figure scoring numbers was on Nov. 17, 2013 against Alcorn State. Seven players put up double-digits in that 112-28 victory.

FRESHMAN OF THE WEEK TIMES THREE

Cierra Rice has earned Big Ten weekly honors twice this season, the most for an Illini freshman since Karisma Penn received the honor four times in the 2009-10 season. She first garnered the award on Monday, Nov. 23, coming off of a 20-point performance against UT Martin and helping the Illini to a 94-74 win. Rice went 6-for-6 from the field against UT Martin, banking three triples on the day. She had a 6-for-7 performance from the charity stripe as well. The Grosse Pointe, Mich., native scored 21 points, dished five assists and grabbed five rebounds in the game, only tallying one turnover. She then earned her second nod on Dec. 7, after putting up 22 points against Miami and following up with a 12-point performance in Illinois' win over Lehigh.

INSIDE THE NUMBERS

	ILL	USD
Points Per Game	76.4	79.7
Points Allowed Per Game	62.2	68.5
Scoring Margin	+14.2	+11.2
Field Goal %	.442	.442
3-pt Field Goals Made-Att.	76-206	104-272
3-pt Field Goal %	.369	.382
Free Throws Made-Att.	106-147	150-219
Free Throw %	.721	.685
Rebounds Per Game	40.0	42.0
Rebounding Margin	+1.4	+9.0
Fouls Per Game	15.5	18.6
Assists Per Game	15.4	17.9
Turnovers Per Game	14.7	16.1
Turnover Margin	+3.1	+2.1
Steals Per Game	8.4	10.8
Blocks Per Game	4.6	1.8

WOMEN'S BASKETBALL MEDIA AVAILABILITY SCHEDULE

Date	Time
Monday, Dec. 21	Players at 2 p.m. Coach Bollant at 2:30 p.m.

Fighting Illini Women's Basketball welcomes members of the media to the Ubben Practice Facility for interviews with players and head coach Matt Bollant prior to practice on the days listed above.

Please player send interview requests to JDewar2@illinois.edu by noon on the scheduled media day to ensure their availability.

Practice will be open following media availability on the days listed above.

In addition to media days listed above, Coach Bollant and selected players will hold a press conference following each contest.

FIGHTING ILLINI WOMEN'S BASKETBALL NOTES



**HEAD COACH
MATT BOLLANT**
50-53 // Fourth Season

Now entering his fourth season as head coach of the University of Illinois, Matt Bollant has begun to revive a dormant Illini program after being a part of the best seasons in program history at each of his other four collegiate coaching stops. In just his first season with the program, Bollant led the Orange and Blue to the postseason for the first time in three years in 2013 and Illinois finished with a winning Big Ten record for the first time in 10 seasons. He also has spearheaded the composition of back-to-back top-25 recruiting classes during his first two recruiting years in Champaign.

Despite taking a step back in wins and losses, the Illini program began to change its culture in the 2013-14 season. The values of hard work, fundamentals, attention to detail and team unity began to pay off as Illinois was much more competitive down the stretch, including a 61-51 win at Michigan State. The Orange and Blue also broke the school record for three-pointers made with 202 and finished eighth and 13th nationally in steals and turnover margin, respectively. On the recruiting front, two Illini commits earned All-America honors, as Chatrice White became only the second McDonald's All American in Illinois program history and Amarah Coleman earned honorable mention WBCA All-America honors.

The 2014-15 season saw the Illini post a 9-3 non-conference record, starting the season with a 5-0 record to mark the best non-conference record to start a season that the program has seen in 12 years. Freshman Chatrice White proved to be a weapon on the floor as she broke the Illinois Freshman All-Time Scoring and Blocked Shots records. With Bollant's coaching, the Illini earned a win over No. 9-ranked Kentucky at the Paradise Jam, and continued to upset No. 17 Iowa later in the season. Defensively, Illinois ranked among the top-15 in the nation, averaging more than 11 steals per game. Seniors Ivory Crawford and Brittany Carter played a major role in those numbers as they each ranked among the top-40 in the nation, individually. Bollant saw seven of his student-athletes earn All-Big Ten Academic honors following the season, proving that the program is headed in the right direction both on and off the court.

In 2012-13, the Illini reached the Women's NIT quarterfinals and saw attendance at the Assembly Hall increase 80 percent from 2011-12 to an average of 1,926, the third-highest average attendance increase in Division I women's basketball. Illinois also defeated three ranked opponents: No. 6 Georgia, No. 24 Iowa and No. 24 Ohio State, with the win over the Buckeyes snapping their 31-game home winning streak. The win over the Hawkeyes also broke an eight-game skid against Iowa.

The Illini shattered the Big Ten record for steals, steals per game and turnovers forced in a conference season, and also broke school records for steals, turnovers forced and three-pointers made in a season. Senior forward Karisma Penn became one of the country's most dominant post players, averaging 19.2 points, 9.6 rebounds, 2.9 steals and 2.2 blocked shots per game with 50.6 percent field-goal shooting, all of which ranked in the top five in the Big Ten. She was named an Associated Press honorable mention All-American and also earned two national player of the week honors. Senior guard Adrienne GodBold earned Big Ten Defensive Player of the Year honors after posting 55 steals in 16 conference games and routinely guarding opponents' top offensive players.

- Helped Chatrice White to set the new all-time freshman records for scoring and blocks
- Led Illinois to its first postseason berth in three years in 2012-13 and a winning Big Ten record for the first time in 10 years
- Guided the Illini to the quarterfinals of the 2013 Women's NIT and five wins over teams who were ranked or receiving votes, with two of those wins coming on the road.
- Helped Karisma Penn become an honorable mention All-American and Adrienne GodBold become the Big Ten Defensive Player of the Year in 2012-13.

Alex Wittinger joins Rice in earning the weekly honor as she was named Big Ten Freshman of the Week on Dec. 13 after back-to-back double-digit scoring games against SIU and Central Michigan and her second-career double-double against CMU.

It is the first time since the award was developed in 2009-10 that Illinois has had two players receive Freshman of the Week honors.

THE ROARING TWENTIES

Illinois saw three players score at least 20 points against UT Martin as freshmen **Cierra Rice** and **Alex Wittinger** each put up double-figure scoring numbers for the first time in their careers. Wittinger (20), Rice (21) and **Chatrice White** (26) combined for 67 of Illinois' 94 points in the game. The last time three Illini scored 20 or more points was UI's 95-69 win over Minnesota on Feb. 5, 2015. Wittinger also grabbed 11 rebounds in the contest, marking her first-ever double-double.

Cierra Rice continued to rack up the points, dropping 22 at Miami on Dec. 2. Rice is one of just three freshmen in Illinois history, dating back to 1980, to put up 20 or more points twice within the first five games of her career. Also on that list is sophomore **Chatrice White**, who scored 20 or more points in six games last season. **Krista Reinking** (1994-95) rounds out the total list. Reinking has four 20+ points games in her freshman season.

With two 20+ point games under her belt already, Rice is averaging almost 14 points per game. If she keeps up this type of production, Rice will etch her name among the all-time freshman records at Illinois.

20+ point games	Name	Freshman season
9	Mandy Cunningham	1990-91
8	Allison Curtin	1998-99
6	Chatrice White	2014-15
4	Jacqui Grant	2013-14
4	Lori Bjork	2005-06
4	Iveta Marcauskaite	2000-01
4	Krista Reinking	1994-95
4	Lisa Bradley	1984-85
3	Tauja Catchings	1996-97
3	Robbyn Precely	1992-93
2	Cierra Rice	2015-16
2	Karisma Penn	2009-10
2	Katie Coleman	1996-97
2	Ashley Berggren	1994-95
2	Kris Dupps	1991-92
2	Janelle Polk	1983-84

2015-16 STARTING LINEUPS

Opponent	G	G	G	G/F	C	Record
Chicago State #	Simmons	Hartwell	Rice	Cattenhead	White	1-0
Ohio #	Simmons	Hartwell	Rice	Cattenhead	White	2-0
Tennessee Martin #	Simmons	Hartwell	Rice	Cattenhead	White	3-0
Tennessee State	Simmons	Hartwell	Rice	Cattenhead	White	4-0
Miami	Simmons	Hartwell	Rice	Cattenhead	White	4-1
Lehigh	Simmons	Hartwell	Rice	Cattenhead	White	5-1
Southern Illinois	Simmons	Hartwell	Rice	Cattenhead	White	6-1
Central Michigan	Simmons	Hartwell	Rice	Cattenhead	White	7-1
Memphis	Simmons	Hartwell	Rice	Cattenhead	White	7-2
South Dakota						
George Washington						
Maryland						
Purdue						
Minnesota						
Nebraska						
Rutgers						
Wisconsin						
Indiana						
Penn State						
Minnesota						
Ohio State						
Northwestern						
Michigan						
Indiana						
Rutgers						
Wisconsin						
Ohio State						
Michigan						
Iowa						
# Played at Parkland College						

FIGHTING ILLINI WOMEN'S BASKETBALL NOTES

THE FOUNTAIN OF YOUTH

With only two starters returning this season, the Illini have a few new faces in the starting lineup. Redshirt senior **Kyley Simmons** and sophomore **Chatrice White** are returning for a second year, but they are joined by first-time starters **Sarah Hartwell**, **Kennedy Cattenhead** and **Cierra Rice**. Three of the five starting Illini are underclassmen, while three of the five are also first-time starters.

A PROMISING FUTURE

The Illini are headed into the 2015-16 season with a positive outlook on things to come. The team returns starters **Chatrice White** and **Kyley Simmons**, and also brings back experienced returners in **Kennedy Cattenhead**, **Sarah Hartwell**, **Brooke Kissinger** and **Ashley McConnell**. Several Illini newcomers bring major promise, as **Simone Law** and **Eriel Davis** each have Division I playing experience under their belts. Illini freshmen **Cierra Rice**, **Jaelyne Kirkpatrick** and **Alex Wittinger** are a decorated incoming class as they are each ranked among the top-5 recruits in their home state.

ILLINI CRUISE PAST GREYHOUNDS IN EXHIBITION

Fighting Illini Women's Basketball started its season on a high note Saturday afternoon, tallying a 95-36 exhibition win over the University of Indianapolis at Parkland College. The Orange and Blue saw all nine players on the floor put up at least three points in the game, and the Illini assisted on 20 of 35 field goals in the contest. Illinois out rebounded the Greyhounds 38-26 and held UIndy to just under 23-percent shooting in the game. The Illini dropped 13 three-pointers in the contest, while shooting over 54-percent from the floor.

WHITE RETURNS FOR SUPER SOPHOMORE SEASON

Returning for her sophomore season, **Chatrice White**, expects no sophomore slump. She closed out the 2014-15 season averaging 14.5 points per game and a team-leading 7.0 rebounds per contest. She owns the Illinois freshman records for scoring and blocked shots as she led the team with 60 rejections.

ILLINI LOOKING FOR NEW CONTRIBUTORS

The Illini will have a few holes to fill in the absence of recent graduates **Ivory Crawford** and **Brittany Carter**. The two combined for an average of 23.6 points per game, and Carter led the team in steals, closing the season with 80. Crawford grabbed 64 steals herself last season, helping the Illini to a league-leading 11.2 steals per game.

NEWCOMERS

The Illini welcome a decorated class of freshman this year, including Parade All-American **Cierra Rice**, who was ranked as the No. 1 player out of Michigan. Ranked at No. 5 in the state of Minnesota, **Alex Wittinger** also joins the Illini this year. She grabbed 21 rebounds in her first outing with the Illini, an exhibition matchup against the AMW All Stars in Paris, France. Coming off of a stint with the Canadian National team, **Jaelyne Kirkpatrick** joins the Illini this season. She was ranked as the No. 1 guard in Canada.

The Illini also welcome some experience to the program this year in seniors **Eriel Davis** and **Simone Law**. Law comes to Illinois from Loyola-Chicago, where she earned First Team All-Horizon League honors and was twice named to the Horizon League All-Tournament Team. Davis, a native of Danville, returns to the Illini squad after two seasons. She was a member of the 2012-13 squad and assisted the team as a practice player prior to that.

ILLINI WELCOME JODY MARTINEZ

Head coach **Matt Bollant** announced the addition of **Jody Martinez** to the Illini staff over the summer. Martinez brings 17 years of head coaching experience with him, and he has led his teams to more than 400 wins in his head-coaching career. Martinez comes to Illinois from Southeastern University, where he led the Fire to a 25-7 record in the 2014-15 season and guided the program to its first-ever NAIA Division II Women's Basketball NIT. Prior to his stint at Southeastern, Martinez served as the head coach for the Bethel Pilots, where he led the Lady Pilots to 20 or more wins in 15 of his 16 seasons at the helm of the program, and prior to his arrival in 1998, the program had never seen a winning season. Martinez guided the Lady Pilots to six NCCAA National Championship titles and made seven trips to the NAIA National Tournament including five elite eight appearances. His teams won three MCC regular season titles and an MCC tournament championship as well.

ILLINI MAKE WAVES ON A NATIONAL STAGE

Illini sophomore **Chatrice White** and freshman **Jaelyne Kirkpatrick** were busy over the summer, competing at the FIBA U19 World Championships. Kirkpatrick competed for Canada, while White helped to bring home the gold on team USA. White averaged five points per game while in Russia, playing in seven games throughout the tournament.

TOUR DE FRANCE

The Illini packed in some extra practice over the summer, heading overseas to play a few games in France. The Illini faced off against Paris' professional team, the AMW All Stars, and also played two games against Bretigny Select. Freshmen **Alex Wittinger**, **Jaelyne Kirkpatrick** and **Cierra Rice** got a taste of competition, as they competed with their new teammates for the first time.

While across the pond, the Illini got to take some time to see the sights. Tour stops included the Eiffel Tower, Monaco, Lyon, and Nice.

A NEW HOME

After the 2013-14 season, the Fighting Illini had to vacate their home arena, State Farm Center, as the three-year, \$169.5 million Illinois Renaissance renovation project began. The renovation includes the installation of premium seating, upgrades to team locker rooms, all concourses, concession and restroom facilities, and wider aisles and increased access for patrons with disabilities. In addition, air conditioning will be installed and grand entrances will be constructed on the arena's east and west sides. While most of the first year of construction's work was mechanical and infrastructure-related, fans will notice new, blue seats in the 200 level, which was formerly known as "C" section.

2015-16 BIG TEN RECORDS (DEC. 21)

Pl.	Team	Big Ten	Pct.	Overall	Pct.
1.	Maryland	0-0	.000	11-0	1.000
	Northwestern	0-0	.000	10-1	.909
5.	Iowa	0-0	.000	9-2	.818
	Michigan	0-0	.000	8-2	.800
7.	Michigan State	0-0	.000	8-2	.800
	Nebraska	0-0	.000	8-2	.800
6.	Purdue	0-0	.000	8-2	.800
	ILLINOIS	0-0	.000	7-2	.778
10.	Rutgers	0-0	.000	9-3	.750
11.	Indiana	0-0	.000	7-3	.700
	Ohio State	0-0	.000	7-3	.700
	Minnesota	0-0	.000	6-3	.667
13.	Penn State	0-0	.000	5-6	.455
14.	Wisconsin	0-0	.000	4-6	.400

THIS WEEK'S BIG TEN GAMES

MONDAY, DEC. 21

Detroit at Michigan State, 6 PM
Virginia at Ohio State, 6 PM
Maine at Purdue, 6 PM
Indiana at West Virginia, 6:15 PM
Arkansas State at Nebraska, 7 PM

TUESDAY, DEC. 22

UMKC at Northwestern, 1 PM
Drake at Iowa, 5 PM

WEDNESDAY, DEC. 23

Michigan at Eastern Michigan, 2:30 PM

MONDAY, DEC. 28

George Washington at Illinois, 2 PM
Yale at Indiana, 6 PM
NJIT at Minnesota, 7 PM
Maryland at Connecticut, 7:30 PM

THURSDAY, DEC. 31

Michigan State at Ohio State, 11 AM
Purdue at Michigan, 12 PM
Minnesota at Rutgers, 12 PM
Iowa at Nebraska, 1 PM
Maryland at Illinois, 2 PM
Indiana at Wisconsin, 2 PM

SATURDAY, JAN. 2

Ohio State at Maryland, 1 PM

SUNDAY, JAN. 3

Michigan at Indiana, 11:30 AM
Wisconsin at Michigan State, 1 PM
Illinois at Purdue, 1 PM
Nebraska at Northwestern, 1:30 PM
Penn State at Minnesota, 2 PM

MONDAY, JAN. 4

Rutgers at Iowa, 6 PM

THURSDAY, JAN. 7

Nebraska at Maryland, 6 PM
Iowa at Michigan, 6 PM
Indiana at Ohio State, 6 PM
Michigan State at Penn State, 6 PM
Wisconsin at Rutgers, 6 PM
Purdue at Northwestern, 7 PM
Minnesota at Illinois, 8 PM

All times Central

ILLINI INK FOUR FOR 2016

The Fighting Illini Women's Basketball program and head coach Matt Bollant announce the signing of four standout players to national letters of intent on Wednesday, Nov. 11. **Ali Andrews** (Lake in the Hills, Ill.), **Brandi Beasley** (Memphis, Tenn.), **Courtney Joens** (Cedar Rapids, Iowa) and **Sarah Overcash** (Chevy Chase, Md.) will join the Illini for the 2016-17 season.

Ali Andrews // 6-2 // F // Lake in the Hills, Ill. // Huntley HS

Ranked the No. 14 forward in the country and No. 1 in Illinois by ESPN HoopGurlz...Ranked as the No. 79 recruit in the nation...Class 4A All-State Team...Helped Huntley to two-straight Fox Valley Conference Valley Division titles...Has scored more than 1,800 points in her high school career so far...Daily Herald Fox Valley All-Area Team Co-Captain...Associated Press First Team All-State selection...Has earned Huntley three consecutive regional titles and two straight sectional titles.

Brandi Beasley // 5-6 // G // Memphis, Tenn. // Ridgeway HS

Stands as the No. 2-ranked recruit from the state of Tennessee and the No. 27-ranked point guard in the nation by ESPN HoopGurlz...AAA Miss Basketball Finalist...Chose Illinois over Florida, MTSU, UT Martin, Vanderbilt and Memphis...Plans to study engineering at Illinois.

Courtney Joens // 5-10 // G // Iowa City, Iowa // City High

Achievements: Ranked the No. 27 point guard in the country by ESPN HoopGurlz, and the top out of the state of Iowa...Ranked among the top-5 guards in Iowa by IowaPreps.com...Holds City High's single-game records for points (42) and three-pointers (8)...Chose Illinois over Creighton, Drake, South Dakota, Nebraska, Minnesota and DePaul...Made 41 three-pointers in her sophomore season while averaging 14.6 points per game...Took City High to the 2013 state semifinals...Volunteers at her local elementary school and at her church...Consistently appears on the Iowa City High School Honor Roll.

Sarah Overcash // 6-1 // F // Chevy Chase, Md. // St. John's College

The top-ranked recruit out of the District of Columbia...Named DCSAA First Team All-State in 2015...Played with Penn State's Amari Carter and Michigan signee Kayla Robbins...Chose Illinois over Penn and Princeton...First-Team All-WCAC selection.

FIGHTING ILLINI WOMEN'S BASKETBALL NOTES

2015-16 Illinois Women's Basketball Illinois Combined Team Statistics (as of Dec 19, 2015) All games

RECORD:	OVERALL	HOME	AWAY	NEUTRAL
ALL GAMES	7-2	7-0	0-2	0-0
CONFERENCE	0-0	0-0	0-0	0-0
NON-CONFERENCE	7-2	7-0	0-2	0-0

##	Player	gp-gs	min	avg	Total		3-Point		F-Throw		Rebounds				pf	dq	a	to	blk	stl	pts	avg
					fg-fga	fg%	3fg-fga	3fg%	ft-fa	ft%	off	def	tot	avg								
32	Chatrice White	9-9	274	30.4	66-159	.415	7-35	.200	29-32	.906	20	68	88	9.8	23	0	14	18	21	17	168	18.7
05	Cierra Rice	9-9	275	30.6	43-82	.524	9-20	.450	28-43	.651	12	28	40	4.4	17	0	22	19	1	11	123	13.7
15	Kyley Simmons	9-9	309	34.3	37-78	.474	27-56	.482	13-15	.867	3	23	26	2.9	18	1	37	25	0	16	114	12.7
35	Alex Wittinger	9-0	182	20.2	38-72	.528	0-3	.000	3-6	.500	27	26	53	5.9	18	0	4	8	16	2	79	8.8
00	Sarah Hartwell	9-9	261	29.0	25-59	.424	9-27	.333	7-9	.778	13	34	47	5.2	19	0	25	14	1	16	66	7.3
25	Kennedy Cattenhead	9-9	225	25.0	15-46	.326	3-10	.300	20-28	.714	6	31	37	4.1	15	0	16	18	2	4	53	5.9
21	Brooke Kissinger	9-0	135	15.0	17-45	.378	14-33	.424	2-8	.250	0	9	9	1.0	12	0	9	5	0	2	50	5.6
23	Jaelyne Kirkpatrick	8-0	96	12.0	9-23	.391	5-15	.333	4-6	.667	5	12	17	2.1	14	1	7	16	0	8	27	3.4
12	Ashley McConnell	4-0	43	10.8	3-8	.375	2-7	.286	0-0	.000	3	2	5	1.3	4	0	5	3	0	0	8	2.0
Team											17	21	38					6				
Total.....		9	1800		253-572	.442	76-206	.369	106-147	.721	106	254	360	40.0	140	2	139	132	41	76	688	76.4
Opponents.....		9	1799		205-571	.359	62-217	.286	88-136	.647	124	223	347	38.6	147	-	112	160	45	64	560	62.2

TEAM STATISTICS	ILL	OPP	Date	Opponent	Score	Att.
SCORING	688	560	11/13/15	CHICAGO STATE	w 67-36	1001
Points per game	76.4	62.2	11/15/15	OHIO UNIVERSITY	w 62-53	983
Scoring margin	+14.2	-	11/21/15	UT MARTIN	w 94-74	907
FIELD GOALS-ATT	253-572	205-571	11/24/15	TENNESSEE STATE	w 98-43	952
Field goal pct	.442	.359	12/02/15	at Miami	L 64-73	910
3 POINT FG-ATT	76-206	62-217	12/6/15	LEHIGH	w 76-67	1800
3-point FG pct	.369	.286	12/8/15	SOUTHERN ILLINOIS	w 78-64	1317
3-pt FG made per game	8.4	6.9	12/12/15	CENTRAL MICHIGAN	w 74-69	1557
FREE THROWS-ATT	106-147	88-136	12/19/15	at Memphis	L 75-81	593
Free throw pct	.721	.647				
F-Throws made per game	11.8	9.8				
REBOUNDS	360	347				
Rebounds per game	40.0	38.6				
Rebounding margin	+1.4	-				
ASSISTS	139	112				
Assists per game	15.4	12.4				
TURNOVERS	132	160				
Turnovers per game	14.7	17.8				
Turnover margin	+3.1	-				
Assist/turnover ratio	1.1	0.7				
STEALS	76	64				
Steals per game	8.4	7.1				
BLOCKS	41	45				
Blocks per game	4.6	5.0				
ATTENDANCE	8517	1503				
Home games-Avg/Game	7-1217	2-752				
Neutral site-Avg/Game	-	0-0				

* - Conference game

Score by Periods	1st	2nd	3rd	4th	Totals
Illinois	187	167	167	167	688
Opponents	137	116	135	172	560

2015-16 GAME-BY-GAME TEAM COMPARISON

Opponent	1st	2nd	3rd	4th	OT	Score	Margin	Tot. FG	FG%	3-PT FG	3-FG %	Free Throws	FT %	Rebs.	Assists	TO	Blocks	Steals	Fouls
Chicago State #	23 / 11	16 / 12	16 / 12	12 / 3		67 / 36	+31	23-61 / 16-51	.377 / .314	10-31 / 0-15	.323 / .000	11-14 / 4-3	.786 / .308	37 / 36	15 / 4	19 / 29	2 / 5	19 / 9	18 / 17
Ohio #	11 / 23	15 / 5	16 / 10	20 / 15		62 / 53	+9	18-51 / 19-61	.353 / .311	3-10 / 8-32	.300 / .250	25-30 / 7-12	.767 / .583	44 / 33	8 / 7	14 / 13	5 / 7	3 / 4	10 / 25
UT Martin #	18 / 11	27 / 14	21 / 10	28 / 39		94 / 74	+20	36-61 / 27-73	.590 / .370	10-24 / 13-40	.417 / .325	12-19 / 7-8	.632 / .875	43 / 30	26 / 18	15 / 12	4 / 3	3 / 10	11 / 16
Tennessee State #	33 / 9	27 / 12	22 / 10	16 / 12		98 / 43	+55	35-70 / 15-69	.500 / .217	9-22 / 3-21	.409 / .143	19-24 / 10-19	.792 / .526	49 / 46	17 / 7	13 / 24	4 / 6	10 / 4	15 / 22
at Miami	12 / 18	14 / 10	17 / 21	12 / 24		64 / 73	-9	23-57 / 30-67	.404 / .448	9-24 / 4-19	.375 / .211	9-14 / 9-11	.643 / .818	37 / 39	11 / 20	26 / 18	1 / 5	12 / 12	18 / 16
Lehigh	19 / 15	12 / 13	24 / 20	21 / 19		76 / 67	+9	32-71 / 22-60	.451 / .367	8-22 / 10-25	.364 / .400	4-5 / 13-22	.800 / .591	35 / 44	14 / 14	7 / 16	9 / 3	9 / 4	18 / 12
Southern Illinois	20 / 17	15 / 18	23 / 18	20 / 11		78 / 64	+14	30-62 / 25-67	.484 / .373	5-15 / 7-23	.333 / .304	13-20 / 7-9	.650 / .778	44 / 34	11 / 14	11 / 10	5 / 7	5 / 3	12 / 14
Central Michigan	19 / 10	23 / 15	16 / 17	16 / 27		74 / 69	+5	28-76 / 24-64	.368 / .375	10-23 / 11-27	.313 / .407	8-11 / 10-16	.727 / .625	43 / 50	22 / 11	6 / 17	8 / 6	7 / 3	14 / 13
at Memphis	23 / 23	18 / 19	12 / 17	22 / 22		75 / 81	-6	28-63 / 27-59	.444 / .458	12-26 / 6-15	.462 / .400	7-10 / 21-26	.700 / .808	28 / 35	15 / 17	21 / 21	3 / 3	8 / 15	24 / 12

Played at Parkland College

Rankings are AP/Coaches on date of game // Totals are displayed in the ILLINOIS / OPPONENT format

2015-16 ILLINOIS' RECORD WHEN...

Overall record	7-2	Shoots better than opponent	6-0
Big Ten record	0-0	Shoots worse than opponent	1-2
Record at home	7-0	Illini out-rebound opponent	5-0
Record at Parkland	4-0	Teams have equal number of rebounds	0-0
Record at SFC	3-0	Opponents out-rebound Illini	1-2
Record on road	0-2	Illini have fewer turnovers than opponent	4-0
Record in neutral-site games	0-0	Teams have same number of turnovers	0-1
Record vs. AP-ranked teams	0-0	Illini have more turnovers than opponent	3-1
Record when on TV	0-0	Wearing white uniforms	7-0
Coming off a win	5-2	Wearing blue uniforms	0-1
Coming off a loss	1-0	Wearing orange uniforms	0-1
Scoring 80+ points	2-0	Wearing pink uniforms	0-0
Scoring 70-79 points	3-1	When leading at halftime	5-1
Scoring 60-69 points	2-1	When tied at halftime	2-0
Scoring less than 60 points	0-0	When trailing at halftime	0-1
Giving up 80+ points	0-1	When Illini shoot more FTs than opponent	5-1
Giving up 70-79 points	1-1	When Illini shoot fewer FTs than opponent	2-1
Giving up 60-69 points	3-0	When teams shoot same number of FTs	0-0
Giving up 50-59 points	1-0	Game goes to overtime	0-0
Giving up less than 50 points	2-0	Margin is five points or less	1-0
Shooting 55% FGs or better	1-0	Margin is 6-10 points	2-2
Shooting 50-54% FGs	1-0	Margin is 11-15 points	1-0
Shooting 45-49% FGs	2-0	Margin is 16-20 points	1-0
Shooting 40-44% FGs	0-2	Margin is 21+ points	2-0
Shooting 30-39% FGs	3-0	Playing in November	4-0
Shooting below 30% FGs	0-0	Playing in December	3-2
Opponents shoot 50% FGs or better	0-0	Playing in January	0-0
Opponents shoot 45-49% FGs	0-2	Playing in February	0-0
Opponents shoot 40-44% FGs	0-0	Playing in March	0-0
Opponents shoot 35-39% FGs	4-0	In day games (start before 5 PM)	4-1
Opponents shoot under 35% FGs	3-0	In night games (start 5 PM or later)	3-1

Double-Doubles	2015-16	Career
Chatrice White	5	11
Alex Wittinger	2	2
Kyley Simmons	0	1
Double-Digit Scoring Games	2015-16	Career
Chatrice White	8	33
Kyley Simmons	7	25
Sarah Hartwell	2	11
Ashley McConnell	0	1
Cierra Rice	7	7
Alex Wittinger	4	4
Kenedy Cattenhead	2	2
Brooke Kissinger	1	2
30+ Point Games	2015-16	Career
Chatrice White	0	1
20+ Point Games	2015-16	Career
Chatrice White	5	10
Kyley Simmons	1	2
Cierra Rice	2	2
Alex Wittinger	1	1
Double-Digit Rebound Games	2015-16	Career
Chatrice White	5	11
Alex Wittinger	2	2

2015-16 EXPANDED SCHEDULE/RESULTS

DATE	OPPONENT	RESULT	SCORE	RECORD	BIG RECORD	ATTENDANCE	HIGH POINTS	HIGH REBOUNDS	HIGH ASSISTS
11/13	Chicago State	W	67-36	1-0		1,001	White (13)	White (13)	Cattenhead/Hartwell (3)
11/15	Ohio	W	62-53	2-0		983	White (22)	White (13)	3 Players (2)
11/21	UT Martin	W	94-74	3-0		907	White (26)	Wittinger (11)	Simmons (9)
11/24	Tennessee State	W	98-43	4-0		952	White (20)	Wittinger (9)	Kissinger/Kirkpatrick (3)
12/2	at Miami	L	64-73	4-1		910	Rice (22)	White/Rice (7)	Simmons (5)
12/6	Lehigh	W	76-67	5-1		1,800	Simmons (21)	White (9)	Hartwell/Rice (4)
12/8	Southern Illinois	W	78-64	6-1		1,317	Rice (17)	White (14)	Simmons (4)
12/12	Central Michigan	W	74-69	7-1		1,557	White (20)	Wittinger (12)	Simmons (5)
12/19	at Memphis	L	81-75	7-2		593	White (28)	White (12)	Simmons (5)

Played at Parkland College // Rankings are AP/Coaches on date of game

SPECIALTY STATS

	OPPONENT	Pts in Paint (ILL-Opp.)	Pts off TO (ILL-Opp.)	2nd Chance Pts (ILL-Opp.)	Fast Break Pts (ILL-Opp.)	Bench Pts (ILL-Opp.)	Largest Lead	Largest Deficit	Lead Changes	Ties
11/13	Chicago State #	20 - 32	27 - 6	13 - 5	4 - 0	14 - 2	31	N/A	0	0
11/15	Ohio #	20 - 22	6 - 6	4 - 13	2 - 0	8 - 4	9	13	3	1
11/21	UT Martin #	42 - 26	15 - 17	13 - 17	12 - 2	33 - 33	32	N/A	0	1
11/24	Tennessee State #	42 - 22	36 - 11	9 - 10	8 - 4	31 - 9	58	N/A	0	0
12/2	Miami	16 - 34	15 - 34	12 - 6	12 - 6	9 - 15	13	9	3	3
12/6	Lehigh	36 - 18	15 - 5	9 - 16	6 - 0	16 - 7	10	4	3	3
12/8	Southern Illinois	42 - 24	13 - 7	21 - 9	4 - 0	12 - 15	14	2	8	7
12/12	Central Michigan	30 - 20	30 - 6	14 - 9	0 - 0	22 - 13	17	N/A	0	0
12/19	Memphis	30 - 28	25 - 21	12 - 8	2 - 6	19 - 18	3	12	11	9
12/22	South Dakota									
12/28	George Washington									
12/31	Maryland									
1/3	Purdue									
1/7	Minnesota									
1/10	Nebraska									
1/13	Rutgers									
1/17	Wisconsin									
1/20	Indiana									
1/23	Penn State									
1/26	Minnesota									
2/1	Ohio State									
2/4	Northwestern									
2/7	Michigan									
2/10	Indiana									
2/13	Rutgers									
2/17	Wisconsin									
2/21	Ohio State									
2/24	Michigan State									
2/27	Iowa									
Totals		278 - 224	182 - 113	107 - 93	36 - 18	164 - 116	58	13	11	1
Average		30.8 - 24.8	20.2 - 12.5	11.8 - 10.3	4.0 - 2.0	18.2 - 12.8				
Margin		+6.0	+7.7	+1.5	+2.0	+5.4				

Illinois scored 100 points or more	Nov. 17 2013 vs. Alcorn State (Illinois 112, Alcorn State 28)
Illinois scored 90 points or more	Nov. 24, 2015 vs. Tennessee State (Illinois 98, TSU 43)
Illinois scored 50 points or less	Feb. 21, 2015 at Purdue (Illinois 47, Purdue 46)
Illinois scored 40 points or less	Jan. 12, 2009 vs. Ohio State (Ohio State 67, Illinois 35)
Illinois gave up 100 points or more	Feb. 15, 2001 at Penn State (Penn State 101, Illinois 80)
Illinois gave up 90 points or more	Jan. 20, 2014 at Ohio State (Illinois 64, Ohio State 90)
Illinois gave up 40 points or less	Nov. 13, 2015 vs. Chicago State (Illinois 67, Chicago State 36)
Illinois won by 40+ points	Nov. 24, 2015 vs. Tennessee State (Illinois 98, TSU 43)
Illinois won an overtime game	Jan. 26, 2012 at Michigan State (Illinois 71, Michigan State 62 [OT])
Illinois lost an overtime game	Nov. 29, 2014 vs. Oklahoma (Oklahoma 78, Illinois 76 [OT])
Illinois made 10 or more three-pointers	Dec. 19, 2015 at Memphis, 12 (Memphis 81, Illinois 75)
An Illinois opponent made 10 or more three-pointers	Nov. 21, 2015, UT Martin (13) (Illinois 94, UT Martin 74)
An Illinois player scored 30+ points	Feb. 28, 2015, Chatrice White, 30 vs. Michigan (Illinois 72, Michigan 60)
An Illinois player scored 40+ points	Jan. 14, 1996, Ashley Berggren, 43 at Minnesota (Illinois 87, Minnesota 76)
An opposing player scored 30+ points	Jan. 15, 2015, Aerial Powers, 33 at Michigan State (Michigan State 63, Illinois 56)
An opposing player scored 40+ points	Dec. 16, 1989, Carol Owens, 41 at Northern Illinois (Northern Illinois 110, Illinois 93)
An Illinois player had a triple-double	Jan. 22, 1982, Kim Brombolich vs. Eastern Michigan, 13 p, 11 r, 15 a (Illinois 107, Eastern Michigan 73)
An opposing player had a triple-double	Dec. 2, 2006, Armentie Price, Ole Miss, 34 p, 15 r, 12 st (Ole Miss 75, Illinois 50)
No Illini scored double figures	March 2, 2007, vs. Penn State at Big Ten Tournament (Penn State 61, Illinois 49 - Rebecca Harris had 8)
No opposing player scored double figures	Nov. 25, 2011, vs. Arizona State (Arizona State 51, Illinois 50)
Two Illini players had a double-double in the same game	Dec., 12, 2015 vs. Central Michigan, Chatrice White 20 p, 10 r and Alex Wittinger 14 p, 12 r (Illinois 74, CMU 69)
An Illini had 15+ rebounds	Jan. 8, 2015, Jacqui Grant, 15, vs. #17 Iowa (Illinois 73, #17 Iowa 61)
An Illini had 20+ rebounds	Feb. 7, 2010, Jenna Smith, 20, vs. Indiana (Indiana 67, Illinois 54)
An Illini had 25+ rebounds	Jan. 23, 1975, Betty Anderson, 30, vs. Eastern Illinois (Illinois 57, Eastern Illinois 51 [OT])
An opposing player had 15+ rebounds	Dec. 6, 2015, Lexi Martins, 17, Lehigh (Illinois 76, Lehigh 67)
An opposing player had 20+ rebounds	Jan. 4, 1985, Laura Coener, Minnesota, 21 (Minnesota 77, Illinois 61)
An opposing player had 25+ rebounds	Never
An Illini had 10+ assists	Feb. 5, 2015, Ivory Crawford, 11, vs. Minnesota (Illinois 95, Minnesota 69)
An Illini had 15+ assists	Jan. 15, 2006, Maggie Acuna, 16, at Wisconsin (Illinois 84, Wisconsin 54)
An opposing player had 10+ assists	Jan. 8, 2015, Samantha Logic, 14, vs. #17 Iowa (Illinois 73, #17 Iowa 61)
An opposing player had 15+ assists	March 12, 1983, Debbie Hunter, 15, vs. Minnesota (Minnesota 89, Illinois 65)
An Illini player made 5+ three-pointers	Dec. 12, 2015, Kiley Simmons vs. Central Michigan (5) (Illinois 74, Central Michigan 69)
An Illini player made 8+ three-pointers	Nov. 29, 1997, Katie Coleman, 9, vs. Providence, at Puerto Rico (Illinois 106, Providence 74)
An Illini player made 10+ three-pointers	Never
An opposing player made 5+ threes	Dec. 19, 2015, at Memphis, A. Hearn, 5 (Memphis 81, Illinois 75)
An opposing player made 8+ threes	Jan. 8, 2015, Melissa Dixon, 8, #17 Iowa (Illinois 73, #17 Iowa 61)
Illinois shot 60 pct. FG or better	Nov. 22, 2010, .616 (45-73) vs. Cal Poly (Illinois 104, Cal Poly 63)
Illinois shot 30 pct. FG or lower	Feb. 21, 2015, .265 (18-68) at Purdue (Illinois 47, Purdue 46)
An opponent shot 60 pct. FG or better	March 5, 2015, .617 (29-47), vs. Nebraska (Nebraska 84, Illinois 71)
An opponent shot 30 pct. FG or lower	Dec. 22, 2014, .275 (19-69), Murray State (Illinois 64, Murray State 44)
An opponent shot 25 pct. FG or lower	Nov. 21, 2013, .226 (14-62), Southern Illinois (SIU 43, Illinois 78)
An opponent shot 20 pct. FG or lower	Nov. 17, 2013, .152 (7-46), vs. Alcorn State (Illinois 112, Alcorn State 28)
Illinois forced 30 or more turnovers	Feb. 25, 2015, 34, Michigan State (Michigan State 67, Illinois 65)
Illinois committed 30 or more turnovers	Dec. 2, 2006, 34, at Ole Miss (Ole Miss 75, Illinois 50)
Illinois had 20 or more steals	Nov. 14, 2014, 21, vs. IPFW (Illinois 70, IPFW 63)
An Illinois opponent had 20 or more steals	Dec. 2, 2006, 26, at Ole Miss (Ole Miss 75, Illinois 50)
Illinois blocked 10 or more shots	Dec. 28, 2011, 10, vs. Alabama A&M (Illinois 83, Alabama A&M 65)
Illinois won 5+ games in a row	Nov. 14, 2014-Nov. 27, 2014, 5-game streak
Illinois won 10+ games in a row	Nov. 20, 1981-Jan. 2, 1982, 10-game streak
Illinois lost 5+ games in a row	Jan. 11, 2015-Feb. 1, 2015, 7-game streak
Illinois lost 10+ games in a row	Jan. 27, 2014-March 6, 2014, 11-game streak
Illinois won 5+ in a row at home	Feb. 28, 2015-Dec. 12, 2015, 8-game streak
Illinois won 10+ in a row at home	Dec. 20, 1997-Jan. 5, 1999, 18-game streak
Illinois won 15+ in a row at home	Dec. 20, 1997-Jan. 5, 1999, 18-game streak
Illinois lost 5+ in a row at home	Jan. 3, 2014-March 2, 2014, 8-game streak
Illinois lost 10+ in a row at home	Never
Illinois won 5+ in a row away from home	Dec. 9, 2012-Feb. 3, 2013, 6-game streak
Illinois won 10+ in a row away from home	Never

FIGHTING ILLINI WOMEN'S BASKETBALL NOTES

ILLINOIS TEAM HIGHS

Points	98	vs. Tennessee State (11/24/15)
Field Goals Made	36	vs. UT Martin (11/21/15)
Field Goals Attempted	76	vs. Central Michigan (12/12/15)
Field Goal %	.590 (36-61)	vs. UT Martin (11/21/15)
3-Pt. Field Goals Made	12	at Memphis (12/19/15)
3-Pt. Field Goals Attempted	32	vs. Central Michigan (12/12/15)
3-Pt. Field Goal Percentage	.462 (12-26)	at Memphis (12/19/15)
Free Throws Made	23	vs. Ohio (11/15/15)
Free Throws Attempted	30	vs. Ohio (11/15/15)
Free Throw Percentage	.800 (4-5)	vs. Lehigh (12/6/12)
Rebounds	49	vs. Tennessee State (11/24/15)
Assists	26	vs. UT Martin (11/21/15)
Steals	19	vs. Chicago State (11/13/15)
Blocked Shots	9	vs. Lehigh (12/6/12)
Turnovers	26	at Miami (12/2/15)
Fouls	24	at Memphis (12/19/15)

ILLINOIS TEAM LOWS

Points	62	vs. Ohio (11/15/15)
Field Goals Made	18	vs. Ohio (11/15/15)
Field Goals Attempted	51	vs. Ohio (11/15/15)
Field Goal %	.353 (18-51)	vs. Ohio (11/15/15)
3-Pt. Field Goals Made	3	vs. Ohio (11/15/15)
3-Pt. Field Goals Attempted	10	vs. Ohio (11/15/15)
3-Pt. Field Goal Percentage	.300 (3-10)	vs. Ohio (11/15/15)
Free Throws Made	4	vs. Lehigh (12/6/12)
Free Throws Attempted	5	vs. Lehigh (12/6/12)
Free Throw Percentage	.632 (12-19)	vs. UT Martin (11/21/15)
Rebounds	28	at Memphis (12/19/15)
Assists	8	vs. Ohio (11/15/15)
Steals	3	2x, last vs. UT Martin (11/21/15)
Blocked Shots	1	at Miami (12/2/15)
Turnovers	6	vs. Central Michigan (12/12/15)
Fouls	10	vs. Ohio (11/15/15)

OPPONENT TEAM HIGHS

Points	81	Memphis (12/19/15)
Field Goals Made	30	Miami (12/2/15)
Field Goals Attempted	73	UT Martin (11/21/15)
Field Goal %	.458 (27-59)	Memphis (12/19/15)
3-Pt. Field Goals Made	13	UT Martin (11/21/15)
3-Pt. Field Goals Attempted	40	UT Martin (11/21/15)
3-Pt. Field Goal Percentage	.407 (11-27)	Central Michigan (12/12/15)
Free Throws Made	21	Memphis (12/19/15)
Free Throws Attempted	26	Memphis (12/19/15)
Free Throw Percentage	.875 (7-8)	UT Martin (11/21/15)
Rebounds	50	Central Michigan (12/12/15)
Assists	20	Miami (12/2/15)
Steals	15	Memphis (12/19/15)
Blocked Shots	7	2x, last vs. Southern Illinois (12/8/15)
Turnovers	29	Chicago State (11/13/15)
Fouls	25	Ohio (11/15/15)

OPPONENT TEAM LOWS

Points	36	Chicago State (11/13/15)
Field Goals Made	15	Tennessee State (11/24/15)
Field Goals Attempted	51	Chicago State (11/13/15)
Field Goal %	.217 (15-69)	Tennessee State (11/24/15)
3-Pt. Field Goals Made	0	Chicago State (11/13/15)
3-Pt. Field Goals Attempted	15	Chicago State (11/13/15)
3-Pt. Field Goal Percentage	.000 (0-15)	Chicago State (11/13/15)
Free Throws Made	4	Chicago State (11/13/15)
Free Throws Attempted	9	Southern Illinois (12/8/15)
Free Throw Percentage	.304 (7-9)	Southern Illinois (12/8/15)
Rebounds	30	UT Martin (11/21/15)
Assists	4	Chicago State (11/13/15)
Steals	3	2x, last Central Michigan (12/12/15)
Blocked Shots	3	3x, last Memphis (12/19/15)
Turnovers	10	Southern Illinois (12/8/15)
Fouls	12	2x, last Memphis (12/19/15)

ILLINOIS INDIVIDUAL GAME HIGHS

Points	28	Chatrice White at Memphis (12/19/15)
Field Goals Made	12	Chatrice White vs. UT Martin (11/21/15)
Field Goals Attempted	22	Chatrice White, vs. Lehigh (12/6/12)
Field Goal % (Min. 5 made)	.667 (12-18)	Chatrice White vs. UT Martin (11/21/15)
3-Pt. Field Goals Made	7	Kyle Simmons vs. Lehigh (12/6/12)
3-Pt. Field Goals Attempted	11	Kyle Simmons vs. Central Michigan (12/12/15)
3-Pt. Field Goal % (Min. 3 made)	.800 (4-5)	Chatrice White at Memphis (12/19/15)
Free Throws Made	9	Chatrice White vs. Ohio (11/15/15)
Free Throws Attempted	9	Chatrice White vs. Ohio (11/15/15)
Free Throw % (Min. 5 made)	1.000	Chatrice White vs. Ohio (11/15/15)
Rebounds	13	Chatrice White 2x, last vs. Ohio (11/15/15)
Assists	9	Kyle Simmons vs. UT Martin (11/21/15)
Steals	6	Chatrice White Tenn. State (11/24/15)
Blocked Shots	6	2x, last C. White vs. Central Michigan (12/12/15)
Turnovers	4	3x, last Chatrice White at Memphis (12/19/15)
Fouls	5	2x, last J. Kirkpatrick at Memphis (12/19/15)
Minutes	40	Kyle Simmons vs. Lehigh (12/6/12)

OPPONENT INDIVIDUAL GAME HIGHS

Points	29	A. Hearn, Memphis (12/19/15)
Field Goals Made	11	A. Motley, Miami (12/2/15)
Field Goals Attempted	21	K. Black Ohio (11/15/15)
Field Goal % (Min. 5 made)	.750 (9-12)	D. Ruffin, UT Martin (11/21/15)
3-Pt. Field Goals Made	6	J. Ward, vs. UT Martin (11/21/15)
3-Pt. Field Goals Attempted	15	J. Ward, vs. UT Martin (11/21/15)
3-Pt. Field Goal % (Min. 3 made)	.648 (4-9)	R. Napier, Southern Illinois (12/8/15)
Free Throws Made	8	A. Hearn, Memphis (12/19/15)
Free Throws Attempted	12	L. Martins, Lehigh (12/6/12)
Free Throw % (Min. 5 made)	.800 (8-10)	A. Hearn, Memphis (12/19/15)
Rebounds	17	L. Martins, Lehigh (12/6/12)
Assists	6	R. Napier, Southern Illinois, (12/8/15)
Steals	5	2x, last A. Hearn, Memphis (12/19/15)
Blocked Shots	4	2x, last, D. Pierre, Southern Illinois (12/8/15)
Turnovers	7	2x, last, M. Woods, Miami (12/2/15)
Fouls	5	E. Hof, Miami (12/2/15)
Minutes	39	P. Hudson, Central Michigan (12/12/15)

ILLINOIS 67, CHICAGO STATE 36

Chicago State 36 • 0-1

Player	Total	3-Ptr	Rebounds	PF	TP	A TO Blk Stl	Min
FG-FGA	FT-FTA	Off Def Totl					
00 Allen, Kaylee	7-13	0-0	0-2	3	3	14	0 3 1 0 32
11 Harris, Konner	2-4	0-0	1-2	1	1	1	1 2 0 0 24
14 Sanders, Sh'Toya	1-3	0-0	0 3 6	4	2	0 2 2 0	25
21 Sanders, Jasmine	0-3	0-1	2-4	1 0 1	2 2 0	0 5 0 3	38
25 Murphy, Layne	2-14	0-0	1-4	3 11 14	3 15	2 7 2 2	38
28 Nix, Caitlin	0-1	0-1	0-0	0 1 1	0 0	2 0 0 1	6
23 Harden, Precious	1-3	0-0	0-1	0 0 0	4 2	1 6 0 1	17
38 Cerdia, Jessica	0-9	0-8	0-0	0 0 0	0 0	1 0 2 0	20
Team			1 3 4			1	
Totals	16-51	0-15	4-13	11 25 36	17 36	4 29 5 9	200

FG % 1st Half: 9-25 36.0%	2nd half: 7-26 26.9%	Game: 16-51 31.4%	Deadball Rebounds 4
3FG % 1st Half: 0-5 0.0%	2nd half: 0-10 0.0%	Game: 0-15 0.0%	
FT % 1st Half: 1-3 33.3%	2nd half: 1-3 33.3%	Game: 6-15 40.0%	

Illinois 67 • 1-0

Player	Total	3-Ptr	Rebounds	PF	TP	A TO Blk Stl	Min
FG-FGA	FT-FTA	Off Def Totl					
00 Sarah Hartwell	5-9	2-6	2-2	3 1 4	1 14	3 1 1 4	28
05 Cierra Rice	2-4	1-2	4-4	1 2 3	1 9	2 4 0 4	30
15 Kyley Simmons	5-9	5-9	0-0	0 3 3	2 15	2 4 0 4	32
25 Kennedy Cattenhead	1-6	0-3	0-0	0 4 4	2 2 3	0 4 0 1	25
23 Chatrice White	5-14	0-2	3-4	4 9 13	4 13	2 2 0 1	27
12 Ashley McConnell	0-2	0-2	0-0	0 1 1	1 0	1 0 0 0	9
21 Brooke Kissinger	3-6	2-4	1-2	0 1 1	2 9	0 0 0 2	17
23 Jaelyne Kirkpatrick	1-4	0-3	1-2	1 1 2	1 3	2 4 0 2	16
35 Alex Wittinger	1-7	0-0	2 1 3	4 2	0 0	1 1 15	
Team			1 2 3				
Totals	23-61	10-31	11-14	12 25 37	18 67	15 29 5 19	200

FG % 1st Half: 12-27 44.4%	2nd half: 11-34 32.4%	Game: 23-61 37.3%	Deadball Rebounds 4
3FG % 1st Half: 6-17 35.3%	2nd half: 4-14 28.6%	Game: 10-31 32.3%	
FT % 1st Half: 9-10 90.0%	2nd half: 2-3 66.7%	Game: 11-15 73.3%	

Officials: Barb Smith, Erika Herriman-Camaroto, Natasha Harris
Technical fouls: Chicago State None, Illinois None.
Attendance: 1001

Fighting Illini Women's Basketball started its season on a high note, tallying a 95-36 exhibition win over the University of Indianapolis at Parkland College. The Orange and Blue saw all nine players on the floor put up at least three points in the game, and the Illini assisted on 20 of 35 field goals in the contest. Illinois out rebounded the Greyhounds 38-26 and held UIndy to just under 23-percent shooting in the game. The Illini dropped 13 three-pointers in the contest, while shooting over 54-percent from the floor.

ILLINOIS 98, TENNESSEE STATE 43

Tennessee State 43 • 1-3

Player	Total	3-Ptr	Rebounds	PF	TP	A TO Blk Stl	Min
FG-FGA	FT-FTA	Off Def Totl					
01 DAVIS,Imani	2-10	0-3	3-6	1 6 7	3 7	0 3 1 2	28
05 PALMA,Samantha	2-7	0-0	1-2	0 0 1	5	0 2 1 0	23
20 JOHNSON,Jayda	4-17	0-2	3-5	5 10 4	5 11	2 5 0 0	29
15 COX,Michelle	1-3	1-3	1-2	1 0 1	4	2 6 0 0	21
25 LAWRENCE,Brianna	3-11	1-6	0-0	2 3 5	3 7	0 0 1 28	
01 PARKER,Diana	1-6	0-0	1-2	0 3 3	3 3	0 2 2 0	15
02 BEATTY,Tiffany	0-7	0-4	0-0	1 0 1	2	1 1 0 21	
06 BOLDING,Nicomi	1-3	1-2	0 1 1	0 4	1 0	1 0 10	
10 BRIGHTWELL,Jordan	0-0	0-0	0 0 2	1 0	0 0	0 0 7	
11 HODD,Yeshia	0-2	0-0	0 1 1	1	0	0 2 1 6	
24 SIMS,ASIA	1-3	0-1	0-0	1 2 3	2 2	0 2 0 1 12	
Team			3 2 2				
Totals	15-69	3-21	10-19	19 27 46	22 43	7 24 6 4	200

FG % 1st Half: 8-34 23.5%	2nd half: 7-35 20.0%	Game: 15-69 21.7%	Deadball Rebounds 4
3FG % 1st Half: 2-11 18.2%	2nd half: 1-10 10.0%	Game: 3-21 14.3%	
FT % 1st Half: 3-5 60.0%	2nd half: 7-14 50.0%	Game: 10-19 52.6%	

Illinois 98 • 4-0

Player	Total	3-Ptr	Rebounds	PF	TP	A TO Blk Stl	Min
FG-FGA	FT-FTA	Off Def Totl					
35 Chatrice White	8-20	1-5	3-4	0 7 7	2 20	2 1 1 6	24
00 Sarah Hartwell	3-4	1-1	2-2	1 2 3	2 9	2 1 0 1	20
05 Cierra Rice	4-6	0-0	2-3	2 6 8	2 10	2 3 1 1	22
15 Kyley Simmons	2-4	3-3	0 2 2	1 17	2 0	1 1	21
25 Kennedy Cattenhead	2-7	0-1	7-8	0 7 7	0 11	1 2 1 0	29
12 Ashley McConnell	1-2	0-1	0-0	1 1 1	2	2 0 0 15	
21 Brooke Kissinger	4-11	4-7	0 0 2	3 12	3 1	0 0 25	
23 Jaelyne Kirkpatrick	2-3	1-2	0-0	1 6 7	3 5	3 2 0 1	21
35 Alex Wittinger	5-8	0-1	2-4	4 5 9	1 12	0 0 1 0	23
Team			1 6 7				
Totals	35-70	9-22	19-24	10 39 49	15 98	17 13 4 10	200

FG % 1st Half: 22-34 64.7%	2nd half: 13-36 36.1%	Game: 35-70 50.0%	Deadball Rebounds 4
3FG % 1st Half: 6-12 50.0%	2nd half: 3-10 30.0%	Game: 9-22 40.9%	
FT % 1st Half: 10-13 76.9%	2nd half: 9-11 81.8%	Game: 19-24 79.2%	

Officials: Laura Morris, Beverly Roberts, Tim Daley
Technical fouls: Tennessee State None, Illinois None.
Attendance: 952

Score by periods	1st	2nd	3rd	4th	Total
Tennessee State	9	12	10	12	43
Illinois	33	27	22	16	98

Last FG - TSU 4th 04:59, IL 4th 04:51.
Largest lead - TSU None, IL by 58 04:06.
TSU led for 00:00, IL led for 39:12. Game was tied for 00:29.

Fighting Illini Women's Basketball used a balanced scoring attack to overcome Tennessee State on Tuesday, Nov. 24. Illinois improved to 4-0 on the season with the 98-43 victory at Parkland College. The 55-point victory marks the fourth largest margin of victory in Illinois history. Six Illini scored in the double-digits on the night, including sophomores Kennedy Cattenhead and Brooke Kissinger who put up new career-high numbers with 11 and 12 points, respectively.

ILLINOIS 62, OHIO 53

Ohio University 53 • 0-1

Player	Total	3-Ptr	Rebounds	PF	TP	A TO Blk Stl	Min
FG-FGA	FT-FTA	Off Def Totl					
04 BLACK,Kiayanna	7-21	4-13	0-0	0 5 5	3 18	1 2 0 2	35
05 HARKINS,Quiana	0-1	0-1	0-0	0 1 1	4 9	0 3 0 0	24
10 BALDWIN,Lexie	4-10	3-7	0-0	1 0 1	4 11	0 0 1 0	25
21 JENKINS,Yamorie	2-6	1-4	0-0	2 3 5	4 5	1 1 0 0	26
25 WEATHERSPOON, Jasm	2-3	0-0	2-4	2 7 9	2 6	1 4 4 2	35
01 HARRIS, Mariah	0-1	0-0	0-0	0 0 0	0 5	0 1 2 0	0
11 KARLS, Kelly	0-5	0-3	0-0	0 0 0	0 0	1 1 0 11	
20 STINSON, Tinsht	0-3	0-1	0-0	1 2 3	1 0	1 0 0 10	
22 BOESINGER, Hannah	1-4	0-2	2-2	1 0 1	2 4	1 0 1 0	18
Team			4 4 8			2	
Totals	19-61	8-32	7-12	11 22 33	25 53	7 13 7 4	200

FG % 1st Half: 10-30 33.3%	2nd half: 9-31 29.0%	Game: 19-61 31.1%	Deadball Rebounds 2
3FG % 1st Half: 4-14 28.6%	2nd half: 4-18 22.2%	Game: 8-32 25.0%	
FT % 1st Half: 4-6 66.7%	2nd half: 3-6 50.0%	Game: 7-12 58.3%	

Illinois 62 • 2-0

Player	Total	3-Ptr	Rebounds	PF	TP	A TO Blk Stl	Min
FG-FGA	FT-FTA	Off Def Totl					
00 Sarah Hartwell	2-8	0-1	0-0	1 7 8	0 4	1 3 0 2	35
05 Cierra Rice	2-4	0-0	5-9	0 2 2	2 9	2 2 0 1	30
15 Kyley Simmons	4-9	0-1	4-6	1 3 4	2 12	2 0 0 0	39
25 Kennedy Cattenhead	1-4	1-1	4-4	0 6 6	1 7	1 1 0 0	32
12 Chatrice White	6-18	1-5	9-9	5 8 13	2 22	2 4 0 35	
21 Brooke Kissinger	0-0	0-0	0-0	0 0 0	0 1	0 0 1 0	5
23 Jaelyne Kirkpatrick	1-2	1-1	0-0	0 1 1	0 3	0 2 0 0	9
35 Alex Wittinger	2-6	1-1	1-2	2 2 4	2 0	1 1 0 15	
Team			3 3 6				
Totals	18-51	3-10	12-30	12 32 44	10 62	8 14 5 3	200

FG % 1st Half: 6-27 22.2%	2nd half: 12-24 50.0%	Game: 18-51 35.3%	Deadball Rebounds 6
3FG % 1st Half: 4-14 28.6%	2nd half: 1-4 25.0%	Game: 5-10 50.0%	
FT % 1st Half: 12-15 80.0%	2nd half: 11-15 73.3%	Game: 23-30 76.7%	

Officials: Rob Entenry, Michael McConnell, Jeff Cross
Technical fouls: Ohio University None, Illinois None.
Attendance: 983

Fighting Illini women's basketball team improved to 2-0 on the season Sunday, Nov. 15, defeating Ohio, 62-53 inside Parkland College. Sophomore Chatrice White led the Illini with 22 points and 13 rebounds, securing her second double-double in as many games. The Illini capitalized on 25 Ohio fouls in the contest, shooting better than 76-percent from the charity stripe. The Bobcats, who returned three starters from last year's NCAA tournament team, came out strong from the first tip, taking an early lead in the game. The Orange and Blue trailed 23-11 at the end of the first quarter and Ohio led by as much as 13 early in the second quarter.

MIAMI 73, ILLINOIS 64

Illinois 64 • 4-1

Player	Total	3-Ptr	Rebounds	PF	TP	A TO Blk Stl	Min
FG-FGA	FT-FTA	Off Def Totl					
32 Chatrice White	2-9	1-4	1-2	3 4 7	3 6	1 3 1 3	35
00 Sarah Hartwell	3-5	1-2	0-0	0 2 3	5	2 8 1 4	30
05 Cierra Rice	4-14	1-2	5-6	3 4 7	2 22	1 3 0 1	35
15 Kyley Simmons	4-11	2-9	0-0	0 1 1	5 10	5 0 3 0	34
25 Kennedy Cattenhead	3-8	0-0	1-6	2 4 6	4 9	0 2 0 1	24
21 Brooke Kissinger	2-5	2-5	0-0	0 2 2	0 6	3 2 0 0	17
23 Jaelyne Kirkpatrick	1-3	1-2	0-0	0 1 1	3 0	3 0 0 0	13
35 Alex Wittinger	0-1	0-0	0-0	1 2 3	1 0	2 0 0 15	
Team			3 3 6				
Totals	23-57	9-24	9-14	11 24 35	16 64	11 26 1 12	200

FG % 1st Half: 12-27 48.1%	2nd half: 10-30 33.3%	Game: 23-57 40.4%	Deadball Rebounds 2
3FG % 1st Half: 5-13 38.5%	2nd half: 4-11 36.4%	Game: 9-24 37.5%	
FT % 1st Half: 4-6 66.7%	2nd half: 5-8 62.5%	Game: 9-14 64.3%	

Miami 73 • 8-0

Player	Total	3-Ptr	Rebounds	PF	TP	A TO Blk Stl	Min
FG-FGA	FT-FTA	Off Def Totl					
00 HAYES,KEYONA	3-8	0-1	0-0	1 5 6	3 0	1 1 31	
05 DAVENPORT,ERYKAH	2-6	0-0	2-3	0 1 1	3 6	0 0 0 0	14
03 THOMAS,JESSICA	6-14	1-6	2-2	0 4 4	1 15	5 1 2 5	37
10 WOODS,MICHELLE	2-6	1-4	2-2	0 8 8	3 7	5 7 0 2	29
23 MOTLEY,ADRIENNE	0-11	0-2	0-0	5 1 6	1 24	4 1 0 1	36
00 HARRIS,KEYANNA	0-1	0-1	0-0	0 0 0	0 0	0 1 0 1	2
05 CORNELIUS,LAURA	0-3	0-2	0-0	0 2 1	0 2	2 0 0 15	
05 GREENE,NIGIA	0-1	0-1	2-2	0 1 1	0 2	1 0 0 1	5
21 HOFENSE	6-10	0-0	1-2	4 2 6	5 13	4 1 0 26	
25 PRATHER,KHALIA	0-0	0-0	0-0	1 1 2	0 0	2 1 1 5	
Team			3 3 6				
Totals	30-67	4-19	9-11	15 24 39	15 73	20 18 5 12	200

FG % 1st Half: 13-27 48.1%	2nd half: 17-32 53.1%	Game: 30-67 44.4%	Deadball Rebounds 0
3FG % 1st Half: 5-13 38.5%	2nd half: 3-9 33.3%	Game: 9-19 21.1%	
FT % 1st Half: 1-1 100.0%	2nd half: 0-10 00.0%	Game: 4-11 36.4%	

Officials: Denise Roberts, Billy Smith, Luis Gonzalez
Technical fouls: Illinois None, Miami None.
Attendance: 910

Score by periods	1st	2nd	3rd	4th	Total
Illinois	18	14	17	12	61
Miami	21	18	10	24	73

Last FG - IL 4th 00:32, UH 4th 00:18.
Largest lead - IL by 11 2nd 08:03, UH by 9 4th 03:11.
IL led for 28:34, UH led for 08:26. Game was tied for 02:30.

Fighting Illini women's basketball dropped a hard-fought battle to the Miami Hurricanes on Wednesday night, Dec. 2, in the annual Big Ten/ACC Challenge. Despite maintaining the lead for most of the contest, Illinois couldn't overcome a late deficit, falling 73-64. The Orange and Blue move to 4-1 overall on the season and 2-1 in the all-time series with Miami. Freshman Cierra Rice put up double-figure scoring numbers for the third consecutive contest on Wednesday, and earned her second 20-point game of her career.

ILLINOIS 94, UT MARTIN 74

UT MARTIN 74 • 2-3

#	PLAYER	FG		3-Ptr		Rebounds		PF	TP	A TO Blk Stl				Min	
		F	A	F	A	O	D			F	T	A	O		B
00	ROBERTSON, Emanye	0-4	0-1	2-2	0-0	3	2	5	1	2	1	3	0	1	27
14	ROBERTS, Chelsea	1-6	1-1	0-0	0-0	1	1	2	4	3	0	1	1	28	
28	SCHUBERT, Katie	2-9	1-5	0-0	0-0	1	0	1	4	5	2	0	1	16	
21	WARD, Jessy	8-19	6-15	0-0	0-0	1	4	1	0	22	0	0	0	1	28
22	HOWARD, Haley	3-14	3-10	0-0	0-0	2	4	6	3	9	5	2	0	0	30
10	RUFFIN, Dakota	9-12	1-1	3-3	0-0	2	0	2	2	22	2	0	0	0	18
18	RYAN, Myah	2-3	0-0	0-0	0-0	0	2	2	0	1	1	1	0	3	18
42	SMITH, Dakota	0-1	0-0	0-0	0-0	1	1	1	0	0	2	0	0	0	8
	Team					1	3	4							
Totals		27-73	13-40	7-8	1-2	18	30	16	74	13	18	3	10	199	

FIGHTING ILLINI WOMEN'S BASKETBALL NOTES

ILLINOIS 78, SOUTHERN ILLINOIS 64

Southern Illinois 64 • 4-4																
	#	Player	FG	FGA	FT	FTA	Off	Def	Tot	PF	TP	A	TO	Bk	Sf	
36		Vanthylte, Celina	r	2-4	0-0	0-0	0	3	3	2	4	1	0	1	1	
40		Pierre, Dyanis	r	4-16	0-0	2-5	4	8	12	3	14	1	3	4	0	
9		Macklin, Cortanah	g	4-11	1-5	2-2	4	2	6	3	11	1	2	1	2	
13		Napier, Rhonda	g	5-15	4-9	0-0	0	1	1	3	14	6	1	0	0	
32		Gabelhausen, Kylie	g	2-7	1-5	1-2	3	3	6	0	6	3	1	0	0	
32		Stephenson, Blair	g	0-0	0-0	0-0	0	0	0	0	0	0	0	0	0	
18		Rowling, China	g	0-0	0-0	0-0	1	0	1	0	0	1	1	0	0	
24		Nebo, Kim	g	2-3	0-0	0-0	0	1	1	0	4	0	0	0	0	
20		Washington, Jaki	g	2-4	1-1	2-2	0	2	2	1	7	0	0	0	0	
40		Cornigan, Carrie	g	2-7	0-3	0-0	0	0	0	2	4	1	1	0	0	
Team			25-67		7-23		7-9		14		20		34		14	
Totals			25-67		7-23		7-9		14		20		34		14	
30% 1st half: 12-33 33.3%			2nd half: 13-31 41.9%			Game: 23-67 37.3%			30% 1st half: 12-33 33.3%			30% 1st half: 12-33 33.3%			Dashed	
77% 1st half: 7-8 87.5%			2nd half: 8-7 85.7%			Game: 7-23 30.4%			77% 1st half: 7-8 87.5%			77% 1st half: 7-8 87.5%			Dashed	

FG % 1st Half: 12-36 33.3% 2nd half: 13-31 41.9% Game: 25-67 37.3%
 3PG % 1st Half: 4-13 30.8% 2nd half: 3-10 30.0% Game: 7-23 30.4%
 FT % 1st Half: 7-8 87.5% 2nd half: 0-1 0.0% Game: 7-9 77.8%

Illinois 78 • 6-1

#	Player	FG	FGA	FT	FTA	Off	Def	Tot	PF	TP	A	TO	Bk	Sf	Min
25	Kennedy Cattenhead	r	2-2	1-1	5-5	1	1	2	1	10	2	1	0	0	21
32	Chatrice White	r	7-13	0-4	2-2	1	13	14	3	16	1	2	3	2	34
00	Sarah Hartwell	g	5-7	1-3	1-1	3	1	4	1	12	1	0	0	0	31
05	Cierra Rice	g	7-12	0-1	3-9	2	5	7	1	17	1	1	0	0	35
15	Kyley Simmons	g	3-8	3-4	2-2	1	5	6	2	11	4	7	0	0	38
21	Brooke Kissinger	g	1-4	0-1	0-0	0	1	1	2	1	0	0	0	0	13
23	Jaslyne Kirkpatrick	g	0-1	0-1	0-0	0	0	1	0	0	0	0	0	1	6
35	Alex Wittinger	g	5-7	0-0	0-0	3	1	4	2	10	1	0	2	0	22
Team															
Totals		30-62		5-15		13-20		16		28		44		12	

FG % 1st Half: 14-34 41.2% 2nd half: 16-28 57.1% Game: 30-62 48.4%
 3PG % 1st Half: 3-10 30.0% 2nd half: 2-5 40.0% Game: 5-15 33.3%
 FT % 1st Half: 4-7 57.1% 2nd half: 9-15 60.0% Game: 13-20 65.0%

Officials: Beverly Roberts, Bryan Entenman, Doug Knight

Technical fouls: Southern Illinois-None, Illinois-None.

Attendance: 1317

Score by periods	1st	2nd	3rd	4th	Total
Southern Illinois	17	18	18	11	64
Illinois	20	16	29	20	78

Last FG - SU 4th-00:00, ILL 4th-00:57
 Largest lead - SU by 7 4th-00:16, ILL by 14 4th-01:00
 SU led for 01:16, ILL led for 00:26. Game was tied for 00:25.

The Fighting Illini once again relied on a balanced scoring effort, edging Southern Illinois, 78-64, Tuesday night (Dec. 8) at the State Farm Center. Illinois improves to 6-1 on the season, the best start for an Illini team under head coach Matt Bollant so far. Six Illini scored in double figures in the game, led by freshman Cierra Rice (17) and sophomore Chatrice White (16). White also contributed 13 rebounds for her third double-double of the season.

ILLINOIS 74, CENTRAL MICHIGAN 69

Central Michigan 69 • 4-3															
#	Player	FG	FGA	FT	FTA	Off	Def	Tot	PF	TP	A	TO	Bk	Sf	Min
02	MOORE, Tiana	r	0-3	0-0	0-0	3	3	6	2	0	0	2	1	0	14
20	COTTON, Jewel	r	4-9	0-0	2-2	1	10	11	0	10	0	1	2	0	27
01	TURNER, De'Jourie	g	1-4	0-0	3-4	0	1	1	1	5	3	0	0	0	27
03	HUDSON, Presley	g	5-14	4-12	4-4	0	8	8	3	18	2	3	0	1	39
10	BREEN, Cassie	g	9-17	5-9	0-0	0	2	2	3	23	2	1	0	0	34
06	HARRIS, Jeanine	g	1-7	1-4	0-0	0	2	2	0	2	2	0	0	0	13
05	SWARTY, Aleah	g	1-3	1-2	0-0	1	1	2	0	3	0	0	1	0	9
13	FROST, Reyna	g	3-6	0-0	1-6	6	6	12	2	7	2	0	2	1	34
14	CORLEY, Amani	g	0-1	0-0	0-0	0	0	0	0	0	0	1	0	1	3
Team															
Totals		24-64	11-27	10-16	14	36	50	13	69	11	7	6	2	0	200
CUMULATIVE															
FG % last half: 8-27 29.6%		2nd half: 9-19 47.4%		Game: 24-64 37.5%		69		11	7	6	Overall: 24-64 37.5%				
3FG % last half: 3-8 37.5%		2nd half: 1-6 16.7%		Game: 3-12 25.0%		69		11	7	6	Overall: 3-12 25.0%				
FT % last half: 7-12 58.3%		2nd half: 10-16 62.5%		Game: 10-16 62.5%		69		11	7	6	Overall: 10-16 62.5%				

FG % 1st Half: 8-27 29.6% 2nd half: 16-37 43.2% Game: 24-64 37.5%
 3PG % 1st Half: 2-8 25.0% 2nd half: 9-19 47.4% Game: 11-27 40.7%
 FT % 1st Half: 7-10 70.0% 2nd half: 3-6 50.0% Game: 10-16 62.5%

Illinois 74 • 7-1

#	Player	FG	FGA	FT	FTA	Off	Def	Tot	PF	TP	A	TO	Bk	Sf	Min
32	Chatrice White	r	8-18	0-3	4-4	1	9	10	2	20	2	1	0	0	30
00	Sarah Hartwell	g	2-7	1-5	0-0	1	4	5	3	5	3	0	0	0	24
05	Cierra Rice	g	4-11	2-4	0-1	0	0	0	0	10	3	1	0	1	28
15	Kyley Simmons	g	5-12	5-11	2-2	0	1	1	2	17	5	0	0	0	35
25	Kennedy Cattenhead	g	0-8	0-2	0-2	1	2	3	1	0	3	0	0	0	23
42	Ashley McConnell	g	0-0	0-0	0-0	0	0	0	1	0	1	0	0	0	3
21	Brooke Kissinger	g	0-3	0-3	0-0	0	1	1	2	0	0	0	0	0	14
23	Jaslyne Kirkpatrick	g	2-5	2-4	2-2	1	1	2	1	8	2	2	0	0	17
35	Alex Wittinger	g	7-12	0-0	0-0	7	5	12	2	14	3	2	2	1	26
Team															
Totals		28-76		10-32		8-11		29		43		14		74	

FG % 1st Half: 15-43 34.9% 2nd half: 13-33 39.4% Game: 28-76 36.8%
 3PG % 1st Half: 6-18 33.3% 2nd half: 4-14 28.6% Game: 10-32 31.3%
 FT % 1st Half: 6-7 85.7% 2nd half: 2-4 50.0% Game: 8-11 72.7%

Officials: Lisa Mattingly, Jesse Dickinson, Tom Hallard

Technical fouls: Central Michigan-None, Illinois-None.

Attendance: 1557

Score by periods	1st	2nd	3rd	4th	Total
Central Michigan	10	15	17	27	69
Illinois	15	23	16	15	74

Last FG - CMU 4th-00:01, ILL 4th-00:57
 Largest lead - CMU None, ILL by 17 2nd-00:11
 CMU led for 00:00, ILL led for 37:55. Game was tied for 02:05.

Fighting Illini women's basketball handed head coach Matt Bollant his 50th victory at Illinois on Sunday, using an unselfish style of play to overcome Central Michigan, 74-69. Illinois improves to 7-1 on the year, continuing the best start for an Illinois team since the 2009-10 season. The underclassmen were the story on Saturday as freshman Alex Wittinger and sophomore Chatrice White both recorded double-doubles in the contest. Illinois' freshmen accounted for 32 of UI's total points.

MEMPHIS 81, ILLINOIS 75

Illinois 75 • 7-2															
#	Player	FG	FGA	FT	FTA	Off	Def	Tot	PF	TP	A	TO	Bk	Sf	Min
32	Chatrice White	r	10-19	4-5	4-4	1	11	12	2	28	2	4	3	0	37
00	Sarah Hartwell	g	2-8	1-4	1-2	1	3	4	4	6	3	0	3	0	30
05	Cierra Rice	g	5-13	2-6	1-2	1	1	2	4	13	2	3	0	1	34
15	Kyley Simmons	g	2-4	2-4	0-0	0	3	3	2	6	3	0	0	1	38
25	Kennedy Cattenhead	g	1-3	0-1	1-2	0	0	0	0	3	2	3	0	0	17
21	Brooke Kissinger	g	3-6	3-5	0-0	0	0	1	9	1	0	0	0	0	13
23	Jaslyne Kirkpatrick	g	1-3	0-1	0-0	2	1	3	5	2	0	3	0	1	10
35	Alex Wittinger	g	4-7	0-0	0-0	1	0	1	3	8	0	2	0	0	21
Team															
Totals		28-63		12-26		7-10		7		21		28		24	
FG 1st half: 15-28 53.6% 2nd half: 13-35 37.1% Game: 28-63 44.4%															
FTG 1st half: 8-13 61.5% 2nd half: 4-13 30.8% Game: 12-26 46.2%															
TP 1st half: 3-4 75.0% 2nd half: 4-6 66.7% Game: 7-10 70.0%															
															Deathball

FG % 1st Half: 15-28 53.6% 2nd half: 13-35 37.1% Game: 28-63 44.4%
 3PG % 1st Half: 8-13 61.5% 2nd half: 4-13 30.8% Game: 12-26 46.2%
 FT % 1st Half: 4-4 75.0% 2nd half: 4-6 66.7% Game: 7-10 70.0%

Memphis 81 • 6-5

#	Player	FG	FGA	FT	FTA	Off	Def	Tot	PF	TP	A	TO	Bk	Sf	Min
21	Fuqua-Bey, Asianna	r	0-5	0-0	4-4	2	6	8	2	4	4	2	1	4	27
33	Wright, Brianna	r	4-9	0-0	4-4	1	2	3	2	12	2	0	0	1	25
02	Morris, Loysha	g	1-6	0-2	0-0	1	0	1	0	2	0	4	0	2	20
04	Heam, Ariel	g	8-14	5-8	8-10	1	6	7	1	29	6	5	2	5	36
24	Rosner, Moonah	g	7-12	0-2	2-4	0	1	1	1	16	1	1	0	1	26
05	Wilder-Cochran, Breigh	g	0-1	0-1	0-0	0	2	2	1	0	3	3	0	1	19
03	Williams, Taylor	g	1-2	0-1	0-0	1	1	2	3	2	0	2	0	1	13
21	Elmore, Brea	g	1-1	1-1	0-0	1	1	2	0	3	0	1	0	0	8
10	Creshington, Cheyenne	g	5-9	0-0	1-2	1	3	4	1	11	1	1	0	0	24
44	Bajic, Milena	g	0-0	0-0	2-2	0	0	0	1	2	0	1	0	0	2
Team															
Totals		27-59		6-15		21-26		11		24		35		12	

FG % 1st Half: 17-32 53.1% 2nd half: 10-27 37.0% Game: 27-59 45.8%
 3PG %

FIGHTING ILLINI WOMEN'S BASKETBALL NOTES



SARAH HARTWELL

0

5-10 // RS SENIOR // GUARD

TACOMA, WASH.

BELLARMINE PREP

GEORGIA TECH UNIVERSITY

SEASON BESTS

Pts: 14 (vs. Chicago State, 11/13/15)
Rebs: 8 (2x, last vs. UT Martin, 11/21/15)
FGM: 5 (2x, last vs. Southern Illinois, 12/8/15)
FGA: 9 (vs. Chicago State, 11/13/15)
FTM: 2 (vs. Chicago State, 11/13/15)
FTA: 2 (3x, last at Miami, 12/19/15)
3FGM: 2 (vs. Chicago State, 11/13/15)
3FGA: 6 (vs. Chicago State, 11/13/15)
Ast: 7 (vs. UT Martin, 11/21/15)
Blk: 1 (vs. Chicago State, 11/13/15)
Stl: 4 (vs. Chicago State, 11/13/15)
Min: 35 (vs. Ohio, 11/15/15)

CAREER BESTS

Pts: 18 (at Bradley, 11/0/13)
Rebs: 9 (vs. SIU, 11/21/13)
FGM: 8 (at Bradley, 11/8/13)
FGA: 14 (vs. Valparaiso, 11/12/13)
FTM: 12 (vs. Alcorn St., 11/17/13)
FTA: 14 (vs. Alcorn St., 11/17/13)
3FGM: 3 (at Northwestern, 1/15/14)
3FGA: 6 (vs. Chicago State, 11/13/15)
Ast: 7 (2x, last vs. UT Martin, 11/21/15)
Blk: 1 (4x, last vs. Chicago State, 11/13/15)
Stl: 4 (3x, last vs. Chicago State, 11/13/15)
Min: 44 (vs. Wisconsin, 1/3/14)

CAREER HONORS

2015 Winter Academic Honor Roll

2015-16 HIGHLIGHTS

- Earned her first career start against Chicago State in Illinois' season opener and has started in all of Illinois' games so far
- Matched her career best with four steals against Chicago State
- Grabbed a season-high eight rebounds against Ohio on Nov. 15
- Dished a career-best seven assists against UT Martin
- Has recorded a steal in all but two games this season
- Put up 12 points against Southern Illinois, the most in a game since her season-high against Chicago State.

2015-16 GAME-BY-GAME STATISTICS

Date	Opponent	GS	MIN	FG-A	3P-A	FT-A	REB	PF	A	TO	BL	ST	PTS
11/13	Chicago State	*	28	5-9	2-6	2-2	4	1	3	1	1	4	14
11/15	Ohio	*	35	2-8	0-1	0-0	8	0	1	3	0	2	4
11/21	UT Martin	*	31	2-7	1-3	1-2	8	3	7	1	0	0	6
11/24	Tennessee State	*	20	3-4	1-1	2-2	3	2	2	1	0	1	9
12/2	at Miami	*	34	3-6	2-2	0-0	5	2	1	4	0	3	8
12/6	Lehigh	*	28	1-3	0-2	0-0	6	3	4	1	0	1	2
12/8	Southern Illinois	*	31	5-7	1-3	1-1	4	1	1	0	0	2	12
12/12	Central Michigan	*	24	2-7	1-5	0-0	5	3	3	0	0	0	5
12/19	at Memphis	*	30	2-8	1-3	1-2	4	4	3	3	0	3	6

HARTWELL'S CAREER STATISTICS

YEAR	G-GS	MIN/AVG	FGM-FGA/%	3PM-3PA/%	FTM-FTA/%	REB/AVG	PF/DQ	A	TO	B	ST	PTS/AVG
2011-12	10-0	38/3.8	1-5/.200	0-1/.000	0-0/.000	3-1-4/0.4	6/0	0	7	0	1	2/0.2
2012-13	Redshirted season											
2013-14	30-20	680/22.7	67-176/.381	17-58/.293	39-49/.796	18-36-54/1.8	56/1	62	58	3	31	190/6.3
2014-15	14-0	43/3.1	3-11/.273	1-4/.250	3-4/.750	0-2-4/0.4	8/0	2	3	0	3	10/0.7
2015-16	9-9	261/29.0	25-59/.424	9-27/.333	7-9/.778	13-34-47/5.2	19/0	25	14	1	16	66/7.3
TOTAL	53-29	984/18.6	95-246/.386	27-89/.303	49-62/.790	34-73-107/2.0	83/1	89	75	4	50	266/5.0

*2011-12 statistics are from Georgia Tech and are not counted in career totals

HARTWELL'S CAREER BIG TEN STATISTICS

YEAR	G-GS	MIN/AVG	FGM-FGA/%	3PM-3PA/%	FTM-FTA/%	REB/AVG	PF/DQ	A	TO	B	ST	PTS/AVG
2013-14	16-7	270/16.9	23-68/.338	7-31/.226	12-13/.923	8-14-22/1.4	17/0	16	17	1	10	65/4.1
2014-15	7-0	18/2.6	1-7/.143	1-4/.250	2-2/1.000	1/0.1	3/0	0	1	0	1	5/0.7

FIGHTING ILLINI WOMEN'S BASKETBALL NOTES



SIMONE LAW

4

6-0 // RS SENIOR // FORWARD

SOUTH HOLLAND, ILL.

MARIAN CATHOLIC

LOYOLA (ILL.)

SEASON BESTS

Pts: -
Rebs: -
FGM: -
FGA: -
FTM: -
FTA: -
3FGM: -
3FGA: -
Blk: -
Stl: -
Min: -

CAREER BESTS (AT LOYOLA)

Pts: 33 (Milwaukee, 2/28/13)
Rebs: 14 (3x, last vs. Green Bay, 3/17/13)
FGM: 12 (2x, last vs. Youngstown St., 3/15/13)
FTM: 13 (Southern Illinois, 11/17/12)
Ast: 3 (2x, last vs. Bradley, 2/20/15)
Blk: 4 (Omaha, 12/18/11)
Stl: 3 (Chicago State, 12/22/12)
Min: 40 (UIC, 1/12/13)

HONORS

2013-14 Preseason All-Missouri Valley Conference
2013 First Team All-Horizon League
2013 Horizon League All-Tournament Team
2012 Horizon League All-Newcomer Team

AT LOYOLA

2014-14 – SENIOR: Started in eight games and appeared in 11 for the Ramblers... Averaged 12.5 points per game, good for third on the team...Her 6.2 rebounds per game were second-best on the team...Put up double-figure scoring numbers in seven of her 11 appearances...Grabbed a season-high 10 rebounds at Bradley

2014-14 – JUNIOR: Battled knee injuries for a majority of the season...Appeared in three games...Scored eight points in her debut against Eastern Illinois

2012-13 – SOPHOMORE: Played in 25 games, earning 22 starts...Was named to the All-Horizon League Tournament Team after averaging 21 points and almost 10 rebounds in three postseason games...Led the Ramblers in scoring (17.8 ppg) and rebounding (8.7 rpg) for the second consecutive season and was the only player in program history to accomplish that in her freshman and sophomore seasons...Knocked down 122 free throws, good for fifth on Loyola's single-season list...Set a school record with 22 made free throws against Youngstown State...Scored in double-figures in 22 of her 25 appearances...Recorded eight double-doubles and grabbed 10 or more rebounds on nine occasions...Put up a career-high 33 points against Milwaukee

2011-12 – FRESHMAN: Played in 23 games, earning 21 starts...Put together one of the best freshman seasons in Loyola history as she finished fourth all-time in freshman scoring (320 pts) and fifth in rebounding (166 rbs)...Was the first freshman in school history to lead the team in both scoring (13.9 ppg) and rebounding (7.2 rpg)...Recorded season highs of 28 points, 13 rebounds and four blocked shots in home win over Nebraska Omaha

HIGH SCHOOL

Played at Marian Catholic for head coach Annie Basic Byrne and AAU ball for the Chicago Hoops Express under head coach Jerald Davis...Four-year honor roll student...Two-time team most valuable player...Garnered Special Mention All-State accolades from the Campaign News-Gazette and was a McDonald's All-American nominee...Member of Chicago Sun-Times All-Area squad each of her last two seasons and earned All-Area honors from ESPN Chicago...Averaged 17.7 points, 8.9 rebounds and 1.5 blocked shots per game as a senior for team that went 30-5 and advanced to Class 4A supersectional round for third straight season...Named 2010-11 SouthtownStar Player of the Year and Illinois Times Player of the Year...Chosen Second Team All-State by the Illinois Basketball Coaches Association and the Chicago Tribune...Selected Third Team All-State by Illinois

Basketball Services...Member of Chicago Sun-Times All-Area squad each of her last two seasons and earned All-Area honors from ESPN Chicago

PERSONAL

Born on April 2, 1993...Daughter of Victor Law and Bridgett Anthony...Father played collegiate basketball at Western University and brother, Victor Law, plays for Northwestern...Earned a degree in Criminal Justice with a minor in Psychology and is pursuing a master's degree in Recreation, Sport and Tourism...Lists Kevin Durant as her favorite athlete.

2015-16 GAME-BY-GAME STATISTICS

Date	Opponent	GS	MIN	FG-A	3P-A	FT-A	REB	PF	A	TO	BL	ST	PTS
11/13	Chicago State						DNP						
11/15	Ohio						DNP						
11/21	UT Martin						DNP						
11/24	Tennessee State						DNP						
12/2	at Miami						DNP						
12/6	Lehigh						DNP						
12/8	Southern Illinois						DNP						
12/12	Central Michigan						DNP						
12/19	at Memphis						DNP						

LAW'S CAREER STATISTICS (AT LOYOLA)

YEAR	G-GS	MIN/AVG	FGM-FGA/%	3PM-3PA/%	FTM-FTA/%	REB/AVG	PF/DQ	A	TO	B	ST	PTS/AVG
2011-12	23-21	604/26.3	118-259/.456	0-0/.000	84-108/.778	166/7.2	-/-	23	49	28	16	320/13.9
2012-13	25-22	818/32.7	162-333/.486	0-2/.000	122-173/.705	217/8.7	-/-	19	52	26	27	446/17.8
2013-14	3-0	37/12.3	7-21/.333	0-0/.000	7-8/.875	9/3.0	-/-	0	2	0	0	21/7.0
2014-15	11-8	258/23.5	49-108/.454	0-0/.000	24-41/.585	68/6.2	-/-	9	20	6	5	122/11.1
Total	62-51	1717/27.7	336-721/.466	0-2/.000	237-330/.718	460/7.4	-/-	51	123	60	48	909/14.7

**statistics are from Loyola (Ill.) and are not counted in Illinois career totals*

FIGHTING ILLINI WOMEN'S BASKETBALL NOTES



CIERRA RICE

5

5-9 // FRESHMAN // GUARD

GROSSE POINTE, MICH.

GROSSE POINT

SEASON BESTS

Pts: 22 (at Miami, 12/2/15)
Rebs: 8 (vs. Tennessee State, 11/24/15)
FGM: 8 (at Miami, 12/2/15)
FGA: 14 (at Miami, 12/2/15)
FTM: 6 (vs. UT Martin, 11/21/15)
FTA: 9 (2x, last vs. Southern Illinois, 12/8/15)
3FGM: 3 (vs. UT Martin, 11/21/15)
3FGA: 6 (at Miami, 12/19/15)
Ast: 5 (vs. UT Martin, 11/21/15)
Blk: 1 (vs. Tennessee State, 11/24/15)
Stl: 4 (vs. Chicago State, 11/13/15)
Min: 35 (at Miami, 12/2/15)

CAREER BESTS

Pts: 22 (at Miami, 12/2/15)
Rebs: 8 (vs. Tennessee State, 11/24/15)
FGM: 8 (at Miami, 12/2/15)
FGA: 14 (at Miami, 12/2/15)
FTM: 6 (vs. UT Martin, 11/21/15)
FTA: 9 (2x, last vs. Southern Illinois, 12/8/15)
3FGM: 3 (vs. UT Martin, 11/21/15)
3FGA: 6 (at Miami, 12/19/15)
Ast: 5 (vs. UT Martin, 11/21/15)
Blk: 1 (vs. Tennessee State, 11/24/15)
Stl: 4 (vs. Chicago State, 11/13/15)
Min: 35 (at Miami, 12/2/15)

2015-16 HIGHLIGHTS

- Earned her first career start against Chicago State in Illinois' season opener and has started in all games so far this year.
- Played 30 minutes in her first appearance for the Illini tallying nine points and four steals
- Recorded her first 20-point game against UT Martin, tallying 21 points in the contest, following that up with a 22-point performance against Miami
- Was named Big Ten co-Freshman of the Week on Nov. 23, coming off of a 6-for-6 shooting performance against UT Martin. She again earned the award on Dec. 7 after her second 20-point performance against Miami
- Swatted her first-career block against Tennessee State, also grabbing a new career-high eight rebounds in the matchup
- Is on a streak of seven consecutive double-figure scoring games
- Is just the third freshman in Illinois history, since 1980, to put up two 20+ point scoring games within the first five games of the season

HIGH SCHOOL

A Four-star recruit, ranked the No. 66 overall player and the No. 21 guard in the Class of 2015 by ESPN Hoopgurlz...Ranked the No. 1 player in Michigan in the Class of 2015 by Midwest Girls Basketball Recruiting Report...Played for All Ohio Black AAU team, the same squad that former Illini All-American Karisma Penn played for...Averaged 18.1 points, 5.5 rebounds, 3.0 steals and 2.5 assists per game in 2013-14....Has led Grosse Pointe South to a 68-7 record in the past three seasons, including consecutive Class A runner-up finishes in 2012 and 2013...Two-time MLive Detroit Dream Team selection...Two-time Basketball Coaches Association of Michigan All-State selection in 2013 and 2014....2015 Parade All-America selection

PERSONAL

Born July 22, 1997...Daughter of Marvin and Valeria Rice...Has three siblings, John, Aaron and Ashton...Is a member of the Fellowship of Christian Athletes...Lists David Beckham as her favorite athlete...Was a four-year member of the National Honor Society...Enjoys dancing in her spare time.

2015-16 GAME-BY-GAME STATISTICS

Date	Opponent	GS	MIN	FG-A	3P-A	FT-A	REB	PF	A	TO	BL	ST	PTS
11/13	Chicago State	*	30	2-4	1-2	4-4	3	1	2	4	0	4	9
11/15	Ohio	*	30	2-4	0-0	5-9	2	2	2	2	0	1	9
11/21	UT Martin	*	20	6-6	3-3	6-7	5	2	5	1	0	0	21
11/24	Tennessee State	*	22	4-6	0-0	2-3	8	2	2	3	1	1	10
12/2	at Miami	*	35	8-14	1-2	5-6	7	2	1	3	0	1	22
12/6	Lehigh	*	32	5-12	0-2	2-2	6	3	4	1	0	2	12
12/8	Southern Illinois	*	35	7-12	0-1	3-9	7	1	1	1	0	0	17
12/12	Central Michigan	*	28	4-11	2-4	0-1	5	3	3	1	0	1	10
12/19	at Memphis	*	34	5-13	2-6	1-2	2	4	2	3	0	1	13

RICE'S CAREER STATISTICS

YEAR	G-GS	MIN/AVG	FGM-FGA/%	3PM-3PA/%	FTM-FTA/%	REB/AVG	PF/DQ	A	TO	B	ST	PTS/AVG
2015-16	9-9	275/30.6	43-82/.524	9-20/.450	28-43/.651	12-28-40/4.4	17/0	22	19	1	11	123/13.7
TOTAL	9-9	275/30.6	43-82/.524	9-20/.450	28-43/.651	12-28-40/4.4	17/0	22	19	1	11	123/13.7

FIGHTING ILLINI WOMEN'S BASKETBALL NOTES



ASHLEY MCCONNELL 12

5-9 // JUNIOR // GUARD

PALATINE, ILL.

FREMD HIGH SCHOOL

SEASON BESTS

Pts: 6 (vs. UT Martin, 11/21/15)
Rebs: 3 (vs. UT Martin, 11/21/15)
FGM: 2 (vs. UT Martin, 11/21/15)
FGA: 4 (vs. UT Martin, 11/21/15)
FTM: -
FTA: -
3FGM: 2 (vs. UT Martin, 11/21/15)
3FGA: 4 (vs. UT Martin, 11/21/15)
Ast: 2 (vs. Tennessee State, 11/24/15)
Blk: -
Stl: -
Min: 16 (vs. UT Martin, 11/21/15)

CAREER BESTS

Pts: 13 (at Iowa, 2/13/14)
Rebs: 5 (at Michigan, 1/26/15)
FGM: 4 (at Iowa, 2/13/14)
FGA: 8 (vs. Michigan State, 2/5/14)
FTM: 3 (vs. Michigan State, 2/5/14)
FTA: 4 (2x, last at Iowa, 2/13/14)
3FGM: 3 (2x, last vs. Wisconsin, 2/1/15)
3FGA: 6 (vs. Michigan State, 2/5/14)
Ast: 4 (3x, last vs. Iowa, 3/6/14)
Blk: 1 (vs. Michigan State, 2/5/14)
Stl: 4 (vs Iowa, 3/6/14)
Min: 36 (vs. Michigan State, 2/5/14)

CAREER HONORS

2015 Winter Academic All-Big Ten

2015-16 HIGHLIGHTS

- Scored her first points of the season against UT Martin, banking two treys in the game

AT ILLINOIS

2013-14 – SOPHOMORE: Shot 67-percent from distance, making 8-of-12 triples in the season...Appeared in 22 games for Illinois, averaging 8.9 minutes per contest...Drained a career high-tying three three-pointers against Wisconsin (2/1), good for a season-best nine points...Hit her first triple of the 2014-15 season against Virginia on Dec. 3.

2013-14 – FRESHMAN: Played in 20 games on the season, starting the final eight ... Averaged 2.5 points, 1.0 assists and 0.7 rebounds per game ... Shared the team's Most Improved Player Award with Jacqui Grant at the annual postseason banquet ... Made multiple three-pointers in each of the last four games and in five of the last six, averaging 7.8 ppg & going 12-of-27 (44.4 percent) over that span after starting her career 0-of-14 from beyond the arc ... Shot 42.9 percent from the field in the season's last six games (15-of-35) after starting her career 0-of-16... Made 2-of-5 three-pointers at Indiana (Feb. 22) and also had a career-high three steals against the Hoosiers ... In her third career start, McConnell made her first collegiate field goals, including her first three-pointers, scoring a career- and team-high 13 points at Iowa (Feb. 13) on 4-of-7 shooting from the field and 3-of-5 from beyond the arc ... Made her first career start against Michigan State (Feb. 5) and scored her first collegiate points on 3-of-4 free-throw shooting in a career-best 36 minutes, also tying her career high with three assists ... Made her collegiate debut against Mississippi Valley State (Nov. 14).

2015-16 GAME-BY-GAME STATISTICS

Date	Opponent	GS	MIN	FG-A	3P-A	FT-A	REB	PF	A	TO	BL	ST	PTS
11/13	Chicago State	9	0-2	0-2	0-0	1	1	1	0	0	0	0	0
11/15	Ohio					DNP							
11/21	UT Martin	16	2-4	2-4	0-0	3	1	1	3	0	0	6	
11/24	Tennessee State	15	1-2	0-1	0-0	1	1	2	0	0	0	2	
12/2	at Miami					DNP							
12/6	Lehigh					DNP							
12/8	Southern Illinois					DNP							
12/12	Central Michigan	3	0-0	0-0	0-0	0	0	1	0	0	0	0	
12/19	at Memphis					DNP							

MCCONNELL'S CAREER STATISTICS

YEAR	G-GS	MIN/AVG	FGM-FGA/%	3PM-3PA/%	FTM-FTA/%	REB/AVG	PF/DQ	A	TO	B	ST	PTS/AVG
2013-14	20-8	291/14.6	15-51/.294	12-41/.293	8-15/.533	14/0.7	20/1	20	8	1	16	50/2.5
2014-15	22-0	196/8.9	9-18/.500	8-12/.667	1-4/.250	16/0.7	8/0	7	8	0	5	27/1.2
2015-16	4-0	43/10.8	3-8/.375	2-7/.286	0-0/.000	3-2-5/1.3	4/0	5	3	0	0	8/2.0
TOTAL	46-8	530/11.5	27-77/.351	22-60/.367	9-19/.474	9-26-35/0.8	32/1	32	19	1	21	85/1.8

MCCONNELL'S CAREER BIG TEN STATISTICS

YEAR	G-GS	MIN/AVG	FGM-FGA/%	3PM-3PA/%	FTM-FTA/%	REB/AVG	PF/DQ	A	TO	B	ST	PTS/AVG
2013-14	10-7	225/22.5	13-42/.310	10-32/.313	7-13/.538	9/0.9	19/1	13	8	1	11	43/4.3
2014-15	11-0	123/11.2	6-12/.500	6-8/.750	0-0/.000	12/1.1	3/0	5	5	0	4	18/1.6

FIGHTING ILLINI WOMEN'S BASKETBALL NOTES



ERIEL DAVIS

13

5-7 // SENIOR // GUARD

DANVILLE, ILL.

DANVILLE HIGH SCHOOL

SEASON BESTS

Pts: -
Rebs: -
FGM: -
FGA: -
FTM: -
FTA: -
3FGM: -
3FGA: -
Ast: -
Blk: -
Stl: -
Min: -

CAREER BESTS

Pts: 2 (vs. Cleveland St, 11/18/12)
Rebs: 1 (vs. Evansville, 11/11/12)
FGM: 1 (vs. Cleveland St, 11/18/12)
FGA: 2 (vs. Cleveland St, 11/18/12)
FTM: -
FTA: -
3FGM: -
3FGA: 1 (2x, last vs. Cleveland St, 11/18/12)
Ast: -
Blk: -
Stl: -
Min: 2 (at Kansas State, 3/30/13)

AT ILLINOIS

2012-13 – SOPHOMORE: Played in eight games, recording two points and one rebound in nine minutes of action.

2011-12 – FRESHMAN: Was enrolled at the University of Illinois but was not a member of the team.

HIGH SCHOOL

Named a BlueStar All-Star in 2010 after averaging 17.6 points per game and 13.3 rebounds per game...Was a three-time All-Area selection...Scored over 1,000 points for her career ...Averaged 19.3 points and 14.7 rebounds per game in 2010-11, her senior season at Danville...Totaled 335 career steals: 95 in 2008, 77 in 2009, 75 in 2010 and 88 in 2011...Started every game of her last three seasons at Danville...Helped the Vikings to a Big 12 championship and an IHSA Class 3A regional title in 2008 as a freshman... Played one season for the Indy Speice Lady Gym Rats club team...Four-year letterwinner.

2015-16 GAME-BY-GAME STATISTICS

Date	Opponent	GS	MIN	FG-A	3P-A	FT-A	REB	PF	A	TO	BL	ST	PTS
11/13	Chicago State						DNP						
11/15	Ohio						DNP						
11/21	UT Martin						DNP						
11/24	Tennessee State						DNP						
12/2	at Miami						DNP						
12/6	Lehigh						DNP						
12/8	Southern Illinois						DNP						
12/12	Central Michigan						DNP						
12/19	at Memphis						DNP						

PERSONAL

Born Aug. 17, 1993...Parents are Edgar and Terri Davis...Has two brothers, Elijah and Emersen, and a sister, Emone...Working towards a masters degree in recreation, sport and tourism...Member the Mannie Jackson Illinois Academic Enrichment & Leadership Program, the Fellowship of Christian Athletes and served as homecoming queen during her time at Danville High School...Hobbies include knitting and crocheting...her younger sister competes on the Illinois Track & Field team...Lists Kevin Durant as her favorite athlete.

DAVIS' CAREER STATISTICS

YEAR	G-GS	MIN/AVG	FGM-FGA/%	3PM-3PA/%	FTM-FTA/%	REB/AVG	PF/DQ	A	TO	B	ST	PTS/AVG
2012-13	8-0	9/1.1	1-5/200	0-2/0.000	0-0/0.000	1/0.1	1/0	0	1	0	0	2/0.3
TOTAL	8-0	9/1.1	1-5/200	0-2/0.000	0-0/0.000	1/0.1	1/0	0	1	0	0	2/0.3

DAVIS' CAREER BIG TEN STATISTICS

YEAR	G-GS	MIN/AVG	FGM-FGA/%	3PM-3PA/%	FTM-FTA/%	REB/AVG	PF/DQ	A	TO	B	ST	PTS/AVG
2012-13	2-0	2/1.0	0-1/0.000	0-0/0.000	0-0/0.000	0/0.0	0/0	0	0	0	0	0/0.0
Total	2-0	2/1.0	0-1/0.000	0-0/0.000	0-0/0.000	0/0.0	0/0	0	0	0	0	0/0.0

FIGHTING ILLINI WOMEN'S BASKETBALL NOTES



KYLEE SIMMONS

15

5-9 // REDSHIRT-SENIOR // GUARD

COUNCIL BLUFFS, IOWA

LEWIS CENTRAL H.S.

MISSOURI

SEASON BESTS

Pts: 21 (vs. Lehigh, 12/6/15)
Rebs: 6 (vs. Southern Illinois, 12/8/15)
FGM: 7 (vs. Lehigh, 12/6/15)
FGA: 12 (2x, last vs. CMU, 12/12/15)
FTM: 4 (vs. Ohio, 11/15/15)
FTA: 6 (vs. Ohio, 11/15/15)
3FGM: 7 (vs. Lehigh, 12/6/15)
3FGA: 10 (vs. Lehigh, 12/6/15)
Ast: 9 (vs. UT Martin, 11/21/15)
Blk: --
Stl: 5 (at Miami, 12/2/15)
Min: 40 (vs. Lehigh, 12/6/15)

CAREER BESTS

Pts: 22 (vs. Minnesota, 2/5/15)
Rebs: 6 (2x, last vs. Southern Illinois, 12/8/15)
FGM: 7 (2x, last vs. Lehigh, 12/6/15)
FGA: 14 (vs. USF, 11/28/14)
FTM: 11 (vs. Kentucky, 11/27/14)
FTA: 12 (vs. Kentucky, 11/27/14)
3FGM: 7 (vs. Lehigh, 12/6/15)
3FGA: 11 (vs. USF, 11/28/14)
Ast: 11 (vs. TAMU-CC, 11/12/11)
Blk: 1 (7x, last vs. Eastern Illinois, 3/20/13)
Stl: 5 (at Miami, 12/2/15)
Min: 45 (at Iowa State, 2/21/12)

HONORS

2012 Big 12 All-Freshman Team
 2012 Big 12 Freshman of the Week
 2013 Winter SEC Academic Honor Roll

2015-16 HIGHLIGHTS

- Led the team with 15 points in the 2015-16 season opener against Chicago State
- Knocked down five three-pointers against Chicago State, just one short of her career best
- Dished a season-best nine assists against UT Martin on Nov. 21
- Swatted a career-best five steals at Miami, on her way to her third double-digit scoring performance of the year
- Netted seven three-pointers against Lehigh to set a new career-best and match the State Farm Center record set by Amber Moore in 2011
- Knocked down five three-pointers against Central Michigan.
- UI is 6-0 when Simmons and Chatrice White both score in double-figures
- Leads the Big Ten, shooting almost 50-percent from distance

2015-16 GAME-BY-GAME STATISTICS

Date	Opponent	GS	MIN	FG-A	3P-A	FT-A	REB	PF	A	TO	BL	ST	PTS
11/13	Chicago State	*	32	5-9	5-9	0-0	3	2	2	4	0	4	15
11/15	Ohio	*	39	4-9	0-1	4-6	4	2	2	0	0	0	12
11/21	UT Martin	*	32	1-4	1-4	2-2	4	1	9	3	0	2	5
11/24	Tennessee State	*	21	6-9	2-4	3-3	2	1	2	2	0	1	17
12/2	at Miami	*	34	4-11	2-9	0-0	1	5	5	3	0	5	10
12/6	Lehigh	*	40	7-12	7-10	0-0	2	1	3	3	0	0	21
12/8	Southern Illinois	*	38	3-8	3-4	2-2	6	2	4	7	0	0	11
12/12	Central Michigan	*	35	5-12	5-11	2-2	1	2	5	0	0	3	17
12/19	at Memphis	*	38	2-4	2-4	0-0	3	2	5	3	0	1	6

SIMMONS' CAREER STATISTICS

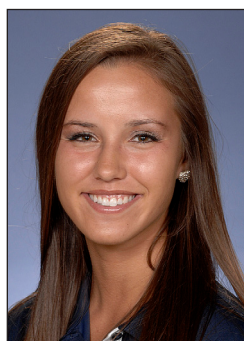
YEAR	G-GS	MIN/AVG	FGM-FGA/%	3PM-3PA/%	FTM-FTA/%	REB/AVG	PF/DQ	A	TO	B	ST	PTS/AVG
2011-12	31-31	1121/36.2	49-121/.405	37-95/.389	11-23/.478	68/2.2	57-0	111	89	3	32	146/4.7
2012-13	32-27	783/24.5	35-106/.330	23-79/.291	18-24/.750	48/1.5	27-0	82	48	4	37	111/3.5
2013-14					DNP							
2014-15	30-30	1095/36.5	91-226/.403	72-179/.402	38-50/.760	69/2.3	65/2	97	60	1	47	292/9.7
2015-16	9-9	309/34.3	37-78/.474	27-56/.482	13-15/.867	3-23-.26/2.9	18/1	37	25	0	16	114/12.7
Total	39-39	1404/36.0	128-304/.421	99-235/.421	51-65/.785	14-81-.95/2.4	83/3	134	85	1	63	406/10.4

*2011-13 statistics are from Missouri and are not counted in career totals

SIMMONS' CAREER BIG TEN STATISTICS

YEAR	G-GS	MIN/AVG	FGM-FGA/%	3PM-3PA/%	FTM-FTA/%	REB/AVG	PF/DQ	A	TO	B	ST	PTS/AVG
2014-15	18-18	688/38.2	59-140/.421	47-112/.420	18-23/.783	44/2.4	42/1	58	39	1	31	183/10.2
Total	18-18	688/38.2	59-140/.421	47-112/.420	18-23/.783	44/2.4	42/1	58	39	1	31	183/10.2

FIGHTING ILLINI WOMEN'S BASKETBALL NOTES



BROOKE KISSINGER 21

5-7 // SOPHOMORE // GUARD

MINDEN, NEB.

MINDEN H.S.

SEASON BESTS

Pts: 12 (vs. Tennessee State, 11/24/15)
Rebs: 2 (2x, last at Miami, 12/2/15)
FGM: 4 (vs. Tennessee State, 11/24/15)
FGA: 11 (vs. Tennessee State, 11/24/15)
FTM: 1 (2x, last vs. UT Martin, 11/21/15)
FTA: 6 (vs. UT Martin, 11/21/15)
3FGM: 4 (vs. Tennessee State, 11/24/15)
3FGA: 7 (vs. Tennessee State, 11/24/15)
Ast: 3 (2x, last at Miami, 12/2/15)
Blk: --
Stl: 2 (vs. Chicago State, 11/13/15)
Min: 25 (vs. Tennessee State, 11/24/15)

CAREER BESTS

Pts: 12 (vs. Tennessee State, 11/24/15)
Rebs: 3 (vs. Southern, 11/23/14)
FGM: 4 (2x, last vs. Tenn. State, 11/24/15)
FGA: 11 (vs. Tennessee State, 11/24/15)
FTM: 2 (vs. IPFW, 11/14/14)
FTA: 6 (vs. UT Martin, 11/21/15)
3FGM: 4 (vs. Tennessee State, 11/24/15)
3FGA: 7 (vs. Tennessee State, 11/24/15)
Ast: 3 (2x, last at Miami, 12/2/15)
Blk: --
Stl: 2 (vs. Chicago State, 11/13/15)
Min: 25 (vs. Tennessee State, 11/24/15)

2015-16 HIGHLIGHTS

- Knocked down two triples against Chicago State, the most since also making two against Robert Morris on Nov 18, 2014.
- Put up a career-best 12 points against Tennessee State, making four threes in the game
- Scored 28 points in just four games this season, one more than she scored during her entire freshman year

2015-16 GAME-BY-GAME STATISTICS

Date	Opponent	GS	MIN	FG-A	3P-A	FT-A	REB	PF	A	TO	BL	ST	PTS
11/13	Chicago State		17	3-6	2-4	1-2	1	2	0	0	0	2	9
11/15	Ohio		5	0-0	0-0	0-0	0	1	0	1	0	0	0
11/21	UT Martin		21	2-4	2-4	1-6	1	1	1	1	0	0	7
11/24	Tennessee State		25	4-11	4-7	0-0	2	3	3	1	0	0	12
12/2	at Miami		17	2-5	2-5	0-0	2	0	3	2	0	0	6
12/6	Lehigh		10	2-6	1-4	0-0	1	1	0	0	0	0	5
12/8	Southern Illinois		13	1-4	0-1	0-0	1	1	1	0	0	0	2
12/12	Central Michigan		14	0-3	0-3	0-0	1	2	0	0	0	0	0
12/19	at Memphis		13	3-6	3-5	0-0	0	1	1	0	0	0	9

AT ILLINOIS

2014-15 – FRESHMAN: Played in 21 games during her freshman campaign, averaging almost six minutes on the court per contest...Put up a career-best performance against Robert Morris on Nov. 18 as she tallied 10 points and two assists...Grabbed her career-best three rebounds against Southern on. Nov. 23...Had four points and two rebounds in 13 minutes off the bench against IPFW in her Illini debut (11/14)

HIGH SCHOOL

Ranked the No. 19 guard nationally in 2014 class by ESPN Hoopgurlz ... Holds Nebraska's all-time three-pointers record (363) and finished 19th on the career scoring list (1,851 points)... Her 110 three-pointers in 2011 are the Nebraska single-season record and she holds three of the top seven seasons in state history (5th, 90, 2014; 7th, 85, 2013) ... Named to the Associated Press 2013 All-Nebraska second team and Class C-1 first team ... Named to the Associated Press Nebraska Class C-1 first team ... Shared Kearney Hub Territory Player of the Year honors with her twin sister, Jamie ... Led Minden to the 2014 Class C-1 state title game, where the Whippets lost to Pierce, 69-60 ... Tied her own state tournament record of seven three-pointers with seven treys in the state championship game ... Minden broke the Class C-1 record for points in a state tournament with 211 in the three-game event ... Averaged 22.7 points per game during the 2014 Class C-1 state tournament and was named to both the All-Class and All-Class C-1 all-tournament teams ... Nebraska Girls C-1 state tournament three-point record holder (15) ... Averaged 19.5 points and 3.1 rebounds per game in leading Minden to the Class C-1 state tournament in 2012-13 ... Played with the Cornhusker Shooting Stars AAU team ... High school coach was Rick Chramosta.

KISSINGER'S CAREER STATISTICS

YEAR	G-GS	MIN/AVG	FGM-FGA/%	3PM-3PA/%	FTM-FTA/%	REB/AVG	PF/DQ	A	TO	B	ST	PTS/AVG
2014-15	21-0	120/5.7	10-51/.196	5-38/.132	2-2/1.000	11/0.5	9/0	5	10	1	3	27/1.3
2015-16	9-0	135/15.0	17-45/.378	14-33/.424	2-8/.250	0-9-9/1.0	12/0	9	5	0	2	50/5.6
TOTAL	30-0	255/8.5	27-96/.281	19-71/.268	4-10/.400	2-18-20/0.7	21/0	14	15	1	5	77/2.6

KISSINGER'S CAREER BIG TEN STATISTICS

YEAR	G-GS	MIN/AVG	FGM-FGA/%	3PM-3PA/%	FTM-FTA/%	REB/AVG	PF/DQ	A	TO	B	ST	PTS/AVG
2014-15	11-0	30/2.7	2-15/.133	1-11/.091	0-0/.000	4/0.4	2/0	2	3	1	0	5/0.5
Total	11-0	30/2.7	2-15/.133	1-11/.091	0-0/.000	4/0.4	2/0	2	3	1	0	5/0.5

FIGHTING ILLINI WOMEN'S BASKETBALL NOTES



JAELYNE KIRKPATRICK

23

5-7 // FRESHMAN // GUARD

OAKVILLE, ONTARIO

ST. IGNATIUS OF LOYOLA

SEASON BESTS

Pts: 8 (vs. Central Michigan, 12/12/15)
Rebs: 7 (vs. Tennessee State, 11/24/15)
FGM: 2 (2x, last vs. CMU, 12/12/15)
FGA: 5 (vs. Central Michigan, 12/12/15)
FTM: 2 (vs. Central Michigan, 12/12/15)
FTA: 2 (3x, last vs. CMU, 12/12/15)
3FGM: 2 (vs. Central Michigan, 12/12/15)
3FGA: 4 (vs. Central Michigan, 12/12/15)
Ast: 3 (vs. Tennessee State, 11/24/15)
Blk: --
Stl: 2 (2x, last vs. CMU, 12/12/15)
Min: 21 (vs. Tennessee State, 11/24/15)

CAREER BESTS

Pts: 5 (vs. Tennessee State, 11/24/15)
Rebs: 7 (vs. Tennessee State, 11/24/15)
FGM: 2 (2x, last vs. CMU, 12/12/15)
FGA: 5 (vs. Central Michigan, 12/12/15)
FTM: 2 (vs. Central Michigan, 12/12/15)
FTA: 2 (3x, last vs. CMU, 12/12/15)
3FGM: 2 (vs. Central Michigan, 12/12/15)
3FGA: 4 (vs. Central Michigan, 12/12/15)
Ast: 3 (vs. Tennessee State, 11/24/15)
Blk: --
Stl: 2 (2x, last vs. CMU, 12/12/15)
Min: 21 (vs. Tennessee State, 11/24/15)

2015-16 HIGHLIGHTS

- Earned her first appearance for the Illini in the 2015-16 season opener against Chicago State
- Had a career game against Tennessee State with five points, seven rebounds and three assists
- Has scored at least three points in all but two of her appearances for Illinois

HIGH SCHOOL

Ranked the No. 1 guard and No. 2 overall player in Canada in the Class of 2015 by CROWN Scout Girls...Ranked a three-star recruit and the No. 31 point guard in the United States and Canada in the Class of 2015 by ESPN Hoopgurlz...Played for Canada in the 2014 FIBA U17 World Championships and the 2013 FIBA Americas U16 Championship...Led all players in assists at the 2013 FIBA Americas U16 tournament and helped Canada to a silver medal

PERSONAL

Born July 26, 1997...Daughter of Scott and Laurel Kirkpatrick...has two siblings, Easton and Ty...Enjoys playing volleyball, watching scary movies, painting, sketching and drawing...was a member of Best Buddies in high school, a club that organized events for those with special needs...also played soccer, volleyball, dodgeball, badminton, softball and club football in high school...Lists Serena Williams and Cheryl Miller as her favorite athletes.

2015-16 GAME-BY-GAME STATISTICS

Date	Opponent	GS	MIN	FG-A	3P-A	FT-A	REB	PF	A	TO	BL	ST	PTS
11/13	Chicago State		16	1-4	0-3	1-2	2	1	2	4	0	2	3
11/15	Ohio		9	1-2	1-1	0-0	1	0	0	2	0	0	3
11/21	UT Martin						DNP						
11/14	Tennessee State		21	2-3	1-2	0-0	7	3	3	2	0	1	5
12/2	at Miami		8	1-3	1-2	0-0	1	1	0	3	0	0	3
12/6	Lehigh		9	1-2	0-1	1-2	1	2	0	0	0	1	3
12/8	Southern Illinois		6	0-1	0-1	0-0	0	1	0	0	0	1	0
12/12	Central Michigan		17	2-5	2-4	2-2	2	1	2	2	0	2	8
12/19	at Memphis		10	1-3	0-1	0-0	3	5	0	3	0	1	2

KIRKPATRICK'S CAREER STATISTICS

YEAR	G-GS	MIN/AVG	FGM-FGA/%	3PM-3PA/%	FTM-FTA/%	REB/AVG	PF/DQ	A	TO	B	ST	PTS/AVG
2015-16	8-0	96/12.0	9-23/.391	5-15/.333	4-6/.667	5-12-17/2.1	14/1	7	16	0	8	27/3.4
TOTAL	8-0	96/12.0	9-23/.391	5-15/.333	4-6/.667	5-12-17/2.1	14/1	7	16	0	8	27/3.4

FIGHTING ILLINI WOMEN'S BASKETBALL NOTES



KENNEDY CATTENHEAD 25

5-10 // REDSHIRT-SOPHOMORE // GUARD

BOLINGBROOK, ILL.

BOLINGBROOK H.S.

SEASON BESTS

Pts: 11 (vs. Tennessee State, 11/24/15)
Rebs: 7 (vs. Tennessee State, 11/24/15)
FGM: 4 (vs. Lehigh, 12/6/15)
FGA: 8 (at Miami, 12/2/15)
FTM: 7 (vs. Tennessee State, 11/24/15)
FTA: 8 (2x, last vs. CMU, 12/12/15)
3FGM: 1 (3x, last vs. Southern Illinois, 12/8/15)
3FGA: 3 (vs. Chicago State, 11/13/15)
Ast: 3 (3x, last vs. CMU, 12/12/15)
Blk: 1 (2x, last vs. Tenn. State, 11/24/15)
Stl: 2 (at Memphis, 12/19/15)
Min: 32 (vs. Ohio, 11/15/15)

CAREER BESTS

Pts: 11 (vs. Tennessee State, 11/24/15)
Rebs: 7 (vs. Tennessee State, 11/24/15)
FGM: 4 (vs. Lehigh, 12/6/15)
FGA: 8 (at Miami, 12/2/15)
FTM: 7 (vs. Tennessee State, 11/24/15)
FTA: 8 (2x, last vs. CMU, 12/12/15)
3FGM: 1 (5x, last vs. Southern Illinois, 12/8/15)
3FGA: 4 (vs. Nebraska, 3/5/15)
Ast: 3 (3x, last vs. CMU, 12/12/15)
Blk: 1 (3x, last vs. Tenn. State, 11/24/15)
Stl: 5 (Nebraska, 3/5/15)
Min: 32 (vs. Ohio, 11/15/15)

CAREER HONORS

2015 Winter Academic Honor Roll

2015-16 HIGHLIGHTS

- Earned her first-career start against Chicago State, playing a career-best 25 minutes and dishing a career-best three assists in the game
- Set a new career-high with seven points against Ohio, hitting a momentum-changing three-pointer for the Illini
- Again re-set her career-bests with 11 points and seven rebounds against Tennessee State

2015-16 GAME-BY-GAME STATISTICS

Date	Opponent	GS	MIN	FG-A	3P-A	FT-A	REB	PF	A	TO	BL	ST	PTS
11/13	Chicago State	*	25	1-6	0-3	0-0	4	2	3	4	0	1	2
11/15	Ohio	*	32	1-4	1-1	4-4	6	1	1	1	0	0	7
11/21	UT Martin	*	24	1-2	1-1	0-0	5	1	3	3	1	0	3
11/24	Tennessee State	*	29	2-7	0-1	7-8	7	0	1	2	1	0	11
12/2	at Miami	*	24	3-8	0-0	3-6	6	4	0	2	0	0	9
12/6	Lehigh	*	30	4-6	0-0	0-0	4	2	1	2	0	1	8
12/8	Southern Illinois	*	21	2-2	1-1	5-6	2	1	2	1	0	0	10
12/12	Central Michigan	*	23	0-8	0-2	0-2	3	1	3	0	0	0	0
12/19	at Memphis	*	17	1-3	0-1	1-2	0	3	2	3	0	2	3

AT ILLINOIS

2014-15 – REDSHIRT FRESHMAN: Appeared in 22 games for the Illini averaging almost six minutes per game...Played a career-high 16 minutes against Southern on Nov. 23, also grabbing a career-best four rebounds in the game...Hit her first career three-pointer at Valparaiso on Dec. 13...Recorded three points, one rebound, one steal and one block against IPFW in her Illini debut (11/14)

2013-14 – FRESHMAN: Redshirted the season after suffering a knee injury in July 2013.

HIGH SCHOOL

Ranked the No. 14 point guard and the No. 84 player nationally in the class of 2013 by Collegiate Girls Basketball Report ... Ranked a three-star prospect by ESPN HoopGurlz ... First-team All-State selection by the Illinois Basketball Coaches Association in 2013 ... Named special mention All-State in 2013 by the Chicago Tribune and Champaign News-Gazette ... Led Bolingbrook to a berth in the IHSA Class 4A supersectional before falling to Whitney Young ... Was a 2012 IBCA All-State special mention selection as the only junior in the starting lineup for a Bolingbrook team that reached the IHSA Class 4A supersectional before losing an epic game to Whitney Young ... High school teammates with fellow Illini Taylor Tuck at Bolingbrook ... High school coach was Anthony Smith.

CATTENHEAD'S CAREER STATISTICS

YEAR	G-GS	MIN/AVG	FGM-FGA/%	3PM-3PA/%	FTM-FTA/%	REB/AVG	PF/DQ	A	TO	B	ST	PTS/AVG
2014-15	22-0	129/5.9	9-27/.333	2-7/.286	4-10/.400	7-16-.23/1.0	8/0	7	15	1	9	24/1.1
2015-16	9-9	225/25.0	15-46/.326	3-10/.300	20-28/.714	6-31-.37/4.1	15/0	16	18	2	4	53/5.9
TOTAL	31-9	354/11.4	24-73/.329	5-17/.294	24-38/.632	13-47-.60/1.9	23/0	23	33	3	13	77/2.5

CATTENHEAD'S CAREER BIG TEN STATISTICS

YEAR	G-GS	MIN/AVG	FGM-FGA/%	3PM-3PA/%	FTM-FTA/%	REB/AVG	PF/DQ	A	TO	B	ST	PTS/AVG
2014-15	10-0	27/2.7	3-6/.500	0-1/.000	0-0/.000	6/0.6	1/0	2	6	0	0	6/0.6

FIGHTING ILLINI WOMEN'S BASKETBALL NOTES



CHATRICE WHITE

32

6-3 // SOPHOMORE // CENTER

SHELBY, NEB.

SHELBY-RISING CITY H.S.

SEASON BESTS

Pts: 28 (at Memphis, 12/19/15)
Rebs: 14 (vs. Southern Illinois, 12/8/15)
FGM: 12 (vs. UT Martin, 11/21/15)
FGA: 22 (vs. Lehigh, 12/6/15)
FTM: 9 (vs. Ohio, 11/15/15)
FTA: 9 (vs. Ohio, 11/15/15)
3FGM: 4 (at Memphis, 12/19/15)
3FGA: 5 (3x, last at Memphis, 12/19/15)
Ast: 2 (6x, last vs. at Memphis, 12/19/15)
Blk: 6 (vs. Central Michigan, 12/12/15)
Stl: 6 (Tennessee State, 11/24/15)
Min: 35 (vs. Ohio, 11/15/15)

CAREER BESTS

Pts: 30 (vs. Michigan, 2/28/15)
Rebs: 15 (2x, last vs. Murray State, 12/22/14)
FGM: 12 (vs. UT Martin, 11/21/15)
FGA: 22 (vs. Lehigh, 12/6/15)
FTM: 9 (vs. Ohio, 11/15/15)
FTA: 9 (vs. Ohio, 11/15/15)
3FGM: 4 (at Nebraska, 1/29/15)
3FGA: 8 (at Nebraska, 1/29/15)
Ast: 2 (6x, last vs. at Memphis, 12/19/15)
Blk: 7 (at Maryland, 1/18/15)
Stl: 6 (Tennessee State, 11/24/15)
Min: 38 (at Maryland, 1/18/15)

CAREER HONORS

2015 All-Big Ten Honorable Mention
 2015 Big Ten All-Freshman Team
 Three-time 2015 Big Ten Freshman of the Week (1/12, 12/8, 11/24)
 2015 USA Basketball FIBA World Championship Team
 2015 College Sports Madness Preseason All-Big Ten Third Team

2015-16 HIGHLIGHTS

- Had six blocks against Central Michigan, a new season best and just one away from her career and school single-game record of seven. White's blocks total for the day equaled Central Michigan's team total.
- Led the team with 13 points and 13 rebounds, on Friday the 13th against Chicago State
- Recorded two consecutive double-doubles to start the season. The last two Illini to started the year off with double-doubles, include Karisma Penn (2012-13) and Jenna Smith (2009-10)
- Started the season on a streak of four-straight double-figure scoring games this season, with a season-best 26 points against UT Martin
- Led the Illini at Memphis, earning her fifth double-double of the season with 28 points and 12 rebounds. She was just two away from reaching her career-best of 30 points in a game.
- Earned a spot on the Big Ten Player of the Week Honor Roll after her performance at Memphis.

2015-16 GAME-BY-GAME STATISTICS

Date	Opponent	GS	MIN	FG-A	3P-A	FT-A	REB	PF	A	TO	BL	ST	PTS
11/13	Chicago State	*	27	5-14	0-2	3-4	13	4	2	2	0	1	13
11/15	Ohio	*	35	6-18	1-5	9-9	13	2	2	2	4	0	22
11/21	UT Martin	*	23	12-18	0-4	2-2	3	1	0	2	1	1	26
11/24	Tennessee State	*	24	8-20	1-5	3-4	7	2	2	2	1	6	20
12/2	at Miami	*	35	2-9	1-4	1-2	7	3	1	3	1	3	6
12/6	Lehigh	*	29	8-22	0-3	1-1	9	4	2	0	3	4	17
12/8	Southern Illinois	*	34	7-21	0-4	2-2	14	3	1	2	3	2	16
12/12	Central Michigan	*	30	8-18	0-3	4-4	10	2	2	1	6	0	20
12/19	at Memphis	*	37	10-19	4-5	4-4	12	2	2	4	3	0	28

WHITE'S CAREER STATISTICS

YEAR	G-GS	MIN/AVG	FGM-FGA/%	3PM-3PA/%	FTM-FTA/%	REB/AVG	PF/DQ	A	TO	B	ST	PTS/AVG
2014-15	31-30	953/30.7	174-395/.441	25/69/.362	75-117/.641	216/7.0	106/8	34	85	60	60	448/14.5
2015-16	9-9	274/30.4	66-159/.415	7-35/.200	29-32/.906	20-68-88/9.8	23/0	14	18	21	17	168/18.7
TOTAL	40-39	1227/30.7	240-554/.433	32-104/.308	104-149/.698	114-190-304/7.6	129/8	48	103	81	77	616/15.4

WHITE'S CAREER BIG TEN STATISTICS

YEAR	G-GS	MIN/AVG	FGM-FGA/%	3PM-3PA/%	FTM-FTA/%	REB/AVG	PF/DQ	A	TO	B	ST	PTS/AVG
2014-15	18-17	597/33.2	99-238/.416	15-46/.326	45-72/.625	122/6.8	65/4	22	52	36	42	258/14.3

FIGHTING ILLINI WOMEN'S BASKETBALL NOTES



ALEX WITTINGER 35

6-1 // FRESHMAN // FORWARD

DELANO, MINN.

DELANO

SEASON BESTS

Pts: 20 (vs. UT Martin, 11/21/15)
Rebs: 11 (vs. UT Martin, 11/21/15)
FGM: 10 (vs. UT Martin, 11/21/15)
FGA: 16 (vs. UT Martin, 11/21/15)
FTM: 2 (vs. Tennessee State, 11/24/15)
FTA: 4 (vs. Tennessee State, 11/24/15)
3FGM: --
3FGA: 1 (3x, last vs. Tenn. State, 11/24/15)
Stl: 1 (vs. Southern Illinois, 12/8/15)
Blk: 6 (vs. Lehigh, 12/6/15)
Min: 24 (vs. vs. UT Martin, 11/21/15)

CAREER BESTS

Pts: 20 (vs. UT Martin, 11/21/15)
Rebs: 11 (vs. UT Martin, 11/21/15)
FGM: 10 (vs. UT Martin, 11/21/15)
FGA: 16 (vs. UT Martin, 11/21/15)
FTM: 2 (vs. Tennessee State, 11/24/15)
FTA: 4 (vs. Tennessee State, 11/24/15)
3FGM: --
3FGA: 1 (3x, last vs. Tenn. State, 11/24/15)
Stl: 1 (vs. Southern Illinois, 12/8/15)
Blk: 6 (vs. Lehigh, 12/6/15)
Min: 24 (vs. vs. UT Martin, 11/21/15)

2015-16 HIGHLIGHTS

- Made her first-ever appearance for the Illini against Chicago State on Nov. 13
- Recorded her first-ever double-double and 20-point game with 20 points and 11 rebounds against UT Martin
- Recorded a career-high and team-high six blocks against Lehigh on Dec. 6
- Put up 14 points and grabbed 12 rebounds against Central Michigan, good for her second double-double of the season. She grabbed seven offensive rebounds, half of Illinois' 14 total.

2015-16 GAME-BY-GAME STATISTICS

Date	Opponent	GS	MIN	FG-A	3P-A	FT-A	REB	PF	A	TO	BL	ST	PTS
11/13	Chicago State		16	1-7	0-0	0-0	3	4	0	0	1	1	2
11/15	Ohio		15	2-6	0-1	1-2	4	2	0	1	1	0	5
11/21	UT Martin		24	10-16	0-1	0-0	11	1	0	1	3	0	20
11/24	Tennessee State		23	5-8	0-1	2-4	9	1	0	0	1	0	12
12/2	at Miami		13	0-1	0-0	0-0	3	0	0	2	0	0	1
12/6	Lehigh		22	4-8	0-0	0-0	6	2	0	0	6	0	8
12/8	Southern Illinois		22	5-7	0-0	0-0	4	2	1	0	2	0	10
12/12	Central Michigan		26	7-12	0-0	0-0	12	2	3	2	2	1	14
12/19	at Memphis		21	4-7	0-0	0-0	1	3	0	2	0	0	8

HIGH SCHOOL

Ranked the No. 16 wing in the Class of 2015 by ESPN Hoopgurlz...Ranked the No. 5 overall prospect and the No. 3 post player in the Class of 2015 in Minnesota, according to gPrep Minnesota High School Girls Basketball...Ranked the No. 185 overall player in the Class of 2015 by Blue Star Basketball...Named honorable mention All-State by the Minnesota Girls Basketball Coaches Association in 2014...Averaged a double-double in 2013-14...Was a starting post player for North Tartan AAU, one of the top five teams in the country in 2014...Named to the 2014 Minnesota Volleyball Coaches Association Class AAA All-State honorable mention team...Named to the Star Tribune's 2013 Class AAA All-State Tournament team after helping Delano to a state runner-up finish...Finished sixth in the 300 hurdles at the Minnesota Class AA track and field state championships in 2012...Qualified for the Minnesota Class AA track and field championships in the 100 hurdles and 300 hurdles in 2014...Also was recruited to play college volleyball.

PERSONAL

Born April 4, 1997...Daughter of Kevin and Ann Wittinger...Is studying Industrial and Systems Engineering at the University of Illinois...Her mother played volleyball at the University of Minnesota...Is active in Campus Ignite...Enjoys being outdoors, swimming and drawing...Lists LeBron James as her favorite athlete...credits her father with influencing her basketball career as he was her coach until the eighth grade.

WITTINGER'S CAREER STATISTICS

YEAR	G-GS	MIN/AVG	FGM-FGA/%	3PM-3PA/%	FTM-FTA/%	REB/AVG	PF/DQ	A	TO	B	ST	PTS/AVG
2015-16	9-0	182/20.3	38-72/.528	0-3/.000	3-6/.500	27-26-53/5.9	18/0	4	8	16	2	79/8.8
TOTAL	9-0	182/20.3	38-72/.528	0-3/.000	3-6/.500	27-26-53/5.9	18/0	4	8	16	2	79/8.8

2015-16 RADIO/TV ROSTER



0 Sarah Hartwell
5-7 // RSr. // G



4 Simone Law
6-0 // RSr. // F



5 Cierra Rice
5-9 // Fr. // G



12 Ashley McConnell
5-9 // Jr. // G



13 Eriel Davis
5-7 // Sr. // G



15 Kyley Simmons
5-7 // RSr. // G



21 Brooke Kissinger
5-7 // So. // G



23 Jaelyne Kirkpatrick
5-7 // Fr. // G



25 Kennedy Cattenhead
5-10 // So. // G



32 Chatrice White
6-3 // So. // C



35 Alex Wittinger
6-1 // Fr. // F



Matt Bollant
Head Coach



LaKale Malone
Associate Head Coach/
Recruiting Coordinator



Tianna Kirkland
Assistant Coach



Jody Martinez
Assistant Coach



Hannah Iverson
Director of Operations