



1 MEDIA INFORMATION

- 2 University of Illinois
- 3 State Farm Center
- 4 Athletics Communication
- 5 Media Policies
- 7 Fighting Illini Sports Network
- 8 Covering the Illini
- 9 Opponent Information
- 11 Big Ten Composite Schedule
- 12 2016 NCAA Tournament
- 12 2016 Big Ten Tournament

13 COACHING STAFF

- 14 Head Coach John Groce
- 17 Assistant Coach Dustin Ford
- 17 Assistant Coach Paris Parham
- 18 Assistant Coach Jamall Walker
- 18 Special Assistant to the Head Coach Darren Hertz
- 19 Director of Basketball Operations Mark Morris
- 19 Graduate Managers Walter Offutt & James Haring
- 20 Strength and Conditioning Coach Adam Fletcher
- 20 Director of Sports Medicine Paul Schmidt
- 21 Basketball Support Staff
- 22 Director of Athletics Mike Thomas
- 23 DIA Administration/Support Staff
- 25 University Administration
- 26 Richmond Endowment

27 FIGHTING ILLINI

- 28 2015-16 Roster
- 29 Season Preview
- 30 European Trip Recap
- 32 Tracy Abrams
- 34 Mike Thorne Jr.
- 35 Khalid Lewis
- 36 Mike LaTulip
- 38 Malcolm Hill
- 40 Maverick Morgan
- 42 Kendrick Nunn
- 44 Jaylon Tate
- 46 Leron Black
- 47 Cameron Liss
- 48 Alex Austin
- 48 Michael Finke
- 49 Jalen Coleman-Lands
- 49 Aaron Jordan
- 50 D.J. Williams

51 YEAR IN REVIEW

- 52 2014-15 Season Review
- 53 Season Results
- 54 Overall Statistics
- 55 Big Ten Statistics
- 56 Game-By-Game Results
- 57 Team Superlatives
- 58 Individual Superlatives
- 59 Specialty Statistics

- 60 Record Under Groce
- 60 Starting Line-Ups
- 60 Top 25 National Rankings
- 61 Big Ten Standings
- 61 Big Ten Rankings
- 61 All-Big Ten Teams
- 62 Box Scores

71 RECORDS

- 72 All-Time Head Coaches
- 72 All-Time Assistant Coaches
- 72 Year-By-Year Records
- 97 NCAA Tournament History
- 97 NIT History
- 98 NCAA Tournament Records
- 101 Current Illini Career NCAA Tournament Statistics
- 102 Big Ten Tournament History
- 103 Big Ten Tournament Records
- 104 Current Illini Career Big Ten Tournament Statistics
- 106 Records vs. Opponents
- 108 Series Records
- 117 Annual Leaders
- 119 Annual Team Statistics
- 127 Top 50 Career Scorers
- 132 Individual Records
- 137 Single-Season Team Highs
- 137 Illinois Team Records
- 139 Combined Team Records
- 140 Opponent Records
- 141 Attendance Records
- 141 State Farm Center Records

145 HONORS AND TRADITION

- 146 Orange Krush
- 147 Honored Jerseys
- 150 Honored Coaches
- 150 Lou Henson Court
- 151 All-Americans
- 152 National Honors
- 153 All-Big Ten Selections
- 154 Big Ten Honors
- 155 Illinois Honors
- 157 Illini in the NBA
- 159 All-Time Letterwinners
- 164 Head Managers
- 165 Illini by the Numbers

ON THE COVER

Fighting Illini Seniors (L-R): Mike LaTulip, Khalid Lewis, Mike Thorne Jr., Tracy Abrams.

CREDITS

Executive Editors: Derrick Burson, Kent Brown
Editorial Assistance: Derek Neal
Cover Design: Analisa Bernardi, Eddie Diazmunoz
Interior Design: Derrick Burson
Cover and Interior Photography: Mark Jones
Printing: Premier Print Group; Champaign, Ill.
USA Basketball and NBA photos courtesy of NBAE/Getty Images.

QUICK FACTS

GENERAL INFORMATION

Location: Champaign-Urbana, Ill.
Founded: 1867
Enrollment: 44,942
Nickname: Fighting Illini
Colors: Orange and Blue
Conference: Big Ten
President: Timothy L. Killeen
Interim Chancellor: Barbara Wilson
Director of Athletics: Mike Thomas
Arena (Capacity): State Farm Center (15,544)
Ticket Office Phone: 217-333-3470

HISTORY

First Year of Basketball: 1906
All-Time Record: 1,729-939 (.648)
All-Time Big Ten Record: 910-677 (.573)
Years in NCAA Tournament / Last: 30 / 2013
All-Time NCAA Tournament Record: 40-31 (.563)
NCAA Final Four Appearances / Last: 5 / 2005
Big Ten Championships / Last: 17 / 2005
Big Ten Tournament Championships / Last: 2 / 2005

COACHING STAFF

Head Coach: John Groce, 4th year
Alma Mater, Year: Taylor University '94
Record at Illinois / Years: 62-42 (.596) / 3
Career Record / Years: 147-98 (.600) / 7
Basketball Office Phone: 217-333-3400
Assistant Coaches: Dustin Ford, 4th year; Paris Parham, 4th year; Jamall Walker, 4th year
Special Assistant to the Head Coach: Darren Hertz
Director of Basketball Operations: Mark Morris
Graduate Managers: Walter Offutt; James Haring
Strength and Conditioning Coach: Adam Fletcher
Athletic Trainer: Paul Schmidt

TEAM INFORMATION

2014-15 Record: 19-14
2014-15 Big Ten Record / Finish: 9-9 / T-7th
Starters Returning / Lost: 3 / 2
Lettermen Returning / Lost: 7 / 6
Starters Returning (3): Malcolm Hill, Kendrick Nunn, Jaylon Tate
Total Lettermen Returning (7): Leron Black, Malcolm Hill, Mike LaTulip, Cameron Liss, Maverick Morgan, Kendrick Nunn, Jaylon Tate
Others Returning (2): Alex Austin, Michael Finke
Newcomers (5): Jalen Coleman-Lands, Aaron Jordan, Khalid Lewis, Mike Thorne Jr., D.J. Williams
Starters Lost (2): Nnanna Egwu, Rayvonte Rice
Other Lettermen Lost (4): Austin Colbert, Aaron Cosby, Ryan Schmidt, Ahmad Starks
Others Lost (1): Tracy Abrams (injured)

ATHLETICS COMMUNICATION

Assistant AD/Basketball Contact: Derrick Burson
Cell Phone: 217-766-7315
Email: burson@illinois.edu
Associate AD, Media Relations: Kent Brown
Cell Phone: 217-493-9795
Email: kwbrown3@illinois.edu
Assistant Basketball Contact: Derek Neal
Cell Phone: 309-241-0804
Email: drneal@illinois.edu
Athletics Communication Office Phone: 217-333-1391
Press Row Phone: 217-333-1227
Mailing Address: Bielfeldt Athletics Admin. Bldg.
 1700 S. Fourth St.
 Champaign, IL 61820
Website: FIGHTINGILLINI.com

UNIVERSITY OF ILLINOIS

The University of Illinois at Urbana-Champaign is the state's classic land grant university, dedicated to building on its tradition of excellence in education, research and public engagement, and driven to innovate in each of these missions. True to its commitment to provide access to top quality higher education to all of Illinois, the Urbana campus regularly ranks among the "best buys" among American universities.

Nearly 3,000 faculty members lead more than 44,000 undergraduate, graduate and professional students in a process of discovery and learning in 17 colleges and schools and more than 150 research centers and institutes.

Illinois provides a diverse learning environment with students and faculty members from more than 120 nations, and a choice of 150 undergraduate majors. Students have opportunities ranging from participating in research or studying abroad, to leading one of more than 1,000 student organizations.

Illinois faculty members win the most prestigious national and international awards, including Nobel and Pulitzer prizes, Guggenheim Fellowships, Tony Awards, and National Medals of Science and Technology. Illinois alumni are similarly recognized; 11 have won Nobel Prizes.

Campus resources include one of the world's largest public university libraries, with its online resources and precious rare book collections, including the earliest specimen of printing in the world, the oldest book printed in moveable type, and the first folio of Shakespeare (1623).

HISTORIC FIRSTS AT ILLINOIS

- 1868** — first architectural instruction west of the Allegheny Mountains
- 1876** — establishment of the oldest continuous soil fertility research plots in the United States, the Morrow Plots
- 1893** — first school of library science west of the Alleghenies
- 1922** — invention of sound-on-film movies
- 1935** — discovery of the essential amino acid threonine
- 1940** — invention of the betatron for high energy physics
- 1948** — first comprehensive college program for students with severe physical disabilities
- 1952** — construction of the pioneering ILLIAC and ORDVAC computers
- 1959** — development of PLATO, the first computer used for direct education
- 1970** — construction of the first visible-spectrum semiconductor laser
- 1977** — discovery of a third life form, distinct from the forms that produce plants, animals and bacterial, called Archaea
- 1977** — development of the quantum well laser, which made compact disc players possible
- 1990** — invention of the e-mail program Eudora
- 1993** — development of the first browser for the world wide web, Mosaic, which was developed into Netscape
- 1996** — development of a processing method that extends the life of microchips as much as 50 times
- 2001** — development of self-healing plastics
- 2003** — the University Library's collection exceeds 10 million volumes, the largest collection of any public university in the world
- 2004** — development of the laser transistor
- 2005** — development of the world's fastest transistor and of a stretchable silicon that can be used to build high-performance electronic devices onto rubber substances
- 2006** — discovery of synthetic molecule that causes cancer cells to self-destruct
- 2007** — student invention allows wheelchairs to be controlled by thought
- 2008** — development begins on Blue Waters - expected to be the world's most powerful academic supercomputer



World-class research facilities include the National Center for Supercomputing Applications, Beckman Institute and the Siebel Center for Computer Science, and the campus community enjoys outstanding centers for the arts as well as Big Ten sports.

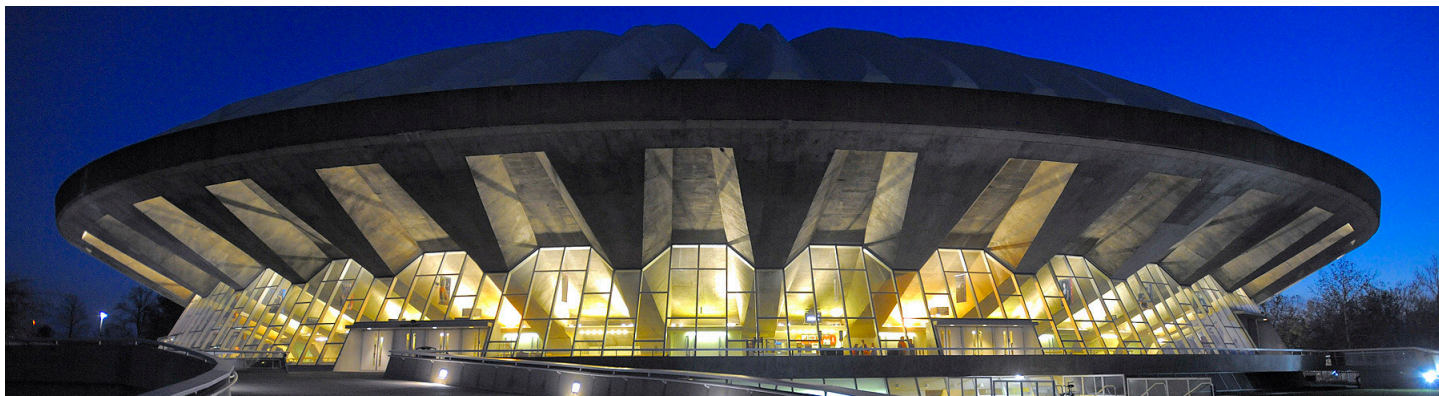
Finally, the University of Illinois at Urbana-Champaign is the only U.S. institution of higher education ranking in the top 10 in the three key metrics of international education: international student enrollment, total number of study abroad students, and the number of federally funded Title

VI National Resource Centers for international and area studies. The campus has collaborative relationships with the best institutions around the world, which benefit students and faculty alike.

In its 2015 rankings, *U.S. News & World Report's America's Best Colleges* rated Illinois as the No. 11 public university and the No. 42 national university.



STATE FARM CENTER

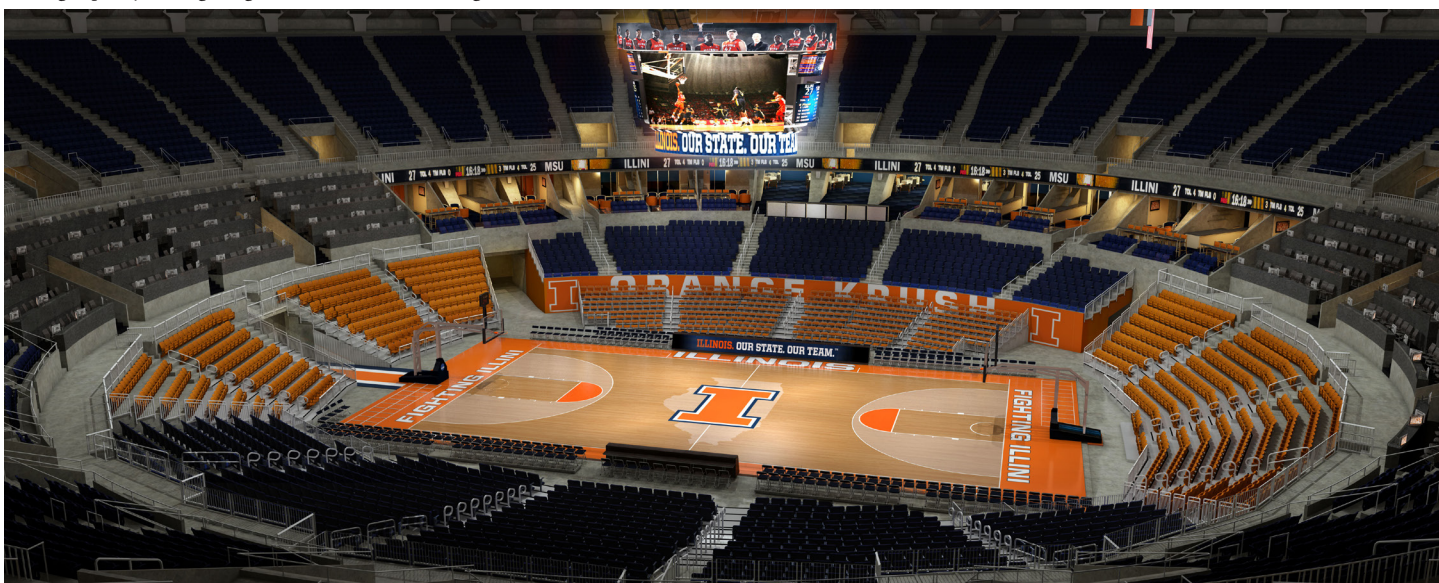


Illinois has an outstanding home in State Farm Center. Known as Assembly Hall from its construction in 1963 to 2013, the iconic arena was renamed State Farm Center on April 29, 2013, with the announcement of a 30-year, \$60 million naming rights agreement. State Farm Center is undergoing a major renovation, which began following the conclusion of the 2014 season, dubbed the Illinois Renaissance. The \$169.5-million project includes a renovated seating bowl; the addition of four levels of premium seating; improved restrooms and concessions; a team store; air conditioning and many other amenities. Construction is occurring around each Fighting Illini basketball season, with the project scheduled to be completed in the fall of 2016.

The historic building opened on March 2, 1963, and continues to attract attention for its design and construction. Four hundred feet across, it at one time was one of only two edge-supported domes in the world. The roof is supported by 614 miles of one-quarter inch steel wire wrapped at the base of the dome under intensive pressure. The architect was Max Abramovitz, a distinguished University of Illinois alumnus.

Illinois opened play at State Farm Center on March 4, 1963, with a 79-73 victory over Northwestern. Since that first game, the Illini have accumulated a 578-157 (.786) record. Illinois has sold out a total of 256 games at State Farm Center and has ranked in the top 25 nationally in home attendance for 37 straight years, including in the top 17 for each of the last 16 seasons. Fans help turn State Farm Center into a sea of orange for every Illini home game, with practically every person in attendance proudly wearing orange. That, combined with the Orange Krush student cheering section surrounding the court, gives the Illini one of the best home court advantages in the country.

In seating capacity, State Farm Center ranks among the great arenas of major cities and is the largest arena in the state of Illinois outside of Chicago's United Center. Seating capacity for Fighting Illini basketball following State Farm Center renovations is 15,544.



ATHLETICS COMMUNICATION



Kent Brown
Football



Derrick Burson
M Basketball



Derek Neal
Football
M Basketball (Asst.)



Jenny Dewar
W Basketball
Soccer
M Golf



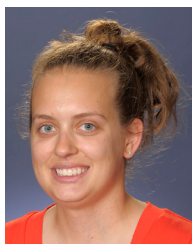
Brett Moore
Baseball
Football (Asst.)



Libby Knight
Volleyball
Softball



Chad Beyler
Wrestling
M & W Track
M & W Cross Country



Jess Leifheit
M Gymnastics
W Tennis
W Golf
Swimming



Dan Longo
M Tennis
W Gymnastics
W Basketball (Asst.)



Jen Fisher
Office Manager



Adam Marantz
Webmaster



Eddie Diazmunoz
Graphic Designer

ATHLETICS COMMUNICATION STAFF DIRECTORY

Bielfeldt Athletics Administration Building
1700 South Fourth Street, Champaign, IL 61820
Phone: (217) 333-1391
Website: FIGHTINGILLINI.com/media

KENT BROWN

Associate Athletics Director,
Media Relations
Work: (217) 244-6533
Cell: (217) 493-9795
Email: kwbrown3@illinois.edu

DERRICK BURSON

Assistant Athletics Director,
Communication
Men's Basketball Contact
Work: (217) 333-0933
Cell: (217) 766-7315
Email: burson@illinois.edu

DEREK NEAL

Associate Director
Work: (217) 244-3707
Cell: (309) 241-0804
Email: dneal@illinois.edu

JENNY DEWAR

Assistant Director
Work: (217) 300-1148
Cell: (847) 567-2487
Email: jdewar2@illinois.edu

BRETT MOORE

Assistant Director
Work: (217) 244-2092
Cell: (309) 212-6367
Email: btmoore3@illinois.edu

LIBBY KNIGHT

Assistant Director
Work: (217) 265-8171
Cell: (217) 714-1218
Email: eknight2@illinois.edu

CHAD BEYLER

Intern
Work: (217) 300-1449
Cell: (217) 493-3777
Email: beyler2@illinois.edu

JESS LEIFHEIT

Intern
Work: (217) 300-1503
Cell: (630) 870-9582
Email: jessleif@illinois.edu

DAN LONGO

Graduate Assistant
Work: (217) 300-1569
Cell: (847) 361-8735
Email: longo1@illinois.edu

JEN FISHER

Office Manager
Work: (217) 333-1391
Email: jdfishe1@illinois.edu

ADAM MARANTZ

Webmaster
Work: (217) 300-1325
Email: amarantz@illinois.edu

EDDIE DIAZMUNOZ

Graphic Designer
Work: (217) 300-1855
Email: diazmunoz@illinois.edu

Members of the Media,

The 2015-16 University of Illinois men's basketball record book is intended as the primary information handbook for media members covering the University of Illinois men's basketball program. This book has been designed to meet your needs in covering Fighting Illini basketball. If you find there is information not contained in this book that would be beneficial to your coverage of Illinois basketball, please let us know and we'll try to incorporate your suggestions into next season's guide.

The University of Illinois Athletics Communication staff is ready to assist you in your coverage of Illini basketball. Feel free to call on myself or any member of the staff. Thanks for your coverage of Illinois sports and . . . GO ILLINI !

Kent Brown
Associate Athletics Director, Media Relations

MEDIA POLICIES

The University of Illinois record book is your source for information on the Fighting Illini basketball program. The Athletics Communication staff is here to help you in your coverage of Illinois basketball. Don't hesitate to call any member of our staff if you need assistance during the course of the year.

HOME GAME CREDENTIALS

Media and photo credential and parking requests for Illinois home games should be made online at **FIGHTINGILLINI.com/media**. Media season credential requests should be made by Friday, Nov. 6. Single-game requests should be made at least 10 days prior to the date of the game to ensure mail delivery. Otherwise, single-game credentials must be picked up prior to the game at media will-call. Illinois associate athletics director Kent Brown will review each application and individuals will receive an email notification following that review. No credential requests will be accepted over the phone.

Due to limitations in seating numbers, all requests will be prioritized according to published circulation numbers. Be specific when requesting the type of credential needed, either media or photo. Any non-working people in possession of a media credential will be asked to turn over the credential and leave the press area. Spouses, dates, non-workers and children are not permitted in the press seating areas. Media agencies that violate this policy may not be issued credentials for future games.

CREDENTIAL USE

Working credentials are subject in all respects to the Media Credential Criteria and Policies set forth by the Big Ten Conference and University of Illinois as in effect from time to time. Working credentials are issued for the sole purpose of providing facility access to an accredited agency's employee who has a legitimate working function (media or game service) in conjunction with this game or games. It is non-transferable and non-assignable and any duplication or alteration of this document is prohibited. Any unauthorized use of the credential subjects the bearer to ejection from the facility and prosecution for criminal trespass.

Any secondary use of any picture, photograph, audio description, video, film/tape, drawing or other description of a game taken or made by the accredited organization or individual to whom this credential has been issued (including, but not limited to use in delayed editorial or non-editorial advertising, sales promotion or merchandising) is prohibited without prior specific written approval of the University of Illinois or the Big Ten Conference. Nothing in these terms and conditions authorizes or allows

bearer to violate any of the trademarks, copyright and other proprietary rights of the University of Illinois or the Big Ten Conference. A maximum of two minutes (2:00) of game video footage (without audio) may be utilized during the one-week period following the conclusion of the game solely within regularly scheduled bona fide news programming distributed via television, and may not be distributed via the internet, wireless or other forms of media.

WEBSITES

Media credentials are issued for individuals who are affiliated with websites for national or regional television and news media organizations, e.g. USA Today, ESPN, Sports Illustrated, CBS Sports, Rivals, Scout, etc., for institutions that are conference members and non-conference opponents, and for the Big Ten Conference. The University of Illinois reserves the right to deny media credentials to any individual whose website is not affiliated with an official news-gathering organization.

LIVE IN-GAME BLOGGING AND ELECTRONIC TRANSMISSIONS

Media Agencies and Representatives shall not transmit or display any real-time video or audio, while the Event or live network presentation of the Event is in progress. Photographs or any text-based accounts or descriptions of the Event (including without limitation, any web log, blog, online journal or other web-based publication) during the event is only allowed with the advance written permission of the University of Illinois Division of Intercollegiate Athletics.

STATE FARM CENTER

All media will enter the arena through the Northeast Entrance of State Farm Center. After you enter the concourse, turn left and at your first left take the stairs or elevator down one flight to the media room (located on Mezzanine Level). We will have wireless internet access available in the media room where all press can work pregame and postgame.

The media room will open two hours prior to tip-off. You may secure roster sheets, media guides and pre-game notes and reserve a work space in this area.

PARKING

A limited number of media parking passes are available for 2015-16 men's basketball games at State Farm Center. Media parking passes will be issued for either the Northeast Lot, located on Fourth Street, or Lot E-14, located between First and Oak streets. The issuance of passes will be done on a priority basis with media who cover the University of Illinois basketball team on a regular basis holding the highest priority.

Requests will then be prioritized according to circulation for newspapers and coverage area for radio and television. A replacement pass **WILL NOT BE ISSUED IF THE ORIGINAL IS LOST**. To avoid game traffic, media are encouraged to arrive at least 45 minutes prior to tip-off.

WIRELESS INTERNET ACCESS

The workroom and press seating areas inside the arena will have a wireless internet network available for media. Members of the media and photographers who want to use a wireless connection at State Farm Center must pick up a wireless login and password sheet in the media workroom prior to the game. Please contact a UI Athletics Communication representative if wireless assistance is needed during the game.

COURTSIDE PHOTOGRAPHY

All photographers must work from within the designated areas behind the baselines of the playing court. The University of Illinois follows NCAA and Big Ten guidelines regarding event photography. Photo locations are first-come, first-served, but in the event of heavy demand for photo credentials for a particular game, shooting locations may be assigned by the UI Athletics Communication Office.

Strobes—Photographers wishing to use strobe equipment at Illinois home games must notify the Illinois Athletics Communication staff at least one week in advance of the game for which they are requesting. There is a charge for installation and/or use of such equipment. A maximum of two strobe units may be used for any individual game.

All photographs are to be used in coverage of Illinois basketball and cannot be sold for any commercial enterprise benefiting the photographer. Should photos be sold commercially, credential privileges could be terminated.

TELEPHONES

With wireless internet serving as the preferred method of media communication, phones lines are no longer provided in the media workroom. Any individual wishing to order phone lines for the season or for a single game should direct the request to AT&T (800) 321-8152 during regular business hours. Street address for State Farm Center is 1800 South First Street, Champaign, IL 61820.

POST-GAME INTERVIEWS

The University of Illinois will utilize the media room, located on the Mezzanine Level on the Northeast side of State Farm Center, for post-game interviews. John Groce and selected Illinois

MEDIA POLICIES

players will be brought to this area for interviews, along with the opposing head coach. Opposing players will be available outside their locker room. Player requests for the visiting team should be made through that school's SID. If you need to interview an Illinois player who has not been requested for the interview room, you must make arrangements with a member of the Illinois Athletics Communication staff. The normal schedule will begin with the visiting coach, followed by John Groce and selected Illinois players.

POSTGAME INFORMATION

Media are strongly encouraged to use the official University of Illinois athletics website, **FIGHTINGILLINI.com** to access the box score after home games. Updated Illinois season statistics also will be available following each game. Media can access a direct livestats feed of all home games at **illinois.statbroadcast.com**.

All persons wishing to receive releases, stats, or box scores should retrieve the information off the official UI athletics website at **FIGHTINGILLINI.com**. To receive releases via email, contact Derrick Burson (burson@illinois.edu).

FIGHTINGILLINI.COM

Illinois releases, statistics, audio and video of press conferences and live radio coverage of Fighting Illini games are available on the official University of Illinois athletics website, **FIGHTINGILLINI.com**. In addition to men's basketball, live audio and video is available for football, women's basketball, volleyball and baseball, and the coaches' radio show broadcasts.

INTERVIEW POLICIES

All interview requests for Illinois players, John Groce and members of the coaching staff must be cleared in advance through Derrick Burson in the Illinois Athletics Communication Office. Please give at least 24 hours advance notice for interview requests. Student-athletes are not available on the day of scheduled competition until after the event is completed. Players have been instructed not to talk to media who have not coordinated their requests through Athletics Communication.

JOHN GROCE INTERVIEWS

The media will have an opportunity to interview John Groce prior to every game, either in person at a press conference or via teleconference. To receive Groce's media schedule for the season, contact Derrick Burson or refer to the weekly basketball game notes. All Groce press conferences will be held on the eighth floor of the Press Box at Memorial Stadium (enter through Gate 10 and take the north service elevator), unless otherwise indicated.

PLAYER INTERVIEWS

Players will be available to the media prior to every game on one designated day, either before or after practice, at a time and location to be dictated by the practice and travel schedule. Player interviews will normally take place at the Ubben Basketball Practice Facility, but also could occur at State Farm Center if that is the location of practice on a scheduled day of media availability. Media will be alerted to the day, time and location of player interviews via email from Derrick Burson. Media unable to attend the player interview opportunities should contact Burson to arrange a phone interview.

BASKETBALL PRACTICE

Illinois basketball practices are closed to the media and public. Most practices will be held at the Ubben Basketball Practice Facility, except for isolated times when the team will practice at State Farm Center. Please note that ALL team areas – locker room, film room, weight room and training room – are off limits to members of the media. In order to avoid congestion on the court, media arriving at Ubben for interviews should wait in the lobby area on the first level. Illinois' game day shootarounds are also closed to the media and only available to the television announcers broadcasting the game.

JOHN GROCE RADIO SHOW

The John Groce Radio Show airs statewide on the Fighting Illini Sports Network. The show originates from Buffalo Wild Wings in Savoy and is hosted by Illini play-by-play announcer Brian Barnhart. It airs most Mondays from 7-8 p.m., beginning Dec. 7. A complete schedule of the show will be listed in the weekly basketball notes update.

SOCIAL MEDIA

Fighting Illini fans can get all the latest news on the basketball team via the official social media accounts:

Twitter	@IlliniMBB
Instagram	@IlliniMBB
Facebook	IlliniBasketball

ROAD/NEUTRAL SITE CREDENTIALS

Media planning to travel to road and neutral-site games to cover the Illini should contact the following to request credentials:

Nov. 8, 13, 15, 21, 23 – at Springfield

Illinois season credential valid for these games

Contact: Derrick Burson, Illinois SID

Online: FIGHTINGILLINI.com/media

Nov. 18 – at Providence

Contact: Arthur Parks, Providence SID

Email: aparks@providence.edu

Nov. 27-28 – at Emerald Coast Classic

Contact: Mike Mahon, Media Coordinator

Email: mmbird1@gmail.com

Dec. 12 – vs. UIC at Chicago

Illinois season credential valid for this game

Contact: Derrick Burson, Illinois SID

Online: FIGHTINGILLINI.com/media

Dec. 23 – vs. Missouri at St. Louis

Contact: Megan Little, Scottrade Center

Online: formstack.com/forms/stlblues-MOIL

Jan. 3 – at Ohio State

Contact: Dan Wallenberg, Ohio State SID

Online: ohiostatebuckeyes.com/media

Jan. 7 – at Michigan State

Contact: Matt Larson, Michigan State SID

Online: msuspartans.com/mbballcredentials

Jan. 19 – at Indiana

Contact: Derrick Burson, Illinois SID

Burson will compile a list of Illinois traveling media and submit it to the Indiana SID office

Jan. 23 – at Minnesota

Contact: Dan Reisig, Minnesota SID

Online: gophersports.com/mbbmedia

Feb. 3 – at Rutgers

Contact: Derrick Burson, Illinois SID

Burson will compile a list of Illinois traveling media and submit it to the Rutgers SID office

Feb. 13 – at Northwestern

Contact: Nick Brilowski, Northwestern SID

Online: nusports.com/media

Feb. 21 – at Wisconsin

Contact: Patrick Herb, Wisconsin SID

Online: go.wisc.edu/credentials

March 3 – at Maryland

Contact: Derrick Burson, Illinois SID

Burson will compile a list of Illinois traveling media and submit it to the Maryland SID office

March 6 – at Penn State

Contact: Alissa Clendenen, Penn State SID

Online: bit.ly/PSUMBBCredentials

March 9-13 – Big Ten Tournament at Indianapolis

Contact: Scott Chipman, Big Ten Conference

Online: office.bigten.org/media

FIGHTING ILLINI SPORTS NETWORK



(L-R): Former Illini great Jerry Hester and Brian Barnhart team up for basketball broadcasts on the Fighting Illini Sports Network.

The 43-station Fighting Illini Sports Network brings Illinois basketball to fans across the state and Midwest with Brian Barnhart and Jerry Hester calling the action from courtside.

Barnhart is in his 14th season as the “Voice of the Illini” after a long stint in professional baseball, including two years as the play-by-play voice of the Anaheim Angels. Barnhart serves as the voice of the Fighting Illini Sports Network, providing play-by-play coverage of football and men’s basketball and as the host of the statewide coaches call-in programs held weekly during the season (Tuesdays at 7 p.m. for football, Mondays at 7 p.m. for basketball).

A native of nearby Tolono, Barnhart graduated from Unity High School and Liberty University before beginning a 15-year career in professional baseball in 1986. He served as the play-by-play voice of the Lynchburg Mets and Salem Buccaneers before moving up to the Oklahoma City 89ers, the Class AAA affiliate of the Texas Rangers, from 1988-94. Barnhart did high school football and other sport play-by-play for 11 years and was also the voice for Oklahoma Baptist basketball from 1992-94 and Oklahoma City Blazers minor league hockey in 1993. From 1996-98, he handled news, sports and play-by-play at WWLS in Oklahoma City.

In 1998, Barnhart was named the play-by-play announcer for the Angels and spent two full seasons with the American League club before returning to the Champaign-Urbana area in 2000. He currently is a news and sports announcer at WDWS-AM 1400 in Champaign.

During the 2007 season, Barnhart was honored by the Illinois Broadcasters Association with the Silver Dome Award for Best Sports Play-by-Play for his call of Illinois’ football upset of No. 1 Ohio State. He received the Silver Dome again in 2008 for his call of the Illini’s ninth straight Braggin’ Rights win over Missouri, and earned a third-straight Silver Dome in 2009 for his play-by-play description of Illinois’ school-record come-from-behind win at Clemson. Barnhart was named the 2008 Illinois Sportscaster of the Year by the National Sportscasters and Sportswriters Association, becoming just the second downstate sportscaster to win the award since 1959.

Jerry Hester is now in his 11th season serving as the expert analyst on Fighting Illini Sports Network men’s basketball broadcasts. Hester started at Illinois from 1994-98 and was a key member of the UI’s 1998 Big Ten Championship team. Following graduation, he played professionally in Poland, England and Italy. Hester is currently a financial advisor with The Downey Group.

The statewide Fighting Illini Sports Network is managed by Fighting Illini Sports Properties and encompasses all sponsorship and operational elements. Fighting Illini Sports Network programming includes hour-long pregame and postgame shows around live football and men’s basketball games, plus coverage of women’s basketball, volleyball and baseball, along with the “Illini Today” daily report.

The “John Groce Show” can be heard in-season, statewide on the Fighting Illini Sports Network on Mondays beginning Dec. 7 at 7 p.m.



FIGHTING ILLINI SPORTS NETWORK AFFILIATES

Aledo, WRMJ-FM 102.3
 Alton, WBGZ-AM 1570
 Alton, WBGZ-FM 94.3
 Bloomington, WRPW-FM 92.9
 Canton, WBYS-AM 1560
 Champaign, WDWS-AM 1400
 Champaign, WHMS-FM 97.5
 Chicago, WSCR-AM 670
 Danville, WDAN-AM 1490
 Danville, WDNL-FM, 102.1
 Davenport, IA, WFXN-AM 1230
 Decatur, WSOY-AM 1340
 DuQuoin, WDQN-AM 1580
 Dwight, WJEZ-FM 98.9
 Effingham-Mattoon, WHQQ-FM 98.9
 Fairfield, WFIW-AM 1390
 Galesburg, WGIL-AM 1400
 Galesburg, WGIL-FM 93.7
 Jacksonville, WJIL-AM 1550
 Jacksonville, WJIL-FM 102.9
 Jerseyville, WJBM-AM 1480
 Kewanee, WKEI-AM 1450
 Litchfield, WSMI-FM 106.1
 Macomb-Rushville, WKXQ-FM 92.5
 Mt. Carmel, WSJD-FM 100.5
 Murphysboro, WINI-AM 1440
 Olney, WSEI-FM 92.9
 Paxton, WPXN-FM 104.9
 Peoria, WZPN-FM 96.5
 Pittsfield, WBBA-FM 97.5
 Quincy, WTAD-AM 930
 Robinson, WTYE-FM 101.7
 Rockford, WROK-AM 1440
 Salem, WJBD-AM 1350
 Salem, WJBD-FM 100.1
 Sparta, WHCO-AM 1230
 Springfield, WFMB-AM 1450
 Springfield, WFMB-FM 107.1
 Springfield, WCVS-FM 96.7
 St. Louis, WQQX-AM 1490
 Watseka, WGFA-FM 94.1



COVERING THE ILLINI

PRINT

Alton Telegraph

Steve Porter
steveporter51@hotmail.com
111 E. Broadway
Alton, IL 62002
Phone: (618) 463-2500
www.thetelegraph.com

Arlington Heights Daily Herald

155 E. Algonquin Road
Arlington Heights, IL 60006
Phone: (847) 427-4430
www.dailyherald.com

Belleville News-Democrat

Dave Wilhelm
dwillhelm@bnd.com
120 S. Illinois St.
Box 427
Belleville, IL 62222
Phone: (618) 234-1000
www.belleville.com

Bloomington Pantagraph

301 W. Washington
Bloomington, IL 61701
Phone: (800) 747-7323
www.pantagraph.com

Champaign-Urbana News-Gazette

Marcus Jackson
mjackson@news-gazette.com
Loren Tate
ltate@news-gazette.com
Box 677
Champaign, IL 61820
Phone: (217) 351-5232
www.illinihq.com

Chicago Sun-Times

Steve Greenberg
sgreenberg@suntimes.com
350 N. Orleans St.
Chicago, IL 60654
Phone: (312) 321-2663
www.suntimes.com

Chicago Tribune

Shannon Ryan
sryan@tribune.com
435 N. Michigan Ave.
Chicago, IL 60611
Phone: (312) 222-3478
www.chicagotribune.com

Daily Illini

Joey Figueroa
jfiguer2@dailyillini.com
Eli Schwardon
schwadr2@dailyillini.com
Alex Roux
roux2@dailyillini.com
512 East Green Street
Champaign, IL 61820
Phone: (217) 337-8350
www.dailyillini.com

Danville Commercial-News

Chad Dare
cdare@dancomnews.com
17 W. North Street
Danville, IL 61832
Phone: (217) 477-5151
www.commercial-news.com

Decatur Herald & Review

Mark Tupper
mtupper@herald-review.com
601 E. William, Box 311
Decatur, IL 62525
Phone: (217) 421-6979
www.herald-review.com

GateHouse News Service

JJ Wilson
wilson07@yahoo.com
Covering Peoria Journal Star, Springfield State-Journal Register and Rockford Register Star

Moline Dispatch

Rock Island Argus

Kedric Prince
princekedric@yahoo.com
1720 5th Avenue
Moline, IL 61265
Phone: (309) 764-4344
www.qconline.com

Peoria Journal Star

Kirk Wessler

kwessler@pjstar.com
One News Plaza
Peoria, IL 61643
Phone: (309) 686-3214
www.pjstar.com

Quad-City Times

500 E. Third Street
Davenport, IA 52801
Phone: (319) 383-2285
www.qctimes.com

Rockford Register Star

99 East State Street
Rockford, IL 61104
Phone: (815) 987-1200
www.rrstar.com

Springfield State Journal-Register

One Copley Plaza
Springfield, IL 62705
Phone: (217) 788-1300
www.sj-r.com

St. Louis Post-Dispatch

Stu Durando
sdurando@post-dispatch.com
900 N. Tucker Blvd.
St. Louis, MO 63101
Phone: (314) 340-8195
www.stltoday.com

RADIO

Fighting Illini Sports Network

Brian Barnhart - Play-by-Play
bbarn64@hotmail.com
Box 3939
Champaign, IL 61826
Phone: (217) 351-5300
Jerry Hester - Analyst
jhes711@hotmail.com

WDWS 1400 AM

Dave Loane, Sports Director
dloane@wdws.com
Steve Kelly, "SportsTalk" Host
skelly@wdws.com

Box 3939

Champaign, IL 61826
Phone: (217) 351-5300
www.wdws.com

ESPNCU Radio

Jeremy Werner
jwerner56@gmail.com
2702 Boulder Drive
Urbana, IL 61802
Phone: (217) 367-1195
www.espncu.com

Daily Illini On Air

Joey Gelman
jgelman2@dailyillini.com
Masaki Sugimoto
msugimo2@dailyillini.com
512 East Green Street
Champaign, IL 61820
Phone: (217) 337-8350
www.dailyillini.com/on_air

Illini Radio Group

2603 West Bradley Ave.
Champaign, IL 61821
Phone: (217) 352-4141
www.mix945.com / www.wkio.com

WHMS 97.5 FM

Mike Haile
Box 3939
Champaign, IL 61826
Phone: (217) 351-5300

WILL 580 AM

228 Gregory Hall
Urbana, IL 61801
Phone: (217) 333-0850
www.will.uiuc.edu

WPGU 107.1 FM

24 East Green Street
Champaign, IL 61820
Phone: (217) 244-3000
www.wpgu.com

WSCR 670 AM

180 N. Stetson Avenue, Suite 1250
Chicago, IL 60601
Phone: (312) 729-3967
www.http://chicago.cbslocal.com/station/670-the-score

TV

WAND, Ch. 17 (NBC Affiliate)

Matt Loveless, Sports Director
matt.loveless@wandtv.com
Noah Newman
904 Southside Drive
Decatur, IL 62522
Phone: (217) 424-2500
www.wandtv.com

WCIA, Ch. 3 (CBS Affiliate)

Matt Wettersten, Sports Director
mwettersten@wcia.com
Bret Beherns
Craig Choate
509 S. Neil Street
Champaign, IL 61820
Phone: (217) 356-8333
www.illinoishomepage.net

WICS, Ch. 20/WICD, Ch. 15 (ABC Affiliate)

WRSP, Ch. 55/WCCU, Ch. 27 (Fox Affiliate)

Louie Del Rio, Sports Reporter
ledrio@foxillinois.com
250 Country Fair Drive
Champaign, IL 61821
Phone: (217) 351-8538
www.newschannel20.com
www.foxillinois.com

Big Ten Network

600 W. Chicago Ave.
Suite 875
Chicago, IL 60610
Phone: (312) 665-0700
www.btn.com

Comcast SportsNet

350 N. Orleans St.
Suite S1-100
Chicago, IL 60654
Phone: (312) 222-6080
chicago.comcastsportsnet.com

WGN, Ch. 9

2501 W. Bradley Place
Chicago, IL 60618
Phone: (773) 883-3325
wgntv.com

Fox Sports Midwest

Annex Building
700 St. Louis Union State
Suite 300
St. Louis, MO 63103
Phone: (314) 206-7034

INTERNET

Orange & Blue News (Rivals Network)

Brad Sturdy
sturdy32@yahoo.com
Doug Buschon
dougbuschon@aol.com
www.illinois.rivals.com

Illini Insider (Scout Network)

Jeremy Werner
jwerner56@gmail.com
www.illinois.scout.com

IlliniBoard

Robert Rosenthal
robert@alioneeye.com
www.illiniboard.com

ESPN Chicago

Scott Powers
spowers@espnchicago.com
www.espnchicago.com

WIRE SERVICE

Associated Press

David Mercer
dmerc@ap.org
Box 677
Champaign, IL 61820
Phone: (217) 351-4094

OPPONENT INFORMATION

NORTH FLORIDA *unfospreys.com*

Nov. 13 // 7 pm // Springfield, Ill. // BTN Plus

Basketball SID: Brian Morgan

Phone: (904) 620-4027

Email: b.morgan@unf.edu

Head Coach: Matthew Driscoll (7th year)

2014-15 Team Overall/Conf. Record: 23-12, 12-2 (1st)

All-Time Series: First meeting

NORTH DAKOTA STATE *gobison.com*

Nov. 15 // 2 pm // Springfield, Ill. // ESPN3

Basketball SID: Wes Offerman

Phone: (701) 231-8047

Email: wes.offerman@ndsu.edu

Head Coach: David Richman (2nd year)

2014-15 Team Overall/Conf. Record: 23-10, 12-4 (T-1st)

All-Time Series: Illinois leads 2-0

PROVIDENCE *friars.com*

Nov. 18 // 6 pm // Providence, R.I. // FS1

Basketball SID: Arthur Parks

Phone: (401) 865-2759

Email: aparks@providence.edu

Press Row Phone: (401) 751-9737

Head Coach: Ed Cooley (5th year)

2014-15 Team Overall/Conf. Record: 22-12, 11-7 (4th)

All-Time Series: Providence leads 2-0

CHATTANOOGA *gomocs.com*

Nov. 21 // 7:30 pm // Springfield, Ill. // BTN

Basketball SID: Jim Horten

Phone: (423) 425-2350

Email: james-horten@utc.edu

Head Coach: Matt McCall (1st year)

2014-15 Team Overall/Conf. Record: 22-10, 15-3 (2nd)

All-Time Series: Chattanooga leads 1-0

CHICAGO STATE *gocsucougars.com*

Nov. 23 // 7 pm // Springfield, Ill. // ESPN3

Basketball SID: Corey Miggins

Phone: (773) 995-2217

Email: cmiggins@csu.edu

Head Coach: Tracy Dildy (6th year)

2014-15 Team Overall/Conf. Record: 8-24, 4-10 (T-7th)

All-Time Series: Illinois leads 11-0

UAB *uabsports.com*

Nov. 27 // 8:30 pm // Niceville, Fla. // CBSSN

Basketball SID: Tray Littlefield

Phone: (205) 934-7920

Email: trayl@uab.edu

Head Coach: Jerod Haase (4th year)

2014-15 Team Overall/Conf. Record: 20-16, 12-6 (T-4th)

All-Time Series: UAB leads 1-0

IOWA STATE *cyclones.com*

Nov. 28 // 3:30/6 pm // Niceville, Fla. // -/CBSSN

Basketball SID: Matt Shoultz

Phone: (515) 520-7642

Email: mshoultz@iastate.edu

Head Coach: Steve Prohm (1st year)

2014-15 Team Overall/Conf. Record: 25-9, 12-6 (T-2nd)

All-Time Series: Illinois leads 11-1

VIRGINIA TECH *hokiesports.com*

Nov. 28 // 3:30/6 pm // Niceville, Fla. // -/CBSSN

Basketball SID: Bill Dyer

Phone: (540) 231-8852

Email: wdyer@vt.edu

Head Coach: Buzz Williams (2nd year)

2014-15 Team Overall/Conf. Record: 11-22, 2-16 (15th)

All-Time Series: Illinois leads 2-1

NOTRE DAME *und.com*

Dec. 2 // 8:15 pm // State Farm Center // ESPN2

Basketball SID: Bernadette Cafarelli

Phone: (574) 631-8548

Email: cafarelli.1@nd.edu

Head Coach: Mike Brey (16th year)

2014-15 Team Overall/Conf. Record: 32-6, 14-4 (3rd)

All-Time Series: Illinois leads 27-13

WESTERN CAROLINA *catamountsports.com*

Dec. 5 // 2 pm // State Farm Center // ESPN3

Basketball SID: Sean Forrester

Phone: (828) 227-2655

Email: stforrester@email.wcu.edu

Head Coach: Larry Hunter (11th year)

2014-15 Team Overall/Conf. Record: 15-17, 9-9 (4th)

All-Time Series: Illinois leads 2-0

YALE *yalebulldogs.com*

Dec. 9 // 7 pm // State Farm Center // ESPN3

Basketball SID: Tim Bennett

Phone: (203) 432-1457

Email: timothy.bennett@yale.edu

Head Coach: James Jones (17th year)

2014-15 Team Overall/Conf. Record: 22-10, 11-3 (T-1st)

All-Time Series: Illinois leads 2-0

UIC *uicflames.com*

Dec. 12 // 1 pm // Chicago, Ill. // ESPN3

Basketball SID: Dan Yopchick

Phone: (312) 413-9340

Email: yopchick@uic.edu

Head Coach: Steve McClain (1st year)

2014-15 Team Overall/Conf. Record: 10-24, 4-12 (7th)

All-Time Series: Illinois leads 13-2

SOUTH DAKOTA *goyotes.com*

Dec. 19 // 2 pm // State Farm Center // ESPN3

Basketball SID: Bryan Boettcher

Phone: (605) 677-5927

Email: bryan.boettcher@usd.edu

Head Coach: Craig Smith (2nd year)

2014-15 Team Overall/Conf. Record: 17-16, 9-7 (T-4th)

All-Time Series: Illinois leads 1-0

MISSOURI *mutigers.com*

Dec. 23 // 6 pm // St. Louis, Mo. // ESPN2

Basketball SID: Patrick Crawford

Phone: (573) 882-2531

Email: crawfordpa@missouri.edu

Head Coach: Kim Anderson (2nd year)

2014-15 Team Overall/Conf. Record: 9-23, 3-15 (14th)

All-Time Series: Illinois leads 29-16

Games at St. Louis: Illinois leads 22-13

Games at Illinois: Illinois leads 4-1

Games at Missouri: Illinois leads 3-2

Current Series Streak: Illinois W-2

Groce vs. Missouri: 2-1

Anderson vs. Illinois: 0-1

INDIANA *iuhoosiers.com*

Jan. 19 // 6 pm // Bloomington, Ind. // ESPN

Feb. 25 // 8 pm // State Farm Center // ESPN/2

Basketball SID: J.D. Campbell

Phone: (812) 855-9794

Email: jc56@indiana.edu

Press Row Phone: (812) 855-2754

Head Coach: Tom Crean (8th year)

2014-15 Team Overall/Conf. Record: 20-14, 9-9 (T-7th)

All-Time Series: Indiana leads 87-86

Games at Illinois: Illinois leads 51-32

Games at Indiana: Indiana leads 53-29

Neutral Games: Illinois leads 6-2

Current Series Streak: Indiana W-1

Current Series Streak at Illinois: Indiana W-1

Current Series Streak at Indiana: Indiana W-3

Longest Illinois W-Streak: 8 (2/23/1912-1/23/1923)

Longest Indiana W-Streak: 9 (2/22/1972-1/8/1977)

Longest Illinois Home W-Streak: 11 (1/20/1906-1/17/1925)

Longest Indiana Home W-Streak: 6 (1/2/1991-2/28/1996)

Longest Illinois Road W-Streak: 3, three times
(last, 2/29/1988-3/11/1990)

Longest Indiana Road W-Streak: 4 (2/22/1972-1/17/1976)

Groce vs. Indiana: 3-3

Crean vs. Illinois: 5-8

IOWA *hawkeyesports.com*

Feb. 7 // Noon // State Farm Center // BTN

Basketball SID: Matt Weitzel

Phone: (319) 335-9411

Email: matthew-weitzel@uiowa.edu

Press Row Phone: (319) 335-7284

Head Coach: Fran McCaffery (6th year)

2014-15 Team Overall/Conf. Record: 22-12, 12-6 (T-3rd)

All-Time Series: Illinois leads 82-70

Games at Illinois: Illinois leads 61-15

Games at Iowa: Iowa leads 54-21

Neutral Games: Iowa leads 1-0

Current Series Streak: Iowa W-1

Current Series Streak at Illinois: Iowa W-1

Current Series Streak at Iowa: Iowa W-1

Longest Illinois W-Streak: 7 (3/1/2008-2/26/2012)

Longest Iowa W-Streak: 6 (1/4/1975-2/24/1977)

Longest Illinois Home W-Streak: 17 (2/28/1931-2/14/1953)

Longest Iowa Home W-Streak: 10 (3/6/1965-2/24/1977)

Longest Illinois Road W-Streak: 3, twice
(last, 3/1/2008-12/29/2010)

Longest Iowa Road W-Streak: 3 (3/8/1975-1/15/1977)

Groce vs. Iowa: 1-3

McCaffery vs. Illinois: 4-4

MARYLAND *umterps.com*

March 3 // 6 pm // College Park, Md. // ESPN/2

Basketball SID: Zack Bolno

Phone: (301) 314-1482

Email: zbolno@umd.edu

Press Row Phone: (301) 314-8624

Head Coach: Mark Turgeon (5th year)

2014-15 Team Overall/Conf. Record: 28-7, 14-4 (2nd)

All-Time Series: Tied, 5-5

Games at Illinois: Tied, 1-1

Games at Maryland: Maryland leads 2-1

Neutral Games: Illinois leads 3-2

Current Series Streak: Illinois W-3

Groce vs. Maryland: 1-0

Turgeon vs. Illinois at Maryland: 0-2

Turgeon vs. Illinois All-Time: 0-3

MICHIGAN *mgoblue.com*

Dec. 30 // 2 pm // State Farm Center // ESPN/2

Basketball SID: Tom Wywrot

Phone: (734) 647-1268

Email: twywrot@umich.edu

Press Row Phone: (734) 998-7188

Head Coach: John Beilein (9th year)

2014-15 Team Overall/Conf. Record: 16-16, 8-10 (9th)

All-Time Series: Illinois leads 86-80

Games at Illinois: Illinois leads 55-26

Games at Michigan: Michigan leads 50-29

Neutral Games: Michigan leads 4-2

Current Series Streak: Michigan W-1

Current Series Streak at Illinois: Illinois W-1

Current Series Streak at Michigan: Michigan W-3

Longest Illinois W-Streak: 11 (2/9/2000-1/14/2006)

Longest Michigan W-Streak: 9 (1/18/1992-1/9/1996)

Longest Illinois Home W-Streak: 13 (3/3/1996-2/16/2011)

Longest Michigan Home W-Streak: 8 (3/3/1975-2/6/1982)

Longest Illinois Road W-Streak: 4, twice
(last, 1/25/2001-2/8/2005)

Longest Michigan Road W-Streak: 4 (1/18/1992-1/17/1995)

Groce vs. Michigan at Illinois: 1-6

Groce vs. Michigan All-Time: 2-6

Beilein vs. Illinois: 11-6

OPPONENT INFORMATION

MICHIGAN STATE *msuspartans.com*

Jan. 7 // 6/8 pm // East Lansing, Mich. // ESPN2/U
Basketball SID: Matt Larson
Phone: (517) 355-2271
Email: larson@ath.msu.edu
Press Row Phone: (517) 353-1626
Head Coach: Tom Izzo (20th year)
2014-15 Team Overall/Conf. Record: 27-12, 12-6 (T-3rd)
All-Time Series: Tied, 58-58
Games at Illinois: Illinois leads 37-19
Games at MSU: Michigan State leads 36-20
Neutral Games: Michigan State leads 3-1
Current Series Streak: Michigan State W-1
Current Series Streak at Illinois: Michigan State W-2
Current Series Streak at Michigan State: Illinois W-2
Longest Illinois W-Streak: 7 (1/5/1987-1/18/1990)
Longest Michigan St. W-Streak: 10 (1/14/1974-2/25/1978)
Longest Illinois Home W-Streak: 7 (1/11/1979-1/12/1985)
Longest Michigan St. Home W-Streak: 8 (2/8/1972-2/2/1980)
Longest Illinois Road W-Streak: 3 (3/7/1987-2/16/1991)
Longest Michigan St. Road W-Streak: 5 (1/14/1974-1/12/1978)
Groce vs. Michigan State: 2-3
Izzo vs. Illinois: 21-16

MINNESOTA *gophersports.com*

Jan. 23 // 5/6/7/8 pm // Minneapolis, Minn. // BTN
Feb. 28 // TBD // State Farm Center // TBD
Basketball SID: Dan Reisig
Phone: (612) 625-4090
Email: dbreisig@umn.edu
Press Row Phone: (612) 626-1308
Head Coach: Richard Pitino (3rd year)
2014-15 Team Overall/Conf. Record: 18-15, 6-12 (T-10th)
All-Time Series: Illinois leads 119-65
Games at Illinois: Illinois leads 70-18
Games at Minnesota: Minnesota leads 46-44
Neutral Games: Illinois leads 5-1
Current Series Streak: Minnesota W-1
Current Series Streak at Illinois: Minnesota W-1
Current Series Streak at Minnesota: Minnesota W-1
Longest Illinois W-Streak: 20 (3/4/1999-3/15/2008)
Longest Minnesota W-Streak: 9 (2/27/1971-2/2/1976)
Longest Illinois Home W-Streak: 16 (2/1/1979-2/22/1995)
Longest Minnesota Home W-Streak: 6, twice
(last, 1/25/1992-2/3/1999)
Longest Illinois Road W-Streak: 8 (2/17/2000-2/12/2008)
Longest Minnesota Road W-Streak: 4 (2/19/1973-2/2/1976)
Groce vs. Minnesota: 3-2
Pitino vs. Illinois: 1-1

NEBRASKA *huskers.com*

Jan. 16 // 1:30 pm // State Farm Center // BTN
Basketball SID: Shamus McKnight
Phone: (402) 472-2263
Email: smcknight@huskers.com
Press Row Phone: (402) 472-2279
Head Coach: Tim Miles (4th year)
2014-15 Team Overall/Conf. Record: 13-18, 5-13 (12th)
All-Time Series: Illinois leads 12-5
Games at Illinois: Illinois leads 9-1
Games at Nebraska: Tied, 3-3
Neutral Games: Nebraska leads 1-0
Current Series Streak: Illinois W-1
Current Series Streak at Illinois: Illinois W-9
Current Series Streak at Nebraska: Nebraska W-2
Longest Illinois W-Streak: 7 (1/3/1921-12/11/1976)
Longest Nebraska W-Streak: 1, five times
(last, 1/11/2015)
Longest Illinois Home W-Streak: 8 (1/3/1921-current)
Longest Nebraska Home W-Streak: 2 (2/12/2014-current)
Longest Illinois Road W-Streak: 2 (12/20/1945-11/28/1975)
Longest Nebraska Road W-Streak: 1 (1/1/1921)
Groce vs. Nebraska: 4-2
Miles vs. Illinois: 2-4

NORTHWESTERN *nusports.com*

Feb. 13 // 7 pm // Evanston, Ill. // BTN
Basketball SID: Nick Brilowski
Phone: (847) 467-3831
Email: brilowski@northwestern.edu
Press Row Phone: (847) 491-8853
Head Coach: Chris Collins (3rd year)
2014-15 Team Overall/Conf. Record: 15-17, 6-12 (T-10th)
All-Time Series: Illinois leads 132-39
Games at Illinois: Illinois leads 67-14
Games at Northwestern: Illinois leads 61-25
Neutral Games: Illinois leads 4-0
Current Series Streak: Illinois W-2
Current Series Streak at Illinois: Illinois W-1
Current Series Streak at Northwestern: Illinois W-1
Longest Illinois W-Streak: 16, twice
(last, 2/4/1984-3/2/1991)
Longest Northwestern W-Streak: 3, twice
(last, 2/7/1966-1/10/1967)
Longest Illinois Home W-Streak: 19 (1/5/1980-2/18/1998)
Longest Northwestern Home W-Streak: 3, twice
(last, 3/7/1966-2/10/1968)
Longest Illinois Road W-Streak: 12 (2/28/1980-3/2/1991)
Longest Northwestern Road W-Streak: 2, three times
(last, 2/5/2012-1/17/2013)
Groce vs. Northwestern: 3-2
Collins vs. Illinois: 1-2

OHIO STATE *ohiostatebuckeyes.com*

Jan. 3 // 4 pm // Columbus, Ohio // BTN
Jan. 28 // 8 pm // State Farm Center // BTN
Basketball SID: Dan Wallenberg
Phone: (614) 292-6861
Email: wallenberg.1@osu.edu
Press Row Phone: (614) 688-5330
Head Coach: Thad Matta (12th year)
2014-15 Team Overall/Conf. Record: 24-11, 11-7 (6th)
All-Time Series: Illinois leads 104-74
Games at Illinois: Illinois leads 61-26
Games at Ohio State: Ohio State leads 46-41
Neutral Games: Tied, 2-2
Current Series Streak: Ohio State W-4
Current Series Streak at Illinois: Ohio State W-1
Current Series Streak at Ohio State: Ohio State W-6
Longest Illinois W-Streak: 12 (1/21/1950-2/11/1956)
Longest Ohio State W-Streak: 7 (2/19/1977-2/16/1980)
Longest Illinois Home W-Streak: 12 (1/13/1947-1/3/1959)
Longest Ohio State Home W-Streak: 6, twice
(last, 3/2/2010-current)
Longest Illinois Road W-Streak: 6 (1/30/1993-1/28/1998)
Longest Ohio State Road W-Streak: 4 (2/19/1977-1/24/1980)
Groce vs. Ohio State: 1-4
Matta vs. Illinois: 15-5

PENN STATE *gopsusports.com*

March 6 // 11 am // University Park, Pa. // BTN
Basketball SID: Alissa Clendenen
Phone: (814) 865-1757
Email: akc16@psu.edu
Press Row Phone: (814) 863-3516
Head Coach: Patrick Chambers (5th year)
2014-15 Team Overall/Conf. Record: 18-16, 4-14 (13th)
All-Time Series: Illinois leads 28-13
Games at Illinois: Illinois leads 14-5
Games at Penn State: Illinois leads 11-7
Neutral Games: Illinois leads 3-1
Current Series Streak: Illinois W-4
Current Series Streak at Illinois: Illinois W-5
Current Series Streak at Penn State: Illinois W-1
Longest Illinois W-Streak: 6 (2/20/2002-2/16/2005)
Longest Penn State W-Streak: 3 (3/21/1942-11/25/1991)
Longest Illinois Home W-Streak: 5, twice
(last, 1/12/2010-current)
Longest Penn State Home W-Streak: 2, twice
(last, 1/11/2011-1/19/2012)
Longest Illinois Road W-Streak: 4 (1/25/2003-2/24/2007)

Longest Penn State Road W-Streak: 3 (2/24/2006-2/18/2009)
Groce vs. Penn State: 4-0
Chambers vs. Illinois: 1-4

PURDUE *purduesports.com*

Jan. 10 // 1/5 pm // State Farm Center // BTN
Basketball SID: Chris Forman
Phone: (765) 494-3201
Email: cforman@purdue.edu
Press Row Phone: (765) 494-6364
Head Coach: Matt Painter (11th year)
2014-15 Team Overall/Conf. Record: 21-13, 12-6 (T-3rd)
All-Time Series: Purdue leads 98-86
Games at Illinois: Illinois leads 56-35
Games at Purdue: Purdue leads 61-28
Neutral Games: Tied, 2-2
Current Series Streak: Purdue W-1
Current Series Streak at Illinois: Illinois W-1
Current Series Streak at Purdue: Purdue W-5
Longest Illinois W-Streak: 11 (1/9/1950-2/20/1956)
Longest Purdue W-Streak: 13 (2/25/1967-2/15/1975)
Longest Illinois Home W-Streak: 13 (1/6/1941-3/4/1961)
Longest Purdue Home W-Streak: 14 (2/24/1964-1/10/1980)
Longest Illinois Road W-Streak: 4 (2/6/1912-1/6/1917)
Longest Purdue Road W-Streak: 6, twice
(last, 3/4/1995-1/12/2000)
Groce vs. Purdue: 2-3
Painter vs. Illinois: 13-6

RUTGERS *scarletknights.com*

Feb. 3 // 5:30 pm // Piscataway, N.J. // BTN
Feb. 16 // 8 pm // State Farm Center // BTN
Basketball SID: Kevin Lorincz
Phone: (732) 445-7028
Email: klorincz@scarletknights.com
Press Row Phone: (732) 445-7894
Head Coach: Eddie Jordan (3rd year)
2014-15 Team Overall/Conf. Record: 10-22, 2-16 (14th)
All-Time Series: Illinois leads 2-0
Games at Illinois: Illinois leads 1-0
Games at Rutgers: N/A
Neutral Games: Illinois leads 1-0
Current Series Streak: Illinois W-2
Groce vs. Rutgers: 1-0
Jordan vs. Illinois: 0-1

WISCONSIN *uwbadgers.com*

Jan. 31 // 6:30 pm // State Farm Center // BTN
Feb. 21 // TBD // Madison, Wis. // TBD
Basketball SID: Patrick Herb
Phone: (608) 957-2085
Email: pah@athletics.wisc.edu
Press Row Phone: (608) 265-4333
Head Coach: Bo Ryan (15th year)
2014-15 Team Overall/Conf. Record: 36-4, 16-2 (1st)
All-Time Series: Illinois leads 110-82
Games at Illinois: Illinois leads 68-24
Games at Wisconsin: Wisconsin leads 55-39
Neutral Games: Tied, 3-3
Current Series Streak: Wisconsin W-8
Current Series Streak at Illinois: Wisconsin W-3
Current Series Streak at Wisconsin: Wisconsin W-5
Longest Illinois W-Streak: 16 (2/12/1981-1/12/1989)
Longest Wisconsin W-Streak: 8 (1/15/2011-current)
Longest Illinois Home W-Streak: 13 (2/4/1982-2/27/1994)
Longest Wisconsin Home W-Streak: 8 (2/1/1907-2/20/1914)
Longest Illinois Road W-Streak: 10 (1/18/1979-1/16/1988)
Longest Wisconsin Road W-Streak: 3, four times
(last, 1/22/2012-current)
Groce vs. Wisconsin: 0-5
Ryan vs. Illinois at Wisconsin: 19-11
Ryan vs. Illinois All-Time: 19-12

BIG TEN CONFERENCE *bigten.org*

Basketball SID: Brett McWethy
Phone: (847) 696-1010
Email: bmcwethy@bigten.org

BIG TEN COMPOSITE SCHEDULE

*All times listed are Central.

NOVEMBER

13	Eastern Illinois at Indiana	6 pm	BTN Plus
	Mount St. Mary's at Maryland	6 pm	BTN
	Northern Michigan at Michigan	6 pm	BTN Plus
	Florida Atlantic at Michigan State	6 pm	ESPN3
	North Carolina A&T at Purdue	6 pm	BTN Plus
	Rutgers-Newark at Rutgers	6 pm	BTN Plus
	North Florida at Illinois	7 pm	BTN Plus
	Mass.-Lowell at Northwestern	7 pm	BTN Plus
	Missouri-Kansas City at Minnesota	8 pm	BTN Plus
	Western Illinois at Wisconsin	8 pm	BTN
	Gardner Webb at Iowa	8:30 pm	ESPN3
14	VMI at Penn State	Noon	BTN Plus
	Mississippi Valley St. at Nebraska	TBD	BTN Plus
15	Mount Saint Mary's at Ohio State	Noon	ESPNU
	Howard at Rutgers	Noon	BTN Plus
	Vermont at Purdue	1 pm	ESPN3
	North Dakota State at Illinois	2 pm	ESPN3
	Louisiana-Monroe at Minnesota	2 pm	BTN
	Coppin State at Iowa	4 pm	BTN
	Siena at Wisconsin	7 pm	ESPNU
16	Austin Peay at Indiana	6 pm	BTN
	Elon at Michigan	6 pm	ESPN3
17	DePaul at Penn State	4 pm	ESPNU
	Grambling at Ohio State	6 pm	BTN
	North Dakota State at Wisconsin	7 pm	ESPN3
	Nebraska at Villanova	7:30 pm	FS1
	Georgetown at Maryland	8 pm	ESPN2
	Michigan State vs. Kansas	9 pm	ESPN
18	Illinois at Providence	6 pm	FS1
	Incarnate Word at Purdue	6 pm	ESPN3
	Fairfield at Northwestern	7 pm	BTN Plus
19	Minnesota vs. Temple	10:30 am	ESPNU
	Creighton at Indiana	6 pm	BTN
	Rutgers at St. John's	6 pm	FS1
	Delaware State at Nebraska	7 pm	BTN Plus
	Iowa at Marquette	8 pm	FS1
20	Wisconsin vs. Georgetown	4:30 pm	ESPN/2
	Rider at Maryland	6 pm	BTN
	Ark.-Pine Bluff at Michigan State	6 pm	ESPN3
	UT-Arlington at Ohio State	6 pm	ESPN3
	Penn State vs. Duquesne	6 pm	TBD
	Columbia at Northwestern	7 pm	ESPN3
	Xavier at Michigan	8 pm	BTN
	Minnesota vs. TBD	TBD	TBD
21	Purdue vs. Old Dominion	11 am	ESPN3
	Central Arkansas at Rutgers	4 pm	BTN Plus
	Chattanooga at Illinois	7:30 pm	BTN
22	Purdue vs. Florida/St. Joseph's	11 am/4:30 pm	ESPN2/U
	SE Louisiana at Nebraska	6 pm	BTN
	Minnesota vs. TBD	TBD	TBD
	Wisconsin vs. Duke/VCU	TBD	ESPN/2
23	Indiana vs. Wake Forest	4 pm	ESPN2
	Eastern Michigan at Michigan State	6 pm	BTN
	Chicago State at Illinois	7 pm	ESPN3
	Northwestern vs. North Carolina	8 pm	ESPN2
	Rutgers vs. Creighton	TBD	TBD
24	Indiana vs. St. John's/Vanderbilt	1/6:30 pm	ESPN/2
	Radford at Penn State	5 pm	BTN
	Arkansas-Pine Bluff at Nebraska	7 pm	BTN Plus
	Louisiana Tech at Ohio State	7 pm	BTN
	Illinois State vs. Maryland	TBD	TBD
	Northwestern vs. Missouri/Kansas St.	TBD	TBD
25	Prairie View A&M at Wisconsin	7 pm	BTN
	Michigan vs. Connecticut	8:30 pm	AXS TV
	Indiana vs. TBD	TBD	TBD
	Maryland vs. Rhode Island/TCU	TBD	TBD
	Rutgers vs. Clemson/UMass	TBD	TBD
26	Michigan State vs. Boston College	5:30 pm	ESPN2
	Iowa vs. Dayton	8 pm	ESPN2
	Michigan vs. Syracuse/Charlotte	TBD	TBD
27	Nebraska-Omaha at Minnesota	2 pm	ESPN3
	Nebraska vs. Cincinnati	5:30 pm	TBD
	Ohio State vs. Memphis	6:30 pm	ESPN
	Illinois vs. UAB	8:30 pm	CBSSN
	Iowa vs. Notre Dame/Monmouth	TBD	TBD

	Michigan vs. TBD	TBD	TBD
	Michigan State vs. Boise St./UC Irvine	TBD	ESPN2/3
28	Nebraska vs. Tennessee/G. Washington	11 am/2:30 pm	TBD
	Bucknell at Penn State	Noon	BTN Plus
	Illinois vs. Virginia Tech/Iowa State	3:30/6 pm	CBSSN
	Lehigh at Purdue	6/7 pm	ESPN3
	New Orleans at Northwestern	7 pm	BTN Plus
	Cleveland State at Maryland	7:30 pm	BTN
29	Wisconsin at Oklahoma	1:30 pm	ESPN2
	Iowa vs. TBD	TBD	TBD
	Michigan State vs. TBD	TBD	TBD
30	Alcorn State at Indiana	6 pm	BTN
	Wake Forest at Rutgers	6 pm	ESPNU
	Clemson at Minnesota	8 pm	ESPN2

DECEMBER

1	Michigan at N.C. State	6 pm	ESPNU
	Northwestern at Virginia Tech	6 pm	ESPN2
	Virginia at Ohio State	6:30 pm	ESPN
	Miami (Fla.) at Nebraska	8 pm	ESPNU
	Purdue at Pittsburgh	8 pm	ESPN2
	Maryland at North Carolina	8:30 pm	ESPN
2	Louisville at Michigan State	6:15 pm	ESPN
	Penn State at Boston College	6:15 pm	ESPNU
	Wisconsin at Syracuse	6:15 pm	ESPN2
	Notre Dame at Illinois	8:15 pm	ESPN2
	Indiana at Duke	8:15 pm	ESPN
	Florida State at Iowa	8:15 pm	ESPNU
4	St. Francis (Pa.) at Maryland	6 pm	BTN
5	Binghamton at Michigan State	11 am	ESPNU
	Eastern Michigan at Penn State	11 am	BTN
	Seton Hall at Rutgers	11 am	ESPNEWS
	Temple at Wisconsin	11:30 am	CBS
	Houston Baptist at Michigan	1 pm	ESPNU
	Abilene Christian at Nebraska	1 pm	BTN Plus
	New Mexico at Purdue	1:15 pm	BTN
	Western Carolina at Illinois	2 pm	ESPN3
	Missouri-Kansas City at Iowa	2 pm	ESPN3
	SIU-Edwardsville at Northwestern	2 pm	BTN Plus
	South Dakota at Minnesota	2 pm	BTN Plus
	VMI at Ohio State	3:30 pm	BTN
	Morehead State at Indiana	6 pm	BTN
7	Western Illinois at Iowa	6 pm	BTN
	IUPUI at Purdue	6 pm	ESPNU
8	Central Connecticut St. at Rutgers	5 pm	BTN
	South Dakota State at Minnesota	7 pm	ESPN3
	Air Force at Ohio State	7 pm	BTN
	Connecticut vs. Maryland	8 pm	ESPN
	Michigan at Southern Methodist	8 pm	ESPN2
	Penn State at George Washington	TBD	TBD
9	IPFW at Indiana	6 pm	BTN Plus
	Md.-Eastern Shore at Michigan State	6 pm	BTN
	Howard at Purdue	6 pm	ESPNU
	Nebraska at Creighton	7 pm	CBSSN
	Yale at Illinois	7 pm	ESPN3
	Milwaukee at Wisconsin	8 pm	BTN
10	Canisius at Penn State	6 pm	BTN Plus
	Iowa at Iowa State	6:30 pm	ESPN2
12	Delaware State at Michigan	11 am	ESPNU
	Ohio State at Connecticut	11 am	CBS
	Marquette at Wisconsin	12:30 pm	ESPN2
	Illinois vs. Illinois-Chicago	1 pm	ESPN3
	Louisiana Monroe at Penn State	1 pm	BTN
	Youngstown State at Purdue	1 pm	ESPN3
	Maryland-Eastern Shore at Maryland	3:15 pm	BTN
	Rutgers at George Washington	3:30 pm	CBSSN
	Florida at Michigan State	5 pm	ESPN2
	McNeese State at Indiana	5:30 pm	BTN
	Oklahoma State vs. Minnesota	7:30 pm	BTN
13	Rhode Island at Nebraska	1 pm	ESPN3
	Chicago State at Northwestern	6 pm	BTN
15	Northern Kentucky at Michigan	6 pm	BTN
	Miss. Valley St. at Northwestern	7 pm	BTN Plus
	Texas A&M-CC at Wisconsin	8 pm	BTN
16	Northern Illinois at Ohio State	6 pm	BTN
	Chicago State at Minnesota	7 pm	ESPN3
19	Indiana vs. Notre Dame	1 pm	ESPN
	Northwestern at DePaul	1 pm	FS1

	South Dakota at Illinois	2 pm	ESPN3
	Ohio State vs. Kentucky	2:30 pm	CBS
	Iowa vs. Drake	3:30 pm	ESPN3
	Purdue vs. Butler	4 pm	BTN
	Youngstown State at Michigan	5 pm	ESPN3
	Princeton vs. Maryland	6 pm	BTN
	Michigan State at Northeastern	TBD	TBD
	Penn State at Drexel	TBD	TBD
20	Monmouth at Rutgers	Noon	BTN Plus
	Samford at Nebraska	6 pm	BTN
21	Sacred Heart at Northwestern	6 pm	BTN
22	Kennesaw State at Indiana	5 pm	BTN
	Oakland vs. Michigan State	6 pm	ESPNU
	Prairie View A&M at Nebraska	7 pm	BTN Plus
	Vanderbilt at Purdue	7 pm	BTN
	Tennessee Tech at Iowa	7:30 pm	ESPN3
	Mercer at Ohio State	8 pm	ESPNU
	Penn State vs. Colorado	9:30 pm	TBD
23	Illinois vs. Missouri	6 pm	ESPN2
	Bryant at Michigan	6 pm	BTN
	Fairleigh Dickinson at Rutgers	6 pm	BTN Plus
	Milwaukee at Minnesota	7 pm	ESPN3
	Green Bay at Wisconsin	8 pm	BTN
	Penn State vs. SMU/Kent State	TBD	TBD
27	Marshall at Maryland	3 pm	BTN
	South Carolina St. at Ohio State	5 pm	BTN
	Loyola (Md.) at Northwestern	7 pm	BTN
28	Massachusetts-Lowell at Rutgers	6 pm	BTN
29	Purdue at Wisconsin	6 pm	BTN
	Michigan State at Iowa	8 pm	BTN
30	Indiana at Rutgers	Noon	ESPN2
	Michigan at Illinois	2 pm	ESPN2
	Northwestern at Nebraska	3 pm	ESPNU
	Penn State at Maryland	4 pm	ESPN2
	Minnesota at Ohio State	6 pm	BTN

JANUARY

2	Penn State at Michigan	11 am	BTN
	Rutgers at Wisconsin	1 pm	BTN
	Michigan State at Minnesota	2 pm	ESPN2
	Indiana at Nebraska	3 pm	BTN
	Iowa at Purdue	5 pm	BTN
	Maryland at Northwestern	7 pm	BTN
3	Illinois at Ohio State	4 pm	BTN
5	Wisconsin at Indiana	6 pm	ESPN
	Minnesota at Penn State	6 pm	BTN
	Nebraska at Iowa	8 pm	BTN
6	Rutgers at Maryland	6 pm	BTN
	Ohio State at Northwestern	8 pm	BTN
7	Illinois at Michigan State	6/8 pm	ESPN/2/U
	Michigan at Purdue	6/8 pm	ESPN/2/U
9	Maryland at Wisconsin	11 am/Noon	ESPN/2
	Northwestern at Minnesota	11 am/1:30 pm	BTN
	Nebraska at Rutgers	4 pm	ESPNU
10	Michigan State at Penn State	11 am	BTN
	Ohio State at Indiana	12:30/3:30 pm	CBS
	Purdue at Illinois	1/5 pm	BTN
12	Wisconsin at Northwestern	6 pm	BTN
	Maryland at Michigan	8 pm	ESPN
	Minnesota at Nebraska	8 pm	BTN
13	Rutgers at Ohio State	5:30 pm	BTN
	Penn State at Purdue	7:30 pm	BTN
14	Iowa at Michigan State	6 pm	ESPN/2
16	Ohio State at Maryland	11 am	ESPN/2
	Indiana at Minnesota	11:30 am	BTN
	Nebraska at Illinois	1:30 pm	BTN
	Penn State at Northwestern	7:30 pm	ESPNU
17	Michigan State at Wisconsin	12:30/3:30 pm	CBS
	Michigan at Iowa	1/3:30 pm	BTN
18	Purdue at Rutgers	6 pm	BTN
19	Illinois at Indiana	6 pm	ESPN
	Northwestern at Maryland	7 pm	BTN
20	Nebraska at Michigan State	5:30 pm	BTN
	Minnesota at Michigan	7:30 pm	BTN
21	Iowa at Rutgers	6 pm	ESPNU
	Wisconsin at Penn State	7 pm	BTN
	Ohio State at Purdue	8 pm	ESPN/2
23	Northwestern at Indiana	11 am	ESPN/2/U

BIG TEN COMPOSITE SCHEDULE

Michigan at Nebraska	1 pm	ESPN/2	Purdue at Maryland	3 pm	ESPN/2	23 Rutgers at Minnesota	7:30 pm	BTN
Maryland at Michigan State	TBD	ESPN/2	Indiana at Penn State	7 pm	BTN	Michigan State at Ohio State	8 pm	ESPN
Illinois at Minnesota	TBD	BTN	7 Iowa at Illinois	Noon	BTN	24 Northwestern at Michigan	6 pm	BTN
24 Purdue at Iowa	Noon	BTN	9 Michigan State at Purdue	6 pm	ESPN	Wisconsin at Iowa	8 pm	BTN
25 Penn State at Ohio State	6 pm	BTN	Bowie State at Maryland	6:30 pm	BTN Plus	25 Nebraska at Penn State	6 pm	ESPNU
26 Indiana at Wisconsin	6 pm	ESPN	Northwestern at Ohio State	7 pm	BTN	Indiana at Illinois	8 pm	ESPN/2
27 Rutgers at Michigan	6 pm	BTN	10 Nebraska at Wisconsin	6 pm	BTN	27 Rutgers at Northwestern	1 pm	ESPNU
Purdue at Minnesota	8 pm	BTN	Michigan at Minnesota	8 pm	BTN	Maryland at Purdue	3 pm	ESPN/2
28 Iowa at Maryland	6 pm	ESPN/2/U	11 Iowa at Indiana	8 pm	ESPN/2	28 Penn State at Michigan State	11 am	BTN
Ohio State at Illinois	8 pm	BTN	13 Purdue at Michigan	1 pm	ESPN/2	Michigan at Wisconsin	3/5 pm	CBS/BTN
Michigan State at Northwestern	8 pm	ESPN/2	Ohio State at Rutgers	3 pm	BTN	Minnesota at Illinois	TBD	CBS/BTN
30 Michigan vs. Penn State	11 am	BTN	Wisconsin at Maryland	5 pm	ESPN/2	27/28 Iowa at Ohio State	TBD	CBS/BTN
Minnesota at Indiana	1:15 pm	BTN	Penn State at Nebraska	5 pm	ESPNU			
Nebraska at Purdue	3:30 pm	BTN	Illinois at Northwestern	7 pm	BTN			
31 Maryland at Ohio State	Noon	CBS	14 Indiana at Michigan State	Noon	CBS			
Northwestern at Iowa	2 pm	BTN	Minnesota at Iowa	6:30 pm	BTN			
Rutgers at Michigan State	4:15 pm	BTN	16 Northwestern at Purdue	6 pm	BTN			
Wisconsin at Illinois	6:30 pm	BTN	Michigan at Ohio State	6 pm	ESPN			
			Rutgers at Illinois	8 pm	BTN			
			17 Iowa at Penn State	5:30 pm	BTN			
			Nebraska at Indiana	7:30 pm	BTN			
			18 Maryland at Minnesota	7 pm	BTN			
			Wisconsin at Michigan State	8 pm	ESPN/2			
			20 Penn State at Rutgers	Noon	ESPNU			
			Purdue at Indiana	6/8 pm	ESPN			
			21 Michigan at Maryland	Noon/6:30 pm	CBS/BTN			
			Illinois at Wisconsin	Noon/6:30 pm	CBS/BTN			
			20/21 Ohio State at Nebraska	TBD	CBS/BTN			

FEBRUARY

2 Indiana at Michigan	8 pm	ESPN
3 Illinois at Rutgers	5:30 pm	BTN
Penn State at Iowa	6 pm	ESPNU
Maryland at Nebraska	7:30 pm	BTN
4 Ohio State at Wisconsin	6 pm	ESPN/2
Minnesota at Northwestern	8 pm	BTN
6 Michigan State at Michigan	1 pm	CBS
Rutgers at Nebraska	1 pm	ESPNU

MARCH

1 Purdue at Nebraska	7 pm	BTN
Indiana at Iowa	8 pm	ESPN
2 Michigan State at Rutgers	6 pm	BTN
Wisconsin at Minnesota	8 pm	BTN
3 Illinois at Maryland	6 pm	ESPN/2
Northwestern at Penn State	8 pm	ESPNU
5 Minnesota at Rutgers	Noon	BTN
Iowa at Michigan	7 pm	BTN
6 Illinois at Penn State	11 am	BTN
Nebraska at Northwestern	1 pm	BTN
5/6 Maryland at Indiana	TBD	TBD
Ohio State at Michigan State	TBD	TBD
Wisconsin at Purdue	TBD	TBD

2016 NCAA TOURNAMENT

FIRST FOUR // MARCH 15-16

DAYTON, OHIO

UD Arena

Host: University of Dayton

FIRST AND SECOND ROUNDS // MARCH 17-20

PROVIDENCE, R.I.

Dunkin Donuts Center

March 17 & 19

Host: Providence College

RALEIGH, N.C.

PNC Arena

March 17 & 19

Host: North Carolina State University

BROOKLYN, N.Y.

Barclays Center

March 18 & 20

Host: Atlantic 10 Conference

OKLAHOMA CITY, OKLA.

Chesapeake Energy Arena

March 18 & 20

Host: Big 12 Conference

DES MOINES, IOWA

Wells Fargo Arena

March 17 & 19

Host: Iowa State University

DENVER, COLO.

Pepsi Center

March 17 & 19

Host: Mountain West Conference

ST. LOUIS, MO.

Scottrade Center

March 18 & 20

Host: Missouri Valley Conference

SPOKANE, WASH.

Spokane Veterans Memorial Arena

March 18 & 20

Host: University of Idaho

REGIONALS // MARCH 24-27

WEST – ANAHEIM, CALIF.

Honda Center

March 24 & 26

Host: Big West Conference

SOUTH – LOUISVILLE, KY.

KFC YUM! Center

March 24 & 26

Host: University of Louisville

MIDWEST – CHICAGO, ILL.

United Center

March 25 & 27

Host: Big Ten Conference

EAST – PHILADELPHIA, PA.

Wells Fargo Center

March 25 & 27

Hosts: La Salle University

FINAL FOUR // APRIL 2 & 4 // HOUSTON, TEXAS // NRG STADIUM

2016 BIG TEN TOURNAMENT

MARCH 9-13 // INDIANAPOLIS, IND. // BANKERS LIFE FIELDHOUSE

FIRST ROUND

Wednesday, March 9

Game 1: #12 Seed vs. #13 Seed

4:30 pm ET/3:30 pm CT – ESPN2

Game 2: #11 Seed vs. #14 Seed

7 pm ET/6 pm CT – BTN

SECOND ROUND

Thursday, March 10

Game 3: #8 Seed vs. #9 Seed

Noon ET/11 am CT – BTN

Game 4: #5 Seed vs. Game 1 Winner

2:30 pm ET/1:30 pm CT – BTN

Game 5: #7 Seed vs. #10 Seed

6:30 pm ET/5:30 pm CT – ESPN2

Game 6: #6 Seed vs. Game 2 Winner

9 pm ET/8 pm CT – ESPN2

QUARTERFINALS

Friday, March 11

Game 7: #1 Seed vs. Game 3 Winner

Noon ET/11 am CT – ESPN

Game 8: #4 Seed vs. Game 4 Winner

2:30 pm ET/1:30 pm CT – ESPN

Game 9: #2 Seed vs. Game 5 Winner

6:30 pm ET/5:30 pm CT – BTN

Game 10: #3 Seed vs. Game 6 Winner

9 pm ET/8 pm CT – BTN

SEMIFINALS

Saturday, March 12

Game 11: Game 7 Winner vs. Game 8 Winner

1 pm ET/Noon CT – CBS

Game 12: Game 9 Winner vs. Game 10 Winner

3:30 pm ET/2:30 pm CT – CBS

CHAMPIONSHIP

Sunday, March 13

Game 13: Game 11 Winner vs. Game 12 Winner

3 pm ET/2 pm CT – CBS