

VISITORS GUIDE



QUICK FACTS

School	Eckerd College
City/Zip Code	St. Petersburg, Fla. 33711
Founded	1958
Enrollment	2,017
Nickname	Tritons
School Colors	Navy, Teal, Steel
Affiliation	Division II
Conference	Sunshine State
President	Dr. James Annarelli
Director of Athletics	Tom Ryan
Athletic Department Phone	727-864-8242
Website	eckerdtritons.com
Facebook	Eckerd Tritons
Twitter	ECTritons
Instagram	EckerdTritons



TABLE OF CONTENTS

2	About Eckerd	6	Athletic Communications
3	Staff Directory	7	Sports Medicine
4	Directions and Parking	8-9	Policies
5	Campus Map	10	Hotels and Restaurants

STAFF DIRECTORY

ADMINISTRATION

Tom Ryan '87	Director of Athletics	727-864-8305	ryantj@eckerd.edu
Billy Evers '04	Associate Director of Athletics Advancement and Operations	727-864-8723	everswj@eckerd.edu
Bill Mathews '79	Associate Director of Athletics Facilities and Game Day Operations	727-864-8253	mathewwj@eckerd.edu
Becky Clark	Assistant Athletic Director Internal Operations, SWA	727-864-7849	clarkrm@eckerd.edu
Amanda Green '16	Assistant Director of Athletics Marketing & Communications	727-864-8242	greenaa@eckerd.edu
Sarah Duren	Assistant Director of Athletics Sports Medicine	727-864-8255	durens@eckerd.edu
Dr. Anthony Brunello	Faculty Athletic Representative (FAR)	727-864-8240	brunelar@eckerd.edu

SPORTS MEDICINE

Sarah Duren	Assistant Director of Athletics Sports Medicine	727-864-8255	durens@eckerd.edu
-------------	--	--------------	-------------------

ATHLETIC COMMUNICATIONS

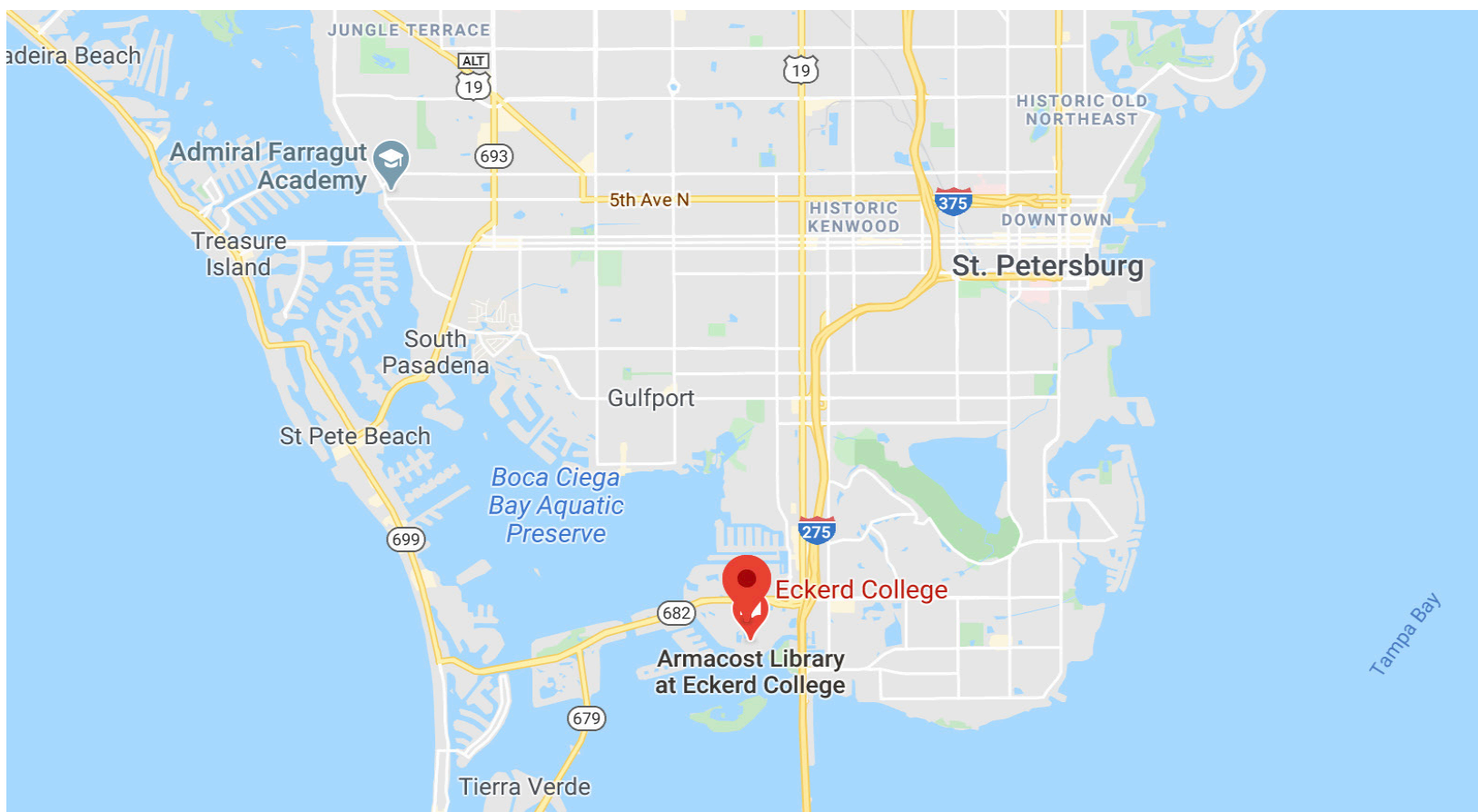
Amanda Green '16	Assistant Director of Athletics Marketing & Communications	727-864-8242	greenaa@eckerd.edu
Brittany Iamele	Athletic Communications Coordinator	727-864-8842	iamelebl@eckerd.edu

STRENGTH AND CONDITIONING

Jodie Johnson	Strength and Conditioning Coach		
---------------	---------------------------------	--	--

COACHING STAFF

Josh Beauregard '03	Head Baseball Coach	727-864-8310	beaurejm@eckerd.edu
Bryan Galuski '98	Head Men's Basketball Coach	727-864-8540	galuskbc@eckerd.edu
Chakiris Moss	Assistant Men's Basketball Coach	727-864-8540	mossbcm@eckerd.edu
Paul Honsinger '98	Head Women's Basketball Coach	727-864-8586	honsinpf@eckerd.edu
Ashton Feldhaus	Associate Women's Basketball Coach	727-864-7506	feldhaak@eckerd.edu
Bill Buttner	Head Men's and Women's Golf Coach	727-864-7765	buttnewa@eckerd.edu
Ben Maxwell '11	Head Men's and Women's Tennis Coach	727-864-8299	maxwelbp@eckerd.edu
Caroline Young	Head Sailing Coach	727-864-7834	bernardkh@eckerd.edu
John Fletcher '09	Head Men's Soccer Coach	727-864-7852	fletchjc@eckerd.edu
Luke Sheekey '10	Interim Head Women's Soccer Coach	727-864-8254	fotopodr@eckerd.edu
Katie Profit	Head Softball Coach	727-864-7697	grimeskj@eckerd.edu
Michelle Piantadosi-Lima	Head Volleyball/Beach Volleyball Coach	727-864-7875	piantama@eckerd.edu
Delaney Clesen	Assistant Volleyball/Beach Volleyball Coach	727-864-7875	clesend@eckerd.edu
Grace Richmeyer	Assistant Volleyball/Beach Volleyball Coach	727-864-7875	richmeyer@eckerd.edu



DIRECTIONS

From East and North: Take I-4 West or I-75 and I-275 South to Tampa and continue on I-275 across Tampa Bay via the Howard Frankland Bridge to St. Petersburg. Continue south on I-275 past the downtown St. Petersburg exits - all the way to Eckerd College at Exit No. 17 - Pinellas Bayway/St. Petersburg Beach - bearing right as the exit splits. The College entrance is 1/4 mile on the left before the tollbooth.

From the South: Take I-75 North to I-275 and the Sunshine Skyway. After you cross the bridge and Tampa Bay, take Exit No. 17 - Pinellas Bayway/St. Petersburg Beach - which is a left exit. Turn left at the traffic light onto 54th Avenue South. Proceed 1/2 mile and turn left into the college's entrance.

From Tampa International Airport: As you leave the airport, follow the signs to I-275 South and St. Petersburg. Follow directions above from the North.

From St. Petersburg/Clearwater International Airport: Exit the airport and turn left onto Roosevelt Boulevard (686) and continue onto the overpass which will immediately merge with Ulmerton Road (688). Continue on Roosevelt to the I-275 interchange then bear right onto I-275 South to St. Petersburg. Then follow directions above from the North.

UNLOADING/PARKING

McArthur Center (Basketball/Volleyball):

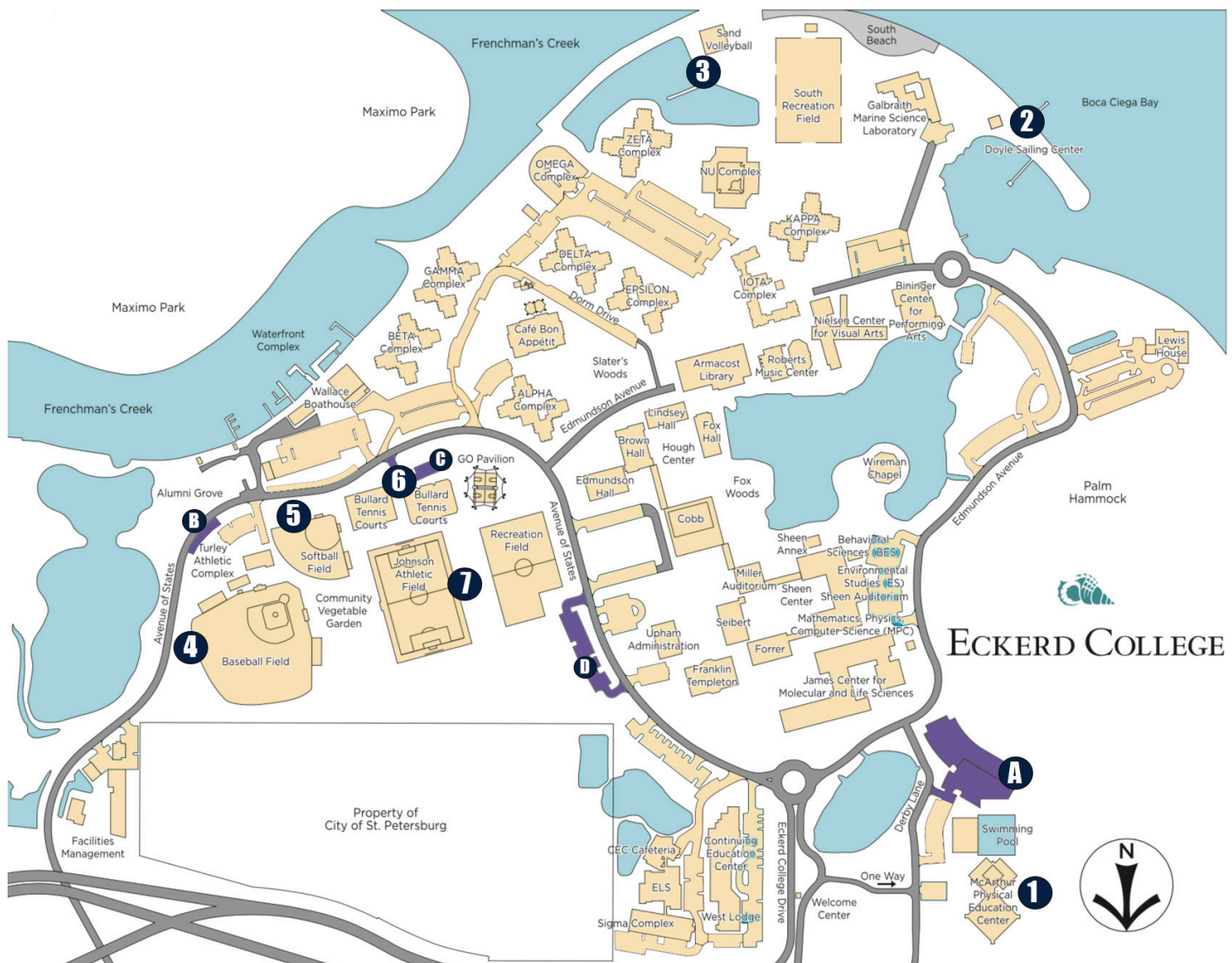
Buses are welcome to unload teams in the McArthur Center parking lot. Once unloading is complete, parking is available in the McArthur Center east lot.

Turley Athletic Complex (Baseball/Soccer/Softball/Tennis):

Turley Field parking is available behind the softball field. Buses are permitted to park in the open space across the street.

Eckerd South Beach (Sailing/Beach Volleyball):

Parking for the Doyle Sailing Center or Eckerd Beach Courts is available beside the Galbraith Marine Science Center. Overflow parking is located behind the Visual Arts Center.

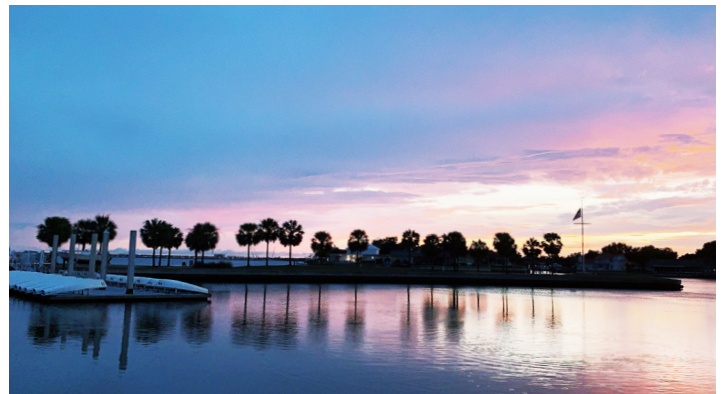


FACILITIES

1. McArthur Center
A. Parking
2. Doyle Sailing Center
3. Eckerd Beach Courts

TURLEY ATHLETIC COMPLEX

4. Baseball Field
B. Parking
5. Softball Field
B. Parking
6. Bullard Courts
C. Parking
7. Johnson Field
D. Parking



ATHLETIC COMMUNICATIONS

STATISTICS/SERVICES

Eckerd College Athletics personnel will oversee statistical work for all home events. For basketball and volleyball, monitors are placed at the ends of the scorer's table for statistics, only halftime and final statistics will be available to coaches and visiting athletic communication personnel. Final stat books will be delivered to the head coach or athletic communication personnel following each event, upon their request. Programs and cumulative statistics will be distributed upon request and are also available on our website at EckerdTritons.com/programs.

Any visiting teams requiring radio must notify the Director of Athletic Communication (DAC) five (5) days in advance of the event.

INTERVIEWS

All interviews with Eckerd players and coaches should be scheduled through the DAC Office. The best time to arrange interviews is in the afternoon on weekdays (when not interfering with athletes' class schedules). Interviews at the conclusion of all home events will be held after a brief NCAA-prescribed cooling off period.

Requests for media credentials must be made 24 hours prior to the scheduled event by contacting the DAC.

LIVE STATISTICS AND VIDEO

Eckerd Athletic Communications brings you live statistics for all home games courtesy of StatBroadcast. Fans will be able to view live in-game statistics for the following sports: Men's and Women's Soccer, Volleyball, Men's and Women's Basketball, Baseball, and Softball.

SOCIAL MEDIA

Eckerd has the following Facebook, Twitter, and Instagram accounts. In addition, the following teams have individual accounts as well. .



Eckerd Athletics	Eckerd Tritons
Baseball	Eckerd College Baseball
Men's Basketball	---
Women's Basketball	Eckerd College Women's Basketball
Golf	---
Sailing	Eckerd College Sailing
Men's Soccer	---
Women's Soccer	Eckerd College Women's Soccer
Softball	Eckerd College Softball
Tennis	---
Volleyball	Eckerd College Volleyball
Beach Volleyball	Eckerd College Volleyball
Student-Athlete Advisory Committee (SAAC)	---
Sports Medicine	---



@ECTritons
@Eckerdbaseball
@EckerdMBB
@EC_WBB

@eckerd_s
@Eckerdwsoccer
@EckerdSoftball



EckerdTritons
Eckerdbaseball
Eckerdmbb
Eckerd_WBB
Eckerdcollegegolf
EC_Sailing
Eckerdmensoccer
Eckerd_WSOC
Eckerd_Softball
Eckerdcollegetennis
Eckerdvolleyball
Eckerd_beachvolleyball
Eckerd_SAAC
Eckerdsportsmed

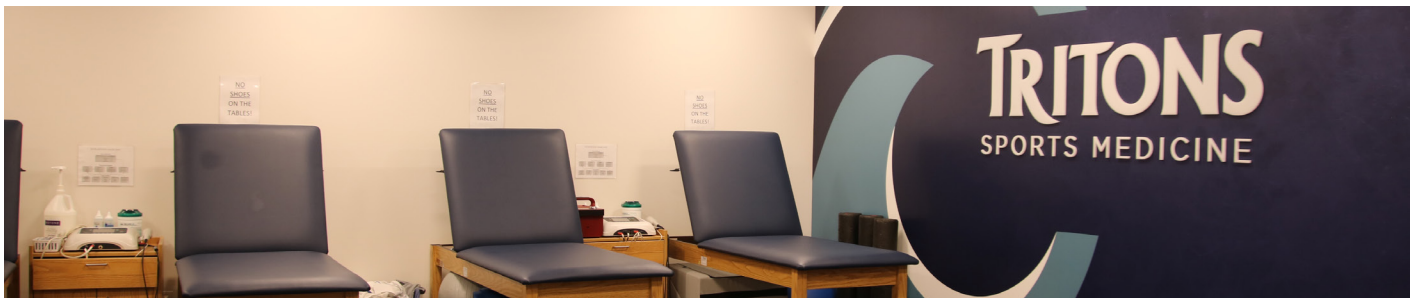
Amanda Green

Assistant Director of Athletics
Marketing & Communications
greenaa@eckerd.edu
O: 727-864-8242
C: 609-408-6571

Brittany Iamele

Athletic Communications Coordinator
iamelebl@eckerd.edu
O: 727-864-8842
C: 631-560-2189

SPORTS MEDICINE



Eckerd College welcomes you and your team to our facilities. Our staff is committed to making your stay as enjoyable as possible. The primary athletic training room is located by the McArthur Center Gymnasium on the right side of the courtyard. When you enter campus stay to the right at the traffic circle and then take your first right onto Derby Lane and the gym is on your left at the end of the road.

The primary athletic training room has the following modalities available: hydrocollator, ultrasound, electrical stimulation and whirlpool.

Treatment and taping tables are available. We request that you please provide your team with the necessary supplies for treatment/taping (tape, ace bandage, etc)

The following items will be provided on your bench: water, cups, injury ice and bags.

Soccer, tennis, baseball, and softball teams will only have access to a hydrocollator, ice and taping tables at the Turley Athletic Complex. If you need access to the additional modalities, you will need to visit our primary athletic training room at the gym. Please notify us ahead of time if you will need access to this athletic training.

We will have a team physician on call for soccer and basketball games.

In order for us to make necessary arrangements and provide coverage for your team please notify our staff in advance if your team will be traveling without an ATC.

Treatment of pre-existing injuries will only be given by our staff with prior written consent from the visiting team's ATC or supervising physician. With the written consent, please indicate each athlete's treatment protocol. You can fax or email your written request. This applies to any team traveling without an ATC.

If you have any questions, comments or concerns, please do not hesitate to contact us. Please call us if you would like a contact cell phone number.

Sarah Duren

Assistant Director of Athletics, Sports Medicine
727-864-7931
durensm@eckerd.edu

Dr George Canizares

Team Physician

Tickets

Complimentary tickets will not be available for visiting fans. Admission for basketball, baseball, soccer, and volleyball games is \$10.00 for adults, \$7.00 for students/seniors, and free for children under 12. Tickets are available for purchase at EckerdTritons.com/Tickets.

Pre-Match Protocols

Our communications staff will do introductions and the playing of the national anthem prior to the beginning of the match.

Locker Rooms

Locker room use must be requested through the head coach prior to competition. Locker room assignments at the McArthur Center will be posted on the doors. An Eckerd College Athletics representative will be available to assist if necessary. Each locker room includes showers, whiteboard, and trainers table.

Water coolers

Water, cups, and ice will be provided for each bench. Ice is also available upon request.



Benches

At McArthur Gym, when facing the score table, the visiting team bench is located to the left. At Johnson field, for men's soccer the visiting bench is located on the north end of the field, and for women's soccer, it's located at the south end. The baseball visiting dugout will be on the third-base side. The softball visiting dugout is on the first-base side. Please note that bench assignments are subject to change. Teams will be notified by the Game Manager.

Towels

Teams are asked to supply their own towels.

Smoke Free

As part of the EC Smoke Free campus initiative, Eckerd College is smoke free in all indoor areas and in outdoor areas surrounding the administrative, academic, and athletic facilities on campus.

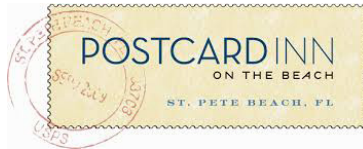
Public Accommodations

Eckerd College is able to facilitate many accommodations throughout its facilities, and is committed to providing inclusive experiences for all students, staff, faculty, and visitors. If you require any type of an accommodation for an event sponsored by Eckerd College, please contact us for assistance by email at ec-titleix@eckerd.edu or by telephone at 727.864.7810 at least 72 hours in advance of the event.



HOTELS

Residence INN.
BY MARRIOTT



**Hilton
Garden Inn**

RESIDENCE INN

214 Madonna Blvd.
Tierra Verde, FL 33715
(727) 864-4868
3.7 miles

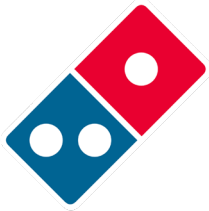
POST CARD INN

6300 Gulf Blvd
St Pete Beach, FL 33706
(727) 367-2711
5.2 miles.

HILTON GARDEN INN

6100 Gulf Blvd
St Pete Beach, FL 33706
(727) 360-7041
5.1 miles.

RESTAURANTS



DOMINOS

4925 34th St S
St. Petersburg, FL 33711
(727) 866-8891
1.2 miles



FERG'S SPORT BAR

1320 Central Ave
St. Petersburg, FL 33705
(727) 822-4562
6.0 miles



CHICK-FIL-A

4623 Gulf Blvd
St. Pete Beach, FL 33706
(727) 367-7038
4.3 miles



BEEF 'O' BRADY'S

4775 34th St S
St. Petersburg, FL 33711
(727) 866-1086
1.2 miles



PORTOFINO'S

5035 34th St S
Saint Petersburg FL 33711
27-864-2800
0.9 miles

