



2011-12 WOMEN'S BASKETBALL



Maggie Hayon, Sports Information Director | O: 302-857-6239 | C: 920-912-6635 | mhayon@desu.edu | DSUHornets.com | @DSUwbb
Delaware State University | 1200 N. DuPont Highway | Dover, DE 19901

2011-12 SCHEDULE

N12	Wilmington	Dover, Del.	W	80-32
N15	Wesley	Dover, Del.	W	85-53
N19	Wright State	Dayton, Ohio	L	53-57
N23	NJIT	Dover, Del.	L	65-49
N26	East Carolina#	Greenville, N.C.	L	47-54
N27	Robert Morris#	Greenville, N.C.	L	67-75
D3	UMES*	Princess Anne, Md.	L	60-32
D5	Howard*	Washington, D.C.	L	59-49
D8	No. 5/6 Maryland	College Park, Md.	L	108-33
D11	St. Francis (N.Y.)	Dover, Del.	W	73-66
D17	North Florida&	Jacksonville, Fla.	L	61-72
D18	FIU&	Jacksonville, Fla.	L	57-73
D22	Towson	Dover, Del.	L	59-70
D28	No. 22/25 Texas	Austin, Texas	L	35-89
J4	Fordham	Dover, Del.	L	48-63
J14	UMES*	Dover, Del.	L	56-69
J21	Bethune-Cookman*	Dover, Del.	L	50-52
J23	Florida A&M*	Dover, Del.	5:30 p.m.	
J28	North Carolina Central*	Durham, N.C.	2 p.m.	
J30	North Carolina A&T*	Greensboro, N.C.	6 p.m.	
F4	Norfolk State*	Dover, Del.	5 p.m.	
F6	Hampton*	Dover, Del.	5:30 p.m.	
F11	Coppin State*	Baltimore, Md.	2 p.m.	
F13	Morgan State*	Baltimore, Md.	5:30 p.m.	
F18	Norfolk State*	Norfolk, Va.	4 p.m.	
F20	Hampton*	Hampton, Va.	6 p.m.	
F25	Howard*	Dover, Del.	5 p.m.	
F27	Morgan State*	Dover, Del.	5:30 p.m.	
M1	South Carolina State*	Dover, Del.	5:30 p.m.	

MEAC Tournament | MEACHoops.com

M6	TBA	Winston-Salem, N.C.	TBA
M7	N/A - Men only	Winston-Salem, N.C.	TBA
M8	TBA	Winston-Salem, N.C.	TBA
M9	TBA	Winston-Salem, N.C.	TBA
M10	TBA	Winston-Salem, N.C.	TBA

- 10th Annual East Carolina Thanksgiving Classic

& - UNF Osprey Holiday Classic

* - Mid-Eastern Athletic Conference Game

Times and dates subject to change | Home dates bolded
All times Eastern

LADY HORNETS ONLINE

Web site	DSUHornets.com
	DESU.edu
Facebook	facebook.com/DSUAthletics
Foursquare	Check in at Memorial Hall
Media Guide	issuu.com/DSUAthletics
Twitter	twitter.com/DSUwbb
	twitter.com/DSUAthletics

GAMEDAY CENTRAL

GAME EIGHTEEN | Florida A&M University at Delaware State University



FLORIDA A&M (13-5, 6-0 MEAC)

RATTLERS

DateMonday, January 23, 2012
Time 5:30 p.m. Eastern
Location Memorial Hall | 2,000
.....Dover, Del.
Press Row (302) 857-7112
TVNone
WebcastNone
AudioNone
Live StatsDSUHornets.com
Twitter twitter.com/DSUwbb
Tickets (302) 857-7497
.....DSUHornets.com



Delaware State (3-14, 0-4 MEAC)

HORNETS

THE GAME

- The contest is the 18th of the year for DSU and the 19th for Florida A&M.
- The Lady Hornets are currently amidst a seven-game losing streak while the Lady Rattlers are riding a 10-game winning streak dating back to Dec. 16.

THE SERIES

- FAMU leads the all-time series over DSU, 28-18.
- This is the first and lone game regular season game between the two teams this season.
- During the 2010-11 season, the Lady Hornets fell, 56-66, to FAMU in Dover and 46-69, to the Lady Rattlers at Florida A&M. In the last meeting of the season, FAMU's Antonia Bennett posted game-highs of 26 points and 18 rebounds. Tasia Bristow was the only DSU player in double figures with 10 points.

THE COACHES

- DSU head coach Ed Davis holds a 16-10 career record over Florida A&M.
- Ed Davis is in his 12th season at the helm of Del State women's basketball and 20th year coaching women's basketball. He holds a 345-227 (.603) overall record and is 174-173 (.501) at DSU. In MEAC play, Davis is 117-77 (.603).
- FAMU head coach LeDawn Gibson is in her fourth season with the Lady Rattlers and overall. She is 60-48 (.556) on her career.

TALE OF THE TAPE

	FAMU	DSU
Record	13-5	3-14
PPG	71.8	54.9
Opp PPG	65.0	65.7
FG %	.399	.352
Opp FG %	.375	.449
3pt %	.323	.264
Opp 3pt %	.303	.264
FT %	.677	.666
Opp FT %	.647	.718
RPG	45.3	33.9
APG	13.2	8.6
TO	18.9	19.3
SPG	10.1	9.0
BPG	3.4	2.6
FPG	16.9	18.8

PLAYERS TO WATCH



#12 Deanna Harmon | Sophomore | Guard

- Scored career-high 20 points (9-for-20) in the first game of the season
- Leads team in steals (2.3), assists (2.7) and minutes played (36.0)
- Named to ECU All-Tournament Team
- Missed first career game against Fordham on 1/4/12 with concussion-like symptoms



#24 Tierra Hawkins | Redshirt Freshman | Guard/Forward

- Posted a game-high 21 points and 10 rebounds in her first collegiate game
- Leads DSU in scoring (12.9) and rebounds (6.2) per game
- Recorded double figure scoring in 13 of 17 games
- MEAC Rookie of the Week for Nov. 28 and Dec. 19



#5 Tasia Bristow | Sophomore | Guard

- Scored a career-high 28 points against St. Francis
- Second on team in points (12.2), assists (2.1) and steals (2.1)
- Named to UNF All-Classical Team
- Led team in scoring in seven of last nine games

DSU QUICK FACTS

Location Dover, Del. 19901
 Founded 1891
 Enrollment 4,000
 Affiliation..... NCAA Division I
 Conference..... Mid-Eastern Athletic (MEAC)
 Nickname..... Lady Hornets
 Colors Columbia Blue (299) and Red (199)
 Home Court Memorial Hall (2,000)
 President Dr. Harry L. Williams
 Interim Athletic Director.....Eric Hart
 Assoc. AD/SWA..... Candy Young
 Assoc. AD/Internal Ops.....PJ Moses
 Assoc. AD/Student ServicesEric Hart
 Asst. AD/Athletics Admin TBA
 Asst. AD/Media RelationsDennis Jones
 Faculty Representative..... Dr. Jan Blade

2010-11 SEASON IN REVIEW

Overall Record..... 9-20
 MEAC Record/Finish 5-11/10th
 Home/Away/Neutral 4-9/5-9/0-2
 Postseason Play.....0-1
Fell to UMES, 52-44, in the opening round of the MEAC Tournament

2011 SEASON PREVIEW

Starters Returning/Lost 2/3
 Letterwinners Returning/Lost..... 4/6
 Newcomers..... 9
 Top Returnees Tasia Bristow, Deanna Harmon
 Key losses Kianna Carter, Brittany Washington, Kianna D'Oliveira

DSU WOMEN'S BASKETBALL HISTORY

First Year of Women's Basketball..... 1976
 All-Time Record446-504 | .469
 All-Time MEAC Record.....244-218 | .528
 MEAC Championships One | 2006-07
 Last NCAA Tourn. Appearance 2006-07
 *Lost, 62-47, to Vanderbilt in the First Round*

WOMEN'S BASKETBALL STAFF

Head Coach Ed Davis
 Alma Mater.....West Virginia State '73
 Davis at DSU 173-161 | 12th Season
 Davis Career 338-222 | 20th Season
 Assistant Coaches
 Andre Bolton | C. Newport '97 | 7th Season
 Danielle Dawson | Hampton '99 | 7th Season
 Fred Burroughs | Belford '08 | 4th Season
 Director of Basketball Operations.....
 Trenita Shields | Bowie State '00 | 10th Season
 Office Phone (302) 857-7493
 Office Fax (302) 857-7448
 Mailing Address
 Delaware State University
 Women's Basketball
 1200 N. DuPont Hwy.
 Dover, DE 19901

PROJECTED DSU STARTERS

Pos.	No.	Name	Ht.	Yr.	Hometown	2011-12 Stats
G	5	Tasia Bristow	5-5	So	Baltimore, Md.	12.2 ppg, 2.4 rpg, 2.1 apg, 2.1 spg
G	12	Deanna Harmon	5-7	So	Owings Mills, Md.	7.8 ppg, 4.4 rpg, 2.7 apg, 2.3 spg
F	14	Keyanna Tate	6-0	Fr	Beltsville, Md.	5.1 ppg, 4.1 rpg, 1.2 apg, 1.0 spg
F	24	Tierra Hawkins	6-2	rFr	Clinton, Md.	12.9 ppg, 6.2 rpg, 0.9 bpg, 1.5 spg
F	30	Kianna D'Oliveira	5-10	Jr.	Newport News, Va.	6.6 ppg, 6.8 rpg, 1.0 bpg

LAST TIME OUT

DELAWARE STATE: The Lady Hornets led almost the entirety of the game but was outscored, 15-7, in the final eight minutes of the game as Bethune-Cookman took a 52-50 victory over the Lady Hornets early Saturday evening. Junior **Kianna D'Oliveira** posted her first double double of the year and the second of her career with 10 points and 12 rebounds on the night. Redshirt freshman **Tierra Hawkins** added in 14 points and eight boards of her own in the loss. Del State went up by eight at 43-35 with 8:52 left on the clock with a three-point play from Hawkins. Bethune-Cookman responded with an 11-0 run, going up by three at 46-43 with just over three minutes remaining in the game. The Lady Wildcats would go up by as much as five with 1:25 left on the clock before Hawkins went on her own 5-0 run to tie things at 50-50 with 22-seconds remaining. DSU played tough defense in the final seconds and it looked as though the game was going to go into overtime as Jasmine Elum aired a three-pointer for B-CU with four seconds left before Dukes was called for a foul. Cleniece Roberts hit both free throws in the bonus situation to put Bethune-Cookman up, 52-50, with two seconds on the clock.

FLORIDA A&M: The Lady Rattlers (13-5, 6-0 MEAC) picked up their tenth win in a row as they held on for a 54-49 win over UMES Saturday afternoon at the W.P. Hytche Athletic Center. Both teams finished the game shooting 27.4 percent from the field, while FAMU held the rebounding margin over UMES 57-41. Florida A&M was paced by **Kimberly Sparkman** as she scored a team high 12 points, followed by **Antonia Bennett** with a double-double scoring 11 points and pulling down 11 rebounds. **Tameka McKelton** added 10 points, while **Qiana Donald** led the Lady Rattlers on the boards with 14 rebounds.

SCOUTING THE LADY RATTLERS

After starting the season 1-4, FAMU is currently 13-5 and 6-0 in the Mid-Eastern Athletic Conference. The Lady Rattlers are riding a 10-game winning streak, dating back to Dec. 16. FAMU leads the MEAC with an average of 71.8 points per game and has five players averaging in double figures. **Antonia Bennett's** 19.0 points per game is best for both FAMU and the MEAC. Additionally, Bennett leads both FAMU and the MEAC with 9.6 rebounds per game.

FAMU AND DSU STREAKIN'

DSU looks to snap a current seven-game losing streak, tied for the longest of the season, with a victory over Florida A&M. The Lady Rattlers, however, are amidst a 10-game winning streak. With a win against St. Francis earlier this season, the Lady Hornets snapped a seven-game losing streak, their longest since the 2009-10 season. That year's squad had two significant losing streaks, one of 12 games (Nov. 18-Jan. 3) and the other of seven games (Jan. 16-Feb. 5).

D'OLIVEIRA AND PITT NAMED TO PRESIDENT'S LIST

The 2011 fall semester grades have been released by the Delaware State University Athletic Academic Services staff and nearly 50 percent of the Delaware State University student-athlete population has been named to the Hornet Academic Honor Roll for the 2011 Fall Semester. Women's basketball juniors **Kianna D'Oliveira** and **Crystal Pitt** were two of 15 student-athletes to earn perfect 4.0 grade point averages for the semester. The Lady Hornets also had four players, in addition to D'Oliveira and Pitt, named to the Hornet Academic Honor Roll for receiving a 3.00 GPA for the semester in junior **Uchechi Ahaiwe**, redshirt sophomore **Ashley Davis** and freshmen **Alexis Thornton** and **Morgan Woodruff**.

DSU STATS LEADERS

Points	12.9	Tierra Hawkins
Rebounds	6.2	Tierra Hawkins
Assists	2.7	Deanna Harmon
Steals	2.3	Deanna Harmon
Blocks	1.0	Kianna D'Oliveira
3-pointers	1.1	Tasia Bristow
FG %	.419 (90-215)	Tierra Hawkins
3pt %	.310 (13-42)	Chelsea Dukes
FT % (min. 10 attempt)	.869 (53-61)	Tasia Bristow
Min	36.0	Deanna Harmon



2011-12 DELAWARE STATE LADY HORNETS

#	Name	Pos.	Ht.	Cl.	Hometown/High School/Prev. School
3	Morgan Woodruff	FC	6-2	FR	Bloomington, Ind./Bloomington South H.S.
5	Tasia Bristow	G	5-5	SO	Baltimore, Md./St. Francis Academy
12	Deanna Harmon	GF	5-7	SO	Owings Mills, Md./St. Francis Academy
14	Keyanna Tate	GF	6-0	FR	Beltsville, Md./Bowie H.S.
15	Tarshaye' White	G	5-0	SO	Suitland, Md./Parkdale H.S./Patrick Henry CC
21	Coreenah Redden	G	5-7	FR	Wilmington, Del./Hodgson Vo-Tech H.S.
22	Crystal Pitt^	GF	5-7	JR	Ft. Washington, Md./National Christian Academy
23	Ashley Davis*	G	5-10	RSo	Odenton, Md./Arundel H.S./Drexel
24	Tierra Hawkins	GF	6-2	RFr	Clinton, Md./Riverdale Baptist
25	Nadirah Durr	F	6-0	FR	Avenel, N.J./St. Anthony H.S.
30	Kianna D'Oliveira	F	5-10	JR	Newport News, Va./Woodside H.S.
32	Alexis Thornton	G	5-9	FR	El Paso, Texas/Montwood H.S.
34	Chelsea Dukes	G	5-10	FR	Baltimore, Md./St. Francis Academy
51	Uchechi Ahaibe	C	6-3	RSo	Riverdale, Md./Bladensburg

*Medical redshirt - will not compete 2011-12 season

^Not eligible to compete until the 2012-13 season due to NCAA transfer rules

COACHING STAFF

HC: Ed Davis | West Virginia State '70 | 12th Season at DSU | 20th Season Overall
 AC: Andre Bolton | Christopher Newport '97 | 7th Season at DSU
 AC: Danielle Dawson | Hampton '99 | 7th Season at DSU
 AC: Fred Burroughs | Bowie State | 4th Season at DSU
 DBO: Trenita Shields | Bowie State '00 | 10th Season at DSU

PRONUNCIATIONS

5	Tasia Bristow	Tay-zhuh
14	Keyanna Tate	Key-on-uh
15	Tarshaye' White	Tar-shay
25	Nadirah Durr	Nah-deer-ah
30	Kianna D'Oliveira	Key-on-uh Doll-uh-vare-uh
51	Uchechi Ahaibe	You-chetch-chee Ah-hah-way

BY POSITION

GUARD (6): Bristow, Davis, Dukes, Redden, Thornton, White
 FORWARD (7): D'Oliveira, Durr, Harmon, Hawkins, Pitt, Tate, Woodruff
 CENTER (1): Ahaibe

BY CLASS

FRESHMAN (7): Dukes, Durr, Hawkins, Tate, Thornton, Redden, Woodruff
 SOPHOMORE (5): Ahaibe, Bristow, Davis, Harmon, White
 JUNIOR (2): D'Oliveira, Pitt
 SENIOR (0): None

BY STATE

DELAWARE (1): Redden (Wilmington)
 INDIANA (1): Woodruff (Bloomington)
 MARYLAND (9): Ahaibe (Riverdale), Bristow (Baltimore), Davis (Odenton), Dukes (Baltimore), Harmon (Owings Mills), Hawkins (Clinton), Pitt (Ft. Washington), Tate (Beltsville), White (Suitland)
 NEW JERSEY (1): Durr (Avenel)
 TEXAS (1): Thornton (El Paso)
 VIRGINIA (1): D'Oliveira (Newport News)

2011-12 DSU TRENDS

	Overall	Home	Rd/Netl
Overall Record	3-14	3-5	0-9
Conference Record	0-4	0-2	0-2

SCORING

Leading at half	2-1	2-1	0-0
Trailing at half	1-13	1-4	0-9
Tied at half	0-0	0-0	0-0
Scoring first	1-5	1-4	0-1
Games decided by five points or less	0-2	0-1	0-1
Games decided by 10 points or less	1-4	1-1	0-3
Leading with 2:00 left	3-0	3-0	0-0
Overtime games	0-0	0-0	0-0

OFFENSE

DSU scores 80+ points	2-0	2-0	0-0
DSU scores 70+ points	3-0	3-0	0-0
DSU scores 60+ points	2-2	2-0	0-2
DSU scores <60 points	0-12	0-5	0-7
Shooting 45% or better	1-1	1-0	0-1
Shooting less than 45%	2-13	2-5	0-8
FT % over .700	2-6	2-2	0-4
Player scoring 30+ points	0-0	0-0	0-0
Player scoring 20+ points	3-2	3-1	0-1
Two-plus players in double digit scoring	3-11	3-5	0-6

DEFENSE

OPP scores 80+ points	0-2	0-0	0-2
OPP scores 70+ points	0-4	0-1	0-3
OPP scores 60+ points	1-4	1-3	0-1
OPP scores <60 points	2-4	2-1	0-3
More steals than OPP	2-3	2-1	0-2
Less steals than OPP	1-10	1-3	0-7
Even steals	0-1	0-1	0-0

REBOUNDING/TURNOVERS

More rebounds than OPP	2-3	2-2	0-1
Less rebounds than OPP	0-11	0-3	0-8
Even rebounding	1-0	1-0	0-0
More TO than OPP	0-8	0-2	0-6
Less TO than OPP	3-5	3-3	0-2
Even TO	0-1	0-0	0-1

MONTHS

November	2-4	2-1	0-3
December	1-7	1-1	0-6
January	0-3	0-3	0-0
February	0-0	0-0	0-0
March	0-0	0-0	0-0

DAYS

Sunday	1-2	1-0	0-2
Monday	0-1	0-0	0-1
Tuesday	1-0	1-0	0-0
Wednesday	0-3	0-2	0-1
Thursday	0-2	0-1	0-1
Friday	0-0	0-0	0-0
Saturday	1-6	1-2	0-4

TIME

Day	2-6	2-0	0-6
Night (after 5 p.m.)	1-8	1-5	0-3

UNIFORM

Black	0-4	0-0	0-4
White	1-6	1-5	0-1
Blue	2-3	2-0	0-3
Red	0-1	0-0	0-1

MISCELLANEOUS

DSU controls tip	2-5	2-4	0-1
Following a DSU win	1-2	1-0	0-2
Following a DSU loss	1-12	1-5	0-7

DELAWARE STATE EXTREMES

Largest lead	48	Nov. 12	vs. Wilmington
Largest deficit	75	Dec. 8	at #5/6 Maryland
Largest halftime lead	22	Nov. 15	vs. Wesley
Largest halftime deficit	43	Dec. 8	at #5/6 Maryland
Largest lead in loss	12 (Twice)	11/27, 1/21	vs. Robert Morris/B-CU
Largest deficit in win	20	Dec. 11	vs. St. Francis (N.Y.)
Largest halftime lead in loss	6	Jan. 21	vs. Bethune-Cookman
Largest halftime deficit in win	11	Dec. 11	vs. St. Francis (N.Y.)
Largest lead at home	48	Nov. 12	vs. Wilmington
Largest deficit at home	21	Nov. 23	vs. NJIT
Largest lead on road	12	Nov. 27	vs. Robert Morris
Largest deficit on road	75	Dec. 8	at #5/6 Maryland

THE LAST TIME DSU...

SCORING

Scored 100+ points: vs. Lincoln (Pa.) (119*-31), 1991-92
 Scored 90+ points: vs. Wesley (90-58), 1/1/11
 Scored less than 40 points: at #22/25 Texas (35-89), 12/28/11
 Scored less than 30 points: at Hampton (29-52), 1/29/11
 Scored less than 20 points: at Syracuse (17-87), 12/4/10
 Had two players score 20+ points: vs. Wilmington, 11/12/11
 Tierra Hawkins (21), Deanna Harmon (20)
 Had no player in double figures: at #22/25 Texas (35-89), 12/28/11
 Had five players in double figures:

REBOUNDING

Had over 50 rebounds: vs. Wilmington (51), 11/12/11
 Had under 25 rebounds: at #5/6 Maryland (108-33), 12/8/11
 Had three players with 10+ rebounds:

MISCELLANEOUS

Won in overtime: vs. UMES (74-69, 1OT), 1/13/11
 Lost in overtime: at Hampton (64-68, 1OT), 2/7/09
 Had 20+ assists: vs. Lincoln (Pa.) (22), 11/13/09
 Had 15+ steals: at #22/25 Texas (35-89), 12/28/11
 Had 10+ blocks:
 Had two players with double-doubles: vs. Wesley, 11/15/11
 Tierra Hawkins (22 pts/11 reb), Uchechi Ahaïwe (12 pts/10 reb)
 Won by 50+ points: vs. Lincoln (Pa.) (84-28), 11/13/09
 Won by 40+ points: vs. Wilmington (80-32), 11/12/11
 Won by 30+ points: vs. Wesley (85-53), 11/15/11
 Allowed 100+ points: at #5/6 Maryland (108-33), 12/8/11
 Allowed 40 points or less: vs. Wilmington (80-32), 11/12/11
 Allowed 30 points or less: vs. Lincoln (Pa.) (84-28), 11/13/09

**school record*

THE LAST TIME A DSU PLAYER...

SCORING

Scored 40+ points:
 Sabrina Leonard (40*) vs. Lincoln (Pa.), 1983
 Scored 30+ points:
 Scored 25+ points:
 Tasia Bristow (28) vs. St. Francis (N.Y.), 12/11/11
 Shot 100% in field goals (min. 7 made):
 Made 5+ 3-pointers:
 Kianna Conner (5) vs North Carolina A&T, 2/5/11
 Made 12+ free throws:
 Shot 100% in free throws (min. 8):

MISCELLANEOUS

Had 15+ rebounds:
 Had 10+ assists:
 Had 10+ steals:
 Had 5+ blocks:
 Thea Littlepage (6*) at South Carolina State, 1/12/08
 Had a double-double:
 Kianna D'Oliveira (10 pts, 12 reb) vs. Beth-Cook, 1/21/12

**school record*

HARMON MISSES FIRST CAREER GAME

For the first time since her middle school career, sophomore **Deanna Harmon** did not dress for competition. Harmon was deemed medically ineligible with concussion-like symptoms to play on Jan. 4 against Fordham.

SCORING WOES

The Lady Hornets have scored under 40 points twice this season, both coming against ranked teams (33 at no. 5/6 Maryland and 35 at no. 22/25 Texas). Additionally, both teams didn't allow a Lady Hornet to score in double figures. Last season, DSU was held under 40 points four times.

WHITE ELIGIBLE TO SEE ACTION FOR DSU

Sophomore **Tarshaye' White**, who previously played for Patrick Henry Community College, has been ruled eligible for competition with the completion and submission of first semester grades. In her first game, White saw two minutes of action and recorded one rebound and one assist for the Lady Hornets against Towson on Dec. 22.

HAWKINS NABS MEAC ROOKIE OF WEEK FOR SECOND TIME

For the second time this season, redshirt freshman **Tierra Hawkins** was named the Mid-Eastern Athletic Conference Rookie of the Week for the week of December 19. The forward recorded back-to-back double-digit outings with 18 points against North Florida and 11 points against FIU that weekend at the UNF Osprey Holiday Classic. She added in 15 rebounds and four steals in the two DSU losses.

DOWN, BUT NOT OUT

A 28-4 run over St. Francis gave the Lady Hornets their largest comeback victory in the recent years. With 14:25 remaining in the second half, St. Francis led by 20 points before DSU went on their run to win. During the 2008-09 season, the Lady Hornets came back from a 16-point deficit to take a win over North Carolina A&T.

D'OLIVEIRA RETURNS

Ed Davis announced on Dec. 8 the addition of junior forward **Kianna D'Oliveira** to the 2011-12 roster. D'Oliveira was a member of the Lady Hornets her freshman and sophomore years. In her two seasons, she averaged 5.6 points, 5.2 rebounds and 1.1 blocks per contest in 58 games played. She also led DSU in blocked shots with 27 her freshman season and 34 as a sophomore. In her first game back with the Lady Hornets, D'Oliveira recorded nine points, three rebounds and one blocked shot in 18 minutes of play.

RANKED OPPONENTS

DSU has faced two ranked opponents this season. On Dec. 8, the Lady Hornets fell to no. 5/6 Maryland, 108-33. On Dec. 28, no. 22/25 Texas defeated DSU, 89-35.

HAWKINS SPARKS DSU IN OPENER

In her first game wearing a Delaware State University uniform, redshirt freshman **Tierra Hawkins** recorded a double double of 21 points and 10 rebounds as the Lady Hornets cruised by Wilmington University, 80-32, in their season-opener. Hawkins finished the day on 9-of-20 shooting and 3-for-6 from the charity stripe in addition to three blocks, two assists and two steals in 28 minutes of play. Joining Hawkins in double digits and recording career-highs were sophomore **Deanna Harmon** with 20 points on 8-of-12 shooting and 2-for-3 from behind the arc, and redshirt sophomore **Uchechi Ahaïwe** with 10 points and eight rebounds. All 10 players on DSU's active roster saw playing time and scored at least one point.

NEW MARKS SET IN FIRST GAME

The Lady Hornets rewrote numerous historical statistical categories in their first game as they collected over 50 rebounds (51) for the first time since 2008 when they tallied 56 against Cheyney.

DSU ALLTIME RECORDS

SINGLE-GAME SCORING

40 Sabrina Leonard vs. Lincoln (Pa.) - 1993
 39 Charlene Allen vs. Brooklyn - 1984
 Eva McCormick vs. Salisbury - 1978
 Eva McCormick vs. Stockton - 1980
 37 Eva McCormick vs. Bowie State - 1980

SINGLE-GAME REBOUNDS

28 Jackie Tunstall vs. Stockton - 1979
 22 Karen Johnson vs. Coppin State - 1998
 Karen Johnson vs. Hofstra - 1995
 20 Charlotte Spellman vs. Stockton - 1978
 Jackie Tunstall vs. Jersey City - 1982
 Jackie Tunstall vs. Lincoln (Pa.) - 1982

SINGLE-GAME ASSISTS

12 Alfreda Jefferson vs. Bethune-Cookman - 1996

SINGLE-GAME STEALS

12 Alfreda Jefferson vs. SC State - 1995

SINGLE-GAME BLOCKS

6 Thea Littlepage vs. SC State - 1/12/08
 Thea Littlepage vs. Morgan State - 1/8/07

SINGLE-GAME MOST POINTS SCORED

119 vs. Lincoln (Pa.) - 1991-92
 107 vs. Lincoln (Pa.) - 107-68 - 1983-84
 vs. Coppin State - 107-34 - 1979-80

SINGLE-GAME MOST POINTS ALLOWED

123 Richmond - 69-123 - 1996-97
 116 NC State - 39-116 - 1996-97

Additionally, they recorded 22 steals, their most since Jan. 8, 2011 when they had 17 against North Carolina Central. The last time Del State won by more than 40 points was in 2009 when they posted a score of 84-28 over Lincoln (Pa.) and the last time they allowed less than 40 points was on Jan. 9, 2010 in a 57-39 win over Winston-Salem State.

YOUNG TEAM

The 2011-12 Lady Hornets bear little resemblance to the team that posted a 9-20 overall record and a 10th place finish in the MEAC (5-11) last season. Del State returns just four players who saw action last year. Head coach **Ed Davis** faces the challenge of replacing his top two scorers, leading rebounders and best three-point shooter from a season ago. The 2011-12 active roster features seven freshmen, four sophomores, one junior and zero seniors.

TENURED COACHING STAFF

Despite a young squad on the court, Delaware State features a talented and experienced coaching staff on the bench. Head coach **Ed Davis** in his 12th season with the Lady Hornets and 20th overall as a NCAA head coach. His staff has a combined 24 seasons under their belts at Del State. **Andre Bolton, Danielle Dawson, Fred Burroughs** and **Trenita Shields** were monumental instruments in helping lead the Lady Hornets to their first MEAC title and NCAA tournament appearance in school history during the 2006-07 season.

LADY HORNETS PREDICTED TO FINISH 10TH

DSU is predicted to finish 10th overall in the MEAC, according to a preseason poll voted on by the conference's head coaches and sports information directors. The Lady Hornets received a total of 184 points in the rankings. For the second consecutive year, the Hampton Lady Pirates were predicted to win the regular season title. Hampton received 667 points, 100 more than second place finishing Howard University, and 23 first place votes.

HOME COOKING

Memorial Hall has not been very friendly to Delaware State opponents during the **Ed Davis** era. Including eight games this season, the Lady Hornets are 91-45 at home since the 2000-01 season (.670). Davis led DSU to a school-record 23-game home win streak from 2003-05, which included a victory over the Big East's West Virginia.

SEASON/HOME OPENERS

Since the 1977-78 season, the Lady Hornets are 20-15 (8-4 during Ed Davis era) in home openers, including this year's 80-32 victory over Wilmington. When winning the home opener, they have gone on to post winning record that season 12 of the 19 times. Del State hasn't fared as well in season openers as they are 11-23 overall to start a season since 1977-78. Conversely, six of those 11 victories have come with Davis in charge. The Lady Hornets gone on to have had a winning season in seven of those 11 years.

REDSHIRT TRANSFER

Ashley Davis, a guard from Odenton, Md., will sit out this season due to NCAA Division I transfer rules. The 5-10 player comes to Delaware State from Drexel University, where she played in 11 games for the Dragons as a redshirt sophomore. Davis averaged 1.4 points in 6.7 minutes played. She redshirted her freshman season at DU. At Arundel High School, Davis was a McDonald's All-American nominee and holds the school's career record for three-pointers made.

ST. FRANCIS ACADEMY TEAMMATES

The Lady Hornets feature three players who come from St. Francis Academy in Baltimore, Md. Returning sophomores **Tasia Bristow** and **Deanna Harmon** welcome freshman and former teammate **Chelsea Dukes** to the Del State squad. During their tenure, SFA posted a 69-3 combined record, including a 21-0 season when Bristow and Harmon were juniors and Dukes was a sophomore. The three also helped lead SFA to two IAAM championships in addition to Diamond State Classic and Bishop Walsh tournament championships.

DSU IN THE MEAC/NCAA

MEAC ranking as of games through Jan. 22 | NCAA ranking as of games through Jan. 15

Category	MEAC	NCAA
Scoring Offense	54.9	10 th 286 th
Scoring Defense	65.7	8 th 254 th
Scoring Margin	-10.8	11 th 303 rd
FT %	.666	6 th 209 th
FG %	.352	12 th 297 th
FG % Def.	.449	13 th 331 st
3FG/Game	2.8	10 th 321 st
3FG %	.264	8 th
3FG % Def.	.264	3 rd 55 th
Rebounds (Off)	15.2	6 th N/A
Rebounds (Def)	18.7	13 th N/A
Rebounding Margin	-3.5	9 th 285 th
Blocks	2.6	8 th 258 th
Assists	8.6	12 th 329 th
Steals	9.0	T10 th 139 th
Turnover Margin	+0.12	7 th 161 st
Assist/TO Ratio	0.4	11 th 324 th
Win/Loss %	.176	12 th 305 th

RANKED DSU PLAYERS

MEAC ranking as of games through Jan. 22 | NCAA ranking as of games through Jan. 8

Category	Player	MEAC	NCAA
Scoring	Tierra Hawkins	12.9	15 th
	Tasia Bristow	12.2	18 th
Rebounding	Tierra Hawkins	6.2	14 th
	Tierra Hawkins	.419	11 th 169 th
Assists	Deanna Harmon	2.7	10 th
FT%	Tasia Bristow	.869	3 rd 33 rd
	Deanna Harmon	2.3	11 th 142 nd
Steals	Tasia Bristow	2.1	12 th 168 th
	Chelsea Dukes	.310	13 th
3FG%	Chelsea Dukes	.310	13 th
3FG Made	Tierra Hawkins	0.9	10 th
Blocks	Tierra Hawkins	0.9	10 th
A/TO Ratio	Tierra Hawkins	3.8	14 th
Off Reb	Tierra Hawkins	3.8	14 th
Def Reb	Tierra Hawkins	3.8	14 th
Minutes	Deanna Harmon	36.0	T4 th

To be ranked, player must appear in at least 75% of their team's games

NCAA minimums are higher than MEAC, hence some players ranked higher in the MEAC not ranked in the NCAA

2011-12 DSU STREAKIN'

Current Streak: L7
 Longest Win Streak: W2
 Longest Losing Streak: L7 (twice)

Current Home Streak: L4
 Longest Home Win Streak: W2
 Longest Home Losing Streak: L4

Current Road/Neutral Streak: L9
 Longest Road/Neutral Win Streak: N/A
 Longest Road/Neutral Losing Streak: L9

DSU NOTABLES

DOUBLE-DOUBLES	SEASON	CAREER
Uchechi Ahaiwe	1	1
Kianna D'Oliveira	1	2
Tierra Hawkins	3	3
DOUBLE-FIGURE SCORING	SEASON	CAREER
Uchechi Ahaiwe	3	3
Tasia Bristow	9	18
Kianna D'Oliveira	2	13
Chelsea Dukes	3	3
Deanna Harmon	5	12
Tierra Hawkins	13	13
Crystal Pitt	--	2
Keyanna Tate	2	2
20-POINT GAMES	SEASON	CAREER
Tasia Bristow	2	3
Deanna Harmon	1	1
Tierra Hawkins	3	3
DOUBLE-FIGURE REBOUNDS	SEASON	CAREER
Uchechi Ahaiwe	1	1
Kianna D'Oliveira	1	3
Deanna Harmon	1	2
Tierra Hawkins	3	3

HEAD COACH ED DAVIS

DAVIS CAREER

Year	School	Overall	MEAC
1992-93	Bowie State	6-19	--
1993-94	Bowie State	14-11	--
1994-95	Bowie State	19-9	--
1995-96	Bowie State	28-2	--
1996-97	Bowie State	29-2	--
1997-98	Bowie State	28-2	--
1998-99	Bowie State	25-4	--
1999-00	Bowie State	22-5	--
2000-01	Delaware State	16-14	12-6
2001-02	Delaware State	9-19	6-12
2002-03	Delaware State	20-10	16-2
2003-04	Delaware State	21-9	14-4
2004-05	Delaware State	16-12	12-6
2005-06	Delaware State	21-9	13-5
2006-07	Delaware State	20-13	12-6
2007-08	Delaware State	18-14	12-4
2008-09	Delaware State	15-15	11-5
2009-10	Delaware State	6-24	4-12
2010-11	Delaware State	9-20	5-11
2011-12	Delaware State	3-14	0-4
OVERALL (20th Season)		345-227	117-77
Bowie State Record (8 yrs)		171-54	N/A
DSU Record (12 th Season)		174-173	117-77
MEAC Tournament		12-10	
NCAA Tournament		0-1	



12th Season at DSU | 20th Season Overall | West Virginia State '73

Davis is in his 12th season as head coach of the Lady Hornets. Since accepting the post prior to the 2000-01 season, he has led DSU to the most successful run in the history of the program.

Prior to the 2011-12 season, the Washington, D.C., native had an overall record of 171-159 (.518) at DSU, including a 117-73 (.616) mark in MEAC regular season contests. The Davis years at Delaware State are highlighted by a MEAC Tournament championship and NCAA Tournament berth (2007), a MEAC regular season co-championship (2003-04), five MEAC championship game appearances and the only 20-win seasons (four) in team history.

Davis further enhanced his credentials after a hard fought loss to No. 2 seed Vanderbilt in the 2007 NCAA Tournament. His 15th seeded Lady Hornets trailed by just four points at the half and by six with eight minutes left to the heavily favored Commodores.

Now in his 20th season as a collegiate head coach, Davis surpassed the 300-win mark for his career and became Delaware State's all-time leader in women's basketball victories during the 2007-08 season. He owns a career record of 342-211 (.618), highlighted by nine seasons with 20-or-more wins.

Delaware State has been particularly tough at home under Davis. The Lady Hornets an 89-39 (.695) mark at home during the Davis era. He led the team to a school-record 23 straight home wins from 2003-05.

Delaware State led the MEAC in scoring defense for seven straight years before the string was snapped last season.

During the 2006-07 season, Davis led the Lady Hornets on a 13-2 late-season spurt, including a three-game MEAC Tournament sweep en route to the first league championship in team history.

In 2005-06, Davis led the Lady Hornets to a 21-9 overall record and an appearance in the MEAC Tournament title game. The 21 wins matched the most in team history, tying the mark set by his 2003-04 squad. On February 27, 2006 Davis reached a milestone by posting his 100th win at Delaware State.

One year after setting a national record for scoring defense, Delaware State was tops in the MEAC and sixth among all Division I teams in scoring defense at 53.4 points-per-game during the 2005-06 season.

During the 2004-05 campaign, Delaware State set a national record for scoring defense. That season, the Lady Hornets became the first Division I women's team to hold opponents to less than 50 points per game in a season, allowing 49.6 per contest.

Davis also served as the university's interim Director of Athletics during the 2004-05 academic year.

The previous season (2003-04), Davis led the Lady Hornets to new heights, recording a school-record 21 wins (21-9) and capturing a share of the Mid-Eastern Athletic Conference regular season title for the first time in team history. His 2003-04 team was defeated by regular season co-champ Hampton in the MEAC Tournament championship game. That season, Delaware State was 11-0 at home including a 59-56 win over West Virginia, Delaware State's first against a Big East opponent.

Davis was rewarded by being named MEAC Coach-of-the-Year for the 2003-04 season.

In 2002-03, Davis led the Hornets to the first 20-win season (20-10) in team history. Along the way, the 2002-03 Lady Hornets also set team records for consecutive wins (10) and conference victories (16-2). In addition, the team's second-place finish in the final MEAC regular standings was the best in the program's history at the time.

The team was particularly tough at home, winning its last 10 games in Memorial Hall that season.

During the 2000-01 season, his first at DSU, Davis guided a Delaware State that was picked to finish 10th in the Mid-Eastern Athletic Conference to within minutes of a conference championship.

In the four years prior to Davis' arrival, the Lady Hornets were 36-85, and failed to advance beyond the quarterfinals of the conference tourney.

Prior to taking over the Delaware State job, Davis was head coach at Bowie State University (Md.).

In eight seasons at Bowie, he posted an overall record of 171-54 and turned the Bulldogs into one of the top Division II programs in the country. His tenure was highlighted by three Central Intercollegiate Athletic Association (CIAA) championships, three NCAA Tournament appearances, and numerous "coach of the year" awards.

Although Bowie State posted a record of 6-19 in 1992-93, Davis' first season, it marked the most wins by the team in four years.

The following season, 1993-94, Bowie improved to 14-11, its first winning team in 10 years.

VS. '11-'12 OPPONENTS

Opponent	W-L (11-12 Result)	Matchup
Bethune-Cookman	16-6 (L, 50-52)	1/21
Coppin State	8-13	2/11
East Carolina	0-1 (L, 47-54)	11/26
Florida A&M	16-10	1/23
Florida International	0-1 (L, 57-73)	12/18
Fordham	0-1 (L, 48-63)	1/4
Hampton	5-23	2/6, 2/20
Howard	13-7 (L, 49-59)	12/5, 2/25
Maryland	0-3 (L, 108-33)	12/8
Morgan State	17-5	2/13, 2/27
NJIT	1-1 (L, 49-65)	11/23
Norfolk State	21-12	2/4, 2/18
North Carolina A&T	14-4	1/30
North Carolina Central	9-2	1/28
North Florida	0-1 (L, 61-72)	12/17
Robert Morris	0-1 (L, 67-75)	11/27
St. Francis (N.Y.)	3-0 (W, 73-66)	12/11
South Carolina State	10-7	3/1
Texas	0-1 (L, 35-89)	12/28
Towson	0-2 (L, 59-70)	12/22
UMES	16-12 (L 32-60; L 56-69)	
Wesley	5-0 (W, 85-53)	11/15
Wilmington	1-0 (W, 80-32)	11/12
Wright State	0-2 (L, 53-57)	11/19

MID-EASTERN ATHLETIC CONFERENCE

WEEKLY ACCOLADES

2011-12 STANDINGS

	MEAC	Overall
Hampton	6-0	14-3
Florida A&M	6-0	13-5
Howard	5-1	13-6
Coppin State	4-2	9-10
Bethune-Cookman	3-3	6-12
Maryland Eastern Shore	2-2	4-11
Norfolk State	3-4	8-10
South Carolina State	3-4	8-10
North Carolina A&T	2-3	7-11
Savannah State	2-5	7-11
Morgan State	1-4	4-14
Delaware State	0-4	3-14
North Carolina Central	0-5	2-16

PRESEASON PREDICTED ORDER OF FINISH

School.....	Points
1. Hampton (23).....	667
2. Howard (1).....	557
3. North Carolina A&T (1).....	495
4. Florida A&M.....	482
5. Morgan State	464
6. Coppin State (1).....	415
7. Bethune-Cookman	290
8. Maryland Eastern Shore.....	264
9. South Carolina State	242
10. Delaware State	184
11. Savannah State	178
12. North Carolina Central	94
13. Norfolk State	90

UPCOMING GAMES

MONDAY, JANUARY 23
 North Carolina A&T at Coppin State* 4:30 p.m.
Florida A&M at Delaware State* **5:30 p.m.**
 Bethune-Cookman at Maryland Eastern Shore* 5:30 p.m.
 North Carolina Central at Morgan State* 5:30 p.m.
 Hampton at Howard* 7 p.m.

WEDNESDAY, JANUARY 25
 Lincoln (Pa.) at UMES 6 p.m.

THURSDAY, JANUARY 26
 Talledega College at Savannah State 7 p.m.

SATURDAY, JANUARY 28
Delaware State at North Carolina Central* **2 p.m.**
 UMES at North Carolina A&T* 2 p.m.
 Howard at Savannah State* 2 p.m.
 Coppin State at Hampton 4 p.m.
 Bethune-Cookman at Florida A&M* 4 p.m.
 Morgan State at Norfolk State* 4 p.m.

MONDAY, JANUARY 30
 Morgan State at Hampton* (ESPNU) 4:30 p.m.
 UMES at North Carolina Central* 5:30 p.m.
 Howard at South Carolina State* 5:30 p.m.
Delaware State at North Carolina A&T* **6 p.m.**
 Coppin State at Norfolk State* 6 p.m.

PLAYER OF THE WEEK

Date	Player	School	Pos.	Class
N28	Tiara Knotts	SCSU	G	Jr.
D5	Melanie Warner	Hampton	F	Sr.
D12	Choicetta McMillan	Hampton	G	Sr.
D19	Saadia Doyle	Howard	F	rJr.
D26	Saadia Doyle	Howard	F	rJr.
J2	Jericka Jenkins	Hampton	G	Sr.
J9	Alyssa Bennett	Hampton	F	So.
J16	Nicole Hamilton	Hampton	G	So.
J23				
J30				
F6				
F13				
F20				
F27				

ROOKIE OF THE WEEK

Date	Player	School	Pos.	Class
N28	Tierra Hawkins	DSU	GF	rFr.
D5	Amber Antoine	B-CU	G	Fr.
D12	Cabriel Duren	SCSU	G	Jr.
D19	Tierra Hawkins	DSU	GF	rFr.
D26	Jaylan Bodiford	NCAT	FC	Fr.
J2	Porsha Barr	UMES	F	Fr.
J9	Amarah Williams	Morgan St.	FC	Fr.
J16	Tiffanie Adair	NCAT	F	So.
J23				
J30				
F6				
F13				
F20				
F27				

HEAD COACH ED DAVIS, CONTINUED

DEFENSIVE PLAYER OF THE WEEK

Date	Player	School	Pos.	Class
N28	Tracy King	NCAT	G	So.
D5	Qjana Donald	FAMU	FC	Sr.
D12	Paris Alston	SCSU	C	Jr.
D19	Chasidy Williams	NCCU	G	rJr.
D26	Tracy King	NCAT	G	So.
J2	Demetria Frank	B-CU	G	Sr.
	Ariel Phelps	Hampton	F	Jr.
J9	Antonia Bennett	FAMU	GF	Sr.
J16	Alisha Nelson	SSU	F	Sr.
J23				
J30				
F6				
F13				
F20				
F27				

Davis' 1994-95 team was 19-9 and advanced to the championship game of the CIAA Tournament. He captured his first CIAA Coach of the Year award following the season.

The next four years Davis led Bowie State to an unprecedented run of success in the CIAA. From 1995 to 1999, the Bulldogs posted a remarkable 110-10 record and a CIAA championship "three-peat."

His 1995-96 team was 28-2 and advanced to the "Sweet 16" of the NCAA. The squad also ranked first among all Division II teams in scoring defense.

The 1996-97 team had a 28-game winning streak en route to a 29-2 overall mark and the CIAA Tournament championship. The team also qualified for the NCAA Tournament for the second straight year.

The following year, 1997-98, the Bulldogs posted a 28-2 record and captured their second straight CIAA Tournament. The team was ranked as high as number six in the national polls.

Davis' 1998-99 team was 25-4 and captured a third consecutive CIAA championship before advancing to the "Sweet 16" of the NCAA Tournament.

In 1999-2000, Bowie State was 22-5 and reached the championship game of the CIAA Tournament.

From 1995 to 2000, Davis' teams won 40 consecutive games on their home court.

Davis has earned a number of awards for his coaching success, including CIAA Coach of the Year in 1995 and Women's Basketball Coaches Association District II Coach of the Year in 198 and 1999. He was CIAA Tournament Outstanding Coach in 1997, '98 and '99.

Prior to his years at Bowie State, Davis was a teacher and successful high school coach in the Washington, D.C. area.

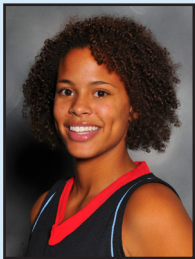
Davis was a four-year letterwinner on the West Virginia State men's basketball team that set NCAA and National Association of Intercollegiate Athletics (NAIA) scoring records in the late 1960s and early 70s.

He holds a master's in education from Howard University and a bachelor's in education from West Virginia State College. Davis was inducted into the West Virginia State Athletics Hall of Fame in October 2008.



#3 MORGAN WOODRUFF

FC | 6-2 | Freshman | Bloomington, Ind. | Bloomington South H.S.



	GP-GS	MIN.	PPG	RPG	APG	SPG	BPG	FG%	3FG%	FT%
2011-12	11-0	8.7	0.2	0.7	0.0	0.4	0.1	.000	.000	.667
Career	11-0	8.7	0.2	0.7	0.0	0.4	0.1	.000	.000	.667

- Played for Indiana Elite AAU team
- Father, Steve Downing, played basketball at Indiana University from 1971-75
- Chose Del State for its HBCU roots
- Major: Public Relations

SEASON HIGHS	Points	2	vs. Wilmington 11/12/11
	Rebs	3	vs. Wesley 11/15/11
	Assists		
	Steals	3	at #22/25 Texas 12/28/11
	Blocks	1	at UMES 12/3/11

CAREER HIGHS	Points	2	vs. Wilmington 11/12/11
	Rebs	3	vs. Wesley 11/15/11
	Assists		
	Steals	3	at #22/25 Texas 12/28/11
	Blocks	1	at UMES 12/3/11

#5 TASIA BRISTOW

G | 5-5 | Sophomore | Baltimore, Md. | St. Francis Academy



	GP-GS	MIN.	PPG	RPG	APG	SPG	BPG	FG%	3FG%	FT%
2011-12	17-17	32.5	12.2	2.4	2.1	2.1	0.2	.340	.257	.869
Career	46-34	28.5	9.7	1.9	1.5	1.7	0.1	.320	.286	.740

- Named to the UNF All-Classic Team
- Scored career-high four 3-pointers at UMES on 1/13/11
- High school teammate of current DSU players Deanna Harmon and Chelsea Dukes
- Major: Criminal Justice

SEASON HIGHS	Points	28	vs. St. Francis 12/11/11
	Rebs	5	vs. NJIT 11/23/11
	Assists	5	vs. Wilmington 11/12/11
	Steals	7	vs. Wilmington 11/12/11
	Blocks	1	4x, last vs. Beth-Cook 1/21/12

CAREER HIGHS	Points	28	vs. St. Francis 12/11/11
	Rebs	5	Twice, last vs. NJIT 11/23/11
	Assists	5	Twice, last vs. Wilmington 11/12/11
	Steals	7	vs. Wilmington 11/12/11
	Blocks	1	6x, last vs. Beth-Cook 1/21/12

#12 DEANNA HARMON

GF | 5-7 | Sophomore | Owings Mills, Md. | St. Francis Academy



	GP-GS	MIN.	PPG	RPG	APG	SPG	BPG	FG%	3FG%	FT%
2011-12	16-16	36.0	7.8	4.4	2.7	2.3	0.1	.315	.250	.641
Career	45-45	33.9	7.4	4.7	2.8	1.9	0.05	.331	.238	.620

- Missed first career game (since middle school) with concussion-like symptoms on 1/4/12
- Named to the ECU All-Classic Team
- H.S. class Salutatorian (2010)
- Played for MYBA Wildcats AAU team
- High school teammate of current DSU players Tasia Bristow and Chelsea Dukes
- Major: Mathematics (minor: Accounting)

SEASON HIGHS	Points	20	vs. Wilmington 11/12/11
	Rebs	10	at Wright State 11/19/11
	Assists	5	vs. Wesley 11/15/11
	Steals	3	vs. Wilmington 11/12/11
	Blocks	1	vs. FIU 12/18/11

CAREER HIGHS	Points	20	vs. Wilmington 11/12/11
	Rebs	11	at Bethune-Cookman 2/12/11
	Assists	7	vs. Coppin State 1/24/11
	Steals	6	at St. Francis (N.Y.) 12/22/10
	Blocks	1	Twice, last vs. FIU 12/18/11

#14 KEYANNA TATE

GF | 6-0 | Freshman | Beltsville, Md. | Bowie H.S.



	GP-GS	MIN.	PPG	RPG	APG	SPG	BPG	FG%	3FG%	FT%
2011-12	17-17	27.1	5.1	4.1	1.2	1.0	0.3	.322	.000	.778
Career	17-17	27.1	5.1	4.1	1.2	1.0	0.3	.322	.000	.778

- Played five years with the Lady Diamonds AAU team and one with the Fairfax Stars
- Spent time with the ROTC in high school
- Major: Undecided

SEASON HIGHS	Points	11	Twice, last vs. St. Francis 12/11/11
	Rebs	9	vs. Robert Morris 11/27/11
	Assists	4	vs. Wilmington 11/12/11
	Steals	3	Twice, last at #22 Texas 12/28/11
	Blocks	1	5x, last vs. UMES 1/14/12

CAREER HIGHS	Points	11	Twice, last vs. St. Francis 12/11/11
	Rebs	9	vs. Robert Morris 11/27/11
	Assists	4	vs. Wilmington 11/12/11
	Steals	3	Twice, last at #22 Texas 12/28/11
	Blocks	1	5x, last vs. UMES 1/14/12

#15 TARSHAYE' WHITE

G | 5-0 | Sophomore | Suitland, Md. | Parkdale H.S. | Patrick Henry CC



	GP-GS	MIN.	PPG	RPG	APG	SPG	BPG	FG%	3FG%	FT%
2011-12	4-0	5.8	0.0	0.3	0.3	0.0	0.0	.000	.000	.000
Career	4-0	5.8	0.0	0.3	0.3	0.0	0.0	.000	.000	.000

- Ineligible to play first semester; saw action in her first game on Dec. 22
- Won District I, Region 10, conference regular season and conference tournament championships at Patrick Henry CC
- Major: Movement Science

SEASON HIGHS	Points		
	Rebs	1	vs. Towson 12/22/11
	Assists	1	vs. Towson 12/22/11
	Steals		
	Blocks		

CAREER HIGHS	Points		
	Rebs	1	vs. Towson 12/22/11
	Assists	1	vs. Towson 12/22/11
	Steals		
	Blocks		

#21 COREENAH REDDEN

G | 5-7 | Freshman | Wilmington, Del. | Hodgson Vo-Tech H.S.



	GP-GS	MIN.	PPG	RPG	APG	SPG	BPG	FG%	3FG%	FT%
2011-12	14-0	8.3	0.9	0.7	0.4	0.4	0.0	.333	.000	.300
Career	14-0	8.3	0.9	0.7	0.4	0.4	0.0	.333	.000	.300

- Played with the Lady Sharks AAU team
- McDonald's All-American nominee
- Delaware North Top 10 player
- H.S. lost just one conference game in her four years
- Major: Movement Science

SEASON HIGHS	Points	Rebs	Assists	Steals	Blocks
	3	3	1	3	

CAREER HIGHS	Points	Rebs	Assists	Steals	Blocks
	3	3	1	3	

#22 CRYSTAL PITT

GF | 5-7 | Junior | Fort Washington, Md. | National Christian Academy



	GP-GS	MIN.	PPG	RPG	APG	SPG	BPG	FG%	3FG%	FT%
2011-12										
Career	47-1	11.5	2.6	1.7	0.5	0.6	0.06	.286	.221	.735

- Will not compete 2011-12 season due to medical redshirt
- Brother, Neal Pitt, was a member of the UMES men's basketball team from 2008-10
- H.S. class Salutatorian

SEASON HIGHS	Points	Rebs	Assists	Steals	Blocks

CAREER HIGHS	Points	Rebs	Assists	Steals	Blocks
	12	7	2	4	1

#23 ASHLEY DAVIS

G | 5-10 | Redshirt Sophomore | Odenton, Md. | Arundel H.S. | Drexel



	GP-GS	MIN.	PPG	RPG	APG	SPG	BPG	FG%	3FG%	FT%
2011-12										
Career										

- Will not play 2011-12 season due to NCAA transfer rules
- Cousin of WNBA star Nikki Teasley
- Major: Criminal Justice

SEASON HIGHS	Points	Rebs	Assists	Steals	Blocks

CAREER HIGHS	Points	Rebs	Assists	Steals	Blocks

#24 TIERRA HAWKINS

GF | 6-2 | Redshirt Freshman | Clinton, Md. | Riverdale Baptist H.S.



	GP-GS	MIN.	PPG	RPG	APG	SPG	BPG	FG%	3FG%	FT%
2011-12	17-16	28.9	12.9	6.2	0.5	1.5	0.9	.419	.000	.582
Career	17-16	28.9	12.9	6.2	0.5	1.5	0.9	.419	.000	.582

- Two-time MEAC Rookie of the Week (11/28, 12/19)
- Twin sister, Tianna, plays basketball at the University of Maryland
- Major: Mass Communications

SEASON HIGHS	Points	Rebs	Assists	Steals	Blocks
	22	12	2	3	3

CAREER HIGHS	Points	Rebs	Assists	Steals	Blocks
	22	12	2	3	3

#25 NADIRAH DURR

F | 6-0 | Freshman | Avenel, N.J. | St. Anthony H.S.



	GP-GS	MIN.	PPG	RPG	APG	SPG	BPG	FG%	3FG%	FT%
2011-12	15-1	11.1	1.1	2.1	0.4	0.3	0.1	.292	.000	.333
Career	15-1	11.1	1.1	2.1	0.4	0.3	0.1	.292	.000	.333

- Father, Alexander Durr, played basketball at Benedict College from 1959-64 and is a member of their Hall of Fame
- Played two years for All-NJ Elite AAU
- Major: Undecided

SEASON HIGHS	Points	Rebs	Assists	Steals	Blocks
	8	6	2	2	1

CAREER HIGHS	Points	Rebs	Assists	Steals	Blocks
	8	6	2	2	1

#30 KIANNA D'OLIVEIRA

F | 5-10 | Junior | Newport News, Va. | Woodside H.S.



	GP-GS	MIN.	PPG	RPG	APG	SPG	BPG	FG%	3FG%	FT%
2011-12	8-4	25.8	6.6	6.8	0.9	0.7	1.0	.315	.000	.655
Career	66-59	23.7	5.7	5.4	0.8	1.2	1.0	.317	.000	.648

- Recorded first double double of season (10 pts, 12 reb.) vs. Beth-Cook on Jan. 21
- Joined team on Dec. 8, 2011 - previously played her freshman and sophomore years
- Last name is pronounced Doll-uh-vare-uh
- Major: Criminal Justice

SEASON HIGHS	Points	10	Twice, last vs. Beth-Cook 1/21/12
Rebs	12	vs. Bethune-Cookman 1/21/12	
Assists	3	vs. Fordham 1/4/12	
Steals	2	Twice, last vs. UMES 1/14/12	
Blocks	3	vs. UMES 1/14/12	

CAREER HIGHS	Points	13	vs. Morgan State 2/20/10
Rebs	14	at N.C. Central 1/8/11	
Assists	4	vs. Lincoln (Pa.) 11/13/09	
Steals	5	at Florida A&M 1/18/10	
Blocks	4	Twice, last vs. Norfolk State 2/7/11	

#32 ALEXIS THORNTON

G | 5-9 | Freshman | El Paso, Texas | Montwood H.S.



	GP-GS	MIN.	PPG	RPG	APG	SPG	BPG	FG%	3FG%	FT%
2011-12	16-0	12.2	3.2	0.8	0.1	0.4	0.1	.286	.303	1.000
Career	16-0	12.2	3.2	0.8	0.1	0.4	0.1	.286	.303	1.000

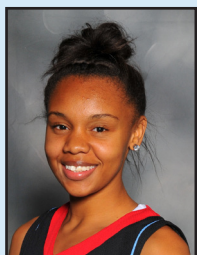
- Led Dedicated Athletes AAU team to two Southwest Shootout and I-10 League Championships
- Skipped fourth grade due to academic excellence
- Major: Physical Therapy

SEASON HIGHS	Points	8	3x, last at #22 Texas 12/28/11
Rebs	3	at Wright State 11/19/11	
Assists	1	at Wright State 11/19/11	
Steals	2	Twice, last at #22 Texas 12/28/11	
Blocks	1	vs. Wesley 11/15/11	

CAREER HIGHS	Points	8	3x, last at #22 Texas 12/28/11
Rebs	3	at Wright State 11/19/11	
Assists	1	at Wright State 11/19/11	
Steals	2	Twice, last at #22 Texas 12/28/11	
Blocks	1	vs. Wesley 11/15/11	

#34 CHELSEA DUKES

G | 5-10 | Freshman | Baltimore, Md. | St. Francis Academy



	GP-GS	MIN.	PPG	RPG	APG	SPG	BPG	FG%	3FG%	FT%
2011-12	13-1	21.8	6.2	1.5	0.7	0.6	0.2	.325	.310	.778
Career	13-1	21.8	6.2	1.5	0.7	0.6	0.2	.325	.310	.778

- Missed four games after receiving a concussion at Wright State on 11/19/11
- High school teammate of current DSU players Deanna Harmon and Tasia Bristow
- Major: Mass Communications

SEASON HIGHS	Points	15	vs. Wesley 11/15/11
Rebs	3	5x, last vs. UMES 1/14/12	
Assists	3	vs. Bethune-Cookman 1/21/12	
Steals	2	Twice, last at #22 Texas 12/28/11	
Blocks	1	Twice, last vs. Beth-Cook 1/21/12	

CAREER HIGHS	Points	15	vs. Wesley 11/15/11
Rebs	3	5x, last vs. UMES 1/14/12	
Assists	3	vs. Bethune-Cookman 1/21/12	
Steals	2	Twice, last at #22 Texas 12/28/11	
Blocks	1	Twice, last vs. Beth-Cook 1/21/12	

#51 UCHECHI AHAIWE

C | 6-3 | Redshirt Sophomore | Riverdale, Md. | Bladensburg H.S.



	GP-GS	MIN.	PPG	RPG	APG	SPG	BPG	FG%	3FG%	FT%
2011-12	17-13	13.8	4.8	4.2	0.5	0.2	0.2	.478	.000	.455
Career	38-13	8.3	2.6	2.4	0.3	0.2	0.2	.402	.000	.421

- Did not play freshman year due to injury (granted medical redshirt)
- 2009 H.S. Female Athlete of the Year
- All-Prince George's County Second Team selection and PG Cty Senior All-Star (2009)
- Major: Health Promotions

SEASON HIGHS	Points	12	vs. Wesley 11/15/11
Rebs	10 <td>vs. Wesley 11/15/11</td>	vs. Wesley 11/15/11	
Assists	2 <td>vs. NJIT 11/23/11</td>	vs. NJIT 11/23/11	
Steals	1 <td>Twice, last at North Florida 12/17/11</td>	Twice, last at North Florida 12/17/11	
Blocks	2 <td>Twice, last vs. Wesley 11/15/11</td>	Twice, last vs. Wesley 11/15/11	

CAREER HIGHS	Points	12	vs. Wesley 11/15/11
Rebs	10 <td>vs. Wesley 11/15/11</td>	vs. Wesley 11/15/11	
Assists	2 <td>vs. NJIT 11/23/11</td>	vs. NJIT 11/23/11	
Steals	1 <td>5x, last at North Florida 12/17/11</td>	5x, last at North Florida 12/17/11	
Blocks	2 <td>3x, last vs. Wesley 11/15/11</td>	3x, last vs. Wesley 11/15/11	

1

Delaware State 80, Wilmington 32
Dover, Del. | Memorial Hall | November 12, 2011

Wilmington Universit 32 • 0-1

#	Player	Total			3-Ptr			Rebounds			PF	TP	A	TO	Blk	Stl	Min
		FG	FGA	FT	FTA	Off	Def	Tot									
15	DeSHIELDS, Candace	f	1-4	1-4	0-1	0	2	2	2	3	1	6	0	1	22		
32	REED, Joune	f	0-2	0-0	4-6	0	1	1	1	4	0	4	0	0	14		
35	WALTON, Kimberly	c	0-1	0-0	0-0	0	2	2	1	0	0	2	0	2	12		
04	CALLAWAY, Cari	g	1-6	0-3	3-4	0	0	0	2	5	2	3	0	2	17		
10	MOORE, Erin	g	1-5	1-2	2-2	0	0	0	1	5	0	3	0	0	18		
01	COLEMAN, Courtney	g	1-7	0-2	1-3	1	2	3	0	3	1	1	0	1	15		
03	BROWN, Lauren	g	2-7	0-0	1-2	0	0	0	1	5	0	2	0	1	20		
05	FOX, Megan	g	0-3	0-2	2-2	1	1	2	2	2	0	2	0	0	30		
12	WALTERS, Amanda	g	1-1	0-0	0-0	0	3	3	2	2	0	3	0	0	13		
20	RETAS, Samantha	g	1-5	0-0	0-0	1	1	2	0	2	0	1	0	0	21		
24	WAGNER, Tianna	g	0-0	0-0	0-0	0	0	0	1	0	0	2	0	0	3		
33	FRANKLIN, Kathryn	g	0-0	0-0	0-2	1	0	1	2	0	0	1	0	0	2		
44	PHRANCE, Candace	g	0-1	0-0	1-2	1	2	3	3	1	0	3	0	0	13		
Team						5	6	11				1					
Totals			8-42	2-13	14-24	10	20	30	18	32	4	34	0	7	200		

FG % 1st Half: 5-23 21.7% 2nd half: 3-19 15.8% Game: 8-42 19.0%
3FG % 1st Half: 1-3 33.3% 2nd half: 1-10 10.0% Game: 2-13 15.4%
FT % 1st Half: 9-13 69.2% 2nd half: 5-11 45.5% Game: 14-24 58.3%

Delaware State University 80 • 1-0

#	Player	Total			3-Ptr			Rebounds			PF	TP	A	TO	Blk	Stl	Min
		FG	FGA	FT	FTA	Off	Def	Tot									
14	TATE,Keyanna	f	1-6	0-0	2-3	4	1	5	0	4	4	2	1	3	28		
24	HAWKINS,Tierra	f	9-20	0-1	3-6	4	6	10	1	21	2	3	3	2	28		
51	AHAIWE,Uchechi	c	5-7	0-0	0-0	3	5	8	5	10	0	3	2	0	17		
05	BRISTOW,Tasia	g	2-9	0-3	4-4	0	3	3	1	8	5	2	1	7	32		
12	HARMON,Deanna	g	8-12	2-3	2-4	3	4	7	3	20	2	2	0	3	30		
03	WOODRUFF,Morgan	g	0-2	0-0	2-2	0	1	1	2	2	0	0	0	0	17		
21	REDDEN,Coreenah	g	1-3	0-0	1-4	2	0	2	1	3	1	0	0	3	7		
25	DURR,Nadirah	g	0-0	0-0	1-2	1	4	5	2	1	1	2	0	0	12		
32	THORNTON,Alexis	g	3-5	1-2	1-1	0	0	0	2	8	0	2	0	2	11		
34	DUKES,Chelsea	g	1-4	1-4	0-0	0	0	0	1	3	0	2	0	2	17		
Team						5	5	10									
Totals			30-68	4-13	16-26	22	29	51	18	80	15	20	7	22	200		

FG % 1st Half: 14-33 42.4% 2nd half: 16-35 45.7% Game: 30-68 44.1%
3FG % 1st Half: 2-7 28.6% 2nd half: 2-6 33.3% Game: 4-13 30.8%
FT % 1st Half: 6-12 50.0% 2nd half: 10-14 71.4% Game: 16-26 61.5%

Officials: Bonita Shields, Felicia Young, Michelle Ross
Technical fouls: Wilmington Universit-None. Delaware State University-None.
Attendance: 384

Score by periods	1st	2nd	Total
Wilmington Universit	20	12	32
Delaware State University	36	44	80

Last FG - WU-WBB 2nd-04:58, DSUW 2nd-01:48.
Largest lead - WU-WBB by 3 1st-18:09, DSUW by 48 2nd-00:06.
Score tied - 1 time.
Lead changed - 1 time.

2

Delaware State 85, Wesley 53
Dover, Del. | Memorial Hall | November 15, 2011

Wesley College 53 • 0-1

#	Player	Total			3-Ptr			Rebounds			PF	TP	A	TO	Blk	Stl	Min
		FG	FGA	FT	FTA	Off	Def	Tot									
32	Aleisha Hobbs	f	4-8	0-0	2-4	0	1	1	5	10	0	0	0	0	15		
34	Heather Fuller	c	4-5	0-0	4-4	0	5	5	5	12	1	2	2	2	27		
05	Jazmine Miller	g	6-12	2-5	3-4	1	3	4	2	17	3	4	0	2	34		
10	Haley Thomas	g	1-4	0-3	0-0	0	1	1	1	2	4	3	0	1	30		
22	Rachelle Allen	g	1-6	0-1	1-4	1	4	5	4	3	3	2	1	1	33		
01	Jenny Kaufman	g	1-6	1-3	0-0	1	2	3	2	3	3	2	0	2	32		
02	Aleksandra Belcovska	g	0-0	0-0	0-0	0	0	0	0	0	0	1	0	0	0+		
20	Pez Scott	g	0-0	0-0	0-0	0	0	0	0	0	0	2	0	0	5		
45	Earlena Frazier	g	3-6	0-1	0-0	1	3	4	1	6	0	3	0	0	24		
Team						3	3	6									
Totals			20-47	3-13	10-16	7	22	29	20	53	14	21	3	8	200		

FG % 1st Half: 9-23 39.1% 2nd half: 11-24 45.8% Game: 20-47 42.6%
3FG % 1st Half: 2-6 33.3% 2nd half: 1-7 14.3% Game: 3-13 23.1%
FT % 1st Half: 4-8 50.0% 2nd half: 6-8 75.0% Game: 10-16 62.5%

Delaware State University 85 • 2-0

#	Player	Total			3-Ptr			Rebounds			PF	TP	A	TO	Blk	Stl	Min
		FG	FGA	FT	FTA	Off	Def	Tot									
14	TATE,Keyanna	f	3-9	0-0	2-2	2	2	4	2	8	2	2	1	1	26		
24	HAWKINS,Tierra	f	7-13	0-0	8-10	5	7	12	1	22	1	1	1	2	29		
51	AHAIWE,Uchechi	c	6-10	0-0	0-2	6	4	10	2	12	0	0	2	0	18		
05	BRISTOW,Tasia	g	3-9	1-4	2-2	1	3	4	3	9	2	1	1	0	22		
12	HARMON,Deanna	g	5-8	0-1	2-3	1	3	4	2	12	5	2	0	2	32		
03	WOODRUFF,Morgan	g	0-3	0-0	0-0	1	2	3	1	0	0	0	0	0	18		
21	REDDEN,Coreenah	g	0-0	0-0	0-2	0	0	0	0	0	1	1	0	0	4		
25	DURR,Nadirah	g	1-3	0-0	1-2	0	1	1	1	3	1	0	0	0	11		
32	THORNTON,Alexis	g	1-7	0-3	2-2	1	1	2	0	4	0	0	1	0	12		
34	DUKES,Chelsea	g	5-7	3-5	2-2	0	0	0	2	15	1	2	0	1	28		
Team						4	0	4									
Totals			31-69	4-13	19-27	21	23	44	14	85	13	9	6	6	200		

FG % 1st Half: 17-37 45.9% 2nd half: 14-32 43.8% Game: 31-69 44.9%
3FG % 1st Half: 2-8 25.0% 2nd half: 2-5 40.0% Game: 4-13 30.8%
FT % 1st Half: 10-15 66.7% 2nd half: 9-12 75.0% Game: 19-27 70.4%

Officials: Timothy Bryant; Tony Williams; Tori Williams
Technical fouls: Wesley College-None. Delaware State University-None.
Attendance: 378

Score by periods	1st	2nd	Total
Wesley College	24	29	53
Delaware State University	46	39	85

Last FG - WES 2nd-00:10, DSUW 2nd-05:42.
Largest lead - WES None, DSUW by 35 2nd-05:42.
Score tied - 1 time.
Lead changed - 0 times.

3

Wright State 57, Delaware State 53
Dayton, Ohio | Ervin J. Nutter Center | November 19, 2011

Delaware State University 53 • 2-1

#	Player	Total			3-Ptr			Rebounds			PF	TP	A	TO	Blk	Stl	Min
		FG	FGA	FT	FTA	Off	Def	Tot									
14	TATE,Keyanna	f	1-2	0-0	0-0	0	7	7	3	2	1	4	0	2	33		
24	HAWKINS,Tierra	f	7-22	0-3	1-3	4	6	10	2	15	1	2	1	1	37		
51	AHAIWE,Uchechi	c	5-8	0-0	1-2	5	1	6	3	11	0	2	0	0	23		
05	BRISTOW,Tasia	g	5-10	2-6	1-1	0	1	1	5	13	1	3	0	2	20		
12	HARMON,Deanna	g	1-12	0-4	2-2	4	6	10	2	4	4	5	0	2	38		
03	WOODRUFF,Morgan	g	0-0	0-0	0-0	0	2	2	3	0	0	3	0	0	17		
25	DURR,Nadirah	g	0-0	0-0	0-0	1	0	1	0	0	0	1	0	0	5		
32	THORNTON,Alexis	g	2-5	2-2	0-0	0	3	3	1	6	1	1	0	1	15		
34	DUKES,Chelsea	g	0-3	0-0	2-2	2	1	3	0	2	0	0	0	0	12		
Team						3	1	4									
Totals			21-62	4-15	7-10	19	28	47	19	53	8	22	1	8	200		

FG % 1st Half: 7-28 25.0% 2nd half: 14-34 41.2% Game: 21-62 33.9%
3FG % 1st Half: 1-7 14.3% 2nd half: 3-8 37.5% Game: 4-15 26.7%
FT % 1st Half: 3-3 100.0% 2nd half: 4-7 57.1% Game: 7-10 70.0%

Wright State 57 • 2-0

#	Player	Total			3-Ptr			Rebounds			PF	TP	A	TO	Blk	Stl	Min
		FG	FGA	FT	FTA	Off	Def	Tot									
22	SANDIFER, Shaunda	f	4-7	0-0	6-8	9	4	13	3	14	0	2	0	0	30		
31	FOX, Molly	f	5-17	0-0	6-10	4	6	10	1	16	1	1	0	3	33		
04	DEMINGS, Kim	g	2-5	0-1	1-1	2	2	4	2	5	3	3	1	1	21		
23	BOYD, Courtney	g	0-10	0-8	2-2	2	2	4	1	2	3	3	0	0	28		
24	LAMOTTE, Kayla	g	1-9	0-4	0-0	1	2	3	1	2	0	3	0	3	27		
10	HUNTER, Sarah	g	1-4	1-2	0-0	0	1	1	0	3	2	1	0	0	18		
20	ELKINS, KC	g	2-9	2-5	2-2	0	2	2	2	8	0	1	0	0	24		
32	STUCKE, Breanna	g	1-5	1-5	2-2	2	1	3	1	5	2	2	0	0	16		
34	GLIESMANN, Kirsten	g	0-0	0-0	2-2	0	1	1	1	2	0	1	0	0	3		
Team						6	3	9									
Totals			16-66	4-25	21-27	26	24	50	12	57	11	17	1	7	200		

FG % 1st Half: 9-31 29.0% 2nd half: 7-35 20.0% Game: 16-66 24.2%
3FG % 1st Half: 2-13 15.4% 2nd half: 2-12 16.7% Game: 4-25 16.0%
FT % 1st Half: 8-9 88.9% 2nd half: 13-18 72.2% Game: 21-27 77.8%

Officials: David Stewart, Natasha Harris, Brandon Enterline
Technical fouls: Delaware State University-None. Wright State-None.
Attendance: 319

Score by periods	1st	2nd	Total
Delaware State University	18	35	53
Wright State	28	29	57

Last FG - DSUW 2nd-00:48, WSU 2nd-01:57.
Largest lead - DSUW by 3 1st-19:47, WSU by 13 1st-02:36.
Score tied - 3 times.
Lead changed - 3 times.

4

NJIT 65, Delaware State 49
Dover, Del. | Memorial Hall | November 23, 2011



East Carolina 54, Delaware State 47
Greenville, N.C. | Minges Coliseum | November 26, 2011

Delaware State University 47 • 2-3

##	Player	Total			3-Ptr			Rebounds			PF	TP	A	TO	Blk	Stl	Min
		FG-FGA	FG-FGA	FT-FTA	Off	Def	Tot	Off	Def	Tot							
14	TATE, Keyanna	f	4-8	0-1	1-2	1	4	5	4	9	1	4	0	1	35		
24	HAWKINS, Tierra	f	0-1	0-0	0-0	0	0	0	0	0	0	0	0	0	3		
01	AHAIWE, Uchechi	c	3-5	0-0	1-2	0	4	4	2	7	0	3	0	0	12		
05	BRISTOW, Tasia	g	4-11	2-6	0-0	0	0	0	1	10	0	2	0	2	24		
12	HARMON, Deanna	g	3-8	1-1	4-4	1	3	4	4	11	5	4	0	3	40		
03	WOODRUFF, Morgan	g	0-0	0-0	0-0	0	0	0	0	0	1	0	0	0	3		
21	REDDEN, Coreenah	g	1-3	0-0	0-0	0	3	3	1	2	1	1	0	0	15		
25	DURR, Nadirah	g	0-3	0-0	0-0	4	4	8	4	8	0	2	1	0	38		
32	THORNTON, Alexis	g	3-5	2-2	0-0	1	0	1	1	8	0	3	0	1	30		
Team			2	4	6												
Totals			18-44	5-10	6-8	9	22	31	17	47	9	21	1	7	200		

FG % 1st Half: 9-23 39.1% 2nd half: 9-21 42.9% Game: 18-44 40.9%
 3FG % 1st Half: 2-5 40.0% 2nd half: 3-5 60.0% Game: 5-10 50.0%
 FT % 1st Half: 2-2 100.0% 2nd half: 4-6 66.7% Game: 6-8 75.0%

East Carolina 54 • 3-2

##	Player	Total			3-Ptr			Rebounds			PF	TP	A	TO	Blk	Stl	Min
		FG-FGA	FG-FGA	FT-FTA	Off	Def	Tot	Off	Def	Tot							
04	MIAL, Kristine	f	0-2	0-2	0-2	0	0	0	1	0	2	3	1	1	12		
15	SMITH, Chareya	f	8-12	0-0	4-8	4	3	7	1	20	0	2	1	3	28		
20	CHAPPEL, Tatiana	f	1-4	0-0	0-0	0	2	2	3	2	1	1	0	1	18		
14	STEWART, Celeste	g	1-4	0-1	0-0	0	3	3	0	2	2	2	0	1	20		
30	HODGES, Shala	g	3-8	3-5	2-2	0	1	1	3	11	1	1	0	0	22		
03	JONES, Dana	g	0-7	0-3	3-4	2	2	4	1	3	2	0	1	1	24		
23	SMITH, Bryelle	g	1-3	0-1	1-3	1	2	3	1	3	4	0	0	1	25		
31	PASCHAL, Katie	g	1-3	1-2	0-0	2	1	3	0	3	1	0	0	0	21		
03	EBRON, Janesha	g	0-2	0-2	0-0	0	0	0	2	0	1	1	1	11			
42	EDWARDS, Britny	g	4-8	0-0	2-4	5	1	6	0	10	0	0	3	1	19		
Team			3	3	6												
Totals			19-53	4-16	12-23	17	18	35	12	54	14	11	7	10	200		

FG % 1st Half: 10-26 38.5% 2nd half: 9-27 33.3% Game: 19-53 35.8%
 3FG % 1st Half: 2-9 22.2% 2nd half: 2-7 28.6% Game: 4-16 25.0%
 FT % 1st Half: 6-11 54.5% 2nd half: 6-12 50.0% Game: 12-23 52.2%

Officials: Jeff Faulconer, Randy Robertson, Danielle Bittle
 Technical fouls: Delaware State University-None. East Carolina-None.
 Attendance: 1328

Score by periods	1st	2nd	Total
Delaware State University	22	25	47
East Carolina	28	26	54

Points	In	Off	2nd	Fast	Bench
DSUW	Paint	T/O	Chance	Break	
ECU	24	12	11	7	10
ECU	28	20	13	9	19

Last FG - DSUW 2nd-05:13, ECU 2nd-01:26.
 Largest lead - DSUW by 2 2nd-15:15, ECU by 11 1st-05:40.

Score tied - 3 times.
 Lead changed - 2 times.



Robert Morris 75, Delaware State 67
Greenville, N.C. | Minges Coliseum | November 27, 2011

Robert Morris 75 • 5-1

##	Player	Total			3-Ptr			Rebounds			PF	TP	A	TO	Blk	Stl	Min
		FG-FGA	FG-FGA	FT-FTA	Off	Def	Tot	Off	Def	Tot							
14	DUROJAYE, Mary	f	2-6	0-0	4-5	5	4	9	4	8	1	5	2	1	33		
15	SPANOU, Artemis	f	8-14	2-8	2-2	4	3	7	0	20	2	7	0	2	34		
02	CAMPBELL, Josette	g	4-10	2-7	0-0	1	4	5	3	10	2	4	0	2	35		
11	DESSACS, Romane	g	0-2	0-2	1-2	0	1	1	1	1	1	3	0	0	14		
23	MEDRANO, Rocio	g	0-2	0-1	2-2	1	3	4	2	2	1	1	0	0	15		
05	EMBERG, Britta	g	0-0	0-0	0-0	0	1	1	0	0	0	0	0	0	3		
25	TYE, Brianna	g	4-8	0-4	4-4	1	1	2	5	12	4	2	1	3	26		
42	HARTWELL, Kelly	g	7-8	0-0	6-7	4	2	6	2	20	1	2	0	3	33		
52	GALLITE, Anna	g	1-2	0-0	0-0	0	1	1	0	2	0	0	3	0	7		
Team						0	2	2									
Totals			26-52	4-22	19-22	16	22	38	17	75	12	24	6	11	200		

FG % 1st Half: 11-25 44.0% 2nd half: 15-27 55.6% Game: 26-52 50.0%
 3FG % 1st Half: 2-14 14.3% 2nd half: 2-8 25.0% Game: 4-22 18.2%
 FT % 1st Half: 13-15 86.7% 2nd half: 6-7 85.7% Game: 19-22 86.4%

Delaware State University 67 • 2-4

##	Player	Total			3-Ptr			Rebounds			PF	TP	A	TO	Blk	Stl	Min
		FG-FGA	FG-FGA	FT-FTA	Off	Def	Tot	Off	Def	Tot							
14	TATE, Keyanna	f	5-12	0-0	1-1	5	4	9	4	11	2	2	0	1	31		
25	DURR, Nadirah	f	4-7	0-0	0-2	4	2	6	0	8	1	0	0	2	31		
51	AHAIWE, Uchechi	c	1-4	0-0	2-3	0	1	1	3	4	2	1	0	0	16		
05	BRISTOW, Tasia	g	4-13	0-4	3-3	1	3	4	4	11	4	6	0	0	38		
12	HARMON, Deanna	g	4-5	0-0	6-7	0	0	0	3	14	3	5	0	5	37		
03	WOODRUFF, Morgan	g	0-0	0-0	0-0	0	0	0	0	0	0	2	0	0	1		
21	REDDEN, Coreenah	g	0-0	0-0	0-0	0	0	0	1	0	1	1	0	0	6		
32	THORNTON, Alexis	g	1-4	1-3	0-0	1	0	1	1	3	0	0	0	0	12		
Team						1	1	2									
Totals			27-59	1-7	12-16	13	11	24	18	67	13	18	0	9	200		

FG % 1st Half: 15-32 46.9% 2nd half: 12-27 44.4% Game: 27-59 45.8%
 3FG % 1st Half: 1-6 16.7% 2nd half: 0-1 0.0% Game: 1-7 14.3%
 FT % 1st Half: 3-3 100.0% 2nd half: 9-13 69.2% Game: 12-16 75.0%

Officials: Kelly Moyer, Danielle Bittle, Michael Johnson
 Technical fouls: Robert Morris-None. Delaware State University-None.
 Attendance:

Score by periods	1st	2nd	Total
Robert Morris	37	38	75
Delaware State University	34	33	67

Points	In	Off	2nd	Fast	Bench
RMU	Paint	T/O	Chance	Break	
DSUW	34	21	21	8	34
DSUW	38	27	8	10	19

Last FG - RMU 2nd-00:33, DSUW 2nd-00:15.
 Largest lead - RMU by 13 2nd-04:03, DSUW by 12 1st-09:43.

Score tied - 4 times.
 Lead changed - 4 times.



UMES 60, Delaware State 32*
Princess Anne, Md. | Hytche Center | December 3, 2011

Delaware State University 32 • 2-5, 0-1 MEAC

##	Player	Total			3-Ptr			Rebounds			PF	TP	A	TO	Blk	Stl	Min
		FG-FGA	FG-FGA	FT-FTA	Off	Def	Tot	Off	Def	Tot							
12	HARMON, Deanna	f	2-8	0-2	4-5	0	5	5	2	8	2	6	0	4	40		
14	TATE, Keyanna	f	2-10	0-0	2-2	3	2	5	1	6	0	3	1	2	35		
24	HAWKINS, Tierra	f	4-10	0-0	1-4	2	4	6	4	9	0	5	1	2	24		
01	AHAIWE, Uchechi	c	0-3	0-0	0-0	0	2	2	3	0	0	0	0	1	21		
05	BRISTOW, Tasia	g	1-10	0-5	0-0	1	0	1	4	2	1	6	0	1	40		
03	WOODRUFF, Morgan	g	0-0	0-0	0-0	0	0	0	0	0	0	0	1	0	2		
21	REDDEN, Coreenah	g	1-1	0-0	1-2	0	1	1	1	3	0	0	0	2	8		
25	DURR, Nadirah	g	0-1	0-0	0-0	0	1	1	3	0	0	1	0	1	10		
32	THORNTON, Alexis	g	1-4	0-3	2-2	0	1	1	1	4	0	4	0	0	20		
Team						4	1	5									
Totals			11-47	0-10	10-15	10	17	27	19	32	3	25	3	13	200		

FG % 1st Half: 2-20 10.0% 2nd half: 9-27 33.3% Game: 11-47 23.4%
 3FG % 1st Half: 0-6 0.0% 2nd half: 0-4 0.0% Game: 0-10 0.0%
 FT % 1st Half: 4-5 80.0% 2nd half: 6-10 60.0% Game: 10-15 66.7%

U. of Maryland Eastern Shore 60 • 2-3, 1-0 MEAC

##	Player	Total			3-Ptr			Rebounds			PF	TP	A	TO	Blk	Stl	Min
		FG-FGA	FG-FGA	FT-FTA	Off	Def	Tot	Off	Def	Tot							
23	SANDERS, Chelsea	f	5-11	0-1	3-4	1	6	7	3	13	1	6	1	1	31		
24	ROACH, Karona	f	1-7	0-0	2-4	2	2	4	1	4	3	1	0	2	27		
25	STEWART, Shanyce	c	1-3	0-0	0-1	4	7	11	3	2	1	1	1	1	20		
15	MERCER, Kwinyata	g	3-4	3-3	0-0	0	1	1	0	9	1	1	0	2	25		
21	COOK, Amber	g	3-6	0-1	2-3	2	1	3	3	8	4	2	0	3	25		
01	AGBASI, Adobi	g	4-7	0-0	2-2	5	6	11	5	10	0	4	2	2	19		
03																	



#5/6 Maryland 108, Delaware State 33
College Park, Md. | Comcast Center | December 8, 2011

Delaware State University 33 • 2-7

#	Player	Total		3-Ptr		Rebounds			PF	TP	A	TO	Blk	Stl	Min
		FG-FGA	FT-FGA	FG-FGA	FT-FGA	Off	Def	Tot							
12	HARMON, Deanna	f	1-8	0-1	2-2	1	1	2	1	4	2	5	0	1	33
24	HAWKINS, Tierra	f	3-17	0-0	1-2	3	3	6	3	7	1	5	0	1	33
51	AHAIWE, Uchechi	c	1-2	0-0	5-8	1	0	1	1	7	1	2	0	0	18
05	BRISTOW, Tasia	g	2-9	1-4	2-2	0	1	1	3	7	1	2	0	2	34
14	TATE, Keyanna	g	1-4	0-0	0-0	0	0	0	1	2	1	3	0	0	27
03	WOODRUFF, Morgan	g	0-0	0-0	0-0	2	2	2	0	0	1	0	0	0	7
21	REDDEN, Coreenah	g	0-2	0-0	0-0	0	0	0	2	0	1	1	0	0	11
25	DURR, Nadirah	g	0-1	0-0	0-0	1	1	2	3	0	0	0	0	0	8
32	THORNTON, Alexis	g	1-6	1-3	0-0	0	0	0	3	0	1	0	1	9	
34	DUKES, Chelsea	g	1-3	1-2	0-0	0	1	1	3	0	1	0	0	20	
Team						3	3	6			2				
Totals			10-52	3-10	10-14	11	10	21	17	33	7	23	0	5	200

FG % 1st Half: 5-24 20.8% 2nd half: 5-28 17.9% Game: 10-52 19.2% Deadball Rebounds 2
3FG % 1st Half: 2-7 28.6% 2nd half: 1-3 33.3% Game: 3-10 30.0%
FT % 1st Half: 2-4 50.0% 2nd half: 8-10 80.0% Game: 10-14 71.4%

Maryland 108 • 10-0

#	Player	Total		3-Ptr		Rebounds			PF	TP	A	TO	Blk	Stl	Min
		FG-FGA	FT-FGA	FG-FGA	FT-FGA	Off	Def	Tot							
21	Tianna Hawkins	f	6-9	0-0	1-3	3	6	9	1	13	3	1	3	1	25
25	Alyssa Thomas	f	4-6	0-0	2-4	1	5	6	1	10	4	1	1	3	23
13	Alicia DeVaughn	c	4-6	0-0	5-6	3	5	8	3	13	1	0	2	1	22
01	Laurin Mincy	g	7-10	1-1	0-0	1	2	3	1	15	1	2	0	1	29
10	Anjale Barrett	g	3-4	1-2	6-6	2	2	4	2	13	6	1	0	0	23
00	Sequoia Austin	g	6-7	0-1	0-0	0	1	1	0	12	0	0	0	1	11
03	Brene Moseley	g	6-11	0-1	1-1	1	2	3	1	13	7	2	0	2	28
05	Essence Townsend	g	5-7	0-0	0-2	1	3	4	2	10	0	2	4	0	21
12	Lynetta Kizer	g	2-5	0-1	5-6	2	4	6	0	9	3	1	1	0	18
Team						2	1	3							
Totals			43-65	2-6	20-28	16	31	47	11	108	25	10	11	10	200

FG % 1st Half: 24-36 66.7% 2nd half: 19-29 65.5% Game: 43-65 66.2% Deadball Rebounds 4,2
3FG % 1st Half: 2-3 66.7% 2nd half: 0-3 0.0% Game: 2-6 33.3%
FT % 1st Half: 7-11 63.6% 2nd half: 13-17 76.5% Game: 20-28 71.4%

Officials: Denise Brooks, Angelica Suffren, Tiara Cruise
Technical fouls: Delaware State University-None. Maryland-None.
Attendance: 2351

Score by periods	1st	2nd	Total
Delaware State University	14	19	33
Maryland	57	51	108

	In	Off	2nd	Fast	Bench
Points	Paint	T/O	Chance	Break	
DSUW	8	6	4	2	6
MD	64	34	21	22	44

Last FG - DSUW 2nd-02:10, MD 2nd-00:01.
Largest lead - DSUW by 1 1st-19:17, MD by 75 2nd-00:01.

Score tied - 0 times.
Lead changed - 2 times.



Delaware State 73, St. Francis 66
Dover, Del. | Memorial Hall | December 11, 2011

St. Francis (NY) 66 • 1-8

#	Player	Total		3-Ptr		Rebounds			PF	TP	A	TO	Blk	Stl	Min
		FG-FGA	FT-FGA	FG-FGA	FT-FGA	Off	Def	Tot							
12	SNAUWAERT, Kim	f	1-5	1-3	2-2	0	3	3	4	5	4	4	0	1	34
34	VENEY, Jaymee	f	6-9	0-0	7-8	2	8	10	4	19	2	2	1	2	36
00	ROBINSON, Jasmin	g	5-6	0-0	5-9	1	3	4	3	15	4	6	0	1	34
11	BINGHAM, Stefanie	g	5-11	0-2	0-0	0	2	2	3	10	3	7	0	0	38
21	FOX, Katie	g	1-1	1-1	0-0	0	2	2	5	3	1	2	0	0	22
14	BENEDETTI, Sarah	g	1-2	1-2	0-0	0	0	0	0	3	0	0	0	0	4
25	MARGINEAN, Ozana	g	1-1	1-1	0-0	0	0	0	1	3	0	0	0	0	5
30	MYERS, Kelly	g	0-0	0-0	0-0	1	0	1	1	0	0	1	0	0	4
41	SIMPSON, Eliidh	g	2-3	1-1	1-1	0	0	0	0	6	0	2	0	0	17
50	HOUNSHELL, Colette	g	1-2	0-0	0-0	0	1	1	2	2	0	0	0	1	6
Team						1	5	6			2				
Totals			23-40	5-10	15-20	5	24	29	23	66	14	26	1	5	200

FG % 1st Half: 14-24 58.3% 2nd half: 9-16 56.3% Game: 23-40 57.5% Deadball Rebounds 1
3FG % 1st Half: 2-6 33.3% 2nd half: 3-4 75.0% Game: 5-10 50.0%
FT % 1st Half: 7-7 100.0 2nd half: 8-13 61.5% Game: 15-20 75.0%

Delaware State University 73 • 3-7

#	Player	Total		3-Ptr		Rebounds			PF	TP	A	TO	Blk	Stl	Min
		FG-FGA	FT-FGA	FG-FGA	FT-FGA	Off	Def	Tot							
14	TATE, Keyanna	f	2-5	0-0	7-8	2	2	4	0	11	2	0	0	1	28
24	HAWKINS, Tierra	f	2-7	0-0	7-8	0	3	3	3	11	0	1	0	2	28
51	AHAIWE, Uchechi	c	0-4	0-0	0-0	3	0	3	2	0	1	2	0	1	14
05	BRISTOW, Tasia	g	7-13	4-7	10-11	1	2	3	28	2	1	0	3	36	
12	HARMON, Deanna	g	2-4	1-1	0-3	0	6	6	4	5	2	1	0	2	29
21	REDDEN, Coreenah	g	1-1	0-0	0-0	1	0	1	2	2	1	0	0	1	12
25	DURR, Nadirah	g	0-0	0-0	0-0	0	1	1	1	0	0	1	0	0	3
30	D'OLIVEIRA, Kianna	g	3-6	0-0	3-4	2	1	3	3	9	0	1	1	0	18
32	THORNTON, Alexis	g	0-2	0-1	0-0	0	0	0	0	0	0	0	0	0	7
34	DUKES, Chelsea	g	3-11	1-7	0-0	0	0	0	1	7	1	1	1	0	25
Team						4	1	5			1				
Totals			20-53	6-16	27-34	13	16	29	19	73	9	9	2	10	200

FG % 1st Half: 6-24 25.0% 2nd half: 14-29 48.3% Game: 20-53 37.7% Deadball Rebounds 3
3FG % 1st Half: 2-5 40.0% 2nd half: 4-11 36.4% Game: 6-16 37.5%
FT % 1st Half: 12-15 80.0% 2nd half: 15-19 78.9% Game: 27-34 79.4%

Officials: Toby Jones, Heather Browne, Jarod Smoller
Technical fouls: St. Francis (NY)-None. Delaware State University-None.
Attendance: 123

Score by periods	1st	2nd	Total
St. Francis (NY)	37	29	66
Delaware State University	26	47	73

	In	Off	2nd	Fast	Bench
Points	Paint	T/O	Chance	Break	
DSUW	34	12	6	6	14
SNFYW	24	28	9	2	18

Last FG - SNFYW 2nd-00:00, DSUW 2nd-01:34.
Largest lead - SNFYW by 20 2nd-14:25, DSUW by 10 2nd-00:04.

Score tied - 1 time.
Lead changed - 1 time.



North Florida 72, Delaware State 61
Jacksonville, Fla. | UNF Arena | December 17, 2011

Delaware State University 61 • 3-8

#	Player	Total		3-Ptr		Rebounds			PF	TP	A	TO	Blk	Stl	Min
		FG-FGA	FT-FGA	FG-FGA	FT-FGA	Off	Def	Tot							
51	AHAIWE, Uchechi	c	3-5	0-0	1-2	3	1	4	1	7	0	0	0	1	14
05	BRISTOW, Tasia	g	9-15	2-3	4-5	0	1	1	1	24	3	2	0	4	36
12	HARMON, Deanna	g	1-9	0-2	5-9	0	4	4	2	7	1	5	0	1	40
14	TATE, Keyanna	g	1-1	0-0	0-0	0	2	2	3	2	1	0	0	0	20
24	HAWKINS, Tierra	g	8-13	0-0	2-3	3	5	8	2	18	0	5	0	3	37
03	WOODRUFF, Morgan	g	0-0	0-0	0-0	0	0	0	0	0	0	0	0	0	1
21	REDDEN, Coreenah	g	0-0	0-0	0-0	0	0	0	3	0	0	1	0	0	9
25	DURR, Nadirah	g	0-1	0-0	0-0	0	0	0	1	0	0	1	0	0	9
30	D'OLIVEIRA, Kianna	g	1-4	0-0	0-0	2	3	5	3	2	1	2	0	0	13
32	THORNTON, Alexis	g	0-0	0-0	0-0	0	0	0	0	0	1	0	0	0	4
34	DUKES, Chelsea	g	0-4	0-3	1-2	1	2	3	3	1	0	0	0	0	17
Team						0	1	1							
Totals			23-52	2-8	13-21	9	19	28	19	61	6	17	0	9	200

FG % 1st Half: 9-25 36.0% 2nd half: 14-27 51.9% Game: 23-52 44.2% Deadball Rebounds 2
3FG % 1st Half: 1-3 33.3% 2nd half: 1-5 20.0% Game: 2-8 25.0%
FT % 1st Half: 9-14 64.3% 2nd half: 4-7 57.1% Game: 13-21 61.9%

North Florida 72 • 3-7

#	Player	Total		3-Ptr		Rebounds			PF	TP	A	TO	Blk	Stl	Min
		FG-FGA	FT-FGA	FG-FGA	FT-FGA	Off	Def	Tot							
21	SMITH, Taylor	f	4-5	0-0	5-8	2	1	3	4	13	1	2	0	0	28
35	KERR, Jadhken	f	1-4	0-3	0-0	1	1	2	0	2	1	1	0	0	13
10	JOSIL, Fabiola	g													

13 Towson 70, Delaware State 59

Dover, Del. | Memorial Hall | December 22, 2011

Towson 70 • 9-2

#	Player	Total		3-Ptr		Rebounds			PF	TP	A	TO	Blk	Stl	Min
		FG-FGA	FG-FGA	FT-FTA	Off	Def	Tot								
22	McTiller, Tanisha	f	3-13	0-2	8-10	3	2	5	2	14	2	5	0	2	35
55	Williams, Nyree	f	3-5	0-0	1-2	4	6	10	4	7	1	1	3	0	23
01	Parnell, Krystal	g	5-9	1-3	11-15	1	3	4	1	22	2	2	0	1	35
02	Fooks, Deree	g	7-9	0-0	1-1	5	1	6	2	15	1	3	0	2	34
12	Fields, Krystin	g	1-2	0-0	2-4	1	4	5	1	4	0	3	1	4	29
03	Webb, Ciara	g	0-1	0-0	0-0	0	0	0	1	0	1	1	0	0	5
10	Peebles, Michelle	g	0-1	0-0	1-2	0	0	0	1	1	0	1	0	0	3
15	Shearin, Destiny	g	1-1	0-0	0-0	0	0	0	0	2	1	1	0	0	6
20	Smith, Markell	g	0-1	0-0	0-0	0	0	0	0	0	0	0	0	0	3
33	Ledbetter, Sheree	g	2-4	0-0	1-2	0	6	6	2	5	1	3	0	0	27
Team						1	4	5							
Totals			22-46	1-5	25-36	15	26	41	14	70	9	20	4	9	200

FG % 1st Half: 9-23 39.1% 2nd half: 13-23 56.5% Game: 22-46 47.8%
 3FG % 1st Half: 1-3 33.3% 2nd half: 0-2 0.0% Game: 1-5 20.0%
 FT % 1st Half: 7-9 77.8% 2nd half: 18-27 66.7% Game: 25-36 69.4%

Deadball Rebounds 5

Delaware State University 59 • 3-10

#	Player	Total		3-Ptr		Rebounds			PF	TP	A	TO	Blk	Stl	Min
		FG-FGA	FG-FGA	FT-FTA	Off	Def	Tot								
14	TATE,Keyanna	f	1-3	0-0	3-3	2	0	2	4	5	1	0	0	2	18
24	HAWKINS,Tierra	f	6-16	0-1	2-4	2	4	6	1	14	2	3	2	2	37
51	AHAIWE,Uchechi	c	1-1	0-0	0-0	0	0	0	2	2	0	0	0	0	8
05	BRISTOW,Tasia	g	6-14	1-5	3-4	1	2	3	1	16	3	7	0	3	40
12	HARMON,Deanna	g	3-7	0-1	4-6	1	3	4	4	10	2	1	0	2	39
15	WHITE,Tarshaye	g	0-0	0-0	0-0	1	0	1	0	0	1	1	0	0	2
21	REDDEN,Coreenah	g	0-1	0-0	1-2	0	1	1	5	1	0	1	0	0	10
25	DURR,Nadirah	g	1-1	0-0	0-0	0	0	0	1	2	0	0	0	0	4
30	D'OLIVEIRA,Kianna	g	2-8	0-0	3-4	3	3	6	3	7	1	1	1	0	26
32	THORNTON,Alexis	g	0-2	0-0	0-0	0	0	0	0	0	0	0	0	0	4
34	DUKES,Chelsea	g	0-2	0-1	2-2	0	0	0	3	2	0	2	0	0	12
Team						3	2	5							
Totals			20-55	1-10	18-25	13	15	28	24	59	10	17	3	9	200

FG % 1st Half: 8-26 30.8% 2nd half: 12-29 41.4% Game: 20-55 36.4%
 3FG % 1st Half: 1-6 16.7% 2nd half: 0-4 0.0% Game: 1-10 10.0%
 FT % 1st Half: 8-10 80.0% 2nd half: 10-15 66.7% Game: 18-25 72.0%

Deadball Rebounds 3

Officials: Angela Lewis, Timothy Bryant, Pualani Spurlock
 Technical fouls: Towson-TEAM, Delaware State University-None.
 Attendance: 102

Score by periods	1st	2nd	Total
Towson	26	44	70
Delaware State University	25	34	59

Points TOWSON 70, DSUW 59

Last FG - TOWSON 2nd-02:14, DSUW 2nd-00:52.
 Largest lead - TOWSON by 13 1st-11:35, DSUW by 10 2nd-13:09.

Score tied - 5 times.
 Lead changed - 7 times.

14 #22/25 Texas 89, Delaware State 35

Austin, Texas | Erwin Center | December 28, 2011

Delaware State University 35 • 3-11

#	Player	Total		3-Ptr		Rebounds			PF	TP	A	TO	Blk	Stl	Min
		FG-FGA	FG-FGA	FT-FTA	Off	Def	Tot								
14	TATE,Keyanna	f	1-7	0-0	0-1	4	0	4	3	2	0	3	1	3	22
24	HAWKINS,Tierra	f	3-11	0-0	0-1	1	2	3	3	6	0	4	1	3	25
51	AHAIWE,Uchechi	c	1-5	0-0	0-0	5	2	7	1	2	0	1	0	0	10
05	BRISTOW,Tasia	g	3-13	1-4	2-2	1	2	3	4	9	0	7	0	1	25
12	HARMON,Deanna	g	0-6	0-0	6-10	0	2	2	4	6	4	6	0	2	38
03	WOODRUFF,Morgan	g	0-0	0-0	0-0	0	0	0	1	0	0	2	0	3	7
15	WHITE,Tarshaye	g	0-2	0-1	0-0	0	0	0	0	0	0	0	0	0	8
21	REDDEN,Coreenah	g	0-1	0-0	0-0	1	0	1	0	0	0	4	0	0	8
25	DURR,Nadirah	g	0-0	0-0	0-0	1	0	1	0	0	0	0	0	0	6
30	D'OLIVEIRA,Kianna	g	1-8	0-0	0-0	5	3	8	3	2	0	2	1	0	20
32	THORNTON,Alexis	g	3-5	2-3	0-0	0	1	1	1	8	0	2	0	2	20
34	DUKES,Chelsea	g	0-3	0-2	0-0	0	0	0	0	0	0	2	0	2	11
Team						3	1	4							
Totals			12-61	3-10	8-14	21	13	34	20	35	4	35	3	16	200

FG % 1st Half: 7-32 21.9% 2nd half: 5-29 17.2% Game: 12-61 19.7%
 3FG % 1st Half: 2-5 40.0% 2nd half: 1-5 20.0% Game: 3-10 30.0%
 FT % 1st Half: 3-7 42.9% 2nd half: 5-7 71.4% Game: 8-14 57.1%

Deadball Rebounds 1,1

Texas 89 • 10-2

#	Player	Total		3-Ptr		Rebounds			PF	TP	A	TO	Blk	Stl	Min
		FG-FGA	FG-FGA	FT-FTA	Off	Def	Tot								
22	Gayle, Ashley	f	2-5	0-0	3-3	3	5	8	1	7	1	1	4	1	17
45	Reed, Cokie	c	3-5	0-0	2-3	1	1	2	3	8	0	3	3	0	16
12	Anderson, Yvonne	g	4-9	0-2	4-8	0	2	2	3	12	4	5	0	5	24
04	Fussell, Chassidy	g	4-10	2-5	2-2	0	0	0	1	12	2	3	0	2	26
33	Fontenette, Ashleigh	g	6-9	1-1	1-2	1	3	4	0	14	5	2	1	2	27
00	Brewer, Kayla	g	3-4	0-0	1-2	3	4	7	1	7	0	1	1	0	19
04	Enemkpali, Nneka	g	1-4	0-0	2-2	6	3	9	2	4	3	5	1	1	18
11	Bass, Chelsea	g	2-6	1-4	2-3	0	3	3	1	7	1	4	0	3	18
25	Major, Ronisha	g	2-2	0-0	2-2	2	2	4	1	6	0	0	0	0	14
44	Hartung, Anne Marie	g	5-7	0-0	2-2	1	6	7	3	12	0	1	1	5	21
Team						3	3	6							
Totals			32-61	4-12	21-29	20	32	52	16	89	16	25	11	19	200

FG % 1st Half: 16-33 48.5% 2nd half: 16-28 57.1% Game: 32-61 52.5%
 3FG % 1st Half: 4-10 40.0% 2nd half: 0-2 0.0% Game: 4-12 33.3%
 FT % 1st Half: 13-15 86.7% 2nd half: 8-14 57.1% Game: 21-29 72.4%

Deadball Rebounds 3,1

Officials: Scott Yarbrough, Bobby Jarmon, Chaney Muench
 Technical fouls: Delaware State University-None, Texas-Reed, Cokie.
 Attendance: 3017

Score by periods	1st	2nd	Total
Delaware State University	19	16	35
Texas	49	40	89

Points DSUW 35, UT 89

Last FG - DSUW 2nd-00:01, UT 2nd-00:21.
 Largest lead - DSUW None, UT by 56 2nd-00:21.

Score tied - 1 time.
 Lead changed - 0 times.

15 Fordham 63, Delaware State 48

Dover, Del. | Memorial Hall | January 4, 2012

Fordham 63 • 9-6

#	Player	Total		3-Ptr		Rebounds			PF	TP	A	TO	Blk	Stl	Min
		FG-FGA	FG-FGA	FT-FTA	Off	Def	Tot								
21	STODDART, Charlotte	f	3-7	1-2	2-4	2	8	10	0	9	2	1	0	0	38
02	GASKIN, Christina	f	2-5	1-2	0-0	1	1	2	3	5	0	2	0	0	20
02	COLLINS, Arielle	g	3-8	1-4	2-2	0	2	2	1	9	6	7	0	4	38
41	PETERS, Becky	g	3-5	1-2	3-4	0	6	6	2	10	1	1	0	1	32
02	CORNING, Abigail	g	7-11	4-7	1-1	0	2	2	1	19	3	3	0	1	28
04	DURANT, Taryn	g	0-1	0-0	1-2	0	3	3	1	1	1	1	0	1	13
11	TAPIO, Emily	g	0-0	0-0	2-4	0	0	0	3	2	0	1	0	0	15
12	MCGOVERN, Kelly	g	0-0	0-0	0-0	0	0	0	1	0	0	1	0	0	3
31	MILNER, Liz	g	2-3	2-2	2-2	1	1	2	1	8	0	2	0	0	13
Team						1	3	4							
Totals			20-40	10-19	13-19	5	26	31	13	63	13	19	0	7	200

FG % 1st Half: 13-26 50.0% 2nd half: 7-14 50.0% Game: 20-40 50.0%
 3FG % 1st Half: 8-15 53.3% 2nd half: 2-4 50.0% Game: 10-19 52.6%
 FT % 1st Half: 3-3 100.0% 2nd half: 10-16 62.5% Game: 13-19 68.4%

Deadball Rebounds 5

Delaware State University 48 • 3-12

#	Player	Total		3-Ptr		Rebounds			PF	TP	A	TO	Blk	Stl	Min
		FG-FGA	FG-FGA	FT-FTA	Off	Def	Tot								
14	TATE,Keyanna	f	2-5	0-0	0-0	0	0	0	2	4	1	2	0	1	26
24	HAWKINS,Tierra	f	7-11	0-0	0-3	1	6	7	2	14	1	2	2	2	34
30	D'OLIVEIRA,Kianna	f	2-3	0-0	3-10	1	2	3	4	7	3	2	0	2	32
05	BRISTOW,Tasia	g	1-7	0-2	2-2	0	1	1	2	4	4	6	0	3	37
34	DUKES,Chelsea	g	6-15	2-5	0-0	2	1	3	2	14	1	1	0	1	32
15	WHITE,Tarshaye	g	0-1	0-0	0-0	0	0	0	0	0	1	0	0	0	7
21	REDDEN,Coreenah	g	0-0	0-0	0-0	1	0	1	2	0	0	2	0	0	7
25	DURR,Nadirah	g	0-0	0-0	0-0	0	1	1	0	0	0	0	0	0	6
32	THORNTON,Alexis	g	2-4	0-1	0-0	1	0	1	0	4	0	0	0	0	12
51	AHAIWE,Uchechi	g	0-2	0-0	1-2	3	2	5	1	1	0	1	0	0	7
Team						0	3	3							
Totals			20-48	2-8	6-17	9	16	25	15	48	10	17	2	9	200

FG % 1st Half: 10-29 34.5% 2nd half: 10-19 52.6% Game: 20-48 41.7%
 3FG % 1st Half: 1-5 20.0% 2nd half: 1-3 33.3% Game: 2-8 25.0%
 FT % 1st Half: 1-2 50.0% 2nd half: 5-15 33.3% Game: 6-17 35.3%

Deadball Rebounds 4

Officials: Roy Jackson, Timothy Bryant, Angela Jones
 Technical fouls: Fordham-None, Delaware State University-None.
 Attendance: 114

Score by periods	1st	2nd	Total
Fordham	37	26	63
Delaware State University	22	26	48

Points FOR 63, DSUW 48

Last FG - FOR 2nd-00:31, DSUW 2nd-01:37.
 Largest lead - FOR by 20 2nd-04:00, DSUW by 6 1st-18:00.

Score tied - 0 times.
 Lead changed - 3 times.

16 UMES 69, Delaware State 56*

Dover, Del. | Memorial Hall | January 14, 2012

U. of Maryland Eastern Shore 69 • 4-10; 2-1 MEAC

#	Player	Total		3-Ptr		Rebounds			PF	TP	A	TO	Blk	Stl	Min
		FG-FGA	FG-FGA	FT-FTA	Off	Def									

17

Bethune-Cookman 52, Delaware State 50*
Dover, Del. | Memorial Hall | January 21, 2012

Bethune-Cookman 52 • 6-12, 3-3 MEAC

#	Player	Total			Rebounds			PF	TP	A	TO	Blk	Stl	Min	
		FG-FGA	FG-FGA	FT-FTA	Off	Def	Tot								
01	ROBERTS,Cleniece	f	3-6	0-1	2-3	4	3	7	4	8	1	1	1	1	34
10	CRAWFORD,Kayla	f	2-3	0-0	0-0	1	5	6	1	4	0	1	1	0	14
12	FRANK,Demetria	g	4-9	0-0	6-8	1	4	5	4	14	4	5	2	6	39
15	ELUM,Jasmine	g	4-10	1-5	1-2	1	1	2	3	10	0	2	0	0	28
20	ISAAC,Jalisa	g	1-9	0-2	1-2	0	3	3	0	3	1	0	2	1	30
03	KING,Whitney		3-7	0-3	3-4	0	2	2	1	9	3	0	1	1	20
11	HARRIS,Austen		0-0	0-0	0-0	0	0	0	1	0	0	0	0	0	5
23	REDMON, Kiara		0-1	0-0	0-0	1	2	3	0	0	0	0	0	0	8
25	NEAL,Sharnese		2-3	0-0	0-0	0	1	1	2	4	1	2	0	2	19
34	QUIGLEY,Khalilah		0-1	0-0	0-0	0	0	0	0	0	0	1	0	0	2
42	DEVANE,Kiki		0-0	0-0	0-0	0	1	1	1	0	0	0	0	0	1
	Team					1	0	1			2				
Totals			19-49	1-11	13-19	9	22	31	17	52	10	14	7	11	200

FG % 1st Half: 5-20 25.0% 2nd half: 14-29 48.3% Game: 19-49 38.8% Deadball
3FG % 1st Half: 1-6 16.7% 2nd half: 0-5 0.0% Game: 1-11 9.1% Rebounds
FT % 1st Half: 5-8 62.5% 2nd half: 8-11 72.7% Game: 13-19 68.4% 2

Delaware State University 50 • 3-14, 0-4 MEAC

#	Player	Total			Rebounds			PF	TP	A	TO	Blk	Stl	Min	
		FG-FGA	FG-FGA	FT-FTA	Off	Def	Tot								
14	TATE,Keyanna	f	1-1	0-0	0-0	3	1	4	1	2	1	4	0	0	17
24	HAWKINS,Tierra	f	5-11	0-0	4-8	3	5	8	2	14	0	3	1	0	30
30	D'OLIVEIRA,Kianna	f	3-14	0-1	4-4	5	7	12	2	10	0	2	1	1	35
05	BRISTOW,Tasia	g	1-10	1-4	4-4	2	2	4	3	7	3	5	1	1	33
12	HARMON,Deanna	g	3-12	0-0	0-1	3	2	5	4	6	2	3	0	2	35
15	WHITE,Tarshaye		0-1	0-1	0-0	0	0	0	0	0	0	0	0	0	6
34	DUKES,Chelsea		3-6	2-4	1-3	0	2	2	3	9	3	0	1	1	34
51	AHAIWE,Uchechi		0-1	0-0	2-4	1	4	5	1	2	0	2	0	0	10
	Team					6	2	8							
Totals			16-56	3-10	15-24	23	25	48	16	50	9	19	4	5	200

FG % 1st Half: 8-30 26.7% 2nd half: 8-26 30.8% Game: 16-56 28.6% Deadball
3FG % 1st Half: 2-6 33.3% 2nd half: 1-4 25.0% Game: 3-10 30.0% Rebounds
FT % 1st Half: 4-9 44.4% 2nd half: 11-15 73.3% Game: 15-24 62.5% 4

Officials: Richelle Brown, Nykeshia Thompson, Kenneth Stephens
Technical fouls: Bethune-Cookman-None. Delaware State University-None.
Attendance: 834

Score by periods	1st	2nd	Total
Bethune-Cookman	16	36	52
Delaware State University	22	28	50

Points	In	Off	2nd	Fast	Bench
	Paint	T/O	Chance	Break	
BCUW	30	20	6	10	13
DSUW	20	17	19	0	11

Last FG - BCUW 2nd-01:25, DSUW 2nd-00:22.
Largest lead - BCUW by 5 2nd-01:25, DSUW by 12 1st-06:50.

Score tied - 1 time.
Lead changed - 1 time.

18

Florida A&M at Delaware State*
Dover, Del. | Memorial Hall | January 23, 2012

19

Delaware State at North Carolina Central*
Durham, N.C. | McDougald-McLendon Gym | January 28, 2012

20

Delaware State at North Carolina A&T
Greensboro, N.C. | Corbett Center | January 30, 2012



2011-12 DSU WOMEN'S BASKETBALL
 Delaware State University Combined Team Statistics (as of Jan 21, 2012)
All games



RECORD:	OVERALL	HOME	AWAY	NEUTRAL
ALL GAMES	3-14	3-5	0-7	0-2
CONFERENCE	0-4	0-2	0-2	0-0
NON-CONFERENCE	3-10	3-3	0-5	0-2

#	Player	Total		3-Point		F-Throw		Rebounds																	
		gp-gs	min	avg	fg-fga	fg%	3fg-fga	3fg%	ft-fta	ft%	off	def	tot	avg	pf	dq	a	to	blk	stl	pts	avg			
24	HAWKINS,Tierra	17-16	491	28.9	90-215	.419	0-5	.000	39-67	.582	41	64	105	6.2	40	0	9	46	16	25	219	12.9			
05	BRISTOW,Tasia	17-17	553	32.5	68-200	.340	19-74	.257	53-61	.869	15	26	41	2.4	51	1	35	61	4	36	208	12.2			
12	HARMON,Deanna	16-16	576	36.0	39-124	.315	5-20	.250	41-64	.641	21	50	71	4.4	46	0	43	57	1	36	124	7.8			
30	D'OLIVEIRA,Kianna	8-4	206	25.8	17-54	.315	0-1	.000	19-29	.655	25	29	54	6.8	23	0	7	17	8	5	53	6.6			
34	DUKES,Chelsea	13-1	284	21.8	27-83	.325	13-42	.310	14-18	.778	9	11	20	1.5	18	0	9	18	2	8	81	6.2			
14	TATE,Keyanna	17-17	460	27.1	29-90	.322	0-1	.000	28-36	.778	34	36	70	4.1	41	0	20	38	5	17	86	5.1			
51	AHAIWE,Uchechi	17-13	234	13.8	33-69	.478	0-0	.000	15-33	.455	36	35	71	4.2	36	1	9	23	4	4	81	4.8			
32	THORNTON,Alexis	16-0	195	12.2	18-63	.286	10-33	.303	5-5	1.000	6	6	12	0.8	8	0	1	17	1	7	51	3.2			
25	DURR,Nadirah	15-1	166	11.1	7-24	.292	0-0	.000	2-6	.333	14	17	31	2.1	20	0	6	11	2	5	16	1.1			
21	REDDEN,Coreenah	14-0	116	8.3	5-15	.333	0-0	.000	3-10	.300	5	5	10	0.7	22	1	6	13	0	6	13	0.9			
03	WOODRUFF,Morgan	11-0	96	8.7	0-5	.000	0-0	.000	2-3	.667	3	5	8	0.7	14	0	0	14	1	4	2	0.2			
15	WHITE,Tarshaye	4-0	23	5.8	0-4	.000	0-2	.000	0-0	.000	1	0	1	0.3	0	0	1	2	0	0	0	0.0			
Team											49	34	83												11
Total.....		17	3400		333-946	.352	47-178	.264	221-332	.666	259	318	577	33.9	319	3	146	328	44	153	934	54.9			
Opponents.....		17	3400		379-845	.449	56-212	.264	303-422	.718	213	424	637	37.5	276	-	223	330	72	171	1117	65.7			

TEAM STATISTICS	DSUW	OPP	Date	Opponent	Score	Att.
SCORING	934	1117	11/12/11	WILMINGTON UNIVERSIT	w 80-32	384
Points per game	54.9	65.7	11/15/11	WESLEY COLLEGE	w 85-53	378
Scoring margin	-10.8	-	11/19/11	at Wright State	L 53-57	319
FIELD GOALS-ATT	333-946	379-845	11/23/11	NJIT	L 49-65	174
Field goal pct	.352	.449	# 11/26/11	at East Carolina	L 47-54	1328
3 POINT FG-ATT	47-178	56-212	# 11/27/11	vs Robert Morris	L 67-75	132
3-point FG pct	.264	.264	* 12/03/11	at U. of Maryland Eastern Shore	L 32-60	1985
3-pt FG made per game	2.8	3.3	* 12/5/11	at Howard	L 49-59	298
FREE THROWS-ATT	221-332	303-422	12/08/11	at Maryland	L 33-108	2351
Free throw pct	.666	.718	12/11/11	ST. FRANCIS (NY)	w 73-66	123
F-Throws made per game	13.0	17.8	\$ 12/17/11	at North Florida	L 61-72	618
REBOUNDS	577	637	\$ 12/18/11	vs FIU	L 57-73	581
Rebounds per game	33.9	37.5	12/22/11	TOWSON	L 59-70	102
Rebounding margin	-3.5	-	12/28/11	at Texas	L 35-89	3017
ASSISTS	146	223	1/4/12	FORDHAM	L 48-63	114
Assists per game	8.6	13.1	* 1/14/12	U. OF MARYLAND EASTERN SHORE	L 56-69	875
TURNOVERS	328	330	* 1/21/12	BETHUNE-COOKMAN	L 50-52	834
Turnovers per game	19.3	19.4	# = 10th Annual ECU Thanksgiving Classic			
Turnover margin	+0.1	-	\$ = UNF Osprey Holiday Classic			
Assist/turnover ratio	0.4	0.7	* = Conference game			
STEALS	153	171				
Steals per game	9.0	10.1				
BLOCKS	44	72				
Blocks per game	2.6	4.2				
ATTENDANCE	2984	10629				
Home games-Avg/Game	8-373	7-1417				
Neutral site-Avg/Game	-	2-356				

Score by Periods	1st	2nd	Totals
Delaware State Univer	418	516	934
Opponents	574	543	1117