



## 2016-17 Drexel Women's Squash ROSTER

NAME	CL	HOMETOWN / HIGH SCHOOL
Apoorva Addepalli	So.	Chennai, India / Bhavans Rajaji Vidyashram
Kathryn Bottger	So.	Newtown Square, Pa. / The Agnes Irwin School
Maria Diagama	Jr.	Bogota, Colombia / Colegio Santa Maria
Mary Fung-A-Fat	Sr.	Georgetown, Guyana / The Marian Academy
Kristine Giltvedt	Sr.	Portland, Ore. / St. Mary's Academy
Hayley Hughes	Jr.	Auckland, New Zealand / Epsom Girls Grammar
Kaitlyn Money	Sr.	Vancouver, B.C. / York House School
Ryan Morgan	Jr.	Bryn Mawr, Pa. / Baldwin School
Fiona Power	So.	Galway, Ireland / Coláiste Iognáid
Jennifer White	Jr.	Gladwyne, Pa. / Harriton

### COACHES

Head Coach: John White (sixth season)

Assistant Coach: Kelsey Engman (fourth season)

### SCHEDULE/RESULTS

Overall: 0-1 | Home: 0-0 | Away: 0-1 | Neutral: 0-0

DAY	DATE	OPPONENT	LOCATION	TIME/RESULT	OVERALL
Tue.	Nov. 15	No. 14 Franklin and Marshall	Lancaster, Pa.	L, 9-0	0-1
Sat.	Nov. 19	Columbia	New York, N.Y.	2 p.m.	
Sun.	Nov. 20	Trinity	Hartford, Conn.	10 a.m.	
Sun.	Nov. 20	Bowdoin	Hartford, Conn.	noon	
Thu.	Dec. 1	Princeton	Princeton, N.J.	6 p.m.	
Fri.	Dec. 2	Middlebury	Middlebury, Vt.	6 p.m.	
Sat.	Dec. 3	Williams	Williamstown, Mass.	2 p.m.	
<b>Fri.</b>	<b>Jan. 13</b>	<b>Harvard</b>	<b>Kline &amp; Specter Squash Center</b>	<b>noon</b>	
<b>Mon.</b>	<b>Jan. 16</b>	<b>Wellesley</b>	<b>Kline &amp; Specter Squash Center</b>	<b>6 p.m.</b>	
<b>Tue.</b>	<b>Jan. 17</b>	<b>Penn</b>	<b>Kline &amp; Specter Squash Center</b>	<b>6 p.m.</b>	
Sat.	Jan. 21	Cornell	Ithaca, N.Y.	2 p.m.	
Sun.	Jan. 22	Hobart and William Smith	Geneva, N.Y.	10 a.m.	
<b>Fri.</b>	<b>Jan. 27</b>	<b>Yale</b>	<b>Kline &amp; Specter Squash Center</b>	<b>2 p.m.</b>	
<b>Sun.</b>	<b>Jan. 29</b>	<b>Dartmouth</b>	<b>Kline &amp; Specter Squash Center</b>	<b>10 a.m.</b>	
Fri.	Feb. 10	George Washington	Washington, D.C.	6 p.m.	
Sun.	Feb. 12	Dickinson	Kline & Specter Squash Center	noon	
Wkd	Feb. 24-26	Team Nationals	Princeton, N.J.	All Day	
Wkd	Mar. 3-5	Individual Championships	Hanover, N.H.	All Day	

## 2016-17 Drexel Women's Squash

### INDIVIDUAL RECORDS

Player	1	2	3	4	5	6	7	8	9	Overall
Apoorva Addepalli				0-1						0-1 (0.000)
Kathryn Bottger					0-1					0-1 (0.000)
Maria Diagama						0-1				0-1 (0.000)
Mary Fung-A-Fat		0-1								0-1 (0.000)
Kristine Giltvedt								0-1		0-1 (0.000)
Hayley Hughes										0-0 (0.000)
Kaitlyn Money							0-1			0-1 (0.000)
Ryan Morgan	0-1									0-1 (0.000)
Fiona Power			0-1							0-1 (0.000)
Jennifer White									0-1	0-1 (0.000)
Team										0-0 (0.000)
<b>OVERALL</b>	<b>0-1</b>	<b>0-1</b>	<b>0-1</b>	<b>0-1</b>	<b>0-1</b>	<b>0-1</b>	<b>0-1</b>	<b>0-1</b>	<b>0-1</b>	<b>0-9 (0.000)</b>

### 2016-17 Dunlop Women's College Squash Association Team Ranking

Preseason: 10

### 2015-16 Dunlop Women's College Squash Association Team Ranking

Highest: 9

Lowest: 13

### 2014-15 Team Ranking

Highest: 13

Lowest: 15

### 2013-14 Team Ranking

Highest: 13

Lowest: 19

### 2012-13 Team Ranking

Highest: 20

Lowest: 32

### 2011-12 Team Ranking

Highest: 34

Lowest: 36



# 2016-17 Drexel Women's Squash

## MATCH RESULTS

### L1: No. 14 Franklin & Marshall 9, No. 10 Drexel 0

Tuesday, Nov. 15

- 1 | Fiona Murphy (F&M) def. **Ryan Morgan (Drexel)**; 11-6, 11-7, 11-5
- 2 | Sherilyn Yang (F&M) def. **Mary Fung-A-Fat (Drexel)**; 11-8, 6-11, 11-7, 11-5
- 3 | Lauren Johnston (F&M) def. **Fiona Power (Drexel)**; 11-9, 6-11, 11-8, 11-9
- 4 | Dulakshi Elikewela (F&M) def. **Apoorva Addepalli (Drexel)**; 12-10, 6-11, 18-20, 11-4, 11-9
- 5 | Andreina Benedith (F&M) def. **Kathryn Bottger (Drexel)**; 11-8, 11-6, 11-4
- 6 | Ellen Verry (F&M) def. **Maria Diagama (Drexel)**; 8-11, 11-3, 15-17, 11-4, 11-9
- 7 | Katherine Galambos (F&M) def. **Kaitlyn Money (Drexel)**; 11-9, 11-6, 5-11, 11-5
- 8 | Kate O'Brien (F&M) def. **Kristine Giltvedt (Drexel)**; 11-7, 11-7, 11-2
- 9 | Clare Tompkins (F&M) def. **Jennifer White (Drexel)**; 11-4, 11-2, 11-1



## 2016-17 Drexel Women's Squash INDIVIDUALS

### APOORVA ADDEPALLI

Year: Sophomore

Hometown: Chennai, India

High School: Bhavans Rajaji Vidyashram

DAY	DATE	POS	OPPONENT	SCHOOL	W/L	SCORE	RECORD
Tues.	Nov. 15	4	Dulakshi Elikewela	F&M	L	10-12, 11-6, 20-18, 4-11, 9-11	0-1

After...

Winning first game: --

Losing first game: 0-1

Winning first 2 games: --

Losing first 2 games: --

Tied after 2 games: 0-1

Number of--

3-game wins: --

4-game wins: --

5-game wins: --

Default wins: --

3-game losses: --

4-game losses: --

5-game losses: 1

Default losses: --

Current Streak: L1

Record at position...

No. 1: --

No. 2: --

No. 3: --

No. 4: 0-1

No. 5: --

No. 6: --

No. 7: --

No. 8: --

No. 9: --

Career Record...

2016-17: 0-1 (0.000)

2015-16: 8-10 (0.444)

Overall: 8-11



## 2016-17 Drexel Women's Squash INDIVIDUALS

### Kathryn Bottger

Year: Sophomore

Hometown: Newtown Square, Pa.

High School: The Agnes Irwin School

DAY	DATE	POS	OPPONENT	SCHOOL	W/L	SCORE	RECORD
Tues.	Nov. 15	5	Andreina Benedith	F&M	L	8-11, 6-11, 4-11	0-1

After...

Winning first game: --

Losing first game: 0-1

Winning first 2 games: --

Losing first 2 games: 0-1

Tied after 2 games: --

Number of--

3-game wins: --

4-game wins: --

5-game wins: --

Default wins: --

3-game losses: 1

4-game losses: --

5-game losses: --

Default losses: --

Current Streak: L1

Record at position...

No. 1: --

No. 2: --

No. 3: --

No. 4: --

No. 5: 0-1

No. 6: --

No. 7: --

No. 8: --

No. 9: --

Career Record...

2016-17: 0-1 (0.000)

2015-16: 4-4 (0.500)

Overall: 4-5



## 2016-17 Drexel Women's Squash INDIVIDUALS

### MARIA DIAGAMA

Year: Senior

Hometown: Bogota, Colombia

High School: Colegio Santa Maria

DAY	DATE	POS	OPPONENT	SCHOOL	W/L	SCORE	RECORD
Tues.	Nov. 15	6	Ellen Verry	F&M	L	11-8, 3-11, 17-15, 4-11, 9-11	0-1

After...

Winning first game: 0-1

Losing first game: --

Winning first 2 games: --

Losing first 2 games: --

Tied after 2 games: 0-1

Number of--

3-game wins: --

4-game wins: --

5-game wins: --

Default wins: --

3-game losses: --

4-game losses: --

5-game losses: 1

Default losses: --

Current Streak: L1

Record at position...

No. 1: --

No. 2: --

No. 3: --

No. 4: --

No. 5: --

No. 6: 0-1

No. 7: --

No. 8: --

No. 9: --

Career Record...

2016-17: 0-1 (0.000)

2015-16: 6-12 (0.333)

2014-15: 0-0 (0.000)

2013-14: 5-5 (0.500)

Overall: 11-18



## 2016-17 Drexel Women's Squash INDIVIDUALS

### MARY FUNG-A-FAT

Year: Senior

Hometown: Georgetown, Guyana

High School: The Marian Academy

DAY	DATE	POS	OPPONENT	SCHOOL	W/L	SCORE	RECORD
Tues.	Nov. 15	2	Sherilyn Yang	F&M	L	8-11, 11-6, 7-11, 5-11	0-1

After...

Winning first game: --

Losing first game: 0-1

Winning first 2 games: --

Losing first 2 games: --

Tied after 2 games: 0-1

Number of--

3-game wins: --

4-game wins: --

5-game wins: --

Default wins: --

3-game losses: --

4-game losses: 1

5-game losses: --

Default losses: --

Current Streak: --

Record at position...

No. 1: --

No. 2: 0-1

No. 3: --

No. 4: --

No. 5: --

No. 6: --

No. 7: --

No. 8: --

No. 9: --

Career Record...

2016-17: 0-1 (0.000)

2015-16: 12-10 (0.545)

2014-15: 11-11 (0.500)

2013-14: 11-7 (0.611)

Overall: 34-29



## 2016-17 Drexel Women's Squash INDIVIDUALS

### KRISTINE GILTVEDT

Year: Senior

Hometown: Portland, Ore.

High School: St. Mary's Academy

DAY	DATE	POS	OPPONENT	SCHOOL	W/L	SCORE	RECORD
Tues.	Nov. 15	8	Katie O'Brien	F&M	L	7-11, 7-11, 2-11	0-1

After...

Winning first game: --

Losing first game: 0-1

Winning first 2 games: --

Losing first 2 games: 0-1

Tied after 2 games: --

Number of--

3-game wins: --

4-game wins: --

5-game wins: --

Default wins: --

3-game losses: 1

4-game losses: --

5-game losses: --

Default losses: --

Current Streak: --

Record at position...

No. 1: --

No. 2: --

No. 3: --

No. 4: --

No. 5: --

No. 6: --

No. 7: --

No. 8: 0-1

No. 9: --

Career Record...

2016-17: 0-1 (0.000)

2015-16: 0-0 (0.000)

2014-15: 7-11 (0.389)

2013-14: 5-2 (0.714)

Overall: 12-14





## 2016-17 Drexel Women's Squash INDIVIDUALS

### HAYLEY HUGHES

Year: Junior

Hometown: Auckland, New Zealand

High School: Epsom Girls Grammar

DAY	DATE	POS	OPPONENT	SCHOOL	W/L	SCORE	RECORD
Has yet to appear in a No. 1-9 match							0-0

After...

Winning first game: --

Losing first game: --

Winning first 2 games: --

Losing first 2 games: --

Tied after 2 games: --

Number of--

3-game wins: --

4-game wins: --

5-game wins: --

Default wins: --

3-game losses: --

4-game losses: --

5-game losses: --

Default losses: --

Current Streak: --

Record at position...

No. 1: --

No. 2: --

No. 3: --

No. 4: --

No. 5: --

No. 6: --

No. 7: --

No. 8: --

No. 9: --

Career Record...

2016-17: 0-0 (0.000)

2015-16: 13-7 (0.650)

2014-15: 12-7 (0.631)

Overall: 25-14



## 2016-17 Drexel Women's Squash INDIVIDUALS

### KAITLYN MONEY

Year: Senior

Hometown: Vancouver, B.C.

High School: York House School

<u>DAY</u>	<u>DATE</u>	<u>POS</u>	<u>OPPONENT</u>	<u>SCHOOL</u>	<u>W/L</u>	<u>SCORE</u>	<u>RECORD</u>
Tues. Nov. 15	7		Katherine Galambos	F&M	L	9-11, 6-11, 11-5, 5-11	0-1

After...

Winning first game: --

Losing first game: 0-1

Winning first 2 games: --

Losing first 2 games: 0-1

Tied after 2 games: --

Number of--

3-game wins: --

4-game wins: --

5-game wins: --

Default wins: --

3-game losses: --

4-game losses: 1

5-game losses: --

Default losses: --

Current Streak: --

Record at position...

No. 1: --

No. 2: --

No. 3: --

No. 4: --

No. 5: --

No. 6: --

No. 7: 0-1

No. 8: --

No. 9: --

Career Record...

2016-17: 0-1 (0.000)

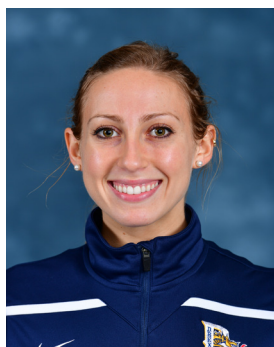
2015-16: 0-0 (0.000)

2014-15: 13-7 (0.650)

2013-14: 11-6 (0.647)

2012-13: 8-9 (0.470)

Overall: 32-23



## 2016-17 Drexel Women's Squash INDIVIDUALS

### RYAN MORGAN

Year: Junior

Hometown: Bryn Mawr, Pa.

High School: Baldwin School

DAY	DATE	POS	OPPONENT	SCHOOL	W/L	SCORE	RECORD
Tues.	Nov. 15	1	Fiona Murphy	F&M	L	6-11, 7-11, 5-11	0-1

After...

Winning first game: --

Losing first game: 0-1

Winning first 2 games: --

Losing first 2 games: 0-1

Tied after 2 games: --

Number of--

3-game wins: --

4-game wins: --

5-game wins: --

Default wins: --

3-game losses: 1

4-game losses: --

5-game losses: --

Default losses: --

Current Streak: --

Record at position...

No. 1: 0-1

No. 2: --

No. 3: --

No. 4: --

No. 5: --

No. 6: --

No. 7: --

No. 8: --

No. 9: --

Career Record...

2015-16: 0-1 (0.000)

2015-16: 15-5 (0.750)

2014-15: 12-10 (0.545)

Overall: 27-16



## 2016-17 Drexel Women's Squash INDIVIDUALS

### FIONA POWER

Year: Sophomore

Hometown: Galway, Ireland

High School: Coláiste Iognáid

DAY	DATE	POS	OPPONENT	SCHOOL	W/L	SCORE	RECORD
Tues.	Nov. 15	3	Lauren Johnston	F&M	L	9-11, 11-6, 8-11, 9-11	0-1

After...

Winning first game: --

Losing first game: 0-1

Winning first 2 games: --

Losing first 2 games: --

Tied after 2 games: 0-1

Number of--

3-game wins: --

4-game wins: --

5-game wins: --

Default wins: --

3-game losses: --

4-game losses: 1

5-game losses: --

Default losses: --

Current Streak: --

Record at position...

No. 1: --

No. 2: --

No. 3: 0-1

No. 4: --

No. 5: --

No. 6: --

No. 7: --

No. 8: --

No. 9: --

Career Record...

2016-17: 0-1 (0.000)

2015-16: 15-6 (0.714)

Overall: 15-6



## 2016-17 Drexel Women's Squash INDIVIDUALS

### JENNIFER WHITE

Year: Junior

Hometown: Gladwyne, Pa.

High School: Harriton

DAY	DATE	POS	OPPONENT	SCHOOL	W/L	SCORE	RECORD
Tues.	Nov. 15	9	Clare Tompkins	F&M	L	4-11, 2-11, 1-11	0-1

After...

Winning first game: --

Losing first game: 0-1

Winning first 2 games: --

Losing first 2 games: 0-1

Tied after 2 games: --

Number of--

3-game wins: --

4-game wins: --

5-game wins: --

Default wins: --

3-game losses: 1

4-game losses: --

5-game losses: --

Default losses: --

Current Streak: --

Record at position...

No. 1: --

No. 2: --

No. 3: --

No. 4: --

No. 5: --

No. 6: --

No. 7: --

No. 8: --

No. 9: 0-1

Career Record...

2016-17: 0-1 (0.000)

Overall: 32-31(.508)