



ILLINOIS STATE 2012-13 WOMEN'S BASKETBALL

ASSISTANT ATHLETICS COMMUNICATIONS DIRECTOR LAUREN HUTCHCRAFT // 203C HORTON FIELD HOUSE // OFFICE: (309) 438-3802 // CELL: (217) 781-2895 // EMAIL: lehutch@ilstu.edu

2012-13 SCHEDULE/RESULTS

10-5 // 2-1 MVC

Date	Opponent	Score/Time
Nov. 1WISC.-PARKSIDE^W, 76-40
Nov. 9MOREHEAD STATE\$W, 62-45
Nov. 11Iowa \$L, 74-64
Nov. 14MEMPHIS \$L, 76-74
Nov. 21Illinois-ChicagoW, 86-74
Nov. 24	...Western KentuckyW, 83-68
Nov. 29	...MILWAUKEEW, 75-54
Dec. 5MICHIGANL, 56-45
Dec. 7NORTHWESTERNW, 64-46
Dec. 16	...BALL STATEW, 71-56
Dec. 19	...PRINCETONL, 67-50
Dec. 21IllinoisW, 69-68
Dec. 30ButlerW, 65-57
Jan. 4NORTHERN IOWA *W, 72-41
Jan. 6BRADLEY *W, 81-65
Jan. 11Creighton *L, 64-45
Jan. 13Drake *2:05 p.m.
Jan. 17	...EVANSVILLE *7:05 p.m.
Jan. 19	...SOUTHERN ILLINOIS * ..	4:05 p.m.
Jan. 25	...INDIANA STATE *7:05 p.m.
Feb. 1Wichita State *7:05 p.m.
Feb. 3Missouri State *2:05 p.m.
Feb. 8DRAKE *7:05 p.m.
Feb. 10	...CREIGHTON *2:05 p.m.
Feb. 14	...Southern Illinois *7:05 p.m.
Feb. 16	...Evansville *5 p.m.
Feb. 24	...Indiana State *1:05 p.m.
Feb. 28	...WICHITA STATE *7:35 p.m.
March 3	...MISSOURI STATE *2:05 p.m.
March 7	...Bradley *6 p.m.
March 9	...Northern Iowa *2 p.m.
Mar 14-17	MVC TournamentTBA

\$ - Preseason WNIT

^ - Exhibition Game

* - Missouri Valley Conference game

HOME GAMES IN CAPS

2012-13 PRESS CONFERENCES

Head coach Stephanie Glance and a Redbird player will hold mid-week press conferences throughout the season. The press conferences will be held in the Redbird Arena media room at 1:30 p.m. on the following dates:

Nov-7	Jan. 14
Nov-28	Jan. 28
Dec-17	Feb. 7
Dec-28	Feb. 25



GAME 16 // DRAKE

Sunday, January 13 // 2:05 p.m. (CST)
Knapp Center (7,152) // Des Moines, Iowa
Listen: GoRedbirds.com | WJBC 1230 AM

REDBIRDS OPEN VALLEY ROAD SCHEDULE AT CREIGHTON, DRAKE

After opening the Missouri Valley Conference season at home with two wins, the Illinois State women's basketball team will continue its first road swing of the conference season at Drake. On Sunday, the Redbirds will take on the Bulldogs at 2:05 p.m., in the Knapp Center.

The Redbirds enter Sunday's game with a Valley record of 2-1, while the Bulldogs are 0-3 and still looking for their first conference win. For her back-to-back double-double performances, ISU sophomore transfer Janae Smith earned her sixth Valley Newcomer of the Week Honor on Monday for her performances against Northern Iowa and Bradley.

Drake just barely leads the all-time series with Illinois State, 33-32. The series began in 1981 and the two teams have met at least twice annually since 1984.

COACHING MATCHUP

Stephanie Glance (Illinois State) - Third Season (52-28)
Jennie Baranczyk (Drake) - First Season (5-9)

FASTBREAK POINTS

- Stephanie Glance is the sixth head coach in Illinois State women's basketball history.
- Illinois State was picked to finish third in the Missouri Valley Conference preseason poll
- Illinois State returns 10 letterwinners and four starters from the 2011-12 team that finished second in the MVC.
- Illinois State is in its 42nd season of women's basketball with an all-time record of 677-508.
- ISU has made six-straight postseason appearances. (1 NCAA and 5 WNIT appearance)

THE STARTING FIVE

NO.	NAME	POS.	GP-GS	PPG	FG%	3FG%	FT%	RPG	A	B	S	MPG
1	Alexis Jenkins	G	15-12	5.0	.373	.360	1.000	2.4	50	1	8	23.0
23	Jamie Russell	G	15-15	13.3	.359	.143	.887	5.5	41	6	37	29.8
24	Katy Winge	G	15-7	4.2	.296	.322	.500	1.5	11	1	5	18.4
25	Janae Smith	F	15-15	16.1	.489	.000	.761	9.5	27	14	12	33.5
31	Maddie Oliver	F	15-15	4.7	.612	.000	.846	3.1	7	7	1	16.0

2012-13 REDBIRD ROSTER

#	NAME	POS	HT.	YR	HOMETOWN (HIGH SCHOOL/LAST SCHOOL)
1	Alexis Jenkins	G	5-6	Sr.-3L	Chicago (University)
3	Candace Sykes	G	5-10	Sr.-2L	St. Anne, Ill. (Alabama)
4	Chloe Nelson	G	5-7	Jr.-2L	Florissant, Mo. (Incarnate Word Academy)
11	Stekara Hall	G	5-8	Fr.- HS	Oak Park, Ill. (Oak Park-River Forest)
14	Alexis Foley	G	5-10	Fr.-HS	White Bear Lake, Minn. (White Bear Lake Area)
22	Alison Seberger	G	6-1	Jr.-2L	Geneva, Ill. (Montini Catholic)
23	Jamie Russell	G	5-8	Sr.-1L	Rock Falls, Ill. (Wisconsin)
24	Katy Winge	G	5-11	So.-1L	Eden Prairie, Minn. (Minnetonka)
25	Janae Smith	F	6-2	So.-Tr.	Matteson, Ill. (College of Charleston)
31	Maddie Oliver	F	6-1	So.-1L	Roland, Iowa (Roland-Story)
32	Octavia Crump	F	5-10	Fr.-HS	Zion, Ill. (Zion-Benton)
35	Brianna Puni	F	6-0	So.-1L	St. Charles, Mo. (Incarnate Word Academy)
50	Megan Grace	C	6-4	Sr.-3L	St. Louis (St. Joseph's Academy)

Head Coach: Stephanie Glance (3rd Season)

Assistant Coaches: Ryan Bragdon, Tynesha Lewis, Sheila Roux

Director of Basketball Operations: Cassie Kowaleski

Coordinator of Basketball Operations: Brenda Keene

PRONUNCIATION GUIDE

Stekara Hall.....Stuh-CARE-ah
Cassie Kowaleski Kuh-vuhl-eski
Brianna PuniPooH-KNEE
Janae Smith Jen-A
Katy Winge..... win-GEE

2012-13 SEASON/CAREER SUPERLATIVES

GAMES PLAYED/STARTS		
	2012-13	CAREER
Octavia Crump	8/0	8/0
Alexis Foley	15/8	15/8
Megan Grace	5/0	59/0
Stekara Hall	8/0	8/0
Alexis Jenkins	15/12	118/29
Chloe Nelson	15/3	65/19
Maddie Oliver	15/15	47/18
Brianna Puni	15/0	35/0
Jamie Russell	15/15	47/47
Alison Seberger	8/0	34/0
Janae Smith	15/15	15/15
Katy Winge	15/7	47/7

DOUBLE-DIGIT GAMES		
	2012-13	CAREER
Points		
Alexis Jenkins	2	12
Maddie Oliver	1	2
Brianna Puni	1	1
Jamie Russell	8	30
Janae Smith	12	12
Candace Sykes	9	28
Katy Winge	2	3

30+ POINTS		
	2012-13	CAREER
Jamie Russell	1	2
Janae Smith	1	1


20+ POINTS		
	2012-13	CAREER
Jamie Russell	3	7
Janae Smith	2	2
Candace Sykes	4	9


5+ ASSISTS		
	2012-13	CAREER
Alexis Foley	1	1
Alexis Jenkins	4	10
Chloe Nelson	1	1
Jamie Russell	2	9
Janae Smith	1	1
Candace Sykes	1	1

3+ BLOCKS		
	2012-13	CAREER
Brianna Puni	1	1
Janae Smith	2	2
Candace Sykes	1	5

3+ STEALS		
	2012-13	CAREER
Alexis Foley	1	1
Jamie Russell	6	22
Candace Sykes	1	11

TALE OF THE TAPE

DRAKE BULLDOGS	
	
Head Coach: Jennie Baranczyk	
Conference: Missouri Valley	
2012-13 Record: 5-9, 0-3	
PPG	64.1
OPP. PPG	67.3
SCORING MARGIN	-3.1
FG%	.384
OPP. FG%	.407
3-PT FG%	.289
OPP. 3-PT FG%	.314
FT%	.684
OPP. FT%	.659
RPG	39.6
OPP. RPG	40.4
REBOUND MARGIN	-0.8
APG	13.1
TOPG	17.1
TO MARGIN	-1.1
BPG	2.4
SPG	7.1
TEAM LEADERS	
SCORING	
K. Clark	13.3
FG %	
S. Running	.489
3-PT FG %	
C. Grenfell	.394
FT %	
K. Clark	.796
REBOUNDING	
M. Reid	8.2
ASSISTS	
A. Marschner	6.8
BLOCKS	
S. Running	10
STEALS	
K. Clark	2.8

ILLINOIS STATE REDBIRDS	
	
Head Coach: Stephanie Glance	
Conference: Missouri Valley	
2012-13 Record: 10-5, 2-1	
PPG	67.1
OPP. PPG	60.7
SCORING MARGIN	+6.3
FG%	.395
OPP. FG%	.389
3-PT FG%	.331
OPP. 3-PT FG%	.298
FT%	.758
OPP. FT%	.694
RPG	41.5
OPP. RPG	36.2
REBOUND MARGIN	+5.3
APG	13.3
TOPG	15.5
TO MARGIN	+0.5
BPG	3.5
SPG	7.4
TEAM LEADERS	
SCORING	
J. Smith	16.1
FG %	
J. Smith	.489
3-PT FG %	
C. Sykes	.378
FT %	
J. Russell	.887
REBOUNDING	
J. Smith	9.5
ASSISTS	
A. Jenkins	5.0
BLOCKS	
J. Smith	1.4
STEALS	
J. Russell	3.7

ILLINOIS STATE-DRAKE SERIES

Drake just barely leads the all-time series with Illinois State, 33-32. The series began in 1981 and the two teams have met at least twice annually since 1984. ISU posted a 14-10 record against Drake through 1994. From 1995-2004, The Bulldogs went 18-3 against ISU, including a 14-game winning streak. ISU is 13-5 against Drake since 2005, winning six-straight matchups before falling to Drake on Feb. 17, 2011, in Des Moines, Iowa. Drake leads the series 18-12 in games played in Des Moines, Iowa.

IN-SEASON MEDIA CONFERENCES

ISU Athletics Communications will host eight in-season media conferences during the 2012-13 season. Each conference will feature head coach Stephanie Glance and a member of the ISU basketball team. The media conferences start at 1 p.m., and the remaining scheduled dates are: Jan. 14, Jan. 28, Feb. 7 and Feb. 25.

LESS THAN 50

The Illinois State women's basketball team scored 45 points in its 64-45 loss to Creighton (Jan. 11), shooting 29 percent (17-of-59) from the field. It was the second time this season ISU has scored less than 50 points in a game. In the Redbirds loss to Michigan on Dec. 5th, ISU netted 45 points. The last time the Redbirds scored less than 45 points in a game was on March 30, 2011, when ISU fell to USC, 63-36, in the WNIT. ISU shot 33 percent for the game, connecting on 18-of-54 from the field.

BATTLING FOR REBOUNDS

In ISU's loss to Creighton, the Bluejays brought down one more rebound than the Redbirds, 38-37. It was the first time in five games that Illinois State was out-rebounded. ISU out-rebounded four-straight opponents since Princeton (Dec. 19) grabbed one more board than Illinois State. In the Creighton game, **Brianna Puni** pulled down a career-high eight boards.

SINGLE DIGITS

At Creighton, the ISU women's basketball team had eight players score in the game, but none of the players recorded a double digit scoring effort. It was the first time this season that no Redbird players netted 10 or more points.

INSIDE GAME

At Creighton (Jan. 11), the two teams scored a combined nine three pointers, with most of the offense coming from inside. The Bluejays out-scored the Redbirds, 36-18, in the paint. ISU's forwards scored 15 points in the game and were led by **Janae Smith**, who had nine points.

AT THE BREAK

In 13 of Illinois State's 15 games during the 2012-13 season, the way the Redbirds go into the locker room at the half is the way they have ended each game. When leading at the half, ISU is 10-0 on the season, but when trailing or tied on their way into the locker room, the Redbirds are 0-5.

PLAYING THE FIELD

When examining Illinois State's wins and losses, a lot can be said about how the Redbirds play the field. In the 10 wins, ISU is shooting 43 percent from the field (267-of-619). In the five losses, the field goal percentage drops to 32.3 percent (101-of-313). The Redbirds are also scoring 18 points less in their losses (55.6 ppg) than in their wins (72.8 ppg).

BENCH POINTS

In the Redbirds' loss against Memphis, ISU's bench outscored the Tigers, 23-17, marking the first time this season Illinois State's bench outscored an opponent. Since the Memphis game, Illinois State poured in more bench points than all of its opponents until Creighton (Jan. 11), when the Bluejays scored seven more points, 26-19. At Illinois, ISU scored 41 bench points, a season high, compared to the Illini's 13 points. The Redbird bench is outscoring opponents by 124 points, 353-229, through 14 games.

CAREER RECORD WATCH

THREE-POINT FIELD GOALS

1. Kristi Cirone	229
2. Katie Broadway.....	225
3. Jenny Schmidt.....	205
4. Jaci McCormack	183
5. Maggie Krick.....	169
6. Megan McCracken	148
7. Katie Broadway.....	136
8. Cindy Kaufmann.....	129
9. Katie Donovan	104
10. Taren O'Brien	100
11. Candace Sykes	98

BLOCKS

1. Nicolle Lewis.....	260
2. Leslie Ferrell.....	177
3. Kenyatta Shelton	96
4. Cathy Boswell	95
5. Caryn Brune.....	90
6. Kristi Larson	83
Marla Maupin	68
8. Lashawn Johnson	59
9. Ashleen Bracey	55
Hannah Spanich	55
11. Candace Sykes	50
12. Zora Skrabalova	47
13. Valarie Trame.....	42
14. Sharon Blade	41
15. Melanie Ward	40

DOING IT ALL

Janae Smith had to sit out the 2011-12 season due to NCAA transfer rules, but the year-long break hasn't bothered Smith at all, as the sophomore forward is nearly averaging a double-double. Smith is averaging 16.1 points and 9.5 rebounds per game through 15 contests. She ranks in the top-five in five statistical categories in the Valley, including No. 2 in scoring and No. 1 in rebounding. Smith ranks first in defensive rebounds, averaging 6.9 per game, as of Jan. 11.

FOUR IN A ROW

The ISU women's basketball team won four-straight games, its longest win streak of the season. ISU won its final two road games of the non-conference schedule at Illinois (Dec. 21) and Butler (Dec. 30), before opening MVC play with two wins against Northern Iowa (Jan. 4) and Bradley (Jan. 6). The last time ISU had a four-game win streak was during the 2010-11 season, when the Redbirds had four-, five- and seven-game win streaks.

A STRONG OPENING WEEKEND

ISU opened conference play with two wins, which marks the third-straight season the Redbirds have started Valley play undefeated 2-0. Illinois State defeated Northern Iowa (Jan. 4), 72-41, before topping Bradley (Jan. 6), 81-65. Last season, ISU beat Southern Illinois (75-51) and Evansville (62-49) in the opening weekend of conference play for a 2-0 start in the Valley. In the opening weekend of the 2010-11 season, the Redbirds defeated Bradley (83-69) and Northern Iowa (69-60) to grab a 2-0 record in conference play after the first weekend.

KEEPING THE STREAK ALIVE

Illinois State defeated Northern Iowa, 72-41, in its Missouri Valley Conference opener, which marked the seventh-consecutive conference opening win for the Redbirds and improved their record to 20-10 all-time in Valley openers. The 31-point win is the largest victory for ISU this season. The last time the 'Birds opened the conference season with a loss was during the 2005-06 season, when they fell to Southern Illinois (Dec. 30), 87-65, in Redbird Arena.

DE-DE-DE-DEFENSE

For the third time this season, the Illinois State women's basketball team held an opponent to less than 50 points. In ISU's 72-41 victory over UNI, the Redbirds' strong defense held the Panthers to a 29.6 field goal percentage (16-of-54), as UNI only scored 15 points in the second half. With the solid defensive performance by Illinois State, Northern Iowa only dished out two assists as a team. ISU also held Morehead State (45) and Northwestern (46) to less than 50 points. The last time ISU held three opponents to less than 50 points in one season was the 2010-11 season, when the Redbirds held Drake, (45), Southern Illinois (44) and Arkansas (49) below the 50-point mark.

ANOTHER VALLEY HONOR FOR SMITH

Sophomore transfer **Janae Smith** was named the Missouri Valley Conference Newcomer of the Week for the week of Jan. 7. It is the sixth time Smith has earned the honor this season. Smith has played a crucial part for the Redbirds on both the offensive and defensive sides of the ball during the 2012-13 season. Smith had back-to-back double-double performances in the opening weekend of MVC play and has recorded a double-double performance in five of ISU's last six games. Smith is shooting 49 percent from the field and leads the Redbirds with 14 blocks.

CONTROLLING THE BOARDS

In ISU's 72-41 win over UNI (Jan. 4), the Redbirds pulled down 14 more boards than the Panthers, 45-31. It marks the third-straight game Illinois State has pulled down 45 rebounds or more and its fourth-straight game with 40-plus boards. The Redbirds kept the momentum on the boards against Bradley (Jan. 6), bringing down 50 compared to BU's 42. Illinois State has had three games with 50 or more rebounds. On the season, the Redbirds have had 10 games with 40 or more rebounds and have out-rebounded opponents in nine contests.

SEEING DOUBLE

In ISU's 72-41 win over UNI, the Redbirds were led by **Janae Smith** and **Candace Sykes**, as the duo each recorded a double-double. Smith led all players with 23 points and 12 rebounds, while Sykes netted 20 points and pulled down 11 boards. Smith was 7-of-12 from the field and was perfect from the free throw line, making 9-of-9. Sykes was 8-of-15 from the field and shot 50 percent from beyond the arc (4-of-8). It was the second double-double of the season for Sykes. Against Bradley, Smith recorded her third-straight double-double performance with 21 points and 13 rebounds. It was the sixth double-double for Smith, five of which occurred in the last six games.

STOPPING THE SCORER

Coming into the conference opener, Illinois State had to come up with a plan to stop Northern Iowa's Jacqui Kalin, the Missouri Valley Conference's leading scorer through the non-conference schedule, at 17.7 points per game. **Chloe Nelson** took the task and succeeded in her job. Nelson held Kalin to 3-of-11 shooting from the field and 10 points, her second-lowest performance of the season.

STRONG PERFORMANCES

The Redbirds entered Missouri Valley Conference play with an 8-4 non-conference record, as they had one of the toughest non-conference schedules in the Valley. Two of ISU's losses came at the hands of Big Ten Conference foes (Iowa and Michigan), while Princeton was a 2012 NCAA Tournament qualifier. Memphis was able to hang on late and grab the third-round Preseason WNIT win by two points, 76-74. Six of Illinois State's eight wins were won by double-digit margins, while two wins were against Big Ten Conference members (Northwestern and Illinois). ISU ended the non-conference season with strong road wins at Illinois (Dec. 21) and Butler (Dec. 30).

2012-13 REDBIRDS WHEN...

At home	6-3
On the road	4-2
At neutral site	0-0
Leading at half	10-0
Trailing at half	0-4
Tied at half	0-1
In overtime	0-0
Coming off a win	6-4
Coming off a loss	3-1
ISU scores first	7-4
Opponent scores first	2-2
In 1-4 point games	1-1
In 5-9 point games	1-0
In 10-14 point games	1-2
In 15+ point games	7-2
Leading with 5 minutes left in regulation	9-0
Trailing with 5 minutes left in regulation	1-5
Tied with 5 minutes left in regulation	0-0
Scoring less than 50 points	0-2
Scoring 50-59 points	0-1
Scoring 60-69 points	4-1
Scoring 70-79 points	3-1
Scoring 80-89 points	3-0
Scoring 90-99 points	0-0
Scoring 100 + points	0-0
Allowing less than 50 points	3-0
Allowing 50-59 points	3-1
Allowing 60-69 points	3-2
Allowing 70-79 points	1-2
Allowing 80-89 points	0-0
Allowing 90-99 points	0-0
Allowing 100 + points	0-0
Better than 50% FG	0-0
Less than 50% FG	10-5
Opponent better than 50% FG	0-1
Opponent less than 50% FG	10-4
Outshooting opponent	10-0
Outshot by opponent	0-5
Better than 50% 3-Pt. FG	2-0
Less than 50% 3-Pt. FG	8-5
Opponent better than 50% 3-Pt. FG	1-0
Opponent less than 50% 3-Pt. FG	9-5
Better than 50% FT	10-4
Less than 50% FT	0-1
Opponent better than 50% FT	9-5
Opponent less than 50% FT	1-0
Shooting more free throws than opponent	0-3
Shooting less free throws than opponent	1-2
Free throws are even	0-0
ISU starters outscore opponent's	7-0
Opponent's starters outscore ISU	2-5
Starter scoring is even	1-0
Bench scores in double-digits	10-5
Bench outscores opponent's	10-2
Opponent bench outscores ISU's	1-3
Bench scoring is even	0-0
Outrebounding opponent	9-0
Outrebounded by opponent	1-5
Rebounds are even	0-0
10+ assists	9-2
10+ steals	3-1
5+ blocks	4-0
Forcing more turnovers than opponent	3-3
Committing more turnovers than opponent	4-0
In November	4-2
In December	4-2
In January	2-1
In February	0-0
In March	0-0

POWER IN THE POST

In ISU's 65-57 win at Butler in its final non-conference game of the regular season, **Brianna Puni** and **Janae Smith** were a force to be reckoned with down low. The duo both netted 17 points in the game, which was a career high for Puni, who was 8-of-11 from the field, also setting a career-high in both categories. Smith pulled down 11 rebounds, marking her fourth double-double of the season. Puni grabbed six boards, including five offensive boards. Her effort on the offensive end helped the Redbirds make 19 second-chance points, tying a season high.

TOUGH D

In ISU's 65-57 win at Butler (Dec. 30), the Redbirds shot 46 percent from the field, their second-best shooting performance of the season, while the Bulldogs connected on 35 percent of their shots. ISU also had a strong advantage on the boards pulling down 13 more boards than BU, 45-32. Despite Butler's 12 blocks and 15 steals, the Redbirds won their final non-conference game.

HOLDING ON FOR THE WIN

The Redbirds' 69-68 victory over in-state rival Illinois (Dec. 21) was their closest game and victory of the 2012-13 season. In a game that was made up of runs and saw 16 lead changes, free throws proved to be the deciding factor. **Jamie Russell** connected on three free throws with less than two minutes to play in the contest, which would be ISU's only points in the final three minutes of the game. With a 69-68 ISU advantage, Illinois' Karisma Penn was fouled with 37 seconds to play. Penn missed both free throws, and the Illini missed a last second three-point attempt to secure the win for the Redbirds.

TURNOVER CITY

The Redbirds had a season-high 25 turnovers against Illinois on Dec. 21, with 16 coming in the first half. Despite the 25-18 turnover margin, Illinois State was able to hold on to its halftime lead and win the game by one point, 69-68.

BOUNCING BACK

In the Illinois State women's basketball team's loss to Princeton, the Redbirds shot 23.4 percent from the field compared to the Tigers' 46 percent. Despite the lack of offense in the game, ISU regrouped and made 44 percent of its shots from the field in its 69-68 victory over Illinois (Dec. 21), which was the Redbirds' second-highest shooting percentage of the season. **Candace Sykes** and **Janae Smith** each netted double-digit performances in the win.

'BIRDS BATTLE THE BIG TEN

At the end of the Illinois State women's basketball team's 2012-13 nonconference schedule, the Redbirds faced off against four Big Ten opponents. The Redbirds fell to Iowa in the second round of the Preseason WNIT on Nov. 11, in Iowa City, Iowa, and Michigan on Dec. 5, but Illinois State bounced back and defeated Northwestern by 18 points, 64-46, on Dec. 7. ISU topped in-state rival Illinois (Dec. 21), 69-68, for its second-straight victory over a Big Ten opponent. ISU finished the 2012-13 non-conference schedule with a 2-2 record over Big Ten foes. The last time ISU competed against four Big Ten opponents in one season was during the 1990-91 campaign, when the Redbirds competed against Illinois, Indiana, Michigan State and Wisconsin. ISU went 3-1 over Big Ten rivals during that season.

ADDING TO THE ROSTER

Lindsay Smith, a guard from Wisconsin, has transferred to Illinois State to join the women's basketball team, as announced by head coach **Stephanie Glance**. Smith will enroll in classes for the spring semester as a sophomore. She will be eligible to play for the Redbirds after the 2013 fall semester is completed, and is currently a redshirt sophomore. Smith played in 26 games as a freshman at Wisconsin with two starting assignments, averaging 9.7 minutes per game. The DeWitt, Iowa, native earned her first career start at Iowa (Jan. 12), playing 12 minutes and recording three rebounds. Smith netted a career-high six points at Colorado (Nov. 26, 2011), playing a career-high 22 minutes and shooting 2-of-2 beyond the arc, and pulled down a career-high six rebounds against Ohio State (Dec. 30, 2011). Smith averaged 1.8 points and 1.5 rebounds per game last season, scoring in 15 games.

JUST WON'T FALL

In ISU's game against Princeton (Dec. 19), the Redbirds struggled from the field in the first half, shooting 28 percent compared to the Tigers' 46 percent, but a strong showing on the boards and 11 more free throw attempts than Princeton sent the Redbirds into the locker room tied, 42-42, at the half. After struggling at the start of the game, the Redbirds regrouped and ended the first half with a 14-2 run, but after the break, it only got worse for Illinois State. ISU shot 18 percent from the field for the second half and connected on only 23.4 percent of its shots for the game, the lowest percentage in program history. The 17 point loss was ISU's largest losing margin of the season. **Janae Smith** was the only Redbird who seemed to find a rhythm, as she was 7-of-17 from the field, scoring 17 points.

FACING NCAA TOURNEY TEAMS

The Illinois State women's basketball team faced two 2012 NCAA Tournament team in four games, when the Redbirds hosted Michigan (Dec. 5) and Princeton (Dec. 19) at Redbird Arena. ISU fell to both teams. The Wolverines' height proved to be too much, as ISU fell 56-45. The Redbirds struggled from the field, shooting 24.3 percent in the 67-50 loss to the Tigers. Princeton fell in the first round of the tournament, 67-64, to Kansas State. Like Princeton, Michigan also advanced to the NCAA Tournament last season, but fell in the first round to Oklahoma, 88-67.

THE BEST OF THE BEST

Illinois State 20-win seasons:

Team	Record	Pct.	Regular Season Wins	Games to 20 Wins
1. 2009-10	28-7	.800	23	25
1980-81	28-8	.778	22	26
3. 2008-09	27-8	.771	24	24
4. 2007-08	26-7	.788	23	23
5. 2010-11	24-11	.686	20	28
6. 1984-85	23-6	.793	23	25
1988-89	23-8	.742	20	25
1983-84	23-8	.742	22	26
1979-80	23-10	.697	19	28
10. 2006-07	22-11	.667	20	29
11. 1989-90	21-11	.656	19	28
12. 1976-77	20-6	.769	16	25
1982-83	20-10	.667	17	29
1987-88	20-11	.645	18	29

ISU BEST SINGLE-SEASON HOME RECORDS

YEAR	RECORD	PCT.	STREAK
1. 2010-11*	17-1	.944	17
2. 2008-09*	14-1	.933	11
3. 1989-90	13-1	.929	12
4. 1984-85	12-1	.923	8
5. 1988-89	10-1	.909	10
6. 1980-81	8-1	.889	5
7. 1990-91	11-2	.846	6
1996-97	11-2	.846	7
9. 1995-96	10-2	.833	8
10. 1981-82	9-2	.818	9

* Includes postseason

ISU BEST HOME COURT STARTS

1. 2010-11	17-0
2. 1989-90	12-0
3. 2008-09	11-0
4. 2006-07	11-0
5. 1981-82	9-0

PULLING DOWN THE BOARDS

In the Redbirds' win over the Wildcats, Illinois State out-rebounded Northwestern, 54-39, marking its third-largest rebounding margin of the season. Out of ISU's 54 rebounds, 21 came on the offensive end, the most offensive rebounds for the Redbirds this season. Senior Jamie Russell led Illinois State with 10 rebounds, including seven offensive boards. ISU's 54 boards against Northwestern is a season high.

NEED MORE BOARDS

In ISU's 56-45 loss to Michigan (Dec. 5), the Redbirds brought down just 24 rebounds in the game compared to the Wolverines' 42 boards, with just four coming on the offensive end. Prior to the Michigan game, the Redbirds had a season-low 32 rebounds at Memphis (Nov. 18) as a team and a season-low 10 offensive boards at Western Kentucky (Nov. 24).

FOUR REDBIRDS RECORD DOUBLE-DIGIT PERFORMANCES IN BACK-TO-BACK GAMES

The Illinois State women's basketball team won two road games last week and did it with a strong offensive performance from four players. The same four Redbirds recorded double-figure scoring performances in back-to-back games. In ISU's win at UIC, **Candace Sykes** led all Illinois State players with 20 points, while **Janae Smith** added 18. **Jamie Russell** and **Alexis Jenkins** scored 14 and 13 points, respectively. It marked the first time since last season, when ISU had four players in double figures against Missouri State on Feb. 27, 2012. At Western Kentucky, Sykes led all scorers with 22 points, one point shy of her career high, while Smith and Russell had 11 points. Jenkins added 10 points to the ISU total.

OFFENSIVE ATTACK

In ISU's two road wins against Illinois-Chicago and Western Kentucky, the Redbirds scored 80-plus points in each game. At Illinois-Chicago, Illinois State won 86-74 and defeated Western Kentucky, 83-68. With the Redbirds back-to-back 80-plus point victories, ISU only needs one more 80-point victory to match the three it had last season. During the 2011-12 season, Illinois State recorded back-to-back 80-plus point wins against Northern Iowa (84-68) and Bradley (82-63) on Feb. 10 and 12, respectively.

30-FOR-30

Senior guard **Jamie Russell** and sophomore forward **Janae Smith** have made large contributions to the Redbirds early in the season. Both Russell and Smith have recorded 30-plus scoring performances. Russell tied a career-high 30 points, shooting 12-of-28, against Iowa (Nov. 11), as she set or tied a career high in five categories in the game. Russell recorded the first double-double performance of her career. The Rock Falls, Ill., native also accomplished the career-high last season against Eastern Illinois (Nov. 21, 2011). Russell also brought down 12 rebounds, including seven in the second half, and recorded eight steals, just missing a triple-double. In ISU's next game, Smith poured in a career-high 31 points against Memphis (Nov. 18). Smith was 11-of-15 from the field, shooting 73 percent and sank 9-of-10 from the charity stripe.

WATCHING RUSSELL

Illinois State senior guard **Jamie Russell** was added to the 2013 Final Four Watch List, as announced by Overseas Basketball Combines. The watch list is made up of seniors eligible for the WNBA draft at the end of the 2012-13 season. Thirty finalists will have the opportunity to attend the Third-Annual Women's Final Four Combine in New Orleans, April 4-6, to showcase their talents. During the combine, finalists will participate in three scouted games, individual filmed workouts and evaluations of skills. A final roster of finalists will be sent out in February.

REDBIRDS PICKED THIRD IN MVC

The Illinois State women's basketball team was picked to finish in the top-five for the sixth time in the last seven seasons, as the Redbirds were projected to finish third in the Missouri Valley Conference Preseason Poll for the 2012-13 season, as voted on by the league's head coaches, sports information directors and media. Illinois State received 323 votes in the poll, including two first-place votes. ISU has been picked in the top-five in 19 of the 30 preseason polls in conference history. The Redbirds have been picked to finish third eight times in program history. The last time the team was picked to finish third was prior to the 2004-05 season, when the Redbirds finished eighth with a 7-11 conference record.

RUSSELL EARNS PRESEASON HONORS

Senior guard **Jamie Russell** was named to the Missouri Valley Conference Preseason All-Conference team, as voted on by league head coaches, sports information directors and media. Russell is one of five on the preseason all-conference team. She returns for the 2012-13 season as ISU's top returner in seven categories, including points (13.1), field goals (157), steals (82) and assists (109).

TRANSFER FUNDS

Illinois State has a bevy of Division I transfers from some premiere conferences on the 2012-13 roster. Senior **Candace Sykes** transferred from Alabama in January 2010 and enters her third season on the Redbird roster. Senior **Jamie Russell** joined the Redbirds from Wisconsin and begins her second season as a Redbird in 2012-13, after having to sit out during the 2010-11 season due to NCAA transfer regulations. Sophomore **Janae Smith** came to Illinois State from the College of Charleston, and will be eligible for the 2012-13 season, after sitting out the 2011-12 season due to NCAA transfer rules.

SIX-PEAT

Illinois State's berth in the 2012 Postseason WNIT put the Redbirds in the postseason for the sixth-consecutive season. ISU made WNIT trips in five of the last six years and appeared in the NCAA Tournament in 2008. ISU's six-year run ties the longest postseason run in school history. The Redbirds also made six-straight postseason trips from 1980-85.

2012-13 MVC PRESEASON POLL

TEAM	POINTS
1. Creighton (26)	.382
2. Wichita State (12)	.347
3. Illinois State (2)	.323
4. Northern Iowa	.272
5. Missouri State	.265
6. Bradley	.144
7. Indiana State	.135
8. Southern Illinois	.123
9. Drake	.121
10. Evansville	.119

2012-13 MVC STANDINGS

TEAM	MVC	OVERALL
1. Creighton	3-0	13-3
2. Wichita State	2-0	8-6
3. Indiana State	2-1	10-4
Illinois State	2-1	10-5
Northern Iowa	2-1	7-8
6. Southern Illinois	1-1	4-9
Evansville	1-1	3-10
8. Missouri State	0-2	8-6
9. Bradley	0-3	6-8
Drake	0-3	5-9

As of Jan. 11

2012-13 REDBIRD HONOR ROLL

Jamie Russell	Player of the Week (Nov. 12)
Janae Smith	Newcomer of the Week (Nov. 12)
Janae Smith	Newcomer of the Week (Nov. 19)
Candace Sykes	Player of the Week (Nov. 26)
Janae Smith	Newcomer of the Week (Nov. 26)
Janae Smith	Newcomer of the Week (Dec. 17)
Janae Smith	Newcomer of the Week (Dec. 27)
Janae Smith	Newcomer of the Week (Jan. 7)

2012-13 MVC RANKINGS-TEAM

-- ALL GAMES --

SCORING OFFENSE	
3rd	68.6
SCORING DEFENSE	
3rd	60.5
SCORING MARGIN	
1st	+8.1
FG PERCENTAGE	
3rd	40.2
FG PERCENTAGE DEFENSE	
3rd	38.3
3-PT FG PERCENTAGE	
3rd	33.3
3-PT FG PERCENTAGE DEFENSE	
5th	29.8
3-PT FG MADE	
5th	5.4
FREE THROW PERCENTAGE	
2nd	75.9
REBOUNDING OFFENSE	
2nd	41.9
REBOUNDING DEFENSE	
3rd	36.1
REBOUNDING MARGIN	
1st	+5.8
OFFENSIVE REBOUNDS	
2nd	14.1
DEFENSIVE REBOUNDS	
4th	27.8
ASSISTS	
3rd	13.6
ASSIST/TURNOVER RATIO	
2nd	0.9
TURNOVER MARGIN	
4th	+0.57
BLOCKS	
1st	3.7
STEALS	
6th	7.5

-- VALLEY GAMES --

SCORING OFFENSE	
1st	76.5
SCORING DEFENSE	
1st	53.0
SCORING MARGIN	
1st	+23.5
FG PERCENTAGE	
3rd	44.3
FG PERCENTAGE DEFENSE	
1st	31.0
3-PT FG PERCENTAGE	
6th	36.7
3-PT FG PERCENTAGE DEFENSE	
1st	25.0
3-PT FG MADE	
5th	5.5
FREE THROW PERCENTAGE	
3rd	83.9
REBOUNDING OFFENSE	
1st	47.5
REBOUNDING DEFENSE	
5th	36.5
REBOUNDING MARGIN	
1st	+11.0
OFFENSIVE REBOUNDS	
T4th	13.0
DEFENSIVE REBOUNDS	
1st	34.5
ASSISTS	
3rd	14.5
ASSIST/TURNOVER RATIO	
2nd	1.3
TURNOVER MARGIN	
5th	+1.50
BLOCKS	
1st	7.0
STEALS	
7th	6.0

2012-13 MVC RANKINGS-INDIVIDUAL

-- ALL GAMES --

SCORING	
2. Janae Smith	16.6
7. Candace Sykes	14.2
9. Jamie Russell	13.6
FIELD GOAL PERCENTAGE	
4. Janae Smith	50.6
3-PT FG PERCENTAGE	
6. Candace Sykes	38.4
3-PT FG MADE	
2. Candace Sykes	2.8
T15. Katy Winge	1.3
FREE THROW PERCENTAGE	
3. Jamie Russell	89.4
10. Janae Smith	77.1
REBOUNDING	
1. Janae Smith	9.5
15. Jamie Russell	6.3
OFFENSIVE REBOUNDS	
T8. Jamie Russell	2.3
T8. Janae Smith	2.3
DEFENSIVE REBOUNDS	
1. Janae Smith	7.2
9. Candace Sykes	4.8
ASSISTS	
T6. Alexis Jenkins	3.5
13. Jamie Russell	2.9
ASSIST/TURNOVER RATIO	
1. Alexis Jenkins	2.5
BLOCKS	
T5. Janae Smith	1.0
8. Candace Sykes	0.9
STEALS	
2. Jamie Russell	2.5

-- VALLEY GAMES --

SCORING	
T.1 Janae Smith	22.0
4. Candace Sykes	18.5
T12. Jamie Russell	13.5
FIELD GOAL PERCENTAGE	
1. Maddie Oliver	1.000
6. Janae Smith	53.6
3-PT FG PERCENTAGE	
n/a	n/a
3-PT FG MADE	
T.2 Candace Sykes	4.0
FREE THROW PERCENTAGE	
9. Janae Smith	87.5
T.11 Jamie Russell	83.3
REBOUNDING	
1. Janae Smith	12.5
T.4. Candace Sykes	9.5
OFFENSIVE REBOUNDS	
T.12 B. Puni, C. Sykes	2.5
DEFENSIVE REBOUNDS	
1. Janae Smith	10.5
T.5 Candace Sykes	7.0
ASSISTS	
8. Alexis Jenkins	3.5
T10. J. Smith, C. Nelson	3.0
ASSIST/TURNOVER RATIO	
2. Alexis Jenkins	7.0
T.4 Chloe Nelson	3.0
T.11 Janae Smith	1.2
BLOCKS	
1. Candace Sykes	3.0
8. M. Oliver, J. Smith, J. Russell	1.0
STEALS	
T.4 Jamie Russell	2.5
T.15 Janae Smith	1.5

-- Ranked based on per game average

* As of Jan. 9

LAST TIME THAT...

ILLINOIS STATE INDIVIDUAL

Scored 40 pointsCaryn Brune (43) vs. Marquette (12/11/92)
 Scored 30 pointsJanae Smith (31) vs. Memphis (11/18/12)
 Scored 25 pointsKatie Broadway (26) vs. Indiana State (2/3/12)
 Made 15 field goalsCaryn Brune (16) vs. Marquette (12/11/92)
 Made 10 field goalsJanae Smith (11) vs. Memphis (11/18/12)
 Made 5 three-point field goalsCandace Sykes (6) at Illinois (12/21/12)
 Made 10 free throwsShala Jackson (11) at Wichita State (1/16/11)
 Attempted 15 field goalsC. Sykes and J. Russell (15) vs. Northern Iowa (1/4/13)
 Attempted 10 three-point field goalsCandace Sykes (11) vs. Bradley (1/6/13)
 Attempted 15 free throwsKristi Cirone (16) vs. Ball State (12/6/06)
 Attempted 10 free throwsJanae Smith (11) at Butler (12/30/12)
 Had 20 reboundsCandace Sykes (20) vs. Arkansas State (12/2/11)
 Had 15 reboundsJanae Smith (16) vs. Princeton (12/19/12)
 Had 10 reboundsJanae Smith (13) vs. Bradley (1/6/13)
 Posted a double-doubleJanae Smith vs. Bradley (1/6/13)
 (21 points, 13 rebounds)
 Posted a triple-doubleTami Baalke at Western Illinois (2/22/91)
 (15 points, 10 rebounds, 11 assists)
 Had 10 assistsAmanda Clifton (10) vs. Missouri State (2/12/11)
 Had 5 stealsJamie Russell (8) at Iowa (11/11/12)
 Had 5 blocksCandace Sykes (5) vs. Northern Iowa (1/4/13)

ILLINOIS STATE TEAM

Scored 100 points101 vs. Eastern Illinois (11/28/06)
 Scored 90 points92 vs. UMSL (11/1/11)
 Scored 80 points81 vs. Bradley (1/6/13)
 Scored less than 50 points45 at Creighton (1/11/13)
 Scored less than 40 points36 vs. USC (3/30/11)
 Scored 50 points in a half52 (2nd) at UIC (11/21/12)
 Scored less than 20 points in a half18 (1st) at Indiana State (1/6/12)
 Made 50 field goals50 vs. Loyola (2/2/78)
 Made 40 field goals41 at Western Illinois (12/22/91)
 Made 30 field goals30 vs. Bradley (1/6/13)
 Made 15 3-pt. field goals15 vs. Eastern Illinois (11/28/06)
 Made 10 3-pt. field goals10 vs. Bradley (2/12/12)
 Made 30 free throws31 vs. Northern Iowa (1/2/04)
 Made 20 free throws20 at UIC (11/21/12)
 Made 15 free throws15 vs. Bradley (1/6/13)
 Had 60 rebounds66 vs. Fairleigh Dickinson (12/4/93)
 Had 50 rebounds50 vs. Bradley (1/6/13)
 Had 40 rebounds45 vs. Northern Iowa (1/4/13)
 Had 30 assists32 at Western Illinois (1/20/90)
 Had 20 assists20 vs. Indiana State (3/12/10)
 Committed less than 10 turnovers9 vs. Princeton (12/19/12)
 Committed more than 20 turnovers25 at Illinois (12/21/12)
 Had 20 steals20 vs. Howard (12/2/94)
 Had 10 steals10 vs. Northwestern (12/7/12)
 Had 10 blocks10 vs. Drake (1/22/11)
 Had 5 blocks7 vs. Bradley (1/6/13)
 Two players scored 30 points Never happened
 Three players scored 20 points at Bradley (2/7/98)
 Jenny Schmidt (28), Corinne Vossel (23), Valerie Trame (20)
 Two players scored 20 points vs. Northern Iowa (1/4/13)
 Janae Smith (23), Candace Sykes (20)
 Six players scored in double-figures vs. Eastern Michigan (12/6/08)
 Kristi Cirone (14), Katie Broadway (13), Ashleen Bracey (11),
 Emily Hanley (10), Shala Jackson (10), Nicolle Lewis (10)
 Five players scored in double-figures at Southern Illinois (2/27/11)
 Candace Sykes (13), Hannah Spanich (12), Megan Grace (11),
 Emily Hanley (11), Shala Jackson (10)
 Four players scored in double-figures at Western Kentucky (11/24/12)
 Candace Sykes (22), Janae Smith (11), Jamie Russell (11), Alexis Jenkins (10)
 Three players scored in double-figures vs. Bradley (1/6/13)
 Janae Smith (21), Jamie Russell (18), Candace Sykes (17)

OPPONENT INDIVIDUAL

Scored 40 pointsKendra Wecker (41), Kansas State (11/26/04)
 Scored 30 pointsNicole Dickson (36), Memphis (11/18/12)
 Scored 25 pointsRachel Story (28), UIC (11/21/12)
 Made 15 field goalsNicole Dickson (15), Memphis (11/18/12)
 Made 10 field goalsNiveen Rasheed (10), Princeton (12/19/12)
 Made 5 three-point field goalsTahnee Robinson (6), Nevada (12/20/10)
 Made 10 free throwsMorgan Johnson (12), Iowa (11/11/12)
 Attempted 15 field goalsMarissa Janning (16), Creighton (1/11/13)
 Attempted 10 three-point field goalsBrittany Schoen (11), Indiana State (2/3/12)
 Attempted 15 free throwsKachine Alexander (13), Iowa (11/15/09)
 Attempted 10 free throwsAlexus Patterson (17), Illinois (12/21/12)
 Had 20 rebounds Never Happened
 Had 15 reboundsKarisma Penn (15), Illinois (12/21/12)
 Had 10 reboundsSarah Nelson (12), Creighton (1/11/13)
 Posted a double-doubleSarah Nelson, Creighton (1/11/13)
 (10 points, 12 rebounds)
 Posted a triple-double Never happened
 Had 10 assistsCasey Garrison (10), Missouri State (1/29/12)
 Had 5 stealsDaress McClung (6), Butler (12/30/12)
 Had 5 blocksKarisma Penn (6), Illinois (12/21/12)

OPPONENT TEAM

Scored 100 points100, DePaul (12/1/10)
 Scored 90 points92, Green Bay (12/22/06)
 Scored 80 points80, Missouri State (2/27/12)
 Scored less than 50 points41, Northern Iowa (1/4/13)
 Scored less than 40 points38, UW-Milwaukee (12/15/09)
 Scored 50 points in a half56 (2nd), Southern Illinois (3/3/12)
 Scored less than 20 points in a half15 (2nd), Northern Iowa (1/4/13)
 Made 50 field goals Never happened
 Made 40 field goals41, Kansas State (11/26/04)
 Made 30 field goals34, Memphis (11/18/12)
 Made 15 3-Pt. field goals Never happened
 Made 10 3-Pt. field goals10, Illinois (12/21/12)
 Made 30 free throws32, Iowa (11/11/12)
 Made 20 free throws22, Missouri State (2/27/12)
 Made 15 free throws15, Bradley (1/6/13)
 Had 60 rebounds60, Rice (3/15/07)
 Had 50 rebounds50, Iowa (11/11/12)
 Had 40 rebounds42, Bradley (1/6/13)
 Had 30 assists Never happened
 Had 20 assists23, Missouri State (1/29/12)
 Committed less than 10 turnovers8, Northern Iowa (2/10/12)
 Committed more than 20 turnovers23, Iowa (11/11/12)
 Had 20 steals20, Evansville (12/31/99)
 Had 10 steals15, Butler (12/30/12)
 Had 10 blocks12, Butler (12/30/12)
 Had 5 blocks7, Creighton (1/11/13)
 Two players scored 30 pointsNorthern Iowa (2/17/05)
Jessie Biggs (34), Emily Berry (33)
 Three players scored 20 pointsDrake (3/5/95)
Tricia Wakely (27), Kristi Kinne (21), Julie Rittgers (20)
 Two players scored 20 pointsDePaul (12/19/11)
Jasmine Penny (20), Anna Martin (20)
 Six players scored in double-figuresGreen Bay (12/22/06)
Rachel Porath (16), Nicole Soulis (14), Lavesa Glover (13),
Kati Harty (13), Natalie Berglin (12), Erin Templin (10)
 Five players scored in double-figuresSouthern Illinois
Christine Presswood (25), Katrina Swingler (15), Katerina Garcia (13),
Teri Oliver (11), Stephany Neptune (10)
 Four players scored in double-figuresIllinois (12/21/12)
Karisma Penn (22), Amber Moore (13), Ivory Crawford (11), Taylor Tuck (11)
 Three players scored in double-figuresPrinceton (12/19/12)
Niveen Rasheed (21), Michelle Miller (14), Megan Bowen (11)

2012-13 CUMULATIVE STATS

2012-13 Illinois State Women's Basketball
 Illinois State Combined Team Statistics (as of Jan 11, 2013)
 All games

RECORD:	OVERALL	HOME	AWAY	NEUTRAL
ALL GAMES	10-5	6-3	4-2	0-0
CONFERENCE	2-1	2-0	0-1	0-0
NON-CONFERENCE	8-4	4-3	4-1	0-0

#	Player	gp-gs	min	avg	Total		3-Point		F-Throw		Rebounds				pf	dq	a	to	blk	stl	pts	avg
					fg-fga	fg%	3fg-fga	3fg%	ft-fa	ft%	off	def	tot	avg								
25	SMITH, Janae	15-15	503	33.5	87-178	.489	0-0	.000	67-88	.761	38	104	142	9.5	29	0	27	47	14	12	241	16.1
03	SYKES, Candace	13-0	342	26.3	61-160	.381	34-90	.378	21-26	.808	17	60	77	5.9	14	0	16	19	11	12	177	13.6
23	RUSSELL, Jamie	15-15	447	29.8	75-209	.359	2-14	.143	47-53	.887	32	50	82	5.5	27	0	41	51	6	37	199	13.3
01	JENKINS, Alexis	15-12	345	23.0	28-75	.373	9-25	.360	10-10	1.000	6	30	36	2.4	15	0	50	22	1	8	75	5.0
31	OLIVER, Maddie	15-15	240	16.0	30-49	.612	0-0	.000	11-13	.846	16	31	47	3.1	20	0	7	7	7	1	71	4.7
24	WINGE, Katy	15-7	276	18.4	21-71	.296	19-59	.322	2-4	.500	4	19	23	1.5	16	0	11	16	1	5	63	4.2
14	FOLEY, Alexis	15-8	273	18.2	22-65	.338	11-36	.306	6-7	.857	7	29	36	2.4	24	1	16	24	0	11	61	4.1
35	PUNI, Brianna	15-0	192	12.8	21-54	.389	0-0	.000	10-17	.588	27	25	52	3.5	32	0	4	18	6	4	52	3.5
04	NELSON, Chloe	15-3	269	17.9	17-49	.347	4-11	.364	6-12	.500	8	22	30	2.0	17	0	26	16	6	13	44	2.9
32	CRUMP, Octavia	8-0	65	8.1	2-11	.182	0-0	.000	6-16	.375	7	13	20	2.5	6	0	1	6	0	6	10	1.3
11	HALL, Stekara	7-0	26	3.7	2-6	.333	0-2	.000	3-4	.750	2	4	6	0.9	4	0	1	0	1	1	7	1.0
50	GRACE, Megan	5-0	8	1.6	1-2	.500	0-0	.000	2-2	1.000	0	0	0	0.0	4	0	0	0	0	0	4	0.8
22	SEBERGER, Alison	8-0	14	1.8	1-3	.333	0-2	.000	0-0	.000	1	1	2	0.3	0	0	0	1	0	1	2	0.3
Team											45	25	70				5					
Total.....		15	3000		368-932	.395	79-239	.331	191-252	.758	210	413	623	41.5	208	1	200	232	53	111	1006	67.1
Opponents.....		15	3000		346-890	.389	76-255	.298	143-206	.694	157	386	543	36.2	227	-	169	240	87	132	911	60.7

TEAM STATISTICS	ILS	OPP	Date	Opponent	Score	Att.
SCORING	1006	911	11/09/12	MOREHEAD STATE	w 62-45	801
Points per game	67.1	60.7	11/11/12	at Iowa	L 64-74	2930
Scoring margin	+6.3	-	11/18/12	MEMPHIS	L 74-76	2544
FIELD GOALS-ATT	368-932	346-890	11-21-12	at UIC	w 86-74	512
Field goal pct	.395	.389	11/24/12	at WKU	w 83-68	1566
3 POINT FG-ATT	79-239	76-255	11/29/12	MILWAUKEE	w 75-54	1181
3-point FG pct	.331	.298	12/5/12	MICHIGAN	L 45-56	1231
3-pt FG made per game	5.3	5.1	12/7/12	NORTHWESTERN	w 64-46	1431
FREE THROWS-ATT	191-252	143-206	12/16/12	BALL STATE	w 71-56	1414
Free throw pct	.758	.694	12/19/12	PRINCETON	L 50-67	1221
F-Throws made per game	12.7	9.5	12/21/12	at Illinois	w 69-68	1973
REBOUNDS	623	543	12/30/12	at Butler	w 65-57	442
Rebounds per game	41.5	36.2	* 1/4/13	NORTHERN IOWA	w 72-41	1349
Rebounding margin	+5.3	-	* 1/6/13	BRADLEY	w 81-65	1611
ASSISTS	200	169	* 01-11-13	at Creighton	L 45-64	1324
Assists per game	13.3	11.3				
TURNOVERS	232	240				
Turnovers per game	15.5	16.0				
Turnover margin	+0.5	-				
Assist/turnover ratio	0.9	0.7				
STEALS	111	132				
Steals per game	7.4	8.8				
BLOCKS	53	87				
Blocks per game	3.5	5.8				
ATTENDANCE	12783	8747				
Home games-Avg/Game	9-1420	6-1458				
Neutral site-Avg/Game	-	0-0				

Score by Periods	1st	2nd	Totals
Illinois State	503	503	1006
Opponents	452	459	911

2012-13 CONFERENCE STATS

2012-13 Illinois State Women's Basketball
 Illinois State Combined Team Statistics (as of Jan 11, 2013)
 Conference games

RECORD:	OVERALL	HOME	AWAY	NEUTRAL
ALL GAMES	2-1	2-0	0-1	0-0
CONFERENCE	2-1	2-0	0-1	0-0
NON-CONFERENCE	0-0	0-0	0-0	0-0

#	Player	gp-gs	min	avg	Total		3-Point		F-Throw		Rebounds				pf	dq	a	to	blk	stl	pts	avg
					fg-fga	fg%	3fg-fga	3fg%	ft-fa	ft%	off	def	tot	avg								
25	SMITH, Janae	3-3	105	35.0	18-40	.450	0-0	.000	17-21	.810	10	24	34	11.3	3	0	9	7	2	3	53	17.7
03	SYKES, Candace	3-0	86	28.7	17-42	.405	9-23	.391	1-2	.500	5	16	21	7.0	6	0	6	4	6	2	44	14.7
23	RUSSELL, Jamie	3-3	87	29.0	13-36	.361	0-0	.000	10-12	.833	3	11	14	4.7	6	0	4	5	3	7	36	12.0
35	PUNI, Brianna	3-0	63	21.0	6-19	.316	0-0	.000	2-3	.667	7	12	19	6.3	10	0	0	8	0	1	14	4.7
31	OLIVER, Maddie	3-3	48	16.0	6-7	.857	0-0	.000	2-2	1.000	2	4	6	2.0	5	0	0	1	2	0	14	4.7
01	JENKINS, Alexis	3-2	62	20.7	5-15	.333	2-5	.400	0-0	.000	0	5	5	1.7	0	0	8	3	0	1	12	4.0
24	WINGE, Katy	3-3	54	18.0	4-11	.364	3-9	.333	0-0	.000	0	5	5	1.7	3	0	2	1	1	1	11	3.7
04	NELSON, Chloe	3-1	53	17.7	3-11	.273	0-2	.000	2-2	1.000	3	6	9	3.0	3	0	7	2	1	2	8	2.7
14	FOLEY, Alexis	3-0	29	9.7	3-8	.375	0-2	.000	0-0	.000	2	4	6	2.0	2	0	2	0	0	1	6	2.0
50	GRACE, Megan	1-0	1	1.0	0-0	.000	0-0	.000	0-0	.000	0	0	0	0.0	0	0	0	0	0	0	0	0.0
32	CRUMP, Octavia	1-0	3	3.0	0-0	.000	0-0	.000	0-0	.000	0	0	0	0.0	0	0	0	0	0	0	0	0.0
11	HALL, Stekara	2-0	5	2.5	0-1	.000	0-0	.000	0-0	.000	0	0	0	0.0	1	0	1	0	0	0	0	0.0
22	SEBERGER, Alison	2-0	4	2.0	0-0	.000	0-0	.000	0-0	.000	0	0	0	0.0	0	0	0	1	0	0	0	0.0
Team											7	6	13				1					
Total.....		3	600		75-190	.395	14-41	.341	34-42	.810	39	93	132	44.0	39	0	39	33	15	18	198	66.0
Opponents.....		3	600		66-184	.359	14-52	.269	24-33	.727	30	81	111	37.0	40	-	25	36	17	17	170	56.7

TEAM STATISTICS	ILS	OPP	Date	Opponent	Score	Att.
SCORING	198	170	* 1/4/13	NORTHERN IOWA	w 72-41	1349
Points per game	66.0	56.7	* 1/6/13	BRADLEY	w 81-65	1611
Scoring margin	+9.3	-	* 01-11-13	at Creighton	L 45-64	1324
FIELD GOALS-ATT	75-190	66-184	* - Conference game			
Field goal pct	.395	.359				
3 POINT FG-ATT	14-41	14-52				
3-point FG pct	.341	.269				
3-pt FG made per game	4.7	4.7				
FREE THROWS-ATT	34-42	24-33				
Free throw pct	.810	.727				
F-Throws made per game	11.3	8.0				
REBOUNDS	132	111				
Rebounds per game	44.0	37.0				
Rebounding margin	+7.0	-				
ASSISTS	39	25				
Assists per game	13.0	8.3				
TURNOVERS	33	36				
Turnovers per game	11.0	12.0				
Turnover margin	+1.0	-				
Assist/turnover ratio	1.2	0.7				
STEALS	18	17				
Steals per game	6.0	5.7				
BLOCKS	15	17				
Blocks per game	5.0	5.7				
ATTENDANCE	2960	1324				
Home games-Avg/Game	2-1480	1-1324				
Neutral site-Avg/Game	-	0-0				

Score by Periods	1st	2nd	Totals
Illinois State	104	94	198
Opponents	97	73	170

2012-13 ILLINOIS STATE WOMEN'S BASKETBALL GAME NOTES

GAME 1 ILLINOIS STATE 62
 MOREHEAD STATE 45
 Nov. 9, 2012
 Shirk Center // Bloomington, Ill.

Official Basketball Box Score -- Game Totals -- Final Statistics
 Morehead State vs Illinois State
 11/09/12 7:05 p.m. at Shirk Center

Morehead State 45 • 0-1

#	Player	Total			3-Ptr			Rebounds			PF	TP	A	TO	Bk	Stl	Min
		FG	FGA	FT	FTA	Off	Def	Off	Def	Off							
10	KYLE, Whitney	f	0-3	0-1	0-2	1	2	3	3	0	1	2	0	2	25		
22	HOWE, Kailee	f	3-9	0-1	0-0	1	0	1	3	6	1	3	0	0	25		
45	ARLEGE, Mackenzie	f	0-0	0-0	0-0	0	4	4	3	0	2	0	1	22			
04	JONES, Almesth	g	5-10	3-6	2-2	0	4	4	0	15	4	7	0	4	31		
23	PARKER, Shanice	g	2-6	0-1	0-0	0	0	0	0	4	1	1	1	13			
01	RYANS, Casey	g	1-2	0-0	0-0	1	2	3	4	2	0	0	0	2	17		
11	ROBINSON, Terrice	g	5-9	3-5	3-4	0	2	2	0	16	1	4	0	21			
13	TURNER, Allie	g	0-5	0-4	0-0	0	0	0	1	0	2	2	0	19			
14	FUNDERBURGH, Kelsey	g	0-0	0-0	0-0	0	0	0	0	0	0	0	0	1			
20	ITUEN, Tyler	g	1-2	0-1	0-0	0	4	4	2	2	0	0	0	23			
24	ARNOLD, Tara	g	0-0	0-0	0-0	0	0	0	0	0	0	0	0	1			
25	TACKETT, Paige	g	0-0	0-0	0-0	0	0	0	0	0	0	0	0	1			
32	MARTINEZ, Mackenzie	g	0-0	0-0	0-0	0	0	0	0	0	0	0	0	1			
Team						1	1	2									
Totals			17-46	6-19	5-8	4	19	23	16	45	10	22	1	14	200		

FG % 1st Half: 11-22 50.0% 2nd half: 6-24 25.0% Game: 17-46 37.0%
 3FG % 1st Half: 4-9 44.4% 2nd half: 2-10 20.0% Game: 6-19 31.6%
 FT % 1st Half: 0-0 0.0% 2nd half: 5-8 62.5% Game: 5-8 62.5%

Illinois State 62 • 1-0

#	Player	Total			3-Ptr			Rebounds			PF	TP	A	TO	Bk	Stl	Min
		FG	FGA	FT	FTA	Off	Def	Off	Def	Off							
25	SMITH, Janae	f	2-7	0-0	3-4	1	5	6	1	7	1	5	2	0	33		
31	OLIVER, Maddie	f	5-7	0-0	2-2	4	3	7	1	12	1	0	1	0	27		
01	JENKINS, Alexis	g	1-7	0-0	0-0	0	4	4	0	2	2	1	0	24			
14	FOLEY, Alexis	g	3-7	3-5	0-0	1	1	2	3	9	1	3	0	1	28		
23	RUSSELL, Jamie	g	8-16	1-1	3-3	1	2	3	20	6	4	0	3	31			
04	NELSON, Chloe	g	0-2	0-0	0-0	0	2	2	0	2	3	0	2	17			
11	HALL, Stekara	g	1-1	0-0	1-2	0	1	1	0	3	0	1	1	5			
22	SEBERGER, Allison	g	0-0	0-0	0-0	0	0	0	0	0	0	0	0	1			
24	WINGE, Katy	g	0-2	0-2	0-0	0	1	1	1	0	0	1	1	14			
32	CRUMP, Octavia	g	2-3	0-0	3-5	4	7	11	2	7	0	2	0	17			
35	PUNI, Brianna	g	0-1	0-0	0-0	0	0	0	0	0	1	0	0	2			
50	GRACE, Megan	g	0-0	0-0	2-2	0	0	0	0	2	0	0	0	1			
Team						2	1	3									
Totals			22-53	4-8	14-18	13	27	40	11	62	13	20	4	10	200		

FG % 1st Half: 12-29 41.4% 2nd half: 10-24 41.7% Game: 22-53 41.5%
 3FG % 1st Half: 1-2 50.0% 2nd half: 3-6 50.0% Game: 4-8 50.0%
 FT % 1st Half: 6-7 85.7% 2nd half: 8-11 72.7% Game: 14-18 77.8%

Officials: Missy Brooks, Jeff Cross, Greg Small
 Technical fouls: Morehead State-None. Illinois State-None.
 Attendance: 801

Score by periods	1st	2nd	Total
Morehead State	26	19	45
Illinois State	31	31	62

Points In Off 2nd Fast
 MOR 20 8 4 6 20
 ILS 26 13 12 8 12

Score tied - 3 times
 Lead changed - 2 times.

GAME 2 ILLINOIS STATE 64
 IOWA 74
 Nov. 11, 2012
 Carver-Hawkeye Arena // Iowa City, Iowa

Official Basketball Box Score -- Game Totals -- Final Statistics
 Illinois State vs Iowa
 11/11/12 2:00 PM at Carver-Hawkeye Arena, Iowa City, IA

Illinois State 64 • 1-1

#	Player	Total			3-Ptr			Rebounds			PF	TP	A	TO	Bk	Stl	Min
		FG	FGA	FT	FTA	Off	Def	Off	Def	Off							
25	SMITH, Janae	f	7-14	0-0	3-6	5	4	9	2	17	1	5	1	1	31		
31	OLIVER, Maddie	f	0-2	0-0	0-0	1	0	1	4	0	0	0	0	14			
01	JENKINS, Alexis	g	1-2	1-2	0-0	0	0	0	1	3	2	1	0	23			
14	FOLEY, Alexis	g	1-8	1-4	0-0	2	4	6	5	3	0	2	0	27			
23	RUSSELL, Jamie	g	12-28	0-2	6-6	2	10	12	3	30	2	6	1	8	37		
04	NELSON, Chloe	g	2-9	0-3	2-4	1	3	3	6	0	0	1	2	20			
11	HALL, Stekara	g	0-0	0-0	0-0	0	1	1	2	0	0	0	0	3			
22	SEBERGER, Allison	g	0-0	0-0	0-0	0	0	0	0	0	0	0	0	1			
24	WINGE, Katy	g	1-5	0-3	0-0	0	2	2	0	2	0	1	0	11			
32	CRUMP, Octavia	g	0-6	0-0	1-5	2	2	4	2	1	1	2	0	22			
35	PUNI, Brianna	g	0-1	0-0	0-0	0	1	1	4	0	0	0	1	10			
50	GRACE, Megan	g	1-1	0-0	0-0	1	2	0	0	0	0	0	0	1			
Team						3	2	5									
Totals			25-76	2-14	12-21	17	27	44	27	64	6	17	4	15	200		

FG % 1st Half: 11-40 27.5% 2nd half: 14-36 38.9% Game: 25-76 32.9%
 3FG % 1st Half: 1-6 16.7% 2nd half: 1-8 12.5% Game: 2-14 14.3%
 FT % 1st Half: 6-9 66.7% 2nd half: 6-12 50.0% Game: 12-21 57.1%

Iowa 74 • 2-0

#	Player	Total			3-Ptr			Rebounds			PF	TP	A	TO	Bk	Stl	Min
		FG	FGA	FT	FTA	Off	Def	Off	Def	Off							
12	Johnson, Morgan	c	6-14	0-0	12-13	4	5	9	2	24	2	5	1	30			
51	Doollittle, Bethany	c	4-10	0-1	0-0	0	5	5	1	8	2	2	1	25			
21	Dixon, Melissa	g	2-3	2-3	2-2	0	0	0	4	8	2	1	0	24			
22	Logic, Samantha	g	1-6	0-1	4-4	3	2	5	2	6	4	6	1	24			
23	Taylor, Theairra	g	3-6	1-1	3-4	0	11	11	1	10	5	2	0	21			
03	Tilli, Claire	g	1-2	0-0	2-2	0	3	3	1	4	0	2	0	7			
11	Nesbitt, Trisha	g	0-3	0-1	3-4	0	1	1	3	3	0	1	0	15			
13	Thomas, Kathy	g	0-2	0-0	5-8	2	1	3	3	5	3	3	0	16			
24	Printy, Jaime	g	0-4	0-3	1-2	0	2	2	0	1	1	2	0	15			
25	Peschel, Kali	g	0-2	0-1	0-0	0	3	3	1	0	2	0	0	16			
45	Smith, Nicole	g	0-0	0-0	0-0	0	0	0	0	0	0	0	0	2			
54	Timmerman, Kayla	g	2-2	1-1	0-2	0	0	0	5	1	0	1	0	5			
Team						3	5	8									
Totals			19-54	4-12	32-41	12	38	50	18	74	18	23	10	9	200		

FG % 1st Half: 7-26 26.9% 2nd half: 12-28 42.9% Game: 19-54 35.2%
 3FG % 1st Half: 1-6 16.7% 2nd half: 2-5 40.0% Game: 4-12 33.3%
 FT % 1st Half: 23-26 88.5% 2nd half: 9-15 60.0% Game: 32-41 78.0%

Officials: Doug Knight, Erika Herriman, Scott Fruehling
 Technical fouls: Illinois State-None. Iowa-None.
 Attendance: 2930
 Fouled out: #14 ISU 1:02 2nd

Score by periods	1st	2nd	Total
Illinois State	29	35	64
Iowa	39	35	74

Points In Off 2nd Fast
 ILS 24 20 6 12 11
 IOWA 22 18 8 11 18

Score tied - 2 times
 Lead changed - 1 time.

GAME 3 ILLINOIS STATE 74
 MEMPHIS 76
 Nov. 18, 2012
 Redbird Arena // Normal, Ill.

Official Basketball Box Score -- Game Totals -- Final Statistics
 MEMPHIS vs Illinois State
 11/18/12 5:06 p.m. at Doug Collins Court at Redbird Arena

MEMPHIS 76 • 2-1

#	Player	Total			3-Ptr			Rebounds			PF	TP	A	TO	Bk	Stl	Min
		FG	FGA	FT	FTA	Off	Def	Off	Def	Off							
35	DICKSON, Nicole	f	15-25	3-7	3-3	1	5	6	3	36	2	1	2	4	38		
33	JONES, Ann	c	3-4	0-0	0-0	1	2	3	3	6	0	0	0	0	12		
10	ABDUL-QAADIR, Bilqis	g	4-7	1-2	0-0	1	1	2	1	9	6	4	0	1	39		
24	HEARN, Ariel	g	3-11	0-2	0-0	0	7	7	3	6	0	3	0	29			
24	ROWSER, Mooriah	g	1-1	0-0	0-0	0	1	0	1	0	2	1	0	10			
05	MCGRAW, Lauren	g	0-0	0-0	0-0	0	2	2	4	0	0	1	0	15			
15	HOPE, Pa'Sonna	g	1-2	0-0	1-2	0	2	2	1	3	0	1	2	12			
21	FUQUA-BEY, Asianna	g	3-5	0-0	2-2	4	2	6	4	6	1	3	0	1	17		
23	JACKSON, Jaymie	g	4-8	0-2	0-0	0	1	1	1	8	1	2	0	1	21		
34	MACK, Devin	g	0-1	0-1	0-0	1	1	2	1	0	1	0	0	7			
Team						2	2	2									
Totals			34-64	4-14	4-7	10	24	34	21	76	11	17	4	9	200		

FG % 1st Half: 18-30 60.0% 2nd half: 16-34 47.1% Game: 34-64 53.1%
 3FG % 1st Half: 4-7 57.1% 2nd half: 0-7 0.0% Game: 4-14 28.6%
 FT % 1st Half: 3-6 50.0% 2nd half: 1-1 100.0% Game: 4

2012-13 ILLINOIS STATE WOMEN'S BASKETBALL GAME NOTES

GAME 5 ILLINOIS STATE 83
WESTERN KENTUCKY 68
Nov. 24, 2012
E. A. Diddle Arena // Bowling Green, Ky.

Official Basketball Box Score -- Game Totals -- Final Statistics
Illinois State vs WKU
11/24/12 5:30 p.m. at E.A. Diddle Arena, Bowling Green, Ky.

Illinois State 83 • 3-2

#	Player	Total			3-Ptr			Rebounds			PF	TP	A	To	Bk	Stl	Min
		FG	FGA	FT	FTA	Off	Def	Total	FG	FGA							
25	SMITH, Janae	f	3-5	0-0	5-6	3	9	12	3	11	1	2	4	0	0	34	
31	OLIVER, Maddie	f	3-4	0-0	3-4	0	2	2	2	9	0	0	1	0	0	15	
01	JENKINS, Alexis	g	4-8	0-1	2-2	1	3	4	1	10	7	3	0	0	0	32	
14	FOLEY, Alexis	g	2-4	1-2	2-2	0	1	1	4	7	1	2	0	0	0	18	
23	RUSSELL, Jamie	g	5-13	0-1	1-2	2	0	2	1	11	4	4	0	3	3	33	
03	SYKES, Candace	g	7-14	5-10	3-3	1	7	8	1	22	1	1	2	1	28		
04	NELSON, Chloe	g	2-4	0-1	0-0	0	0	0	2	4	0	2	0	2	10		
11	HALL, Stekara	g	0-1	0-0	0-0	1	0	1	0	0	0	0	0	0	4		
24	WINGE, Katy	g	3-6	3-5	0-0	1	2	3	2	9	1	1	0	0	24		
35	PUNI, Brianna	g	0-0	0-0	0-0	0	1	1	0	0	1	0	0	0	2		
Team						1	0	1									
Totals			29-59	9-20	16-19	10	25	35	16	83	16	16	7	6	200		

FG % 1st Half: 15-33 45.5% 2nd half: 14-26 53.8% Game: 29-59 49.2%
3FG % 1st Half: 4-12 33.3% 2nd half: 5-8 62.5% Game: 9-20 45.0%
FT % 1st Half: 2-2 100.0% 2nd half: 14-17 82.4% Game: 16-19 84.2%

WKU 68 • 3-1

#	Player	Total			3-Ptr			Rebounds			PF	TP	A	To	Bk	Stl	Min
		FG	FGA	FT	FTA	Off	Def	Total	FG	FGA							
30	Gooch, Chastity	f	5-12	0-0	4	6	10	3	11	1	8	2	1	3	9		
33	McClain, Jalynn	f	4-10	0-0	1-1	1	3	4	4	9	0	3	1	1	35		
02	Means, Chaney	g	1-4	0-1	1-2	3	3	6	1	3	1	1	3	2	20		
05	Jones, Micah	g	3-7	1-3	3-5	1	2	3	2	10	3	0	0	1	30		
21	Govan, Alexis	g	6-17	1-2	0-0	3	3	6	2	13	2	3	0	2	31		
10	Fothergill, Danay	g	5-8	4-6	1-4	2	3	5	1	15	0	1	0	0	12		
23	Wright, LeAsia	g	2-3	0-0	2-2	1	1	2	1	6	2	0	0	0	16		
24	Johnson, Ileana	g	0-0	0-0	1-2	0	0	0	0	1	1	1	0	0	12		
32	Sunkett, Mariah	g	0-1	0-0	0-0	0	0	0	0	0	0	0	0	0	5		
Team						1	1	2									
Totals			26-62	6-12	10-18	16	22	38	14	68	10	17	4	8	200		

FG % 1st Half: 11-28 39.3% 2nd half: 15-34 44.1% Game: 26-62 41.9%
3FG % 1st Half: 1-2 50.0% 2nd half: 5-10 50.0% Game: 6-12 50.0%
FT % 1st Half: 5-9 55.6% 2nd half: 5-9 55.6% Game: 10-18 55.6%

Officials: Jack Whittemore, Kelly Johnson, Jeff Faulconer
Technical fouls: Illinois State-None, WKU-None.
Attendance: 1566

Score by periods	1st	2nd	Total
Illinois State	36	47	83
WKU	28	40	68

Last FG - ILS 2nd-01:42, WKU 2nd-03:06
Largest lead - ILS by 15 2nd-01:14, WKU None.

Score tied - 1 time.
Lead changed - 0 times.

GAME 7 ILLINOIS STATE 56
MICHIGAN 45
Dec. 5, 2012
Redbird Arena // Normal, Ill.

Official Basketball Box Score -- Game Totals -- Final Statistics
Michigan vs Illinois State
12/5/12 7:05 p.m. at Doug Collins Court at Redbird Arena

Michigan 56 • 7-2

#	Player	Total			3-Ptr			Rebounds			PF	TP	A	To	Bk	Stl	Min
		FG	FGA	FT	FTA	Off	Def	Total	FG	FGA							
21	Jordan, Nya	f	0-3	0-0	2-3	1	2	3	1	2	3	1	2	1	0	0	20
44	Sheffer, Rachel	f	5-13	0-0	0-0	2	5	7	4	10	0	2	1	0	0	25	
12	Thompson, Kate	g	7-14	4-9	0-0	0	4	4	1	18	1	3	1	2	34		
14	Elmblad, Nicole	g	1-4	0-1	0-2	4	6	10	0	2	1	6	0	0	36		
24	Ryan, Jenny	g	4-5	1-2	3-4	0	7	7	3	12	5	4	0	1	39		
01	Harris, Brenae	g	0-1	0-0	0-0	0	1	1	0	0	1	0	0	0	1	7	
05	Ristovski, Madison	g	1-2	1-1	2-2	0	1	1	0	5	1	1	0	1	21		
11	Arnold, Sam	g	3-6	0-0	1-1	0	5	5	1	7	2	3	1	0	18		
Team						1	3	4									
Totals			21-48	6-13	8-12	8	34	42	10	56	12	19	3	6	200		

FG % 1st Half: 9-24 37.5% 2nd half: 12-24 50.0% Game: 21-48 43.8%
3FG % 1st Half: 4-8 50.0% 2nd half: 2-5 40.0% Game: 6-13 46.2%
FT % 1st Half: 1-3 33.3% 2nd half: 7-9 77.8% Game: 8-12 66.7%

Illinois State 45 • 4-3

#	Player	Total			3-Ptr			Rebounds			PF	TP	A	To	Bk	Stl	Min
		FG	FGA	FT	FTA	Off	Def	Total	FG	FGA							
25	SMITH, Janae	f	5-9	0-0	1-3	0	7	7	2	11	1	2	0	0	0	34	
31	OLIVER, Maddie	f	3-5	0-0	0-1	0	1	1	1	6	3	0	0	0	0	20	
01	JENKINS, Alexis	g	1-3	1-2	0-0	1	0	1	3	3	1	3	0	0	19		
14	FOLEY, Alexis	g	3-6	2-4	0-0	0	3	3	1	8	3	2	0	2	29		
23	RUSSELL, Jamie	g	1-9	0-2	0-0	0	1	1	2	2	4	3	0	2	28		
03	SYKES, Candace	g	1-11	1-8	0-0	0	4	4	0	3	0	1	1	0	20		
04	NELSON, Chloe	g	2-3	2-2	0-0	1	2	3	0	3	1	2	0	1	20		
24	WINGE, Katy	g	2-7	2-6	0-0	0	1	1	1	6	0	0	0	0	25		
35	PUNI, Brianna	g	0-1	0-0	0-0	0	1	1	0	0	0	1	0	0	5		
Team						2	0	2									
Totals			18-54	8-24	1-4	4	20	24	13	45	13	14	1	5	200		

FG % 1st Half: 9-30 30.0% 2nd half: 9-24 37.5% Game: 18-54 33.3%
3FG % 1st Half: 3-11 27.3% 2nd half: 5-13 38.5% Game: 8-24 33.3%
FT % 1st Half: 0-2 0.0% 2nd half: 1-2 50.0% Game: 1-4 25.0%

Officials: Beverly Roberts, Barb Smith, John Whitson
Technical fouls: Michigan-None, Illinois State-None.
Attendance: 1231

Score by periods	1st	2nd	Total
Michigan	23	33	56
Illinois State	21	24	45

Points	In	Off	2nd	Fast	Bench
ILS	Paint	T/O	Chance	Break	
Michigan	22	21	2	0	12
ILS	13	13	0	0	15

Last FG - MICH 2nd-02:07, ILS 2nd-01:06.
Largest lead - MICH by 11 2nd-08:56, ILS by 4 1st-16:51.

Score tied - 1 time.
Lead changed - 3 times.

GAME 6 ILLINOIS STATE 75
MILWAUKEE 54
Nov. 29, 2012
Redbird Arena // Normal, Ill.

Official Basketball Box Score -- Game Totals -- Final Statistics
Milwaukee vs Illinois State
11/29/12 7:07 p.m. at Doug Collins Court at Redbird Arena

Milwaukee 54 • 3-3

#	Player	Total			3-Ptr			Rebounds			PF	TP	A	To	Bk	Stl	Min
		FG	FGA	FT	FTA	Off	Def	Total	FG	FGA							
04	GREEN, Ashley	f	1-4	0-0	2-4	1	2	3	3	4	2	0	0	1	24		
20	TUCKER, Sami	f	4-13	1-3	1-2	1	7	8	3	10	1	2	0	4	29		
02	CHANDLER, Kimee	g	0-0	0-0	0-0	0	1	1	0	0	0	1	1	15			
03	DECORAH, Emily	g	4-12	3-8	0-0	1	2	3	1	11	0	0	1	0	32		
23	RODRIGUEZ, Angela	g	3-9	1-4	2-2	0	1	1	9	3	7	0	0	0	26		
05	SWOPSHIRE, Janna	g	4-9	0-1	0-0	1	2	2	8	0	0	0	0	1	13		
10	DOROW, Macie	g	0-0	0-0	0-0	0	0	0	2	0	1	0	1	9			
12	THEUT, Sammy	g	1-2	0-1	0-0	0	0	0	2	0	2	0	0	14			
15	HOWARD, Sydney	g	0-4	0-3	1-2	1	2	3	0	1	0	0	0	12			
40	YOUNG, Avyanna	g	1-2	0-0	2-2	0	2	2	4	0	3	1	1	17			
41	SWAN, Jordyn	g	0-2	0-2	3-4	0	2	2	0	3	0	0	0	7			
54	PRINCE, Jessica	g	1-1	0-0	0-0	1	0	1	2	0	0	0	0	2			
Team						0	4	4									
Totals			19-58	5-22	11-16	6	24	30	15	54	6	16	3	10	200		

FG % 1st Half: 10-31 32.3% 2nd half: 9-27 33.3% Game: 19-58 32.8%
3FG % 1st Half: 4-12 33.3% 2nd half: 1-10 10.0% Game: 5-22 22.7%
FT % 1st Half: 4-4 100.0% 2nd half: 7-12 58.3% Game: 11-16 68.8%

Illinois State 75 • 4-2

#	Player	Total			3-Ptr			Rebounds			PF	TP	A	To	Bk	Stl	Min
		FG	FGA	FT	FTA	Off	Def	Total	FG	FGA							
25	SMITH, Janae	f	6-10	0-0	6-7	2	3	5	3	18	1	3	1	1	19		
31	OLIVER, Maddie	f	3-4	0-0	0-3	3	1	6	0	1	0	1	0	0	12		
01	JENKINS, Alexis	g	4-7	1-3	0-0	2	4	6	1	9	7	0	0	0	32		
14	FOLEY, Alexis	g	0-5	0-3	0-0	0	1	1	0	0	3	0					

2012-13 ILLINOIS STATE WOMEN'S BASKETBALL GAME NOTES

GAME 9 ILLINOIS STATE 71
BALL STATE 56
Dec. 16, 2012
Redbird Arena // Normal, Ill.

Official Basketball Box Score -- Game Totals -- Final Statistics
Ball State vs Illinois State
12/16/12 1:05 p.m. at Doug Collins Court at Redbird Arena

Ball State 56 • 3-8

#	Player	Total			3-Ptr			Rebounds			PF	TP	A	To	Bk	Stl	Min
		FG	FGA	FT	FTA	Off	Def	Off	Def	Off							
33	MURPHY, Katie	f	2-5	0-0	1-4	0	7	4	5	1	2	1	1	26			
03	JUSTICE, Shelby	g	2-6	0-2	4-4	0	0	0	1	8	1	1	0	35			
04	FONTAINE, Nathalie	g	6-10	0-0	2-4	3	6	9	0	14	1	5	0	30			
11	WOODY, Brandy	g	7-14	1-4	3-6	2	4	6	3	18	1	3	0	36			
23	CARTER, Brittany	g	1-7	1-2	4-4	1	4	5	4	7	1	4	3	30			
10	JACKSON, Shanae'	g	2-5	0-0	0-0	0	0	0	2	4	2	2	0	24			
25	MILLER, Taylor	g	0-2	0-0	0-0	0	0	0	1	0	0	0	0	19			
Team					1	3	4										
Totals			20-49	2-8	14-22	7	24	31	15	56	7	18	4	7	200		

FG % 1st Half: 8-20 40.0% 2nd half: 12-29 41.4% Game: 20-49 40.8% Deadball Rebounds: 5
3FG % 1st Half: 2-5 40.0% 2nd half: 0-3 0.0% Game: 2-8 25.0%
FT % 1st Half: 10-14 71.4% 2nd half: 4-8 50.0% Game: 14-22 63.6%

Illinois State 71 • 6-3

#	Player	Total			3-Ptr			Rebounds			PF	TP	A	To	Bk	Stl	Min
		FG	FGA	FT	FTA	Off	Def	Off	Def	Off							
25	SMITH, Janae	f	9-11	0-0	4-6	0	11	11	1	22	3	2	0	0	33		
31	OLIVER, Maddie	f	0-2	0-0	2-2	1	3	4	1	2	0	2	0	0	12		
01	JENKINS, Alexis	g	4-11	1-5	0-0	1	1	2	2	9	5	1	0	22			
23	RUSSELL, Jamie	g	2-6	0-1	2-2	4	0	4	3	6	3	6	0	24			
24	WINGE, Katy	g	5-13	2-11	0	1	1	15	3	0	0	0	1	30			
03	SYKES, Candace	g	4-7	2-2	2-3	3	3	6	1	12	1	2	0	18			
04	NELSON, Chloe	g	0-1	0-1	0-0	0	0	0	2	2	2	1	0	18			
11	HALL, Stekara	g	1-2	0-1	0-0	0	0	0	1	2	0	0	0	4			
14	FOLEY, Alexis	g	1-6	1-4	0-0	1	0	1	3	1	2	0	0	16			
22	SEBERGER, Allison	g	0-1	0-1	0-0	0	1	1	0	0	0	0	0	2			
32	CRUMP, Octavia	g	0-0	0-0	0-1	1	3	4	1	0	0	0	0	13			
35	PUNI, Brianna	g	0-0	0-0	0-0	1	2	3	3	0	1	1	0	6			
50	GRACE, Megan	g	0-0	0-0	0-0	0	0	0	2	0	0	0	0	2			
Team			1	2													
Totals			26-60	9-26	10-14	14	25	39	19	71	19	18	2	6	200		

FG % 1st Half: 17-35 48.6% 2nd half: 9-25 36.0% Game: 26-60 43.3% Deadball Rebounds: 0
3FG % 1st Half: 7-14 50.0% 2nd half: 2-12 16.7% Game: 9-26 34.6%
FT % 1st Half: 2-4 50.0% 2nd half: 8-10 80.0% Game: 10-14 71.4%

Officials: David Stewart, Becky Blank, Brad Maxey
Technical fouls: Ball State-None, Illinois State-None.
Attendance: 1414

Score by periods	1st	2nd	Total
Ball State	28	28	56
Illinois State	43	28	71

Last FG - BSU 2nd-00:10, ILS 2nd-00:52
Largest lead - BSU None, ILS by 19 2nd-19:00.

Score tied - 0 times.
Lead changed - 0 times.

GAME 11 ILLINOIS STATE 69
ILLINOIS 68
Dec. 21, 2012
Assembly Hall // Champaign, Ill.

Official Basketball Box Score -- Game Totals -- Final Statistics
Illinois State vs Illinois
12/21/12 7:05 pm at Assembly Hall, Champaign, Ill.

Illinois State 69 • 7-4

#	Player	Total			3-Ptr			Rebounds			PF	TP	A	To	Bk	Stl	Min
		FG	FGA	FT	FTA	Off	Def	Off	Def	Off							
25	SMITH, Janae	f	5-11	0-0	3-3	3	4	7	2	13	4	6	1	0	37		
31	OLIVER, Maddie	f	3-4	0-0	0-0	2	3	5	2	6	1	0	1	0	18		
01	JENKINS, Alexis	g	0-0	0-0	0-0	0	1	1	2	0	2	5	0	0	11		
23	RUSSELL, Jamie	g	3-10	0-1	3-4	2	3	5	1	9	1	4	0	1	17		
24	WINGE, Katy	g	0-4	0-4	0-0	0	0	0	1	0	1	4	0	0	20		
03	SYKES, Candace	g	8-17	6-12	0-0	0	7	7	1	22	1	2	0	1	29		
04	NELSON, Chloe	g	3-4	1-1	1-2	0	2	2	1	8	3	0	1	0	29		
14	FOLEY, Alexis	g	2-5	0-1	3-3	1	5	6	1	7	1	3	0	3	22		
35	PUNI, Brianna	g	2-4	0-0	0-0	0	1	1	3	4	0	0	3	0	17		
Team					5	2	7										
Totals			26-59	7-19	10-12	13	28	41	14	69	14	25	6	5	200		

FG % 1st Half: 13-28 46.4% 2nd half: 13-31 41.9% Game: 26-59 44.1% Deadball Rebounds: 12
3FG % 1st Half: 3-9 33.3% 2nd half: 4-10 40.0% Game: 7-19 36.8%
FT % 1st Half: 5-6 83.3% 2nd half: 5-6 83.3% Game: 10-12 83.3%

Illinois 68 • 6-5

#	Player	Total			3-Ptr			Rebounds			PF	TP	A	To	Bk	Stl	Min
		FG	FGA	FT	FTA	Off	Def	Off	Def	Off							
42	Moore, Amber	f	5-8	2-5	1-1	0	3	3	1	13	1	1	1	2	40-		
44	Magrum, Kersten	f	0-8	0-3	0-2	0	4	4	2	0	5	3	0	1	30		
00	Penn, Karisma	c	8-17	1-1	5-8	7	8	15	2	22	0	6	6	3	39		
22	Crawford, Ivory	g	4-12	3-9	0-0	2	4	6	5	11	1	3	1	4	31		
23	Smith, Alex	g	4-13	1-5	0-0	2	2	3	2	3	9	4	3	0	33		
03	Tuck, Taylor	g	4-8	3-6	0-0	0	2	2	1	11	1	2	0	0	20		
05	Oden, Nia	g	1-1	0-0	0-0	0	0	0	1	2	0	0	0	0	7		
Team					2	2	2										
Totals			26-67	10-29	6-11	13	21	34	15	68	12	18	8	11	200		

FG % 1st Half: 12-37 32.4% 2nd half: 14-30 46.7% Game: 26-67 38.8% Deadball Rebounds: 3
3FG % 1st Half: 4-14 28.6% 2nd half: 6-15 40.0% Game: 10-29 34.5%
FT % 1st Half: 1-1 100.0% 2nd half: 5-10 50.0% Game: 6-11 54.5%

Officials: Lisa Mattingly, Amy Bonner, Tom Hallead
Technical fouls: Illinois State-None, Illinois-None.
Attendance: 1973

Score by periods	1st	2nd	Total
Illinois State	34	35	69
Illinois	29	39	68

Last FG - ILS 2nd-03:11, ILL 2nd-01:17.
Largest lead - ILS by 6 2nd-17:40, ILL by 8 2nd-07:28.

Score tied - 8 times.
Lead changed - 16 times.

GAME 10 ILLINOIS STATE 50
PRINCETON 67
Dec. 19, 2012
Redbird Arena // Normal, Ill.

Official Basketball Box Score -- Game Totals -- Final Statistics
Princeton vs Illinois State
12/19/12 7:05 p.m. at Doug Collins Court at Redbird Arena

Princeton 67 • 7-4

#	Player	Total			3-Ptr			Rebounds			PF	TP	A	To	Bk	Stl	Min
		FG	FGA	FT	FTA	Off	Def	Off	Def	Off							
20	Miller, Kate	f	2-5	1-3	0-0	2	4	6	3	5	2	1	1	2	37		
32	Helmstetter, Kristen	f	2-7	0-2	0-0	1	5	6	0	4	3	2	2	3	32		
43	Bowen, Megan	c	5-12	0-0	1-1	2	3	5	2	11	4	1	0	0	19		
11	Dietrick, Blake	g	2-5	2-4	2-2	0	5	5	1	8	3	1	0	0	40		
24	Rasheed, Niveen	g	10-18	0-0	1-1	9	10	3	21	1	3	2	1	36			
13	Miller, Michelle	g	6-9	2-4	0-0	0	3	3	1	14	0	0	1	20			
21	Wheatley, Alex	g	0-0	0-0	0-0	2	2	2	1	0	0	1	0	6			
33	Smith, Mariah	g	2-5	0-0	0-0	1	1	2	4	4	0	3	3	0	10		
Team					2	1	3										
Totals			29-61	5-13	4-4	9	33	42	15	67	13	12	8	7	200		

FG % 1st Half: 13-28 46.4% 2nd half: 16-33 48.5% Game: 29-61 47.5% Deadball Rebounds: 0
3FG % 1st Half: 3-9 33.3% 2nd half: 2-4 50.0% Game: 5-13 38.5%
FT % 1st Half: 3-3 100.0% 2nd half: 1-1 100.0% Game: 4-4 100.0%

Illinois State 50 • 6-4

#	Player	Total			3-Ptr			Rebounds			PF	TP	A	To	Bk	Stl	Min
		FG	FGA	FT	FTA	Off	Def	Off	Def	Off							
25	SMITH, Janae	f	7-17	0-0	3-5	5	11	16	1	17	2	1	0	1	38		
31	OLIVER, Maddie	f	1-2	0-0	0-0	1	1	2	1	2	0	0	0	0	10		
01	JENKINS, Alexis	g	0-2	0-1	0-0	0	1	1	1	0	1	0	1	0	21		
23	RUSSELL, Jamie	g	1-11	0-0	4-4	0	2	2	1	6	1	2	0	1	24		
24	WINGE, Katy	g	1-8	1-7	2-3	0	0	0	3	5	2	2	0	1	22		
03	SYKES, Candace	g	2-15	1-6	7-8	1	6	7	1	12	0	0	0	1	33		
04	NELSON, Chloe	g	0-1	0-0	0-0	1	1	2	0	0	0	1	0	0	19		
14	FOLEY, Alexis	g	0-0	0-0	0-0	0	0	0	0	0	0	0	0	0	9		
35	PUNI, Brianna	g	3-8	0-0	2-4	6	1	7	2	8	0	2	0	2	24		
Team					4	0	4										
Totals			15-64	2-14	18-24	18	23	41	10	50	7	9	1	6	200		

FG % 1st Half: 10-36 27.8%

2012-13 ILLINOIS STATE WOMEN'S BASKETBALL GAME NOTES

GAME 13

**ILLINOIS STATE
NORTHERN IOWA**
Jan. 4, 2012
Redbird Arena // Normal, Ill.

72
41

Official Basketball Box Score -- Game Totals -- Final Statistics
Northern Iowa vs Illinois State
1/4/13 7:07 p.m. at Doug Collins Court at Redbird Arena

Northern Iowa 41 • 5-8

#	Player	Total		3-Ptr		Rebounds			PF	TP	A	TO	Blk	Stl	Min
		FG	FGA	FG	FGA	FT	FTA	Off							
20	Schonhardt, Hannah	f	2-3	0-0	0-1	0	4	4	3	4	0	0	1	1	14
42	Keitel, Jen	f	3-6	0-0	0-0	1	3	4	2	6	0	3	1	0	25
10	Kalin, Jacqui	g	3-11	2-4	2-2	1	4	5	0	10	1	3	0	0	30
22	Brown, Brooke	g	1-5	0-1	2-6	2	5	7	0	4	0	2	0	0	29
2	Donaldson, Brittni	g	4-12	1-3	0-0	1	0	1	1	9	0	2	0	1	25
00	Kirschbaum, Amber		2-8	0-0	0-0	0	2	2	1	4	0	1	2	1	20
13	Lamar, Sharnae		0-4	0-1	1-2	1	1	2	0	1	1	1	0	0	20
14	Davison, Stephanie		0-1	0-0	1-0	1	0	1	0	0	1	0	0	0	16
15	McDowell, Jess		1-4	1-4	0-0	1	3	4	3	0	2	0	1	21	
	Team					0	1	1							
	Totals		16-54	4-14	5-11	8	23	31	11	41	2	14	4	4	200

FG % 1st Half: 9-28 32.1% 2nd half: 7-26 26.9% Game: 16-54 29.6%
3FG % 1st Half: 4-9 44.4% 2nd half: 0-5 0.0% Game: 4-14 28.6%
FT % 1st Half: 4-6 66.7% 2nd half: 1-5 20.0% Game: 5-11 45.5%

Illinois State 72 • 9-4

#	Player	Total		3-Ptr		Rebounds			PF	TP	A	TO	Blk	Stl	Min
		FG	FGA	FG	FGA	FT	FTA	Off							
25	SMITH, Janae	f	7-12	0-0	9-9	2	10	12	2	23	0	2	1	1	35
31	OLIVER, Maddie	f	3-3	0-0	0-0	2	1	3	2	6	0	0	0	0	22
01	JENKINS, Alexis	g	2-5	0-1	0-0	0	1	1	0	4	3	0	0	0	16
23	RUSSELL, Jamie	g	4-15	0-0	1-2	2	2	4	2	9	1	1	0	1	25
24	WINGE, Katy	g	1-2	1-1	0-0	0	0	0	0	3	1	0	0	0	12
03	SYKES, Candace		8-15	4-8	0-0	2	9	11	2	20	2	2	5	0	29
04	NELSON, Chloe		1-2	0-0	0-0	1	2	3	1	2	5	1	1	1	23
11	HALL, Stekara		0-0	0-0	0-0	0	0	0	0	0	1	0	0	0	1
14	FOLEY, Alexis		1-1	0-0	0-0	1	3	4	1	2	2	0	0	0	14
22	SEBERGER, Allison		0-0	0-0	0-0	0	0	0	0	0	1	0	0	0	2
35	PUNI, Brianna		1-6	0-0	1-1	1	3	4	4	3	0	3	0	1	20
50	GRACE, Megan		0-0	0-0	0-0	0	0	0	0	0	0	0	0	0	1
	Team					0	3	3							
	Totals		28-61	5-10	11-12	11	34	45	14	72	14	11	7	4	200

FG % 1st Half: 14-31 45.2% 2nd half: 14-30 46.7% Game: 28-61 45.9%
3FG % 1st Half: 3-5 60.0% 2nd half: 2-5 40.0% Game: 5-10 50.0%
FT % 1st Half: 6-6 100.0% 2nd half: 5-6 83.3% Game: 11-12 91.7%

Officials: Felicia Grinter, Laura Morris, Rod Creech
Technical fouls: Northern Iowa-None. Illinois State-None.
Attendance: 1349

Score by periods	1st	2nd	Total
Northern Iowa	26	15	41
Illinois State	37	35	72

Last FG - UNIW 2nd-00:49, ILS 2nd-00:36.
Largest lead - UNIW by 5 1st-14:55, ILS by 31 2nd-01:18.

Points	In	Off	2nd	Fast	Bench
	Paint	T/O	Chance	Break	
UNIW	18	4	9	0	8
ILS	36	17	15	11	27

Score tied - 1 time.
Lead changed - 2 times.

GAME 14

**ILLINOIS STATE
BRADLEY**
Jan. 6, 2013
Redbird Arena // Normal, Ill.

81
65

Official Basketball Box Score -- Game Totals -- Final Statistics
Bradley vs Illinois State
1/6/13 2:05 p.m. at Doug Collins Court at Redbird Arena

Bradley 65 • 6-7, 0-2

#	Player	Total		3-Ptr		Rebounds			PF	TP	A	TO	Blk	Stl	Min
		FG	FGA	FG	FGA	FT	FTA	Off							
00	Butts, Shronda	g	6-18	0-4	4-5	0	1	1	3	16	3	1	0	1	29
01	Young, Michelle	g	4-8	1-1	0-0	1	3	4	2	9	0	1	0	3	19
03	Budd, Kelsey	g	4-12	1-2	1-2	0	6	6	3	10	2	4	0	1	34
10	Yohn, Katie	g	1-9	1-6	0-0	1	4	5	1	3	1	2	2	0	26
32	Smith, Jenny	g	2-4	1-1	1-2	1	0	1	1	6	1	0	0	1	13
12	Vine, Fantasia		0-1	0-0	0-0	1	0	1	2	0	0	0	0	0	3
13	Bisping, Brooke		3-7	0-0	1-1	6	1	7	3	7	1	2	0	1	24
22	O'Leary, Caitie		0-6	0-3	8-8	1	4	5	1	8	1	1	2	2	24
44	Frings, Kelly		3-5	0-1	0-0	1	3	4	1	6	0	1	0	1	22
53	Spinas-Vatainis, Aly		0-2	0-0	0-0	0	1	1	0	0	0	0	1	0	6
	Team					3	4	7							
	Totals		23-72	4-18	15-18	15	27	42	17	65	9	12	6	9	200

FG % 1st Half: 14-37 37.8% 2nd half: 9-35 25.7% Game: 23-72 31.9%
3FG % 1st Half: 3-9 33.3% 2nd half: 1-9 11.1% Game: 4-18 22.2%
FT % 1st Half: 5-6 83.3% 2nd half: 10-12 83.3% Game: 15-18 83.3%

Illinois State 81 • 10-4, 2-0

#	Player	Total		3-Ptr		Rebounds			PF	TP	A	TO	Blk	Stl	Min
		FG	FGA	FG	FGA	FT	FTA	Off							
25	SMITH, Janae	f	8-16	0-0	5-7	2	11	13	0	21	6	3	1	2	37
31	OLIVER, Maddie	f	3-3	0-0	2-2	0	3	3	2	8	0	1	2	0	15
04	NELSON, Chloe	g	1-4	0-1	2-2	1	3	4	2	4	1	1	0	1	18
23	RUSSELL, Jamie	g	7-12	0-0	4-4	1	5	6	2	18	2	1	2	4	36
24	WINGE, Katy	g	1-5	1-5	0-0	0	3	3	1	3	1	0	1	0	19
01	JENKINS, Alexis		2-5	1-2	0-0	0	1	1	0	5	4	1	0	0	21
03	SYKES, Candace		6-18	4-11	1-2	3	5	8	3	17	1	1	1	1	31
14	FOLEY, Alexis		0-2	0-1	0-0	0	0	0	0	0	0	0	0	0	4
35	PUNI, Brianna		2-5	0-0	1-2	4	3	7	3	5	0	4	0	0	19
	Team					4	1	5							
	Totals		30-70	6-20	15-19	15	35	50	13	81	15	12	7	8	200

FG % 1st Half: 18-39 46.2% 2nd half: 12-31 38.7% Game: 30-70 42.9%
3FG % 1st Half: 3-12 25.0% 2nd half: 3-8 37.5% Game: 6-20 30.0%
FT % 1st Half: 5-6 83.3% 2nd half: 10-13 76.9% Game: 15-19 78.9%

Officials: David Stewart, Mark Berger, Marissa Whaley
Technical fouls: Bradley-None. Illinois State-None.
Attendance: 1611

Score by periods	1st	2nd	Total
Bradley	36	29	65
Illinois State	44	37	81

Last FG - BU 2nd-01:44, ILS 2nd-01:17.
Largest lead - BU None, ILS by 17 2nd-07:36.

Score tied - 0 times.
Lead changed - 0 times.

GAME 15

**ILLINOIS STATE
CREIGHTON**
Jan. 11, 2013
D.J. Sokol Arena // Omaha, Neb.

45
64

Official Basketball Box Score -- Game Totals -- Final Statistics
Illinois State vs Creighton
01-11-13 7:00 p.m. at Omaha, Neb. (D.J. Sokol Arena)

Illinois State 45 • 10-5, 2-1 MVC

#	Player	Total		3-Ptr		Rebounds			PF	TP	A	TO	Blk	Stl	Min
		FG	FGA	FG	FGA	FT	FTA	Off							
01	JENKINS, Alexis	*	1-5	1-2	0-0	0	3	3	0	3	1	2	0	1	25
23	RUSSELL, Jamie	*	2-9	0-0	5-6	0	4	4	2	9	1	3	1	2	26
24	WINGE, Katy	*	2-4	1-3	0-0	0	2	2	2	5	1	0	0	1	33
25	SMITH, Janae	*	3-12	0-0	3-5	6	3	9	1	9	3	2	0	0	23
31	OLIVER, Maddie	*	0-1	0-0	0-0	0	0	0	1	0	0	0	0	0	11
03	SYKES, Candace	*	3-9	1-4	0-0	0	2	2	1	7	3	1	0	1	26
04	NELSON, Chloe		1-5	0-1	0-0	1	1	2	0	2	1	0	0	0	12
11	HALL, Stekara		0-1	0-0	0-0	0	0	0	1	0	0	0	0	0	4
14	FOLEY, Alexis		2-5	0-1	0-0	1	1	2	1	4	0	0	0	1	11
22	SEBERGER, Alison		0-0	0-0	0-0	0	0	0	0	0	0	0	0	0	2
32	CRUMP, Octavia		0-0	0-0	0-0	0	0	0	0	0	0	0	0	0	3
35	PUNI, Brianna		3-8	0-0	0-0	2	6	8	3	6	0	1	0	0	24
	Team					3	2	5							
	Totals		17-59	3-11	8-11	13	24	37	12	45	10	10	1	6	200

FG % 1st Half: 9-28 32.1% 2nd half: 8-31 25.8% Game: 17-59 28.8%
3FG % 1st Half: 2-5 40.0% 2nd half: 1-6 16.7% Game: 3-11 27.3%
FT % 1st Half: 3-4 75.0% 2nd half: 5-7 71.4% Game: 8-11 72.7%

Creighton 64 • 11-3, 3-0 MVC

#	Player	Total		3-Ptr		Rebounds			PF	TP	A	TO</
---	--------	-------	--	-------	--	----------	--	--	----	----	---	------

2012-13 ILLINOIS STATE WOMEN'S BASKETBALL GAME NOTES

2012-13 GAME-BY-GAME COMPARISONS

GAME	POINTS	TOTAL		3-PT.		FT-FTA	PCT.	REBOUNDS							
		FG-FGA	PCT.	FG-FGA	PCT.			OFF.	DEF.	TOTAL	PF	A	TO	B	S
Illinois State	62	22-53	.415	4-8	.500	14-18	.778	13	27	40	11	13	20	4	10
<i>Morehead State</i>	45	17-46	.370	6-19	.316	5-8	.625	4	19	23	16	10	22	1	14
Illinois State	64	25-76	.329	2-14	.143	12-21	.571	17	27	44	27	6	17	4	15
<i>Iowa</i>	74	19-54	.352	4-12	.333	32-41	.780	12	38	50	18	18	23	10	9
Illinois State	74	26-60	.433	5-15	.333	17-22	.773	11	21	32	13	16	17	1	8
<i>Memphis</i>	76	34-64	.531	4-14	.286	4-7	.571	10	24	34	21	11	17	4	9
Illinois State	86	30-68	.441	6-23	.261	20-22	.909	19	24	43	14	20	12	2	4
<i>UIC</i>	74	29-69	.420	4-18	.222	12-14	.857	17	20	37	18	16	13	4	8
Illinois State	83	29-59	.492	9-20	.450	16-19	.842	10	25	35	16	16	16	7	6
<i>Western Kentucky</i>	68	26-62	.419	6-12	.500	10-18	.556	16	22	38	14	10	17	4	8
Illinois State	75	28-69	.406	4-15	.267	15-18	.833	19	34	53	12	18	14	3	10
<i>Wisconsin-Milwaukee</i>	54	19-58	.328	5-22	.227	11-16	.688	6	24	30	15	6	16	3	10
Illinois State	45	18-54	.333	8-24	.333	1-4	.250	4	20	24	13	13	14	1	5
<i>Michigan</i>	56	21-48	.438	6-13	.462	8-12	.667	8	34	42	10	12	19	3	6
Illinois State	64	23-65	.354	6-13	.462	12-15	.800	21	33	54	8	11	17	4	10
<i>Northwestern</i>	46	19-68	.279	5-23	.217	3-5	.600	17	22	39	15	14	16	9	11
Illinois State	71	26-60	.433	9-26	.346	10-14	.714	14	25	39	19	19	18	2	6
<i>Ball State</i>	56	20-49	.408	2-8	.250	14-22	.636	7	24	31	15	7	18	4	7
Illinois State	50	15-64	.234	2-14	.143	18-24	.750	18	23	41	10	7	9	1	6
<i>Princeton</i>	67	29-61	.475	5-13	.385	4-4	1.000	9	33	42	15	13	12	8	7
Illinois State	69	26-58	.441	7-19	.368	10-12	.833	13	28	41	14	14	25	6	5
<i>Illinois</i>	68	26-67	.388	10-29	.345	6-11	.545	13	21	34	15	12	18	8	11
Illinois State	65	25-55	.455	3-7	.429	12-21	.571	12	33	45	12	8	20	3	8
<i>Butler</i>	57	21-60	.350	5-20	.250	10-15	.667	8	24	32	15	15	13	12	15
Illinois State	72	28-61	.459	5-10	.500	11-12	.917	11	34	45	14	14	11	7	4
<i>Northern Iowa</i>	41	16-54	.296	4-14	.286	5-11	.455	8	23	31	11	2	14	4	4
Illinois State	81	30-70	.429	6-20	.300	15-19	.789	15	35	50	13	15	12	7	8
<i>Bradley</i>	65	23-72	.319	4-18	.222	15-18	.833	15	27	42	17	9	12	6	9
Illinois State	45	17-59	.288	3-11	.273	8-11	.727	13	24	37	12	10	10	1	6
<i>Creighton</i>	64	27-58	.466	6-20	.300	4-4	1.000	7	31	38	12	14	10	7	4
TOTAL	1006	368-932	.395	79-239	.331	194-252	.770	223	437	660	208	200	232	53	111
OPPONENTS	911	346-890	.389	76-255	.298	143-206	.694	157	386	543	227	169	240	87	132

2012-13 ILLINOIS STATE WOMEN'S BASKETBALL GAME NOTES

2012-13 GAME-BY-GAME LEADERS

DATE	OPPONENT	W/L	SCORE	POINTS	REBOUNDS	ASSISTS	BLOCKS	STEALS
11/9	vs. Morehead State	W	62-45	20 Jamie Russell	11 Octavia Crump	6 Jamie Russell	2 Janae Smith	3 Jamie Russell
11/11	at Iowa	L	74-64	10 Jamie Russell	12 Jamie Russell	2 Jamie Russell Alexis Jenkins	1 Three Players	8 Jamie Russell
11/18	vs. Memphis	L	76-74	31 Janae Smith	9 Janae Smith	5 Alexis Foley Alexis Jenkins	1 Brianna Puni	2 Alexis Foley Alexis Jenkins
11/21	at UIC	W	86-74	20 Candace Sykes	8 Jamie Russell	6 Alexis Jenkins	1 Jamie Russell Chloe Nelson	1 Four Players
11/24	at Western Kentucky	W	83-68	22 Candace Sykes	12 Janae Smith	7 Alexis Jenkins	4 Janae Smith	3 Jamie Russell
11/29	vs. Milwaukee	W	75-54	18 Janae Smith	13 Jamie Russell	7 Alexis Jenkins	1 Three Players	3 Candace Sykes
12/5	vs. Michigan	L	56-45	11 Janae Smith	7 Janae Smith	4 Jamie Russell	1 Candace Sykes	2 Alexis Foley Jamie Russell
12/7	vs. Northwestern	W	64-46	24 Jamie Russell	10 Jamie Russell	5 Jamie Russell	1 Janae Smith Candace Sykes	3 Jamie Russell
12/16	vs. Ball State	W	71-56	22 Janae Smith	11 Janae Smith	5 Alexis Jenkins	1 Chloe Nelson Brianna Puni	2 Jamie Russell Octavia Crump
12/19	vs. Princeton	L	67-50	17 Janae Smith	16 Janae Smith	2 Janae Smith Katy Winge	1 Alexis Jenkins	2 Brianna Puni
12/21	at Illinois	W	69-68	22 Candace Sykes	7 Janae Smith Candace Sykes	4 Janae Smith	3 Brianna Puni	3 Alexis Foley
12/30	at Butler	W	65-57	17 Brianna Puni Janae Smith	11 Janae Smith	3 Alexis Jenkins	2 Janae Smith	3 Jamie Russell
1/4	vs. Northern Iowa	W	72-41	23 Janae Smith	12 Janae Smith	5 Chloe Nelson	5 Candace Sykes	1 Four Players
1/6	vs. Bradley	W	81-65	21 Janae Smith	13 Janae Smith	6 Janae Smith	2 Maddi Oliver Jamie Russell	4 Jamie Russell
1/11	at Creighton	L	64-45	9 Janae Smith Jamie Russell	9 Janae Smith	3 Janae Smith Candace Sykes	1 Jamie Russell	2 Jamie Russell

2012-13 ISU GAME LEADERS

POINTS	REBOUNDS	ASSISTS	BLOCKS	STEALS
Brianna Puni.....1	Octavia Crump.....1	Alexis Foley.....2	Alexis Jenkins.....1	Octavia Crump.....1
Jamie Russell.....4	Jamie Russell.....4	Alexis Jenkins.....6	Chloe Nelson.....3	Alexis Foley.....3
Janae Smith.....9	Janae Smith.....10	Chloe Nelson.....1	Maddie Oliver.....1	Alexis Jenkins.....2
Candace Sykes.....3	Candace Sykes.....1	Jamie Russell.....4	Brianna Puni.....3	Chloe Nelson.....2
		Janae Smith.....4	Jamie Russell.....5	Brianna Puni.....2
		Candace Sykes.....1	Janae Smith.....7	Jamie Russell.....11
		Katy Winge.....1	Candace Sykes.....4	Candace Sykes.....3



megan GRACE

Center // SR // 6-4 // St. Louis, Mo. // St. Joseph's Academy

- Tied a career-high six field goal attempts against Western Kentucky (12/9/11) last season

2012-13 Game-By-Game

Opponent	Date	gs	min	Total		3-Pointers		Free throws		Rebounds				pts	avg					
				fg-fga	pct	3fg-fga	pct	ft-fa	pct	off	def	tot	avg							
MOREHEAD STATE	11/09/12	1		0-0	.000	0-0	.000	2-2	1.000	0	0	0	0.0	0	0	0	0	2	2.0	
at Iowa	11/11/12	1		1-1	1.000	0-0	.000	0-0	.000	0	0	0	0.0	1	0	0	0	0	2	2.0
MILWAUKEE	11/29/12	3		0-1	.000	0-0	.000	0-0	.000	0	0	0	0.0	1	0	0	0	0	1.3	
BALL STATE	12/16/12	2		0-0	.000	0-0	.000	0-0	.000	0	0	0	0.0	2	0	0	0	0	1.0	
NORTHERN IOWA	1/4/13	1		0-0	.000	0-0	.000	0-0	.000	0	0	0	0.0	0	0	0	0	0	0.8	
Totals		0	8	1-2	.500	0-0	.000	2-2	1.000	0	0	0	0.0	4	0	0	0	0	4	0.8

Games played: 5
 Minutes/game: 1.6
 Points/game: 0.8
 FG Pct: 50.0
 FT Pct: 100.0

GRACE'S CAREER HIGHS

POINTS	11	at Southern Illinois	1/27/11
REBOUNDS	7	vs. Ball State	12/9/10
ASSISTS	1	Three Times	12/9/10
BLOCKS	1	10 Times	1/27/11
STEALS	1	Six Times	2/5/11
FIELD GOALS	3	at Southern Illinois	1/27/11
FIELD GOAL ATTEMPTS	6	vs. Eastern Illinois	11/18/10
		vs. Western Kentucky	12/9/11
3-PT. FIELD GOALS	0		
3-PT. FIELD GOAL ATTEMPTS	1	vs. Eastern Illinois	11/18/10
FREE THROWS	5	at Southern Illinois	1/27/11
FREE THROW ATTEMPTS	6	at Southern Illinois	1/27/11
MINUTES	12	Two Times	12/9/10

GRACE'S CAREER STATS

YEAR	GP	GS	FIELD GOALS		3-POINT FG		FREE THROWS		REBOUNDS				SCORING			MINUTES					
			M-A	PCT.	M-A	PCT.	M-A	PCT.	OFF.	DEF.	TOT.	AVG.	PF-FO	AST	TO	BLK	STL	PTS.	AVG.	MIN.	AVG.
2009-10	16	0	4-11	.364	0-0	.000	1-2	.500	3	4	7	0.4	6-0	1	6	2	2	9	0.6	38	2.4
2010-11	26	0	12-31	.387	0-1	.000	8-12	.667	12	11	23	0.9	22-0	2	3	8	5	32	1.2	111	4.3
2011-12	12	0	1-13	.077	0-0	.000	2-2	1.000	2	3	5	0.4	9-0	0	3	2	0	4	0.3	32	2.7
2012-13	5	0	1-2	.500	0-0	.000	2-2	1.000	0	0	0	0.0	4-0	0	0	0	0	4	0.8	8	1.6
TOTALS	59	0	18-57	.316	0-1	.000	13-18	.722	17	18	35	0.6	41	3	12	12	7	49	0.8	190	3.2

As of Jan. 10



jaz GREEN

Guard // SR // 5-8 // St. Petersburg, Fla. // Santa Fe College

- Transferred from Santa Fe College at the start of the 2011-12 season
- Brought down a career-high four rebounds against Arkansas State (12/2/11) last season

2012-13 Game-By-Game

-- Will not play the remainder of the season due to injury --

GREEN'S CAREER HIGHS

POINTS		
2	at Eastern Illinois	11/21/11
	at Southern Illinois	3/3/12
REBOUNDS		
4	vs. Arkansas State	12/2/11
ASSISTS		
1	Western Kentucky	12/9/11
BLOCKS		
--		
STEALS		
--		
FIELD GOALS		
1	at Eastern Illinois	11/21/11
FIELD GOAL ATTEMPTS		
2	at Eastern Illinois	11/21/11
	at Southern Illinois	3/3/12
3-PT. FIELD GOALS		
--		
3-PT. FIELD GOAL ATTEMPTS		
--		
FREE THROWS		
2	at Southern Illinois	3/3/12
FREE THROW ATTEMPTS		
4	at Southern Illinois	3/3/12
MINUTES		
5	at Eastern Illinois	11/21/11

GREEN'S CAREER STATS

YEAR	GP	GS	FIELD GOALS		3-POINT FG		FREE THROWS		REBOUNDS				SCORING				MINUTES				
			M-A	PCT.	M-A	PCT.	M-A	PCT.	OFF.	DEF.	TOT.	AVG.	PF-FO	AST	TO	BLK	STL	PTS.	AVG.	MIN.	AVG.
2011-12	10	0	1-6	.167	0-0	.000	2-4	.500	2	8	10	1.0	3-0	1	1	2	0	4	0.4	29	2.9
TOTALS	10	0	1-6	.167	0-0	.000	2-4	.500	2	8	10	1.0	3-0	1	1	2	0	4	0.4	29	2.9



alexis JENKINS

Guard // SR // 5-6 // Chicago // University HS

- A member of the 2012-13 leadership team
- Set a career-high seven assists at Western Kentucky (Nov. 24)
- Tied a career-high seven assists against Milwaukee (Nov. 29)
- Tied or set a career high in field goal attempts and three-point field goal attempts vs. Ball State (Dec. 16)

2012-13 Game-By-Game

JENKINS' CAREER HIGHS

POINTS	21	vs. Northern Iowa	2/28/10
REBOUNDS	8	at Evansville	3/1/12
ASSISTS	7	at Western Kentucky vs. Milwaukee	11/24/12 11/29/12
BLOCKS	2	vs. Central Michigan	3/15/12
STEALS	4	at Southern Illinois	3/3/12
FIELD GOALS	8	vs. Northern Iowa vs. Illinois-Chicago	2/28/10 11/28/11
FIELD GOAL ATTEMPTS	11	Three Times	12/16/12
3-PT. FIELD GOALS	3	vs. Northern Iowa vs. Illinois-Chicago	2/28/10 11/28/11
3-PT. FIELD GOAL ATTEMPTS	5	vs. Ball State	12/16/12
FREE THROWS	5	vs. Northern Illinois at Wichita State	12/4/09 1/18/10
FREE THROW ATTEMPTS	6	vs. Northern Illinois at Wichita State	12/4/09 1/18/10
MINUTES	38	vs. Illinois	12/7/11

Opponent	Date	gs	min	Total		3-Pointers		Free throws		Rebounds				pts	avg						
				fg-fga	pct	3fg-fga	pct	ft-fa	pct	off	def	tot	avg								
MOREHEAD STATE	11/09/12	*	24	1-7	.143	0-0	.000	0-0	.000	0	4	4	4.0	0	2	1	0	0	2	2.0	
at Iowa	11/11/12	*	23	1-2	.500	1-2	.500	0-0	.000	0	0	0	2.0	1	2	1	0	2	3	2.5	
MEMPHIS	11/18/12	*	17	1-3	.333	1-1	1.000	2-2	1.000	0	2	2	2.0	0	5	1	0	2	5	3.3	
at UIC	11-21-12	*	31	4-7	.571	1-2	.500	4-4	1.000	0	4	4	2.5	1	6	1	0	1	13	5.8	
at WKU	11/24/12	*	32	4-8	.500	0-1	.000	2-2	1.000	1	3	4	2.8	1	7	3	0	0	10	6.6	
MILWAUKEE	11/29/12	*	32	4-7	.571	1-3	.333	0-0	.000	2	4	6	3.3	1	7	0	0	0	9	7.0	
MICHIGAN	12/5/12	*	19	1-3	.333	1-2	.500	0-0	.000	1	0	1	3.0	3	1	3	0	0	3	6.4	
NORTHWESTERN	12/7/12	*	26	0-5	.000	0-1	.000	0-0	.000	1	2	3	3.0	1	1	2	0	0	0	5.6	
BALL STATE	12/16/12	*	22	4-11	.364	1-5	.200	0-0	.000	1	1	2	2.9	2	5	1	0	1	9	6.0	
PRINCETON	12/19/12	*	21	0-2	.000	0-1	.000	0-0	.000	0	1	1	2.7	1	1	0	1	0	0	5.4	
at Illinois	12/21/12	*	11	0-0	.000	0-0	.000	0-0	.000	0	1	1	2.5	2	2	5	0	0	0	4.9	
at Butler	12/30/12	*	25	3-5	.600	1-2	.500	2-2	1.000	0	3	3	2.6	2	3	1	0	1	9	5.3	
NORTHERN IOWA	1/4/13	*	16	2-5	.400	0-1	.000	0-0	.000	0	1	1	2.5	0	3	0	0	0	4	5.2	
BRADLEY	1/6/13	*	21	2-5	.400	1-2	.500	0-0	.000	0	1	1	2.4	0	4	1	0	0	5	5.1	
at Creighton	01-11-13	*	25	1-5	.200	1-2	.500	0-0	.000	0	3	3	2.4	0	1	2	0	1	3	5.0	
Totals			12	345	28-75	.373	9-25	.360	10-10	1.000	6	30	36	2.4	15	50	22	1	8	75	5.0

Games played: 15
 Minutes/game: 23.0
 Points/game: 5.0
 FG Pct: 37.3
 3FG Pct: 36.0
 FT Pct: 100.0

Rebounds/game: 2.4
 Assists/game: 3.3
 Turnovers/game: 1.5
 Assist/turnover ratio: 2.3
 Steals/game: 0.5
 Blocks/game: 0.1

JENKINS' CAREER STATS

YEAR	GP	GS	FIELD GOALS		3-POINT FG		FREE THROWS		REBOUNDS				SCORING			MINUTES					
			M-A	PCT.	M-A	PCT.	M-A	PCT.	OFF.	DEF.	TOT.	AVG.	PF-FO	AST	TO	BLK	STL	PTS.	AVG.	MIN.	AVG.
2009-10	36	0	33-82	.402	9-30	.300	28-38	.737	3	34	37	1.0	30-0	37	39	2	15	103	2.9	397	11.0
2010-11	35	0	50-114	.439	10-25	.400	24-30	.800	19	32	51	1.5	34-0	44	46	2	16	134	3.8	474	13.5
2011-12	32	17	72-174	.414	14-38	.368	25-34	.735	19	71	90	2.8	49-0	90	67	5	25	183	5.7	789	24.7
2012-13	14	11	27-70	.386	8-23	.348	10-10	1.000	6	27	33	2.4	15-0	49	20	1	7	82	5.9	320	22.9
TOTALS	118	28	182-440	.414	41-116	.353	87-112	.777	47	164	211	1.8	128-0	220	172	10	63	492	4.2	1980	16.8

As of Jan. 10



jamie RUSSELL

Guard // SR-Tr. // 5-7 // Rock Falls, Ill. // Wisconsin (Rock Falls HS)

- A member of the 2012-13 leadership team
- Named to the Preseason All-MVC Team
- Set or tied a career high in four categories at Iowa (Nov. 11), including points (30) and steals (8)
- Recorded first double-double performance at Iowa (Nov. 11)
- Named Valley Player of the Week (Nov. 12)
- Set a career-high 13 rebounds against Milwaukee (Nov. 29)
- Recorded second-career double-double against Northwestern (Dec. 7)

RUSSELL'S CAREER HIGHS

POINTS			
30	at Eastern Illinois	11/21/11	
	at Iowa	11/11/12	
REBOUNDS			
13	vs. Milwaukee	11/29/12	
ASSISTS			
9	Illinois-Chicago	11/28/11	
BLOCKS			
4	vs. Jackson State	11/17/09	
STEALS			
8	at Iowa	11/11/12	
FIELD GOALS			
12	at Iowa	11/11/12	
FIELD GOAL ATTEMPTS			
28	at Iowa	11/11/12	
3-PT. FIELD GOALS			
5	at Eastern Illinois	11/21/11	
3-PT. FIELD GOAL ATTEMPTS			
8	at Eastern Illinois	11/21/11	
FREE THROWS			
7	vs. Indiana State	2/3/12	
FREE THROW ATTEMPTS			
7	Three Times	2/3/12	
MINUTES			
39	at Indiana State	1/6/12	

2012-13 Game-By-Game

Opponent	Date	gs	min	Total		3-Pointers		Free throws		Rebounds				Other				pts	avg		
				fg-fga	pct	3fg-fga	pct	ft-fa	pct	off	def	tot	avg	pf	a	t/o	blk			stl	
MOREHEAD STATE	11/09/12	*	31	8-16	.500	1-1	1.000	3-3	1.000	1	2	3	3.0	3	6	4	0	3	20	20.0	
at Iowa	11/11/12	*	37	12-28	.429	0-2	.000	6-6	1.000	2	10	12	7.5	3	2	6	1	8	30	25.0	
MEMPHIS	11/18/12	*	34	5-15	.333	0-2	.000	2-2	1.000	2	3	5	6.7	0	2	5	0	1	12	20.7	
at UIC	11-21-12	*	31	4-11	.364	0-2	.000	6-6	1.000	3	5	8	7.0	3	5	4	1	1	14	19.0	
at WKU	11/24/12	*	33	5-13	.385	0-1	.000	1-2	.500	2	0	2	6.0	1	4	4	0	3	11	17.4	
MILWAUKEE	11/29/12	*	35	7-22	.318	1-2	.500	2-2	1.000	5	8	13	7.2	1	4	0	1	2	17	17.3	
MICHIGAN	12/5/12	*	28	1-9	.111	0-2	.000	0-0	.000	0	1	1	6.3	2	4	3	0	2	2	15.1	
NORTHWESTERN	12/7/12	*	34	9-18	.500	0-0	.000	6-6	1.000	7	3	10	6.8	1	5	4	0	3	24	16.3	
BALL STATE	12/16/12	*	24	2-6	.333	0-1	.000	2-2	1.000	4	0	4	6.4	3	3	6	0	2	6	15.1	
PRINCETON	12/19/12	*	24	1-11	.091	0-0	.000	4-4	1.000	0	2	2	6.0	1	1	2	0	1	6	14.2	
at Illinois	12/21/12	*	17	3-10	.300	0-1	.000	3-4	.750	2	3	5	5.9	1	1	4	0	1	9	13.7	
at Butler	12/30/12	*	32	5-14	.357	0-0	.000	2-4	.500	1	2	3	5.7	2	0	4	0	3	12	13.6	
NORTHERN IOWA	1/4/13	*	25	4-15	.267	0-0	.000	1-2	.500	2	2	4	5.5	2	1	1	0	1	9	13.2	
BRADLEY	1/6/13	*	36	7-12	.583	0-0	.000	4-4	1.000	1	5	6	5.6	2	2	1	2	4	18	13.6	
at Creighton	01-11-13	*	26	2-9	.222	0-0	.000	5-6	.833	0	4	4	5.5	2	1	3	1	2	9	13.3	
Totals			15	447	75-209	.359	2-14	.143	47-53	.887	32	50	82	5.5	27	41	51	6	37	199	13.3

Games played: 15
 Minutes/game: 29.8
 Points/game: 13.3
 FG Pct: 35.9
 3FG Pct: 14.3
 FT Pct: 88.7

Rebounds/game: 5.5
 Assists/game: 2.7
 Turnovers/game: 3.4
 Assist/turnover ratio: 0.8
 Steals/game: 2.5
 Blocks/game: 0.4

RUSSELL'S CAREER STATS

YEAR	GP	GS	FIELD GOALS		3-POINT FG		FREE THROWS		REBOUNDS				SCORING				MINUTES				
			M-A	PCT.	M-A	PCT.	M-A	PCT.	OFF.	DEF.	TOT.	AVG.	PF-FO	AST	TO	BLK	STL	PTS.	AVG.	MIN.	AVG.
2008-09*	31	0	21-64	.328	3-15	.200	4-11	.364	7	23	30	1.0	25-0	7	29	2	13	49	1.6	274	8.8
2009-10*	17	0	12-35	.343	2-10	.200	1-2	.500	1	17	18	1.1	60-0	14	52	17	13	163	5.1	138	8.1
2011-12	32	32	157-370	.424	24-65	.369	81-102	.794	52	118	170	5.3	76-1	109	77	12	82	419	13.1	1025	32.0
2012-13	14	14	73-200	.365	2-14	.143	42-27	.894	32	46	78	5.6	25-0	40	48	5	35	190	13.6	421	30.1
TOTALS	94	46	263-669	.393	31-104	.298	128-142	.901	92	204	296	3.1	186-1	170	206	36	143	821	8.7	1858	19.8

*AT WISCONSIN
 As of Jan. 10



candace SYKES

Guard // SR-Tr. // 5-10 // St. Anne, Ill. // Alabama (Momence HS)

- Earned All-Valley Honorable-Mention honors for the 2011-12 season
- Didn't play the first two games of the regular season (coach's decision)
- Named Valley Player of the Week (Nov. 26)
- Set a career-high five assists against Milwaukee (Nov. 29)
- Tied a season-best 22 points at Illinois (Dec. 21)
- Set a career-high 18 field goal attempts against Bradley (Jan. 6)
- Scored in double figures in five of last seven games

SYKES' CAREER HIGHS

POINTS		
23	vs. Central Michigan	3/15/12
REBOUNDS		
20	vs. Arkansas State	12/2/11
ASSISTS		
5	vs. Milwaukee	11/29/12
BLOCKS		
5	vs. Northern Iowa	1/4/13
STEALS		
5	Three Times	3/9/12
FIELD GOALS		
9	vs. Central Michigan	3/15/12
FIELD GOAL ATTEMPTS		
18	vs. Bradley	1/6/13
3-PT. FIELD GOALS		
5	at Indiana State	1/6/12
	vs. Central Michigan	3/15/12
3-PT. FIELD GOAL ATTEMPTS		
12	vs. Missouri State	2/27/12
FREE THROWS		
7	vs. Illinois-Chicago	11/28/11
FREE THROW ATTEMPTS		
7	Three Times	2/10/12
MINUTES		
44	vs. Drake	1/20/12

2012-13 Game-By-Game

Opponent	Date	gs	min	Total		3-Pointers		Free throws		Rebounds				pf	a	t/o	blk	stl	pts	avg
				fg-fga	pct	3fg-fga	pct	ft-fa	pct	off	def	tot	avg							
MEMPHIS	11/18/12	22	5-11	.455	3-7	.429	0-0	.000	0	1	1	1.0	2	0	2	0	1	13	13.0	
at UIC	11-21-12	26	7-14	.500	3-8	.375	3-3	1.000	2	1	3	2.0	0	1	2	0	1	20	16.5	
at WKU	11/24/12	28	7-14	.500	5-10	.500	3-3	1.000	1	7	8	4.0	1	1	1	2	1	22	18.3	
MILWAUKEE	11/29/12	33	5-11	.455	2-6	.333	4-5	.800	3	8	11	5.8	1	5	2	1	3	16	17.8	
MICHIGAN	12/5/12	20	1-11	.091	1-8	.125	0-0	.000	0	4	4	5.4	0	0	1	1	0	3	14.8	
NORTHWESTERN	12/7/12	19	2-9	.222	1-4	.250	1-2	.500	1	2	3	5.0	1	0	1	1	1	6	13.3	
BALL STATE	12/16/12	18	4-7	.571	2-2	1.000	2-3	.667	3	3	6	5.1	1	1	2	0	0	12	13.1	
PRINCETON	12/19/12	33	2-15	.133	1-6	.167	7-8	.875	1	6	7	5.4	1	0	0	0	1	12	13.0	
at Illinois	12/21/12	29	8-17	.471	6-12	.500	0-0	.000	0	7	7	5.6	1	1	2	0	1	22	14.0	
at Butler	12/30/12	28	3-9	.333	1-4	.250	0-0	.000	1	5	6	5.6	0	1	2	0	1	7	13.3	
NORTHERN IOWA	1/4/13	29	8-15	.533	4-8	.500	0-0	.000	2	9	11	6.1	2	2	2	5	0	20	13.9	
BRADLEY	1/6/13	31	6-18	.333	4-11	.364	1-2	.500	3	5	8	6.3	3	1	1	1	1	17	14.2	
at Creighton	01-11-13	26	3-9	.333	1-4	.250	0-0	.000	0	2	2	5.9	1	3	1	0	1	7	13.6	
Totals		0	342	61-160	.381	34-90	.378	21-26	.808	17	60	77	5.9	14	16	19	11	12	177	13.6

Games played: 13
 Minutes/game: 26.3
 Points/game: 13.6
 FG Pct: 38.1
 3FG Pct: 37.8
 FT Pct: 80.8

Rebounds/game: 5.9
 Assists/game: 1.2
 Turnovers/game: 1.5
 Assist/turnover ratio: 0.8
 Steals/game: 0.9
 Blocks/game: 0.8

SYKES' CAREER STATS

YEAR	GP	GS	FIELD GOALS		3-POINT FG		FREE THROWS		REBOUNDS				SCORING				MINUTES				
			M-A	PCT.	M-A	PCT.	M-A	PCT.	OFF.	DEF.	TOT.	AVG.	PF-FO	AST	TO	BLK	STL	PTS.	AVG.	MIN.	AVG.
2010-11*	34	0	45-111	.405	15-49	.306	15-19	.789	11	44	55	1.6	40-0	8	28	8	14	120	3.5	366	10.8
2011-12*	31	29	133-311	.428	51-124	.411	43-60	.717	41	208	249	8.0	83-2	49	78	31	59	360	11.6	980	31.6
2012-13*	12	0	58-151	.384	33-86	.384	21-26	.808	17	58	75	6.3	13-0	13	18	11	11	170	14.2	316	26.3
TOTAL	77	29	236-573	.412	99-259	.382	79-105	.752	69	310	379	4.9	136-2	70	124	50	84	650	8.4	1662	21.6

* At Illinois State
 As of Jan. 10



chloe NELSON

Guard // JR // 5-7 // Florissant, Mo. // Incarnate Word Academy

- A member of the 2012-13 leadership team
- Awarded the Rev. Dr. Joanne Peppard-Cooke and Jill Hutchison Endowed Scholarships
- Tied a career-high in attempted threes and set a career-high in field goal attempts (Nov. 11)
- Tied a career-high assists with four against Memphis (Nov. 18)
- Tied a career-high two three pointers against Michigan (Dec. 5)
- Recorded a block at Butler (Dec. 30) and against Northern Iowa (Jan. 4), tying a career-high
- Set a career-high five assists against Northern Iowa (Jan. 4)

NELSON'S CAREER HIGHS

POINTS		
10	vs. Arkansas State at Creighton	12/3/11 2/17/12
REBOUNDS		
7	vs. Missouri State	2/27/12
ASSISTS		
5	vs. Northern Iowa	1/4/13
BLOCKS		
1	Six Times	1/4/13
STEALS		
3	at Arizona State	12/3/11
FIELD GOALS		
4	at Arizona State at Creighton	12/3/11 2/17/12
FIELD GOAL ATTEMPTS		
9	at Iowa	11/11/12
3-PT. FIELD GOALS		
2	at Northwestern vs. Michigan	11/17/11 12/5/12
3-PT. FIELD GOAL ATTEMPTS		
3	at Arizona State at Iowa	12/3/11 11/11/12
FREE THROWS		
4	vs. Bradley	2/12/12
FREE THROW ATTEMPTS		
6	Three Times	2/27/12
MINUTES		
37	vs. Missouri State	2/27/12

2012-13 Game-By-Game

Opponent	Date	gs	min	Total		3-Pointers		Free throws		Rebounds				pf	a	t/o	blk	stl	pts	avg	
				fg-fga	pct	3fg-fga	pct	ft-fa	pct	off	def	tot	avg								
MOREHEAD STATE	11/09/12		17	0-2	.000	0-0	.000	0-0	.000	0	2	2	2.0	0	2	3	0	2	0	0.0	
at Iowa	11/11/12		20	2-9	.222	0-3	.000	2-4	.500	2	1	3	2.5	3	0	0	1	2	6	3.0	
MEMPHIS	11/18/12	*	24	1-5	.200	0-0	.000	1-2	.500	0	0	0	1.7	1	4	0	0	0	3	3.0	
at UIC	11-21-12		13	1-2	.500	0-0	.000	0-0	.000	1	0	1	1.5	2	1	1	1	1	2	2.8	
at WKU	11/24/12		10	2-4	.500	0-1	.000	0-0	.000	0	0	0	1.2	2	0	2	0	2	4	3.0	
MILWAUKEE	11/29/12		15	2-3	.667	0-0	.000	0-0	.000	0	2	2	1.3	0	1	1	0	1	4	3.2	
MICHIGAN	12/5/12		20	2-3	.667	2-2	1.000	0-0	.000	1	2	3	1.6	3	1	2	0	1	6	3.6	
NORTHWESTERN	12/7/12		15	0-3	.000	0-0	.000	0-0	.000	0	4	4	1.9	0	3	1	0	2	0	3.1	
BALL STATE	12/16/12		18	0-1	.000	0-1	.000	0-0	.000	0	0	0	1.7	2	2	2	1	0	0	2.8	
PRINCETON	12/19/12		19	0-1	.000	0-0	.000	0-0	.000	1	1	2	1.7	0	1	0	0	0	0	2.5	
at Illinois	12/21/12		29	3-4	.750	1-1	1.000	1-2	.500	0	2	2	1.7	1	3	0	1	0	8	3.0	
at Butler	12/30/12	*	16	1-1	1.000	1-1	1.000	0-2	.000	0	2	2	1.8	0	1	2	1	0	3	3.0	
NORTHERN IOWA	1/4/13		23	1-2	.500	0-0	.000	0-0	.000	1	2	3	1.8	1	5	1	1	1	2	2.9	
BRADLEY	1/6/13	*	18	1-4	.250	0-1	.000	2-2	1.000	1	3	4	2.0	2	1	1	0	1	4	3.0	
at Creighton	01-11-13		12	1-5	.200	0-1	.000	0-0	.000	1	1	2	2.0	0	1	0	0	0	2	2.9	
Totals			3	269	17-49	.347	4-11	.364	6-12	.500	8	22	30	2.0	17	26	16	6	13	44	2.9

Games played: 15
 Minutes/game: 17.9
 Points/game: 2.9
 FG Pct: 34.7
 3FG Pct: 36.4
 FT Pct: 50.0

Rebounds/game: 2.0
 Assists/game: 1.7
 Turnovers/game: 1.1
 Assist/turnover ratio: 1.6
 Steals/game: 0.9
 Blocks/game: 0.4

NELSON'S CAREER STATS

YEAR	GP	GS	FIELD GOALS		3-POINT FG		FREE THROWS		REBOUNDS				SCORING				MINUTES				
			M-A	PCT.	M-A	PCT.	M-A	PCT.	OFF.	DEF.	TOT.	AVG.	PF-FO	AST	TO	BLK	STL	PTS.	AVG.	MIN.	AVG.
2010-11	18	0	4-8	.500	2-3	.667	3-4	.750	1	3	4	0.2	6-0	3	2	0	2	13	0.7	53	2.9
2011-12	32	16	39-97	.402	6-20	.300	28-45	.622	16	46	62	1.9	41-1	57	35	5	27	112	3.5	575	18.0
2012-13	14	3	16-44	.364	4-10	.400	6-12	.500	7	21	28	2.0	17-0	25	16	6	13	42	3.0	257	18.4
TOTALS	65	19	59-149	.396	12-33	.364	37-61	.607	24	70	94	1.4	64-1	85	53	11	42	167	2.6	885	13.6

As of Jan. 10



alison SEBERGER

Guard // JR // 6-1 // Geneva, Ill. // Montini Catholic HS

- Earned Best Teammate Award - Non-starter at the end of the 2011-12 season
- Set career-bests in five categories at Northwestern (11/17/11)

2012-13 Game-By-Game

SEBERGER'S CAREER HIGHS

POINTS		
6	vs. Ball State	12/9/10
REBOUNDS		
4	vs. Eastern Illinois at Northwestern	11/18/10 11/17/11
ASSISTS		
1	at Northwestern	11/17/11
BLOCKS		
1	vs. Bradley	12/30/10
STEALS		
1	vs. Eastern Illinois vs. Northern Iowa	11/18/10 2/10/12
FIELD GOALS		
1	Nine Times	2/3/12
FIELD GOAL ATTEMPTS		
6	at Northwestern	11/17/11
3-PT. FIELD GOALS		
1	Six Times	2/3/12
3-PT. FIELD GOAL ATTEMPTS		
5	at Northwestern	11/17/11
FREE THROWS		
4	vs. Ball State	12/9/10
FREE THROW ATTEMPTS		
4	vs. Ball State vs. DePaul	12/9/10 12/19/11
MINUTES		
25	at Northwestern	11/17/11

Opponent	Date	gs	min	Total		3-Pointers		Free throws		Rebounds				pf	a	t/o	blk	stl	pts	avg
				fg-fga	pct	3fg-fga	pct	ft-fga	pct	off	def	tot	avg							
MOREHEAD STATE	11/09/12	1		0-0	.000	0-0	.000	0-0	.000	0	0	0	0.0	0	0	0	0	0	0	0.0
at Iowa	11/11/12	1		0-0	.000	0-0	.000	0-0	.000	0	0	0	0.0	0	0	0	0	0	0	0.0
at UIC	11-21-12	3		0-1	.000	0-1	.000	0-0	.000	0	0	0	0.0	0	0	0	0	0	0	0.0
MILWAUKEE	11/29/12	2		1-1	1.000	0-0	.000	0-0	.000	1	0	1	0.3	0	0	0	0	0	2	0.5
NORTHWESTERN	12/7/12	1		0-0	.000	0-0	.000	0-0	.000	0	0	0	0.2	0	0	0	0	1	0	0.4
BALL STATE	12/16/12	2		0-1	.000	0-1	.000	0-0	.000	0	1	1	0.3	0	0	0	0	0	0	0.3
NORTHERN IOWA	1/4/13	2		0-0	.000	0-0	.000	0-0	.000	0	0	0	0.3	0	0	1	0	0	0	0.3
at Creighton	01-11-13	2		0-0	.000	0-0	.000	0-0	.000	0	0	0	0.3	0	0	0	0	0	0	0.3
Totals		0	14	1-3	.333	0-2	.000	0-0	.000	1	1	2	0.3	0	0	1	0	1	2	0.3

Games played: 8
 Minutes/game: 1.8
 Points/game: 0.3
 FG Pct: 33.3
 3FG Pct: 0.0

Rebounds/game: 0.3
 Turnovers/game: 0.1
 Steals/game: 0.1

SEBERGER'S CAREER STATS

YEAR	GP	GS	FIELD GOALS		3-POINT FG		FREE THROWS		REBOUNDS				PF-FO	AST	TO	BLK	STL	SCORING		MINUTES	
			M-A	PCT.	M-A	PCT.	M-A	PCT.	OFF.	DEF.	TOT.	AVG.						PTS.	AVG.	MIN.	AVG.
2010-11	15	0	3-19	.158	1-11	.091	9-12	.750	3	7	10	.7	3-0	0	6	1	1	16	1.1	40	2.7
2011-12	26	0	9-43	.209	7-27	.259	4-5	.800	10	17	27	1.0	7-0	2	5	0	4	29	1.1	143	5.5
2012-13	7	0	1-3	.333	0-2	.000	0-0	.000	1	1	2	0.3	0-0	0	1	0	1	2	0.3	12	1.7
TOTALS	48	0	13-65	.200	8-40	.200	13-17	.765	14	25	39	1.2	10-0	2	12	1	6	47	0.9	192	4.0

As of Jan. 10



maddie OLIVER

Forward // SO // 6-1 // Roland, Iowa // Roland-Story HS

- Earned the Janyth Aellig Endowed Scholarship
- Tied career-highs in free throws made and free throw attempts against Morehead State (Nov. 9)
- Tied career-highs in rebounds and blocks against Northwestern (Dec. 7)
- Tied a career-high in three categories against Bradley (Jan. 6), including blocks with two

2012-13 Game-By-Game

OLIVER'S CAREER HIGHS

POINTS	14	at Ball State	11/11/11
REBOUNDS	8	at Arizona State vs. Northwestern	12/3/11 12/7/12
ASSISTS	5	at Eastern Illinois	11/21/11
BLOCKS	2	Four Times	1/6/13
STEALS	1	Three Times	12/2/11
FIELD GOALS	7	at Ball State	11/11/11
FIELD GOAL ATTEMPTS	8	at Ball State	11/11/11
3-PT. FIELD GOALS	0		
3-PT. FIELD GOAL ATTEMPTS	0		
FREE THROWS	2	Seven Times	1/6/13
FREE THROW ATTEMPTS	2	Three Times	1/6/13
MINUTES	31	at Northwestern	11/17/11

Opponent	Date	qs	min	Total		3-Pointers		Free throws		Rebounds				pf	a	t/o	blk	stl	pts	avg	
				fg-fga	pct	3fg-fga	pct	ft-fa	pct	off	def	tot	avg								
MOREHEAD STATE	11/09/12	*	27	5-7	.714	0-0	.000	2-2	1.000	4	3	7	7.0	1	1	0	1	0	12	12.0	
at Iowa	11/11/12	*	14	0-2	.000	0-0	.000	0-0	.000	1	0	1	4.0	4	0	0	0	1	0	6.0	
MEMPHIS	11/18/12	*	8	0-0	.000	0-0	.000	0-0	.000	0	2	2	3.3	1	0	0	0	0	4.0		
at UIC	11-21-12	*	15	2-3	.667	0-0	.000	2-2	1.000	4	1	5	3.8	0	0	1	0	0	6	4.5	
at WKU	11/24/12	*	15	3-4	.750	0-0	.000	3-4	.750	0	2	2	3.4	2	0	0	1	0	9	5.4	
MILWAUKEE	11/29/12	*	12	3-4	.750	0-0	.000	0-0	.000	0	3	3	3.3	1	0	1	0	0	6	5.5	
MICHIGAN	12/5/12	*	20	3-5	.600	0-0	.000	0-1	.000	0	1	1	3.0	1	3	0	0	0	6	5.6	
NORTHWESTERN	12/7/12	*	25	4-6	.667	0-0	.000	0-0	.000	1	7	8	3.6	0	1	1	2	0	8	5.9	
BALL STATE	12/16/12	*	12	0-2	.000	0-0	.000	2-2	1.000	1	3	4	3.7	1	0	2	0	0	2	5.4	
PRINCETON	12/19/12	*	10	1-2	.500	0-0	.000	0-0	.000	1	1	2	3.5	1	0	0	0	0	2	5.1	
at Illinois	12/21/12	*	18	3-4	.750	0-0	.000	0-0	.000	2	3	5	3.6	2	1	0	1	0	6	5.2	
at Butler	12/30/12	*	16	0-3	.000	0-0	.000	0-0	.000	0	1	1	3.4	1	1	1	0	0	0	4.8	
NORTHERN IOWA	1/4/13	*	22	3-3	1.000	0-0	.000	0-0	.000	2	1	3	3.4	2	0	0	0	0	6	4.8	
BRADLEY	1/6/13	*	15	3-3	1.000	0-0	.000	2-2	1.000	0	3	3	3.4	2	0	1	2	0	8	5.1	
at Creighton	01-11-13	*	11	0-1	.000	0-0	.000	0-0	.000	0	0	0	3.1	1	0	0	0	0	0	4.7	
Totals			15	240	30-49	.612	0-0	.000	11-13	.846	16	31	47	3.1	20	7	7	7	1	71	4.7

Games played: 15
 Minutes/game: 16.0
 Points/game: 4.7
 FG Pct: 61.2
 FT Pct: 84.6

Rebounds/game: 3.1
 Assists/game: 0.5
 Turnovers/game: 0.5
 Assist/turnover ratio: 1.0
 Steals/game: 0.1
 Blocks/game: 0.5

OLIVER'S CAREER STATS

YEAR	GP	GS	FIELD GOALS		3-POINT FG		FREE THROWS		REBOUNDS				SCORING				MINUTES				
			M-A	PCT.	M-A	PCT.	M-A	PCT.	OFF.	DEF.	TOT.	AVG.	PF-FO	AST	TO	BLK	STL	PTS.	AVG.	MIN.	AVG.
2011-12	32	3	31-74	.419	0-0	.000	20-26	.769	21	51	72	2.3	38-0	12	27	12	6	82	2.6	369	11.5
2012-13	14	14	30-48	.625	0-0	.000	11-13	.846	16	31	47	3.4	19-0	7	7	7	1	71	5.1	229	16.4
TOTALS	46	17	61-122	.500	0-0	.000	31-49	.633	37	82	119	2.6	57-0	19	34	19	7	153	3.3	598	13.0

As of Jan. 10



brianna PUNI

Forward // SO // 6-0 // St. Charles, Mo. // Incarnate Word Academy

- Sat out the first nine games of the 2011-12 season due to an injury
- Tied a career high in free throws and free throw attempts against Milwaukee (Nov. 29)
- Set or tied a career high in five categories vs. Princeton (Dec. 19), including and rebounds (7)
- Recorded a career-high three blocks at Illinois (Dec. 21)
- Recorded a career-high in three categories at Butler (Dec. 30), including points with 17
- Set a career-high eight rebounds at Creighton (Jan. 11)

2012-13 Game-By-Game

PUNI'S CAREER HIGHS

POINTS			
17	at Butler	12/30/12	
REBOUNDS			
8	at Creighton	1/11/13	
ASSISTS			
1	vs. Northwestern	12/7/12	
BLOCKS			
3	at Illinois	12/21/12	
STEALS			
2	vs. Princeton	12/19/12	
FIELD GOALS			
8	at Butler	12/30/12	
FIELD GOAL ATTEMPTS			
11	at Butler	12/30/12	
3-PT. FIELD GOALS			
0			
3-PT. FIELD GOAL ATTEMPTS			
0			
FREE THROWS			
2	Three Times	12/19/12	
FREE THROW ATTEMPTS			
4	vs. Princeton	12/19/12	
MINUTES			
24	vs. Princeton	12/19/12	

Opponent	Date	gs	min	Total		3-Pointers		Free throws		Rebounds					pts	avg					
				fg-fga	pct	3fg-fga	pct	ft-fa	pct	off	def	tot	avg	pf			a	t/o	blk	stl	
MOREHEAD STATE	11/09/12		2	0-1	.000	0-0	.000	0-0	.000	0	0	0	0.0	0	0	1	0	0	0.0		
at Iowa	11/11/12		10	0-1	.000	0-0	.000	0-0	.000	0	1	1	0.5	4	0	0	1	0	0.0		
MEMPHIS	11/18/12		15	0-2	.000	0-0	.000	1-2	.500	4	2	6	2.3	1	0	3	1	0	1		
at UIC	11-21-12		5	1-1	1.000	0-0	.000	1-2	.500	0	1	1	2.0	1	1	0	0	0	3		
at WKU	11/24/12		2	0-0	.000	0-0	.000	0-0	.000	0	1	1	1.8	0	1	0	0	0	0.8		
MILWAUKEE	11/29/12		7	0-2	.000	0-0	.000	2-2	1.000	1	0	1	1.7	3	0	1	0	0	2		
MICHIGAN	12/5/12		5	0-1	.000	0-0	.000	0-0	.000	0	1	1	1.6	0	0	1	0	0	0.9		
NORTHWESTERN	12/7/12		14	1-4	.250	0-0	.000	1-2	.500	3	2	5	2.0	1	1	1	0	0	3		
BALL STATE	12/16/12		6	0-0	.000	0-0	.000	0-0	.000	1	2	3	2.1	3	1	1	1	0	1.0		
PRINCETON	12/19/12		24	3-8	.375	0-0	.000	2-4	.500	6	1	7	2.6	2	0	2	0	2	8		
at Illinois	12/21/12		17	2-4	.500	0-0	.000	0-0	.000	0	1	1	2.5	3	0	0	3	0	4		
at Butler	12/30/12		22	8-11	.727	0-0	.000	1-2	.500	5	1	6	2.8	4	0	0	0	1	17		
NORTHERN IOWA	1/4/13		20	1-6	.167	0-0	.000	1-1	1.000	1	3	4	2.8	4	0	3	0	1	3		
BRADLEY	1/6/13		19	2-5	.400	0-0	.000	1-2	.500	4	3	7	3.1	3	0	4	0	0	5		
at Creighton	01-11-13		24	3-8	.375	0-0	.000	0-0	.000	2	6	8	3.5	3	0	1	0	0	6		
Totals			0	192	21-54	.389	0-0	.000	10-17	.588	27	25	52	3.5	32	4	18	6	4	52	3.5

Games played: 15
 Minutes/game: 12.8
 Points/game: 3.5
 FG Pct: 38.9
 FT Pct: 58.8

Rebounds/game: 3.5
 Assists/game: 0.3
 Turnovers/game: 1.2
 Assist/turnover ratio: 0.2
 Steals/game: 0.3
 Blocks/game: 0.4

PUNI'S CAREER STATS

YEAR	GP	GS	FIELD GOALS		3-POINT FG		FREE THROWS		REBOUNDS				SCORING			MINUTES					
			M-A	PCT.	M-A	PCT.	M-A	PCT.	OFF.	DEF.	TOT.	AVG.	PF-FO	AST	TO	BLK	STL	PTS.	AVG.	MIN.	AVG.
2011-12	20	0	8-22	.364	0-0	.000	4-6	.667	13	11	24	1.2	24-0	2	3	2	1	20	1.0	108	5.4
2012-13	14	0	18-46	.391	0-0	.000	10-17	.588	25	19	44	3.1	29-0	4	17	6	4	46	3.3	257	18.4
TOTALS	34	0	26-68	.382	0-0	.000	14-23	.609	38	30	68	2.0	53-0	6	20	8	5	66	1.9	365	10.7

As of Jan. 10



katy WINGE

Guard // SO // 5-11 // Eden Prairie, Minn. // Minnetonka HS

- A member of the 2012-13 leadership team
- Earned Robert and Laura Garrett Endowed Scholarship
- Set or tied a career-high in three categories at Western Kentucky (Nov. 24), including made threes (3)
- Set or tied a career-high in seven categories versus Ball State (Dec. 16), including points (15)
- Recorded first career start against Ball State on Dec. 16
- Set a career-high three free throw attempts against Princeton (Dec. 19)

2012-13 Game-By-Game

WINGE'S CAREER HIGHS

POINTS		
15	vs. Ball State	12/16/12
REBOUNDS		
5	vs. Arkansas State	12/2/11
ASSISTS		
3	vs. Ball State	12/16/12
BLOCKS		
1	at Eastern Illinois	11/21/11
	vs. Bradley	2/12/12
STEALS		
2	vs. Southern Illinois	12/30/11
FIELD GOALS		
5	vs. Ball State	12/16/12
FIELD GOAL ATTEMPTS		
13	vs. Ball State	12/16/12
3-PT. FIELD GOALS		
5	vs. Ball State	12/16/12
3-PT. FIELD GOAL ATTEMPTS		
11	vs. Ball State	12/16/12
FREE THROWS		
2	Three Times	12/19/12
FREE THROW ATTEMPTS		
3	vs. Princeton	12/19/12
MINUTES		
30	vs. Ball State	12/16/12

Opponent	Date	gs	min	Total		3-Pointers		Free throws		Rebounds					pts	avg					
				fg-fga	pct	3fg-fga	pct	ft-fa	pct	off	def	tot	avg	pf			a	t/o	blk	stl	
MOREHEAD STATE	11/09/12		14	0-2	.000	0-2	.000	0-0	.000	0	1	1	1.0	1	0	1	0	1	0	0.0	
at Iowa	11/11/12		11	1-5	.200	0-3	.000	0-0	.000	0	2	2	1.5	0	0	1	0	0	2	1.0	
MEMPHIS	11/18/12		4	1-2	.500	1-2	.500	0-0	.000	0	0	0	1.0	2	0	0	0	0	3	1.7	
at UIC	11-21-12		13	0-4	.000	0-3	.000	0-0	.000	0	0	0	0.8	1	2	0	0	0	0	1.3	
at WKU	11/24/12		24	3-6	.500	3-5	.600	0-0	.000	1	2	3	1.2	2	1	1	0	0	9	2.8	
MILWAUKEE	11/29/12		19	0-2	.000	0-1	.000	0-0	.000	1	3	4	1.7	0	0	2	0	1	0	2.3	
MICHIGAN	12/5/12		25	2-7	.286	2-6	.333	0-0	.000	0	1	1	1.6	1	0	0	0	0	6	2.9	
NORTHWESTERN	12/7/12		21	4-7	.571	4-6	.667	0-1	.000	1	2	3	1.8	1	0	3	0	0	12	4.0	
BALL STATE	12/16/12	*	30	5-13	.385	5-11	.455	0-0	.000	1	0	1	1.7	1	3	0	0	1	15	5.2	
PRINCETON	12/19/12	*	22	1-8	.125	1-7	.143	2-3	.667	0	0	0	1.5	3	2	2	0	1	5	5.2	
at Illinois	12/21/12	*	20	0-4	.000	0-4	.000	0-0	.000	0	0	0	1.4	1	1	4	0	0	0	4.7	
at Butler	12/30/12	*	19	0-0	.000	0-0	.000	0-0	.000	0	3	3	1.5	0	0	1	0	0	0	4.3	
NORTHERN IOWA	1/4/13	*	12	1-2	.500	1-1	1.000	0-0	.000	0	0	0	1.4	0	0	1	0	0	3	4.2	
BRADLEY	1/6/13	*	19	1-5	.200	1-5	.200	0-0	.000	0	3	3	1.5	1	1	0	1	0	3	4.1	
at Creighton	01-11-13	*	23	2-4	.500	1-3	.333	0-0	.000	0	2	2	1.5	2	1	0	0	1	5	4.2	
Totals			7	276	21-71	.296	19-59	.322	2-4	.500	4	19	23	1.5	16	11	16	1	5	63	4.2

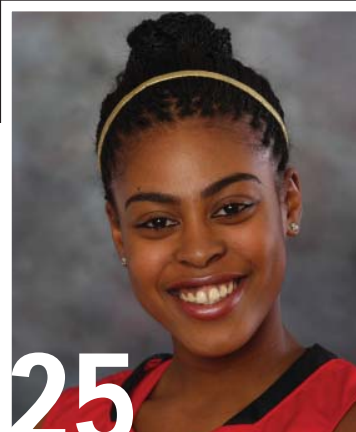
Games played: 15
 Minutes/game: 18.4
 Points/game: 4.2
 FG Pct: 29.6
 3FG Pct: 32.2
 FT Pct: 50.0

Rebounds/game: 1.5
 Assists/game: 0.7
 Turnovers/game: 1.1
 Assist/turnover ratio: 0.7
 Steals/game: 0.3
 Blocks/game: 0.1

WINGE'S CAREER STATS

YEAR	GP	GS	FIELD GOALS		3-POINT FG		FREE THROWS		REBOUNDS				SCORING			MINUTES					
			M-A	PCT.	M-A	PCT.	M-A	PCT.	OFF.	DEF.	TOT.	AVG.	PF-FO	AST	TO	BLK	STL	PTS.	AVG.	MIN.	AVG.
2011-12	32	0	19-57	.333	15-38	.395	4-5	.800	7	24	31	1.0	14-0	16	17	2	7	57	1.8	322	10.1
2012-13	14	6	19-67	.284	18-56	.321	2-4	.500	4	17	21	1.5	14-0	10	16	1	4	58	4.1	253	18.1
TOTALS	46	6	38-124	.306	33-94	.351	6	11	.545	41	52	1.1	28-0	26	33	3	11	115	2.5	575	12.5

As of Jan. 10



janae SMITH

Forward // SO-TR // 6-1 // Matteson, Ill. // College of Charleston

- Sat out the 2011-12 season due to NCAA transfer rules
- Set or tied five career highs, including points (31) vs. Memphis (Nov. 18)
- Set a career high in field goal attempts (17) at UIC (Nov. 21)
- Set a career high at Western Kentucky in blocks (4)
- Pulled down a career-high 16 rebounds against Princeton (Dec. 19)
- Dished out a career-high four assists at Illinois (Dec. 21)
- Six-time Valley Newcomer of the Week (Nov. 12, Nov. 19, Nov. 26, Dec. 17, Dec. 27, Jan. 7)
- Set or tied a career high in two categories against Bradley, including six assists
- Scored double digits in all but two games

SMITH'S CAREER HIGHS

POINTS			
31	vs. Memphis	11/18/12	
REBOUNDS			
16	vs. Princeton	12/19/12	
ASSISTS			
6	vs. Bradley	1/6/13	
BLOCKS			
4	at Western Kentucky	11/21/12	
STEALS			
2	Three Times	1/6/13	
FIELD GOALS			
11	vs. Memphis	11/18/12	
FIELD GOAL ATTEMPTS			
17	at UIC	11/21/12	
3-PT. FIELD GOALS			
0			
3-PT. FIELD GOAL ATTEMPTS			
0			
FREE THROWS			
9	vs. Memphis	11/18/12	
	vs. Northern Iowa	1/4/13	
FREE THROW ATTEMPTS			
11	at Butler	12/30/12	
MINUTES			
38	Three Times	12/30/12	

2012-13 Game-By-Game

Opponent	Date	gs	min	Total		3-Pointers		Free throws		Rebounds					pts	avg					
				fg-fga	pct	3fg-fga	pct	ft-fa	pct	off	def	tot	avg	pf			a	t/o	blk	stl	
MOREHEAD STATE	11/09/12	*	33	2-7	.286	0-0	.000	3-4	.750	1	5	6	6.0	1	1	5	2	2	7	7.0	
at Iowa	11/11/12	*	31	7-14	.500	0-0	.000	3-6	.500	5	4	9	7.5	2	1	5	1	1	17	12.0	
MEMPHIS	11/18/12	*	38	11-15	.733	0-0	.000	9-10	.900	4	5	9	8.0	3	0	3	0	1	31	18.3	
at UIC	11-21-12	*	32	8-17	.471	0-0	.000	2-2	1.000	3	4	7	7.8	3	2	1	0	0	18	18.3	
at WKU	11/24/12	*	34	3-5	.600	0-0	.000	5-6	.833	3	9	12	8.6	3	1	2	4	0	11	16.8	
MILWAUKEE	11/29/12	*	19	6-10	.600	0-0	.000	6-7	.857	2	3	5	8.0	3	1	3	1	1	18	17.0	
MICHIGAN	12/5/12	*	34	5-9	.556	0-0	.000	1-3	.333	0	7	7	7.9	2	1	2	0	0	11	16.1	
NORTHWESTERN	12/7/12	*	31	1-10	.100	0-0	.000	4-4	1.000	1	7	8	7.9	3	0	4	1	1	6	14.9	
BALL STATE	12/16/12	*	33	9-11	.818	0-0	.000	4-6	.667	0	11	11	8.2	1	3	2	0	0	22	15.7	
PRINCETON	12/19/12	*	38	7-17	.412	0-0	.000	3-5	.600	5	11	16	9.0	1	2	1	0	1	17	15.8	
at Illinois	12/21/12	*	37	5-11	.455	0-0	.000	3-3	1.000	3	4	7	8.8	2	4	6	1	0	13	15.5	
at Butler	12/30/12	*	38	5-12	.417	0-0	.000	7-11	.636	1	10	11	9.0	2	2	6	2	2	17	15.7	
NORTHERN IOWA	1/4/13	*	35	7-12	.583	0-0	.000	9-9	1.000	2	10	12	9.2	2	0	2	1	1	23	16.2	
BRADLEY	1/6/13	*	37	8-16	.500	0-0	.000	5-7	.714	2	11	13	9.5	0	6	3	1	2	21	16.6	
at Creighton	01-11-13	*	33	3-12	.250	0-0	.000	3-5	.600	6	3	9	9.5	1	3	2	0	0	9	16.1	
Totals			15	503	87-178	.489	0-0	.000	67-88	.761	38	104	142	9.5	29	27	47	14	12	241	16.1

Games played: 15
 Minutes/game: 33.5
 Points/game: 16.1
 FG Pct: 48.9
 FT Pct: 76.1

Rebounds/game: 9.5
 Assists/game: 1.8
 Turnovers/game: 3.1
 Assist/turnover ratio: 0.6
 Steals/game: 0.8
 Blocks/game: 0.9

SMITH'S CAREER STATS

YEAR	GP	GS	FIELD GOALS		3-POINT FG		FREE THROWS		REBOUNDS				SCORING				MINUTES				
			M-A	PCT.	M-A	PCT.	M-A	PCT.	OFF.	DEF.	TOT.	AVG.	PF-FO	AST	TO	BLK	STL	PTS.	AVG.	MIN.	AVG.
2012-13*	13	13	76-150	.507	0-0	.000	59-76	.776	30	90	120	9.2	28-0	18	42	13	10	211	16.2	433	33.3
TOTALS*	13	13	76-150	.507	0-0	.000	59-76	.776	30	90	120	9.2	28-0	18	42	13	10	211	16.2	433	33.3

* At Illinois State
 As of Jan. 10



octavia CRUMP

Forward // FR // 5-10 // Zion, Ill. // Zion-Benton HS

- Led all rebounders with 11 boards in first regular-season game against Morehead State (Nov. 9)
- Set or tied a career high in five categories, including minutes (22) at Iowa (Nov. 11)
- Recorded her first assist and steal at Iowa (Nov. 11)
- Did not play at Western Kentucky due to concussion-like symptoms suffered in practice
- Set a career-high two steals against Ball State (12/16/12)

2012-13 Game-By-Game

CRUMP'S CAREER HIGHS

POINTS			
7	vs. Morehead State	11/9/12	
REBOUNDS			
11	vs. Morehead State	11/9/12	
ASSISTS			
1	at Iowa	11/11/12	
BLOCKS			
0			
STEALS			
2	vs. Ball State	12/16/12	
FIELD GOALS			
2	vs. Morehead State	11/9/12	
FIELD GOAL ATTEMPTS			
6	at Iowa	11/11/12	
3-PT. FIELD GOALS			
0			
3-PT. FIELD GOAL ATTEMPTS			
0			
FREE THROWS			
3	vs. Morehead State	11/9/12	
FREE THROW ATTEMPTS			
5	vs. Morehead State	11/9/12	
	at Iowa	11/11/12	
MINUTES			
22	at Iowa	11/11/12	

Opponent	Date	gs	min	Total		3-Pointers		Free throws		Rebounds				pf	a	t/o	blk	stl	pts	avg
				fg-fga	pct	3fg-fga	pct	ft-fa	pct	off	def	tot	avg							
MOREHEAD STATE	11/09/12		17	2-3	.667	0-0	.000	3-5	.600	4	7	11	11.0	2	0	2	0	0	7	7.0
at Iowa	11/11/12		22	0-6	.000	0-0	.000	1-5	.200	2	2	4	7.5	2	1	2	0	1	1	4.0
MEMPHIS	11/18/12		4	0-1	.000	0-0	.000	1-2	.500	0	0	0	5.0	0	0	1	0	1	1	3.0
at UIC	11-21-12		1	0-0	.000	0-0	.000	0-1	.000	0	1	1	4.0	0	0	0	0	0	0	2.3
MILWAUKEE	11/29/12		4	0-1	.000	0-0	.000	1-2	.500	0	0	0	3.2	0	0	1	0	2	1	2.0
BALL STATE	12/16/12		13	0-0	.000	0-0	.000	0-1	.000	1	3	4	3.3	1	0	0	0	2	0	1.7
at Butler	12/30/12		1	0-0	.000	0-0	.000	0-0	.000	0	0	0	2.9	1	0	0	0	0	0	1.4
at Creighton	01-11-13		3	0-0	.000	0-0	.000	0-0	.000	0	0	0	2.5	0	0	0	0	0	0	1.3
Totals			65	2-11	.182	0-0	.000	6-16	.375	7	13	20	2.5	6	1	6	0	6	10	1.3

Games played: 8
 Minutes/game: 8.1
 Points/game: 1.3
 FG Pct: 18.2
 FT Pct: 37.5

Rebounds/game: 2.5
 Assists/game: 0.1
 Turnovers/game: 0.8
 Assist/turnover ratio: 0.2
 Steals/game: 0.8

CRUMP'S CAREER STATS

YEAR	GP	GS	FIELD GOALS		3-POINT FG		FREE THROWS		REBOUNDS				SCORING			MINUTES					
			M-A	PCT.	M-A	PCT.	M-A	PCT.	OFF.	DEF.	TOT.	AVG.	PF-FO	AST	TO	BLK	STL	PTS.	AVG.	MIN.	AVG.
2012-13	7	0	2-11	.182	0-0	.000	6-16	.375	7	13	20	2.9	6-0	1	6	0	6	10	1.4	62	8.9
TOTALS	7	0	2-11	.182	0-0	.000	6-16	.375	7	13	20	2.9	6-0	1	6	0	6	10	1.4	62	8.9

As of Jan. 10



alexis FOLEY

Guard // FR // 5-10 // White Bear Lake, Minn. // White Bear Lake Area HS

- Recorded her first career start against Morehead State (Nov. 9)
- Grabbed a career-high six rebounds and tied career-high field goal attempts at Iowa (Nov. 11)
- Set a career-high in assists (5) and steals (2) against Memphis (Nov. 18)
- Tied a career-high in field goals with three and set a career-high in three-point field goal attempts at UIC (Nov. 21)
- Tied or set a career high in three categories at Illinois (Dec. 21), including rebounds, steals and made three pointers

2012-13 Game-By-Game

FOLEY'S CAREER HIGHS

POINTS		
9	vs. Morehead State	11/9/12
REBOUNDS		
6	at Iowa	11/11/12
	at Illinois	12/21/12
ASSISTS		
5	vs. Memphis	11/18/12
BLOCKS		
0		
STEALS		
3	at Illinois	12/21/12
FIELD GOALS		
3	vs. Morehead State	11/9/12
	at UIC	11/21/12
FIELD GOAL ATTEMPTS		
8	vs. Morehead State	11/9/12
	at Iowa	11/11/12
3-PT. FIELD GOALS		
3	vs. Morehead State	11/9/12
	at Illinois	12/21/12
3-PT. FIELD GOAL ATTEMPTS		
6	at UIC	11/21/12
FREE THROWS		
2	at Western Kentucky	11/21/12
FREE THROW ATTEMPTS		
2	at Western Kentucky	11/21/12
MINUTES		
28	vs. Morehead State	11/9/12

Opponent	Date	gs	min	Total		3-Pointers		Free throws		Rebounds				pf	a	l/o	blk	stl	pts	avg	
				fg-fga	pct	3fg-fga	pct	ft-fga	pct	off	def	tot	avg								
MOREHEAD STATE	11/09/12	*	28	3-7	.429	3-5	.600	0-0	.000	1	1	2	2.0	3	1	3	0	1	9	9.0	
at Iowa	11/11/12	*	27	1-8	.125	1-4	.250	0-0	.000	2	4	6	4.0	5	0	2	0	0	3	6.0	
MEMPHIS	11/18/12	*	34	2-6	.333	0-3	.000	1-2	.500	0	4	4	4.0	3	5	2	0	2	5	5.7	
at UIC	11-21-12	*	25	3-7	.429	2-6	.333	0-0	.000	0	3	3	3.8	3	2	2	0	0	8	6.3	
at WKU	11/24/12	*	18	2-4	.500	1-2	.500	2-2	1.000	0	1	1	3.2	4	1	2	0	0	7	6.4	
MILWAUKEE	11/29/12	*	19	0-5	.000	0-3	.000	0-0	.000	0	1	1	2.8	1	0	3	0	0	0	5.3	
MICHIGAN	12/5/12	*	29	3-6	.500	2-4	.500	0-0	.000	0	3	3	2.9	1	3	2	0	2	8	5.7	
NORTHWESTERN	12/7/12	*	14	2-3	.667	1-2	.500	0-0	.000	0	2	2	2.8	0	0	0	0	2	5	5.6	
BALL STATE	12/16/12		16	1-6	.167	1-4	.250	0-0	.000	1	0	1	2.6	1	1	2	0	0	3	5.3	
PRINCETON	12/19/12		9	0-0	.000	0-0	.000	0-0	.000	0	0	0	2.3	0	0	0	0	0	0	4.8	
at Illinois	12/21/12		22	2-5	.400	0-1	.000	3-3	1.000	1	5	6	2.6	1	1	3	0	3	7	5.0	
at Butler	12/30/12		3	0-0	.000	0-0	.000	0-0	.000	0	1	1	2.5	0	0	3	0	0	0	4.6	
NORTHERN IOWA	1/4/13		14	1-1	1.000	0-0	.000	0-0	.000	1	3	4	2.6	1	2	0	0	0	2	4.4	
BRADLEY	1/6/13		4	0-2	.000	0-1	.000	0-0	.000	0	0	0	2.4	0	0	0	0	0	0	4.1	
at Creighton	01-11-13		11	2-5	.400	0-1	.000	0-0	.000	1	1	2	2.4	1	0	0	0	1	4	4.1	
Totals			8	273	22-65	.338	11-36	.306	6-7	.857	7	29	36	2.4	24	16	24	0	11	61	4.1

Games played: 15
 Minutes/game: 18.2
 Points/game: 4.1
 FG Pct: 33.8
 3FG Pct: 30.6
 FT Pct: 85.7

Rebounds/game: 2.4
 Assists/game: 1.1
 Turnovers/game: 1.6
 Assist/turnover ratio: 0.7
 Steals/game: 0.7

FOLEY'S CAREER STATS

YEAR	GP	GS	FIELD GOALS		3-POINT FG		FREE THROWS		REBOUNDS				SCORING			MINUTES					
			M-A	PCT.	M-A	PCT.	M-A	PCT.	OFF	DEF	TOT	AVG.	PF-FO	AST	TO	BLK	STL	PTS.	AVG.	MIN.	AVG.
2012-13	14	8	20-60	.333	11-35	.314	6-7	.857	6	28	34	2.4	23-1	16	24	0	10	57	4.1	262	18.7
TOTALS	14	8	20-60	.333	11-35	.314	6-7	.857	6	28	34	2.4	23-1	16	24	0	10	57	4.1	262	18.7

As of Jan. 10



stekara HALL

Guard // FR // 5-8 // Oak Park, Ill. // Oak Park-River Forest

- Sat out of Nov. 29, Dec. 5 and Dec. 7 for a nonorthopedic medical issue, but saw time on Dec. 16
- Set or tied a career high in three categories, including field goals against Ball State (Dec. 16)
- Recorded first career assist against Northern Iowa (Jan. 4)

11

2012-13 Game-By-Game

HALL'S CAREER HIGHS

POINTS			
3	vs. Morehead State	11/9/12	
REBOUNDS			
1	vs. Morehead State	11/9/12	
	at Iowa	11/11/12	
ASSISTS			
1	vs. Northern Iowa	1/4/13	
BLOCKS			
1	vs. Morehead State	11/9/12	
STEALS			
1	vs. Morehead State	11/9/12	
FIELD GOALS			
1	vs. Morehead State	11/9/12	
	vs. Ball State	12/16/12	
FIELD GOAL ATTEMPTS			
2	vs. Ball State	12/16/12	
3-PT. FIELD GOALS			
0			
3-PT. FIELD GOAL ATTEMPTS			
1	vs. Ball State	12/16/12	
FREE THROWS			
1	vs. Morehead State	11/9/12	
FREE THROW ATTEMPTS			
2	vs. Morehead State	11/9/12	
MINUTES			
16	vs. Morehead State	11/9/12	

Opponent	Date	gs	min	Total		3-Pointers		Free throws		Rebounds			pf	a	t/o	blk	stl	pts	avg		
				fg-fga	pct	3fg-fga	pct	ft-fga	pct	off	def	tot								avg	
MOREHEAD STATE	11/09/12		5	1-1	1.000	0-0	.000	1-2	.500	0	1	1	1.0	0	0	0	1	1	3	3.0	
at Iowa	11/11/12		3	0-0	.000	0-0	.000	0-0	.000	0	1	1	1.0	2	0	0	0	0	0	1.5	
at UIC	11-21-12		5	0-1	.000	0-1	.000	2-2	1.000	1	2	3	1.7	0	0	0	0	0	2	1.7	
at WKU	11/24/12		4	0-1	.000	0-0	.000	0-0	.000	1	0	1	1.5	0	0	0	0	0	0	1.3	
BALL STATE	12/16/12		4	1-2	.500	0-1	.000	0-0	.000	0	0	0	1.2	1	0	0	0	0	2	1.4	
NORTHERN IOWA	1/4/13		1	0-0	.000	0-0	.000	0-0	.000	0	0	0	1.0	0	1	0	0	0	0	1.2	
at Creighton	01-11-13		4	0-1	.000	0-0	.000	0-0	.000	0	0	0	0.9	1	0	0	0	0	0	1.0	
Totals			0	26	2-6	.333	0-2	.000	3-4	.750	2	4	6	0.9	4	1	0	1	1	7	1.0

Games played: 7
 Minutes/game: 3.7
 Points/game: 1.0
 FG Pct: 33.3
 3FG Pct: 0.0
 FT Pct: 75.0

Rebounds/game: 0.9
 Assists/game: 0.1
 Assist/turnover ratio: 99.9
 Steals/game: 0.1
 Blocks/game: 0.1

HALL'S CAREER STATS

YEAR	GP	GS	FIELD GOALS		3-POINT FG		FREE THROWS		REBOUNDS				SCORING			MINUTES					
			M-A	PCT.	M-A	PCT.	M-A	PCT.	OFF.	DEF.	TOT.	AVG.	PF-FO	AST	TO	BLK	STL	PTS.	AVG.	MIN.	AVG.
2012-13	6	0	2-5	.400	0-2	.000	3-4	.750	2	4	6	1.0	3-0	1	0	1	1	7	1.2	22	3.7
TOTALS	6	0	2-5	.400	0-2	.000	3-4	.750	2	4	6	1.0	3-0	1	0	1	1	7	1.2	22	3.7

As of Jan. 10



32 OCTAVIA CRUMP
Fr. | F | 5-10
Zion, Ill.



14 ALEXIS FOLEY
Fr. | G | 5-10
White Bear Lake, Minn.



50 MEGAN GRACE
Sr. | C | 6-4
St. Louis, Mo.



15 JAZ GREEN
Sr.-Tr. | G | 5-8
St. Petersburg, Fla.



11 STEKARA HALL
Fr. | G | 5-8
Oak Park, Ill.



1 ALEXIS JENKINS
Sr. | G | 5-6
Chicago



4 CHLOE NELSON
Jr. | G | 5-7
Florissant, Mo.



31 MADDIE OLIVER
So. | G | 6-1
Roland, Iowa



35 BRIANNA PUNI
So. | F | 6-0
St. Charles, Mo.



23 JAMIE RUSSELL
Sr.-Tr. | G | 5-8
Rock Falls, Ill.



22 ALISON SEBERGER
Jr. | G | 6-1
Geneva, Ill.



25 JANAЕ SMITH
So.-Tr. | F | 6-2
Matteson, Ill.



3 CANDACE SYKES
Sr. | G | 5-10
St. Anne, Ill.



24 KATY WINGE
So. | G | 5-11
Eden Prairie, Minn.

