

DRAKE BASKETBALL 2011-12



DRAKE (16-14, 9-9) vs. BRADLEY (7-24, 2-16) | THU., MARCH 1, 2012 • 8:38 P.M. (CT) | SCOTTRADE CENTER (18,592) | ST. LOUIS, MO.

Asst. A.D./Athletic Communications: Paul Kirk | 515-271-3014 (o) | 515-208-8281 (c) | paul.kirk@drake.edu

2011-12 SCHEDULE/RESULTS

Date	Opponent	Time (CT)/Result
Nov. 12	UPPER IOWA	W 83-58
Nov. 15	IOWA STATE (Mediacom)	W 74-65
Nov. 18	vs. Mississippi#	L 59-63
Nov. 19	vs. Winthrop#	W 66-62
Nov. 21	vs. Virginia#	L 52-60
Nov. 26	CAL ST. NORTHRIDGE (Mediacom)	W 73-49
Nov. 30	at Boise State	L 64-108
Dec. 3	AIR FORCE* (Mediacom)	W 62-60
Dec. 8	EASTERN MICH. (Mediacom)	W 66-53
Dec. 17	at Iowa (Big Ten Network)	L 68-82
Dec. 21	CENTRAL ARKANSAS	W 87-64
Dec. 28	INDIANA STATE*	W 79-64
Dec. 31	at Missouri State*	L 61-72
Jan. 3	at Creighton*	L 59-76
Jan. 7	NORTHERN IOWA* (Mediacom)	L 68-83
Jan. 10	BRADLEY*	W 82-74
Jan. 13	at Evansville*	W 69-60
Jan. 15	ILLINOIS STATE*	W 77-60
Jan. 18	at Southern Illinois* (OT)	W 75-68
Jan. 22	at Northern Iowa* (ESPNU)	L 52-66
Jan. 25	CREIGHTON* (Mediacom)	L 69-77
Jan. 28	WICHITA ST.* (FSMidwest) (3OT)	W 93-86
Feb. 1	at Indiana State* (FSMidwest)	L 54-61
Feb. 4	MISSOURI STATE* (Mediacom)	L 39-57
Feb. 8	at Illinois State*	L 53-64
Feb. 12	EVANSVILLE* (ESPNU)	W 78-54
Feb. 15	at Bradley* (FSMidwest)	W 62-55
Feb. 18	at New Mexico State\$ (ESPNU)	L 55-71
Feb. 22	SOUTHERN ILLINOIS* (Mediacom)	W 78-63
Feb. 25	at Wichita State* (FSMidwest)	L 58-81
Mar. 1	vs. Bradley% (FSMidwest)	8:38 p.m.

#at Paradise Jam, St. Thomas, U.S. Virgin Islands
 *Mountain West/MVC Challenge
 \$Missouri Valley Conference game
 %Sears BracketBusters
 %State Farm MVC Tournament

RADIO/WEB/TV INFORMATION

RADIO: KRNT (AM 1350): **Larry Cotlar** (play-by-play) and **Dolph Pulliam** (analyst). Listen online by visiting www.GoDrakeBulldogs.com.

TV: FOX Sports Midwest with **John Rooney** (play-by-play) and **Mark Adams** (analyst) on the call, and **Tom Ackerman**.

WEBSTREAM: Live coverage of home men's and women's games at the Knapp Center and select road contests is available on the official audio and video portal of the Drake Bulldogs, *True Blue TV on D-Pack*, with the exception of all MVC-TV & ESPN games. For more information on the subscription-based service click on the Watch Now tab at www.GoDrakeBulldogs.com.



@DUBulldogs
 @CoachMarkPhelps
 @PaulKirk_Drake



DrakeAthletics
 Drake Men's Basketball Team

THIS WEEK'S SCHEDULE

Tues., Feb. 28	3:45 p.m.	Media availability
	4:15 p.m.	Practice (Knapp Ctr)
Wed., Feb. 29	1 p.m.	Depart for MVC Tournament (St. Louis, Mo.)
Thu., March 1	10:15-11 a.m.	Practice (Scotttrade Center)
Thu., March 1	8:38 p.m.	vs. Bradley (Scotttrade Ctr.)

2012 STATE FARM MVC TOURNAMENT

Round 1

Thursday March 1 8:38 p.m. CT vs. Bradley

TV: FSMidwest / RADIO: KRNT 1350 AM

DRAKE-BRADLEY SERIES

OVERALL	Bradley leads 79-55
In Des Moines	Drake leads 35-28
In Peoria	Bradley leads 47-18
Neutral Site Games	Bradley leads 4-2
MVC Tournament	Bradley leads 5-3
Last Drake Win	2/15/12, 62-55, in Des Moines
Last Bradley Win	3/3/11, 63-48, in St. Louis
Current Streak	Drake, 2

Mark Phelps	Geno Ford
4th Year / 60-67	1st Yr. / 7-24
Overall / same	Overall / 126-93

DRAKE	STATS COMPARISON	BRADLEY
67.2	Scoring Offense	61.5
67.2	Scoring Defense	70.7
44.4%	FG%	40.2%
42.8%	Opp. FG%	45.4%
36.6%	3-Pt. FG%	30.4%
31.2%	Opp. 3-Pt%	36.2%
64.2%	FT%	68.1%
32.5	Reb. Avg.	32.9
34.5	Opp. Reb.	37.3
10.5	Assist Avg.	10.8
13.4	TO Avg.	13.7
3.1	Blk. Avg.	3.1
7.0	Steal Avg.	6.5

THE STORYLINE: The Drake Bulldogs (16-14, 9-9 MVC; T-3rd) posted their second-highest regular season finish in the Missouri Valley Conference in 26 years, tying for third place with four other teams. Tiebreakers pushed the Bulldogs to the No. 7 seed in the State Farm MVC Tournament, where they will tip off vs. 10th-seeded Bradley on Thursday, March 1, at approximately 8:38 p.m. (CT) at the Scottrade Center in St. Louis (18,592). Drake swept Bradley this season and faces the Braves for the second year in a row in a first-round tournament game as the No. 7 seed. Bradley, 5-3 vs. Drake in MVC Tournament history, won that matchup, 63-48. The winner draws No. 2-seed Creighton at 6:08 p.m., Friday, March 2.

ARCH MADNESS: Bradley is the second-most frequent Valley opponent for Drake in the State Farm MVC Tournament, with Thursday's matchup the ninth between the schools in tournament history. The Bulldogs' most-played postseason opponent is Illinois State (10). Drake plays its 48th MVC Tournament game Thursday (15-32).

RADIO/TV: All games can be heard on AM 1350 KRNT in Des Moines, with **Larry Cotlar** on play-by-play and **Dolph Pulliam** as analyst. The game vs. Bradley will be televised by FOX Sports Midwest with **John Rooney** handling play-by-play, **Mark Adams** providing color commentary and **Tom Ackerman** courtside. The game will air on FOX Sports Midwest, FOX Sports Indiana, FOX Sports Kansas City, FOX College Sports Central and ESPN3.com. It can be found on DirecTV (Ch. 657) DISH and AT&T U-verse: Ch. 691.

TOP NOTES:

- Junior **Ben Simons** and sophomore **Rayvonte Rice** were named **second-team All-Missouri Valley Conference** on Tuesday. Rice was honorable mention a year ago, and Simons was honored for the first time.
- Drake's third-place finish, tied with five other teams at 9-9, is its second-highest in the MVC standings in the last 26 years. The 2007-08 Bulldogs won the conference title at 15-3, and the 1985-86 team tied for second at 10-6. This year's 9-9 conference record, best under head coach **Mark Phelps**, is topped in the last 26 years only by the 15-3 record of '07-'08, and matched by the 9-9 marks of 2001-02, '94-'95 and '92-'93.
- With 16 wins the Bulldogs will finish with a winning record for the second time in Phelps' four years at Drake. He is the first Drake head coach in 50 years to post two winning seasons in his first four years (Maury John, 2, 1958-62). It is the second-highest win total in Phelps' tenure (17-16, 2008-09).
- Drake boasts two of the top four scorers in the Valley, with **Rayvonte Rice** third at 16.6 points per game and **Ben Simons** fourth at 16.2. If those numbers hold, Drake will be the first MVC team with two players to finish in the top four in scoring since 2003-04, and first with two players to average 16.0 or more points per game since '02-'03.

BULLDOGS AT A GLANCE...

PROBABLE STARTERS

Pos	#	Player	Ht...Yr...Hometown	PPG	RPG	FG%	FT%
G	11	Karl Madison	5-10...RS-Fr...Springfield, Ill.	4.9	1.6	.341	.691
G	24	Rayvonte Rice	6-4...So...Champaign, Ill.	16.6	5.7	.427	.696
F	1	Jordan Clarke	6-8...R-Jr...Rockville, Md.	6.0	6.5	.523	.425
F	10	Jeremy Jeffers	6-6...RS-Fr...Wilson, N.C.	6.9	2.6	.493	.759
F	34	Ben Simons	6-8...Jr...Cadillac, Mich.	16.2	3.4	.475	.860

KEY RESERVES

Pos	#	Player	Ht...Yr...Hometown	PPG	RPG	FG%	FT%
F	2	Aaron Hawley	6-8...Jr...Rogers, Ark.	6.9	2.7	.367	.571
G	3	Kurt Alexander	6-0...Sr...Toronto, Ontario	8.1	2.1	.432	.789
F	22	Kraidon Woods	6-9...RS-Sr...Henryville, Pa.	3.5	4.3	.684	.419
G	25	David Smith	6-4...RS-So...Chicago, Ill.	0.9	1.2	.429	.550



NOTABLE THIS WEEK:

- Drake ranks second in the MVC in three-point field-goal pct. defense (.312) and third in steals (7.0).
- With 60 career wins Phelps has more wins than any Drake coach in his first four seasons (2nd: Maury John, 55, 1958-62). No Drake head coach since Maury John (.555 from 1958-62) has had a better winning percentage in his first four seasons than Phelps (.472).
- **Rayvonte Rice's** 16.6-point scoring average is on pace to be the best by a Bulldog in 11 seasons (Luke McDonald, 17.9, 2001-02). The next highest averages in recent history are 18.1 by Lynnrick Rogers in 1994-95 and 21.1 by Curt Smith in 1992-93.
- **Rice ranks No. 94 in the nation in scoring** (16.6) and **No. 37 in the nation in steals** (2.0; No. 1 MVC). He is averaging 2.3 steals per game in MVC-only games and tied his career high with five at Southern Illinois (1/18). He also had five at Creighton (1/3).
- **Rice** is one of 10 Missouri Valley Conference players on the Watch List for the 2012 Larry Bird Player of the Year Trophy. He was named National High-Major Player of the Week by College Sports Madness for games of Jan. 23-29.
- **Ben Simons leads the MVC and ranks 48th in the NCAA** in three-point field goals per game (2.6), while ranking **No. 23 among NCAA DI players in three-point field goal percentage** (42.6%). With a career-high seven three-pointers at Wichita State (2/25) Simons now ranks sixth among active MVC players and **eighth on Drake's career list** with 145. His 66 this season tie for 10th-most by a Bulldog.
- **Simons** has topped the 20-point mark seven times this season, including a career-high of 29 points vs. Wichita State (1/28/12), which matched the best output by a Bulldog since Josh Young scored 34 points vs. Morehead State on Nov. 19, 2008. Rice scored 29 earlier this year vs. Central Arkansas (12/21/11) and Ryan Wedel scored 29 vs. Evansville Feb. 23, 2011.
- **Simons**, a co-captain, ranks second in the MVC free-throw shooting (.860; 49-57). He had made 21 consecutive free throws and 27-of-28 from the stripe over an 11-game span between Dec 28 and Feb. 1, before missing his first attempt vs. Southern Illinois (2/22/12), in his first game back after missing five games with mononucleosis. Simons' last miss had come with 4:24 to play vs. Bradley (1/10). Simons ranks No. 1 among active MVC players in career free-throw percentage (.867).
- Drake is 15-2 when shooting a higher percentage than its opponent and 9-0 when shooting 50 percent or higher.
- The Bulldogs have not allowed an opponent to shoot higher than 50 percent from the field in any of its last 15 outings. Opponents in this stretch are shooting a combined 41.1 percent (341-829), including a figure of 38.7 percent over the last six games (132-of-341). In addition, those six opponents have combined to shoot 35-of-159 (.220) from three-point range.
- This 15-game stretch follows a period in which Drake allowed six opponents over an 11-game span to top 50-percent shooting before tightening up on the defensive end.
- Junior **Jordan Clarke** ranks eighth in the MVC in rebounds with a team-leading average of 6.5 and sixth in steals (1.4). Clarke had 34 rebounds in a three-game stretch in mid-February (11.3 rpg). He posted his third double-double of the season on Feb. 12 vs. Evansville with a career-high 18 points and 12 rebounds.
- Junior **Aaron Hawley** made 17 three pointers in six-game stretch (2.8) while starting in place of Ben Simons (mono). Three times he made a career-high four three-pointers in that six-game span (vs. Missouri State, 2/4; at Illinois State, 2/8 & at New Mexico State, 2/18).
- Redshirt-freshman **Jeremy Jeffers** (207 points) needs 10 more points to move into the top 10 on Drake's all-time freshman scoring list. Rice set the record last year with 428 points. Jeffers' 28 three-pointers rank eighth by a freshman in Drake history, and his .467 percentage from beyond the arc is best among all in the top 10.
- Senior **Kraidon Woods** ranks third in the MVC in blocked shots (1.3; 39) and third also in conference-only games (1.6; 28). His 64 career blocks rank seventh among active Valley players. Woods tied his career high with four blocks and set a career high with four steals vs. Wichita State (1/28/12).
- **Woods'** .654 career field-goal percentage ranks second among active players in the Missouri Valley Conference with at least 10 attempts (87-133).
- The Bulldogs are the last team to defeat first-place Wichita State (Jan. 28), which is No. 10 in the RPI rankings.
- The Missouri Valley Conference is No. 8 in the NCAA's latest RPI rankings, with two teams in the top 25 and a combined 14 Top 50 wins, including two by Drake—over No. 10 Wichita State and No. 31 Iowa State. The MVC's 14 Top 50 wins are third-most of any conference. Five of the Bulldogs' MVC losses have come at the hands of Wichita State, No. 25 Creighton (twice) and No. 65 Northern Iowa (twice). Drake is No. 132.
- **Mark Phelps** picked up the first two overtime victories of his career in a span of 11 days in January after dropping the first three overtime games of his career from 2008-11. The first win came Jan. 18 at Southern Illinois, a 75-68 victory in a single overtime session. The second came Jan. 28 in triple overtime against Wichita State, 93-86.

LAST OUTING: The Drake Bulldogs suffered defeat at the hands of MVC regular season champion Wichita State, 81-58, before a charged-up crowd of 10,506 at Charles Koch Arena. **Ben Simons** led Drake with 21 points, all on three-point baskets, in the final regular-season tune-up for both teams before the MVC Tournament. Simons made a career-high seven three-point shots, tied for fifth-most in a game by a Bulldog, including five in the first half to keep Drake in the game after it fell behind 12-1 in the game's first five minutes. He shot 7-of-12 from beyond the arc, and 7-of-17 on all field goals. Simons made four three-points in a span of 2:27 in the first half to pull Drake to within two points, at 15-13, with 12:06 to play in the half. **Rayvonte Rice** added 18 points for the Bulldogs, with 14 coming in the second half. Rice was 7-of-12 from the field and 4-of-5 from the free-throw line, and tied for the team lead in rebounds with four. He earned most of his second-half baskets on strong drives to the hoop against a Shockers' defense that ranks No. 1 in the MVC in field-goal percentage defense and No. 2 in points allowed.

2011-12 FINAL MVC STANDINGS

SCHOOL	MVC		Overall	
	W	L	W	L
Wichita State	16	2	26	4
Creighton	14	4	25	5
Northern Iowa	9	9	19	12
Illinois State	9	9	18	12
Drake	9	9	16	14
Missouri State	9	9	16	15
Evansville	9	9	15	14
Indiana State	8	10	17	13
Southern Illinois	5	13	8	22
Bradley	2	16	7	24

Thursday, March 1--Round 1 MVC Tourn.

Indiana State (8) vs. Southern Illinois (9) [FSMidwest], 6:08

Drake (7) vs. Bradley (10) [FSMidwest], 8:38p

Friday, March 2--Quarterfinals

Wichita State (1) vs. Game 1 winner [FSMidwest], 12:08p

Illinois State (4) vs. Northern Iowa (5) [FSMidwest], 2:38p

Creighton (2) vs. Game 2 winner [FSMidwest], 6:08p

Evansville (3) vs. Missouri State (6) [FSMidwest], 8:38p

SUPERLATIVE SCORING-REBOUNDING GAMES

CAREER DOUBLE-FIGURE SCORING-REBOUNDING GAMES

Player	POINTS		REBOUNDS
	10+	20+	10+
Rayvonte Rice	50	11	4
Ben Simons	42	10	0
Seth VanDeest	23	3	1
Kurt Alexander	18	1	0
Aaron Hawley	16	1	0
Jeremy Jeffers	10	0	0
Jordan Clarke	9	0	8
Kraidon Woods	3	0	3
Karl Madison	2	1	0

CAREER DOUBLE-DOUBLES

Player	Number
Rayvonte Rice	4
2/22/12 vs. Southern Illinois (19 pts., 10 reb.)	
1/28/12 vs. Wichita State (19 pts., 14 reb.)	
1/25/12 vs. Creighton (23 pts., 11 reb.)	
11/24/10 vs. Southern Utah (15 pts., 10 reb.)	
Jordan Clarke	3
2/12/12 vs. Evansville (18 pts., 12 reb.)	
12/21/11 vs. Central Arkansas (16 pts., 10 reb.)	
12/17/11 at Iowa (10 pts., 10 reb.)	
Kraidon Woods	1
1/15/12 vs. Illinois State (11 pts., 11 reb.)	
Seth VanDeest	1
12/12/10 vs. Boise State (13 pts., 10 reb.)	

DRAKE INKS THREE IN EARLY SIGNING PERIOD

The Bulldogs signed three student-athletes to letters of intent during the early signing period on Nov. 9. The following will enroll at Drake for the 2012-13 academic year:

- RICHARD CARTER** 6-0, 175 | Detroit, Mich.
Cody H.S. / Cloud County Comm. Coll. (Concordia, Kan.)
- Jayhawk West Freshman of Year, 2010-11
 - First-team all-conference, 2nd team all-region; 17 ppg
 - First-team all-metro, HM Class A all-state at Cody HS
 - 19.3 ppg, 4.4 apg, 2.6 rpg at Cody

- JOEY KING** 6-9, 220 | Apple Valley, Minn.
Eastview High School
- 17.6 ppg as junior, leading Eastview to conference title
 - Scored in double figures 24 of 27 games in 2010-11
 - Season high: 36 points
 - Also played for Minnesota Southside AAU team

- MICAH MASON** 6-2, 170 | Allegheny, Pa.
Highlands High School
- 33.3 ppg, 8.0 assists, 3.0 steals as junior in 2010-11
 - Shot 47% from three-point range last year
 - Scored 64 pts. in a 2010-11 game, 2nd in WPIAL history
 - *Pittsburgh Post-Gazette* "Fab Five"



HEAD COACH

MARK PHELPS
FOURTH SEASON

PERSONAL

Hometown: Virginia Beach, Va.
Family: Wife, Alissa; son Owen, daughter Laney

EDUCATION

College: Old Dominion, 1996

COACHING EXPERIENCE

2008- Drake; head coach
2006-08 Arizona State; asst. coach
1996-06 North Carolina State; asst. coach
1994-96 Atlantic Shores (Va.) H.S.; head coach
1990-94 Rock Church Academy (Va.); head coach

HEAD COACHING LEDGER

Year	School	Record	
		Overall	Conf.
2011-12	Drake	16-14	9-9
2010-11	Drake	13-18	7-11
2009-10	Drake	14-19	7-11
2008-09	Drake	17-16	7-11
TOTAL		60-67	30-42

Mark Phelps is in his fourth season as head coach of the Bulldogs in 2011-12, driven by a passion and commitment to elevate Drake to levels of consistent excellence on and off the court. His dedicated approach to recruiting and program-building over his first three seasons at the helm has positioned the Bulldogs to take the next step in their progression. This season is the first in his Drake tenure with a roster that features more upperclassmen than underclassmen. In addition it is the first time Phelps presides over a team that returns more than two of its top four scorers and rebounders from the previous year. The Bulldogs return three of their top four, and five of the top six, in each category. Six of the nine top contributors in 2010-11 were either freshmen (1) or sophomores (5).

The maturation of the Drake roster brings a powerful blend of experience and continuity that was a goal Coach Phelps sought in putting his program together. His incoming recruiting classes in 2009-10 and '10-'11 were ranked at the top of the Missouri Valley Conference, and that talent now forms the nucleus of the Bulldogs squad. Drake's 2009-10 recruiting class was No. 1 in the MVC according to Van Coleman's Hoopmasters.com, while Scouts Inc., in conjunction with ESPN.com, rated Drake's signees for the 2010-11 class the best in the MVC, as well.

Phelps was named the 25th men's head basketball coach at Drake on April 21, 2008 after serving as associate head coach at Arizona State from 2006-08.

While building the program, Phelps has experienced success in his initial seasons that positions him among the top coaches in school history. His 44 victories in his first three seasons as head coach at Drake are the most wins accumulated by a Bulldogs coach in his first three seasons in the position.

Last year Phelps' Bulldogs led the MVC in three-point shooting defense (.321) and ranked third in steals (5.8), with a +1.3 turnover margin. Drake ranked third in the Valley in three-point shooting percentage (.362).

Phelps, 45, has coached basketball for 22 seasons, including 15 years on the collegiate level after a highly successful high school coaching career. The Virginia Beach, Va., native served on the coaching staff at North Carolina State under head coach Herb Sendek from 1996-2006 before joining Sendek at Arizona State in 2006. For the Wolfpack Phelps served as director of basketball operations for four years before being promoted to assistant coach in 2000. In 2005 he was named recruiting coordinator and director of scouting while continuing as an assistant coach.



SCAN TO READ MARK PHELPS' COMPLETE BIO FROM **GoDRAKEBULLDOGS.COM**

INSIDE THE MATCHUP

ABOUT THE BRAVES: Bradley finished the regular season 7-24, 2-16 in the MVC. The Braves are led in scoring by Taylor Brown (14.8; 6th MVC) and Walt Lemon, Jr. (12.5), and in rebounding by Jordan Prosser (6.7; 7th MVC) and Brown (6.4; 9th). Bradley ranks fourth in the MVC in steals (6.5) and fifth in blocked shots (3.1) and three-point field-goal percentage defense (.362). Head coach Geno Ford is in his first year at Bradley, and has a career record of 126-93 in seven seasons.

BULLDOGS-BRAVES SERIES: Bradley leads the all-time series 79-55, and holds a 5-3 advantage in MVC Tournament games between the schools (4-2 on a neutral court). The Braves defeated the Bulldogs 63-48 last year on March 3 in an opening-round MVC Tournament game, with the teams slotted in the same 7/10 seedings as this year. Bradley leads 47-18 in Peoria, while Drake leads 35-28 in Des Moines. **Rayvonte Rice** averaged 17.0 points in two games vs. Bradley this year, **Kurt Alexander** 16.0 and **Ben Simons** 21 in one game.

THE LAST TIME (Drake 62, at Bradley 55; Feb. 15, 2012): Drake built an 18-point second-half lead and survived a late Bradley rally to win 62-55 on Wednesday night at Carver Arena in Peoria, Ill., in a Missouri Valley Conference matchup. Junior **Jordan Clarke** grabbed a career-high 16 rebounds and three players scored in double figures for the Bulldogs, who moved into a three-way tie for fourth place in the MVC with two conference games remaining. Sophomore **Rayvonte Rice** and senior **Kurt Alexander** scored 15 points apiece to lead the Bulldogs, and junior **Aaron Hawley** added 12 points. Hawley's last two points came on a clutch 15-foot jumper from the right side with 47 seconds remaining, with his team clinging to a three-point lead after Bradley had scored 10 consecutive points.

BULLDOGS-BRAVES IN 2011 MVC TOURNAMENT (Bradley 63, Drake 48; March 3, 2011): The Drake Bulldogs saw their 2010-11 season end with the disappointment of a 63-48 first-round loss to Bradley in the State Farm Missouri Valley Conference Tournament on Thursday, March 3, at the Scottrade Center in St. Louis. Drake finished with a 13-18 record, while the Braves extended their season at 12-19. Both sides struggled from the field in the first half as the Bulldogs connected on 28.6 percent of their shots, while Bradley shot 34.4 percent. The Braves scored 10 of the first half's final 13 points to overcome a 19-17 Bulldog lead and hold a 27-22 halftime advantage. Redshirt junior **Kraidon Woods** dominated the glass in the initial stanza, matching a career high with nine rebounds en route to a Drake season-best 13 boards. Freshman **Rayvonte Rice** led an early-second half charge, scoring eight points in a 10-4 Drake run to assume a 35-31 lead. The Bulldogs made five of their first six shots of the second half. Bradley answered with a 13-0 run of its own, including a four-point play by Andrew Warren, to take a lead it didn't relinquish. Four straight points cut Drake's deficit to 44-39, but that proved to be as close as the Bulldogs got. Rice scored a team-high 13 points, while senior **Ryan Wedel** turned in an 11-point, six-rebound effort in his final collegiate game. Rice established a new career mark in blocked shots (4). Bradley's Dyricus Simms-Edwards paced all scorers with 26 points and nine rebounds, while Warren added 15 points.

BULLDOGS TOP FIVE IN MVC STATISTICAL RANKINGS: Drake holds the following top-five rankings:

- 2nd in three-point field-goal defense (.316)
 - 3rd in steals (7.0)
 - 4th in field-goal percentage (.444), field-goal percentage defense (.428)
 - 5th in scoring (67.2) and defensive rebounds (tie, 24.0)
- In conference-only play Drake ranks:*
- 1st in three-point field-goal percentage defense (.272)
 - 2nd in steals (6.9)
 - 4th in scoring defense (67.8), field-goal percentage defense (.431), three-point FG% (.377) and blocked shots (tie, 3.0)
 - 5th in scoring (67.0), field-goal percentage (.441), three-point FG made (6.6; 118) and scoring margin (+0.5).

2011-12 DRAKE BULLDOGS NUMERIC ROSTER

No.	Name	Pos.	Hgt.	Wgt.	Year	Exp.	Hometown (High School/Last School)
1	Jordan Clarke	F	6-8	254	RJr.	1L	Rockville, Md. (Vermont / Our Lady of Good Counsel)
2	Aaron Hawley	F	6-8	197	Jr.	2L	Rogers, Ark. (Rogers)
3	Kurt Alexander	G	6-0	193	Sr.	1L	Toronto, Ontario (Iowa Central CC/Pine Ridge Sec.)
4	Judd Welfringer	G	6-5	201	Fr.	HS	Waukee, Iowa (Waukee)
10	Jeremy Jeffers	F	6-6	213	RFr.	RS	Wilson, N.C. (Greenfield)
11	Karl Madison	G	5-10	182	RFr.	RS	Springfield, Ill. (Lanphier)
14	Lincoln Vorba	G	6-3	172	Fr.	HS	Mason City, Iowa (Mason City)
21	Cory Parker	F	6-8	242	RJr.	2L	Aspen, Colo. (Aspen)
22	Kraidon Woods	F	6-9	225	RSr.	1L	Henryville, Pa. (Binghamton / Pocono Mountain East)
23	Mitch McLaughlin	G	6-1	181	Fr.	HS	Cedar Rapids, Iowa (Xavier)
24	Rayvonte Rice	G	6-4	240	So.	1L	Champaign, Ill. (Centennial)
25	David Smith	G	6-4	208	RSo.	1L	Chicago, Ill. (Lake Forest Academy)
32	Greg Whitaker	F	6-6	243	RJr.	3	Fairfax, Va. (W.T. Woodson)
34	Ben Simons	F	6-8	206	Jr.	2L	Cadillac, Mich. (Cadillac)
40	Reece Uhlenhopp	F	6-8	239	Jr.	2L	Urbandale, Iowa (Urbandale)
45	Seth VanDeest	C	6-11	260	Jr.	2L	Bettendorf, Iowa (Bettendorf)

HEAD COACH: Mark Phelps | **ASSISTANTS:** Mike Gibson, Stan Johnson, Brett Nelson
PRONUNCIATIONS: Rayvonte Rice (ray-VON-tay); Ben Simons (SY-muns); Reece Uhlenhopp (YEW-len-hop)

ADDITIONAL PLAYER NOTES

SOPHOMORE SENSATION: Sophomore guard **Rayvonte Rice** (Champaign, Ill.) has followed his tremendous freshman season by earning **2012 second-team All-MVC honors**, steadily improving his game in all facets.

- The 2010-11 all-freshman, all-newcomer and honorable mention All-MVC performer has raised his scoring average to 16.6, **third-best in the MVC and No. 94 in the NCAA**, and averages 5.7 rebounds per game, 12th in the MVC and up from his team-leading 4.8 figure of a year ago.
- Rice ranks **No. 1 in the MVC and No. 37 in the NCAA in steals (2.0)**, and ranks **third in minutes played (33.4)**.
- He has scored a career-high 29 points in a game this season (12/21/11 vs. Central Arkansas), 27 (1/7/12 vs. UNI), and three times scored 23 (Winthrop, 11/19; at Iowa, 12/17; vs. Creighton, 1/25). Rice has seven games with 20 or more points (including three in a row in late December), 11 for his career.
- Rice has recorded three double-doubles this season and has four for his career. His most recent came vs. Southern Illinois (2/22/12), following back-to-back double-doubles in late January (23 points and 11 rebounds in a loss to Creighton Jan 25; 19 points and a career-high 14 rebounds in a Jan. 28 win over Wichita State).
- Rice was one of 10 MVC Players on the conference's Watch List for the 2012 Larry Bird Player of the Year Award, and was named in late December to *collegehoops.net*'s Pre-League Play All-MVC team along with Creighton's Doug McDermott, Missouri State's Kyle Weems, Evansville's Colt Ryan and Bradley's Taylor Brown.
- Named National High-Major Player of the Week for Jan. 23-29 by *CollegeSportsMadness.com*.

SIMONS ELEVATES HIS GAME: Junior forward **Ben Simons** (Cadillac, Mich.) earned his first **All-MVC honor this season, claiming second-team laurels**, despite missing five games in February after contracting mononucleosis. The Feb. 4 game vs. Missouri State was his first missed game after playing in 87 in a row.

- Simons earned his first **MVC Player of the Week** honor Jan. 16 for his two 20-point games in 3 Drake wins.
- Simons ranks second on the team in scoring at **16.0 points per game (4th MVC)**, with outputs of 29 (career high), 24 (tied then-career high) 22, 21 (three times) and 20 points, and has led the team in scoring 12 times, tied for the team lead. He has more than doubled his previous career average of 7.0 and last year's average of 8.1.
- Simons, who has scored at least 11 points in all but two of his games this season, **leads the Missouri Valley Conference in three-point field goals (2.6/gm.; No. 48 NCAA)**, while ranking **second in minutes played (35.7)**, twice playing all 40 minutes in a game, in addition to 42 minutes in Drake's overtime win at Southern Illinois (1/18) and a career-high 53 minutes in the triple-overtime win vs. Wichita State (1/28).
- He is shooting 47.5% from the field (**No. 107 NCAA**), and nearly as well from three-point range, at 42.6% (66-155; **No. 23 NCAA**).
- Simons has 14 games this season with three or more three-pointers made, and seven with at least four, including a season-high seven (12 att.) at Wichita State (2/25).

CLARKE STANDS TALL IN PAINT: Junior forward **Jordan Clarke** (Rockville, Md.) has carried the bulk of the inside load for the Bulldogs with C Seth VanDeest and F Reece Uhlenhopp sidelined because of injury all season.

- Clarke ranks **eighth in the MVC in rebounding (6.5) and sixth in steals (1.4)**.
- Clarke produced his third double-double of the season vs. Evansville (2/12/12), re-emerging in a big way with a career-high 18 points and tying his career high with 12 rebounds. He topped that with 16 boards at Bradley (2/15). The first two double-doubles of his career came in back-to-back mid-December games (at Iowa, vs. Cent. Ark.), including then-career highs for points (16) and rebounds (11, tie) vs. Central Ark. (12/21). One game after that display he established a new career high with 12 boards vs. Indiana State (12/28).
- Clarke received the prestigious **Prairie Farms/Missouri Valley Conference Scholar-Athlete of the Week** for the week of Dec. 19-25. The award honors MVC student-athletes for their athletic performance for a one-week period and academic success in the classroom. Clarke posted a double-double with 16 points and 11 rebounds in Drake's win over Central Ark. (12/21), and carries a 3.35 cumulative GPA in management and finance.

When Drake Shoots 50% or Better	9-0
When Drake Shoots Less than 50%	7-14
When Opponent Shoots 50% or Better	0-7
When Opponents Shoots Less than 50%	16-7
When Drake Shoots Better than Opponent.....	15-2
When Opponents Shoot Better than Drake	1-12
When Drake Shoots 40% or Better from 3pt	10-1
When Drake Shoots Less than 40% from 3pt	6-13
When Opponent Shoots 40% or Better from 3pt	4-7
When Opponent Shoots Less than 40% from 3pt	12-7
When Drake Attempts More FT than Opponent	10-4
When Drake Attempts Fewer FT than Opponent	5-9
When FT Attempts are Equal	1-1
When Drake Shoots 80% or Better from FT	1-0
When Drake Shoots Less than 80% from FT	15-14
When Opponent Shoots 80% or Better from FT	2-4
When Opponent Shoots Less than 80% from FT	14-10
When One or Two Players Score Double Figures.....	2-9
When Three Players Score Double Figures.....	5-5
When Four or More Players Score Double Figures	9-0
When Outrebounding Opponent	11-3
When Outrebounded by Opponent	5-11
When Drake Commits More Turnovers	7-6
When Opponents Commit More Turnovers.....	8-6
When Turnovers are the Same	1-2
When Drake Scores Less than 60.....	0-9
When Drake Scores Between 60-70	5-5
When Drake Scores Between 70-80	7-0
When Drake Scores More than 80	4-0
When Opponent Scores Less than 60	5-1
When Opponent Scores Between 60-70	9-5
When Opponent Scores Between 70-80	1-4
When Opponent Scores More than 80	1-4
Home	12-3
Away	3-9
Neutral	1-2
Conference	9-9
Home	6-3
Away	3-6
When Leading at Halftime	13-2
When Trailing at Halftime	2-12
When Tied at Halftime	1-0
When Leading With 5 Minutes to Play	14-1
When Trailing With 5 Minutes to Play	2-13
When Drake Scores First	10-2
When Opponent Scores First.....	6-12
OT	2-0
When Following a Win.....	7-9
When Following a Loss	8-5
In November	4-3
In December	4-2
In January	5-4
In February	3-5
Day	0-5
Night	16-9
On Sunday	2-1
On Monday	0-1
On Tuesday	2-1
On Wednesday	5-4
On Thursday	1-0
On Friday	1-1
On Saturday	5-6

BULLDOGS' SINGLE-GAME LEADERS (INCLUDES TIES)

Scoring Leader: Rice – 12 Simons – 12 Hawley – 2 Alexander -- 2 Clarke -- 1 Jeffers -- 1 Madison – 1	Double-Figure Scoring: Rice – 25 Simons – 23 Alexander -- 11 Jeffers – 9 Hawley – 8 Clarke – 7 Madison – 2 Woods – 1	20+ Points: Rice – 7 Simons – 7 Alexander – 1 Hawley – 1 Madison – 1	Rebounding Leader: Clarke – 17 Rice – 11 Woods – 5 Hawley -- 2 Alexander -- 1 Jeffers – 1 Madison – 1 Simons – 1	Double Doubles: Clarke – 3 Rice – 3 Woods – 1	Steals Leader: Rice – 18 Clarke – 11 Madison – 5 Woods – 5 Simons – 4 Alexander – 3	Blocks Leader: Woods – 15 Rice – 11 Clarke – 5 Hawley – 2 Simons – 2 Smith – 1 Welfringer -- 1
			Double-Figure Reb.: Clarke – 7 Rice – 3 Woods – 2	Assist Leader: Madison – 17 Clarke – 6 Alexander – 5 Simons – 4 Jeffers – 3 Rice – 3 Hawley – 2		

MARK PHELPS vs. OPPONENTS

School	W	L
Air Force	1	0
Akron	0	1
Austin Peay	2	0
Binghamton	1	0
Boise State	1	1
Bradley	4	5
Butler	0	1
Cal State Northridge	2	0
Central Arkansas	1	0
Central Florida	0	1
Chicago State	1	0
Colorado State	0	1
Creighton	3	5
Dartmouth	0	1
Detroit	1	0
Eastern Michigan	2	0
Evansville	4	4
Georgia Southern	1	0
Georgia State	1	0
Idaho	0	1
Illinois State	3	5
Indiana State	2	7
Iowa	1	3
Iowa State	2	2
IUPUI	0	1
Lincoln	1	0
Mississippi State	0	1
Missouri State	2	6
Morehead State	1	0
New Mexico	1	0
New Mexico State	0	1
North Carolina Central	1	0
North Dakota	1	0
Northern Iowa	2	7
San Diego State	0	1
SIU Edwardsville	0	1
South Dakota	1	0
South Dakota State	1	0
Southern Illinois	8	1
Southern Utah	1	0
St. John's	0	1
Stephen F. Austin	0	1
Texas Southern	1	0
Texas-Pan American	1	0
Upper Iowa	1	0
Vanderbilt	0	1
Virginia	0	1
Weber State	0	1
Wichita State	3	5
Winthrop	1	0
Totals	60	67

	W	L
Overtime Games	2	3

MARK PHELPS IN THE POSTSEASON

2008-09

*3/5/09--#9 Indiana State 62, #8 Drake 55
#3/18/09--at Idaho 69, Drake 67

2009-10

*3/4/10--#8 Drake 63, #9 Southern Illinois 61
*3/5/10--#1 UNI 55, Drake 40

2010-11

*3/3/10--#10 Bradley 63, #7 Drake 48

*State Farm MVC Tournament
#CollegeInsider.com Tournament

YEAR-TO-YEAR "TALE-OF-THE-TAPE" SHOWS PROGRESS: Playing a more challenging schedule, the Bulldogs improved statistically in many categories from last year, and their record represents a three-win improvement. Here's a look at some major categories compared to the the 2010-11 season:

Category	2011-12	'10-'11 (season)
Record	16-14	13-18
Points	67.2	64.4
Opp. Points	67.2	67.7
Rebounds	32.5	30.0
Opp. Reb.	34.5	35.6
Rebound diff.	-2.0	-5.6
FG%	.444	.427
Opp. FG%	.428	.450

STARTING LINEUPS: Drake has used seven different starting lineups with no player starting all 30 games. Guard **Karl Madison** and forward **Jordan Clarke** have started all but one game. Guard **Rayvonte Rice** (28), forwards **Ben Simons** (24), **Jeremy Jeffers** (22), **Aaron Hawley** (12) and **Kraidon Woods** (4), and guard **David Smith** (1) have filled the other spots. Drake's most frequent starting lineup of Madison, Rice, Jeffers, Simons and Clarke has started 15 games (8-7).

MEET THE CAPTAINS: **Ben Simons** and **Jordan Clarke** have been chosen captains by their teammates for 2011-12. Simons, a junior, and Clarke, a redshirt junior, have continued to grow as leaders both on and off the court in each of their third seasons with the Drake program.

CHALLENGING SCHEDULE: Drake's 2011-12 schedule features 15 games against teams that qualified for postseason play last year. Three opponents are ranked in this week's AP Top 25: Wichita State (15), Virginia (14) and Creighton (24). The MVC schedule included 12 games against six teams (Missouri St., Indiana St., Wichita St., Creighton, UNI and Evansville) that advanced to the postseason, while the non-conference schedule included '10-'11 NIT participant Mississippi and CBI invitees Air Force and Boise State.

PHELPS IN GOOD COMPANY ON SENDEK COACHING TREE: Drake head coach **Mark Phelps** comes from the largest "coaching tree" in Division I college basketball, having been an assistant coach under Arizona State head coach Herb Sendek. Phelps was on Sendek's staff at both North Carolina State and ASU. Nine former Sendek full-time assistants are head coaches: Phelps; Jim Christian, TCU; Charlie Coles, Miami of Ohio; John Groce, Ohio; Larry Hunter, Western Carolina; Ron Hunter, Georgia State; Thad Matta, Ohio State; Archie Miller, Dayton; Sean Miller, Arizona.

PHELPS LAYS FOUNDATION WITH BULLDOGS: Head coach **Mark Phelps'** 44 wins in his first three seasons as head coach were the most by a head coach in his equivalent period in program history. **With 60 career wins at this stage of Year 4, Phelps already has more wins than any Drake coach in his first four seasons.** No Drake head coach since Maury John (.555 from 1958-62) has had a better winning percentage or posted two winning seasons in his first four seasons than Phelps (.472). Here is a look at the top five coaches ranked by wins in their first four years at the helm:

Most Wins By A Head Coach. First Four Years at Drake

- 1) 60 Mark Phelps (2008-12)*
- 2) 55 Maury John (1958-62)
- 3) 54 Tom Davis (2003-06)
- 4) 51 Jack McClelland (1948-52)
- 5) 45 Gary Garner (1981-85)

*with minimum 1 games remaining this season

2012 "ARCH MADNESS": Tickets are on sale now for the 2012 State Farm Missouri Valley Conference Men's Basketball Tournament, to be held March 1-4 at the Scottrade Center in St. Louis. To order please call Ticketmaster (800-745-3000) or go to www.mvc.org for more information.

NEW-LOOK COACHING STAFF: Drake's coaching staff has a new look in 2011-12 with the additions of **Stan Johnson** (Southern Utah, 2003) and **Brett Nelson** (Florida, w2004) as assistant coaches; **Jamelle McMillan** (Arizona State, 2011) as coordinator of basketball operations and **Ryan Wedel** (Drake, 2011) as graduate manager.

WEEKLY COACHES RADIO SHOW: Join coaches Amy Stephens and Mark Phelps at Boston's Restaurant (12401 University Ave. in Clive) every Monday night from 7-8 p.m. for the Bulldog radio show. Coach Stephens and Coach Phelps will recap games and scout upcoming opponents live inside Boston's on AM 1350 KRNT, with host Larry Cotlar. Show time is subject to change.

THE LAST TIME IT HAPPENED

Individual:

- Scored 30+ Points:** 34, Josh Young, vs. Morehead St. (11/19/08)
- Made 10+ Free Throws:** 11, Rayvonte Rice, vs. Southern Illinois (2/22/12)
- Made 5+ Three-Pointers:** 7, Ben Simons, at Wichita State (2/25/12)
- Had 15+ Rebounds:** 16, Jordan Clarke, at Bradley (2/15/12)
- Had 10+ Assists:** 12, Frank Wiseler, vs. Wichita State (1/23/10)
- Had 5+ Steals:** 5, Rayvonte Rice, at Southern Illinois (1/18/12)
- Had 5+ Blocked Shots:** 5, Brent Heemskirk, vs. Bradley (2/19/08)

Team:

- Shot 60% or Better:** .614 (27-44), at Evansville (1/13/12)
- Scored 100+ Points in a Game:** 102, vs. Chicago State (12/23/10) / **Road Game:** 100, at Indiana State (2/23/84)
- Scored 100+ Points in a MVC Game:** 109, vs. Wichita State (2/28/94) / **MVC Road Game:** 100, at Ind. St. (2/23/84)
- Allowed 100+ Points in a Game:** 108, at Boise State (11/30/11) / **Home Game:** 110, vs. Grinnell (2/11/02)
- Overtime:** vs. Wichita State, W 93-86 (3OT; 1/28/12) / **2OT:** vs. WSU, W 93-86 (3OT; 1/28/12) / **3OT:** vs. WSU (1/28/12)
- Defeated Ranked Team at Home:** 56-55 vs. No. 7 Tulsa (2/15/82) / **Road:** (#16 Drake) 71-64 at No. 8 Butler (2/23/08)
- Defeated Ranked Team on Neutral Court:** 80-70 over No. 13 USC (3/13/75)

**DRAKE MISSOURI VALLEY CONFERENCE
TOURNAMENT HISTORY**

Record:	15-32
Neutral Court:	13-21
Home:	1-1
Road:	1-10
First Round:	5-6
Quarterfinals:	8-20
Semifinal Round:	1-6
Championship:	1-0
Tournament Titles:	1 (2008)

DRAKE PLAYERS NAMED TO ALL-MVC TOURNAMENT TEAMS

1993—Curt Smith

2008—Adam Emmenecker (MVP)

Jonathan Cox, Josh Young

DRAKE SERIES RECORDS IN MVC TOURNAMENT

	W	L
Bradley	3	5
Creighton	2	3
Evansville	2	0
Illinois State	2	8
Indiana State	1	2
Missouri State	0	1
New Mexico State	0	1
Northern Iowa	2	2
Southern Illinois	2	3
Tulsa	0	2
Wichita State	1	5

DRAKE STATE FARM MVC TOURNAMENT GAMES

[MVC Tournament played in St. Louis, Mo., 1991-present]

- 1977 (Feb. 28) – #5 Drake 80, #6 Bradley 73 – Ames, Iowa
- 1977 (March 2) – #3 Wichita State 67, Drake 63 – Wichita Kan.
- 1978 (Feb. 27) – #9 Drake 75, #2 SIU 59 – Carbondale, Ill.
- 1978 (March 1) – New Mexico St. 90, Drake 73 – Las Cruces, N.M.
- 1979 (Feb. 27) – #3 Wichita State 70, #6 Drake 69 – Wichita, Kan.
- 1980 (Feb. 26) – #2 Creighton 86, #7 Drake 80 – Omaha, Neb.
- 1981 (March 3) – #4 Drake 89, #5 Bradley 84 – Des Moines, Iowa
- 1981 (March 5) – Wichita State 88, Drake 74 – Wichita, Kan.
- 1982 (March 3) – #4 Illinois State 56, #5 Drake 43 – Normal, Ill.
- 1983 (March 8) – #4 Bradley 63, #5 Drake 53 – Peoria, Ill.
- 1984 (March 6) – #1 Illinois State 91, #8 Drake 62 – Normal, Ill.
- 1986 (March 3) – #3 Drake 82, #6 Creighton 56 – Tulsa, Okla.
- 1986 (March 4) – Tulsa 68, Drake 67 – Tulsa, Okla.
- 1987 (Feb. 28) – #5 Southern Illinois 76, #4 Drake 70 – Drake Fieldhouse
- 1988 (March 5) – #3 Illinois State 72, #6 Drake 60 – Peoria, Ill.
- 1989 (March 4) – #5 Drake 77, #4 Bradley 75 – Wichita, Kan.
- 1989 (March 5) – Creighton 54, Drake 49 – Wichita, Kan.
- 1990 (March 3) – #2 Illinois State 77, #7 Drake 62 – Normal, Ill.
- 1991 (March 1) – #9 Drake 57, #8 Illinois State 55
- 1991 (March 2) – #1 Creighton 77, Drake 58
- 1993 (March 6) – #5 Drake 63, #4 UNI 58
- 1993 (March 7) – Illinois State 60, Drake 59
- 1994 (March 5) – #1 Tulsa 91, #8 Drake 82
- 1995 (March 4) – #3 Southern Illinois 85, #6 Drake 65
- 1996 (March 2) – #1 Bradley 64, #8 Drake 51
- 1997 (Feb. 28) – #10 Drake 74, #7 Wichita State 63
- 1997 (March 1) – #2 Bradley 66, Drake 47
- 1998 (Feb. 27) – #7 Bradley 69, #10 Drake 62
- 1999 (Feb. 26) – #7 Illinois State 51, #10 Drake 47
- 2000 (March 3) – #10 Drake 58, #7 UNI 57
- 2000 (March 4) – #2 Missouri State 62, Drake 50
- 2001 (March 2) – #10 UNI 59, #7 Drake 53
- 2002 (March 4) – #3 Illinois State 64, #6 Drake 63
- 2003 (March 7) – #9 Illinois State 63, #8 Drake 62
- 2004 (March 6) – #3 Wichita State 63, #6 Drake 57
- 2005 (March 3) – #7 Drake 82, #10 Evansville 68
- 2005 (March 5) – #2 Wichita State 72, Drake 52
- 2006 (March 2) – #9 Indiana State 72, #8 Drake 63
- 2007 (March 1) – #9 Drake 101, #8 Evansville 96 (ot)
- 2007 (March 2) – #1 Southern Illinois 71, Drake 59
- 2008 (March 7) – #1 Drake 68, Indiana State 46
- 2008 (March 8) – Drake 75, Creighton 67
- 2008 (March 9) – Drake 79, Illinois State 49 *[Championship Game]*
- 2009 (March 5) – #9 Indiana State 62, #8 Drake 55
- 2010 (March 4) – #8 Drake 63, #9 Southern Illinois 61
- 2010 (March 5) – #1 UNI 55, Drake 40
- 2011 (March 3) – #10 Bradley 63, #7 Drake 48

STATE FARM MVC TOURNAMENT CENTRAL

Drake will play its 48th Missouri Valley Conference tournament game on Thursday vs. Bradley. The Bulldogs carry a record of 15-32 in their previous 47 contests, and have won at least one tournament game in three of the past five seasons, including a 3-0 record in 2008 en route to the tournament title. As the No. 7 seed Drake has posted a 1-4 mark, with the lone victory coming in 2005 over 10th-seeded Evansville, 82-68.

Since the MVC Tournament moved to St. Louis in 1991, Drake has posted 5-7, 2-10, 1-1 and 1-0 marks in the tournament's opening, quarterfinal, semifinal and championship rounds, respectively. Over its 47-game MVC Tournament history, Drake has averaged 64.3 points, while allowing the opposition to register 65.9 points. The average margin in 15 victories has been 10.1 points, while the margin in 32 setbacks has been 10.1. The Bulldogs are 6-7 in games decided by five points or less, including going 1-5 in six one-point affairs.

TOURNAMENT ODDITY: A No. 7 seed has never won the tournament, but the only No. 7 seed to win two games and reach the semifinal round bore some similarity to Drake's situation this year. It was Bradley in 1998, which defeated No. 10 Drake in the first round, 69-62, then topped No. 2 Creighton in the quarterfinals, 76-68. Creighton is this year's No. 2 seed, awaiting the Drake-Bradley winner.

Drake Bulldogs State Farm MVC Tournament Records:

Individual Game Records:

Free Throws: 22, Lewis Lloyd vs. Bradley, 3/3/81
 Free Throw Attempts: 26, Lewis Lloyd vs. Bradley 3/3/81
 Three-Point Field Goals Attempted: 13, Lynnrick Rogers vs. Southern Illinois, 3/4/95
 Steals: 7, Lewis Lloyd vs. Creighton, 2/26/80

Individual Tournament Records:

Free Throw Attempts: 36, Lewis Lloyd (2 games), 1981
 Blocks: 8, Drake vs. Bradley, 3/3/11

Drake Bulldogs State Farm MVC Tournament Records, St. Louis Only

Individual Game Records:

Points: 38, Lynnrick Rogers vs. Wichita State, 2/28/97
 Field Goals: 14, Lynnrick Rogers vs. Wichita State, 2/28/97
 Field Goals Attempted: 30, Lynnrick Rogers vs. Wichita State 2/28/97
 Free throws: 12, Adam Emmenecker vs. Creighton, 3/8/08
 Assists: 11, Adam Emmenecker vs. Creighton, 3/8/08

Team Game Records:

Three-Pointers Made: 15, Drake vs. Evansville, 3/1/07
 Points: 101, Drake vs. Evansville, 3/1/07
 Rebounds: 45, Drake vs. Evansville, 3/4/05
 Blocks: 8, Drake vs. Bradley, 3/3/11

STARTING LINEUPS. GAME-BY-GAME (RECORD)

Opponent	Guard	Guard	Forward	Forward	Forward
Upper Iowa (11/12/11)	Madison	Woods (F)	Hawley	Simons	Clarke (1-0)
Iowa State (11/15/11)	Madison	Rice	Hawley	Simons	Clarke
Mississippi (11/18/11)	Madison	Rice	Hawley	Simons	Clarke
Winthrop (11/19/11)	Madison	Rice	Hawley	Simons	Clarke
Virginia (11/21/11)	Madison	Rice	Woods	Simons	Clarke
CS Northridge (11/26/11)	Madison	Rice	Hawley	Simons	Clarke
at Boise State (11/30/11)	Madison	Rice	Hawley	Simons	Clarke (3-2)
Air Force (12/3/11)	Madison	Rice	Jeffers	Simons	Clarke
Eastern Mich. (12/8/11)	Madison	Rice	Jeffers	Simons	Clarke
at Iowa (12/17/11)	Madison	Rice	Jeffers	Simons	Clarke
Cent. Ark. (12/21/11)	Madison	Rice	Jeffers	Simons	Clarke
Indiana State (12/28/11)	Madison	Rice	Jeffers	Simons	Clarke
at Missouri State (12/31/11)	Madison	Rice	Jeffers	Simons	Clarke
at Creighton (1/3/12)	Madison	Rice	Jeffers	Simons	Clarke
Northern Iowa (1/7/12)	Madison	Rice	Jeffers	Simons	Clarke
Bradley (1/10/12)	Madison	Smith	Jeffers	Simons	Clarke (1-0)
at Evansville (1/13/12)	Madison	Rice	Jeffers	Simons	Clarke
Illinois State (1/15/12)	Madison	Rice	Jeffers	Simons	Clarke
at Southern Illinois (1/18/12)	Madison	Rice	Jeffers	Simons	Clarke
at Northern Iowa (1/22/12)	Madison	Rice	Jeffers	Simons	Clarke
Creighton (1/25/12)	Madison	Rice	Woods	Simons	Clarke (0-2)
Wichita State (1/28/12)	Madison	Rice	Jeffers	Simons	Clarke
at Indiana State (2/1/12)	Madison	Rice	Jeffers	Simons	Clarke
Missouri State (2/4/12)	Madison	Rice	Jeffers	Hawley	Clarke
at Illinois State (2/8/12)	Madison	Rice	Jeffers	Hawley	Clarke
Evansville (2/12/12)	Madison	Rice	Jeffers	Hawley	Clarke
at Bradley (2/15/12)	Madison	Rice	Jeffers	Hawley	Clarke
at New Mexico St. (2/18/12)	Madison	Rice	Jeffers	Hawley	Clarke (2-3)
Southern Illinois (2/22/12)	Alexander	Rice	Jeffers	Hawley	Woods (1-0)
at Wichita State (2/25/12)	Madison	Rice	Jeffers	Simons	Clarke (8-7)

2011-12 Drake Basketball
 Drake Combined Team Statistics (as of Feb 25, 2012)
 All games

RECORD:	OVERALL	HOME	AWAY	NEUTRAL
ALL GAMES	16-14	12-3	3-9	1-2
CONFERENCE	9-9	6-3	3-6	0-0
NON-CONFERENCE	7-5	6-0	0-3	1-2

##	Player	gp-gs	min	avg	Total		3-Point		F-Throw		Rebounds				pf	dq	a	to	blk	stl	pts	avg
					fg-fga	fg%	3fg-fga	3fg%	ft-fa	ft%	off	def	tot	avg								
24	Rice, Rayvonte	29-28	969	33.4	164-384	.427	24-102	.235	128-184	.696	39	126	165	5.7	89	2	45	76	24	58	480	16.6
34	Simons, Ben	25-24	893	35.7	145-305	.475	66-155	.426	49-57	.860	15	71	86	3.4	52	1	34	42	6	20	405	16.2
03	Alexander, Kurt	29-1	542	18.7	82-190	.432	16-37	.432	56-71	.789	7	53	60	2.1	72	2	43	47	2	19	236	8.1
02	Hawley, Aaron	30-12	651	21.7	72-196	.367	44-117	.376	20-35	.571	20	62	82	2.7	50	2	25	31	5	11	208	6.9
10	Jeffers, Jeremy	30-22	738	24.6	69-140	.493	28-60	.467	41-54	.759	9	70	79	2.6	66	2	27	29	0	8	207	6.9
01	Clarke, Jordan	30-29	687	22.9	68-130	.523	0-1	.000	45-106	.425	65	130	195	6.5	90	3	34	43	12	41	181	6.0
11	Madison, Karl	30-29	711	23.7	45-132	.341	10-35	.286	47-68	.691	7	41	48	1.6	71	2	76	60	1	24	147	4.9
22	Woods, Kraidon	30-4	519	17.3	39-57	.684	0-0	.000	26-62	.419	38	90	128	4.3	77	3	13	41	39	17	104	3.5
04	Welfringer, Judd	11-0	129	11.7	5-18	.278	3-15	.200	2-4	.500	5	14	19	1.7	17	1	9	6	1	6	15	1.4
25	Smith, David	25-1	214	8.6	6-14	.429	0-0	.000	11-20	.550	8	21	29	1.2	27	0	10	18	2	5	23	0.9
32	Whitaker, Greg	5-0	7	1.4	1-2	.500	0-0	.000	1-2	.500	1	0	1	0.2	1	0	0	0	0	0	3	0.6
21	Parker, Cory	11-0	39	3.5	1-2	.500	0-0	.000	4-7	.571	1	1	2	0.2	5	0	0	1	0	0	6	0.5
40	Uhlenhopp, Reece	1-0	1	1.0	0-0	.000	0-0	.000	0-0	.000	0	0	0	0.0	0	0	0	0	0	0	0	0.0
Team											41	41	82				9					
Total.....		30	6100		697-1570	.444	191-522	.366	430-670	.642	256	720	976	32.5	617	18	316	403	92	209	2015	67.2
Opponents.....		30	6100		678-1583	.428	148-474	.312	512-722	.709	294	740	1034	34.5	584	-	334	411	89	189	2016	67.2

TEAM STATISTICS	DU	OPP	Date	Opponent	Score	Att.
SCORING	2015	2016	11/12/11	UPPER IOWA	w 83-58	3367
Points per game	67.2	67.2	11/15/11	IOWA STATE	w 74-65	5665
Scoring margin	+0.0	-	# 11/18/11	vs Ole Miss	L 59-63	1285
FIELD GOALS-ATT	697-1570	678-1583	# 11/19/11	vs Winthrop	w 66-62	1677
Field goal pct	.444	.428	# 11/21/11	vs Virginia	L 52-60	2322
3 POINT FG-ATT	191-522	148-474	11/26/11	CAL STATE NORTHRIDGE	w 73-49	2931
3-point FG pct	.366	.312	11/30/11	at Boise State	L 64-108	3235
3-pt FG made per game	6.4	4.9	12/03/11	AIR FORCE	w 62-60	3538
FREE THROWS-ATT	430-670	512-722	12/08/11	EASTERN MICHIGAN	w 66-53	2898
Free throw pct	.642	.709	12/17/11	at Iowa	L 68-82	10479
F-Throws made per game	14.3	17.1	12/21/11	CENTRAL ARKANSAS	w 87-64	3751
REBOUNDS	976	1034	* 12/28/11	INDIANA STATE	w 79-64	4035
Rebounds per game	32.5	34.5	* 12/31/11	at Missouri State	L 61-72	6801
Rebounding margin	-1.9	-	* 01/03/12	at Creighton	L 59-76	15134
ASSISTS	316	334	* 01/07/12	NORTHERN IOWA	L 68-83	5876
Assists per game	10.5	11.1	* 01/10/12	BRADLEY	w 82-74	3807
TURNOVERS	403	411	* 01/13/12	at Evansville	w 69-60	4027
Turnovers per game	13.4	13.7	* 01/15/12	ILLINOIS STATE	w 77-60	3410
Turnover margin	+0.3	-	* 01/18/12	at Southern Illinois	Wot 75-68	3399
Assist/turnover ratio	0.8	0.8	* 01/22/12	at Northern Iowa	L 52-66	3975
STEALS	209	189	* 01/25/12	CREIGHTON	L 69-77	6110
Steals per game	7.0	6.3	* 01/28/12	WICHITA STATE	Wo3 93-86	4895
BLOCKS	92	89	* 02/01/12	at Indiana State	L 54-61	5445
Blocks per game	3.1	3.0	* 02/04/12	MISSOURI STATE	L 39-57	4276
ATTENDANCE	61613	85422	* 02/08/12	at Illinois State	L 53-64	4196
Home games-Avg/Game	15-4108	12-6678	* 02/12/12	EVANSVILLE	w 78-54	3477
Neutral site-Avg/Game	-	3-1761	* 02/15/12	at Bradley	w 62-55	7822
Score by Periods	1st	2nd	OT	OT2	OT3	Totals
Drake	916	1057	19	12	11	2015
Opponents	944	1044	12	12	4	2016

= Paradise Jam, St. Thomas, USVI
 \$ = Sears BracketBusters
 * = Missouri Valley Conference game

2011-12 Drake Basketball
 Drake Combined Team Statistics (as of Feb 25, 2012)
 Conference games

RECORD:	OVERALL	HOME	AWAY	NEUTRAL
ALL GAMES	9-9	6-3	3-6	0-0
CONFERENCE	9-9	6-3	3-6	0-0
NON-CONFERENCE	0-0	0-0	0-0	0-0

##	Player	gp-gs	min	avg	Total		3-Point		F-Throw		Rebounds			pf	dq	a	to	blk	stl	pts	avg	
					fg-fga	fg%	3fg-fga	3fg%	ft-fa	ft%	off	def	tot									avg
34	Simons, Ben	14-13	509	36.4	86-178	.483	37-88	.420	29-34	.853	6	39	45	3.2	26	0	15	19	1	10	238	17.0
24	Rice, Rayvonte	18-17	602	33.4	93-237	.392	11-52	.212	83-122	.680	19	87	106	5.9	55	0	32	48	13	41	280	15.6
03	Alexander, Kurt	18-1	366	20.3	63-138	.457	14-28	.500	38-47	.809	4	32	36	2.0	41	1	27	24	1	12	178	9.9
10	Jeffers, Jeremy	18-17	505	28.1	48-95	.505	22-46	.478	21-29	.724	4	45	49	2.7	47	2	16	18	0	8	139	7.7
02	Hawley, Aaron	18-5	396	22.0	41-119	.345	27-69	.391	10-17	.588	13	38	51	2.8	33	1	14	15	1	6	119	6.6
01	Clarke, Jordan	18-17	393	21.8	32-64	.500	0-0	.000	20-53	.377	34	71	105	5.8	50	1	16	24	8	20	84	4.7
11	Madison, Karl	18-17	404	22.4	30-78	.385	6-22	.273	16-25	.640	2	24	26	1.4	37	1	46	38	0	13	82	4.6
22	Woods, Kraidon	18-2	330	18.3	26-36	.722	0-0	.000	13-34	.382	28	62	90	5.0	46	3	7	21	28	10	65	3.6
32	Whitaker, Greg	3-0	4	1.3	1-1	1.000	0-0	.000	1-2	.500	0	0	0	0.0	0	0	0	0	0	0	3	1.0
04	Welfringer, Judd	7-0	86	12.3	2-9	.222	1-7	.143	2-3	.667	4	8	12	1.7	8	0	6	5	1	3	7	1.0
25	Smith, David	13-1	80	6.2	2-7	.286	0-0	.000	3-4	.750	4	10	14	1.1	10	0	7	6	1	2	7	0.5
21	Parker, Cory	8-0	24	3.0	1-2	.500	0-0	.000	2-3	.667	1	1	2	0.3	3	0	0	1	0	0	4	0.5
40	Uhlenhopp, Reece	1-0	1	1.0	0-0	.000	0-0	.000	0-0	.000	0	0	0	0.0	0	0	0	0	0	0	0	0.0
Team											25	25	50				5					
Total.....		18	3700		425-964	.441	118-312	.378	238-373	.638	144	442	586	32.6	356	9	186	224	54	125	1206	67.0
Opponents.....		18	3700		422-978	.431	80-294	.272	297-399	.744	173	463	636	35.3	330	-	205	225	53	107	1221	67.8

TEAM STATISTICS	DU	OPP	Date	Opponent	Score	Att.
SCORING	1206	1221	* 12/28/11	INDIANA STATE	w 79-64	4035
Points per game	67.0	67.8	* 12/31/11	at Missouri State	L 61-72	6801
Scoring margin	-0.8	-	* 01/03/12	at Creighton	L 59-76	15134
FIELD GOALS-ATT	425-964	422-978	* 01/07/12	NORTHERN IOWA	L 68-83	5876
Field goal pct	.441	.431	* 01/10/12	BRADLEY	w 82-74	3807
3 POINT FG-ATT	118-312	80-294	* 01/13/12	at Evansville	w 69-60	4027
3-point FG pct	.378	.272	* 01/15/12	ILLINOIS STATE	w 77-60	3410
3-pt FG made per game	6.6	4.4	* 01/18/12	at Southern Illinois	Wot 75-68	3399
FREE THROWS-ATT	238-373	297-399	* 01/22/12	at Northern Iowa	L 52-66	3975
Free throw pct	.638	.744	* 01/25/12	CREIGHTON	L 69-77	6110
F-Throws made per game	13.2	16.5	* 01/28/12	WICHITA STATE	Wo3 93-86	4895
REBOUNDS	586	636	* 02/01/12	at Indiana State	L 54-61	5445
Rebounds per game	32.6	35.3	* 02/04/12	MISSOURI STATE	L 39-57	4276
Rebounding margin	-2.8	-	* 02/08/12	at Illinois State	L 53-64	4196
ASSISTS	186	205	* 02/12/12	EVANSVILLE	w 78-54	3477
Assists per game	10.3	11.4	* 02/15/12	at Bradley	w 62-55	7822
TURNOVERS	224	225	* 02/22/12	SOUTHERN ILLINOIS	w 78-63	3577
Turnovers per game	12.4	12.5	* 02/25/12	at Wichita State	L 58-81	10506
Turnover margin	+0.1	-				
Assist/turnover ratio	0.8	0.9				
STEALS	125	107				
Steals per game	6.9	5.9				
BLOCKS	54	53				
Blocks per game	3.0	2.9				
ATTENDANCE	39463	61305				
Home games-Avg/Game	9-4385	9-6812				
Neutral site-Avg/Game	-	0-0				

= Paradise Jam, St. Thomas, USVI
 \$ = Sears BracketBusters
 * = Missouri Valley Conference game

Score by Periods	1st	2nd	OT	OT2	OT3	Totals
Drake	549	615	19	12	11	1206
Opponents	579	614	12	12	4	1221

2011-12 Drake Basketball Team & Opponent Game-By-Game Statistics

TEAM STATISTICS

Opponent	Date	Score	W/L	TOTAL			3-PTRS			REBOUNDS				PF	A	TO	Blk	Stl	Pts	Avg			
				FG	FGA	Pct	3FG	FGA	Pct	FT	FTA	Pct	Off								Def	Tot	Avg
UPPER IOWA	11/12/11	83-58	W	29	56	.518	5	12	.417	20	32	.625	8	26	34	34.0	28	9	13	3	9	83	83.0
IOWA STATE	11/15/11	74-65	W	28	56	.500	6	18	.333	12	14	.857	7	27	34	34.0	20	13	16	4	5	74	78.5
vs Ole Miss	11/18/11	59-63	L	19	50	.380	7	19	.368	14	21	.667	11	29	40	36.0	27	11	23	2	8	59	72.0
vs Winthrop	11/19/11	66-62	W	20	37	.541	7	17	.412	19	29	.655	6	24	30	34.5	20	11	15	2	6	66	70.5
vs Virginia	11/21/11	52-60	L	16	41	.390	2	10	.200	18	23	.783	9	15	24	32.4	20	6	16	1	9	52	66.8
CAL STATE NORTHRIDGE	11/26/11	73-49	W	24	51	.471	5	14	.357	20	31	.645	10	29	39	33.5	18	12	17	7	10	73	67.8
at Boise State	11/30/11	64-108	L	22	51	.431	8	18	.444	12	26	.462	8	16	24	32.1	26	9	15	5	3	64	67.3
AIR FORCE	12/03/11	62-60	W	18	45	.400	6	20	.300	20	31	.645	6	26	32	32.1	26	8	13	4	9	62	66.6
EASTERN MICHIGAN	12/08/11	66-53	W	22	49	.449	5	16	.313	17	26	.654	10	20	30	31.9	18	14	9	3	8	66	66.6
at Iowa	12/17/11	68-82	L	23	54	.426	5	19	.263	17	23	.739	14	19	33	32.0	23	7	19	2	5	68	66.7
CENTRAL ARKANSAS	12/21/11	87-64	W	33	63	.524	10	25	.400	11	18	.611	12	27	39	32.6	17	22	10	4	7	87	68.5
INDIANA STATE	12/28/11	79-64	W	31	55	.564	6	10	.600	11	20	.550	8	29	37	33.0	21	7	13	1	6	79	69.4
at Missouri State	12/31/11	61-72	L	23	50	.460	4	11	.364	11	21	.524	6	17	23	32.2	16	8	8	0	4	61	68.8
at CREIGHTON	01/03/12	59-76	L	21	57	.368	5	19	.263	12	19	.632	13	14	27	31.9	21	13	15	1	14	59	68.1
UNI	01/07/12	68-83	L	23	53	.434	5	18	.278	17	22	.773	8	17	25	31.4	27	7	13	4	7	68	68.1
BRADLEY	01/10/12	82-74	W	23	59	.390	8	21	.381	28	40	.700	12	25	37	31.8	24	7	7	1	7	82	68.9
at Evansville	01/13/12	69-60	W	27	44	.614	7	12	.583	8	19	.421	6	32	38	32.1	22	18	22	2	5	69	68.9
ILLINOIS STATE	01/15/12	77-60	W	27	48	.563	9	21	.429	14	22	.636	7	29	36	32.3	18	13	11	6	6	77	69.4
at Southern Illinois	01/18/12	75-68	Wot	24	51	.471	7	16	.438	20	27	.741	9	23	32	32.3	20	8	16	2	8	75	69.7
at Northern Iowa	01/22/12	52-66	L	21	55	.382	6	19	.316	4	7	.571	7	25	32	32.3	17	7	10	4	4	52	68.8
CREIGHTON	01/25/12	69-77	L	25	56	.446	4	18	.222	15	20	.750	6	19	25	32.0	22	6	6	2	6	69	68.8
WICHITA STATE	01/28/12	93-86	W3ot	32	73	.438	5	17	.294	24	36	.667	14	34	48	32.7	20	16	13	6	10	93	69.9
at Indiana State	02/01/12	54-61	L	18	54	.333	7	20	.350	11	20	.550	8	24	32	32.7	20	12	8	2	7	54	69.2
MISSOURI STATE	02/04/12	39-57	L	12	44	.273	7	20	.350	8	12	.667	7	20	27	32.4	14	8	14	2	7	39	68.0
at Illinois State	02/08/12	53-64	L	20	52	.385	6	22	.273	7	13	.538	3	20	23	32.0	20	8	8	5	9	53	67.4
EVANSVILLE	02/12/12	78-54	W	30	56	.536	11	22	.500	7	11	.636	9	29	38	32.3	18	15	19	6	7	78	67.8
at Bradley	02/15/12	62-55	W	23	55	.418	7	15	.467	9	18	.500	10	34	44	32.7	19	15	15	3	5	62	67.6
at New Mexico State	02/18/12	55-71	L	18	53	.340	7	22	.318	12	23	.522	11	20	31	32.6	18	8	13	1	5	55	67.1
SOUTHERN ILLINOIS	02/22/12	78-63	W	24	43	.558	5	8	.625	25	37	.676	4	26	30	32.6	20	12	11	5	7	78	67.5
at Wichita State	02/25/12	58-81	L	21	59	.356	9	23	.391	7	9	.778	7	25	32	32.5	17	6	15	2	6	58	67.2
Drake		2015		697	1570	.444	191	522	.366	430	670	.642	256	720	976	32.5	617	316	403	92	209	2015	67.2
Opponents		2016		678	1583	.428	148	474	.312	512	722	.709	294	740	1034	34.5	584	334	411	89	189	2016	67.2

Games played: 30
 Points/game: 67.2
 FG Pct: 44.4
 3FG Pct: 36.6
 FT Pct: 64.2
 Rebounds/game: 32.5
 Assists/game: 10.5
 Turnovers/game: 13.4
 Assist/turnover ratio: 0.8
 Steals/game: 7.0
 Blocks/game: 3.1

OPPONENT STATISTICS

Opponent	Date	Score	W/L	TOTAL			3-PTRS			REBOUNDS				PF	A	TO	Blk	Stl	Pts	Avg			
				FG	FGA	Pct	3FG	FGA	Pct	FT	FTA	Pct	Off								Def	Tot	Avg
UPPER IOWA	11/12/11	83-58	W	14	44	.318	4	14	.286	26	38	.684	9	27	36	36.0	24	5	23	2	5	58	58.0
IOWA STATE	11/15/11	74-65	W	21	57	.368	6	19	.316	17	27	.630	12	23	35	35.5	17	15	14	2	6	65	61.5
vs Ole Miss	11/18/11	59-63	L	20	54	.370	5	16	.313	18	38	.474	17	21	38	36.3	20	10	20	6	11	63	62.0
vs Winthrop	11/19/11	66-62	W	20	51	.392	6	15	.400	16	22	.727	11	16	27	34.0	23	12	12	0	6	62	62.0
vs Virginia	11/21/11	52-60	L	20	38	.526	0	5	.000	20	23	.870	5	18	23	31.8	21	8	16	1	10	60	61.6
CAL STATE NORTHRIDGE	11/26/11	73-49	W	20	57	.351	3	17	.176	6	12	.500	8	21	29	31.3	25	9	21	2	4	49	59.5
at Boise State	11/30/11	64-108	L	36	59	.610	14	22	.636	22	34	.647	12	30	42	32.9	23	20	10	3	6	108	66.4
AIR FORCE	12/03/11	62-60	W	16	41	.390	6	15	.400	22	35	.629	5	26	31	32.6	24	6	15	2	9	60	65.6
EASTERN MICHIGAN	12/08/11	66-53	W	18	45	.400	7	14	.500	10	14	.714	8	23	31	32.4	24	7	15	3	2	53	64.2
at Iowa	12/17/11	68-82	L	28	56	.500	3	13	.231	23	29	.793	13	19	32	32.4	17	16	12	6	12	82	66.0
CENTRAL ARKANSAS	12/21/11	87-64	W	19	53	.358	7	17	.412	19	27	.704	11	22	33	32.5	15	8	14	4	3	64	65.8
INDIANA STATE	12/28/11	79-64	W	23	59	.390	4	18	.222	14	19	.737	11	21	32	32.4	18	8	12	4	6	64	65.7
at Missouri State	12/31/11	61-72	L	29	48	.604	5	8	.625	9	17	.529	6	26	32	32.4	18	9	8	1	4	72	66.2
at CREIGHTON	01/03/12	59-76	L	27	45	.600	5	11	.455	17	22	.773	7	27	34	32.5	18	16	20	5	5	76	66.9
UNI	01/07/12	68-83	L	26	47	.553	4	8	.500	27	34	.794	8	26	34	32.6	19	9	14	3	6	83	67.9
BRADLEY	01/10/12	82-74	W	22	46	.478	6	18	.333	24	35	.686	4	29	33	32.6	29	9	15	3	4	74	68.3
at EVANSVILLE	01/13/12	69-60	W	23	54	.426	2	12	.167	12	19	.632	4	17	21	31.9	17	13	10	2	8	60	67.8
ILLINOIS STATE	01/15/12	77-60	W	20	57	.351	9	26	.346	11	15	.733	10	19	29	31.8	16	13	10	0	5	60	67.4
at Southern Illinois	01/18/12	75-68	Wot	23	58	.397	4	17	.235	18	26	.692	18	21	39	32.2	20	10	19	4	4	68	67.4
at Northern Iowa	01/22/12	52-66	L	22	51	.431	6	15	.400	16	24	.667	9	28	37	32.4	10	11	6	3	4	66	67.3
CREIGHTON	01/25/12	69-77	L	25	50	.500	7	15	.467	20	26	.769	9	28	37	32.6	19	17	11	0	5	77	67.8
WICHITA STATE	01/28/12	93-86	W3ot	31	76	.408	7	25	.280	17	19	.895	13	33	46	33.2	29	15	18	3	11	86	68.6
at Indiana State	02/01/12	54-61	L	22	49	.449	2	14	.143	15	18	.833	6	31	37	33.4	16	12	12	4	3	61	68.3
MISSOURI STATE	02/04/12	39-57	L	21	47	.447	5	15	.333	10	14	.714	8	28	36	33.5	14	11	12	4	8	57	67.8
at Illinois State	02/08/12	53-64	L	16	46	.348	4	20	.200	28	31	.903	12	33	45	34.0	13	11	13	2	1	64	67.7
EVANSVILLE	02/12/12	78-54	W	21	57	.368	3	11	.273	9	9	1.000	7	18	25	33.6	18	12	16	1	9	54	67.2
at Bradley	02/15/12	62-55	W	21	62	.339	0	20	.000	13	22	.591	11	28	39	33.8	20	8	8	3	10	55	66.7
at New Mexico State	02/18/12	55-71	L	24	50	.480	7	13	.538	16	24	.667	10	31	41	34.1	21	13	14	5	8	71	66.9
SOUTHERN ILLINOIS	02/22/12	78-63	W	21	61	.344	1	16	.063	20	29	.690	17	19	36	34.1	26	5	11	3	6	6	

2011-12 Drake Basketball
 Drake Team Game-by-Game Comparison (as of Feb 25, 2012)
 All games

Opponent	1st	2nd	Score	Mar	Total FG	FG Pct	3-Pointers	3FG Pct	Free Throws	FT Pct	Rebounds	Assist	T/Over	Block	Steal	Fouls
UPPER IOWA	39/28	44/30	83-58	+25	29-56/14-44	.518/.318	5-12/4-14	.417/.286	20-32/26-38	.625/.684	34/36 (2)	9/5	13/23	3/2	9/5	28/24
IOWA STATE	30/27	44/38	74-65	+9	28-56/21-57	.500/.368	6-18/6-19	.333/.316	12-14/17-27	.857/.630	34/35 (1)	13/15	16/14	4/2	5/6	20/17
Ole Miss	31/25	28/38	59-63	(4)	19-50/20-54	.380/.370	7-19/5-16	.368/.313	14-21/18-38	.667/.474	40/38 +2	11/10	23/20	2/6	8/11	27/20
Winthrop	33/29	33/33	66-62	+4	20-37/20-51	.541/.392	7-17/6-15	.412/.400	19-29/16-22	.655/.727	30/27 +3	11/12	15/12	2/0	6/6	20/23
Virginia	15/26	37/34	52-60	(8)	16-41/20-38	.390/.526	2-10/0-5	.200/.000	18-23/20-23	.783/.870	24/23 +1	6/8	16/16	1/1	9/10	20/21
CAL STATE NORTHRIDGE	36/23	37/26	73-49	+24	24-51/20-57	.471/.351	5-14/3-17	.357/.176	20-31/6-12	.645/.500	39/29 +10	12/9	17/21	7/2	10/4	18/25
Boise State	23/45	41/63	64-108	(44)	22-51/36-59	.431/.610	8-18/14-22	.444/.636	12-26/22-34	.462/.647	24/42 (18)	9/20	15/10	5/3	3/6	26/23
AIR FORCE	31/21	31/39	62-60	+2	18-45/16-41	.400/.390	6-20/6-15	.300/.400	20-31/22-35	.645/.629	32/31 +1	8/6	13/15	4/2	9/9	26/24
EASTERN MICHIGAN	24/27	42/26	66-53	+13	22-49/18-45	.449/.400	5-16/7-14	.313/.500	17-26/10-14	.654/.714	30/31 (1)	14/7	9/15	3/3	8/2	18/24
Iowa	30/44	38/38	68-82	(14)	23-54/28-56	.426/.500	5-19/3-13	.263/.231	17-23/23-29	.739/.793	33/32 +1	7/16	19/12	2/6	5/12	23/17
CENTRAL ARKANSAS	49/30	38/34	87-64	+23	33-63/19-53	.524/.358	10-25/7-17	.400/.412	11-18/19-27	.611/.704	39/33 +6	22/8	10/14	4/4	7/3	17/15
INDIANA STATE	35/31	44/33	79-64	+15	31-55/23-59	.564/.390	6-10/4-18	.600/.222	11-20/14-19	.550/.737	37/32 +5	7/8	13/12	1/4	6/6	21/18
Missouri State	29/34	32/38	61-72	(11)	23-50/29-48	.460/.604	4-11/5-8	.364/.625	11-21/9-17	.524/.529	23/32 (9)	8/9	8/8	0/1	4/4	16/18
Creighton	25/40	34/36	59-76	(17)	21-57/27-45	.368/.600	5-19/5-11	.263/.455	12-19/17-22	.632/.773	27/34 (7)	13/16	15/20	1/5	14/5	21/18
NORTHERN IOWA	35/34	33/49	68-83	(15)	23-53/26-47	.434/.553	5-18/4-8	.278/.500	17-22/27-34	.773/.794	25/34 (9)	7/9	13/14	4/3	7/6	27/19
BRADLEY	33/34	49/40	82-74	+8	23-59/22-46	.390/.478	8-21/6-18	.381/.333	28-40/24-35	.700/.686	37/33 +4	7/9	7/15	1/3	7/4	24/29
Evansville	39/32	30/28	69-60	+9	27-44/23-54	.614/.426	7-12/2-12	.583/.167	8-19/12-19	.421/.632	38/21 +17	18/13	22/10	2/2	5/8	22/17
ILLINOIS STATE	41/33	36/27	77-60	+17	27-48/20-57	.563/.351	9-21/9-26	.429/.346	14-22/11-15	.636/.733	36/29 +7	13/13	11/10	6/0	6/5	18/16
Southern Illinois	31/31	32/32	75-68	+7	24-51/23-58	.471/.397	7-16/4-17	.438/.235	20-27/18-26	.741/.692	32/39 (7)	8/10	16/19	2/4	8/4	20/20
Northern Iowa	23/34	29/32	52-66	(14)	21-55/22-51	.382/.431	6-19/6-15	.316/.400	4-7/16-24	.571/.667	32/37 (5)	7/11	10/6	4/3	4/4	17/10
CREIGHTON	26/37	43/40	69-77	(8)	25-56/25-50	.446/.500	4-18/7-15	.222/.467	15-20/20-26	.750/.769	25/37 (12)	6/17	6/11	2/0	6/5	22/19
WICHITA STATE	38/37	25/26	93-86	+7	32-73/31-76	.438/.408	5-17/7-25	.294/.280	24-36/17-19	.667/.895	48/46 +2	16/15	13/18	6/3	10/11	20/29
Indiana State	26/32	28/29	54-61	(7)	18-54/22-49	.333/.449	7-20/2-14	.350/.143	11-20/15-18	.550/.833	32/37 (5)	12/12	8/12	2/4	7/3	20/16
MISSOURI STATE	20/33	19/24	39-57	(18)	12-44/21-47	.273/.447	7-20/5-15	.350/.333	8-12/10-14	.667/.714	27/36 (9)	8/11	14/12	2/4	7/8	14/14
Illinois State	28/30	25/34	53-64	(11)	20-52/16-46	.385/.348	6-22/4-20	.273/.200	7-13/28-31	.538/.903	23/45 (22)	8/11	8/13	5/2	9/1	20/13
EVANSVILLE	33/26	45/28	78-54	+24	30-56/21-57	.536/.368	11-22/3-11	.500/.273	7-11/9-9	.636/1000	38/25 +13	15/12	19/16	6/1	7/9	18/18
Bradley	24/20	38/35	62-55	+7	23-55/21-62	.418/.339	7-15/0-20	.467/.000	9-18/13-22	.500/.591	44/39 +5	15/8	15/8	3/3	5/10	19/20
New Mexico State	26/40	29/31	55-71	(16)	18-53/24-50	.340/.480	7-22/7-13	.318/.538	12-23/16-24	.522/.667	31/41 (10)	8/13	13/14	1/5	5/8	18/21
SOUTHERN ILLINOIS	38/25	40/38	78-63	+15	24-43/21-61	.558/.344	5-8/1-16	.625/.063	25-37/20-29	.676/.690	30/36 (6)	12/5	11/11	5/3	7/6	20/26
Wichita State	25/36	33/45	58-81	(23)	21-59/29-65	.356/.446	9-23/6-25	.391/.240	7-9/17-20	.778/.850	32/44 (12)	6/16	15/10	2/8	6/8	17/10

Note: Game totals are displayed in the format TEAM/OPPONENT for each category

2011-12 Drake Basketball
 Drake Game-by-Game Highs (as of Feb 25, 2012)
 All games

Opponent	Date	Score	Points	Rebounds	Assists	Steals	Blocked shots
UPPER IOWA	11/12/11	83-58	23-Hawley, Aaron	8-Clarke, Jordan	2-Jeffers, Jeremy Madison, Karl	3-Clarke, Jordan	1-Simons, Ben Smith, David Clarke, Jordan
IOWA STATE	11/15/11	74-65	24-Simons, Ben	8-Clarke, Jordan	5-Madison, Karl	2-Woods, Kraidon Clarke, Jordan	2-Rice, Rayvonte
vs Ole Miss	11/18/11	59-63	22-Simons, Ben	11-Clarke, Jordan	3-Clarke, Jordan	4-Simons, Ben	1-Rice, Rayvonte Hawley, Aaron
vs Winthrop	11/19/11	66-62	23-Rice, Rayvonte	6-Clarke, Jordan	3-Hawley, Aaron	4-Rice, Rayvonte	1-Clarke, Jordan Rice, Rayvonte
vs Virginia	11/21/11	52-60	14-Simons, Ben	5-Madison, Karl	2-Simons, Ben	3-Rice, Rayvonte Clarke, Jordan	1-Woods, Kraidon
CAL STATE NORTHRIDGE	11/26/11	73-49	22-Rice, Rayvonte	7-Rice, Rayvonte Clarke, Jordan	3-Smith, David Alexander, Kurt Clarke, Jordan	3-Rice, Rayvonte	2-Rice, Rayvonte
at Boise State	11/30/11	64-108	19-Rice, Rayvonte	5-Simons, Ben Rice, Rayvonte	4-Madison, Karl	1-Rice, Rayvonte Woods, Kraidon Madison, Karl	4-Woods, Kraidon
AIR FORCE	12/03/11	62-60	16-Simons, Ben	8-Clarke, Jordan Rice, Rayvonte	3-Rice, Rayvonte	4-Clarke, Jordan	3-Woods, Kraidon
EASTERN MICHIGAN	12/08/11	66-53	16-Simons, Ben	8-Clarke, Jordan	4-Madison, Karl	3-Rice, Rayvonte	2-Rice, Rayvonte
at Iowa	12/17/11	68-82	23-Rice, Rayvonte	10-Clarke, Jordan	3-Simons, Ben	2-Rice, Rayvonte Clarke, Jordan	1-Clarke, Jordan Woods, Kraidon
CENTRAL ARKANSAS	12/21/11	87-64	29-Rice, Rayvonte	11-Clarke, Jordan	7-Madison, Karl	2-Clarke, Jordan Simons, Ben	2-Rice, Rayvonte
INDIANA STATE	12/28/11	79-64	24-Madison, Karl	12-Clarke, Jordan	3-Madison, Karl	4-Rice, Rayvonte	1-Simons, Ben
at Missouri State	12/31/11	61-72	16-Rice, Rayvonte	6-Clarke, Jordan	2-Madison, Karl Simons, Ben Clarke, Jordan	1-Madison, Karl Alexander, Kurt Rice, Rayvonte Simons, Ben	None
at Creighton	01/03/12	59-76	17-Simons, Ben	7-Clarke, Jordan	5-Madison, Karl	5-Rice, Rayvonte	1-Rice, Rayvonte
NORTHERN IOWA	01/07/12	68-83	27-Rice, Rayvonte	11-Clarke, Jordan	2-Madison, Karl Simons, Ben	2-Clarke, Jordan Madison, Karl Rice, Rayvonte	2-Clarke, Jordan
BRADLEY	01/10/12	82-74	21-Simons, Ben	14-Woods, Kraidon	2-Alexander, Kurt	3-Rice, Rayvonte	1-Woods, Kraidon
at Evansville	01/13/12	69-60	17-Simons, Ben	6-Clarke, Jordan Woods, Kraidon Rice, Rayvonte Jeffers, Jeremy	4-Jeffers, Jeremy Madison, Karl	2-Rice, Rayvonte	2-Woods, Kraidon
ILLINOIS STATE	01/15/12	77-60	21-Simons, Ben	11-Woods, Kraidon	5-Madison, Karl	4-Rice, Rayvonte	4-Woods, Kraidon
at Southern Illinois	01/18/12	75-68	20-Simons, Ben	7-Rice, Rayvonte	2-Jeffers, Jeremy Clarke, Jordan Madison, Karl	5-Rice, Rayvonte	2-Woods, Kraidon
at Northern Iowa	01/22/12	52-66	21-Alexander, Kurt	6-Rice, Rayvonte	2-Madison, Karl Clarke, Jordan	2-Madison, Karl	3-Woods, Kraidon
CREIGHTON	01/25/12	69-77	23-Rice, Rayvonte	11-Rice, Rayvonte	3-Madison, Karl	2-Rice, Rayvonte	1-Woods, Kraidon Rice, Rayvonte
WICHITA STATE	01/28/12	93-86	29-Simons, Ben	14-Rice, Rayvonte	8-Rice, Rayvonte	4-Rice, Rayvonte Woods, Kraidon	4-Woods, Kraidon
at Indiana State	02/01/12	54-61	17-Rice, Rayvonte	6-Woods, Kraidon	5-Rice, Rayvonte	3-Simons, Ben	1-Rice, Rayvonte Woods, Kraidon
MISSOURI STATE	02/04/12	39-57	12-Hawley, Aaron	6-Rice, Rayvonte	3-Madison, Karl	2-Alexander, Kurt	1-Clarke, Jordan Welfringer, Judd
at Illinois State	02/08/12	53-64	13-Jeffers, Jeremy	5-Woods, Kraidon	6-Madison, Karl	2-Rice, Rayvonte	3-Woods, Kraidon

2011-12 Drake Basketball
 Drake Game-by-Game Highs (as of Feb 25, 2012)
 All games

Opponent	Date	Score	Points	Rebounds	Assists	Steals	Blocked shots
EVANSVILLE	02/12/12	78-54	18-Clarke, Jordan	12-Clarke, Jordan	4-Hawley, Aaron	Madison, Karl	
at Bradley	02/15/12	62-55	15-Alexander, Kurt Rice, Rayvonte	16-Clarke, Jordan	5-Alexander, Kurt	2-Rice, Rayvonte 3-Clarke, Jordan	3-Rice, Rayvonte 2-Rice, Rayvonte
at New Mexico State	02/18/12	55-71	18-Rice, Rayvonte	6-Hawley, Aaron Clarke, Jordan	2-Clarke, Jordan Madison, Karl	2-Clarke, Jordan	1-Hawley, Aaron
SOUTHERN ILLINOIS	02/22/12	78-63	19-Rice, Rayvonte	10-Rice, Rayvonte	3-Alexander, Kurt	2-Woods, Kraidon Clarke, Jordan	3-Woods, Kraidon
at Wichita State	02/25/12	58-81	21-Simons, Ben	4-Alexander, Kurt Rice, Rayvonte Hawley, Aaron	3-Alexander, Kurt	2-Alexander, Kurt Clarke, Jordan	2-Woods, Kraidon

2011-12 Drake Basketball
 Drake Points-Rebounds-Assists (as of Feb 25, 2012)
 All games

Opponent	Date	Score		01	02	03	04	10	11	21
				CLARKE,JOR	HAWLEY,AAR	ALEXANDER, WELFRINGER	JEFFERS,JE	MADISON,KA	PARKER,COR	
UPPER IOWA	11/12/11	83-58	w	11-8-1	23-7-1	DNP	2-1-1	15-3-2	13-1-2	1-0-0
IOWA STATE	11/15/11	74-65	w	6-8-3	5-4-0	10-3-4	DNP	0-2-0	7-1-5	DNP
vs Ole Miss	11/18/11	59-63	L	5-11-3	8-4-2	8-4-2	DNP	0-3-0	0-2-1	DNP
vs Winthrop	11/19/11	66-62	w	6-6-1	2-1-3	3-2-2	DNP	2-2-1	2-1-0	DNP
vs Virginia	11/21/11	52-60	L	0-3-1	5-2-0	2-1-1	DNP	6-0-1	9-5-1	DNP
CAL STATE NORTHRIDGE	11/26/11	73-49	w	11-7-3	6-1-0	11-5-3	0-1-0	2-1-0	7-4-2	0-0-0
at Boise State	11/30/11	64-108	L	2-4-1	0-0-2	7-0-1	6-1-1	4-2-0	2-1-4	1-0-0
AIR FORCE	12/03/11	62-60	w	10-8-0	6-2-1	0-2-1	DNP	5-5-1	6-0-1	DNP
EASTERN MICHIGAN	12/08/11	66-53	w	13-8-2	5-0-0	4-3-0	DNP	11-2-3	4-1-4	DNP
at Iowa	12/17/11	68-82	L	10-10-0	6-2-0	7-2-2	DNP	9-3-0	7-3-1	DNP
CENTRAL ARKANSAS	12/21/11	87-64	w	16-11-1	9-2-1	2-1-0	DNP	11-4-3	0-2-7	DNP
INDIANA STATE	12/28/11	79-64	w	4-12-1	0-3-1	0-0-0	DNP	14-1-1	24-4-3	DNP
at Missouri State	12/31/11	61-72	L	10-6-2	9-3-0	7-1-1	DNP	1-2-0	4-2-2	DNP
at Creighton	01/03/12	59-76	L	6-7-0	5-2-1	7-4-4	DNP	5-3-0	3-1-5	4-1-0
NORTHERN IOWA	01/07/12	68-83	L	5-11-0	2-0-1	10-1-0	DNP	8-2-0	5-0-2	DNP
BRADLEY	01/10/12	82-74	w	0-1-0	0-0-0	17-1-2	DNP	11-2-1	3-1-0	0-0-0
at Evansville	01/13/12	69-60	w	9-6-0	11-4-0	6-1-0	DNP	7-6-4	3-1-4	0-0-0
ILLINOIS STATE	01/15/12	77-60	w	0-3-0	6-3-2	13-1-0	DNP	5-4-0	3-4-5	0-0-0
at Southern Illinois	01/18/12	75-68	w	5-3-2	16-5-0	5-0-0	DNP	1-5-2	8-1-2	DNP
at Northern Iowa	01/22/12	52-66	L	3-5-2	8-4-0	21-2-0	0-0-1	0-2-1	2-0-2	0-0-0
CREIGHTON	01/25/12	69-77	L	4-6-0	0-0-1	16-0-1	DNP	5-1-1	2-1-3	DNP
WICHITA STATE	01/28/12	93-86	w	4-3-1	2-0-0	17-5-2	DNP	11-4-1	4-1-3	DNP
at Indiana State	02/01/12	54-61	L	2-4-0	6-1-0	6-4-2	DNP	8-5-1	0-2-2	DNP
MISSOURI STATE	02/04/12	39-57	L	2-4-0	12-4-1	5-1-1	3-2-2	9-2-0	0-2-3	0-1-0
at Illinois State	02/08/12	53-64	L	4-2-1	12-3-0	0-0-0	0-1-0	13-2-0	9-2-6	DNP
EVANSVILLE	02/12/12	78-54	w	18-12-1	10-5-4	16-6-3	2-4-2	12-1-0	5-0-1	DNP
at Bradley	02/15/12	62-55	w	6-16-4	12-5-2	15-3-5	2-3-0	6-3-2	2-1-1	DNP
at New Mexico State	02/18/12	55-71	L	7-6-2	14-6-1	4-1-0	0-4-1	3-3-0	8-1-2	DNP
SOUTHERN ILLINOIS	02/22/12	78-63	w	2-1-0	8-5-1	11-2-3	0-1-1	11-1-2	5-0-2	0-0-0
at Wichita State	02/25/12	58-81	L	0-3-2	0-4-0	6-4-3	0-1-0	12-3-0	0-3-0	0-0-0

Opponent	Date	Score		22	24	25	32	34	40
				WOODS,KRAI	RICE,RAYVO	SMITH,DAVI	WHITAKER,G	SIMONS,BEN	UHLENHOPP,
UPPER IOWA	11/12/11	83-58	w	5-4-1	DNP	1-3-0	0-0-0	12-5-1	DNP
IOWA STATE	11/15/11	74-65	w	4-4-0	18-6-0	0-1-0	DNP	24-4-1	DNP
vs Ole Miss	11/18/11	59-63	L	0-1-1	12-7-0	4-0-0	DNP	22-4-2	DNP
vs Winthrop	11/19/11	66-62	w	6-4-2	23-2-1	3-3-0	DNP	19-3-1	DNP
vs Virginia	11/21/11	52-60	L	2-3-0	12-2-0	2-1-0	DNP	14-3-2	DNP
CAL STATE NORTHRIDGE	11/26/11	73-49	w	0-3-0	22-7-1	0-1-3	DNP	14-5-0	DNP
at Boise State	11/30/11	64-108	L	7-2-0	19-5-0	2-1-0	0-1-0	14-5-0	DNP
AIR FORCE	12/03/11	62-60	w	2-3-0	15-8-3	2-0-0	DNP	16-2-1	DNP
EASTERN MICHIGAN	12/08/11	66-53	w	3-4-0	9-7-2	1-1-0	DNP	16-3-3	DNP
at Iowa	12/17/11	68-82	L	1-4-0	23-5-1	0-0-0	DNP	5-3-3	DNP
CENTRAL ARKANSAS	12/21/11	87-64	w	9-6-1	29-5-4	0-1-0	DNP	11-4-5	DNP
INDIANA STATE	12/28/11	79-64	w	0-1-0	22-8-1	DNP	DNP	15-3-0	0-0-0
at Missouri State	12/31/11	61-72	L	0-3-0	16-3-1	0-0-0	DNP	14-2-2	DNP
at Creighton	01/03/12	59-76	L	6-4-0	6-2-1	0-1-1	0-0-0	17-1-1	DNP
NORTHERN IOWA	01/07/12	68-83	L	0-1-0	27-3-1	0-1-1	DNP	11-4-2	DNP
BRADLEY	01/10/12	82-74	w	9-14-1	19-8-1	2-3-1	DNP	21-3-1	DNP
at Evansville	01/13/12	69-60	w	8-6-3	8-6-3	0-2-3	DNP	17-2-1	DNP
ILLINOIS STATE	01/15/12	77-60	w	11-11-1	14-3-3	4-3-0	DNP	21-4-2	DNP
at Southern Illinois	01/18/12	75-68	w	2-3-0	18-7-1	0-1-0	DNP	20-3-1	DNP
at Northern Iowa	01/22/12	52-66	L	2-5-0	9-6-1	0-1-0	DNP	7-4-0	DNP
CREIGHTON	01/25/12	69-77	L	1-1-0	23-11-0	DNP	DNP	18-3-0	DNP
WICHITA STATE	01/28/12	93-86	w	7-8-0	19-14-8	DNP	DNP	29-8-1	DNP
at Indiana State	02/01/12	54-61	L	2-6-0	17-4-5	DNP	DNP	13-4-2	DNP
MISSOURI STATE	02/04/12	39-57	L	2-5-1	6-6-0	0-0-0	0-0-0	DNP	DNP
at Illinois State	02/08/12	53-64	L	4-5-0	11-4-1	0-1-0	DNP	DNP	DNP
EVANSVILLE	02/12/12	78-54	w	2-6-1	13-3-3	0-0-0	DNP	DNP	DNP
at Bradley	02/15/12	62-55	w	4-4-0	15-4-0	0-1-1	DNP	DNP	DNP
at New Mexico State	02/18/12	55-71	L	0-0-1	18-5-1	1-3-0	DNP	DNP	DNP
SOUTHERN ILLINOIS	02/22/12	78-63	w	5-5-0	19-10-1	DNP	3-0-0	14-2-2	DNP
at Wichita State	02/25/12	58-81	L	0-2-0	18-4-1	1-0-0	DNP	21-2-0	DNP

2011-12 Drake Basketball
 Drake Player High/Low Analysis (as of Feb 25, 2012)
 All games

Drake - INDIVIDUAL GAME HIGHS

Points	29		Simons, Ben vs Wichita State (01/28/12)
	29		Rice, Rayvonte vs Central Arkansas (12/21/11)
	27		Rice, Rayvonte vs Northern Iowa (01/07/12)
	24		Madison, Karl vs INDIANA STATE (12/28/11)
	24		Simons, Ben vs Iowa State (11/15/11)
Field Goals Made	12		Rice, Rayvonte vs Central Arkansas (12/21/11)
	11		Simons, Ben vs Wichita State (01/28/12)
Field Goal Att.	23		Rice, Rayvonte vs Wichita State (01/28/12)
	22		Simons, Ben vs Wichita State (01/28/12)
FG Pct (min 5 made)	1.000	(9-9)	Madison, Karl vs INDIANA STATE (12/28/11)
	.833	(5-6)	Clarke, Jordan vs Upper Iowa (11/12/11)
3-Point FG Made	7		Simons, Ben at Wichita State (02/25/12)
	5		Simons, Ben vs Winthrop (11/19/11)
3-Point FG Att.	12		Simons, Ben at Wichita State (02/25/12)
	11		Hawley, Aaron at New Mexico State (02/18/12)
3-Pt FG Pct (min 2 made)	1.000	(2-2)	Hawley, Aaron at Evansville (01/13/12)
	1.000	(2-2)	Hawley, Aaron at Missouri State (12/31/11)
	1.000	(2-2)	Jeffers, Jeremy vs INDIANA STATE (12/28/11)
Free Throws Made	13		Rice, Rayvonte vs Bradley (01/10/12)
	11		Rice, Rayvonte vs Southern Illinois (02/22/12)
Free Throw Att.	18		Rice, Rayvonte vs Bradley (01/10/12)
	16		Rice, Rayvonte vs Southern Illinois (02/22/12)
FT Pct (min 3 made)	1.000	(6-6)	Alexander, Kurt vs Northern Iowa (01/07/12)
	1.000	(6-6)	Simons, Ben vs Virginia (11/21/11)
	1.000	(6-6)	Jeffers, Jeremy vs Upper Iowa (11/12/11)
	1.000	(4-4)	Rice, Rayvonte vs Missouri State (02/04/12)
	1.000	(4-4)	Simons, Ben vs Wichita State (01/28/12)
	1.000	(4-4)	Simons, Ben at Missouri State (12/31/11)
	1.000	(4-4)	Madison, Karl at Iowa (12/17/11)
	1.000	(4-4)	Simons, Ben vs Eastern Michigan (12/08/11)
	1.000	(4-4)	Simons, Ben vs Ole Miss (11/18/11)
	1.000	(4-4)	Simons, Ben vs Iowa State (11/15/11)
	1.000	(3-3)	Simons, Ben at Southern Illinois (01/18/12)
	1.000	(3-3)	Alexander, Kurt at Southern Illinois (01/18/12)
	1.000	(3-3)	Simons, Ben vs Illinois State (01/15/12)
	1.000	(3-3)	Alexander, Kurt vs Bradley (01/10/12)
	1.000	(3-3)	Jeffers, Jeremy vs Eastern Michigan (12/08/11)
	1.000	(3-3)	Rice, Rayvonte vs Iowa State (11/15/11)
Rebounds	16		Clarke, Jordan at Bradley (02/15/12)
	14		Rice, Rayvonte vs Wichita State (01/28/12)
	14		Woods, Kraidon vs Bradley (01/10/12)
Assists	8		Rice, Rayvonte vs Wichita State (01/28/12)
	7		Madison, Karl vs Central Arkansas (12/21/11)
Steals	5		Rice, Rayvonte at Southern Illinois (01/18/12)
	5		Rice, Rayvonte at Creighton (01/03/12)
Blocked Shots	4		Woods, Kraidon vs Wichita State (01/28/12)
	4		Woods, Kraidon vs Illinois State (01/15/12)
	4		Woods, Kraidon at Boise State (11/30/11)
Turnovers	6		Rice, Rayvonte vs Evansville (02/12/12)
	6		Rice, Rayvonte at Iowa (12/17/11)
	6		Hawley, Aaron vs Ole Miss (11/18/11)
Fouls	5		Woods, Kraidon vs Southern Illinois (02/22/12)
	5		Rice, Rayvonte at New Mexico State (02/18/12)

5	Jeffers, Jeremy at Bradley (02/15/12)
5	Woods, Kraidon vs Wichita State (01/28/12)
5	Hawley, Aaron vs Illinois State (01/15/12)
5	Madison, Karl at Evansville (01/13/12)
5	Alexander, Kurt vs Bradley (01/10/12)
5	Jeffers, Jeremy vs Northern Iowa (01/07/12)
5	Clarke, Jordan vs Northern Iowa (01/07/12)
5	Woods, Kraidon at Creighton (01/03/12)
5	Simons, Ben vs Central Arkansas (12/21/11)
5	Clarke, Jordan at Iowa (12/17/11)
5	Welfringer, Judd at Boise State (11/30/11)
5	Alexander, Kurt at Boise State (11/30/11)
5	Rice, Rayvonte vs Virginia (11/21/11)
5	Hawley, Aaron vs Ole Miss (11/18/11)
5	Clarke, Jordan vs Ole Miss (11/18/11)
5	Madison, Karl vs Upper Iowa (11/12/11)

2011-12 Drake Basketball
 Drake Opponent High/Low Analysis (as of Feb 25, 2012)
 All games

OPPONENT INDIVIDUAL GAME HIGHS

Points	30		McDermott,Doug vs Creighton (01/25/12)
	28		Brown, Taylor vs Bradley (01/10/12)
	27		STUTZ, Garrett vs Wichita State (01/28/12)
	26		Brown,Tyler at Illinois State (02/08/12)
	26		James, Anthony vs Northern Iowa (01/07/12)
	26		MIDDLETON, Reggie vs Winthrop (11/19/11)
Field Goals Made	10		STUTZ, Garrett vs Wichita State (01/28/12)
	10		McDermott,Doug vs Creighton (01/25/12)
	10		Kyle Weems at Missouri State (12/31/11)
Field Goal Att.	19		Lemon Jr., Walt at Bradley (02/15/12)
	19		White, Royce vs Iowa State (11/15/11)
FG Pct (min 5 made)	1.000	(5-5)	WILEY, Drew at Boise State (11/30/11)
	.889	(8-9)	BUCKNER, Kenny at Boise State (11/30/11)
3-Point FG Made	6		THOMPSON, Derek vs Eastern Michigan (12/08/11)
	5		Manigat,Jahenns vs Creighton (01/25/12)
	5		WILEY, Drew at Boise State (11/30/11)
3-Point FG Att.	10		THOMPSON, Derek vs Eastern Michigan (12/08/11)
	8		SMITH, Ben at Wichita State (02/25/12)
	8		Brown,Tyler at Illinois State (02/08/12)
	8		KYLES, David vs Wichita State (01/28/12)
	8		NELSON, Dundrecous vs Ole Miss (11/18/11)
3-Pt FG Pct (min 2 made)	1.000	(5-5)	WILEY, Drew at Boise State (11/30/11)
	1.000	(3-3)	Laroche, Hernst at New Mexico State (02/18/12)
	1.000	(3-3)	Mcgee, Tyrus vs Iowa State (11/15/11)
	1.000	(2-2)	Kyle Weems at Missouri State (12/31/11)
	1.000	(2-2)	Crawford, Robert vs Central Arkansas (12/21/11)
Free Throws Made	13		Koch, Jake vs Northern Iowa (01/07/12)
	12		Brown,Tyler at Illinois State (02/08/12)
Free Throw Att.	14		Mamadou Seck vs Southern Illinois (02/22/12)
	14		Koch, Jake vs Northern Iowa (01/07/12)
FT Pct (min 3 made)	1.000	(12-12)	Brown,Tyler at Illinois State (02/08/12)
	1.000	(8-8)	Cartwright, Bryce at Iowa (12/17/11)
	1.000	(7-7)	STUTZ, Garrett at Wichita State (02/25/12)
	1.000	(7-7)	Lathan, Dwayne at Indiana State (02/01/12)
	1.000	(6-6)	STUTZ, Garrett vs Wichita State (01/28/12)
	1.000	(6-6)	McDermott,Doug at Creighton (01/03/12)
	1.000	(6-6)	HARRIS, Joe vs Virginia (11/21/11)
	1.000	(6-6)	SCOTT, Mike vs Virginia (11/21/11)
	1.000	(5-5)	RAGLAND, Joe vs Wichita State (01/28/12)
	1.000	(4-4)	WILLIAMS, Demetric at Wichita State (02/25/12)
	1.000	(4-4)	Eitel, Lucas at Indiana State (02/01/12)
	1.000	(4-4)	Young,Antoine vs Creighton (01/25/12)
	1.000	(4-4)	Moore,Nic vs Illinois State (01/15/12)
	1.000	(4-4)	Wilkins,John vs Illinois State (01/15/12)
	1.000	(4-4)	Woods, Charonn vs Bradley (01/10/12)
	1.000	(4-4)	Mitchell, Deon vs Northern Iowa (01/07/12)
	1.000	(4-4)	Anthony Downing at Missouri State (12/31/11)
	1.000	(4-4)	Odum, Jake vs INDIANA STATE (12/28/11)
	1.000	(4-4)	JONES, Andre vs Winthrop (11/19/11)
	1.000	(4-4)	Christopherson,Scott vs Iowa State (11/15/11)
	1.000	(3-3)	Ekey,Jon at Illinois State (02/08/12)
	1.000	(3-3)	Christian Kirk vs Missouri State (02/04/12)
	1.000	(3-3)	MURRY, Toure' vs Wichita State (01/28/12)

Rebounds	20	Carmichael,Jackie at Illinois State (02/08/12)
	14	White, Royce vs Iowa State (11/15/11)
Assists	7	Watson, Tyrone at New Mexico State (02/18/12)
	7	Gibbs,Grant vs Creighton (01/25/12)
	7	Allen, Chris vs Iowa State (11/15/11)
Steals	6	NELSON, Dundrecous vs Ole Miss (11/18/11)
	5	Mullings, Daniel at New Mexico State (02/18/12)
Blocked Shots	5	Rahman, Hamidu at New Mexico State (02/18/12)
	4	ORUKPE, Ehimen at Wichita State (02/25/12)
	4	Echenique,Gregory at Creighton (01/03/12)
Turnovers	7	STUTZ, Garrett vs Wichita State (01/28/12)
	6	Young,Antoine at Creighton (01/03/12)
	6	HENRY, Terrance vs Ole Miss (11/18/11)
	6	Lafrenz,Mark vs Upper Iowa (11/12/11)
Fouls	5	T.J. Lindsay vs Southern Illinois (02/22/12)
	5	Jeff Early vs Southern Illinois (02/22/12)
	5	MURRY, Toure' vs Wichita State (01/28/12)
	5	STUTZ, Garrett vs Wichita State (01/28/12)
	5	Dantiel Daniels at Southern Illinois (01/18/12)
	5	Ryan, Colt at Evansville (01/13/12)
	5	Simms-Edwards, D. vs Bradley (01/10/12)
	5	Woods, Charonn vs Bradley (01/10/12)
	5	BRAKEVILLE, Adam vs Air Force (12/03/11)
	5	MARKS, Derrick at Boise State (11/30/11)
	5	MIDDLETON, Reggie vs Winthrop (11/19/11)
	5	JEROME, Joab vs Winthrop (11/19/11)
	5	Lafrenz,Mike vs Upper Iowa (11/12/11)
	5	Wentzien,Tucker vs Upper Iowa (11/12/11)

2011-12 Drake Basketball
 Drake Team High/Low Analysis (as of Feb 25, 2012)
 All games

Drake - TEAM GAME HIGHS

POINTS	93	WICHITA STATE (01/28/12)
	87	CENTRAL ARKANSAS (12/21/11)
	83	UPPER IOWA (11/12/11)
	82	BRADLEY (01/10/12)
	79	INDIANA STATE (12/28/11)
FIELD GOALS MADE	33	CENTRAL ARKANSAS (12/21/11)
	32	WICHITA STATE (01/28/12)
FIELD GOAL ATTEMPTS	73	WICHITA STATE (01/28/12)
	63	CENTRAL ARKANSAS (12/21/11)
FIELD GOAL PERCENTAGE	.614 (27-44)	at Evansville (01/13/12)
	.564 (31-55)	INDIANA STATE (12/28/11)
3 PT FIELD GOALS MADE	11	EVANSVILLE (02/12/12)
	10	CENTRAL ARKANSAS (12/21/11)
3 PT FG ATTEMPTS	25	CENTRAL ARKANSAS (12/21/11)
	23	at Wichita State (02/25/12)
3 PT FG PERCENTAGE	.625 (5-8)	SOUTHERN ILLINOIS (02/22/12)
	.600 (6-10)	INDIANA STATE (12/28/11)
FREE THROWS MADE	28	BRADLEY (01/10/12)
	25	SOUTHERN ILLINOIS (02/22/12)
FREE THROW ATTEMPTS	40	BRADLEY (01/10/12)
	37	SOUTHERN ILLINOIS (02/22/12)
FREE THROW PERCENTAGE	.857 (12-14)	IOWA STATE (11/15/11)
	.783 (18-23)	vs Virginia (11/21/11)
REBOUNDS	48	WICHITA STATE (01/28/12)
	44	at Bradley (02/15/12)
ASSISTS	22	CENTRAL ARKANSAS (12/21/11)
	18	at Evansville (01/13/12)
STEALS	14	at Creighton (01/03/12)
	10	WICHITA STATE (01/28/12)
	10	CAL STATE NORTHRIDGE (11/26/11)
BLOCKED SHOTS	7	CAL STATE NORTHRIDGE (11/26/11)
	6	EVANSVILLE (02/12/12)
	6	WICHITA STATE (01/28/12)
	6	ILLINOIS STATE (01/15/12)
TURNOVERS	23	vs Ole Miss (11/18/11)
	22	at Evansville (01/13/12)
FOULS	28	UPPER IOWA (11/12/11)
	27	NORTHERN IOWA (01/07/12)
	27	vs Ole Miss (11/18/11)

2011-12 Drake Basketball
 Drake High/Low Analysis (as of Feb 25, 2012)
 All games

Opponent - GAME HIGHS

POINTS	108		at Boise State (11/30/11)
	86		WICHITA STATE (01/28/12)
	83		NORTHERN IOWA (01/07/12)
	82		at Iowa (12/17/11)
	81		at Wichita State (02/25/12)
FIELD GOALS MADE	36		at Boise State (11/30/11)
	31		WICHITA STATE (01/28/12)
FIELD GOAL ATTEMPTS	76		WICHITA STATE (01/28/12)
	65		at Wichita State (02/25/12)
FIELD GOAL PERCENTAGE	.610	(36-59)	at Boise State (11/30/11)
	.604	(29-48)	at Missouri State (12/31/11)
3 PT FIELD GOALS MADE	14		at Boise State (11/30/11)
	9		ILLINOIS STATE (01/15/12)
3 PT FG ATTEMPTS	26		ILLINOIS STATE (01/15/12)
	25		at Wichita State (02/25/12)
	25		WICHITA STATE (01/28/12)
3 PT FG PERCENTAGE	.636	(14-22)	at Boise State (11/30/11)
	.625	(5-8)	at Missouri State (12/31/11)
FREE THROWS MADE	28		at Illinois State (02/08/12)
	27		NORTHERN IOWA (01/07/12)
FREE THROW ATTEMPTS	38		vs Ole Miss (11/18/11)
	38		UPPER IOWA (11/12/11)
FREE THROW PERCENTAGE	1.000	(9-9)	EVANSVILLE (02/12/12)
	.903	(28-31)	at Illinois State (02/08/12)
REBOUNDS	46		WICHITA STATE (01/28/12)
	45		at Illinois State (02/08/12)
ASSISTS	20		at Boise State (11/30/11)
	17		CREIGHTON (01/25/12)
STEALS	12		at Iowa (12/17/11)
	11		WICHITA STATE (01/28/12)
	11		vs Ole Miss (11/18/11)
BLOCKED SHOTS	8		at Wichita State (02/25/12)
	6		at Iowa (12/17/11)
	6		vs Ole Miss (11/18/11)
TURNOVERS	23		UPPER IOWA (11/12/11)
	21		CAL STATE NORTHRIDGE (11/26/11)
FOULS	29		WICHITA STATE (01/28/12)
	29		BRADLEY (01/10/12)

2011-12 Drake Basketball
 Drake High/Low Analysis (as of Feb 25, 2012)
 All games

Drake - GAME LOWS

POINTS	39	MISSOURI STATE (02/04/12)
	52	vs Virginia (11/21/11)
	52	at Northern Iowa (01/22/12)
	53	at Illinois State (02/08/12)
	54	at Indiana State (02/01/12)
FIELD GOALS MADE	12	MISSOURI STATE (02/04/12)
	16	vs Virginia (11/21/11)
FIELD GOAL ATTEMPTS	37	vs Winthrop (11/19/11)
	41	vs Virginia (11/21/11)
FIELD GOAL PERCENTAGE	.273 (12-44)	MISSOURI STATE (02/04/12)
	.333 (18-54)	at Indiana State (02/01/12)
3 PT FIELD GOALS MADE	2	vs Virginia (11/21/11)
	4	at Missouri State (12/31/11)
	4	CREIGHTON (01/25/12)
3 PT FG ATTEMPTS	8	SOUTHERN ILLINOIS (02/22/12)
	10	vs Virginia (11/21/11)
	10	INDIANA STATE (12/28/11)
3 PT FG PERCENTAGE	.200 (2-10)	vs Virginia (11/21/11)
	.222 (4-18)	CREIGHTON (01/25/12)
FREE THROWS MADE	4	at Northern Iowa (01/22/12)
	7	at Illinois State (02/08/12)
	7	EVANSVILLE (02/12/12)
	7	at Wichita State (02/25/12)
FREE THROW ATTEMPTS	7	at Northern Iowa (01/22/12)
	9	at Wichita State (02/25/12)
FREE THROW PERCENTAGE	.421 (8-19)	at Evansville (01/13/12)
	.462 (12-26)	at Boise State (11/30/11)
REBOUNDS	23	at Missouri State (12/31/11)
	23	at Illinois State (02/08/12)
ASSISTS	6	vs Virginia (11/21/11)
	6	CREIGHTON (01/25/12)
	6	at Wichita State (02/25/12)
STEALS	3	at Boise State (11/30/11)
	4	at Missouri State (12/31/11)
	4	at Northern Iowa (01/22/12)
BLOCKED SHOTS	0	at Missouri State (12/31/11)
	1	vs Virginia (11/21/11)
	1	INDIANA STATE (12/28/11)
	1	at Creighton (01/03/12)
	1	BRADLEY (01/10/12)
	1	at New Mexico State (02/18/12)
TURNOVERS	6	CREIGHTON (01/25/12)
	7	BRADLEY (01/10/12)
FOULS	14	MISSOURI STATE (02/04/12)
	16	at Missouri State (12/31/11)

2011-12 Drake Basketball
 Drake High/Low Analysis (as of Feb 25, 2012)
 All games

Opponent - GAME LOWS

POINTS	49	CAL STATE NORTHRIDGE (11/26/11)
	53	EASTERN MICHIGAN (12/08/11)
	54	EVANSVILLE (02/12/12)
	55	at Bradley (02/15/12)
	57	MISSOURI STATE (02/04/12)
FIELD GOALS MADE	14	UPPER IOWA (11/12/11)
	16	AIR FORCE (12/03/11)
	16	at Illinois State (02/08/12)
FIELD GOAL ATTEMPTS	38	vs Virginia (11/21/11)
	41	AIR FORCE (12/03/11)
FIELD GOAL PERCENTAGE	.318 (14-44)	UPPER IOWA (11/12/11)
	.339 (21-62)	at Bradley (02/15/12)
3 PT FIELD GOALS MADE	0	vs Virginia (11/21/11)
	0	at Bradley (02/15/12)
3 PT FG ATTEMPTS	5	vs Virginia (11/21/11)
	8	at Missouri State (12/31/11)
	8	NORTHERN IOWA (01/07/12)
3 PT FG PERCENTAGE	.000 (0-5)	vs Virginia (11/21/11)
	.000 (0-20)	at Bradley (02/15/12)
FREE THROWS MADE	6	CAL STATE NORTHRIDGE (11/26/11)
	9	at Missouri State (12/31/11)
	9	EVANSVILLE (02/12/12)
FREE THROW ATTEMPTS	9	EVANSVILLE (02/12/12)
	12	CAL STATE NORTHRIDGE (11/26/11)
FREE THROW PERCENTAGE	.474 (18-38)	vs Ole Miss (11/18/11)
	.500 (6-12)	CAL STATE NORTHRIDGE (11/26/11)
REBOUNDS	21	at Evansville (01/13/12)
	23	vs Virginia (11/21/11)
ASSISTS	5	UPPER IOWA (11/12/11)
	5	SOUTHERN ILLINOIS (02/22/12)
STEALS	1	at Illinois State (02/08/12)
	2	EASTERN MICHIGAN (12/08/11)
BLOCKED SHOTS	0	vs Winthrop (11/19/11)
	0	ILLINOIS STATE (01/15/12)
	0	CREIGHTON (01/25/12)
TURNOVERS	6	at Northern Iowa (01/22/12)
	8	at Missouri State (12/31/11)
	8	at Bradley (02/15/12)
FOULS	10	at Northern Iowa (01/22/12)
	10	at Wichita State (02/25/12)



AARON HAWLEY

2

Forward • 6-8 • Junior
Rogers, Ark.
(Rogers)



- Career-high 4 three-pointers 3 times in 5-gm. stretch (2/4, 2/8 & 2/18).
- Opened season with career-high 23 points in win over Upper Iowa.
- Started 6 of season's first 7 games after starting six games '09-'11
- Averaged 5.8 points and 2.3 rebounds as a sophomore in 2010-'11
- Born June 23, 1990 in Rogers, Ark.

SEASON/CAREER HIGHS

Points.....	23	vs. Upper Iowa (11-12-11)
Career.....	23	vs. Upper Iowa (11-12-11)
Rebounds.....	7	vs. Upper Iowa (11-12-11)
Career.....	8	vs. Bradley (12-29-09)
Assists.....	4	vs. Evansville (2-12-12)
Career.....	4	vs. Evansville (2-12-12)
Blocks.....	1	at New Mexico State (2-18-12) [5]
Career.....	1	at New Mexico State (2-18-12) [10]
Steals.....	2	at Southern Illinois (1-18-12)
Career.....	3	vs. Boise State (12-12-10)
FG Made.....	8	vs. Upper Iowa (11-12-11)
Career.....	8	vs. Upper Iowa (11-12-11)
FG Att.....	14	at New Mexico State (2-18-12) [2]
Career.....	14	at New Mexico State (2-18-12) [2]
3PT Made.....	4	at New Mexico State (2-18-12) [3]
Career.....	4	at New Mexico State (2-18-12) [3]
3PT Att.....	11	at New Mexico State (2-18-12)
Career.....	11	at New Mexico State (2-18-12)
FT Made.....	5	vs. Upper Iowa (11-12-11)
Career.....	5	vs. Upper Iowa (11-12-11)
FT Att.....	7	vs. Upper Iowa (11-12-11)
Career.....	7	vs. Upper Iowa (11-12-11)
Minutes.....	38	at Bradley (2-15-12)
Career.....	38	at Bradley (2-15-12)

Opponent	Date	GS	Min	FG	FGA	Pct	3FG	FGA	Pct	FT	FTA	Pct	GAME-BY-GAME STATISTICS												
													Off	Def	Tot	Avg	PF	FO	A	TO	Blk	Stl	Pts	Avg	
UPPER IOWA	11/12/11	*	30	8	13	.615	2	4	.500	5	7	.714	1	6	7	7.0	4	0	1	0	0	1	23	23.0	
IOWA STATE	11/15/11	*	22	2	6	.333	1	3	.333	0	0	.000	0	4	4	5.5	0	0	0	0	0	0	5	14.0	
vs Ole Miss	11/18/11	*	29	3	6	.500	2	3	.667	0	0	.000	2	2	4	5.0	5	1	2	6	1	1	8	12.0	
vs Winthrop	11/19/11	*	20	1	4	.250	0	3	.000	0	0	.000	1	0	1	4.0	3	0	3	0	0	0	2	9.5	
vs Virginia	11/21/11	*	17	2	3	.667	1	2	.500	0	0	.000	0	2	2	3.6	0	0	2	0	0	0	5	8.6	
CS NORTHRIDGE	11/26/11	*	19	2	5	.400	2	3	.667	0	0	.000	1	0	1	3.2	2	0	0	1	0	1	6	8.2	
at Boise State	11/30/11	*	12	0	3	.000	0	2	.000	0	0	.000	0	0	0	2.7	0	0	2	0	0	0	0	7.0	
AIR FORCE	12/03/11	*	18	1	4	.250	1	4	.250	3	5	.600	1	1	2	2.6	2	0	1	1	0	0	6	6.9	
EASTERN MICHIGAN	12/08/11	*	13	2	5	.400	1	2	.500	0	0	.000	0	0	0	2.3	0	0	0	0	1	1	5	6.7	
at Iowa	12/17/11	*	22	2	7	.286	1	5	.200	1	2	.500	0	2	2	2.3	0	0	0	0	0	0	6	6.6	
CENTRAL ARKANSAS	12/21/11	*	18	3	7	.429	2	6	.333	1	4	.250	0	2	2	2.3	0	0	1	1	1	1	9	6.8	
INDIANA STATE	12/28/11	*	16	0	3	.000	0	0	.000	0	0	.000	2	1	3	2.3	1	0	1	1	0	0	0	6.3	
at Missouri State	12/31/11	*	26	3	7	.429	2	2	1.000	1	1	1.000	1	2	3	2.4	2	0	0	0	0	0	9	6.5	
at Creighton	01/03/12	*	18	2	8	.250	1	5	.200	0	0	.000	0	2	2	2.4	0	0	1	0	0	1	5	6.4	
UNI	01/07/12	*	23	1	4	.250	0	1	.000	0	0	.000	0	0	0	2.2	2	0	1	0	1	0	2	6.1	
BRADLEY	01/10/12	*	8	0	3	.000	0	2	.000	0	0	.000	0	0	0	2.1	1	0	0	0	0	0	0	5.7	
at Evansville	01/13/12	*	15	4	4	1.000	2	2	1.000	1	5	.200	1	3	4	2.2	2	0	0	2	0	0	11	6.0	
ILLINOIS STATE	01/15/12	*	15	2	6	.333	2	4	.500	0	0	.000	2	1	3	2.2	5	1	2	1	0	0	6	6.0	
at Southern Illinois	01/18/12	*	26	5	11	.455	3	6	.500	3	5	.600	2	3	5	2.4	4	0	0	1	0	2	16	6.5	
at Northern Iowa	01/22/12	*	26	3	10	.300	2	7	.286	0	0	.000	1	3	4	2.5	0	0	2	0	0	0	8	6.6	
CREIGHTON	01/25/12	*	17	0	4	.000	0	3	.000	0	0	.000	0	0	0	2.3	1	0	1	0	0	0	0	6.3	
WICHITA STATE	01/28/12	*	10	1	2	.500	0	1	.000	0	0	.000	0	0	0	2.2	1	0	0	1	0	0	2	6.1	
at Indiana State	02/01/12	*	15	2	5	.400	2	4	.500	0	0	.000	0	1	1	2.2	2	0	0	0	0	0	6	6.1	
MISSOURI STATE	02/04/12	*	31	4	11	.364	4	8	.500	0	0	.000	1	3	4	2.3	4	0	1	1	0	0	12	6.3	
at Illinois State	02/08/12	*	30	4	9	.444	4	7	.571	0	0	.000	0	3	3	2.3	3	0	0	0	0	1	12	6.6	
EVANSVILLE	02/12/12	*	36	4	10	.400	2	7	.286	0	0	.000	1	4	5	2.4	2	0	4	2	0	1	10	6.7	
at Bradley	02/15/12	*	38	4	14	.286	2	6	.333	2	2	1.000	2	3	5	2.5	1	0	2	2	0	0	12	6.9	
at New Mexico State	02/18/12	*	35	5	14	.357	4	11	.364	0	0	.000	1	5	6	2.6	1	0	1	2	1	0	14	7.1	
SOUTHERN ILLINOIS	02/22/12	*	27	2	3	.667	1	1	1.000	3	4	.750	0	5	5	2.7	1	0	1	1	0	1	8	7.2	
at Wichita State	02/25/12	*	19	0	5	.000	0	3	.000	0	0	.000	0	4	4	2.7	1	0	0	1	0	0	0	6.9	
Totals			12	651	72	196	.367	44	117	.376	20	35	.571	20	62	82	2.7	50	2	25	31	5	11208	6.9	

Year	GP	GS	Min	Avg	Total			3-Point			F-Throw			Rebounds				CAREER STATISTICS							
					FG	FGA	Pct	FG	FGA	Pct	FT	FTA	Pct	Off	Def	Tot	Avg	PF	FO	Ast	TO	Blk	Stl	Pts	Avg
2009-10	33	2	407	12.3	57	139	.410	23	58	.397	18	25	.720	17	48	65	2.0	33	0	8	21	2	12	155	4.7
2010-11	30	4	484	16.1	63	159	.396	24	73	.329	24	31	.774	19	50	69	2.3	43	0	12	23	3	17	174	5.8
2011-12	30	12	651	21.7	72	196	.367	44	117	.376	20	35	.571	20	62	82	2.7	50	2	25	31	5	11	208	6.9
TOTAL	93	18	1542	16.6	192	494	.389	91	248	.367	62	91	.681	56	160	216	2.3	126	2	45	75	10	40	537	5.8



JEREMY JEFFERS

10

Forward • 6-6 • Freshman-RS
Wilson, N.C.
(Greenfield)



- Made first career start vs. Air Force, Dec. 3, 2011; started since
- Scored career-high 15 points in 31 min. vs. Upper Iowa in opener
- Sparked on Drake's 2011 Foreign Tour with 9.3 ppg, 2.5 rbg & 2 assts
- Played 7 games before redshirting in 2010-11 (11 pts., 4 reb, 3 assts)
- Born Nov. 14, 1991 in Wilson, N.C.

SEASON/CAREER HIGHS

Points.....	15	vs. Upper Iowa (11-12-11)
Career.....	15	vs. Upper Iowa (11-12-11)
Rebounds.....	6	at Evansville (1-13-12)
Career.....	6	at Evansville (1-13-12)
Assists.....	4	at Evansville (1-13-12)
Career.....	5	vs. Iowa State (11-22-09)
Blocks.....	0	
Career.....	0	
Steals.....	2	at Creighton (1-3-12)
Career.....	2	at Creighton (1-3-12)
FG Made.....	6	vs. Indiana State (12-28-11)
Career.....	6	vs. Indiana State (12-28-11)
FG Att.....	11	at Illinois State (2-8-12)
Career.....	11	at Illinois State (2-8-12)
3PT Made.....	4	vs. Evansville (2-12-12)
Career.....	4	vs. Evansville (2-12-12)
3PT Att.....	7	at Illinois State (2-8-12)
Career.....	7	at Illinois State (2-8-12)
FT Made.....	6	vs. Upper Iowa (11-12-11)
Career.....	6	vs. Upper Iowa (11-12-11)
FT Att.....	6	vs. Upper Iowa (11-12-11)
Career.....	6	vs. Upper Iowa (11-12-11)
Minutes.....	48	vs. Wichita State (3OT) (1-28-12)
Career.....	48	vs. Wichita State (3OT) (1-28-12)

Opponent	Date	GS	Min	FG	FGA	Pct	3FG	FGA	Pct	FT	FTA	Pct	GAME-BY-GAME STATISTICS												
													Off	Def	Tot	Avg	PF	FO	A	TO	Blk	Stl	Pts	Avg	
UPPER IOWA	11/12/11		31	4	8	.500	1	2	.500	6	6	1.000	0	3	3	3.0	2	0	2	0	0	0	15	15.0	
IOWA STATE	11/15/11		5	0	1	.000	0	0	.000	0	0	.000	0	2	2	2.5	1	0	0	1	0	0	0	7.5	
vs Ole Miss	11/18/11		9	0	1	.000	0	0	.000	0	0	.000	0	3	3	2.7	2	0	0	1	0	0	0	5.0	
vs Winthrop	11/19/11		17	1	2	.500	0	1	.000	0	0	.000	0	2	2	2.5	1	0	1	1	0	0	2	4.3	
vs Virginia	11/21/11		14	2	2	1.000	0	0	.000	2	4	.500	0	0	0	2.0	1	0	1	1	0	0	6	4.6	
CS NORTHRIDGE	11/26/11		10	0	2	.000	0	0	.000	2	2	1.000	0	1	1	1.8	0	0	0	0	0	0	2	4.2	
at Boise State	11/30/11		15	1	4	.250	0	1	.000	2	4	.500	2	0	2	1.9	1	0	0	1	0	0	4	4.1	
AIR FORCE	12/03/11	*	22	2	3	.667	0	1	.000	1	2	.500	0	5	5	2.3	4	0	1	1	0	0	5	4.3	
EASTERN MICHIGAN	12/08/11	*	27	4	7	.571	1	1	.000	3	3	1.000	2	0	2	2.2	1	0	3	1	0	0	11	5.0	
at Iowa	12/17/11	*	26	3	5	.600	1	2	.500	2	2	1.000	0	3	3	2.3	2	0	0	1	0	0	9	5.4	
CENTRAL ARKANSAS	12/21/11	*	29	3	6	.500	3	4	.750	2	2	1.000	1	3	4	2.5	2	0	3	3	0	0	11	5.9	
INDIANA STATE	12/28/11	*	35	6	8	.750	2	2	1.000	0	0	.000	0	1	1	2.3	2	0	1	1	0	0	14	6.6	
at Missouri State																									



KARL MADISON

11



Guard • 5-10 • Freshman-RS
Springfield, Ill.
(Lanphier)

- Won the starting point guard job and has flashed quickness & smarts
- Career-high 24 pts. (9-9 FG, 5-6 FT) in 1st MVC game vs. Ind. St. (12/28/11)
- Dished career-best 7 assists vs. Cent. Ark. (12/21/11); just 1 turnover
- Third-team 3A/4A all-state at Lanphier HS in Springfield, Ill.
- Competed against teammate Rayvonte Rice in high school

SEASON/CAREER HIGHS

Points.....	24vs. Indiana State (12-28-11)
Rebounds.....	5vs. Virginia (11-21-11)
Assists.....	7vs. Central Arkansas (12-21-11)
Blocks.....	1vs. Cal State Northridge (11-26-11)
Steals.....	2at Illinois State (2-8-12)
FG Made.....	9vs. Indiana State (12-28-11)
FG Att.....	10at Illinois State (2-8-12)
3PT Made.....	1vs. Evansville (2-12-12) [9]
3PT Att.....	3vs. Missouri State (2-4-12) [2]
FT Made.....	6vs. Air Force (12-3-11)
FT Att.....	10vs. Air Force (12-3-11)
Minutes.....	34vs. Illinois State (2-8-12)

		GAME-BY-GAME STATISTICS																						
Opponent	Date	GS	Min	FG	FGA	Pct	3FG	FGA	Pct	FT	FTA	Pct	Off	Def	Tot	Avg	PF	FO	A	TO	Blk	Stl	Pts	Avg
UPPER IOWA	11/12/11 *	32	4	7	.571	1	1	1.000	4	5	.800	0	1	1	1.0	5	1	2	4	0	1	13	13.0	
IOWA STATE	11/15/11 *	22	2	4	.500	0	2	.000	3	4	.750	1	0	1	1.0	2	0	5	2	0	0	7	10.0	
vs Ole Miss	11/18/11 *	20	0	6	.000	0	2	.000	0	2	.000	0	2	2	1.3	3	0	1	4	0	2	0	6.7	
vs Winthrop	11/19/11 *	15	0	2	.000	0	0	.000	2	2	1.000	1	0	1	1.3	3	0	0	2	0	0	2	5.5	
vs Virginia	11/21/11 *	26	2	5	.400	0	0	.000	5	6	.833	2	3	5	2.0	2	0	1	1	0	1	9	6.2	
CS NORTHRIDGE	11/26/11 *	23	2	3	.667	1	1	1.000	2	2	1.000	0	4	4	2.3	4	0	2	3	1	2	7	6.3	
at Boise State	11/30/11 *	25	1	6	.167	0	2	.000	0	0	.000	1	0	1	2.1	3	0	4	1	0	1	2	5.7	
AIR FORCE	12/03/11 *	32	0	4	.000	0	1	.000	6	10	.600	0	0	1	9	4	0	1	2	0	2	6	5.8	
EASTERN MICHIGAN	12/08/11 *	27	1	2	.500	1	1	1.000	1	2	.500	0	1	1	1.8	4	0	4	0	0	1	4	5.6	
at Iowa	12/17/11 *	25	1	3	.333	1	2	.500	4	4	1.000	0	3	3	1.9	2	0	1	2	0	1	7	5.7	
CENTRAL ARKANSAS	12/21/11 *	29	0	4	.000	0	0	.000	0	0	.000	0	2	2	1.9	1	0	7	1	0	0	0	5.2	
INDIANA STATE	12/28/11 *	34	9	9	1.000	1	1	1.000	5	6	.833	0	4	4	2.1	2	0	3	2	0	1	24	6.8	
at Missouri State	12/31/11 *	24	1	4	.250	0	1	.000	2	4	.500	0	2	2	2.1	2	0	2	0	0	1	4	6.5	
at Creighton	01/03/12 *	22	0	7	.000	0	2	.000	3	4	.750	1	0	1	2.0	3	0	5	3	0	1	3	6.3	
UNI	01/07/12 *	26	2	5	.400	1	3	.333	0	0	.000	0	0	1	9	4	0	2	5	0	2	5	6.2	
BRADLEY	01/10/12 *	17	1	2	.500	1	1	1.000	0	0	.000	0	1	1	1.8	4	0	0	3	0	0	3	6.0	
at Evansville	01/13/12 *	27	1	2	.500	1	1	1.000	0	0	.000	0	1	1	1.8	5	1	4	4	0	0	3	5.8	
ILLINOIS STATE	01/15/12 *	20	1	3	.333	1	2	.500	0	0	.000	0	4	4	1.9	3	0	5	3	0	0	3	5.7	
at Southern Illinois	01/18/12 *	29	3	3	1.000	0	0	.000	2	2	1.000	0	1	1	1.8	2	0	2	4	0	0	8	5.8	
at Northern Iowa	01/22/12 *	19	1	4	.250	0	1	.000	0	0	.000	0	0	0	1.8	3	0	2	0	0	2	2	5.6	
CREIGHTON	01/25/12 *	18	0	1	.000	0	1	.000	2	2	1.000	0	1	1	1.7	1	0	3	1	0	0	2	5.4	
WICHITA STATE	01/28/12 *	24	2	4	.500	0	1	.000	0	1	.000	0	1	1	1.7	0	0	3	1	0	0	4	5.4	
at Indiana State	02/01/12 *	21	0	1	.000	0	1	.000	0	0	.000	0	2	2	1.7	1	0	2	1	0	0	0	5.1	
MISSOURI STATE	02/04/12 *	24	0	5	.000	0	3	.000	0	0	.000	0	2	2	1.7	0	0	3	3	0	1	0	4.9	
at Illinois State	02/08/12 *	34	4	10	.400	0	1	.000	1	2	.500	0	2	2	1.7	0	0	6	2	0	2	9	5.1	
EVANSVILLE	02/12/12 *	15	2	4	.500	1	1	1.000	0	2	.000	0	0	1	7	2	0	1	3	0	1	5	5.1	
at Bradley	02/15/12 *	13	1	2	.500	0	0	.000	0	0	.000	0	1	1	1.6	2	0	1	1	0	1	2	5.0	
at New Mexico State	02/18/12 *	31	2	8	.250	0	1	.000	4	6	.667	0	1	1	1.6	1	0	2	0	0	0	8	5.1	
SOUTHERN ILLINOIS	02/22/12	20	2	7	.286	0	0	.000	1	2	.500	0	0	0	1.6	1	0	2	0	0	0	5	5.1	
at Wichita State	02/25/12 *	17	0	5	.000	0	2	.000	0	0	.000	1	2	3	1.6	2	0	0	2	0	1	0	4.9	
Totals		29	711	45	132	.341	10	35	.286	47	68	.691	7	41	48	1.6	71	2	76	60	1	24	147	4.9

		CAREER STATISTICS																							
Year	GP	GS	Min	Avg	FG	FGA	Pct	FG	FGA	Pct	FT	FTA	Pct	Off	Def	Tot	Avg	PF	FO	Ast	TO	Blk	Stl	Pts	Avg
2011-12	30	29	711	23.7	45	132	.341	10	35	.286	47	68	.691	7	41	48	1.6	71	2	76	60	1	24	147	4.9



CORY PARKER

21



Forward • 6-8 • Junior
Aspen, Colo.
(Aspen)

- Scored season-high 4 pts. at Creighton (1/3/12)
- Started on 2011 Foreign Tour with VanDeest, Uhlenhopp & Clarke out
- Played in 18 games as a redshirt-sophomore in 2010-11
- Redshirted in 2008-09
- Born (12/29/89) and raised in Aspen, Colo.

SEASON/CAREER HIGHS

Points.....	4at Creighton (1-3-12)
Career.....	6vs. Chicago State (12-23-10) [2]
Rebounds.....	1vs. Missouri State (2-4-12) [2]
Career.....	3at Creighton (1-6-10)
Assists.....	0
Career.....	1at Bradley (2-26-10)
Blocks.....	0
Career.....	0
Steals.....	0
Career.....	3vs. Boise State (12-12-10) [2]
FG Made.....	1at Creighton (1-3-12)
Career.....	3vs. Chicago State (12-23-10)
FG Att.....	1at Wichita State (2-25-12)
Career.....	4vs. Chicago State (12-23-10)
3PT Made.....	0
Career.....	1at Creighton (1-6-10)
3PT Att.....	0
Career.....	1at Southern Illinois (2-2-10)
FT Made.....	2at Creighton (1-3-12)
Career.....	2at Creighton (1-3-12)
FT Att.....	2at Creighton (1-3-12) [3]
Career.....	2at Creighton (1-3-12) [3]
Minutes.....	8vs. Upper Iowa (11-12-11)
Career.....	14vs. Illinois State (1-18-11)

		GAME-BY-GAME STATISTICS																						
Opponent	Date	GS	Min	FG	FGA	Pct	3FG	FGA	Pct	FT	FTA	Pct	Off	Def	Tot	Avg	PF	FO	A	TO	Blk	Stl	Pts	Avg
UPPER IOWA	11/12/11	8	0	0	.000	0	0	.000	1	2	.500	0	0	0	0.0	2	0	0	0	0	0	1	1	0
Games 2-5																								
DID NOT PLAY																								
CS NORTHRIDGE	11/26/11	2	0	0	.000	0	0	.000	0	0	.000	0	0	0	0.0	0	0	0	0	0	0	0	0	0.5
at Boise State	11/30/11	5	0	0	.000	0	0	.000	1	2	.500	0	0	0	0.0	0	0	0	0	0	0	0	1	0.7
Games 8-13	12/03/11																							
DID NOT PLAY																								
at Creighton	01/03/12	5	1	1	1.000	0	0	.000	2	2	1.000	0	1	1	0.3	0	0	0	1	0	0	4	1.5	
NORTHERN IOWA	01/07/12																							
DID NOT PLAY																								
BRADLEY	01/10/12	4	0	0	.000	0	0	.000	0	0	.000	0	0	0	0.2	0	0	0	0	0	0	0	0	1.2
at Evansville																								
DID NOT PLAY																								
ILLINOIS STATE	01/15/12	3	0	0	.000	0	0	.000	0	0	.000	0	0	0	0.1	1	0	0	0	0	0	0	0	0.9
at Southern Illinois	01/18/12																							
DID NOT PLAY																								
at Northern Iowa	01/22/12	2	0	0	.000	0	0	.000	0	0	.000	0	0	0	0.1	0	0	0	0	0	0	0	0	0.8
Games 21-23																								
DID NOT PLAY																								
MISSOURI STATE	02/04/12	6	0	0	.000	0	0	.000	0	1	.000	1	0	1	0.2	0	0	0	0	0	0	0	0	0.7
Games 25-28																								
DID NOT PLAY																								
SOUTHERN ILLINOIS	02/22/12	3	0	0	.000	0	0	.000	0	0	.000	0	0	0	0.2	2	0	0	0	0	0	0	0	0.6
at Wichita State	02/25/12	1	0	1	.000	0	0	.000	0	0	.000	0	0	0	0.2	0	0	0	0	0	0	0	0	0.5
Totals		0	39	1	2	.500	0	0	.000	4	7	.571	1	1	2	0.2	5	0	0	1	0	0	6	0.5

		CAREER STATISTICS																							
Year	GP	GS	Min	Avg	FG	FGA	Pct	FG	FGA	Pct	FT	FTA	Pct	Off	Def	Tot	Avg	PF	FO	Ast	TO	Blk	Stl	Pts	Avg
2009-10	10	0	24	2.4	2	2	1.000	1																	



DAVID SMITH 25

Guard • 6-4 • Sophomore
Chicago, Ill.
(Lake Forest Academy)



- Big guard who gives Drake options at both the point and 2-guard.
- Saw more playing time on Aug. foreign tour & avgd. 4.3 ppg, 3.8 rpg
- Redshirted in 2009-10 after suffering season-ending injury after 8 gms
- Born Sept. 6, 1990 in Evanston, Ill.

SEASON/CAREER HIGHS

Points..... 4vs. Illinois State (1-15-12) [2]
 Career 7vs. Wichita State (1-15-11)

Rebounds..... 3vs. New Mexico State (2-18-12) [4]
 Career 3vs. New Mexico State (2-18-12) [4]

Assists..... 3at Evansville (1-13-12) [2]
 Career 3at Evansville (1-13-12) [3]

Blocks..... 1vs. Illinois State (1-15-12) [2]
 Career 1vs. Illinois State (1-15-12) [3]

Steals..... 1at New Mexico State (2-18-12) [5]
 Career 1at New Mexico State (2-18-12) [8]

FG Made..... 1vs. Illinois State (1-15-12) [6]
 Career 3vs. Wichita State (1-15-11)

FG Att..... 3vs. Bradley (1-10-12) [2]
 Career 3vs. Bradley (1-10-12) [3]

3PT Made..... 0
 Career 0

3PT Att..... 0
 Career 0

FT Made..... 2vs. Illinois State (1-15-12) [3]
 Career 2vs. Illinois State (1-15-12) [4]

FT Att..... 4at New Mexico State (2-18-12)
 Career 4at New Mexico State (2-18-12)

Minutes..... 21vs. Winthrop (11-19-11)
 Career 38at Evansville (1-9-11)

Opponent	Date	GS	Min	FG			3FG			FT			Off Def Tot			GAME-BY-GAME STATISTICS								
				FGA	Pct	Pct	FGA	Pct	FT	FTA	Pct	Off	Def	Tot	Avg	PF	FO	A	TO	Blk	Stl	Pts	Avg	
UPPER IOWA	11/12/11	16	0	1	.000	0	0	.000	1	2	.500	0	3	3	3.0	4	0	0	0	1	1	1	1.0	
IOWA STATE	11/15/11	10	0	0	.000	0	0	.000	0	0	.000	0	1	1	2.0	2	0	0	1	0	0	0	0.5	
vs Ole Miss	11/18/11	6	1	1	1.000	0	0	.000	2	2	1.000	0	0	0	1.3	0	0	0	1	0	0	4	1.7	
vs Winthrop	11/19/11	21	1	1	1.000	0	0	.000	1	2	.500	1	2	3	1.8	2	0	0	0	0	0	3	2.0	
vs Virginia	11/21/11	15	1	3	.333	0	0	.000	0	1	.000	0	1	1	1.6	2	0	0	2	0	1	2	2.0	
CS NORTHRIDGE	11/26/11	18	0	0	.000	0	0	.000	0	0	.000	1	0	1	1.5	2	0	3	3	0	0	0	1.7	
at Boise State	11/30/11	11	1	1	1.000	0	0	.000	0	2	.000	1	0	1	1.4	1	0	0	1	0	0	2	1.7	
AIR FORCE	12/03/11	10	0	0	.000	0	0	.000	2	2	1.000	0	0	0	1.3	2	0	0	1	0	0	2	1.8	
EASTERN MICHIGAN	12/08/11	4	0	0	.000	0	0	.000	1	1	1.000	0	1	1	1.2	1	0	0	0	0	0	1	1.7	
at Iowa	12/17/11	7	0	0	.000	0	0	.000	0	0	.000	0	0	0	1.1	0	0	0	0	0	0	0	1.5	
CENTRAL ARKANSAS	12/21/11	5	0	0	.000	0	0	.000	0	0	.000	0	1	1	1.1	1	0	0	1	0	0	0	1.4	
INDIANA STATE	12/28/11																							
at Missouri State	12/31/11	1	0	0	.000	0	0	.000	0	0	.000	0	0	0	1.0	0	0	0	0	0	0	0	1.3	
at Creighton	01/03/12	13	0	1	.000	0	0	.000	0	0	.000	0	1	1	1.0	2	0	1	1	0	1	0	1.2	
UNI	01/07/12	12	0	1	.000	0	0	.000	0	0	.000	1	0	1	1.0	2	0	1	0	0	0	0	1.1	
BRADLEY	01/10/12 *	13	1	3	.333	0	0	.000	0	0	.000	2	1	3	1.1	2	0	1	0	0	0	2	1.1	
at Evansville	01/13/12	9	0	0	.000	0	0	.000	0	0	.000	0	2	2	1.2	2	0	3	1	0	0	0	1.1	
ILLINOIS STATE	01/15/12	12	1	1	1.000	0	0	.000	2	2	1.000	1	2	3	1.3	0	0	0	1	1	0	4	1.2	
at Southern Illinois	01/18/12	3	0	0	.000	0	0	.000	0	0	.000	0	1	1	1.3	0	0	0	1	0	0	0	1.2	
at Northern Iowa	01/22/12	3	0	1	.000	0	0	.000	0	0	.000	0	1	1	1.3	0	0	0	0	0	0	0	1.1	
Games 21-23																								
MISSOURI STATE	02/04/12	7	0	0	.000	0	0	.000	0	0	.000	0	0	0	1.2	1	0	0	0	0	1	0	1.1	
at Illinois State	02/08/12	3	0	0	.000	0	0	.000	0	0	.000	0	1	1	1.2	1	0	0	2	0	0	0	1.0	
EVANSVILLE	02/12/12	0+	0	0	.000	0	0	.000	0	0	.000	0	0	0	1.1	0	0	0	0	0	0	0	1.0	
at Bradley	02/15/12	3	0	0	.000	0	0	.000	0	0	.000	0	1	1	1.1	0	0	1	0	0	0	0	0.9	
at New Mexico State	02/18/12	11	0	0	.000	0	0	.000	1	4	.250	1	2	3	1.2	0	0	2	0	1	1	0.9		
SOUTHERN ILLINOIS	02/22/12																							
at Wichita State	02/25/12	1	0	0	.000	0	0	.000	1	2	.500	0	0	0	1.2	0	0	0	0	0	0	1	0.9	
Totals		1	214	6	14	.429	0	0	.000	11	20	.550	8	21	29	1.2	27	0	10	18	2	5	23	0.9

Year	GP	GS	Min	Avg	Total			3-Point			F-Throw			Rebounds				CAREER STATISTICS							
					FG	FGA	Pct	FG	FGA	Pct	FT	FTA	Pct	Off	Def	Tot	Avg	PF	FO	Ast	TO	Blk	Stl	Pts	Avg
2009-10	8	0	57	7.1	4	6	.667	0	0	.000	4	9	.444	2	2	4	0.5	5	0	2	4	1	3	12	1.5
2010-11	26	0	177	6.8	8	17	.471	0	0	.000	8	12	.667	2	17	19	0.7	14	0	19	15	1	3	24	0.9
2011-12	25	1	214	8.6	6	14	.429	0	0	.000	11	20	.550	8	21	29	1.2	27	0	10	18	2	5	23	0.9
TOTAL	59	1	448	7.6	18	37	.486	0	0	.000	23	41	.561	12	40	52	0.9	46	0	31	37	4	11	59	1.0



REECE UHLENHOPP 40

Forward • 6-8 • Junior
Urbandale, Iowa
(Urbandale)



- Stress fracture in right foot will keep him out of action for season
- Played in 31 games and started four in 2010-11
- Four starts in 2010-11 came in consec. gms. vs. E. Mich., Boise St., Iowa and Dartmouth
- Step-sister, Jill Martin, also played basketball at Drake

SEASON/CAREER HIGHS

Points..... 8vs. Chicago State (12-23-10)
 Career 8vs. Chicago State (12-23-10)

Rebounds..... 9at Eastern Michigan (12-8-10)
 Career 9at Eastern Michigan (12-8-10)

Assists.....
 Career

Blocks..... 1vs. Dartmouth (12-21-10) [4]
 Career 1vs. Dartmouth (12-21-10) [4]

Steals..... 2vs. Southern Illinois (12-29-10) [4]
 Career 2vs. Southern Illinois (12-29-10) [4]

FG Made..... 3at Illinois State (1-30-11) [2]
 Career 3at Illinois State (1-30-11) [2]

FG Att..... 7at Eastern Michigan (12-8-10)
 Career 7at Eastern Michigan (12-8-10)

3PT Made..... 2vs. Southern Illinois (2-2-11) [2]
 Career 2vs. Southern Illinois (2-2-11) [2]

3PT Att..... 2vs. Southern Illinois (2-2-11)
 Career 2vs. Southern Illinois (2-2-11)

FT Made..... 2vs. Northern Iowa (2-5-11) [6]
 Career 2vs. Northern Iowa (2-5-11) [6]

FT Att..... 2vs. Northern Iowa (2-5-11) [6]
 Career 2vs. Northern Iowa (2-5-11) [6]

Minutes..... 1vs. Indiana State (12-28-11)
 Career 29vs. Boise State (12-12-10) [2]

Opponent	Date	GS	Min	FG			3FG			FT			Off Def Tot			GAME-BY-GAME STATISTICS									
				FGA	Pct	Pct	FGA	Pct	FT	FTA	Pct	Off	Def	Tot	Avg	PF	FO	A	TO	Blk	Stl	Pts	Avg		
Games 1-11																									
INDIANA STATE	12/28/11	1	0	0	.000	0	0	.000	0	0	.000	0	0	0	0.0	0	0	0	0	0	0	0	0	0.0	
Games 13-30																									
Totals		0	1	0	.000	0	0	.000	0	0	.000	0	0	0	0.0	0	0	0	0	0	0	0	0	0.0	

Year	GP	GS	Min	Avg	Total			3-Point			F-Throw			Rebounds				CAREER STATISTICS							
					FG	FGA	Pct	FG	FGA	Pct	FT	FTA	Pct	Off	Def	Tot	Avg	PF	FO	Ast	TO	Blk	Stl	Pts	Avg
2009-10	30	0	209	7.0	14	31	.452	7	16	.438	6	6	1.000	6	26	32	1.1	33	0	0	2	1	9	41	1.4
2010-11	31	4	384	12.4	25	73	.342	14	38	.368	10	13	.769	21	45	66	2.1	45	0	10	14	4	10	74	2.4
2011-12	1	0	1	1.0	0	0	.000	0	0	.000	0	0	.000	0	0	0	0.0	0	0	0	0	0	0	0	0.0
TOTAL	62	4	594	9.6	39	104	.375	21	54	.389	16	19	.842	27	71	98	1.6	78	0	10	16	5	19	115	1.9



SETH VANDEEST 45

Center • 6-11 • Junior
Bettendorf, Iowa
(Bettendorf)



- Underwent shoulder surgery in late July...will redshirt this season
- Ranked 10th in MVC in FT% in 2010-11 (.770); 7th (.807) in MVC gms
- Tied for sixth on Drake's career blocked shots list (63)
- 45 blocked shots in 2010-11 were third-most in a season for Drake

SEASON/CAREER HIGHS

Points.....
Career..... 26 vs. Southern Utah (11-24-10)

Rebounds.....
Career..... 10 vs. Boise State (12-12-10)

Assists.....
Career..... 5 vs. Evansville (2-23-11)

Blocks.....
Career..... 4 vs. Southern Utah (11-24-10) [4]

Steals.....
Career..... 2 at Missouri State (2-15-11) [5]

FG Made.....
Career..... 9 vs. Binghamton (12-12-09)

FG Att.....
Career..... 12 vs. Southern Utah (11-24-10)

3PT Made.....
Career..... 2 vs. Evansville (2-23-11)

3PT Att.....
Career..... 2 vs. Evansville (2-23-11)

FT Made.....
Career..... 9 vs. Southern Utah (11-24-10)

FT Att.....
Career..... 12 vs. Southern Utah (11-24-10)

Minutes.....
Career..... 32 vs. Bradley (1-7-11) [3]

GAME-BY-GAME STATISTICS

Opponent	Date	GS	Min	FG	FGA	Pct	3FG	FGA	Pct	FT	FTA	Pct	Off	Def	Tot	Avg	PF	FO	A	TO	Blk	Stl	Pts	Avg	
Games 1-30																									
DID NOT PLAY																									
Total			0	0	0	.000	0	0	.000	0	0	.000	0	0	0.0		0	0	0	0	0	0	0	0.0	

Year	GP	GS	Min	Avg	Total			3-Point			F-Throw			Rebounds				CAREER STATISTICS							
					FG	FGA	Pct	FG	FGA	Pct	FT	FTA	Pct	Off	Def	Tot	Avg	PF	FO	Ast	TO	Blk	Stl	Pts	Avg
2009-10	33	33	800	24.2	98	201	.488	3	12	.250	80	110	.727	38	101	139	4.2	104	3	31	34	45	12	279	8.5
2010-11	29	29	701	24.2	83	158	.525	1	4	.250	87	113	.770	37	92	129	4.4	71	1	44	38	18	15	254	8.8
2011-12	0	0	0	0.0	0	0	.000	0	0	.000	0	0	.000	0	0	0	0.0	0	0	0	0	0	0	0.0	
TOTAL	62	62	1501	24.2	181	359	.504	4	16	.250	167	223	.749	75	193	268	4.3	175	4	75	72	63	27	533	8.6



JUDD WELFRINGER 4

Guard • 6-4 • Freshman
Waukee, Iowa
(Waukee)



- Played season/career-high 20 min. vs. Mo. St. (2/4), Evansville (2/12)
- High scoring game of 6 came at Boise St. (11/30/11); started 2nd half
- True freshman who saw extensive time on Foreign Tour in August
- On tour scored 11 points, grabbed 7 rebounds and dished two assists
- Averaged 18 ppg last year to lead Waukee (H.S.) to state quarterfinals
- Transferred from Basha H.S. in Arizona to Waukee for senior year after committing to Drake before his junior season

SEASON/CAREER HIGHS

Points..... 6 at Boise State (11-30-11)

Rebounds..... 4 at New Mexico State (2-18-12)

Assists..... 2 vs. Evansville (2-12-12) [2]

Blocks..... 1 vs. Missouri State (2-4-12)

Steals..... 2 vs. Upper Iowa (11-12-11)

FG Made..... 2 at Boise State (11-30-11)

FG Att..... 4 at Boise State (11-30-11)

3PT Made..... 2 at Boise State (11-30-11)

3PT Att..... 4 at Boise State (11-30-11)

FT Made..... 2 at Bradley (2-15-12)

FT Att..... 2 at Bradley (2-15-12)

Minutes..... 20 vs. Evansville (2-12-12) [2]

GAME-BY-GAME STATISTICS

Opponent	Date	GS	Min	FG	FGA	Pct	3FG	FGA	Pct	FT	FTA	Pct	Off	Def	Tot	Avg	PF	FO	A	TO	Blk	Stl	Pts	Avg	
UPPER IOWA	11/12/11	11	1	3	.333	0	2	.000	0	0	.000	0	1	1	1.0	2	0	1	0	0	2	2	2.0		
Games 2-5																									
DID NOT PLAY																									
CS NORTHBRIDGE	11/26/11	3	0	0	.000	0	0	.000	0	0	.000	0	1	1	1.0	0	0	0	0	0	0	0	1.0		
at Boise State	11/30/11	15	2	4	.500	2	4	.500	0	1	1.0	0	1	1	1.0	5	1	1	1	0	0	6	2.7		
Games 8-19																									
DID NOT PLAY																									
at Northern Iowa	01/22/12	7	0	1	.000	0	1	.000	0	0	.000	0	0	0	0.8	1	0	1	0	0	0	0	2.0		
Games 21-23																									
DID NOT PLAY																									
MISSOURI STATE	02/04/12	20	1	2	.500	1	2	.500	0	2	1.0	0	2	2	1.0	0	0	2	1	1	1	3	2.2		
at Illinois State	02/08/12	15	0	3	.000	0	3	.000	0	0	.000	0	1	1	1.0	3	0	0	0	0	1	0	1.8		
EVANSVILLE	02/12/12	20	1	2	.500	0	1	.000	0	0	.000	1	3	4	1.4	2	0	2	1	0	1	2	1.9		
at Bradley	02/15/12	15	0	1	.000	0	0	.000	2	2	1.000	2	1	3	1.6	2	0	0	1	0	0	2	1.9		
at New Mexico State	02/18/12	14	0	2	.000	0	2	.000	0	0	.000	1	3	4	1.9	2	0	1	0	0	1	0	1.7		
SOUTHERN ILLINOIS	02/22/12	6	0	0	.000	0	0	.000	0	0	.000	0	1	1	1.8	0	0	1	0	0	0	0	1.5		
at Wichita State	02/25/12	3	0	0	.000	0	0	.000	0	0	.000	1	0	1	1.7	0	0	0	2	0	0	0	1.4		
Totals			0	129	5	18	.278	3	15	.200	2	4	.500	5	14	19	1.7	17	1	9	6	1	6	15	1.4

Year	GP	GS	Min	Avg	Total			3-Point			F-Throw			Rebounds				CAREER STATISTICS							
					FG	FGA	Pct	FG	FGA	Pct	FT	FTA	Pct	Off	Def	Tot	Avg	PF	FO	Ast	TO	Blk	Stl	Pts	Avg
2011-12	11	0	129	11.7	5	18	.278	3	15	.200	2	4	.500	5	14	19	1.7	17	1	9	6	1	6	15	1.4



GREG WHITAKER

32

Forward • 6-6 • Junior
Fairfax, Va.
(W.T. Woodson)



- Scored career-high 3 points on Senior Night vs. SIU (2/22/12)
- Returned in Nov. from Study Abroad program in Cape Town, South Africa
- Played in two games in 2010-11 and scored two points with one reb.
- Saw first college action vs. Chicago State (12/23/10)
- Redshirted in 2008-09; did not see game action 2009-10

SEASON/CAREER HIGHS

Points.....3.....vs. Southern Illinois (2-22-12)
 Career.....3.....vs. Southern Illinois (2-22-12)
 Rebounds.....1.....at Boise State (11-30-11)
 Career.....1.....vs. Chicago State (12-23-10)
 Assists.....
 Career.....
 Blocks.....
 Career.....
 Steals.....
 Career.....
 FG Made.....1.....vs. Southern Illinois (2-22-12)
 Career.....1.....vs. Southern Illinois (2-22-12)
 FG Att.....1.....vs. Southern Illinois (2-22-12) [2]
 Career.....1.....vs. Southern Illinois (2-22-12) [2]
 3PT Made.....
 Career.....
 3PT Att.....
 Career.....
 FT Made.....1.....vs. Southern Illinois (2-22-12)
 Career.....2.....vs. Chicago State (12-23-10)
 FT Att.....2.....vs. Southern Illinois (2-22-12)
 Career.....2.....vs. Southern Illinois (2-22-12) [2]
 Minutes.....
 Career.....4.....vs. Chicago State (12-23-10)

Opponent	Date	GS	Min	FG			3FG	FGA		Pct	FT	FTA	Pct	Off	Def	Tot	Avg	GAME-BY-GAME STATISTICS									
				Pct	3FG	Pct		PF	FO									A	TO	Blk	Stl	Pts	Avg				
UPPER IOWA	11/12/11	1	0	0	0	.000	0	0	.000	0	0	.000	0	0	0	0.0	1	0	0	0	0	0	0	0	0	0	0
Games 2-6																											
at Boise State	11/30/11	2	0	1	.000	0	0	.000	0	0	.000	0	0	1	0	1	0.5	0	0	0	0	0	0	0	0	0	0
Games 8-13																											
at Creighton	01/03/12	1	0	0	.000	0	0	.000	0	0	.000	0	0	0	0	0	0.3	0	0	0	0	0	0	0	0	0	0
Games 15-23																											
MISSOURI STATE	02/04/12	1	0	0	.000	0	0	.000	0	0	.000	0	0	0	0	0	0.3	0	0	0	0	0	0	0	0	0	0
Games 25-28																											
SOUTHERN ILLINOIS	02/22/12	2	1	1	1.000	0	0	.000	1	2	.500	1	0	0	0	0	0.2	0	0	0	0	0	0	0	3	0	6
at Wichita State	02/25/12																										
Totals		0	7	1	2	.500	0	0	.000	1	2	.500	1	0	1	0.2	1	0	0	0	0	0	0	3	0	6	

Year	GP	GS	Min	Avg	Total			3-Point			F-Throw			Rebounds				CAREER STATISTICS										
					FG	FGA	Pct	FG	FGA	Pct	FT	FTA	Pct	Off	Def	Tot	Avg	PF	FO	Ast	TO	Blk	Stl	Pts	Avg			
2009-10	0	0	0	0.0	0	0	.000	0	0	.000	0	0	.000	0	0	0	0.0	0	0	0	0	0	0	0	0	0	0	0.0
2010-11	2	0	5	2.5	0	0	.000	0	0	.000	2	2	1.000	0	1	1	0.5	0	0	0	0	0	0	0	0	0	2	1.0
2011-12	5	0	7	1.4	1	2	.500	0	0	.000	1	2	.500	1	0	1	0.2	1	0	0	0	0	0	0	0	3	0.6	
TOTAL	7	0	12	1.7	1	2	.500	0	0	.000	3	4	.750	1	1	2	0.3	1	0	0	0	0	0	0	0	5	0.7	



KRAIDON WOODS

22

Forward • 6-9 • Senior
Henryville, Pa.
(Pocono Mountain East)



- Grabbed career-high 14 reb. in win over Bradley, Jan. 10, 2012
- Shot .632 from field in 2010-11, best among all returning MVC players
- Over final 14 games of 2010-11 averaged 5.1 pts. to finish year at 3.9
- Transferred to Drake from Binghamton where he redshirted in 2009-10
- Played at Arizona State 2007-08 and 2008-09

SEASON/CAREER HIGHS

Points.....11.....vs. Illinois State (1-15-12)
 Career.....13.....vs. Detroit (2-19-11)
 Rebounds.....14.....vs. Bradley (1-10-12)
 Career.....14.....vs. Bradley (1-10-12)
 Assists.....3.....at Evansville (1-13-12)
 Career.....3.....at Evansville (1-13-12)
 Blocks.....4.....vs. Wichita State (3OT) (1-28-12) [2]
 Career.....4.....vs. Wichita State (3OT) (1-28-12) [3]
 Steals.....4.....vs. Wichita State (3OT) (1-28-12)
 Career.....4.....vs. Wichita State (3OT) (1-28-12)
 FG Made.....4.....at Evansville (1-13-12)
 Career.....6.....vs. Detroit (2-19-11)
 FG Att.....4.....vs. Wichita State (3OT) (1-28-12) [4]
 Career.....8.....vs. Detroit (2-19-11)
 3PT Made.....
 Career.....
 3PT Att.....
 Career.....
 FT Made.....5.....vs. Illinois State (1-15-12)
 Career.....5.....vs. Illinois State (1-15-12)
 FT Att.....10.....vs. Illinois State (1-15-12)
 Career.....10.....vs. Illinois State (1-15-12)
 Minutes.....32.....vs. Wichita State (3OT) (1-28-12) [2]
 Career.....32.....vs. Wichita State (3OT) (1-28-12) [2]

Opponent	Date	GS	Min	FG			3FG	FGA		Pct	FT	FTA	Pct	Off	Def	Tot	Avg	GAME-BY-GAME STATISTICS						
				Pct	3FG	Pct		PF	FO									A	TO	Blk	Stl	Pts	Avg	
UPPER IOWA	11/12/11 *	19	2	3	.667	0	0	.000	1	5	.200	1	3	4	4.0	4	0	1	1	0	1	5	5.0	
IOWA STATE	11/15/11	18	2	2	1.000	0	0	.000	0	0	.000	2	2	4	4.0	3	0	1	1	2	4	4.5		
vs Ole Miss	11/18/11	10	0	1	.000	0	0	.000	0	0	.000	0	1	1	3.0	2	0	1	0	0	0	0	3.0	
vs Winthrop	11/19/11	15	2	3	.667	0	0	.000	2	2	1.000	0	4	4	3.3	2	0	2	3	0	1	6	3.8	
vs Virginia	11/21/11 *	20	0	3	.000	0	0	.000	2	2	1.000	1	2	3	3.2	4	0	2	1	0	2	3.4		
CS NORTHBRIDGE	11/26/11	10	0	0	.000	0	0	.000	0	0	.000	0	3	3	3.2	2	0	2	1	0	0	2.8		
at Boise State	11/30/11	18	3	3	1.000	0	0	.000	1	4	.250	0	2	2	3.0	4	0	2	4	1	7	3.4		
AIR FORCE	12/03/11	18	0	1	.000	0	0	.000	2	2	1.000	0	3	3	3.0	2	0	2	3	1	2	3.3		
EASTERN MICHIGAN	12/08/11	13	1	2	.500	0	0	.000	1	4	.250	2	2	4	3.1	2	0	2	0	0	3	3.2		
at Iowa	12/17/11	25	0	0	.000	0	0	.000	1	2	.500	1	3	4	3.2	2	0	4	1	0	1	3.0		
CENTRAL ARKANSAS	12/21/11	15	3	3	1.000	0	0	.000	3	6	.500	3	3	6	3.5	1	0	1	1	0	1	9	3.5	
INDIANA STATE	12/28/11	8	0	1	.000	0	0	.000	0	0	.000	0	1	1	3.3	2	0	1	0	0	0	3.3		
at Missouri State	12/31/11	9	0	0	.000	0	0	.000	0	0	.000	0	3	3	3.2	3	0	1	0	0	0	3.0		
at Creighton	01/03/12	17	3	3	1.000	0	0	.000	0	1	.000	3	1	4	3.3	5	1	0	1	0	0	6	3.2	
UNI	01/07/12	7	0	0	.000	0	0	.000	0	0	.000	0	1	1	3.1	1	0	0	1	0	0	3.0		
BRADLEY	01/10/12	32	3	4	.750	0	0	.000	3	8	.375	6	8	14	3.8	2	0	1	2	1	0	9	3.4	
at Evansville	01/13/12	22	4	4	1.000	0	0	.000	2	2	1.000	1	5	6	3.9	4	0	3	5	2	1	8	3.6	
ILLINOIS STATE	01/15/12	29	3	3	1.000	0	0	.000	5	10	.500	3	8	11	4.3	2	0	1	0	4	1	11	4.1	
at Southern Illinois	01/18/12	25	1	2	.500	0	0	.000	0	0	.000	0	3	3	4.3	3	0	1	2	0	2	3.9		
at Northern Iowa	01/22/12	18	1	4	.250	0	0	.000	0	0	.000	2	3	5	4.3	0	0	2	3	0	2	3.9		
CREIGHTON	01/25/12 *	19	0	1	.000	0	0	.000	1	3	.333	0	1	1	4.1	4	0	0	1	1	1	3.7		
WICHITA STATE	01/28/12	32	3	4	.750	0	0	.000	1	3	.333	4	4	8	4.3	5	1	0	1	4	4	7	3.9	
at Indiana State	02/01/12	15	1	2	.500	0	0	.000	2	2	1.000	2	4	6	4.4	2	0	0	1	0	2	3.8		
MISSOURI STATE	02/04/12	12	0	0	.000	0	0	.000	2	2	1.000	2	3	5	4.4	1	0	1	1	0	0	2	3.7	
at Illinois State	02/08/12	16	2	3	.667	0	0	.000	0	0	.000	2	3	5	4.4	2	0	0	3	1	4	3.7		
EVANSVILLE	02/12/12	12	1	1	1.000	0	0	.000	0	0	.000	1	5	6	4.5	2	0	1	3	1	0	2	3.7	
at Bradley	02/15/12	7	2	2	1.000	0	0	.000	0	1	.000	1	3	4	4.5	1	0	0	1	1	0	4	3.7	
at New Mexico State	02/18/12	8	0	0	.000	0	0	.000	0	1	.000	0	0	0	4.3	3	1	0	0	0	0	3.5		
SOUTHERN ILLINOIS	02/22/12 *	24	2	2	1.000	0	0	.000	1	2	.500	0	5	5	4.3	5	1	0	1	3	2	5	3.6	
at Wichita State	02/25/12	26	0	0	.000	0	0	.000	0	0	.000	1	1	2	4.3	2	0	0	2	0	0	3.5		
Totals		4	519	39	57	.684	0	0	.000	26	62	.419	38	90	128	4.3	77	3	13	41	39	17	104	3.5

Year	GP	GS	Min	Avg	Total			3-Point			F-Throw			Rebounds				CAREER STATISTICS							
					FG	FGA	Pct	FG	FGA	Pct	FT	FTA	Pct	Off	Def	Tot	Avg	PF	FO	Ast	TO	Blk	Stl	Pts	Avg
2010-11	30	8	488	16.3	48	76	.632	0	0	.000	21	59	.356	34	88	122	4.1	63	1	13	28	25	5	117	3.9
2011-12	30	4	519	17.3	39	57	.684	0	0	.000	26	62</													

Official Basketball Box Score -- Game Totals -- Final Statistics
Upper Iowa vs DRAKE

11/12/11 7:05 p.m. at Des Moines, Iowa (Knapp Center)

Upper Iowa 58 • 0-1

#	Player	Total			3-Pr			Rebounds			PF	TP	A	T	Bk	Stl	Min
		FG	FGA	FT	FTA	FT-FTA	Off	Def	Def	Def							
24	Lafrenz, Mike	f	0-4	2-4	0-0	3	4	7	4	8	0	6	1	0	24		
33	Elgin, Sam	f	0-4	0-1	3-4	0	4	0	3	1	1	3	1	0	22		
44	Wentzien, Tucker	c	5-10	1-1	3-4	2	4	6	5	14	0	1	0	0	20		
64	Collins, Cedric	g	1-3	0-0	1-2	0	1	1	0	3	0	1	0	0	20		
15	Hughes, Jake	g	0-1	0-3	10-12	0	0	0	0	10	3	0	0	0	29		
23	Spicer, Brandon	g	0-0	0-0	0-0	0	0	0	0	0	0	0	0	0	1		
03	Johnson, Logan	g	0-0	0-0	0-0	0	2	3	0	0	0	0	0	0	7		
05	Arnold, Brad	g	3-3	1-1	4-6	0	3	3	1	11	0	0	0	0	14		
12	Pageel, Bo	g	1-5	0-2	2-2	0	3	4	4	4	0	2	0	1	19		
23	Spicer, Nick	g	0-1	0-1	1-2	0	0	3	3	4	1	0	0	0	1		
23	Hook, Trevor	g	1-5	0-2	0-0	0	6	6	1	2	3	5	0	0	25		
32	Evans, Alex	g	0-0	0-0	1-4	0	0	0	0	1	1	0	0	0	6		
34	Nagle, Kellyn	g	0-0	0-0	0-0	0	0	0	0	0	0	0	0	0	1		
42	Lafrenz, Mike	g	0-3	0-0	2-2	0	2	2	5	2	3	0	0	0	11		
Team			14-44	4-14	26-38	9	27	36	24	58	5	23	2	5	200		

FG % 1st Half: 8-21 38.1% 2nd half: 6-23 26.1% Game: 14-44 31.8%
3FG % 1st Half: 2-8 25.0% 2nd half: 2-6 33.3% Game: 4-14 28.6%
FT % 1st Half: 10-14 71.4% 2nd half: 16-24 66.7% Game: 26-38 68.4%

DRAKE 63 • 1-0

#	Player	Total			3-Pr			Rebounds			PF	TP	A	T	Bk	Stl	Min
		FG	FGA	FT	FTA	FT-FTA	Off	Def	Def	Def							
01	Clarke, Jordan	f	5-6	0-0	1-4	4	8	2	11	1	3	1	3	23			
02	Hawley, Aaron	f	8-13	2-4	5-7	1	6	7	4	23	1	1	0	30			
22	Woods, Kraidon	f	2-3	0-0	1-5	1	3	4	5	1	1	0	1	13			
34	Simons, Ben	f	5-15	1-3	1-1	0	5	5	2	12	3	1	0	29			
11	Madison, Karl	g	4-7	1-1	4-5	1	1	1	2	13	2	4	0	32			
04	Welfringer, Judd	g	1-3	0-2	0-0	1	1	2	2	3	1	0	2	11			
10	Jeffers, Jeremy	g	4-8	1-2	6-6	0	3	3	2	15	2	0	0	31			
21	Parker, Cory	g	0-0	0-0	1-2	0	0	0	2	1	0	0	0	8			
23	Smith, David	g	0-1	0-1	1-2	0	1	1	4	1	0	0	1	16			
42	Whitaker, Greg	g	0-0	0-0	0-0	0	0	0	1	0	0	0	0	0			
Team			29-56	6-12	20-32	8	26	34	28	83	9	13	3	91			

FG % 1st Half: 15-31 48.4% 2nd half: 14-25 56.0% Game: 29-56 51.8%
3FG % 1st Half: 4-6 66.7% 2nd half: 1-6 16.7% Game: 5-12 41.7%
FT % 1st Half: 5-8 62.5% 2nd half: 16-20 80.0% Game: 20-32 62.5%

Officials: Paul Janssen, Mike Thibodeaux, Donnie Olson
Technical fouls: Upper Iowa-None. DRAKE-None.
Attendance: 367

Fouled Out: UT: Wentzien @ 5:41; Mike Lafrenz @ 4:07; Drake: Madison @ 1:06

Score by periods		1st	2nd	Total
Upper Iowa	DR	28	30	58
DRAKE	UIU	39	44	83

Last FG - UIU 2nd 01:49, DU 2nd 00:33.
Largest lead - UIU by 21 at 17:31, DU by 2nd 02:23.
Score tied - 4 times.
Lead changed - 10 times.

Official Basketball Box Score -- Game Totals -- Final Statistics
Iowa State vs DRAKE

11/15/11 8:05 p.m. at Des Moines, Iowa (Knapp Center)

Iowa State 65 • 1-1

#	Player	Total			3-Pr			Rebounds			PF	TP	A	T	Bk	Stl	Min
		FG	FGA	FT	FTA	FT-FTA	Off	Def	Def	Def							
03	Ejim, Melvin	f	1-7	0-2	2-2	1	2	2	4	4	0	1	0	1	20		
30	White, Royce	g	9-19	0-0	3-8	7	14	3	21	4	5	1	1	38			
02	Bobb, Chris	g	3-6	3-5	1-2	0	2	2	1	10	1	2	0	1	37		
11	Allen, Chris	g	2-13	0-7	4-6	0	4	4	3	8	7	0	1	27			
11	Christopher, Scott	g	2-5	0-2	4-4	0	5	3	8	3	3	0	0	30			
01	Palo, Bubu	g	0-0	0-0	2-3	1	1	0	2	2	0	1	0	1	5		
22	Booker, Anthony	g	1-3	0-0	0-0	2	4	0	2	2	0	1	0	8			
23	Smith, Tyrus	g	3-4	3-3	1-2	0	1	1	3	10	0	0	0	25			
Team			21-57	6-19	17-27	12	35	23	61	15	14	2	6	200			

FG % 1st Half: 9-26 34.6% 2nd half: 12-31 38.7% Game: 21-57 36.6%
3FG % 1st Half: 2-7 28.6% 2nd half: 4-12 33.3% Game: 6-19 31.6%
FT % 1st Half: 7-11 63.6% 2nd half: 10-10 100.0% Game: 17-27 63.0%

DRAKE 74 • 2-0

#	Player	Total			3-Pr			Rebounds			PF	TP	A	T	Bk	Stl	Min
		FG	FGA	FT	FTA	FT-FTA	Off	Def	Def	Def							
01	Clarke, Jordan	f	3-6	0-0	0-0	3	5	8	4	6	3	2	0	23			
02	Hawley, Aaron	f	2-6	1-3	0-0	0	4	4	5	0	0	0	0	22			
34	Simons, Ben	f	8-14	4-7	4-4	1	3	4	1	24	1	3	1	39			
11	Madison, Karl	g	2-4	0-2	3-4	1	0	1	2	13	2	4	0	22			
04	Rice, Rayvonte	g	7-13	1-5	3-3	0	6	6	4	18	0	3	2	32			
03	Alexander, Kurt	g	4-10	0-1	2-3	0	3	3	10	4	3	0	0	29			
10	Jeffers, Jeremy	g	0-1	0-0	0-0	2	2	1	0	0	1	0	0	5			
22	Woods, Kraidon	g	2-2	0-0	0-0	2	4	0	3	4	0	1	1	18			
23	Smith, David	g	0-0	0-0	0-0	1	1	2	0	0	1	0	0	10			
Team			28-56	6-18	12-14	7	27	34	20	74	13	16	4	5			

FG % 1st Half: 12-29 41.4% 2nd half: 16-27 59.3% Game: 28-56 50.0%
3FG % 1st Half: 4-10 40.0% 2nd half: 2-8 25.0% Game: 6-18 33.3%
FT % 1st Half: 2-4 50.0% 2nd half: 10-10 100.0% Game: 12-14 85.7%

Officials: Steve Olson, Kelly Self, Don Dale
Technical fouls: Iowa State-None. DRAKE-None.
Attendance: 565

Score by periods		1st	2nd	Total
Iowa State	DR	27	38	65
DRAKE	ISU	30	44	74

Last FG - ISU 2nd 01:00, DU 2nd 00:38.
Largest lead - ISU by 21 at 14:45, DU by 10 02:27.
Score tied - 8 times.
Lead changed - 13 times.

Official Basketball Box Score -- Game Totals -- Final Statistics
Drake vs Ole Miss

11/18/11 4:30 p.m.AST at St. Thomas, U.S. Virgin Islands

Drake 59 • 2-1

#	Player	Total			3-Pr			Rebounds			PF	TP	A	T	Bk	Stl	Min
		FG	FGA	FT	FTA	FT-FTA	Off	Def	Def	Def							
01	Clarke, Jordan	f	0-2	0-0	5-9	3	8	11	5	3	1	0	0	33			
02	Hawley, Aaron	f	3-6	2-3	0-0	2	2	4	5	8	2	6	1	29			
11	Madison, Karl	g	0-6	0-2	0-2	0	2	3	0	1	4	0	2	20			
24	Rice, Rayvonte	g	4-12	1-5	3-4	3	4	7	4	12	0	3	1	37			
34	Simons, Ben	g	7-14	4-8	4-4	2	4	3	22	3	2	4	0	38			
03	Alexander, Kurt	g	4-7	2-1	0-0	0	4	3	8	2	4	0	1	18			
10	Jeffers, Jeremy	g	0-1	0-0	0-0	0	3	3	2	0	1	0	0	9			
22	Woods, Kraidon	g	1-1	0-0	0-0	1	1	2	0	1	0	0	0	10			
23	Smith, David	g	1-1	0-0	2-2	0	0	0	4	0	1	0	0	6			
Team			19-50	7-19	14-21	11	29	40	59	11	23	2	8	200			

FG % 1st Half: 11-27 40.7% 2nd half: 8-23 34.8% Game: 19-50 38.0%
3FG % 1st Half: 2-9 22.2% 2nd half: 5-12 41.7% Game: 7-19 36.8%
FT % 1st Half: 7-9 77.8% 2nd half: 7-12 58.3% Game: 14-21 66.7%

Ole Miss 63 • 3-0

#	Player	Total			3-Pr			Rebounds			PF	TP	A	T	Bk	Stl	Min
		FG	FGA	FT	FTA	FT-FTA	Off	Def	Def	Def							
01	HENRY, Terrance	g	3-11	0-1	2-4	4	6	10	4	8	1	6	0	0	31		
04	COX, Demarco	g	3-3	0-0	0	1	2	3	1	6	1	1	1	0	15		
05	NELSON, Dunderous	g	5-16	2-8	4-7	1	3	4	16	1	2	1	6	23			
03	WELLS, Maurice	g	2-6	2-1	0-2	0	1	1	1	2	0	3	1	17			
20	WILLIAMS, Nick	g	2-7	1-2	0-4	1	6	2	1	2	1	0	1	27			
23	BUCKNER, Reginald	g	0-1	0-0	2-6	3	6	4	2	1	0	3	0	26			
31	HOLLOWAY, Murphy	g	1-3	0-0	2-6	3	1	4	4	1	3	1	0	20			
32	WILKINSON, Jarvis	g	1-3	0-0	7-11	0	0	1	14	2	0	0	0	33			
34	JONES, Aaron	g	1-1	0-0	0-0	1	0	1	2	0	0	0	0	8			
Team			20-54	5-16	18-38	17	21	38	20	63	10	20	6	11			

FG % 1st Half: 10-28 35.7% 2nd half: 10-26 38.5% Game: 20-54 37.0%
3FG % 1st Half: 2-9 22.2% 2nd half: 3-7 42.9% Game: 5-16 31.3%
FT % 1st Half: 3-9 33.3% 2nd half: 15-29 51.7% Game: 18-38 47.4%

Officials: Sean Corbin, Charles Jones, Bob Testa
Technical fouls: Drake-Hawley, Aaron. Ole Miss-None.
Attendance: 1355

Official Basketball Box Score -- Game Totals -- Final Statistics

Drake vs Iowa 12/17/11 8:05 p.m. at Carver-Hawkeye Arena - Iowa City, IA

Drake 66 • 6-4

Box score table for Drake vs Iowa, showing player stats for Drake (66-6-4) and Iowa (72-33-10).

FG % 1st Half: 11-30 36.7% 2nd half: 12-24 50.0% 3FG % 1st Half: 3-12 25.0% 2nd half: 2-7 28.6% FT % 1st Half: 5-8 62.5% 2nd half: 12-15 80.0%

Iowa 72 • 6-5

Box score table for Drake vs Iowa, showing player stats for Iowa (72-33-10).

FG % 1st Half: 19-33 57.6% 2nd half: 9-23 39.1% 3FG % 1st Half: 2-5 40.0% 2nd half: 1-8 12.5% FT % 1st Half: 4-5 80.0% 2nd half: 12-15 80.0%

Officials: Mike Sanzone, Frank Spencer, Brad Smith Technical fouls: Drake-None, Iowa-None. Attendance: 10479 Fouled out by: Drake - Clarke (09:50)

Score by periods table for Drake vs Iowa, showing scores by quarter and total.

Last FG - DU 2nd-00:24, IOWA 2nd-01:38, Largest lead - DU by 3 1st-09:39, IOWA by 16 2nd-12:41.

Official Basketball Box Score -- Game Totals -- Final Statistics

Central Arkansas vs Drake 12/21/11 7:05 PM at Des Moines, IA (Knapp Center)

Central Arkansas 64 • 5-6

Box score table for Central Arkansas vs Drake, showing player stats for Central Arkansas (64-5-6) and Drake (72-33-10).

FG % 1st Half: 8-27 29.6% 2nd half: 11-26 42.3% 3FG % 1st Half: 3-6 50.0% 2nd half: 4-11 36.4% FT % 1st Half: 11-15 73.3% 2nd half: 8-12 66.7%

Drake 77 • 7-4

Box score table for Central Arkansas vs Drake, showing player stats for Drake (77-4-7).

FG % 1st Half: 18-32 56.3% 2nd half: 15-31 48.4% 3FG % 1st Half: 6-18 33.3% 2nd half: 4-9 44.4% FT % 1st Half: 7-10 70.0% 2nd half: 4-8 50.0%

Officials: Mike Stuart, Rick Hartzel, K.B. Burdett Jr. Technical fouls: Central Arkansas-None, Drake-None. Attendance: 3751 Fouled out by: Drake: Simons (2:40)

Score by periods table for Central Arkansas vs Drake, showing scores by quarter and total.

Last FG - UCA 2nd-00:29, DU 2nd-00:23, Largest lead - UCA by 2 1st-16:31, DU by 25 2nd-09:03.

Official Basketball Box Score -- Game Totals -- Final Statistics

Indiana State vs Drake 12/28/11 7:05 PM at Des Moines, IA (Knapp Center)

Indiana State 64 • 9-3, 0-1 MVC

Box score table for Indiana State vs Drake, showing player stats for Indiana State (64-9-3, 0-1 MVC) and Drake (72-33-10).

FG % 1st Half: 13-29 44.8% 2nd half: 10-30 33.3% 3FG % 1st Half: 2-8 25.0% 2nd half: 2-10 20.0% FT % 1st Half: 3-3 100.0% 2nd half: 11-16 68.8%

Drake 77 • 8-4, 1-0 MVC

Box score table for Indiana State vs Drake, showing player stats for Drake (77-8-4, 1-0 MVC).

FG % 1st Half: 14-31 45.2% 2nd half: 17-24 70.8% 3FG % 1st Half: 3-7 42.9% 2nd half: 3-3 100.0% FT % 1st Half: 4-6 66.7% 2nd half: 7-14 50.0%

Officials: Tom Eades, Mark Whitehead, Steve Olson Technical fouls: Indiana State-None, Drake-None. Attendance: 4035

Score by periods table for Indiana State vs Drake, showing scores by quarter and total.

Last FG - UNI 2nd-00:25, DU 2nd-00:36, Largest lead - INS None, DU by 22 2nd-04:19.

Drake vs Missouri State 12/31/11 2:05 p.m. at JQH Arena, Springfield, Mo.

Drake 61 • 8-5 (1-1 MVC)

Box score table for Drake vs Missouri State, showing player stats for Drake (61-8-5, 1-1 MVC) and Missouri State (72-33-10).

FG % 1st Half: 12-25 48.0% 2nd half: 11-25 44.0% 3FG % 1st Half: 2-5 40.0% 2nd half: 2-6 33.3% FT % 1st Half: 3-5 60.0% 2nd half: 8-16 50.0%

Missouri State 72 • 9-5 (2-0 MVC)

Box score table for Drake vs Missouri State, showing player stats for Missouri State (72-33-10).

FG % 1st Half: 14-25 56.0% 2nd half: 15-23 65.2% 3FG % 1st Half: 4-6 66.7% 2nd half: 3-12 25.0% FT % 1st Half: 2-2 100.0% 2nd half: 7-15 46.7%

Officials: Mike Thibodeau, Don Dally, Terry Davis Technical fouls: Drake-None, Missouri State-None. Attendance: 4501 2011-12 MVC Home Opener

Score by periods table for Drake vs Missouri State, showing scores by quarter and total.

Last FG - DU 2nd-00:28, MSU 2nd-00:35, Largest lead - DU by 8 1st-14:24, MSU by 14 2nd-04:35.

Official Basketball Box Score -- Game Totals -- Final Statistics

Central Arkansas vs Creighton 01/03/12 7:05 pm at Omaha, Neb. (CenturyLink Center Omaha)

Drake 59 • 8-6, 1-2 MVC

Box score table for Central Arkansas vs Creighton, showing player stats for Drake (59-8-6, 1-2 MVC) and Creighton (72-33-10).

FG % 1st Half: 9-27 33.3% 2nd half: 12-30 40.0% 3FG % 1st Half: 2-9 22.2% 2nd half: 4-10 40.0% FT % 1st Half: 5-9 55.6% 2nd half: 7-10 70.0%

Creighton 76 • 12-2, 2-1 MVC

Box score table for Central Arkansas vs Creighton, showing player stats for Creighton (76-12-2, 2-1 MVC).

FG % 1st Half: 13-21 61.9% 2nd half: 14-24 58.3% 3FG % 1st Half: 3-4 75.0% 2nd half: 2-7 28.6% FT % 1st Half: 11-12 91.7% 2nd half: 6-10 60.0%

Officials: David Hall, Rick Randall, Terry Ogleby Technical fouls: Drake-None, CREIGHTON-None. Attendance: 5332 Creighton ranked 24th in coaches poll, not ranked in AP poll. Creighton ranked 24th in coaches poll, not ranked in AP poll. Fouled out: Visitor #22 with 4:47 left in 2nd half.

Score by periods table for Central Arkansas vs Creighton, showing scores by quarter and total.

Last FG - UCA 2nd-00:29, DU 2nd-00:23, Largest lead - UCA by 2 1st-16:31, DU by 25 2nd-09:03.

13 AT MISSOURI ST.

Official Basketball Box Score -- Game Totals -- Final Statistics

Bradley vs Drake 01/10/12 7:05 P.M. at Des Moines, IA (Knapp Center)

Bradley 74 • 8-2, 0-5

Box score table for Bradley vs Drake, showing player stats for Bradley (74-8-2, 0-5) and Drake (72-33-10).

FG % 1st Half: 11-20 55.0% 2nd half: 11-26 42.3% 3FG % 1st Half: 3-7 42.9% 2nd half: 3-7 42.9% FT % 1st Half: 9-13 69.2% 2nd half: 15-22 68.2%

Drake 82 • 9-7, 2-3

Box score table for Bradley vs Drake, showing player stats for Drake (82-9-7, 2-3).

FG % 1st Half: 11-36 30.6% 2nd half: 12-23 52.2% 3FG % 1st Half: 3-8 37.5% 2nd half: 3-11 27.3% FT % 1st Half: 7-10 70.0% 2nd half: 21-30 70.0%

Officials: Verne Harris, Paul Janssen, Hal Lusk Technical fouls: Bradley-None, Drake-None. Attendance: 2807 No. 0 Chaerons Woods fouled out at 55:1 (Bradley) No. 1 Simms Edwards fouled out at 26:2 (Bradley) No. 3 Kurt Alexander fouled out at 41:7 (Drake)

Score by periods table for Bradley vs Drake, showing scores by quarter and total.

Last FG - BRAD 2nd-00:16, DU 2nd-01:05, Largest lead - BRAD by 10 1st-14:30, DU by 11 2nd-04:05.

Official Basketball Box Score -- Game Totals -- Final Statistics

Drake vs Evansville 1/13/12 7:05 p.m. at Ford Center, Evansville, Ind.

Drake 69 • 10-7, 3-3 MVC

Box score table for Drake vs Evansville, showing player stats for Drake (69-10-7, 3-3 MVC) and Evansville (72-33-10).

FG % 1st Half: 16-22 72.7% 2nd half: 11-22 50.0% 3FG % 1st Half: 5-7 71.4% 2nd half: 2-5 40.0% FT % 1st Half: 2-6 33.3% 2nd half: 8-12 66.7%

Evansville 60 • 9-4, 2-4 MVC

Box score table for Drake vs Evansville, showing player stats for Evansville (60-9-4, 2-4 MVC).

FG % 1st Half: 12-30 40.0% 2nd half: 11-24 45.8% 3FG % 1st Half: 5-13 38.5% 2nd half: 4-13 30.8% FT % 1st Half: 6-10 60.0% 2nd half: 6-9 66.7%

Officials: Tom Eades, Gerry Pollard, Zelton Stead Technical fouls: Drake-None, EVANSVILLE-None. Attendance: 4027

Score by periods table for Drake vs Evansville, showing scores by quarter and total.

Last FG - UNI 2nd-00:25, DU 2nd-00:36, Largest lead - UNI by 2 1st-16:31, DU by 25 2nd-09:03.

12 VS. IND. ST.

Official Basketball Box Score -- Game Totals -- Final Statistics

Indiana State vs Drake 12/28/11 7:05 PM at Des Moines, IA (Knapp Center)

Indiana State 64 • 9-3, 0-1 MVC

Box score table for Indiana State vs Drake, showing player stats for Indiana State (64-9-3, 0-1 MVC) and Drake (72-33-10).

FG % 1st Half: 13-29 44.8% 2nd half: 10-30 33.3% 3FG % 1st Half: 2-8 25.0% 2nd half: 2-10 20.0% FT % 1st Half: 3-3 100.0% 2nd half: 11-16 68.8%

Drake 77 • 8-4, 1-0 MVC

Box score table for Indiana State vs Drake, showing player stats for Drake (77-8-4, 1-0 MVC).

FG % 1st Half: 14-31 45.2% 2nd half: 17-24 70.8% 3FG % 1st Half: 3-7 42.9% 2nd half: 3-3 100.0% FT % 1st Half: 4-6 66.7% 2nd half: 7-14 50.0%

Officials: Tom Eades, Mark Whitehead, Steve Olson Technical fouls: Indiana State-None, Drake-None. Attendance: 4035

Score by periods table for Indiana State vs Drake, showing scores by quarter and total.

Last FG - UNI 2nd-00:25, DU 2nd-00:36, Largest lead - INS None, DU by 22 2nd-04:19.

Official Basketball Box Score -- Game Totals -- Final Statistics

Northern Iowa vs Drake 01/07/12 7:05 P.M. at Des Moines, Iowa (Knapp Center)

Northern Iowa 83 • 12-4, 2-2 MVC

Box score table for Northern Iowa vs Drake, showing player stats for Northern Iowa (83-12-4, 2-2 MVC) and Drake (72-33-10).

FG % 1st Half: 11-21 52.4% 2nd half: 15-26 57.7% 3FG % 1st Half: 3-4 75.0% 2nd half: 1-4 25.0% FT % 1st Half: 9-10 90.0% 2nd half: 18-24 75.0%

Drake 68 • 7-1, 3 MVC

Box score table for Northern Iowa vs Drake, showing player stats for Drake (68-7-1, 3 MVC).

FG % 1st Half: 13-25 52.0% 2nd half: 10-28 35.7% 3FG % 1st Half: 2-7 28.6% 2nd half: 3-11 27.3% FT % 1st Half: 7-9 77.8% 2nd half: 10-13 76.9%

Officials: Daniel Chrisman, Bob Staffen, Eric Curry Technical fouls: Northern Iowa-None, Drake-None. Attendance: 5876 Fouled out: Drake: Jeffers (5:25; Clarke) (2:03)

Score by periods table for Northern Iowa vs Drake, showing scores by quarter and total.

Last FG - UNI 2nd-00:39, DU 2nd-00:28, Largest lead - UNI by 18 2nd-00:39, DU by 5 2nd-17:25.

15 VS. UNI

Official Basketball Box Score -- Game Totals -- Final Statistics

Illinois State vs Drake 01/15/12 7:05 P.M. at Des Moines, IA (Knapp Center)

Illinois State 60 • 11-7, 3-4

Box score table for Illinois State vs Drake, showing player stats for Illinois State (60-11-7, 3-4) and Drake (72-33-10).

FG % 1st Half: 12-27 44.4% 2nd half: 8-30 26.7% 3FG % 1st Half: 5-13 38.5% 2nd half: 4-13 30.8% FT % 1st Half: 4-7 57.1% 2nd half: 6-9 66.7%

Drake 77 • 11-7, 4-3

Box score table for Illinois State vs Drake, showing player stats for Drake (77-11-7, 4-3).

FG % 1st Half: 15-26 57.7% 2nd half: 12-22 54.5% 3FG % 1st Half: 6-13 46.2% 2nd half: 3-8 37.5% FT % 1st Half: 5-7 71.4% 2nd half: 9-15 60.0%

Officials: John Higgins, Scott Thornley, Randy McCull Technical fouls: Illinois State-None, Drake-None. Attendance: 3410 Fouled out: Drake: Hawley (2:36)

Score by periods table for Illinois State vs Drake, showing scores by quarter and total.

Last FG - UNI 2nd-00:25, DU 2nd-00:36, Largest lead - UNI by 2 1st-16:31, DU by 25 2nd-09:03.

16 VS. BRADLEY

Official Basketball Box Score -- Game Totals -- Final Statistics

Bradley vs Drake 01/10/12 7:05 P.M. at Des Moines, IA (Knapp Center)

Bradley 74 • 8-2, 0-5

Box score table for Bradley vs Drake, showing player stats for Bradley (74-8-2, 0-5) and Drake (72-33-10).

FG % 1st Half: 11-20 55.0% 2nd half: 11-26 42.3% 3FG % 1st Half: 3-7 42.9% 2nd half: 3-7 42.9% FT % 1st Half: 9-13 69.2% 2nd half: 15-22 68.2%

Drake 82 • 9-7, 2-3

Box score table for Bradley vs Drake, showing player stats for Drake (82-9-7, 2-3).

FG % 1st Half: 11-36 30.6% 2nd half: 12-23 52.2% 3FG % 1st Half: 3-8 37.5% 2nd half: 3-11 27.3% FT % 1st Half: 7-10 70.0% 2nd half: 21-30 70.0%

Officials: Verne Harris, Paul Janssen, Hal Lusk Technical fouls: Bradley-None, Drake-None. Attendance: 2807 No. 0 Chaerons Woods fouled out at 55:1 (Bradley) No. 1 Simms Edwards fouled out at 26:2 (Bradley) No. 3 Kurt Alexander fouled out at 41:7 (Drake)

Score by periods table for Bradley vs Drake, showing scores by quarter and total.

Last FG - BRAD 2nd-00:16, DU 2nd-01:05, Largest lead - BRAD by 10 1st-14:30, DU by 11 2nd-04:05.

17 AT EVANSVILLE

Official Basketball Box Score -- Game Totals -- Final Statistics

Drake vs Evansville 1/13/12 7:05 p.m. at Ford Center, Evansville, Ind.

Drake 69 • 10-7, 3-3 MVC

Box score table for Drake vs Evansville, showing player stats for Drake (69-10-7, 3-3 MVC) and Evansville (72-33-10).

FG % 1st Half: 16-22 72.7% 2nd half: 11-22 50.0% 3FG % 1st Half: 5-7 71.4% 2nd half: 2-5 40.0% FT % 1st Half: 2-6 33.3% 2nd half: 8-12 66.7%

Evansville 60 • 9-4, 2-4 MVC

Box score table for Drake vs Evansville, showing player stats for Evansville (60-9-4, 2-4 MVC).

FG % 1st Half: 12-30 40.0% 2nd half: 11-24 45.8% 3FG % 1st Half: 5-13 38.5% 2nd half: 4-13 30.8% FT % 1st Half: 6-10 60.0% 2nd half: 6-9 66.7%

Officials: Tom Eades, Gerry Pollard, Zelton Stead Technical fouls: Drake-None, EVANSVILLE-None. Attendance: 4027

Score by periods table for Drake vs Evansville, showing scores by quarter and total.

Last FG - UNI 2nd-00:25, DU 2nd-00:36, Largest lead - UNI by 2 1st-16:31, DU by 25 2nd-09:03.

18 VS. ILL. ST.

Official Basketball Box Score -- Game Totals -- Final Statistics

Indiana State vs Drake 12/28/11 7:05 PM at Des Moines, IA (Knapp Center)

Indiana State 64 • 9-3, 0-1 MVC

Box score table for Indiana State vs Drake, showing player stats for Indiana State (64-9-3, 0-1 MVC) and Drake (72-33-10).

FG % 1st Half: 13-29 44.8% 2nd half: 10-30 33.3% 3FG % 1st Half: 2-8 25.0% 2nd half: 2-10 20.0% FT % 1st Half: 3-3 100.0% 2nd half: 11-16 68.8%

Drake 77 • 8-4, 1-0 MVC

Box score table for Indiana State vs Drake, showing player stats for Drake (77-8-4, 1-0 MVC).

FG % 1st Half: 14-31 45.2% 2nd half: 17-24 70.8% 3FG % 1st Half: 3-7 42.9% 2nd half: 3-3 100.0% FT % 1st Half: 4-6 66.7% 2nd half: 7-14 50.0%

Officials: Tom Eades, Mark Whitehead, Steve Olson Technical fouls: Indiana State-None, Drake-None. Attendance: 4035

Score by periods table for Indiana State vs Drake, showing scores by quarter and total.

Last FG - UNI 2nd-00:25, DU 2nd-00:36, Largest lead - INS None, DU by 22 2nd-04:19.

Official Basketball Box Score -- Game Totals -- Final Statistics
Drake vs Southern Illinois
 01/18/12 7:05 p.m. at Carbondale, Ill. (SIU Arena)

Drake 75 • 12-7, 5-3 MVC

#	Player	Total			3-Pr			Rebounds			PF	TP	A	T	Bk	Stl	Min
		FG	FGA	FT	FTA	FT-FTA	Off	Def	Total								
01	Clarke, Jordan	f	1-2	0-0	1-4	3	0	3	4	5	2	0	0	1	23		
10	Jeffers, Jeremy	f	0-2	0-1	3-2	0	5	1	1	2	0	0	0	1	29		
11	Madison, Karl	f	7-11	3-6	3-3	1	2	3	2	20	1	1	0	0	42		
34	Rice, Rayvonte	g	6-11	3-3	5-8	2	5	7	4	18	1	2	0	0	29		
02	Hawley, Aaron	g	5-11	3-6	3-5	2	3	5	4	16	0	1	0	2	26		
03	Alexander, Kurt	g	1-2	0-0	3-3	0	0	0	0	5	0	2	0	0	14		
22	Woods, Kraidon	g	1-2	0-0	0-0	0	3	3	2	0	1	2	0	0	25		
25	Smith, David	g	0-0	0-0	0	1	0	0	0	0	1	0	0	0	3		
Totals			24-51	7-16	20-27	9	23	20	20	75	8	16	2	8	225		

FG % 1st Half: 11-22 50.0% 2nd half: 10-17 57.0% OT: 2-8 25.0% Game: 24-51 47.1% Deaball
 3FG % 1st Half: 6-11 54.5% 2nd half: 4-14 28.6% OT: 0-1 0.0% Game: 7-16 43.8% Rebounds
 FT % 1st Half: 3-4 75.0% 2nd half: 9-13 69.2% OT: 0-0 0.0% Game: 20-27 74.1% 4

Southern Illinois 68 • 6-13, 3-5 MVC

#	Player	Total			3-Pr			Rebounds			PF	TP	A	T	Bk	Stl	Min
		FG	FGA	FT	FTA	FT-FTA	Off	Def	Total								
00	Mamadou Seck	f	2-10	0-0	7-8	5	10	3	11	4	4	1	0	1	37		
15	Daniel Daniels	f	5-6	0-0	5-7	3	14	4	5	15	2	0	1	1	26		
22	Jeffery Brown-Surles	g	5-9	3-7	0-2	2	3	3	13	2	2	0	0	1	36		
32	T.J. Lindsay	g	3-7	1-5	2-2	0	1	1	9	2	3	0	0	1	25		
02	Kend Early	g	7-10	0-0	1-2	7	4	11	0	15	2	4	1	0	34		
04	Davonte Drinkard	g	0-0	0-0	0	0	0	0	0	0	0	0	0	0	11		
11	Kourteney Goff	g	0-0	0-0	0	0	0	0	0	0	0	0	0	0	9		
21	Josh Swan	g	1-6	0-1	1	4	5	1	2	0	1	0	0	0	20		
34	Scott Boccot	g	0-3	1-3	0-0	0	1	1	9	2	3	0	0	1	4		
24	Diamond Taylor	g	0-3	0-1	1-2	0	0	0	2	1	0	0	0	0	7		
34	Harry Whittey	g	0-1	0-0	0	0	0	0	1	0	0	0	0	0	4		
35	Treg Setts	g	0-3	0-2	2-2	0	1	1	4	2	0	2	0	0	12		
Totals			23-58	4-17	18-26	18	21	39	20	68	10	19	4	4	225		

FG % 1st Half: 12-26 46.2% 2nd half: 10-27 37.0% OT: 1-5 20.0% Game: 23-58 39.7% Deaball
 3FG % 1st Half: 3-10 30.0% 2nd half: 1-5 20.0% OT: 0-2 0.0% Game: 4-17 23.5% Rebounds
 FT % 1st Half: 4-6 66.7% 2nd half: 11-14 78.6% OT: 3-6 50.0% Game: 18-26 69.2% 2

Officials: Rick Randall, Bobby Vekroetter, Brad Gaston
 Technical fouls: Drake-None. Southern Illinois-None.
 Attendance: 3399

Score by periods	1st	2nd	Total
Drake	31	32	63
Southern Illinois	31	32	63

Last FG - DU 00-36, SIU 01-48.
 Largest lead - DU by 7 00-10, SIU by 4 1st-07:26.

Score tied - 14 times.
 Lead changed - 18 times.

Points In Off 2nd Fast
 Part T/O Chance Break Bench
 DU 24 10 10 2 10
 SIU 30 15 20 2 2

Official Basketball Box Score -- Game Totals -- Final Statistics
Drake vs Northern Iowa
 02/12/12 7:05 PM at Cedar Falls, Iowa (McLeod Center)

Drake 52 • 12-8, 5-4 MVC

#	Player	Total			3-Pr			Rebounds			PF	TP	A	T	Bk	Stl	Min
		FG	FGA	FT	FTA	FT-FTA	Off	Def	Total								
01	Clarke, Jordan	* f	0-0	1-1	0-2	0	5	3	3	2	0	0	0	0	20		
10	Jeffers, Jeremy	* f	0-3	0-1	0-0	0	2	2	1	0	0	0	0	0	19		
11	Madison, Karl	* f	1-4	0-1	0-0	0	0	0	0	3	2	0	0	2	19		
24	Rice, Rayvonte	* f	4-12	0-1	1-3	1	5	6	3	9	1	2	1	1	32		
34	Simons, Ben	* f	3-9	1-4	0-0	1	3	4	7	0	3	0	0	0	26		
02	Hawley, Aaron	* f	3-10	2-7	0-0	1	3	4	0	8	0	2	0	0	26		
03	Alexander, Kurt	* f	8-10	3-4	2-2	0	2	2	21	0	1	0	1	0	28		
04	Wellfingier, Judd	* f	0-1	0-1	0-0	0	0	0	1	0	0	0	0	0	7		
21	Parker, Cory	* f	0-0	0-0	0-0	0	0	0	0	0	0	0	0	0	2		
22	Woods, Kraidon	* f	1-4	0-0	0-0	2	3	5	2	2	3	0	0	0	18		
25	Smith, David	* f	0-1	0-0	0-0	0	1	1	0	0	0	0	0	0	3		
Totals			21-55	6-19	4-7	7	25	32	17	52	7	10	4	4	200		

FG % 1st Half: 11-30 36.7% 2nd half: 10-25 40.0% Game: 21-55 38.2% Deaball
 3FG % 1st Half: 1-5 20.0% 2nd half: 5-14 35.7% Game: 6-19 31.6% Rebounds
 FT % 1st Half: 0-0 0.0% 2nd half: 4-7 57.1% Game: 4-7 57.1% 2

Northern Iowa 66 • 14-7, 4-5 MVC

#	Player	Total			3-Pr			Rebounds			PF	TP	A	T	Bk	Stl	Min
		FG	FGA	FT	FTA	FT-FTA	Off	Def	Total								
01	Tuttle, Seth	* f	5-6	1-1	2-2	2	3	5	3	13	1	0	0	0	19		
13	Moran, Johnny	* f	2-6	2-5	1-2	0	3	3	1	7	1	1	0	0	26		
02	Kota, Jake	* f	2-5	1-3	5-6	1	4	1	10	3	1	3	0	0	29		
23	Sonnen, Marc	* f	3-8	1-2	2-2	2	2	4	2	8	3	1	0	2	29		
05	James, Anthony	* f	3-5	0-2	3-7	1	5	2	9	0	1	0	1	0	26		
01	Mitchell, Deon	* f	1-4	0-0	3-4	1	1	2	5	2	2	0	0	0	15		
04	Rank, Chip	* f	1-2	0-0	0-1	3	4	2	0	0	0	0	0	0	12		
21	Singletton, Marvin	* f	0-1	0-0	0-0	0	0	0	0	0	0	0	0	0	1		
21	Morrison, Matt	* f	2-5	1-2	1-1	0	2	2	0	6	0	0	0	0	20		
24	Martino, Max	* f	2-2	0-0	0-0	0	0	0	1	4	0	0	0	0	7		
33	Pehl, Austin	* f	1-6	0-0	0-0	1	5	6	2	1	0	0	0	0	9		
34	Lange, Tyler	* f	0-0	0-0	0-0	0	0	0	0	0	0	0	0	0	1		
Totals			22-51	6-15	16-24	9	28	37	10	66	11	6	3	4	200		

FG % 1st Half: 12-29 41.4% 2nd half: 10-22 45.5% Game: 22-51 43.1% Deaball
 3FG % 1st Half: 4-9 44.4% 2nd half: 2-6 33.3% Game: 6-15 40.0% Rebounds
 FT % 1st Half: 6-8 75.0% 2nd half: 10-16 62.5% Game: 16-24 66.7% 3

Officials: Mark Whitehead, David Hall, Don Daily
 Technical fouls: Drake-None. Northern Iowa-None.
 Attendance: 3975

Score by periods	1st	2nd	Total
Drake	23	29	52
Northern Iowa	34	32	66

Points In Off 2nd Fast
 Part T/O Chance Break Bench
 DU 28 13 13 10 20
 NI 34 35 45 54

Last FG - NI 2nd-05:1, DU 2nd-02:31.
 Largest lead - NI 2nd-04:17, DU by 27 2nd-02:31.

Score tied - 0 times.
 Lead changed - 0 times.

Officials: Tom Eades, Don Daily, Terry Ogelsby
 Technical fouls: Drake-None. Northern Iowa-None.
 Attendance: 3477

Score by periods	1st	2nd	Total
Drake	26	28	54
Northern Iowa	32	29	61

Points In Off 2nd Fast
 Part T/O Chance Break Bench
 NI 34 35 45 54

Last FG - NI 2nd-05:1, DU 2nd-02:31.
 Largest lead - NI 2nd-04:17, DU by 27 2nd-02:31.

Score tied - 0 times.
 Lead changed - 0 times.

Officials: Mike Thibodeaux, Kipp Kissinger, Jeff Campbell
 Technical fouls: NI 14/15 Creighton-None. Drake-None.
 Attendance: 6110

Score by periods	1st	2nd	Total
No. 14/15 Creighton	37	40	77
Drake	26	43	69

Last FG - CU 2nd-03:02, DU 2nd-02:26.
 Largest lead - CU by 15 01-02:27, DU by 1 1st-09:58.

Score tied - 0 times.
 Lead changed - 2 times.

Points In Off 2nd Fast
 Part T/O Chance Break Bench
 NI 34 35 45 54

Last FG - NI 2nd-03:02, DU 2nd-02:26.
 Largest lead - NI 2nd-04:17, DU by 27 2nd-02:31.

Score tied - 0 times.
 Lead changed - 2 times.

Officials: Mike Thibodeaux, Kipp Kissinger, Jeff Campbell
 Technical fouls: NI 14/15 Creighton-None. Drake-None.
 Attendance: 6110

Score by periods	1st	2nd	Total
No. 14/15 Creighton	37	40	77
Drake	26	43	69

Last FG - CU 2nd-03:02, DU 2nd-02:26.
 Largest lead - CU by 15 01-02:27, DU by 1 1st-09:58.

Score tied - 0 times.
 Lead changed - 2 times.

Points In Off 2nd Fast
 Part T/O Chance Break Bench
 NI 34 35 45 54

Last FG - NI 2nd-03:02, DU 2nd-02:26.
 Largest lead - NI 2nd-04:17, DU by 27 2nd-02:31.

Score tied - 0 times.
 Lead changed - 2 times.

Points In Off 2nd Fast
 Part T/O Chance Break Bench
 NI 34 35 45 54

Last FG - NI 2nd-03:02, DU 2nd-02:26.
 Largest lead - NI 2nd-04:17, DU by 27 2nd-02:31.

Score tied - 0 times.
 Lead changed - 2 times.

Points In Off 2nd Fast
 Part T/O Chance Break Bench
 NI 34 35 45 54

Last FG - NI 2nd-03:02, DU 2nd-02:26.
 Largest lead - NI 2nd-04:17, DU by 27 2nd-02:31.

Official Basketball Box Score -- Game Totals -- Final Statistics
Wichita State vs Drake
 1/28/12 8:07 pm at Des Moines, Iowa (Knapp Center)

Wichita State 86 • 18-4, 9-2

#	Player	Total			3-Pr			Rebounds			PF	TP	A	T	Bk	Stl	Min
		FG	FGA	FT	FTA	FT-FTA	Off	Def	Total								
1	HALL, Carl	f	2-5	0-0	2-2	1	7	8	4	6	0	3	1	0	31		
1	RAGLAND, Joe	g	8-15	4-6	5-5	0	6	6	4	25	6	0	2	0	45		
5	WILLIAMS, Demetric	g	1-2	0-1	0-1	2	3	4	2	4	3	0	1	0	45		
1	MURRY, Toure'	g	6-18	1-2	3-3	3	7	10	5	16	3	1	0	3	43		
1	STUTZ, Garrett	g	10-16	1-3	6-6	0	5										

Official Basketball Box Score -- Game Totals -- Final Statistics

Drake vs New Mexico State
2/18/12 1 PM at Las Cruces, N.M. (Pan American Center)

28 AT NMSU

Drake 55 • 15-13

#	Player	Total	3-Ptr			Rebounds			PF	TP	A	TO	Blk	Stl	Min
			FG	FGA	FT	FTA	Off	Def							
01	Clarke, Jordan	f	3-6	0-1	1-3	3	3	6	2	7	2	0	0	2	32
02	Hawley, Aaron	f	5-14	4-11	0-0	1	5	6	1	14	1	2	1	0	35
10	Jeffers, Jeremy	f	1-4	1-2	0-0	0	3	3	2	3	0	0	0	0	28
11	Madison, Karl	g	2-8	0-1	4-6	0	1	1	1	8	2	0	0	0	31
24	Rice, Rayvonte	g	6-15	1-4	5-7	3	2	5	5	18	1	5	0	0	28
03	Alexander, Kurt	g	1-4	1-1	1-2	0	1	1	2	4	0	4	0	1	13
04	Wellfringer, Judd	g	0-2	0-2	0-0	1	3	4	2	0	1	0	0	1	14
22	Woods, Kraidon	g	0-0	0-0	0-1	0	0	0	3	0	1	0	0	0	8
25	Smith, David	g	0-0	0-0	1-4	1	2	3	0	1	0	2	0	1	11
	Team					2	0	2							
	Totals		18-53	7-22	12-23	11	20	31	18	55	8	13	1	5	200

FG % 1st Half: 10-28 35.7% 2nd half: 8-25 32.0% Game: 18-53 34.0% Deadball Rebounds 4
3FG % 1st Half: 3-10 30.0% 2nd half: 4-12 33.3% Game: 7-22 31.8%
FT % 1st Half: 3-6 50.0% 2nd half: 9-17 52.9% Game: 12-23 52.2%

New Mexico State 71 • 20-8

#	Player	Total	3-Ptr			Rebounds			PF	TP	A	TO	Blk	Stl	Min
			FG	FGA	FT	FTA	Off	Def							
31	McKines, Wendell	f	7-16	2-5	9-10	4	8	12	2	25	2	1	0	1	33
45	Watson, Tyrone	f	1-3	0-1	0-0	1	3	4	0	2	7	1	0	1	35
32	Rahman, Hamidu	c	3-3	0-0	3-7	1	5	6	3	9	1	2	5	0	18
13	Laroche, Hermet	g	5-7	2-3	2-3	7	1	3	3	17	1	1	0	1	29
23	Mullings, Daniel	g	4-9	0-0	2-2	2	2	4	2	10	1	4	0	5	29
03	Barry, Remi	g	0-3	0-1	0-0	0	0	0	3	0	0	0	0	0	7
05	Lewis, D.J.	g	0-0	0-0	0-0	0	0	0	2	0	0	0	0	0	3
10	Sy, Bandja	g	3-6	2-3	0-0	0	4	4	2	8	0	2	0	0	24
15	Nephawe, Tshilidzi	g	0-3	0-0	0-2	1	8	9	4	0	1	3	0	0	22
	Team					1	0	1							
	Totals		24-50	7-13	16-24	10	31	41	21	71	13	14	5	8	200

FG % 1st Half: 13-28 46.4% 2nd half: 11-22 50.0% Game: 24-50 48.0% Deadball Rebounds 4
3FG % 1st Half: 5-7 71.4% 2nd half: 2-6 33.3% Game: 7-13 53.8%
FT % 1st Half: 9-12 75.0% 2nd half: 7-12 58.3% Game: 16-24 66.7%

Officials: R. David Stevens, Warren Evans, Doron Gotschall

Technical fouls: Drake-None. New Mexico State-None.

Attendance: 5119

Score by periods	1st	2nd	Total
Drake	26	29	55
New Mexico State	40	31	71

Official Basketball Box Score -- Game Totals -- Final Statistics

Southern Illinois vs Drake

02/22/12 7:06 pm at Des Moines, Iowa (Knapp Center)

29 VS. SIU

Southern Illinois 63 • 8-21, 5-12 MVC

#	Player	Total	3-Ptr			Rebounds			PF	TP	A	TO	Blk	Stl	Min
			FG	FGA	FT	FTA	Off	Def							
00	Mamadou Seck	f	5-16	0-0	10-14	7	3	10	4	20	0	2	1	39	
18	Daniel Daniels	f	0-1	0-0	0-2	2	1	3	0	0	0	0	2	0	12
12	T.J. Lindsay	g	2-7	0-2	0-0	1	1	2	5	4	2	3	0	2	24
22	Jeff Early	g	8-16	0-5	2-2	4	5	9	5	18	0	3	0	0	33
35	Treg Setty	g	0-2	0-0	3-4	0	1	4	3	1	1	0	0	0	14
02	Kendal Brown-Surles	g	1-5	0-3	1-2	1	2	3	0	3	1	1	0	0	30
11	Kourtney Goff	g	0-3	0-3	0-0	0	0	0	1	0	0	0	0	0	5
23	Justin Boco	g	3-6	1-2	2-3	0	2	2	9	0	1	0	0	1	15
24	Diamond Taylor	g	2-5	0-1	2-2	1	3	4	4	6	1	0	0	0	24
34	Harry White	g	0-0	0-0	0-0	0	0	0	1	0	0	0	0	0	4
	Team					1	1	2							
	Totals		21-61	1-16	20-29	17	19	36	26	63	5	11	3	6	200

FG % 1st Half: 11-33 33.3% 2nd half: 10-28 35.7% Game: 21-61 34.4% Deadball Rebounds 6
3FG % 1st Half: 0-9 0.0% 2nd half: 1-7 14.3% Game: 1-16 6.3%
FT % 1st Half: 3-6 50.0% 2nd half: 17-23 73.9% Game: 20-29 69.0%

Drake 78 • 16-13, 9-8 MVC

#	Player	Total	3-Ptr			Rebounds			PF	TP	A	TO	Blk	Stl	Min
			FG	FGA	FT	FTA	Off	Def							
02	Hawley, Aaron	f	2-3	1-1	3-4	0	5	5	1	8	1	1	0	1	27
10	Jeffers, Jeremy	f	3-4	1-2	4-5	0	1	1	3	11	2	3	0	0	21
22	Woods, Kraidon	f	2-2	0-0	1-2	0	5	5	5	0	1	3	2	2	24
03	Alexander, Kurt	g	6-8	0-1	0-0	0	2	2	3	11	3	3	0	0	22
24	Rice, Rayvonte	g	4-7	0-0	11-16	1	9	10	3	19	1	3	1	1	36
01	Clarke, Jordan	g	0-1	0-0	2-2	0	1	1	2	2	0	0	0	1	14
04	Wellfringer, Judd	g	0-0	0-0	0-0	0	1	1	0	0	1	0	0	0	6
11	Madison, Karl	g	2-7	0-0	1-2	0	0	0	1	5	2	0	0	0	20
21	Parker, Cory	g	0-0	0-0	0-0	0	0	0	2	0	0	0	0	0	3
32	Whitaker, Greg	g	1-1	0-0	1-2	0	0	0	3	0	0	0	0	0	2
34	Simons, Ben	g	5-10	2-4	2-4	0	2	2	0	14	2	0	0	1	25
	Team					3	0	3							
	Totals		24-43	5-8	25-37	4	28	30	20	78	12	11	5	7	200

FG % 1st Half: 13-22 59.1% 2nd half: 11-21 52.4% Game: 24-43 55.8% Deadball Rebounds 8
3FG % 1st Half: 4-6 66.7% 2nd half: 1-2 50.0% Game: 5-8 62.5%
FT % 1st Half: 8-13 61.5% 2nd half: 17-24 70.8% Game: 25-37 67.6%

Officials: Randy McCall, Mike Thibodeaux, Bo Boroski

Technical fouls: Southern Illinois-None. Drake-None.

Attendance: 3577

Fouled Out: DU: Woods @ 2:37; SIU: Early @ 1:33; Lindsay @ 1:08

Score by periods	1st	2nd	Total
Southern Illinois	25	38	63
Drake	38	40	78

	Points	In	Off	2nd	Fast	Bench
Southern Illinois	28	9	18	4	18	
Drake	30	8	5	4	24	

Last FG - SIU 2nd-00:31, DU 2nd-01:13. Score tied - 1 time. Lead changed - 0 times.

Largest lead - SIU None, DU by 18 2nd-12:33.

Official Basketball Box Score -- Game Totals -- Final Statistics

Drake vs Wichita State

02/25/12 12:30 p.m. at Wichita, Kan. (Charles Koch Arena)

30 AT WICH. ST.

Drake 58 • 16-14, 9-9

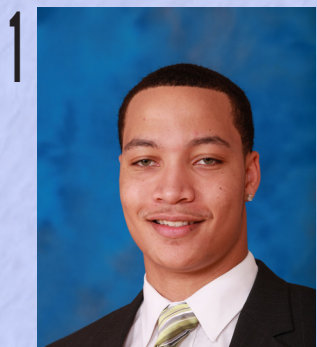
#	Player	Total	3-Ptr			Rebounds			PF	TP	A	TO	Blk	Stl	Min
			FG	FGA	FT	FTA	Off	Def							
01	Clarke, Jordan	f	0-0	0-0	0-0	0	3	3	3	0	2	2	0	2	13
10	Jeffers, Jeremy	f	4-8	2-4	2-2	0	3	2	12	0	1	0	0	0	28
34	Simons, Ben	f	7-17	7-12	0-0	0	2	1	21	0	4	0	1	1	33
11	Madison, Karl	g	0-5	0-2	0-0	1	2	3	2	0	0	2	0	1	17
24	Rice, Rayvonte	g	7-12	0-2	4-5	0	4	4	3	18	1	2	0	0	35
02	Hawley, Aaron	g	0-5	0-3	0-0	0	4	4	1	0	0	1	0	0	19
03	Alexander, Kurt	g	3-11	0-0	0-0	0	4	3	6	3	1	2	0	2	24
04	Wellfringer, Judd	g	0-0	0-0	0-0	1	0	1	0	0	0	2	0	0	3
21	Parker, Cory	g	0-1	0-0	0-0	0	0	0	0	0	0	0	0	0	1
22	Woods, Kraidon	g	0-0	0-0	0-0	1	1	2	2	0	0	0	2	0	26
25	Smith, David	g	0-0	0-0	1-2	0	0	0	1	0	0	0	0	0	1
	Team					4	2	6							
	Totals		21-59	9-23	7-9	7	25	32	17	58	6	15	2	6	200

FG % 1st Half: 9-29 31.0% 2nd half: 12-30 40.0% Game: 21-59 35.6% Deadball Rebounds 2
3FG % 1st Half: 5-15 33.3% 2nd half: 4-8 50.0% Game: 9-23 39.1%
FT % 1st Half: 2-3 66.7% 2nd half: 5-6 83.3% Game: 7-9 77.8%

Wichita State 81 • 26-4, 16-2

#	Player	Total	3-Ptr			Rebounds			PF	TP	A	TO	Blk	Stl	Min
			FG	FGA	FT	FTA	Off	Def							
20	SMITH, Ben	f	6-12	4-8	2-2	2	2	4	0	18	0	2	1	0	30
41	STUTZ, Garrett	c	4-10	0-2	7-7	1	4	5	1	15	0	2	0	1	19
01	RAGLAND, Joe	g	0-1	0-1	0-1	0	0	0	1	0	1	0	0	0	12
05	WILLIAMS, Demetric	g	3-8												

RADIO/TV ROSTER



1
F Jordan Clarke 6-8, 254 Jr.
Rockville, Md. (Our Lady of Good Counsel)



2
F Aaron Hawley 6-8, 197 Jr.
Rogers, Ark. (Rogers)



3
G Kurt Alexander 6-0, 193 Sr.
Toronto, Canada (Iowa Central/Pine Ridge)



4
G Judd Welfringer 6-5, 201 Fr.
Waukee, Iowa (Waukee)



10
F Jeremy Jeffers 6-6, 213 Fr.
Wilson, N.C. (Greenfield)



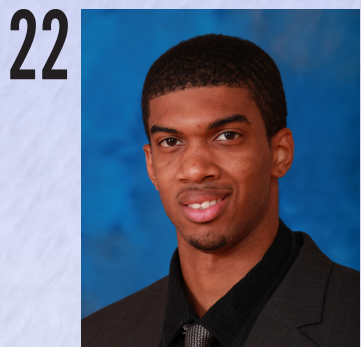
11
G Karl Madison 5-10, 182 Fr.
Springfield, Ill. (Lanphier)



14
G Lincoln Vorba 6-3, 172 Fr.
Mason City, Iowa (Mason City)



21
F Cory Parker 6-8, 242 Jr.
Aspen, Colo. (Aspen)



22
F Kraidon Woods 6-9, 225 Sr.
Henryville, Pa. (Binghamton/Pocono Mtn. E.)



23
G Mitch McLaughlin 6-1, 181 Fr.
Cedar Rapids, Iowa (Xavier)



24
G Rayvonte Rice 6-4, 240 So.
Champaign, Ill. (Centennial)



25
G David Smith 6-4, 208 So.
Chicago, Ill. (Lake Forest Academy)



32
F Greg Whitaker 6-6, 243 Jr.
Fairfax, Va. (W.T. Woodson)



34
F Ben Simons 6-8, 206 Jr.
Cadillac, Mich. (Cadillac)



40
F Reece Uhlenhopp 6-8, 239 Jr.
Urbandale, Iowa (Urbandale)



45
F Seth VanDeest 6-11, 260 Jr.
Bettendorf, Iowa (Bettendorf)



Mark Phelps—Head Coach



Mike Gibson—Asst. Coach



Stan Johnson—Asst. Coach



Brett Nelson—Asst. Coach



Jamelle McMillan—Coord. BB Ops



Paul Kirk—Asst. AD/Ath. Comm.