



# 2012-13 Saint Mary's College Men's Basketball

SMC Athletic Communications • www.SMCGaels.com • Twitter: @smcgaels  
PO Box 5100 • 1928 St. Mary's Road • Moraga, CA 94575  
MBK Contact: Richard Kilwien (rak5@stmarys-ca.edu • 925/631-4402)

## Week #5 Press Notes

December 3, 2012

Date	Opponent (TV)	Time/Res
N. 10	Sonoma State	W, 95-69
N. 15	at Utah State (CSN+)	W, 67-58
N. 18	Eastern Washington	W, 85-66
N. 22	#vs. Drexel (ESPN2)	W, 76-64
N. 23	#Pacific (ESPN2)	L, 66-76
N. 25	#Georgia Tech (ESPNU)	L, 56-65
D. 1	Cal Poly	W, 86-68
D. 5	#at Drake	5:00 p.m.
D. 11	Jackson State	7:00 p.m.
D. 19	Pacific	7:00 p.m.
D. 22	at Northern Iowa	12:00 p.m.
D. 27	Rhode Island	7:00 p.m.
D. 30	Yale	2:30 p.m.
D. 31	&Harvard (ESPN2)	5:00 p.m.
J. 5	*Loyola Marymount (tba)	1:30 p.m.
J. 10	*at Gonzaga (ESPN2)	8:00 p.m.
J. 12	*San Francisco (tba)	4:00 p.m.
J. 16	*at BYU (ESPNU)	8:00 p.m.
J. 19	*at Portland (tba)	7:30 p.m.
J. 24	*San Diego (tba)	8:00 p.m.
J. 26	*Pepperdine (tba)	3:30 p.m.
J. 30	*at San Francisco (tba)	7:00 p.m.
F. 2	*Portland (tba)	4:30 p.m.
F. 7	*at Santa Clara (ESPN2)	8:00 p.m.
F. 9	*at San Diego (ESPNU)	8:00 p.m.
F. 14	*Gonzaga (ESPN2)	8:00 p.m.
F. 16	*at Loyola Marymount (tba)	4:00 p.m.
F. 21	*BYU (ESPN2)	8:00 p.m.
F. 23	ESPN Bracketbusters (tba)	TBA
F. 27	*at Pepperdine (ESPNU)	8:00 p.m.
M. 2	*Santa Clara (tba)	7:00 p.m.
M.6-11	WCC Championships	

All times listed Pacific; \*West Coast Conference opponent; #DIRECTV Classic (Anaheim, Calif. & Des Moines, Iowa); Shamrock Office Solutions Shootout; ~2013 Sears BracketBusters; WCC Championships (Las Vegas, Nev.).  
TV: WCC=TWC SportsNet, CSN Bay Area/California, ROOT Sports Northwest, ROOT Sports Rocky Mountain



### Saint Mary's at Drake

Wednesday, Dec. 5, 2012 • 5 p.m. (PT)  
TV: None Radio: None  
Internet: SMCGaels.com (audio)  
Tickets: GoDrakeBulldogs.com or (515) 271-DOGS

**Series Record:** SMC Leads 1-0  
**Series at SMC:** SMC leads, 1-0  
**Series at Drake:** First Meeting  
**Neutral Site:** First Meeting  
**First Meeting:** 11/10/07, SMC won 72-66 in Moraga  
**Last Meeting:** 11/10/07, SMC won 72-66 in Moraga  
**Bennett vs. Drake:** 1-0  
**Streak:** SMC won only meeting

### THIS WEEK FOR SAINT MARY'S

The two-time defending West Coast Conference champion Saint Mary's men's basketball team (5-2) plays just one game this week, a Wednesday night contest at Drake (3-3) from the Missouri Valley Conference. The game is scheduled as a non-bracketed matchup considered part of the DIRECTV Classic. The game is scheduled for a 5 p.m. (Pacific) tipoff. The Gaels return to action Dec. 11 at home against Jackson State.

### LIVE COVERAGE

There is no television coverage of Saturday's game. SMC-Gaels.com will provide a live audio stream of the game with play-by-play provided by Gaels broadcaster Alex Jensen. A subscription to Gaels Live is required for live audio/video streams of SMC games. Frequent in-game Twitter updates (@SMCGaels) will also be provided throughout the game. Live statistics will also be available on SMCGaels.com.

### SAINT MARY'S HOME GAME TICKETS

Non-conference single-game tickets as well as a special package of WCC games only are currently available by visiting the tickets link on SMCGaels.com or by calling the SMC Athletic Ticket Office at (925) 631-GoTx (4689). A limited number of tickets to WCC games will go on sale in mid-December.

### About Saint Mary's

- » Saint Mary's is one of five programs nationally to have won at least 25 games in each of the last five seasons. Others include BYU, Gonzaga, Duke and Kansas.
- » Matthew Dellavedova and former SMC guard Patrick Mills formed the starting backcourt and led Australia to the quarterfinals at the 2012 London Olympics.
- » SMC ranked 23rd in the 2012 final AP poll. The Gaels appeared in a national poll the final nine weeks of the regular season, a program best.
- » SMC won a school-record 14 conference games last season, which tied the WCC record for most league wins in a season.
- » The Gaels' finished 16-1 at home last season and have won at least 15 home games five times in the last eight years.
- » SMC has finished no lower than 3rd in the WCC in each of the last eight seasons and has finished no worse than 2nd seven times during that span.
- » SMC has a 73-12 record (.859) winning percentage against non-conference opponents during the last seven+ years.
- » In 2012, SMC clinched its second-straight WCC title & won both the regular-season & tournament titles for the 1st time in its history.
- » Saint Mary's has won either the WCC regular-season ('11 & '12) or tournament titles ('10 & '12) in each of the last three seasons.

### Following The Gaels

**Website:** www.SMCGaels.com  
**Facebook:** facebook.com/smcgaels  
**Twitter:** @smcgaels  
**Blog:** smcgaels.wordpress.com  
**Google+:** +SMCGaels

### 2012-13 Saint Mary's Gaels (As of Dec. 2, 2012)

No.	Player	PPG	RPG	APG	Notes
* 4	Matthew Dellavedova (G, 6-4, Sr.)	16.6	2.3	5.4	All-time assist leader ... Naimsmith & Wooden Watch List ... 82-23 as a starter ... Academic AA ... 2012 Olympian
14	Stephen Holt (G, 6-4, Jr.)	12.0	5.3	2.7	Preseason all-WCC ... 7th in career steals ... career 8.3 pts, 3.9 rebs, 2.1 asts, 1.7 steals ... .456 career fg%
* 00	Brad Waldow (F, 6-9, So.)	10.9	5.7	0.6	WCC all-fresh ... set SMC record for FG% (.667) ... 34 blocks led team ... 17 pts on 8-9 FG vs Cal Poly
* 35	James Walker III (G, 6-3, Jr.)	9.4	3.1	1.3	Transfer ... Calif. JC Player of the Year ... avg 19 ppg as soph ... played Fr season at Utah State ... 46% from 3pt
15	Beau Levesque (F, 6-6, Jr.)	8.1	4.3	1.3	started 1st 5 games ... career-high 18 pts w/4 3pt FGs vs Pacific ... Academic All-WCC ... former walk-on
* 3	Mitchell Young (F, 6-8, Sr.)	6.0	4.0	1.3	Led WCC in FG pct. in '11 (.594) ... missed 5 games in '12 due to injury ... 6.3 pts, 3.6 rebs career avgs
* 1	Jorden Page (G, 6-1, Jr.)	5.0	2.0	2.0	32 apps as frosh in '10 ... missed '11 due to knee inj ... 47 3pt FGs, 3rd on team in '12 ... 22 career starts
33	Matthew Hodgson (C, 6-11, Jr.)	4.6	2.9	0.3	Transfer ... played 2 seasons at So. Utah ... plyd in '11 World Univ. Games (AUS) ... 3 blocks vs Eastern Wash.
5	Kyle Rowley (C, 7-0, Sr.)	3.0	2.2	0.0	Transfer from Northwestern ... 61 apps, 33 starts in 2 seasons at NU ... 9 rebs at Rhode Island in '10 NIT
12	Jordan Giusti (G, 6-2, Fr.)	1.7	0.9	0.3	Walk-on RS frosh ... 15 mins in debut v SSU, 7 pts, 3 rebs, 3-5 shooting ... Avg. 15 pts, 6 rebs & 6 asts as HS Sr.
24	Eividas Petrulis (F, 6-7, So.)	1.3	0.8	0.3	Walk-on forward ... 18 apps as a RS frosh in '12 ... 3-9 from 3pt FG career ... 9 of 12 career FG att are 3s

\*Possible starter (based on previous game)



## Saint Mary's Quick Facts

Conference:	West Coast
Home Court:	McKeon Pavilion (3,500)
NCAA Affiliation:	NCAA Division I
Head Coach:	Randy Bennett
Office Phone:	(925) 631-4388
Record at SMC:	240-120 (.667) / 11th Year
WCC Record:	103-53 (.660)
Career Record:	Same
2011-12 Record:	27-6
2011-12 WCC Record:	14-2
Letterwinners Returning/Lost:	10/3
Starters Returning/Lost:	4/1

## 2012-13 WCC Standings (12/3/2012)

Team	WCC	Pct.	Rec.	Pct.
Gonzaga	0-0	.000	8-0	1.000
San Francisco	0-0	.000	4-1	.800
Saint Mary's	0-0	.000	5-2	.714
Santa Clara	0-0	.000	5-2	.714
BYU	0-0	.000	5-3	.625
Pepperdine	0-0	.000	4-3	.571
Loyola Marymount	0-0	.000	4-4	.500
Portland	0-0	.000	3-4	.429
San Diego	0-0	.000	3-5	.375

## 2011-12 WCC Standings (final)

Team	WCC	Pct.	Rec.	Pct.
Saint Mary's <sup>NCAA</sup>	14-2	.875	27-6	.818
Gonzaga <sup>NCAA</sup>	13-3	.812	26-7	.788
BYU <sup>NCAA</sup>	12-4	.750	26-9	.743
Loyola Marymount <sup>NT</sup>	11-5	.688	21-13	.618
San Francisco <sup>CB</sup>	8-8	.500	20-14	.588
San Diego	7-9	.438	13-18	.419
Pepperdine	4-12	.250	10-19	.345
Portland	3-13	.188	7-24	.226
Santa Clara	0-16	.000	8-22	.267

## 2012-13 Gaels Honor Roll

### Matthew Dellavedova

- Wooden Award Watch List
- Naismith Award Watch List
- Basketball Times 4th-team Preseason All-America
- Senior CLASS Award Candidate
- Preseason all-WCC

### Stephen Holt

- Preseason all-WCC

## Saint Mary's Record When...

Overall record	5-2
Conference record	0-0
Monday	0-0
Tuesday	0-0
Wednesday	0-0
Thursday	2-0
Friday	0-1
Saturday	2-0
Sunday	1-1
Playing at Home	3-0
Playing on the Road	1-0
Playing at a Neutral Site	1-2
Leading at Halftime	4-1
Trailing at Halftime	0-0
Tied at Halftime	0-0
Shooting better FG% than opponent	5-0
Shooting equal FG% as opponent	0-0
Shooting worse FG% than opponent	0-2
Shooting better 3-FG% than opponent	3-0
Shooting equal 3-FG% as opponent	0-0
Shooting worse 3-FG% than opponent	3-1
Shooting better FT% than opponent	4-1
Shooting equal FT% as opponent	0-0
Shooting worse FT% than opponent	1-1
Outrebound opponent	4-1
Outrebounded by opponent	1-1

## 2012-13 Saint Mary's Men's Basketball

No.	Name	Pos.	Ht.	Yr.	Hometown (Previous Schools)
00	Brad Waldow*	F	6-9	So.	Shingle Springs, Calif. (Ponderosa)
1	Jorden Page*	G	6-1	Jr.	Maroochydore, Queensland, Australia (AIS)
2	Paul McCoy*	G	5-11	Sr.	Portland, Ore. (SMU/Grant)
3	Mitchell Young	F	6-9	Sr.	Logan, New South Wales, Australia (AIS)
4	Matthew Dellavedova	G	6-4	Sr.	Maryborough, Victoria, Australia (AIS)
5	Kyle Rowley*	C	7-0	Sr.	Arima, Trinidad (N'western/Lake Forest [Ill.] Acad)
10	Zach Sanchez*	G	6-1	So.	Bonita, Calif. (Bonita Vista)
12	Jordan Giusti*	G	6-2	Fr.	San Ramon, Calif. (San Ramon Valley)
14	Stephen Holt	G	6-4	Jr.	Portland, Ore. (Jesuit)
15	Beau Levesque*	F	6-6	Jr.	Lafayette, Calif. (De La Salle)
20	Treaven Duffy	G	6-2	Fr.	Walnut Creek, Calif. (Cushing [Mass.] Academy)
22	Garrett Jackson#	F	6-5	Jr.	Portland, Ore. (USC/Westview)
23	Chris Reyes	F	6-7	Fr.	LaVerne, Calif. (Damien)
24	Eividas Petrulis*	F	6-7	So.	Vilnius, Lithuania (Sarunis Marciulionis Academy)
25	Tim Williams*	F	6-9	Sr.	Antioch, Calif. (Antioch)
33	Matt Hodgson*	C	6-11	Jr.	Booval, Queensland, Australia (Ipswich Grammar)
35	James Walker III	G	6-3	Jr.	Long Beach, Calif. (Utah St./Citrus Coll./Los Alamitos)

\*utilized redshirt season; #Sitting out 2012-13 due to NCAA transfer rules

**Head Coach:** Randy Bennett (UC San Diego, 1986/12th Year)

**Assistant Coaches:** Eran Ganot, Rick Croy, and Adam Caporn

## NEXT WEEK FOR SAINT MARY'S

Following the contest at Drake, Saint Mary's plays just one game next week, a Tuesday, Dec. 11 contest at home against Jackson State. The next game after that will be a Dec. 19 rematch against future West Coast Conference rival Pacific.

## SCOUTING THE GAELS

Saint Mary's is 5-2 on the season following an 86-68 home victory over Cal Poly on Saturday. The Gaels won the first four games of the season before dropping two games at the DIRECTV Classic in Anaheim. Senior All-America candidate Matthew Dellavedova leads a trio of Gaels in double-figures with a 16.6 per game scoring average, while handing out a team-best 5.4 assists per game. Forward Brad Waldow is the team rebounding leader at 5.7 and is third on the team with a 10.9 scoring average.

The Gaels return four starters and 10 letterwinners from last year's team that posted a 27-6 record, went 14-2 in the West Coast Conference and won both the regular-season and league tournament titles for the first time in school history. Returning starters include guards Dellavedova, Stephen Holt and Jorden Page and Waldow. The Gaels are coming off their fifth-straight postseason appearance and third straight year with either a WCC regular-season and/or tournament title.

## SAINT MARY'S HOME WIN STREAK

The Gaels bring an 12-game home win streak over non-conference opponents into the Dec. 11 Jackson State contest. SMC's last home loss to a non-league opponent was a 71-70 setback against Kent State in the first round of the NIT on March 15, 2011. The last regular-season loss to a non-league opponent at home was a 75-65 decision to then 24th-ranked Utah State on Feb. 19, 2011 in the Sears BracketBusters.

## WELCOME (BACK) TO THE LEAGUE

The West Coast Conference welcomes Pacific into the league this summer. Since the two teams met at the DIRECTV Classic on Nov. 23, they will play twice this season in the span of a month. The rematch will take place in Moraga on Dec. 19.

## NEED TO KNOW - ABOUT THE GAELS

- » Junior guard Stephen Holt is expected to miss the Drake contest due to a bruised knee, suffered in practice last week. He did not play against Cal Poly.
- » Matthew Dellavedova leads the WCC and ranks 16th nationally in free throw percentage. He is 28-30 from the line for .933. Dellavedova is a .867 career free throw shooter, which would easily surpass the school record of .840 by Eric Schrader (1995-99).
- » Saint Mary's registered consecutive non-conference losses recently for only the second time since 2006. The only other time Saint Mary's lost consecutive non-league games over the last six seasons was 2010 when the Gaels dropped decisions to 24th-ranked BYU and 17th-ranked San Diego State.
- » The win over Sonoma State extends the Gaels' streak to 11-straight victories in season-opening games, dating back to Randy Bennett's first season in 2001-02.
- » Saint Mary's is 93-8 over the last four seasons when scoring 70 points or more.
- » Dellavedova was named to both the Naismith and Wooden Award preseason watch lists and is a candidate for the Senior CLASS Award, given to the top senior bkb student-athlete for on and off court achievement.
- » Dellavedova is the school's all-time career assist leader, is second in 3-point field goals made and attempts. He is also sixth in career scoring and fifth in starts and has three of the school's top-10 single-season assist performances.



Equal Rebounds as opponent ..... 0-0

**Scoring Total Is...**

35-49 Points ..... 0-0  
 50-59 Points ..... 0-1  
 60-69 Points ..... 1-1  
 70-79 Points ..... 1-0  
 80-89 Points ..... 2-0  
 90-99 Points ..... 1-0  
 100+ Points ..... 0-0

**Scoring Margin Is...**

1 point ..... 0-0  
 2 points ..... 0-0  
 3-5 points ..... 0-0  
 6-10 points ..... 1-2  
 between 11-20 ..... 3-0  
 more than 20 ..... 1-0

**The Last Time A Gael...**

scored 40 or more points  
 ..... 40 by Paul Marigney vs. Pepperdine 2/29/04  
 scored 30 or more points  
 ..... 32 by Matthew Dellavedova vs Drexel, 11/22/12  
 totaled 20 or more rebounds  
 ..... 20 by Ken Jones vs. Santa Clara, 2/15/79  
 totaled 15 or more rebounds  
 ..... 15 by Rob Jones vs LMU, 2/15/12  
 totaled 10 or more assists  
 ..... 10 by Matthew Dellavedova vs. Santa Clara, 2/11/12  
 recorded a double-double (pts./reb.)  
 ..... 23/14 by Rob Jones vs. Purdue, 3/15/12  
 a double-double (pts./asst)  
 ..... 16/10 by Matthew Dellavedova vs. Santa Clara, 2/11/12  
 at least two players with a double-double  
 ..... 14/14 by Rob Jones at USF, 2/25/12  
 ..... 10/12 by Brad Waldow at USF, 2/25/12  
 at least three players with a double-double  
 ..... Rob Jones (24/12) vs. Weber State, 11/28/11  
 ..... Kenton Walker (14/11) vs. Weber State, 11/28/11  
 ..... Matthew Dellavedova (25/11) vs. Weber State, 11/28/11

**Last Time The Gaels...**

Played an overtime game .... W, 78-74 (ot) vs. Gonzaga (3/5/12)  
 Scored 100 or more points ..... 121 vs. Chicago State (11/23/10)  
 Allowed 100 or more points ..... 105 by Gonzaga (3/3/01)  
 Had 50 or more rebounds ..... 53 at Santa Clara (1/21/12)  
 Had 20 or more assists ..... 22 vs. Cal Poly (12/11/12)  
 Had 15 or more steals ..... 18 vs. College of Idaho (11/12/10)  
 Played ranked opponent W, 78-74 (ot) vs. 24/25 Gonzaga (3/5/12)  
 Def. ranked opponent . W, 78-74 (ot) vs. 24/25 Gonzaga (3/5/12)

**Gaels In Statistical Rankings (12/3/12)**

	Totals	WCC Rank	NCAA Rank
<b>Scoring (75% games played)</b>			
Matthew Dellavedova	16.6	7th	126th
Stephen Holt	12.0	17th	
Brad Waldow	10.9	21st	
<b>Rebounds (75% games played)</b>			
Brad Waldow	5.7	11th	
Stephen Holt	5.3	15th	
Beau Levesque	4.3	20th	
<b>FG Percentage (5.0 made/75% games played)</b>			
Brad Waldow	.615	3rd	
James Walker III	.595	4th	
Matthew Dellavedova	.479	12th	169th
<b>Assists (75% games played)</b>			
Matthew Dellavedova	5.4	3rd	44th
<b>FT Percentage (2.5 made/75% games played)</b>			
Matthew Dellavedova	.933	1st	16th
Stephen Holt	.833	5th	151st
<b>Steals (75% games played)</b>			
Matthew Dellavedova	1.3	12th	



**Randy Bennett, Saint Mary's Head Coach**

A two-time West Coast Conference Coach of the Year (2011, 2008) and 2010 Sporting News WCC Coach of the Year, Randy Bennett, took over as the head men's basketball coach prior to the 2001-02 season.

In his 12th season, he's become the school's all-time wins leader, guided SMC to six post-season appearances (4 NCAA and 2 NIT), led the Gaels to their first post-season victory and had a player drafted (Patrick Mills, 2009) by the NBA for the first time since 1984.

Bennett is second among WCC coaches in career wins and has a 240-120 (.667) record while compiling a 102-53 (.658) mark in WCC regular-season competition. Bennett became the winningest coach at SMC when the Gaels defeated East Tennessee State in the semifinals of the Rainbow Classic on

December 21, 2007, passing James Weaver (110-67), who held the record for 47 years.

He has led Saint Mary's to at least the semifinals of the WCC Tournament in each of his 11 seasons, and final appearances in 2004, 2005, 2009, 2010, 2011 and 2012. His side captured the WCC Tournament titles in 2010 and 2012. Under Bennett's tutelage, the Gaels have posted six second place finishes in the WCC and the 2011 and 2012 regular-season championships.

In addition to the team accomplishments, Bennett has had 13 players garner All-West Coast Conference recognition, with 19 first team and five honorable mention selections. He coached Mickey McConnell and Matthew Dellavedova to WCC Player of the Year honors. In 2011, he served as an assistant coach for the USA team that competed in the FIBA U19 World Championship in Liepaja and Riga, Latvia

**A Quick Snapshot**

- Averaged 24 wins over the last 8 seasons
- Posted 94-35 (.729) record vs WCC opponents over last 7 seasons.
- Posted 135-28 (.828) record at McKeon Pavilion since the 2002-03 season.
- Posted 78-8 (.907) record at McKeon Pavilion over last 5 seasons (including 16-1 last year).

**SUCCESSFUL SENIORS**

SMC four-year seniors Matthew Dellavedova, Tim Williams and Mitchell Young (Kyle Rowley is a transfer) own an 85-23 record for a .787 winning percentage over the last 3-plus seasons.

**25-WINS - ELITE COMPANY**

Just five teams nationally have won 25 or more games in each of the last five seasons: Saint Mary's, BYU, Duke, Gonzaga and Kansas.

**FRESH FACES**

The Gaels welcome a few new players to this year's team: Freshmen Chris Reyes (La Verne, Calif.) and Treaven Duffy (Walnut Creek, Calif.) and junior transfers James Walker III (Long Beach, Calif / Citrus College) and Garrett Jackson (Portland Ore. / USC). Reyes and Duffy did not suit up for the team's first three games and will most likely redshirt this season. Jackson is sitting out this year after transferring from USC. Walker III is among the team's leading scorers.

**GAELS OVER THE LAST SIX YEARS**

Dating back to the 2007-08 season, Saint Mary's has posted an impressive 138-37 (.789) overall record, and has averaged 27.0 wins per year during that stretch. The winning percentage over the last five years ranks fifth nationally.

**Last Six Years (through games of 12/2)**

Team	2012-13		Pct	2011-12	
	W	L		W	L
Kansas	170	25	.872	6	1
Duke	160	30	.842	8	0
Memphis	150	37	.802	4	2
North Carolina	155	39	.799	6	2
Saint Mary's	138	37	.789	5	2
BYU	145	39	.788	5	3
Gonzaga	139	38	.785	8	0
Syracuse	145	40	.784	5	0
Kentucky	146	44	.768	4	3
Ohio State	145	44	.767	5	1
San Diego State	136	44	.756	5	1

**WCC PRESEASON PREDICTIONS**

West Coast Conference coaches predicted the Gaels to end the season as runners-up in the league and believe Matthew Dellavedova and Stephen Holt will be all-conference performers. Here is a look at the preseason WCC coaches' rankings:

1. Gonzaga (7) 63
2. BYU (1) 55
3. Saint Mary's (1) 52
4. LMU 37
5. San Diego 36
6. Santa Clara 35
7. San Francisco 19
8. Portland 15
9. Pepperdine 12



<b>3-pt FG Percentage</b> (1.5 made/75% games played)			
James Walker III	.455	4th	
Matthew Dellavedova	.409	19th	67th
Beau Levesque	.400	11th	

<b>3-Point FG Made</b>			
Matthew Dellavedova	2.6	2nd	87th
Stephen Holt	1.7	11th	
James Walker III	1.4	15th	

<b>Blocked Shots</b> (75% games played)			
Matt Hodgson	0.9	10th	
Brad Waldow	0.7	11th	

<b>Assist/TO Ratio</b> (75% games played)			
Matthew Dellavedova	2.4	8th	74th

<b>Minutes Played</b>			
Matthew Dellavedova	36.0	2nd	

<b>Returning From Last Season</b>			
Points	2,467	1,605	65%
Rebounds	1,211	667	55%
Offensive	378	211	56%
Defensive	883	466	52%
Minutes	6615	4489	68%
Assists	520	410	79%
Steals	227	144	63%
Blocked Shots	102	58	57%
Field Goals	857	533	62%
3pt Field Goals	245	151	62%
Free Throws	508	388	76%

<b>Gaels In The Pros</b>			
Ben Allen	Townsville Crocs		Australia
Rob Jones	Stelmet ZG		Poland
Daniel Kickert	Dnipro		Ukraine
Mickey McConnell	Tezenis VE		Italy
Patrick Mills	San Antonio Spurs		USA
Ian O'Leary	Valladolid		Spain
E.J. Rowland	VEF Riga		Latvia
Diamon Simpson	Maccabi Ashdod		Israel
Clint Steindl	Cairns Taipans		Australia
Lucas Walker	Melbourne Tigers		Australia
Kenton Walker II	UCD Demons		Ireland

**Preseason All-WCC**  
 Gary Bell, Gonzaga, So, G  
 Brandon Davies, BYU, Sr, F  
 Johnny Dee, San Diego, So., G  
**Matthew Dellavedova**, Saint Mary's, Jr, G  
 Sam Dower, Gonzaga, Jr, C  
 Kevin Foster, Santa Clara, Sr, G  
 Elias Harris, Gonzaga, Sr, F  
**Stephen Holt**, Saint Mary's, Jr, G  
 Anthony Ireland, LMU, Jr, G  
 Kevin Pangos, Gonzaga, So, G

**AT HOME VS. NON-CONFERENCE OPPONENTS**  
 In the last seven seasons at home against non-conference opponents, SMC is 72-9 (.889) overall in McKeon Pavilion. Saint Mary's is 50-5 in its last 55 home games against non-conference opponents.

**HOME SWEET HOME**  
 With the Cal Poly win, the Gaels own a 78-8 (.907) record over the last five seasons at home - including a 3-0 record this season.

Saint Mary's went 16-1 at home last season and posted a 15-1 mark in 2007-08 and 2008-09.

In 11+ seasons, Randy Bennett has led SMC to a 139-47 (.747) record in McKeon Pavilion.

The last time the Gaels went undefeated at home was an 8-0 mark in 1958-59.

**DELLAVEDOVA MAKES INTERNATIONAL IMPACT**  
 Matthew Dellavedova played a significant role as the starting point guard on the Australian National Team that advanced to the quarterfinals at the 2012 London Olympic Games. Dellavedova was joined by former Saint Mary's guard Patrick Mills in the team's starting backcourt. Some of the professional players he played against during the summer include Kobe Bryant, LeBron James, Tony Parker & Rudy Fernandez.

**GAELS PARTICIPATE IN MOVEMBER**  
 Initiated last season by Matthew Dellavedova and Mitchell Young, several Saint Mary's players and coaches participated in an international prostate cancer awareness program called "Movember." Managed by the Movember Foundation, the initiative raises awareness for prostate and other male cancers. Participants were encouraged to grow mustaches in support of the fund-raising & awareness efforts. On Oct. 31, the team gathered to shave their faces and did not shave in November.

**AUSSIES UNDER BENNETT'S REIGN**  
 When Randy Bennett came to Moraga in 2001, he brought Australian Adam Caporn (2001-03) to fill a void at point guard. Caporn helped bring SMC all-time leading scorer Daniel Kickert (2002-06) to Moraga in 2002, which then sparked the transfer of

Carlin Hughes (2007-09) and Lucas Walker (2007-09) from Montana State-Billings, prior to the 2006-07 season. Ben Allen (2008-10) joined the mix prior to the 2007-08 season when he transferred to SMC from Indiana. Patrick Mills (2007-09) came the same year, and Clint Steindl (2008-pres.) made the trip across the Pacific Ocean prior for the start of the 2008-09 campaign. Two years ago, Matthew Dellavedova (2009-pres), Jordan Page (2009-pres) and Mitchell Young (2009-pres) joined the Gaels. Matt Hodgson is the latest Aussie to join the team, increasing the number to 11 players from Australia on the roster since Bennett came to Moraga in 2001. National Letter of Intent signee Dane Pineau will make that number an even dozen beginning next season.

<b>Australian Gaels</b>	
2001-03	Adam Caporn
2002-06	Daniel Kickert
2007-09	Carlin Hughes
2007-09	Lucas Walker
2008-19	Ben Allen
2007-09	Patrick Mills
2008-12	Clint Steindl
2009-present	Matthew Dellavedova
2009-present	Jordan Page
2009-present	Mitchell Young
2011-present	Matt Hodgson
2013-	Dane Pineau

**WALKER III ENJOYS REUNION**  
 James Walker III enjoyed his return to Logan, Utah earlier this year with a 14-point, three rebound, three steals performance at his former school. He spent his freshman season at Utah State before transferring to Citrus College, then Saint Mary's.

**GAELS GOING BRACKETBUSTING**  
 For the sixth time since 2006, Saint Mary's will participate in ESPN's BracketBusters event, which pits mid-major programs from around the country against each other. Matchups and the exact game date and time will be determined in late January.

Date	Result	Site
2/18/06	W, Cal Poly: 89-85	Moraga, Calif.
2/23/08	L, Kent State: 57-65	Moraga, Calif.
2/21/09	W, Utah State: 75-64	Moraga, Calif.
2/19/11	L, Utah State: 75-65	Moraga, Calif.
2/18/12	L, at Murray St.: 51-65	Murray, Ky.
2/23/13	TBA	Moraga, Calif.

### GAELS ACHIEVE ANOTHER 20-WIN SEASON

In 2011-12 Saint Mary's surpassed the 20-win mark for the 8th time in school history and the sixth under Randy Bennett. It also marked the quickest to 20 wins in program history. In every year when the Gaels won more than 20 games, they advanced to post-season play.

Season	Overall Record	Reached 20th Win	Postseason
2011-12	27-6	22	NCAA
2010-11	25-8	24	NIT
2009-10	28-6	23	NCAA
2008-09	28-7	25	NIT
2007-08	25-7	23	NCAA
2004-05	25-9	26	NCAA
1996-97	23-8	27	NCAA
1988-89	25-5	23	NCAA

### TOP STARTS IN SMC HISTORY

With its 22-2 start last season, the Gaels registered one of their best records in school history. The team didn't register its third loss until Feb. 9 at Gonzaga. Below is a chart of the best starts ever at SMC (record listed is immediately prior to the team's 3rd loss of that particular season).

Year	Start	Overall
2011-12	22 2	27 6
2008-09	18 2	28 7
1988-89	18 2	25 5
2010-11	17 2	25 9
2007-08	17 2	25 7
1913-14	16 2	16 2
2009-10	15 2	28 6
1931-32	9 2	11 14
1996-97	8 2	23 8
1981-82	8 2	11 16
1960-61	8 2	19 7
1916-17	8 2	15 6

### TOP WCC STARTS IN SMC HISTORY

With its 11-0 start to league play last year, the Gaels equaled the best WCC start in school history. They also clinched a winning record in league play for the 9th-straight season and the 25th time since 1967. Below is a chart of the best league starts ever at SMC.

Year	Start	Final League
1958-59	11 0	11 1
2011-12	11 0	14 2
2007-08	11 1	12 2
2010-11	10 1	11 3
2009-10	8 1	11 3

### SAINT MARY'S IN 2011-12

The Saint Mary's men's basketball team finished the 2011-12 season with a 27-6 overall record and a 14-2 mark in the West Coast Conference. The Gaels won both the league regular-season and tournament titles for the first time in school history and advanced to the NCAA Tournament for the seventh time ever and the fourth under head coach Randy Bennett.

Winners of four of its last five games to end the season, the Gaels ranked 23rd in the final Associated Press national poll and were ranked 16th in the ESPN/USA Today Coaches Poll entering the NCAA Tournament.

SMC opened the season by winning 11 of its 13 non-conference games. The only blemishes during that time were a road loss at Denver and a neutral site setback against then sixth-ranked Baylor. SMC started the WCC schedule off in strong fashion with 11-straight wins - equaling the best league start in school history (11-0 in 1958-59). A season sweep of league newcomer BYU, a 21-point home win over Gonzaga and clinching the WCC title were among the highlights of the league's regular-season.

### A FEW MORE NOTES ABOUT THE 2011-12 GAELS

- » Saint Mary's was selected to participate in the NCAA Tournament for the seventh time in school history and the fourth time under Randy Bennett. The Gaels are 3-7 in NCAA Tournament games. The 2010 team advanced to the NCAA Sweet 16 after wins over Richmond and Villanova. SMC played in the NIT in 2009 and 2011.
- » Saint Mary's entered the NCAA Tournament with a RPI ranking of 29th, according to the NCAA.
- » SMC won the Zappos.com West Coast Conference Championship in Las Vegas for the second time in three seasons with a 78-74 overtime win over second-seeded Gonzaga.
- » The Gaels clinched their second-straight WCC regular-season title with a 70-43 win at Portland - the first back-to-back league titles in school history.
- » SMC clinched the outright regular-season title for the first time since 1989. The Gaels won WCC outright titles in 1989 and 1959 and shared it in 1980, 1997 and 2011.
- » The team's 12-game win streak earlier this season was the third-longest in school history. Three of the program's seven longest win streaks have occurred since 2005.
- » The Gaels' 16 home wins were the most in school history and the 14 WCC wins is the most ever for a Saint Mary's team and ties the league record for most wins in a league season.
- » Matthew Dellavedova became the Gaels' second-straight WCC Player of the Year and seventh in program history. He was joined on the all-WCC team by Rob Jones and Stephen Holt (HM). Brad Waldow was named to the WCC all-freshman team.
- » Dellavedova became the school's first-ever male recipient of (CoSIDA) Capital One Academic First-Team All-America honors. He was also among the 5 finalists for the Bob Cousy Award and was a USBWA All-District selection.
- » Dellavedova and Rob Jones, first-team all-WCC selections, earned WCC Player of the Week and Player of the Month honors. Jones won it twice (Nov. & Feb.)

# Charting The Saint Mary's Gaels

## Team Win Streaks

No.	Year	Streak	1st Win	Last Win
1.	2008-09	15	11/28/08	1/22/09
2.	1958-59	13	12/27/58	2/27/59
3.	2011-12	12	12/23/11	1/2/12
4.	2010-11	11	12/8/10	1/19/11
5.	2004-05	9	12/14/04	1/11/05
	1996-97	9	2/7/97	3/3/97
	1994-95	9	1/21/94	2/14/95
	1988-89	9	11/26/88	12/22/89

## Saint Mary's Conference Titles

2011-12	WCC Regular-Season & WCC Tournament
2010-11	WCC Regular-Season (tie)
2009-10	WCC Tournament
1996-97	WCC Regular-Season (tie)
1996-97	WCC Tournament
1988-89	WCC Regular-Season
1979-80	WCC Regular-Season (tie)
1958-59	WCAC Regular-Season

## Home Record Under Randy Bennett

Season	W	L	Pct.
2012-13	3	0	1.000
2011-12*	16	1	.941
2010-11	15	3	.833
2009-10	14	2	.875
2008-09	15	1	.937
2007-08	15	1	.937
2006-07	12	5	.706
2005-06	11	5	.687
2004-05	15	1	.937
2003-04	10	3	.769
2002-03	9	6	.600
2001-02	4	9	.308
Total	139	37	.790

\*school record # of wins

## Top-5 Coaches Win Totals

No.	Name (Years)	Yrs	Record
1.	Randy Bennett (2002-present)	11	240-120
2.	James Weaver (1956-62)	7	110-69
3.	Ernie Kent (1992-97)	6	90-80
4.	Bill Oates (1980-86)	7	86-103
5.	Lynn Nance (1987-89)	3	61-27

## WCC Series Records Under Bennett

Opponent	Home	Away	Neutral	Overall
BYU	2-0	1-1	0-1	3-2
Gonzaga	4-7	1-10	2-5	7-22
LMU	8-3	9-2	0-1	17-6
Pepperdine	10-1	7-4	2-1	19-6
Portland	10-1	7-5	2-0	19-6
San Diego	8-3	7-5	0-0	15-8
San Francisco	9-2	9-2	1-0	19-4
Santa Clara	7-4	7-5	4-1	18-10

## WCC Tournament Under Bennett

No.	Seed	Advance	Result
2012	1	Champion	def. Gonzaga 78-74 (ot)
2011	1	Finalist	loss to Gonzaga 64-73
2010	2	Champion	def. Gonzaga 81-62
2009	2	Finalist	lost to Gonzaga 58-83
2008	2	Semifinalist	lost to USD 69-75 (2ot)
2007	3	Semifinalist	lost to SCU 47-63
2006	3	Semifinalist	lost to LMU 63-66
2005	2	Finalist	lost to Gonzaga 67-80
2004	2	Finalist	lost to Gonzaga 71-84
2003	5	Semifinalist	lost to Gonzaga 52-73
2002	6	Semifinalist	lost to Pepperdine 47-68

## Saint Mary's NCAA Tournament Apps

Year	W	L	How Invited	Rnd
2011-12	27	6	WCC Tour Champ	1st
2009-10	28	6	WCC Tour Champ	16
2007-08	25	7	At Large	1st
2004-05	25	9	At Large	1st
1996-97	23	8	WCC Tour Champ	1st
1988-89	25	5	At Large	1st
1958-59	19	6	WCAC Champs	2nd

## Career Scoring

1.	Daniel Kickert (2002-06)	1,874
2.	Omar Samhan (2006-10)	1,846
3.	David Vann (1978-82)	1,738
4.	Diamon Simpson (2005-09)	1,603
5.	Robert Haugen (1985-89)	1,502
6.	<b>Matthew Dellavedova (2010-present)</b>	<b>1,496</b>
7.	Peter Thibeaux (1979-83)	1,490
8.	Eric Schraeder (1995-99)	1,396
9.	Steve Gray (1960-63)	1,390
10.	Frank Kudelka (1946-49)	1,343
11.	Rick Bernard (1973-78)	1,299
12.	David Sivulich (1995-98)	1,251
13.	Mickey McConnell (2007-11)	1,234

## Career Made Three-Point Field Goals

1.	David Sivulich (1995-98)	238
2.	<b>Matthew Dellavedova (2010-present)</b>	<b>220</b>
3.	Frank Allocco (1996-00)	197
4.	Mickey McConnell (2008-11)	187
5.	Tyler Herr (1999-04)	186
7.	Clint Steindl (2009-present)	185
8.	Daniel Kickert (2002-06)	176
8.	Eric Schraeder (1995-99)	170
9.	John Levitt (1989-93)	166
10.	Chris Johnson (1992-95)	155

## Career Three-Point Field Goal Attempts

1.	David Sivulich (1995-98)	624
2.	<b>Matthew Dellavedova (2009-pres)</b>	<b>580</b>
3.	Tyler Herr (1999-04)	529
4.	Frank Allocco (1996-00)	479
5.	Clint Steindl (2008-pres)	461
6.	John Levitt (1989-93)	447
7.	Eric Schraeder (1995-99)	427
8.	Mickey McConnell (2007-11)	404
9.	Daniel Kickert (2002-06)	395
10.	Chris Johnson (1992-95)	391

## Career Free throws made

1.	Diamon Simpson (2005-09)	470
2.	Robert Haugen (1985-89)	443
3.	Daniel Kickert (2002-06)	387
4.	Omar Samhan (2006-10)	374
	Steve Gray (1960-63)	374
6.	<b>Matthew Dellavedova (2009-pres)</b>	<b>366</b>
7.	Odell Johnson (1955-57)	345
8.	Bill Sanchez (1953-56)	344
9.	Frederic Adjiwanou (2002-05)	330
10.	Rick Bernard (1973-78)	299
11.	Peter Thibeaux (1979-83)	288

## Free throws attempted

1.	Diamon Simpson (2005-09)	777
2.	Steve Gray (1960-63)	570
3.	Robert Haugen (1985-89)	553
4.	Daniel Kickert (2002-06)	474
5.	Bill Sanchez (1953-56)	539
6.	Omar Samhan (2006-10)	528
7.	Frederic Adjiwanou (2002-05)	467
8.	Odell Johnson (1955-57)	424
9.	<b>Matthew Dellavedova (2009-pres)</b>	<b>422</b>
10.	David Cooke (1981-85)	418
11.	Peter Thibeaux (1979-83)	396

## Career Assists

1.	<b>Matthew Dellavedova (2010-present)</b>	<b>583</b>
2.	Kamran Sufi (1993-97)	507
3.	David Carter (1985-89)	498
4.	Mickey McConnell (2008-11)	476
5.	Nick Pappageorge (1976-78)	408
6.	Frank Allocco (1996-00)	372
7.	Ted Wood (1976-80)	350
8.	Josh Unruh (1993-97)	340
9.	Darrell Daniel (1990-94)	329
10.	Paul Pickett (1981-85)	298

## Career Steals

1.	Diamon Simpson (2005-09)	174
2.	Kamran Sufi (1993-97)	162
3.	Chase Poole (2000-04)	134
4.	David Carter (1985-89)	130
5.	Erick Newman (1987-89)	126
6.	<b>Matthew Dellavedova (2010-present)</b>	<b>119</b>
7.	<b>Stephen Holt (2011-present)</b>	<b>115</b>
8.	Mickey McConnell (2007-11)	114
	Patrick Mills (2007-09)	114
10.	Eric Bamberger (1988-92)	109

## Career Games Played

1.	Omar Samhan (2006-10)	133
2.	Diamon Simpson (2005-09)	128
3.	Ian O'Leary (2005-09)	127
4.	Mickey McConnell (2007-11)	124
5.	Daniel Kickert (2002-06)	123
6.	Clint Steindl (2008-present)	121
7.	Tyler Herr (1999-04)	120
8.	Chase Poole (2000-04)	119
9.	Brett Collins (2003-07)	118
10.	Eric Schraeder (1995-99)	114
	Robert Haugen (1985-89)	114
	A.J. Rollins (1992-97)	114
	Frankie King (1997-01)	114
	Blake Sholberg (2002-07)	114

## Approaching

Matthew Dellavedova (2009-pres)	108
Mitchell Young (2009-pres)	103

## Career Games Started

1.	Daniel Kickert (2002-06)	122
2.	Robert Haugen (1985-89)	113
3.	Omar Samhan (2006-10)	108
4.	<b>Matthew Dellavedova (2009-present)</b>	<b>105</b>
	David Carter (1985-89)	105
6.	Diamon Simpson (2005-09)	100
7.	David Vann (1978-82)	94
8.	Peter Thibeaux (1979-83)	89

## Single-Season Assists

1.	Nick Pappageorge (1976-77)	213
2.	Mickey McConnell (2010-11)	212
3.	Matthew Dellavedova (2011-12)	204
4.	Allen Cavevness (1990-91)	198
5.	Nick Pappageorge (1977-78)	195
6.	Matthew Dellavedova (2010-11)	180
7.	Mickey McConnell (2009-10)	174
8.	David Carter (1985-86)	173
9.	Ted Wood (1979-80)	162
10.	Matthew Dellavedova (2009-10)	153
	Kamran Sufi (1995-96)	153

## Single-Season Steals

1.	Erick Newman (1988-89)	72
2.	Stephen Holt (2010-11)	61
	Diamon Simpson (2008-09)	61
4.	Patrick Mills (2008-09)	57
	Patrick Mills (2007-08)	57
6.	Allen Cavevness (1990-91)	56
	Kamran Sufi (1994-95)	56
8.	E.J. Rowland (2004-05)	54
	Erick Newman (1987-88)	54
10.	Paul Pickett (1983-84)	52
	Rob Jones (2011-12)	52
12.	Mickey McConnell (2009-10)	50
13.	Stephen Holt (2011-12)	49



# 4 Matthew Dellavedova

Guard • 6-4 • 190 • Senior  
 Maryborough, Victoria, Australia /  
 Australian Institute of Sport

- 2012 Olympian - Starter on Australian National Team
- Capital One First-Team Academic All-America (3.54 gpa, Psychology)
- Naismith Award Watch List; Wooden Award Watch List; Senior CLASS Award Candidate
- 2012 Bob Cousy Award Final 5; Two-Time USBWA All-District
- 2012 AP Honorable Mention All-America
- School record-holder for career assists.
- Second in career 3-point makes and attempts; Among career leaders in steals (6th) and games started (5th).
- 6th in career scoring at Saint Mary's (1,496 points).
- 82-23 record as a starter - started 105 of 108 games

**Career:** A member of the Australian National Team that advanced to the quarterfinals at the 2012 London Olympics before losing to the United States ... has participated in various Australian national teams since 2008 ... already among the leaders in several career categories at Saint Mary's ... is the school's all-time leader in career assists with 583 ... 2nd in career three-pointers (220) and in attempts (580) ... enters Drake contest in sixth-place on the school's all-time scoring list with 1,496 points (fellow Aussie Daniel Kickert, 2002-06, is the leader with 1,874) ... also is sixth in career steals (119) and tied for fourth in career starts (105) ... owns a 82-23 record as a starter - has started 105 of 108 games in his career.

**As a senior (2012-13):** A preseason all-WCC selection by league coaches ... named to watch lists for the James Naismith and John R. Wooden national player of the year awards ... a candidate for the Senior CLASS Award, given for achievement on and off the court ... scored a game-high 20 points in the season opener against Sonoma State in just 25 minutes of action ... tied career high with five steals against the Seawolves ... scored 21 points in 40 minutes at Utah State ... scored a career-high 32 on 10 of 16 shooting in win over Drexel at the DIRECTV Classic ... had 13 points and nine assists in win over Cal Poly, moving him into sixth on the school's all-time scoring list.

*"We played a very good Saint Mary's team and they've got an NBA player at the point guard. He's something special."* - Utah State head coach Stew Morrill.

Date	Opponent	G-GS	Min	FG-A	3FG-A	FT-A	O-D	Reb	PF	Ast	TO	Blk	Stl	Pts
N10	Sonoma State	1-1	25	7-10	4-6	2-2	2-0	2	2	5	3	0	5	20
N15	at Utah State	1-1	40	6-15	3-9	6-6	0-2	2	1	3	3	0	0	21
N18	Eastern Washington	1-1	32	3-8	2-5	1-1	1-5	6	0	8	0	0	0	9
N22	vs. Drexel*	1-1	38	10-16	2-7	10-12	2-0	2	2	4	3	0	2	32
N23	vs. Pacific*	1-1	39	5-10	4-7	2-2	0-0	0	5	1	0	0	0	16
N25	vs. Georgia Tech*	1-1	40	1-8	1-6	2-2	1-2	3	1	8	5	0	0	5
D1	Cal Poly	1-1	38	3-6	2-4	5-5	0-1	1	1	9	2	0	2	13
D5	at Drake													
D11	Jackson State													
J19	Pacific													
D22	at Northern Iowa													
D27	Rhode Island													
D30	Yale													
D31	Harvard													
J5	Loyola Marymount													
J10	at Gonzaga													
J12	San Francisco													
J16	at BYU													
J19	at Portland													
J24	San Diego													
J26	Pepperdine													
J30	at San Francisco													
F2	Portland													
F7	at Santa Clara													
F9	at San Diego													
F14	Gonzaga													
F16	at Loyola Marymount													
F21	BYU													
F23	ESPN BracketBusters													
F27	at Pepperdine													
M2	Santa Clara													

\* DIRECTV Classic (Anaheim Convention Center)

	CAREER HIGHS	SEASON HIGHS
Points:	32 vs. Drexel (11.22.12)	32 vs. Drexel (11.22.12)
Rebounds:	8 at Gonzaga (2.11.10)	6 vs. Eastern Washington (11.18.12)
FG Made:	11 at Santa Clara (1.21.12)	10 vs. Drexel (11.22.12)
FG Att:	21 vs. Gonzaga (3.5.12)	16 vs. Drexel (11.22.12)
3pt. FG Made:	6 2x vs. San Francisco (1.9.12)	4 2x vs. Pacific (11.23.12)
3pt. FG Att:	12 at Loyola Marymount (1.30.10)	9 at Utah State (11.15.12)
FT Made:	13 vs. St. John's (11.15.10)	10 vs. Drexel (11.22.12)
FT Att:	14 vs. St. John's (11.15.10)	12 vs. Drexel (11.22.12)
Assists:	12 vs. BYU (12.29.11)	9 vs. Cal Poly (12.1.12)
Steals:	5 2x vs. Sonoma State (11.10.11)	5 vs. Sonoma State (11.10.12)
Blocks:	2 vs. Pepperdine (12.19.12)	None
Min. Played:	45 vs. Gonzaga (3.5.12)	40 2x vs. Georgia Tech (11.25.12)

## Matthew Dellavedova's Career Statistics

Year	GP-GS	Min/Avg	Total		3-Point		FT-FTA	Pct	Rebounds			PF-FO	Ast	TO	Blk	Stl	Pts/Avg
			FG-FGA	Pct	FG-FGA	Pct			Tot	Avg	Off-Def						
2009-10	34-34	1236/36.4	121-310	.390	74-186	.398	96-113	.850	34-85	119	3.5	76-0	153	67	0	40	412/12.1
2010-11	34-31	1199/35.3	142-340	.418	68-181	.376	104-118	.881	37-86	123	3.6	70-1	180	80	1	42	456/13.4
2011-12	33-33	1236/37.5	157-352	.446	60-169	.355	138-161	.857	19-90	109	3.3	57-0	212	96	2	28	512/15.5
2012-13	7-7	252/36.0	35-73	.479	18-44	.409	28-30	.933	6-10	16	2.3	12-1	38	16	0	9	116/16.6
TOTAL	108-105	3923/36.3	455-1075	.423	220-580	.379	366-422	.867	96-271	367	3.4	215-2	583	259	3	119	1496/13.9



# 12 Jordan Giusti

Guard • 6-2 • 185 • Freshman  
 San Ramon, Calif. /  
 San Ramon Valley

**As a redshirt freshman (2012-13):** Scored seven points to go with an assist and three rebounds in a 15-minute debut against Sonoma State ... Scored three points against Pacific at the DIRECTV Classic ... Played a career-high 18 minutes against Cal Poly, scoring two points.

	<u>SMC CAREER HIGHS</u>	<u>SEASON HIGHS</u>
Points:	7 vs. Sonoma State (11.10.12)	7 vs. Sonoma State (11.10.12)
Rebounds:	3 vs. Sonoma State (11.10.12)	3 vs. Sonoma State (11.10.12)
FG Made:	3 vs. Sonoma State (11.10.12)	3 vs. Sonoma State (11.10.12)
FG Att:	5 vs. Sonoma State (11.10.12)	5 vs. Sonoma State (11.10.12)
3pt. FG Made:	None	None
3pt. FG Att:	1 2x vs. Eastern Washington (11.18.12)	1 2x vs. Eastern Washington (11.18.12)
FT Made:	1 vs. Sonoma State (11.10.12)	1 2x vs. Pacific (11.23.12)
FT Att:	2 vs. Sonoma State (11.10.12)	2 3x vs. Cal Poly (12.1.12)
Assists:	1 vs. Sonoma State (11.10.12)	1 2x vs. Pacific (11.23.12)
Steals:	1 vs. Sonoma State (11.10.12)	2 vs. Pacific (11.23.12)
Blocks:	None	1 vs. Pacific (11.23.12)
Min. Played:	18 vs. Cal Poly (12.1.12)	18 vs. Cal Poly (12.1.12)

Date	Opponent	G-GS	Min	FG-A	3FG-A	FT-A	O-D	Reb	PF	Ast	TO	Blk	Stl	Pts
N10	Sonoma State	1-0	15	3-5	0-1	1-2	0-3	3	2	1	0	0	1	7
N15	at Utah State	1-0	1	0-0	0-0	0-0	0-0	0	0	0	0	0	0	0
N18	Eastern Washington	1-0	8	0-1	0-1	0-0	0-2	2	2	0	1	0	0	0
N22	vs. Drexel*	1-0	1	0-0	0-0	0-0	0-0	0	0	0	0	0	0	0
N23	vs. Pacific*	1-0	8	1-3	0-0	1-2	0-0	0	3	1	1	1	2	3
N25	vs. Georgia Tech*	1-0	1	0-0	0-0	0-0	0-0	0	0	0	0	0	0	0
D1	Cal Poly	1-0	18	1-4	0-0	0-2	1-0	1	2	0	0	0	0	2
D5	at Drake													
D11	Jackson State													
J19	Pacific													
D22	at Northern Iowa													
D27	Rhode Island													
D30	Yale													
D31	Harvard													
J5	Loyola Marymount													
J10	at Gonzaga													
J12	San Francisco													
J16	at BYU													
J19	at Portland													
J24	San Diego													
J26	Pepperdine													
J30	at San Francisco													
F2	Portland													
F7	at Santa Clara													
F9	at San Diego													
F14	Gonzaga													
F16	at Loyola Marymount													
F21	BYU													
F23	ESPN BracketBusters													
F27	at Pepperdine													
M2	Santa Clara													

\* DIRECTV Classic (Anaheim Convention Center)

## Jordan Giusti's Career Statistics

Year	GP-GS	Min/Avg	Total		3-Point		FT-FTA	Rebounds			PF-FO	Ast	TO	Blk	Stl	Pts/Avg	
			FG-FGA	Pct	FG-FGA	Pct		Pct	Off-Def	Tot							Avg
2011-12	Redshirt	Season															
2012-13	7-0	51/7.3	5-13	.385	0-2	.000	2-6	.333	1-5	6	0.9	8-0	2	2	1	3	12/1.7
TOTAL	7-0	51/7.3	5-13	.385	0-2	.000	2-6	.333	1-5	6	0.9	8-0	2	2	1	3	12/1.7



# 11 Matthew Hodgson

C • 6-11 • 255 • Junior  
 Booval, Queensland, Australia /  
 Southern Utah / Ipswitch Grammar  
 School

**As a Junior (2012-13):** Transfer from Southern Utah who sat out the 2011-12 season due to NCAA transfer rules ... made debut against Sonoma State and scored five points with four rebounds ... Went 6 for 7 from the field to score 13 points against Cal Poly.

	<u>CAREER HIGHS</u>	<u>SEASON HIGHS</u>
Points:	13 vs. Cal Poly (12.1.12)	13 vs. Cal Poly (12.1.12)
Rebounds:	6 vs. Eastern Washington (11.18.12)	6 vs. Eastern Washington (11.18.12)
FG Made:	6 vs. Cal Poly (12.1.12)	6 vs. Cal Poly (12.1.12)
FG Att:	7 vs. Cal Poly (12.1.12)	7 vs. Cal Poly (12.1.12)
3pt. FG Made:	None	None
3pt. FG Att:	2 vs. Sonoma State (11.10.12)	2 vs. Sonoma State (11.10.12)
FT Made:	1 2x vs. Cal Poly (12.1.12)	1 2x vs. Cal Poly (12.1.12)
FT Att:	3 vs. Sonoma State (11.10.12)	3 vs. Sonoma State (11.10.12)
Assists:	1 2x vs. Eastern Washington (11.18.12)	1 2x vs. Eastern Washington (11.18.12)
Steals:	1 at Utah State (11.15.12)	1 at Utah State (11.15.12)
Blocks:	3 vs. Eastern Washington (11.18.12)	3 vs. Eastern Washington (11.18.12)
Min. Played:	17 2x vs. Eastern Washington (11.18.12)	17 2x vs. Eastern Washington (11.18.12)

Date	Opponent	G-GS	Min	FG-A	3FG-A	FT-A	O-D	Reb	PF	Ast	TO	Blk	Stl	Pts
N10	Sonoma State	1-0	17	2-6	0-2	1-3	2-2	4	4	1	2	1	0	5
N15	at Utah State	1-0	13	1-1	0-0	0-0	0-1	1	5	0	0	0	1	2
N18	Eastern Washington	1-0	17	1-2	0-0	0-0	0-6	6	3	1	1	3	0	2
N22	vs. Drexel*	1-0	14	2-4	0-1	2-2	1-3	4	2	0	0	0	0	6
N23	vs. Pacific*	1-0	16	0-2	0-0	0-0	1-0	1	1	0	0	0	0	0
N25	vs. Georgia Tech*	1-0	14	2-2	0-0	0-0	2-1	3	0	0	2	1	0	4
D1	Cal Poly	1-0	16	6-7	0-0	1-1	0-1	1	3	0	1	1	0	13
D5	at Drake													
D11	Jackson State													
J19	Pacific													
D22	at Northern Iowa													
D27	Rhode Island													
D30	Yale													
D31	Harvard													
J5	Loyola Marymount													
J10	at Gonzaga													
J12	San Francisco													
J16	at BYU													
J19	at Portland													
J24	San Diego													
J26	Pepperdine													
J30	at San Francisco													
F2	Portland													
F7	at Santa Clara													
F9	at San Diego													
F14	Gonzaga													
F16	at Loyola Marymount													
F21	BYU													
F23	ESPN BracketBusters													
F27	at Pepperdine													
M2	Santa Clara													

\* DIRECTV Classic (Anaheim Convention Center)

## Matthew Hodgson's Career Statistics

Year	GP-GS	Min/Avg	Total		3-Point		FT-FTA	Rebounds		PF-FO	Ast	TO	Blk	Stl	Pts/Avg		
			FG-FGA	Pct	FG-FGA	Pct		Pct	Off-Def							Tot	Avg
*2009-10	29-29	676/23.3	73-125	.584	0-0	.000	38-65	.585	38-102	140	4.8	101-7	8	55	64	10	184/6.3
*2010-11	29-10	380/13.1	43-81	.531	0-0	.000	44-58	.759	43-58	101	3.5	69-3	8	45	35	8	130/4.5
2011-12	Did Not Participate																
2012-13	7-0	107/15.3	14-24	.583	0-3	.000	4-6	.667	6-14	20	2.9	18-1	2	6	6	1	32/4.6
TOTAL	7-0	107/15.3	14-24	.583	0-3	.000	4-6	.667	6-14	20	2.9	18-1	2	6	6	1	32/4.6

\*Statistics at Southern Utah. Do not count toward career totals.



# 14 Stephen Holt

Guard • 6-4 • 195 • Junior  
Portland, Ore. / Jesuit

- Preseason all-WCC selection by league coaches.
- Top two in the WCC in steals in each of his first two seasons (led as frosh in (2010)).

**As a junior (2012-13):** A preseason all-WCC selection by league coaches ... scored 12 points with six rebounds and four assists in just 22 minutes in the season opener against Sonoma State ... scored 16 points in win over Eastern Washington ... Grabbed season-high nine rebounds in a season-high 37 minutes of action against Georgia Tech ... Sat out Cal Poly game with a bruised knee.

### CAREER HIGHS

Points: 23 vs. San Diego (2.2.12)  
Rebounds: 10 vs. Jackson State (12.13.11)  
FG Made: 8 vs. BYU (12.29.11)  
FG Att: 13 2x at LMU (1.26.12)  
3pt. FG Made: 4 vs. BYU (12.29.11)  
3pt. FG Att: 9 vs. Pacific (11.23.12)  
FT Made: 8 2x at Utah State (11.15.12)  
FT Att: 10 2x vs. San Diego (2.2.12)  
Assists: 10 2x vs. San Francisco (1.9.12)  
Steals: 9 vs. Coll of Idaho (11.12.10)  
Blocks: 1 4x vs. Jackson St. (12.13.11)  
Min. Played: 38 3x at LMU (1.26.12)

### SEASON HIGHS

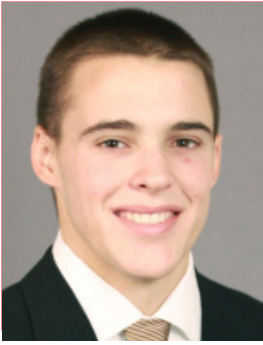
16 2x vs. Eastern Washington (11.18.12)  
9 vs. Georgia Tech (11.25.12)  
5 2x vs. Eastern Washington (11.18.12)  
12 vs. Pacific (11.23.12)  
3 vs. Eastern Washington (11.18.12)  
9 vs. Pacific (11.23.12)  
8 at Utah State (11.15.12)  
9 at Utah State (11.15.12)  
4 3x vs. Georgia Tech (11.25.12)  
2 vs. Georgia Tech (11.25.12)  
None  
37 vs. Georgia Tech (11.25.12)

Date	Opponent	G-GS	Min	FG-A	3FG-A	FT-A	O-D	Reb	PF	Ast	TO	Blk	Stl	Pts
N10	Sonoma State	1-1	22	5-11	2-4	0-2	3-3	6	1	4	1	0	1	12
N15	at Utah State	1-1	27	3-8	2-4	8-9	1-1	2	2	1	2	0	0	16
N18	Eastern Washington	1-1	28	5-7	3-3	3-3	0-3	3	1	3	1	0	1	16
N22	vs. Drexel*	1-1	36	2-8	0-2	2-2	2-6	8	1	0	5	0	1	6
N23	vs. Pacific*	1-1	32	4-12	2-9	2-2	0-4	4	3	4	1	0	0	12
N25	vs. Georgia Tech*	1-1	37	2-7	1-5	5-6	4-5	9	5	4	5	0	2	10
D1	Cal Poly	DNP - Injury												
D5	at Drake													
D11	Jackson State													
J19	Pacific													
D22	at Northern Iowa													
D27	Rhode Island													
D30	Yale													
D31	Harvard													
J5	Loyola Marymount													
J10	at Gonzaga													
J12	San Francisco													
J16	at BYU													
J19	at Portland													
J24	San Diego													
J26	Pepperdine													
J30	at San Francisco													
F2	Portland													
F7	at Santa Clara													
F9	at San Diego													
F14	Gonzaga													
F16	at Loyola Marymount													
F21	BYU													
F23	ESPN BracketBusters													
F27	at Pepperdine													
M2	Santa Clara													

\* DIRECTV Classic (Anaheim Convention Center)

## Stephen Holt's Career Statistics

Year	GP-GS	Min/Avg	Total		3-Point		FT-FTA		Rebounds		PF-FO	Ast	TO	Blk	Stl	Pts/Avg	
			FG-FGA	Pct	FG-FGA	Pct	Pct	Off-Def	Tot	Avg							
2010-11	34-7	777/22.9	64-149	.430	25-73	.342	58-70	.829	38-66	104	3.1	64-1	35	33	3	61	211/6.2
2011-12	28-27	906/32.4	88-177	.497	27-72	.375	79-103	.767	37-95	132	4.7	63-2	89	44	1	49	282/10.1
2012-13	6-6	182/30.3	21-53	.396	10-27	.370	20-24	.833	10-22	32	5.3	13-1	16	15	0	5	72/12.0
TOTAL	68-40	1865/27.4	173-379	.456	62-172	.360	157-197	.797	85-183	268	3.9	140-4	140	92	4	115	565/8.3



# 15 Beau Levesque

Forward • 6-6 • 220 • Junior  
Lafayette, Calif. / De La Salle

**As a junior (2012-13):** Scored nine points to go with five rebounds and a career-high three assists in the season opener against Sonoma State ... made a pair of 3-point field goals to go with six rebounds at Utah State ... Set career highs with 18 points, six field goals, four 3-pointers, two steals and 24 minutes played in loss to Pacific ... Scored eight points and grabbed six rebounds in win over Cal Poly.

	<u>CAREER HIGHS</u>	<u>SEASON HIGHS</u>
Points:	18 vs. Pacific (11.23.12)	18 vs. Pacific (11.23.12)
Rebounds:	6 3x vs. Cal Poly (12.1.12)	6 2x vs. Cal Poly (12.1.12)
FG Made:	6 vs. Pacific (11.23.12)	6 vs. Pacific (11.23.12)
FG Att:	11 vs. Pacific (11.23.12)	11 vs. Pacific (11.23.12)
3pt. FG Made:	4 vs. Pacific (11.23.12)	4 vs. Pacific (11.23.12)
3pt. FG Att:	8 vs. Pacific (11.23.12)	8 vs. Pacific (11.23.12)
FT Made:	4 2x vs. Cal Poly (12.1.12)	4 2x vs. Cal Poly (12.1.12)
FT Att:	5 vs. Jackson State (12.13.11)	5 vs. Georgia Tech (11.25.12)
Assists:	3 2x vs. Cal Poly (12.1.12)	3 2x vs. Cal Poly (12.1.12)
Steals:	2 3x vs. Pacific (11.23.11)	2 vs. Pacific (11.23.12)
Blocks:	1 3x at Utah State (11.15.12)	1 at Utah State (11.15.12)
Min. Played:	29 vs. SFSU (11.27.11)	24 vs. Pacific (11.23.12)

Date	Opponent	G-GS	Min	FG-A	3FG-A	FT-A	O-D	Reb	PF	Ast	TO	Blk	Stl	Pts
N10	Sonoma State	1-1	21	3-4	1-1	2-3	1-4	5	0	3	1	0	1	9
N15	at Utah State	1-1	22	2-3	2-3	0-0	0-6	6	4	0	1	1	0	6
N18	Eastern Washington	1-1	16	2-8	0-2	1-1	2-1	3	2	2	2	0	1	5
N22	vs. Drexel*	1-1	22	1-4	0-0	0-0	0-2	2	4	0	0	0	0	4
N23	vs. Pacific*	1-1	24	6-11	4-8	2-2	1-2	3	3	0	4	0	2	18
N25	vs. Georgia Tech*	1-0	20	2-7	1-5	4-5	1-4	5	4	1	0	0	0	9
D1	Cal Poly	1-0	20	2-6	0-1	4-4	2-4	6	3	3	1	0	0	8
D5	at Drake													
D11	Jackson State													
J19	Pacific													
D22	at Northern Iowa													
D27	Rhode Island													
D30	Yale													
D31	Harvard													
J5	Loyola Marymount													
J10	at Gonzaga													
J12	San Francisco													
J16	at BYU													
J19	at Portland													
J24	San Diego													
J26	Pepperdine													
J30	at San Francisco													
F2	Portland													
F7	at Santa Clara													
F9	at San Diego													
F14	Gonzaga													
F16	at Loyola Marymount													
F21	BYU													
F23	ESPN BracketBusters													
F27	at Pepperdine													
M2	Santa Clara													

\* DIRECTV Classic (Anaheim Convention Center)

## Beau Levesque Career Statistics

Year	GP-GS	Min/Avg	Total		3-Point		FT-FTA	Rebounds			PF-FO	Ast	TO	Blk	Stl	Pts/Avg	
			FG-FGA	Pct	FG-FGA	Pct		Pct	Off-Def	Tot							Avg
2009-10	18-0	101/5.6	9-19	.474	2-5	.400	15-18	.833	13-11	24	1.3	9-0	2	4	1	2	35/1.9
2011-12	33-5	324/9.8	33-75	.440	13-46	.283	22-29	.759	12-43	55	1.7	29-1	6	16	1	7	101/3.1
2012-13	7-5	145/20.7	18-43	.419	8-20	.400	13-15	.867	7-23	30	4.3	20-0	9	9	1	4	57/8.1
TOTAL	58-10	570/9.8	60-137	.438	23-71	.324	50-62	.806	32-77	109	1.9	58-1	17	29	3	13	193/3.3



# 1 Jorden Page

Guard • 6-1 • 180 • Junior  
 Maroochydore, Queensland, Australia  
 / Australian Institute of Sport

**As a junior (2012-13):** One of four returning starters from last year's championship team ... opened the season with three points and two assists against Sonoma State ... Made five field goals and finished with 12 points against Eastern Washington ... Made first start of the season against Cal Poly and scored 12 points to go with four assists.

	<b>CAREER HIGHS</b>	<b>SEASON HIGHS</b>
Points:	19 at Santa Clara (1.21.12)	12 2x vs. Cal Poly (12.1.12)
Rebounds:	7 vs. Chicago State (11.23.10)	5 vs. Eastern Washington (11.18.12)
FG Made:	6 vs. Chicago State (11.23.10)	5 vs. Eastern Washington (11.18.12)
FG Att:	11 3x vs. Gonzaga (3.5.12)	8 vs. Eastern Washington (11.18.12)
3pt. FG Made:	5 vs. NC A&T (12.15.11)	3 vs. Cal Poly (12.1.12)
3pt. FG Att:	11 vs. NC A&T (12.15.11)	5 vs. Cal Poly (12.1.12)
FT Made:	7 at Santa Clara (1.21.12)	3 vs. Cal Poly (12.1.12)
FT Att:	9 at Santa Clara (1.21.12)	4 vs. Cal Poly (12.1.12)
Assists:	6 vs. San Francisco (1.9.12)	4 2x vs. Cal Poly (12.1.12)
Steals:	3 2x vs. Portland (1.14.12)	2 2x vs. Cal Poly (12.1.12)
Blocks:	2 vs. LMU (2.15.12)	1 vs. Cal Poly (12.1.12)
Min. Played:	45 vs. Gonzaga (3.5.12)	30 vs. Cal Poly (12.1.12)

Date	Opponent	G-GS	Min	FG-A	3FG-A	FT-A	O-D	Reb	PF	Ast	TO	Blk	Stl	Pts
N10	Sonoma State	1-0	19	1-4	1-4	0-0	1-1	2	2	2	2	0	2	3
N15	at Utah State	1-0	14	0-0	0-0	0-0	0-1	1	1	4	0	0	0	0
N18	Eastern Washington	1-0	17	5-8	0-2	2-2	0-5	5	0	1	1	0	1	12
N22	vs. Drexel*	1-0	15	0-1	0-0	0-0	0-4	4	0	3	2	0	0	0
N23	vs. Pacific*	1-0	13	1-2	0-0	0-0	0-1	1	1	0	0	0	0	2
N25	vs. Georgia Tech*	1-0	11	2-4	2-3	0-0	0-1	1	0	0	3	0	0	6
D1	Cal Poly	1-1	30	3-5	3-5	3-4	0-0	0	1	4	2	1	2	12
D5	at Drake													
D11	Jackson State													
J19	Pacific													
D22	at Northern Iowa													
D27	Rhode Island													
D30	Yale													
D31	Harvard													
J5	Loyola Marymount													
J10	at Gonzaga													
J12	San Francisco													
J16	at BYU													
J19	at Portland													
J24	San Diego													
J26	Pepperdine													
J30	at San Francisco													
F2	Portland													
F7	at Santa Clara													
F9	at San Diego													
F14	Gonzaga													
F16	at Loyola Marymount													
F21	BYU													
F23	ESPN BracketBusters													
F27	at Pepperdine													
M2	Santa Clara													

\* DIRECTV Classic (Anaheim Convention Center)

## Jorden Page Career Statistics

Year	GP-GS	Min/Avg	Total		3-Point		FT-FTA	Pct	Off-Def	Rebounds		PF	Ast	TO	Blk	Stl	Pts/Avg
			FG-FGA	Pct	FG-FGA	Pct				Tot	Avg						
2009-10	32-1	514/16.1	40-100	.400	19-57	.333	19-23	.826	3-30	33	1.0	29-0	32	21	3	9	118/3.7
2010-11	7-0	83/11.9	16-25	.640	9-16	.563	4-5	.800	2-11	13	1.9	9-0	10	6	1	5	45/6.4
2011-12	33-20	858/26.0	77-217	.355	47-144	.326	62-72	.861	6-34	40	1.2	44-0	75	54	4	24	263/8.0
2012-13	7-1	119/17.0	12-24	.500	6-14	.429	5-6	.833	1-13	14	2.0	5-0	14	10	1	5	35/5.0
<b>TOTAL</b>	<b>79-22</b>	<b>1574/19.9</b>	<b>145-366</b>	<b>.396</b>	<b>81-231</b>	<b>.351</b>	<b>90-106</b>	<b>.849</b>	<b>12-88</b>	<b>100</b>	<b>1.3</b>	<b>87-0</b>	<b>131</b>	<b>91</b>	<b>9</b>	<b>43</b>	<b>461/5.8</b>





# 5 Kyle Rowley

Center • 7-0 • 280 • Senior  
Arima, Trinidad / Northwestern /  
Lake Forest (Ill.) Academy

**As a senior (2012-13):** One of five seniors on this year's team ... opened with an 8 points, four rebound effort against Sonoma State ... first player off bench against Georgia Tech, scoring two points in eight minutes.

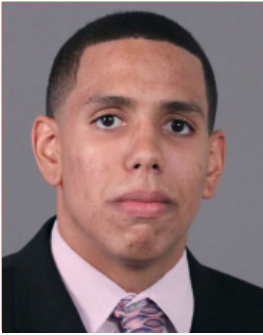
	<b>CAREER HIGHS</b>	<b>SEASON HIGHS</b>
Points:	8 vs. Sonoma State (11.10.12)	8 vs. Sonoma State (11.10.12)
Rebounds:	6 vs. Gonzaga (3.5.12)	4 2x vs. Utah State (11.15.12)
FG Made:	4 vs. Sonoma State (11.10.12)	4 vs. Sonoma State (11.10.12)
FG Att:	6 vs. Sonoma State (11.10.12)	6 vs. Sonoma State (11.10.12)
3pt. FG Made:	None	None
3pt. FG Att:	None	None
FT Made:	1 2x at Gonzaga (1.9.12)	2 vs. Cal Poly (12.1.12)
FT Att:	2 2x at Gonzaga (1.9.12)	3 at Utah State (11.15.12)
Assists:	2 vs. Kennesaw St. (12.19.11)	None
Steals:	2 2x vs. SFSU (11.27.11)	None
Blocks:	2 at Cal Poly (12.3.11)	1 3x vs. Cal Poly (12.1.12)
Min. Played:	15 vs. SFSU (11.27.11)	10 vs. Sonoma State (11.10.12)

Date	Opponent	G-GS	Min	FG-A	3FG-A	FT-A	O-D	Reb	PF	Ast	TO	Blk	Stl	Pts
N10	Sonoma State	1-0	10	4-6	0-0	0-0	1-3	4	0	0	1	0	0	8
N15	at Utah State	1-0	4	1-1	0-0	0-3	2-2	4	1	0	0	0	0	2
N18	Eastern Washington	1-0	9	2-3	0-0	0-1	1-0	1	2	0	2	0	0	4
N22	vs. Drexel*	1-0	0	0-0	0-0	0-0	0-0	0	0	0	0	1	0	1
N23	vs. Pacific*	DNP												
N25	vs. Georgia Tech*	1-0	8	1-2	0-0	0-0	0-1	1	1	0	1	1	0	2
D1	Cal Poly	1-0	2	0-0	0-0	2-2	1-2	3	0	0	0	1	0	2
D5	at Drake													
D11	Jackson State													
J19	Pacific													
D22	at Northern Iowa													
D27	Rhode Island													
D30	Yale													
D31	Harvard													
J5	Loyola Marymount													
J10	at Gonzaga													
J12	San Francisco													
J16	at BYU													
J19	at Portland													
J24	San Diego													
J26	Pepperdine													
J30	at San Francisco													
F2	Portland													
F7	at Santa Clara													
F9	at San Diego													
F14	Gonzaga													
F16	at Loyola Marymount													
F21	BYU													
F23	ESPN BracketBusters													
F27	at Pepperdine													
M2	Santa Clara													

\* DIRECTV Classic (Anaheim Convention Center)

## Kyle Rowley Career Statistics

Year	GP-GS	Min/Avg	Total		3-Point		FT-FTA	Pct	Off-Def	Tot	Avg	PF-FO	Ast	TO	Blk	Stl	Pts/Avg
			FG-FGA	Pct	FG-FGA	Pct											
2008-09*	At Northwestern																
2009-10*	At Northwestern																
2010-11	Redshirt/Transfer Season																
2011-12	24-6	106/4.4	11-26	.423	0-0	.000	3-8	.375	15-15	30	1.3	23-1	2	11	4	5	25/1.0
2012-13	6-0	34/5.7	8-12	.667	0-0	.000	2-6	.333	5-8	13	2.2	4-0	0	4	3	0	18/3.0
TOTAL	30-6	140/4.7	19-38	.500	0-0	.000	5-14	.357	20-23	43	1.4	27-1	2	15	7	5	43/1.4



# 00 Brad Waldow

F • 6-9 • 260 • Sophomore  
Shingle Springs, Calif. /  
Ponderosa

**As a sophomore (2012-13):** One of four returning starters from last year's championship team ... opened the season with 11 points and seven rebounds against Sonoma State ... Scored 16 points and went 7-for-12 from the field against Eastern Washington ... Backed that effort up with 15 points and seven rebounds in win over Drexel ... Went 8 for 9 from the field and scored 17 points in win over Cal Poly.

	CAREER HIGHS	SEASON HIGHS
Points:	19 at BYU (1.28.12)	17 vs. Cal Poly (12.1.12)
Rebounds:	16 at Santa Clara (1.21.12)	7 3x vs. Georgia Tech (11.25.12)
FG Made:	8 2x at BYU (1.28.12)	8 vs. Cal Poly (12.1.12)
FG Att:	13 vs. Missouri State (12.23.11)	12 vs. Eastern Washington (11.18.12)
3pt. FG Made:	None	None
3pt. FG Att:	None	None
FT Made:	6 at Santa Clara (1.21.12)	3 2x vs. Drexel (11.22.12)
FT Att:	12 at Santa Clara (1.21.12)	4 2x vs. Drexel (11.22.12)
Assists:	3 at Santa Clara (1.21.12)	1 4x vs. Cal Poly (12.1.12)
Steals:	1 14x vs. Sonoma State (11.10.12)	1 vs. Sonoma State (11.10.12)
Blocks:	3 3X vs. Santa Clara (2.11.12)	2 2x vs. Eastern Washington (11.18.12)
Min. Played:	36 vs. San Francisco (2.25.12)	26 2x vs. Drexel (11.22.12)

Date	Opponent	G-GS	Min	FG-A	3FG-A	FT-A	O-D	Reb	PF	Ast	TO	Blk	Stl	Pts
N10	Sonoma State	1-1	25	4-6	0-0	3-4	2-5	7	1	1	2	2	1	11
N15	at Utah State	1-1	26	2-4	0-0	0-2	1-2	3	4	1	3	0	0	4
N18	Eastern Washington	1-1	24	7-12	0-0	2-2	4-2	6	2	1	0	2	0	16
N22	vs. Drexel*	1-1	26	6-7	0-0	3-4	1-6	7	2	0	0	0	0	15
N23	vs. Pacific*	1-1	21	3-7	0-0	2-2	3-2	5	2	0	2	0	0	8
N25	vs. Georgia Tech*	1-1	18	2-7	0-0	1-2	1-6	7	1	0	0	0	0	5
D1	Cal Poly	1-1	22	8-9	0-0	1-1	1-4	5	2	1	1	1	0	17
D5	at Drake													
D11	Jackson State													
J19	Pacific													
D22	at Northern Iowa													
D27	Rhode Island													
D30	Yale													
D31	Harvard													
J5	Loyola Marymount													
J10	at Gonzaga													
J12	San Francisco													
J16	at BYU													
J19	at Portland													
J24	San Diego													
J26	Pepperdine													
J30	at San Francisco													
F2	Portland													
F7	at Santa Clara													
F9	at San Diego													
F14	Gonzaga													
F16	at Loyola Marymount													
F21	BYU													
F23	ESPN BracketBusters													
F27	at Pepperdine													
M2	Santa Clara													

\* DIRECTV Classic (Anaheim Convention Center)

Brad Waldow Career Statistics																		
Year	GP-GS	Min/Avg	Total			3-Point		FT-FTA	Pct	Rebounds			PF-FO	Ast	TO	Blk	Stl	Pts/Avg
			FG-FGA	Pct	FG-FGA	Pct	Off-Def			Tot	Avg							
2011-12	33-24	612/18.5	108-162	.667	0-0	.000	50-99	.505	67-79	146	4.4	73-0	12	24	34	13	266/8.1	
2012-13	7-7	162/23.1	32-52	.615	0-0	.000	12-17	.706	13-27	40	5.7	14-0	4	8	5	1	76/10.9	
TOTAL	40-31	774/19.4	140-214	.654	0-0	.000	62-116	.534	80-106	186	4.7	87-0	16	32	39	14	342/8.6	





# 35 James Walker III

Guard • 6-3 • 185 • Junior  
 Long Beach, Calif. / Citrus College  
 Utah State / Los Alamitos HS

**As a junior (2012-13):** Scored 14 points to go with three steals and three rebounds off the bench at Utah State ... went 5-9 from the field in his return to Logan ... scored six points and grabbed three rebounds in 17 minutes off the bench in his SMC debut against Sonoma State ... Made three 3-pointers and scored 12 points against Eastern Washington ... Played 32 minutes in his first start of the year against Georgia Tech ... Made second start against Cal Poly and grabbed five rebounds to go with seven points.

	<b>CAREER HIGHS</b>	<b>SEASON HIGHS</b>
Points:	14 at Utah State (11.15.12)	14 at Utah State (11.15.12)
Rebounds:	5 vs. Cal Poly (12.1.12)	5 vs. Cal Poly (12.1.12)
FG Made:	5 2x vs. Drexel (11.22.12)	5 2x vs. Drexel (11.22.12)
FG Att:	9 at Utah State (11.15.12)	9 at Utah State (11.15.12)
3pt. FG Made:	2 at Utah State (11.15.12)	3 vs. Eastern Washington (11.18.12)
3pt. FG Att:	6 at Utah State (11.15.12)	6 at Utah State (11.15.12)
FT Made:	2 2x vs. Drexel (11.22.12)	2 2x vs. Drexel (11.22.12)
FT Att:	3 at Utah State (11.15.12)	3 at Utah State (11.15.12)
Assists:	3 vs. Eastern Washington (11.18.12)	3 vs. Eastern Washington (11.18.12)
Steals:	3 at Utah State (11.15.12)	3 at Utah State (11.15.12)
Blocks:	1 vs. Cal Poly (12.1.12)	1 vs. Cal Poly (12.1.12)
Min. Played:	32 vs. Georgia Tech (11.25.12)	32 vs. Georgia Tech (11.25.12)

Date	Opponent	G-GS	Min	FG-A	3FG-A	FT-A	O-D	Reb	PF	Ast	TO	Blk	Stl	Pts
N10	Sonoma State	1-0	17	2-5	1-4	1-2	1-2	3	3	0	0	0	2	6
N15	at Utah State	1-0	28	5-9	2-6	2-3	2-1	3	0	1	0	0	3	14
N18	Eastern Washington	1-0	24	4-7	3-5	1-2	1-0	1	1	3	1	0	1	12
N22	vs. Drexel*	1-0	28	5-8	1-2	2-2	1-2	3	4	0	1	0	1	13
N23	vs. Pacific*	1-0	28	2-4	1-3	0-0	0-3	3	3	2	2	0	0	5
N25	vs. Georgia Tech*	1-1	32	4-5	1-1	0-0	0-3	3	2	0	2	0	0	9
D1	Cal Poly	1-1	31	3-4	1-1	0-1	3-2	5	2	3	1	1	0	7
D5	at Drake													
D11	Jackson State													
J19	Pacific													
D22	at Northern Iowa													
D27	Rhode Island													
D30	Yale													
D31	Harvard													
J5	Loyola Marymount													
J10	at Gonzaga													
J12	San Francisco													
J16	at BYU													
J19	at Portland													
J24	San Diego													
J26	Pepperdine													
J30	at San Francisco													
F2	Portland													
F7	at Santa Clara													
F9	at San Diego													
F14	Gonzaga													
F16	at Loyola Marymount													
F21	BYU													
F23	ESPN BracketBusters													
F27	at Pepperdine													
M2	Santa Clara													

\* DIRECTV Classic (Anaheim Convention Center)

## James Walker III Career Statistics

Year	GP-GS	Min/Avg	Total		3-Point		FT-FTA	Rebounds			PF-FO	Ast	TO	Blk	Stl	Pts/Avg	
			FG-FGA	Pct	FG-FGA	Pct		Pct	Off-Def	Tot							Avg
2010-11	At Utah State																
2011-12	At Citrus College																
2012-13	7-2	188/26.9	25-42	.595	10-22	.455	6-10	.600	7-15	22	3.1	15-0	9	7	1	7	66/9.4
TOTAL	7-2	188/26.9	25-42	.595	10-22	.455	6-10	.600	7-15	22	3.1	15-0	9	7	1	7	66/9.4



# 25 Tim Williams

Forward • 6-9 • 235 • Senior  
Antioch, Calif. / Antioch

**As a senior (2012-13):** Has not seen game action after undergoing offseason knee surgery in the spring ... undergoing rehab and hopes to return by the start of conference play.

	<u>CAREER HIGHS</u>	<u>SEASON HIGHS</u>
Points:	23 vs. Point Loma (11.18.10)	None
Rebounds:	14 vs. Point Loma (11.18.10)	None
FG Made:	8 vs. Point Loma (11.18.10)	None
FG Att:	9 vs. Point Loma (11.18.10)	None
3pt. FG Made:	None	None
3pt. FG Att:	1 2x at Pepperdine (12.31.11)	None
FT Made:	7 vs. Point Loma (11.18.10)	None
FT Att:	8 2x vs. Texas Tech (11.26.10)	None
Assists:	1 4x vs. Texas Tech (11.26.10)	None
Steals:	2 vs. Long Beach St (12.18.10)	None
Blocks:	4 2x vs. Texas Tech (11.26.10)	None
Min. Played:	29 vs. Texas Tech (11.26.10)	None

Date	Opponent	G-GS	Min	FG-A	3FG-A	FT-A	O-D	Reb	PF	Ast	TO	Blk	Stl	Pts
N10	Sonoma State													
N15	at Utah State													
N18	Eastern Washington													
N22	vs. Drexel*													
N23	vs. Pacific*													
N25	vs. Georgia Tech*													
D1	Cal Poly													
D5	at Drake													
D11	Jackson State													
J19	Pacific													
D22	at Northern Iowa													
D27	Rhode Island													
D30	Yale													
D31	Harvard													
J5	Loyola Marymount													
J10	at Gonzaga													
J12	San Francisco													
J16	at BYU													
J19	at Portland													
J24	San Diego													
J26	Pepperdine													
J30	at San Francisco													
F2	Portland													
F7	at Santa Clara													
F9	at San Diego													
F14	Gonzaga													
F16	at Loyola Marymount													
F21	BYU													
F23	ESPN BracketBusters													
F27	at Pepperdine													
M2	Santa Clara													

\* DIRECTV Classic (Anaheim Convention Center)

## Tim Williams Career Statistics

Year	GP-GS	Min/Avg	Total		3-Point		FT-FTA	Pct	Rebounds			PF-FO	Ast	TO	Blk	Stl	Pts/Avg
			FG-FGA	Pct	FG-FGA	Pct			Off-Def	Tot	Avg						
2009-10	23-0	130/5.7	22-32	.688	0-3	.000	15-22	.682	11-30	41	1.8	27-1	3	9	12	2	59/2.6
2010-11	34-26	345/10.1	60-109	.550	0-1	.000	38-52	.731	34-67	101	3.0	49-0	12	23	18	8	158/4.6
2011-12	15-0	40/2.7	5-9	.556	1-3	.333	7-10	.700	2-10	12	0.8	6-0	0	2	1	0	18/1.2
<b>TOTAL</b>	<b>72-26</b>	<b>515/7.2</b>	<b>87-150</b>	<b>.580</b>	<b>1-7</b>	<b>.143</b>	<b>60-84</b>	<b>.714</b>	<b>47-107</b>	<b>154</b>	<b>2.1</b>	<b>82-1</b>	<b>15</b>	<b>34</b>	<b>31</b>	<b>10</b>	<b>235/3.3</b>





# 3 Mitchell Young

Forward • 6-9 • 235 • Senior  
 Logan, New South Wales, Australia /  
 Australian Institute of Sport

**As a senior (2012-13):** Opened the season with an 11-point, 7-rebound effort as a starter against Sonoma State ... connected on his second career 3-point field goal against the Seawolves ... went 4-for-6 from the free throw line against Georgia Tech ... Scored 11 points and went 4-for-5 from the line in win over Cal Poly.

	<b>CAREER HIGHS</b>	<b>SEASON HIGHS</b>
Points:	28 vs. Long Beach St (12.18.10)	11 2x vs. Cal Poly (12.1.12)
Rebounds:	11 vs. Utah State (2.19.11)	7 vs. Sonoma State (11.10.12)
FG Made:	13 vs. Long Beach St (12.18.10)	4 vs. Sonoma State (11.10.12)
FG Att:	18 vs. Long Beach St (12.18.10)	6 2x vs. Eastern Washington (11.18.12)
3pt. FG Made:	1 3x vs. Cal Poly (12.1.12)	1 2x vs. Cal Poly (12.1.12)
3pt. FG Att:	2 at Oregon (12.12.09)	1 2x vs. Cal Poly (12.1.12)
FT Made:	5 3x vs. Fresno Pacific (11.11.11)	4 2x vs. Cal Poly (12.1.12)
FT Att:	7 2x vs. Hartford (12.31.10)	6 vs. Georgia Tech (11.25.12)
Assists:	3 2x vs. Point Loma (11.18.10)	2 4x vs. Cal Poly (12.1.12)
Steals:	3 2x vs. Georgia Tech (11.25.12)	3 vs. Georgia Tech (11.25.12)
Blocks:	5 at Santa Clara (1.10.10)	1 vs. Cal Poly (12.1.12)
Min. Played:	31 at San Diego (2.16.11)	25 at Utah State (11.15.12)

Date	Opponent	G-GS	Min	FG-A	3FG-A	FT-A	O-D	Reb	PF	Ast	TO	Blk	Stl	Pts
N10	Sonoma State	1-1	22	4-6	1-1	2-3	2-5	7	2	2	2	0	1	11
N15	at Utah State	1-1	25	1-5	0-0	0-0	0-5	5	4	1	2	0	0	2
N18	Eastern Washington	1-1	20	3-6	0-0	2-2	2-3	5	2	2	0	0	1	5
N22	vs. Drexel*	1-1	19	1-2	0-0	0-0	0-0	0	2	0	2	0	0	2
N23	vs. Pacific*	1-1	19	1-4	0-0	0-0	2-2	4	2	2	2	0	0	2
N25	vs. Georgia Tech*	1-1	20	1-4	0-0	4-6	1-3	4	2	0	3	0	3	6
D1	Cal Poly	1-1	20	3-4	1-1	4-5	0-3	3	1	2	0	1	0	11
D5	at Drake													
D11	Jackson State													
J19	Pacific													
D22	at Northern Iowa													
D27	Rhode Island													
D30	Yale													
D31	Harvard													
J5	Loyola Marymount													
J10	at Gonzaga													
J12	San Francisco													
J16	at BYU													
J19	at Portland													
J24	San Diego													
J26	Pepperdine													
J30	at San Francisco													
F2	Portland													
F7	at Santa Clara													
F9	at San Diego													
F14	Gonzaga													
F16	at Loyola Marymount													
F21	BYU													
F23	ESPN BracketBusters													
F27	at Pepperdine													
M2	Santa Clara													

\* DIRECTV Classic (Anaheim Convention Center)

## Mitchell Young Career Statistics

Year	GP-GS	Min/Avg	Total			3-Point			Rebounds			PF	Ast	TO	Blk	Stl	Pts/Avg
			FG-FGA	Pct	Pct	FG-FGA	Pct	Pct	Tot	Avg	PF-FO						
2009-10	34-0	459/13.5	52-102	.510	1-7	.143	29-49	.592	35-60	95	2.8	53-2	18	28	22	7	134/3.9
2010-11	34-0	720/21.2	145-244	.594	0-1	.000	58-101	.574	63-112	175	5.1	91-5	18	40	21	15	348/10.2
2011-12	28-3	359/12.8	51-84	.607	0-2	.000	26-40	.650	26-51	77	2.8	50-0	10	28	11	17	128/4.6
2012-13	7-7	145/20.7	14-31	.452	2-2	1.000	12-16	.750	7-21	28	4.0	15-0	9	11	1	5	42/6.0
<b>TOTAL</b>	<b>103-10</b>	<b>1683/16.3</b>	<b>262-461</b>	<b>.568</b>	<b>3-12</b>	<b>.250</b>	<b>125-206</b>	<b>.607</b>	<b>131-244</b>	<b>375</b>	<b>3.6</b>	<b>209-7</b>	<b>55</b>	<b>107</b>	<b>55</b>	<b>44</b>	<b>652/6.3</b>

**Game 1** Sonoma State 69  
Saint Mary's 95  
Date: 11.10.12 - Moraga, Calif.

VISITORS: Sonoma State

#	Player Name	TOT-FG		3-PT		REBOUNDS		FT-FTA	OF	DE	PF	TP	A	TO	BLK	S	MIN
		FG	FGA	FG	FGA	REB	DEF										
13	LACKEY, Steve.....	f	3-7	0-0	0-0	0	3	2	6	3	2	0	0	25			
24	SCOTT, Patrick.....	f	4-8	2-4	2-2	1	1	2	1	2	1	3	3	30			
32	STANLEY, Ryan.....	f	4-6	2-3	0-0	1	1	2	10	1	3	0	0	19			
20	OLSEN, Will.....	g	4-8	3-5	4-6	0	3	4	15	2	1	1	3	30			
21	BRADFORD, Emanuel..	g	2-5	0-0	2-3	0	0	0	4	6	0	3	0	15			
02	BOLTON, Andrew.....	g	1-3	0-0	0-0	1	8	9	1	2	0	1	0	19			
03	WALTER, Jason.....	g	4-12	1-2	2-2	1	4	5	0	11	5	1	0	28			
05	MATTSON, Andre.....	g	1-1	1-1	0-0	0	0	0	0	3	0	0	0	9			
10	GLANZ, Brandon.....	g	1-4	0-0	1-3	0	0	0	0	3	3	0	1	10			
15	AVERY, Michael.....	g	0-1	0-1	1-2	0	1	1	1	1	1	2	1	15			
	TEAM.....					1	2	3									
	Totals.....		24-55	9-16	12-18	5	22	27	20	69	13	16	3	7	200		

TOTAL FG% 1st Half: 8-27 29.6% 2nd Half: 16-28 57.1% Game: 43.6% DEADB  
3-Pt. FG% 1st Half: 3-8 37.5% 2nd Half: 6-8 75.0% Game: 56.3% REBS  
F Throw % 1st Half: 5-7 71.4% 2nd Half: 7-11 63.6% Game: 66.7% 4

HOME TEAM: Saint Mary's (CA) 1-0

#	Player Name	TOT-FG		3-PT		REBOUNDS		FT-FTA	OF	DE	PF	TP	A	TO	BLK	S	MIN
		FG	FGA	FG	FGA	REB	DEF										
00	WALDON, Brad.....	f	4-6	0-1	3-4	2	5	7	1	11	1	2	2	1	25		
03	YOUNG, Mitchell.....	f	4-6	1-1	2-3	2	5	7	2	11	2	2	0	1	22		
15	LEVESQUE, Beau.....	f	3-4	1-1	2-3	1	4	5	0	9	3	1	0	1	21		
04	DELLAVEDOVA, Matthew	g	7-10	4-6	2-2	2	0	2	20	5	3	0	5	25			
14	HOLT, Stephen.....	g	5-11	2-4	0-2	3	3	6	1	12	4	1	0	1	22		
01	PAGE, Jordan.....	g	1-4	1-4	0-0	1	1	2	2	3	2	2	0	10			
05	ROWLEY, Kyle.....	g	4-6	0-0	0-0	1	3	4	0	8	0	1	0	19			
10	SANCHEZ, Zach.....	g	0-1	0-1	0-0	0	0	0	0	0	0	0	0	0			
12	GIUSTI, Jordan.....	g	3-5	0-1	1-2	0	3	2	7	1	0	0	1	15			
24	PETRULLIS, Eividas.....	g	1-2	0-0	1	0	1	0	3	1	0	0	6	6			
33	HODGSON, Matt.....	g	2-6	0-2	1-3	2	2	4	5	1	2	1	0	17			
35	WALKER III, James.....	g	2-5	1-4	1-2	1	2	3	6	0	0	0	2	17			
	TEAM.....					1	1	1									
	Totals.....		36-67	11-26	12-21	17	28	45	17	95	20	14	3	14	200		

TOTAL FG% 1st Half: 20-35 57.1% 2nd Half: 16-32 50.0% Game: 53.7% DEADB  
3-Pt. FG% 1st Half: 6-13 46.2% 2nd Half: 5-13 38.5% Game: 42.3% REBS  
F Throw % 1st Half: 2-6 33.3% 2nd Half: 10-15 66.7% Game: 57.1% 1

Officials: Sam Haddad, Horace Shields, Courtney Holmes

Technical fouls: Sonoma State-None, Saint Mary's (CA)-None.

Attendance: 2397

Score by Periods

	1st	2nd	Total
Sonoma State.....	24	45	69
Saint Mary's (CA).....	48	47	95

Season opener

**Game 2** Saint Mary's 67  
Utah State 58  
Date: 11.15.12 - Logan Utah

VISITORS: Saint Mary's (CA) 2-0

#	Player Name	TOT-FG		3-PT		REBOUNDS		FT-FTA	OF	DE	PF	TP	A	TO	BLK	S	MIN
		FG	FGA	FG	FGA	REB	DEF										
00	WALDON, Brad.....	f	2-4	0-0	0-2	1	2	3	4	4	1	3	0	0	26		
03	YOUNG, Mitchell.....	f	1-5	0-0	0-0	0	5	4	2	1	2	0	0	25			
15	LEVESQUE, Beau.....	f	2-3	2-3	0-0	0	6	6	4	6	0	1	0	22			
04	DELLAVEDOVA, Matthew	g	6-15	3-9	6-6	0	2	2	21	3	3	0	0	40			
14	HOLT, Stephen.....	g	3-8	2-4	8-9	1	1	2	2	16	1	2	0	27			
01	PAGE, Jordan.....	g	0-0	0-0	0-0	0	1	1	0	4	0	0	0	14			
05	ROWLEY, Kyle.....	g	1-1	0-0	0-3	2	2	4	1	2	0	0	0	4			
12	GIUSTI, Jordan.....	g	0-0	0-0	0-0	0	0	0	0	0	0	0	0	1			
33	HODGSON, Matt.....	g	1-1	0-0	0-0	1	1	5	2	0	0	0	1	13			
35	WALKER III, James.....	g	2-6	2-3	2-2	0	0	3	0	14	1	0	0	28			
	TEAM.....					3	3										
	Totals.....		21-46	9-22	16-23	6	24	30	22	67	11	1	4	200			

TOTAL FG% 1st Half: 14-21 66.7% 2nd Half: 7-25 28.0% Game: 45.7% DEADB  
3-Pt. FG% 1st Half: 6-9 66.7% 2nd Half: 3-13 23.1% Game: 40.9% REBS  
F Throw % 1st Half: 0-2 0.0% 2nd Half: 16-21 76.2% Game: 69.6% 1

HOME TEAM: Utah State

#	Player Name	TOT-FG		3-PT		REBOUNDS		FT-FTA	OF	DE	PF	TP	A	TO	BLK	S	MIN
		FG	FGA	FG	FGA	REB	DEF										
12	Berger, Danny.....	f	4-9	2-6	0-0	2	1	3	1	3	1	0	0	23			
34	Reed, Kyleean.....	f	5-8	0-0	6-10	5	3	8	10	2	1	2	4	35			
05	Shaw, Jarred.....	c	5-13	0-0	7-8	6	9	15	3	17	1	1	0	34			
13	Medlin, Preston.....	g	3-11	1-3	0-1	1	3	4	1	7	3	1	0	1	36		
20	Roland, TeMale.....	g	1-9	0-3	2-3	1	1	2	2	4	2	2	0	22			
00	Clifford, Marcel.....	g	0-0	0-0	0-0	0	1	1	0	0	0	0	0	7			
01	Davis, Ben.....	g	0-1	0-1	0-0	0	0	0	0	3	0	0	0	5			
15	Jean, Marvin.....	g	1-4	0-2	0-1	2	2	1	2	0	1	0	0	9			
21	Buttnerfield, Spencer	g	1-4	0-1	0-0	1	4	5	2	1	0	1	0	23			
25	Stone, Jordan.....	g	0-3	0-0	0-1	5	1	6	0	0	1	0	0	6			
	TEAM.....					3	3										
	Totals.....		20-62	3-16	15-24	24	25	49	20	58	10	4	7	200			

TOTAL FG% 1st Half: 11-32 34.4% 2nd Half: 9-30 30.0% Game: 32.3% DEADB  
3-Pt. FG% 1st Half: 2-9 22.2% 2nd Half: 1-7 14.3% Game: 18.8% REBS  
F Throw % 1st Half: 7-11 63.6% 2nd Half: 8-13 61.5% Game: 62.5% 3

Officials: Mike Reed <R>, Mike Greenstein <D>, Tommy Nunez <D>

Technical fouls: Saint Mary's (CA)-None, Utah State-None.

Attendance: 9077

Score by Periods

	1st	2nd	Total
Saint Mary's (CA).....	33	34	67
Utah State.....	31	27	58

**Game 3** Eastern Washington 66  
Saint Mary's 85  
Date: 11.18.12 - Moraga, Calif.

VISITORS: Eastern Washington

#	Player Name	TOT-FG		3-PT		REBOUNDS		FT-FTA	OF	DE	PF	TP	A	TO	BLK	S	MIN
		FG	FGA	FG	FGA	REB	DEF										
12	SEIFERTH, Martin....	f	2-4	0-0	2-5	4	1	5	4	6	1	0	1	0	18		
24	CHIVERTON, Collin....	f	3-5	1-1	0-0	0	5	3	5	7	1	0	0	15			
55	JOIS, Venky.....	f	4-13	0-0	1-2	0	5	0	9	1	0	2	0	26			
05	CROSSLIE, Justin....	g	5-13	3-8	0-0	1	2	3	1	13	5	2	0	34			
22	FORBES, Jeffrey.....	g	3-4	1-2	0-0	2	4	1	2	4	1	7	1	0	32		
01	HARVEY, Tyler.....	g	1-1	0-0	0-0	0	1	1	0	2	0	0	0	4			
04	POMELL, Danny.....	g	2-8	0-4	2-2	0	4	4	1	6	0	1	0	10			
10	KELLY, Parker.....	g	0-1	0-1	0-0	0	1	0	1	0	1	0	0	9			
13	REUTER, Thomas.....	g	0-4	0-1	2-4	0	0	0	0	2	0	1	0	12			
20	DORSEY, Ivan.....	g	1-3	0-1	0-0	0	0	0	0	2	0	1	0	17			
21	JORG, Frederick.....	g	0-0	0-1	1	2	0	0	0	0	0	0	1	3			
23	MINOR, Kevin.....	g	1-3	0-1	4-5	0	2	2	0	6	0	0	0	18			
25	HICKER, Jordan.....	g	2-5	2-4	0-0	1	1	3	6	0	1	0	0	12			
	TEAM.....					3	3										
	Totals.....		24-64	7-23	11-19	12	22	34	19	66	10	8	4	7	200		

TOTAL FG% 1st Half: 14-35 40.0% 2nd Half: 10-29 34.5% Game: 37.5% DEADB  
3-Pt. FG% 1st Half: 4-11 36.4% 2nd Half: 3-12 25.0% Game: 30.4% REBS  
F Throw % 1st Half: 1-2 50.0% 2nd Half: 10-17 58.8% Game: 57.9% 5

HOME TEAM: Saint Mary's (CA) 3-0

#	Player Name	TOT-FG		3-PT		REBOUNDS		FT-FTA	OF	DE	PF	TP	A	TO	BLK	S	MIN
		FG	FGA	FG	FGA	REB	DEF										
00	WALDON, Brad.....	f	7-12	0-0	2-2	4	2	6	2	16	1	0	2	0	24		
03	YOUNG, Mitchell.....	f	3-6	0-0	2-2	2	3	5	2	8	2	0	1	20			
15	LEVESQUE, Beau.....	f	2-8	0-2	1-1	2	1	3	2	5	2	0	0	16			
04	DELLAVEDOVA, Matthew	g	3-8	2-5	1-1	1	5	6	9	8	0	0	0	32			
14	HOLT, Stephen.....																

**Game 7** Cal Poly Saint Mary's  
Date: 12.1.12 - Moraga, Calif.

68  
86

VISITORS: Cal Poly 2-3

#	Player Name	TOT-FG		3-PT		REBOUNDS		PF	TP	A	TO	BLK	S	MIN
		FG	FGA	FG	FGA	FT	FTA							
33	Eversley, Chris.....	f	8-15	1-4	8-9	4	2	6	1	25	1	2	0	37
34	Bennett, Brian.....	c	5-8	0-0	0-0	2	1	3	3	10	0	2	1	28
02	O'Brien, Chris.....	g	1-1	1-1	0-0	0	2	2	3	3	1	0	0	21
13	Royer, Dylan.....	g	0-2	0-1	0-0	1	0	1	4	0	1	1	0	24
24	Johnson, Jama.....	g	2-4	0-1	1-1	0	0	0	0	5	4	0	0	25
05	Morgan, Reese.....		3-4	3-3	0-2	0	0	0	5	9	1	1	0	18
22	U'u, Drake.....		3-6	2-2	0-0	0	2	3	8	4	0	0	1	18
35	Odister, Kyle.....		1-4	1-4	0-0	0	0	0	1	3	2	2	0	18
42	Silvestri, Anthony..		1-2	1-2	0-0	1	1	2	0	3	0	0	0	4
44	Gordon, Zach.....		1-2	0-0	0-0	0	1	1	2	2	0	0	0	7
	TEAM.....					2	2	4		2				
	Totals.....		25-48	9-18	9-12	10	11	21	22	68	14	10	1	3 200

TOTAL FG% 1st Half: 12-20 60.0% 2nd Half: 13-28 46.4% Game: 52.1% DEADB  
3-Pt. FG% 1st Half: 6-8 75.0% 2nd Half: 3-10 30.0% Game: 50.0% REBS  
F Throw % 1st Half: 5-5 100% 2nd Half: 4-7 57.1% Game: 75.0% 1

HOME TEAM: Saint Mary's (CA) 5-2

#	Player Name	TOT-FG		3-PT		REBOUNDS		PF	TP	A	TO	BLK	S	MIN
		FG	FGA	FG	FGA	FT	FTA							
00	WALDOW, Brad.....	f	8-9	0-0	1-1	1	4	5	2	17	1	1	1	22
03	YOUNG, Mitchel.....	f	3-4	1-1	4-5	0	3	3	1	11	2	0	1	20
01	PAGE, Jordan.....	g	3-5	3-5	3-4	0	0	0	1	12	4	2	1	30
04	DELANEY, Matthew	g	3-6	2-4	5-5	0	1	1	13	9	2	0	2	38
36	WALKER III, James..	g	3-4	1-1	0-1	3	2	5	2	7	3	1	1	31
05	ROWLEY, Kyle.....		0-0	0-0	2-2	1	2	3	0	2	0	0	1	2
10	SANCHEZ, Zach.....		0-0	0-0	0-0	0	0	0	0	0	0	0	0	1
12	GIUSTI, Jordan.....		1-4	0-0	0-2	1	0	1	2	2	0	0	0	18
15	LEVESQUE, Beau.....		2-6	0-1	4-4	2	4	6	3	8	3	1	0	20
24	PETROLIS, Elvidas..		0-0	0-0	1-2	0	0	0	1	1	0	0	0	2
33	HODGSON, Matt.....		6-7	0-0	1-1	0	1	1	3	13	0	1	1	16
	TEAM.....													
	Totals.....		29-45	7-12	21-27	8	17	25	16	86	22	8	6	4 200

TOTAL FG% 1st Half: 16-24 66.7% 2nd Half: 13-21 61.9% Game: 64.4% DEADB  
3-Pt. FG% 1st Half: 4-7 57.1% 2nd Half: 3-5 60.0% Game: 58.3% REBS  
F Throw % 1st Half: 6-9 66.7% 2nd Half: 15-18 83.3% Game: 77.8% 2

Officials: Rick Batsell, Horace Shields, Klaus Endrissat  
Technical fouls: Cal Poly-TEAM. Saint Mary's (CA)-None.

Attendance: 2418

Score by Periods	1st	2nd	Total
Cal Poly.....	35	33	68
Saint Mary's (CA).....	42	44	86

**Game 8** Saint Mary's Drake  
Date: 12.5.12 - Des Moines, Iowa

**Game 9** Jackson State Saint Mary's  
Date: 12.11.11 - Moraga, Calif.

**Game 10** Pacific Saint Mary's  
Date: 12.19.12 - Moraga, Calif.

**Game 11** Saint Mary's Northern Iowa  
Date: 12.22.12 - Cedar Falls, Iowa

**Game 12** Rhode Island Saint Mary's  
Date: 12.27.12 - Moraga, Calif.



**Saint Mary's (CA)**  
**Saint Mary's (CA) Combined Team Statistics (as of Dec 01, 2012)**  
**All games**

<b>RECORD:</b>	<b>OVERALL</b>	<b>HOME</b>	<b>AWAY</b>	<b>NEUTRAL</b>
ALL GAMES	5-2	3-0	1-0	1-2
CONFERENCE	0-0	0-0	0-0	0-0
NON-CONFERENCE	5-2	3-0	1-0	1-2

##	Player	gp-gs	min	avg	Total		3-Point		F-Throw		Rebounds				pf	dq	a	to	blk	stl	pts	avg		
					fg-fga	fg%	3fg-fga	3fg%	ft-fa	ft%	off	def	tot	avg										
04	DELLAVEDOVA, Matth	7-7	252	36.0	35-73	.479	18-44	.409	28-30	.933	6	10	16	2.3	12	1	38	16	0	9	116	16.6		
14	HOLT, Stephen	6-6	182	30.3	21-53	.396	10-27	.370	20-24	.833	10	22	32	5.3	13	1	16	15	0	5	72	12.0		
00	WALDOW, Brad	7-7	162	23.1	32-52	.615	0-0	.000	12-17	.706	13	27	40	5.7	14	0	4	8	5	1	76	10.9		
35	WALKER III, James	7-2	188	26.9	25-42	.595	10-22	.455	6-10	.600	7	15	22	3.1	15	0	9	7	1	7	66	9.4		
15	LEVESQUE, Beau	7-5	145	20.7	18-43	.419	8-20	.400	13-15	.867	7	23	30	4.3	20	0	9	9	1	4	57	8.1		
03	YOUNG, Mitchell	7-7	145	20.7	14-31	.452	2-2	1.000	12-16	.750	7	21	28	4.0	15	0	9	11	1	5	42	6.0		
01	PAGE, Jordan	7-1	119	17.0	12-24	.500	6-14	.429	5-6	.833	1	13	14	2.0	5	0	14	10	1	5	35	5.0		
33	HODGSON, Matt	7-0	107	15.3	14-24	.583	0-3	.000	4-6	.667	6	14	20	2.9	18	1	2	6	6	1	32	4.6		
05	ROWLEY, Kyle	6-0	34	5.7	8-12	.667	0-0	.000	2-6	.333	5	8	13	2.2	4	0	0	4	3	0	18	3.0		
12	GIUSTI, Jordan	7-0	51	7.3	5-13	.385	0-2	.000	2-6	.333	1	5	6	0.9	8	0	2	2	1	3	12	1.7		
24	PETRULIS, Eividas	4-0	13	3.3	1-4	.250	1-3	.333	2-4	.500	1	2	3	0.8	1	0	1	0	0	0	5	1.3		
10	SANCHEZ, Zach	4-0	2	0.5	0-1	.000	0-1	.000	0-0	.000	0	0	0	0.0	0	0	0	0	0	0	0	0.0		
Team											5	7	12											
Total.....		7	1400		185-372	.497	55-138	.399	106-140	.757	69	167	236	33.7	125	3	104	89	19	40	531	75.9		
Opponents.....		7	1400		161-380	.424	43-110	.391	101-138	.732	72	139	211	30.1	129	-	81	75	17	35	466	66.6		

TEAM STATISTICS	SMC	OPP	Date	Opponent	Score	Att.
SCORING	531	466	11/10/12	SONOMA STATE	w 95-69	2397
Points per game	75.9	66.6	11/15/12	at Utah State	w 67-58	9077
Scoring margin	+9.3	-	11/18/12	EASTERN WASHINGTON	w 85-66	2614
FIELD GOALS-ATT	185-372	161-380	11/22/12	vs Drexel	w 76-64	1107
Field goal pct	.497	.424	11/23/12	vs Pacific	L 66-76	0
3 POINT FG-ATT	55-138	43-110	11/25/12	vs Georgia Tech	L 56-65	0
3-point FG pct	.399	.391	12/01/12	CAL POLY	w 86-68	2418
3-pt FG made per game	7.9	6.1	* - Conference game			
FREE THROWS-ATT	106-140	101-138				
Free throw pct	.757	.732				
F-Throws made per game	15.1	14.4				
REBOUNDS	236	211				
Rebounds per game	33.7	30.1				
Rebounding margin	+3.6	-				
ASSISTS	104	81				
Assists per game	14.9	11.6				
TURNOVERS	89	75				
Turnovers per game	12.7	10.7				
Turnover margin	-2.0	-				
Assist/turnover ratio	1.2	1.1				
STEALS	40	35				
Steals per game	5.7	5.0				
BLOCKS	19	17				
Blocks per game	2.7	2.4				
ATTENDANCE	7429	10184				
Home games-Avg/Game	3-2476	1-9077				
Neutral site-Avg/Game	-	3-369				

Score by Periods	1st	2nd	Totals
Saint Mary's (CA)	252	279	531
Opponents	205	261	466

**Saint Mary's (CA)**  
**Saint Mary's (CA) Points-Rebounds-Assists (as of Dec 01, 2012)**  
**All games**

Opponent	Date	Score		00	01	03	04	05	10	12
				WALDOW,BRA	PAGE,JORDE	YOUNG,MITC	DELLAVEDOV	ROWLEY,KYL	SANCHEZ,ZA	GIUSTI,JOR
SONOMA STATE	11/10/12	95-69	w	11-7-1	3-2-2	11-7-2	20-2-5	8-4-0	0-0-0	7-3-1
at Utah State	11/15/12	67-58	w	4-3-1	0-1-4	2-5-1	21-2-3	2-4-0	DNP	0-0-0
EASTERN WASHINGTON	11/18/12	85-66	w	16-6-1	12-5-1	8-5-2	9-6-8	4-1-0	0-0-0	0-2-0
vs Drexel	11/22/12	76-64	w	15-7-0	0-4-3	2-0-0	32-2-4	0-0-0	0-0-0	0-0-0
vs Pacific	11/23/12	66-76	L	8-5-0	2-1-0	2-4-2	16-0-1	DNP	DNP	3-0-1
vs Georgia Tech	11/25/12	56-65	L	5-7-0	6-1-0	6-4-0	5-3-8	2-1-0	DNP	0-0-0
CAL POLY	12/01/12	86-68	w	17-5-1	12-0-4	11-3-2	13-1-9	2-3-0	0-0-0	2-1-0

Opponent	Date	Score		14	15	24	33	35
				HOLT,STEPH	LEVESQUE,B	PETRULIS,E	HODGSON,MA	WALKER III
SONOMA STATE	11/10/12	95-69	w	12-6-4	9-5-3	3-1-1	5-4-1	6-3-0
at Utah State	11/15/12	67-58	w	16-2-1	6-6-0	DNP	2-1-0	14-3-1
EASTERN WASHINGTON	11/18/12	85-66	w	16-3-3	5-3-2	1-2-0	2-6-1	12-2-3
vs Drexel	11/22/12	76-64	w	6-8-0	2-2-0	0-0-0	6-4-0	13-3-0
vs Pacific	11/23/12	66-76	L	12-4-4	18-3-0	DNP	0-1-0	5-3-2
vs Georgia Tech	11/25/12	56-65	L	10-9-4	9-5-1	DNP	4-3-0	9-3-0
CAL POLY	12/01/12	86-68	w	DNP	8-6-3	1-0-0	13-1-0	7-5-3

**Saint Mary's (CA) Extended Season Box Score (as of Dec 01, 2012)**  
**All games**

<b>RECORD:</b>	<b>OVERALL</b>	<b>HOME</b>	<b>AWAY</b>	<b>NEUTRAL</b>
ALL GAMES	5-2	3-0	1-0	1-2
CONFERENCE	0-0	0-0	0-0	0-0
NON-CONFERENCE	5-2	3-0	1-0	1-2

#	Player	gp	gs	min	Total			3-Point			F-Throw			Rebounds			blk	afto	to/g	stl	stl/g	pts	avg					
					fg	fga	fg%	3fg	3fga	3fg%	ft	fta	ft%	off	def	tot								avg	pf	dq	a	alg
04	DELLAVEDOVA, Matthew	7	7	252	36.0	35-73	.479	18-44	.409	28-30	.933	6	10	16	2.3	12	1	38	5.43	16	2.29	2.38	0	0.00	9	1.29	116	16.6
14	HOLT, Stephen	6	6	182	30.3	21-53	.396	10-27	.370	20-24	.833	10	22	32	5.3	13	1	16	2.67	15	2.50	1.07	0	0.00	5	0.83	72	12.0
00	WALDOW, Brad	7	7	162	23.1	32-52	.615	0-0	.000	12-17	.706	13	27	40	5.7	14	0	4	0.57	8	1.14	0.50	5	0.71	1	0.14	76	10.9
35	WALKER III, James	7	2	188	26.9	25-42	.595	10-22	.455	6-10	.600	7	15	22	3.1	15	0	9	1.29	7	1.00	1.29	1	0.14	7	1.00	66	9.4
15	LEVESQUE, Beau	7	5	145	20.7	18-43	.419	8-20	.400	13-15	.867	7	23	30	4.3	20	0	9	1.29	9	1.29	1.00	1	0.14	4	0.57	57	8.1
03	YOUNG, Mitchell	7	7	145	20.7	14-31	.452	2-2	1.000	12-16	.750	7	21	28	4.0	15	0	9	1.29	11	1.57	0.82	1	0.14	5	0.71	42	6.0
01	PAGE, Jordan	7	1	119	17.0	12-24	.500	6-14	.429	5-6	.833	1	13	14	2.0	5	0	14	2.00	10	1.43	1.40	1	0.14	5	0.71	35	5.0
33	HODGSON, Matt	7	0	107	15.3	14-24	.583	0-3	.000	4-6	.667	6	14	20	2.9	18	1	2	0.29	6	0.86	0.33	6	0.86	1	0.14	32	4.6
05	ROWLEY, Kyle	6	0	34	5.7	8-12	.667	0-0	.000	2-6	.333	5	8	13	2.2	4	0	0	0.00	4	0.67	0.00	3	0.50	0	0.00	18	3.0
12	GIUSTI, Jordan	7	0	51	7.3	5-13	.385	0-2	.000	2-6	.333	1	5	6	0.9	8	0	2	0.29	2	0.29	1.00	1	0.14	3	0.43	12	1.7
24	PETRULIS, Eividas	4	0	13	3.3	1-4	.250	1-3	.333	2-4	.500	1	2	3	0.8	1	0	1	0.25	0	0.00	99.00	0	0.00	0	0.00	5	1.3
10	SANCHEZ, Zach	4	0	2	0.5	0-1	.000	0-1	.000	0-0	.000	0	0	0	0.0	0	0	0	0.00	0	0.00	0.00	0	0.00	0	0.00	0	0.0
Total.....		7	1400			185-372	.497	55-138	.399	106-140	.757	69	167	236	33.7	125	3	104	14.86	89	12.71	1.17	19	2.71	40	5.71	531	75.9
Opponents.....		7	1400			161-380	.424	43-110	.391	101-138	.732	72	139	211	30.1	129	-	81	11.57	75	10.71	1.08	17	2.43	35	5.00	466	66.6

Score by Periods	1st	2nd	Totals
Saint Mary's (CA)	252	279	531
Opponents	205	261	466

**Saint Mary's (CA)**  
**Saint Mary's (CA) Team Game-by-Game Comparison (as of Dec 01, 2012)**  
**All games**

Opponent	1st	2nd	Score	Mar	Total FG	FG Pct	3-Pointers	3FG Pct	Free Throws	FT Pct	Rebounds	Assist	T/Over	Block	Steal	Fouls
SONOMA STATE	48/24	47/45	95-69	+26	36-67/24-55	.537/.436	11-26/9-16	.423/.563	12-21/12-18	.571/.667	45/27 +18	20/13	14/16	3/3	14/7	17/20
Utah State	34/31	33/27	67-58	+9	21-46/20-62	.457/.323	9-22/3-16	.409/.188	16-23/15-24	.696/.625	30/49 (19)	11/12	12/10	1/4	4/7	22/20
EASTERN WASHINGTON	37/33	48/33	85-66	+19	32-63/24-64	.508/.375	8-19/7-23	.421/.304	13-16/11-19	.813/.579	42/34 +8	21/10	9/8	5/4	5/7	15/19
Drexel	36/28	40/36	76-64	+12	27-50/21-47	.540/.447	3-12/5-12	.250/.417	19-22/17-20	.864/.850	32/20 +12	7/8	13/9	1/2	4/5	17/19
Pacific	29/32	37/44	66-76	(10)	23-55/26-49	.418/.531	11-27/3-6	.407/.500	9-10/21-26	.900/.808	24/34 (10)	10/13	12/11	1/2	4/2	22/12
Georgia Tech	26/22	30/43	56-65	(9)	17-46/21-55	.370/.382	6-20/7-19	.300/.368	16-21/16-19	.762/.842	38/26 +12	13/11	21/11	2/1	5/4	16/17
CAL POLY	42/35	44/33	86-68	+18	29-45/25-48	.644/.521	7-12/9-18	.583/.500	21-27/9-12	.778/.750	25/21 +4	22/14	8/10	6/1	4/3	16/22

Note: Game totals are displayed in the format TEAM/OPPONENT for each category