



2022 MATCH NOTES

DARTMOUTH VOLLEYBALL

2022 SCHEDULE

6-1, 0-0 Ivy

SEPTEMBER

UCI INVITATIONAL

- 2 Sacred Heart.....W, 3-1
3 Holy Cross.....W, 3-0
3 at UC Irvine.....L, 3-0

DARTMOUTH INVITATIONAL

- 9 SIENA.....W, 3-1
9 LEHIGH.....W, 3-1
10 MERRIMACK.....W, 3-0
10 HARTFORD.....W, 3-0

SETON HALL INVITATIONAL

- 16 NJIT.....4:30 PM
17 at Seton Hall.....12:30 PM
17 Central Connecticut St. ....4:30 PM

Start of Ivy League Play

- 24 at Harvard\*.....5 PM
30 PRINCETON\*.....7 PM

OCTOBER

- 2 PENN\*.....12:30 PM
7 BROWN\*.....7 PM
8 YALE\*.....5 PM
14 at Columbia\*.....7 PM
15 at Cornell\*.....5 PM
21 HARVARD\*.....7 PM
28 at Penn\*.....7 PM
29 at Princeton\*.....5 PM

NOVEMBER

- 4 CORNELL\*.....7 PM
5 COLUMBIA\*.....5 PM
11 at Yale\*.....7 PM
12 at Brown\*.....5 PM

\*Conference Match
BOLD indicates home match
All times Eastern

THIS WEEK'S BROADCAST INFORMATION

Seton Hall match on FloSports
Live stats available for all matches on schedule page



SETON HALL CLASSIC



NJIT HIGHLANDERS

Friday, September 16 | 4:30 PM | South Orange, N.J. | Walsh Gym

HIGHLANDERS' RECORD

3-9

ALL-TIME SERIES

2-1

LAST MEETING

L, 3-2 (9/11/11)



SETON HALL PIRATES

Saturday, September 17 | 12:30 PM | South Orange, N.J. | Walsh Gym

PIRATES' RECORD

6-3

ALL-TIME SERIES

1-2

LAST MEETING

W, 3-0 (9/14/18)



CENTRAL CONNECTICUT STATE BLUE DEVILS

Saturday, September 17 | 4:30 PM | South Orange, N.J. | Walsh Gym

BLUE DEVILS' RECORD

5-3

ALL-TIME SERIES

12-3

LAST MEETING

W, 3-2 (9/18/21)

SETON HALL MATCH STREAMED ON FLOSPORTS

THE RUNDOWN

DARTMOUTH

Head Coach ..... Gilad Doron (7th Season)
Streak ..... 4W
Team Hitting Percentage ..... .234
Points/Set Leader ..... Ellie Blain, .378
Assists/Set Leader ..... Makenzie Arent, 6.21

NJIT

Head Coach ..... Pedro Trevino (4th Season)
Streak ..... 1L
Team Hitting Percentage ..... .147
Points/Set Leader ..... Cami Augustine, 2.89
Assists/Set Leader ..... Juliana Impaglia, 6.92

SETON HALL

Head Coach ... Shannon Thompson (1st Season)
Streak ..... 2L
Team Hitting Percentage ..... .240
Points/Set Leader ..... Jenna Walsh, 3.30
Assists/Set Leader ..... Maddie Klungel, 5.97

CENTRAL CONNECTICUT STATE

Head Coach ..... Linda Sagnelli (22nd Season)
Streak ..... 4W
Team Hitting Percentage ..... .204
Points/Set Leader ..... Isabella Bratzke, 3.3
Assists/Set Leader ..... Tori Boulay, 5.48

KEY STORYLINES

FOUR STRAIGHT

Dartmouth continually looked better and better last weekend while hosting the Dartmouth Invitational. The Big Green defeated Siena and a tough Lehigh team, which entered the day 7-1, in four sets before dominating both Merrimack and Hartford in three sets. Should the upward trajectory continue, Dartmouth is in store for another impressive weekend before Ivy League play begins.

WE MEET AGAIN

Last year's meeting between Dartmouth and Central Connecticut State was a thriller that saw the two sides trade sets before the Big Green won the fourth and fifth to improve to 8-1 on the season. Ellie Blain and Makenzie Arent were the catalysts in that one, combining for 21 kills and 35 assists respectively.

IVY PLAY RAPIDLY APPROACHING

This is Dartmouth's last go-round in nonconference tournament action with the Ivy League slate kicking off Saturday, Sept. 24 at Harvard. The Big Green currently have the best record in the Ancient Eight at 6-1, just ahead of 5-1 Yale.



DARTMOUTHVBALL

DARTMOUTHSPORTS.COM



DARTMOUTHVBALL

# BIG GREEN FACTS AND NOTES

## QUICK FACTS

### COLLEGE INFORMATION

Location .....Hanover, N.H.  
 Founded ..... 1769  
 Enrollment.....4,450  
 President ..... Philip J. Hanlon '77  
 Athletic Director..... Mike Harrity  
 Nickname ..... Big Green  
 Colors ..... Dartmouth Green and White  
 NCAA Affiliation..... Division I  
 Conferences..... Ivy League

### ARENA INFORMATION

Court .....Leede Arena  
 Capacity ..... 2,100  
 Dimensions.....88,400 square feet

### TEAM INFORMATION

First Season..... 1994  
 All-Time Record ..... 321-370  
 2021 Record ..... 15-8  
 2021 Ivy Record ..... 7-7  
 Players Returning/Lost..... 14/5  
 Newcomers.....4

### COACHING STAFF

Head Coach ..... Gilad Doron (7th year)  
 Alma Mater ..... Temple '00  
 Dartmouth Record..... 56-68  
 Email ..... Gilad.Doron@dartmouth.edu

Asst. Coach.....Regan Scott (First year)  
 Alma Mater ..... LSU '06  
 Email ..... Regan.Scott@dartmouth.edu

Asst. Coach..... Alesha Wilson (Second year)  
 Alma Mater ..... NC State '14  
 Email ..... Alesha.J.Wilson@dartmouth.edu

### ATHLETIC COMMUNICATIONS

Contact.....Kyle Relf  
 Phone ..... 603-646-0424  
 Fax..... 603-646-3348  
 E-Mail ..... Kyle.A.Relf@Dartmouth.edu  
 Website.....www.DartmouthSports.com  
 Twitter .....@DartmouthSports  
 .....@DartmouthVBall

## IVY LEAGUE STANDINGS

1	Dartmouth.....	6-1
2	Yale.....	5-1
3	Princeton.....	4-2
4	Columbia.....	3-3
5	Brown.....	3-4
6	Cornell.....	2-4
7	Harvard.....	1-5
8	Penn.....	1-5

## BIG GREEN QUICK HITS

### WHAT A WEEKEND!

Dartmouth won four games in just two days between last Friday and Saturday, claiming the Dartmouth Invitational championship for the second consecutive season. The Big Green beat Siena and Lehigh in four sets Friday, and only needed three to take down Merrimack and Hartford on Saturday. The Big Green notched a season-best .403 hitting percentage in a particular dominant effort against Hartford. The win over Lehigh was likely the highlight of the weekend - the Mountain Hawks came into that one at 7-1 on the season, ranking among the nation's best in service aces. They were held well under their season average against a tough Dartmouth defense that ranks top-20 in the country in digs per set.

### STUFFING THE STAT SHEET

**Ellie Blain** had one of the best weekends of her career during the Dartmouth Invitational. She led the team in total kills with 36 over the four matches and even posted a team-best 3.42 digs per set, along with a career-high 23 digs in a four-setter against Siena. Those types of numbers land you on the Dartmouth Invitational All-Tournament Team for a second straight year. She recorded back-to-back double-doubles for the first time in her career after serving as the jack-of-all-trades in Dartmouth's first two matches of the tournament.

### ROBERTS' LEEDE ARENA DEBUT

It's safe to say **Ava Roberts** is excited to call Leede Arena home for the next four years. The Mansfield, Texas product led the team with 4.00 points per set over the course of the weekend and notched a career-high 18 kills with a .400 percentage against Lehigh. Not to mention, her team-high seven aces were instrumental in the four winning efforts. Like Blain, Roberts earned All-Tournament honors.

### RIGHT AROUND THE CORNER

Ivy League play is rapidly approaching. By this time next week, the Big Green will be in the midst of their first weekend in the Ancient Eight, traveling to Harvard Saturday, Sept. 24 for the conference opener. With the best record in the league through the majority of the nonconference slate, Dartmouth looks primed to exceed the expectations set forth by its fifth-place finish in the preseason poll. Individually, **Amelia Gibbs** and **Ava Roberts** rank second and fourth respectively in hitting percentage across the Ivy League.

### HISTORICALLY ACCURATE

**Amelia Gibbs** exploded for an .818 hitting percentage (11 attacks, nine kills, no errors) against Hartford. That's the best in program history for any player with 10-14 attempts, besting Felicity Kolp's .786 mark against Penn in 1995. Danra Kazenski has the percentage to beat at .833 (18 attacks, 16 kills, one error), a record she achieved in 1998 against Quinnipiac.

### WHAT'S AHEAD

Dartmouth opens Ivy League play Saturday, Sept. 24 at Harvard before returning to Leede Arena to host Princeton. After that? The nationally televised battle with Penn Sunday, Oct. 2 on ESPNU.

# 2022 ROSTER

## MEET THE BIG GREEN



**The 2022 Dartmouth Volleyball Team** - Front (L-R): Emma Engstrom, Makenzie Arent, Piper Stevens, Ali Silva, Bomi Ogunlari, Karen Murphy, Jojo Brown, Ava Roberts. Back (L-R): Regan Scott, Kayleigh Fournier, Tasman Mullins, Molly Power, Emma Sinclair, Emma Symon, Amelia Gibbs, Grace Wiczek, Ellie Blain, Natalie Grover, Taite Ryan, Kauany Gutz.

### NUMERICAL ROSTER

No.	Name	Pos.	Ht.	Yr.	Last School/Hometown
1	Tasman Mullins	S/RS	6-1	So.	Mira Costa / Manhattan Beach, Calif.
3	Jojo Brown	OH	5-9	Sr.	Montverde Academy / Winter Garden, Fla.
4	Emma Symon	MB	6-2	Fr.	Los Altos / Los Altos, Calif.
5	Piper Stevens	OH/OPP	5-11	So.	Mira Costa / Manhattan Beach, Calif.
6	Makenzie Arent	S	5-9	Sr.	Oak Ridge / Spring, Texas
7	Karen Murphy	S	5-9	Jr.	Skyview / Nampa, Idaho
8	Ellie Blain	OH/MB/RS	6-2	Jr.	The Benjamin School / Palm Beach Gardens, Fla.
9	Taite Ryan	OH	6-0	Sr.	New Trier / Winnetka, Ill.
10	Kauany Gutz	OH	6-0	Fr.	Colégio Campos Salles - Lapa / São Paulo, Brazil
11	Molly Power	MB	6-1	Fr.	Loyola Academy / Winnetka, Illinois
12	Grace Wiczek	OH	6-2	Sr.	Park City / Park City, Utah
13	Natalie Grover	OH	6-1	Jr.	Menlo Atherton / Menlo Park, Calif.
14	Emma Engstrom	L/DS	5-9	So.	San Ramon Valley / Danville, Calif.
16	Amelia Gibbs	MB	6-2	Jr.	Palo Alto / Palo Alto, Calif.
18	Ava Roberts	MB/RS	6-0	Fr.	Mansfield / Mansfield Texas
22	Bomi Ogunlari	MB/RS	5-10	Jr.	Rockwall / Rockwall, Texas
23	Ali Silva	DS/L	5-10	Sr.	Northgate / Walnut Creek, Calif.
32	Emma Sinclair	OH	6-1	So.	Keith Country Day School / Rockford, Ill.

### COACHING STAFF

Staff Position	Name	Alma Mater	Season at Dartmouth
Head Coach	Gilad Doron	Temple '00	7th season
Assistant Coach	Regan Scott	LSU '06	1st season
Assistant Coach	Alesha Wilson	Adrian College '14	2nd season

### CLASS OF 2023

(L-R): Jojo Brown, Ali Silva, Grace Wiczek, Taite Ryan, Makenzie Arent.



## THE BREAKDOWN

### BY STATE

#### California (7)

Danville . . . . . Emma Engstrom  
 Los Altos . . . . . Emma Symon  
 Manhattan Beach . . . . . Piper Stevens  
 Manhattan Beach . . . . . Tasman Mullins  
 Menlo Park . . . . . Natalie Grover  
 Palo Alto . . . . . Amelia Gibbs  
 Walnut Creek, Calif. . . . . Ali Silva

#### Illinois (3)

Rockford . . . . . Emma Sinclair  
 Winnetka . . . . . Taite Ryan  
 Winnetka . . . . . Molly Power

#### Texas (3)

Mansfield . . . . . Ava Roberts  
 Rockwall . . . . . Bomi Ogunlari  
 Spring . . . . . Makenzie Arent

#### Florida (2)

Palm Beach Gardens . . . . . Ellie Blain  
 Winter Garden . . . . . Jojo Brown

#### Idaho (1)

Nampa . . . . . Karen Murphy

#### Utah (1)

Park City . . . . . Grace Wiczek

#### International (1)

São Paulo, Brazil . . . . . Kauany Gutz

### BY CLASS

**Seniors (5)** . . . . . Jojo Brown  
 . . . . . Makenzie Arent  
 . . . . . Taite Ryan  
 . . . . . Grace Wiczek  
 . . . . . Ali Silva

**Juniors (5)** . . . . . Karen Murphy  
 . . . . . Ellie Blain  
 . . . . . Natalie Grover  
 . . . . . Amelia Gibbs  
 . . . . . Bomi Ogunlari

**Sophomores (4)** . . . . . Tasman Mullins  
 . . . . . Piper Stevens  
 . . . . . Emma Engstrom  
 . . . . . Emma Sinclair

**Freshmen (4)** . . . . . Emma Symon  
 . . . . . Kauany Gutz  
 . . . . . Molly Power  
 . . . . . Ava Roberts

### PRONUNCIATIONS

Gilad Doron . . . . . gi-LAHD dor-ON (hard 'g')

Makenzie Arent . . . . . ARNT

Kauany Gutz . . . . . kuh-WAHNY GOOTZ

Grace Wiczek . . . . . WEE-check

Bomi Ogunlari . . . . . BO-me oh-gun-LAR-ree

Taite Ryan . . . . . TATE

Tasman Mullins . . . . . TAZ-min

# THE COACHING STAFF

## HEAD COACH GILAD DORON



### THE DORON FILE

**RECORD AT DARTMOUTH**  
7th Year/6th Season (60-68)

**ALMA MATER**  
Temple '00 - Business Admin.

**EXPERIENCE**  
**2007-16**  
**Head Coach**  
University of San Francisco  
San Francisco, Calif.

**2004-07**  
**Head Coach**  
Villanova University  
Villanova, Penn.

**1996-00**  
**Assistant Coach**  
Temple University  
Philadelphia, Penn.



Gilad Doron is entering his seventh year at the helm of the program in 2022 after being named head coach in April of 2016. He is the third head coach in program history.

Dartmouth finished the 2021 season with a 15-8 record, which marked the Big Green's best since 2011. Doron guided the team to a 6-0 start and a pair of tournament titles, including the Dartmouth Invitational, which the Big Green won for the first time since 2015. In Ivy League play, Dartmouth enjoyed a five-match winning streak, capped by a five-set thriller against Yale - the first victory over the Bulldogs in six years. Freshmen Ellie Blain and Emma Engstrom received Second Team All-Ivy honors following the season.

Prior to the cancelation of the 2020 season, Doron's Big Green went 10-15 in back-to-back seasons 2018 and 2019. The 2017 team posted a 10-13 record after a 9-16 mark in Doron's first season in Hanover.

Doron came to Dartmouth from the University of San Francisco, where he spent nine years as the Dons' head coach and three as the co-head coach of the beach volleyball team. Compiling the winningest record in USF history, he boasted an overall record of 131-130 and a program-best 60 victories against West Coast Conference foes during his stint in the Golden Gate City. In 2008, he led the team to its best ever WCC finish (2nd) and an NCAA Tournament appearance. The Dons were also No. 22 in the country, their best national ranking.

Prior to his appointment at USF in March of 2007, Doron served as head coach at Villanova for three seasons (2004-06) and as an assistant coach at Temple (1996-99), where he helped lead the lead to three consecutive Atlantic 10 championship titles and NCAA appearances (1997-99). He also founded the Philadelphia Volleyball Academy, a nationally ranked club comprised of five teams of players between the ages of 14-18.

Doron began his coaching career in his native Israel as the head men's volleyball coach for the Mate Asher Professional Club, where he mentored national team players from Israel, the Czech Republic, Romania and Croatia. He led his teams to the 1994 Israeli Championship and the finals of the 1995 Israel Cup.

An accomplished player himself, Doron competed for the Israeli national team for 10 years and was part of the squad that placed fourth in the World University Games in Japan in 1995. He played 12 seasons with aforementioned Mate Asher, helping lead the club to four Israeli League titles and a pair of Israeli Cup championships.

Doron graduated from Temple in 2000 with a degree in business administration.

### DORON AT DARTMOUTH

Year	Record	Ivy	Postseason
2016	9-16	7-16	NA
2017	10-13	8-16	NA
2018	10-15	12-12	NA
2019	10-15	14-11	NA
2020	No season due to pandemic.		
2021	15-8	7-7	NA

## ASSISTANTS



**ALESHA WILSON**  
NC STATE '14

Alesha Wilson was hired as an assistant volleyball coach in May of 2021.

Wilson completed her graduate assistant position at the University of Dallas in 2021. During her time there, the Crusaders went 40-46 overall with two fourth place finishes in the conference, making it to the post-season each year.

She also coached for one season as an undergraduate assistant at her alma mater, North Carolina State in 2015, helping the Wolfpack go 16-16 that fall.

Wilson graduated from North Carolina State in 2014 and was a four-year member of the Wolfpack volleyball team. As a sophomore, she was second on the team in total blocks and fourth in total attacks, helping the team make its first NCAA Tournament appearance since 1987.

Wilson went on to earn her Bachelor of Science in chemical and biomolecular engineering with a Spanish minor in 2016 and her Master of Leadership in 2021.



**REGAN SCOTT**  
LSU '06

Regan Scott, a 15-year professional player and former national team member, was hired as an assistant volleyball coach in June of 2022.

Scott's lengthy professional career took her across the globe with stints in Spain, Azerbaijan, The Netherlands, Romania, Turkey, Puerto Rico, Poland, Italy, Germany, Greece and Romania.

Scott also found time to compete with the U.S. National Team from 2011-14, helping the squad finish third at the Pan American Games in Guadalajara in 2011. There was also a fifth-place finish in the World Grand Prix, and she captained the team to a second-place showing in Mexico City in the Pan America Cup in June of 2014.

A 2006 graduate of LSU, Scott was a four-year letterwinner for the Tigers and served as a captain in her junior and senior seasons. She was a Second Team All-SEC selection in 2003 and ranks sixth all-time in kills per set (3.31).

# TV/RADIO CHART



**#1 TASMAN MULLINS**  
S/RS • 6-1 • SO.  
MANHATTAN BEACH, CALIF.



**#3 JOJO BROWN**  
OH • 5-9 • SR.  
WINTER GARDEN, FLA.



**#4 EMMA SYMON**  
MB • 6-2 • FR.  
LOS ALTOS, CALIF.



**#5 PIPER STEVENS**  
OH/OPP • 5-11 • SO.  
MANHATTAN BEACH, CALIF.



**#6 MAKENZIE ARENT**  
S • 5-9 • SR.  
SPRING, TEXAS



**#7 KAREN MURPHY**  
S • 5-9 • JR.  
NAMPA, IDAHO



**#8 ELLIE BLAIN**  
OH/MB/RS • 6-2 • JR.  
PALM BEACH GARDENS, FLA.



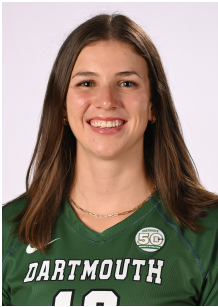
**#9 TAITE RYAN**  
OH • 6-0 • SR.  
WINNETKA, ILL.



**#10 KAUANY GUTZ**  
OH • 6-0 • FR.  
SAO PAULO, BRAZIL



**#11 MOLLY POWER**  
MB • 6-1 • FR.  
WINNETKA, ILL.



**#12 GRACE WICZEK**  
OH • 6-2 • SR.  
PARK CITY, UTAH



**#13 NATALIE GROVER**  
OH • 6-1 • JR.  
MENLO PARK, CALIF.



**#14 EMMA ENGSTROM**  
L/DS • 5-9 • SO.  
DANVILLE, CALIF.



**#16 AMELIA GIBBS**  
MB • 6-2 • JR.  
PALO ALTO, CALIF.



**#18 AVA ROBERTS**  
MB/RS • 6-0 • FR.  
MANSFIELD, TEXAS



**#22 BOMI OGUNLARI**  
MB/RS • 5-10 • JR.  
ROCKWALL, TEXAS



**#23 ALI SILVA**  
DS/L • 5-10 • SR.  
WALNUT CREEK, CALIF.



**#32 EMMA SINCLAIR**  
OH • 6-1 • SO.  
ROCKFORD, ILL.



# INDIVIDUAL STATS

##	Player	SP MP-MS		Attack					Set				Serve				
				K	K/S	E	TA	PCT	A	A/S	TA	PCT	SA	SA/S	SE	TA	PCT
3	Brown, Jojo	5	3-0	5	1.00	1	13	.308	0	0.00	4	.000	2	0.40	1	7	.857
4	Symon, Emma	4	3-0	5	1.25	2	11	.273	0	0.00	1	.000	0	0.00	0	0	.000
5	Stevens, Piper	7	4-0	16	2.29	3	32	.406	1	0.14	5	.200	2	0.29	2	15	.867
6	Arent, Makenzie	24	7-7	3	0.13	2	27	.037	149	6.21	387	.385	6	0.25	4	104	.962
7	Murphy, Karen	24	7-0	4	0.17	1	20	.150	104	4.33	292	.356	7	0.29	4	89	.955
8	Blain, Ellie	20	7-7	65	3.25	28	178	.208	2	0.10	15	.133	5	0.25	6	55	.891
9	Ryan, Taite	20	7-7	16	0.80	12	88	.045	11	0.55	43	.256	5	0.25	10	81	.877
10	Gutz, Kauany	12	6-0	24	2.00	8	58	.276	1	0.08	11	.091	1	0.08	2	15	.867
11	Power, Molly	6	3-0	6	1.00	2	10	.400	0	0.00	3	.000	0	0.00	0	0	.000
12	Wiczek, Grace	16	7-4	36	2.25	14	81	.272	2	0.13	13	.154	0	0.00	0	0	.000
13	Grover, Natalie	12	6-4	29	2.42	11	73	.247	0	0.00	5	.000	0	0.00	1	4	.750
14	Engstrom, Emma	24	7-0	1	0.04	0	11	.091	23	0.96	103	.223	9	0.38	2	79	.975
16	Gibbs, Amelia	22	7-0	36	1.64	6	80	.375	0	0.00	12	.000	0	0.00	0	0	.000
18	Roberts, Ava	18	7-6	47	2.61	6	123	.333	2	0.11	15	.133	9	0.50	5	72	.931
22	Ogunlari, Bomi	21	7-7	30	1.43	17	81	.160	0	0.00	20	.000	0	0.00	0	0	.000
23	Silva, Ali	12	6-0	0	0.00	2	3	-.667	0	0.00	5	.000	3	0.25	1	37	.973
<b>DARTMOUTH</b>		<b>24</b>	<b>7-7</b>	<b>323</b>	<b>13.46</b>	<b>115</b>	<b>889</b>	<b>.234</b>	<b>295</b>	<b>12.29</b>	<b>934</b>	<b>.316</b>	<b>49</b>	<b>2.04</b>	<b>38</b>	<b>558</b>	<b>.932</b>
<b>Opponents</b>		<b>24</b>	<b>7-7</b>	<b>267</b>	<b>11.13</b>	<b>127</b>	<b>883</b>	<b>.159</b>	<b>244</b>	<b>10.17</b>	<b>948</b>	<b>.257</b>	<b>24</b>	<b>1.00</b>	<b>46</b>	<b>469</b>	<b>.902</b>

##	Player	SP	Receptions			Dig		Blocking					Points		
			RE	TA	PCT	DIG	DIG/S	BS	BA	TOTAL	BLK/S	BE	BHE	PTS	PTS/S
3	Brown, Jojo	5	1	8	.875	6	1.20	0	1	1	0.20	0	0	7.5	1.50
4	Symon, Emma	4	0	0	.000	1	0.25	0	1	1	0.25	0	0	5.5	1.38
5	Stevens, Piper	7	0	0	.000	5	0.71	0	3	3	0.43	0	0	19.5	2.79
6	Arent, Makenzie	24	0	0	.000	57	2.38	0	0	0	0.00	0	2	9.0	0.38
7	Murphy, Karen	24	0	1	1.000	40	1.67	0	0	0	0.00	0	1	11.0	0.46
8	Blain, Ellie	20	4	74	.946	69	3.45	1	9	10	0.50	0	0	75.5	3.78
9	Ryan, Taite	20	3	100	.970	61	3.05	0	3	3	0.15	0	0	22.5	1.13
10	Gutz, Kauany	12	4	40	.900	7	0.58	0	6	6	0.50	1	0	28.0	2.33
11	Power, Molly	6	0	1	1.000	0	0.00	1	6	7	1.17	0	0	10.0	1.67
12	Wiczek, Grace	16	0	0	.000	6	0.38	1	4	5	0.31	0	0	39.0	2.44
13	Grover, Natalie	12	0	0	.000	9	0.75	1	4	5	0.42	0	0	32.0	2.67
14	Engstrom, Emma	24	3	164	.982	97	4.04	0	0	0	0.00	0	0	10.0	0.42
16	Gibbs, Amelia	22	1	1	.000	4	0.18	1	18	19	0.86	0	0	46.0	2.09
18	Roberts, Ava	18	0	8	1.000	23	1.28	0	12	12	0.67	0	0	62.0	3.44
22	Ogunlari, Bomi	21	0	5	1.000	9	0.43	8	17	25	1.19	1	0	46.5	2.21
23	Silva, Ali	12	1	14	.929	13	1.08	0	0	0	0.00	0	0	3.0	0.25
-	TEAM	-	7	-	-	-	-	-	-	-	-	-	-	-	-
<b>DARTMOUTH</b>		<b>24</b>	<b>24</b>	<b>423</b>	<b>.943</b>	<b>407</b>	<b>16.96</b>	<b>13</b>	<b>84</b>	<b>55.0</b>	<b>2.29</b>	<b>2</b>	<b>3</b>	<b>427.0</b>	<b>17.79</b>
<b>Opponents</b>		<b>24</b>	<b>49</b>	<b>520</b>	<b>.906</b>	<b>359</b>	<b>14.96</b>	<b>5</b>	<b>67</b>	<b>38.5</b>	<b>1.60</b>	<b>4</b>	<b>4</b>	<b>329.5</b>	<b>13.73</b>

## TEAM STATS

	DART	OPP
<b>ATTACK</b>		
Kills	323	267
Errors	115	127
Total Attacks	889	883
Attack Pct	.234	.159
Kills/Set	13.5	11.1
<b>SET</b>		
Assists	295	244
Attempts	934	948
Assist Pct	.316	.257
Assists/Set	12.3	10.2
<b>SERVE</b>		
Aces	49	24
Errors	38	46
Attempts	558	469
Serve Pct	.932	.902
Aces/Set	2	1
<b>SERVE RECEPTIONS</b>		
Errors	24	49
Errors/Set	1	2
Attempts	423	520
Reception Pct	.943	.996
<b>DEFENSE</b>		
Digs	407	359
Digs/Set	17	15
<b>BLOCKING</b>		
Block solo	13	5
Block Assist	84	67
Total Blocks	55	38.5
Blocks/Set	2.3	1.6
Block Errors	2	4
Ball handling errors	3	4
<b>ATTENDANCE</b>		
Total	519	305
Dates/Avg Per Date	4/130	1/305
Neutral Site #/Avg	2/237	-
Current win streak	4	-
Home win streak	4	-

### Match wins by #sets

Team	1st	2nd	3rd	4th	5th	TOTAL
Dartmouth	0	0	3	3	0	6
Opponents	0	0	1	0	0	1

### Points by set

Team	1st	2nd	3rd	4th	5th	TOTAL
Dartmouth	167	160	159	78	0	564
Opponents	134	123	141	65	0	463

# MATCH-BY-MATCH

Date	Opponent	SP	Attack				Set			Serve				Recept			Blocking					BHE	POINTS	SCORE
			K	E	TA	PCT	A	TA	PCT	SA	SE	TA	PCT	RE	TA	PCT	DIG	BS	BA	BE	TOTAL			
09/02/2022	vs Sacred Heart	4	62	25	173	.214	56	167	.335	7	7	97	.928	3	83	.964	74	4	10	1	9.0	1	78.0	3-1
09/03/2022	vs Holy Cross	3	42	9	91	.363	36	86	.419	9	3	74	.959	2	29	.931	52	1	12	0	7.0	0	58.0	3-0
09/03/2022	at UC Irvine	3	36	20	133	.120	35	134	.261	2	4	55	.927	1	72	.986	60	1	12	1	7.0	2	45.0	0-3
09/09/2022	Siena	4	59	25	193	.176	57	216	.264	8	7	100	.930	6	90	.933	86	2	18	0	11.0	0	78.0	3-1
09/09/2022	Lehigh	4	53	21	151	.212	49	169	.290	4	6	85	.929	6	74	.919	68	1	10	0	6.0	0	63.0	3-1
09/10/2022	Merrimack	3	36	11	71	.352	31	75	.413	8	6	74	.919	4	39	.897	35	2	12	0	8.0	0	52.0	3-0
09/10/2022	Hartford	3	35	4	77	.403	31	87	.356	11	5	73	.932	2	36	.944	32	2	10	0	7.0	0	53.0	3-0
<b>Totals</b>		<b>24</b>	<b>323</b>	<b>115</b>	<b>889</b>	<b>.234</b>	<b>295</b>	<b>934</b>	<b>.316</b>	<b>49</b>	<b>38</b>	<b>558</b>	<b>.932</b>	<b>24</b>	<b>423</b>	<b>.943</b>	<b>407</b>	<b>13</b>	<b>84</b>	<b>2</b>	<b>55.0</b>	<b>3</b>	<b>427.0</b>	
<b>Opponents</b>		<b>24</b>	<b>267</b>	<b>127</b>	<b>883</b>	<b>.159</b>	<b>244</b>	<b>948</b>	<b>.257</b>	<b>24</b>	<b>46</b>	<b>469</b>	<b>.902</b>	<b>49</b>	<b>520</b>	<b>.906</b>	<b>359</b>	<b>5</b>	<b>67</b>	<b>4</b>	<b>38.5</b>	<b>4</b>	<b>329.5</b>	

## Team Averages

Sets Played	Kills per set	Assists per set	Service aces per set	Digs per set	Blocks per set	Points per set	Ball handling error per set	Reception errors per set
24	13.46	12.29	2.04	16.96	2.29	17.79	0.13	1.00