

COLORADO VOLLEYBALL

CU SPORTS INFORMATION SERVICE | Contact: Linda Sprouse

Telephone: 303/492-5980 E-mail: linda.sprouse@colorado.edu

Web: www.cubuffs.com/volleyball



BUFFS CONTINUE ROAD TRIP IN THE DESERT, HEAD TO ARIZONA STATE AND ARIZONA

Match #18

Colorado vs. Arizona State (10-8, 0-6 Pac-12)

Tempe, Ariz.

Friday, Oct. 13, 8 p.m. MT

Series: ASU leads the series 8-4

Audio: N/A

TV/Stream: Pac-12 Mountain/Arizona

Livestats: <http://stats.statbroadcast.com/broadcast/?id=180244>



Match #19

Colorado vs. Arizona (8-7, 2-4 Pac-12)

Tucson, Ariz.

Sunday, Oct 15, 2 p.m. MT

Series: The series is tied 6-6

Audio: N/A

TV/Stream: Pac-12 Digital

Livestats: <http://www.arizonawildcats.com/news/2015/8/19/210276803.aspx>



STARTING OFF: Colorado will finish a four-match road trip with a pair of contests against the schools in the desert. On Friday, Oct. 13, the Buffs will face off against Arizona State at 8 p.m. MT in Tempe, Ariz. Then on Sunday, Oct. 15, CU will play Arizona at 2 p.m. in Tucson, Ariz.

HOW TO WATCH: The match against Arizona State on Friday will be televised live on Pac-12 Mountain/Arizona.

The contest on Sunday against Arizona will be streamed live on the Pac-12 Digital Network.

Links to the live stats for both matches will be available at CUBuffs.com.

WHAT'S NEXT: The Buffs will return to Boulder after a four-match road trip. They will host a pair of ranked opponents in Southern California and UCLA, Oct. 20 and 21, respectively.

MATCH TIME SET: The time for Colorado's match against UCLA on Oct. 21 has been set for a 7 p.m. MT start. That contest is set to be televised on Pac-12 Mountain.

Probable Starters

##	Name	Pos.	Ht.	Yr.	KPS	Pct.	DPS	BPS
1	Frankie Shebby	OH	6-0	Jr.	3.22	.188	2.41	0.57
3	Gabby Carta-Samuels	DS/L	5-6	Jr.	0.02	.000	3.66	0.00
4	Anna Pfefferle	MB	6-2	Sr.	1.51	.321	0.65	0.82
7	Alexa Smith	OH	6-1	Jr.	4.19	.243	2.90	0.37
10	Brynna DeLuzio	S	5-9	Fr.	0.52	.333	2.23	0.35
14	Naghede Abu	MB	6-4	Jr.	2.12	.343	0.11	1.31
22	Joslyn Hayes	OPP	6-3	Sr.	2.23	.267	0.49	0.66

2017 Schedule and Results

Overall Record: 12-5 | Pac-12 Record: 2-4

Day CU Rank Opponent (rank) Result/MT TV
NIKE Invitational (Norman, Okla.)

Aug. 25		vs. Northwestern St.	W, 3-1	----
Aug. 26		vs. Seton Hall	W, 3-0	----
Aug. 27		at Oklahoma	W, 3-1	FSO

Omni Invitational (Boulder, Colo.)

Sept. 2		WAKE FOREST	W, 3-0	P12D
Sept. 2		RICE	W, 3-0	P12D
Sept. 3		ABILENE CHRISTIAN	W, 3-0	P12D

Pac-12/Big Ten Challenge (Champaign, Ill.)

Sept. 8		vs. Penn State (3)	L, 0-3	Stream
Sept. 9		at Illinois (RV)	W, 3-2	Stream

Sept. 15 RV		XAVIER	W, 3-1	P12D
Sept. 16 RV		vs. Albany	W, 3-0	----
Sept. 16 RV		at Colorado State (22)	W, 3-2	Stream

Pac-12 Conference Matches

Sept. 22	25	at Utah (16)	L, 1-3	P12M
Sept. 24	25	STANFORD (4)	L, 2-3	P12M/B
Sept. 29	RV	OREGON STATE	W, 3-2	P12M/O
Sept. 30	RV	OREGON (12)	W, 3-1	P12D
Oct. 6	25	at Washington State	L, 1-3	P12M/W
Oct. 8	25	at Washington (9)	L, 0-3	P12M/W
Oct. 13	RV	at Arizona State	8 p.m.	P12M/A
Oct. 15	RV	at Arizona	2 p.m.	P12D
Oct. 20		USC (19)	8 p.m.	P12M/L
Oct. 21		UCLA (12)	7 p.m.	P12M
Oct. 27		at Oregon (15)	8 p.m.	P12D
Oct. 28		at Oregon State	7 p.m.	P12D
Nov. 1		WASHINGTON ST.	7 p.m.	P12M/M/W
Nov. 3		WASHINGTON (14)	6 p.m.	P12M/M/W
Nov. 9		at UCLA (12)	9 p.m.	P12M/L
Nov. 11		at USC (19)	2 p.m.	P12D
Nov. 17		ARIZONA	6 p.m.	P12D
Nov. 18		ARIZONA STATE	7 p.m.	P12D
Nov. 22		at California	4 p.m.	P12M/B
Nov. 24		UTAH (13)	8 p.m.	P12M

TV Key - Pac12 = Pac-12 Networks; N - National; M - Mountain; A - Arizona; B - Bay Area; L - Los Angeles; O - Oregon; W - Washington; D - Digital (Live Stream).

FSO - Fox Sports Oklahoma

Stream - Live stream is available at CUBuffs.com

PAC12
NETWORKS

COLORADO VOLLEYBALL

2017 University of Colorado Volleyball Roster

No	Player	Pos	Ht	Yr	Exp	Hometown (HS/Previous College)
1	Frankie Shebby*	OH	6-0	Jr.	1L	La Mirada, Calif. (Mater Dei/Oregon)
2	Stephanie Shadley	OH	6-0	Sr.	3L	Lewisville, Texas (Prince of Peace Christian)
3	Gabby Carta-Samuels	DS/L	5-6	Jr.	2L	Saratoga, Calif. (Archbishop Mitty)
4	Anna Pfefferle	MB	6-2	Sr.	3L	Northfield, Minn. (Northfield)
5	Jaden Newsome	S	6-0	Fr.	HS	Houston, Texas (Clear Brooks)
6	Taylor Joachim*	OPP	6-4	So.	2L	Baroda, Mich. (Lakeshore)
7	Alexa Smith	OH	6-1	Jr.	1L	Colorado Springs, Colo. (Lewis-Palmer/Purdue)
8	Justine Spann	OH	5-8	So.	1L	Chandler, Ariz. (Basha)
9	Emily DeMure*	S/OPP	6-1	Fr.	TR	Granite Bay, Calif. (Granite Bay/Penn State)
10	Brynna DeLuzio	S/L	5-9	Fr.	HS	Windermere, Fla. (The First Academy)
12	Rachel Whipple	DS/L	5-7	So.	1L	Centennial, Colo. (Smoky Hill)
14	Naghede Abu	MB	6-4	Jr.	1L	Riverside, Calif. (Norte Vista)
16	Lillie Klemmer	MB	5-11	So.	1L	Honolulu, Hawai'i (Panahou)
17	Danielle Price	MB	6-4	Fr.	HS	Lethbridge, Alberta, Canada (Chinook)
18	Anyse Smith	OH	5-10	Fr.	HS	Amarillo, Texas (Tascosa)
21	Lauren Dorrell*	OPP	6-0	Fr.	1L	Brentwood, Tenn. (Father Ryan)
22	Joslyn Hayes*	OPP	6-3	Sr.	4L	Santa Monica, Calif. (Santa Monica)

*Has used a redshirt season

Head Coach: Jesse Mahoney (second season, Colorado, 1995)

Associate Head Coach: Lee Maes (second season, Long Beach State, 1994)

Assistant Coach: Evan Sanders (second season, Washington, 2012)

Technical Coordinator: Eduardo Fiallos (first season, Arizona, 1998)

Director of Operations: Crystal Gippe (third season, Santa Clara, 2008)

2017 AVCA Top 25 Poll #7 - Oct. 9

Rk	Team	Points	Rec.	Last
1	Florida (61)	1597	13-0	1
2	Penn State (1)	1482	15-1	3
3	Stanford (2)	1474	13-2	2
4	Nebraska	1404	13-3	4
5	Texas	1366	12-2	5
6	Minnesota	1286	15-2	6
7	BYU	1183	17-1	8
8	Kentucky	1110	14-2	10
9	Kansas	993	16-2	11
10	Michigan State	973	12-3	14
11	Wisconsin	944	11-4	7
12	UCLA	867	11-4	13
13	Utah	848	14-3	17
14	Washington	832	14-3	9
15	Oregon	673	10-4	16
16	Purdue	658	15-2	18
17	Creighton	564	12-5	12
18	San Diego	530	12-4	19
19	Southern California	484	13-4	15
20	Northern Iowa	351	16-4	21
21	Colorado State	309	16-2	23
22	Wichita State	241	14-3	24
23	Iowa State	185	11-3	20
24	Cal Poly	133	16-2	NR
25	Baylor	91	15-4	NR

Others receiving points and listed on two or more ballots: Western Kentucky 81; Michigan 47; Colorado 18; Marquette 13; Illinois 10; Missouri State 8; Pittsburgh 3

CU's 2017 Opponents in Bold

CU In The Polls

	Rec.	AVCA	RPI
Preseason	0-0	--	n/a
August 28	3-0	--	n/a
September 4	6-0	--	n/a
September 11	7-1	RV	n/a
September 18	10-1	25	n/a
September 25	10-3	RV	n/a
October 2	12-3	25	20
October 9	12-5	RV	24
October 16			
October 23			
October 30			
November 6			
November 13			
November 20			
November 27			
Final			

Colorado AVCA Poll Notes

- The Buffs have been ranked 124 total weeks
- CU is 170-96 when ranked.
- The Buffs have been ranked in the top 10 seven times
- The highest ranking for Colorado was eighth (Sept. 14, 1993).

Roster Breakdown

BY POSITION

Left Side Hitter

Stephanie Shadley
Frankie Shebby
Alexa Smith
Anyse Smith
Justine Spann

Opposite

Lauren Dorrell
Joslyn Hayes
Taylor Joachim

Middle Blocker

Naghede Abu
Lillie Klemmer
Anna Pfefferle
Danielle Price

Setter

Brynna DeLuzio
Emily DeMure
Jaden Newsome

Def. Specialist/Libero

Gabby Carta-Samuels
Rachel Whipple

BY YEAR

Seniors

Joslyn Hayes
Anna Pfefferle
Stephanie Shadley

Juniors

Naghede Abu
Gabby Carta-Samuels
Frankie Shebby
Alexa Smith

Sophomores

Taylor Joachim
Lillie Klemmer
Justine Spann
Rachel Whipple

Redshirt Freshmen

Emily DeMure
Lauren Dorrell

Freshmen

Brynna DeLuzio
Jaden Newsome
Danielle Price
Anyse Smith

Follow Us On Social Media:



@CUBuffsVB

PAC-12 CONFERENCE

Standings

	OVERALL			PAC-12		
	W	L	Pct.	W	L	Pct.
Stanford	13	2	.846	6	0	1.000
Utah	14	3	.800	5	1	.833
USC	13	4	.800	5	1	.833
Washington	14	3	.867	4	2	.667
UCLA	11	4	.692	4	2	.667
Oregon	10	4	.750	3	3	.500
Washington St.	13	5	.750	2	4	.250
Colorado	12	5	.800	2	4	.333
California	11	6	.733	2	4	.333
Arizona	8	7	.538	2	4	.333
Oregon St.	11	7	.625	1	5	.167
Arizona St.	10	8	.625	0	6	.000

Preseason Poll

School (first-place votes)	Points
1. Washington (8)	118
2. Stanford (3)	113
3. Oregon	93
4. Utah (1)	88
5. UCLA	83
6. Southern California	71
7. Washington State	66
8. Arizona	51
9. Colorado	38
10. Oregon State	33
11. California	23
12. Arizona State	15

Preseason All-Pac-12 Team

Taylor Agost, Oregon
 Adora Anae, Utah
 Reily Buechler, UCLA
 Crissy Jones, Washington
 Audriana Fitzmorris, Stanford
 Morgan Hentz, Stanford
 Khalia Lanier, USC
 Merete Lutz, Stanford
 Mary-Kate Marshall, Oregon State
 Kathryn Plummer, Stanford
 Courtney Schwan, Washington
 Ronika Stone, Oregon
 Bailey Tanner, Washington
 Lindsey Vander Weide, Oregon

Statistics

Pac-12 Team Statistics

(All Matches)

Category	CU	Rank
Hitting %	.252	8th
Opp Hitting %	.205	11th
Kills	13.89	6th
Assists	13.00	6th
Blocks	2.33	8th
Service Aces	1.09	8th
Digs	15.02	4th

Pac-12 Individual Statistics

(All Matches)

Hitting %		
Naghede Abu	.343	9th
Kills		
Alexa Smith	4.19	5th
Frankie Shebby	3.22	10th
Assists		
Brynna DeLuzio	11.26	3rd
Blocks		
Naghede Abu	1.31	7th
Digs		
Gabby Carta-Samuels	3.66	7th
Points		
Alexa Smith	4.58	6th

Pac-12 Team Statistics

(Conference Matches Only)

Category	CU	Rank
Hitting %	.185	11th
Opp Hitting %	.229	6th
Kills	12.96	7th
Assists	12.40	5th
Blocks	2.20	7th
Service Aces	0.84	10th
Digs	16.24	2nd

Pac-12 Individual Statistics

(Conference Matches Only)

Kills		
Alexa Smith	4.13	3rd
Assists		
Brynna DeLuzio	10.96	3rd
Blocks		
Naghede Abu	1.24	8th
Digs		
Gabby Carta-Samuels	4.13	t5th
Points		
Alexa Smith	4.36	6th

Players of the Week

Offense

Aug. 28	Khalia Lanier, USC
Sept. 4	Mary-Kate Marshall, OSU
Sept. 11	Taylor Agost, Oregon
Sept. 18	Alexa Smith, CU
Sept. 25	Brittany Abercrombie, USC
Oct. 2	Brittany Abercrombie, USC
Oct. 9	
Oct. 16	
Oct. 23	
Oct. 30	
Nov. 6	
Nov. 13	
Nov. 20	
Nov. 27	

Defense

Aug. 28	Zana Muno, UCLA
Sept. 4	Tawnee Luafalemana, Utah
Sept. 11	Berkeley Oblad, Utah
Sept. 18	Halle Harker, ASU
Sept. 25	Victoria Garrick, USC
Oct. 2	Naghede Abu, CU
Oct. 9	
Oct. 16	
Oct. 23	
Oct. 30	
Nov. 6	
Nov. 13	
Nov. 20	
Nov. 27	

Freshman

Aug. 28	Mac May, UCLA
Sept. 4	Dani Barton, Utah
Sept. 11	Mima Mirkovic, Cal
Sept. 18	Brynna DeLuzio, CU
Sept. 25	Mac May, UCLA
Oct. 2	Brynna DeLuzio, CU
Oct. 9	
Oct. 16	
Oct. 23	
Oct. 30	
Nov. 6	
Nov. 13	
Nov. 20	
Nov. 27	

THE MATCH-UP

Oct. 13



**COLORADO
BUFFALOES**

General Information

2017 Record: 12-5
Pac-12 Record: 2-4
AVCA Ranking: RV
Head Coach: Jesse Mahoney
Record at CU: 26-21
Division I Record: 114-32
Overall Record: 221-144



**ARIZONA STATE
SUN DEVILS**

General Information

2017 Record: 10-8
Conf. Record: 0-6
AVCA Ranking: NR
Head Coach: Sanja Tomasevic
Record at ASU: 10-8
Overall Record: 10-8

THE COMPARISON

CU	STAT	ASU
803	KILLS	877
295	ERRORS	337
2413	ATTACKS	2273
0.252	ATTACK PCT.	0.238
13.9	KILLS/SET	13.7
845	ASSISTS	840
13.0	ASSISTS/GM	13.1
71	ACES	53
59	RECEPTION ERRORS	59
976	DIGS	1059
15.0	DIGS/SET	16.5
28	BLOCK SOLOS	60
247	BLOCK ASSISTS	156
151.5	BLOCKS (TOTAL)	138.0
2.3	BLOCKS/SET	2.2
1125.5	POINTS	1068.0

THE SERIES HISTORY

- Arizona State leads the all-time series at 8-4.
- ASU took the only meeting last season, defeating CU 3-1 in Tempe, Ariz.
- From 2012-15, the two teams split meetings every season.
- The Buffs have only recorded one win at ASU, that coming on 11/2/14 in five-sets. Scores were 25-19, 29-27, 23-25, 15-25, 15-11.

Oct. 15



**COLORADO
BUFFALOES**

General Information

2017 Record: 12-5
Pac-12 Record: 2-4
AVCA Ranking: RV
Head Coach: Jesse Mahoney
Record at CU: 26-21
Division I Record: 114-32
Overall Record: 221-144



**ARIZONA
WILDCATS**

General Information

2017 Record: 8-7
Conf. Record: 204
AVCA Ranking: NR
Head Coach: David Rubio
Record at UA: 487-297
Overall Record: 609-375

THE COMPARISON

CU	STAT	UA
803	KILLS	724
295	ERRORS	301
2413	ATTACKS	1861
0.252	ATTACK PCT.	0.227
13.9	KILLS/SET	13.2
845	ASSISTS	668
13.0	ASSISTS/GM	12.1
71	ACES	45
59	RECEPTION ERRORS	67
976	DIGS	774
15.0	DIGS/SET	14.1
28	BLOCK SOLOS	32
247	BLOCK ASSISTS	212
151.5	BLOCKS (TOTAL)	138.0
2.3	BLOCKS/SET	2.5
1125.5	POINTS	907.0

THE SERIES HISTORY

- The series is tied up at 6-6.
- UA won the first five matches in the series before the Buffs took the meeting on 10/25/13, defeating the Wildcats 3-0.
- CU is riding a five-match win streak against the Wildcats. The last time UA won a match was on 11/17/13.
- The Buffs are 2-4 all-time in Tucson, Ariz., and are 2-3 there since joining the Pac-12.

COLORADO VOLLEYBALL

ABOUT THE BUFFS: CU is currently 12-5 overall (2-4 Pac-12). The Buffs fell below .500 in conference play after suffering a pair of losses last weekend to Washington State (3-1) and then-No. 9 Washington (3-0). CU tied for seventh in the conference standings with WSU, California and Arizona.

Junior Alexa Smith leads the Buffs and ranks fifth in the Pac-12 with 4.19 kills per set and is also second in the league in attacks (11.59 per set). Junior Naghede Abu has the team's best hitting percentage at .343, which is seventh in the conference and Anna Pfefferle is second for the Buffs with a .321 hitting efficiency.

Colorado's offense is directed by freshman setter Brynna DeLuzio. She ranks third in the Pac-12 and is 22nd in the NCAA with an 11.26 assists per set average and has guided the Buffs to a .252 mark.

Defensively the Buffs are led by Abu who is recording 1.31 blocks per set (seventh in the Pac-12 and 46th in the NCAA). Junior Gabby Carta-Samuels ranks seventh in the conference with a 3.66 digs per set mark.

SCOUTING THE SUN DEVILS: Arizona State enters this weekend with a 10-8 record and is 12th in the Pac-12 with a 0-6 mark. Oluoma Okaro is the top attacker for the Sun Devils with 4.45 kills per set, the third highest in the conference and 16th in the NCAA. As a team, they are recording 13.70 kills per set while hitting .238. ASU leads the league with 16.55 digs per set, thanks in part to Halle Harker's Pac-12 leading 5.41 digs per set, which also ranked 17th in the NCAA.

SCOUTING THE WILDCATS: Arizona is 8-7 overall and is tied with the Buffs for seventh in the Pac-12 standings with a 2-4 mark. UA started Pac-12 play with a win over ASU before dropping four straight matches. The Wildcats rebounded in their most recent match, recording a 3-0 win over then-No. 15 Southern California. Kendra Dahlke has a team-best 3.16 kills per set, while Tyler Spriggs adds 2.78 kills per set. Kimberly Gutierrez is the team leader with 2.72 digs per set and at the net, Devyn Cross has posted 1.04 blocks per set.

JESSE MAHONEY ERA: Jesse Mahoney was named the fifth head coach in CU history in December of 2015 and is in his second season at the helm of the Colorado Buffaloes.

Mahoney joined CU after spending four seasons as the head coach at Denver, where he guided the Pioneers to an 88-41 mark and back-to-back NCAA Tournament appearances (2014-15).

This season Mahoney is joined by associate head coach Lee Maes and

NCAA Rankings

TEAM RANKINGS

Category	Stat	NCAA
Aces/set	1.09	247
Assists/set	13.00	44
Blocks/set	2.33	70
Digs/set	15.02	140
Attack Pct.	0.252	46
Kills/set	13.89	38
W-L Pct.	0.706	60
Opp Attack Pct.	0.205	189
Assists	856	91
Attacks/set	37.12	49
Digs	976	166
Kills	903	97
Service Aces	71	240
Attacks	2,413	131
Blocks	151.5	92

INDIVIDUAL RANKINGS

Category	Player	Stat	NCAA
Aces/set	--		
Assists/set	Brynna DeLuzio	11.26	22
Attacks/set	Alexa Smith	11.59	33
Blocks/set	Naghede Abu	1.31	46
Digs/set	--		
Attack Pct.	Naghede Abu	0.343	110
Kills/set	Alexa Smith	4.19	35
Points	Alexa Smith	270.0	122
Points/set	Alexa Smith	4.58	44
Service Aces	--		
Assists	Brynna DeLuzio	732	36
Attacks	Alexa Smith	684	104
Blocks	Naghede Abu	85	37
Digs	--		
Kills	Alexa Smith	247	91
Triple Doubles	--		

2017 COLORADO QUICK FACTS

BUFFS AT A GLANCE

Location.....	Boulder, Colo. (102,500)
Founded.....	1876
Enrollment.....	30,789
Colors.....	Silver, Gold and Black
Nickname.....	Buffaloes (Buffs)
Mascot.....	Ralphie V, The Buffalo (live), Chip (costumed)
Home Arena (Capacity).....	Coors Events Center (11,064)
Elevation.....	5,435 feet above sea level
NCAA Affiliation.....	Division I
Conference.....	Pac-12 (Joined 2011)
President.....	Bruce Benson
Chancellor.....	Phil DiStefano
Athletic Director.....	Rick George
SWA.....	Ceal Barry

COACHING STAFF

Head Coach.....	Jesse Mahoney (Colorado, 1995)
Record at Colorado (years).....	26-21 (2)
Division I Record (years).....	114-62 (7)
Collegiate Record (years).....	221-144 (13)
Associate Head Coach.....	Lee Maes
Assistant Coach.....	Evan Sanders
Director of Operations.....	Crystal Gippe
Technical Coordinator.....	Eduardo Fiallos
Volleyball Office.....	303/492-1718 (Fax: 303/492-2300)

2016 REVIEW

2016 Overall Record...	14-16 (H,9-6; A,2-10; N,3-0)
2016 Pac-12 Record.....	6-14/9th
Postseason.....	DNP
Final Ranking.....	NR
Letterwinners Returning/Lost.....	11/4
Starters Returning/Lost.....	5/1+libero

VOLLEYBALL HISTORY

First Season.....	1986
All-Time Record.....	526-431 (.549)
NCAA Appearances.....	
.....	18 (1989, 1991-2001, 2003-06, 2013-14)
NCAA Record.....	11-18/.379
Last NCAA Appearance/Result:	2014 Second Round
Best NCAA Finishes Sweet 16	(1993, 1994 & 1997)

SPORTS INFORMATION

Mailing Address.....	357 UCB Boulder, CO 80309
Main Office Phone.....	303/492-5626
Fax.....	303/492-3811
Volleyball Contact.....	Linda Sprouse
Office Phone.....	303/492-5980
E-Mail.....	linda.sprouse@colorado.edu
Web Site.....	cubuffs.com/volleyball
Facebook.....	facebook.com/cubuffsvb
Twitter/Instagram.....	@cubuffsvb



COLORADO VOLLEYBALL

2017 Situational Records

Home	6-1
Road	3-2
Neutral	3-1

Day	8-2
Night	4-3

Wednesday	0-0
Thursday	0-0
Friday	3-3
Saturday	8-0
Sunday	1-2

3 games	5-2
4 games	4-2
5 games	3-1

Winning game 1	11-1
Losing game 1	1-4
Winning game 2	5-2
Losing game 2	7-3
Winning first two games	2-0
Splitting first two games	6-3
Losing first two games	1-2
Winning game 3	12-1
Losing game 3	0-4
Leading 2-1	6-1
Down 2-1	1-2
Winning game 4	5-0
Losing game 4	2-3

vs. Ranked teams (AVCA)	2-4
-------------------------	-----

Hitting	
Less than .100	0-0
.100-.199	2-3
.200-.299	6-2
.300-.399	5-0
.400-up	0-0

Opponent hitting	
Less than .100	1-0
.100-.199	5-0
.200-.299	5-4
.300-.399	1-1
.400-up	0-0

More kills than opponent	10-0
Kills are equal	0-1
Less kills than opponent	2-4
More attack errors than opponent	3-2
Attack errors are equal	0-0
Less attack errors than opponent	9-3
More attacks than opponent	6-3
Attacks are equal	1-0
Less attacks than opponent	5-2
More aces than opponent	7-1
Aces are equal	4-2
Less aces than opponent	1-2
More serve errors than opponent	7-2
Serve errors are equal	1-1
Less serve errors than opponent	4-3
More reception errors than opponent	1-2
Reception errors are equal	4-2
Less reception errors than opponent	7-1
More digs than opponent	3-0
Digs are equal	3-1
Less digs than opponent	6-4
More blocks than opponent	8-2
Blocks are equal	0-0
Less blocks than opponent	4-3

assistant coach Evan Sanders. Eduardo Fiallos is the technical coordinator and Crystal Gippe will again serve as the director of operations.

THE LAST TIME OUT: Colorado lost a pair of matches on the road last weekend, falling to 2-4 in the Pac-12 (12-5 overall).

The weekend started off in Pullman, Wash., on Oct. 6, where Colorado battled Washington State. WSU won the match 3-1 (25-23, 25-19, 22-25, 30-28) despite a great effort by the Buffs. Alexa Smith led the way offensively for CU with 24 kills and also hit .304 while adding 14 digs and two blocks. Justine Spann recorded a team-best 18 digs and Naghede Abu posted five blocks in the effort.

Two days later in Seattle, the Buffs squared off against No. 9 Washington. The Huskies were a strong opponent and defeated CU 3-0 despite a couple of closely played sets (26-24, 25-22, 14-25). Frankie Shebby led CU with 13 kills and added 13 digs, both team-high marks.

PLAYER OF THE WEEK HONORS (10/2): Colorado earned another set of Pac-12 Player of the Week awards on Oct. 2 after picking up a pair of wins over Oregon State and then-No. 12 Oregon.

Junior Naghede Abu was named the Pac-12 Defensive Player of the Week, as well as the CU Athlete of the Week. Abu led the Buffs with 13 blocks, averaging 1.44 per set. She also performed well offensively, adding 2.56 kills per set while hitting a team-best .435. Abu tallied 12 kills and hit .579 with just one error on 19 attacks against Oregon State and added four blocks, one solo and three assists. The following night against Oregon, she posted nine blocks, one solo and eight assists, in addition to 11 kills. Abu hit .333 with two errors on 27 swings. This is the third overall conference player of the week honor for Abu. She was the freshman of the week on Oct. 19, 2015 and was the defensive player of the week on Sept. 5, 2016.

Freshman Brynna DeLuzio was selected the Pac-12 Freshman of the Week for the second time in three weeks after averaging 11.22 assists per set and guiding the Buffs to a .222 attack percentage and 13.00 kills per set. She added 2.56 digs per set, which was second on the team for the weekend, and led the Buffs with five aces (0.56 per set). Four of those aces came in the win over Oregon State, where she also tied a career-high with 55 assists. DeLuzio added 10 digs, three kills and one block against the Beavers. The following night against the Ducks, she recorded 46 assists, 13 digs, two kills, one ace and one block. The Buffs hit .269 in the match with 57 kills for their second win over a ranked team this season. With the honor, DeLuzio is the first Buff to ever record the Pac-12 Freshman of the Week honor twice as she also picked up the award on Sept. 18.

The Last Time...

Team	
100 Kills	115 @ TTU, 11/13/99
90 Kills	90 vs. KSU, 11/1/06
80 Kills	80 @ TTU, 10/13/10
25 or Fewer Errors	23 @ UW, 10/8/17
15 or Fewer Errors	14 vs. UA, 9/16/17
5 or Fewer Errors	5 vs. Chi.St., 9/16/16
40 Errors	40 @ AFA, 9/13/12
250 Attacks	273 vs. UT, 11/30/99
200 Attacks	202 vs. USC, 10/9/15
100 or Fewer Attacks	99 vs. LBSU, 8/27/16
.400 Attack %	.453 vs. Chi.St., 9/16/16
.300 Attack %	.318 @ CSU, 9/16/17
.100 or less Att. %	.051 vs. WSU, 11/20/16
90 Assists	92 vs. UT, 11/20/99
25 or Fewer Assists	25 @ UA, 11/17/13
10 Service Aces	11 vs. Pitt, 9/6/14
0 Service Aces	0 vs. Utah, 9/13/11
0 Service Errors	0 vs. TSU, 8/24/12
10 Service Errors	14 @ CSU, 9/16/17
100 Digs	100 vs. UM, 9/4/10
90 Digs	92 vs. UW, 11/13/14
25 or Fewer Digs	23 vs. RMU, 9/12/14
10 Block Solos	8 @ ASU, 10/24/15
0 Block Solos	0 @ UW, 10/8/17
30 Block Assists	30 vs. UO, 9/30/17
5 or Fewer Block Assists	4 vs. Illinois, 9/5/15
20 Total Blocks	22 (12.0) @ Oklahoma, 8/26/17
5 or Fewer Total Blocks	4.0 @ UW, 10/8/17

Individual

40 Kills	40, Sarah Lodge vs. UT, 11/28/97
35 Kills	35, Kerra Schroeder @ TTU, 10/13/10
30 Kills	32, Taylor Simpson @ ACU, 12/6/14
25 Kills	25, Alexa Smith vs. SU, 9/24/17
20 Kills	21, Alexa Smith vs. OSU, 9/29/17
100 Attacks	106, Rachel Wacholder at ISU, 11/24/95
90 Attacks	106, Rachel Wacholder at ISU, 11/24/95
80 Attacks	81, Courtney Owens at KSU, 11/27/98
70 Attacks	70, Alexis Austin vs. USC, 10/9/15
.800 Att. Pct.	.818, Katelyn Cuff vs. LBSU, 8/27/16
.700 Att. Pct.	.700, Anna Pfefferle @ OU, 8/26/17
.600 Att. Pct.	.615, Naghede Abu, vs. ACU, 9/20/17
.500 Att. Pct.	.583, Anna Pfefferle @ WSU, 10/6/17
90 Assists	93, Kelly Campbell at TTU, 11/13/05
80 Assists	93, Kelly Campbell at TTU, 11/13/05
70 Assists	74, Ashley Nu'u KSU, 11/1/06
10 Aces	10, Staci Wolfe vs. Montana, 8/30/91
5 Aces	5, Gabby Simpson vs. GMU, 9/20/15
40 Digs	40, Rachel Wacholder at ISU, 11/24/95
30 Digs	31, Cierra Simpson vs. Cal, 10/16/15
25 Digs	27, Cierra Simpson vs. UCLA, 10/2/16
20 Digs	23, Gabby Carta-Samuels @ UU, 9/22/16
15 Blocks	15, Naghede Abu @ PSU, 8/27/16
10 Blocks	10, Naghede Abu, @ OU, 8/26/17

COLORADO VOLLEYBALL

RPI RANKINGS: In the second RPI Ranking of the season, the Buffs are 24th. The Pac-12 Conference has a strong showing in the rankings with six teams in the top-20. Stanford leads the league at seventh. Behind the Cardinal is Oregon (eighth), Utah (ninth), Washington (10th), UCLA (16th) and Southern California (17th). After Colorado, there is a pair of teams in the top-60. Washington State is 31st and Oregon State is 43rd.

EPIC SHOWDOWN: In the last 32 years, CU volleyball has had some great showdowns. One of those came on Sept. 24 as the then-No. 25 Buffaloes host the then-No. 4 Stanford Cardinal. The Buffs won the first set (25-20) before the Cardinal rallied back to even the match (25-13) 1-1 heading into intermission.

After intermission, both teams played some inspired volleyball, pushing the third and fourth sets to extra points. CU hit .380 and had 24 kills in the third set to take that frame 29-27. The Buffs had their changes to close out the match in the fourth set, but Stanford held them off, taking the set with the identical score. The race to 15 was on in the fifth set, and despite a great effort by the Buffs, SU won the set, 15-12, to avoid the upset.

PLAYER OF THE WEEK HONORS (9/18): Colorado picked up several player of the week awards after going 3-0 in the final weekend of non-conference play.

Junior Alexa Smith was named the Pac-12 Offensive Player of the Week, CU Athlete of the Week and the VolleyMob National Player of the Week. She played in two of the three matches for the Buffs and averaged a team-best 4.56 kills per set while adding 3.33 digs per set. She started the weekend with 16 kills and 15 digs against Xavier on Sept. 15, for her third double-double of the season. In CU's upset at CSU, which was CU's first win at Moby Arena since 1995, Smith hammered a career-high 25 kills, the third most by a Pac-12 player this season, and hit .310 while adding 15 digs for her fourth double-double this season. She served up a pair of aces and posted one block solo in the win.

Freshman Brynna DeLuzio also collected the Pac-12 Freshman of the Week honor after averaging 13.67 assists per set while guiding the Buffs to 15.00 kills per set and a .275 team hitting percentage. She recorded a career-high 55 assists in two of the three matches. She handed out 55 assists on Sept. 15 against Xavier and earned a double-double with 15 digs, tying a career-high. In the win over CSU, she also had 55 assists and earned her second double-double of the weekend with 13 digs while directing the Buffs to a weekend best .318 hitting percentage.

BRAGGING RIGHTS: The Buffaloes took down their in-state rival, Colorado State, on Sept. 16 to earn bragging rights for the second straight year. CU rallied from an 0-2 deficit to defeat the No. 22 Rams at Moby Arena in an exciting 3-2 match.

This was the first win at Moby Arena for the Buffs since 1995 and is also marked the second straight win over CSU, which the Buffs haven't accomplished since 1994.

ENDING THE STREAK: Entering the match against CU on Sept. 15, Colorado State head coach Tom Hilbert was 51-0 against in-state NCAA DI opponents at Moby Arena. That came to an end as the Buffs defeated CSU in five sets.

Since Jesse Mahoney took over the reigns at CU, his teams have beaten the Rams twice in as many meetings. The Buffs snapped an eight-match losing streak to the Rams in 2016 and have extended their win streak to two.

FRESHMAN PHENOM: The Colorado coaching staff knew that freshman Brynna DeLuzio was talented when she was recruited, but were not sure what role she would play since she had played setter, outside hitter and libero. That has now been settled as she has earned the starting setter role for the Buffs. DeLuzio has guided the Buffs to a .252 hitting percentage and ranks 22nd individually, third in the Pac-12, averag-

2017 Awards And Honors

Naghede Abu

- Omni Invitational All-Tournament Team
- Pac-12 Defensive Player of the Week (10/1)
- CU Athlete of the Week (10/2)

Brynna DeLuzio

- NIKE Invitational All-Tournament Team
- Omni Invitational All-Tournament Team
- Pac-12 Freshman of the Week (9/18, 10/1)

Anna Pfefferle

- NIKE Invitational All-Tournament Team

Alexa Smith

- NIKE Invitational All-Tournament Team
- Omni Invitational All-Tournament MVP
- CU Athlete of the Week (9/5, 9/18, 9/25)
- Pac-12 Offensive Player of the Week (9/18)
- VolleyMob National Player of the Week (9/18)

Team Awards

- NIKE Invitational Champion (3-0)
- Omni Invitational Champion (3-0)

400-Career Blocks Club

Anna Pfefferle
- Currently has 405

2017 Match Highs

Individual

Hitting % (minimum 12 kills).....	.632, Joslyn Hayes @ Oklahoma (8/26/17)
Kills.....	25, Alexa Smith @ Colorado State (9/16/17) & vs. Stanford (9/24/17)
Attacks.....	68, Alexa Smith vs. Stanford (9/24/17)
Points.....	28.0, Alexa Smith @ Colorado State (9/16/17)
Assists.....	55, Brynna DeLuzio, three times
Digs.....	23, Gabby Carta-Samuels @ Utah (9/22/17)
Aces.....	4, Brynna DeLuzio vs. OSU (9/29/17)
Blocks.....	10, Naghede Abu vs. Northwestern State (8/25/17)

Team

Hitting %391 @ Oklahoma (8/26/17)
Kills.....	72 @ Colorado State (9/16/17)
Attacks.....	188 vs. Stanford (9/24/17)
Assists.....	65 @ Colorado State (9/16/17)
Digs.....	.80 vs. OSU (9/29/17)
Aces.....	.9, twice
Blocks.....	17.0 vs. Oregon (9/30/17)

COLORADO VOLLEYBALL

ing 11.26 assists per set.

BLOCK RECORDS: Entering the 2017 season, only one Buff had every reached 400 career blocks since the rally-scoring era started in 2001. That was Nikki Lindow, who played for the Buffs from 2010-13. She has the rally-scoring era record with 426 total blocks.

Current CU senior Anna Pfefferle just joined that prestigious 400-career blocks club on Sept. 30 and another, junior Naghede Abu, is right behind her as she has 380 career assists. Pfefferle now has 411 and is on track to eclipse Lindow's mark.

Prior to 2001, three other Buffs surpassed the 400 career blocks mark. Meghan Barkman is the overall record holder with 565 and Alison Koepke is second with 441. Lisa Soulliere (412) is also a member of the club.

PAC-12/BIG TEN CHALLENGE: The Buffaloes competed at the Pac-12/Big Ten Challenge for the third straight year and came away with a 1-1 record. Colorado started off the weekend with a 25-22, 25-18, 25-21 loss to third-ranked Penn State on Sept. 8. The Buffs returned to action less than 24 hours later to face Illinois, which was hosting the challenge. The Buffs rebounded and took home a 3-2 win against the Illini.

CU is now 3-3 all-time in the challenge.

EXTRA POINTS AGAIN VS. ILLINOIS: For the second straight season, Colorado defeated Illinois in five sets at the Pac-12/Big Ten Challenge. The Buffs played a very close match with the Illini on Sept. 4, 2016 in Boulder, taking the contest 25-17, 18-25, 25-15, 18-25, 19-17. The match was even closer this season, with four of the five sets won by two points, and once again extra points were needed in the final frame. CU was victorious, taking the match 25-23, 26-24, 28-26, 12-25, 17-15.

OMNI INVITATIONAL RECAP: Colorado won its own Omni Invitational the second weekend of the season, sweeping all three of its opponents. The Buffs started off with a 3-0 victory over Wake Forest on Sept. 2 and later that day, defeated Rice 3-0. The following morning, the Buffs finished the tournament with another 3-0 win against Abilene Christian. Brynna DeLuzio and Naghede Abu were selected to the all-tournament team, while Alexa Smith earned MVP honors.

NIKE INVITATIONAL RECAP: The Buffs got the 2017 season off on a great foot, winning all three contests at the NIKE Invitational in Norman, Okla. CU opened the season with a 3-1 win over Northwestern State and then cruised to a 3-0 win over Seton Hall. The Buffs capped off the tournament with a 3-1 victory over former Big Eight/12 rival Oklahoma. Anna Pfefferle hit .630 in the three matches with 17 kills on 27 errorless attacks, while Alexa Smith tallied 50 kills and hit .351. Brynna DeLuzio directed CU to a .330 hitting efficiency and tallied 11.7 assists per set. All three were named to the all-tournament team.

FAMILY TIES: Freshman setter Brynna DeLuzio is already making a name for herself at CU, but she is not the first in her family to play for the Buffaloes. Her father, Donald, played football for CU and lettered in 1985, 86 and 88. Her aunt, Denise, was on the inaugural CU volleyball team in 1986.

32 SEASONS OF CU VOLLEYBALL: The University of Colorado volleyball program is playing its 32nd season. Since debuting as a varsity program in the fall of 1986, the Buffs have recorded an overall record of 526-431 including one conference title (Big Eight in 1993).

HOME OPENERS: The Buffs are 22-10 in home openers. CU swept Wake Forest to open the season in 2017 with set scores of 25-23, 25-18, 25-15.

SEASON OPENERS: The Buffs are 21-11 in season openers all-time, which includes a 8-4 record in the last 12 season openers.

CONFERENCE OPENERS: Colorado is 14-17 in all-time conference openers. It had a record of 7-8 in the Big 12 era and was 5-5 in the Big Eight. CU is 2-5 in Pac-12 openers, all against Utah.

NON-CONFERENCE DOMINANCE: Colorado has recorded a .500 record or better in non-conference play for 29 straight seasons after earning a 10-1 mark

Double-Doubles Club

Brynna DeLuzio
vs. ACU, 9/3/17 (38 assists, 14 digs)
@ Illinois, 9/9/17 (53 assists, 15 digs)
vs. Xavier, 9/15/17 (55 assists, 15 digs)
@ CSU, 9/16/17 (55 assists, 13 digs)
vs. SU, 9/24/17 (52 assists, 11 digs)
vs. OSU, 9/29/17 (55 assists, 10 digs)
vs. UO, 9/30/17 (46 assists, 13 digs)

Stephanie Shadley
vs. ACU, 9/3/17 (11 kills, 14 digs)

Frankie Shebby
vs. NSU, 8/25/17 (13 kills, 11 digs)
@ Oklahoma, 8/26/17 (13 kills, 10 digs)
vs. PSU, 9/8/17 (10 kills, 12 digs)
vs. Xavier, 9/15/17 (19 kills, 10 digs)
@ CSU, 9/16/17 (16 kills, 11 digs)
vs. SU, 9/24/17 (12 kills, 11 digs)
@ UW, 10/8/17 (13 kills, 13 digs)

Alexa Smith
vs. SHU, 8/26/17 (17 kills, 11 digs)
@ Illinois, 9/9/17 (19 kills, 12 digs)
vs. Xavier, 9/15/17 (16 kills, 15 digs)
@ CSU, 9/16/17 (25 kills, 15 digs)
@ Utah, 9/22/17 (11 kills, 15 digs)
vs. SU, 9/24/17 (25 kills, 12 digs)
vs. OSU, 9/29/17 (21 kills, 16 digs)
vs. UO, 9/30/17 (14 kills, 19 digs)
@ WSU, 10/6/17 (24 kills, 14 digs)

Justine Spann
vs. Albany, 9/16/17 (11 kills, 11 digs)

20+ Points Club

Frankie Shebby
20.5 vs. Xavier, 9/15/17
Alexa Smith
28.0 @ CSU, 9/16/17
25.5 vs. SU, 9/24/17
23.0 vs. OSU, 9/29/17
25.0 @ WSU, 10/6/17

20+ Kills Club

Alexa Smith
25 @ CSU, 9/16/17
25 vs. SU, 9/24/17
21 vs. OSU, 9/29/17
24 @ WSU, 10/6/17

20+ Digs Club

Gabby Carta-Samuels
23 @ Utah, 9/24/17

50+ Assists Club

Brynna DeLuzio
53 @ Illinois, 9/9/17
55 vs. Xavier, 9/15/17
55 @ CSU, 9/16/17
52 vs. Stanford, 9/24/17
55 vs. Oregon State, 9/29/17
53 @ Washington State, 10/6/17

COLORADO VOLLEYBALL

in 2017.

CAPTAINS: Three of CU's seniors, Joslyn Hayes, Anna Pfefferle and Steph Shadley, will serve as the captains this year. This will be Hayes' second year as a captain, while it is the first year for Pfefferle and Shadley.

PAC-12 NETWORKS: The Pac-12 Network will televise 13 of CU's matches this season, seven home and six away.

TICKET INFORMATION: Single match tickets start at just \$5 for general admission and \$8 for reserved seating. Kids 12 and under are free. Season tickets are also available and start at just \$25 for general admission, while reserved seats are \$40. Fans can purchase single match and season tickets online at CUBuffs.com or by calling 303-49-BUFFS.

New for the 2017 season is the General Admission Flex season ticket for \$35. Fans will receive 14 match vouchers redeemable to all games. The flex plan is 50% off single game pricing.

And don't forget about the Women's Sports Pass. For just \$125, the Women's sports pass gives you general admission seating for all volleyball, soccer and women's basketball home games.

COORS EVENTS CENTER CLEAR BAG POLICY: In an effort to provide a safer environment for fans, the University of Colorado will continue its clear bag policy at the Coors Events Center for all CU volleyball matches, men's basketball and women's basketball games.

Fans may bring one clear bag no larger than 12 inches x 6 inches x 12 inches, or a one-gallon reseal-able clear plastic storage bag, into the arena. Fans will also be allowed one small clutch purse, no larger than 4.5 inches by 6.5 inches.

Bags that are not allowed into the CEC include backpacks, large purses, oversized tote bags, camera bags and binocular cases, diaper bags, fanny packs and printed plastic bags.

HOME SWEET HOME: Colorado will call the Coors Events Center home for the 30th straight season this year. The Buffs are 272-141 all-time at the CEC for a winning percentage of .659.

USOTC TRAINING: When the United States Olympic Training Center is practically in the backyard, it would be crazy to not take advantage of that. From August 12-18, the Buffaloes trained in Colorado Springs, Colo. during the pre-season camp.

MORE USA VOLLEYBALL: Associate head coach Lee Maes was involved with USA Volleyball this summer as he was named an assistant coach of the USAV Youth A1 National Team, which ran July 13-22.

WHAT I DID DURING SUMMER BREAK: This past summer, three members of the CU volleyball team has once-in-a-lifetime opportunities.

NAGHEDE ABU had a 10-week Operations Internship program with Wal-Mart U.S. The majority of her internship has been spent in Denver, but she had the chance to travel to the Wal-Mart Home Office in Bentonville, Ark., and see some of the inner workings of Wal-Mart.

ANNA PFEFFERLE spent two and a half weeks in China, traveling to Hong Kong, Shenzhen and Macau, to

participate in a global seminar focused on international operations management through CU's Leeds Business School.

STEPHANIE SHADLEY spend part of her summer in Uganda doing missionary work for her second straight summer. She spent time volunteering at a school and medical clinic in Kirugu.

HEAD COACH JESSE MAHONEY



Jesse Mahoney was named the fifth head volleyball coach in University of Colorado history on December 17, 2015.

In his first season at the helm of the Buffaloes, CU saw its share of success, recording a 14-16 overall record. The Buffs also earned a ninth place finish in the Pac-12 with a 6-14 match. CU finished its non-conference slate with an 8-2 record, which included several huge wins. The Buffs recorded back-to-back wins against ranked opponents for

the first time in school history when they took down No. 13 Penn State and No. 17 Illinois at the Pac-12/Big Ten Challenge. Colorado also earned its first win against Colorado State since 2002, defeating the Rams 3-1.

During the Pac-12 schedule, CU knocked off three more ranked opponents. The Buffs recorded a huge 3-1 win over No. 12 UCLA in the 400th match at Coors Events Center. The other wins came on the road. The Buffs knocked off No. 13 Washington State in Pullman, Wash., which was the Cougars first home loss of the season, and took down No. 17 Utah in the final contest of the season in Salt Lake City.

The Buffs were ranked five weeks and were ranked as high as 16th. After they dropped out of the poll, they were still receiving votes for an additional five weeks.

Several individual Buffs earned recognition during the season, most notably Gabby Simpson who was named to the AVCA All-Pacific South honorable mention team after she was selected to the All-Pac-12 honorable mention team. Simpson was joined on the all-conference team by teammate Naghede Abu and Alexa Smith. Simpson was also a member of the Pac-12 All-Academic team with Abu, Anna Pfefferle, Stephanie Shadley and Cierra Simpson.

Prior to coming to CU, Mahoney spent the previous four seasons at the University of Denver, where he guided the Pioneers to an 88-41 mark, including back-to-back NCAA Tournament appearances (2014, 2015).

The Pioneers finished with a 27-8 mark this past fall after falling to No. 5 Washington in the first round of the NCAA Tournament. In 2014, DU was 27-7, its season ending in the first round of the tournament, on that occasion to No. 13 Colorado State, also in the first round.

The Pioneers accumulated a 46-18 conference mark with Mahoney at the helm, winning the Summit League regular season championship the last two seasons with identical 13-3 league records; Denver also claimed the postseason tournament title both years. The 2014 crown was the

Head Coaching Ledger

Division I Head Coaching Ledger

Year	School	Overall	Conference
2012	Denver	17-13	10-8
2013	Denver	17-13	10-4
2014	Denver	27-7	13-3
2015	Denver	27-8	13-3
2016	Colorado	14-16	6-14
2017	Colorado	12-5	2-4
Career		114-62 (.648)	54-36 (.600)

Division II Head Coaching Ledger

Year	School	Overall	Conference
1999	Fort Hays St.	14-16	8-11
2000	Fort Hays St.	1-28	0-19
2001	Fort Hays St.	18-13	12-7
2002	Fort Hays St.	18-13	11-8
2003	Fort Hays St.	25-7	16-3
2004	Fort Hays St.	31-5	17-2
Career		107-82 (.567)	64-50 (.561)

school's first in the sport after joining the league in 2013, in which Mahoney coached the Pioneers to a 10-4 league mark and runner-up finishes in both the regular season and in the postseason tourney. That team was 17-13 overall, as was his first team at DU in 2012, when the Pioneers were members of the Western Athletic Conference (with a 10-8 mark in conference play).

While at Denver, Mahoney coached 17 all-conference selections, including a pair of 2014 AVCA Division I Honorable Mention All-Americans. His 2014 recruiting class was tabbed No. 28 by prepvolleyball.com. Nationally, the Pioneers' offense was ranked in the top 25 in hitting efficiency three times (2013-15) and this fall the defense cracked the top 25 in opponent hitting efficiency. Mahoney also helped the Pioneers to the AVCA Team Academic Award from 2012-14.

Prior to his success at DU, Mahoney served as an assistant coach at Colorado State (2005-11), including four as the associate head coach. In his time there under head coach Tom Hilbert, the Rams participated in seven consecutive NCAA Tournaments and won five Mountain West titles. CSU compiled a 162-51 record during his time on the staff.

While with the Rams, he helped to assemble three recruiting classes ranked in the top 25 by prepvolleyball.com. His primary responsibility in practice was working with the middle blockers and CSU was ranked nationally in the top 10 in blocking five of his seven seasons. He tutored two All-American middle blockers as well as multiple All-Conference and All-Region performers.

Mahoney, a Boulder native, joined the staff at CSU after six seasons as the head coach at Fort Hays State, where the Tigers recorded a 107-82 overall record under his direction. FHSU tallied an impressive 56-12 record over his last two years there (2003-04), which included a 31-5 mark and No. 11 final national ranking in 2004.



HEAD COACH JESSE MAHONEY

His first varsity coaching position was as an assistant coach at Colorado Christian, which followed his first foray into the profession – the head coach of the CU men's club volleyball team from 1995-98. Mahoney has also coached in the club circuit as a member of the Front Range Volleyball Club, guiding the 18-Black to the 1998 USA Junior Rocky Mountain Region title.

Mahoney is no stranger to the University of Colorado, having earning a bachelor's degree in Psychology in 1995 and a Juris Doctorate degree from CU's Law School in 1999. He is married to the former Gwen McEntyre and the couple has three children: Macy, Griffin and Declan.



Mahoney vs. the Nation (Division I opponents only)

Opponent	Matches	Sets		
Abilene Christian	2-0	6-0	Oral Roberts	4-0
Air Force	3-1	11-5	*Oregon	1-2
Akron	1-0	3-0	*Oregon State	2-1
Albany	1-0	3-0	Penn State	1-1
Appalachian State	0-1	2-3	Portland State	0-1
*Arizona	1-0	3-2	Rice	1-0
*Arizona State	0-1	1-3	Rhode Island	1-0
Army	1-0	3-0	Sam Houston State	1-0
Bakersfield	1-0	3-0	San Diego	0-1
Bradley	1-0	3-0	San Diego State	1-0
Brown	1-0	3-0	San Francisco	1-1
*California	1-1	4-3	San Jose State	1-1
UC Irvine	1-1	5-3	Seattle University	1-1
UCLA	0-1	0-3	Seton Hall	1-0
CSU Northridge	0-1	1-3	South Dakota	6-2
Chicago State	2-0	6-0	South Dakota State	6-0
The Citadel	1-0	3-1	*Southern California	0-2
Colorado State	2-4	7-15	*Stanford	0-3
Colgate	1-0	3-0	Syracuse	1-0
Creighton	0-2	3-6	Texas Arlington	4-1
East Carolina	1-0	3-2	Texas A&M CC	1-0
Fort Wayne	5-1	15-5	Texas El-Paso	2-0
Idaho	1-1	3-5	Texas Tech	1-0
Illinois	2-0	6-4	UTSA	1-1
Illinois at Chicago	2-0	6-0	Texas State	2-0
Incarnate Word	1-0	3-1	*UCLA	1-1
IUPUI	4-4	15-14	*Utah	1-2
Jackson State	1-0	3-0	Utah State	0-2
Kansas	0-2	2-6	Villanova	1-0
Kansas State	0-1	0-3	Virginia	1-0
Long Beach State	1-1	3-3	Wake Forest	1-0
Louisiana Tech	2-0	6-1	*Washington	0-4
Marshall	1-0	3-0	*Washington State	1-2
Montana	1-0	3-1	Western Illinois	6-0
Navy	1-0	3-1	Western Michigan	1-0
Nebraska	0-1	0-3	Xavier	1-0
Nebraska-Omaha	6-1	18-5		
Nevada	1-0	3-1		
New Mexico State	0-4	2-12		
New Orleans	1-0	3-0		
North Dakota State	4-3	15-11		
Northern Colorado	3-0	9-0		
Northwestern State	1-0	3-1		
Oklahoma	1-1	4-4		

*indicates Pac-12 Conference opponents

2017 BUFFALOES



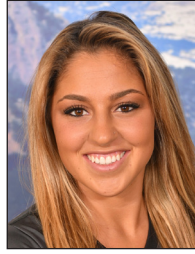
1 Frankie Shebby

OH • 6-0 • Jr.
La Mirada, Calif.
Mater Dei/Oregon



2 Stephanie Shadley

OH • 6-0 • Sr.
Lewisville, Texas
Prince of Peace Christian



3 Gabby Carta-Samuels

DS/L • 5-6 • Jr.
Saratoga, Calif.
Archbishop Mitty



4 Anna Pfefferle

MB • 6-2 • Sr.
Northfield, Minn.
Northfield



5 Jaden Newsome

S • 6-0 • Fr.
Houston, Texas
Clear Brooks



6 Taylor Joachim

OPP • 6-4 • So.
Baroda, Mich.
Lakeshore



7 Alexa Smith

OH • 6-1 • Jr.
Colorado Springs, Colo.
Lewis-Palmer/Purdue



8 Justine Spann

OH • 5-8 • So.
Chandler, Ariz.
Basha



9 Emily DeMure

S/OH • 6-1 • R-Fr.
Lakewood, Colo.
Lakewood/Sacred Heart



10 Brynna DeLuzio

S/L • 5-9 • Fr.
Windermere, Fla.
The First Academy



12 Rachel Whipple

DS/L • 5-7 • So.
Centennial, Colo.
Smoky Hill



14 Naghede Abu

MB • 6-4 • Jr.
Riverside, Calif.
Norte Vista



16 Lillie Klemmer

MB/OPP • 5-11 • So.
Honolulu, Hawai'i
Panahou



17 Danielle Price

MB • 6-4 • Fr.
Lethbridge, Alberta
Chinook



18 Anyse Smith

OH • 5-10 • Fr.
Amarillo, Texas
Tascosa



21 Lauren Dorrell

OH • 6-0 • R-Fr.
Brentwood, Tenn.
Father Ryan



22 Joslyn Hayes

OH • 6-3 • Sr.
Santa Monica, Calif.
Santa Monica



Jesse Mahoney

Head Coach
Second Season
Colorado, 1995



Lee Maes

Assistant Coach
Second Season
Long Beach State, 1994



Evan Sanders

Assistant Coach
Second Season
Washington, 2012



Crystal Gippe

Director of Operations
Third Season
Santa Clara, 2008



Eduardo Fiallos

Technical Coordinator
First Season
Arizona, 1998



#14 Naghede Abu **6-4, Junior, Middle Blocker** **Riverside, Calif. (Norte Vista)**

2017 Match-by-Match

Team (Date)	GP	K	E	TA	Pct.	Ast.	SA	SE	RE	Dig	BS	BA	BE	BHE	Pts.
vs. Northwestern St. (8/25)	4	5	3	14	.143	0	0	0	0	0	1	9	0	0	10.5
vs. Seton Hall (8/26)	3	9	0	16	.562	0	0	0	0	0	2	4	1	0	13.0
@ Oklahoma (8/26)	4	6	1	17	.294	0	0	0	0	0	2	5	0	0	10.5
WAKE FOREST (9/2)	3	7	0	14	.500	0	0	0	0	0	0	2	1	0	8.0
RICE (9/2)	3	9	2	18	.389	0	0	0	0	0	0	3	0	0	10.5
ABILENE CHRISTIAN (9/3)	3	8	0	13	.615	0	0	0	0	1	0	5	1	0	10.5
vs. Penn State (9/8)	3	5	2	10	.300	0	0	0	0	0	1	3	1	0	7.5
@ Illinois (9/9)	5	15	2	21	.619	0	0	0	0	0	0	6	2	0	18.0
XAVIER (9/15)	4	7	3	16	.250	0	0	0	0	2	2	2	1	0	10.0
vs. Albany (9/16)	3	11	2	20	.450	0	0	0	0	0	1	3	0	0	13.5
@ Colorado State (9/16)	5	7	3	22	.182	0	0	0	0	1	0	3	1	0	8.5
@ Utah (9/22)	4	10	4	21	.286	0	0	0	0	1	1	4	0	0	13.0
STANFORD (9/24)	5	7	3	14	.286	0	0	0	0	1	0	6	0	0	10.0
OREGON STATE (9/29)	5	12	1	19	.579	0	0	0	0	1	1	3	1	0	14.5
OREGON (9/30)	4	11	2	27	.333	0	0	0	0	0	1	8	0	0	16.0
@ Washington State (10/6)	4	5	3	21	.095	0	0	0	0	0	1	4	1	0	8.0
@ Washington (10/8)	3	4	5	14	-.071	0	0	0	0	0	0	2	1	0	5.0
@ Arizona State (10/13)															
@ Arizona (10/15)															
SOUTHERN CALIFORNIA (10/20)															
UCLA (10/21)															
@ Oregon (10/27)															
@ Oregon State (10/28)															
WASHINGTON STATE (11/1)															
WASHINGTON (11/3)															
@ UCLA (11/9)															
@ Southern California (11/11)															
ARIZONA (11/17)															
ARIZONA STATE (11/18)															
@ California (11/22)															
UTAH (11/24)															
TOTALS	65	138	36	297	.343	0	0	0	0	7	13	72	11	0	0187.0
TOTALS - Pac-12	25	49	18	116	.267	0	0	0	0	3	4	27	3	0	066.5

MATCH HIGHS

Season Highs

Kills - 15 @ Illinois (9/9/17)
 Attacks - 27 vs. UO (9/30/17)
 Att Per. - .619 @ Illinois (9/9/17)
 Assists - 0
 Aces - 0
 Digs - 2 vs. Xavier (9/15/17)
 Blocks - 10 vs. Northwestern State (8/25/17)
 Points - 18.0 @ Illinois (9/9/17)

Career Highs

Kills - 15 @ Illinois (9/9/17)
 Attacks - 27 vs. UO (9/30/17)
 Att Per. - .750 vs. WSU (9/20/15)
 Assists - 1, three times
 Aces - 1 vs. USD (8/28/15)
 Digs - 3 vs. Colorado State (9/17/16)
 Blocks - 15 @ Portland State (8/27/16)
 Points - 20.5 @ Portland State (8/27/16)

Career Statistics

Overall	MP-MS	GP	K	E	TA	Pct.	KPG	Ast.	APG	SA	Dig	DPG	BS	BA	TB	BPG	Pts.
2015-Fr.	31-29	118	139	54	335	.254	1.18	3	0.03	1	12	0.10	15	127	142	1.20	218.5
2016-So.	30-30	121	205	55	465	.323	1.69	0	0.00	0	13	0.11	15	138	153	1.26	289.0
2017-Jr.	17-17	65	138	36	297	.343	2.12	0	0.00	0	7	0.11	13	72	85	1.31	187.0
Totals	78-76	304	482	145	1097	.307	1.59	3	0.01	1	32	0.11	43	337	380	1.25	694.5

2017

- Started the season with 10 blocks against NSU (8/25)
- Did not commit an error against SHU (8/26) with 9 kills on 16 attacks.
- Named to the Omni Invitational All-Tournament Team after she hit .489 with 24 kills and just two errors on 45 attacks while adding 1.11 blocks per set.
- Hit a team-best .516 during the Pac-12/Big Ten Challenge. She recorded 20 kills and four errors on 31 attacks. Abu also added 1.25 blocks per set.
- In the fifth-set win against Illinois (9/9), she hammered five kills on five swings, helping CU to a 17-15 victory.
- Was named the Pac-12 Defensive Player of the Week for the second time in her career (10/2) after helping CU defeat Oregon State and then-No. 12 Oregon.
- Continues to be a strong presense both offensively and defensively.

2016

- All-Pac-12 honorable mention
- Recorded 153 blocks as a sophomore, setting CU's single season rally scoring-era record.
- Tied the CU single match blocks record with 15 block assists against Portland State. That record had stood solo since 1989 and was set by Lisa Soulliere.
- Her 15 block assists is a CU record for most block assists in a single match, breaking the previous record of 13 by Alison Koepke from 1997. It is also the CU sophomore single match record.
- Her 15 blocks is tied for second in the NCAA Division I for total blocks in a five-set match.
- Was 52nd in the NCAA with 1.24 blocks per set, sixth in the Pac-12
- Was named the CU Athlete of the Week on August 30 and Sept. 6.

- Tabbed Pac-12 Defensive Player of the Week on Sept. 5.
- Omni Invite All-Tournament Team member
- Has been an offensive and defensive threat for the the Buffs as sophomore
- In the final match of the season, she hit .400 with 10 kills on 25 errorless attacks

2015

- Debuted for the Buffs against San Diego (8/28) and recorded two kills and four blocks.
- Earned her first career start against No. 9 Florida State (8/29) and tallied four kills and five blocks
- Recorded a career-high 10 kills and hit .750 against Weber State (9/18). The .750 hitting percentage tied the 13th best in CU history.
- Omni Invitational All-Tournament Team
- Led CU with 1.17 blocks per set (9th in the Pac-12)
- Named Pac-12 Freshman of the Week on Oct. 19 after averaging 1.50 blocks per set in wins against Cal and Stanford.
- Recorded 11 blocks in a four-set upset at No. 13 Arizona (10/23)
- Named a 2015 Pac-12 All-Freshman honorable mention selection



#3 Gabby Carta-Samuels

5-6, Junior, Defensive Specialist/Libero

Saratoga, Calif. (Archbishop Mitty)

2017 Match-by-Match

Team (Date)	GP	K	E	TA	Pct.	Ass.	SA	SE	RE	Dig	BS	BA	BE	BHE	Pts.
vs. Northwestern St. (8/25)	1	0	0	0	.000	0	0	0	0	0	0	0	0	0	0.0
vs. Seton Hall (8/26)	1	0	0	0	.000	2	0	0	0	6	0	0	0	0	0.0
@ Oklahoma (8/26)	4	0	0	0	.000	4	0	1	2	19	0	0	0	0	0.0
WAKE FOREST (9/2)	3	0	0	0	.000	1	0	0	1	6	0	0	0	1	0.0
RICE (9/2)	3	0	0	0	.000	3	0	1	0	15	0	0	0	0	0.0
ABILENE CHRISTIAN (9/3)	3	0	0	0	.000	2	1	0	1	9	0	0	0	0	1.0
vs. Penn State (9/8)	3	0	0	0	.000	1	0	0	0	4	0	0	0	0	0.0
@ Illinois (9/9)	5	0	0	0	.000	4	0	1	4	17	0	0	0	0	0.0
XAVIER (9/15)	4	1	0	2	.500	3	0	0	2	16	0	0	0	0	1.0
vs. Albany (9/16)	3	0	0	0	.000	0	1	1	0	12	0	0	0	0	1.0
@ Colorado State (9/16)	5	0	0	0	.000	3	0	2	1	13	0	0	0	0	0.0
@ Utah (9/22)	4	0	0	0	.000	2	0	2	0	23	0	0	0	0	0.0
STANFORD (9/24)	5	0	0	0	.000	8	0	0	0	11	0	0	0	0	0.0
OREGON STATE (9/29)	5	0	0	1	.000	1	1	0	3	19	0	0	0	0	1.0
OREGON (9/30)	4	0	0	0	.000	3	0	0	3	17	0	0	0	0	0.0
@ Washington State (10/6)	2	0	0	0	.000	2	0	1	1	12	0	0	0	0	0.0
@ Washington (10/8)	3	0	0	0	.000	1	0	1	2	13	0	0	0	0	0.0
@ Arizona State (10/13)															
@ Arizona (10/15)															
SOUTHERN CALIFORNIA (10/20)															
UCLA (10/21)															
@ Oregon (10/27)															
@ Oregon State (10/28)															
WASHINGTON STATE (11/1)															
WASHINGTON (11/3)															
@ UCLA (11/9)															
@ Southern California (11/11)															
ARIZONA (11/17)															
ARIZONA STATE (11/18)															
@ California (11/22)															
UTAH (11/24)															
TOTALS	58	1	0	3	.333	40	3	10	20	212	0	0	0	1	4.0
TOTALS - Pac-12	23	0	0	1	.000	17	1	4	9	95	0	0	0	0	1.0

MATCH HIGHS

Season Highs

Assists - 8 vs. Stanford (9/24/17)
 Aces - 1, three times
 Digs - 23 @ Oklahoma (9/22/17)
 Points - 1.0, four times

Career Highs

Assists - 8 vs. Stanford (9/24/17)
 Aces - 2, twice
 Digs - 23 @ Oklahoma (9/22/17)
 Points - 2.0, twice

Career Statistics

Overall	MP-MS	GP	K	E	TA	Pct.	KPG	Ass.	APG	SA	Dig	DPG	BS	BA	TB	BPG	Pts.
2015-Fr.	14-0	26	0	0	0	.000	0.00	2	0.05	1	20	0.77	0	0	0	0.00	1.0
2016-So.	20-0	58	1	0	2	.500	0.02	2	0.03	6	21	0.36	0	0	0	0.00	7.0
2017-Jr.	17-0	58	1	0	3	.333	0.02	40	0.69	3	212	3.66	0	0	0	0.00	4.0
Totals	51-0	142	2	0	5	.400	0.01	44	0.31	10	253	1.78	0	0	0	0.00	12.0

2017

- Was the libero in CU's 3-0 win over Oklahoma (8/26/17), recording a then-career-best 19 digs in the win.
- Has earned the libero position and leads CU in digs this season.
- Has recorded double-digit kills in 12 matches this season.
- Tallied a career-high 23 digs against Utah (9/22).
- She handed out a career-best eight assists in a close loss to No. 4 Stanford (9/24)

2016

- Played in 20 matches for the Buffs
- Came back from an injury against UCLA after missing eight matches

2015

- Debuted for the Buffs against San Diego (8/28/15)
- Was a solid back row defender off the bench



#10 Brynna DeLuzio

5-10, Freshman, Setter/Libero

Windermere, Fla. (The First Academy)

2017 Match-by-Match																
Team (Date)	GP	K	E	TA	Pct.	Ast.	SA	SE	RE	Dig	BS	BA	BE	BHE	Pts.	
vs. Northwestern St. (8/25)	4	1	1	3	.000	43	2	1	0	9	0	1	0	0	3.5	
vs. Seton Hall (8/26)	3	1	1	2	.000	41	1	1	0	4	0	2	0	0	3.0	
@ Oklahoma (8/26)	4	3	0	4	.750	45	2	1	0	6	0	2	0	0	6.0	
WAKE FOREST (9/2)	3	2	0	5	.400	35	0	1	0	3	0	1	0	1	2.5	
RICE (9/2)	3	3	0	6	.500	32	2	0	0	3	0	1	0	0	5.5	
ABILENE CHRISTIAN (9/3)	3	3	0	6	.500	38	0	0	0	14	0	0	0	0	3.0	
vs. Penn State (9/8)	3	2	0	3	.667	28	0	1	0	5	0	1	0	1	2.5	
@ Illinois (9/9)	5	1	0	4	.250	53	0	3	0	15	0	1	0	2	1.5	
XAVIER (9/15)	4	1	1	5	.000	55	2	1	1	15	0	1	0	0	3.5	
vs. Albany (9/16)	3	1	0	3	.333	33	0	1	0	6	0	0	0	0	1.0	
@ Colorado State (9/16)	5	4	0	9	.444	55	2	1	0	13	1	3	0	0	8.5	
@ Utah (9/22)	4	2	0	6	.333	38	1	0	0	6	0	2	0	0	4.0	
STANFORD (9/24)	5	2	1	5	.200	52	0	1	0	11	0	3	1	0	3.5	
OREGON STATE (9/29)	5	3	1	9	.222	55	4	1	0	10	0	1	0	0	7.5	
OREGON (9/30)	4	2	1	3	.333	46	1	1	0	13	0	1	0	0	3.5	
@ Washington State (10/6)	4	2	0	5	.400	53	0	1	0	7	0	1	0	0	2.5	
@ Washington (10/8)	3	1	1	3	.000	30	0	0	0	5	0	1	0	0	1.5	
@ Arizona State (10/13)																
@ Arizona (10/15)																
SOUTHERN CALIFORNIA (10/20)																
UCLA (10/21)																
@ Oregon (10/27)																
@ Oregon State (10/28)																
WASHINGTON STATE (11/1)																
WASHINGTON (11/3)																
@ UCLA (11/9)																
@ Southern California (11/11)																
ARIZONA (11/17)																
ARIZONA STATE (11/18)																
@ California (11/22)																
UTAH (11/24)																
TOTALS	65	34	7	81	.333	732	17	15	1	145	1	22	1	4	63.0	
TOTALS - Pac-12	25	12	4	31	.258	274	6	4	0	52	0	9	1	0	22.5	

MATCH HIGHS

Season/Career Highs

Kills - 4 @ Colorado State (9/16/17)
 Attacks - 9, twice
 Att Per. - .750 @ Oklahoma (8/26/17)
 Assists - 55, three times
 Aces - 4 vs. OSU (9/29/17)
 Digs - 15, twice
 Blocks - 4 @ Colorado State (9/16/17)
 Points - 8.5 @ Colorado State (9/16/17)

Career Statistics

Overall	MP-MS	GP	K	E	TA	Pct.	KPG	Ast.	APG	SA	Dig	DPG	BS	BA	TB	BPG	Pts.
2017-Fr.	17-17	65	34	7	81	.333	0.52	732	11.26	17	145	2.23	1	22	23	0.35	63.0

2017

- Earned her first collegiate start in CU's season opener against Northwestern State (8/25/17).
- Selected to the NIKE Invitational All-Tournament team after directing CU to a .330 hitting percentage.
- Was named to the Omni Invitational All-Tournament team after guiding CU to a .321 hitting efficiency.
- Has handed out 50 or more assists in six matches this year, including a pair of 55 assists matches which is a career-high.
- Named the Pac-12 Freshman of the Week after helping CU to a 3-0 mark the final weekend of non-conference action. She recorded 143 assists (11.9 per set) and directed the Buffs to a .275 hitting percentage, which including a weekend-best .318 against No. 22 Colorado State.
- Earned her second Pac-12 Freshman of the Week honor after helping CU past Oregon State and then-No. 12 Oregon. She tallied 11.22 assists per set and guided the Buffs to a .222 hitting percentage and 13.00 kills per set.
- She is the first Buff to earn Pac-12 Freshman of the Week twice.



#9 Emily DeMure
6-1, Redshirt Freshman, Setter/Opposite
Granite Bay, Calif. (Granite Bay/Penn State)

2017 Match-by-Match

Team (Date)	GP	K	E	TA	Pct.	Ass.	SA	SE	RE	Dig	BS	BA	BE	BHE	Pts.
vs. Northwestern St. (8/25)	1	0	0	0	.000	3	0	0	0	1	0	0	0	0	0.0
vs. Seton Hall (8/26)	3	0	0	0	.000	0	0	0	0	0	0	0	0	0	0.0
@ Oklahoma (8/26)	2	0	0	0	.000	1	0	0	0	0	0	0	0	0	0.0
WAKE FOREST (9/2)	3	0	0	0	.000	3	0	0	0	0	0	0	0	0	0.0
RICE (9/2)	3	0	0	1	.000	2	0	0	0	0	0	0	0	0	0.0
ABILENE CHRISTIAN (9/3)	3	0	1	1	-1.000	4	0	0	0	1	0	0	0	2	0.0
vs. Penn State (9/8)	3	0	0	0	.000	0	0	0	0	0	0	0	0	0	0.0
@ Illinois (9/9)	DNP - CD														
XAVIER (9/15)	2	0	0	0	.000	0	0	0	0	0	0	0	0	0	0.0
vs. Albany (9/16)	2	0	0	0	.000	3	0	0	0	0	0	0	0	0	0.0
@ Colorado State (9/16)	DNP - CD														
@ Utah (9/22)	DNP - CD														
STANFORD (9/24)	1	0	0	0	.000	0	0	0	0	0	0	0	0	0	0.0
OREGON STATE (9/29)	1	0	0	0	.000	0	0	0	0	0	0	0	0	0	0.0
OREGON (9/30)	DNP - CD														
@ Washington State (10/6)	DNP - CD														
@ Washington (10/8)	DNP - CD														
@ Arizona State (10/13)															
@ Arizona (10/15)															
SOUTHERN CALIFORNIA (10/20)															
UCLA (10/21)															
@ Oregon (10/27)															
@ Oregon State (10/28)															
WASHINGTON STATE (11/1)															
WASHINGTON (11/3)															
@ UCLA (11/9)															
@ Southern California (11/11)															
ARIZONA (11/17)															
ARIZONA STATE (11/18)															
@ California (11/22)															
UTAH (11/24)															

Career Statistics																	
Field Goals Made	2	Field Goals Attempted	500	Free Throws Made	0	Free Throws Attempted	0	Rebounds	16	Assists	0	Points	0	Steals	0	Blocks	0
Field Goal Percentage	0.004	Free Throw Percentage	0.000	Rebounds Per Game	0.00	Assists Per Game	0.00	Points Per Game	0.00	Steals Per Game	0.00	Blocks Per Game	0.00	Minutes Played	0	Games Played	0

MATCH HIGHS

Season/Career Highs
Kills - 0
Attacks - 1, twice
Att Per. - .000
Assists - 4 vs. ACU (9/3/17)
Aces - 0
Digs - 1, twice
Blocks - 0
Points - 0.0

2017

- Transferred from Penn State in the spring of 2017
- Is a dependable sub at setter

2016

- Redshirt at Penn State



#5 Lauren Dorrell **6-0, Redshirt Freshman, Outside Hitter** **Brentwood, Tenn. (Father Ryan)**

2017 Match-by-Match																
Team (Date)	GP	K	E	TA	Pct.	Ast.	SA	SE	RE	Dig	BS	BA	BE	BHE	Pts.	
vs. Northwestern St. (8/25)																
vs. Seton Hall (8/26)																
@ Oklahoma (8/26)																
WAKE FOREST (9/2)																
RICE (9/2)	1	0	0	1	.000	0	0	0	0	1	0	0	0	0	0.0	
ABILENE CHRISTIAN (9/3)	3	8	1	22	.318	0	0	0	0	0	0	2	1	0	9.0	
vs. Penn State (9/8)	2	0	0	1	.000	0	0	0	0	0	0	0	0	0	0.0	
@ Illinois (9/9)																
XAVIER (9/15)	1	0	0	0	.000	0	0	0	0	1	0	1	0	0	0.5	
vs. Albany (9/16)	3	4	2	14	.143	0	0	0	0	2	0	2	0	0	5.0	
@ Colorado State (9/16)																
@ Utah (9/22)	2	2	0	6	.333	0	0	0	0	0	0	1	0	0	2.5	
STANFORD (9/24)																
OREGON STATE (9/29)	1	0	0	1	.000	0	0	0	0	0	0	0	0	0	0.0	
OREGON (9/30)																
@ Washington State (10/6)																
@ Washington (10/8)																
@ Arizona State (10/13)																
@ Arizona (10/15)																
SOUTHERN CALIFORNIA (10/20)																
UCLA (10/21)																
@ Oregon (10/27)																
@ Oregon State (10/28)																
WASHINGTON STATE (11/1)																
WASHINGTON (11/3)																
@ UCLA (11/9)																
@ Southern California (11/11)																
ARIZONA (11/17)																
ARIZONA STATE (11/18)																
@ California (11/22)																
UTAH (11/24)																
TOTALS	13	14	3	45	.244	0	0	0	0	4	0	6	1	0	17.0	
TOTALS - Pac-12	3	2	0	7	.286	0	0	0	0	0	0	1	0	0	2.5	

MATCH HIGHS

Season/Career Highs

Kills - 8 vs. ACU (9/3/17)
 Attacks - 22 vs. ACU (9/3/17)
 Att Per. - .318 vs. ACU (9/3/17)
 Assists - 0
 Aces - 0
 Digs - 2 vs. Xavier (9/15/17)
 Blocks - 2, twice
 Points - 9.0 vs. ACU (9/3/17)

Career Statistics																
Overall	MP-MS	GP	K	E	TA	Pct.	KPG	Ast.	APG	SA	Dig	DPG	BS	BA	TB	BPG
2017-R-Fr.	7-1	13	14	3	45	.244	1.08	0	0.00	0	4	0.31	0	6	6	0.46

2017

- Recorded eight kills and hit .318 in the win over Abilene Christian (9/3)
- Has seen action on the right side in seven matches this season



#22 Joslyn Hayes

6-3, Senior, Outside Hitter

Santa Monica, Calif. (Santa Monica)

2017 Match-by-Match

Team (Date)	GP	K	E	TA	Pct.	Ast.	SA	SE	RE	Dig	BS	BA	BE	BHE	Pts.
vs. Northwestern St. (8/25)	4	8	1	19	.368	0	0	0	0	3	2	3	0	0	11.5
vs. Seton Hall (8/26)	3	7	2	17	.294	0	0	0	0	2	0	1	0	0	7.5
@ Oklahoma (8/26)	4	13	1	19	.632	0	0	0	0	1	0	2	0	0	14.0
WAKE FOREST (9/2)	3	5	3	14	.143	0	0	0	0	1	0	2	0	0	6.0
RICE (9/2)	3	9	1	19	.421	0	0	0	0	2	0	3	0	0	10.5
ABILENE CHRISTIAN (9/3)	1	2	0	5	.400	0	0	0	0	1	0	1	0	0	2.5
vs. Penn State (9/8)	3	5	1	16	.216	0	0	0	0	0	1	2	0	0	7.0
@ Illinois (9/9)	5	8	5	34	.088	1	0	0	0	2	0	3	0	0	9.5
XAVIER (9/15)	4	11	7	32	.125	0	0	0	0	2	0	1	0	0	11.5
vs. Albany (9/16)	1	1	0	1	1.000	0	0	0	0	0	0	0	0	0	1.0
@ Colorado State (9/16)	5	11	1	23	.435	0	0	0	0	3	0	3	1	0	12.5
@ Utah (9/22)	4	3	1	20	.100	0	0	0	0	1	0	1	2	0	3.5
STANFORD (9/24)	5	16	7	40	.225	0	0	0	0	3	0	1	0	0	16.5
OREGON STATE (9/29)	5	15	3	28	.429	0	0	0	0	0	0	1	1	0	15.5
OREGON (9/30)	4	10	3	26	.269	0	0	0	0	8	1	8	1	0	15.0
@ Washington State (10/6)	4	4	3	23	.043	0	0	0	0	1	0	2	0	0	5.0
@ Washington (10/8)	3	8	2	20	.300	0	0	0	0	0	0	2	0	0	9.0
@ Arizona State (10/13)															
@ Arizona (10/15)															
SOUTHERN CALIFORNIA (10/20)															
UCLA (10/21)															
@ Oregon (10/27)															
@ Oregon State (10/28)															
WASHINGTON STATE (11/1)															
WASHINGTON (11/3)															
@ UCLA (11/9)															
@ Southern California (11/11)															
ARIZONA (11/17)															
ARIZONA STATE (11/18)															
@ California (11/22)															
UTAH (11/24)															
TOTALS	61	136	41	356	.267	1	0	0	0	30	4	36	5	0	0158.0
TOTALS - Pac-12	25	56	19	157	.236	0	0	0	0	13	1	15	4	0	64.5

MATCH HIGHS

Season Highs

Kills - 16 vs. Stanford (9/24/17)
 Attacks - 40 vs. Stanford (9/24/17)
 Att Per. - .632 @ Oklahoma (8/26/17)
 Assists - 1 @ Illinois (9/9/17)
 Aces - 0
 Digs - 8 vs. UO (9/30/17)
 Blocks - 9 vs. UO (9/30/17)
 Points - 16.5 vs. Stanford (9/24/17)

Career Highs

Kills - 16, twice
 Attacks - 41 vs. USC (9/30/16)
 Att Per. - .632 @ Oklahoma (8/26/17)
 Assists - 2, three times
 Aces - 2 vs. vs. UP (9/6/14)
 Digs - 9 vs. OSU (10/30/15)
 Blocks - 11 @ Portland State (8/27/16)
 Points - 17.0 vs. USC (9/30/16)

Career Statistics

Overall	MP-MS	GP	K	E	TA	Pct.	KPG	Ast.	APG	Dig	DPG	BS	BA	TB	BPG	Pts.
2013-Fr.	22-3	47	29	18	118	.085	0.62	0	0.00	1	10	0.21	2	15	17	0.36 39.5
2014-So.	12-8	40	88	46	222	.189	2.20	3	0.08	5	15	0.38	4	13	17	0.43 103.5
2015-RSo.	24-8	79	117	67	357	.140	1.48	6	0.08	4	38	0.48	4	28	32	0.41 139.0
2016-Jr.	27-11	108	214	74	572	.245	1.98	8	0.07	1	48	0.44	2	93	95	0.88 262.5
2017-Sr.	17-15	61	136	41	356	.267	2.23	1	0.02	0	30	0.49	4	36	40	0.66 158.0
Totals	102-45	335	584	247	1625	.207	1.74	18	0.05	10	141	0.42	16	185	201	0.60 702.5

2017

- Is serving as a captain this season
- Tallied a then-season-high 13 kills and hit a career-high .632 against Oklahoma (8/26)
- Has recorded double-digit kills in four matches this season
- Tied a career-high 16 kills in a strong effort against Stanford (9/24)
- Had an outstanding match in CU's upset of then-No. 12 Oregon, recording 10 kills, eight digs and eight blocks.
- Continues to be a strong presence for the Buffs on the right side

2016

- One of two captains with Cierra Simpson
- Averaged a 0.88 blocks per set
- Her 11 block assists against PSU (8/27/16) is a career-high and is tied for 13th in CU history.
- Recorded the final point (kill) to defeat Colorado State on Sept. 17. It was the first win for the Buffs against the Rams since 2002.
- Recorded a season-best 16 kills against USC on Sept. 30.
- Had the last kill in the win against UCLA on Oct. 2

2015

- Returned to the Buffs starting line-up against San Diego (8/28), recording two kills, an ace and two blocks for 4.0 points.
- Suffered an injury in the first set against Florida State (8/29) and missed the following four matches
- Made a huge impact in the win against No. 6 Stanford with seven kills and three blocks
- Recorded 11 kills and hit .286 as the Buffs upset No. 14 Arizona in Tucson
- Saw action in 24 matches and started in eight

2014

- Named to the Omni Hotels Colorado Volleyball Classic All-Tournament Team
- Redshirted the season after suffering an injury

2013

- Made her collegiate debut against St. Mary's (Calif.) and recorded five kills and hit .333 (8/30/13)
- Made steady progress during the season and can come in at keys points in the match



#6 Taylor Joachim **6-4, Sophomore, Opposite** **Baroda, Mich. (Lakeshore)**

2017 Match-by-Match															
Team (Date)	GP	K	E	TA	Pct.	Ast.	SA	SE	RE	Dig	BS	BA	BE	BHE	Pts.
vs. Northwestern St. (8/25)	DNP - CD														
vs. Seton Hall (8/26)	3	0	0	2	.000	0	0	0	0	0	0	1	0	0	0.5
@ Oklahoma (8/26)	2	0	0	0	.000	0	0	0	0	0	0	1	0	0	0.5
WAKE FOREST (9/2)	3	0	0	0	.000	0	0	0	0	0	0	1	0	0	0.5
RICE (9/2)	2	0	0	0	.000	0	0	0	0	0	0	0	0	1	0.0
ABILENE CHRISTIAN (9/3)	3	0	0	4	.000	0	0	0	0	0	0	1	0	0	0.5
vs. Penn State (9/8)	3	0	0	0	.000	0	0	0	0	0	0	0	0	0	0.0
@ Illinois (9/9)	DNP - CD														
XAVIER (9/15)	1	0	0	0	.000	0	0	0	0	0	0	0	0	0	0.0
vs. Albany (9/16)	2	0	0	0	.000	0	0	0	0	0	0	1	0	0	0.5
@ Colorado State (9/16)	DNP - CD														
@ Utah (9/22)	DNP - CD														
STANFORD (9/24)	1	0	0	1	.000	0	0	0	0	0	0	0	0	0	0.0
OREGON STATE (9/29)	DNP - CD														
OREGON (9/30)	DNP - CD														
@ Washington State (10/6)	DNP - CD														
@ Washington (10/8)	DNP - CD														
@ Arizona State (10/13)	DNP - CD														
@ Arizona (10/15)	DNP - CD														
SOUTHERN CALIFORNIA (10/20)	DNP - CD														
UCLA (10/21)	DNP - CD														
@ Oregon (10/27)	DNP - CD														
@ Oregon State (10/28)	DNP - CD														
WASHINGTON STATE (11/1)	DNP - CD														
WASHINGTON (11/3)	DNP - CD														
@ UCLA (11/9)	DNP - CD														
@ Southern California (11/11)	DNP - CD														
ARIZONA (11/17)	DNP - CD														
ARIZONA STATE (11/18)	DNP - CD														
@ California (11/22)	DNP - CD														
UTAH (11/24)	DNP - CD														
TOTALS	20	0	0	7	.000	0	0	0	0	0	0	5	1	0	2.5
TOTALS - Pac-12	1	0	0	1	.000	0	0	0	0	0	0	0	0	0	0.0

MATCH HIGHS

Season Highs

Kills - 0
 Attacks - 4 vs. ACU (9/3/17)
 Att Per. - .000
 Assists - 0
 Aces - 0
 Digs - 0
 Blocks - 1, five times
 Points - 0.5, five times

Career Highs

Kills - 3 @ Southern California (10/29/16)
 Attacks - 10 @ Southern California (10/29/16)
 Att Per. - .400 vs. New Orleans (9/17/16)
 Assists - 0
 Digs - 1, twice
 Blocks - 1, seven times
 Points - 3.0 @ Southern California (10/29/16)

Career Statistics

Overall	MP-MS	GP	K	E	TA	Pct.	KPG	Ast.	APG	SA	Dig	DPG	BS	BA	TB	BPG	Pts.
2016-RFr.	6-0	11	5	1	18	.222	0.45	0	0.00	0	2	0.18	0	2	2	0.18	6.0
2017-So.	9-0	20	0	0	7	.000	0.00	0	0.00	0	0	0.00	0	5	5	0.26	2.5
Totals	15-0	30	5	1	24	.160	0.16	0	0.00	0	2	0.06	0	7	7	0.23	8.5

2017

- Has seen action in nine matches this season.
- Provides extra height in CU's block when she subs in.

2016

- Made her CU debut against Texas Tech (8/26/16)
- Recorded two kills, one dig and a block against New Orleans for 2.5 points
- Tallied a career-best three kills and no errors on 10 attacks to hit .300 against No. 24 USC (10/29/16)

2015

- Redshirt. Did not compete.



#16 Lillie Klemmer

5-11, Sophomore, Middle Blocker/Opposite

Honolulu, Hawai'i (Panahou)

2017 Match-by-Match															
Team (Date)	GP	K	E	TA	Pct.	Ast.	SA	SE	RE	Dig	BS	BA	BE	BHE	Pts.
vs. Northwestern St. (8/25)		DNP	-	CD											
vs. Seton Hall (8/26)		DNP	-	CD											
@ Oklahoma (8/26)		DNP	-	CD											
WAKE FOREST (9/2)	1	1	0	1	1.000	0	0	0	0	0	0	0	1	0	1.0
RICE (9/2)		DNP	-	CD											
ABILENE CHRISTIAN (9/3)	1	0	0	0	.000	0	0	0	0	0	0	0	0	0	0.0
vs. Penn State (9/8)		DNP	-	CD											
@ Illinois (9/9)		DNP	-	CD											
XAVIER (9/15)		DNP	-	CD											
vs. Albany (9/16)	1	1	0	2	.500	0	0	0	0	0	0	0	0	0	1.0
@ Colorado State (9/16)		DNP	-	CD											
@ Utah (9/22)		DNP	-	CD											
STANFORD (9/24)		DNP	-	CD											
OREGON STATE (9/29)	1	0	0	1	.000	0	0	0	0	0	0	0	0	0	0.0
OREGON (9/30)		DNP	-	CD											
@ Washington State (10/6)		DNP	-	CD											
@ Washington (10/8)		DNP	-	CD											
@ Arizona State (10/13)															
@ Arizona (10/15)															
SOUTHERN CALIFORNIA (10/20)															
UCLA (10/21)															
@ Oregon (10/27)															
@ Oregon State (10/28)															
WASHINGTON STATE (11/1)															
WASHINGTON (11/3)															
@ UCLA (11/9)															
@ Southern California (11/11)															
ARIZONA (11/17)															
ARIZONA STATE (11/18)															
@ California (11/22)															
UTAH (11/24)															
TOTALS	4	2	0	4	.500	0	0	0	0	0	0	0	0	1	0 2.0
TOTALS - Pac-12	1	0	0	1	.000	0	0	0	0	0	0	0	0	0	0.0

MATCH HIGHS

Season Highs

Kills - 1, twice
 Attacks - 2 vs. Albany (9/16/17)
 Att Per. -
 Assists - 0
 Aces - 0
 Digs - 0
 Blocks - 0
 Points - 1.0, twice

Career Highs

Kills - 2 vs. Chicago State (9/16/16)
 Attacks - 3 vs. Chicago State (9/16/16)
 Att Per. - .667 vs. Chicago State (9/16/16)
 Assists - 0
 Aces - 0
 Digs - 0
 Blocks - 6 vs. Chicago State (9/16/16)
 Points - 5.0 vs. Chicago State (9/16/16)

Career Statistics

Overall	MP-MS	GP	K	E	TA	Pct.	KPG	Ast.	APG	SA	Dig	DPG	BS	BA	TB	BPG	Pts.
2016-Fr.	4-0	7	3	0	5	.600	0.43	0	0.00	0	0	0.00	0	7	7	1.00	6.5
2017-So.	4-0	4	2	0	4	.500	0.67	0	0.00	0	0	0.00	0	0	0	0.00	2.0
Totals	8-0	11	5	0	9	.556	0.50	0	0.00	0	0	0.00	0	7	7	0.64	8.5

2017

- Has seen action in four matches this season, totalling two kills and two points.

2016

- Made her CU debut against No. 15 San Diego (9/9/16)
- Played in three sets against Chicago State and recorded two kills and six blocks for 5.0 points



#5 Jaden Newsome

6-0, Freshman, Setter

Houston, Texas (Clear Brook)

2017 Match-by-Match

Team (Date)	GP	K	E	TA	Pct.	Ast.	SA	SE	RE	Dig	BS	BA	BE	BHE	Pts.
vs. Northwestern St. (8/25)	DNP	-	CD												
vs. Seton Hall (8/26)	DNP	-	CD												
@ Oklahoma (8/26)	DNP	-	CD												
WAKE FOREST (9/2)	DNP	-	CD												
RICE (9/2)	DNP	-	CD												
ABILENE CHRISTIAN (9/3)	DNP	-	CD												
vs. Penn State (9/8)	DNP	-	CD												
@ Illinois (9/9)	DNP	-	CD												
XAVIER (9/15)	DNP	-	CD												
vs. Albany (9/16)	DNP	-	CD												
@ Colorado State (9/16)	DNP	-	CD												
@ Utah (9/22)	DNP	-	CD												
STANFORD (9/24)	DNP	-	CD												
OREGON STATE (9/29)	DNP	-	CD												
OREGON (9/30)	DNP	-	CD												
@ Washington State (10/6)	DNP	-	CD												
@ Washington (10/8)	DNP	-	CD												
@ Arizona State (10/13)	DNP	-	CD												
@ Arizona (10/15)	DNP	-	CD												
SOUTHERN CALIFORNIA (10/20)	DNP	-	CD												
UCLA (10/21)	DNP	-	CD												
@ Oregon (10/27)	DNP	-	CD												
@ Oregon State (10/28)	DNP	-	CD												
WASHINGTON STATE (11/1)	DNP	-	CD												
WASHINGTON (11/3)	DNP	-	CD												
@ UCLA (11/9)	DNP	-	CD												
@ Southern California (11/11)	DNP	-	CD												
ARIZONA (11/17)	DNP	-	CD												
ARIZONA STATE (11/18)	DNP	-	CD												
@ California (11/22)	DNP	-	CD												
UTAH (11/24)	DNP	-	CD												
TOTALS	0	0	0	0	.000	0	0	0	0	0	0	0	0	0	0.0
TOTALS - Pac-12	0	0	0	0	.000	0	0	0	0	0	0	0	0	0	0.0

MATCH HIGHS

Season/Career Highs

Kills -
Attacks -
Att Per. -
Assists -
Aces -
Digs -
Blocks -
Points -

Career Statistics

Overall	MP-MS	GP	K	E	TA	Pct.	KPG	Ast.	APG	SA	Dig	DPG	BS	BA	TB	BPG	Pts.
2017-Fr.	0-0	0	0	0	0	.000	0.00	0	0.00	0	0	0.00	0	0	0	0.00	0.0

2017

- Has not played this season



#4 Anna Pfefferle

6-2, Senior, Middle Blocker

Northfield, Minn. (Northfield)

2017 Match-by-Match

Team (Date)	GP	K	E	TA	Pct.	Ast.	SA	SE	RE	Dig	BS	BA	BE	BHE	Pts.
vs. Northwestern St. (8/25)	4	7	0	10	.700	1	0	0	0	5	0	2	0	0	8.0
vs. Seton Hall (8/26)	3	3	0	7	.429	0	0	0	0	1	0	3	0	0	4.5
@ Oklahoma (8/26)	4	7	0	10	.700	0	3	1	0	0	0	5	0	0	12.5
WAKE FOREST (9/2)	3	4	0	9	.444	0	0	2	0	6	0	4	0	0	6.0
RICE (9/2)	3	6	0	14	.429	0	1	0	0	1	0	2	0	0	8.0
ABILENE CHRISTIAN (9/3)	3	7	2	13	.385	0	0	1	0	3	0	1	0	0	7.5
vs. Penn State (9/8)	3	3	0	10	.300	1	0	0	0	1	1	2	0	0	5.0
@ Illinois (9/9)	5	11	2	18	.500	1	1	1	0	2	0	1	0	1	12.5
XAVIER (9/15)	4	8	2	17	.353	0	0	0	1	4	0	3	0	0	9.5
vs. Albany (9/16)	3	8	2	17	.353	0	0	0	0	1	1	3	0	0	10.5
@ Colorado State (9/16)	5	9	3	21	.286	2	2	2	0	4	0	4	0	0	13.0
@ Utah (9/22)	4	4	4	19	.000	0	0	0	0	4	0	3	0	0	5.5
STANFORD (9/24)	5	3	4	13	-.077	0	2	1	0	2	1	2	1	0	7.0
OREGON STATE (9/29)	5	2	2	15	.000	0	1	1	0	3	0	2	1	0	4.0
OREGON (9/30)	4	3	1	7	.286	0	0	2	0	1	0	7	1	0	6.5
@ Washington State (10/6)	4	9	2	12	.583	0	0	3	0	4	0	4	0	0	11.0
@ Washington (10/8)	3	4	2	12	.167	0	1	0	0	3	0	2	0	0	6.0
@ Arizona State (10/13)															
@ Arizona (10/15)															
SOUTHERN CALIFORNIA (10/20)															
UCLA (10/21)															
@ Oregon (10/27)															
@ Oregon State (10/28)															
WASHINGTON STATE (11/1)															
WASHINGTON (11/3)															
@ UCLA (11/9)															
@ Southern California (11/11)															
ARIZONA (11/17)															
ARIZONA STATE (11/18)															
@ California (11/22)															
UTAH (11/24)															
TOTALS	65	98	26	224	.321	5	11	14	1	42	3	50	3	1137.0	
TOTALS - Pac-12	25	25	15	78	.128	0	4	7	0	17	1	20	3	0 40.0	

MATCH HIGHS

Season Highs

Kills - 11 @ Illinois (9/9/17)
 Attacks - 21 @ Colorado State (9/16/17)
 Att Per. - .700, twice
 Assists - 2 @ Colorado State (9/16/17)
 Aces - 3 @ Oklahoma (8/26/17)
 Digs - 6 vs. Wake Forest (9/2/17)
 Blocks - 7 vs. UO (9/30/17)
 Points - 13.0 @ Colorado State (9/16/17)

Career Highs

Kills - 14 vs. ASU (11/12/15)
 Attacks - 29 vs. FSU (8/29/15)
 Att Per. - .727 vs. PC (8/30/14)
 Assists - 2, five times
 Aces - 3, twice
 Digs - 8 vs. Colorado State (9/17/16)
 Blocks - 11 vs. UW (11/13/14)
 Points - 17.0 vs. ASU (10/3/14)

Career Statistics

Overall	MP-MS	GP	K	E	TA	Pct.	KPG	Ast.	APG	SA	Dig	DPG	BS	BA	TB	BPG	Pts.
2014-Fr.	34-32	125	159	43	395	.294	1.27	11	0.09	12	57	0.46	16	122	138	1.10	248.0
2015-So.	32-32	123	244	57	549	.341	1.98	14	0.11	19	72	0.59	9	108	117	0.95	326.0
2016-Jr.	30-27	117	103	27	289	.263	0.88	8	0.07	11	64	0.55	9	94	103	0.88	170.0
2017-Sr.	17-17	65	98	26	224	.321	1.51	5	0.08	11	42	0.65	3	50	53	0.82	137.0
Totals	113-108	430	604	153	1457	.310	1.40	38	0.09	53	235	0.55	37	374	411	0.96	881.0

2017

- Pfefferle is one of three captains this season.
- She was named to the NIKE Invitational All-Tournament Team after leading CU with a .630 hitting percentage with 17 kills and no errors on 27 attacks.
- Recorded her 400th career block against Oregon (9/30). She is just the fifth Buff all-time to reach the mark and is only the second since 2001.

2016

- Came into the first three matches as a reserve and earned a starting position after the first weekend
- Has seen action in all of CU's matches this season
- Recorded a season high 11 kills and hit .625 against No. 17 Illinois
- Collected a career high eight digs against Colorado State
- Hit a team-best .545 at Stanford (10/7/16) with six kills and no errors on 11 attacks

2015

- Recorded a career-high 14 kills against Arizona State (11/12/15)
- Led the Buffs with a .341 hitting percentage (eighth in the Pac-12) and was second on the team with 0.95 blocks per set
- Ranked seventh in conference only matches with a .347 hitting percentage
- Put up a season-best 10 block assists against Montana State (9/18)
- Hit .400 or above in 12 matches
- Had eight matches without an attack error, including an eight kill performance on 12 attacks to hit a season-best .667

2014

- Made her collegiate debut against Northwestern
- Hit a career-best .727 against Presbyterian
- Ranked eighth in the Pac-12 in blocks and was fifth in conference only matches
- Posted a career-best 11 blocks in an upset of No. 2 Washington (11/13)
- Led CU as a freshman in blocking (1.10 per set)
- Was named to the 2014 Pac-12 All-Freshman honorable mention team



#17 Danielle Price
6-4, Freshman, Middle Blocker
Lethbridge, Alberta, Canada (Chinook)

2017 Match-by-Match

Team (Date)	GP	K	E	TA	Pct.	Ast.	SA	SE	RE	Dig	BS	BA	BE	BHE	Pts.
vs. Northwestern St. (8/25)	DNP	-	CD												
vs. Seton Hall (8/26)	DNP	-	CD												
@ Oklahoma (8/26)	DNP	-	CD												
WAKE FOREST (9/2)	DNP	-	CD												
RICE (9/2)	DNP	-	CD												
ABILENE CHRISTIAN (9/3)	DNP	-	CD												
vs. Penn State (9/8)	DNP	-	CD												
@ Illinois (9/9)	DNP	-	CD												
XAVIER (9/15)	DNP	-	CD												
vs. Albany (9/16)	DNP	-	CD												
@ Colorado State (9/16)	DNP	-	CD												
@ Utah (9/22)	DNP	-	CD												
STANFORD (9/24)	DNP	-	CD												
OREGON STATE (9/29)	DNP	-	CD												
OREGON (9/30)	DNP	-	CD												
@ Washington State (10/6)	DNP	-	CD												
@ Washington (10/8)	DNP	-	CD												
@ Arizona State (10/13)															
@ Arizona (10/15)															
SOUTHERN CALIFORNIA (10/20)															
UCLA (10/21)															
@ Oregon (10/27)															
@ Oregon State (10/28)															
WASHINGTON STATE (11/1)															
WASHINGTON (11/3)															
@ UCLA (11/9)															
@ Southern California (11/11)															
ARIZONA (11/17)															
ARIZONA STATE (11/18)															
@ California (11/22)															
UTAH (11/24)															
TOTALS	0	0	0	0	.000	0	0	0	0	0	0	0	0	0	0.0
TOTALS - Pac-12	0	0	0	0	.000	0	0	0	0	0	0	0	0	0	0.0

MATCH HIGHS

Season/Career Highs

Kills -
Attacks -
Att Per. -
Assists -
Aces -
Digs -
Blocks -
Points -

Career Statistics

Overall	MP-MS	GP	K	E	TA	Pct.	KPG	Ast.	APG	SA	Dig	DPG	BS	BA	TB	BPG	Pts.
2017-Fr.	0-0	0	0	0	0	.000	0.00	0	0.00	0	0	0.0	0	0	0	0.0	0.0

2017

- Has not played this season



#2 Stephanie Shadley

6-0, Senior, Outside Hitter

Lewisville, Texas (Prince of Peace Christian)

2017 Match-by-Match

Team (Date)	GP	K	E	TA	Pct.	Ast.	SA	SE	RE	Dig	BS	BA	BE	BHE	Pts.
vs. Northwestern St. (8/25)	1	0	0	0	.000	0	0	0	0	1	0	2	1	0	1.0
vs. Seton Hall (8/26)	DNP - CD														
@ Oklahoma (8/26)	DNP - CD														
WAKE FOREST (9/2)	2	1	0	3	.333	0	0	1	0	1	0	0	0	0	1.0
RICE (9/2)	1	1	0	1	1.000	0	0	0	0	1	0	0	0	0	1.0
ABILENE CHRISTIAN (9/3)	3	11	2	32	.281	0	0	0	0	14	0	2	0	0	12.0
vs. Penn State (9/8)	2	0	0	0	.000	0	0	0	0	0	0	0	0	0	0.0
@ Illinois (9/9)	5	2	0	4	.500	1	1	2	0	3	0	0	0	0	3.0
XAVIER (9/15)	2	1	0	2	.500	0	0	0	0	2	0	0	0	0	1.0
vs. Albany (9/16)	3	7	2	22	.227	1	0	0	0	10	0	2	1	0	8.0
@ Colorado State (9/16)	5	0	0	1	.000	1	3	1	0	3	0	0	0	0	3.0
@ Utah (9/22)	4	0	0	1	.000	0	0	0	0	1	0	0	0	0	0.0
STANFORD (9/24)	4	0	0	2	.000	0	0	1	0	3	0	0	0	0	0.0
OREGON STATE (9/29)	5	6	5	39	.026	1	0	0	1	15	1	1	0	0	7.5
OREGON (9/30)	2	0	0	1	.000	0	0	0	0	1	0	0	0	0	0.0
@ Washington State (10/6)	1	0	0	0	.000	0	0	0	0	0	0	0	0	0	0.0
@ Washington (10/8)	2	0	0	0	.000	0	1	0	0	1	0	0	0	0	1.0
@ Arizona State (10/13)															
@ Arizona (10/15)															
SOUTHERN CALIFORNIA (10/20)															
UCLA (10/21)															
@ Oregon (10/27)															
@ Oregon State (10/28)															
WASHINGTON STATE (11/1)															
WASHINGTON (11/3)															
@ UCLA (11/9)															
@ Southern California (11/11)															
ARIZONA (11/17)															
ARIZONA STATE (11/18)															
@ California (11/22)															
UTAH (11/24)															
TOTALS	42	29	9	108	.185	4	5	5	1	56	1	7	2	0	38.5
TOTALS - Pac-12	18	6	5	43	.023	1	1	1	1	21	1	1	0	0	8.5

MATCH HIGHS

Season Highs

Kills - 11 vs. Abilene Christian (9/3/17)
 Attacks - 39 vs. OSU (9/29/17)
 Att Per. - .281 vs. Abilene Christian (9/3/17)
 Assists - 1, four times
 Aces - 3 @ CSU (9/16/17)
 Digs - 15 vs. OSU (9/29/17)
 Blocks - 2, four times
 Points - 12.0 vs. Abilene Christian (9/3/17)

Career Highs

Kills - 18 @ Portland State (8/27/16)
 Attacks - 48, twice
 Att Per. - .333 vs. New Orleans (9/17/16)
 Assists - 6 vs. ISU (9/12/14)
 Aces - 4 vs. ISU (9/12/14)
 Digs - 19 @ Southern California (10/29/16)
 Blocks - 5 @ Portland State (8/27/16)
 Points - 21.5 @ Portland State (8/27/16)

Career Statistics

Overall	MP-MS	GP	K	E	TA	Pct.	KPG	Ast.	APG	SA	Dig	DPG	BS	BA	TB	BPG	Pts.
2014-Fr.	25-8	72	22	13	67	.134	0.31	7	0.10	17	91	1.26	0	1	1	0.01	39.5
2015-So.	24-3	66	15	8	51	.137	0.23	3	0.05	4	54	0.82	1	2	3	0.05	21.0
2016-Jr.	30-30	116	258	138	901	.133	2.22	12	0.10	19	276	2.38	2	38	40	0.34	298.0
2017-Sr.	15-3	42	29	9	108	.185	0.59	4	0.10	5	56	1.33	1	7	8	0.19	38.5
Totals	94-43	296	324	168	1127	.138	1.09	26	0.09	45	477	1.61	4	48	52	0.18	397.0

2017

- Saw time in the season opener against Northwestern State (8/25)
- Tallied a double-double with 11 kills and 14 digs against Abilene Christian (9/3)
- Is a dependable reserve who provides a spark off the bench, as a hitter, passer or serving specialist

2016

- Has started in every match this season as an outside hitter
- Recorded a career high 18 kills against Portland State (8/27/16)
- Earned a double-double against Colorado State with 13 kills and 13 digs
- Has recorded double-digit kills in nine matches this season
- Recorded a career-best 19 digs against No. 12 UCLA. Added 15 kills in the match.

2015

- Made her season debut against Oklahoma (8/29/15)
- Was a versatile player for the Buffs playing several positions this season
- Came in against Arizona State and recorded six kills, nine digs, two blocks and hit .235

2014

- Made her collegiate debut against Northwestern
- Spent most of her time as a defensive/serving specialist
- Ranked 10th in the Pac-12 in service aces (0.24 per set)



#1 Frankie Shebby

6-0, Redshirt Junior, Outside Hitter

La Mirada, Calif. (Mater/Dei/Oregon)

2017 Match-by-Match

Team (Date)	GP	K	E	TA	Pct.	Ast.	SA	SE	RE	Dig	BS	BA	BE	BHE	Pts.
vs. Northwestern St. (8/25)	4	13	4	32	.281	2	1	1	1	11	0	5	0	0	16.5
vs. Seton Hall (8/26)	3	10	8	43	.047	0	1	1	0	6	0	2	0	0	12.0
@ Oklahoma (8/26)	4	13	5	34	.235	0	0	1	3	10	0	4	0	0	15.0
WAKE FOREST (9/2)	3	8	3	20	.250	1	0	0	0	9	0	1	1	0	8.5
RICE (9/2)	3	5	5	23	.000	1	0	3	1	10	0	0	1	0	5.0
ABILENE CHRISTIAN (9/3)	DNP - CD														
vs. Penn State (9/8)	3	10	4	25	.240	3	0	2	2	12	1	1	0	0	11.5
@ Illinois (9/9)	5	14	5	46	.196	0	1	0	2	4	0	1	1	0	15.5
XAVIER (9/15)	4	19	4	44	.341	1	1	3	0	10	0	1	0	0	20.5
vs. Albany (9/16)	DNP - CD														
@ Colorado State (9/16)	5	16	3	38	.342	3	0	3	4	11	0	1	1	1	16.5
@ Utah (9/22)	4	11	6	41	.122	0	0	1	1	6	1	3	0	1	13.5
STANFORD (9/24)	5	12	6	45	.133	1	0	1	3	11	0	3	0	0	13.5
OREGON STATE (9/29)	DNP - CD														
OREGON (9/30)	4	16	7	41	.220	3	0	2	0	9	0	3	0	0	17.5
@ Washington State (10/6)	4	14	11	43	.070	1	0	2	3	8	0	3	1	0	15.5
@ Washington (10/8)	3	13	7	37	.162	1	0	1	1	13	0	1	0	0	13.5
@ Arizona State (10/13)															
@ Arizona (10/15)															
SOUTHERN CALIFORNIA (10/20)															
UCLA (10/21)															
@ Oregon (10/27)															
@ Oregon State (10/28)															
WASHINGTON STATE (11/1)															
WASHINGTON (11/3)															
@ UCLA (11/9)															
@ Southern California (11/11)															
ARIZONA (11/17)															
ARIZONA STATE (11/18)															
@ California (11/22)															
UTAH (11/24)															
TOTALS	54	174	78	512	.188	17	4	21	21	130	2	29	5	2194.5	
TOTALS - Pac-12	20	66	37	207	.140	6	0	7	8	47	1	13	1	173.5	

MATCH HIGHS

Season Highs

Kills - 19 vs. Xavier (9/15/17)
 Attacks - 46 @ Illinois (9/9/17)
 Att Per. - .342 @ Colorado State (9/16/17)
 Assists - 3, three times
 Aces - 1, four times
 Digs - 13 @ Washington (10/8/17)
 Blocks - 5 vs. Northwestern State (8/25/17)
 Points - 20.5 vs. Xavier (9/15/17)

Career Highs

Kills - 19 vs. Xavier (9/15/17)
 Attacks - 46 @ Illinois (9/9/17)
 Att Per. - .483 (at Oregon)
 Assists - 3, twice
 Aces - 1, multiple times
 Digs - 13 @ Washington (10/8/17)
 Blocks - 5, twice (once at Oregon, once at CU)
 Points - 20.5 vs. Xavier (9/15/17)

Career Statistics

Overall	MP-MS	GP	K	E	TA	Pct.	KPG	Ast.	APG	SA	Dig	DPG	BS	BA	TB	BPG	Pts.
2017-Jr.	14-14	54	174	78	512	.188	3.22	17	0.31	4	130	2.41	2	29	31	0.57	194.5

2017

- Recorded her first start for CU in the season opener against Northwestern State (8/25) and recorded a double-double with 13 kills and 11 digs.
- Has been a strong addition on the left side, adding to CU's depth.
- Recorded 20.5 points in CU's win over Xavier with a career-high 19 kills.
- She has collected seven double-doubles this season.

2016

- Redshirt. Did not compete.

2014-15

- Played two seasons at Oregon



#7 Alexa Smith

6-5, Junior, Outside Hitter

Colorado Springs, Colo. (Lewis-Palmer/Purdue)

2017 Match-by-Match

Team (Date)	GP	K	E	TA	Pct.	Ast.	SA	SE	RE	Dig	BS	BA	BE	BHE	Pts.
vs. Northwestern St. (8/25)	4	18	4	50	.280	1	0	1	1	7	1	1	0	0	19.5
vs. Seton Hall (8/26)	3	17	1	33	.485	0	1	2	0	11	1	1	0	0	19.5
@ Oklahoma (8/26)	4	15	5	31	.323	2	1	0	0	5	0	1	0	0	16.5
WAKE FOREST (9/2)	3	14	2	27	.444	1	0	2	1	5	0	1	0	1	14.5
RICE (9/2)	3	9	0	21	.429	1	1	0	0	5	0	2	0	0	11.0
ABILENE CHRISTIAN (9/3)	DNP - CD														
vs. Penn State (9/8)	3	11	3	32	.250	2	1	2	2	9	0	1	0	0	12.5
@ Illinois (9/9)	5	19	8	57	.193	1	1	1	2	12	0	2	0	0	21.0
XAVIER (9/15)	4	16	6	58	.172	1	1	2	0	15	1	1	1	0	18.5
vs. Albany (9/16)	DNP - CD														
@ Colorado State (9/16)	5	25	7	58	.310	0	2	2	1	15	1	0	0	0	28.0
@ Utah (9/22)	4	11	5	44	.136	0	0	2	0	15	0	0	0	0	11.0
STANFORD (9/24)	5	25	10	68	.221	1	0	0	0	12	0	1	1	0	25.5
OREGON STATE (9/29)	5	21	13	66	.121	0	1	0	0	16	0	2	0	0	23.0
OREGON (9/30)	4	14	4	38	.263	3	0	1	0	19	0	3	0	0	15.5
@ Washington State (10/6)	4	24	7	56	.304	1	0	0	0	14	0	2	0	0	25.0
@ Washington (10/8)	3	8	6	45	.044	3	1	0	0	11	0	0	0	0	9.0
@ Arizona State (10/13)															
@ Arizona (10/15)															
SOUTHERN CALIFORNIA (10/20)															
UCLA (10/21)															
@ Oregon (10/27)															
@ Oregon State (10/28)															
WASHINGTON STATE (11/1)															
WASHINGTON (11/3)															
@ UCLA (11/9)															
@ Southern California (11/11)															
ARIZONA (11/17)															
ARIZONA STATE (11/18)															
@ California (11/22)															
UTAH (11/24)															
TOTALS	59	247	81	684	.243	17	10	15	7	171	4	18	2	1270.0	
TOTALS - Pac-12	25	103	45	317	.183	8	2	3	0	87	0	8	1	0109.0	

MATCH HIGHS

Season Highs

Kills - 25, twice
 Attacks - 68 vs. Stanford (9/24/17)
 Att Per. - .485 vs. Seton Hall (8/26/17)
 Assists - 3, twice
 Aces - 2 @ Colorado State (9/16/17)
 Digs - 19 vs. UO (9/30/17)
 Blocks - 3 vs. UO (9/30/17)
 Points - 28.0 @ Colorado State (9/16/17)

Career Highs

Kills - 25, twice
 Attacks - 68 vs. Stanford (9/24/17)
 Att Per. - .529 (at Purdue)
 Assists - 3, twice
 Aces - 3 vs. New Orleans (9/17/16)
 Digs - 19, twice
 Blocks - 5 vs. USC (9/30/16)
 Points - 28.0 @ Colorado State (9/16/17)

Career Statistics

Overall	MP-MS	GP	K	E	TA	Pct.	KPG	Ast.	APG	SA	Dig	DPG	BS	BA	TB	BPG	Pts.
2016-So.	30-30	120	380	151	1075	.213	3.17	15	0.12	21	313	2.61	3	51	54	0.45	429.5
2017-Jr.	15-15	59	247	81	684	.243	4.19	17	0.29	10	171	2.90	4	18	22	0.37	270.0
Totals	45-45	179	627	232	1759	.225	3.50	32	0.18	31	484	2.70	7	69	76	0.42	699.5

2017

- Was named to the NIKE Invitational All-Tournament team after lead CU to three wins. She tallied 50 kills and hit .351, while adding 23 digs.
- Named the Omni Invitational MVP. She hit .437 in two matches with 23 kills and just two errors on 28 attacks.
- Tallied a then-season-best 19 kills in the five-set win over Illinois. Also added 12 digs for a double-double
- Had recorded double-digit kills in all but two matches this season.
- In CU's upset win over No. 22 Colorado State, she recorded a career-high 25 kills and added 15 digs.
- Smith was named the Pac-12 Offensive, CU Athlete and VolleyMob National Player of the Week for her performance.
- Tied her career-high 25 kills against Stanford (9/24).
- Has recorded nine total double-double this season.

2016

- All-Pac-12 honorable mention
- Leads the team with 3.17 kills per set
- Has earned a starting role on the outside for the Buffs
- Has recorded 10 or more kills in 22 matches this season
- Named the Omni Invitational MVP
- Led the Buffs to their first win over Colorado State since 2002 with 21 kills and 10 digs in the four set victory
- Has recorded 20 kills in three matches this season

2015

- Played one season at Purdue



#18 Anyse Smith

5-10, Freshman, Outside Hitter

Amarillo, Texas (Tascosa)

2017 Match-by-Match

Team (Date)	GP	K	E	TA	Pct.	Ast.	SA	SE	RE	Dig	BS	BA	BE	BHE	Pts.
vs. Northwestern St. (8/25)	DNP	-	CD												
vs. Seton Hall (8/26)	DNP	-	CD												
@ Oklahoma (8/26)	DNP	-	CD												
WAKE FOREST (9/2)	DNP	-	CD												
RICE (9/2)	DNP	-	CD												
ABILENE CHRISTIAN (9/3)	DNP	-	CD												
vs. Penn State (9/8)	DNP	-	CD												
@ Illinois (9/9)	DNP	-	CD												
XAVIER (9/15)	DNP	-	CD												
vs. Albany (9/16)	DNP	-	CD												
@ Colorado State (9/16)	DNP	-	CD												
@ Utah (9/22)	DNP	-	CD												
STANFORD (9/24)	DNP	-	CD												
OREGON STATE (9/29)	DNP	-	CD												
OREGON (9/30)	DNP	-	CD												
@ Washington State (10/6)	DNP	-	CD												
@ Washington (10/8)	DNP	-	CD												
@ Arizona State (10/13)															
@ Arizona (10/15)															
SOUTHERN CALIFORNIA (10/20)															
UCLA (10/21)															
@ Oregon (10/27)															
@ Oregon State (10/28)															
WASHINGTON STATE (11/1)															
WASHINGTON (11/3)															
@ UCLA (11/9)															
@ Southern California (11/11)															
ARIZONA (11/17)															
ARIZONA STATE (11/18)															
@ California (11/22)															
UTAH (11/24)															
TOTALS	0	0	0	0	.000	0	0	0	0	0	0	0	0	0	0.0
TOTALS - Pac-12	0	0	0	0	.000	0	0	0	0	0	0	0	0	0	0.0

MATCH HIGHS

Season/Career Highs

Kills -
Attacks -
Att Per. -
Assists -
Aces -
Digs -
Blocks -
Points -

Career Statistics

Overall	MP-MS	GP	K	E	TA	Pct.	KPG	Ast.	APG	SA	Dig	DPG	BS	BA	TB	BPG	Pts.
2017-Fr.	0-0	0	0	0	0	.000	0.00	0	0.00	0	0	0.00	0	0	0	0.00	0.0

2017

- Has not played this season



#8 Justine Spann

5-8, Sophomore, Outside Hitter

Chandler, Ariz. (Basha)

2017 Match-by-Match																
Team (Date)	GP	K	E	TA	Pct.	Ast.	SA	SE	RE	Dig	BS	BA	BE	BHE	Pts.	
vs. Northwestern St. (8/25)																
vs. Seton Hall (8/26)																
@ Oklahoma (8/26)	1	0	0	0	.000	0	0	0	0	0	0	0	0	0	0.0	
WAKE FOREST (9/2)	2	2	0	3	.667	0	0	0	0	4	0	0	0	0	2.0	
RICE (9/2)	1	1	1	3	.000	0	0	0	0	0	0	0	0	0	1.0	
ABILENE CHRISTIAN (9/3)	3	9	4	33	.152	2	1	0	1	11	0	1	0	0	10.5	
vs. Penn State (9/8)	2	0	0	0	.000	0	0	1	0	1	0	0	0	0	0.0	
@ Illinois (9/9)	5	0	0	0	.000	0	3	1	0	2	0	0	0	0	3.0	
XAVIER (9/15)	4	0	0	0	.000	0	1	1	0	2	0	0	0	0	1.0	
vs. Albany (9/16)	3	11	6	31	.161	1	3	2	0	11	0	1	0	1	14.5	
@ Colorado State (9/16)	5	0	0	1	.000	1	0	3	1	7	0	0	0	0	0.0	
@ Utah (9/22)	3	0	0	1	.000	0	0	0	0	0	0	0	0	0	0.0	
STANFORD (9/24)	5	0	0	0	.000	0	0	0	0	2	0	0	0	0	0.0	
OREGON STATE (9/29)	4	1	1	5	.000	0	0	0	0	8	0	0	0	0	1.0	
OREGON (9/30)	4	1	0	2	.500	0	2	2	0	7	0	0	0	0	3.0	
@ Washington State (10/6)	4	2	0	3	.667	1	2	0	2	18	0	0	0	0	4.0	
@ Washington (10/8)	3	1	0	1	1.000	0	0	0	0	12	0	0	0	0	1.0	
@ Arizona State (10/13)																
@ Arizona (10/15)																
SOUTHERN CALIFORNIA (10/20)																
UCLA (10/21)																
@ Oregon (10/27)																
@ Oregon State (10/28)																
WASHINGTON STATE (11/1)																
WASHINGTON (11/3)																
@ UCLA (11/9)																
@ Southern California (11/11)																
ARIZONA (11/17)																
ARIZONA STATE (11/18)																
@ California (11/22)																
UTAH (11/24)																
TOTALS	49	28	12	83	.193	5	12	10	4	85	0	2	0	1	41.0	
TOTALS - Pac-12	23	5	1	12	.333	1	4	2	2	47	0	0	0	0	9.0	

MATCH HIGHS

Season Highs

Kills - 11 vs. Albany (9/16/17)
 Attacks - 33 vs. Abilene Christian (9/3/17)
 Att Per. - .161 vs. Albany (9/16/17)
 Assists - 2 vs. Abilene Christian (9/3/17)
 Aces - 3, twice
 Digs - 18 @ Washington State (10/6/17)
 Blocks - 1, twice
 Points - 14.5 vs. Albany (9/16/17)

Career Highs

Kills - 12 @ Oregon State (11/12/16)
 Attacks - 35 @ Oregon State (11/12/16)
 Att Per. - .412 vs. New Orleans (9/17/16)
 Assists - 2 vs. Abilene Christian (9/3/17)
 Aces - 3, twice
 Digs - 18 @ Washington State (10/6/17)
 Blocks - 3, twice
 Points - 14.5 vs. Albany (9/16/17)

Career Statistics

Overall	MP-MS	GP	K	E	TA	Pct.	KPG	Ast.	APG	SA	Dig	DPG	BS	BA	TB	BPG	Pts.
2016-Fr.	17-0	43	57	33	175	.137	1.33	5	0.14	4	54	1.26	1	10	11	0.26	67.0
2017-So.	15-2	49	28	12	83	.193	0.57	5	0.10	12	85	1.73	0	2	2	0.04	41.0
Totals	32-2	92	85	45	258	.155	0.92	10	0.11	16	139	1.51	1	12	13	0.14	108.0

2017

- Saw time in one match at the NIKE Invitational
- Had a big match against Abilene Christian in the Omni Invitational where she earned her first career start. Spann tallied nine kills and 11 digs in the match.
- Tallied three aces in the five-set win over Illinois.
- Recorded a season-best 11 kills in the win over Xavier.
- Also tallied a double-double with 11 digs against XU.
- Is seeing more time as a defensive substitution.
- Played the third and fourth sets against WSU (10/6) as the libero.

2016

- Debuted for the Buffs against Portland State (8/26/16)
- Has been spending time on the court as a serving specialist
- Saw significant time against Chicago State and New Orleans at the Omni Invitational.
- She recorded nine kills and hit .412 against New Orleans and added 10 digs
- Picked up a career best 13 digs against Chicago State
- Saw significant playing time in three matches (10/9-10/16) in place of injured teammate Joslyn Hayes
- Her best match was against Oregon State (11/12/16) where she recorded a career-high 12 kills and tallied 13.5 points



#12 Rachel Whipple

5-7, Sophomore, Defensive Specialist/Libero

Centennial, Colo. (Smoky Hill)

2017 Match-by-Match															
Team (Date)	GP	K	E	TA	Pct.	Ast.	SA	SE	RE	Dig	BS	BA	BE	BHE	Pts.
vs. Northwestern St. (8/25)	4	1	0	1	1.000	0	1	2	0	8	0	0	0	0	2.0
vs. Seton Hall (8/26)	3	0	0	0	.000	1	0	0	1	7	0	0	0	0	0.0
@ Oklahoma (8/26)	4	0	0	0	.000	1	3	1	0	5	0	0	0	0	3.0
WAKE FOREST (9/2)	3	1	0	3	.333	0	0	1	0	2	0	0	0	0	1.0
RICE (9/2)	3	0	0	0	.000	0	0	0	0	3	0	0	0	0	0.0
ABILENE CHRISTIAN (9/3)	3	0	1	1	-1.000	0	0	0	0	4	0	0	0	0	0.0
vs. Penn State (9/8)	3	0	0	1	.000	0	0	0	0	6	0	0	0	0	0.5
@ Illinois (9/9)	5	0	0	0	.000	0	1	1	0	4	0	0	0	0	1.0
XAVIER (9/15)	4	0	0	0	.000	0	1	0	0	5	0	0	0	0	1.0
vs. Albany (9/16)	3	0	0	0	.000	1	0	0	0	5	0	0	0	0	0.0
@ Colorado State (9/16)	DNP - CD														
@ Utah (9/22)	3	0	0	1	.000	0	2	0	0	6	0	0	0	0	2.0
STANFORD (9/24)	5	0	0	0	.000	1	1	1	0	6	0	0	0	0	1.0
OREGON STATE (9/29)	4	0	0	0	.000	2	0	1	1	8	0	0	0	0	0.0
OREGON (9/30)	DNP - CD														
@ Washington State (10/6)	2	0	0	0	.000	0	0	2	0	4	0	0	0	1	0.0
@ Washington (10/8)	DNP - CD														
@ Arizona State (10/13)	DNP - CD														
@ Arizona (10/15)	DNP - CD														
SOUTHERN CALIFORNIA (10/20)	DNP - CD														
UCLA (10/21)	DNP - CD														
@ Oregon (10/27)	DNP - CD														
@ Oregon State (10/28)	DNP - CD														
WASHINGTON STATE (11/1)	DNP - CD														
WASHINGTON (11/3)	DNP - CD														
@ UCLA (11/9)	DNP - CD														
@ Southern California (11/11)	DNP - CD														
ARIZONA (11/17)	DNP - CD														
ARIZONA STATE (11/18)	DNP - CD														
@ California (11/22)	DNP - CD														
UTAH (11/24)	DNP - CD														
TOTALS	49	2	1	7	.143	6	9	9	2	73	0	0	0	1	11.0
TOTALS - Pac-12	14	0	0	1	.000	3	3	4	1	24	0	0	0	1	3.0

MATCH HIGHS

Season Highs

Assists - 2 vs. OSU (9/29/17)
 Aces - 3 @ Oklahoma (8/26/17)
 Digs -8, twice
 Points - 3.0 @ Oklahoma (8/26/17)

Career Highs

Assists - 2 vs. OSU (9/29/17)
 Aces - 3 @ Oklahoma (8/26/17)
 Digs -8, twice
 Points - 3.0 @ Oklahoma (8/26/17)

Career Statistics

Overall	MP-MS	GP	K	E	TA	Pct.	KPG	Ast.	APG	SA	Dig	DPG	BS	BA	TB	BPG	Pts.
2016-Fr.	5-0	8	0	0	0	.000	0.00	0	0.00	0	5	0.62	0	0	0	0.00	0.0
2017-So.	14-1	49	2	1	7	.143	0.04	6	0.12	9	73	1.49	0	0	0	0.00	11.0
Totals	19-1	57	2	1	7	.143	0.04	6	0.11	9	78	1.37	0	0	0	0.00	11.0

2017

- Has seen time in 14 matches this season
- Has become a dependable backrow player for the Buffs

2016

- Made her CU debut against UC Irvine (9/10/16)
- Recorded three digs against New Orleans

2017 OVERALL COMBINED STATS

Overall record: 12-5 Conf: 2-4 Home: 6-1 Away: 3-3 Neutral: 3-1

##	Player	sp	Attack					Set		Serve			re	Dig		Blocking						points
			k	k/s	e	ta	pct	a	a/s	sa	se	sa/s		dig	dig/s	bs	ba	total	blk/s	be	bhe	
16	Klemmer, Lillie	4	2	0.50	0	4	.500	0	0.00	0	0	0.00	0	0	0.00	0	0	0	0.00	1	0	2.0
14	Abu, Naghede	65	138	2.12	36	297	.343	0	0.00	0	0	0.00	0	7	0.11	13	72	85	1.31	11	0	187.0
10	DeLuzio, Brynna	65	34	0.52	7	81	.333	732	11.26	17	15	0.26	1	145	2.23	1	22	23	0.35	1	4	63.0
3	Carta-Samuels, Gabby	58	1	0.02	0	3	.333	40	0.69	3	10	0.05	20	212	3.66	0	0	0	0.00	0	1	4.0
4	Pfefferle, Anna	65	98	1.51	26	224	.321	5	0.08	11	14	0.17	1	42	0.65	3	50	53	0.82	3	1	137.0
22	Hayes, Joslyn	61	136	2.23	41	356	.267	1	0.02	0	0	0.00	0	30	0.49	4	36	40	0.66	5	0	158.0
21	Dorrell, Lauren	13	14	1.08	3	45	.244	0	0.00	0	0	0.00	0	4	0.31	0	6	6	0.46	1	0	17.0
7	Smith, Alexa	59	247	4.19	81	684	.243	17	0.29	10	15	0.17	7	171	2.90	4	18	22	0.37	2	1	270.0
8	Spann, Justine	49	28	0.57	12	83	.193	5	0.10	12	10	0.24	4	85	1.73	0	2	2	0.04	0	1	41.0
1	Shebby, Frankie	54	174	3.22	78	512	.188	17	0.31	4	21	0.07	21	130	2.41	2	29	31	0.57	5	2	194.5
2	Shadley, Stephanie	42	29	0.69	9	108	.185	4	0.10	5	5	0.12	1	56	1.33	1	7	8	0.19	2	0	38.5
12	Whipple, Rachel	49	2	0.04	1	7	.143	6	0.12	9	9	0.18	2	73	1.49	0	0	0	0.00	0	1	11.0
6	Joachim, Taylor	20	0	0.00	0	7	.000	0	0.00	0	0	0.00	0	0	0.00	0	5	5	0.25	1	0	2.5
13	Berta, Branen	6	0	0.00	0	0	.000	2	0.33	0	4	0.00	0	19	3.17	0	0	0	0.00	0	0	0.0
9	DeMure, Emily	24	0	0.00	1	2	-.500	16	0.67	0	0	0.00	0	2	0.08	0	0	0	0.00	0	2	0.0
COLORADO		65	903	13.89	295	2413	.252	845	13.00	71	103	1.09	59	976	15.02	28	247	151.5	2.33	32	13	1125.5
Opponents		65	885	13.62	386	2432	.205	835	12.85	59	87	0.91	71	1035	15.92	32	200	132.0	2.03	35	12	1076.0

Team Statistics	COLO	OPP
ATTACK		
Kills	903	885
Errors	295	386
Total Attacks	2413	2432
Attack Pct	.252	.205
Kills/Set	13.9	13.6
SET		
Assists	845	835
Attempts	2311	2384
Assist Pct	.366	.350
Assists/Set	13.0	12.8
SERVE		
Aces	71	59
Errors	103	87
Attempts	1467	1380
Serve Pct	.930	.937
Aces/Set	1.1	0.9
SERVE RECEPTIONS		
Errors	59	71
Errors/Set	0.9	1.1
Attempts	1291	1361
Reception Pct	.954	.948
DEFENSE		
Digs	976	1035
Digs/Set	15.0	15.9
BLOCKING		
Block Solo	28	32
Block Assist	247	200
Total Blocks	151.5	132.0
Blocks/Set	2.3	2.0
Block Errors	32	35
Ball handling errors	13	12
ATTENDANCE		
Total	8004	13887
Dates/Avg Per Date	7/1143	6/2314
Neutral site #/Avg	4/177	
Current win streak	0	-
Home win streak	2	-

Date	Opponent	Score	Score by set	Att.
Aug 25	vs Northwestern State	w 3-1	25-14,26-28,25-17,25-15	210
Aug 26	vs Seton Hall	w 3-0	25-22,25-18,25-19	140
Aug 26	at Oklahoma	w 3-1	25-11,23-25,25-16,25-14	1007
Sep 2	WAKE FOREST	w 3-0	25-23,25-18,25-15	846
Sep 2	RICE	w 3-0	25-15,25-20,25-20	845
Sep 3	ABILENE CHRISTIAN	w 3-0	25-19,25-20,25-20	704
Sep 08	vs #3 Penn State	L 0-3	22-25,18-25,21-25	0
Sep 09	at Illinois	w 3-2	25-23,24-26,28-26,12-25,17-15	2470
Sep 15	XAVIER	w 3-1	25-23,21-25,25-23,25-18	1106
Sep 16	vs UAlbany	w 3-0	25-17,25-13,25-19	359
Sep 16	at #22 Colorado State	w 3-2	21-25,23-25,25-22,25-14,15-8	4664
*Sep 22	at #16 Utah	L 1-3	14-25,25-16,20-25,17-25	1480
*Sep 24	#4 STANFORD	L 2-3	25-20,13-25,29-27,27-29,12-15	1980
*Sep 29	OREGON STATE	w 3-2	25-21,25-27,25-23,7-25,15-12	1098
*Sep 30	#12 OREGON	w 3-1	25-18,24-26,25-19,25-18	1425
*Oct 06	at Washington State	L 1-3	23-25,19-25,25-22,28-30	1203
*Oct 08	at #9 Washington	L 0-3	24-26,22-25,14-25	3063

Record in 3-set matches:5-2 • Record in 4-set matches:4-2 • Record in 5-set matches:3-1

2017 PAC-12 ONLY COMBINED STATS

RECORD:	OVERALL	HOME	AWAY	NEUTRAL
ALL GAMES	2-4	2-1	0-3	0-0
CONFERENCE	2-4	2-1	0-3	0-0
NON-CONFERENCE	0-0	0-0	0-0	0-0

##	Player	sp	Attack					Set		Serve			re	Dig		Blocking						points
			k	k/s	e	ta	pct	a	a/s	sa	se	sa/s		dig	dig/s	bs	ba	total	blk/s	be	bhe	
8	Spann, Justine	23	5	0.22	1	12	.333	1	0.04	4	2	0.17	2	47	2.04	0	0	0	0.00	0	0	9.0
21	Dorrell, Lauren	3	2	0.67	0	7	.286	0	0.00	0	0	0.00	0	0	0.00	0	1	1	0.33	0	0	2.5
14	Abu, Naghede	25	49	1.96	18	116	.267	0	0.00	0	0	0.00	0	3	0.12	4	27	31	1.24	3	0	66.5
10	DeLuzio, Brynna	25	12	0.48	4	31	.258	274	10.96	6	4	0.24	0	52	2.08	0	9	9	0.36	1	0	22.5
22	Hayes, Joslyn	25	56	2.24	19	157	.236	0	0.00	0	0	0.00	0	13	0.52	1	15	16	0.64	4	0	64.5
7	Smith, Alexa	25	103	4.12	45	317	.183	8	0.32	2	3	0.08	0	87	3.48	0	8	8	0.32	1	0	109.0
1	Shebby, Frankie	20	66	3.30	37	207	.140	6	0.30	0	7	0.00	8	47	2.35	1	13	14	0.70	1	1	73.5
4	Pfefferle, Anna	25	25	1.00	15	78	.128	0	0.00	4	7	0.16	0	17	0.68	1	20	21	0.84	3	0	40.0
2	Shadley, Stephanie	18	6	0.33	5	43	.023	1	0.06	1	1	0.06	1	21	1.17	1	1	2	0.11	0	0	8.5
16	Klemmer, Lillie	1	0	0.00	0	1	.000	0	0.00	0	0	0.00	0	0	0.00	0	0	0	0.00	0	0	0.0
9	DeMure, Emily	2	0	0.00	0	0	.000	0	0.00	0	0	0.00	0	0	0.00	0	0	0	0.00	0	0	0.0
6	Joachim, Taylor	1	0	0.00	0	1	.000	0	0.00	0	0	0.00	0	0	0.00	0	0	0	0.00	0	0	0.0
3	Carta-Samuels, Gabby	23	0	0.00	0	1	.000	17	0.74	1	4	0.04	9	95	4.13	0	0	0	0.00	0	0	1.0
12	Whipple, Rachel	14	0	0.00	0	1	.000	3	0.21	3	4	0.21	1	24	1.71	0	0	0	0.00	0	1	3.0
	#TM	-	-	-	-	-	-	-	-	-	-	-	0	-	-	-	-	-	-	-	-	-
	COLORADO	25	324	12.96	144	972	.185	310	12.40	21	32	0.84	21	406	16.24	8	94	55.0	2.20	13	2	400.0
	Opponents	25	370	14.80	143	992	.229	346	13.84	21	33	0.84	21	433	17.32	18	100	68.0	2.72	10	4	459.0

Team Statistics	COLO	OPP
ATTACK		
Kills	324	370
Errors	144	143
Total Attacks	972	992
Attack Pct	.185	.229
Kills/Set	13.0	14.8
SET		
Assists	310	346
Attempts	963	978
Assist Pct	.322	.354
Assists/Set	12.4	13.8
SERVE		
Aces	21	21
Errors	32	33
Attempts	535	573
Serve Pct	.940	.942
Aces/Set	0.8	0.8
SERVE RECEPTIONS		
Errors	21	21
Errors/Set	0.8	0.8
Attempts	540	502
Reception Pct	.961	.958
DEFENSE		
Digs	406	433
Digs/Set	16.2	17.3
BLOCKING		
Block Solo	8	18
Block Assist	94	100
Total Blocks	55.0	68.0
Blocks/Set	2.2	2.7
Block Errors	13	10
Ball handling errors	2	4
ATTENDANCE		
Total	4503	5746
Dates/Avg Per Date	3/1501	3/1915
Neutral site #/Avg	0/0	-
Current win streak	0	-
Home win streak	2	-

Date	Opponent	Score	Score by set	Att.
*Sep 22	at #16 Utah	L 1-3	14-25,25-16,20-25,17-25	1480
*Sep 24	#4 STANFORD	L 2-3	25-20,13-25,29-27,27-29,12-15	1980
*Sep 29	OREGON STATE	w 3-2	25-21,25-27,25-23,7-25,15-12	1098
*Sep 30	#12 OREGON	w 3-1	25-18,24-26,25-19,25-18	1425
*Oct 06	at Washington State	L 1-3	23-25,19-25,25-22,28-30	1203
*Oct 08	at #9 Washington	L 0-3	24-26,22-25,14-25	3063

Record in 3-set matches: 0-1
Record in 4-set matches: 1-2
Record in 5-set matches: 1-1

2017 RESULTS/TEAM LEADERS

Date	Opponent (Rank)	Rank	W/L	Rec	Score	Score-by-Game	K	Att%	Ast.	SA	Dig	TB	Kills	Digs	Blocks	Assists
Aug. 25	SNorthwestern State	NR	W	1-0	3-1	25-14, 26-28, 25-17, 25-15	53	.310	51	4	55	15.5	A. Smith (18)	F. Shebby (11)	N. Abu (10)	B. DeLuzio (43)
Aug. 26	SSeton Hall	NR	W	2-0	3-0	25-22, 25-18, 25-19	47	.292	45	3	46	10.0	A. Smith (17)	A. Smith (11)	N. Abu (6)	B. DeLuzio (41)
Aug. 26	SOklahoma	NR	W	3-0	3-1	25-11, 23-25, 25-16, 25-14	57	.391	53	9	46	12.0	A. Smith (15)	G. Carta-Samuels (19)	N. Abu (7)	B. DeLuzio (45)
Sept. 2	#WAKE FOREST	NR	W	4-0	3-0	25-23, 25-18, 25-15	45	.374	41	0	34	6.0	A. Smith (14)	F. Shebby (9)	A. Pfeifferle (4)	B. DeLuzio (35)
Sept. 2	#RICE	NR	W	5-0	3-0	25-15, 25-20, 25-20	43	.318	39	4	41	5.5	AS, NA, JH (9)	G. Carta-Samuels (15)	NA, JH (3)	B. DeLuzio (32)
Sept. 3	#ABILENE CHRISTIAN	NR	W	6-0	3-0	25-19, 25-20, 25-20	48	.285	46	2	58	6.5	S. Shadley (11)	SS, BD (14)	N. Abu (5)	B. DeLuzio (38)
Sept. 8	%Penn State (3)	NR	L	6-1	0-3	22-25, 18-25, 21-25	36	.265	35	1	38	9.0	A. Smith (11)	F. Shebby (12)	N. Abu (4)	B. DeLuzio (28)
Sept. 9	%Illinois (RV)	NR	W	7-1	3-2	25-23, 24-26, 28-26, 12-25, 17-15	70	.261	61	8	61	7.0	A. Smith (19)	G. Carta-Samuels (17)	N. Abu (6)	B. DeLuzio (53)
Sept. 15	^XAVIER	RV	W	8-1	3-1	25-23, 21-25, 25-23, 25-18	64	.233	60	6	74	8.0	F. Shebby (19)	G. Carta-Samuels (16)	N. Abu (4)	B. DeLuzio (55)
Sept. 16	!Albany	RV	W	9-1	3-0	25-17, 25-13, 25-19	44	.273	39	4	47	8.0	JS, NA (11)	G. Carta-Samuels (12)	NA, AP (4)	B. DeLuzio (33)
Sept. 16	!Colorado State (22)	RV	W	10-1	3-2	21-25, 23-25, 25-22, 25-14, 15-8	72	.318	65	9	70	9.0	A. Smith (25)	A. Smith (15)	AP, BD (4)	B. DeLuzio (55)
Sept. 22	*Utah (16)	25	L	10-2	1-3	14-25, 25-16, 20-25, 17-25	43	.144	40	3	63	9.0	FS, AS (11)	G. Carta-Samuels (23)	N. Abu (5)	B. DeLuzio (38)
Sept. 24	*STANFORD (4)	25	L	10-3	2-3	25-20, 13-25, 29-27, 27-29, 12-15	65	.181	63	3	62	9.0	A. Smith (25)	A. Smith (12)	N. Abu (7)	B. DeLuzio (52)
Sept. 29	*OREGON STATE	RV	W	11-3	3-2	25-21, 25-27, 25-23, 7-25, 15-12	60	.185	59	7	80	7.0	A. Smith (21)	G. Carta-Samuels (19)	N. Abu (4)	B. DeLuzio (55)
Sept. 30	*OREGON (12)	RV	W	12-3	3-1	25-18, 24-26, 25-19, 25-18	57	.269	55	3	75	17.0	F. Shebby (16)	A. Smith (19)	NA, JH (9)	B. DeLuzio (46)
Oct. 6	*Washington State	25	L	12-4	1-3	23-25, 25-19, 22-25, 28-30	60	.209	58	2	68	9.0	A. Smith (24)	J. Spann (18)	N. Abu (5)	B. DeLuzio (53)
Oct. 8	*Washington (9)	25	L	12-5	0-3	24-26, 22-25, 14-25	39	.121	35	3	58	4.0	F. Shebby (13)	FS, GCS (13)	AP, NA, JH (2)	B. DeLuzio (30)

2017 COMPARISON MATCH-BY-MATCH

Date	Opponent	Score	Kills	Errors	TA	Hit%	Assists	SA	SE	RE	Digs	Blocks	BS	BA	BE	BHE
Aug 25, 2017	vs Northwestern State	3-1	53 / 48	13 / 33	129 / 145	.310 / .103	51 / 46	4 / 4	8 / 8	4 / 4	55 / 59	15.5 / 3.0	4 / 1	23 / 4	1 / 2	0 / 1
Aug 26, 2017	vs Seton Hall	3-0	47 / 41	12 / 21	120 / 120	.292 / .167	45 / 40	3 / 1	5 / 2	1 / 3	46 / 48	10.0 / 6.0	3 / 2	14 / 8	1 / 1	0 / 0
Aug 26, 2017	at Oklahoma	3-1	57 / 43	12 / 29	115 / 130	.391 / .108	53 / 42	9 / 5	5 / 3	5 / 9	46 / 38	12.0 / 5.5	2 / 1	20 / 9	0 / 2	0 / 0
Sep 2, 2017	WAKE FOREST	3-0	45 / 36	8 / 22	99 / 98	.374 / .143	41 / 34	0 / 2	7 / 6	2 / 0	34 / 39	6.0 / 6.5	0 / 3	12 / 7	3 / 2	3 / 1
Sep 2, 2017	RICE	3-0	43 / 41	9 / 19	107 / 106	.318 / .208	39 / 40	4 / 1	4 / 7	1 / 4	41 / 48	5.5 / 1.0	0 / 0	11 / 2	2 / 1	0 / 2
Sep 3, 2017	ABILENE CHRISTIAN	3-0	48 / 42	11 / 16	130 / 122	.285 / .213	46 / 39	2 / 2	1 / 7	2 / 2	58 / 55	6.5 / 5.0	0 / 0	13 / 10	2 / 1	2 / 1
Sep 08, 2017	vs Penn State	0-3	36 / 53	10 / 18	98 / 114	.265 / .307	35 / 49	1 / 4	6 / 6	4 / 1	38 / 48	9.0 / 5.0	4 / 1	10 / 8	1 / 2	1 / 0
Sep 09, 2017	at Illinois	3-2	70 / 72	22 / 20	184 / 168	.261 / .310	61 / 68	8 / 8	10 / 6	8 / 8	61 / 76	7.0 / 12.0	0 / 1	14 / 22	3 / 6	3 / 0
Sep 15, 2017	XAVIER	3-1	64 / 54	23 / 19	176 / 165	.233 / .212	60 / 49	6 / 4	7 / 2	4 / 6	74 / 74	8.0 / 12.0	3 / 3	10 / 18	2 / 3	0 / 1
Sep 16, 2017	vs UAlbany	3-0	44 / 30	14 / 23	110 / 113	.273 / .062	39 / 30	4 / 0	4 / 2	0 / 4	47 / 47	8.0 / 1.0	2 / 1	12 / 0	1 / 2	1 / 2
Sep 16, 2017	at Colorado State	3-2	72 / 55	17 / 23	173 / 159	.318 / .201	65 / 52	9 / 7	14 / 5	7 / 9	70 / 70	9.0 / 7.0	2 / 1	14 / 12	3 / 3	1 / 0
Sep 22, 2017	at Utah	1-3	43 / 64	20 / 27	160 / 170	.144 / .218	40 / 59	3 / 1	5 / 1	1 / 3	63 / 82	9.0 / 7.0	2 / 1	14 / 12	2 / 3	1 / 2
Sep 24, 2017	STANFORD	2-3	65 / 73	31 / 25	188 / 170	.181 / .282	63 / 69	3 / 3	5 / 9	3 / 3	62 / 74	9.0 / 15.0	1 / 4	16 / 22	3 / 3	0 / 0
Sep 29, 2017	OREGON STATE	3-2	60 / 73	26 / 25	184 / 191	.185 / .251	59 / 67	7 / 5	3 / 4	5 / 7	80 / 87	7.0 / 11.0	2 / 4	10 / 14	3 / 1	0 / 0
Sep 30, 2017	OREGON	3-1	57 / 52	18 / 27	145 / 173	.269 / .145	55 / 49	3 / 3	8 / 9	3 / 3	75 / 60	17.0 / 9.0	2 / 1	30 / 16	2 / 1	0 / 2
Oct 06, 2017	at Washington State	1-3	60 / 60	26 / 27	163 / 161	.209 / .205	58 / 56	2 / 6	9 / 6	6 / 2	68 / 68	9.0 / 11.0	1 / 3	16 / 16	2 / 0	1 / 0
Oct 08, 2017	at Washington	0-3	39 / 48	23 / 12	132 / 127	.121 / .283	35 / 46	3 / 3	2 / 4	3 / 3	58 / 62	4.0 / 15.0	0 / 5	8 / 20	1 / 2	0 / 0

Note: Match totals are displayed in the format TEAM/OPPONENT for each category

MATCH BOX SCORES

Match 5: Colorado 3, Rice 0

Volleyball Box Score The Automated ScoreBook Rice vs Colorado (Sep 2, 2017 at Boulder, Colo.)

#	Rice	S	Attack				Pct	Serve			RE	Dig	Block			BH	Pts
			K	E	TA			SA	SE	RE			BS	BA	BE		
3	MCDANIEL, Madison	3	5	1	8	.500	31	1	0	0	10	0	1	0	1	0	6.5
7	MORGAN, Grace	3	6	2	13	.308	0	0	0	0	1	0	0	0	0	0	6.0
8	LEE, Lauren	3	0	0	0	.000	1	0	0	2	4	0	0	0	0	0	0.0
11	LENNON, Nicole	3	15	5	34	.294	0	0	2	0	7	0	0	0	0	0	15.0
22	KYLE, McKay	3	6	2	10	.400	0	0	1	0	1	0	1	0	0	0	6.5
25	OKAFOR, Portia	3	2	1	8	.125	1	0	0	0	0	0	0	0	0	0	2.0
5	CUNNINGHAM, Lee Ann	3	0	0	0	.000	4	0	0	0	16	0	0	0	0	0	0.0
13	MENDIVIL, Stephanie	1	0	0	3	.000	0	0	0	0	1	0	0	1	0	0	0.0
16	DOLE, Julianna	3	0	0	1	.000	3	0	2	2	5	0	0	0	0	1	0.0
18	MARTINEZ, Adria	1	0	0	0	.000	0	0	0	0	1	0	0	0	0	0	0.0
39	WAGGONER, Seyvion	3	7	8	29	.034	0	0	2	0	2	0	0	0	0	0	7.0
Totals		3	41	19	106	.208	40	1	7	4	48	0	2	1	2	43.0	

TOTAL TEAM BLOCKS: 1.0

Team Attack By Set									TOTAL TEAM RECORDS: 1						
Set	K	E	TA	Pct	Sideout	Pct			SET SCORES			Team Records:			
1	13	6	41	.171	12-24	50%			1	2	3	15	20	20	4-3
2	15	8	33	.212	13-25	51%			Rice (0)			25	25	25	5-0
3	13	5	32	.250	14-24	58%			Colorado (3)						
					39-73	53%									

MATCH BOX SCORES

Match 9: Colorado 3, Xavier 1

Volleyball Box Score The Automated ScoreBook Xavier vs Colorado (Sep 15, 2017 at Boulder, Colo.)

#	Xavier	S	Attack				Pct	Ast	Serve			RE	Dig	Block				BH	Pts
			K	E	TA				SA	SE	RE			BS	BA	BE			
1	FRILLING, Lauren	4	4	1	14	.214	0	0	0	0	2	0	3	3	0	0	0	5.5	
5	ADAMS, Audrey	4	4	1	14	.214	0	0	0	1	1	0	2	0	0	0	0	5.0	
7	NEWSOME, Alexis	4	7	3	16	.250	0	0	0	1	3	2	5	0	0	0	0	11.5	
9	FOTI, Samantha	4	0	2	4	-.500	3	2	0	1	14	0	0	0	0	0	0	2.0	
11	HUMM, Mackenzi	4	0	0	0	.000	23	0	0	0	9	0	0	0	0	0	0	0.0	
14	MASSA, Kristen	4	20	4	53	.302	0	0	2	1	8	1	3	0	0	0	0	22.5	
2	DIEUDONNE, Nadia	4	0	0	1	.000	20	1	0	0	12	0	0	0	0	0	1	1.0	
3	FINN, Morgan	4	7	2	24	.208	1	0	0	0	2	0	1	0	0	0	0	7.5	
4	GROSSMAN, Laura	4	12	6	39	.154	0	0	0	2	3	0	4	0	0	0	0	14.0	
6	KLARE, Meredith	4	0	0	0	.000	2	1	0	0	20	0	0	0	0	0	0	1.0	
8	HOPKINS, Moriah	1	0	0	0	.000	0	0	0	0	0	0	0	0	0	0	0	0.0	
13	KRAUSE, Maya	1	0	0	0	.000	0	0	0	0	0	0	0	0	0	0	0	0.0	
Team											1								
Totals		4	54	19	165	.212	49	4	2	6	74	3	18	3	1	1	70.0		

Team Attack By Set							TOTAL TEAM BLOCKS: 12.0						
Set	K	E	TA	Pct	Sideout	Pct	SET SCORES						
1	16	2	40	.350	15-24	62%	1 2 3 4 Team Records:						
2	15	5	45	.222	11-23	47%	Xavier (1)						
3	10	6	37	.108	12-24	50%	Colorado (3)						
4	13	6	43	.163	10-25	40%	23 25 23 18 4-7						
							25 21 25 25 8-1						
							48-96 50%						

#	Colorado	S	K	Attack				Pct	Serve				RE	Dig	Block				BH	Pts
				E	TA	SA	SE		RE	BS	BA	BE								
1	Shebby, Frankie	4	19	4	44	.341	1	1	3	0	10	0	1	0	0	0	0	20.5		
4	Pfefferle, Anna	4	8	2	17	.353	0	0	0	1	4	0	3	0	0	0	0	9.5		
7	Smith, Alexa	4	16	6	58	.172	1	1	2	0	15	1	1	0	0	0	0	18.5		
10	DeLuzio, Brynna	4	1	1	5	.000	55	2	1	1	15	0	1	0	0	0	0	3.5		
14	Abu, Naghede	4	7	3	16	.250	0	0	0	0	2	2	2	1	0	0	0	10.0		
22	Hayes, Joslyn	4	11	7	32	.125	0	0	0	0	2	0	1	0	0	0	0	11.5		
2	Shadley, Stephanie	2	1	0	2	.500	0	0	0	0	2	0	0	0	0	0	0	1.0		
3	Carta-Samuels, Gabby	4	1	0	2	.500	3	0	0	2	16	0	0	0	0	0	0	1.0		
6	Joachim, Taylor	1	0	0	0	.000	0	0	0	0	0	0	0	0	0	0	0	0.0		
8	Spann, Justine	4	0	0	0	.000	0	1	1	0	2	0	0	0	0	0	0	1.0		
9	DeMure, Emily	2	0	0	0	.000	0	0	0	0	0	0	0	0	0	0	0	0.0		
12	Whipple, Rachel	4	0	0	0	.000	0	1	0	0	5	0	0	0	0	0	0	1.0		
21	Dorrell, Lauren	1	0	0	0	.000	0	0	0	1	0	1	0	0	0	0	0	0.5		
Totals		4	64	23	176	.233	60	6	7	4	74	3	10	2	0	78.0				

Team Attack By Set							TOTAL TEAM BLOCKS: 8.0						
Set	K	E	TA	Pct	Sideout	Pct	SET SCORES						
1	17	7	41	.244	16-24	66%	1 2 3 4 Total						
2	13	5	49	.163	10-24	41%	0 2 12 9 23						
3	18	6	44	.273	13-24	54%	Tie scores						
4	16	5	42	.262	10-18	55%	Lead change						
							0 1 5 7 13						
							49-90 54%						

Site: Boulder, Colo. (Coors Events Center)
Date: Sep 15, 2017 Attend: 1106 Time: 2:15
Referees: Kimberly Renquest, Gary Houghton

Tie scores
Lead change

Match 10: Colorado 3, Albany 0

Volleyball Box Score The Automated ScoreBook UAlbany vs Colorado (Sep 16, 2017 at Fort Collins, CO)

#	UAlbany	S	Attack				Pct	Ast	Serve			RE	Dig	Block			BH	Pts
			K	E	TA				SA	SE	RE			BS	BA	BE		
8	FOCOSTI, Larissa	2	0	0	2	.000	12	0	0	0	6	0	0	0	0	0	2	0.0
9	EVERING, Chloe	3	6	6	20	.000	0	0	0	0	3	0	0	0	0	0	0	6.0
17	HANSEN, Gabrielle	3	6	2	19	.211	0	0	1	1	4	0	0	0	0	0	0	6.0
20	O'CONNELL, Courtney	3	2	4	11	-.182	0	0	0	0	0	0	0	0	1	0	2.0	
23	TEDESCO, Danielle	3	0	4	12	-.333	0	0	0	0	2	1	0	1	0	0	1.0	
34	OKENWA, Akubabata	3	15	5	36	.278	0	0	1	0	7	0	0	0	0	0	15.0	
4	HOLMES, Nina	3	0	0	1	.000	2	0	0	1	7	0	0	0	0	0	0.0	
5	LAMB, Chloe	1	0	1	7	-.143	0	0	0	0	0	0	0	0	0	0	0.0	
7	OTERO, Nicole	3	0	1	1	-1.000	4	0	0	2	14	0	0	0	0	0	0.0	
11	CAMERON, Kelly	2	1	0	4	.250	12	0	0	0	4	0	0	0	0	0	1.0	
Totals		3	30	23	113	.062	30	0	2	4	47	1	0	2	2	31.0		

Team Attack By Set							TOTAL TEAM BLOCKS: 1.0						
Set	K	E	TA	Pct	Sideout	Pct	SET SCORES						
1	8	8	35	.000	8-24	33%	1 2 3 Team Records:						
2	9	7	43	.047	10-25	40%	UAlbany (0)						
3	13	8	35	.143	13-24	54%	Colorado (3)						
							17 13 19 0-11						
							25 25 25 9-1						
							31-73 42%						

#	Colorado	S	Attack					Pct	Ast	Serve			RE	Dig	Block			BH	Pts
			K	E	TA	SA	SE			SA	SE	RE			BS	BA	BE		
2	Shadley, Stephanie	3	7	2	22	.227	1	0	0	0	10	0	2	1	0	0	0	8.0	
4	Pfefferle, Anna	3	8	2	17	.353	0	0	0	1	1	3	0	0	0	0	0	10.5	
8	Spann, Justine	3	11	6	31	.161	1	3	2	0	11	0	1	0	0	0	0	14.5	
10	DeLuzio, Brynna	3	1	0	3	.333	33	0	1	0	6	0	0	0	0	0	0	1.0	
14	Abu, Naghede	3	11	2	20	.450	0	0	0	0	1	3	0	0	0	0	0	13.5	
21	Dorrell, Lauren	3	4	2	14	.143	0	0	0	0	2	0	2	0	0	0	0	5.0	
3	Carta-Samuels, Gabby	3	0	0	0	.000	0	1	1	0	12	0	0	0	0	0	0	1.0	
6	Joachim, Taylor	2	0	0	0	.000	0	0	0	0	0	0	0	0	0	0	0	0.5	
9	DeMure, Emily	2	0	0	0	.000	3	0	0	0	0	0	0	0	0	0	0	0.0	
12	Whipple, Rachel	3	0	0	0	.000	1	0	0	0	5	0	0	0	0	0	0	0.0	
16	Klemmer, Lillie	1	1	0	2	.500	0	0	0	0	0	0	0	0	0	0	0	1.0	
22	Hayes, Joslyn	1	1	0	1	1.000	0	0	0	0	0	0	0	0	0	0	0	1.0	
Totals		3	44	14	110	.273	39	4	4	0	47	2	12	1	1	56.0			

Team Attack By Set							TOTAL TEAM BLOCKS: 8.0		
Set	K	E	TA	Pct	Sideout	Pct			
1	16	7	37	.243	9-18	50%	Site: Fort Collins, CO (Moby Arena)		
2	15	3	38	.316	10-13	76%	Date: Sep 16, 2017 Attend: 359 Time: 1:08		
3	13	4	35	.257	14-20	69%	Referees: Ryan MacDowell, Gary Houghton		
					33-51	64%	Line Judges: Anthony Buller, Chris Hermosillo		

MATCH BOX SCORES

Match 13: No. 4 Stanford 3, No. 25 Colorado 2

Volleyball Box Score The Automated ScoreBook #4 Stanford vs #25 Colorado (Sep 24, 2017 at Boulder, Colo.)

#	Stanford	S	Attack				Pct	Ast	Serve			RE	Dig	Block			BH	Pts
			K	E	TA	SA			SE	BS	BA			BE				
1	Gray, Jenna	5	3	0	5	.600	64	0	2	0	7	0	2	0	0	0	4.0	
2	Plummer, Kathryn	5	18	10	52	.154	1	2	3	0	19	0	6	2	0	0	23.0	
4	McClure, Meghan	5	10	6	33	.121	0	0	0	2	14	0	1	1	0	0	10.5	
6	Alade, Tami	5	17	3	29	.483	0	0	0	0	0	2	7	0	0	0	22.5	
8	Keefe, Michaela	5	7	4	26	.115	0	0	0	0	0	1	2	0	0	0	9.0	
17	Lutz, Merete	5	17	2	24	.625	0	0	0	0	1	1	4	0	0	0	20.0	
9	Hentz, Morgan	5	1	0	1	1.000	4	0	0	0	18	0	0	0	0	0	1.0	
10	Chang, Payton	4	0	0	0	.000	0	1	0	0	1	0	0	0	0	0	1.0	
11	Formico, Kate	5	0	0	0	.000	0	3	1	11	0	0	0	0	0	0	0.0	
20	Keefe, Caitlin	2	0	0	0	.000	0	0	1	3	3	0	0	0	0	0	0.0	
Totals		5	73	25	170	.282	69	3	9	3	74	4	22	3	0	0	91.0	

Team Attack By Set

Set	K	E	TA	Pct	Sideout	Pct
1	10	9	35	.029	9-25	36%
2	16	5	32	.344	11-14	78%
3	19	3	41	.390	18-28	64%
4	14	6	41	.195	18-28	64%
5	14	2	21	.571	9-12	75%

TOTAL TEAM BLOCKS: 15.0

SET SCORES

	1	2	3	4	5	Team Records:
Stanford (3)	20	25	27	29	15	9-2, 2-0 Pac-12
Colorado (2)	25	13	29	27	12	10-3, 0-2 Pac-12

#	Colorado	S	Attack				Ast	Serve			RE	Dig	Block			BH	Pts
			K	E	TA	Pct		SA	SE	RE			BS	BA	BE		
1	Shebby, Frankie	5	12	6	45	.133	1	0	1	3	11	0	3	0	0	0	13.5
4	Pfefferle, Anna	5	3	4	13	-.077	0	2	1	0	2	1	2	1	0	0	7.0
7	Smith, Alexa	5	25	10	68	.221	1	0	0	0	12	0	1	1	0	0	25.5
10	DeLuzio, Brynna	5	2	1	5	.200	52	0	1	0	11	0	3	1	0	0	3.5
14	Abu, Naghede	5	7	3	14	.286	0	0	0	0	1	0	6	0	0	0	10.0
22	Hayes, Joslyn	5	16	7	40	.225	0	0	0	0	3	0	1	0	0	0	16.5
2	Shadley, Stephanie	4	0	0	2	.000	0	1	0	0	3	0	0	0	0	0	0.0
3	Carta-Samuels, Gabby	5	0	0	0	.000	8	0	0	0	11	0	0	0	0	0	0.0
6	Joachim, Taylor	1	0	0	1	.000	0	0	0	0	0	0	0	0	0	0	0.0
8	Spann, Justine	5	0	0	0	.000	0	0	0	0	2	0	0	0	0	0	0.0
9	DeMure, Emily	1	0	0	0	.000	0	0	0	0	0	0	0	0	0	0	0.0
12	Whipple, Rachel	5	0	0	0	.000	1	1	1	0	6	0	0	0	0	0	1.0
Totals		5	65	31	188	.181	63	3	5	3	62	1	16	3	0	0	77.0

Team Attack By Set

Set	K	E	TA	Pct	Sideout	Pct
1	11	7	37	.108	10-21	47%
2	5	6	35	-.029	10-24	41%
3	24	5	50	.380	19-28	67%
4	16	12	45	.089	17-28	60%
5	9	1	21	.381	9-15	60%

TOTAL TEAM BLOCKS: 9.0

Site: Boulder, Colo. (Coors Events Center)

Date: Sep 24, 2017 Attend: 1980 Time: 2:43

Referees: Glenn Sapp, Tony Chan

	1	2	3	4	5	Total
Tie scores	3	3	19	19	4	48
Lead change	2	1	8	8	0	19

Match 14: Colorado 3, Oregon State 2

Volleyball Box Score The Automated ScoreBook Oregon State vs Colorado (Sep 29, 2017 at Boulder, Colo.)

#	Oregon State	S	Attack				Pct	Serve			RE	Block				BH	Pts
			K	E	TA			Ast	SA	SE		RE	Dig	BS	BA		
4	Bennett, Haylie	5	10	3	32	.219		0	0	0	0	3	1	3	0	0	12.5
8	Gravley, Maddy	2	0	2	2	-.000		0	0	0	0	0	0	1	0	0	0.5
10	Goings, Maddie	5	20	10	53	.189		2	0	1	1	14	0	0	0	0	20.0
12	McLaughlin, Kylee	5	4	1	9	.333		57	1	0	0	17	1	4	0	0	8.0
13	Cheshire, Kory	5	14	3	28	.393		0	1	3	0	2	2	5	0	0	19.5
15	Marshall, Mary-Kate	5	22	5	57	.298		2	1	0	5	16	0	0	1	0	23.0
7	Massey, Grace	5	0	0	0	.000		0	1	0	0	14	0	0	0	0	1.0
22	Ellis, Kayla	5	0	0	0	.000		6	1	0	0	21	0	0	0	0	1.0
23	Clarke, Shekinah	1	0	0	0	.000		0	0	0	0	0	0	0	0	0	0.0
24	Bruin, Serena	4	3	1	10	.200		0	0	0	1	0	0	1	0	0	3.5
Totals		5	73	25	191	.251		67	5	4	7	87	4	14	1	0	89.0

Team Attack By Set

Set	K	E	TA	Pct	Sideout	Pct
1	15	6	41	.220	13-24	54%
2	19	5	49	.286	17-26	65%
3	14	8	48	.125	13-24	54%
4	15	1	25	.560	6-8	75%
5	10	5	28	.179	7-14	50%

TOTAL TEAM BLOCKS: 11.0

SET SCORES

	1	2	3	4	5	Team Records:
Oregon State (2)	21	27	23	25	12	10-5, 0-3 Pac-12
Colorado (3)	25	25	25	7	15	11-3, 1-2 Pac-12

#	Colorado	S	Attack				Ast	Serve			RE	Dig	Block			BH	Pts
			K	E	TA	Pct		SA	SE	BE							
2	Shadley, Stephanie	5	6	5	39	.026	1	0	0	1	15	1	1	0	0	0	7.5
4	Pfefferle, Anna	5	2	2	15	.000	0	1	1	0	3	0	2	1	0	0	4.0
7	Smith, Alexa	5	21	13	66	.121	0	1	0	0	16	0	2	0	0	0	23.0
10	DeLuzio, Brynna	5	3	1	9	.222	55	4	1	0	10	0	1	0	0	0	7.5
14	Abu, Naghede	5	12	1	19	.579	0	0	0	0	1	1	3	1	0	0	14.5
22	Hayes, Joslyn	5	15	3	28	.429	0	0	0	0	0	0	0	1	1	0	15.5
3	Carta-Samuels, Gabby	5	0	0	1	.000	1	1	0	3	19	0	0	0	0	0	1.0
8	Spann, Justine	4	1	1	5	.000	0	0	0	0	8	0	0	0	0	0	1.0
9	DeMure, Emily	1	0	0	0	.000	0	0	0	0	0	0	0	0	0	0	0.0
12	Whipple, Rachel	4	0	0	0	.000	2	0	1	1	8	0	0	0	0	0	0.0
16	Klemmer, Lillie	1	0	0	1	.000	0	0	0	0	0	0	0	0	0	0	0.0
21	Dorrell, Lauren	1	0	0	1	.000	0	0	0	0	0	0	0	0	0	0	0.0
Totals		5	60	26	184	.185	59	7	3	5	80	2	10	3	0	0	74.0

Team Attack By Set

Set	K	E	TA	Pct	Sideout	Pct
1	15	5	39	.256	14-22	63%
2	17	6	47	.234	16-26	61%
3	14	7	47	.149	14-24	58%
4	5	7	27	-.074	5-24	20%
5	9	1	24	.333	8-13	61%

TOTAL TEAM BLOCKS: 7.0

Site: Boulder, Colo. (Coors Events Center)

Date: Sep 29, 2017 Attend: 1098 Time: 2:26

Referees: Glenn Sapp, Pi'i Aiu

	1	2	3	4	5	Total
Tie scores	6	12	4	2	3	27
Lead change	1	4	1	2	2	10

Match 15: Colorado 3, No. 12 Oregon 1

Volleyball Box Score The Automated ScoreBook #12 Oregon vs Colorado (Sep 30, 2017 at Boulder, Colo.)

#	Oregon	S	Attack				Pct	Ast	Serve			RE	Dig	Block				BH	Pts
			K	E	TA				SA	SE	RE			BS	BA	BE			
1	Gill, Summeet	4	4	0	15	.267		1	0	0	1	2	0	4	1	0	0	6.0	
3	Scott, Maggie	4	0	0	1	.000	24	0	1	0	6	0	0	0	0	0	0	0.0	
4	Johnson, Willow	4	10	5	31	.161	0	0	0	0	1	0	3	0	0	0	0	11.5	
6	Page, Lauren	4	4	8	19	-.211	0	0	0	0	5	0	0	0	0	0	0	4.0	
8	Vander Weide,Lindsey	4	13	7	45	.133	4	1	3	2	8	1	2	0	0	0	0	16.0	
17	Stone, Ronika	4	11	2	24	.375	0	0	0	0	4	0	4	0	0	0	0	13.0	
7	Agost, Taylor	4	9	5	35	.114	0	0	0	0	2	0	3	0	0	0	0	10.5	
10	Hojnar, Alex	4	0	0	0	.000	0	2	1	0	19	0	0	0	0	0	0	2.0	
12	Hall-Poirier, Marine	4	1	0	2	.500	0	0	2	0	8	0	0	0	0	2	1	0.0	
16	Raskie, August	4	0	0	1	.000	20	2	0	0	5	0	0	0	0	0	0	6.0	
Totals		4	52	27	173	.145	49	3	9	3	60	1	16	1	2	2	0	04.0	

MATCH BOX SCORES

Match 17: No. 9 Washington 3, No. 25 Colorado 1

Volleyball Box Score The Automated ScoreBook

#25 Colorado vs Washington State (Oct 06, 2017 at Pullman, Wash.)

#	Colorado	S	Attack				Pct	Ast	Serve			RE	Dig	Block				BH	Pts
			K	E	TA				SA	SE	BS			BA	BE				
1	Shebby, Frankie	4	14	11	43	.070		1	0	2	3		8	0	3	1	0		15.5
4	Pfefferle, Anna	4	9	2	12	.583		0	0	3	0		4	0	4	0	0		11.0
7	Smith, Alexa	4	24	7	56	.304		1	0	0	0		14	0	2	0	0		25.0
10	DeLuzio, Brynna	4	2	0	5	.400		53	0	1	0		7	0	1	0	0		2.5
14	Abu, Naghede	4	5	3	21	.095		0	0	0	0		0	1	4	1	0		8.0
22	Hayes, Joslyn	4	4	3	23	.043		0	0	0	0		1	0	2	0	0		5.0
2	Shadley, Stephanie	1	0	0	0	.000		0	0	0	0		0	0	0	0	0		0.0
3	Carta-Samuels, Gabby	2	0	0	0	.000		2	1	0	1		12	0	0	0	0		0.0
8	Spann, Justine	4	2	0	3	.667		1	2	0	2		18	0	0	0	0		4.0
12	Whipple, Rachel	2	0	0	0	.000		0	0	2	0		4	0	0	0	1		0.0
Totals		4	60	26	163	.209		58	2	9	6		68	1	16	2	1		71.0

Team Attack By Set

Set	K	E	TA	Pct	Sideout	Pct
1	17	7	39	.256	18-25	72%
2	9	3	35	.171	11-24	45%
3	16	6	39	.256	14-23	60%
4	18	10	50	.160	18-29	62%
61-101						60%

TOTAL TEAM BLOCKS: 9.0

SET SCORES

	1	2	3	4	Team Records:
Colorado (1)	23	19	25	28	12-4, 2-3
Washington State (3)	25	25	22	30	13-4, 2-3

#	Washington State	S	Attack				Pct	Ast	Serve			RE	Dig	Block				BH	Pts
			K	E	TA				SA	SE	BS			BA	BE				
1	Tusa, Penny	4	3	2	13	.077		29	1	3	0		16	0	2	0	0		5.0
6	Urias, Jocelyn	4	5	2	13	.231		0	2	1	0		4	2	5	0	0		11.5
10	Minns, Taylor	4	24	12	65	.185		0	0	1	0		5	0	2	0	0		25.0
12	Martin, Claire	4	5	4	16	.062		0	0	0	0		2	0	2	0	0		6.0
18	Lajos, Ella	4	9	3	17	.353		0	0	0	0		0	1	2	0	0		11.0
21	Schoenlein, Casey	4	13	4	34	.265		0	1	0	0		0	0	2	0	0		15.0
4	Dirige, Alexis	4	0	0	0	.000		6	2	1	2		23	0	0	0	0		2.0
15	Phillips, Abby	4	1	0	1	1.000		1	0	0	0		10	0	0	0	0		1.0
16	Smith, Savannah	1	0	0	0	.000		0	0	0	0		0	0	1	0	0		0.5
19	Brown, Ashley	4	0	0	2	.000		20	0	0	0		8	0	0	0	0		0.0
Totals		4	60	27	161	.205		56	6	6	2		68	3	16	0	0		77.0

Team Attack By Set

Set	K	E	TA	Pct	Sideout	Pct
1	15	3	35	.343	18-23	78%
2	18	9	48	.188	12-20	60%
3	14	7	35	.200	13-24	54%
4	13	8	43	.116	19-29	65%
62-96						64%

TOTAL TEAM BLOCKS: 11.0

Site: Pullman, Wash. (Bohler Gym)
Date: Oct 06, 2017 Attend: 1203 Time: 2:21
Referees: Lara Donaldson, Ron Pelham
Line judges: Heide Wehr, Ben Goodwin

	1	2	3	4	Total
Tie scores	20	5	2	19	46
Lead change	8	4	1	8	21