



# BUCCANEER

## 20 SOFTBALL 21



### THE RUNDOWN

RECORD	OVERALL:	6-16
	BIG SOUTH	3-9
	HOME	5-12
	AWAY	1-4
	NEUTRAL	0-0

### THE SCHEDULE

Date	Opponent	Time/Result
Feb. 20	Cleveland State (DH)	L, 4-3; W, 2-1
Feb. 21	Eastern Kentucky (DH)	L, 8-3; L, 11-5
Feb. 26	at Coastal Carolina	Canceled
Feb. 26	vs. Lipscomb	Canceled
Feb. 26	at Coastal Carolina	Canceled
Feb. 26	vs. Lipscomb	Canceled
Feb. 28	at Coastal Carolina	Canceled
Mar. 5	at Georgia	Canceled
Mar. 6	vs. Mercer (DH)	Canceled
Mar. 7	vs. UAB (DH)	Canceled
Mar. 12	USC Upstate (DH)*	L, 8-6; L, 5-0
Mar. 13	USC Upstate*	L, 7-4
Mar. 19	Radford*	W, 5-4
Mar. 20	Radford (DH)*	L, 14-1; L, 5-3
Mar. 24	Coastal Carolina (DH)	W, 8-7; L, 7-6
Mar. 27	at Presbyterian (DH)*	L, 2-1; L, 4-1
Mar. 28	at Presbyterian*	W, 8-0
Mar. 30	College of Charleston (DH)	L, 6-2; W, 6-4
Apr. 2	Winthrop*	L, 4-3
Apr. 3	Winthrop (DH)*	W, 2-1; L, 4-1
Apr. 7	at South Carolina (DH)	L, 9-2; L, 8-0
Apr. 9	Gardner-Webb*	6 p.m.
Apr. 10	Gardner-Webb (DH)*	Noon/2 p.m.
Apr. 13	at Georgia Southern (DH)	TBA
Apr. 17	at Campbell (DH)*	1/3 p.m.
Apr. 18	at Campbell*	1 p.m.
Apr. 20	at Furman (DH)	4/6 p.m.
Apr. 24	at Longwood (DH)*	1/3 p.m.
Apr. 25	at Longwood*	11 a.m.
May 4	College of Charleston (DH)	5/7 p.m.

May 13-15 - Big South Championships

\*Big South Opponent // All times Eastern

### GAMES 23-25 | GARDNER-WEBB

APRIL 9, 2021 \* 6 P.M. // APRIL 10, 2021 \* NOON / 2 P.M. (DH) \* CHARLESTON, S.C.



CHARLESTON SOUTHERN  
BIG SOUTH

2021 Record: 6-16/3-9  
Head Coach: Christi Musser  
Career: 6-16 (1st)  
CSU: Same

### QUICK HITS

.264	Batting Average	.186
3.3	Runs/Game	1.7
7.1	Hits/Game	4.2
.378	Slugging Percentage	.237
4.92	ERA	5.61
71	Strikeouts	126
.300	Opposing BA	.317



GARDNER-WEBB  
BIG SOUTH

2021 Record: 4-21/3-11  
Interim HC: Lani Ries  
Career: 0-2 (1st)  
GWU: Same

### AT A GLANCE

#### KEY STORYLINES >>SENIOR WEEKEND

With this weekend's games against Gardner-Webb being the last weekend home series for the Bucs, Charleston Southern will honor seniors Meghan Gagliano, Holly Clark, Alyssa Heinrich and Dominique Mannerino for their contributions to the Buccaneer softball program over the last five years.

The Senior Day ceremony will take place after the conclusion of Saturday's doubleheader.

#### >>GAME BY GAME

Prior to Wednesday's doubleheader sweep at the hands of South Carolina, the Bucs were starting to get back on track.

After a slow start to the 2021 season, Charleston Southern was 3-3 in its six games prior to the midweek sweep by the Gamecocks.

#### >>KNOW THE SCHEDULE

As is customary in most seasons, the Bucs will play everyone in the Big South Conference for one three-game series. CSU will play four home series and three road series against Big South competition. Those making the trip to Charleston this season are USC Upstate, Radford, Winthrop and Gardner-Webb. The Bucs will play at Presbyterian, Campbell and Longwood. Hampton elected to not play a spring sports season for the 2020-21 academic year.

#### SERIES INFORMATION

Overall:	Gardner-Webb leads 27-17
at CSU:	Gardner-Webb leads 10-8
at GWU:	Gardner-Webb leads 12-6
Neutral:	Gardner-Webb leads 5-3
First Meeting:	Feb. 16, 2002 (Neutral W, 9-3)
Last Meeting:	Apr. 20, 2019 (Home W, 10-3)
Winning Streak:	CSU won last game
Series Streak:	GWU won last two series

#### The Venue

Field:	CSU Softball Field
Stadium:	CSU Softball Complex
Opened:	1970
Capacity:	250
Surface:	Natural Grass
Record Att:	312 - vs. Campbell, May 4, 2014



### >>HOW THEY STACK UP



.186	105	5	0	8	.282	.237	13	5.61	126	112	.317	.948
BATTING AVG	HITS	DOUBLES	TRIPLES	HOME RUNS	ON-BASE %	SLUGGING %	STOLEN BASES	ERA	STRIKE-OUTS	WALKS	OPPO. BATTING AVG	FIELDING %
.264	156	19	3	14	.326	.378	25	4.92	71	55	.300	.962



The Charleston Southern Athletics Communications department's mission is to strategically provide communication between the athletics department and its internal and external constituents, increase awareness of and interest in Buccaneer Athletics and to publicize the activities and achievements of the student-athletes, teams and the athletics department.

We understand the importance of assisting the media in providing coverage of the university, its athletics programs, administrators, coaches and student-athletes. Our goal is to disseminate information as widely, uniformly and fairly as possible using accepted media standards. To this end, the best attempt will be made to fill reasonable requests by recognized media outlets. Members of the media are encouraged to work with our staff to assist in that endeavor.

## MEDIA INFORMATION

### PRESS RELEASES/GAME NOTES

Prior to each contest, a complete release previewing the upcoming game and reviewing the season will be available on CSUSports.com. The release will also be emailed to media requesting this service.

### PREGAME INTERVIEWS

Head Coach Christi Musser will be available for pregame interviews and live television shots depending on time schedules. CSU players will not be available for pregame media activities. Media are encouraged to call the CSU athletic communications office well in advance to arrange such interviews.

### POSTGAME INTERVIEWS

CSU's locker room is closed to media after the game. Media in the press box will be asked for player requests prior to the conclusion of the game. Head Coach Christi Musser and requested players will be available following the game at the CSU Softball Field.

### INTERVIEWS

Direct all requests for interviews with CSU head coach Christi Musser or softball student-athletes through Assistant Director of Athletic Communications Kieran Intemann by calling (843) 863-7289 or emailing kintemann@csuniv.edu

## COVERING HOME GAMES

### CREDENTIALS

Credentials for CSU softball home games are issued to working media only and must be requested at least 24 hours in advance to Kieran Intemann by emailing kintemann@csuniv.edu. Media will have a credential left for them at the Media Will Call located at the entrance to the CSU Softball Field.

### PARKING

Parking is free to the public and is available on a first-come, first-serve basis for CSU softball games with the exception of marked off spaces for Buc Club, coaches, and officials.

### WORKING MEDIA LOCATION

The working press, radio, and television area is located inside the press box at the CSU Softball Field. Media may also be able to reserve press row seats upon request.

### MEDIA ROOM SERVICES

Pregame packets, including notes, statistics, programs and rosters, will be available. Final box scores will also be provided.

### WIRELESS INTERNET

Complimentary access to wireless internet is available for working media at the CSU Softball Field.

## Athletics Communications Charleston Southern University

9200 University Blvd  
Charleston, SC 29406  
Phone: 843-863-7853

### Seth Montgomery

Associate A.D. for Communications/P.R.  
Football, Baseball, Golf

### Derrick Bennington

Associate Director for Communications  
Men's Basketball, Volleyball, Tennis, XC/Track & Field

### Kieran Intemann

Assistant Director for Communications  
Women's Basketball, Softball

### Hannah Allison

Assistant Director for Communications  
Women's Soccer

## Video/Content Creation

### Nick Case

Director for Athletic Video Communications  
ESPN+/Big South Network

### Regan Budig

Associate Director for Video Communications  
Creative Content

### Killian McClatchey

"Voice of the Bucs"/ESPN+ Play-by-Play Talent

### Anna Witte

Side Line Report/ESPN+ Color Analyst

# 2021 CHARLESTON SOUTHERN SOFTBALL

## UNIVERSITY INFORMATION

Location..... Charleston, S.C.  
School Founded ..... 1964  
Enrollment..... 3,378  
Nickname..... Buccaneers  
Colors..... Blue (PMS 295) and Gold (PMS 7853)  
President ..... Dr. Dondi E. Costin  
Director of Athletics..... Jeff Barber

## CSU SOFTBALL COMPLEX INFORMATION

Field Name..... CSU Softball Field  
Stadium Name..... CSU Softball Complex  
Capacity ..... 250

## COACHING STAFF

Head Coach ..... Christi Musser  
Alma Mater..... Kansas, 2003  
Record at CSU..... 6-14 (First Season)  
Overall Record ..... Same  
Assistant Coach ..... Stevi Johnson (Third Season)  
Volunteer Assistant Coach..... Russell Cooper (Third Season)

## SUPPORT STAFF

Athletic Trainer ..... Lydia Johnson  
Associate A.D. for Communications/P.R..... Seth Montgomery  
Assistant Director of Athletic Communications..... Kieran Intemann

## TEAM HISTORY

First Season of Softball ..... 1986  
All-Time Record ..... 690-1,068-5  
All-Time Big South Record ..... 165-319-1  
Big South Regular Season Championships ..... None  
All-Time Big South Tournament Record ..... 32-55  
Big South Tournament Championships ..... 2 (1988, 2015)  
Big South Tournament Runner-Ups ..... 1 (2012)  
NCAA Postseason Appearances (Last) ..... 1 (2014)  
Last Postseason Opponent ..... vs. Lipscomb (2014 NCAA Knoxville Regional)  
Result..... L, 4-2

20+ Win Seasons: ..... 15  
..... (1987, 1988, 1990, 1991, 1992, 1993, 1994, 2001, 2009, 2010, 2011, 2012, 2014, 2017, 2018)  
30+ Win Seasons: ..... 7 (1987, 1988, 1990, 1992, 1993, 2010, 2012)  
Big South Coach of the Year: ..... 2  
..... (Howard Bagwell - 1987, Chandel Schulte - 2001)  
Big South Players of the Year: ..... None  
Big South Pitchers of the Year: ..... None  
Big South Freshman of the Year: ..... 1  
..... (Rachael Stern - 2001)  
Big South Scholar-Athletes of the Year: ..... 1  
..... (Caitlin Allen - 2010)  
Team Sportsmanship Award..... 1 (2006)  
First Team All-Conference Honors: ..... 38  
Second Team All-Conference Honors: ..... 34  
Academic All-Conference Honors: ..... 23  
All-Tournament Team Honors: ..... 24  
Big South Tournament MVP: ..... 2  
..... (Dori Beach - 1988, Cheyenne Gandara - 2014)

## 2020 REVIEW

2020 Record ..... 10-9  
Big South Record (finish)..... 0-0 (N/A)  
Big South Championship ..... N/A  
Postseason ..... N/A  
Final Ranking ..... N/A  
Letterwinners returning/lost ..... 16/5  
Newcomers ..... 2

## COMMUNICATIONS OFFICE

Primary Contact..... Kieran Intemann  
Email..... kintemann@csuniv.edu  
Office #: ..... 843-863-7289  
Website: ..... www.CSUsports.com

## GAMES 23-25 | GARDNER-WEBB

# Quick FACTS



**BROOKLYNN BREWINGTON**

## &gt;&gt;2021 CHARLESTON SOUTHERN SOFTBALL ROSTER

#	Name	Pos.	Cl.	Ht.	Hometown / High School / Previous School
00	Katelyn Norris	OF	So.	5-2	Knoxville, Tenn. / The Kings Academy
2	Ashley Meckley	INF	Jr.	5-6	Hanahan, S.C. / Hanahan / Coker
3	Meghan Gagliano	OF	Sr.	5-6	South Elgin, Ill. / Wheaton Academy
4	Holly Clark	RHP	R-Sr.	5-6	Siler City, N.C. / Jordan-Matthews
8	Baylee Eaton	LHP	Sr.	5-9	Eugene, Ore. / Marist / Central Arizona College
10	Sarah Brown	INF	Sr.	5-7	Sacramento, Calif. / Sheldon
11	Annah Junge	RHP	So.	5-7	Ballwin, Mo. / Marquette
12	Alyssa Heinrich	RHP	Sr.	5-8	Mount Pleasant, S.C. / Wando
15	Madison Koger	INF	Sr.	5-7	Fairfield, Ohio / Fairfield
16	Dominique Mannerino	INF	Sr.	5-5	Homer Glen, Ill. / Lockport Township / Hillsborough CC
21	Emily Crosby	INF	So.	5-4	Beaufort, S.C. / Battery Creek
25	Ashlyn Cribb	C	So.	5-5	Hanahan, S.C. / Hanahan
27	Rhiana Hubbard	OF	Jr.	5-7	Fairfield, Ohio / Fairfield
32	Noelle Chaney	RHP	Fr.	5-7	Batavia, Ill. / Batavia
33	Brooklynn Brewington	INF	Jr.	5-6	Andrews, S.C. / Andrews
41	Erika Cooper	INF	Jr.	5-10	Fenton, Mo. / Rockwood Summit
54	SeaEnna Satcher	INF	Jr.	5-5	Newbury Park, Calif. / Newbury Park
99	Taylor Gleason	OF	Sr.	5-8	Bluffton, S.C. / May River

**Coaching Staff**

Head Coach: Christi Musser (First season)

Assistant Coach: Stevi Johnson (Third season)

Volunteer Assistant Coach: Russell Cooper (Third season)

Athletic Trainer: Lydia Johnson

**Pronunciations**

#11 Annah Junge - Ah-nah Youn-guh

#12 Alyssa Heinrich - Hyne-rick

#15 Madison Koger - Koh-ger

#54 SeaEnna Satcher - See-enn-a

HC Christi Musser - Muss-err

2020-21  
ROSTER





# THE TRANSFER EFFECT

## ASHLEY MECKLEY

Ashley Meckley has become a mainstay in the Buccaneer lineup from the day she arrived on campus. The Hanahan, South Carolina, native has started all 22 games this season at shortstop after transferring into the program from Coker University.

Meckley is hitting .273 through the first 22 games of this season. The junior infielder also leads the team with four doubles, seven homers, 11 extra-base hits, 13 walks and 13 runs batted in.

Meckley has four multi-hit games and has at least one hit in 13 of the first 22 games. In addition, she has reached base in 19 of the first 22 games this season, including each of the Bucs' first 13 contests.

Prior to arriving at CSU, Meckley was a standout for Division II Coker University in Hartsville, South Carolina, where she hit .325 with seven homers and 35 runs batted in across 73 games. Despite the jump up to Division I, she is still on pace to put up numbers similar to those she produced during her time with the Cobras.

## THE MECKLEY FILE

LEADS ALL CHARLESTON  
SOUTHERN STARTERS WITH A

**.652**  
SLUGGING %  
THROUGH 22  
GAMES

LEADS THE  
BUCCANEERS WITH

**7**  
HOME RUNS  
IN 2021

HAS REACHED BASE  
SAFELY IN

**19**  
OF THE FIRST 22  
GAMES

### ONE TO REMEMBER

Holly Clark struck out six in a complete game performance against Cleveland State, giving head coach Christi Musser her first career win in a 2-1 Buccaneer victory on Feb. 20.

Ashley Meckley provided the offense for CSU with a two-run homer to left in the second innings, while Clark allowed one run on eight hits.

### WALK IT OFF

Brewington hit a walk-off RBI single in the bottom of the 11th, scoring Ashley Meckley in the process, as the Bucs earned their first Big South win of the season with a 5-4 extra-inning thriller over Radford.

Annah Junge and Alyssa Heinrich combined to allow just six Radford hits in 11.0 innings of work. Heinrich was credited with the win after tossing 3.0 scoreless innings of relief. Junge allowed three earned runs in a career-high 8.0 innings while tying her season high with three strikeouts.

### BACK IN THE WIN COLUMN

Charleston Southern defeated Coastal Carolina for the first time since the 2017 season when it took the opening game of a midweek doubleheader over the Chanticleers, 8-7.

Erika Cooper had the go-ahead hit with a solo

home run in the bottom of the fifth inning. Alyssa Heinrich earned her second win of the season with 3.0 innings of relief work, while Annah Junge allowed four runs in 4.0 innings in her fourth start of the season.

### SHUT IT DOWN

Annah Junge and Baylee Eaton combined to throw a one-hit shutout with three strikeouts each, as Charleston Southern run-ruled Presbyterian, 8-0, in the series finale between the teams.

Katelyn Norris had a season-high three hits, while Brooklynn Brewington and Erika Cooper recorded two hits apiece. Eight different Bucs had a hit, with seven different players notching an RBI.

### SALVAGING A SPLIT

Charleston Southern used a four-run second inning to defeat crosstown rival College of Charleston in the second game of a doubleheader, 6-4.

Baylee Eaton got the win for the Bucs after allowing just one hit in 4.0 scoreless innings, while Ashley Meckley hit her team-leading fifth homer of the season to left center in the fifth inning.

## ROSTER BREAKDOWN

### PITCHERS

4 Holly Clark  
8 Baylee Eaton  
11 Annah Junge  
12 Alyssa Heinrich  
32 Noelle Chaney

### OUTFIELDERS

00 Katelyn Norris  
3 Meghan Gagliano  
27 Rhiana Hubbard  
99 Taylor Gleason

### INFIELDERS

2 Ashley Meckley  
10 Sarah Brown  
15 Madison Koger  
16 Dominique Mannerino  
21 Emily Crosby  
33 Brooklynn Brewington  
41 Erika Cooper  
54 SeaEnna Satcher

### CATCHERS

25 Ashlyn Cribb

### CLASS\*

Freshmen 1  
Sophomores 4  
Juniors 5  
Seniors 8

### STATE

South Carolina 6  
Illinois 3  
California 3  
Missouri 2  
Ohio 2  
North Carolina 1  
Oregon 1  
Tennessee 1

### COUNTRY

USA 18

(\*) - includes redshirts



# LEAD THE WAY

## ALL AROUND THE ORDER

Brooklynn Brewington has started every game since she stepped foot on campus prior to the 2019 season. That hasn't changed this year, and the junior is now leading the way at the plate as well.

Brewington has hit all around the batting order for the Bucs this season and has been found anywhere from the leadoff spot to the six spot on head coach Christi Musser's lineup card.

The Andrews, South Carolina, native has rewarded her head coach's trust in her by leading CSU with a .352 batting average through 20 games. Brewington has at least one hit in 17 of the first 22 games this season, including eight multi-hit games.

Brewington delivered a walk-off RBI single in the 11th inning against Radford last week to give the Bucs their first Big South win of the season.

## THE BREWINGTON FILE

LEADS ALL BUCCANEER  
STARTERS WITH A

**.352**  
BATTING AVERAGE  
IN 2021

HAS STARTED  
ALL

**96**  
GAMES IN HER  
CAREER

HAS RECORDED AT LEAST  
ONE HIT IN

**17**  
OF THE FIRST 22  
GAMES THIS  
SEASON

### A NEW ERA

Charleston Southern softball ushered in a new chapter in program history in January with the hiring of Christi Musser as the 10th head coach in program history.

Musser comes to the Lowcountry with an extensive coaching background and most recently served as the associate head coach at Grand Canyon University in Phoenix, Arizona. Musser was previously an assistant coach on the Grand Canyon staff prior to being promoted to associate head coach. During her time at GCU, the Lopes were ranked among the top teams in Division I in batting average and doubles per game. Musser coached three all-conference players during her time with the Lopes, including a pair of First Team All-WAC outfielders.

Musser previously had a three-year stint as an assistant coach at New Mexico, where she was the hitting instructor for the Lobos. Under her tutelage, the Lobos led all of Division I with 96 home runs in 2012.

Musser got her start in coaching at Kansas, her alma mater, where she spent seven seasons as an assistant. She was the hitting instructor and recruiting coordinator during her coaching tenure with the Jayhawks.

### FAMILIAR FACES IN THE FOLD

While Christi Musser is a new face to the Buccaneer softball program, people familiar with CSU softball will recognize the assistant coaches for the Bucs.

Stevi Johnson is in her third season as an assistant coach for the Bucs and is one of the top players in program history. Johnson was a part of CSU's 2014 Big South Championship-winning team and also earned all-conference honors in 2017. She works with the outfielders and as a hitting instructor, with an emphasis on power hitting.

Russell Cooper is also in his third season as an assistant coach, albeit in his second stint with the Buccaneer softball program. Cooper previously spent the 2017-18 seasons on the CSU staff as an assistant coach and works primarily with the pitchers.

## CSU RECORD WHEN...

	2021	MUSSER
Overall Record	6-16	6-16
Current Streak	L3	L3
Series Record	0-4	0-4
Home	5-12	5-12
Road	1-4	1-4
Neutral	0-0	0-0
Day Game	4-13	4-13
Night Game	2-3	2-3
vs. Top 25 Teams	0-0	0-0
CHSO Scores First	5-5	5-5
Opponent Scores First	1-11	1-11
Extra Innings	1-1	1-1
Run-Rule Games	1-2	1-2
One-Run Games	4-4	4-4
Two-Run Games	1-2	1-2
Leading After 5	5-2	5-2
Trailing After 5	0-12	0-12
Tied After 5	1-2	1-2
CHSO Out-Hits Opponent	5-2	5-2
Opponent Out-Hits CHSO	1-12	1-12
Two Teams Match on Hits	0-2	0-2

## RECORD BREAKDOWN

	2021	Streak	Under MUSSER
Overall	6-16	L3	6-16
Home	5-12	L1	5-12
Road	1-4	L2	1-4
Neutral	0-0	W1	0-0
Extra Innings	1-1	W1	1-1
Big South	3-9	L1	3-9
Big South Home	2-7	L1	2-7
Big South Road	1-2	W1	1-2

## HOW CSU FARES AGAINST

### ...the Big South

OPPONENT	RECORD	LAST MET (RESULT)
Campbell	25-44-1	Mar. 24, 2019 (W, 5-2)
Gardner-Webb	17-27	Apr. 20, 2019 (W, 10-3)
Hampton	7-2	Apr. 7, 2019 (L, 3-2)
Longwood	6-24	Apr. 14, 2019 (L, 4-3)
Presbyterian	29-18	Mar. 28, 2021 (W, 8-0)
Radford	24-54	Mar. 20, 2021 (L, 5-3)
UNC Asheville	5-2	Apr. 1, 1988 (L, 9-8)*
USC Upstate	2-22	Mar. 13, 2021 (L, 7-4)
Winthrop	28-55	Apr. 3, 2021 (L, 4-1)
<b>TOTAL</b>	<b>165-319-1</b>	

\*UNC Asheville discontinued softball; High Point does not sponsor softball

## SERIES BUSINESS

Series Record	GWU leads 27-17
at CSU	GWU leads 10-8
at GWU	GWU leads 12-6
Neutral Site	GWU leads 5-3
Big South	GWU leads 16-12
Biggest CSU Win	Apr. 25, 2010 (W, 16-5)
Biggest GWU Win	9, 3 times
Most CSU Runs	Feb. 11, 2011 (L, 10-6)
Most GWU Runs	Apr. 8, 2018 (L, 18-9)
Most Combined Runs	Apr. 8, 2018 (L, 18-9)
Fewest CSU Runs	0, 6 Times
Fewest GWU Runs	0, 4 times
Fewest Combined Runs	1, 2 times
Current Streak	CSU won last game
Series Streak	GWU won last two series

2021 CHARLESTON SOUTHERN SOFTBALL

>>TEAM NOTES

**Staying In-State**  
Charleston Southern returns home for its final weekend series at the CSU Softball Field this season when it welcomes Gardner-Webb for a three-game series.

After this weekend, the Bucs are down to just two home games this season, both in May against crosstown rival College of Charleston as part of a doubleheader.

**All-Time Against Gardner-Webb**  
Charleston Southern and Gardner-Webb have met 44 times on the diamond prior to this weekend. The series dates back to 2002, when Gardner-Webb was in the process of reclassifying to Division I. CSU won the inaugural meeting between the programs, 9-3, in a neutral-site game played at Georgia State.

Gardner-Webb has a 27-17 advantage in the all-time series, though the Bucs won the last contest between the teams back in 2019. The Runnin' Bulldogs have a slim 10-8 lead in games played at the CSU Softball Field.

**About South Carolina**  
Gardner-Webb enters the weekend at 4-21 overall and 3-11 in Big South play. The Runnin' Bulldogs were swept by Campbell in a three-game series in their most recent contests. This will be GWU's first road games since a March 23 doubleheader at Winthrop.

Leslie McNeil leads the Runnin' Bulldogs with a .298 average. Andrea Lyon has a team-high three homers and nine RBI's, while Weslyn Almond leads GWU with two doubles and five stolen bases.

In the circle, Brooke Perry has pitched the bulk of the innings for the Runnin' Bulldogs and has a 3-11 record with a 5.12 ERA and 71 strikeouts in 67.0 innings across 15 appearances, 14 of which were starts. Just three GWU pitchers have logged at least 20 innings in the circle this season - Andrea Lyon has a 4.91 ERA in 35.2 innings, while Laken Myers has an 8.46 ERA in 22.1 innings. That trio has combined to start 24 of the 25 games for the Runnin' Bulldogs this season.

**Recapping Tuesday**  
Charleston Southern opened the scoring in Wednesday's doubleheader at South Carolina, but the Gamecocks swept both games from the visiting Bucs.

South Carolina won the first game, 9-2, and won the second game in run-rule fashion, 8-0, in five innings.

Ashley Meckley accounted for both of Charleston Southern's runs batted in with a two-run homer, her team-leading seventh of the season. Meckley, Madison Koger and Sarah Brown each had hits in the first game, while Meghan Gagliano had a hit in the second game.

South Carolina had a five-run inning in each game

to break both games open. The Gamecocks had a 4-2 lead in the first game prior to scoring five in the fifth and led 2-0 in the second game before scoring four in the fourth.

**Recapping Last Weekend**  
The Bucs went 1-2 over the weekend against Winthrop, splitting a Saturday doubleheader after dropping the series opener on Friday.

Despite losing two of three, Charleston Southern pitchers allowed just eight earned runs in the three-game series and posted a 2.67 ERA in 21.0 innings pitched against the Eagles. Baylee Eaton pitched her first complete game of the season in the Bucs' 2-1 win on Saturday, allowing just three hits and one run with a pair of strikeouts in 7.0 innings.

Charleston Southern had the lead in all three games of the series, but Winthrop rallied with three late runs to win the series opener, 4-3, and used a pair of two-run extra-base hits to win the series finale, 4-1. Eaton's complete game in the middle game of the series gave the Bucs their lone win of the weekend in a 2-1 pitchers' duel.

Six different Bucs had at least one multi-hit game during the three-game set. Ashley Meckley and Erika Cooper both recorded extra-base hits during the series, while SeaEnna Satcher led Charleston Southern with four hits against the Eagles.

**Friendly Confines**  
Charleston Southern began the season with 17 of its first 20 games at home, including each of the first 12 games.

The lone road trip for the Bucs during this span was a three-game Big South series at Presbyterian, where CSU went 1-2. CSU has still not played a game outside the state of South Carolina and will not do so until April 13.

**Season Leaders**  
Brewington is the Bucs' leader among its regular starters in batting average at .352 and hits with 25. Meckley has seven homers and four doubles to lead CSU in extra-base hits and also has 13 runs batted in to lead the team in that category as well. Brown and Satcher have nine RBI's apiece, while Brewington has a team-high seven stolen bases.

In the circle, Eaton leads the Bucs in ERA at 4.23 while limiting opponents to a .254 batting average. Annah Junge has a team-high 21 strikeouts while pitching a team-best 36.1 innings. Eaton also leads the team with three wins.

**What to Watch For**  
CSU remains perfect on the basepaths through the first 22 games of the season. The Bucs are 25-for-25 on stolen base attempts this season, with Brooklynn Brewington's nine steals leading the team.

GAMES 23-25 | GARDNER-WEBB

>>SEASON & CAREER TOTALS

2021 SEASON MULTI-HIT GAMES					
Player	2	3	4	5+	Total
Brooklynn Brewington	8	-	-	-	8
Madison Koger	5	-	-	-	5
Ashley Meckley	3	1	-	-	4
Sarah Brown	4	-	-	-	4
SeaEnna Satcher	4	-	-	-	4
Erika Cooper	3	-	-	-	3
Emily Crosby	1	1	-	-	2
Katelyn Norris	1	1	-	-	2
Ashlyn Cribb	2	-	-	-	2
Meghan Gagliano	1	-	-	-	1
Dominique Mannerino	1	-	-	-	1
TEAM	33	3	0	0	36

CAREER MULTI-HIT GAMES					
Player	2	3	4	5+	Total
Sarah Brown	26	4	1	-	31
Brooklynn Brewington	19	5	-	-	24
Madison Koger	15	-	-	-	15
Meghan Gagliano	8	-	-	-	8
Ashlyn Cribb	5	-	-	-	5
Katelyn Norris	2	2	-	-	4
Ashley Meckley	3	1	-	-	4
Emily Crosby	2	1	-	-	3
Dominique Mannerino	3	-	-	-	3
Erika Cooper	3	-	-	-	3
SeaEnna Satcher	4	-	-	-	4
Taylor Gleason	1	-	-	-	1

2021 SEASON MULTI-RBI GAMES					
Player	2	3	4	5+	Total
Ashley Meckley	3	1	-	-	4
Sarah Brown	1	1	-	-	2
Ashlyn Cribb	2	-	-	-	2
Emily Crosby	1	-	-	-	1
Madison Koger	1	-	-	-	1
Dominique Mannerino	1	-	-	-	1
Katelyn Norris	1	-	-	-	1
SeaEnna Satcher	1	-	-	-	1
TEAM	11	2	0	0	13

CAREER MULTI-RBI GAMES					
Player	2	3	4	5+	Total
Madison Koger	9	2	-	1	12
Sarah Brown	7	5	-	-	12
Rhiana Hubbard	3	1	-	-	4
Ashley Meckley	3	1	-	-	4
Taylor Gleason	2	-	1	-	3
SeaEnna Satcher	2	1	-	-	3
Ashlyn Cribb	2	-	-	-	2
Katelyn Norris	2	-	-	-	2
Emily Crosby	1	-	-	-	1
Dominique Mannerino	1	-	-	-	1

>>CURRENT STREAKS

HITTING STREAKS

Player	SEASON	CURRENT	CAREER
Brooklynn Brewington	8	-	8
Madison Koger	5	-	8
Sarah Brown	3	-	6
Emily Crosby	4	5	5
Meghan Gagliano	1	1	5
Taylor Gleason	-	-	5
Ashlyn Cribb	4	-	4
Rhiana Hubbard	3	-	4
Ashley Meckley	4	-	4
Katelyn Norris	4	3	4
Erika Cooper	3	-	3
Dominique Mannerino	3	-	3
SeaEnna Satcher	3	-	3

REACHED BASE STREAKS

Player	SEASON	CURRENT	CAREER
Sarah Brown	4	-	14
Ashley Meckley	13	-	13
Brooklynn Brewington	8	1	9
Ashlyn Cribb	4	-	9
Madison Koger	4	2	8
Katelyn Norris	8	8	8
Dominique Mannerino	6	-	6
SeaEnna Satcher	6	-	6
Emily Crosby	4	5	5
Meghan Gagliano	1	1	5
Taylor Gleason	-	-	5
Rhiana Hubbard	3	-	5
Erika Cooper	4	-	4

CURRENT CSU STREAKS

All Games .....	L3
Games at CSU Softball Field .....	L1
Road Games .....	L2
Neutral Games .....	W1
vs. Conference (Home) .....	L1
vs. Conference (Away) .....	W1
vs. Non-Conference (Home) .....	W1
vs. Non-Conference (Away) .....	L10

>>TEAM NOTES

Six of the Bucs' regular starters are hitting above .250, including a pair over .300 in Brooklynn Brewington and Madison Koger.

The CSU defense has gone three straight games without committing an error, the longest such streak for the Bucs this season.

The Bucs have yet to play a game outside the state of South Carolina this season. CSU opens with 20 of its first 25 games at home, with its only road trips so far being to Presbyterian and South Carolina.

The Bucs have a pair of pitchers who have fared well in conference games this season, with Baylee Eaton posting a 2.49 ERA against Big South opposition and Annah Junge having a 2.63 ERA in conference play.

**Thievery on the Basepaths**  
Charleston Southern has recorded at least one stolen base in 11 of their 12 Big South Conference games, including a season-high four steals in a run-rule win over Presbyterian.

The Bucs are a perfect 25-for-25 on stolen base attempts this season, with Brooklynn Brewington's nine steals leading the team. The Bucs are the only team in the Big South to have not been caught stealing this season.

**Swing for the Fences**  
Charleston Southern nearly doubled its home run total for the season in a midweek doubleheader against Coastal Carolina. The Bucs entered the game with six home runs in 10 games but sent four over the fence in the two games against the Chanticleers.

Erika Cooper and Madison Koger both homered in the first game of the doubleheader, while Ashley Meckley and Sarah Brown went yard in the second half of the twin bill.

**Adding Local Flavor**  
CSU will take on local rival College of Charleston in a pair of doubleheaders this season, with both set to take place at the CSU Softball Field.

The Bucs and Cougars split the first doubleheader at the CSU Softball Field on March 30, with CofC taking the first game, 6-2, and CSU winning the second game, 6-4.

The Bucs and Cougars will meet for a second time at the CSU Softball Field on May 4.

**Early Schedule Adjustments**  
Charleston Southern had to back out of early season tournaments at Coastal Carolina and Georgia this season due to a COVID-19 pause within the Buccaneer program.

The Bucs also had their three-game series against USC Upstate pushed back by one week to allow for more time for CSU to practice following the pause. The Bucs and Spartans played their three-game set on March 12-13.

Follow the Bucs on Social Media

For more information and news, stay up-to-date with Buccaneer Softball via Twitter, Instagram and CSUSports.com.



>>2021 BIG SOUTH STANDINGS

Team	Big South	PCT	Overall	PCT	Streak
USC Upstate	6-0	1.000	16-8	.727	L4
Campbell	8-1	.889	15-10	.600	W8
Radford	5-1	.833	12-20	.375	L6
Longwood	6-3	.667	15-18	.455	L5
Winthrop	4-7	.364	16-18	.471	W1
Presbyterian	3-6	.333	9-9	.500	L1
<b>Charleston Southern</b>	<b>3-9</b>	<b>.250</b>	<b>6-16</b>	<b>.273</b>	<b>L3</b>
Gardner-Webb	3-11	.214	4-21	.160	L3

>>BY THE NUMBERS

>>CHARLESTON SOUTHERN NCAA RANKINGS

	NCAA	Big South	Value
Batting Average (281 ranked)	125	2	0.270
Double Plays Per Game (279 ranked)	204	6	0.18
Doubles (280 ranked)	230	7	18
Doubles Per Game (280 ranked)	250	5	0.82
Earned Run Average (281 ranked)	205	6	4.69
Fielding Percentage (281 ranked)	137	4	0.960
Hit Batters (280 ranked)	74	1	10
Home Runs Per Game (279 ranked)	139	4	0.59
On Base Percentage (281 ranked)	177	6	0.333
Scoring (281 ranked)	224	7	3.18
Shutouts (177 ranked)	177	7	1
Slugging Percentage (281 ranked)	163	4	0.382
Stolen Bases Per Game (281 ranked)	122	6	1.14
Strikeout-to-Walk Ratio (281 ranked)	191	5	1.43
Triple Plays (1 ranked)			
Triples Per Game (261 ranked)	157	3	0.14
W-L Percentage (278 ranked)	229	7	0.273

>>NCAA NATIONAL POLLS

D1 Softball.com Top 25

Rk	School	Rec.	LW
1.	Oklahoma	28-0	1
2.	UCLA	19-1	2
3.	Oregon	26-2	3
4.	Alabama	29-4	5
5.	Florida	26-4	6
6.	Washington	28-4	4
7.	Florida State	24-6	7
8.	Arkansas	31-3	9
9.	Arizona	22-5	8
10.	Oklahoma State	29-5	11
11.	Kentucky	27-6	10
12.	Texas	27-3	13
13.	Virginia Tech	23-6	15
14.	Arizona State	21-9	14
15.	LSU	21-12	12
16.	Louisiana	25-6	16
17.	Missouri	28-7	18
18.	Texas State	24-3	22
19.	Tennessee	28-6	24
20.	Clemson	26-4	23
21.	Duke	27-6	17
22.	Northwestern	18-2	20
23.	UCF	25-9	19
24.	Wichita State	24-5	NR
25.	Georgia	23-6	NR

Dropped Out: No. 21 Baylor (21-8), No. 25 Texas A&M (25-8)

USA Today/NFCA Coaches Poll

Rk	School	Rec.	Pts.	LW
1.	Oklahoma (32)	28-0	800	1
2.	UCLA	19-1	762	2
3.	Oregon	26-2	721	3
4.	Alabama	29-4	698	4
5.	Florida	26-4	658	5
6.	Washington	28-4	640	6
7.	Texas	27-3	581	8
9.	Arizona	22-5	580	9
10.	Florida State	24-6	531	12
13.	Arkansas	31-3	474	15
8.	Kentucky	27-6	474	7
11.	Oklahoma State	29-5	472	10
14.	Arizona State	21-9	370	14
16.	Louisiana	25-6	343	16
19.	Virginia Tech	23-6	322	19
12.	Duke	27-6	304	11
15.	LSU	21-12	301	13
18.	Clemson	26-4	288	20
17.	Missouri	28-7	287	18
20.	Georgia	23-6	198	17
21.	Tennessee	28-6	193	21
24.	Northwestern	18-2	113	NR
23.	Michigan	13-3	101	25
22.	UCF	25-9	48	22
25.	Texas State	24-3	43	NR

Dropped Out: No. 25 Baylor (21-8)

Others receiving votes: Wichita State (24-5, 19), Texas A&M (25-8, 18), James Madison (14-1, 13), Fresno State (20-7, 9), Auburn (19-11, 8), Baylor (21-8, 8), Minnesota (15-5, 7), Tulsa (12-8, 6), Western Kentucky (15-4, 3), BYU (16-13, 2), Miami (Ohio) (17-6, 2), Ole Miss (22-13, 2), Cal State Fullerton (22-11, 1), Troy (25-6, 1)

>>2021 BIG SOUTH PRESEASON SELECTIONS

PLAYER OF THE YEAR

Autumn Owen, Gardner-Webb  
Sydney Fisher, Radford

PITCHER OF THE YEAR

Brooke Perry, Gardner-Webb

>>2021 BIG SOUTH PRESEASON POLL

Team	1	Points
Gardner-Webb	3	50
USC Upstate	1	47
Longwood	3	42
Radford		38
Campbell		38
Presbyterian		33
Winthrop		23
<b>Charleston Southern</b>	<b>1</b>	<b>17</b>



# CHRISTI MUSSER

>>HEAD COACH | 1ST SEASON AT CSU | KANSAS, '03

## >>COACH MUSSER BY RECORD

Overall record .....	6-16
Record at CSU.....	6-16
Big South Record (Regular Season).....	3-9
Big South Record (Tournament).....	0-0
Home .....	5-12
Road.....	1-4
Neutral .....	0-0

## >>COACH MUSSER'S MILESTONES

### OVERALL

1.....	vs. Cleveland State, 2/20/2021 (W, 2-1)
25.....	

### AT CSU

1.....	vs. Cleveland State, 2/20/2021 (W, 2-1)
25.....	

### BIG SOUTH WINS

1.....	vs. Radford, 3/19/2021 (W, 5-4)
25.....	

Christi Musser became the 10th CSU head softball coach in program history after accepting the position in January 2021. She takes over the Buccaneers' reins bringing 17 years of Division I softball coaching experience with stops at the University of Kansas, the University of New Mexico and, most recently, Grand Canyon University.

A four-star master coach as recognized by the National Fastpitch Coaches Conference, Musser comes to the Buccaneers after a six-year coaching stint at Grand Canyon University where she served as the associate head coach from August 2015-May 2020. Her efforts as both the hitting instructor and outfield coach helped pace GCU to becoming one of the top hitting teams in the NCAA in both batting average and doubles.

From 2016-18, the Lopes were ranked among the top-15 hitting teams in the NCAA Division I in batting average, finishing sixth overall in 2016 (.342). GCU also finished in the top-eight in doubles per game, ranking second overall in the country in 2016 (1.88) and fourth in 2017 (1.62).

During her tenure at GCU, Musser was a part of a staff that earned the program's first Division I era victory over a nationally-No. 1 ranked team of any program at GCU (Florida State, March 6, 2019), while also helping the program tally its eighth 30-win season. She coached three All-Conference players with the Lopes, including a pair of First Team All-WAC outfielders in the 2018 season with Laynee Gomez and Bianca Boling both earning the recognition.

Prior to her time at GCU, Musser served as the New Mexico state director for the Fellowship of Christian Athletes. Over her year and a half with the organization, she helped create the strategic vision plan for the state, while also training and equipping the staff, volunteers, and board members to carry out the organization's ministry goals.

Musser's first collegiate coaching position came at her alma mater, Kansas, from 2003 to 2010. She assisted the Jayhawks on the field as a hitting instructor and served as recruiting coordinator during her tenure. She then joined the staff at New Mexico in July 2010 and enjoyed a successful three-year run that included serving as the hitting instructor for a Lobo squad that, in 2012, led the nation with 96 home runs.

During her playing career at Kansas, Musser earned All-American honors in 2002 as an outfielder and was a four-time All-Big 12 selection. In her senior season, she hit .354 with 35 runs, 30 RBI, and nine home runs, while also earning All-Region and All-Big 12 honors.

During the summers of her college career, Musser played three seasons in the Women's Major for the Arizona Storm, winning a national championship in 1999 and finishing as a runner-up in 2000.

Musser graduated from Kansas in 2003 with a bachelor's degree in sports management.

## HEAD COACHING RECORD

Year	School	Position	Record
2021	Charleston So.	Head Coach	1st Season

## PLAYING/COACHING CAREER

Year	School	Position
1999-03	Kansas	Outfielder
2003-10	Kansas	Assistant Coach
2010-13	New Mexico	Assistant Coach
2015-18	Grand Canyon	Assistant Coach
2019-21	Grand Canyon	Associate Head Coach
2021-pres.	Charleston Southern	Head Coach

## &gt;&gt;2021 CHARLESTON SOUTHERN SOFTBALL PITCHING STAFF NOTES

4

**HOLLY CLARK****RHP \* 5-6 \* R-Sr.**

- Came to CSU via Jordan-Matthews High School in Siler City, N.C.
- Has made nine appearances in the 2021 season, starting four.
- 1-3 record with a 4.97 ERA and 19 strikeouts in 27.2 innings pitched.
- Earned the Bucs' first win of the season with a complete game against Cleveland State, allowing just one run with six strikeouts.
- Allowed one hit in 3.0 innings of relief in second game vs. Eastern Kentucky.

- Four strikeouts in 6.1 innings in last start vs. College of Charleston.
- Earned Big South All-Academic Team honors following the 2019 season.
- Big South All-Freshman Team selection in 2017, when she made 40 appearances (18 starts) with eight wins, three saves and 85 strikeouts in 128.1 innings.
- Has one career Big South Pitcher of the Week honor (Feb. 26, 2018), earned after she allowed just two runs (none earned) in 12.0 innings across four appearances, earning a pair of wins.

8

**BAYLEE EATON****LHP \* 5-9 \* Sr.**

- Came to CSU via Central Arizona College in Coolidge, Ariz.
- Prior to Central Arizona, played at Marist High School in Eugene, Ore.
- Has made 14 appearances in the 2021 season, starting six.
- 3-6 record with a team-leading 4.23 ERA and 19 strikeouts in 43.0 innings pitched.
- Complete game three-hitter in first game of doubleheader against Winthrop.
- Credited with each of CSU's last three wins.

- Career-high five strikeouts vs. Radford.
- Has allowed just two runs and six hits across her last six appearances (0.79 ERA).
- 2.49 ERA in 25.1 innings against Big South competition.
- Pitched one season at Central Arizona College, finishing that season with a 23-7 record.
- Had a 3.57 ERA in nearly 200 innings for the Vaqueras.
- Led Marist HS to an Oregon 5A state championship as a senior.

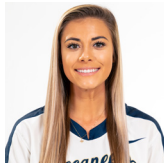
11

**ANNAH JUNGE****RHP \* 5-7 \* So.**

- Came to CSU via Marquette High School in Ballwin, Mo.
- Has made 13 appearances during the 2021 season, starting nine.
- 0-2 record with a 4.49 ERA and 21 strikeouts in a team-high 48.1 innings.
- 2.63 ERA in 32.0 innings vs. Big South competition
- Pitched a career-high 8.0 innings in the series opener against the Highlanders, striking out three.

- Recorded a season-high three strikeouts on four separate occasions.
- 7-4 with a 2.85 ERA and 58 strikeouts during the 2020 season.
- Also had one save in 2020, making 15 appearances and starting nine games.
- Career-high 10 strikeouts on two separate occasions during the 2020 season (vs. Main, vs. North Carolina AGT).
- Career 3.03 ERA in 27 appearances (18 starts) at CSU.

12

**ALYSSA HEINRICH****RHP \* 5-8 \* Sr.**

- Came to CSU via Wando High School in Mount Pleasant, S.C.
- Has made nine appearances during the 2021 season, starting four.
- 2-5 record with a 5.97 ERA and 12 strikeouts in 31.2 innings pitched.
- Earned wins against Radford and Coastal Carolina.
- Has earned at least one start in the circle in each of CSU's first three Big South series.
- Four runs allowed in four innings in first game of doubleheader at South Carolina.

- Four runs allowed in 5.0 innings in second game of doubleheader at PC.
- Led the Big South with 15 games finished in 2019.
- Earned a pair of Big South weekly honors in 2018, being named Freshman of the Week on Feb. 12 (2-0, 0.70 ERA, 9 K) and Pitcher of the Week on April 2 (1-0, 1 SV, 0.00 ERA, 5 K).
- Career-best 3.54 ERA in eight appearances (five starts) in 2020.
- Career 4.34 ERA in 65 appearances (24 starts) at CSU.

32

**NOELLE CHANEY****RHP \* 5-7 \* Fr.**

- Came to CSU via Batavia High School in Batavia, Ill.
- Has not made an appearance this season.

>>2021 CHARLESTON SOUTHERN SOFTBALL PITCHING STAFF NOTES

PROBABLE PITCHERS

RHP #11 Annah Junge - Sophomore

2021 Stats: G-GS: 13-9 W-L: 0-2 ERA: 4.49 IP: 48.1 BB: 17 K: 21

Last Start: March 30, 2021 - W, 6-2 vs. College of Charleston  
Stats: Loss, 5.1 innings pitched, nine hits, four runs, four earned runs, three walks, one strikeout

Annah Junge started two of the three games during Charleston Southern's Big South series against Winthrop, including Saturday's series finale. Junge has started in four of CSU's five wins this season and has a 2.63 ERA in games against Big South competition this year.

LHP #8 Baylee Eaton - Senior

2021 Stats: G-GS: 14-6 W-L: 3-6 ERA: 4.23 IP: 43.0 BB: 10 K: 19

Last Start: April 7, 2021 - L, 8-0 at South Carolina  
Stats: Loss, 3.1 innings pitched, eight hits, five runs, five earned runs, one walk, three strikeouts

Baylee Eaton got the start in the second game of CSU's doubleheader on Wednesday at South Carolina, allowing five runs in 3.1 innings in the circle. Eaton struck out three and was the lone member of the Bucs' pitching staff to record a strikeout against the Gamecocks.

RHP #4 Holly Clark - Redshirt Senior

2021 Stats: G-GS: 9-3 W-L: 1-3 ERA: 5.57 IP: 27.2 BB: 14 K: 19

Last Start: March 30, 2021 - L, 6-2 vs. College of Charleston  
Stats: Loss, 6.1 innings pitched, eight hits, six runs, four earned runs, two walks, four strikeouts

Holly Clark made her first start since the opening weekend of Big South play when she started the first game of Tuesday's doubleheader against the College of Charleston. Clark allowed four earned runs in 6.1 innings, her longest start since the opening weekend of the season.

RHP #12 Alyssa Heinrich - Senior

2021 Stats: G-GS: 9-4 W-L: 2-5 ERA: 5.97 IP: 31.2 BB: 14 K: 12

Last Start: April 7, 2021 - L, 9-2 at South Carolina  
Stats: Loss, 4.0 innings pitched, seven hits, four runs, four earned runs, two walks, no strikeouts

Alyssa Heinrich got her first start in nearly two weeks in the first game of Wednesday's doubleheader at South Carolina, allowing four runs in 4.0 innings. Both of Heinrich's wins this season have come in relief appearances, though she has started a game in both of Charleston Southern's road trips.

PITCHERS HI/LO

STARTERS LOG

	TEAM W-L	5.0+ IP	CG/SHO
Annah Junge	4-5	4	1/1
Baylee Eaton	1-5	2	1/0
Alyssa Heinrich	0-4	1	0/1
Holly Clark	1-2	2	1/0

INDIVIDUAL PITCHERS GAME BESTS  
MOST INNINGS PITCHED, STARTER

8.0 by Annah Junge vs. Radford, 3/19/2021  
7.0 by Holly Clark vs. Cleveland State, 2/20/2021  
7.0 by Baylee Eaton vs. USC Upstate, 3/13/2021  
7.0 by Baylee Eaton vs. Winthrop, 4/3/2021

MOST INNINGS PITCHED, RELIEVER

4.0 by Alyssa Heinrich vs. Cleveland State, 2/20/2021  
4.0 by Baylee Eaton vs. College of Charleston, 3/30/2021  
3.0 by Holly Clark vs. Eastern Kentucky, 3/12/2021  
3.0 by Alyssa Heinrich vs. Radford, 3/19/2021  
3.0 by Annah Junge vs. Radford, 3/20/2021  
3.0 by Alyssa Heinrich vs. Coastal Carolina, 3/24/2021  
3.0 by Baylee Eaton at Presbyterian, 3/28/2021

MOST WALKS

5 by Annah Junge vs. Eastern Kentucky, 2/21/2021  
5 by Annah Junge vs. Radford, 3/19/2021  
4 by Alyssa Heinrich vs. Cleveland State, 2/20/2021  
4 by Alyssa Heinrich vs. Radford, 3/20/2021  
4 by Holly Clark at South Carolina, 4/7/2021

MOST STRIKEOUTS

6 by Holly Clark vs. Cleveland State, 2/20/2021  
5 by Baylee Eaton vs. Radford, 3/19/2021  
3 by Annah Junge vs. Eastern Kentucky, 2/21/2021  
3 by Alyssa Heinrich vs. USC Upstate, 3/12/2021  
3 by Annah Junge vs. Radford, 3/19/2021  
3 by Alyssa Heinrich vs. Radford, 3/20/2021  
3 by Annah Junge at Presbyterian, 3/27/2021  
3 by Annah Junge at Presbyterian, 3/28/2021  
3 by Baylee Eaton at Presbyterian, 3/28/2021  
3 by Baylee Eaton at South Carolina, 4/7/2021

FEWEST HITS, CG

3 by Baylee Eaton vs. Winthrop, 4/3/2021  
8 by Holly Clark vs. Cleveland State, 2/20/2021  
8 by Annah Junge at Presbyterian, 3/28/2021

FEWEST WALKS, CG

1 by Annah Junge at Presbyterian, 3/28/2021  
1 by Baylee Eaton vs. Winthrop, 4/3/2021  
2 by Holly Clark vs. Cleveland State, 2/20/2021

MOST STRIKEOUTS, CG

6 by Holly Clark vs. Cleveland State, 2/20/2021  
3 by Annah Junge at Presbyterian, 3/27/2021  
2 by Baylee Eaton vs. Winthrop, 4/3/2021

PITCHING BREAKDOWN

	W-L-S	ERA	IP	H	R	ER	BB	SO
Starting	2-13	5.22	106.0	123	88	79	40	49
Relief	4-3	4.43	42.2	45	35	27	15	21



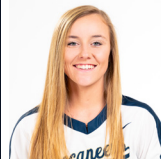
## &gt;&gt;2021 CHARLESTON SOUTHERN SOFTBALL HITTER NOTES

00

**KATELYN NORRIS****OF \* 5-2 \* So.**

- Came to CSU via The Kings Academy in Knoxville, Tenn.
- Started 15 games this season, primarily playing left field.
- Hitting .286 with nine hits and 12 runs scored.
- Reached base safely in each of the last eight games.
- First two RBI's of 2021 came in first game vs. Coastal Carolina.
- Tied career high with 3-for-3 game in last game at PC.

2

**ASHLEY MECKLEY****INF \* 5-6 \* Jr.**

- Came to CSU via Coker University in Hartsville, S.C.
- Also previously played at Hanahan High School in Hanahan, S.C.
- Has started all 22 games this season, playing primarily at shortstop.
- Leads CSU with seven homers and 13 runs batted in
- 11 extra-base hits and 12 runs scored.

3

**MEGHAN GAGLIANO****OF \* 5-6 \* Sr.**

- Came to CSU via Wheaton Academy in South Elgin, Ill.
- Has appeared in 19 games, starting nine.
- Hitting .227 with five hits and two stolen bases.
- Scored her first run of the season in last game against Radford.
- Started each of last four games in RF, 2-for-2 in second game of Winthrop series.

10

**SARAH BROWN****INF \* 5-7 \* Sr.**

- Came to CSU via Sheldon High School in Sacramento, Calif.
- Has started all 22 games this season, playing third base, center field and right field.
- .258 average with four multi-hit games and nine runs batted in.
- Two RBI's in series finale vs. Radford.
- First homer of the season, a three-run shot, came vs. CCU.

15

**MADISON KOGER****INF \* 5-7 \* Sr.**

- Came to CSU via Fairfield High School in Fairfield, Ohio.
- Has started each of the last 18 games.
- Hitting .308 with five RBI's.
- Two multi-hit games in three-game series vs. Radford.
- Five multi-hit games this season.
- First homer of the season came in first game vs. Coastal.

16

**DOMINIQUE MANNERINO****INF \* 5-5 \* Sr.**

- Came to CSU via Hillsborough CC in Plant City, Fla.
- Previously attended Lockport Township High School in Homer Glen, Ill.
- 19 games, 17 starts, has played first base and right field.
- .157 average with two doubles and four runs batted in.

21

**EMILY CROSBY****INF \* 5-4 \* So.**

- Came to CSU via Battery Creek High School in Beaufort, S.C.
- Started each of the first four games this season.
- Hitting .538 with two homers, a triple and three runs batted in.
- Homered in both games of doubleheader vs. ECU.
- Hit CSU's lone triple of the season against Cleveland State.

25

**ASHLYN CRIBB****C \* 5-5 \* So.**

- Came to CSU via Hanahan High School in Hanahan, S.C.
- Has started all 22 games and has caught every inning behind the plate.
- .232 average with three doubles and six runs batted in.
- Three RBI's in last two games of PC series.
- Two-run double in first game of DH vs. Coastal Carolina.

27

**RHIANA HUBBARD****OF \* 5-7 \* Jr.**

- Came to CSU via Fairfield High School in Fairfield, Ohio
- Has played in 12 games this season, starting nine.
- .200 average with five hits and two RBI's.
- Five hits, with four coming in games she started.
- Pinch hit RBI triple in series finale at Presbyterian.

33

**BROOKLYNN BREWINGTON****INF \* 5-6 \* Jr.**

- Came to CSU via Andrews High School in Andrews, S.C.
- Has started all 22 games this season, playing at second base and as the DP.
- .352 average, has at least one hit in 17 of the first 20 games.
- Eight-game hit streak snapped vs. College of Charleston.
- Eight multi-hit games in 2021 season.

41

**ERIKA COOPER****INF \* 5-9 \* Jr.**

- Came to CSU via Rockwood Summit High School in Fenton, Mo.
- Has made 21 appearances this season, starting 17.
- .245 average with 12 hits this season.
- Solo homer in first game vs. Coastal, proved to be game-winner.
- Also hit a double against USC Upstate.
- Multi-hit games in last two games of PC series.

54

**SEAENNA SATCHER****INF \* 5-5 \* Jr.**

- Came to CSU via Newbury Park High School in Newbury Park, Calif.
- Has started 21 games this season, playing primarily third base.
- .258 average with two homers and nine runs batted in.
- First homer of the season was a two-run shot against USC Upstate.
- Two hits, including a solo homer, in first game vs. CoFC.

99

**TAYLOR GLEASON****OF \* 5-8 \* Sr.**

- Came to CSU via May River High School in Bluffton, S.C.
- Has appeared in three games this season.
- Three at-bats this season, one each against USC Upstate, Radford and South Carolina.

>>2021 CHARLESTON SOUTHERN SOFTBALL HITTER NOTES

PROJECTED LINEUP

C #25 Ashlyn Cribb - So.

GP-GS: 22-22    AVG: .232    HR: 0    RBI: 6

Ashlyn Cribb has started all 22 games this season for the Bucs and has caught every inning behind the plate for CSU so far. She had three RBI's in the three-game series at Presbyterian and doubles against ECU, USC Upstate and Coastal Carolina.

1B #41 Erika Cooper - Jr.

GP-GS: 21-17    AVG: .245    HR: 1    RBI: 3

Erika Cooper has appeared in 21 games this season, starting 17. Cooper had multi-hit outings in each of the last two games against PC, including a triple in the second game of the series. She hit the go-ahead homer in the first game against Coastal Carolina in the bottom of the fifth inning. Cooper had a pair of hits and scored the go-ahead run in CSU's win over Winthrop.

2B #33 Brooklynn Brewington - Jr.

GP-GS: 22-22    AVG: .352    HR: 0    RBI: 4

Brooklynn Brewington has started all 22 games this season and has seen time at both second base and as the designated player. Brewington has at least one hit in 17 of the first 22 games this season and delivered a walk-off RBI single in the series opener against Radford. She leads the team with a .352 batting average and nine stolen bases, and has a team-leading eight multi-hit games.

3B #54 SeaEnna Satcher - Jr.

GP-GS: 21-21    AVG: .258    HR: 2    RBI: 9

SeaEnna Satcher has started all 19 games she has appeared in, playing primarily at third base. Satcher had four hits, including a two-run homer, in CSU's conference-opening series against USC Upstate and is tied for second on the team with nine RBI's. She hit her second homer of the season against Coff.

SS #2 Ashley Meckley - Jr.

GP-GS: 22-22    AVG: .273    HR: 7    RBI: 13

Ashley Meckley has started all 22 games at shortstop for CSU after transferring into the program from Coker. Meckley leads the team with seven homers, including three in her last six games, and also has a team-leading 13 runs batted in and 43 total bases. She hit a two-run homer Wednesday at South Carolina.

LF #27 Rhiana Hubbard - Jr.

GP-GS: 12-9    AVG: .200    HR: 0    RBI: 2

Rhiana Hubbard has started six of the last seven games in left field for the Bucs, including both games of Wednesday's doubleheader at South Carolina. She has five hits this season, including an RBI triple at Presbyterian.

CF #10 Sarah Brown - Sr.

GP-GS: 22-22    AVG: .258    HR: 1    RBI: 9

Sarah Brown has been a mainstay in the lineup, starting all 22 games while spending time at third base, center field and right field this season. Brown hit her first home run of the season against Coastal Carolina and is second on the team with nine runs batted in, including one in CSU's 2-1 win over Winthrop.

RF #3 Meghan Gagliano - Sr.

GP-GS: 19-9    AVG: .227    HR: 0    RBI: 0

Meghan Gagliano has started in right field in each of Charleston Southern's last six games. She had her first multi-hit game of the season Saturday against Winthrop and has three hits in her last four starts, including one in the second game of Wednesday's doubleheader at South Carolina.

DP #15 Madison Koger - Sr.

GP-GS: 18-18    AVG: .308    HR: 1    RBI: 5

Madison Koger has started each of the last 16 games for the Bucs and has five multi-hit games during that span. Koger recorded her first RBI of the season in the series opener against Radford and had four hits in three games against the Highlanders. She hit her first home run of the season to lead off the first inning against Coastal Carolina. Koger doubled to lead off Wednesday's doubleheader at South Carolina.

PLAYER NOTES

#00 Katelyn Norris - OF - So.

GP-GS: 15-15    AVG: .286    HR: 0    RBI: 3

Katelyn Norris started each of the first 15 games this season and has primarily played in left field during her time at CSU. Norris has a career-best eight-game on-base streak with hits in each of the last three games, including a 3-for-3 outing in the series finale at Presbyterian.

#16 Dominique Mannerino - INF - Sr.

GP-GS: 19-17    AVG: .157    HR: 0    RBI: 4

Dominique Mannerino started each of the first 16 games for CSU and has seen time at both first base and right field. Mannerino had a season-best two RBI's in the series finale against USC Upstate and hit a two-out double in the series opener at Presbyterian.

#21 Emily Crosby - INF - So.

GP-GS: 4-4    AVG: .538    HR: 2    RBI: 3

Emily Crosby started each of the first four games of this season for CSU. Crosby had seven hits, including a triple and two homers, and three RBI's in those four Opening Weekend games.

#99 Taylor Gleason - OF - Sr.

GP-GS: 3-0    AVG: .000    HR: 0    RBI: 0

Taylor Gleason has appeared in three games this season. Gleason has three at-bats this season, one each against USC Upstate, Radford and South Carolina.

HITTERS HI/LO

INDIVIDUAL BATTERS GAME BESTS

MOST AT-BATS

6 by Katelyn Norris vs. Radford, 3/19/2021

MOST HITS

3 by Emily Crosby vs. Eastern Kentucky, 2/21/2021  
3 by Ashley Meckley vs. Coastal Carolina, 3/24/2021  
3 by Katelyn Norris at Presbyterian, 3/28/2021

MOST RUNS

3 by Katelyn Norris vs. Radford, 3/19/2021

MOST RBI

3 by Ashley Meckley vs. Eastern Kentucky, 2/21/2021  
3 by Sarah Brown vs. Coastal Carolina, 3/24/2021

MOST DOUBLES

2 by Brooklynn Brewington vs. Coastal Carolina, 3/24/2021  
1 by Ashlyn Cribb vs. Cleveland State, 2/20/2021  
1 by Ashley Meckley vs. Eastern Kentucky, 2/21/2021  
1 by Dominique Mannerino vs. Eastern Kentucky, 2/21/2021  
1 by Ashley Meckley vs. Eastern Kentucky, 2/21/2021  
1 by Sarah Brown vs. USC Upstate, 3/12/2021  
1 by Ashlynn Cribb vs. USC Upstate, 3/12/2021  
1 by Erika Cooper vs. USC Upstate, 3/12/2021  
1 by Dominique Mannerino vs. USC Upstate, 3/13/2021  
1 by Ashley Meckley vs. USC Upstate, 3/13/2021  
1 by Sarah Brown vs. Radford, 3/19/2021  
1 by Ashlyn Cribb vs. Coastal Carolina, 3/24/2021  
1 by Ashley Meckley vs. Coastal Carolina, 3/24/2021  
1 by SeaEnna Satcher vs. Coastal Carolina, 3/24/2021  
1 by Dominique Mannerino at Presbyterian, 3/28/2021  
1 by Katelyn Norris at Presbyterian, 3/28/2021  
1 by Erika Cooper vs. Winthrop, 4/3/2021  
1 by Madison Koger at South Carolina, 4/7/2021

MOST TRIPLES

1 by Emily Crosby vs. Cleveland State, 2/20/2021  
1 by Erika Cooper at Presbyterian, 3/27/2021  
1 by Rhiana Hubbard at Presbyterian, 3/28/2021

MOST HOME RUNS

1 by Ashley Meckley vs. Cleveland State, 2/20/2021  
1 by Emily Crosby vs. Eastern Kentucky, 2/21/2021  
1 by Ashley Meckley vs. Eastern Kentucky, 2/21/2021  
1 by Emily Crosby vs. Eastern Kentucky, 2/21/2021  
1 by SeaEnna Satcher vs. USC Upstate, 3/13/2021  
1 by Ashley Meckley vs. Radford, 3/20/2021  
1 by Erika Cooper vs. Coastal Carolina, 3/24/2021  
1 by Madison Koger vs. Coastal Carolina, 3/24/2021  
1 by Sarah Brown vs. Coastal Carolina, 3/24/2021  
1 by Ashley Meckley vs. Coastal Carolina, 3/24/2021  
1 by SeaEnna Satcher vs. College of Charleston, 3/30/2021  
1 by Ashley Meckley vs. College of Charleston, 3/30/2021  
1 by Ashley Meckley vs. Winthrop, 4/2/2021  
1 by Ashley Meckley at South Carolina, 4/7/2021

## &gt;&gt;2021 CHARLESTON SOUTHERN SOFTBALL SEASON OVERALL STATISTICS

Record: 6-16 Home: 5-12 Away: 1-4 Big South: 3-9

Player	avg	gp-gs	ab	r	h	2b	3b	hr	rbi	tb	slg%	bb	hp	so	gdp	ob%	sf	sh	sb-att	po	a	e	fld%
33 BREWINGTON, Brookly	.352	22-22	71	11	25	2	0	0	4	27	.380	6	0	4	0	.403	0	3	9-9	58	37	5	.950
15 KOGER, Madison	.308	18-18	52	2	16	1	0	1	5	20	.385	7	0	6	1	.377	2	1	1-1	3	3	0	1.000
0 NORRIS, Katelyn	.286	15-15	49	12	14	1	0	0	3	15	.306	6	0	8	0	.364	0	1	4-4	24	2	0	1.000
2 MECKLEY, Ashley	.273	22-22	66	11	18	4	0	7	13	43	.652	13	0	12	0	.392	0	0	4-4	36	53	5	.947
54 SATCHER, SeaEnna	.258	21-21	62	4	16	1	0	2	9	23	.371	1	4	6	3	.309	1	1	0-0	18	29	6	.887
10 BROWN, Sarah	.258	22-22	66	8	17	2	0	1	9	22	.333	2	1	9	1	.286	1	2	3-3	39	3	1	.977
41 COOPER, Erika	.245	21-17	49	7	12	2	1	1	3	19	.388	4	0	11	0	.302	0	2	2-2	110	5	1	.991
25 CRIBB, Ashlyn	.232	22-22	56	5	13	3	0	0	6	16	.286	5	2	9	0	.308	2	1	0-0	80	13	2	.979
16 MANNERINO, Dominiqu	.157	19-17	51	5	8	3	0	0	4	11	.216	3	1	10	0	.214	1	0	0-0	39	1	2	.952
-----																							
21 CROSBY, Emily	.538	4-4	13	4	7	0	1	2	3	15	1.154	0	0	4	0	.538	0	0	0-0	0	0	0	.000
3 GAGLIANO, Meghan	.227	19-9	22	2	5	0	0	0	0	5	.227	0	0	2	0	.227	0	2	2-2	11	1	0	1.000
27 HUBBARD, Rhiana	.200	12-9	25	1	5	0	1	0	2	7	.280	2	1	3	0	.276	1	1	0-0	25	0	1	.962
99 GLEASON, Taylor	.000	3-0	3	0	0	0	0	0	0	0	.000	0	0	0	0	.000	0	0	0-0	0	0	0	.000
11 JUNGE, Annah	.000	3-0	3	0	0	0	0	0	0	0	.000	0	0	0	0	.000	0	0	0-0	6	6	0	1.000
1 CARVER, Heather	.000	3-0	2	0	0	0	0	0	0	0	.000	0	0	0	0	.000	0	0	0-0	0	0	0	.000
Totals	.264	22	590	72	156	19	3	14	61	223	.378	49	9	84	5	.326	8	14	25-25	452	173	25	.962
Opponents	.300	22	620	123	186	32	3	22	114	290	.468	55	10	71	2	.363	7	21	32-37	449	156	28	.956

LOB - Team (150), Opp (140). DP's turned - Team (4), Opp (6). CI - Team (1), CRIBB, A 1.

## (All games Sorted by Earned run avg)

Player	era	w-l	app	gs	cg	sho	sv	ip	h	r	er	bb	so	2b	3b	hr	b/avg	wp	hp	bks	sfa	sha
8 EATON, Baylee	4.23	3-6	14	6	1	0/1	0	43.0	45	30	26	10	19	10	1	2	.254	6	4	0	2	4
11 JUNGE, Annah	4.49	0-2	13	9	1	0/1	0	48.1	63	34	31	17	21	9	1	7	.321	4	1	0	3	7
4 CLARK, Holly	5.57	1-3	9	3	1	0/0	0	27.2	37	29	22	14	19	4	0	6	.314	2	1	0	0	3
12 HEINRICH, Alyssa	5.97	2-5	9	4	0	0/0	0	31.2	41	30	27	14	12	9	1	7	.318	5	4	0	2	7
Totals	4.92	6-16	22	22	3	1/1	0	150.2	186	123	106	55	71	32	3	22	.300	17	10	0	7	21
Opponents	2.67	16-6	22	22	11	2/0	2	149.2	156	72	57	49	84	19	3	14	.264	12	9	0	8	14

PB - Team (1), CRIBB, A 1, Opp (5). Pickoffs - Team (1), CRIBB, A 1. SBA/ATT - CRIBB, A (32-37), CLARK, H (12-12), JUNGE, A (5-9), EATON, B (8-9), HEINRICH, A (7-7).

## &gt;&gt;2021 CHARLESTON SOUTHERN SOFTBALL CONFERENCE-ONLY STATISTICS

Record: 3-9 Home: 2-7 Away: 1-2 Big South: 3-9

Player	avg	gp-gs	ab	r	h	2b	3b	hr	rbi	tb	slg%	bb	hp	so	gdp	ob%	sf	sh	sb-att	po	a	e	fld%
41 COOPER, Erika	.360	11-10	25	5	9	2	1	0	2	13	.520	4	0	4	0	.448	0	1	2-2	66	4	1	.986
33 BREWINGTON, Brookly	.333	12-12	42	6	14	0	0	0	3	14	.333	1	0	2	0	.349	0	2	6-6	30	22	5	.912
0 NORRIS, Katelyn	.333	9-9	33	7	11	1	0	0	1	12	.364	1	0	5	0	.353	0	1	2-2	13	1	0	1.000
15 KOGER, Madison	.306	12-12	36	0	11	0	0	0	2	11	.306	4	0	4	1	.366	1	1	1-1	3	3	0	1.000
54 SATCHER, SeaEnna	.303	11-11	33	1	10	0	0	1	6	13	.394	0	2	5	2	.333	1	1	0-0	9	15	3	.889
25 CRIBB, Ashlyn	.300	12-12	30	2	9	1	0	0	3	10	.333	3	1	3	0	.371	1	1	0-0	42	11	1	.981
10 BROWN, Sarah	.250	12-12	36	4	9	2	0	0	5	11	.306	2	1	7	1	.300	1	2	2-2	19	2	0	1.000
2 MECKLEY, Ashley	.176	12-12	34	4	6	1	0	2	3	13	.382	11	0	6	0	.378	0	0	3-3	19	27	4	.920
16 MANNERINO, Dominiqu	.143	11-10	28	4	4	2	0	0	3	6	.214	3	1	5	0	.242	1	0	0-0	22	1	0	1.000
-----																							
3 GAGLIANO, Meghan	.222	11-3	9	1	2	0	0	0	0	2	.222	0	0	2	0	.222	0	1	1-1	7	0	0	1.000
27 HUBBARD, Rhiana	.176	8-5	17	1	3	0	1	0	1	5	.294	1	0	2	0	.222	0	1	0-0	14	0	1	.933
99 GLEASON, Taylor	.000	2-0	2	0	0	0	0	0	0	0	.000	0	0	0	0	.000	0	0	0-0	0	0	0	.000
11 JUNG, Annah	.000	1-0	1	0	0	0	0	0	0	0	.000	0	0	0	0	.000	0	0	0-0	2	4	0	1.000
Totals	.270	12	326	35	88	9	2	3	29	110	.337	30	5	45	4	.336	5	11	17-17	249	99	17	.953
Opponents	.276	12	333	58	92	15	3	9	52	140	.420	27	5	38	1	.336	4	13	18-22	251	81	16	.954

LOB - Team (91), Opp (75). DPs turned - Team (2), Opp (5).

## (Big South games only Sorted by Earned run avg)

Player	era	w-l	app	gs	cg	sho	sv	ip	h	r	er	bb	so	2b	3b	hr	b/avg	wp	hp	bk	sfa	sha
8 EATON, Baylee	2.49	2-3	7	3	1	0/1	0	25.1	20	12	9	4	11	5	1	0	.198	5	2	0	1	3
11 JUNGE, Annah	2.62	0-2	8	5	1	0/1	0	32.0	34	15	12	11	14	2	1	3	.283	1	0	0	2	6
12 HEINRICH, Alyssa	6.75	1-3	5	3	0	0/0	0	18.2	25	19	18	8	9	6	1	3	.321	4	3	0	1	4
-----																						
4 CLARK, Holly	7.00	0-1	3	1	0	0/0	0	7.0	13	12	7	4	4	2	0	3	.382	1	0	0	0	0
Totals	3.88	3-9	12	12	2	1/1	0	83.0	92	58	46	27	38	15	3	9	.276	11	5	0	4	13
Opponents	2.18	9-3	12	12	7	1/0	2	83.2	88	35	26	30	45	9	2	3	.270	2	5	0	5	11

PB - Team (1), CRIBB, A 1, Opp (3). SBA/ATT - CRIBB, A (18-22), EATON, B (6-7), HEINRICH, A (5-5), JUNG, A (2-5), CLARK, H (5-5).



## &gt;&gt;2021 CHARLESTON SOUTHERN SOFTBALL GAME RESULTS

Date	Opponent		Score	Inns	Overall	Big South	Pitcher of record	Attend	Time
Feb 20, 2021	CLEVELAND STATE-1	L	3-4	(8)	0-1-0	0-0-0	HEINRICH, A (L 0-1)	60	2:01
Feb 20, 2021	CLEVELAND STATE-2	w	2-1	7	1-1-0	0-0-0	CLARK, H (W 1-0)	60	1:56
Feb 21, 2021	EASTERN KENTUCKY-1	L	3-8	7	1-2-0	0-0-0	EATON, B (L 0-1)	60	1:01
Feb 21, 2021	EASTERN KENTUCKY-2	L	5-11	7	1-3-0	0-0-0	CLARK, H (L)	60	2:33
* Mar 12, 2021	USC UPSTATE-1	L	6-8	7	1-4-0	0-1-0	HEINRICH, A (L 0-2)	71	1 HR
* Mar 12, 2021	USC UPSTATE-2	L	0-5	7	1-5-0	0-2-0	CLARK, H (L 1-2)	48	2 HR
* Mar 13, 2021	USC UPSTATE	L	4-7	7	1-6-0	0-3-0	EATON, B (L)	30	2:06
* Mar 19, 2021	RADFORD	w	5-4	(11)	2-6-0	1-3-0	HEINRICH, A (W 1-2)	60	2:39
* Mar 20, 2021	RADFORD-1	L	1-14	6	2-7-0	1-4-0	EATON, B (L 0-3)	60	2:00
* Mar 20, 2021	RADFORD-2	L	3-5	7	2-8-0	1-5-0	HEINRICH, A (L 1-3)	60	2:04
Mar 24, 2021	COASTAL CAROLINA-1	w	8-7	7	3-8-0	1-5-0	HEINRICH, A (W 2-3)	60	2:06
Mar 24, 2021	COASTAL CAROLINA-2	L	6-7	7	3-9-0	1-5-0	EATON, B (L 0-4)	60	2:17
* Mar 27, 2021	at Presbyterian College-1	L	1-2	7	3-10-0	1-6-0	JUNGE, A (L 0-1)	50	2:05
* Mar 27, 2021	at Presbyterian College-2	L	1-4	7	3-11-0	1-7-0	HEINRICH, A (L 2-4)	-	1:56
* Mar 28, 2021	at Presbyterian College	w	8-0	5	4-11-0	2-7-0	EATON, B (W 1-4)	38	1:54
Mar 30, 2021	COL. OF CHARLESTON-1	L	2-6	7	4-12-0	2-7-0	CLARK, H (L 1-3)	60	1:47
Mar 30, 2021	COL. OF CHARLESTON-2	w	6-4	7	5-12-0	2-7-0	EATON, B (W 2-4)	60	2:06
* Apr 02, 2021	WINTHROP	L	3-4	7	5-13-0	2-8-0	EATON, B (L 2-5)	60	2:11
* Apr 03, 2021	WINTHROP-1	w	2-1	7	6-13-0	3-8-0	EATON, B (W 3-5)	60	1:32
* Apr 03, 2021	WINTHROP-2	L	1-4	7	6-14-0	3-9-0	JUNGE, A (L 0-2)	60	2:11
Apr 07, 2021	at South Carolina-1	L	2-9	7	6-15-0	3-9-0	HEINRICH, A (L 2-5)	200	2:11
Apr 07, 2021	at South Carolina-2	L	0-8	5	6-16-0	3-9-0	EATON, B (L 3-6)	200	1:34

\* = Conference game

() extra inning game

## &gt;&gt;2021 CHARLESTON SOUTHERN SOFTBALL GAMES SUMMARY

Score by innings	1	2	3	4	5	6	7	8	9	EX	Total
Charleston Southern	16	21	10	3	12	4	4	1	0	1	72
Opponents	16	14	10	24	21	21	15	2	0	0	123

**Record when ...**

Overall	6-16	After 4 leading	5-4
Conference	3-9	..... trailing	1-11
Non-Conference	3-7	..... tied	0-1
Home games	5-12	After 5 leading	4-2
Away games	1-4	..... trailing	0-11
Neutral site	0-0	..... tied	1-2
Day games	4-13	After 6 leading	4-1
Night games	2-3	..... trailing	0-11
vs Left starter	0-3	..... tied	1-2
vs Right starter	6-13		
1-Run games	4-4	Hit 0 home runs	3-8
2-Run games	1-2	... 1 home run	2-6
5+Run games	1-6	... 2+ home runs	1-2
Extra innings	1-1		
Shutouts	1-2	Opponent 0 home runs	3-4
		..... 1 home run	2-7
Scoring 0-2 runs	2-8	..... 2+ HRs	1-5
..... 3-5 runs	1-6		
..... 6-9 runs	3-2	Made 0 errors	1-7
..... 10+ runs	0-0	.... 1 error	4-6
		.... 2+ errors	1-3
Opponent 0-2 runs	3-1		
..... 3-5 runs	2-6	Opp. made 0 errors	2-4
..... 6-9 runs	1-7	..... 1 error	1-8
..... 10+ runs	0-2	..... 2+ errors	3-4
Scored in 1st inning	4-6	Out-hit opponent	5-2
Opp. scored in 1st	1-8	Out-hit by opponent	1-12
Scores first	5-5	Hits are tied	0-2
Opp. scores first	1-11		

**Record when team scores:**

Runs	0	1	2	3	4	5	6	7	8	9	10+
W-L	0-2	0-4	2-2	0-4	0-1	1-1	1-2	0-0	2-0	0-0	0-0

**Record when opponent scores:**

Runs	0	1	2	3	4	5	6	7	8	9	10+
W-L	1-0	2-0	0-1	0-0	2-4	0-2	0-1	1-2	0-3	0-1	0-2

**Record when leading after:**

Inn.	1	2	3	4	5	6
W-L	3-5	5-5	4-5	5-4	4-2	4-1

**Record when trailing after:**

Inn.	1	2	3	4	5	6
W-L	0-6	0-7	1-9	1-11	0-11	0-11

**Record when tied after:**

Inn.	1	2	3	4	5	6
W-L	3-5	1-4	1-2	0-1	1-2	1-2

Current losing streak: 3

Longest winning streak: 1

Longest losing streak: 5

Home attendance : 989 ( 17 dates avg = 58 )

Away attendance : 488 ( 4 dates avg = 122 )

Total attendance: 1477 ( 21 dates avg = 70 )

## &gt;&gt;2021 CHARLESTON SOUTHERN SOFTBALL BATTING LEADERS

Hitting minimums - 1 Games 2.0 AB/Game 2.0 TPA/Game  
Pitching minimums - 1 Games 1.0 IP/Game

**Batting avg**

1. 33 BREWINGTON, Brooklyn	.352
2. 15 KOGER, Madison	.308
3. 0 NORRIS, Katelyn	.286
4. 2 MECKLEY, Ashley	.273
5. 54 SATCHER, SeaEnna	.258

**Slugging pct**

1. 2 MECKLEY, Ashley	.652
2. 41 COOPER, Erika	.388
3. 15 KOGER, Madison	.385
4. 33 BREWINGTON, Brooklyn	.380
5. 54 SATCHER, SeaEnna	.371

**On base pct**

1. 33 BREWINGTON, Brooklyn	.403
2. 2 MECKLEY, Ashley	.392
3. 15 KOGER, Madison	.377
4. 0 NORRIS, Katelyn	.364
5. 54 SATCHER, SeaEnna	.309

**Runs scored**

1. 0 NORRIS, Katelyn	12
2. 33 BREWINGTON, Brooklyn	11
2 MECKLEY, Ashley	11
4. 10 BROWN, Sarah	8
5. 41 COOPER, Erika	7

**Hits**

1. 33 BREWINGTON, Brooklyn	25
2. 2 MECKLEY, Ashley	18
3. 10 BROWN, Sarah	17
4. 54 SATCHER, SeaEnna	16
15 KOGER, Madison	16

**Runs batted in**

1. 2 MECKLEY, Ashley	13
2. 54 SATCHER, SeaEnna	9
10 BROWN, Sarah	9
4. 25 CRIBB, Ashlyn	6
5. 15 KOGER, Madison	5

**Doubles**

1. 2 MECKLEY, Ashley	4
2. 16 MANNERINO, Dominique	3
25 CRIBB, Ashlyn	3
4. 3 tied at.....	2

**Triples**

1. 27 HUBBARD, Rhiana	1
41 COOPER, Erika	1
21 CROSBY, Emily	1

**Home runs**

1. 2 MECKLEY, Ashley	7
2. 21 CROSBY, Emily	2
54 SATCHER, SeaEnna	2
4. 3 tied at.....	1

**Total bases**

1. 2 MECKLEY, Ashley	43
2. 33 BREWINGTON, Brooklyn	27
3. 54 SATCHER, SeaEnna	23
4. 10 BROWN, Sarah	22
5. 15 KOGER, Madison	20

**Walks**

1. 2 MECKLEY, Ashley	13
2. 15 KOGER, Madison	7
3. 33 BREWINGTON, Brooklyn	6
0 NORRIS, Katelyn	6
5. 25 CRIBB, Ashlyn	5

**Hit by pitch**

1. 54 SATCHER, SeaEnna	4
2. 25 CRIBB, Ashlyn	2
3. 10 BROWN, Sarah	1
16 MANNERINO, Dominique	1
27 HUBBARD, Rhiana	1

**Sac bunts**

1. 33 BREWINGTON, Brooklyn	3
2. 3 GAGLIANO, Meghan	2
41 COOPER, Erika	2
10 BROWN, Sarah	2
5. 5 tied at.....	1

**Sac flies**

1. 25 CRIBB, Ashlyn	2
15 KOGER, Madison	2
3. 4 tied at.....	1

**Stolen bases**

1. 33 BREWINGTON, Brooklyn	9
2. 0 NORRIS, Katelyn	4
2 MECKLEY, Ashley	4
4. 10 BROWN, Sarah	3
5. 2 tied at.....	2

**Caught stealing****Steal attempts**

1. 33 BREWINGTON, Brooklyn	9
2. 0 NORRIS, Katelyn	4
2 MECKLEY, Ashley	4
4. 10 BROWN, Sarah	3
5. 2 tied at.....	2

**Stolen base pct**

1. 33 BREWINGTON, Brooklyn	1.000
2 MECKLEY, Ashley	1.000
10 BROWN, Sarah	1.000
15 KOGER, Madison	1.000
0 NORRIS, Katelyn	1.000

**Strikeouts**

1. 2 MECKLEY, Ashley	12
2. 41 COOPER, Erika	11
3. 16 MANNERINO, Dominique	10
4. 25 CRIBB, Ashlyn	9
10 BROWN, Sarah	9

**Grounded into DP**

1. 54 SATCHER, SeaEnna	3
2. 10 BROWN, Sarah	1
15 KOGER, Madison	1

**Total plate appearances**

1. 33 BREWINGTON, Brooklyn	80
2. 2 MECKLEY, Ashley	79
3. 10 BROWN, Sarah	72
4. 54 SATCHER, SeaEnna	69
5. 25 CRIBB, Ashlyn	66

**At bats**

1. 33 BREWINGTON, Brooklyn	71
2. 2 MECKLEY, Ashley	66
10 BROWN, Sarah	66
4. 54 SATCHER, SeaEnna	62
5. 25 CRIBB, Ashlyn	56

**Games played**

1. 2 MECKLEY, Ashley	22
25 CRIBB, Ashlyn	22
10 BROWN, Sarah	22
33 BREWINGTON, Brooklyn	22
5. 2 tied at.....	21

**Game starts**

1. 2 MECKLEY, Ashley	22
25 CRIBB, Ashlyn	22
10 BROWN, Sarah	22
33 BREWINGTON, Brooklyn	22
5. 54 SATCHER, SeaEnna	21

**Games as sub**

1. 3 GAGLIANO, Meghan	10
2. 41 COOPER, Erika	4
3. 4 tied at.....	3

## &gt;&gt;2021 CHARLESTON SOUTHERN SOFTBALL PITCHING LEADERS

Hitting minimums - 1 Games 2.0 AB/Game 2.0 TPA/Game  
 Pitching minimums - 1 Games 1.0 IP/Game

<b>Earned run avg</b>		<b>Opposing bat avg</b>		<b>Won-loss pct</b>	
1. 8 EATON, Baylee	4.23	1. 8 EATON, Baylee	.254	1. 8 EATON, Baylee	.333
2. 11 JUNG, Annah	4.49	2. 4 CLARK, Holly	.314	2. 12 HEINRICH, Alyssa	.286
3. 4 CLARK, Holly	5.57	3. 12 HEINRICH, Alyssa	.318	3. 4 CLARK, Holly	.250
4. 12 HEINRICH, Alyssa	5.97	4. 11 JUNG, Annah	.321	4. 11 JUNG, Annah	.000
<b>Wins</b>		<b>Losses</b>		<b>Saves</b>	
1. 8 EATON, Baylee	3	1. 8 EATON, Baylee	6		
2. 12 HEINRICH, Alyssa	2	2. 12 HEINRICH, Alyssa	5		
3. 4 CLARK, Holly	1	3. 4 CLARK, Holly	3		
		4. 11 JUNG, Annah	2		
<b>Innings pitched</b>		<b>Batters struck out</b>		<b>Appearances</b>	
1. 11 JUNG, Annah	48.1	1. 11 JUNG, Annah	21	1. 8 EATON, Baylee	14
2. 8 EATON, Baylee	43.0	2. 4 CLARK, Holly	19	2. 11 JUNG, Annah	13
3. 12 HEINRICH, Alyssa	31.2	8 EATON, Baylee	19	3. 12 HEINRICH, Alyssa	9
4. 4 CLARK, Holly	27.2	4. 12 HEINRICH, Alyssa	12	4 CLARK, Holly	9
<b>Games started</b>		<b>Games finished</b>		<b>Games in relief</b>	
1. 11 JUNG, Annah	9	1. 8 EATON, Baylee	8	1. 8 EATON, Baylee	8
2. 8 EATON, Baylee	6	2. 12 HEINRICH, Alyssa	4	2. 4 CLARK, Holly	6
3. 12 HEINRICH, Alyssa	4	4 CLARK, Holly	4	3. 12 HEINRICH, Alyssa	5
4. 4 CLARK, Holly	3	4. 11 JUNG, Annah	3	4. 11 JUNG, Annah	4
<b>Wild pitches</b>		<b>Balks</b>		<b>Hit batters</b>	
1. 8 EATON, Baylee	6			1. 8 EATON, Baylee	4
2. 12 HEINRICH, Alyssa	5			12 HEINRICH, Alyssa	4
3. 11 JUNG, Annah	4			3. 11 JUNG, Annah	1
4. 4 CLARK, Holly	2			4 CLARK, Holly	1
<b>Intentional BB allowed</b>		<b>Runners picked off</b>		<b>Batters SO out looking</b>	
		1. 25 CRIBB, Ashlyn	1	1. 8 EATON, Baylee	9
				2. 11 JUNG, Annah	5
				3. 4 CLARK, Holly	3
				12 HEINRICH, Alyssa	3
<b>Sac bunts allowed</b>		<b>Sac flies allowed</b>		<b>Hits allowed</b>	
1. 12 HEINRICH, Alyssa	7	1. 11 JUNG, Annah	3	1. 4 CLARK, Holly	37
11 JUNG, Annah	7	2. 8 EATON, Baylee	2	2. 12 HEINRICH, Alyssa	41
3. 8 EATON, Baylee	4	12 HEINRICH, Alyssa	2	3. 8 EATON, Baylee	45
4. 4 CLARK, Holly	3			4. 11 JUNG, Annah	63
<b>Runs allowed</b>		<b>Earned runs allowed</b>		<b>Walks allowed</b>	
1. 4 CLARK, Holly	29	1. 4 CLARK, Holly	22	1. 8 EATON, Baylee	10
2. 12 HEINRICH, Alyssa	30	2. 8 EATON, Baylee	26	2. 12 HEINRICH, Alyssa	14
8 EATON, Baylee	30	3. 12 HEINRICH, Alyssa	27	4 CLARK, Holly	14
4. 11 JUNG, Annah	34	4. 11 JUNG, Annah	31	4. 11 JUNG, Annah	17
<b>Doubles allowed</b>		<b>Triples allowed</b>		<b>Home runs allowed</b>	
1. 4 CLARK, Holly	4	1. 4 CLARK, Holly	0	1. 8 EATON, Baylee	2
2. 12 HEINRICH, Alyssa	9	2. 11 JUNG, Annah	1	2. 4 CLARK, Holly	6
11 JUNG, Annah	9	12 HEINRICH, Alyssa	1	3. 11 JUNG, Annah	7
4. 8 EATON, Baylee	10	8 EATON, Baylee	1	12 HEINRICH, Alyssa	7



## &gt;&gt;2021 CHARLESTON SOUTHERN SOFTBALL BATTING GAME-BY-GAME STATISTICS

Team Game-by-Game for Charleston Southern (as of Apr 07, 2021)  
Batting (All games)

Date	Opponent	ab	r	h	rbi	2b	3b	hr	tb	bb	ibb	sb	cs	hbp	sac	sf	gdp	k	po	a	e	lob	avg
Feb 20	CLEVELAND STATE	32	3	7	2	0	0	0	7	0	0	0	0	1	0	0	0	1	24	9	1	7	.219
Feb 20	CLEVELAND STATE	22	2	4	2	1	1	1	10	3	0	3	0	0	0	0	0	4	21	8	1	5	.204
Feb 21	EASTERN KENTUCKY	30	3	10	3	2	0	1	15	1	0	0	0	1	0	0	0	7	21	11	1	8	.250
Feb 21	EASTERN KENTUCKY	30	5	11	5	1	0	2	18	3	0	2	0	0	1	1	0	6	21	7	0	9	.281
*Mar 12	USC UPSTATE	26	6	8	3	2	0	0	10	4	0	1	0	0	2	1	1	5	21	7	0	6	.286
*Mar 12	USC UPSTATE	28	0	9	0	1	0	0	10	1	0	1	0	0	0	0	1	3	21	10	0	8	.292
*Mar 13	USC UPSTATE	25	4	5	4	2	0	1	10	2	0	0	0	1	2	0	0	5	21	13	3	5	.280
*Mar 19	RADFORD	38	5	11	3	1	0	0	12	7	0	2	0	0	3	1	1	3	33	9	1	12	.281
*Mar 20	RADFORD	22	1	4	1	0	0	1	7	0	0	1	0	0	0	0	1	4	18	5	6	3	.273
*Mar 20	RADFORD	27	3	6	3	0	0	0	6	1	0	1	0	1	3	0	0	1	21	8	0	8	.268
Mar 24	COASTAL CAROLINA	31	8	12	8	1	0	2	19	1	0	1	0	1	0	0	0	3	21	7	0	7	.280
Mar 24	COASTAL CAROLINA	28	6	7	5	4	0	2	17	4	0	1	0	0	1	0	0	7	21	6	1	6	.277
*Mar 27	at Presbyterian College	30	1	7	1	1	0	0	8	3	0	2	0	1	0	0	0	9	18	8	1	12	.274
*Mar 27	at Presbyterian College	24	1	4	1	1	1	0	7	1	0	1	0	0	0	1	0	1	18	7	1	4	.267
*Mar 28	at Presbyterian College	25	8	12	8	0	1	0	14	3	0	4	0	2	0	1	0	3	15	6	3	8	.280
Mar 30	COL. OF CHARLESTON	26	2	5	2	0	0	1	8	0	0	0	0	0	0	1	0	0	21	7	3	4	.275
Mar 30	COL. OF CHARLESTON	25	6	8	3	0	0	1	11	5	0	1	0	0	0	1	1	4	21	7	1	7	.277
*Apr 02	WINTHROP	29	3	8	2	0	0	1	11	1	0	2	0	0	0	0	0	4	21	9	1	6	.277
*Apr 03	WINTHROP	25	2	9	2	1	0	0	10	3	0	1	0	0	1	1	0	1	21	6	1	10	.281
*Apr 03	WINTHROP	27	1	5	1	0	0	0	5	4	0	1	0	0	0	0	0	6	21	11	0	9	.276
Apr 07	at South Carolina	24	2	3	2	1	0	1	7	0	0	0	0	1	1	0	0	4	18	6	0	3	.270
Apr 07	at South Carolina	16	0	1	0	0	0	0	1	2	0	0	0	0	0	0	0	3	14	6	0	3	.264
Totals		590	72	156	61	19	3	14	223	49	0	25	0	9	14	8	5	84	452	173	25	150	.264

## &gt;&gt;2021 CHARLESTON SOUTHERN SOFTBALL PITCHING GAME-BY-GAME STATISTICS

Team Game-by-Game for Charleston Southern (as of Apr 07, 2021)  
Pitching (All games)

Date	Opponent	ip	h	r	er	bb	so	2b	3b	hr	wp	bk	hbp	dp	ibb	score	w-l	sv	era
Feb 20	CLEVELAND STATE	8.0	9	4	3	5	1	4	0	0	0	0	0	1	0	3-4	0-1	0	2.62
Feb 20	CLEVELAND STATE	7.0	8	1	1	2	6	0	0	0	1	0	0	0	0	2-1	1-1	0	1.87
Feb 21	EASTERN KENTUCKY	7.0	8	8	7	4	4	2	0	2	1	0	0	0	0	3-8	1-2	0	3.50
Feb 21	EASTERN KENTUCKY	7.0	11	11	11	6	5	4	0	1	1	0	1	0	0	5-11	1-3	0	5.31
*Mar 12	USC UPSTATE	7.0	8	8	8	0	4	2	0	2	1	0	1	0	0	6-8	1-4	0	5.83
*Mar 12	USC UPSTATE	7.0	8	5	5	2	2	2	0	1	1	0	0	1	0	0-5	1-5	0	5.70
*Mar 13	USC UPSTATE	7.0	9	7	5	0	0	2	1	0	4	0	3	0	0	4-7	1-6	0	5.60
*Mar 19	RADFORD	11.0	6	4	3	5	4	0	0	1	1	0	0	0	0	5-4	2-6	0	4.93
*Mar 20	RADFORD	6.0	16	14	7	3	7	4	0	2	2	0	0	0	0	1-14	2-7	0	5.22
*Mar 20	RADFORD	7.0	7	5	5	4	4	2	1	1	0	0	0	0	0	3-5	2-8	0	5.20
Mar 24	COASTAL CAROLINA	7.0	9	7	7	0	2	1	0	3	0	0	1	0	0	8-7	3-8	0	5.36
Mar 24	COASTAL CAROLINA	7.0	10	7	6	1	3	1	0	2	0	0	2	0	0	6-7	3-9	0	5.41
*Mar 27	at Presbyterian College	6.0	8	2	1	1	3	0	0	0	0	0	0	0	0	1-2	3-10	0	5.14
*Mar 27	at Presbyterian College	6.0	8	4	4	4	3	2	0	0	1	0	0	0	0	1-4	3-11	0	5.11
*Mar 28	at Presbyterian College	5.0	1	0	0	1	6	0	0	0	0	0	0	0	0	8-0	4-11	0	4.87
Mar 30	COL. OF CHARLESTON	7.0	8	6	4	2	4	0	0	2	0	0	0	1	0	2-6	4-12	0	4.81
Mar 30	COL. OF CHARLESTON	7.0	7	4	4	1	4	1	0	1	2	0	0	0	0	6-4	5-12	0	4.76
*Apr 02	WINTHROP	7.0	9	4	3	1	1	0	0	1	0	0	1	0	0	3-4	5-13	0	4.67
*Apr 03	WINTHROP	7.0	3	1	1	1	2	0	0	0	1	0	0	0	0	2-1	6-13	0	4.47
*Apr 03	WINTHROP	7.0	9	4	4	5	2	1	1	1	0	0	0	1	0	1-4	6-14	0	4.45
Apr 07	at South Carolina	6.0	10	9	9	6	1	1	0	1	1	0	0	0	0	2-9	6-15	0	4.70
Apr 07	at South Carolina	4.2	14	8	8	1	3	3	0	1	0	0	1	0	0	0-8	6-16	0	4.92
Totals		150.2	186	123	106	55	71	32	3	22	17	0	10	4	0	72-123	6-16	0	4.92

## &gt;&gt;2021 CHARLESTON SOUTHERN SOFTBALL LINEUP BY POSITION/BATTING ORDER

**Starting Lineup By Position  
(Team W-L record when starter)****PITCHER:**

11 JUNGE, Annah	9	(4-5)
8 EATON, Baylee	6	(1-5)
12 HEINRICH, Alyssa	4	(0-4)
4 CLARK, Holly	3	(1-2)

**CATCHER:**

25 CRIBB, Ashlyn	22	(6-16)
------------------	----	--------

**FIRST BASE:**

41 COOPER, Erika	17	(4-13)
16 MANNERINO, Dom	5	(2-3)

**SECOND BASE:**

33 BREWINGTON, Br	21	(6-15)
15 KOGER, Madison	1	(0-1)

**THIRD BASE:**

54 SATCHER, SeaEnn	21	(6-15)
10 BROWN, Sarah	1	(0-1)

**SHORTSTOP:**

2 MECKLEY, Ashley	22	(6-16)
-------------------	----	--------

**LEFT FIELD:**

0 NORRIS, Katelyn	15	(4-11)
27 HUBBARD, Rhiana	6	(2-4)
16 MANNERINO, Dom	1	(0-1)

**CENTER FIELD:**

10 BROWN, Sarah	19	(5-14)
27 HUBBARD, Rhiana	3	(1-2)

**RIGHT FIELD:**

16 MANNERINO, Dom	11	(2-9)
3 GAGLIANO, Megha	9	(3-6)
10 BROWN, Sarah	2	(1-1)

**DESIGNATED HITTER:**

15 KOGER, Madison	17	(5-12)
21 CROSBY, Emily	4	(1-3)
33 BREWINGTON, Br	1	(0-1)

**Starting Lineup By Lineup Spot  
(Team W-L record when starter)****LEADOFF:**

15 KOGER, Madison	10	(3-7)
10 BROWN, Sarah	9	(2-7)
33 BREWINGTON, Br	2	(1-1)
2 MECKLEY, Ashley	1	(0-1)

**2ND SPOT:**

0 NORRIS, Katelyn	13	(3-10)
33 BREWINGTON, Br	7	(2-5)
27 HUBBARD, Rhiana	2	(1-1)

**3RD SPOT:**

2 MECKLEY, Ashley	11	(3-8)
54 SATCHER, SeaEnn	8	(3-5)
21 CROSBY, Emily	2	(0-2)
15 KOGER, Madison	1	(0-1)

**CLEANUP:**

33 BREWINGTON, Br	10	(3-7)
2 MECKLEY, Ashley	7	(1-6)
25 CRIBB, Ashlyn	2	(1-1)
10 BROWN, Sarah	1	(0-1)
15 KOGER, Madison	1	(1-0)
54 SATCHER, SeaEnn	1	(0-1)

**5TH SPOT:**

16 MANNERINO, Dom	5	(1-4)
41 COOPER, Erika	5	(2-3)
15 KOGER, Madison	4	(1-3)
10 BROWN, Sarah	4	(1-3)
33 BREWINGTON, Br	2	(0-2)
54 SATCHER, SeaEnn	1	(1-0)
27 HUBBARD, Rhiana	1	(0-1)

**6TH SPOT:**

16 MANNERINO, Dom	6	(1-5)
10 BROWN, Sarah	5	(1-4)
2 MECKLEY, Ashley	3	(2-1)
15 KOGER, Madison	2	(0-2)
25 CRIBB, Ashlyn	2	(0-2)
27 HUBBARD, Rhiana	1	(1-0)
33 BREWINGTON, Br	1	(0-1)
54 SATCHER, SeaEnn	1	(1-0)
41 COOPER, Erika	1	(0-1)

**7TH SPOT:**

54 SATCHER, SeaEnn	10	(1-9)
16 MANNERINO, Dom	4	(2-2)
10 BROWN, Sarah	3	(2-1)
27 HUBBARD, Rhiana	3	(0-3)
0 NORRIS, Katelyn	2	(1-1)

**8TH SPOT:**

41 COOPER, Erika	10	(2-8)
3 GAGLIANO, Megha	6	(2-4)
16 MANNERINO, Dom	2	(0-2)
27 HUBBARD, Rhiana	2	(1-1)
21 CROSBY, Emily	2	(1-1)

**9TH SPOT:**

25 CRIBB, Ashlyn	18	(5-13)
3 GAGLIANO, Megha	3	(1-2)
41 COOPER, Erika	1	(0-1)

[illegible]

## &gt;&gt;2021 CHARLESTON SOUTHERN SOFTBALL TEAM GAME HIGHS

## Batting

At bats:	38	-	vs Radford (Mar 19, 2021)
Runs scored:	8	-	vs Coastal Carolina (Mar 24, 2021)
	8	-	at Presbyterian College (Mar 28, 2021)
Hits:	12	-	vs Coastal Carolina (Mar 24, 2021)
	12	-	at Presbyterian College (Mar 28, 2021)
RBIs:	8	-	vs Coastal Carolina (Mar 24, 2021)
	8	-	at Presbyterian College (Mar 28, 2021)
Doubles:	4	-	vs Coastal Carolina (Mar 24, 2021)
Triples:	1	-	vs Cleveland State (Feb 20, 2021)
	1	-	at Presbyterian College (Mar 27, 2021)
	1	-	at Presbyterian College (Mar 28, 2021)
Home runs:	2	-	vs Eastern Kentucky (Feb 21, 2021)
	2	-	vs Coastal Carolina (Mar 24, 2021)
	2	-	vs Coastal Carolina (Mar 24, 2021)
Total bases:	19	-	vs Coastal Carolina (Mar 24, 2021)
Walks:	7	-	vs Radford (Mar 19, 2021)
Strikeouts:	9	-	at Presbyterian College (Mar 27, 2021)
Sac hits:	3	-	vs Radford (Mar 19, 2021)
	3	-	vs Radford (Mar 20, 2021)
Sac flies:	1	-	(8 times )
Stolen bases:	4	-	at Presbyterian College (Mar 28, 2021)
Hit by pitch:	2	-	at Presbyterian College (Mar 28, 2021)
Runners LOB:	12	-	vs Radford (Mar 19, 2021)
	12	-	at Presbyterian College (Mar 27, 2021)
Hit into DP:	2	-	vs USC Upstate (Mar 12, 2021)

## Fielding

Putouts:	33	-	vs Radford (Mar 19, 2021)
Assists:	13	-	vs USC Upstate (Mar 13, 2021)
Errors:	6	-	vs Radford (Mar 20, 2021)
Passed balls:	1	-	vs Winthrop (Apr 02, 2021)
DPs turned:	1	-	(4 times )

## Pitching

Innings pitched:	11.0	-	vs Radford (Mar 19, 2021)
Runs allowed:	14	-	vs Radford (Mar 20, 2021)
Earned runs:	11	-	vs Eastern Kentucky (Feb 21, 2021)
Walks allowed:	6	-	vs Eastern Kentucky (Feb 21, 2021)
	6	-	at South Carolina (Apr 07, 2021)
Strikeouts:	7	-	vs Radford (Mar 20, 2021)
Hits allowed:	16	-	vs Radford (Mar 20, 2021)
Doubles allowed:	4	-	vs Cleveland State (Feb 20, 2021)
	4	-	vs Eastern Kentucky (Feb 21, 2021)
	4	-	vs Radford (Mar 20, 2021)
Triples allowed:	1	-	vs USC Upstate (Mar 13, 2021)
	1	-	vs Radford (Mar 20, 2021)
	1	-	vs Winthrop (Apr 03, 2021)
Homers allowed:	3	-	vs Coastal Carolina (Mar 24, 2021)
Wild pitches:	4	-	vs USC Upstate (Mar 13, 2021)
Hit batters:	3	-	vs USC Upstate (Mar 13, 2021)



## &gt;&gt;2021 CHARLESTON SOUTHERN SOFTBALL INDIVIDUAL GAME HIGHS

## Batting

At bats:	6	-	NORRIS, Katelyn vs Radford (Mar 19, 2021)
Runs scored:	3	-	NORRIS, Katelyn vs Radford (Mar 19, 2021)
Hits:	3	-	CROSBY, Emily vs Eastern Kentucky (Feb 21, 2021)
	3	-	MECKLEY, Ashley vs Coastal Carolina (Mar 24, 2021)
	3	-	NORRIS, Katelyn at Presbyterian College (Mar 28, 2021)
RBIs:	3	-	MECKLEY, Ashley vs Eastern Kentucky (Feb 21, 2021)
	3	-	BROWN, Sarah vs Coastal Carolina (Mar 24, 2021)
Doubles:	2	-	BREWINGTON, Brooklyn vs Coastal Carolina (Mar 24, 2021)
Triples:	1	-	CROSBY, Emily vs Cleveland State (Feb 20, 2021)
	1	-	COOPER, Erika at Presbyterian College (Mar 27, 2021)
	1	-	HUBBARD, Rhiana at Presbyterian College (Mar 28, 2021)
Home runs:	1	-	(14 times )
Total bases:	7	-	MECKLEY, Ashley vs Coastal Carolina (Mar 24, 2021)
Walks:	2	-	(8 times )
Strikeouts:	3	-	CROSBY, Emily vs Eastern Kentucky (Feb 21, 2021)
Sac hits:	1	-	(14 times )
Sac flies:	1	-	(8 times )
Stolen bases:	1	-	(25 times )
Hit by pitch:	1	-	(9 times )
Runners LOB:	5	-	MANNERINO, Dominique vs Coastal Carolina (Mar 24, 2021)

## Fielding

Putouts:	11	-	COOPER, Erika vs USC Upstate (Mar 13, 2021)
Assists:	5	-	(4 times )
Errors:	4	-	BREWINGTON, Brooklyn vs Radford (Mar 20, 2021)
Passed balls:	1	-	CRIBB, Ashlyn vs Winthrop (Apr 02, 2021)

## Pitching

Innings pitched:	8.0	-	JUNGE, Annah vs Radford (Mar 19, 2021)
Runs allowed:	9	-	CLARK, Holly vs Radford (Mar 20, 2021)
Earned runs:	8	-	HEINRICH, Alyssa vs USC Upstate (Mar 12, 2021)
Walks allowed:	5	-	JUNGE, Annah vs Eastern Kentucky (Feb 21, 2021)
	5	-	JUNGE, Annah vs Radford (Mar 19, 2021)
Strikeouts:	6	-	CLARK, Holly vs Cleveland State (Feb 20, 2021)
Hits allowed:	9	-	CLARK, Holly vs Radford (Mar 20, 2021)
	9	-	EATON, Baylee vs Coastal Carolina (Mar 24, 2021)
	9	-	JUNGE, Annah vs Winthrop (Apr 03, 2021)
Doubles allowed:	3	-	JUNGE, Annah vs Cleveland State (Feb 20, 2021)
	3	-	EATON, Baylee vs Radford (Mar 20, 2021)
	3	-	EATON, Baylee at South Carolina (Apr 07, 2021)
Triples allowed:	1	-	EATON, Baylee vs USC Upstate (Mar 13, 2021)
	1	-	HEINRICH, Alyssa vs Radford (Mar 20, 2021)
	1	-	JUNGE, Annah vs Winthrop (Apr 03, 2021)
Homers allowed:	2	-	(6 times )
Wild pitches:	2	-	HEINRICH, Alyssa vs USC Upstate (Mar 13, 2021)
	2	-	EATON, Baylee vs USC Upstate (Mar 13, 2021)
	2	-	JUNGE, Annah vs Col. of Charleston (Mar 30, 2021)
Hit batters:	2	-	HEINRICH, Alyssa vs USC Upstate (Mar 13, 2021)
	2	-	EATON, Baylee vs Coastal Carolina (Mar 24, 2021)

## &gt;&gt;2021 CHARLESTON SOUTHERN SOFTBALL TEAM AMONG NCAA/BIG SOUTH LEADERS

Statistic	National Rank	Conference Rank	Value	National Leader	Value	Conference Leader	Value
Batting Average (281 ranked)	125	2	0.270	Oklahoma	0.457	USC Upstate	0.302
Double Plays per Game (279 ranked)	204	6	0.18	McNeese	0.73	USC Upstate	0.38
Doubles (280 ranked)	230	7	18	Troy	68	USC Upstate	42
Doubles per Game (280 ranked)	250	6	0.82	UCLA	2.40	USC Upstate	1.62
Earned Run Average (281 ranked)	205	6	4.69	Michigan	0.87	Campbell	2.52
Fielding Percentage (281 ranked)	137	4	0.960	Arizona	0.986	USC Upstate	0.980
Hit Batters (280 ranked)	74	1	10	Hartford	1	Charleston So.	10
Home Runs per game (279 ranked)	139	4	0.59	Oklahoma	3.25	Winthrop	1.00
On Base Percentage (281 ranked)	177	6	0.333	Oklahoma	0.533	USC Upstate	0.374
Scoring (281 ranked)	224	7	3.18	Oklahoma	12.07	USC Upstate	5.88
Shutouts (177 ranked)	177	7	1	Oklahoma Oklahoma St.	14 14	Campbell	7
Slugging Percentage (281 ranked)	163	4	0.382	Oklahoma	0.894	USC Upstate	0.461
Stolen Bases per Game (281 ranked)	122	6	1.14	Hofstra	3.61	USC Upstate	2.15
Strikeout-to-Walk Ratio (281 ranked)	191	5	1.43	Michigan	7.41	USC Upstate	2.60
Triple Plays (1 ranked)				7 teams tied	1		
Triples per Game (261 ranked)	157	3	0.14	South Dakota St.	0.70	Campbell	0.40
WL Percentage (278 ranked)	229	7	0.273	Oklahoma	1.000	USC Upstate	0.654
Walks (30 ranked)				Southern Ill.	167	Winthrop	109

## &gt;&gt;2021 CHARLESTON SOUTHERN SOFTBALL INDIVIDUALS AMONG NCAA/BIG SOUTH LEADERS

Statistic	Player	National Rank	Conference Rank	Value	National Leader	Value	Conference Leader	Value
Batting Average (150 ranked)					Linda Rush, Drexel	0.595	Rebecca Clark, Presbyterian	0.417
Doubles (18 ranked)					Autumn Bishop, Liberty Danielle Gibson, Arkansas Sara Vanderford, Texas St.	14 14 14		
Doubles Per Game (143 ranked)					Tommi Stowers, Monmouth	0.62	Tiffany Domingue, USC Upstate	0.30
Earned Run Average (150 ranked)					Morgan Newport, Northwestern Sydney Senerchia, Saint Peter's	0.00 0.00	Megan Richards, Campbell	1.89
Hit Batters (14 ranked)					4 players tied	1	Aisha Weixlmann, Winthrop	2
Hit by Pitch per Game (149 ranked)					Maddy Vermejan, Southern Ill.	0.72	Marisa Soterakis, USC Upstate	0.42
Hits (138 ranked)					Ciara Bryan, Louisiana Kayla Kowalik, Kentucky	55 55	Sydney Fisher, Radford	40
Hits Allowed Per Seven Innings (150 ranked)					Shannon Saile, Oklahoma	1.85	Haley Haselden, Presbyterian	4.93
Home Runs (49 ranked)					Jocelyn Alo, Oklahoma	22	Ansley Gilreath, Winthrop	12
Home Runs Per Game (149 ranked)	Ashley Meckley	94	2	0.29	Jocelyn Alo, Oklahoma	0.79	Ansley Gilreath, Winthrop	0.36
On Base Percentage (150 ranked)					Linda Rush, Drexel	0.660	Macy McCall, Winthrop	0.524
RBI's (28 ranked)					Jocelyn Alo, Oklahoma	58	Ansley Gilreath, Winthrop	33
Runs Batted In Per Game (150 ranked)					Linda Rush, Drexel	2.23	Tiffany Domingue, USC Upstate	1.10
Runs per Game (150 ranked)					Linda Rush, Drexel	1.54	Sarah Price, USC Upstate	1.00
Sacrifice Bunts per game (147 ranked)					Anja Solveig Kane, Saint Peter's Katie Sciglimpaglia, Saint Peter's	0.50 0.50	Jaiden Tweed, Presbyterian	0.43
Sacrifice Flies (69 ranked)	Ashlyn Cribb Madison Koger	69 69	4 4	2 2	Sammy Dees, Bowling Green	6	Lauren King, Winthrop Alexis WAYLAND, Longwood Ashley Westbrooks, Winthrop	3 3 3
Saves (28 ranked)					Ellie DuBois, Southeastern La.	5		
Shutouts (20 ranked)					Keely Rochard, Virginia Tech	10		
Slugging Percentage (300 ranked)	Ashley Meckley	268	4	0.619	Jocelyn Alo, Oklahoma	1.513	Ansley Gilreath, Winthrop	0.770
Stolen Bases (91 ranked)					Jenna Wildeman, Central Ark.	32	Macy McCall, Winthrop	29
Stolen Bases Per Game (150 ranked)	Brooklynn Brewington	113	4	0.43	Kristin Hallam, Hofstra	1.17	Macy McCall, Winthrop	0.85
Strikeout-to-Walk Ratio (149 ranked)					Ivy Rosenberry, Virginia Tech	19.00	Riley Oakes, Radford	7.20
Strikeouts (149 ranked)					Keely Rochard, Virginia Tech	197	Madyson Watson, Winthrop	140
Strikeouts Per Seven Innings (150 ranked)					Rachel Garcia, UCLA	14.3	Jenna Greene, Presbyterian	9.2
Total Bases (149 ranked)					Jocelyn Alo, Oklahoma	115	Ansley Gilreath, Winthrop	77
Toughest to Strike Out (149 ranked)	Brooklynn Brewington	105	1	17.2	12 players tied	0.0	Brooklynn Brewington, Charleston So.	17.2
Triples (24 ranked)					Sydney Chambley, Georgia Kayla Kowalik, Kentucky	6 6	Destini England, Campbell Claudia Ware, Campbell	3 3
Triples Per Game (143 ranked)					Kaitlyn Cunningham, Fla. Atlantic Emma Osmundson, South Dakota St.	0.20 0.20	Destini England, Campbell Claudia Ware, Campbell	0.12 0.12
Victories (44 ranked)					Keely Rochard, Virginia Tech	19	Sydney Backstrom, Longwood	11
Walks Allowed Per Seven Innings (150 ranked)	Baylee Eaton	138	2	1.68	Ivy Rosenberry, Virginia Tech	0.21	Riley Oakes, Radford	0.84
Walks Per Game (150 ranked)	Ashley Meckley	102	3	0.62	Renee Trotman, Detroit Mercy	1.75	Macy McCall, Winthrop	0.79