



# BUCCANEER

## 20 SOFTBALL 21



### THE RUNDOWN

RECORD	OVERALL:	3-9
	BIG SOUTH	1-5
	HOME	3-9
	AWAY	0-0
	NEUTRAL	0-0

### THE SCHEDULE

Date	Opponent	Time/Result
Feb. 20	Cleveland State (DH)	L, 4-3; W, 2-1
Feb. 21	Eastern Kentucky (DH)	L, 8-3; L, 11-5
Feb. 26	at Coastal Carolina	Canceled
Feb. 26	vs. Lipscomb	Canceled
Feb. 26	at Coastal Carolina	Canceled
Feb. 26	vs. Lipscomb	Canceled
Feb. 28	at Coastal Carolina	Canceled
Mar. 5	at Georgia	Canceled
Mar. 6	vs. Mercer (DH)	Canceled
Mar. 7	vs. UAB (DH)	Canceled
Mar. 12	USC Upstate (DH)*	L, 8-6; L, 5-0
Mar. 13	USC Upstate*	L, 7-4
Mar. 19	Radford*	W, 5-4
Mar. 20	Radford (DH)*	L, 14-1; L, 5-3
Mar. 24	Coastal Carolina (DH)	W, 8-7; L, 7-6
Mar. 27	at Presbyterian (DH)*	1/3 p.m.
Mar. 28	at Presbyterian*	1 p.m.
Mar. 30	College of Charleston (DH)	5/7 p.m.
Apr. 2	Winthrop*	6 p.m.
Apr. 3	Winthrop (DH)*	1/3 p.m.
Apr. 7	at South Carolina (DH)	4/7 p.m.
Apr. 9	Gardner-Webb*	6 p.m.
Apr. 10	Gardner-Webb (DH)*	Noon/2 p.m.
Apr. 13	at Georgia Southern (DH)	TBA
Apr. 17	at Campbell (DH)*	1/3 p.m.
Apr. 18	at Campbell*	1 p.m.
Apr. 24	at Longwood (DH)*	1/3 p.m.
Apr. 25	at Longwood*	11 a.m.

May 13-15 - Big South Championships

\*Big South Opponent // All times Eastern

### GAMES 13-15 | at PRESBYTERIAN

MARCH 27, 2021 \* 1 P.M. / 3 P.M. (DH) // MARCH 28 \* 1 P.M. \* CLINTON, S.C.



CHARLESTON SOUTHERN  
BIG SOUTH

2021 Record: 3-9/1-5  
Head Coach: Christi Musser  
Career: 3-9 (1st)  
CSU: Same

#### QUICK HITS

.277	Batting Average	.249
3.8	Runs/Game	3.8
7.8	Hits/Game	5.8
.416	Slugging Percentage	.397
5.41	ERA	2.78
42	Strikeouts	77
.295	Opposing BA	.210



PRESBYTERIAN  
BIG SOUTH

2021 Record: 6-6/0-3  
Head Coach: David Williams  
Career: 369-377-3 (16th)  
PC: 33-54-2 (3rd)

### AT A GLANCE

#### KEY STORYLINES

##### >>ROAD TRIPPIN'

Charleston Southern hits the road for the first time this season when it takes on Presbyterian in a three-game Big South series in Clinton. The Bucs opened the season with 12 consecutive home games and split their two most recent contests against Coastal Carolina.

##### >>GETTING BACK ON TRACK

Charleston Southern is looking to pick up its first Big South series win of the season this weekend after dropping its first two series at home against USC Upstate and Radford. Despite the series losses, two of the Bucs' three wins this season have come in the last five games.

##### >>KNOW THE SCHEDULE

As is customary in most seasons, the Bucs will play everyone in the Big South Conference for one three-game series. CSU will play four home series and three road series against Big South competition. Those making the trip to Charleston this season are USC Upstate, Radford, Winthrop and Gardner-Webb. The Bucs will play at Presbyterian, Campbell and Longwood. Hampton elected to not play a spring sports season for the 2020-21 academic year.

#### SERIES INFORMATION

Overall:	Charleston Southern leads 28-16
at CSU:	Charleston Southern leads 13-8
at PC:	Charleston Southern leads 11-5
Neutral:	Charleston Southern leads 4-3
First Meeting:	Mar. 17, 2007 (Home W, 6-5, 8 inn.)
Last Meeting:	Apr. 3, 2019 (Away W, 8-3)
Winning Streak:	CSU won last six games
Series Streak:	CSU won last two series

#### The Venue

Stadium:	PC Softball Complex
Opened:	1997
Capacity:	250
Surface:	Natural Grass



### >>HOW THEY STACK UP



.249	69	18	1	7	.334	.397	6	2.78	77	30	.210	.948
BATTING AVG	HITS	DOUBLES	TRIPLES	HOME RUNS	ON-BASE %	SLUGGING %	STOLEN BASES	ERA	STRIKE-OUTS	WALKS	OPPO. BATTING AVG	FIELDING %
.277	94	15	1	10	.337	.416	11	5.41	42	32	.295	.963



The Charleston Southern Athletics Communications department's mission is to strategically provide communication between the athletics department and its internal and external constituents, increase awareness of and interest in Buccaneer Athletics and to publicize the activities and achievements of the student-athletes, teams and the athletics department.

We understand the importance of assisting the media in providing coverage of the university, its athletics programs, administrators, coaches and student-athletes. Our goal is to disseminate information as widely, uniformly and fairly as possible using accepted media standards. To this end, the best attempt will be made to fill reasonable requests by recognized media outlets. Members of the media are encouraged to work with our staff to assist in that endeavor.

## MEDIA INFORMATION

### PRESS RELEASES/GAME NOTES

Prior to each contest, a complete release previewing the upcoming game and reviewing the season will be available on CSUSports.com. The release will also be emailed to media requesting this service.

### PREGAME INTERVIEWS

Head Coach Christi Musser will be available for pregame interviews and live television shots depending on time schedules. CSU players will not be available for pregame media activities. Media are encouraged to call the CSU athletic communications office well in advance to arrange such interviews.

### POSTGAME INTERVIEWS

CSU's locker room is closed to media after the game. Media in the press box will be asked for player requests prior to the conclusion of the game. Head Coach Christi Musser and requested players will be available following the game at the CSU Softball Field.

### INTERVIEWS

Direct all requests for interviews with CSU head coach Christi Musser or softball student-athletes through Assistant Director of Athletic Communications Kieran Intemann by calling (843) 863-7289 or emailing kintemann@csuniv.edu

## COVERING HOME GAMES

### CREDENTIALS

Credentials for CSU softball home games are issued to working media only and must be requested at least 24 hours in advance to Kieran Intemann by emailing kintemann@csuniv.edu. Media will have a credential left for them at the Media Will Call located at the entrance to the CSU Softball Field.

### PARKING

Parking is free to the public and is available on a first-come, first-serve basis for CSU softball games with the exception of marked off spaces for Buc Club, coaches, and officials.

### WORKING MEDIA LOCATION

The working press, radio, and television area is located inside the press box at the CSU Softball Field. Media may also be able to reserve press row seats upon request.

### MEDIA ROOM SERVICES

Pregame packets including notes, statistics, programs, and rosters, will be available. Final box scores will also be provided.

### WIRELESS INTERNET

Complimentary access to wireless internet is available for working media at the CSU Softball Field.

## Athletics Communications Charleston Southern University

9200 University Blvd  
Charleston, SC 29406  
Phone: 843-863-7853

### Seth Montgomery

Associate A.D. for Communications/P.R.  
Football, Baseball, Golf  
smontgomery@csuniv.edu

### Derrick Bennington

Associate Director for Communications  
Men's Basketball, Volleyball, Tennis, XC/Track & Field

### Kieran Intemann

Assistant Director for Communications  
Women's Basketball, Softball

### Hannah Allison

Assistant Director for Communications  
Women's Soccer

## Video/Content Creation

### Nick Case

Director for Athletic Video Communications  
ESPN+/Big South Network

### Regan Budig

Associate Director for Video Communications  
Creative Content

### Killian McClatchey

"Voice of the Bucs"/ESPN+ Play-by-Play Talent

### Anna Witte

Side Line Report/ESPN+ Color Analyst

# 2021 CHARLESTON SOUTHERN SOFTBALL

## UNIVERSITY INFORMATION

Location..... Charleston, S.C.  
School Founded ..... 1964  
Enrollment ..... 3,378  
Nickname ..... Buccaneers  
Colors ..... Blue (PMS 295) and Gold (PMS 7853)  
President ..... Dr. Dondi E. Costin  
Director of Athletics..... Jeff Barber

## CSU SOFTBALL COMPLEX INFORMATION

Field Name..... CSU Softball Field  
Stadium Name..... CSU Softball Complex  
Capacity ..... 250

## COACHING STAFF

Head Coach ..... Christi Musser  
Alma Mater..... Kansas, 2003  
Record at CSU..... 3-9 (First Season)  
Overall Record ..... Same  
Assistant Coach ..... Stevi Johnson (Third Season)  
Volunteer Assistant Coach..... Russell Cooper (Third Season)

## SUPPORT STAFF

Athletic Trainer ..... Lydia Johnson  
Associate A.D. for Communications/P.R..... Seth Montgomery  
Assistant Director of Athletic Communications..... Kieran Intemann

## TEAM HISTORY

First Season of Softball ..... 1986  
All-Time Record ..... 687-1061-5  
All-Time Big South Record ..... 163-315-1  
Big South Regular Season Championships ..... None  
All-Time Big South Tournament Record ..... 32-55  
Big South Tournament Championships ..... 2 (1988, 2015)  
Big South Tournament Runner-Ups ..... 1 (2012)  
NCAA Postseason Appearances (Last) ..... 1 (2014)  
Last Postseason Opponent ..... vs. Lipscomb (2014 NCAA Knoxville Regional)  
Result..... L, 4-2

20+ Win Seasons: ..... 15  
..... (1987, 1988, 1990, 1991, 1992, 1993, 1994, 2001, 2009, 2010, 2011, 2012, 2014, 2017, 2018)  
30+ Win Seasons: ..... 7 (1987, 1988, 1990, 1992, 1993, 2010, 2012)  
Big South Coach of the Year: ..... 2  
..... (Howard Bagwell - 1987, Chandel Schulte - 2001)  
Big South Players of the Year: ..... None  
Big South Pitchers of the Year: ..... None  
Big South Freshman of the Year: ..... 1  
..... (Rachael Stern - 2001)  
Big South Scholar-Athletes of the Year: ..... 1  
..... (Caitlin Allen - 2010)  
Team Sportsmanship Award..... 1 (2006)  
First Team All-Conference Honors: ..... 38  
Second Team All-Conference Honors: ..... 34  
Academic All-Conference Honors: ..... 23  
All-Tournament Team Honors: ..... 24  
Big South Tournament MVP: ..... 2  
..... (Dori Beach - 1988, Cheyenne Gandara - 2014)

## 2020 REVIEW

2020 Record ..... 10-9  
Big South Record (finish)..... 0-0 (N/A)  
Big South Championship ..... N/A  
Postseason ..... N/A  
Final Ranking ..... N/A  
Letterwinners returning/lost ..... 16/5  
Newcomers ..... 2

## COMMUNICATIONS OFFICE

Primary Contact..... Kieran Intemann  
Email ..... kintemann@csuniv.edu  
Office #: ..... 843-863-7289  
Website: ..... www.CSUsports.com

## GAMES 13-15 | at PRESBYTERIAN

# Quick FACTS



**BROOKLYNN BREWINGTON**

## &gt;&gt;2021 CHARLESTON SOUTHERN SOFTBALL ROSTER

#	Name	Pos.	Cl.	Ht.	Hometown / High School / Previous School
00	Katelyn Norris	OF	So.	5-2	Knoxville, Tenn. / The Kings Academy
2	Ashley Meckley	INF	Jr.	5-6	Hanahan, S.C. / Hanahan / Coker
3	Meghan Gagliano	OF	Sr.	5-6	South Elgin, Ill. / Wheaton Academy
4	Holly Clark	RHP	R-Sr.	5-6	Siler City, N.C. / Jordan-Matthews
8	Baylee Eaton	LHP	Sr.	5-9	Eugene, Ore. / Marist / Central Arizona College
10	Sarah Brown	INF	Sr.	5-7	Sacramento, Calif. / Sheldon
11	Annah Junge	RHP	So.	5-7	Ballwin, Mo. / Marquette
12	Alyssa Heinrich	RHP	Sr.	5-8	Mount Pleasant, S.C. / Wando
15	Madison Koger	INF	Sr.	5-7	Fairfield, Ohio / Fairfield
16	Dominique Mannerino	INF	Sr.	5-5	Homer Glen, Ill. / Lockport Township / Hillsborough CC
21	Emily Crosby	INF	So.	5-4	Beaufort, S.C. / Battery Creek
25	Ashlyn Cribb	C	So.	5-5	Hanahan, S.C. / Hanahan
27	Rhiana Hubbard	OF	Jr.	5-7	Fairfield, Ohio / Fairfield
32	Noelle Chaney	RHP	Fr.	5-7	Batavia, Ill. / Batavia
33	Brooklynn Brewington	INF	Jr.	5-6	Andrews, S.C. / Andrews
41	Erika Cooper	INF	Jr.	5-10	Fenton, Mo. / Rockwood Summit
54	SeaEnna Satcher	INF	Jr.	5-5	Newbury Park, Calif. / Newbury Park
99	Taylor Gleason	OF	Sr.	5-8	Bluffton, S.C. / May River

**Coaching Staff**

Head Coach: Christi Musser (First season)

Assistant Coach: Stevi Johnson (Third season)

Volunteer Assistant Coach: Russell Cooper (Third season)

Athletic Trainer: Lydia Johnson

**Pronunciations**

#11 Annah Junge - Ah-nah Youn-guh

#12 Alyssa Heinrich - Hyne-rick

#15 Madison Koger - Koh-ger

#54 SeaEnna Satcher - See-enn-a

HC Christi Musser - Muss-err

2020-21  
ROSTER





# THE TRANSFER EFFECT

## ASHLEY MECKLEY

Ashley Meckley has become a mainstay in the Buccaneer lineup from the day she arrived on campus. The Hanahan, South Carolina, native has started all 10 games this season at shortstop after transferring into the program from Coker University.

Meckley is hitting .333 through the first 12 games of this season. The junior infielder also leads the team with four doubles, four homers, eight extra-base hits and six runs batted in.

Meckley has four multi-hit games and has at least one hit in eight of the first 12 games. In addition, she carries a 12-game on-base streak, having reached base safely in every game this season.

Prior to arriving at CSU, Meckley was a standout for Division II Coker University in Hartsville, South Carolina, where she hit .325 with seven homers and 35 runs batted in across 73 games. Despite the jump up to Division I, she is still on pace to put up numbers similar to those she produced during her time with the Cobras.

## THE MECKLEY FILE

SECOND AMONG BUCCANEER  
STARTERS WITH A

**.333**  
BATTING AVERAGE  
THROUGH 10  
GAMES

LEADS THE  
BUCCANEERS WITH

**4**  
HOME RUNS  
IN 2021

HAS REACHED BASE SAFELY  
IN ALL

**12**  
GAMES DURING  
THE 2021  
SEASON

### ONE TO REMEMBER

Holly Clark struck out six in a complete game performance against Cleveland State, giving head coach Christi Musser her first career win in a 2-1 Buccaneer victory on Feb. 20.

Ashley Meckley provided the offense for CSU with a two-run homer to left in the second innings, while Clark allowed one run on eight hits.

### WALK IT OFF

Brooklynn Brewington made her first - and only - hit of the series opener against Radford count.

Brewington hit a walk-off RBI single in the bottom of the 11th, scoring Ashley Meckley in the process, as the Bucs earned their first Big South win of the season with a 5-4 extra-inning thriller over the Highlanders.

Annah Junge and Alyssa Heinrich combined to allow just six Radford hits in 11.0 innings of work. Heinrich was credited with the win after tossing 3.0 scoreless innings of relief. Junge allowed three earned runs in a career-high 8.0 innings while tying her season high with three strikeouts.

### BACK IN THE WIN COLUMN

Charleston Southern defeated Coastal Carolina for the first time since the 2017 season when it took the opening game of a midweek doubleheader over the Chanticleers, 8-7.

Madison Koger hit a solo home run to straightaway center field to lead off the bottom of the first inning, while Katelyn Norris and Ashlyn Cribb delivered two-RBI base hits in the second and third inning, respectively.

Erika Cooper had the go-ahead hit with a solo home run in the bottom of the fifth inning. Alyssa Heinrich earned her second win of the season with 3.0 innings of relief work, while Annah Junge allowed four runs in 4.0 innings in her fourth start of the season.

## ROSTER BREAKDOWN

### PITCHERS

4 Holly Clark  
8 Baylee Eaton  
11 Annah Junge  
12 Alyssa Heinrich  
32 Noelle Chaney

### OUTFIELDERS

00 Katelyn Norris  
3 Meghan Gagliano  
27 Rhiana Hubbard  
99 Taylor Gleason

### INFIELDERS

2 Ashley Meckley  
10 Sarah Brown  
15 Madison Koger  
16 Dominique Mannerino  
21 Emily Crosby  
33 Brooklynn Brewington  
41 Erika Cooper  
54 SeaEnna Satcher

### CATCHERS

25 Ashlyn Cribb

### CLASS\*

Freshmen	1
Sophomores	4
Juniors	5
Seniors	8

### STATE

South Carolina	6
Illinois	3
California	3
Missouri	2
Ohio	2
North Carolina	2
Oregon	1
Tennessee	1

### COUNTRY

USA	18
-----	----

(\*) - includes redshirts



# LEAD THE WAY

## ALL AROUND THE ORDER

Brooklynn Brewington has started every game since she stepped foot on campus prior to the 2019 season. That hasn't changed this year, and the junior is now leading the way at the plate as well.

Brewington has hit all around the batting order for the Bucs this season and has been found anywhere from the two spot to the six spot on head coach Christi Musser's lineup card.

The Andrews, South Carolina, native has rewarded her head coach's trust in her by leading CSU with a .364 batting average through 10 games. Brewington has at least one hit in nine of the first 10 games of the 2021 season.

Brewington delivered a walk-off RBI single in the 11th inning against Radford last week to give the Bucs their first Big South win of the season.

## THE BREWINGTON FILE

LEADS ALL BUCCANEER  
STARTERS WITH A

**.410**  
BATTING AVERAGE  
IN 2021

HAS STARTED  
ALL

**86**  
GAMES IN HER  
CAREER

HAS RECORDED AT LEAST  
ONE HIT IN

**11**  
OF THE FIRST 12  
GAMES THIS  
SEASON

### A NEW ERA

Charleston Southern softball ushered in a new chapter in program history in January with the hiring of Christi Musser as the 10th head coach in program history.

Musser comes to the Lowcountry with an extensive coaching background and most recently served as the associate head coach at Grand Canyon University in Phoenix, Arizona. Musser was previously an assistant coach on the Grand Canyon staff prior to being promoted to associate head coach. During her time at GCU, the Lopes were ranked among the top teams in Division I in batting average and doubles per game. Musser coached three all-conference players during her time with the Lopes, including a pair of First Team All-WAC outfielders.

Musser previously had a three-year stint as an assistant coach at New Mexico, where she was the hitting instructor for the Lobos. Under her tutelage, the Lobos led all of Division I with 96 home runs in 2012.

Musser got her start in coaching at Kansas, her alma mater, where she spent seven seasons as an assistant. She was the hitting instructor and recruiting coordinator during her coaching tenure with the Jayhawks.

### FAMILIAR FACES IN THE FOLD

While Christi Musser is a new face to the Buccaneer softball program, people familiar with CSU softball will recognize the assistant coaches for the Bucs.

Stevi Johnson is in her third season as an assistant coach for the Bucs and is one of the top players in program history. Johnson was a part of CSU's 2014 Big South Championship-winning team and also earned all-conference honors in 2017. She works with the outfielders and as a hitting instructor, with an emphasis on power hitting.

Russell Cooper is also in his third season as an assistant coach, albeit in his second stint with the Buccaneer softball program. Cooper previously spent the 2017-18 seasons on the CSU staff as an assistant coach and works primarily with the pitchers.

## CSU RECORD WHEN...

	2021	MUSSER
Overall Record	3-9	3-9
Current Streak	L1	L1
Series Record	0-2	0-2
Home	3-9	3-9
Road	0-0	0-0
Neutral	0-0	0-0
Day Game	2-8	2-8
Night Game	1-1	1-1
vs. Top 25 Teams	0-0	0-0
CHSO Scores First	2-2	2-2
Opponent Scores First	1-9	1-9
Extra Innings	1-1	1-1
Run-Rule Games	0-1	0-1
One-Run Games	3-2	3-2
Two-Run Games	0-2	0-2
Leading After 5	2-1	2-1
Trailing After 5	0-6	0-6
Tied After 5	1-2	1-2
CHSO Out-Hits Opponent	2-2	2-2
Opponent Out-Hits CHSO	1-5	1-5
Two Teams Match on Hits	0-2	0-2

## RECORD BREAKDOWN

	2021	Streak	Under MUSSE
Overall	3-9	L1	3-9
Home	3-9	L1	3-9
Road	0-0	L3	0-0
Neutral	0-0	W1	0-0
Extra Innings	1-1	W1	1-1
Big South	1-5	L2	1-5
Big South Home	1-5	L2	1-5
Big South Road	0-0	L2	0-0

## HOW CSU FARES AGAINST

### ...the Big South

OPPONENT	RECORD	LAST MET (RESULT)
Campbell	25-44-1	Mar. 24, 2019 (W, 5-2)
Gardner-Webb	17-27	Apr. 20, 2019 (W, 10-3)
Hampton	7-2	Apr. 7, 2019 (L, 3-2)
Longwood	6-24	Apr. 14, 2019 (L, 4-3)
Presbyterian	28-16	Apr. 3, 2019 (W, 8-3)
Radford	24-54	Mar. 20, 2021 (L, 5-3)
UNC Asheville	5-2	Apr. 1, 1988 (L, 9-8)*
USC Upstate	2-22	Mar. 13, 2021 (L, 7-4)
Winthrop	26-53	May 3, 2019 (L, 4-2)
<b>TOTAL</b>	<b>163-315-1</b>	

\*UNC Asheville discontinued softball; High Point does not sponsor softball

## SERIES BUSINESS

Series Record	CSU leads 28-16
at CSU	CSU leads 13-8
at PC	CSU leads 11-5
Record in Big South	CSU leads 19-11
Biggest CSU Win	Apr. 2, 2010 (W, 11-1)
Biggest PC Win	5 runs, twice
Most CSU Runs	Apr. 3, 2010 (14 runs)
Most PC Runs	8, 3 times
Most Combined Runs	Apr. 3, 2010 (W, 14-9)
Fewest CSU Runs	0, 4 Times
Fewest PC Runs	0, 6 times
Fewest Combined Runs	Apr. 2, 2010 (W, 1-0)
Current Streak	CSU won last six contests

## 2021 CHARLESTON SOUTHERN SOFTBALL

## GAMES 13-15 | at PRESBYTERIAN

### >>TEAM NOTES

#### Weekend Schedule Change

Saturday's doubleheader to kick off the series against Presbyterian was originally set to be played at 2 p.m.. The start of the series was pushed up by one hour to account for potential storms later in the day in Clinton and the surrounding area.

#### All-Time Against Presbyterian

Charleston Southern has a 28-16 lead in the all-time series and has won each of the last six games in the series. The Bucs have swept each of the last two series against the Blue Hose, including the most recent series in Clinton during the 2019 season.

CSU also has an 11-5 advantage in games played in Clinton, with wins in four of the last six games played at the PC Softball Complex.

CSU has an all-time advantage in games played in Charleston, games played in Clinton, neutral-site games and Big South games, marking the only series among conference opponents that the Bucs have the edge in the all-time series in all four categories.

#### About Presbyterian

Presbyterian enters the weekend at 6-6 overall and 0-3 in Big South play. The Blue Hose was swept on the road by USC Upstate to open conference play, but rebounded with a 3-1 win over South Carolina State in its most recent contest.

Rebecca Clark leads the Blue Hose with a .400 average, while Katelyn Petty is hitting .364 for Presbyterian. Kylie Kross leads PC with three homers, while Jillian Hewes has a team-leading eight runs batted in.

In the circle, Jenna Greene is 3-2 with a team-leading 2.33 ERA and 38 strikeouts in 27.0 innings. Greene threw a no-hitter in Presbyterian's last game against South Carolina State, striking out 11. Haley Haselden is 3-3 with a 2.67 ERA in a team-high seven starts.

#### Staying on Track

Charleston Southern is looking to win its first Big South series of the season after dropping its first two conference series at home against USC Upstate and Radford. The Bucs are playing a road conference series for the first time since a three-game series at Longwood in April 2019.

Despite the Bucs having just three wins in the 2021 season, two of those have come fairly recently in victories over Radford (Mar. 19) and Coastal Carolina (Mar. 24).

#### Recapping Wednesday

Charleston Southern split a doubleheader with Coastal Carolina in its first midweek action of the season. The Bucs took the first game, 8-7, before the Chanticleers closed the day with a 7-6 win.

CSU led 6-1 in the first game, with Katelyn Norris

and Ashlyn Cribb both providing two-RBI base hits to account for most of the early scoring. Coastal rallied with three homers in the middle innings, but Erika Cooper hit a go-ahead home run to right center in the bottom of the fifth that proved to be the game-winner. Annah Junge started the game in the circle and went 4.0 innings, allowing four runs. Alyssa Heinrich earned the win after pitching 3.0 innings in relief.

The Bucs took an early lead in the second game with an Ashley Meckley two-run homer in the first inning, but CCU responded with two-run innings in the second, fourth and fifth to take a 6-2 lead. Sarah Brown got CSU within one on a three-run homer in the fifth, but the Bucs were unable to grab the lead and ultimately dropped a one-run contest for the second time this season. Baylee Eaton earned the start and allowed six earned runs in 6.0 innings, while Holly Clark tossed a scoreless inning in relief.

#### Recapping Last Weekend

Charleston Southern got off to a strong start to open its weekend series with Radford, but the visiting Highlanders prevailed in a Saturday doubleheader to clinch the series win.

Brooklynn Brewington got the Bucs on the right track with a walk-off RBI single in the series opener, helping CSU earn a 5-4 win Friday night. Annah Junge went a career-high 8.0 innings, while Alyssa Heinrich earned her first win of the season.

Radford responded with a 14-1 win in six innings in the middle game of the series. The Highlanders then used a four-run first in the rubber match to take the series finale, 5-3.

Madison Koger had a pair of two-hit games in the series, while Ashley Meckley hit her team-leading third homer run of the season in the second game. Junge had a 1.91 ERA in 11.0 innings pitched across two appearances against the Highlanders.

#### Previous Non-Conference Series

Eastern Kentucky scored 19 runs across 14 innings in a two-game doubleheader sweep of Charleston Southern in the Bucs' most recent non-conference action.

The visiting Colonels put together a five-run frame in both games of the doubleheader. ECU got off to a quick start with a five-run second inning on its way to an 8-3 win in the first game.

Emily Crosby and Ashley Meckley both went deep for the Bucs in the second half of the doubleheader, but ECU rallied from a 5-2 deficit with five in the fifth and four in the seventh to clinch an 11-5 win over the Bucs.

Meckley had two hits in both games, while Crosby, Brooklynn Brewington and Dominique Mannerino each had one two-hit game in the doubleheader. Holly Clark threw 3.0 scoreless innings in the first game, while Annah Junge had

### >>SEASON & CAREER TOTALS

#### 2021 SEASON MULTI-HIT GAMES

Player	2	3	4	5+	Total
Brooklynn Brewington	5	-	-	-	5
Ashley Meckley	3	1	-	-	4
Madison Koger	4	-	-	-	4
Sarah Brown	3	-	-	-	3
Emily Crosby	1	1	-	-	2
Ashlyn Cribb	2	-	-	-	2
Dominique Mannerino	1	-	-	-	1
Katelyn Norris	1	-	-	-	1
SeaEnna Satcher	1	-	-	-	1
TEAM	21	2	0	0	23

#### CAREER MULTI-HIT GAMES

Player	2	3	4	5+	Total
Sarah Brown	25	4	1	-	30
Brooklynn Brewington	16	5	-	-	21
Madison Koger	14	-	-	-	14
Meghan Gagliano	7	-	-	-	7
Ashlyn Cribb	5	-	-	-	5
Ashley Meckley	3	1	-	-	4
Emily Crosby	2	1	-	-	3
Katelyn Norris	2	1	-	-	3
Dominique Mannerino	3	-	-	-	3
Taylor Gleason	1	-	-	-	1
SeaEnna Satcher	1	-	-	-	1

#### 2021 SEASON MULTI-RBI GAMES

Player	2	3	4	5+	Total
Ashley Meckley	2	1	-	-	3
Sarah Brown	1	1	-	-	2
Ashlyn Cribb	1	-	-	-	1
Emily Crosby	1	-	-	-	1
Madison Koger	1	-	-	-	1
Dominique Mannerino	1	-	-	-	1
Katelyn Norris	1	-	-	-	1
SeaEnna Satcher	1	-	-	-	1
TEAM	9	2	0	0	11

#### CAREER MULTI-RBI GAMES

Player	2	3	4	5+	Total
Madison Koger	9	2	-	1	12
Sarah Brown	7	5	-	-	12
Rhiana Hubbard	3	1	-	-	4
Taylor Gleason	2	-	1	-	3
Ashley Meckley	2	1	-	-	3
SeaEnna Satcher	2	1	-	-	3
Katelyn Norris	2	-	-	-	2
Ashlyn Cribb	1	-	-	-	1
Emily Crosby	1	-	-	-	1
Dominique Mannerino	1	-	-	-	1

## &gt;&gt;CURRENT STREAKS

## HITTING STREAKS

Player	SEASON	CURRENT	CAREER
Brooklynn Brewington	6	5	8
Madison Koger	2	-	8
Sarah Brown	3	3	6
Emily Crosby	4	5	5
Meghan Gagliano	1	-	5
Taylor Gleason	-	-	5
Rhiana Hubbard	2	-	4
Ashley Meckley	4	2	4
Katelyn Norris	4	-	4
Ashlyn Cribb	2	-	3
Dominique Mannerino	3	-	3
SeaEnna Satcher	3	2	3
Erika Cooper	2	-	2

## REACHED BASE STREAKS

Player	SEASON	CURRENT	CAREER
Sarah Brown	4	3	14
Ashley Meckley	12	12	12
Brooklynn Brewington	6	5	9
Ashlyn Cribb	4	-	9
Madison Koger	3	3	8
Dominique Mannerino	6	-	6
Katelyn Norris	5	5	6
Emily Crosby	4	5	5
Meghan Gagliano	1	-	5
Taylor Gleason	-	-	5
Rhiana Hubbard	2	-	5
SeaEnna Satcher	3	2	3
Erika Cooper	2	-	2

## CURRENT CSU STREAKS

All Games .....	L1
Games at CSU Softball Field .....	L1
Road Games .....	L3
Neutral Games .....	W1
vs. Conference (Home) .....	L2
vs. Conference (Away) .....	L2
vs. Non-Conference (Home) .....	L2
vs. Non-Conference (Away) .....	L7

## &gt;&gt;TEAM NOTES

a season-best three strikeouts in the second game.

**Swing for the Fences**

Charleston Southern nearly doubled its home run total for the season in Wednesday's doubleheader against Coastal Carolina. The Bucs entered the game with six home runs in 10 games but sent four over the fence in the two games against the Chanticleers.

Erika Cooper and Madison Koger both homered in the first game of the doubleheader, while Ashley Meckley and Sarah Brown went yard in the second half of the twin bill.

**Adding Local Flavor**

CSU will take on local rival College of Charleston in a pair of doubleheaders this season, with both set to take place at the CSU Softball Field.

The first doubleheader between the Bucs and Cougars is set for Tuesday, March 30, with the first game slated to begin at 5 p.m.

The date and time of the second doubleheader between the two Lowcountry schools are still to be determined.

**Early Schedule Adjustments**

Charleston Southern had to back out of early season tournaments at Coastal Carolina and Georgia this season due to a COVID-19 pause within the Buccaneer program.

The Bucs also had their three-game series against USC Upstate pushed back by one week to allow for more time for CSU to prepare following the pause. The Bucs and Spartans played their three-game set on March 12-13.

**Follow the Bucs on Social Media**

For more information and news, stay up-to-date with Buccaneer Softball via Twitter, Instagram and CSUSports.com.



>>2021 BIG SOUTH STANDINGS

Team	Big South	PCT	Overall	PCT	Streak
USC Upstate	6-0	1.000	16-6	.727	L2
Longwood	3-0	1.000	12-13	.480	W8
Campbell	2-1	.667	9-10	.474	W2
Radford	2-1	.667	9-14	.391	L1
Winthrop	2-3	.400	14-14	.500	L1
Gardner-Webb	1-4	.200	2-14	.125	W1
<b>Charleston Southern</b>	<b>1-5</b>	<b>.167</b>	<b>3-9</b>	<b>.250</b>	<b>L1</b>
Presbyterian	0-3	.000	6-6	.500	W1

>>BY THE NUMBERS

>>CHARLESTON SOUTHERN NCAA RANKINGS

	NCAA	Big South	Value
Batting Average (277 ranked)	109	2	0.277
Double Plays Per Game (267 ranked)	192	6	0.17
Doubles (271 ranked)	188	7	15
Doubles Per Game (274 ranked)	102	4	1.25
Earned Run Average (277 ranked)	225	6	5.41
Fielding Percentage (277 ranked)	106	3	0.963
Hit Batters (275 ranked)	94	2	8
Home Runs Per Game (266 ranked)	73	2	0.83
On Base Percentage (277 ranked)	161	6	0.337
Scoring (276 ranked)	164	6	3.83
Shutouts (146 ranked)			
Slugging Percentage (277 ranked)	98	3	0.416
Stolen Bases Per Game (275 ranked)	137	6	1.08
Strikeout-to-Walk Ratio (277 ranked)	204	5	1.31
Triple Plays (1 ranked)			
Triples Per Game (243 ranked)	199	5	0.08
W-L Percentage (272 ranked)	222	7	0.250
Walks (29 ranked)			

>>NCAA NATIONAL POLLS

D1 Softball.com Top 25

Rk	School	Rec.	LW
1.	Oklahoma	22-0	1
2.	UCLA	19-1	2
3.	Oregon	20-1	3
4.	Washington	22-2	6
5.	Alabama	24-2	4
6.	Florida	21-2	8
7.	Florida State	16-6	7
8.	Oklahoma State	23-4	5
9.	LSU	17-8	10
10.	Arizona	14-5	9
11.	Kentucky	23-2	14
12.	Arkansas	23-3	13
13.	Texas	20-3	12
14.	Virginia Tech	15-4	15
15.	Arizona State	17-6	11
16.	Duke	24-1	17
17.	Georgia	21-3	19
18.	Louisiana	16-6	16
19.	Missouri	20-6	18
20.	Texas State	20-3	21
21.	Northwestern	11-1	22
22.	Tennessee	22-5	23
23.	Clemson	20-2	25
24.	Baylor	17-5	24
25.	UCF	19-6	20

Dropped Out: None

USA Today/NFCA Coaches Poll

Rk	School	Rec.	Pts.	LW
1.	Oklahoma (32)	22-0	800	1
2.	UCLA	19-1	765	2
3.	Oregon	20-1	710	4
4.	Alabama	24-2	690	3
5.	Florida	21-2	678	5
6.	Washington	22-2	653	6
7.	Kentucky	23-2	573	9
8.	Texas	20-2	532	10
9.	Arizona	14-5	493	7
10.	Oklahoma State	23-4	480	8
11.	Duke	24-1	475	14
12.	Florida State	16-6	472	13
13.	LSU	17-8	440	12
14.	Arizona State	17-6	410	11
15.	Arkansas	23-3	337	17
16.	Louisiana	16-6	317	15
17.	Georgia	21-3	316	19
18.	Missouri	20-6	249	16
19.	Virginia Tech	15-4	224	18
20.	Clemson	20-2	176	23
21.	Tennessee	21-5	164	21
22.	UCF	19-6	96	20
23.	South Carolina	17-7	89	24
24.	Auburn	18-6	61	22
25.	Michigan	9-3	54	25

Dropped Out: None

Others receiving votes: Northwestern (11-1, 41), Iowa State (22-5, 22), Baylor (17-5, 19), Illinois (10-2, 12), Liberty (21-9, 12), Southern Illinois (20-3, 9), James Madison (9-0, 7), Texas State (17-3, 6), Wichita State (17-4, 6), South Alabama (16-8, 5), Texas A&M (20-5, 4), Fresno State (15-6, 3)

>>2021 BIG SOUTH PRESEASON SELECTIONS

PLAYER OF THE YEAR

Autumn Owen, Gardner-Webb

Sydney Fisher, Radford

PITCHER OF THE YEAR

Brooke Perry, Gardner-Webb

>>2021 BIG SOUTH PRESEASON POLL

Team	1	Points
Gardner-Webb	3	50
USC Upstate	1	47
Longwood	3	42
Radford		38
Campbell		38
Presbyterian		33
Winthrop		23
<b>Charleston Southern</b>	<b>1</b>	<b>17</b>



# CHRISTI MUSSER

>>HEAD COACH | 1ST SEASON AT CSU | KANSAS, '03

## >>COACH MUSSER BY RECORD

Overall record .....	3-9
Record at CSU .....	3-9
Big South Record (Regular Season) .....	1-5
Big South Record (Tournament) .....	0-0
Home .....	3-9
Road .....	0-0
Neutral .....	0-0

## >>COACH MUSSER'S MILESTONES

### OVERALL

1.....	vs. Cleveland State, 2/20/2021 (W, 2-1)
25.....	

### AT CSU

1.....	vs. Cleveland State, 2/20/2021 (W, 2-1)
25.....	

### BIG SOUTH WINS

1.....	vs. Radford, 3/19/2021 (W, 5-4)
25.....	

Christi Musser became the 10th CSU head softball coach in program history after accepting the position in January 2021. She takes over the Buccaneers' reins bringing 17 years of Division I softball coaching experience with stops at the University of Kansas, the University of New Mexico and, most recently, Grand Canyon University.

A four-star master coach as recognized by the National Fastpitch Coaches Conference, Musser comes to the Buccaneers after a six-year coaching stint at Grand Canyon University where she served as the associate head coach from August 2015-May 2020. Her efforts as both the hitting instructor and outfield coach helped pace GCU to becoming one of the top hitting teams in the NCAA in both batting average and doubles.

From 2016-18, the Lopes were ranked among the top-15 hitting teams in the NCAA Division I in batting average, finishing sixth overall in 2016 (.342). GCU also finished in the top-eight in doubles per game, ranking second overall in the country in 2016 (1.88) and fourth in 2017 (1.62).

During her tenure at GCU, Musser was a part of a staff that earned the program's first Division I era victory over a nationally-No. 1 ranked team of any program at GCU (Florida State, March 6, 2019), while also helping the program tally its eighth 30-win season. She coached three All-Conference players with the Lopes, including a pair of First Team All-WAC outfielders in the 2018 season with Laynee Gomez and Bianca Boling both earning the recognition.

Prior to her time at GCU, Musser served as the New Mexico state director for the Fellowship of Christian Athletes. Over her year and a half with the organization, she helped create the strategic vision plan for the state, while also training and equipping the staff, volunteers, and board members to carry out the organization's ministry goals.

Musser's first collegiate coaching position came at her alma mater, Kansas, from 2003 to 2010. She assisted the Jayhawks on the field as a hitting instructor and served as recruiting coordinator during her tenure. She then joined the staff at New Mexico in July 2010 and enjoyed a successful three-year run that included serving as the hitting instructor for a Lobo squad that, in 2012, led the nation with 96 home runs.

During her playing career at Kansas, Musser earned All-American honors in 2002 as an outfielder and was a four-time All-Big 12 selection. In her senior season, she hit .354 with 35 runs, 30 RBI, and nine home runs, while also earning All-Region and All-Big 12 honors.

During the summers of her college career, Musser played three seasons in the Women's Major for the Arizona Storm, winning a national championship in 1999 and finishing as a runner-up in 2000.

Musser graduated from Kansas in 2003 with a bachelor's degree in sports management.

## HEAD COACHING RECORD

Year	School	Position	Record
2021	Charleston So.	Head Coach	1st Season

## PLAYING/COACHING CAREER

Year	School	Position
1999-03	Kansas	Outfielder
2003-10	Kansas	Assistant Coach
2010-13	New Mexico	Assistant Coach
2015-18	Grand Canyon	Assistant Coach
2019-21	Grand Canyon	Associate Head Coach
2021-pres.	Charleston Southern	Head Coach

## &gt;&gt;2021 CHARLESTON SOUTHERN SOFTBALL PITCHING STAFF NOTES

4

**HOLLY CLARK****RHP \* 5-6 \* R-Sr.**

- Came to CSU via Jordan-Matthews High School in Siler City, N.C.
- Has made six appearances in the 2021 season, starting two.
- 1-2 record with a 5.16 ERA and 14 strikeouts in 19.0 innings pitched.
- Earned the Bucs' first win of the season with a complete game against Cleveland State, allowing just one run with six strikeouts.
- Allowed one hit in 3.0 innings of relief in second game vs. Eastern Kentucky.

- Earned Big South All-Academic Team honors following the 2019 season.
- Big South All-Freshman Team selection in 2017, when she made 40 appearances (18 starts) with eight wins, three saves and 85 strikeouts in 128.1 innings.
- Has one career Big South Pitcher of the Week honor (Feb. 26, 2018), earned after she allowed just two runs (none earned) in 12.0 innings across four appearances, earning a pair of wins.

8

**BAYLEE EATON****LHP \* 5-9 \* Sr.**

- Came to CSU via Central Arizona College in Coolidge, Ariz.
- Prior to Central Arizona, played at Marist High School in Eugene, Ore.
- Has made six appearances in the 2021 season, starting four.
- 0-4 record with a 6.00 ERA and seven strikeouts in 21.0 innings pitched.
- Career-high five strikeouts in last appearance vs. Radford.
- Pitched 9.1 innings in the series against USC Upstate, allowing four earned runs.

- Pitched one season at Central Arizona College, finishing that season with a 23-7 record.
- Had a 3.50 ERA in nearly 200 innings for the Vaqueras.
- Led Marist HS to an Oregon 5A state championship as a senior.
- All-state selection after finishing with the best ERA among 5A pitchers in Oregon at 1.76 and finishing fourth in strikeouts with 76.
- All-conference selection as a freshman at Sheldon HS before transferring.

11

**ANNAH JUNGE****RHP \* 5-7 \* So.**

- Came to CSU via Marquette High School in Ballwin, Mo.
- Has made seven appearances during the 2021 season, starting four.
- 0-0 record with a team-leading 4.70 ERA and 11 strikeouts in 25.1 innings.
- Had a 1.91 ERA across two appearances (one start) in most recent series vs. Radford.
- Pitched a career-high 8.0 innings in the series opener against the Highlanders, striking out three.

- Recorded a season-high three strikeouts on two separate occasions (vs. ECU, vs. Radford).
- 7-4 with a 2.85 ERA and 58 strikeouts during the 2020 season.
- Also had one save in 2020, making 15 appearances and starting nine games.
- Career-high 10 strikeouts on two separate occasions during the 2020 season (vs. Main, vs. North Carolina A&T).
- Career 2.71 ERA in 22 appearances (12 starts) at CSU.

12

**ALYSSA HEINRICH****RHP \* 5-8 \* Sr.**

- Came to CSU via Wando High School in Mount Pleasant, S.C.
- Has made seven appearances during the 2021 season, starting two.
- 2-3 record with a 5.69 ERA and 10 strikeouts in 22.2 innings pitched.
- Credited with each of CSU's two most recent wins, against Radford and Coastal Carolina.
- Also earned a start against the Highlanders, allowing five runs in 4.0 innings with three strikeouts.

- Led the Big South with 15 games finished in 2019.
- Earned a pair of Big South weekly honors in 2018, being named Freshman of the Week on Feb. 12 (2-0, 0.70 ERA, 9 K) and Pitcher of the Week on April 2 (1-0, 1 SV, 0.00 ERA, 5 K).
- Career-best 3.54 ERA in eight appearances (five starts) in 2020.
- Career 4.26 ERA in 63 appearances (23 starts) at CSU.

32

**NOELLE CHANEY****RHP \* 5-7 \* Fr.**

- Came to CSU via Batavia High School in Batavia, Ill.
- Has not made an appearance this season.

## &gt;&gt;2021 CHARLESTON SOUTHERN SOFTBALL PITCHING STAFF NOTES

**PROBABLE PITCHERS****RHP #11 Annah Junge - Sophomore****2021 Stats: G-GS: 7-4 W-L: 0-0 ERA: 4.70 IP: 25.1 BB: 11 K: 11**

Last Start: March 24, 2021 - W, 8-7 vs. Coastal Carolina

Stats: No decision, 4.0 innings pitched, six hits, four runs, four earned runs, no walks, one strikeout

Annah Junge started the first game of Wednesday's doubleheader against Coastal Carolina, allowing four earned runs in 4.0 innings of work. Junge has received a no-decision in all seven appearances she has made this season, with at least one strikeout in every appearance.

**LHP #8 Baylee Eaton - Senior****2021 Stats: G-GS: 6-4 W-L: 0-4 ERA: 6.00 IP: 21.0 BB: 7 K: 7**

Last Start: March 24, 2021 - L, 7-6 vs. Coastal Carolina

Stats: Loss, 6.0 innings pitched, seven hits, five runs, three earned runs, two walks, five strikeouts

Baylee Eaton started the second game of the Bucs' doubleheader against Coastal Carolina, going 6.0 innings and allowing six earned runs. Eaton struck out a pair in the game, but was tagged with the loss. She has started at least one game in all three weekends CSU has played in, in addition to the start in game two of Wednesday's doubleheader.

**RHP #12 Alyssa Heinrich - Senior****2021 Stats: G-GS: 7-2 W-L: 2-3 ERA: 5.87 IP: 22.2 BB: 8 K: 10**

Last Start: March 20, 2021 - L, 5-3 vs. Radford

Stats: Loss, 4.0 innings pitched, nine hits, seven runs, six earned runs, one walk, two strikeouts

Alyssa Heinrich is coming off her shortest start of the season, pitching 4.0 innings with three strikeouts in the series finale against Radford. Heinrich was tagged with the loss after allowing five runs, all earned, with four of those five runs coming in the first inning. Heinrich earned each of CSU's two most recent wins, against Radford and Coastal Carolina.

**RHP #4 Holly Clark - Redshirt Senior****2021 Stats: G-GS: 6-2 W-L: 1-2 ERA: 5.16 IP: 19.0 BB: 6 K: 14**

Last Start: March 12, 2021 - L, 5-0 vs. USC Upstate

Stats: Win, 2.2 innings pitched, four hits, three runs, three earned runs, one walk, one strikeout

Holly Clark's last start came in the middle game of the Bucs' three-game series against USC Upstate. Clark made one appearance last weekend against Radford, allowing nine runs (four earned) in 2.2 innings against the Highlanders. She earned CSU's first win of the season with a complete game against Cleveland State, allowing one run with six strikeouts.

**PITCHERS HI/LO****STARTERS LOG**

	TEAM W-L	5.0+ IP	CG/SHO
Annah Junge	2-2	1	0/0
Baylee Eaton	0-4	1	0/0
Alyssa Heinrich	0-2	1	0/0
Holly Clark	1-1	1	1/0

**INDIVIDUAL PITCHERS GAME BESTS  
MOST INNINGS PITCHED, STARTER**

8.0 by Annah Junge vs. Radford, 3/19/2021

7.0 by Holly Clark vs. Cleveland State, 2/20/2021

7.0 by Baylee Eaton vs. USC Upstate, 3/13/2021

**MOST INNINGS PITCHED, RELIEVER**

4.0 by Alyssa Heinrich vs. Cleveland State, 2/20/2021

3.0 by Holly Clark vs. Eastern Kentucky, 3/12/2021

3.0 by Alyssa Heinrich vs. Radford, 3/19/2021

3.0 by Annah Junge vs. Radford, 3/20/2021

3.0 by Alyssa Heinrich vs. Coastal Carolina, 3/24/2021

**MOST WALKS**

5 by Annah Junge vs. Eastern Kentucky, 2/21/2021

5 by Annah Junge vs. Radford, 3/19/2021

4 by Alyssa Heinrich vs. Cleveland State, 2/20/2021

4 by Alyssa Heinrich vs. Radford, 3/20/2021

**MOST STRIKEOUTS**

6 by Holly Clark vs. Cleveland State, 2/20/2021

5 by Baylee Eaton vs. Radford, 3/19/2021

3 by Annah Junge vs. Eastern Kentucky, 2/21/2021

3 by Alyssa Heinrich vs. USC Upstate, 3/12/2021

3 by Annah Junge vs. Radford, 3/19/2021

3 by Alyssa Heinrich vs. Radford, 3/20/2021

**FEWEST HITS, CG**

8 by Holly Clark vs. Cleveland State, 2/20/2021

**FEWEST WALKS, CG**

2 by Holly Clark vs. Cleveland State, 2/20/2021

**MOST STRIKEOUTS, CG**

6 by Holly Clark vs. Cleveland State, 2/20/2021

**PITCHING BREAKDOWN**

	W-L-S	ERA	IP	H	R	ER	BB	SO
Starting	1-7	5.97	58.2	76	55	50	24	28
Relief	2-4	4.61	27.1	33	26	18	8	14



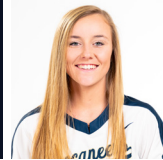
## &gt;&gt;2021 CHARLESTON SOUTHERN SOFTBALL HITTER NOTES

00

**KATELYN NORRIS****OF \* 5-2 \* So.**

- Came to CSU via The Kings Academy in Knoxville, Tenn.
- Started all 12 games this season, primarily playing left field.
- Hitting .231 with nine hits and 10 runs scored.
- Second on the team with three stolen bases.
- First two RBI's of 2021 came in first game vs. Coastal Carolina.

2

**ASHLEY MECKLEY****INF \* 5-6 \* Jr.**

- Came to CSU via Coker University in Hartsville, S.C.
- Also previously played at Hanahan High School in Hanahan, S.C.
- Has started all 12 games this season, playing primarily at shortstop.
- Leads CSU with four homers and eight runs batted in
- Eight extra-base hits and eight runs scored.

3

**MEGHAN GAGLIANO****OF \* 5-6 \* Sr.**

- Came to CSU via Wheaton Academy in South Elgin, Ill.
- Has appeared in 11 games, starting three.
- Hitting .143 with one hit and one stolen base.
- Scored her first run of the season in last game against Radford.

10

**SARAH BROWN****INF \* 5-7 \* Sr.**

- Came to CSU via Sheldon High School in Sacramento, Calif.
- Has started all 12 games this season, playing third base, center field and right field.
- .282 average with three multi-hit games and eight runs batted in.
- Two RBI's in series finale vs. Radford.
- First homer of the season, a three-run shot, came in last game.

15

**MADISON KOGER****INF \* 5-7 \* Sr.**

- Came to CSU via Fairfield High School in Fairfield, Ohio.
- Has started each of the last eight games.
- Hitting .375 with three RBI's.
- Two multi-hit games in three-game series vs. Radford.
- Four multi-hit games this season.
- First homer of the season came in first game vs. Coastal.

16

**DOMINIQUE MANNERINO****INF \* 5-5 \* Sr.**

- Came to CSU via Hillsborough CC in Plant City, Fla.
- Previously attended Lockport Township High School in Homer Glen, Ill.
- Has started all 12 games this season, playing first base and right field.
- .194 average with two doubles and four runs batted in.

21

**EMILY CROSBY****INF \* 5-4 \* So.**

- Came to CSU via Battery Creek High School in Beaufort, S.C.
- Started each of the first four games this season.
- Hitting .538 with two homers, a triple and three runs batted in.
- Homered in both games of doubleheader vs. ECU.
- Hit CSU's lone triple of the season against Cleveland State.

25

**ASHLYN CRIBB****C \* 5-5 \* So.**

- Came to CSU via Hanahan High School in Hanahan, S.C.
- Has started all 12 games and has caught every inning behind the plate.
- .206 average with three doubles and three runs batted in.
- Two hits in series opener vs. Radford.
- Two-run double in first game of DH vs. Coastal Carolina.

27

**RHIANA HUBBARD****OF \* 5-7 \* Jr.**

- Came to CSU via Fairfield High School in Fairfield, Ohio
- Saw her first action of the season against Radford, starting all three games in centerfield.
- .222 average with one sacrifice hit.
- Hits in each of the first two games in the Radford series.

33

**BROOKLYNN BREWINGTON****INF \* 5-6 \* Jr.**

- Came to CSU via Andrews High School in Andrews, S.C.
- Has started all 12 games this season, playing at second base and as the DP.
- .410 average, has at least one hit in 11 of the first 12 games.
- Walk-off RBI single in series opener vs. Radford.
- Four hits in doubleheader vs. Coastal Carolina (2 in each game).

41

**ERIKA COOPER****INF \* 5-9 \* Jr.**

- Came to CSU via Rockwood Summit High School in Fenton, Mo.
- Has made 11 appearances this season, starting seven games.
- .167 average with three hits this season.
- Solo homer in first game vs. Coastal, proved to be game-winner.
- Also hit a double against USC Upstate.

54

**SEAENNA SATCHER****INF \* 5-5 \* Jr.**

- Came to CSU via Newbury Park High School in Newbury Park, Calif.
- Has started 11 games this season, playing primarily at third base.
- .258 average with one homer and four runs batted in.
- First homer of the season was a two-run shot against USC Upstate.
- Doubled in last game vs. Coastal Carolina.

99

**TAYLOR GLEASON****OF \* 5-8 \* So.**

- Came to CSU via May River High School in Bluffton, S.C.
- Has appeared in two games this season.
- Two at-bats this season, one each against USC Upstate and Radford.

>>2021 CHARLESTON SOUTHERN SOFTBALL HITTER NOTES

PROJECTED LINEUP

C #25 Ashlyn Cribb - So.

GP-GS: 12-12    AVG: .206    HR: 0    RBI: 3

Ashlyn Cribb has started all 12 games this season for the Bucs and has caught every inning behind the plate for CSU so far. Cribb had a two-hit game in the series opener against Radford and added a two-run double in the first game against Coastal Carolina.

1B #41 Erika Cooper - Jr.

GP-GS: 11-7    AVG: .167    HR: 1    RBI: 1

Erika Cooper has appeared in nine games this season, starting five. Cooper has four hits on the season, including a double against USC Upstate. She hit the go-ahead homer in the first game against Coastal Carolina in the bottom of the fifth inning.

2B #33 Brooklynn Brewington - Jr.

GP-GS: 12-12    AVG: .410    HR: 0    RBI: 3

Brooklynn Brewington has started all 10 games this season and has seen time at both second base and as the designated player. Brewington has at least one hit in 11 of the first 12 games this season and delivered a walk-off RBI single in the series opener against Radford. She leads the team with a .410 batting average and four stolen bases.

3B #54 SeaEnna Satcher - Jr.

GP-GS: 11-11    AVG: .258    HR: 1    RBI: 4

SeaEnna Satcher has started all 11 games she has appeared in, playing primarily at third base. Satcher had four hits, including a two-run homer, in CSU's conference-opening series against USC Upstate and is tied for third on the team with four RBI's. She has hits in six of her last eight games.

SS #2 Ashley Meckley - Jr.

GP-GS: 12-12    AVG: .333    HR: 4    RBI: 8

Ashley Meckley has started all 12 games at shortstop for CSU after transferring into the program from Coker. Meckley leads the team with four homers, including one in Wednesday's doubleheader against Coastal Carolina, and also has a team-leading eight runs batted in and 29 total bases.

LF #00 Katelyn Norris - So.

GP-GS: 12-12    AVG: .231    HR: 0    RBI: 2

Katelyn Norris has started all 12 games this season and has primarily played in left field during her time at CSU. Norris has at least one hit in four of the last five games, including four hits in the most recent three-game series against Radford.

CF #10 Sarah Brown - Sr.

GP-GS: 12-12    AVG: .282    HR: 1    RBI: 8

Sarah Brown has been a mainstay in the lineup, starting all 10 games while spending time at third base, center field and right field this season. Brown hit her first home run of the season Wednesday against Coastal Carolina and is tied for the team lead with eight runs batted in.

RF #16 Dominique Mannerino - Sr.

GP-GS: 12-12    AVG: .194    HR: 0    RBI: 4

Dominique Mannerino has started all 12 games for CSU and has seen time at both first base and right field. Mannerino had a season-best two RBI's in the series finale against USC Upstate and has hits in five of the last seven games.

DH #15 Madison Koger - Sr.

GP-GS: 8-8    AVG: .375    HR: 1    RBI: 3

Madison Koger has started each of the last eight games for the Bucs and has four multi-hit games during that span. Koger recorded her first RBI of the season in the series opener against Radford and had four hits in three games against the Highlanders. She hit her first home run of the season to lead off the first inning against Coastal Carolina.

PLAYER NOTES

#3 Meghan Gagliano - OF - Sr.

GP-GS: 11-3    AVG: .143    HR: 0    RBI: 0

Meghan Gagliano has appeared in 11 games this season and started three. Gagliano has been used primarily as a pinch runner in 2021 and scored her first run of the season in the last game against Radford.

#21 Emily Crosby - INF - So.

GP-GS: 4-4    AVG: .538    HR: 2    RBI: 3

Emily Crosby started each of the first four games of this season for CSU. Crosby had seven hits, including a triple and two homers, and three RBI's in those four Opening Weekend games.

#27 Rhiana Hubbard - OF - Jr.

GP-GS: 3-3    AVG: .222    HR: 0    RBI: 0

Rhiana Hubbard started all three games of the Radford series in center field. She had hits in each of the first two games.

#99 Taylor Gleason - OF - Sr.

GP-GS: 2-0    AVG: .000    HR: 0    RBI: 0

Taylor Gleason has appeared in two games this season. Gleason has a pair of at-bats, one each against USC Upstate and Radford.

HITTERS HI/LO

INDIVIDUAL BATTERS GAME BESTS

MOST AT-BATS

6 by Katelyn Norris vs. Radford, 3/19/2021

MOST HITS

3 by Emily Crosby vs. Eastern Kentucky, 2/21/2021  
3 by Ashley Meckley vs. Coastal Carolina, 3/24/2021

MOST RUNS

3 by Katelyn Norris vs. Radford, 3/19/2021

MOST RBI

3 by Ashley Meckley vs. Eastern Kentucky, 3/19/2021

MOST DOUBLES

2 by Brooklynn Brewington vs. Coastal Carolina, 3/24/2021  
1 by Ashlyn Cribb vs. Cleveland State, 2/20/2021  
1 by Ashley Meckley vs. Eastern Kentucky, 2/21/2021  
1 by Dominique Mannerino vs. Eastern Kentucky, 2/21/2021  
1 by Ashley Meckley vs. Eastern Kentucky, 2/21/2021  
1 by Sarah Brown vs. USC Upstate, 3/12/2021  
1 by Ashlynn Cribb vs. USC Upstate, 3/12/2021  
1 by Erika Cooper vs. USC Upstate, 3/12/2021  
1 by Dominique Mannerino vs. USC Upstate, 3/13/2021  
1 by Ashley Meckley vs. USC Upstate, 3/13/2021  
1 by Sarah Brown vs. Radford, 3/19/2021  
1 by Ashlyn Cribb vs. Coastal Carolina, 3/24/2021  
1 by Ashley Meckley vs. Coastal Carolina, 3/24/2021  
1 by SeaEnna Satcher vs. Coastal Carolina, 3/24/2021

MOST TRIPLES

1 by Emily Crosby vs. Cleveland State, 2/20/2021

MOST HOME RUNS

1 by Ashley Meckley vs. Cleveland State, 2/20/2021  
1 by Emily Crosby vs. Eastern Kentucky, 2/21/2021  
1 by Ashley Meckley vs. Eastern Kentucky, 2/21/2021  
1 by Emily Crosby vs. Eastern Kentucky, 2/21/2021  
1 by SeaEnna Satcher vs. USC Upstate, 3/13/2021  
1 by Ashley Meckley vs. Radford, 3/20/2021  
1 by Erika Cooper vs. Coastal Carolina, 3/24/2021  
1 by Madison Koger vs. Coastal Carolina, 3/24/2021  
1 by Sarah Brown vs. Coastal Carolina, 3/24/2021  
1 by Ashley Meckley vs. Coastal Carolina, 3/24/2021

## &gt;&gt;2021 CHARLESTON SOUTHERN SOFTBALL SEASON OVERALL STATISTICS

Record: 3-9 Home: 3-9 Away: 0-0 Big South: 1-5

Player	avg	gp-gs	ab	r	h	2b	3b	hr	rbi	tb	slg%	bb	hp	so	gdp	ob%	sf	sh	sb-att	po	a	e	fld%
21 CROSBY, Emily	.538	4-4	13	4	7	0	1	2	3	15	1.154	0	0	4	0	.538	0	0	0-0	0	0	0	.000
33 BREWINGTON, Brookly	.410	12-12	39	6	16	2	0	0	3	18	.462	4	0	4	0	.465	0	2	4-4	34	22	5	.918
15 KOGER, Madison	.375	8-8	24	1	9	0	0	1	3	12	.500	4	0	2	1	.464	0	1	0-0	3	3	0	1.000
2 MECKLEY, Ashley	.333	12-12	39	8	13	4	0	4	8	29	.744	8	0	7	0	.447	0	0	2-2	24	25	3	.942
10 BROWN, Sarah	.282	12-12	39	6	11	2	0	1	8	16	.410	2	0	4	1	.310	1	2	3-3	22	3	1	.962
54 SATCHER, SeaEnna	.258	11-11	31	2	8	1	0	1	4	12	.387	0	3	2	2	.324	0	1	0-0	8	16	2	.923
0 NORRIS, Katelyn	.231	12-12	39	10	9	0	0	0	2	9	.231	5	0	7	0	.318	0	1	3-3	22	1	0	1.000
25 CRIBB, Ashlyn	.206	12-12	34	3	7	3	0	0	3	10	.294	1	2	7	0	.263	1	1	0-0	47	6	1	.981
16 MANNERINO, Dominiqu	.194	12-12	36	3	7	2	0	0	4	9	.250	3	0	6	0	.250	1	0	0-0	32	1	1	.971
41 COOPER, Erica	.167	11-7	24	2	4	1	0	1	1	8	.333	0	0	4	0	.167	0	2	0-0	56	3	0	1.000
-----																							
27 HUBBARD, Rhiana	.222	3-3	9	0	2	0	0	0	0	2	.222	0	0	1	0	.222	0	1	0-0	8	0	0	1.000
3 GAGLIANO, Meghan	.143	11-3	7	1	1	0	0	0	0	1	.143	0	0	1	0	.143	0	1	1-1	1	1	0	1.000
99 GLEASON, Taylor	.000	2-0	2	0	0	0	0	0	0	0	.000	0	0	0	0	.000	0	0	0-0	0	0	0	.000
1 CARVER, Heather	.000	3-0	2	0	0	0	0	0	0	0	.000	0	0	0	0	.000	0	0	0-0	0	0	0	.000
11 JUNG, Annah	.000	1-0	1	0	0	0	0	0	0	0	.000	0	0	0	0	.000	0	0	0-0	5	3	0	1.000
Totals	.277	12	339	46	94	15	1	10	39	141	.416	27	5	49	4	.337	3	12	13-13	264	100	14	.963
Opponents	.295	12	369	81	109	24	2	15	73	182	.493	32	8	42	0	.363	1	12	23-25	257	105	19	.950

LOB - Team (84), Opp (78). DPs turned - Team (2), Opp (5).

## (All games Sorted by Earned run avg)

Player	era	w-l	app	gs	cg	sho	sv	ip	h	r	er	bb	so	2b	3b	hr	b/avg	wp	hp	bks	sfa	sha
11 JUNG, Annah	4.70	0-0	7	4	0	0/0	0	25.1	25	18	17	11	11	7	0	3	.255	2	0	0	1	4
4 CLARK, Holly	5.16	1-2	6	2	1	0/0	0	19.0	29	19	14	6	14	4	0	4	.345	2	1	0	0	2
12 HEINRICH, Alyssa	5.87	2-3	7	2	0	0/0	0	22.2	27	22	19	8	10	6	1	6	.293	4	4	0	0	4
8 EATON, Baylee	6.00	0-4	6	4	0	0/0	0	21.0	28	22	18	7	7	7	1	2	.295	4	3	0	0	2
Totals	5.41	3-9	12	12	1	0/0	0	88.0	109	81	68	32	42	24	2	15	.295	12	8	0	1	12
Opponents	2.78	9-3	12	12	6	1/0	1	85.2	94	46	34	27	49	15	1	10	.277	6	5	0	3	12

PB - Team (0), Opp (2). SBA/ATT - CRIBB, A (23-25), CLARK, H (8-8), EATON, B (6-7), JUNG, A (5-6), HEINRICH, A (4-4).

## &gt;&gt;2021 CHARLESTON SOUTHERN SOFTBALL CONFERENCE-ONLY STATISTICS

Record: 1-5 Home: 1-5 Away: 0-0 Big South: 1-5

Player	avg	gp-gs	ab	r	h	2b	3b	hr	rbi	tb	slg%	bb	hp	so	gdp	ob%	sf	sh	sb-att	po	a	e	fld%
15 KOGER, Madison	.389	6-6	18	0	7	0	0	0	1	7	.389	2	0	1	1	.450	0	1	0-0	3	3	0	1.000
33 BREWINGTON, Brookly	.368	6-6	19	3	7	0	0	0	2	7	.368	1	0	2	0	.400	0	2	1-1	14	14	5	.848
54 SATCHER, SeaEnna	.308	5-5	13	1	4	0	0	1	3	7	.538	0	1	1	2	.357	0	1	0-0	2	6	1	.889
10 BROWN, Sarah	.263	6-6	19	3	5	2	0	0	4	7	.368	2	0	2	1	.318	1	2	2-2	10	2	0	1.000
0 NORRIS, Katelyn	.261	6-6	23	5	6	0	0	0	0	6	.261	0	0	4	0	.261	0	1	1-1	11	0	0	1.000
25 CRIBB, Ashlyn	.250	6-6	16	1	4	1	0	0	0	5	.313	1	1	2	0	.333	0	1	0-0	23	5	1	.966
27 HUBBARD, Rhiana	.222	3-3	9	0	2	0	0	0	0	2	.222	0	0	1	0	.222	0	1	0-0	8	0	0	1.000
16 MANNERINO, Dominiqu	.188	6-6	16	2	3	1	0	0	3	4	.250	3	0	2	0	.300	1	0	0-0	17	1	0	1.000
41 COOPER, Erica	.182	5-4	11	0	2	1	0	0	0	3	.273	0	0	1	0	.182	0	1	0-0	32	2	0	1.000
2 MECKLEY, Ashley	.167	6-6	18	3	3	1	0	1	1	7	.389	6	0	4	0	.375	0	0	1-1	12	11	2	.920
-----																							
99 GLEASON, Taylor	.000	2-0	2	0	0	0	0	0	0	0	.000	0	0	0	0	.000	0	0	0-0	0	0	0	.000
11 JUNGE, Annah	.000	1-0	1	0	0	0	0	0	0	0	.000	0	0	0	0	.000	0	0	0-0	1	1	0	1.000
3 GAGLIANO, Meghan	.000	6-0	1	1	0	0	0	0	0	0	.000	0	0	1	0	.000	0	0	1-1	0	0	0	.000
Totals	.259	6	166	19	43	6	0	2	14	55	.331	15	2	21	4	.324	2	10	6-6	135	52	10	.949
Opponents	.281	6	192	43	54	12	2	7	37	91	.474	14	4	21	0	.343	0	6	15-16	134	54	11	.945

LOB - Team (42), Opp (38). DPs turned - Team (1), Opp (5).

## (Big South games only Sorted by Earned run avg)

Player	era	w-l	app	gs	cg	sho	sv	ip	h	r	er	bb	so	2b	3b	hr	b/avg	wp	hp	bk	sfa	sha
11 JUNGE, Annah	2.62	0-0	4	1	0	0/0	0	13.1	8	6	5	5	6	1	0	1	.170	1	0	0	0	3
8 EATON, Baylee	3.87	0-2	3	2	0	0/0	0	12.2	15	10	7	3	5	5	1	0	.268	3	1	0	0	2
12 HEINRICH, Alyssa	7.17	1-2	4	2	0	0/0	0	13.2	18	15	14	4	7	4	1	3	.305	4	3	0	0	1
-----																						
4 CLARK, Holly	9.19	0-1	2	1	0	0/0	0	5.1	13	12	7	2	3	2	0	3	.433	1	0	0	0	0
Totals	5.13	1-5	6	6	0	0/0	0	45.0	54	43	33	14	21	12	2	7	.281	9	4	0	0	6
Opponents	1.88	5-1	6	6	4	1/0	1	44.2	43	19	12	15	21	6	0	2	.259	2	2	0	2	10

PB - Team (0), Opp (1). SBA/ATT - CRIBB, A (15-16), EATON, B (4-5), CLARK, H (5-5), HEINRICH, A (4-4), JUNGE, A (2-2).



## &gt;&gt;2021 CHARLESTON SOUTHERN SOFTBALL GAME RESULTS

Date	Opponent		Score	Inns	Overall	Big South	Pitcher of record	Attend	Time
Feb 20, 2021	CLEVELAND STATE-1	L	3-4	(8)	0-1-0	0-0-0	HEINRICH, A (L 0-1)	60	2:01
Feb 20, 2021	CLEVELAND STATE-2	W	2-1	7	1-1-0	0-0-0	CLARK, H (W 1-0)	60	1:56
Feb 21, 2021	EASTERN KENTUCKY-1	L	3-8	7	1-2-0	0-0-0	EATON, B (L 0-1)	60	1:01
Feb 21, 2021	EASTERN KENTUCKY-2	L	5-11	7	1-3-0	0-0-0	CLARK, H (L)	60	2:33
* Mar 12, 2021	USC UPSTATE-1	L	6-8	7	1-4-0	0-1-0	HEINRICH, A (L 0-2)	71	1 HR
* Mar 12, 2021	USC UPSTATE-2	L	0-5	7	1-5-0	0-2-0	CLARK, H (L 1-2)	48	2 HR
* Mar 13, 2021	USC UPSTATE	L	4-7	7	1-6-0	0-3-0	EATON, B (L)	30	2:06
* Mar 19, 2021	RADFORD	W	5-4	(11)	2-6-0	1-3-0	HEINRICH, A (W 1-2)	60	2:39
* Mar 20, 2021	RADFORD	L	1-14	6	2-7-0	1-4-0	EATON, B (L 0-3)	60	2:00
* Mar 20, 2021	RADFORD	L	3-5	7	2-8-0	1-5-0	HEINRICH, A (L 1-3)	60	2:04
Mar 24, 2021	COASTAL CAROLINA	W	8-7	7	3-8-0	1-5-0	HEINRICH, A (W 2-3)	60	2:06
Mar 24, 2021	COASTAL CAROLINA	L	6-7	7	3-9-0	1-5-0	EATON, B (L 0-4)	60	2:17

() extra inning game

## &gt;&gt;2021 CHARLESTON SOUTHERN SOFTBALL GAMES SUMMARY

Score by innings	1	2	3	4	5	6	7	8	9	EX	Total
Charleston Southern	10	12	9	1	6	3	3	1	0	1	46
Opponents	11	8	6	15	14	12	13	2	0	0	81

**Record when ...**

Overall	3-9	After 4 leading	2-3
Conference	1-5	..... trailing	1-5
Non-Conference	2-4	..... tied	0-1
Home games	3-9	After 5 leading	2-1
Away games	0-0	..... trailing	0-6
Neutral site	0-0	..... tied	1-2
Day games	2-8	After 6 leading	2-1
Night games	1-1	..... trailing	0-6
vs Left starter	0-2	..... tied	1-1
vs Right starter	3-7		
1-Run games	3-2	Hit 0 home runs	1-4
2-Run games	0-2	... 1 home run	1-3
5+Run games	0-4	... 2+ home runs	1-2
Extra innings	1-1		
Shutouts	0-1	Opponent 0 home runs	1-2
		..... 1 home run	1-3
Scoring 0-2 runs	1-2	..... 2+ HRs	1-4
..... 3-5 runs	1-5		
..... 6-9 runs	1-2	Made 0 errors	1-4
..... 10+ runs	0-0	.... 1 error	2-3
		.... 2+ errors	0-2
Opponent 0-2 runs	1-0		
..... 3-5 runs	1-3	Opp. made 0 errors	1-2
..... 6-9 runs	1-4	..... 1 error	0-4
..... 10+ runs	0-2	..... 2+ errors	2-3
Scored in 1st inning	2-3	Out-hit opponent	2-2
Opp. scored in 1st	1-5	Out-hit by opponent	1-5
Scores first	2-2	Hits are tied	0-2
Opp. scores first	1-7		

**Record when team scores:**

Runs	0	1	2	3	4	5	6	7	8	9	10+
W-L	0-1	0-1	1-0	0-3	0-1	1-1	0-2	0-0	1-0	0-0	0-0

**Record when opponent scores:**

Runs	0	1	2	3	4	5	6	7	8	9	10+
W-L	0-0	1-0	0-0	0-0	1-1	0-2	0-0	1-2	0-2	0-0	0-2

**Record when leading after:**

Inn.	1	2	3	4	5	6
W-L	1-2	3-3	2-4	2-3	2-1	2-1

**Record when trailing after:**

Inn.	1	2	3	4	5	6
W-L	0-4	0-4	1-4	1-5	0-6	0-6

**Record when tied after:**

Inn.	1	2	3	4	5	6
W-L	2-3	0-2	0-1	0-1	1-2	1-1

Current losing streak: 1

Longest winning streak: 1

Longest losing streak: 5

Home attendance : 689 ( 12 dates avg = 57 )

Away attendance : 0 ( 0 dates avg = 0 )

Total attendance: 689 ( 12 dates avg = 57 )

## &gt;&gt;2021 CHARLESTON SOUTHERN SOFTBALL BATTING LEADERS

Hitting minimums - 1 Games 1.0 AB/Game 1.0 TPA/Game

Pitching minimums - 1 Games 1.0 IP/Game

**Batting avg**

1. 21 CROSBY, Emily	.538
2. 33 BREWINGTON, Brooklyn	.410
3. 15 KOGER, Madison	.375
4. 2 MECKLEY, Ashley	.333
5. 10 BROWN, Sarah	.282

**Slugging pct**

1. 21 CROSBY, Emily	1.154
2. 2 MECKLEY, Ashley	.744
3. 15 KOGER, Madison	.500
4. 33 BREWINGTON, Brooklyn	.462
5. 10 BROWN, Sarah	.410

**On base pct**

1. 21 CROSBY, Emily	.538
2. 33 BREWINGTON, Brooklyn	.465
3. 15 KOGER, Madison	.464
4. 2 MECKLEY, Ashley	.447
5. 54 SATCHER, SeaEnna	.324

**Runs scored**

1. 0 NORRIS, Katelyn	10
2. 2 MECKLEY, Ashley	8
3. 33 BREWINGTON, Brooklyn	6
10 BROWN, Sarah	6
5. 21 CROSBY, Emily	4

**Hits**

1. 33 BREWINGTON, Brooklyn	16
2. 2 MECKLEY, Ashley	13
3. 10 BROWN, Sarah	11
4. 0 NORRIS, Katelyn	9
15 KOGER, Madison	9

**Runs batted in**

1. 2 MECKLEY, Ashley	8
10 BROWN, Sarah	8
3. 16 MANNERINO, Dominique	4
54 SATCHER, SeaEnna	4
5. 4 tied at.....	3

**Doubles**

1. 2 MECKLEY, Ashley	4
2. 25 CRIBB, Ashlyn	3
3. 16 MANNERINO, Dominique	2
10 BROWN, Sarah	2
33 BREWINGTON, Brooklyn	2

**Triples**

1. 21 CROSBY, Emily	1
---------------------	---

**Home runs**

1. 2 MECKLEY, Ashley	4
2. 21 CROSBY, Emily	2
3. 4 tied at.....	1

**Total bases**

1. 2 MECKLEY, Ashley	29
2. 33 BREWINGTON, Brooklyn	18
3. 10 BROWN, Sarah	16
4. 21 CROSBY, Emily	15
5. 2 tied at.....	12

**Walks**

1. 2 MECKLEY, Ashley	8
2. 0 NORRIS, Katelyn	5
3. 15 KOGER, Madison	4
33 BREWINGTON, Brooklyn	4
5. 16 MANNERINO, Dominique	3

**Hit by pitch**

1. 54 SATCHER, SeaEnna	3
2. 25 CRIBB, Ashlyn	2

**Sac bunts**

1. 10 BROWN, Sarah	2
33 BREWINGTON, Brooklyn	2
41 COOPER, Erica	2
4. 6 tied at.....	1

**Sac flies**

1. 16 MANNERINO, Dominique	1
25 CRIBB, Ashlyn	1
10 BROWN, Sarah	1

**Stolen bases**

1. 33 BREWINGTON, Brooklyn	4
2. 10 BROWN, Sarah	3
0 NORRIS, Katelyn	3
4. 2 MECKLEY, Ashley	2
5. 3 GAGLIANO, Meghan	1

**Caught stealing****Steal attempts**

1. 33 BREWINGTON, Brooklyn	4
2. 0 NORRIS, Katelyn	3
10 BROWN, Sarah	3
4. 2 MECKLEY, Ashley	2
5. 3 GAGLIANO, Meghan	1

**Stolen base pct**

1. 33 BREWINGTON, Brooklyn	1.000
0 NORRIS, Katelyn	1.000
10 BROWN, Sarah	1.000
2 MECKLEY, Ashley	1.000

**Strikeouts**

1. 2 MECKLEY, Ashley	7
25 CRIBB, Ashlyn	7
0 NORRIS, Katelyn	7
4. 16 MANNERINO, Dominique	6
5. 4 tied at.....	4

**Grounded into DP**

1. 54 SATCHER, SeaEnna	2
2. 10 BROWN, Sarah	1
15 KOGER, Madison	1

**Total plate appearances**

1. 2 MECKLEY, Ashley	47
2. 0 NORRIS, Katelyn	45
33 BREWINGTON, Brooklyn	45
4. 10 BROWN, Sarah	44
5. 16 MANNERINO, Dominique	40

**At bats**

1. 2 MECKLEY, Ashley	39
0 NORRIS, Katelyn	39
33 BREWINGTON, Brooklyn	39
10 BROWN, Sarah	39
5. 16 MANNERINO, Dominique	36

**Games played**

1. 6 tied at.....	12
-------------------	----

**Game starts**

1. 6 tied at.....	12
-------------------	----

**Games as sub**

1. 3 GAGLIANO, Meghan	8
2. 41 COOPER, Erica	4
3. 1 CARVER, Heather	3
4. 99 GLEASON, Taylor	2
5. 11 JUNG, Annah	1

## &gt;&gt;2021 CHARLESTON SOUTHERN SOFTBALL PITCHING LEADERS

Hitting minimums - 1 Games 1.0 AB/Game 1.0 TPA/Game  
Pitching minimums - 1 Games 1.0 IP/Game

<b>Earned run avg</b>		<b>Opposing bat avg</b>		<b>Won-loss pct</b>	
1. 11 JUNGE, Annah	4.70	1. 11 JUNGE, Annah	.255	1. 12 HEINRICH, Alyssa	.400
2. 4 CLARK, Holly	5.16	2. 12 HEINRICH, Alyssa	.293	2. 4 CLARK, Holly	.333
3. 12 HEINRICH, Alyssa	5.87	3. 8 EATON, Baylee	.295	3. 8 EATON, Baylee	.000
4. 8 EATON, Baylee	6.00	4. 4 CLARK, Holly	.345	4. 11 JUNGE, Annah	.000
<b>Wins</b>		<b>Losses</b>		<b>Saves</b>	
1. 12 HEINRICH, Alyssa	2	1. 8 EATON, Baylee	4		
2. 4 CLARK, Holly	1	2. 12 HEINRICH, Alyssa	3		
		3. 4 CLARK, Holly	2		
<b>Innings pitched</b>		<b>Batters struck out</b>		<b>Appearances</b>	
1. 11 JUNGE, Annah	25.1	1. 4 CLARK, Holly	14	1. 12 HEINRICH, Alyssa	7
2. 12 HEINRICH, Alyssa	22.2	2. 11 JUNGE, Annah	11	11 JUNGE, Annah	7
3. 8 EATON, Baylee	21.0	3. 12 HEINRICH, Alyssa	10	3. 8 EATON, Baylee	6
4. 4 CLARK, Holly	19.0	4. 8 EATON, Baylee	7	4 CLARK, Holly	6
<b>Games started</b>		<b>Games finished</b>		<b>Games in relief</b>	
1. 8 EATON, Baylee	4	1. 12 HEINRICH, Alyssa	4	1. 12 HEINRICH, Alyssa	5
11 JUNGE, Annah	4	2. 4 CLARK, Holly	3	2. 4 CLARK, Holly	4
3. 4 CLARK, Holly	2	3. 11 JUNGE, Annah	2	3. 11 JUNGE, Annah	3
12 HEINRICH, Alyssa	2	8 EATON, Baylee	2	4. 8 EATON, Baylee	2
<b>Wild pitches</b>		<b>Balks</b>		<b>Hit batters</b>	
1. 12 HEINRICH, Alyssa	4			1. 12 HEINRICH, Alyssa	4
8 EATON, Baylee	4			2. 8 EATON, Baylee	3
3. 11 JUNGE, Annah	2			3. 4 CLARK, Holly	1
4 CLARK, Holly	2				
<b>Intentional BB allowed</b>		<b>Runners picked off</b>		<b>Batters SO out looking</b>	
				1. 11 JUNGE, Annah	3
				12 HEINRICH, Alyssa	3
				3. 4 CLARK, Holly	2
				8 EATON, Baylee	2
<b>Sac bunts allowed</b>		<b>Sac flies allowed</b>		<b>Hits allowed</b>	
1. 11 JUNGE, Annah	4	1. 11 JUNGE, Annah	1	1. 11 JUNGE, Annah	25
12 HEINRICH, Alyssa	4			2. 12 HEINRICH, Alyssa	27
3. 4 CLARK, Holly	2			3. 8 EATON, Baylee	28
8 EATON, Baylee	2			4. 4 CLARK, Holly	29
<b>Runs allowed</b>		<b>Earned runs allowed</b>		<b>Walks allowed</b>	
1. 11 JUNGE, Annah	18	1. 4 CLARK, Holly	14	1. 4 CLARK, Holly	6
2. 4 CLARK, Holly	19	2. 11 JUNGE, Annah	17	2. 8 EATON, Baylee	7
3. 12 HEINRICH, Alyssa	22	3. 8 EATON, Baylee	18	3. 12 HEINRICH, Alyssa	8
8 EATON, Baylee	22	4. 12 HEINRICH, Alyssa	19	4. 11 JUNGE, Annah	11
<b>Doubles allowed</b>		<b>Triples allowed</b>		<b>Home runs allowed</b>	
1. 4 CLARK, Holly	4	1. 4 CLARK, Holly	0	1. 8 EATON, Baylee	2
2. 12 HEINRICH, Alyssa	6	11 JUNGE, Annah	0	2. 11 JUNGE, Annah	3
3. 8 EATON, Baylee	7	3. 8 EATON, Baylee	1	3. 4 CLARK, Holly	4
11 JUNGE, Annah	7	12 HEINRICH, Alyssa	1	4. 12 HEINRICH, Alyssa	6



## &gt;&gt;2021 CHARLESTON SOUTHERN SOFTBALL GAME-BY-GAME STATISTICS

**Team Game-by-Game for Charleston Southern (as of Mar 25, 2021)**  
**Batting (All games)**

Date	Opponent	ab	r	h	rbi	2b	3b	hr	tb	bb	ibb	sb	cs	hbp	sac	sf	gdp	k	po	a	e	lob	avg
Feb 20	CLEVELAND STATE	32	3	7	2	0	0	0	7	0	0	0	0	1	0	0	0	1	24	9	1	7	.219
Feb 20	CLEVELAND STATE	22	2	4	2	1	1	1	10	3	0	3	0	0	0	0	0	4	21	8	1	5	.204
Feb 21	EASTERN KENTUCKY	30	3	10	3	2	0	1	15	1	0	0	0	1	0	0	0	7	21	11	1	8	.250
Feb 21	EASTERN KENTUCKY	30	5	11	5	1	0	2	18	3	0	2	0	0	1	1	0	6	21	7	0	9	.281
*Mar 12	USC UPSTATE	26	6	8	3	2	0	0	10	4	0	1	0	0	2	1	1	5	21	7	0	6	.286
*Mar 12	USC UPSTATE	28	0	9	0	1	0	0	10	1	0	1	0	0	0	0	1	3	21	10	0	8	.292
*Mar 13	USC UPSTATE	25	4	5	4	2	0	1	10	2	0	0	0	1	2	0	0	5	21	13	3	5	.280
*Mar 19	RADFORD	38	5	11	3	1	0	0	12	7	0	2	0	0	3	1	1	3	33	9	1	12	.281
*Mar 20	RADFORD	22	1	4	1	0	0	1	7	0	0	1	0	0	0	0	1	4	18	5	6	3	.273
*Mar 20	RADFORD	27	3	6	3	0	0	0	6	1	0	1	0	1	3	0	0	1	21	8	0	8	.268
Mar 24	COASTAL CAROLINA	31	8	12	8	1	0	2	19	1	0	1	0	1	0	0	0	3	21	7	0	7	.280
Mar 24	COASTAL CAROLINA	28	6	7	5	4	0	2	17	4	0	1	0	0	1	0	0	7	21	6	1	6	.277
Totals		339	46	94	39	15	1	10	141	27	0	13	0	5	12	3	4	49	264	100	14	84	.277

Charleston Southern Softball  
Team Game-by-Game for Charleston Southern (as of Mar 25, 2021)  
Pitching (All games)

Date	Opponent	ip	h	r	er	bb	so	2b	3b	hr	wp	bk	hbp	dp	ibb	score	w-l	sv	era
Feb 20	CLEVELAND STATE	8.0	9	4	3	5	1	4	0	0	0	0	0	1	0	3-4	0-1	0	2.62
Feb 20	CLEVELAND STATE	7.0	8	1	1	2	6	0	0	0	1	0	0	0	0	2-1	1-1	0	1.87
Feb 21	EASTERN KENTUCKY	7.0	8	8	7	4	4	2	0	2	1	0	0	0	0	3-8	1-2	0	3.50
Feb 21	EASTERN KENTUCKY	7.0	11	11	11	6	5	4	0	1	1	0	1	0	0	5-11	1-3	0	5.31
*Mar 12	USC UPSTATE	7.0	8	8	8	0	4	2	0	2	1	0	1	0	0	6-8	1-4	0	5.83
*Mar 12	USC UPSTATE	7.0	8	5	5	2	2	2	0	1	1	0	0	1	0	0-5	1-5	0	5.70
*Mar 13	USC UPSTATE	7.0	9	7	5	0	0	2	1	0	4	0	3	0	0	4-7	1-6	0	5.60
*Mar 19	RADFORD	11.0	6	4	3	5	4	0	0	1	1	0	0	0	0	5-4	2-6	0	4.93
*Mar 20	RADFORD	6.0	16	14	7	3	7	4	0	2	2	0	0	0	0	1-14	2-7	0	5.22
*Mar 20	RADFORD	7.0	7	5	5	4	4	2	1	1	0	0	0	0	0	3-5	2-8	0	5.20
Mar 24	COASTAL CAROLINA	7.0	9	7	7	0	2	1	0	3	0	0	1	0	0	8-7	3-8	0	5.36
Mar 24	COASTAL CAROLINA	7.0	10	7	6	1	3	1	0	2	0	0	2	0	0	6-7	3-9	0	5.41
Totals		88.0	109	81	68	32	42	24	2	15	12	0	8	2	0	46-81	3-9	0	5.41

## &gt;&gt;2021 CHARLESTON SOUTHERN SOFTBALL LINEUP BY POSITION/BATTING ORDER

**Starting Lineup By Position  
(Team W-L record when starter)****PITCHER:**

11 JUNGE, Annah	4	(2-2)
8 EATON, Baylee	4	(0-4)
4 CLARK, Holly	2	(1-1)
12 HEINRICH, Alyssa	2	(0-2)

**CATCHER:**

25 CRIBB, Ashlyn	12	(3-9)
------------------	----	-------

**FIRST BASE:**

41 COOPER, Erica	7	(1-6)
16 MANNERINO, Dom	5	(2-3)

**SECOND BASE:**

33 BREWINGTON, Br	11	(3-8)
15 KOGER, Madison	1	(0-1)

**THIRD BASE:**

54 SATCHER, SeaEnn	11	(3-8)
10 BROWN, Sarah	1	(0-1)

**SHORTSTOP:**

2 MECKLEY, Ashley	12	(3-9)
-------------------	----	-------

**LEFT FIELD:**

0 NORRIS, Katelyn	12	(3-9)
-------------------	----	-------

**CENTER FIELD:**

10 BROWN, Sarah	9	(2-7)
27 HUBBARD, Rhiana	3	(1-2)

**RIGHT FIELD:**

16 MANNERINO, Dom	7	(1-6)
3 GAGLIANO, Megha	3	(1-2)
10 BROWN, Sarah	2	(1-1)

**DESIGNATED HITTER:**

15 KOGER, Madison	7	(2-5)
21 CROSBY, Emily	4	(1-3)
33 BREWINGTON, Br	1	(0-1)

**Starting Lineup By Lineup Spot  
(Team W-L record when starter)****LEADOFF:**

10 BROWN, Sarah	9	(2-7)
15 KOGER, Madison	2	(1-1)
2 MECKLEY, Ashley	1	(0-1)

**2ND SPOT:**

0 NORRIS, Katelyn	10	(2-8)
33 BREWINGTON, Br	2	(1-1)

**3RD SPOT:**

2 MECKLEY, Ashley	7	(2-5)
21 CROSBY, Emily	2	(0-2)
54 SATCHER, SeaEnn	2	(1-1)
15 KOGER, Madison	1	(0-1)

**CLEANUP:**

33 BREWINGTON, Br	7	(2-5)
25 CRIBB, Ashlyn	2	(1-1)
2 MECKLEY, Ashley	2	(0-2)
10 BROWN, Sarah	1	(0-1)

**5TH SPOT:**

16 MANNERINO, Dom	5	(1-4)
15 KOGER, Madison	3	(1-2)
10 BROWN, Sarah	2	(1-1)
33 BREWINGTON, Br	2	(0-2)

**6TH SPOT:**

16 MANNERINO, Dom	4	(1-3)
25 CRIBB, Ashlyn	2	(0-2)
2 MECKLEY, Ashley	2	(1-1)
15 KOGER, Madison	2	(0-2)
33 BREWINGTON, Br	1	(0-1)
54 SATCHER, SeaEnn	1	(1-0)

**7TH SPOT:**

54 SATCHER, SeaEnn	8	(1-7)
0 NORRIS, Katelyn	2	(1-1)
27 HUBBARD, Rhiana	1	(0-1)
16 MANNERINO, Dom	1	(1-0)

**8TH SPOT:**

41 COOPER, Erica	6	(1-5)
21 CROSBY, Emily	2	(1-1)
27 HUBBARD, Rhiana	2	(1-1)
16 MANNERINO, Dom	2	(0-2)

**9TH SPOT:**

25 CRIBB, Ashlyn	8	(2-6)
3 GAGLIANO, Megha	3	(1-2)
41 COOPER, Erica	1	(0-1)

## >>2021 CHARLESTON SOUTHERN SOFTBALL STARTERS SUMMARY

[illegible]

## &gt;&gt;2021 CHARLESTON SOUTHERN SOFTBALL TEAM GAME HIGHS

## Batting

At bats:	38	-	vs Radford (Mar 19, 2021)
Runs scored:	8	-	vs Coastal Carolina (Mar 24, 2021)
Hits:	12	-	vs Coastal Carolina (Mar 24, 2021)
RBIs:	8	-	vs Coastal Carolina (Mar 24, 2021)
Doubles:	4	-	vs Coastal Carolina (Mar 24, 2021)
Triples:	1	-	vs Cleveland State (Feb 20, 2021)
Home runs:	2	-	vs Eastern Kentucky (Feb 21, 2021)
	2	-	vs Coastal Carolina (Mar 24, 2021)
	2	-	vs Coastal Carolina (Mar 24, 2021)
Total bases:	19	-	vs Coastal Carolina (Mar 24, 2021)
Walks:	7	-	vs Radford (Mar 19, 2021)
Strikeouts:	7	-	vs Eastern Kentucky (Feb 21, 2021)
	7	-	vs Coastal Carolina (Mar 24, 2021)
Sac hits:	3	-	vs Radford (Mar 19, 2021)
	3	-	vs Radford (Mar 20, 2021)
Sac flies:	1	-	vs Eastern Kentucky (Feb 21, 2021)
	1	-	vs USC Upstate (Mar 12, 2021)
	1	-	vs Radford (Mar 19, 2021)
Stolen bases:	3	-	vs Cleveland State (Feb 20, 2021)
Hit by pitch:	1	-	(5 times )
Runners LOB:	12	-	vs Radford (Mar 19, 2021)
Hit into DP:	2	-	vs USC Upstate (Mar 12, 2021)

## Fielding

Putouts:	33	-	vs Radford (Mar 19, 2021)
Assists:	13	-	vs USC Upstate (Mar 13, 2021)
Errors:	6	-	vs Radford (Mar 20, 2021)
DPs turned:	1	-	vs Cleveland State (Feb 20, 2021)
	1	-	vs USC Upstate (Mar 12, 2021)

## Pitching

Innings pitched:	11.0	-	vs Radford (Mar 19, 2021)
Runs allowed:	14	-	vs Radford (Mar 20, 2021)
Earned runs:	11	-	vs Eastern Kentucky (Feb 21, 2021)
Walks allowed:	6	-	vs Eastern Kentucky (Feb 21, 2021)
Strikeouts:	7	-	vs Radford (Mar 20, 2021)
Hits allowed:	16	-	vs Radford (Mar 20, 2021)
Doubles allowed:	4	-	vs Cleveland State (Feb 20, 2021)
	4	-	vs Eastern Kentucky (Feb 21, 2021)
	4	-	vs Radford (Mar 20, 2021)
Triples allowed:	1	-	vs USC Upstate (Mar 13, 2021)
	1	-	vs Radford (Mar 20, 2021)
Homers allowed:	3	-	vs Coastal Carolina (Mar 24, 2021)
Wild pitches:	4	-	vs USC Upstate (Mar 13, 2021)
Hit batters:	3	-	vs USC Upstate (Mar 13, 2021)



## &gt;&gt;2021 CHARLESTON SOUTHERN SOFTBALL INDIVIDUAL GAME HIGHS

## Batting

At bats:	6	-	NORRIS, Katelyn vs Radford (Mar 19, 2021)
Runs scored:	3	-	NORRIS, Katelyn vs Radford (Mar 19, 2021)
Hits:	3	-	CROSBY, Emily vs Eastern Kentucky (Feb 21, 2021)
	3	-	MECKLEY, Ashley vs Coastal Carolina (Mar 24, 2021)
RBIs:	3	-	MECKLEY, Ashley vs Eastern Kentucky (Feb 21, 2021)
	3	-	BROWN, Sarah vs Coastal Carolina (Mar 24, 2021)
Doubles:	2	-	BREWINGTON, Brooklyn vs Coastal Carolina (Mar 24, 2021)
Triples:	1	-	CROSBY, Emily vs Cleveland State (Feb 20, 2021)
Home runs:	1	-	(10 times )
Total bases:	7	-	MECKLEY, Ashley vs Coastal Carolina (Mar 24, 2021)
Walks:	2	-	(6 times )
Strikeouts:	3	-	CROSBY, Emily vs Eastern Kentucky (Feb 21, 2021)
Sac hits:	1	-	(12 times )
Sac flies:	1	-	CRIBB, Ashlyn vs Eastern Kentucky (Feb 21, 2021)
	1	-	MANNERINO, Dominique vs USC Upstate (Mar 12, 2021)
	1	-	BROWN, Sarah vs Radford (Mar 19, 2021)
Stolen bases:	1	-	(13 times )
Hit by pitch:	1	-	(5 times )
Runners LOB:	5	-	MANNERINO, Dominique vs Coastal Carolina (Mar 24, 2021)

## Fielding

Putouts:	11	-	COOPER, Erica vs USC Upstate (Mar 13, 2021)
Assists:	5	-	BREWINGTON, Brooklyn vs USC Upstate (Mar 12, 2021)
	5	-	EATON, Baylee vs USC Upstate (Mar 13, 2021)
	5	-	MECKLEY, Ashley vs Coastal Carolina (Mar 24, 2021)
Errors:	4	-	BREWINGTON, Brooklyn vs Radford (Mar 20, 2021)

## Pitching

Innings pitched:	8.0	-	JUNGE, Annah vs Radford (Mar 19, 2021)
Runs allowed:	9	-	CLARK, Holly vs Radford (Mar 20, 2021)
Earned runs:	8	-	HEINRICH, Alyssa vs USC Upstate (Mar 12, 2021)
Walks allowed:	5	-	JUNGE, Annah vs Eastern Kentucky (Feb 21, 2021)
	5	-	JUNGE, Annah vs Radford (Mar 19, 2021)
Strikeouts:	6	-	CLARK, Holly vs Cleveland State (Feb 20, 2021)
Hits allowed:	9	-	CLARK, Holly vs Radford (Mar 20, 2021)
	9	-	EATON, Baylee vs Coastal Carolina (Mar 24, 2021)
Doubles allowed:	3	-	JUNGE, Annah vs Cleveland State (Feb 20, 2021)
	3	-	EATON, Baylee vs Radford (Mar 20, 2021)
Triples allowed:	1	-	EATON, Baylee vs USC Upstate (Mar 13, 2021)
	1	-	HEINRICH, Alyssa vs Radford (Mar 20, 2021)
Homers allowed:	2	-	(5 times )
Wild pitches:	2	-	HEINRICH, Alyssa vs USC Upstate (Mar 13, 2021)
	2	-	EATON, Baylee vs USC Upstate (Mar 13, 2021)
Hit batters:	2	-	HEINRICH, Alyssa vs USC Upstate (Mar 13, 2021)
	2	-	EATON, Baylee vs Coastal Carolina (Mar 24, 2021)

## &gt;&gt;2021 CHARLESTON SOUTHERN SOFTBALL TEAM AMONG NCAA/BIG SOUTH LEADERS

Statistic	National Rank	Conference Rank	Value	National Leader	Value	Conference Leader	Value
Batting Average (276 ranked)	132	2	0.268	Oklahoma	0.470	USC Upstate	0.303
Double Plays per Game (265 ranked)	174	6	0.20	CSUN	2.00	USC Upstate	0.35
Doubles (271 ranked)	231	7	10	Troy	58	USC Upstate	32
Doubles per Game (274 ranked)	169	6	1.00	Iona	3.00	USC Upstate	1.60
Earned Run Average (276 ranked)	218	6	5.20	Binghamton	0.58	USC Upstate	2.67
Fielding Percentage (276 ranked)	135	3	0.960	Wisconsin	0.992	USC Upstate	0.983
Hit Batters (273 ranked)	32	1	5	4 teams tied	1	Charleston So.	5
Home Runs per game (266 ranked)	122	5	0.60	Oklahoma	3.50	Winthrop	1.11
On Base Percentage (276 ranked)	180	6	0.327	Oklahoma	0.538	USC Upstate	0.381
Scoring (276 ranked)	205	7	3.20	Drexel	12.50	USC Upstate	6.20
Shutouts (145 ranked)				Oklahoma	13	USC Upstate	5
Slugging Percentage (276 ranked)	151	5	0.375	Oklahoma	0.926	USC Upstate	0.475
Stolen Bases per Game (275 ranked)	136	6	1.10	Indiana	3.58	USC Upstate	2.35
Strikeout-to-Walk Ratio (276 ranked)	217	5	1.19	Michigan	8.72	USC Upstate	3.07
Triple Plays (1 ranked)				6 teams tied	1		
Triples per Game (240 ranked)	187	5	0.10	Northwestern	0.67	Campbell	0.47
WL Percentage (272 ranked)	250	7	0.200	4 teams tied	1.000	USC Upstate	0.800
Walks (30 ranked)				Southern Ill.	123	Winthrop	89

# 2021 CHARLESTON SOUTHERN SOFTBALL

# GAMES 13-15 | at PRESBYTERIAN

## >>2021 CHARLESTON SOUTHERN SOFTBALL INDIVIDUALS AMONG NCAA/BIG SOUTH LEADERS

Statistic	Player	National Rank	Conference Rank	Value	National Leader	Value	Conference Leader	Value
Batting Average (150 ranked)					Bella Jankowski, Holy Cross	0.714	Macy McCall, Winthrop	0.430
Doubles (24 ranked)					Danielle Gibson, Arkansas	14		
Doubles Per Game (149 ranked)					4 players tied	0.75		
Earned Run Average (150 ranked)					6 players tied	0.00		
Hit Batters (28 ranked)					Valerie Cagle, Clemson Karlie Keeney, Liberty	1 1	Sydney Backstrom, Longwood	7
Hit by Pitch per Game (143 ranked)	Seaenna Satcher	143	4	0.22	Kaitlin Hoffman, Fairfield	0.75	Marisa Soterakis, USC Upstate	0.45
Hits (136 ranked)					Sami Williams, Iowa St.	46	Macy McCall, Winthrop	34
Hits Allowed Per Seven Innings (149 ranked)					Shannon Saile, Oklahoma	1.40	Mallie Brown, USC Upstate	4.82
Home Runs (41 ranked)					Jocelyn Alo, Oklahoma	19	Ansley Gilreath, Winthrop	12
Home Runs Per Game (130 ranked)	Ashley Meckley	88	2	0.30	Linda Rush, Drexel	1.00	Ansley Gilreath, Winthrop	0.44
On Base Percentage (150 ranked)					Bella Jankowski, Holy Cross	0.769	Macy McCall, Winthrop	0.567
RBI's (28 ranked)					Jocelyn Alo, Oklahoma	49	Ansley Gilreath, Winthrop	31
Runs Batted In Per Game (149 ranked)					Linda Rush, Drexel	3.50	Peyton Darnell, USC Upstate	1.15
Runs per Game (147 ranked)					Linda Rush, Drexel	2.17	Macy McCall, Winthrop	1.00
Sacrifice Bunts per game (140 ranked)	Brooklynn Brewington Sarah Brown	98 98	4 4	0.20 0.20	Katie Harrington, Monmouth	0.75	Kaitlyn Tucker, Presbyterian	0.27
Sacrifice Flies (34 ranked)					Kassidy Krupit, South Carolina	5	Lauren King, Winthrop Ashley Westbrooks, Winthrop	3 3
Saves (15 ranked)					Morgan Leinstock, Southern Miss. Jenna Edwards, McNeese	4 4		
Shutouts (25 ranked)					Payton Gottshall, Bowling Green	6		
Slugging Percentage (300 ranked)	Ashley Meckley	195	3	0.677	Linda Rush, Drexel	1.824	Ansley Gilreath, Winthrop	0.912
Stolen Bases Per Game (150 ranked)					Kara Paradowski, Canisius	1.75	Macy McCall, Winthrop	0.96
Strikeout-to-Walk Ratio (150 ranked)					Rachel Garcia, UCLA	16.33	Riley Oakes, Radford	5.75
Strikeouts (149 ranked)					Payton Gottshall, Bowling Green Gabbie Plain, Washington	165 165	Madysen Watson, Winthrop	119
Strikeouts Per Seven Innings (149 ranked)					Rachel Garcia, UCLA	14.3	Madysen Watson, Winthrop	9.5
Total Bases (147 ranked)					Jocelyn Alo, Oklahoma Sami Williams, Iowa St.	95 95	Ansley Gilreath, Winthrop	73
Toughest to Strike Out (150 ranked)					43 players tied	0.0	Kiley Kross, Presbyterian	28.0
Triples (12 ranked)					4 players tied	5	Destini England, Campbell Claudia Ware, Campbell	3 3
Triples Per Game (138 ranked)					Bella Egizio, Lehigh Shanna Scribner, Maine	0.29 0.29	Destini England, Campbell Claudia Ware, Campbell	0.16 0.16
Victories (47 ranked)					Mary Haff, Arkansas	14	Sydney Backstrom, Longwood	9
Walks Allowed Per Seven Innings (149 ranked)					10 players tied	0.00	Riley Oakes, Radford	0.98
Walks Per Game (146 ranked)	Ashley Meckley	38	2	0.80	Kendra Allen, Massachusetts Renee Trotman, Detroit Mercy	1.75 1.75	Macy McCall, Winthrop	0.89