



# CHARLESTON SOUTHERN

## 2021-22 WOMEN'S BASKETBALL GAME NOTES

### MEDIA INFORMATION

**BROADCAST:** ESPN+

**TALENT:** TBA

**LIVE STATS:** CatamountSports.com

**BE SOCIAL:** @CSUBucsWBB / #ClimbTheLadder

**VENUE:** Liston B. Ramsey Center (7,826)

### 2021-22 RECORD

**OVERALL:** 0-2

**HOME:** 0-1

**ROAD:** 0-1

**NEUTRAL:** 0-0

**BIG SOUTH:** 0-0

**CURRENT STREAK:** L2

### >>2021-22 SCHEDULE

#### NOVEMBER (0-1)

Nov. 9	at ALABAMA	SECN+	L, 32-109
Nov. 16	GEORGE MASON	ESPN+	L, 55-64
Nov. 20	at WESTERN CAROLINA	TBA	4 p.m.
Nov. 26	at AUBURN	SECN+	1 p.m.
Nov. 29	BELMONT ABBEY	ESPN+	6 p.m.

#### DECEMBER (0-0, 0-0 BIG SOUTH)

Dec. 2	COLLEGE OF CHARLESTON	ESPN+	5:30 p.m.
Dec. 5	at FLORIDA STATE	ACCNX	2 p.m.
Dec. 16	FURMAN	ESPN+	5:30 p.m.
Dec. 18	vs. SOUTH ALABAMA ^	TBA	Noon
Dec. 19	at GEORGIA STATE ^	TBA	2 p.m.
Dec. 21	DUKE	ESPN+	Noon
Dec. 29	at WINTHROP *	ESPN+	6 p.m.

#### JANUARY 0-0, 0-0 BIG SOUTH)

Jan. 1	HIGH POINT *	ESPN+	2 p.m.
Jan. 5	at GARDNER-WEBB *	ESPN+	7 p.m.
Jan. 8	CAMPBELL *	ESPN+	2 p.m.
Jan. 12	at PRESBYTERIAN *	ESPN+	6 p.m.
Jan. 15	UNC ASHEVILLE *	ESPN+	3 p.m.
Jan. 19	at NORTH CAROLINA AGT *	ESPN+	6 p.m.
Jan. 22	USC UPSTATE *	ESPN+	2 p.m.
Jan. 25	RADFORD *	ESPN+	6 p.m.
Jan. 29	at HAMPTON *	ESPN+	3 p.m.

#### FEBRUARY (0-0, 0-0 BIG SOUTH)

Feb. 2	at LONGWOOD *	ESPN+	7 p.m.
Feb. 5	PRESBYTERIAN *	ESPN+	3 p.m.
Feb. 9	GARDNER-WEBB *	ESPN+	6 p.m.
Feb. 12	at CAMPBELL *	ESPN+	2 p.m.
Feb. 15	WINTHROP *	ESPN+	6 p.m.
Feb. 19	at HIGH POINT *	ESPN+	2 p.m.
Feb. 23	NORTH CAROLINA AGT *	ESPN+	6 p.m.
Feb. 28	at UNC ASHEVILLE *	ESPN+	2 p.m.

#### MARCH (0-0)

March 1	BIG SOUTH FIRST ROUND %	TBA	TBA
March 3	BIG SOUTH QUARTERFINALS %	TBA	TBA
March 5	BIG SOUTH SEMIFINALS %	TBA	TBA
March 6	BIG SOUTH CHAMPIONSHIP %	TBA	TBA

Home Games in **BOLD**

\* - Big South Game

% - 2021 Hercules Tires Big South Championships

^ - Georgia State Holiday Classic

### CSU ATHLETIC COMMUNICATIONS

**WBB CONTACT:** Kieran Intemann

**TITLE:** Assistant Director of Athletic Communications

**CELL:** (980) 422-7882

**OFFICE:** (843) 863-7289

**EMAIL:** kintemann@csuniv.edu

# 3

## CHARLESTON SOUTHERN (0-2, 0-0 BIG SOUTH)

at **WESTERN CAROLINA (2-1, 0-0 SOCON)**

NOVEMBER 20, 2021 // 4 p.m. // LISTON B. RAMSEY CENTER (7,826) // CULLOWHEE, N.C.

GAME 3 // AWAY GAME 2

### THE TEAMS



## CHARLESTON SOUTHERN BUCCANEERS

2021-22 Record:	0-2	Head Coach:	Clarisse Garcia
Conference Record:	0-0	Overall Record:	15-41 (3rd)
Current Streak:	L2	Record at CSU:	0-2 (1st)
Last Five:	LL	Starters Ret./Lost:	4/1
Last Game:	L, 64-55 vs. George Mason	Letterwinners Ret./Lost:	7/6



## WESTERN CAROLINA CATAMOUNTS

2021-22 Record:	2-1	Head Coach:	Kiley Hill
Conference Record:	0-0	Overall Record:	307-232 (20th)
Current Streak:	W1	Record at WCU:	13-44 (3rd)
Last Five:	WLW	Starters Ret./Lost:	4/1
Last Game:	W, 52-51 vs. Presbyterian	Letterwinners Ret./Lost:	10/3

### >>OPENING TIP

- Charleston Southern begins a two-game road trip Saturday afternoon when it heads to Western Carolina for a 4 p.m. tip against the Catamounts.

### >>STAT COMPARISON



- The Buccaneers are coming off a loss in their home opener against George Mason. Charleston Southern held George Mason without a point in the final 5:07 of the game, ending the contest on a 13-0 run.
- Two freshmen made an impact in the starting lineup Tuesday evening, as Skylar Baltezegar had a game-high 12 rebounds, while Madison Adamson had a team-high five assists and four steals.
- Tori Gittens scored a career-high 18 points against George Mason, with 11 of those 18 points coming in the second half. Gittens also set a new career high with seven made field goals against the Patriots.
- Saturday's game against Western Carolina marks the first time this season that CSU is not playing a first-time opponent. The Bucs defeated WCU last season in Charleston, 66-56.

43.5	POINTS PER GAME	65.3
86.5	POINTS ALLOWED	57.7
-43.0	SCORING MARGIN	+7.6
.274	FIELD GOAL %	.437
.450	FIELD GOAL % DEFENSE	.385
.211	3-POINT %	.190
.302	3-POINT % DEFENSE	.283
4.0	3-POINT FG/GAME	2.7
7.5	FREE THROWS/GAME	12.0
.682	FREE THROW %	.750
-14.5	REBOUNDING MARGIN	+14.3
8.5	ASSISTS/GAME	9.7
0.4	AST./TO RATIO	0.4
23.0	TURNOVERS/GAME	22.7
-10.0	TO MARGIN	-5.0
3.5	BLOCKS/GAME	2.3
7.0	STEALS/GAME	9.7
19.5	FOULS/GAME	18.7

### >>CHARLESTON SOUTHERN PROJECTED STARTERS



**2** **Skylar BALTEZEGAR**  
F // 6'2" // Fr.  
MIN: 20.6  
PPG: 4.0  
REB: 8.5  
BLK: 1.5



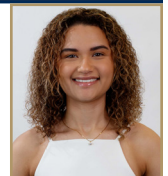
**5** **Sha'Mya LEIGH**  
G // 5'10" // Jr.  
MIN: 37.0  
PPG: 9.5  
REB: 1.5  
AST: 1.5



**13** **Sharita GODFREY**  
G // 5'10" // Sr.  
MIN: 20.8  
PPG: 7.5  
REB: 5.5  
AST: 0.5



**20** **Madison ADAMSON**  
F // 6'0" // Fr.  
MIN: 38.5  
PPG: 1.0  
REB: 5.5  
AST: 3.5



**23** **Tori GITTENS**  
G // 5'11" // Jr.  
MIN: 33.9  
PPG: 11.5  
REB: 3.5  
AST: 1.0



The Charleston Southern Athletics Communications department's mission is to strategically provide communication between the athletics department and its internal and external constituents, increase awareness of and interest in Buccaneer Athletics and to publicize the activities and achievements of the student-athletes, teams and the athletics department.

We understand the importance of assisting the media in providing coverage of the university, its athletics programs, administrators, coaches and student-athletes. Our goal is to disseminate information as widely, uniformly and fairly as possible using accepted media standards. To this end, the best attempt will be made to fill reasonable requests by recognized media outlets. Members of the media are encouraged to work with our staff to assist in that endeavor.

## **MEDIA INFORMATION**

### **PRESS RELEASES/GAME NOTES**

Prior to each contest, a complete release previewing the upcoming game and reviewing the season will be available on CSUSports.com. The release will also be emailed to media requesting this service.

### **PREGAME INTERVIEWS**

Head Coach Clarisse Garcia will be available for pregame interviews and live television shots depending on time schedules. CSU players will not be available for pregame media activities. Media are encouraged to call the CSU athletic communications office well in advance to arrange such interviews.

### **POSTGAME INTERVIEWS**

CSU's locker room is closed to media after the game. Media in attendance will be asked for player requests prior to the conclusion of the game. Head Coach Clarisse Garcia and requested players will be available following the game at the Buccaneer Fieldhouse.

### **INTERVIEWS**

Direct all requests for interviews with CSU head coach Clarisse Garcia or women's basketball student-athletes through Assistant Director of Athletic Communications Kieran Intemann by calling (843) 863-7289 or emailing kintemann@csuniv.edu

## **COVERING HOME GAMES CREDENTIALS**

Credentials for CSU women's basketball home games are issued to working media only and must be requested at least 24 hours in advance to Kieran Intemann by emailing kintemann@csuniv.edu.

### **PARKING**

Parking is free to the public and is available on a first-come, first-serve basis for CSU women's basketball games with the exception of marked off spaces for Buc Club members, coaches and officials.

### **WORKING MEDIA LOCATION**

The working press, radio, and television area is located in the Athletic Communication offices inside the Buccaneer Field House. Media may also be able to reserve press row seats upon request.

### **MEDIA ROOM SERVICES**

Pregame packets, including notes, statistics, programs and rosters, will be available. Final box scores will also be provided.

### **WIRELESS INTERNET**

Complimentary access to wireless internet is available for working media at the Buccaneer Field House.

## **Athletics Communications Charleston Southern University**

9200 University Blvd  
Charleston, SC 29406  
Phone: 843-863-7853

### **Communications Staff**

#### **Travis Woods**

Associate A.D. for Communications/P.R.  
Football, M/W Golf, Cross Country, Track & Field

#### **Taylor Chitwood**

Associate Director of Communications  
Men's Basketball, Baseball, Volleyball, Tennis

#### **Kieran Intemann**

Assistant Director of Communications  
Women's Basketball, Softball, Soccer

### **Video/Content Creation Staff**

#### **Nick Case**

Assistant A.D. for Broadcast Services  
ESPN+/Big South Network

#### **Marlon Howard**

Director of Creative Content  
Creative Content

### **Broadcast Staff**

#### **Killian McClatchey**

"Voice of the Bucs"/ESPN+ Play-by-Play Talent

#### **Anna Witte**

Side Line Report/ESPN+ Color Analyst



# BROADCAST/MEDIA SPOT CHART

PROBABLE STARTERS SHADED IN BLUE/GOLD TEXT

1		<b>VICTORIA DAMES</b> <i>G/F // 6-0 // SO. // LOGANVILLE, GA.</i> PPG: 0.0 // REB: 1.5 // AST: 1.0 // BLK: 0.0 // STL: 0.0	<b>LAST GAME:</b> 3 minutes played vs. George Mason (11/16/21) <b>NOTES:</b> First season at CSU after transferring from Arkansas State... Tied for team lead with two assists in season opener... Appeared in five games for the Red Wolves during the 2020-21 season, averaging 2.0 points and 0.4 rebounds per game.
2		<b>SKYLAR BALTEZEGAR</b> <i>F/C // 6-2 // FR. // ORANGE PARK, FLA.</i> PPG: 4.0 // REB: 8.5 // AST: 0.0 // BLK: 1.5 // STL: 1.5	<b>LAST GAME:</b> 5 points, 12 rebounds, 3 blocks, 1 steal vs. George Mason (11/16/21) <b>NOTES:</b> Has led the Bucs in rebounding in every game this season... Season-best 12 boards vs. GMU... All-region and all-conference selection at Middleburg, where she was one of the top rebounders in Northeast Florida... Averaged a double-double in her high school career.
5		<b>SHA'MYA LEIGH</b> <i>G // 5-10 // JR. // DAYTON, OHIO</i> PPG: 9.5 // REB: 1.5 // AST: 1.5 // BLK: 0.0 // STL: 1.5	<b>LAST GAME:</b> 10 points, 2 assists, 2 steals vs. George Mason (11/16/21) <b>NOTES:</b> Season-high 10 points in home opener vs. GMU... Led CSU with nine points in season opener, including seven in first quarter... Has appeared in 52 games for the Bucs, starting 44... Career-high 18 points against conference champion High Point (2/6/21).
10		<b>JORDAN ROGERS</b> <i>G // 5-10 // FR. // FRANKLIN, OHIO</i> PPG: 0.0 // REB: 1.0 // AST: 0.0 // BLK: 0.0 // STL: 0.0	<b>LAST GAME:</b> 3 minutes played vs. George Mason (11/16/21) <b>NOTES:</b> Made collegiate debut at Alabama... Three-time first team all-district player at Franklin, where she was one of the top guards in the state... Finished high school career third in school history in scoring... Averaged double-figures each of the last three years.
12		<b>ZAIRE HICKS</b> <i>G // 5-7 // R-SR. // MEMPHIS, TENN.</i> PPG: --- // REB: --- // AST: --- // BLK: --- // STL: ---	<b>LAST GAME:</b> --- (DNP vs. GMU) <b>NOTES:</b> First season at CSU after transferring from UT Martin... 78 career games for the Skyhawks, including 34 starts... Career-high 19 points on two occasions during the 2018-19 season... Career averages of 5.5ppg, 1.7rpg, 1.5apg, 1.0spg.
13		<b>SHARITA GODFREY</b> <i>G/F // 5-11 // SR. // COLUMBIA, S.C.</i> PPG: 7.5 // REB: 5.5 // AST: 0.5 // BLK: 0.0 // STL: 0.0	<b>LAST GAME:</b> 10 points, 6 rebounds, 1 assist vs. George Mason (11/16/21) <b>NOTES:</b> Season-high 10 points, six rebounds in home opener vs. GMU... Tied for team lead with five rebounds at Alabama... Emerged as CSU's top 3-point shooter last season, connecting on a career-best 44 percent of attempts from beyond the arc.
14		<b>TYRA WRIGHT</b> <i>C // 6-2 // JR. // MORRISON, TENN.</i> PPG: --- // REB: --- // AST: --- // BLK: --- // STL: ---	<b>LAST GAME:</b> 3 rebounds at USC Upstate (3/6/21) (DNP vs. GMU) <b>NOTES:</b> 41 games, eight starts in her career... 3.7ppg, 2.1rpg in her career... Nine points in 12 minutes at Radford last season (2/20/21)... Career-high 16 points against Virginia Lynchburg during 2019-20 season (12/7/19)... Double-double (12pts, 10reb) vs. USC Upstate (2/11/20).
15		<b>JANAIA FARGO</b> <i>G // 5-8 // SO. // INWOOD, W.VA.</i> PPG: 5.0 // REB: 3.0 // AST: 1.0 // BLK: 0.0 // STL: 0.5	<b>LAST GAME:</b> 8 points, 4 rebounds, 1 assist, 1 steal vs. George Mason (11/16/21) <b>NOTES:</b> Eight points, four rebounds in 18 minutes against George Mason... Averaged 5.4ppg, 1.7rpg, 1.7apg last year, ranking second on the team in assists... Career-best 14 points against Gardner-Webb (1/9/21)... Pulled down a career-best seven rebounds in collegiate debut vs. CIU (11/25/21).
20		<b>MADISON ADAMSON</b> <i>F // 6-0 // FR. // HOOVER, ALA.</i> PPG: 1.0 // REB: 5.5 // AST: 3.5 // BLK: 0.5 // STL: 2.5	<b>LAST GAME:</b> 2 points, 7 rebounds, 5 assists, 4 steals, 1 block vs. George Mason (11/16/21) <b>NOTES:</b> Leads CSU in assists and steals, second in rebounds... Two-time state champion at Hoover, where her teams were 122-10 over a four-year span... Averaged 10 points, seven rebounds and 2 steals at Hoover... Third team all-region selection in 2020.
22		<b>ALYSSIA FAYE</b> <i>F // 6-2 // R-SR. // VALENCE, FRANCE</i> PPG: 8.0 // REB: 3.0 // AST: 0.0 // BLK: 0.0 // STL: 1.0	<b>LAST GAME:</b> 8 points, 3 rebounds, 1 steal at Alabama (11/9/21) (DNP vs. GMU) <b>NOTES:</b> Led CSU in scoring (11.9) and rebounding (7.1) last season... Four double-doubles in 2020-21 season... Top 15 in Big South in points and rebounds... 13 games with 10 or more points last season, tops on the team... Career-high 22 points at Longwood (2/13/21).
23		<b>TORI GITTENS</b> <i>G // 5-11 // JR. // SHERMAN, TEXAS</i> PPG: 11.5 // REB: 3.5 // AST: 1.0 // BLK: 0.5 // STL: 1.5	<b>LAST GAME:</b> 18 points, 4 rebounds, 1 assist, 2 steals vs. George Mason (11/16/21) <b>NOTES:</b> Career-high 18 points, seven FGM in last game vs. GMU... Shot 36.7 percent from beyond the arc last season... Career-high four 3-pointers at Winthrop (1/29/21)... Big South All-Academic Team selection in 2020-21 season... Six career double-digit scoring games.
25		<b>MAKENNA WINANS</b> <i>F // 6-0 // SO. // PARKERSBURG, W.VA.</i> PPG: 1.0 // REB: 1.0 // AST: 0.0 // BLK: 1.0 // STL: 0.0	<b>LAST GAME:</b> 2 points vs. George Mason (11/16/21) <b>NOTES:</b> Team-high two blocks in season opener... Scored her first points of the season vs. GMU... 5.2ppg, 3.7rpg last year... Ranked eighth in the Big South in blocks last year (17, 0.8bpg)... Season-high 14 points against both Hampton (12/22/20) and Gardner-Webb (1/10/21).



## >>CURRENT STREAKS

Overall .....	L14
Unranked Teams .....	L14
Home.....	L6
Home Big South .....	L5
Home nonconference.....	W2
Home non-Division I.....	W13
Road.....	L12
Road Big South.....	L6
Road nonconference .....	L7
Neutral.....	L1

### Consecutive Games with 10+ Points

Tori Gittens.....	1
Sharita Godfrey.....	1
Sha'Mya Leigh.....	1

### Consecutive Games with 5+ Rebounds

Skylar Baltezegar.....	2
Sharita Godfrey.....	2
Madison Adamson.....	1

### Consecutive Games with 2+ Assists

Madison Adamson.....	2
Sha'Mya Leigh.....	1

### Consecutive Games with 1+ Steals

Madison Adamson.....	2
Tori Gittens.....	2
Sha'Mya Leigh.....	2
Skylar Baltezegar.....	1
Janaia Fargo.....	1

### Consecutive Games with 1+ Blocks

Madison Adamson.....	1
Skylar Baltezegar.....	1
Tori Gittens.....	1

### Consecutive Games Started

Sha'Mya Leigh.....	7
Sharita Godfrey.....	5
Madison Adamson.....	2
Tori Gittens.....	2
Skylar Baltezegar.....	1

### Consecutive Games with a 3-Pointer

Sharita Godfrey.....	5
Tori Gittens.....	5
Sha'Mya Leigh.....	2

## >>CSU IN WINS VS. LOSSES

CATEGORY	WINS	LOSSES
Points per game	---	43.5
Opponent points per game	---	86.5
Field goal pct.	---	.274
Opponent field goal pct.	---	.450
3PT field goal pct.	---	.211
Opponent 3PT field goal pct.	---	.302
Free throw pct.	---	.682
Rebounds per game	---	36.5
Rebound margin	---	-14.5
Assists per game	---	9.5
Turnovers per game	---	23.0
Turnover margin	---	-10.0
Steals per game	---	7.0
Blocks per game	---	3.5

## >>TEAM NOTES

### **New Year, New Look**

Charleston Southern enters a new era of women's basketball, with Clarisse Garcia beginning her first season as head coach. In addition to Garcia, the entire coaching staff, consisting of Stephanie Stoglin-Reed, Ashley Jones and Jordan Kyles, all enters year one in the Lowcountry.

With a new staff comes a new system, and the Bucs have embraced a style of play that Garcia has described as "fast, fun and fierce." CSU will also feature five newcomers on its roster this season in freshmen Skylar Baltezegar, Jordan Rogers and Madison Adamson, and transfers Victoria Dames (Arkansas State) and Zaire Hicks (UT Martin).

### **Veteran Presence**

CSU returns four of its five starters from last season, including nearly all of its offensive production from the 2020-21 team. Alyssia Faye was the Bucs' leading scorer and rebounder last season, ranking inside the top 15 in the Big South in both scoring and rebounding at 11.9 points and 7.1 boards per game.

Sharita Godfrey is also back for her senior season after finishing third on the team in scoring (9.6 points per game) and second in rebounding (5.3 rebounds per game), while leading the team in 3-point percentage at 44.0 percent from beyond the arc.

In addition, six Bucs who averaged more than 15 minutes per game are back in the fold for the 2021-22 season, while Zaire Hicks has also played significant minutes throughout her collegiate career.

The starting five in CSU's season opener at Alabama consisted of two seniors (Godfrey, Faye), two juniors (Gittens, Leigh) and a freshman (Adamson). Godfrey, Gittens, Leigh, Adamson and fellow freshman Skylar Baltezegar got the start against George Mason.

### **Strength in Numbers**

Eight of Charleston Southern's nine players with previous collegiate experience, including all seven returners from the 2020-21 team, have scored in double-figures multiple times in their careers.

Sharita Godfrey leads all Buccaneers players with 23 career double-figure scoring games, including Tuesday's home opener against George Mason. Alyssia Faye led the Bucs with 13 games of double-digit scoring during the 2020-21 season.

### **Out of the Gate**

Sha'Mya Leigh jumped out to a quick start in the season opener at Alabama, scoring each of the Bucs' first seven points.

Leigh led the Bucs with nine points in the contest and her seven first-half points were the most by a Buccaneer in either half against the Crimson Tide.

### **Late-Game Looks**

Charleston Southern closed Tuesday's home

opener against George Mason on a 13-0 run, keeping the Patriots scoreless for the final 5:07.

As a team, CSU had eight made field goals in the fourth quarter alone and shot 45 percent from the field (14-for-31) in the second half against George Mason.

### **Light it Up**

Tori Gittens had a career-high 18 points and seven made field goals in Charleston Southern's home opener against George Mason. 11 of Gittens' 18 points came in the second half, while she also knocked down a pair of 3-pointers against the Patriots.

Gittens had five points and three rebounds while earning the start in the season opener at Alabama, playing 31 minutes against the Crimson Tide.

Gittens' previous career high in a regular season game was 14 points, which she accomplished at Winthrop during the 2020-21 season.

### **Pressure, Pressure, Pressure**

Charleston Southern's intensity on the defensive side forced George Mason into 18 turnovers Tuesday evening. The game against the Patriots marked the first time this season that CSU won the turnover margin.

The Bucs also kept George Mason to a shooting clip below 40 percent for the game.

### **Closing out Strong**

Alyssia Faye ended the 2020-21 season on a high note for the Bucs. Faye reached double-figure scoring in each of the last five games, and also had five or more rebounds in eight straight games to close the season. Included in that stretch was a streak of three games with 20-plus points, with a career-high 22 on the road at Longwood.

### **Stuffing the Stat Sheet**

Alyssia Faye was also one of just eight players to rank inside the top 15 of the Big South in both scoring and rebounding during the 2020-21 season, and the only player in the conference to reach that mark and not be selected to the all-conference teams.

Faye was one of two players to achieve that mark last season and not earn any preseason all-conference accolades.

### **Deadeye**

Sharita Godfrey had a shooting percentage under 30 percent from beyond the arc prior to the 2020-21 season, but that changed quickly.

Godfrey emerged as the top 3-point weapon for the Buccaneers last season, making a career-best 37 3-pointers while shooting a team-leading 44.0 percent from long range.

Included in those 37 3-pointers was a game-winning trey on the road at Hampton, which helped Godfrey earn Big South Player of the Week





## >>TEAM NOTES

honors for the first time in her career.

Godfrey hit one of CSU's three 3-pointers in the season opener at Alabama and knocked down a pair of triples against George Mason.

She also led the team at the free throw line last season, connecting on 84.2 percent of her attempts from the charity stripe.

### Weekly Winners

Charleston Southern had multiple Big South weekly award winners last season for the first time since the 2018-19 campaign, as Sharita Godfrey and Makenna Winans swept Player and Freshman of the Week honors after the Bucs swept a Big South series at Hampton.

The weekly awards were the first-ever weekly honors for both Godfrey and Winans.

### Clean as a Whistle

The Buccaneers ranked inside the top 60 in the nation in personal fouls per game during the 2020-21 season, committing just 15.1 per game.

In addition to ranking high in the nation, that mark was also the best in the Big South Conference.

### Local Flavor

Charleston Southern's non-conference schedule has a regional feel to it, as six of the 11 non-conference games will be played against opponents from South Carolina or from states that border South Carolina.

The Buccaneers play Belmont Abbey, College of Charleston, Furman and Duke at home, while playing at Western Carolina and in a holiday tournament at Georgia State.

### Power Five Presence

Charleston Southern's non-conference schedule includes a quartet of Power Five opponents, including the first home game against a Power Five opponent since the 1991-92 season.

Charleston Southern opened the 2021-22 season at Alabama and will make a return trip to the Yellowhammer state later this month to face Auburn. CSU will also play at Florida State in December.

The Bucs will also host arguably their most high-profile home game in program history on December 21 when Duke visits Buccaneer Fieldhouse in the last non-conference game for CSU.

### On the Road Again

CSU hits the road for the second time this season and begins a stretch where three of the next five games will be away from home.

The Bucs are seeking their first road win since sweeping a two-game series at Hampton in December 2019.

### Chasing the Pack

Charleston Southern was picked to finish last in the Big South Preseason Poll, which was voted on by the head coaches in the conference. The Buccaneers received 18 points in the poll.

1. High Point (11)
2. Campbell
3. Longwood
4. North Carolina A&T (1)
5. Gardner-Webb
6. Radford
7. UNC Asheville
7. Presbyterian
9. Hampton
10. USC Upstate
11. Winthrop

### 12. Charleston Southern

### A Closer Look at the Bucs

Charleston Southern is currently 0-2 overall and looking to right the ship after ending the 2020-21 season on a sour note with 12 straight losses and a first-round exit in the Big South Tournament. The Buccaneers started conference play 3-1 with a sweep of Hampton and a series split with Presbyterian before things went south.

CSU returns four of its five starters from the 2020-21 season, including leading scorer and rebounder Alyssia Faye. Six different returning Bucs spent time in the starting lineup last season, while transfer Zaire Hicks started 34 games in her career at UT Martin before joining the Bucs this season.

### Charleston Southern 2021-22 Leaders per game

- Scoring - Tori Gittens (11.5)
- Rebounding - Skylar Baltezegar (8.5)
- Assists - Madison Adamson (3.5)
- Steals - Madison Adamson (2.5)
- Blocks - Skylar Baltezegar (1.5)
- Three-Pointers - Tori Gittens, Sharita Godfrey (1.5)

### Climbing the Coaching Ladder

Charleston Southern head coach Clarisse Garcia and Western Carolina head coach Kiley Hill have both spent time in the lower ranks of the NCAA in their careers.

Garcia's coaching career began as a graduate assistant at Seton Hill and her first head coaching job was at Palm Beach Atlantic. Hill previously spent 16 seasons as the head coach at Valdosta State and also had coaching experience at West Alabama.

### A Closer Look at the Catamounts

Western Carolina enters the weekend at 2-1 overall. The Catamounts are playing their third consecutive contest against a Big South opponent in Charleston Southern. WCU lost to UNC Asheville in overtime and defeated Presbyterian on a last-second shot in their first two games against Big South competition.

Kylie Hill enters his third season in charge of the Catamounts, having led the program to its most wins in five years during the 2020-21 season. The Catamounts also return five of their top six

## >>SEASON & CAREER TOTALS

	2021-22	CAREER
<b>DOUBLE-FIGURE SCORING GAMES</b>		
Sharita Godfrey	1	23
Alyssia Faye		13
Sha'Mya Leigh	1	10
Tori Gittens	1	7
Tyra Wright		4
Janaia Fargo		3
Makenna Winans		3
<b>20+ POINT GAMES</b>		
Alyssia Faye		3
Sharita Godfrey		2
<b>30+ POINT GAMES</b>		
<b>10+ REBOUND GAMES</b>		
Alyssia Faye		4
Sharita Godfrey		2
Skylar Baltezegar	1	1
Makenna Winans		1
Tyra Wright		1
<b>10+ ASSIST GAMES</b>		
<b>DOUBLE-DOUBLES</b>		
Alyssia Faye		3
Sharita Godfrey		2
Tyra Wright		1
<b>TRIPLE DOUBLES</b>		
<b>20-10 GAMES</b>		
Alyssia Faye		1
<b>3+ STEAL GAMES</b>		
Sha'Mya Leigh		5
Sharita Godfrey		3
Madison Adamson	1	1
Makenna Winans		1
Alyssia Faye		1
<b>3+ BLOCK GAMES</b>		
Skylar Baltezegar	1	1
Makenna Winans		1
<b>3+ THREE-POINT GAMES</b>		
Sharita Godfrey		7
Tori Gittens		5
Sha'Mya Leigh		1
Makenna Winans		1
Janaia Fargo		1



## >>TEAM NOTES

scorers from last year, with each of those players having started more than 10 games during the 2020-21 season.

### Western Carolina 2021-22 Leaders per game

- Scoring - Vanessa Oduah (15.3)
- Rebounding - Nadia Marshall (8.3)
- Assists - Zanoria Cruz (3.7)
- Steals - Mykaylyn Davis (2.7)
- Blocks - Zanoria Cruz (1.0)
- Three-Pointers - Vanessa Oduah (1.0)

### Series Breakdown

Saturday's game marks the 12th all-time meeting between the Buccaneers and Catamounts. Western Carolina has a 9-2 lead in the all-time series and is undefeated against CSU when playing in Cullowhee (6-0).

CSU defeated WCU last season in Charleston, 66-56, using a balanced offense to outpace the Catamounts. Janaia Fargo and Sha'Mya Leigh each cracked double-figures in the win for the Bucs, who limited Western Carolina to just 25 points in the first half.

### Bucs Against the Tar Heel State

Charleston Southern has compiled 79 wins all-time against teams from North Carolina, including a pair over Western Carolina. The Bucs will have multiple chances to add to that total, both in non-conference play and in Big South play.

CSU's most common opponents from the state

are fellow Big South foes UNC Asheville, High Point and Campbell. The Bucs' 32 wins against UNC Asheville are the most for CSU against any opponent from the state.

## >>TRACKING THE BUCS

Overall .....	0-2
At Buc Dome .....	0-1
On the road .....	0-1
At a neutral site.....	0-0

Vs. ranked opponents .....	0-0
Vs. Unranked opponents.....	0-2
Vs. teams .500 or better .....	0-2
Vs. teams worse than .500 .....	0-0

Games decided by 3 points or less.....	0-0
Games decided by 4-10 points .....	0-1
Games decided by 11-19 points .....	0-0
Games decided by 20+ points .....	0-1
Leading at Half .....	0-0
Tied at Half .....	0-0
Trailing at Half .....	0-2
Leading at start of 4th quarter.....	0-0
Trailing at start of 4th quarter .....	0-2
Tied at start of 4th quarter.....	0-0
In overtime .....	0-0

CSU scores 49 points or less .....	0-1
CSU scores 50-59 points.....	0-1
CSU scores 60-69 points .....	0-0
CSU scores 70-79 points .....	0-0
CSU scores 80+ points .....	0-0
Opponent scores 49 points or less .....	0-0
Opponent scores 50-59 points .....	0-0
Opponent scores 60-69 points .....	0-1
Opponent scores 70-79 points.....	0-0
Opponent scores 80+ points .....	0-1

CSU shoots 40% or better .....	0-0
CSU shoots less than 40% .....	0-1
CSU shoots better than opponent .....	0-0
Shooting is even.....	0-0
Opponent shoots better than CSU.....	0-2
Opponent shoots 40% or better .....	0-1
Opponent shoots less than 40%.....	0-1

CSU outrebounds opponent .....	0-0
Opponent outrebounds CSU.....	0-2
Rebounds are tied .....	0-0

CSU commits 14 or fewer turnovers.....	0-0
CSU commits 14+ turnovers .....	0-2
CSU records 7+ steals .....	0-1
CSU records less than 7 steals .....	0-1

CSU wears white.....	0-1
CSU wears blue .....	0-1
CSU wears gold .....	0-0

CSU controls tip.....	0-1
CSU loses tip .....	0-1
CSU scores first .....	0-1
Opponent scores first .....	0-1

Day Games (Before 5 p.m. local time) .....	0-1
Night Games .....	0-1

CSU in November .....	0-2
CSU in December.....	0-0
CSU in January .....	0-0
CSU in February.....	0-0
CSU in March .....	0-0

On Monday.....	0-0
On Tuesday .....	0-2
On Wednesday .....	0-0
On Thursday .....	0-0
On Friday .....	0-0
On Saturday .....	0-0
On Sunday.....	0-0

## >>SPECIALTY STATS

OPPONENT	OFF TURNOVERS		PAINT		2ND CHANCE		FAST BREAK		BENCH	
	CSU	OPP	CSU	OPP	CSU	OPP	CSU	OPP	CSU	OPP
Columbus State (Exh.)	23	21	22	42	9	8	8	24	14	13
at Alabama	4	40	12	62	2	20	0	25	5	53
George Mason	13	16	24	34	7	19	19	7	10	17
at Western Carolina										
at Auburn										
Belmont Abbey										
College of Charleston										
at Florida State										
Furman										
vs. South Alabama ^										
at Georgia State ^										
Duke										
at Winthrop *										
High Point *										
at Gardner-Webb *										
Campbell *										
at Presbyterian*										
UNC Asheville *										
at North Carolina A&T *										
Radford *										
at Hampton *										
at Longwood *										
Presbyterian *										
Gardner-Webb *										
at Campbell *										
Winthrop *										
at High Point *										
North Carolina A&T *										
at UNC Asheville *										
<b>TOTALS</b>	<b>17</b>	<b>56</b>	<b>36</b>	<b>96</b>	<b>9</b>	<b>39</b>	<b>19</b>	<b>32</b>	<b>15</b>	<b>70</b>
<b>AVERAGES</b>	<b>8.5</b>	<b>28.0</b>	<b>18.0</b>	<b>48.0</b>	<b>4.5</b>	<b>19.5</b>	<b>9.5</b>	<b>16.0</b>	<b>7.5</b>	<b>35.0</b>

*Exhibition Stats are not included in season averages*



## 2021-22 GAME-BY-GAME LEADERS

Date	Opponent	W/L	Score	Charleston So. High Scorer	Opponent High Scorer	Charleston So. High Rebounder	Opponent High Rebounder	Charleston So. High Assists
Nov. 6	Columbus State (Exh.)	Exh.	Exh.	Gittens, 23	Arnold, 19	Baltezegar, 8	Boston, 15	Godfrey/Faye, 4
Nov. 9	Alabama	L	32-109	Leigh, 9	Davis, 25	Baltezegar/Godfrey, 5	Davis, 12	Adamson/Dames, 2
Nov. 16	George Mason	L	55-64	Gittens, 18	Wakefield, 19	Baltezegar, 12	Doster, 8	Adamson, 5
Nov. 20	Western Carolina							
Nov. 26	Auburn							
Nov. 29	Belmont Abbey							
Dec. 2	College of Charleston							
Dec. 5	Florida State							
Dec. 16	Furman							
Dec. 18	South Alabama ^							
Dec. 19	Georgia State ^							
Dec. 21	Duke							
Dec. 29	Winthrop *							
Jan. 1	High Point *							
Jan. 5	Gardner-Webb *							
Jan. 8	Campbell *							
Jan. 12	Presbyterian *							
Jan. 15	UNC Asheville *							
Jan. 19	North Carolina A&T *							
Jan. 22	USC Upstate *							
Jan. 25	Radford *							
Jan. 29	Hampton *							
Feb. 2	Longwood *							
Feb. 5	Presbyterian *							
Feb. 9	Gardner-Webb *							
Feb. 12	Campbell *							
Feb. 15	Winthrop *							
Feb. 19	High Point *							
Feb. 23	North Carolina A&T *							
Feb. 26	UNC Asheville *							

\*Big South Game

## CURRENT BUCCANEERS VS. WESTERN CAROLINA

Player	GP-GS	Min	Avg.	FG-A	FG%	3FG-A	3FG%	FT-A	FT%	O-D-T	Avg.	PF-DQ	A	TO	B	S	Pts	Avg
Janaia Fargo	1-1	23	23.0	2-3	.667	2-2	1.000	7-8	.875	0-1-1	1.0	3-0	3	1	0	0	13	13.0
Sha'Mya Leigh	2-2	72	36.0	10-17	.588	0-2	.000	2-9	.222	1-2-3	1.5	3-0	6	8	0	6	22	11.0
Sharita Godfrey	2-2	60	30.0	9-19	.473	3-8	.375	0-0	.000	0-4-4	2.0	2-0	2	3	1	5	21	10.5
Alyssia Faye	1-1	30	30.0	4-12	.333	0-3	.000	0-1	.000	1-5-6	6.0	2-0	3	3	1	0	8	8.0
Tori Gittens	2-0	20	10.0	2-4	.500	2-3	.667	0-0	.000	0-3-3	1.5	0-0	0	1	0	1	6	3.0
Tyra Wright	1-1	15	15.0	1-2	.500	0-0	.000	0-0	.000	0-3-3	3.0	1-0	0	2	0	0	2	2.0
Makenna Winans	1-0	2	2.0	0-0	.000	0-0	.000	0-0	.000	0-0-0	0.0	0-0	0	0	0	0	0	0.0



## STARTING LINEUPS BY GAME

Date	Opponent	#1	#2	#3	#4	#5	#
Nov. 6	Columbus State (Exh.)	Leigh	Hicks	Gittens	Godfrey	Faye	Exh.
Nov. 9	Alabama	Leigh	Gittens	Godfrey	Adamson	Faye	1
Nov. 16	George Mason	Leigh	Gittens	Godfrey	Adamson	Baltezegar	2
Nov. 20	Western Carolina						
Nov. 26	Auburn						
Nov. 29	Belmont Abbey						
Dec. 2	College of Charleston						
Dec. 5	Florida State						
Dec. 16	Furman						
Dec. 18	South Alabama ^						
Dec. 19	Georgia State ^						
Dec. 21	Duke						
Dec. 29	Winthrop *						
Jan. 1	High Point *						
Jan. 5	Gardner-Webb *						
Jan. 8	Campbell *						
Jan. 12	Presbyterian *						
Jan. 15	UNC Asheville *						
Jan. 19	North Carolina A&T *						
Jan. 22	USC Upstate *						
Jan. 25	Radford *						
Jan. 29	Hampton *						
Feb. 2	Longwood *						
Feb. 5	Presbyterian *						
Feb. 9	Gardner-Webb *						
Feb. 12	Campbell *						
Feb. 15	Winthrop *						
Feb. 19	High Point *						
Feb. 23	North Carolina A&T *						
Feb. 26	UNC Asheville *						

\*Big South Game

## RECORD BY STARTING LINEUP COMBINATION

### Lineup

Leigh, Gittens, Godfrey, Adamson, Faye

Leigh, Gittens, Godfrey, Adamson, Baltezegar

### Record

0-1

0-1





## &gt;&gt;2021-22 BIG SOUTH STANDINGS

Team	Big South	PCT	Overall	PCT	Streak
Campbell	0-0	.000	2-1	.667	W1
High Point	0-0	.000	2-1	.667	W2
UNC Asheville	0-0	.000	2-1	.667	W2
USC Upstate	0-0	.000	1-1	.500	W1
Longwood	0-0	.000	1-2	.333	W1
Hampton	0-0	.000	1-3	.250	L2
<b>Charleston Southern</b>	<b>0-0</b>	<b>.000</b>	<b>0-2</b>	<b>.000</b>	<b>L2</b>
Radford	0-0	.000	0-2	.000	L2
Gardner-Webb	0-0	.000	0-3	.000	L3
Presbyterian	0-0	.000	0-3	.000	L3
Winthrop	0-0	.000	0-3	.000	L3
North Carolina A&T	0-0	.000	0-4	.000	L4

## &gt;&gt;BY THE NUMBERS

## &gt;&gt;CHARLESTON SOUTHERN 2021-22 NCAA RANKINGS

	NCAA	Big South	Value
Assist Turnover Ratio (348 ranked)	329	11	0.37
Assists (348 ranked)	340	12	17
Assists Per Game (348 ranked)	313	10	8.5
Blocked Shots (341 ranked)	228	4	7
Blocked Shots Per Game (343 ranked)	143	3	3.5
Defensive Rebounds per Game (30 ranked)			
Fewest Fouls (345 ranked)	63	3	39
Fewest Turnovers (348 ranked)	123	4	46
Field-Goal Percentage (348 ranked)	345	12	27.4
Field-Goal Percentage Defense (348 ranked)	298	8	45.0
Free Throw Attempts (348 ranked)	332	12	22
Free Throws Made (348 ranked)	332	12	15
Free-Throw Percentage (348 ranked)	196	6	68.2
Offensive Rebounds per Game (26 ranked)			
Personal Fouls Per Game (348 ranked)	265	11	19.5
Rebound Margin (348 ranked)	340	9	-14.5
Rebounds (348 ranked)	321	10	73
Rebounds Per Game (348 ranked)	227	4	36.50
Scoring Defense (348 ranked)	338	12	86.5
Scoring Margin (348 ranked)	345	12	-43.0
Scoring Offense (348 ranked)	346	11	43.5
Steals (348 ranked)	317	11	14
Steals Per Game (348 ranked)	256	8	7.0
Three Pt FG Defense (338 ranked)	206	7	30.2
Three-Point Field Goals Attempted (144 ranked)			
Three-Point Field Goals Made (348 ranked)	307	10	8
Three-Point Field Goals Per Game (348 ranked)	265	6	4.0
Three-Point Field-Goal Percentage (348 ranked)	311	9	21.1
Turnover Margin (348 ranked)	336	11	-10.00
Turnovers Forced (348 ranked)	318	12	13.00
Turnovers Per Game (348 ranked)	322	9	23.0

## &gt;&gt;NCAA NATIONAL POLLS

ASSOCIATED PRESS TOP 25					USA TODAY / WBCA COACHES TOP 25				
Rk	School	Rec.	Pts.	PV	Rk	School	Rec.	Pts.	PV
1	South Carolina (25)	2-0	744	1	1	South Carolina (13)	0-0	768	4
2	UConn (5)	1-0	724	2	T2	Stanford (13)	0-0	763	1
3	Maryland	3-0	691	4	T2	UConn (6)	0-0	763	3
4	Indiana	2-0	617	8	4	NC State	0-0	670	7
5	NC State	2-1	609	5	5	Maryland	0-0	661	9
6	Baylor	2-0	562	7	6	Louisville	0-0	642	6
7	Stanford	1-1	553	3	7	Indiana	0-0	558	8
8	Iowa	3-0	547	9	8	Baylor	0-0	495	5
9	Oregon	2-0	506	10	9	Oregon	0-0	475	15
10	Louisville	0-1	467	6	10	Michigan	0-0	470	11
11	Arizona	2-0	411	22	11	Iowa	0-0	440	19
12	Texas	2-0	408	25	12	Tennessee	0-0	346	16
13	Michigan	2-0	393	11	13	Kentucky	0-0	322	21
14	Iowa State	1-0	379	12	14	UCLA	0-0	311	12
15	Oregon State	1-0	272	14	15	Arizona	0-0	277	2
16	Tennessee	2-0	243	15	16	Iowa State	0-0	258	NR
17	Florida State	2-0	234	16	17	Texas A&M	0-0	251	10
18	Georgia Tech	3-0	219	17	18	Oregon State	0-0	224	NR
19	Kentucky	2-1	207	13	19	Georgia	0-0	197	13
20	UCLA	1-0	186	20	20	Georgia Tech	0-0	192	22
21	Ohio State	2-0	181	17	21	Texas	0-0	190	17
22	West Virginia	0-0	119	19	22	South Florida	0-0	169	18
23	South Florida	209	111	21	23	West Virginia	0-0	165	24
24	Texas A&M	209	101	23	24	Florida State	0-0	157	NR
25	Virginia Tech	3-0	85	24	25	Ohio State	0-0	128	NR

Dropped out: None

Others receiving votes: Florida Gulf Coast 56, Georgia 50, Michigan State 17, Missouri State 14, Washington State 10, Notre Dame 8, Arkansas 6, Colorado 5, DePaul 4, Oklahoma 4

Others receiving votes: Missouri State 112, Gonzaga 59, Virginia Tech 56, Florida Gulf Coast 54, Arkansas 53, Michigan State 28, Rutgers 17, Stephen F. Austin 16, LSU 13, Northwestern 13, South Dakota State 13, Washington State 13, BYU 11, North Carolina 11, UCF 8, Colorado 8, DePaul 5, Ole Miss 5, Belmont 4, Delaware 4, Oklahoma 4, Notre Dame 3, South Dakota 3, Houston 2, IUPUI 1, Seton Hall 1, Virginia 1

## &gt;&gt;2021-22 PRESEASON ALL-CONFERENCE TEAMS

## FIRST TEAM

Skyler Curran, High Point\*  
 Kyla McMakin, Longwood  
 Akila Smith, Longwood  
 Nadiria Evans, UNC Asheville  
 Shy Tuelle, Campbell

## SECOND TEAM

Jenson Edwards, High Point  
 Chanin Scott, North Carolina A&T  
 Taya Bolden, Campbell  
 Nylah Young, Hampton  
 Alasia Smith, Gardner-Webb

\*indicates Preseason Player of the Year

## &gt;&gt;2021-22 BIG SOUTH PRESEASON POLL

Team	1	2	3	4	5	6	7	8	9	10	11	12	Points
1. High Point (11)	11	1	-	-	-	-	-	-	-	-	-	-	143
2. Campbell	-	3	7	2	-	-	-	-	-	-	-	-	121
3. Longwood	-	4	3	5	-	-	-	-	-	-	-	-	119
4. North Carolina A&T (1)	1	4	1	3	1	1	1	-	-	-	-	-	114
5. Gardner-Webb	-	-	1	1	5	4	1	-	-	-	-	-	93
6. Radford	-	-	-	-	2	5	2	2	-	1	-	-	76
T7. UNC Asheville	-	-	-	1	1	-	4	5	1	-	-	-	70
T7. Presbyterian	-	-	-	-	3	1	2	3	3	-	-	-	70
9. Hampton	-	-	-	-	-	-	2	1	7	1	1	-	50
10. USC Upstate	-	-	-	-	-	1	-	1	1	6	2	1	38
11. Winthrop	-	-	-	-	-	-	-	-	-	3	5	4	23
12. Charleston So.	-	-	-	-	-	-	1	1	2	1	4	7	18



## 2021-22 High/Low Analysis

### CSU High

Points/Game	55	George Mason, 11/16/21
Points/Half	33	George Mason, 11/16/21
FG Made	20	George Mason, 11/16/21
FG Attempts	61	George Mason, 11/16/21
FG%	328	George Mason, 11/16/21
3-Pt. FG Made	5	George Mason, 11/16/21
3-Pt FG Attempts	21	George Mason, 11/16/21
FT Made	10	George Mason, 11/16/21
FT Attempts	17	George Mason, 11/16/21
FT%	1.000	at Alabama, 11/9/21
Offensive Reb.	12	George Mason, 11/16/21
Rebounds	37	George Mason, 11/16/21
Assists	10	George Mason, 11/16/21
Steals	10	George Mason, 11/16/21
Blocked Shots	5	George Mason, 11/16/21
Turnovers	31	at Alabama, 11/9/21
Fouls	24	at Alabama, 11/9/21

### CSU Low

Points/Game	32	at Alabama, 11/9/21
Points/Half	16	at Alabama, 11/9/21
FG Made	12	at Alabama, 11/9/21
FG Attempts	56	at Alabama, 11/9/21
FG%	214	at Alabama, 11/9/21
3-Pt. FG Made	3	at Alabama, 11/9/21
3-Pt FG Attempts	17	at Alabama, 11/9/21
FT Made	5	at Alabama, 11/9/21
FT Attempts	5	at Alabama, 11/9/21
FT%	588	George Mason, 11/16/21
Offensive Reb.	7	at Alabama, 11/9/21
Rebounds	36	at Alabama, 11/9/21
Assists	7	at Alabama, 11/9/21
Steals	4	at Alabama, 11/9/21
Blocked Shots	2	at Alabama, 11/9/21
Turnovers	15	George Mason, 11/16/21
Fouls	15	George Mason, 11/16/21

### Opponent High

Points/Game	109	Alabama, 11/9/21
Points/Half	63	Alabama, 11/9/21
FG Made	39	Alabama, 11/9/21
FG Attempts	79	Alabama, 11/9/21
FG%	494	Alabama, 11/9/21
3-Pt. FG Made	8	Alabama, 11/9/21
3-Pt FG Attempts	25	Alabama, 11/9/21
FT Made	23	Alabama, 11/9/21
FT Attempts	31	Alabama, 11/9/21
FT%	742	Alabama, 11/9/21
Offensive Reb.	16	George Mason, 11/16/21
Rebounds	53	Alabama, 11/9/21
Assists	19	Alabama, 11/9/21
Steals	13	Alabama, 11/9/21
Blocked Shots	3	George Mason, 11/16/21
Turnovers	18	George Mason, 11/16/21
Fouls	17	George Mason, 11/16/21

### Opponent Low

Points/Game	64	George Mason, 11/16/21
Points/Half	28	George Mason, 11/16/21
FG Made	24	George Mason, 11/16/21
FG Attempts	61	George Mason, 11/16/21
FG%	393	George Mason, 11/16/21
3-Pt. FG Made	5	George Mason, 11/16/21
3-Pt FG Attempts	18	George Mason, 11/16/21
FT Made	11	George Mason, 11/16/21
FT Attempts	17	George Mason, 11/16/21
FT%	647	George Mason, 11/16/21
Offensive Reb.	16	Alabama, 11/9/21
Rebounds	49	George Mason, 11/16/21
Assists	12	George Mason, 11/16/21
Steals	7	George Mason, 11/16/21
Blocked Shots	2	Alabama, 11/9/21
Turnovers	8	Alabama, 11/9/21
Fouls	15	Alabama, 11/9/21

## 2021-22 Individual Game Highs

### CSU High

Points/Game	18	Tori Gittens, vs. George Mason, 11/16/21
Points/Half	11	Tori Gittens, 2nd half vs. George Mason, 11/16/21
FG Made	7	Tori Gittens, vs. George Mason, 11/16/21
FG Attempts	15	Sha'Mya Leigh (2x), at Alabama, 11/9/21; vs. George Mason, 11/16/21
3-Pt. FG Made	2	Tori Gittens, Sharita Godfrey, vs. George Mason, 11/16/21
3-Pt FG Attempts	6	Tori Gittens, Sharita Godfrey, vs. George Mason, 11/16/21
FT Made	4	Janaia Fargo, vs. George Mason, 11/16/21
FT Attempts	5	Janaia Fargo, vs. George Mason, 11/16/21
Offensive Reb.	4	Skylar Baltezegar, Sharita Godfrey, vs. George Mason, 11/16/21
Rebounds	12	Skylar Baltezegar, vs. George Mason, 11/16/21
Assists	5	Madison Adamson, vs. George Mason, 11/16/21
Steals	4	Madison Adamson, vs. George Mason, 11/16/21
Blocked Shots	3	Skylar Baltezegar, vs. George Mason, 11/16/21
Turnovers	5	Janaia Fargo, Tori Gittens, at Alabama, 11/9/21

### Opponent High

Points/Game	25	Brittany Davis, Alabama, 11/9/21
Points/Half	14	Brittany Davis, Alabama, 1st half, 11/9/21
FG Made	9	Brittany Davis, Alabama, 11/9/21
FG Attempts	19	Brittany Davis, Alabama, 11/9/21
3-Pt. FG Made	5	Brittany Davis, Alabama, 11/9/21; Jordan Wakefield, George Mason, 11/16/21
3-Pt FG Attempts	10	Brittany Davis, Alabama, 11/9/21
FT Made	7	Taylor Sutton, Alabama, 11/9/21
FT Attempts	9	Taylor Sutton, Alabama, 11/9/21
Offensive Reb.	5	Brittany Davis, Alabama, 11/9/21
Rebounds	12	Brittany Davis, Alabama, 11/9/21
Assists	5	JaMya Mingo-Young, Alabama, 11/9/21
Steals	2	Megan Abrams, Ahriahna Grizzle, Khyla Wade-Warren, Alabama, 11/9/21; Taylor Jameson, George Mason, 11/16/21
Blocked Shots	2	Jazmyn Doster, George Mason, 11/16/21
Turnovers	7	Taylor Jameson, George Mason, 11/16/21



## 2021-22 SCHEDULE

Date	Opponent	Location	Venue	Time/Result
<b>NOVEMBER</b>				
Nov. 9	at ALABAMA	TUSCALOOSA, ALA.	COLEMAN COLISEUM	L, 32-109
<b>Nov. 16</b>	<b>GEORGE MASON</b>	<b>CHARLESTON, S.C.</b>	<b>BUCCANEER FIELDHOUSE</b>	<b>L, 55-64</b>
Nov. 20	at WESTERN CAROLINA	CULLOWHEE, N.C.	LISTON B. RAMSEY CENTER	4 p.m.
Nov. 26	at AUBURN	AUBURN, ALA.	AUBURN ARENA	1 p.m.
<b>Nov. 29</b>	<b>BELMONT ABBEY</b>	<b>CHARLESTON, S.C.</b>	<b>BUCCANEER FIELDHOUSE</b>	<b>6 p.m.</b>
<b>DECEMBER</b>				
<b>Dec. 2</b>	<b>COLLEGE OF CHARLESTON</b>	<b>CHARLESTON, S.C.</b>	<b>BUCCANEER FIELDHOUSE</b>	<b>6 p.m.</b>
Dec. 5	at FLORIDA STATE	TALLAHASSEE, FLA.	DONALD L. TUCKER CENTER	2 p.m.
<b>Dec. 16</b>	<b>FURMAN</b>	<b>CHARLESTON, S.C.</b>	<b>BUCCANEER FIELDHOUSE</b>	<b>6 p.m.</b>
Dec. 18	vs. SOUTH ALABAMA ^	ATLANTA, GA.	GSU SPORTS ARENA	NOON
Dec. 19	at GEORGIA STATE ^	ATLANTA, GA.	GSU SPORTS ARENA	2 p.m.
<b>Dec. 21</b>	<b>DUKE</b>	<b>CHARLESTON, S.C.</b>	<b>BUCCANEER FIELDHOUSE</b>	<b>NOON</b>
Dec. 29	at WINTHROP *	ROCK HILL, S.C.	WINTHROP COLISEUM	6 p.m.
<b>JANUARY</b>				
Jan. 1	HIGH POINT *	CHARLESTON, S.C.	BUCCANEER FIELDHOUSE	2 p.m.
Jan. 5	at GARDNER-WEBB *	BOILING SPRINGS, N.C.	PAUL PORTER ARENA	7 p.m.
Jan. 8	CAMPBELL *	CHARLESTON, S.C.	BUCCANEER FIELDHOUSE	2 p.m.
Jan. 12	at PRESBYTERIAN *	CLINTON, S.C.	ROSS E. TEMPLETON CENTER	6 p.m.
Jan. 15	UNC ASHEVILLE *	CHARLESTON, S.C.	BUCCANEER FIELDHOUSE	3 p.m.
Jan. 19	at NORTH CAROLINA A&T *	GREENSBORO, N.C.	ELLIS F. CORBETT SPORTS CENTER	6 p.m.
Jan. 22	USC UPSTATE *	CHARLESTON, S.C.	BUCCANEER FIELDHOUSE	2 p.m.
Jan. 25	RADFORD *	CHARLESTON, S.C.	BUCCANEER FIELDHOUSE	6 p.m.
Jan. 29	at HAMPTON *	HAMPTON, VA.	HU CONVOCATION CENTER	3 p.m.
<b>FEBRUARY</b>				
Feb. 2	at LONGWOOD *	FARMVILLE, VA.	WILLETT HALL	7 p.m.
Feb. 5	PRESBYTERIAN *	CHARLESTON, S.C.	BUCCANEER FIELDHOUSE	3 p.m.
Feb. 9	GARDNER-WEBB *	CHARLESTON, S.C.	BUCCANEER FIELDHOUSE	6 p.m.
Feb. 12	at CAMPBELL *	BUIES CREEK, N.C.	GILBERT CRAIG GORE ARENA	2 p.m.
Feb. 15	WINTHROP *	CHARLESTON, S.C.	BUCCANEER FIELDHOUSE	6 p.m.
Feb. 19	at HIGH POINT *	HIGH POINT, N.C.	NIDO AND MARIANA QUBEIN ARENA	2 p.m.
Feb. 23	NORTH CAROLINA A&T *	CHARLESTON, S.C.	BUCCANEER FIELDHOUSE	6 p.m.
Feb. 26	at UNC ASHEVILLE *	ASHEVILLE, N.C.	KIMMEL ARENA	2 p.m.
<b>MARCH</b>				
March 1	BIG SOUTH FIRST ROUND %	CHARLOTTE, N.C.	BOJANGLES' COLISEUM	TBA
March 3	BIG SOUTH QUARTERFINALS %	CHARLOTTE, N.C.	BOJANGLES' COLISEUM	TBA
March 5	BIG SOUTH SEMIFINALS %	CHARLOTTE, N.C.	BOJANGLES' COLISEUM	TBA
March 6	BIG SOUTH CHAMPIONSHIP GAME %	CHARLOTTE, N.C.	BOJANGLES' COLISEUM	8:30 p.m.

Home games in Bold

All times Eastern and subject to change

\* - Big South Game

% - Big South Championships

^ - Georgia State Holiday Classic



**Capacity:** 881

**Sports:** Men's Basketball, Women's Basketball, Volleyball

Home to CSU's men's and women's basketball and volleyball programs, the Buc Dome offers one of the most intimate settings for NCAA Division I sports in the nation. The Buc Dome is regularly packed with overflow, standing-room only crowds for men's basketball games, allowing CSU a distinct home court advantage.

The Bucs have hosted multiple postseason competitions in recent years including a home win for the men's basketball team over Florida Atlantic in the CollegeInsider.com Tournament (CIT). The CSU women's basketball team hosted the first round of the WBI in the 2017 season against UNC Greensboro as the Bucs capped arguably the most successful season in program history in both wins and Big South victories on the year.

CSU captured its second Big South regular-season men's basketball championship in three years in 2014-15, clinching the title with a thrilling triple-overtime win over High Point. The Bucs went 13-2 inside the Buc Dome and were 8-1 in conference play. CSU also boasted a nine-game home winning streak from November 25 - January 24.

The Bucs went 11-3 at home in 2012-13 en route to capturing the Big South's regular season championship. CSU capped off that title run with a rousing senior day win over rival Coastal Carolina, clinching the program's first conference championship in 26 years. CSU also hosted in-city rivals The Citadel and College of Charleston in 2012-13, with the latter packing in a crowd of over 1,000 raucous supporters.

In 2010-11, the men's and women's basketball programs were undefeated at home into the month of February, making CSU one of four schools in the nation to hold that distinction.

CSU volleyball often entertains local rivals The Citadel and College of Charleston at home, in addition to a full Big South Conference slate. The Buc Dome was home to the 2011 Big South Conference Volleyball Championships.

CSU volleyball has also hosted CSU Volleyball Tournaments in 2012 and 2014.

## ALL-TIME RECORD AT BUCCANEER FIELD HOUSE

Year	W	L	Year	W	L	Year	W	L
2021-22	0	1	2002-03	7	5	1983-84	1	7
2020-21	4	8	2001-02	9	4	1982-83	0	10
2019-20	3	13	2000-01	13	10	1981-82	1	11
2018-19	9	7	1999-00	5	5	1980-81	6	9
2017-18	7	8	1998-99	12	2	1979-80	2	10
2016-17	12	5	1997-98	6	5	1978-79	N/A	N/A
2015-16	9	6	1996-97	8	3	1977-78	5	2
2014-15 *	1	9	1995-96	8	4	1976-77	2	7
2013-14 *	0	10	1994-95	6	5	<b>TOTAL</b>	<b>245</b>	<b>316</b>
2012-13 *	0	10	1993-94	3	11	* - Wins later vacated by NCAA		
2011-12 *	8	3	1992-93	7	5			
2010-11	10	3	1991-92	2	11			
2009-10	12	5	1990-91	0	14			
2008-09	8	7	1989-90	1	11			
2007-08	6	5	1988-89	1	12			
2006-07	8	7	1987-88	5	9			
2005-09	6	9	1986-87	5	8			
2004-05	9	3	1985-86	6	5			
2003-04	7	5	1984-85	5	7			





# CLARISSE GARCIA

>>HEAD COACH | 1ST SEASON AT CSU | VILLANOVA, '07

## >>COACH GARCIA BY RECORD

Overall record.....	15-41
Record at CSU.....	0-2
Big South Record (Regular Season).....	0-0
Big South Record (Tournament).....	0-0
Home.....	0-1
Road.....	0-1
Neutral.....	0-0

## >>COACH GARCIA'S MILESTONES

### OVERALL

1.....	vs. Warner, 11/12/2010 (W, 89, 62)
25.....	

### AT CSU

1.....	
25.....	

### BIG SOUTH WINS

1.....	
25.....	

Clarisse Garcia is in her first season at the helm of the Charleston Southern women's basketball program and is the 16th head women's basketball coach in program history. She takes over the Buccaneers after coaching stops at Auburn, Wake Forest, Alabama, Palm Beach Atlantic, and Stetson.

Garcia comes to the Buccaneers after spending the last five seasons at Auburn University, including serving as the program's interim head coach following the 2020-21 season. Over her time with the Tigers, Auburn advanced to the NCAA tournament twice while multiple players garnered national and conference recognition.

Garcia spent five seasons (2016-21) with the Auburn women's basketball team serving as the Tigers' recruiting coordinator among other duties. Over her tenure at Auburn, the Tigers posted two top-25 recruiting classes according to espnW HoopGurlz (No. 13 in 2018, No. 25 in 2019), while 11 players received conference postseason accolades.

Garcia's first season at Auburn saw the Tigers advance to their second consecutive NCAA Tournament, finishing with a 17-15 overall record. Her second season saw Auburn finish with a 14-15 overall record, but she was instrumental in landing the nation's No. 12-ranked recruiting class that enrolled at Auburn for the 2018-19 school year. The 2018-19 season saw the Tigers return to the NCAA Tournament for the third time in four seasons while posting a 22-10 overall record (9-7 SEC), the best finish for Auburn in a decade.

Prior to her time at Auburn, she spent four seasons as an assistant at Wake Forest. At Wake Forest, Garcia's teams steadily improved, going from a 13-win season in her first year to a 17-win season in 2016 that resulted in a berth in the Women's NIT, the best finish for the Demon Deacons since 2012.

Garcia also previously served as an assistant at Alabama for one year, spending the 2011-12 season on the bench. During her time Alabama, she was primarily responsible for recruiting, player development, the elite camp and scouting.

Prior to Alabama, she was the head coach at NCAA Division II Palm Beach Atlantic for two seasons. Under Garcia's watch, Sailfish student-athletes set several program bests including the all-time three-point scoring leader and single-season three-point scoring leader, the all-time leading rebounder, and the all-time blocking leader. She also had two student-athletes named to the Independent Collegiate Athletic Association (ICAA) second team and another two named to the All-ICAA third team.

In addition to their success on the court, Garcia's teams excelled in the classroom as she oversaw an increase in the team's overall GPA from below a 3.0 to 3.2. Throughout her tenure, she had two student-athletes with 4.0 GPAs, attaining President's List status, two qualifying for the Provost's List (3.5-3.9) and six on the Athletics Director's List (3.0-3.4).

Prior to Palm Beach Atlantic, Garcia spent one season as the top assistant and recruiting coordinator at Stetson University. While there, she recruited and signed a nationally-ranked student-athlete and helped coach the team to an appearance in the Atlantic Sun Conference Tournament.

Garcia began her coaching career as a graduate assistant at Seton Hill University in Greensburg, Pa. In her two seasons with the Griffins, she assisted in the mentoring and development of student-athletes both on and off the court.

In her final season at Seton Hill, Garcia helped coach the team to a fourth-place finish in the West Virginia Intercollegiate Athletic Association (WVIAA) Conference tournament, in addition to helping the Griffins rank third nationally for team GPA in NCAA Division II. Garcia was named the 2009 Women's Basketball Coaches Association/Women's Sports Foundation graduate assistant of the year.

Garcia was an accomplished player at Villanova University. During her four-year career (2003-07) with the Wildcats women's basketball team, she was a three-time BIG EAST All-Academic team member as well as a three-time member of the Villanova dean's list. She served as team captain her senior season and helped the Wildcats advance to the NCAA Tournament in 2004, as well as the Women's National Invitation Tournament in 2005 and 2006.

A native of Hopewell, Pa., Garcia also has been involved in several camps and clinics including the Prohoops Camp at the Final Four, Leadership Through Basketball Camps in Morocco, University of Pittsburgh Summer Camps, Harry Perretta Basketball Clinics, Nike Basketball Camps and the Philadelphia Big 5 Clinics.

## HEAD COACHING RECORD

Year	School	Position	Record
2010-11	Palm Beach Atl.	Head Coach	8-20
2011-12	Palm Beach Atl.	Head Coach	7-19
2021-22	Charleston So.	Head Coach	0-2 (0-0)

## PLAYING/COACHING CAREER

Year	School	Position
2003-07	Villanova	Guard
2007-09	Seton Hill	Graduate Assistant
2009-10	Stetson	Assistant Coach
2010-12	Palm Beach Atlantic	Head Coach
2012-13	Alabama	Assistant Coach
2013-16	Wake Forest	Assistant Coach
2016-21	Auburn	Assistant Coach
2021-pres.	Charleston Southern	Head Coach



# VICTORIA DAMES

**GUARD / FORWARD**

**SOPHOMORE • 6-0**

**LOGANVILLE, GA. • GRAYSON • ARKANSAS STATE**

**1**

- First season at CSU after transferring from Arkansas State.
- Three minutes played in home opener against George Mason (11/16/21).
- Made her CSU debut against Alabama, finishing with three rebounds and a team-high two assists (11/9/21).
- Five points, four rebounds in exhibition against Columbus State.
- Five games during 2020-21 season with the Red Wolves, averaging 2.0 points per game.
- Season-high 11 minutes against Champion Christian (12/15/20), finishing with five points and two rebounds.
- Played at Grayson High School, where she averaged double-figure scoring in each of her last two seasons.
- Honorable mention all-state honors in her senior year at Grayson (12.2 ppg, 4.0 rpg).
- All-region selection as a junior at Grayson (11.2 ppg, 4.7 rpg, 3.1 spg, 1.2 bpg).

## 2021-22 Game Log

Opp	FG-A	3FG-A	FT-A	O-D-T	PF	TP	A	TO	B	S	Min
at Alabama	0-5	0-2	0-0	1-2-3	3	0	2	2	0	0	19
George Mason	0-0	0-0	0-0	0-0-0	0	0	0	0	0	0	3
at Western Carolina											
at Auburn											
Belmont Abbey											
College of Charleston											
at Florida State											
Furman											
vs. South Alabama ^											
at Georgia State ^											
Duke											
at Winthrop *											
High Point *											
at Gardner-Webb *											
Campbell *											
at Presbyterian *											
UNC Asheville *											
at North Carolina A&T *											
USC Upstate *											
Radford *											
at Hampton *											
at Longwood *											
Presbyterian *											
Gardner-Webb *											
at Campbell *											
Winthrop *											
at High Point *											
North Carolina A&T *											
at UNC Asheville *											



## Career Highs

Points	--	--	--
Rebounds	3	at Alabama	11-9-21
Assists	2	at Alabama	11-9-21
Steals	--	--	--
Blocks	--	--	--
FG Made	--	--	--
3FG Made	--	--	--
FT Made	--	--	--
Minutes	19	at Alabama	11-9-21

## Career Stats

Year	GP-GS	Min	Avg.	FG-A	FG%	3FG-A	3FG%	FT-A	FT%	O-D-T	Avg.	PF-DQ	A	TO	B	S	Pts	Avg
2020-21	5-0	22	4.4	4-7	.571	2-4	.500	0-0	.000	1-1-2	0.4	0-0	1	2	0	0	10	2.0
2021-22	2-0	23	11.4	0-5	.000	0-2	.000	0-0	.000	1-2-3	1.5	3-0	2	2	0	0	0	0.0
<b>CAREER</b>	<b>7-0</b>	<b>45</b>	<b>6.4</b>	<b>4-12</b>	<b>.333</b>	<b>2-6</b>	<b>.333</b>	<b>0-0</b>	<b>.000</b>	<b>2-3-5</b>	<b>0.7</b>	<b>3-0</b>	<b>3</b>	<b>4</b>	<b>0</b>	<b>0</b>	<b>10</b>	<b>1.4</b>
<b>AT CSU</b>	<b>2-0</b>	<b>23</b>	<b>11.4</b>	<b>0-5</b>	<b>.000</b>	<b>0-2</b>	<b>.000</b>	<b>0-0</b>	<b>.000</b>	<b>1-2-3</b>	<b>1.5</b>	<b>3-0</b>	<b>2</b>	<b>2</b>	<b>0</b>	<b>0</b>	<b>0</b>	<b>0.0</b>





# SKYLAR BALTEZEGAR

**FORWARD / CENTER**

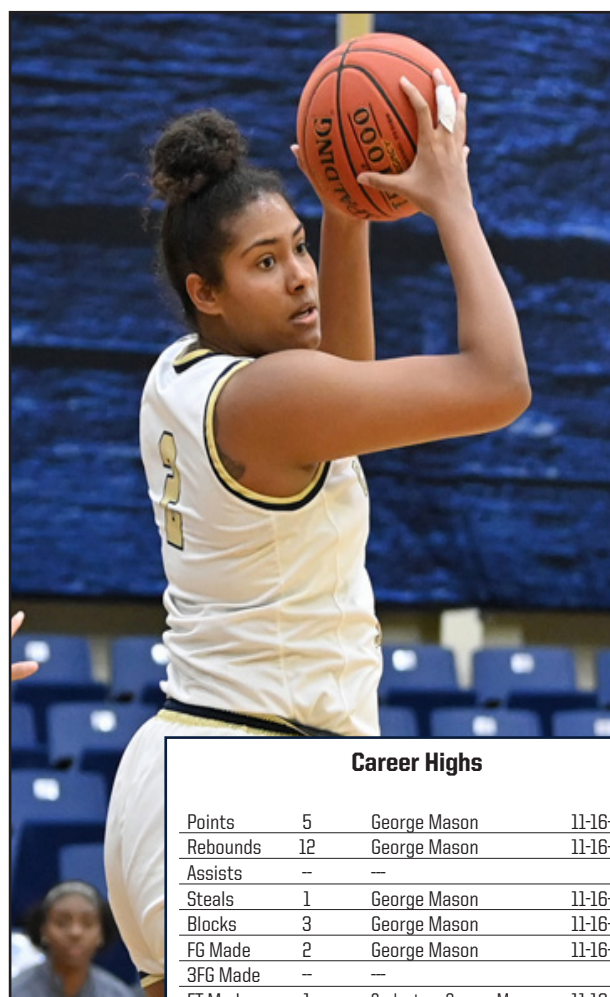
**FRESHMAN • 6-2**  
**ORANGE PARK, FLA. • MIDDLEBURG**

**2**

- Has led the team in rebounds in every game this season (including the exhibition).
- Earned first career start vs. George Mason, finishing with five points, 12 rebounds and three blocks (11/16/21).
- Three points and a team-high five rebounds in season opener at Alabama (11/9/21).
- Led CSU with eight rebounds in exhibition against Columbus State.
- Averaged a double-double during her high school career at Middleburg.
- All-conference selection in 2019-20 season.
- Two-time Defensive Player of the Year in high school.
- Multi-sport athlete in high school, also played volleyball.

## 2021-22 Game Log

Opp	FG-A	3FG-A	FT-A	O-D-T	PF	TP	A	TO	B	S	Min
at Alabama	1-6	0-0	1-1	1-4-5	3	3	0	2	0	0	14
George Mason	2-8	0-0	1-2	4-8-12	3	5	0	1	3	1	27
at Western Carolina											
at Auburn											
Belmont Abbey											
College of Charleston											
at Florida State											
Furman											
vs. South Alabama ^											
at Georgia State ^											
Duke											
at Winthrop *											
High Point *											
at Gardner-Webb *											
Campbell *											
at Presbyterian *											
UNC Asheville *											
at North Carolina A&T *											
USC Upstate *											
Radford *											
at Hampton *											
at Longwood *											
Presbyterian *											
Gardner-Webb *											
at Campbell *											
Winthrop *											
at High Point *											
North Carolina A&T *											
at UNC Asheville *											



## Career Highs

Points	5	George Mason	11-16-21
Rebounds	12	George Mason	11-16-21
Assists	--	---	--
Steals	1	George Mason	11-16-21
Blocks	3	George Mason	11-16-21
FG Made	2	George Mason	11-16-21
3FG Made	--	---	--
FT Made	1	2x, last vs. George Mason	11-16-21
Minutes	27	George Mason	11-16-21

## Career Stats

Year	GP-GS	Min	Avg.	FG-A	FG%	3FG-A	3FG%	FT-A	FT%	O-D-T	Avg.	PF-DQ	A	TO	B	S	Pts	Avg
2021-22	2-1	41	20.6	3-14	.214	0-0	.000	2-3	.667	5-12-17	8.5	6-0	0	3	3	1	8	4.0
<b>CAREER</b>	<b>2-1</b>	<b>41</b>	<b>20.6</b>	<b>3-14</b>	<b>.214</b>	<b>0-0</b>	<b>.000</b>	<b>2-3</b>	<b>.667</b>	<b>5-12-17</b>	<b>8.5</b>	<b>6-0</b>	<b>0</b>	<b>3</b>	<b>3</b>	<b>1</b>	<b>8</b>	<b>4.0</b>



# SHA'MYA LEIGH

**GUARD**

**JUNIOR • 5-10**  
**DAYTON, OHIO • TROTWOOD-MADISON**

**5**

- Has started 45 of the 53 games she has appeared in.
- 10 points, two assists, two steals in home opener against George Mason (11/16/21)
- Finished as CSU's leading scorer in season opener at Alabama with nine points (11/9/21).
- Also added three rebounds and an assist against the Crimson Tide.
- One of four returning starters from the 2020-21 team.
- Averaged 30.0 minutes, 7.5 points and 2.7 rebounds per game in 2020-21 season.
- Led the Bucs with 25 steals last season, including a career-best three in four different games.
- Four rebounds, three assists, one block and one steal in exhibition vs. Columbus State.
- Career-high 18 points against conference champion High Point (2/6/21).
- Averaged 28.2 minutes, 5.4 points and 2.0 rebounds per game in 2019-20 season.
- Second on the team in assists during 2020-21 season after leading the Bucs in assists during the 2019-20 season.

## 2021-22 Game Log

Opp	FG-A	3FG-A	FT-A	O-D-T	PF	TP	A	TO	B	S	Min
at Alabama	4-15	1-4	0-0	0-3-3	4	9	1	4	0	1	34
George Mason	4-15	1-4	1-3	0-0-0	2	10	2	4	0	2	40
at Western Carolina											
at Auburn											
Belmont Abbey											
College of Charleston											
at Florida State											
Furman											
vs. South Alabama ^											
at Georgia State ^											
Duke											
at Winthrop *											
High Point *											
at Gardner-Webb *											
Campbell *											
at Presbyterian *											
UNC Asheville *											
at North Carolina A&T *											
USC Upstate *											
Radford *											
at Hampton *											
at Longwood *											
Presbyterian *											
Gardner-Webb *											
at Campbell *											
Winthrop *											
at High Point *											
North Carolina A&T *											
at UNC Asheville *											



## Career Highs

Points	18	High Point	2-6-21
Rebounds	7	Columbia (S.C.)	12-16-19
Assists	6	2x, last at Radford	2-20-21
Steals	3	5x, last at Winthrop	1-30-21
Blocks	2	2x, last at Hampton	12-21-20
FG Made	7	2x, last vs. High Point	2-6-21
3FG Made	3	at Davidson	12-9-20
FT Made	8	at Hampton	12-22-20
Minutes	40	Western Carolina	12-13-20

## Career Stats

Year	GP-GS	Min	Avg.	FG-A	FG%	3FG-A	3FG%	FT-A	FT%	O-D-T	Avg.	PF-DQ	A	TO	B	S	Pts	Avg
2019-20	29-26	818	28.2	59-166	.355	7-37	.189	33-54	.611	11-46-57	2.0	56-1	60	91	1	30	158	5.4
2020-21	22-17	661	30.0	57-147	.388	13-40	.325	38-55	.691	8-51-59	2.7	42-0	36	55	5	25	165	7.5
2021-22	2-2	74	37.0	8-30	.267	2-8	.250	1-3	.333	0-3-3	1.5	6-0	3	8	0	3	19	9.5
<b>CAREER</b>	<b>53-45</b>	<b>1553</b>	<b>29.3</b>	<b>124-343</b>	<b>.362</b>	<b>22-85</b>	<b>.259</b>	<b>72-112</b>	<b>.643</b>	<b>19-100-119</b>	<b>2.2</b>	<b>104-1</b>	<b>99</b>	<b>154</b>	<b>6</b>	<b>58</b>	<b>342</b>	<b>6.5</b>





# JORDAN ROGERS

**GUARD**

**FRESHMAN • 5-10**  
**FRANKLIN, OHIO • FRANKLIN**

**10**

- Made collegiate debut in season opener at Alabama, grabbing two rebounds in nine minutes (11/9/21).
- Played three minutes in home opener against George Mason (11/16/21).
- Finished her high school career ranked third in school history in scoring.
- Averaged double-figures in each of her last three years at Franklin, including 17.0 ppg as a senior.
- Scored in double-figures in 17 of her 19 games during the 2020-21 season.
- Three-time SWBL First Team All-Southwest Division selection.
- Two-time district champion at Franklin, reaching the regional semifinals once and the regional finals once.
- Two-time First Team Ohio All-Area selection.

## 2021-22 Game Log

Opp	FG-A	3FG-A	FT-A	O-D-T	PF	TP	A	TO	B	S	Min
at Alabama	0-1	0-0	0-0	1-1-2	0	0	0	1	0	0	9
George Mason	0-0	0-0	0-0	0-0-0	0	0	0	0	0	0	3
at Western Carolina											
at Auburn											
Belmont Abbey											
College of Charleston											
at Florida State											
Furman											
vs. South Alabama ^											
at Georgia State ^											
Duke											
at Winthrop *											
High Point *											
at Gardner-Webb *											
Campbell *											
at Presbyterian *											
UNC Asheville *											
at North Carolina A&T *											
USC Upstate *											
Radford *											
at Hampton *											
at Longwood *											
Presbyterian *											
Gardner-Webb *											
at Campbell *											
Winthrop *											
at High Point *											
North Carolina A&T *											
at UNC Asheville *											



## Career Highs

Points	--	--	--
Rebounds	2	at Alabama	11-9-21
Assists	--	--	--
Steals	--	--	--
Blocks	--	--	--
FG Made	--	--	--
3FG Made	--	--	--
FT Made	--	--	--
Minutes	10	at Alabama	11-9-21

## Career Stats

Year	GP-GS	Min	Avg.	FG-A	FG%	3FG-A	3FG%	FT-A	FT%	O-D-T	Avg.	PF-DQ	A	TO	B	S	Pts	Avg
2021-22	2-0	13	6.6	0-1	.000	0-0	.000	0-0	.000	1-1-2	1.0	0-0	0	1	0	0	0	0.0
<b>CAREER</b>	<b>2-0</b>	<b>13</b>	<b>6.6</b>	<b>0-1</b>	<b>.000</b>	<b>0-0</b>	<b>.000</b>	<b>0-0</b>	<b>.000</b>	<b>1-1-2</b>	<b>1.0</b>	<b>0-0</b>	<b>0</b>	<b>1</b>	<b>0</b>	<b>0</b>	<b>0</b>	<b>0.0</b>



# ZAIRE HICKS

## GUARD

REDSHIRT SENIOR • 5-7  
MEMPHIS, TENN. • WHITE STATION • UT MARTIN

# 12

- First season at CSU after transferring from UT Martin.
- 78 games, 34 starts for the Skyhawks, averaging 5.5 points per game.
- 31 starts during the 2018-19 season, averaging 8.5 points, 2.5 assists and 2.2 rebounds per game.
- Career-high 19 points on two occasions, against Alabama Huntsville (12/19/18) and Murray State (3/7/19).
- 19 career games with double-figure scoring.
- 1.5 assists per game in her career with an assist-turnover ratio of 1.5.
- Two points, two assists, one rebound, one steal in exhibition vs. Columbus State.

### 2021-22 Game Log

Opp	FG-A	3FG-A	FT-A	O-D-T	PF	TP	A	TO	B	S	Min
at Alabama				—DNP—							
George Mason				—DNP—							
at Western Carolina											
at Auburn											
Belmont Abbey											
College of Charleston											
at Florida State											
Furman											
vs. South Alabama ^											
at Georgia State ^											
Duke											
at Winthrop *											
High Point *											
at Gardner-Webb *											
Campbell *											
at Presbyterian *											
UNC Asheville *											
at North Carolina A&T *											
USC Upstate *											
Radford *											
at Hampton *											
at Longwood *											
Presbyterian *											
Gardner-Webb *											
at Campbell *											
Winthrop *											
at High Point *											
North Carolina A&T *											
at UNC Asheville *											



### Career Highs

Points	--	--	--
Rebounds	--	--	--
Assists	--	--	--
Steals	--	--	--
Blocks	--	--	--
FG Made	--	--	--
3FG Made	--	--	--
FT Made	--	--	--
Minutes	--	--	--

### Career Stats

Year	GP-GS	Min	Avg.	FG-A	FG%	3FG-A	3FG%	FT-A	FT%	O-D-T	Avg.	PF-DQ	A	TO	B	S	Pts	Avg
2017-18	32-1	344	10.8	28-85	.329	14-40	.350	23-37	.622	15-28-43	1.3	36-2	29	23	1	24	93	2.9
2018-19	32-31	816	25.5	100-286	.350	41-132	.311	35-45	.778	25-46-71	2.2	63-2	77	43	2	45	276	8.6
2019-20	2-2	64	32.0	7-18	.389	2-10	.200	3-5	.600	2-3-5	2.5	7-0	4	4	0	3	19	9.5
2020-21	12-0	131	10.9	16-34	.471	6-15	.400	2-3	.667	3-8-11	0.9	17-0	7	8	1	6	40	3.3
2021-22	0-0																	
<b>CAREER</b>	<b>78-34</b>	<b>1355</b>	<b>17.4</b>	<b>151-423</b>	<b>.357</b>	<b>63-197</b>	<b>.320</b>	<b>63-90</b>	<b>.700</b>	<b>45-85-130</b>	<b>1.7</b>	<b>123-4</b>	<b>117</b>	<b>78</b>	<b>4</b>	<b>78</b>	<b>428</b>	<b>5.5</b>
<b>AT CSU</b>	<b>0-0</b>																	



# SHARITA GODFREY

**GUARD / FORWARD**

**SENIOR • 5-11**  
**COLUMBIA, S.C. • RICHLAND NORTHEAST**

**13**

- One of four returning starters from 2020-21 team.
- 10 points, six rebounds in home opener against George Mason (11/16/21).
- Five points along with a team-high five rebounds in season opener at Alabama (11/9/21).
- Charleston Southern's top 3-point shooter during 2020-21 season (44.0 percent).
- Third on the team in scoring (9.6 ppg), second in rebounding (5.3 rpg) last season.
- Ranked in the top 25 in the Big South in both scoring and rebounding during 2020-21 season.
- 9.6 points, 5.3 rebounds per game while averaging 31.5 minutes per contest.
- Hit game-winning 3-pointer at Hampton (12/21/20) for CSU's first Big South win of the season.
- Career-high 22 points on two occasions, including last season vs. Presbyterian (1/5/21).
- Recorded a double-double (13 points, 10 rebounds) in a win over UNC Asheville (1/15/21).
- 23 career games with double-figure scoring, all of which have come during the last two seasons.

## 2021-22 Game Log

Opp	FG-A	3FG-A	FT-A	O-D-T	PF	TP	A	TO	B	S	Min
at Alabama	2-7	1-3	0-0	0-5-5	2	5	0	2	0	0	16
George Mason	4-6	2-6	0-0	4-2-6	2	10	1	2	0	0	26
at Western Carolina											
at Auburn											
Belmont Abbey											
College of Charleston											
at Florida State											
Furman											
vs. South Alabama ^											
at Georgia State ^											
Duke											
at Winthrop *											
High Point *											
at Gardner-Webb *											
Campbell *											
at Presbyterian *											
UNC Asheville *											
at North Carolina A&T *											
USC Upstate *											
Radford *											
at Hampton *											
at Longwood *											
Presbyterian *											
Gardner-Webb *											
at Campbell *											
Winthrop *											
at High Point *											
North Carolina A&T *											
at UNC Asheville *											



## Career Highs

Points	22	2x, last vs. Presbyterian	1-5-21
Rebounds	11	2x, last at Hampton	12-22-20
Assists	5	College of Charleston	12-20-19
Steals	5	at Western Carolina	12-4-19
Blocks	2	3x, last at Radford	2-20-21
FG Made	10	High Point	1-11-20
3FG Made	4	2x, last vs. Presbyterian	1-5-21
FT Made	5	at UNC Asheville	1-14-20
Minutes	40	South Carolina State	11-9-19

## Career Stats

Year	GP-GS	Min	Avg.	FG-A	FG%	3FG-A	3FG%	FT-A	FT%	O-D-T	Avg.	PF-DQ	A	TO	B	S	Pts	Avg
2018-19	16-0	94	5.9	11-33	.333	4-18	.222	4-7	.571	5-10-15	0.9	9-0	6	4	2	2	30	1.9
2019-20	30-25	789	26.3	104-260	.400	21-76	.276	20-26	.769	29-130-159	5.3	55-0	32	60	12	34	249	8.3
2020-21	23-21	722	31.4	84-204	.412	37-84	.440	16-19	.842	17-104-121	5.3	40-0	29	49	12	17	221	9.6
2021-22	2-2	42	20.8	6-16	.375	3-9	.333	0-0	.000	4-7-11	5.5	4-0	1	4	0	0	15	7.5
<b>CAREER</b>	<b>71-48</b>	<b>1646</b>	<b>23.2</b>	<b>205-513</b>	<b>.400</b>	<b>65-187</b>	<b>.348</b>	<b>40-52</b>	<b>.769</b>	<b>55-251-306</b>	<b>4.3</b>	<b>108-0</b>	<b>68</b>	<b>117</b>	<b>26</b>	<b>53</b>	<b>515</b>	<b>7.3</b>





# TYRA WRIGHT

## CENTER

JUNIOR • 6-2  
MORRISON, TENN. • WARREN COUNTY

# 14

- 41 games, eight starts in her career.
- Averaged 2.7 points and 1.4 rebounds per game in limited action during 2020-21 season.
- Season-best nine points in 12 minutes at Radford (2/20/21).
- Career-high 16 points in 18 minutes in a win over Virginia Lynchburg (12/7/19).
- Had a stretch of three straight games in 2019-20 season with double-figure scoring, including a double-double (12 points, 10 rebounds) against USC Upstate (2/11/20).
- 3.7 points, 2.1 rebounds per game for her career.

### 2021-22 Game Log

Opp	FG-A	3FG-A	FT-A	O-D-T	PF	TP	A	TO	B	S	Min
at Alabama				—DNP—							
George Mason				—DNP—							
at Western Carolina											
at Auburn											
Belmont Abbey											
College of Charleston											
at Florida State											
Furman											
vs. South Alabama ^											
at Georgia State ^											
Duke											
at Winthrop *											
High Point *											
at Gardner-Webb *											
Campbell *											
at Presbyterian *											
UNC Asheville *											
at North Carolina A&T *											
USC Upstate *											
Radford *											
at Hampton *											
at Longwood *											
Presbyterian *											
Gardner-Webb *											
at Campbell *											
Winthrop *											
at High Point *											
North Carolina A&T *											
at UNC Asheville *											



### Career Highs

Points	16	Virginia Lynchburg	12-7-19
Rebounds	10	USC Upstate	2-11-20
Assists	2	at UNC Asheville	3-10-20
Steals	3	Campbell	2-25-20
Blocks	2	3x, last at UNC Asheville	3-10-20
FG Made	8	Virginia Lynchburg	12-7-19
3FG Made	2	USC Upstate	2-11-20
FT Made	4	USC Upstate	2-11-20
Minutes	33	South Carolina State	11-9-19

### Career Stats

Year	GP-GS	Min	Avg.	FG-A	FG%	3FG-A	3FG%	FT-A	FT%	O-D-T	Avg.	PF-DQ	A	TO	B	S	Pts	Avg
2019-20	28-8	432	15.4	49-106	.462	4-15	.267	14-19	.737	12-56-58	2.4	48-1	8	35	10	6	116	4.1
2020-21	13-0	98	7.5	12-30	.400	2-5	.400	9-14	.643	2-16-18	1.4	13-0	3	1	0	3	35	2.7
2021-22	0-0																	
<b>CAREER</b>	<b>41-8</b>	<b>530</b>	<b>12.9</b>	<b>61-136</b>	<b>.449</b>	<b>6-20</b>	<b>.300</b>	<b>23-33</b>	<b>.697</b>	<b>14-72-86</b>	<b>2.1</b>	<b>61-1</b>	<b>11</b>	<b>36</b>	<b>10</b>	<b>9</b>	<b>151</b>	<b>3.7</b>





# JANAIA FARGO

## GUARD

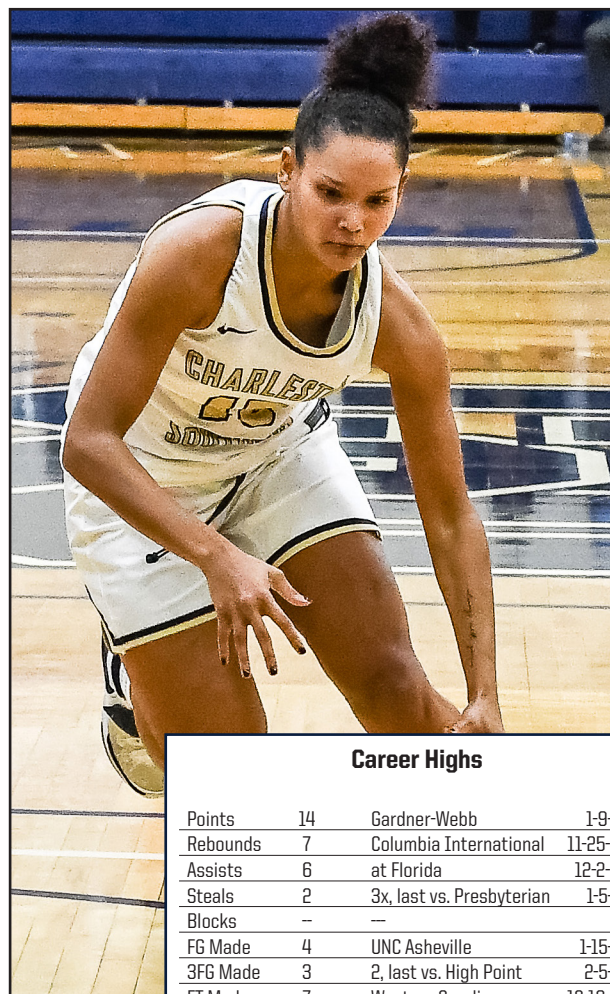
SOPHOMORE • 5-8  
INWOOD, W.VA. • MUSSELMAN

# 15

- One of four returning starters from 2020-21 season.
- Eight points, four rebounds in home opener against George Mason, playing 18 minutes off the bench (11/16/21).
- Two points, two rebounds, one assist in season opener at Alabama (11/9/21).
- 22 games, 20 starts last season as a freshman.
- Averaged 5.4 points, 1.7 rebounds and 1.7 assists per game last season.
- Season-best 14 points against Gardner-Webb (1/9/21).
- Three games with double-figure scoring last season.
- Five games with three or more assists, including career-best six at Florida (12/2/20).

### 2021-22 Game Log

Opp	FG-A	3FG-A	FT-A	O-D-T	PF	TP	A	TO	B	S	Min
at Alabama	0-1	0-1	2-2	0-2-2	2	2	1	5	0	0	11
George Mason	2-4	0-1	4-5	1-3-4	3	8	1	2	0	1	18
at Western Carolina											
at Auburn											
Belmont Abbey											
College of Charleston											
at Florida State											
Furman											
vs. South Alabama ^											
at Georgia State ^											
Duke											
at Winthrop *											
High Point *											
at Gardner-Webb *											
Campbell *											
at Presbyterian *											
UNC Asheville *											
at North Carolina A&T *											
USC Upstate *											
Radford *											
at Hampton *											
at Longwood *											
Presbyterian *											
Gardner-Webb *											
at Campbell *											
Winthrop *											
at High Point *											
North Carolina A&T *											
at UNC Asheville *											



### Career Highs

Points	14	Gardner-Webb	1-9-21
Rebounds	7	Columbia International	11-25-20
Assists	6	at Florida	12-2-20
Steals	2	3x, last vs. Presbyterian	1-5-21
Blocks	-	-	-
FG Made	4	UNC Asheville	1-15-21
3FG Made	3	2, last vs. High Point	2-5-21
FT Made	7	Western Carolina	12-13-20
Minutes	35	2x, last vs. Campbell	1-23-21

### Career Stats

Year	GP-GS	Min	Avg.	FG-A	FG%	3FG-A	3FG%	FT-A	FT%	O-D-T	Avg.	PF-DQ	A	TO	B	S	Pts	Avg
2020-21	22-20	539	24.5	37-106	.349	14-44	.318	30-41	.732	3-35-38	1.7	45-2	38	61	0	17	118	5.4
2021-22	2-0	29	14.5	2-5	.400	0-2	.000	6-7	.857	1-5-6	3.0	5-0	2	7	0	1	10	5.0
<b>CAREER</b>	<b>24-20</b>	<b>568</b>	<b>23.7</b>	<b>39-111</b>	<b>.351</b>	<b>14-46</b>	<b>.304</b>	<b>36-48</b>	<b>.750</b>	<b>4-40-44</b>	<b>1.8</b>	<b>50-2</b>	<b>40</b>	<b>68</b>	<b>0</b>	<b>18</b>	<b>128</b>	<b>5.3</b>



# MADISON ADAMSON

## FORWARD

FRESHMAN • 6-0  
HOOVER, ALA. • HOOVER

# 20

- Two points, seven rebounds, five assists, four steals, one block in home opener against George Mason (11/16/21).
- Earned the start in the season opener at Alabama, finishing with four rebounds and a team-high two assists (11/9/21).
- Eight points, four rebounds, five steals, one assist in exhibition vs. Columbus State.
- Two-time state champion in high school, went 122-10 in her career at Hoover.
- Averaged 10 points, seven rebounds and two steals per game at Hoover.
- Was named a team captain during the 2019-20 season, where the Bucs went 34-3 overall and 8-0 in the region.
- Spent the 2020-21 season at the US Air Force Academy Preparatory School.

### 2021-22 Game Log

Opp	FG-A	3FG-A	FT-A	O-D-T	PF	TP	A	TO	B	S	Min
at Alabama	0-7	0-3	0-0	2-2-4	3	0	2	5	0	1	38
George Mason	1-10	0-4	0-2	0-7-7	2	2	5	1	1	4	39
at Western Carolina											
at Auburn											
Belmont Abbey											
College of Charleston											
at Florida State											
Furman											
vs. South Alabama ^											
at Georgia State ^											
Duke											
at Winthrop *											
High Point *											
at Gardner-Webb *											
Campbell *											
at Presbyterian *											
UNC Asheville *											
at North Carolina A&T *											
USC Upstate *											
Radford *											
at Hampton *											
at Longwood *											
Presbyterian *											
Gardner-Webb *											
at Campbell *											
Winthrop *											
at High Point *											
North Carolina A&T *											
at UNC Asheville *											



### Career Highs

Points	2	George Mason	11-16-21
Rebounds	7	George Mason	11-16-21
Assists	5	George Mason	11-16-21
Steals	4	George Mason	11-16-21
Blocks	1	George Mason	11-16-21
FG Made	1	George Mason	11-16-21
3FG Made	--	--	--
FT Made	--	--	--
Minutes	39	George Mason	11-16-21

### Career Stats

Year	GP-GS	Min	Avg.	FG-A	FG%	3FG-A	3FG%	FT-A	FT%	O-D-T	Avg.	PF-DQ	A	TO	B	S	Pts	Avg
2021-22	2-2	77	38.5	1-17	.059	0-7	.000	0-2	.000	2-9-11	5.5	5-0	7	6	1	5	2	1.0
CAREER	2-2	77	38.5	1-17	.059	0-7	.000	0-2	.000	2-9-11	5.5	5-0	7	6	1	5	2	1.0



# ALYSSIA FAYE

## FORWARD

REDSHIRT SENIOR • 6-2

VALENCE, FRANCE • LYCEE JEAN MERMOZ • WICHITA STATE

# 22

- One of four returning starters from 2020-21 season.
- Has started all 22 games she has appeared in at Charleston Southern.
- Eight points, three rebounds in season opener at Alabama (11/9/21).
- Six points, four assists, two rebounds, one steal, one block in exhibition vs. Columbus State.
- Led the Bucs in scoring and rebounding during the 2020-21 season (11.9 ppg, 7.1 rpg).
- Ranked inside the top 15 of the conference in both scoring and rebounding.
- 13 games with double-figure scoring during the 2020-21 season.
- Three games with 20-plus points, including career-high 22 against Longwood (2/13/21).
- Double-double with 15 points and 12 rebounds in Big South Tournament game at USC Upstate (3/6/21).
- Double-figures in each of the last five games to close out the 2020-21 season.
- Spent first two seasons of her career at Wichita State, where she appeared in 58 games with five starts.

### 2021-22 Game Log

Opp	FG-A	3FG-A	FT-A	O-D-T	PF	TP	A	TO	B	S	Min
at Alabama	4-9	0-2	0-0	0-3-3	4	8	0	4	0	1	21
George Mason	—DNP—										
at Western Carolina											
at Auburn											
Belmont Abbey											
College of Charleston											
at Florida State											
Furman											
vs. South Alabama ^											
at Georgia State ^											
Duke											
at Winthrop *											
High Point *											
at Gardner-Webb *											
Campbell *											
at Presbyterian *											
UNC Asheville *											
at North Carolina A&T *											
USC Upstate *											
Radford *											
at Hampton *											
at Longwood *											
Presbyterian *											
Gardner-Webb *											
at Campbell *											
Winthrop *											
at High Point *											
North Carolina A&T *											
at UNC Asheville *											



### Career Highs

Points	22	at Longwood	2-13-21
Rebounds	12	at USC Upstate	3-6-21
Assists	3	3x, last vs. High Point	2-5-21
Steals	3	at Longwood	2-13-21
Blocks	2	2x, last at Hampton	12-22-20
FG Made	10	at Longwood	2-13-21
3FG Made	1	3x, last at Hampton	12-21-20
FT Made	6	at Longwood	2-12-21
Minutes	41	at Radford	2-21-21

### Career Stats

Year	GP-GS	Min	Avg.	FG-A	FG%	3FG-A	3FG%	FT-A	FT%	O-D-T	Avg.	PF-DQ	A	TO	B	S	Pts	Avg
2017-18	30-0	276	9.2	21-61	.344	1-10	.100	6-9	.667	10-34-44	1.5	29-0	6	28	0	5	49	1.6
2018-19	28-5	349	12.5	32-93	.344	7-17	.412	6-15	.400	23-39-62	2.2	26-0	9	22	6	9	77	2.8
2020-21	21-21	625	29.8	106-249	.426	3-25	.120	35-56	.625	40-110-150	7.1	53-1	24	49	7	18	250	11.9
2021-22	1-1	21	20.5	4-9	.444	0-2	.000	0-0	.000	0-3-3	3.0	4-0	0	4	0	1	8	8.0
<b>CAREER</b>	<b>80-27</b>	<b>1271</b>	<b>15.9</b>	<b>163-412</b>	<b>.396</b>	<b>11-54</b>	<b>.204</b>	<b>47-80</b>	<b>.588</b>	<b>73-186-259</b>	<b>3.2</b>	<b>112-1</b>	<b>39</b>	<b>103</b>	<b>13</b>	<b>33</b>	<b>384</b>	<b>4.8</b>
<b>AT CSU</b>	<b>22-22</b>	<b>645</b>	<b>29.3</b>	<b>110-258</b>	<b>.426</b>	<b>3-27</b>	<b>.111</b>	<b>35-56</b>	<b>.625</b>	<b>40-113-153</b>	<b>7.0</b>	<b>57-1</b>	<b>24</b>	<b>53</b>	<b>7</b>	<b>19</b>	<b>258</b>	<b>11.7</b>





# TORI GITTENS

**GUARD**

**JUNIOR • 5-11**  
**SHERMAN, TEXAS • GUNTER**

**23**

- 54 games in her career, mostly coming off the bench.
- Has started each of the first two games this season.
- Averaged 18.0 minutes per game for her career.
- Career-high 18 points, seven field goals made in home opener vs. George Mason (11/16/21).
- Five points, three rebounds, one assist in season opener at Alabama, earning the start in the first game of the regular season (11/9/21).
- Led all scorers with 23 points in exhibition vs. Columbus State, along with three rebounds and three steals.
- Averaged 4.2 points per game while shooting 36.7 percent from beyond the arc during 2020-21 season.
- 14 points, including four 3-pointers, at Winthrop (1/29/21).
- Seven career games with double-figure scoring.
- Second on the team with 22 3-pointers during 2020-21 season.

## 2021-22 Game Log

Opp	FG-A	3FG-A	FT-A	O-D-T	PF	TP	A	TO	B	S	Min
at Alabama	1-4	1-2	2-2	2-1-3	1	5	1	5	0	1	31
George Mason	7-13	2-6	2-3	1-3-4	0	18	1	3	1	2	36
at Western Carolina											
at Auburn											
Belmont Abbey											
College of Charleston											
at Florida State											
Furman											
vs. South Alabama ^											
at Georgia State ^											
Duke											
at Winthrop *											
High Point *											
at Gardner-Webb *											
Campbell *											
at Presbyterian *											
UNC Asheville *											
at North Carolina A&T *											
USC Upstate *											
Radford *											
at Hampton *											
at Longwood *											
Presbyterian *											
Gardner-Webb *											
at Campbell *											
Winthrop *											
at High Point *											
North Carolina A&T *											
at UNC Asheville *											



## Career Highs

Points	18	George Mason	11-16-21
Rebounds	7	South Carolina State	11-9-19
Assists	4	Campbell	1-22-21
Steals	2	George Mason	11-16-21
Blocks	2	at Hampton	12-22-20
FG Made	7	George Mason	11-16-21
3FG Made	4	at Winthrop	1-29-21
FT Made	2	9x, last vs. George Mason	11-16-21
Minutes	36	2x, last vs. George Mason	11-16-21

## Career Stats

Year	GP-GS	Min	Avg.	FG-A	FG%	3FG-A	3FG%	FT-A	FT%	O-D-T	Avg.	PF-DQ	A	TO	B	S	Pts	Avg
2019-20	29-11	511	17.6	36-137	.263	25-96	.260	10-15	.667	5-37-42	1.4	19-0	12	22	4	9	107	3.7
2020-21	23-5	396	17.2	33-88	.375	22-60	.367	8-14	.571	9-26-35	1.5	25-0	18	24	7	5	96	4.2
2021-22	2-2	68	33.9	8-17	.471	3-8	.375	4-5	.800	3-4-7	3.5	1-0	2	8	1	3	23	11.5
<b>CAREER</b>	<b>54-18</b>	<b>975</b>	<b>18.0</b>	<b>77-242</b>	<b>.318</b>	<b>50-164</b>	<b>.305</b>	<b>22-34</b>	<b>.647</b>	<b>17-67-84</b>	<b>1.6</b>	<b>45-0</b>	<b>32</b>	<b>54</b>	<b>12</b>	<b>17</b>	<b>226</b>	<b>4.2</b>





# MAKENNA WINANS

## FORWARD

SOPHOMORE • 6-0  
PARKERSBURG, W.VA. • PARKERSBURG SOUTH

# 25

- Two points in home opener against George Mason (11/16/21).
- Two rebounds along with a team-high two blocks in season opener at Alabama (11/9/21).
- Appeared in 22 games last season, making 10 starts.
- 5.2 points, 3.7 rebounds per game during 2020-21 season.
- Three games of double-figure scoring, including season-high of 14 against both Hampton (12/22/20) and Gardner-Webb (1/10/21).
- 12 games with four or more rebounds, including a season-best 13 against conference champion High Point (2/6/21).
- Big South Freshman of the Week once last year after helping the Bucs to two wins over Hampton.
- Five games with multiple blocked shots and posted a nine-game stretch with at least one blocked shot per game from 1/15/21 - 2/13/21.

### 2021-22 Game Log

Opp	FG-A	3FG-A	FT-A	O-D-T	PF	TP	A	TO	B	S	Min
at Alabama	0-1	0-0	0-0	0-2-2	2	0	0	0	2	0	5
George Mason	0-2	0-0	2-2	0-0-0	3	2	0	0	0	0	8
at Western Carolina											
at Auburn											
Belmont Abbey											
College of Charleston											
at Florida State											
Furman											
vs. South Alabama ^											
at Georgia State ^											
Duke											
at Winthrop *											
High Point *											
at Gardner-Webb *											
Campbell *											
at Presbyterian *											
UNC Asheville *											
at North Carolina A&T *											
USC Upstate *											
Radford *											
at Hampton *											
at Longwood *											
Presbyterian *											
Gardner-Webb *											
at Campbell *											
Winthrop *											
at High Point *											
North Carolina A&T *											
at UNC Asheville *											



### Career Highs

Points	14	2x, last vs. Gardner-Webb	1-10-21
Rebounds	13	High Point	2-6-21
Assists	2	2x, last vs. Presbyterian	1-5-21
Steals	3	UNC Asheville	1-16-21
Blocks	3	Gardner-Webb	1-9-21
FG Made	6	Gardner-Webb	1-10-21
3FG Made	4	at Hampton	12-22-20
FT Made	4	2x, last vs. UNC Asheville	1-16-21
Minutes	38	Gardner-Webb	1-10-21

### Career Stats

Year	GP-GS	Min	Avg.	FG-A	FG%	3FG-A	3FG%	FT-A	FT%	O-D-T	Avg.	PF-DQ	A	TO	B	S	Pts	Avg
2020-21	22-10	403	18.3	38-88	.432	11-27	.407	28-41	.683	15-67-82	3.7	44-1	13	31	17	7	115	5.2
2021-22	2-0	13	6.6	0-3	.000	0-0	.000	2-2	1.000	0-2-2	1.0	5-0	0	0	2	0	2	1.0
<b>CAREER</b>	<b>24-10</b>	<b>416</b>	<b>17.3</b>	<b>38-91</b>	<b>.418</b>	<b>11-27</b>	<b>.407</b>	<b>30-43</b>	<b>.698</b>	<b>15-69-84</b>	<b>3.5</b>	<b>49-1</b>	<b>13</b>	<b>31</b>	<b>19</b>	<b>7</b>	<b>117</b>	<b>4.9</b>



# 2021-22 OVERALL STATS

## Game Records

Record	Overall	Home	Away	Neutral
ALL GAMES	0-2	0-1	0-1	0-0
CONFERENCE	0-0	0-0	0-0	0-0
NON-CONFERENCE	0-2	0-1	0-1	0-0

## Score by Periods

Team	1st	2nd	3rd	4th	OT	TOT
Charleston So.	24	14	21	28	0	87
Opponents	40	42	55	36	0	173

## Team Box Score

No.	Player				Total		3-Point		F-Throw		Rebounds													
		GP-GS	MIN	AVG	FG-FGA	FG%	3FG-3FGA	3FG%	FT-FTA	FT%	OFF	DEF	TOT	AVG	PF	DQ	A	TO	BLK	STL	PTS	AVG		
23	GITTENS, Tori	2-2	67:42	33.9	8-17	.471	3-8	.375	4-5	.800	3	4	7	3.5	1	0	2	8	1	3	23	11.5		
5	LEIGH, Sha'Mya	2-2	73:57	37.0	8-30	.267	2-8	.250	1-3	.333	0	3	3	1.5	6	0	3	8	0	3	19	9.5		
22	FAYE, Alyssia	1-1	20:30	20.5	4-9	.444	0-2	.000	0-0	.000	0	3	3	3.0	4	0	0	4	0	1	8	8.0		
13	GODFREY, Sharita	2-2	41:38	20.8	6-16	.375	3-9	.333	0-0	.000	4	7	11	5.5	4	0	1	4	0	0	15	7.5		
15	FARGO, Janaia	2-0	28:54	14.5	2-5	.400	0-2	.000	6-7	.857	1	5	6	3.0	5	0	2	7	0	1	10	5.0		
2	BALTEZEGAR, Skylar	2-1	41:14	20.6	3-14	.214	0-0	.000	2-3	.667	5	12	17	8.5	6	0	0	3	3	1	8	4.0		
20	ADAMSON, Madison	2-2	76:55	38.5	1-17	.059	0-7	.000	0-2	.000	2	9	11	5.5	5	0	7	6	1	5	2	1.0		
25	WINANS, Makenna	2-0	13:09	6.6	0-3	.000	0-0	.000	2-2	1.000	0	2	2	1.0	5	0	0	0	2	0	2	1.0		
10	ROGERS, Jordan	2-0	13:09	6.6	0-1	.000	0-0	.000	0-0	.000	1	1	2	1.0	0	0	0	1	0	0	0	0.0		
1	DAMES, Victoria	2-0	22:51	11.4	0-5	.000	0-2	.000	0-0	.000	1	2	3	1.5	3	0	2	2	0	0	0	0.0		
Team											2	6	8					3						
Total		2	400		32-117	.274	8-38	.211	15-22	.682	19	54	73	36.5	39	0	17	46	7	14	87	43.5		
Opponents		2	400		63-140	.450	13-43	.302	34-48	.708	32	70	102	51.0	32	0	31	26	5	20	173	86.5		

## Team Statistics

	CHASOU	OPP
<b>Scoring</b>	<b>87</b>	<b>173</b>
Points per game	43.5	86.5
Scoring margin	-43.0	-
<b>Field goals-att</b>	<b>32-117</b>	<b>63-140</b>
Field goal pct	.274	.450
<b>3 point fg-att</b>	<b>8-38</b>	<b>13-43</b>
3-point FG pct	.211	.302
3-pt FG made per game	4.0	6.5
<b>Free throws-att</b>	<b>15-22</b>	<b>34-48</b>
Free throw pct	.682	.708
F-Throws made per game	7.5	17.0
<b>Rebounds</b>	<b>73</b>	<b>102</b>
Rebounds per game	36.5	51.0
Rebounding margin	-14.5	-
<b>Assists</b>	<b>17</b>	<b>31</b>
Assists per game	8.5	15.5
<b>Turnovers</b>	<b>46</b>	<b>26</b>
Turnovers per game	23.0	13.0
Turnover margin	-10.0	-
Assist/turnover ratio	0.4	1.2
<b>Steals</b>	<b>14</b>	<b>20</b>
Steals per game	7.0	10.0
<b>Blocks</b>	<b>7</b>	<b>5</b>
Blocks per game	3.5	2.5
<b>Winning streak</b>	<b>0</b>	<b>-</b>
Home win streak	0	-
<b>Attendance</b>	<b>237</b>	<b>452</b>
Home games-Avg/Game	1-237	1-452
Neutral site-Avg/Game	-	0-0

## Team Results

Date	Opponent		Score	Att.
11/09/2021	at Alabama	L	32-109	452
11/16/2021	George Mason	L	55-64	237