



CHARLESTON SOUTHERN

2021-22 WOMEN'S BASKETBALL GAME NOTES

MEDIA INFORMATION

BROADCAST: ESPN+

TALENT: John Peters (PxP), Larry Sienko (Color), Anna Witte (Sideline)

LIVE STATS: CSUSports.com

BE SOCIAL: @CSUBucsWBB / #ClimbTheLadder

VENUE: Buccaneer Fieldhouse (881)

2021-22 RECORD

OVERALL: 0-1

HOME: 0-0

ROAD: 0-1

NEUTRAL: 0-0

BIG SOUTH: 0-0

CURRENT STREAK: L1

>>2021-22 SCHEDULE

NOVEMBER (0-1)

Nov. 9	at ALABAMA	SECN+	L, 32-109
Nov. 16	GEORGE MASON	ESPN+	6 p.m.
Nov. 20	at WESTERN CAROLINA	TBA	4 p.m.
Nov. 26	at AUBURN	SECN+	1 p.m.
Nov. 29	BELMONT ABBEY	ESPN+	6 p.m.

DECEMBER (0-0, 0-0 BIG SOUTH)

Dec. 2	COLLEGE OF CHARLESTON	ESPN+	5:30 p.m.
Dec. 5	at FLORIDA STATE	ACCNX	2 p.m.
Dec. 16	FURMAN	ESPN+	5:30 p.m.
Dec. 18	vs. SOUTH ALABAMA ^	TBA	Noon
Dec. 19	at GEORGIA STATE ^	TBA	2 p.m.
Dec. 21	DUKE	ESPN+	Noon
Dec. 29	at WINTHROP *	ESPN+	6 p.m.

JANUARY 0-0, 0-0 BIG SOUTH)

Jan. 1	HIGH POINT *	ESPN+	2 p.m.
Jan. 5	at GARDNER-WEBB *	ESPN+	7 p.m.
Jan. 8	CAMPBELL *	ESPN+	2 p.m.
Jan. 12	at PRESBYTERIAN *	ESPN+	6 p.m.
Jan. 15	UNC ASHEVILLE *	ESPN+	3 p.m.
Jan. 19	at NORTH CAROLINA AGT *	ESPN+	6 p.m.
Jan. 22	USC UPSTATE *	ESPN+	2 p.m.
Jan. 25	RADFORD *	ESPN+	6 p.m.
Jan. 29	at HAMPTON *	ESPN+	3 p.m.

FEBRUARY (0-0, 0-0 BIG SOUTH)

Feb. 2	at LONGWOOD *	ESPN+	7 p.m.
Feb. 5	PRESBYTERIAN *	ESPN+	3 p.m.
Feb. 9	GARDNER-WEBB *	ESPN+	6 p.m.
Feb. 12	at CAMPBELL *	ESPN+	2 p.m.
Feb. 15	WINTHROP *	ESPN+	6 p.m.
Feb. 19	at HIGH POINT *	ESPN+	2 p.m.
Feb. 23	NORTH CAROLINA AGT *	ESPN+	6 p.m.
Feb. 28	at UNC ASHEVILLE *	ESPN+	2 p.m.

MARCH (0-0)

March 1	BIG SOUTH FIRST ROUND %	TBA	TBA
March 3	BIG SOUTH QUARTERFINALS %	TBA	TBA
March 5	BIG SOUTH SEMIFINALS %	TBA	TBA
March 6	BIG SOUTH CHAMPIONSHIP %	TBA	TBA

Home Games in **BOLD**

* - Big South Game

% - 2021 Hercules Tires Big South Championships

^ - Georgia State Holiday Classic

CSU ATHLETIC COMMUNICATIONS

WBB CONTACT: Kieran Intemann

TITLE: Assistant Director of Athletic Communications

CELL: (980) 422-7882

OFFICE: (843) 863-7289

EMAIL: kintemann@csuniv.edu

2

CHARLESTON SOUTHERN (0-1, 0-0 BIG SOUTH)

vs. **GEORGE MASON (2-1, 0-0 ATLANTIC 10)**

NOVEMBER 16, 2021 // 6 p.m. // BUCCANEER FIELDHOUSE (881) // CHARLESTON, S.C.

GAME 2 // HOME GAME 1

THE TEAMS



CHARLESTON SOUTHERN BUCCANEERS

2021-22 Record:	0-1	Head Coach:	Clarisse Garcia
Conference Record:	0-0	Overall Record:	15-40 (3rd)
Current Streak:	L1	Record at CSU:	0-1 (1st)
Last Five:	L	Starters Ret./Lost:	4/1
Last Game:	L, 109-32 at Alabama	Letterwinners Ret./Lost:	7/6



GEORGE MASON PATRIOTS

2021-22 Record:	2-1	Head Coach:	Vanessa Blair-Lewis
Conference Record:	0-0	Overall Record:	318-303 (23rd)
Current Streak:	L1	Record at MASON:	2-1 (1st)
Last Five:	LWW	Starters Ret./Lost:	4/1
Last Game:	L, 81-52 vs. Virginia Tech	Letterwinners Ret./Lost:	9/5

>>OPENING TIP

- Charleston Southern plays its first home game of the Clarisse Garcia era Tuesday evening when it welcomes George Mason to Buccaneer Fieldhouse for a 6 p.m. tip.

>>STAT COMPARISON



- The Buccaneers are coming off a tough season-opening loss to Alabama in their first game of the season. The game against the Crimson Tide was the first of four games against Power Five competition for the Bucs this season.
- Four different Buccaneers made their CSU debut in last week's game at Alabama. Freshman Madison Adamson earned the start in her first collegiate game, while fellow freshmen Skylar Baltezgar and Jordan Rogers, and sophomore transfer Victoria Dames all played double-digit minutes off the bench.
- Tuesday's game against George Mason is the first-ever meeting between the Buccaneers and Patriots. George Mason is one of two teams from Virginia to visit the Buc Dome this season, with Radford making the trip to Charleston during conference play.

32.0	POINTS PER GAME	58.0
109.0	POINTS ALLOWED	66.3
-77.0	SCORING MARGIN	-8.3
.214	FIELD GOAL %	.365
.494	FIELD GOAL % DEFENSE	.418
.176	3-POINT %	.240
.320	3-POINT % DEFENSE	.397
3.0	3-POINT FG/GAME	4.0
5.0	FREE THROWS/GAME	15.3
1.000	FREE THROW %	.754
-17.0	REBOUNDING MARGIN	-2.0
7.0	ASSISTS/GAME	11.0
0.2	AST./TO RATIO	0.6
31.0	TURNOVERS/GAME	19.3
-23.0	TO MARGIN	-3.0
2.0	BLOCKS/GAME	2.0
4.0	STEALS/GAME	5.3
24.0	FOULS/GAME	14.3

>>CHARLESTON SOUTHERN PROJECTED STARTERS



5 Sha'Mya
LEIGH
6 // 5-10 // Jr.
MIN: 34.0
PPG: 9.0
REB: 3.0
AST: 1.0



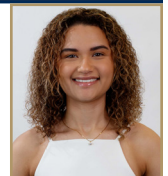
13 Sharita
GODFREY
6 // 5-11 // Sr.
MIN: 16.0
PPG: 5.0
REB: 5.0
AST: 0.0



20 Madison
ADAMSON
F // 6-0 // Fr.
MIN: 39.0
PPG: 0.0
REB: 4.0
AST: 2.0



22 Alyssia
FAYE
F // 6-2 // R-Sr.
MIN: 21.0
PPG: 8.0
REB: 3.0
AST: 0.0



23 Tori
GITTENS
6 // 5-11 // Jr.
MIN: 31.0
PPG: 5.0
REB: 3.0
AST: 1.0



The Charleston Southern Athletics Communications department's mission is to strategically provide communication between the athletics department and its internal and external constituents, increase awareness of and interest in Buccaneer Athletics and to publicize the activities and achievements of the student-athletes, teams and the athletics department.

We understand the importance of assisting the media in providing coverage of the university, its athletics programs, administrators, coaches and student-athletes. Our goal is to disseminate information as widely, uniformly and fairly as possible using accepted media standards. To this end, the best attempt will be made to fill reasonable requests by recognized media outlets. Members of the media are encouraged to work with our staff to assist in that endeavor.

MEDIA INFORMATION

PRESS RELEASES/GAME NOTES

Prior to each contest, a complete release previewing the upcoming game and reviewing the season will be available on CSUSports.com. The release will also be emailed to media requesting this service.

PREGAME INTERVIEWS

Head Coach Clarisse Garcia will be available for pregame interviews and live television shots depending on time schedules. CSU players will not be available for pregame media activities. Media are encouraged to call the CSU athletic communications office well in advance to arrange such interviews.

POSTGAME INTERVIEWS

CSU's locker room is closed to media after the game. Media in attendance will be asked for player requests prior to the conclusion of the game. Head Coach Clarisse Garcia and requested players will be available following the game at the Buccaneer Fieldhouse.

INTERVIEWS

Direct all requests for interviews with CSU head coach Clarisse Garcia or women's basketball student-athletes through Assistant Director of Athletic Communications Kieran Intemann by calling (843) 863-7289 or emailing kintemann@csuniv.edu

COVERING HOME GAMES CREDENTIALS

Credentials for CSU women's basketball home games are issued to working media only and must be requested at least 24 hours in advance to Kieran Intemann by emailing kintemann@csuniv.edu.

PARKING

Parking is free to the public and is available on a first-come, first-serve basis for CSU women's basketball games with the exception of marked off spaces for Buc Club members, coaches and officials.

WORKING MEDIA LOCATION

The working press, radio, and television area is located in the Athletic Communication offices inside the Buccaneer Field House. Media may also be able to reserve press row seats upon request.

MEDIA ROOM SERVICES

Pregame packets, including notes, statistics, programs and rosters, will be available. Final box scores will also be provided.

WIRELESS INTERNET

Complimentary access to wireless internet is available for working media at the Buccaneer Field House.

Athletics Communications Charleston Southern University

9200 University Blvd
Charleston, SC 29406
Phone: 843-863-7853

Communications Staff

Travis Woods

Associate A.D. for Communications/P.R.
Football, M/W Golf, Cross Country, Track & Field

Taylor Chitwood

Associate Director of Communications
Men's Basketball, Baseball, Volleyball, Tennis

Kieran Intemann

Assistant Director of Communications
Women's Basketball, Softball, Soccer

Video/Content Creation Staff

Nick Case

Assistant A.D. for Broadcast Services
ESPN+/Big South Network

Marlon Howard

Director of Creative Content
Creative Content

Broadcast Staff

Killian McClatchey

"Voice of the Bucs"/ESPN+ Play-by-Play Talent

Anna Witte

Side Line Report/ESPN+ Color Analyst



BROADCAST/MEDIA SPOT CHART

PROBABLE STARTERS SHADED IN BLUE/GOLD TEXT

1		VICTORIA DAMES <i>G/F // 6-0 // SO. // LOGANVILLE, GA.</i> PPG: 0.0 // REB: 3.0 // AST: 2.0 // BLK: 0.0 // STL: 0.0	<i>LAST GAME:</i> 3 rebounds, 2 assists at Alabama (11/9/21) <i>NOTES:</i> First season at CSU after transferring from Arkansas State... Tied for team lead with two assists in season opener... Appeared in five games for the Red Wolves during the 2020-21 season, averaging 2.0 points and 0.4 rebounds per game.
2		SKYLAR BALTEZGAR <i>F/C // 6-2 // FR. // ORANGE PARK, FLA.</i> PPG: 3.0 // REB: 5.0 // AST: 0.0 // BLK: 0.0 // STL: 0.0	<i>LAST GAME:</i> 3 points, 5 rebounds at Alabama (11/9/21) <i>NOTES:</i> Led CSU in rebounds in season opener (at Alabama) and exhibition game (Columbus State)... All-region and all-conference selection at Middleburg, where she was one of the top rebounders in Northeast Florida... Averaged a double-double in her high school career.
5		SHA'MYA LEIGH <i>G // 5-10 // JR. // DAYTON, OHIO</i> PPG: 9.0 // REB: 3.0 // AST: 1.0 // BLK: 0.0 // STL: 1.0	<i>LAST GAME:</i> 9 points, 3 rebounds, 1 assist at Alabama (11/9/21) <i>NOTES:</i> 6.4ppg, 2.3rpg for her career at CSU... Led CSU with nine points in season opener, including seven in first quarter... Has appeared in 52 games for the Bucs, starting 44... Career-high 18 points against conference champion High Point (2/6/21).
10		JORDAN ROGERS <i>G // 5-10 // FR. // FRANKLIN, OHIO</i> PPG: 0.0 // REB: 2.0 // AST: 0.0 // BLK: 0.0 // STL: 0.0	<i>LAST GAME:</i> 2 rebounds at Alabama (11/9/21) <i>NOTES:</i> Made collegiate debut at Alabama... Three-time first team all-district player at Franklin, where she was one of the top guards in the state... Finished high school career third in school history in scoring... Averaged double-figures each of the last three years.
12		ZAIRE HICKS <i>G // 5-7 // R-SR. // MEMPHIS, TENN.</i> PPG: --- // REB: --- // AST: --- // BLK: --- // STL: ---	<i>LAST GAME:</i> --- (DNP at Alabama) <i>NOTES:</i> First season at CSU after transferring from UT Martin... 78 career games for the Skyhawks, including 34 starts... Career-high 19 points on two occasions during the 2018-19 season... Career averages of 5.5ppg, 1.7rpg, 1.5apg, 1.0spg.
13		SHARITA GODFREY <i>G/F // 5-11 // SR. // COLUMBIA, S.C.</i> PPG: 5.0 // REB: 5.0 // AST: 0.0 // BLK: 0.0 // STL: 0.0	<i>LAST GAME:</i> 5 points, 5 rebounds at Alabama (11/9/21) <i>NOTES:</i> Tied for team lead with five rebounds at Alabama... Emerged as CSU's top 3-point shooter last season, connecting on a career-best 44 percent of attempts from beyond the arc... Third on the team in scoring (9.6ppg), third in rebounding (5.3rpg) during the 2020-21 season.
14		TYRA WRIGHT <i>C // 6-2 // JR. // MORRISON, TENN.</i> PPG: --- // REB: --- // AST: --- // BLK: --- // STL: ---	<i>LAST GAME:</i> 3 rebounds at USC Upstate (3/6/21) (DNP at Alabama) <i>NOTES:</i> 41 games, eight starts in her career... 3.7ppg, 2.1rpg in her career... Nine points in 12 minutes at Radford last season (2/20/21)... Career-high 16 points against Virginia Lynchburg during 2019-20 season (12/7/19)... Double-double (12pts, 10reb) vs. USC Upstate (2/11/20).
15		JANAIA FARGO <i>G // 5-8 // SO. // INWOOD, W.VA.</i> PPG: 2.0 // REB: 2.0 // AST: 1.0 // BLK: 0.0 // STL: 0.0	<i>LAST GAME:</i> 2 points, 2 rebounds, 1 assist at Alabama (11/9/21) <i>NOTES:</i> 22 games, 20 starts as a freshman during 2020-21 season... Averaged 5.4ppg, 1.7rpg, 1.7apg last year, ranking second on the team in assists... Season-best 14 points against Gardner-Webb (1/9/21)... Pulled down a season-best seven rebounds in collegiate debut vs. CIU (11/25/21).
20		MADISON ADAMSON <i>F // 6-0 // FR. // HOOVER, ALA.</i> PPG: 0.0 // REB: 5.0 // AST: 2.0 // BLK: 0.0 // STL: 1.0	<i>LAST GAME:</i> 4 rebounds, 2 assists, 1 steal at Alabama (11/9/21) <i>NOTES:</i> Started season opener at Alabama... Two-time state champion at Hoover, where her teams were 122-10 over a four-year span... Averaged 10 points, seven rebounds and 2 steals at Hoover... Third team all-region selection in 2020... Spent 2020-21 season at USAFA Prep School.
22		ALYSSIA FAYE <i>F // 6-2 // R-SR. // VALENCE, FRANCE</i> PPG: 8.0 // REB: 3.0 // AST: 0.0 // BLK: 0.0 // STL: 1.0	<i>LAST GAME:</i> 8 points, 3 rebounds, 1 steal at Alabama (11/9/21) <i>NOTES:</i> Led CSU in scoring (11.9) and rebounding (7.1) last season... Four double-doubles in 2020-21 season... Top 15 in Big South in points and rebounds... 13 games with 10 or more points last season, tops on the team... Career-high 22 points at Longwood (2/13/21).
23		TORI GITTENS <i>G // 5-11 // JR. // SHERMAN, TEXAS</i> PPG: 5.0 // REB: 3.0 // AST: 1.0 // BLK: 0.0 // STL: 1.0	<i>LAST GAME:</i> 5 points, 3 rebounds, 1 steal at Alabama (11/9/21) <i>NOTES:</i> 53 games, 17 starts in her career... Earned the start in the season opener... Shot 36.7 percent from beyond the arc last season... Career-high four 3-pointers at Winthrop (1/29/21)... Big South All-Academic Team selection in 2020-21 season... Six career double-digit scoring games.
25		MAKENNA WINANS <i>F // 6-0 // SO. // PARKERSBURG, W.VA.</i> PPG: 0.0 // REB: 2.0 // AST: 0.0 // BLK: 2.0 // STL: 0.0	<i>LAST GAME:</i> 2 rebounds, 2 blocks at Alabama (11/9/21) <i>NOTES:</i> Team-high two blocks in season opener... 22 games, 10 starts during the 2020-21 season... 5.2ppg, 3.7rpg last year... Ranked eighth in the Big South in blocks last year (17, 0.8bpg)... Season-high 14 points against both Hampton (12/22/20) and Gardner-Webb (1/10/21).



>>CURRENT STREAKS

Overall	L13
Unranked Teams	L13
Home.....	L5
Home Big South	L5
Home nonconference.....	W2
Home non-Division I.....	W13
Road.....	L12
Road Big South.....	L6
Road nonconference	L7
Neutral.....	L1

Consecutive Games with 10+ Points

Consecutive Games with 5+ Rebounds

Skylar Baltezgar	1
Sharita Godfrey	1

Consecutive Games with 2+ Assists

Madison Adamson.....	1
Victoria Dames	1

Consecutive Games with 1+ Steals

Madison Adamson.....	1
Alyssia Faye.....	1
Tori Gittens.....	1
Sha'Mya Leigh.....	1

Consecutive Games with 1+ Blocks

Makenna Winans	1
----------------------	---

Consecutive Games Started

Alyssia Faye.....	14
Sha'Mya Leigh.....	6
Sharita Godfrey.....	4
Madison Adamson.....	1
Tori Gittens.....	1

Consecutive Games with a 3-Pointer

Sharita Godfrey.....	4
Tori Gittens.....	4
Sha'Mya Leigh.....	1

>>CSU IN WINS VS. LOSSES

CATEGORY	WINS	LOSSES
Points per game	---	32.0
Opponent points per game	---	109.0
Field goal pct.	---	.214
Opponent field goal pct.	---	.494
3PT field goal pct.	---	.176
Opponent 3PT field goal pct.	---	.320
Free throw pct.	---	1.000
Rebounds per game	---	36.0
Rebound margin	---	-17.0
Assists per game	---	7.0
Turnovers per game	---	31.0
Turnover margin	---	-23.0
Steals per game	---	4.0
Blocks per game	---	2.0

>>TEAM NOTES

New Year, New Look

Charleston Southern enters a new era of women's basketball, with Clarisse Garcia beginning her first season as head coach. In addition to Garcia, the entire coaching staff, consisting of Stephanie Stoglin-Reed, Ashley Jones and Jordan Kyles, all enters year one in the Lowcountry.

With a new staff comes a new system, and the Bucs have embraced a style of play that Garcia has described as "fast, fun and fierce." CSU will also feature five newcomers on its roster this season in freshmen Skylar Baltezgar, Jordan Rogers and Madison Adamson, and transfers Victoria Dames (Arkansas State) and Zaire Hicks (UT Martin).

Veteran Presence

CSU returns four of its five starters from last season, including nearly all of its offensive production from the 2020-21 team. Alyssia Faye was the Bucs' leading scorer and rebounder last season, ranking inside the top 15 in the Big South in both scoring and rebounding at 11.9 points and 7.1 boards per game.

Sharita Godfrey is also back for her senior season after finishing third on the team in scoring (9.6 points per game) and second in rebounding (5.3 rebounds per game), while leading the team in 3-point percentage at 44.0 percent from beyond the arc.

In addition, six Bucs who averaged more than 15 minutes per game are back in the fold for the 2021-22 season, while Zaire Hicks has also played significant minutes throughout her collegiate career.

The starting five in CSU's season opener at Alabama consisted of two seniors (Godfrey, Faye), two juniors (Gittens, Leigh) and a freshman (Adamson).

Strength in Numbers

Eight of Charleston Southern's nine players with previous collegiate experience, including all seven returners from the 2020-21 team, have scored in double-figures multiple times in their careers.

Sharita Godfrey leads all Buccaneers players with 22 career double-figure scoring games, while Alyssia Faye led the Bucs with 13 games of double-digit scoring during the 2020-21 season.

Out of the Gate

Sha'Mya Leigh jumped out to a quick start in the season opener at Alabama, scoring each of the Bucs' first seven points.

Leigh led the Bucs with nine points in the contest and her seven first-half points were the most by a Buccaneer in either half against the Crimson Tide.

Late-Game Looks

Four of Charleston Southern's five 3-pointers in the exhibition game against Columbus State came in the fourth quarter.

The Bucs started that quarter on a 13-0 run, shot 44 percent (4-for-9) from beyond the arc and 57 percent (8-for-14) from the field in the final 10 minutes.

Light it Up

Tori Gittens had 23 points in Charleston Southern's exhibition contest against Columbus State Saturday evening. Gittens had nine field goals, including a trio of 3-pointers, and also added three rebounds and three steals.

Gittens had five points and three rebounds while earning the start in the season opener at Alabama, playing 31 minutes against the Crimson Tide.

Gittens' career high in a regular season game is 14 points, which was accomplished at Winthrop during the 2020-21 season.

Pressure, Pressure, Pressure

Charleston Southern's intensity on the defensive side gave Columbus State fits in the preseason exhibition game. The Buccaneers forced 29 Cougar turnovers, which they turned into 23 points.

CSU also kept Columbus State under 40 percent shooting for the game, including an 8-for-27 (.296) mark from the field in the first half.

Closing out Strong

Alyssia Faye ended the 2020-21 season on a high note for the Bucs. Faye reached double-figure scoring in each of the last five games, and also had five or more rebounds in eight straight games to close the season. Included in that stretch was a streak of three games with 20-plus points, with a career-high 22 on the road at Longwood.

Stuffing the Stat Sheet

Alyssia Faye was also one of just eight players to rank inside the top 15 of the Big South in both scoring and rebounding during the 2020-21 season, and the only player in the conference to reach that mark and not be selected to the all-conference teams.

Faye was one of two players to achieve that mark last season and not earn any preseason all-conference accolades.

Deadeye

Sharita Godfrey had a shooting percentage under 30 percent from beyond the arc prior to the 2020-21 season, but that changed quickly.

Godfrey emerged as the top 3-point weapon for the Buccaneers last season, making a career-best 37 3-pointers while shooting a team-leading 44.0 percent from long range.

Included in those 37 3-pointers was a game-winning trey on the road at Hampton, which helped Godfrey earn Big South Player of the Week honors for the first time in her career.

Godfrey hit one of CSU's three 3-pointers in the



>>TEAM NOTES

season opener at Alabama.

She also led the team at the free throw line last season, connecting on 84.2 percent of her attempts from the charity stripe.

Weekly Winners

Charleston Southern had multiple Big South weekly award winners last season for the first time since the 2018-19 campaign, as Sharita Godfrey and Makenna Winans swept Player and Freshman of the Week honors after the Bucs swept a Big South series at Hampton.

The weekly awards were the first-ever weekly honors for both Godfrey and Winans.

Clean as a Whistle

The Buccaneers ranked inside the top 60 in the nation in personal fouls per game during the 2020-21 season, committing just 15.1 per game.

In addition to ranking high in the nation, that mark was also the best in the Big South Conference.

Local Flavor

Charleston Southern's non-conference schedule has a regional feel to it, as six of the 11 non-conference games will be played against opponents from South Carolina or from states that border South Carolina.

The Buccaneers play Belmont Abbey, College of Charleston, Furman and Duke at home, while playing at Western Carolina and in a holiday tournament at Georgia State.

Power Five Presence

Charleston Southern's non-conference schedule includes a quartet of Power Five opponents, including the first home game against a Power Five opponent since the 1991-92 season.

Charleston Southern opened the 2021-22 season at Alabama and will make a return trip to the Yellowhammer state later this month to face Auburn. CSU will also play at Florida State in December.

The Bucs will also host arguably their most high-profile home game in program history on December 21 when Duke visits Buccaneer Fieldhouse in the last non-conference game for CSU.

Home, Sweet Home

CSU plays inside the friendly confines of Buccaneer Fieldhouse for the first time this season Tuesday evening.

Four of the Bucs' six wins during the 2020-21 season came at home, including a 2-0 mark in non-conference play a season ago.

Chasing the Pack

Charleston Southern was picked to finish last in the Big South Preseason Poll, which was voted on by the head coaches in the conference. The

Buccaneers received 18 points in the poll.

1. High Point (11)
2. Campbell
3. Longwood
4. North Carolina A&T (1)
5. Gardner-Webb
6. Radford
7. UNC Asheville
7. Presbyterian
9. Hampton
10. USC Upstate
11. Winthrop
12. Charleston Southern

A Closer Look at the Bucs

Charleston Southern is looking to right the ship after ending the 2020-21 season on a sour note with 12 straight losses and a first-round exit in the Big South Tournament. The Buccaneers started conference play 3-1 with a sweep of Hampton and a series split with Presbyterian before things went south.

CSU returns four of its five starters from the 2020-21 season, including leading scorer and rebounder Alyssia Faye. Six different returning Bucs spent time in the starting lineup last season, while transfer Zaire Hicks started 34 games in her career at UT Martin before joining the Bucs this season.

Charleston Southern 2021-22 Leaders per game

- Scoring – Sha'Mya Leigh (9.0)
- Rebounding – Skylar Baltezgar, Sharita Godfrey (5.0)
- Assists – Madison Adamson, Victoria Dames (2.0)
- Steals – Adamson, Faye, Gittens, Leigh (1.0)
- Blocks – Makenna Winans (2.0)
- Three-Pointers – Gittens, Godfrey, Leigh (1.0)

First Time for Everything

For the third straight game to begin the season (including the exhibition game against Columbus State), Charleston Southern will play a first-time opponent when George Mason visits Buccaneer Fieldhouse.

Head coach Clarisse Garcia and George Mason head coach Vanessa Blair-Lewis both bring Sunshine State connections to their respective programs, with Garcia spending two seasons as the head coach at Palm Beach Atlantic and Blair-Lewis arriving at George Mason following a successful tenure as head coach at Bethune-Cookman.

A Closer Look at the Patriots

George Mason enters Tuesday's game at 2-1 overall. The Patriots opened the season with consecutive road wins at FIU and Loyola (Md.) before falling in their home opener to Virginia Tech on Sunday.

Similar to the Buccaneers, George Mason enters a new era of women's basketball. Vanessa Blair-Lewis enters her first season as head coach of the Patriots after spending the last 13 years as head coach at Bethune-Cookman, compiling 196 wins, six winning seasons and the Wildcats' first-ever NCAA Tournament appearance during her

>>SEASON & CAREER TOTALS

	2021-22	CAREER
DOUBLE-FIGURE SCORING GAMES		
Sharita Godfrey		22
Alyssia Faye		13
Sha'Mya Leigh		9
Tori Gittens		6
Tyra Wright		4
Janaia Fargo		3
Makenna Winans		3
20+ POINT GAMES		
Alyssia Faye		3
Sharita Godfrey		2
30+ POINT GAMES		
10+ REBOUND GAMES		
Alyssia Faye		4
Sharita Godfrey		2
Makenna Winans		1
Tyra Wright		1
10+ ASSIST GAMES		
DOUBLE-DOUBLES		
Alyssia Faye		3
Sharita Godfrey		2
Tyra Wright		1
TRIPLE DOUBLES		
20-10 GAMES		
Alyssia Faye		1
3+ STEAL GAMES		
Sha'Mya Leigh		5
Sharita Godfrey		3
Makenna Winans		1
Alyssia Faye		1
3+ BLOCK GAMES		
Makenna Winans		1
3+ THREE-POINT GAMES		
Sharita Godfrey		7
Tori Gittens		5
Sha'Mya Leigh		1
Makenna Winans		1
Janaia Fargo		1



>>TEAM NOTES

time in Daytona Beach.

Blair-Lewis gets an added boost to start her tenure in Fairfax, as five of George Mason's top six scorers from last season all return for the 2021-22 campaign.

George Mason 2021-22 Leaders per game

- Scoring - Jordan Wakefield (15.3)
- Rebounding - Amaya Scott (6.7)
- Assists - Jayla Adams (4.0)
- Steals - Taylor Jameson (1.7)
- Blocks - Jordan Wakefield (1.0)
- Three-Pointers - Jordan Wakefield (2.3)

Series Breakdown

Tuesday's meeting between Charleston Southern and George Mason will be the first-ever meeting between the Bucs and Patriots.

Charleston Southern last faced an opponent from the A-10 during the 2020-21 season, when the Bucs made the trip to face Davidson. The last A-10 opponent to play inside Buccaneer Fieldhouse was Davidson during the 2018-19 season.

Bucs Against the Old Dominion

Charleston Southern has compiled 46 wins all-time against teams from the state of Virginia. CSU's most common opponent from the state has been Liberty, with the Bucs and Flames facing off 67 times.

11 of the Bucs' 46 wins against Virginia foes have

come against Longwood, representing the most wins for CSU against any team from the state.

>>TRACKING THE BUCS

Overall	0-1
At Buc Dome	0-0
On the road	0-1
At a neutral site.....	0-0

Vs. ranked opponents	0-0
Vs. Unranked opponents.....	0-1
Vs. teams .500 or better	0-1
Vs. teams worse than .500	0-0

Games decided by 3 points or less.....	0-0
Games decided by 4-10 points	0-0
Games decided by 11-19 points	0-0
Games decided by 20+ points	0-1
Leading at Half	0-0
Tied at Half	0-0
Trailing at Half	0-1
Leading at start of 4th quarter.....	0-0
Trailing at start of 4th quarter	0-1
Tied at start of 4th quarter.....	0-0
In overtime	0-0

CSU scores 49 points or less	0-1
CSU scores 50-59 points.....	0-0
CSU scores 60-69 points	0-0
CSU scores 70-79 points	0-0
CSU scores 80+ points	0-0
Opponent scores 49 points or less	0-0
Opponent scores 50-59 points	0-0
Opponent scores 60-69 points	0-0
Opponent scores 70-79 points.....	0-0
Opponent scores 80+ points	0-1

CSU shoots 40% or better	0-0
CSU shoots less than 40%	0-1
CSU shoots better than opponent	0-0
Shooting is even.....	0-0
Opponent shoots better than CSU.....	0-1
Opponent shoots 40% or better	0-1
Opponent shoots less than 40%.....	0-0

CSU outrebounds opponent	0-0
Opponent outrebounds CSU.....	0-1
Rebounds are tied	0-0

CSU commits 14 or fewer turnovers.....	0-0
CSU commits 14+ turnovers	0-1
CSU records 7+ steals	0-0
CSU records less than 7 steals	0-1

CSU wears white.....	0-0
CSU wears blue	0-1
CSU wears gold	

CSU controls tip.....	0-0
CSU loses tip	0-0
CSU scores first	0-0
Opponent scores first	0-0

Day Games (Before 5 p.m. local time)	0-1
Night Games	0-0

CSU in November	0-1
CSU in December.....	0-0
CSU in January	0-0
CSU in February.....	0-0
CSU in March	0-0

On Monday.....	0-0
On Tuesday	0-1
On Wednesday	0-0
On Thursday	0-0
On Friday	0-0
On Saturday	0-0
On Sunday.....	0-0

>>SPECIALTY STATS

OPPONENT	OFF TURNOVERS		PAINT		2ND CHANCE		FAST BREAK		BENCH	
	CSU	OPP	CSU	OPP	CSU	OPP	CSU	OPP	CSU	OPP
Columbus State (Exh.)	23	21	22	42	9	8	8	24	14	13
at Alabama	4	40	12	62	2	20	0	25	5	53
George Mason										
at Western Carolina										
at Auburn										
Belmont Abbey										
College of Charleston										
at Florida State										
Furman										
vs. South Alabama ^										
at Georgia State ^										
Duke										
at Winthrop *										
High Point *										
at Gardner-Webb *										
Campbell *										
at Presbyterian*										
UNC Asheville *										
at North Carolina A&T *										
Radford *										
at Hampton *										
at Longwood *										
Presbyterian *										
Gardner-Webb *										
at Campbell *										
Winthrop *										
at High Point *										
North Carolina A&T *										
at UNC Asheville *										
TOTALS	4	40	12	62	2	20	0	25	5	53
AVERAGES	4.0	40.0	12.0	62.0	2.0	20.0	0.0	25.0	5.0	53.0

Exhibition Stats are not included in season averages



2021-22 GAME-BY-GAME LEADERS

Date	Opponent	W/L	Score	Charleston So. High Scorer	Opponent High Scorer	Charleston So. High Rebounder	Opponent High Rebounder	Charleston So. High Assists
Nov. 6	Columbus State (Exh.)	Exh.	Exh.	Gittens, 23	Arnold, 19	Baltezegar, 8	Boston, 15	Godfrey/Faye, 4
Nov. 9	Alabama	L	32-109	Leigh, 9	Davis, 25	Baltezegar/Godfrey, 5	Davis, 12	Adamson/Dames, 2
Nov. 16	George Mason							
Nov. 20	Western Carolina							
Nov. 26	Auburn							
Nov. 29	Belmont Abbey							
Dec. 2	College of Charleston							
Dec. 5	Florida State							
Dec. 16	Furman							
Dec. 18	South Alabama ^							
Dec. 19	Georgia State ^							
Dec. 21	Duke							
Dec. 29	Winthrop *							
Jan. 1	High Point *							
Jan. 5	Gardner-Webb *							
Jan. 8	Campbell *							
Jan. 12	Presbyterian *							
Jan. 15	UNC Asheville *							
Jan. 19	North Carolina A&T *							
Jan. 22	USC Upstate *							
Jan. 25	Radford *							
Jan. 29	Hampton *							
Feb. 2	Longwood *							
Feb. 5	Presbyterian *							
Feb. 9	Gardner-Webb *							
Feb. 12	Campbell *							
Feb. 15	Winthrop *							
Feb. 19	High Point *							
Feb. 23	North Carolina A&T *							
Feb. 26	UNC Asheville *							

*Big South Game

CURRENT BUCCANEERS VS. GEORGE MASON

Player	GP-GS	Min	Avg.	FG-A	FG%	3FG-A	3FG%	FT-A	FT%	O-D-T	Avg.	PF-DQ	A	T	B	S	Pts	Avg
--------	-------	-----	------	------	-----	-------	------	------	-----	-------	------	-------	---	---	---	---	-----	-----

None - First-ever meeting



STARTING LINEUPS BY GAME

Date	Opponent	#1	#2	#3	#4	#5	#
Nov. 6	Columbus State (Exh.)	Leigh	Hicks	Gittens	Godfrey	Faye	Exh.
Nov. 9	Alabama	Leigh	Gittens	Godfrey	Adamson	Faye	1
Nov. 16	George Mason						
Nov. 20	Western Carolina						
Nov. 26	Auburn						
Nov. 29	Belmont Abbey						
Dec. 2	College of Charleston						
Dec. 5	Florida State						
Dec. 16	Furman						
Dec. 18	South Alabama ^						
Dec. 19	Georgia State ^						
Dec. 21	Duke						
Dec. 29	Winthrop *						
Jan. 1	High Point *						
Jan. 5	Gardner-Webb *						
Jan. 8	Campbell *						
Jan. 12	Presbyterian *						
Jan. 15	UNC Asheville *						
Jan. 19	North Carolina A&T *						
Jan. 22	USC Upstate *						
Jan. 25	Radford *						
Jan. 29	Hampton *						
Feb. 2	Longwood *						
Feb. 5	Presbyterian *						
Feb. 9	Gardner-Webb *						
Feb. 12	Campbell *						
Feb. 15	Winthrop *						
Feb. 19	High Point *						
Feb. 23	North Carolina A&T *						
Feb. 26	UNC Asheville *						
*Big South Game							

RECORD BY STARTING LINEUP COMBINATION

Lineup

Leigh, Gittens, Godfrey, Adamson, Faye

Record

0-1



>>2021-22 BIG SOUTH STANDINGS

Team	Big South	PCT	Overall	PCT	Streak
Campbell	0-0	.000	1-1	.500	L1
High Point	0-0	.000	1-1	.500	W1
UNC Asheville	0-0	.000	1-1	.500	W1
Hampton	0-0	.000	1-2	.333	L1
Charleston Southern	0-0	.000	0-1	.000	L1
USC Upstate	0-0	.000	0-1	.000	L1
Gardner-Webb	0-0	.000	0-2	.000	L2
Longwood	0-0	.000	0-2	.000	L2
North Carolina A&T	0-0	.000	0-2	.000	L2
Presbyterian	0-0	.000	0-2	.000	L2
Radford	0-0	.000	0-2	.000	L2
Winthrop	0-0	.000	0-2	.000	L2

>>BY THE NUMBERS

>>CHARLESTON SOUTHERN 2021-22 NCAA RANKINGS

	NCAA	Big South	Value
Assist Turnover Ratio (342 ranked)	335	12	0.23
Assists (341 ranked)	331	11	7
Assists Per Game (342 ranked)	325	11	7.0
Blocked Shots (306 ranked)	269	10	2
Blocked Shots Per Game (324 ranked)	225	7	2.0
Defensive Rebounds per Game (27 ranked)			
Fewest Fouls (342 ranked)	128	3	24
Fewest Turnovers (342 ranked)	194	5	31
Field-Goal Percentage (342 ranked)	341	12	21.4
Field-Goal Percentage Defense (342 ranked)	316	10	49.4
Free Throw Attempts (342 ranked)	338	12	5
Free Throws Made (341 ranked)	329	12	5
Free-Throw Percentage (341 ranked)	1	1	1.000
Offensive Rebounds per Game (16 ranked)			
Personal Fouls Per Game (342 ranked)	315	12	24.0
Rebound Margin (342 ranked)	325	9	-17.0
Rebounds (341 ranked)	289	10	36
Rebounds Per Game (341 ranked)	218	4	36.00
Scoring Defense (342 ranked)	340	12	109.0
Scoring Margin (342 ranked)	341	12	-77.0
Scoring Offense (342 ranked)	339	12	32.0
Steals (340 ranked)	2321	10	4
Steals Per Game (340 ranked)	312	10	4.0
Three Pt FG Defense (339 ranked)	223	5	32.0
Three-Point Field Goals Attempted (141 ranked)			
Three-Point Field Goals Made (339 ranked)	317	11	3
Three-Point Field Goals Per Game (338 ranked)	293	6	3.0
Three-Point Field-Goal Percentage (339 ranked)	319	10	17.6
Turnover Margin (342 ranked)	341	12	-23.00
Turnovers Forced (342 ranked)	337	12	8.00
Turnovers Per Game (342 ranked)	339	11	31.0

>>NCAA NATIONAL POLLS

ASSOCIATED PRESS TOP 25					USA TODAY / WBCA COACHES TOP 25				
Rk	School	Rec.	Pts.	PV	Rk	School	Rec.	Pts.	PV
1	South Carolina (14)	0-0	705	6	1	South Carolina (13)	0-0	768	4
2	UConn (10)	0-0	696	1	T2	Stanford (13)	0-0	763	1
3	Stanford (5)	0-0	682	2	T2	UConn (6)	0-0	763	3
4	Maryland	0-0	632	7	4	NC State	0-0	670	7
5	NC State	0-0	589	3	5	Maryland	0-0	661	9
6	Louisville	0-0	575	8	6	Louisville	0-0	642	6
7	Baylor	0-0	522	5	7	Indiana	0-0	558	8
8	Indiana	0-0	521	12	8	Baylor	0-0	495	5
9	Iowa	0-0	513	NR	9	Oregon	0-0	475	15
10	Oregon	0-0	479	23	10	Michigan	0-0	470	11
11	Michigan	0-0	403	16	11	Iowa	0-0	440	19
12	Iowa State	0-0	376	NR	12	Tennessee	0-0	346	16
13	Kentucky	0-0	368	18	13	Kentucky	0-0	322	21
14	Oregon State	0-0	273	NR	14	UCLA	0-0	311	12
15	Tennessee	0-0	244	13	15	Arizona	0-0	277	2
16	Florida State	0-0	231	NR	16	Iowa State	0-0	258	NR
T17	Ohio State	0-0	197	22	17	Texas A&M	0-0	251	10
T17	Georgia Tech	0-0	197	NR	18	Oregon State	0-0	224	NR
19	West Virginia	0-0	192	17	19	Georgia	0-0	197	13
20	UCLA	0-0	175	9	20	Georgia Tech	0-0	192	22
21	South Florida	0-0	146	19	21	Texas	0-0	190	17
22	Arizona	0-0	135	11	22	South Florida	0-0	169	18
23	Texas A&M	0-0	134	4	23	West Virginia	0-0	165	24
24	Virginia Tech	0-0	98	NR	24	Florida State	0-0	157	NR
25	Texas	0-0	79	NR	25	Ohio State	0-0	128	NR

Others receiving votes: Georgia 65, Michigan State 63, Florida Gulf Coast 43, Missouri State 18, South Dakota 13, LSU 10, Arkansas 10, Washington State 9, Oklahoma State 8, Notre Dame 8, DePaul 6, Belmont 5, Oklahoma 3, South Dakota State 1

Others receiving votes: Missouri State 112, Gonzaga 59, Virginia Tech 56, Florida Gulf Coast 54, Arkansas 53, Michigan State 28, Rutgers 17, Stephen F. Austin 16, LSU 13, Northwestern 13, South Dakota State 13, Washington State 13, BYU 11, North Carolina 11, UCF 8, Colorado 8, DePaul 5, Ole Miss 5, Belmont 4, Delaware 4, Oklahoma 4, Notre Dame 3, South Dakota 3, Houston 2, IUPUI 1, Seton Hall 1, Virginia 1

>>2021-22 PRESEASON ALL-CONFERENCE TEAMS

FIRST TEAM

Skyler Curran, High Point*
 Kyla McMakin, Longwood
 Akila Smith, Longwood
 Nadiria Evans, UNC Asheville
 Shy Tuelle, Campbell

SECOND TEAM

Jenson Edwards, High Point
 Chanin Scott, North Carolina A&T
 Taya Bolden, Campbell
 Nylah Young, Hampton
 Alasia Smith, Gardner-Webb

*indicates Preseason Player of the Year

>>2021-22 BIG SOUTH PRESEASON POLL

Team	1	2	3	4	5	6	7	8	9	10	11	12	Points
1. High Point (11)	11	1	-	-	-	-	-	-	-	-	-	-	143
2. Campbell	-	3	7	2	-	-	-	-	-	-	-	-	121
3. Longwood	-	4	3	5	-	-	-	-	-	-	-	-	119
4. North Carolina A&T (1)	1	4	1	3	1	1	1	-	-	-	-	-	114
5. Gardner-Webb	-	-	1	1	5	4	1	-	-	-	-	-	93
6. Radford	-	-	-	-	2	5	2	2	-	1	-	-	76
T7. UNC Asheville	-	-	-	1	1	-	4	5	1	-	-	-	70
T7. Presbyterian	-	-	-	-	3	1	2	3	3	-	-	-	70
9. Hampton	-	-	-	-	-	-	2	1	7	1	1	-	50
10. USC Upstate	-	-	-	-	-	1	-	1	1	6	2	1	38
11. Winthrop	-	-	-	-	-	-	-	-	-	3	5	4	23
12. Charleston So.	-	-	-	-	-	-	1	1	2	1	4	7	18



2021-22 High/Low Analysis

CSU High

Points/Game	32	at Alabama, 11/9/21
Points/Half	16	at Alabama, 11/9/21
FG Made	12	at Alabama, 11/9/21
FG Attempts	56	at Alabama, 11/9/21
FG%	.214	at Alabama, 11/9/21
3-Pt. FG Made	3	at Alabama, 11/9/21
3-Pt FG Attempts	17	at Alabama, 11/9/21
FT Made	5	at Alabama, 11/9/21
FT Attempts	5	at Alabama, 11/9/21
FT%	1.000	at Alabama, 11/9/21
Offensive Reb.	7	at Alabama, 11/9/21
Rebounds	36	at Alabama, 11/9/21
Assists	7	at Alabama, 11/9/21
Steals	4	at Alabama, 11/9/21
Blocked Shots	2	at Alabama, 11/9/21
Turnovers	31	at Alabama, 11/9/21
Fouls	24	at Alabama, 11/9/21

CSU Low

Points/Game	32	at Alabama, 11/9/21
Points/Half	16	at Alabama, 11/9/21
FG Made	12	at Alabama, 11/9/21
FG Attempts	56	at Alabama, 11/9/21
FG%	.214	at Alabama, 11/9/21
3-Pt. FG Made	3	at Alabama, 11/9/21
3-Pt FG Attempts	17	at Alabama, 11/9/21
FT Made	5	at Alabama, 11/9/21
FT Attempts	5	at Alabama, 11/9/21
FT%	1.000	at Alabama, 11/9/21
Offensive Reb.	7	at Alabama, 11/9/21
Rebounds	36	at Alabama, 11/9/21
Assists	7	at Alabama, 11/9/21
Steals	4	at Alabama, 11/9/21
Blocked Shots	2	at Alabama, 11/9/21
Turnovers	31	at Alabama, 11/9/21
Fouls	24	at Alabama, 11/9/21

Opponent High

Points/Game	109	Alabama, 11/9/21
Points/Half	63	Alabama, 11/9/21
FG Made	39	Alabama, 11/9/21
FG Attempts	79	Alabama, 11/9/21
FG%	.494	Alabama, 11/9/21
3-Pt. FG Made	8	Alabama, 11/9/21
3-Pt FG Attempts	25	Alabama, 11/9/21
FT Made	23	Alabama, 11/9/21
FT Attempts	31	Alabama, 11/9/21
FT%	.742	Alabama, 11/9/21
Offensive Reb.	16	Alabama, 11/9/21
Rebounds	53	Alabama, 11/9/21
Assists	19	Alabama, 11/9/21
Steals	13	Alabama, 11/9/21
Blocked Shots	2	Alabama, 11/9/21
Turnovers	8	Alabama, 11/9/21
Fouls	15	Alabama, 11/9/21

Opponent Low

Points/Game	109	Alabama, 11/9/21
Points/Half	63	Alabama, 11/9/21
FG Made	39	Alabama, 11/9/21
FG Attempts	79	Alabama, 11/9/21
FG%	.494	Alabama, 11/9/21
3-Pt. FG Made	8	Alabama, 11/9/21
3-Pt FG Attempts	25	Alabama, 11/9/21
FT Made	23	Alabama, 11/9/21
FT Attempts	31	Alabama, 11/9/21
FT%	.742	Alabama, 11/9/21
Offensive Reb.	16	Alabama, 11/9/21
Rebounds	53	Alabama, 11/9/21
Assists	19	Alabama, 11/9/21
Steals	13	Alabama, 11/9/21
Blocked Shots	2	Alabama, 11/9/21
Turnovers	8	Alabama, 11/9/21
Fouls	15	Alabama, 11/9/21

2021-22 Individual Game Highs

CSU High

Points/Game	9	Sha'Mya Leigh, at Alabama, 11/9/21
Points/Half	7	Sha'Mya Leigh, 1st half at Alabama, 11/9/21
FG Made	4	Alyssia Faye, Sha'Mya Leigh, at Alabama, 11/9/21
FG Attempts	15	Sha'Mya Leigh, at Alabama, 11/9/21
3-Pt. FG Made	1	Tori Gittens, Sharita Godfrey, Sha'Mya Leigh, at Alabama, 11/9/21
3-Pt FG Attempts	4	Sha'Mya Leigh, at Alabama, 11/9/21
FT Made	2	Janaia Fargo, Tori Gittens, at Alabama, 11/9/21
FT Attempts	2	Janaia Fargo, Tori Gittens, at Alabama, 11/9/21
Offensive Reb.	2	Madison Adamson, Tori Gittens, at Alabama, 11/9/21
Rebounds	5	Skylar Baltezegar, Sharita Godfrey, at Alabama, 11/9/21
Assists	2	Madison Adamson, Victoria Dames, at Alabama, 11/9/21
Steals	1	Madison Adamson, Tori Gittens, Alyssia Faye, Sha'Mya Leigh, at Alabama, 11/9/21
Blocked Shots	2	Makenna Winans, at Alabama, 11/9/21
Turnovers	5	Janaia Fargo, Tori Gittens, at Alabama, 11/9/21

Opponent High

Points/Game	25	Brittany Davis, Alabama, 11/9/21
Points/Half	14	Brittany Davis, Alabama, 11/9/21
FG Made	9	Brittany Davis, Alabama, 11/9/21
FG Attempts	19	Brittany Davis, Alabama, 11/9/21
3-Pt. FG Made	5	Brittany Davis, Alabama, 11/9/21
3-Pt FG Attempts	10	Brittany Davis, Alabama, 11/9/21
FT Made	7	Taylor Sutton, Alabama, 11/9/21
FT Attempts	9	Taylor Sutton, Alabama, 11/9/21
Offensive Reb.	5	Brittany Davis, Alabama, 11/9/21
Rebounds	12	Brittany Davis, Alabama, 11/9/21
Assists	5	JaMya Mingo-Young, Alabama, 11/9/21
Steals	2	Megan Abrams, Ahriahna Grizzle, Khyla Wade-Warren, Alabama, 11/9/21
Blocked Shots	1	Ahriahna Grizzle, JaMya Mingo-Young, Alabama, 11/9/21
Turnovers	2	Hannah Barber, Kayla Blackshear, Alabama, 11/9/21



2021-22 SCHEDULE

Date	Opponent	Location	Venue	Time/Result
NOVEMBER				
Nov. 9	at ALABAMA	TUSCALOOSA, ALA.	COLEMAN COLISEUM	L, 32-109
Nov. 16	GEORGE MASON	CHARLESTON, S.C.	BUCCANEER FIELDHOUSE	6 p.m.
Nov. 20	at WESTERN CAROLINA	CULLOWHEE, N.C.	LISTON B. RAMSEY CENTER	4 p.m.
Nov. 26	at AUBURN	AUBURN, ALA.	AUBURN ARENA	1 p.m.
Nov. 29	BELMONT ABBEY	CHARLESTON, S.C.	BUCCANEER FIELDHOUSE	6 p.m.
DECEMBER				
Dec. 2	COLLEGE OF CHARLESTON	CHARLESTON, S.C.	BUCCANEER FIELDHOUSE	6 p.m.
Dec. 5	at FLORIDA STATE	TALLAHASSEE, FLA.	DONALD L. TUCKER CENTER	2 p.m.
Dec. 16	FURMAN	CHARLESTON, S.C.	BUCCANEER FIELDHOUSE	6 p.m.
Dec. 18	vs. SOUTH ALABAMA ^	ATLANTA, GA.	GSU SPORTS ARENA	NOON
Dec. 19	at GEORGIA STATE ^	ATLANTA, GA.	GSU SPORTS ARENA	2 p.m.
Dec. 21	DUKE	CHARLESTON, S.C.	BUCCANEER FIELDHOUSE	NOON
Dec. 29	at WINTHROP *	ROCK HILL, S.C.	WINTHROP COLISEUM	6 p.m.
JANUARY				
Jan. 1	HIGH POINT *	CHARLESTON, S.C.	BUCCANEER FIELDHOUSE	2 p.m.
Jan. 5	at GARDNER-WEBB *	BOILING SPRINGS, N.C.	PAUL PORTER ARENA	7 p.m.
Jan. 8	CAMPBELL *	CHARLESTON, S.C.	BUCCANEER FIELDHOUSE	2 p.m.
Jan. 12	at PRESBYTERIAN *	CLINTON, S.C.	ROSS E. TEMPLETON CENTER	6 p.m.
Jan. 15	UNC ASHEVILLE *	CHARLESTON, S.C.	BUCCANEER FIELDHOUSE	3 p.m.
Jan. 19	at NORTH CAROLINA A&T *	GREENSBORO, N.C.	ELLIS F. CORBETT SPORTS CENTER	6 p.m.
Jan. 22	USC UPSTATE *	CHARLESTON, S.C.	BUCCANEER FIELDHOUSE	2 p.m.
Jan. 25	RADFORD *	CHARLESTON, S.C.	BUCCANEER FIELDHOUSE	6 p.m.
Jan. 29	at HAMPTON *	HAMPTON, VA.	HU CONVOCATION CENTER	3 p.m.
FEBRUARY				
Feb. 2	at LONGWOOD *	FARMVILLE, VA.	WILLETT HALL	7 p.m.
Feb. 5	PRESBYTERIAN *	CHARLESTON, S.C.	BUCCANEER FIELDHOUSE	3 p.m.
Feb. 9	GARDNER-WEBB *	CHARLESTON, S.C.	BUCCANEER FIELDHOUSE	6 p.m.
Feb. 12	at CAMPBELL *	BUIES CREEK, N.C.	GILBERT CRAIG GORE ARENA	2 p.m.
Feb. 15	WINTHROP *	CHARLESTON, S.C.	BUCCANEER FIELDHOUSE	6 p.m.
Feb. 19	at HIGH POINT *	HIGH POINT, N.C.	NIDO AND MARIANA QUBEIN ARENA	2 p.m.
Feb. 23	NORTH CAROLINA A&T *	CHARLESTON, S.C.	BUCCANEER FIELDHOUSE	6 p.m.
Feb. 26	at UNC ASHEVILLE *	ASHEVILLE, N.C.	KIMMEL ARENA	2 p.m.
MARCH				
March 1	BIG SOUTH FIRST ROUND %	CHARLOTTE, N.C.	BOJANGLES' COLISEUM	TBA
March 3	BIG SOUTH QUARTERFINALS %	CHARLOTTE, N.C.	BOJANGLES' COLISEUM	TBA
March 5	BIG SOUTH SEMIFINALS %	CHARLOTTE, N.C.	BOJANGLES' COLISEUM	TBA
March 6	BIG SOUTH CHAMPIONSHIP GAME %	CHARLOTTE, N.C.	BOJANGLES' COLISEUM	8:30 p.m.

Home games in Bold

All times Eastern and subject to change

* - Big South Game

% - Big South Championships

^ - Georgia State Holiday Classic



Capacity: 881
Sports: Men's Basketball, Women's Basketball, Volleyball

Home to CSU's men's and women's basketball and volleyball programs, the Buc Dome offers one of the most intimate settings for NCAA Division I sports in the nation. The Buc Dome is regularly packed with overflow, standing-room only crowds for men's basketball games, allowing CSU a distinct home court advantage.

The Bucs have hosted multiple postseason competitions in recent years including a home win for the men's basketball team over Florida Atlantic in the CollegeInsider.com Tournament (CIT). The CSU women's basketball team hosted the first round of the WBI in the 2017 season against UNC Greensboro as the Bucs capped arguably the most successful season in program history in both wins and Big South victories on the year.

CSU captured its second Big South regular-season men's basketball championship in three years in 2014-15, clinching the title with a thrilling triple-overtime win over High Point. The Bucs went 13-2 inside the Buc Dome and were 8-1 in conference play. CSU also boasted a nine-game home winning streak from November 25 - January 24.

The Bucs went 11-3 at home in 2012-13 en route to capturing the Big South's regular season championship. CSU capped off that title run with a rousing senior day win over rival Coastal Carolina, clinching the program's first conference championship in 26 years. CSU also hosted in-city rivals The Citadel and College of Charleston in 2012-13, with the latter packing in a crowd of over 1,000 raucous supporters.

In 2010-11, the men's and women's basketball programs were undefeated at home into the month of February, making CSU one of four schools in the nation to hold that distinction.

CSU volleyball often entertains local rivals The Citadel and College of Charleston at home, in addition to a full Big South Conference slate. The Buc Dome was home to the 2011 Big South Conference Volleyball Championships.

CSU volleyball has also hosted CSU Volleyball Tournaments in 2012 and 2014.

ALL-TIME RECORD AT BUCCANEER FIELD HOUSE								
Year	W	L	Year	W	L	Year	W	L
2021-22	0	0	2002-03	7	5	1983-84	1	7
2020-21	4	8	2001-02	9	4	1982-83	0	10
2019-20	3	13	2000-01	13	10	1981-82	1	11
2018-19	9	7	1999-00	5	5	1980-81	6	9
2017-18	7	8	1998-99	12	2	1979-80	2	10
2016-17	12	5	1997-98	6	5	1978-79	N/A	N/A
2015-16	9	6	1996-97	8	3	1977-78	5	2
2014-15 *	1	9	1995-96	8	4	1976-77	2	7
2013-14 *	0	10	1994-95	6	5	TOTAL	245	315
2012-13 *	0	10	1993-94	3	11	* - Wins later vacated by NCAA		
2011-12 *	8	3	1992-93	7	5			
2010-11	10	3	1991-92	2	11			
2009-10	12	5	1990-91	0	14			
2008-09	8	7	1989-90	1	11			
2007-08	6	5	1988-89	1	12			
2006-07	8	7	1987-88	5	9			
2005-09	6	9	1986-87	5	8			
2004-05	9	3	1985-86	6	5			
2003-04	7	5	1984-85	5	7			



CLARISSE GARCIA

>>HEAD COACH | 1ST SEASON AT CSU | VILLANOVA, '07

>>COACH GARCIA BY RECORD

Overall record.....	15-40
Record at CSU.....	0-1
Big South Record (Regular Season).....	0-0
Big South Record (Tournament).....	0-0
Home.....	0-0
Road.....	0-1
Neutral.....	0-0

>>COACH GARCIA'S MILESTONES

OVERALL

1.....	vs. Warner, 11/12/2010 (W, 89, 62)
25.....	

AT CSU

1.....	
25.....	

BIG SOUTH WINS

1.....	
25.....	

Clarisse Garcia is in her first season at the helm of the Charleston Southern women's basketball program and is the 16th head women's basketball coach in program history. She takes over the Buccaneers after coaching stops at Auburn, Wake Forest, Alabama, Palm Beach Atlantic, and Stetson.

Garcia comes to the Buccaneers after spending the last five seasons at Auburn University, including serving as the program's interim head coach following the 2020-21 season. Over her time with the Tigers, Auburn advanced to the NCAA tournament twice while multiple players garnered national and conference recognition.

Garcia spent five seasons (2016-21) with the Auburn women's basketball team serving as the Tigers' recruiting coordinator among other duties. Over her tenure at Auburn, the Tigers posted two top-25 recruiting classes according to espnW HoopGurlz (No. 13 in 2018, No. 25 in 2019), while 11 players received conference postseason accolades.

Garcia's first season at Auburn saw the Tigers advance to their second consecutive NCAA Tournament, finishing with a 17-15 overall record. Her second season saw Auburn finish with a 14-15 overall record, but she was instrumental in landing the nation's No. 12-ranked recruiting class that enrolled at Auburn for the 2018-19 school year. The 2018-19 season saw the Tigers return to the NCAA Tournament for the third time in four seasons while posting a 22-10 overall record (9-7 SEC), the best finish for Auburn in a decade.

Prior to her time at Auburn, she spent four seasons as an assistant at Wake Forest. At Wake Forest, Garcia's teams steadily improved, going from a 13-win season in her first year to a 17-win season in 2016 that resulted in a berth in the Women's NIT, the best finish for the Demon Deacons since 2012.

Garcia also previously served as an assistant at Alabama for one year, spending the 2011-12 season on the bench. During her time Alabama, she was primarily responsible for recruiting, player development, the elite camp and scouting.

Prior to Alabama, she was the head coach at NCAA Division II Palm Beach Atlantic for two seasons. Under Garcia's watch, Sailfish student-athletes set several program bests including the all-time three-point scoring leader and single-season three-point scoring leader, the all-time leading rebounder, and the all-time blocking leader. She also had two student-athletes named to the Independent Collegiate Athletic Association (ICAA) second team and another two named to the All-ICAA third team.

In addition to their success on the court, Garcia's teams excelled in the classroom as she oversaw an increase in the team's overall GPA from below a 3.0 to 3.2. Throughout her tenure, she had two student-athletes with 4.0 GPAs, attaining President's List status, two qualifying for the Provost's List (3.5-3.9) and six on the Athletics Director's List (3.0-3.4).

Prior to Palm Beach Atlantic, Garcia spent one season as the top assistant and recruiting coordinator at Stetson University. While there, she recruited and signed a nationally-ranked student-athlete and helped coach the team to an appearance in the Atlantic Sun Conference Tournament.

Garcia began her coaching career as a graduate assistant at Seton Hill University in Greensburg, Pa. In her two seasons with the Griffins, she assisted in the mentoring and development of student-athletes both on and off the court.

In her final season at Seton Hill, Garcia helped coach the team to a fourth-place finish in the West Virginia Intercollegiate Athletic Association (WVIAA) Conference tournament, in addition to helping the Griffins rank third nationally for team GPA in NCAA Division II. Garcia was named the 2009 Women's Basketball Coaches Association/Women's Sports Foundation graduate assistant of the year.

Garcia was an accomplished player at Villanova University. During her four-year career (2003-07) with the Wildcats women's basketball team, she was a three-time BIG EAST All-Academic team member as well as a three-time member of the Villanova dean's list. She served as team captain her senior season and helped the Wildcats advance to the NCAA Tournament in 2004, as well as the Women's National Invitation Tournament in 2005 and 2006.

A native of Hopewell, Pa., Garcia also has been involved in several camps and clinics including the Prohoops Camp at the Final Four, Leadership Through Basketball Camps in Morocco, University of Pittsburgh Summer Camps, Harry Perretta Basketball Clinics, Nike Basketball Camps and the Philadelphia Big 5 Clinics.

HEAD COACHING RECORD

Year	School	Position	Record
2010-11	Palm Beach Atl.	Head Coach	8-20
2011-12	Palm Beach Atl.	Head Coach	7-19
2021-22	Charleston So.	Head Coach	0-0 (0-0)

PLAYING/COACHING CAREER

Year	School	Position
2003-07	Villanova	Guard
2007-09	Seton Hill	Graduate Assistant
2009-10	Stetson	Assistant Coach
2010-12	Palm Beach Atlantic	Head Coach
2012-13	Alabama	Assistant Coach
2013-16	Wake Forest	Assistant Coach
2016-21	Auburn	Assistant Coach
2021-pres.	Charleston Southern	Head Coach



VICTORIA DAMES

GUARD / FORWARD

SOPHOMORE • 6-0

LOGANVILLE, GA. • GRAYSON • ARKANSAS STATE

1

- First season at CSU after transferring from Arkansas State.
- Made her CSU debut against Alabama, finishing with three rebounds and a team-high two assists (11/9/21).
- Five points, four rebounds in exhibition against Columbus State.
- Five games during 2020-21 season with the Red Wolves, averaging 2.0 points per game.
- Season-high 11 minutes against Champion Christian (12/15/20), finishing with five points and two rebounds.
- Played at Grayson High School, where she averaged double-figure scoring in each of her last two seasons.
- Honorable mention all-state honors in her senior year at Grayson (12.2 ppg, 4.0 rpg).
- All-region selection as a junior at Grayson (11.2 ppg, 4.7 rpg, 3.1 spg, 1.2 bpg).

2021-22 Game Log

Opp	FG-A	3FG-A	FT-A	O-D-T	PF	TP	A	TO	B	S	Min
at Alabama	0-5	0-2	0-0	1-2-3	3	0	2	2	0	0	19
George Mason											
at Western Carolina											
at Auburn											
Belmont Abbey											
College of Charleston											
at Florida State											
Furman											
vs. South Alabama ^											
at Georgia State ^											
Duke											
at Winthrop *											
High Point *											
at Gardner-Webb *											
Campbell *											
at Presbyterian *											
UNC Asheville *											
at North Carolina A&T *											
USC Upstate *											
Radford *											
at Hampton *											
at Longwood *											
Presbyterian *											
Gardner-Webb *											
at Campbell *											
Winthrop *											
at High Point *											
North Carolina A&T *											
at UNC Asheville *											



Career Highs

Points	--	--	--
Rebounds	3	at Alabama	11-9-21
Assists	2	at Alabama	11-9-21
Steals	--	--	--
Blocks	--	--	--
FG Made	--	--	--
3FG Made	--	--	--
FT Made	--	--	--
Minutes	19	at Alabama	11-9-21

Career Stats

Year	GP-GS	Min	Avg.	FG-A	FG%	3FG-A	3FG%	FT-A	FT%	O-D-T	Avg.	PF-DQ	A	TO	B	S	Pts	Avg
2020-21	5-0	22	4.4	4-7	.571	2-4	.500	0-0	.000	1-1-2	0.4	0-0	1	2	0	0	10	2.0
2021-22	1-0	19	19.4	0-5	.000	0-2	.000	0-0	.000	1-2-3	3.0	3-0	2	2	0	0	0	0.0
CAREER	6-0	41	6.9	4-12	.333	2-6	.333	0-0	.000	2-3-5	0.8	3-0	3	4	0	0	10	1.7
AT CSU	1-0	19	19.4	0-5	.000	0-2	.000	0-0	.000	1-2-3	3.0	3-0	2	2	0	0	0	0.0



SKYLAR BALTEZEGAR

FORWARD / CENTER

FRESHMAN • 6-2
ORANGE PARK, FLA. • MIDDLEBURG

2

- Three points and a team-high five rebounds in season opener at Alabama (11/9/21).
- Led CSU with eight rebounds in exhibition against Columbus State.
- Averaged a double-double during her high school career at Middleburg.
- All-conference selection in 2019-20 season.
- Two-time Defensive Player of the Year in high school.
- Multi-sport athlete in high school, also played volleyball.

2021-22 Game Log

Opp	FG-A	3FG-A	FT-A	O-D-T	PF	TP	A	TO	B	S	Min
at Alabama	1-6	0-0	1-1	1-4-5	3	3	0	2	0	0	14
George Mason											
at Western Carolina											
at Auburn											
Belmont Abbey											
College of Charleston											
at Florida State											
Furman											
vs. South Alabama ^											
at Georgia State ^											
Duke											
at Winthrop *											
High Point *											
at Gardner-Webb *											
Campbell *											
at Presbyterian *											
UNC Asheville *											
at North Carolina A&T *											
USC Upstate *											
Radford *											
at Hampton *											
at Longwood *											
Presbyterian *											
Gardner-Webb *											
at Campbell *											
Winthrop *											
at High Point *											
North Carolina A&T *											
at UNC Asheville *											



Career Highs

Points	3	at Alabama	11-9-21
Rebounds	5	at Alabama	11-9-21
Assists	--	--	--
Steals	--	--	--
Blocks	--	--	--
FG Made	1	at Alabama	11-9-21
3FG Made	--	--	--
FT Made	1	at Alabama	11-9-21
Minutes	14	at Alabama	11-9-21

Career Stats

Year	GP-GS	Min	Avg.	FG-A	FG%	3FG-A	3FG%	FT-A	FT%	O-D-T	Avg.	PF-DQ	A	TO	B	S	Pts	Avg
2021-22	1-0	14	14.0	1-6	.167	0-0	.000	1-1	1.000	1-4-5	5.0	3-0	0	2	0	0	3	3.0
CAREER	1-0	14	14.0	1-6	.167	0-0	.000	1-1	1.000	1-4-5	5.0	3-0	0	2	0	0	3	3.0



SHA'MYA LEIGH

GUARD

JUNIOR • 5-10
DAYTON, OHIO • TROTWOOD-MADISON

5

- Has started 44 of the 52 games she has appeared in.
- Finished as CSU's leading scorer in season opener at Alabama with nine points (11/9/21).
- Also added three rebounds and an assist against the Crimson Tide.
- One of four returning starters from the 2020-21 team.
- Averaged 30.0 minutes, 7.5 points and 2.7 rebounds per game in 2020-21 season.
- Led the Bucs with 25 steals last season, including a career-best three in four different games.
- Four rebounds, three assists, one block and one steal in exhibition vs. Columbus State.
- Career-high 18 points against conference champion High Point (2/6/21).
- Averaged 28.2 minutes, 5.4 points and 2.0 rebounds per game in 2019-20 season.
- Second on the team in assists during 2020-21 season after leading the Bucs in assists during the 2019-20 season.

2021-22 Game Log

Opp	FG-A	3FG-A	FT-A	O-D-T	PF	TP	A	TO	B	S	Min
at Alabama	4-15	1-4	0-0	0-3-3	4	9	1	4	0	1	34
George Mason											
at Western Carolina											
at Auburn											
Belmont Abbey											
College of Charleston											
at Florida State											
Furman											
vs. South Alabama ^											
at Georgia State ^											
Duke											
at Winthrop *											
High Point *											
at Gardner-Webb *											
Campbell *											
at Presbyterian *											
UNC Asheville *											
at North Carolina A&T *											
USC Upstate *											
Radford *											
at Hampton *											
at Longwood *											
Presbyterian *											
Gardner-Webb *											
at Campbell *											
Winthrop *											
at High Point *											
North Carolina A&T *											
at UNC Asheville *											



Career Highs

Points	18	High Point	2-6-21
Rebounds	7	Columbia (S.C.)	12-16-19
Assists	6	2x, last at Radford	2-20-21
Steals	3	5x, last at Winthrop	1-30-21
Blocks	2	2x, last at Hampton	12-21-20
FG Made	7	2x, last vs. High Point	2-6-21
3FG Made	3	at Davidson	12-9-20
FT Made	8	at Hampton	12-22-20
Minutes	40	Western Carolina	12-13-20

Career Stats

Year	GP-GS	Min	Avg.	FG-A	FG%	3FG-A	3FG%	FT-A	FT%	O-D-T	Avg.	PF-DQ	A	TO	B	S	Pts	Avg
2019-20	29-26	818	28.2	59-166	.355	7-37	.189	33-54	.611	11-46-57	2.0	56-1	60	91	1	30	158	5.4
2020-21	22-17	661	30.0	57-147	.388	13-40	.325	38-55	.691	8-51-59	2.7	42-0	36	55	5	25	165	7.5
2021-22	1-1	34	34.0	4-15	.267	1-4	.250	0-0	.000	0-3-3	3.0	4-0	1	4	0	1	9	9.0
CAREER	52-44	1513	29.1	120-328	.366	21-81	.259	71-109	.651	19-100-119	2.3	102-1	97	150	6	56	332	6.4



JORDAN ROGERS

GUARD

FRESHMAN • 5-10
FRANKLIN, OHIO • FRANKLIN

10

- Made collegiate debut in season opener at Alabama, grabbing two rebounds in nine minutes (11/9/21).
- Finished her high school career ranked third in school history in scoring.
- Averaged double-figures in each of her last three years at Franklin, including 17.0 ppg as a senior.
- Scored in double-figures in 17 of her 19 games during the 2020-21 season.
- Three-time SWBL First Team All-Southwest Division selection.
- Two-time district champion at Franklin, reaching the regional semifinals once and the regional finals once.
- Two-time First Team Ohio All-Area selection.

2021-22 Game Log

Opp	FG-A	3FG-A	FT-A	O-D-T	PF	TP	A	TO	B	S	Min
at Alabama	0-1	0-0	0-0	1-1-2	0	0	0	1	0	0	9
George Mason											
at Western Carolina											
at Auburn											
Belmont Abbey											
College of Charleston											
at Florida State											
Furman											
vs. South Alabama ^											
at Georgia State ^											
Duke											
at Winthrop *											
High Point *											
at Gardner-Webb *											
Campbell *											
at Presbyterian *											
UNC Asheville *											
at North Carolina A&T *											
USC Upstate *											
Radford *											
at Hampton *											
at Longwood *											
Presbyterian *											
Gardner-Webb *											
at Campbell *											
Winthrop *											
at High Point *											
North Carolina A&T *											
at UNC Asheville *											



Career Highs

Points	--	--	--
Rebounds	2	at Alabama	11-9-21
Assists	--	--	--
Steals	--	--	--
Blocks	--	--	--
FG Made	--	--	--
3FG Made	--	--	--
FT Made	--	--	--
Minutes	10	at Alabama	11-9-21

Career Stats

Year	GP-GS	Min	Avg.	FG-A	FG%	3FG-A	3FG%	FT-A	FT%	O-D-T	Avg.	PF-DQ	A	TO	B	S	Pts	Avg
2021-22	1-0	9	9.4	0-1	.000	0-0	.000	0-0	.000	1-1-2	2.0	0-0	0	1	0	0	0	0.0
CAREER	1-0	9	9.4	0-1	.000	0-0	.000	0-0	.000	1-1-2	2.0	0-0	0	1	0	0	0	0.0



ZAIRE HICKS

GUARD

REDSHIRT SENIOR • 5-7
MEMPHIS, TENN. • WHITE STATION • UT MARTIN

12

- First season at CSU after transferring from UT Martin.
- 78 games, 34 starts for the Skyhawks, averaging 5.5 points per game.
- 31 starts during the 2018-19 season, averaging 8.5 points, 2.5 assists and 2.2 rebounds per game.
- Career-high 19 points on two occasions, against Alabama Huntsville (12/19/18) and Murray State (3/7/19).
- 19 career games with double-figure scoring.
- 1.5 assists per game in her career with an assist-turnover ratio of 1.5.
- Two points, two assists, one rebound, one steal in exhibition vs. Columbus State.

2021-22 Game Log

Opp	FG-A	3FG-A	FT-A	O-D-T	PF	TP	A	TO	B	S	Min
at Alabama				—DNP—							
George Mason											
at Western Carolina											
at Auburn											
Belmont Abbey											
College of Charleston											
at Florida State											
Furman											
vs. South Alabama ^											
at Georgia State ^											
Duke											
at Winthrop *											
High Point *											
at Gardner-Webb *											
Campbell *											
at Presbyterian *											
UNC Asheville *											
at North Carolina A&T *											
USC Upstate *											
Radford *											
at Hampton *											
at Longwood *											
Presbyterian *											
Gardner-Webb *											
at Campbell *											
Winthrop *											
at High Point *											
North Carolina A&T *											
at UNC Asheville *											



Career Highs

Points	--	--	--
Rebounds	--	--	--
Assists	--	--	--
Steals	--	--	--
Blocks	--	--	--
FG Made	--	--	--
3FG Made	--	--	--
FT Made	--	--	--
Minutes	--	--	--

Career Stats

Year	GP-GS	Min	Avg.	FG-A	FG%	3FG-A	3FG%	FT-A	FT%	O-D-T	Avg.	PF-DQ	A	TO	B	S	Pts	Avg
2017-18	32-1	344	10.8	28-85	.329	14-40	.350	23-37	.622	15-28-43	1.3	36-2	29	23	1	24	93	2.9
2018-19	32-31	816	25.5	100-286	.350	41-132	.311	35-45	.778	25-46-71	2.2	63-2	77	43	2	45	276	8.6
2019-20	2-2	64	32.0	7-18	.389	2-10	.200	3-5	.600	2-3-5	2.5	7-0	4	4	0	3	19	9.5
2020-21	12-0	131	10.9	16-34	.471	6-15	.400	2-3	.667	3-8-11	0.9	17-0	7	8	1	6	40	3.3
2021-22	0-0																	
CAREER	78-34	1355	17.4	151-423	.357	63-197	.320	63-90	.700	45-85-130	1.7	123-4	117	78	4	78	428	5.5
AT CSU	0-0																	



SHARITA GODFREY

GUARD / FORWARD

13

SENIOR • 5-11

COLUMBIA, S.C. • RICHLAND NORTHEAST

- One of four returning starters from 2020-21 team.
- Five points along with a team-high five rebounds in season opener at Alabama (11/9/21).
- 13 points, six rebounds, four assists, two steals in exhibition vs. Columbus State.
- Charleston Southern's top 3-point shooter during 2020-21 season (44.0 percent).
- Third on the team in scoring (9.6 ppg), second in rebounding (5.3 rpg) last season.
- Ranked in the top 25 in the Big South in both scoring and rebounding during 2020-21 season.
- 9.6 points, 5.3 rebounds per game while averaging 31.5 minutes per contest.
- Hit game-winning 3-pointer at Hampton (12/21/20) for CSU's first Big South win of the season.
- Career-high 22 points on two occasions, including last season vs. Presbyterian (1/5/21).
- Recorded a double-double (13 points, 10 rebounds) in a win over UNC Asheville (1/15/21).
- 23 career games with double-figure scoring, all of which have come during the last two seasons.

2021-22 Game Log

Opp	FG-A	3FG-A	FT-A	O-D-T	PF	TP	A	TO	B	S	Min
at Alabama	2-7	1-3	0-0	0-5-5	2	5	0	2	0	0	16
George Mason											
at Western Carolina											
at Auburn											
Belmont Abbey											
College of Charleston											
at Florida State											
Furman											
vs. South Alabama ^											
at Georgia State ^											
Duke											
at Winthrop *											
High Point *											
at Gardner-Webb *											
Campbell *											
at Presbyterian *											
UNC Asheville *											
at North Carolina A&T *											
USC Upstate *											
Radford *											
at Hampton *											
at Longwood *											
Presbyterian *											
Gardner-Webb *											
at Campbell *											
Winthrop *											
at High Point *											
North Carolina A&T *											
at UNC Asheville *											



Career Highs

Points	22	2x, last vs. Presbyterian	1-5-21
Rebounds	11	2x, last at Hampton	12-22-20
Assists	5	College of Charleston	12-20-19
Steals	5	at Western Carolina	12-4-19
Blocks	2	3x, last at Radford	2-20-21
FG Made	10	High Point	1-11-20
3FG Made	4	2x, last vs. Presbyterian	1-5-21
FT Made	5	at UNC Asheville	1-14-20
Minutes	40	South Carolina State	11-9-19

Career Stats

Year	GP-GS	Min	Avg.	FG-A	FG%	3FG-A	3FG%	FT-A	FT%	O-D-T	Avg.	PF-DQ	A	TO	B	S	Pts	Avg
2018-19	16-0	94	5.9	11-33	.333	4-18	.222	4-7	.571	5-10-15	0.9	9-0	6	4	2	2	30	1.9
2019-20	30-25	789	26.3	104-260	.400	21-76	.276	20-26	.769	29-130-159	5.3	55-0	32	60	12	34	249	8.3
2020-21	23-21	722	31.4	84-204	.412	37-84	.440	16-19	.842	17-104-121	5.3	40-0	29	49	12	17	221	9.6
2021-22	1-1	16	16.1	2-7	.286	1-3	.333	0-0	.000	0-5-5	5.0	2-0	0	2	0	0	5	5.0
CAREER	70-47	1620	23.1	201-504	.399	63-18	.348	40-52	.769	51-249-300	4.3	106-0	67	115	26	53	505	7.2



TYRA WRIGHT

CENTER

JUNIOR • 6-2

MORRISON, TENN. • WARREN COUNTY

14

- 41 games, eight starts in her career.
- Averaged 2.7 points and 1.4 rebounds per game in limited action during 2020-21 season.
- Season-best nine points in 12 minutes at Radford (2/20/21).
- Career-high 16 points in 18 minutes in a win over Virginia Lynchburg (12/7/19).
- Had a stretch of three straight games in 2019-20 season with double-figure scoring, including a double-double (12 points, 10 rebounds) against USC Upstate (2/11/20).
- 3.7 points, 2.1 rebounds per game for her career.

2021-22 Game Log

Opp	FG-A	3FG-A	FT-A	O-D-T	PF	TP	A	TO	B	S	Min
at Alabama				—DNP—							
George Mason											
at Western Carolina											
at Auburn											
Belmont Abbey											
College of Charleston											
at Florida State											
Furman											
vs. South Alabama ^											
at Georgia State ^											
Duke											
at Winthrop *											
High Point *											
at Gardner-Webb *											
Campbell *											
at Presbyterian *											
UNC Asheville *											
at North Carolina A&T *											
USC Upstate *											
Radford *											
at Hampton *											
at Longwood *											
Presbyterian *											
Gardner-Webb *											
at Campbell *											
Winthrop *											
at High Point *											
North Carolina A&T *											
at UNC Asheville *											



Career Highs

Points	16	Virginia Lynchburg	12-7-19
Rebounds	10	USC Upstate	2-11-20
Assists	2	at UNC Asheville	3-10-20
Steals	3	Campbell	2-25-20
Blocks	2	3x, last at UNC Asheville	3-10-20
FG Made	8	Virginia Lynchburg	12-7-19
3FG Made	2	USC Upstate	2-11-20
FT Made	4	USC Upstate	2-11-20
Minutes	33	South Carolina State	11-9-19

Career Stats

Year	GP-GS	Min	Avg.	FG-A	FG%	3FG-A	3FG%	FT-A	FT%	O-D-T	Avg.	PF-DQ	A	TO	B	S	Pts	Avg
2019-20	28-8	432	15.4	49-106	.462	4-15	.267	14-19	.737	12-56-58	2.4	48-1	8	35	10	6	116	4.1
2020-21	13-0	98	7.5	12-30	.400	2-5	.400	9-14	.643	2-16-18	1.4	13-0	3	1	0	3	35	2.7
2021-22	0-0																	
CAREER	41-8	530	12.9	61-136	.449	6-20	.300	23-33	.697	14-72-86	2.1	61-1	11	36	10	9	151	3.7



JANAIA FARGO

GUARD

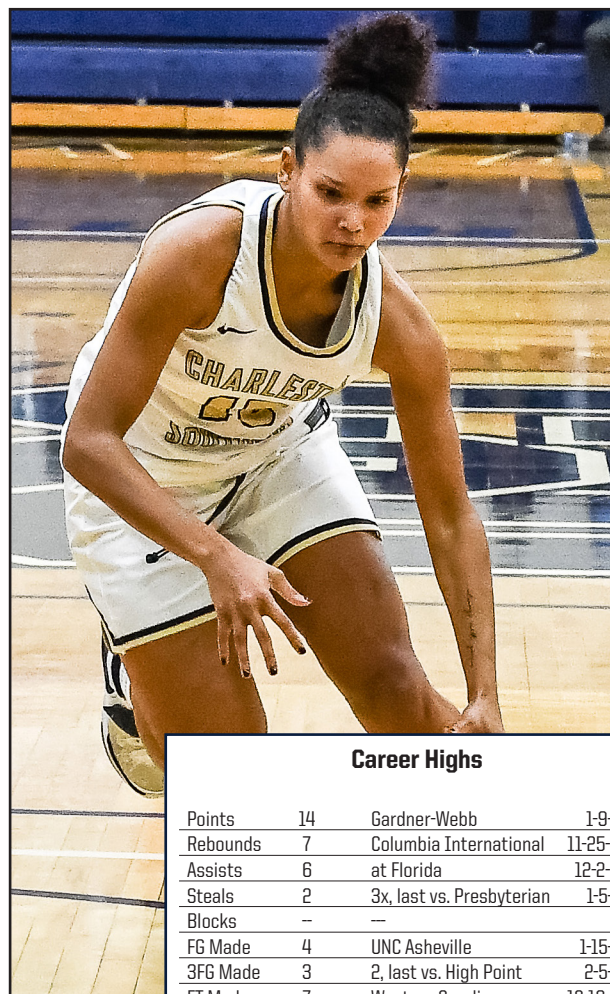
SOPHOMORE • 5-8
INWOOD, W.VA. • MUSSELMAN

15

- One of four returning starters from 2020-21 season.
- Two points, two rebounds, one assist in season opener at Alabama (11/9/21).
- 22 games, 20 starts last season as a freshman.
- Averaged 5.4 points, 1.7 rebounds and 1.7 assists per game last season.
- Season-best 14 points against Gardner-Webb (1/9/21).
- Three games with double-figure scoring last season.
- Five games with three or more assists, including career-best six at Florida (12/2/20).

2021-22 Game Log

Opp	FG-A	3FG-A	FT-A	O-D-T	PF	TP	A	TO	B	S	Min
at Alabama	0-1	0-1	2-2	0-2-2	2	2	1	5	0	0	11
George Mason											
at Western Carolina											
at Auburn											
Belmont Abbey											
College of Charleston											
at Florida State											
Furman											
vs. South Alabama ^											
at Georgia State ^											
Duke											
at Winthrop *											
High Point *											
at Gardner-Webb *											
Campbell *											
at Presbyterian *											
UNC Asheville *											
at North Carolina A&T *											
USC Upstate *											
Radford *											
at Hampton *											
at Longwood *											
Presbyterian *											
Gardner-Webb *											
at Campbell *											
Winthrop *											
at High Point *											
North Carolina A&T *											
at UNC Asheville *											



Career Highs

Points	14	Gardner-Webb	1-9-21
Rebounds	7	Columbia International	11-25-20
Assists	6	at Florida	12-2-20
Steals	2	3x, last vs. Presbyterian	1-5-21
Blocks	-	-	-
FG Made	4	UNC Asheville	1-15-21
3FG Made	3	2, last vs. High Point	2-5-21
FT Made	7	Western Carolina	12-13-20
Minutes	35	2x, last vs. Campbell	1-23-21

Career Stats

Year	GP-GS	Min	Avg.	FG-A	FG%	3FG-A	3FG%	FT-A	FT%	O-D-T	Avg.	PF-DQ	A	TO	B	S	Pts	Avg
2020-21	22-20	539	24.5	37-106	.349	14-44	.318	30-41	.732	3-35-38	1.7	45-2	38	61	0	17	118	5.4
2021-22	1-0	12	11.6	0-1	.000	0-1	.000	2-2	1.000	0-2-2	2.0	2-0	1	4	0	0	2	2.0
CAREER	23-20	551	23.9	37-107	.346	14-45	.311	32-43	.744	3-37-40	1.7	47-2	39	66	0	17	120	5.2



MADISON ADAMSON

FORWARD

FRESHMAN • 6-0
HOOVER, ALA. • HOOVER

20

- Earned the start in the season opener at Alabama, finishing with four rebounds and a team-high two assists (11/9/21).
- Eight points, four rebounds, five steals, one assist in exhibition vs. Columbus State.
- Two-time state champion in high school, went 122-10 in her career at Hoover.
- Averaged 10 points, seven rebounds and two steals per game at Hoover.
- Was named a team captain during the 2019-20 season, where the Bucs went 34-3 overall and 8-0 in the region.
- Spent the 2020-21 season at the US Air Force Academy Preparatory School.

2021-22 Game Log

Opp	FG-A	3FG-A	FT-A	O-D-T	PF	TP	A	TO	B	S	Min
at Alabama	0-7	0-3	0-0	2-2-4	3	0	2	5	0	1	38
George Mason											
at Western Carolina											
at Auburn											
Belmont Abbey											
College of Charleston											
at Florida State											
Furman											
vs. South Alabama ^											
at Georgia State ^											
Duke											
at Winthrop *											
High Point *											
at Gardner-Webb *											
Campbell *											
at Presbyterian *											
UNC Asheville *											
at North Carolina A&T *											
USC Upstate *											
Radford *											
at Hampton *											
at Longwood *											
Presbyterian *											
Gardner-Webb *											
at Campbell *											
Winthrop *											
at High Point *											
North Carolina A&T *											
at UNC Asheville *											



Career Highs

Points	--		--
Rebounds	4	at Alabama	11-9-21
Assists	2	at Alabama	11-9-21
Steals	1	at Alabama	11-9-21
Blocks	--	--	--
FG Made	--	--	--
3FG Made	--	--	--
FT Made	--	--	--
Minutes	39	at Alabama	11-9-21

Career Stats

Year	GP-GS	Min	Avg.	FG-A	FG%	3FG-A	3FG%	FT-A	FT%	O-D-T	Avg.	PF-DQ	A	TO	B	S	Pts	Avg
2021-22	1-1	38	38.2	0-7	.000	0-3	.000	0-0	.000	2-2-4	4.0	3-0	2	5	0	1	0	0.0
CAREER	1-1	38	38.2	0-7	.000	0-3	.000	0-0	.000	2-2-4	4.0	3-0	2	5	0	1	0	0.0



ALYSSIA FAYE

FORWARD

REDSHIRT SENIOR • 6-2

VALENCE, FRANCE • LYCEE JEAN MERMOZ • WICHITA STATE

22

- One of four returning starters from 2020-21 season.
- Has started all 22 games she has appeared in at Charleston Southern.
- Eight points, three rebounds in season opener at Alabama (11/9/21).
- Six points, four assists, two rebounds, one steal, one block in exhibition vs. Columbus State.
- Led the Bucs in scoring and rebounding during the 2020-21 season (11.9 ppg, 7.1 rpg).
- Ranked inside the top 15 of the conference in both scoring and rebounding.
- 13 games with double-figure scoring during the 2020-21 season.
- Three games with 20-plus points, including career-high 22 against Longwood (2/13/21).
- Double-double with 15 points and 12 rebounds in Big South Tournament game at USC Upstate (3/6/21).
- Double-figures in each of the last five games to close out the 2020-21 season.
- Spent first two seasons of her career at Wichita State, where she appeared in 58 games with five starts.

2021-22 Game Log

Opp	FG-A	3FG-A	FT-A	O-D-T	PF	TP	A	TO	B	S	Min
at Alabama	4-9	0-2	0-0	0-3-3	4	8	0	4	0	1	21
George Mason											
at Western Carolina											
at Auburn											
Belmont Abbey											
College of Charleston											
at Florida State											
Furman											
vs. South Alabama ^											
at Georgia State ^											
Duke											
at Winthrop *											
High Point *											
at Gardner-Webb *											
Campbell *											
at Presbyterian *											
UNC Asheville *											
at North Carolina A&T *											
USC Upstate *											
Radford *											
at Hampton *											
at Longwood *											
Presbyterian *											
Gardner-Webb *											
at Campbell *											
Winthrop *											
at High Point *											
North Carolina A&T *											
at UNC Asheville *											



Career Highs

Points	22	at Longwood	2-13-21
Rebounds	12	at USC Upstate	3-6-21
Assists	3	3x, last vs. High Point	2-5-21
Steals	3	at Longwood	2-13-21
Blocks	2	2x, last at Hampton	12-22-20
FG Made	10	at Longwood	2-13-21
3FG Made	1	3x, last at Hampton	12-21-20
FT Made	6	at Longwood	2-12-21
Minutes	41	at Radford	2-21-21

Career Stats

Year	GP-GS	Min	Avg.	FG-A	FG%	3FG-A	3FG%	FT-A	FT%	O-D-T	Avg.	PF-DQ	A	TO	B	S	Pts	Avg
2017-18	30-0	276	9.2	21-61	.344	1-10	.100	6-9	.667	10-34-44	1.5	29-0	6	28	0	5	49	1.6
2018-19	28-5	349	12.5	32-93	.344	7-17	.412	6-15	.400	23-39-62	2.2	26-0	9	22	6	9	77	2.8
2020-21	21-21	625	29.8	106-249	.426	3-25	.120	35-56	.625	40-110-150	7.1	53-1	24	49	7	18	250	11.9
2021-22	1-1	21	20.5	4-9	.444	0-2	.000	0-0	.000	0-3-3	3.0	4-0	0	4	0	1	8	8.0
CAREER	80-27	1271	15.9	163-412	.396	11-54	.204	47-80	.588	73-186-259	3.2	112-1	39	103	13	33	384	4.8
AT CSU	22-22	645	29.3	110-258	.426	3-27	.111	35-56	.625	40-113-153	7.0	57-1	24	53	7	19	258	11.7



TORI GITTENS

GUARD

JUNIOR • 5-11
SHERMAN, TEXAS • GUNTER

23

- 53 games in her career, mostly coming off the bench.
- Averaged 17.7 minutes per game for her career.
- Five points, three rebounds, one assist in season opener at Alabama, earning the start in the first game of the regular season (11/9/21).
- Led all scorers with 23 points in exhibition vs. Columbus State, along with three rebounds and three steals.
- Averaged 4.2 points per game while shooting 36.7 percent from beyond the arc during 2020-21 season.
- Career-best 14 points, including four 3-pointers, at Winthrop (1/29/21).
- Six career games with double-figure scoring.
- Second on the team with 22 3-pointers during 2020-21 season.

2021-22 Game Log

Opp	FG-A	3FG-A	FT-A	O-D-T	PF	TP	A	TO	B	S	Min
at Alabama	1-4	1-2	2-2	2-1-3	1	5	1	5	0	1	31
George Mason											
at Western Carolina											
at Auburn											
Belmont Abbey											
College of Charleston											
at Florida State											
Furman											
vs. South Alabama ^											
at Georgia State ^											
Duke											
at Winthrop *											
High Point *											
at Gardner-Webb *											
Campbell *											
at Presbyterian *											
UNC Asheville *											
at North Carolina A&T *											
USC Upstate *											
Radford *											
at Hampton *											
at Longwood *											
Presbyterian *											
Gardner-Webb *											
at Campbell *											
Winthrop *											
at High Point *											
North Carolina A&T *											
at UNC Asheville *											



Career Highs

Points	14	at Winthrop	1-29-21
Rebounds	7	South Carolina State	11-9-19
Assists	4	Campbell	1-22-21
Steals	1	15x, last at Alabama	11-9-21
Blocks	2	at Hampton	12-22-20
FG Made	5	at Winthrop	1-29-21
3FG Made	4	at Winthrop	1-29-21
FT Made	2	7x, last vs. Gardner-Webb	1-9-21
Minutes	36	at Winthrop	1-29-21

Career Stats

Year	GP-GS	Min	Avg.	FG-A	FG%	3FG-A	3FG%	FT-A	FT%	O-D-T	Avg.	PF-DQ	A	TO	B	S	Pts	Avg
2019-20	29-11	511	17.6	36-137	.263	25-96	.260	10-15	.667	5-37-42	1.4	19-0	12	22	4	9	107	3.7
2020-21	23-5	396	17.2	33-88	.375	22-60	.367	8-14	.571	9-26-35	1.5	25-0	18	24	7	5	96	4.2
2021-22	1-1	31	31.4	1-4	.250	1-2	.500	2-2	1.000	2-1-3	3.0	1-0	1	5	0	1	5	5.0
CAREER	53-17	938	17.7	70-229	.306	48-158	.304	20-31	.645	16-64-80	1.5	45-0	31	51	11	15	208	3.9



MAKENNA WINANS

FORWARD

SOPHOMORE • 6-0
PARKERSBURG, W.VA. • PARKERSBURG SOUTH

25

- Two rebounds along with a team-high two blocks in season opener at Alabama (11/9/21).
- Appeared in 22 games last season, making 10 starts.
- 5.2 points, 3.7 rebounds per game during 2020-21 season.
- Three games of double-figure scoring, including season-high of 14 against both Hampton (12/22/20) and Gardner-Webb (1/10/21).
- 12 games with four or more rebounds, including a season-best 13 against conference champion High Point (2/6/21).
- Big South Freshman of the Week once last year after helping the Bucs to two wins over Hampton.
- Five games with multiple blocked shots and posted a nine-game stretch with at least one blocked shot per game from 1/15/21 - 2/13/21.

2021-22 Game Log

Opp	FG-A	3FG-A	FT-A	O-D-T	PF	TP	A	TO	B	S	Min
at Alabama	0-1	0-0	0-0	0-2-2	2	0	0	0	2	0	5
George Mason											
at Western Carolina											
at Auburn											
Belmont Abbey											
College of Charleston											
at Florida State											
Furman											
vs. South Alabama ^											
at Georgia State ^											
Duke											
at Winthrop *											
High Point *											
at Gardner-Webb *											
Campbell *											
at Presbyterian *											
UNC Asheville *											
at North Carolina A&T *											
USC Upstate *											
Radford *											
at Hampton *											
at Longwood *											
Presbyterian *											
Gardner-Webb *											
at Campbell *											
Winthrop *											
at High Point *											
North Carolina A&T *											
at UNC Asheville *											



Career Highs

Points	14	2x, last vs. Gardner-Webb	1-10-21
Rebounds	13	High Point	2-6-21
Assists	2	2x, last vs. Presbyterian	1-5-21
Steals	3	UNC Asheville	1-16-21
Blocks	3	Gardner-Webb	1-9-21
FG Made	6	Gardner-Webb	1-10-21
3FG Made	4	at Hampton	12-22-20
FT Made	4	2x, last vs. UNC Asheville	1-16-21
Minutes	38	Gardner-Webb	1-10-21

Career Stats

Year	GP-GS	Min	Avg.	FG-A	FG%	3FG-A	3FG%	FT-A	FT%	O-D-T	Avg.	PF-DQ	A	TO	B	S	Pts	Avg
2020-21	22-10	403	18.3	38-88	.432	11-27	.407	28-41	.683	15-67-82	3.7	44-1	13	31	17	7	115	5.2
2021-22	1-0	5	5.5	0-1	.000	0-0	.000	0-0	.000	0-2-2	2.0	2-0	0	0	2	0	0	0.0
CAREER	23-10	408	17.7	38-89	.427	11-27	.407	28-41	.683	15-69-84	3.7	46-1	13	31	19	7	115	5.0



2021-22 OVERALL STATS

Game Records

Record	Overall	Home	Away	Neutral
ALL GAMES	0-1	0-0	0-1	0-0
CONFERENCE	0-0	0-0	0-0	0-0
NON-CONFERENCE	0-1	0-0	0-1	0-0

Score by Periods

Team	1st	2nd	3rd	4th	OT	TOT
Charleston So.	10	6	7	9	0	32
Opponents	20	26	34	29	0	109

Team Box Score

Team Box Score																						
No.	Player				Total		3-Point		F-Throw		Rebounds											
		GP-GS	MIN	AVG	FG-FGA	FG%	3FG-3FGA	3FG%	FT-FTA	FT%	OFF	DEF	TOT	AVG	PF	DQ	A	TO	BLK	STL	PTS	AVG
5	LEIGH, Sha'Mya	1-1	33:57	34.0	4-15	.267	1-4	.250	0-0	.000	0	3	3	3.0	4	0	1	4	0	1	9	9.0
22	FAYE, Alyssia	1-1	20:30	20.5	4-9	.444	0-2	.000	0-0	.000	0	3	3	3.0	4	0	0	4	0	1	8	8.0
13	GODFREY, Sharita	1-1	16:06	16.1	2-7	.286	1-3	.333	0-0	.000	0	5	5	5.0	2	0	0	2	0	0	5	5.0
23	GITTENS, Tori	1-1	31:23	31.4	1-4	.250	1-2	.500	2-2	1.000	2	1	3	3.0	1	0	1	5	0	1	5	5.0
2	BALTEZEGAR, Skylar	1-0	14:01	14.0	1-6	.167	0-0	.000	1-1	1.000	1	4	5	5.0	3	0	0	2	0	0	3	3.0
15	FARGO, Janaia	1-0	11:34	11.6	0-1	.000	0-1	.000	2-2	1.000	0	2	2	2.0	2	0	1	5	0	0	2	2.0
20	ADAMSON, Madison	1-1	38:13	38.2	0-7	.000	0-3	.000	0-0	.000	2	2	4	4.0	3	0	2	5	0	1	0	0.0
1	DAMES, Victoria	1-0	19:22	19.4	0-5	.000	0-2	.000	0-0	.000	1	2	3	3.0	3	0	2	2	0	0	0	0.0
25	WINANS, Makenna	1-0	05:29	5.5	0-1	.000	0-0	.000	0-0	.000	0	2	2	2.0	2	0	0	0	2	0	0	0.0
10	ROGERS, Jordan	1-0	09:25	9.4	0-1	.000	0-0	.000	0-0	.000	1	1	2	2.0	0	0	0	1	0	0	0	0.0
Team												4	4					1				
Total		1	200		12-56	.214	3-17	.176	5-5	1.000	7	29	36	36.0	24	0	7	31	2	4	32	32.0
Opponents		1	200		39-79	.494	8-25	.320	23-31	.742	16	37	53	53.0	15	0	19	8	2	13	109	109.0

Team Statistics

	CHASOU	OPP
Scoring	32	109
Points per game	32.0	109.0
Scoring margin	-77.0	-
Field goals-att	12-56	39-79
Field goal pct	.214	.494
3 point fg-att	3-17	8-25
3-point FG pct	.176	.320
3-pt FG made per game	3.0	8.0
Free throws-att	5-5	23-31
Free throw pct	1.000	.742
F-Throws made per game	5.0	23.0
Rebounds	36	53
Rebounds per game	36.0	53.0
Rebounding margin	-17.0	-
Assists	7	19
Assists per game	7.0	19.0
Turnovers	31	8
Turnovers per game	31.0	8.0
Turnover margin	-23.0	-
Assist/turnover ratio	0.2	2.4
Steals	4	13
Steals per game	4.0	13.0
Blocks	2	2
Blocks per game	2.0	2.0
Winning streak	0	-
Home win streak	0	-
Attendance	0	452
Home games-Avg/Game	0-0	1-452
Neutral site-Avg/Game	-	0-0

Team Results

Date	Opponent		Score	Att.
11/09/2021	at Alabama	L	32-109	452