



TM.

2024-25 CREIGHTON BLUEJAYS

A T H L E T I C S G U I D E



DEAR BLUEJAY NATION,

Creighton Athletics continues to set the standard for excellence in the world of collegiate athletics. Each day I am inspired by our nearly 300 student-athletes as they consistently demonstrate the highest levels of skill, sportsmanship, and dedication. They are not only exceptional competitors on the field but also exemplary scholars, leaders, and role models within our community.

Along with our tremendous student-athletes, coaches, and staff, Bluejay Nation continues to be one of the most dedicated and supportive fan bases in the country and we are reminded of that on a daily basis. The unwavering support has helped us not only compete within the BIG EAST Conference, but soar to new heights on a national level.

As you read through this booklet and consider making a donation, buying tickets, promoting your organization through our corporate partnership program, or supporting NIL, please know that your ongoing support is the best way we can sustain competitive excellence moving forward. Whether you are a long-time supporter or considering making your first donation, your participation at any level truly makes a difference. Your investment allows us to recruit, retain, develop, and graduate outstanding student-athletes, build and maintain world class athletic facilities, ensure high-character personnel leading our teams, and ensure a fiscally responsible athletic department.

MISSION:

**CREIGHTON UNIVERSITY
ATHLETICS IS COMMITTED TO
PROVIDING A DISTINCTIVE
STUDENT-ATHLETE EXPERIENCE
THAT DEVELOPS LEADERS OF
CHARACTER THROUGH ACADEMIC
ACHIEVEMENT, COMPETITIVE
EXCELLENCE, & COMMUNITY
ENGAGEMENT.**

You will notice updates for the upcoming 2024-25 seasons. New member benefits and giving levels for various sports have been made to show appreciation for your support. We have also included information about our two NIL collectives. Both of these organizations directly impact our student-athletes and allow us to stay competitive in this space.

On behalf of our student-athletes, coaches and staff, thank you for all that you do to advance Creighton Athletics.

GO JAYS!



MARCUS BLOSSOM

McCormick Endowed Athletic Director



CONTENTS

- 4** NAME, IMAGE, AND LIKENESS
- 6** CHAMPIONS CIRCLE
- 8** SPORT-SPECIFIC GIVING
- 9** GIVING DAY / BIG EAST EXCELLENCE FUND
- 10** ENDOWMENTS
- 11** ATHLETIC EVENTS
- 12** MEN'S BASKETBALL JAYBACKER
- 13** MEN'S BASKETBALL TICKETS AND PARKING
- 14** WOMEN'S BASKETBALL JAYBACKERS, TICKETS, AND PARKING
- 17** VOLLEYBALL JAYBACKERS, TICKETS, AND PARKING
- 18** MEN'S SOCCER JAYBACKERS, TICKETS, AND PARKING
- 21** WOMEN'S SOCCER JAYBACKERS, TICKETS, AND PARKING
- 22** BASEBALL JAYBACKERS, TICKETS, AND PARKING
- 24** GROUP TICKETS / BILLY BLUEJAY AND CU DANCE TEAM REQUESTS
- 25** CORPORATE PARTNERSHIPS
- 26** OUR STAFF
- 27** WAYS TO GIVE



NIL // NAME, IMAGE, & LIKENESS



// THE BIRD CLUB //

Bird Club contributions directly promote and facilitate NIL opportunities for Creighton Men's Basketball student-athletes. Your support ensures their success as well as the success of the men's basketball program. In addition to NIL opportunities, the Bird Club provides financial advising, education, and tax assistance among other resources.

**Bird Club, LLC is not affiliated with Creighton University and given its stated purpose, is required to be a for profit organization.*

FOR MORE INFORMATION OR
TO SUPPORT THE BIRD CLUB
COLLECTIVE, FOLLOW THE
QR CODE:



// PRIDE OF OMAHA //

Fans of the Creighton Bluejays now have the opportunity to support student-athletes directly by joining Pride of Omaha. Each membership level offers exclusive benefits, and contributions can be designated by specific sport, with funds being allocated equally among all participating team members.

**Pride of Omaha collective is not affiliated with Creighton University. It is a third party created to work with Creighton student-athletes.*

MEMBERSHIPS START AT \$8.99/MONTH.

FOR MORE INFORMATION OR
TO SUPPORT THE PRIDE OF
OMAHA COLLECTIVE, FOLLOW
THE QR CODE:





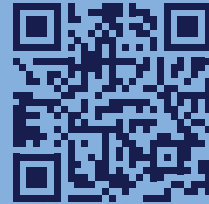
THE CREIGHTON NIL STORE

// CREIGHTON NIL STORE //

Shop officially licensed NIL apparel and support your favorite Bluejay student-athlete. From team-specific to unique student-athlete items and personalized gear, every purchase puts money directly into their pocket!

Shop. Support. Cheer.

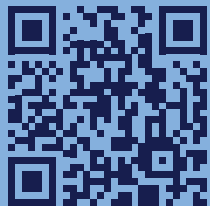
TO SHOP THE CREIGHTON
NIL STORE, FOLLOW THE
QR CODE :



// CREIGHTON NIL MARKETPLACE //

It's now easier than ever for Creighton supporters to directly pitch student-athletes an NIL deal in just a few clicks. After receiving a notification of a deal on the marketplace, an athlete can choose to accept, complete and receive payment for the opportunity all on Opendorse's secure platform. Once a deal is completed, the activity is automatically disclosed for compliance purposes and tax documentation is automatically generated. Former Creighton athletes can also be accessed through the marketplace.

TO VIEW THE CREIGHTON
NIL MARKETPLACE,
FOLLOW THE QR CODE :



To learn more on how to support Bluejay student-athletes through NIL, contact Brian Hanna at brianhanna@creighton.edu or 402-280-1216





CHAMPIONS CIRCLE

Champions Circle is the leadership annual giving society supporting the Creighton men's basketball team, which represents a dedicated program to promote philanthropic giving. Your investment will help us continue our program's winning traditions while addressing our financial priorities – travel, personnel, student-athlete development, and facilities.

TRAVEL

In-season travel, recruiting, and international trips comprise the most significant expense associated with our program. Due to Creighton's geographical location of being the western most school in the BIG EAST, we spend more time and resources than our peers. Our intra-conference team travel is 62% more than the BIG EAST average.



PERSONNEL

Our student-athletes, coaches, and staff understand that it takes more than great facilities to become an outstanding competitor. It takes a winning culture built with high character individuals and the endurance to sustain it. Our scholarship and endowment fund will build endurance into the basketball program, creating a financial source of support, allowing us to recruit, retain, and develop talented student-athletes, coaches, and staff.



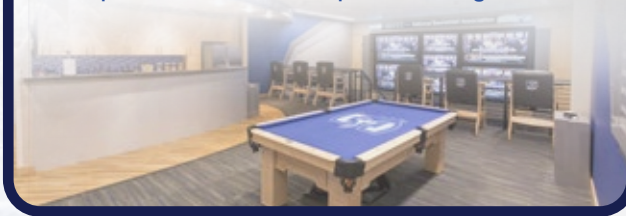
STUDENT-ATHLETE DEVELOPMENT

Balancing the obligations of academics at a prestigious institution and competing at the highest level of intercollegiate athletics can be a challenge for our men's basketball student-athletes. Our program is committed to supporting a well-balanced experience and lifestyle for our student-athletes. We aim to provide a holistic development experience, cemented in Creighton's Jesuit Ignatian tradition, to produce men who are engaged on campus and in the Omaha community with compassion, confidence, and character.



FACILITIES

One of the ongoing needs for our basketball program, especially competing at the highest level of intercollegiate athletics, is support for the construction and enhancement of first-class athletic facilities. In recruiting future Bluejays, it is essential that our facilities exceed the expectations of prospective student-athletes when compared to our BIG EAST peers and regional rivals.





CHAMPIONS CIRCLE MEMBER BENEFITS

\$10,000+ Annually

Exclusive invitation to select Champions Circle events

Invitation to VIP social reception at the men's basketball BIG EAST Tournament and NCAA Tournament

Access to NEW Champions Circle Lounge during home men's basketball games at CHI Health Center Omaha

Ticket access for non-season ticket holders and out-of-state members

Priority to purchase Men's Basketball BIG EAST Tournament and NCAA Tournament tickets

\$25,000+ Annually

All benefits above included, plus:

Invitation to Champions Circle travel experience for an away game

Premium Champions Circle gift item

\$50,000+ Annually

All benefits above included, plus:

Personal invitation to travel with the team for select away games

All gifts are processed by the Creighton University Development Office 501(c)(3). Gifts made toward Champions Circle are tax-deductible to the fullest extent allowable by law. Please consult with a tax professional for more information on the tax-deductibility of your contribution.



SPORT-SPECIFIC GIVING

Sport-specific giving comprises restricted funds that bolster specific programs by supplying necessary resources to sustain and improve each of our 16 athletic programs. These funds are not only vital for attracting and retaining top-tier student-athletes, but also for enhancing each program's capacity to nurture student-athletes in competition, academics, and community engagement. Allocation of sport-specific funds is guided by individual coaches in consultation with McCormick Endowed Athletic Director Marcus Blossom.

SPORT-SPECIFIC FUNDS MAY BE USED FOR PRIORITIES SUCH AS:

- Student-athlete leadership development and team-building programs
- Strengthening recruiting and travel budgets, including competitive and culturally immersive learning experiences through international travel
- Technology and equipment upgrades to enhance performance
- Ensuring staff retention and support



GIVING DAY

Each spring, Creighton University celebrates Giving Day. Creighton Athletics encourages gifts to support sport-specific causes on this date.

Giving Day 2024 led to all-time highs for Athletics and Creighton University!



DONORS

765

TOTAL ATHLETICS DONATIONS

\$79,690

CROSS COUNTRY/TRACK HIGHEST NUMBER OF DONORS OF ANY CAUSE ON CAMPUS (388 TOTAL DONORS)

To show your support on this day, visit givingday.creighton.edu

If interested in learning more about challenge gifts, please contact the Athletic Development Office at 402-280-GIVE or athleticdevelopment@creighton.edu.

BIG EAST EXCELLENCE FUND

The BIG EAST Excellence Fund provides flexibility to address the department's greatest current need and apply money where it does the most good, such as growing athletic scholarships, increased recruiting budgets, competition travel and maintaining competitive athletic staffing. This discretionary fund allows the leadership team to make decisions that impact the department's success.

BIG EAST Excellence Fund donations do not influence Jaybacker membership benefits. Under the University's 501(c)(3) status, all gifts made to the BIG EAST Excellence Fund are tax-deductible to the fullest extent allowable by law.





ENDOWMENTS

The Creighton Athletic Endowment Fund builds endurance into Creighton Athletics, creating a perpetual source of support and generating revenue to sustain athletic scholarships. Your loyalty to Creighton Athletics provides the opportunity to recruit, retain, develop, and graduate outstanding student-athletes and lifelong leaders. We look forward to helping you structure a gift that expresses your vision and leaves an everlasting impact on Bluejay Athletics.

CURRENT NUMBERS

In 2023, Creighton student-athletes boasted a 3.49 average cumulative GPA and 86% earned 3.0 GPAs or higher. That same year, with 283 student-athletes, Creighton Athletics awarded just 106 athletic scholarships, considerably under the 161 scholarships the NCAA allows for Creighton Athletics' 16 varsity programs.

HOW IT WORKS

Endowed funds are invested to produce an annual source of income that can be distributed each year as a scholarship for a student-athlete, approximately 4.5% of the principal investment. For example, a gift of \$100,000 will generate around \$4,500 annually.

GIVING BENCHMARKS

**GIFTS CAN BE PLEDGED OVER 5 YEARS
AND ARE 100% TAX-DEDUCTIBLE**

\$50,000

Minimum to establish an endowed scholarship

\$100,000

Minimum to establish a sport-specific endowed scholarship

\$250,000

Minimum to establish a position-specific endowed scholarship

\$500,000

Minimum to establish an endowed coaching position

\$2,000,000

Minimum to establish a varsity sport endowment



Receiving the Parker Family Foundation Athletic Scholarship was an investment and belief in me, my team, and our aspirations. It provided the support for me to be a Bluejay.

Endowments facilitate the Jesuit values at Creighton including care for the whole person - not only from an academic and athletic standpoint but as individuals forging their own path and making a positive impact in the lives of others.



DANIELLE HOTALLING

Senior – Cross Country / Track

Lee's Summit, MO

Parker Family Foundation
Athletic Scholarship Recipient





ATHLETIC EVENTS



**LEADERS
FOR LIFE**

LEADERS FOR LIFE

Annually held each May, Leaders for Life is a fundraiser that provides scholarship support and leadership development for our female student-athletes.

Two awards are presented at the annual luncheon. The Believe and Achieve Award honors a business/civic leader that has impacted the community-at-large. The Leader for Life Award honors women who have demonstrated a truly outstanding and consistent support for women's athletics at Creighton University.

**IF INTERESTED IN SUPPORTING
FEMALE STUDENT-ATHLETES
WITH SCHOLARSHIP SUPPORT,
PLEASE FOLLOW THE QR CODE:**



ALUMNI/FAN EVENTS

Join your fellow Bluejays at receptions, pregame events, and watch parties across the country. Check out alumni.creighton.edu/news-events/athletic-events to stay up to date on when and where the next Bluejay gathering will take place.





MEN'S BASKETBALL

JAYBACKER BENEFITS

Introducing NEW Men's Basketball Jaybacker levels and benefits for the 2024-25 season!

	Blue	Bronze	Silver	Gold	Platinum	Diamond	Champions Circle		
	\$100	\$1,000	\$2,500	\$5,000	\$10,000	\$15,000	\$10,000	\$25,000	\$50,000
MEN'S BASKETBALL PARKING									
Premium Parking Permit					1	1	1	2	2
Reserved Parking Permit <i>*subject to availability</i>		1*	1	1	1	1	1		
HOSPITALITY ACCESS									
Courtside Club							X	X	X
Lexus Club				4	4	6	6	6	6
The Creighton Room			4	4	4	4	4	4	4
Jaybacker Hospitality Area		4	4	4	4	4	4	4	4
EVENTS AND TICKET REQUESTS									
Exclusive Men's Basketball Event Invites					X	X	X	X	X
BIG EAST Ticket Request	2	2	2	4	4	4	6	6	6
NCAA Ticket Request <i>(1st & 2nd Round/Sweet 16 & Elite 8/Final 4 & Championship)</i>		0/0/2	0/2/4	0/2/4	2/4/6	2/4/6	4/6/8	4/6/8	4/6/8
GIFTS									
Gift Tier		3	3	2	1	1	CC	CC	CC
Lawlor's Discount <i>*one-time, in-store only</i>	X	X	X	X	X	X	X	X	X
Membership Packet	X	X	X	X	X	X	X	X	X





TICKETS & PREMIUM SEATING

TICKET OPTION LEVELS:

	OPTION 1 SEASON TICKETS \$1,000 Per Seat First Row Courtside Tickets – East Side Only REQUIRED JAYBACKER RANGE: \$5,000-\$12,500
	OPTION 1 SEASON TICKETS \$1,000 Per Seat Second / Third Row Courtside Tickets REQUIRED JAYBACKER RANGE: \$2,500 - \$10,000
	OPTION 2 SEASON TICKETS \$650 Per Seat REQUIRED JAYBACKER RANGE: \$1,250 - \$6,250
	OPTION 3 SEASON TICKETS \$650 Per Seat REQUIRED JAYBACKER RANGE: \$1,000 - \$5,000
	OPTION 4 SEASON TICKETS \$575 Per Seat REQUIRED JAYBACKER RANGE: \$450 - \$3,000
	OPTION 5 SEASON TICKETS \$575 Per Seat REQUIRED JAYBACKER RANGE: \$275 - \$1,500
	OPTION 6 SEASON TICKETS \$500 Per Seat REQUIRED JAYBACKER RANGE: \$200 - \$500

Options 1 through 6 require a Jaybacker membership in addition to the cost of the season ticket

 **OPTION 7 SEASON TICKETS**
\$275

 **OPTION 8 SEASON TICKETS**
\$250

 **STUDENTS**



PARKING

Parking in Lots A and B, the attached parking garage, Hilton and Marriot hotel parking are reserved for Jaybacker members only and are based on fiscal year giving as well as priority points. Parking in Lots C and D are available as pay-to-park on gamedays.

ACCESSIBLE PARKING

Accessible parking is available in the connecting parking garage and surrounding CHI Health Center Omaha surface lots. These spaces, including van-accessible spaces, are designated for vehicles displaying a current state-issued hangtag or license plate. Drop-off and pick-up locations for guests are located along 10th Street on the west side of the facility by the arena and convention center entrances. Additionally, guests parking in Lot A on the southeast side of the arena may drop off and pick up guests in the curb cut of this parking lot. Accessible spaces are filled on a first-come, first-served basis so please plan accordingly.



WOMEN'S BASKETBALL

JAYBACKER BENEFITS

\$100-\$249

- Directly supports women's basketball student-athletes and the program

\$250-\$499

- Two (2) access passes to the hospitality area in the Don and Carmen Leahy Hall of Fame Room at D.J. Sokol Arena for all home games

\$500-\$999

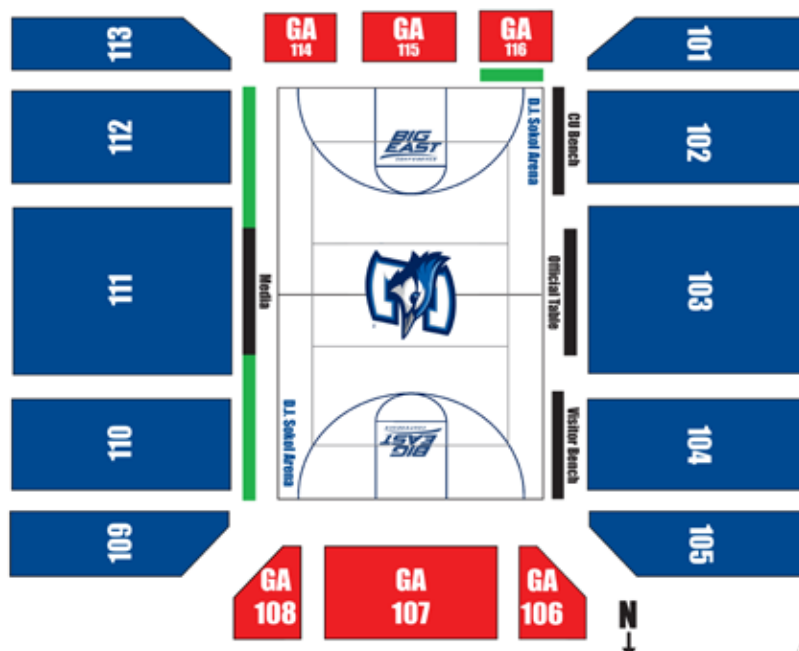
- Four (4) total access passes to the hospitality area in the Don and Carmen Leahy Hall of Fame Room at D.J. Sokol Arena for all home games
- One (1) surface lot parking pass for every home regular season game played at D.J. Sokol Arena

\$1000 OR MORE

- All above benefits included, plus:
- Exclusive access to opportunities with the Women's Basketball Program

TICKETS & PREMIUM SEATING

-  COURTSIDE: \$225 PER SEAT
-  RESERVED: \$109 PER SEAT



PARKING

Parking in Lots N and W are reserved for Jaybacker members only and are based on fiscal year giving as well as priority points. Parking in Lots C and L are available as pay-to-park on gamedays. Lot M is reserved for media.

ACCESSIBLE PARKING

Accessible parking is available in our gameday parking lots and surrounding surface lots. These spaces, including van-accessible spaces, are designated for vehicles displaying a current state-issued hangtag or license plate. Accessible spaces are filled on a first-come, first-served basis so please plan accordingly.







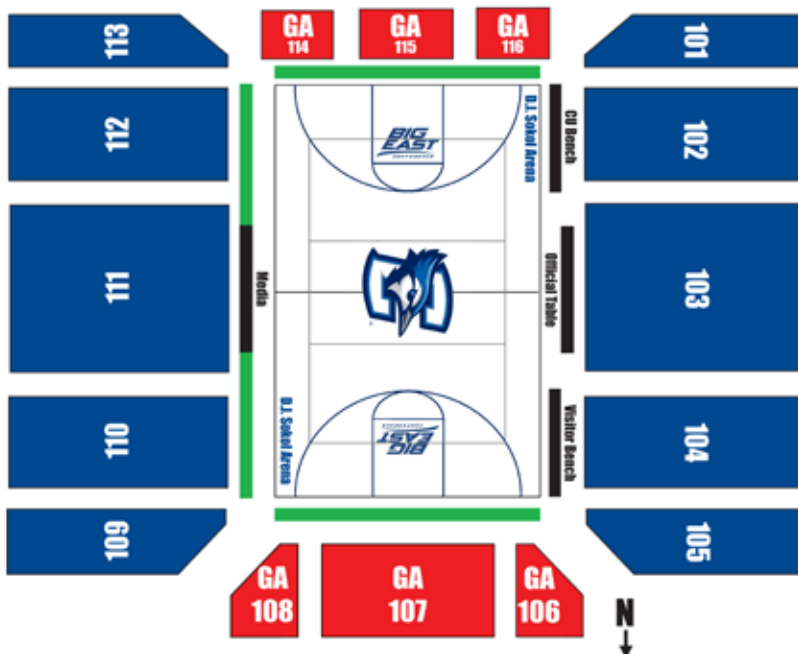


VOLLEYBALL

TICKETS & PREMIUM SEATING

COURTSIDE: \$300

RESERVED: \$170



JAYBACKER BENEFITS

\$100-\$249

- Directly supports volleyball student-athletes and the program

\$250-\$499

- Two (2) access passes to the hospitality area in the Don and Carmen Leahy Hall of Fame Room at D.J. Sokol Arena for all home games
- Invitation to coaches luncheon

\$500-\$999

- Four (4) total access passes to the hospitality area in the Don and Carmen Leahy Hall of Fame Room at D.J. Sokol Arena for all home games
- One (1) surface lot parking pass for every home regular season game played at D.J. Sokol Arena

\$1000 OR MORE

- All above benefits included, plus:
- Exclusive access to opportunities with the Volleyball Program



PARKING

Parking in Lots N and W are reserved for Jaybacker members only and are based on fiscal year giving as well as priority points. Parking in Lots C and L are available as pay-to-park on gamedays. Lot M is reserved for media.

ACCESSIBLE PARKING

Accessible parking is available in our gameday parking lots and surrounding surface lots. These spaces, including van-accessible spaces, are designated for vehicles displaying a current state-issued hangtag or license plate. Accessible spaces are filled on a first-come, first-served basis so please plan accordingly.



MEN'S SOCCER

JAYBACKER BENEFITS

\$100-\$249

- Directly supports men's soccer student-athletes and the program

\$250-\$499

- Two (2) access passes to the club lounge in the upper level of Morrison Stadium for every home exhibition & regular season match
- One (1) surface lot parking pass near Morrison Stadium for every home exhibition, regular season & postseason match

\$500-\$999

- Four (4) access passes to the club lounge in the upper level of Morrison Stadium for every home exhibition & regular season match
- Two (2) surface lot parking passes near Morrison Stadium for every home exhibition, regular season & postseason match

\$1000 OR MORE

- All above benefits included, plus:
- Exclusive access to opportunities with the Men's Soccer Program

TICKETS & PREMIUM SEATING

CLUB: \$300

RESERVED: \$150

GENERAL ADMISSION: \$99

SUITE: Please contact the Creighton Athletic Development Office at 402-280-GIVE for more information



PARKING

Parking in Lots C and S are reserved for Jaybacker members only and are based on fiscal year giving as well as priority points. Parking in Lots L and W are available as pay-to-park on gamedays.

ACCESSIBLE PARKING

Accessible parking is available in our gameday parking lots and surrounding surface lots. These spaces, including van-accessible spaces, are designated for vehicles displaying a current state-issued hangtag or license plate. Accessible spaces are filled on a first-come, first-served basis so please plan accordingly.









WOMEN'S SOCCER

TICKETS & PREMIUM SEATING

- RESERVED: \$75**
- PREMIUM:** For those interested in club seats or suites, please contact the Creighton Athletic Development Office at 402-280-GIVE.



JAYBACKER BENEFITS

\$100-\$249

- Directly supports women's soccer student-athletes and the program

\$250-\$499

- Two (2) access passes to the club lounge in the upper level of Morrison Stadium for every home exhibition & regular season match
- One (1) surface lot parking pass near Morrison Stadium for every home exhibition, regular season & postseason match

\$500-\$999

- Four (4) access passes to the club lounge in the upper level of Morrison Stadium for every home exhibition & regular season match
- Two (2) surface lot parking passes near Morrison Stadium for every home exhibition, regular season & postseason match

\$1000 OR MORE

- All above benefits included, plus:
- Exclusive access to opportunities with the Women's Soccer Program

PARKING

Parking in Lot S is reserved for Jaybacker members only and are based on fiscal year giving as well as priority points. Parking in Lots C and L are complimentary on gamedays.

ACCESSIBLE PARKING

Accessible parking is available in our gameday parking lots and surrounding surface lots. These spaces, including van-accessible spaces, are designated for vehicles displaying a current state-issued hangtag or license plate. Accessible spaces are filled on a first-come, first-served basis so please plan accordingly.





BASEBALL

JAYBACKER BENEFITS

\$100-\$249

- Directly supports baseball student-athletes and the program

\$250-\$499

- Two (2) access passes to the club lounge located on the club level for all home games
- One (1) surface lot parking pass to Lot C for all home games

\$500-\$999

- Four (4) access passes to the club lounge located on the club level for all home games
- Two (2) surface lot parking passes to Lot C for all home games

\$1000 OR MORE

- All above benefits included, plus:
- Exclusive access to opportunities with the Baseball Program

TICKETS & PREMIUM SEATING

RESERVED: \$140

Prices are subject to change



PARKING

Parking in Lot C is reserved for Jaybacker members only and are based on fiscal year giving as well as priority points. Parking in Lot B is pay-to-park on gamedays.

ACCESSIBLE PARKING

Accessible parking is available in our gameday parking lots and surrounding surface lots. These spaces, including van-accessible spaces, are designated for vehicles displaying a current state-issued hangtag or license plate. Accessible spaces are filled on a first-come, first-served basis so please plan accordingly.







GROUP TICKET PACKAGES



Significant savings off single-game prices

No per-ticket fees

Unique fan experience opportunities

Customized in-game group messages on video boards



FOR MORE INFORMATION CONTACT PATRICK BINISH AT 402-280-5297

BILLY BLUEJAY & DANCE TEAM REQUESTS

Book Billy Bluejay or the CU Dance Team for your next event. Fill out the QR code form below to submit your request.



DANCE TEAM



BILLY BLUEJAY





CORPORATE PARTNERSHIPS



468,000

Social media followers



700,000

Unique website visitors



20.4 million

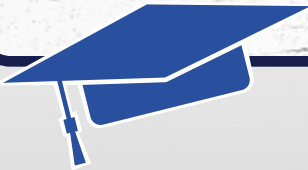
People nationally watched, listened to, or attended a Creighton game in 2023-2024



8,500+

plus students attend Creighton University

OVER
80,000
LIVING ALUMNI



OVER
276,000

FANS ATTENDED A CREIGHTON HOME BASKETBALL GAME 6TH BEST ATTENDANCE IN THE NCAA.



YEAR-ROUND ACTIVATION

with the college sports season longer than any professional team

CONTINUOUSLY GROWING FAN BASE

with new students enrolling & alumni graduating each year

ACCESS TO MULTI-CHANNEL MARKETING SOLUTIONS

including traditional digital & social assets

REACH AN ENGAGED AUDIENCE

with sponsorship integrated into the content & entertainment of sporting events

If interested in associating your brand/business with Creighton Athletics, contact Nelson Pouliot at nelsonpouliot@creighton.edu



OUR STAFF

ATHLETIC DEVELOPMENT OFFICE



Matt Giller

Associate Athletic Director/Assistant
VP for Athletic Development



Sean Bourke

Assistant Athletic Director for Athletic
Development



Shelley Guthrie Gates

Associate Director of
Donor Relations



Stephanie Kremla

Senior Coordinator of Athletic
Development



Andre Streete

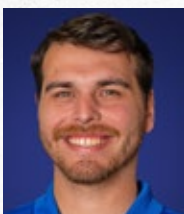
Assistant Director of Athletic
Development



Brian Hanna

Assistant Director of Athletic
Development

ATHLETIC TICKET OFFICE



Zachary Klein

Senior Director of
Ticket Operations



Jordan Dembowski

Assistant Director of
Ticket Operations



Patrick Binish

Group Sales
Coordinator

CORPORATE PARTNERSHIPS



Mike Odom

Executive Associate Athletic
Director for External Operations



Nelson Pouliot

Director of Corporate
Partnerships



Patty Kliver

Graduate Assistant – Corporate
Partnerships

WAYS TO GIVE

Online

Visit gocreighton.com/sports/ath-development and select "Donate Now" to contribute towards sport-specific funds or towards annual Jaybacker through your MyCreighton account

Visa, Mastercard, American Express, Discover accepted

Check

Checks and money orders should be made payable to Creighton University. Please include your MyCreighton account number on the check or money order in the memo.

Checks can be mailed to:

Creighton Athletic Development Office
Ryan Athletic Center
2500 California Plaza
Omaha, NE 68178

Matching Gifts

Many employers match the contributions made by employees, sometimes on a one-to-one, two-to-one or even three-to-one basis. To find out if your employer matches charitable gifts, use our employer matching gift search engine found at matchinggifts.com/creighton/

Gifts-In-Kind

Gifts of goods or servicing can be a great financial assistance to Creighton Athletics while providing the donor with a tax deduction for the fair market value of a gift. Please contact your tax advisor and the Creighton Athletic Development Office for more information.

Gifts of Securities

Donors may make charitable contributions of securities via electronic transfers and physical stock certificates.

Planned Giving

- Provision in a will or revocable trust
- Income-producing gifts
- Charitable lead trust
- Testamentary gift of retirement assets
- Life insurance or annuity policy
- Real Estate

Tax Information

Under Creighton University's 501(c)(3) status, gifts made in support of Creighton Athletics are tax-deductible to the fullest extent allowable by law. Donors are encouraged to consult with a legal or financial advisor.

The Tax Cuts and Jobs Act, effective December 31, 2017, repealed the deduction for amounts paid in exchange for college athletic event seating rights. Contributions made towards Men's Basketball Jaybacker tied to season tickets are not tax-deductible.

To learn about other 100 percent tax-deductible giving opportunities to Creighton Athletic Development including the use of foundation-based gifts, or for more information on any of the above methods, please contact the Athletic Development Office at athleticdevelopment@creighton.edu or 402-280-GIVE.

CREIGHTON ATHLETIC DEVELOPMENT OFFICE



Ryan Athletic Center
2500 California Plaza
Omaha, NE 68178



402-280-GIVE



athleticdevelopment@creighton.edu

