

CREIGHTON

B A S K E T B A L L



**CHAMPIONS
CIRCLE**

FAMILY
CULTURE
DEVELOPMENT



RISE TOGETHER

CHAMPIONS CIRCLE

is the leadership annual giving society supporting the Creighton men's basketball team, which represents a dedicated program to promote philanthropic giving. Members of the Champions Circle have made significant financial contributions to help us raise the standard and reach new heights.

CREIGHTON[™]

BASKETBALL

Championship Center • 625 Florence Blvd • Omaha, NE 68178

Creighton's arrival into the BIG EAST Conference brought in a new era for Bluejay Athletics. Since 2013, our student-athletes have navigated the learning curve of aggressive Division I basketball in the competitive arena of the BIG EAST.

You, our supporters, serve as founders of this era. Since its formation in 2018, Champions Circle has helped our program experience unprecedented growth, including a BIG EAST Conference Regular Season Championship along with a Sweet Sixteen and Elite Eight appearance most recently. What once seemed unattainable is now the standard. The Champions Circle is pivotal in this success.

With your help, we will continue to arm our men's basketball program with resources comparable to our peers who we compete for personnel, BIG EAST titles and in the NCAA Tournament. Your investment will help us to continue our program's winning traditions while addressing our financial priorities—travel, facilities, personnel and student-athlete development. Strengthening these areas will allow us to continue to compete for BIG EAST titles and pursue our ultimate goals: Final Fours and National Titles.

Thank you for your consideration and vision. As you will see in the following pages, we are—and will remain—incredible stewards of your generosity. We look forward to the impact you will have on our program as we take the next step together.

Let's Dance,

Coach Mac



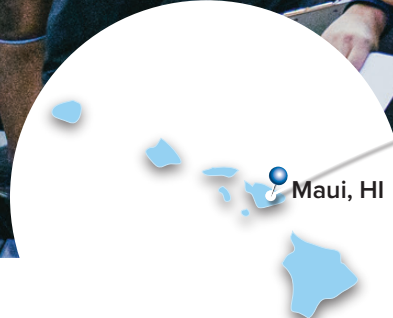


- Creighton's intra-conference team travel is 62% more than the BIG EAST average.
- With dollars allocated toward private aviation, the average game trip is now less than two days, including holiday break trips.



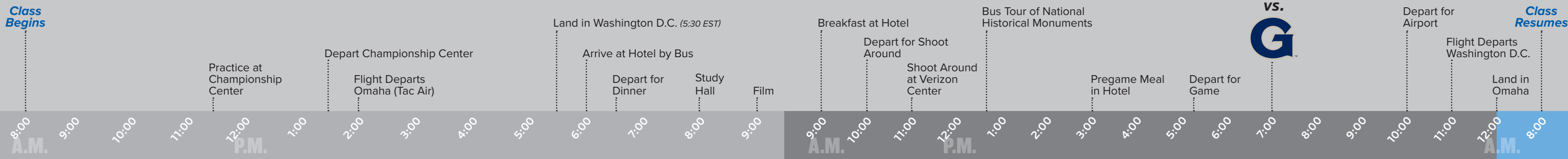
TRAVEL

In-season travel, recruiting, and international trips comprise the **MOST SIGNIFICANT EXPENSE** associated with our program. Due to Creighton's geographical location of being the westernmost school in the BIG EAST, we spend more time and resources than our peers.



One of the program's biggest assets are the resources available for team travel. Currently, our program is fortunate to have access to the use of private aviation during the season for away games. This is imperative as Creighton is the most western located institution in the BIG EAST, which often requires travel to the east coast. Private flights allow our student-athletes to compete at the highest level and receive the maximum experience from their education, by allowing them to spend more time in the classroom and less time in hotel rooms and airports. Our travel has become a major selling point on the recruiting trail and the success of our program depends on the ability to count on this necessity moving forward.

2-DAY ITINERARY – CREIGHTON AT GEORGETOWN





Kyle Korver Courts



Pat and Dorothy Nipp Locker Room Suite



CHI Health Center Gameday Locker Room Entrance

One of the ongoing needs for our basketball program, especially competing at the highest level of intercollegiate athletics, is support for the construction and enhancement of first-class athletic facilities. In recruiting future Bluejays, it is essential that our facilities **EXCEED THE EXPECTATIONS** of prospective student-athletes when compared to our BIG EAST peers and regional rivals. Your investment in this area ensures that we provide the program with the resources necessary to compete and provide a positive experience for our men's basketball student-athletes.



Photo ©2023 Blakeway Panoramas

FACILITIES

Enhancing and maintaining facilities, while strategically planning for the future, is an active and ongoing process. The men's basketball program benefits tremendously from recent facility additions, including the Championship Center, Pat and Dorothy Nipp Locker Room Suite, as well as competing in the CHI Health Center Omaha. State-of-the-art facilities help provide an incredible experience for our student-athletes and serve as sought-after assets in recruiting. Investments in this fund allow our administration and coaches to provide our basketball student-athletes with facilities and living accommodations competitive with peer institutions.



Roy and Macaela Smith Locker Room



Bob and Karla Baltzell Video Lecture Room



CHI Health Center Gameday Locker Room



Doug McDermott Players Lounge



PERSONNEL

Our student-athletes, coaches and staff understand that it takes more than great facilities to become an outstanding competitor. It takes **A WINNING CULTURE** built with high-character individuals and the endurance to sustain it. Our scholarship and endowment fund will build endurance into the basketball program, creating a financial source of support, allowing us to recruit, retain, and develop talented student-athletes, coaches and staff.



“My teammates and coaches impacted my Creighton experience the most. They are the people I spent most of my time with and they helped make my experience enjoyable. They also pushed me to be the best player and person I was capable of becoming.”
- Marcus Zegarowski



Marcus Zegarowski >
Hoch Family Endowed Point Guard
2018-2021
Hamilton, MA

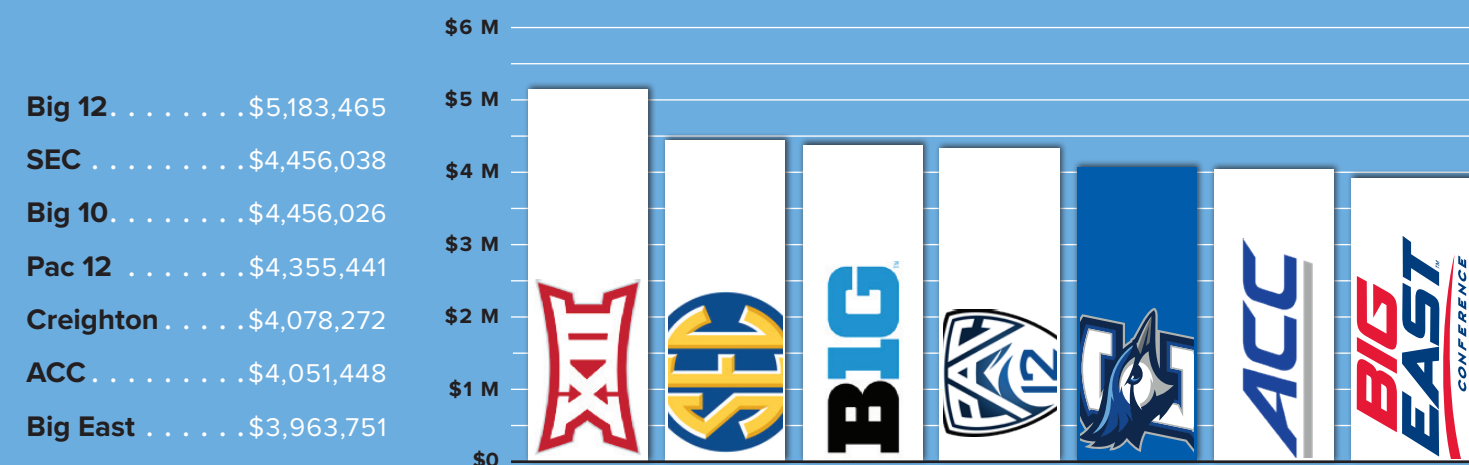


HEAD AND ASSISTANT COACHING ENDOWMENTS

By establishing an endowment for the Head Coach or Assistant Coaching positions, you will help Creighton pursue, support and retain some of the nation's elite coaches and recruiters. You also will allow us to honor top coaches in a competitive pay environment.



2020-2022 Total Coaching Salary Pool – 3 Year Average



STUDENT-ATHLETE DEVELOPMENT

STRENGTH AND CONDITIONING

One of the greatest opportunities for our men’s basketball program lies within athletic performance training. Our transition to the BIG EAST Conference exposed the need for excellence in this area. Now, our student-athletes benefit tremendously from The Dick and Mary Pat McCormick Athletic Performance Center, which provides them with access to a year-round strength and conditioning facility. Your investment in this initiative will help us continue to build a sustainable strength and conditioning program. Over the last few seasons, the men’s basketball program has implemented a comprehensive, holistic men’s basketball-specific training regimen which integrates nutrition, state-of-the-art technology that assist our student-athletes in conditioning, preparation, competition, endurance and recovery.



THE DICK AND MARY PAT MCCORMICK ATHLETIC PERFORMANCE CENTER

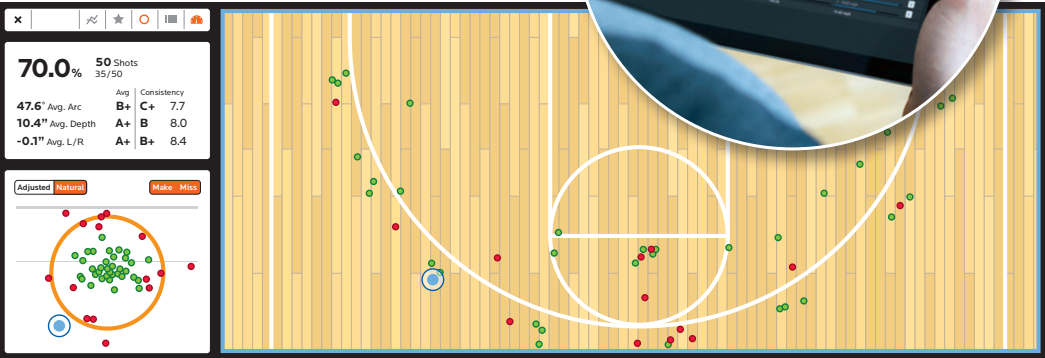
- 6,000 square feet
- 12 Power Lift half racks
- Delos Postural Proprioceptive System
- Kinexon Performance Tracking and Analysis System
- Elite Form tracking system
- Noah shot tracking system



Balancing the obligations of academics at a prestigious institution and competing at the highest level of intercollegiate athletics can be a challenge for our men’s basketball student-athletes. Our program is committed to supporting a **WELL-BALANCED EXPERIENCE AND LIFESTYLE** for our student-athletes. We aim to provide a holistic development experience, cemented in Creighton’s Jesuit Ignatian tradition, to produce men who are engaged on campus and in the Omaha community with compassion, confidence and character.

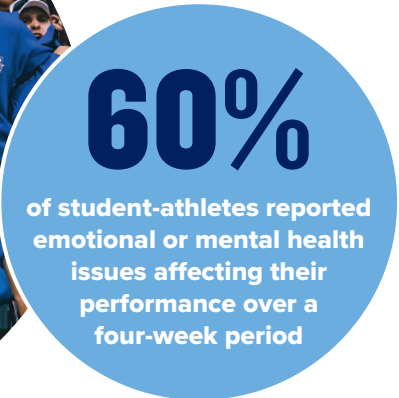
ATHLETIC TRAINING

Our program is committed to providing men’s basketball student-athletes with the highest standards of care during their careers at Creighton. Your investment enables our program to empower a top Athletic Training staff to maximize performance by providing injury and illness prevention, assessment, management and rehabilitation using state-of-the-art facilities, technology and practices.



MENTAL HEALTH

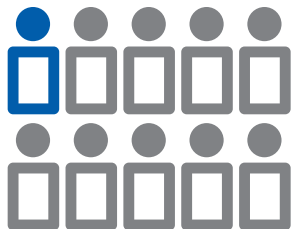
One out of every four individuals suffer from depression or anxiety; unfortunately, only one out of every ten student-athletes seek assistance with a mental health professional. This circumstance is especially heightened for men’s basketball student-athletes who compete at the highest level of competition in front of thousands of spectators and millions on television. We aim to provide our mental health staff with the resources needed to impact our men’s basketball program – especially student-athletes experiencing symptoms consistent with mental health issues. Your investment in this area will allow us to care for the well-being of our student-athletes while also optimizing their performance in competition and in the classroom.



1 in 3
college students with depression or anxiety seek assistance



1 in 10
student-athletes seek professional assistance



STUDENT-ATHLETE DEVELOPMENT

ACADEMICS, LEADERSHIP AND CAREER DEVELOPMENT

In line with the University’s mission, Creighton Athletics is committed to providing our basketball student-athletes with the resources necessary to receive a Creighton education beyond athletics to prepare lifelong leaders. Your investment enables our Academic Services staff to continue to provide outstanding academic support while offering professional and educational career programs to assist our men’s basketball student-athletes in transitioning to life after the sport.



< Kyle Korver
1999-2003

Less than
2%
of NCAA student-athletes go on to be professional athletes

“One thing I think can improve and probably has since I’ve been there is the life after basketball aspect. Everyone thinks they’ll be a 10 year NBA player - but that’s not the reality and figuring out and having an idea what you’re going to do when the ball stops bouncing is critical to continue developing even while still playing your respected sport” - Mitch Ballock



Mitch Ballock >
2017-2021
Eurdora, KS



MEN’S BASKETBALL “STARTING 5” POSITION SCHOLARSHIP

A gift commitment of \$500,000 or greater can establish a named annual or endowed scholarship for a specific position (i.e. point guard, center, etc.) for the basketball program.



Hoch Family Endowed Point Guard Position



FULLY FUNDED 2023

A SINGLE BASKETBALL STUDENT-ATHLETE BENEFIT ANNUAL COST BREAKDOWN

TUITION, FEES, ROOM & BOARD
\$60,590

STRENGTH AND CONDITIONING
\$4,500

ACADEMIC TUTORING
\$3,720

GAME AND PRACTICE GEAR
\$1,975

FOOD AND NUTRITION
\$5,560

ACADEMIC AWARD
\$5,980

TRAVEL
\$36,000

SPORTS MEDICINE
\$5,200

SHOES
\$950

TOTAL AMOUNT TO FULLY
FUND A STUDENT-ATHLETE

\$124,475

ANNUAL INVESTMENT LEVELS

Your investment into our men's basketball program **WILL TAKE** our program's success to the next level and bring you into our circle. In appreciation for your impact on our men's basketball student-athletes, investors will receive exclusive engagement opportunities with our coaches, administration and student-athletes. Please contact the Athletic Development Office for more information.

\$10,000+ ANNUALLY

- Exclusive invitation to select Champions Circle events.
- Invitation to VIP social reception at the men's basketball BIG EAST Tournament and NCAA Tournament.
- Access to Champions Circle Lounge during home men's basketball games at CHI Health Center Omaha.
- Ticket Access for non-season ticket holders and out-of-state members.
- Priority to purchase Men's Basketball BIG EAST Tournament and NCAA Tournament Tickets.

\$25,000+ ANNUALLY

- All benefits above included, plus:
- Private opportunity to attend team practice
- Invitation to Champions Circle Travel Experience for a BIG EAST away game.

\$50,000+ ANNUALLY

- All benefits above included, plus:
- Personal invitation to travel with the team for away games.



Athletic Donors whose lifetime giving exceeds \$500,000 will be considered a lifetime member of Champions Circle.

All gifts are processed by the Creighton University Development Office 501(c)(3). Gifts made toward Champions Circle are tax deductible to the fullest extent allowable by law. Please consult with a tax professional for more information on the tax-deductibility of your contribution.

FIGHT TILL THE
FIGHT IS WON



ATHLETIC DEVELOPMENT OFFICE

402-280-GIVE

AthleticDevelopment@Creighton.edu

2500 California Plaza | Omaha, NE 68178