

CORNELL BIG RED

2025 WOMEN'S SOCCER MATCH NOTES

2 IVY LEAGUE CHAMPIONSHIPS | 4 ALL-AMERICANS | 23 FIRST TEAM ALL-IVY SELECTIONS

2025 SCHEDULE

CU Date	Opp Rk	Opponent (TV)	Time / Result
AUGUST (2-0-2)			
22	—	at Boston College (ACCNX)	T, 0-0
24	—	COLGATE (ESPN+)	W, 2-1
28	—	LA SALLE (ESPN+)	W, 1-0
31	—	KENT STATE (ESPN+)	T, 1-1
SEPTEMBER (0-3-2)			
4	—	at Delaware (ESPN+)	L, 1-3
7	—	at Syracuse (ACCNX)	L, 0-3
11	—	at Providence (ESPN+)	T, 1-1
14	—	BINGHAMTON (ESPN+)	T, 0-0
20	—	COLUMBIA* (ESPN+)	L, 1-2
27	—	at Yale* (ESPN+)	6 p.m.
OCTOBER			
4	—	HARVARD* (ESPN+)	12 p.m.
7	—	at Lafayette (ESPN+)	8 p.m.
12	—	at Princeton* (ESPN+)	1 p.m.
18	—	at Penn* (ESPN+)	2 p.m.
25	—	BROWN* (ESPN+)	1 p.m.
NOVEMBER			
1	—	at Dartmouth* (ESPN+)	5 p.m.

All match times Eastern, subject to change

* - Denotes Ivy League contest

Bold Red CAPS denotes home game

THE MATCHUP



CORNELL BIG RED

Overall Record | Form: 2-3-4 (.444) | LLTTL

Ivy Record | Form: 0-1-0 (.000) | LWLLL

Head Coach: Rob Ferguson

Record at Cornell: 16-35-21 (.368) | 6th season

Career Record: 29-66-23 (.343) | 8th season



YALE BULLDOGS

Overall Record | Form: 2-6-0 (.250) | LLLLL

Ivy Record | Form: 0-1-0 (.000) | WLLLL

Head Coach: Sarah Martinez

Record at Yale: 25-38-9 (.410) | 5th season

Career Record: Same as above

MATCH INFORMATION

TV / WEBCAST



Play-by-Play: Jacob Munch

Analyst: Christine Huber

Live Stats: cornellbigred.com

SATURDAY FORECAST

74° 6:42

Temperature: 78° high | 64° low

Forecast: Cloudy

Winds: SE 0-5 mph

FIRST TOUCH

► The Cornell women's soccer team begins a challenging road-heavy stretch of its schedule this evening at Yale, launching a season-ending gauntlet that includes five away matches in its final seven contests.

LAST TIME OUT

► **ITHACA, N.Y. (SEPT. 20, 2025)** — Two late goals off corner kicks in the final 22 minutes propelled visiting Columbia to a 2-1 comeback win over Cornell in both team's Ivy League opener on Berman Field.

► Cornell grabbed the early lead in the 12th minute when senior defender **GABY GONZALEZ** recorded her first goal since her freshman season by heading in a corner from senior midfielder **MARIANA KESSINGER**. Just two minutes later, junior midfielder **BROOKE BROWN** appeared to double the advantage after pouncing on a rebound of a blocked shot by junior forward **ALANNA COLBERT**, but the goal was waved off for offside after a discussion between the referee and assistant referees.

► "We started very well, played how we wanted to play, and imposed ourselves," said Cornell women's soccer head coach **ROB FERGUSON**. "We got in front with a great goal from Gaby and thought we'd doubled the lead, but I don't know that we responded very well to that. We sat back a little bit too deep in the first half, but defended well."

► Cornell's lead stood for nearly 57 minutes before Maia Tabion swung in a near-post corner that Maia Beltran headed home in the 69th minute to level the score. The Big Red defense blocked three shots in the final 10 minutes to keep the match tied, but Columbia struck again with 28.5 seconds left. Another Tabion corner found Dema Elder, whose far-post header tucked inside the post for the game-winning goal.

► Kessinger attempted a last-second shot from near midfield, but her bid to force overtime sailed wide.

THANKS FOR THE HELP!

► Senior midfielder **MARIANA KESSINGER** delivered her third assist of the season last Saturday against Columbia, whipping an in-swinging corner kick into the heart of the penalty area where senior defender **GABY GONZALEZ** connected with a perfectly timed header, opening the scoring in the 12th minute.

► Entering this weekend's action, Kessinger is currently situated in a six-way tie for the second-most assists in the Ivy League alongside Brown's Brooke Birtwistle, Princeton's Dylan Jovanovic, Dartmouth's Stephanie Lathrop, Harvard's Elsa Santos López, and Columbia's Maia Tabion. Brown's Joy Okonye is the lone Ancient Eight player with more helpers, tallying five assists so far on the season.

► Kessinger is tied with Tabion for the fourth-best assists per game average in the Ivy League at 0.30, trailing the quartet of Okonye (0.50), Santos López (0.38), Jovanovic (0.38), and Lathrop (0.38).

► One more assist would make Kessinger the ninth different Cornell player since 2003 to register four assists in a season, marking the 11th such occurrence during the span. The most recent Cornell player to achieve the milestone was **REAGAN PAUWELS**, who recorded six assists in 2023, matching totals by **DONNA EBERHARDT** (1988), **AMY SNOW** (1991 and 1992), **REBECCA D'ALEO** (1993), **LORI PENNY** (1993), and **DEMPSEY BANKS** (2013). The Cornell single-season assists record remains in a four-way tie between **LAURIE COLLIER** (1986), **JENNIFER SMITH** (1987), **JENNIFER DALY** (1994), and **AMY FINKELSTEIN** (1994).

IVY LEAGUE OUTLOOK

TEAM	IVY LEAGUE			OVERALL	
	PTS	W-L-T	PCT	W-L-T	PCT
Brown	3	1-0-0	1.000	6-1-2	.778
Columbia	3	1-0-0	1.000	3-4-2	.444
Dartmouth	3	1-0-0	1.000	4-2-2	.625
Princeton	3	1-0-0	1.000	2-3-3	.438
Cornell	0	0-1-0	.000	2-3-4	.444
Harvard	0	0-1-0	.000	2-4-2	.375
Penn	0	0-1-0	.000	4-2-2	.625
Yale	0	0-1-0	.000	2-6-0	.250

NOTE: Top four teams advance to Ivy Tournament

LAST WEEK'S RESULTS

Wednesday, Sept. 17

Brown 4, Providence 0

Friday, Sept. 19

Princeton 1, Penn 0

Saturday, Sept. 20

Columbia 2, Cornell 1

Dartmouth 1, Harvard 0

Sunday, Sept. 21

Brown 5, Yale 2

THIS WEEK'S SCHEDULE

Saturday, Sept. 27

Cornell at Yale, 6:00

Dartmouth at Penn, 1:00

Princeton at Harvard, 1:00

Brown at Columbia, 6:00

Tuesday, Sept. 30

Brandeis at Dartmouth, 6:00

All match times listed are Eastern, subject to change

MEDIA CONTACT

MARSHALL HAIM

Assistant Director of Athletic Communications

✉ mh2348@cornell.edu

☎ (716) 465-4945 (mobile)

IVY LEAGUE LEADERS

HIGHEST ASSIST TOTALS
This Season (as of 9/25/25)

PLAYER	TEAM	AST
Joy Okonye	Brown	5
Brooke Birtwistle	Brown	3
Dylan Jovanovic	Princeton	3
► Mariana Kessinger	Cornell	3
Stephanie Lathrop	Dartmouth	3
Elsa Santos Lopez	Harvard	3
Maia Tabion	Columbia	3

2025 CORNELL WOMEN'S SOCCER ROSTER

#	NAME	POS	HT	YR	HOMETOWN	HIGH SCHOOL	CLUB TEAM
00	Natalie Medugno	GK	5-8	Sr.	Oceanside, N.Y.	Oceanside HS	Long Island SC
0	Samantha Qureshey	GK	5-7	Fr.	Macungie, Pa.	Episcopal HS [Texas]	Albion Hurricanes
1	Naomi Glassberg	GK	5-6	Jr.	New Tripoli, Pa.	Northwestern Lehigh HS	FC Bucks
2	Brooke Brown	M	5-7	Jr.	Barrington, Ill.	Barrington HS	Eclipse Select
3	Jessica Alessi	F/D	5-4	Fr.	Syosset, N.Y.	Syosset HS	Long Island SC
4	Jane Offit	D	5-7	So.	New York, N.Y.	Horace Mann School	Players Development Academy
5	Abigail Bishara	M	5-8	Sr.	Clarence Center, N.Y.	Clarence HS	WNY Flash
6	Isabel Chapman	D	5-8	Jr.	Ann Arbor, Mich.	Pioneer HS	Michigan Hawks
7	Izzy Scott	D	5-11	Sr.	Austin, Texas	Westlake HS	Lonestar SC
8	Amanda Polyniak	D	5-7	So.	River Vale, N.J.	Pascack Valley HS	World Class FC
9	Alanna Colbert	F	5-4	Jr.	Lexington, S.C.	River Bluff HS	South Carolina United FC
10	Lauren DiPierri	M	5-7	So.	Plainview, N.Y.	Plainview-Old Bethpage JFK HS	Long Island SC
11	Mariana Kessinger	M	5-4	Sr.	Palo Alto, Calif.	Palo Alto HS	PSV Union FC
12	Maran Kingsley	F	5-11	Sr.	Buffalo, N.Y.	Nardin Academy	WNY Flash
13	Madeline Park	D	5-7	Fr.	Palos Verdes, Calif.	Chadwick School	FRAM SC
14	Tanum Nelson	M/F	5-8	Sr.	Duxbury, Vt.	Harwood HS	FC Stars
15	Gaby Gonzalez	D	5-9	Sr.	Westport, Conn.	Staples HS	Connecticut FC
16	Madison Guiry	D	5-7	Fr.	Hardwick, N.J.	Blair Academy	Match Fit Academy FC
17	Sydney Allen	F	5-9	Jr.	Rockville, Md.	Bethesda-Chevy Chase HS	Maryland United
18	Grace Diehl	F	5-10	Sr.	Driftwood, Texas	Glenbrook South HS [Ill.]	Eclipse Select SC
19	Estelle Jarrells	F	5-7	So.	Atlanta, Ga.	Marist School	Tophat GA Gold
20	Raya Leikin	D/M	5-6	Fr.	Mill Valley, Calif.	Marin Academy	Mountain View Los Altos SC
21	Chloe Benik	M	5-7	Fr.	Garden City, N.Y.	Garden City HS	SUSA FC
22	Ella Koschineg	D	5-3	So.	Ambler, Pa.	Gwynedd Mercy Academy	FC Bucks
23	Andrea Wilson	F	5-7	Fr.	Fairport, N.Y.	Fairport HS	WNY Flash
24	Ivy Tolbert	M	5-7	So.	Commerce, Ga.	Commerce HS	Gwinnett Soccer Academy
26	Kayla Ristianto	D	5-4	Jr.	Dallas, Texas	Lakehill Preparatory School	FC Dallas
27	Evelyn Chudowsky	F	5-8	So.	Westport, Conn.	Staples HS	New York SC
33	Sydney Malaga	F	5-8	Sr.	Elmhurst, Ill.	York Community HS	Sockers FC
34	Emily Gibbons	M/F	5-9	Jr.	Hingham, Mass.	Hingham HS	South Shore Select
35	Ava Jung	M	5-9	Jr.	Richmond, Va.	Douglas S. Freeman HS	Richmond United
36	Hannah Grimes	GK	5-6	Sr.	Woodinville, Wash.	Woodinville HS	Seattle United

COACHING AND SUPPORT STAFF

Head Coach:	Rob Ferguson
Assistant Coach:	Dani Reid-Espinal
Assistant Coach:	Shaela Krayner
Athletic Trainer:	Emily Berg
Strength and Conditioning:	Seamus Garland

PRUH-NUHN-SEE-AY-SHN GUIDE

00	Natalie Medugno	meh-DOON-yoh
0	Samantha Qureshey	KUR-eh-shee
4	Jane Offit	AH-fiht
5	Abigail Bishara	bih-SHAR-uh
8	Amanda Polyniak	poh-LIHN-ee-ahk
9	Alanna Colbert	uh-LAH-nuh
10	Lauren DiPierri	dee-PEER-ee
11	Mariana Kessinger	MAR-ee-ah-nuh
12	Maran Kingsley	MAIR-ihn
14	Tanum Nelson	TAGHN-uhm
16	Madison Guiry	GUY-ree
18	Grace Diehl	DEEL
19	Estelle Jarrells	J-AIR-uhls
20	Raya Leikin	R-EYE-uh LAY-kihn
21	Chloe Benik	BEHN-ihk
22	Ella Koschineg	KOH-shih-nehg
26	Kayla Ristianto	rih-stee-AHN-toe
27	Evelyn Chudowsky	chuh-DOW-skee
33	Sydney Malaga	MAGHL-uh-guh
35	Ava Jung	JUHG
AC	Dani Reid-Espinal	reed-ESS-pih-nahl
AC	Shaela Krayner	SHAY-luh KRAY-yuhr

ROSTER BREAKDOWN

BY CLASS

FRESHMAN (7)	SOPHOMORES (7)	JUNIORS (8)	SENIORS (10)
0 Qureshey	4 Offit	1 Glassberg	00 Medugno
3 Alessi	8 Polyniak	2 Brown	5 Bishara
13 Park	10 DiPierri	6 Chapman	7 Scott
16 Guiry	19 Jarrells	9 Colbert	11 Kessinger
20 Leikin	22 Koschineg	17 Allen	12 Kingsley
21 Benik	24 Tolbert	26 Ristianto	14 Nelson
23 Wilson	27 Chudowsky	34 Gibbons	15 G.Gonzalez
		35 Jung	18 Diehl
			33 Malaga
			36 Grimes

BY STATE

New York 8	Connecticut 2	Massachusetts 1	Vermont 1
California 3	Georgia 2	Maryland 1	Virginia 1
Pennsylvania 3	Illinois 2	Michigan 1	Washington 1
Texas 3	New Jersey 2	South Carolina 1	

TODAY'S OPPONENT: YALE BULLDOGS

MATCH #10 • ROAD MATCH #5 • SATURDAY, SEPT. 27 • CORNELL AT YALE • 6 P.M. ET • NEW HAVEN, CONN. • REESE STADIUM • TV: ESPN+



Season Stats (as of 9/25)	OFF	RK	DEF	RK	SH%	RK	SOG%	RK	SV/G	RK	SV%	RK	CK/G	PK	F/G	YC	RC
Cornell (2-3-4, 0-1-0 Ivy League)	0.78	T-305	1.22	T-160	.067	T-319	.419	249	3.78	T-187	.756	T-163	4.78	0-0	10.89	6	1
Yale (2-6-0, 0-1-0 Ivy League)	1.63	T-123	2.50	T-323	.149	56	.506	56	7.00	12	.737	199	2.38	1-3	12.88	15	0

NEWS AND NOTES

- ▶ This evening's clash in New Haven will serve as the 43rd all-time meeting between Cornell and Yale. The Bulldogs hold a narrow 21-18-3 edge in the series, but the Big Red enters unbeaten in its last three matchups against Yale (1-0-2).
- ▶ A result for Cornell would be the Big Red's first four-match unbeaten streak against Yale since posting five straight victories between 1991 and 1995. A victory would also serve as the Big Red's first time winning consecutive matches against the Bulldogs since 2015 and 2016.
- ▶ Yale, meanwhile, is unbeaten in its last four home contests against Cornell (2-0-2) and will be looking to extend the streak to its longest since winning six consecutive home matches against the Big Red between 2003 to 2013.
- ▶ Contests between Cornell and Yale have been relatively close in recent years as each of the last 15 meetings have been decided by one goal or fewer, including the last eight played in New Haven.
- ▶ Vienna Lundstedt leads Yale with five goals and 12 points, while Alex Chang (0-2—2), Reagan Exley (1-2—4), and Logan Jacobs (0-2—2) share the team lead with two assists apiece.

THE SERIES

Overall	Yale leads, 21-18-3
In Ithaca, N.Y.	Cornell leads, 10-8-1
at Berman Field	Yale leads, 8-4-1
In New Haven, Conn.	Yale leads, 13-8-2
at Reese Stadium	Yale leads, 13-8-2
Neutral Sites	N/A
Last Meeting	@Cornell 2, Yale 1 (Oct. 19, 2024)

ON THIS DATE: SEPT. 27

- ▶ This evening's match will serve as Cornell's 12th-ever match played on Sept. 27. Cornell has won its last three matches on Sept. 27, having defeating Columbia (2-0 in 2013), Wagner (2-1 in 2015), and Colgate (1-0 in 2023).
- ▶ Cornell and Yale will be meeting on Sept. 27 for the first time in program history, while squaring off against the Bulldogs in September for the first time since 2002 (Sept. 28).
- ▶ The Big Red is 2-1-0 against Ivy League opponents on the date, defeating Columbia in 2003, 3-0, and 2013, 2-0.

SERIES FACTS (MORE ON PAGE 6)

Overall Streak	W1 UB3 (1-0-2)
Home Streak	W1 UB2 (1-0-1)
Road Streak	T1 WL4 (0-2-2)
Neutral Streak	—
Last Home Win	2-1 (Oct. 19, 2024)
Last Road Win	1-0 (Oct. 17, 2015)
Last Neutral Win	—
Last Home Loss	0-1 (Oct. 13, 2018)
Last Road Loss	0-1 (Oct. 16, 2021)
Last Neutral Loss	—
Last Home Tie	0-0 (Oct. 15, 2022)
Last Road Tie	1-1 (Oct. 14, 2023)
Last Neutral Tie	—
Largest Winning Margin	+5, (5-0, Sept. 28, 1991)
Largest Losing Margin	-5, (4x), Last: (0-5, Oct. 13, 2007)
Most Goals Scored	5, (5-0, Sept. 28, 1991)
Most Goals Allowed	6, (1-6, Nov. 7, 1998)
Fewest Goals Scored	0, (15x), Last: (0-0, Oct. 15, 2022)
Fewest Goals Allowed	0, (13x), Last: (0-0, Oct. 15, 2022)

NEXT OPPONENT: HARVARD CRIMSON

MATCH #11 • HOME MATCH #6 • SATURDAY, OCT. 4 • CORNELL VS. HARVARD • NOON ET • ITHACA, N.Y. • BERMAN FIELD • TV: ESPN+



Season Stats (as of 9/25)	OFF	RK	DEF	RK	SH%	RK	SOG%	RK	SV/G	RK	SV%	RK	CK/G	PK	F/G	YC	RC
Cornell (2-3-4, 0-1-0 Ivy League)	0.78	T-305	1.22	T-160	.067	T-319	.419	249	3.78	T-187	.756	T-163	4.78	0-0	10.89	6	1
Harvard (2-4-2, 0-1-0 Ivy League)	1.13	T-226	1.38	T-197	.087	277	.375	T-321	3.38	T-242	.711	T-248	7.25	1-2	9.50	8	0

NEWS AND NOTES

- ▶ Next Saturday will be the 43rd all-time meeting between the bitter Ivy League rivals. Harvard has a 30-3-9 lead in the series and is unbeaten in the last 30 contests against Cornell (25-0-5).
- ▶ Cornell is seeking for its first win over Harvard since Oct. 2, 1993, when it defeated the Crimson in double overtime, 1-0, behind a goal from **AMY DUESING** with 1:18 remaining. **SUE DeLONG** made 11 saves to earn the clean sheet for the Big Red.
- ▶ Harvard, who is concluding its seven-match homestand this afternoon against Princeton, is looking to avoid starting Ivy play 0-2-0 for the second consecutive season. The Crimson has never gone winless in its first two Ivy League matches in back-to-back seasons in program history.
- ▶ Jasmine Leshnick and Lauren Muniz are tied for the team lead in goals (2) and have the same amount of points as Elsa Santos López (1-3—5), who has a Crimson-best three assists.
- ▶ Rhiannon Stewart has played all 720 minutes in goal for the Crimson, compiling a 2-4-2 record, 1.38 goals-against average, and .711 save percentage. Stewart's lone clean sheet came against Kansas State (Sept. 1).

THE SERIES

Overall	Harvard leads, 30-3-9
In Ithaca, N.Y.	Harvard leads, 14-2-5
at Berman Field	Harvard leads, 12-0-2
In Cambridge, Mass.	Harvard leads, 16-1-4
at Jordan Field	Harvard leads, 5-0-2
Neutral Sites	N/A
Last Meeting	@Harvard 5, Cornell 0 (Oct. 13, 2024)

ON THIS DATE: OCT. 4

- ▶ Next Saturday will be Cornell's 13th match played on Oct. 4. Cornell is unbeaten its last two on the date, defeating Colgate, 1-0, in 2022, and drawing with Columbia, 1-1, in 2023.
- ▶ Cornell and Harvard are meeting on Oct. 4 for the first time in program history. It will be the earliest meeting between the sides since playing to a scoreless double-overtime draw on Sept. 30, 1995, at Robison Alumni Fields in Ithaca.
- ▶ The Big Red is 1-4-1 against Ivy League opponents on the date, with the lone win coming against Yale (4-1) in 1986.

SERIES FACTS

Overall Streak	L7 WL30 (0-25-5)
Home Streak	L6 WL15 (0-12-3)
Road Streak	L3 WL17 (0-14-3)
Neutral Streak	—
Last Home Win	1-0 (OT) (Oct. 2, 1993)
Last Road Win	3-0 (Oct. 8, 1988)
Last Neutral Win	—
Last Home Loss	1-3 (Oct. 7, 2023)
Last Road Loss	0-5 (Oct. 13, 2024)
Last Neutral Loss	—
Last Home Tie	2-2 (2OT) (Oct. 8, 2011)
Last Road Tie	0-0 (2OT) (Oct. 8, 2016)
Last Neutral Tie	—
Largest Winning Margin	+3, (3-0, Oct. 8, 1988)
Largest Losing Margin	-6, (0-6, Oct. 9, 1982)
Most Goals Scored	3, (3-0, Oct. 8, 1988)
Most Goals Allowed	7, (2-7, Oct. 12, 2013)
Fewest Goals Scored	0, (27x), Last: (0-5, Oct. 13, 2024)
Fewest Goals Allowed	0, (7x), Last: (0-0 (2OT), Oct. 8, 2016)

CORNELL VERSUS THE IVY LEAGUE

	VARSITY MEMBERSHIP	OVERALL RECORD		HOME RECORD		AWAY RECORD		NEUTRAL RECORD		BERMAN FIELD RECORD		IVY LEAGUE REGULAR SEASON RECORD		IVY LEAGUE POSTSEASON RECORD		LAST	
		RECORD	PCT	RECORD	PCT	RECORD	PCT	RECORD	PCT	RECORD	PCT	RECORD	PCT	RECORD	PCT	STRK	10
Brown	1978-present	7-31-4	.214	2-17-2	.143	5-14-2	.286	0-0-0	—	1-10-2	.154	7-31-4	.214	0-0-0	—	L13	0-10-0
Columbia	1986-present	20-18-1	.526	11-7-1	.605	9-11-0	.450	0-0-0	—	7-7-1	.500	20-18-1	.526	0-0-0	—	L2	2-7-1
Dartmouth	1979-present	11-28-5	.307	9-10-3	.477	1-18-2	.095	1-0-0	1.000	4-8-1	.346	10-27-4	.293	0-0-0	—	W1	4-6-0
Harvard	1978-present	3-30-9	.179	2-14-5	.214	1-16-4	.143	0-0-0	—	0-12-2	.071	3-30-9	.179	0-0-0	—	L7	0-9-1
Penn	1991-present	7-22-4	.273	4-10-2	.313	3-12-2	.235	0-0-0	—	1-10-2	.154	7-22-4	.273	0-0-0	—	L2	1-6-3
Princeton	1980-present	8-30-4	.238	5-15-1	.262	3-15-3	.214	0-0-0	—	1-12-0	.077	8-30-4	.238	0-0-0	—	L2	1-9-0
Yale	1978-present	18-21-3	.464	10-8-1	.553	8-13-2	.391	0-0-0	—	4-8-1	.346	18-21-3	.464	0-0-0	—	W1	3-4-3
TOTALS		74-179-30	.314	43-80-15	.366	30-99-15	.260	1-0-0	1.000	18-66-9	.262	73-176-29	.315	0-0-0	.000		

CORNELL QUICK FACTS

GENERAL INFORMATION

Location:	Ithaca, N.Y.
Enrollment:	26,284 (16,071 undergraduate)
Founded:	1865
Nickname:	Big Red
School Colors:	Carnelian Red and White
Conference:	The Ivy League
President:	Michael I. Kotlikoff
Meakam Smith Director of Athletics:	Dr. Nicki Moore
Athletics Website:	CornellBigRed.com
Facebook:	/CornellSports
X:	@CornellSports
Instagram:	@CornellSports @cornellwsoccer

HISTORY

First Varsity Season (Seasons):	1982 (43rd)
All-Time Record:	240-352-79 (.417)
Ivy League Regular-Season Titles (last):	2 (1991)
Ivy League Tournament Appearances:	None
Ivy League Championship Titles:	None
NCAA Tournament Appearances:	None

BERMAN FIELD

Year Opened (Seasons):	1997 (27th)
Capacity:	1,000
All-Time Record:	71-109-29 (.409)
Under Rob Ferguson:	14-11-11 (.542)

COACHING / SUPPORT STAFF

Head Coach:	Rob Ferguson (University of Manchester) Seventh season at Cornell (Sixth in role)
Record at Cornell:	16-35-21 (.368)
Overall Record:	29-66-23 (.343)
Assistant Coach:	Dani Reid-Espinal (UAlbany '15) Fifth season
Assistant Coach:	Shaela Krayner (USC Aiken '01) Second Season
Athletic Trainer:	Emily Berg (SUNY Cortland '22) Third year at Cornell; Second with program

2024 IN REVIEW

Overall Record:	3-9-4 (.312)
Ivy League Record (Finish):	2-5-0 (.286) — 7th
Home Record:	3-3-2 (.500)
Road Record:	0-6-2 (.125)
Neutral Record:	0-0-0
Ivy League Tournament:	Did not qualify
NCAA Tournament:	Not selected
United Soccer Coaches Poll (final):	Not ranked
TopDrawer Soccer Poll (final):	Not ranked

2025 TEAM INFORMATION

Letterwinners Returning / Lost:	13 / 8
Newcomers:	7
Fr / So / Jr / Sr:	7 / 7 / 8 / 10

ATHLETIC COMMUNICATIONS

Jeremy Hartigan	
Sr. Associate Director of Athletics for Communications	
Emmie Agee	
Assistant Director of Editorial Content	
Shawn Gillen	
Assistant Director of Athletic Communications	
Marshall Haim	
Assistant Director of Athletic Communications (WSOC)	
Phone:	(716) 465-4945
Email:	mh2348@cornell.edu
Aaron Kelly	
Assistant Director of Athletic Communications	

#YELLCORNELL

FRESHMAN IN FOCUS

► Freshman goalkeeper **SAMANTHA QURESHEY** has already made quite an impact in her first collegiate season. After starting the season opener at Boston College (Aug. 22), Qureshey became just the eighth freshman goalkeeper in program history to start a season opener, joining **LISA BRIGHAM** (1982), **KATE THOMPSON** (1983), **KATE ALEXANDER** (1992), **KATIE THOMAS** (2001), **JODI PALMER** (2007), **NICOLE SHULMAN** (2019), and **ERICA FOX** (2021).

► Her clean sheet over the Eagles placed her among exclusive company, becoming the fifth Big Red freshman goalkeeper to post a shutout in a season opener, joining Thompson (1983), Alexander (1992), Thomas (2001), and Fox (2021).

► After posting a clean sheet over Binghamton on Sept. 14, Qureshey became the fifth Cornell rookie to register at least three solo shutouts in a season while becoming the first to do so since Alexander (six) in 1992. Brigham (three in 1982), Thompson (nine in 1983), and **SHERRIE CHOCOLA** (five in 1984) are the other keepers with three-plus shutouts in their freshman campaigns.

► Through the completion of Wednesday's matches, Qureshey is one of 18 freshmen Division I goalkeepers with at least three clean sheets this season, and one of two Ivy League first-year keepers that matches the criteria (Dartmouth's Paige Knoth — three).

► Entering this weekend, Qureshey leads all Ivy League goalkeepers in save percentage, posting a .750 save percentage (22-of-33), ahead of Yale's Kyla Holmes by 20 points (.730 — 34-of-54). Qureshey's 1.22 goals-against average ranks third in the Ancient Eight, only behind Knoth (0.83) and Brown's Bella Schopp (1.11).

KNOT AGAIN...

► Cornell's four draws are tied with 34 other Division I programs for the seventh-highest total through the completion of Wednesday's matches.

► A total of 16 programs have more draws than the Big Red, highlighted by Cal Poly (2-1-7) and Drexel (2-2-7) having the most ties in Division I with seven apiece.

► The Big Red's total, which leads all Ivy League programs this season, is already tied for the third-most in a single season in program history, alongside the 2002 (8-5-4), 2015 (9-4-4), and 2024 (3-9-4) squads. With its next tie, it would match the 2022 team (4-7-5) for the second-most, while the 4-5-6 mark in 2023 remains as the single-season record.

THE FINISHING TOUCH

► Junior forward **SYDNEY ALLEN** has built a reputation as one of Cornell's most reliable clutch performers. She delivered again in the Big Red's home-opening win over Colgate on Aug. 24, netting her fourth career goal and game-winning goal.

► Another decisive strike would cement Allen into Cornell's record book, creating a five-way tie for 10th on the program's all-time list for game-winners alongside **DINA GROSSMAN** (1988-91), **AMY DUESING** (1991-94), **JEN TIDSBURY** (1991-94), and **EMILY KNIGHT** (2000-03). At the top stands **LAURIE COLLIER** (1984-87), who owns the program standard with 11.

► Allen's knack for big moments was on full display last fall, when her winner against Yale on Oct. 19 made her just the 12th player (14th instance) in school history to record at least three game-winning goals in a single season. She became the first to accomplish the feat since **MANEESHA CHITANVIS** in 2010 and went on to finish the season tied for the Ivy League lead with Harvard's Josefine Hasbo and Princeton's Brooke Dawihare and Pietra Tordin in game-winners while ranking 94th nationally.

► The finishing touch provided by Allen has fueled a broader offensive trend under head coach **ROB FERGUSON**. Since being named head coach, the Big Red has scored in 48 of the 72 matches (66.7 percent) coached by Ferguson, standing as the second-highest rate in program history, only behind **RANDY MAY**'s 67.7 percent mark set between 1982-99. Ferguson is one of four Cornell coaches to see their teams score in at least 60 percent of matches played — a group featuring May, **BERHANE ANDERBERHAN** (66.0 percent, 2000-05), and **PATRICK FARMER** (62.2 percent, 2012-16).

CORNELL RECORD BOOK

MOST CLEAN SHEETS BY A FRESHMAN

Cornell Program History

RK.	PLAYER	SEASON	CS
1.	Kate Thompson	1983	9
2.	Kate Alexander	1992	6
3.	Sherrie Chocola	1984	5
4.	Lisa Brigham	1982	3
►	Samantha Qureshey	2025	3

IVY LEAGUE LEADERS

BEST SAVE PERCENTAGES

This Season (as of 9/25/25)

PLAYER	TEAM	SV%
► Samantha Qureshey	Cornell	.750
Kyla Holmes	Yale	.730
Rhiannon Stewart	Harvard	.711
Paige Knoth	Dartmouth	.688
Bella Schopp	Brown	.680
Cecilia Cerone	Princeton	.640
Samantha Mahoney	Columbia	.583

CORNELL RECORD BOOK

MOST DRAWS IN A SINGLE SEASON

Cornell Program History

SEASON	RECORD	W%
2023	4-5-6	.467
2022	4-7-5	.406
2002	8-5-4	.588
2015	9-4-4	.647
2024	3-9-4	.312
► 2025	2-3-4	.444

CORNELL RECORD BOOK

HIGHEST PCT. OF MATCHES WITH GOAL

By Coach — Cornell Program History

COACH	YEAR(S)	GG/GP	PCT
Randy May	1982-99	191/282	.677
► Rob Ferguson	2020-25	48/72	.667
Berhane Anderberhan	2000-05	64/97	.660
Patrick Farmer	2012-16	51/82	.622
Gretchen Zigante	2006	10/17	.588

CORNELL MISCELLANEA

GOALS SCORED BY MINUTE

	TOTAL	1-15'	16-30'	31-45'	46-60'	61-75'	75+'
Cornell	7	1	2	1	0	1	2
Opp.	11	3	1	0	3	3	1
Quickest Goal Scored							Time
Gaby Gonzalez, vs. Columbia (9/20/25)							11:22
Quickest Goal Allowed							Time
Taisiya Reid, at Delaware (9/4/25)							8:34
Latest Goal Scored							Time
Sydney Allen, vs. Colgate (8/24/25)							86:03
Latest Goal Allowed							Time
Dema Elder, vs. Columbia (9/20/25)							89:30
Game-Winning Goals After 75'							Time
Sydney Allen, vs. Colgate (8/24/25)							86:03
Multi-Goal Matches							Goals
Multi-Assist Matches							Assists

ALL-TIME PROGRAM VICTORIES

9/21/82	at Hamilton	W, 4-1	1
10/26/85	vs. Yale	W, 3-0	25
10/1/88	vs. Yale	W, 2-0	50
10/19/91	vs. Harvard	W, 2-1	75
11/13/94	vs. Colgate	W, 2-0	100
10/18/98	vs. Northeastern	W, 5-2	125
10/23/02	vs. Wagner	W, 4-0	150
9/16/07	vs. Lafayette	W, 3-2	175
9/21/14	at Binghamton	W, 1-0 (OT)	200
8/27/21	vs. Canisius	W, 2-0	225
8/28/25	vs. La Salle	W, 1-0	240

ALL-TIME GOALS SCORED • ALL MATCHES

9/21/82	Karlee Seager	A	Hamilton	1
10/25/86	Jennifer Smith	A	Dartmouth	100
9/18/90	Krista Twombly	H	Canisius	200
11/6/93	Amy Finkelstein	H	Yale	300
10/7/97	Nikki Platte	A	Syracuse	400
10/23/02	Sarah Olsen	H	Wagner	500
11/10/07	Samantha Wiener	H	Columbia	600
9/19/14	Elizabeth Crowell	H	Buffalo	700
9/22/23	Kendall Patten	A	Princeton	800
9/20/25	Gaby Gonzalez	H	Columbia	830

ALL-TIME GOALS SCORED • HOME MATCHES

10/5/82	Karlee Seager	Cazenovia	1
10/7/89	Karen Roberts	Columbia	100
10/23/95	Lori Penny	Army	200
9/16/05	Kara Ishikawa	Canisius	300
10/24/15	Charlotte Tate	Brown	400
9/20/25	Gaby Gonzalez	Columbia	465

ALL-TIME GOALS SCORED • NON-HOME MATCHES

9/21/82	Karlee Seager	A	Hamilton	1
9/22/91	Amy Snow	A	Rutgers	100
9/16/00	Ellen Daly	A	Columbia	200
10/15/11	Xandra Hompe	A	Yale	300
9/11/25	Sydney Allen	A	Providence	365

2025 RECORDS BY KIT COMBINATIONS

FIELD PLAYERS	OVERALL	IVY
Red-Red-Red	0-0-1	0-0-0
White-White-White	0-1-0	0-0-0
Black-Black-Black	2-2-3	0-1-0
GOALKEEPERS	OVERALL	IVY
Black-Black-Black	0-0-1	0-0-0
Gray-Gray-Gray	1-2-0	0-1-0
Teal-Teal-Teal	1-1-3	0-0-0

NOTE: Order of colors denote Jersey-Shorts-Socks

CLEAN SHEET CLUB

► Senior goalkeeper **NATALIE MEDUGNO** enters this evening's match against Yale with 5.5 career clean sheets, positioning her 12th all-time in program history and within striking distance of entering the top 10.

► Medugno stands just a half-clean sheet away from tying **MEGHAN CAUZILLO** (1997-00) and **MEGHAN KENNEDY** (2015-18) for the 10th-most shutouts in program history. With a full clean sheet against the Bulldogs tonight, Medugno would leapfrog both goalkeepers while moving into a tie with **KATRINA MATLIN** (6.5, 2003-06) for the ninth-most career clean sheets.

A GLANCE AT WHAT'S BACK

► Cornell brings back a strong returning group in 2025, with 18 players who saw action last fall. The Big Red also return four of its top six scorers and half of the team's offensive production (17 of 34 points: six goals, five assists).

► Leading the way is junior forward **SYDNEY ALLEN**, the Big Red's top returning scorer after tying **LAKEN GALLMAN** for the team lead in goals (3) and finishing with six points. She is joined by senior midfielders **ABIGAIL BISHARA** and **TANUM NELSON**, and junior forward **ALANNA COLBERT**, each of whom added a goal and an assist last season.

► Bishara, a Second Team All-Ivy selection in 2024, is one of 13 all-conference honorees returning across the Ivy League this fall — with all eight programs represented.

► Cornell's 18 returners are tied with Columbia and Penn for the second-most in the Ivy League, trailing only Brown (19). The Big Red is also one of four Ivy programs bringing back at least half of last year's scoring output, alongside Brown (64.4 percent), Penn (64.1 percent), and Princeton (56.3 percent).

► In goal, seniors **NATALIE MEDUGNO** and **HANNAH GRIMES** return as experienced options. Medugno made 11 appearances (10 starts) in 2024, compiling a 2-4-4 record, while Grimes saw her first collegiate action against Pepperdine, closing out the final 9:27 after starter **ERICA FOX** received a red card.

► The Big Red also regains senior forward **SYDNEY MALAGA**, who missed the 2024 campaign due to injury. In 2023, Malaga finished in a four-way tie with **LAKEN GALLMAN**, **MIA GONZALEZ**, and **AVA LADEN** for the team lead in goals (three), which included scoring the game-winning goal against Colgate (Sept. 26, 2023).

GETTING THE CAPTAIN'S BAND

► Leadership for the 2025 season will be guided by a three-player captaincy, with senior midfielders **ABIGAIL BISHARA** and **TANUM NELSON** joined by senior defender **GABY GONZALEZ**.

► Bishara enters her third year in a leadership role, having served on the team's leadership council the past two seasons. Nelson and Gonzalez assume leadership responsibilities for the first time this season.

IVY PRESEASON POLL

► When the Ivy League preseason poll was released on Aug. 18, Cornell found itself projected to finish eighth in the eight-team conference. Reigning Ivy League Tournament champion Princeton claimed the top spot with nine of 16 first-place votes, while Brown followed closely with six first-place votes and Harvard captured the remaining first-place vote. Columbia, Yale, Dartmouth, and Penn all finished ahead of the Big Red in the preseason rankings.

► The stakes are clear for the Big Red's pursuit of reaching the Ivy League Tournament for the first time in program history, as only the top four teams from the regular season advance to the 2025 Ivy League Women's Soccer Tournament.

► The tournament format features the No. 1 overall seed serving as the host of the three-game slate, with semifinal matches scheduled for Thursday, Nov. 6, and the championship match set for Sunday, Nov. 9, and the winner receiving the conference's automatic bid to the 2025 NCAA Division I Women's Soccer Championship.

CORNELL RECORD BOOK

MOST CAREER CLEAN SHEETS
Cornell Program History

RK.	PLAYER	SEASONS	CS
1.	Melissa Gambrell	1986-89	22
8.	Kate Alexander	1992-93	7
9.	Katrina Matlin	2003-06	6.5
10.	Meghan Cauzillo	1997-00	6
	Meghan Kennedy	2015-18	6
► 12.	Natalie Medugno	2022-Pres.	5.5

IVY LEAGUE LEADERS

MOST POINTS RETURNING FROM 2024
This Season

TEAM	% OF G	% OF AST	% OF PTS
Brown	66.7%	58.8%	64.4%
Penn	69.2%	53.8%	64.1%
Princeton	57.5%	54.3%	56.3%
► Cornell	50.0%	50.0%	50.0%
Dartmouth	29.2%	65.2%	40.8%
Yale	37.5%	46.2%	40.5%
Harvard	39.3%	38.5%	39.0%
Columbia	34.6%	40.7%	36.7%

IVY LEAGUE LEADERS

2025 IVY LEAGUE PRESEASON POLL
First-Place Votes Denoted in Parentheses

RK.	TEAM	PTS
1.	Princeton (9)	118
2.	Brown (6)	105
3.	Harvard (1)	96
4.	Columbia	87
5.	Yale	61
6.	Dartmouth	41
	Penn	41
► 8.	Cornell	27

SERIES HISTORY

C

AT

Y

SERIES HISTORY

YALE LEADS, 21-18-3

Ithaca, N.Y. (Berman Field):10-8-1 (4-8-1)

New Haven, Conn. (Reese Stadium):8-13-2 (8-13-2)

Neutral Sites:0-0-0

Under Rob Ferguson:1-1-2

SCORING RECORDS

CORNELL

Ithaca:5

COR, 5-0 (9/28/1991)

New Haven:4, (3x)

Last: COR, 4-0 (10/3/1987)

YALE

Ithaca:3

YALE, 3-1 (10/18/2008)

New Haven:6

YALE, 6-1 (11/7/1998)

MATCH-BY-MATCH RESULTS

DATE	COR RK	YALE RK	SITE	SCORE
9/25/1982			New Haven, Conn.	L, 2-3
10/22/1983			Ithaca, N.Y.	W, 4-0
10/27/1984	#17		New Haven, Conn.	W, 4-1
10/26/1985			Ithaca, N.Y.	W, 3-0
10/4/1986			New Haven, Conn.	W, 4-1
10/3/1987			New Haven, Conn.	W, 4-0
10/1/1988			Ithaca, N.Y.	W, 2-0
9/30/1989			New Haven, Conn.	W, 1-0
9/28/1990			New Haven, Conn.	L, 0-2
9/28/1991	#14		Ithaca, N.Y.	W, 5-0
9/26/1992	#17	#20	New Haven, Conn.	W, 1-0
11/6/1993			Ithaca, N.Y.	W, 3-2 (OT)
11/5/1994			New Haven, Conn.	W, 2-1
11/4/1995			Ithaca, N.Y.	W, 1-0
11/9/1996			New Haven, Conn.	L, 2-4
11/8/1997			Ithaca, N.Y.	L, 0-1 (OT)
11/7/1998			New Haven, Conn.	L, 1-6
11/6/1999			New Haven, Conn.	L, 0-5
9/30/2000			Ithaca, N.Y.	L, 1-2
9/22/2001			New Haven, Conn.	W, 1-0 (OT)
9/28/2002			Ithaca, N.Y.	L, 0-2
10/18/2003			New Haven, Conn.	L, 1-2 (OT)
10/16/2004			Ithaca, N.Y.	L, 0-2
10/15/2005	#21		New Haven, Conn.	L, 0-5
10/14/2006			Ithaca, N.Y.	W, 3-1
10/13/2007			New Haven, Conn.	L, 0-5
10/18/2008			Ithaca, N.Y.	L, 1-3
10/17/2009			New Haven, Conn.	L, 1-2 (OT)
10/16/2010			Ithaca, N.Y.	W, 1-0
10/15/2011			New Haven, Conn.	L, 1-2 (OT)
10/13/2012			Ithaca, N.Y.	L, 0-1
10/19/2013			New Haven, Conn.	L, 0-1
10/18/2014			Ithaca, N.Y.	L, 0-1
10/17/2015			New Haven, Conn.	W, 1-0
10/15/2016			Ithaca, N.Y.	W, 2-1
10/14/2017			New Haven, Conn.	T, 0-0 (2OT)
10/13/2018			Ithaca, N.Y.	L, 0-1
10/19/2019			New Haven, Conn.	L, 0-1
10/16/2021			New Haven, Conn.	L, 0-1
10/15/2022			Ithaca, N.Y.	T, 0-0
10/14/2023			New Haven, Conn.	T, 1-1
10/19/2024			Ithaca, N.Y.	W, 2-1

SCOUTING YALE

► Yale (2-6-0) comes into tonight's match riding a six-match losing streak after starting the season strong with wins over Vermont (1-0) and Hofstra (4-0) in late August. The Bulldogs now share the fourth-longest active losing streak in Division I soccer alongside UC Riverside and Southern.

► The Bulldogs' offense has come alive recently, exploded for seven goals over their last three outings after being held to just one goal across a three-match span against then-No. 25 Vanderbilt, UConn, and then-No. 20 Kansas. Despite Yale's recent offensive success, it has conceded 13 goals over its most recent three-match span, which includes allowing five goals apiece to Stony Brook and Brown.

► Vienna Lundstedt leads the attack with five goals and 11 points, while Anita Thorvaldsdottir has contributed three goals — all coming in the team's last three matches. In net, Kyla Holmes has played every second of the season, posting a 2.50 goals-against average and .730 save percentage with two clean sheets.

LAST TIME AGAINST YALE

► ITHACA, N.Y. (OCT. 9, 2024) — Sophomore forwards **ALANNA COLBERT** and **SYDNEY ALLEN** scored first-half goals to provide enough cushion for the Cornell women's soccer team as it defeated Yale, 2-1, at Berman Field.

► Yale's Vienna Lundstedt tallied the lone goal of the match for the visitors, netting her second goal of the season in the 54th minute in an effort to ignite a second-half comeback. First-year goalkeeper Anna Shamgochian matched her season high in saves (seven) in the setback for Yale.

► Joining Colbert and Allen in the scoring column for the Big Red was senior forward **LAKEN GALLMAN** and senior defender **LILY ELLINGSON**, who assisted on the respective goals for the Big Red. Junior goalkeeper **NATALIE MEDUGNO** notched her second victory of the season, halting a trio of Bulldog shots.

YALE'S LAST TIME OUT

► NEW HAVEN, Conn. (SEPT. 20, 2025) — Yale was dealt its sixth consecutive loss, opening Ivy League play with a 5-2 setback against Brown at Reese Stadium.

► The match was effectively decided during a first-half sequence where Brown quickly built a 3-0 lead through goals from Joy Okonye (17th and 29th minutes) and Naya Cardoza (26th minute). Anita Thorvaldsdottir provided a quick response to Okonye's second goal with a 31st-minute tally, to extend her goal-scoring streak to three matches.

► Brown extended its advantage in the second half when Corine Gregory's shot deflected off a Yale defender in the 59th minute. Vienna Lundstedt converted her team-leading fifth goal in the 71st minute to cut the deficit, 4-2, before Ayla Sahin tallied an insurance marker six minutes later for Brown.

► Kyla Holmes made seven saves in the setback for the Bulldogs.

42 YEARS, 255 MILES, 42 MEETINGS

► Tonight marks the 43rd meeting between the programs, with Yale holding a 21-18-3 series edge. Cornell has not lost in any of the last three straight meetings against the Bulldogs (1-0-2), and is seeking its first four-match unbeaten streak against Yale since winning five straight from 1991-95.

► Yale has been tough to beat at home in the series, as the Bulldogs are unbeaten in their last four home games against Cornell (2-0-2). Recent meetings have been tight affairs, with each of the last 15 matches have been decided by one goal or fewer, including all eight contests played in New Haven.

CORNELL PLAYERS VS. YALE

PLAYER	GP	GS	MIN	G	A	PTS	SH	SH%	SOG	SOG%	YC	RC	GWG
Abigail Bishara	3	1	132	0	0	0	0	.000	0	.000	1	0	0
Tanum Nelson	3	1	156	0	0	0	7	.000	4	.571	0	0	0
Sydney Malaga	2	0	63	0	0	0	1	.000	0	.000	0	0	0
Mariana Kessinger	2	2	102	0	0	0	0	.000	0	.000	0	0	0
Gaby Gonzalez	2	1	93	0	0	0	1	.000	1	1.000	0	0	0
Sydney Allen	1	1	51	1	0	2	2	.500	2	1.000	0	0	0
Kayla Ristianto	1	1	81	0	0	0	0	.000	0	.000	0	0	0
Alanna Colbert	1	0	45	1	0	2	2	.500	2	1.000	0	0	0
Ella Koschineg	1	0	9	0	0	0	0	.000	0	.000	0	0	0
Emily Gibbons	1	0	34	0	0	0	0	.000	0	.000	0	0	0
TOTALS	17	7	766	2	0	4	13	.154	9	.692	1	0	0
GOALKEEPER	GP	GS	MIN	W	L	T	W%	GA	GAA	SV	SV%	SHO	SF
Natalie Medugno	1	1	90:00	0	1	0	.000	3	3.00	3	.500	0	8

6 | 2025 BIG RED WOMEN'S SOCCER

CORNELL GAME NOTES | MATCH NO. 10 AT YALE



ROB FERGUSON

SIXTH YEAR AS HEAD COACH (FIFTH SEASON)

Season at Cornell: Seventh Season
College: University of Manchester

ROB FERGUSON, who is entering his sixth year as the head coach of the Cornell women's soccer team, was hired as the sixth head coach in program history in February 2020. Prior to his appointment as head coach, Ferguson served as an assistant coach for the Big Red during the 2019 campaign under previous head coach **DWIGHT HORNIBROOK**.

His most recent season in 2024 saw Cornell have an overall record of 3-9-4 and a 2-5-0 mark in Ivy League action, matching the most conference wins by the Big Red under Ferguson (2-3-2 in 2022). The Big Red had two Second Team All-Ivy honorees in junior midfielder **ABIGAIL BISHARA** and senior defender **LILY ELLINGSON**.

Cornell opened the 2024 campaign without a loss in its first three matches, highlighted by a 2-1 victory over Syracuse (Sept. 1, 2024), the second consecutive year the Big Red defeated its Central New York rival. It marked the 12th instance in program history and the first time since 2014 and 2015 that it did not lose any of its first three matches in back-to-back years.

The 2023 campaign saw Cornell go 4-5-6 overall and 0-5-2 in Ivy League action. The Big Red had its highest offensive production in a season since 2015, as the Big Red recorded 21 goals and 58 points. **REAGAN PAUWELS** was named a Second Team All-Ivy selection for a second consecutive season while **MIA GONZALEZ** (forward) and **CECILY POKIGO** (defender) earned Honorable Mention All-Ivy honors. The trio of Big Red players marked the first time Cornell has had at least three players earn All-Ivy honors in consecutive seasons since 2014 and 2015.

Cornell also opened the 2023 campaign unbeaten over its first six matches of the season (2-0-4), marking the fifth time in program history that the Big Red had not lost any of its first six matches of a season (1986, 1991, 2005, 2015, 2023). The Big Red also went 2-0-3 in its first five home games to register a program-record 11-game home unbeaten streak that dated back to 2022 (5-0-6).

Posting a 4-7-5 record with a 2-3-2 Ivy League ledger in 2022, both of Cornell's conference victories — the most in a season since 2016 — came in the program's final two matches of the season. It was the first time Cornell had won consecutive Ivy League matches since the last match in 2014 and the first fixture in 2015. The Big Red had a 3-1-3 record on Berman Field, which included going unbeaten in its final six matches (3-0-3). The Big Red also had a trio of All-Ivy award winners, including Pauwels and Pokigo receiving Second Team All-Ivy honors.

After Ferguson's first year as head coach in 2020 was canceled due to the COVID-19 pandemic, Cornell had a 3-11-2 mark in 2021, including a 1-6-0 Ivy League record. The Big Red recorded its first conference win at home against Columbia, its first Ancient Eight win since 2016.

In his first season on East Hill as an assistant coach on Hornibook's staff in 2019, Ferguson guided the Big Red to four consecutive victories to start the season — including three straight clean sheets over Siena, Bucknell, and St. Bonaventure. Cornell ultimately finished the season with a 4-10-1 record after the rigors of one some of the strongest Ivy League competition seen in recent years. Ferguson helped get the Big Red's impact freshman class acclimated to collegiate competition, a group that included 2019 All-Ivy League honorable mention selection Ashley Durik.

Ferguson joined the Big Red following a very successful stint as the director of coaching with the WNY Flash Academy. He helped turn the program into a player development leader in Western New York, expanding the program's footprint from 15 teams to 34 teams, and moving them into national recognition in Elite Clubs National League (ECNL).

Under Ferguson's leadership at the Flash, their 03G ECNL and 02G ECNL advanced into the Elite 8 in June 2018, and the club had their first US Youth National Team Camp call-up.

Before joining the WNY Flash Academy, Ferguson was the head coach of both the men's and women's soccer programs at Huston-Tillotson University, an NAIA institution based in Austin, Texas. Prior to that, he served as the executive director of business for the Lonestar Soccer Club for eight years, spanning from 2008 to 2015.

One of the largest and most successful youth soccer clubs in the country, Ferguson coached the Lonestar 96B Red, 93G Red, 94G Red and 95G Red, helping advance the 95G Red to the USYSNC Region III Championships in 2013 and 2014.

Previous stops for Ferguson included a stint as the head coach with Albion Hurricanes FC in Houston, where he guided the AHFC 94G Blue to the USYSNC Regionals for the first time in their history. Before that, he was the director of coaching for FC Arsenal for three years in Bastrop, Texas, and was a regional manager for Britannia Soccer/ProExcel, based in Seattle.

Ferguson is a graduate of the University of Manchester, where he received a bachelor of arts degree in sports studies and business management. He lives with his wife, Kelsey, their two children, Maxwell and Mirann, and their two dogs, Bonsai and Charlie.

FERGUSON'S FILE

COACHING EXPERIENCE

2008-15	Lonestar SC (Director of Business)
2014-15	Huston-Tillotson (Men's Head Coach)
2015	Huston-Tillotson (Women's Head Coach)
2016-19	WNY Flash (Director of Coaching)
2019	Cornell (Assistant Coach)
2020-Pres.	Cornell (Head Coach)

COACHING CREDENTIALS

- USSF 'A' Coaching License
- USSF National Youth License
- NSCAA GK Diploma

EDUCATION

University of Manchester (England)
B.A., Sports Studies & Business Management

NCAA COACHING CAREER

SEASON	RECORD	W%	CONF.	W%
CORNELL (2020 - PRESENT)				
2020	— NO SEASON (COVID-19 PANDEMIC) —			
2021	3-11-2	.250	1-6-0	.143
2022	4-7-5	.406	2-3-2	.429
2023	4-5-6	.467	0-5-2	.143
2024	3-9-4	.313	2-5-0	.286
2025	2-3-4	.444	0-1-0	.000
TOTALS	16-35-21	.368	5-20-4	.241

CORNELL UNDER FERGUSON

CATEGORY	2025	ALL TIME	STREAK
Overall	2-3-4	16-35-21	L1 WL5
Ivy League Match	0-1-0	5-20-4	L3
Non-Conference Match	2-2-4	12-15-17	T2 WL4
Home Match	2-1-2	14-11-11	L1 WL3
Away Match	0-2-2	2-24-10	T1 WL18
Neutral Site Match	0-0-0	0-0-0	—
Day Match (before 5 p.m.)	1-2-2	9-23-12	L1 WL4
Night Match (after 5 p.m.)	1-1-2	7-12-9	T1 WL2
August Match	2-0-2	4-2-6	T1 U8
September Match	0-3-2	5-18-11	L1 WL12
October Match	0-0-0	6-13-4	L1
November Match	0-0-0	1-2-0	L1
Cornell Scores First	2-1-0	14-3-6	L1
Opponent Scores First	0-2-2	2-32-9	T1 WL21
Leading at Half	2-1-0	8-3-5	L1
Trailing at Half	0-2-1	0-21-6	L2 WL7
Tied at Half	0-0-3	8-11-10	T3 WL5
In Regulation	2-3-4	16-34-19	L1 WL5
In Overtime	0-0-0	0-1-2	L1
Nets Zero Goals	0-1-2	0-18-6	T1
Nets One Goal	1-2-2	7-12-12	L1 WL3
Nets Two Goals	1-0-0	8-4-3	W2
Nets Three Goals	0-0-0	0-1-0	L1
Nets Four-Plus Goals	0-0-0	1-0-0	W1
Records Clean Sheet	1-0-2	10-0-6	T1
Allows One Goal	1-0-2	6-8-12	T2 U3
Allows Two Goals	0-1-0	0-9-3	L3
Allows Three Goals	0-2-0	0-10-0	L10
Allows Four-Plus Goals	0-0-0	0-8-0	L8
One-Goal Matches	2-1	13-17	L1
Out-shoots Opponent	2-0-3	13-7-13	T3 U5
Out-shot by Opponent	0-1-1	2-24-5	L1 WL14
Tied in Shots	0-2-0	1-4-3	L2 WL7

STREAK NOTE: W=Won; L=Loss; U=Unbeaten; WL=Winless

2025 CORNELL GOAL SCORING SUMMARIES

PLAYER	GOALS		BY SITE		BY HALF		BY MINUTE						GAME WINNER	LAST LEADING	TEAM W-L-D	LAST GOAL		MATCHES SINCE
	2025	CAREER	HOME	ROAD	1ST	2ND	1-15'	16-30'	31-45'	46-60'	61-75'	76'+				DATE / OPP	GOALKEEPER	
Jessica Alessi	—	—	—	—	—	—	—	—	—	—	—	—	—	—	—	—	—	—
Sydney Allen	2	5	1	1	—	2	—	—	—	—	—	2	1	1	1-0-1	9/11/25 at Providence	Thallman	2
Chloe Benik	—	—	—	—	—	—	—	—	—	—	—	—	—	—	—	—	—	—
Abigail Bishara	—	3	—	—	—	—	—	—	—	—	—	—	—	—	—	8/25/24 at Colgate	Poppinga	24
Brooke Brown	1	1	1	—	—	1	—	—	—	—	1	—	—	—	0-0-1	8/31/25 vs. Kent State	Shaffer	3
Isabel Chapman	—	—	—	—	—	—	—	—	—	—	—	—	—	—	—	—	—	—
Evelyn Chudowsky	—	—	—	—	—	—	—	—	—	—	—	—	—	—	—	—	—	—
Alanna Colbert	1	3	1	—	1	—	—	1	—	—	—	—	—	—	1-0-0	8/24/25 vs. Colgate	Poppinga	6
Grace Diehl	—	—	—	—	—	—	—	—	—	—	—	—	—	—	—	—	—	—
Lauren DiPierri	—	—	—	—	—	—	—	—	—	—	—	—	—	—	—	—	—	—
Emily Gibbons	—	—	—	—	—	—	—	—	—	—	—	—	—	—	—	—	—	—
Gaby Gonzalez	1	2	1	—	1	—	1	—	—	—	—	—	—	—	0-1-0	9/20/25 vs. Columbia	Miller	0
Madison Guiry	—	—	—	—	—	—	—	—	—	—	—	—	—	—	—	—	—	—
Estelle Jarrells	—	—	—	—	—	—	—	—	—	—	—	—	—	—	—	—	—	—
Mariana Kessinger	1	1	1	—	1	—	—	1	—	—	—	—	1	1	1-0-0	8/28/25 vs. La Salle	Yaracs	6
Maran Kingsley	—	—	—	—	—	—	—	—	—	—	—	—	—	—	—	—	—	—
Ella Koschineg	1	1	—	1	1	—	—	—	1	—	—	—	—	—	0-1-0	9/4/25 at Delaware	Hall	2
Raya Leikin	—	—	—	—	—	—	—	—	—	—	—	—	—	—	—	—	—	—
Sydney Malaga	—	4	—	—	—	—	—	—	—	—	—	—	—	—	—	10/28/23 at Penn	Gladu	2
Tanum Nelson	—	2	—	—	—	—	—	—	—	—	—	—	—	—	—	9/5/24 vs. BC	Shippee	19
Jane Offit	—	—	—	—	—	—	—	—	—	—	—	—	—	—	—	—	—	—
Madison Park	—	—	—	—	—	—	—	—	—	—	—	—	—	—	—	—	—	—
Amanda Polyniak	—	—	—	—	—	—	—	—	—	—	—	—	—	—	—	—	—	—
Kayla Ristianto	—	—	—	—	—	—	—	—	—	—	—	—	—	—	—	—	—	—
Izzy Scott	—	—	—	—	—	—	—	—	—	—	—	—	—	—	—	—	—	—
Ivy Tolbert	—	—	—	—	—	—	—	—	—	—	—	—	—	—	—	—	—	—
Andrea Wilson	—	—	—	—	—	—	—	—	—	—	—	—	—	—	—	—	—	—

CORNELL CAREER HIGHS

PLAYER	GOALS	ASSISTS	POINTS	SHOT ATTEMPTS
Jessica Alessi	—	—	—	—
Sydney Allen	1, (5x), Last: at Providence (9/11/25)	—	2, (5x), Last: at Providence (9/11/25)	2, (3x), Last: at Providence (9/11/25)
Chloe Benik	—	—	—	—
Abigail Bishara	1, (3x), Last: at Colgate (8/25/24)	1, (2x), Last: vs. Colgate (8/24/25)	2, (3x), Last: at Colgate (8/25/24)	3, (2x), Last: at Penn (10/28/23)
Brooke Brown	1, vs. Kent State (8/31/25)	1, at Princeton (9/22/23)	2, vs. Kent State (8/31/25)	3, vs. Kent State (8/31/25)
Isabel Chapman	—	—	—	—
Evelyn Chudowsky	—	—	—	—
Alanna Colbert	1, (3x), Last: vs. Colgate (8/24/25)	1, vs. Syracuse (9/1/24)	2, (3x), Last: vs. Colgate (8/24/25)	4, (3x), Last: vs. Binghamton (9/14/25)
Grace Diehl	—	—	—	—
Lauren DiPierri	—	—	—	2, vs. Columbia (9/20/25)
Emily Gibbons	—	—	—	2, (2x), Last: vs. Kent State (8/31/25)
Gaby Gonzalez	1, (2x), Last: vs. Columbia (9/20/25)	1, vs. Syracuse (9/1/24)	2, (2x), Last: vs. Columbia (9/20/25)	5, vs. Syracuse (9/1/24)
Madison Guiry	—	—	—	—
Estelle Jarrells	—	—	—	—
Mariana Kessinger	1, vs. La Salle (8/28/25)	1, (5x), Last: vs. Columbia (9/20/25)	2, vs. La Salle (8/28/25)	3, vs. Marist (8/28/22)
Maran Kingsley	—	—	—	—
Ella Koschineg	1, at Delaware (9/4/25)	—	2, at Delaware (9/4/25)	1, (4x), Last: at Delaware (9/4/25)
Raya Leikin	—	—	—	1, (3x), Last: vs. Columbia (9/20/25)
Sydney Malaga	1, (4x), Last: at Penn (10/28/23)	1, vs. Syracuse (9/3/23)	2, (4x), Last: at Penn (10/28/23)	5, vs. Colgate (9/26/23)
Tanum Nelson	1, (2x), Last: vs. Boston Coll. (9/5/24)	1, (2x), Last: vs. Buffalo (8/29/24)	2, (2x), Last: vs. Boston Coll. (9/5/24)	5, (2x), Last: vs. Colgate (10/17/23)
Jane Offit	—	—	—	—
Madeline Park	—	—	—	—
Amanda Polyniak	—	—	—	1, (3x), Last: vs. Columbia (9/20/25)
Kayla Ristianto	—	1, vs. UAlbany (10/17/23)	1, vs. UAlbany (10/17/23)	1, (3x), Last: vs. Columbia (9/20/25)
Izzy Scott	—	—	—	2, (2x), Last: vs. Kent State (8/31/25)
Ivy Tolbert	—	—	—	3, at Delaware (9/4/25)
Andrea Wilson	—	—	—	3, vs. Kent State (8/31/25)

NOTE: **Bold** denotes accomplished this season

CORNELL GOALKEEPERS CAREER HIGHS

PLAYER	SAVES	SHUTOUTS	SHUTOUT STREAK	ACTIVE SHUTOUT STREAK
Naomi Glassberg	—	—	—	—
Hannah Grimes	—	—	9:27, 9/22/24 - Present	9:27, 9/22/24 - Present
Natalie Medugno	7, at Princeton (9/22/23)	5.5, Last: at Lehigh (9/8/24)	196:22, 8/27/23 - 9/13/23	36:59, 10/19/24 - Present
Samantha Qureshey	8, at Syracuse (9/7/25)	3, vs. Binghamton (9/14/25)	178:57, 9/11/25 - 9/20/25	0:30, 9/20/25 - Present

NOTE: **Bold** denotes accomplished this season

2025 STARTING XI BY MATCH

OPPONENT	00	0	1	2	3	4	5	6	7	8	9	10	11	12	13	14	15	16	17	18	19	20	21	22	23	24	26	27	33	34	36
at Boston College (8/22)	—	S	—	—	—	—	S	—	S	P	S	—	S	—	—	S	S	—	P	—	P	S	—	P	S	P	S	—	P	S	—
Colgate (8/24)	—	S	—	—	—	—	S	—	S	S	S	P	S	—	—	S	P	—	S	—	P	P	—	S	P	P	S	—	P	S	—
La Salle (8/28)	—	S	—	P	—	—	S	—	S	P	—	S	S	—	—	S	S	—	S	—	—	S	—	P	P	P	S	—	—	S	—
Kent State (8/31)	—	S	—	P	—	—	S	—	S	S	S	P	S	—	—	S	S	—	P	—	P	P	—	P	S	S	S	—	—	P	—
at Delaware (9/4)	—	S	—	—	—	—	S	—	S	S	S	S	S	—	—	S	S	—	P	—	P	—	—	P	P	P	S	—	—	S	—
at Syracuse (9/7)	—	S	—	—	P	—	S	P	—	S	S	P	S	—	—	S	S	P	S	—	P	—	—	S	—	P	S	—	—	S	—
at Providence (9/11)	—	S	—	P	—	—	P	—	S	P	S	P	S	—	—	S	S	P	P	—	—	S	—	—	S	S	S	—	—	S	—
Binghamton (9/14)	—	S	—	S	—	—	S	—	S	P	S	P	S	—	—	S	S	—	S	—	P	S	—	—	P	P	S	—	—	P	—
Columbia (9/20)	—	S	—	S	—	—	S	—	S	S	S	P	S	—	—	—	S	—	S	—	P	P	—	P	P	P	S	—	—	S	—
at Yale (9/27)																															
Harvard (10/4)																															
at Lafayette (10/7)																															
at Princeton (10/11)																															
at Penn (10/18)																															
Brown (10/25)																															
at Dartmouth (11/1)																															
MATCHED PLAYED	—	9	—	5	1	—	9	1	8	9	8	8	9	—	—	8	9	2	9	—	7	7	—	7	8	9	9	—	2	9	—
MATCHES STARTED	—	9	—	2	0	—	8	0	8	5	8	2	9	—	—	8	8	0	5	—	0	4	—	2	3	2	9	—	0	7	—

2025 MATCH LEADERS

OPPONENT	GOALS	ASSISTS	POINTS	SHOT ATTEMPTS	SHOTS ON GOAL	SAVES
at Boston College (8/22)	—	—	—	2, Alanna Colbert Izzy Scott	1, by Three Players	4, Samantha Qureshey
Colgate (8/24)	1, Sydney Allen Alanna Colbert	1, Abigail Bishara Mariana Kessinger	2, Sydney Allen Alanna Colbert	4, Alanna Colbert	2, Sydney Allen	3, Samantha Qureshey
La Salle (8/28)	1, Mariana Kessinger	—	2, Mariana Kessinger	2, Abigail Bishara Andrea Wilson	1, by Four Players	3, Samantha Qureshey
Kent State (8/31)	1, Brooke Brown	—	2, Brooke Brown	4, Tanum Nelson	3, Brooke Brown	4, Samantha Qureshey
at Delaware (9/4)	1, Ella Koschineg	—	2, Ella Koschineg	4, Tanum Nelson	2, by Three Players	4, Samantha Qureshey
at Syracuse (9/7)	—	—	—	1, by Four Players	1, Sydney Allen Tanum Nelson	8, Samantha Qureshey
at Providence (9/11)	1, Sydney Allen	1, Mariana Kessinger	2, Sydney Allen	4, Tanum Nelson	1, by Three Players	5, Samantha Qureshey
Binghamton (9/14)	—	—	—	4, Alanna Colbert	3, Alanna Colbert	—
Columbia (9/20)	1, Gaby Gonzalez	1, Mariana Kessinger	2, Gaby Gonzalez	2, Lauren DiPierri	1, by Three Players	2, Samantha Qureshey
at Yale (9/27)						
Harvard (10/4)						
at Lafayette (10/7)						
at Princeton (10/11)						
at Penn (10/18)						
Brown (10/25)						
at Dartmouth (11/1)						

NOTE: Shaded row denotes season high

2025 MATCH HIGHS AND LOWS

CORNELL HIGH	CORNELL LOW	CATEGORY	OPPONENT HIGH	OPPONENT LOW
2, vs. Colgate (8/24)	0, (4x), Last: vs. Columbia (9/20)	Goals	3, (2x), Last: at Syracuse (9/7)	0, (3x), Last: vs. Binghamton (9/14)
1, (7x), Last: vs. Columbia (9/20 — 1H)	0, (11x), Last: vs. Columbia (9/20 — 2H)	Goals in a Half	2, (3x), Last: vs. Columbia (9/20 — 2H)	0, (10x), Last: vs. Columbia (9/20 — 1H)
2, vs. Colgate (8/24)	0, (6x), Last: vs. Binghamton (9/14)	Assists	2, vs. Columbia (9/20)	0, (5x), Last: vs. Binghamton (9/14)
1, (4x), Last: vs. Columbia (9/20 — 1H)	0, (14x), Last: vs. Columbia (9/20 — 2H)	Assists in a Half	2, vs. Columbia (9/20 — 2H)	0, (13x), Last: vs. Columbia (9/20 — 1H)
6, vs. Colgate (8/24)	0, (3x), Last: vs. Binghamton (9/14)	Points	7, (2x), Last: at Syracuse (9/7)	0, (3x), Last: vs. Binghamton (9/14)
3, (4x), Last: vs. Columbia (9/20 — 1H)	0, (10x), Last: vs. Columbia (9/20 — 2H)	Points in a Half	6, vs. Columbia (9/20 — 2H)	0, (10x), Last: vs. Columbia (9/20 — 1H)
17, vs. Kent State (8/31)	4, at Syracuse (9/7)	Shot Attempts	15, at Syracuse (9/7)	3, vs. La Salle (8/28)
10, (2x), Last: at Delaware (9/4 — 1H)	1, at Boston College (8/22 — 1H)	Shot Att. in a Half	9, at Syracuse (9/7 — 2H)	0, vs. La Salle (8/28 — 2H)
10, vs. Kent State (8/31)	2, at Syracuse (9/7)	Shots on Goal	11, at Syracuse (9/7)	0, vs. Binghamton (9/14)
6, vs. Kent State (8/31 — 1H)	0, (3x), Last: vs. Columbia (9/20 — 2H)	SOG in a Half	7, at Syracuse (9/7 — 2H)	0, (4x), Last: vs. Binghamton (9/14 — 2H)
8, at Syracuse (9/7)	0, vs. Binghamton (9/14)	Saves	9, vs. Kent State (8/31)	2, (3x), Last: vs. Columbia (9/20)
5, at Syracuse (9/7 — 2H)	0, (6x), Last: vs. Columbia (9/20 — 2H)	Saves in a Half	6, vs. Kent State (8/31)	0, (3x), Last: vs. Columbia (9/20 — 2H)
8, vs. Kent State (8/31)	3, (2x), Last: at Providence (9/11)	Corner Kicks	8, vs. Colgate (8/24)	1, at Providence (9/11)
5, at Boston College (8/22 — 2H)	0, (2x), Last: at Providence (9/11 — 1H)	Corners in a Half	6, vs. Colgate (8/24)	0, (3x), Last: at Providence (9/11 — 2H)
13, (2x), Last: at Delaware (9/4)	7, at Providence (9/11)	Fouls	13, vs. Kent State (8/31)	3, vs. Columbia (9/20)
9, vs. Kent State (8/31 — 2H)	1, vs. Binghamton (9/14 — 2H)	Fouls in a Half	7, (3x), Last: vs. Binghamton (9/14 — 1H)	0, vs. Columbia (9/20 — 2H)
3, at Delaware (9/4)	0, (5x), Last: vs. Columbia (9/20)	Yellow Cards	1, (6x), Last: vs. Binghamton (9/14)	0, (3x), Last: vs. Columbia (9/20)
2, at Delaware (9/4 — 1H)	0, (13x), Last: vs. Columbia (9/20 — 2H)	Yellows in a Half	1, (6x), Last: vs. Binghamton (9/14 — 2H)	0, (12x), Last: vs. Columbia (9/20 — 2H)
1, at Delaware (9/4)	0, (8x), Last: vs. Columbia (9/20)	Red Cards	0, (9x), Last: vs. Columbia (9/20)	0, (9x), Last: vs. Columbia (9/20)
1, at Delaware (9/4 — 2H)	0, (17x), Last: vs. Columbia (9/20 — 2H)	Reds in a Half	0, (18x), Last: vs. Columbia (9/20 — 2H)	0, (18x), Last: vs. Columbia (9/20 — 2H)

2025 OVERALL CORNELL STATISTICS

Overall **2-3-4** Home **2-1-2** Away **0-2-2** Neutral **0-0-0** Ivy League **0-1-0**

#	PLAYER	GP	GS	MIN	G	A	PTS	SH	SH%	SOG	SOG%	YC	RC	GWG	PK	FG	OT	HT	GTG	FOUL
11	Mariana Kessinger	9	9	680	1	3	5	9	.111	3	.333	0	0	1	0-0	1	0	0	0	5
17	Sydney Allen	9	5	447	2	0	4	8	.250	6	.750	0	0	1	0-0	0	0	0	1	6
15	Gaby Gonzalez	9	8	715	1	0	2	3	.333	2	.667	0	0	0	0-0	1	0	0	0	10
9	Alanna Colbert	8	8	598	1	0	2	15	.067	6	.400	0	0	0	0-0	1	0	0	0	10
22	Ella Koschineg	7	2	273	1	0	2	1	1.000	1	1.000	1	0	0	0-0	0	0	0	0	2
2	Brooke Brown	5	2	282	1	0	2	6	.167	5	.833	0	0	0	0-0	0	0	0	1	3
5	Abigail Bishara	9	8	695	0	1	1	6	.000	2	.333	1	0	0	0-0	0	0	0	0	8
0	Samantha Qureshey	9	9	810	0	0	0	0	.000	0	.000	0	0	0	0-0	0	0	0	0	0
26	Kayla Ristianto	9	9	750	0	0	0	1	.000	0	.000	0	0	0	0-0	0	0	0	0	4
34	Emily Gibbons	9	7	447	0	0	0	8	.000	2	.250	0	0	0	0-0	0	0	0	0	9
8	Amanda Polyniak	9	5	416	0	0	0	3	.000	1	.333	0	0	0	0-0	0	0	0	0	4
24	Ivy Tolbert	9	2	422	0	0	0	4	.000	3	.750	0	0	0	0-0	0	0	0	0	4
7	Izzy Scott	8	8	640	0	0	0	7	.000	3	.429	2	1	0	0-0	0	0	0	0	4
14	Tanum Nelson	8	8	613	0	0	0	19	.000	7	.368	0	0	0	0-0	0	0	0	0	9
23	Andrea Wilson	8	3	256	0	0	0	7	.000	2	.286	0	0	0	0-0	0	0	0	0	9
10	Lauren DiPierri	8	2	240	0	0	0	4	.000	0	.000	0	0	0	0-0	0	0	0	0	4
20	Raya Leikin	7	4	415	0	0	0	3	.000	1	.333	0	0	0	0-0	0	0	0	0	3
19	Estelle Jarrells	7	0	87	0	0	0	0	.000	0	.000	0	0	0	0-0	0	0	0	0	1
33	Sydney Malaga	2	0	52	0	0	0	1	.000	0	.000	0	0	0	0-0	0	0	0	0	2
16	Madison Guiry	2	0	37	0	0	0	0	.000	0	.000	0	0	0	0-0	0	0	0	0	0
6	Isabel Chapman	1	0	28	0	0	0	0	.000	0	.000	0	0	0	0-0	0	0	0	0	1
3	Jessica Alessi	1	0	19	0	0	0	0	.000	0	.000	0	0	0	0-0	0	0	0	0	0
TOTALS		8	—	—	6	3	15	92	.065	41	.446	6	1	2	0-0	2	0	0	2	87
OPPONENTS		8	—	—	9	3	21	75	.120	40	.533	6	0	2	2-2	4	0	0	0	69

#	PLAYER	GP	GS	MIN	GA	GAA	SV	SV%	W	L	T	SHO	CBO
0	Samantha Qureshey	9	9	810:00	11	1.22	33	.750	2	3	4	3	0
TEAM		—	—	—	—	—	1	1.000	—	—	—	0	—
TOTALS		9	—	810:00	11	1.22	34	.756	2	3	4	3	0
OPPONENTS		9	—	810:00	7	0.78	37	.841	3	2	4	3	0

GOALS BY PERIOD

TEAM	1ST	2ND	OT1	OT2	TOTAL
Cornell	4	3	0	0	7
Opponent	4	7	0	0	11

SHOTS BY PERIOD

TEAM	1ST	2ND	OT1	OT2	TOTAL
Cornell	52	53	0	0	105
Opponent	41	47	0	0	88

SAVES BY PERIOD

TEAM	1ST	2ND	OT1	OT2	TOTAL
Cornell	21	13	0	0	34
Opponent	16	21	0	0	37

CORNERS BY PERIOD

TEAM	1ST	2ND	OT1	OT2	TOTAL
Cornell	18	25	0	0	43
Opponent	18	19	0	0	37

FOULS BY PERIOD

TEAM	1ST	2ND	OT1	OT2	TOTAL
Cornell	42	56	0	0	98
Opponent	36	36	0	0	72

ATTENDANCE SUMMARY

	CORNELL	OPPONENTS
Total	2439	2235
Dates/Avg / Date	5 / 488	4 / 559
Neutral Site #/Avg	0 / 0	

2025 CORNELL STATISTICS IN IVY LEAGUE MATCHES

Overall2-3-4

Home2-1-2

Away0-2-2

Neutral0-0-0

Ivy League0-1-0

#	PLAYER	GP	GS	MIN	G	A	PTS	SH	SH%	SOG	SOG%	YC	RC	GWG	PK	FG	OT	HT	GTG	FOUL
15	Gaby Gonzalez	1	1	74	1	0	2	1	1.000	1	1.000	0	0	0	0-0	1	0	0	0	1
11	Mariana Kessinger	1	1	85	0	1	1	1	.000	0	.000	0	0	0	0-0	0	0	0	0	0
0	Samantha Qureshey	1	1	90	0	0	0	0	.000	0	.000	0	0	0	0-0	0	0	0	0	0
7	Izzy Scott	1	1	90	0	0	0	1	.000	0	.000	0	0	0	0-0	0	0	0	0	1
26	Kayla Ristianto	1	1	84	0	0	0	1	.000	0	.000	0	0	0	0-0	0	0	0	0	0
2	Brooke Brown	1	1	82	0	0	0	0	.000	0	.000	0	0	0	0-0	0	0	0	0	1
9	Alanna Colbert	1	1	79	0	0	0	1	.000	0	.000	0	0	0	0-0	0	0	0	0	0
5	Abigail Bishara	1	1	68	0	0	0	1	.000	0	.000	0	0	0	0-0	0	0	0	0	3
8	Amanda Polyniak	1	1	63	0	0	0	1	.000	0	.000	0	0	0	0-0	0	0	0	0	0
34	Emily Gibbons	1	1	63	0	0	0	1	.000	0	.000	0	0	0	0-0	0	0	0	0	2
17	Sydney Allen	1	1	51	0	0	0	1	.000	1	1.000	0	0	0	0-0	0	0	0	0	0
24	Ivy Tolbert	1	0	47	0	0	0	0	.000	0	.000	0	0	0	0-0	0	0	0	0	1
10	Lauren DiPierri	1	0	46	0	0	0	2	.000	0	.000	0	0	0	0-0	0	0	0	0	1
20	Raya Leikin	1	0	27	0	0	0	1	.000	0	.000	0	0	0	0-0	0	0	0	0	0
22	Ella Koschineg	1	0	22	0	0	0	0	.000	0	.000	0	0	0	0-0	0	0	0	0	0
23	Andrea Wilson	1	0	11	0	0	0	1	.000	1	1.000	0	0	0	0-0	0	0	0	0	1
19	Estelle Jarrells	1	0	8	0	0	0	0	.000	0	.000	0	0	0	0-0	0	0	0	0	0
TOTALS		1	—	—	1	1	3	13	.077	3	.231	0	0	0	0-0	1	0	0	0	11
OPPONENTS		1	—	—	2	2	6	13	.154	5	.385	0	0	1	0-0	0	0	0	0	3

#	PLAYER	GP	GS	MIN	GA	GAA	SV	SV%	W	L	T	SHO	CBO
0	Samantha Qureshey	1	1	90:00	2	2.00	2	.500	0	1	0	0	0
TEAM		—	—	—	—	—	1	1.000	—	—	—	0	—
TOTALS		1	—	90:00	2	2.00	3	.600	0	1	0	0	0
OPPONENTS		1	—	90:00	1	1.00	2	.667	1	0	0	0	0

GOALS BY PERIOD

TEAM	1ST	2ND	OT1	OT2	TOTAL
Cornell	1	0	0	0	1
Opponent	0	2	0	0	2

SHOTS BY PERIOD

TEAM	1ST	2ND	OT1	OT2	TOTAL
Cornell	9	4	0	0	13
Opponent	6	7	0	0	13

SAVES BY PERIOD

TEAM	1ST	2ND	OT1	OT2	TOTAL
Cornell	3	0	0	0	3
Opponent	2	0	0	0	2

CORNERS BY PERIOD

TEAM	1ST	2ND	OT1	OT2	TOTAL
Cornell	3	2	0	0	5
Opponent	2	3	0	0	5

FOULS BY PERIOD

TEAM	1ST	2ND	OT1	OT2	TOTAL
Cornell	4	7	0	0	11
Opponent	3	0	0	0	3

ATTENDANCE SUMMARY

	CORNELL	OPPONENTS
Total	381	1,108
Dates/Avg / Date	1 / 381	3 / 369
Neutral Site #/Avg	0 / 0	

2025 MATCH-BY-MATCH OFFENSIVE STATISTICS

Overall **2-3-4** Home **2-1-2** Away **0-2-2** Neutral **0-0-0** Ivy League **0-1-0**

DATE	OPPONENT	SCORE	G	A	PTS	SH	SH%	SOG	SOG%	GWG	GT	UA	OT	PK	YC	RC	FOULS
8/22/2025	at Boston College	0-0	0	0	0	7	.000	3	.429	0	0	0	0	0-0	1	0	10
8/24/2025	vs. Colgate	2-1	2	2	6	15	.091	5	.364	1	0	0	0	0-0	1	0	11
8/28/25	vs. La Salle	1-0	1	0	2	9	.097	4	.387	1	0	1	0	0-0	1	0	12
8/31/25	vs. Kent State	1-1	1	0	2	17	.083	10	.458	0	1	1	0	0-0	0	0	13
9/4/25	at Delaware	1-3	1	0	2	13	.082	7	.475	0	0	1	0	0-0	3	1	13
9/7/25	at Syracuse	0-3	0	0	0	4	.077	2	.477	0	0	0	0	0-0	0	0	12
9/11/25	at Providence	1-1	1	1	3	12	.078	3	.442	0	1	0	0	0-0	0	0	7
9/14/25	vs. Binghamton	0-0	0	0	0	15	.065	7	.446	0	0	0	0	0-0	0	0	9
9/20/25	vs. Columbia	1-2	1	1	3	13	.067	3	.419	0	0	0	0	0-0	0	0	
9/27/25	at Yale																
10/4/25	vs. Harvard																
10/7/25	at Lafayette																
10/11/25	at Princeton																
10/18/25	at Penn																
10/25/25	vs. Brown																
11/1/25	at Dartmouth																
CORNELL TOTALS		7-11	7	4	18	105	.067	44	.419	2	2	3	0	0-0	6	1	98
PER MATCH AVERAGES		—	0.78	0.44	2.00	11.67	—	4.89	—	—	—	—	—	—	0.67	0.11	10.89
OPPONENT TOTALS		11-7	11	5	27	88	.125	45	.511	3	0	6	0	2-2	6	0	72
PER MATCH AVERAGES		—	1.22	0.53	3.00	9.78	—	5.00	—	—	—	—	—	—	0.67	0.00	8.00

2025 MATCH-BY-MATCH DEFENSIVE STATISTICS

DATE	OPPONENT	SCORE	MIN	GA	GAA	SV	SV%	W	L	T	SHO
8/22/2025	at Boston College	0-0	90:00	0	0.00	4	1.000	0	0	1	1
8/24/2025	vs. Colgate	2-1	90:00	1	0.50	3	.875	1	0	0	0
8/28/25	vs. La Salle	1-0	90:00	0	0.33	3	.909	1	0	0	1
8/31/25	vs. Kent State	1-1	90:00	1	0.50	4	.875	0	0	1	0
9/4/25	at Delaware	1-3	90:00	3	1.00	4	.783	0	1	0	0
9/7/25	at Syracuse	0-3	90:00	3	1.33	8	.765	0	1	0	0
9/11/25	at Providence	1-1	90:00	1	1.29	5	.775	0	0	1	0
9/14/25	vs. Binghamton	0-0	90:00	0	1.13	0	.775	0	0	1	1
9/20/25	vs. Columbia	1-2	90:00	2	1.22	3	.756	0	1	0	0
9/27/25	at Yale										
10/4/25	vs. Harvard										
10/7/25	at Lafayette										
10/11/25	at Princeton										
10/18/25	at Penn										
10/25/25	vs. Brown										
11/1/25	at Dartmouth										
CORNELL TOTALS		7-11	810:00	11	1.22	34	.756	2	3	4	3
PER MATCH AVERAGES		—	—	1.22	—	3.67	—	—	—	—	0.33
OPPONENT TOTALS		11-7	810:00	7	0.78	37	.841	3	2	4	3
PER MATCH AVERAGES		—	—	0.78	—	4.11	—	—	—	—	0.33

TEAM GOALS IN A GAME

1.	7	9/17/84 vs. Hamilton (W, 7-0)
	7	9/18/90 vs. Canisius (W, 7-1)
	7	10/18/92 vs. Bucknell (W, 7-0)
	7	10/22/96 at Army (W, 7-2)
	7	9/5/10 vs. Delaware State (W, 7-0)
6.	6	9/28/83 vs. Wells (W, 6-1)
	6	11/1/86 at Columbia (W, 6-1)
	6	10/21/87 vs. Canisius (W, 6-0)
	6	9/24/88 at Columbia (W, 6-0)
	6	10/7/89 vs. Columbia (W, 6-1)
	6	9/22/90 at Columbia (W, 6-0)
	6	9/15/91 vs. Monmouth (W, 6-1)
	6	9/13/97 vs. Columbia (W, 6-2)
	6	9/16/98 vs. Bucknell (W, 6-0)
	6	10/19/99 vs. Saint Francis (Pa.) (W, 6-1)
16.	5	11 times; Last: 9/12/14 vs. VMI (W, 5-0)

INDIVIDUAL GOALS IN A GAME

1.	4	Laurie Collier	at Yale (10/3/87)
	4	Genna Terranova	vs. Northeastern (10/18/98)
3.	3	Meagan McMahan	vs. Wells (9/28/83)
	3	Meagan McMahan	vs. Hamilton (9/17/84)
	3	Jennifer Smith	vs. Columbia (10/7/89)
	3	Amy Finkelstein	vs. Princeton (9/15/90)
	3	Cindy Spera	vs. Monmouth (9/15/91)
	3	Lori Penny	vs. Penn (10/17/92)
	3	Lori Penny	vs. Bucknell (10/18/92)
	3	Heather Ott	at Princeton (10/5/93)
	3	Genna Terranova	at Army (10/22/96)
	3	Caarki Sweitzer	vs. Columbia (9/13/97)
	3	Alicia Doolittle	vs. Vermont (10/8/00)
	3	Alison McKeown	vs. UAlbany (10/6/06)
	3	Lena Russomagno	vs. Lafayette (9/16/07)
15.	2	77 times by 39 players Last: Laken Gallman, vs. UAlbany (10/17/23)	

MULTIPLE 2+ GOAL SCORERS

2	Laura Payne	vs. Cazenovia (10/5/82)
2	Karlee Seager	
2	Laurie Collier	at Colgate (10/3/84)
2	Meagan McMahan	
3	Jennifer Smith	vs. Columbia (10/7/89)
2	Cindy Spera	
2	Lauren Gallagher	at Columbia (9/22/90)
2	Cindy Spera	
2	Amy Finkelstein	vs. Duke (10/13/90)
2	Cindy Spera	
3	Cindy Spera	vs. Monmouth (9/15/91)
2	Dina Grossman	
3	Lori Penny	vs. Bucknell (10/18/92)
2	Tasha Fleury	
2	Tasha Fleury	vs. Princeton (9/25/94)
2	Lori Penny	
2	Andrea Madison	vs. Saint Francis (Pa.) (10/19/99)
2	Sophia Smith	
2	Emily Knight	vs. Bucknell (10/24/00)
2	Sarah Olsen	
2	Megan Crowell	vs. Delaware State (9/5/10)
2	Mary Keroack	

TEAM ASSISTS IN A GAME

1.	8	9/16/98 vs. Bucknell (W, 6-0)
2.	7	9/15/91 vs. Monmouth (W, 6-1)
	7	10/18/92 vs. Bucknell (W, 7-0)
4.	6	9/28/83 vs. Wells (W, 6-1)
	6	9/17/84 vs. Hamilton (W, 7-0)
	6	10/4/86 at Yale (W, 4-1)
	6	10/21/87 vs. Canisius (W, 6-0)
	6	9/18/90 vs. Canisius (W, 7-1)
9.	5	11 times; Last: 9/12/14 vs. VMI (W, 5-0)

INDIVIDUAL ASSISTS IN A GAME

1.	4	Krista Kallio	vs. Wells (9/28/83)
2.	3	Jennifer Smith	at Hartwick (10/7/87)
	3	Amy Snow	vs. Monmouth (9/15/91)
	3	Elizabeth Crowell	vs. UAlbany (9/15/13)
4.	2	51 times by 32 players Last: Laken Gallman, vs. Lehigh (8/27/23)	

MULTIPLE 2+ ASSIST OUTINGS

2	Cindy Bishop	
2	Laurie Collier	at Yale (10/4/86)
2	Jeri Maerz	
2	Karen Roberts	vs. Canisius (10/25/88)
2	Amy Finkelstein	
2	Sue Miller	vs. Canisius (9/18/90)
3	Amy Snow	
2	Corinne Cantrall	vs. Monmouth (9/15/91)
2	Amy Finkelstein	
2	Lori Penny	vs. Bucknell (10/18/92)
2	Amy Snow	
2	Miki Agrawal	
2	Caarki Sweitzer	vs. Northeastern (10/18/98)
2	Caroline Growney	
2	Claire MacManus	vs. VMI (9/12/14)

TEAM POINTS IN A GAME

1.	21	10/18/92 vs. Bucknell (W, 6-0; 7g-7a)
2.	20	9/17/84 vs. Hamilton (W, 7-0; 7g-6a)
	20	9/18/90 vs. Canisius (W, 7-1; 7g-6a)
	20	9/16/98 vs. Bucknell (W, 6-0; 6g-8a)
5.	19	9/15/91 vs. Monmouth (W, 6-1; 6g-7a)
	19	10/22/96 at Army (W, 7-2; 7g-5a)
	19	9/5/10 vs. Delaware State (W, 7-0; 7g-5a)
8.	18	9/28/83 vs. Wells (W, 6-1; 6g-6a)
	18	10/21/87 vs. Canisius (W, 6-0; 6g-6a)
10.	17	11/1/86 at Columbia (W, 6-1; 6g-5a)
	17	9/24/88 at Columbia (W, 6-0; 6g-5a)
	17	10/19/99 vs. Saint Francis (Pa.) (W, 6-1; 6g-5a)

INDIVIDUAL POINTS IN A GAME

1.	8	Laurie Collier (4g)	at Yale (10/3/87)
	8	Lori Penny (3g-2a)	vs. Bucknell (10/18/92)
	8	Genna Terranova (4g)	vs. Northeastern (10/18/98)
4.	7	Meagan McMahan (3g-a)	vs. Hamilton (9/17/84)
	7	Caarki Sweitzer (3g-a)	vs. Columbia (9/13/97)
6.	6	Meagan McMahan (3g)	vs. Wells (9/28/83)
	6	Jennifer Smith (3g)	vs. Columbia (10/7/89)
	6	Amy Finkelstein (3g)	vs. Princeton (9/15/90)
	6	Cindy Spera (3g)	vs. Monmouth (9/15/91)
	6	Lori Penny (3g)	vs. Penn (10/17/92)
	6	Heather Ott (3g)	at Princeton (10/5/93)
	6	Genna Terranova (3g)	at Army (10/22/96)
	6	Alicia Doolittle (3g)	vs. Vermont (10/8/00)
	6	Alicia McKeown (3g)	vs. UAlbany (10/6/06)
	6	Lena Russomagno (3g)	vs. Lafayette (9/16/07)

FASTEST GOALS TO BEGIN MATCH

1.	0:16	Maneesha Chitanvis	at Fordham (9/2/11)
2.	0:22	Jackie Stromberg	at Syracuse (10/13/04)
3.	0:36*	Molly Easterlin	at Robert Morris (9/4/05)
4.	0:43	Genna Terranova	at Army (10/22/96)
5.	0:48*	Tasha Fleury	vs. Princeton (9/25/94)
6.	0:51	Lena Russomagno	vs. Oakland (9/5/08)
7.	0:59*	Laurie Collier	at Ithaca (9/15/87)
8.	1:17*	Shannon Fraser	vs. Lafayette (9/18/05)
9.	1:21	Meagan McMahan	vs. Wells (9/28/83)
10.	1:25*	Michelle Lauermann	vs. St. Bonaventure (9/10/93)

* - denotes game-winning goal

LATEST REGULATION GOAL SCORED

1.	89:56*	Tasha Fleury	at Princeton (9/21/91)
2.	89:55	Debbie Laske	vs. Canisius (10/21/87)
3.	89:51	Eva Dixon	vs. Dartmouth (11/8/08)
4.	89:49	Krista Kallio	at Hamilton (9/21/82)
	89:49*	Brenna Mockler	vs. UAlbany (9/15/13)
6.	89:45	Cindy Bishop	vs. Colgate (10/2/85)
7.	89:40	Cindy Spera	vs. Yale (9/28/91)
	89:40	Sarah Olsen	vs. Bucknell (10/9/02)
9.	89:12	Alicia Doolittle	at Harvard (10/6/00)
10.	89:10*	Laurie Collier	at Brown (10/17/87)

* - denotes game-winning goal

LATEST GAME-WINNING GOAL (NON-OT)

1.	89:56	Tasha Fleury	at Princeton (9/21/91)
2.	89:49	Brenna Mockler	vs. UAlbany (9/15/13)
3.	89:10	Laurie Collier	at Brown (10/17/87)
4.	88:20	Sarah Olsen	at Vermont (10/4/02)
5.	87:57	Amy Duesing	at Providence (10/31/93)
6.	86:03	Sydney Allen	vs. Colgate (8/24/25)
7.	85:08	Amy Finkelstein	at Yale (11/5/94)
8.	84:09	Caitlin Oliver	vs. Canisius (9/16/05)
9.	83:34	Heather Ott	at Penn (9/16/95)
10.	83:23	Sydney Malaga	vs. Colgate (9/26/23)

TEAM SAVES IN A GAME

1.	17	vs. Princeton (9/18/82)
	17	vs. Stony Brook (9/29/01)
3.	16	at Brown (10/15/83)
	16	vs. Providence (9/23/94)
	16	at Penn State (10/30/96)
	16	vs. Yale (11/8/97)
7.	15	vs. Brown (10/16/82)
	15	vs. Adelphi (10/1/83)
	15	at Dartmouth (11/5/83)
	15	at Harvard (10/13/84)
	15	vs. N.C. State (10/14/90)
	15	vs. UMass (10/30/94)
	15	vs. Boston College (10/2/94)
	15	vs. Colgate (9/19/95)
	15	vs. Columbia (9/22/18)

INDIVIDUAL SAVES IN A GAME

1.	17	Lisa Brigham	vs. Princeton (9/18/82)
	17	Katie Thomas	vs. Stony Brook (9/29/01)
2.	16	Kate Thompson	at Brown (10/15/83)
	16	Sue DeLong	vs. Providence (9/23/94)
	16	Marybeth Bell	at Penn State (10/30/96)
	16	Kristin Pepe	vs. Yale (11/8/97)
6.	15	Lisa Brigham	vs. Brown (10/16/82)
	15	Kate Thompson	vs. Adelphi (10/1/83)
	15	Kate Thompson	at Dartmouth (11/5/83)
	15	Sue DeLong	vs. N.C. State (10/14/90)
	15	Sue DeLong	vs. UMass (10/30/94)
	15	Sue DeLong	vs. Boston College (10/2/94)
	15	Marybeth Bell	vs. Colgate (9/19/95)
	15	Meghan Kennedy	vs. Columbia (9/22/18)

Bold denotes accomplished this season

GOALS IN A SEASON

1.	11	Meagan McMahan	1984
	11	Laurie Collier	1987
	11	Amy Finkelstein	1990
	11	Lori Penny	1992
	11	Genna Terranova	1996
	11	Emily Knight	2003
7.	10	Meagan McMahan	1983
	10	Lori Penny	1994
9.	9	Laurie Collier	1986
	9	Cindy Spera	1988

ASSISTS IN A SEASON

1.	7	Laurie Collier	1986
	7	Jennifer Smith	1987
	7	Jennifer Daly	1994
	7	Amy Finkelstein	1994
5.	6	Donna Eberhardt	1988
	6	Amy Snow	1991
	6	Amy Snow	1992
	6	Rebecca D'Aleo	1993
	6	Lori Penny	1993
	6	Dempsey Banks	2013
	6	Reagan Pauwels	2023

POINTS IN A SEASON

1.	27	Amy Finkelstein (11 goals, 5 assists)	1990
2.	26	Laurie Collier (11 goals, 4 assists)	1987
	26	Emily Knight (11 goals, 4 assists)	2003
4.	25	Meagan McMahan (11 goals, 3 assists)	1984
	25	Laurie Collier (9 goals, 7 assists)	1986
6.	24	Lori Penny (11 goals, 2 assists)	1992
	24	Genna Terranova (11 goals, 2 assists)	1996
8.	21	Meagan McMahan (10 goals, 1 assist)	1983
	21	Lori Penny (10 goals, 1 assist)	1994
	21	Lori Penny (8 goals, 4 assists)	1995

SAVES IN A SEASON

1.	139	Sue DeLong	1994
2.	137	Kate Thompson	1983
3.	130	Marybeth Bell	1995
	130	Kristin Pepe	1997
5.	119	Marybeth Bell	1996
6.	108	Lisa Brigham	1982
7.	107	Meghan Cauzillo	1998
8.	104	Sherrie Chocola	1985
	104	Katie Thomas	2001
10.	94	Meghan Kennedy	2018

SEASON GOALS-AGAINST AVERAGE

1.	0.41	Sue DeLong (7 GA, 1519 minutes)	1991
2.	0.45	Melissa Gambrell (7 GA, 1401 minutes)	1987
3.	0.50	Kelsey Tierney (9 GA, 1625 minutes)	2015
4.	0.65	Kate Thompson (10 GA, 1377 minutes)	1983
5.	0.78	Sherrie Chocola (12 GA, 1387 minutes)	1985
6.	0.79	Sherrie Chocola (11 GA, 1248 minutes)	1986
7.	0.94	Kate Alexander (16 GA, 1530 minutes)	1992
8.	0.96	Katie Thomas (13 GA, 1216 minutes)	2002
9.	0.97	Marybeth Bell (18 GA, 1667 minutes)	1995
10.	0.98	Sue DeLong (19 GA, 1740 minutes)	1994

CLEAN SHEETS IN A SEASON

1.	12	Melissa Gambrell	1987
	12	Kelsey Tierney	2015
3.	9	Kate Thompson	1983
4.	8	Sherrie Chocola	1985
	8	Sue DeLong	1991
6.	7	Sue DeLong	1994
	7	Marybeth Bell	1995
8.	6	Kate Alexander	1992
	6	Katie Thomas	2002
10.	5	Melissa Gambrell	1988

TEAM GOALS IN A SEASON

1.	34	1994	# of players with goals:	10
2.	32	1990	# of players with goals:	9
3.	31	1986	# of players with goals:	9
	31	1995	# of players with goals:	9
5.	30	1987	# of players with goals:	10
	30	2003	# of players with goals:	9
7.	29	1984	# of players with goals:	10
	29	1988	# of players with goals:	9
9.	28	1993	# of players with goals:	9
	28	1996	# of players with goals:	8

TEAM ASSISTS IN A SEASON

1.	29	1986	# of players with assists:	10
	29	1994	# of players with assists:	9
3.	28	1995	# of players with assists:	10
4.	27	1993	# of players with assists:	11
5.	24	1987	# of players with assists:	8
6.	23	1991	# of players with assists:	11
	23	2003	# of players with assists:	9
8.	22	1992	# of players with assists:	10
	22	1998	# of players with assists:	12
	22	2013	# of players with assists:	8

TEAM POINTS IN A SEASON

1.	97	1994	# of players with points:	13
2.	91	1986	# of players with points:	12
3.	90	1995	# of players with points:	10
4.	84	1987	# of players with points:	13
	84	1990	# of players with points:	10
6.	83	1993	# of players with points:	13
	83	2003	# of players with points:	13
8.	79	1988	# of players with points:	10
9.	78	1984	# of players with points:	12
10.	77	1991	# of players with points:	12

TEAM SAVES IN A SEASON

1.	143	1995	Matches: 19	SV/match: 7.53
2.	139	1994	Matches: 18	SV/match: 7.72
3.	138	1983	Matches: 15	SV/match: 9.20
4.	136	1997	Matches: 16	SV/match: 8.50
5.	133	1996	Matches: 17	SV/match: 7.82
6.	117	2008	Matches: 15	SV/match: 7.80
7.	116	1985	Matches: 15	SV/match: 7.73
8.	114	1998	Matches: 17	SV/match: 6.71
9.	108	1982	Matches: 12	SV/match: 9.00
	108	2000	Matches: 17	SV/match: 6.35

SEASON GOALS-AGAINST AVERAGE

1.	0.44	1987	GA: 7	Minutes: 1440
2.	0.47	1991	GA: 8	Minutes: 1530
3.	0.50	2015	GA: 9	Minutes: 1625
4.	0.70	1983	GA: 11	Minutes: 1410
5.	0.77	1985	GA: 12	Minutes: 1410
6.	0.80	1986	GA: 12	Minutes: 1350
7.	0.84	2002	GA: 15	Minutes: 1610
8.	0.94	1992	GA: 16	Minutes: 1530
9.	0.983	1994	GA: 19	Minutes: 1740
10.	0.984	1995	GA: 20	Minutes: 1830

SEASON CLEAN SHEETS

1.	12	1987
	12	2015
3.	9	1983
4.	8	1985
	8	1991
	8	1995
	8	2002
8.	7	1994
9.	6	2010
	6	2014

Bold denotes active player / feat accomplished this season

CAREER GOALS

1.	33	Lori Penny	1992-95
2.	32	Laurie Collier	1984-87
3.	26	Cindy Spera	1988-91
	26	Genna Terranova	1995-98
5.	24	Emily Knight	2000-03
6.	21	Meagan McMahan	1983-85
	21	Amy Finkelstein	1990-94
8.	19	Jennifer Smith	1986-89
9.	18	Sarah Olsen	1999-02
10.	16	Maneesha Chitanvis	2009-12

CAREER ASSISTS

1.	18	Amy Snow	1989-92
2.	17	Laurie Collier	1984-87
	17	Amy Finkelstein	1990-94
4.	15	Rebecca D'Aleo	1993-97
	15	Jennifer Daly	1993-96
6.	13	Alice McAneny	1984-87
	13	Jennifer Smith	1986-89
	13	Lori Penny	1992-95
	13	Rachel Nichols	2010-13
10.	12	Shannon Fraser	2002-05

CAREER POINTS

1.	81	Laurie Collier (32 goals, 17 assists)	1984-87
2.	79	Lori Penny (33 goals, 13 assists)	1992-95
3.	59	Amy Finkelstein (21 goals, 17 assists)	1990-94
	59	Genna Terranova (26 goals, 7 assists)	1995-98
5.	58	Cindy Spera (26 goals, 6 assists)	1988-91
6.	55	Emily Knight (24 goals, 7 assists)	2000-03
7.	51	Jennifer Smith (19 goals, 13 assists)	1986-89
8.	46	Meagan McMahan (21 goals, 4 assists)	1983-85
9.	42	Shannon Fraser (15 goals, 12 assists)	2002-05
10.	40	Sarah Olsen (18 goals, 4 assists)	1999-02

CAREER SAVES

1.	370	Sue DeLong	1990-94
2.	279	Meghan Cauzillo	1997-00
3.	270	Katie Thomas	2001-04
4.	252	Sherrie Chocola	1984-86
5.	249	Marybeth Bell	1995-96
6.	235	Melissa Gambrell	1986-89
7.	228	Meghan Kennedy	2015-18
8.	183	Kelsey Tierney	2013-16
9.	157	Kristin Pepe	1995-97
10.	152	Megan Bartlett	2008-11

CAREER GOALS-AGAINST AVERAGE

1.	0.80	Kate Thompson (13 GA, 1467 min.)	1983-84
2.	0.87	Sherrie Chocola (37 GA, 3829 min.)	1984-86
3.	0.97	Kate Alexander (17 GA, 1573 min.)	1992-93
4.	0.99	Melissa Gambrell (43 GA, 3897 min.)	1986-89
5.	1.00	Sue DeLong (63 GA, 5646 min.)	1990-94
6.	1.20	Kelsey Tierney (63 GA, 4707 min.)	2013-16
7.	1.35	Chrissy Mayer (15 GA, 1006 min.)	2016-19
8.	1.39	Katie Thomas (69 GA, 4479 min.)	2001-04
9.	1.46	Katrina Matlin (25 GA, 1540 min.)	2003-06
10.	1.49	Marybeth Bell (51 GA, 3089 min.)	1995-96

CAREER CLEAN SHEETS

1.	22	Melissa Gambrell	1986-89
2.	21.5	Kelsey Tierney	2013-16
3.	20	Sue DeLong	1990-94
4.	16	Sherrie Chocola	1984-86
5.	13	Katie Thomas	2001-04
6.	10	Marybeth Bell	1995-96
7.	9	Kate Thompson	1983-84
8.	7	Kate Alexander	1992-93
9.	6.5	Katrina Matlin	2003-06
10.	6	Meghan Cauzillo	1997-00
	6	Meghan Kennedy	2015-18
12.	5.5	Natalie Medugno	2022-Pr.

NUMBERS FOR HOME, ROAD, NEUTRAL SITES, AND IVY LEAGUE MATCHES ARE BASED UPON THOSE TYPES OF MATCHES

CORNELL AS A TEAM...

Won a Home Match (3 matches)	8/28/2025 vs. La Salle (W, 1-0)
Won a Road Match (18 matches)	8/30/2023 at Marist (W, 2-0)
Won a Neutral Site Match (0 matches)	9/6/2015 vs. Akron (W, 2-0)
Lost a Home Match (0 matches)	9/20/2025 vs. Columbia (L, 1-2)
Lost a Road Match (1 match)	9/7/2025 at Syracuse (L, 0-3)
Lost a Neutral Site Match (2 matches)	9/20/2013 vs. Cincinnati (L, 0-1)
Home Match End in Draw (1 match)	9/14/2025 vs. Binghamton (T, 1-1)
Road Match End in Draw (0 matches)	9/11/2025 at Providence (T, 1-1)
Neutral Site Match End in Draw (12 matches)	11/16/2002 vs. Providence (T, 1-1 — 2OT)
Won in Overtime (101 matches)	8/24/2018 at St. Bonaventure (W, 2-1 — OT)
Lost in Overtime (64 matches)	9/17/2021 at Stony Brook (L, 3-4 — OT)
Played Double Overtime (67 matches)	9/9/2021 at Syracuse (T, 0-0 — 2OT)
Won an Ivy League Match (3 matches)	10/19/2024 vs. Yale (W, 2-1)
Lost an Ivy League Match (0 matches)	9/20/2025 vs. Columbia (L, 1-2)
Ivy League Match Ended in Draw (10 matches)	10/14/2023 at Yale (T, 1-1)
Played a Ranked Opponent (16 matches)	at #19 Pepperdine (9/22/2024 — L, 0-3)
Defeated a Ranked Opponent (484 matches)	vs. #4 Hartford (10/16/1994 — W, 2-0)
Played Ranked Opponent at Home (13 matches)	vs. #15 Brown (10/21/2023 — L, 1-2)
Defeated Ranked Opp. at Home (250 matches)	vs. #15 George Mason (10/5/1991 — W, 1-0)
Held Scoreless (1 match)	9/14/2025 vs. Binghamton (T, 1-1)
Scored One Goal (0 matches)	9/20/25 vs. Columbia (L, 1-2)
Scored Two Goals (7 matches)	8/24/25 vs. Colgate (W, 2-1)
Scored Three Goals (27 matches)	10/17/2023 vs. UAlbany (W, 4-0)
Scored Four Goals (27 matches)	10/17/2023 vs. UAlbany (W, 4-0)
Scored Five-Plus Goals (163 matches)	9/12/2014 vs. VMI (W, 5-0)
Multiple Players with 2+ Goals (227 matches)	9/5/2010 vs. Delaware State (W, 7-0) (2, Megan Crowell & 2, Mary Keroack)
Three-Plus Players with 2+ Goals	Never
Multiple Players with Hat Tricks	Never
Multiple Players with 2+ Assists (163 matches)	9/12/2014 vs. VMI (W, 5-0) (2, Caroline Growney & 2, Claire MacManus)
Three-Plus Players with 2+ Assists (540 matches)	9/15/1991 vs. Monmouth (W, 6-1) (3, Amy Snow; 2, Corinne Cantrall; 2, Amy Finkelstein)
Multiple Players with 3+ Assists	Never
Shutout Opponent (1 match)	9/14/2025 vs. Binghamton (T, 1-1)
Allowed One Goal (0 matches)	9/20/2025 vs. Columbia (L, 1-2)
Allowed Two Goals (0 matches)	9/20/2025 vs. Columbia (L, 1-2)
Allowed Three Goals (3 matches)	9/7/2025 at Syracuse (L, 0-3)
Allowed Four Goals (12 matches)	10/13/2024 at Harvard (L, 0-5)
Allowed Five-Plus Goals (12 matches)	10/13/2024 at Harvard (L, 0-5)
Attempted 20-Plus Shots (9 matches)	22, vs. Penn (11/2/2024 — L, 0-1)
Attempted 25-Plus Shots (27 matches)	30, vs. UAlbany (10/17/2023 — W, 4-0)
Attempted 30-Plus Shots (27 matches)	30, vs. UAlbany (10/17/2023 — W, 4-0)
Recorded 10-Plus Shots on Goal (5 matches)	10, vs. Kent State (8/31/2025 — T, 1-1)
Recorded 15-Plus Shots on Goal (27 matches)	17, vs. UAlbany (10/17/2023 — W, 4-0)
Recorded 10-Plus Corner Kicks (70 matches)	10, vs. UAlbany (8/29/2021 — T, 2-2 — 2OT)
Allowed 10-Plus Corner Kicks (39 matches)	10, vs. Lehigh (8/27/2023 — T, 2-2)
Called for 15-Plus Fouls (12 matches)	15, at Harvard (10/13/2024 — L, 0-5)
Opponent Called for 15-Plus Fouls (51 matches)	17, at UAlbany (9/7/2022 — T, 1-1)

A CORNELL PLAYER...

Scored a Brace (27 matches)	2, Laken Gallman, vs. UAlbany (10/17/2023 — W, 4-0)
Scored a Hat Trick (269 matches)	3, Lena Russomagno, vs. Lafayette (9/16/2007 — W, 3-2)
Scored Four Goals (413 matches)	4, Genna Terranova, vs. Northeastern (10/18/1998 — W, 5-2)
Recorded Multiple Assists (39 matches)	2, Laken Gallman, vs. Lehigh (8/27/2023 — T, 2-2)
Recorded Three Assists (177 matches)	3, Elizabeth Crowell, vs. UAlbany (9/15/2013 — W, 5-4)
Recorded Four Assists (654 matches)	4, Krista Kallio, vs. Wells (9/28/1983 — W, 6-1)
Recorded 3+ Points (27 matches)	4, Laken Gallman (2g), vs. UAlbany (10/17/2023 — W, 4-0)
Recorded 5+ Points (177 matches)	5, Elizabeth Crowell (1g-3a), vs. UAlbany (9/15/2013 — W, 5-4)
Recorded 5+ Shot Att. (15 matches)	5, Laken Gallman, vs. Princeton (9/28/2024 — L, 0-3)
Recorded 7+ Shot Att. (61 matches)	7, Reina Gabriel, vs. Colgate (10/5/2021 — W, 2-1)
Scored on a Penalty (53 matches)	Ashley Durik, at Niagara (9/1/2022 — L, 2-3)
Attempted a Penalty (53 matches)	Ashley Durik, at Niagara (9/1/2022 — L, 2-3)
Saved 10-Plus Shots (57 matches)	10, Miranda Iannone, at Princeton (10/30/2021 — L, 0-1)
Saved 15-Plus Shots (94 matches)	15, Meghan Kennedy, vs. Columbia (9/22/2018 — L, 1-2)
Recorded a Clean Sheet (1 match)	Samantha Qureshey, vs. Binghamton (9/14/25 — T, 1-1)
Recorded a Red Card (4 matches)	Izzy Scott, at Delaware (9/4/2025 — L, 1-3)

AN OPPOSING PLAYER...

Scored a Brace (21 matches)	2, Paige Peltier, vs. Boston College (9/5/2024 — L, 2-3)
Hat Trick (69 matches)	3, Annie Ibey, vs. Niagara (9/2/2021 — L, 2-5)
Recorded Multiple Assists (0 matches)	2, Maia Tabion, vs. Columbia (9/20/2025 — L, 1-2)
Recorded Three Assists (12 matches)	3, Áslaug Gunnlaugsdóttir, at Harvard (10/13/2024 — L, 0-5)
Recorded 3+ Points (12 matches)	5, Áslaug Gunnlaugsdóttir (g-3a), at Harvard (10/13/2024 — L, 0-5)
Recorded 5+ Points (12 matches)	5, Áslaug Gunnlaugsdóttir (g-3a), at Harvard (10/13/2024 — L, 0-5)
Recorded 5+ Shot Attempts (10 matches)	7, Ella Weil, at Brown (10/26/2024 — L, 0-1)
Recorded 7+ Shot Attempts (10 matches)	7, Ella Weil, at Brown (10/26/2024 — L, 0-1)
Recorded 10+ Shot Attempts (133 matches)	10, Tyler Lussi, at Princeton (10/31/2015 — L, 0-2)
Scored on a Penalty (2 matches)	Ella McBride, at Providence (9/11/2025 — T, 1-1)
Attempted a Penalty (2 matches)	Ella McBride, at Providence (9/11/2025 — T, 1-1)
Saved 10-Plus Shots (26 matches)	12, Gabriella Terranova, vs. UAlbany (10/17/2023 — W, 4-0)
Recorded a Clean Sheet (1 match)	Rebecca Kessler, vs. Binghamton (9/14/2025 — T, 0-0)
Recorded a Red Card (14 matches)	Taylor Schram (coach), vs. Dartmouth (10/5/2022 — W, 1-0)

Bold denotes occurred during 2025 season

2025 CORNELL WOMEN'S SOCCER TV ROSTER



**NATALIE
MEDUGNO**

GK • 5'8" • Sr.
Oceanside, N.Y.



**SAMANTHA
QURESHEY**

GK • 5'7" • Fr.
Macungie, Pa.



**NAOMI
GLASSBERG**

GK • 5'6" • Jr.
New Tripoli, Pa.



**BROOKE
BROWN**

M • 5'7" • Jr.
Barrington, Ill.



**JESSICA
ALESSI**

F/D • 5'4" • Fr.
Syosset, N.Y.



**JANE
OFFIT**

D • 5'7" • So.
New York, N.Y.



**ABIGAIL
BISHARA**

M • 5'8" • Sr.
Clarence Center, N.Y.



**ISABEL
CHAPMAN**

D • 5'8" • Jr.
Ann Arbor, Mich.



**IZZY
SCOTT**

D • 5'11" • Sr.
Austin, Texas



**AMANDA
POLYNIK**

D • 5'7" • So.
River Vale, N.J.



**ALANNA
COLBERT**

F • 5'4" • Jr.
Lexington, S.C.



**LAUREN
DIPERRI**

M • 5'7" • So.
Plainview, N.Y.



**MARIANA
KESSINGER**

M • 5'4" • Sr.
Palo Alto, Calif.



**MARAN
KINGSLEY**

F • 6'0" • Sr.
Buffalo, N.Y.



**MADELINE
PARK**

D • 5'7" • Fr.
Palos Verdes, Calif.



**TANUM
NELSON**

M/F • 5'8" • Sr.
Duxbury, Vt.



**GABY
GONZALEZ**

D • 5'9" • Sr.
Westport, Conn.



**MADISON
GUIRY**

D • 5'7" • Fr.
Hardwick, N.J.



**SYDNEY
ALLEN**

F • 5'9" • Jr.
Rockville, Md.



**GRACE
DIEHL**

F • 5'10" • Sr.
Driftwood, Texas



**ESTELLE
JARELS**

F • 5'7" • So.
Atlanta, Ga.



**RAYA
LEIKIN**

D/M • 5'6" • Fr.
Mill Valley, Calif.



**CHLOE
BENIK**

M • 5'7" • Fr.
Garden City, N.Y.



**ELLA
KOSCHINEG**

D • 5'3" • So.
Ambler, Pa.



**ANDREA
WILSON**

F • 5'7" • Fr.
Fairport, N.Y.



**IVY
TOLBERT**

M • 5'7" • So.
Commerce, Ga.



**KAYLA
RISTANTO**

D • 5'4" • Jr.
Dallas, Texas



**EVELYN
CHUDOWSKY**

F • 5'8" • So.
Westport, Conn.



**SYDNEY
MALAGA**

F • 5'8" • Sr.
Elmhurst, Ill.



**EMILY
GIBBONS**

M/F • 5'9" • Jr.
Hingham, Mass.



**AVA
JUNG**

M • 5'9" • Jr.
Richmond, Va.



**HANNAH
GRIMES**

GK • 5'6" • Sr.
Woodinville, Wash.



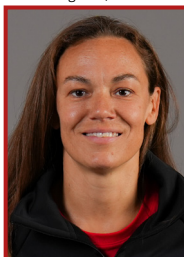
**ROB
FERGUSON**

Head Coach
Seventh Season



**DANI
REID-ESPINAL**

Assistant Coach
Fourth Season



**SHAELA
KRAYE**

Assistant Coach
Second Season



**EMILY
BERG**

Athletic Trainer
Second Season



**SEAMUS
GARLAND**

Strength & Conditioning
First Season