

ALL-TIME ROSTER

A

Jenny Ackley 1995-98
 Micki Adachi 1974
 Themy-Jo Adachi 1976-79
 Sarah Adams 2004-present
 Val Altamirano 1989-92
 Kelly Anderson 2002-present
 Katie Andrew 2001
 Gwen Arafiles 2004-present
 Denise Arce 1988
 Judy Arciniega 1987-90

B

Stacey Baba 1977
 Jo Baker 1981-84
 Roxi Bardwell 1980-82
 Kristen Bayless 2002-present
 Sandy Beach 1985-88
 Jamia Berkman 1986-88
 Victoria Blint 1994
 Heather Bo 1984
 Cassie Bobrow 2002-2003
 Karen Bonini 1994-97
 Linda Bothwell 1974
 Paige Bowie 1998-2001
 Jacque Bowman 1981-84
 Gillian Boxx 1992-95
 Tera Brandon 1992
 Maiko Bristow 1996-99
 Robyn Burgess 1989-92

C

Christy Calderon 1988-91
 Donna Campana 1987-88
 Christy Campbell 1992-93
 Kelly Campbell 1982-83
 Erin Cassidy 1986-89
 Cindy Casteel 1977
 Shauna Chapin 1999-2000
 Debra Chaw 1975-78
 Jo Ellen Chew 1977
 Vicky Cody 1977-79
 Peggy Critz 1976-77
 Marlo Cruz-Sands 1989, '91-93

D

Kourtney Davis 2001
 Jen Deering 2000-2003
 Joan DeLeon 1977-78
 Debra Delgado 1976
 Roni Deutch 1983-86
 Tammy Dietrich 1993
 Nicole DiSalvio 1998-2001
 Ann Drake 1980
 Kirsten Drake 1995-99
 Pauline Dueñas 1998-2001

E

Denise Ebright 1995
 Kaleo Eldredge 2002-present

F

Evelyn Fernandez 1985-88
 Shari Fisher 1979-82

Marianne Flatland 1978-80
 Mary Fleming 1978-81
 Whitney Floyd 1994-98
 Corinne "Corky" Foo 1977-80
 Jocelyn Forest 1999-2002
 Dina Frandsen 1994-97
 Lori Friday 1985

G

Karen Gai 1975
 Deborah Gaisford 1978
 Vicky Galindo 2003-present
 Colleen Galloway 1979, '81
 Pamela Goldsborough 1979-80
 Keely Graf 1978
 Jo Anne Graham 1985
 Michele Granger 1989-93
 Melinda Griffith 1974
 Doreen Gutierrez 1978
 Candy Green 1976-77

H

Becky Hanson 1987-88
 Candace Harper 1999-2002
Shannon Harper 2004-present
 Paula Hernandez 1993
 Kathy Hicks 1980
 Stephanie Hinds 1984-87
 Kelly Hintz 1982-83
 Diana Ho 1974-75
 Debra Hodson 1976
 Barbara Hofer 1988-90
 LeAnna Hoglen 2002-2003
 Jennifer Horgan 1991-92
 Cindy Huhn 1984
 Tricia Hunt 1998-99
 Ty Hunter 1998

I

Lisa Iancin 1997-2000
 Michelle Ishihara 1996-97

J

Angie Jacobs 1985, '87-89
 Gretchen Jacobs 1981-84
 Sue Jacquez 1989-92
 Lindsay James 2003-present
 Tracy Jensen 1975
 Oneda Johnson 1974
 Sheryl Johnson 1978

K

Lisa Kantor 1986-89
 Kim Kappus 1989-90
 Tina Kellner 1994-96
 Sue Kensill 1979
 Saanen Kerson 1994
 Theresa Kilgariff 1996-97
 Kelly Kirkland 1981-83
 Arlene Koski 1976-77
 Jackie Kostka 1979
 Rhonda Krider 1994-95
 Keri Kropke 1990-93

L

Janeen LaGrace 1990-93

Mike Leavitt 1985
 Sara Leiman 1974-76
 Katherine Lee 1976
 Lisa Lipelt 1980
 Diane Lorence 1975-77
 Jessica Luna 1996

M

Eryn Manahan 2000-2003
 Marcia Mann 1974-75
 Jean Marquardt 1975
 Lisa Martinez 1984-86
 Patricia Martinez 1977-79
 Danielle Mashy 1993
 Katie May 1996-99
 Melanie McCart 1994-97
 Rose Messina 1986-87
 Katy Meyer 1981-83
 Elena Mitschkowetz 1978-79
 Kim Moe 1985-88
 Meredith Mollner 1997
 Jo Ann Momono 1974-76
 Tina Montoya 1989-92
 Kristen Morley 1999-2003
 Cheri Mowry 1993

N

Veronica Nelson 2000-2003
 Nancy Nerenberg 1978
 Lori Newdoll 1983-84
 Valerie Nicklas 1995-99

O

Kathy O'Brien 1974
 Ali O'Connor 1991
 Lisa O'Connor 1990-93
 Jeannette Ong 1975
 Jill Osur 1986-87

P

Jessica Pamanian 2002-present
 Jessica Parker 1993-97
 Leslie Partch 1979-82
 Marcia Partch 1982
 Mikella Pedretti 2000-2003
 Erika Perez 1992-95
 Amber Phillips 1998-2001
 Ivy Pinkerton 1990
 Stacy Pitton 1987-90
 Janice Pontes 1978
 Laura Power 1999-2000

Q

Michelle Quinney 1978-79

R

Shauna Rajkowski 1984-87
 Frances Reed 1986, 88
 Jennifer Reichhoff 2002
 Pam Reinoehl 1980-83
 Kendall Richards 1993-94
 Theresa Robinson 1979-80
 Anne Marie Rockwell 1977
 Roni Rodrigues 2002-present
 Carlyn Rojas 1996-98
 Jennifer Russell 1983-84

S

Debbie Salazor 1974-76
 Pua Santiago 1986
 Pat Sauer 1974
 Kim Sawyer 1985
 Emily Schwegman 1978
 Courtney Scott 2000-2003
 Peggy Scully 1978
 Donna Seid 1974-76
 Danielle Setiawan 2001
 Tonya Seymore 1991-94
 Andria Sievers 1980-83
 Cheryl Smith 1980
 Karen Smith 1981, '84
 Heather Smittle 1989-91
 Alyssa Smoke 2004-present
 Chelsea Spencer 2002-present
 Dorothy Stevenson 1975
 Joan Stevenson 1974
 Lidia Stiglich 1989-92
 Connie Stith 1974-77
 Beth Strauss 1985
 Mary Streshly 1987
 Margaret Sutter 1981-84
 Alex Sutton 2004-present
 Gloria Swanson 1975

T

Megumi Takasaki 1996-99
 Debbie Temple 1974-75
 Laura Terada 1992-95
 Connie Thodos 1974
 Kris Thorig 1994
 Kristina Thorson 2003-present
 Marsha Tiller 1982
 Chanel Tripp 2003

U

Sherri Uffelman 1979

V

Marielle Vaughn 1989
 Jessica Vernaglia 2002-present

W

Marilyn Walker 1980
 Anne Walsh 1994-96
 Mary Walsh 1991
 Linzi Wescott 2003
 Cheryl Westberg 1976-77
 Nancy White 1985
 Anne Williams 1990-91
 Caryn Williams 1985-88
 Lynda Wills 1985-88
 Ann Wondoloski 1977-80
 Haley Woods 2003-present

Y

Susan Yoshioka 1975
 Holly Yost 1996-99

Z

Judy Zeigler 1983

SERIES RECORDS

Opponent	Record	Last Meeting	Score	Winner
Adams State	1-0	3/6/87	8-0	Cal
Adelphi	7-0	3/27/91	2-1	Cal
Akron	1-0	3/14/98	4-1	Cal
Alabama	1-1	2/22/03	4-2	Ala
Arizona	17-53	5/25/03	4-1	CaI
Arizona State	45-29	5/4/03	1-0(9)	ASU
Arkansas	1-0	3/19/98	7-0	Cal
Ball State	1-0	3/17/95	5-0	Cal
Baylor	3-0	3/3/00	9-1	Cal
Boston University	7-3	2/28/98	5-1	Cal
Bowling Green	5-0	2/21/99	9-1	Cal
Brigham Young	6-0	2/22/02	1-0 (8)	Cal
Cal Poly Pomona	9-8-1	4/9/93	1-0	CPP
Cal Poly	16-5	2/23/02	4-1 (8)	Cal
Cal State Dominguez Hills	1-0	4/16/82	3-1	Cal
Cal State Fullerton	13-22	2/28/03	5-4	CSF
Cal State Hayward	7-2	2/25/85	2-0	Cal
Cal State Northridge	9-8	5/15/98	3-1	CaI
Cal State Sacramento	42-19	3/16/02	6-2	Cal
Cal State Stanislaus	1-0	4/2/81	9-0	Cal
Carthage	1-0	3/25/81	10-0	Cal
Central Michigan	4-4	2/18/00	9-1	Cal
Chaminade	1-0	4/27/90	10-1	Cal
Chico State	4-4	4/19/80	2-1	Chico
Cleveland State	1-0	3/19/94	7-0	Cal
Colorado State	6-1	3/4/00	3-1	Cal
Connecticut	1-1	5/17/01	2-0	Cal
Creighton	9-0	3/15/98	8-1	Cal
DePaul	3-1	5/17/03	1-0	Cal
Drake	1-0	3/14/98	2-0	Cal
Eastern Illinois	2-0	3/16/01	13-4 (5)	Cal
Eastern Kentucky	1-0	3/21/03	9-0(5)	Cal
Florida	3-1	5/21/00	2-1	Cal
Florida A&M	2-0	2/13/00	14-0	Cal
Florida Atlantic	3-0	3/14/03	10-2(5)	CaI
Florida International	1-0	3/15/03	5-1	CaI
Florida State	7-1	5/24/02	1-0	Cal
Fordham	1-0	2/18/01	14-1	Cal
Fresno State	37-60	5/16/02	2-1	Cal
Georgia	1-0	2/14/99	3-0	Cal
Georgia State	1-0	3/25/01	4-1	Cal
Georgia Tech	1-0	3/8/03	1-0(8)	Cal
Harvard	3-0	3/25/01	8-0	Cal
Hawaii	12-6	2/16/03	1-0	Haw
Hofstra	3-0	3/24/02	15-2	Cal
Humboldt State	4-1	3/26/79	6-5	Cal
Idaho State	0-1	4/18/80	4-2	ISU
Illinois	1-0	2/24/02	8-0 (5)	Cal
Illinois State	3-0	2/23/03	11-0	Cal
Indiana	3-0	3/22/92	8-0 (5)	Cal
Iowa	9-8	3/22/03	4-3	Iowa
Iowa State	1-2	3/19/88	3-2	ISU
Kansas	8-1	3/15/02	1-0	CaI
Kent State	2-0	2/16/02	10-2	Cal
Long Beach State	13-10	3/9/02	1-0	LBSU
Long Island	2-0	3/20/03	9-0(6)	Cal
Louisiana State	3-0	2/16/02	3-0	CaI
Louisiana Tech	1-0	3/1/96	2-1	Cal
Loyola Marymount	3-0	2/18/00	5-0	CaI
Massachusetts	10-0	3/15/03	6-4	Cal
Mercer	1-0	3/24/01	3-2 (8)	Cal
Miami-OH	3-0	3/14/02	9-0 (5)	Cal
Michigan	6-0	5/18/03	1-0	Cal
Michigan State	2-1	3/21/97	4-0	CaI
Minnesota	10-2	3/7/03	3-2	Cal
Mississippi State	1-0	2/12/99	6-4	Cal
Missouri	4-1	3/3/00	1-0 (9)	Cal
Nebraska	8-13	2/15/03	6-1	Neb

Opponent	Record	Last Meeting	Score	Winner
Nevada	20-10-1	3/3/89	1-0	Cal
New Mexico	4-1	3/3/01	3-1	Cal
New Mexico State	15-1	3/6/01	3-0	Cal
Northeast Louisiana	1-0	3/21/92	10-0 (5)	Cal
North Carolina	2-0	3/25/01	8-0 (6)	Cal
Northern Arizona	4-1	4/28/85	7-0	Cal
Northern Colorado	1-0	3/23/81	2-1	Cal
Northern Illinois	2-0	3/13/96	1-0	Cal
Northern Iowa	1-0	3/9/02	6-1	Cal
Northwestern	9-3	2/28/03	4-3(8)	NW
Notre Dame	2-0	2/22/03	6-0	Cal
Oakland	8-0	5/15/03	8-0(6)	Cal
Ohio State	3-3	3/1/03	1-0	OSU
Oklahoma	9-3	5/24/03	5-2	Cal
Oklahoma State	2-5	3/1/02	1-0	OSU
Oregon	58-28	5/9/03	9-1(6)	Ore
Oregon State	55-22	5/10/03	6-2	CaI
Oregon Tech	1-0	4/22/78	25-0	Cal
Pacific	47-34-1	3/1/03	7-0	CaI
Portland State	13-2	2/15/03	5-0	CaI
Purdue	3-0	2/14/03	1-0	CaI
Sacramento State	3-0	4/9/03	4-1	CaI
Saint Mary's (Calif.)	34-0	2/9/03	8-1	CaI
St. Mary's (Texas)	2-0	3/20/92	9-0 (5)	Cal
Sam Houston State	1-0	3/19/88	4-0	Cal
San Diego State	8-3	3/1/02	5-4	Cal
San Francisco	52-3	4/26/89	10-0 (5)	Cal
San Francisco State	7-1	5/1/79	14-0	Cal
San Jose State	39-5	2/1/03	9-0(5)	CaI
Santa Clara	62-0	4/16/03	4-0(6)	CaI
Sonoma State	5-0	4/11/77	14-4	Cal
South Carolina	1-0	3/29/86	6-2	Cal
Southeast Missouri State	2-0	3/23/01	5-4	Cal
Southeastern Louisiana	1-0	3/22/92	12-0 (5)	Cal
Southern Cal	2-0	3/1/85	10-0	Cal
Southern Oregon State	1-0	4/28/78	8-7	Cal
Southern Illinois	1-0	3/9/01	2-0	Cal
Southwest Texas	0-1	2/10/02	3-2 (8)	SWT
Southwestern Louisiana	5-1	5/23/99	8-1	Cal
Stanford	46-12	4/19/03	2-1	CaI
Syracuse	2-0	3/14/03	8-0 (5)	Cal
Tennessee	2-0	2/1/03	11-1(5)	Cal
Tennessee Tech	1-0	2/18/95	8-0	Cal
Texas	0-3	5/23/03	1-0	Texas
Texas A&M	4-9	3/20/98	9-0	Cal
Texas A&M-Corpus Christi	1-0	3/17/00	3-2	Cal
Texas Tech	2-0	2/14/03	7-0	Cal
Texas-Arlington	3-0	2/15/91	2-0	Cal
Toledo	2-0	2/21/98	17-1	Cal
Tulsa	2-0	3/9/99	2-0	Cal
U.S. International	16-4	4/14/90	3-1	USIU
UC Davis	10-6	2/25/82	17-0	Cal
UCLA	14-63	5/26/03	1-0(9)	UCLA
UC Riverside	5-0	2/15/02	3-0	Cal
UC San Diego	1-0	5/19/78	4-0	Cal
UC Santa Barbara	13-4	3/26/03	6-2	CaI
UC Santa Cruz	1-0	4/16/74	8-7	Cal
UNLV	8-5	3/22/03	1-0	Cal
Utah	15-7	2/16/01	4-0	CaI
Utah State	9-6	3/21/03	5-1	Cal
Virginia	4-0	3/8/02	7-1	CaI
Washington	21-22	4/27/03	5-2	Wash
Weber State	2-0	3/26/83	4-3	Cal
West Texas State	1-0	3/26/81	8-0	Cal
Western Kentucky	1-0	3/16/01	8-0 (6)	Cal
Western Michigan	0-2	3/24/81	1-0	WMU
Wichita State	1-0	2/26/00	4-3	Cal
Wisconsin	6-2	3/17/02	1-0	Cal

Bold indicates 2004 scheduled opponents



ALL-TIME RESULTS

1972

HEAD COACH: DEBBIE GEBHARDT

OVERALL RECORD: 2-4

Sonoma State	5-1	H
Cal State Hayward	7-11	A
Nevada	6-8	H
Chico State	8-6	H
Sacramento State	2-4	A
UC Davis	2-9	A

1973

HEAD COACH: DEBBIE GEBHARDT

OVERALL RECORD: 2-4

NCAIAC RECORD: 4TH

Sonoma State	22-19	A
Chico State	7-13	A
Cal State Hayward	10-6	H
Nevada	9-11	A
Sacramento State	6-14	H
UC Davis	1-11	H

1974

HEAD COACH: CONI STAFF

OVERALL RECORD: 5-4

NCAIAC RECORD: 5TH

UC Santa Cruz	8-7	H
San Francisco State	5-4	H
UC Davis	2-8	A
Chico State	9-7	H
Sacramento State	8-10	
Cal State Hayward	0-1	A
Nevada	5-12, 10-5	H
Sonoma State	5-4	H

1975

HEAD COACH: CONI STAFF

OVERALL RECORD: 4-3

NCAIAC RECORD: 3RD

Sacramento State	9-18	H
UC Davis	8-16	H
Chico State	5-3	A
Cal State Hayward	14-13	H
Nevada	2-4	A
Sonoma State	19-9	A
Humboldt State	13-1	H

1976

HEAD COACH: MYRTLE BAKER

OVERALL RECORD: 9-6

NCAIAC RECORD: 3RD

Nevada	2-8	
Humboldt State	17-1	
Chico State	3-1	
Sacramento State	0-3	
Cal Poly Pomona	L	
Nevada	L	
San Diego State	W	
Sonoma State	W	
Nevada	L	
Portland	L, W	
San Francisco	W	

Note: records incomplete

1977

HEAD COACH: MYRTLE BAKER

OVERALL RECORD: 12-9

NORCAL RECORD: 5-3/4TH

San Francisco State	13-7	H
San Francisco	10-5	A
Oregon State	1-5	H
UD Davis	6-4	H
Sonoma State	18-4	A
Nevada	2-12	A
Cal State Hayward	15-5	H
Sacramento State	6-12	H
UC Davis	16-10	1
Sacramento State	0-8	1
San Francisco State	4-3	1
Chico State	2-9	1
Chabot	10-2	A
Chico State	0-13	A
Humboldt State	23-2	A
Pacific	14-3	H
San Francisco	17-6	H
UC Davis	15-19	2
UC Riverside	3-4	2
UC Santa Barbara	1-5	2
UC San Diego	11-7	2

1 – NCAIAC Tournament, Chico, CA
2 – All-California Tournament

1978

HEAD COACH: BONNIE JOHNSON

OVERALL RECORD: 19-19-1

NORCAL RECORD: 2ND

Nevada	2-4, 2-8	A
Pacific	4-8, 3-15	A
Utah State	2-11	H
Cal Poly SLO	0-10, 2-19	A
UC Riverside	10-4, 12-6	A
UCLA	0-6, 1-7	A
San Francisco	10-0, 6-5	H
Nevada	5-1, 9-9	H
Fresno State	4-3, 5-1	H
Santa Clara	10-4	H
Pacific	6-5, 7-6	H
Fresno State	0-2, 0-4	A
San Francisco	6-1, 12-5	A
Sacramento State	4-6	1
Oregon State	7-11	1
Oregon Tech	25-0	1
Portland State	5-4	1
Humboldt State	13-2	1
Sacramento State	3-1, 0-4	A
Southern Oregon State	8-7	H
West Valley JC	4-5	H
Nevada	3-4	H
San Francisco State	16-1, 8-10	H
UC San Diego	4-0	N
UC Davis	1-4	N
UC Santa Barbara	0-6	N

1 – Reno Invitational, Reno, NV

1979

HEAD COACH: BONNIE JOHNSON

OVERALL RECORD: 37-9

NORCAL RECORD: 1ST

Nevada	1-0, 4-1	H
UC Davis	5-3, 6-1	H
Sacramento State	2-8, 2-0	H

San Francisco	10-0, 10-0	H
Portland State	3-2, 7-1	H
Humboldt State	3-6, 6-5	A
Fresno State	8-1, 2-0	H
Portland State	1-0	A
Oregon Col. of Education	8-2	
Oregon State	0-1	A
Oregon	0-1	A
Pacific	8-1, 11-0	A
Fresno State	6-0, 1-2	A
Santa Clara	10-0, 9-0	H
San Francisco	2-1, 12-0	A
San Francisco State	6-0	1
Portland State	2-3	1
Northern Arizona	3-1	1
Chico State	1-0	1
Nevada	7-4	1
Weber State	3-0	1
Portland State	4-5	1
Santa Clara	2-0, 5-0	A
UC Santa Barbara	1-0	H
Sacramento State	2-1	H
West Valley JC	1-0	H
San Francisco State	16-0, 14-0	A
Pacific	3-0, 9-0	H
Cal Poly SLO	5-4	A
UCLA	0-3	N
Sacramento State	4-1	N
Cal Poly Pomona	0-10	A

1 – Reno Invitational, Reno, NV

1980

HEAD COACH: BONNIE JOHNSON

OVERALL RECORD: 46-11

NORCAL RECORD: 1ST

UC Davis	2-1, 4-0	
Nevada	2-1, 0-2	
Stanford	12-1, 15-2	
Portland State	11-1, 8-0	
Oregon	1-0, 3-1	
Cal Poly SLO	5-0, 3-2	
Cal State Fullerton	3-2, 6-3	
Cal Poly Pomona	1-2, 0-1	
UCLA	0-1, 4-1	
U.S. International	12-0, 6-0	
Santa Clara	12-0, 6-0	
San Francisco	2-0, 1-3	
Pacific	10-0, 11-0	
Fresno State	2-1, 2-3	
Portland State	15-1	1
Idaho State	2-4	1
Northern Arizona	8-1	1
Pacific	11-1	1
Fresno State	6-1	1
Utah	1-0	1
Chico State	1-2	1
Sacramento State	4-0	2
Oregon State	1-0	2
Oklahoma	2-1, 1-0	2
Pacific	7-0, 2-0	
San Francisco	4-0, 11-1	
Fresno State	1-0, 2-0	
Santa Clara	12-0, 5-0	
Fresno State	1-0	
Cal Poly Pomona	0-1	3
UCLA	2-0	3
Fresno State	2-1	3
Cal Poly Pomona	1-0	3
Cal State Fullerton	1-0, 4-0	3
Utah State	1-4	4

Massachusetts	2-0	4
Texas A&M	0-1	4

1 – Reno Invitational, Reno, NV
2 – Cal Invitational, Berkeley, CA
3 – WIAAW Tournament, Fresno, CA
4 – AIAW College World Series, Oklahoma City, OK

1981

HEAD COACH: BONNIE JOHNSON

OVERALL RECORD: 48-13

NORCAL RECORD: 1ST

UC Davis	8-0, 9-0	H
Nevada	4-0, 1-0	H
Santa Clara	1-0, 8-0	H
San Francisco	3-0, 2-0	A
LSU	1-0	1
Texas-Arlington	3-0	1
Missouri	1-0	1
Ohio State	1-0	1
Oklahoma	0-2	1
Northern Colorado	2-1	1
Iowa	7-0	1
Western Michigan	0-1	1
Ohio State	12-0	1
Western Michigan	0-1	1
Michigan State	0-1	1
Carthage	10-0	1
Oklahoma	1-0	1
Iowa State	2-1	2
Missouri	0-1	2
Texas A&M	0-1	2
West Texas State	8-0	2
Oklahoma State	2-1	2
New Mexico	0-1	2
Santa Clara	12-0, 4-1	A
Stanislaus State	9-0	3
Oregon State	3-0	3
Arizona State	1-0, 2-0	
Fresno State	1-2, 2-1	A
Pacific	2-0, 5-2	A
San Francisco	2-1, 2-0	H
Cal Poly Pomona	3-0, 1-0	H
San Francisco	3-0	4
Fresno State	1-2	4
Sacramento State	9-0	4
Oregon	7-0	4
Fresno State	3-0	4
Pacific	9-1, 2-0	H
Sacramento State	4-2, 9-0	
Fresno State	1-0, 3-2	H
Arizona State	2-1	5
Cal State Fullerton	2-3	5
Arizona State	6-0	5
Cal State Fullerton	1-3	5
Illinois State	3-1	6
Oklahoma	4-1	6
Cal State Fullerton	0-1	6
UCLA	0-2	6

1 – Oklahoma Invitational, Norman, OK
2 – Texas Women's Invitational, Denton, TX
3 – Pacific Invitational, Stockton, CA
4 – Cal Invitational, Berkeley, CA
5 – WIAAW Tournament, Tempe, AZ
6 – AIAW College World Series, Oklahoma City, OK

1982

HEAD COACH BONNIE JOHNSON

OVERALL RECORD: 37-17-1

NORCAL RECORD: 2ND

UC Davis	6-0, 17-0	A
San Francisco	1-0, 13-3	H
Stanford	10-0, 1-0	A
Santa Clara	7-0, 9-0	H
Oregon State	2-0, 1-0	H
U.S. International	2-1, 1-0	H
Cal Poly Pomona	0-2, 0-0	A
Cal State Fullerton	0-1, 3-0	A
UCLA	0-3	A
San Diego State	2-0	1
Arizona State	0-2	1
San Francisco	5-2	1
Texas A&M	0-1	1
San Francisco	3-2, 1-0	A
Cal State Hayward	4-0	2
Cal State Fullerton	0-1	2
Sacramento State	1-0	2
Arizona	2-0	2
Utah State	3-5	3
Long Beach State	5-4	3
Cal State Dominguez Hills	3-1	3
Utah	6-4	3
Fresno State	1-3	3
Long Beach State	4-1	3
Santa Clara	W, W	A
San Francisco	4-2	4
Pacific	4-0	4
Utah	0-1, 1-0	4
Fresno State	0-1, 0-6	H
Stanford	10-2, 7-0	H
Pacific	0-4	A
Fresno State	1-0, 1-2	A
Pacific	1-0, 5-0	H
Arizona State	1-0, 1-3, 1-2	5
Central Michigan	5-0	6
Oklahoma State	0-3	6
Texas A&M	0-5	6
1 - Pony Invitational, Fullerton, CA		
2 - Pacific Invitational, Stockton, CA		
3 - Las Vegas Invitational, Las Vegas, NV		
4 - California Invitational, Berkeley, CA		
5 - WAIW Tournament, Tempe, AZ		
6 - AIAW College World Series, Oklahoma City, OK		

1983

HEAD COACH: DONNA TERRY

OVERALL RECORD: 26-21

NORPAC RECORD: 6-6/4TH

Fresno State	2-0, 2-0	H
Pacific	1-2, 1-4	A
U.S. International	9-0, 0-7	A
San Diego State	3-0, 0-2	A
U.S. International	2-0	1
Cal Poly Pomona	0-2	1
Weber State	3-4	1
New Mexico State	1-0	1
Fresno State	2-1	1
Cal Poly Pomona	0-2	1
Cal State Fullerton	0-2, 0-2	H
Pacific	0-3, 3-4	H
Fresno State	0-4, 0-1	A
San Francisco	1-0, 4-0	H
U.S. International	4-0	2
Sacramento State	5-0	2
Cal Poly SLO	8-1	2
Cal State Northridge	0-2	2
Santa Clara	15-0, 5-0	H

San Francisco	3-1, 11-0	A
Nebraska	1-2	3
Texas A&M	0-5	3
Creighton	1-0	3
Nebraska	3-4	3
Santa Clara	6-0, 7-0	A
Oregon	3-0, 1-0	A
Oregon State	1-5, 1-4	A
UC Santa Barbara	2-4, 4-0	H
UC Santa Barbara	3-0	4
Pacific	0-1	4
Nebraska	1-2	4
San Francisco	2-0	4
Fresno State	2-1	4
1 - Pony Invitational, Fullerton, CA		
2 - Pacific Invitational, Stockton, CA		
3 - Nebraska Invitational, Lincoln, NE		
4 - Cal Invitational, Berkeley, CA		

1984

HEAD COACH: DONNA TERRY

OVERALL RECORD: 27-19-1

NORPAC RECORD: 8-4/3RD

Pacific	1-2, 1-1	H
San Francisco	2-0, 1-4	H
Fresno State	0-3, 1-0	A
San Francisco	2-1, 2-1	A
Northern Arizona	0-3	1
Utah	2-1	1
Nevada	1-0	1
Northern Arizona	2-0	1
Nevada	1-2	1
Utah	1-5	1
Oregon State	1-0, 0-1	H
Oregon	2-0, 7-1	H
Utah	2-1	2
Fresno State	0-1	2
Pacific	1-2	2
UCLA	0-1, 0-4	A
UC Santa Barbara	4-2, 8-6	A
Fresno State	1-2, 0-1	H
Santa Clara	6-1, 14-0	H
Oregon State	1-0	3
Sacramento State	8-1	3
Stanford	7-0	3
UC Santa Barbara	5-0	3
U.S. International	1-0	3
Arizona State	0-2	3
Pacific	1-3	3
Arizona	0-4	3
Santa Clara	10-0, 2-0	A
Pacific	0-4, 2-0	A
UC Santa Barbara	2-0	4
Oregon	1-0	4
Fresno State	2-1	4
Oregon State	0-1	4
San Francisco	3-0	4
Pacific	0-1	4
1 - Reno Invitational, Reno, NV		
2 - Pony Invitational, Fullerton, CA		
3 - Libby Matson Invitational, Lodi, CA		
4 - Cal Invitational, Berkeley, CA		

1985

HEAD COACH: DONNA TERRY

OVERALL RECORD: 35-25

NORPAC RECORD: 6-4/4TH

San Francisco	10-0, 11-0	A
San Francisco	3-1, 0-2	A
Pacific	0-1, 6-0	A
Cal State Hayward	11-0, 2-0	H
Stanford	5-2, 6-0	H
USC	7-2, 10-0	H

Fresno State	0-1, 1-2	A
San Diego State	2-0, 0-1	N
San Diego State	4-1, 1-2	N
Texas A&M	0-6, 1-0	H
Pacific	0-2, 0-3	H
Oregon State	0-1	H
Cal State Fullerton	4-3	1
San Francisco	3-1	1
Pacific	1-2	1
Oregon State	1-0	2
U.S. International	3-1	2
UCLA	1-2	2
Stanford	6-0, 2-0	A
Long Beach State	3-2, 0-1	H
Santa Clara	10-0, 12-0	H
San Francisco	2-1, 1-0	H
UC Santa Barbara	0-1	3
Fresno State	1-0	3
Cal State Fullerton	7-0	3
U.S. International	4-0	3
Fresno State	1-2, 1-3	H
Utah	1-2, 4-3	4
Arizona	3-0	4
Brigham Young	4-1	4
Utah State	10-4	4
Nevada	4-0	4
Northern Arizona	7-0	4
Cal Poly Pomona	0-1, 2-1	H
Oregon	2-0, 2-0	A
Oregon State	1-2, 0-1	A
Fresno State	1-2	5
San Francisco	3-2	5
Oregon State	1-0	5
Fresno State	3-0, 1-3	5
1 - Pony Invitational, Fullerton, CA		
2 - Pacific Invitational, Stockton, CA		
3 - Libby Matson Invitational, Lodi, CA		
4 - Utah Invitational, Salt Lake City, UT		
6 - NorPac Tournament, Fresno, CA		



1986

HEAD COACH: DONNA TERRY

OVERALL RECORD: 43-17

NORPAC RECORD: 8-2/T1ST

Cal Poly SLO	1-0, 1-0	H
Fresno State	0-1, 1-2	H
Nevada	3-0, 1-0	H
San Francisco	5-1, 4-2	H
Brigham Young	2-0, 5-0	H
Texas A&M	1-0	N
Long Beach State	1-0	1
Texas A&M	0-1	1
UNLV	2-0	1
Cal State Fullerton	0-5	1
Cal Poly Pomona	2-0	1
Adelphi	3-0	2
Minnesota	4-1	2
St. Mary's (Texas)	4-1	2
Oklahoma State	0-2	2
Baylor	2-0	2
South Carolina	6-2	2
Northwestern	2-0	2
Stanford	6-0, 5-1	H
San Jose State	5-0, 15-0	H

Oregon State	1-2, 6-0	A
Oregon	7-0, 4-1	A
New Mexico State	2-1	3
Stanford	4-0	3
U.S. International	1-0	3
Arizona	3-4	3
Oregon State	8-0	3
San Francisco	7-0	3
Pacific	5-2	3
Arizona	1-8	3
Oregon	10-0, 4-1	H
Long Beach State	2-0, 1-3	H
Fresno State	0-1, 4-2	A
Pacific	0-1, 0-1	A
Stanford	5-1, 1-0	A
San Jose State	1-0	4
Fresno State	0-1	4
Oregon State	2-0	4
Fresno State	0-2	4
Arizona State	8-0	5
Arizona State	0-3, 1-0	5
Northwestern	2-0	6
Cal State Fullerton	0-3	6
Creighton	1-0	6
Texas A&M	0-1	6
1 - Pony Invitational, Fullerton, CA		
2 - Houston Classic, Houston, TX		
3 - Libby Matson Invitational, Lodi, CA		
4 - NorPac Tournament		
5 - NCAA Regional, Tempe, AZ		
6 - Women's College World Series, Omaha, NE		

1987

HEAD COACH: DONNA TERRY

OVERALL RECORD: 34-15

PAC-10 RECORD: 8-2/1ST

San Francisco	5-0, 2-0	H
Pacific	0-5, 4-1	A
Nevada	6-0	H
Fresno State	1-0	H
Nevada	2-1, 6-5	H
Michigan	4-3	1
New Mexico State	11-1	1
Adams State	8-0	1
Central Arizona JC (Exh)	6-3	1
BYU Club (Exh)	2-0	1
Fresno State	0-5	1
Nevada	5-0	H
Adelphi	1-0	H
Pacific	1-0	H
Northwestern	1-2	H
Nebraska	2-1, 2-1	H
Arizona State	3-0, 2-1	H
Nebraska	0-1	2
Central Michigan	1-3	2
UNLV	3-0	2
Kansas	8-0	2
UCLA	1-3	2
Cal Poly SLO	1-2, 1-0	H
UCLA	3-0, 1-0	H
Fresno State	2-0, 1-3	A
Arizona	1-0, 0-5	H
Oregon	2-1	3
Oregon State	0-1	3
Arizona	1-6	3
San Francisco	2-1	3
Pacific	5-0	3
Oregon	5-3	3
Oregon State	6-1, 1-0	A
Oregon	4-2, 0-6	A
San Francisco	1-0, 3-0	H
U.S. International	1-0, 1-2	H
Fresno State	0-3	4
Fresno State	2-5	4



- 1 – Roadrunner Tournament, Las Cruces, NM
- 2 – National Invitational Softball Tournament, Sunnyvale, CA
- 3 – Libby Matson Invitational, Lodi, CA
- 4 – NCAA Regional, Fresno, CA

1988

HEAD COACH: DIANE NINEMIRE

OVERALL RECORD: 39-24

PAC-10 RECORD: 7-11/5TH

Pacific	2-3, 2-0	A
Arizona State	1-0, 3-4	A
Arizona	2-3, 0-7	A
Iowa State	3-5	1
Long Beach State	1-4	1
UC Santa Barbara	1-0	1
Arizona State	5-1	1
New Mexico State	4-1	1
Oregon	4-5	1
UCLA	0-6, 0-2	H
San Francisco	3-1, 8-0	H
Nevada	4-0, 4-2	H
Indiana	6-1	2
SW Louisiana	4-0	2
Texas-Arlington	2-0	2
Colorado State	7-0	2
Sam Houston State	4-0	2
Bowling Green	6-0	2
Iowa State	2-3	2
Utah	4-3	H
Northwestern	3-2	H
Arizona State	1-2, 2-5	H
Central Michigan	2-3	3
Utah State	2-1	3
Kansas	9-0	3
Oklahoma	11-5	3
UCLA	0-1	3
Oregon State	2-0, 1-0	H
Oregon	2-3, 2-1	H
Adelphi	1-0, 10-2	H
Fresno State	3-1, 1-3	A
San Francisco	3-2, 2-0	H
Arizona	2-3, 4-0	H
Fresno State	5-2, 0-1	H
Hawaii	1-0, 3-1	H
Cal State Fullerton	0-1, 1-0	H
San Jose State	3-1, 4-0	H
UCLA	0-4, 1-0	A
Cal State Fullerton	1-3, 3-0	N
Oregon	4-1, 0-1	N
Fresno State	3-0	4
Fresno State	0-3, 2-5	4
1 – Nissan Invitational, Tucson, AZ		
2 – Houston Classic, Houston, TX		
3 – National Invitational Softball Tournament, Sunnyvale, CA		
4 – NCAA Regional, Fresno, CA		

1989

HEAD COACH: DIANE NINEMIRE

OVERALL RECORD: 38-26

PAC-10 RECORD: 10-10/4TH

Pacific	0-2, 1-2	H
New Mexico State	8-0	1
Kansas	6-0	1
Bowling Green	1-0	1
Oregon	1-0	1
Long Beach State	0-3	1
Utah	3-0	1
Nebraska	0-1	1
Oregon State	4-0, 3-0	H
San Jose State	1-0, 7-1	H
Nevada	11-0, 1-0	H

San Jose State	3-0, 9-0	A
UCLA	0-1, 0-2	A
Cal State Fullerton	0-1, 0-1	A
Arizona State	1-0, 1-0	H
Indiana	3-2	2
New Mexico	3-1	2
Massachusetts	3-0	2
Central Michigan	0-2	2
Santa Clara	20-0	2
Northwestern	8-0	3
Cal Poly Pomona	4-0	3
New Mexico State	1-4	3
Texas A&M	0-1	3
U.S. International	1-0	3
Utah	1-8	3
St. Mary's	2-0, 11-0	A
Oregon	4-3, 7-1	H
UCLA	2-7, 0-2	H
Fresno State	5-6, 0-6	H
Oregon State	9-0, 7-0	A
Oregon	2-1, 0-4	A
U.S. International	5-0, 4-0	H
St. Mary's	2-1, 5-0	H
San Francisco	1-0, 9-2	H
Arizona State	2-1, 0-1	A
Arizona	0-1, 2-3	A
San Francisco	11-0, 10-0	H
Fresno State	1-2, 2-3	A
Arizona	2-3, 0-1	H
Fresno State	0-1	4
Fresno State	0-6	4
1 – Nissan Invitational, Tucson, AZ		
2 – National Invitational Softball Tournament, Sunnyvale, CA		
3 – Pony Invitational, Fullerton, CA		
4 – NCAA Regional, Fresno, CA		

1990

HEAD COACH: DIANE NINEMIRE

OVERALL RECORD: 41-28

PAC-10 RECORD: 9-9/T3RD

Santa Clara	6-3, 4-0	H
Sacramento State	3-4, 0-2	H
Oregon	1-2	1
Pacific	2-1	1
Arizona State	4-0	1
Ohio State	2-3	1
U.S. International	1-0	1
Minnesota	2-0	1
Utah	1-2	1
Pacific	0-1, 3-8	A
Oregon State	7-0, 5-0	H
San Jose State	1-0	H
San Jose State	1-2, 2-0	A
Cal State Fullerton	0-1, 0-1	H
St. Mary's	11-0, 8-0	A
Arizona State	1-0, 1-0	H
Oregon	6-0, 3-0	H
Massachusetts	2-0, 7-1	H
Massachusetts	2-0	2
Utah State	3-0	2
Michigan	5-1	2
Santa Clara	4-0	2
Sacramento State	2-0	2
Iowa	2-1	2
Arizona State	2-3	2
UCLA	0-2, 1-2	H
Fresno State	0-2, 0-1	H
Sacramento State	2-0, 3-0	A
Fresno State	1-2, 0-1	A
UCLA	0-1, 0-1	A
U.S. International	0-1, 1-3	A
Hawaii	1-0, 3-0	H
Arizona State	2-1, 0-1	A
Arizona	0-2, 0-9	A

St. Mary's	11-0, 7-0	H
Chaminade	10-1	A
Colorado State	2-0	3
Hawaii	4-0	3
New Mexico State	3-0	3
New Mexico State	3-2	3
Hawaii	3-0	3
Oregon	0-1, 0-1	A
Oregon State	6-0, 2-1	A
San Jose State	2-1	4
UNLV	0-1	4
UNLV	1-0	4
UNLV	0-1	4
1 – Arizona Softball Classic, Tucson, AZ		
2 – National Invitational Softball Tournament, Sunnyvale, CA		
3 – Hawaii Invitational, Honolulu, HI		
4 – NCAA Regional, Berkeley, CA		

1991

HEAD COACH: DIANE NINEMIRE

OVERALL RECORD: 48-20

PAC-10 RECORD: 14-6/3RD

St. Mary's	8-2, 12-0	H
Fresno State	4-5, 0-1	H
Pacific	1-0, 6-0	H
Florida State	4-0	1
UCLA	3-6	1
Texas-Arlington	2-0	1
New Mexico State	10-5	1
Pacific	0-2	1
Arizona	0-4	1
Long Beach State	0-1	1
Utah State	5-0	2
San Diego State	2-1	2
Cal State Northridge	8-1	2
Long Beach State	1-2	2
Northwestern	4-1	2
Minnesota	3-5	2
Northwestern	6-0	2
Utah State	1-2	2
Sacramento State	2-0, 6-1	A
Oregon State	1-0, 8-0	H
Stanford	4-0, 11-0	H
Pacific	3-0, 12-0	A
Virginia	8-0	3
Adelphi	8-0	3
Creighton	3-0	3
Kansas	4-0	3
Arizona State	6-1	3
Adelphi	5-0, 2-1	H
Oregon	3-0, 2-0	H
Fresno State	0-1, 4-3	A
Arizona	1-0, 0-4	H
Arizona State	0-1, 0-3	H
San Jose State	3-0, 1-0	H
UCLA	2-0, 1-0	H
Arizona State	2-0, 1-2	A
Arizona	3-1, 1-0	A
UCLA	0-1, 0-1	A
Cal State Fullerton	0-1, 0-1	A
Cal Poly Pomona	1-0, 1-0	A
Sacramento State	3-0, 3-2	H
Oregon State	7-0, 4-0	A
Oregon	4-0, 1-0	A
Cal State Northridge	3-0, 1-0	H
Fresno State	0-2	4
Fresno State	1-8	4
1 – Arizona Softball Classic, Tucson, AZ		
2 – San Diego State Tournament, San Diego, CA		
3 – National Invitational Softball Tournament, Sunnyvale, CA		
4 – NCAA Regional, Fresno, CA		



1992

HEAD COACH: DIANE NINEMIRE

OVERALL RECORD: 47-16

PAC-10 RECORD: 8-8/3RD

Texas A&M	3-0	1
Cal State Fullerton	3-1	1
Long Beach State	5-0	1
Minnesota	4-0	1
Pacific	1-0	1
New Mexico State	6-0	1
Fresno State	1-0, 1-0	A
San Jose State	1-0, 0-6	A
Pacific	3-0, 4-0	H
Oregon	4-1, 6-1	H
Santa Clara	15-0, 8-0	A
Massachusetts	5-0, 4-1	H
SW Louisiana	1-0	2
St. Mary's (Texas)	9-0	2
Central Michigan	1-2	2
Northeast Louisiana	10-0	2
Southeastern Louisiana	12-0	2
Indiana	8-0	2
Iowa	4-0, 1-0	H
Creighton	7-0	3
Hawaii	3-4	3
Michigan	5-4	3
San Jose State	6-5	3
UCLA	1-6	3
Hawaii	4-5	3
Arizona	1-3, 1-2	A
Arizona State	4-0, 1-2	A
Sacramento State	1-0, 3-2	H
UCLA	0-1, 1-3	H
St. Mary's	10-0, 7-2	A
Santa Clara	8-0, 13-0	H
UCLA	0-2, 3-4	A
Cal State Northridge	1-0, 1-0	A
Stanford	10-0, 5-0	H
Oregon State	4-0, 1-0	A
Oregon	2-0, 0-1	A
Oregon State	1-0, 1-0	A
Sacramento State	0-1, 5-0	A
San Jose State	1-0	4
San Jose State	6-1	4
Florida State	3-0	5
UCLA	0-10	5
Arizona	1-2	5
1 – Arizona Softball Classic, Tucson, AZ		
2 – Houston Classic, Houston, TX		
3 – National Invitational Softball Tournament, Sunnyvale, CA		
4 – NCAA Regional, Berkeley, CA		
5 – Women's College World Series, Oklahoma City, OK		

1993

HEAD COACH: DIANE NINEMIRE

OVERALL RECORD: 37-20

PAC-10 RECORD: 12-10/3RD

Stanford	16-0, 16-0	H
Pacific	10-0, 1-2	A
Long Beach State	0-1	1
Minnesota	6-5	1

Northwestern	1-0	1
San Diego State	5-3	1
St. Mary's	17-1	1
Northwestern	8-0	1
San Diego State	7-5	1
Ohio State	6-9	2
Cal State Fullerton	3-0	2
Northern Illinois	5-0	2
Arizona State	4-0	2
Minnesota	5-0	2
Cal State Fullerton	0-1	2
Arizona State	3-0, 6-0	H
Oregon	0-1, 3-1	H
Nebraska	8-0, 1-2	H
Washington	3-0, 2-1	H
Oklahoma	1-0	3
Hawaii	4-0	3
Sacramento State	4-0	3
Iowa	0-2	3
St. Mary's	10-0, 6-0	H
Stanford	26-0, 22-2	A
Oregon State	2-0, 1-3	H
Sacramento State	1-0, 3-2	H
Cal Poly Pomona	0-1	A
UCLA	0-1, 0-5	A
Sacramento State	4-2, 0-1	A
Arizona State	0-1, 0-8	A
Arizona	0-1, 2-3	A
Pacific	2-0, 4-0	H
UCLA	0-2, 1-4	H
San Jose State	10-0	H
Washington	9-2, 3-2	A
Sacramento State	1-0	4
Long Beach State	2-5	4
Long Beach State	1-0	4
Long Beach State	1-2	4
1 - San Diego State Spring Classic, San Diego, CA		
2 - Arizona Softball Classic, Tucson, AZ		
3 - National Invitational Softball Tournament, Sunnyvale, CA		
4 - NCAA Regional, Berkeley, CA		

1994

HEAD COACH: DIANE NINEMIRE
OVERALL RECORD: 40-21
PAC-10 RECORD: 10-12/5TH

Santa Clara	4-1, 5-0	H
St. Mary's	4-0	A
Sacramento State	2-1, 1-0	H
Cal State Northridge	0-2	1
San Jose State	2-3	1
Santa Clara	9-0	1
Cal State Northridge	0-1	1
Santa Clara	11-0	1
San Jose State	5-2	1
Pacific	5-1, 1-4	A
UCLA	0-2, 5-7	A
Arizona	0-8, 3-5	A
Arizona State	10-4, 6-0	A
Arizona State	0-1	2
San Jose State	3-2	2
Missouri	7-4	2
Cleveland State	7-0	2
Hawaii	0-6	2
San Jose State	4-0	2
Missouri	1-0	2
Hawaii	5-1	2
Oregon	10-0, 0-1	H
Central Michigan	2-0	3
DePaul	5-6	3
Nebraska	5-3	3
Long Beach State	5-3	3
Nebraska	10-0	3
Michigan	5-3	3

Iowa	5-0	3
Oklahoma	6-5	3
Washington	4-2, 4-6	H
Santa Clara	9-0, 4-0	A
Oregon State	8-0, 4-0	H
Arizona	1-10, 3-4	H
St. Mary's	2-0, 4-1	A
Oregon	0-2, 2-3	A
Oregon State	4-1, 3-0	A
St. Mary's	2-0	A
Sacramento State	3-1, 4-1	A
Arizona State	7-0, 4-0	H
Washington	2-3, 2-7	A
Oregon	2-3	4
Central Michigan	8-0	4
Oregon	1-2	4
1 - Fabulous Four Tournament, San Jose, CA		
2 - Hawaii Invitational, Honolulu, HI		
3 - Capital Classic, Sacramento, CA		
4 - NCAA Regional, Fresno, CA		

1995

HEAD COACH: DIANE NINEMIRE
OVERALL RECORD: 41-21
PAC-10 RECORD: 20-8/3RD

Santa Clara	6-5, 14-0	H
San Jose State	7-5, 5-3	H
Stanford	4-1, 11-1	H
Pacific	5-4, 3-5	H
Long Beach State	7-4	1
Cal State Northridge	8-2	1
Fresno State	0-2	1
UCLA	0-9	1
Loyola Marymount	2-0	1
Tennessee Tech	8-0	1
Washington	6-1	1
Cal State Northridge	1-2	2
San Jose State	1-0	2
Santa Clara	4-0	2
Cal State Northridge	2-3	2
Santa Clara	1-0	2
San Jose State	3-0	2
Ball State	5-0	3
Colorado State	5-1	3
Washington	2-3	3
Nebraska	0-5	3
Connecticut	1-2	4
Utah State	5-1	4
Iowa	3-2	4
Sacramento State	3-4	4
Washington	2-1, 5-1	H
Washington	3-1, 15-14	A
Stanford	8-1, 12-0	A
Arizona State	6-3, 5-4	H
Arizona State	5-2, 4-2	A
Arizona	2-4, 1-6	A
St. Mary's	5-0, 10-0	H
UCLA	0-2, 3-5	A
Sacramento State	0-1, 0-5	A
UCLA	2-0	H
Oregon	0-2, 0-2	H
UCLA	4-2	H
Oregon	8-1, 2-3	A
Oregon State	11-1, 6-0	A
Oregon State	10-0, 9-3	H
Arizona	7-2, 1-15	H
Fresno State	1-2	5
Sacramento State	2-1	5
Fresno State	0-2	5
1 - Campbell/Cartier Spring Classic, San Diego, CA		
2 - Fabulous Four Tournament, San Jose, CA		
3 - National Invitational Softball Tournament, Sunnyvale, CA		
4 - Capital Classic, Sacramento, CA		
5 - NCAA Regional, Fresno, CA		
6 - Women's College World Series, Columbus, GA		

Tournament, Sunnyvale, CA
 4 - Capital Classic, Sacramento, CA
 5 - NCAA Regional, Sacramento, CA



1996

HEAD COACH: DIANE NINEMIRE
OVERALL RECORD: 41-23
PAC-10 RECORD: 14-12/4TH

UCLA	0-7, 5-2	A
Stanford	6-4, 4-0	H
Cal State Northridge	5-0	1
San Jose State	1-2	1
Louisiana Tech	2-1	2
Oklahoma State	0-3	2
DePaul	8-3	2
Utah	5-4	2
UNLV	0-2	2
Oregon State	10-0, 3-1	H
Oregon	3-0, 2-0	H
Northern Illinois	1-0	H
Colorado State	2-1	3
Santa Clara	8-2	3
Pacific	7-0	3
Washington	2-7	3
Pacific	11-8	3
Colorado State	1-6	3
Washington	0-5, 1-0	H
Iowa	1-0	4
Toledo	9-0	4
Utah	5-4	4
Iowa	1-2	4
Cal Poly SLO	4-2	4
Michigan State	2-1	4
Sacramento State	0-7	4
Bowling Green	3-2, 14-0	H
Fresno State	0-9, 0-3	A
Santa Clara	6-1, 1-0	A
Arizona State	1-3, 3-2	A
Arizona	2-7, 2-5	A
St. Mary's	1-0, 2-1	A
Washington	0-3, 2-3	A
Oregon	5-0	A
Oregon State	6-1	A
Arizona	3-1, 3-1	H
Arizona State	1-2, 3-2	H
UCLA	0-2, 3-8	H
Cal Poly SLO	3-0, 4-1	H
Stanford	2-7, 3-0	A
Long Beach State	4-1	5
Fresno State	1-0	5
Fresno State	2-1	5
SW Louisiana	2-0	6
Washington	7-9	6
Iowa	0-1	6
1 - Fabulous Four Tournament, San Jose, CA		
2 - NSCA Leadoff Classic, Columbus, GA		
3 - National Invitational Softball Tournament, Sunnyvale, CA		
4 - Capital Classic, Sacramento, CA		
5 - NCAA Regional, Fresno, CA		
6 - Women's College World Series, Columbus, GA		

1997

HEAD COACH: DIANE NINEMIRE
OVERALL RECORD: 36-26
PAC-10 RECORD: 13-14/4TH

Santa Clara	7-0, 2-1	H
San Jose State	3-6, 5-4	H
St. Mary's	3-0, 8-0	H
Pacific	3-6, 1-3	A
UCLA	7-0, 1-11	H
New Mexico	6-4	1
UNLV	3-8	1
Utah State	4-8	1
Oklahoma State	12-3	1
Utah	8-7	1
Arizona State	5-3, 3-7	H
Arizona	3-4, 1-4	A
Arizona State	8-1, 0-4	A
Illinois State	3-1	2
Southeast Missouri State	1-0	2
Creighton	4-0	2
Hawaii	3-2	2
Creighton	7-0	2
Hawaii	6-11	2
Creighton	5-1	2
Hawaii	0-4	2
San Jose State	3-1	3
Nebraska	3-4	3
Michigan State	4-0	3
Wisconsin	7-0	3
Iowa	2-5	3
Kansas	0-4	3
Oregon	4-0, 8-13	H
Oregon State	3-0, 10-0	H
UCLA	5-6, 0-3	A
Stanford	10-2, 8-7	H
Santa Clara	10-0, 9-1	A
Washington	1-9	A
Arizona	4-10, 0-11	H
New Mexico State	2-0, 2-0	H
Stanford	1-0, 1-2	A
Washington	5-6, 5-4	H
Oregon State	5-4, 5-2	A
Oregon	3-5, 4-3	A
Fresno State	0-7	4
Cal State Northridge	3-2	4
Long Beach State	3-1	4
Fresno State	3-9	4
1 - UNLV Softball Classic, Las Vegas, NV		
2 - Hawaii Invitational, Honolulu, HI		
3 - Capital Classic, Sacramento, CA		
4 - NCAA Regional, Fresno, CA		

1998

HEAD COACH: DIANE NINEMIRE
OVERALL RECORD: 35-27
PAC-10 RECORD: 12-14/4TH

Sacramento State	8-0, 3-0	H
Colorado State	5-4	1
Toledo	17-1	1
Utah	1-6	1
Utah State	9-5	1
UNLV	4-2	1
Oklahoma	0-1	2
Florida	2-3	2
Boston University	1-0	2
Oklahoma State	0-1	2
Nebraska	0-1	2
Florida State	4-1	2
Pacific	0-2	H
Stanford	2-4, 0-4	H
Wisconsin	5-7, 2-1	H
Creighton	2-1	3



Akron	4-1	3	Hawaii	3-0	4	Utah	4-0	6	Fordham	14-1	1
Santa Clara	5-2	3	UCLA	3-4, 1-3	A	San Jose State	6-3	6	DePaul	1-0	2
Drake	2-0	3	Washington	1-2	A	Nebraska	1-4	6	Nebraska	2-1	2
Arizona State	2-0	3	Stanford	0-5, 4-3	A	Utah	2-5	H	Long Island	7-1	2
Creighton	8-1	3	St. Mary's	2-1, 9-0	H	Portland State	2-1	7	LSU	3-0	2
Arkansas	7-0	4	Oregon	9-1, 0-7	H	Virginia	6-5	7	Saint Mary's	2-0, 4-0	H
Kansas	5-4	4	Oregon State	0-1, 0-1	H	Texas A&M-CC	3-2	7	Minnesota	1-0	3
Hawaii	3-1	4	Arizona	4-2, 2-3	A	Wisconsin	1-2	7	Long Beach State	3-0	3
Texas A&M	9-0	4	Arizona State	7-6, 0-1	A	San Jose State	3-0	7	New Mexico	3-1	3
Baylor	6-2	4	UCLA	2-6, 2-10	H	Utah	2-1	7	Cal State Fullerton	2-0	3
Iowa	2-4	4	Washington	7-0, 0-2	H	Wisconsin	1-0	7	Harvard	7-0	3
Nebraska	5-6	4	Arizona	0-1, 5-1	H	Oregon	3-0	7	Portland State	7-0	3
Cal Poly SLO	0-2, 4-7	H	Arizona State	5-3, 0-4	H	Cal Poly	5-1, 6-0	H	New Mexico State	3-0, 3-0	H
Washington	6-4, 3-0	A	Sacramento State	10-2, 2-0	A	Stanford	6-5	H	Southern Illinois	2-0	4
Oregon	2-3, 3-5	A	Oregon State	8-6, 1-0	A	Stanford	0-2	A	UC Santa Barbara	7-2	4
Oregon State	1-0, 3-4	A	Oregon	10-6, 3-0	A	Pacific	2-3, 1-14	H	Iowa	3-0	4
Stanford	3-2, 2-3	A	Stanford	7-1, 6-3	H	UCLA	1-6	H	Long Beach State	1-0	4
San Jose State	5-0, 7-0	A	Hofstra	5-4	5	Washington	2-0	H	Oregon	6-0	4
Arizona	4-8, 0-3	H	Massachusetts	1-0	5	Washington	1-10	H	Arizona State	2-0	4
Arizona State	5-2, 4-3	H	SW Louisiana	1-2	5	Arizona	1-4	A	Iowa	1-0	4
UCLA	8-1, 6-0	H	Massachusetts	2-0	5	Arizona State	0-1	A	Miami-Ohio	13-1	5
Washington	0-3, 0-2	H	SW Louisiana	3-0, 8-1	5	Arizona State	4-0	A	Purdue	3-1	5
Arizona State	0-2, 2-4	A	Arizona	0-3	6	Oregon	2-3	H	Eastern Illinois	13-4	5
Arizona	0-8, 1-7	A	Arizona State	2-0	6	Oregon State	2-5	H	Western Kentucky	8-0	5
Oregon State	3-1, 8-0	H	Fresno State	1-0	6	Oregon State	0-4	H	Iowa	0-1	5
Oregon	2-0, 8-0	H	Washington	0-3	6	Santa Clara	3-1, 6-4	A	Harvard	8-0	6
Cal State Northridge	3-1	5	1 – Fiesta Bowl Classic, Tempe, AZ			Stanford	0-2	A	SE Missouri State	5-4	6
Fresno State	3-6	5	2 – UNLV Softball Classic, Las Vegas, NV			Washington	1-3	A	Mercer	3-2	6
Minnesota	2-3	5	3 – National Invitational Softball			UCLA	0-8	A	Wisconsin	4-0	6
1 – UNLV Softball Classic,			Tournament, Sunnyvale, CA			UCLA	0-5	A	Georgia State	4-1	6
Las Vegas, NV			4 – Bank of Hawaii Invitational,			Sacramento State	1-2, 4-0	H	North Carolina	8-0	6
2 – NFCA Leadoff Classic, Columbus, GA			Honolulu, HI			Oregon State	1-0	A	Harvard	8-0	6
3 – National Invitational Softball			5 – NCAA Regional, Amherst, MA			Oregon	4-0	A	Washington	0-2	H
Tournament, Sunnyvale, CA			6 – Women's College World Series,			Oregon	0-4	A	UCLA	1-2	H
4 – Capital Classic, Sacramento, CA			Oklahoma City, OK			Arizona State	1-0	H	UCLA	1-5	H
5 – NCAA Regional, Fresno, CA						Arizona	1-4	H	Oregon	4-0	H



1999

HEAD COACH: DIANE NINEMIRE

OVERALL RECORD: 51-22

PAC-10 RECORD: 13-14/5TH

San Jose State	8-0, 8-0	H
Mississippi State	6-4	1
New Mexico State	7-0	1
Florida State	4-0	1
Texas	3-6	1
Alabama	2-0	1
Georgia	3-0	1
Loyola Marymount	10-2	2
UNLV	2-6	2
Utah State	4-0	2
Bowling Green	9-1	2
Cal Poly	7-3	2
Pacific	1-2, 1-2	A
Santa Clara	7-0, 4-0	H
UC Santa Barbara	9-1, 4-0	A
Cal Poly	6-0, 5-4	A
Tulsa	6-1, 2-0	H
Notre Dame	4-0	3
North Carolina	6-0	3
UC Santa Barbara	2-5	3
Texas Tech	1-0	3
Purdue	2-0	3
Utah	2-0	3
Wisconsin	3-2	4
Eastern Illinois	7-2	4



2000

HEAD COACH: DIANE NINEMIRE

OVERALL RECORD: 49-25

PAC-10 RECORD: 6-15/17TH

Sacramento State	3-0	1
San Jose State	5-1	1
BYU	7-0	1
Florida State	1-0	2
Florida Atlantic	4-3	2
Florida A&M	7-0	2
Florida A&M	14-0	2
Florida State	1-0	2
Loyola Marymount	5-0	3
Central Michigan	9-1	3
Portland State	7-1	3
Virginia	6-1	3
UNLV	9-3	3
St. Mary's	5-0	A
New Mexico State	7-2	4
Florida	6-1	4
Wichita State	4-3	4
Oregon	12-1	4
New Mexico State	9-4	4
Oregon State	5-6	4
Missouri	1-0	5
Baylor	9-1	5
Colorado State	3-1	5
Utah State	4-1	6
Kent State	10-5	6
Nebraska	3-2	6

Utah	4-0	6	Utah	4-0	6
San Jose State	6-3	6	San Jose State	6-3	6
Nebraska	1-4	6	Nebraska	1-4	6
Utah	2-5	H	Utah	2-5	H
Portland State	2-1	7	Portland State	2-1	7
Virginia	6-5	7	Virginia	6-5	7
Texas A&M-CC	3-2	7	Texas A&M-CC	3-2	7
Wisconsin	1-2	7	Wisconsin	1-2	7
San Jose State	3-0	7	San Jose State	3-0	7
Utah	2-1	7	Utah	2-1	7
Wisconsin	1-0	7	Wisconsin	1-0	7
Oregon	3-0	7	Oregon	3-0	7
Cal Poly	5-1, 6-0	H	Cal Poly	5-1, 6-0	H
Stanford	6-5	H	Stanford	6-5	H
Stanford	0-2	A	Stanford	0-2	A
Pacific	2-3, 1-14	H	Pacific	2-3, 1-14	H
UCLA	1-6	H	UCLA	1-6	H
Washington	2-0	H	Washington	2-0	H
Washington	1-10	H	Washington	1-10	H
Arizona	1-4	A	Arizona	1-4	A
Arizona State	0-1	A	Arizona State	0-1	A
Arizona State	4-0	A	Arizona State	4-0	A
Oregon	2-3	H	Oregon	2-3	H
Oregon State	2-5	H	Oregon State	2-5	H
Oregon State	0-4	H	Oregon State	0-4	H
Santa Clara	3-1, 6-4	A	Santa Clara	3-1, 6-4	A
Stanford	0-2	A	Stanford	0-2	A
Washington	1-3	A	Washington	1-3	A
UCLA	0-8	A	UCLA	0-8	A
UCLA	0-5	A	UCLA	0-5	A
Sacramento State	1-2, 4-0	H	Sacramento State	1-2, 4-0	H
Oregon State	1-0	A	Oregon State	1-0	A
Oregon	4-0	A	Oregon	4-0	A
Oregon	0-4	A	Oregon	0-4	A
Arizona State	1-0	H	Arizona State	1-0	H
Arizona	1-4	H	Arizona	1-4	H
Arizona	3-8	H	Arizona	3-8	H
Florida	2-0	8	Florida	2-0	8
CS Fullerton	3-2	8	CS Fullerton	3-2	8
Fresno State	0-2	8	Fresno State	0-2	8
Florida	2-1	8	Florida	2-1	8
Fresno State	2-0	8	Fresno State	2-0	8
Oklahoma	1-2	9	Oklahoma	1-2	9
Arizona	0-6	9	Arizona	0-6	9
1 – Early Bird Tournament, San Jose, CA			1 – Early Bird Tournament, San Jose, CA		
2 – Seminole Classic, Tallahassee, FL			2 – Seminole Classic, Tallahassee, FL		
3 – UNLV Softball Classic, Las Vegas, NV			3 – UNLV Softball Classic, Las Vegas, NV		
4 – Troy Cox Classic, Las Cruces, NM			4 – Troy Cox Classic, Las Cruces, NM		
5 – Easton Showcase Tournament,			5 – Easton Showcase Tournament,		
Fullerton, CA			Fullerton, CA		
6 – National Invitational Softball			6 – National Invitational Softball		
Tournament, Sunnyvale, CA			Tournament, Sunnyvale, CA		
7 – Capital Classic, Sacramento, CA			7 – Capital Classic, Sacramento, CA		
8 – NCAA Regional, Fresno, CA			8 – NCAA Regional, Fresno, CA		
9 – Women's College World Series,			9 – Women's College World Series,		
Oklahoma City, OK			Oklahoma City, OK		



2001

HEAD COACH: DIANE NINEMIRE

OVERALL RECORD: 54-18

PAC-10 RECORD: 6-14/7TH

UC Riverside	1-0, 9-1	H
Utah	4-0	1
Kansas	4-3	1
Nebraska	6-5	1
UNLV	3-0	1

Utah	4-0	6	Utah	4-0	6
San Jose State	6-3	6	San Jose State	6-3	6
Nebraska	1-4	6	Nebraska	1-4	6
Utah	2-5	H	Utah	2-5	H
Portland State	2-1	7	Portland State	2-1	7
Virginia	6-5	7	Virginia	6-5	7
Texas A&M-CC	3-2	7	Texas A&M-CC	3-2	7
Wisconsin	1-2	7	Wisconsin	1-2	7
San Jose State	3-0	7	San Jose State	3-0	7
Utah	2-1	7	Utah	2-1	7
Wisconsin	1-0	7	Wisconsin	1-0	7
Oregon	3-0	7	Oregon	3-0	7
Cal Poly	5-1, 6-0	H	Cal Poly	5-1, 6-0	H
Stanford	6-5	H	Stanford	6-5	H
Stanford	0-2	A	Stanford	0-2	A
Pacific	2-3, 1-14	H	Pacific	2-3, 1-14	H
UCLA	1-6	H	UCLA	1-6	H
Washington	2-0	H	Washington	2-0	H
Washington	1-10	H	Washington	1-10	H
Arizona	1-4	A	Arizona	1-4	A
Arizona State	0-1	A	Arizona State	0-1	A
Arizona State	4-0	A	Arizona State	4-0	A
Oregon	2-3	H	Oregon	2-3	H
Oregon State	2-5	H	Oregon State	2-5	H
Oregon State	0-4	H	Oregon State	0-4	H
Santa Clara	3-1, 6-4	A	Santa Clara	3-1, 6-4	A
Stanford	0-2	A	Stanford	0-2	A
Washington	1-3	A	Washington	1-3	A
UCLA	0-8	A	UCLA	0-8	A
UCLA	0-5	A	UCLA	0-5	A
Sacramento State	1-2, 4-0	H	Sacramento State	1-2, 4-0	H
Oregon State	1-0	A	Oregon State	1-0	A
Oregon	4-0	A	Oregon	4-0	A
Oregon	0-4	A	Oregon	0-4	A
Arizona State	1-0	H	Arizona State	1-0	H
Arizona	1-4	H	Arizona	1-4	H
Arizona	3-8	H	Arizona	3-8	H
Florida	2-0	8	Florida	2-0	8
CS Fullerton	3-2	8	CS Fullerton	3-2	8
Fresno State	0-2	8	Fresno State	0-2	8
Florida	2-1	8	Florida	2-1	8
Fresno State	2-0	8	Fresno State	2-0	8
Oklahoma	1-2	9	Oklahoma	1-2	9
Arizona	0-6	9	Arizona	0-6	9
1 – Early Bird Tournament, San Jose, CA			1 – Early Bird Tournament, San Jose, CA		
2 – Seminole Classic, Tallahassee, FL			2 – Seminole Classic, Tallahassee, FL		
3 – UNLV Softball Classic, Las Vegas, NV			3 – UNLV Softball Classic, Las Vegas, NV		
4 – Troy Cox Classic, Las Cruces, NM			4 – Troy Cox Classic, Las Cruces, NM		
5 – Easton Showcase Tournament,			5 – Easton Showcase Tournament,		
Fullerton, CA			Fullerton, CA		
6 – National Invitational Softball			6 – National Invitational Softball		
Tournament, Sunnyvale, CA			Tournament, Sunnyvale, CA		
7 – Capital Classic, Sacramento, CA			7 – Capital Classic, Sacramento, CA		
8 – NCAA Regional, Fresno, CA			8 – NCAA Regional, Fresno, CA		
9 – Women's College World Series,			9 – Women's College World Series,		
Oklahoma City, OK			Oklahoma City, OK		

Florida Atlantic	2-0	7
Florida State	1-0	7
Florida State	1-2	7
Florida State	3-2	7
Arizona	2-3	8
Michigan	5-2	8
Stanford	0-1	8
1 – UNLV Classic, Las Vegas NV		
2 – National Fastpitch Coaches		
Association Leadoff Classic,		
Columbus, GA		
3 – Fullerton Worth Invitational,		
Fullerton, CA		
4 – National Invitational Softball		
Tournament, San Jose, CA		
5 – Capital Classic, Sacramento, CA		
6 – Georgia Tech Buzz Classic,		
Marietta, GA		
7 – NCAA Regional, Tallahassee, FL		
8 – Women's College World Series,		
Oklahoma City, OK		

YEAR-BY-YEAR RESULTS

Year	Coach	Record	Conference	National
1972	Debbie Gebhardt	2-4		
1973		2-4	4th NCIAC	
Gebhardt's Totals		4-8		
1974	Coni Staff	5-4	5th NCIAC	
1975		4-3	3rd NCIAC	
Staff's Totals		9-7		
1976	Myrtle Baker	9-6	3rd NCIAC	
1977		12-9	4th NorCal	
Baker's Totals		21-15		
1978	Bonnie Johnson	19-19-1	2nd NorCal	
1979		37-9	1st NorCal	
1980		46-11	1st NorCal	AIAW CWS (9th)
1981		48-13	1st NorCal	AIAW CWS (T5th)
1982		37-17-1	2nd NorCal	AIAW CWS (T3rd)/ NCAA Regional
Johnson's Totals		187-69-2		
1983	Donna Terry	26-21	4th NorPac	
1984		27-19-1	3rd NorPac	
1985		35-25	4th NorPac	17th NCAA poll
1986		43-17	T1st NorPac	NCAA CWS (T3rd)
1987		34-15	1st Pac-10	NCAA Regional
Terry's Totals		165-97-1		
1988	Diane Ninemire	39-24	5th Pac-10	NCAA Regional
1989		38-26	4th Pac-10	NCAA Regional
1990		41-28	3rd Pac-10	NCAA Regional
1991		48-20	3rd Pac-10	NCAA Regional
1992		47-16	3rd Pac-10	NCAA CWS (T5th)
1993		37-20	4th Pac-10	NCAA Regional
1994		40-21	5th Pac-10	NCAA Regional
1995		41-21	3rd Pac-10	NCAA Regional
1996		41-23	4th Pac-10	NCAA CWS (T5th)
1997		36-26	4th Pac-10	NCAA Regional
1998		35-27	4th Pac-10	NCAA Regional
1999		51-22	5th Pac-10	NCAA CWS (T3rd)
2000		49-25	T7th Pac-10	NCAA CWS (T7th)
2001		54-18	7th Pac-10	NCAA CWS (T5th)
2002		56-19	4th Pac-10	NCAA Champion
2003		49-20	3rd Pac-10	NCAA CWS (2nd)
Ninemire's Totals		702-356		
Overall (32 years)		1088-552-3		



2002

HEAD COACH: DIANE NINEMIRE

OVERALL RECORD: 56-19

PAC-10 RECORD: 12-9/4TH

Sacramento State	3-2, 4-0	H
Pacific	0-4	A
Fresno State	0-1	1

Kansas	6-2	1
Texas	1-2	1
UNLV	5-0	1
Southwest Texas	2-3	1
BYU	5-2	2
UC Riverside	3-0	2
Kent State	10-2	2
LSU	3-0	2
Portland State	8-0	2
Kansas	8-4	2
Santa Clara	7-2	3
BYU	1-0	3
UCSB	3-1	3
Cal Poly	4-1	3
Illinois	8-0	3
Oklahoma State	0-1	4
San Diego State	5-4	4
Ohio State	4-0	4

Cal State Fullerton	1-2	4
Minnesota	2-1	4
Portland State	9-1	4
Miami (OH)	12-1	5
Santa Clara	6-3	5
Virginia	7-1	5
Iowa (17)	1-4	5
Northern Iowa	6-1	5
Long Beach State	0-1	5
San Jose State	6-1	6
Miami (OH)	9-0	6
Kansas	1-0	6
Syracuse	8-0	6
Sacramento State	6-2	6
Wisconsin	1-0	6
Nebraska	3-4	6
Hawaii	4-0	7
Hofstra	4-2	7
Northwestern	0-1	7
Hofstra	15-2	7
Northwestern	9-0	7
Stanford	3-2	H
Stanford	0-6, 7-6	A
Oregon State	2-3	A
Oregon	3-2	A
Oregon	7-0	A
San Jose State	7-0	H
Washington	4-1	A
UCLA	0-3	A
UCLA	0-1	A
Arizona State	3-2	H
Arizona	5-2	H
Arizona	2-1	H
Saint Mary's	3-0, 4-0	A
UCLA	0-3	H
Washington	3-6	H
Washington	3-2	H
Arizona	0-3	A
Arizona State	4-8	A
Arizona State	1-2	A
Oregon	3-2	H
Oregon State	6-1, 10-7	H
Fresno State	2-1	8
Stanford	1-0	8
Cal State Fullerton	4-2	8
Cal State Fullerton	1-0	8
Oklahoma	4-2	9
Florida State	1-0	9
Arizona State	3-0	9
Arizona	6-0	9

- 1 - Fiesta Bowl Classic, Phoenix/Tempe, AZ
- 2 - UNLV Classic, Las Vegas, NV
- 3 - UCSB Invitational, Santa Barbara, CA
- 4 - Fullerton Worth Invitational, Fullerton, CA
- 5 - NIST Tournament, Pleasanton, CA
- 6 - Capital Classic, Sacramento, CA
- 7 - Hawaii Chevron Invitational, Honolulu, HI
- 8 - NCAA Regional, Fresno, CA
- 9 - Women's College World Series, Oklahoma City, OK

2003

HEAD COACH: DIANE NINEMIRE

OVERALL RECORD: 49-20

PAC-10 RECORD: 10-11/3RD

San Jose State	3-1	H
Tennessee	8-4	H
Tennessee	11-1	H
San Jose State	9-0	H
Pacific	4-0	H
St. Mary's (Cal.)	8-2, 8-1	H
Purdue	1-0	1



Texas Tech	7-0	1
Nebraska	1-6	1
Portland State	5-0	1
Hawaii	0-1	1
Alabama	2-4	2
Notre Dame	6-0	2
Illinois State	11-0	2
Northwestern	3-4	3
Cal State Fullerton	4-5	3
Ohio State	0-1	3
Pacific	7-0	3
Minnesota	7-0	3
Minnesota	3-2	4
Sacramento State	4-0	4
Georgia Tech	1-0	4
Arizona State	6-1	4
Oregon	6-0	4
Florida Atlantic	10-2	5
Syracuse	8-0	5
Massachusetts	6-4	5
Florida International	5-1	5
Long Island	9-0	6
Eastern Kentucky	9-0	6
Utah State	5-1	6
UNLV	1-0	6
Iowa	3-4	6
UC Santa Barbara	6-2	H
Washington	2-0	H
UCLA	0-3	H
UCLA	1-4	H
Oregon State	7-2	H
Oregon	4-0	H
Oregon	4-1	H
Sacramento State	7-1, 4-1	A
Arizona State	0-1	A
Arizona	5-7	A
Arizona	0-1	A
Santa Clara	4-0	H
Stanford	2-1	A
Stanford	1-0, 2-1	H
UCLA	0-10	A
Washington	1-0	A
Washington	2-5	A
Arizona State	10-1	H
Arizona State	0-1	H
Arizona	0-6	H
Oregon	1-9	A
Oregon State	3-5, 6-2	A
Oakland	8-0	7
Michigan	9-0	7
DePaul	1-0	7
Michigan	1-0	7
UCLA	7-3	8
Texas	0-1	8
Oklahoma	5-2	8
Arizona	2-1	8
Arizona	4-1	8
UCLA	0-1	8
1 - UNLV Tournament, Las Vegas, NV		
2 - NFCA Leadoff Classic, Columbus, GA		
3 - Worth Tournament, Fullerton, CA		
4 - NIST Tournament, Sunnyvale, CA		
5 - Nike Blue and Gold Classic, Miami, FL		
6 - Capital Classic, Sacramento, CA		
7 - NCAA Regional, Ann Arbor, MI		
8 - Women's College World Series, Oklahoma City, OK		



THE UNIVERSITY



The University of California is one of the world's leading academic institutions. The school, known throughout the world as "Cal," is truly a prototype of a contemporary university. It attracts what many consider the finest applicant pool in the country, generates an ethnically and culturally diverse student population on campus, and provides one of the finest learning experiences in the world today.

WORLD-CLASS FACULTY AND STUDENTS

The Berkeley campus is renowned for the size and quality of its libraries and laboratories, the scope of its research and publications, and the distinction of its faculty and students. National rankings consistently place Cal's undergraduate and graduate programs among the very best. The faculty includes eight Nobel Laureates, 124 members of the National Academy of Sciences, 19 MacArthur Fellows, 81 Fulbright Scholars, three Pulitzer Prize winners and more Guggenheim Fellows (138) than any other university in the country.

The quality of Cal's diverse and independent student body complements the stature of the faculty. More than 33,000 students annually enroll at Cal. Of these, about 23,000 are undergraduates. Students come to Berkeley from all over California, in addition to every state in the union and more than 2,000 students from 75 countries around the world.

CAL EXCELS IN THE CLASSROOM

- 20 of Cal's 27 teams had a cumulative team GPA of 3.0 or higher during the 2002-03 academic year
- 48 percent of Cal student-athletes have cumulative GPAs over 3.00
- More than 160 student-athletes have cumulative GPAs over 3.50

The undergraduate student body can best be characterized by its diversity; there is no one racial or ethnic majority. Students reflect all age groups, and economic, cultural and geographic backgrounds. This dynamic mix produces the wide range of opinion and perspective essential to a great university.

CAL STUDENT POPULATION

Fall 2002

No. of Students	33,145
Undergraduates	23,835
Graduate Students ..	9,310
Gender Distribution	
Male	15,965
Female	17,180

STUDENT COMPOSITION

Fall 2002

A multi-cultural and multi-ethnic campus. No ethnic group forms a majority.

Native American	214
Asian/Asian American .	11,366
African American	1,154
Hispanic	2,871
Caucasian	11,581
Other	624
International	2,653
No Ethnic Data	2,682





**CAL RANKED
AS NO. 1
PUBLIC UNIVERSITY
IN UNITED STATES**

The top public universities, as ranked by *U.S. News and World Report*:

1. CALIFORNIA Virginia
3. Michigan
4. UCLA
5. North Carolina

CAL FACULTY WHO HAVE WON NOBEL PRIZE

CURRENT FACULTY

George A. Akerlof	Economics	2001
Daniel L. McFadden	Economics	2000
Yuan T. Lee	Chemistry	1986
Gerard Debreu	Economics	1983
Czeslaw Milosz	Literature	1980
Charles H. Townes	Physics	1964
Donald A. Glaser	Physics	1960
Owen Chamberlain	Physics	1959

DECEASED OR NO LONGER AT CAL

John C. Harsanyi	Economics	1994
Luis Alvarez	Physics	1968
Melvin Calvin	Chemistry	1961
Emilio G. Segre	Physics	1959
Edwin M. McMillan	Chemistry	1951
Glenn T. Seaborg	Chemistry	1951
William F. Giaque	Chemistry	1949
John H. Northrop	Chemistry	1946
Wendell M. Stanley	Chemistry	1946
Ernest O. Lawrence	Physics	1939

CAL FACTS

- * More students who earn undergraduate degrees at Cal complete doctorates than graduates of any other university in the country
- * With more than 9.2 million volumes in 18 campus libraries, Cal's libraries are ranked third nationally by the Association of Research Libraries

THE BAY AREA

Overlooking San Francisco Bay, the campus is a lush and tranquil 1,232-acre oasis in an urban setting. The grounds have retained much of the beauty of their rural beginnings. Spacious lawns, hiking and running trails, as well as groves of oak, redwood and eucalyptus blend with the Neo-classical architecture of John Galen Howard. The University is bordered by the wooded rolling hills of Tilden Regional Park and the City of Berkeley, one of America's most lively, culturally diverse and politically adventurous municipalities.

ACADEMIC SUCCESS

By any standard, Cal offers its students one of the best educations available. Since its birth it has earned a reputation unmatched by any public university in America. According to a recent study by the National Research Council, Cal ranks first nationally in both the number of graduate programs in the Top 10 in their fields (97 percent) and the number of "distinguished" programs for the scholarship of the faculty (32 programs).

Although Cal is well known for its stellar graduate programs, undergraduate teaching is a campus priority. Nearly half of all courses offered at the undergraduate level have 25 students or fewer, and many lecture courses include smaller laboratory or study group sections which allow close interaction with professors and other instructors.

Cal offers a wide arena for academic endeavor and personal growth with more than 7,000 courses in nearly 300 degree programs. Exceptional support services such as the Student Learning Center, Career and Graduate School Services, the Disabled Students' Program, and campus and alumni mentor programs reflect

Cal's strong commitment to undergraduate education. Study abroad is available to undergraduate students through the Education Abroad Program, which maintains more than 90 study centers in countries such as Australia, Costa Rica, Egypt, Hong Kong, New Zealand and Thailand.

Each year, more than 8,500 students receive degrees from the University – about 5,500 bachelor's degrees, 2,000 master's degrees, 900 doctorates and 200 law degrees.

ATHLETIC EXCELLENCE

The excellence of the University's intercollegiate athletic program rivals the school's academic reputation as Cal boasts one of the finest all-around programs in the nation. Twenty-seven sports – men's and women's basketball, crew, cross country, golf, gymnastics, soccer, swimming and diving, tennis, track & field and water polo; men's baseball, football and rugby; along with women's softball, volleyball, field hockey and lacrosse – are sponsored by the University. Over the years, Cal has captured more than 60 national team championships – most recently softball, men's crew and rugby in 2002 – while claiming over 105 NCAA individual championships in a variety of sports. This past season, six coaches received Conference Coach of the Year honors, Natalie Coughlin was named the NCAA Swimmer of the Year and the tandem of Christina Fusano and Raquel Kops-Jones were chosen the national Doubles Team of the Year in tennis.

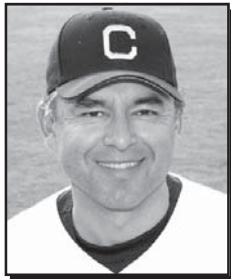
OUTSIDE THE CLASSROOM

A myriad of activities also goes on outside the classroom. There are more than 350 registered student organizations, such as the Marching Band, Hang Gliding Club, radio station KALX, ethnic associations, humor and literary magazines, debate team, Cal Corps (volunteer programs), Cal in the Capitol/Sacramento, and political organizations.

In addition, Cal has a host of other features, including public lectures and concerts, campus-sponsored forums and seminars, clubs and workshops, dramatic presentations, international festivals, art, photographic, design, architectural, anthropological and archaeological exhibits and displays, and dozens of bookstores within one-square mile – all of this making Berkeley one of the most intellectually stimulating communities in the country.



GOLDEN BEAR HEAD COACHES



*David Esquer
Baseball*



*Ben Braun
Basketball-Men*



*Caren Horstmeyer
Basketball-Women*



*Steve Gladstone
Crew-Men*



*Dave O'Neill
Crew-Women*



*Tony Sandoval
Cross Country - M/W*



*Phil Tonne
Diving - M/W*



*Shellie Onstead
Field Hockey*



*Jeff Tedford
Football*



*Steve Desimone
Golf-Men*



*Nancy McDaniel
Golf-Women*



*Barry Weiner
Gymnastics-Men*



*Carrie DuBois
Gymnastics-Women*



*Jill Malko
Lacrosse*



*Jack Clark
Rugby*



*Kevin Grimes
Soccer-Men*



*Kevin Boyd
Soccer-Women*



*Nort Thornton
Swimming-Men*



*Teri McKeever
Swimming-Women*



*Peter Wright
Tennis-Men*



*Jan Brogan
Tennis-Women*



*Chris Huffins
Track & Field - M/W*



*Rich Feller
Volleyball*



*Kirk Everist
Water Polo - Men*



*Amber Drury-Pinto
Water Polo - Women*

ATHLETIC STUDY CENTER/ATHLETIC ADMINISTRATION

One of the real success stories for the University of California in recent years is the development and growth of a comprehensive academic support program for its student-athletes – the Athletic Study Center.

In 1984, campus officials and Athletic Department administrators decided that a greater emphasis needed to be placed on helping Cal student-athletes with their academic pursuits. The Athletic Study Center was thus born and charged with developing an academic support program geared to the needs of NCAA Division I student-athletes. It was a significant development for an academically-oriented institution such as Cal to recognize the special needs required for a modern student-athlete's success both as an athletic competitor and in the classroom.

PROGRAM FOR STUDENT-ATHLETES

The Athletic Study Center, which is housed under the University's Student Life Educational Development cluster, is the tutorial and academic support program for the nearly 1,000 student-athletes at Cal. Centrally-located in the Cesar Chavez Student Center, the program provides a spacious and comfortable arboretum for quiet study, separate classrooms for individual and group tutorials, and a computer lab for word processing and required course work.

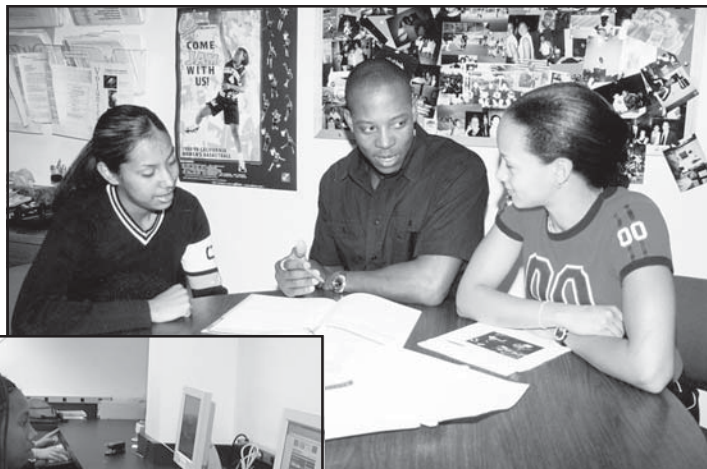
Geared around the understanding of the amount of time student-athletes must devote to practice, training, physical therapy and team travel, the program creates an environment where students can cultivate good study habits, receive individual or group tutoring and obtain counseling from academic advisors.

TUTORIAL PROGRAM

The tutorial component promotes and enhances students' academic skills and progress by providing individual tutoring, group workshops, study groups, credit courses and intensive special programs. The program focuses mainly on freshman and sophomores, and the Center uses between 50-60 tutors per semester to guarantee that as many courses as possible are covered. Tutorial sessions are also offered at night enabling student-athletes to receive help after practices when they have more time to devote to studying.

ADVISING PROGRAM

The advising component offers a broad range of services and programs to meet the unique needs of student-athletes, including assistance in



Cal student-athletes receive personal academic counseling from the staff of the Athletic Study Center (above) and may utilize various academic services, including the Haas Pavilion computer lab (left).



understanding and complying with University, college and NCAA rules, developing time management skills and resolving personal issues unique to student-athletes. During the freshman year, advisors typically try to help student-athletes make a successful academic transition from high school, while during the sophomore year, they assist student-athletes in making decisions on appropriate majors and fields of study. For the final two years, advisors take more of an exiting approach, ensuring that proper academic progress is being made and referring juniors and seniors to areas on campus that can help with internships, graduate school applications and career planning.

SPECIAL PROGRAMS

In addition, the Athletic Study Center offers a six-week Summer Bridge adjunct program designed to help ease the transition from high school to college. The primary components for the program include writing and math workshops, an advising workshop, study skills seminars and an evening tutorial program.

Another special program offered is Peer Advising. Peer advisors provide academic and campus life guidance for new intercollegiate athletes. They are selected from junior and senior student-athletes and assist in developing programs to further address the needs of student-athletes.

ATHLETIC DEPARTMENT ADMINISTRATION



*Stephen Gladstone
Athletic Director*



*Dan Coonan
Executive Associate A.D./
Revenue Sports*



*Teresa Kuehn
Executive Associate A.D./
Senior Woman Administrator*



*Bob Rose
Executive Associate A.D./
Communications*



*Mark Stephens
Executive Associate A.D./
Operations*



STRENGTH & CONDITIONING/SPORTS MEDICINE

An integral part of Cal basketball is the strength and conditioning program. The program's philosophy is geared towards helping each student-athlete achieve the highest level of athletic development.

By teaching how all the components of strength and conditioning fit together, student-athletes understand how to maximize force production. This includes enhancement of speed, strength and flexibility that results in improved power. Motivating, educating and helping to reach maximum athletic development is the primary focus of the Cal program.

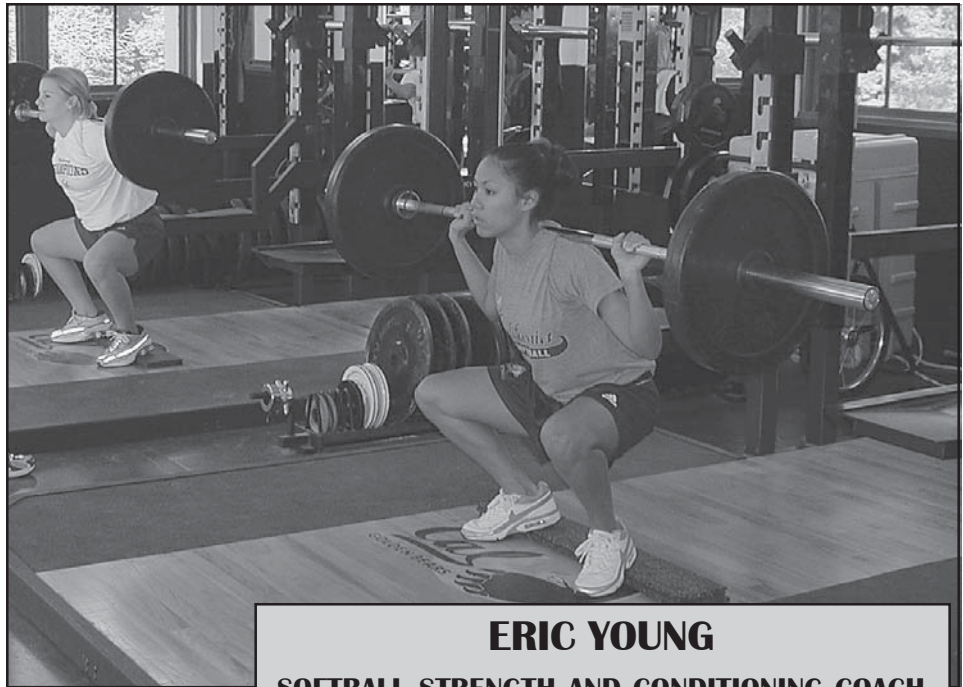
The Cal weight room at Haas Pavilion includes six Olympic platforms, more than 5,000 pounds of Olympic bars and bumper plates, and an array of aerobic and anaerobic equipment. The facility is brightly designed and overlooks Evans Baseball Diamond to the west. Cal also has a 2,000-square foot weight room in Memorial Stadium with similar Olympic equipment that offers panoramic views of the entire region, including San Francisco and the Bay.

The training regimen at Cal is a year-round process that emphasizes the speed, strength and flexibility. With closely monitored workouts that involve a great deal of individual instruction and attention, student-athletes are taught the correct techniques to increase their ability to perform at their peak during competition.

Cal's program stresses comprehensive training in order to improve both strength and speed. Flexibility is a key component because it is essential for proper lifting. It also improves the running mechanics needed for acceleration and deceleration, both essential for playing basketball.

Athlete workouts are closely monitored by the conditioning staff, who work in collaboration with the entire sports medicine team (doctors, athletic trainers, physical therapists, nutritionists, etc.) to ensure the health and safety of all of student-athletes.

In this way, Cal's strength and conditioning program is a vital component linking the "full circle" of a student-athlete's physical development from conditioning through rehabilitation and re-conditioning.



Strength and conditioning is an integral part of the California softball program.

ERIC YOUNG

SOFTBALL STRENGTH AND CONDITIONING COACH



Eric Young, a former head strength and conditioning coach at the University of Denver, is in his second year as an assistant with the Golden Bear program.

Young previously worked at Denver for four seasons, the first two as an assistant coach and the next two years as head coach. In 1998, he coached defensive backs and wide receivers at Rex Putnam high school in Portland, Ore., while he was an assistant football coach at Portland's Madison High in 1997.

As a player, Young was an outside linebacker at Western Oregon State and a safety at Montana. He earned his bachelor's degree in health and human performance in 1995. He obtained his Master's in exercise and movement science at Oregon, where he served as a graduate assistant in strength and conditioning from 1996-97.

Young and his wife, Tiffany, have a daughter, Madison, and a son, Zach.

SPORTS MEDICINE PROGRAM

Golden Bear student-athletes are privileged to be supported by one of the top medical staffs in college athletics along with some of the most modern training and rehabilitation equipment in the country. The comprehensive program features state-of-the-art facilities, as well as a staff of acclaimed practitioners of all areas of sports medicine.

In addition to facilities at both Haas Pavilion and Memorial Stadium, Cal athletes also use University Health Services (UHS), which oversees and supervises sports medicine services to all injured or ailing Golden Bear athletes.

The sports medicine area is supervised by Dr. Bill Coysh, Ph.D., who is also actively engaged in sports psychology.

The expert staff of team physicians is headed by Dr. Cindy Chang, M.D., a family physician and sports medicine specialist. The staff features specialists from the fields of orthopedic surgery,



*Mona AuYoung
Softball Trainer*

family medicine, internal medicine, physiatry and podiatry. The medical staff, with their diverse backgrounds and areas of expertise, has vast experience treating injured athletes on every level of competition, including Olympic and professional athletes.

Cal's athletic training staff boasts 11 certified athletic trainers and 20 student athletic trainers. The staff tends to the day-to-day health care needs of Cal athletes in 27 different sports, including the evaluation and treatment of injuries and illnesses. The rehabilitation of injuries is also the responsibility of the athletic training staff, with additional assistance from our staff physical therapist. The trainers also provide coverage at home and away athletic contests, and practices are staffed on a full-time basis.

Whether it's for taping, physical therapy, or the prompt recovery from an illness or injury, Golden Bear athletes have the full confidence that Cal's medical staff will provide the best care available with one of the most progressive treatment and rehabilitation programs in the country.

ATHLETIC EXCELLENCE

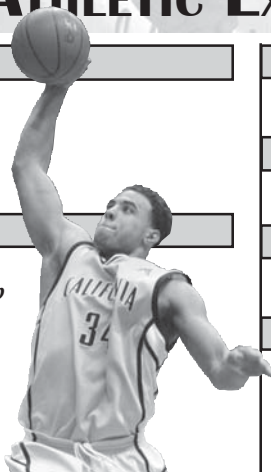
BASEBALL

- 33 All-America selections
- 1 National Freshman of the Year
- 9 NCAA regional appearances
- 2 College World Series championships (1947, '57)
- 5 College World Series appearances

MEN'S BASKETBALL

- 33 All-America selections
- 1 NCAA championship (1959)
- 1 NIT championship (1999)
- 13 NCAA Tournament appearances
- 3 Final Four appearances
- 5 National Invitation Tournaments
- 2 World Championship team members
- 6 Olympic team members
- 4 Pac-10 Players of the Year

Joe Shipp



WOMEN'S BASKETBALL

- 19 All-America selections
- 3 NCAA Tournament appearances (1990, '92-93)
- 3 AIAW Tournament appearances (1980-82)
- 4 Nat'l Women's Invitation Tournament appearances (1979, '81, '84, '87)

MEN'S CREW

- 14 national championships (1928, '32, '34-35, '39, '49, '60-61, '64, '76, '99-02)
- 46 Olympians since 1928
- 3 Olympic championships (1928, '32, '48)

WOMEN'S CREW

- 1 national championship (1980)
- 10 rowing Olympians

MEN'S CROSS COUNTRY

- 3 All-America selections
- 9 Individual NCAA appearances

WOMEN'S CROSS COUNTRY

- 9 All-America selections
- 2 NCAA appearances
- 18 Individual NCAA appearances

FIELD HOCKEY

- 10 All-America selections
- 7 NCAA Tournament appearances
- 3 AIAW championship appearances
- 3 Olympians

FOOTBALL

- 64 first team All-America selections
- 2 national championships (1920, '37)
- 13 bowl appearances (8 Rose Bowls)
- 20 National Foundation Hall of Fame members

MEN'S GOLF

- 2 All-America selections
- 10 NCAA regional appearances
- 6 NCAA Tournament appearance

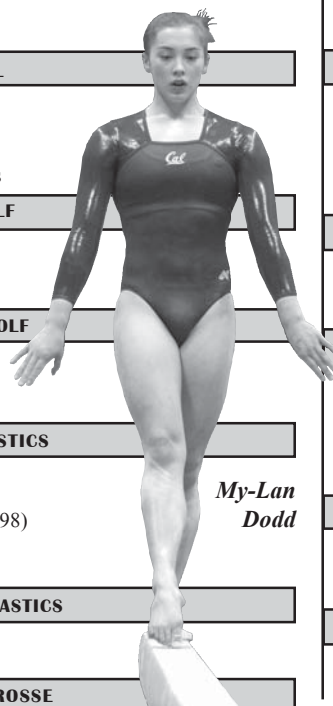
WOMEN'S GOLF

- 2 All-America selections
- 4 NCAA regional appearance
- 3 NCAA championship appearance

MEN'S GYMNASTICS

- 130 All-America selections
- 43 NCAA appearances
- 4 team NCAA championships (1968, '75, '97-98)
- 19 Individual NCAA champions
- 9 Olympians

My-Lan Dodd



WOMEN'S GYMNASTICS

- 3 All-America selections
- 11 NCAA appearances

WOMEN'S LACROSSE

Sixth year of program



RUGBY

- 19 national championships (1980-83, '85-86, '88, '91-02)
- 14 Olympians

MEN'S SOCCER

- 21 All-America selections
- 11 NCAA Tournament appearances

WOMEN'S SOCCER

- 20 All-America selections
- 11 NCAA Tournament appearances

SOFTBALL

- 1 NCAA championship (2002)
- 23 All-America selections
- 19 NCAA Tournament appearances
- 10 College World Series appearances
- 4 Olympians

MEN'S SWIMMING

- 337 All-America selections
- 2 NCAA team championships (1979, '80)
- 38 Individual NCAA champions
- 9 NCAA relay championships
- 17 World records
- 27 NCAA records
- 29 Olympic medalists

Vikki Laing



WOMEN'S SWIMMING

- 210 All-America selections
- 19 Individual NCAA champions
- 2 NCAA relay championships
- 17 Olympians
- 13 NCAA records
- 6 World records

MEN'S TENNIS

- 37 All-America selections
- 38 NCAA Tournament appearances
- 1 NCAA championship (1925)
- 2 NCAA singles championships (1925, '26)
- 9 NCAA doubles championships (1925, '26, '30, '35, '37, '39, '52, '90, '91)

WOMEN'S TENNIS

- 53 All-America selections
- 22 NCAA Tournament appearances
- 4 NCAA doubles championships (1998-00)

MEN'S TRACK & FIELD

- 159 All-America selections
- 1 NCAA team championship (1922)
- 30 Individual NCAA champions
- 26 world records
- 12 Olympic medalists

WOMEN'S TRACK & FIELD

- 58 All-America selections
- 4 Individual NCAA champions
- 1 Olympian

VOLLEYBALL

- 4 All-America selections
- 6 NCAA Tournament appearances
- 1 NIVC Tournament appearance
- 1 AIAW Tournament appearance
- 2 Olympians

MEN'S WATER POLO

- 149 All-America selections
- 11 NCAA championships (1973-75, '77, '83-84, '87-88, '90-92)
- 16 Olympians

WOMEN'S WATER POLO

- 24 All-America selections
- 3 NCAA runner-up finishes (1996-98)
- 3 Olympians

ATHLETIC HIGHLIGHTS



Third baseman Conor Jackson was selected No. 19 overall in the 2003 Major League Baseball draft.

Baseball: Conor Jackson, who batted .388 with 10 home runs and 44 RBI, earned first team All-Pac-10 honors. Jackson went on to be a first round draft pick by Arizona Diamondbacks—the first Golden Bear to be selected in the first round since Dave Masters in 1985.

Men's Basketball: Cal advanced to the postseason for the fifth consecutive year – a first in school history. The Bears, who were ranked as high as 18th in the Associated Press poll, reached the second round of the NCAA Tournament. All-Pac-10 forward Joe Shipp ended his career ranked third on Cal's career scoring list with 1,666 points.

Women's Basketball: Cal posted double-digit wins for the fourth time in last five seasons. The Bears entered the Pac-10 Tournament as the ninth seed, but upended No. 8 Arizona State, 46-38, to reach the quarterfinals. Junior college transfers Nihan Anaz and Timea Ivanyi paced Cal in scoring at 10.1 and

9.8 points per game, respectively.

Men's Crew: The Bears' varsity 8 finished third in the IRA regatta, seeing their run of nationals titles stop at four straight. Cal did claim the JV championship, while the freshman boat was second. At the Pac-10 races, the Bears won the team title.

Women's Crew: Led by a runner-up finish in fours and a third-place spot by the JV 8, Cal captured fifth at the NCAA championships June 1. The Bears won both the four and JV races at the Pac-10 regatta.

Cross Country: Senior Martin Conrad was the men's top finisher at the Pac-10 championships in 22nd place, while freshman Bridget Duffy led women in all five competitions she competed in, including the Pac-10 championships (35th).

Field Hockey: Paced by All-American and NorPac Player of the Year Nora Feddersen's 14 goals and 34 points, the Bears won their second consecutive NorPac title. Shellie Onstead was voted the league's Coach of the Year.

Football: Led by Pac-10 Coach of the Year Jeff Tedford, Cal completed the greatest single-season turnaround in the country during the fall, defeating three ranked opponents on the road for the first time ever. Kyle Boller became the school's all-time leader in touchdown passes with 64, while tailback Joe Igber set a Big Game rushing record with 236 yards on the ground.

Men's Golf: With Michael Wilson being named Co-Pac-10 Freshman of the Year and junior Peter Tomasulo earning his second consecutive first team All-Pac-10 honor, Cal reached the NCAA regionals for the seventh consecutive season.

Women's Golf: Cal, which won a nation's-best seven tournament titles, achieved the highest ranking in the history of the program – second – after claiming victory at both the Pac-10 and NCAA regional competitions. Nancy McDaniel was named the NCGA National Coach of the Year, while senior Vikki Laing was chosen a second team All-American.

Men's Gymnastics: Paced by sophomore Graham Ackerman, who captured league crowns on both the floor exercise and vault, Cal finished second at the MPSF championships. The Bears then advanced to the NCAA meet, where they tied for seventh place.

Women's Gymnastics: Under the guidance of Cari DuBois, the Co-Pac-10 Coach of the Year and West Regional Coach of the Year, Cal made its first appearance in the NCAA regionals since 2001, placing fourth – its highest spot since taking third place in 1992.

Lacrosse: For the second year in a row, Cal was the runner-up in the Mountain Pacific Lacrosse League. Junior Colleen O'Mara led the team with 52 points (26 goals, 26 assists) while receiving her first MPLL All-Star nod.

Rugby: Cal saw its streak of consecutive national titles stop at 12 when the Bears were upset by Air Force in the semifinals, 46-28. Cal, though, came out with a vengeance in the consolation match, whipping Army, 75-3.

Men's Soccer: Pac-10 Co-Coach of the Year Kevin Grimes guided Cal to the third round of the NCAA Tournament. Senior goalkeeper Josh Saunders, the Pac-10 Player of the Year, collected 10 shutouts, the second most in Cal history.

Women's Soccer: Cal reached the second round of the NCAA playoffs for the first time since 1988. Senior Laura Schott, the Bears' all-time leading scorer with 56 goals, and junior Kim Yokers were selected first team All-Pac-10.

Softball: Cal reached the Women's College World Series championship game for the second straight year, but fell one run shy of defending its 2002 NCAA crown. First baseman Veronica Nelson, who hit a school-record 55 home runs during her career, and catcher Courtney Scott were both voted second team All-Americans.

Men's Swimming: The Bears captured one individual and one relay title to finish fourth at the NCAA championships. Cal's 400-yard freestyle relay team set an NCAA, U.S. Open and school record (2:48.99) in its victory, while Duje Draganja added another win for the Bears in the 100 free.

Women's Swimming: Led by the 2003

NCAA Swimmer of the Year – Natalie Coughlin – Cal turned in its seventh consecutive Top 10 finish at the NCAA championships. At the national meet, Coughlin became the first swimmer in NCAA history to earn three straight titles in the 100 and 200-yard backstroke and 100-yard butterfly events.

Men's Tennis: Ranked in the Top 10 all year, Cal advanced to the NCAA quarterfinals for the first time since 1991. Sophomore Conor Niland and senior Robert Kowalczyk earned All-Pac-10 honors, while Kowalczyk and Steve Berke claimed All-America status in doubles.

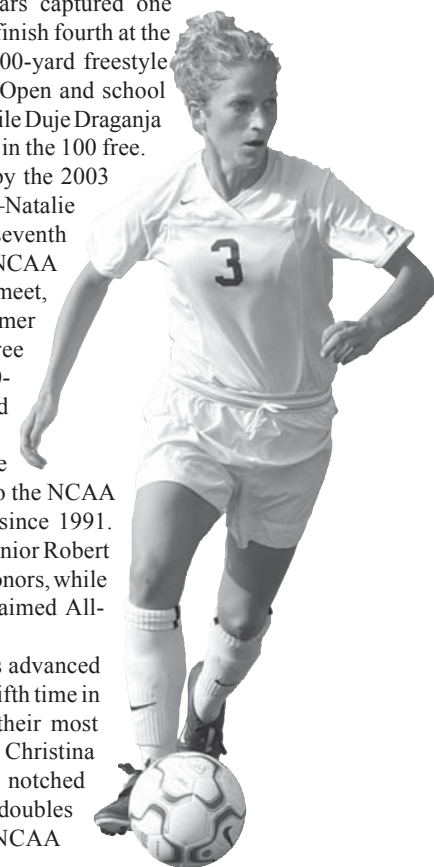
Women's Tennis: The Bears advanced to the NCAA semifinals for the fifth time in school history, finishing with their most wins in a season since 1990 (23). Christina Fusano and Raquel Kops-Jones notched their second consecutive Pac-10 doubles title and claimed the 2003 NCAA doubles crown, as well.

Track & Field: Under the guidance of first-year coach Chris Huffins, the Bears qualified 12 athletes for the NCAA championships. Freshman Teak Wilburn was Cal's top finisher, taking 12th place in the high jump.

Volleyball: Cal qualified for the NCAA Tournament for the first time in 13 seasons, defeating six ranked opponents during the season. Sophomore Mia Jerkov, Cal's first All-American since 1983, earned first team All-Pac-10 honors and was the Oct. 21 National Player of the Week.

Men's Water Polo: Cal, which won the MPSF championship, finished as the national runner-up. Kirk Everist was voted MPSF Coach of the Year, and junior driver Attila Banhidly was named a first team All-American.

Women's Water Polo: Cal finished the season ranked sixth in the national polls. Sophomore center Jodie Needles led the Bears in scoring with 34 goals and was named second team All-MPSF.



Kimberly Yokers was a first-team All-Pac-10 choice in 2002.

FAMOUS CAL GRADUATES

Shareef Abdur-Rahim - NBA All-Star, 2000 U.S. Olympian

Horace Albright - Awarded 1980 Medal of Freedom

Roger Baccigaluppi - President, Blue Diamond Growers

Stanley Barnes - Judge, U.S. Court of Appeals

Steve Bartkowski - No. 1 overall NFL draft pick in 1975

Stephen Bechtel - Founder of world's largest constructional engineering firm

Zulfikar Ali Bhutto - President, Islamic Republic of Pakistan

Matt Biondi - Three-time Olympic swimmer, winner of eight gold medals

Rose Bird - Chief Justice, California Supreme Court

Bill Bixby - Actor, "The Incredible Hulk"

W. Michael Blumenthal - U.S. Secretary of the Treasury

Allen Broussard - Assoc. Justice, California Supreme Court

Jerry Brown - Governor of California, Mayor of Oakland

Thomas Cech - Chemist, Nobel Prize winner

Peter Chernin - Chairman, 20th Century Fox

Leroy Chiao - First Chinese-American astronaut

Choon Kun Cho - President, Korean Airlines

Rachelle Chong - Member, Federal Communications Commission

Beverly Cleary - Author, "Ramona the Pest"

Shirley Dean - Mayor of Berkeley

Joan Didion - Author, "Play It as It Lays"

Brig. Gen. James H. Doolittle - World War II hero, Medal of Honor winner

Newton Drury - Director, National Park Service

Adam Duritz - Lead singer, Counting Crows

Maria Echaveste - Deputy Chief of Staff, Clinton Administration

Joseph Erlanger - Winner of 1944 Nobel Prize for chemistry

Joy (Biefeld) Fawcett - '91, '95, '99, '03, U.S. Women's World Cup, '96, '00 Olympics

Don Fisher - Founder and Chairman of the Board, The Gap

David Flinn - President, University of Wisconsin

John Kenneth Galbraith - Economist

John W. Gardner - U.S. Secretary of Health, Education & Welfare

Tony Gonzalez - NFL All-Pro tight end

Mark Goodson - TV producer, "Family Feud", "The Price is Right"

Walter A. Gordon - Governor of Virgin Islands, U.S. District Court Judge

Michele Granger - Olympic gold medallist, softball pitcher

Andrew Grove - President and CEO of Intel Corporation

Walter Haas Jr. - President, Levi Strauss & Co.; former owner of Oakland Athletics

Philip Habib - U.S. Special Envoy to Middle East

William R. Hearst Jr. - Newspaper publisher

Thelton E. Henderson - Chief judge, U.S. District Court of Northern California

Judith Heumann - Asst. U.S. Secretary of Education

Marguerite Higgins - Journalist, Pulitzer Prize winner

Susanna Hoffs - Lead singer of "The Bangles"

Lance Ito - Superior Court Judge, presided over O.J. Simpson trial

Ida Jackson - United Nations observer, founder local chapter of National Council of Negro Women

Jackie Jensen - Former American League MVP

Kevin Johnson - NBA All-Star

Edgar F. Kaiser - Founder, Kaiser Permanente



Gregory Peck



Adam Duritz

Jeff Kent - 2000 National League MVP

Clark Kerr - Chancellor, UC Berkeley

Jason Kidd - NBA All-Star, 2000 U.S. Olympian

Maxine Hong Kingston - Author, 1997 National Humanities Medal

Yuan T. Lee - Chemist, Nobel Prize winner

Jean Lemmon - Editor, "Better Homes and Gardens"

Willard Libby - Scientist, discovered Carbon 14, Nobel Prize winner

Tung Yen Lin - World-renown civic engineer

Jack London - Author, "The Call of the Wild"

Wiley Manuel - First African-American California State Supreme Court Justice

Jerry Mathers - Actor, "Leave it to Beaver"

John A. McCone - Director of CIA, Atomic Energy Commission

Terry McMillan - Author, "Waiting To Exhale," "How Stella Got Her Groove Back"

Robert McNamara - U.S. Secretary of Defense

Mary T. Meagher - U.S. Olympic swimmer, winner of three gold medals

Norman Mineta - U.S. Secretary of Transportation

Gordon Moore - Co-founder, Intel Corp.

Julia Morgan - Architect

Emil M. Mrak - Chancellor, UC Davis

Hardy Nickerson - NFL All-Pro linebacker

Sadako Ogata - U.N. High Commissioner for Refugees

Gregory Peck - Actor, Academy Award winner, "To Kill a Mockingbird"

Kenneth Pitzer - Chemist, president of Stanford University

Robert Raven - President, American Bar Association

Helen Wills Moody Roark - Winner of eight Wimbledon championships

James Schamus - Producer, "In the Bedroom"

Glenn Seaborg - Nuclear physicist, Nobel Prize winner, co-founder of Element 106

Margaret Rhea Seddon - Astronaut

Mimi Silbert - Co-founder, Delancey Street Foundation

William G. Simon - Director, FBI

Samuel Smith - President, Washington State University

Leigh Steinberg - Lawyer, sports agent

Irving Stone - Chairman, American Greetings Co.

Michelle Tafoya - TV Sports Personality

George Takei - Actor, Mr. Sulu on "Star Trek"

Roger Traynor - Chief Justice, California Supreme Court

Eugene Trefethen Jr. - President, Kaiser Industries

Rex Walheim - Space Shuttle astronaut

Earl Warren - Chief Justice, U.S. Supreme Court

Alice Waters - Chef, restaurateur, "Chez Panisse"

Jann Wenner - Founder, "Rolling Stone" magazine

Frederick Weyand - U.S. Army Chief of Staff

Lionel Wilson - First African-American mayor of Oakland

Pete Wilson - Governor of California

Dean Witter - Founder, Dean Witter Financial Services

Steve Wozniak - Co-founder, Apple Computer Systems

James D. Zellerbach - U.S. Ambassador to Italy



Mary T. Meagher



Rex Walheim

CAMPUS LIFE

Living in the residence halls at the University of California is an exciting opportunity to be a part of a dynamic community where you will enjoy unique academic, social, cultural and personal experiences. You'll discover that studying with classmates, sharing meals with fellow residents, and living with other students will enhance your college experience.

Each residence hall or residential complex is unique and reflects a "character" of its own. A sampling of campus living follows:

Clark Kerr Campus houses 750 residents in Spanish Mediterranean style buildings nestled in a park-like setting approximately six blocks south of the University. Students enjoy studying and lounging in picturesque courtyards or jogging eucalyptus-lined trails.

Faculty members and teaching assistants also live at Clark Kerr and are an integral part of the academic support program. Residents at Clark Kerr can take advantage of faculty lecture series, group tutorials in English, mathematics and science, as well as educational programs that promote academic success.

In addition to regular double and triple rooms, halls contain single and double rooms in a suite arrangement, each with a common living area and bath. Three of the buildings at Clark Kerr are designated as 24-hour quiet-environment halls.

Students like the "High-rise" complexes of **Unit 1**, **Unit 2** and **Unit 3** because they're near the hub of campus, Sproul Plaza and the south campus area. Units 1, 2, and 3 consist of four eight-story halls grouped around a dining commons. The halls are mostly coed.

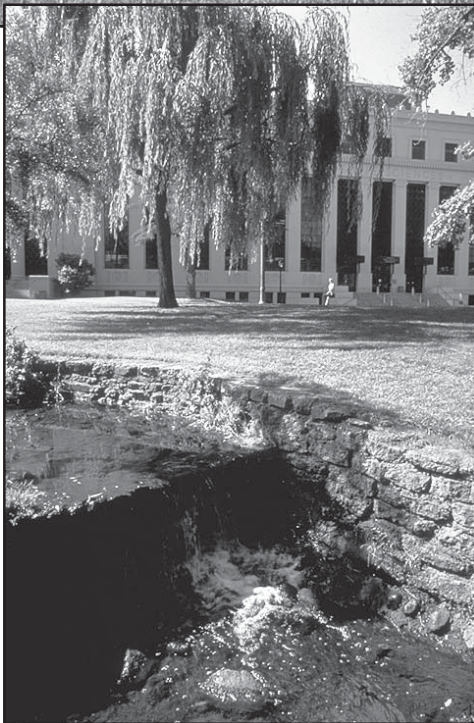
Each hall in the Units has a main lounge where students can gather in front of the fireplace, watch TV, or play a friendly game of pool or ping pong. Most halls have a piano. Within each Unit, there is study space and coin-operated laundry facilities.

Stern Hall, which houses 246 women, lies in the beautiful northeast area of campus. One of the two oldest residence halls at Cal, Stern has a rich history and proud tradition.

Foothill Student Housing residents enjoy the chalet-like atmosphere of their buildings. This living complex combines state-of-the-art amenities with the rustic ambiance of a hideaway in the woods, taking full advantage of the natural beauty of the prime north campus area.

This coed complex is composed of suites in seven buildings. The complex also has a Commons building that contains the dining hall, assembly room, lounge, a convenience store, offices, and meeting space where residents can gather for social or academic activities.

Theme houses provide a living and learning experience for students who share an interest in a particular cultural theme. Theme houses maintain close



relationships with their sponsoring academic departments. Residents explore the histories, languages, and literatures of their respective cultural groups. The five theme houses are **African American House**, **Asian Pacific American House**, **Casa Italiana**, **Casa Magdalena Mora**, and **Slavic House**.

In all residence halls and theme houses, rooms are furnished with twin beds (extra long), dressers, desks, closets, mirrors, and shelving. Rooms in Clark Kerr Campus, Unit 3, and Foothill are carpeted.

A primary goal of residential programs is to facilitate the formation of a community that encourages personal, social, cultural, and academic development of students who choose to live in University residence halls.

A special factor within the environment is the diversity that reflects the cultural pluralism of California and the University. The numerous programs and activities within the halls are intended to assist residents in recognizing, appreciating and celebrating the differences in a community in which the common goal is learning.

Community standards require that members develop and maintain a high degree of respect for one another. To promote a greater appreciation for diversity, programs exploring issues such as cultural, ethnic, gender and religious differences are sponsored throughout the academic year.

Each residence hall complex is coordinated by the residential life coordinator, a professional staff member who oversees the residential program in his or her living community. Each hall within the unit is staffed with up to five paraprofessionals: one hall coordinator and four resident assistants. Hall coordinators supervise the activities of the hall, and resident assistants serve as peer advisers who assist with residents' educational and social activities and help maintain community standards.

ATHLETIC FACILITIES & TURF CREW

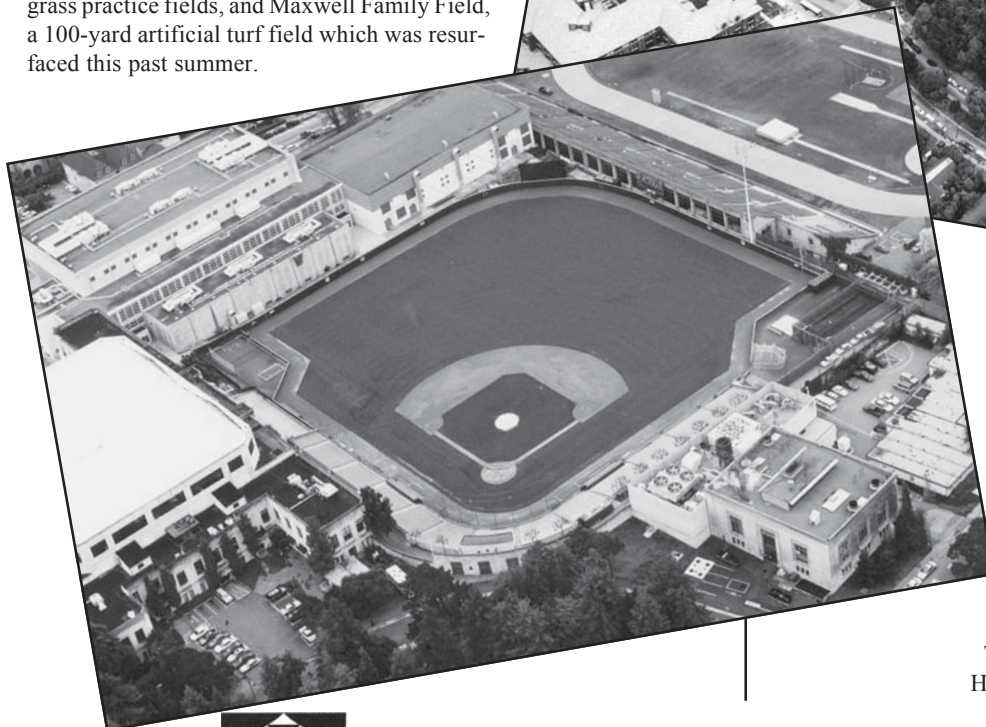
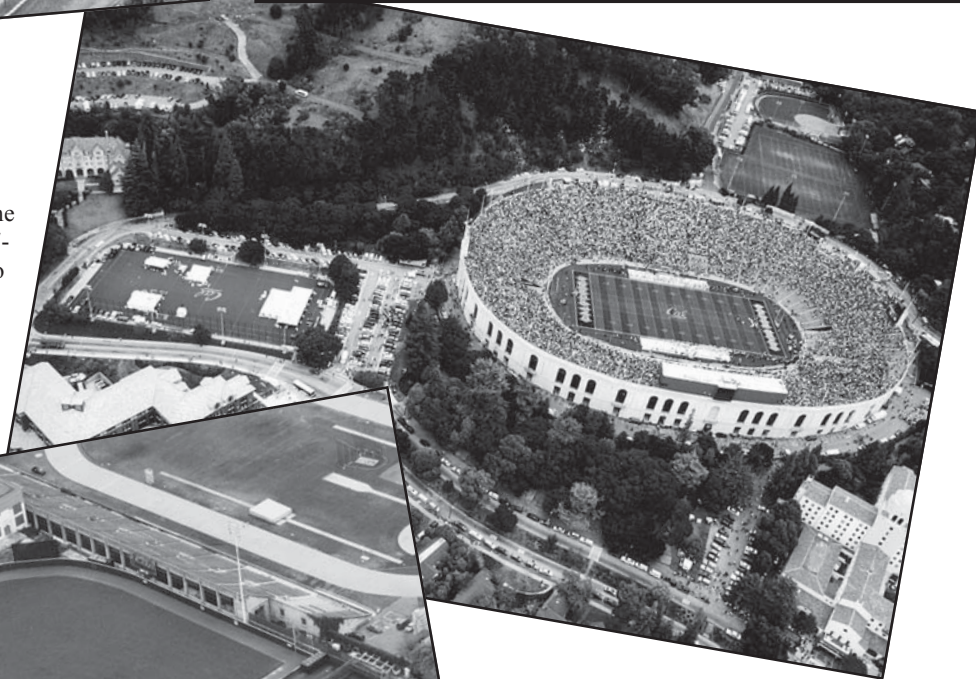


CAL TURF CREW

*BACK ROW (l to r): Tory Merritt, Nick Cole, and Miguel Vasquez.
FRONT ROW: Mark Lucas, Dan Alvarado, Tavi Rodriguez, Tim Vigil.*

HOME OF GOLDEN BEAR ATHLETICS

Cal student-athletes have access to some of the finest facilities in the nation, starting with 73,347-seat Memorial Stadium (right), which was judged to be best place in the country to watch college football by *Sports Illustrated* in 1997. Flanking the stadium are Witter Field, which provides two grass practice fields, and Maxwell Family Field, a 100-yard artificial turf field which was resurfaced this past summer.



Home of Golden Bear softball is Levine-Fricke Field (top left). Nestled at the base of Strawberry Canyon, the field sits high above the Berkeley campus overlooking the San Francisco Bay Area.

In close proximity to each other on the western end of campus are many of Cal's other athletic facilities (lower left), including Edwards Track Stadium, Evans Diamond, Hellman Tennis Complex, Spieker Aquatics Complex and Haas Pavilion.



2004 CALIFORNIA SOFTBALL BROADCAST ROSTER



#1 KRISTINA THORSON
P * 5-7 * R/R * So.
Lake Forest Park, WA



#2 CHELSEA SPENCER
SS * 5-4 * R/R * Jr.
San Leandro, CA



#3 ALEX SUTTON
2B/OF * 5-6 * R/R * Fr.
San Jose, CA



#4 SHANNON HARPER
C * 5-4 * R/R * Fr.
Stockton, CA



#5 LINDSAY JAMES
OF * 5-5 * L/R * So.
San Carlos, CA



#6 ALYSSA SMOKE
1B * 5-11 * R/R * Fr.
Everett, WA



#7 SARAH ADAMS
P * 5-11 * R/R * So.
Half Moon Bay, CA



#9 HALEY WOODS
C/1B * 5-11 * R/R * So.
Burlingame, CA



#10 KALEO ELDRIDGE
OF * 5-4 * L/R * Jr.
Kahului, HI



#11 KRISTEN BAYLESS
OF/C * 5-5 * R/R * Jr.
San Jose, CA



#16 KELLY ANDERSON
P/1B * 5-9 * R/R * Jr.
Woodland, CA



#18 RONI RODRIGUES
UT * 5-9 * R/R * Sr.
Antioch, CA



#19 VICKY GALINDO
3B * 5-4 * L/R * Jr.
Union City, CA



#22 GWEN AFRFILES
1B * 5-11 * R/R * Fr.
Stockton, CA



#24 JESSICA PAMANIAN
2B/OF * 5-4 * R/R * Jr.
Milpitas, CA



#33 JESSICA VERNAGLIA
3B/OF * 5-4 * R/R * Jr.
Laguna Niguel, CA



DIANE NINEMIRE
Head Coach
17th season at Cal



JOHN REEVES
Assistant Coach
11th season at Cal



KIM MAHER
Assistant Coach
5th season at Cal



DAN PARAJON
Volunteer Coach
2nd season at Cal