



# SAN DIEGO STATE BASKETBALL

## 2016-17 MEN'S BASKETBALL GAME NOTES

Mike May, Senior Associate Athletics Director of Communications and Media Relations ♦ E-Mail: mmay@mail.sdsu.edu ♦ Office: 619.594.5547 ♦ Cell: 619.957.8372  
Darin Wong, Assistant Athletics Director of Media Relations ♦ E-Mail: dwong@mail.sdsu.edu ♦ Office: 619.594.5548 ♦ Cell: 310.489.2378

### GAME INFORMATION

**Date / Time:** Monday, November 21 / 8 p.m. PT  
**Site:** Golden 1 Center (17,500) / Sacramento, Calif.  
**Television:** PAC-12 Networks  
**Talent:** Ted Robinson (play-by-play), Mike Montgomery (analyst)  
**SDSU Radio:** The Mighty 1090 / 105.7 The MAX  
**Talent:** Ted Leitner (play-by-play); Jordan Carruth (pre, half and post)  
**Live Stats:** GoAztecs.com  
**Series vs. California:** San Diego State leads, 6-4  
**Streak:** San Diego State, W3  
**at San Diego:** San Diego State leads, 3-2  
**at Berkeley:** Tied, 2-2  
**Neutral:** San Diego State leads, 1-0  
**First Meeting:** Jan. 15, 1940: at San Diego, Calif. - L, 34-36  
**Last Meeting:** Nov. 26, 2015: at Las Vegas, Nev. - W, 72-58  
**Fisher vs. California:** 4-3

### SCHEDULE / RESULTS

Date	SDSU	Opp.	Opponent (TV/Stream)	Time / Result
N.11	rv/rv		San Diego (ESPN2)	W, 69-59
N.14	rv/rv	14/14	at Gonzaga (ESPN2)	L, 48-69
N.16	rv/rv		San Diego Christian	W, 81-58
N.21	rv/rv	25/rv	^vs. California (PAC-12 Networks)	8 p.m. PT
N.28			Savannah State	7 p.m. PT
D.3			at Loyola (ESPN3)	3 p.m. CT
D.7			at Grand Canyon	7 p.m. MT
D.10			Arizona State (CBS Sports Network)	4 p.m. PT
D.12			Alabama State (Campus Insiders)	7 p.m. PT
D.22			#vs. Southern Miss (ESPN2)	2 p.m. HT
D.23			#vs. TBD (ESPN2 or ESPN3)	TBD
D.25			#vs. TBD (ESPN Networks)	TBD
J.1			*New Mexico (CBS Sports Network)	2 p.m. PT
J.4			*at Nevada (ESPN2 or ESPN3)	8 p.m. MT
J.7			*at Boise State (ESPN2 or ESPN3)	9:15 p.m. MT
J.10			*San José State (ESPN3 or ESPN3)	8 p.m. PT
J.14			*Utah State (ESPN3)	7 p.m. PT
J.17			*at UNLV (ESPN3 or ESPN3)	8 p.m. PT
J.24			*at Air Force (ESPN3 or ESPN3)	9 p.m. MT
J.28			*Colorado State (CBS Sports Network)	3 p.m. PT
J.31			*Wyoming (CBS Sports Network)	8 p.m. PT
F.4			*at Fresno State (ESPN3)	4 p.m. PT
F.7			*at San José State (CBS Sports Network)	8 p.m. PT
F.12			*Nevada (CBS Sports Network)	1 p.m. PT
F.15			*at Utah State (CBS Sports Network)	8 p.m. MT
F.19			*UNLV (CBS Sports Network)	1 p.m. PT
F.22			*Fresno State (CBS Sports Network)	8 p.m. PT
F.25			*at Colorado State (CBS Sports Network)	6 p.m. MT
M.1			*Air Force (CBS Sports Network)	7 p.m. PT
M.4			*at New Mexico (CBS Sports Network)	8 p.m. MT
M.8			+at MW First Round	TBD
M.9			+at MW Quarterfinals (CBS Sports Network)	TBD
M.10			+at MW Semifinals (CBS Sports Network)	TBD
M.11			+at MW Finals (CBS)	3 p.m. PT

^ - Golden 1 Center (Sacramento, Calif.); # - Hawaiian Airlines Diamond Head Classic (Stan Sheriff Center; Honolulu, Hawaii); \* - Mountain West game; + - Mountain West Championship (Thomas & Mack Center; Las Vegas, Nev.)

### GAME 4



#### [rv/rv] SAN DIEGO STATE AZTECS

**Record:** 2-1 (0-0 Mountain West)  
**Head Coach:** Steve Fisher  
**Career Record:** 553-278 (26th Full Season), **Record at San Diego State:** 369-196 (18th Season)



#### [25/rv] CALIFORNIA GOLDEN BEARS

**Record:** 2-0 (0-0 PAC-12)  
**Head Coach:** Cuonzo Martin  
**Career Record:** 167-108 (7th Season), **Record at California:** 43-26 (3rd Season)

### NEWS AND NOTES

- San Diego State heads north to Sacramento to play California in a neutral-site contest inside the new Golden 1 Center on Monday night. The intrastate match-up is set for an 8 p.m. PT start on the PAC-12 Networks, The Mighty 1090 and 105.7 The MAX.
- The Aztecs are coming off an 81-58 home victory over San Diego Christian last Wednesday. It was San Diego State's sixth straight win in the game immediately following a defeat after it was a dealt a road loss at nationally ranked Gonzaga last Monday during ESPN's College Hoops Marathon.
- Four Aztecs scored in double figures in the win over the Hawks and were led by **Jeremy Hemsley's** 23 points on 9-of-12 shooting (3-4 3FG) to go with five assists. **Trey Kell** added 19 points (7-10 FG), **Zylan Cheatham** had 15 points, seven rebounds and three steals, and **Dakarai Allen** finished with 15 points, a career-high nine rebounds, four assists, a personal-best five blocked shots and two steals.
- For the third time in as many games, the Aztecs were without the services of projected starter **Malik Pope** (knee), **Max Hoetzel** (knee) and **Ben Perez** (back). **Matt Shrigley** (ankle) and **Valentine Izundu** (ankle), who both played at Gonzaga, were also held out of the San Diego Christian game due to preventative reasons.
- As a team, the Aztecs shot a season-best 56.1 percent from the field, including 60.0 percent in the second half. San Diego State had a season-high 18 assists on 32 buckets after totaling only 12 in the first two games combined. On the defensive side of the ball, SDSU held San Diego Christian to 32.3-percent shooting, forced 17 turnovers and blocked a season-high eight shots.
- San Diego State will look to carry the momentum from the San Diego Christian game into its clash with the Golden Bears, a team it has defeated three straight times, including last year's 72-58 decision in Las Vegas while California was ranked No. 14/13. In that game, the unranked Aztecs rallied from a 15-point second-half deficit, which was SDSU's second-largest overcome in a victory since 1996-97.
- SDSU will look to continue its dominance over schools from the state of California. The Aztecs are 58-4 in their last 62 games vs. California universities and 48-1 in their last 49 vs. non-league foes from The Golden State. SDSU will look to improve to 3-0 this year vs. California teams after downing San Diego and San Diego Christian already this year.
- The Aztecs have won their last two games vs. the PAC-12 Conference, defeating the Golden Bears in Las Vegas last November and then beating Washington at home in the second round of the 2016 NIT. In those two victories, San Diego State's average margin of victory was 14.5 points. SDSU went 2-1 vs. the league last year after dropping an 81-76 decision at No. 16/16 Utah in the second game of the season.
- San Diego State has gone 11-7 vs. teams in the PAC-12 Conference at game time since the start of the 2009-10 campaign. Four of those losses came to Arizona teams that were ranked in the top six nationally.
- The Aztecs will look to add to their record vs. the PAC-12 as one of the top teams nationally since the beginning of the 2010-11 season. San Diego State is 171-47 since that year and its .784 winning percentage is the seventh-best in the country and No. 1 in the state of California.
- SDSU has been one of the top road/neutral teams in the country since the start of the 2009-10. San Diego State ranks sixth nationally in winning percentage since '09-10, winning at a .662 clip (88-45), which is also the best mark among teams in California.

#### ROAD/NEUTRAL RECORD

Highest road/neutral winning percentages since the beginning of '09-10 (through Nov. 17).

School	W-L	Pct.
Gonzaga	102-34	75.0
Kansas	100-40	71.4
Duke	100-41	70.9
Wichita State	95-39	70.9
Kentucky	99-43	69.7
San Diego State	88-45	66.2
Syracuse	79-41	65.8

#### BEST RECORD SINCE '10-11

Below is a list of the highest winning percentages in the country since the beginning of 2010-11 (through Nov. 17).

School	W-L	Pct.
Wichita State	180-38	82.6
Gonzaga	177-38	82.3
Kansas	184-41	81.8
Kentucky	185-44	80.8
Duke	177-43	80.5
Arizona	174-46	79.1
San Diego State	171-47	78.4

#### WINNING IN THE POSTSEASON

Below is a list of longest active seasons with at least one victory in an NCAA-sponsored event (NCAA or NIT) entering 2016-17.

School	No.	School	No.
North Carolina	14	San Diego State	4
Kansas	10	Virginia	4
Gonzaga	8	Wichita State	4
Oregon	5		

<b>2</b>	<b>Ben Perez</b> <i>Guard, 6-3, 175, So.-1L</i> <i>San Marcos, Calif. (USAFA Prep Academy)</i>	<b>PPG</b> 16-17 -- MW -- <b>Career Highs:</b> Points: 11 vs. Nicholls (12-10-15) Rebounds: 3 - two times Assists: 2 vs. Nicholls (12-10-15)	<b>RPG</b> -- -- --	<b>APG</b> -- -- --	<b>FG</b> -- -- --	<b>3FG</b> -- -- --	<b>FT</b> -- -- --	Has not played this season (back)... Played in 25 games last season as a true freshman (10.0 mpg)... Reached double figures in scoring twice (11 vs. Nicholls, 10 at LBSU)... Played a career-high 21 minutes vs. Kansas... Knocked down multiple 3-pointers five times... Made a career-high three 3-pointers twice (Little Rock, Nicholls)... Saw action in two of SDSU's four NIT games (IPFW, vs. George Washington).
<b>3</b>	<b>Trey Kell</b> <i>Guard, 6-4, 210, Jr.-2L</i> <i>San Diego, Calif. (St. Augustine HS)</i>	<b>PPG</b> 16-17 18.7 MW -- <b>Career Highs:</b> Points: 27 vs. Fresno State (1-19-16) Rebounds: 10 at Nevada (1-26-16) Assists: 5 - two times	<b>RPG</b> 4.7 -- --	<b>APG</b> 2.3 -- --	<b>FG</b> 43.9 -- --	<b>3FG</b> 23.1 -- --	<b>FT</b> 77.3 -- --	<b>Preseason all-MW...</b> Top returner scorer from 2015-16... All-MW first team and NABC all-district 2nd team last year... 23 pts. vs. USD... 19 pts. (7-10) vs. SDC... Top-2 in scoring for SDSU last 3 games... Scored in double figures 37x in his career (3 20-pt gms)... 27 of last 29 games w/3FGM... 1 TO or less 42x... Made a team-best 71 3FG last season... At one point last year, scored 10+ points in 20 straight games.
<b>4</b>	<b>Dakarai Allen</b> <i>Guard, 6-5, 200, Sr.-3L</i> <i>Elk Grove, Calif. (Sheldon HS)</i>	<b>PPG</b> 16-17 8.7 MW -- <b>Career Highs:</b> Points: 16 vs. Illinois State (11-13-15) Rebounds: 9 vs. SD Christian (11-16-16) Assists: 4 - three times	<b>RPG</b> 6.0 -- --	<b>APG</b> 1.7 -- --	<b>FG</b> 47.6 -- --	<b>3FG</b> 1/6 -- --	<b>FT</b> 5/9 -- --	<b>Pronounced Duh-KAR-ee...</b> Game-high 3 stl. vs. USD... 7 blks. last 2 games, including career-high 5 vs. SD Christian... Only Aztec at 6-5 or shorter to have 5 blks. in a game since at least '96-97 (4th this season nationally)... Ranked 1st in the nation last year in points per possession allowed (0.591) among players with at least 200 possessions defended... Led the team with 40 steals last season... 13 double-digit scoring games in his career.
<b>5</b>	<b>Jalen McDaniels</b> <i>Forward, 6-9, 190, Fr.-HS</i> <i>Federal Way, Wash. (Federal Way HS)</i>	<b>PPG</b> 16-17 -- MW -- <b>Career Highs:</b> Points: Rebounds: Assists:	<b>RPG</b> -- -- --	<b>APG</b> -- -- --	<b>FG</b> -- -- --	<b>3FG</b> -- -- --	<b>FT</b> -- -- --	<b>Preseason MW Co-Freshman of the Year...</b> Has not played this season (CD)... Is the only true freshman on the team... Four-star player by Scout and 247Sports... No. 98 on Rivals 150... Led Federal Way High to a 29-0 record and a state title, its second straight, as a senior in 2015-16... Named AP Washington state Class 4A first-team player as a senior... All-state selection by USA Today and The News Tribune.
<b>10</b>	<b>Max Hoetzel</b> <i>Forward, 6-9, 210, So.-TR</i> <i>Calabasas, Calif. (Indiana)</i>	<b>PPG</b> 16-17 -- MW -- <b>Career Highs:</b> Points: 19 vs. Miss. Valley St. (11-14-14) Rebounds: 9 vs. Miss. Valley St. (11-14-14) Assists: 2 - two times	<b>RPG</b> -- -- --	<b>APG</b> -- -- --	<b>FG</b> -- -- --	<b>3FG</b> -- -- --	<b>FT</b> -- -- --	Has not played this season (knee)... Sat out 2015-16 season after transferring from Indiana... Hyperextended right knee and suffered a bone bruise on Oct. 11, which sidelined him... Played in 31 games during the 2014-15 season at Indiana... Averaged 2.4 points and 1.3 rebounds as a true freshman... Logged double-figure minutes 11 times... Helped the Hoosiers to the 2015 NCAA tournament.
<b>11</b>	<b>D'Erryl Williams</b> <i>Guard, 6-3, 205, Sr.-3L</i> <i>Sacramento, Calif. (Sheldon HS)</i>	<b>PPG</b> 16-17 3.3 MW -- <b>Career Highs:</b> Points: 9 vs. SD Christian (11-18-15) Rebounds: 9 vs. SD Christian (11-16-16) Assists: 4 vs. Nicholls (12-10-15)	<b>RPG</b> 4.7 -- --	<b>APG</b> 1.3 -- --	<b>FG</b> 4/8 -- --	<b>3FG</b> 2/2 -- --	<b>FT</b> 0/0 -- --	<b>Pronounced Dee-AIR-ol...</b> Career-high 9 rebounds in 30 minutes vs. SD Christian... Is 2-for-2 3FG after entering the season 3-for-7 3FG in his career... Committed only 22 turnovers in 453 career minutes... Has only three multi-turnover game in 59 career outings... Two turnovers in last 13 games (97 mins)... 3-time MW All-Academic Team honoree; Only Chris Walton has done it four times (01, 02, 04, 05).
<b>14</b>	<b>Zylan Cheatham</b> <i>Forward, 6-9, 220, So.-1L</i> <i>Phoenix, Ariz. (South Mountain HS)</i>	<b>PPG</b> 16-17 9.0 MW -- <b>Career Highs:</b> Points: 17 vs. San José State (1-6-16) Rebounds: 11 vs. Grand Canyon (12-18-15) Assists: 4 vs. Kansas (12-22-15)	<b>RPG</b> 5.7 -- --	<b>APG</b> 1.7 -- --	<b>FG</b> 45.0 -- --	<b>3FG</b> 0/2 -- --	<b>FT</b> 81.8 -- --	<b>Pronounced Zy-lin CHEAT-um...</b> Returning starter... 15 pts., 7 rebs., 3 stl. vs. SD Christian... 6 rebounds at Gonzaga... Played in 41 career games (29 starts)... 11 double-digit scoring games, 6 double-digit reb. games, 2 double-doubles... Made 25 of last 44 FGA (56.8 pct.)... 50.0+ FG pct. in 26 games... Ranked 20th in the MW in rebounding last season... Set an SDSU freshman record with 111 free throws and 155 free-throw attempts.
<b>20</b>	<b>Matt Shrigley</b> <i>Forward, 6-6, 180, Jr.-2L</i> <i>San Diego, Calif. (La Costa Canyon HS)</i>	<b>PPG</b> 16-17 0.0 MW -- <b>Career Highs:</b> Points: 16 at Colorado State (1-24-15) Rebounds: 5 - four times Assists: 6 vs. Air Force (2-13-16)	<b>RPG</b> 3.0 -- --	<b>APG</b> 0.0 -- --	<b>FG</b> 0/2 -- --	<b>3FG</b> 0/2 -- --	<b>FT</b> 0/0 -- --	DNP vs. USD (ankle), but made debut at Gonzaga... DNP vs. SDC (ankle)... Suffered ACL injury last July and returned to action in January, ultimately playing in 18 games last season... Played in 85 career games, which is the 2nd most among current Aztecs (20 starts)... Team leader with 95 career 3FG, which ranks 16th in school history... 14 of his 15 FGs last season were 3FGs... Has committed only 49 TOs in 1,426 career mins.
<b>21</b>	<b>Malik Pope</b> <i>Forward, 6-10, 210, So.-1L</i> <i>Sacramento, Calif. (Laguna Creek HS)</i>	<b>PPG</b> 16-17 -- MW -- <b>Career Highs:</b> Points: 22 at Colorado State (1-24-15) Rebounds: 12 vs. Washington (3-21-16) Assists: 5 vs. UNLV (3-5-16)	<b>RPG</b> -- -- --	<b>APG</b> -- -- --	<b>FG</b> -- -- --	<b>3FG</b> -- -- --	<b>FT</b> -- -- --	<b>Pronounced muh-LEEK...</b> Has not played this season (knee)... Averaged 11.7 points and 6.9 rebounds, while shooting 47.5 percent from the field and 50 percent from 3-point distance over his final 13 games last season... SDSU was 11-1 last year when he reached double figures in scoring... Had four double-doubles last year, including three in his final five games... Named to the 2016 MW all-tourney team (14.0 ppg, 7.3 rpg).
<b>23</b>	<b>Montaque Gill-Caesar</b> <i>Guard, 6-6, 215, So.-TR</i> <i>Vaughn, Ontario, Canada (Missouri)</i>	<b>PPG</b> 16-17 3.0 MW -- <b>Career Highs:</b> Points: 21 vs. UMKC (11-14-14) Rebounds: 7 vs. UMKC (11-14-14) Assists: 3 vs. Florida (2-24-15)	<b>RPG</b> 3.7 -- --	<b>APG</b> 0.0 -- --	<b>FG</b> 3/16 -- --	<b>3FG</b> 1/6 -- --	<b>FT</b> 2/4 -- --	<b>Pronounced MON-take...</b> <b>Preseason MW Newcomer of the Year...</b> Started his 1st game at SDSU vs. USD... Team-high 6 rebs. at Gonzaga... Hit in nose; played 8 mins. vs. SDC... Sat out '15-16 after transferring from Missouri... In 2014-15, finished with the highest scoring avg. (9.1) for an MU freshman since '06-07... Played in 27 gms. (13 starts) for MU... Ranked 3rd on team in mins. (24.0)... Averaged 11.5 pts. through MU's non-league schedule.
<b>24</b>	<b>Nolan Narain</b> <i>Forward, 6-9, 220, Fr.-RS</i> <i>Hamilton, Ontario, Canada (La Lumiere School)</i>	<b>PPG</b> 16-17 2.0 MW -- <b>Career Highs:</b> Points: 4 vs. SD Christian (11-16-16) Rebounds: 1 vs. SD Christian (11-16-16) Assists: N/A	<b>RPG</b> 0.3 -- --	<b>APG</b> 0.0 -- --	<b>FG</b> 3/10 -- --	<b>3FG</b> 0/2 -- --	<b>FT</b> 0/0 -- --	Averaging 10.7 mins. per game... Eligible this season after sitting out last season as a true freshman... Enrolled a year early at San Diego State and practiced with the team... A consensus four-star player out of high school following his 2014-15 season at La Lumiere... Helped La Lumiere to a 20-2 record and a No. 1 ranking in the state of Indiana in his final season... Averaged 16 points, 10 rebounds and 2 blocked shots.
<b>42</b>	<b>Jeremy Hemsley</b> <i>Guard, 6-3, 180, So.-1L</i> <i>Rancho Cucamonga, Calif. (Damien HS)</i>	<b>PPG</b> 16-17 20.7 MW -- <b>Career Highs:</b> Points: 25 vs. San Diego (11-11-16) Rebounds: 6 - three times Assists: 6 vs. East Carolina (11-23-15)	<b>RPG</b> 3.3 -- --	<b>APG</b> 3.0 -- --	<b>FG</b> 56.1 -- --	<b>3FG</b> 60.0 -- --	<b>FT</b> 70.0 -- --	Led team in scoring in all 3 games... 1 of 2 Div. 1 players averaging 20 pts., 56.0 FG, 60.0 3FG (min. 15 3FGA)... 3rd nationally in 3FG pct. (min. 3 GP, 15 3FGA)... Career-high 25 pts. on career-high 9 FG vs. USD... 23 pts. (9-12 FG) vs. SDC... Has six 20-pt. games... 14 pts. at Gonzaga... MW Freshman of the Year and all-MW third-team choice last season... Reached double figures in scoring 29 career times.
<b>45</b>	<b>Valentine Izundu</b> <i>Center, 6-10, 240, Sr.-TR</i> <i>Houston, Texas (Washington State)</i>	<b>PPG</b> 16-17 1.0 MW -- <b>Career Highs:</b> Points: 10 - three times Rebounds: 7 - two times Assists: 2 vs. New Mexico (12-25-15)	<b>RPG</b> 4.0 -- --	<b>APG</b> 0.0 -- --	<b>FG</b> 1/2 -- --	<b>3FG</b> 0/0 -- --	<b>FT</b> 0/1 -- --	Had game-high 2 blks. in SDSU debut vs. USD... Started at Gonzaga (2 blks.)... DNP vs. SDC (ankle)... Graduate transfer from Washington St... Played last season at WSU (23 GP, 13 GS)... Blocked 50 shots a year ago to rank 98th in Div. 1 and 7th in single-season WSU history... Blocked a career-high 6 shots vs. Idaho State... Pac-12 All-Academic 2nd-Team honoree... Played first 2 seasons at Houston (24 GP).

## SCHEDULE / RESULTS

Date	Opponent (Television/Stream)	Time/Result	Note
N.11	San Diego (ESPN)	W, 69-59	► Hemsley: Career-high 25 points on career-high 9 FGs; Kell: 23 points; 1st time two Aztecs with at least 20 points since 1-15-12
N.14	at No. 14/14 Gonzaga (ESPN2)	L, 48-69	► Hemsley and Kell score a team-high 14 points; SDSU limits Gonzaga to 39.4 percent shooting and 33.3 percent from three-point range
N.16	San Diego Christian	W, 81-58	► Four players score in double figures, led by Hemsley's 23 points; SDSU shoots 56.1 percent and holds Hawks to 32.3 percent shooting
N.21	<b>^vs. No. 25/rv California (PAC-12 Networks)</b>	<b>8 p.m. PT</b>	<b>► SDSU has won three straight in the series, including last season's game in Las Vegas; SDSU leads, 6-4</b>
N.28	Savannah State	7 p.m. PT	► First meeting with the MEAC school; Tigers advanced to the CollegeInsider.com Tournament in 2016
D.3	at Loyola (ESPN3)	3 p.m. CT	► First meeting between the Aztecs and Ramblers; Loyola is 1-1 in MW-MV Challenge (def. Boise State, 12/23/14)
D.7	at Grand Canyon	7 p.m. MT	► SDSU looks to avenge 52-45 loss from last season; First trip to GCU in series history (GCU leads, 2-0)
D.10	Arizona State (CBS Sports Network)	4 p.m. PT	► San Diego State plays host to Arizona State for first time since 2008; Beginning of home-and-home series
D.12	Alabama State (Campus Insiders)	7 p.m. PT	► First meeting between the Mountain West and SWAC schools
D.22	#vs. Southern Miss (ESPN2)	2 p.m. HT	► Second meeting, but first since a 79-51 win in 2005 at the BP Top of the World Classic in Fairbanks, Alaska
D.23	#vs. Tulsa or Stephen F. Austin (ESPN2 or ESPN3)	TBD	► SDSU is 1-6 vs. Tulsa with the last meeting coming during the 1998 WAC season; SDSU is 0-0 vs. SFA
D.25	#vs. TBD (ESPN Networks)	TBD	► Rest of Hawaiian Airlines Diamond Head Classic field: Hawai'i, Illinois State, San Francisco, Utah
J.1	*New Mexico (CBS Sports Network)	2 p.m. PT	► San Diego State has won four straight in the series (65 points); Fisher has defeated UNM 21 times
J.4	*at Nevada (ESPN2 or ESPN3)	8 p.m. PT	► Aztecs lead the series 12-3, including seven straight wins in the series; Last 2 wins in Lawlor by a total of 5 pts.
J.7	*at Boise State (ESPN2 or ESPN3)	9:15 p.m. MT	► Each road team in the series won by 3 points last season; Aztecs lead all-time series 9-4 (3-2 in Boise)
J.10	*San José State (ESPN3 or ESPN3)	8 p.m. PT	► SDSU has won six straight in the series and now owns a 35-34 advantage; Spartans have not won in Viejas
J.14	*Utah State (ESPN3)	7 p.m. PT	► The Aztecs swept the Aggies last season (3-0, 24 pts.); SDSU has won 7 straight in series (last loss: 11/24/98)
J.17	*at UNLV (ESPN3 or ESPN3)	8 p.m. PT	► SDSU has won a school-record 8 straight games against UNLV; Aztecs have won 5 straight road games in series
J.24	*at Air Force (ESPN3 or ESPN3)	9 p.m. MT	► San Diego State plays at Air Force for first time since Jan. 20, 2015; SDSU has won 6 straight in series
J.28	*Colorado State (CBS Sports Network)	3 p.m. PT	► SDSU leads series, 40-38; Aztecs have won 4 straight vs. Rams; SDSU won 13 straight at home vs. CSU
J.31	*Wyoming (CBS Sports Network)	8 p.m. PT	► Aztecs trail series, 40-39; SDSU has won 4 of 5 and 10 of 13; SDSU has won last 8 vs. UW in Viejas
F.4	*at Fresno State (ESPN3)	4 p.m. PT	► Rematch of the 2016 Mountain West Conference championship game; Aztecs last win in Fresno, 3/1/14
F.7	*at San José State (CBS Sports Network)	8 p.m. PT	► Aztecs won 6 straight and are 5-0 vs. SJSU since Spartans joined MW; SDSU has won last 3 games in San Jose by 65 points
F.12	*Nevada (CBS Sports Network)	1 p.m. PT	► SDSU is 5-1 at home vs. Nevada (3 straight wins); MW era home wins by 13, 15 and 24 points
F.15	*at Utah State (CBS Sports Network)	8 p.m. MT	► Aztecs have won in last two visits to Logan (5 pts. in OT (2014) and 3 pts. (2016))
F.19	*UNLV (CBS Sports Network)	1 p.m. PT	► San Diego State 7-1 in last 8 home games vs. UNLV; Claimed a 92-56 win on "Senior Night" last year
F.22	*Fresno State (CBS Sports Network)	8 p.m. PT	► Aztecs have defeated the Bulldogs 6 straight times in Viejas; Last 5 gms. in Viejas, Fresno is 36.0 pct. from floor
F.25	*at Colorado State (CBS Sports Network)	6 p.m. MT	► SDSU 8-3 in last 11 visits to Moby; Aztecs will try for consecutive wins in Moby for 1st time since 2010-11
M.1	*Air Force (CBS Sports Network)	7 p.m. PT	► Aztecs have won 11 straight home games against the Academy (+149 pts.); During streak, +80 rebs.; +47 TOs
M.4	*at New Mexico (CBS Sports Network)	8 p.m. MT	► Won 2 straight and 7 of last 11 at The Pit; Since 05-06, SDSU is 7-4 at UNM, rest of the country: 22-151
M.8	+at MW First Round	TBD	► SDSU has never played in the first round of the MW Championship; Teams that finish in 6th-11th place play in the first round
M.9	+at MW Quarterfinals (CBS Sports Network)	TBD	► San Diego State has won nine straight MW quarterfinal games
M.10	+at MW Semifinals (CBS Sports Network)	TBD	► The Aztecs are 7-1 in their last eight MW semifinal games and have won three straight
M.11	+at MW Finals (CBS)	3 p.m. PT	► SDSU has reached the MW championship game three straight seasons and in seven of the last eight years

^ - Golden 1 Center (Sacramento, Calif.), # - Hawaiian Airlines Diamond Head Classic (Stan Sheriff Center; Honolulu, Hawaii), \* - Mountain West game, + - MW Championship (Thomas & Mack Center; Las Vegas, Nev.)

## SERIES HISTORY VS. CALIFORNIA

- San Diego State leads the all-time series, 6-4, and this meeting will be the second straight on a neutral court.
- SDSU has won three straight in the series, which is the longest winning streak by any team.
- The teams met three straight years in the 1940s (1940, 1941, 42) with the Aztecs taking two games.
- In SDSU's four most recent victories (2006, 2010, 2011, 2015), the Aztecs have won by an average of 10.5 points.
- San Diego State head coach Steve Fisher is 4-3 all-time vs. the Golden Bears. All seven meetings have come during his stay at SDSU.

## SDSU VS. THE PAC-12

- San Diego State is 15-6 in its last 21 vs. current members of the Pac-12 Conference and 16-7 since the start of the 2009-10 season.
- San Diego State has gone 11-7 vs. teams in the PAC-12 Conference at game time since the start of the 2009-10 campaign.

## WELCOME HOME

■ The trip to Sacramento will be a homecoming for seniors Dakarai Allen and D'Erryl Williams, and junior Malik Pope. Allen and Williams went to high school at Sheldon High, which is located in the state capital, and Pope attended Laguna Creek High, which is 21 miles from Sacramento. Head coach Steve Fisher and associate head coach/head coach in waiting Brian Dutcher also spent time with the Sacramento Kings prior to their stints at San Diego State.

## BLOCKS FROM UNLIKELY SOURCE

■ Dakarai Allen, known clogging passing lanes, blocked a game- and career-high five shots vs. San Diego Christian. His effort made him the fourth player nationally, standing at 6-5 or shorter, to have at least five rejections in a game this season. At an Aztec level, he became the first such player to accomplish the feat since 1996-97.

## SHOOTING THE VIEJAS LIGHTS OUT

■ Jeremy Hemsley has shot the ball well all year, but exceptionally well inside Viejas Arena. The sophomore is 18-for-27 from the floor (.667), making a career-high nine field goals in each of the first two home games of the year, and is 7-for-9 from three-point distance (.778). In home games, he is averaging 24.0 points, and 20.7 for the season.

## MEDIA RELATIONS

### MEDIA RELATIONS OFFICE

Fowler Athletics Center  
5302 55th Street, Suite 3014  
San Diego, CA 92182  
■ Office: 619.594.5547  
■ Fax: 619.582.6541

### MIKE MAY

#### Senior Associate A.D. of Communications and Media Relations

■ Coach Fisher Interviews  
■ E-Mail: mmay@mail.sdsu.edu  
■ Office: 619.594.5547  
■ Cell: 619.957.8372

### DARIN WONG

#### Assistant A.D. - Media Relations

■ Student-Athlete Interviews  
■ E-Mail: dwong@mail.sdsu.edu  
■ Office: 619.594.5547  
■ Cell: 310.489.2378  
■ Twitter: @dwong\_

### STAY CONNECTED

■ Athletics Website: goaztecs.com  
■ Twitter: @GoAztecs / @Aztec\_MBB  
■ Facebook: facebook.com/goaztecs  
■ Instagram: @goaztecs  
■ YouTube: youtube.com/goaztecs.com

## SERIES HISTORY VS. CALIFORNIA

### SAN DIEGO STATE LEADS, 6-4

Home: 3-2, Away: 2-2, Neutral: 1-0

Date	Location		Score
J.15.40	San Diego (AG)	L	34-36
J.4.41	Berkeley	W	29-28
J.12.42	San Diego (AG)	W	27-26
D.11.04	San Diego (SL) (CA)	L	57-60
D.6.05	Berkeley	L	64-82
N.18.06	San Diego (CA)	W	86-79
N.24.07	Berkeley (d)	L	69-77
D.8.10	Berkeley	W	77-57
D.4.11	San Diego (VA) (d) (24/23)	W	64-63
N.26.15	N-Las Vegas (LI) (14/13)	W	72-58

AG - Aztec Gym, CA - Cox Arena, VA - Viejas Arena, d - Day Game, N - Neutral Site, SL - San Diego SLAM, LI - Las Vegas Invitational, (#/#) - Opponent National Ranking

## OPPORTUNITY KNOCKED

- Opportunity knocked and D'Erryl Williams answered. The senior guard set then-career-highs vs. San Diego in rebounds (5), steals (2, tied) and minutes (29), while making his only three-point attempt, something he did at Gonzaga as well. Then vs. San Diego Christian, he established new personal bests with nine rebounds and 30 minutes, to go with four points and three assists.
- Williams is 2-for-2 from three-point distance this season after entering the year having made 3-of-7 from behind the arc in his career.

## NEAR THE TOP OF THE LIST

- Jeremy Hemsley is one of two players nationally averaging 20 points on at least 56 percent shooting and 60 percent from three-point range with a minimum of 15 three-point attempts through Nov. 17 (Khadeen Carrington - Seton Hall).
- Hemsley also ranks third in the nation in three-point field-goal percentage (.600) among players who have played at least three games and attempted a minimum 15 three-pointers through Nov. 17 games (Khadeen Carrington - Seton Hall: .667; Patrick Good - Appalachian State: .611).

## 20-POINT DUO

- Jeremy Hemsley and Trey Kell, one of the top backcourts in the nation, exploded for 25 and 23 points, respectively, in the season opener vs. San Diego. The two became the first Aztec teammates to score at least 20 points in a game since Jamaal Franklin scored 24 points and James Rahon added 22 vs. UNLV on Jan. 15, 2012.

## GOOD OMEN?

- Montaque Gill-Caesar started the opener vs. USD in what amounted to his first career game as an Aztec after transferring from Missouri. He became the first San Diego State player to start in his first game of his first season of eligibility following a transfer since Josh Davis (Tulane) in 2013-14. That season, the Aztecs went 31-5 (16-2 Mountain West) and advanced to the Sweet 16.

## BIG MARGINS IN SEASON OPENERS AT VIEJAS

- The Aztecs won their seventh straight season opener that took place inside Viejas Arena after dismissing USD. All seven have come by double-digit margins.
- In those seven wins, San Diego State has won by an average of 19.1 points. In the previous six seasons, five turned into NCAA tournament appearances. The lone exception was 2008-09 when SDSU beat UCSD by 19 and went to the semifinals of the NIT.

## AZTEC STAPLE: DEFENSE

- The Aztecs have been one of the elite defensive teams in the nation over the last few seasons and this year they are returning eight letterwinners off a team that finished first in the nation last season in field-goal percentage defense (.373), third in scoring defense (60.6), fifth in total blocked shots (207), sixth in total rebounds (1,475), seventh in three-point field-goal percentage defense (.300) and 10th in blocked shots per game (5.4).
- SDSU was fourth nationally last year in defensive adjusted efficiency (90.3), according to KenPom. In other defensive metrics, the Aztecs were first in effective field-goal percentage (.425), second in three-point percentage (.294), fourth in block percentage (.150) and fifth in two-point percentage (.416).
- 2013-14 ranks: 2nd in scoring defense, 6th in scoring margin, 8th in field-goal percentage defense.
- 2014-15 ranks: 2nd in scoring defense, 7th in field-goal percentage defense, 24th in blocked shots.

## DAKARAI ISLAND

- Senior Dakarai Allen established himself as one of the top defenders in the nation last season. The Elk Grove, California native ranked first in the country last year in points per possession allowed (0.591) among 949 Division I players with at least 200 possessions defended, according to Synergy.

## KEY STARTING EXPERIENCE

- Senior Dakarai Allen and junior Malik Pope are two Aztecs who started a significant amount of games last season, but are not considered returning starters, and figure to log heavy minutes through the campaign. Allen earned the starting nod 17 times and Pope started on 16 occasions.
- Senior Matt Shrigley, who was a returning starter heading into 2015-16, but was sidelined due to ACL surgery in July 2015, started 15 times in 2014-15.
- Others with starting experience at the Division I level include, Montaque Gill-Caesar and Valentine Izundu, who each started 13 games at Missouri and Washington State, respectively.

## NEW FACES

- San Diego State welcomes three new faces to floor in transfers Montaque Gill-Caesar, Max Hoetzel and Valentine Izundu, and redshirt freshman Nolan Narain.
- Gill-Caesar and Hoetzel transferred to SDSU from Missouri and Indiana, respectively, while Izundu is a graduate transfer from Washington State. The last time San Diego State had three transfers making their debut in one season was in 2012-13 when JJ O'Brien (Utah), Dwayne Polee II (St. John's) and James Johnson (Virginia) all became eligible. That team won 23 games and advanced to the NCAA tournament.

## NEW FACES... NEXT YEAR

- SDSU signed a pair of players from Southern California on the first day of the early signing period on Nov. 9. Inking National Letters of Intent were a versatile wing in Jordan Schakel and combo guard Adam Seiko.
- Hailing from Torrance, Schakel helped Bishop Montgomery High School to the Del Rey League championship and an appearance in the CIF State Open Division regional final last season as a junior. A versatile wing, Schakel averaged 18.1 points and 7.1 rebounds, and



knocked down 81 three-pointers en route to Daily Breeze all-area first-team and all-CIF Southern Section Open Division accolades. Standing at 6-6, 180 pounds, Schakel is a four-star player by both ESPN and Scout, and the 137th player nationally on the Rivals 150. ■ Seiko, a native of Chatsworth, inks with San Diego State out of Sierra Canyon High School. The 6-4, 195-pound combo guard averaged 9.0 points, 3.2 rebounds and 2.0 assists as junior, while knocking down 50.8 percent of his field-goal attempts (.424 3FG) over his prep career, according to MaxPreps. Seiko helped Sierra Canyon to the CIF Southern Section Open Division finals and the Open Division state regionals. He is a three-star player by Rivals.

## POLLING

■ The Aztecs for the second straight week are receiving votes in both major college basketball polls, but received some preseason top-25 love from some national writers. ESPN's Jeff Goodman has SDSU at No. 16, ESPN's Dick Vitale put the Aztecs at No. 23, Sporting News' Ryan Fagan has San Diego State at No. 25.

## NOT AN EASY TASK

■ Defeating the Aztecs at home has not been easy for opponents. Since the start of 2005-06, the Aztecs are 161-20 (.890) inside Viejas Arena.  
■ Only 15 teams have won inside Viejas Arena since the start of 2005-06. Of the 15, eight were non-conference foes.

### BEST HOME RECORDS, SINCE 2005-06 (Through Nov. 17)

Rk.	Team	W	L	Pct.
1.	Kansas	185	9	95.4
2.	Duke	172	14	92.5
3.	Brigham Young	162	17	90.5
4.	Gonzaga	152	16	90.5
5.	Belmont	125	15	89.3
6.	Ohio State	190	23	89.2
7.	Kentucky	172	21	89.1
8.	<b>San Diego State</b>	<b>161</b>	<b>20</b>	<b>89.0</b>
9.	Stephen F. Austin	145	19	88.4
10.	VCU	149	20	88.2

## TOUGH AWAY FROM HOME

■ San Diego State is 81-38 (68.1 percent) in road/neutral games since March 6, 2010. That is the sixth-highest winning percentage in the country during that time frame.

### BEST ROAD/NEUTRAL RECORDS, SINCE MARCH 6, 2010 (Through Nov. 17)

Rk.	Team	W	L	Pct.
1.	Gonzaga	90	30	75.0
2.	Wichita State	88	31	73.9
3.	Duke	91	36	71.7
4.	Kansas	91	38	70.5
5.	Kentucky	88	41	68.2
6.	<b>San Diego State</b>	<b>81</b>	<b>38</b>	<b>68.1</b>
7.	Louisville	72	36	66.7
8.	Stephen F. Austin	72	37	66.1
9.	North Carolina	87	45	65.9
10.	Arizona	76	40	65.5

■ Included in that stretch are victories at Kansas, at Arizona, at Gonzaga, at New Mexico (four times), at UNLV (eight times), at California, at Utah State (twice), at Utah and at USC. Also included are neutral court victories over UCLA, California, Marquette, Creighton, New Mexico, BYU (twice), Oklahoma, Pittsburgh and St. John's.

## ATOP THE MOUNTAIN

■ Since the beginning of the Mountain West in 1999-00, San Diego State has the most men's basketball championships than any other current member of the league, which is a remarkable feat considering the Aztecs went 0-14 in league play the first season (1999-2000) and 4-10 the second year (2000-01). Here is the list of current Mountain West schools with their regular-season championships (includes ties) and tournament championships: 1. San Diego State 10, New Mexico 8, t-3. UNLV 3, t-3. Wyoming 3, 5. Air Force 1, Colorado State 1, Boise State 1, Fresno State 1.

### MOUNTAIN WEST RECORDS (through 2015-16), SINCE 2010-11 SEASON (includes MW Championship)

Rk.	Team	W	L	Pct.	RS Championships	Tourney Championships
1.	<b>San Diego State</b>	<b>91</b>	<b>26</b>	<b>77.8</b>	<b>5</b>	<b>1</b>
2.	New Mexico	73	40	64.6	2	3
3.	UNLV	63	50	55.8	0	0
4.	Colorado State	61	50	55.0	0	0
5.	Boise State	49	43	53.3	1	0
6.	Fresno State	41	36	53.2	0	1
7.	Utah State	27	32	45.8	0	0
8.	Wyoming	44	65	40.4	0	1
9.	Nevada	29	46	38.7	0	0
10.	Air Force	35	72	32.7	0	0
11.	San José State	5	51	8.9	0	0

## AMONG THE BEST

### BEST FOOTBALL AND MEN'S BASKETBALL WINNING PERCENTAGE SINCE THE BEGINNING OF THE 2010-11 ACADEMIC YEAR (through Nov. 17)

Rk.	Team	W	L	Pct.
1.	Ohio State	244	67	78.5
2.	Louisville	237	74	76.2
3.	<b>San Diego State</b>	<b>232</b>	<b>75</b>	<b>75.6</b>
4.	Wisconsin	232	80	74.4
5.	Michigan State	228	84	73.1
6.	Oregon	228	84	73.1
7.	North Carolina	226	88	72.0
8.	Duke	220	87	71.7
9.	Arizona	220	88	71.4
10.	Brigham Young	214	91	70.2

### BEST MEN'S BASKETBALL WINNING PERCENTAGE SINCE THE BEGINNING OF THE 2010-11 SEASON (Through Nov. 17)

Rk.	Team	W	L	Pct.
1.	Wichita State	180	38	82.6
2.	Gonzaga	177	38	82.3
3.	Kansas	184	41	81.8
4.	Kentucky	185	44	80.8
5.	Duke	177	43	80.5
6.	Arizona	174	46	79.1
7.	<b>San Diego State</b>	<b>171</b>	<b>47</b>	<b>78.4</b>
8.	Louisville	174	48	78.4
9.	Stephen F. Austin	155	43	78.3
10.	North Carolina	172	54	76.1

## PRESEASON MOUNTAIN WEST POLL

Rk.	Team	Points	1P Votes
1.	<b>San Diego State</b>	<b>293</b>	<b>23</b>
2.	Nevada	253	--
3.	New Mexico	249	3
4.	Fresno State	200	1
5.	Boise State	164	--
6.	Utah State	153	--
7.	Colorado State	146	--
8.	UNLV	120	--
9.	Air Force	90	--
10.	Wyoming	73	--
11.	San José State	41	--

### All-MW Team

Trey Kell, Jr., G, San Diego State

Cameron Oliver, So., F, Nevada

Elijah Brown, Jr., G, New Mexico

Jalen Moore, Sr., W, Utah State

Tim Williams, Jr., F, New Mexico

**Player of the Year:** Elijah Brown, Jr., G, New Mexico

**Co-Freshmen of the Year:** Jalen McDaniels, F, San Diego State; Koby McEwen, G, Utah State

**Newcomer of the Year:** Montaque Gill-Caesar, So., G, San Diego State

## POLL TRACKER

### SAN DIEGO STATE IN THE TOP-25 POLLS

Week	Associated Press		Coaches	
	Rk.	Points	Rk.	Points
Preseason	rv (30)	48	rv (35)	17
Nov. 14	rv (29)	54	rv (31)	20

### AP POLL BREAKDOWN

Total Polls Ranked	66
Top 10 Rankings	21
Longest Consecutive Polls Ranked	23
Current Streak	0

Seasons Ranked	5
Consecutive Seasons Ranked	0

Highest Ranking	4 (Jan. 24, 2011)
Record As Ranked Team	97-22
Record As Ranked Team vs. AP Top 25	6-9
Record As Ranked Team vs. Unranked	91-13

### LAST TIME SAN DIEGO STATE WAS...

Ranked: Feb. 23, 2015
Ranked In The Top 15: Dec. 1, 2014 (13th)
Ranked In The Top 10: March 10, 2014 (T-8th)
Ranked In The Top 5: Feb. 10, 2014 (5th)

RANK	WEEKS	RECORD
No. 1		
No. 2		
No. 3		
No. 4	1	1-1
No. 5	3	4-1
No. 6	8	12-3
No. 7	5	10-0
No. 8	1	2-1
No. 9	1	2-0
No. 10	2	3-0
No. 11	1	2-0
No. 12		
No. 13	7	8-6
No. 14	1	2-0
No. 15	2	2-3
No. 16	4	7-0
No. 17	4	6-1
No. 18	5	9-1
No. 19	2	2-1
No. 20	2	0-1
No. 21	2	4-0
No. 22	3	2-2
No. 23	1	1-0
No. 24	5	6-1
No. 25	6	9-0
<b>TOTALS</b>	<b>66</b>	<b>97-22</b>

## STREAKING THROUGH CALIFORNIA

- SDSU had won 47 straight games vs. teams from the state of California, a streak that dated to Dec. 2, 2009, before falling at Fresno State, 59-57, on Jan. 3, 2015.
- The Aztecs are now 58-4 in their last 62 vs. California schools and 48-1 in their last 49 vs. non-league California teams.
- San Diego State has also beaten six Pac-12 schools during this remarkable run.
- The 47-game winning streak vs. California schools was the longest active streak in the country ahead of second-place BYU (22 straight vs. Colorado teams) and Pittsburgh (22 straight vs. Pennsylvania teams).
- Since the start of the 2010-11 season, San Diego State owns the best record of any school in California (171-47).

## TOUGH TICKET

- The Aztecs have played in front of 74 straight regular-season home sellouts at Viejas Arena.
- The 2016-17 campaign represents the fifth straight year SDSU is sold out on a season-ticket basis.
- San Diego State has led all California Division I schools in average home attendance the last six seasons.
- By averaging 12,414 fans at its home games in 2015-16, SDSU ranked 29th nationally.

## WE OWN THE SYSTEM

- San Diego State is a member of the California State University system and has won 21 straight home games against CSU schools. The streak dates to the 2000-01 campaign. The Aztecs' last loss to a Cal State school at home happened back on Jan. 5, 2000, against Cal State Fullerton, which occurred during Steve Fisher's first season at SDSU.
- SDSU has also won 21 consecutive non-conference games vs. its fellow CSU institutions. The Aztecs have not suffered a loss since Nov. 27, 2000, at Fresno State (WAC).

## PRETTY GOOD WHEN LOW ON TIME

- The Aztecs have been good at preparing when short on time. When there is less than 24 hours to prepare, SDSU is 16-2 in its last 18 regular-season tries.

## PROGRAM NOTES ENTERING 2016-17

- San Diego State has won at least 20 games and advanced to the postseason 11 straight years (seven NCAAs, four NITs). In those 11 seasons, the Aztecs have averaged 26 victories.
- The Aztecs have won at least one postseason tournament game in an NCAA-sponsored event (NCAA or NIT) four years in a row (2013 NCAA third round, 2014 NCAA Sweet 16, 2015 NCAA third round, 2016 NIT semifinals), which is tied for the fifth-longest active streak in America.
- SDSU has reached the postseason and appeared in 11 straight NCAA-sponsored tournaments (NCAA or NIT), which is tied for the eighth-longest active streak nationally.
- SDSU has won at least 27 games the last three years and has averaged nearly 29 wins during that span (28.7).
- San Diego State has won at least 23 games in eight straight seasons (27.5 wins per year).
- SDSU is one of six schools to win at least 23 games every season from 2008-09 to 2015-16 (Brigham Young, Duke, Gonzaga, Kansas, VCU).
- The Aztecs have won Mountain West regular-season crown (outright or shared) five times in the last six years.
- San Diego State has been one of the elite programs in the nation since the start of the 2010-11 season, posting a cumulative record of 169-46. SDSU's .797 winning percentage is the seventh-best nationally over the last six years.
- The Aztecs will feature a 2016-17 roster that will have a total of 603 games under their collective belt, which is more than both of the program's NCAA Sweet 16 squads. The 2010-11 group entered the year with 523 career games played, while the 2013-14 team boasted 450 career Division I outings at the start of that campaign.
- San Diego State is set to return 72.6 percent of its scoring, 61.2 percent of its rebounding, 62.7 percent of its assists, 48.8 percent of its blocked shots, 69.8 percent of its steals, and 95.5 percent of its three-point field goals.



# JEFF JACOBS JAM CENTER

On Aug. 23, 2015, San Diego State held a grand-opening ceremony for the 23,500-square-foot Jeff Jacobs JAM Center. The \$15-million facility is located just south of Fowler Athletics Center and east of the San Diego State football practice fields. The JAM Center includes:

- Two full-length basketball courts
- Locker rooms
- Team lounges
- Coaches locker rooms
- Eight baskets
- Two scoreboards
- Athletic training room
- Film room equipped with 80-inch short throw projector with write-on capability
- Keiser strength equipment

Hundreds of supporters contributed to the effort to make the Jeff Jacobs JAM Center a reality. In addition to the naming gift from Jeff Jacobs, Hal and Debby Jacobs, Steve and Lisa Altman and Jim Morris, creating the name "JAM" Center, sizeable donations were made from the Manna Charitable Foundation and the Walter and Betty Zable Foundation.





# SDSU BROADCAST ROSTER

[rv/rv] San Diego State vs. [25/rv] California | Golden 1 Center | Nov. 21, 2016



**# 2**  
**BEN PEREZ**

Guard  
6-3, 175, Sophomore-1L  
San Marcos, Calif.  
USAF Prep Academy

PPG: -- RPG: -- APG: --  
FG%: -- 3FG: -- FT%: --



**# 3**  
**TREY KELL**

Guard  
6-4, 210, Junior-2L  
San Diego, Calif.  
St. Augustine HS

PPG: 18.7 RPG: 4.7 APG: 2.3  
FG%: 43.9 3FG: 23.1 FT%: 77.3



**# 4**  
**DAKARAI ALLEN**

Guard  
6-5, 200, Senior-3L  
Elk Grove, Calif.  
Sheldon High

PPG: 8.7 RPG: 6.0 APG: 1.7  
FG%: 47.6 3FG: 1/6 FT%: 5/9



**# 5**  
**JALEN MCDANIELS**

Forward  
6-9, 190, Freshman-HS  
Federal Way, Wash.  
Federal Way High

PPG: -- RPG: -- APG: --  
FG%: -- 3FG: -- FT%: --



**# 10**  
**MAX HOETZEL**

Forward  
6-9, 210, Sophomore-TR  
Calabasas, Calif.  
Indiana

PPG: -- RPG: -- APG: --  
FG%: -- 3FG: -- FT%: --



**# 11**  
**D'ERRYL WILLIAMS**

Guard  
6-3, 205, Senior-3L  
Sacramento, Calif.  
Sheldon High

PPG: 3.3 RPG: 4.7 APG: 1.3  
FG%: 4/8 3FG: 2/2 FT%: 0/0



**# 12**  
**EMMANUEL WILSON**

Guard  
6-2, 185, Freshman-RS  
Dallas, Texas  
Plano East Senior High

PPG: 0.0 RPG: 0.0 APG: 0.0  
FG%: 0/3 3FG: 0/2 FT%: 0/0



**# 14**  
**ZYLAN CHEATHAM**

Forward  
6-9, 215, Freshman-RS  
Phoenix, Ariz.  
South Mountain High

PPG: 9.0 RPG: 5.7 APG: 1.7  
FG%: 45.0 3FG: 0/2 FT%: 9/11



**# 20**  
**MATT SHRIGLEY**

Guard  
6-6, 190, Senior-3L  
San Diego, Calif.  
La Costa Canyon High

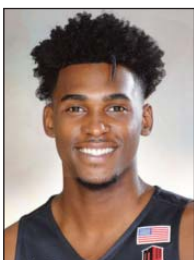
PPG: 0.0 RPG: 3.0 APG: 0.0  
FG%: 0/2 3FG: 0/2 FT%: 0/0



**# 21**  
**MALIK POPE**

Forward  
6-10, 220, Junior-2L  
Sacramento, Calif.  
Laguna Creek High

PPG: -- RPG: -- APG: --  
FG%: -- 3FG: -- FT%: --



**# 23**  
**MONTAQUE GILL-CAESAR**

Guard  
6-6, 215, Sophomore-TR  
Vaughan, Ontario, Canada  
Missouri

PPG: 3.0 RPG: 3.7 APG: 0.0  
FG%: 3/16 3FG: 1/6 FT%: 2/4



**# 24**  
**NOLAN NARAIN**

Forward  
6-9, 220, Freshman-RS  
Hamilton, Ontario, Canada  
La Lumiere School (Ind.)

PPG: 2.0 RPG: 0.3 APG: 0.0  
FG%: 3/10 3FG: 0/2 FT%: 0/0



**# 33**  
**NIKSHA FEDERICO**

Forward  
6-7, 200, Senior-SQ  
San Diego, Calif.  
Cathedral Catholic High

PPG: -- RPG: -- APG: --  
FG%: -- 3FG: -- FT%: --



**# 42**  
**JEREMY HEMSLEY**

Guard  
6-3, 190, Sophomore-1L  
Rancho Cucamonga, Calif.  
Damien High

PPG: 20.7 RPG: 3.3 APG: 3.0  
FG%: 56.1 3FG: 60.0 FT%: 7/10



**# 45**  
**VALENTINE IZUNDU**

Center  
6-10, 240, Senior-TR  
Houston, Texas  
Washington State

PPG: 1.0 RPG: 4.0 APG: 0.0  
FG%: 1/2 3FG: 0/0 FT%: 0/1



## 2016-17 SAN DIEGO STATE ALPHABETICAL ROSTER

No.	Name	Pos.	Ht.	Wt.	Yr.	Exp.	Most Recent Div. I Season			Hometown (High School/Previous School)
							PPG	RPG	APG	
4	Dakarai Allen	G	6-5	200	Sr.	3L	6.4	2.7	1.2	Elk Grove, Calif. (Sheldon High)
14	Zylan Cheatham	F	6-9	220	So.	1L	7.9	5.4	0.9	Phoenix, Ariz. (South Mountain High)
33	Niksha Federico	F	6-7	200	Sr.	SQ	1.1	0.1	0.1	San Diego, Calif. (Cathedral Catholic High)
23	Montaque Gill-Caesar	G	6-6	215	So.	TR	9.1	3.0	0.5	Vaughan, Ontario, Canada (Huntington Prep (W.Va.)/Missouri)
42	Jeremy Hemsley	G	6-3	190	So.	1L	12.0	2.4	1.8	Rancho Cucamonga, Calif. (Damien High)
10	Max Hoetzel	F	6-9	210	So.	TR	2.4	1.3	0.3	Calabasas, Calif. (Wilbraham & Monson Academy (Mass.)/Indiana)
45	Valentine Izundu	C	6-10	240	Sr.	TR	3.8	2.7	0.3	Houston, Texas (Lamar Consolidated High/Washington State)
3	Trey Kell	G	6-4	210	Jr.	2L	12.6	3.7	1.4	San Diego, Calif. (St. Augustine High)
5	Jalen McDaniels	F	6-9	190	Fr.	HS	--	--	--	Federal Way, Wash. (Federal Way High)
24	Nolan Narain	F	6-9	220	Fr.	RS	--	--	--	Hamilton, Ontario, Canada (La Lumiere School (Ind.))
2	Ben Perez	G	6-3	175	So.	1L	2.9	0.8	0.2	San Marcos, Calif. (Air Force Prep Academy (Colo.))
21	Malik Pope	F	6-10	220	Jr.	2L	7.3	5.0	0.8	Sacramento, Calif. (Laguna Creek High)
20	Matt Shrigley	F	6-6	190	Sr.	3L	2.4	1.0	0.6	San Diego, Calif. (La Costa Canyon High)
11	D'Erryl Williams	G	6-3	205	Sr.	3L	1.3	0.7	0.3	Sacramento, Calif. (Sheldon High)
12	Emmanuel Wilson	G	6-2	185	Fr.	RS	--	--	--	Dallas, Texas (Plano East Senior High)

## 2016-17 SAN DIEGO STATE NUMERICAL ROSTER

No.	Name	Pos.	Ht.	Wt.	Yr.	Exp.	Most Recent Div. I Season			Hometown (High School/Previous School)
							PPG	RPG	APG	
2	Ben Perez	G	6-3	175	So.	1L	2.9	0.8	0.2	San Marcos, Calif. (Air Force Prep Academy (Colo.))
3	Trey Kell	G	6-4	210	Jr.	2L	12.6	3.7	1.4	San Diego, Calif. (St. Augustine High)
4	Dakarai Allen	G	6-5	200	Sr.	3L	6.4	2.7	1.2	Elk Grove, Calif. (Sheldon High)
5	Jalen McDaniels	F	6-9	190	Fr.	HS	--	--	--	Federal Way, Wash. (Federal Way High)
10	Max Hoetzel	F	6-9	210	So.	TR	2.4	1.3	0.3	Calabasas, Calif. (Wilbraham & Monson Academy (Mass.)/Indiana)
11	D'Erryl Williams	G	6-3	205	Sr.	3L	1.3	0.7	0.3	Sacramento, Calif. (Sheldon High)
12	Emmanuel Wilson	G	6-2	185	Fr.	RS	--	--	--	Dallas, Texas (Plano East Senior High)
14	Zylan Cheatham	F	6-9	220	So.	1L	7.9	5.4	0.9	Phoenix, Ariz. (South Mountain High)
20	Matt Shrigley	F	6-6	190	Sr.	3L	2.4	1.0	0.6	San Diego, Calif. (La Costa Canyon High)
21	Malik Pope	F	6-10	220	Jr.	2L	7.3	5.0	0.8	Sacramento, Calif. (Laguna Creek High)
23	Montaque Gill-Caesar	G	6-6	215	So.	TR	9.1	3.0	0.5	Vaughan, Ontario, Canada (Huntington Prep (W.Va.)/Missouri)
24	Nolan Narain	F	6-9	220	Fr.	RS	--	--	--	Hamilton, Ontario, Canada (La Lumiere School (Ind.))
33	Niksha Federico	F	6-7	200	Sr.	SQ	1.1	0.1	0.1	San Diego, Calif. (Cathedral Catholic High)
42	Jeremy Hemsley	G	6-3	190	So.	1L	12.0	2.4	1.8	Rancho Cucamonga, Calif. (Damien High)
45	Valentine Izundu	C	6-10	240	Sr.	TR	3.8	2.7	0.3	Houston, Texas (Lamar Consolidated High/Washington State)

<b>Head Coach:</b>	Steve Fisher (Illinois State, 1967), 18th Season
<b>Assoc. HC/HC in Waiting:</b>	Brian Dutcher (Minnesota, 1982), 18th Season
<b>Assistant Coaches:</b>	Justin Hutson (CSU Bakersfield, 1994), Ninth Season Dave Velasquez (San Diego State, 2007), 15th Season
<b>Assistant to the Head Coach:</b>	Mark Fisher (Michigan, 2001), 15th Season
<b>Asst. AD/Director of Operations:</b>	Matt Soria (San Diego State, 2002), 17th Season
<b>Director of Player Development:</b>	Tim Shelton (San Diego State, 2011), 10th Season

## ELIGIBLE IN 2017-18

No.	Name	Pos.	Ht.	Wt.	Yr.	Exp.	Most Recent Div. I Season			Hometown (High School/Previous School)
							PPG	RPG	APG	
0	Devin Watson	G	6-1	165	Jr.	TR	20.3	2.5	4.9	Oceanside, Calif. (El Camino High/San Francisco)

## PRONUNCIATIONS

**Dakarai Allen**  
 Duh-kar-ree Allen  
**Zylan Cheatham**  
 ZY-lin Cheat-um  
**Niksha Federico**  
 NEEK-sha Federico  
**Montaque Gill-Caesar**  
 MON-take Gill-Caesar  
**Max Hoetzel**  
 Max HOTE-zull  
**Valentine Izundu**  
 Valentine i-ZOON-doo  
**D'Erryl Williams**  
 DEE-air-ol Williams



## RECORD BREAKDOWN

	Career
Home	313-78
Away	147-153
Neutral	93-46

### By Month

November	82-28
December	140-47
January	124-70
February	101-74
March	100-52
April	4-2

### Games Decided By/In

1-Point Games	24-10
2 Points	28-23
3 Points or Less	99-65
Overtime	39-17

# STEVE FISHER

26th-Full Season • 18th Season at SDSU • Illinois State, 1967

- 2015 John R. Wooden Legends of Coaching Award Recipient
- 2011 Naismith Coach of the Year
- 2011 NABC Coach of the Year
- 2011 Adolph Rupp Cup recipient
- 1992 Basketball Times Coach of the Year
- 15 NCAA tournament appearances (8 San Diego State, 7 Michigan)
- 22 postseason appearances
- 10 Mountain West championships (6 regular season, 4 tournament)
- 4-time MW Coach of the Year (2011, 2012, 2014, 2016-media/coaches)
- 3-time NABC District Coach of the Year (2011, 2012, 2014)
- 2-time USBWA District Coach of the Year (2011, 2012)
- 2-time Basketball Times District Coach of the Year (2012, 2014)
- SDSU and Mountain West all-time winningest coach
- Longest-tenured coach in Mountain West history



## Steve Fisher Year-By-Year

Year	School	W	L	Pct.	Conference			Postseason/Honors
1989	Michigan	6	0	1.000	-	-	-	NCAA Champions
1989-90	Michigan	23	8	.742	12	6	.667	NCAA Second Round
1990-91	Michigan	14	15	.483	7	11	.389	NIT First Round
1991-92	Michigan	25	9	.735	11	7	.611	NCAA Runner-Up, <i>Basketball Times</i> Coach of the Year
1992-93	Michigan	31	5	.861	15	3	.833	NCAA Runner-Up
1993-94	Michigan	24	8	.750	13	5	.722	NCAA Regional Finalist
1994-95	Michigan	17	14	.548	11	7	.611	NCAA First Round
1995-96	Michigan	20	12	.625	10	8	.556	NCAA First Round
1996-97	Michigan	24	11	.686	9	9	.500	NIT Champions
<b>Eight Full Seasons at UM</b>		<b>184</b>	<b>82</b>	<b>.692</b>	<b>88</b>	<b>56</b>	<b>.611</b>	<b>7 NCAA Tournaments, 9 Postseason Appearances</b>

Year	School	W	L	Pct.	W	L	Pct.	Postseason/Honors
1999-00	San Diego State	5	23	.179	0	14	.000	
2000-01	San Diego State	14	14	.500	4	10	.286	8th-most improved team in the country (Sagarin Ratings)
2001-02	San Diego State	21	12	.636	7	7	.500	NCAA First Round; Aztecs' first NCAA trip since 1985
2002-03	San Diego State	16	14	.552	6	8	.429	NIT Second Round; Aztecs reach postseason in consecutive yrs
2003-04	San Diego State	14	16	.483	5	9	.357	Two players that earned all-league honors return in 04-05
2004-05	San Diego State	11	18	.379	4	10	.286	Young Aztecs drop seven games by four points or less or in overtime
2005-06	San Diego State	24	9	.727	13	3	.813	NCAA First Round; MWC regular season and tournament champs.
2006-07	San Diego State	22	11	.667	10	6	.625	NIT Second Round; First road win in D-I postseason tourney
2007-08	San Diego State	20	13	.606	9	7	.563	NIT First Round; Third straight 20-win season
2008-09	San Diego State	26	10	.722	11	5	.688	NIT Semifinals; Fourth straight 20-win year; SDSU-record 26 wins
2009-10	San Diego State	25	9	.735	11	5	.667	NCAA First Round; MWC tournament champions
2010-11	San Diego State	34	3	.919	14	2	.875	NCAA Sweet 16; MWC champions (co-reg. season, tourney), MWC COY
2011-12	San Diego State	26	8	.765	10	4	.714	NCAA Second Round; MW co-reg. season champs; MW COY
2012-13	San Diego State	23	11	.676	9	7	.563	NCAA Third Round; Fifth straight season with at least 23 wins
2013-14	San Diego State	31	5	.861	16	2	.889	NCAA Sweet 16; Outright Mountain West regular-season champions, MW COY
2014-15	San Diego State	27	9	.750	14	4	.778	NCAA Third Round; MW co-regular-season champions
2015-16	San Diego State	28	10	.737	16	2	.889	Outright Mountain West regular-season champions, MW COY - media/coaches
2016-17	San Diego State	2	1	.667	0	0	.000	
<b>18 Seasons at SDSU</b>		<b>369</b>	<b>196</b>	<b>.653</b>	<b>159</b>	<b>106</b>	<b>.600</b>	<b>8 NCAA Tournaments; 13 Postseason Appearances</b>

	W	L	Pct.	W	L	Pct.	Postseason/Honors
<b>26-Full Season Career</b>	<b>553</b>	<b>278</b>	<b>.665</b>	<b>247</b>	<b>162</b>	<b>.604</b>	<b>15 NCAA Tournaments, 22 Postseason Appearances</b>

## SEASON / CAREER HIGHS

### Points

Season	
Career	11 vs. Nicholls (12-10-15)

### Rebounds

Season	
Career	3 vs. Nicholls (12-10-15) 3 vs. Illinois State (11-13-15)

### Assists

Season	
Career	2 vs. Nicholls (12-10-15)

### Field Goals

Season	
Career	4 vs. Nicholls (12-10-15) 4 at Long Beach State (12-1-15)

### Field Goals Attempted

Season	
Career	10 vs. Nicholls (12-10-15)

### Three-Point Field Goals

Season	
Career	3 vs. Nicholls (12-10-15) 3 vs. Little Rock (11-21-15)

### Three-Point FG Attempted

Season	
Career	7 vs. Nicholls (12-10-15) 7 vs. Illinois State (11-13-15)

### Free Throws

Season	
Career	2 vs. Illinois State (11-13-15)

### Free Throws Attempted

Season	
Career	2 vs. Illinois State (11-13-15)

### Steals

Season	
Career	2 vs. IPFW (3-15-16) 2 vs. Nicholls (12-10-15) 2 vs. Illinois State (11-13-15)

### Blocked Shots

Season	
Career	1 at San José State (2-21-16) 1 vs. Grand Canyon (12-18-15) 1 vs. Nicholls (12-10-15) 1 vs. East Carolina (11-23-15)

### Minutes Played

Season	
Career	21 vs. Kansas (12-22-15)



# 2 • BEN PEREZ

GUARD • 6-3 • 175 • SOPHOMORE - 1L  
SAN MARCOS, CALIF. (AIR FORCE PREP ACADEMY)

### Quick Hits

- \* Has not played this season (back).
- \* Returns having made the fifth most three-pointers (16) in 2015-16 as a true freshman.
- \* Nearly 60 percent (59.3 percent; 16-27) of his field goals last year were from behind the three-point arc.
- \* Played the most games (25) of any Aztec last season without seeing time in the starting rotation.

### 2016-17 GAME-BY-GAME STATISTICS

Opponent	GS	FG	3FG	FT	O-D-R	PF	TP	A	TO	B	S	MP
San Diego		DNP - Injured										
at Gonzaga		Did Not Travel										
San Diego Christian		DNP - Injured										
vs. California												
Savannah State												
at Loyola												
at Grand Canyon												
Arizona State												
Alabama State												
vs. Southern Miss												
vs. TBD												
vs. TBD												
New Mexico												
at Nevada												
at Boise State												
San Jose State												
Utah State												
at UNLV												
at Air Force												
Colorado State												
Wyoming												
at Fresno State												
at San Jose State												
Nevada												
at Utah State												
UNLV												
Fresno State												
at Colorado State												
Air Force												
at New Mexico												

### MISCELLANEOUS STATS / SAN DIEGO STATE RECORD

Category	2016-17 Season Games	SDSU W/L	Career Games	Career SDSU W/L
Double-Figure Scoring	0	0-0	2	2-0
Double-Figure Assists	0	0-0	0	0-0
Double-Doubles	0	0-0	0	0-0
Led SDSU in Scoring	0	0-0	0	0-0
Led SDSU in Rebounding	0	0-0	0	0-0
Led SDSU in Assists	0	0-0	0	0-0
15+ Point Games	0	0-0	0	0-0
One Turnover or Less	0	0-0	23	17-6
Multiple Three-Pointers	0	0-0	5	3-2
Consecutive Games	Current	Long		
Double-Figure Scoring	0	2		
With At Least 1 Assist	0	1		
Played 30 or More Minutes	0	0		
Consecutive Made FTs	1	2		

## ► PEREZ CAREER STATISTICS

Year	G-GS	Min.-Avg.	FG-FGA	Pct.	3P-3PA	Pct.	FT-FTA	Pct.	OR	DR	Reb	Avg.	PF-D	AT	TO	BS	ST	Pts	Avg.
15-16	25-0	249-10.0	27-80	.338	16-60	.267	3-4	.750	6	14	20	0.8	17-0	5	10	5	10	73	2.9
16-17																			
<b>Totals</b>	<b>25-0</b>	<b>249-10.0</b>	<b>27-80</b>	<b>.338</b>	<b>16-60</b>	<b>.267</b>	<b>3-4</b>	<b>.750</b>	<b>6</b>	<b>14</b>	<b>20</b>	<b>0.8</b>	<b>17-0</b>	<b>5</b>	<b>10</b>	<b>5</b>	<b>10</b>	<b>73</b>	<b>2.9</b>



## SEASON / CAREER HIGHS

### Points

Season	23 vs. San Diego (11-11-16)
Career	27 vs. Fresno State (1-19-16)

### Rebounds

Season	6 vs. SD Christian (11-16-16)
Career	10 at Nevada (1-26-16)

### Assists

Season	4 vs. SD Christian (11-16-16)
Career	5 at Colorado State (1-13-16) 5 at Nevada (2-4-15)

### Field Goals

Season	7 vs. SD Christian (11-16-16) 7 vs. San Diego (11-11-16)
Career	9 vs. Fresno State (1-19-16)

### Field Goals Attempted

Season	16 vs. San Diego (11-11-16)
Career	17 vs. New Mexico (2-6-16) 17 at Colorado State (1-13-16)

### Three-Point Field Goals

Season	2 vs. San Diego (11-11-16)
Career	4 - six times

### Three-Point FG Attempted

Season	7 vs. San Diego (11-11-16)
Career	12 vs. Air Force (2-13-16)

### Free Throws

Season	7 vs. San Diego (11-11-16)
Career	9 at Wyoming (1-14-15)

### Free Throws Attempted

Season	9 vs. San Diego (11-11-16)
Career	12 vs. Fresno State (1-19-16) 12 vs. St. John's (3-20-15)

### Steals

Season	2 at Gonzaga (11-14-16)
Career	4 vs. Colorado State (2-2-16)

### Blocked Shots

Season	1 vs. SD Christian (11-16-16) 1 vs. San Diego (11-11-16)
Career	2 vs. Utah State (3-10-16)

### Minutes Played

Season	35 at Gonzaga (11-14-16) 35 vs. San Diego (11-11-16)
Career	37 at Fresno State (2-10-16) 37 at Nevada (1-26-16) 37 vs. Fresno State (1-19-16) 37 at Colorado State (1-13-16)



# 3 • TREY KELL

GUARD • 6-4 • 210 • JUNIOR - 2L  
SAN DIEGO, CALIF. (ST. AUGUSTINE HIGH)

### Quick Hits

\* Returns as the team's top three-point shooter after making 71 on 38.4-percent shooting last season.

\* Scored in double figures in 28 of his last 34 games (14.4 ppg; 489 points), including all three games this season.

\* Owns the most starting experience of any Aztec on the roster with 56 career starting assignments.

### Season Highlights

\* Scored 23 points vs. San Diego (11-11-16) and teamed with Jeremy Hemsley (25 points) to become the first Aztec duo to score at least 20 points in a game since Jan. 15, 2012.

\* Led with the team with 14 points and two steals at No. 14/14 Gonzaga (11-14-16).

\* Put up 19 points and season-highs of six rebounds and four assists vs. San Diego Christian (11-16-16).

### 2016-17 GAME-BY-GAME STATISTICS

Opponent	GS	FG	3FG	FT	O-D-R	PF	TP	A	TO	B	S	MP
San Diego	*	7-16	2-7	7-9	1-3-4	1	23	2	2	1	1	35
at Gonzaga	*	4-15	0-5	6-7	1-3-4	0	14	1	2	0	2	35
San Diego Christian	*	7-10	1-1	4-6	0-6-6	1	19	4	1	1	1	31
vs. California												
Savannah State												
at Loyola												
at Grand Canyon												
Arizona State												
Alabama State												
vs. Southern Miss												
vs. TBD												
vs. TBD												
New Mexico												
at Nevada												
at Boise State												
San Jose State												
Utah State												
at UNLV												
at Air Force												
Colorado State												
Wyoming												
at Fresno State												
at San Jose State												
Nevada												
at Utah State												
UNLV												
Fresno State												
at Colorado State												
Air Force												
at New Mexico												

### MISCELLANEOUS STATS / SAN DIEGO STATE RECORD

Category	2016-17 Season Games	SDSU W/L	Career Games	Career SDSU W/L
Double-Figure Scoring	3	2-1	37	30-7
Double-Figure Assists	0	0-0	0	0-0
Double-Doubles	0	0-0	1	1-0
Led SDSU in Scoring	1	0-1	17	13-4
Led SDSU in Rebounding	0	0-0	3	1-2
Led SDSU in Assists	1	1-0	12	8-4
15+ Point Games	2	2-0	22	19-3
5+ Assist Games	0	0-0	2	2-0
Consecutive Games	Current	Long		
Double-Figure Scoring	3	20		
With At Least 1 Assist	4	11		
Played 30 or More Minutes	3	13		
Consecutive Made FTs	0	10		

## ► KELL CAREER STATISTICS

Year	G-GS	Min.-Avg.	FG-FGA	Pct.	3P-3PA	Pct.	FT-FTA	Pct.	OR	DR	Reb	Avg.	PF-D	AT	TO	BS	ST	Pts	Avg.
14-15	35-15	709-20.3	62-186	.333	15-68	.221	58-91	.637	19	79	98	2.8	33-0	56	38	3	20	197	5.6
15-16	38-38	1,084-28.5	158-390	.405	71-185	.384	90-135	.667	29	113	142	3.7	51-1	54	68	7	30	477	12.6
16-17	3-3	101-33.7	18-41	.439	3-13	.231	17-22	.773	2	12	14	4.7	2-0	7	5	2	4	56	18.7
<b>Totals</b>	<b>76-56</b>	<b>1,894-24.9</b>	<b>238-617</b>	<b>.386</b>	<b>89-266</b>	<b>.335</b>	<b>165-248</b>	<b>.665</b>	<b>50</b>	<b>204</b>	<b>254</b>	<b>3.3</b>	<b>86-1</b>	<b>117</b>	<b>111</b>	<b>12</b>	<b>54</b>	<b>730</b>	<b>9.6</b>

## SEASON / CAREER HIGHS

### Points

Season	15 vs. SD Christian (11-16-16)
Career	16 vs. Illinois State (11-13-15)

### Rebounds

Season	9 vs. SD Christian (11-16-16)
Career	9 vs. SD Christian (11-16-16)

### Assists

Season	4 vs. SD Christian (11-16-16)
Career	4 vs. SD Christian (11-16-16)
	4 at San José State (2-21-16)
	4 vs. East Carolina (11-23-15)
	4 vs. SD Christian (11-18-15)

### Field Goals

Season	7 vs. SD Christian (11-16-16)
Career	7 vs. SD Christian (11-16-16)

### Field Goals Attempted

Season	12 vs. SD Christian (11-16-16)
Career	12 vs. SD Christian (11-16-16)

### Three-Point Field Goals

Season	1 at Gonzaga (11-14-16)
Career	3 at Utah (11-16-15)

### Three-Point FG Attempted

Season	3 vs. SD Christian (11-16-16)
Career	7 vs. Little Rock (11-21-15)

### Free Throws

Season	4 vs. San Diego (11-11-16)
Career	7 vs. Illinois State (11-13-15)
	7 vs. UC Riverside (11-8-13)

### Free Throws Attempted

Season	6 vs. San Diego (11-11-16)
Career	9 vs. Utah State (3-10-16)

### Steals

Season	3 vs. San Diego (11-11-16)
Career	4 vs. Georgia Tech (3-23-16)
	4 vs. Nevada (3-11-16)
	4 at San José State (2-21-16)
	4 vs. Wyoming (12-30-15)
	4 vs. Utah State (1-31-15)

### Blocked Shots

Season	5 vs. SD Christian (11-16-16)
Career	5 vs. SD Christian (11-16-16)

### Minutes Played

Season	36 vs. SD Christian (11-16-16)
Career	36 vs. SD Christian (11-16-16)



# 4 • DAKARAI ALLEN

GUARD • 6-5 • 200 • SENIOR - 3L  
ELK GROVE, CALIF. (SHELDON HIGH)

### Quick Hits

- \* Returns in 2016-17 as the team leader in steals after having 40 last season and 77 in his career.
- \* Played in 103 career games (21 starts), which leads all Aztecs.
- \* Is coming off a 2015-16 campaign where he averaged career highs in every statistic, including double-figure scoring games (12), all of which occurred last season.

### Season Highlights

- \* Shared game-high honors with Jeremy Hemsley as both had three steals vs. San Diego (11-11-16).
- \* Had a game-high-tying two blocked shots at No. 14/14 Gonzaga (11-14-16).
- \* Scored a season-high 15 points and set career highs in field goals (7), rebounds (9), assists (4) and blocked shots (game-high 5) vs. San Diego Christian (11-16-16)... Became just the fourth player standing at 6-5 or shorter to record at least five blocked shots in a single game in 2016-17.

### 2016-17 GAME-BY-GAME STATISTICS

Opponent	GS	FG	3FG	FT	O-D-R	PF	TP	A	TO	B	S	MP
San Diego	*	1-2	0-1	4-6	1-3-4	4	6	1	1	0	3	20
at Gonzaga	*	2-7	1-2	0-1	0-5-5	2	5	0	0	2	0	27
San Diego Christian	*	7-12	0-3	1-2	0-9-9	2	15	4	1	5	2	36
vs. California												
Savannah State												
at Loyola												
at Grand Canyon												
Arizona State												
Alabama State												
vs. Southern Miss												
vs. TBD												
vs. TBD												
New Mexico												
at Nevada												
at Boise State												
San Jose State												
Utah State												
at UNLV												
at Air Force												
Colorado State												
Wyoming												
at Fresno State												
at San Jose State												
Nevada												
at Utah State												
UNLV												
Fresno State												
at Colorado State												
Air Force												
at New Mexico												

### MISCELLANEOUS STATS / SAN DIEGO STATE RECORD

Category	2016-17 Season Games	SDSU W/L	Career Games	Career SDSU W/L
Double-Figure Scoring	1	1-0	13	10-3
15-Point Games	1	1-0	3	2-1
Led SDSU in Scoring	0	0-0	2	0-2
Led SDSU in Rebounding	1	1-0	3	2-1
Led SDSU in Assists	0	0-0	4	4-0
Multiple Steals	2	2-0	19	16-3
One Turnover or Less	3	2-1	84	69-15
Consecutive Games	Current	Long		
Consecutive Games Played	41	41		
Without Fouling Out	14	44		
Scoring A Point	16	16		
Double-Figure Scoring	1	2		
With At Least 1 Assist	1	7		

## ► ALLEN CAREER STATISTICS

Year	G-GS	Min.-Avg.	FG-FGA	Pct.	3P-3PA	Pct.	FT-FTA	Pct.	OR	DR	Reb	Avg.	PF-D	AT	TO	BS	ST	Pts	Avg.
13-14	29-1	306-10.6	25-60	.417	0-0	.000	23-43	.535	15	19	34	1.2	44-1	11	14	10	18	73	2.5
14-15	33-0	396-12.0	30-73	.411	2-10	.200	23-34	.676	19	37	56	1.7	58-1	14	21	8	19	85	2.6
15-16	38-17	841-22.1	78-202	.386	26-98	.265	63-93	.677	21	83	104	2.7	79-2	44	41	20	40	245	6.4
16-17	3-3	83-27.7	10-21	.476	1-6	.167	5-9	.556	1	17	18	6.0	8-0	5	2	7	5	26	8.7
<b>Totals</b>	<b>103-21</b>	<b>1,626-15.8</b>	<b>143-356</b>	<b>.402</b>	<b>29-114</b>	<b>.254</b>	<b>114-179</b>	<b>.637</b>	<b>56</b>	<b>156</b>	<b>212</b>	<b>2.1</b>	<b>189-4</b>	<b>74</b>	<b>78</b>	<b>45</b>	<b>82</b>	<b>429</b>	<b>4.2</b>

## Career



FORWARD • 6-9 • 190 • FRESHMAN - HS  
FEDERAL WAY, WASH. (FEDERAL WAY HIGH)

- \* Has not played this season (coach's decision).
- \* Finished his prep career at No. 98 on the Rivals 150 to go with four stars after signing with the Aztecs at No. 127 and three stars.
- \* Named an Associated Press Washington state Class 4A first-team selection as a senior after averaging 19 points, 10 rebounds and four blocked shots during the regular season
- \* During his final campaign, he helped Federal Way to an undefeated 29-0 record and a Class 4A state title for the second time in as many years

[illegible]

2016-17 Season		
Category	Games	SDSU W/L
Double-Figure Scoring	0	0-0
15-Point Games	0	0-0
Led SDSU in Scoring	0	0-0
Led SDSU in Rebounding	0	0-0
Led SDSU in Assists	0	0-0
Multiple Steals	0	0-0
One Turnover or Less	0	0-0
<b>Consecutive Games</b>	<b>Current</b>	<b>Long</b>
Consecutive Games Played	0	0
Without Fouling Out	0	0
Scoring A Point	0	0
One Turnover or Less	0	0

[illegible]



## SEASON / CAREER HIGHS

### Points

Season	
Career	19 vs. Miss. Valley State (11-14-14)

### Rebounds

Season	
Career	9 vs. Miss. Valley State (11-14-14)

### Assists

Season	
Career	2 vs. Georgetown (12-27-14) 2 vs. Savannah State (12-6-14)

### Field Goals

Season	
Career	6 vs. Miss. Valley State (11-14-14)

### Field Goals Attempted

Season	
Career	12 vs. Miss. Valley State (11-14-14)

### Three-Point Field Goals

Season	
Career	1 vs. Maryland (3-13-15) 1 at Ohio State (1-25-15) 1 vs. Maryland (1-22-15) 1 at Illinois (1-18-15) 1 vs. Butler (12-20-14) 1 vs. Grand Canyon (12-13-14) 1 vs. Louisville (12-9-14) 1 vs. Pittsburgh (12-2-14) 1 vs. UNC Greensboro (11-28-14) 1 vs. Miss. Valley State (11-14-14)

### Three-Point FG Attempted

Season	
Career	6 vs. Miss. Valley State (11-14-14)

### Free Throws

Season	
Career	6 vs. Miss. Valley State (11-14-14)

### Free Throws Attempted

Season	
Career	8 vs. Miss. Valley State (11-14-14)

### Steals

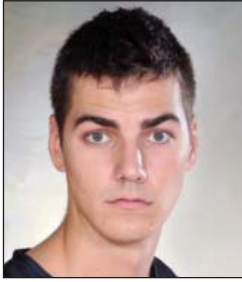
Season	
Career	1 at Illinois (1-18-15) 1 vs. Eastern Washington (11-24-14) 1 vs. Texas Southern (11-17-14) 1 vs. Miss. Valley State (11-14-14)

### Blocked Shots

Season	
Career	1 vs. Louisville (12-9-14) 1 vs. Eastern Washington (11-24-14) 1 vs. Texas Southern (11-17-14)

### Minutes Played

Season	
Career	19 vs. Miss. Valley State (11-14-14)



# 10 • MAX HOETZEL

FORWARD • 6-9 • 210 • SOPHOMORE - TR  
CALABASAS, CALIF. (INDIANA)

### Quick Hits

- \* Has not played this season (knee).
- \* His freshman three-point field goal percentage (.345) would have ranked fourth among all Aztecs last season.
- \* Is one of three newcomers this season with Division I experience (31 games) joining Montaque Gill-Caesar and Valentine Izundu.
- \* Enters the season as the only newcomer with Division I postseason experience (2015 NCAA tournament).

### 2016-17 GAME-BY-GAME STATISTICS

Opponent	GS	FG	3FG	FT	O-D-R	PF	TP	A	TO	B	S	MP
San Diego		DNP - Injured										
at Gonzaga		Did Not Travel										
San Diego Christian		DNP - Injured										
vs. California												
Savannah State												
at Loyola												
at Grand Canyon												
Arizona State												
Alabama State												
vs. Southern Miss												
vs. TBD												
vs. TBD												
New Mexico												
at Nevada												
at Boise State												
San Jose State												
Utah State												
at UNLV												
at Air Force												
Colorado State												
Wyoming												
at Fresno State												
at San Jose State												
Nevada												
at Utah State												
UNLV												
Fresno State												
at Colorado State												
Air Force												
at New Mexico												

### MISCELLANEOUS STATS / SAN DIEGO STATE RECORD

Category	2016-17 Season Games	SDSU W/L	Career Games	Career SDSU W/L
Double-Figure Scoring	0	0-0	1	0-0
Double-Figure Rebounds	0	0-0	0	0-0
Double-Doubles	0	0-0	0	0-0
Led SDSU in Scoring	0	0-0	0	0-0
Led SDSU in Rebounding	0	0-0	0	0-0
Led SDSU in Assists	0	0-0	0	0-0
15+ Point Games	0	0-0	1	0-0
One Turnover or Less	0	0-0	28	0-0
Multiple Three-Pointers	0	0-0	0	0-0
Consecutive Games	Current	Long		
Double-Figure Scoring	0	0		
With At Least 1 Assist	0	0		
Played 30 or More Minutes	0	0		
Consecutive Made FTs	0	0		

## ► HOETZEL CAREER STATISTICS

\* - Indiana

Year	G-GS	Min.-Avg.	FG-FGA	Pct.	3P-3PA	Pct.	FT-FTA	Pct.	OR	DR	Reb	Avg.	PF-D	AT	TO	BS	ST	Pts	Avg.
14-15*	31-0	240-7.7	24-56	.429	10-29	.345	15-21	.714	10	31	41	1.3	32-1	10	13	3	4	73	2.4
16-17																			
<b>Totals</b>	<b>31-0</b>	<b>240-7.7</b>	<b>24-56</b>	<b>.429</b>	<b>10-29</b>	<b>.345</b>	<b>15-21</b>	<b>.714</b>	<b>10</b>	<b>31</b>	<b>41</b>	<b>1.3</b>	<b>32-1</b>	<b>10</b>	<b>13</b>	<b>3</b>	<b>4</b>	<b>73</b>	<b>2.4</b>

## SEASON / CAREER HIGHS

### Points

Season	4 vs. SD Christian (11-16-16)
Career	9 vs. SD Christian (11-18-15)

### Rebounds

Season	9 vs. SD Christian (11-16-16)
Career	9 vs. SD Christian (11-16-16)

### Assists

Season	3 vs. SD Christian (11-16-16)
Career	4 vs. Nicholls (12-10-15)

### Field Goals

Season	2 vs. SD Christian (11-16-16)
Career	3 vs. SD Christian (11-18-15)

### Field Goals Attempted

Season	4 vs. San Diego (11-11-16)
Career	4 vs. San Diego (11-11-16)

### Three-Point Field Goals

Season	1 at Gonzaga (11-14-16)
	1 vs. San Diego (11-11-16)
Career	1 at Gonzaga (11-14-16)
	1 vs. San Diego (11-11-16)
	1 at Fresno State (1-3-15)
	1 vs. Ball State (12-20-14)
	1 at Fresno State (3-1-14)

### Three-Point FG Attempted

Season	1 at Gonzaga (11-14-16)
	1 vs. San Diego (11-11-16)
Career	1 at Gonzaga (11-14-16)
	1 vs. San Diego (11-11-16)
	1 vs. Little Rock (11-21-15)
	1 vs. Illinois State (11-13-15)
	1 vs. Ball State (12-20-14)
	1 at Fresno State (3-1-14)

### Free Throws

Season	
Career	3 vs. SD Christian (11-18-15)

### Free Throws Attempted

Season	
Career	3 vs. SD Christian (11-18-15)
	3 at Fresno State (3-1-14)

### Steals

Season	2 vs. San Diego (11-11-16)
Career	2 vs. San Diego (11-11-16)
	2 vs. Nicholls (12-10-15)
	2 vs. Little Rock (11-21-15)
	2 vs. SD Christian (12-27-14)
	2 vs. UC Riverside (12-22-14)

### Blocked Shots

Season	
Career	1 vs. San José State (2-25-14)
	1 vs. Coll. of Charleston (11-28-13)

### Minutes Played

Season	30 vs. SD Christian (11-16-16)
Career	30 vs. SD Christian (11-16-16)



# 11 • D'ERRYL WILLIAMS

GUARD • 6-3 • 205 • SENIOR - 3L  
SACRAMENTO, CALIF. (SHELDON HIGH)

### Quick Hits

\* Entered this season having increased his scoring and rebounding numbers in each of his three seasons.

\* Has committed only 22 turnovers in his career (453 minutes).

\* Equaled his career high for three-pointers in a single season just two games into the 2016-17 campaign.

\* Entered the season as one of three returners who had positive assist-to-turnover ratios (Trey Kell, Matt Shrigley).

### Season Highlights

\* Played what was then a career-high 29 minutes and led the team with a game-high five rebounds while adding three points and a career-high two steals vs. San Diego (11-11-16).

\* Knocked down a three-pointer, on his only attempt, for the second straight game at No. 14/14 Gonzaga (11-14-16).

\* Set a career high for minutes (30) and rebounds (game-high 9), while adding a season-high four points and three assists vs. San Diego Christian (11-16-16).

### 2016-17 GAME-BY-GAME STATISTICS

Opponent	GS	FG	3FG	FT	O-D-R	PF	TP	A	TO	B	S	MP
San Diego		1-4	1-1	0-0	1-4-5	4	3	1	0	0	2	29
at Gonzaga		1-2	1-1	0-0	0-0-0	2	3	0	1	0	1	7
San Diego Christian		2-2	0-0	0-0	1-8-9	2	4	3	1	0	0	30
vs. California												
Savannah State												
at Loyola												
at Grand Canyon												
Arizona State												
Alabama State												
vs. Southern Miss												
vs. TBD												
vs. TBD												
New Mexico												
at Nevada												
at Boise State												
San Jose State												
Utah State												
at UNLV												
at Air Force												
Colorado State												
Wyoming												
at Fresno State												
at San Jose State												
Nevada												
at Utah State												
UNLV												
Fresno State												
at Colorado State												
Air Force												
at New Mexico												

### MISCELLANEOUS STATS / SAN DIEGO STATE RECORD

Category	2016-17 Season Games	SDSU W/L	Career Games	Career SDSU W/L
Double-Figure Scoring	0	0-0	0	0-0
20-Point Games	0	0-0	0	0-0
Led SDSU in Scoring	0	0-0	0	0-0
Led SDSU in Rebounding	2	2-0	2	2-0
Led SDSU in Assists	0	0-0	3	2-1
Multiple 3FG	0	0-0	0	0-0
Multiple Steals	1	1-0	5	4-1
One Turnover or Less	3	2-1	56	44-12
Consecutive Games	Current	Long		
Consecutive Games Played	4	7		
One Turnover or Less	15	25		
Scoring A Point	3	5		
Double-Figure Scoring	0	0		
With At Least 1 Assist	1	2		

## ► WILLIAMS CAREER STATISTICS

Year	G-GS	Min.-Avg.	FG-FGA	Pct.	3P-3PA	Pct.	FT-FTA	Pct.	OR	DR	Reb	Avg.	PF-D	AT	TO	BS	ST	Pts	Avg.
13-14	20-0	127-6.4	4-12	.333	1-1	1.000	4-9	.444	3	8	11	0.6	17-0	8	3	2	0	13	0.7
14-15	17-0	129-7.6	8-14	.571	2-3	.667	1-2	.500	3	9	12	0.7	12-0	7	8	0	10	19	1.1
15-16	19-0	131-6.9	8-19	.421	0-3	.000	8-14	.571	1	12	13	0.7	17-0	6	9	0	6	24	1.3
16-17	3-0	66-22.0	4-8	.500	2-2	1.000	0-0	.000	2	12	14	4.7	8-0	4	2	0	3	10	3.3
<b>Totals</b>	<b>59-0</b>	<b>453-7.7</b>	<b>24-53</b>	<b>.453</b>	<b>5-9</b>	<b>.556</b>	<b>13-25</b>	<b>.520</b>	<b>9</b>	<b>41</b>	<b>50</b>	<b>0.8</b>	<b>54-0</b>	<b>25</b>	<b>22</b>	<b>2</b>	<b>19</b>	<b>66</b>	<b>1.1</b>

## CAREER HIGHS

### Points

Career

### Rebounds

Career

### Assists

Career

### Field Goals

Career

### Field Goals Attempted

Career 3 vs. SD Christian (11-16-16)

### Three-Point Field Goals

Career

### Three-Point FG Attempted

Career 2 vs. SD Christian (11-16-16)

### Free Throws

Career

### Free Throws Attempted

Career

### Steals

Career 1 vs. SD Christian (11-16-16)

### Blocked Shots

Career 1 vs. SD Christian (11-16-16)

### Minutes Played

Career 12 vs. SD Christian (11-16-16)



# 12 • EMMANUEL WILSON

GUARD • 6-2 • 185 • FRESHMAN - RS  
DALLAS, TEXAS (PLANO EAST SENIOR HIGH)

### Quick Hits

\* Seen action three times this season (two exhibitions, one game).

\* Made the team last season through the school's open tryouts.

### Season Highlights

\* Made his collegiate debut vs. San Diego Christian (11-16-16) and had one blocked shot and one steal in 12 minutes.

### 2016-17 GAME-BY-GAME STATISTICS

Opponent	GS	FG	3FG	FT	O-D-R	PF	TP	A	TO	B	S	MP
San Diego												
at Gonzaga												
San Diego Christian	0-3	0-2	0-0	0-0-0	3	0	0	3	1	1	12	
vs. California												
Savannah State												
at Loyola												
at Grand Canyon												
Arizona State												
Alabama State												
vs. Southern Miss												
vs. TBD												
vs. TBD												
New Mexico												
at Nevada												
at Boise State												
San Jose State												
Utah State												
at UNLV												
at Air Force												
Colorado State												
Wyoming												
at Fresno State												
at San Jose State												
Nevada												
at Utah State												
UNLV												
Fresno State												
at Colorado State												
Air Force												
at New Mexico												

### MISCELLANEOUS STATS / SAN DIEGO STATE RECORD

Category	2016-17 Season Games	SDSU W/L
Double-Figure Scoring	0	0-0
20-Point Games	0	0-0
Led SDSU in Scoring	0	0-0
Led SDSU in Rebounding	0	0-0
Led SDSU in Assists	0	0-0
Multiple 3FG	0	0-0
Multiple Steals	0	0-0
One Turnover or Less	0	0-0
Consecutive Games	Current	Long
Consecutive Games Played	1	1
One Turnover or Less	0	0
Scoring A Point	0	0
Double-Figure Scoring	0	0
With At Least 1 Assist	0	0

## ► WILSON CAREER STATISTICS

Year	G-GS	Min.-Avg.	FG-FGA	Pct.	3P-3PA	Pct.	FT-FTA	Pct.	OR	DR	Reb	Avg.	PF-D	AT	TO	BS	ST	Pts	Avg.
16-17	1-0	12-12.0	0-3	.000	0-2	.000	0-0	.000	0	0	0	0.0	3-0	0	3	1	1	0	0.0



## SEASON / CAREER HIGHS

### Points

Season	15 vs. SD Christian (11-16-16)
Career	17 vs. San José State (1-6-16)

### Rebounds

Season	7 vs. SD Christian (11-16-16)
Career	11 vs. Grand Canyon (12-18-15)

### Assists

Season	2 vs. SD Christian (11-16-16)
	2 at Gonzaga (11-14-16)
Career	4 vs. Kansas (12-22-15)

### Field Goals

Season	5 vs. SD Christian (11-16-16)
Career	5 vs. SD Christian (11-16-16)
	5 vs. San José State (1-6-16)
	5 at Utah State (1-2-16)
	5 vs. Kansas (12-22-15)
	5 vs. Biola (12-7-15)

### Field Goals Attempted

Season	10 vs. SD Christian (11-16-16)
Career	10 vs. SD Christian (11-16-16)
	10 vs. California (11-26-15)

### Three-Point Field Goals

Season	
Career	1 vs. Biola (12-7-15)
	1 vs. East Carolina (11-23-15)

### Three-Point FG Attempted

Season	1 vs. SD Christian (11-16-16)
	1 vs. San Diego (11-11-16)
Career	3 vs. Biola (12-7-15)

### Free Throws

Season	5 vs. SD Christian (11-16-16)
Career	7 at Nevada (1-26-16)
	7 vs. San José State (1-6-16)
	7 vs. Nicholls (12-10-15)
	7 vs. California (11-26-15)
	7 vs. SD Christian (11-18-15)

### Free Throws Attempted

Season	6 vs. SD Christian (11-16-16)
Career	10 vs. Nicholls (12-10-15)

### Steals

Season	3 vs. SD Christian (11-16-16)
Career	3 vs. SD Christian (11-16-16)

### Blocked Shots

Season	1 at Gonzaga (11-14-16)
	1 vs. San Diego (11-11-16)
Career	4 at Fresno State (2-10-16)

### Minutes Played

Season	36 vs. San Diego (11-11-16)
Career	36 vs. San Diego (11-11-16)



# 14 • ZYLAN CHEATHAM

FORWARD • 6-9 • 220 • SOPHOMORE - 1L  
PHOENIX, ARIZ. (SOUTH MOUNTAIN HIGH)

### Quick Hits

- \* Has at least one steal in every game this season.
- \* Returned this season as the top shooter in terms of field goal percentage (.528) and is the No. 1 returning rebounder (5.4).
- \* Shot at least 50 percent from the floor 25 times as a redshirt freshman.

### Season Highlights

- \* Played a career-high 36 minutes and did not commit a foul for an injury-plagued team vs. San Diego (11-11-16).
- \* Had a team-high six rebounds and two assists at No. 14/14 Gonzaga (11-14-16).
- \* Posted season highs in points (15), rebounds (7), assists (2) and steals (career-high 3) vs. San Diego Christian (11-16-16).

### 2016-17 GAME-BY-GAME STATISTICS

Opponent	GS	FG	3FG	FT	O-D-R	PF	TP	A	TO	B	S	MP
San Diego	*	3-7	0-1	2-3	2-2-4	0	8	1	1	1	1	36
at Gonzaga	*	1-3	0-0	2-2	0-6-6	3	4	2	3	1	1	31
San Diego Christian	*	5-10	0-1	5-6	2-5-7	3	15	2	5	0	3	33
vs. California												
Savannah State												
at Loyola												
at Grand Canyon												
Arizona State												
Alabama State												
vs. Southern Miss												
vs. TBD												
vs. TBD												
New Mexico												
at Nevada												
at Boise State												
San Jose State												
Utah State												
at UNLV												
at Air Force												
Colorado State												
Wyoming												
at Fresno State												
at San Jose State												
Nevada												
at Utah State												
UNLV												
Fresno State												
at Colorado State												
Air Force												
at New Mexico												

### MISCELLANEOUS STATS / SAN DIEGO STATE RECORD

Category	2016-17 Season Games	SDSU W/L	Career Games	SDSU W/L
Double-Figure Scoring	1	1-0	11	9-2
Double-Figure Rebounds	0	0-0	6	4-2
Double-Doubles	0	0-0	2	2-0
Led SDSU in Scoring	0	0-0	2	1-1
Led SDSU in Rebounding	1	0-1	12	6-6
Led SDSU in Assists	1	0-1	5	2-3
15+ Point Games	1	1-0	3	3-0
15+ Rebound Games	0	0-0	0	0-0
Consecutive Games	Current	Long		
Double-Figure Scoring	1	2		
With At Least 1 Assist	5	6		
Played 30 or More Minutes	3	3		
Consecutive Made FTs	5	8		

## ► CHEATHAM CAREER STATISTICS

Year	G-GS	Min.-Avg.	FG-FGA	Pct.	3P-3PA	Pct.	FT-FTA	Pct.	OR	DR	Reb	Avg.	PF-D	AT	TO	BS	ST	Pts	Avg.
15-16	38-26	791-20.8	93-176	.528	3-17	.176	111-155	.716	62	143	205	5.4	87-2	36	72	26	22	300	7.9
16-17	3-3	100-33.3	9-20	.450	0-2	.000	9-11	.818	4	13	17	5.7	6-0	5	9	2	5	27	9.0
<b>Totals</b>	<b>41-29</b>	<b>891-21.7</b>	<b>102-196</b>	<b>.520</b>	<b>3-19</b>	<b>.158</b>	<b>120-166</b>	<b>.723</b>	<b>66</b>	<b>156</b>	<b>222</b>	<b>5.4</b>	<b>93-2</b>	<b>41</b>	<b>81</b>	<b>28</b>	<b>27</b>	<b>327</b>	<b>8.0</b>

## SEASON / CAREER HIGHS

### Points

Season  
Career 16 at Colorado State (1-24-15)

### Rebounds

Season 3 at Gonzaga (11-14-16)  
Career 5 vs. Nevada (3-7-15)  
5 vs. UC Riverside (12-22-14)  
5 at UNLV (3-14-14)  
5 vs. St. Katherine (12-27-13)

### Assists

Season  
Career 6 vs. Air Force (2-13-16)

### Field Goals

Season  
Career 6 at Colorado State (1-24-15)

### Field Goals Attempted

Season 2 at Gonzaga (11-14-16)  
Career 12 vs. Air Force (12-31-14)  
12 vs. McNeese State (12-21-13)

### Three-Point Field Goals

Season  
Career 4 vs. Washington (3-21-16)  
4 vs. Air Force (2-13-16)  
4 vs. St. John's (3-20-15)  
4 at Colorado State (1-24-15)  
4 at Fresno State (1-3-15)  
4 at UNLV (3-5-14)  
4 vs. Utah State (2-18-14)  
4 vs. Coll. of Charleston (11-28-13)

### Three-Point FG Attempted

Season 2 at Gonzaga (11-14-16)  
Career 12 vs. Air Force (12-31-14)

### Free Throws

Season  
Career 3 vs. San José State (2-25-14)

### Free Throws Attempted

Season  
Career 4 vs. Fresno State (1-15-14)  
4 vs. St. Katherine (12-27-13)

### Steals

Season  
Career 3 at Wyoming (1-14-15)

### Blocked Shots

Season  
Career 3 at Air Force (1-20-15)

### Minutes Played

Season 14 at Gonzaga (11-14-16)  
Career 29 at Boise State (2-8-15)



# 20 • MATT SHRIGLEY

FORWARD • 6-6 • 190 • SENIOR - 3L  
SAN DIEGO, CALIF. (LA COSTA CANYON HIGH)

### Quick Hits

- \* Has played the second-most games among all Aztecs (85).
- \* Has knocked down 95 career three-pointers, which is the most on the team and the 16th-most in school history.
- \* Only committed 49 turnovers in 1,426 career minutes.

### Season Highlights

- \* Made his season debut at No. 14/14 Gonzaga (11-14-16) and had three rebounds in 14 minutes after missing the opener vs. San Diego (11-11-16) due to an ankle injury.

### 2016-17 GAME-BY-GAME STATISTICS

Opponent	GS	FG	3FG	FT	O-D-R	PF	TP	A	TO	B	S	MP
San Diego		DNP - Injured										
at Gonzaga	0-2	0-2	0-0		1-2-3	0	0	0	0	0	0	14
San Diego Christian		DNP - Injured										
vs. California												
Savannah State												
at Loyola												
at Grand Canyon												
Arizona State												
Alabama State												
vs. Southern Miss												
vs. TBD												
vs. TBD												
New Mexico												
at Nevada												
at Boise State												
San Jose State												
Utah State												
at UNLV												
at Air Force												
Colorado State												
Wyoming												
at Fresno State												
at San Jose State												
Nevada												
at Utah State												
UNLV												
Fresno State												
at Colorado State												
Air Force												
at New Mexico												

### MISCELLANEOUS STATS / SAN DIEGO STATE RECORD

Category	2016-17 Season Games	SDSU W/L	Career Games	Career SDSU W/L
Double-Figure Scoring	0	0-0	15	13-2
20-Point Games	0	0-0	0	0-0
Led SDSU in Scoring	0	0-0	1	1-0
Led SDSU in Rebounding	0	0-0	0	0-0
Led SDSU in Assists	0	0-0	4	2-2
Multiple 3FG	0	0-0	25	21-4
Multiple Steals	0	0-0	7	6-1
One Turnover or Less	1	0-1	69	54-15
Consecutive Games	Current	Long		
Consecutive Games Played	0	36		
Without Fouling Out	85	85		
Scoring A Point	0	11		
Double-Figure Scoring	0	3		
With At Least 1 Assist	0	9		

## ► SHRIGLEY CAREER STATISTICS

Year	G-GS	Min.-Avg.	FG-FGA	Pct.	3P-3PA	Pct.	FT-FTA	Pct.	OR	DR	Reb	Avg.	PF-D	AT	TO	BS	ST	Pts	Avg.
13-14	36-3	568-15.8	63-168	.375	40-113	.354	22-33	.667	8	48	56	1.6	54-0	18	17	12	14	188	5.2
14-15	30-17	632-21.1	53-156	.340	41-126	.325	6-6	1.000	6	43	49	1.6	38-0	31	26	9	24	153	5.1
15-16	18-0	212-11.8	15-54	.278	14-49	.286	0-1	.000	3	15	18	1.0	18-0	11	6	2	2	44	2.4
16-17	1-0	14-14.0	0-2	.000	0-2	.000	0-0	.000	1	2	3	3.0	0-0	0	0	0	0	0	0.0
<b>Totals</b>	<b>85-20</b>	<b>1,426-16.8</b>	<b>131-380</b>	<b>.345</b>	<b>95-290</b>	<b>.328</b>	<b>28-40</b>	<b>.700</b>	<b>18</b>	<b>108</b>	<b>126</b>	<b>1.5</b>	<b>110-0</b>	<b>60</b>	<b>49</b>	<b>23</b>	<b>40</b>	<b>385</b>	<b>4.5</b>

## SEASON / CAREER HIGHS

### Points

Season  
Career 22 at Colorado State (1-24-15)

### Rebounds

Season  
Career 12 vs. Washington (3-21-16)

### Assists

Season  
Career 5 vs. UNLV (3-5-16)

### Field Goals

Season  
Career 9 at Colorado State (1-24-15)

### Field Goals Attempted

Season  
Career 16 vs. Fresno State (3-12-16)

### Three-Point Field Goals

Season  
Career 4 at Colorado State (1-24-15)

### Three-Point FG Attempted

Season  
Career 5 vs. Georgia Tech (3-23-16)  
5 vs. Utah State (3-10-16)  
5 vs. Air Force (2-13-16)  
5 at Long Beach State (12-1-15)  
5 vs. SD Christian (11-18-15)  
5 vs. Utah State (1-31-15)

### Free Throws

Season  
Career 6 at New Mexico (3-1-16)

### Free Throws Attempted

Season  
Career 6 at New Mexico (3-1-16)  
6 vs. San José State (1-6-16)  
6 vs. West Virginia (11-27-15)

### Steals

Season  
Career 2 vs. New Mexico (2-6-16)  
2 vs. California (11-26-15)  
2 vs. Bakersfield (11-20-14)

### Blocked Shots

Season  
Career 3 vs. Colorado State (2-2-16)  
3 vs. Nevada (3-7-15)  
3 vs. Boise State (2-28-15)

### Minutes Played

Season  
Career 37 at New Mexico (3-1-16)



# 21 • MALIK POPE

FORWARD • 6-10 • 220 • JUNIOR - 2L  
SACRAMENTO, CALIF. (LAGUNA CREEK HIGH)

### Quick Hits

- \* Has not played this season (knee).
- \* Had the second-highest three-point field-goal percentage (.373) and made the third-most three-pointers on the team (38) in 2015-16 despite averaging the sixth-most minutes (21.3).
- \* Scored in double figures in seven of his last nine games and in nine of his last 13.
- \* Eight of his 16 career double-figure scoring efforts came away from Viejas Arena.

### 2016-17 GAME-BY-GAME STATISTICS

Opponent	GS	FG	3FG	FT	O-D-R	PF	TP	A	TO	B	S	MP
San Diego		DNP - Injured										
at Gonzaga		DNP - Injured										
San Diego Christian		DNP - Injured										
vs. California												
Savannah State												
at Loyola												
at Grand Canyon												
Arizona State												
Alabama State												
vs. Southern Miss												
vs. TBD												
vs. TBD												
New Mexico												
at Nevada												
at Boise State												
San Jose State												
Utah State												
at UNLV												
at Air Force												
Colorado State												
Wyoming												
at Fresno State												
at San Jose State												
Nevada												
at Utah State												
UNLV												
Fresno State												
at Colorado State												
Air Force												
at New Mexico												

### MISCELLANEOUS STATS / SAN DIEGO STATE RECORD

Category	2016-17 Season Games	SDSU W/L	Career Games	Career SDSU W/L
Double-Figure Scoring	0	0-0	16	13-3
Double-Doubles	0	0-0	4	3-1
Led SDSU in Scoring	0	0-0	7	4-3
Led SDSU in Rebounding	0	0-0	10	7-3
Led SDSU in Assists	0	0-0	5	4-1
15+ Point Games	0	0-0	7	5-2
2+ Assist Games	0	0-0	10	8-2
Consecutive Games	Current	Long		
Double-Figure Scoring	0	4		
With At Least 1 Assist	1	5		
Played 30 or More Minutes	0	1		
Consecutive Made FTs	1	8		

## ► POPE CAREER STATISTICS

Year	G-GS	Min.-Avg.	FG-FGA	Pct.	3P-3PA	Pct.	FT-FTA	Pct.	OR	DR	Reb	Avg.	PF-D	AT	TO	BS	ST	Pts	Avg.
14-15	31-0	459-14.8	56-123	.455	20-49	.408	27-40	.675	25	59	84	2.7	30-0	19	25	24	8	159	5.1
15-16	38-16	810-21.3	101-252	.401	38-102	.373	37-57	.649	33	156	189	5.0	56-1	29	41	29	10	277	7.3
16-17																			
<b>Totals</b>	<b>69-16</b>	<b>1,269-18.4</b>	<b>157-375</b>	<b>.419</b>	<b>58-151</b>	<b>.384</b>	<b>64-97</b>	<b>.660</b>	<b>58</b>	<b>215</b>	<b>273</b>	<b>4.0</b>	<b>86-1</b>	<b>48</b>	<b>66</b>	<b>53</b>	<b>18</b>	<b>436</b>	<b>6.3</b>

## SEASON / CAREER HIGHS

### Points

Season	6 at Gonzaga (11-14-16)
Career	21 vs. UMKC (11-14-14)

### Rebounds

Season	6 at Gonzaga (11-14-16)
Career	7 vs. UMKC (11-14-14)

### Assists

Season	
Career	3 vs. Florida (2-24-15)

### Field Goals

Season	2 at Gonzaga (11-14-16)
Career	9 vs. UMKC (11-14-14)

### Field Goals Attempted

Season	8 at Gonzaga (11-14-16)
Career	23 vs. UMKC (11-14-14)

### Three-Point Field Goals

Season	1 at Gonzaga (11-14-16)
Career	4 at Chaminade (11-26-14)

### Three-Point FG Attempted

Season	4 at Gonzaga (11-14-16)
Career	8 at Chaminade (11-26-14)

### Free Throws

Season	1 at Gonzaga (11-14-16)
Career	8 vs. Arizona (11-24-14)

### Free Throws Attempted

Season	2 vs. SD Christian (11-16-16)
	2 at Gonzaga (11-14-16)
Career	12 vs. Arizona (11-24-14)

### Steals

Season	
Career	3 at Chaminade (11-26-14)

### Blocked Shots

Season	
Career	1 vs. Oklahoma State (12-30-14)
	1 vs. Elon (12-11-14)

### Minutes Played

Season	32 vs. San Diego (11-11-16)
Career	36 vs. UMKC (11-14-14)



# 23 • MONTAQUE GILL-CAESAR

GUARD • 6-6 • 215 • SOPHOMORE - TR  
VAUGHAN, ONTARIO, CANADA (MISSOURI)

### Quick Hits

\* His 9.1 scoring average as a freshman in 2014-15 would have ranked fourth on the team last season.

\* Averaged 11.0 points at the 2014 Maui Invitational, the same tournament the Aztecs competed in.

\* Scored 15 or more points in seven of his 13 double-digit scoring efforts in 2014-15.

### Season Highlights

\* Started his first SDSU game vs. San Diego (11-11-16) after becoming eligible following his transfer, making him the first to do so since Josh Davis in 2013-14.

\* Came off the bench to grab a team-best six rebounds at No. 14/14 Gonzaga (11-14-16).

### 2016-17 GAME-BY-GAME STATISTICS

Opponent	GS	FG	3FG	FT	O-D-R	PF	TP	A	TO	B	S	MP
San Diego	*	1-6	0-2	0-0	1-3-4	3	2	0	2	0	0	32
at Gonzaga		2-8	1-4	1-2	0-6-6	1	6	0	2	0	0	20
San Diego Christian	*	0-2	0-0	1-2	0-1-1	0	1	0	0	0	0	8
vs. California												
Savannah State												
at Loyola												
at Grand Canyon												
Arizona State												
Alabama State												
vs. Southern Miss												
vs. TBD												
vs. TBD												
New Mexico												
at Nevada												
at Boise State												
San Jose State												
Utah State												
at UNLV												
at Air Force												
Colorado State												
Wyoming												
at Fresno State												
at San Jose State												
Nevada												
at Utah State												
UNLV												
Fresno State												
at Colorado State												
Air Force												
at New Mexico												

### MISCELLANEOUS STATS / SAN DIEGO STATE RECORD

Category	2016-17 Season Games	SDSU W/L	Career Games	Career SDSU W/L
Double-Figure Scoring	0	0-0	13	0-0
Double-Figure Rebounds	0	0-0	0	0-0
Double-Doubles	0	0-0	0	0-0
Led SDSU in Scoring	0	0-0	0	0-0
Led SDSU in Rebounding	1	0-1	1	0-1
Led SDSU in Assists	0	0-0	0	0-0
15+ Point Games	0	0-0	7	0-0
One Turnover or Less	1	1-0	12	1-0
Multiple Three-Pointers	0	0-0	8	0-0
Consecutive Games	Current	Long		
Double-Figure Scoring	0	0		
With At Least 1 Assist	0	0		
Played 30 or More Minutes	0	1		
Consecutive Made FTs	0	2		

## ► GILL-CAESAR CAREER STATISTICS

\* - Missouri

Year	G-GS	Min.-Avg.	FG-FGA	Pct.	3P-3PA	Pct.	FT-FTA	Pct.	OR	DR	Reb	Avg.	PF-D	AT	TO	BS	ST	Pts	Avg.
14-15*	27-13	647-24.0	84-231	.364	29-94	.309	49-66	.742	20	60	80	3.0	55-1	14	52	2	19	246	9.1
16-17	3-2	60-20.0	3-16	.188	1-6	.167	2-4	.500	1	10	11	3.7	4-0	0	4	0	0	9	3.0
<b>Totals</b>	<b>30-15</b>	<b>707-23.6</b>	<b>87-247</b>	<b>.352</b>	<b>30-100</b>	<b>.300</b>	<b>51-70</b>	<b>.729</b>	<b>21</b>	<b>70</b>	<b>91</b>	<b>3.0</b>	<b>59-1</b>	<b>14</b>	<b>56</b>	<b>2</b>	<b>19</b>	<b>255</b>	<b>8.5</b>

## CAREER HIGHS

### Points

Career 4 vs. SD Christian (11-16-16)

### Rebounds

Career 1 vs. SD Christian (11-16-16)

### Assists

Career

### Field Goals

Career 2 vs. SD Christian (11-16-16)

### Field Goals Attempted

Career 6 vs. SD Christian (11-16-16)

### Three-Point Field Goals

Career

### Three-Point FG Attempted

Career 1 vs. SD Christian (11-16-16)  
1 at Gonzaga (11-14-16)

### Free Throws

Career

### Free Throws Attempted

Career

### Steals

Career

### Blocked Shots

Career

### Minutes Played

Career 18 vs. SD Christian (11-16-16)



# 24 • NOLAN NARAIN

FORWARD • 6-9 • 220 • FRESHMAN - RS

HAMILTON, ONTARIO, CANADA (LA LUMIERE SCHOOL)

### Quick Hits

\* Has seen action in both games this season.

\* Played double-figure minutes in each of his last two games (14.0 mpg).

\* Is one of six players this season that stand 6-9 or taller.

### Season Highlights

\* Made his first field-goal attempt of his career (1-1) in four minutes of action vs. San Diego (11-11-16).

\* Played 10 minutes at No. 14/14 Gonzaga (11-14-16).

\* Scored four points and grabbed his first career rebound vs. San Diego Christian (11-16-16).

### 2016-17 GAME-BY-GAME STATISTICS

Opponent	GS	FG	3FG	FT	O-D-R	PF	TP	A	TO	B	S	MP
San Diego	1-1	0-0	0-0	0-0-0	1	2	0	0	0	0	0	4
at Gonzaga	0-3	0-1	0-0	0-0-0	1	0	0	0	0	0	0	10
San Diego Christian	2-6	0-1	0-0	0-1-1	2	4	0	1	0	0	0	18
vs. California												
Savannah State												
at Loyola												
at Grand Canyon												
Arizona State												
Alabama State												
vs. Southern Miss												
vs. TBD												
New Mexico												
at Nevada												
at Boise State												
San Jose State												
Utah State												
at UNLV												
at Air Force												
Colorado State												
Wyoming												
at Fresno State												
at San Jose State												
Nevada												
at Utah State												
UNLV												
Fresno State												
at Colorado State												
Air Force												
at New Mexico												

### MISCELLANEOUS STATS / SAN DIEGO STATE RECORD

Category	2016-17 Season	
	Games	SDSU W/L
Double-Figure Scoring	0	0-0
15-Point Games	0	0-0
Led SDSU in Scoring	0	0-0
Led SDSU in Rebounding	0	0-0
Led SDSU in Assists	0	0-0
Multiple Steals	0	0-0
One Turnover or Less	3	2-1
Consecutive Games	Current	Long
Consecutive Games Played	3	3
Without Fouling Out	3	3
Scoring A Point	1	1
One Turnover or Less	3	3

## ► NARAIN CAREER STATISTICS

Year	G-GS	Min.-Avg.	FG-FGA	Pct.	3P-3PA	Pct.	FT-FTA	Pct.	OR	DR	Reb	Avg.	PF-D	AT	TO	BS	ST	Pts	Avg.
16-17	3-0	32-10.7	3-10	.300	0-2	.000	0-0	.000	0	1	1	0.3	4-0	0	1	0	0	6	2.0



## SEASON / CAREER HIGHS

### Points

Season  
Career 6 vs. San José State (2-25-14)

### Rebounds

Season  
Career 1 vs. UNLV (3-5-16)  
1 vs. San Diego Christian (12-27-14)  
1 vs. San José State (2-25-14)  
1 vs. St. Katherine (12-27-13)  
1 vs. McNeese State (12-21-13)

### Assists

Season  
Career 1 vs. UNLV (3-5-16)  
1 vs. St. Katherine (12-27-13)

### Field Goals

Season  
Career 2 vs. UNLV (3-5-16)  
2 vs. San José State (2-25-14)  
2 vs. St. Katherine (12-27-13)

### Field Goals Attempted

Season  
Career 3 vs. UNLV (3-5-16)

### Three-Point Field Goals

Season  
Career 2 vs. San José State (2-25-14)

### Three-Point FG Attempted

Season  
Career 2 vs. UNLV (3-5-16)  
2 vs. San Diego Christian (12-27-14)  
2 vs. UC Riverside (12-22-14)  
2 vs. San José State (2-25-14)

### Free Throws

Season  
Career

### Free Throws Attempted

Season  
Career

### Steals

Season 1 vs. Nicholls (12-10-15)  
Career 1 vs. Nicholls (12-10-15)

### Blocked Shots

Season  
Career 1 vs. San Diego Christian (12-27-14)

### Minutes Played

Season  
Career 4 vs. St. Katherine (12-27-13)



### Quick Hits

- \* Has not played this season.
- \* A walk-on who made the team through SDSU's open tryout process prior to the 2013-14 campaign.
- \* Attempted a shot in five of seven games last year and in 11 of 16 career outings.
- \* Has played in 16 career games, including a career-high seven last season.

# 33 • NIKSHA FEDERICO

FORWARD • 6-7 • 200 • SENIOR - SQ  
SAN DIEGO, CALIF. (CATHEDRAL CATHOLIC HIGH)

### 2016-17 GAME-BY-GAME STATISTICS

Opponent	GS	FG	3FG	FT	O-D-R	PF	TP	A	TO	B	S	MP
San Diego		Did Not Dress										
at Gonzaga		Did Not Travel										
San Diego Christian		Did Not Dress										
vs. California												
Savannah State												
at Loyola												
at Grand Canyon												
Arizona State												
Alabama State												
vs. Southern Miss												
vs. TBD												
vs. TBD												
New Mexico												
at Nevada												
at Boise State												
San Jose State												
Utah State												
at UNLV												
at Air Force												
Colorado State												
Wyoming												
at Fresno State												
at San Jose State												
Nevada												
at Utah State												
UNLV												
Fresno State												
at Colorado State												
Air Force												
at New Mexico												

### MISCELLANEOUS STATS / SAN DIEGO STATE RECORD

Category	2016-17 Season Games	SDSU W/L	Career Games	Career SDSU W/L
Double-Figure Scoring	0	0-0	0	0-0
Double-Figure Rebounds	0	0-0	0	0-0
Double-Doubles	0	0-0	0	0-0
Led SDSU in Scoring	0	0-0	0	0-0
Led SDSU in Rebounding	0	0-0	0	0-0
Led SDSU in Assists	0	0-0	0	0-0
15+ Point Games	0	0-0	0	0-0
One Turnover or Less	0	0-0	16	15-1
Multiple Three-Pointers	0	0-0	1	1-0
Consecutive Games	Current	Long		
Double-Figure Scoring	0	0		
With At Least 1 Assist	0	1		
Played 30 or More Minutes	0	0		
Consecutive Made FTs	0	0		

## ► FEDERICO CAREER STATISTICS

Year	G-GS	Min.-Avg.	FG-FGA	Pct.	3P-3PA	Pct.	FT-FTA	Pct.	OR	DR	Reb	Avg.	PF-D	AT	TO	BS	ST	Pts	Avg.
13-14	4-0	10-2.5	4-6	.667	3-5	.600	0-0	.000	1	2	3	0.8	1-0	1	0	0	0	11	2.8
14-15	5-0	8-1.6	0-4	.000	0-4	.000	0-0	.000	0	1	1	0.2	1-0	0	0	1	0	0	0.0
15-16	7-0	12-1.7	3-8	.375	2-6	.333	0-0	.000	0	1	1	0.1	1-0	1	0	0	1	8	1.1
16-17																			
<b>Totals</b>	<b>16-0</b>	<b>30-1.9</b>	<b>7-18</b>	<b>.389</b>	<b>5-15</b>	<b>.333</b>	<b>0-0</b>	<b>.000</b>	<b>1</b>	<b>4</b>	<b>5</b>	<b>0.3</b>	<b>3-0</b>	<b>2</b>	<b>0</b>	<b>1</b>	<b>1</b>	<b>19</b>	<b>1.2</b>

## SEASON / CAREER HIGHS

### Points

Season	25 vs. San Diego (11-11-16)
Career	25 vs. San Diego (11-11-16)

### Rebounds

Season	4 at Gonzaga (11-14-16)
	4 vs. San Diego (11-11-16)
Career	6 vs. New Mexico (2-6-16)
	6 vs. California (11-26-15)
	6 vs. Illinois State (11-13-15)

### Assists

Season	5 vs. SD Christian (11-16-16)
Career	6 vs. East Carolina (11-23-15)

### Field Goals

Season	9 vs. SD Christian (11-16-16)
	9 vs. San Diego (11-11-16)
Career	9 vs. SD Christian (11-16-16)
	9 vs. San Diego (11-11-16)

### Field Goals Attempted

Season	15 vs. San Diego (11-11-16)
Career	16 vs. New Mexico (2-6-16)
	16 vs. Grand Canyon (12-18-15)

### Three-Point Field Goals

Season	4 vs. San Diego (11-11-16)
Career	4 vs. San Diego (11-11-16)
	4 vs. San José State (1-6-16)
	4 vs. East Carolina (11-23-15)

### Three-Point FG Attempted

Season	6 at Gonzaga (11-14-16)
Career	7 vs. New Mexico (2-6-16)
	7 vs. East Carolina (11-23-15)

### Free Throws

Season	3 vs. San Diego (11-11-16)
Career	10 vs. New Mexico (2-6-16)

### Free Throws Attempted

Season	5 vs. SD Christian (11-16-16)
Career	10 vs. New Mexico (2-6-16)

### Steals

Season	3 vs. San Diego (11-11-16)
Career	4 at Wyoming (2-24-16)

### Blocked Shots

Season	1 vs. SD Christian (11-16-16)
Career	2 vs. Wyoming (12-30-15)
	2 at Utah (11-16-15)

### Minutes Played

Season	32 vs. SD Christian (11-16-16)
	32 at Gonzaga (11-14-16)
Career	38 vs. New Mexico (2-6-16)



# 42 • JEREMY HEMSLEY

GUARD • 6-3 • 190 • SOPHOMORE - 1L  
RANCHO CUCAMONGA, CALIF. (DAMIEN HIGH)

### Quick Hits

\* Is one of two players nationally averaging 20 points on at least 56 percent shooting and 60 percent from three-point range with a minimum of 15 three-point attempts through Nov. 17 (Khadeen Carrington - Seton Hall).

\* Ranks third in the nation in three-point field-goal percentage (.600) among players who have played at least three games and attempted a minimum 15 three-pointers (Khadeen Carrington - Seton Hall: .667; Patrick Good - Appalachian State: .611).

\* SDSU is 8-0 when he has at least four assists, 11-1 when he scored at least 15 points and 17-3 when he commits one turnover or less.

\* Averaging 24.0 points and 9 field goals in home games this season.

\* Is 7-for-9 from three-point at home this year.

\* Has not committed a foul in his last two games (64 minutes).

### Season Highlights

\* Set career highs in points (25) and field goals (9), while adding a team-high-tying two assists and a game-high-tying three steals in just 28 minutes vs. San Diego (11-11-16).

\* Led the team with 14 points and two assists at No. 14/14 Gonzaga (11-14-16).

\* Led all players with 23 points on 9-of-12 shooting and five assists vs. San Diego Christian (11-16-16).

### 2016-17 GAME-BY-GAME STATISTICS

Opponent	GS	FG	3FG	FT	O-D-R	PF	TP	A	TO	B	S	MP
San Diego	*	9-15	4-5	3-3	0-4-4	4	25	2	1	0	3	28
at Gonzaga	*	5-14	2-6	2-2	0-4-4	0	14	2	5	0	1	32
San Diego Christian	*	9-12	3-4	2-5	0-2-2	0	23	5	1	1	1	32
vs. California												
Savannah State												
at Loyola												
at Grand Canyon												
Arizona State												
Alabama State												
vs. Southern Miss												
vs. TBD												
vs. TBD												
New Mexico												
at Nevada												
at Boise State												
San Jose State												
Utah State												
at UNLV												
at Air Force												
Colorado State												
Wyoming												
at Fresno State												
at San Jose State												
Nevada												
at Utah State												
UNLV												
Fresno State												
at Colorado State												
Air Force												
at New Mexico												

### MISCELLANEOUS STATS / SAN DIEGO STATE RECORD

Category	2016-17 Season Games	SDSU W/L	Career Games	Career SDSU W/L
Double-Figure Scoring	3	2-1	29	22-7
Double-Figure Assists	0	0-0	0	0-0
Double-Doubles	0	0-0	0	0-0
Led SDSU in Scoring	3	2-1	17	12-5
Led SDSU in Rebounding	0	0-0	0	0-0
Led SDSU in Assists	3	2-1	16	12-4
15+ Point Games	2	2-0	12	11-1
5+ Assist Games	1	1-0	6	6-0
One Turnover or Less	2	2-0	20	17-3
Consecutive Games	Current	Long		
Double-Figure Scoring	3	8		
With At Least 1 Assist	3	11		
Played 30 or More Minutes	2	4		
Consecutive Made FTs	1	17		

## ► HEMSLEY CAREER STATISTICS

Year	G-GS	Min.-Avg.	FG-FGA	Pct.	3P-3PA	Pct.	FT-FTA	Pct.	OR	DR	Reb	Avg.	PF-D	AT	TO	BS	ST	Pts	Avg.
15-16	37-25	1,014-27.4	147-342	.430	42-118	.356	107-141	.759	19	70	89	2.4	82-3	68	71	12	27	443	12.0
16-17	3-3	92-30.7	23-41	.561	9-15	.600	7-10	.700	0	10	10	3.3	4-0	9	7	1	5	62	20.7
<b>Totals</b>	<b>40-28</b>	<b>1,106-27.7</b>	<b>170-383</b>	<b>.444</b>	<b>51-133</b>	<b>.383</b>	<b>114-151</b>	<b>.755</b>	<b>19</b>	<b>80</b>	<b>99</b>	<b>2.5</b>	<b>86-3</b>	<b>77</b>	<b>78</b>	<b>13</b>	<b>32</b>	<b>505</b>	<b>12.6</b>

## SEASON / CAREER HIGHS

### Points

Season	2 at Gonzaga (11-14-16)
Career	10 vs. Arizona State (2-6-16) 10 vs. New Mexico (12-25-15) 10 vs. Idaho State (11-20-15)

### Rebounds

Season	5 at Gonzaga (11-14-16)
Career	7 vs. Arizona State (2-6-16) 7 vs. Idaho State (11-20-15)

### Assists

Season	
Career	2 vs. New Mexico (12-25-15)

### Field Goals

Season	1 at Gonzaga (11-14-16)
Career	5 vs. Arizona State (2-6-16)

### Field Goals Attempted

Season	2 at Gonzaga (11-14-16)
Career	7 vs. Arizona State (2-6-16)

### Three-Point Field Goals

Season	
Career	

### Three-Point FG Attempted

Season	
Career	

### Free Throws

Season	
Career	4 vs. New Mexico (12-25-15)

### Free Throws Attempted

Season	1 vs. San Diego (11-11-16)
Career	7 vs. New Mexico (12-25-15)

### Steals

Season	
Career	1 at Oregon (2-24-16) 1 at Utah (2-14-16) 1 vs. Northern Iowa (12-23-15) 1 vs. Oklahoma (12-22-15) 1 vs. Texas Southern (11-28-15) 1 vs. Northern Arizona (11-13-15) 1 at UTEP (2-27-13) 1 vs. Louisiana College (11-19-12)

### Blocked Shots

Season	2 at Gonzaga (11-14-16) 2 vs. San Diego (11-11-16)
Career	6 vs. Idaho State (11-20-15)

### Minutes Played

Season	24 at Gonzaga (11-14-16)
Career	27 vs. New Mexico (12-25-15)



# 45 • VALENTINE IZUNDU

CENTER • 6-10 • 240 • SENIOR - TR  
HOUSTON, TEXAS (WASHINGTON STATE)

### Quick Hits

- \* Is a 66.3-percent shooter for his career and has only missed 27 shots in 49 games.
- \* Is the team's top shot blocker with 77 career rejections, including 50 last season.
- \* Is the third graduate transfer to join the program, following in the footsteps of Garrett Green (2012; LSU) and Josh Davis (2014; Tulane).

### Season Highlights

- \* Had a game-high two blocked shots and three rebounds in his SDSU debut vs. San Diego (11-11-16).
- \* Started for the first time for the Aztecs at No. 14/14 Gonzaga (11-14-16) and had a game-high two blocked shots, five rebounds and his first two points in an SDSU uniform.

### 2016-17 GAME-BY-GAME STATISTICS

Opponent	GS	FG	3FG	FT	O-D-R	PF	TP	A	TO	B	S	MP
San Diego		0-0	0-0	0-1	2-1-3	0	0	0	0	2	0	16
at Gonzaga	*	1-2	0-0	0-0	2-3-5	3	2	0	1	2	0	24
San Diego Christian		DNP - Injured										
vs. California												
Savannah State												
at Loyola												
at Grand Canyon												
Arizona State												
Alabama State												
vs. Southern Miss												
vs. TBD												
vs. TBD												
New Mexico												
at Nevada												
at Boise State												
San Jose State												
Utah State												
at UNLV												
at Air Force												
Colorado State												
Wyoming												
at Fresno State												
at San Jose State												
Nevada												
at Utah State												
UNLV												
Fresno State												
at Colorado State												
Air Force												
at New Mexico												

### MISCELLANEOUS STATS / SAN DIEGO STATE RECORD

Category	2016-17 Season Games	SDSU W/L	Career Games	Career SDSU W/L
Double-Figure Scoring	0	0-0	3	0-0
Double-Figure Rebounds	0	0-0	0	0-0
Double-Doubles	0	0-0	0	0-0
Led SDSU in Scoring	0	0-0	0	0-0
Led SDSU in Rebounding	0	0-0	0	0-0
Led SDSU in Assists	0	0-0	0	0-0
15+ Point Games	0	0-0	0	0-0
One Turnover or Less	2	1-1	44	1-1
Multiple Blocked Shots	2	1-1	23	1-1
Consecutive Games	Current	Long		
Double-Figure Scoring	0	0		
With At Least 1 Assist	0	0		
One Turnover or Less	2	2		
Played 30 or More Minutes	0	0		

## ► IZUNDU CAREER STATISTICS

\* - Houston, ^ - Washington State

Year	G-GS	Min.-Avg.	FG-FGA	Pct.	3P-3PA	Pct.	FT-FTA	Pct.	OR	DR	Reb	Avg.	PF-D	AT	TO	BS	ST	Pts	Avg.
12-13*	20-0	159-8.0	16-21	.762	0-0	.000	7-18	.389	11	9	20	1.0	20-0	2	2	22	2	39	2.0
13-14*	4-0	25-6.3	0-1	.000	0-0	.000	0-2	.000	1	2	3	0.8	5-0	1	2	1	0	0	0.0
15-16^	23-13	342-14.9	36-56	.643	0-0	.000	15-34	.441	27	34	61	2.7	52-1	6	19	50	6	87	3.8
16-17	2-1	40-20.0	1-2	.500	0-0	.000	0-1	.000	4	4	8	4.0	3-0	0	1	4	0	2	1.0
<b>Totals</b>	<b>49-14</b>	<b>566-11.6</b>	<b>53-80</b>	<b>.663</b>	<b>0-0</b>	<b>.000</b>	<b>22-55</b>	<b>.400</b>	<b>43</b>	<b>49</b>	<b>92</b>	<b>1.9</b>	<b>80-1</b>	<b>9</b>	<b>24</b>	<b>77</b>	<b>8</b>	<b>128</b>	<b>2.6</b>



## Game 1

**San Diego State 69**  
**San Diego 59**  
Nov. 11, 2016 ♦ San Diego, Calif.  
Viejas Arena ♦ Att.: 12,414

SAN DIEGO - San Diego State rallied from a nine-point first-half deficit to defeat cross-town foe San Diego, 69-59, in the season opener for both teams at Viejas Arena.

The Toreros began the game by making their first four shots from the field, three of which were layups. USD cooled a bit and the Aztecs started to find a rhythm, but the visitors warmed back up and scored seven unanswered points to take a 23-14 lead with 7:56 left.

The teams traded baskets and San Diego regained its nine-point lead with 5:20 remaining before halftime. SDSU, however, took over the game slowly as Trey Kell and Jeremy Hemsley combined to score the team's final 13 points before Olin Carter III made a bucket just before halftime to make it, 35-33, Aztecs.

The second half started much like the first, with USD making a layup right out of the gate and followed it with yet another, this one from Carter III. SDSU answered with layups from Zylan Cheatham and Hemsley to give the home side a 39-37 lead, but Carter III made a pair of free throws to knot the score.

Five consecutive points from Hemsley gave the Aztecs breathing room and it jumpstarted an 18-2 run that put San Diego State ahead, 57-41, with 7:10 to go.

Less than two minutes later, SDSU's lead ballooned to 19 and the Aztecs never looked back. In the final minutes, the Toreros chipped into their deficit before settling for the 10-point loss, which happened to be their eighth straight loss at San Diego State.

The Aztecs, who allowed USD to shoot 54.2 percent in the first half, clamped down in the second and held the Toreros to 44.0-percent shooting in the final 20 minutes.

Hemsley finished with a career-high 25 points and Kell poured in 23 of his own. D'Erryl Williams provided a spark defensively in the first half and was key to shutting USD down on the perimeter, which allowed the Aztecs to get back into the game. The senior finished with career highs in rebounds (5) and steals (2).

USD	FG	3FG	FT	R	F	TP	A	TO	B	S	MP
Neubauer*	3-4	2-3	0-0	3	5	8	3	0	0	0	25
Bailey*	4-10	0-1	0-1	9	3	8	1	3	1	0	32
Barrino*	5-8	0-1	1-4	1	2	11	1	2	0	0	33
Williams*	2-4	0-1	0-0	5	1	4	1	2	0	0	30
Carter III*	6-14	3-7	2-2	2	3	17	0	3	0	0	37
Carbone	0-1	0-0	0-0	0	3	0	1	0	0	0	5
Gray	3-5	1-2	0-1	2	3	7	0	0	1	0	19
Ryder	1-3	0-0	2-2	1	3	4	3	2	0	0	19
Team				5							2
<b>Totals</b>	<b>24-49</b>	<b>6-15</b>	<b>5-10</b>	<b>28</b>	<b>23</b>	<b>59</b>	<b>10</b>	<b>14</b>	<b>2</b>	<b>0</b>	<b>200</b>

SDSU	FG	3FG	FT	R	F	TP	A	TO	B	S	MP
Cheatham*	3-7	0-1	2-3	4	0	8	1	1	1	1	36
Gill-Caesar*	1-6	0-2	0-0	4	3	2	0	2	0	0	32
Kell*	7-16	2-7	7-9	4	1	23	2	2	1	1	35
Allen*	1-2	0-1	4-6	4	4	6	1	1	0	3	20
Hemsley*	9-15	4-5	3-3	4	4	25	2	1	0	3	28
Williams	1-4	1-1	0-0	5	4	3	1	0	0	2	29
Narain	1-1	0-0	0-0	0	1	2	0	0	0	0	4
Izundu	0-0	0-0	0-1	3	0	0	0	0	0	2	16
Team				3							
<b>Totals</b>	<b>23-51</b>	<b>7-17</b>	<b>16-22</b>	<b>31</b>	<b>17</b>	<b>69</b>	<b>7</b>	<b>7</b>	<b>4</b>	<b>10</b>	<b>200</b>

**Halftime:** San Diego State 35, San Diego 33. **FG%:** San Diego 49.0, San Diego State 45.1. **3FG%:** San Diego State 41.2, San Diego 40.0. **FT%:** San Diego State 72.7, San Diego 50.0. **Officials:** Tony Padilla, Daryl Gelinas, Tom Nalley. **Technical:** Jeremy Hemsley - San Diego State.



## Game 2

**No. 14/14 Gonzaga 69**  
**San Diego State 48**  
Nov. 14, 2016 ♦ Spokane, Wash.  
McCarthy Athletic Center ♦ Att.: 6,000

SPOKANE, Wash. - SDSU shot the ball poorly and committed 15 turnovers, which led to a 69-48 loss at No. 14/14 Gonzaga.

Both teams opened the game by missing 15 consecutive shots (Gonzaga - 8, San Diego State - 7), but the Aztecs were the ones to eventually jump out to a 6-2 lead.

Once the Bulldogs settled down, they scored 10 unanswered points to move ahead, 12-6. Montague Gill-Caesar ended SDSU's scoring drought, but it was just the beginning of the Aztecs' tough shooting night as they finished the half by making just two of their 11 attempts from the field.

Gonzaga, on the other hand, outscored San Diego State, 24-13, after the Gill-Caesar basket to take a 36-21 lead at halftime. In the first half, the Aztecs shot 20.7 percent from the field and was 1-for-12 from three-point distance.

San Diego State opened the second half with a Dakarai Allen three-pointer and a Trey Kell bucket to get to within 10 points, but Jordan Mathews hit a three of his own. Jeremy Hemsley answered with a trey on the next possession only to have Mathews hit yet another three-ball to push the Bulldogs lead back to 13. That would be as close as the Aztecs would get the rest of the way.

Mathews, who finished with a game-high 17 points, would go on to make his third three-pointer in the first 3:04 of the period, which spurred a 19-2 run, covering nearly 10 minutes. Kell finally stopped the bleeding with a pair of free throws with 6:30 left in the game, but the game was well in hand for the home team.

Kell and Hemsley each scored 14 points to lead the Aztecs, who shot 28.6 percent for the game and had their 15 turnovers turn into 25 Gonzaga points.

SDSU	FG	3FG	FT	R	F	TP	A	TO	B	S	MP
Kell*	4-15	0-5	6-7	4	0	14	1	2	0	2	35
Allen*	2-7	1-2	0-1	5	2	5	0	0	2	0	27
Cheatham*	1-3	0-0	2-2	6	3	4	2	3	1	1	31
Izundu*	1-2	0-0	0-0	5	3	2	0	1	2	0	24
Hemsley*	5-14	2-6	2-2	4	0	14	2	5	0	1	32
Williams	1-2	1-1	0-0	0	2	3	0	1	0	1	7
Shrigley	0-2	0-2	0-0	3	0	0	0	0	0	0	14
Gill-Caesar	2-8	1-4	1-2	6	1	6	0	2	0	0	20
Narain	0-3	0-1	0-0	0	1	0	0	0	0	0	10
Team				7					1		
<b>Totals</b>	<b>16-56</b>	<b>5-21</b>	<b>11-14</b>	<b>40</b>	<b>12</b>	<b>48</b>	<b>5</b>	<b>15</b>	<b>5</b>	<b>5</b>	<b>200</b>

GU	FG	3FG	FT	R	F	TP	A	TO	B	S	MP
Melson*	1-5	0-2	0-0	1	2	2	1	0	1	1	28
Williams*	1-9	0-1	2-6	5	3	4	1	1	1	1	19
Mathews*	6-10	5-7	0-0	2	1	17	2	0	2	1	26
Williams-Goss*	3-12	0-4	4-4	8	0	10	3	4	0	3	35
Karnowski*	4-7	0-0	0-0	6	4	8	2	0	1	0	16
Alberts	0-2	0-2	0-0	0	0	0	0	1	0	0	5
Perkins	1-6	1-4	0-0	2	2	3	2	2	0	1	25
Bakamus	0-0	0-0	0-0	0	1	0	1	0	0	0	1
Hachimura	0-1	0-1	0-0	1	1	0	0	0	0	0	2
Edwards	1-1	0-0	0-0	0	0	2	0	0	0	0	1
Collins	6-7	0-0	3-3	8	0	15	1	0	2	3	21
Tillie	3-6	2-3	0-1	10	3	8	2	0	1	3	20
Triano	0-0	0-0	0-0	0	0	0	0	0	0	0	1
Team				2							
<b>Totals</b>	<b>26-66</b>	<b>8-24</b>	<b>9-14</b>	<b>45</b>	<b>17</b>	<b>69</b>	<b>16</b>	<b>7</b>	<b>8</b>	<b>13</b>	<b>200</b>

**Halftime:** Gonzaga 36, San Diego State 21. **FG%:** Gonzaga 39.4, San Diego State 28.6. **3FG%:** Gonzaga 33.3, San Diego State 23.8. **FT%:** San Diego State 78.6, Gonzaga 64.3. **Officials:** Verne Harris, Randy McCall, David Hall. **Technical:** None.



## Game 3

**San Diego State 81**  
**San Diego Christian 58**  
Nov. 16, 2016 ♦ San Diego, Calif.  
Viejas Arena ♦ Att.: 12,414

SAN DIEGO - San Diego State, playing its second game in three days, recovered from a sluggish opening to defeat San Diego Christian, 81-58, at Viejas Arena.

The Aztecs led, 18-17, with 8:49 left in the first before snapping out of their funk. After Isaiah Milan's three-pointer brought the Hawks to within one, San Diego State went on a 10-2 run to create separation.

Milan stopped the SDSU scoring run momentarily, but the home team answered by scoring nine of the game's next 12 points to take a 37-23 lead at halftime.

The second half featured a more inspired brand of basketball and San Diego State's 60-percent shooting exhibition proved it. The Aztecs outscored the Hawks, 44-35, in the final 20 minutes to cruise to the 23-point victory.

San Diego State had four players reach double figures in scoring and were led by Jeremy Hemsley's 23 points on 9-of-12 shooting, including a 3-for-4 effort from behind the three-point arc. The sophomore also added a season- and game-high five assists.

Hemsley's backcourt teammate Trey Kell missed only three of his 10 attempts from the field to finish with 19 points and four assists. Zylan Cheatham and Dakarai Allen chipped in with 15 points apiece with Cheatham contributing seven rebounds and three steals. Allen, meanwhile, grabbed a career-high nine rebounds and blocked a personal-best five shots.

San Diego State needed those contributions and more, for instance, D'Erryl Williams' career-high nine rebounds off the bench, because of its injury situation. The Aztecs did not have Malik Pope (knee), Max Hoetzel (knee), Matt Shrigley (ankle), Valentine Izundu (ankle) or Ben Perez (back) available.

SDC	FG	3FG	FT	R	F	TP	A	TO	B	S	MP
Singleton*	2-3	1-2	0-0	7	4	5	0	2	0	0	17
Klekas*	2-8	2-4	0-0	4	2	6	1	1	1	0	21
Milan*	7-14	2-3	3-4	5	2	19	3	1	0	2	28
Fredrick*	2-10	1-5	0-0	4	3	5	0	2	0	0	24
Novsek*	1-7	0-1	2-2	6	1	4	2	3	0	0	32
Moore	1-6	1-3	0-0	2	2	3	1	0	0	1	19
Stanley	0-4	0-4	2-2	1	2	2	1	1	0	0	12
Roman	0-0	0-0	0-0	0	0	0	0	0	0	1	1
Gonzalez	0-1	0-1	0-0	0	0	0	0	1	0	0	6
Salgado	4-4	4-4	0-0	1	4	12	3	4	1	2	26
Limon	1-4	0-1	0-0	1	0	2	0	0	0	0	12
Garcia	0-1	0-1	0-0	0	0	0	1	0	0	0	2
Team				3					2		
<b>Totals</b>	<b>20-62</b>	<b>11-29</b>	<b>7-8</b>	<b>34</b>	<b>20</b>	<b>58</b>	<b>12</b>	<b>17</b>	<b>2</b>	<b>6</b>	<b>200</b>

SDSU	FG	3FG	FT	R	F	TP	A	TO	B	S	MP
Cheatham*	5-10	0-1	5-6	7	3	15	2	5	0	3	33
Kell*	7-10	1-1	4-6	6	1	19	4	1	1	1	31
Allen*	7-12	0-3	1-2	9	2	15	4	1	5	2	36
Gill-Caesar*	0-2	0-0	1-2	1	0	1	0	0	0	0	8
Hemsley*	9-12	3-4	2-5	2	0	23	5	1	1	1	32
Williams	2-2	0-0	0-0	9	2	4	3	1	0	0	30
Wilson	0-3	0-2	0-0	0	3	0	0	3	1	1	12
Narain	2-6	0-1	0-0	1	2	4	0	1	0	0	18
Team				2							
<b>Totals</b>	<b>32-57</b>	<b>4-12</b>	<b>13-21</b>	<b>37</b>	<b>13</b>	<b>81</b>	<b>18</b>	<b>13</b>	<b>8</b>	<b>8</b>	<b>200</b>

**Halftime:** San Diego State 37, San Diego Christian 23. **FG%:** San Diego State 56.1, San Diego Christian 32.3. **3FG%:** San Diego Christian 37.9, San Diego State 33.3. **FT%:** San Diego Christian 87.5, San Diego State 61.9. **Officials:** Mike Scyphers, Keith Kimble, James Schipper. **Technical:** Isaiah Milan - San Diego Christian - 2.

# SAN DIEGO STATE SCHEDULE/RESULTS

Record: 2-1 (Home: 2-0, Away: 0-1, Neutral: 0-0)

Mountain West: 0-0 (Home: 0-0, Away: 0-0)

Date	SDSU NR	Opponent	SDSU Result	W-L	Record	MW	Scorer	San Diego State High Rebounder	Assists	Attendance
Nov. 11	rv/rv	SAN DIEGO	W 69-59	W1	1-0		Hemsley - 25	Williams - 5	Hemsley, Kell - 2	12,414 (c)
Nov. 14	rv/rv	at [14/14] Gonzaga	L 48-69	L1	1-1		Kell, Hemsley - 14	Cheatham, Gill-Caesar - 6	Cheatham, Hemsley - 2	6,000 (c)
Nov. 16	rv/rv	SAN DIEGO CHRISTIAN	W 81-58	W2	2-1		Hemsley - 23	Allen, Williams - 9	Hemsley - 5	12,414 (c)
Nov. 21		vs. California~								
Nov. 28		SAVANNAH STATE								
Dec. 3		at Loyola								
Dec. 7		at Grand Canyon								
Dec. 10		ARIZONA STATE								
Dec. 12		ALABAMA STATE								
Dec. 22		vs. Southern Miss#								
Dec. 23		vs. TBD#								
Dec. 25		vs. TBD#								
Jan. 1		NEW MEXICO*								
Jan. 4		at Nevada*								
Jan. 7		at Boise State*								
Jan. 10		SAN JOSÉ STATE*								
Jan. 14		UTAH STATE*								
Jan. 17		at UNLV*								
Jan. 24		at Air Force*								
Jan. 28		COLORADO STATE*								
Jan. 31		WYOMING*								
Feb. 4		at Fresno State*								
Feb. 7		at San José State*								
Feb. 12		NEVADA*								
Feb. 15		at Utah State*								
Feb. 19		UNLV*								
Feb. 22		FRESNO STATE*								
Feb. 25		at Colorado State*								
March 1		AIR FORCE*								
March 4		at New Mexico*								

Caps denotes home game. ~ - Golden 1 Center (Sacramento, Calif.). # - Hawaiian Airlines Diamond Head Classic (Stan Sheriff Center; Honolulu, Hawaii). \* - Mountain West Game. ` - Mountain West Men's Basketball Championship (Thomas & Mack Center; Las Vegas, Nevada). c - Capacity crowd. SDSU NR - San Diego State national ranking (*Associated Press* and *USA Today* coaches polls at game time). Time to the right of opponent name indicates time remaining on a game-winning shot.

## Record/Attendance Summary

	G	W-L	Total	Average	High	
Home	2	2-0	24,828	12,414	12,414 - two times	** 74 consecutive regular-season sellouts
Mountain West						
Away	1	0-1	6,000	6,000	6,000 at Gonzaga (Nov. 14)	
Mountain West						
Neutral						
Total	3	2-1	30,828	10,276	12,414 - two times	
Mountain West						

## Win/Loss Margin

	1	2	3	4	5	6	7	9	10	11	12	13	14	15	16	17	18	19	20	21	23	=<3	=<5	=<10
Win									1											1				1
Loss																				1				



SEASON STATS

Record: 2-1 (Home: 2-0, Away: 0-1, Neutral: 0-0)

No.	Player	GP	GS	Min	Avg	TOTAL			3-PTS			FT	FTA	Pct	REBOUNDS								PF	FO	A	TO	Blk	Stl	Pts	Avg
						FG	FGA	Pct	3FG	FGA	Pct				Off	Def	Tot	Avg												
42	HEMSLEY, Jeremy	3	3	92	30.7	23	41	.561	9	15	.600	7	10	.700	0	10	10	3.3	4	0	9	7	1	5	62	20.7				
03	KELL, Trey	3	3	101	33.7	18	41	.439	3	13	.231	17	22	.773	2	12	14	4.7	2	0	7	5	2	4	56	18.7				
14	CHEATHAM, Zylan	3	3	100	33.3	9	20	.450	0	2	.000	9	11	.818	4	13	17	5.7	6	0	5	9	2	5	27	9.0				
04	ALLEN, Dakarai	3	3	83	27.7	10	21	.476	1	6	.167	5	9	.556	1	17	18	6.0	8	0	5	2	7	5	26	8.7				
11	WILLIAMS, D'Erryl	3	0	66	22.0	4	8	.500	2	2	1.000	0	0	.000	2	12	14	4.7	8	0	4	2	0	3	10	3.3				
23	GILL-CAESAR, Montagu	3	2	60	20.0	3	16	.188	1	6	.167	2	4	.500	1	10	11	3.7	4	0	0	4	0	0	9	3.0				
24	NARAIN, Nolan	3	0	32	10.7	3	10	.300	0	2	.000	0	0	.000	0	1	1	0.3	4	0	0	1	0	0	6	2.0				
45	IZUNDU, Valentine	2	1	40	20.0	1	2	.500	0	0	.000	0	1	.000	4	4	8	4.0	3	0	0	1	4	0	2	1.0				
20	SHRIGLEY, Matt	1	0	14	14.0	0	2	.000	0	2	.000	0	0	.000	1	2	3	3.0	0	0	0	0	0	0	0	0.0				
12	WILSON, Emmanuel	1	0	12	12.0	0	3	.000	0	2	.000	0	0	.000	0	0	0	0.0	3	0	0	3	1	1	0	0.0				
TEAM															5	7	12	4.0	0			1				0				
SAN DIEGO STATE		3				71	164	.433	16	50	.320	40	57	.702	20	88	108	36.0	42	0	30	35	17	23	198	66.0				
OPPONENTS		3				70	177	.395	25	68	.368	21	32	.656	25	82	107	35.7	60	-	38	38	12	19	186	62.0				

SCORE BY PERIODS:	1st	2nd	OT	2OT	Total
SAN DIEGO STATE	93	105			198
OPPONENTS	92	94			186

Mountain West: 0-0 (Home: 0-0, Away: 0-0)

# HOME/AWAY STATS

Home: 2-0

No.	Player	GP	GS	Min	Avg	TOTAL			3-PTS			FT	FTA	Pct	REBOUNDS								PF	FO	A	TO	Blk	Stl	Pts	Avg
						FG	FGA	Pct	3FG	FGA	Pct				Off	Def	Tot	Avg												
42	HEMSLEY, Jeremy	2	2	60	30.0	18	27	.667	7	9	.778	5	8	.625	0	6	6	3.0	4	0	7	2	1	4	48	24.0				
03	KELL, Trey	2	2	66	33.0	14	26	.538	3	8	.375	11	15	.733	1	9	10	5.0	2	0	6	3	2	2	42	21.0				
14	CHEATHAM, Zylan	2	2	69	34.5	8	17	.471	0	2	.000	7	9	.778	4	7	11	5.5	3	0	3	6	1	4	23	11.5				
04	ALLEN, Dakarai	2	2	56	28.0	8	14	.571	0	4	.000	5	8	.625	1	12	13	6.5	6	0	5	2	5	5	21	10.5				
11	WILLIAMS, D'Erryl	2	0	59	29.5	3	6	.500	1	1	1.000	0	0	.000	2	12	14	7.0	6	0	4	1	0	2	7	3.5				
24	NARAIN, Nolan	2	0	22	11.0	3	7	.429	0	1	.000	0	0	.000	0	1	1	0.5	3	0	0	1	0	0	6	3.0				
23	GILL-CAESAR, Montagu	2	2	40	20.0	1	8	.125	0	2	.000	1	2	.500	1	4	5	2.5	3	0	0	2	0	0	3	1.5				
45	IZUNDU, Valentine	1	0	16	16.0	0	0	.000	0	0	.000	0	1	.000	2	1	3	3.0	0	0	0	0	2	0	0	0.0				
12	WILSON, Emmanuel	1	0	12	12.0	0	3	.000	0	2	.000	0	0	.000	0	0	0	0.0	3	0	0	3	1	1	0	0.0				
TEAM															2	3	5	2.5	0			0				0				
SAN DIEGO STATE		2				55	108	.509	11	29	.379	29	43	.674	13	55	68	34.0	30	0	25	20	12	18	150	75.0				
OPPONENTS		2				44	111	.396	17	44	.386	12	18	.667	15	47	62	31.0	43	-	22	31	4	6	117	58.5				

SCORE BY PERIODS:	1st	2nd	OT	2OT	Total
SAN DIEGO STATE	72	78			150
OPPONENTS	56	61			117

Road/Neutral: 0-1 (Away: 0-1, Neutral: 0-0)

No.	Player	GP	GS	Min	Avg	TOTAL			3-PTS			REBOUNDS														Pts	Avg
						FG	FGA	Pct	3FG	FGA	Pct	FT	FTA	Pct	Off	Def	Tot	Avg	PF	FO	A	TO	Blk	Stl			
03	KELL, Trey	1	1	35	35.0	4	15	.267	0	5	.000	6	7	.857	1	3	4	4.0	0	0	1	2	0	2	14	14.0	
42	HEMSLEY, Jeremy	1	1	32	32.0	5	14	.357	2	6	.333	2	2	1.000	0	4	4	4.0	0	0	2	5	0	1	14	14.0	
23	GILL-CAESAR, Montagu	1	0	20	20.0	2	8	.250	1	4	.250	1	2	.500	0	6	6	6.0	1	0	0	2	0	0	6	6.0	
04	ALLEN, Dakarai	1	1	27	27.0	2	7	.286	1	2	.500	0	1	.000	0	5	5	5.0	2	0	0	0	2	0	5	5.0	
14	CHEATHAM, Zylan	1	1	31	31.0	1	3	.333	0	0	.000	2	2	1.000	0	6	6	6.0	3	0	2	3	1	1	4	4.0	
11	WILLIAMS, D'Erryl	1	0	7	7.0	1	2	.500	1	1	1.000	0	0	.000	0	0	0	0.0	2	0	0	1	0	1	3	3.0	
30	IZUNDU, Valentine	1	1	24	24.0	1	2	.500	0	0	.000	0	0	.000	2	3	5	5.0	3	0	0	1	2	0	2	2.0	
20	SHRIGLEY, Matt	1	0	14	14.0	0	2	.000	0	2	.000	0	0	.000	1	2	3	3.0	0	0	0	0	0	0	0	0.0	
24	NARAIN, Nolan	1	0	10	10.0	0	3	.000	0	1	.000	0	0	.000	0	0	0	0.0	1	0	0	0	0	0	0	0.0	
TEAM															3	4	7	7.0	0			1			0		
SAN DIEGO STATE		1				16	56	.286	5	21	.238	11	14	.786	7	33	40	40.0	12	0	5	15	5	5	48	48.0	
OPPONENTS		1				26	66	.394	8	24	.333	9	14	.643	10	35	45	45.0	17	-	16	7	8	13	69	69.0	

SCORE BY PERIODS:	1st	2nd	OT	2OT	Total
SAN DIEGO STATE	21	27			48
OPPONENTS	36	33			69

## WIN/LOSS STATS

Wins: 2

No.	Player	GP	GS	Min	Avg	TOTAL			3-PTS			FT	FTA	Pct	REBOUNDS				PF	FO	A	TO	Blk	Stl	Pts	Avg
						FG	FGA	Pct	3FG	FGA	Pct				Off	Def	Tot	Avg								
42	HEMSLEY, Jeremy	2	2	60	30.0	18	27	.667	7	9	.778	5	8	.625	0	6	6	3.0	4	0	7	2	1	4	48	24.0
03	KELL, Trey	2	2	66	33.0	14	26	.538	3	8	.375	11	15	.733	1	9	10	5.0	2	0	6	3	2	2	42	21.0
14	CHEATHAM, Zylan	2	2	69	34.5	8	17	.471	0	2	.000	7	9	.778	4	7	11	5.5	3	0	3	6	1	4	23	11.5
04	ALLEN, Dakarai	2	2	56	28.0	8	14	.571	0	4	.000	5	8	.625	1	12	13	6.5	6	0	5	2	5	5	21	10.5
11	WILLIAMS, D'Erryl	2	0	59	29.5	3	6	.500	1	1	1.000	0	0	.000	2	12	14	7.0	6	0	4	1	0	2	7	3.5
24	NARAIN, Nolan	2	0	22	11.0	3	7	.429	0	1	.000	0	0	.000	0	1	1	0.5	3	0	0	1	0	0	6	3.0
23	GILL-CAESAR, Montagu	2	2	40	20.0	1	8	.125	0	2	.000	1	2	.500	1	4	5	2.5	3	0	0	2	0	0	3	1.5
45	IZUNDU, Valentine	1	0	16	16.0	0	0	.000	0	0	.000	0	1	.000	2	1	3	3.0	0	0	0	0	2	0	0	0.0
12	WILSON, Emmanuel	1	0	12	12.0	0	3	.000	0	2	.000	0	0	.000	0	0	0	0.0	3	0	0	3	1	1	0	0.0
TEAM																2	3	5	2.5	0		0			0	
SAN DIEGO STATE		2				55	108	.509	11	29	.379	29	43	.674	13	55	68	34.0	30	0	25	20	12	18	150	75.0
OPPONENTS		2				44	111	.396	17	44	.386	12	18	.667	15	47	62	31.0	43	-	22	31	4	6	117	58.5

SCORE BY PERIODS:	1st	2nd	OT	2OT	Total
SAN DIEGO STATE	72	78			150
OPPONENTS	56	61			117

Losses: 1

No.	Player	GP	GS	Min	Avg	TOTAL			3-PTS			FT	FTA	Pct	REBOUNDS				PF	FO	A	TO	Blk	Stl	Pts	Avg
						FG	FGA	Pct	3FG	FGA	Pct				Off	Def	Tot	Avg								
03	KELL, Trey	1	1	35	35.0	4	15	.267	0	5	.000	6	7	.857	1	3	4	4.0	0	0	1	2	0	2	14	14.0
42	HEMSLEY, Jeremy	1	1	32	32.0	5	14	.357	2	6	.333	2	2	1.000	0	4	4	4.0	0	0	2	5	0	1	14	14.0
23	GILL-CAESAR, Montagu	1	0	20	20.0	2	8	.250	1	4	.250	1	2	.500	0	6	6	6.0	1	0	0	2	0	0	6	6.0
04	ALLEN, Dakarai	1	1	27	27.0	2	7	.286	1	2	.500	0	1	.000	0	5	5	5.0	2	0	0	0	2	0	5	5.0
14	CHEATHAM, Zylan	1	1	31	31.0	1	3	.333	0	0	.000	2	2	1.000	0	6	6	6.0	3	0	2	3	1	1	4	4.0
11	WILLIAMS, D'Erryl	1	0	7	7.0	1	2	.500	1	1	1.000	0	0	.000	0	0	0	0.0	2	0	0	1	0	1	3	3.0
30	IZUNDU, Valentine	1	1	24	24.0	1	2	.500	0	0	.000	0	0	.000	2	3	5	5.0	3	0	0	1	2	0	2	2.0
20	SHRIGLEY, Matt	1	0	14	14.0	0	2	.000	0	2	.000	0	0	.000	1	2	3	3.0	0	0	0	0	0	0	0	0.0
24	NARAIN, Nolan	1	0	10	10.0	0	3	.000	0	1	.000	0	0	.000	0	0	0	0.0	1	0	0	0	0	0	0	0.0
TEAM																3	4	7	7.0	0		1			0	
SAN DIEGO STATE		1				16	56	.286	5	21	.238	11	14	.786	7	33	40	40.0	12	0	5	15	5	5	48	48.0
OPPONENTS		1				26	66	.394	8	24	.333	9	14	.643	10	35	45	45.0	17	-	16	7	8	13	69	69.0

SCORE BY PERIODS:	1st	2nd	OT	2OT	Total
SAN DIEGO STATE	21	27			48
OPPONENTS	36	33			69

## TEAM GAME-BY-GAME

[illegible]

## TEAM GAME-BY-GAME

[illegible]



# INDIVIDUAL GAME-BY-GAME (POINTS/REBS./ASTS.)

	2	3	4	5	10	11	12	14	20	21	23	24	33	42	45
	Ben	Trey	Dakarai	Jalen	Max	D'Erryl	Emmanuel	Zylan	Matt	Malik	Montaque	Nolan	Niksha	Jeremy	Valentine
Opponent	Perez	Kell	Allen	McDaniels	Hoetzel	Williams	Wilson	Cheatham	Shrigley	Pope	Gill-Caesar	Narain	Federico	Hemsley	Izundu
SAN DIEGO	INJ	23/4/2	6/4/1	CD	INJ	3/5/1	CD	8/4/1	INJ	INJ	2/4/0	2/0/0	DND	25/4/2	0/3/0
at [14/14] Gonzaga	DNT	14/4/1	5/5/0	CD	DNT	3/0/0	DNT	4/6/2	0/3/0	INJ	6/6/0	DNT	DNT	14/4/2	2/5/0
SAN DIEGO CHRISTIAN	INJ	19/6/4	15/9/4	CD	INJ	4/9/3	0/0/0	15/7/2	INJ	INJ	1/1/0	4/1/0	DND	23/2/5	INJ
vs. California~															
SAVANNAH STATE															
at Loyola															
at Grand Canyon															
ARIZONA STATE															
ALABAMA STATE															
vs. Southern Miss#															
vs. TBD#															
vs. TBD#															
NEW MEXICO*															
at Nevada*															
at Boise State*															
SAN JOSÉ STATE*															
UTAH STATE*															
at UNLV*															
at Air Force*															
COLORADO STATE*															
WYOMING*															
at Fresno State*															
at San José State*															
NEVADA*															
at Utah State															
UNLV*															
FRESNO STATE*															
at Colorado State															
AIR FORCE*															
at New Mexico*															

Red indicates players started. CD – Did Not Play-Coach's Decision. DND - Did Not Dress. DNT - Did Not Travel. INJ – Did Not Play-Injured. SUSP - Suspension. Caps denotes home game. ~ - Golden I Center (Sacramento, Calif.).  
 # - Hawaiian Airlines Diamond Head Classic (Stan Sheriff Center; Honolulu, Hawaii). \* – Mountain West Game. ` - Mountain West Men's Basketball Championship (Thomas & Mack Center; Las Vegas, Nevada).

## STARTING LINEUPS

F / G	F / G	F / C	G	G	W-L	Record As SDSU Starter	Season	Career*
Allen	Gill-Caesar	Cheatham	Kell	Hemsley	2-0	Dakarai Allen	2-1	15-6
Allen	Izundu	Cheatham	Kell	Hemsley	0-1	Zylan Cheatham	2-1	23-6
						Montaque Gill-Caesar	2-0	2-0
						Jeremy Hemsley	2-1	20-8
						Valentine Izundu	0-1	0-1
						Trey Kell	2-1	41-15
						Malik Pope		11-5
						Matt Shrigley		17-3
						* Aztec career		

# INDIVIDUAL SUPERLATIVES

Category	San Diego State	Opponent
Points Scored	25 - Jeremy Hemsley vs. San Diego (11-11-16)	19 - Isaiah Milan, San Diego Christian (11-16-16)
Field Goals	9 - Jeremy Hemsley vs. San Diego Christian (11-16-16), vs. San Diego (11-11-16)	7 - Isaiah Milan, San Diego Christian (11-16-16)
Field Goals Attempted	16 - Trey Kell vs. San Diego (11-11-16)	14 - Isaiah Milan, San Diego Christian (11-16-16), Olin Carter III, San Diego (11-11-16)
Highest FG Percentage (min. 5 made)	.750 (9-12) - Jeremy Hemsley vs. San Diego Christian (11-16-16)	.857 (6-7) - Zach Collins, Gonzaga (11-14-16)
Highest FG Percentage (min. 10 made)	N/A	N/A
3-Point Field Goals Made	4 - Jeremy Hemsley vs. San Diego (11-11-16)	5 - Jordan Mathews, Gonzaga (11-14-16)
3-Point Field Goals Attempted	7 - Trey Kell vs. San Diego (11-11-16)	7 - Jordan Mathews, Gonzaga (11-14-16), Olin Carter III, San Diego (11-11-16)
3-Point Field Goal Percentage (min. 4 made)	.800 (4-5), Jeremy Hemsley vs. San Diego (11-11-16)	1.000 (4-4) - Luis Salgado, San Diego Christian (11-16-16)
3-Point Field Goal Percentage (min. 5 made)	N/A	.714 (5-7) - Jordan Mathews, Gonzaga (11-14-16)
Free Throws	7 - Trey Kell vs. San Diego (11-11-16)	4 - Nigel Williams-Goss, Gonzaga (11-14-16)
Free Throws Attempted	9 - Trey Kell vs. San Diego (11-11-16)	4 - I. Milan, SDC (11-16-16), N. Williams-Goss, GU (11-14-16), N. Barrino, USD (11-11-16)
Free Throw Percentage (min. 7 made)	.778 (7-9) - Trey Kell vs. San Diego (11-11-16)	N/A
Free Throw Percentage (min. 10 made)	N/A	N/A
Offensive Rebounds	2 - five times	3 - Zach Collins, Johnathan Williams, Gonzaga (11-14-16)
Defensive Rebounds	9 - Dakarai Allen vs. San Diego Christian (11-16-16)	8 - Killian Tillie, Nigel Williams-Goss, Gonzaga (11-14-16); Brett Bailey, San Diego (11-11-16)
Total Rebounds	9 - Dakarai Allen, D'Erryl Williams vs. San Diego Christian (11-16-16)	10 - Killian Tillie, Gonzaga (11-14-16)
Assists	5 - Jeremy Hemsley vs. San Diego Christian (11-16-16)	3 - Five times
Blocked Shots	5 - Dakarai Allen vs. San Diego Christian (11-16-16)	2 - Zach Collins, Jordan Mathews, Gonzaga (11-14-16)
Steals	3 - Z. Cheatham vs. SD Christian (11-16-16), D. Allen, J. Hemsley vs. USD (11-11-16)	3 - three times
Minutes Played	36 - Dakarai Allen vs. SD Christian (11-16-16), Zylan Cheatham vs. USD (11-11-16)	37 - Olin Carter III, San Diego (11-11-16)

# TEAM SUPERLATIVES

SDSU High	SDSU Low	Category	Opponent High	Opponent Low
81 vs. San Diego Christian (11-16-16)	48 at Gonzaga (11-14-16)	Points Scored	69, Gonzaga (11-14-16)	58, San Diego Christian (11-16-16)
32 vs. San Diego Christian (11-16-16)	16 at Gonzaga (11-14-16)	Field Goals	26, Gonzaga (11-14-16)	20, San Diego Christian (11-16-16)
57 vs. San Diego Christian (11-16-16)	51 vs. San Diego (11-11-16)	Field Goals Attempted	66, Gonzaga (11-14-16)	49, San Diego (11-11-16)
.561 vs. San Diego Christian (11-16-16)	.286 at Gonzaga (11-14-16)	FG Percentage	.490, San Diego (11-11-16)	.323, San Diego Christian (11-16-16)
7 vs. San Diego (11-11-16)	4 vs. San Diego Christian (11-16-16)	3-Point Field Goals Made	11, San Diego Christian (11-16-16)	6, San Diego (11-11-16)
21 at Gonzaga (11-14-16)	12 vs. San Diego Christian (11-16-16)	3-Point Field Goals Attempted	29, San Diego Christian (11-16-16)	15, San Diego (11-11-16)
.412 vs. San Diego (11-11-16)	.238 at Gonzaga (11-14-16)	3-Point Field Goal Percentage	.400, San Diego (11-11-16)	.333, Gonzaga (11-14-16)
16 vs. San Diego (11-11-16)	11 at Gonzaga (11-14-16)	Free Throws Made	9, Gonzaga (11-14-16)	5, San Diego (11-11-16)
22 vs. San Diego (11-11-16)	14 at Gonzaga (11-14-16)	Free Throws Attempted	14, Gonzaga (11-14-16)	8, San Diego Christian (11-16-16)
.786 at Gonzaga (11-14-16)	.619 vs. San Diego Christian (11-16-16)	Free Throw Percentage	.875, San Diego Christian (11-16-16)	.500, San Diego (11-11-16)
10 vs. San Diego (11-11-16)	3 vs. San Diego Christian (11-16-16)	Offensive Rebounds	10, Gonzaga (11-14-16)	7, San Diego (11-11-16)
34 vs. San Diego Christian (11-16-16)	21 vs. San Diego (11-11-16)	Defensive Rebounds	35, Gonzaga (11-14-16)	21, San Diego (11-11-16)
40 at Gonzaga (11-14-16)	31 vs. San Diego (11-11-16)	Total Rebounds	45, Gonzaga (11-14-16)	28, San Diego (11-11-16)
17 vs. San Diego (11-11-16)	12 at Gonzaga (11-14-16)	Fouls	23, San Diego (11-11-16)	17, Gonzaga (11-14-16)
0 - three times	0 - three times	Fouled Out	1, San Diego (11-11-16)	0 - two times
18 vs. San Diego Christian (11-16-16)	5 at Gonzaga (11-14-16)	Assists	16, Gonzaga (11-14-16)	10, San Diego (11-11-16)
15 at Gonzaga (11-14-16)	7 vs. San Diego (11-11-16)	Turnovers	17, San Diego Christian (11-16-16)	7, Gonzaga (11-14-16)
8 vs. San Diego Christian (11-16-16)	4 vs. San Diego (11-11-16)	Blocked Shots	8, Gonzaga (11-14-16)	2, SD Christian (11-16-16), USD (11-11-16)
10 vs. San Diego (11-11-16)	5 at Gonzaga (11-14-16)	Steals	13, Gonzaga (11-14-16)	0, San Diego (11-11-16)
44 (2nd) vs. San Diego Christian (11-16-16)	21 (1st) at Gonzaga (11-14-16)	Points/Half	36 (1st), Gonzaga (11-14-16)	23 (1st), San Diego Christian (11-16-16)
.600 (2nd) vs. San Diego Christian (11-16-16)	.207 (1st) at Gonzaga (11-14-16)	FG Percentage/Half	.542 (1st), San Diego (11-11-16)	.222 (1st), San Diego Christian (11-16-16)
4 vs. San Diego Christian (11-16-16)	2 - two times	Double-Figure Scorers	3, Gonzaga (11-14-16)	2, SD Christian (11-16-16), San Diego (11-11-16)
+3 vs. SD Christian (11-16-16), vs. USD (11-11-16)	-5 at Gonzaga (11-14-16)	Rebound Margin		
+14 vs. San Diego Christian (11-16-16)	-15 at Gonzaga (11-14-16)	Halftime Scoring Margin		

## BIGGEST LEADS/TIME IN LEAD/SPECIALTY STATS

Date	Opponent	SDSU Result		SDSU Big		Opp Big		Ties	LC	SDSU in		Opp in		Tied	Paint		Off TOs		2nd Ch.		Bench	
				Lead	Lead	Lead	Lead			Lead	Lead	Lead	Lead		SD	Opp	SD	Opp	SD	Opp	SD	Opp
Nov. 11	SAN DIEGO	W	69-59	19	9	3	9			21:35	16:15	1:51			32	30	13	7	8	8	5	11
Nov. 14	at [14/14] Gonzaga	L	48-69	4	30	1	1			2:23	33:45	3:52			22	34	8	25	6	9	9	28
Nov. 16	SAN DIEGO CHRISTIAN	W	81-58	15	0	0	0			38:17	0:00	1:43			14	4	12	3	0	7	4	14
Nov. 21	vs. California~																					
Nov. 28	SAVANNAH STATE																					
Dec. 3	at Loyola																					
Dec. 7	at Grand Canyon																					
Dec. 10	ARIZONA STATE																					
Dec. 12	ALABAMA STATE																					
Dec. 22	vs. Southern Miss#																					
Dec. 23	vs. TBD#																					
Dec. 25	vs. TBD#																					
Jan. 1	NEW MEXICO*																					
Jan. 4	at Nevada*																					
Jan. 7	at Boise State*																					
Jan. 10	SAN JOSÉ STATE*																					
Jan. 14	UTAH STATE*																					
Jan. 17	at UNLV*																					
Jan. 24	at Air Force*																					
Jan. 28	COLORADO STATE*																					
Jan. 31	WYOMING*																					
Feb. 4	at Fresno State*																					
Feb. 7	at San José State*																					
Feb. 12	NEVADA*																					
Feb. 15	at Utah State*																					
Feb. 19	UNLV*																					
Feb. 22	FRESNO STATE*																					
Feb. 25	at Colorado State*																					
March 1	AIR FORCE*																					
March 4	at New Mexico*																					

Caps denotes home game. ~ - Golden 1 Center (Sacramento, Calif.). # - Hawaiian Airlines Diamond Head Classic (Stan Sheriff Center; Honolulu, Hawaii). \* - Mountain West Game. ` - Mountain West Men's Basketball Championship (Thomas & Mack Center; Las Vegas, Nevada).

LEADS AND DEFICITS	SEASON	MOUNTAIN WEST GAME
SDSU Biggest Halftime Lead	14 vs. San Diego Christian (11-16-16)	
SDSU Biggest Halftime Lead Lost	2 vs. San Diego (11-11-16)	
SDSU Biggest Halftime Lead Lost in a Loss	N/A	
SDSU Biggest Halftime Deficit	15 at Gonzaga (11-14-16)	
SDSU Biggest Halftime Deficit Overcome	N/A	
SDSU Biggest Halftime Deficit Overcome for Victory	N/A	
SDSU Biggest Lead	19 vs. San Diego (11-11-16)	
SDSU Biggest Lead Lost	4 at Gonzaga (11-11-16), vs. San Diego (11-11-16)	
SDSU Biggest Lead Lost in a Loss	4 at Gonzaga (11-11-16)	
SDSU Biggest Deficit	30 at Gonzaga (11-11-16)	
SDSU Biggest Deficit Overcome	9 vs. San Diego (11-11-16)	
SDSU Biggest Deficit Overcome in a Victory	9 vs. San Diego (11-11-16)	

# MISCELLANEOUS STATISTICS

SEASON	Team Leader -----			Games With -----					Double-Doubles	
	Points	Rebounds	Assists	10+ Pts	20+Pts	30+Pts	10+Rebs	10+Ast	Point/Reb.	Point/Ast.
Dakarai Allen		1		1						
Zylan Cheatham		1	1	1						
Niksha Federico										
Montaque Gill-Caesar		1								
Jeremy Hemsley	3		3	3	2					
Max Hoetzel										
Valentine Izundu										
Trey Kell	1		1	3	1					
Jalen McDaniels										
Nolan Narain										
Ben Perez										
Malik Pope										
Matt Shrigley										
D'Erryl Williams		2								
Emmanuel Wilson										

CAREER	Team Leader -----			Games With -----					Double-Doubles	
	Points	Rebounds	Assists	10+ Pts	20+Pts	30+Pts	10+Rebs	10+Ass.	Point/Reb.	Point/Ast.
Dakarai Allen	2	3	5	13						
Zylan Cheatham	2	12	5	11			5		2	
Niksha Federico										
Montaque Gill-Caesar		1		13	1					
Jeremy Hemsley	17		16	29	6					
Max Hoetzel				1						
Valentine Izundu				3						
Trey Kell	17	3	12	37	3		1		1	
Jalen McDaniels										
Nolan Narain										
Ben Perez				2						
Malik Pope	7	9	5	15	2		4		4	
Matt Shrigley	1		4	15						
D'Erryl Williams		2	3							
Emmanuel Wilson										

DUNKS	SEASON	GM. HIGH
Zylan Cheatham .....	3	3
Jeremy Hemsley .....	2	1
Dakarai Allen .....	1	1
TOTAL .....	6	5

TOP SCORING PERFORMANCES

25, Jeremy Hemsley vs. San Diego (11-11-16)
23, Jeremy Hemsley vs. San Diego Christian (11-16-16)
23, Trey Kell vs. San Diego (11-11-16)
19, Trey Kell vs. San Diego Christian (11-16-16)
15, Dakarai Allen vs. San Diego Christian (11-16-16)
15, Zylan Cheatham vs. San Diego Christian (11-16-16)

TOP REBOUNDING PERFORMANCES

9, Dakarai Allen vs. San Diego Christian (11-16-16)
9, D'Erryl Williams vs. San Diego Christian (11-16-16)
7, Zylan Cheatham vs. San Diego Christian (11-16-16)
6, Trey Kell vs. San Diego Christian (11-16-16)
6, Zylan Cheathan at Gonzaga (11-14-16)
6, Montaque Gill-Caesar at Gonzaga (11-14-16)

TOP ASSIST PERFORMANCES

5, Jeremy Hemsley vs. San Diego Christian (11-16-16)
4, Dakarai Allen vs. San Diego Christian (11-16-16)
4, Trey Kell vs. San Diego Christian (11-16-16)
3, D'Erryl Williams vs. San Diego Christian (11-16-16)

TOP 3-POINT FG PERFORMANCES

4, Jeremy Hemsley vs. San Diego (11-11-16)
3, Jeremy Hemsley vs. San Diego Christian (11-16-16)
2, Jeremy Hemsley at Gonzaga (11-14-16)
2, Trey Kell vs. San Diego (11-11-16)

TOP STEALS

3, Zylan Cheatham vs. San Diego Christian (11-16-16)
3, Dakarai Allen vs. San Diego (11-11-16)
3, Jeremy Hemsley vs. San Diego (11-11-16)
2, Dakarai Allen vs. San Diego Christian (11-16-16)
2, Zylan Cheatham at Gonzaga (11-14-16)
2, D'Erryl Williams vs. San Diego (11-11-16)

GAMES MISSED

Max Hoetzel .....	3
Ben Perez .....	3
Malik Pope .....	3
Matt Shrigley .....	2
Valentine Izundu .....	1
TOTAL .....	12

\* - conference game. \* - conference tournament game.

# SEASON/CAREER HIGHS

## #2 • BEN PEREZ

	Season	Career
Points		11 vs. Nicholls, 12-10-15
Rebounds		3 - two times
Assists		2 vs. Nicholls, 12-10-15
Steals		2 - three times
Blocked Shots		1 - four times
Minutes		21 vs. Kansas, 12-22-15
10+ Scoring Games		2 times

## #3 • TREY KELL

	Season	Career
Points	23 vs. San Diego, 11-11-16	27 vs. Fresno State*, 1-19-16
Rebounds	6 vs. San Diego Christian, 11-16-16	10 at Nevada*, 1-26-16
Assists	4 vs. San Diego Christian, 11-16-16	25 - two times
Steals	2 at Gonzaga, 11-14-16	4 vs. Colorado State*, 2-2-16
Blocked Shots	1 - two times	2 vs. Utah State, 3-10-16
Minutes	35 - two times	37 - four times
10+ Scoring Games	3 times	37 times
20+ Scoring Games	1 time	3 times

## #4 • DAKARAI ALLEN

	Season	Career
Points	15 vs. San Diego Christian, 11-16-16	16 vs. Illinois State, 11-13-15
Rebounds	9 vs. San Diego Christian, 11-16-16	9 vs. San Diego Christian, 11-16-16
Assists	4 vs. San Diego Christian, 11-16-16	4 - three times
Steals	3 vs. San Diego, 11-11-16	4 - five times
Blocked Shots	5 vs. San Diego Christian, 11-16-16	5 vs. San Diego Christian, 11-16-16
Minutes	36 vs. San Diego Christian, 11-16-16	36 vs. San Diego Christian, 11-16-16
10+ Scoring Games	1 time	13 times

## #5 • JALEN MCDANIELS

	Season/Career
Points	
Rebounds	
Assists	
Steals	
Blocked Shots	
Minutes	

## #10 • MAX HOETZEL

	Season	Career
Points		19 vs. Mississippi Valley State, 11-14-14
Rebounds		9 vs. Mississippi Valley State, 11-14-14
Assists		2 - two times
Steals		1 - four times
Blocked Shots		1 - three times
Minutes		19 vs. Mississippi Valley State, 11-14-14
10+ Scoring Games		1 time

## #11 • D'ERRYL WILLIAMS

	Season	Career
Points	4 vs. San Diego Christian, 11-16-16	9 vs. San Diego Christian, 11-18-15
Rebounds	9 vs. San Diego Christian, 11-16-16	5 vs. San Diego, 11-11-16
Assists	3 vs. San Diego Christian, 11-16-16	4 vs. Nicholls, 12-10-15
Steals	2 vs. San Diego, 11-11-16	2 - five times
Blocked Shots		1 - two times
Minutes	30 vs. San Diego Christian, 11-16-16	30 vs. San Diego Christian, 11-16-16

## #12 • EMMANUEL WILSON

	Season/Career
Points	
Rebounds	
Assists	
Steals	
Blocked Shots	
Minutes	

## #14 • ZYLAN CHEATHAM

	Season	Career
Points	15 vs. San Diego Christian, 11-16-16	17 vs. San José State*, 1-6-16
Rebounds	7 vs. San Diego Christian, 11-16-16	11 vs. Grand Canyon, 12-18-15
Assists	2 - two times	4 vs. Kansas, 12-22-15
Steals	3 vs. San Diego Christian, 11-16-16	2 - four times
Blocked Shots	1 - two times	4 at Fresno State*, 2-10-16

Minutes	36 vs. San Diego, 11-11-16	36 vs. San Diego, 11-11-16
10+ Scoring Games	1 time	11 times
10+ Rebounding Games		6 times
Double-Doubles		2 times

## #20 • MATT SHRIGLEY

	Season	Career
Points		16 at Colorado State*, 1-24-15
Rebounds	3 at Gonzaga (11-14-16)	5 - four times
Assists		6 vs. Air Force*, 2-13-16
Steals		3 at Wyoming*, 1-14-15
Blocked Shots		3 at Air Force*, 1-20-15
Minutes	14 at Gonzaga (11-14-16)	28 at Colorado State*, 1-24-15
10+ Scoring Games		15 times

## #21 • MALIK POPE

	Season	Career
Points		22 at Colorado State*, 1-24-15
Rebounds		12 vs. Washington^, 3-21-16
Assists		5 vs. UNLV*, 3-5-16
Steals		2 - three times
Blocked Shots		3 - four times
Minutes		37 at New Mexico* (3-1-16)
10+ Scoring Games		16 times
20+ Scoring Games		2 times
Double-Doubles		4 times

## #23 • MONTAQUE GILL-CAESAR

	Season	Career
Points	6 at Gonzaga, 11-14-16	21 vs. UMKC, 11-14-14
Rebounds	6 at Gonzaga, 11-14-16	7 vs. UMKC, 11-14-14
Assists		3 vs. Florida, 2-24-15
Steals		3 at Chaminade, 11-26-14
Blocked Shots		1 - two times
Minutes	32 vs. San Diego, 11-11-16	36 vs. UMKC, 11-14-14
10+ Scoring Games		13 times

## #24 • NOLAN NARAIN

	Season/Career
Points	4 vs. San Diego Christian, 11-16-16
Rebounds	1 vs. San Diego Christian, 11-16-16
Assists	
Steals	
Blocked Shots	
Minutes	18 vs. San Diego Christian, 11-16-16

## #33 • NIKSHA FEDERICO

	Season	Career
Points		6 vs. San José State*, 2-25-14
Rebounds		1 - five times
Assists		1 - two times
Steals		
Blocked Shots		1 vs. San Diego Christian, 12-27-14
Minutes		4 vs. St. Katherine, 12-27-13

## #42 • JEREMY HEMSLEY

	Season	Career
Points	25 vs. San Diego, 11-11-16	25 vs. San Diego, 11-11-16
Rebounds	4 - two times	6 - three times
Assists	5 vs. San Diego Christian, 11-16-16	6 vs. East Carolina, 11-23-15
Steals	3 vs. San Diego, 11-11-16	4 at Wyoming, 2-24-16
Blocked Shots	1 vs. San Diego Christian, 11-16-16	2 - two times
Minutes	32 - two times	38 vs. New Mexico*, 2-6-16
10+ Scoring Games	3 times	29 times
20+ Scoring Games	2 times	6 times

## #45 • VALENTINE IZUNDU

	Season	Career
Points	2 at Gonzaga, 11-14-16	10 - three times
Rebounds	5 at Gonzaga, 11-14-16	7 - two times
Assists		2 vs. New Mexico, 12-25-15
Steals		1 - eight times
Blocked Shots	2 - two times	6 vs. Idaho State, 11-20-15
Minutes	24 at Gonzaga, 11-14-16	27 vs. New Mexico, 12-25-15
10+ Scoring Games		3 times



# MISCELLANEOUS STATISTICS

## San Diego State's Record When...

Category	2016-17 Season	Fisher Era	SDSU Streak	Note
Home	2-0	220-57	Won 6	SDSU is 48-5 in its last 53 home games and 32-2 in its last 34 Mountain West home games (since Jan. 26, 2013)
Away	0-1	101-109	Lost 1	SDSU is 51-21 in its last 72 road games; Aztecs are 50-14 in last 64 road games vs. non-AP top 25 teams
Neutral		48-29	Lost 2	Aztecs have won 28 of the last 44 games at neutral sites
Scoring First	1-1		Won 1	SDSU is 106-25 in its last 131 games in which it has scored first
Opponent Scores First	1-0		Won 1	SDSU is 65-22 in its last 87 games in which the opponent has scored first
Leading at Half	2-0	285-45	Won 11	SDSU is 46-2 in its last 48 games when ahead at half. Last Loss: at Fresno State (2-10-16); <b>64-1 in last 65 at home when leading at half</b>
Trailing at Half	0-1	68-145	Lost 4	SDSU is 4-4 the last eight times trailing at the half and 30-36 since the beginning of the 2010-11 season when trailing at halftime
Tied at Half		16-6	Won 1	SDSU is 7-3 in last 10 games that have been tied at half
Leading with 5:00 Left	2-0		Won 8	Won 237 of last 239 times; SDSU had 164-game winning streak snapped vs. Boise State (2-27-16); Last previous loss: at Wyoming (1-9-10)
Trailing with 5:00 Left	0-1		Lost 3	SDSU is 7-35 in its last 42; Last wins: vs. Boise (2-6-13), at USU (1-25-14), vs. LBSU (12-10-14), at UNLV (3-4-15), at UN (1-26-16), vs. USU (3-10-16)
Tied with 5:00 Left			Lost 1	SDSU is 3-1 in last 4; at Boise (2-5-14), at UNLV (3-1-14), at CSU (1-13-16), at Fresno (2-10-16) are recent games that were tied
In Overtime		21-14	Won 2	SDSU is 20-2 in its last 22 overtime games; Last loss: at Cincinnati (12-17-14); Won last seven overtime games played at home
SDSU Outrebounds Opp.	2-0	272-81	Won 5	SDSU is 19-2 in its last 21 and 129-21 in its last 150 games when outrebounding foe. Last loss: vs. Fresno State (3-12-16)
SDSU is Outrebounded	0-1	87-108	Lost 2	SDSU is 36-23 in its last 59 games when outrebounded ; Last win: vs. Utah State (3-10-16)
Opp. Commits More TOs	2-0	218-62	Won 16	SDSU is 35-2 in its last 37 when committing fewer turnovers. Last loss: vs. Wyoming (3-14-15)
SDSU Commits More TOs	0-1	126-120	Lost 2	SDSU is 58-28 in its last 86 games when committing more turnovers; Last win: vs. Washington (3-21-16)
SDSU More FT Attempts	2-0	272-70	Won 2	SDSU is 127-20 in its last 147 games in the category. Last loss: vs. George Washington (3-29-16)
Opp. More FT Attempts		85-120	Won 1	SDSU is 38-24 in its last 62 games in this category. Last win: at New Mexico (3-1-16)
SDSU Shoots Better than Opp.	1-0	296-41	Won 4	SDSU is 148-8 in last 156 with higher FG pct.. Ls: at UNLV (12), vs. UA (12), vs. UA (14), at Fresno (15), at CSU (15), at Utah (15), at Fresno (16), vs. Fresno (16)
Opp. Shoots Better than SDSU	1-1	68-152	Lost 1	SDSU is 32-38 since the beginning of the 2010-11 season when the opponent has a higher FG pct.; Last win: vs. San Diego (11-11-16)
SDSU Shoots 50% or Better	1-0	125-14	Won 54	Won 54 straight games; Last loss: at No. 15 UNM (2-6-10); <b>Won 62 straight at home when FG pct. &gt;= 50.0 pct. (UNLV, 1-26-02)</b>
SDSU Shoots 40-50%	1-0	184-81	Won 3	SDSU is 85-13 in its last 98 and 60-8 in last 68; Recent Ls: at FSU (1-3-15), at CSU (1-24-15), at Utah (11-16-15), vs. Boise (2-27-16), vs. Fresno (3-12-16)
SDSU Shoots 40% or Less	0-1	60-101	Lost 2	<b>SDSU is 35-3 when shooting 38.9 pct. or better (since Jan. 31, 2015); SDSU is 50-1 since Feb. 22, 2012, at home when shooting at least 38.9 pct.</b>
Opp. Shoots 50% or Better		24-58	Won 1	Duke snapped streak of 41 straight SDSU opponents to less than 50 pct. from the field last season
Opp. Shoots 40-50%	1-0	146-109	Won 1	Losses last season: at No. 16/16 Utah (11-16-15), vs. W. Va. (11-27-15), vs. Kansas (12-22-15), vs. Boise State (2-27-16), vs. GWU (3-29-16)
Opp. Shoots 40% or Less	1-1	199-29	Won 1	SDSU is 109-16 in last 125 games. Last losses: vs. GCU (12-18-15), at Fresno (2-10-16), vs. Fresno (3-12-16), at Gonzaga (11-14-16)
SDSU Bench Outscores Opp.		212-80	Lost 1	SDSU is 114-20 in this category since the beginning of the 2010-11 season; Aztecs are 82-16 in last 98 games
Opp. Bench Outscores SDSU	2-1	148-107	Won 1	SDSU is 52-25 in this category since the beginning of the 2010-11 season
SDSU Scores Less Than 60	0-1	36-73	Lost 3	SDSU is 22-23 in its last 45 games when scoring less than 60 points; Last win: at Nevada (1-26-16)
SDSU Scores Between 60-69	1-0	104-79	Won 1	SDSU is 50-18 in its last 68 games. Last losses: vs. No. 4/5 Arizona (3-27-14), at Cincinnati (12-17-14), vs. Boise (2-27-16), vs. Fresno (3-12-16)
SDSU Scores Between 70-79		140-26	Won 16	The Aztecs are 37-2 in last 39 and 81-5 in their last 86 games when scoring between 70-79 points. Last loss: at No. 16/16 Utah (11-16-15)
SDSU Scores Between 80-89	1-0	67-16	Won 12	SDSU is 19-2 in its last 21 games when scoring between 80-89 points
SDSU Scores Between 90-99		20-2	Won 15	The Aztecs have won 15 straight games and are 20-2 under Steve Fisher in this category
SDSU Scores 100+		2-0	Won 25	The Aztecs have won 25 straight games when reaching triple digits
Opp. Scores Less Than 60	2-0	189-21	Won 8	SDSU is 116-11 in the category in last 127 games; Last losses: vs. San Diego (12-6-15), vs. Grand Canyon (12-18-15), at Fresno (2-10-16) <b>SDSU is 101-4 the last 105 home games when holding the opponent to 60 points or less</b>
Opp. Scores Less Than 50		65-4	Won 1	SDSU is 50-3 in last 53 games in this category (at UW, 12-7-14; vs. Wyoming, 3-14-15; Little Rock, 11-21-15); <b>SDSU is 53-1 under Fisher at home</b>
Opp. Scores Between 50-59	2-0	123-17	Won 8	SDSU is 37-6 in last 43 games in this category; <b>47-2 in last 49 home games; 69-5 under Fisher at home</b>
Opp. Scores Between 60-69	0-1	114-53	Lost 3	SDSU is 46-17 in the category since the start of 2010-11. Last losses: vs. Fresno (3-12-16), vs. GWU (3-29-16), at Gonzaga (11-14-16)
Opp. Scores Between 70-79		59-66	Won 2	SDSU is 16-14 in its last 30 games when allowing between 70-79 points
Opp. Scores Between 80-89		6-39	Lost 1	SDSU is 2-5 since the beginning of the 2010-11 season in this category.
Opp. Scores Between 90-99		1-14	Won 1	SDSU snapped a 24-game losing streak in the category by winning at TCU (3-3-12)
Opp. Scores 100+		0-3	Lost 9	
Wearing Black	1-1		Won 1	SDSU is 10-3 in last 13 and 38-21 in its last 59 games in the black uniforms; Last worn at home vs. San Diego Christian (11-16-16)
Wearing Red			Won 1	Aztecs are 15-5 in their last 20 when wearing red since the start of 2010-11; Last worn: at San Jose State (2-21-15)
Wearing White	1-0		Won 1	SDSU is 113-19 in white uniforms since the beginning of the 2010-11 season
Wearing Retro White		0-2	Lost 2	Wore vs. USD and vs. No. 2/3 Kansas
Wearing Camouflage		0-1	Lost 1	SDSU lost to No. 9/9 Syracuse (11-11-12)
Wearing Pewter Gray		3-1	Won 2	Uniforms made its debut vs. USD (12-15-12); also worn against UNLV (1-16-13), FS (2-9-13), BSU (3-13-13)
Wearing Turquoise		2-0	Won 2	Uniforms made its debut vs. Bakersfield (11-20-14) and new set was worn vs. San Diego Christian (11-18-15)
On Monday	0-1		Lost 1	Aztecs are 9-2 on Monday since the beginning of 2010-11
On Tuesday			Lost 1	SDSU is 29-5 in its last 34 games played on Tuesday. Last loss: vs. George Washington (3-29-16)
On Wednesday	1-0		Won 3	SDSU is 12-1 in last 13 and 42-9 in its last 51 games played on Wednesday
On Thursday			Won 6	Aztecs played just 20 Thursday games since the start of the 2010-11 season
On Friday	1-0		Won 2	SDSU is 22-4 in its last 26 games played on the day
On Saturday			Lost 1	SDSU is 53-18 in its last 71 games played on Saturday
On Sunday			Won 1	The Aztecs have played only 16 Sunday games since the beginning of the 2010-11 campaign (10-6)
In November	2-1		Won 1	SDSU is 32-9 in November since the beginning of the 2010-11 campaign
In December			Won 1	The Aztecs are 40-6 in their last 46 games played in December. Last loss: vs. Kansas (12-22-15)
In January			Won 10	SDSU is 24-2 in last 26 and 40-6 in last 46 January games
In February			Lost 1	SDSU is 23-10 in its last 33 games played during the month
In March			Lost 1	The Aztecs are 43-15 in their last 58 March games