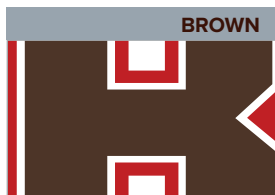




BROWN BASKETBALL

2023-2024 GAME NOTES

FOLLOW US! [f/BrownUMBB](#) [X@BrownU_MBB](#) [@BrownU_MBB](#)
 Contact Kelvin Queliz Email kelvin_queliz@brown.edu Phone (917) 683-6517



RECORD 12-17, 8-6 Ivy

HEAD COACH
 Mike Martin 12th Year
 Brown '04 11th Season

CAREER RECORD
 Overall 147-170
 at Brown same
 vs. Princeton 5-17

ALL-TIME SERIES
 Princeton leads 112-31



RECORD 24-3, 12-2 Ivy

HEAD COACH
 Mitch Henderson 13th Year
 Princeton '98 12th Season

CAREER RECORD
 Overall 232-120
 at Princeton same
 vs. Brown 19-5

LOCATION / HOW TO WATCH
 New York, N.Y. / Columbia University
 ESPNU



RECORD n/a

HEAD COACH
 n/a

CAREER RECORD
 n/a

LOCATION / HOW TO WATCH
 Sunday, March 17 / 12 p.m.
 New York, N.Y. / hosted at Columbia
 University / ESPN2

FOR MORE INFORMATION ON THE ALL-TIME SERIES SEE PAGE THREE.


TIP-OFF

- >> The two hottest teams entering Ivy Madness match up in the semifinals as Brown, winners of six straight, take on #RV Princeton, winners of nine in a row.
- >> Brown is making its debut in Ivy Madness. The 2025 hosts of the amazing event are in the midst of their longest win streak since the 2018-19 season.
- >> **KINO LILLY JR.** became a back-to-back First Team All-Ivy honoree after leading the league in scoring. He's also tops in three-pointers made and minutes played, while **KIMO FERRARI** leads in three-point shooting percentage. **NANA OWUSU-ANANE** has registered 10 double-doubles this season. The junior is averaging career-highs in points and rebounds and was selected Second Team All-Ivy.
- >> Brown has seven wins away from the Pizzitola Sports Center this season.
- >> **MIKE MARTIN '04's** starting lineup change paid dividends as the Bears are 5-1 when starting **KINO LILLY JR., LYNDEL EROLD, ALEXANDER LESBURT JR., KALU ANYA** and **NANA OWUSU-ANANE**.

	BROWN	CONFERENCE	PRINCETON
Points Scored	71.1	72.8	76.9
Points Allowed	71.9	72.5	65.1
Scoring Margin	-0.8	+0.3	11.8
Shooting Percentage	.426	.445	.461
Opponent Shooting	.449	.459	.434
Free Throw Percentage	.654	.675	.813
Three Point Percentage	.342	.365	.362
Rebounding	37.2	35.2	33.7
Opponent Rebounding	34.5	33.3	31.5
Rebounding Margin	+2.7	1.9	2.2
Assists	13.1	13.9	14.7
Turnovers	12.3	11.6	8.1
Ratio	1.1	1.2	1.8
Steals	6.3	6.1	5.4
Blocks	4.2	3.7	2.0

PROJECTED STARTING FIVE (BASED ON LAST GAME)

LYNDEL EROLD
 #4 GUARD




POINTS	1.2
REBOUNDS	0.9
ASSISTS	0.2
STEALS	0.2
MINUTES	7.2

KINO LILLY JR.
 #10 GUARD




POINTS	18.4
REBOUNDS	2.4
ASSISTS	3.4
STEALS	0.9
MINUTES	38.0

KALU ANYA
 #15 FORWARD




POINTS	9.4
REBOUNDS	7.2
ASSISTS	1.8
STEALS	1.2
MINUTES	27.2

NANA OWUSU-ANANE
 #31 FORWARD



POINTS	15.0
REBOUNDS	8.8
ASSISTS	2.1
STEALS	1.3
MINUTES	32.6

AJ LESBURT
 #33 GUARD



POINTS	5.0
REBOUNDS	2.4
ASSISTS	0.4
STEALS	0.4
MINUTES	14.8

2023-2024 SCHEDULE

ALL TIMES EASTERN AND SUBJECT TO CHANGE

OVERALL 12-17 | IVY 8-6
 HOME 5-7 | AWAY 6-8 | NEUTRAL 1-2

NOVEMBER (2-6)

6	@ Colgate	L, 70-72
11	Loyola (Md.)	L, 75-77 (OT)
14	@ New Hampshire	L, 64-82
16	Rhode Island College	W, 92-51
19	@ #16/20 USC	L, 70-81
24	vs. Delaware ^	L, 59-67
25	vs. Kansas City ^	W, 93-83 (OT)
26	vs. Ohio ^	L, 77-82

DECEMBER (2-4)

1	Bryant	L, 66-69
3	@ Maine	L, 49-60
6	@ Rhode Island	W, 67-64
10	@ #RV Providence	L, 54-74
22	Siena	W, 71-67
29	@ Stony Brook	L, 65-69

JANUARY (1-4, 1-3 IVY)

2	Vermont	L, 70-71
9	Yale *	L, 70-80
15	@ Harvard *	W, 74-72
20	Cornell *	L, 83-84
27	@ Dartmouth *	L, 71-75

FEBRUARY (3-3, 3-3 IVY)

2	Penn *	W, 70-61
3	#RV Princeton *	L, 60-70
10	Columbia *	L, 69-83
16	@ Princeton *	L, 63-72
17	@ Penn *	W, 71-64
23	@ Columbia *	W, 66-64
24	@ Cornell *	W, 78-74

MARCH (3-0, 3-0 IVY)

1	Harvard *	W, 71-68
2	Dartmouth *	W, 89-67
9	@ Yale *	W, 84-81 (OT)
16	#RV Princeton (No. 1) #	11 a.m.

* Bahá Mar Hoops Nassau Championship (Nassau, The Bahamas)
 * Ivy League game
 # Ivy Madness (New York)

All times in EST

COVERAGE INFORMATION

TELEVISION ESPNU
 Play-by-Play Dalen Cuff
 Color Noah Savage

STREAMING [ESPN+](#)
 Play-by-Play Dalen Cuff
 Color Noah Savage

AUDIO [BrownVarsityNetwork](#)
 Play-by-Play Scott Cordischi
 Color Russ Tyler '71

LIVE STATS [BrownBears.com](#)

SOCIAL MEDIA [@BrownU_MBB](#)

Updated Coverage Information can be found on [BrownBears.com](#) or on X at [@BrownU_MBB](#)



BROWN BASKETBALL

2023-2024 GAME NOTES

2023-2024 ROSTER

ABOUT THE BEARS

- >> Riding a six game win streak into the Empire State, the Brown Bears look to upset top seed and 2023 Sweet 16 participant, #RV Princeton on Saturday. Brown's win at Yale on Saturday tied the most conference wins in the **MIKE MARTIN '04** coaching era.
- >> **KINO LILLY JR.** became the first back-to-back First Team All-Ivy recipient since **SEAN MCGONAGILL** (2012-14) after leading the league in scoring, minutes and three-pointers. Lilly Jr. enters ranked second in three-pointers made in a season (83) in Brown history (McGonagill hit 93 in 2013-14). He is two points away from tying **STEVEN SPIETH** (518) for No. 10 in program history in total points in a season.
- >> **NANA OWUSU-ANANE** earned his first postseason accolade (Second Team All-Ivy) after collecting 8.8 rebounds and 15.0 points per game during the regular season. The co-captain scored 20 points in Saturday's win at Yale, and forced overtime with a corner three-pointer in the closing seconds of regulation.
- >> **AARON COOLEY** drained a contested three with 0.3 seconds remaining in overtime to defeat Yale on Saturday. The left-hander appeared on #scTop10 earlier this season with a highlight-reel dunk in the win over Siena (Dec. 22).

5-1 SINCE THE CHANGE

- >> **MIKE MARTIN '04** made a lineup change and it has paid off, as inserting **LYNDEL EROLD** and **ALEXANDER LESBURT JR.** into the starting five has led to a 5-1 mark. The lone loss was at Princeton, a game Brown led for more than half of regulation. Overall, Brown has featured six different starting lineups.

PASS THE ROCK

- >> The selfless Bears continued to make the extra pass and Brown registered 22 assists in the win over Dartmouth (3/2), including career-high eight assists for **KINO LILLY JR.** and **NANA OWUSU-ANANE**. The 22 total assists for Brown are the most since Nov. 9, 2021 (Salve Regina).

LEAGUE LEADERS

- >> The Bears are featured heavily among the team and individual statistical leaders in the Ivy League, highlighted by **KINO LILLY JR.** (18.4 points per game and 37.9 minutes along with 84 total three-pointers), **KIMO FERRARI** (.483 from three-point range), **NANA OWUSU-ANANE**'s offensive rebounds (3.3) per game pacing the league.

RECORD WATCH

- >> **KIMO FERRARI** set a program record in Brown's Senior Night win over Dartmouth (March 2), draining 10 three-pointers and finishing with 39 points. The 10 3FG made are the most in a game in program history, and the 39 points tied a Pizzitola Sports Center mark for the Bears - **EARL HUNT** vs. Harvard (Jan. 15, 2000) and **SEAN MCGONAGILL** vs. Columbia (Feb. 4, 2011). The 10 triples sit tied for the most in NCAA Division I this season and are the second most (tie) in Ivy single game history, behind Maodo Lo's 11 in 2015.
- >> Known mostly for his offense, **KINO LILLY JR.** clamped the Dartmouth guards on 3/2, collecting seven steals in the playoff-clinching win. The seven steals are tied for second most in a game by a Brown Bear.
- >> Junior **KINO LILLY JR.** continues to climb up the charts and is ranked No. 8 in scoring (1,358). He is currently also No. 3 in three-pointers made with 234. The full 1K-point club and three-pointers made are listed on [page 14](#).

With career marks of 16.0 points per game and a .818 free throw percentage. Lilly Jr. ranks seventh in both statistical categories.

RING OF HONOR TYSON WHEELER

- >> Brown sent assistant coach **TYSON WHEELER** home with a victory following his induction into the URI Ring of Honor in the win at URI. Head coach **MIKE MARTIN '04** on Wheeler; "as good of a player and coach Tys is, he's that great of a person. He's always making everyone smile and he is deserving of such a great honor."

#	NAME	POS	HT	WT	CL	HOMETOWN	PREVIOUS SCHOOL
2	Felix Kloman	G	6-5	190	Sr.	Ipswich, Mass.	Pingree School
4	Lyndel Eroid	G	6-3	170	Jr.	Boston, Mass.	St. Sebastian's School
5	Sam Klores	G	6-1	180	Jr.	New York, N.Y.	Riverdale Country School
10	Kino Lilly Jr.	G	6-0	165	Jr.	Glenn Dale, Md.	Landon School
11	Malachi Ndur *	F	6-8	215	Sr.	St. Thomas, Ont.	Cushing Academy
13	Malcolm Wrisby-Jefferson	G	6-4	195	Fr.	Queens, N.Y.	The Phelps School
14	Luke Paragon	G	6-4	195	Fr.	Cicero, N.Y.	Cicero-North Syracuse
15	Kalu Anya	F	6-8	215	So.	Worcester, Mass.	IMG Academy
21	Aaron Cooley	G/F	6-5	196	Jr.	Roxbury, Mass.	Newton North
22	Landon Lewis	F	6-7	215	So.	Los Angeles, Calif.	Harvard-Westlake School
23	Kimo Ferrari	G	6-0	185	Sr.	San Diego, Calif.	Francis Parker
24	Drew Kania	F	6-8	215	So.	Chatham, N.J.	Gill St. Bernard's
25	Adrian Uchidiuno	G	6-2	160	Fr.	Marham, Ont.	Cushing Academy
31	Nana Owusu-Anane *	F	6-8	220	Jr.	Burlington, Ont.	Putnam Science Academy
33	Alexander Lesburt Jr.	G	6-5	197	So.	Derry, N.H.	Bradford Christian Academy
43	Symeon Efstathiou	F	6-9	215	Fr.	Athens, Greece	Moraitis School
45	N'famara Dabo	F	6-8	225	Fr.	Conakry, Guinea	Napa Christian

* denotes captains

COACHES & STAFF

		ALMA MATER	YEARS AT BROWN
Head Coach	Mike Martin '04	Brown '04	12th Year, 11th Season
Associate Head Coach	T.J. Sorrentine	Vermont '05	16th Year, 15th Season
Assistant Coach	Tyson Wheeler	Rhode Island '98	Second Season
Assistant Coach	Sam Hershberger	Elon '16	Fifth Year, Fourth Season
Director of Operations	Sydney Armand	Rhode Island '19	Second Season

SPORTS MEDICINE & PERFORMANCE

Athletic Trainer	Tori Bouchard	Springfield '17	Second Season
Sports Performance Coach	Dave Downey	Rutgers '13	Second Season

PRONUNCIATION GUIDE

Kalu Anya	kah-LOO AHN-yuh
Sydney Armand	ar-MAHN-d
N'famara Dabo	Fah-MAH-dah DAH-bow
Symeon Efstathiou	sima-OWN eff-STAH-thee-o
Lyndel Eroid	eh-ROLL-d
Kimo Ferrari	key-MOH
Drew Kania	KAY-nee-uh
Felix Kloman	KLOW-men
Kino Lilly Jr.	key-NO
Malachi Ndur	MAL-uh-kai nuh-DUR
Nana Owusu-Anane	NAN-uh oh-WOO-sue uh-NAH-nay
Luke Paragon	para-gone
TJ Sorrentine	SORE-en-teen
Adrian Uchidiuno	oo-chid-ee-uno

CLASSIFICATION

Seniors	3	Kloman, Ferrari, Ndur
Juniors	5	Cooley, Eroid, Klores, Lilly Jr., Owusu-Anane
Sophomores	4	Anya, Kania, Lesburt Jr., Lewis
Freshmen	5	Dabo, Efstathiou, Paragon, Uchidiuno, Wrisby-Jefferson

HOME STATE/COUNTRY

California	2	Ferrari, Lewis
Canada	3	Ndur, Owusu-Anane, Uchidiuno
Greece	1	Efstathiou
Guinea	1	Dabo
Maryland	1	Lilly Jr.
Massachusetts	4	Anya, Cooley, Eroid, Kloman
New Hampshire	1	Lesburt Jr.
New York	3	Klores, Paragon, Wrisby-Jefferson



BROWN BASKETBALL

2023-2024 GAME NOTES

20-POINT GAMES

>> Five Bears have scored 20 points in a game this season - **KINO LILLY JR.**, **NANA OWUSU-ANANE**, **ALEXANDER LESBURT JR.**, **KALU ANYA** and **KIMO FERRARI**. In his career, Lilly Jr. has 26 (12 this season), and Owusu-Anane has eight (six this season). Career breakdowns of 20-point games found on [page 4](#).

SHORTENED ROTATION

>> The Bears rotation was shortened in Brown's 67-64 victory over URI, with seven players receiving most minutes and eight total appearing in the win. All eight were returning student-athletes for Brown.

TAKE CARE OF THE BALL

>> **MIKE MARTIN '04** mentioned one of the keys to Dec. 6's Ocean State win over URI was taking care of the basketball, and the eight turnovers were the least against an NCAA Division I opponent since Brown's six in a neutral site contest against Bradley on Nov. 20, 2021.

This season, Brown has six games with less than 10 turnovers, including the last three contests (at Dartmouth, v. Penn, v. #RV Princeton).

A.J. SHINES IN WIN

>> Brown sophomore **ALEXANDER LESBURT JR.** was huge in the Bears' overtime victory over Kansas City on day two of the Baha Mar Hoops Nassau Championship. Lesburt Jr. posted a career-high 20 points and drained four triples, along with 6-of-6 from the line.

COLLEGIATE DEBUTS THIS SEASON

>> Let's track the collegiate debuts of Brown student-athletes this season.

NAME/DATE OF DEBUT	NOTES
MALCOLM WRISBY-JEFFERSON / Nov. 6	1 pt, 5 min
N'FAMARA DABO / Nov. 14	4 pts (2-of-2 FG, 1 block)
SYMEON EFSTATHIOU / Nov. 14	2 min
ADRIAN UCHIDIUNO / Nov. 14	4 pts (2-of-2 FG, 1 reb)
DREW KANIA / Nov. 16	4 pts (2-of-2 FG, 1 steal)
LUKE PARAGON / Nov. 16	8 pts (3-of-3 FG, 2-of-2 3FG)

IT'S A BLOCK PARTY

>> Brown finished with 10 blocks in its home opener vs. Loyola (Md.) on Nov. 11, tallying the most swats since Jan. 7, 2020 (Johnson and Wales).

The 10 blocks are the most by an Ivy League team this season.

CAREER NIGHT FOR KALU

>> **KALU ANYA** posted a then-career-high 19-point performance at New Hampshire (Nov. 14). The sophomore went 6-of-6 from the charity stripe.

Anya picked up Ivy Player of the Week honors following a career-night at Cornell (2/24). The sophomore recorded a career-high 23 points and 17 rebounds to take down the first-place Big Red.

In the Bahamas, Anya swiped five passes in the win over Kansas City. The five steals are tied for the most in a game by an Ivy student-athlete this year.

OH CANADA

>> Brown features three Canadians on the squad as captains **NANA OWUSU-ANANE** and **MALACHI NDUR**, and newcomer **ADRIAN UCHIDIUNO** represent for the North.

Owusu-Anane appeared on the Canadian National Team this summer as part of GLOBL Jam.

FAMILY TIES

>> Brown Manager of Broadcasting and Voice of Men's Basketball **SCOTT CORDISCHI** and sophomore basketball student manager **JACK CORDISCHI** work with the Brown Bears men's basketball program.

DEL EARNS FIRST CAREER START

>> Junior **LYNDEL EROLD** made his first career start on Friday at Princeton (Feb. 16) and followed with another start in the win at Penn (Feb. 17).

A WIN WOULD...

>> Brown advances to the finals of Ivy Madness for the first time in program history and take on the winner of Yale and Cornell on Sunday, March 17 at noon on ESPN2. The winner of that game receives the automatic bid into the NCAA Tournament.

>> Give Brown its first seven-game win streak since Jan. 8, 2003-Feb. 14, 2003, when the Bears won nine straight.

ALL-TIME SERIES

OVERALL VS. PRINCETON 31-113

HOME 24-48 | AWAY 7-65 | NEUTRAL 0-0 | OVERTIME 3-6

SINCE 2001-02

DATE H/A/N RESULT SCORE

2/2/01	A	L	62-66
3/3/01	H	L	55-64
2/8/02	H	L	56-70
2/23/02	A	L	47-73
2/14/03	A	W	80-73
3/1/03	H	W	88-74
1/30/04	H	L	49-64
2/21/04	A	L	61-68
1/28/05	A	W	57-52
2/19/05	H	L	52-69
2/4/06	A	L	37-52
3/3/06	H	W	61-46
2/3/07	H	W	63-48
3/2/07	A	W	64-55
2/16/08	A	W65-63 (OT)	
2/29/08	H	W	64-57
2/14/09	H	W	61-43
2/27/09	A	L	48-56
1/29/10	H	L	46-63
2/20/10	A	W	57-54
1/28/11	A	L	60-78
2/19/11	H	W	75-65
2/3/12	H	L	63-77
3/3/12	A	L	47-81

2/8/13	A	L	46-63
3/9/13	H	W	80-67
2/14/14	H	L	65-69
3/1/14	A	L	64-69
2/13/15	A	L	64-75
2/28/15	H	L	62-80
1/29/16	H	L	59-83
2/20/16	A	L	66-77
1/13/17	A	L	66-97
2/18/17	H	L	51-66
2/3/18	A	W102-100 (OT)	
3/2/18	H	L	63-78
2/9/19	H	W	78-70
3/8/19	A	W	67-63
2/15/20	A	L	54-73
2/28/20	H	L	49-71
1/15/22	A	L	74-76
2/18/22	H	L	50-69
1/14/23	H	W	72-70
2/17/23	A	L	67-78
2/3/24	H	L	60-70
2/16/24	A	L	63-72

FIRST MEETING	1/7/1908 (L, 9-27)
LAST MEETING	2/16/2024 (L, 63-72)
CURRENT STREAK	L3
LONGEST WINNING STREAK	6, from 2006-2009
LONGEST LOSING STREAK	26, from 1960-1973
LARGEST VICTORY	19 on 2/15/1957
LARGEST DEFEAT	58 on 2/10/1968
UNDER MARTIN	5-17



BROWN BASKETBALL

2023-2024 GAME NOTES

GAME BY GAME LEADERS / DOUBLE-FIGURES

GAME BY GAME LEADERS

DATE	OPPONENT	PTS	FGS	3FGS	FTS	REBS	ASSISTS	BLOCKS	STEALS	MINS
11/6	@ Colgate	Lilly Jr. (21)	Lilly Jr. (8)	Lilly Jr. (5)	Owusu-Anane (6)	Owusu-Anane (11)	Lilly Jr. (3)	Owusu-Anane (3)	Owusu-Anane (4)	Lilly Jr. (35)
11/11	Loyola (Md.)	Lilly Jr. (27)	Lilly Jr. (10)	Lilly Jr. (4)	Anya (5)	Owusu-Anane (13)	Lilly Jr. (4)	3 Tied (2)	2 Tied (2)	Lilly Jr. (43)
11/14	@ New Hampshire	Owusu-Anane (20)	Owusu-Anane (8)	3 Tied (1)	Anya (6)	Owusu-Anane (10)	2 Tied (2)	3 Tied (1)	Ferrari (3)	Anya (31)
11/16	Rhode Island College	Owusu-Anane (16)	Cooley (5)	Cooley (4)	Owusu-Anane (6)	3 Tied (5)	Anya (5)	Owusu-Anane (2)	5 Tied (2)	Lesburt Jr. (22)
11/19	@ #16/20 USC	Lilly Jr. (24)	Lilly Jr. (10)	Lilly Jr. (4)	Cooley (4)	Owusu-Anane (11)	Lilly Jr. (6)	3 Tied (1)	Ferrari (2)	Lilly Jr. (37)
11/24	vs. Delaware	Lilly Jr. (22)	Lilly Jr. (8)	Lilly Jr. (5)	Owusu-Anane (3)	Cooley (10)	Lilly Jr. (4)	4 Tied (1)	Owusu-Anane (2)	Lilly Jr. (39)
11/25	vs. Kansas City	Lilly Jr. (27)	Lilly Jr. (8)	Lesburt Jr. (4)	Lilly Jr. (9)	Lesburt Jr. (6)	Cooley (4)	4 Tied (1)	Anya (5)	Lilly Jr. (43)
11/26	vs. Ohio	Lilly Jr. (21)	Lilly Jr. (8)	Lilly Jr. (4)	Owusu-Anane (9)	Owusu-Anane (11)	2 Tied (3)	4 Tied (1)	Owusu-Anane (3)	Lilly Jr. (40)
12/1	Bryant	Lilly Jr. (19)	Lilly Jr. (7)	Lilly Jr. (4)	2 Tied (3)	Anya (11)	Anya (6)	3 Tied (1)	Anya (3)	Lilly Jr. (39)
12/3	@ Maine	Owusu-Anane (15)	Owusu-Anane (5)	3 Tied (1)	Lilly Jr. (5)	Owusu-Anane (11)	Kloman (4)	Ndur (3)	3 Tied (1)	Lilly Jr. (40)
12/6	@ Rhode Island	Lilly Jr. (22)	Lilly Jr. (6)	2 Tied (3)	Lilly Jr. (7)	Anya (7)	Ndur (4)	2 Tied (2)	3 Tied (2)	Lilly Jr. (39)
12/10	@ #RV Providence	Owusu-Anane (15)	Owusu-Anane (6)	Lilly Jr. (3)	Cooley (4)	Owusu-Anane (9)	Lilly Jr. (3)	2 Tied (1)	Ferrari (4)	Lilly Jr. (38)
12/22	Siena	Lilly Jr. (26)	Lilly Jr. (9)	Lilly Jr. (2)	Lilly Jr. (6)	Owusu-Anane (12)	Lilly Jr. (5)	Ndur (3)	5 Tied (1)	Lilly Jr. (39)
12/29	@ Stony Brook	Lilly Jr. (19)	Lilly Jr. (7)	3 Tied (2)	Lewis (4)	Anya (10)	Ferrari (4)	Anya (2)	4 Tied (1)	Ferrari (36)
1/2	Vermont	Lilly Jr. (18)	Lilly Jr. (7)	Lilly Jr. (4)	2 Tied (5)	Anya (12)	Lilly Jr. (6)	3 Tied (2)	n/a	Lilly Jr. (38)
1/9	Yale	Lilly Jr. (23)	Lilly Jr. (8)	Lilly Jr. (5)	2 Tied (3)	Owusu-Anane (11)	Lilly Jr. (4)	Anya (2)	2 Tied (2)	Lilly Jr. (39)
1/15	@ Harvard	Lilly Jr. (19)	2 Tied (7)	Lilly Jr. (4)	Owusu-Anane (4)	Owusu-Anane (9)	Lilly Jr. (4)	2 Tied (3)	Lilly Jr. (2)	Lilly Jr. (37)
1/20	Cornell	Owusu-Anane (21)	Owusu-Anane (7)	Lilly Jr. (3)	Anya (8)	Owusu-Anane (7)	Lilly Jr. (5)	4 Tied (1)	Owusu-Anane (4)	Lilly Jr. (36)
1/27	@ Dartmouth	Owusu-Anane (20)	Owusu-Anane (7)	Ndur (4)	Owusu-Anane (6)	Owusu-Anane (9)	Ferrari (4)	Ndur (3)	Anya (3)	Lilly Jr. (37)
2/2	Penn	2 Tied (19)	Owusu-Anane (8)	4 Tied (1)	Lilly Jr. (4)	Anya (13)	Owusu-Anane (4)	2 Tied (1)	Anya (3)	Lilly Jr. (37)
2/3	#RV Princeton	Owusu-Anane (20)	Owusu-Anane (7)	2 Tied (3)	Owusu-Anane (4)	Anya (9)	5 Tied (2)	3 Tied (1)	Ferrari (2)	2 Tied (37)
2/10	Columbia	Lilly Jr. (24)	Lilly Jr. (9)	Lilly Jr. (4)	Ndur (5)	Ndur (8)	Ferrari (5)	Cooley (2)	Owusu-Anane (2)	Lilly Jr. (39)
2/16	@ Princeton	Owusu-Anane (17)	2 Tied (6)	2 Tied (3)	Owusu-Anane (2)	Cooley (8)	Lilly Jr. (6)	Anya (2)	Erold (2)	Lilly Jr. (39)
2/17	@ Penn	Lilly Jr. (25)	Lilly Jr. (5)	3 Tied (3)	Lilly Jr. (12)	Owusu-Anane (11)	2 Tied (4)	Ferrari (2)	4 Tied (1)	Lilly Jr. (37)
2/23	@ Columbia	Ferrari (18)	Ferrari (6)	Ferrari (6)	Owusu-Anane (5)	Anya (13)	Anya (7)	Owusu-Anane (3)	2 Tied (2)	Lilly Jr. (36)
2/24	@ Cornell	Anya (23)	Anya (9)	Ferrari (3)	Owusu-Anane (7)	Anya (17)	Ferrari (5)	Cooley (2)	Ferrari (2)	Lilly Jr. (37)
3/1	Harvard	Lilly Jr. (16)	Lilly Jr. (6)	3 Tied (2)	Owusu-Anane (5)	Owusu-Anane (14)	Lilly Jr. (5)	Anya (3)	Owusu-Anane (2)	Lilly Jr. (42)
3/2	Dartmouth	Ferrari (39)	Ferrari (14)	Ferrari (10)	Owusu-Anane (3)	Owusu-Anane (8)	2 Tied (8)	Anya (1)	Lilly Jr. (7)	2 Tied (35)
3/9	@ Yale	Lilly Jr. (26)	Lilly Jr. (10)	Lilly Jr. (3)	Owusu-Anane (6)	Anya (11)	Lilly Jr. (4)	2 Tied (1)	Lilly Jr. (2)	2 Tied (42)
3/16	#RV Princeton									

CAREER DOUBLE-DOUBLES

NAME	TOTALS	OPPONENT	DATE
Kalu Anya (1)	11 pts & 10 reb	Stony Brook	11/17/22
Nana Owusu-Anane (1)	16 pts & 16 reb	Penn	1/2/23
Nana Owusu-Anane (2)	16 pts & 10 reb	Dartmouth	1/7/23
Nana Owusu-Anane (3)	27 pts & 18 reb	Columbia	1/21/23
Nana Owusu-Anane (4)	16 pts & 11 reb	@ Princeton	2/17/23
Nana Owusu-Anane (5)	20 pts & 11 reb	@ Colgate	11/6/23
Nana Owusu-Anane (6)	18 pts & 13 reb	Loyola (Md.)	11/11/23
Nana Owusu-Anane (7)	20 pts & 10 reb	@ New Hampshire	11/14/23
Nana Owusu-Anane (8)	13 pts & 11 reb	@ #16/20 USC	11/19/23
Nana Owusu-Anane (9)	19 pts & 11 reb	v. Ohio	11/26/23
Kalu Anya (2)	13 pts & 11 reb	Bryant	12/1/23
Nana Owusu-Anane (10)	15 pts & 11 reb	@ Maine	12/3/23
Kalu Anya (3)	11 pts & 12 reb	Vermont	1/2/24
Nana Owusu-Anane (11)	14 pts & 11 reb	Yale	1/9/24
Kalu Anya (4)	13 pts & 13 reb	Penn	2/2/24
Nana Owusu-Anane (12)	19 pts & 12 reb	Penn	2/2/24
Nana Owusu-Anane (13)	15 pts & 13 reb	@ Cornell	2/24/24
Kalu Anya (5)	23 pts & 17 reb	@ Cornell	2/24/24
Nana Owusu-Anane (14)	13 pts & 14 reb	Harvard	3/1/24

NOTE - Bold denotes this season.

CAREER 20 POINT GAMES

NAME	TOTALS	OPPONENT	DATE
Nana Owusu-Anane (1)	20	@ UNC	11/12/21
Kino Lilly Jr. (1)	22	CCSU	11/14/21
Kino Lilly Jr. (2)	24	@ Quinnipiac	11/28/21
Kino Lilly Jr. (3)	23	@ Harvard	1/7/22
Kino Lilly Jr. (4)	25	@ Princeton	1/15/22
Kino Lilly Jr. (5)	23	Cornell	1/30/22
Kino Lilly Jr. (6)	20	Penn	2/19/22
Kino Lilly Jr. (7)	32	Maine	11/27/22
Kino Lilly Jr. (8)	28	Penn	1/2/23
Kino Lilly Jr. (9)	26	Princeton	1/14/23
Kino Lilly Jr. (10)	25	@ Yale	1/16/23
Nana Owusu-Anane (2)	27	Columbia	1/21/23
Kino Lilly Jr. (11)	23	@ Dartmouth	2/3/23
Kino Lilly Jr. (12)	21	@ Harvard	2/4/23
Kino Lilly Jr. (13)	23	Cornell	2/11/23
Kino Lilly Jr. (14)	23	@ Columbia	2/25/23
Kino Lilly Jr. (15)	21	@ Colgate	11/6/23
Nana Owusu-Anane (3)	20	@ Colgate	11/6/23
Kino Lilly Jr. (16)	27	Loyola (Md.)	11/11/23
Nana Owusu-Anane (4)	20	@ New Hampshire	11/14/23
Kino Lilly Jr. (17)	24	@ #16/20 USC	11/19/23
Kino Lilly Jr. (18)	22	v. Delaware	11/24/23
Kino Lilly Jr. (19)	27	v. Kansas City	11/25/23
Alexander Lesburt Jr. (1)	20	v. Kansas City	11/25/23
Kino Lilly Jr. (20)	21	v. Ohio	11/26/23
Kino Lilly Jr. (21)	22	@ Rhode Island	12/6/23
Kino Lilly Jr. (22)	26	Siena	12/22/23
Kino Lilly Jr. (23)	23	Yale	1/9/24
Nana Owusu-Anane (5)	21	Cornell	1/20/24
Nana Owusu-Anane (6)	20	@ Dartmouth	1/27/24
Nana Owusu-Anane (7)	20	#RV Princeton	2/3/24
Kino Lilly Jr. (24)	24	Columbia	2/10/24
Kino Lilly Jr. (25)	25	@ Penn	2/17/24
Kalu Anya (1)	23	@ Cornell	2/24/24

CAREER DOUBLE-FIGURE GAMES

POINTS	2023-24	2022-23	2021-22	2020-21	TOTAL	STREAK
Kino Lilly, Jr.	26	25	22	-	72	3
Nana Owusu-Anane	24	12	6	-	41	5
Kalu Anya	12	7	-	-	19	0
Aaron Cooley	8	5	1	-	14	0
Kimo Ferrari	6	1	2	-	9	1
Felix Kloman	5	0	0	-	5	0
Alexander Lesburt Jr.	4	0	-	-	4	1
Malachi Ndur	1	1	0	-	2	0
Landon Lewis	-	1	-	-	1	0

FIELD GOALS	2023-24	2022-23	2021-22	2020-21	TOTAL	STREAK
Kino Lilly, Jr.	3	3	1	-	7	1
Nana Owusu-Anane	-	1	0	-	1	0
Kimo Ferrari	1	0	0	-	1	0

3FG MADE	2023-24	2022-23	2021-22	2020-21	TOTAL	STREAK
Kimo Ferrari	1	0	0	-	1	0

FREE THROWS	2023-24	2022-23	2021-22	2020-21	TOTAL	STREAK
Kino Lilly, Jr.	1	0	0	-	1	0

REBOUNDS	2023-24	2022-23	2021-22	2020-21	TOTAL	STREAK
Nana Owusu-Anane	12	6	0	-	18	0
Kalu Anya	7	3	-	-	10	0
Aaron Cooley	1	0	0	-	1	0

ASSISTS	2023-24	2022-23	2021-22	2020-21	TOTAL	STREAK

CAREER 20 POINT GAMES CONT...

NAME	TOTALS	OPPONENT	DATE
Kimo Ferrari (1)	39	Dartmouth	3/2/24
Kino Lilly Jr. (26)	26	@ Yale	3/9/24
Nana Owusu-Anane (8)	20	@ Yale	3/9/24

NOTE - Bold denotes this season.



BROWN BASKETBALL

2023-2024 GAME NOTES

COMBINED STATS



2023-24 Brown Men's Basketball
Combined Team Statistics
All games

Page 1/1
as of Mar 09, 2024

Game Records

Record	Overall	Home	Away	Neutral
ALL GAMES	12-17	5-7	6-8	1-2
CONFERENCE	8-6	3-4	5-2	0-0
NON-CONFERENCE	4-11	2-3	1-6	1-2

Score by Periods

Team	1st	2nd	OT	TOT
Brown	953	1057	51	2061
Opponents	968	1079	37	2084

Team Box Score

No. Player				Total		3-Point		F-Throw		Rebounds											
	GP-GS	MIN	AVG	FG-FGA	FG%	3FG-3FGA	3FG%	FT-FTA	FT%	OFF	DEF	TOT	AVG	PF	DQ	A	TO	BLK	STL	PTS	AVG
10 LILLY JR., Kino	28-28	1064:02	38.0	181-469	.386	84-248	.339	70-86	.814	9	59	68	2.4	37	0	94	79	5	24	516	18.4
31 OWUSU-ANANE, Nana	29-29	946:05	32.6	153-326	.469	21-68	.309	108-157	.688	100	154	254	8.8	91	4	61	54	29	37	435	15.0
15 ANYA, Kalu	29-28	790:09	27.2	100-217	.461	7-29	.241	67-128	.523	77	133	210	7.2	62	3	52	62	28	36	274	9.4
21 COOLEY, Aaron	29-21	821:06	28.3	80-197	.406	21-69	.304	32-50	.640	35	84	119	4.1	66	1	31	35	21	13	213	7.3
23 FERRARI, Kimo	24-7	635:43	26.5	59-117	.504	43-89	.483	11-18	.611	9	52	61	2.5	57	2	45	22	3	28	172	7.2
2 KLOMAN, Felix	25-18	489:54	19.6	42-111	.378	23-70	.329	19-31	.613	7	41	48	1.9	44	1	30	19	5	13	126	5.0
33 LESBURT JR., AJ	19-7	281:10	14.8	33-84	.393	21-58	.362	8-10	.800	6	40	46	2.4	12	0	8	11	1	7	95	5.0
14 PARAGON, Luke	2-0	10:03	5.0	3-3	1.000	2-2	1.000	0-0	.000	1	1	2	1.0	0	0	0	0	0	0	8	4.0
11 NDUR, Malachi	29-1	408:28	14.1	33-74	.446	11-31	.355	28-38	.737	30	53	83	2.9	63	1	31	26	20	10	105	3.6
22 LEWIS, Landon	25-0	172:12	6.9	20-37	.541	0-0	.000	17-25	.680	18	19	37	1.5	25	0	12	11	5	5	57	2.3
45 DABO, N'famara	6-0	18:02	3.0	4-5	.800	0-0	.000	4-6	.667	2	5	7	1.2	2	0	1	2	2	2	12	2.0
43 EFSTATHIOU, Symeon	2-0	08:46	4.4	2-5	.400	0-1	.000	0-0	.000	0	1	1	0.5	0	0	1	0	0	0	4	2.0
24 KANIA, Drew	2-0	07:43	3.9	2-3	.667	0-0	.000	0-0	.000	1	1	2	1.0	0	0	0	0	0	2	4	2.0
25 UCHIDIJUNO, Adrian	6-0	16:23	2.7	5-10	.500	0-3	.000	0-0	.000	1	2	3	0.5	3	0	1	1	1	2	10	1.7
4 EROLD, Lyndel	19-6	137:31	7.2	7-29	.241	5-19	.263	3-9	.333	6	11	17	0.9	20	0	3	10	2	3	22	1.2
13 WRISBY-JEFFERSON, Malcolm	9-0	62:20	6.9	1-13	.077	1-8	.125	3-7	.429	0	11	11	1.2	4	0	8	5	1	2	6	0.7
5 KLORES, Sam	6-0	37:26	6.2	1-4	.250	0-3	.000	0-1	.000	1	2	3	0.5	4	0	2	3	0	0	2	0.3
Team										48	59	107					18				
Total	29	5907		726-1704	.426	239-698	.342	370-566	.654	351	728	1079	37.2	490	12	380	358	123	184	2061	71.1
Opponents	29	5900		746-1660	.449	210-630	.333	382-546	.700	263	737	1000	34.5	514	10	383	350	93	192	2084	71.9

Team Statistics

	BRN	OPP
Scoring	2061	2084
Points per game	71.1	71.9
Scoring margin	-0.8	-
Field goals-att	726-1704	746-1660
Field goal pct	.426	.449
3 point fg-att	239-698	210-630
3-point FG pct	.342	.333
3-pt FG made per game	8.2	7.2
Free throws-att	370-566	382-546
Free throw pct	.654	.700
F-Throws made per game	12.8	13.2
Rebounds	1079	1000
Rebounds per game	37.2	34.5
Rebounding margin	+2.7	-
Assists	380	383
Assists per game	13.1	13.2
Turnovers	358	350
Turnovers per game	12.3	12.1
Turnover margin	-0.3	-
Assist/turnover ratio	1.1	1.1
Steals	184	192
Steals per game	6.3	6.6
Blocks	123	93
Blocks per game	4.2	3.2
Winning streak	6	-
Home win streak	2	-
Attendance	11742	33464
Home games-Avg/Game	12-979	14-2390
Neutral site-Avg/Game	-	3-225

Team Results

Date	Opponent	Score	Att.
11/06/2023	at Colgate	L 70-72	1036
11/11/2023	Loyola Maryland	Lot 75-77	846
11/14/2023	at New Hampshire	L 64-82	578
11/16/2023	Rhode Island Col.	W 92-51	323
11/19/2023	at Southern California	L 70-81	4522
11/24/2023	vs Delaware	L 59-67	213
11/25/2023	vs Kansas City	Wot 93-83	211
11/26/2023	vs Ohio	L 77-82	251
12/01/2023	Bryant	L 66-69	1113
12/03/2023	at Maine	L 49-60	631
12/06/2023	at Rhode Island	W 67-64	4475
12/10/2023	at Providence	L 54-74	8655
12/22/2023	Siena	W 71-67	611
12/29/2023	at Stony Brook	L 65-69	2429
01/02/2024	Vermont	L 70-71	623
01/09/2024	Yale	L 70-80	777
01/15/2024	at Harvard	W 74-72	1124
01/20/2024	Cornell	L 83-84	1012
01/27/2024	at Dartmouth	L 71-75	868
02/02/2024	Penn	W 70-61	1284
02/03/2024	Princeton	L 60-70	1350
02/10/2024	Columbia	L 69-83	897
02/16/2024	at Princeton	L 63-72	2533
02/17/2024	at Penn	W 71-64	1966
02/23/2024	at Columbia	W 66-64	1203
02/24/2024	at Cornell	W 78-74	1864
03/01/2024	Harvard	Wot 71-68	1788
03/02/2024	Dartmouth	W 89-67	1118
03/09/2024	at Yale	Wot 84-81	1580





BROWN BASKETBALL

2023-2024 GAME NOTES

SEASON + CAREER STATS



2023-24 Brown Men's Basketball
Season/Career Statistics
All games

Page 1/2
as of Mar 09, 2024

Summary

Player	Season Statistics										Career Statistics									
	GP-GS	MIN/G	FG%	3FG%	FT%	R/G	A/G	STL	BLK	PTS/G	GP-GS	MIN/G	FG%	3FG%	FT%	R/G	A/G	STL	BLK	PTS/G
ANYA, Kalu	29-28	27.2	.461	.241	.523	7.2	1.8	36	28	9.4	47-45	26.5	.483	.294	.519	6.9	1.7	48	40	9.0
COOLEY, Aaron	29-21	28.3	.406	.304	.640	4.1	1.1	13	21	7.3	77-42	19.6	.415	.274	.621	2.9	0.7	35	47	5.2
DABO, N'famara	6-0	3.0	.800	.000	.667	1.2	0.2	2	2	2.0	6-0	3.0	.800	.000	.667	1.2	0.2	2	2	2.0
EFSTATHIOU, Symeon	2-0	4.4	.400	.000	.000	0.5	0.5	0	0	2.0	2-0	4.4	.400	.000	.000	0.5	0.5	0	0	2.0
EROLD, Lyndel	19-6	7.2	.241	.263	.333	0.9	0.2	3	2	1.2	37-6	4.7	.268	.240	.333	0.8	0.1	3	3	0.9
FERRARI, Kimo	24-7	26.5	.504	.483	.611	2.5	1.9	28	3	7.2	73-8	21.9	.420	.397	.641	1.9	1.5	64	4	5.0
KANIA, Drew	2-0	3.9	.667	.000	.000	1.0	0.0	2	0	2.0	2-0	3.9	.667	.000	.000	1.0	0.0	2	0	2.0
KLOMAN, Felix	25-18	19.6	.378	.329	.613	1.9	1.2	13	5	5.0	52-18	12.9	.365	.312	.630	1.4	0.7	19	6	3.3
KLORES, Sam	6-0	6.2	.250	.000	.000	0.5	0.3	0	0	0.3	18-0	3.7	.273	.143	.250	0.6	0.4	0	0	0.4
LESBURT JR., AJ	19-7	14.8	.393	.362	.800	2.4	0.4	7	1	5.0	27-7	10.9	.386	.356	.800	1.9	0.3	7	1	3.6
LEWIS, Landon	25-0	6.9	.541	.000	.680	1.5	0.5	5	5	2.3	41-0	8.6	.576	.000	.667	1.7	0.4	8	12	2.2
LILLY JR., Kino	28-28	38.0	.386	.339	.814	2.4	3.4	24	5	18.4	84-65	34.1	.416	.375	.820	2.0	2.7	90	10	16.2
NDUR, Malachi	29-1	14.1	.446	.355	.737	2.9	1.1	10	20	3.6	56-4	12.1	.460	.306	.660	2.6	0.8	19	32	3.1
OWUSU-ANANE, Nana	29-29	32.6	.469	.309	.688	8.8	2.1	37	29	15.0	75-57	26.9	.459	.269	.654	7.1	1.8	86	66	10.8
PARAGON, Luke	2-0	5.0	1.000	1.000	.000	1.0	0.0	0	0	4.0	2-0	5.0	1.000	1.000	.000	1.0	0.0	0	0	4.0
UCHIDIUNO, Adrian	6-0	2.7	.500	.000	.000	0.5	0.2	2	1	1.7	6-0	2.7	.500	.000	.000	0.5	0.2	2	1	1.7
WRISBY-JEFFERSON, Malcolm	9-0	6.9	.077	.125	.429	1.2	0.9	2	1	0.7	9-0	6.9	.077	.125	.429	1.2	0.9	2	1	0.7

Scoring

Player	Season Statistics										Career Statistics									
	FG-FGA	FG%	3FG-3FGA	3FG%	FT-FTA	FT%	PTS	PTS/G	FG-FGA	FG%	3FG-3FGA	3FG%	FT-FTA	FT%	PTS	PTS/G				
ANYA, Kalu	100-217	.461	7-29	.241	67-128	.523	274	9.4	158-327	.483	10-34	.294	95-183	.519	421	9.0				
COOLEY, Aaron	80-197	.406	21-69	.304	32-50	.640	213	7.3	151-364	.415	32-117	.274	64-103	.621	398	5.2				
DABO, N'famara	4-5	.800	0-0	.000	4-6	.667	12	2.0	4-5	.800	0-0	.000	4-6	.667	12	2.0				
EFSTATHIOU, Symeon	2-5	.400	0-1	.000	0-0	.000	4	2.0	2-5	.400	0-1	.000	0-0	.000	4	2.0				
EROLD, Lyndel	7-29	.241	5-19	.263	3-9	.333	22	1.2	11-41	.268	6-25	.240	5-15	.333	33	0.9				
FERRARI, Kimo	59-117	.504	43-89	.483	11-18	.611	172	7.2	124-295	.420	92-232	.397	25-39	.641	365	5.0				
KANIA, Drew	2-3	.667	0-0	.000	0-0	.000	4	2.0	2-3	.667	0-0	.000	0-0	.000	4	2.0				
KLOMAN, Felix	42-111	.378	23-70	.329	19-31	.613	126	5.0	57-156	.365	29-93	.312	29-46	.630	172	3.3				
KLORES, Sam	1-4	.250	0-3	.000	0-1	.000	2	0.3	3-11	.273	1-7	.143	1-4	.250	8	0.4				
LESBURT JR., AJ	33-84	.393	21-58	.362	8-10	.800	95	5.0	34-88	.386	21-59	.356	8-10	.800	97	3.6				
LEWIS, Landon	20-37	.541	0-0	.000	17-25	.680	57	2.3	34-59	.576	0-0	.000	24-36	.667	92	2.2				
LILLY JR., Kino	181-469	.386	84-248	.339	70-86	.814	516	18.4	473-1138	.416	234-624	.375	178-217	.820	1358	16.2				
NDUR, Malachi	33-74	.446	11-31	.355	28-38	.737	105	3.6	63-137	.460	15-49	.306	33-50	.660	174	3.1				
OWUSU-ANANE, Nana	153-326	.469	21-68	.309	108-157	.688	435	15.0	301-656	.459	28-104	.269	183-280	.654	813	10.8				
PARAGON, Luke	3-3	1.000	2-2	1.000	0-0	.000	8	4.0	3-3	1.000	2-2	1.000	0-0	.000	8	4.0				
UCHIDIUNO, Adrian	5-10	.500	0-3	.000	0-0	.000	10	1.7	5-10	.500	0-3	.000	0-0	.000	10	1.7				
WRISBY-JEFFERSON, Malcolm	1-13	.077	1-8	.125	3-7	.429	6	0.7	1-13	.077	1-8	.125	3-7	.429	6	0.7				





BROWN BASKETBALL

2023-2024 GAME NOTES

CONFERENCE + CAREER STATS



2023-24 Brown Men's Basketball
Season/Career Statistics
In Conference games

Page 1/1
as of Mar 09, 2024

Summary

Player	Season Statistics										Career Statistics									
	GP-GS	MIN/G	FG%	3FG%	FT%	R/G	A/G	STL	BLK	PTS/G	GP-GS	MIN/G	FG%	3FG%	FT%	R/G	A/G	STL	BLK	PTS/G
ANYA, Kalu	14-13	27.1	.441	.250	.576	7.6	1.4	17	16	8.5	19-18	27.1	.468	.231	.608	7.1	1.4	22	20	8.6
COOLEY, Aaron	14-7	24.7	.380	.176	.438	3.1	0.6	7	10	5.9	36-20	18.9	.415	.211	.526	2.2	0.4	18	20	4.9
DABO, N'famara	2-0	0.8	1.000	.000	.000	0.5	0.0	0	0	1.0	2-0	0.8	1.000	.000	.000	0.5	0.0	0	0	1.0
EROLD, Lyndel	7-6	12.0	.417	.375	.400	1.0	0.1	3	2	2.1	16-6	6.1	.400	.333	.333	0.5	0.1	3	3	1.1
FERRARI, Kimo	14-2	27.1	.554	.515	.833	2.6	2.2	13	2	9.4	37-3	23.5	.452	.409	.714	2.0	1.5	35	2	5.8
KANIA, Drew	1-0	1.6	.000	.000	.000	1.0	0.0	1	0	0.0	1-0	1.6	.000	.000	.000	1.0	0.0	1	0	0.0
KLOMAN, Felix	10-7	16.7	.412	.286	.462	0.7	1.2	5	1	4.0	25-7	10.5	.377	.290	.500	0.7	0.6	5	2	2.4
LESBURT JR., AJ	11-6	17.4	.419	.390	.500	3.0	0.6	3	0	6.3	16-6	12.5	.406	.381	.500	2.3	0.5	3	0	4.3
LEWIS, Landon	10-0	5.5	.727	.000	.500	1.1	0.2	0	1	1.9	22-0	9.3	.667	.000	.667	1.8	0.2	2	7	2.3
LILLY JR., Kino	14-14	37.9	.381	.347	.895	2.4	3.9	14	2	17.6	42-36	35.1	.416	.398	.852	1.9	2.8	40	3	16.8
NDUR, Malachi	14-1	15.7	.512	.471	.720	3.2	1.5	4	7	4.9	20-1	13.0	.479	.421	.704	2.7	1.1	6	9	3.7
OWUSU-ANANE, Nana	14-14	34.0	.503	.333	.730	8.9	2.7	17	11	16.1	35-28	27.9	.473	.286	.685	8.0	2.1	44	36	11.6
PARAGON, Luke	1-0	1.6	.000	.000	.000	0.0	0.0	0	0	0.0	1-0	1.6	.000	.000	.000	0.0	0.0	0	0	0.0
UCHIDIUNO, Adrian	2-0	1.0	.000	.000	.000	0.0	0.0	0	0	0.0	2-0	1.0	.000	.000	.000	0.0	0.0	0	0	0.0
WRISBY-JEFFERSON, Malcolm	3-0	4.1	.000	.000	1.000	0.0	0.7	1	0	0.7	3-0	4.1	.000	.000	1.000	0.0	0.7	1	0	0.7

Scoring

Player	Season Statistics								Career Statistics							
	FG-FGA	FG%	3FG-3FGA	3FG%	FT-FTA	FT%	PTS	PTS/G	FG-FGA	FG%	3FG-3FGA	3FG%	FT-FTA	FT%	PTS	PTS/G
ANYA, Kalu	41-93	.441	3-12	.250	34-59	.576	119	8.5	58-124	.468	3-13	.231	45-74	.608	164	8.6
COOLEY, Aaron	35-92	.380	6-34	.176	7-16	.438	83	5.9	73-176	.415	12-57	.211	20-38	.526	178	4.9
DABO, N'famara	1-1	1.000	0-0	.000	0-0	.000	2	1.0	1-1	1.000	0-0	.000	0-0	.000	2	1.0
EROLD, Lyndel	5-12	.417	3-8	.375	2-5	.400	15	2.1	6-15	.400	3-9	.333	3-9	.333	18	1.1
FERRARI, Kimo	46-83	.554	34-66	.515	5-6	.833	131	9.4	76-168	.452	54-132	.409	10-14	.714	216	5.8
KANIA, Drew	0-1	.000	0-0	.000	0-0	.000	0	0.0	0-1	.000	0-0	.000	0-0	.000	0	0.0
KLOMAN, Felix	14-34	.412	6-21	.286	6-13	.462	40	4.0	20-53	.377	9-31	.290	11-22	.500	60	2.4
LESBURT JR., AJ	26-62	.419	16-41	.390	1-2	.500	69	6.3	26-64	.406	16-42	.381	1-2	.500	69	4.3
LEWIS, Landon	8-11	.727	0-0	.000	3-6	.500	19	1.9	20-30	.667	0-0	.000	10-15	.667	50	2.3
LILLY JR., Kino	85-223	.381	42-121	.347	34-38	.895	246	17.6	243-584	.416	121-304	.398	98-115	.852	705	16.8
NDUR, Malachi	21-41	.512	8-17	.471	18-25	.720	68	4.9	23-48	.479	8-19	.421	19-27	.704	73	3.7
OWUSU-ANANE, Nana	80-159	.503	11-33	.333	54-74	.730	225	16.1	151-319	.473	14-49	.286	89-130	.685	405	11.6
PARAGON, Luke	0-0	.000	0-0	.000	0-0	.000	0	0.0	0-0	.000	0-0	.000	0-0	.000	0	0.0
UCHIDIUNO, Adrian	0-1	.000	0-0	.000	0-0	.000	0	0.0	0-1	.000	0-0	.000	0-0	.000	0	0.0
WRISBY-JEFFERSON, Malcolm	0-1	.000	0-0	.000	2-2	1.000	2	0.7	0-1	.000	0-0	.000	2-2	1.000	2	0.7

Totals

Player	Season Statistics								Career Statistics							
	O-REB	D-REB	TOTAL	PF	FO	A	TO	A/TO	O-REB	D-REB	TOTAL	PF	FO	A	TO	A/TO
ANYA, Kalu	39	68	107	35	2	19	21	0.9	42	92	134	47	2	27	33	0.8
COOLEY, Aaron	16	27	43	34	1	8	14	0.6	26	54	80	68	1	15	28	0.5
DABO, N'famara	0	1	1	1	0	0	1	0.0	0	1	1	1	0	0	1	0.0
EROLD, Lyndel	4	3	7	11	0	1	7	0.1	4	4	8	15	0	2	7	0.3
FERRARI, Kimo	6	30	36	30	0	31	17	1.8	18	55	73	84	3	54	37	1.5
KANIA, Drew	0	1	1	0	0	0	0	0.0	0	1	1	0	0	0	0	0.0
KLOMAN, Felix	1	6	7	13	0	12	4	3.0	1	17	18	26	0	16	6	2.7
LESBURT JR., AJ	4	29	33	4	0	7	7	1.0	4	32	36	4	0	8	8	1.0
LEWIS, Landon	4	7	11	10	0	2	4	0.5	14	26	40	32	0	5	12	0.4
LILLY JR., Kino	7	26	33	19	0	54	40	1.4	10	69	79	58	1	118	118	1.0
NDUR, Malachi	15	30	45	36	1	21	12	1.8	19	35	54	38	1	22	16	1.4
OWUSU-ANANE, Nana	50	74	124	45	2	38	26	1.5	105	174	279	107	5	72	68	1.1
PARAGON, Luke	0	0	0	0	0	0	0	0.0	0	0	0	0	0	0	0	0.0
UCHIDIUNO, Adrian	0	0	0	2	0	0	0	0.0	0	0	0	2	0	0	0	0.0
WRISBY-JEFFERSON, Malcolm	0	0	0	0	0	2	2	1.0	0	0	0	0	0	2	2	1.0





BROWN BASKETBALL

2023-2024 GAME NOTES

LAST TIME ON THE FLOOR



Official Basketball Box Score - Final

Brown at Yale

03/09/24 John J. Lee Amphitheater, New Haven
2023-24 Men's Basketball

Game Time: 12:00 PM

Game Duration: 2:16

Attendance: 1,580

Officials: Dave Fernandez, Gary Corbett, Jason Stallworth

Brown - 84

Record: 12-17 (8-6)

NO. Name	Min	FG		3P	FT	Rebounds			Fouls		TP	AS	TO	ST	Blocks		+/-
		M-A	M-A	M-A	M-A	OR	DR	TOT	PF	FD					BS	BA	
15 Kalu Anya	F 24:54	2-8	0-0	4-5	7 4 11	4 3	8	1	3	1	1	3	1	1	1	7	
31 Nana Owusu-Anane	F 41:48	6-9	2-3	6-8	3 3 6	3 5	20	2	3	1	0	0	0	0	0	0	
4 Lyndel Eroid	G 10:25	1-1	0-0	0-0	1 0 1	0 1	2	0	1	0	0	0	0	0	0	-14	
10 Kino Lilly Jr.	G 42:09	10-19	3-10	3-3	0 3 3	3 1	26	4	2	2	0	1	2	0	1	2	
33 AJ Lesburt Jr.	G 32:47	4-11	2-5	0-0	1 7 8	0 0	10	2	0	0	0	0	0	0	0	8	
21 Aaron Cooley	29:39	4-9	1-2	0-1	1 0 1	1 2	9	0	0	1	0	1	0	1	15		
23 Kimo Ferrari	19:60	1-4	1-4	0-0	0 2 2	2 3	3	3	2	1	0	0	0	0	-2		
11 Malachi Ndur	23:18	1-1	1-1	3-4	2 2 4	3 2	6	2	3	0	1	0	0	0	-1		
45 N'famara Dabo	00:01	0-0	0-0	0-0	0 0 0	0 0	0	0	0	0	0	0	0	0	0	0	
Team					1 2 3		0			0							
Totals		29-62	10-25	16-21	16 23 39	16 17	84	13	13	5	2	3	3				

Shooting By Period		
1st FG%	12-30	40.0%
3PT%	5-14	35.7%
FT%	7-8	87.5%
2nd FG%	13-24	54.2%
3PT%	3-8	37.5%
FT%	8-10	80%
OT FG%	4-8	50.0%
3PT%	2-3	66.7%
FT%	1-3	33.3%
GM FG%	29-62	46.8%
3PT%	10-25	40.0%
FT%	16-21	76.2%

Technical Fouls::NONE

Dead Ball Rebounds: 2, 0

Yale - 81

Record: 20-9 (11-3)

NO. Name	Min	FG		3P	FT	Rebounds			Fouls		TP	AS	TO	ST	Blocks		+/-
		M-A	M-A	M-A	M-A	OR	DR	TOT	PF	FD					BS	BA	
22 Matt Knowing	F 35:28	5-10	0-1	1-3	1 4 5	2 4	11	3	0	2	0	2	0	2	-5		
23 Yussif Basa-Ama	F 04:34	0-0	0-0	0-0	1 1 2	0 0	0	1	0	0	1	0	0	1	0	7	
2 Bez Mbeng	G 45:00	4-8	2-6	0-0	0 1 1	3 2	10	6	3	1	2	0	-3				
3 August Mahoney	G 32:58	5-9	4-7	2-2	0 2 2	3 2	16	1	1	1	0	0	13				
4 John Poulakidas	G 35:06	6-13	2-7	0-0	0 2 2	2 0	14	4	0	2	0	0	1				
1 Danny Wolf	32:04	4-8	0-1	4-4	1 6 7	2 6	12	2	3	1	0	0	-11				
42 Nick Townsend	17:54	3-5	1-1	2-2	1 2 3	2 1	9	1	0	1	0	0	3				
14 Casey Simmons	16:08	4-6	1-2	0-0	0 0 0	2 1	9	0	2	0	0	0	-21				
24 Yassine Gharram	05:49	0-0	0-0	0-0	1 1 2	1 0	0	0	0	0	0	0	1				
Team					1 1 2		0			1							
Totals		31-59	10-25	9-11	6 20 26	17 16	81	18	10	8	3	2	-3				

Shooting By Period		
1st FG%	16-29	55.2%
3PT%	8-14	57.1%
FT%	3-5	60%
2nd FG%	13-27	48.1%
3PT%	2-10	20.0%
FT%	2-2	100%
OT FG%	2-3	66.7%
3PT%	0-1	0.0%
FT%	4-4	100%
GM FG%	31-59	52.5%
3PT%	10-25	40.0%
FT%	9-11	81.8%

Technical Fouls::NONE

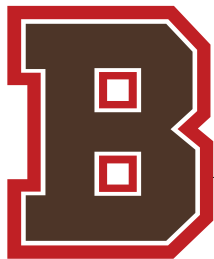
Dead Ball Rebounds: 1, 0

	BROWN	YALE
Biggest lead	3 (1st OT 0:00)	15 (2nd 15:36)
Best Scoring Run	10 (2nd 1:40)	8 (1st 13:34)
Lead Changes	1	
Times Tied	3	
Time with Lead	00:01	42:39

Points from	BROWN	YALE
Turnovers	14	24
Paint	24	30
Second Chance	21	5
Fast Breaks	6	11
Bench	18	30

Period by Period Scoring				
	1st	2nd	OT1	TOT
BROWN	36	37	11	84
YALE	43	30	8	81





BROWN BASKETBALL

2023-2024 GAME NOTES

LAST TIME v. PRINCETON



Official Basketball Box Score - Final
Princeton at Brown
 02/03/24 Pizzitola Sports Center, Providence
 2023-24 Men's Basketball

Game Time: 6:00 PM
 Game Duration: 1:53
 Attendance: 1,350

Officials: John Cahill Jr., Matt Dorn, Matthew Lavigne

Princeton - 70

Record: 16-3 (4-2)

NO. Name	Min	FG		3P	FT	Rebounds			Fouls		TP	AS	TO	ST	Blocks		+/-
		M-A	M-A	M-A	M-A	OR	DR	TOT	PF	FD					BS	BA	
3 Caden Pierce	F 32:29	2-6	0-2	0-2	9-9	1	13	14	3	7	13	4	2	1	1	0	11
54 Zach Martini	F 37:41	2-9	2-8	0-0	0-0	0	3	3	1	2	6	0	0	0	0	0	14
1 Xaivian Lee	G 36:27	7-14	2-5	4-5	0-5	0	5	5	0	5	20	0	4	0	0	2	3
14 Matt Allocco	G 32:21	5-9	0-1	3-3	1-2	1	2	3	3	2	13	2	1	0	0	0	10
24 Blake Peters	G 24:58	3-4	2-3	0-0	1-1	1	1	2	2	0	8	0	0	0	0	0	9
5 Jack Scott	14:04	1-3	0-1	2-2	0-4	0	4	4	1	1	4	0	0	1	0	1	7
12 Jacob Huggins	01:07	0-0	0-0	0-0	0-0	0	0	0	0	1	0	0	0	0	0	0	-4
22 Dalen Davis	13:38	1-2	0-0	2-2	0-1	1	1	1	2	1	4	0	0	0	0	0	-2
43 Philip Byriel	06:12	1-3	0-2	0-0	0-0	0	0	0	1	0	2	0	0	0	0	0	2
10 Derek Sangster	00:21	0-0	0-0	0-0	0-0	0	0	0	0	0	0	0	0	0	0	0	0
11 Darius Gakwasi	00:21	0-0	0-0	0-0	0-0	0	0	0	0	0	0	0	0	0	0	0	0
33 Vernon Collins	00:21	0-0	0-0	0-0	0-0	0	1	1	0	0	0	0	0	0	0	0	0
Team						2	2	4			0		1				
Totals		22-50	6-22	20-21		5	32	37	13	19	70	6	8	2	1	3	10

Shooting By Period		
1 st FG%	11-27	40.7%
3PT%	4-17	23.5%
FT%	4-5	80%
2 nd FG%	11-23	47.8%
3PT%	2-5	40.0%
FT%	16-16	100%
GM FG%	22-50	44.0%
3PT%	6-22	27.3%
FT%	20-21	95.2%

Dead Ball Rebounds: 1, 0

Technical Fouls: NONE

Brown - 60

Record: 6-15 (2-4)

NO. Name	Min	FG		3P	FT	Rebounds			Fouls		TP	AS	TO	ST	Blocks		+/-
		M-A	M-A	M-A	M-A	OR	DR	TOT	PF	FD					BS	BA	
15 Kalu Anya	F 36:01	2-10	0-4	3-4	4-5	4	5	9	5	3	7	0	0	1	1	0	-8
31 Nana Owusu-Anane	F 31:59	7-10	2-2	4-5	3-3	3	3	6	5	4	20	2	0	0	1	0	-4
2 Felix Kloman	G 10:05	0-0	0-0	0-0	0-0	0	0	0	2	0	0	2	1	1	0	0	-2
10 Kino Lilly Jr.	G 37:26	5-17	3-8	2-2	0-0	0	0	0	2	2	15	2	0	0	0	1	-10
21 Aaron Cooley	G 36:39	3-12	1-8	0-0	1-3	4	2	1	7	2	7	2	1	1	0	0	-12
23 Kimo Ferrari	35:50	4-10	3-8	0-0	1-5	6	1	3	1	3	11	2	1	2	0	0	-6
11 Malachi Ndur	11:47	0-4	0-1	0-0	2-1	3	2	0	0	0	0	0	1	0	1	0	-6
33 AJ Lesburt Jr.	00:13	0-1	0-1	0-0	0-0	0	0	0	0	0	0	0	0	0	0	0	-2
Team						1	6	7			0		0				
Totals		21-64	9-32	9-11		12	23	35	19	13	60	10	4	5	3	1	-10

Shooting By Period		
1 st FG%	9-33	27.3%
3PT%	5-14	35.7%
FT%	5-6	83.3%
2 nd FG%	12-31	38.7%
3PT%	4-18	22.2%
FT%	4-5	80%
GM FG%	21-64	32.8%
3PT%	9-32	28.1%
FT%	9-11	81.8%

Dead Ball Rebounds: 1, 0

Technical Fouls: NONE

	PRI	Brown
Biggest lead	11 (2 nd 0:20)	3 (1 st 15:49)
Best Scoring Run	7 (1 st 1:53)	6 (1 st 15:49)
Lead Changes	11	
Times Tied	9	
Time with Lead	26:08	03:29

	PRI	Brown
Points from		
Turnovers	8	4
Paint	30	22
Second Chance	5	15
Fast Breaks	0	7
Bench	10	11

	Period by Period Scoring		
	1st	2nd	TOT
PRI	30	40	70
Brown	28	32	60



BROWN BASKETBALL

2023-2024 GAME NOTES

STARTING LINEUPS THIS SEASON

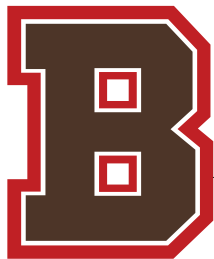
DATE	OPPONENT	G	G	G/F	G/F	F/C
11/6	@ Colgate	Lilly Jr.	Kloman	Cooley	Anya	Owusu-Anane
11/11	Loyola (Md.)	Lilly Jr.	Kloman	Cooley	Anya	Owusu-Anane
11/14	@ New Hampshire	Lilly Jr.	Ferrari	Cooley	Anya	Owusu-Anane
11/16	Rhode Island College	Ferrari	Kloman	Cooley	Anya	Owusu-Anane
11/19	@ #16/20 USC	Lilly Jr.	Ferrari	Cooley	Anya	Owusu-Anane
11/24	vs. Delaware	Lilly Jr.	Kloman	Cooley	Anya	Owusu-Anane
11/25	vs. Kansas City	Lilly Jr.	Kloman	Cooley	Anya	Owusu-Anane
11/26	vs. Ohio	Lilly Jr.	Kloman	Cooley	Anya	Owusu-Anane
12/1	Bryant	Lilly Jr.	Kloman	Cooley	Anya	Owusu-Anane
12/3	@ Maine	Lilly Jr.	Kloman	Cooley	Anya	Owusu-Anane
12/6	@ Rhode Island	Lilly Jr.	Kloman	Cooley	Anya	Owusu-Anane
12/10	@ #RV Providence	Lilly Jr.	Kloman	Cooley	Anya	Owusu-Anane
12/22	Siena	Lilly Jr.	Kloman	Cooley	Anya	Owusu-Anane
12/29	@ Stony Brook	Lilly Jr.	Ferrari	Lesburt Jr.	Anya	Owusu-Anane
1/2	Vermont	Lilly Jr.	Ferrari	Cooley	Anya	Owusu-Anane
1/9	Yale	Lilly Jr.	Ferrari	Cooley	Anya	Owusu-Anane
1/15	@ Harvard	Lilly Jr.	Kloman	Cooley	Anya	Owusu-Anane
1/20	Cornell	Lilly Jr.	Kloman	Cooley	Anya	Owusu-Anane
1/27	@ Dartmouth	Lilly Jr.	Kloman	Cooley	Anya	Owusu-Anane
2/2	Penn	Lilly Jr.	Kloman	Cooley	Anya	Owusu-Anane
2/3	#RV Princeton	Lilly Jr.	Kloman	Cooley	Anya	Owusu-Anane
2/10	Columbia	Lilly Jr.	Kloman	Cooley	Anya	Owusu-Anane
2/16	@ Princeton	Lilly Jr.	Erold	Lesburt Jr.	Anya	Owusu-Anane
2/17	@ Penn	Lilly Jr.	Erold	Lesburt Jr.	Anya	Owusu-Anane
2/23	@ Columbia	Lilly Jr.	Erold	Lesburt Jr.	Anya	Owusu-Anane
2/24	@ Cornell	Lilly Jr.	Erold	Lesburt Jr.	Anya	Owusu-Anane
3/1	Harvard	Lilly Jr.	Erold	Lesburt Jr.	Anya	Owusu-Anane
3/2	Dartmouth	Lilly Jr.	Ferrari	Kloman	Ndur	Owusu-Anane
3/9	@ Yale	Lilly Jr.	Erold	Lesburt Jr.	Anya	Owusu-Anane
3/16	#RV/RV Princeton					

RECORDS BY STARTING LINEUP

#	STARTERS (ALPHABETICAL ORDER)	RECORD	HOME	AWAY	NEUTRAL
1	Anya, Cooley, Kloman, Lilly Jr., Owusu-Anane	5-11	2-6	2-4	1-2
2	Anya, Cooley, Ferrari, Lilly Jr., Owusu-Anane	0-4	0-2	0-2	-
3	Anya, Cooley, Ferrari, Kloman, Owusu-Anane	1-0	1-0	-	-
4	Anya, Ferrari, Lesburt Jr., Lilly Jr., Owusu-Anane	0-1	-	0-1	-
5	Anya, Erold, Lesburt Jr., Lilly Jr., Owusu-Anane	5-1	1-0	4-1	-
6	Ferrari, Kloman, Lilly Jr., Ndur, Owusu-Anane	1-0	1-0	-	-

SEASON TRENDS

LOCATION	OVERALL	IVY
At Home	5-7	3-4
On The Road	6-8	5-2
At Neutral Site	1-2	0-0
AT HALFTIME		
Leads At Halftime	8-6	6-2
Trails At Halftime	4-10	2-4
Tied At Halftime	0-1	0-0
WITH TWO-MINUTES LEFT		
Leads With 2:00	8-2	5-1
Trails With 2:00	4-14	3-5
Tied With 2:00	0-1	0-0
REBOUNDING		
Has More Rebounds	9-10	7-1
Opp. Has More Rebounds	3-7	1-5
Rebounds Are Tied	0-0	0-0
FIELD GOAL PERCENTAGE		
Shoots Higher FG Pct	6-2	4-1
Opp. Shoots Higher FG Pct	6-14	4-4
FG Pct. Is Tied	0-1	0-1
Hits Less Than 40% Of FGs	3-6	1-1
Hits 40-49.9% Of FGs	7-11	6-5
Hits 50-59.9% Of FGs	2-0	1-0
Hits 60% Or Better FGs	0-0	0-0
Opp. Hits Less Than 40% Of FGs	2-0	1-0
Opp. Hits 40-49.9% Of FGs	8-13	5-4
Opp. Hits 50-59.9% Of FGs	2-4	2-2
Opp. Hits 60% Or Better FGs	0-0	0-0
FIELD GOALS MADE		
Has More FGs	5-2	4-2
Opp. Has More FGs	4-14	3-4
FGs Are Tied	3-1	1-0
FREE THROWS		
Shoots Higher FT Pct	6-5	3-2
Opp. Shoots Higher FT Pct	6-12	5-4
FT Pct. Is Tied	0-0	0-0
Shoots More FTs	8-7	5-3
Opp. Shoots More FTs	4-8	3-3
FTs Are Tied	0-2	0-0
FREE THROWS MADE		
Makes More FTs	8-6	5-2
Opp. Makes More FTs	3-11	3-4
FTs Made Are Tied	1-0	0-0
At Least 70% From FT Line	4-6	3-3
50-69% From FT Line	7-8	4-2
Below 50% From FT Line	1-3	1-1
THREE POINT FIELD GOALS		
Makes More 3FGs	7-9	5-4
Opp. Makes More 3FGs	4-7	2-2
3FGs Are Tied	1-1	1-0
ASSISTS		
Has More Assists	7-5	6-1
Opp. Has More Assists	5-10	2-4
Assists Are Tied	0-2	0-1
STEALS		
Has More Steals	5-7	2-4
Opp. Has More Steals	6-9	5-2
Steals Are Tied	1-1	1-0
BLOCKS		
Has More Blocks	8-10	5-4
Opp. Has More Blocks	2-6	1-1
Blocks Are Tied	2-1	2-1
PLAYERS IN DOUBLE-FIGURES		
1 Player Scores 10-Plus	0-0	0-0
2 Players Score 10-Plus	1-5	0-1
3 or More Players Score 10-Plus	11-12	8-5
POINTS SCORED		
Scores 40-49 Points	0-1	0-0
Scores 50-59 Points	0-2	0-0
Scores 60-69 Points	2-6	1-3
Scores 70-79 Points	6-7	5-2
Scores 80-89 Points	2-1	2-1
Scores 90-99 Points	2-0	0-0
Scores 100+ Points	0-0	0-0
DAY/NIGHT/WEEKDAY/WEEKEND		
Plays At Night	8-9	6-3
Plays During The Day	4-8	2-3
Plays On Weekdays	7-9	4-2
Plays On Weekends	5-8	4-4
UNIFORMS		
In Black	1-3	1-1
In Brown	5-7	3-3
In White	6-7	4-2



BROWN BASKETBALL

2023-2024 GAME NOTES

HEAD COACH MIKE MARTIN '04



PERSONAL INFORMATION

- Birthdate: July 4, 1982
- Native of Agawam, Mass.
- 2004 graduate of Brown with concentration in economics.
- Family includes: Kristin Ferrell '04 (wife) and Keira, Teagan and Avery (children).

BACK HOME

- Mike Martin '04 returned to his alma mater and enters his 12th year (11th season) as head coach of Brown University Men's Basketball.

CAREER HIGHLIGHTS AT BROWN

- >> Mike Martin '04 was named the 31st head men's basketball coach in Brown's history on May 31, 2012.
- >> At the time of his hire, Martin was the fourth youngest head men's basketball coach in NCAA Division I.
- >> Has compiled a 146-170 record in 11+ seasons with the Bears, the most wins in program history. Martin shattered a 54 year old record (previously 134 wins held by L. Stanley Ward).
- >> Record of 63-90 in Ivy League play in 11+ seasons.
- >> Has coached the team to two postseason tournaments - 2014 CIT and 2019 CBI.
- >> Member of the New England Sports Hall of Fame
- >> A four-year starter at Brown, Martin was part of the winningest class in the Bears' basketball history, posting a 63-45 four-year record from 2000-2004. He also helped the Class of 2004 to a school-record 39-17 Ivy League mark during that period -- the best by an Ivy League team other than Penn and Princeton since 1970.

CAREER PRIOR TO COACHING AT BROWN

- >> Martin averaged 11 points per game for Brown as a senior. He also played a major role on the Bears' 2003 team that posted a 12-2 Ivy League mark and earned a berth in the National Invitation Tournament (NIT). When he graduated, Martin ranked third all-time at Brown in career treys (143), ninth in career steals (113), and tenth in career assists (232).

After graduating from Brown, Martin spent the 2004-05 season playing professionally for Dart Killester in Ireland's top division of professional basketball.

Martin launched his coaching career at Brown on head coach Glen Miller's staff as an assistant coach in 2005-2006. He joined Miller at Penn in 2006-2007 as an assistant coach and enjoyed a memorable season, with the Quakers posting a 22-9 record, winning the Ivy League Championship with a 13-1 League mark, and advancing to the NCAA Tournament.

At Penn, he helped head coach Jerome Allen and the Quakers post 20 wins overall in 2011-2012 for the first time since 2006-07, finishing second in the Ivy League at 11-3, one game behind Harvard in the standings. Penn then played in the postseason College Basketball Invitational, defeating Quinnipiac in the opening round before falling to Butler in the quarterfinal round.

HEAD COACHING RECORD YEAR-BY-YEAR

YEAR	SCHOOL	OVERALL	CONFERENCE	IVY FINISH	POSTSEASON
2012-13	Brown	13-15 (.464)	7-7 (.500)	fourth	
2013-14	Brown	15-14 (.517)	7-7 (.500)	fourth	CIT First Round
2014-15	Brown	13-18 (.419)	4-10 (.286)	seventh	
2015-16	Brown	8-20 (.286)	3-11 (.214)	seventh	
2016-17	Brown	13-17 (.433)	4-10 (.286)	sixth	
2017-18	Brown	11-16 (.407)	4-10 (.286)	seventh	
2018-19	Brown	20-12 (.625)	7-7 (.500)	fourth	CBI Quarterfinals
2019-20	Brown	15-12 (.556)	8-6 (.571)	t-fourth	
2020-21*	Brown	-	-	-	
2021-22	Brown	13-16 (.448)	5-9 (.357)	t-sixth	
2022-23	Brown	14-13 (.519)	7-7 (.500)	t-fourth	
2023-24	Brown	12-17 (.393)	8-6 (.571)	fourth	Ivy Madness
BROWN	11TH SEASON	147-170 (.464)	64-90 (.416)		
	12TH YEAR (317 GAMES / 154 IVY GAMES)				

*Season canceled due to COVID-19

AWARDS AND HONORS

- >> 2012-13 Joe B. Hall Award Finalist (Nation's Outstanding First Year Coach)
- >> 2018-19 Ivy League Coach of the Year

STUDENT-ATHLETE DEVELOPMENT

- >> **6 ALL-IVY LEAGUE FIRST TEAM**
Sean McGonagill '14 (2x): 2012-13 & 2013-14
Steven Spieth '17: 2016-17
Kino Lilly Jr. '25 (2x): 2022-23 & 2023-24
- >> **5 IVY LEAGUE DEFENSIVE PLAYER OF THE YEAR**
Cedric Kuakumensah '16 (2x): 2012-13 & 2013-14
NOTE: Brown's First-Ever Defensive Player of the Year winner
Obi Okolie '19: 2018-19
Jaylan Gainey '22 (2x): 2019-20 & 2021-22
- >> **2 IVY LEAGUE FRESHMAN OF THE YEAR**
Desmond Cambridge: 2017-18
Kino Lilly Jr. '25: 2021-22

MEMORABLE DATES AT BROWN

- >> **NOV. 11, 2012**
First victory at Brown (58-49 vs. Binghamton)
- >> **DEC. 28, 2012**
Defeated Providence in a sold-out Pizzitola Sports Center 69-68
NOTE: First home game vs. PC in 30 years
- >> **JAN. 19, 2013**
First Ivy League victory (65-51 vs. Yale)
- >> **MARCH 17, 2014**
Hosted Holy Cross in first postseason game hosted by Brown (CIT)
- >> **MARCH 12, 2019**
Named Ivy League Coach of the Year
- >> **MARCH 20, 2019**
Earned Brown's first-ever postseason victory (83-78 vs. UAB in CBI)
NOTE: Win gave Brown 20 wins for the first time in program history
- >> **JAN. 7, 2020**
100th win at Brown (79-53 vs. Johnson & Wales)
- >> **FEB. 11, 2023**
Became the winningest head coach in program history with his 134th win (80-66 vs. Cornell).
NOTE: Broke a 54-year-old record previously held by L. Stanley Ward.
- >> **MARCH 2, 2024**
Defeated Dartmouth 89-67 at home to clinch the first Ivy Madness spot in program history.



BROWN BASKETBALL

2023-2024 GAME NOTES

QUICK FACTS

THE UNIVERSITY

Location	Providence, Rhode Island
Founded	1764
Enrollment	10,425 (7,125 undergrads)
Nickname	Bears
Colors	Brown, Red, White
Conference	Ivy League
President	Christina H. Paxson

ATHLETIC DEPARTMENT

Vice President for Athletics and Recreation	M. Grace Calhoun, Ph.D.
>> Alma Mater	<i>Brown '92</i>
Athletic Department Address	235 Hope Street Pizzitola Sports Center, Room 204A Box 1932 Providence, RI 02912
Athletic Department Phone	(401) 572-7374

MEN'S BASKETBALL HISTORY

First Season	1900-01 (no stats available prior to 1900)
All-Time Record	1101-1589-1
	Home: 689-597
	Away: 366-914-1
	Neutral: 46-78
Conf. Season Championships	1 - 1986
NCAA Appearances	2 - 1939, 1986
NIT Appearances	1 - 2003
CBI Appearances	2 - 2008, 2019
CIT Appearances	1 - 2014

PIZZITOLA SPORTS CENTER

Year Opened	1989
Capacity	3,000
Press Row Phone	(917) 683-6517
Home Record	235-183
>> Previous Homes	Pre-Marvel Gymnasium (1900-27): 120-76
	Marvel Gym Era (1927-89): 334-338
	91-61
>> Record under Martin	

BASKETBALL STAFF

Head Coach	Mike Martin	
>> Alma Mater	<i>Brown '04</i>	
>> Record at Brown	147-170	12th Season (11th Year)
>> Career Record	SAME	
Associate Head Coach	T.J. Sorrentine	16th Season
>> Alma Mater	<i>Vermont '05</i>	
Assistant Coach	Tyson Wheeler	2nd Season
>> Alma Mater	<i>Rhode Island '98</i>	
Assistant Coach	Sam Hershberger	5th Season
>> Alma Mater	<i>Elon '16</i>	
Director of Operations	Sydney Armand	2nd Season
>> Alma Mater	<i>Rhode Island '19</i>	

LAST SEASON

Overall Record	14-13 (.519)
Ivy Record (Finish)	7-7 (t-fourth)
Final Ranking	Not Ranked
Postseason	None

2023-2024 TEAM INFORMATION

Starters Returning/Lost	4/1	Anya, Cooley, Lilly Jr., Owusu-Anane / Wojcik
Lettermen Returning/Lost	8/3	(R) Anya, Cooley, Ferrari, Kloman, Lewis, Lilly Jr., Ndur, Owusu-Anane
		(L) Cowan, Friday, Wojcik
Additional Returnees	4	Erold, Klores, Kania, Lesburt Jr.
Newcomers	5	Dabo, Efstathiou, Paragon, Uchidiuno, Wrisby-Jefferson
Fr. / So. / Jr. / Sr.		5 / 4 / 5 / 3

2023-2024 MEDIA INFORMATION

POST GAME INTERVIEWS

Brown head coach Mike Martin '04 and requested players will be available to the media after each game following a customary 10-minute cooling down period. The Brown locker room will not be open to the media. Each visiting team will set its own post-game policy.

INTERVIEW REQUESTS

All Brown players and coaches will be available throughout the 2023-2024 season for interviews with members of the media before or after practice and by **APPOINTMENT ONLY** through the Athletic Communications Office. It is important, however, that all requests for interviews be made through the Brown Athletic Communications Office and its associate director of athletics, Kelvin Queliz, at (917) 683-6517. This policy allows us to arrange a time that will not interfere with a student-athlete's academic schedule, which has top priority. No student-athlete's home phone number or cell phone number will be released to ensure each student-athletes' privacy away from the court.

CREDENTIALS

For a work credential for all home men's basketball games at the Pizzitola Sports Center, please email Queliz (kelvin_queliz@brown.edu) with your name and affiliation. **Please note:** we reserve the right to deny a credential.

SOCIAL MEDIA

The official Brown men's basketball accounts will have up to the minute coverage of men's hoops throughout the season. Please contact Queliz if you have any questions.

Facebook	/BrownMBB
X/Twitter	@BrownU_MBB
Instagram	@BrownU_MBB
YouTube	/BrownAthletics

PHOTOS

All photos will be posted on BrownBears.com. We will not sell photos but all photos will be available by contacting the Athletic Communications office.

PARKING

Parking is limited surrounding the Pizzitola Sports Center and Brown University's campus. For media needing special parking accommodations, contact Brown Athletic Communications.

ATHLETIC COMMUNICATIONS

Associate Director of Athletics	Kelvin Queliz
MBB Contact	Kelvin Queliz
Office	Room 204A, Pizzitola Sports Center
Cell Phone	(917) 683-6517



BROWN BASKETBALL

2023-2024 GAME NOTES

AROUND THE IVY

2023-24 STANDINGS (AS OF MARCH 11)

SCHOOL	IVY	PCT	OVR	PCT	STREAK
Princeton *	12-2	.857	24-3	.889	W9
Cornell *	11-3	.786	22-6	.786	W1
Yale *	11-3	.786	20-9	.690	L1
Brown *	8-6	.571	12-17	.414	W6
Harvard	5-9	.357	14-13	.519	L3
Columbia	4-10	.286	13-14	.481	L6
Penn	3-11	.214	11-18	.379	L1
Dartmouth	2-12	.143	6-21	.222	W1

LEAGUE LEADERS (AS OF MARCH 11)

CATEGORY	NAME	SCHOOL	#
Points Per Game	Kino Lilly Jr.	Brown	18.4
Field Goal Percentage	Josh Odunowo	Columbia	.611
Three-Point Percentage	Kimo Ferrari	Brown	.483
Free-Throw Percentage	Matt Allocco	Princeton	.920
Rebounds Per Game	Danny Wolf	Yale	9.7
Offensive Rebounds	Nana Owusu-Anane	Brown	3.4
Assists Per Game	Malik Mack	Harvard	4.8
Steals Per Game	Chris Manon	Cornell	2.2
Blocked Shots Per Game	Justice Ajogbor	Harvard	2.9
Minutes	Kino Lilly Jr.	Brown	37.9

IVY LEAGUE POSTSEASON AWARDS

PLAYER OF THE YEAR: Caden Pierce, Princeton (So., F)
DEFENSIVE PLAYER OF THE YEAR: Bez Mbeng, Yale (Jr., G)
ROOKIE OF THE YEAR: *Malik Mack, Harvard (Fr., G)
COACH OF THE YEAR: Mitch Henderson, Princeton

FIRST TEAM

NAME, SCHOOL (YR., POS.)

Kino Lilly Jr., Brown (Jr., G)
 *Chris Manon, Cornell (Sr., G)
 *Xaivian Lee, Princeton (So., G)
 *Caden Pierce, Princeton (So., F)
 *Danny Wolf, Yale (So., F)

SECOND TEAM ^

NAME, SCHOOL (YR., POS.)

Nana Owusu-Anane, Brown (Jr., F)
 Nazir Williams, Cornell (Jr., G)
 Clark Slajchert, Penn (Sr., G)
 Matt Allocco, Princeton (Sr., G)
 Bez Mbeng, Yale (Jr., G)
 John Poulakidas, Yale (Jr., G)

HONORABLE MENTION

NAME, SCHOOL (YR., POS.)

G. Rubio De La Rosa, Columbia (Jr., G)
 Malik Mack, Harvard (Fy., G)
 Matt Knowling, Yale (Sr., F)

*Unanimous Selection

^Team Extended Due To Tie In Voting

IVY PLAYERS OF THE WEEK

WEEK	WINNER	POS	SCHOOL
1	Caden Pierce (1)	F	Princeton
2	Matt Allocco (1)	G	Princeton
3	Xaivian Lee (1)	G	Princeton
4 (co)	Clark Slajchert	G	Penn
	Caden Pierce (2)	F	Princeton
5	Jayden Williams (1)	F	Dartmouth
6	Danny Wolf (1)	F	Yale
7	Chris Manon (1)	F	Cornell
	Chisom Okpara (1)	G	Harvard
8	Caden Pierce (3)	F	Princeton
9	Xaivian Lee (2)	G	Princeton
10	Danny Wolf (2)	F	Yale
11	Danny Wolf (3)	F	Yale
12	Chris Manon (2)	G	Cornell
13	Danny Wolf (4)	F	Yale
14	Danny Wolf (5)	F	Yale
15	Matt Allocco (2)	G	Princeton
16	Kalu Anya (1)	G	Brown
17	Kimo Ferrari (1)	G	Brown
	Caden Pierce (4)	F	Princeton
18	Caden Pierce (5)	F	Princeton

IVY ROOKIE OF THE WEEK

WEEK	WINNER	POS	SCHOOL
1	Malik Mack (1)	G	Harvard
2	Malik Mack (2)	G	Harvard
3	Malik Mack (3)	G	Harvard
4	Malik Mack (4)	G	Harvard
5	Dalen Davis (1)	G	Princeton
6	Sam Brown (1)	G	Penn
7	Sam Brown (2)	G	Penn
8	Thomas Batties II	F	Harvard
9	Tyler Perkins (1)	G	Penn
10	Malik Mack (5)	G	Harvard
11	Malik Mack (6)	G	Harvard
12	Tyler Perkins (2)	G	Penn
13	Malik Mack (7)	G	Harvard
14	Malik Mack (8)	G	Harvard
15	Jake Fiegen	G	Cornell
16	Sam Brown (3)	G	Penn
17	Dalen Davis (2)	G	Princeton
18	Tyler Perkins (3)	G	Penn

PRESEASON POLL

#	SCHOOL	POINTS (FIRST-PLACE)
1	Yale	124 (14)
2	Princeton	110 (2)
3	Cornell	80
4	Brown	77
5	Penn	68
6	Harvard	66
7	Dartmouth	28
8	Columbia	23

NET RANKINGS (THROUGH MARCH 11)

#	SCHOOL	RANKING
1	Princeton	48
2	Yale	87
3	Cornell	88
4	Brown	191
5	Harvard	204
6	Penn	212
7	Columbia	228
8	Dartmouth	334

ASSOCIATED PRESS POLL (3.11)

#	TEAM (1ST VOTES)	RECORD	POINTS	PREV
1	Houston (52)	28-3	1540	1
2	UConn (6)	28-3	1471	2
3	Purdue (4)	28-3	1453	3
4	North Carolina	25-6	1361	7
5	Tennessee	24-7	1291	4
6	Arizona	24-7	1125	5
7	Iowa State	24-7	1120	6
8	Creighton	23-8	1094	10
9	Kentucky	23-8	1018	15
10	Marquette	23-8	1011	8
11	Duke	24-7	976	9
12	Auburn	24-7	914	13
13	Illinois	23-8	802	12
14	Baylor	22-9	786	11
15	South Carolina	25-6	567	17
16	Kansas	22-9	558	14
17	Gonzaga	24-6	511	19
18	Utah State	26-5	486	22
19	Alabama	21-10	432	16
20	BYU	22-9	381	20
21	Saint Mary's	24-7	306	23
22	Washington State	23-8	223	18
23	Nevada	26-6	223	NR
24	Dayton	24-6	155	25
25	Texas Tech	22-9	149	NR

Others receiving votes: Boise State 46, South Florida 27, San Diego St. 21, Drake 16, Texas 14, James Madison 14, FAU 11, Florida 8, Princeton 7, Nebraska 6, New Mexico 4, Colorado 2, McNeese State 2, Colorado State 1, Wake Forest 1, Indiana State 1.

USA TODAY COACHES POLL (3.11)

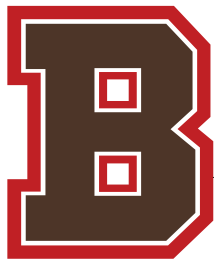
#	TEAM	RECORD	POINTS	PREV.
1	Houston	28-3	772	1
2	UConn	28-3	732	2
3	Purdue	28-3	728	3
4	North Carolina	25-6	671	7
5	Tennessee	24-7	653	4
6	Creighton	23-8	569	10
7	Arizona	24-7	566	5
8	Iowa State	24-7	546	6
9	Kentucky	23-8	513	13
10	Marquette	23-8	487	9
11	Duke	24-7	481	8
12	Auburn	24-7	423	14
13	Baylor	22-9	387	11
14	Illinois	23-8	385	12
15	Gonzaga	24-6	274	18
16	South Carolina	25-6	273	16
17	Kansas	22-9	256	15
18	Utah State	26-5	249	22
19	Alabama	21-10	217	17
20	Saint Mary's	24-7	193	21
21	BYU	22-9	166	23
22	Nevada	26-6	109	NR
23	Texas Tech	22-9	104	NR
24	Dayton	24-6	103	NR
25	Washington State	23-8	82	20

Others receiving votes: Boise State 30; San Diego State 19; James Madison 19; Florida 17; Drake 15; South Florida 11; Nebraska 7; Oklahoma 6; Florida Atlantic 6; Colorado 3; Princeton 1; Northwestern 1; Indiana State 1;

COLLEGEINSIDER.COM MID-MAJOR POLL (3.11)

#	TEAM	RECORD	POINTS	PREV.
1	Gonzaga (30)	24-6	775	1
2	Saint Mary's (1)	24-7	742	4
3	Drake	28-6	694	8
4	Princeton	24-3	673	5
5	Indiana State	28-6	643	3
6	James Madison	30-3	625	6
7	McNeese	28-3	584	7
8	Appalachian State	27-6	557	2
9	Grand Canyon	27-4	542	9
10	Charleston	25-7	478	10
11	Samford	28-5	446	11
12	Vermont	26-6	436	12
13	UC Irvine	24-8	402	14
14	Sam Houston	20-11	347	18
15	Colgate	24-9	275	19
16	Cornell	22-6	266	16
17	High Point	25-8	255	13
18	San Francisco	23-9	253	20
19	Yale	20-9	224	15
20	Louisiana Tech	22-9	218	17
21	Morehead State	26-8	120	NR
22	Oakland	21-11	113	NR
23	Bradley	22-11	103	22
24	Toledo	20-11	63	NR
25	Little Rock	21-12	57	21

OTHERS RECEIVING VOTES: Santa Clara 30, UC San Diego 20, Akron 16, Tarleton State 16, Longwood 12, South Dakota State 12, Stetson 11, Texas A&M-Corpus Christi 11, UNCW 11, Western Carolina 11, Hofstra 9, Norfolk State 9, Ohio 7, Troy 5, Quinnipiac 5, Northern Iowa 4, UMass Lowell 4, Arkansas State 3, UC Davis 2, Belmont 1, Merrimack 1



BROWN BASKETBALL

2023-2024 GAME NOTES

THE LAST TIME THE BEARS...

SCORED 100 POINTS	W, 100-61 vs. Johnson & Wales	1/14/19
ALLOWED 100 POINTS	W, 102-100 (OT) at Princeton	2/3/18
SCORED <60 POINTS	L, 54-74 at #RV Providence	12/10/23
ALLOWED <60 POINTS	W, 92-51 vs. Rhode Island College	11/16/23
WON BY 30 POINTS	W, 92-51 vs. Rhode Island College	11/16/23
LOST BY 30 POINTS	L, 62-93 at Syracuse	12/27/21
WON BY 20 POINTS	W, 89-67 vs. Dartmouth	3/2/24
LOST BY 20 POINTS	L, 54-74 at #RV Providence	12/10/23
SHOT 55% FROM FIELD	56.7% vs. Dartmouth; W, 89-67	3/2/24
MADE 20 FREE THROWS	25 v. Cornell; L, 83-84	1/20/24
MADE 10 3FG	10 at Yale; W, 84-81 (OT)	3/9/24
HAD 50 REBOUNDS	50 vs. Bryant; L, 59-65	11/26/21
HAD 20 ASSISTS	22 vs. Dartmouth; W, 89-67	3/2/24
HAD 10 STEALS	12 vs. Dartmouth; W, 89-67	3/2/24
HAD 10 BLOCKS	10 vs. Loyola (Md.); L, 75-77 (OT)	11/11/23
HAD < 10 TURNOVERS	9 at Cornell; W, 78-74	2/24/24
FORCED 20 TURNOVERS	22 vs. Rhode Island College; W, 92-51	11/16/23
PLAYED OVERTIME	W, 84-81 at Yale	3/9/24
PLAYED DOUBLE OVERTIME	L, 83-84 vs. Marist	12/22/15

NOTE - Bold denotes this season.

- NOTE: Hall of Fame Shootout (Mohegan Sun Arena)

THE LAST TIME A BEAR...

SCORED 25 POINTS			
HOME	Kimo Ferrari	39	Dartmouth
AWAY	Kino Lilly Jr.	26	@ Yale
NEUTRAL	Kino Lilly Jr.	27	vs. Kansas City
			11/25/23
			- NOTE: Hall of Fame Shootout (Mohegan Sun Arena)
SCORED 30 POINTS			
HOME	Kimo Ferrari	39	Dartmouth
AWAY	Brandon Anderson	31	@ Penn
NEUTRAL	n/a		2/14/20
SCORED 40 POINTS			
HOME	Russ Tyler	46	Rhode Island
AWAY	Marcus Thompson	43	@ Harvard
NEUTRAL	n/a		3/9/71
			2/24/89
GRABBED 15 REBOUNDS			
HOME	Nana Owusu-Anane	18	Columbia
AWAY	Kalu Anya	17	@ Cornell
NEUTRAL	n/a		1/21/23
			2/24/23
GRABBED 20 REBOUNDS			
HOME	Tamenang Choh	21	Bryant
AWAY	n/a		11/26/21
NEUTRAL	n/a		
HAD 10 ASSISTS			
HOME	Tavon Blackmon	10	Penn
AWAY	n/a		1/30/16
NEUTRAL	n/a		
DOUBLE-DOUBLES			
HOME	Nana Owusu-Anane	13 pts, 14 rebs	Harvard
AWAY	Nana Owusu-Anane	15 pts, 13 rebs	@ Cornell
	Kalu Anya	23 pts, 17 rebs	@ Cornell
NEUTRAL	Nana Owusu-Anane	19 pts, 11 rebs	v. Ohio (Baha Mar Hoops Nassau Ch.)
			11/26/23
TRIPLE-DOUBLES			
#1	Jason Forte	12 rebs, 11 pts, 10 asts	Dartmouth
			2/27/04

NOTE - Bold denotes this season.

RECORD CHASERS

CAREER POINTS (1,000 POINT CLUB)

RANK	POINTS	NAME	YEARS
1	2,041	Earl Hunt	1999-03
2	1,668	Arnie Berman	1969-72
3	1,618	Sean McGonagill	2010-14
4	1,597	Jason Forte	2001-05
5	1,405	Brandon Anderson	2016-20
6	1,367	Steven Spieth	2013-17
7	1,361	Peter Sullivan	2007-11
8	1,358	Kino Lilly Jr.	2021-Present
9	1,344	Alai Nuualiitia	1999-03
10	1,331	Mike Cingiser	1959-62
11	1,328	Marcus Thompson	1985-89
12	1,322	Tamenang Choh	2017-22
13	1,319	Joe Tebo	1955-58
14	1,306	Damon Huffman	2004-08
15	1,294	Rick Lloyd	1988-92
16	1,288	Brian Saunders	1974-77
17	1,241	Phil Brown	1972-75
	1,241	Peter Moss	1977-80
19	1,190	Chuck Savage	1988-92
20	1,181	Cedric Kuakumensah	2012-16
21	1,166	Tavon Blackmon	2013-17
22	1,165	Mike Waitkus	1982-86
23	1,147	Lou Murgo	1951-55
24	1,134	Matt Mullery	2006-10
25	1,133	Rusty Tyler	1968-71
26	1,100	Mark McAndrew	2004-08
27	1,079	Ira James	1979-82
28	1,067	Obi Okolie	2015-19
29	1,046	Gerry Alaimo	1955-58
30	1,033	Matt Sullivan	2009-13
31	1,031	Eric Blackiston	1992-96
32	1,011	Brian Lloyd	1992-96
33	1,009	Woody Grimshaw	1944-47

CAREER THREE-POINTERS MADE

RANK	3FGM	NAME	YEARS
1	257	JR Hobbie	2013-17
2	249	Sean McGonagill	2010-13
3	234	Kino Lilly Jr.	2021-Present
4	232	Damon Huffman	2004-08
5	215	Brian Lloyd	1992-96

CAREER SCORING AVERAGE

RANK	PPG	NAME	YEARS
1	21.6	Arnie Berman	1969-72
2	18.9	Earl Hunt	1999-2003
3	18.2	Lou Murgo	1951-54
4	17.8	Joe Tebo	1955-58
	17.8	Mike Cingiser	1959-62
6	16.5	Brian Saunders	1974-77
7	16.2	Kino Lilly Jr.	2021-present
8	16.0	Phil Brown	1972-75

CAREER FREE THROW PERCENTAGE (MIN. 150 ATT.)

RANK	FT%	NAME	YEARS
1	.861	Mike Waitkus	1982-86
2	.850	Patrick Lynch	1983-87
3	.848	Steven Spieth	2013-17
4	.847	Arnie Berman	1969-72
5	.824	Damon Huffman	2004-08
6	.823	Mark McAndrew	2004-08
7	.820	Kino Lilly Jr.	2021-present
8	.811	Earl Hunt	1999-2003

SEASON 3FG MADE

RANK	3FG	NAME	YEAR
1	93	Sean McGonagill	2013-14
2	84	Kino Lilly Jr.	2023-24
3	82	Damon Huffman	2007-08
4	77	Patrick Powers	2003-04
	77	Kino Lilly Jr.	2022-23



BROWN BASKETBALL

2023-2024 GAME NOTES

SEASON + CAREER HIGHS



SEASON-HIGH			
TOTAL #	LAST AGAINST	DATE	
15	Bryant	12/1	
5	Bryant	12/1	
3	2x @ Harvard	1/15	
5	Vermont	1/2	
7	v. Delaware	11/24	
4	@ Maine	12/3	
3	@ #RV Providence	12/10	
1	4x Cornell	1/20	
35	2x Cornell	1/20	

POINTS
FIELD GOALS
3-POINTERS
FREE THROWS
REBOUNDS
ASSISTS
STEALS
BLOCKS
MINUTES

CAREER-HIGH AT BROWN			
TOTAL #	LAST AGAINST	DATE	
same as season			
same as season			
same as season			
same as season			
same as season			
same as season			
same as season			
same as season			
same as season			



SEASON-HIGH			
TOTAL #	LAST AGAINST	DATE	
7	Harvard	3/1	
2	2x Harvard	3/1	
2	@ Cornell	2/24	
2	Harvard	3/1	
5	@ Colgate	11/6	
1	3x @ Princeton	2/16	
2	@ Princeton	2/16	
2	Harvard	3/1	
20	Harvard	3/1	

POINTS
FIELD GOALS
3-POINTERS
FREE THROWS
REBOUNDS
ASSISTS
STEALS
BLOCKS
MINUTES

CAREER-HIGH AT BROWN			
TOTAL #	LAST AGAINST	DATE	
same as season			
same as season			
same as season			
same as season			
same as season			
1	4x @ Penn	2/16/24	
same as season			
same as season			
same as season			



SEASON-HIGH			
TOTAL #	LAST AGAINST	DATE	
2	Rhode Island College	11/16	
1	Rhode Island College	11/16	
None			
None			
2	@ New Hampshire	11/14	
1	2x v. Kansas City	11/25	
None			
None			
13	Rhode Island College	11/16	

POINTS
FIELD GOALS
3-POINTERS
FREE THROWS
REBOUNDS
ASSISTS
STEALS
BLOCKS
MINUTES

CAREER-HIGH AT BROWN			
TOTAL #	LAST AGAINST	DATE	
3	@ Penn	2/18/23	
1	2x Rhode Island College	11/16/23	
1	@ Penn	2/18/23	
1	@ Hartford	12/4/22	
same as season			
1	3x Kansas City	11/25/23	
None			
None			
same as season			



SEASON-HIGH			
TOTAL #	LAST AGAINST	DATE	
27	2x v. Kansas City	11/25	
10	3x @ Yale	3/9	
5	3x Yale	1/9	
12	@ Penn	2/17	
6	Harvard	3/1	
8	Dartmouth	3/2	
7	Dartmouth	3/2	
1	6x @ Penn	2/17	
43	Loyola (Md.)	11/11	

POINTS
FIELD GOALS
3-POINTERS
FREE THROWS
REBOUNDS
ASSISTS
STEALS
BLOCKS
MINUTES

CAREER-HIGH AT BROWN			
TOTAL #	LAST AGAINST	DATE	
32	Maine	11/27/22	
11	Maine	11/27/22	
7	Maine	11/27/22	
same as season			
7	Yale	3/4/23	
same as season			
same as season			
1	10x @ Penn	2/17/24	
same as season			



SEASON-HIGH			
TOTAL #	LAST AGAINST	DATE	
14	@ Dartmouth	1/27	
4	@ Dartmouth	1/27	
4	@ Dartmouth	1/27	
5	Columbia	2/10	
8	Columbia	2/10	
4	2x Harvard	3/1	
2	2x @ Rhode Island	12/6	
3	3x @ Dartmouth	1/27	
25	2x @ Dartmouth	1/27	

POINTS
FIELD GOALS
3-POINTERS
FREE THROWS
REBOUNDS
ASSISTS
STEALS
BLOCKS
MINUTES

CAREER-HIGH AT BROWN			
TOTAL #	LAST AGAINST	DATE	
14	@ Dartmouth	1/27/24	
4	3x @ Dartmouth	1/27/24	
4	@ Dartmouth	1/27/24	
same as season			
9	@ Bryant	12/2/22	
same as season			
2	5x Rhode Island	12/6/23	
same as season			
29	@ Bryant	12/2/22	



SEASON-HIGH			
TOTAL #	LAST AGAINST	DATE	
3	@ #RV Providence	12/10	
1	@ #RV Providence	12/10	
1	@ #RV Providence	12/10	
2	Cornell	1/20	
3	3x v. Delaware	11/24	
3	Rhode Island College	11/16	
1	2x Columbia	2/10	
1	Rhode Island College	11/16	
15	@ New Hampshire	11/14	

POINTS
FIELD GOALS
3-POINTERS
FREE THROWS
REBOUNDS
ASSISTS
STEALS
BLOCKS
MINUTES

CAREER-HIGH AT BROWN			
TOTAL #	LAST AGAINST	DATE	
same as season			
none			
none			
same as season			
same as season			
same as season			
same as season			
same as season			
same as season			



BROWN BASKETBALL

2023-2024 GAME NOTES

SEASON + CAREER HIGHS



14

LUKE PARAGON

SEASON-HIGH

TOTAL #	LAST AGAINST	DATE
8	Rhode Island College	11/16
3	Rhode Island College	11/16
2	Rhode Island College	11/16

2	Rhode Island College	11/16

8	Rhode Island College	11/16

POINTS
FIELD GOALS
3-POINTERS
FREE THROWS
REBOUNDS
ASSISTS
STEALS
BLOCKS
MINUTES

CAREER-HIGH AT BROWN

TOTAL #	LAST AGAINST	DATE
same as season		
same as season		
same as season		

same as season		

same as season		



15

KALU ANYA

SEASON-HIGH

TOTAL #	LAST AGAINST	DATE
23	@ Cornell	2/24
9	@ Cornell	2/24
1	5x @ Cornell	2/24
8	Cornell	1/20
17	@ Cornell	2/24
7	@ Columbia	2/23
5	v. Kansas City	11/25
3	Harvard	3/1
36	Penn	2/2

POINTS
FIELD GOALS
3-POINTERS
FREE THROWS
REBOUNDS
ASSISTS
STEALS
BLOCKS
MINUTES

CAREER-HIGH AT BROWN

TOTAL #	LAST AGAINST	DATE
same as season		
same as season		
1	7x @ Cornell	2/24/24
same as season		
same as season		
same as season		
same as season		
same as season		
36	2x Penn	2/2/24



21

AARON COOLEY

SEASON-HIGH

TOTAL #	LAST AGAINST	DATE
15	Rhode Island College	11/16
6	Penn	2/2
4	Rhode Island College	11/16
5	v. Kansas City	11/25
10	v. Delaware	11/24
4	v. Kansas City	11/25
2	Yale	1/9
3	@ Harvard	1/15
39	@ Maine	12/3

POINTS
FIELD GOALS
3-POINTERS
FREE THROWS
REBOUNDS
ASSISTS
STEALS
BLOCKS
MINUTES

CAREER-HIGH AT BROWN

TOTAL #	LAST AGAINST	DATE
same as season		
6	3x Penn	2/2/24
same as season		
same as season		
same as season		
5	Maine	11/27/22
3	@ Dartmouth	2/3/23
3	2x @ Harvard	1/15/24
same as season		



22

LANDON LEWIS

SEASON-HIGH

TOTAL #	LAST AGAINST	DATE
8	2x @ Stony Brook	12/29
3	2x @ Harvard	1/15
None		
4	2x @ Stony Brook	12/29
5	3x @ #16/20 USC	11/19
3	2x @ Stony Brook	12/29
2	2x Bryant	12/1
1	5x Harvard	3/1
21	Loyola (Md.)	11/11

POINTS
FIELD GOALS
3-POINTERS
FREE THROWS
REBOUNDS
ASSISTS
STEALS
BLOCKS
MINUTES

CAREER-HIGH AT BROWN

TOTAL #	LAST AGAINST	DATE
12	Columbia	1/21/23
3	3x @ Harvard	1/15/24
None		
6	Columbia	1/21/23
5	6x @ #16/20 USC	11/19/23
same as season		
same as season		
1	12x Harvard	3/1/24
26	Yale	3/4/23



23

KIMO FERRARI

SEASON-HIGH

TOTAL #	LAST AGAINST	DATE
39	Dartmouth	3/2
14	Dartmouth	3/2
10	Dartmouth	3/2
2	3x Harvard	3/1
7	@ Stony Brook	12/29
5	2x @ Cornell	2/24
4	@ #RV Providence	12/10
2	@ Penn	2/17
36	2x #RV Princeton	2/3

POINTS
FIELD GOALS
3-POINTERS
FREE THROWS
REBOUNDS
ASSISTS
STEALS
BLOCKS
MINUTES

CAREER-HIGH AT BROWN

TOTAL #	LAST AGAINST	DATE
same as season		
same as season		
same as season		
2	9x Harvard	3/1/24
same as season		
5	3x @ Cornell	2/24/24
5	Penn	1/2/23
same as season		
same as season		



24

DREW KANIA

SEASON-HIGH

TOTAL #	LAST AGAINST	DATE
4	Rhode Island College	11/16
2	Rhode Island College	11/16

1	2x Dartmouth	3/2

1	2x Dartmouth	3/2

6	Rhode Island College	11/16

POINTS
FIELD GOALS
3-POINTERS
FREE THROWS
REBOUNDS
ASSISTS
STEALS
BLOCKS
MINUTES

CAREER-HIGH AT BROWN

TOTAL #	LAST AGAINST	DATE
same as season		
same as season		

same as season		

same as season		

same as season		



BROWN BASKETBALL

2023-2024 GAME NOTES

SEASON + CAREER HIGHS



25

ADRIAN UCHIDIUNO

SEASON-HIGH

TOTAL #	LAST AGAINST	DATE
6	Rhode Island College	11/16
3	Rhode Island College	11/16
None		
None		
2	Rhode Island College	11/16
1	Rhode Island College	11/16
2	Rhode Island College	11/16
1	Rhode Island College	11/16
10	Rhode Island College	11/16

POINTS
FIELD GOALS
3-POINTERS
FREE THROWS
REBOUNDS
ASSISTS
STEALS
BLOCKS
MINUTES

CAREER-HIGH AT BROWN

TOTAL #	LAST AGAINST	DATE
same as season		
same as season		

same as season		
same as season		
same as season		
same as season		
same as season		



31

NANA OWUSU-ANANE

SEASON-HIGH

TOTAL #	LAST AGAINST	DATE
21	Cornell	1/20
8	3x Penn	2/2
3	@ Princeton	2/16
9	v. Ohio	11/26
14	Harvard	3/1
8	Dartmouth	3/2
4	2x Cornell	1/20
3	2x @ Columbia	2/23
42	@ Yale	3/9

POINTS
FIELD GOALS
3-POINTERS
FREE THROWS
REBOUNDS
ASSISTS
STEALS
BLOCKS
MINUTES

CAREER-HIGH AT BROWN

TOTAL #	LAST AGAINST	DATE
27	@ Columbia	1/21/23
11	@ Columbia	1/21/23
same as season		
9	2x v. Ohio	11/26/23
18	@ Columbia	1/21/23
same as season		
4	4x Cornell	1/20/24
5	@ Dartmouth	2/3/23
same as season		



33

ALEXANDER LESBURT JR.

SEASON-HIGH

TOTAL #	LAST AGAINST	DATE
20	v. Kansas City	11/25
6	v. Kansas City	11/25
4	v. Kansas City	11/25
4	v. Kansas City	11/25
8	@ Yale	3/9
3	@ Cornell	2/24
2	2x @ Penn	2/17
1	v. Kansas City	11/25
33	@ Yale	3/9

POINTS
FIELD GOALS
3-POINTERS
FREE THROWS
REBOUNDS
ASSISTS
STEALS
BLOCKS
MINUTES

CAREER-HIGH AT BROWN

TOTAL #	LAST AGAINST	DATE
same as season		
same as season		
same as season		
same as season		
same as season		
same as season		
same as season		
same as season		
same as season		
same as season		



43

SYMEON EFSTATHIOU

SEASON-HIGH

TOTAL #	LAST AGAINST	DATE
4	Rhode Island College	11/16
2	Rhode Island College	11/16
None		
None		
1	Rhode Island College	11/16
1	Rhode Island College	11/16
None		
None		
7	Rhode Island College	11/16

POINTS
FIELD GOALS
3-POINTERS
FREE THROWS
REBOUNDS
ASSISTS
STEALS
BLOCKS
MINUTES

CAREER-HIGH AT BROWN

TOTAL #	LAST AGAINST	DATE
same as season		
same as season		

same as season		
same as season		

same as season		



45

N'FAMARA DABO

SEASON-HIGH

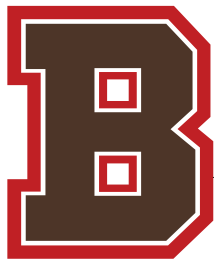
TOTAL #	LAST AGAINST	DATE
6	Rhode Island College	11/16
2	@ New Hampshire	11/14
None		
4	Rhode Island College	11/16
5	Rhode Island College	11/16
1	@ #RV Providence	12/10
2	Rhode Island College	11/16
1	2x Rhode Island College	11/16
8	Rhode Island College	11/16

POINTS
FIELD GOALS
3-POINTERS
FREE THROWS
REBOUNDS
ASSISTS
STEALS
BLOCKS
MINUTES

CAREER-HIGH AT BROWN

TOTAL #	LAST AGAINST	DATE
same as season		
same as season		










same as season		
same as season		
same as season		
same as season		
same as season		
same as season		



BROWN BASKETBALL

2023-2024 GAME NOTES

BROADCAST ROSTER

2		<p>FELIX KLOMAN <i>"KLOW-MEN"</i> SR GUARD 6-5 190 IPSWICH, MASS.</p> <table border="1"> <thead> <tr> <th>GP/GS</th> <th>MIN</th> <th>PTS</th> <th>FG%</th> <th>3FG%</th> <th>FT%</th> <th>REBS</th> <th>AST</th> <th>TO</th> <th>RATIO</th> <th>STL</th> <th>BLK</th> </tr> </thead> <tbody> <tr> <td>25/18</td> <td>19.6</td> <td>5.0</td> <td>.378</td> <td>.329</td> <td>.613</td> <td>1.9</td> <td>1.2</td> <td>.8</td> <td>1.6</td> <td>.5</td> <td>.2</td> </tr> </tbody> </table> <p>CAREER-HIGHS 15 PTS, 5 FGM, 3 3FG, 5 FTM, 7 REB, 4 AST, 3 STL, 1 BLK, 35 MIN</p>	GP/GS	MIN	PTS	FG%	3FG%	FT%	REBS	AST	TO	RATIO	STL	BLK	25/18	19.6	5.0	.378	.329	.613	1.9	1.2	.8	1.6	.5	.2	<p>QUICK NOTES ON KLOMAN</p> <ul style="list-style-type: none"> » Career-high 15 points vs. Bryant (12/1) » Reached double figures five times » Nickname is Flex » CONCENTRATION: Business Economics » IG: @lixstayslit
GP/GS	MIN	PTS	FG%	3FG%	FT%	REBS	AST	TO	RATIO	STL	BLK																
25/18	19.6	5.0	.378	.329	.613	1.9	1.2	.8	1.6	.5	.2																
4		<p>LYNDEL EROLD <i>"EH-ROLLD"</i> JR GUARD 6-3 170 BOSTON, MASS.</p> <table border="1"> <thead> <tr> <th>GP/GS</th> <th>MIN</th> <th>PTS</th> <th>FG%</th> <th>3FG%</th> <th>FT%</th> <th>REBS</th> <th>AST</th> <th>TO</th> <th>RATIO</th> <th>STL</th> <th>BLK</th> </tr> </thead> <tbody> <tr> <td>19/6</td> <td>7.2</td> <td>1.2</td> <td>.241</td> <td>.263</td> <td>.333</td> <td>.9</td> <td>.2</td> <td>.5</td> <td>.3</td> <td>.2</td> <td>.1</td> </tr> </tbody> </table> <p>CAREER-HIGHS 7 PTS, 2 FGM, 2 3FG, 2 FTM, 5 REB, 1 AST, 2 STL, 2 BLK, 20 MIN</p>	GP/GS	MIN	PTS	FG%	3FG%	FT%	REBS	AST	TO	RATIO	STL	BLK	19/6	7.2	1.2	.241	.263	.333	.9	.2	.5	.3	.2	.1	<p>QUICK NOTES ON EROLD</p> <ul style="list-style-type: none"> » Played AAU for Mass Rivals » Made first career start at Princeton (2/16) » Career-high two steals against the Tigers (2/16) » Pulled down career-high five rebounds in season opener (11/6) » IG: @lyndelerold
GP/GS	MIN	PTS	FG%	3FG%	FT%	REBS	AST	TO	RATIO	STL	BLK																
19/6	7.2	1.2	.241	.263	.333	.9	.2	.5	.3	.2	.1																
5		<p>SAM KLORES JR GUARD 6-1 180 NEW YORK, N.Y.</p> <table border="1"> <thead> <tr> <th>GP/GS</th> <th>MIN</th> <th>PTS</th> <th>FG%</th> <th>3FG%</th> <th>FT%</th> <th>REBS</th> <th>AST</th> <th>TO</th> <th>RATIO</th> <th>STL</th> <th>BLK</th> </tr> </thead> <tbody> <tr> <td>6/0</td> <td>6.2</td> <td>.3</td> <td>.250</td> <td>.000</td> <td>.000</td> <td>.5</td> <td>.3</td> <td>.5</td> <td>.7</td> <td>.0</td> <td>.0</td> </tr> </tbody> </table> <p>CAREER-HIGHS 3 PTS, 1 FGM, 1 3FG, 1 FTM, 2 REB, 1 AST, 0 STL, 0 BLK, 13 MIN</p>	GP/GS	MIN	PTS	FG%	3FG%	FT%	REBS	AST	TO	RATIO	STL	BLK	6/0	6.2	.3	.250	.000	.000	.5	.3	.5	.7	.0	.0	<p>QUICK NOTES ON KLORES</p> <ul style="list-style-type: none"> » Mother, Abbe is Brown Class of 1984 » Brother, Jake played at Columbia » New York State Class B Player of the Year in 2020-21 » Made season debut at UNH (11/14) » IG: @sk__5
GP/GS	MIN	PTS	FG%	3FG%	FT%	REBS	AST	TO	RATIO	STL	BLK																
6/0	6.2	.3	.250	.000	.000	.5	.3	.5	.7	.0	.0																
10		<p>KINO LILLY JR. <i>"KEY-NO"</i> JR GUARD 6-0 165 GLENN DALE, MD.</p> <table border="1"> <thead> <tr> <th>GP/GS</th> <th>MIN</th> <th>PTS</th> <th>FG%</th> <th>3FG%</th> <th>FT%</th> <th>REBS</th> <th>AST</th> <th>TO</th> <th>RATIO</th> <th>STL</th> <th>BLK</th> </tr> </thead> <tbody> <tr> <td>28/28</td> <td>38.0</td> <td>18.4</td> <td>.386</td> <td>.339</td> <td>.814</td> <td>2.4</td> <td>3.4</td> <td>2.8</td> <td>1.2</td> <td>.9</td> <td>.2</td> </tr> </tbody> </table> <p>CAREER-HIGHS 32 PTS, 11 FGM, 7 3FG, 12 FTM, 7 REB, 8 AST, 7 STL, 1 BLK, 43 MIN</p>	GP/GS	MIN	PTS	FG%	3FG%	FT%	REBS	AST	TO	RATIO	STL	BLK	28/28	38.0	18.4	.386	.339	.814	2.4	3.4	2.8	1.2	.9	.2	<p>QUICK NOTES ON LILLY JR.</p> <ul style="list-style-type: none"> » 2023 First Team All-Ivy » 2022 Ivy Rookie of the Year » Career-high seven steals in win vs. Dartmouth (3/2)... tied for second most in a game in program history. » Leading the Ivy in scoring and 3FG made » IG: @kinolillyjr
GP/GS	MIN	PTS	FG%	3FG%	FT%	REBS	AST	TO	RATIO	STL	BLK																
28/28	38.0	18.4	.386	.339	.814	2.4	3.4	2.8	1.2	.9	.2																
11		<p>MALACHI NDUR <i>"MAL-UH-KAI NUH-DUR"</i> SR FORWARD 6-8 215 ST THOMAS, ONTARIO, CANADA</p> <table border="1"> <thead> <tr> <th>GP/GS</th> <th>MIN</th> <th>PTS</th> <th>FG%</th> <th>3FG%</th> <th>FT%</th> <th>REBS</th> <th>AST</th> <th>TO</th> <th>RATIO</th> <th>STL</th> <th>BLK</th> </tr> </thead> <tbody> <tr> <td>29/1</td> <td>14.1</td> <td>3.6</td> <td>.446</td> <td>.355</td> <td>.737</td> <td>2.9</td> <td>1.1</td> <td>.9</td> <td>1.2</td> <td>.3</td> <td>.7</td> </tr> </tbody> </table> <p>CAREER-HIGHS 10 PTS, 4 FGM, 1 3FG, 5 FTM, 9 REB, 4 AST, 2 STL, 3 BLK, 29 MIN</p>	GP/GS	MIN	PTS	FG%	3FG%	FT%	REBS	AST	TO	RATIO	STL	BLK	29/1	14.1	3.6	.446	.355	.737	2.9	1.1	.9	1.2	.3	.7	<p>QUICK NOTES ON NDUR</p> <ul style="list-style-type: none"> » Team captain » Picked up six rebounds in first round vs. Yale (1/9) » Played for the Canadian Youth National Team » IG: @mal_ndur
GP/GS	MIN	PTS	FG%	3FG%	FT%	REBS	AST	TO	RATIO	STL	BLK																
29/1	14.1	3.6	.446	.355	.737	2.9	1.1	.9	1.2	.3	.7																
13		<p>MALCOLM WRISBY-JEFFERSON FR GUARD 6-4 195 QUEENS, N.Y.</p> <table border="1"> <thead> <tr> <th>GP/GS</th> <th>MIN</th> <th>PTS</th> <th>FG%</th> <th>3FG%</th> <th>FT%</th> <th>REBS</th> <th>AST</th> <th>TO</th> <th>RATIO</th> <th>STL</th> <th>BLK</th> </tr> </thead> <tbody> <tr> <td>9/0</td> <td>6.9</td> <td>.7</td> <td>.077</td> <td>.125</td> <td>.429</td> <td>1.2</td> <td>.9</td> <td>.6</td> <td>1.6</td> <td>.2</td> <td>.1</td> </tr> </tbody> </table> <p>CAREER-HIGHS 3 PTS, 1 FGM, 1 3FG, 2 FTM, 3 REB, 3 AST, 1 STL, 1 BLK, 15 MIN</p>	GP/GS	MIN	PTS	FG%	3FG%	FT%	REBS	AST	TO	RATIO	STL	BLK	9/0	6.9	.7	.077	.125	.429	1.2	.9	.6	1.6	.2	.1	<p>QUICK NOTES ON WRISBY-JEFFERSON</p> <ul style="list-style-type: none"> » Prepped at The Phelps School » Made collegiate debut at Colgate in the 2023-24 season opener » Two assists vs. Columbia (2/10) » IG: @malcolmjef10
GP/GS	MIN	PTS	FG%	3FG%	FT%	REBS	AST	TO	RATIO	STL	BLK																
9/0	6.9	.7	.077	.125	.429	1.2	.9	.6	1.6	.2	.1																
14		<p>LUKE PARAGON <i>"PARA-GONE"</i> FR GUARD 6-4 195 CICERO, N.Y.</p> <table border="1"> <thead> <tr> <th>GP/GS</th> <th>MIN</th> <th>PTS</th> <th>FG%</th> <th>3FG%</th> <th>FT%</th> <th>REBS</th> <th>AST</th> <th>TO</th> <th>RATIO</th> <th>STL</th> <th>BLK</th> </tr> </thead> <tbody> <tr> <td>2/0</td> <td>5.0</td> <td>4.0</td> <td>1.000</td> <td>1.000</td> <td>-</td> <td>1.0</td> <td>-</td> <td>-</td> <td>-</td> <td>-</td> <td>-</td> </tr> </tbody> </table> <p>CAREER-HIGHS 8 PTS, 3 FGM, 2 3FG, n/a FTM, 2 REB, n/a AST, n/a STL, n/a BLK, 8 MIN</p>	GP/GS	MIN	PTS	FG%	3FG%	FT%	REBS	AST	TO	RATIO	STL	BLK	2/0	5.0	4.0	1.000	1.000	-	1.0	-	-	-	-	-	<p>QUICK NOTES ON PARAGON</p> <ul style="list-style-type: none"> » Played at Cicero-North (Senior) + Blair Academy (Junior) » Scored eight points on 3-of-3 shooting and 2-of-2 from 3FG in collegiate debut (11/16 vs. RIC) » IG: @luke.paragon
GP/GS	MIN	PTS	FG%	3FG%	FT%	REBS	AST	TO	RATIO	STL	BLK																
2/0	5.0	4.0	1.000	1.000	-	1.0	-	-	-	-	-																
15		<p>KALU ANYA <i>"KAH-LOO AHN-YUH"</i> SO FORWARD 6-8 215 WORCESTER, MASS.</p> <table border="1"> <thead> <tr> <th>GP/GS</th> <th>MIN</th> <th>PTS</th> <th>FG%</th> <th>3FG%</th> <th>FT%</th> <th>REBS</th> <th>AST</th> <th>TO</th> <th>RATIO</th> <th>STL</th> <th>BLK</th> </tr> </thead> <tbody> <tr> <td>29/28</td> <td>27.2</td> <td>9.4</td> <td>.461</td> <td>.241</td> <td>.523</td> <td>7.2</td> <td>1.8</td> <td>2.1</td> <td>.8</td> <td>1.2</td> <td>1.0</td> </tr> </tbody> </table> <p>CAREER-HIGHS 23 PTS, 9 FGM, 1 3FG, 8 FTM, 17 REB, 7 AST, 5 STL, 3 BLK, 36 MIN</p>	GP/GS	MIN	PTS	FG%	3FG%	FT%	REBS	AST	TO	RATIO	STL	BLK	29/28	27.2	9.4	.461	.241	.523	7.2	1.8	2.1	.8	1.2	1.0	<p>QUICK NOTES ON ANYA</p> <ul style="list-style-type: none"> » Averaging career-highs in points and rebounds » Four double-doubles this season » Ivy League Player of the Week (2/27) » CONCENTRATION: Applied Mathematics-Economics » IG: @kaluany_a
GP/GS	MIN	PTS	FG%	3FG%	FT%	REBS	AST	TO	RATIO	STL	BLK																
29/28	27.2	9.4	.461	.241	.523	7.2	1.8	2.1	.8	1.2	1.0																
21		<p>AARON COOLEY JR GUARD 6-5 196 ROXBURY, MASS.</p> <table border="1"> <thead> <tr> <th>GP/GS</th> <th>MIN</th> <th>PTS</th> <th>FG%</th> <th>3FG%</th> <th>FT%</th> <th>REBS</th> <th>AST</th> <th>TO</th> <th>RATIO</th> <th>STL</th> <th>BLK</th> </tr> </thead> <tbody> <tr> <td>29/21</td> <td>28.3</td> <td>7.3</td> <td>.406</td> <td>.304</td> <td>.640</td> <td>4.1</td> <td>1.1</td> <td>1.2</td> <td>.9</td> <td>.4</td> <td>.7</td> </tr> </tbody> </table> <p>CAREER-HIGHS 15 PTS, 6 FGM, 4 3FG, 5 FTM, 10 REB, 5 AST, 3 STL, 3 BLK, 39 MIN</p>	GP/GS	MIN	PTS	FG%	3FG%	FT%	REBS	AST	TO	RATIO	STL	BLK	29/21	28.3	7.3	.406	.304	.640	4.1	1.1	1.2	.9	.4	.7	<p>QUICK NOTES ON COOLEY</p> <ul style="list-style-type: none"> » Averaging career highs in points and rebounds » Hit game-winner at Yale (3/9) » Runs a photo and video production » Goes by AC » CONCENTRATION: Modern Culture & Media » IG: @aaronxcooley
GP/GS	MIN	PTS	FG%	3FG%	FT%	REBS	AST	TO	RATIO	STL	BLK																
29/21	28.3	7.3	.406	.304	.640	4.1	1.1	1.2	.9	.4	.7																



BROWN BASKETBALL

2023-2024 GAME NOTES

BROADCAST ROSTER

22		<p>LANDON LEWIS SO FORWARD 6-7 215 LOS ANGELES, CALIF.</p> <table border="1"> <thead> <tr> <th>GP/GS</th> <th>MIN</th> <th>PTS</th> <th>FG%</th> <th>3FG%</th> <th>FT%</th> <th>REBS</th> <th>AST</th> <th>TO</th> <th>RATIO</th> <th>STL</th> <th>BLK</th> </tr> </thead> <tbody> <tr> <td>25/0</td> <td>6.9</td> <td>2.3</td> <td>.541</td> <td>-</td> <td>.680</td> <td>1.5</td> <td>.5</td> <td>.4</td> <td>1.1</td> <td>.2</td> <td>.2</td> </tr> </tbody> </table> <p>CAREER-HIGHS 12 PTS, 3 FGM, 0 3FG, 6 FTM, 5 REB, 3 AST, 2 STL, 1 BLK, 26 MIN</p>	GP/GS	MIN	PTS	FG%	3FG%	FT%	REBS	AST	TO	RATIO	STL	BLK	25/0	6.9	2.3	.541	-	.680	1.5	.5	.4	1.1	.2	.2	<p>QUICK NOTES ON LEWIS</p> <ul style="list-style-type: none"> » Seven points and four rebounds vs. Cornell (1/20) » Attended the Black Student-Athlete Summit in LA in summer » McDonald's All-American nominee as a senior » IG: @llandonlewis
GP/GS	MIN	PTS	FG%	3FG%	FT%	REBS	AST	TO	RATIO	STL	BLK																
25/0	6.9	2.3	.541	-	.680	1.5	.5	.4	1.1	.2	.2																
23		<p>KIMO FERRARI "KEY-MOH" SR GUARD 6-0 185 SAN DIEGO, CALIF.</p> <table border="1"> <thead> <tr> <th>GP/GS</th> <th>MIN</th> <th>PTS</th> <th>FG%</th> <th>3FG%</th> <th>FT%</th> <th>REBS</th> <th>AST</th> <th>TO</th> <th>RATIO</th> <th>STL</th> <th>BLK</th> </tr> </thead> <tbody> <tr> <td>24/7</td> <td>26.5</td> <td>7.2</td> <td>.504</td> <td>.483</td> <td>.611</td> <td>2.5</td> <td>1.9</td> <td>.9</td> <td>2.0</td> <td>1.2</td> <td>.1</td> </tr> </tbody> </table> <p>CAREER-HIGHS 39 PTS, 14 FGM, 10 3FG, 2 FTM, 7 REB, 5 AST, 5 STL, 2 BLK, 36 MIN</p>	GP/GS	MIN	PTS	FG%	3FG%	FT%	REBS	AST	TO	RATIO	STL	BLK	24/7	26.5	7.2	.504	.483	.611	2.5	1.9	.9	2.0	1.2	.1	<p>QUICK NOTES ON FERRARI</p> <ul style="list-style-type: none"> » Student-Athlete Advisory Committee (SAAC) co-President » Set program record with 10 3FG in win vs. Dartmouth (3/2) » 39 points vs. Big Green = most by Ivy this season » CONCENTRATION: Business Economics » IG: @kimoferrari
GP/GS	MIN	PTS	FG%	3FG%	FT%	REBS	AST	TO	RATIO	STL	BLK																
24/7	26.5	7.2	.504	.483	.611	2.5	1.9	.9	2.0	1.2	.1																
24		<p>DREW KANIA "KAY-NEE-UH" SO FORWARD 6-8 215 CHATHAM, N.J.</p> <table border="1"> <thead> <tr> <th>GP/GS</th> <th>MIN</th> <th>PTS</th> <th>FG%</th> <th>3FG%</th> <th>FT%</th> <th>REBS</th> <th>AST</th> <th>TO</th> <th>RATIO</th> <th>STL</th> <th>BLK</th> </tr> </thead> <tbody> <tr> <td>2/0</td> <td>3.9</td> <td>2.0</td> <td>.667</td> <td>-</td> <td>-</td> <td>1.0</td> <td>-</td> <td>-</td> <td>-</td> <td>1.0</td> <td>-</td> </tr> </tbody> </table> <p>CAREER-HIGHS 4 PTS, 2 FGM, n/a 3FG, n/a FTM, 1 REB, n/a AST, 1 STL, n/a BLK, 6 MIN</p>	GP/GS	MIN	PTS	FG%	3FG%	FT%	REBS	AST	TO	RATIO	STL	BLK	2/0	3.9	2.0	.667	-	-	1.0	-	-	-	1.0	-	<p>QUICK NOTES ON KANIA</p> <ul style="list-style-type: none"> » Made collegiate debut in win over RIC (11/16) » Collected one rebound and a steal in win vs. Dartmouth (3/2) » IG: @drewkania
GP/GS	MIN	PTS	FG%	3FG%	FT%	REBS	AST	TO	RATIO	STL	BLK																
2/0	3.9	2.0	.667	-	-	1.0	-	-	-	1.0	-																
25		<p>ADRIAN UCHIDIUNO "OO-CHID-EE-UNO" FR GUARD 6-2 160 MARHAM, ONTARIO, CANADA</p> <table border="1"> <thead> <tr> <th>GP/GS</th> <th>MIN</th> <th>PTS</th> <th>FG%</th> <th>3FG%</th> <th>FT%</th> <th>REBS</th> <th>AST</th> <th>TO</th> <th>RATIO</th> <th>STL</th> <th>BLK</th> </tr> </thead> <tbody> <tr> <td>6/0</td> <td>2.7</td> <td>1.7</td> <td>.500</td> <td>.000</td> <td>-</td> <td>.5</td> <td>.2</td> <td>.2</td> <td>1.0</td> <td>.3</td> <td>.2</td> </tr> </tbody> </table> <p>CAREER-HIGHS 6 PTS, 3 FGM, n/a 3FG, n/a FTM, 2 REB, 1 AST, 2 STL, 1 BLK, 10 MIN</p>	GP/GS	MIN	PTS	FG%	3FG%	FT%	REBS	AST	TO	RATIO	STL	BLK	6/0	2.7	1.7	.500	.000	-	.5	.2	.2	1.0	.3	.2	<p>QUICK NOTES ON UCHIDIUNO</p> <ul style="list-style-type: none"> » Played at Cushing Academy » Made collegiate debut at New Hampshire (11/14) » IG: @yb.adrian
GP/GS	MIN	PTS	FG%	3FG%	FT%	REBS	AST	TO	RATIO	STL	BLK																
6/0	2.7	1.7	.500	.000	-	.5	.2	.2	1.0	.3	.2																
31		<p>NANA OWUSU-ANANE "NAN-UH OH-WOO-SUE UH-NAH-NAY" JR FORWARD 6-8 220 BURLINGTON, ONTARIO, CANADA</p> <table border="1"> <thead> <tr> <th>GP/GS</th> <th>MIN</th> <th>PTS</th> <th>FG%</th> <th>3FG%</th> <th>FT%</th> <th>REBS</th> <th>AST</th> <th>TO</th> <th>RATIO</th> <th>STL</th> <th>BLK</th> </tr> </thead> <tbody> <tr> <td>29/29</td> <td>32.6</td> <td>15.0</td> <td>.469</td> <td>.309</td> <td>.688</td> <td>8.8</td> <td>2.1</td> <td>1.9</td> <td>1.1</td> <td>1.3</td> <td>1.0</td> </tr> </tbody> </table> <p>CAREER-HIGHS 27 PTS, 11 FGM, 3 3FG, 9 FTM, 18 REB, 8 AST, 4 STL, 5 BLK, 42 MIN</p>	GP/GS	MIN	PTS	FG%	3FG%	FT%	REBS	AST	TO	RATIO	STL	BLK	29/29	32.6	15.0	.469	.309	.688	8.8	2.1	1.9	1.1	1.3	1.0	<p>QUICK NOTES ON OWUSU-ANANE</p> <ul style="list-style-type: none"> » Team captain » Ten double-doubles in 2023-24 » Season-high 14 reb. in win vs. Harvard (3/1) » Born in Maryland » Binge watches TV shows » CONCENTRATION: Business Economics » IG: @nanaowusu
GP/GS	MIN	PTS	FG%	3FG%	FT%	REBS	AST	TO	RATIO	STL	BLK																
29/29	32.6	15.0	.469	.309	.688	8.8	2.1	1.9	1.1	1.3	1.0																
33		<p>ALEXANDER LESBURT JR. SO GUARD 6-5 197 DERRY, N.H.</p> <table border="1"> <thead> <tr> <th>GP/GS</th> <th>MIN</th> <th>PTS</th> <th>FG%</th> <th>3FG%</th> <th>FT%</th> <th>REBS</th> <th>AST</th> <th>TO</th> <th>RATIO</th> <th>STL</th> <th>BLK</th> </tr> </thead> <tbody> <tr> <td>19/7</td> <td>14.8</td> <td>5.0</td> <td>.393</td> <td>.362</td> <td>.800</td> <td>2.4</td> <td>.4</td> <td>.6</td> <td>.7</td> <td>.4</td> <td>.1</td> </tr> </tbody> </table> <p>CAREER-HIGHS 20 PTS, 6 FGM, 4 3FG, 4 FTM, 8 REB, 1 AST, 2 STL, 0 BLK, 33 MIN</p>	GP/GS	MIN	PTS	FG%	3FG%	FT%	REBS	AST	TO	RATIO	STL	BLK	19/7	14.8	5.0	.393	.362	.800	2.4	.4	.6	.7	.4	.1	<p>QUICK NOTES ON LESBURT JR.</p> <ul style="list-style-type: none"> » Broke Mo Bamba's scoring record at junior boarding school (Cardigan Mt. School) » Started six of last seven games (9.9 ppg) » 20-point game in win over KC (11/25) » CONCENTRATION: Business Economics » IG: @ajlesburt3
GP/GS	MIN	PTS	FG%	3FG%	FT%	REBS	AST	TO	RATIO	STL	BLK																
19/7	14.8	5.0	.393	.362	.800	2.4	.4	.6	.7	.4	.1																
43		<p>SYMEON EFSTATHIOU "SIMA-OWN EFF-STAH-THEE-O" FR FORWARD 6-9 215 ATHENS, GREECE</p> <table border="1"> <thead> <tr> <th>GP/GS</th> <th>MIN</th> <th>PTS</th> <th>FG%</th> <th>3FG%</th> <th>FT%</th> <th>REBS</th> <th>AST</th> <th>TO</th> <th>RATIO</th> <th>STL</th> <th>BLK</th> </tr> </thead> <tbody> <tr> <td>2/0</td> <td>4.4</td> <td>2.0</td> <td>.400</td> <td>.000</td> <td>-</td> <td>.5</td> <td>.5</td> <td>-</td> <td>-</td> <td>-</td> <td>-</td> </tr> </tbody> </table> <p>CAREER-HIGHS 4 PTS, 2 FGM, n/a 3FG, n/a FTM, 1 REB, 1 AST, n/a STL, n/a BLK, 7 MIN</p>	GP/GS	MIN	PTS	FG%	3FG%	FT%	REBS	AST	TO	RATIO	STL	BLK	2/0	4.4	2.0	.400	.000	-	.5	.5	-	-	-	-	<p>QUICK NOTES ON EFSTATHIOU</p> <ul style="list-style-type: none"> » Brought a GoPro to show behind the scenes on media day » Greek National Team participant » Made collegiate debut at New Hampshire (11/14) » IG: @simeonefs
GP/GS	MIN	PTS	FG%	3FG%	FT%	REBS	AST	TO	RATIO	STL	BLK																
2/0	4.4	2.0	.400	.000	-	.5	.5	-	-	-	-																
45		<p>N'FAMARA DABO "FAH-MAH-DAH DAH-BOW" FR FORWARD 6-8 225 CONAKRY, GUINEA</p> <table border="1"> <thead> <tr> <th>GP/GS</th> <th>MIN</th> <th>PTS</th> <th>FG%</th> <th>3FG%</th> <th>FT%</th> <th>REBS</th> <th>AST</th> <th>TO</th> <th>RATIO</th> <th>STL</th> <th>BLK</th> </tr> </thead> <tbody> <tr> <td>5/0</td> <td>3.6</td> <td>2.4</td> <td>.800</td> <td>-</td> <td>.667</td> <td>1.4</td> <td>.2</td> <td>.4</td> <td>.5</td> <td>.4</td> <td>.4</td> </tr> </tbody> </table> <p>CAREER-HIGHS 6 PTS, 2 FGM, n/a 3FG, 4 FTM, 5 REB, 1 AST, 2 STL, 1 BLK, 8 MIN</p>	GP/GS	MIN	PTS	FG%	3FG%	FT%	REBS	AST	TO	RATIO	STL	BLK	5/0	3.6	2.4	.800	-	.667	1.4	.2	.4	.5	.4	.4	<p>QUICK NOTES ON DABO</p> <ul style="list-style-type: none"> » Received a certificate of special congressional recognition by Mike Thompson » Made collegiate debut at UNH (11/14) » CONCENTRATION: Computer Engineering & Computer Science » IG: @dabs.11
GP/GS	MIN	PTS	FG%	3FG%	FT%	REBS	AST	TO	RATIO	STL	BLK																
5/0	3.6	2.4	.800	-	.667	1.4	.2	.4	.5	.4	.4																



BROWN BASKETBALL

2023-2024 GAME NOTES

MEET THE PLAYERS



2

FELIX KLOMAN
SENIOR GUARD

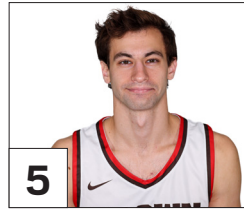
6-5 | 190 | Ipswich, Mass.



4

LYNDEL EROLD
JUNIOR GUARD

6-3 | 170 | Boston, Mass.



5

SAM KLORES
JUNIOR GUARD

6-1 | 180 | New York, N.Y.



10

KINO LILLY JR.
JUNIOR GUARD

6-0 | 165 | Glenn Dale, Md.



11

MALACHI NDUR
SENIOR FORWARD

6-8 | 215 | St. Thomas, Ont.



13

MALCOLM WRISBY-JEFFERSON
FRESHMAN GUARD

6-4 | 195 | Queens, N.Y.



14

LUKE PARAGON
FRESHMAN GUARD

6-4 | 195 | Cicero, N.Y.



15

KALU ANYA
SOPHOMORE FORWARD

6-8 | 215 | Worcester, Mass.



21

AARON COOLEY
JUNIOR GUARD

6-5 | 196 | Roxbury, Mass.



22

LANDON LEWIS
SOPHOMORE FORWARD

6-7 | 215 | Los Angeles, Calif.



23

KIMO FERRARI
SENIOR GUARD

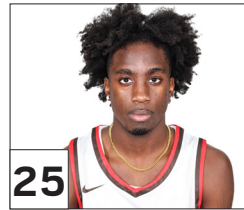
6-0 | 185 | San Diego, Calif.



24

DREW KANIA
SOPHOMORE FORWARD

6-8 | 215 | Chatham, N.J.



25

ADRIAN UCHIDIUNO
FRESHMAN GUARD

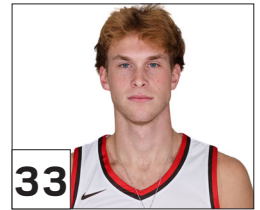
6-2 | 160 | Marham, Ont.



31

NANA OWUSU-ANANE
JUNIOR FORWARD

6-8 | 220 | Burlington, Ont.



33

ALEXANDER LESBURT JR.
SOPHOMORE GUARD

6-5 | 197 | Derry, N.H.



43

SYMEON EFSTATHIOU
FRESHMAN FORWARD

6-9 | 215 | Athens, Greece



45

N'FAMARA DABO
FRESHMAN FORWARD

6-8 | 225 | Conakry, Guinea

MEET THE STAFF



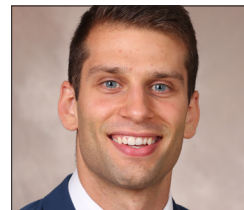
MIKE MARTIN '04
HEAD COACH
12th Season



T.J. SORRENTINE
ASSOCIATE HEAD COACH
16th Season



TYSON WHEELER
ASSISTANT COACH
Second Season



SAM HERSHBERGER
ASSISTANT COACH
Fifth Season



SYDNEY ARMAND
DIRECTOR OF OPERATIONS
Second Season