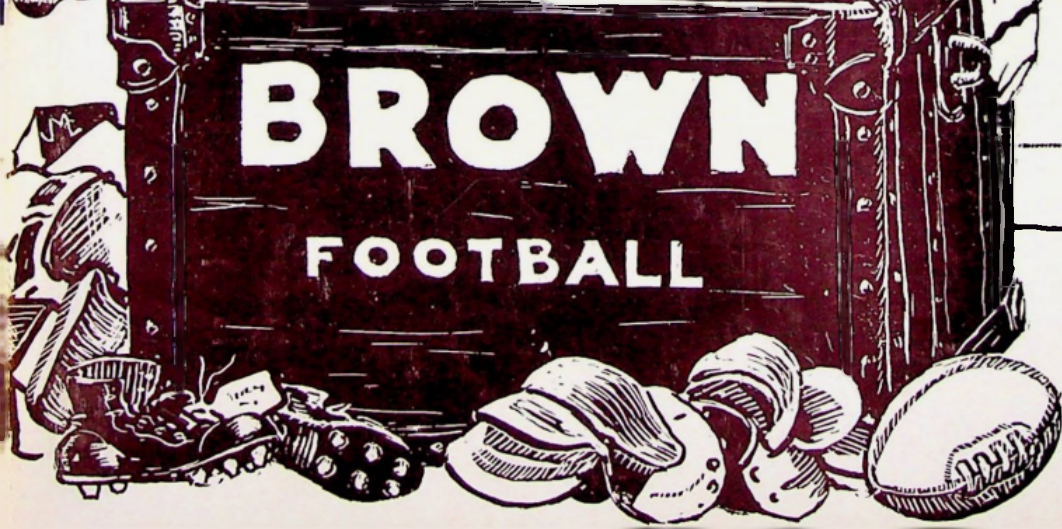




BROWN
FOOTBALL



A NOTE TO PRESS, RADIO AND TV

The Brown football brochure has been designed to enable you to evaluate the 1963 Brown squad and its opponents as well. It contains all the vital information on team personnel, a complete rundown of team and individual performances of the 1962 season, all-time series and season records and many other features that make up The Brown Football Story.

Further information, pictures and special stories are available upon request from:

Pete McCarthy
Director of Sports Information
Brown University
Providence 12, R. I.
Office Phone: UNion 1-2900
PLantations 1-5050
Home Phone: GEneva 4-0624

REQUESTS FOR WORKING PRESS TICKETS

should be directed to the Office of Sports Information as far in advance as possible. Because press box facilities are limited, you are urgently requested not to seek working press tickets for family or friends who may be accompanying you to a game. Women are not admitted to the press box. Requests for direct wire and radio facilities should also be made as far in advance as possible.

Table of Contents

THE UNIVERSITY	2-3
The 1963 Schedule	4
The University Directory	4
THE STAFF	
Coach John J. McLaughry	5
The Assistants	6
THE PROSPECTS FOR '63	7-8
THE PERSONNEL	
Player Situation at a Glance (depth and experience chart)	9
Leading Player Candidates (sketches and career records)	10-13
THE VARSITY ROSTER	14-16
Pronunciation Guide	16
Co-captains Gerry Bucci and Tony Matteo (photo)	17
THE BROWN OFFENSE FOR '63	
Description and Diagrams of the Bruins' Offense	18
THE OPPONENTS	
Vital Facts, Game Notes, and Series Records	19-27
THE '62 RECORD	
Ivy Standings	29
Ivy Team Offense	29
Ivy Team Defense	29
Game-by-Game Team Statistics and Scoring Summary	30-31
Best Team and Individual Performances	31
Final Team Individual Statistics	32
1962 Highlights	33
THE PAST	
Coaches' Records	34
Team Records	34
Individual Records	35-37
Team Records Year-by-Year	38-42
Roll of Honor — All Americans	43-46
FRESHMAN FOOTBALL	47
BROWN MASCOT	48-49
Varsity Soccer	52-53
Varsity Cross Country	54
Area News Media	55
Navigational Aids	56
MAP	Inside Cover



The University

Brown is one of the nation's oldest universities, dating back before the American Revolution, and to that War of Independence when University Hall was used as a barracks to house American and French soldiers.

Founded in 1764 in Warren as the Rhode Island College, it was the seventh college in America and the third in New England. In 1770 it was moved to Providence, and University Hall, one of the nation's architectural treasures and nerve center of the present-day administration, was built.

In 1804, it became Brown University, changing its name in recognition of a substantial gift made by Nicholas Brown, of the class of 1786.

But Brown boasts so much more than its rich historical tradition, for while it is one of the nation's oldest educational institutions, it has kept pace with the times, and is at once one of its youngest colleges, in terms of vigor and new ideas.

It is a university in the liberal tradition. It respects the right to explore, examine, discuss . . . it seeks to educate the full man, rather than the narrow specialist. In keeping with its ancient heritage in liberal education, it offers undergraduate and advanced degrees in all major areas of the liberal arts and sciences.

It is a leader in developing new approaches to liberal education. Its Identification and Criticism of Ideas program has been described as the most exciting and stimulating for freshmen and sophomores in America today and its pioneering approach to engineering is establishing a new pattern across the nation in the teaching of that vital field.

Brown is a laboratory of ideas, experiments and discoveries in the fields of science and the humanities, as well as in education theories. More than 100 foundations and business concerns are presently underwriting experiments and other activities in various departments of the University.

The faculty is the heart of a university and by any measurements, Brown is fortunate here: in skill and experience, scholarship and leadership, the international reputation of its present leaders, and in academic policies and research opportunities that enable it to attract brilliant teachers in every field.

The incoming freshman class this fall averages in the top 10 per cent of the nation in intelligence, and those men numbered in its ranks earned their place in the face of tremendous competition.

It has a charming campus. The old campus of Hope, Sayles, Faunce and University Hall reflects what has been. The new campus with its eye-catching refectory and new quadrangles reflects the promise of an even brighter future. Centrally located are the John Hay Library (1,000,000 volumes) and the John Carter Brown Library, with its world-famous collection of Americana.

It has a friendly atmosphere. Its size (2,400 undergraduates — smallest in the Ivy League) is such that a feeling of warmth and intimacy pervades all the activities and experiences of campus life. It has realized the almost impossible achievement of maintaining the remote atmosphere of the "country college" in the heart of one of America's great historical cities.

It has been called "the biggest small university in the land."

That is Brown. And in today's hurried pace of American life and intense public interest in athletics, it is well to remember that Brown is first — a university, and that the young men who represent it on the athletic field, do so as part of the educational process at the institution they have chosen for no other reason than that it ranks as one of America's greatest.

THE 1963 SCHEDULE

Date	Opponent	Location	Time	'62 Score	Series Standing
Sept. 28	COLUMBIA	BROWN FIELD	2:00 p.m.	20-22	11-14-2
Oct. 5	Yale	Yale Bowl	2:00 p.m.	6-6	14-49-4
Oct. 12	Dartmouth	Memorial Field	2:00 p.m.	0-41	13-25-2
Oct. 19	PENNSYLVANIA	BROWN FIELD	2:00 p.m.	15-18	4-26-1
Oct. 26	RHODE ISLAND	BROWN FIELD	2:00 p.m.	12-12	42- 5-1
Nov. 2	Princeton	Palmer Stadium	1:30 p.m.	12-28	6-23-0
Nov. 9	Cornell	Schoellkopf Field	1:30 p.m.	26-28	3- 7-0
Nov. 16	HARVARD	BROWN FIELD	1:30 p.m.	19-31	15-45-2
Nov. 23	COLGATE	BROWN FIELD	1:30 p.m.	6-2	16-21-7

TICKET INFORMATION

Tickets for the Columbia, Pennsylvania, Harvard and Colgate games are \$3.50 and \$2.00. Tickets for the Rhode Island game are \$3.00 and \$2.00. Children 12 years of age and under are admitted for half price at all games. Checks or money orders should be made payable to Brown University, and ticket orders should be addressed to Ticket Manager, Brown University, Division of Athletics, Providence 12, Rhode Island. A handling fee of 25 cents should accompany each mail order. Tickets are not redeemable.

DIRECTORY

Color: Seal Brown

Nickname: Bears, Bruins

Enrollment: 2,400

Football Stadium: Brown Field (1925)

Elmgrove Ave., opposite Marvel Gym

Seating Capacity: 20,000

President	DR. BARNABY C. KEENEY
Director of Athletics	PHILIP R. THEIBERT
Ticket Manager	MISS LOUISE BROWNELL
Director of Sports Information	PETE McCARTHY
Head Coach of Football	JOHN J. McLAUGHRY
Backfield Coach	MILTON J. PIEPUL
Line Coach	RICHARD M. GOWEN
End Coach	WILLIAM E. NARDUZZI
Assistant Coach	ALEXANDER F. NAHIGIAN
Freshman Coach	CHARLES D. MARKHAM
Freshman Line Coach	PHILIP E. COEN
Football Co-captains	GERALD A. BUCCI ANTHONY T. MATTEO
Undergraduate Manager	EDWIN TULLER
Varsity Manager	ROBERT FOLLOWS
Team Physician	DR. G. EDWARD CRANE
Head Trainer	JOE ROMO

The Staff

HEAD COACH

JOHN J. McLAUGHRY

Brown Record: Won 6, Lost 27, Tied 3

Overall Record: Won 67, Lost 56, Tied 8



John J. McLaughry, outstanding Brown athlete in the late 30's, its football captain in 1939, and president of his senior class, is beginning his fifth season as head football coach.

As an undergraduate, he played three years of varsity football after serving as captain of his freshman eleven. In addition, he was university boxing champion all four years, won three varsity track letters and was named to the All-American collegiate track squad as a hammer thrower. He quarterbacked the East team in the East-West Shrine game and was co-captain of the 1940 Eastern College All-Stars, the first collegiate team to defeat the New York Giants.

He played professionally as quarterback for the Giants in 1940 and entered the service in 1941. He was discharged as a first lieutenant from the Marine Corps in 1946 and his service included two and a half years as a line officer in the Pacific Theater.

McLaughry began his coaching career the same year as an assistant at the University of Connecticut and moved on to Union College as head coach in 1947. At Union his teams won 17 games, lost six and tied one in three seasons, going undefeated in 1949.

In 1950 he became head coach at Amherst, where he compiled a nine-year record of 44 victories, 23 losses and four ties. His 1953 team was undefeated and included Brown among its victims.

John is married and has three children.

THE ASSISTANTS:

MILTON J. PIEPUL, Backfield Coach — The veteran of the Brown staff in point of service, Milt also is one of the old-timers in the Ivy League, having served 11 years under John McLaughry's father at Dartmouth before coming to Brown in 1955. He is an excellent teacher, a fact underlined by the development of Frank Finney, an unheralded member of the 1955 Brown freshman team, into the Ivy League's top quarterback in '58. A smashing offensive fullback and a strong linebacker at Notre Dame, Milt captained the Irish in 1940 and then played a year of professional football with the Detroit Lions before entering the coaching ranks at Cathedral High School in Indianapolis. He joined the Dartmouth staff in 1943 under Earl Brown and stayed on through Tuss McLaughry's regime at Hanover. Milt is married and has four children.



RICHARD M. GOWEN, Line Coach — A native of Amesbury, Mass., Gowen played under John's father and Piepul on the strong Dartmouth teams of the late 40's. A midterm graduate in 1950, Dick actually began his coaching career as an assistant freshman coach at Dartmouth in 1949 when his eligibility expired. He joined the Amherst staff when the younger McLaughry took over as head coach there in the fall of 1950 and has been John's right-hand man ever since. A strong believer in football fundamentals and an excellent teacher of the techniques of line play. He is single.

WILLIAM E. NARDUZZI, End Coach — The newest member of McLaughry's staff, Narduzzi replaced Jack Zilly, who was appointed head coach at the University of Rhode Island last winter. A native of East Canton, Ohio, he won 11 varsity letters in four sports in high school and became a star lineman at Miami (Ohio) University in the late 50s. At Miami, he played under Ara Parseghian, present Northwestern coach, and John Pont, who is beginning his first year as head coach at Yale. A strong and versatile player, he was a tackle as a sophomore, a guard as a junior, and was voted the team's outstanding lineman as an end in his senior season. After being graduated from Miami in 1959, Narduzzi coached at high schools in Cleveland and was freshman line coach at Pittsburgh before coming to Brown. He is married and has one child.



ALEX F. NAHIGIAN, Assistant Coach — Currently serving his 15th season as a member of the Brown staff, Alex is the lone holdover from the regimes of Rip Engle, Gus Zitrides and Al Kelley. A graduate of Holy Cross, '42, Nahigian played football there until an injury ended his grid career, and was an outstanding baseball player for three seasons. After graduation he played pro ball in the New England League for several seasons. He has been associated with the Pawtucket school system since 1942 as a teacher and coach, though his football coaching has been restricted to Brown since 1949. A versatile man, he coaches the varsity baseball team at Providence College in the spring. Alex is regarded as one of the best scouts in collegiate football today. He is married and the father of three daughters.

The Prospects for '63

LETTERMEN RETURNING: 19.

STARTERS RETURNING: 7 — LG Tony Matteo, RG Gerry Bucci, RE John Parry, QB Jim Dunda, LH Jan Moyer, RH Bill Lemire, FB John Kelly.

LETTERMEN LOST: 11.

STARTERS LOST: 4 — LE Dick Greene, LT Bill Savicki, C Dave Krafchik, RT John Arata.

An air of optimism pervades the Brown campus for the first time in five years in anticipation of the 1963 football season. Nineteen lettermen are available from the '62 team, which President Barnaby C. Keeney called "the most exciting losing team I've ever seen." Another dozen varsity holdovers and an equal number of promising sophomores combine to provide strength and depth to the overall picture.

Coach John McLaughry, who has patiently suffered through a steady succession of ill fortune, numbers himself among those who expect the Bears to bolt the nether regions of the Ivy League, though his optimism is tempered by a more realistic appraisal of the situation. His two main sobering thoughts are these: 1, the Brown picture is not as bright as it had appeared last spring as the result of the unexpected loss of center Dave Krafchik and tackle Mike Allara; 2, the Bruins' acknowledged improvement may be matched by nearly all of their opponents.

Still, the Bears will have a lot going for them. With the exception of the center and tackle positions, there is much more experience, depth and potential than has been available the last few seasons. This is especially true in the back-field, where lettermen are two deep in every position and several sophomores should see considerable action.

"Ours will not be a big team physically," McLaughry says, "but we expect to offset this shortcoming with greater team speed. And with more good runners and pass receivers available, our offense can be much more flexible."

Whereas Brown was principally a passing team last season, the running game will carry more of the load this fall and thereby remove some of the pressure from the aerial game. This will make possible a more wide-open and balanced attack.

Commenting on the Ivy League race, McLaughry rates defending-champion Dartmouth and Harvard as the two standout teams with all of the others pretty much on a par.

Analysis By Positions

THE LINE

ENDS: A stronger squad than last year's with more depth, experience and balance between offensive and defensive ability. John Parry, who set Ivy League records for pass receptions in a single game and season, heads a solid core of three returning junior lettermen. The others are Bob Seiple and Ron Ferraris. This trio will be backed up by holdovers Bill Sudell, Roy Litzen and Bob Taylor and a good sophomore group led by Dick O'Toole.

TACKLES: Knee injuries to key players have made this position the chief trouble spot. Senior letterman Mike Allara underwent a knee operation during the summer and will be lost for the season. The top two tackles on the '62 freshman squad, Andy McNeil and Ackley Blocher, also underwent knee surgery last spring and the extent of their participation this season remains to be seen. Co-captain Tony Matteo has been shifted from guard to join letterman Jack Lutz and the starting JV tackles, Harry Leszchyn and Bill Earle. John Hoover, a letter-winner in '61, and Allan Kirkman, who sat out his sophomore season because of a knee injury, could provide needed depth.

GUARDS: A strong position with four lettermen, Co-captain Gerry Bucci, Al Barney, Paul Coughlan and John Miles, being joined by several varsity holdovers and three good sophomores, Terry Zerngast, George Viles and Neill Anderson.

CENTER: Unexpected trouble spot with the loss of Dave Krafchik through ineligibility. The 6-2, 215-pounder led the team in playing time with 444 minutes as a sophomore last season. Ralph Duerre, 6-2, 185-pound junior is the only other experienced holdover with 76 minutes played last fall. Sophomore Clark Hopson, 6-0, 210 pounds, has the size and ability to take over the starting job.

THE BACKFIELD

QUARTERBACK: Probably the best-balanced group in the Ivy League. Junior Jim Dunda, who completed 65 passes for 928 yards and nine touchdowns last year, will have to fight to keep his job. Besides his two junior rivals, Don Carcier and Terry Walsh, he will have to contend with sophomore Bob Hall, one of the most versatile athletes to come to Brown in many years. Hall is the best runner of the group and a strong defensive back as well. Walsh and Carcier are not to be discounted offensively, according to McLaughry, since both are good runners and smooth ball-handlers.

HALFBACKS: There will be more talent, experience and depth at both half-back spots than Brown has had in the last five years. Veterans Jan Moyer, Bill Lemire, Tom Draper and Bill Vareschi will be backed up by sophomores Ken Neal, Bill Peters and Bill Carr. All are good runners and pass receivers.

FULLBACK: Two lettermen and two able sophomores make this another fairly healthy position. John Kelly, the team's leading ground-gainer as a sophomore last season, will have more support this fall from senior Frank Antifonario and sophomores Pete Thorbahn and Knute Westerlund.

The Personnel

PLAYER SITUATION AT A GLANCE

Here is a chart of Brown's personnel situation. At each position are listed the players lost, those returning from last year's squad (minutes played in parenthesis) and the leading newcomers. CAPS indicate lettermen.

Lost from '62 Squad	Returning from '62 Squad	Leading Soph. Candidates
ENDS —		
DICK GREENE (223)	BOB SEIPLE (255)	Dick O'Toole
NICK SPIEZIO (118)	JOHN PARRY (219)	
*DON BOYLE (55)	RON FERRARIS (161)	
TACKLES —		
JOHN ARATA (320)	yTONY MATTEO (414)	Andy McNeil
BILL SAVICKI (318)	JACK LUTZ (216)	Ackley Blocher
‡MIKE ALLARA (216)	xJOHN HOOVER	Alan Miller
GUARDS —		
None	GERRY BUCCI (323)	Terry Zerngast
	JOHN MILES (122)	Craig Evans
	AL BARNEY (120)	Neill Anderson
	PAUL COUGHLAN (81)	
	Manny Menezes (26)	
CENTERS —		
*DAVE KRAFCHIK (444)	RALPH DUERRE (76)	Clark Hopson
		John Pate
QUARTERBACKS —		
None	JIM DUNDA (205)	Bob Hall
	DON CARCIERI (243)	
	Terry Walsh (43)	
HALFBACKS —		
PARKER CROWELL (294)	BILL LEMIRE (245)	Ken Neal
JON MEEKER (66)	JAN MOYER (214)	Bill Peters
**CHRIS EUSTIS (126)	BILL VARESCHI (194)	
	xTOM DRAPER	
FULLBACKS —		
BUDDY FREEMAN (60)	JOHN KELLY (381)	Pete Thorbahn
*Lou Vodopivec (33)	xFRANK ANTIFONARIO	Knute Westerlund

*Ineligible

‡Injured

xLetterman in '61

yPlayed guard in '62

**Out of school

Leading Player Candidates

ENDS

Ronald C. FERRARIS Jr. 20 5-11 190 Union City, N. J.

Hampered for part of last season by an injury but still logged 161 minutes . . . caught four passes for 46 yards . . . a good blocker and very strong defensively . . . plays on right side.

Career Record	Time Caught	Yards	TD
Soph	161 (L) 4	46	0

John C. PARRY Jr. 20 6-3 190 Marcellus, N. Y.

Leading pass receiver and scorer on the team last year with 27 receptions for 285 yards and five touchdowns . . . broke three Ivy League pass-receiving records with nine catches against Harvard, 26 for the season, and 374 yards gained in league competition . . . also broke Brown record for passes caught in a single game with nine . . . scored two touchdowns against Cornell and one each against Harvard, Columbia and Yale . . . has great hands and a good change of pace . . . plays right end.

Career Record	Time Caught	Yards	TD
Soph	219 (L) 27	385	5

Robert A. SEIPLE Jr. 20 6-1 180 Phillipsburg, N. J.

Third leading pass receiver with 13 catches for 171 yards and two touchdowns . . . scored winning touchdown against Colgate in season's opener . . . also scored against Cornell . . . a strong defensive player, one of the hardest tacklers on the squad . . . plays left end.

Career Record	Time Caught	Yards	TD
Soph	255 (L) 13	171	2

Richard P. O'TOOLE Soph 19 6-2 190 Oradell, N. J.

A strong, solid player who can contribute much defensively . . . also makes good target as a receiver . . . caught four passes for 37 yards with the freshmen last fall.

TACKLES

Ackley E. BLOCHER Soph 19 6-0 215 Ormand Beach, Fla.

A strong lad who has the size and speed to develop into a good tackle . . . could help the tackle situation a great deal if completely recovered from a knee operation he underwent last spring.

John S. HOOVER Sr. 20 6-4 230 Danville, Pa.

An outstanding tackle as a freshman, he won a letter as a center in his sophomore year with a total of 219 minutes playing time . . . ineligible last fall . . . very strong defensively.

John S. LUTZ Jr. 20 6-3 210 Garden City, N. Y.

The strongest lineman on the squad and extremely mobile for his size . . . gained considerable experience as a sophomore, playing 216 minutes . . . will be the man to beat out for left tackle.

Anthony T. MATTEO (Co-capt.) Sr. 20 6-2 205 Lawrence, Mass.

A two-year letter-winner who played 267 minutes at tackle as a sophomore and 414 at left guard last season . . . being switched back to tackle to take advantage of his speed and experience . . . a solid, two-way operative with great pursuit.

Andrew M. McNeil Soph 19 6-0 220 Wellesley, Mass.

Andy is in the same category as Blocher, having undergone knee surgery last spring . . . if he is physically fit, he should see much action . . . scored the winning touchdown against Yale freshmen last fall when he stole the ball from an Eli halfback and slogged 36 yards through the snow for the game's only score.

Alan B. MILLER Soph 19 6-3 210 Abington, Mass.

Here's another sophomore who could play an important role this season . . . possessing all of the physical attributes — size, strength, speed, agility — he also has an excellent attitude toward the game . . . a good defensive tackle with great lateral pursuit . . . set the freshman record in the javelin for the Cub track team last spring.

GUARDS

Alfred A. BARNEY Jr. 20 5-11 185 Braintree, Mass.

Came along fast as a sophomore and earned his letter with 120 minutes of action . . . on the small side, but strong, quick and blocks well.

Gerald A. BUCCI (Co-capt.) Sr. 21 5-11 190 Ridgewood, N. J.

A standout two-year letterman both offensively and defensively . . . excellent linebacker who was accorded All-Ivy honorable mention last season . . . calls defensive signals . . . recorded 252 minutes as a sophomore and 323 last season.

Paul F. COUGHLAN Jr. 19 5-9 180 North Quincy, Mass.

Another mighty mite who is strong and quick . . . blocks well and has good pursuit . . . won letter as a sophomore with 81 minutes of action.

John P. MILES Sr. 21 6-1 195 Castlecove, NSW, Australia

The only international player on the squad, John entered Brown from Bellaire, Ohio . . . attended Staunton Military Academy . . . a two-year letterman who logged 86 minutes as a sophomore and 122 last fall . . . has good speed and hustle . . . tough defensively.

Terry J. ZERNGAST Soph 19 5-10 180 Ottumwa, Iowa

The complete football player, according to freshman coach Charlie Markham . . . strong and quick, a good blocker, has great pursuit . . . learns fast and has a real zest for the game . . . will be hard to keep out of playing position.

CENTERS

Ralph E. DUERRE Jr. 20 6-2 185 Tenafly, N. J.

A strong, rangy player with good potential who stood in the shadow of Dave Krafchik last season . . . improved rapidly during the season, according to line coach Red Gowen, and will be counted upon heavily this fall . . . won letter with 76 minutes played in '62.

Clark N. HOPSON Soph 19 6-0 210 East Orange, N. J.

One of the few sophomores with a good chance to nail down a starting position . . . he has the size and his speed, pursuit and play-analysis make him an excellent linebacker . . . broke the school record for the discus as a freshman last spring . . . should see much action.

John R. PATE Soph 19 5-11 190 Arlington, Va.

A well-conditioned athlete who should be very much in the picture this fall . . . saw considerable action with the frosh . . . a good two-way center.

QUARTERBACKS

Donald L. CARCIERI Jr. 20 6-1 175 East Greenwich, R. I.

An excellent safetyman who also can contribute much offensively . . . a good runner and ball-handler and adequate passer . . . completed six of 14 passes for 91 yards last season . . . a sound all-around player.

Career Record	Time	Passing				Running			Total Off.
		Att.	Comp.	Yds.	TD	Att.	Yds.	TD	
Soph	243 (L)	14	6	91	0	2	9	0	100

James J. DUNDA Jr. 19 5-10 175 Avenel, N. J.

Broke in with a bang as a sophomore, completing 65 of 139 passes for 928 yards and nine touchdowns . . . ranked 37th nationally . . . second in Ivy League in passing and fourth in total offense . . . tied Ivy League record with 16 completions against Harvard . . . also broke Frank Finney's mark for the best performance by a Brown quarterback in Ivy competition with his effort against Harvard (198 yards passing and 220 yards total offense) . . . a competent play-caller . . . ran for three touchdowns . . . should be more effective as a runner this season after having undergone surgery to correct a defect in his foot . . . made honorable mention on All-Ivy and All-New England teams.

Career Record	Time	Passing				Running			Total Off.
		Att.	Comp.	Yds.	TD	Att.	Yds.	TD	
Soph	205 (L)	139	65	928	9	82	4	3	932

Robert F. HALL Soph 20 6-2 180 Walpole, Mass.

An outstanding all-around athlete who poses a strong threat to Dunda's claim to the No. 1 quarterback role . . . an elusive runner who is extremely effective on the pass-run option . . . also will play a vital part defensively because of his quick reactions and general football savvy . . . scored three touchdowns and passed for two more with the Cubs last fall . . . led team in rushing (297 yards) and passing (32 for 405 yards) . . . catcher and captain of the Cub baseball team.

W. Terry WALSH Jr. 19 6-1 185 Atlanta, Ga.

Played mostly defense with the varsity last fall but sparkled offensively for the jayvees . . . like Carciery, he's a sound, tough football player . . . also starred for the Bruins' rugby and golf teams.

HALFBACKS

Thomas H. DRAPER Sr. 22 6-0 190 Milford, Del.

An effective runner and excellent pass-receiver as a sophomore who was ineligible last fall . . . gained 125 yards rushing and caught eight passes for 87 yards in '61 . . . will add strength and depth to the right halfback position . . . an outstanding midfielder and leading scorer on Brown's lacrosse team the last two years.

Career Record	Time	Att.	Running			Receiving		
			Yds.	Ave.	TD	Caught	Yds.	TD
Soph	209 (L)	30	125	4.2	0	8	87	0

William A. LEMIRE Sr. 21 5-10 180 Beverly, Mass.

Tough, durable and dependable best describes this two-year letterman . . . gained 182 yards as a sophomore and 168 last fall . . . caught six passes for 47 yards and one touchdown . . . star defenseman on Bruin lacrosse team.

Career Record	Time	Att.	Running			Receiving		
			Yds.	Ave.	TD	Caught	Yds.	TD
Soph	207 (L)	40	182	4.6	0	3	32	0
Junior	245 (L)	47	168	3.6	0	6	47	1

Jan R. MOYER Sr. 21 5-10 170 Williamstown, Pa.

Second leading ground-gainer (256 yards) and pass-receiver (15 for 260 yards) last season . . . led team in returns of punts and kickoffs . . . ranked 19th nationally in kickoff returns (14 for 23.3-yard average) . . . a fast, shifty runner . . . very strong to the outside . . . plays left halfback . . . two-year letterman.

Career Record	Time	Att.	Running			Receiving		
			Yds.	Ave.	TD	Caught	Yds.	TD
Soph	126 (L)	65	271	4.2	0	8	62	0
Junior	214 (L)	70	256	3.7	1	15	260	1

Kenneth R. NEAL Soph 20 6-1 190 Warwick, R. I.

The biggest left halfback Brown has had in many years . . . a strong, hard runner with fine balance and a good change of pace . . . hard to bring down . . . has the speed to make it as a halfback or fullback . . . scored three touchdowns and gained 149 yards for the Cubs last fall . . . also won numerals as a defenseman in hockey and a pitcher in baseball . . . son of Eddie Neal, star Brown football and baseball player in the mid-30s.

William C. PETERS Soph 19 5-9 175 Middletown, R. I.

A sound football player who took a turn at every backfield position with the frosh last season . . . a slippery runner who fights for every yard . . . excellent safetyman . . . good tackler . . . gained 123 yards rushing and caught six passes for 63 yards . . . captained Cubs last fall . . . may turn out to be the team's best punter.

William J. VARESCHI Sr. 21 6-0 180 North Adams, Mass.

A two-year letterman who has been used mostly as a defensive specialist . . . has good speed and could figure more in the Bears' running game this season . . . scored touchdown against Columbia last year.

Career Record	Time	Att.	Running			Passing		
			Yds.	Ave.	TD	Caught	Yds.	TD
Soph	115 (L)	0	0	0.0	0	2	1	0
Junior	194 (L)	12	30	2.5	0	5	77	1

FULLBACKS

Francis ANTIFONARIO Sr. 20 5-8 175 Dracut, Mass.

Small for a fullback but a solidly built, hard-hitting runner who uses his blockers to best advantage . . . expected to provide good depth at this position.

Career Record	Time	Att.	Running			Receiving		
			Yds.	Ave.	TD	Caught	Yds.	TD
Soph	149 (L)	38	83	2.2	1	0	0	0

John J. KELLY Jr. 19 5-11 190 West Warwick, R. I.

The team's leading ground-gainer last year with 311 yards in 70 carries . . . scored three touchdowns, one on a 50-yard run against Penn . . . a strong runner, excellent blocker and an effective cornerman defensively . . . logged most playing time among the backs with 381 minutes . . . also won varsity letter in baseball.

Career Record	Time	Att.	Running			Receiving		
			Yds.	Ave.	TD	Caught	Yds.	TD
Soph	381 (L)	70	311	4.4	3	0	0	0

Peter F. THORBAHN Soph 19 5-11 185 Abington, Mass.

A stout competitor who will press the varsity veterans for the starting berth . . . a hard runner with good speed whom freshman coach Charlie Markham rates as the best fullback as a freshman he has had in his seven years at Brown . . . was a guard in high school but was switched to the backfield with gratifying results . . . a good blocker and sound defensive back . . . second leading ground-gainer on Cub team with 173 yards.

The Varsity Roster

Name	Class	Age	Ht.	Wt.	School	Hometown
Brisbane, William	So.	19	6-2	185	Donora	Donora, Pa.
*Ferraris, Ronald	Jr.	20	5-11	190	Emerson	Union City, N. J.
Gardinier, Charles D.	So.	19	6-1	180	Rome	Rome, N. Y.
Goeltz, Richard K.	Sr.	21	6-3	170	Arlington	Mt. Prospect, Ill.
Horahan, Francis E.	So.	19	6-4	185	Drury	North Adams, Mass.
Kudless, Robert J.	So.	19	6-3	190	New Dorp	Staten Island, N. Y.
Lenker, Herbert E.	Jr.	20	6-2	180	Shamokin	Paxinos, Pa.
Litzen, Roy M.	Sr.	21	6-2	180	Bridgewater	Bridgewater, Mass.
*O'Toole, Richard P.	So.	19	6-2	190	River Dell	Oradell, N. J.
*Parry, John C.	Jr.	20	6-3	190	Marcellus	Marcellus, N. Y.
Pigott, Charles W.	So.	18	6-1	190	Williamsville	Williamsville, N. Y.
Plasteras, George J.	So.	19	6-0	180	Asbury Park	Deal, N. J.
Ryan, S. Paul	So.	18	6-3	195	Moses Brown	Providence, R. I.
*Seiple, Robert A.	Jr.	20	6-1	180	Belvidere	Phillipsburg, N. J.
Sudell, William H.	Jr.	20	6-1	175	Springfield	Springfield, Pa.
Taylor, Robert G.	Jr.	19	6-1	185	Lincoln	Philadelphia, Pa.
Weatherby, John M.	So.	19	5-10	155	St. Bernard's	Summit, N. J.
Zwarg, Stephen M.	So.	18	6-0	175	Haddonfield	Haddonfield, N. J.

ENDS

TACKLES

Armstrong, Robert E.	So.	19	6-1	220	Manlius	Ft. Lauderdale, Fla.
Baldino, Anthony D.	So.	19	6-1	225	Notre Dame	Trenton, N. J.
Blocher, Ackley E.	So.	19	6-0	215	Deerfield	Ormond Beach, Fla.
Brooks, C. Gerard	So.	19	6-2	215	Mamaroneck	Mamaroneck, N. Y.
Earle, William G.	Jr.	19	6-1	215	Beverly	Beverly, Mass.
Evans, Craig R.	So.	19	5-10	195	Wellesley	Wellesley, Mass.
*Hoover, John S.	Sr.	20	6-4	230	Danville	Danville, Pa.
Kirkman, Allan C.	Jr.	20	6-1	195	Springfield	Springfield, Pa.
Leszchyn, Harry W.	Jr.	20	6-3	210	North Plainfield	North Plainfield, N. J.
*Lutz, John S.	Jr.	20	6-3	210	St. Paul's	Garden City, N. Y.
*Matteo, Anthony T.	Sr.	20	6-2	205	Central Catholic	Lawrence, Mass.
McNeil, Andrew M.	So.	19	6-0	220	Wellesley	Wellesley, Mass.
Michno, Michael J.	So.	19	6-2	215	Vestal	Vestal, N. Y.
Miller, Alan B.	So.	19	6-3	210	Abington	Abington, Mass.

GUARDS

Anderson, Neill E.	So.	19	6-1	180	Fulton	Fulton, N. Y.
*Barney, Alfred A.	Jr.	20	5-11	185	Archbishop Williams	Braintree, Mass.
*Bucci, Gerald A.	So.	21	5-11	190	Ridgewood	Ridgewood, N. J.
Buscemi, Paul K.	So.	19	5-10	195	Weber	Chicago, Ill.
Campbell, John C.	So.	19	5-9	190	Moses Brown	Pawtucket, R. I.
*Coughlan, Paul F.	Jr.	19	5-9	180	North Quincy	North Quincy, Mass.
Daly, David J.	So.	18	5-10	205	Gilmour	Bradford, Pa.
Deutsch, David	So.	19	5-10	180	North	Great Neck, N. Y.
Fitzgerald, Warren D.	Jr.	19	6-0	220	Oliver Ames	North Easton, Mass.
Goldkamp, C. Edwin	So.	19	5-11	180	St. Sebastian's	Weston, Mass.
Jones, John C.	Jr.	21	5-11	210	Linsley Military	Hope Dale, Ohio
Kolibash, William A.	So.	19	5-10	180	Linsley Military	Benwood, W. Va.
Menezes, Manuel E.	So.	22	5-11	185	Warren	Warren, R. I.
*Miles, John P.	So.	21	6-1	195	Stanton Military	Castlecove, NSW, Australia
Viles, George H.	So.	20	5-10	190	Lawrenceville	So. Paris, Me.
Zerngast, Terry J.	So.	18	5-11	180	Ottumwa	Ottumwa, Iowa
Zimmer, Jerry A.	So.	19	5-10	185	Vestal	Maine, N. Y.

CENTERS

Carroll, John M.	Jr.	20	5-11	190	Warwick	Warwick, R. I.
DeLuca, Robert	So.	19	5-8	185	Framingham	Framingham, Mass.
*Duerre, Ralph E.	Jr.	20	6-2	185	Tenafly	Tenafly, N. J.
Gollatz, Alfred	So.	19	6-1	190	Penncrest	Media, Pa.
Hopson, Clark N.	So.	19	6-0	210	Clifford Scott	East Orange, N. J.
Pate, John R.	So.	19	5-11	190	Washington-Lee	Arlington, Va.
Perry, Roy	Jr.	19	5-9	185	Archbishop Williams	Brockton, Mass.

QUARTERBACKS

*Carcieri, Donald L.	Jr.	20	6-1	175	East Greenwich	East Greenwich, R. I.
DeBruler, William C.	So.	19	5-8	170	Libertyville	Libertyville, Ill.
*Dunda, James J.	Jr.	19	5-10	175	Woodbridge	Avenel, N. J.
Hall, Robert F.	So.	20	6-2	180	Worcester Academy	Walpole, Mass.
Walsh, W. Terry	Jr.	19	6-1	185	Marist College H. S.	Atlanta, Ga.

HALFBACKS

Name	Class	Age	Ht.	Wt.	School	Hometown
Bryant, Melvin	Jr.	19	5-8	155	Classical	Indian Orchard, Mass.
Burgess, Jay A.	So.	19	5-11	170	Ferndale	Ferndale, Mich.
Carr, William R.	So.	19	5-11	180	Beverly	Beverly, Mass.
*Draper, Thomas H.	Sr.	22	6-0	190	Mount Hermon	Milford, Del.
Falbo, Anthony	So.	19	5-11	160	Wyoming	Carbondale, Pa.
Hodge, Paul	Jr.	20	5-9	180	Moses Brown	Rumford, R. I.
Jenkins, H. Lee	Jr.	20	6-0	180	Tabor	Marion, Mass.
Lapine, Lawrence M.	So.	19	5-9	160	Stamford	Stamford, Conn.
LeBeau, Raymond P.	Jr.	20	5-9	165	Central Falls	Central Falls, R. I.
*Lemire, William A.	Sr.	21	5-8	180	Beverly	Beverly, Mass.
McMahon, John S.	Jr.	20	5-10	165	Warren	Warren, R. I.
*Moyer, Jan R.	Sr.	21	5-10	170	Moses Brown	Williamstown, Pa.
Neal, Kenneth R.	So.	20	6-1	190	Deerfield	Warwick, R. I.
Northrop, Arthur W.	So.	19	6-2	185	Johnson City	Johnson City, N. Y.
Peters, William C.	So.	19	5-9	175	Rogers	Middletown, R. I.
Powell, Richard A.	Jr.	20	5-9	150	West Springfield	West Springfield, Mass.
Shugrue, Gerald E.	So.	19	5-6	145	Northbridge	Whitinsville, Mass.
*Vareschi, William J.	Sr.	21	6-0	180	Drury	North Adams, Mass.

FULLBACKS

Name	Class	Age	Ht.	Wt.	School	Hometown
*Antifonario, Francis	Sr.	20	5-8	175	Dracut	Dracut, Mass.
Diaz, Robert	So.	19	5-9	185	Middletown	Red Bank, N. J.
Erven, William N.	So.	19	5-8	175	Elmira Free Academy	Elmira, N. Y.
*Kelly, John J.	Jr.	19	5-11	190	J. F. Deering	West Warwick, R. I.
Kelly, Paul F.	So.	19	5-8	175	Archbishop Williams	Weymouth, Mass.
Meddaugh, Gary L.	Jr.	20	6-0	190	Johnson City	Endwell, N. Y.
Thorbahn, Peter F.	So.	19	5-11	185	Abington	Abington, Mass.
Varner, Conrad W.	Jr.	20	6-0	170	Mercersburg	Chevy Chase, Md.
Westerlund, Knute B.	So.	20	6-0	195	Vermont	Brattleboro, Vt.

*Lettermen (19)

PRONUNCIATION GUIDE

Goeltz — Geltz
 Seiple — SY-pul
 Sudell — Su-DELL
 Deutsch — Doytch
 Duerre — Dev-AIR
 Gollatz — GO-latz
 Diaz — DIE-az

Leszchyn — LES-gin
 Matteo — MATT-ee-o
 Michno — MISH-no
 Buccì — BOOCH-ee
 Lapine — La-PEEN
 Lemire — La-MEER
 Kudless — KOOD-less

Meddaugh — Meadow
 Shugrue — Sha-GREW
 Blocher — BLOW-ker
 Buscemi — Bew-SEE-me
 Coughlan — COUGH-lin
 Ferraris — Fer-RAH-ris
 Gardinier — Gar-DIN-yer

Plasteras — PLASS-ter-us
 Thorbahn — THOR-bahn
 Kolibash — KOLL-i-bash
 Menezes — Ma-NAY-zes
 Carcieri — Car-CHEER-ee
 Vareschi — Va-REES-kee
 DeBruler — Dee-BREW-ler

Antifonario — Ann-tee-fo-NAH-ree-o



Co-captains Gerald A. Bucci
and Anthony T. Matteo

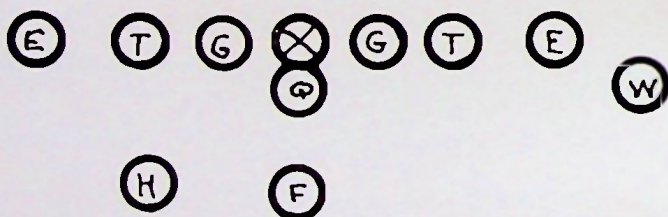
Brown Offense for '63

By John J. McLaughry

There will be no change in our basic wing-T formation this season but we will be using more spreads, with either or both ends split up to eight yards and the right halfback occasionally flanked up to 10 yards. This will enable us to take better advantage of our many receivers and we hope will put more pressure on the defense. Our quarterbacks will do more running this year than was the case the last few seasons. Overall, our attack should show a better balance between the passing and running games.



1963 Formation



1962 Formation

The Opponents

COLUMBIA UNIVERSITY

Sept. 28 at Brown Field, 2:00 p.m.

Colors: Light Blue and White Nickname: Lions Enrollment: 3,000

Head Coach: Aldo T. (Buff) Donelli, Duquesne '30
(Seventh season: Won 18, Lost 36)
(vs. Brown: Won 5, Lost 1)

Assistants: John L. Toner, Boston University '50, backs; Al Paul, Western Maryland '50, line; Tony Zullo, Tufts '48, line; John B. Armstrong, Columbia '55.

Captain: Allison F. Butts

Director of Sports Information:
Phillip J. Burke, UNiversity 5-4000
Ext. 2277

1963 Schedule

Sept. 28 at BROWN
Oct. 5 Princeton
Oct. 12 at Yale
Oct. 19 at Harvard
Oct. 26 Lehigh
Nov. 2 at Cornell
Nov. 9 Dartmouth
Nov. 16 Pennsylvania
Nov. 23 at Rutgers

1962 Results

22 BROWN 20
0 Princeton 33
14 Yale 10
14 Harvard 36
22 Lehigh 15
25 Cornell 21
0 Dartmouth 42
21 Pennsylvania 7
6 Rutgers 22

Won 5, Lost 4

1963 PROSPECTS

Lettermen Lost: 11

Lettermen Returning: 16

All indications point to an improved Columbia team this fall . . . Quarterback Archie Roberts, an All-Ivy first-team choice as a sophomore last year, heads a group of 16 lettermen, most of whom logged considerable playing time in '62 . . . Coach Buff Donelli expects to have the biggest squad in six years.

GAME NOTES

The Lions eked out a 22-20 victory in a thrilling battle of sophomore quarterbacks . . . Tom O'Connor's 26-yard field goal in the third period eventually proved the winning margin as Brown failed to convert after Jim Dunda had directed a 68-yard touchdown drive in the final 58 seconds of the game . . . Dunda passed for two touchdowns and scored the other . . . Roberts passed for the Lions' third TD and thwarted two Brown bids with interceptions.

SERIES RECORD

Brown: Won 11, Lost 14, Tied 2

Last Brown victory: 1958

Last Columbia victory: 1962

	Br.	Col.		Br.	Col.		Br.	Col.
1902	28	0	1940	0	0	1954	18	7
1919	7	7	1941	6	13	1955	12	14
1930	6	0	1942	28	21	1956	20	0
1931	7	9	1944	12	0	1957	20	23
1932	7	6	1945	6	27	1958	22	0
1934	0	39	1949	16	7	1959	6	21
1935	0	18	1950	0	33	1960	0	37
1937	7	6	1951	14	29	1961	0	50
1938	36	27	1952	0	14	1962	20	22

YALE UNIVERSITY

Oct. 5 at Yale Bowl, 2:00 p.m.

Color: Yale Blue

Nickname: Bulldogs

Enrollment: 3,900

Head Coach: John Pont, Miami (O.) '52
(First season)

Assistants: Harry Jacunski, Fordham '39; Ernie Plank, Miami (O.); Carmen Cozza, Miami (O.); Jay Fry, Miami (O.); Herb Fairfield, Miami (O.).

Captain: George Humphrey

Director of Sports Information:

Charles Loftus, State 7-3131

Ext. 5811 or

UN 5-5358

1963 Schedule

Sept. 28	Connecticut
Oct. 5	BROWN
Oct. 12	Columbia
Oct. 19	at Cornell
Oct. 26	Colgate
Nov. 2	Dartmouth
Nov. 9	at Pennsylvania
Nov. 16	at Princeton
Nov. 23	Harvard

1962 Results

18	Connecticut	14
6	BROWN	6
10	Columbia	14
26	Cornell	8
14	Colgate	14
0	Dartmouth	9
12	Pennsylvania	15
10	Princeton	14
6	Harvard	14

Won 2, Lost 5, Tied 2

1963 PROSPECTS

Lettermen Lost: 22

Lettermen Returning: 19

Operating under a new coach and a new system, the Elis nevertheless expect to be much improved over '62 . . . At least two lettermen are available at every position with main strength at center, tackle and fullback . . . Sophomore help is needed at quarterback, guard and halfback.

GAME NOTES

Brown and Yale played to their first tie game in 24 years as a seven-inch rainfall turned Brown Stadium into a duck pond . . . Wally Grant's two 28-yard field goals, one in the second and one in the third period, offset Brown's lone touchdown one second before the end of the first half . . . This was scored by John Parry on a four-yard pass from Dunda . . . An attempted conversion kick was thwarted by a high pass from center.

SERIES RECORD

Brown: Won 14, Lost 49, Tied 4

Last Brown victory: 1958

Last Yale victory: 1961

	Br.	Y.		Br.	Y.		Br.	Y.
1880	0	8g 5t	1915	3	0	1941	7	0
1893	0	18	1916	21	6	1942	0	27
1894	0	28	1919	0	14	1943	21	20
1894	0	12	1920	10	14	1944	0	13
1895	0	4	1921	7	45	1945	20	7
1895	6	6	1922	0	20	1946	0	49
1896	0	18	1923	0	21	1947	20	14
1896	6	18	1924	3	13	1948	13	28
1897	14	18	1925	7	20	1949	14	0
1898	6	22	1926	7	0	1950	12	36
1902	0	10	1927	0	19	1951	14	13
1904	0	22	1928	14	32	1952	0	28
1905	0	11	1929	6	14	1953	0	13
1906	0	5	1930	0	21	1954	24	26
1907	0	22	1932	7	2	1955	20	27
1908	10	10	1933	6	14	1956	2	20
1909	0	23	1934	0	37	1957	21	20
1910	21	0	1935	0	20	1958	35	29
1911	0	15	1936	6	14	1959	0	17
1912	0	10	1937	0	19	1960	0	9
1913	0	17	1938	14	20	1961	3	14
1914	6	14	1939	14	14	1962	6	6
			1940	6	2			

DARTMOUTH COLLEGE

Oct. 12 at Memorial Field, 2:00 p.m.

Color: Oak Green

Nickname: Indians

Enrollment: 3,000

Head Coach: Robert L. Blackman, USC '41
 Ninth season: Won 47, Lost 22, Tied 3)
 (vs. Brown: Won 5, Lost 1, Tied 1)

Assistants: John E. Musick, USC '47, line; Wilbur Volz, Missouri '49; Joseph Yukica, Penn State '53; Earl Hamilton, Wichita '49; Elmer Lampe, Chicago '26; Neil Putnam, Miami (O.) '58; Alvin Julian, Bucknell '23.

Captain: Scott H. Creelman

Director of Sports Information:
 Ernie Roberts, (Hanover) 643-3000
 Ext. 468, 449

1963 Schedule

Sept. 28	Bucknell
Oct. 5	at Pennsylvania
Oct. 12	BROWN
Oct. 19	Holy Cross
Oct. 26	at Harvard
Nov. 2	at Yale
Nov. 9	at Columbia
Nov. 16	Cornell
Nov. 23	at Princeton

1962 Results

27	Massachusetts	3
17	Pennsylvania	0
41	BROWN	0
10	Holy Cross	0
24	Harvard	6
9	Yale	0
42	Columbia	0
28	Cornell	21
38	Princeton	27
Won 9, Lost 0		

1963 PROSPECTS

Lettermen Lost: 11

Lettermen Returning: 24

The 1962 Ivy champions lost four All-Ivy players, Bill King, Don McKinnon, Ed Boies and Bill Blumenschein, but Coach Bob Blackman has a total of 24 lettermen returning . . . Dana Kelly should prove a worthy successor to King at quarterback and All-Ivy Tom Spangenberg heads up a strong contingent at the halfback position . . . Several sophomores are expected to help the cause along.

GAME NOTES

Bill King scored three touchdowns and passed for another as the Indians romped to a 41-0 victory . . . Brown failed to score against Dartmouth for the sixth straight season, a span covering 411 minutes . . . Bruins' total offense of 179 yards bettered considerably the combined total of 115 by Indians' two previous opponents.

SERIES RECORD

Brown: Won 13, Lost 25, Tied 2
 Last Brown victory: 1955
 Last Dartmouth victory: 1962

	Br.	D.		Br.	D.		Br.	D.
1894	20	4	1918	28	0	1938	13	34
1895	10	4	1919	7	6	1940	6	20
1896	10	10	1920	6	14	1944	13	14
1898	12	0	1922	0	7	1946	20	13
1899	16	5	1923	14	16	1947	10	13
1900	12	5	1924	3	10	1955	7	0
1901	0	22	1925	0	14	1956	7	14
1902	6	12	1926	10	0	1957	0	35
1903	0	62	1927	7	19	1958	0	20
1904	5	12	1928	14	0	1959	0	0
1905	6	24	1929	6	13	1960	0	20
1906	23	0	1935	0	41	1961	0	34
1917	13	0	1936	0	34	1962	0	41
			1937	0	41			

UNIVERSITY OF PENNSYLVANIA

Oct. 19 at Brown Field, 2:00 p.m.

HOMECOMING GAME

Colors: Red and Blue Nickname: Red and Blue Enrollment: 5,400 (4,200 men)

Head Coach: John R. Stiegman, Williams '44
(Fourth season: Won 8, Lost 19)
(vs. Brown: Won 3, Lost 0)

Assistants: Paul G. Riblett, Pennsylvania '32; Joe Stanczyk, Columbia '32;
Robert Graham, Pennsylvania '50; John R. Cervino, Gettysburg
'52; Harry Gamble, Rider '52.

Captain: Fred Jaffin

Director of Sports Information:
Ed Fabricius, EVergreen 6-0961

1963 Schedule

Sept. 28 Lafayette
Oct. 5 Dartmouth
Oct. 12 at Princeton
Oct. 19 at BROWN
Oct. 26 Rutgers
Nov. 2 Harvard
Nov. 9 Yale
Nov. 16 at Columbia
Nov. 28 Cornell

1962 Results

13	Lafayette	11
0	Dartmouth	17
8	Princeton	21
18	BROWN	15
7	Rutgers	12
0	Harvard	36
15	Yale	12
7	Columbia	21
22	Cornell	29

Won 3, Lost 6

1963 PROSPECTS

Lettermen Lost: 14

Lettermen Returning: 26

Despite the return of the largest group of lettermen in the Ivy League, the Quakers' optimism leans toward the cautious side . . . Strong at end and in the backfield, Coach John Stiegman regards the interior line as his biggest problem . . . However, the sophomore group is considered one of the finest in many years . . . The three-unit system again will be used.

GAME NOTES

The Bruins won the battle of statistics by a wide margin but lost a heart-breaking, 18-15 squeaker as a 65-yard drive for the winning touchdown petered out on the one-yard line in the closing minutes . . . Brown beat the clock at halftime for its first touchdown, on a 13-yard pass from Jim Dunda to Bill Lemire . . . Fullback John Kelly rambled 50 yards for the Bears' second TD in the third quarter . . . After Sieg Molnar's 27-yard field goal had opened the scoring in the first period, John Owens passed 15 yards to Ron Allshouse for Penn's first touchdown in the second period and scored the other on a 14-yard run in the third . . . Penn yielded an intentional safety after stopping Brown on the one.

SERIES RECORD

Brown: Won 4, Lost 26, Tied 1
Last Brown victory: 1957
Last Penn victory: 1962

	Br.	P.		Br.	P.		Br.	P.
1895	0	12	1905	6	8	1936	6	48
1896	0	16	1906	0	14	1945	0	50
1897	0	40	1907	0	11	1950	0	50
1898	0	18	1908	0	12	1956	7	14
1899	6	6	1909	5	12	1957	20	7
1900	0	12	1910	0	20	1958	20	21
1901	0	26	1911	6	0	1959	9	36
1902	15	6	1912	30	7	1960	7	36
1903	0	30	1913	0	28	1961	0	7
1904	0	6	1925	0	9	1962	15	18
			1927	6	14			

UNIVERSITY OF RHODE ISLAND

Oct. 26 at Brown Field, 2:00 p.m.

Color: Blue and White Nickname: Rams Enrollment: 3,647 (2,488 men)

Head Coach: John L. "Jack" Zilly, Notre Dame '47
(First season)

Assistants: Brinton C. Piez, Temple; John L. O'Leary, Rhode Island; Robert J. Lynch, New York University; Herbert H. Maack, Columbia.

Co-Captains: Tony Tetro and
Tony DeMatteo

Director of Sports Information:
Tom Doherty, STerling 9-9311

1963 Schedule

Sept. 21 at Northeastern
Sept. 28 Maine
Oct. 5 New Hampshire
Oct. 12 at Vermont
Oct. 19 at Massachusetts
Oct. 26 at BROWN
Nov. 2 Springfield
Nov. 9 at Hofstra
Nov. 16 Connecticut

1962 Results

0 Northeastern 28
14 Maine 7
6 New Hampshire 6
12 Vermont 21
8 Massachusetts 42
12 BROWN 12
24 Springfield 13
8 Hofstra 20
0 Connecticut 27

Won 2, Lost 5, Tied 2

1963 PROSPECTS

Lettermen Lost: 11

Lettermen Returning: 10

Jack Zilly, former Brown aide, begins the job of rebuilding the Rams' football fortunes in his first year as head coach . . . He expects to use an adaptation of the pro offense, featuring a wide-open attack . . . What progress he makes during his first season will depend largely on the development of untested material.

GAME NOTES

The Rams and the Bears played their first tie game in the 53-year-old series, a 12-12 deadlock . . . Fumbles led to the game's first three touchdowns . . . John Kelly put Brown ahead in the first period on a one-yard plunge, capping a 21-yard drive . . . The Rams recovered a fumble at the Brown 20 in the second period and Tony Tetro scored six plays later from the two . . . URI went ahead in the third period on a 14-yard pass from Mike Pariseau to Errol Hunt after picking up a loose ball at the Brown 30 . . . A 61-yard pass from Jim Dunda to Jan Moyer closed the scoring late in the third quarter.

SERIES RECORD

Brown: Won 42, Lost 5, Tied 1

Last Brown victory: 1960

Last Rhode Island victory: 1961

	Br.	R. I.		Br.	R. I.		Br.	R. I.
1909	6	0	1928	33	7	1947	55	6
1910	5	0	1929	14	6	1948	33	0
1911	12	0	1930	7	0	1949	46	0
1912	14	0	1931	18	0	1950	55	13
1913	19	0	1932	19	0	1951	20	13
1914	20	0	1933	26	0	1952	6	7
1915	38	0	1934	13	0	1953	13	19
1916	18	0	1935	7	13	1954	35	0
1918	27	0	1936	7	6	1955	7	19
1919	27	0	1937	13	6	1956	27	7
1920	25	0	1938	40	21	1957	21	0
1921	6	0	1939	34	0	1958	47	6
1922	27	0	1940	20	17	1959	6	0
1925	33	0	1941	14	7	1960	36	14
1926	14	0	1942	28	0	1961	9	12
1927	27	0	1946	29	0	1962	12	12

PRINCETON UNIVERSITY

Nov. 2 at Palmer Stadium, 1:30 p.m.

Colors: Orange and Black Nickname: Tigers Enrollment: 3,025

Head Coach: Richard W. Colman, Jr., Williams '37
(Seventh season: Won 34, Lost 20)
(vs. Brown: Won 6, Lost 0)

Assistants: J. Robert Pflug, Grove City '28; William G. Whitton, St. Lawrence '47; Joey L. McCandless, Princeton '51; Robert F. Casciola, Princeton '58.

Captain: William Guedel

Director of Sports Information:
William Stryker, WALNUT 1-6600
Ext. 717

1963 Schedule

Sept. 28 Rutgers
Oct. 5 at Columbia
Oct. 12 Pennsylvania
Oct. 19 Colgate
Oct. 26 Cornell
Nov. 2 BROWN
Nov. 9 at Harvard
Nov. 16 Yale
Nov. 23 Dartmouth

1962 Results

15	Rutgers	7
33	Columbia	0
21	Pennsylvania	8
15	Colgate	16
34	Cornell	35
28	BROWN	12
0	Harvard	20
14	Yale	10
27	Dartmouth	38

Won 5, Lost 4

1963 PROSPECTS

Lettermen Lost: 18

Lettermen Returning: 18

Graduation losses were heavy but the Tigers are still healthy with 18 lettermen available plus several good sophomores who could win starting positions . . . Cosmo Iacavazzi, second-team All-Ivy fullback, wingback Jim Rockenbach, guard Ron Bonomo and tackle Bill Guedel are the outstanding veterans . . . Top sophs include tackle Paul Savidge, center Kit Mill and fullback Bert Kerstetter.

GAME NOTES

Fumbles and pass interceptions nullified an otherwise fine effort by the Bruins as Princeton scored a 28-12 victory . . . Jim Dunda experienced his most frustrating game of the season at rain-swept Palmer Stadium . . . completed only five of 22 passes and had six intercepted, two of them close to the Tigers' goal line . . . John Kelly and Jan Moyer scored for Brown . . . Tiger TDs were provided by Bill Merlini, Pete Porietis, John Henrich and Hugh McMillan.

SERIES RECORD

Brown: Won 6, Lost 23

Last Brown victory: 1954

Last Princeton victory: 1962

	Br.	Pr.		Br.	Pr.		Br.	Pr.
1898	0	23	1942	13	32	1953	13	27
1899	6	18	1943	28	20	1954	21	20
1900	5	17	1946	12	33	1955	7	14
1901	0	35	1947	7	21	1956	7	21
1903	0	29	1948	23	20	1957	0	7
1929	13	12	1949	14	27	1958	18	28
1930	7	0	1950	0	34	1959	0	7
1931	19	7	1951	0	12	1960	21	54
1933	0	33	1952	0	39	1961	0	52
1939	12	26				1962	12	28

CORNELL UNIVERSITY

Nov. 9 at Schoellkopf Field, 1:30 p.m.

Colors: Carnelian and White Nickname: Big Red Enrollment: 8,100 (6,900 men)

Head Coach: Tom Harp, Muskingum '51
(Third season: Won 7, Lost 11)
(vs. Brown: Won 2, Lost 0)

Assistants: Fred Dunlap, Colgate '50; Ted Thoren, Ithaca College '49; William Moore, Penn State '47; Jacque Hetrick, Muskingum '52; John Hogan, Cincinnati '51; Chuck Gottfried, Illinois '50; Dave McClain, Bowling Green '60.

Captain: Gary Wood

Director of Sports Information:
Ben Mintz, AR 3-432

1963 Schedule

Sept. 28 Colgate
Oct. 5 Lehigh
Oct. 12 at Harvard
Oct. 19 Yale
Oct. 26 at Princeton
Nov. 2 Columbia
Nov. 9 BROWN
Nov. 16 at Dartmouth
Nov. 28 at Pennsylvania

1962 Results

12 Colgate 23
14 Harvard 12
0 Navy 41
8 Yale 26
35 Princeton 34
21 Columbia 25
28 BROWN 26
21 Dartmouth 28
29 Pennsylvania 22

Won 4, Lost 5

1963 PROSPECTS

Lettermen Lost: 13

Lettermen Returning: 18

If Coach Tom Harp can develop a balanced running attack to back up quarterback Gary Wood's running-passing threat, the Big Red could be in the thick of the Ivy title scramble . . . One thing is certain . . . Cornell has the league's best place-kicker in Pete Gogolak, who had nary a miss in 20 conversion attempts last season . . . Experienced depth is lacking at tackle and center.

GAME NOTES

A "watered-down" homecoming crowd of 8,500 was treated to an exciting duel of quarterbacks as Gary Wood completed six of 15 passes, rushed for 169 yards and scored one touchdown in leading Cornell to a thrilling 28-26 victory . . . Brown's Jim Dunda completed 13 of 23 passes for three TDs and scored the other himself . . . Pete Gogolak's four conversions proved the difference . . . Brown lost another potential touchdown in the third quarter when a pass interception halted a 78-yard drive on the Cornell four-yard line.

SERIES RECORD

Brown: Won 3, Lost 7

Last Brown victory: 1960

Last Cornell victory: 1962

	Br.	C.		Br.	C.		Br.	C.
1895	4	6	1956	13	6	1960	7	6
1914	7	28	1957	6	13	1961	0	25
1955	7	20	1958	12	8	1962	26	28
			1959	0	19			

HARVARD UNIVERSITY

Nov. 16 at Brown Field, 1:30 p.m.

Color: Crimson Nickname: Crimson Enrollment: 4,500

Head Coach: John M. Yovicsin, Gettysburg '40
(Seventh season: Won 30, Lost 23)
(vs. Brown: Won 3, Lost 3)

Assistants: James S. Lentz, Gettysburg '51; Paul M. McKee, Syracuse '47;
James J. Feula, George Washington '50; Robert Gongola, Illinois
'55; Pat Stark, Syracuse '54.

Captain: William W. Southmayd '64 Director of Sports Information:
Baaron Pittenger, KI 7-7913

1963 Schedule

Sept. 28	Massachusetts
Oct. 5	Rutgers
Oct. 12	Cornell
Oct. 19	Columbia
Oct. 26	Dartmouth
Nov. 2	at Pennsylvania
Nov. 9	Princeton
Nov. 16	at BROWN
Nov. 23	at Yale

1962 Results

27	Lehigh	7
12	Cornell	14
20	Holy Cross	34
36	Columbia	14
6	Dartmouth	24
36	Pennsylvania	0
20	Princeton	0
31	BROWN	19
14	Yale	6

Won 6, Lost 3

1963 PROSPECTS

Lettermen Lost: 15

Lettermen Returning: 21

A solid veteran group augmented by a generous supply of talented sophomores makes Harvard a strong contender for the Ivy title . . . Graduation losses robbed Coach John Yovicsin's squad of some of its offensive firepower, but the Crimson should field one of the toughest defensive clubs in the league . . . Harvard's strength is concentrated up the middle, at guard, center, quarterback and fullback . . . must develop depth at end, tackle and halfback.

GAME NOTES

Bill Taylor's four touchdowns clinched the third straight victory for Harvard, 31-19, but the Bruins' spectacular aerial display stole the show . . . Jim Dunda completed 16 of 24 passes, tying an Ivy League record and breaking the Brown mark . . . End John Parry caught nine, breaking both Ivy and Brown records, and halfback Jan Moyer grabbed six . . . Brown last defeated Harvard in 1959 in a 16-8 upset at Brown Stadium.

SERIES RECORD

Brown: Won 15, Lost 45, Tied 2
Last Brown victory: 1959
Last Harvard victory: 1962

	Br.	H.		Br.	H.		Br.	H.
1893	0	58	1914	0	0	1940	0	14
1894	4	18	1915	7	16	1941	7	23
1894	0	18	1916	21	0	1942	0	7
1895	6	24	1918	6	3	1945	7	14
1896	0	12	1919	0	7	1946	0	28
1897	0	18	1920	0	27	1947	7	13
1898	6	17	1921	7	9	1948	19	30
1899	0	11	1922	3	0	1949	28	14
1900	6	11	1923	20	7	1950	13	14
1901	0	48	1924	7	0	1951	21	34
1902	0	6	1925	0	3	1952	28	21
1903	0	29	1926	21	0	1953	20	27
1905	0	10	1927	6	18	1954	21	21
1906	5	9	1932	14	0	1955	14	6
1907	5	6	1933	6	12	1956	21	12
1908	2	6	1934	0	13	1957	33	6
1909	0	11	1935	0	33	1958	29	22
1910	0	12	1936	0	28	1959	16	6
1911	6	20	1937	7	34	1960	8	22
1912	10	30	1938	20	13	1961	6	21
1913	0	37				1962	19	31

COLGATE UNIVERSITY

Nov. 23 at Brown Field, 1:30 p.m.

Color: Maroon

Nickname: Red Raiders

Enrollment: 1,450

Head Coach: Harold W. Lahar, Oklahoma '41
(Seventh season: Won 27, Lost 22, Tied 5)
(vs. Brown: Won 2, Lost 3, Tied 1)

Assistants: Howard N. Hartman, West Virginia Wesleyan '31; James Butterfield, Maine '53; Tom Parnell, St. Cloud '55; Neil Wheelwright, Springfield '54; Leland Kendall, Oklahoma State '57.

Captain: Eric Orke

Director of Sports Information:
Walt Splain, HAMILTON 660
Ext. 3

1963 Schedule

Sept. 28 at Cornell
Oct. 5 at Boston University
Oct. 12 Rutgers
Oct. 19 at Princeton
Oct. 26 at Yale
Nov. 2 at Lehigh
Nov. 9 Bucknell
Nov. 16 at Buffalo
Nov. 23 at BROWN

1962 Results

2 BROWN 6
23 Cornell 12
0 Holy Cross 22
15 Rutgers 27
16 Princeton 15
14 Yale 14
13 Lehigh 0
14 Bucknell 32
0 Buffalo 6
Won 3, Lost 5, Tied 1

1963 PROSPECTS

Lettermen Lost: 11

Lettermen Returning: 17

Coach Hal Lahar will rely pretty much on holdover veterans to improve on his '62 record of 3-5-1 . . . Sophomores will be counted on to provide depth at several positions, notably at guard and halfback . . . Guard and fullback are the chief problem spots . . . Quarterback Gerry Barudin will do more passing than running with five lettermen returning at end.

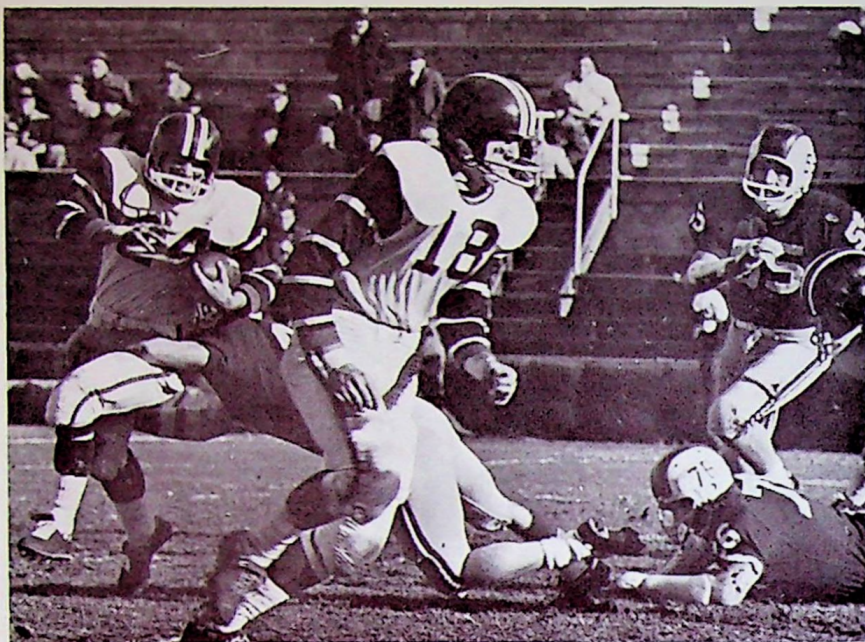
GAME NOTES

The Bruins snapped a nine-game losing streak with an opening-game, 6-2 victory at Hamilton . . . The winning touchdown came early in the fourth period on a 19-yard pass from Dennis Hauffaire to Bob Seiple . . . Brown gave up an intentional safety in the final minute after stopping a Red Raider drive on the one-yard line.

SERIES RECORD

Brown: Won 16, Lost 21, Tied 7
Last Brown victory: 1962
Last Colgate victory: 1961

	Br.	C.		Br.	C.		Br.	C.
1908	6	0	1931	7	13	1948	35	7
1909	14	0	1932	0	21	1949	41	26
1910	0	0	1933	0	25	1950	34	35
1916	0	28	1934	13	20	1951	14	32
1917	7	6	1935	0	33	1952	27	33
1919	0	14	1936	0	32	1953	7	7
1920	14	0	1939	0	10	1954	18	14
1921	7	0	1940	3	20	1955	0	25
1924	20	6	1942	0	13	1956	20	0
1925	14	14	1943	14	21	1957	33	7
1926	10	10	1944	32	20	1958	28	6
1927	0	0	1945	6	6	1959	14	33
1928	16	13	1946	14	20	1960	21	14
1929	0	32	1947	13	13	1961	6	30
1930	0	27				1962	6	2



Bill Lemire shakes loose for a good gain against Harvard.

The 1962 Record

1962 IVY STANDINGS

	LEAGUE GAMES					ALL GAMES				
	W	L	T	Pts.	OP	W	L	T	Pts.	OP
Dartmouth ..	7	0	0	199	54	9	0	0	236	57
Harvard	5	2	0	155	77	6	3	0	202	118
Columbia	4	3	0	96	169	5	4	0	124	206
Princeton	4	3	0	157	123	5	4	0	187	146
Cornell	4	3	0	156	173	4	5	0	168	237
Pennsylvania ..	2	5	0	70	151	3	6	0	89	174
Yale	1	5	1	70	80	2	5	2	102	108
BROWN	0	6	1	98	174	1	6	2	116	188

TEAM OFFENSE

	RUSHING			PASSING				TOTAL OFF.			
	G	Att.	Yds.	Att.	Comp.	Yds.	Int.	TD	Plays	Yds.	Ave.
Dartmouth ..	7	367	1763	102	57	922	4	5	469	2685	383.6
Cornell	7	340	1638	101	52	803	8	5	441	2441	348.7
Harvard	7	334	1434	75	37	614	2	5	409	2048	292.6
Princeton	7	357	627	88	37	409	6	1	445	2036	290.6
BROWN	7	324	985	146	70	953	15	8	470	1938	276.9
Columbia	7	276	621	168	98	1102	8	5	444	1723	246.1
Yale	7	321	1180	84	35	371	8	4	405	1551	221.6
Pennsylvania ..	7	291	746	103	38	500	16	2	394	1246	178.0

TEAM DEFENSE

	RUSHING			PASSING				TOTAL OFF.			
	G	Att.	Yds.	Att.	Comp.	Yds.	Int.	TD	Plays	Yds.	Ave.
Dartmouth ..	7	275	725	101	42	547	9	2	376	1272	181.7
Harvard	7	322	952	119	59	679	8	3	441	1631	233.0
Yale	7	371	1225	80	40	439	7	3	451	1664	237.7
Princeton	7	309	1273	128	59	719	16	1	437	1992	284.6
Pennsylvania ..	7	354	1323	111	63	782	9	4	465	2105	300.7
BROWN	7	323	1383	92	55	767	4	6	421	2150	307.1
Columbia	7	306	1335	116	55	976	9	10	422	2311	330.1
Cornell	7	350	1778	120	51	765	5	6	470	2543	363.3

1962 Game by Game

	First	Yds.	Yds.	Passes	Had Punts	Fumbles	Yds.		
	Score	Downs	Rush	Pass	Att.-Comp.	Int.	Ave.	Lost	Pen.
BROWN	6	8	64	76	12-7	0	9-27	2	20
Colgate	2	15	156	94	18-6	0	8-30	3	60
Scoring: (4th per.) Brown — Seiple (19, pass from Hauflaire); kick failed. Colgate — Safety.									
Columbia	22	14	84	119	18-13	0	6-39.8	2	54
BROWN	20	13	116	191	25-11	2	8-28.1	0	42
Scoring: (1st per.) Columbia — Hassan (46, run); O'Connor (kick). (2nd per.) Columbia — Donohue (blocked punt recovery); pass failed. Brown — Parry (52, pass from Dunda); Vodopivec (kick). (3rd per.) Brown — Dunda (2, run); Vodopivec (kick). Columbia — O'Connor (26, field goal). (4th per.) Columbia — Hug (25, pass from Roberts); pass failed. Brown — Vareschi (6, pass from Dunda); pass failed.									
BROWN	6	8	68	94	14-7	1	7-31	1	10
Yale	6	14	191	64	8-6	0	5-32	4	20
Scoring: (2nd per.) Yale — Grant (28, field goal). Brown — Parry (4, pass from Dunda); kick failed. (3rd per.) Yale — Grant (28, field goal).									
Dartmouth	41	20	279	146	16-11	0	3-22.6	2	75
BROWN	0	13	80	99	21-7	1	6-25.5	0	10
Scoring: (1st per.) Dartmouth — King (1, run); Wellstead (kick). (2nd per.) Dartmouth — Creelman (17, pass from King); Wellstead (kick); King (9, run); Wellstead (kick); King (12, run); Wellstead (kick). 3rd per.) Dartmouth — Spangenberg (2, run); Wellstead (kick). (4th per.) Dartmouth — Kelly (1, run); kick failed.									
Penn	18	13	64	129	15-9	1	3-38.3	1	12
BROWN	15	20	217	130	17-11	2	3-39	1	25
Scoring: (1st per.) Penn — Molnar (27, field goal). (2nd per.) Penn — Allshouse (15, pass from Owens); Molnar (kick). Brown — Lemire (13, pass from Dunda); Vodopivec (kick). (3rd per.) Penn — Owens (14, run); Panfil (pass from McCarthy). Brown — Kelly (50, run); kick failed. (4th per.) Brown — Safety.									
BROWN	12	10	38	170	19-7	1	6-30.3	3	20
Rhode Island	12	9	120	13	11-3	0	8-34.8	2	35
Scoring: (1st per.) Brown — Kelly (1, run); kick failed. (2nd per.) Rhode Island — Tetro (2, run); pass failed. (3rd per.) Rhode Island — Hunt (14, pass from Pariseau); kick failed. Brown — (61, pass from Dunda); kick failed.									

1962 Game by Game

	Score	Yds. Downs	Yds. Rush	Yds. Pass	Passes Att.-Comp.	Had Punts Int. Ave.	Fumbles Lost	Yds. Pen.
Princeton	28	10	221	30	9-2	1 6-29	1	50
BROWN	12	11	170	73	22-5	6 5-26	2	50
Scoring: (1st per.) Princeton — Merlini (1, run); Gouldin (kick). (2nd per.) Brown — Kelly (2, run); kick failed. Princeton — Poriatis (45, run); Gouldin (kick); Henrich (21, pass from Riley); Gouldin (kick). (3rd per.) Princeton — McMillan (1, run); Gouldin (kick). (4th per.) Brown — Moyer (9, run); run failed.								
Cornell	28	23	301	107	15-6	2 0-0	1	43
BROWN	26	25	240	168	23-13	1 2-30	2	47
Scoring: (1st per.) Cornell — Strick (15, lateral from Wood); Gogolak (kick). (2nd per.) Cornell — Aragona (53, pass from Wood); Gogolak (kick). Brown — Parry (6, pass from Dunda); pass failed; Seiple (12, pass from Dunda); pass failed. (3rd per.) Cornell — Milne (1, run); Gogolak (kick). (4th per.) Brown — Dunda (1, run); Carcieri (kick). Cornell — Wood (6, run); Gogolak (kick). Brown — Parry (10, pass from Dunda); Carcieri (kick).								
Harvard	31	18	264	153	11-8	0 3-33.3	0	55
BROWN	19	19	98	198	24-16	1 4-32.2	1	15
Scoring: (1st per.) Harvard — Taylor (7, run); Hartranft (kick). Brown — Dunda (1, run); Carcieri (kick). (2nd per.) Harvard — Taylor (21, run); Hartranft (kick). (3rd per.) Harvard — Taylor (3, run); Hartranft (kick); Hartranft (19, field goal). (4th per.) Brown — Freeman (1, run); kick failed. Harvard — Taylor (76, pass from Basset); Hartranft (kick). Brown — Parry (9, pass from Dunda); kick failed.								

BEST PERFORMANCES

By the Brown Team

Most first downs	25, vs. Cornell
Most yards gained rushing	240, vs. Cornell
Most yards gained passing	198, vs. Harvard
Most total offense	408, vs. Cornell
Most rushes	60, vs. Penn
Most passes attempted	25, vs. Columbia
Most rushing, passing plays	77, vs. Penn
Most passes completed	16, vs. Harvard
Most touchdown passes	3, vs. Cornell
Most points	26, vs. Cornell

By a Brown Individual

Most yards gained rushing	96, KELLY vs. Penn (12 carries)
Most yards gained passing	198, DUNDA vs. Harvard (24-16)
Most total offense	220, DUNDA vs. Harvard (198 pass, 22 run)
Most scoring passes	3, DUNDA vs. Cornell
Most pass receptions	9, PARRY vs. Harvard
Most yards pass receptions	106, PARRY vs. Harvard
Longest scoring play	61, DUNDA-MOYER pass vs. URI
Longest scoring run	50, KELLY vs. Penn
Longest scoring pass	61, DUNDA vs. URI
Most points	12, PARRY vs. Cornell

(CAPS indicate returning players)

1962 Statistics

TEAM STATISTICS

	Brown	Opp.		Brown	Opp.
Scoring	116	188	Pass Attempts ...	176	121
First Downs	124	136	Pass Completions ..	84	64
Yards Rushing	1091	1680	Had Intercepted ..	16	4
Yards Passing	1199	855	Punts, Average ...	50- 29.2	43- 33.5
Total Offense	2290	2535	Fumbles Lost	12	16
			Yards Penalized ..	239	404

INDIVIDUAL STATISTICS

RUSHING

	Att.	Yds.	Ave.
(Ranked on Net Yards Gained)			
KELLY	70	311	4.4
MOYER	70	256	3.7
Meeker	47	191	4.0
LEMIRE	47	168	3.6
Crowell	17	58	3.4
Eustis	12	48	4.0
Vodopivec	12	37	3.1
VARESCHI	12	30	2.5
Freeman	6	29	4.8
CARCIERI	2	9	4.5
DUNDA	83	4	.05
Haufaire	7	-27	-3.8

PASSING

(Ranked on Completions)

	Att.	Comp.	Yds.	Int.	TD
DUNDA ..	139	65	928	15	9
Haufaire ..	24	13	178	1	1
CARCIERI ..	14	6	91	0	0

RECEIVING

(Ranked on Number Caught)

	Caught	Yds.	TD
PARRY	27	385	5
MOYER	15	260	1
SEIPLE	13	171	2
Greene	8	101	0
VARESCHI	5	77	1
LEMIRE	6	47	1
FERRARIS	4	46	0
Eustis	3	40	0
LITZEN	1	38	0
SUDELL	1	19	0
Crowell	1	5	0

(CAPS indicate returning players)

PUNTING

	Punts	Yds.	Ave.
Freeman	49	1459	30.0

PUNT RETURNS

	Ret.	Yds.	Ave.
MOYER	5	43	8.6
VARESCHI	6	42	7.0
LEMIRE	3	25	8.3
Crowell	3	19	6.3
Eustis	2	4	2.0

KICKOFF RETURNS

	Ret.	Yds.	Ave.
MOYER	14	326	23.3
LEMIRE	7	147	21.0
Eustis	3	43	14.3
DUNDA	3	33	11.0
Crowell	2	36	18.0
KELLY	1	24	24.0
Meeker	1	17	17.0
VARESCHI	1	12	12.0
CARCIERI	1	10	10.0

SCORING

	TD	Kick	P-R	FG	Pts.
PARRY	5	0-0	0-0	0	30
DUNDA	3	0-0	0-0	0	18
KELLY	3	0-0	0-0	0	18
MOYER	2	0-0	0-0	0	12
SEIPLE	2	0-0	0-0	0	12
Freeman	1	0-0	0-0	0	6
LEMIRE	1	0-0	0-0	0	6
VARESCHI ..	1	0-0	0-0	0	6
Vodopivec ..	0	3-7	0-0	0	3
CARCIERI ..	0	3-5	0-0	0	3

Safety — Team vs. Penn

1962 Highlights

RANKING BROWN PLAYERS AND HONOR WINNERS

AP All-Ivy Second Team — JOHN PARRY, end

AP All-Ivy Honorable Mention — Bill Savicki, tackle
JIM DUNDA, quarterback

Coaches' All-Ivy Honorable Mention — PARRY
GERRY BUCCI, guard
JAN MOYER, halfback
DUNDA

UPI All-New England Second Team — Mike Allara, tackle

UPI All-New England Honorable Mention — Nick Spiezio, end
BUCCI
Dave Krafchik, center
Jon Meeker, halfback

AP All-New England Honorable Mention — PARRY
DUNDA
BUCCI

Boston Football Writers Senior Achievement Award — Spiezio

Brown Club of R. I. War Memorial Trophy — Spiezio

Class of 1910 Trophy — Parker Crowell, halfback

IVY LEAGUE STATISTICS

Total Offense — 4th, DUNDA (850 yards)
Passing — 2nd, DUNDA (126-61, 818 yards)
Pass Receiving — 1st, PARRY (26 for 374 yards, league record)
— 7th, MOYER (13 for 180 yards)
Punting — 6th, Freeman (29 for 31.1 average)
Scoring — 8th, PARRY (30 points)

NATIONAL STATISTICS

Kickoff Returns — 19th, MOYER (14 for 23.3 average)
Pass Receiving — 27th, PARRY (28 for 406 yards, 5 TDs)
Passing — 37th, DUNDA (138-65, 930 yards, 9 TDs)

Brown ranked eighth in the nation in defense against kickoff returns, 159 yards, and 23rd in passing offense with 133.2 yards per game.

The Past

COACHES' RECORDS

Years	Name	Won	Lost	Tied	Pct.	PF	PA
1878-91	(Coached by team captains)	9	15	1	.380	202	296
1892	Howland	4	5	1	.450	60	86
1893	W. Odlin	6	3	0	.667	168	88
1894	W. G. Norton	10	5	0	.667	264	102
1895-97	W. S. Moyle	18	15	2	.543	456	359
1898-01	E. N. Robinson	24	17	3	.580	524	432
1902	J. A. Gammons	5	4	1	.550	115	52
1903	D. S. Fultz	5	4	1	.550	98	161
1904-07	E. N. Robinson	26	15	0	.634	742	191
1908-09	J. A. Gammons	12	6	1	.658	219	88
1910-25	E. N. Robinson	90	50	9	.634	2255	1100
1926-40	D. O. McLaughry	76	58	5	.565	1861	1697
1941-43	J. N. Stahley	14	11	0	.560	392	385
1944-49	C. A. Engle	28	20	4	.577	1067	811
1950	G. G. Zitrides	1	8	0	.111	147	271
1951-58	A. E. Kelley	31	39	2	.444	1147	1180
1959-62	J. J. McLaughry	6	27	3	.208	291	784
TOTALS		365	302	33	.545	10,183	8083

TEAM RECORDS

GAME RECORD

	OFFENSE (Most by Brown)	DEFENSE (Least by Opponents)
Total First Downs	25, 1958 vs. Harvard 1962 vs. Cornell	0, 1941 by Yale
Rushing		
Attempts	74, 1915 vs. Carlisle	16, 1947 by Rhode Island
Net yards gained	472, 1940 vs. Wesleyan	-29, 1950 by Rhode Island
Passing		
Attempts	36, 1943 vs. Army	1, 1955 by Rutgers
Completions	18, 1943 vs. Army	1, 1947 by Holy Cross (12) 1951 by Rutgers (4) 1955 by Rutgers (1) 1957 by Princeton (6) 1957 by Penn (10) 1958 by Cornell (13) 1958 by Harvard (5)
Most had intercepted	6, 1950 vs. Holy Cross and Colgate 1962 vs. Princeton	11, 1949 vs. Rhode Island
Per cent completed (Minimum 10)	.762, 1955 vs. Yale (10 of 21)	.077, 1958 by Cornell (1 of 13)
Yards gained	266, 1943 vs. Coast Guard	-1, 1958 by Harvard
Total Offense		
Rush. and pass. plays	94, 1950 vs. Rhode Island	38, 1948 by Holy Cross
Yards gained	522, 1940 vs. Wesleyan	47, 1950 by Rhode Island
Punting		
Most punts	17, 1941 vs. Yale	
Highest average (Minimum 5)	50.8, 1947 vs. Connecticut (5-254 yards)	
Forced Opp. to punt		20, 1941 by Yale
Lowest average (Minimum 5)		21.2, 1954 by Colgate (5-106 yards)
Punt Returns		
Most returned	10, 1941 vs. Yale	
Most yards returned	116, 1948 vs. Western Reserve	
Kickoff Returns		
Most returned	9, 1960 vs. Princeton	
Most yards returned	196, 1960 vs. Princeton	
Pass Interception Returns		
Most yards returned	148, 1957 vs. Colgate	
Most Fumbles	9, 1952 vs. Columbia	7, on four occasions
Most Fumbles Lost	5, on three occasions	5, on four occasions

Individual Records

GAME

Rushing	
Most rushes	30, Dave Tyler vs. Rhode Island, 1959
Most yards gained	233, Bob Margarita vs. Columbia, 1942
Passing	
Most attempts	27, Nick Pannes vs. Columbia, 1959
Most completions	16, Jim Dunda vs. Harvard, 1962
Highest Pct.	.818, Bill Demchak vs. Yale, 1955 (9-11)
Most yards gained	252, Doc Savage vs. Coast Guard, 1943
Most TD passes	3, by several players
Total Offense	
Most rushing and passing yards	286, Savage vs. Coast Guard, 1943
Pass Receiving	
Most passes caught	9, John Parry vs. Harvard, 1962
Most yards gained	113, Moe Mahoney vs. Princeton, 1949
Most TD passes caught	2, by several players
Punting	
Highest average	53.5, Walt Pastuzak vs. Western Reserve, 1948 (Minimum 4; 4-214)
Punt Returns	
Most yards returned	105, Margarita vs. Lafayette, 1941
Kickoff Returns	
Most yards returned	147, Earl Sprackling vs. Carlisle, 1909 (2 returns)
Pass Interceptions	
Most passes intercepted	5, Pastuzak vs. Rhode Island, 1949 (NATIONAL RECORD)
Most yards returned	114, Frank Finney vs. Colgate, 1957 (2)
Scoring	
Most touchdowns	5, Gus Russ vs. Vermont, 1905
Most conversions	7, Pastuzak vs. Rhode Island, 1950 (8 attempts)
	7, Russ vs. WPI and Colby, 1905
Most Field Goals	3, Sprackling vs. Yale, 1910
Most points	30, Russ vs. Vermont, 1905

SEASON

Rushing	
Most rushes	179, Paul Choquette, 1959
Most yards gained	693, Bob Margarita, 1942
Passing	
Most attempts	156, Jack Rohrbach, 1960
Most completions	76, Rohrbach, 1960
Highest Pct.	.533, Pete Kohut, 1954 (65-122)
Most yards gained	982, Finney 1958
Most TD passes	13, Ed Finn, 1948
Total Offense	
Most rushing and passing yards	1134, Finney, 1958
Most rushing and passing attempts	221, Dunda, 1962
Pass Receiving	
Most passes caught	29, Dick Laine, 1960
Most yards gained	435, Chuck Nelson, 1948
Most TD passes caught	7, Nelson, 1948
Punting	
Highest average	42.6, Bob Babcock, 1943 (Minimum 20; 21-894)
Punt Returns	
Most yards returned	549, Margarita, 1941

Kickoff Returns	
Most yards returned	379, Ken Kessariz, 1952
Pass Interceptions	
Most passes intercepted	7, Walt Pastuzak, 1949
Most yards returned	155, Finney, 1957
Scoring	
Most touchdowns	12, Russ, 1905 12, Fritz Pollard, 1916 12, William Hopkins, 1893
Most conversions	31, Joe Condon, 1949 (37 attempts)
Most Field Goals	6, Sprackling, 1910
Most points	90, Russ, 1905

CAREER

Rushing	
Most attempts	392, Paul Choquette, 1957-58-59
Most net yards gained	1555, Choquette
Forwarding Passing	
Most attempts	374, Pete Kohut, 1952-53-54
Most completions	170, Frank Finney, 1956-57-58
Most had intercepted	28, Ed Finn, 1945-46-47-48
Highest P. C. completed (Minimum 150 atts.)	486, Finney (170 of 350)
Most yards gained	2286, Finn (4 years) 2231, Finney (3 years)
Most TD passes	28, Finn (4 years) 21, Kohut (3 years)
Total Offense	
Most rush. and pass. plays	492, Finney
Most rush. and pass yards	2599, Finney
Punting	
Most punts	103, Fred Kozak, 1947-48-49
Highest punting average (Minimum 75 punts)	38.7, (89 for 3448), Bob MacConnell, 1949-50-51
Pass Receiving	
Most passes caught	49, Chuck Nelson, 1946-47-48-49
Most yards gained	1197, Nelson
Average gain	24.4, Nelson
Most TD passes caught	14, Nelson
Interceptions	
Most passes intercepted	13, Walt Pastuzak, 1948-49-50
Most yards returned	225, Finney
Scoring	
Most points	174, Dave Fultz, 1894-95-96-97
Most touchdowns	31, Fultz
Most conversions	69, Joe Condon, 1946-47-48-49
Most field goals	10, Earl Sprackling, 1908-09-10-11

NOTEWORTHY PERFORMANCE

In 1942, Bob Margarita, who later starred for the Chicago Bears, performed the unusual feat of gaining 100 yards or more in three consecutive games. His three-game total of 529 yards was tops in the nation at that point in the season and was achieved on 75 rushes, for an average of 7.0 per carry.

The game-by-game rundown:

Oct. 3, 1942 vs. Rhode Island	120 yards
Oct. 10, 1942 vs. Columbia	233 yards
Oct. 17, 1942 vs. Lafayette	176 yards
Total	529 yards

Note: Margarita's 1942 season total of 693 yards is still an all-time Brown record.

LONGEST PLAYS

Longest Rushing Plays:	90. E. B. Marsan vs. Holy Cross, 1928 (TD) 87. R. C. McCulloch vs. Tufts, 1938 (TD) 85. Wiley Marble vs. New Hampshire, 1911 (TD) 83. Pat O'Brien vs. Columbia, 1944 (TD) 77. George Gorgodian vs. Rhode Island, 1956 (TD)
Longest Pass Plays:	71. Pete Kohut to Tommy Thompson vs. Princeton, 1953 (TD) 69. Doc Savage to Tommy Dorsey vs. Coast Guard, 1943 (TD) 69. Frank Finney to Bob Carlin vs. Colgate, 1958 (TD)
Kickoff Returns:	110. George Crowther vs. University of Mass., 1911 (TD) 105. P. P. Chase vs. WPI, 1905 (TD) 100. Earl Sprackling vs. Carlisle, 1909 (TD) 98. Johnny Brooks vs. Trinity, 1916 (TD) 98. H. L. Harris vs. Holy Cross, 1929 (TD) 95. Linc Fogarty vs. Dayton, 1928 (TD) 95. Frank Foster vs. Rutgers, 1937 (TD) 80. Frank Dennie vs. Bates, 1908
Punt Returns:	90. Mickey O'Reilly vs. Boston University, 1934 80. Jim Murphy vs. Vermont, 1916 (TD)
Interception Returns:	99. Lee Marshall vs. New Hampshire, 1929 (TD) 95. Frank Finney vs. Colgate, 1957 (TD)
Returns After Fumble Recoveries:	91. Bill Moody vs. Holy Cross, 1944 (TD) 90. Bob Priestley vs. URI, 1941 (TD) 83. Bill Klaess vs. Holy Cross, 1953 (TD)
Longest Punts:	78. Linc Fogarty vs. Yale, 1930 74. Red Randall vs. Lebanon Valley, 1927 69. Roy Swingler vs. Dartmouth, 1946 67. Perry Elrod vs. Boston University, 1934 65. Ernie Savignano vs. Lafayette, 1941 65. Bob MacConnell vs. Holy Cross, 1950 64. Jack Cokefair vs. Yale, 1943 63. Ralph Gordon vs. Carlisle, 1914 62. Preston Barry vs. Canisius, 1946 61. Larry Atwell vs. URI, 1938 60. Harry Josephson vs. Temple, 1954
Longest Field Goal:	45. Bob Chase vs. Tufts, 1932 42. Ralph Gordon vs. Wesleyan, 1914 42. Joe Condon vs. Western Reserve, 1948

THE LONG AND SHORT OF IT

Longest winning streak	— 9 games, 1926
Longest losing streak	— 11 games, last 6 in '51, first 5 in '52
Most points, game	— 69 vs. Amherst, 1916
Most points by opponent, game	— 62 by Dartmouth, 1903
Most points, season	— 281, 1905
Most points by opponents, season	— 271, 1950
Fewest points, season	— 21, 1935
Fewest points by opponents, season	— 32, 1906
Longest streak without defeat	— 14 games, 1925-27
	(Includes ties with Colgate in 1925-26)

BROWN'S TOP FIVE SCORERS

174, Dave Fultz, 1894-95-96-97
154, Gus Russ, 1902-03-04-05
136, Willie Richardson, 1897-98-99
116, Fritz Pollard, 1915-16
116, Frank Finney, 1956-57-58

Team Records Year-by-Year

(Team Captains in Parenthesis)

0	Amherst	4T	1878	34	Trinity	0	0	Penn	40
		1G	0-1-0	10	Andover	0	24	Newton A. A.	0
			1880	0	Harvard	58	18	Carlisle	14
0	Yale	5T		36	M.I.T.	0	0	Army	42
		8G	0-1-0	28	M.I.T.	6	12	Wesleyan	4
			1886	30	Tufts	0	180	7-4-0	152
				168	6-3-0	88			
			1889						
					(W. B. Hopkins)			(F. W. Murphy)	
70	Prov. H. S.	0		56	Fort Adams	0	19	Holy Cross	0
6	Boston U.	10		0	Yale	28	29	Tufts	6
76	1-1-0	10		28	Boston A. C.	0	0	Penn	18
			1889	4	Harvard	18	41	Colby	5
				10	Army	0	6	Yale	22
			(J. E. Walker)	14	Andover	0	6	Boston College	0
14	Pawtucket C. C.	0		26	Wesleyan	0	0	Princeton	23
0	M.I.T.	48		4	M.I.T.	8	16	Newton A. A.	5
16	Tufts	0		30	Tufts	0	6	Harvard	17
0	Boston A. C.	16		0	Yale	12	12	Dartmouth	0
30	2-2-0	64		12	Orange A. A.	10	135	6-4-0	96
			1890	0	Harvard	18			
				42	Bowdoin	0		(H. S. Pratt)	
			(J. H. Lindsey)	20	Dartmouth	4	19	Holy Cross	0
8	M.I.T.	8		16	M.I.T.	4	6	Tufts	0
0	Fall River	8		262	10-5-0	102	6	Penn	6
14	Tufts	0					25	Campello	0
12	Boston A. C.	26			1895		0	Harvard	11
16	Trinity	20			(C. P. Nott)		35	Newton A. A.	0
22	Harvard Fr.	8		22	Newton A. A.	0	6	Princeton	18
6	Wesleyan	34		0	Yale	4	38	M.I.T.	0
78	2-4-1	104		28	Tufts	0	18	Boston College	0
			1891	6	Harvard	26	16	Dartmouth	5
				14	M.I.T.	0	6	Chicago	17
			(J. H. Lindsey)	22	Lehigh	4	175	7-3-1	57
6	M.I.T.	4		0	Penn	12			
0	Trinity	8		0	Crescent A. C.	16		1900	
18	Fall River	4		10	Wesleyan	5		(L. Washburn)	
0	Andover	26		6	Yale	6	27	Colby	0
18	Bowdoin	22		28	M.I.T.	0	18	Holy Cross	0
6	M.I.T.	14		4	Cornell	6	22	M.I.T.	0
18	Bowdoin	0		0	Army	26	0	Penn	12
0	Williams	58		10	Dartmouth	4	11	Chicago	6
32	W.P.I.	6		150	7-6-1	109	5	Princeton	17
12	Tufts	34					12	Needham	5
110	4-6-0	176			1896		26	Tufts	5
			1892	20	W.P.I.	0	6	Harvard	11
				0	Yale	18	17	Dartmouth	5
			(R. W. Drawbridge)	44	Amherst	6	6	Syracuse	6
8	W.P.I.	4		0	Harvard	12	150	7-3-1	67
24	Fall River	0		16	Lehigh	0			
6	Andover	4		0	Penn	16		1901	
6	M.I.T.	30		10	Dartmouth	10		(W. P. Bates)	
4	Tufts	24		6	Yale	18	12	Boston College	0
0	Trinity	0		6	Yale	18	16	Colby	0
6	M.I.T.	12		6	Army	8	0	Syracuse	20
0	Bowdoin	8		24	Carlisle	12	6	Manhattan	5
0	W.P.I.	4		126	4-5-1	100	0	Penn	26
6	Wesleyan	0					0	Princeton	35
60	4-5-1	86			1897		6	Holy Cross	6
			1893	24	Tufts	0	0	Harvard	48
				44	Boston U.	0	0	Homestead	34
			(W. B. Hopkins)	20	Andover	4	6	Lafayette	11
0	Yale	18		24	Wesleyan	12	24	Union	5
30	W.P.I.	0		14	Yale	18	0	Dartmouth	22
0	Boston A. C.	6		0	Harvard	18	70	4-7-1	212

1902	
(T. A. Barry)	
0	U. of Vermont
5	Wesleyan
0	Yale
15	Penn
0	Harvard
5	Lafayette
45	Tufts
28	Columbia
11	Springfield
6	Dartmouth
115	5-4-1

1903	
(A. R. Webb)	
23	Colby
11	Wesleyan
0	Princeton
0	Penn
0	Harvard
22	Williams
24	Vermont
12	Syracuse
6	Springfield
0	Dartmouth
98	5-4-1

1904	
(F. Schwin)	
0	Univ. of Maine
27	Univ. of Mass.
12	Wesleyan
0	Penn
0	Amherst
22	Bowdoin
33	U. of Vermont
41	Tufts
0	Yale
41	Colby
5	Dartmouth
181	6-5-0

1905	
(G. A. Russ)	
16	New Hampshire
24	Univ. of Mass.
42	W.P.I.
70	Colby
34	Univ. of Maine
6	Penn
0	Harvard
27	Syracuse
0	Yale
56	U. of Vermont
6	Dartmouth
281	7-4-0

1906	
(V. A. Schwartz)	
12	New Hampshire
17	Wesleyan
17	Univ. of Mass.
0	Penn
26	Norwich
5	Harvard
0	Yale
12	U. of Vermont
23	Dartmouth
112	6-3-0

1907	
(J. D. Pryor)	
16	New Hampshire
5	Univ. of Mass.
24	Norwich
40	Univ. of Maine
0	Penn
24	Williams
5	Harvard
0	Yale
36	U. of Vermont
18	Amherst
168	7-3-0

1908	
(J. W. Mayhew)	
34	New Hampshire
35	Bates
6	Colgate
12	Bowdoin
0	Penn
6	Lafayette
2	Harvard
10	Yale
12	U. of Vermont
117	5-3-1

1909	
(A. E. Regnier)	
6	Univ. of R. I.
14	Colgate
17	Bates
10	Amherst
5	Penn
0	Harvard
12	Univ. of Mass.
0	Yale
17	U. of Vermont
21	Carlisle
102	7-3-0

1910	
(J. R. McKay)	
31	Norwich
5	Univ. of R. I.
0	Colgate
0	Penn
0	Harvard
27	Tufts
21	Yale
50	U. of Vermont
49	Univ. of Mass.
15	Carlisle
198	7-2-1

1911	
(W. E. Sprackling)	
56	New Hampshire
12	Univ. of R. I.
26	Univ. of Mass.
33	Bowdoin
6	Penn
6	Harvard
30	Tufts
0	Yale
6	U. of Vermont
6	Trinity
6	Carlisle
187	7-3-1

1912	
(P. G. Ashbaugh)	
3	Colby
14	Univ. of R. I.
6	Wesleyan
30	Penn
10	Harvard
12	U. of Vermont
0	Yale
21	Lafayette
21	Norwich
0	Carlisle
117	6-4-0

1913	
(D. Henry)	
0	Colby
19	Univ. of R. I.
6	Ursinus
0	Penn
26	Springfield
19	U. of Vermont
0	Yale
0	Harvard
0	Carlisle
70	4-5-0

1914	
(S. K. Mitchell)	
24	Norwich
20	Univ. of R. I.
0	Amherst
16	Wesleyan
7	Cornell
12	U. of Vermont
6	Yale
0	Harvard
20	Carlisle
105	5-2-2

1915	
(H. P. Andrews)	
38	Univ. of R. I.
0	Trinity
0	Amherst
33	Williams
0	Syracuse
46	U. of Vermont
3	Yale
7	Harvard
39	Carlisle
0	Wash. State
166	5-4-1

1916	
(M. Farnum)	
18	Univ. of R. I.
42	Trinity
69	Amherst
20	Williams
21	Rutgers
42	U. of Vermont
21	Yale
21	Harvard
0	Colgate
254	8-1-0

1917			0	Yale	20	6	Harvard	18
(V. A. Bowman)			27	Bates	12	31	Univ. of N. H.	13
27	Univ. of R. I.	0	3	Harvard	0	0	Colgate	0
20	Johns Hopkins	0	0	Dartmouth	7	109	3-6-1	103
27	Holy Cross	6	92	6-2-1	47			
7	Boston College	2	1923					
7	Colgate	6	(J. F. Spellman)					
0	Syracuse	6	34	Haverford	0	32	W.P.I.	0
0	USN Reserve	35	33	Colby	0	13	Dayton	7
40	Camp Devens	0	7	Wash. & Jeff.	12	14	Yale	32
19	Colby	7	20	Boston U.	3	19	Tufts	13
13	Dartmouth	0	0	Yale	21	6	Holy Cross	0
160	8-2-0	62	19	St. Bonaventure	0	14	Dartmouth	0
1918			14	Dartmouth	16	20	Univ. of N. H.	0
(J. H. Weeks)			20	Harvard	7	33	Univ. of R. I.	7
7	Camp Devens	19	6	Univ. of N. H.	0	16	Colgate	13
0	Syracuse	53	6	Lehigh	12	167	8-1-0	72
7	League 1,		159	6-4-0	71			
	Navy Yard	23	1924					
28	Dartmouth	0	(J. H. Sheldon)					
6	Harvard	3	45	Colby	0	6	Springfield	7
48	2-3-0	98	7	Chicago	19	14	Univ. of R. I.	6
1919			35	Boston U.	0	13	Princeton	12
(R. H. Nichols)			3	Yale	13	6	Yale	14
27	Univ. of R. I.	0	3	Dartmouth	10	0	Syracuse	6
7	Bowdoin	0	13	Haskell	17	15	Holy Cross	14
0	Colgate	14	7	Harvard	0	6	Dartmouth	13
0	Harvard	7	21	Univ. of N. H.	0	66	Norwich	6
20	Norwich	0	20	Colgate	6	14	Univ. of N. H.	7
0	Syracuse	13	154	5-4-0	65	0	Colgate	32
0	Yale	14	1925					
7	Dartmouth	6	(J. M. Stifer)					
6	Univ. of N. H.	0	(J. M. Keefer)					
7	Columbia	7	33	Univ. of R. I.	0	54	W.P.I.	0
74	5-4-1	61	33	Colby	0	7	Princeton	0
1920			0	Penn	9	0	Yale	21
(E. G. Armstrong)			48	Bates	0	13	Holy Cross	0
25	Univ. of R. I.	0	7	Yale	20	16	Syracuse	16
13	Amherst	0	0	Dartmouth	14	32	Tufts	7
32	Univ. of Maine	6	42	Boston U.	6	6	Columbia	0
14	Colgate	0	0	Harvard	3	0	Univ. of N. H.	7
14	Springfield	0	38	Univ. of N. H.	14	0	Colgate	27
35	U. of Vermont	0	14	Colgate	14	135	6-3-1	78
10	Yale	14	215	5-4-1	80			
0	Harvard	27	1926					
6	Dartmouth	14	(H. A. Broda)					
149	6-3-0	61	14	Univ. of R. I.	0	22	Colby	0
1921			35	Colby	0	18	Univ. of R. I.	0
(W. H. Shupert)			32	Lehigh	0	19	Princeton	7
6	Univ. of R. I.	0	27	Bates	14	38	Tufts	12
12	Colby	7	7	Yale	0	33	Lehigh	0
13	N. Y. Univ.	0	10	Dartmouth	0	0	Holy Cross	33
0	Syracuse	28	27	Norwich	0	26	Ohio Wesleyan	13
0	Springfield	0	21	Harvard	0	7	Columbia	9
7	Yale	45	40	Univ. of N. H.	12	19	Univ. of N. H.	13
55	St. Bonaventure	0	10	Colgate	10	7	Colgate	13
7	Harvard	9	223	9-0-1	36	189	7-3-0	100
7	Colgate	0	1927					
107	5-3-1	89	(R. E. Randall)					
1922			27	Univ. of R. I.	0	19	Univ. of R. I.	0
(M. Gulian)			20	Albright	0	13	Springfield	6
27	Univ. of R. I.	0	6	Penn	14	7	Yale	2
13	Colby	0	0	Yale	19	11	Tufts	0
0	Syracuse	0	12	Lebanon Valley	13	14	Harvard	0
6	Lehigh	2	0	Temple	7	10	Holy Cross	7
16	Boston U.	6	7	Dartmouth	19	7	Columbia	6
1928			(A. C. Cornsweet)					
(W. L. Fogarty)			32	W.P.I.	0	7	Univ. of R. I.	0
(C. H. Edwards)			13	Dayton	7	14	Yale	32
6	Springfield	7	13	Princeton	12	19	Tufts	13
14	Univ. of R. I.	6	6	Yale	14	6	Holy Cross	0
13	Princeton	12	0	Syracuse	6	14	Dartmouth	0
6	Yale	14	15	Holy Cross	14	20	Univ. of N. H.	0
0	Syracuse	6	6	Dartmouth	13	33	Univ. of R. I.	7
15	Holy Cross	14	66	Norwich	6	16	Colgate	13
6	Dartmouth	13	14	Univ. of N. H.	7	167	8-1-0	72
66	Norwich	6	0	Colgate	32			
14	Univ. of N. H.	7	140	5-5-0	117			
0	Colgate	32	1930					
140	5-5-0	117	(W. L. Fogarty)					
1931			(P. F. Mackesey)					
(W. J. Gilbane)			22	Colby	0	7	Univ. of R. I.	0
(R. E. Randall)			54	W.P.I.	0	7	Princeton	0
(M. Gulian)			7	Princeton	0	0	Yale	21
(J. M. Keefer)			13	Holy Cross	0	16	Syracuse	16
(H. A. Broda)			32	Tufts	7	6	Columbia	0
(J. M. Stifer)			6	Columbia	0	0	Univ. of N. H.	7
(J. M. Keefer)			0	Univ. of N. H.	7	0	Colgate	27
(J. M. Keefer)			33	Univ. of R. I.	0	135	6-3-1	78
(J. M. Keefer)			33	Colby	0			
(J. M. Keefer)			0	Penn	9			
(J. M. Keefer)			48	Bates	0			
(J. M. Keefer)			7	Yale	20			
(J. M. Keefer)			0	Dartmouth	14			
(J. M. Keefer)			42	Boston U.	6			
(J. M. Keefer)			0	Harvard	3			
(J. M. Keefer)			38	Univ. of N. H.	14			
(J. M. Keefer)			14	Colgate	14			
(J. M. Keefer)			215	5-4-1	80			
(J. M. Keefer)			1926					
(J. M. Keefer)			(H. A. Broda)					
(J. M. Keefer)			14	Univ. of R. I.	0	22	Colby	0
(J. M. Keefer)			35	Colby	0	18	Univ. of R. I.	0
(J. M. Keefer)			32	Lehigh	0	19	Princeton	7
(J. M. Keefer)			27	Bates	14	38	Tufts	12
(J. M. Keefer)			7	Yale	0	33	Lehigh	0
(J. M. Keefer)			10	Dartmouth	0	0	Holy Cross	33
(J. M. Keefer)			27	Norwich	0	26	Ohio Wesleyan	13
(J. M. Keefer)			21	Harvard	0	7	Columbia	9
(J. M. Keefer)			40	Univ. of N. H.	12	19	Univ. of N. H.	13
(J. M. Keefer)			10	Colgate	10	7	Colgate	13
(J. M. Keefer)			223	9-0-1	36	189	7-3-0	100
(J. M. Keefer)			1927					
(J. M. Keefer)			(R. E. Randall)					
(J. M. Keefer)			27	Univ. of R. I.	0	19	Univ. of R. I.	0
(J. M. Keefer)			20	Albright	0	13	Springfield	6
(J. M. Keefer)			6	Penn	14	7	Yale	2
(J. M. Keefer)			0	Yale	19	11	Tufts	0
(J. M. Keefer)			12	Lebanon Valley	13	14	Harvard	0
(J. M. Keefer)			0	Temple	7	10	Holy Cross	7
(J. M. Keefer)			7	Dartmouth	19	7	Columbia	6
(J. M. Keefer)			1928					
(J. M. Keefer)			(A. C. Cornsweet)					
(J. M. Keefer)			(W. L. Fogarty)					
(J. M. Keefer)			(C. H. Edwards)					
(J. M. Keefer)			32	W.P.I.	0	7	Univ. of R. I.	0
(J. M. Keefer)			13	Dayton	7	14	Yale	32
(J. M. Keefer)			14	Yale	32	19	Tufts	13
(J. M. Keefer)			6	Holy Cross	0	6	Holy Cross	0
(J. M. Keefer)			14	Dartmouth	0	14	Dartmouth	0
(J. M. Keefer)			20	Univ. of N. H.	0	20	Univ. of N. H.	0
(J. M. Keefer)			33	Univ. of R. I.	7	33	Univ. of R. I.	7
(J. M. Keefer)			16	Colgate	13	16	Colgate	13
(J. M. Keefer)			167	8-1-0	72			
(J. M. Keefer)			1929					
(J. M. Keefer)			(C. H. Edwards)					
(J. M. Keefer)			6	Springfield	7	6	Springfield	7
(J. M. Keefer)			14	Univ. of R. I.	6	14	Univ. of R. I.	6
(J. M. Keefer)			13	Princeton	12	13	Princeton	12
(J. M. Keefer)			6	Yale	14	6	Yale	14
(J. M. Keefer)			0	Syracuse	6	0	Syracuse	6
(J. M. Keefer)			15	Holy Cross	14	15	Holy Cross	14
(J. M. Keefer)			6	Dartmouth	13	6	Dartmouth	13
(J. M. Keefer)			66	Norwich	6	66	Norwich	6
(J. M. Keefer)			14	Univ. of N. H.	7	14	Univ. of N. H.	7
(J. M. Keefer)			0	Colgate	32	0	Colgate	32
(J. M. Keefer)			140	5-5-0	117			
(J. M. Keefer)			1930					
(J. M. Keefer)			(W. L. Fogarty)					
(J. M. Keefer)			7	Univ. of R. I.	0	7	Univ. of R. I.	0
(J. M. Keefer)			54	W.P.I.	0	7	W.P.I.	0
(J. M. Keefer)			7	Princeton	0	7	Princeton	0
(J. M. Keefer)			0	Yale	21	0	Yale	21
(J. M. Keefer)			13	Holy Cross	0	13	Holy Cross	0
(J. M. Keefer)			16	Syracuse	16	16	Syracuse	16
(J. M. Keefer)			32	Tufts	7	32	Tufts	7
(J. M. Keefer)			6	Columbia	0	6	Columbia	0
(J. M. Keefer)			0	Univ. of N. H.	7	0	Univ. of N. H.	7
(J. M. Keefer)			0	Colgate	27	0	Colgate	27
(J. M. Keefer)			135	6-3-1	78			
(J. M. Keefer)			1931					
(J. M. Keefer)			(P. F. Mackesey)					
(J. M. Keefer)			22	Colby	0	7	Univ. of R. I.	0
(J. M. Keefer)			18	Univ. of R. I.	0	7	Univ. of R. I.	0
(J. M. Keefer)			19	Princeton	7	19	Princeton	7
(J. M. Keefer)			38	Tufts	12	38	Tufts	12
(J. M. Keefer)			33	Lehigh	0	33	Lehigh	0
(J. M. Keefer)			0	Holy Cross	33	0	Holy Cross	33
(J. M. Keefer)			26	Ohio Wesleyan	13	26	Ohio Wesleyan	13
(J. M. Keefer)								

1933

(J. E. Buonanno)		
26	Univ. of R. I.	0
13	Springfield	6
6	Yale	14
7	Holy Cross	19
0	Princeton	33
10	Syracuse	7
6	Harvard	12
0	Colgate	25
68	3-5-0	116

1934

(W. J. Karaban)		
18	Boston U.	0
13	Univ. of R. I.	0
0	Harvard	13
0	Yale	37
0	Syracuse	33
13	Springfield	7
0	Columbia	39
7	Holy Cross	20
13	Colgate	20
64	3-6-0	169

1935

(D. M. Emery)		
7	Univ. of R. I.	13
0	Springfield	20
0	Dartmouth	41
0	Syracuse	19
0	Harvard	33
0	Yale	20
14	Boston U.	0
0	Columbia	18
0	Colgate	33
21	1-8-0	197

1936

(W. A. Ostergard)		
0	Univ. of Conn.	27
7	Univ. of R. I.	6
0	Harvard	28
0	Dartmouth	34
6	Penn	48
38	Tufts	7
6	Yale	14
19	Colby	6
0	Holy Cross	32
0	Colgate	32
76	3-7-0	234

1937

(No captain elected)		
20	Univ. of Conn.	0
13	Univ. of R. I.	6
7	Harvard	34
0	Dartmouth	41
7	Columbia	6
19	Tufts	0
0	Yale	19
0	Holy Cross	7
7	Rutgers	6
73	5-4-0	119

1938

(L. A. Atwell)		
20	Harvard	13
20	Lafayette	0
13	Dartmouth	34
40	Univ. of R. I.	21
48	Tufts	0
14	Yale	20
12	Holy Cross	14
36	Columbia	27
203	5-3-0	129

1939

(J. J. McLaughry)		
34	Univ. of R. I.	0
20	Amherst	14
0	Colgate	10
0	Holy Cross	20
12	Princeton	26
54	Tufts	7
14	Yale	14
41	Univ. of Conn.	0
13	Rutgers	0
188	5-3-1	91

1940

(L. J. Duesing)		
(B. J. Stepczyk)		
41	Wesleyan	0
20	Univ. of R. I.	17
3	Colgate	20
26	Tufts	6
9	Holy Cross	6
6	Yale	2
13	Army	9
0	Harvard	14
6	Dartmouth	20
0	Columbia	0
124	6-3-1	94

1941

(E. T. Savignano)		
20	Wesleyan	6
6	Columbia	13
14	Univ. of R. I.	7
28	Tufts	6
13	Lafayette	0
7	Yale	0
0	Holy Cross	13
7	Harvard	23
7	Rutgers	13
102	5-4-0	81

1942

(Game Captains)		
28	Univ. of R. I.	0
28	Columbia	21
7	Lafayette	0
13	Princeton	32
0	Yale	27
20	Holy Cross	14
0	Harvard	7
0	Colgate	13
96	4-4-0	114

1943

(D. G. Savage, Jr.)		
0	Holy Cross	20
35	Tufts	6
62	Camp Kilmer	3
28	Princeton	20
21	Yale	20
34	U. S. Coast	
	Guard Acad.	31
0	Army	59
14	Colgate	21
194	5-3-0	180

1944

(R. E. Lowe)		
44	Tufts	0
7	Army	59
24	Holy Cross	24
13	Dartmouth	14
0	U. S. Coast	
	Guard Acad.	20
0	Yale	13
12	Columbia	0
32	Colgate	20
132	3-4-1	150

1945

(R. D. Williams)		
0	Penn	50
51	Boston College	6
0	Holy Cross	25
6	Columbia	27
33	U. S. Coast	
	Guard Acad.	6
20	Yale	7
7	Harvard	14
6	Colgate	6
123	3-4-1	141

1946

(J. Lalikos)		
14	Canisius	6
12	Princeton	33
29	Univ. of R. I.	0
20	Dartmouth	13
14	Boston U.	14
19	Holy Cross	21
0	Yale	49
0	Harvard	28
14	Colgate	20
122	3-5-1	184

1947

(L. J. Regine)		
33	Univ. of Conn.	13
7	Princeton	21
55	Univ. of R. I.	6
10	Dartmouth	13
13	Colgate	13
20	Holy Cross	19
20	Yale	14
7	Harvard	13
20	Rutgers	27
185	4-4-1	139

1948 (N. J. Iacule)			1952 (M. Mattcodo)			1956 (R. Bence)		
13	Yale	28	0	Yale	28	20	Columbia	0
23	Princeton	20	6	Univ. of R. I.	7	2	Yale	20
33	Univ. of R. I.	0	0	Holy Cross	46	7	Dartmouth	14
14	Holy Cross	6	7	Rutgers	19	7	Penn	14
49	Univ. of Conn.	6	0	Princeton	39	27	Univ. of R. I.	7
20	Rutgers	6	21	Univ. of Conn.	13	7	Princeton	21
36	Western Res.	0	28	Harvard	21	13	Cornell	6
19	Harvard	30	0	Columbia	14	21	Harvard	12
35	Colgate	7	27	Colgate	33	20	Colgate	0
242	7-2-0	103	89	2-7-0	220	124	5-4-0	94
1949 (J. V. Paterno)			1953 (G. E. Haverty)			1957 (G. Robertshaw)		
(J. S. Scott)			(G. E. Haverty)			(G. Robertshaw)		
28	Holy Cross	6	6	Amherst	7	20	Columbia	23
46	Univ. of R. I.	0	0	Yale	13	21	Yale	20
14	Princeton	27	13	Univ. of R. I.	19	0	Dartmouth	35
48	Lehigh	0	27	Rutgers	20	20	Penn	7
28	Western Res.	14	6	Holy Cross	0	21	Univ. of R. I.	7
14	Yale	0	13	Princeton	27	0	Princeton	7
28	Harvard	14	42	Univ. of Conn.	7	6	Cornell	13
16	Columbia	7	20	Harvard	27	33	Harvard	6
41	Colgate	26	7	Colgate	7	33	Colgate	7
263	8-1-0	94	134	3-5-1	127	154	5-4-0	118
1950 (L. H. Hill)			1954 (E. Pearson)			1958 (D. Warburton)		
(L. H. Hill)			(E. Pearson)			(D. Warburton)		
12	Yale	36	18	Columbia	7	22	Columbia	0
21	Holy Cross	41	24	Yale	26	35	Yale	29
55	Univ. of R. I.	13	35	Univ. of R. I.	0	0	Dartmouth	20
0	Princeton	34	21	Princeton	20	20	Penn	21
34	Colgate	35	14	Temple	19	47	Univ. of R. I.	6
12	Rutgers	15	34	Lehigh	6	18	Princeton	28
0	Univ. of Penn	50	40	Springfield	7	12	Cornell	8
13	Harvard	14	21	Harvard	21	29	Harvard	22
0	Columbia	33	18	Colgate	14	28	Colgate	6
147	1-8-0	271	225	6-2-1	120	211	6-3-0	140
1951 (J. A. Martland)			1955 (J. McGuinness)			1959 (R. Carlin)		
(J. A. Martland)			(J. McGuinness)			(R. Carlin)		
14	Temple	20	12	Columbia	14	6	Columbia	21
14	Yale	13	20	Yale	27	0	Yale	17
20	Univ. of R. I.	13	7	Dartmouth	0	0	Dartmouth	0
14	Colgate	32	12	Rutgers	14	9	Penn	36
6	Holy Cross	41	7	Univ. of R. I.	19	6	Univ. of R. I.	0
0	Princeton	12	7	Princeton	14	0	Princeton	7
21	Rutgers	28	7	Cornell	20	0	Cornell	19
21	Harvard	34	14	Harvard	6	16	Harvard	6
14	Columbia	29	0	Colgate	25	14	Colgate	33
124	2-7-0	222	86	2-7-0	139	51	2-6-1	139
1960 (W. Packer)			1961 (N. J. Rohrbach)			1962 (N. J. Spiezio)		
(W. Packer)			(N. J. Rohrbach)			(N. J. Spiezio)		
0	Columbia	37	0	Columbia	50	6	Colgate	2
0	Yale	9	3	Yale	14	20	Columbia	22
0	Dartmouth	20	0	Dartmouth	34	6	Yale	6
7	Penn	36	0	Penn	7	0	Dartmouth	41
36	Univ. of R. I.	14	9	Univ. of R. I.	12	15	Pennsylvania	18
21	Princeton	54	0	Princeton	52	12	Rhode Island	12
7	Cornell	6	0	Cornell	25	12	Princeton	28
8	Harvard	22	6	Harvard	21	26	Cornell	28
21	Colgate	14	6	Colgate	30	19	Harvard	31
100	3-6-0	212	24	0-9-0	245	116	1-6-2	188

Brown's Roll of Honor

NATIONAL HALL OF FAME

JOHN W. HEISMAN, '91

An outstanding football and baseball player at Brown from 1887 to 1889, John William Heisman became one of the leading coaches and a dominant personality in intercollegiate football during the ensuing 45 years until his death in 1936. After obtaining his law degree from the University of Pennsylvania, he launched a football coaching career at Oberlin College that extended through a long series of successes at Akron, Alabama Poly, Clemson, Georgia Tech, Penn, Washington and Jefferson and Rice. He did much to "open up" the game by use of the forward pass and the shifting line. At Georgia Tech, where he coached for 16 years, his teams of 1915-16-17 won 25 straight and rolled up 1,129 points to their opponents' 61. After retiring from coaching he became Physical Director of the Downtown Athletic Club of New York and was one of the founders and first president of the Touchdown Club. In his honor, the Downtown A. C. established the Heisman Trophy, which is presented annually to the outstanding collegiate football player in the nation. Born in Cleveland, Oct. 23, 1869, he died on Oct. 3, 1936.

DeORMOND (Tuss) McLAUGHRY

A 55-year association with football as player, coach and administrator was duly acknowledged in December, 1962, when Tuss McLaughry was inducted into the National Football Foundation's Hall of Fame. From the day he played his first football game at Sharon, Pa., High School in 1907, Tuss and football were inseparable, except for distinguished service in World War II. A standout player at Michigan State and Westminster, he began his coaching career at the latter college in 1915. He coached four years at Amherst, 1922-25, and his last team there was the highest scoring team in the history of the Little Three. He then moved to Brown, where he guided the famed Iron Men of 1926 to the only undefeated season in the school's history. His 1928 and 1932 teams lost only one game. Before leaving Brown for Dartmouth in 1941, he had the pleasure of coaching his son, John, present Bruin coach. Later at Dartmouth another son, Bob, played for him. His 1948 and 1949 teams were the first in Dartmouth's history to win six major games. He coached East squads in the San Francisco Shrine game four times, the New York All-Star Game in 1940 and the Chicago All-Star Game in 1947. After retiring from coaching in 1954, Tuss continued to serve the American Football Coaches Association as secretary-treasurer, a post he has held from 1940 to the present. He now resides in Norwich, Vt.

FREDERICK DOUGLAS (Fritz) POLLARD, '16

Probably the greatest player ever to perform for Brown, and ranked as one of the greatest Negro players ever to perform in college ranks, Fritz Pollard was the star of Brown's 1915 team which played in the first official Rose Bowl game (1916), and the '16 team which compiled an 8-1 record and ranks among the University's best. Walter Camp, whose All-American selections are regarded as the last word for the era he covered, ranked Pollard as "one of the greatest runners these eyes have ever seen." In 1916 he scored all three touchdowns as Brown handed Yale its lone defeat of the season, 21-6, and scored two and set up the other in the 21-0 victory against Harvard. Born in Chicago January 27, 1894, Pollard presently resides in New York City.

Brown's Roll of Honor

EDWARD NORTH ROBINSON, '96

If any man deserves recognition as "the father of Brown football," it is Edward North Robinson. His influence spans more than a quarter of a century -- from 1892, when he entered Brown and helped put the game on a sound basis as an undergraduate, to 1925 when he wound up an illustrious coaching career that covered 24 seasons at his alma mater. He won nine letters in his playing days, four in football. But more important was his activity in helping the grid game take root when baseball was THE sport at Brown. He served three separate terms as head coach, the last covering 16 years, and won 140 games against 82 losses and 12 ties at a time when Eastern football was undisputedly the nation's best, and Brown was often called upon to meet the top grid powers with undermanned forces.

Born in Lynn, Mass. on October 15, 1873, he died on March 10, 1945. His coaching record at Brown follows:

Years	W	L	T	Pct.	PF	PA
1898-1901	24	17	3	.580	524	532
1904-1907	26	15	0	.634	742	191
1910-1925	90	50	9	.634	2255	1100
TOTALS	140	82	12	.624	3521	1823

W. WALLACE WADE, '17

A member of the 1915 Brown team that played Washington State in the first Rose Bowl game on Jan. 1, 1916, Wally Wade earned a place among the great coaches of American intercollegiate football during an illustrious career that spanned 40 years. After serving his apprenticeship as a high school coach and an assistant at Vanderbilt, he took over the head-coaching reins at Alabama in 1923 and built the Crimson Tide into a major football power, winning 61 of 74 games and taking three of his teams to the Rose Bowl. Moving to Duke University in 1931, he sent two Blue Devil squads to the Rose Bowl and compiled a record of 110 victories, 36 losses and 10 ties through 1950, when he retired to become the Commissioner of the Southern Conference. In addition to his achievements in the field of coaching, he distinguished himself in service during two World Wars. He interrupted his tenure at Duke at the age of 53 to serve as a lieutenant colonel in the artillery during World War II, taking part in several major battles in the European Theatre. Wally was born in Trenton, Tennessee on June 15, 1892. Now retired from his Southern Conference post, he operates his 120-acre livestock farm near Durham, N. C.

THE BEST RECORDS

Team	Coach	W	L	T	PF	PA
1926	— DeOrmond McLaughry	9	0	1	223	36
1916	— Edward North Robinson	8	1	0	254	37
1928	— DeOrmond McLaughry	8	1	0	167	72
1949	— Charles A. Engle	8	1	0	263	94
1932	— DeOrmond McLaughry	7	1	0	81	42

Brown's All-Americans

Selected by Walter Camp (First-Team Choices)

- | | |
|----------------------------------|----------------------------------|
| 1906 — John W. Mayhew, hb | 1912 — George M. Crowther, qb |
| 1909 — Adrian E. Regnier, hb | 1916 — F. D. (Fritz) Pollard, hb |
| 1910 — William E. Sprackling, qb | |

(Second-Team Choices)

- | | |
|-----------------------------|----------------------------------|
| 1897 — David L. Fultz, hb | 1911 — William E. Sprackling, qb |
| 1898 — W. B. Richardson, hb | 1912 — Daniel H. Culp, g |
| 1899 — W. B. Richardson, hb | 1916 — Clair J. Purdy, qb |
| 1902 — Thomas Barry, hb | 1918 — Joshua H. Weeks, e |
| 1908 — Frank Dennie, c | 1921 — Bertrand L. Shurtleff, c |
| 1910 — J. Russell McKay, fb | |

(Third-Team Choices)

- | | |
|----------------------------------|--------------------------------|
| 1895 — Charles Nott, t | 1912 — Russell G. Ashbaugh, c |
| 1895 — Edward N. Robinson, hb | 1918 — Frederick E. Higgins, g |
| 1905 — Albert M. Fletcher, g | 1922 — Mike Gulian, t |
| 1909 — William E. Sprackling, qb | 1924 — Jackson M. Keefer, hb |
| 1910 — Charles E. Sisson, c | 1925 — Jackson M. Keefer, hb |
| 1911 — Russell G. Ashbaugh, e | |

Selected by Grantland Rice (First-Team Choice)

- 1926 — Orland F. Smith, t

Selected by the Associated Press (Third-Team Choice)

- 1932 — Frank Meadow, e

THE IRON MEN

Beside being the only undefeated team in Brown history, the 1926 team earned even greater fame as the "Iron Men," so-called because the starting 11 played 60 minutes without substitution on consecutive weeks against Yale and Dartmouth, and well into the fourth quarter against Harvard later in the season. They lost their chance for an undefeated-untied season in the last game when Colgate earned a 10-10 deadlock. The team was ranked among the top 10 nationally. Its members were Captain Hal Broda and Thurston Towle, ends; Ed Kevorkian and Paul Hodge, tackles; Lou Farber and Orland Smith, guards; Charles Considine, center; Red Randall, quarterback; Dave Mishel and Ed Lawrence, halfbacks; and Al Cornsweet, fullback.

All-Americans

The following Brown players were accorded honorable mention in All-American selections:

1926

Edwin A. Kevorkian, t
Louis Farber, g
Roy (Red) Randall, b
David Mishel, b
Albert C. Cornsweet, b

1928

Edwin A. Kevorkian, t
Louis Farber, g
Albert C. Cornsweet, b

1929

William (Line) Fogarty, b

1930

Paul F. Mackesey, t

1931

Joseph Sawyer, e
Paul F. Mackesey, t

1932

George Lear, g
Thomas F. Gilbane, c
William J. Gilbane, b
Joseph E. Buonanno, b
Robert R. Chase, b

1933

Maury Caito, e
Joseph E. Buonanno, b

1934

William J. Karaban, b

1937

John Prodgers, e
John Cioci, t
Jack W. Hawley, g
Frank B. Foster, b
Irving (Shine) Hall, b
John J. McLaughry, b

1938

Irving (Shine) Hall, b
John J. McLaughry, b

1939

John Prodgers, e
Charles E. Blount, b
John J. McLaughry, b

1940

John Marsolini, e
Harold Detwiler, b
John O'Leary, b
Ernest T. Savignano, b

1941

Richard T. High, b
Henry (Bob) Margarita, b

1942

Steward MacNeil, e
Donald E. Corzine, t
Jay W. Fiddler, t
Louis Regine, c
Henry (Bob) Margarita, b
John (Jay) Pattee

1943

Edward A. Fiorentino, e
J. P. E. (Jack) Cokefair, b
Daniel (Doc) Savage, b

1945

James Lalikos, t

1946

George W. (Woody) Grimshaw, e
Thomas F. Dorsey, b
Edward J. Finn, b
Roy H. Swingler, b

1948

Edward J. Finn, b

1949

Gerard E. (Bucky) Walters, t
Milton Hodosh, t

1954

Harry Josephson, e
Peter Kohut, b

1955

James McGuinness, t

1956

Gilbert Robertshaw, t

1957

Donald J. Warburton, c

1958

Thomas Budrewicz, t
Donald J. Warburton, c
Paul J. Choquette, b
Frank H. Finney, b

1959

Paul J. Choquette, b

1960

Richard R. Laine, e
Nelson J. (Jack) Rohrbach, b

Freshman Football



CHARLES D. MARKHAM became first "full time" freshman coach in 1956, coming to Providence after compiling a brilliant record in three sports over an 11-year period at Tabor Academy, and a single season at Turner Falls, Mass. High. Markham attended both Williams College and NYU, being graduated from the latter in 1944. He played both basketball and baseball in college. At Tabor, he coached football, baseball and basketball in addition to his teaching duties, turning in four undefeated grid seasons and one in basketball.

PHILIP E. COEN, former star guard at Boston College, joined the collegiate coaching ranks in 1958 as freshman line coach after heading the football program at Rogers High in Newport for three seasons. An All-State selection in his senior year at Rogers, Coen won three varsity football letters at B.C., where he was graduated in 1951. He was an All-New England choice in each of his last two seasons, captained the Eagles as a senior, and won honorable mention All-American honors his last campaign.



1963 SCHEDULE

Oct. 5	Dean Jr. College ..	2:00
Oct. 12	Dartmouth	2:00
Oct. 18	at Connecticut	3:00
Oct. 25	at Yale	2:00
Nov. 2	at Columbia	2:00
Nov. 8	at Rhode Island ...	2:30
Nov. 15	Harvard	1:30

1962 RESULTS

0	Boston College	25
12	Dartmouth	14
7	Harvard	14
6	Yale	0
7	Columbia	0
27	Rhode Island	12
Won 3, Lost 3		



The Mascot

That Brown teams are known as the Bears is a matter of design, full credit for which belongs to one of Brunonia's most illustrious sons — Senator Theodore Francis Green '87. Following is a digest of an account he wrote in 1923 on how the bear came to Brown:

"From time to time, like a lot of other Brown men, I had felt the lack of a definite symbol for our college.

"So I set about selecting an appropriate symbol. I wanted something alive, and though not human, such as we endow with humanlike qualities. First of all, I thought our symbol should be a mammal and one of fair size, so as to be capable of portrayal in the graphic and plastic arts impressively and without absurd exaggeration.

"The animal should if feasible be indigenous American to emphasize the sturdy American quality of the college. But above all, our symbol must in some way suggest those elemental qualities which I believe characterize Brown men: strength, independence and courage.

"By process of elimination there emerged a symbol more filling these requirements than one could reasonably have expected — The Brown Bear.

"It is a mammal and the largest on the continent. It has been used heraldically. It is truly American and, most important of all, it embodies and suggests those qualities we want to emphasize. While somewhat unsociable, it is good-natured and clean. While courageous and ready to fight, it does not look for trouble for its own sake, nor is it bloodthirsty. It is not one of a herd but acts independently. It is intelligent and capable of being educated (if caught young enough!) Remember, an athlete can make Phi Beta Kappa. Furthermore the bear's color is brown; and its name is Brown.

"I bided my time. It came when Rockefeller Hall was built. I happened to be one of the Building Committee and on its completion had charge of the furnishing. The central feature of the building was the trophy room and the central feature of the room was the great arch. Here, over the arch, at the central point of student life at Brown, I put a head of a real Brown Bear labeled beyond misinterpretation.

"The building was formally opened January 20, 1904, so that is, I suppose, the bear's birthday.

"The idea caught on at once. The newspapers gladly received the new symbol, and the next fall the students took a live bear as a mascot to the Dartmouth game at Springfield. Songs were written about him, and it was not long before the Brown Bear was so firmly established that in the quick succession of college generations, it was looked upon as a grand old tradition.

"You remember in 'Waverly,' the description of the banquet at Tully-veolan, when the baron brought out for Waverly a golden goblet in the shape of a rampant bear. 'It represents,' he said, 'the chosen crest of our family — a bear, as ye observe, and rampant; because a herald will depict every animal in its noblest posture.' On the cup was the motto 'Beware the Bear.'"

Bear cub mascots have been appearing on the sidelines at Brown games for many years. They are currently presented to the University by an animal farm, and their care and feeding is entrusted to the Brown Key organization.



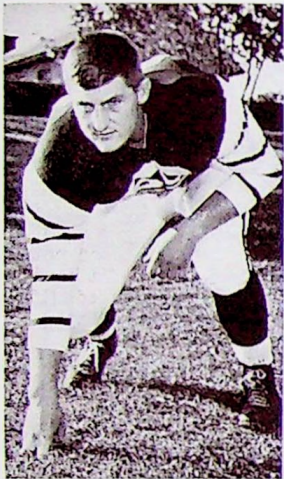
Jack Lutz, tackle



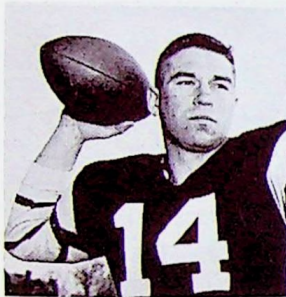
John Kelly, fullback



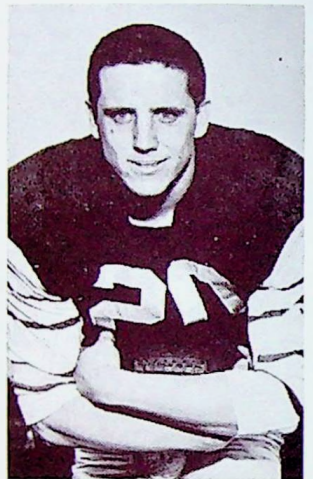
Clark Hopson, center



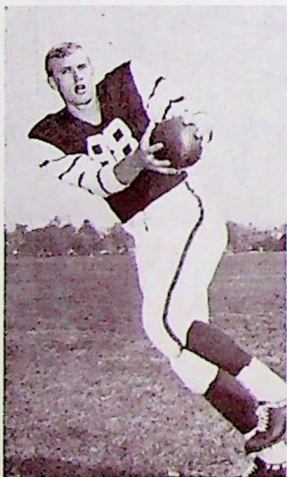
John Miles, guard



Jim Dunda, quarterback



Tom Draper, halfback



John Parry, end



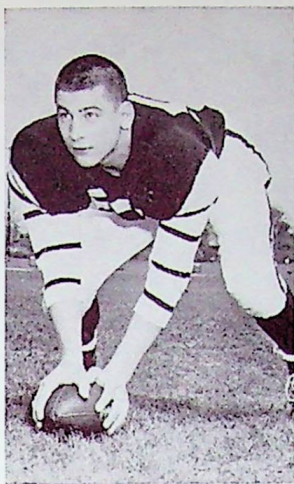
Frank Antifonario, fullback



Ron Ferraris, end



Bill Vareschi, halfback



Ralph Duerre, center



Jan Moyer, halfback



Al Barney, guard



Bob Hall, quarterback



Paul Coughlan, guard



Bob Seiple, end



Pete Tharbahn, fullback



Ken Neal, halfback

Brown Soccer in 1963

By Coach Cliff Stevenson

The soccer situation at Brown is the healthiest it's been since I came here four seasons ago. We have 14 lettermen back and I'm looking for strong support from a good group of sophomores. We are hopeful of improving on last year's 5-5-1 record despite our tough schedule and a much tighter Ivy League race. We'll have more experience and depth than we've had the last two seasons. Our leading veterans are Bill Hooks, first-team All-Ivy choice as a sophomore last year, Co-captains Alan Young and George Schweikert, Phil Solomita and Allan Walsh. Young and Solomita made the All-Ivy second team in '62. Sophomores who should play an important part are George Halmos, John Krupski, Phil McGuire, John Mylopoulos and Bob Wernesbach. This could be the strongest Brown soccer team in more than a decade.



Varsity Schedule

Sept. 21 at Rhode Island
Sept. 28 Wesleyan
Oct. 5 at Yale
Oct. 9 Williams
Oct. 12 at Dartmouth
Oct. 16 Connecticut
Oct. 19 Pennsylvania
Oct. 26 Columbia
Oct. 30 at Springfield
Nov. 2 Princeton
Nov. 9 at Cornell
Nov. 16 Harvard

Junior Varsity Schedule

Oct. 8 at Barrington
Oct. 15 Durfee
Oct. 21 Dean Jr. College
Oct. 24 St. George's
Oct. 28 at Dean Jr. College
Nov. 4 at Leicester
Nov. 8 at Mitchell

Freshman Schedule

Oct. 2 Tabor Academy
Oct. 11 at Wesleyan
Oct. 16 Trinity
Oct. 19 at Moses Brown
Oct. 23 at Yale
Oct. 26 at Hall H. S.
Nov. 1 at Andover
Nov. 7 Connecticut
Nov. 12 New Bedford
Nov. 15 at Harvard

1962 Varsity Results

B	Opp.	
1	Wesleyan	3
5	Rhode Island	0
1	Yale	2
2	Dartmouth	0
3	Connecticut	1
2	Pennsylvania	2
1	Columbia	2
0	Springfield	2
3	Princeton	1
3	Cornell	0
0	Harvard	1

Won 5, Lost 5, Tied 1

1963 Varsity Soccer Roster

Name	Pos.	Yr.	Age	Ht.	Wt.	Hometown
Alter, Richard	G	So.	19	5-10	165	Baltimore, Md.
Avery, Rexford W.	For.	So.	19	5-9	160	Durham, Conn.
Anderson, Richard L.	For.	So.	19	5-9	160	Fall River, Mass.
*Billo, Charles G.	For.	Sr.	21	5-11	175	Bronxville, N. Y.
Browde, Michael B.	HB	Jr.	20	5-11	160	Granville, N. Y.
*Brown, Richard S.	FB	Jr.	19	6-2	190	Ridgewood, N. J.
Carlson, Robert J.	For.	Jr.	20	5-11	165	Bloomfield, N. J.
Chused, Richard H.	For.	Jr.	20	5-10	165	St. Louis, Mo.
Cooper, Martin S.	For.	Jr.	20	5-10	160	Teaneck, N. J.
Davies, Gary C.	HB	So.	19	6-1	175	Nyack, N. Y.
*Davis, Jonathan E.	HB	Jr.	19	6-2	185	Philadelphia, Pa.
Field, David	For.	Sr.	21	5-11	165	Pottstown, Pa.
Forsberg, Franklin C.	FB	So.	19	6-1	182	Greatneck, N. Y.
Fuller, Peter C.	FB	Jr.	20	6-0	185	No. Attleboro, Mass.
*Garrigues, Ian L.	HB	Jr.	20	6-0	180	Hastings, N. Y.
Halmos, George I.	For.	So.	19	6-0	165	Summit, N. J.
Hiller, Richard J.	For.	So.	19	6-0	170	Roslyn Heights, N. Y.
*Haskell, John	FB	Sr.	20	5-11	170	Pittsburgh, Pa.
*Healy, Michael	HB	Sr.	20	5-11	165	New Gloucester, Me.
*Hooks, William G.	For.	Jr.	20	6-0	180	River Edge, N. J.
Horsfall, David E.	FB	So.	19	6-0	180	New Bedford, Mass.
Higginbottom, Robert E.	For.	So.	19	6-0	175	Worcester, Mass.
Jerrett, David H.	For.	So.	19	5-11	165	Summit, N. J.
Krey, Lewis C.	For.	So.	19	5-11	160	Teaneck, N. J.
Krupski, John P.	HB	So.	19	6-3	180	Mattituck, N. Y.
Mathews, Arthur B.	For.	So.	19	5-8	140	Easton, Conn.
McGuire, Philip L.	For.	So.	19	6-0	160	W. Hartford, Conn.
Mylopoulos, John P.	For.	So.	19	5-10	155	Athens, Greece
*Myslik, John L.	HB	Jr.	20	5-11	185	River Edge, N. J.
Neidlinger, Peter A.	FB	So.	19	6-3	175	Westbrook, Conn.
Niederer, Thomas O.	HB	So.	19	6-1	175	Titusville, N. J.
*Nielsen, R. Craig	For.	Jr.	19	6-0	175	Oradell, N. J.
Parker, Christopher W.	HB	So.	19	6-1	170	Middletown, Conn.
Powers, William R.	HB	So.	18	5-9	160	Berkeley Heights, N. J.
*Schweikert, George	HB	Sr.	21	6-1	190	Baldwin, N. Y.
Sheffield, Gary R.	For.	Jr.	20	6-1	175	Blue Point, N. Y.
Simon, Kurt K.	FB	So.	19	5-11	185	Philadelphia, Pa.
Simon, Morton J.	HB	So.	19	5-11	180	Elkins Park, Pa.
Singsen, Gary	For.	Sr.	20	6-2	195	Winnetka, Ill.
Smith, Jeffrey A.	G	So.	18	5-11	160	Huntington, N. Y.
Soja, John F.	For.	So.	18	5-9	155	Springfield, Mass.
*Solomita, Philip A.	HB	Jr.	20	6-0	160	Garden City, N. Y.
Souers, R. Terry	HB	Jr.	20	6-2	190	Teaneck, N. J.
Spencer, Robert A.	HB	So.	19	6-1	168	Camillus, N. Y.
Trice, Harley N.	FB	So.	19	5-11	155	Pittsburgh, Pa.
Udom, Patrick R.	For.	Jr.	24	6-0	165	E. Nigeria
*Walsh, Allan T.	G	Jr.	20	6-3	185	Yardley, Pa.
Wernesbach, Robert A.	For.	So.	19	5-10	165	Massapequa, N. Y.
*Wheaton, David	For.	Sr.	20	5-11	165	Short Hills, N. J.
Woodruff, Stephen M.	For.	So.	18	5-11	160	Philadelphia, Pa.
Yates, George A.	For.	So.	18	5-11	170	Miami, Fla.
Yegen, Christian C.	FB	Jr.	19	6-1	175	Teaneck, N. J.
*Young, Alan	For.	Sr.	21	5-9	160	Rockville Centre, N. Y.

Coach: Cliff Stevenson

Co-captains: George Schweikert and Alan Young

*Lettermen

Cross Country in '63

By Coach Ivan Fuqua

It's risky business to predict a stronger team than last year's, which won the New England title and defeated all of our Heptagonal rivals in the IC4A championship at the end of the season. But that's exactly how I feel about our prospects this fall. Captain Dave Farley, who placed second in the Heptagonal and New England meets, is backed up by three solid juniors, Vic Boog, Bob Rothenberg and Bob Woolley, and three top sophomores in Pat O'Donnell, Bill Kinsella and John Brandon. O'Donnell was the No. 1 man with the freshmen last fall and Kinsella, who played soccer, holds the Brown freshman two-mile record. There will be several others battling for scoring positions, giving us reasonably good depth for the big meets.



Varsity Schedule

Oct. 4 Yale & Connecticut at Yale
Oct. 12 Harvard & Cornell at Harvard
Oct. 18 at Dartmouth
Oct. 25 Providence College & Rhode Island at Rhode Island
Nov. 8 Heps at New York
Nov. 11 New Englands at Franklin Park
Nov. 18 IC4A's at New York

Freshman Schedule

Oct. 4 Yale & Connecticut at Yale
Oct. 12 Harvard & Cornell at Harvard
Oct. 18 at Dartmouth
Oct. 25 Providence College & Rhode Island at Rhode Island
Nov. 8 Heps at New York
Nov. 11 New Englands at Franklin Park

1962 Varsity Results

B	Opp.	B	Opp.
29 Yale 36	18 Rhode Island 37
Connecticut 59	42 Providence College 31
29 Harvard 27	Fordham 37
19 Dartmouth 40	Syracuse 77

Won 3, Lost 2

1963 VARSITY CROSS-COUNTRY ROSTER

Name	Class	Age	Ht.	Wt.	Hometown
Baglow, Richard	Jr.	20	6-2	155	New Hyde Park, N. Y.
*Boog, Victor F.	Jr.	20	5-6	125	Syracuse, N. Y.
Brandon, John S.	So.	18	5-9	155	Hudson, N. Y.
*Farley, David	Sr.	22	5-11	135	Orrington, Me.
Franco, James	So.	19	5-6	130	Salt Lake City, Utah
Higgins, Duncan G.	So.	18	5-7	140	Arlington, Va.
Kinsella, William P.	So.	19	5-9	130	Ho-Ho-Kus, N. J.
LePage, Clifford B.	So.	19	6-1	140	Reading, Pa.
Lynn, Joel J.	Jr.	20	6-0	140	Mountain Home, N. C.
Nutting, David F.	Jr.	19	5-8	135	Abington, Pa.
O'Donnell, Patrick R.	So.	19	5-9	135	Scituate, Mass.
Reifenberg, John W.	So.	19	6-0	145	Bethpage, N. Y.
Richmond, Joseph P.	So.	19	6-1	165	Wilmington, Del.
*Rothenberg, Robert J.	Jr.	20	6-0	145	West Orange, N. J.
Rumsey, David K.	Sr.	21	5-11	160	Ft. Meade, Md.
*Woolley, Robert S.	Jr.	20	6-0	160	Riverdale, N. J.

*Lettermen Captain: David Farley Manager: Pete Keegan

Area News Media

A.M. and SUNDAY

Providence Journal
Westerly Sun

P.M.s

Evening Bulletin
Providence
Pawtucket Times
Pawtucket Valley Times
West Warwick
Newport Daily News
Woonsocket Call
Westerly Sun
Fall River Herald News
Fall River, Mass.
New Bedford Standard-Times
New Bedford, Mass.

WEEKLYS

Barrington Times
Bristol Phoenix
Cranston Herald
East Providence Post
Greenville Observer
Warren Times
Warwick Beacon

TV STATIONS

WJAR-TV Channel 10
WPRO-TV Channel 12

RADIO STATIONS

Providence
WJAR
WPRO
WEAN
WLKW
WICE
WHIM
East Providence
WRIB
Cumberland
WXTR
Westerly
WERI
Woonsocket
WWON
West Warwick
WWRI
North Kingstown
WKFD
Newport
WADK

Radio Station WJAR will broadcast all Brown football games (home and away). Chris Barnes will do the play-by-play.

NO NEED TO GET LOST . . .

. . . When Coming To Brown

FROM BOSTON: Follow Route 1 through the Pawtucket Expressway; make an S turn at traffic light at junction of George St. and Pawtucket Ave., turning left on Pawtucket Ave., then a sharp right on East Ave. (very short distance); East Ave. becomes Hope St. at Pawtucket-Providence city line; follow Hope St. past the traffic light at Rochambeau Ave. to Savoy St.; take left on Savoy St. to Brown Field.

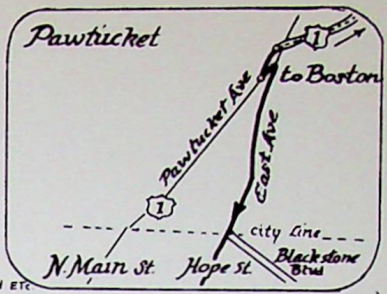
FROM WORCESTER: Take Branch Ave. exit off Route 146; follow Branch Ave. to North Main St. (cemetery on left); go directly across North Main St. at light, up Cypress St., crossing Camp, Ivy and Hope Sts. to Morris Ave.; take left on Morris Ave. and right on Sessions St. to the field.

FROM CONNECTICUT (via Route 44): Follow Smith St. (44) past the State Capitol to North Main St.; take left on North Main, bearing right up the hill; take right on Doyle Ave. (third traffic light from top of hill); follow Doyle Ave. to Elmgrove Ave. (bottom of hill); take left on Elmgrove to the field.

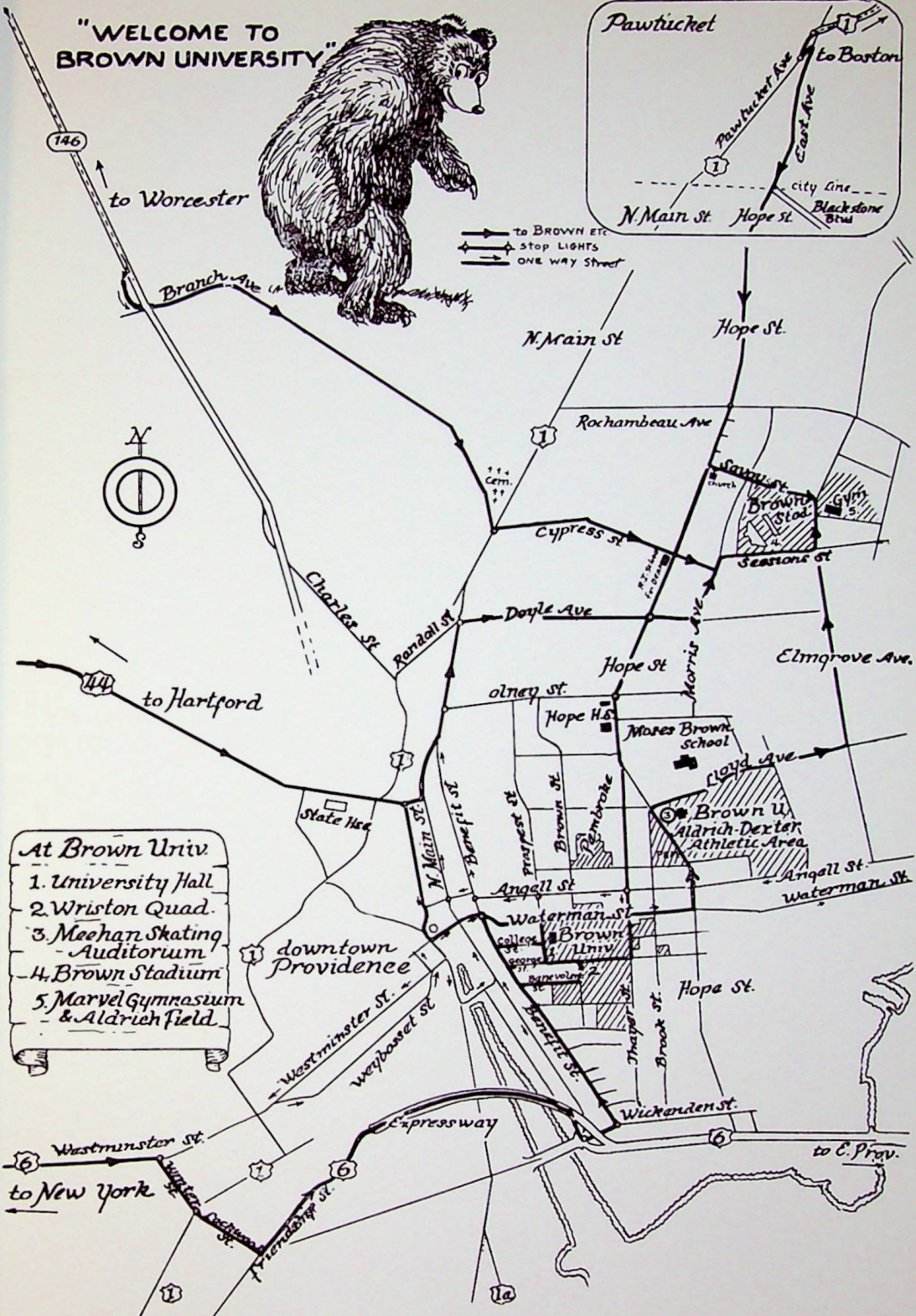
FROM NEW YORK AND CONNECTICUT (via Route 6): Follow Route 6 after leaving Roberts Expressway along Westminster, Winter, Lockwood and Friendship Sts. to the Providence River Expressway; after crossing river, take Wickenden St. exit; turn left at first traffic light (Benefit St.); follow Benefit all the way until it joins North Main St.; take right on Doyle Ave. (second traffic light); follow Doyle Ave. up the hill, then all the way to the bottom of hill to Elmgrove Ave.; take left on Elmgrove to the field. (This route is slightly longer but much easier because of the traffic pattern.)

NOTE: Football practice will be conducted this fall at the University's new Aldrich-Dexter athletic field on the corner of Hope St. and Lloyd Ave. (No. 3 on map). **FROM BOSTON:** Stay on Hope St.; field is just beyond Hope High School (on right) and Moses Brown School (on left), Hope St. bears left beyond the two schools. **FROM WORCESTER:** Turn right off Cypress St. at Hope St. (School for Deaf on corner) and follow Hope St. to the field. **FROM CONNECTICUT (44):** Turn right off North Main St. at Olney St.; continue up Olney to Hope St. (traffic light); take right on Hope St. and continue on Hope to Lloyd Ave. **FROM NEW YORK AND CONNECTICUT (6):** Turn right off Benefit St. up Waterman St. Hill; continue on Waterman St. to Hope St. (fourth traffic light); take left on Hope to the field.

"WELCOME TO BROWN UNIVERSITY"



→ TO BROWN ETC.
 ⇄ STOP LIGHTS
 — ONE WAY STREET



- At Brown Univ**
1. University Hall
 2. Wriston Quad.
 3. Meehan Skating Auditorium
 4. Brown Stadium
 5. Marvel Gymnasium & Aldrich Field

downtown Providence

to C. Prov.

to New York

to Worcester

Pawtucket

to Boston

Branch Ave

N. Main St

Hope St.

Rochambeau Ave

Cypress St

Doyle Ave

Hope St

Elm Grove Ave.

to Hartford

State Hse

olney st.

Hope H.S.

Moses Brown School

Brown U. Aldrich-Dexter Athletic Area

Angall St.

Waterman St

Brown Univ

downtown Providence

Westminster St.

Weybosset St.

Waterman St

Brown Univ

Hope St.

Thayer St.

Brook St.

Wickenden St.

Expressway

to C. Prov.

to New York

Friendship St.

1

1a

6

6

7

6

146

1

N. Main St

Hope St.

Hope St.

Rochambeau Ave

Cypress St

Doyle Ave

Hope St

Elm Grove Ave.

to Hartford

State Hse

olney st.

Hope H.S.

Moses Brown School

Brown U. Aldrich-Dexter Athletic Area

Angall St.

Waterman St

Brown Univ

downtown Providence

Westminster St.

Weybosset St.

Waterman St

Brown Univ

Hope St.

Thayer St.

Brook St.

Wickenden St.

Expressway

to C. Prov.

to New York

Friendship St.

1

1a

6

6

7

6

146

1

N. Main St

Hope St.

Hope St.

Rochambeau Ave

Cypress St

Doyle Ave

Hope St

Elm Grove Ave.

to Hartford

State Hse

olney st.

Hope H.S.

Moses Brown School

Brown U. Aldrich-Dexter Athletic Area

Angall St.

Waterman St

Brown Univ

downtown Providence

Westminster St.

Weybosset St.

Waterman St

Brown Univ

Hope St.

Thayer St.

Brook St.

Wickenden St.

Expressway

to C. Prov.

to New York

Friendship St.

1

1a

6

6

7

6

146

1

N. Main St

Hope St.

Hope St.

Rochambeau Ave

Cypress St

Doyle Ave

Hope St

Elm Grove Ave.

to Hartford

State Hse

olney st.

Hope H.S.

Moses Brown School

Brown U. Aldrich-Dexter Athletic Area

Angall St.

Waterman St

Brown Univ

downtown Providence

Westminster St.

Weybosset St.

Waterman St

Brown Univ

Hope St.

Thayer St.

Brook St.

Wickenden St.

Expressway

to C. Prov.

to New York

Friendship St.

1

1a

6

6

7

6

146

1

N. Main St

Hope St.

Hope St.

Rochambeau Ave

Cypress St

Doyle Ave

Hope St

Elm Grove Ave.

to Hartford

State Hse

olney st.

Hope H.S.

Moses Brown School

Brown U. Aldrich-Dexter Athletic Area

Angall St.

Waterman St

Brown Univ

downtown Providence

Westminster St.

Weybosset St.

Waterman St

Brown Univ

Hope St.

Thayer St.

Brook St.

Wickenden St.

Expressway

to C. Prov.

to New York

Friendship St.

1

1a

6

6

7

6

146

1

N. Main St

Hope St.

Hope St.

Rochambeau Ave

Cypress St

Doyle Ave

Hope St

Elm Grove Ave.

to Hartford

State Hse

olney st.

Hope H.S.

Moses Brown School

Brown U. Aldrich-Dexter Athletic Area

Angall St.

Waterman St

Brown Univ

downtown Providence

Westminster St.

Weybosset St.

Waterman St

Brown Univ

Hope St.

Thayer St.

Brook St.

Wickenden St.

Expressway

to C. Prov.

to New York

Friendship St.

1

1a

6

6

7

6

146

1

N. Main St

Hope St.

Hope St.

Rochambeau Ave

Cypress St

Doyle Ave

Hope St

Elm Grove Ave.

to Hartford

State Hse

olney st.

Hope H.S.

Moses Brown School

Brown U. Aldrich-Dexter Athletic Area

Angall St.

Waterman St

Brown Univ

downtown Providence

Westminster St.

Weybosset St.

Waterman St

Brown Univ

Hope St.

Thayer St.

Brook St.

Wickenden St.

Expressway

to C. Prov.

to New York

Friendship St.

1

1a

6

6

7

6

146

1

N. Main St

Hope St.

Hope St.

Rochambeau Ave

Cypress St

Doyle Ave

Hope St

Elm Grove Ave.

to Hartford

State Hse

olney st.

Hope H.S.

Moses Brown School

Brown U. Aldrich-Dexter Athletic Area

Angall St.

Waterman St

Brown Univ

downtown Providence

Westminster St.

Weybosset St.

Waterman St

Brown Univ

Hope St.

