



GAME INFORMATION	
Date	Feb. 6 (Tuesday)
Time	7 p.m. (MT)
Location	Las Vegas, Nev.
Facility	Cox Pavilion
Elevation (in feet)	2001
THE TEAMS	
Boise State Broncos	UNLV Lady Rebels
	
THE STATS	
Record..... 17-3	Record..... 7-13
MW..... 8-1	Conference..... 5-4
Home..... 10-1	Home..... 6-5
Road..... 4-2	Road..... 1-8
Neutral..... 3-0	Neutral..... 0-0
Scoring Offense..... 75.5	Scoring Offense..... 60.3
Scoring Defense..... 62.8	Scoring Defense..... 63.0
Scoring Margin..... +12.7	Scoring Margin..... -2.7
FG Pct. Offense..... 45.5	FG Pct. Offense..... 38.4
FG Pct. Defense..... 39.2	FG Pct. Defense..... 40.8
3FG Pct. Offense..... 37.4	3FG Pct. Offense..... 28.6
3FG Pct. Defense..... 30.2	3FG Pct. Defense..... 33.1
3FG Made Per Game..... 8.4	3FG Made Per Game..... 4.3
FT Pct..... 70.4	FT Pct..... 65.3
FT Made Per Game..... 9.7	FT Made Per Game..... 12.3
Rebounding..... 37.6	Rebounding..... 37.9
Rebound Margin..... +3.2	Rebound Margin..... +3.5
Assists..... 16.6	Assists..... 9.9
Turnovers..... 15.4	Turnovers..... 17.3
Steals..... 8.4	Steals..... 7.8
Blocks..... 4.3	Blocks..... 2.8
TEAM LEADERS	
Points Per Game	Points Per Game
Riley Lupfer..... 12.5	Katie Powell..... 14.3
Braydey Hodgins..... 10.1	Nikki Wheatley..... 11.6
Rebounds Per Game	Rebounds Per Game
Joyce Harrell..... 5.8	Two tied with..... 6.7
Assists Per Game	Assists Per Game
Jayde Christopher..... 5.30	Nikki Wheatley..... 2.25
THE SERIES	
vs. Mountain West.....	102-64
Series vs. Nevada.....	UNLV leads, 9-8
Home.....	3-4
Road.....	5-5
Neutral.....	0-0
Current Streak.....	L1
Last Meeting.....	UNLV 77, Boise State 54 Feb. 3, 2018 (Las Vegas, Nev.)
THE COVERAGE	
SOCIAL MEDIA	
Twitter	
Women's Basketball.....	@BroncoSportsWBB
Boise State Athletics.....	@BroncoSports
Facebook	
Women's Basketball.....	Boise State Women's Basketball
Boise State Athletics.....	Boise State Broncos
Instagram	
Women's Basketball.....	BoiseStateWBB
Boise State Athletics.....	BoiseStateBroncos



BOISE STATE

2018-19 WOMEN'S BASKETBALL

2017-18 Mountain West Regular Season & Tournament Champions

Boise State Opens Second Half Of MW Play At UNLV

Boise State (17-3, 8-1 MW)

at

UNLV (7-13, 5-4 MW)

Series: UNLV leads, 9-8

Wednesday, Feb. 6

7 p.m. (MT)

Las Vegas, Nev.

Cox Pavilion

BROADCAST INFORMATION

Live Stream (Watch game in its entirety)

Mountain West Network

Radio

Bronco Radio Network: 1350 KTIK

Play-by-Play: Chris Lewis

WHAT'S HAPPENING

- The Game:** Boise State heads back out on the road for two games this week, beginning Wednesday as the Broncos visit UNLV for a 7 p.m. MT tip at Cox Pavilion.
- Next Up:** The Broncos finish the week at San Jose State Saturday at 3 p.m. MT.

THE LATEST

- Boise State hits the turn of Mountain West play at 8-1, tied for first with New Mexico. The 8-1 mark is the program's best at the halfway point of Mountain West play since joining the conference in 2011-12.
- The Broncos swept the regular-season series from Nevada with Saturday's 80-65 win.
- Boise State hit its first 11 attempts from the field and went 12-for-13 (92.3 percent) in the first quarter against the Wolf Pack.
- Riley Lupfer scored 14 points to lead five Broncos in double digits Saturday. A'Shanti Coleman (13 points), Braydey Hodgins (12), Rachel Bowers (11), and Jayde Christopher (10) rounded out the quintet.
- Bowers finished the game 3-for-4 from the field and 5-for-5 from the line, scoring all 11 of her points in the third quarter Saturday against Nevada.
- The Bronco defense held Nevada to just one 3-pointer in nine attempts, the seventh time in nine conference games this season in which an opponent has failed to make more than four.
- Boise State limited last week's opponents, Colorado State and Nevada, to a combined 45 rebounds.

2018-19 SCHEDULE

17-3 (8-1 MW)

H: 10-1 | A: 4-2 | N: 3-0

Date	Opponent	Time (MT)/Result
11/8	CSUN	W, 74-63
11/10	SOUTHERN OREGON	W, 91-46
11/16	NORTHWEST CHRISTIAN	W, 93-26
11/19	#5/4 LOUISVILLE	L, 55-74
at Beach Classic (Long Beach, Calif.)		
11/23	vs. Idaho	W, 91-85
11/24	vs. Northern Iowa	W, 61-60
12/1	at Washington State	L, 71-95
12/7	EASTERN WASHINGTON	W, 67-55
at Husky Classic (Seattle, Wash.)		
12/15	vs. St. Francis (Pa.)	W, 78-64
12/16	at Washington	W, 73-69
12/19	SOUTHERN UTAH	W, 88-53
1/2	WYOMING *	W, 72-64
1/5	at San Diego State *	W, 69-66
1/12	SAN JOSE STATE *	W, 99-68
1/16	at Nevada *	W, 75-74
1/19	at Fresno State *	W, 72-60
1/23	AIR FORCE *	W, 79-48
1/26	at Wyoming *	L, 52-64
1/30	COLORADO STATE *	W, 70-57
2/2	NEVADA *	W, 80-65
2/6	at UNLV *	7 p.m.
2/9	at San Jose State*	3 p.m.
2/13	FRESNO STATE *	7 p.m.
2/16	SAN DIEGO STATE *	2 p.m.
2/23	at Utah State *	2 p.m.
2/27	at Colorado State *	7 p.m.
3/2	UNLV *	2 p.m.
3/4	NEW MEXICO *	7 p.m.
3/7	at Air Force *	7 p.m.
at Mountain West Championship Las Vegas, Nev.		
3/10	First Round	TBD
3/11	Quarterfinal	TBD
3/12	Semifinal	TBD
3/13	Championship Game	7 p.m.
ALL TIMES ARE MOUNTAIN * = Mountain West Conference game		

MOUNTAIN WEST

(Feb. 6)

No.	School	MW		Overall	
		W	L	W	L
1	BOISE STATE	8	1	17	3
1	New Mexico	8	1	18	2
3	Fresno State	6	3	13	7
4	Wyoming	5	3	12	5
5	UNLV	5	4	7	13
5	Utah State	5	4	10	10
7	Air Force	4	6	8	13
8	Nevada	3	6	7	13
9	San Diego State	2	6	7	12
10	Colorado State	2	7	8	12
11	San Jose State	1	8	2	18
x - Regular Season Champion					
y - Mountain West Tournament Champion					
# / # = WBCA Coaches Poll / AP Poll					

2018-19 BOISE STATE WOMEN'S BASKETBALL ROSTERS



Sofía Galerón
6-2 • R-Fr. • F



Braydey Hodgins
5-8 • Jr. • G



Tess Amundsen
6-1 • So. • F



Marta Hermida
5-11 • Sr. • G



Riley Lupfer
5-9 • Jr. • G



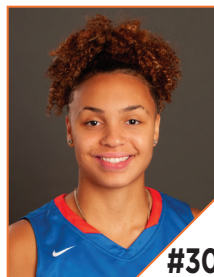
Ellie Woerner
6-0 • R-Jr. • G



Jayde Christopher
5-8 • R-Jr. • G



Rachel Bowers
6-3 • Fr. • F



Jade Loville
5-10 • Fr. • G



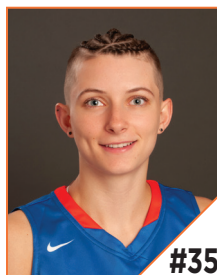
Marijke Vanderschaaf
6-3 • R-Sr. • C



Mallory McGwire
6-5 • Jr. • C



Joyce Harrell
6-0 • Sr. • F



Maggie Freeman
5-11 • Fr. • G



A'Shanti Coleman
6-2 • R-Jr. • F



Emerald Toth
6-1 • Jr. • F



Gordy Presnell
Head Coach

NUMERICAL ROSTER

NO.	STUDENTS	POS.	HT.	YR.	HOMETOWN (High School / College)
3	Sofía Galerón	F	6-2	R-Fr.	Burgos, Spain
14	Braydey Hodgins	G	5-8	Jr.	Pasco, Wash. (Chiawana HS)
15	Tess Amundsen	F	6-1	So.	Fresno, Calif. (Clovis West HS)
20	Marta Hermida	G	5-11	Sr.	Madrid, Spain (Magarita Salas HS)
21	Riley Lupfer	G	5-9	Jr.	Spokane, Wash. (Lewis & Clark HS)
22	Ellie Woerner	G	6-0	R-Jr.	Sammamish, Wash. (Eastlake HS / Portland)
23	Jayde Christopher	G	5-10	R-Jr.	Federal Way, Wash. (Cleveland HS / Kansas)
25	Rachel Bowers	F	6-3	Fr.	Newhall, Calif. (Canyon HS)
30	Jade Loville	G	5-10	Fr.	Sammamish, Wash. (Skyline HS)
31	Marijke Vanderschaaf	C	6-3	R-Sr.	Sammamish, Wash. (Eastlake HS)
32	Mallory McGwire	C	6-5	Jr.	Reno, Nev. (Reno HS / Oregon)
33	Joyce Harrell	F	6-0	Sr.	Seattle, Wash. (Cleveland HS)
35	Maggie Freeman	G	5-11	Fr.	Beaverton, Ore. (Southridge HS)
42	A'Shanti Coleman	F	6-2	R-Jr.	San Francisco, Calif. (Sacred Heart Cathedral / Arizona)
44	Emerald Toth	F	6-1	Jr.	Bozeman, Mont. (Bozeman HS)

Head Coach: Gordy Presnell (Northwest Nazarene, 1983: 14th season at Boise State, 32nd overall)

Assistant Coach: Heather Sower (Boise State, 1995: 17th season)

Assistant Coach: Cody Butler (Nevada, 2005: Seventh season)

Assistant Coach: Cariann Ramirez (Boise State, 2005: Third season as coach/Ninth overall)






Director of Operations: Julia Fishman (Puget Sound, 2014: Fourth season)

Graduate Assistant: Brittney Pahukoa (Boise State, 2017: Second season)

PRONUNCIATIONS

Name	Pronunciation
Boise	Boy-SEE
Broncos	Broncos (NOT "Lady" Broncos)
Tess Amundsen	Ä-mund-sen ("A" as in "Apple")
Rachel Bowers	BOW-ers
A'Shanti Coleman	Ah-SHAWN-tee
Sofía Galerón	So-FEE-a Gahl-eh-RONE
Marta Hermida	Air-MEE-duh
Braydey Hodgins	Braydee
Jade Loville	Jayde Luv-ELL
Riley Lupfer	LOOP-fer
Brittney Pahukoa	pow-uh-COE-uh
Gordy Presnell	Press-nell
Heather Sower	SÖ-wer
Emerald Toth	Tahth
Ellie Woerner	WAR-ner
Marijke Vanderschaaf	Muh-RY-kuh VAN-der-shawf

BOISE STATE LAST GAME STARTERS

Point Guard	Guard	Guard	Forward	Forward
				
Jayde Christopher 5-8 • R-Jr. Federal Way, Wash.	Riley Lupfer 5-9 • Jr. Spokane, Wash.	Marta Hermida 5-11 • Sr. Madrid, Spain	Joyce Harrell 6-0 • Sr. Seattle, Wash.	A'Shanti Coleman 6-2 • R-Jr. San Francisco, Calif.
Points 6.1	Points 12.5	Points 8.4	Points 7.3	Points 10.0
Rebounds 3.2	Rebounds 3.4	Rebounds 3.8	Rebounds 5.8	Rebounds 3.8
FG% .457	FG% .386	FG% .454	FG% .508	FG% .553
3FG% .300	3FG% .340	3FG% .420	3FG% -	3FG% .286
FT% .667	FT% .914	FT% .765	FT% .417	FT% .618

TOP PERFORMANCES

DOUBLE-DOUBLES

Joyce Harrell - 1

DOUBLE-DIGIT POINTS GAMES

Riley Lupfer - 15
A'Shanti Coleman - 11
Braydey Hodgins - 8
Marta Hermida - 7
Joyce Harrell - 6
Rachel Bowers - 5
Jayde Christopher - 5
Jade Loville - 5
Tess Amundsen - 2
Ellie Woerner - 2

20-POINT PLUS GAMES

Riley Lupfer - 3
Joyce Harrell - 1
Marta Hermida - 1
Braydey Hodgins - 1
Ellie Woerner - 1

30-POINT PLUS GAMES

None

10+ REBOUND GAMES

Joyce Harrell - 3

10+ ASSISTS GAMES

Jayde Christopher - 1

6 SCORE IN DOUBLE DIGITS

11/16/18 vs. Northwest Christian

5 SCORE IN DOUBLE DIGITS

12/19/18 vs. Eastern Washington
2/2/19 vs. Nevada

"5-5-5" COMBO (5 PTS/5 REB/5 AST)

Christopher - 1
Hodgins - 1
Lupfer - 1

BRONCO FASTBREAK NOTES
LAST TIME OUT

Boise State made its first 11 attempts from the field and went 12-for-13 (92.3 percent) in the first quarter Saturday against Nevada, rolling to an 80-65 win.

Riley Lupfer (14 points) led five Broncos scoring in double digits, as A'Shanti Coleman (13 points), Braydey Hodgins (12), Rachel Bowers (11), and Jayde Christopher (10) rounded out the quintet.

The Bronco defense also had a day, holding the Wolf Pack to just one 3-pointer in nine attempts, and dominating the glass by a 38-20 margin.

WHO'S NEXT

Boise State and UNLV meet for the first time this season when the Broncos visit Cox Pavilion Wednesday.

UNLV (7-13, 5-4 MW) has bounced back from an injury-plagued non-conference campaign, winning five of nine since starters Paris Strawther and Katie Powell returned to the lineup. Powell (14.3 ppg, 6.7 rpg) and Nikki Wheatley (11.6 ppg) lead the Lady Rebels statistically.

LAST YEAR'S MEETINGS

Boise State and UNLV split last season's series, each defending their own home court.

The Broncos beat the Lady Rebels, 69-60, at Taco Bell Arena on Dec. 30, 2017, behind seven 3-pointers and 28 points from Riley Lupfer. The Lady Rebels returned the favor on Feb. 3, routing the Broncos, 77-54, at Thomas & Mack Center.

PROGRAM-RECORD FIRST HALF

Saturday's 85-70 victory over Nevada closed Boise State's first half of Mountain West play at 8-1, the program's best mark at the halfway point since joining the conference in 2011-12.

Prior to this season's start to Mountain West play, the Broncos' best first-half performance was 7-2 in 2015-16.

THE 20-GAME MARK

Saturday's win over Nevada brought Boise State's record to 17-3, the program's best 20-game start since also being 17-3 in 1993-94.

Overall, it is the program's fourth 17-3 start (also 1976-77 and 1977-78). Boise State's best-ever 20-game start was a 19-1 mark in 1974-75.

ANOTHER BIG FEBRUARY ON TAP?

February may take place in the cold of winter, but for Boise State it's been a rather hot month over the past couple of seasons. The Broncos, following Feb. 2's win over Nevada, are now 13-3 during February since 2015-16, and have won 13 of the past 14 games during the month.

After losing its first two games in February 2016, the Broncos won the next six to finish the month 6-2. Last year, Boise State lost its February opener (77-54 at UNLV on Feb. 3) before reeling off six-straight wins to close the month.

AMONG THE NATION'S BEST

Boise State's recent performances from the field have lifted the Broncos up the national rankings in shooting percentages. Through the games of Feb. 3, Boise State ranks 22nd in the country in field-goal percentage (45.6 percent) and 17th in 3-point field-goal percentage (37.4 percent).

HOT IN MOUNTAIN WEST PLAY

The Broncos have also been one of the top-performing teams, both on the league table and in the stat rankings, since Mountain West play opened.

Through the first half of conference play, Boise State leads the Mountain West in the following categories in conference-only games: scoring offense (74.2 ppg), scoring margin (+11.3), field-goal percentage (47.5), 3-point field-goal percentage defense (25.4), and assists (16.56 apg).

DOMINATING THE GLASS

Boise State sure made rebounding an

HISTORICAL FACTS

Years of Women's Basketball	49th
First Year of Women's Basketball	1970-71
All-Time Program Record	740-580 (.561)
All-Time Head Coaches	6
Winning Seasons	26
.500 Seasons	3
Losing Seasons	19
20+ Win Seasons	7

CONFERENCE GAMES ONLY

All-Time Conference Record	329-303 (.521)
All-Time Tournament Record	24-24 (.500)
Winning Seasons	18
.500 Seasons	6
Losing Seasons	16
Regular Season Titles	5
1992	Big Sky
1994	Big Sky
2007	WAC
2008	WAC
2018	Mountain West
Regular Season Division Titles	2
1978	NWBL, Mountain Division
1998	Big West, Eastern Division
Tournament Titles	4
2007	WAC
2015	MW
2017	MW
2018	MW

CONFERENCE MEMBERSHIP

Northwest Women's Basketball League	1977-82
Mountain West Athletic Conference (MWAC)	1982-88
Big Sky Conference	1988-95
Big West Conference	1996-01
Western Athletic Conference (WAC)	2001-10
Mountain West Conference (MW)	2011-present

NATIONAL POSTSEASON APPEARANCES

NCAA Tournament Appearances (Record)	5 (0-5)
1994	at Washington, L 89-61
2007	vs. George Washington, L 76-67
2015	at Tennessee, L 72-61
2017	at UCLA, L 83-56
2018	at Louisville, L, 74-42
WNIT Tournament Appearances (Record)	2 (1-2)
1998	at LSU, L 58-38
2008	Idaho State, W 77-54 (First Round)
at TCU, L 85-56 (Second Round)	
WBI Tournament Appearances (Record)	1 (1-1)
2014	at Grand Canyon, W 52-51 (First Round)
at Stephen F. Austin, L 80-59 (Second Round)	
AIAW Tournament Appearances (Record)	1 (0-2)
1975	vs. Wayland Baptist, L 93-37
vs. Kansas State, L 65-37	

BOISE STATE vs. MOUNTAIN WEST

	MW	ALL
Air Force	13-1	16-1
Colorado State	5-9	9-10
Fresno State	5-6	15-24
New Mexico	8-6	11-7
Nevada	10-3	41-17
San Diego State	7-7	7-8
San Jose State	8-1	21-11
UNLV	5-9	8-9
Utah State	9-1	25-9
Wyoming	8-7	12-11
TOTALS	77-50	164-106

emphasis ahead of last week's games, as the Broncos dominated the boards, out-rebounding Colorado State and Nevada by a combined 73-45.

After setting the single-game opponent low of 25 Wednesday against the Rams, Boise State one-upped itself, holding Nevada to just 20 rebounds, tied for the fourth-lowest single-game total by an opponent, on Saturday. Boise State's plus-18 margin on the boards against the Wolf Pack also matched its season-best (Jan. 23 against Air Force).

FIRE START

Boise State got off to one of its best starts Saturday against Nevada, hitting its first 11 attempts from the field and going 12-for-13 (92.3 percent) in the first quarter.

The 11-straight buckets to open included a pair of 3-pointers from Riley Lupfer, and it took until a blocked layup from Jayde Christopher with 1:28 to go in the frame for the Broncos to miss a shot. Marta Hermida then made it a 12-for-13 quarter as she nailed a 3-pointer with 24 seconds on the clock.

WHO'S BACK OF THE WEEK: RILEY LUPFER

Junior guard Riley Lupfer wins the "Who's Back of the Week" honor after her performances against Colorado State and Nevada. The Bronco sharpshooter hit a combined eight 3-pointers and averaged 18.0 points over the wins, bringing her MW-only scoring average up to a team-best 13.1.

Wednesday against Colorado State, Lupfer six 3-pointers and scored a season high-matching 22 points, and followed up with two more triples and a team-high 14 points Saturday against Nevada.

WHEN RILEY GETS HOT...

Riley Lupfer hitting 3-pointers nearly always portends well for Boise State, as the Broncos are 11-1 all-time in games in which Lupfer hits at least five 3-pointers.

However, the one blemish on the mark came at UNLV last Feb. 3, when the Broncos fell to the Lady Rebels, 77-54, despite Lupfer going 5-for-10 from deep.

LUPFER APPROACHES ANOTHER BRONCO RECORD

With two more 3-pointers made during Mountain West play, Riley Lupfer will have 129 career 3-pointers in conference play, eclipsing the record of 128 set by Abby Vaughan (1999-03), who played in both the Big West and WAC.

BOWERS POWER

Freshman center Rachel Bowers has been making her name and presence known since the start of Mountain West play, and this past week was no exception.

Over the wins against Colorado State and Nevada, Bowers went a combined 9-for-11 from the field (81.8 percent) and a perfect 5-for-5 from the line, averaging 12.0 points and 2.5 rebounds. The performances boosted her credentials as one of the top freshmen in the loop, as through nine conference games, all off the bench, Bowers is shooting 62.2 percent (23-for-37) from the field, a perfect 11-for-11 from the line, and averaging 6.4 points and 3.0 rebounds over just 10.8 minutes per game.

CITY OF THREES

While the outdoor weather in Boise has been downright pleasant for this time of year, the Broncos have been making it rain in Taco Bell Arena on Mountain West opponents. Over the first five home games of the conference season, the Broncos have hit 43 triples (8.6 per game at a 39.8-percent clip).

Thrice in those five games the Broncos have hit at least 10 3-pointers, highlighted by 11 Jan. 30 against Colorado State.

PROTECT TACO BELL ARENA

Boise State went 7-2 in conference play at Taco Bell Arena last season, and are off to a 5-0 start this season after last week's home sweep of Colorado State and Nevada.

The Broncos are 46-19 all-time in Mountain West games at Taco Bell Arena, and have gone 7-2 in each of the past five seasons.

WHO ARE YOU GOING TO GUARD?

Boise State's depth has been on display quite a bit this season, especially with any player on the roster able to lead the team in scoring on any given night.

Through 20 games this season, the Broncos have had 10 different players (out of 13 active) lead or share the team scoring lead at least once.

THE DEPTH IS THERE

Boise State has also given opponents fits with its depth, as five players are averaging at least seven points per game over this 8-1 start to Mountain West play.

Riley Lupfer leads the group with 13.1 points per game in conference play, with A'Shanti Coleman behind her at 11.3 points per game. Also averaging at least seven points a game are Braydey Hodgins (9.4 ppg), Marta Hermida (7.3 ppg), and Joyce Harrell (7.0 ppg).

ANOTHER TEN-GAME WINNING STREAK

Jan. 23's win against Air Force extended the Broncos' winning streak at the time to 10 games, marking the third-straight season in which Boise State has posted a 10-game winning streak.

In both 2016-17 and 2017-18, the Broncos entered the NCAA Tournament on a 10-game winning streak, having won the final seven games of the regular season and three-straight in the Mountain West Tournament.

This year's streak would be snapped with Jan. 26's 64-52 loss at Wyoming.

PROGRAM-RECORD STREAK SNAPPED

Boise State set a program record Jan. 23 with its 16th-straight win against a conference opponent, defeating Air Force, 79-48. That streak would be snapped with Jan. 26's 64-52 loss at Wyoming.

While the win extended Boise State's program-best run against Mountain West competition (winning the last seven regular-season games of last season, three Mountain West tournament games, and this year's first six regular-season games), it eclipsed the program's all-time best mark against conference competition of 15, set from Jan. 12-March 12, 2008, against WAC competition.

The previous best streak against Mountain West competition was a 12-game run over the end of the 2016-17 season and first two games of last year.

HERMIDA NAMED MOUNTAIN WEST PLAYER OF THE WEEK

Senior guard Marta Hermida was named Mountain West Player of the Week Monday thanks in part to her second-half performance in Jan. 19's win at Fresno State.

Over the final 20 minutes in Fresno, Hermida scored all 21 of her points and made all five of her 3-pointers, finishing the game 8-for-12 from the field.

The performance followed her line of eight points, seven rebounds, and four assists in Jan. 16's win at Nevada, in which she grabbed her 500th-career rebound. That board made made her, along with former Bronco Tasha Harris (2004-10), just the second player in Boise State history to accumulate 1,000 points, 500 rebounds, and 300 assists in her career.

LUPFER JOINS THE 1,000-POINT CLUB

Junior guard Riley Lupfer scored 11 points in Jan. 19's win at Fresno State, the final two coming on a shot clock-beating runner with 3:47 to play and putting her at 1,001 career points, the 21st Bronco to join the club.

It capped a game in which Lupfer hit a pair of 3-pointers and added two steals in 29 minutes of action.

PROGRAM-BEST MW START

Jan. 12's win over San Jose State got Boise State out to the first 3-0 start to Mountain West play in program history. The Broncos had opened MW play 2-0 five times (including

this season), but had never, until Saturday, been able to get that third-straight win.

Boise State's all-time best start to conference play is an 10-0 run to open Northwest Basketball League (NWBL) play in 1977-78. This current 5-0 start is the program's best to a conference slate since an 8-0 start to the 2006-07 WAC campaign.

MARIJKE'S BACK

Redshirt senior center Marijke Vanderschaaf made her much-anticipated return to the court Jan. 12 against San Jose State, going 3-for-3 from the field for six points in five minutes of action.

It marked Vanderschaaf's return to action after a 13-month injury absence. The 2016-17 All-Mountain West Honorable Mention had been averaging 11.0 points and 6.7 rebounds through six games last season before suffering a torn ACL just 30 seconds into the seventh contest of the campaign, Dec. 7, 2017 against Washington.

Over six games this season, Vanderschaaf, though averaging just 3.0 minutes per game, is 5-for-8 from the field with 12 points.

WIN 650 FOR PRESNELL

Jan. 5's 69-66 victory at San Diego State was a milestone one for Boise State head coach Gordy Presnell, marking the 650th win of his illustrious career. Hitting the 650-win mark made Presnell the 16th active Division I women's basketball head coach, and the 24th active NCAA (all levels) women's basketball coach to do so.

Following the win at San Diego State, Presnell, in his 32nd season as a head coach, owns an overall record of 656-296. He is 260-169 at Boise State, now in his 14th season at the Bronco helm (2005-Present), and went 396-127 in 18 seasons at Seattle Pacific (1987-2005).

HERMIDA JOINS THE CLUB

Senior guard Marta Hermida became the 20th member of Boise State's 1,000-Point Club early in Dec. 16's 73-69 win at Washington.

Hermida entered the game at 997 points, and hit a 3-pointer 20 seconds into the contest to hit the 1,000-point mark on the nose. She would go on to finish the game with 12 points.

Through Feb. 2, Hermida's career tally stands at 1,078.

MANAGING THE MINUTES

Boise State's depth has been key to keeping its roster healthy and fresh entering Mountain West play. Entering Mountain West play, no Boise State player was averaging 30.0 minutes per game, as Riley Lupfer paced the team at 27.1 through the 11 non-conference games.

QUICK FACTS

GENERAL FACTS

Name	Boise State University
Location	Boise, Idaho
Founded	1932
Enrollment (Fall 2016)	25,540
Nickname	Broncos
Colors	Blue (royal) and Orange
Affiliation	NCAA Division I
Conference	Mountain West
Interim President	Martin Schimpf
Director of Athletics	Curt Apsey
Associate A.D./SWA	Christina VanTol
NCAA Faculty Rep.	Dr. Roger Munger
Athletic Dept. Phone	(208) 426-1288
Athletic Ticket Office Phone	(208) 426-4737

FACILITY FACTS

Name	Taco Bell Arena
Elevation (campus level)	2,704 Feet
Opened	Fall 1982
Capacity	12,480
BSU's Facility Record	326-158 (.674)
Press Row	(208) 426-1503

BASKETBALL STAFF FACTS

Head Coach	Gordy Presnell
Alma Mater	Northwest Nazarene, 1983
Years at Boise State	14th
Boise State Record (Years)	260-170 (14th)
Career Record (Years)	656-297 (32nd)
Basketball Office Phone	(208) 426-4452
Office Fax	(208) 426-3361

Assistant Coach	Heather Sower
Alma Mater	Boise State, 1995
Years at Boise State	17th
Office Phone	(208) 426-1760

Assistant Coach	Cody Butler
Alma Mater	Nevada, 2005
Years at Boise State	Seventh
Office Phone	(208) 426-4019

Assistant Coach	Cariann Ramirez
Alma Mater	Boise State, 2005
Years at Boise State	Third as coach/Ninth
Office Phone	(208) 426-4452

Director of Operations	Julia Fishman
Alma Mater	Puget Sound, 2014
Years at Boise State	Fourth
Office Phone	(208) 426-4891

Graduate Assistant	Brittney Pahukoa
Alma Mater	Boise State, 2017
Years at Boise State	Second
Office Phone	(208) 426-4891

TEAM FACTS

2017-18 Overall Record	23-10
2017-18 MW Record	14-4
2017-18 MW Finish	T-1st
2017-18 Postseason	NCAA Tournament First Round
Starters Returning/Lost	4/1
Letterwinners Returning/Lost	9/4
Transfers Eligible/Newcomers	1/4

Boise State's last regular-season non-conference slate without a player averaging 30 minutes a game came in 2014-15, when Deanna Weaver topped the team at 27.8.

GOING FOR A REPEAT AND A THREE-PEAT

This year, Boise State will be going for a repeat of its 2017-18 Mountain West regular-season title, and a three-peat at the conference tournament in March.

Should the Broncos capture the Mountain West Tournament crown, they would become just the second program to pull off the three-peat, matching New Mexico's run from 2002-04.

A repeat of the regular-season title would mark the second time in school history that Boise State has won back-to-back crowns, matching the 2007-08 and 2008-09 WAC regular-season titles.

REPEAT PERFORMANCE FOR LUPFER?

As Mountain West play gets set to begin, junior guard Riley Lupfer aims to repeat her record-setting performance of a season ago.

Over the 18-game Mountain West season last year, Lupfer averaged 18.9 points per game, shot 50.9 percent from the field, and hit a conference-record 79 3-pointers while hitting exactly half of her attempts (79-for-158) from downtown.

Four times Lupfer hit seven 3-pointers in a contest, and hit at least five in nine of the 18 games. She also posted eight 20-point performances.

HODGINS GRABS MOUNTAIN WEST PLAYER OF THE WEEK

Junior guard Braydey Hodgins claimed her second-career Mountain West Player of the Week honor Dec. 17, following her MVP performance at the Husky Classic.

Hodgins averaged 17.0 points and 5.0 rebounds, shooting 52.4 percent (11-for-21) from the field and 50.0 percent (9-for-18) over the two wins. In the title game against Washington, Hodgins scored 19 points, with 16 coming in the second half to help erase a 41-35 early third-quarter deficit.

Hodgins had earned her first conference weekly honor last March 4 after a 24-point effort in the regular-season finale at Wyoming.

ADD IT TO THE NEW TROPHY CASE

Boise State picked up its second "classic" title this season with a 2-0 performance at the Husky Classic in Seattle from Dec. 15-16.

Over Thanksgiving Weekend, the Broncos captured the Beach Classic in Long Beach with victories over Idaho (91-85) and Northern

Iowa (61-60). Riley Lupfer was named the event's MVP after averaging 14.5 points over the two games, and hitting a team-high five 3-pointers. Jayde Christopher was named to the All-Tournament Team as she averaged 11.5 points and 3.00 assists.

Just two more trophies to put on display in the team's brand-new trophy case in the Arguinchona Basketball Complex.

SEVEN WINS OVER 2018 POSTSEASON TEAMS

Boise State picked up its seventh win this season over a 2017-18 postseason team with Jan. 30's win over Colorado State, a 2018 WNIT participant. Earlier this season, at the Husky Classic (Dec. 15-16), Boise State knocked off 2018 NCAA Tournament participant Saint Francis (Pa.).

The Broncos are now 5-2 this season against 2018 postseason teams, having also fallen to 2018 NCAA Final Four participant and fifth-ranked Louisville, and beaten 2018 WNIT participants Idaho, Northern Iowa, and Wyoming, along with WBI participants Nevada and Fresno State.

THEY BOW DOWN TO US

Dec. 16's 73-69 victory at Washington marked Boise State's second-straight win over the Huskies, after last year's 85-62 victory at Taco Bell Arena.

It marks the first time the Broncos have ever taken two in a row from the Huskies, and the first back-to-back wins over a Pac-12 program since beating UCLA on Dec. 19, 1993 and Dec. 3, 1994.

FAMILY BRAGGING RIGHTS

Braydey Hodgins once again played some of her best basketball against a team for which a family member formerly played on Dec. 16 in Seattle. This time, Washington, alma mater of her mother, Karen (Murray) Hodgins, had to watch Braydey run wild as she scored 19 points, including 16 in the second half, in the 73-69 Bronco win.

Braydey is 2-1 against the Huskies, where Karen is currently seventh on the Huskies' all-time scoring list (1,745) and a member of the Washington Athletic Hall of Fame.

On Dec. 7, Hodgins was a thorn in the side of Eastern Washington for the second year in a row in Dec. 7's 67-55 Bronco win. For the second-straight season against the Eagles, Hodgins scored 14 points, this time going 5-for-8 from the field and hitting her first three 3-point attempts.

It gives Braydey more bragging rights at family get-togethers, as she is 3-0 all-time against Eastern Washington, the alma mater of older sisters Hayley and Delaney, who are currently the top two scorers in Eagles history (Delaney

Season Honors

Jayde Christopher

- Beach Classic All-Tournament Team

Marta Hermida

- Preseason All-Mountain West Team
- Mountain West Player of the Week (Jan. 21, 2019)

Braydey Hodgins

- Mountain West Player of the Week (Dec. 17, 2018)
- Husky Classic MVP

Jade Loville

- Preseason Mountain West Freshman of the Year

Riley Lupfer

- NCAA.com Starting Five (Nov. 19-25)
- Husky Classic All-Tournament Team
- Preseason Mountain West Player of the Year

with 2,120 points, Hayley with 1,865).

LUPFER EARNS NATIONAL HONOR

Junior guard Riley Lupfer was named to the NCAA.com Starting Five for the week of Nov. 19-25 in recognition of her performance at the Beach Classic over Thanksgiving Weekend.

Lupfer was named the Beach Classic MVP after leading the Broncos with 14.5 points per game and hitting five 3-pointers. She hit four 3-pointers in Saturday's comeback win over Northern Iowa, including the go-ahead triple with 1:27 to play which gave the Broncos the lead for good.

BIG-GAME CROWD

Boise State drew 4,125 fans to Nov. 19's matchup with No. 5/4 Louisville, the biggest crowd for a women's basketball-only date at Taco Bell Arena since the 2006-7 season.

The Broncos drew 4,518 for a 79-63 loss to Louisiana Tech on Feb. 3, 2007, the last time the program cracked the 4,000 mark for a home contest.

It should be noted that these numbers are in reference to a women's basketball-only crowd, meaning that the Bronco women's game was not part of a doubleheader with the men's team.

BRONCOS TABBED TO WIN MOUNTAIN WEST FOR SECOND-STRAIGHT SEASON

Boise State was tabbed to win the Mountain West regular-season title for the second-straight season with the release of the preseason poll Nov. 1. The Broncos earned 19 of 23 first-place votes from the conference head coaches and media members to finish ahead of UNLV (four first-place votes) and Fresno State in the top three.

The announcement underscores Boise State's rise to the top of the Mountain West since joining the conference in 2011-12. The

Broncos have been voted to finish in the Mountain West top three in each of the past five seasons (second in 2014-15, third in 2015-16, second in 2016-17, first in 2017-18 and 2018-19).

LUPFER LOOKING FOR BIG 2018-19

Junior guard Riley Lupfer was voted Preseason Mountain West Player of the Year on Nov. 1, becoming the first Bronco to earn the conference's top preseason honor.

It follows a breakout 2017-18 campaign in which Lupfer led the Broncos with 16.2 points per game and set the Boise State and Mountain West single-season records with 122 3-pointers made. The Spokane, Wash., native was thrice named Mountain West Player of the Week last season, and recorded four games with at least seven 3-pointers made. She went on to be voted the Most Outstanding Player of the Mountain West Tournament after averaging 16.7 points and shooting 44.4 percent (12-for-27) from 3-point range over Boise State's 3-0 run.

HERMIDA NAMED TO PRESEASON ALL-MW TEAM

Also earning recognition with the preseason conference announcements was senior guard Marta Hermida, who joined Riley Lupfer on the Preseason All-Mountain West Team. The inclusion of Lupfer and Hermida on the five-player team marked the first time since joining the Mountain West (2011-12) that the Broncos had multiple players on the squad. It also made for five-straight seasons in which the Broncos have landed at least one player to the squad, making Boise State the only program to achieve the feat over that span.

Hermida began her junior year (2017-18) off of a gold-medal performance with Spain's U20 National Team at the 2017 FIBA U20 European Women's Championship, and went on to average 10.8 points (second on the team) and a team-leading 4.70 assists per game for Boise State. The Madrid native posted the second triple-double in Boise State women's basketball history with 22 points, 11 rebounds, and 10 assists against Corban on Nov. 26, 2017, and was a key contributor to the Broncos' successful Mountain West Tournament run, averaging 12.7 points, 6.3 rebounds and 3.33 assists while shooting 43.6 percent from the floor over the three wins.

LOVILLE GRABS PRESEASON FRESHMAN HONOR

The Broncos had another first with the preseason conference honors on Nov. 1, as freshman guard Jade Loville was voted the Preseason Mountain West Freshman of the Year.

Loville will make her Boise State debut this season after a decorated prep career at Skyline High School in Sammamish, Wash. Loville was named to the All-USA

TODAY Washington Girls Second Team and Associated Press All-State (Wash.) 4A Honorable Mention following a 2017-18 senior campaign in which she averaged 37.1 points and 8.8 rebounds per game and shot 45 percent from the field. She also earned a spot on the All-KingCo 4A First Team, and for her career was a four-time All-KingCo 4A selection, being twice named to the Second Team (as a freshman and sophomore), before earning her first-team selections following her junior and senior seasons.

BRONCOS ADD MCGWIRE

Boise State added center Mallory McGwire via transfer in early May to round out the 2018-19 roster. McGwire, who joins the Broncos after playing the last two seasons at Oregon, will have two seasons of eligibility remaining after sitting out the 2018-19 campaign due to NCAA transfer rules.

Over two seasons at Oregon, the 6-foot-5 McGwire appeared in 75 games, making 43 starts. She averaged 6.1 points and 3.8 rebounds per game while blocking 66 shots and shooting 52.2 percent from the field. McGwire appeared in every single game the Ducks played the last two seasons, being a key part of Oregon's consecutive runs to the NCAA Tournament Elite Eight. In 2017-18, McGwire made 19 starts as the Ducks went 33-5 and captured the Pac-12 double, winning the program's first Pac-12 Tournament crown and its first regular-season title since 2000.

McGwire brings a deep athletic pedigree to Boise State. Her father, Dan, was a first-round NFL draft pick and spent five years in the league, playing for the Seattle Seahawks (1991-94) and Miami Dolphins (1995). Her uncle, Mark, played 16 seasons in Major League Baseball with the Oakland Athletics (1986-97) and St. Louis Cardinals (1997-2001), and currently serves as the bench coach for the San Diego Padres. Mallory's older sister, Morgan, completed her collegiate playing career at Santa Clara in 2017-18, where she was named All-WCC Honorable Mention.

2018-19 SCHEDULE

A rematch of 2018's NCAA Tournament First Round against Louisville, along with trips to Long Beach, Pullman, and Seattle, highlighted Boise State women's basketball's non-conference slate for the upcoming campaign.

The Cardinals, who defeated the Broncos, 74-42, at the KFC Yum! Center last year en route to their third Final Four appearance since 2009, made the trip to Taco Bell Arena to take on Boise State on Nov. 19.

The Broncos made the first of their three non-conference road trips over Thanksgiving weekend, playing on consecutive days at the Long Beach Classic from Nov. 23-24. A quick trip to Pullman for a matchup against

Washington State on Dec. 1, and a home date Dec. 7 against Eastern Washington preceded another two-games-in-two-days swing at the Husky Classic, hosted by Washington, from Dec. 15-16 in Seattle.

The Broncos' 18-game Mountain West slate, featuring nine games at home and nine away, tips off Wednesday, Jan. 2, 2019, and concludes Thursday, March 7.

The 2019 Mountain West Women's Basketball Championship, at which the Broncos are two-time defending champions and winners of three of the last four, will be held Sunday-Wednesday, March 10-13, at the Thomas & Mack Center in Las Vegas.

In 2018-19, the Broncos will play eight of its 10 Mountain West foes in home-and-home affairs, while meeting Utah State (Feb. 23 in Logan) and New Mexico (March 4 at Taco Bell Arena) just once apiece.

2017-18 RECAP

Boise State is coming off of a 2017-18 campaign in which it went 23-10 (14-4 MW), captured the Mountain West double (regular season and tournament titles), and made the NCAA Tournament for the third time in four years, returns four starters and nine letterwinners in 2018-19.

The Broncos' 14-4 conference record was its best since joining the Mountain West in 2011-12, and the team swept through Air Force, Colorado State, and Nevada in the Mountain West Tournament in March.

Boise State was tacked with a 16 seed in the NCAA Tournament, and traveled to Louisville, where they fell, 74-42, to the top-seeded Cardinals.

Boise State won its second-straight Mountain West Tournament title, and third in four seasons, with a 62-60 championship game victory over Nevada.

The Broncos also became just the third Mountain West program to win consecutive tournaments, joining Fresno State (2013-14) and New Mexico (2003-05, 2007-08).

THE PRESNELL FILE

YEAR-BY-YEAR RESULTS

Season	School	Overall W-L	Conference W-L (Pl)
1987-88	Seattle Pacific	16-11	13-10 (5)
1988-89	Seattle Pacific	24-6	17-5 (4)
1989-90	Seattle Pacific	21-9	17-7 (4)
1990-91	Seattle Pacific	18-11	7-9 (6)
1991-92	Seattle Pacific	17-13	5-5 (4)
1992-93	Seattle Pacific	17-10	7-3 (2)
1993-94	Seattle Pacific	17-10	6-4 (3)
1994-95	Seattle Pacific	21-8	7-3 (2)
1995-96	Seattle Pacific	17-10	3-7 (4)
1996-97	Seattle Pacific	26-3	7-1 (1)
1997-98	Seattle Pacific	27-3	7-1 (1)
1998-99	Seattle Pacific	19-10	11-7 (4D)
1999-00	Seattle Pacific	21-7	13-5 (3)
2000-01	Seattle Pacific	24-5	18-4 (1)
2001-02	Seattle Pacific	22-6	14-4 (2)
2002-03	Seattle Pacific	29-1	18-0 (1)
2003-04	Seattle Pacific	30-1	18-0 (1)
2004-05	Seattle Pacific	30-3	17-1 (1)
2005-06	Boise State	15-15	6-10 (6)
2006-07	Boise State	24-9	12-4 (t-1)
2007-08	Boise State	24-8	14-2 (1)
2008-09	Boise State	16-15	9-7 (t-5)
2009-10	Boise State	19-12	8-8 (t-4)
2010-11	Boise State	12-19	3-13 (8)
2011-12	Boise State	15-16	5-9 (6)
2012-13	Boise State	11-19	4-12 (7)
2013-14	Boise State	18-14	12-6 (T-3rd)
2014-15	Boise State	22-11	11-7 (4th)
2015-16	Boise State	19-11	12-6 (3rd)
2016-17	Boise State	25-8	12-6 (3rd)
2017-18	Boise State	23-10	14-4 (T-1st)
2018-19	Boise State	17-3	8-1

Totals	Record	Pct.
at Seattle Pacific	396-127	.757
at Boise State	260-170	.605
Overall	656-297	.688
Postseason	22-18	.550
Winning Seasons	27	
.500 Seasons	1	
Losing Seasons	3	

HIGHLIGHTS

NCAA Div. II Winningest Coaches All-Time

By Percentage	t-10th	75.7%
By Victories	21st	396

(as of his departure in summer of 2005)

COACH OF THE YEAR HONORS

TOTAL	15
WBCA National Division II	2
WBCA West Region Division I	1
WBCA West Region Division II	4
Western Athletic Conference (WAC)	1
Other Conference COY	8

CONFERENCE CHAMPIONSHIPS

TOTAL	12
Mountain West	3
Western Athletic (WAC)	2
Pacific West	2
Great Northwest Athletic (GNAC)	5

NATIONAL POSTSEASON APPEARANCES

TOTAL	19
NCAA Division I Tournament	4
First Round	4
WNIT	1
Second Round	1
WBI	1
Second Round	1
NCAA Division II Tournament	10
Reached 2nd round	7
Reached Sweet 16	6
Reached Elite Eight	3
Reached Final (runner-up)	1
Record in regional title games	3-3
NAIA Tournament	3
Reached Region 2nd round	2

Gordy PRESNELL

Boise State Head Coach

14th Season at Boise State; 32nd Overall

Alma Mater: Northwest Nazarene, 1983;

Seattle Pacific, 1989

Hometown: Lapwai, Idaho



BOISE STATE TENURE (2005-present)

Fourteen years ago Gordy Presnell returned to his home state to become the sixth head coach in Boise State University's women's basketball program history. He brought with him 18 years of head-coaching experience and a long record of success. Presnell currently ranks first in Bronco history for victories by a coach with a record of 260-170 (.603) overall. The 2018-19 season marks his 32nd as a collegiate head coach with a career record of 656-297 (.687).

Presnell's Bronco teams have reached the NCAA Tournament on four occasions (2007, 2015, 2017, 2018) while making six postseason appearances. Under his watch, Boise State has also won three regular-season titles (2007-08 WAC; 2018 Mountain West) and four conference tournament titles (2007 WAC; 2015, 2017, 2018 Mountain West).

Under Presnell's guidance, the Broncos made program history in 2017-18, capturing the Mountain West double (regular season and tournament titles) for the first time while going 23-10 overall. The Broncos won a program-best 14 games in Mountain West play sweeping to their second-straight conference tournament title and third in four seasons.

For the second season in a row, the Broncos heated up when it mattered most, once again winning 10-straight games heading into the first round of the NCAA Tournament. In conference play, the Broncos were the only Mountain West team to defeat every other team at least once during the regular season.

Guards Riley Lupfer and Marta Hermida were named to the All-Mountain West Team for their performances during the season, while Lupfer went on to be named the Mountain West Tournament MVP.

The achievements of the 2017-18 campaign came on the heels of a 2016-17 season in which Presnell led the Broncos to a program-record 25 wins in addition to the Mountain West Tournament title and second NCAA Tournament appearance in three years.

On Dec. 18, 2017, Presnell recorded his 600th career win as Boise State defeated Portland, 74-60, at Taco Bell Arena. With 616 career wins entering the 2017-18 campaign, Presnell ranks 55th among all NCAA women's basketball coaches and 30th among active coaches.

Since Boise State joined the Mountain West in 2011-12, the Broncos, under Presnell, lead all conference schools with three NCAA Tournament appearances.

The Broncos have recorded nine winning seasons over Presnell's 13-year tenure. After going 15-15 in his first season (2005-06), the Broncos recorded four-consecutive winning seasons, including a then-school-record 24 wins in both the 2006-07 (24-9) and 2007-08 (24-8) campaigns. Boise State currently has an active streak of five-straight winning seasons with four national postseason appearances over that stretch. Presnell's teams have gone 122-94 (.565) in conference games and an impressive 144-56 (.720) at home in Boise, including a perfect 14-0 mark in 2007-08.

Over the course of his tenure Presnell's Broncos have pushed the tempo of the game. His teams are routinely ranked among the top scoring and rebounding teams in the conference and have set numerous school records along the way. Presnell coached teams have set the school record for points in a season three times in 2006-07 (2,275), 2007-08 (2,330) and 2014-15 (2,331), in addition to recording six of the top 10 season totals all-time (46 years). In rebounding the Broncos have turned in the top six totals all-time and have set the record three times in 2005-06 (1,252), 2006-07 (1,330) and most recently 2007-08 (1,335).

They have five of the top 10 scoring averages in program history including the fourth-best mark of 72.8 points per game

in 2007-08 and the fifth-most at 70.6 in 2014-15. Presnell's Broncos have six of the top 10 season marks for field goals made, seven of the top 10 in field goal attempts, eight of the top 10 in 3-point field goals made and the top 10 marks for 3-point field goal attempts. His 2015-16 team set the school record for free-throw percentage hitting .752; while his 2011-12 squad hit .742 and the 2012-13 .734 to round out the top three marks all-time.

In 2007, Presnell led the team to new heights with a 24-9 overall record, they won the league regular-season crown and WAC Tournament title advancing to the NCAA Tournament, the program's first postseason national tournament since the 1998 WNIT. For his coaching performance he was named the WAC and WBCA Division I Regional Coach of the Year.

In addition to the regular-season and conference tournament titles, and NCAA Tournament appearances, program honors during Presnell's tenure at Boise State include: advancing to the second round in both the 2008 Women's National Invitation Tournament and the 2014 Women's Basketball Invitational; one WBCA All-Region and one Honorable Mention All-America honors; 13 all-conference honors, eight conference all-freshmen team members, two conference newcomers of the year, two freshmen of the year, three conference all-defensive team honors, seven conference all-tournament team honors with three tournament MVPs, four CoSIDA Academic All-District selections and a combined 65 academic all-conference honors by 27 individuals.

PRIOR TO BOISE STATE

Prior to taking over at Boise State, Presnell coached for 18 successful years at Seattle Pacific University in Washington. At SPU, he inherited a program that had not recorded a winning season in the previous nine years. He built the Falcons into a NCAA Division II national power, accumulating an overall record of 396 victories with 127 defeats (.757). Along the way his teams amassed an average of 22 wins per season while claiming seven conference championships, including four in his last five seasons. In addition, his teams were an impressive 221-29 (.884) at home in Broughman Pavilion, including five unbeaten home seasons.

On the national scene under Presnell, the Falcons advanced to nine-straight (1997-2005) and 10 of 11 NCAA Division II tournaments while he was in Seattle. Overall, Seattle Pacific made postseason appearances in 13 of his 18 years, 10 NCAA and three NAIA. Presnell's teams reached three NCAA Division II Elite Eights and advanced to the 2005 national title game.

At the time of his departure from Seattle Pacific in the summer of 2005, Presnell was ranked tied for 10th-place nationally among NCAA Division II coaches for win percentage (.757) and 21st for total victories.

COACHING HIGHLIGHTS

In 31 years as a collegiate head coach Presnell has experienced 27 winning seasons and one at .500. His teams have won a combined 10 regular-season titles, seven at SPU and three at Boise State. In addition, he has guided 19 of his 31 squads to postseason national tournaments.

During his career he has been named conference coach of the year eight times, WBCA Regional Coach of the Year five times (four at NCAA Division II level and one at Division I), and the WBCA NCAA Division II National Coach of the Year twice. His coach of the year honors now total 15 in 31 years. In 2007 during the NCAA's 25th anniversary celebration for women's sports, coach Presnell was listed as one of the top coaches all-time in their publication "Women's Basketball Finest."



MISCELLANEOUS STATS

CATEGORY	SEASON	CAREER
Double-Doubles	0	0
Double-Figure Points	0	0
Double-Figure Rebounds	0	0
Double-Figure Assists	0	0
20-plus Points	0	0
30-plus Points	0	0
Team-High Points	1	1
Team-High Rebounds	0	0
Team-High Assists	0	0

KEY 2018-19 NOTES

Scored six points on 3-of-4 shooting and grabbed four rebounds in her Boise State debut against CSUN (Nov. 8)...went 3-for-3 from the field, scoring seven points with five rebounds against Northern Iowa (Nov. 24)...grabbed four rebounds with five points against Southern Utah (Dec. 19)...grabbed five rebounds with two points against Air Force (Jan. 23)...scored seven points on 3-for-5 shooting at Wyoming (Jan. 26).

3 • SOFÍA GALERÓN

Forward • 6-2 • Fr. • Burgos, Spain

GAME-BY-GAME STATISTICS

THE STAT CREW SYSTEM

Boise State Individual Game-by-Game (as of Feb 03, 2019)
All games

#03 GALERON, Sofia

				Total		3-Pointers		Free throws		Rebounds											
Opponent	Date	gs	min	fg-fga	pct	3fg-fga	pct	ft-fga	pct	off	def	tot	avg	pf	a	t/o	blk	stl	pts	avg	
CSUN	11/08/18	11	3-4	.750	0-0	.000	0-0	.000	1	3	4	4.0	2	0	1	0	1	6	6.0		
SOUTHERN ORE.	11/10/18	12	0-2	.000	0-0	.000	0-0	.000	3	0	3	3.5	1	4	2	0	1	0	3.0		
NORTHWEST CHRST.	11/16/18	18	1-7	.143	0-2	.000	0-0	.000	2	3	5	4.0	3	3	1	0	0	2	2.7		
LOUISVILLE	11/19/18	10	0-0	.000	0-0	.000	0-0	.000	0	1	1	3.3	2	0	0	0	0	0	2.0		
vs Idaho	11/23/18	4	1-1	1.000	0-0	.000	1-1	1.000	0	1	1	2.8	2	0	2	0	0	3	2.2		
vs Northern Iowa	11/24/18	13	3-3	1.000	1-1	1.000	0-0	.000	4	1	5	3.2	0	0	0	1	1	7	3.0		
at Washington St.	12/01/18	16	1-2	.500	1-2	.500	0-0	.000	2	1	3	3.1	1	0	1	0	0	3	3.0		
EASTERN WASH.	12/07/18	14	2-3	.667	0-0	.000	0-0	.000	1	1	2	3.0	2	0	1	0	0	4	3.1		
vs Saint Francis (PA)	12/15/18	11	2-4	.500	0-0	.000	0-0	.000	0	1	1	2.8	0	0	1	0	0	4	3.2		
at Washington	12/16/18	7	0-2	.000	0-0	.000	0-0	.000	0	2	2	2.7	0	1	1	1	0	0	2.9		
SOUTHERN UTAH	12/19/18	15	2-4	.500	1-2	.500	0-0	.000	0	4	4	2.8	3	1	4	1	2	5	3.1		
WYOMING	01/02/19	5	0-0	.000	0-0	.000	0-0	.000	0	0	0	2.6	2	1	0	1	0	0	2.8		
at San Diego State	1-5-19	3	0-0	.000	0-0	.000	0-0	.000	0	0	0	2.4	0	0	0	0	0	0	2.6		
SAN JOSE ST.	01/12/19	10	2-3	.667	1-2	.500	0-0	.000	0	1	1	2.3	0	1	0	1	1	5	2.8		
at Nevada	1/16/19	0	0-0	.000	0-0	.000	0-0	.000	0	0	0	2.1	0	0	0	0	0	0	2.6		
at Fresno State	1/19/19	4	0-0	.000	0-0	.000	0-0	.000	0	0	0	2.0	0	0	0	0	0	0	2.4		
AIR FORCE	01/23/19	10	1-2	.500	0-0	.000	0-0	.000	2	3	5	2.2	0	0	1	1	1	2	2.4		
at Wyoming	01/26/19	12	3-5	.600	1-2	.500	0-0	.000	1	2	3	2.2	2	1	1	2	0	7	2.7		
COLORADO ST.	01/30/19	12	1-4	.250	1-2	.500	0-0	.000	0	1	1	2.2	3	1	1	1	0	3	2.7		
NEVADA	02/02/19	8	1-3	.333	0-0	.000	0-0	.000	2	1	3	2.2	0	0	1	0	0	2	2.7		
Totals		0	195	23-49	.469	6-13	.462	1-1	1.000	18	26	44	2.2	23	13	18	9	7	53	2.7	

CAREER STATISTICS & RANKINGS

Boise State Women's Basketball
Individual Career History

GALERON, Sofia

Season	gp-gs	min/avg	Total		3-Point		F-Throws		Rebounds				pf	fo	ast	to	blk	stl	Scoring	
			fg-fga	pct	fg-fga	pct	ft-fla	pct	off	def	tot	avg							pts	avg
2018-19	20-0	195/9.8	23-49	.469	6-13	.462	1-1	1.000	18	26	44	2.2	23	0	13	18	9	7	53	2.7
TOTAL	20-0	195/9.8	23-49	.469	6-13	.462	1-1	1.000	18	26	44	2.2	23	0	13	18	9	7	53	2.7

SINGLE-GAME HIGHS [all-time ranking]:

Points: 7, at Wyoming -- 01/26/19; vs Northern Iowa -- 11/24/18

Rebounds: 5, Air Force -- 01/23/19; Northwest Chrst. -- 11/16/18; vs Northern Iowa -- 11/24/18

Assists: 4, Southern Ore. -- 11/10/18

Steals: 2, Southern Utah -- 12/19/18

Blocks: 2, at Wyoming -- 01/26/19

FG made: 3, at Wyoming -- 01/26/19; CSUN -- 11/08/18; vs Northern Iowa -- 11/24/18

FG attempts: 7, Northwest Chrst. -- 11/16/18

3FG made: 1, 6 times

3FG attempts: 2, 6 times

FT made: 1, vs Idaho -- 11/23/18

FT attempts: 1, vs Idaho -- 11/23/18



MISCELLANEOUS STATS

CATEGORY	SEASON	CAREER
Double-Doubles	0	0
Double-Figure Points	7	18
Double-Figure Rebounds	0	0
Double-Figure Assists	0	1
20-plus Points	1	3
30-plus Points	0	0
Team-High Points	3	8
Team-High Rebounds	1	5
Team-High Assists	1	12

KEY 2018-19 NOTES

Scored eight points with six rebounds and two assists against CSUN (Nov. 8)...went 3-for-4 from 3-point range and scored 12 points against Louisville (Nov. 19)...scored 23 points on 6-of-9 shooting and went 9-for-10 from the line against Idaho (Nov. 23)...went 5-for-8 from the field and hit three triples for 14 points against Eastern Washington (Dec. 7)...named Husky Classic MVP after averaging 17.0 points and 5.0 rebounds, shooting 52.4 percent from the field, and 50.0 percent from 3-point range over two Bronco wins (Dec. 15-16)...scored 15 points, hit a career-high five 3-pointers in win over Saint Francis (Pa.) (Dec. 15)...finished with 19 points, including 16 in the second half, on 6-for-12 shooting with four 3-pointers and five rebounds in Husky Classic title-game win at Washington (Dec. 16)...grabbed career-high eight rebounds to go with eight points against Wyoming (Jan. 2)...scored 17 points with five rebounds and five assists at San Diego State (Jan. 5)...had a career-high six steals against San Jose State (Jan. 12)...went 7-for-12 from the field, hit three triples, scored 17 points with four rebounds against Air Force (Jan. 23)...scored 12 points on 5-of-7 shooting against Nevada (Feb. 2).

14 • BRAYDEY HODGINS

Guard • 5-8 • Jr. • Pasco, Wash. (Chiawana HS)

GAME-BY-GAME STATISTICS

THE STAT CREW SYSTEM

Boise State Individual Game-by-Game (as of Feb 03, 2019)
All games

#14 HODGINS, Braydey

Opponent	Date	qs	min	Total		3-Pointers		Free throws		Rebounds				pf	a	t/o	blk	stl	pts	avg	
				fg-fga	pct	3fg-fga	pct	ft-fga	pct	off	def	tot	avg								
CSUN	11/08/18		19	2-7	.286	1-5	.200	3-4	.750	0	6	6	6.0	4	2	1	1	0	8	8.0	
SOUTHERN ORE.	11/10/18	*	19	2-4	.500	1-2	.500	1-2	.500	0	5	5	5.5	3	1	2	1	1	6	7.0	
NORTHWEST CHRST.	11/16/18	*	21	1-5	.200	1-3	.333	2-2	1.000	0	2	2	4.3	1	3	1	1	2	5	6.3	
LOUISVILLE	11/19/18		23	3-6	.500	3-4	.750	3-4	.750	1	1	2	3.8	3	0	2	0	0	12	7.8	
vs Idaho	11/23/18	*	21	6-9	.667	2-4	.500	9-10	.900	1	2	3	3.6	3	1	1	1	2	23	10.8	
vs Northern Iowa	11/24/18	*	21	0-8	.000	0-4	.000	0-0	.000	1	2	3	3.5	2	1	1	0	0	0	9.0	
at Washington St.	12/01/18		21	1-7	.143	0-3	.000	4-6	.667	0	3	3	3.4	2	3	2	0	1	6	8.6	
EASTERN WASH.	12/07/18	*	29	5-8	.625	3-6	.500	1-2	.500	1	2	3	3.4	2	5	2	0	1	14	9.3	
vs Saint Francis (PA)	12/15/18	*	26	5-9	.556	5-8	.625	0-0	.000	1	4	5	3.6	4	0	2	0	3	15	9.9	
at Washington	12/16/18		25	6-12	.500	4-10	.400	3-6	.500	2	3	5	3.7	4	1	3	0	0	19	10.8	
SOUTHERN UTAH	12/19/18	*	23	3-4	.750	3-4	.750	0-0	.000	0	0	0	3.4	1	4	1	0	1	9	10.6	
WYOMING	01/02/19	*	34	2-8	.250	2-4	.500	2-4	.500	0	8	8	3.8	2	2	2	0	0	8	10.4	
at San Diego State	1-5-19		29	3-10	.300	2-4	.500	9-10	.900	2	3	5	3.8	1	5	1	0	1	17	10.9	
SAN JOSE ST.	01/12/19	*	21	1-8	.125	0-3	.000	0-0	.000	1	1	2	3.7	2	3	3	1	6	2	10.3	
at Nevada	1/16/19	*	31	2-5	.400	1-2	.500	3-4	.750	0	0	0	3.5	4	2	2	0	2	8	10.1	
at Fresno State	1/19/19		15	2-6	.333	1-5	.200	2-2	1.000	1	1	2	3.4	2	1	2	1	1	7	9.9	
AIR FORCE	01/23/19	*	24	7-12	.583	3-6	.500	0-0	.000	1	3	4	3.4	3	2	4	1	1	17	10.4	
at Wyoming	01/26/19	*	27	2-6	.333	1-3	.333	1-1	1.000	0	3	3	3.4	1	0	3	0	0	6	10.1	
COLORADO ST.	01/30/19	*	27	2-4	.500	2-4	.500	2-2	1.000	0	5	5	3.5	2	3	1	0	1	8	10.0	
NEVADA	02/02/19		21	5-7	.714	2-2	1.000	0-0	.000	1	1	2	3.4	1	2	2	0	3	12	10.1	
Totals			13	477	60-145	.414	37-86	.430	45-59	.763	13	55	68	3.4	47	41	38	7	26	202	10.1

CAREER STATISTICS & RANKINGS

Season	gp-gs	min/avg	Total		3-Point		F-Throws		Rebounds				pf	fo	ast	to	blk	stl	Scoring	
			fg-fga	pct	fg-fga	pct	ft-fa	pct	off	def	tot	avg							pts	avg
2016-17	33-0	416/12.6	33-94	.351	15-38	.395	35-52	.673	13	44	57	1.7	67	3	37	60	3	13	116	3.5
2017-18	29-18	763/26.3	75-199	.377	29-84	.345	59-81	.728	21	75	96	3.3	63	1	95	88	7	25	238	8.2
2018-19	20-13	477/23.9	60-145	.414	37-86	.430	45-59	.763	13	55	68	3.4	47	0	41	38	7	26	202	10.1
TOTAL	82-31	1656/20.2	168-438	.384	81-208	.389	139-192	.724	47	174	221	2.7	177	4	173	186	17	64	556	6.8

SINGLE-GAME HIGHS [all-time ranking]:

Points: 25, vs #5 Colorado State -- 03/07/18

Rebounds: 8, Wyoming -- 01/02/19

Assists: 10 [t-9th], at San Diego State -- 01-13-18

Steals: 6, San Jose St. -- 01/12/19

Blocks: 1, 7 times

FG made: 9, at Wyoming Cowgirls -- 3/2/18

FG attempts: 18, at Wyoming Cowgirls -- 3/2/18

3FG made: 5, vs Saint Francis (PA) -- 12/15/18

3FG attempts: 10, at Washington -- 12/16/18

FT made: 9, at San Diego State -- 1-5-19; vs Idaho -- 11/23/18

FT attempts: 10, at San Diego State -- 1-5-19; vs Idaho -- 11/23/18



MISCELLANEOUS STATS

CATEGORY	SEASON	CAREER
Double-Doubles	0	0
Double-Figure Points	1	5
Double-Figure Rebounds	0	0
Double-Figure Assists	0	0
20-plus Points	0	0
30-plus Points	0	0
Team-High Points	0	0
Team-High Rebounds	0	0
Team-High Assists	0	0

KEY 2018-19 NOTES

Came off the bench to go 4-for-6 from the field, 2-of-3 from deep for 10 points, and rack up a +17 in just 10 minutes against Wyoming (Jan. 2)... went 4-for-4 from the field, scored nine points against San Jose State (Jan. 12)...scored a season-high 12 points at Nevada, going 5-for-6 from the field and 2-of-3 from 3-point range (Jan. 16).

15 • TESS AMUNDSEN

Forward • 6-1 • So. • Fresno, Calif.

GAME-BY-GAME STATISTICS

THE STAT CREW SYSTEM

Boise State Individual Game-by-Game (as of Feb 03, 2019)
All games

#15 AMUNDSEN, Tess

Opponent	Date	gs	min	Total		3-Pointers		Free throws		Rebounds				pf	a	t/o	blk	stl	pts	avg
				fg	fga	fg	fga	ft	fta	off	def	tot	avg							
CSUN	11/08/18	7	1-5	.200	0-1	.000	0-0	.000	0-0	1	0	1	1.0	0	0	0	0	0	2	2.0
SOUTHERN ORE.	11/10/18	8	1-3	.333	1-2	.500	0-0	.000	1	1	2	1.5	3	2	1	0	1	3	2.5	
NORTHWEST CHRST.	11/16/18	13	1-4	.250	0-3	.000	0-0	.000	0	4	4	2.3	3	0	2	0	1	2	2.3	
LOUISVILLE	11/19/18	1	0-0	.000	0-0	.000	0-0	.000	0	0	0	1.8	0	0	1	0	0	0	1.8	
vs Idaho	11/23/18	3	0-0	.000	0-0	.000	0-0	.000	0	0	0	1.4	1	0	0	0	0	0	1.4	
WYOMING	01/02/19	10	4-6	.667	2-3	.667	0-1	.000	0	0	0	1.2	3	0	0	0	0	10	2.8	
at San Diego State	1-5-19	4	0-0	.000	0-0	.000	0-0	.000	0	0	0	1.0	0	0	0	0	0	0	2.4	
SAN JOSE ST.	01/12/19	11	4-4	1.000	1-1	1.000	0-0	.000	0	1	1	1.0	0	0	1	0	0	9	3.3	
at Nevada	1/16/19	8	5-6	.833	2-3	.667	0-0	.000	0	2	2	1.1	1	0	1	0	1	12	4.2	
at Fresno State	1/19/19	12	2-5	.400	0-1	.000	0-0	.000	0	0	0	1.0	3	2	2	0	0	4	4.2	
AIR FORCE	01/23/19	11	1-3	.333	0-1	.000	2-2	1.000	2	2	4	1.3	2	2	1	1	1	4	4.2	
at Wyoming	01/26/19	9	1-3	.333	0-1	.000	0-0	.000	0	0	0	1.2	1	0	0	0	0	2	4.0	
COLORADO ST.	01/30/19	4	0-0	.000	0-0	.000	2-2	1.000	0	1	1	1.2	0	1	2	0	0	2	3.8	
NEVADA	02/02/19	6	0-0	.000	0-0	.000	0-0	.000	1	1	2	1.2	2	0	0	0	0	0	3.6	
Totals		0	107	20-39	.513	6-16	.375	4-5	.800	5	12	17	1.2	19	7	11	1	4	50	3.6

Game-by-Game

Boise State

CAREER STATISTICS & RANKINGS

Season	gp-gs		min/avg		Total		3-Point		F-Throws		Rebounds				Other Stats							Scoring	
	gp	gs	min	avg	fg-fga	pct	fg-fga	pct	ft-fa	pct	off	def	tot	avg	pf	fo	ast	to	blk	stl	pts	avg	
2017-18	31	6	368	11.9	45-118	.381	23-66	.348	29-34	.853	14	37	51	1.6	35	0	16	25	2	10	142	4.6	
2018-19	14	0	107	7.6	20-39	.513	6-16	.375	4-5	.800	5	12	17	1.2	19	0	7	11	1	4	50	3.6	
TOTAL	45	6	475	10.6	65-157	.414	29-82	.354	33-39	.846	19	49	68	1.5	54	0	23	36	3	14	192	4.3	

SINGLE-GAME HIGHS [all-time ranking]:

Points: 19, at San Diego State -- 01-13-18

Rebounds: 4, 5 times

Assists: 2, 6 times

Steals: 1, 14 times

Blocks: 1, Air Force -- 01/23/19

FG made: 6, at San Diego State -- 01-13-18

FG attempts: 13, at San Diego State -- 01-13-18

3FG made: 4, Washington -- 12/07/17

3FG attempts: 8, Washington -- 12/07/17

FT made: 6, at San Jose State -- 01/24/18

FT attempts: 6, at San Jose State -- 01/24/18



MISCELLANEOUS STATS

CATEGORY	SEASON	CAREER
Double-Doubles	0	2
Triple-Doubles	0	1
Double-Figure Points	6	51
Double-Figure Rebounds	0	4
Double-Figure Assists	0	2
20-plus Points	0	6
30-plus Points	0	0
Team-High Points	1	14
Team-High Rebounds	3	18
Team-High Assists	4	30

KEY 2018-19 NOTES

Became 20th member of Boise State's 1,000-Point Club on Dec. 16 at Washington...became just the second player in Boise State history to accumulate 1,000 points, 500 rebounds, and 300 assists in her career, joining Tasha Harris (2004-10)...named to Preseason All-Mountain West Team...opened season with 16 points, hitting four 3-pointers, in win over CSUN (Nov. 8)...scored 18 points with four 3-pointers against Southern Oregon (Nov. 10)...grabbed six rebounds to go with seven points against Louisville (Nov. 19)...scored 11 points, shot 4-for-7, including the game-winning jumper, in win over Northern Iowa (Nov. 24)...hit three 3-pointers for nine points against Eastern Washington (Dec. 7)...went 4-for-7 from the field with three 3-pointers in a 12-point, four-rebound performance at Washington (Dec. 16)...scored 11 points with three rebounds and four assists against Southern Utah (Dec. 19)...made a pair of steals with three assists and seven points against Wyoming (Jan. 2)...hit three 3-pointers, scored 13 points with six assists against San Jose State (Jan. 12)...scored eight points with seven rebounds and four assists at Nevada (Jan. 16).

20 • MARTA HERMIDA

Guard • 5-11 • Sr. • Madrid, Spain (Magarita Salas HS)

GAME-BY-GAME STATISTICS

THE STAT CREW SYSTEM

Boise State Individual Game-by-Game (as of Feb 03, 2019)
All games

#20 HERMIDA, Marta

				Total		3-Pointers		Free throws		Rebounds											
Opponent	Date	gs	min	fg-fga	pct	3fg-fga	pct	ft-fga	pct	off	def	tot	avg	pf	a	t/o	blk	stl	pts	avg	
CSUN	11/08/18	*	26	5-8	.625	4-7	.571	2-2	1.000	1	3	4	4.0	3	4	3	0	2	16	16.0	
SOUTHERN ORE.	11/10/18	*	20	7-10	.700	4-6	.667	0-0	.000	1	3	4	4.0	0	1	3	0	1	18	17.0	
NORTHWEST CHRST.	11/16/18		17	3-4	.750	1-1	1.000	0-0	.000	0	4	4	4.0	0	2	2	0	0	7	13.7	
LOUISVILLE	11/19/18	*	27	3-9	.333	1-4	.250	0-0	.000	0	6	6	4.5	1	1	7	0	2	7	12.0	
vs Idaho	11/23/18	*	17	0-3	.000	0-0	.000	2-2	1.000	1	6	7	5.0	2	4	1	0	0	2	10.0	
vs Northern Iowa	11/24/18		25	4-7	.571	1-3	.333	2-2	1.000	1	2	3	4.7	0	0	1	0	1	11	10.2	
at Washington St.	12/01/18	*	20	1-12	.083	0-7	.000	2-2	1.000	1	2	3	4.4	0	2	2	0	0	4	9.3	
EASTERN WASH.	12/07/18	*	30	3-12	.250	3-7	.429	0-0	.000	2	2	4	4.4	0	4	1	0	3	9	9.3	
vs Saint Francis (PA)	12/15/18		17	2-6	.333	1-5	.200	0-0	.000	1	1	2	4.1	0	1	0	0	2	5	8.8	
at Washington	12/16/18	*	21	4-7	.571	3-5	.600	1-1	1.000	0	4	4	4.1	1	3	1	1	0	12	9.1	
SOUTHERN UTAH	12/19/18	*	22	4-8	.500	1-3	.333	2-2	1.000	1	2	3	4.0	1	4	1	0	3	11	9.3	
WYOMING	01/02/19		16	3-4	.750	1-2	.500	0-0	.000	0	2	2	3.8	1	3	0	0	2	7	9.1	
at San Diego State	1-5-19	*	7	0-0	.000	0-0	.000	0-0	.000	1	0	1	3.6	4	1	0	0	0	0	8.4	
SAN JOSE ST.	01/12/19	*	26	5-7	.714	3-4	.750	0-0	.000	1	1	2	3.5	2	6	1	0	0	13	8.7	
at Nevada	1/16/19		28	3-8	.375	0-1	.000	2-6	.333	3	4	7	3.7	1	4	1	0	1	8	8.7	
at Fresno State	1/19/19	*	26	8-12	.667	5-8	.625	0-0	.000	1	2	3	3.7	3	1	2	0	0	21	9.4	
at Wyoming	01/26/19	*	26	1-6	.167	0-2	.000	0-0	.000	0	6	6	3.8	0	3	3	0	0	2	9.0	
COLORADO ST.	01/30/19		19	0-2	.000	0-2	.000	0-0	.000	1	2	3	3.8	1	3	0	0	0	0	8.5	
NEVADA	02/02/19	*	26	3-5	.600	1-2	.500	0-0	.000	1	3	4	3.8	3	4	5	0	0	7	8.4	
Totals			13	416	59-130	.454	29-69	.420	13-17	.765	17	55	72	3.8	23	51	34	1	17	160	8.4

CAREER STATISTICS & RANKINGS

Season	gp-gs	min/avg	Total		3-Point		F-Throws		Rebounds				pf	fo	ast	to	blk	stl	Scoring	
			fg-fga	pct	fg-fga	pct	ft-fa	pct	off	def	tot	avg							pts	avg
2015-16	30-30	942/31.4	104-285	.365	45-141	.319	28-36	.778	34	101	135	4.5	74	1	85	82	4	46	281	9.4
2016-17	33-32	800/24.2	111-306	.363	36-123	.293	24-33	.727	46	86	132	4.0	47	1	60	56	0	48	282	8.5
2017-18	33-33	997/30.2	136-376	.362	30-125	.240	53-78	.679	49	134	183	5.5	65	1	155	127	6	35	355	10.8
2018-19	19-13	416/21.9	59-130	.454	29-69	.420	13-17	.765	17	55	72	3.8	23	0	51	34	1	17	160	8.4
TOTAL	115-108	3155/27.4	410-1097	.374	140-458	.306	118-164	.720	146	376	522	4.5	209	3	351	299	11	146	1078	9.4

SINGLE-GAME HIGHS [all-time ranking]:

Points: 26, New Mexico -- 02/07/18

Rebounds: 11, Corban -- 11/26/17; St. Francis (Pa.) -- 12/21/17

Assists: 14 [1st], at San Jose State -- 01/24/18

Steals: 5, Hawaii -- 12-20-16; Washington State -- 12-3-15; at Fresno State -- 2/28/17

Blocks: 1, 11 times

FG made: 10, Corban -- 11/26/17

FG attempts: 17, Nevada -- 01/20/18; at Nevada -- 3/1/16

3FG made: 6, Portland State -- 11-16-16

3FG attempts: 10, #6 UNLV -- 03/08/16

FT made: 7, New Mexico -- 02/07/18; Utah State -- 02/10/18; vs Northern Arizona -- 11/19/17

FT attempts: 8, New Mexico -- 02/07/18; Utah State -- 02/10/18; vs Northern Arizona -- 11/19/17



MISCELLANEOUS STATS

CATEGORY	SEASON	CAREER
Double-Doubles	0	0
Double-Figure Points	15	54
Double-Figure Rebounds	0	0
Double-Figure Assists	0	0
20-plus Points	3	11
30-plus Points	0	0
Team-High Points	6	29
Team-High Rebounds	4	6
Team-High Assists	1	8

KEY 2018-19 NOTES

Preseason Mountain West Player of the Year...also named to the Preseason All-Mountain West Team... named to the NCAA.com Starting Five (Nov. 28)... scored nine points against CSUN (Nov. 8)...went 4-of-6 from the field and 2-for-4 from deep for 12 points against Northwest Christian (Nov. 16)...scored 11 points against Louisville (Nov. 19)...named Beach Classic MVP after averaging 14.5 points with five 3-pointers over Boise State's 2-0 performance...scored 13 points with four rebounds against Idaho (Nov. 23)...hit the go-ahead 3-pointer with 1:27 to play, finished with 16 points, hit four 3-pointers, against Northern Iowa (Nov. 24)...matched her career high with seven rebounds to go with 12 points at Washington State (Dec. 1)...scored 11 points with six rebounds against Eastern Washington (Dec. 7)...matched her career-high with seven 3-pointers (fifth time in her career) and scored 22 points in Husky Classic title-game win at Washington (Dec. 16)... scored a game-high 22 points with four 3-pointers in win over Wyoming (Jan. 2)...hit four 3-pointers and scored 17 points at San Diego State (Jan. 5)...matched career high with six assists along with six rebounds and five points against Air Force (Jan. 23)...hit six 3-pointers, scored a game-high 22 points with six rebounds against Colorado State (Jan. 30).

21 • RILEY LUPFER

Guard • 5-9 • Jr. • Spokane, Wash. (Lewis & Clark HS)

GAME-BY-GAME STATISTICS

THE STAT CREW SYSTEM

Boise State Individual Game-by-Game (as of Feb 03, 2019)
All games

#21 LUPFER, Riley

				Total		3-Pointers		Free throws		Rebounds											
Opponent	Date	qs	min	fg-fga	pct	3fg-fga	pct	ft-fita	pct	off	def	tot	avg	pf	a	t/o	blk	stl	pts	avg	
CSUN	11/08/18	*	22	2-7	.286	1-6	.167	4-4	1.000	0	1	1	1.0	2	2	0	0	0	9	9.0	
SOUTHERN ORE.	11/10/18	*	19	4-9	.444	1-6	.167	0-0	.000	2	0	2	1.5	1	2	0	0	1	9	9.0	
NORTHWEST CHRST.	11/16/18	*	14	4-6	.667	2-4	.500	2-2	1.000	0	1	1	1.3	0	1	0	0	0	12	10.0	
LOUISVILLE	11/19/18	*	34	3-11	.273	3-8	.375	2-2	1.000	1	2	3	1.8	1	1	0	0	0	11	10.3	
vs Idaho	11/23/18	*	35	4-11	.364	1-6	.167	4-4	1.000	0	4	4	2.2	3	1	0	0	1	13	10.8	
vs Northern Iowa	11/24/18	*	36	5-13	.385	4-10	.400	2-2	1.000	0	3	3	2.3	3	0	2	1	2	16	11.7	
at Washington St.	12/01/18	*	28	4-12	.333	2-9	.222	2-2	1.000	3	4	7	3.0	1	0	0	1	0	12	11.7	
EASTERN WASH.	12/07/18	*	31	4-14	.286	3-10	.300	0-0	.000	2	4	6	3.4	2	4	2	0	1	11	11.6	
vs Saint Francis (PA)	12/15/18	*	27	4-12	.333	3-10	.300	2-2	1.000	1	1	2	3.2	2	4	1	2	2	13	11.8	
at Washington	12/16/18	*	34	7-13	.538	7-12	.583	1-2	.500	1	3	4	3.3	1	1	3	1	1	22	12.8	
SOUTHERN UTAH	12/19/18	*	19	1-3	.333	1-2	.500	0-0	.000	2	3	5	3.5	1	4	1	0	1	3	11.9	
WYOMING	01/02/19	*	37	8-18	.444	4-10	.400	2-2	1.000	0	2	2	3.3	1	1	1	1	0	22	12.8	
at San Diego State	1-5-19	*	37	6-15	.400	4-12	.333	1-2	.500	1	2	3	3.3	3	1	4	2	1	17	13.1	
SAN JOSE ST.	01/12/19	*	23	3-6	.500	2-5	.400	2-2	1.000	0	1	1	3.1	0	5	1	0	1	10	12.9	
at Nevada	1/16/19	*	34	3-11	.273	2-7	.286	2-2	1.000	0	1	1	3.0	3	3	2	0	0	10	12.7	
at Fresno State	1/19/19	*	29	4-10	.400	2-6	.333	1-2	.500	1	1	2	2.9	2	0	1	0	2	11	12.6	
AIR FORCE	01/23/19	*	31	2-7	.286	1-4	.250	0-0	.000	1	5	6	3.1	2	6	3	1	2	5	12.1	
at Wyoming	01/26/19	*	27	3-11	.273	0-4	.000	1-1	1.000	0	6	6	3.3	1	0	0	1	0	7	11.8	
COLORADO ST.	01/30/19	*	34	7-15	.467	6-14	.429	2-2	1.000	1	5	6	3.4	3	3	2	0	0	22	12.4	
NEVADA	02/02/19	*	25	5-11	.455	2-5	.400	2-2	1.000	0	2	2	3.4	2	0	2	0	3	14	12.5	
Totals			20	576	83-215	.386	51-150	.340	32-35	.914	16	51	67	3.4	34	39	25	10	18	249	12.5

CAREER STATISTICS & RANKINGS

Season	gp-gs	min/avg	Total		3-Point		F-Throws		Rebounds				pf	fo	ast	to	blk	stl	Scoring	
			fg	fga	3fg	3fga	ft	fta	off	def	tot	avg							pts	avg
2016-17	33-2	650/19.7	98-239	.410	56-156	.359	15-20	.750	25	52	77	2.3	51	0	34	31	6	23	267	8.1
2017-18	33-33	1112/33.7	180-387	.465	122-270	.452	51-55	.927	42	75	117	3.5	67	0	54	62	11	19	533	16.2
2018-19	20-20	576/28.8	83-215	.386	51-150	.340	32-35	.914	16	51	67	3.4	34	0	39	25	10	18	249	12.5
TOTAL	86-55	2338/27.2	361-841	.429	229-576	.398	98-110	.891	83	178	261	3.0	152	0	127	118	27	60	1049	12.2

SINGLE-GAME HIGHS [all-time ranking]:

Points: 28, at San Diego State -- 01/13-18; UNLV -- 12/30/17

Rebounds: 7, 4 times

Assists: 6, Air Force -- 01/23/19; vs Northern Arizona -- 11/19/17

Steals: 3, Nevada -- 02/02/19

Blocks: 2, 5 times

FG made: 10, Fresno State -- 01/10/18; at San Jose State -- 01/24/18

FG attempts: 19, UNLV -- 12/30/17

3FG made: 7 [t-3rd], 5 times

3FG attempts: 14 [t-2nd], Colorado St. -- 01/30/19; UNLV -- 12/30/17

FT made: 6, Colorado State -- 02/21/18

FT attempts: 6, Utah State -- 02/10/18; Colorado State -- 02/21/18



MISCELLANEOUS STATS

CATEGORY	SEASON	CAREER
Double-Doubles	0	0
Double-Figure Points	2	6
Double-Figure Rebounds	0	0
Double-Figure Assists	0	0
20-plus Points	1	1
30-plus Points	0	0
Team-High Points	1	3
Team-High Rebounds	1	3
Team-High Assists	1	4

KEY 2018-19 NOTES

Scored five points with two assists against CSUN (Nov. 8)...grabbed a team-high six rebounds to go with seven points against Southern Oregon (Nov. 10)...posted career highs in points (14) and rebounds (eight) against Northwest Christian (Nov. 16)...scored six points with four rebounds and four assists off the bench against Louisville (Nov. 19)...hit four 3-pointers, went 9-for-11 from the line and scored a career-high 23 points against Idaho (Nov. 23)...went for eight points against Southern Utah (Dec. 19)...scored six points against Air Force (Jan. 23)...hit a 3-pointer while scoring five points with three rebounds against Colorado State (Jan. 30).

22 • ELLIE WOERNER

Guard • 6-0 • R-Jr. • Sammamish, Wash. (Portland / Eastlake HS)

GAME-BY-GAME STATISTICS

THE STAT CREW SYSTEM

Boise State Individual Game-by-Game (as of Feb 03, 2019)
All games

#22 WOERNER, Ellie

				Total		3-Pointers		Free throws		Rebounds											
Opponent	Date	gs	min	fg-fga	pct	3fg-fga	pct	ft-fga	pct	off	def	tot	avg	pf	a	t/o	blk	stl	pts	avg	
CSUN	11/08/18	12	2-6	.333	1-3	.333	0-1	.000	0	1	1	1.0	0	2	1	0	1	5	5.0		
SOUTHERN ORE.	11/10/18	20	2-6	.333	1-1	1.000	2-2	1.000	3	3	6	3.5	1	0	1	1	0	7	6.0		
NORTHWEST CHRST.	11/16/18	20	5-6	.833	3-3	1.000	1-2	.500	1	7	8	5.0	1	1	0	1	0	14	8.7		
LOUISVILLE	11/19/18	22	2-7	.286	0-1	.000	2-2	1.000	2	2	4	4.8	0	4	1	0	1	6	8.0		
vs Idaho	11/23/18	28	5-8	.625	4-6	.667	9-11	.818	1	3	4	4.6	0	1	4	0	2	23	11.0		
vs Northern Iowa	11/24/18	16	0-3	.000	0-0	.000	0-0	.000	1	1	2	4.2	0	0	3	0	0	0	9.2		
at Washington St.	12/01/18	18	2-6	.333	0-1	.000	1-2	.500	0	3	3	4.0	2	0	1	1	1	5	8.6		
EASTERN WASH.	12/07/18	13	0-4	.000	0-1	.000	1-2	.500	3	2	5	4.1	0	0	2	0	0	1	7.6		
vs Saint Francis (PA)	12/15/18	15	0-5	.000	0-2	.000	0-0	.000	4	0	4	4.1	2	4	1	0	1	0	6.8		
at Washington	12/16/18	15	1-4	.250	0-1	.000	0-0	.000	0	0	0	3.7	2	1	0	0	1	2	6.3		
SOUTHERN UTAH	12/19/18	20	3-4	.750	0-0	.000	2-2	1.000	0	1	1	3.5	0	2	1	0	0	8	6.5		
WYOMING	01/02/19	12	0-2	.000	0-1	.000	0-0	.000	0	0	0	3.2	0	0	2	0	0	0	5.9		
at San Diego State	1-5-19	14	0-2	.000	0-0	.000	0-0	.000	0	2	2	3.1	2	0	2	0	1	0	5.5		
SAN JOSE ST.	01/12/19	15	2-2	1.000	0-0	.000	0-0	.000	1	1	2	3.0	1	1	3	0	1	4	5.4		
at Nevada	1/16/19	9	1-2	.500	0-0	.000	0-0	.000	1	0	1	2.9	1	0	1	0	2	2	5.1		
at Fresno State	1/19/19	13	1-1	1.000	1-1	1.000	0-0	.000	2	2	4	2.9	1	1	1	0	0	3	5.0		
AIR FORCE	01/23/19	19	3-7	.429	0-2	.000	0-0	.000	0	2	2	2.9	0	0	0	0	0	6	5.1		
at Wyoming	01/26/19	11	0-0	.000	0-0	.000	0-0	.000	1	1	2	2.8	1	1	0	0	0	0	4.8		
COLORADO ST.	01/30/19	14	1-1	1.000	1-1	1.000	2-4	.500	2	1	3	2.8	1	1	1	0	0	5	4.8		
NEVADA	02/02/19	11	0-4	.000	0-3	.000	0-0	.000	0	1	1	2.8	1	0	0	0	0	0	4.6		
Totals		0	317	30-80	.375	11-27	.407	20-28	.714	22	33	55	2.8	16	19	25	3	11	91	4.6	

CAREER STATISTICS & RANKINGS

Season			Total		3-Point		F-Throws		Rebounds											Scoring	
	gp-gs	min/avg	fg-fga	pct	fg-fga	pct	ft-fga	pct	off	def	tot	avg	pf	fo	ast	to	blk	stl	pts	avg	
2017-18	33-15	736/22.3	67-176	.381	18-60	.300	28-46	.609	22	66	88	2.7	50	1	44	29	2	18	180	5.5	
2018-19	19-0	306/16.1	30-76	.395	11-24	.458	20-28	.714	22	32	54	2.8	15	0	19	25	3	11	91	4.8	
TOTAL	52-15	1042/20.0	97-252	.385	29-84	.345	48-74	.649	44	98	142	2.7	65	1	63	54	5	29	271	5.2	

SINGLE-GAME HIGHS [all-time ranking]:

Points: 23, vs Idaho -- 11/23/18

Rebounds: 8, Northwest Chrst. -- 11/16/18

Assists: 6, Saint Mary's -- 11/30/17

Steals: 2, 7 times

Blocks: 1, 5 times

FG made: 6, Saint Mary's -- 11/30/17

FG attempts: 14, vs Northern Arizona -- 11/19/17

3FG made: 4, vs Idaho -- 11/23/18

3FG attempts: 6, vs Northern Arizona -- 11/19/17; vs Idaho -- 11/23/18

FT made: 9, vs Idaho -- 11/23/18

FT attempts: 11, vs Idaho -- 11/23/18



MISCELLANEOUS STATS

CATEGORY	SEASON	CAREER
Double-Doubles	0	0
Double-Figure Points	5	5
Double-Figure Rebounds	0	0
Double-Figure Assists	1	1
20-plus Points	0	0
30-plus Points	0	0
Team-High Points	1	1
Team-High Rebounds	2	2
Team-High Assists	13	13

KEY 2018-19 NOTES

Passed out five assists, scored five points in debut against CSUN (Nov. 8)...had eight assists with two steals against Southern Oregon (Nov. 10)...scored seven points with three rebounds and two assists against Louisville (Nov. 19)...scored 10 points and passed out four assists against Idaho (Nov. 23)...netted career-high 13 points in win over Northern Iowa (Nov. 24)...went 5-for-7 from the field, scored 11 points with five assists at Washington State (Dec. 1)...passed out a career-high 11 assists to go with four points and for rebounds against Saint Francis (Pa.) (Dec. 15)...grabbed a career high-matching six rebounds with eight assists in Husky Classic title-game win at Washington (Dec. 16)...passed out six assists and scored nine points on 4-of-6 shooting against Wyoming (Jan. 2)...had nine assists with four rebounds at San Diego State (Jan. 5)...scored nine points with six rebounds, three assists against San Jose State (Jan. 12)...passed out five assists to go with 11 points on 5-of-9 shooting against Air Force (Jan. 23)...had seven assists to go with four rebounds against Colorado State (Jan. 30)...scored 10 points with five rebounds and four assists against Nevada (Feb. 2).

23 • JAYDE CHRISTOPHER

Guard • 5-8 • R-Jr. • Federal Way, Wash. (Kansas / Cleveland HS)

GAME-BY-GAME STATISTICS

THE STAT CREW SYSTEM

Boise State Individual Game-by-Game (as of Feb 03, 2019)
All games

#23 CHRISTOPHER, Jayde

				Total		3-Pointers		Free throws		Rebounds											
Opponent	Date	gs	min	fg-fga	pct	3fg-fga	pct	ft-fa	pct	off	def	tot	avg	pf	a	t/o	blk	stl	pts	avg	
CSUN	11/08/18	*	25	2-3	.667	1-2	.500	0-0	.000	1	1	2	2.0	0	5	2	0	0	5	5.0	
SOUTHERN ORE.	11/10/18		23	0-1	.000	0-0	.000	0-0	.000	0	2	2	2.0	3	8	6	0	2	0	2.5	
NORTHWEST CHRST.	11/16/18	*	15	2-4	.500	0-1	.000	0-0	.000	0	2	2	2.0	1	7	2	1	1	4	3.0	
LOUISVILLE	11/19/18	*	30	2-3	.667	1-2	.500	2-2	1.000	0	3	3	2.3	2	2	5	1	2	7	4.0	
vs Idaho	11/23/18		31	4-6	.667	1-1	1.000	1-2	.500	1	1	2	2.2	1	4	1	2	1	10	5.2	
vs Northern Iowa	11/24/18	*	33	6-13	.462	0-2	.000	1-1	1.000	0	1	1	2.0	3	2	2	1	1	13	6.5	
at Washington St.	12/01/18	*	27	5-7	.714	1-1	1.000	0-0	.000	0	3	3	2.1	0	5	1	0	0	11	7.1	
EASTERN WASH.	12/07/18		22	1-5	.200	0-3	.000	0-0	.000	0	5	5	2.5	1	2	1	1	1	2	6.5	
vs Saint Francis (PA)	12/15/18	*	30	2-5	.400	0-1	.000	0-1	.000	0	4	4	2.7	2	11	2	0	0	4	6.2	
at Washington	12/16/18	*	35	2-5	.400	0-0	.000	0-0	.000	0	6	6	3.0	3	8	6	1	1	4	6.0	
SOUTHERN UTAH	12/19/18		21	0-0	.000	0-0	.000	0-0	.000	0	1	1	2.8	1	6	5	0	2	0	5.5	
WYOMING	01/02/19	*	33	4-6	.667	1-2	.500	0-0	.000	1	0	1	2.7	0	6	2	0	0	9	5.8	
at San Diego State	1-5-19	*	36	1-4	.250	0-2	.000	1-2	.500	1	3	4	2.8	1	9	4	0	1	3	5.5	
SAN JOSE ST.	01/12/19		22	2-5	.400	2-4	.500	3-4	.750	1	5	6	3.0	2	3	3	0	1	9	5.8	
at Nevada	1/16/19	*	22	1-3	.333	0-0	.000	2-4	.500	0	2	2	2.9	4	5	3	0	1	4	5.7	
at Fresno State	1/19/19	*	34	3-8	.375	2-4	.500	0-0	.000	1	4	5	3.1	2	5	5	0	2	8	5.8	
AIR FORCE	01/23/19	*	25	5-8	.625	0-1	.000	1-2	.500	0	2	2	3.0	3	5	2	0	2	11	6.1	
at Wyoming	01/26/19		29	3-6	.500	0-0	.000	1-2	.500	1	3	4	3.1	1	2	2	0	2	7	6.2	
COLORADO ST.	01/30/19	*	23	0-5	.000	0-2	.000	0-0	.000	2	2	4	3.1	2	7	3	0	0	0	5.8	
NEVADA	02/02/19	*	32	3-8	.375	0-2	.000	4-4	1.000	2	3	5	3.2	2	4	3	1	5	10	6.1	
Totals			14	548	48-105	.457	9-30	.300	16-24	.667	11	53	64	3.2	34	106	60	8	25	121	6.1

CAREER STATISTICS & RANKINGS

Boise State Women's Basketball
Individual Career History

CHRISTOPHER, Jayde

Season	gp-gs	min/avg	Total		3-Point		F-Throws		Rebounds				pf	fo	ast	to	blk	stl	Scoring	
			fg-fga	pct	fg-fga	pct	ft-fa	pct	off	def	tot	avg							pts	avg
2018-19	20-14	548/27.4	48-105	.457	9-30	.300	16-24	.667	11	53	64	3.2	34	0	106	60	8	25	121	6.1
TOTAL	20-14	548/27.4	48-105	.457	9-30	.300	16-24	.667	11	53	64	3.2	34	0	106	60	8	25	121	6.1

SINGLE-GAME HIGHS [all-time ranking]:

Points: 13, vs Northern Iowa -- 11/24/18

Rebounds: 6, San Jose St. -- 01/12/19; at Washington -- 12/16/18

Assists: 11 [t-5th], vs Saint Francis (PA) -- 12/15/18

Steals: 5, Nevada -- 02/02/19

Blocks: 2, vs Idaho -- 11/23/18

FG made: 6, vs Northern Iowa -- 11/24/18

FG attempts: 13, vs Northern Iowa -- 11/24/18

3FG made: 2, San Jose St. -- 01/12/19; at Fresno State -- 1/19/19

3FG attempts: 4, San Jose St. -- 01/12/19; at Fresno State -- 1/19/19

FT made: 4, Nevada -- 02/02/19

FT attempts: 4, San Jose St. -- 01/12/19; Nevada -- 02/02/19; at Nevada -- 1/16/19



MISCELLANEOUS STATS

CATEGORY	SEASON	CAREER
Double-Doubles	0	0
Double-Figure Points	5	5
Double-Figure Rebounds	0	0
Double-Figure Assists	0	0
20-plus Points	0	0
30-plus Points	0	0
Team-High Points	0	0
Team-High Rebounds	2	2
Team-High Assists	0	0

KEY 2018-19 NOTES

Grabbed three rebounds and passed out three assists in Boise State debut against CSUN (Nov. 8)...scored eight points with five rebounds against Southern Oregon (Nov. 10)...went 5-for-6 from the field and scored 11 points against Northwest Christian (Nov. 16)...netted eight points at Washington State (Dec. 1)...went 3-for-4 from the field, scored seven points against Saint Francis (Pa.) (Dec. 15)...scored eight points with five rebounds in season-high 22 minutes at Washington (Dec. 16)...posted season highs in points (13) and rebounds (seven) while going 6-for-9 from the field against Southern Utah (Dec. 19)...set new season-high with 14 points on 6-of-8 shooting with team-high six rebounds against San Jose State (Jan. 12)...grabbed six rebounds and blocked two shots against Air Force (Jan. 23)...hit a 3-pointer, went 6-for-7 from the field for 13 points against Colorado State (Jan. 30)...went 5-for-5 from the line and 3-for-4 from the field for 11 points against Nevada (Feb. 2).

25 • RACHEL BOWERS

Forward • 6-3 • Fr. • Newhall, Calif. (Canyon HS)

GAME-BY-GAME STATISTICS

THE STAT CREW SYSTEM

Boise State Individual Game-by-Game (as of Feb 03, 2019)
All games

#25 BOWERS, Rachel

Opponent	Date	gs	min	Total		3-Pointers		Free throws		Rebounds				pf	a	t/o	blk	stl	pts	avg
				fg-fga	pct	3fg-fga	pct	ft-fa	pct	off	def	tot	avg							
CSUN	11/08/18	10	0-1	.000	0-0	.000	0-0	.000	0-0	2	1	3	3.0	3	3	1	0	0	0	0.0
SOUTHERN ORE.	11/10/18	13	4-6	.667	0-0	.000	0-0	.000	0-0	0	5	5	4.0	1	1	2	1	1	8	4.0
NORTHWEST CHRST.	11/16/18	20	5-6	.833	1-1	1.000	0-0	.000	0-0	1	5	6	4.7	3	1	0	0	0	11	6.3
LOUISVILLE	11/19/18	10	0-2	.000	0-0	.000	0-0	.000	0-0	0	1	1	3.8	3	0	1	0	0	0	4.8
vs Idaho	11/23/18	11	2-4	.500	0-0	.000	0-0	.000	0-0	0	3	3	3.6	2	0	0	0	0	4	4.6
vs Northern Iowa	11/24/18	8	0-3	.000	0-0	.000	0-0	.000	0-0	0	3	3	3.5	2	0	1	1	0	0	3.8
at Washington St.	12/01/18	15	3-9	.333	0-0	.000	0-0	2-2	1.000	2	0	2	3.3	2	0	1	0	0	8	4.4
EASTERN WASH.	12/07/18	9	0-0	.000	0-0	.000	0-0	.000	0-0	1	0	1	3.0	1	0	1	0	0	0	3.9
vs Saint Francis (PA)	12/15/18	10	3-4	.750	0-0	.000	0-0	1-2	.500	0	1	1	2.8	0	1	0	0	0	7	4.2
at Washington	12/16/18	22	4-6	.667	0-0	.000	0-0	.000	0-0	1	4	5	3.0	2	0	0	1	2	8	4.6
SOUTHERN UTAH	12/19/18	18	6-9	.667	0-0	.000	0-0	1-2	.500	1	6	7	3.4	4	0	3	4	1	13	5.4
WYOMING	01/02/19	10	2-4	.500	0-0	.000	0-0	2-2	1.000	1	2	3	3.3	1	0	0	0	0	6	5.4
at San Diego State	1-5-19	11	1-3	.333	0-0	.000	0-0	.000	0-0	1	1	2	3.2	5	1	1	2	0	2	5.2
SAN JOSE ST.	01/12/19	14	6-8	.750	0-0	.000	0-0	2-2	1.000	2	4	6	3.4	2	0	1	0	0	14	5.8
at Nevada	1/16/19	7	1-2	.500	0-0	.000	0-0	.000	0-0	1	0	1	3.3	1	1	1	0	1	2	5.5
at Fresno State	1/19/19	6	1-2	.500	0-0	.000	0-0	.000	0-0	1	1	2	3.2	0	0	0	0	0	2	5.3
AIR FORCE	01/23/19	13	1-3	.333	0-0	.000	0-0	.000	0-0	0	6	6	3.4	2	0	0	2	0	2	5.1
at Wyoming	01/26/19	8	2-4	.500	0-0	.000	0-0	2-2	1.000	0	2	2	3.3	4	0	2	0	0	6	5.2
COLORADO ST.	01/30/19	18	6-7	.857	1-1	1.000	0-0	.000	0-0	1	0	1	3.2	3	1	0	0	0	13	5.6
NEVADA	02/02/19	10	3-4	.750	0-1	.000	5-5	1.000	2-2	2	2	4	3.2	1	0	1	0	0	11	5.9
Totals		0	243	50-87	.575	2-3	.667	15-17	.882	17	47	64	3.2	42	9	16	11	5	117	5.9

CAREER STATISTICS & RANKINGS

Boise State Women's Basketball
Individual Career History

BOWERS, Rachel

			Total		3-Point		F-Throws		Rebounds											Scoring	
Season	gp-gs	min/avg	fg-fga	pct	fg-fga	pct	ft-fa	pct	off	def	tot	avg	pf	fo	ast	to	blk	stl	pts	avg	
2018-19	20-0	243/12.2	50-87	.575	2-3	.667	15-17	.882	17	47	64	3.2	42	1	9	16	11	5	117	5.9	
TOTAL	20-0	243/12.2	50-87	.575	2-3	.667	15-17	.882	17	47	64	3.2	42	1	9	16	11	5	117	5.9	

SINGLE-GAME HIGHS [all-time ranking]:

Points: 14, San Jose St. -- 01/12/19

Rebounds: 7, Southern Utah -- 12/19/18

Assists: 3, CSUN -- 11/08/18

Steals: 2, at Washington -- 12/16/18

Blocks: 4, Southern Utah -- 12/19/18

FG made: 6, San Jose St. -- 01/12/19; Colorado St. -- 01/30/19; Southern Utah -- 12/19/18

FG attempts: 9, at Washington St. -- 12/01/18; Southern Utah -- 12/19/18

3FG made: 1, Colorado St. -- 01/30/19

3FG attempts: 1, Colorado St. -- 01/30/19; Nevada -- 02/02/19

FT made: 5, Nevada -- 02/02/19

FT attempts: 5, Nevada -- 02/02/19



MISCELLANEOUS STATS

CATEGORY	SEASON	CAREER
Double-Doubles	0	0
Double-Figure Points	5	5
Double-Figure Rebounds	0	0
Double-Figure Assists	0	0
20-plus Points	0	0
30-plus Points	0	0
Team-High Points	1	1
Team-High Rebounds	0	0
Team-High Assists	0	0

KEY 2018-19 NOTES

Voted the Preseason Mountain West Freshman of the Year...scored six points with three rebounds in debut against CSUN (Nov. 8)...passed out four assists to go with 10 points against Northwest Christian (Nov. 16)...scored a season-high 18 points at Washington State, going 7-for-9 from the field and 3-for-4 from deep (Dec. 1)...scored 11 points with four rebounds in win over Saint Francis (Pa.) (Dec. 15)...went 4-for-7 from the field, scored 11 points with four rebounds against Southern Utah (Dec. 19)...scored eight points against San Jose State (Jan. 12)...hit a pair of 3-pointers, went 5-for-9 for 12 points with three rebounds and three assists against Air Force (Jan. 23).

30 • JADE LOVILLE

Guard • 5-10 • Fr. • Sammamish, Wash. (Skyline HS)

GAME-BY-GAME STATISTICS

THE STAT CREW SYSTEM

Boise State Individual Game-by-Game (as of Feb 03, 2019)
All games

#30 LOVILLE, Jade

				Total		3-Pointers		Free throws		Rebounds											
Opponent	Date	gs	min	fg-fga	pct	3fg-fga	pct	ft-fa	pct	off	def	tot	avg	pf	a	t/o	blk	stl	pts	avg	
CSUN	11/08/18	16	2-10	.200	1-7	.143	1-1	1.000	2	1	3	3.0	3	0	2	0	0	0	6	6.0	
SOUTHERN ORE.	11/10/18	18	2-6	.333	2-5	.400	0-0	.000	0	2	2	2.5	2	0	1	0	0	0	6	6.0	
NORTHWEST CHRST.	11/16/18	19	3-8	.375	2-3	.667	2-4	.500	1	1	2	2.3	0	4	1	0	2	10	7.3		
LOUISVILLE	11/19/18	5	1-2	.500	0-1	.000	0-0	.000	0	1	1	2.0	0	0	3	0	0	2	6.0		
vs Idaho	11/23/18	13	0-2	.000	0-1	.000	0-2	.000	0	0	0	1.6	2	0	0	0	0	0	4.8		
vs Northern Iowa	11/24/18	3	0-1	.000	0-0	.000	0-0	.000	0	0	0	1.3	0	0	0	0	0	0	4.0		
at Washington St.	12/01/18	12	7-9	.778	3-4	.750	1-2	.500	1	1	2	1.4	3	0	2	0	1	18	6.0		
EASTERN WASH.	12/07/18	6	0-1	.000	0-1	.000	0-0	.000	0	0	0	1.3	2	0	2	0	0	0	5.3		
vs Saint Francis (PA)	12/15/18	12	4-13	.308	2-6	.333	1-1	1.000	3	1	4	1.6	2	1	1	0	0	11	5.9		
at Washington	12/16/18	6	0-3	.000	0-2	.000	2-2	1.000	0	1	1	1.5	1	0	0	0	0	2	5.5		
SOUTHERN UTAH	12/19/18	19	4-7	.571	0-3	.000	3-3	1.000	0	4	4	1.7	1	1	1	0	1	11	6.0		
WYOMING	01/02/19	3	0-2	.000	0-1	.000	0-0	.000	0	0	0	1.6	0	0	0	0	0	0	5.5		
at San Diego State	1-5-19	5	0-0	.000	0-0	.000	0-0	.000	1	1	2	1.6	2	0	2	0	1	0	5.1		
SAN JOSE ST.	01/12/19	17	3-8	.375	1-5	.200	1-1	1.000	0	0	0	1.5	1	1	1	0	0	8	5.3		
at Nevada	1/16/19	5	0-2	.000	0-0	.000	0-0	.000	0	1	1	1.5	0	0	0	0	0	0	4.9		
at Fresno State	1/19/19	3	0-0	.000	0-0	.000	0-0	.000	0	0	0	1.4	0	0	1	0	0	0	4.6		
AIR FORCE	01/23/19	20	5-9	.556	2-3	.667	0-1	.000	0	3	3	1.5	2	3	2	1	0	12	5.1		
at Wyoming	01/26/19	12	1-7	.143	0-2	.000	0-0	.000	0	2	2	1.5	2	0	1	0	0	2	4.9		
COLORADO ST.	01/30/19	10	1-2	.500	0-1	.000	2-2	1.000	0	1	1	1.5	1	1	2	0	0	4	4.8		
NEVADA	02/02/19	6	1-1	1.000	1-1	1.000	0-0	.000	0	0	0	1.4	0	0	0	0	0	3	4.8		
Totals		0	210	34-93	.366	14-46	.304	13-19	.684	8	20	28	1.4	24	11	22	1	5	95	4.8	

CAREER STATISTICS & RANKINGS

Boise State Women's Basketball
Individual Career History

LOVILLE, Jade																					
			Total		3-Point		F-Throws		Rebounds											Scoring	
Season	gp-gs	min/avg	fg-fga	pct	fg-fga	pct	ft-fga	pct	off	def	tot	avg	pf	fo	ast	to	blk	stl	pts	avg	
2018-19	20-0	210/10.5	34-93	.366	14-46	.304	13-19	.684	8	20	28	1.4	24	0	11	22	1	5	95	4.8	
TOTAL	20-0	210/10.5	34-93	.366	14-46	.304	13-19	.684	8	20	28	1.4	24	0	11	22	1	5	95	4.8	

SINGLE-GAME HIGHS [all-time ranking]:

Points: 18, at Washington St. -- 12/01/18

Rebounds: 4, vs Saint Francis (PA) -- 12/15/18; Southern Utah -- 12/19/18

Assists: 3, Air Force -- 01/23/19

Steals: 1, at San Diego State -- 1-5-19; at Washington St. -- 12/01/18; Southern Utah -- 12/19/18

Blocks: 1, Air Force -- 01/23/19

FG made: 7, at Washington St. -- 12/01/18

FG attempts: 13, vs Saint Francis (PA) -- 12/15/18

3FG made: 3, at Washington St. -- 12/01/18

3FG attempts: 7, CSUN -- 11/08/18

FT made: 3, Southern Utah -- 12/19/18

FT attempts: 3, Southern Utah -- 12/19/18



MISCELLANEOUS STATS

CATEGORY	SEASON	CAREER
Double-Doubles	0	4
Double-Figure Points	0	26
Double-Figure Rebounds	0	5
Double-Figure Assists	0	0
20-plus Points	0	3
30-plus Points	0	0
Team-High Points	0	8
Team-High Rebounds	0	13
Team-High Assists	0	0

KEY 2018-19 NOTES

Made season debut Jan. 12 against San Jose State after missing previous 13 months due to injury...went 3-for-3, scored six points in return game against the Spartans (Jan. 12).

31 • MARIJKE VANDERSCHAAF

Center • 6-3 • R-Sr. • Sammamish, Wash. (Eastlake HS)

GAME-BY-GAME STATISTICS

THE STAT CREW SYSTEM

Boise State Individual Game-by-Game (as of Feb 03, 2019)
All games

#31 VANDERSCHAAF, Marijk

				Total		3-Pointers		Free throws		Rebounds											
Opponent	Date	qs	min	fg-fga	pct	3fg-fga	pct	ft-fa	pct	off	def	tot	avg	pf	a	t/o	blk	stl	pts	avg	
SAN JOSE ST.	01/12/19	6		3-3	1.000	0-0	.000	0-2	.000	0	0	0	0.0	0	0	0	0	0	6	6.0	
at Nevada	1/16/19	1		0-0	.000	0-0	.000	0-2	.000	0	0	0	0.0	0	0	0	0	0	0	3.0	
AIR FORCE	01/23/19	4		0-2	.000	0-0	.000	0-0	.000	0	0	0	0.0	2	0	1	0	0	0	2.0	
at Wyoming	01/26/19	3		1-1	1.000	0-0	.000	1-1	1.000	0	0	0	0.0	0	0	0	0	0	3	2.3	
COLORADO ST.	01/30/19	2		1-1	1.000	0-0	.000	0-1	.000	0	0	0	0.0	1	0	0	0	0	2	2.2	
NEVADA	02/02/19	2		0-1	.000	0-0	.000	1-2	.500	0	0	0	0.0	0	0	0	0	0	1	2.0	
Totals		0	18	5-8	.625	0-0	.000	2-8	.250	0	0	0	0.0	3	0	1	0	0	12	2.0	

CAREER STATISTICS & RANKINGS

	Total				3-Point		F-Throws		Rebounds								Scoring			
Season	gp-gs	min/avg	fg-fga	pct	fg-fga	pct	ft-fla	pct	off	def	tot	avg	pf	fo	ast	to	blk	stl	pts	avg
2015-16	30-0	374/12.5	66-125	.528	0-0	.000	48-62	.774	45	53	98	3.3	35	1	11	20	14	4	180	6.0
2016-17	33-33	881/26.7	136-309	.440	0-1	.000	61-78	.782	99	115	214	6.5	83	4	17	63	33	24	333	10.1
2017-18	7-7	146/20.9	26-59	.441	0-0	.000	14-17	.824	16	24	40	5.7	12	0	4	6	3	8	66	9.4
2018-19	6-0	18/3.0	5-8	.625	0-0	.000	2-8	.250	0	0	0	0.0	3	0	0	1	0	0	12	2.0
TOTAL	76-40	1419/18.7	233-501	.465	0-1	.000	125-165	.758	160	192	352	4.6	133	5	32	90	50	36	591	7.8

SINGLE-GAME HIGHS [all-time ranking]:

Points: 26, New Mexico -- 2-15-17

Rebounds: 16, at San Jose State -- 02/25/17

Assists: 3, at San Jose State -- 02/25/17

Steals: 3, vs #5 New Mexico -- 03/07/17; Nevada -- 2-22-17

Blocks: 5 [t-10th], Nevada -- 2-22-17

FG made: 11, New Mexico -- 2-15-17

FG attempts: 26 [t-5th], New Mexico -- 2-15-17

3FG attempts: 1, at #4 UCLA -- 03/18/17

FT made: 7, Eastern Washington -- 12/01/16

FT attempts: 8, Washington State -- 12-3-15; Eastern Washington -- 12/01/16; San Jose State -- 3-4-16



32 • MALLORY McGWIRE

Center • 6-5 • Jr. • Reno, Nev (Oregon / Reno HS)

GAME-BY-GAME STATISTICS

MISCELLANEOUS STATS

CATEGORY	SEASON	CAREER
Double-Doubles	0	0
Double-Figure Points	0	0
Double-Figure Rebounds	0	0
Double-Figure Assists	0	0
20-plus Points	0	0
30-plus Points	0	0
Team-High Points	0	0
Team-High Rebounds	0	0
Team-High Assists	0	0

KEY 2018-19 NOTES

Will sit out the 2018-19 season due to NCAA transfer rules.

CAREER STATISTICS & RANKINGS



MISCELLANEOUS STATS

CATEGORY	SEASON	CAREER
Double-Doubles	1	1
Double-Figure Points	5	10
Double-Figure Rebounds	2	2
Double-Figure Assists	0	0
20-plus Points	0	0
30-plus Points	0	0
Team-High Points	1	2
Team-High Rebounds	8	15
Team-High Assists	0	0

KEY 2018-19 NOTES

Grabbed career-high 11 rebounds to go with six points and two blocks against CSUN (Nov. 8)...scored a career-high 23 points on 11-of-14 shooting against Southern Oregon (Nov. 10)...scored nine points with seven rebounds against Louisville (Nov. 19)...scored 10 points against Eastern Washington (Dec. 7)...went 6-for-8 from the field for 12 points with four rebounds against Southern Utah (Dec. 19)...pulled down a team-high nine rebounds to go with six points against Wyoming (Jan. 2)...scored 11 points to go with seven rebounds at Nevada (Jan. 16)...grabbed 10 rebounds in win over Air Force (Jan. 23).

33 • JOYCE HARRELL

Forward • 6-0 • Sr. • Seattle, Wash. (Cleveland HS)

GAME-BY-GAME STATISTICS

THE STAT CREW SYSTEM

Boise State Individual Game-by-Game (as of Feb 03, 2019)
All games

#33 HARRELL, Joyce

				Total		3-Pointers		Free throws		Rebounds											
Opponent	Date	gs	min	fg-fga	pct	3fg-fga	pct	ft-fga	pct	off	def	tot	avg	pf	a	t/o	blk	stl	pts	avg	
CSUN	11/08/18	*	28	3-9	.333	0-0	.000	0-0	.000	5	6	11	11.0	3	1	3	2	2	6	6.0	
SOUTHERN ORE.	11/10/18	*	19	11-14	.786	0-0	.000	1-2	.500	3	3	6	8.5	0	3	1	0	0	23	14.5	
NORTHWEST CHRST.	11/16/18	*	11	5-6	.833	0-0	.000	0-0	.000	4	2	6	7.7	0	0	0	1	2	10	13.0	
LOUISVILLE	11/19/18	*	21	4-9	.444	0-0	.000	1-3	.333	2	5	7	7.5	4	0	1	0	1	9	12.0	
vs Idaho	11/23/18	*	14	1-2	.500	0-0	.000	0-2	.000	1	2	3	6.6	4	0	0	0	1	2	10.0	
vs Northern Iowa	11/24/18	*	18	0-5	.000	0-0	.000	0-0	.000	3	4	7	6.7	3	0	1	1	1	0	8.3	
at Washington St.	12/01/18	*	20	1-4	.250	0-0	.000	0-0	.000	2	0	2	6.0	3	0	1	1	1	2	7.4	
EASTERN WASH.	12/07/18	*	18	5-9	.556	0-0	.000	0-0	.000	1	2	3	5.6	2	2	0	0	0	10	7.8	
vs Saint Francis (PA)	12/15/18	*	25	3-9	.333	0-0	.000	1-4	.250	4	1	5	5.6	1	1	0	1	2	7	7.7	
at Washington	12/16/18	*	17	1-3	.333	0-0	.000	0-0	.000	0	1	1	5.1	2	2	1	1	0	2	7.1	
SOUTHERN UTAH	12/19/18	*	14	6-8	.750	0-0	.000	0-0	.000	2	2	4	5.0	3	0	1	1	2	12	7.5	
WYOMING	01/02/19	*	22	3-4	.750	0-0	.000	0-0	.000	5	4	9	5.3	4	2	1	0	1	6	7.4	
at San Diego State	1-5-19	*	29	4-9	.444	0-0	.000	0-0	.000	2	5	7	5.5	4	0	4	2	0	8	7.5	
SAN JOSE ST.	01/12/19	*	18	3-4	.750	0-0	.000	1-2	.500	1	4	5	5.4	2	1	1	0	0	7	7.4	
at Nevada	1/16/19	*	32	5-10	.500	0-0	.000	1-2	.500	3	4	7	5.5	2	3	1	0	1	11	7.7	
at Fresno State	1/19/19	*	29	5-7	.714	0-0	.000	2-4	.500	4	7	11	5.9	3	5	0	0	1	12	7.9	
AIR FORCE	01/23/19	*	18	0-4	.000	0-0	.000	2-4	.500	5	5	10	6.1	3	0	2	2	2	2	7.6	
at Wyoming	01/26/19	*	15	2-5	.400	0-0	.000	0-0	.000	0	3	3	5.9	4	1	1	0	0	4	7.4	
COLORADO ST.	01/30/19	*	18	3-7	.429	0-0	.000	0-0	.000	0	4	4	5.8	2	0	2	0	0	6	7.3	
NEVADA	02/02/19	*	25	3-8	.375	0-0	.000	1-1	1.000	1	4	5	5.8	1	1	1	0	1	7	7.3	
Totals			20	411	68-136	.500	0-0	.000	10-24	.417	48	68	116	5.8	50	22	22	12	18	146	7.3

CAREER STATISTICS & RANKINGS

Season	gp-gs	min/avg	Total		3-Point		F-Throws		Rebounds				pf	fo	ast	to	blk	stl	Scoring	
			fg-fga	pct	fg-fga	pct	ft-fa	pct	off	def	tot	avg							pts	avg
2015-16	28-0	235/8.4	25-54	.463	0-0	.000	4-6	.667	20	42	62	2.2	32	0	6	15	6	6	54	1.9
2016-17	33-14	494/15.0	50-113	.442	0-0	.000	10-22	.455	53	76	129	3.9	62	1	12	32	21	12	110	3.3
2017-18	33-9	526/15.9	52-110	.473	0-0	.000	12-20	.600	52	68	120	3.6	72	0	17	31	25	14	116	3.5
2018-19	20-20	411/20.6	68-136	.500	0-0	.000	10-24	.417	48	68	116	5.8	50	0	22	22	12	18	146	7.3
TOTAL	114-43	1666/14.6	195-413	.472	0-0	.000	36-72	.500	173	254	427	3.7	216	1	57	100	64	50	426	3.7

SINGLE-GAME HIGHS [all-time ranking]:

Points: 23, Southern Ore. -- 11/10/18

Rebounds: 11, at Fresno State -- 1/19/19; CSUN -- 11/08/18

Assists: 5, at Fresno State -- 1/19/19

Steals: 3, St. Francis (Pa.) -- 12/21/17

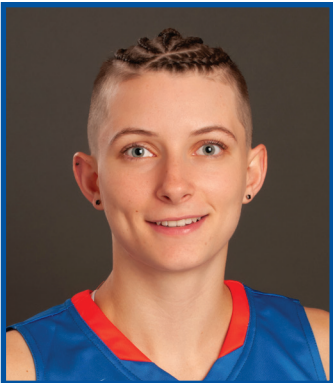
Blocks: 4, Wyoming -- 1-28-17

FG made: 11, Southern Ore. -- 11/10/18

FG attempts: 14, Southern Ore. -- 11/10/18

FT made: 2, 9 times

FT attempts: 5, Southern Oregon -- 11-13-16



35 • MAGGIE FREEMAN

Guard • 5-11 • Fr. • Beaverton, Ore. (Southridge HS)

GAME-BY-GAME STATISTICS

MISCELLANEOUS STATS

CATEGORY	SEASON	CAREER
Double-Doubles	0	0
Double-Figure Points	0	0
Double-Figure Rebounds	0	0
Double-Figure Assists	0	0
20-plus Points	0	0
30-plus Points	0	0
Team-High Points	0	0
Team-High Rebounds	0	0
Team-High Assists	0	0

KEY 2018-19 NOTES

Will redshirt the 2018-19 season.

CAREER STATISTICS & RANKINGS



MISCELLANEOUS STATS

CATEGORY	SEASON	CAREER
Double-Doubles	0	0
Double-Figure Points	11	16
Double-Figure Rebounds	0	0
Double-Figure Assists	0	0
20-plus Points	0	0
30-plus Points	0	0
Team-High Points	4	5
Team-High Rebounds	4	9
Team-High Assists	0	0

KEY 2018-19 NOTES

Scored 11 points with six rebounds and two blocks against CSUN (Nov. 8)...had 10 points on 4-of-5 shooting against Northwest Christian (Nov. 16)...scored nine points against Idaho (Nov. 23)...grabbed a team-high eight rebounds to go with 14 points against Northern Iowa (Nov. 24)...made a career-high five steals, went 7-for-9 from the field and scored 16 points against Eastern Washington (Dec. 7)...scored 12 points with three steals against Saint Francis (Pa.) (Dec. 15)...went 7-for-8 from the field with team-high 14 points against Southern Utah (Dec. 19)...scored a career-high 22 points at San Diego State, going 9-for-13 from the field and 4-for-4 from the line, and grabbed five rebounds (Jan. 5)...grabbed six rebounds to go with 12 points against San Jose State (Jan. 12)...went 7-for-10, scored 18 points at Nevada (Jan. 16)...finished 9-for-10 shooting with a game-high 18 points against Air Force (Jan. 23)...scored 13 points on 5-for-7 shooting with seven rebounds against Nevada (Feb. 2).

42 • A'SHANTI COLEMAN

Forward • 6-2 • R-Jr. • San Francisco, Calif. (Arizona / Sacred Heart Cathedral Prep)

GAME-BY-GAME STATISTICS

THE STAT CREW SYSTEM

Boise State Individual Game-by-Game (as of Feb 03, 2019)
All games

#42 COLEMAN, A'Shanti

Opponent	Date	qs	min	Total		3-Pointers		Free throws		Rebounds				pf	a	t/o	blk	stl	pts	avg	
				fg-fga	pct	3fg-fga	pct	ft-fa	pct	off	def	tot	avg								
CSUN	11/08/18	*	22	5-9	.556	0-0	.000	1-4	.250	3	3	6	6.0	2	1	1	2	0	11	11.0	
SOUTHERN ORE.	11/10/18	*	18	3-6	.500	0-0	.000	0-0	.000	0	0	0	3.0	4	1	0	1	1	6	8.5	
NORTHWEST CHRST.	11/16/18	*	16	4-5	.800	1-1	1.000	1-1	1.000	2	1	3	3.0	0	0	2	0	4	10	9.0	
LOUISVILLE	11/19/18	*	17	0-4	.000	0-1	.000	1-2	.500	0	0	0	2.3	0	0	0	1	3	1	7.0	
vs Idaho	11/23/18	*	21	4-5	.800	1-1	1.000	0-0	.000	1	2	3	2.4	1	0	2	0	1	9	7.4	
vs Northern Iowa	11/24/18	*	27	7-14	.500	0-1	.000	0-1	.000	6	2	8	3.3	0	0	4	0	3	14	8.5	
at Washington St.	12/01/18	*	19	1-6	.167	0-0	.000	0-0	.000	3	2	5	3.6	2	0	2	0	0	2	7.6	
EASTERN WASH.	12/07/18	*	27	7-9	.778	0-0	.000	2-3	.667	2	2	4	3.6	1	1	2	1	5	16	8.6	
vs Saint Francis (PA)	12/15/18	*	24	5-14	.357	0-1	.000	2-2	1.000	1	4	5	3.8	0	0	2	2	3	12	9.0	
at Washington	12/16/18	*	18	1-7	.143	0-0	.000	0-0	.000	0	4	4	3.8	3	0	1	0	1	2	8.3	
SOUTHERN UTAH	12/19/18	*	17	7-8	.875	0-0	.000	0-0	.000	0	2	2	3.6	0	1	0	1	0	14	8.8	
WYOMING	01/02/19	*	18	2-5	.400	0-1	.000	0-0	.000	0	2	2	3.5	1	0	1	2	0	4	8.4	
at San Diego State	1-5-19	*	25	9-13	.692	0-0	.000	4-4	1.000	1	4	5	3.6	3	3	1	3	3	22	9.5	
SAN JOSE ST.	01/12/19	*	17	5-9	.556	0-0	.000	2-2	1.000	2	4	6	3.8	1	0	0	0	0	12	9.6	
at Nevada	1/16/19	*	23	7-10	.700	0-0	.000	4-5	.800	0	2	2	3.7	3	0	1	0	1	18	10.2	
at Fresno State	1/19/19	*	27	2-10	.200	0-0	.000	0-2	.000	0	4	4	3.7	3	1	0	5	0	4	9.8	
AIR FORCE	01/23/19	*	21	9-10	.900	0-0	.000	0-2	.000	1	1	2	3.6	2	0	1	2	2	18	10.3	
at Wyoming	01/26/19	*	18	3-5	.600	0-1	.000	0-0	.000	1	1	2	3.5	5	1	2	2	1	6	10.1	
COLORADO ST.	01/30/19	*	19	2-3	.667	0-0	.000	1-2	.500	2	3	5	3.6	1	0	4	0	1	5	9.8	
NEVADA	02/02/19	*	25	5-7	.714	0-0	.000	3-4	.750	3	4	7	3.8	1	0	5	0	1	13	10.0	
Totals			20	419	88-159	.553	2-7	.286	21-34	.618	28	47	75	3.8	33	9	31	22	30	199	10.0

CAREER STATISTICS & RANKINGS

Season	gp-gs	min/avg	Total		3-Point		F-Throws		Rebounds				Scoring							
			fg-fga	pct	fg-fga	pct	ft-fa	pct	off	def	tot	avg	pf	fo	ast	to	blk	stl	pts	avg
2017-18	33-11	696/21.1	91-181	.503	1-7	.143	47-66	.712	60	80	140	4.2	65	0	25	72	35	13	230	7.0
2018-19	20-20	419/21.0	88-159	.553	2-7	.286	21-34	.618	28	47	75	3.8	33	1	9	31	22	30	199	10.0
TOTAL	53-31	1115/21.0	179-340	.526	3-14	.214	68-100	.680	88	127	215	4.1	98	1	34	103	57	43	429	8.1

SINGLE-GAME HIGHS [all-time ranking]:

Points: 22, at San Diego State -- 1-5-19

Rebounds: 9, at Air Force -- 02/17/18

Assists: 3, at San Diego State -- 1-5-19

Steals: 5, Eastern Wash. -- 12/07/18

Blocks: 5 [1-10th], at Fresno State -- 1/19/19

FG made: 9, Air Force -- 01/23/19; at San Diego State -- 1-5-19

FG attempts: 14, vs Northern Iowa -- 11/24/18; vs Saint Francis (PA) -- 12/15/18

3FG made: 1, Northwest Chrst. -- 11/16/18; vs San Diego -- 11/17/17; vs Idaho -- 11/23/18

3FG attempts: 1, 14 times

FT made: 5, New Mexico -- 02/07/18; Washington State -- 12/18/17

FT attempts: 8, Washington State -- 12/18/17



MISCELLANEOUS STATS

CATEGORY	SEASON	CAREER
Double-Doubles	0	0
Double-Figure Points	0	0
Double-Figure Rebounds	0	0
Double-Figure Assists	0	0
20-plus Points	0	0
30-plus Points	0	0
Team-High Points	0	0
Team-High Rebounds	0	0
Team-High Assists	0	0

KEY 2018-19 NOTES

Scored five points with four rebounds against Southern Oregon (Nov. 10)...grabbed four rebounds and scored two points in 12 minutes against Southern Utah (Dec. 19).

44 • EMERALD TOTH

Forward • 6-1 • Jr. • Bozeman, Mont. (Bozeman HS)

GAME-BY-GAME STATISTICS

THE STAT CREW SYSTEM

Boise State Individual Game-by-Game (as of Feb 03, 2019)
All games

#44 TOTH, Emerald

Opponent	Date	gs	min	Total		3-Pointers		Free throws		Rebounds				pf	a	t/o	blk	stl	pts	avg
				fg-fga	pct	3fg-fga	pct	ft-fga	pct	off	def	tot	avg							
CSUN	11/08/18	2	0-0	.000	0-0	.000	0-0	.000	0	0	0	0.0	0	0	0	0	0	0	0.0	
SOUTHERN ORE.	11/10/18	13	2-5	.400	0-0	.000	1-1	1.000	1	3	4	2.0	1	1	0	0	0	5	2.5	
NORTHWEST CHRST.	11/16/18	19	3-5	.600	0-0	.000	0-0	.000	1	2	3	2.3	1	2	3	0	1	6	3.7	
vs Idaho	11/23/18	3	1-1	1.000	0-0	.000	0-0	.000	0	1	1	2.0	1	0	0	0	0	2	3.3	
at Washington St.	12/01/18	4	0-0	.000	0-0	.000	0-0	.000	1	0	1	1.8	1	0	0	0	0	0	2.6	
EASTERN WASH.	12/07/18	1	0-0	.000	0-0	.000	0-0	.000	0	0	0	1.5	0	0	0	0	0	0	2.2	
vs Saint Francis (PA)	12/15/18	3	0-2	.000	0-0	.000	0-0	.000	1	0	1	1.4	0	0	0	0	0	0	1.9	
SOUTHERN UTAH	12/19/18	12	1-3	.333	0-0	.000	0-0	.000	2	2	4	1.8	1	2	0	0	0	2	1.9	
at Fresno State	1/19/19	2	0-0	.000	0-0	.000	0-2	.000	0	0	0	1.6	0	0	0	0	0	0	1.7	
AIR FORCE	01/23/19	4	0-0	.000	0-0	.000	0-0	.000	0	0	0	1.4	1	0	0	0	0	0	1.5	
at Wyoming	01/26/19	3	0-1	.000	0-0	.000	0-0	.000	0	0	0	1.3	0	0	0	0	0	0	1.4	
NEVADA	02/02/19	3	0-0	.000	0-0	.000	0-0	.000	0	0	0	1.2	1	0	0	0	0	0	1.3	
Totals		0	69	7-17	.412	0-0	.000	1-3	.333	6	8	14	1.2	7	5	3	0	1	15	1.3

CAREER STATISTICS & RANKINGS

Season	gp-gs	min/avg	Total		3-Point		F-Throws		Rebounds				pf	fo	ast	to	blk	stl	Scoring	
			fg-fga	pct	fg-fga	pct	ft-fga	pct	off	def	tot	avg							pts	avg
2016-17	12-0	46/3.8	2-11	.182	0-0	.000	2-3	.667	6	7	13	1.1	8	0	1	7	1	1	6	0.5
2017-18	19-0	77/4.1	10-18	.556	0-1	.000	4-4	1.000	4	5	9	0.5	7	0	2	3	2	2	24	1.3
2018-19	12-0	69/5.8	7-17	.412	0-0	.000	1-3	.333	6	8	14	1.2	7	0	5	3	0	1	15	1.3
TOTAL	43-0	192/4.5	19-46	.413	0-1	.000	7-10	.700	16	20	36	0.8	22	0	8	13	3	4	45	1.0

SINGLE-GAME HIGHS [all-time ranking]:

Points: 24/004, --

Rebounds: 4, Southern Ore. -- 11/10/18; Southern Utah -- 12/19/18

Assists: 9, New Mexico -- 12/19/83

Steals: 1, at Air Force -- 02/17/18; Northwest Chrst. -- 11/16/18; at LOUISVILLE -- 3/16/18

Blocks: 1, at San Jose State -- 01/24/18; Northwest Christian -- 11/10/17

FG made: 12, at Northern Arizona -- 01/21/95; -- 02/16/95

FG attempts: 24/004, --

3FG attempts: 1, Corban -- 11/26/17

FT made: 2, at Portland -- 12/10/17; at LOUISVILLE -- 3/16/18

FT attempts: 2, at Fresno State -- 1/19/19; at Portland -- 12/10/17; at LOUISVILLE -- 3/16/18

2018-19 Boise St. Women's Basketball
Boise St. Season Schedule/Results & Leaders (as of Feb 03, 2019)
All games

RECORD	OVERALL	HOME	AWAY	NEUTRAL
ALL GAMES	17-3	10-1	4-2	3-0
CONFERENCE	8-1	5-0	3-1	-
NON-CONFERENCE	9-2	5-1	1-1	3-0

Date	Opponent	Score	Att. High Points	High Rebounds
11/08/18	CSUN	W 74-63	419 (16)HERMIDA , Marta	(11)HARRELL , Joyce
11/10/18	Southern Ore.	W 91-46	903 (23)HARRELL , Joyce	(6)HARRELL , Joyce (6)WOERNER , Ellie
11/16/18	Northwest Chrst.	W 93-26	749 (14)WOERNER , Ellie	(8)WOERNER , Ellie
11/19/18	Louisville	L 55-74	4125 (12)HODGINS , Braydey	(7)HARRELL , Joyce
11/23/18	vs Idaho	W 91-85	679 (23)WOERNER , Ellie (23)HODGINS , Braydey	(7)HERMIDA , Marta
11/24/18	vs UNI	W 61-60	0 (16)LUPFER , Riley	(8)COLEMAN , A'Shanti
12/01/18	at Washington St.	L 71-95	547 (18)LOVILLE , Jade	(7)LUPFER , Riley
12/07/18	Eastern Wash.	W 67-55	625 (16)COLEMAN , A'Shanti	(6)LUPFER , Riley
12/15/18	vs Saint Francis (PA)	W 78-64	1600 (15)HODGINS , Braydey	(5)COLEMAN , A'Shanti (5)HARRELL , Joyce (5)HODGINS , Braydey
12/16/18	at Washington	W 73-69	1417 (22)LUPFER , Riley	(6)CHRISTOPHER , Jayde
12/19/18	Southern Utah	W 88-53	0 (14)COLEMAN , A'Shanti	(7)BOWERS , Rachel
01/02/19	Wyoming	W 72-64	1097 (22)LUPFER , Riley	(9)HARRELL , Joyce
01/05/19	at San Diego St.	W 69-66	662 (22)COLEMAN , A'Shanti	(7)HARRELL , Joyce
01/12/19	San Jose St.	W 99-68	1284 (14)BOWERS , Rachel	(6)COLEMAN , A'Shanti (6)CHRISTOPHER , Jayde (6)BOWERS , Rachel
01/16/19	at Nevada	W 75-74	872 (18)COLEMAN , A'Shanti	(7)HERMIDA , Marta (7)HARRELL , Joyce
01/19/19	at Fresno St.	W 72-60	2294 (21)HERMIDA , Marta	(11)HARRELL , Joyce

2018-19 Boise St. Women's Basketball

Boise St. Combined Team Statistics (as of Feb 03, 2019)

All games

RECORD	OVERALL	HOME	AWAY	NEUTRAL
ALL GAMES	17-3	10-1	4-2	3-0
CONFERENCE	8-1	5-0	3-1	-
NON-CONFERENCE	9-2	5-1	1-1	3-0

## Player	gp-gs	min	avg	Total		3-Point		F-Throw		Rebounds				pf		a	to	blk	stl	pts	avg
				fg-fga	fg%	3fg-fga	3fg%	ft-fga	ft%	off	def	tot	avg	off	def						
21 LUPFER, Riley	20-20	576	28.8	83-215	.386	51-150	.340	32-35	.914	16	51	67	3.4	34	0	39	25	10	18	249	12.5
14 HODGINS, Braydey	20-13	478	23.9	60-145	.414	37-86	.430	45-59	.763	13	55	68	3.4	47	0	41	38	7	26	202	10.1
42 COLEMAN, A'Shanti	20-20	419	21.0	88-159	.553	2-7	.286	21-34	.618	28	47	75	3.8	33	0	9	31	22	30	199	10.0
20 HERMIDA, Marta	19-13	415	21.8	59-130	.454	29-69	.420	13-17	.765	17	55	72	3.8	23	0	51	34	1	17	160	8.4
33 HARRELL, Joyce	20-20	408	20.4	68-136	.500	0-0	.000	10-24	.417	48	68	116	5.8	50	0	22	22	12	18	146	7.3
23 CHRISTOPHER, Jayde	20-14	549	27.5	48-105	.457	9-30	.300	16-24	.667	11	53	64	3.2	34	0	106	60	8	25	121	6.1
25 BOWERS, Rachel	20-0	240	12.0	50-87	.575	2-3	.667	15-17	.882	17	47	64	3.2	42	0	9	16	11	5	117	5.9
30 LOVILLE, Jade	20-0	209	10.5	34-93	.366	14-46	.304	13-19	.684	8	20	28	1.4	24	0	11	22	1	5	95	4.8
22 WOERNER, Ellie	20-0	321	16.1	30-80	.375	11-27	.407	20-28	.714	22	33	55	2.8	16	0	19	25	3	11	91	4.6
15 AMUNDSEN, Tess	14-0	108	7.7	20-39	.513	6-16	.375	4-5	.800	5	12	17	1.2	19	0	7	11	1	4	50	3.6
03 GALERON, Sofia	20-0	193	9.7	23-49	.469	6-13	.462	1-1	1.000	18	26	44	2.2	23	0	13	18	9	7	53	2.7
31 VANDERSCHAAF, Marijke	6-0	17	2.8	5-8	.625	0-0	.000	2-8	.250	0	0	0	0.0	3	0	0	1	0	0	12	2.0
44 TOTH, Emerald	12-0	68	5.7	7-17	.412	0-0	.000	1-3	.333	6	8	14	1.2	7	0	5	3	0	1	15	1.3
Team										32	35	67					2				
Total	20			575-1263	.455	167-447	.374	193-274	.704	241	510	751	37.6	355	0	332	308	85	167	1510	75.5
Opponents	20			449-1146	.392	103-341	.302	255-360	.708	220	468	688	34.4	297	0	210	371	53	140	1256	62.8

TEAM STATISTICS	BOISE ST.	OPP	Date	Opponent	Score	Att.
SCORING	1510	1256	11/08/18	CSUN	W 74-63	419
Points per game	75.5	62.8	11/10/18	Southern Ore.	W 91-46	903
Scoring margin	+12.7	-	11/16/18	Northwest Chrst.	W 93-26	749
FIELD GOALS-ATT	575-1263	449-1146	11/19/18	Louisville	L 55-74	4125
Field goal pct	.455	.392	11/23/18	vs Idaho	W 91-85	679
3 POINT FG-ATT	167-447	103-341	11/24/18	vs UNI	W 61-60	0
3-point FG pct	.374	.302	12/01/18	at Washington St.	L 71-95	547
3-pt FG made per game	8.4	5.2	12/07/18	at Eastern Wash.	W 67-55	625
FREE THROWS-ATT	193-274	255-360	12/15/18	vs Saint Francis (PA)	W 78-64	1600
Free throw pct	.704	.708	12/16/18	at Washington	W 73-69	1417
F-Throws made per game	9.7	12.8	12/19/18	at Southern Utah	W 88-53	0
REBOUNDS	751	688	01/02/19	Wyoming	W 72-64	1097
Rebounds per game	37.6	34.4	01/05/19	at San Diego St.	W 69-66	662
Rebounding margin	+3.2	-	01/12/19	San Jose St.	W 99-68	1284
ASSISTS	332	210	01/16/19	at Nevada	W 75-74	872
Assists per game	16.6	10.5	01/19/19	at Fresno St.	W 72-60	2294
TURNOVERS	308	371	01/23/19	at Air Force	W 79-48	738
Turnovers per game	15.4	18.6	01/26/19	at Wyoming	L 52-64	2500
Turnover margin	+3.2	-	01/30/19	Colorado St.	W 70-57	1181
Assist/turnover ratio	1.1	0.6	02/02/19	Nevada	W 80-65	1627
STEALS	167	140				
Steals per game	8.4	7.0				
BLOCKS	85	53				
Blocks per game	4.3	2.7				
WINNING STREAK	2	-				
Home win streak	7	-				
ATTENDANCE	12748	8292				
Home games-Avg/Game	11-1159	6-1382				
Neutral site-Avg/Game	-	3-760				

Score by Periods	1st	2nd	OT	Totals
Boise St.	745	765	0	1510
Opponents	575	681	0	1256

BOISE STATE COMBINED MW STATS

RECORD:	OVERALL	HOME	AWAY	NEUTRAL
ALL GAMES	8-1	5-0	3-1	0-0
CONFERENCE	8-1	5-0	3-1	0-0
NON-CONFERENCE	0-0	0-0	0-0	0-0

#	Player	gp-gs	min	avg	Total	fg%	3-Point	3fg%	F-Throw	ft%	Rebounds				pf	dq	a	to	blk	stl	pts	avg
					fg-fga		3fg-fga		ft-fa		off	def	tot	avg								
21	LUPFER, Riley	9-9	277	30.8	41-104	.394	23-67	.343	13-15	.867	4	25	29	3.2	17	0	19	16	5	9	118	13.1
42	COLEMAN, A'Shanti	9-9	193	21.4	44-72	.611	0-2	.000	14-21	.667	10	25	35	3.9	20	1	5	15	14	9	102	11.3
14	HODGINS, Braydey	9-6	229	25.4	26-66	.394	14-33	.424	19-23	.826	6	25	31	3.4	18	0	20	20	3	15	85	9.4
20	HERMIDA, Marta	8-5	174	21.8	23-44	.523	10-21	.476	2-6	.333	8	20	28	3.5	15	0	25	12	0	3	58	7.3
33	HARRELL, Joyce	9-9	206	22.9	28-58	.483	0-0	.000	7-13	.538	21	40	61	6.8	25	0	13	13	4	6	63	7.0
23	CHRISTOPHER, Jayd	9-7	256	28.4	22-53	.415	5-17	.294	12-18	.667	9	24	33	3.7	17	0	46	27	1	14	61	6.8
25	BOWERS, Rachel	9-0	97	10.8	23-37	.622	1-2	.500	11-11	1.000	9	18	27	3.0	19	1	3	6	4	1	58	6.4
15	AMUNDSEN, Tess	9-0	75	8.3	17-27	.630	5-10	.500	4-5	.800	3	7	10	1.1	12	0	5	7	1	2	43	4.8
30	LOVILLE, Jade	9-0	81	9.0	11-31	.355	4-13	.308	3-4	.750	1	8	9	1.0	8	0	5	9	1	1	29	3.2
22	WOERNER, Ellie	9-0	118	13.1	8-21	.381	2-8	.250	2-4	.500	7	10	17	1.9	8	0	4	10	0	4	20	2.2
03	GALERON, Sofia	9-0	64	7.1	8-17	.471	3-6	.500	0-0	.000	5	8	13	1.4	7	0	4	4	6	2	19	2.1
31	VANDERSCHAAF, Ma	6-0	18	3.0	5-8	.625	0-0	.000	2-8	.250	0	0	0	0.0	3	0	0	1	0	0	12	2.0
44	TOTH, Emerald	4-0	12	3.0	0-1	.000	0-0	.000	0-2	.000	0	0	0	0.0	2	0	0	0	0	0	0	0.0
Team											15	12	27					2				
Total.....		9	1800		256-539	.475	67-179	.374	89-130	.685	98	222	320	35.6	171	2	149	142	39	66	668	74.2
Opponents.....		9	1800		203-497	.408	31-122	.254	129-183	.705	86	193	279	31.0	146	-	86	146	23	68	566	62.9

TEAM STATISTICS	BSU	OPP	Date	Opponent	Score	Att.
SCORING	668	566	* 01/02/19	WYOMING	w 72-64	1097
Points per game	74.2	62.9	* 1-5-19	at San Diego State	w 69-66	662
Scoring margin	+11.3	-	* 01/12/19	SAN JOSE ST.	w 99-68	1284
FIELD GOALS-ATT	256-539	203-497	* 1/16/19	at Nevada	w 75-74	872
Field goal pct	.475	.408	* 1/19/19	at Fresno State	w 72-60	0
3 POINT FG-ATT	67-179	31-122	* 01/23/19	AIR FORCE	w 79-48	738
3-point FG pct	.374	.254	* 01/26/19	at Wyoming	L 52-64	2500
3-pt FG made per game	7.4	3.4	* 01/30/19	COLORADO ST.	w 70-57	1181
FREE THROWS-ATT	89-130	129-183	* 02/02/19	NEVADA	w 80-65	1627
Free throw pct	.685	.705	* - Conference game			
F-Throws made per game	9.9	14.3				
REBOUNDS	320	279				
Rebounds per game	35.6	31.0				
Rebounding margin	+4.6	-				
ASSISTS	149	86				
Assists per game	16.6	9.6				
TURNOVERS	142	146				
Turnovers per game	15.8	16.2				
Turnover margin	+0.4	-				
Assist/turnover ratio	1.0	0.6				
STEALS	66	68				
Steals per game	7.3	7.6				
BLOCKS	39	23				
Blocks per game	4.3	2.6				
ATTENDANCE	5927	4034				
Home games-Avg/Game	5-1185	4-1008				
Neutral site-Avg/Game	-	0-0				

Score by Periods	1st	2nd	3rd	4th	Totals
Boise State	188	136	200	144	668
Opponents	135	105	159	167	566

BOISE STATE COMBINED NONCONFERENCE STATS**Boise State Combined Team Statistics (as of Jan 03, 2019)****Non-conference games**

RECORD:	OVERALL	HOME	AWAY	NEUTRAL
ALL GAMES	9-2	5-1	1-1	3-0
CONFERENCE	0-0	0-0	0-0	0-0
NON-CONFERENCE	9-2	5-1	1-1	3-0

#	Player	gp-gs	min	avg	Total		3-Point		F-Throw		Rebounds				pf	dq	a	to	blk	stl	pts	avg
					fg-fga	fg%	3fg-fga	3fg%	ft-fga	ft%	off	def	tot	avg								
21	LUPFER, Riley	11-11	299	27.2	42-111	.378	28-83	.337	19-20	.950	12	26	38	3.5	17	0	20	9	5	9	131	11.9
14	HODGINS, Braydey	11-7	248	22.5	34-79	.430	23-53	.434	26-36	.722	7	30	37	3.4	29	0	21	18	4	11	117	10.6
20	HERMIDA, Marta	11-8	242	22.0	36-86	.419	19-48	.396	11-11	1.000	9	35	44	4.0	8	0	26	22	1	14	102	9.3
42	COLEMAN, A'Shanti	11-11	226	20.5	44-87	.506	2-5	.400	7-13	.538	18	22	40	3.6	13	0	4	16	8	21	97	8.8
33	HARRELL, Joyce	11-11	205	18.6	40-78	.513	0-0	.000	3-11	.273	27	28	55	5.0	25	0	9	9	8	12	83	7.5
22	WOERNER, Ellie	11-0	199	18.1	22-59	.373	9-19	.474	18-24	.750	15	23	38	3.5	8	0	15	15	3	7	71	6.5
30	LOVILLE, Jade	11-0	129	11.7	23-62	.371	10-33	.303	10-15	.667	7	12	19	1.7	16	0	6	13	0	4	66	6.0
23	CHRISTOPHER, Jayd	11-7	292	26.5	26-52	.500	4-13	.308	4-6	.667	2	29	31	2.8	17	0	60	33	7	11	60	5.5
25	BOWERS, Rachel	11-0	146	13.3	27-50	.540	1-1	1.000	4-6	.667	8	29	37	3.4	23	0	6	10	7	4	59	5.4
03	GALERON, Sofia	11-0	131	11.9	15-32	.469	3-7	.429	1-1	1.000	13	18	31	2.8	16	0	9	14	3	5	34	3.1
44	TOTH, Emerald	8-0	57	7.1	7-16	.438	0-0	.000	1-1	1.000	6	8	14	1.8	5	0	5	3	0	1	15	1.9
15	AMUNDSEN, Tess	5-0	32	6.4	3-12	.250	1-6	.167	0-0	.000	2	5	7	1.4	7	0	2	4	0	2	7	1.4
Team											17	23	40									
Total.....		11	2206		319-724	.441	100-268	.373	104-144	.722	143	288	431	39.2	184	0	183	166	46	101	842	76.5
Opponents.....		11	2399		246-649	.379	72-219	.329	126-177	.712	134	275	409	37.2	151	-	124	224	30	72	690	62.7

TEAM STATISTICS			BSU	OPP	Date	Opponent	Score	Att.
SCORING			842	690	11/08/18	CSUN	w 74-63	419
Points per game			76.5	62.7	11/10/18	SOUTHERN ORE.	w 91-46	903
Scoring margin			+13.8	-	11/16/18	NORTHWEST CHRST.	w 93-26	749
FIELD GOALS-ATT			319-724	246-649	11/19/18	LOUISVILLE	L 55-74	4125
Field goal pct			.441	.379	11/23/18	vs Idaho	w 91-85	0
3 POINT FG-ATT			100-268	72-219	11/24/18	vs Northern Iowa	w 61-60	0
3-point FG pct			.373	.329	12/01/18	at Washington St.	L 71-95	547
3-pt FG made per game			9.1	6.5	12/07/18	EASTERN WASH.	w 67-55	625
FREE THROWS-ATT			104-144	126-177	12/15/18	vs Saint Francis (PA)	w 78-64	1600
Free throw pct			.722	.712	12/16/18	at Washington	w 73-69	1417
F-Throws made per game			9.5	11.5	12/19/18	SOUTHERN UTAH	w 88-53	0
REBOUNDS			431	409	* - Conference game			
Rebounds per game			39.2	37.2				
Rebounding margin			+2.0	-				
ASSISTS			183	124				
Assists per game			16.6	11.3				
TURNOVERS			166	224				
Turnovers per game			15.1	20.4				
Turnover margin			+5.3	-				
Assist/turnover ratio			1.1	0.6				
STEALS			101	72				
Steals per game			9.2	6.5				
BLOCKS			46	30				
Blocks per game			4.2	2.7				
ATTENDANCE			6821	3564				
Home games-Avg/Game			6-1137	2-982				
Neutral site-Avg/Game			-	3-533				

Score by Periods	1st	2nd	3rd	4th	Totals
Boise State	210	211	211	210	842
Opponents	150	185	175	180	690

BOISE STATE COMBINED HOME STATS

RECORD:	OVERALL	HOME	AWAY	NEUTRAL
ALL GAMES	10-1	10-1	0-0	0-0
CONFERENCE	5-0	5-0	0-0	0-0
NON-CONFERENCE	5-1	5-1	0-0	0-0

#	Player	gp-gs	min	avg	Total		3-Point		F-Throw		Rebounds												pts	avg
					fg-fga	fg%	3fg-fga	3fg%	ft-fga	ft%	off	def	tot	avg	pf	dq	a	to	blk	stl				
21	LUPFER, Riley	11-11	289	26.3	43-107	.402	26-74	.351	16-16	1.000	9	26	35	3.2	15	0	29	12	2	9	128	11.6		
42	COLEMAN, A'Shanti	11-11	217	19.7	49-75	.653	1-3	.333	11-20	.550	15	22	37	3.4	13	0	4	16	10	17	110	10.0		
20	HERMIDA, Marta	10-7	229	22.9	36-69	.522	19-38	.500	4-4	1.000	8	28	36	3.6	12	0	32	23	0	13	95	9.5		
14	HODGINS, Braydey	11-8	261	23.7	33-73	.452	21-43	.488	14-20	.700	5	34	39	3.5	24	0	27	21	5	16	101	9.2		
33	HARRELL, Joyce	11-11	212	19.3	46-82	.561	0-0	.000	6-12	.500	29	41	70	6.4	24	0	10	13	6	11	98	8.9		
25	BOWERS, Rachel	11-0	145	13.2	33-50	.660	2-3	.667	10-11	.909	11	32	43	3.9	24	0	6	10	7	2	78	7.1		
30	LOVILLE, Jade	11-0	139	12.6	22-56	.393	9-31	.290	9-12	.750	3	13	16	1.5	12	0	10	15	1	3	62	5.6		
23	CHRISTOPHER, Jayd	11-7	271	24.6	21-48	.438	5-19	.263	10-12	.833	7	26	33	3.0	17	0	55	34	4	16	57	5.2		
22	WOERNER, Ellie	11-0	178	16.2	20-49	.408	6-16	.375	10-15	.667	12	21	33	3.0	5	0	11	12	2	3	56	5.1		
15	AMUNDSEN, Tess	9-0	71	7.9	12-25	.480	4-11	.364	4-5	.800	5	10	15	1.7	13	0	5	8	1	3	32	3.6		
03	GALERON, Sofia	11-0	125	11.4	13-32	.406	3-8	.375	0-0	.000	11	18	29	2.6	18	0	11	12	5	6	29	2.6		
31	VANDERSCHAAF, Ma	4-0	14	3.5	4-7	.571	0-0	.000	1-5	.200	0	0	0	0.0	3	0	0	1	0	0	9	2.3		
44	TOTH, Emerald	7-0	54	7.7	6-13	.462	0-0	.000	1-1	1.000	4	7	11	1.6	5	0	5	3	0	1	13	1.9		
Team											13	17	30				1							
Total.....		11	2205		338-686	.493	96-246	.390	96-133	.722	132	295	427	38.8	185	0	205	181	43	100	868	78.9		
Opponents.....		11	2399		225-624	.361	45-186	.242	124-184	.674	122	218	340	30.9	148	-	90	213	21	77	619	56.3		

TEAM STATISTICS	BSU	OPP	Date	Opponent	Score	Att.
SCORING	868	619	11/08/18	CSUN	w 74-63	419
Points per game	78.9	56.3	11/10/18	SOUTHERN ORE.	w 91-46	903
Scoring margin	+22.6	-	11/16/18	NORTHWEST CHRST.	w 93-26	749
FIELD GOALS-ATT	338-686	225-624	11/19/18	LOUISVILLE	L 55-74	4125
Field goal pct	.493	.361	12/07/18	EASTERN WASH.	w 67-55	625
3 POINT FG-ATT	96-246	45-186	12/19/18	SOUTHERN UTAH	w 88-53	0
3-point FG pct	.390	.242	* 01/02/19	WYOMING	w 72-64	1097
3-pt FG made per game	8.7	4.1	* 01/12/19	SAN JOSE ST.	w 99-68	1284
FREE THROWS-ATT	96-133	124-184	* 01/23/19	AIR FORCE	w 79-48	738
Free throw pct	.722	.674	* 01/30/19	COLORADO ST.	w 70-57	1181
F-Throws made per game	8.7	11.3	* 02/02/19	NEVADA	w 80-65	1627

* - Conference game

REBOUNDS	427	340
Rebounds per game	38.8	30.9
Rebounding margin	+7.9	-
ASSISTS	205	90
Assists per game	18.6	8.2
TURNOVERS	181	213
Turnovers per game	16.5	19.4
Turnover margin	+2.9	-
Assist/turnover ratio	1.1	0.4
STEALS	100	77
Steals per game	9.1	7.0
BLOCKS	43	21
Blocks per game	3.9	1.9
ATTENDANCE	12748	0
Home games-Avg/Game	11-1159	0-0
Neutral site-Avg/Game	-	0-0

Score by Periods	1st	2nd	3rd	4th	Totals
Boise State	229	208	238	193	868
Opponents	129	136	182	172	619

BOISE STATE COMBINED ROAD STATS

RECORD:	OVERALL	HOME	AWAY	NEUTRAL
ALL GAMES	7-2	0-0	4-2	3-0
CONFERENCE	3-1	0-0	3-1	0-0
NON-CONFERENCE	4-1	0-0	1-1	3-0

#	Player	gp-gs	min	avg	Total		3-Point		F-Throw		Rebounds						a	to	blk	stl	pts	avg
					fg-fga	fg%	3fg-fga	3fg%	ft-fga	ft%	off	def	tot	avg	pf	dq						
21	LUPFER, Riley	9-9	287	31.9	40-108	.370	25-76	.329	16-19	.842	7	25	32	3.6	19	0	10	13	8	9	121	13.4
14	HODGINS, Braydey	9-5	216	24.0	27-72	.375	16-43	.372	31-39	.795	8	21	29	3.2	23	0	14	17	2	10	101	11.2
42	COLEMAN, A'Shanti	9-9	202	22.4	39-84	.464	1-4	.250	10-14	.714	13	25	38	4.2	20	1	5	15	12	13	89	9.9
20	HERMIDA, Marta	9-6	187	20.8	23-61	.377	10-31	.323	9-13	.692	9	27	36	4.0	11	0	19	11	1	4	65	7.2
23	CHRISTOPHER, Jayd	9-7	277	30.8	27-57	.474	4-11	.364	6-12	.500	4	27	31	3.4	17	0	51	26	4	9	64	7.1
33	HARRELL, Joyce	9-9	199	22.1	22-54	.407	0-0	.000	4-12	.333	19	27	46	5.1	26	0	12	9	6	7	48	5.3
25	BOWERS, Rachel	9-0	98	10.9	17-37	.459	0-0	.000	5-6	.833	6	15	21	2.3	18	1	3	6	4	3	39	4.3
22	WOERNER, Ellie	9-0	139	15.4	10-31	.323	5-11	.455	10-13	.769	10	12	22	2.4	11	0	8	13	1	8	35	3.9
30	LOVILLE, Jade	9-0	71	7.9	12-37	.324	5-15	.333	4-7	.571	5	7	12	1.3	12	0	1	7	0	2	33	3.7
15	AMUNDSEN, Tess	5-0	36	7.2	8-14	.571	2-5	.400	0-0	.000	0	2	2	0.4	6	0	2	3	0	1	18	3.6
03	GALERON, Sofia	9-0	70	7.8	10-17	.588	3-5	.600	1-1	1.000	7	8	15	1.7	5	0	2	6	4	1	24	2.7
31	VANDERSCHAAF, Ma	2-0	4	2.0	1-1	1.000	0-0	.000	1-3	.333	0	0	0	0.0	0	0	0	0	0	0	3	1.5
44	TOTH, Emerald	5-0	15	3.0	1-4	.250	0-0	.000	0-2	.000	2	1	3	0.6	2	0	0	0	0	0	2	0.4
Team											19	18	37				1					
Total.....		9	1801		237-577	.411	71-201	.353	97-141	.688	109	215	324	36.0	170	2	127	127	42	67	642	71.3
Opponents.....		9	1800		224-522	.429	58-155	.374	131-176	.744	98	250	348	38.7	149	-	120	157	32	63	637	70.8

TEAM STATISTICS	BSU	OPP	Date	Opponent	Score	Att.
SCORING	642	637	11/23/18	vs Idaho	w 91-85	0
Points per game	71.3	70.8	11/24/18	vs Northern Iowa	w 61-60	0
Scoring margin	+0.6	-	12/01/18	at Washington St.	L 71-95	547
FIELD GOALS-ATT	237-577	224-522	12/15/18	vs Saint Francis (PA)	w 78-64	1600
Field goal pct	.411	.429	12/16/18	at Washington	w 73-69	1417
3 POINT FG-ATT	71-201	58-155	* 1-5-19	at San Diego State	w 69-66	662
3-point FG pct	.353	.374	* 1/16/19	at Nevada	w 75-74	872
3-pt FG made per game	7.9	6.4	* 1/19/19	at Fresno State	w 72-60	2294
FREE THROWS-ATT	97-141	131-176	* 01/26/19	at Wyoming	L 52-64	2500
Free throw pct	.688	.744				
F-Throws made per game	10.8	14.6				
REBOUNDS	324	348				
Rebounds per game	36.0	38.7				
Rebounding margin	-2.7	-				
ASSISTS	127	120				
Assists per game	14.1	13.3				
TURNOVERS	127	157				
Turnovers per game	14.1	17.4				
Turnover margin	+3.3	-				
Assist/turnover ratio	1.0	0.8				
STEALS	67	63				
Steals per game	7.4	7.0				
BLOCKS	42	32				
Blocks per game	4.7	3.6				
ATTENDANCE	0	9892				
Home games-Avg/Game	0-0	6-1382				
Neutral site-Avg/Game	-	3-533				

* - Conference game

Score by Periods	1st	2nd	3rd	4th	Totals
Boise State	169	139	173	161	642
Opponents	156	154	152	175	637

5

Idaho vs. Boise State

Nov. 23 • Long Beach, Calif. (Walter Pyramid)

Official Basketball Box Score -- Game Totals -- Final Statistics

Idaho vs Boise State

11/23/18 5:00 pm at Long Beach, Calif. (Walter Pyramid)

Idaho 85 • 2-2

#	Player		Total		3-Ptr		Rebounds			PF	TP	A	TO	Blk	Stl	Min
			FG	F-GA	FG	F-GA	FT	FTA	Off							
11	HADDEN, Isabelle	f	2-4	1-1	0-0		0	0	0	2	5	0	1	0	0	11
42	KLINKER, Natalie	f	3-5	0-0	0-0		4	7	11	4	6	1	1	1	1	21
14	PIERCE, Taylor	g	6-18	3-9	5-5		1	2	3	2	20	3	0	0	1	38
21	FERENZ, Mikayla	g	11-23	4-8	4-4		1	4	5	4	30	4	4	0	1	38
23	MARXEN, Gina	g	0-9	0-4	1-2		2	2	4	4	1	2	2	1	1	34
04	CHRISTOPHER, Hailey	g	6-8	0-0	1-4		2	4	6	3	13	1	1	0	0	28
05	JONES, Juliet		0-0	0-0	0-0		0	0	0	0	0	0	0	0	0	0+
20	KIRBY, Allison		0-0	0-0	0-0		0	2	2	4	0	1	1	0	0	16
22	KING, Janie		2-3	2-3	4-5		0	0	0	3	10	1	0	0	0	14
Team							4	4	8							
Totals				30-70	10-25	15-20	14	25	39	26	85	13	10	2	4	200
1st - FG %:			6-20	30.0%	2nd: 11-12	91.7%	3rd: 4-19	21.1%	4th: 9-19	47.4%	Game: 30-70	42.9%	Deadball			
3FG %:			1-5	20.0%	5-5	100.0%	2-8	25.0%	7-10	70.0%	10-25	40.0%	Rebounds			
FT %:			4-5	80.0%	3-3	100.0%	1-2	50.0%	2-7	28.6%	15-20	75.0%	2			

Boise State 91 • 4-1

#	Player	Total		3-Ptr		Rebounds			PF	TP	A		TO	Bk	Stl	Min
		FG	F-GA	FG	F-GA	Off	Def	Tot			TO	Bk				
33	HARRELL, Joyce	f	1-2	0-0	0-2	1	2	3	4	2	0	0	0	1	14	
42	COLEMAN, A'Shanti	f	4-5	1-1	0-0	1	2	3	1	9	0	2	0	1	21	
14	HODGINS, Braydey	g	6-9	2-4	9-10	1	2	3	3	23	1	1	1	2	21	
20	HERMIDA, Marta	g	0-3	0-0	2-2	1	6	7	2	2	4	1	0	0	17	
21	LUPFER, Riley	g	4-11	1-6	4-4	0	4	4	3	12	1	0	0	1	35	
03	CHRISTOPHER, Sofia	g	1-1	0-0	1-1	0	0	1	1	3	0	2	0	0	4	
01	AMUNDSEN, Tess		0-0	0-0	0-0	0	0	0	1	0	0	0	0	0	3	
22	WOERNER, Ellie		5-8	4-6	9-11	1	3	4	0	23	1	4	0	2	28	
23	CHRISTOPHER, Jayde		4-6	1-1	1-2	1	1	2	1	10	4	1	2	1	31	
25	BOWERS, Rachel		2-4	0-0	0-0	0	3	3	2	4	0	0	0	0	11	
20	LOVILLE, Jade		0-2	0-1	0-2	0	0	0	2	0	0	0	0	0	13	
44	TOTH, Emerald		1-1	0-0	0-0	0	0	1	1	2	0	0	0	0	3	
Team						2	4	6								
Totals			28-52	9-19	26-34	8	29	37	22	91	11	11	3	8	201	
1st - FG %:		9-15	60.0%	2nd:	7-10	70.0%	3rd:	5-14	35.7%	4th:	7-13	53.8%	Game:	28-52	53.8%	Deadball
3FG %:		2-5	40.0%	3-4	75.0%	2-6	33.3%	2-4	50.0%	9-19	47.4%	Rebounds				
FT %:		4-4	100.0%	3-3	100.0%	4-6	66.7%	15-21	71.4%	26-34	76.5%	3				

Officials: Charisse Okamoto, Esther Hsu, Sydney Mott

Technical fouls: Idaho-None. Boise State-None.

Attendance:

Score by periods	1st	2nd	3rd	4th	Total
Idaho	17	30	11	27	85
Boise State	24	20	16	31	91

6

Northern Iowa vs. Boise State

Nov. 24 • Long Beach, Calif. (Walter Pyramid)

Official Basketball Box Score -- Game Totals -- Final Statistics

Boise State vs Northern Iowa

11/24/18 2:00 p.m. at Long Beach, Calif. (Walter Pyramid)

Boise State 61 • 5-1

#	Player	Total		3-Ptr		Rebounds			PF	TP	A		TO	Bk	Stl	Min
		FG	F-GA	FG	F-GA	Off	Def	Tot			TO	Bk				
33	HARRELL, Joyce	f	0-5	0-0	0-0	3	4	7	3	0	0	1	1	1	1	18
42	COLEMAN, A'Shanti	f	7-14	0-1	0-1	6	2	8	0	14	0	4	0	0	3	27
14	HODGINS, Braydey	g	0-8	0-4	0-0	1	2	3	2	0	1	1	0	0	0	21
21	LUPFER, Riley	g	5-13	4-10	2-2	0	3	3	3	16	0	2	1	2	36	
23	CHRISTOPHER, Jayde	g	6-13	0-2	1-1	0	1	1	3	13	2	0	1	1	33	
03	GALERON, Sofia		3-3	1-1	0-0	4	1	5	0	7	0	0	1	1	13	
20	HERMIDA, Marta		4-7	1-3	2-2	1	2	3	0	11	0	1	0	1	25	
22	WOERNER, Ellie		0-3	0-0	0-0	1	1	2	0	0	0	3	0	0	16	
25	BOWERS, Rachel		0-3	0-0	0-0	0	3	3	2	0	0	1	1	0	8	
30	LOVILLE, Jade		0-1	0-0	0-0	0	0	0	0	0	0	0	0	0	3	
Team						3	3	6								
Totals			25-70	6-21	5-6	19	22	41	13	61	3	15	5	9	200	
1st - FG %:		6-15	40.0%	2nd:	8-23	34.8%	3rd:	6-16	37.5%	4th:	5-16	31.3%	Game:	25-70	35.7%	Deadball
3FG %:		0-3	0.0%	2-8	25.0%	2-3	66.7%	2-3	66.7%	2-7	28.6%	Rebounds				
FT %:		2-3	66.7%	0-0	0.0%	0-0	0.0%	3-3	100.0%	5-6	83.3%	0				

Northern Iowa 60 • 4-2

#	Player	Total		3-Ptr		Rebounds			PF	TP	A		TO	Bk	Stl	Min
		FG	F-GA	FG	F-GA	Off	Def	Tot			TO	Bk				
50	Maahs, Megan	f	2-7	0-0	0-0	2	8	10	0	4	2	1	1	1	26	
03	Rucker, Karl	f	8-22	0-2	6-7	2	5	7	1	22	3	7	0	0	35	
10	Howell, Ellie	g	6-7	3-4	0-0	0	1	1	2	15	1	2	0	0	1	30
22	Simon-Ressler, Rose	g	0-0	0-0	0-0	0	0	0	1	0	0	0	0	0	6	
24	Morgan, Mikaela	g	2-3	1-2	0-0	2	1	3	2	5	3	4	0	1	29	
05	Kroeger, Nicole		1-3	1-2	0-0	0	0	0	0	3	1	1	0	0	7	
11	Gunnels, Bre		0-0	0-0	0-0	0	1	1	1	0	0	1	2	1	10	
12	Finley, Kam		0-0	0-0	0-0	0	0	0	1	0	0	2	0	0	2	
23	Hillyard, Heidi		0-3	0-1	0-0	1	5	6	1	0	1	2	0	1	24	
34	Hagen, Taylor		3-5	0-0	0-0	1	0	1	1	6	0	1	0	0	14	
41	Gerrits, Abby		2-3	1-1	0-0	0	1	1	1	5	0	1	0	0	17	
Team						1	4	5								
Totals			24-53	6-12	6-7	9	26	35	11	60	11	25	3	5	200	
1st - FG %:		4-13	30.8%	2nd:	12-14	85.7%	3rd:	6-14	42.9%	4th:	2-12	16.7%	Game:	24-53	45.3%	Deadball
3FG %:		1-4	25.0%	2-3	66.7%	1-1	100.0%	3-4	75.0%	2-2	100.0%	Rebounds				
FT %:		0-0	0.0%	0-0	0.0%	0-0	0.0%	0-0	0.0%	6-7	85.7%	0				

Officials: Brad Schmidt, Clifford Sims, Kenny Parazych

Technical fouls: Boise State-None. Northern Iowa-None.

Attendance:

Score by periods	1st	2nd	3rd	4th	Total
Boise State	14	18	14	15	61
Northern Iowa	9	27	17	7	60

7

Boise State at Washington State

Dec. 1 • Pullman, Wash. (Beasley Coliseum)



Official Basketball Box Score - Final

Boise St. at Washington St.

12/01/18 Beasley Coliseum Pullman, WA

2018-19 Women's Basketball

Game Time: 1:00 PM

Game Duration: 1:37

Attendance: 547

Officials: Lisa Jones, Julie Krommhoek, Kimberly Hobbs

Boise St. - 71		Record: 5-2																				
NO. Name		Min	FG		3P	FT		Rebounds		Fouls		TP	AS	TO	ST	Blocks		+/-	Shooting By Period			
			M-A	O-A		M-A	O-A	OR	DR	PF	FD					BS	BA					
33	Joyce Harrell	F	19:28	1-4	0-0	0-0	2	0	2	3	0	2	0	1	1	1	0	-21	1st FG	6-21	28.6%	
42	A'Shanti Coleman	F	19:54	1-6	0-0	0-0	3	2	5	2	0	2	0	0	0	0	1	-17	FT%	2-4	50%	
20	Marta Hermida	G	21:03	1-12	0-7	2-2	1	2	3	0	2	4	2	0	0	0	1	-31	2nd FG	4-15	26.7%	
21	Riley Lupfer	G	28:00	4-12	2-9	2-2	3	4	7	1	2	12	0	0	0	1	1	-29	FT%	5-6	83.3%	
23	Jayde Christopher	G	27:25	5-7	1-1	0-0	0	3	3	0	4	11	5	1	0	0	0	-22	3rd FG	9-18	50.0%	
44	Emerald Toth	G	32:22	0-0	0-0	0-0	0	0	0	1	0	0	0	0	0	1	1	-5	3PT%	2-5	40.0%	
22	Elle Wagoner	18:32	2-6	0-1	1-2	0	0	3	2	1	0	0	0	1	1	0	0	-5	FT%	0-0	0%	
3	Sofia Gaele	15:14	1-2	1-2	0-0	2	1	3	1	1	3	0	0	0	0	0	-2	4th FG	7-20	35.0%		
24	Rachel Bowers	14:47	3-9	0-0	2-2	2	0	2	2	1	8	0	0	1	0	0	-5	3PT%	3-8	37.5%		
15	Brayden Hodgins	20:48	1-7	0-3	4-6	0	3	3	2	3	6	3	2	1	0	1	3	FT%	5-6	83.3%		
30	Jade Loville	11:26	7-9	3-4	1-2	1	1	2	3	1	18	0	2	1	0	1	-1	GM FG	26-74	35.1%		
Team							4	1	5	0	0	0						3PT%	7-21	33.3%		
Totals			26:74	7-27	12-16	19	20	29	17	15	71	10	4	3	3	6	-24	FT%	12-16	75.0%		
																			Technical Fouls		None	
																			In-Bench		2-5	

9

Boise State vs. Saint Francis (Pa.)
Dec. 15 • Seattle, Wash. (Alaska Airlines Arena)**Official Basketball Box Score -- Game Totals -- Final Statistics**
Saint Francis (PA) vs Boise St.
12/15/18 5:00 pm at**Saint Francis (PA) 64 • 2-7**

#	Player		Total			3-Ptr			Rebounds			PF	TP	A	TO	Blk	Stl	Min
			FG	FGA	%	FG	FGA	FT-FTA	Off	Def	Tot							
32	Courtney Zezza	c	1-3	0-2	1-2	1	4	5	3	3	1	1	6	0	1	24		
03	Karson Swogger	g	4-11	3-6	3-4	0	9	9	0	14	5	8	0	1	35			
13	Sam Sabino	g	2-4	0-2	0-0	2	2	4	3	4	1	4	0	3	25			
15	Haley Thomas	g	2-5	0-2	0-0	2	6	8	1	4	4	2	1	0	25			
23	Jess Kovatch	g	9-15	6-11	0-0	0	5	5	1	24	0	3	1	1	38			
10	Leah Morrow		1-6	0-0	2-2	0	3	3	0	4	1	4	0	0	13			
21	AJ Timbers		2-3	1-2	0-0	0	4	4	2	5	0	4	0	0	15			
22	Jenna Mastellone		0-0	0-0	0-0	0	0	0	0	0	0	0	0	0	8			
24	Aunsha Williams		3-8	0-1	0-1	2	3	5	2	6	2	3	1	0	17			
Team						3	3	6										
Totals				24-55	10-26	6-9	10	39	49	12	64	14	30	9	5	200		
1st - FG %:			6-18	33.3%	2nd: 6-10	60.0%	3rd: 7-13	53.8%	4th: 5-14	35.7%	Game: 24-55		43.6%	Deadball				
3FG %:			3-9	33.3%	2-3	66.7%	3-7	42.9%	2-7	28.6%	10-26		38.5%	Rebounds				
FT %:			1-1	100.0%	2-2	100.0%	1-2	50.0%	2-4	50.0%	6-9		66.7%	1				

Boise St. 78 • 7-2

Boise St. 78 • 7-2

#	Player		Total			3-Ptr			Rebounds			PF	TP	A	TO	Blk	Stl	Min
			FG	FGA	%	FG	FGA	%	Off	Def	Total							
33	Joyce Harrell	f	3-9	0-0	1-4	4	1	5	1	7	1	0	1	2	25			
42	A'Shanti Coleman	f	5-14	0-1	2-2	1	4	5	0	12	0	2	2	3	24			
14	Braydey Hodgins	g	5-9	5-8	0-0	1	4	5	0	15	0	2	0	3	26			
21	Riley Lupfer	g	4-12	3-10	2-2	1	1	2	2	13	4	1	2	2	27			
23	Jayde Christopher	g	2-5	0-1	0-1	0	4	4	2	4	11	2	0	0	30			
03	Sofia Galaron		2-4	0-0	0-0	0	1	1	0	4	0	1	0	0	11			
20	Marta Hermida		2-6	1-5	0-0	1	1	2	0	5	1	0	0	2	17			
22	Ellie Woerner		0-5	0-2	0-0	4	0	4	2	0	4	1	0	1	15			
25	Rachel Bowers		3-4	0-0	1-2	0	1	1	0	7	1	0	0	0	10			
30	Jade Loville		4-13	2-6	1-1	3	1	4	2	11	1	1	0	0	12			
44	Emerald Toth		0-2	0-0	0-0	1	0	1	0	0	0	0	0	0	3			
Team						1	5	6										
Totals				30-83	11-33	7-12	17	23	40	13	78	23	10	5	13	200		
1st - FG %:			7-20	35.0%	2nd:	10-21	47.6%	3rd:	7-18	38.9%	4th:	6-24	25.0%	Game:	30-83	36.1%	Deadball	
3FG %:			2-7	28.6%		5-11	45.5%		4-8	50.0%		0-7	0.0%		11-33	33.3%	Rebounds	
FT %:			0-0	0.0%		2-3	66.7%		5-9	55.6%		0-0	0.0%		7-12	58.3%	2	

Officials: Cathi Cornell, Karen Lasuik, InFin Robinson
Technical fouls: Saint Francis (PA)-Sam Sabino, Boise St.-None.
Attendance: 1600
2018-19 Women's Basketball. Round: 0. Boise St. vs Saint Francis (PA). Played

Score by periods	1st	2nd	3rd	4th	Total
Saint Francis (PA)	16	16	18	14	64
Boise St.	16	27	23	12	78

10

Boise State at Washington
Dec. 16 • Seattle, Wash. (Alaska Airlines Arena)**Official Basketball Box Score -- Game Totals -- Final Statistics**
Boise St. vs Washington
12/16/18 4:00 pm at**Boise St. 73 • 8-2**

#	Player		Total			3-Ptr			Rebounds			PF	TP	A	TO	Blk	Stl	Min
			FG	FGA	%	FG	FGA	%	Off	Def	Tot							
33	Joyce Harrell	f	1-3	0-0	0-0	0	1	1	2	2	2	1	1	0	17			
42	A'Shanti Coleman	f	1-7	0-0	0-0	0	4	4	3	2	0	1	0	1	18			
20	Marta Hermida	g	4-7	3-5	1-1	0	4	4	1	12	3	1	1	0	21			
21	Riley Lupfer	g	7-13	7-12	1-2	1	3	4	1	22	1	3	1	1	34			
23	Jayde Christopher	g	2-5	0-0	0-0	0	6	6	3	4	8	6	1	1	35			
03	Sofia Galaron		0-2	0-0	0-0	0	2	2	0	0	1	1	1	0	7			
14	Braydey Hodgins		6-12	4-10	3-6	2	3	5	4	19	1	3	0	0	25			
22	Ellie Woerner		1-4	0-1	0-0	0	0	0	2	2	1	0	0	1	15			
25	Rachel Bowers		4-6	0-0	0-0	1	4	5	2	8	0	0	1	2	22			
30	Jade Loville		0-3	0-2	2-2	0	1	1	2	0	0	0	0	0	6			
Team						1	1	2										
Totals			26-62	14-30	7-11	5	29	34	19	73	17	16	6	6	200			
1st - FG %:			9-18	50.0%	2nd:	4-15	26.7%	3rd:	7-15	46.7%	4th:	6-14	42.9%	Game:	26-62	41.9%	Deadball	
3FG %:			4-7	57.1%		2-7	28.6%		5-9	55.6%		3-7	42.9%		14-30	46.7%	Rebounds	
FT %:			1-1	100.0%		2-2	100.0%		0-0	0.0%		4-8	50.0%		7-11	63.6%	3	

Washington 69 • 7-4

#	Player		Total		3-Ptr		Rebounds		PF	TP	A TO Blk Stl				Min				
			FG	FGA	FG	FGA	FT	FTA			Off	Def	Tot	A		TO	Blk	Stl	
01	Hannah Johnson	f	4	10	0	3	0	0	3	6	9	0	8	0	2	0	0	27	
03	Mai-Loni Henson	f	3	9	1	5	1	2	1	3	4	1	8	2	1	0	2	27	
25	T.T. Watkins	f	2	5	0	0	2	2	5	1	6	1	6	1	3	0	0	21	
04	Amber Melgoza	g	4	17	0	2	9	11	0	5	5	5	17	5	5	0	0	25	
24	Jenna Moser	g	2	4	1	2	1	2	2	1	3	2	6	2	3	0	2	20	
15	Haley Van Dyke		1	2	0	0	0	0	1	2	3	0	2	0	0	0	2	12	
20	Khayla Rooks		1	2	1	2	0	0	0	2	2	0	3	0	1	0	0	14	
35	Alexis Griggsby		0	1	0	0	0	0	0	0	0	0	0	1	1	0	1	13	
44	Missy Peterson		6	18	2	8	3	3	4	5	9	3	17	2	1	0	0	29	
53	Darcy Rees		1	3	0	0	0	0	0	5	5	2	2	0	0	1	1	12	
Team									1	1	2								
Totals				24	71	5	22	16	20	17	31	48	14	69	13	17	1	8	200
1st - FG %:			6-18	33.3%	2nd:	6-22	27.3%	3rd:	6-14	42.9%	4th:	6-17	35.3%	Game:	24-71	33.8%	Deadball		
3FG %:			1-3	33.3%		3-10	30.0%		1-4	25.0%		0-5	0.0%		5-22	22.7%	Rebounds		
FT %:			4-4	100.0%		3-4	75.0%		2-2	100.0%		7-10	70.0%		16-20	80.0%	5	1	

Officials: Cathi Cornell, Brian Woods, InFin Robinson
Technical fouls: Boise St.-None. Washington-None.
Attendance: 1417
2018-19 Women's Basketball. Round: 0. Boise St. vs Washington. Played at .

Score by periods	1st	2nd	3rd	4th	Total
Boise St.	23	12	19	19	73
Washington	17	18	15	19	69

11

Boise State vs. Southern Utah
Dec. 19 • Boise, Idaho (Taco Bell Arena)**Official Basketball Box Score - Final**
Southern Utah at Boise St.
12/19/18 Taco Bell Arena, Boise, Idaho
2018-19 Women's Basketball

Game Time: 3:30 PM
Game Duration: 1:36

Officials: Lisa Jones, Brenda Partridge, Tiffany Bird

Southern Utah - 53			Record: 3-6																					
NO.	Name	Min	FG		3P		FT		Rebounds		Fouls		TP	AS		TO		ST	Blocks		+/-	Shooting By Period		
			M-A	%	M-A	%	M-A	%	OR	DR	FF	PF		ST	BA	ST	BA							
11	Megan Kamps	F	03:20	1-1	0-0	0-0	0	0	0	0	1	2	0	0	0	0	0	0	0	0	1	1st FG	5-13	38.5%
23	Harley Hansen	F	32:07	4-16	1-5	4-5	1	2	3	1	5	13	1	4	3	0	1	-22				3PT%	0-3	0%
2	Rebecca Cardenas	G	36:20	1-7	0-2	0-0	1	3	4	1	0	2	2	5	4	0	3	-29				FT%	1-2	50%
4	Ashley Larsen	G	25:35	4-9	0-0	2-2	2	2	4	0	2	10	0	0	2	1	0	-21				2nd FG	4-15	26.7%
14	Breanu Reid	G	28:25	3-9	0-1	2-3	1	1	2	0	2	8	1	7	0	0	1	-32				FT%	1-3	33.3%
25	Peyton Shepherd		07:32	0-2	0-0	0-0	0	0	0	0	0	0	0	0	0	0	0	-7				3rd FG	5-15	33.3%
34	Hannah Robins		14:26	3-3	0-0	0-0	1	0	1	0	1	6	0	0	0	0	0	-13				3PT%	0-2	0%
10	Claudia Armato		11:03	0-1	0-0	0-0	0	0	0	1	0	0	0	0	0	0	0	-14				FT%	3-7	42.9%
21	Kiana Thomas		23:16	3-9	0-1	3-7	4	0	4	0	5	9	1	2	0	0	2	-19				4th FG	6-15	40.0%
24	Jessica Chatman		11:39	1-1	0-0	1-2	0	0	0	1	1	3	0	1	0	0	0	-13				3PT%	0-1	0%
15	Geassy Germano		04:53	0-0	0-0	0-0	0	0	0	0	0	0	0	1	1	0	0	1				FT%	4-6	66.7%
12	Chloe Bradford		01:24	0-0	0-0	0-0	0	0	0	0	0	0	0	2	0	0	0	-7				GM FG	20-58	34.5%
Team									4	4	8	0	1									3PT%	1-9	11.1%
Totals			20-58	1-9	12-19	14	12	26	5	16	53	5	23	10	1	7	-35					FT%	12-19	63.2%
																						Dead Ball Rebounds: 3		

13

Boise State at San Diego State

Jan. 5 • San Diego, Calif. (Viejas Arena)

Official Basketball Box Score -- Game Totals -- Final Statistics
Boise State vs San Diego State
1-5-19 1:05 p.m. at Steve Fisher Court at Viejas Arena

Boise State 69 • 11-2, 2-0

#	Player	Total			3-Ptr			Rebounds			PF	TP	A	TO	Blk	Stl	Min
		FG	FGA	FT	FTA	Off	Def	Tot									
33	HARRELL, Joyce	f	4-9	0-0	0-0	2	5	7	4	8	0	4	2	0	0	29	
42	COLEMAN, A/Shanti	f	9-13	0-0	4-4	1	4	5	3	22	3	1	3	3	0	25	
20	HERMIDA, Marta	g	0-0	0-0	0-0	1	0	1	4	0	1	0	0	0	0	7	
21	LUPFER, Riley	g	6-15	4-12	1-2	1	2	3	3	17	1	4	2	1	0	37	
23	CHRISTOPHER, Jayde	g	1-4	0-2	1-2	1	3	4	1	3	9	4	0	1	1	36	
03	GALERON, Sofia		0-0	0-0	0-0	0	0	0	0	0	0	0	0	0	0	3	
14	HODGINS, Braydey		3-10	2-4	9-10	2	3	5	1	17	5	1	0	1	1	29	
15	AMUNDSEN, Tess		0-0	0-0	0-0	0	0	0	0	0	0	0	0	0	0	4	
22	WOERNER, Ellie		0-2	0-0	0-0	0	2	2	2	0	0	2	0	1	1	14	
25	BOWERS, Rachel		1-3	0-0	0-0	1	1	2	5	2	1	1	2	0	1	11	
30	LOVILLE, Jade		0-0	0-0	0-0	1	1	2	2	0	0	2	0	1	1	5	
	Team					1	1	2									
Totals			24-56	6-18	15-18	11	22	33	25	69	20	19	9	8	200		

1st - FG %:	9-21	42.9%	2nd:	4-9	44.4%	3rd:	8-18	44.4%	4th:	3-8	37.5%	Game:	24-56	42.9%	Deadball	
3FG %:	3-9	50.0%		0-3	0.0%		2-5	40.0%		1-4	25.0%		6-18	33.3%	Rebounds	
FT %:	1-2	50.0%		0-0	0.0%		3-4	75.0%		11-12	91.7%		15-18	83.3%		4,1

San Diego State 66 • 5-7, 0-1

#	Player	Total			3-Ptr		Rebounds			PF	TP	A	TO	Blk	Stl	Min
		FG-FGA	FG-FTA	FT-FTA	Off	Def	Tot									
03	ADAMS, Mallory	f	6-15	0-0	8-11	7	5	12	2	20	0	0	0	0	1	37
34	VANDERDOES, Baylee	f	1-2	0-0	0-0	1	0	1	0	2	0	2	0	0	0	10
02	RAMOS, Sophia	g	6-13	0-4	3-3	0	5	5	4	15	6	6	0	1	1	36
05	ADAMS, Tea	g	2-8	0-0	2-4	0	2	2	3	6	1	1	0	1	20	
10	MURRAY, Naje	g	4-14	1-7	2-2	0	1	1	5	11	1	3	0	2	35	
00	VILLA, Kennedi		0-0	0-0	1-2	1	0	1	2	1	1	0	0	0	1	10
04	TERRY, Monique		0-2	0-2	0-0	3	1	4	0	0	0	0	0	1	17	
11	GOMEZ, Arantxa		1-2	0-0	1-2	0	1	1	0	3	0	1	2	0	11	
15	PEREZ, Jayden		0-0	0-0	0-0	0	0	0	0	0	0	1	0	0	1	1
22	DORNSTAUDE, Zayn		2-7	0-1	4-5	4	4	8	4	8	1	2	2	0	19	4
23	GOMEZ, Lori		0-0	0-0	0-0	0	1	1	0	0	2	0	0	0	4	4
Team						5	0	5								
Totals			22-63	1-14	21-29	21	20	41	20	66	12	18	4	6	200	

1st - FG %:	3-14	21.4%	2nd:	2-8	11.1%	3rd:	6-13	46.2%	4th:	11-18	61.1%	Game:	22-63	34.9%	Deadball	
3FG %:	0-4	0.0%		0-6	0.0%		0-0	0.0%		1-4	7.1%		1-14	7.1%	Rebounds	
FT %:	8-10	80.0%		3-5	60.0%		8-12	66.7%		2-2	100.0%		21-29	72.4%		5

Officials: Anita Ortega, Penny Davis, Scott Osborne
 Technical fouls: Boise State-None. San Diego State-None.
 Attendance: 662

Score by periods	1st	2nd	3rd	4th	Total
Boise State	22	8	21	18	69
San Diego State	14	7	20	25	66

Points	In	Off	2nd	Fast	Bench
BSU	30	23	11	6	19
SDSU	42	14	15	6	12

Last FG - BSU 4th-06:31, SDSU 4th-00:13.
 Largest lead - BSU by 14 3rd-01:19, SDSU None.
 BSU led for 38:54, SDSU led for 00:00. Game was tied for 00:12.

Score tied - 0 times.
 Lead changed - 0 times.

15

Boise State at Nevada

Jan. 16 • Reno, Nev. (Lawlor Events Center)

Official Basketball Box Score -- Game Totals -- Final Statistics
Boise State vs Nevada
1/16/19 6:30 p.m. at Reno, Nev. | Lawlor Events Center

Boise State 75 • 13-2, 4-0 MW

#	Player	Total			3-Ptr			Rebounds			PF	TP	A	TO	Blk	Stl	Min
		FG	FGA	FT	FTA	Off	Def	Tot									
33	HARRELL, Joyce	f	5-10	0-0	1-2	3	4	7	2	11	3	1	0	1	1	32	
42	COLEMAN, A/Shanti	f	7-10	0-0	4-5	0	2	2	3	18	0	1	0	1	1	23	
14	HODGINS, Braydey	g	2-5	1-2	3-4	0	0	0	4	8	2	2	0	2	3	31	
21	LUPFER, Riley	g	3-11	2-7	2-2	0	1	1	3	10	3	2	0	0	0	34	
23	CHRISTOPHER, Jayde	g	1-3	0-0	2-4	0	2	2	4	4	5	3	0	1	1	22	
03	GALERON, Sofia		0-0	0-0	0-0	0	0	0	0	0	0	0	0	0	0	0+	
15	AMUNDSEN, Tess		5-6	2-3	0-0	0	2	2	1	12	0	1	0	1	1	8	
20	HERMIDA, Marta		3-8	0-1	2-6	3	4	7	1	8	4	1	0	1	1	28	
22	WOERNER, Ellie		1-2	0-0	0-0	1	0	1	1	2	0	1	0	1	2	9	
25	BOWERS, Rachel		1-2	0-0	0-0	1	0	1	1	2	1	1	0	1	1	7	
30	LOVILLE, Jade		0-2	0-0	0-0	0	1	1	0	0	0	0	0	0	0	5	
31	VANDERSCHAAF, Marij		0-0	0-0	0-2	0	0	0	0	0	0	0	0	0	0	1	
Team						5	1	6									
Totals			28-59	5-13	14-25	13	17	30	20	75	18	13	0	10	20	200	

1st - FG %:	9-18	50.0%	2nd:	4-15	26.7%	3rd:	7-13	53.8%	4th:	8-13	61.5%	Game:	28-59	47.5%	Deadball	
3FG %:	1-3	33.3%		2-3	66.7%		2-5	40.0%		0-2	0.0%		5-13	38.5%	Rebounds	
FT %:	0-0	0.0%		2-6	33.3%		7-9	77.8%		5-10	50.0%		14-25	56.0%		5

Nevada 74 • 5-11, 1-4 MW

#	Player	Total			3-Ptr		Rebounds			PF	TP	A	TO	Blk	Stl	Min
		FG	FGA	FT	FTA	Off	Def	Tot								
23	BRIGGS, Terae	f	4-7	0-0	0	9-10	2	7	9	3	17	0	2	0	4	31
35	DEARTH, Kristin	f	0-1	0-0	0	0-0	0	1	1	2	0	0	0	0	0	15
13	WEST, Amaya	f	0-0	0-0	2	2-2	0	0	0	1	2	0	0	0	1	10
24	KING, Camariah	g	4-8	3-5	0	0	1	2	3	2	11	2	2	0	0	31
34	REDMON, Jade	g	5-13	0-0	6	6-6	0	4	4	4	16	3	2	0	0	36
02	HAMILTON, Da'Ja		3-5	0-0	2-2	0	0	0	0	0	8	0	3	0	0	20
03	BOOKER, Essence		2-4	0-0	1-1	0	0	0	0	5	5	0	3	0	1	23
15	TORBERT, Emma		4-5	1-1	1-2	4	3	7	0	10	3	2	0	1	2	22
21	LACY, Imani		2-3	0-0	1-3	0	1	1	3	5	2	2	0	3	1	12
Team							0	3	3							
Totals			24-46	4-6	22-26	7	21	28	20	74	10	18	0	10	10	200
1st: FG %: 6-12 50.0% 2nd: 1-10 10.0% 3rd: 10-12 83.3% 4th: 7-12 58.3% Game: 24-46 52.2% Deadball																
3FG %: 1-1 100.0% 0-0 0.0% 1-1 100.0% 2-3 66.7% 2-6 66.7% Rebounds																
4th: 8-10 80.0% 2-6 33.3% 2-6 33.3%																

1st - FG %:	6-12	50.0%	2nd:	1-10	10.0%	3rd:	10-12	83.3%	4th:	7-12	58.3%	Game:	24-46	52.2%	Deadball	
3FG %:	1-1	100.0%		0-1	0.0%		1-1	100.0%		2-3	66.7%		4-6	66.7%	Rebounds	
FT %:	0-0	0.0%		6-8	75.0%		7-8	87.5%		9-10	90.0%		22-26	84.6%		2,3

Officials: Lisa Jones, Bob Scofield, Michael Price
 Technical fouls: Boise State-None. Nevada-None.
 Attendance: 872

Score by periods	1st	2nd	3rd	4th	Total
Boise State	19	12	23	21	75
Nevada	13	8	28	25	74

Points	In	Off	2nd	Fast	Bench
BSU	40	27	18	2	24
NV	30	17	10	2	28

Last FG - BSU 4th-00:43, NV 4th-00:01.
 Largest lead - BSU by 13 2nd-04:14, NV by 3 1st-05:42.
 RSI led for 34:04, NV led for 04:42. Game was tied for 01:14.

Score tied - 0 times.
 Lead changed - 4 times.

14

Boise State vs. San Jose State

Jan. 12 • Boise, Idaho (Taco Bell Arena)

Official Basketball Box Score - Final
San Jose St. at Boise St.
 01/12/19 Taco Bell Arena, Boise, Idaho
 2018-19 Women's Basketball

Game Time: 1:00 PM
 Game Duration: 1:38
 Attendance: 1,284

Officials: Scott Hermin, Robert Strong, Tiffany Jump

San Jose St. - 68

Record: 1-13 (0-3)

NO.	Name	Min	Shooting By Period													
			FG	3P	FT	Reb	Fouls	PF	AS	TO	ST	Blocks	BA	+	-	
			MA	OR	DR	T	FD	TD								
2	Andrea Kohlhaas	F 17:20	0-3	0-2	0-0	0	1	1	3	0	0	1	1	0	-15	
32	Mikayla Wilson	F 20:53	5-6	0-0	0-0	2	2	4	2	1	10	1	1	0	-23	
4	Fieme'a Hafoka	F 27:22	5-8	1-2	0-0	4	1	5	0	0	11	2	2	0	-22	
22	Danise Marquez	G 07:53	0-2	0-1	0-0	0	1	1	1	0	0	0	1	0	-10	
30	Megan Anderson	G 26:49	1-6	1-3	2-2	0	2	2	0	2	5	0	1	0	-21	
1	Niefer Leun	G 12:03	2-3	1-1	0-0	0	0	0	1	0	5	1	2	1	-0	
5	Analysa Benally	G 17:55	2-7	1-6	0-0	0	0	0	0	0	5	1	2	0	-12	
24	Alexis Harris	G 11:40	3-5	0-0	0-0	2	1	3	2	6	0	0	0	0	-5	
33	Courtesy Clark	G 15:52	2-6	0-2	2-3	1	2	1	3	6	0	2	3	0	-9	
3	Cyndi Lewis	G 18:20	2-6	0-1	2-4	0	5	5	4	3	6	1	3	0	-14	
0	Razina Potter	G 23:56	6-10	0-4	0-0	2-4	0	4	2	4	14	1	6	0	-23	
Total						4	2	6	0	0	0	0	0	0		
Totals			28-64	4-18	8-13	13	20	33	16	13	88	7	21	7	1	-31

17

Boise State vs. Air Force

Jan. 23 • Boise, Idaho (Taco Bell Arena)

Official Basketball Box Score - Final
Air Force at Boise St.
01/23/19 Taco Bell Arena, Boise, Idaho
2018-19 Women's Basketball

Game Time: 7:00 PM
Game Duration: 1:48
Attendance: 738

Officials: Kyle Bacon, Cheryl Blue, Hfiri Robinson

Air Force - 48

Record: 6-12 (2-5)

NO. Name	Min	FG	3P	FT	Rebounds	Fouls	TP	AS	TO	ST	Blocks	+/-
		MA	MA	MA	OR DR TOT	PF					BS BA	
23 Riley Snyder	F 30:04	2-11	1-5	2-2	1 2 3 0	1 1	7	2	1	2	1 1	-20
55 Kassady Huffman	F 28:53	1-5	0-0	3-4	4 6 10 0	2 7	5	2	1	0	1 0	-26
1 Briana Autrey	G 30:09	4-10	0-0	3-3	0 1 1 4	3 11	2	7	1	0	4	-29
13 Emily Conroe	G 15:56	3-5	0-1	0-2	1 4 5 1	3 3	6	0	3	0	1 1	-10
32 Kadiin Inmell	G 23:50	3-15	0-3	2-3	0 2 2 3	2 8	2	1	0	0	1 1	-25
14 Noelle Torres	23:16	2-5	1-2	1-2	0 0 0 3	1 6	1	2	0	1	1	-16
00 Haley Jones	20:31	2-7	0-1	1-2	2 1 3 1	3 5	0	2	0	0	2	-22
5 Kennedy Beale	01:56	0-0	0-0	0-0	0 0 0 2	0 0	1	0	0	0	0	0
41 Natalie Nicks	07:07	0-1	0-0	0-0	0 0 0 1	1 0	0	0	0	0	0	-2
10 Venessannah Itugbu	12:29	0-0	0-0	0-0	1 1 2 1	1 0	0	0	2	1	0	1
21 Michaela McFalls	05:49	0-2	0-0	0-0	0 1 1 0	0 0	0	0	0	0	1	-6
Team					5 1 6	0	0	1				
Totals		17-61	2-12	12-18	14 19 33	17 22 48	10	18	5	5	11	-31

Technical Fouls: NONE

Shooting By Period	1st FG%	2nd FG%	3rd FG%	4th FG%	GM FG%
1st FG%	6-14 42.9%				
3PT%	0-1 0.0%				
FT%	3-3 100%				
2nd FG%	3-21 14.3%				
3PT%	1-5 20.0%				
FT%	2-3 66.7%				
3rd FG%	2-15 13.3%				
3PT%	0-4 0.0%				
FT%	1-10 10.0%				
4th FG%	6-11 54.5%				
3PT%	1-2 50.0%				
FT%	1-2 50.0%				
GM FG%	17-61 27.9%				
3PT%	2-12 16.7%				
FT%	12-18 66.7%				

Dead Ball Rebounds: 2, 0

Boise St. - 79

Record: 15-2 (6-0)

NO. Name	Min	FG	3P	FT	Rebounds	Fouls	TP	AS	TO	ST	Blocks	+/-
		MA	MA	MA	OR DR TOT	PF					BS BA	
33 Joyce Harrell	F 17:29	0-4	0-0	2-4	5 5 10 3	4 2	0	2	2	2	0 0	21
42 A'Shanti Coleman	F 20:26	9-10	0-0	2-2	1 1 2 2	2 18	0	1	2	2	0 0	20
14 Braydey Hodgins	G 24:18	7-12	3-6	0-0	1 3 4 3	3 17	2	4	1	1	1	27
21 Riley Lupfer	G 31:40	2-7	1-4	0-0	1 5 6 2	0 5	6	3	2	1	0	0
23 Jayde Christopher	G 25:42	5-8	0-1	1-2	0 2 2 3	3 11	5	2	2	0	0	25
22 Ellie Woerner	19:14	3-7	0-2	0-0	0 2 2 0	1 6	0	0	0	0	1	1
25 Rachel Bowers	12:29	1-3	0-0	0 6 6	2 1 2	0 0	0	0	0	0	2	9
30 Jade Loville	19:51	5-9	2-3	0-1	0 3 3 2	1 12	3	2	0	1	1	6
15 Tess Amundsen	11:36	1-3	0-1	2-2	2 2 4	2 1 4	2	1	1	1	1	12
3 Sofia Geleron	09:17	1-2	0-0	2 3 5	0 1 2	0 0	1	1	1	0	0	6
31 Marijke Vanderschaaf	03:31	0-2	0-0	0-0	0 0 0 2	0 0	1	0	1	0	0	-3
44 Emerald Toth	04:27	0-0	0-0	0-0	0 0 0 1	0 0	0	0	0	0	0	7
Team					5 2 7	0	0	0				
Totals		34-67	6-17	5-11	17 34 51	23 17 79	18	17	11	11	5	31

Technical Fouls: Coach 3rd 5:33

Shooting By Period	1st FG%	2nd FG%	3rd FG%	4th FG%	GM FG%
1st FG%	8-15 50.0%				
3PT%	2-5 40.0%				
FT%	3-5 60.0%				
2nd FG%	9-16 56.3%				
3PT%	1-2 50.0%				
FT%	0-0 0%				
3rd FG%	11-19 57.9%				
3PT%	1-4 25.0%				
FT%	3-5 60.0%				
4th FG%	6-16 37.5%				
3PT%	2-5 40.0%				
FT%	0-0 0%				
GM FG%	34-67 50.7%				
3PT%	6-17 35.3%				
FT%	5-11 45.5%				

Dead Ball Rebounds: 3, 0

Biggest lead	AFA	BSU
0 (1st 10:00)	34 (4th 1:40)	
Best Scoring Run	7 (4th 4:28)	13 (3rd 7:33)
Lead Changes	0	
Times Tied	0	
Time with Lead	00:00	39:00

Boise State vs. Colorado State

Jan. 30 • Boise, Idaho (Taco Bell Arena)

Official Basketball Box Score - Final
Colorado St. at Boise St.
01/30/19 Taco Bell Arena, Boise, Idaho
2018-19 Women's Basketball

Game Time: 7:00 PM
Game Duration: 1:36
Attendance: 1,161

Officials: Barry Luna, Anita Ortega, Brian Woods

Colorado St. - 57

Record: 7-12 (1-7)

NO. Name	Min	FG	3P	FT	Rebounds	Fouls	TP	AS	TO	ST	Blocks	+/-
		MA	MA	MA	OR DR TOT	PF					BS BA	
44 Tatum Neubert	F 27:03	2-4	0-0	9-11	2 2 4 1	7 13	1	0	2	0	1 0	-10
21 Myanre Hamm	G 28:46	0-3	0-2	0 4 4	1 0 0	1 0	0	1	3	0	0	-15
23 Grace Colavito	G 28:49	2-7	0-2	4-7	1 0 1 4	6 8	1	7	0	0	1	-17
24 Mollie Mounsey	G 39:09	3-11	2-7	1 1 3	4 3 3	9	1	2	0	0	0	-12
35 Lore Devos	G 40:00	8-16	0-1	3-4	2 4 6 1	4 19	1	3	2	0	0	-13
11 Lena Svanholm	09:39	1-2	0-1	0-0	0 0 0 2	0 2	0	0	0	0	0	-2
22 Lauren Brocke	23:16	2-6	2-4	0 0	1 1 2	0 6	1	1	3	1	0	5
34 Liah Davis	03:18	0-1	0-0	0-0	0 1 1 0	0 0	0	0	0	0	0	-1
Team					2 2 4	0	0					
Totals		18-49	4-17	17-23	8 17 25	14 20	57	5	14	9	2	-13

Technical Fouls: NONE

Shooting By Period	1st FG%	2nd FG%	3rd FG%	4th FG%	GM FG%
1st FG%	4-11 36.4%				
3PT%	0-4 0.0%				
FT%	2-4 50%				
2nd FG%	3-12 25.0%				
3PT%	1-5 20.0%				
FT%	5-7 85.7%				
3rd FG%	7-12 58.3%				
3PT%	2-3 66.7%				
FT%	4-6 66.7%				
4th FG%	4-14 28.6%				
3PT%	1-5 20.0%				
FT%	5-6 83.3%				
GM FG%	18-49 36.7%				
3PT%	4-17 23.5%				
FT%	17-23 73.9%				

Dead Ball Rebounds: 4, 2

Boise St. - 70

Record: 16-3 (7-1)

NO. Name	Min	FG	3P	FT	Rebounds	Fouls	TP	AS	TO	ST	Blocks	+/-
		MA	MA	MA	OR DR TOT	PF					BS BA	
33 Joyce Harrell	F 18:20	3-7	0-0	0-0	0 4 4	2 0	6	0	2	0	0 0	5
42 A'Shanti Coleman	F 18:50	2-3	0-0	1-2	2 3 5	1 1	5	0	4	1	0	0
14 Braydey Hodgins	G 27:13	2-4	2-4	2-2	0 5 5	2 2	8	3	1	1	0	7
21 Riley Lupfer	G 34:44	7-15	6-14	2-2	1 5 6	3 3	22	3	2	0	0	12
23 Jayde Christopher	G 22:59	0-5	0-2	0-0	2 2 4	2 1	0	7	3	0	0	10
3 Sofia Geleron	11:17	1-4	1-2	0-0	0 1 1	3 0	3	1	1	0	1	6
25 Rachel Bowers	17:55	6-7	1-1	0-0	1 0 1	3 0	13	1	0	0	0	11
20 Maria Hermida	18:50	0-2	0-0	1 2 3	1 1 0	3 0	0	0	0	0	0	-1
22 Ellie Woerner	13:50	1-1	1-1	2-4	2 1 3	1 2	5	1	1	0	0	-1
15 Tess Amundsen	04:14	0-0	0-0	2 2	0 1 1	0 1	2	1	2	0	0	2
31 Marijke Vanderschaaf	02:16	1-1	0-0	0 0	0 1 1	2 0	0	0	0	0	0	0
30 Jade Loville	09:32	1-2	0-1	2-2	0 1 1	1 2	4	1	2	0	0	-1
Team					1 0 1	0	0					
Totals		24-51	11-27	11-15	10 25 35	20 14	70	21	18	2	1	13

Technical Fouls: NONE

Shooting By Period	1st FG%	2nd FG%	3rd FG%	4th FG%	GM FG%
1st FG%	7-16 43.8%				
3PT%	4-10 40.0%				
FT%	0-0 0%				
2nd FG%	6-11 54.5%				
3PT%	2-4 50.0%				
FT%	2-2 100%				
3rd FG%	9-14 64.3%				
3PT%	4-8 50.0%				
FT%	4-6 66.7%				
4th FG%	2-10 20.0%				
3PT%	1-5 20.0%				
FT%	5-6 83.3%				
GM FG%	24-51 47.1%				
3PT%	11-27 40.7%				
FT%	11-15 73.3%				

Dead Ball Rebounds: 2, 0

Biggest lead	CSU	BSU
2 (1st 9:11)	19 (3rd 2:29)	
Best Scoring Run	6 (3rd 9:03)	8 (1st 3:03)
Lead Changes	3	
Times Tied	0	
Time with Lead	01:44	37:17

Points from Turnovers	CSU	BSU
15	17	
Paint	24	14
Second Chance	6	4
Fast Breaks	4	15
Bench	8	29

Period by Period Scoring	1st	2nd	3rd	4th	TOT
1st	10	13	20	14	57
2nd	10	13	20	14	57
3rd	10	13	20	14	57
4th	10	13	20	14	57
TOT	10	13	20	14	57

18

Boise State at Wyoming

Jan. 26 • Laramie, Wyo. (Arena-Auditorium)

Official Basketball Box Score -- Game Totals -- Final Statistics

Boise St. vs Wyoming

01/26/19 1:00 p.m. at Laramie, Wyo. (Arena-Auditorium)

Boise St. 52 • 15-3, 6-1 MW

#	Player	Total			3-Ptr		Rebounds			PF	TP	A	TO	Blk	Stl	Min
		FG-FGA	FG-FGA	FT-FTA	Off	Def	Total									
33	HARRELL, Joyce	f	2-5	0-0	0-0	0	3	3	4	4	1	1	0	0	15	
42	COLEMAN, A'Shanti	f	3-5	0-1	0-0	1	1	2	5	6	1	2	2	1	18	
14	HODGINS, Braydey	g	2-6	1-3	1-1	0	3	3	1	6	0	3	0	0	27	
20	HERMIDA, Marta	g	1-6	0-2	0-0	0	6	6	0	2	3	3	0	0	26	
21	LUPFER, Riley	g	3-11	0-4	1-1	0	6	6	1	7	0	0	1	0	27	
03	GALERON, Sofia		3-5	1-2	0-0	1	2	3	2	7	1	1	2	0	12	
15	AMUNDSEN, Tess		1-3	0-1	0-0	0	0	0	1	2	0	0	0	0	9	
22	WOERNER, Ellie		0-0	0-0	0-0	1	1	2	1	0	1	0	0	0	11	
23	CHRISTOPHER, Jayde		3-6	0-0	1-2	1	3	4	1	7	2	2	0	2	29	
35	BOWERS, Rachel		2-4	0-0	2-2	0	2	2	4	6	0	2	0	0	8	
20	LOVILLE, Jade		1-7	0-2	0-0	0	2	2	2	2	0	1	0	0	12	
31	VANDERSCHAAF, Marij		1-1	0-0	1-1	0	0	0	0	3	0	0	0	0	3	
44	TOTH, Emerald		0-1	0-0	0	0	0	0	0	0	0	0	0	0	3	
	Team					1	29	34								
Totals			22-60	2-15	6-7	5	29	34	22	52	9	15	5	3	200	