



# 2023-24 Women's Basketball Media Guide



# 2023-24 Roster



0  
Megan McClendon



1  
Aspen Williston



2  
Alena Wilson



3  
LaKysia Johnson



4  
Natalie Stice



5  
Reagan Fox



11  
Shaniya Wiley



12  
Aubrey Taylor



13  
Gracee Miller



20  
Tayler Factor



21  
Karly Wadsworth



22  
Aliyah Llanusa



23  
Talia Pogi



25  
Alexis Martin



31  
Lexi Foreman



35  
Alexis Lewis



HC  
Emma Andrews



AC  
Casi Bays



GA  
Logan Collyer



42  
Caley Young

## 2023-24 Schedule

Date	(Day)	Opponent	Location	Time
Nov. 10	Friday	Mary#	Tahlequah, Okla.	1 p.m.
Nov. 11	Saturday	Northwestern Oklahoma State#	Tahlequah, Okla.	1 p.m.
Nov. 17	Friday	Cameron	Lawton, Okla.	5:30 p.m.
Nov. 18	Saturday	Southern Nazarene	Bethany, Okla.	1 p.m.
<b>Nov. 21</b>	<b>Tuesday</b>	<b>Texas A&amp;M International@</b>	<b>Edmond, Okla.</b>	<b>4 p.m.</b>
<b>Nov. 22</b>	<b>Wednesday</b>	<b>Oklahoma Christian@</b>	<b>Edmond, Okla.</b>	<b>1 p.m.</b>
<b>Nov. 30</b>	<b>Thursday</b>	<b>Central Missouri*</b>	<b>Edmond, Okla.</b>	<b>5:30 p.m.</b>
<b>Dec. 2</b>	<b>Saturday</b>	<b>Lincoln*</b>	<b>Edmond, Okla.</b>	<b>1:30 p.m.</b>
Dec. 7	Thursday	Missouri Southern*	Joplin, Mo.	5:30 p.m.
Dec. 9	Saturday	Pittsburg State*	Pittsburg, Kan.	1:30 p.m.
<b>Dec. 18</b>	<b>Monday</b>	<b>Nebraska-Kearney*</b>	<b>Edmond, Okla.</b>	<b>5:30 p.m.</b>
<b>Dec. 19</b>	<b>Tuesday</b>	<b>Fort Hays State*</b>	<b>Edmond, Okla.</b>	<b>1:30 p.m.</b>
Jan. 4	Thursday	Washburn*	Topeka, Kan.	5:30 p.m.
Jan. 6	Saturday	Emporia State*	Emporia, Kan.	1:30 p.m.
<b>Jan. 10</b>	<b>Wednesday</b>	<b>Northeastern State*</b>	<b>Edmond, Okla.</b>	<b>5:30 p.m.</b>
<b>Jan. 13</b>	<b>Saturday</b>	<b>Rogers State*</b>	<b>Edmond, Okla.</b>	<b>1:30 p.m.</b>
Jan. 18	Thursday	Northwest Missouri*	Maryville, Mo.	5:30 p.m.
Jan. 20	Saturday	Missouri Western*	St. Joseph, Mo.	1:30 p.m.
Jan. 27	Saturday	Newman*	Wichita, Kan.	1:30 p.m.
<b>Feb. 1</b>	<b>Thursday</b>	<b>Pittsburg State*</b>	<b>Edmond, Okla.</b>	<b>5:30 p.m.</b>
<b>Feb. 3</b>	<b>Saturday</b>	<b>Missouri Southern*</b>	<b>Edmond, Okla.</b>	<b>1:30 p.m.</b>
Feb. 8	Thursday	Nebraska-Kearney*	Kearney, Neb.	5:30 p.m.
Feb. 10	Saturday	Fort Hays State*	Hays, Kan.	1:30 p.m.
<b>Feb. 17</b>	<b>Saturday</b>	<b>Washburn*</b>	<b>Edmond, Okla.</b>	<b>1:30 p.m.</b>
Feb. 22	Thursday	Rogers State*	Claremore, Okla.	5:30 p.m.
Feb. 24	Saturday	Northeastern State*	Tahlequah, Okla.	1:30 p.m.
<b>Feb. 29</b>	<b>Thursday</b>	<b>Northwest Missouri*</b>	<b>Edmond, Okla.</b>	<b>5:30 p.m.</b>
<b>March 2</b>	<b>Saturday</b>	<b>Newman*</b>	<b>Edmond, Okla.</b>	<b>1:30 p.m.</b>
March 6-10	Wed.-Sun.	MIAA Basketball Championship	Kansas City, Mo.	TBD

**Bold** – Home game at Hamilton Field House

\* – MIAA game

# – Central Region Challenge

@ – UCO Thanksgiving Classic

## Table of Contents

### General Information

2023-24 Schedule..... 1/Back Cover

UCO Quick Facts/Phone Directory.....2

### Coaches/Season Outlook/Players

Head Coach Emma Andrews..... 4-5

Assistant Coaches.....6

2023-24 Outlook .....8

2023-24 Roster .....9

Player Profiles ..... 10-16

### 2022-23 Review

2022-23 Results .....18

2022-23 Stats.....19

2022-23 MIAA Standings/Championship/Awards.....20

### Records

Women's Basketball Record Book..... 22-28

### History

All-Time Letterwinners .....30

All-Conference/All-Region/All-American.....31

Season-by-Season Results..... 32-35

Series Records .....36

Notable Wins, Losses, and Streaks.....36

Bronchos in the Postseason.....37

Hamilton Field House.....38

### About UCO

The University..... 40-41

About Edmond.....42

About Oklahoma City.....43

University President.....44

Athletic Administration ..... 44-46

The MIAA .....IBC

## Quick Facts

### University Facts

Mailing Address:  
100 North University  
Edmond, OK 73034  
**Founded:** Dec. 24, 1890  
**President:** Todd G. Lamb  
**Athletic Director:** Stan Wagon  
**Senior Strategic Advisor:** Chuck Bailey  
**Senior Associate AD:** Jeremy Rogers  
**Assistant AD/Media Relations:** Chris Brannick  
**Assistant AD/Business, SWA:** Melissa Paul  
**Assistant AD/Academics:** Samm Chavez  
**Head Athletic Trainer:** Alby Lindon  
**Director of Compliance:** Sydni Nelums  
**Assistant Registrar:** Evan Blackburn  
**Financial Aid:** Linda Orr  
**Faculty Athletic Representative:** Trey Cone  
**National Affiliation:** NCAA Division II  
**Conference:** MIAA (2012)  
**Nickname:** Bronchos  
**School Colors:** Bronze and Blue  
**Enrollment:** 12,000

### Basketball Facts

**Head Coach:** Emma Andrews  
**Years, Record at UCO:** Second year (11-17)  
**Years, Overall Record:** Seven years, 84-104  
**Assistant Coach:** Casi Bays  
**2022-23 Record:** 11-17  
**2022-23 Conference Record/Finish:** 7-15 (10th)  
**Lettermen Returning/Lost:** 7/8  
**Starters Returning/Lost:** 3/2

### Basketball History

**First Season of Basketball:** 1969-70  
**All-time Record:** 713-657 (.520 win pct.)  
**Conference/Division Championships:** Two (2008, 2009)  
**National Tournament Appearances:** Seven – two in AIAW Division II (1976 and 1982) and five in NCAA Division II (2008, 2009, 2010, 2011, 2017)

### Media Relations

**Assistant Athletic Director – Media Relations:** Chris Brannick  
**Office:** (405) 974-2142  
**Cell:** (405) 301-1087  
**Email:** cbrannick@uco.edu

### School Nickname

“Bronchos” was the nickname selected for Central Oklahoma in 1922 by Mrs. C.W. Wantland, wife of long-time UCO football coach C.W. Wantland. The name was chosen from a number of suggestions for the name of UCO’s football team and became the nickname for all athletic teams at the school.

Mrs. Wantland was made an honorary member of the Letterman’s Club as a result of selecting the nickname, becoming the first woman admitted to that organization.

### School Colors

Bronze and blue were chosen as Central Oklahoma’s school colors early in the fall of 1895 by school president Edmund Dandridge Murdaugh. The first public display of the bronze and blue was in Guthrie when a student represented UCO in the first oratorical contest ever held in Oklahoma.

### On the Cover

Super seniors Aliyah Llanusa and Aspen Williston are set to play in their fifth season of college basketball in 2023-24.

### Production Credits

The 2022-23 UCO basketball media guide was written, edited and designed by the UCO Athletic Media Relations Office. Photographs were provided by UCO Photographic Services.

### Staff Phone/Email Directory

**University of Central Oklahoma** ..... (405) 974-2000  
**Athletic Department** ..... (405) 974-2500  
**Head Coach**  
Emma Andrews (eandrews5@uco.edu).. (405) 974-2146  
**Assistant Coach**  
Casi Bays (ccoxbays@uco.edu)..... (405) 974-2178  
**Director of Athletics**  
Stan Wagon (swagon1@uco.edu) ..... (405) 974-2500  
**Assistant AD/Senior Woman Administrator**  
Melissa Paul (mpaul3@uco.edu)..... (405) 974-2168  
**Assistant AD/Head Athletic Trainer**  
Alby Lindon (alindon@uco.edu) ..... (405) 974-2188



# The Coaches

# Head Coach Emma Andrews



Emma Andrews took over the head women's basketball coaching position at Central Oklahoma in May 2022.

In her first season with the Bronchos, Andrews started her tenure with three straight wins. She led the Bronchos to the MIAA Basketball Championship quarterfinals, winning an opening round game against Emporia State before falling to the No. 2 seed in the tournament.

Andrews has an 11-17 record at UCO and a 84-104 career record.

Andrews came to UCO from Cameron, where she spent the previous six seasons leading the Aggie women's program in Lawton, Oklahoma. She led CU to five Lone Star Conference tournament appearances and one NCAA Division II national tournament appearance in 2020-21.

Andrews was an assistant at Cameron for two seasons before being named head coach there in May of 2016.

Prior to her time in Lawton, Andrews was a graduate assistant coach for Fresno State from 2012-14. She was a student assistant in 2011-12. That span followed her four-year standout playing career for the Bulldogs.

Andrews starred on the basketball court at Fresno from 2007-11. She helped FSU to four straight Western Athletic Conference titles and four straight NCAA national tournament appearances. She earned All-WAC honors as a junior in 2010 and was named to the WAC All-Tournament team as a freshman in 2008.

Andrews is originally from Melbourne, Australia.

## The Andrews File

**Born:** May 5, 1988

**High School Education:** St. Margaret's School, Melbourne, Australia

**College Education:** Fresno State, bachelor's degree in kinesiology, 2011; master's degree, 2014

**Playing Experience:** Fresno State, 2007-11

## Coaching Experience

**2022-23:** Central Oklahoma, head coach.

**2016-21:** Cameron, head coach

**2014-16:** Cameron, assistant coach

**2012-14:** Fresno State, graduate assistant

**2011-12:** Fresno State, student assistant

## As a Head Coach

Season	W-L	Pct.	Conf.	Pct.
2016-17	11-16	.407	9-11	.450
2017-18	13-16	.448	11-9	.550
2018-19	8-20	.285	5-15	.250
2019-20	13-16	.448	12-10	.545
2020-21	11-8	.578	10-6	.625
2021-22	17-11	.607	11-5	.687
2022-23	11-17	.393	7-15	.318
<b>Totals</b>	<b>84-104</b>	<b>.446</b>	<b>65-71</b>	<b>.477</b>

## Highlights

- Won first career game against Missouri S&T Nov. 12, 2016 in the Tarleton State Classic in Stephenville, Texas.
- Won first Lone Star Conference game Dec. 17, 2016, 97-63, against Texas A&M Kingsville in Lawton, Okla.
- Cameron was one of the top three-point shooting teams in all of Division II, ranking first in the LSC and in the top-15 of the nation in three-point field goals attempted (816), made (271), and per game average (9.3), all three broke LSC records in 2019-20.
- Posted three Top 10 wins, including back-to-back against then ranked No. 5 West Texas A&M.
- Earned NCAA Division II Tournament berth as the No. 6 seed in the South Central Regional.
- Won first game at UCO against Missouri S&T (99-84) on Nov. 18, 2022.
- Won first MIAA game against Lincoln (96-75) on Dec. 3, 2022.
- Won first MIAA Basketball Championship game against Emporia State (First Round, 71-57) on March 1, 2023.

## Noteables

- 1st Win:** Cameron 77, Missouri S&T 60 (Nov. 12, 2016)
- 25th Win:** Cameron 80, Newman 74 (Nov. 9, 2018)
- 50th Win:** Cameron 72, UT-Tyler 58 (Feb. 5, 2021)
- 75th Win:** Central Oklahoma 78, Oklahoma Christian 64 (Nov. 19, 2022)
- Home Record:** 48-43 (.527)
- Away Record:** 29-48 (.376)
- Neutral Site Record:** 7-13 (.350)
- Postseason Record:** 3-7 (.300)
- Overtime Game Record:** 5-6 (.454)
- Longest Winning Streak:** 5, twice, most recent 2021-22

## Andrews vs.

Team	W-L	Pct.
Adams State .....	2-0	1.000
Angelo State.....	1-8	.111
Arkansas-Fort Smith.....	3-0	1.000
<b>Cameron .....</b>	<b>1-0</b>	<b>1.000</b>
Central Oklahoma .....	0-5	.000
<b>Central Missouri .....</b>	<b>0-2</b>	<b>.000</b>
Colorado Christian .....	0-1	.000
Colorado-Colorado Springs .....	1-0	1.000
Colorado Mesa.....	0-2	.000
Eastern New Mexico .....	2-7	.222
<b>Emporia State.....</b>	<b>3-0</b>	<b>1.000</b>
<b>Fort Hays State .....</b>	<b>0-4</b>	<b>.000</b>
Harding.....	0-2	.000
<b>Lincoln .....</b>	<b>1-0</b>	<b>.000</b>
Lubbock Christian.....	1-6	.142
<b>Mary .....</b>	<b>0-0</b>	<b>.000</b>
Midwestern State .....	9-4	.692
Missouri S&T.....	2-0	1.000
<b>Missouri Southern.....</b>	<b>0-2</b>	<b>.000</b>
<b>Missouri Western.....</b>	<b>0-1</b>	<b>.000</b>
<b>Nebraska Kearney .....</b>	<b>0-3</b>	<b>.000</b>
<b>Newman .....</b>	<b>3-1</b>	<b>.750</b>
<b>Northeastern State.....</b>	<b>1-1</b>	<b>.500</b>
<b>Northwest Missouri.....</b>	<b>0-2</b>	<b>.000</b>
<b>Northwestern Oklahoma State .....</b>	<b>0-0</b>	<b>.000</b>
Oklahoma Baptist.....	0-1	1.000
<b>Oklahoma Christian .....</b>	<b>7-3</b>	<b>.700</b>
<b>Pittsburg State .....</b>	<b>0-2</b>	<b>.000</b>
<b>Rogers State.....</b>	<b>2-0</b>	<b>1.000</b>
<b>Southern Nazarene.....</b>	<b>0-1</b>	<b>.000</b>
Southwestern Oklahoma State.....	0-4	.000
St. Edward's .....	2-0	1.000
St. Mary's (Texas).....	1-5	.166
Tarleton State .....	3-4	.428
Texas A&M-Commerce.....	3-10	.230
<b>Texas A&amp;M-International .....</b>	<b>1-1</b>	<b>.500</b>
Texas A&M-Kingsville .....	7-3	.700
Texas Permian Basin .....	9-1	.900
Texas Woman's .....	3-7	.300
Tuskegee .....	1-0	1.000
UT-Tyler.....	5-0	1.000
<b>Washburn.....</b>	<b>1-1</b>	<b>.500</b>
West Texas A&M .....	2-8	.200
Western New Mexico .....	7-2	.777

**Bold – Opponent in 2023-24**

## Assistant Coach Casi Bays



Casi Bays joined Central Oklahoma in 2022-23 as the assistant women's basketball coach.

In her first season with the Bronchos, Bays helped UCO with three straight wins to start the season. She guided the Bronchos to the MIAA Basketball Championship quarterfinals, winning an opening round game against Emporia State before falling to the No. 2 seed in the tournament.

Bays came to UCO from Edmond Santa Fe High School, where she spent the previous two seasons leading the local Wolves. She previously coached 10 years at Oklahoma Baptist University, including eight as the head coach. Bays spent five years before that in the high school ranks in Oklahoma.

Bays won 124 games for the Bison as she helped the school transition from NAIA to NCAA Division II. She led OBU to the 2013-14 Sooner Athletic Conference championship and a trip to the NAIA national tournament. Bays took the team back to the NAIA national tournament and reached the national quarterfinals in 2014-15.

As OBU moved into Division II, Bays led the transition and helped the team to a 17-16 record, including a 12-10 mark in the Great American Conference. Her team finished sixth in the standings but was ineligible for the postseason for its first two years in the league. Bays helped get OBU to the GAC Championship quarterfinals in its first year of eligibility in 2017-18.

Bays has coached seven years at the high school level in Oklahoma and has won over 100 games. She won 23 games at Edmond Santa Fe over the past two seasons and totaled 99 career victories in her two posts prior to entering the college level at Newcastle High School (2006-10) and Bridge Creek High School (2005-06).

Bays is from Newcastle, where she starred on the basketball court. She took her talents to Shawnee, Oklahoma in 1998 and started a record-setting career at Oklahoma Baptist.

Bays is still today the No. 5 scorer in school history at OBU, tallying 1,876 points from 1998-2002. She holds the school records for most 3-pointers made in one game (10) and in a career (373), as well as the most 3-pointers attempted in one game (22) and in one career (948).

Bays earned All-Conference honors four times at OBU and was twice named All-American.

Bays is married (Bryan) and has two daughters (Peyton and Kylie).

## Graduate Assistant Logan Collyer



Logan Collyer joined the Central Oklahoma women's basketball program in July 2022 and serves as a graduate assistant coach.

In her first season with the Bronchos, Collyer led the Bronchos to the MIAA Basketball Championship quarterfinals, winning an opening round game against Emporia State before falling to the No. 2 seed in the tournament.

She came to UCO from Cameron University, where she wrapped up her playing career in 2022. Collyer assists with team travel and operations in addition to serving as an assistant to second-year head coach Emma Andrews and assistant coach Casi Bays.

Collyer is from Harrah, Oklahoma, where she won the 2017 Class 4A state championship following a runner-up finish the year before. She played two seasons at Independence Community College (Kan.) before transferring to Cameron. She played three seasons there.

Collyer received her associate's in 2019 at Independence with a degree in Liberal Studies. She received her bachelors in 2021 at Cameron with a degree in Sports and Exercise Science.



## Season Outlook

Central Oklahoma begins the 2023-24 season with a reloaded roster ready to improve on last year's results. The new season marks year two for head women's basketball coach Emma Andrews. The Bronchos went 11-17 a year ago with a 7-15 record in the MIAA. UCO earned the No. 10 seed in the MIAA Basketball Championship and advanced to the quarterfinals of the postseason tournament.

Andrews returns seven letterwinners from last year's squad, including three regular starters.

"The roster changed quite a bit so we're excited to see how everyone works together," Andrews said. "I think we are more talented this year, but with newcomers you're never really sure what you are going to get. If we can reach our potential, we'll be in a better place this year."

Central averaged 68.1 points per game last season, shooting 38.7 percent overall. The Bronchos shot 29.4 percent from behind the 3-point line, averaging 6.4 threes per game, and 74.9 percent from the free-throw line with 12.6 makes per game from the stripe. UCO also averaged 36.3 rebounds per game.

Aliyah Llanusa returns for her fifth season with Central Oklahoma. The guard from Choctaw, Oklahoma has played in 107 games for the Bronchos in her career. She is utilizing an eligibility extension from the NCAA from the pandemic.

Llanusa averaged a career-high 10.6 points per game last season. She also had a career-high 6.3 rebounds per game and that led the team. Llanusa has been among the best in the MIAA on defense all four years she has been with the program. She swiped 50 steals last season and has 148 steals in her career.

Karly Wadsworth returns this season too for Central Oklahoma. The junior guard is in her fourth year with the program and is the leading returning scorer for the Bronchos. Wadsworth averaged 12.3 points per game last season – almost triple her output the year prior of 4.7 points per game.

Wadsworth is a threat to shoot from anywhere on the floor. She has 104 career 3-pointers made and is a 30.7 percent career shooter. Last season, she tied the school record with 15 attempts in one game and she set a new school record with 196 attempts in a single season.

Aspen Williston returns in her second season with the program but the sixth-year senior with loads of experience is poised for a big year. After playing at OU for two years and South Dakota for two after that, Williston transferred to Central Oklahoma. She worked her way into the lineup and was soon a regular starter.

Williston averaged 9.8 points per game and 5.1 rebounds per game. She also had 63 blocked shots, an average of 2.1 per game. Williston also had a career highlight in February when the left-handed center posted a triple double in a win at Washburn.

The win ultimately gave Central Oklahoma a postseason berth. Williston had 14 points, 10 rebounds, and a

school record 10 blocked shots.

In 2022-23, Central's five regular starters averaged just over 57 points per game. With two of them gone, Andrews needs to find new depth with this year's squad.

Lexi Foreman (3.0), Tayler Factor (2.5), Caley Young (2.5), and Megan McClendon (0.4) all returning as well, Andrews has options.

A slew of newcomers also give the Bronchos new options to put points on the board.

Sixth-year senior transfer Natalie Stice brings a veteran presence to the floor at the guard position. Junior transfers Alena Wilson, LaKysia Johnson, Aubrey Taylor, and Alexis Lewis also add plenty of experience. Sophomore transfers Reagan Fox and Talia Pogi both come from Division I schools and might be regular contributors this season.

Shaniya Wiley, Gracee Miller, and Alexis Martin are three freshmen on the roster and have the opportunity to compete for minutes this season.

Stice is a sixth-year senior like Williston. The Texan sat out a redshirt season in 2018-19 at Eastern New Mexico. She helped the team qualify for the 2019-20 NCAA Division II Women's Basketball Championship but the South Central Regional was canceled due to the pandemic. ENMU also canceled the entire 2020-21 season. Stice finally got back on the floor in 2021-22 before transferring to Midwestern State last season.

Stice is a career 10.9 points per game scorer with 130 career 3-pointers made.

Wilson comes to Central Oklahoma from Cameron where she was the leading scorer and rebounder for the Aggies last year. The Dallas native scored 10.9 points per game and pulled down 8.2 rebounds per game in 27 appearances (all starts) in 2022-23. Wilson also spent two years at Murray State College and averaged 15.1 points and 7.2 rebounds per game.

Johnson, an athletic guard from Altus, spent two years at Northern Oklahoma – Enid and averaged 16 points per game. She earned All-Region honors last season for the Jets.

Taylor also spent the last two seasons at NOC. She played in 24 games in two years and averaged 2.0 points per game.

Lewis spent the last two seasons at Seminole State College and was a big contributor for the Belles. Lewis played in 53 games in two years and averaged 12.7 points per game, including 14.1 last season. She also averaged 6.6 rebounds per game over the two-year stint and pulled down 7.7 boards last season.

Fox, who is from Blanchard, Oklahoma, went to Abilene Christian for her true freshman season. She only played in six games a year ago and scored six points.

Pogi, from Mustang, Oklahoma, spent her true freshman season at Oral Roberts. She played in 18 games and averaged 1.7 points per game.

## 2023-24 Roster

Numerical							
No.	Name	Pos.	Ht.	Class	Hometown	High School	Previous School
0	Megan McClendon	G	5-6	Jr.	Severy, Kan.	West Elk	
1	Aspen Williston	F	6-4	Sr.	Broken Bow, Okla.	Broken Bow	South Dakota
2	Alena Wilson	F	5-10	Jr.	Dallas, Texas	Lincoln	Cameron
3	LaKysia Johnson	G	5-7	Jr.	Altus, Okla.	Altus	NOC Enid
4	Natalie Stice	G	5-7	Sr.	Tahoka, Texas	Tahoka	Midwestern State
5	Reagan Fox	F	5-9	So.	Blanchard, Okla.	Blanchard	Abilene Christian
11	Shaniya Wiley	G	5-7	Fr.	Midwest City, Okla.	Star Spencer	
12	Aubrey Taylor	G	5-5	Jr.	Tulsa, Okla.	Coyle	NOC Enid
13	Gracee Miller	G	5-7	Fr.	Comanche, Okla.	Comanche	
20	Taylor Factor	G	5-9	Sr.	Mitchell, S.D.	Mitchell	
21	Karly Wadsworth	G	5-8	Jr.	Oologah, Okla.	Oologah	
22	Aliyah Llanusa	G	5-7	Sr.	Choctaw, Okla.	Choctaw	
23	Talia Pogi	F	5-9	So.	Mustang, Okla.	Mustang	Oral Roberts
25	Alexis Martin	F	5-9	Fr.	Oologah, Okla.	Oologah	
31	Lexi Foreman	G	5-9	Jr.	Anadarko, Okla.	Anadarko	
35	Alexis Lewis	F	6-0	Jr.	Sapulpa, Okla.	Sapulpa	Seminole State
42	Caley Young	F	5-11	Jr.	Jones, Okla.	Jones	

Alphabetical							
No.	Name	Pos.	Ht.	Class	Hometown	High School	Previous School
20	Taylor Factor	G	5-9	Sr.	Mitchell, S.D.	Mitchell	
31	Lexi Foreman	G	5-9	Jr.	Anadarko, Okla.	Anadarko	
5	Reagan Fox	F	5-9	So.	Blanchard, Okla.	Blanchard	Abilene Christian
3	LaKysia Johnson	G	5-7	Jr.	Altus, Okla.	Altus	NOC Enid
35	Alexis Lewis	F	6-0	Jr.	Sapulpa, Okla.	Sapulpa	Seminole State
22	Aliyah Llanusa	G	5-7	Sr.	Choctaw, Okla.	Choctaw	
25	Alexis Martin	F	5-9	Fr.	Oologah, Okla.	Oologah	
0	Megan McClendon	G	5-6	Jr.	Severy, Kan.	West Elk	
13	Gracee Miller	G	5-7	Fr.	Comanche, Okla.	Comanche	
23	Talia Pogi	F	5-9	So.	Mustang, Okla.	Mustang	Oral Roberts
4	Natalie Stice	G	5-7	Sr.	Tahoka, Texas	Tahoka	Midwestern State
12	Aubrey Taylor	G	5-5	Jr.	Tulsa, Okla.	Coyle	NOC Enid
21	Karly Wadsworth	G	5-8	Jr.	Oologah, Okla.	Oologah	
11	Shaniya Wiley	G	5-7	Fr.	Midwest City, Okla.	Star Spencer	
1	Aspen Williston	F	6-4	Sr.	Broken Bow, Okla.	Broken Bow	South Dakota
2	Alena Wilson	F	5-10	Jr.	Dallas, Texas	Lincoln	Cameron
42	Caley Young	F	5-11	Jr.	Jones, Okla.	Jones	

## By Class

**Seniors (4)** – Tayler Factor, Aliyah Llanusa, Natalie Stice, Aspen Williston  
**Juniors (8)** – Lexi Foreman, LaKysia Johnson, Alexis Lewis, Megan McClendon, Aubrey Taylor, Karly Wadsworth, Alena Wilson, Caley Young  
**Sophomores (2)** – Reagan Fox, Talia Pogi  
**Freshmen (3)** – Alexis Martin, Gracee Miller, Shaniya Wiley

## By State

**Oklahoma (13)** – Lexi Foreman, Reagan Fox, LaKysia Johnson, Alexis Lewis, Aliyah Llanusa, Alexis Martin, Gracee Miller, Talia Pogi, Aubrey Taylor, Karly Wadsworth, Shaniya Wiley, Aspen Williston, Caley Young  
**Texas (2)** – Natalie Stice, Alena Wilson  
**Kansas (1)** – Megan McClendon  
**South Dakota (1)** – Tayler Factor

## Player Profiles



**Aliyah Llanusa**  
**22**  
 G | 5-7 | Sr. | Choctaw, Okla.

### Career Highs

**Points:** 24 at Pittsburg State, 1/26/23  
**Rebounds:** 13 at Lincoln, 12/3/22  
**Assists:** 7 at Lincoln, 1/15/22  
**Steals:** 6, three times  
**Blocks:** 1, four times

Season	Career Statistics								
	G-GS	FG-FGA	Pct.	3PM-3PA	Pct.	FT-FTA	Pct.	Reb-Avg.	Pts-Avg.
2019-20	28-0	29-93	.312	5-32	.156	14-22	.636	49-1.8	77-2.8
2020-21	21-1	18-42	.429	2-5	.400	19-24	.792	34-1.6	57-2.7
2021-22	30-29	77-206	.374	21-73	.288	47-64	.734	102-3.4	222-7.4
2022-23	28-27	93-225	.413	19-51	.373	92-123	.748	177-6.3	297-10.6
<b>Totals</b>	<b>107-57</b>	<b>217-566</b>	<b>.383</b>	<b>47-161</b>	<b>.292</b>	<b>172-233</b>	<b>.738</b>	<b>362-3.4</b>	<b>653-6.1</b>

Senior guard returning to finish off a highlight filled career ... Has a reputation as one of the premier lockdown defenders around in the MIAA ... Found lots of playing time as a freshman off the bench and proved to be a fierce defender as she continued that into her sophomore seasons ... Stepped into a starting role and had a standout second sophomore season ... Was leader a year ago in fourth year ... Has played 107 career games for the Bronchos.

**2022-23:** Played in 28 games and made 27 starts in fourth year ... Played a team-high 34.0 minutes per game ... Averaged career-high 10.6 and 6.3 rebounds per game, leading the team in boards ... Shot 41.3 percent (93-225) from the floor with a 37.3 percent mark from behind the arc (19-51) ... Shot 74.8 percent from the free-throw line (92-123) ... Averaged 3.0 assists per game and 1.8 steals per game ... Scored a career-high 24 points in a road game at Pittsburg State, going 7-for-15 in the game, both season highs ... Scored 20 in win over Newman ... Scored 15 eight times on the season and scored in double figures 15 times ... Career-high 13 rebounds in win at Lincoln in December ... Had double-digit rebounds in four games (13, 12, 11, 10) ... Dished out at least five assists in six games with a season-high six assists twice ... Had one steal in 21 games, at least two in six games, three in six games and four steals in two games ... Took a season-high six steals twice.

**2021-22:** Played in all 30 games for the Bronchos and started 29 of them during second sophomore season ... Averaged 7.4 points per game, 3.4 rebounds per game, 2.0 assists, and 2.0 steals per game ... Shot 37.4 percent from the field, hitting 77 of 206 shots on the year ... Made 21 3-pointers on 73 attempts, a 28.8 percent rate ... Shot 73.4 percent from the free-throw line, hitting 47 of 64 shots from the stripe ... Totaled 61 steals on the year, ranking among the best in the MIAA ... Scored in double figures in 12 of 30 games with a season-high 18 points scored against Missouri Western on Jan. 22 ... Also sank a season-best eight free-throws in that game and tied a season-high six steals against the Grifons, while pulling down one of her four six-rebound games ... Also had six steals against Rogers State on Jan. 8.

**2020-21:** Played in 21 of 23 games as a sophomore and made one start ... Scored 2.7 points per game and added 1.6 rebounds per game ... Shot 42.9 percent overall and 40 percent from behind the arc and 79.2 percent from the free-throw line ... Made 12 steals on the season, one of eight Bronchos with a dozen swipes ... Made a living shutting down opponents' scoring threat ... Season-high eight points at Nebraska Kearney and scored six points to go with season-high three steals at Missouri Western.

**2019-20:** Played in all 28 games as a true freshman ... Averaged 13.3 minutes per game ... Scored 2.8 points per game, 1.8 rebounds per game, and also had nearly one assist and one steal per contest ... Scored a season-high 13 points in a win over Arkansas Fort Smith in November ... Also posted 12 points in a win over Lincoln in January ... Had season-high three steals on three different occasions ... Season-high four rebounds in win over Rogers State in January.

**High School:** All-State selection out of Choctaw High School that helped team win a state championship ... Earned conference MVP honors ... Averaged nearly 20 points per game.

**Personal:** Brother (Jonah) played football and baseball at Navy and sister (Ana) played basketball at Oklahoma ... Lists the Golden State Warriors as her favorite sports team ... Birthdate is Dec. 15, 2000.



**Tayler Factor**  
**20**  
 G | 5-9 | Sr. | Mitchell, S.D.

### Career Highs

**Points:** 10 at Rogers State, 2/21/21  
**Rebounds:** 7 vs. Missouri S&T, 11/18/22  
**Assists:** 5 vs. Rogers State, 2/15/23  
**Steals:** 4 vs. Newman, 1/21/23  
**Blocks:** 1, nine times

Season	Career Statistics								
	G-GS	FG-FGA	Pct.	3PM-3PA	Pct.	FT-FTA	Pct.	Reb-Avg.	Pts-Avg.
2019-20	25-0	17-36	.472	3-11	.273	0-2	.000	25-1.0	37-1.5
2020-21	22-1	25-56	.446	9-28	.321	6-7	.857	38-1.7	65-3.0
2021-22	Did not play - Injury								
2022-23	26-4	27-81	.333	5-21	.238	6-8	.750	76-2.9	65-2.5
<b>Totals</b>	<b>73-5</b>	<b>69-173</b>	<b>.399</b>	<b>17-60</b>	<b>.283</b>	<b>12-17</b>	<b>.706</b>	<b>139-1.9</b>	<b>167-2.3</b>

Senior guard is a hard-working valuable asset ... Can shoot from outside, is good off the dribble, and is a hard working and active defender ... Plays fundamental ... Is fast on the break and can find an open spot on the floor ... Doesn't get caught out of position ... Has played in 73 career games for the Bronchos.

**2022-23:** Played in 26 of 30 games for the Bronchos as a junior, returning to full speed after missing an entire season due to injury ... Averaged 2.5 points and 2.9 rebounds per game in 16.0 minutes per game during the season ... Made four starts for the Bronchos ... Shot 33.3 percent overall, 23.8 percent from behind

## Player Profiles

the arc, and 75 percent from the free-throw line ... Also averaged 1.2 assists and 1.2 steals per game for the year ... Went 4-for-4 in the season debut with a season-high nine points in her first appearance in 625 days ... Also had a season-high seven rebounds in season-opening win over Missouri S&T ... Played a season-high 34 minutes in win at Washburn in February ... Recorded career-high four steals in win over Newman in January.

**2021-22:** Did not play due to injury.

**2020-21:** Played in 22 of 23 games and made one start ... Averaged 11 minutes per game ... Averaged 3.0 points per game and 1.7 rebounds per game ... Shot 44 percent from the field and 32 percent from behind the arc while having a solid 85 percent mark at the free-throw line ... Career-high 10 points in a win over Rogers State in Edmond ... Scored eight twice and six points three times ... Hit multiple threes in a game four times last season ... Had 21 steals in 22 games played ... Season-high three steals in two games and had multiple steals in a game five times.

**2019-20:** Played in 25 of 28 games as a true freshman ... Averaged 6.2 minutes per game in reserve action ... Scored 37 points on 17-for-36 shooting (47.2 percent) overall ... Had 25 total rebounds (11 offensive and 14 defensive) ... Had 14 assists and 10 steals ... Season-high six points in win over Lincoln in January ... Season-high five rebounds in win at Newman in December.

**High School:** Earned All-State honors at Mitchell High School in South Dakota ... Also ran cross country and track & field.

**Personal:** Criminal Justice major ... Uncle (David) played basketball at UCO and is all-time steals leader ... Lists beating No. 1 seed as No. 8 seed in state tournament as top sports memory ... Birthdate is May 26, 2001.



**Aspen Williston**  
1  
F | 6-4 | Sr. | Broken Bow, Okla.

### Career Highs

**Points:** 25 at Missouri Southern, 1/28/23  
**Rebounds:** 17 vs. Emporia State, 3/1/23  
**Assists:** 2 vs. Emporia State, 3/1/23  
**Steals:** 3 at Washburn, 2/11/23  
**Blocks:** 10 at Washburn, 2/11/23

Career Statistics									
Season	G-GS	FG-FGA	Pct.	3PM-3PA	Pct.	FT-FTA	Pct.	Reb-Avg.	Pts-Avg.
2022-23	28-22	118-230	.513	8-24	.333	30-54	.556	141-5.0	274-9.8

Sixth-year senior forward that had a steady rise in her first year with the program and is now poised at a big year for the Bronchos ... Lefty is crafty in the paint ... Long defender is hard to get by ... Transferred to Central Oklahoma after two years with South

Dakota, which followed two years at Oklahoma.

**2022-23:** Played in all 28 games in her first year with the program and made 22 starts ... Averaged 9.8 points per game and 5.1 rebounds per game ... Turned back 2.1 blocks per game ... Shot 51.3 percent from the floor, making 118 of 230 total shots ... Hit eight 3-pointers ... Made 30 of 54 free-throws ... Scored a season-high 25 points at Missouri Southern in January ... Pulled down season-high 17 rebounds in win over Emporia State in the MIAA postseason tournament ... Set a school record with season-high 10 blocked shots in win at Washburn in February ... Scored 20 points four times and posted 15 points in eight games ... Scored in double figures in 13 contests ... Had double-digit rebounds three times ... Had at least five boards in 15 games ... Turned back at least one block in 21 of 28 games ... Had multiple blocks in 16 games ... Named Honorable Mention All-MIAA following the season.

**SD:** Helped the Coyotes reach the NCAA Tournament Sweet 16 last season as a part of the Coyotes' regular season and tournament Summit League titles ... Helped team to NCAA Tournament in both seasons there ... Played in 12 of 35 games as a senior and 13 of 25 games during junior season.

**OU:** Spent first two college seasons in Norman and played in 26 games.

**High School:** Prep standout at Broken Bow High School ... Earned All-State honors from The Oklahoman and OGBCA ... Led team to three consecutive Class 4A state tournaments ... Scored 1,000 points ... Also participated in track and field.



**Natalie Stice**  
4  
G | 5-7 | Sr. | Tahoka, Texas

Senior transfer guard ready to help the Bronchos out this season ... Veteran ball player with tons of experience ... Lethal shooter from all over the floor ... In your face defender ... Career 10.9 points per game scorer with 130 career 3-pointers made ... Enters final year of eligibility with 912 career points ... Transferred to Central Oklahoma after one season at Midwestern State ... Spent four years at Eastern New Mexico.

**MSU:** Played in 28 games for the Mustangs as a fifth-year junior ... Made 25 starts ... Averaged 12.9 points per game ... Scored 360 points on the year ... Hit career-high 47 3-pointers ... Named All-Lone Star Conference Honorable Mention.

**ENMU:** Sat out redshirt season in 2018-19 ... Helped team qualify for NCAA South Central Regional before pandemic canceled the tournament ... School did not play 2020-21 season ... Played in 55 games in two seasons over four years ... Scored 552 points ... Made 83 3-pointers ... Named All-Lone Star Conference Honorable Mention.

**High School:** Prep standout at Tahoka High School in Texas ... Earned District Newcomer of the Year as a freshman and Offense

## Player Profiles

sive MVP the next three years ... All-Region pick in 2017 ... Also competed in softball and track & field.

**Personal:** Business Analytics major ... Names the Las Vegas Aces and the New York Liberty her favorite teams ... Loves the beach and spending time with friends and family ... Wants to go into coaching ... Birthdate is Aug. 30, 2000.



### Karly Wadsworth

21

G | 5-8 | Jr. | Oologah, Okla.

#### Career Highs

**Points:** 30 at Rogers State, 1/7/23

**Rebounds:** 5 at Rogers State, 1/7/23

**Assists:** 5, three times

**Steals:** 5 vs. Southern Nazarene, 11/26/22

**Blocks:** 1, four times

Season	Career Statistics								
	G-GS	FG-FGA	Pct.	3PM-3PA	Pct.	FT-FTA	Pct.	Reb-Avg.	Pts-Avg.
2020-21	20-5	14-50	.280	11-41	.268	3-4	.750	14-0.7	42-2.1
2021-22	29-10	46-127	.362	36-102	.353	8-9	.889	28-1.0	136-4.7
2022-23	28-25	119-324	.367	57-196	.291	48-58	.828	57-2.0	343-12.3
<b>Totals</b>	<b>77-40</b>	<b>179-501</b>	<b>.357</b>	<b>104-339</b>	<b>.307</b>	<b>59-71</b>	<b>.831</b>	<b>99-1.3</b>	<b>521-6.8</b>

Fourth-year guard is a sharp shooter and one of the best in the MIAA from behind the arc ... Can knock down shots from all over the court and has a 25-foot range ... Set two records for 3-point attempts and is always ready to fire ... Is fast and athletic, helping the Bronchos fastbreak game ... Is ready on defense and can force turnovers against anyone ... Officially still a junior with 77 career games played.

**2022-23:** Played in all 28 games and made 25 starts ... Scored career-high 12.3 points per game ... Shot 36.7 percent from the floor on the year, making 119 of 324 total shots ... Shot 30.7 percent from behind the arc, making 57 of 196 threes on the season ... Went 48-for-58 from the free-throw line, an 82.8 percent rate ... Set a school record for 3-point attempts in one season ... Shot 15 threes in a win over Emporia in the MIAA postseason tournament, tying a school record for attempts in a single game ... Made five that day, tying a career-high ... Has made five 3-pointers in a single five times in her career ... Scored a career-high 30 points in a win at Rogers State in January ... Season-high five rebounds and five assists in win at RSU ... Season-high five steals in game against Southern Nazarene in November ... Scored in double figures in 18 of 28 games ... Scored at least 15 points in six games and had 20 or more three times ... Made at least one 3-pointer in 24 of 28 games ... Had multiple threes in a game 15 games ... Had multiple steals in a game 14 times ... Had at least three steals in seven games, four in three games, and the season-high five against SNU.

**2021-22:** Played in 29 of 30 games for the Bronchos during second freshman season and made 10 starts in first half of the year ... Averaged 4.7 points per game ... Shot 36.2 percent from the floor

overall and 35.3 percent from behind the 3-point line ... Hit 88.9 percent of her free-throws ... Also averaged 1.0 rebound, 0.7 assists, and 0.7 steals per game ... Sank 36 threes on the year, the second-most on the squad ... Hit a career-high five 3-pointers in a win at Pitt State in December ... Also made five 3-pointers at Central Missouri ... Hit three 3-pointers in a game twice and two in a game six times ... Made at least one 3-pointer in 18 of 29 games played.

**2020-21:** Played in 20 games as a true freshman and made five starts ... Scored 2.1 points per game ... Hit 11 threes and shot 26.8 percent from behind the arc ... Was also 3-for-4 from the free-throw line ... Scored season-high 16 points against Washburn in just 21 minutes ... It was third game of career and went 6-for-8 from the field and 4-for-5 from behind the 3-point line ... Hit a 3-pointer in eight of 20 games.

**High School:** Earned All-State honors after senior season at Oologah ... Averaged almost 20 points per game as a senior and scored more than 1,000 in her career.

**Personal:** Nutrition major ... Birthdate is Sept. 2, 2001.



### Caley Young

42

G | 5-11 | Jr. | Jones, Okla.

#### Career Highs

**Points:** 20 at Emporia State, 3/3/21

**Rebounds:** 13 at Emporia State, 1/28/21

**Assists:** 3 at Rogers State, 2/16/22

**Steals:** 3, four times

**Blocks:** 2, three times

Season	Career Statistics								
	G-GS	FG-FGA	Pct.	3PM-3PA	Pct.	FT-FTA	Pct.	Reb-Avg.	Pts-Avg.
2020-21	20-16	53-114	.465	4-10	.400	25-30	.833	91-4.6	135-6.8
2021-22	21-4	45-94	.470	2-7	.286	14-20	.700	76-3.6	106-5.0
2022-23	11-2	12-37	.324	0-7	.000	4-6	.667	22-2.0	28-2.5
<b>Totals</b>	<b>52-22</b>	<b>110-245</b>	<b>.449</b>	<b>6-24</b>	<b>.250</b>	<b>43-56</b>	<b>.768</b>	<b>189-3.6</b>	<b>269-5.2</b>

Fourth-year junior forward with strong presence on the court that adds depth and ability to the UCO front court ... Is a competitor that will find a way to get the ball and knows what to do with it around the basket ... Is a tough defender too and will fight for every rebound ... Plays physical in the paint and hustles on every play.

**2022-23:** Played in 11 games and made two starts in an injury shortened season ... Went 12-for-37 from the floor, 32.4 percent ... Scored season-high 10 points at Fort Hays in December ... Had a season-high eight rebounds against Missouri Southern ... Went for nine points and four boards against Washburn on New Year's Eve.

**2021-22:** Played in 21 of 30 games as a second-year freshman and made four starts ... Missed time in November and December

## Player Profiles

with injury but bounced back to regular contribution in second semester ... Averaged 5.0 points per game and 3.6 rebounds per game in just 18.8 minutes per game ... Shot 47.9 percent from the floor and 70 percent from the free-throw line ... Scored a season-high 10 points in a win at Emporia State in January ... Season-high 10 rebounds in win vs. Newman in January ... Was perfect from the floor in three games, including a 5-for-5 game at Emporia.

**2020-21:** Played in 20 of 23 games and made 16 starts ... Averaged 6.8 points per game and 4.6 rebounds per game ... Was among the team leaders in several categories ... Second in rebounds, third in blocks (seven), and fourth in field goals made (53), free-throws made (25), and steals (18) ... Scored in double figures in six games and posted two double-doubles ... Season-high 20 points in final game of the season at Emporia State to go with nine rebounds ... Went 7-for-10 from the floor and 6-for-8 from the free-throw line ... Had first double-double in a win over Lincoln (10 points, 12 rebounds) and had second against ESU a week later (12 points, 13 rebounds) ... Had three steals in a game four times and had two steals in another game.

**High School:** All-State selection out of Jones High School ... Led team to school's first-ever state tournament appearance, though the tournament was canceled due to the public health crisis ... Averaged 14.3 points per game and 4.7 rebounds per game.

**Personal:** Finance major ... Birthdate is May 26, 2002.



**Lexi Foreman**  
**31**  
G | 5-6 | Jr. | Anadarko, Okla.

### Career Highs

**Points:** 10 vs. Emporia State, 1/2/23  
**Rebounds:** 8 at Rogers State, 1/7/23  
**Assists:** 7 at Rogers State, 1/7/23  
**Steals:** 5 vs. Emporia State, 1/2/23  
**Blocks:** 2 vs. Nebraska Kearney, 2/2/23

Season	Career Statistics								
	G-GS	FG-FGA	Pct.	3PM-3PA	Pct.	FT-FTA	Pct.	Reb-Avg.	Pts-Avg.
2021-22	7-0	2-6	.333	1-4	.250	0-0	.000	6-0.9	5-0.7
2022-23	24-12	24-79	.304	7-34	.206	17-24	.708	61-2.5	72-3.0
<b>Totals</b>	<b>31-12</b>	<b>26-85</b>	<b>.306</b>	<b>8-38</b>	<b>.211</b>	<b>17-24</b>	<b>.708</b>	<b>67-2.2</b>	<b>77-2.5</b>

Junior guard with variety of offensive weapons and a competitive work ethic ... Can excel on both sides of the ball ... Has starting experience and has played in big games for the Bronchos and is now aimed at moving into the role of regular contributor in her third season with the program.

**2022-23:** Played in 24 of 30 games for the Bronchos as a sophomore and made 12 starts ... Averaged 3.0 points per game and 2.5 rebounds per game ... Shot 30.4 percent from the field overall, 20.6 percent from behind the 3-point line, and 70.8 percent from the free-throw line ... Also averaged 1.3 assists per game

and 1.0 steal per game ... Played a key role in Central Oklahoma beating Emporia State in January, scoring a career-high 10 points in the win ... Career-high five steals in the win ... Also had a career-high four field goals made ... She made four again at Pitt State later that month ... Posted eight points, eight rebounds, and seven assists in a win at Rogers State in January, earning career-highs in rebounds and assists in the victory ... Earned MIAA Academic Excellence Award (4.0 GPA) following the season.

**2021-22:** Played in seven games before stepping away from team in second semester ... Had five points, six rebounds, seven assists and five steals in small sample size of freshman season.

**High School:** All-State selection out of Anadarko ... Scored 1,044 points for Anadarko and averaged just under 10 during senior season she led team to state semifinals.

**Personal:** Biology major ... Birthdate is Oct. 23, 2002.



**Megan McClendon**  
**0**  
G | 5-6 | Jr. | Severy, Kan.

### Career Highs

**Points:** 6 vs. Lincoln, 1/16/21  
**Rebounds:** 2 at Northwest Missouri, 2/23/23  
**Assists:** 1 vs. Lincoln, 1/16/21  
**Steals:** N/A  
**Blocks:** 1 vs. Pittsburg State, 11/21/20

Season	Career Statistics								
	G-GS	FG-FGA	Pct.	3PM-3PA	Pct.	FT-FTA	Pct.	Reb-Avg.	Pts-Avg.
2020-21	3-0	3-4	.750	3-4	.750	0-0	.000	0-0.0	9-3.0
2021-22	6-0	0-3	.000	0-2	.000	0-0	.000	2-0.3	0-0.0
2022-23	7-0	1-7	.143	1-6	.167	0-2	.000	6-0.9	3-0.4
<b>Totals</b>	<b>16-0</b>	<b>4-14</b>	<b>.286</b>	<b>4-12</b>	<b>.333</b>	<b>0-2</b>	<b>.000</b>	<b>8-0.5</b>	<b>12-0.8</b>

Fourth-year junior with plenty of experience ready to help ... Has good abilities on offense ... Can shoot from all over the floor ... Hustles on defense.

**2022-23:** Played in seven games in third year with the program ... Was 1-for-7 from the floor for the season ... Almost all her shots were outside the arc, with just one inside ... Hit 3-pointer against Central Missouri in the quarterfinals of the MIAA postseason tournament ... Had six rebounds in 27 total minutes of play.

**2021-22:** Played in six games for the Bronchos in second freshman season ... Did not score and was 0-for-3 from the floor (0-for-2 behind the arc) ... Did pull down one rebound in win at Arkansas-Fort Smith and one more in MIAA Tournament win against Emporia State.

**2020-21:** Played in three games as a true freshman ... Scored three points in a win against Pittsburg State, hitting her only shot

## Player Profiles

attempt in the game from the outside ... Scored six points in a win against Lincoln, hitting her only two shot attempts in the game from the outside.

**High School:** All-State selection out of West Elk High School in Kansas ... Was a state qualifier in golf, cross country and track & field.

**Personal:** Finance major ... Sister (Macy) was teammate from 2020-23... Lists Parker McCollum as her favorite music artist and her truck as her most prized possession ... Birthdate is May 2, 2002.



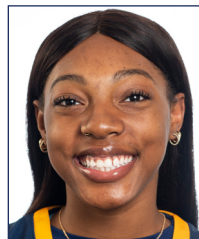
**Alexis Lewis**  
**35**  
 F | 6-0 | Jr. | Sapulpa, Okla.

Junior forward ready to help the Bronchos right away ... Long defender and skilled in the paint with the ball ... Transferred to Central Oklahoma from Seminole State.

**SSC:** Spent two seasons at Seminole State College and was a big contributor for the Belles ... Played in 53 games in two years and averaged 12.7 points per game, including 14.1 in 2023 ... She also averaged 6.6 rebounds per game over the two-year stint and pulled down 7.7 boards last season.

**High School:** Prep standout at Sapulpa and an All-State talent ... Won state championship in 2021.

**Personal:** Kinesiology major ... Lists the Golden State Warriors as her favorite team ... Birthdate is Dec. 17, 2002.



**LaKysia Johnson**  
**3**  
 G | 5-7 | Jr. | Altus, Okla.

Junior transfer guard ready to help the Bronchos this winter ... Speedy and athletic ball handler that can make things happen for the offense ... Knows how to create for herself and find open teammates ... Can drive to the hoop past any defender ... Transferred to Central Oklahoma after two years at Northern Oklahoma - Enid.

**NOC:** Earned First Team All-Region after sophomore season in junior college ... Averaged 16 points per game in two seasons ... Scored 15 points per game as a freshman in 2021-22 and 17 points per game as a sophomore in 2022-23.

**High School:** Prep standout at Altus High School ... Scored more than 2,000 points in her career ... Earned All-State honors.

**Personal:** Would like to go into coaching after playing career is over ... Lists the Golden State Warriors as her favorite sports team ... Names Rod Wave her favorite music artist ... Birthdate is Nov. 25, 2002.



**Aubrey Taylor**  
**12**  
 G | 5-5 | Jr. | Langston, Okla.

Junior transfer guard ready to find a role with the Bronchos ... Versatile player can help in multiple spots ... Brings value to the floor on both offense and defense ... Transferred to Central Oklahoma from NOC Enid.

**NOC:** Played in 24 games in two years and averaged 2.0 points per game.

**High School:** All-time scoring leader at Coyle High School ... Earned conference MVP honors.

**Personal:** Early Education major ... Lists the Golden State Warriors as her favorite sports team ... Enjoys painting ... Birthdate is Aug. 7, 2003.

## Player Profiles



**Alena Wilson**  
2  
F | 5-10 | Jr. | Dallas, Texas

Junior transfer forward ready to help the Bronchos this season ... Talented on both ends of the floor ... Is a physical presence in the paint ... Transferred to Central Oklahoma after one season at Cameron following a two-year junior college career at Murray State.

**CU:** Led Cameron with 10.9 points per game and a team-high 8.2 rebounds per game in 27 appearances (all starts) in 2022-23.

**MSC:** Spent two years at Murray State College and averaged 15.1 points and 7.2 rebounds per game.

**High School:** Prep standout at Lincoln High School in Dallas.

**Personal:** Criminal Justice major ... Names Coach Carter her favorite sports movie ... Doesn't have a favorite sports team but lists Paul George as her favorite player ... Birthdate is Aug. 21, 2000.



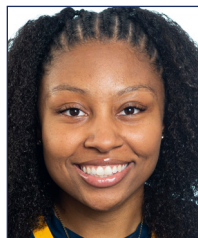
**Reagan Fox**  
5  
F | 5-9 | So. | Blanchard, Okla.

Sophomore guard/forward ready to contribute at UCO ... Talented athlete with ability to play inside and out ... Skilled player can make things happen on the offensive end ... Long defender can guard multiple positions ... Transferred to Central Oklahoma after one season at Abilene Christian.

**ACU:** Played in six games as a true freshman in 2022-23 ... Scored six points, with three coming in her collegiate debut against Southwest (N.M.) ... Also scored three against Utah Valley in February ... Went 2-for-7 on the season and 2-for-6 from behind the 3-point line.

**High School:** Prep standout at Blanchard High School ... Scored more than 1,000 career points ... Three-time state qualifier ... Earned OGBCA and OCA All-State honors.

**Personal:** Psychology major ... Wants to coach after playing days are over ... Lists the Golden State Warriors and the Phoenix Suns as her favorite teams ... Lists Justin Bieber and Rod Wave as her favorite music artists ... Birthdate is Oct. 3, 2000.



**Talia Pogi**  
23  
G | 5-9 | So. | Mustang, Okla.

Sophomore transfer guard ready to help the Bronchos out this season ... Talented athlete that can make the offense go ... Has the ability to be a stout defender and create turnovers ... Transferred to Central Oklahoma after one season at Oral Roberts.

**ORU:** Played in 18 games as a true freshman in 2022-23 ... Averaged 1.7 points per game ... Scored season-high eight points at OU in November ... Played a season-high 21 minutes against Central Christian (Kan.).

**High School:** Prep standout at Mustang ... Earned All-Conference and All-State honors at Mustang High School ... Won the area and regional championships and finished as the state runner-up ... Scored over 1,000 points.

**Personal:** Health and Exercise Science major ... Would like to be an athletic trainer ... Lists the Golden State Warriors as her favorite team ... Birthdate is March 31, 2004.



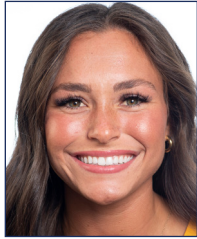
**Alexis Martin**  
25  
F | 5-9 | Fr. | Oologah, Okla.

Freshman guard with scoring ability ready to find a role with the Bronchos ... Talented youngster adds depth to lineup.

**High School:** Prep standout at Oologah.

**Personal:** Human Science major ... Lists the Golden State Warriors as her favorite sports team ... Names Lauren Daigle her favorite music artist ... Birthdate is June 14, 2004.

## Player Profiles



**Gracee Miller**  
**13**  
G | 5-7 | Fr. | Comanche, Okla.

Freshman guard with high upside ... Speedy ball handler ... Plays quick on defense ... Adds depth at the guard spot.

**High School:** Prep standout at Comanche ... Scored more than 1,000 career points ... Averaged 19 points per game, seven rebounds, and five steals.

**Personal:** Undecided on a major ... Birthdate is Aug. 4, 2004.



**Shaniya Wiley**  
**11**  
G | 5-7 | Fr. | Midwest City, Okla.

Freshman forward looking to find a role with the Bronchos ... Will compete for minutes in first collegiate season ... Talented youngster with good abilities on both ends of the floor.

**High School:** Prep standout at Star Spencer ... Earned All-City honors from The Oklahoman ... Also played soccer and softball.

**Personal:** Biology major ... Lists the Las Vegas Aces as her favorite pro team ... Names Coach Carter her favorite sports movie ... Birthdate is March 23, 2005.





# 2022-23 Review

## 2023-23 Results

### Game Records

Record	Overall	Home	Away	Neutral
ALL GAMES	11-17	7-8	3-8	1-1
CONFERENCE	7-15	4-7	3-8	0-0
NON-CONFERENCE	4-2	3-1	0-0	1-1

### Team Results

Date	Opponent		Score	Att.	High Points	High Rebounds
11/18/2022	Missouri S&T	W	99-84	375	(22) RAYNER, Brooke (22) KNAPP, Alayzha	(7) FACTOR, Tayler (7) LLANUSA, Aliyah
11/19/2022	Okla. Christian	W	78-64	250	(24) RAYNER, Brooke (24) KNAPP, Alayzha	(7) WILLISTON, Aspen
11/22/2022	Cameron	W	72-65	350	(19) LLANUSA, Aliyah	(11) LLANUSA, Aliyah
11/26/2022	Southern Nazarene	L	64-85	300	(17) LLANUSA, Aliyah	(5) BOORER, Kassie
12/01/2022	at Central Mo.	L	65-83	1269	(24) WADSWORTH, Karly	(5) LLANUSA, Aliyah
12/03/2022	at Lincoln (MO)	W	96-75	317	(25) KNAPP, Alayzha	(13) LLANUSA, Aliyah
12/08/2022	Mo. Southern St.	L	61-72	309	(13) KNAPP, Alayzha	(8) REECE, Ginger (8) YOUNG, Caley
12/11/2022	Pittsburg St.	L	76-100	237	(22) WADSWORTH, Karly	(7) WILLISTON, Aspen
12/16/2022	at Fort Hays St.	L	48-57	1905	(15) KNAPP, Alayzha	(9) KNAPP, Alayzha
12/18/2022	at Neb.-Kearney	L	52-73	250	(18) KNAPP, Alayzha	(7) LLANUSA, Aliyah
12/31/2022	Washburn	L	73-75	268	(19) RAYNER, Brooke	(7) KNAPP, Alayzha
01/02/2023	Emporia St.	W	66-57	357	(14) LLANUSA, Aliyah	(10) LLANUSA, Aliyah
01/05/2023	at Northeastern St.	L	59-60	460	(15) WILLISTON, Aspen (15) KNAPP, Alayzha	(7) LLANUSA, Aliyah
01/07/2023	at Rogers St.	W	83-70	354	(30) WADSWORTH, Karly	(8) RAYNER, Brooke (8) FOREMAN, Lexi
01/12/2023	Northwest Mo. St.	L	68-72	419	(21) WILLISTON, Aspen	(6) LLANUSA, Aliyah
01/14/2023	Missouri Western	L	55-71	248	(17) WILLISTON, Aspen	(9) WILLISTON, Aspen
01/21/2023	Newman	W	71-57	356	(20) LLANUSA, Aliyah	(10) WILLISTON, Aspen
01/26/2023	at Pittsburg St.	L	75-83	1062	(24) LLANUSA, Aliyah	(8) LLANUSA, Aliyah
01/28/2023	at Mo. Southern St.	L	71-85	803	(25) WILLISTON, Aspen	(7) WILLISTON, Aspen
02/02/2023	Neb.-Kearney	L	44-85	318	(14) LLANUSA, Aliyah	(6) LLANUSA, Aliyah
02/04/2023	Fort Hays St.	L	62-91	325	(22) RAYNER, Brooke	(6) LLANUSA, Aliyah
02/11/2023	at Washburn	W	73-62	825	(32) RAYNER, Brooke	(10) WILLISTON, Aspen
02/15/2023	Rogers St.	W	78-69	325	(23) RAYNER, Brooke	(12) LLANUSA, Aliyah
02/18/2023	Northeastern St.	W	72-57	354	(20) KNAPP, Alayzha	(10) KNAPP, Alayzha
02/23/2023	at Northwest Mo. St.	L	50-97	1844	(21) KNAPP, Alayzha	(6) FACTOR, Tayler
02/25/2023	at Newman	L	66-72	900	(17) RAYNER, Brooke	(7) KNAPP, Alayzha
03/01/2023	vs Emporia St.	W	71-57	0	(19) WADSWORTH, Karly	(17) WILLISTON, Aspen
03/02/2023	vs Central Mo.	L	60-82	0	(19) LLANUSA, Aliyah	(4) WILLISTON, Aspen (4) RAYNER, Brooke (4) FACTOR, Tayler

# 2022-23 Individual Statistics

## Team Box Score

No.	Player	GP-GS		MIN	AVG	Total		3-Point			F-Throw		Rebounds				PF	DQ	A	TO	BLK	STL	PTS	AVG	
		GP	GS			FG-FA	FG%	3FG	3FGA	3FG%	FT-FTA	FT%	OFF	DEF	TOT	AVG									
15	KNAPP, Alayzha	24	16	596:51	24.9	113-295	.383	23	64	.359	60	76	.789	23	86	109	4.5	81	5	25	70	25	29	309	12.9
21	WADSWORTH, Karly	28	25	794:51	28.4	119-324	.367	57	196	.291	48	58	.828	17	40	57	2.0	74	1	52	56	3	48	343	12.3
11	RAYNER, Brooke	28	28	873:02	31.2	117-302	.387	41	129	.318	59	68	.868	34	72	106	3.8	53	0	99	82	3	57	334	11.9
22	LLANUSA, Aliyah	28	27	950:42	34.0	93-225	.413	19	51	.373	92	123	.748	64	113	177	6.3	82	2	85	60	1	50	297	10.6
30	WILLISTON, Aspen	28	22	540:10	19.3	118-230	.513	8	24	.333	30	54	.556	35	107	142	5.1	81	4	8	32	63	10	274	9.8
35	REECE, Ginger	9	0	106:21	11.8	13-25	.520	4	6	.667	3	4	.750	5	17	22	2.4	14	0	2	11	5	4	33	3.7
31	FOREMAN, Lexi	24	12	458:43	19.1	24-79	.304	7	34	.206	17	24	.708	12	49	61	2.5	33	0	32	25	7	24	72	3.0
42	YOUNG, Caley	11	2	123:16	11.2	12-37	.324	0	7	.000	4	6	.667	8	14	22	2.0	22	2	6	6	1	1	28	2.5
20	FACTOR, Tayler	26	4	417:39	16.1	27-81	.333	5	21	.238	6	8	.750	17	59	76	2.9	41	0	32	20	6	32	65	2.5
3	BOORER, Kassie	26	1	176:43	6.8	19-56	.339	1	12	.083	21	32	.656	13	22	35	1.3	26	0	8	16	1	14	60	2.3
12	ROMINE, River	24	3	296:47	12.4	17-66	.258	13	47	.277	3	4	.750	5	22	27	1.1	24	0	15	16	0	4	50	2.1
44	BRAVINGTON, Eliana	15	0	97:41	6.5	11-26	.423	1	4	.250	8	9	.889	8	17	25	1.7	12	0	2	5	7	1	31	2.1
0	MCCLENDON, Megan	7	0	27:49	4.0	1-7	.143	1	6	.167	0	2	.000	1	5	6	0.9	4	0	0	1	0	0	3	0.4
14	CASH, Courtnee	15	0	73:18	4.9	3-13	.231	0	8	.000	0	0	.000	2	2	4	0.3	11	0	0	2	1	3	6	0.4
2	MCCLENDON, Macy	15	0	65:24	4.4	1-12	.083	0	4	.000	1	2	.500	4	5	9	0.6	11	0	2	3	1	0	3	0.2
Team														75	64	139					25				
<b>Total</b>		<b>28</b>		<b>5599</b>		<b>688-1778</b>	<b>.387</b>	<b>180-613</b>	<b>.294</b>	<b>352-470</b>	<b>.749</b>	<b>323</b>	<b>694</b>	<b>1017</b>	<b>36.3</b>	<b>569</b>	<b>14</b>	<b>368</b>	<b>430</b>	<b>124</b>	<b>277</b>	<b>1908</b>	<b>68.1</b>		
<b>Opponents</b>		<b>28</b>		<b>5600</b>		<b>714-1738</b>	<b>.411</b>	<b>205-617</b>	<b>.332</b>	<b>427-584</b>	<b>.731</b>	<b>387</b>	<b>804</b>	<b>1191</b>	<b>42.5</b>	<b>411</b>	<b>4</b>	<b>420</b>	<b>483</b>	<b>120</b>	<b>213</b>	<b>2060</b>	<b>73.6</b>		

## Individual Highs

## Team Highs



2022-23 Central Okla. Women's Basketball  
Player Highs Analysis  
All games  
Page 1/4  
as of Oct 09, 2023

### Central Okla. - Individual Game Highs

<b>POINTS</b>	32	Brooke Rayner at Washburn (02/11/2023)
	30	Karly Wadsworth at Rogers St. (01/07/2023)
	25	Aspen Williston at Mo. Southern St. (01/28/2023)
	25	Alayzha Knapp at Lincoln (MO) (12/03/2022)
	24	Aliyah Llanusa at Pittsburg St. (01/26/2023)
	24	Karly Wadsworth at Central Mo. (12/01/2022)
	24	Alayzha Knapp vs Okla. Christian (11/19/2022)
	24	Brooke Rayner vs Okla. Christian (11/19/2022)
<b>FIELD GOALS MADE</b>	12	Brooke Rayner at Washburn (02/11/2023)
	10	Aspen Williston at Mo. Southern St. (01/28/2023)
	10	Aspen Williston at Pittsburg St. (01/26/2023)
	10	Alayzha Knapp at Lincoln (MO) (12/03/2022)
	10	Alayzha Knapp vs Okla. Christian (11/19/2022)
<b>FIELD GOAL ATTEMPTS</b>	22	Alayzha Knapp at Lincoln (MO) (12/03/2022)
	20	Karly Wadsworth at Central Mo. (12/01/2022)
<b>FIELD GOAL PERCENTAGE (min 5 made)</b>	.833 (10-12)	Aspen Williston at Pittsburg St. (01/26/2023)
	.750 (12-16)	Brooke Rayner at Washburn (02/11/2023)
	.750 (6-8)	Aspen Williston vs Emporia St. (01/02/2023)
<b>3 PT FG MADE</b>	5	Karly Wadsworth vs Emporia St. (N) (03/01/2023)
	5	Karly Wadsworth at Rogers St. (01/07/2023)
	5	Karly Wadsworth vs Pittsburg St. (12/11/2022)
<b>3 PT FG ATTEMPTS</b>	15	Karly Wadsworth vs Emporia St. (N) (03/01/2023)
	13	Karly Wadsworth at Central Mo. (12/01/2022)
<b>3 PT FG PERCENTAGE (min 2 made)</b>	1.000 (2-2)	River Romine vs Fort Hays St. (02/04/2023)
	1.000 (2-2)	Aliyah Llanusa vs Neb.-Kearney (02/02/2023)
	1.000 (2-2)	Aspen Williston at Pittsburg St. (01/26/2023)
	1.000 (2-2)	Alayzha Knapp vs Missouri S&T (11/18/2022)
<b>FREE THROWS MADE</b>	10	Aliyah Llanusa vs Central Mo. (N) (03/02/2023)
	9	Aliyah Llanusa at Pittsburg St. (01/26/2023)
<b>FREE THROW ATTEMPTS</b>	11	Aliyah Llanusa vs Central Mo. (N) (03/02/2023)
	11	Karly Wadsworth at Rogers St. (01/07/2023)
<b>FREE THROW PERCENTAGE (min 3 made)</b>	1.000 (7-7)	Alayzha Knapp vs Washburn (12/31/2022)
	1.000 (6-6)	Brooke Rayner vs Emporia St. (N) (03/01/2023)
	1.000 (6-6)	Brooke Rayner at Washburn (02/11/2023)
	1.000 (5-5)	Aspen Williston vs Newman (01/21/2023)
	1.000 (4-4)	Kassie Boorer vs Emporia St. (N) (03/01/2023)
	1.000 (4-4)	Alayzha Knapp vs Northeastern St. (02/18/2023)
	1.000 (4-4)	Brooke Rayner vs Rogers St. (02/15/2023)
	1.000 (4-4)	Brooke Rayner at Mo. Southern St. (01/28/2023)
	1.000 (4-4)	Karly Wadsworth at Mo. Southern St. (01/28/2023)
	1.000 (4-4)	Alayzha Knapp vs Northwest Mo. St. (01/12/2023)
	1.000 (4-4)	Brooke Rayner at Rogers St. (01/07/2023)
	1.000 (4-4)	Alayzha Knapp at Neb.-Kearney (12/18/2022)
	1.000 (4-4)	Aliyah Llanusa at Neb.-Kearney (12/18/2022)
	1.000 (4-4)	Aliyah Llanusa at Central Mo. (12/01/2022)
	1.000 (4-4)	Karly Wadsworth at Central Mo. (12/01/2022)
	1.000 (4-4)	Brooke Rayner vs Okla. Christian (11/19/2022)
	1.000 (4-4)	Lexi Foreman vs Missouri S&T (11/18/2022)
	1.000 (3-3)	Aliyah Llanusa vs Fort Hays St. (02/04/2023)
	1.000 (3-3)	Brooke Rayner vs Fort Hays St. (02/04/2023)
	1.000 (3-3)	Karly Wadsworth vs Northwest Mo. St. (01/12/2023)
<b>REBOUNDS</b>	17	Aspen Williston vs Emporia St. (N) (03/01/2023)
	13	Aliyah Llanusa at Lincoln (MO) (12/03/2022)
<b>ASSISTS</b>	8	Brooke Rayner vs Rogers St. (02/15/2023)
	8	Brooke Rayner vs Missouri S&T (11/18/2022)



2022-23 Central Okla. Women's Basketball  
Team High/Low Analysis  
All games  
Page 1/4  
as of Oct 09, 2023

### Central Okla. - Game Highs

<b>POINTS</b>	99	Missouri S&T (11/18/2022)
	96	at Lincoln (MO) (12/03/2022)
	83	at Rogers St. (01/07/2023)
	78	Rogers St. (02/15/2023)
	78	Okla. Christian (11/19/2022)
<b>FIELD GOALS MADE</b>	35	Missouri S&T (11/18/2022)
	34	at Lincoln (MO) (12/03/2022)
<b>FIELD GOAL ATTEMPTS</b>	76	at Lincoln (MO) (12/03/2022)
	73	Cameron (11/22/2022)
<b>FIELD GOAL PERCENTAGE</b>	.519 (27-52)	at Washburn (02/11/2023)
	.515 (35-68)	Missouri S&T (11/18/2022)
<b>3 PT FG MADE</b>	14	at Lincoln (MO) (12/03/2022)
	10	at Rogers St. (01/07/2023)
	10	Missouri S&T (11/18/2022)
<b>3 PT FG ATTEMPTS</b>	31	vs Emporia St. (N) (03/01/2023)
	31	at Newman (02/25/2023)
<b>3 PT FG PERCENTAGE</b>	.476 (10-21)	Missouri S&T (11/18/2022)
	.467 (14-30)	at Lincoln (MO) (12/03/2022)
<b>FREE THROWS MADE</b>	22	Northwest Mo. St. (01/12/2023)
	19	vs Central Mo. (N) (03/02/2023)
	19	Missouri S&T (11/18/2022)
<b>FREE THROW ATTEMPTS</b>	29	Northwest Mo. St. (01/12/2023)
	26	Missouri S&T (11/18/2022)
<b>FREE THROW PERCENTAGE</b>	1.000 (9-9)	at Neb.-Kearney (12/18/2022)
	.923 (12-13)	Fort Hays St. (02/04/2023)
<b>REBOUNDS</b>	51	Cameron (11/22/2022)
	48	vs Emporia St. (N) (03/01/2023)
<b>ASSISTS</b>	26	Rogers St. (02/15/2023)
	21	at Lincoln (MO) (12/03/2022)
<b>STEALS</b>	19	Newman (01/21/2023)
	15	at Lincoln (MO) (12/03/2022)
<b>BLOCKED SHOTS</b>	10	at Washburn (02/11/2023)
	9	Okla. Christian (11/19/2022)
<b>TURNOVERS</b>	29	Okla. Christian (11/19/2022)
	21	Southern Nazarene (11/26/2022)
<b>FOULS</b>	29	at Pittsburg St. (01/26/2023)
	27	Washburn (12/31/2022)



## 2022-23 MIAA Review

Final Standings					MIAA Postseason Tournament At Municipal Auditorium Kansas City, Mo.	
	MIAA	Pct.	Overall	Pct.		
y-Nebraska Kearney .....	20-2	.909	28-5	.848		
x-Central Missouri.....	19-3	.864	25-5	.833		
x-Missouri Western .....	18-4	.818	24-7	.774	No. 8 Northwest Missouri 70, No. 9 Newman 54	
x-Pittsburg State .....	17-5	.773	23-8	.742	No. 10 Central Oklahoma 71, No. 7 Emporia State 57	
x-Missouri Southern.....	16-6	.727	29-7	.806	<b>Quarterfinals</b>	
x-Fort Hays State .....	14-8	.636	20-12	.625	No. 1 Nebraska Kearney 65, No. 8 Northwest Missouri 43	
x-Emporia State .....	9-13	.409	14-1	.483	No. 2 Central Missouri 82, No. 10 Central Oklahoma 62	
x-Northwest Missouri.....	9-13	.409	15-15	.500	No. 5 Missouri Southern 75, No. 4 Pittsburg State 61	
x-Newman .....	7-15	.318	10-18	.357	No. 6 Fort Hays State 71, No. 3 Missouri Western 62	
x-Central Oklahoma .....	7-15	.318	11-17	.393	<b>Semifinals</b>	
Washburn .....	7-15	.318	11-17	.393	No. 5 Missouri Southern 63, No. 1 Nebraska Kearney 51	
Lincoln .....	5-17	.227	7-21	.250	No. 2 Central Missouri 66, No. 6 Fort Hays State 64 (OT)	
Northeastern State .....	3-19	.136	6-20	.231	<b>MIAA Championship</b>	
Rogers State .....	3-19	.136	5-23	.179	No. 5 Missouri Southern 78, No. 2 Central Missouri 63	
y-Regular season champion; x-Made MIAA Postseason Tournament						

### Postseason Awards

#### MIAA Postseason Awards

**Player of the Year** – Brooke Littrell, Central Missouri  
**Defensive Player of the Year** – Connie Clarke, Missouri Western  
**Freshman of the Year** – Harper Schreiner, Pittsburg State  
**Coach of the Year** – Carrie Eighmey, Nebraska Kearney

#### MIAA All-Defensive Team

Olivia Nelson, Central Missouri; Lacy Stokes, Missouri Southern; Madi Stokes, Missouri Southern; Connie Clark, Missouri Western; Klaire Kirsch, Nebraska Kearney, Jayna Green, Northwest Missouri

#### First-Team

Brooke Littrell, Central Missouri; Tre'Zure Jobe, Emporia State; Katie Wagner, Fort Hays State; Lacy Stokes, Missouri Southern; Brionna Budgetts, Missouri Western

#### Second-Team

Olivia Nelson, Central Missouri; Connie Clark, Missouri Western; Klaire Kirsch, Nebraska Kearney; Shiloh McCool, Nebraska Kearney; Tristan Gegg, Pittsburg State

#### Third-Team

Olivia Hollenbeck, Fort Hays State; Elisa Backes, Nebraska Kearney; Britney Ho, Newman; Molly Hartnett, Northwest Missouri; Karenna Gerber, Pittsburg State

#### Honorable Mention

**Central Oklahoma** – Aspen Williston, Brooke Rayner  
**Missouri Southern** – Kryslyn Jones, Layne Skiles, Madi Stokes  
**Missouri Western** – Johnni Gonzalez, Trinity Knapp  
**Nebraska Kearney** – Sarah Schmitt  
**Newman** – Maddie Spagnola  
**Northeastern State** – Courtney Lee  
**Northwest Missouri** – Kelsey Fields  
**Pittsburg State** – Grace Pyle, Harper Schreiner  
**Rogers State** – Bailey Kliever  
**Washburn** – Aubree Dewey



## Records

### Team Records

#### Most Points

**Game:** 121 vs. Oklahoma Panhandle, Nov. 19, 2011.  
**Season:** 2,573, 1981-82.

#### Most Field Goals Made

**Game:** 52 vs. Oklahoma Panhandle, Nov. 19, 2011 (attempted 95).  
**Season:** 1,056, 1981-82 (attempted 2,320).

#### Most Field Goals Attempted

**Game:** 95 vs. Oklahoma Panhandle, Nov. 19, 2011 (made 52).  
**Season:** 2,320, 1981-82 (made 1,056).

#### Best Field Goal Percentage

**Game:** 68.1 at Rogers State, Feb. 16, 2022 (32-for-47)  
**Season:** 47.0, 1983-84 (839 of 1,784).

#### Most 3-point Field Goals Made

**Game:** 19 vs. Northwestern Okla., Nov. 11, 2016 (attempted 38)  
**Season:** 244, 2018-19 (attempted 734).

#### Most 3-point Field Goals Attempted

**Game:** 38 vs. North Carolina-Pembroke, Dec. 28, 2001 (made 13); vs. Northwestern Oklahoma State, Nov. 11, 2016 (made 19).  
**Season:** 734, 2018-19 (made 244).

#### Best 3-point Field Goal Percentage

**Game:** 68.4 vs. Northeastern State, Jan. 8, 2000 (13 of 19).  
**Season:** 36.7, 1991-92 (181 of 493).

#### Most Free Throws Made

**Game:** 41 vs. Texas A&M-Kingsville, Feb. 20, 1989 (attempted 55).  
**Season:** 584, 2010-11 (attempted 806).

#### Most Free Throws Attempted

**Game:** 55 vs. Texas A&M-Kingsville, Feb. 20, 1989 (made 41).  
**Season:** 806, 2010-11 (made 584).

#### Best Free Throw Percentage

**Game:** 100 vs. Pittsburg State, Dec. 5, 2015 (20 of 20). Minimum 20 attempts.  
**Season:** 79.1, 2021-22 (412-of-521).

#### Most Rebounds

**Game:** 68 vs. Oklahoma Panhandle, Nov. 19, 2011.  
**Season:** 1,452, 1982-83.

#### Most Assists

**Game:** 34 vs. Cameron, Feb. 15, 1984.  
**Season:** 606, 2008-09.

#### Most Steals

**Game:** 24 vs. Cameron, Jan. 31, 2009.  
**Season:** 393, 2008-09.

#### Most Blocked Shots

**Game:** 14 vs. Newman, Feb. 4, 2012.  
**Season:** 176, 2016-17.

### Individual Records

#### Most Points

**Game:** 46, Tammy Cummings vs. Angelo State, Feb. 21, 1994.  
**Season:** 651, Kelsey Johnson, 2021-22  
**Career:** 1,770, Lizzie Brenner, 2005-09.

#### Most Field Goals Made

**Game:** 20, Tammy Cummings vs. Angelo State, Feb. 21, 1994 (attempted 37).  
**Season:** 256, Gayle Stout, 1981-82 (attempted 549).  
**Career:** 628, Lizzie Brenner, 2005-09 (attempted 1,373).

#### Most Field Goals Attempted

**Game:** 37, Tammy Cummings vs. Angelo State, Feb. 21, 1994 (made 20).  
**Season:** 549, Gayle Stout, 1981-82 (made 256).  
**Career:** 1,373, Lizzie Brenner, 2005-09 (made 628).

#### Best Field Goal Percentage

**Game:** 92.3, Kelsey Johnson at Rogers State, Feb. 15, 2022; Jackie Eckels vs. Oklahoma Panhandle, Nov. 19, 1983 (12-of-13). Minimum 10 attempts.  
**Season:** 60.2, Kelsey Johnson, 2019-20 (157-of-261). Minimum 100 attempts.  
**Career:** 58.6, Kelsey Johnson, 2019-22 (573-of-977). Minimum 400 attempts.

#### Most 3-point Field Goals Made

**Game:** 7, five times. Most recent – Blake Blessington vs. Northwestern, Nov. 11, 2016 (7-for-11).  
**Season:** 70, April Taylor, 1994-95 (attempted 170).  
**Career:** 190, Ami Guffy, 1998-02 (attempted 508).

#### Most 3-point Field Goals Attempted

**Game:** 15, Karly Wadsworth vs. Emporia State, March 1, 2023 (made five); Ami Guffy vs. North Carolina-Pembroke, Dec. 28, 2001 (made six).  
**Season:** 196, Karly Wadsworth, 2022-23 (made 57).  
**Career:** 508, Ami Guffy, 1998-02 (made 190).

#### Best 3-point Field Goal Percentage

**Game:** 100, four times. Minimum 5 attempts.  
Madison Lee vs. Washburn, Feb. 22, 2018 (5-for-5).  
Heather Davis vs. East Central, Jan. 29, 2011 (5-of-5)  
Brienne Grisham vs. Abilene Christian, March 4, 2010 (5-of-5)  
Mallory Markus vs. Paul Quinn, Nov. 22, 2008 (5-of-5).  
**Season:** 46.3, Laura Hamilton, 2004-05 (57-for-123). Minimum 50 attempts.  
**Career:** 42.1, Laura Hamilton, 2002-05 (101-for-240). Minimum 200 attempts.

#### Most Free Throws Made

**Game:** 16, Christy Heavin vs. Texas A&M-Commerce, Jan. 16, 1997 (attempted 18).  
**Season:** 199, Ashley Beckley, 2010-11 (attempted 261).  
**Career:** 479, Ashley Beckley, 2007-11 (attempted 698).

#### Most Free Throws Attempted

**Game:** 18, Christy Heavin vs. TX A&M-Commerce, Jan. 16, 1997 (made 16).  
**Season:** 261, Ashley Beckley, 2010-11 (made 199).  
**Career:** 698, Ashley Beckley, 2007-11 (made 479).

#### Best Free Throw Percentage

**Game:** 100%, 11 times. Most recent – McKenzie Solberg vs. Northwest Missouri, Feb. 11, 2016 (10-of-10). Minimum 10 attempts.  
**Season:** 88.6%, Kim Priddy, 1991-92 (70-of-79). Minimum 75 attempts.  
**Career:** 83.3%, April Woods, 2002-04 (235-of-282). Minimum 150 attempts.

#### Most Rebounds

**Game:** 22, Ton'Nea Cox vs. Abilene Christian, Jan. 27, 1992.  
**Season:** 334, Ton'Nea Cox, 1991-92.  
**Career:** 914, Lizzie Brenner, 2005-09.

#### Most Assists

**Game:** 13, Kelly Parker vs. Angelo State, Jan. 2, 1997; Patti Komalty vs. Southeastern, Feb. 3, 1982.  
**Season:** 199, Kelly Parker, 1998-99.  
**Career:** 645, Kelly Parker, 1995-99.

#### Most Steals

**Game:** 11, Patti Komalty vs. Southeastern, Feb. 3, 1982.  
**Season:** 109, Patti Komalty, 1981-82.  
**Career:** 297, Lizzie Brenner, 2005-09.

#### Most Blocked Shots

**Game:** 10, Aspen Williston at Washburn, Feb. 11, 2023  
**Season:** 100, Jesheon Cooper, 2016-17.  
**Career:** 183, Jesheon Cooper, 2016-18.

## Records

### Scoring

#### All-Time 30-Point Games

Rank	Points	Player	Opponent	Season
1.	46	Tammy Cummings	Angelo State	1993-94
2.	38	Kelsey Johnson	Missouri Western	2021-22
3.	36	McKenzie Solberg	Northwestern Oklahoma	2015-16
4.	34	Marley Anderson	Washburn	2016-17
5.	34	Gayle Stout	Southeastern Oklahoma	1981-82
6.	33	Lizzie Brenner	Texas Womans	2008-09
6.	33	Meghan Craig	Missouri Southern	2005-06
6.	33	Patti Komalty	Northeastern State	1981-82
9.	32	Brooke Rayner	Washburn	2022-23
9.	32	Kelsey Johnson	Harding	2021-22
9.	32	Melinda Murillo	East Central	2017-18
9.	32	Melinda Murillo	Southeastern Oklahoma	2017-18
9.	32	Meghan Craig	Missouri Western	2005-06
9.	32	Meghan Craig	Angelo State	2004-05
9.	32	Keri Smith	Angelo State	2001-02
9.	32	Gayle Stout	East Central	1981-82
9.	32	Donna Miller	Oklahoma Baptist	1979-80
18.	31	Kelsey Johnson	Washburn	2020-21
18.	31	Ashley Beckley	Arkansas Fort Smith	2010-11
18.	31	Laura Hamilton	Texas A&M Commerce	2004-05
18.	31	Christy Heavin	Midwestern State	1997-98
18.	31	Courtney Berry	Angelo State	1997-98
18.	31	Kim Thomas	Texas A&M Commerce	1987-88
24.	30	Karly Wadsworth	Rogers State	2022-23
24.	30	Kelsey Johnson	Rogers State	2021-22
24.	30	Kelsey Johnson	Northwest Missouri	2021-22
24.	30	Kelsey Johnson	Newman	2021-22
24.	30	Kelsey Johnson	Emporia State	2020-21
24.	30	Kelsey Johnson	Missouri Southern	2020-21
24.	30	Savannah Hamilton	McKendree	2011-12
24.	30	Ton'Nea Cox	Southeastern	1991-92
24.	30	Shene Murphy	Texas Woman's	1990-91

#### Top 10 Seasons – Points Per Game

Rank	Avg.	Player	Games	Points	Season
1.	21.7	Kelsey Johnson	30	651	2021-22
2.	19.5	Ashley Beckley	32	623	2010-11
3.	18.9	Kelsey Johnson	23	435	2020-21
4.	18.3	Keri Smith	26	477	2001-02
5.	17.4	Lizzie Brenner	32	558	2007-08
6.	17.0	Donna Miller	24	408	1979-80
7.	16.9	Gayle Stout	35	590	1981-82
8.	16.7	Tammy Cummings	27	451	1993-94
9.	16.4	Ton'Nea Cox	27	444	1991-92
10.	16.2	Melinda Murillo	29	471	2017-18

#### Top 20 Career Scorers

Rank	Points	Player	Years
1.	1,770	Lizzie Brenner	2005-09
2.	1,627	Ashley Beckley	2007-11
3.	1,480	Kelsey Johnson	2019-22
4.	1,376	Christy Heavin	1994-98
5.	1,343	Keri Smith	1998-02
6.	1,199	Ami Guffy	1998-02
7.	1,127	Courtney Berry	1996-99
8.	1,114	Brooke Rayner	2018-23
9.	1,073	Olivia Mason	2013-17
10.	1,028	Kim Thomas	1984-88
11.	1,021	Ton'Nea Cox	1990-93
12.	1,011	Mandy Carlson	1994-98
13.	1,010	Jill Bryan	2009-14
14.	1,004	Gayle Stout	1981-83
15.	977	Britney Morgan	2010-14
16.	969	Cassidy Pillow	2004-08
17.	964	Cristina Yarbrough	2006-10
18.	954	Mallory Markus	2005-09
19.	946	Melinda Murillo	2016-18
20.	940	Julia Mason	2013-16

#### Top 20 Seasons – Points

Rank	Points	Player	Season	Avg.
1.	651	Kelsey Johnson	2021-22	21.7
2.	623	Ashley Beckley	2010-11	19.5
3.	590	Gayle Stout	1981-82	16.9
4.	558	Lizzie Brenner	2007-08	17.4
5.	500	Patti Komalty	1981-82	14.3
6.	490	Lizzie Brenner	2008-09	14.8
7.	483	McKenzie Solberg	2015-16	16.1
8.	477	Keri Smith	2001-02	18.3
9.	475	Melinda Murillo	2016-17	14.4
10.	471	Melinda Murillo	2017-18	16.2
11.	467	Ashley Beckley	2009-10	16.1
12.	451	Tammy Cummings	1993-94	16.7
13.	444	Ton'Nea Cox	1991-92	16.4
14.	435	Kelsey Johnson	2020-21	18.9
15.	434	Lizzie Brenner	2006-07	15.5
16.	429	Jana Flanagan	1991-92	15.3
17.	428	Cassidy Pillow	2007-08	13.4
18.	420	Carrie Tucker	1983-84	14.0
19.	414	Gayle Stout	1982-83	12.2
20.	409	Ton'Nea Cox	1992-93	15.7
20.	409	Donna Miller	1979-80	17.0

## Records

### Field Goals Made

#### Top 10 Games

Rank	No.	Player	Opponent	Season
1.	20	Tammy Cummings	Angelo State	1993-94
2.	16	Kelsey Johnson	Missouri Western	2021-22
3.	15	Christy Heavin	Midwestern State	1997-98
3.	15	Gayle Stout	Southeastern Okla.	1981-82
5.	14	Kelsey Johnson	Harding	2021-22
5.	14	Keri Smith	Angelo State	2001-02
5.	14	Patti Komalty	Northeastern State	1981-82
5.	14	Gayle Stout	East Central	1981-82
9.	13	Kelsey Johnson	Missouri Southern	2020-21
9.	13	Shauna Tubbs	Pittsburg State	1993-94
9.	13	Ton'Nea Cox	Southeastern Okla.	1991-92
9.	13	Gayle Stout	East Central	1981-82
9.	13	Gayle Stout	Phillips	1981-82

### Field Goals Attempted

#### Top 10 Games

Rank	No.	Player	Opponent	Season
1.	37	Tammy Cummings	Angelo State	1993-94
2.	26	Kesley Johnson	Harding	2021-22
2.	26	Gayle Stout	Southeastern Okla.	1981-82
4.	24	Jill Bryan	Northwest Missouri	2013-14
4.	24	Ton'Nea Cox	Abilene Christian	1991-92
4.	24	Gayle Stout	Cameron	1981-82
4.	24	Gayle Stout	Northeastern State	1981-82
8.	23	Kelsey Johnson	Missouri Western	2021-22
8.	23	Patti Komalty	Langston	1981-82
8.	23	Courtney Berry	Southeastern Okla.	1997-98

#### Top 10 Seasons

Rank	No.	Player	Season
1.	256	Gayle Stout	1981-82
2.	255	Kelsey Johnson	2021-22
3.	213	Patti Komalty	1981-82
4.	211	Ashley Beckley	2010-11
5.	196	Lizzie Brenner	2007-08
6.	192	Carrie Tucker	1983-84
7.	188	Carrie Tucker	1982-83
8.	184	Tammy Cummings	1993-94
9.	182	Keri Smith	2001-02
10.	177	Lizzie Brenner	2008-09

#### Top 10 Seasons

Rank	No.	Player	Season
1.	549	Gayle Stout	1981-82
2.	462	Patti Komalty	1981-82
3.	447	Ashley Beckley	2010-11
4.	440	Melinda Murillo	2016-17
5.	434	Carrie Tucker	1982-83
6.	425	Kelsey Johnson	2021-22
7.	419	Gayle Stout	1982-83
8.	416	Carrie Tucker	1983-84
9.	412	Melinda Murillo	2017-18
10.	404	Lizzie Brenner	2007-08

#### Top Five Careers

Rank	No.	Player	Years
1.	628	Lizzie Brenner	2005-09
2.	573	Kelsey Johnson	2019-22
2.	573	Ashley Beckley	2007-11
4.	550	Christy Heavin	1994-98
5.	512	Keri Smith	1998-02

#### Top Five Careers

Rank	No.	Player	Years
1.	1,373	Lizzie Brenner	2005-09
2.	1,175	Ashley Beckley	2007-11
3.	1,001	Christy Heavin	1994-98
4.	977	Kelsey Johnson	2019-22
5.	971	Brooke Rayner	2018-23

## Records

### 3-Point Field Goals Made

#### Top 10 Games

Rank	No.	Player	Opponent	Season
1.	7	Blake Blessington	Northwestern Okla.	2016-17
1.	7	Laura Hamilton	TX A&M-Commerce	2004-05
1.	7	Julie Metheny	Northeastern State	1999-00
1.	7	April Taylor	Lincon	1994-95
1.	7	Jana Flanagan	Abilene Christian	1992-93
1.	7	Rae Martin	Texas Woman's	1989-90
6.	6	18 times by 11 players		

#### Top 10 Seasons

Rank	No.	Player	Season
1.	70	April Taylor	1994-95
2.	67	Mary Rhodes	1995-96
3.	66	Olivia Mason	2016-17
4.	65	Shawn Williams	1988-89
5.	64	Courtney Allen	2010-11
6.	63	Meghan Craig	2005-06
7.	62	Ami Guffy	2001-02
8.	60	Shawn Williams	1989-90
9.	58	Ami Guffy	2000-01
10.	57	Karly Wadsworth	2022-23
10.	57	Micayla Haynes	2018-19
10.	57	Britney Morgan	2010-11
10.	57	Laura Hamilton	2004-05

#### Top Five Careers

Rank	No.	Player	Years
1.	190	Ami Guffy	1998-02
2.	184	Olivia Mason	2013-17
3.	171	April Taylor	1991-95
4.	161	Britney Morgan	2010-14
4.	161	Mary Rhodes	1995-98

### 3-Point Field Goals Attempted

#### Top 10 Games

Rank	No.	Player	Opponent	Season
1.	15	Karly Wadsworth	Emporia State	2022-23
1.	15	Ami Guffy	UNC-Pembroke	2001-02
3.	14	Britney Morgan	Arkansas-Fort Smith	2011-12
4.	13	Karly Wadsworth	Central Missouri	2022-23
4.	13	Melinda Murillo	TAMU-International	2016-17
4.	13	Rae Martin	Texas Woman's	1989-90
4.	13	Shawn Williams	Abilene Christian	1989-90
8.	12	Meghan Craig	Eastern New Mexico	2005-06
8.	12	Shawn Williams	Abilene Christian	1988-89
8.	12	Shawn Williams	Oklahoma Christian	1988-89

#### Top 10 Seasons

Rank	No.	Player	Season
1.	196	Karly Wadsworth	2022-23
2.	175	Shawn Williams	1989-90
3.	174	Olivia Mason	2016-17
4.	171	Meghan Craig	2005-06
5.	170	April Taylor	1994-95
6.	168	Shawn Williams	1988-89
7.	165	Mary Rhodes	1995-96
8.	161	Ami Guffy	2001-02
9.	158	Courtney Allen	2010-11
10.	155	Rae Martin	1989-90

#### Top Five Careers

Rank	No.	Player	Years
1.	508	Ami Guffy	1998-02
2.	489	Olivia Mason	2013-17
3.	462	Brooke Rayner	2019-23
4.	446	Britney Morgan	2010-14
5.	440	April Taylor	1991-95

## Records

### Free Throws Made

#### Top 10 Games

Rank	No.	Player	Opponent	Season
1.	16	Christy Heavin	TX A&M-Commerce	1996-97
2.	15	April Woods	TX A&M-Commerce	2003-04
3.	14	McKenzie Solberg	Nebraska-Kearney	2015-16
3.	14	McKenzie Solberg	Northwestern Okla.	2015-16
5.	13	Ton'Nea Cox	Eastern New Mexico	1991-92
5.	13	Shene Murphy	TX A&M-Kingsville	1989-90
7.	12	Ashley Beckley	Southeastern Okla.	2010-11
7.	12	April Woods	Angelo State	2002-03
7.	12	Mandy Carlson	Ouachita Baptist	1996-97
7.	12	Lisa Lowden	Angelo State	1991-92
7.	12	Ton'Nea Cox	Cameron	1991-92

#### Top 10 Seasons

Rank	No.	Player	Season
1.	199	Ashley Beckley	2010-11
2.	150	Lizzie Brenner	2007-08
3.	148	Ton'Nea Cox	1991-92
4.	137	McKenzie Solberg	2015-16
4.	137	Ashley Beckley	2009-10
4.	137	Cassidy Pillow	2007-08
7.	133	Lizzie Brenner	2006-07
8.	131	Kelsey Johnson	2021-22
8.	125	April Woods	2002-03
9.	123	Ton'Nea Cox	1992-93

#### Top Five Careers

Rank	No.	Player	Years
1.	479	Ashley Beckley	2007-11
2.	466	Lizzie Brenner	2005-09
3.	326	Cassidy Pillow	2004-08
4.	310	Kelsey Johnson	2019-22
5.	307	Ton'Nea Cox	1990-93

### Free Throws Attempted

#### Top 10 Games

Rank	No.	Player	Opponent	Season
1.	18	Christy Heavin	TX A&M-Commerce	1996-97
2.	17	McKenzie Solberg	Fort Hays State	2015-16
2.	17	April Woods	TX A&M-Commerce	2003-04
2.	17	Ton'Nea Cox	Eastern New Mexico	1991-92
2.	17	Donna Miller	Langston	1981-82
6.	16	McKenzie Solberg	Northwestern OK	2015-16
6.	16	Ashley Beckley	TX A&M-Commerce	2010-11
6.	16	Ton'Nea Cox	TX A&M-Kingsville	1991-92
9.	15	Six times by four players		

#### Top 10 Seasons

Rank	No.	Player	Season
1.	261	Ashley Beckley	2010-11
2.	212	Ton'Nea Cox	1991-92
3.	210	Ashley Beckley	2009-10
4.	187	Lizzie Brenner	2007-08
5.	175	Ton'Nea Cox	1992-93
6.	173	Cassidy Pillow	2007-08
6.	173	Keri Smith	2001-02
8.	167	McKenzie Solberg	2015-16
9.	167	Donna Miller	1980-81
10.	163	Lizzie Brenner	2006-07

#### Top Five Careers

Rank	No.	Player	Years
1.	698	Ashley Beckley	2007-11
2.	590	Lizzie Brenner	2005-09
3.	464	Keri Smith	1998-02
4.	451	Ton'Nea Cox	1990-93
5.	431	Cassidy Pillow	2004-08

## Records

### Rebounding

#### Top 10 Games

Rank	Reb.	Player	Opponent	Season
1.	22	Ton'Nea Cox	Abilene Christian	1991-92
2.	21	Paula Peteet	Texas A&M-Commerce	1989-90
2.	21	Rochelle Ware	Northwestern	1981-82
4.	19	Jesheon Coooper	Cameron	2017-18
4.	19	Alex Richardson	Tarleton State	2010-11
4.	19	Lizzie Brenner	Southwest Baptist	2007-08
4.	19	Ton'Nea Cox	Texas A&M-Commerce	1991-92
8.	18	Kelsey Johnson	Northeastern State	2020-21
8.	18	Jesheon Cooper	Mid-America Christian	2016-17
8.	18	Lizzie Brenner	Midwestern State	2008-09
8.	18	Lizzie Brenner	St. Mary's	2007-08
8.	18	Meghan Craig	Texas A&M-Kingsville	2004-05
8.	18	Shauna Tubbs	Emporia State	1993-94
8.	18	Ton'Nea Cox	Angelo State	1992-93
8.	18	Carrie Tucker	Cameron	1982-83

### Assists

#### Top 10 Games

Rank	No.	Player	Opponent	Season
1.	13	Kelly Parker	Angelo State	1996-97
1.	13	Patti Komalty	Southeastern	1981-82
3.	12	Kelly Parker	Northeastern State	1998-99
3.	12	Kelly Parker	Texas Woman's	1996-97
3.	12	Shawn Williams	Abilene Christian	1989-90
6.	11	Taylor Dement	Lincoln	2020-21
6.	11	Cristina Yarbrough	Midwestern State	2009-10
6.	11	Cristina Yarbrough	TX A&M-Commerce	2008-09
6.	11	Kelly Parker	Northeastern State	1997-98
6.	11	Kelly Parker	West Texas A&M	1996-97
6.	11	Kelly Parker	Tarleton State	1996-97
6.	11	Kelly Parker	TX A&M-Commerce	1996-97
6.	11	Shawn Williams	Cameron	1989-90

#### Top 10 Seasons

Rank	Rebounds	Player	Season	Avg.
1.	334	Ton'Nea Cox	1991-92	12.4
2.	304	Jesheon Cooper	2017-18	10.5
3.	288	Kelsey Johnson	2021-22	9.6
4.	286	Lizzie Brenner	2007-08	8.9
4.	286	Donna Miller	1979-80	9.9
6.	285	Lizzie Brenner	2008-09	8.6
7.	283	Ton'Nea Cox	1992-93	10.9
8.	280	Jesheon Cooper	2016-17	8.5
9.	274	Ashley Beckley	2010-11	8.6
9.	274	Rochelle Ware	1981-82	7.8

#### Top 10 Seasons

Rank	No.	Player	Season	Avg.
1.	199	Kelly Parker	1998-99	7.7
2.	184	Kelly Parker	1996-97	6.8
3.	169	Cristina Yarbrough	2009-10	5.6
4.	156	Kelly Parker	1997-98	6.0
4.	156	Carrie Tucker	1983-84	5.2
6.	154	Shawn Williams	1989-90	5.5
7.	152	Bobbi Hardy	1991-92	5.6
8.	149	Carrie Tucker	1982-83	4.4
9.	147	Cristina Yarbrough	2008-09	4.5
9.	147	Bobbi Hardy	1992-93	5.3
9.	147	Patti Komalty	1981-82	4.2

#### Top 10 Careers

Rank	Reb.	Player	Years
1.	914	Lizzie Brenner	2005-09
2.	796	Christy Heavin	1994-98
3.	788	Ton'Nea Cox	1990-93
4.	725	Olivia Mason	2013-17
5.	697	Kelsey Johnson	2021-22
6.	676	Ashley Beckley	2007-11
7.	644	Donna Miller	1979-82
8.	584	Jesheon Cooper	2016-18
9.	482	Blake Blessington	2015-19
10.	479	Keri Smith	1998-02

#### Top 10 Careers

Rank	No.	Player	Years
1.	645	Kelly Parker	1995-99
2.	568	Cristina Yarbrough	2006-10
3.	395	Bobbi Hardy	1990-93
4.	329	Tawni Meek	1999-03
5.	309	Brooke Rayner	2018-23
6.	306	Britney Morgan	2010-14
7.	305	Carrie Tucker	1982-84
8.	293	Cheri Happe	1983-87
9.	278	Shatoya Bryson	2016-20
10.	274	Shawn Williams	1988-90

## Records

### Steals

#### Top 10 Games

Rank	No.	Player	Opponent	Season
1.	11	Patti Komalty	Southeastern Okla.	1981-82
2.	10	Lizzie Brenner	Eastern New Mexico	2007-08
3.	8	Lizzie Brenner	Abilene Christian	2007-08
3.	8	Gayle Stout	East Central	1981-82
5.	7	Cristina Yarbrough	Southeastern Okla.	2009-10
5.	7	Lizzie Brenner	Cameron	2008-09
5.	7	Lizzie Brenner	St. Gregory's	2006-07
8.	6	23 times by 16 players		

### Blocked Shots

#### Top 10 Games

Rank	No.	Player	Opponent	Season
1.	10	Aspen Williston	Washburn	2022-23
2.	9	Jesheon Cooper	Emporia State	2017-18
3.	7	Savannah Hamilton	Newman	2011-12
3.	7	Christy Heavin	TX A&M-Kingsville	1998-99
5.	6	Kelsey Johnson	Harding	2019-20
5.	6	Jesheon Cooper	Lindenwood	2016-17
5.	6	Jesheon Cooper	Emporia State	2016-17
5.	6	Jesheon Cooper	Arkansas-Fort Smith	2016-17
5.	6	Jesheon Cooper	Southern Nazarene	2016-17
5.	6	Alex Richardson	East Central	2010-11
5.	6	Lizzie Brenner	Tarleton State	2008-09

#### Top 10 Seasons

Rank	No.	Player	Season	Avg.
1.	109	Patti Komalty	1981-82	3.1
2.	95	Lizzie Brenner	2007-08	3.0
3.	91	Lizzie Brenner	2008-09	2.8
4.	84	Michelle Williams	1994-95	3.1
5.	83	Patti Komalty	1982-83	2.5
6.	78	Cristina Yarbrough	2008-09	2.4
7.	77	Cristina Yarbrough	2009-10	2.6
8.	76	Carrie Tucker	1983-84	2.5
9.	75	Laura Hamilton	2002-03	2.8
10.	74	Carrie Tucker	1982-83	2.2

#### Top 10 Seasons

Rank	No.	Player	Season	Avg.
1.	100	Jesheon Cooper	2016-17	3.0
2.	83	Jesheon Cooper	2017-18	2.8
3.	63	Aspen Williston	2022-23	2.2
4.	55	Lizzie Brenner	2008-09	1.7
5.	51	Ireon Smith	2018-19	1.6
6.	47	Kim Mullendore	1998-99	1.8
6.	47	Angela Flynn	1995-96	1.7
8.	46	Alex Richardson	2010-11	1.6
9.	44	Lizzie Brenner	2007-08	1.4
10.	37	Rochelle Ware	1981-82	1.1

#### Top Five Careers

Rank	No.	Player	Years
1.	297	Lizzie Brenner	2005-09
2.	257	Cristina Yarbrough	2006-10
3.	213	Brooke Rayner	2018-23
4.	192	Patti Komalty	1981-83
5.	168	Kelly Parker	1995-99

#### Top Five Careers

Rank	No.	Player	Years
1.	183	Jesheon Cooper	2016-18
2.	153	Lizzie Brenner	2005-09
3.	100	Christy Heavin	1994-98
4.	90	Kelsey Johnson	2019-22
5.	80	Kim Mullendore	1998-01



# All-Time Letterwinners

## A-A-A-A

Lori Akins, 1984-85-86-87  
 Mikayla Alexander, 2015  
 Avery Allen, 2021-22  
 Lacie Allen, 2005-06  
 Courtney Allen, 2009-10-11  
 Taylor Allen, 2007-08  
 Rose Anderson, 2009-10  
 Marley Anderson, 2014-15-16-17  
 Angela Andrews, 1987-88

## B-B-B-B

Christy Bailey, 1996-97  
 Tammie Barker, 1992-93-94-95  
 Lauren Beagle, 1986-87  
 Krista Beaty, 2009  
 Ashley Beckley, 2008-09-10-11  
 Carla Bell, 1985-86  
 Courtney Bell, 1999-00-01  
 Courtney Berry, 1997-98-99  
 Amy Blundell, 1992  
 Dara Bierman, 1999  
 Blake Blessington, 2016-17-18-19  
 Shannon Boatwright, 1986  
 Kayla Bogges, 1994-95  
 Kassie Boorer, 2023  
 Erica Bramlett, 2002-03-04  
 Eliana Bravington, 2023  
 Lizzie Brenner, 2006-07-08-09  
 Stephanie Briggs, 1993-94  
 Jackee' Brown, 2004-05  
 Jennifer Brown, 1987-88  
 Michelle Brown, 1999  
 Hayley Bryan, 2013-14-15--17  
 Jill Bryan, 2010-12-13-14  
 Shatoya Bryson, 2017-18-19-20  
 Joy Burd, 1987  
 Jennifer Bullis, 2004-05-06-07  
 Lynne Burrows, 1992  
 Rebecca Butler, 1984

## C-C-C-C

Teresa Campbell, 1982-83  
 Mandy Carlson, 1995-96-97-98  
 Toni Carter, 1997-98  
 Courtnee Cash, 2023  
 Susan Castleberry, 1981  
 Brandi Cathey, 2004  
 Lauren Chancellor, 2018-19-20  
 Michelle Chapman, 1986  
 Irina Clark, 1995  
 Jane Clough, 1982  
 Lisa Collett, 1981  
 Jehseon Cooper, 2017-18  
 Gwen Coyle, 1985-86  
 Ton'Nea Cox, 1991-92-93  
 Cara Craig, 1999-00  
 Meghan Craig, 2005-06  
 Beverly Crawford, 1984-85  
 Willie Crawford, 1988-89  
 Susan Crouser, 1981  
 Tammy Cummings, 1993-94

## D-D-D-D

Joy Dugan, 1995  
 Heather Davis, 2011-12  
 Taylor Dement, 2021-22  
 Chelsi Dennis, 2012-13-15  
 Clary Donica, 2020-21-22  
 Whitney Dunn, 2013-14

## E-E-E-E

Tiphani Eaves, 2008  
 Jackie Eckels, 1983-84  
 Kari Edge, 2003-04  
 Junae Elsberry, 1992-93-94-95

## F-F-F-F

Taylor Factor, 2020-21-23  
 Jana Flanagan, 1992-93  
 Angela Flynn, 1996-97  
 Lexi Foreman, 2022-23  
 Cynthia Foster, 1982-83  
 Krystal Fowler, 2014  
 Karlie Free, 2006-07-08  
 Shannon Freeman, 1999-00-01-02  
 Alyssa Fuxa, 2009-10-11-13

## G-G-G-G

Jennifer Garrison, 1993-94  
 Rory Geer, 2022  
 Denise Gooden, 1987-88  
 Erin Gray, 2018  
 Savannah Gray, 2016  
 Brianne Grisham, 2009-10  
 Ami Guffy, 1999-00-01-0

## H-H-H-H

Joy Hagemann, 2005  
 Alisha Hall, 1996-97-98  
 Laura Hamilton, 2003-05  
 Savannah Hamilton, 2010-12-13  
 Ashley Handing, 2021  
 Cheri Happe, 1984-85-86-87  
 Bobbi Hardy, 1991-92-93  
 Maddie Harelson, 2020-21  
 Courtney Harper, 2012-13  
 Audra Harris, 2013  
 Megan Hartness, 2018-19  
 Bethany Hawthorne, 2002-03  
 Micayla Haynes, 2019-20  
 Christy Heavin, 1995-96-97-98  
 Kristi Heglin, 1990-91  
 Micha Hester, 2005-06-07-08  
 Emily Hoffman, 1995  
 Kati Hoy, 1986-87-88  
 Autumn Huffman, 2011-12

## J-J-J-J

LaDonna James, 1987  
 Albertine Jennings, 1989-91  
 Alette Johnson, 1983-84  
 Ella Johnson, 1981  
 Gabrielle Johnson, 2018  
 Jo'Nah Johnson, 2018  
 Kelsey Johnson, 2020-21-22  
 Tiffany Johnson, 2005  
 Jayne Jones, 1981  
 Melanie Jones, 1984-85-86-87

## K-K-K-K

Glenna Kennemer, 1988  
 Kara Kessler, 1992-93-94  
 Penni Kime, 1993-94  
 Anna Kimsey, 2015  
 Alayzha Knapp, 2022-23  
 Patti Komalty, 1982-83  
 Kim Kramer, 1983-84  
 Zuzana Krumlova, 2001-02

## L-L-L-L

Brittany Lancaster, 2014  
 Madison Lee, 2016-17-18-19  
 Leigh Legrande, 1983-84  
 Jaci Littell, 2020-21-22  
 Aliyah Llanusa, 2020-21-22-23  
 Paige Locke, 2011-12  
 Tammy London, 1982-83  
 Shanna Lott, 1996  
 Lisa Lowden, 1989-90-91-92

## M-M-M-M

Amber Makeever, 2014  
 Mallory Markus, 2006-07-08-09  
 Rae Martin, 1989-90  
 Christie Massey, 2000-01  
 Julia Mason, 2014-15-16  
 Olivia Mason, 2014-15-16-17  
 Sadie Mason, 2016-17-18  
 Athena Mathis, 2000-01  
 Kylie Mayes, 2011-15  
 Macy McClendon, 2021-22-23  
 Megan McClendon, 2021-22-23  
 Susan McCurtain, 1984-85  
 Yolonda McCurtain, 1990-91  
 Alyson McDermott, 2001-02  
 Connie Means, 1983  
 Donnie Medtlock, 1982  
 Tawni Meek, 2000-01-02-03  
 Tevi Meek, 1999-01  
 Julie Metheny, 2000-01-02  
 Alisha Meyers, 2002  
 Deanna Miller, 1981  
 Donna Miller, 1981-82  
 Misty Miller, 1999  
 Tenda Monnahan, 1989-90  
 Erin Moore, 2006  
 Sierra Moore, 2015  
 Britney Morgan, 2011-12-13-14  
 Carrie Moss, 1998  
 Kim Mullendore, 1999-01  
 Melinda Murillo, 2017-18  
 Shene Murphy, 1990-91  
 Traci Murphree, 2009-10

## N-N-N-N

Jodi Nelson, 1990  
 Rachel New, 2010-12-13-14

## O-O-O-O

Tarrington Oakes, 2011  
 Taylor O'Dell, 2017-18  
 Kate O'Neill, 1996

## P-P-P-P

Taylor Paiten, 2012  
 Kelly Parker, 1996-97-98-99  
 Trinity Parker, 2021  
 Amy Parten, 1991-92  
 Paula Peteet, 1989-90  
 Cassidy Pillow, 2005-06-07-08  
 Aliyah Pinon, 2021  
 Gwen Porter, 1990-91  
 Kim Priddy, 1991-92-93-94  
 McKenna Pulley, 2019-20

## R-R-R-R

Arwin Ray, 1997-98-99  
 Brooke Rayner, 2019-20-21-22-23  
 Ginger Reece, 2022-23  
 Regina Rehl, 1994-95  
 Mary Rhodes, 1996-97-98  
 Alex Richardson, 2011  
 Kaci Richardson, 2019-20-21  
 Melanie Riley, 2003  
 Amber Robertson, 2003-05-06-07  
 Chelsea Robinson, 2012-13-14-15  
 River Romine, 2023  
 Dee Dee Rutz, 1985-86-87  
 Paula Ryan, 1989-90

## S-S-S-S

Kelly Savage, 1981  
 Paula Sawyer, 1988  
 Melody Scherich, 1981  
 Renee Shanahan, 1989  
 Antonia Smith, 2007-08  
 Ireon Smith, 2017-18-19  
 Jill Smith, 1987-88-89  
 Kenna Smith, 1984-85  
 Keri Smith, 1999-00-01-02  
 Lindsey Smith, 2003-04  
 Selenia Smith, 1988-89  
 Tina Smith, 1986-87-88-89  
 Dia Snyder, 1986-87-88-89  
 McKenzie Solberg, 2013-14-15-16  
 Jordan Stark, 2010  
 Ashley Stephens, 2015-16-17  
 Tara Stewart, 2004  
 Gayle Stout, 1982-83  
 Stacy Stout, 1986-87-88  
 Carrie Stroud, 1984  
 Tammy Sunderland, 1981-82

## T-T-T-T

Carla Taggart, 1982-83-84  
 April Taylor, 1992-93-94-95  
 Bailey Taylor, 2016  
 Kim Thomas, 1985-86-87-88  
 Carrie Tucker, 1983-84  
 Kasey Tweed, 2008-09-10-12

## V-V-V-V

Julie Vaughn, 1987

## W-W-W-W

Karly Wadsworth, 2021-22-23  
 Summer Wafford, 2003  
 Jordan Ward, 2013-14-15-16  
 Rochelle Ware, 1982-83  
 Haley Weathers, 2014-15-16  
 Sabrena Whittler, 1991-92-93  
 Robin Wiley, 1987-88-89-90  
 Michelle Williams, 1994-95  
 Shawn Williams, 1989-90  
 Aspen Williston, 2023  
 Lindsey Wilson, 2004-05-06  
 Terry Wilson, 1987  
 Cheryl Witty, 1986  
 April Woods, 2003-04  
 Megan Womack, 2015-16-17-18  
 Tameika Wright, 1989

## Y-Y-Y-Y

Cristina Yarbrough, 2007-08-09-10  
 Caley Young, 2021-22-23  
 Lindsay Young, 2002-03-04-05

## Postseason Awards

Central Oklahoma has had 28 players earn All-Conference recognition a combined 44 times since 1982-83. The Bronchos have also three All-Region selections a combined six times, and seven players have earned All-American honors.

The Bronchos competed in District Nine while members of the NAIA before joining NCAA Division II in 1989-90. Central played in the Lone Star Conference and the LSC North Division from the 1989-90 season until 2010-11 and then spent one year as an independent prior to becoming members of the Mid-America Intercollegiate Athletics Association in 2012-13.

The Bronchos have had three players earn All-Conference three times in their careers: Lizzie Brenner (2007-08-09), Ashley Beckley (2009-10-11), and Kelsey Johnson (2020-21-22).

### All-MIAA

#### **2021-22**

Kelsey Johnson (1st)

#### **2020-21**

Kelsey Johnson (1st)

#### **2019-20**

Kelsey Johnson (2nd)

#### **2018-19**

Micayla Haynes (3rd)

#### **2017-18**

Melinda Murillo (1st)

Jesheon Cooper (3rd)

#### **2016-17**

Melinda Murillo (1st)

Jesheon Cooper (3rd)

#### **2015-16**

McKenzie Solberg (2nd)

#### **2014-15**

Julia Mason (3rd)

#### **2013-14**

Jill Bryan (3rd)

### All-LSC North Division

#### **2010-11**

Ashley Beckley (1st, Player of the Year)

Britney Morgan (Freshman of the Year)

#### **2009-10**

Ashley Beckley (1st)

Cristina Yarbrough (1st, Def. Player of the Year)

#### **2008-09**

Lizzie Brenner (1st)

Ashley Beckley (2nd)

Rose Anderson (Newcomer of the Year)

Cristina Yarbrough (Def. Player of the Year)

#### **2007-08**

Lizzie Brenner (1st, co-Player of the Year)

Cassidy Pillow (2nd)

Cristina Yarbrough (co-Def. Player of the Year)

#### **2006-07**

Lizzie Brenner (1st)

Cassidy Pillow (2nd)

Cristina Yarbrough (Freshman of the Year)

#### **2005-06**

Meghan Craig (2nd)

Lizzie Brenner (Freshman of the Year)

#### **2004-05**

Laura Hamilton (1st)

Meghan Craig (2nd)

#### **2003-04**

April Woods (2nd)

#### **2002-03**

Laura Hamilton (1st)

#### **2001-02**

Keri Smith (1st)

Ami Guffy (2nd)

#### **1999-00**

Keri Smith (2nd)

#### **1998-99**

Courtney Berry (1st)

#### **1997-98**

Christy Heavin (1st)

Courtney Berry (2nd)

### All-Lone Star Conference

#### **1996-97**

Christy Heavin (2nd)

#### **1995-96**

Mary Rhodes (Freshman of Year)

#### **1994-95**

Christy Heavin (co-Freshman of the Year)

#### **1993-94**

Tammy Cummings (2nd)

#### **1992-93**

Ton'Nea Cox (1st)

Jana Flanagan (2nd)

Bobbi Hardy (2nd)

#### **1991-92**

Ton'Nea Cox (1st)

Jana Flanagan (1st)

Lisa Lowden (Defensive Player of Year)

April Taylor (Co-Freshman of Year)

#### **1990-91**

Shene Murphy (2nd)

#### **1989-90**

Paula Peteet (2nd)

### All-District Nine

#### **1984-85**

Beverly Crawford (2nd)

#### **1983-84**

Jackie Eckels (1st)

Carrie Tucker (1st)

#### **1982-83**

Patti Komalty (1st)

### All-Region NCAA Division II

#### **2021-22**

Kelsey Johnson (2nd)

#### **2010-11**

Ashley Beckley (1st)

#### **2009-10**

Ashley Beckley (2nd)

#### **2008-09**

Lizzie Brenner (1st)

#### **2007-08**

Lizzie Brenner (1st)

#### **2006-07**

Lizzie Brenner (2nd)

### All-Americans NCAA Division II

#### **2021-22**

Kelsey Johnson (Honorable Mention\*)

#### **2017-18**

Melinda Murillo (HM\*)

#### **2010-11**

Ashley Beckley (3rd!, HM\*)

#### **2008-09**

Lizzie Brenner (HM\*)

#### **1992-93**

Ton'Nea Cox (HM\*)

#### **1991-92**

Ton'Nea Cox (HM\*)

### All-Americans NAIA

#### **1983-84**

Jackie Eckels (HM)

#### **1981-82**

Patti Komalty (1st)

I-Daktronics, Inc.

\*-Women's Basketball Coaches Association

# Season-by-Season Results



**DR. VIRGINIA PETERS**  
1969-80  
69-88

<b>1969-70</b>	<b>(3-0)</b>
No Results	
<b>1970-71</b>	<b>(5-5)</b>
No Results	
<b>1971-72</b>	<b>(5-5)</b>
No Results	
<b>1972-73</b>	<b>(4-5)</b>
No Results	
<b>1973-74</b>	<b>(4-3)</b>
No Results	
<b>1974-75</b>	<b>(6-4)</b>
No Results	

<b>1975-76</b>	<b>(17-3)</b>
66 Southern Nazarene.....	26
70 Oklahoma.....	33
65 USAO.....	63

Forfeit over Southern Nazarene

64 Oklahoma Christian.....	60
55 Southeastern Oklahoma.....	44
58 Oklahoma.....	47
48 Oklahoma State.....	59
68 Southwestern Oklahoma.....	58
60 East Central.....	21
66 St. Gregory's@.....	58
80 Oklahoma Baptist.....	56
71 USAO.....	66
53 Northern Oklahoma.....	45
82 Oklahoma State.....	68
48 Cameron.....	46
46 Southeastern Oklahoma.....	48*
47 Southwestern Oklahoma.....	51*
72 Oklahoma State.....	71*
68 North Texas.....	56#
80 Northwest Louisiana.....	89#

@-Juco games do not count on record  
\*-AIAW State Tournament  
#-AIAW Regional Tournament

<b>1976-77</b>	<b>(8-7)</b>
62 Northern Oklahoma@.....	76
53 Oklahoma.....	42
60 Southeastern Oklahoma.....	48
71 Langston.....	79
70 Northwestern Oklahoma.....	76
73 Southwestern Oklahoma.....	64
73 Oklahoma Christian.....	46
56 Southwestern Oklahoma.....	69
72 Southeastern Oklahoma.....	69
48 Oklahoma State.....	54
63 Southern Nazarene.....	62
61 East Central.....	50
57 Northwestern Oklahoma.....	70
51 Langston.....	71
63 Oklahoma State.....	58
49 Oklahoma.....	60

@-Juco games don't count on record

<b>1977-78</b>	<b>(9-11)</b>
56 USAO.....	65
71 Langston.....	81
48 Southwestern Oklahoma.....	53
68 Oklahoma Baptist.....	56
69 East Central.....	48
62 Colorado State-Pueblo.....	49
60 Oklahoma Christian.....	56
68 Texas A&M-Commerce.....	60
68 USAO.....	59
58 Langston.....	70
74 Northwestern Oklahoma.....	80
50 Phillips.....	82
41 Northwestern Oklahoma.....	58
68 Langston.....	56
57 Oklahoma.....	65
71 Oklahoma Baptist.....	57
39 Oklahoma State.....	66
63 Oklahoma State.....	52*
56 Oklahoma.....	59*
48 Northeastern State.....	51*

\*-AIAW State Tournament

<b>1978-79</b>	<b>(7-20)</b>
42 Cameron.....	47
63 Oklahoma Baptist.....	59

53 Cameron.....	52
56 East Central.....	60
48 Southern Nazarene.....	60
51 Langston.....	59
57 Abilene Christian.....	81
65 Howard Payne.....	64
64 Texas-El Paso.....	75
67 Prairie View A&M.....	65
50 USAO.....	65
52 East Central.....	55
43 Oklahoma Baptist.....	70
50 Northwestern Oklahoma.....	73
53 Langston.....	67
81 Friends.....	68
67 Oklahoma Christian.....	83
74 Oklahoma Christian.....	67
61 Northeastern State.....	75
65 Northwestern Oklahoma.....	76
65 Northwestern Oklahoma.....	70
52 Southeastern Oklahoma.....	74
64 Southern Nazarene.....	70
52 Oklahoma Christian.....	83
57 USAO.....	70
61 Northeastern State.....	67
53 Eastern Oklahoma.....	50@
57 Southwestern Oklahoma.....	50

@-Juco games don't count on record

<b>1979-80</b>	<b>(1-25)</b>
54 Southwestern Oklahoma.....	60
57 Oklahoma City.....	77
44 Cameron.....	86
52 Eastern New Mexico.....	77
43 Southeastern Oklahoma.....	71
62 Langston.....	84
57 Southern Nazarene.....	81
40 Oklahoma Panhandle.....	86
57 Oklahoma Christian.....	71
67 East Central.....	69
48 Oklahoma Baptist.....	78
26 Southeastern Oklahoma.....	71
49 Texas Tech.....	125
57 USAO.....	67
51 Oklahoma City.....	84
57 Oklahoma Baptist.....	64
64 West Texas A&M.....	74
53 East Central.....	75
73 Friends.....	72
56 Oklahoma Panhandle.....	77
72 Cameron.....	78
46 Langston.....	77
49 Oklahoma Christian.....	83
62 East Central.....	63*
54 Langston.....	73*
52 Oklahoma Panhandle.....	64*

\*-AIAW State Tournament



**JOHN KEELY**  
1980-2004  
311-353

<b>1980-81</b>	<b>(2-25)</b>
64 Southwestern Oklahoma.....	65
40 Oklahoma Baptist.....	61
58 Northwestern Oklahoma.....	88
52 Oklahoma Christian.....	67
73 Southern Nazarene.....	76
51 Phillips.....	61
66 Oklahoma City.....	93
37 Langston.....	53
63 East Central.....	89
56 Oklahoma Baptist.....	60
56 Southeastern Oklahoma.....	80
64 West Texas A&M.....	80
53 Oklahoma Christian.....	75
70 Oklahoma Panhandle.....	85
65 Cameron.....	80
64 Southern Nazarene.....	68
53 Southeastern Oklahoma.....	75
44 Southwestern Oklahoma.....	72
56 Northeastern State.....	71
33 Northwestern Oklahoma.....	83
46 East Central.....	92
50 Oklahoma City.....	65
52 Cameron.....	71
36 Northeastern State.....	62
56 Phillips.....	67
59 Langston.....	49

54 Oklahoma Baptist.....	83*
--------------------------	-----

\*-AIAW State Tournament

<b>1981-82</b>	<b>(25-10)</b>
95 Phillips.....	49
66 Oklahoma Baptist.....	80
60 Northwestern Oklahoma.....	62
82 USAO.....	42
84 Southern Nazarene.....	45
61 Southeastern Oklahoma.....	77
56 Oklahoma Christian.....	62
86 East Central.....	73
78 Tulsa.....	75
85 Langston.....	61
71 Northeastern State.....	67
56 Southwestern Oklahoma.....	66
77 Oklahoma Christian.....	73
69 Cameron.....	70
75 Southern Nazarene.....	65
74 Oklahoma City.....	75
75 Phillips.....	60
74 Oklahoma Baptist.....	68
76 Northeastern State.....	72
83 Southeastern Oklahoma.....	71
75 East Central.....	60
64 Cameron.....	56
58 Oklahoma City.....	75
82 USAO.....	40
55 Southwestern Oklahoma.....	66
77 Northwestern Oklahoma.....	71
56 Langston.....	44
70 Tulsa.....	68
76 Oklahoma Panhandle.....	57*
75 East Central.....	60*
86 Texas Christian.....	71@
79 Ouachita Baptist.....	73@
79 Centenary.....	72@
73 Hofstra.....	66#
87 Francis Marion.....	91#

\*-AIAW State Tournament  
@-AIAW Region IV Tournament  
#-AIAW National Tournament

<b>1982-83</b>	<b>(23-11)</b>
63 Southern Nazarene.....	39
66 Phillips.....	56
94 Huston-Tillotson.....	74
77 Pittsburg State.....	58
74 USAO.....	57
73 Northeastern State.....	56
67 Southwestern Oklahoma.....	65
76 Northwestern Oklahoma.....	56
65 USAO.....	61
56 Oklahoma.....	82
53 East Central.....	65
73 Oklahoma Baptist.....	79 OT
65 Missouri Southern.....	45
78 Central Missouri.....	84
51 Oklahoma Christian.....	59
69 Langston.....	46
66 Northeastern State.....	63
78 Southeastern Oklahoma.....	68
70 Oklahoma City.....	71
61 Cameron.....	59
46 Southwestern Oklahoma.....	67
59 Southeastern Oklahoma.....	62 OT
65 Northwestern Oklahoma.....	40
78 Phillips.....	86 OT
82 Cameron.....	70
72 Tulsa.....	62
92 Langston.....	55
63 Oklahoma City.....	76
80 East Central.....	79 OT
83 Oklahoma Christian.....	66
94 Tulsa.....	74
82 Oklahoma Baptist.....	69
55 Cameron.....	49*
58 Southwestern Oklahoma.....	69*

\*-District 9 Playoffs

<b>1983-84</b>	<b>(21-9)</b>
78 Oklahoma Panhandle.....	71
75 USAO.....	71
59 Northeastern State.....	55
64 Southern Nazarene.....	69*
57 Oklahoma Christian.....	60
79 Phillips.....	60
54 Southwestern Oklahoma.....	65
58 East Central.....	49
55 Oklahoma Baptist.....	63
59 Abilene Christian.....	47
62 Angelo State.....	77
73 Oklahoma Christian.....	62

54 Southwestern Oklahoma.....	76
71 Northeastern State.....	65
68 Southeastern Oklahoma.....	54
61 Northwestern Oklahoma.....	46
68 USAO.....	59
50 Cameron.....	56
53 Langston.....	78
95 Oklahoma Panhandle.....	70
60 Southern Nazarene.....	55
77 Phillips.....	67
83 Northwestern Oklahoma.....	68
74 Southeastern Oklahoma.....	70
69 Langston.....	78
55 East Central.....	47
88 Cameron.....	66
68 Oklahoma Baptist.....	70 OT
79 Southeastern Oklahoma.....	78@
61 Southwestern Oklahoma.....	79@

\*Forfeit victory  
@-District 9 Playoffs

<b>1984-85</b>	<b>(7-21)</b>
57 Southern Nazarene.....	55
68 Emporia State.....	72
45 Northeastern State.....	55
46 USAO.....	75
62 Angelo State.....	60
70 Midwestern State.....	61
54 Oklahoma Baptist.....	78
54 Midwestern State.....	66
44 Southwestern Oklahoma.....	61
68 Phillips.....	81
74 Tulsa.....	77
50 Univ. of Ozarks.....	58
53 Northeastern State.....	64
64 Oklahoma Christian.....	60
47 Tulsa.....	58
64 Southeastern Oklahoma.....	69
54 Cameron.....	75
72 USAO.....	76
72 Langston.....	74 OT
63 Southern Nazarene.....	74
48 Oklahoma Panhandle.....	46
61 Southeastern Oklahoma.....	78
67 Langston.....	54
62 Oklahoma Baptist.....	72
58 Oklahoma Panhandle.....	56
62 Phillips.....	68
66 Oklahoma Christian.....	86
61 Cameron.....	76

<b>1985-86</b>	<b>(5-20)</b>
45 East Central.....	68
50 Northeastern State.....	63
38 Oklahoma Christian.....	66
42 USAO.....	67
58 Midwestern State.....	59
51 Southern Nazarene.....	52
59 Oklahoma Baptist.....	55
72 Bartlesville Wesleyan.....	52
59 Phillips.....	52
47 Midwestern State.....	48
52 Southwestern Texas.....	57
46 Oklahoma Baptist.....	52
41 Cameron.....	69
57 Oklahoma City.....	79
47 Midwestern State.....	82
70 USAO.....	72
68 Langston.....	42
55 Southern Nazarene.....	69
39 Oklahoma Panhandle.....	65
61 Oklahoma City.....	64
59 Langston.....	68
41 Oklahoma Panhandle.....	65
49 Cameron.....	76
66 Oklahoma Christian.....	74
53 Phillips.....	47

<b>1986-87</b>	<b>(16-14)</b>
63 Oklahoma Christian.....	54 OT
79 Incarnate Word.....	49
82 Texas Lutheran.....	49
51 Cameron.....	59
51 Arkansas Tech.....	59
64 USAO.....	66
61 Phillips.....	53
70 Southeastern Oklahoma.....	59
33 West Texas A&M.....	74
57 Southern Nazarene.....	66
60 John Brown.....	54
61 Arkansas-Little Rock.....	51
40 Northeastern State.....	59
68 Univ. of Ozarks.....	51
66 USAO.....	51

# Season-by-Season Results

71	Oklahoma City	76
65	Southern Nazarene	60 OT
56	Oklahoma City	66
66	Langston	43
70	Oklahoma Baptist	59
58	Midwestern State	68
51	Oklahoma Panhandle	57
58	Phillips	51
55	Oklahoma Baptist	63
66	Langston	48
78	Bartlesville Wesleyan	55
54	Midwestern State	53
59	Oklahoma Panhandle	72
53	Oklahoma Christian	59
59	Cameron	73

**1987-88 (9-17)**

64	Quincy	57
44	Missouri Western	63
61	Oklahoma Christian	82
80	Marymount	62
39	Oklahoma City	76
63	Pittsburg State	64
65	Univ. of Ozarks	50
52	Oklahoma Christian	79
57	Texas A&M-Kingsville	66
72	Texas A&M-Commerce	72
49	Abilene Christian	84
60	Angelo State	63
80	Texas Woman's	55
65	Cameron	62
47	West Texas A&M	87
82	Eastern New Mexico	69
50	Midwestern State	76
75	Abilene Christian	85
63	Angelo State	77
67	Texas Woman's	57
46	West Texas A&M	95
52	Eastern New Mexico	55
67	Midwestern State	63
74	Texas A&M-Commerce	90
73	Texas A&M-Kingsville	60
52	Cameron	60

**1988-89 (11-16, 5-9\*)**

64	Mississippi Women	69
82	Texas A&M-Kingsville	65
55	Lincoln	59
63	USAO	60
54	Phillips	60
66	Oklahoma Christian	74
67	Texas Woman's	60
67	Pittsburg State	65
49	Missouri Western	57
51	Texas A&M-Commerce*	55
65	Texas A&M-Kingsville*	73
49	Southeastern Oklahoma	64
80	Angelo State*	71
58	Abilene Christian*	84
73	Texas Woman's	69
43	West Texas A&M*	72
69	Eastern New Mexico*	70 OT
72	Cameron*	53
64	West Texas A&M*	82
72	Eastern New Mexico*	68
65	Southeastern Oklahoma	50
75	Angelo State*	73
73	Abilene Christian*	80
74	Texas A&M-Commerce*	75
105	Texas A&M-Kingsville*	96 OT
82	Oklahoma Christian	92
66	Cameron*	74

\*-Lone Star Conference game

**1989-90 (14-14, 7-7\*)**

81	Fort Hays State	69
67	Southwest Baptist	54
96	Missouri Southern	94 (2OT)
90	Pittsburg State	67
57	Emporia State	61
71	Pittsburg State	73
73	Missouri Southern	66
53	Midwestern State	61
79	Southwest Baptist	65
61	Southeastern Oklahoma	69
60	Angelo State*	76
58	Abilene Christian*	79
50	West Texas A&M*	56
78	Eastern New Mexico*	62
75	Texas Woman's*	73
71	Texas A&M-Commerce*	75
79	Texas A&M-Kingsville*	77 OT
65	Texas A&M-Commerce*	70
65	Texas Woman's*	63

71	Texas A&M-Kingsville*	67
70	Southeastern Oklahoma	85
70	Angelo State*	69
68	Abilene Christian*	74
87	Cameron*	66
69	West Texas A&M*	83
64	Eastern New Mexico*	58
70	Cameron*	67
69	Abilene Christian@	88

\*-Lone Star Conference game  
@-Lone Star Conference Tournament

**1990-91 (10-16, 6-10\*)**

74	Southwest Baptist	60
47	Pittsburg State	51
64	Missouri Southern	68
62	Fort Hays State	70
73	Missouri Southern	55
76	Pittsburg State	59
68	Southeastern Oklahoma	85
73	Cameron*	76
42	West Texas A&M*	81
52	Eastern New Mexico*	63
64	Angelo State*	55
58	Abilene Christian*	66
49	West Texas A&M*	60
60	Eastern New Mexico*	71
62	Emporia State	76
51	Abilene Christian*	71
83	Angelo State*	72
72	Southeastern Oklahoma	70
70	Texas Woman's*	69 OT
72	Texas A&M-Commerce*	68
76	Texas A&M-Kingsville*	66
67	Texas A&M-Kingsville*	69
85	Texas A&M-Commerce*	69
70	Texas Woman's*	72 OT
54	Cameron*	58
51	Eastern New Mexico@	66

\*-Lone Star Conference game  
@-Lone Star Conference Tournament

**1991-92 (17-11, 7-5\*)**

60	Southwest Baptist	63
94	Concordia Lutheran	76
78	Missouri Southern	75
53	Missouri Southern	93
66	Pittsburg State	69 OT
62	Southwest Baptist	66
89	Emporia State	85
67	Pittsburg State	64
78	Midwestern State	72
68	Southeastern Oklahoma	75
81	Cameron*	66
82	Eastern New Mexico*	71
71	Texas Woman's*	70
100	Angelo State*	85
91	Abilene Christian*	77
75	Texas A&M-Kingsville*	85 OT
73	Texas A&M-Commerce*	71
77	Southeastern Oklahoma	82
67	Texas A&M-Commerce*	57
83	Texas A&M-Kingsville*	75
75	Eastern New Mexico*	79
65	Texas Woman's*	72
72	Abilene Christian*	87
97	Angelo State*	72
73	Cameron*	80
84	Angelo State@	77
76	Eastern New Mexico@	72
87	Abilene Christian@	85

\*-Lone Star Conference game  
@-Lone Star Conference Tournament

**1992-93 (18-10, 9-5\*)**

83	Texas Wesleyan	62
91	Concordia Lutheran	81
68	Pittsburg State	80
76	Missouri Southern	82
67	Missouri Southern	89
79	Texas Woman's	66
82	Southwest Baptist	79 OT
61	IUPUI-Fort Wayne	58
53	SIU-Edwardsville	65
78	Emporia State	75
81	West Texas A&M	62
64	Oklahoma City	64
58	Cameron*	71
77	Eastern New Mexico*	89
85	Texas Woman's*	66
79	Angelo State*	72
98	Abilene Christian*	91
67	Texas A&M-Kingsville*	64
88	Texas A&M-Commerce*	85
95	Texas A&M-Commerce*	91
94	Texas A&M-Kingsville*	64
80	Texas Woman's*	67

88	Eastern New Mexico*	94
93	Abilene Christian*	102 OT
61	Angelo State*	76
74	Cameron*	63
72	Angelo State@	69
80	Abilene Christian@	85

\*-Lone Star Conference game  
@-Lone Star Conference Tournament

**1993-94 (11-16, 6-8\*)**

85	Texas Wesleyan	77
90	Concordia Lutheran	68
74	Southwest Baptist	76
56	Missouri Southern	66
65	Pittsburg State	79
66	Cameron	65
58	Missouri Southern	79
73	Emporia State	75
65	Pittsburg State	79
39	Southwest Baptist	50
86	Texas Woman's*	68
85	Cameron	74
76	Eastern New Mexico*	70
69	West Texas A&M*	68
72	Angelo State*	96
46	Abilene Christian*	88
54	Texas A&M-Kingsville*	65
64	Texas A&M-Commerce*	65
93	Texas A&M-Commerce*	75
86	Texas A&M-Kingsville*	78
66	Eastern New Mexico*	77
66	West Texas A&M*	98
77	Abilene Christian*	80
96	Angelo State*	103 2OT
71	Texas Woman's*	63
81	Cameron	67
63	Texas A&M-Kingsville@	71

\*-Lone Star Conference game  
@-Lone Star Conference Tournament

**1994-95 (10-17, 6-8\*)**

55	Central Arkansas	67
59	Henderson State	60
48	Missouri Southern	111
53	Pittsburg State	83
58	Lincoln	63
62	Missouri Southern	66
71	Cameron	59
68	Washburn	75
59	Emporia State	80
78	Tarleton State	76
76	Texas Woman's*	73
74	Abilene Christian*	77
76	Angelo State*	56
64	West Texas A&M*	99
75	Eastern New Mexico*	87
79	Texas A&M-Commerce*	70
61	Texas A&M-Kingsville*	58
72	Texas A&M-Commerce*	74
72	Texas A&M-Kingsville*	66
54	Abilene Christian*	103
72	Angelo State*	67
64	Eastern New Mexico*	76
40	West Texas A&M	75
63	Texas Woman's*	77
64	Tarleton State	62
87	Cameron	81
63	Texas A&M-Commerce@	68

\*-Lone Star Conference game  
@-Lone Star Conference Tournament

**1995-96 (10-17, 4-12\*)**

61	Central Arkansas	77
98	Concordia Lutheran	57
86	Friends	61
74	Cameron	68
67	Emporia State	69
50	Texas A&M-Kingsville*	75
91	Texas Woman's*	74
68	Georgia Southwestern	65
74	Ferris State	84
74	Angelo State*	71
54	Abilene Christian*	94
66	Eastern New Mexico*	76
57	West Texas A&M*	112
62	Midwestern State	59
88	Texas A&M-Commerce*	79
78	Tarleton State*	83
60	Abilene Christian*	109
72	Angelo State*	77
60	West Texas A&M*	100
58	Eastern New Mexico*	67
57	Cameron	59
92	Midwestern State	88
59	Tarleton State*	85
78	Texas A&M-Commerce*	94

78	Texas A&M-Kingsville*	77
69	Texas Woman's*	77
72	Eastern New Mexico@	73

\*-Lone Star Conference game  
@-Lone Star Conference Tournament

**1996-97 (14-13, 8-10\*)**

64	Central Arkansas	67
78	Cameron	64
106	Newman	35
62	Central Missouri	82
74	High Point	60
75	Friends	65
60	Texas A&M-Kingsville*	71
82	Texas Woman's*	74
77	Angelo State*	47
68	Abilene Christian*	71
67	Eastern New Mexico*	71
86	West Texas A&M*	98
69	Midwestern State*	75
83	Texas A&M-Commerce*	70
79	Tarleton State*	60
62	Abilene Christian*	79
67	Angelo State*	61
73	Cameron	49
46	West Texas A&M*	61
50	Eastern New Mexico*	55
89	Midwestern State*	78
71	Cameron	66
60	Tarleton State*	67
79	Texas A&M-Commerce*	91 OT
88	Texas Woman's*	48
66	Texas A&M-Kingsville*	63
69	Eastern New Mexico@	88

\*-Lone Star Conference game  
@-Lone Star Conference Tournament

**1997-98 (16-10, 6-8\*)**

68	Texas Lutheran	66
70	Concordia Lutheran	47
75	Texas A&M-Kingsville	71
85	Texas A&M-Commerce	29
66	Midwestern State	64
98	Angelo State	56
85	Henderson State	52
50	Abilene Christian	93
81	Angelo State	79 OT
74	Cal Poly-Pomona	68
64	Nebraska-Kearney	79
78	Slippery Rock	57
88	Northeastern State*	64
84	Harding*	64
73	Ouachita Baptist*	65
78	Southeastern Oklahoma*	85 OT
72	East Central*	83
93	Cameron*	64
52	Southwestern Oklahoma*	61
62	Northeastern State*	65
63	Cameron*	57
57	Southwestern Oklahoma*	66
75	Harding*	85
67	Ouachita Baptist*	70
75	Southeastern Oklahoma*	82
90	East Central*	86

\*-LSC North Division game

**1998-99 (13-13, 6-8\*)**

37	Arkansas Tech	64
45	Incarnate Word	61
73	Eastern New Mexico	71
62	Texas Woman's	48
64	Midwestern State	62
72	Colorado School of Mines	58
60	Colorado Christian	72
54	Tarleton State	51
63	Midwestern State	73
62	Oklahoma Baptist	82
84	Oklahoma Panhandle	60
86	West Texas A&M	80 OT
66	Harding*	73
65	Ouachita Baptist*	80
71	Southeastern Oklahoma*	57
80	East Central*	74
81	Cameron*	84 OT
58	Southwestern Oklahoma*	68
50	Northeastern State*	47
68	Northeastern State*	57
70	Cameron*	61
54	Southwestern Oklahoma*	58
69	Harding*	82
66	Ouachita Baptist*	63
51	Southeastern Oklahoma*	63
84	East Central*	87

\*-LSC North Division game

# Season-by-Season Results

**1999-00 (15-11, 6-8\*)**

55 Louisiana College.....	39
77 Henderson State.....	64
51 Texas A&M-Commerce.....	46
70 Texas A&M-Kingsville.....	91
79 St. Mary's.....	72
67 Minnesota-Duluth.....	64
75 Abilene Christian.....	78
75 Angelo State.....	57
52 Pittsburg State.....	69
70 Midwestern State.....	64
76 St. Gregory's.....	72 OT
62 Northeastern State*.....	72
65 Cameron*.....	49
72 Southwestern Oklahoma*.....	59
89 East Central*.....	53
Southwestern Oklahoma*.....	61
48 Ouachita Baptist*.....	65
73 Harding*.....	58
63 Midwestern State.....	60
36 Northeastern State*.....	60
73 Harding*.....	65
72 Ouachita Baptist*.....	70
53 Southwestern Oklahoma*.....	59
69 Cameron*.....	72 OT
55 Southeastern Oklahoma*.....	61
74 East Central*.....	80

\*-LSC North Division game

**2000-01 (9-17, 1-11\*)**

56 Texas Wesleyan.....	60
51 Ouachita Baptist.....	46
61 South Dakota.....	53
57 North Dakota.....	67
76 Oklahoma Christian.....	74
78 Lubbock Christian.....	70
72 St. Gregory's.....	63
60 Texas Woman's.....	42
61 Texas Wesleyan.....	62
64 Emporia State.....	87
49 Eastern New Mexico.....	48
50 West Texas A&M.....	64
59 Tarleton State.....	61
76 Texas Woman's.....	59
53 East Central*.....	61
77 Southeastern Oklahoma*.....	82
62 Cameron*.....	78
73 Southwestern Oklahoma*.....	55
61 Northeastern State*.....	68
65 Midwestern State*.....	70
40 Northeastern State*.....	61
48 Midwestern State*.....	75
64 East Central*.....	76
68 Southeastern Oklahoma*.....	78
58 Southwestern Oklahoma*.....	61
65 Cameron*.....	81

\*-LSC North Division game

**2001-02 (13-13, 2-10\*)**

61 Missouri Southern.....	65
80 Rockhurst.....	50
84 USAO.....	80 OT
61 Texas A&M-Kingsville.....	56
74 Texas A&M-Commerce.....	64
78 Emporia State.....	68
76 Abilene Christian.....	85
83 Angelo State.....	71
68 North Carolina-Pembroke.....	84
62 USAO.....	60
62 Eastern New Mexico.....	53
61 West Texas A&M.....	60
62 Tarleton State.....	54
71 Texas Woman's.....	59
62 East Central*.....	58
65 Southeastern Oklahoma*.....	73
52 Cameron*.....	63
56 Southwestern Oklahoma*.....	71
45 Northeastern State*.....	55
61 Midwestern State*.....	72
66 East Central*.....	75 OT
61 Southeastern Oklahoma*.....	80
49 Cameron*.....	53
73 Southwestern Oklahoma*.....	66
78 Northeastern State*.....	82
50 Midwestern State*.....	80

\*-LSC North Division game

**2002-03 (15-12, 8-4\*)**

62 Missouri Southern.....	56
73 Christian Brothers.....	51
69 Texas A&M-Kingsville.....	73
58 Incarnate Word.....	67
69 St. Edward's.....	63
68 Abilene Christian.....	65

66 Angelo State.....	72
61 USAO.....	70
51 Midwestern State.....	80
82 Eastern New Mexico.....	69
58 West Texas A&M.....	71
72 Midwestern State.....	76
87 Texas Woman's.....	54
70 Texas A&M-Commerce.....	56
56 Cameron*.....	51
80 Southwestern Oklahoma*.....	75
78 East Central*.....	71
66 Southeastern Oklahoma*.....	56
38 Northeastern State*.....	56
63 Tarleton State*.....	55
63 Cameron*.....	46
68 Southwestern Oklahoma*.....	66
73 East Central*.....	76
71 Southeastern Oklahoma*.....	83
67 Northeastern State*.....	55
50 Tarleton State*.....	53
64 West Texas A&M@.....	78

\*-LSC North Division game  
@-Lone Star Conference Tournament

**2003-04 (7-20, 1-11\*)**

65 Midwestern State.....	60
55 Texas Woman's.....	49
79 Drury.....	86
47 Oklahoma City.....	86
54 Eastern New Mexico.....	69
55 West Texas A&M.....	81
62 Missouri Western.....	73
51 St. Edward's.....	50
37 Missouri Southern.....	78
59 Midwestern State.....	100
69 Texas Woman's.....	53
74 Texas A&M-Kingsville.....	61
71 Texas A&M-Commerce.....	66
61 Abilene Christian.....	80
52 Angelo State.....	75
62 East Central*.....	79
68 Southeastern Oklahoma*.....	74
60 Northeastern State*.....	66
48 Tarleton State*.....	67
58 Cameron*.....	70
69 Southwestern Oklahoma*.....	77
60 East Central*.....	85
56 Southeastern Oklahoma*.....	76
43 Northeastern State*.....	62
63 Tarleton State*.....	55
60 Cameron*.....	70
63 Southwestern Oklahoma*.....	77

\*-LSC North Division game



**SHAWN WILLIAMS**  
2004-06  
24-30

**2004-05 (17-10, 7-5\*)**

55 Missouri Southern.....	68
89 Central Arkansas.....	80
75 Oklahoma Panhandle.....	60
71 Oklahoma City.....	75
73 Texas A&M-Kingsville.....	65
87 Texas A&M-Commerce.....	84 OT
60 Angelo State.....	69
84 Abilene Christian.....	81
65 Southern Arkansas.....	56
63 Central Arkansas.....	79
54 Eastern New Mexico.....	52
73 West Texas A&M.....	68
66 Midwestern State.....	61
74 Texas Woman's.....	70
46 Northeastern State*.....	70
61 Tarleton State*.....	63
40 Cameron*.....	45
73 Southwestern Oklahoma*.....	67
57 East Central*.....	68
70 Southeastern Oklahoma*.....	66
61 Northeastern State*.....	59
73 Tarleton State*.....	71 OT
59 Cameron*.....	56
55 Southwestern Oklahoma*.....	64
82 East Central*.....	71
78 Southeastern Oklahoma*.....	64
39 Angelo State@.....	79

\*-LSC North Division game  
@-Lone Star Conference Tournament

**2005-06 (7-20, 4-8\*)**

59 Washburn.....	96
75 Missouri Southern.....	81

69 Central Missouri.....	83
71 Missouri Western.....	73
68 Texas Woman's.....	54
70 Texas A&M-Kingsville.....	50
69 Oklahoma Christian.....	72
64 Abilene Christian.....	66
69 Angelo State.....	85
68 Emporia State.....	82
64 St. Mary's.....	75
64 West Texas A&M.....	76
84 Eastern New Mexico.....	69
50 Tarleton State.....	70
54 Midwestern State.....	61
52 Northeastern State*.....	58
55 Texas A&M-Commerce*.....	67
56 Southwestern Oklahoma*.....	70
71 Cameron*.....	70 OT
79 Southeastern Oklahoma*.....	78
62 East Central*.....	65
62 Northeastern State*.....	56
70 Texas A&M-Commerce*.....	83
44 Southwestern Oklahoma*.....	64
60 Cameron*.....	70
69 Southeastern Oklahoma*.....	71
62 East Central*.....	57

-LSC North Division game



**GUY HARDAKER**  
2006-2022  
298-171

**2006-07 (15-13, 8-4\*)**

63 Oklahoma Christian.....	64
64 Arkansas Tech.....	84
81 Oklahoma Panhandle.....	56
72 Oklahoma City.....	79
69 Texas Woman's.....	63
65 Texas A&M-Kingsville.....	49
80 Oklahoma Panhandle.....	59
71 Angelo State.....	74
100 Abilene Christian.....	91 OT
75 Oklahoma Christian.....	78
71 St. Gregory's.....	43
55 West Texas A&M.....	68
67 Eastern New Mexico.....	81
54 Tarleton State.....	68
60 Northeastern State*.....	62
67 Southwestern Oklahoma*.....	73
66 Cameron*.....	57
75 Texas A&M-Commerce*.....	90
78 Southeastern Oklahoma*.....	63
58 East Central*.....	51
52 Northeastern State*.....	49
84 Texas A&M-Commerce*.....	64
65 Southwestern Oklahoma*.....	50
66 Cameron*.....	50
49 Southeastern Oklahoma*.....	77
82 East Central*.....	73
76 Abilene Christian@.....	57
56 West Texas A&M@.....	67

\*-LSC North Division game  
@-Lone Star Conference Tournament

**2007-08 (24-8, 9-3\*)**

72 Pittsburg State.....	78
79 Southwest Baptist.....	72
83 Henderson State.....	54
71 Emporia State.....	66
73 Angelo State.....	52
78 Abilene Christian.....	69
60 West Texas A&M.....	73
96 Eastern New Mexico.....	80
59 Barry.....	50
56 Washburn.....	66
91 Oklahoma Panhandle.....	54
62 Tarleton State.....	57
76 Midwestern State.....	69
80 Texas Woman's.....	61
89 Texas A&M-Kingsville.....	64
74 Texas A&M-Commerce*.....	68
83 Cameron*.....	55
88 East Central*.....	52
72 Northeastern State*.....	75
84 Southeastern Oklahoma*.....	98
70 Southwestern Oklahoma*.....	60
68 Texas A&M-Commerce*.....	74
70 Cameron*.....	61
57 Northeastern State*.....	53
81 East Central*.....	68
66 Southwestern Oklahoma*.....	52

89 Southeastern Oklahoma*.....	71
72 Tarleton State@.....	68
67 Abilene Christian@.....	50
73 West Texas A&M@.....	85
75 St. Mary's#.....	73 OT
66 Washburn#.....	73

\*-LSC North Division game  
@-Lone Star Conference Tournament  
#-NCAA Division II Tournament

**2008-09 (27-6, 13-1\*)**

107 Oklahoma Panhandle.....	40
83 Pittsburg State.....	77
104 Paul Quinn.....	54
65 USAO.....	64
106 Midwestern State.....	57
79 West Texas A&M.....	86
90 Eastern New Mexico.....	72
67 Tarleton State.....	64
81 Texas A&M International.....	62
75 St. Edward's.....	57
77 Texas A&M-Kingsville.....	81 OT
68 Abilene Christian.....	67
75 Angelo State.....	82
89 Texas A&M-Commerce*.....	81
64 Southwestern Oklahoma*.....	44
86 East Central*.....	49
76 Southeastern Oklahoma*.....	59
74 Cameron*.....	50
71 Texas Woman's*.....	70
77 Northeastern State*.....	66
56 Northeastern State*.....	51
86 East Central*.....	51
76 Southeastern Oklahoma*.....	87
103 Texas Woman's*.....	84
62 Cameron*.....	47
88 Texas A&M-Commerce*.....	82
65 Southwestern Oklahoma*.....	46
66 Tarleton State@.....	63
100 Texas A&M-Commerce@.....	86
59 West Texas A&M@.....	66
68 Southeastern Oklahoma#.....	66 OT
72 Washburn#.....	63
52 West Texas A&M#.....	65

\*-LSC North Division game  
@-Lone Star Conference Tournament  
#-NCAA Division II Tournament

**2009-10 (22-8, 12-2\*)**

69 Pittsburg State.....	70
61 Oklahoma Baptist.....	56
56 Oklahoma City.....	53
78 USAO.....	55
55 Tarleton State.....	85
78 Midwestern State.....	69
80 Abilene Christian.....	81
65 Angelo State.....	49
78 St. Mary's.....	65
83 Incarnate Word.....	73
100 Texas A&M-Kingsville.....	81
87 Eastern New Mexico.....	75
67 West Texas A&M.....	78
75 East Central*.....	66
63 Southeastern Oklahoma*.....	65
82 Southwestern Oklahoma*.....	43
89 Cameron*.....	69
73 Texas A&M-Kingsville.....	55
77 Northeastern State*.....	74
96 Texas Woman's*.....	93 OT
74 Texas Woman's*.....	69
74 Southwestern Oklahoma*.....	65
87 Cameron*.....	66
92 Texas A&M-Commerce*.....	59
66 Northeastern State*.....	81
96 East Central*.....	46
101 Southeastern Oklahoma*.....	97 OT
111 Abilene Christian@.....	105 OT
70 West Texas A&M@.....	83
52 Northeastern State#.....	54

\*-LSC North Division game  
@-Lone Star Conference Tournament  
#-NCAA Division II Tournament

**2010-11 (22-10, 11-3\*)**

68 Arkansas-Fort Smith.....	76
83 Colorado-Colo. Springs.....	70
71 Pittsburg State.....	56
71 Incarnate Word.....	61
82 Texas A&M-Kingsville.....	52
69 Angelo State.....	65
71 Abilene Christian.....	87
77 West Texas A&M.....	91
75 Eastern New Mexico.....	54
71 Arkansas-Fort Smith.....	80
74 Tarleton State.....	86



## Series Records, Notable Games & Streaks

Opponent	Record	Pct.	Opponent	Record	Pct.
Abilene Christian	11-29	.275	New Haven (Conn.)	1-0	1.000
Angelo State	25-15	.625	<b>Newman</b>	<b>9-1</b>	<b>.900</b>
Arkansas-Fort Smith	9-3	.750	<b>Nebraska-Kearney</b>	<b>10-13</b>	<b>.434</b>
Arkansas-Little Rock	1-0	1.000	North Carolina-Pembroke	0-1	.000
Arkansas-Monticello	0-1	.000	North Dakota	0-1	.000
Arkansas Tech	0-3	.000	Northern Oklahoma	1-1	.500
Augustana (S.D.)	1-0	1.000	<b>Northeastern State</b>	<b>35-38</b>	<b>.479</b>
Barry	1-0	1.000	<b>Northwest Missouri</b>	<b>7-9</b>	<b>.435</b>
Bartlesville Wesleyan	2-0	1.000	<b>Northwestern Oklahoma</b>	<b>11-10</b>	<b>.523</b>
Cal Poly	1-0	1.000	Oklahoma	3-4	.429
<b>Cameron</b>	<b>48-30</b>	<b>.615</b>	Oklahoma Baptist	10-15	.400
Centenary (La.)	1-0	1.000	<b>Oklahoma Christian</b>	<b>18-20</b>	<b>.473</b>
Central Arkansas	1-4	.200	Oklahoma City	2-16	.111
<b>Central Missouri</b>	<b>3-15</b>	<b>.166</b>	Oklahoma Panhandle	12-8	.600
Central Washington	1-0	1.000	Oklahoma State	4-4	.500
Christian Brothers	1-0	1.000	Ouachita Baptist	6-3	.667
Colorado Christian	0-1	.000	Paul Quinn	1-0	1.000
Colorado-Colorado Springs	1-0	1.000	Phillips	9-7	.563
Colorado Mines	1-0	1.000	<b>Pittsburg State</b>	<b>12-25</b>	<b>.324</b>
Colorado State-Pueblo	1-0	1.000	Prairie View (Tex.)	1-0	1.000
Concordia Lutheran	4-0	1.000	Puerto Rico Bayamon	1-0	1.000
Drury	0-1	.000	Quincey (Mo.)	1-0	1.000
East Central	30-21	.588	Rockhurst	1-0	1.000
Eastern New Mexico	16-21	.432	<b>Rogers State</b>	<b>8-0</b>	<b>1.000</b>
Eastern Oklahoma	1-0	1.000	Science & Arts of Okla.	16-10	.615
<b>Emporia State</b>	<b>13-26</b>	<b>.333</b>	Slippery Rock	1-0	1.000
Ferris State	0-1	.000	SIU-Edwardsville	0-1	.000
<b>Fort Hays State</b>	<b>5-19</b>	<b>.208</b>	South Dakota	1-0	1.000
Francis Marion (S.C.)	0-1	.000	Southern Arkansas	2-0	1.000
Friends (Kan.)	4-0	1.000	<b>Southern Nazarene</b>	<b>18-12</b>	<b>.600</b>
Georgia Southwestern	1-0	1.000	Southeastern Oklahoma	26-35	.426
Harding	4-4	.500	Southwestern Oklahoma	24-27	.471
Henderson State	3-1	.750	Southwestern Texas	0-1	.000
High Point	1-0	1.000	Southwest Baptist	10-8	.555
Hillsdale	1-0	1.000	St. Edward's	3-0	1.000
Hofstra (N.Y.)	1-0	1.000	St. Gregory's	4-0	1.000
Howard Payne (Tex.)	1-1	.500	St. Mary's	4-2	.667
Huston-Tillotson (Tex.)	1-0	1.000	Tarleton State	13-12	.520
Incarnate Word	4-2	.667	Texas A&M-Commerce	27-15	.642
IUPUI-Fort Wayne	1-0	1.000	Texas A&M International	2-0	1.000
John Brown (Ark.)	1-0	1.000	Texas A&M-Kingsville	24-10	.706
Langston	10-14	.417	Texas Christian	1-0	1.000
<b>Lincoln (Mo.)</b>	<b>12-2</b>	<b>.857</b>	Texas-El Paso	0-1	.000
Lindenwood	10-3	.769	Texas Lutheran	2-0	1.000
Louisiana College	1-0	1.000	Texas-Permian Basin	1-0	1.000
Lubbock Christian	1-1	.500	Texas Tech	0-1	.000
<b>Mary (N.D.)</b>	<b>2-0</b>	<b>1.000</b>	Texas Wesleyan	2-2	.500
Marymount (Kan.)	1-0	1.000	Texas Woman's	37-6	.860
McKendree	2-0	1.000	Truman State	0-1	.000
Mid-America Christian	2-0	1.000	Tulsa	4-2	.667
Midwestern State	19-19	.514	University of Ozarks	2-1	.667
Minnesota-Duluth	1-1	.500	<b>Washburn</b>	<b>11-14</b>	<b>.440</b>
Mississippi for Women	0-1	.000	West Texas A&M	5-33	.132
Missouri S&T	1-0	1.000	<b>Bold - Indicates 2023-24 opponent</b>		
<b>Missouri Southern</b>	<b>15-19</b>	<b>.441</b>			
<b>Missouri Western</b>	<b>6-12</b>	<b>.333</b>			

<b>Largest Margin of Victory</b>			
Margin	Season	Team	Score
71	1996-97	Newman	106-35
67	2008-09	Oklahoma Panhandle	107-40
59	2016-17	Northwestern Oklahoma	101-42
56	1997-98	Texas A&M-Commerce	85-29
51	2011-12	Southern Arkansas	97-46
50	2009-10	East Central	96-46
50	2008-09	Paul Quinn	104-54
49	2019-20	Cameron	107-58
49	2008-09	Midwestern State	106-57
48	2017-18	East Central	94-46
46	2011-12	Oklahoma Panhandle	121-75
45	2018-19	Oklahoma Christian	95-50
46	1981-82	Phillips	95-49
42	2017-18	Lincoln	81-39
42	1997-98	Angelo State	98-56
42	1981-82	USAO	82-40
41	1995-96	Concordia Lutheran	98-57
40	Three Times		

<b>Largest Margin of Defeat</b>			
Margin	Season	Team	Score
76	1979-80	Texas Tech	125-49
63	1994-95	Missouri Southern	111-48
55	1995-96	West Texas A&M	112-57
50	1980-81	Northwestern	83-33
49	1995-96	Abilene Christian	109-60
49	1994-95	Abilene Christian	103-54
49	1987-88	West Texas A&M	95-46
47	2022-23	Northwest Missouri	97-50
46	1979-80	Oklahoma Panhandle	86-40
45	1980-81	Oklahoma City	95-50
45	1979-80	Southeastern Oklahoma	71-26
42	1993-94	Abilene Christian	88-46
43	1997-98	Abilene Christian	93-50
42	1979-80	Cameron	86-44
41	Four times		

<b>Longest Winning Streaks</b>		
Games	Season(s)	Streak-Starter Ended By
11	2016-17	Northwestern, 101-42 Missouri Western, 67-57
9	Six times	
Last	2017-18	Northwest Missouri, 57-53 Emporia State, 61-53
8	Four times	
Last	2018-19	Northwestern Oklahoma, 64-53 Pittsburg State, 84-71

<b>Longest Losing Streaks</b>		
Games	Season(s)	Streak-Starter Ended Against
20	1980-81	Phillips, 51-76 Langston, 59-49
17	1979-80	Southwestern, 54-60 Friends, 73-72
11	Two times	
10	2012-13	Missouri Western, 78-76 Lincoln, 88-79
9	Two times	

## Bronchos in the Postseason

Central Oklahoma has made seven national tournament appearances, two in the now-defunct AIAW (American Intercollegiate Athletics for Women) and five in NCAA Division II.

The Bronchos have an 10-6 record in national tournament play, including a 5-5 mark in Division II.

### 1975-76, AIAW

UCO first qualified in 1975-76, defeating North Texas, 68-56, in the first round of the AIAW Division II Region IV Tournament before being eliminated by Northwest Louisiana, 89-80.

### 1981-82, AIAW

The Bronchos went back in 1981-82 and won four games to reach the quarterfinals of the AIAW Division II National Tournament. UCO captured the Region IV Tournament crown with wins over Texas Christian (86-71), Ouachita Baptist (79-73) and Centenary (79-72) and then defeated Hofstra, 73-66, to make the quarterfinals before being eliminated by eventual champion Francis-Marion, 91-87.

### 2007-08, NCAAs

UCO didn't return to national tournament play again until 2007-08, when the Bronchos earned their first NCAA Division II playoff bid with an at-large berth into the South Central Regional. Coach Guy Hardaker's crew knocked off St. Mary's 75-73 in overtime in the first round before being eliminated by Washburn, 73-66.

### 2008-09, NCAAs

UCO went back to the Division II national tournament in 2008-09, advancing to the Sweet 16 in making the South Central Regional finals.

The Bronchos opened with a 68-66 overtime win over Southeastern Oklahoma and then got past Washburn 72-63 in the semifinals before falling to host West Texas A&M 65-52 in the regional championship.

### 2009-10, NCAAs

UCO made it back to the playoffs again in 2009-10, but fell to Northeastern State in the first round, 54-52.

### 2010-11, NCAAs

The Bronchos qualified for the fourth straight time in 2010-11 and advanced to the Sweet 16 with back-to-back upsets, knocking off Washburn 65-64 and host Northeastern State 68-60 before falling in the regional finals to Northwest Missouri, 82-70.

### 2016-17, NCAAs

Central Oklahoma went to the NCAA Tournament for the seventh time in 2016-17, earning an at-large bid to the Central Regional. UCO was nationally ranked for most of the season and set a school record with an 11-game win streak to start the year. But the Bronchos would fall in the first round to Pittsburg State.



2016-17 Central Oklahoma women's national tournament team.

## Hamilton Field House



Central Oklahoma plays all its home basketball games inside Hamilton Field House, which opened its doors on Jan. 8, 1965 when the UCO men's team downed intrastate rival Northeastern State 64-52.

UCO's women started playing in the 3,000-seat facility in 1980 and are 324-206 (.611 winning percentage) in 45 years.

Hamilton Field House was renamed from Broncho Field House on May 1, 1993 in honor of long-time UCO coach and athletic director Dale Hamilton, who helped design the building in the 1960s.

The facility underwent extensive renovation before the 2001-02 season, with new chairback seats installed around the floor level. A new floor, pictured above, was installed following the 2019-20 season.

Hamilton Field House is also the home facility for the volleyball and wrestling teams and numerous other events, including the university's graduation ceremonies, are also held in the building.

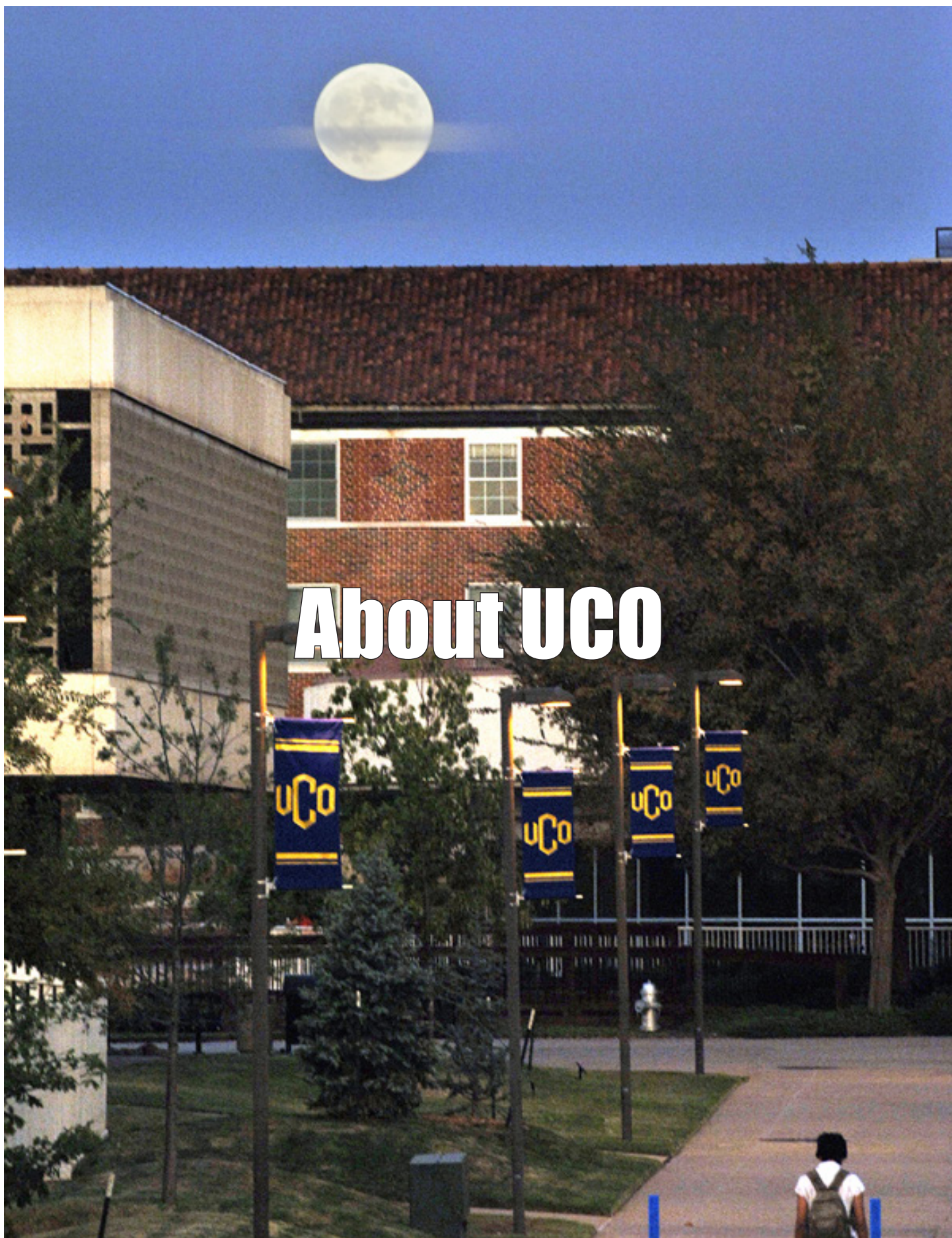
## Hamilton Field House Records

### Team

- Most Points, One Team:** 107, UCO vs. Cameron, Nov. 23, 2019.
- Most Points, Combined:** 204, UCO (105) over Texas A&M-Kingsville (96), Feb. 20, 1989.
- Most Points, One Half:** 65, UCO vs. Midwestern State, Dec. 2, 2008 (first).
- Largest Winning Margin:** 71, UCO (106) over Newman (35), Nov. 26, 1996.
- Field Goals Made:** 43, UCO vs. Cameron (attempted 73), Nov. 23, 2019.
- Field Goals Attempted:** 93, Angelo State, Feb. 21, 1994 (made 40) and Oklahoma City, Dec. 1, 1980 (made 41).
- 3-Point Field Goals Made:** 19, Northwestern Oklahoma, Nov. 11, 2016 (att. 38).
- 3-Point Field Goals Attempted:** 41, East Central, Jan. 29, 2011 (made 16).
- Free Throws Made:** 41, UCO vs. Texas A&M-Kingsville, Feb. 20, 1989 (att. 55).
- Free Throws Attempted:** 55, UCO vs. Texas A&M-Kingsville, Feb. 20, 1989 (made 41).
- Rebounds:** 66, Abilene Christian, Jan. 23, 1989.
- Steals:** 24, UCO vs. Cameron, Jan. 31, 2009.
- Assists:** 34, UCO vs. Cameron, Feb. 15, 1984.
- Blocked Shots:** 14, UCO vs. Newman, Feb. 4, 2012.

### Individual

- Points:** 46, Tammy Cummings, UCO vs. Angelo State, Feb. 21, 1994.
- Field Goals Made:** 20, Tammy Cummings, UCO vs. Angelo State, Feb. 21, 1994 (att. 37).
- Field Goals Attempted:** 37, Tammy Cummings, UCO vs. Angelo State, Feb. 21, 1994 (made 20).
- 3-Point Field Goals Made:** 7, five times. Most recent: Blake Blessington, UCO vs. Northwestern, Nov. 11, 2017.
- 3-Point Field Goals Attempted:** 16, Ashley Gray, Abilene Christian, Dec. 2, 1999 (made 4).
- Free Throws Made:** 18, Renee Renz, Texas Woman's, Feb. 18, 2009 (att. 19).
- Free Throws Attempted:** 19, Renee Renz, Texas Woman's, Feb. 18, 2009 (made 18).
- Rebounds:** 26, Tricia Hampton, Angelo State, Feb. 21, 1994.
- Steals:** 11, Patti Komalty, UCO vs. Southeastern Oklahoma, Feb. 3, 1982.
- Assists:** 14, Deanna English, Science & Arts of Oklahoma, Jan. 21, 1984.
- Blocks:** 10, Brandai Prince, Angelo State, Feb. 21, 1994.



# University of Central Oklahoma

With strong connections throughout the Oklahoma City metro, the University of Central Oklahoma is dedicated to developing in students the confidence to succeed through transformative learning experiences. Central prides itself as a smart investment for success, preparing future leaders in an opportunity-rich environment, with access to more than 200 student organizations and the internship, employment, entertainment and cultural offerings of the rapidly growing Oklahoma City metropolitan area. Founded in 1890 and accredited by the Higher Learning Commission of the North Central Association of Colleges and Schools, Central connects its more than 16,000 students to unmatched value found in 121 undergraduate areas of study and 74 graduate programs from its main campus in Edmond and facilities throughout the metro area.



## UCO Quick Facts

**Founded:** December 24, 1890

**Location:** Edmond, Oklahoma

**President:** Patti Neuhold-Ravikumar

**Enrollment:** 16,000

**Faculty:** More than 400 full-time professors with an additional 380 professionals from the community serving as adjunct faculty. A full 75 percent of faculty members have earned doctorates.

**Student/Faculty Ratio:** 19:1

**Student Representation:** Students come from all 50 states and more than 100 countries.

**Academic Divisions:** Five undergraduate colleges and a college of graduate studies and research.

**Degrees:** UCO awards 10 bachelor's degrees with 121 undergraduate majors and 112 options. There are six master's degrees with 74 majors. UCO also offers a Funeral Service Certificate Program.

**School Calendar:** Two 16-week semesters (fall and spring) and an 8-week summer session.

**Library:** The Chambers Library exceeds 1.4 million volumes of books, microforms, periodicals and government documents.

**Organizations:** More than 200 clubs and organizations on campus.

**Accreditation:** The University of Central Oklahoma has earned numerous accreditations.

UCO has received 15 different accreditations for its undergraduate programs and seven for its graduate programs. UCO's College of Business was also accredited by the Association of Collegiate Business Schools and Programs.

Accredited programs include four different Master of Science programs, as well as two Master of Fine Arts programs. The master's programs in the School of Music are also accredited.

# University of Central Oklahoma

## Best of the Best

- UCO earned national recognition for its dedication to student engagement, ranking No. 6 on the list of “Top Schools for Engagement” in The Wall Street Journal/Times Higher Education College Rankings.
- The Military Times ranked UCO No. 9 among all surveyed four-year colleges and universities in the U.S. on its 2019 “Best for Vets: Colleges” list.
- Oklahoma’s largest and oldest college of education has graduated more than 50,000 teachers since 1890.
- The National Board for Professional Teaching Standards recognized Central as one of the top 50 alma maters in the U.S. for National Board Certified Teachers (NBCT) with 444 total certifications.
- The W. Roger Webb Forensic Science Institute became the only college in North America with three accredited undergraduate forensic science programs — forensic molecular biology, forensic chemistry and digital forensics. Central is the only institution in Oklahoma with undergraduate level accreditation from Forensic Science Education programs and joined Eastern Kentucky University as the first two universities in the nation to receive accreditation for an undergraduate digital forensics program.
- A broadcasting communication program annually recognized as one of the best in the region for technology.
- A theatre arts department specializing in providing opportunities for incoming freshmen on stage and production.
- The state’s largest computing science department.
- Graduates from the department of nursing and pre-medical programs consistently score well above the state average of 88 percent passing.
- The only photojournalism degree in the state.
- Oklahoma’s first and only funeral service program.
- The Academy of Contemporary Music at UCO (ACM@UCO) was started in 2009.

## Campus Life

While activities are abundant in Edmond and nearby Oklahoma City, students will never be bored on the UCO campus. Last year alone, students experienced activities ranging from concerts and Greek, athletic and multicultural events.

- Homecoming Week – Cookout and Dodge Ball Tournament, Talent Show, Bronze and Blueberry Breakfast, Cheer & Dance, Parade, and much more
- BronchoThon – Throughout the academic year, students, faculty and staff participate in fundraising and awareness events. The final event, BronchoThon, is held in April. The eight-hour marathon includes musical entertainment, student-led activities and refreshments. More than \$68,000 was raised last year.
- Concerts – Battle of the Bands, Broncho Idol, Open Mic Nights
- Recreation – Foam Party, Laser Tag, BINGO
- The Office of Diversity and Inclusion (ODI) advances cultural competence while implementing opportunities for diverse communities to learn, thrive and succeed. Met by implementing unique programs and services that promote the pursuit of academic success and encourage retention, while promoting the leadership development of students, ODI initiatives serve to expand students’ cultural horizons and perspectives, honor respective cultural experiences and develop culturally competent citizens.
- Pride and Traditions – Build a Broncho, Chili Cook-off, Pingpong with the Presidents and other events to promote Central traditions

## Greek Life

Join one of the 27 national sororities and fraternities that maintain active chapters at UCO. Lifelong associations and promotion of high standards of leadership are among the benefits members enjoy. Houses near campus provide a comfortable place to meet, yet allow the freedom to choose other housing options.

### Fraternities

- Acacia
- Alpha Phi Alpha
- Alpha Tau Omega
- Beta Upsilon Chi
- Delta Chi
- Omega Delta Phi
- Omega Psi Phi
- Phi Lambda Chi
- Pi Kappa Alpha
- Sigma Alpha Epsilon
- Sigma Nu
- Sigma Tau Gamma
- Tau Kappa Epsilon

### Sororities

- Alpha Delta Pi
- Alpha Gamma Delta
- Alpha Kappa Alpha
- Alpha Xi Delta
- Delta Sigma Theta
- Delta Zeta
- Kappa Delta Chi
- Kappa Phi
- Sigma Gamma Rho
- Sigma Kappa
- Sigma Lambda Gamma
- Sigma Phi Lambda
- Sigma Sigma Sigma
- Zeta Phi Beta



## Edmond

Edmond is located in the heart of Oklahoma, just north of the state capital in Oklahoma City, and has a population of over 90,000 as one of the fastest growing cities in the state.

Edmond has the best of both worlds, including easy access to the city with just enough distance to maintain a close-knit community atmosphere.

The city offers outstanding hotels, nostalgic shopping areas and conveniently located attractions for your enjoyment. Known for its outstanding golf courses, Edmond has hosted some of the most exciting PGA and celebrity events in the past two decades at world-famous Oak Tree Golf Club.

Edmond is the fastest growing, most economically dynamic city in Oklahoma. Thriving technology firms, diverse retail and commercial opportunities and small corporate office headquarters have enhanced its reputation as the affluent residential suburb to the metropolitan area.

There are many more activities in Edmond, with a variety of music, art, theatre, water and sporting events that make for spectacular family fun.

Heard on Hurd is a monthly festival where Downtown Edmond is transformed into an exciting mix of food trucks, family-friendly excitement and music that has become one of the premier, socially engaging events in the area.

Edmond also boasts one of the best Fourth of July fireworks shows in the country. More than 125,000 people attend the event. LibertyFest has been previously chosen by CNN and USA Today as one of the top 10 places to be in America on July 4.

Another Edmond attraction is Lake Arcadia. Home to the Center for Outdoor Adventure Recreation, Lake Arcadia offers trails for running, hiking, and cycling, as well as 1,820 surface acres for boating, skiing, kayaking, and fishing, and 26 miles of shoreline for more fun.



## Oklahoma City

The largest city in the state, Oklahoma City borders Edmond to the south and sits at the crossroads of I-35, I-40 and I-44, leaving OKC with more than 130 miles of federal and interstate highways.

More than 1.3 million people call metro Oklahoma City home.

The City, as it is commonly referred to around the state, offers numerous things to do on any given day of the week – or year for that matter. Whether it is sports, music, art, or just getting outside on a nice day, OKC offers it all.

Chesapeake Energy Arena in downtown Oklahoma City is not only home to the NBA's Oklahoma City Thunder, but it also hosts concerts year-round, as well as other events such as pro wrestling, bull riding and more.

Bricktown, the central hub of entertainment in downtown, is home to Bricktown Ballpark, where the Oklahoma City Dodgers – Triple-A affiliate to MLB's L.A. Dodgers – play ball. The ballpark also hosts high school games, collegiate tournaments, as well as concerts of its own.

There is plenty more to do, especially on the booming, Oklahoma River.

The UCO rowing team calls the river home and has a state-of-the-art boat-house on the river to prove it. Visitors can also enjoy the Riversport Adventure District, where you can challenge yourself through a white-water rapids course, zip line across the river, or bungee jump among other fun activities.



There are also five lakes in the greater OKC metro area that offer ample fun including fishing, running or cycling trails and swimming.

There are also more than a dozen golf courses to choose from.

Along with art museums, a science museum, and many more, there is always something to do in OKC.

The Adventure District is just 10 minutes from UCO and offers many fun things to do.

Remington Park races horses more than half of the year, the Oklahoma City Zoo is always a top-pick, and it sits right next to the science museum.

If you venture west of downtown toward the fairgrounds, you can find more fun.

Home to the Oklahoma State Fair every September, as well as shows year-round, the fairgrounds offer countless entertainment options.

Oklahoma City is in a warm



southwest climate. It sees more than 300 days of sunshine on average per year.

The average temperature annually is 60 degrees ac-

ording to the Oklahoma City Visitors Convention Bureau. OKC also sees on average 32.03 inches of rain and nine inches of snow every year.

## Administration



### President, Todd G. Lamb

Todd G. Lamb became the University of Central Oklahoma's 22nd president July 1, 2023, marking a new chapter in a distinguished career that spans public service, statewide elected office, private law practice and business ownership. In his role leading Oklahoma's metropolitan university, President Lamb ensures the Central team remains focused on educating students through transformative learning and meeting the critical workforce needs of our state and nation.

President Lamb champions a commitment throughout campus to what he has coined "The B.R.O.N.C.H.O. Way" – Being Reflective of Our Neighborhood, Community, History and Oklahoma. This commitment connects the university mission and values to relevant action that ensures accessibility to a quality university education for students.

Born in Enid, Oklahoma, President Lamb earned his bachelor's degree from Oklahoma State University, also attending classes at UCO during his undergraduate pursuit. He earned a Juris Doctor from Oklahoma City

University.

Early in his career, Lamb was a special agent with the U.S. Secret Service. He was appointed to the Joint Terrorism Task Force and was assigned to portions of the 9/11 investigation. He also served on details protecting President Bill Clinton and President George W. Bush.

Following his tenure with the U.S. Secret Service, President Lamb worked on the staff of U.S. Sen. Don Nickles. He was elected to the Oklahoma State Senate in 2004, where he represented portions of Edmond and northwest Oklahoma City. He rose to the position of majority floor leader during his senate tenure.

President Lamb was elected as the lieutenant governor of the state of Oklahoma, a position he held from 2011 to 2019. During his time in elected office at the Oklahoma State Capitol, he served in a number of leadership roles, focusing on educational, financial and commerce matters. He also was the recipient of the Oklahoma State Regents Distinguished Service Award for his dedication to strengthening higher education in Oklahoma.

Upon reentering the private sector in 2019, he was involved in a number of private business ventures, including the practice of law, focusing on business and governmental matters.

President Lamb's diverse background in government, law, financial management and industry is helping guide UCO into the future as a leading university in career readiness.

President Lamb has been married to his wife, Monica, for 28 years. A longtime educator, she most recently taught at Cashion Public Schools. Monica stepped away from the classroom to commit herself to serving UCO students, faculty and staff as the university's first lady. The Lambs have two children.



### Director of Athletics, Stan Wagon

Stan Wagon is the University of Central Oklahoma's director of athletics, becoming the ninth director in the school's more than 125-year athletic history in August 2020.

Wagon made his return to Central following a four-year stint as commissioner of the Sooner Athletic Conference, serving that post from July 2016 to August 2020. Prior to that, Wagon held the same position at the Lone Star Conference, spending 11 years there within the conference's administration and as commissioner.

An Edmond native, Wagon earned his bachelor's degree in journalism/public relations from Central in 1995. He also holds a master's of education from Midwestern State University. His father (Skip) served as director of athletics from 1986-2003 following a 15-year stint as head athletic trainer.

Wagon returns to UCO after a 25-plus year career in athletics. After working in the UCO sports information office as a student, Wagon had stints in the same role at Midwestern State, where he received his master's degree, and Tarleton State.

Wagon moved from Tarleton to the NCAA Division II's Lone Star Conference office and eventually served as commissioner. He spent 11 years in that role before moving to the same post at the NAIA's Sooner Athletic Conference.

At the Lone Star Conference, Wagon's most noteworthy accomplishment was creation of the Lone Star Football Festival, held annually at Arlington's AT&T Stadium, home of the NFL's Dallas Cowboys. The event generated nearly a half-million dollars back to the conference office.

Throughout his career, Wagon has emerged as a national leader in intercollegiate athletics. He has served as Chair of the NCAA Division II Nominating Committee and the NCAA Men's Basketball Regional Advisory Committee. He also served on committees for the D2CCA and College Sports Information Directors of Association (CoSIDA).

Wagon is married (Jill) and has three children (Abby, Macy, and Knox).

## Administration

### Chuck Bailey - Senior Strategic Advisor



Chuck Bailey moved into the position of Senior Strategic Advisor in August 2020 following a brief stint as interim athletic director, for which he served from May 1, 2020 through the end of August.

Bailey came to UCO in 1984 as an assistant football coach. He helped lead the Bronchos to two Lone Star Conference championships and four NCAA Division II playoff appearances during his coaching tenure.

Bailey assumed the additional responsibilities of Director of Football Operations in 2003 and served both roles until moving into athletic administration in 2006. He served as Assistant Athletic Director for Operations before becoming Senior Associate Athletic Director in 2007.

Bailey left UCO to become the District Athletic Director for Mustang Public Schools in 2009 where he served until retiring in 2016. He returned to UCO in 2017 as Development Director for Athletic Scholarships and contributed in that capacity for two years before his service as interim director and now advisor.

Bailey is married (Crystal) and has two children (Burke and Brylee).

### Jeremy Rogers - Senior Associate Athletic Director



Jeremy Rogers, a native of Medford, Oklahoma, serves as Senior Associate Athletic Director at Central Oklahoma.

Joining the department in November 2012, Rogers served the compliance department in an assistant role before moving to Director of Athletic Compliance and Legal Affairs, overseeing all aspects of the crucial facet of the department, in 2020. He was named Senior Associate Athletic Director in July 2021, continuing to lead the efforts of the compliance department while adding oversight of the internal operations of the athletic department. Rogers also oversees operations in athletic training, strength & conditioning, ticketing, and facilities.

Rogers has been heavily involved in projects, committees, forums, and the like both inside the university as well as on the national stage. He holds positions in charge of student-athlete development and the Student Athlete Advisory Committee, he is Deputy Title IX coordinator and a member the University's Behavioral Assessment Team (BAT). And he has sport oversight of the men's golf, women's track & field and cross country, and wrestling programs.

A member of the National Association of Collegiate Directors of Athletics (NACDA), Rogers is also involved with the National Association of Academic and Student-Athlete Development Professionals (N4A), College Athletic Business Management Association (CABMA), and National Association of Athletics Compliance (NAAC) serving on the association's DII Reasonable Standards Committee.

Rogers serves on the NCAA Division II Coaching Enhancement Grant Committee which is designed to provide financial assistance to the division's member schools that are committed to enhancing ethnic minority and gender representation in newly created assistant coaching positions for any NCAA-sponsored sport. He is also a representative of the NCAA Eligibility Advisory Group which provides support and feedback on content and functionality to the NCAA Eligibility Center.

Rogers was a member of the Southern Nazarene University football team (two-year starter) and earned all-conference team honors at tight end. He received his Bachelor's degree in Sport Management from SNU in 2007.

Rogers went on to earn his Juris Doctor from the University of Oklahoma College of Law in 2012. While at OU he worked as an intern for the Athletic Compliance Department and Office of Legal Counsel. Rogers is licensed to practice law in the state of Oklahoma and is a member of the Oklahoma Bar Association.

Jeremy is married (Rachel) and they have four children (Mason, Norah, Sophie, and Lane).

### Melissa Paul, Assistant A.D., Finance, SWA



Melissa Paul enters her sixth year at the University of Central Oklahoma and enters her fourth year in the role of Assistant Athletic Director for Business and Senior Woman Administrator (SWA).

Paul spent two years serving as an assistant registrar at Central and also helped out as a volunteer assistant coach for the softball program in 2020. She moved into her current role during the summer of 2020 and has spent the last three years serving in that capacity, overseeing the financial operations of the department. As SWA, she serves as the lead female voice of the department and works with the female student-athletes. Paul created the Women's Leadership Council where each sport works together for growth and professional development.

Paul played softball collegiately at Division I Marist and later served as head coach for her alma mater. She coached at Marist from 2002-06, leading the Red Foxes to the Metro Atlantic Athletic Conference championship and their first-ever national tournament appearance in her final season. Melissa then spent seven years as assistant coach at Missouri, helping lead the team to a 288-89 record in that span. The Tigers made three straight appearances in the Women's College World Series and Paul mentored three All-America selections

while coaching the team's outfielders.

Paul went to Division II West Florida as assistant coach in 2013 before taking over the head coaching reigns the following season. She put together a 138-83 record in four seasons at UWF and led the Argos to three Division II national tournament appearances.

West Florida won 40-plus games twice under Paul's guidance, including a school-record 46 in 2017 when the Argos captured the South Region title in qualifying for the Division II Softball Championship.

Melissa is married (Andrew) and has one daughter (Ellie).

## Administration



### **Chris Brannick, Assistant A.D. Media Relations**

The Central Oklahoma Athletic Media Relations Office is under the direction of Chris Brannick, who is in his seventh year overseeing the department's communications efforts. Brannick took over the post August 1, 2016.

Brannick's main duty is keeping local, state and national media informed about UCO's athletic department as well as handling the school's athletic website ([www.bronchosports.com](http://www.bronchosports.com)).

Chris came to UCO after three years as a sports reporter for The Oklahoman.

A native of Utica, N.Y. who grew up in Sallisaw, Okla., Brannick is a Central graduate. He received his bachelor's degree in mass communications in 2013 with a journalism major and creative studies minor.

Brannick served as sports editor of UCO's student newspaper (The Vista) and also worked as a sports anchor on the school's student-run broadcast news program (UCentral News).

He won first- and second-place in sports reporting at the Society of Professional Journalists (SPJ) Oklahoma in 2013 and won the UCO Mass Comm Professional Media award the same year. He also won first place at the Oklahoma Broadcasting Association's annual awards for his work on The Huddle, a 30-minute weekly sports recapping UCO football and local high school football action.

Brannick began working at The Oklahoman immediately after graduation.

Chris is married (Cori) and has one daughter (Elle).

---



### **Chandler Short, Assistant A.D. Corporate Sales & Marketing**

Chandler Short joined the University of Central Oklahoma in February 2022 as the Assistant Athletic Director for Corporate Sales and Marketing.

The Texas native comes to UCO after spending the last six years at McPherson College in McPherson, Kansas. She joined McPherson in 2017 and was promoted to assistant athletic director and senior woman administrator in 2018, then was promoted again to director of athletics in March 2020.

Short graduated from McPherson in 2015 with a Bachelor of Science. She played women's basketball and tennis for the Bulldogs during her time there. She then attended the University of Oklahoma and received her master's degree in higher education and intercollegiate athletics administration in 2017.

Short is currently pursuing her doctorate in higher education from Southern Methodist University.

A native of Edgewood, Texas, Short oversees UCO's corporate sales program and the marketing efforts of the department and its 14 varsity sports.

---



### **Samm Chavez, Assistant A.D. Academics & Student Support Services**

Samm Chavez was promoted to Assistant Athletic Director for Academics and Student Support in July of 2022 after spending the previous three years as manager of financial aid for the department.

Chavez supports student-athletes in their academic journey to graduation by connecting services and supports like the BELL (Broncho Education Learning Lab), Academic Advisement, Career Development, CCWB (Center for Counseling and Well Being) and more, so students can be best equipped to see success in the classroom.

She also monitors grades throughout the semester, works with the BELL to plan for learning facilitators (tutors) to be present in the Sports Performance Center's Mike Ciskowski Academic Center for student athletes, along with planning and delivering outreach to students. Chavez assists in coordinating the annual Academic Awards Banquet, and advises first-year freshman student-athletes to support students in discovering a major and classes that help them begin their college career focused and driven in the classroom.

Chavez works with the athletic department in the creation and execution of a cohesive and comprehensive student athlete development program that aligns with the department's vision and mission.

Chavez is active in service both at UCO and off campus. She is involved in the Faculty/Staff mentor for Hispanic Success Initiative (2018-Present), Latino Faculty & Staff Association (2018-Present), Treasurer for Latino Faculty & Staff Association (2022 – Present), Leadership UCO (2021-2022), and Latino Leadership OKC (Feb 2022 – Present).

Chavez received her Bachelor of Science in Education – Special Education Mild/Moderate Disabilities from UCO in 2013 and her Master of Education – Adult & Higher Education, Student Personnel from UCO in 2019.

She is a native of Mustang, Oklahoma and graduated from Mustang High School in 2007.

## Mid-America Intercollegiate Athletics Association

Central Oklahoma enters its 12th year as a member of the Mid-America Intercollegiate Athletics Association.

The MIAA, a 14-member conference of NCAA Division II institutions in Kansas, Missouri, Nebraska and Oklahoma, was first organized in 1912 as the Missouri Intercollegiate Athletic Association.

Over the past 100 years, the MIAA has gained the reputation of being one of the top NCAA Division II conferences in the nation. MIAA schools have won 54 NCAA team championships and over 300 individual national championships.

The MIAA currently conducts championships in nine sports for both men and women.

For the men, champions are crowned in football, cross country, basketball, indoor and outdoor track & field, baseball, tennis, golf, and wrestling. The MIAA crowns champions in bowling, basketball, cross country, golf, soccer, softball, tennis, and indoor and outdoor track & field.

The MIAA turned a new page on July 1, 1992, when the NCAA Division II conference changed its name from the Missouri Intercollegiate Athletic Association to the Mid-America Intercollegiate Athletics Association.

The decision to make the change originated in 1989, when Pittsburg State and Washburn became the first schools outside the state of Missouri to gain membership in the MIAA.

The conference was first organized in 1912 with 14 member institutions. Of those original members, Central Missouri and Northwest Missouri still remain a part of the MIAA.

The first change in membership came in 1924, when the MIAA reorganized to include only the five regional Missouri state colleges: Central Missouri, Truman (at the time known as Northeast Missouri State), Northwest Missouri, Southeast Missouri State and Southwest Missouri State (now Missouri State).

Over the next 56 years, three schools joined the membership: Missouri School of Mines (later Missouri-Rolla) in 1935, Lincoln in 1970 and the Missouri-St. Louis in 1980.

Ken Jones became the first full-time commissioner of the MIAA in 1981 and would be in the position for 16 years, retiring in 1997. Ralph McFillen succeeded Jones, serving 10 years before his retirement in 2007.

Jim Johnson succeeded McFillen in July of that year and served as commissioner until September of 2010, when Dr. Bob Boerigter took over. Mike Racy is the current commissioner and began in January of 2017 following Boerigter's retirement.

Southwest Baptist brought membership back to eight schools



in 1986, before the major expansion of the conference in 1989. Pittsburg State, Washburn, Missouri Southern and Missouri Western began competition in the 1989-90 season.

Southeast Missouri State left the MIAA following the 1990-91 season and was replaced by Emporia State in the 1991-92 season.

Missouri-St. Louis departed the MIAA in 1996, Missouri-Rolla left in 2005 and Lincoln forfeited its membership in 1999. Fort Hays State joined the MIAA in 2006, Nebraska-Omaha entered the league in 2008 and Lincoln re-joined the conference in 2010.

UCO, Lindenwood, Nebraska-Kearney and Northeastern State all become league members with the start of the 2012-13 academic year.

Nebraska-Omaha left the league in 2011 and Truman State did the same in 2013.

Southwest Baptist, which had not competed in football in the MIAA since 2014, and Lindenwood, departed the MIAA altogether in 2019. Lincoln, who like SBU had been competing as associate members without football, returned to fill the void left by Lindenwood to keep the MIAA with 12 football playing schools.

Newman (Kan.) and Rogers State (Okla.) also joined the league in 2019 to give the MIAA 14 total schools. Newman had been an associate member in wrestling.

### ***MIAA Facts***

**Address:** 114 West 11th Street (Suite 105), Kansas City, Mo. 64105

**Phone:** (816) 421-MIAA (6422)

**Media Relations Fax:** (816) 421-6429

**Website:** [www.themiasa.com](http://www.themiasa.com)

**Commissioner:** Mike Racy

**Deputy Commissioner/Senior Woman Administrator:** Amber Feldman

**Assistant Commissioner – External Affairs:** Marshall Fey

**Assistant Commissioner - Communications:** Brenna Winn

**Assistant Director for Compliance & Marketing:** Anthony Rittorf

# 2023-24

# UCO Women's Basketball Schedule

Date	(Day)	Opponent	Location	Time
Nov. 10	Friday	Mary#	Tahlequah, Okla.	1 p.m.
Nov. 11	Saturday	Northwestern Oklahoma State#	Tahlequah, Okla.	1 p.m.
Nov. 17	Friday	Cameron	Lawton, Okla.	5:30 p.m.
Nov. 18	Saturday	Southern Nazarene	Bethany, Okla.	1 p.m.
<b>Nov. 21</b>	<b>Tuesday</b>	<b>Texas A&amp;M International@</b>	<b>Edmond, Okla.</b>	<b>4 p.m.</b>
<b>Nov. 22</b>	<b>Wednesday</b>	<b>Oklahoma Christian@</b>	<b>Edmond, Okla.</b>	<b>1 p.m.</b>
<b>Nov. 30</b>	<b>Thursday</b>	<b>Central Missouri*</b>	<b>Edmond, Okla.</b>	<b>5:30 p.m.</b>
<b>Dec. 2</b>	<b>Saturday</b>	<b>Lincoln*</b>	<b>Edmond, Okla.</b>	<b>1:30 p.m.</b>
Dec. 7	Thursday	Missouri Southern*	Joplin, Mo.	5:30 p.m.
Dec. 9	Saturday	Pittsburg State*	Pittsburg, Kan.	1:30 p.m.
<b>Dec. 18</b>	<b>Monday</b>	<b>Nebraska-Kearney*</b>	<b>Edmond, Okla.</b>	<b>5:30 p.m.</b>
<b>Dec. 19</b>	<b>Tuesday</b>	<b>Fort Hays State*</b>	<b>Edmond, Okla.</b>	<b>1:30 p.m.</b>
Jan. 4	Thursday	Washburn*	Topeka, Kan.	5:30 p.m.
Jan. 6	Saturday	Emporia State*	Emporia, Kan.	1:30 p.m.
<b>Jan. 10</b>	<b>Wednesday</b>	<b>Northeastern State*</b>	<b>Edmond, Okla.</b>	<b>5:30 p.m.</b>
<b>Jan. 13</b>	<b>Saturday</b>	<b>Rogers State*</b>	<b>Edmond, Okla.</b>	<b>1:30 p.m.</b>
Jan. 18	Thursday	Northwest Missouri*	Maryville, Mo.	5:30 p.m.
Jan. 20	Saturday	Missouri Western*	St. Joseph, Mo.	1:30 p.m.
Jan. 27	Saturday	Newman*	Wichita, Kan.	1:30 p.m.
<b>Feb. 1</b>	<b>Thursday</b>	<b>Pittsburg State*</b>	<b>Edmond, Okla.</b>	<b>5:30 p.m.</b>
<b>Feb. 3</b>	<b>Saturday</b>	<b>Missouri Southern*</b>	<b>Edmond, Okla.</b>	<b>1:30 p.m.</b>
Feb. 8	Thursday	Nebraska-Kearney*	Kearney, Neb.	5:30 p.m.
Feb. 10	Saturday	Fort Hays State*	Hays, Kan.	1:30 p.m.
<b>Feb. 17</b>	<b>Saturday</b>	<b>Washburn*</b>	<b>Edmond, Okla.</b>	<b>1:30 p.m.</b>
Feb. 22	Thursday	Rogers State*	Claremore, Okla.	5:30 p.m.
Feb. 24	Saturday	Northeastern State*	Tahlequah, Okla.	1:30 p.m.
<b>Feb. 29</b>	<b>Thursday</b>	<b>Northwest Missouri*</b>	<b>Edmond, Okla.</b>	<b>5:30 p.m.</b>
<b>March 2</b>	<b>Saturday</b>	<b>Newman*</b>	<b>Edmond, Okla.</b>	<b>1:30 p.m.</b>
March 6-10	Wed.-Sun.	MIAA Basketball Championship	Kansas City, Mo.	TBD

**Bold** – Home game at Hamilton Field House

\* – MIAA game

# – Central Region Challenge

@ – UCO Thanksgiving Classic

