

GAME #13
AT SOUTHERN ILLINOIS
JAN. 8, 2016

GAME #14
AT EVANSVILLE
JAN. 10, 2016

BRADLEY

WOMEN'S BASKETBALL

Contact: Jim Rea
 Associate Director of Communications
 jrea@bradley.edu
 O: (309) 677-3869 • C: (309) 256-4379

WWW.BRADLEYBRAVES.COM

2015-16 SCHEDULE

Date	Opponent	Time/Result
11/1	McKENDREE (Exh.)	W, 52-38
11/7	MISSOURI-ST. LOUIS (Exh.)	W, 78-65
11/13	at Detroit (ESPN3)	W, 75-67
11/15	at Bowling Green (ESPN3)	L, 53-66
11/22	#17/24 OKLAHOMA (ESPN3)	L, 46-79
11/24	WESTERN MICHIGAN (ESPN3)	L, 59-72
11/28	EUREKA	W, 87-47
12/2	at Chicago State (WAC Digital Network)	W, 66-60
12/5	ILLINOIS-CHICAGO (ESPN3)	L, 56-66
12/8	KENT STATE (ESPN3)	W, 68-60
12/19	at #24 Iowa	L, 53-60
12/21	at Northern Illinois	L, 64-68
12/30	at Saint Louis	L, 58-75
1/3	*LOYOLA (ESPN3)	L, 54-67
1/8	*at Southern Illinois (ESPN3)	6 p.m.
1/10	*at Evansville (ESPN3)	1 p.m.
1/15	*MISSOURI STATE (ESPN3)	7 p.m.
1/17	*WICHITA STATE (ESPN3)	2 p.m.
1/22	*at Illinois State (ESPN3)	7 p.m.
1/24	*at Indiana State (ESPN3)	11 a.m.
1/29	*DRAKE (ESPN3)	7 p.m.
1/31	*NORTHERN IOWA (ESPN3)	2 p.m.
2/5	*EVANSVILLE (ESPN3)	7 p.m.
2/7	*SOUTHERN ILLINOIS (ESPN3)	2 p.m.
2/12	*at Wichita State (ESPN3)	7 p.m.
2/14	*at Missouri State (ESPN3)	2 p.m.
2/19	*INDIANA STATE (ESPN3)	7 p.m.
2/21	*ILLINOIS STATE (ESPN3)	2 p.m.
2/26	*at Northern Iowa (ESPN3)	7 p.m.
2/28	*at Drake (ESPN3)	2 p.m.
3/5	*at Loyola (ESPN3)	3 p.m.
MVC Tournament (Moline, Ill.)		
3/12	Opening Round	TBA
3/13	Quarterfinals	TBA
3/14	Semifinals	TBA
3/15	Championship	TBA

Home games in **BOLD CAPS** played at Renaissance Coliseum unless otherwise indicated.
 All times Central and subject to change
 * Missouri Valley Conference Games
 All games broadcast on WIRL (1290 AM)

THIS WEEK IN BRADLEY WOMEN'S BASKETBALL

Game #13

SIU Arena (8,500) • Carbondale, Ill.
 Friday, January 8, 2016 • 6 p.m.



Video: ESPN3

Radio: WIRL 1290 AM/102.7 FM

Live Stats: BradleyBraves.com

Series History: SIU leads 44-25

Last Meeting: SIU won 72-66 on 2/27/15 in Peoria

SIU
(9-5, 2-0 MVC)

BRADLEY
(4-8, 0-1 MVC)

Game #14

Ford Center (9,640) • Evansville, Ind.
 Sunday, January 10, 2016 • 1 p.m.



Video: ESPN3

Radio: WIRL 1290 AM/102.7 FM

Live Stats: BradleyBraves.com

Series History: BU leads 26-18

Last Meeting: BU won 56-50 on 2/8/15 in Peoria

EVANSVILLE
(1-12, 0-2 MVC)

BRADLEY
(4-8, 0-1 MVC)

LAST GAME STARTERS

No.	Name	Yr.	Pos.	Ht.	Hometown (Last School)	PPG	RPG	APG	Other
00	Danielle Brewer	So.	G	5-10	Coatesville, Ind.	6.3	3.1	1.3	7.9 p & 1.7 a in last 7
11	Tamya Sims	So.	C	6-2	Milwaukee, Wis. (Oak Creek)	9.1	5.6	2.0*	16 blocks in last 5
14	Kat Yelle	5th	G	5-7	Geneva, Ill. (Ohio)	3.0	4.1	3.7	1.95 A/TO ratio
23	Leti Lerma	Jr.	F	5-10	Muscataine, Iowa (Muscainte)	9.1	7.1	1.1	1.5 steals per game
33	Anneke Schlueter	So.	G	6-0	Ulm, Germany (Max-Weber-Schule)	11.8	2.8	1.3	28-for-75 from 3 in last 9

* - blocks per game

FOR STARTERS

- Bradley plays its first MVC road game of the year Friday at Southern Illinois (6 p.m.) and wraps up a two-game road swing Sunday at Evansville (1 p.m.).
- The Braves will play their MVC road opener at SIU for the second time in three years and third time in five seasons.
- The weekend road swing wraps up a stretch in which Bradley will have played five of six on the road.
- Sunday's game at Evansville is Bradley's third game outside the state of Illinois in the last 12 contests.
- The Braves have managed at least a split of the road matchups against Southern Illinois and Evansville in eight of the last nine seasons and 13 of the last 15 years.
- Bradley is trying to snap a three-game losing streak in MVC road openers dating back to a 72-59 win at Southern Illinois on Jan. 5, 2012.
- Bradley is one of two teams (Drake) in the MVC to have four individuals averaging 9.0 points per game or more.
- The Braves will play six of the next eight games at Renaissance Coliseum after Sunday's outing at Evansville.

FOLLOWING THE BRAVES

Facebook @Bradley Braves Athletics
 @Bradley Women's Basketball
Twitter @BradleyWBB
 @BradleyBraves

ABOUT SOUTHERN ILLINOIS

Southern Illinois has won five of its last six after picking up road victories at Drake (77-67) and Northern Iowa (65-60) last week to open MVC play.

The Salukis are the top rebounding team in the MVC at 44.4 rebounds per contest and own a +5.6 average rebounding margin. SIU is second in the league in both scoring (70.0 ppg) and three-point field goal percentage (.333).

Junior guard Rishonda Napier is third in the MVC in scoring at 16.0 points per game and is shooting 43.8 percent three-point range, while making nearly three triples per outing and dishing out over three assists.

Senior forward Dyana Pierre leads the Valley in both rebounding (11.5 rpg) and blocks (2.2 bpg) to go with her 13.6 points per game.

Senior guard Cartaesha Macklin leads the MVC in free throw percentage (.905) and paces SIU in assists (3.5

BRADLEY UNIVERSITY QUICK FACTS

GENERAL INFORMATION

Location Peoria, Ill.
 Founded 1897
 Enrollment 5,700
 Type Co-educational, private
 Affiliation NCAA Division I-AAA
 Conference Missouri Valley
 Athletics Nickname Braves
 Colors Red and White
 President Gary R. Roberts
 Director of Athletics Dr. Chris Reynolds
 SWA Jen Jones

BASKETBALL INFORMATION

Head Coach Michael Brooks
 Alma Mater Western State '04
 Bradley Record 32-70 (.314)/Fourth Year
 Career Record 37-95 (.280)/Fifth Year
 Assistant Coach Skyler Young
 Alma Mater Western Michigan '05
 Assistant Coach Lindsay Schultz
 Alma Mater Cardinal Stritch '04
 Assistant Coach Lindsay Weiss
 Alma Mater Central Washington '05
 Director of Operations Dustyn Yung
 Alma Mater Central Methodist '13
 Home Arena Renaissance Coliseum
 Capacity 4,200
 Press Row Phone (309) 677-3300
 2014-15 Record 6-24 (.200)
 MVC Record/Place 5-13 (.278)/8th
 Letterwinners Returning/Lost 9/2
 Starters Returning/Lost 4/1
 Basketball Secretary Katie Nagy
 Basketball Office Phone (309) 677-4557
 Bothast's Email knagy2@bradley.edu

HISTORY

First Year of Basketball 1975-76
 All-Time Record 498-598 (.454)
 Last Postseason Opponent Minnesota
 Result L, 59-85 (Second round of 2012 WBI)

SPORTS INFORMATION

Associate AD for Communications Bobby Parker
 Parker's Office Phone (309) 677-2624
 Parker's Email bparker@bradley.edu
 Associate Dir. of Comm./WBB Contact Jim Rea
 Rea's Office Phone (309) 677-3869
 Rea's Cell Phone (309) 256-4379
 Rea's Email jrea@bradley.edu

per game), while adding 12.4 points and 1.6 steals per tilt.

ABOUT EVANSVILLE

Evansville is looking to snap a 10-game losing streak heading into a Friday night home game against Loyola. The Purple Aces opened the season with six consecutive games away from home and enter the weekend with a league-low four home games to date.

Junior guard Sara Dickey leads the Purple Aces in scoring (15.8 ppg) to rank fourth in the MVC. She also leads Evansville in assists (2.5 per game) and steals (1.9).

Junior forward Sasha Robinson missed the first eight games of the season, but has started the last four contests and averaged 12.3 points and 5.0 rebounds and 2.0 assists over the last three games.

The Purple Aces score 35 percent of their points from beyond the arc, which ranks second in the Valley.

ABOUT THE BRAVES

A year removed from having one of the youngest teams in the nation, Bradley boasts one of the most experienced rosters in the Missouri Valley Conference with the Braves returning four starters from 2014-15.

In addition to welcoming back a strong returning cast, which includes redshirt junior forward Whitney Tinjum (11.7 ppg & 6.1 rpg in 2014-15) and sophomore center Tamyia Sims (8.0 ppg, 6.4 rpg & 2.1 bpg in 14-15), the Braves added fifth-year point guard Kat Yelle.

Bradley is one of four Valley teams to return at least 65 percent of its scoring and over 75 percent of its rebounding from last year.

A Washington State transfer, Tinjum is the team's returning scorer and is averaging 10.2 points and 3.6 rebounds per game this season after scoring in double

figures in each of the last two games. She had a double-double (21 pts. & 10 reb.) in the season opener at Detroit and has scored in double figures six times.

After battling injuries early in the year, Sims capped 2014-15 with a season-best 19 points against Loyola in the MVC Tournament in addition to collecting nine boards, one assist, four blocks and a steal. Sims was the first Bradley freshman to lead the squad in rebounding since 1999-2000 and was the first Bradley freshman to average 8.0 points 6.0 rebounds and at least two blocks per outing. She is averaging 9.1 ppg, 5.6 rpg & 2.0 blocks this year.

Yelle has taken over the point guard duties and the Ohio transfer has averaged 3.0 points, 4.1 rebounds and 3.7 assists per game while boasting a 1.95 assist-to-turnover ratio in her first 11 outings. Last year, Yelle averaged 2.7 assists with a 1.83 assist-to-turnover ratio as she helped the Bobcats to a 27-5 overall record along with Mid American Conference regular-season and tournament titles in 2014-15.

Sophomore Anneke Schlueter has started each of the first 12 games in the backcourt and is the first player in program history to have four consecutive games with at least four three-pointers. Schlueter is scoring a team-best 11.8 points per game and shooting 34 percent from beyond the arc. She is the second player in program history to hit a three-pointer in each of the first 12 games

PRONUNCIATION GUIDE

Name	Pronunciation
Anneke Schlueter	anna-ka shloo-ter
Leti	let-EE
Sameia	sa-ME-ah
Tamyia	ta-ME-ah
Yelle	yell

2015-16 BRADLEY BRAVES NUMERICAL ROSTER

No.	Name	Cl.	Elig.	Pos.	Ht.	Hometown (High School/Last School)
00	Danielle Brewer	So.	So.	F	5-10	Coatesville, Ind.
3	%Briana Gray	Jr.	Jr.	F	5-10	Milwaukee, Wis. (Nicolet/Saint Louis)
10	Gabby Green	Fr.	Fr.	G	5-6	Milwaukee, Wis. (Pius XI)
11	Tamyia Sims	So.	So.	F	6-2	Milwaukee, Wis. (Oak Creek)
12	Kellee Clay	Fr.	Fr.	G	5-6	Naperville, Ill. (Metea Valley)
14	Kat Yelle	Grad.	Sr.	G	5-7	Geneva, Ill. (Geneva/Ohio)
15	Emily Eshoo	Fr.	Fr.	G	5-9	Naperville, Ill. (Benet Academy)
20	Shareece Burrell	So.	So.	G	5-8	Des Moines, Iowa (East)
21	Haley Van Cleave	So.	So.	C	6-3	Dubuque, Iowa (Hempstead)
23	Leti Lerma	Jr.	Jr.	F	5-10	Muscatine, Iowa (Muscatine)
24	Sameia Kendall	Sr.	Sr.	G	5-8	Kansas City, Mo.. (Raytown [Kan.]/Johnson County)
30	Whitney Tinjum	Sr.	RS-Jr.	F	6-1	Stacy, Minn. (Chisago Lakes/Washington State)
32	Madison Dellamuth	So.	So.	G	5-6	Cedar Rapids, Iowa (Prairie)
33	Anneke Schlueter	So.	So.	G	6-0	Ulm, Germany (Max-Weber-Schule)
44	Vanessa Markert	Fr.	Fr.	F	6-2	Mt. Sterling, Ill. (Brown County)

% - Will sit out the 2015-16 season due to NCAA transfer rules

Head Coach: Michael Brooks (Western State '04)

Fourth Year at Bradley: 32-70 (.314); **Fifth Year as Collegiate Head Coach:** 37-95 (.280).

Assistant Coaches: Skyler Young (Western Michigan '05), Lindsay Schultz (Cardinal Stritch '04), Lindsay Weiss (Central Washington '05)

Director of Operations: Dustyn Yung (Central Methodist '13)

2015-16 STATS AT A GLANCE

Bradley	Southern Illinois
4-8 (.333)	Record
0-1 (.000)	Conference Record
61.6	Points per game
65.6	Points allowed per game
.366	FG Percentage
.417	FG Percentage Defense
.319	3FG Percentage
.309	3FG Percentage Defense
6.1	3FG per game
6.1	3FG Allowed per game
.667	Free Throw Percentage
17.5	FTA per game
37.2	Rebounds per game
12.7	Offensive Rebounds per game
-2.2	Rebound margin
11.8	Assists per game
16.7	Turnovers per game
17.5	Turnovers forced per game
3.8	Blocked Shots per game
8.5	Steals per game

of a season.

In addition, junior forward Leti Lerma helps highlight a very experienced front court after averaging 5.9 points and 6.2 rebounds per game as a sophomore. Bradley's most experienced player, Lerma is the team's top rebounder at 7.1 boards per game and is scoring 9.1 points per tilt.

THE COACHES

Michael Brooks (Western State '04) is in his fourth season as head coach at Bradley and sixth overall with the Braves. He owns a 32-70 (.314) record on The Hilltop and a 37-95 (.280) mark in his fifth season as a collegiate head coach. Brooks was part of both of Bradley's teams which advanced to the Women's Basketball Invitational, serving as an assistant coach for the Braves in 2011-12 and Director of Operations during the 2009-10 campaign. In between his two stints on the Bradley bench, Brooks was co-head coach at Central Methodist University in 2010-11.

Cindy Stein (Illinois '83) is in her third season as head coach at Southern Illinois and 19th overall as a collegiate head coach. The Richwoods High School and Illinois Central College product was head coach at Missouri for 12 seasons and served as head coach at ICC

for the 2012-13 season prior to her arrival in Carbondale, Ill. She owns a 31-43 (.419) record with the Salukis and a 313-249 (.557) career coaching record.

Oties Epps (Wisconsin-Stout '02) is in his fifth year as head coach at Evansville after a three-year stint as an assistant coach at Wisconsin. Epps, who was an assistant coach at Cleveland State for four years prior to his tenure in Madison, Wis., is 43-93 (.316) in his time with the Purple Aces.

SOUTHERN ILLINOIS SERIES HISTORY

Southern Illinois swept the regular-season series last year and the Salukis have won three of the last four matchups. SIU owns a 44-25 lead in the all-time series, which includes a 24-11 advantage in Carbondale, Ill. The Braves have won 12 of the last 15 overall in the series and 14 of the last 18 contests against the Salukis. In fact, since Bradley's first win at SIU on Jan. 31, 2001, the Braves are 23-8 in the series, which includes an 11-4 road mark during that span.

EVANSVILLE SERIES HISTORY

Bradley leads the all-time series with Evansville 26-18 after the teams split last year's regular-season series. The teams have split the last four matchups, but the Braves are 5-2 in the last seven matchups and 10-3 vs. the Purple Aces over the last six years. Evansville holds a slim 11-10 advantage in games played in Evansville, Ind., but Bradley is 5-2 in its last seven road games in the series. In fact, the Braves are 8-5 on the road against Evansville since 2003. The teams have split the regular-season series three of the last four years and Bradley has won at least one matchup against Evansville each of the last seven seasons.

LAST TIME OUT

Loyola shot 60 percent in the second half and forced a total of 20 Bradley turnovers to top the Braves 67-54 in the MVC opener for both teams. Whitney Tinjum was 8-for-9 from the free throw line and had a team-best 15 points, while sophomore Danielle Brewer made all three of her three-point attempts and had a season-best 14 points in the loss. Bradley outrebounded the Ramblers 36-30, but the Braves shot 32 percent from the field.

CAREER STATS VS. SOUTHERN ILLINOIS

Player	G-S	Min.	FG	Pct.	3FG	Pct.	FT-FTA	Pct.	Reb	Avg.	A	TO	B	S	Pts	Avg	Hi
Lerma	3-1	76	13-25	.520	2-3	.667	3-3	1.000	8-11-19	6.3	3	6	4	2	31	10.3	12
Tinjum	2-2	57	7-26	.269	1-11	.091	6-6	1.000	4-5-9	4.5	0	6	0	2	21	10.5	15
Sims	2-1	56	6-12	.500	0-0	.000	4-4	1.000	2-10-12	6.0	0	2	5	4	16	8.0	8
Brewer	1-1	26	7-12	.583	1-4	.250	0-1	.000	0-2-2	2.0	2	1	0	1	15	15.0	15
Schlueter	2-1	31	3-11	.273	0-5	.000	1-1	1.000	1-3-4	2.0	1	3	0	1	7	3.5	7
Kendall	1-0	29	2-6	.333	0-1	.000	0-0	.000	0-0-0	0.0	4	4	0	3	4	4.0	4
Dellamuth	2-0	26	1-2	.500	0-1	.000	0-0	.000	0-1-1	0.5	5	5	0	1	2	1.0	2
Burrell	2-0	21	1-3	.333	0-0	.000	0-0	.000	1-2-3	1.5	0	0	0	0	2	1.0	2
Van Cleave	2-0	4	0-0	.000	0-0	.000	0-0	.000	0-0-0	0.0	0	1	0	0	0	0.0	0
Totals	17-6	326	40-97	.412	4-25	.160	14-15	.933	16-34-50	2.9	15	28	9	14	98	5.8	15

BRADLEY VS. SOUTHERN ILLINOIS

SIU leads series 44-25

H: 13-19 A: 11-24 N: 1-1

Date	Site	W-L, Score
2/27/83	at SIU	L, 52-81
1/20/84	at Bradley	L, 39-72
2/18/84	at SIU	L, 57-86
1/10/85	at Carver Arena	L, 51-67
2/9/85	at SIU	L, 46-73
1/18/86	at Bradley	L, 63-72
2/17/86	at SIU	L, 48-66
1/22/87	at SIU	L, 59-77
2/21/87	at Bradley	L, 65-68
3/4/87	at SIU	L, 56-63
1/2/88	at Bradley	L, 59-81
1/30/88	at SIU	L, 49-52
1/12/89	at Bradley	L, 63-74
2/11/89	at SIU	L, 41-70
1/6/90	at Bradley	L, 67-73 (ot)
2/5/90	at SIU	L, 56-61
3/9/90	at SIU	L, 58-62
1/12/91	at Bradley	L, 55-56
2/7/91	at SIU	L, 57-78
1/30/92	at SIU	L, 57-85
2/29/92	at Bradley	L, 55-69
1/14/93	at SIU	L, 43-73
2/19/93	at Bradley	L, 64-77
1/4/94	at SIU	L, 72-80
3/3/94	at Bradley	L, 67-78
1/21/95	at SIU	L, 60-71
2/16/95	at Bradley	L, 60-84
1/22/96	at Bradley	W, 66-58
2/15/96	at SIU	L, 50-66
12/31/96	at Bradley	W, 69-66 (ot)
3/1/97	at SIU	L, 64-66
1/15/98	at Bradley	L, 64-55
2/13/98	at SIU	L, 48-64
1/9/99	at SIU	L, 59-63
2/6/99	at Bradley (WTVP)	L, 70-74
1/6/00	at SIU	L, 50-58
2/5/00	at Carver Arena (WTVP)	L, 47-51
1/5/01	at Bradley (WTVP)	L, 62-63
1/31/01	at SIU	W, 73-66
1/26/02	at Bradley (WTVP)	W, 63-45
2/23/02	at SIU	W, 70-48
1/31/03	at Bradley (WTVP)	W, 66-45
2/27/03	at SIU	W, 83-68
1/31/04	at Bradley (WTVP)	L, 75-78
2/25/04	at SIU	W, 86-51
1/16/05	at SIU	W, 68-42
2/12/05	at Bradley (WTVP)	W, 70-60
1/7/06	at SIU	L, 64-66
2/2/06	at Bradley	W, 52-43
1/11/07	at Bradley	L, 40-64
2/9/07	at SIU	L, 50-55
2/2/08	at Bradley	W, 76-59
2/28/08	at SIU	W, 77-72
3/13/08	at St. Charles, Mo.	L, 54-65
1/9/09	at ICC (WTVP)	W, 73-49
2/5/09	at SIU	W, 60-48
1/9/10	at ICC	W, 72-61
2/7/10	at SIU	W, 60-45
1/21/11	at Bradley (MVC-TV)	W, 80-44
2/19/11	at SIU	W, 76-60
1/5/12	at SIU	W, 72-59
2/4/12	at Bradley	W, 66-50
3/8/12	at St. Charles, Mo.	W, 85-67
2/2/13	at Bradley	W, 90-48
3/1/13	at SIU	W, 77-61
1/2/14	at SIU	L, 96-100 (2ot)
3/8/14	at Bradley	W, 86-68
2/1/15	at SIU	L, 59-76
2/27/15	at Bradley	L, 66-72

2015-16 STATS AT A GLANCE

Bradley	Evansville
4-8 (.333)	Record 1-12 (.077)
0-1 (.000)	Conference Record 0-2 (.000)
61.6	Points per game 56.1
65.6	Points allowed per game 74.3
.366	FG Percentage .344
.417	FG Percentage Defense .486
.319	3FG Percentage .304
.309	3FG Percentage Defense .367
6.1	3FG per game 6.6
6.1	3FG Allowed per game 6.7
.667	Free Throw Percentage .671
17.5	FTA per game 15.9
37.2	Rebounds per game 31.2
12.7	Offensive Rebounds per game 10.6
-2.2	Rebound margin -9.5
11.8	Assists per game 11.0
16.7	Turnovers per game 16.6
17.5	Turnovers forced per game 15.7
3.8	Blocked Shots per game 1.8
8.5	Steals per game 7.8

ON THE ROAD

Bradley will play its first Missouri Valley Conference road game at Southern Illinois for the second time in three years and third time in five seasons when the Braves take on the Salukis in Carbondale, Ill., Friday. Bradley is trying to snap a three-game losing streak in MVC road openers dating back to a 72-59 win at Southern Illinois on Jan. 5, 2012. The Braves have managed at least a split of the road matchups against Southern Illinois and Evansville in eight of the last nine seasons and 13 of the last 15 years. Bradley has gotten its first MVC win on the road in four of the last nine seasons.

ROLE REVERSAL

Sophomore Anneke Schlueter has shown a knack for shooting from long range, making 34.4 percent of her three-point attempts this year. Last year, Schlueter shot 42 percent inside the arc and 24 percent from long range with 51 percent of her shots coming from two-point territory. This season, 67 percent of Schlueter's shots are coming from beyond the arc where she is shooting 34 percent compared to 33 percent on two-point shots.

OFF THE BENCH

Junior Whitney Tinjum has scored 15 or more points in each of the last two games and has adapted well to coming off the bench for the Braves. Tinjum started the first five games of the season and averaged 10.8 points per game on 35.7 percent shooting in 20.2 minutes in those contests. Since coming off the bench, she has averaged 9.7 points on 46 percent shooting in 17.9 minutes per game. The Bradley reserves have outscored the opponents bench by an average of 2.4 points per game.

HEATING UP

Sophomore Danielle Brewer was a perfect 3-for-3 from three-point range in Sunday's MVC opener against Loyola and has made six of her last nine from beyond the arc. Brewer opened the season 1-for-5 from three-point range, but has made 10-of-21 from downtown over the last nine games. She is averaging 7.9 points, 3.6 rebounds, 1.7 assists and 1.0 steal per game in the last seven after a season-high 14 points vs. Loyola.

FILLING IT UP

Junior Whitney Tinjum got off to a slow start at Saint Louis on Dec. 30, not scoring in five minutes of action in the first half. The second half was a different story, however, with the Washington State transfer scoring 11 consecutive points for the Braves and making seven straight shots from the field en route to 19 points in a 10-minute span. The 19 points by Tinjum was the most points in a half by a Brave since Michelle Young collected 19 points in the first half of last year's overtime game at Columbia in which Young tied the Bradley single-game scoring record with 38 points. Tinjum is now second on the team in scoring at 10.2 points per game.

BALANCED ATTACK

Bradley has four players scoring 9.1 points per game or more, paced by sophomore Anneke Schlueter's 11.8 points per outing. The Braves join Drake as the only other Missouri Valley Conference team with four players scoring at least nine points per game.

TAKING CARE OF THE BALL

Bradley had just 11 turnovers in the Dec. 21 outing at Northern Illinois and the Braves have averaged 15.0 turnovers in six road games this season. After averaging a league-high 21.0 turnovers per game 2014-15, Bradley has tallied 16.7 turnovers per outing this season and ranks fourth in the league with 17.5 opponent turnovers per contest. Fifth-year transfer Kat Yelle is fourth in the MVC in assists per game (3.7) and her 1.95 assist-to-turnover ratio is second in The Valley.

STEPPING UP

Junior Leti Lerma has snagged six or more rebounds in nine of the last 10 games and she has scored in double figures in five of the last nine. Lerma, who had

BRADLEY VS. EVANSVILLE

Bradley leads series 26-18

H: 15-6 A: 10-11 N: 1-1

Date	Site	W-L, Score
1/19/95	at Evansville	W, 93-65
2/18/95	at Bradley	W, 69-55
1/20/96	at Bradley	W, 71-59
2/17/96	at Evansville	L, 59-61
12/29/96	at Bradley	W, 83-53
2/27/97	at Evansville	W, 73-61
1/17/98	at Bradley	W, 84-69
2/15/98	at Evansville	L, 63-79
1/7/99	at Evansville	L, 71-72
2/4/99	at Bradley	L, 64-80
1/8/00	at Evansville	L, 61-89
2/3/00	at Bradley	W, 79-75 (OT)
1/7/01	at Bradley	L, 52-80
2/3/01	at Evansville	L, 51-76
1/24/02	at Bradley	W, 77-67
2/24/02	at Evansville	L, 48-51
2/2/03	at Bradley	W, 86-63
3/1/03	at Evansville	W, 71-56
2/2/04	at Bradley	L, 65-81
2/29/04	at Evansville	L, 66-69
1/13/05	at Evansville	W, 68-65
2/10/05	at Bradley	W, 81-67
1/5/06	at Evansville	L, 57-71
2/4/06	at Bradley	L, 49-51
1/13/07	at Bradley	W, 87-65
2/11/07	at Evansville	W, 82-76, ot
1/31/08	at Bradley	L, 50-71
3/1/08	at Evansville	L, 70-80
1/11/09	at Illinois Central	W, 65-54
2/7/09	at Evansville	W, 80-68
3/14/09	Şat St. Charles, Mo.	L, 81-84 (OT)
1/7/10	at Illinois Central	W, 75-46
2/5/10	at Evansville	W, 68-58
1/23/11	at Bradley	W, 65-58
2/17/11	at Evansville	W, 66-59
3/10/11	Şat St. Charles, Mo.	W, 64-47
1/8/12	at Evansville	L, 59-71
2/2/12	at Bradley	W, 82-64
1/31/13	at Bradley	W, 78-52
3/3/13	at Evansville	W, 73-57
1/4/14	at Evansville	W, 77-76
3/6/14	at Bradley	L, 55-73
1/12/15	at Evansville	L, 46-86
2/8/15	at Bradley	W, 56-50

CAREER STATS VS. EVANSVILLE

Player	G-S	Min.	FG	Pct.	3FG	Pct.	FT-FTA	Pct.	Reb	Avg.	A	TO	B	S	Pts	Avg	Hi
Lerma	3-3	82	15-24	.625	1-3	.333	0-1	.000	8-21-29	9.7	3	6	3	1	31	10.3	18
Brewer	2-1	38	4-14	.286	3-7	.429	5-6	.833	2-2-4	2.0	2	2	0	3	16	8.0	11
Tinjum	2-1	39	5-11	.455	1-4	.250	3-4	.750	6-5-11	5.5	4	4	0	1	14	7.0	9
Sims	2-1	60	3-13	.231	0-0	.000	5-7	.714	4-13-17	8.5	2	6	4	1	11	5.5	9
Kendall	1-0	22	3-7	.429	0-2	.000	0-0	.000	0-1-1	1.0	2	3	1	2	6	6.0	6
Schlueter	2-1	30	3-11	.273	0-5	.000	0-0	.000	1-3-4	2.0	1	2	0	0	6	3.0	4
Dellamuth	2-1	38	1-7	.143	0-4	.000	0-0	.000	0-3-3	1.5	5	6	0	3	2	1.0	2
Burrell	1-0	19	0-3	.000	0-3	.000	0-0	.000	0-0-0	0.0	0	1	0	0	0	0.0	0
Van Cleave	1-0	2	0-0	.000	0-0	.000	0-0	.000	0-0-0	0.0	0	0	0	0	0	0.0	0
Totals	16-8	330	34-90	.378	5-28	.179	13-18	.722	21-48-69	4.3	19	30	8	11	86	5.4	18

Points In The Paint

Opponent	BU	Opp.	Dif.	W-L
at Detroit	30	20	+10	W
at Bowling Green	12	32	-20	L
#17/24 OKLAHOMA	14	28	-14	L
WESTERN MICHIGAN	32	44	-12	L
EUREKA	44	20	+24	W
at Chicago State	26	36	-10	W
ILLINOIS-CHICAGO	20	32	-12	L
KENT STATE	30	32	-2	W
at #24 Iowa	22	24	-2	L
at Northern Illinois	38	18	+20	L
at Saint Louis	28	34	-6	L
LOYOLA	20	36	-16	L
Totals	316	356	-40	

Points Off Turnovers

Opponent	BU	Opp.	Dif.	W-L
at Detroit	14	15	-1	W
at Bowling Green	4	7	-3	L
#17/24 OKLAHOMA	10	14	-4	L
WESTERN MICHIGAN	20	8	+12	W
EUREKA	36	15	+21	W
at Chicago State	18	16	+2	W
ILLINOIS-CHICAGO	11	20	-9	L
KENT STATE	20	11	+9	W
at #24 Iowa	8	18	-10	L
at Northern Illinois	15	9	+6	L
at Saint Louis	12	15	-3	L
LOYOLA	15	26	-11	L
Totals	183	174	+9	

Second Chance Points

Opponent	BU	Opp.	Dif.	W-L
at Detroit	15	13	+2	W
at Bowling Green	2	15	-13	L
#17/24 OKLAHOMA	13	11	+2	L
WESTERN MICHIGAN	15	9	+6	L
EUREKA	21	13	+8	W
at Chicago State	11	5	+6	W
ILLINOIS-CHICAGO	11	9	+2	L
KENT STATE	7	9	-2	W
at #24 Iowa	5	13	-8	L
at Northern Illinois	5	10	-5	L
at Saint Louis	8	7	+1	L
LOYOLA	8	3	+5	L
Totals	121	117	+4	

Bench Points

Opponent	BU	Opp.	Dif.	W-L
at Detroit	18	15	+3	W
at Bowling Green	18	19	-1	L
#17/24 OKLAHOMA	11	26	-15	L
WESTERN MICHIGAN	21	22	-1	L
EUREKA	47	11	+36	W
at Chicago State	25	26	-1	W
ILLINOIS-CHICAGO	18	23	-5	L
KENT STATE	17	16	+1	W
at #24 Iowa	17	19	-2	L
at Northern Illinois	21	20	+1	L
at Saint Louis	27	16	+11	L
LOYOLA	15	13	+2	L
Totals	255	226	+29	

10 points, seven boards, one assist, two blocks and one steal Dec. 21 at Northern Illinois is averaging 10.9 points, 8.1 boards and 1.8 steals per game while shooting 46 percent from the field over the last eight contests. She collected a combined 11 points and 12 rebounds (3.7 ppg & 4.0 rpg) in the first three games of 2015-16.

STREAKING

Sophomore Anneke Schlueter has hit a three-pointer in all 12 games this season and has joined Michelle Nason (1993-94) as the only players in program history to do so. Nason made a three-pointer in all 27 games of the 1993-94 season. Schlueter's 12-game streak with a three is the longest by a Brave since Katie Yohn had 18 consecutive appearances with a triple midway through 2010-11. On the year, Schlueter's 31 three-pointers are three less than last week's opponent Loyola has made this season. Schlueter has the most three's by a Bradley player since Katie Yohn connected on 41 three-pointers during her senior year of 2012-13 and her total is two from ranking among the top 10 for a Bradley underclassman.

RANKED OPPONENT

The Dec. 19 game at #24 Iowa marked the second game this season for the Braves against a ranked squad after falling to #17/24 Oklahoma in the home opener back on Nov. 22. Bradley had not played a pair of games against teams ranked in the top 25 since 2000-01 when Missouri State was ranked for both regular-season Missouri Valley Conference matchups. In fact, the Braves faced two different ranked teams in the same season for the first time since 1997-98 (Nebraska & Missouri State) and a pair of ranked non-conference opponents in the same year since opening the 1985-86 campaign against #14 Iowa and #15 North Carolina State in Iowa City, Iowa. The matchup with Iowa was Bradley's fourth in the last three years against a ranked team to match the team's total from Feb. 16, 2000 through the 2012-13 season.

BLOCK PARTY

Sophomore Tamyra Sims got off to a slow start to the year, averaging 1.1 blocks per game through the first seven contests of 2015-16 after leading the Missouri Valley Conference in rejections last year. Sims collected a career-best six blocks in the Dec. 8 victory against Kent State, however, to tie a Renaissance Coliseum record and has a total of 16 blocks in the last five games. Her six blocks tied for the fourth best single-game effort in school history and were the most by a Brave since Sonya Harris tallied six blocks against Wichita State on March 4, 2010. Last year, she led the MVC in blocks per game at 2.1 and her 45 blocks in 2014-15 were the most at Bradley since 2009-10. Sims is third in the Valley in blocks per game at 2.0 per contest this year.

ON THE MARK

Sophomore Anneke Schlueter had four more three's in the Dec. 8 win against Kent State, marking the fourth consecutive game in which she hit four triples. She is the first player in program history to hit four three's in four consecutive games and has made a total of 24 triples in the last eight outings. Her team-high 31 three's are the most by a Bradley underclassmen since Catie O'Leary had 33 three's in 2011-12 as a sophomore.

RAINING THREE'S

Bradley is shooting 31.9 percent from three-point territory this season to rank third in the MVC and the Braves are averaging 6.1 triples per game. The team's 67 three's during the non-conference schedule were 22 more than Bradley made against non-conference opponents last year. In fact, last year Braves didn't hit 67 three-pointers until the final game of January. The 31.9 three-point field goal percentage would be the squad's best since 2011-12 (.326) and the team's 6.1 three-pointers per game would be the best on The Hilltop since the 1994-95 team connected on 6.96 triples per game.

BACK-TO-BACK WINS

The 66-60 victory at Chicago State (Dec. 2) gave Bradley consecutive non-conference victories for the first time since opening the 2013-14 season with wins against Illinois and at Southeast Missouri State. The win at Chicago State gave Bradley its second road win of the year, matching the team's total from 2014-15.

GETTING DEFENSIVE

Bradley ranks fifth in the Missouri Valley Conference in scoring defense, surrendering 65.6 points per game and has held four of the last eight opponents to 60 points or less. The Braves had not held consecutive foes to 60 points or fewer since the last back-to-back victories at Loyola (Jan. 25, 2015) and at Illinois State (Jan. 30, 2015) prior to the wins against Eureka and Chicago State. In fact, Bradley had not surrendered 60 or fewer points in consecutive non-conference games under head coach Michael Brooks and did so for the first time since November of 2011 (vs. Niagara & at Northern Illinois). The 65.6 points per game scoring defense would be the best by the Braves since giving up 63.8 points per game in 2009-10. Iowa entered the Dec. 19 matchup averaging 77 points per game, but managed a then season-low 60 points against Bradley. The Braves had won 10 consecutive games when holding foes to 60 or less prior to the loss to Iowa and Bradley is 16-5 (.762) under head coach Michael Brooks when giving up 60 points or fewer.

DOUBLING UP

Junior Leti Lerma tallied 12 points and 12 rebounds at Chicago State (Dec. 2) for her second straight double-double. Lerma was the first Brave with double-doubles in consecutive outings since Catie O'Leary in January 2014. She is sixth in the MVC in rebounding at 7.1 boards per

INDIVIDUAL PRODUCTION STATS

Double-Figure Scoring Games

Name	Sr.	Jr.	So.	Fr.	Tot.	Hi
Whitney Tinjum	-	6	12	0	18	28
Leti Lerma	-	5	4	6	15	21
Anneke Schlueter	-	-	9	5	14	20
Tamya Sims	-	-	3	7	10	19
Danielle Brewer	-	-	1	5	6	17
Gabby Green	-	-	-	1	1	17
Kat Yelle	1	-	-	-	1	12
Emily Eshoo	-	-	-	1	1	11
Shareece Burrell	-	-	1	0	1	10

20-Point Games

Name	Sr.	Jr.	So.	Fr.	Tot.	Hi
Whitney Tinjum	-	1	2	0	3	28
Leti Lerma	-	0	1	0	1	21
Anneke Schlueter	-	-	0	1	1	20

10-Rebound Games

Name	Sr.	Jr.	So.	Fr.	Tot.	Hi
Leti Lerma	-	2	5	1	8	19
Whitney Tinjum	-	1	3	0	4	14
Tamya Sims	-	-	0	2	2	12

Double-Double Games

Name	Sr.	Jr.	So.	Fr.	Tot.
Whitney Tinjum	-	1	3	0	4
Leti Lerma	-	2	1	1	4
Tamya Sims	-	-	0	1	1

DOUBLE-DOUBLES

Leti Lerma (2)

at Chicago State (12/2/15) 12 points & 12 rebounds
vs. Eureka (11/28/15) 19 points & 13 rebounds

Whitney Tinjum (1)

at Detroit (11/13/15) 21 points & 10 rebounds

game this season and ranks second in the league in offensive rebounding at 2.8 offensive rebounds per outing.

DOMINATING PERFORMANCE

The 87-47 victory against Eureka on Nov. 28 was highlighted by one of the best defensive efforts in some time for Bradley. The Braves scored 35 of the final 37 points of the contest and held the Red Devils to just 13 second-half points. The 13 second-half points by Eureka tied a school record for fewest points surrendered in a half set at Northern Iowa on Feb. 11, 1994 and later matched against Wichita State on Jan. 8, 2004. In addition, Bradley outrebounded Eureka 55-29 for the largest rebounding advantage for the Braves since a game against Saint Louis (+26) on March 1, 1995. The 40-point win was the largest margin of victory for Bradley since a 90-48 home win over Southern Illinois on Feb. 2, 2012.

ON THE REBOUND

Bradley is third in the Missouri Valley Conference in offensive rebounding, pulling down almost 13 offensive boards per game. The Braves have tallied 14 or more offensive boards in five games and had 23 offensive rebounds against Eureka Nov. 28. The Braves have had an

advantage in second chance points in eight of 12 games and are 3-5 when they hold an edge in second chance points.

ENDING NOVEMBER ON A HIGH NOTE

Bradley is now 8-1 the last nine times the Braves have ended the month of November with a home game and the Braves are 11-3 all-time when wrapping up November with a home contest after the 87-47 victory against Eureka on Nov. 28. The five games in the month of November this season were the fewest since 2009-10 (2-3).

SUPER SUB

After starting the season opener at Detroit, junior Leti Lerma provided a big lift off the bench in the next four games. Lerma, who is averaging 10.0 points, 7.0 rebounds and 2.5 steals per game when she comes off the bench, tallied 15 points, seven rebounds and four steals vs. Western Michigan on Nov. 22 for the first 15-point, seven-rebound, four-steal game by a Bradley reserve since Genny Mueller at Drake on Jan. 4, 2003. She followed it up with her first double-double of the year, notching 19 points, 13 rebounds, two assists and five steals in the win against Eureka. She was the first Brave with 19 points, 13 boards and five or more steals since Eileen Yerkes on Nov. 25, 1991 in a double overtime win against Loyola. Lerma has started the last seven games and eight of 12 this year.

THERE'S NO PLACE LIKE HOME

Bradley closed out a three-game home stand against Eureka (Nov. 28) with an 87-47 victory. The Braves had not had back-to-back home games at Renaissance Coliseum in the month of November since 2011-12. Bradley has never had a three-game November home stand prior to this season. Coming into the year, the Braves had played a total of 10 November home games at Renaissance Coliseum in the first five years of the facility. The three-game home stand was part of a stretch in which Bradley played five of six at Renaissance Coliseum ending with the Dec. 8 home game against Kent State. In fact, starting with the Nov. 22 outing against 17th-ranked Oklahoma, the Braves play 12 of 20 games at home and 16 of 20 in the state of Illinois.

GETTING TO THE LINE

After scoring almost 32 percent of her points in 2014-15 from the free throw line, junior forward Whitney Tinjum has picked up where she left off last year by scoring almost 25 percent of her points from the charity stripe so far this season. Tinjum has made 30-of-36 free throws this season (83.3 percent) through the first 12 games this year and is 45-for-53 (84.9 percent) from the line in 14 career non-conference games as a Brave. Her career 82.4 free throw percentage would rank fourth in school history.

DISHING IT OUT

Ohio transfer Kat Yelle has already made a big impact on Bradley's offense, with the Braves averaging 16.7 turnovers through the first 12 games. Last season, Bradley committed 21.0 turnovers per game and had an assist-to-turnover ratio of 0.5, while this season Bradley has had more than 20 turnovers just once in 2015-16. The 10 turnovers by the Braves in the Nov. 15 outing at Bowling Green were the fewest for Bradley in a road game since tallying nine turnovers at Wichita State on March 1, 2012. Yelle, who missed the Nov. 28 game against Eureka due to injury, is fourth in the MVC in assists at 3.7 per game and her 1.95 assist-to-turnover ratio is second in the league.

FROM LONG RANGE

Bradley struggled from long range in 2014-15, shooting 23.5 percent from three-point range and averaging 3.6 triples per game last year. The Braves are off to a solid start from beyond the arc in 2015-16, however, making seven or more three's in five of 12 games to date and shooting better than 30 percent from three-point range in nine of the first 12 outings. In fact, Bradley's 10 three-pointers at Bowling Green (Nov. 15) were the most in a game for the Braves since making 11 at Missouri State on Feb. 8, 2013 and Bradley had back-to-back outings with seven or more three's for the first time since Nov. 2012 (wins at Eastern Illinois & Illinois), which the Braves have now done twice this season. Bradley had just two games in 2014-15 with seven or more three's and entered the season with eight contests with seven or more three's during head coach Michael Brooks' first three seasons.

41ST SEASON

The 2015-16 season is the 41st year of intercollegiate competition for the Bradley Women's Basketball team. The Braves will be playing their sixth season at Renaissance Coliseum and this winter's campaign will mark the team's 33rd as a member of the Missouri Valley Conference. Head coach Michael Brooks is in his fourth season as head coach of the Braves and sixth overall with the program.

TAKING ADVANTAGE

For the second straight year, Bradley ranked second in the MVC in free throw percentage and the 2014-15 season also marked the second consecutive year the Braves scored a league-high of their points from the free throw line. Bradley scored 24.1 percent of its points from the charity stripe. Junior Whitney Tinjum shot 82 percent from the line and netted over 30 percent of her 11.7 points per game off free throws. As a team, the Braves have posted three of the top eight free throw percentages in school history during the first three seasons under head coach Michael Brooks, in addition to turning in three of the top-10 season totals for made free throws. This season Bradley has had more success

2015-16 MVC STANDINGS

as of 1/8/16	MVC		Overall	
School	W-L	Pct.	W-L	Pct.
Southern Illinois	2-0	1.000	9-5	.643
Missouri State	2-0	1.000	9-5	.643
Loyola	1-0	1.000	5-7	.417
Drake	1-1	.500	8-5	.615
Northern Iowa	1-1	.500	6-7	.462
Indiana State	1-1	.500	5-8	.385
Illinois State	1-1	.500	3-10	.231
Bradley	0-1	.000	4-8	.333
Wichita State	0-2	.000	3-10	.231
Evansville	0-2	.000	1-12	.077

AROUND THE MVC

Friday, Jan. 8

*Bradley at Southern Illinois (ESPN3) . . . 6 p.m.

*Northern Iowa at Wichita State (ESPN3) . . . 7 p.m.

*Loyola at Evansville (ESPN3) 7 p.m.

*Drake at Missouri State (ESPN3) 7 p.m.

Sunday, Jan. 10

*Illinois State at Indiana State (ESPN3) 1 p.m.

*Bradley at Evansville (ESPN3) 1 p.m.

*Northern Iowa at Missouri St. (ESPN3) 2 p.m.

*Drake at Wichita State (ESPN3) 2 p.m.

*Loyola at Southern Illinois (ESPN3) 2 p.m.

Friday, Jan. 15

*Illinois St. at Northern Iowa (ESPN3) 7 p.m.

*Wichita State at Loyola (ESPN3) 7 p.m.

*Missouri State at Bradley (ESPN3) 7 p.m.

*Indiana State at Drake (ESPN3) 7 p.m.

Saturday, Jan. 16

*Evansville at Southern Illinois (ESPN3) 2 p.m.

Sunday, Jan. 17

*Wichita State at Bradley (ESPN3) 2 p.m.

*Missouri State at Loyola (ESPN3) 2 p.m.

*Indiana State at Northern Iowa (ESPN3) . . . 2 p.m.

*Illinois State at Drake (ESPN3) 6 p.m.

Friday, Jan. 22

*Loyola at Indiana State (ESPN3) 6 p.m.

*Evansville at Missouri State (ESPN3) 7 p.m.

*Bradley at Illinois State (ESPN3) 7 p.m.

*Southern Illinois at Wichita State (ESPN3) 7 p.m.

Sunday, Jan. 24

*Bradley at Indiana State (ESPN3) 11 a.m.

*Loyola at Illinois State (ESPN3) 2 p.m.

*Northern Iowa at Drake (ESPN3) 2 p.m.

*Evansville at Wichita State (ESPN3) 2 p.m.

*Southern Illinois at Missouri St. (ESPN3) . . 7 p.m.

from beyond the arc and is making 11.67 free throws per game.

FREE THROW BREAKDOWN UNDER BROOKS

Year	FTM/game	FT%	% of Points
2015-16	11.67	.667	18.94%
2014-15	13.97	.730	24.15%
2013-14	17.07	.726	24.50%*
2012-13	14.47	.781*	20.29%

* indicates school record

RARE AIR

Sophomore Tamyia Sims was the first Bradley freshman to average at least 8.0 points, 6.0 rebounds and 2.0 blocks per game last year. Despite missing a total of nine games due to injury, Sims was second in the MVC in total blocks (45). She capped the year by averaging 11.2 points, 8.2 rebounds and 2.5 blocks per game over the final six games, which included 19 points, nine boards, one assist, four blocks and one steal in the Valley Tournament game against Loyola. She led the MVC in blocks per game at 2.1 and her 45 blocks were the most at Bradley since 2009-10.

BLOCKS BY A FRESHMAN AT BRADLEY

Rk.	B	Name	Year
1.	52	Dena Williams	2001-02
2.	51	Lynn Pastucha	1999-00
3.	45	Tamyia Sims	2014-15
4.	39	Heather Best	1995-96

BLOCKS IN A SEASON AT BRADLEY

Rk.	B	Name	Year
1.	79	Sonya Harris	2008-09
2.	62	Sonya Harris	2009-10
3.	59	Dena Williams	2004-05
4.	52	Dena Williams	2001-02
5.	51	Lynn Pastucha	1999-00
6.	46	Dena Williams	2003-04
	46	Eileen Yerkes	1991-92
8.	45	Tamyia Sims	2014-15
9.	43	Kimberly Harris	1985-86

ADDING EXPERIENCE

Bradley added an experienced ball handler to the back court during the offseason with point guard Kat Yelle transferring to The Hilltop for her final year of eligibility. A three-time letterwinner at Ohio, Yelle led the Bobcats in assists (2.7 per game) and boasted a 1.83 assist-to-turnover ratio, where she was part of a 27-5 team which won MAC regular-season and tournament titles in 2014-15. Yelle, who also added 6.4 points per game and shot 47 percent from the field last season, will be eligible immediately after earning a degree in health service administration from Ohio. She is working toward a Master's Degree in Leadership in Human Service Administration.

YOUNG AT HEART

Despite Bradley returning nine of 11 letterwinners from last year, the Braves welcome six newcomers to the team in 2015-16. Four freshmen and two transfers will look to blend in with a returning group, which includes just one senior and two juniors. Bradley's 15-person roster features a total of five upperclassmen giving the Braves largest group of underclassmen (10) in school history.

IMMEDIATE IMPACT

Junior forward Whitney Tinjum missed the first eight games of the 2014-15 season due to NCAA Division I transfer rules, but the mid-year Washington State transfer had a big impact for the Braves last season. Tinjum averaged 11.7 points and 6.2 rebounds per game, while shooting 82 percent from the free throw line in 22 outings last year. She scored in double figures in each of her first five games to become the eighth player in program history to do so. She went on to reach 200 points in just 17 games, making her first Brave to do so since Stephanie White in 1998-99 and just the 11th in program history.

QUICKEST TO 200 CAREER POINTS

Player (Year)	Games	Point Total
Judy Burns (1981-82)	10	214
Marlene Flanagan (1984-85)	11	204
Connie Griffith (1977-78)	13	221
Felicia Brown (1984-85)	13	214
Karen Richardson (1979-80)	14	214
Tammy Van Oppen (1995-96)	14	202
Kathy Stokes (1977-78)	15	205
Stephanie White (1998-99)	17	214
Michelle Nason (1993-94)	17	212
Whitney Tinjum (2014-15)	17	207
Karen Anderson (1979-80)	17	200

RETURNING NUMBERS

Unlike last year, when Bradley returned 30 percent of its scoring from the previous year, the Braves welcome back two of their top three scorers and 10 of the top 12 in scoring from 2014-15 this season. Bradley boasts nine of 11 letterwinners, including four starters, on the 2015-16 roster. The Braves return four starters for the first time since 2011-12 when Bradley finished the season with an 18-16 overall record and advanced to the second round of the Women's Basketball Invitational. Compared to the rest of the Missouri Valley Conference, the Braves join Missouri State, Northern Iowa and Southern Illinois as the only teams in the conference to return at least 65 percent of the team's scoring, rebounding and assists. Bradley's returners are fifth in the league in scoring at 39.0 points per game and the team's 25.4 boards per contest returning is fourth.

MVC BREAKDOWN BY THE PERCENTAGES

School	% Returning Scoring (PPG)	% Returning Rebounding	% Returning Assists
Bradley	67.4 (39.0)	77.9 (25.4)	65.6 (6.7)
Drake	70.0 (53.4)	53.8 (20.6)	74.7 (13.0)
Evansville	55.7 (35.0)	61.3 (17.2)	59.1 (7.7)
Illinois State	38.8 (20.3)	47.4 (15.2)	31.7 (2.6)
Indiana State	32.7 (20.1)	33.9 (12.0)	33.0 (3.9)
Loyola	65.0 (35.9)	57.7 (18.8)	74.6 (7.9)
Missouri State	90.2 (60.9)	86.6 (30.3)	84.5 (9.5)
Northern Iowa	80.8 (51.4)	81.5 (26.3)	75.1 (9.9)
SIU	91.7 (60.7)	92.5 (32.9)	87.5 (11.5)
Wichita St.	7.3 (4.7)	13.5 (4.1)	7.6 (1.0)

CRASHING THE BOARDS

Bradley is the only team in the MVC to return three players which averaged six or more rebounds per game last year, with juniors Leti Lerma (6.2 rpg) and Whitney Tinjum (6.1 rpg) along with sophomore Tamyia Sims (6.4 rpg) combining for 448 of Bradley's 1096 boards in 2014-15. Sims was the first freshman to lead the team in rebounding since Lynn Pastucha in 1999-2000 and her 6.38 rebounds per game was the best average by a Bradley freshman since Heather Best averaged 6.44 boards per outing in 1995-96. Lerma pulled down 7.1 rebounds per game over her final 14 appearances and is the squad's active career leader with 400 boards. Tinjum averaged 6.1 rebounds to go with her 11.7 points per game and joined Katie Yohn (2012-13) as the only Braves over the last 13 years to score 11.0 points per game to go with 6.0 rebounds per outing and connect on 15 or more three's.

REBOUNDING AVERAGE BY A FRESHMAN

Rk.	RPG	Name	Year
1.	8.9	Connie Griffith	1977-78
2.	7.8	Maureen Hogan	1978-79
3.	6.44	Heather Best	1995-96
4.	6.38	Tamyia Sims	2014-15
5.	6.1	Karin Nicholls	1986-87

SCHEDULE NOTES

Bradley will open the season outside the state of Illinois for the first time since 2003-04, Friday, Nov. 13 at Detroit. The Nov. 22 home opener against Big 12 power Oklahoma will mark the first Big 12 Conference team to visit Renaissance Coliseum. The Braves will visit Iowa, which was in the 2014-15 NCAA Sweet 16, on Dec. 19 to open a three-game road swing. The Braves open MVC play at home for the second straight year, hosting Loyola Jan. 3 to kick off the busiest January since 2004-05. A season-long four-game MVC home stand starts Jan. 29 and marks Bradley's first four-game league home stand since wrapping up the 1993-94 regular-season schedule with six consecutive games at home. The Braves conclude the home schedule against Illinois State for the second consecutive year with a Feb. 21 contest to mark the earliest ending to the regular-season home slate since 1998-99.

THE VALLEY ON ESPN3

Bradley women's basketball will make a minimum of 25 appearances on ESPN3 during the 2015-16 season as an extension of the Missouri Valley Conference media rights agreement with ESPN. With the launch of The Valley on ESPN3, 13 of 14 Bradley women's basketball home games and select road games, including all nine MVC

2015-16 HONORS & AWARDS

Leti Lerma

Bradley Scholar-Athlete of the Week (12/16/15)
Bradley Scholar-Athlete of the Week (12/2/15)

Tamyia Sims

MVC Scholar-Athlete of the Week (12/29/15)
Bradley Scholar-Athlete of the Week (12/30/15)

Whitney Tinjum

Bradley Scholar-Athlete of the Week (01/06/15)

road contests this winter will be cleared live on ESPN3 (http://espn.go.com/watchESPN/index/_type/upcoming/search/bradley/). For more information visit http://www.bradleybraves.com/ViewArticle.dbml?DB_OEM_ID=3400&ATCLID=2102309046&KEY=6DB_OEM_ID=3400&DB_LANG=C&IN_SUBSCRIBER_CONTENT=

TUNE IN

WIRL 1290 AM/102.7 FM will once again carry the entire Bradley women's basketball slate during the 2015-16 season. Ed Hammond will handle the play-by-play duties and is in his 14th consecutive year of calling Bradley women's basketball games.

UP NEXT

Bradley returns to Renaissance Coliseum for six of the next eight games, opening the stretch Friday, Jan. 15 against Missouri State. The Lady Bears have won five consecutive games in the series and own a 49-23 advantage in the all-time series. The Braves are 13-19 at home in the series, but Missouri State has won four of the five matchups at Renaissance Coliseum. Bradley is 5-5 in the last 10 home games in the series, however.

GAME-BY-GAME STATISTICS

Opponent	Date	Score	W/L	FG-FGA	Pct.	3FG-FGA	Pct.	FT-FTA	Pct.	Off.	Def.	Tot.	Avg.	PF	A	TO	BS	S	Pts.	Avg.
at Detroit	11/13/15	75-67	W	25-60	.417	7-23	.304	18-28	.643	15	27	42	42.0	21	14	15	2	8	75	75.0
				23-60	.383	12-37	.324	9-13	.692	12	29	41	41.0	21	19	18	6	7	67	67.0
at Bowling Green	11/15/15	53-66	L	18-66	.273	10-32	.313	7-11	.636	9	22	31	36.5	24	12	10	2	6	53	64.0
				21-57	.368	5-20	.250	19-20	.950	14	41	55	48.0	17	8	15	7	3	66	66.5
#17/24 OKLAHOMA	11/22/15	46-79	L	13-57	.228	3-13	.231	17-24	.708	15	23	38	37.0	15	8	19	1	8	46	58.0
				31-65	.477	12-26	.462	5-6	.833	12	31	43	46.3	24	22	18	7	9	79	70.7
WESTERN MICH.	11/24/15	59-72	L	21-68	.309	4-11	.364	13-16	.813	19	15	34	36.2	15	10	13	3	10	59	58.2
				28-53	.528	5-13	.385	11-12	.917	11	29	40	44.8	18	16	20	8	8	72	71.0
EUREKA	11/28/15	87-47	W	33-73	.452	7-19	.368	14-20	.700	23	32	55	40.0	19	16	20	9	16	87	64.0
				17-55	.309	6-19	.316	7-11	.636	9	20	29	41.6	16	8	27	1	10	47	66.2
at Chicago State	12/2/15	66-60	W	24-54	.444	8-22	.364	10-14	.714	14	26	40	40.0	13	16	19	3	5	66	64.3
				24-52	.462	4-17	.235	8-13	.615	4	18	22	38.3	16	12	14	8	9	60	65.2
ILL-CHICAGO	12/5/15	56-66	L	19-49	.388	7-21	.333	11-20	.550	11	19	30	38.6	22	17	23	2	9	56	63.1
				24-52	.462	1-11	.091	17-22	.773	11	23	34	37.7	19	14	20	5	11	66	65.3
KENT STATE	12/8/15	68-60	W	24-56	.429	6-21	.286	14-20	.700	7	23	30	37.5	19	16	15	7	13	68	63.8
				21-57	.368	4-13	.308	14-20	.700	16	28	44	38.5	20	12	24	3	10	60	64.6
at #24 Iowa	12/19/15	53-60	L	20-57	.351	4-16	.250	9-15	.600	12	30	42	38.0	20	5	19	5	7	53	62.6
				22-63	.349	7-28	.250	9-14	.643	14	30	44	39.1	15	16	15	6	10	60	64.1
at Northern Illinois	12/21/15	64-68	L	27-63	.429	6-17	.353	4-9	.444	5	28	33	37.5	20	7	11	4	4	64	62.7
				23-60	.383	7-20	.350	15-22	.682	12	35	47	39.9	15	15	12	2	2	68	64.5
at Saint Louis	12/30/15	58-75	L	23-66	.348	5-16	.313	7-10	.700	10	25	35	37.3	19	14	16	3	9	58	62.3
				28-62	.452	8-26	.308	11-12	.917	9	34	43	40.2	9	23	13	4	9	75	65.5
LOYOLA	1/3/16	54-67	L	16-50	.320	6-18	.333	16-23	.696	12	24	36	37.2	16	7	20	4	7	54	61.6
				26-54	.481	2-6	.333	13-16	.813	5	25	30	39.3	17	16	14	8	7	67	65.6

Overall Statistics

2015-16 Record: 4-8 Overall, 0-0 MVC

Home 2-4; Away 2-4; Neutral 0-0

#	Player	gp-gs	min	avg	Total		3-Point		F-Throw		Rebounds				pf	dq	a	to	blk	stl	pts	avg
					fg-fga	fg%	3fg-fga	3fg%	ft-fa	ft%	off	def	tot	avg								
33	Schlueter, Anneke	12-12	333	27.8	46-135	.341	31-90	.344	18-24	.750	4	30	34	2.8	18	0	15	23	3	17	141	11.8
30	Tinjum, Whitney	12-5	226	18.8	41-98	.418	10-33	.303	30-36	.833	13	30	43	3.6	26	1	4	26	0	13	122	10.2
11	Sims, Tamyia	12-12	338	28.2	43-116	.371	0-0	.000	23-36	.639	25	42	67	5.6	28	0	3	26	24	10	109	9.1
23	Lerma, Leti	12-8	301	25.1	44-105	.419	0-6	.000	21-38	.553	34	51	85	7.1	29	0	13	19	9	18	109	9.1
00	Brewer, Danielle	12-7	259	21.6	25-64	.391	11-26	.423	14-20	.700	8	29	37	3.1	25	0	16	19	0	13	75	6.3
10	Green, Gabby	10-5	219	21.9	15-60	.250	5-19	.263	12-21	.571	8	16	24	2.4	19	0	27	22	1	11	47	4.7
20	Burrell, Shareece	11-0	164	14.9	15-36	.417	2-11	.182	7-10	.700	7	22	29	2.6	16	0	9	9	1	7	39	3.5
15	Eshoo, Emily	11-0	84	7.6	11-31	.355	9-22	.409	3-3	1.000	0	4	4	0.4	5	0	4	7	0	1	34	3.1
14	Yelle, Kat	11-11	311	28.3	11-42	.262	4-16	.250	7-13	.538	12	33	45	4.1	30	1	41	21	1	6	33	3.0
21	Van Cleave, Haley	11-0	72	6.5	7-20	.350	1-6	.167	2-4	.500	10	7	17	1.5	11	0	1	7	2	2	17	1.5
44	Markert, Vanessa	6-0	30	5.0	3-6	.500	0-0	.000	3-4	.750	3	0	3	0.5	8	0	3	3	3	0	9	1.5
32	Dellamuth, Madison	6-0	45	7.5	2-5	.400	0-0	.000	0-1	.000	1	3	4	0.7	4	0	4	10	0	4	4	0.7
24	Kendall, Sameia	4-0	18	4.5	0-1	.000	0-0	.000	0-0	.000	1	4	5	1.3	4	0	2	2	1	0	0	0.0
Team																						
Total.....		12	2400		263-719	.366	73-229	.319	140-210	.667	152	294	446	37.2	223	2	142	200	45	102	739	61.6
Opponents.....		12	2400		288-690	.417	73-236	.309	138-181	.762	129	343	472	39.3	207	2	181	210	65	95	787	65.6

SCORE BY QUARTER:	1ST	2ND	3RD	4TH	OT	F	DEADBALL REBOUNDS:	Off.	Def.	Total	AVG. ATTENDANCE:	Totals	Avg.
Bradley	140	195	215	189	0	739	Bradley	33	1	34	Home	4,396	733
Opponents	176	186	212	213	0	787	Opponents	20	0	20	Away	7,959	1,327
											Neutral	0	0
											Total	12,355	1,030

2015-16 RESULT MARGINS

Outcome	1	2	3	4	5	6	7	8	9	10	12	13	14	15	16	17	18	19	20	21	33	40	OT
Wins (4)	0	0	0	0	0	1	0	2	0	0	0	0	0	0	0	0	0	0	0	0	0	1	0
Losses (8)	0	0	0	1	0	0	1	0	0	1	0	3	0	0	0	1	0	0	0	0	1	0	0

MVC Statistics

2015-16 Record: 0-1 MVC

Home 0-1; Away 0-0

#	Player	gp-gs	min	avg	Total		3-Point		F-Throw		Rebounds				pf	dq	a	to	blk	stl	pts	avg
					fg-fga	fg%	3fg-fga	3fg%	ft-fa	ft%	off	def	tot	avg								
30	Tinjum, Whitney	1-0	26	26.0	3-11	.273	1-4	.250	8-9	.889	2	4	6	6.0	1	0	1	1	0	2	15	15.0
00	Brewer, Danielle	1-1	31	31.0	5-7	.714	3-3	1.000	1-2	.500	1	1	2	2.0	2	0	0	2	0	1	14	14.0
33	Schlueter, Anneke	1-1	32	32.0	3-11	.273	2-9	.222	0-0	.000	0	0	0	0.0	1	0	1	4	0	2	8	8.0
23	Lerma, Leti	1-1	21	21.0	1-5	.200	0-0	.000	5-8	.625	4	5	9	9.0	3	0	0	1	2	1	7	7.0
11	Sims, Tamyia	1-1	34	34.0	2-8	.250	0-0	.000	2-2	1.000	2	7	9	9.0	2	0	0	3	2	0	6	6.0
14	Yelle, Kat	1-1	32	32.0	2-7	.286	0-2	.000	0-2	.000	0	4	4	4.0	4	0	5	3	0	0	4	4.0
20	Burrell, Shareece	1-0	12	12.0	0-0	.000	0-0	.000	0-0	.000	0	2	2	2.0	2	0	0	1	0	1	0	0.0
32	Dellamuth, Madison	1-0	7	7.0	0-1	.000	0-0	.000	0-0	.000	0	0	0	0.0	1	0	0	4	0	0	0	0.0
15	Eshoo, Emily	1-0	5	5.0	0-0	.000	0-0	.000	0-0	.000	0	0	0	0.0	0	0	0	1	0	0	0	0.0
Team																						
Total.....		1	200		16-50	.320	6-18	.333	16-23	.696	12	24	36	36.0	16	0	7	20	4	7	54	54.0
Opponents.....		1	200		26-54	.481	2-6	.333	13-16	.813	5	25	30	30.0	17	0	16	14	8	7	67	67.0

SCORE BY QUARTER:	1ST	2ND	3RD	4TH	OT	F	DEADBALL REBOUNDS:	Off.	Def.	Total	AVG. ATTENDANCE:	Totals	Avg.
Bradley	9	16	20	9	0	54	Bradley	4	0	4	Home	572	572
Opponents	14	13	25	15	0	67	Opponents	2	0	2	Away	0	0
											Total	0	0

2015-16 BRADLEY WOMEN'S BASKETBALL
GAMES #13 & #14 AT SIU (01-08-16) & AT EVANSVILLE (01-10-16)

Date	Opponent	W-L	Score	Att.	Record	MVC	Hi Scorer	Hi Rebounder	Hi Assists	Hi Blocks	Hi Steals
11/13	at Detroit (ESPN3)	W	75-67	255	1-0	--	Tinjum 21	Tinjum 10	Yelle 4	Green & Sims 1	Schlueter 3
11/15	at Bowling Green (ESPN3)	L	53-66	1,506	1-1	--	Green 17	Three players with 5	Yelle 5	Lerma & Sims 1	Brewer 2
11/22	*17/24 OKLAHOMA (ESPN3)	L	46-79	778	1-2	--	Schlueter & Tinjum 12	Yelle 8	Green & Yelle 3	Sims 1	Green 3
11/24	WESTERN MICHIGAN (ESPN3)	L	59-72	1,504	1-3	--	Lerma 15	Lerma & Sims 7	Yelle 4	Sims 2	Lerma 4
11/28	EUREKA	W	87-47	609	2-3	--	Lerma 19	Lerma 13	Green & Markert 3	Markert 3	Lerma 5
12/2	at Chicago State	W	66-60	225	3-3	--	Schlueter 14	Lerma 12	Green 6	Three players with 1	Green 2
12/5	ILLINOIS-CHICAGO (ESPN3)	L	56-66	521	3-4	--	Schlueter 19	Lerma 7	Yelle 5	Lerma 2	Brewer & Lerma 2
12/8	KENT STATE (ESPN3)	W	68-60	412	4-4	--	Lerma 19	Lerma 7	Yelle 5	Sims 6	Tinjum & Yelle 3
12/19	at #24 Iowa	L	53-60	4,051	4-5	--	Schlueter 13	Brewer 8	Yelle 3	Sims 3	Burrell & Schlueter 2
12/21	at Northern Illinois	L	64-68	409	4-6	--	Sims 14	Lerma 7	Green 2	Lerma & Sims 2	Four players with 1
12/30	at Saint Louis	L	58-75	1,513	4-7	--	Tinjum 19	Sims 7	Lerma & Yelle 3	Sims 3	Three players with 2
1/3	*LOYOLA (ESPN3)	L	54-67	572	4-8	0-1	Tinjum 15	Lerma & Sims 9	Yelle 5	Lerma & Sims 2	Schlueter & Tinjum 2

Date	Opponent	Site	Time	Series
1/8	*at Southern Illinois (ESPN3)	Carbondale, Ill.	6 p.m.	SIU leads 44-25; SIU leads 24-11 in Carbondale
1/10	*at Evansville (ESPN3)	Evansville, Ind.	1 p.m.	Bradley leads 26-18; UE leads 11-10 in Evansville
1/15	*MISSOURI STATE (ESPN3)	Renaissance Coliseum	7 p.m.	Missouri State leads 49-23; MSU leads 19-13 in Peoria
1/17	*WICHITA STATE (ESPN3)	Renaissance Coliseum	2 p.m.	Wichita State leads 35-30; BU leads 18-14 in Peoria
1/22	*at Illinois State (ESPN3)	Normal, Ill.	7 p.m.	Illinois State leads 50-28; ILS leads 26-12 in Normal
1/24	*at Indiana State (ESPN3)	Terre Haute, Ind.	11 a.m.	Indiana State leads 45-24; INS leads 26-7 in Terre Haute
1/29	*DRAKE (ESPN3)	Renaissance Coliseum	7 p.m.	Drake leads 52-15; DU leads 22-10 in Peoria
1/31	*NORTHERN IOWA (ESPN3)	Renaissance Coliseum	2 p.m.	Bradley leads 34-33; BU leads 22-11 in Peoria
2/5	*EVANSVILLE (ESPN3)	Renaissance Coliseum	7 p.m.	BU leads 15-6 in Peoria
2/7	*SOUTHERN ILLINOIS (ESPN3)	Renaissance Coliseum	2 p.m.	SIU leads 19-13 in Peoria
2/12	*at Wichita State (ESPN3)	Wichita, Kan.	7 p.m.	WSU leads 20-12 in Wichita
2/14	*at Missouri State (ESPN3)	Springfield, Mo.	2 p.m.	MSU leads 29-9 in Springfield
2/19	*INDIANA STATE (ESPN3)	Renaissance Coliseum	7 p.m.	INS leads 17-16 in Peoria
2/21	*ILLINOIS STATE (ESPN3)	Renaissance Coliseum	2 p.m.	ILS leads 21-16 in Peoria
2/26	*at Northern Iowa (ESPN3)	Cedar Falls, Iowa	7 p.m.	UNI leads 19-12 in Cedar Falls
2/28	*at Drake (ESPN3)	Des Moines, Iowa	2 p.m.	DU leads 27-5 in Des Moines
3/5	*at Loyola (ESPN3)	Chicago, Ill.	3 p.m.	Bradley leads 19-14; LU leads 8-7 in Chicago
3/12-15	MVC Tournament	Moline, Ill.		

* - Missouri Valley Conference Regular Season game

2015-16 SINGLE-GAME TEAM HIGHS

Bradley	Category	Opponent
87 vs. Eureka, 11/28/15	Points	79 vs. #17 Oklahoma, 11/22/15
33 vs. Eureka, 11/28/15	FGM	31 vs. #17 Oklahoma, 11/22/15
73 vs. Eureka, 11/28/15	FGA	65 vs. #17 Oklahoma, 11/22/15
45.2 (33-73) vs. Eureka, 11/28/15	FG%	52.8 (28-53) vs. Western Michigan, 11/24/15
10 at Bowling Green, 11/15/15	3FGM	12 (2x) last vs. #17 Oklahoma, 11/22/15
32 at Bowling Green, 11/15/15	3FGA	37 at Detroit, 11/13/15
36.8 (7-19) vs. Eureka, 11/28/15	3FG%	46.2 (12-26) vs. #17 Oklahoma, 11/22/15
18 at Detroit, 11/13/15	FTM	19 at Bowling Green, 11/15/15
28 at Detroit, 11/13/15	FTA	22 (2x) last at Northern Illinois, 12/21/15
81.3 (13-16) vs. Western Michigan, 11/24/15	FT%	95.0 (19-20) at Bowling Green, 11/15/15
55 vs. Eureka, 11/28/15	Rebounds	55 at Bowling Green, 11/15/15
17 vs. Illinois-Chicago, 12/5/15	Assists	23 at Saint Louis, 12/30/15
23 vs. Illinois-Chicago, 12/5/15	Turnovers	27 vs. Eureka, 11/28/15
9 vs. Eureka, 11/28/15	Blocked Shots	8 (3x) last vs. Loyola, 1/3/16
16 vs. Eureka, 11/28/15	Steals	11 vs. Illinois-Chicago, 12/5/15

2015-16 SINGLE-GAME TEAM LOWS

Bradley	Category	Opponent
46 vs. #17 Oklahoma, 11/22/15	Points	47 vs. Eureka, 11/28/15
13 vs. #17 Oklahoma, 11/22/15	FGM	17 vs. Eureka, 11/28/15
49 vs. Illinois-Chicago, 12/5/15	FGA	52 (2x) last vs. Illinois-Chicago, 12/5/15
22.8 (13-57) vs. #17 Oklahoma, 11/22/15	FG%	30.9 (17-55) vs. Eureka, 11/28/15
3 vs. #17 Oklahoma, 11/22/15	3FGM	1 vs. Illinois-Chicago, 12/5/15
11 vs. Western Michigan, 11/24/15	3FGA	6 vs. Loyola, 1/3/16
23.1 (3-13) vs. #17 Oklahoma, 11/22/15	3FG%	9.1 (1-11) vs. Illinois-Chicago, 12/5/15
4 at Northern Illinois, 12/21/15	FTM	5 vs. #17 Oklahoma, 11/22/15
9 at Northern Illinois, 12/21/15	FTA	6 vs. #17 Oklahoma, 11/22/15
44.4 (4-9) at Northern Illinois, 12/21/15	FT%	61.5 (8-13) at Chicago St, 12/2/15
30 (2x) last vs. Kent State, 12/8/15	Rebounds	22 at Chicago St, 12/2/15
5 at #24 Iowa, 12/19/15	Assists	8 (2x) last vs. Eureka, 11/28/15
10 at Bowling Green, 11/15/15	Turnovers	12 at Northern Illinois, 12/21/15
1 vs. #17 Oklahoma, 11/22/15	Blocked Shots	1 vs. Eureka, 11/28/15
4 at Northern Illinois, 12/21/15	Steals	2 at Northern Illinois, 12/21/15

2015-16 BRADLEY INDIVIDUAL SINGLE-GAME HIGHS

Category	Total	Player, Opponent, Date
Points	21	Whitney Tinjum at Detroit, 11/13/15
FGM	9	Leti Lerma vs. Eureka, 11/28/15
FGA	16	Anneke Schlueter at #24 Iowa, 12/19/15
FG%	66.7	Tamya Sims (6-9) vs. Eureka, 11/28/15
3FGM	4	5x, last by Anneke Schlueter vs. Kent State, 12/8/15
3FGA	11	2x, last by Anneke Schlueter at #24 Iowa, 12/19/15
3FG%	57.1	Anneke Schlueter (4-7) at Chicago St, 12/2/15
FTM	8	Whitney Tinjum vs. Loyola, 1/3/16
FTA	9	3x, last by Whitney Tinjum vs. Loyola, 1/3/16

Category	Total	Player, Opponent, Date
FT%	100.0	Whitney Tinjum (6-6) vs. #17 Oklahoma, 11/22/15
Rebounds	13	Leti Lerma vs. Eureka, 11/28/15
Assists	6	Gabby Green at Chicago St, 12/2/15
Turnovers	5	2x, last by Gabby Green at #24 Iowa, 12/19/15
Blocked Shots	6	Tamya Sims vs. Kent State, 12/8/15
Steals	5	Leti Lerma vs. Eureka, 11/28/15

2015-16 OPPONENT INDIVIDUAL SINGLE-GAME HIGHS

Category	Total	Player, Opponent, Date
Points	29	Taylor Johnson vs. Loyola, 1/3/16
FGM	12	Sadie Stipanovich at Saint Louis, 12/30/15
FGA	18	Larissa Lurken vs. Kent State, 12/8/15
FG%	100.0	Kaylon Williams (6-6) vs. #17 Oklahoma, 11/22/15
3FGM	5	Haleigh Ristovski at Detroit, 11/13/15
3FGA	11	Nicole Urbanick at Detroit, 11/13/15
3FG%	66.7	2x, last by Courtney Woods (4-6) at Northern Illinois, 12/21/15
FTM	8	2x, last by Taylor Johnson vs. Loyola, 1/3/16
FTA	10	Ally Disterhoft at #24 Iowa, 12/19/15

Category	Total	Player, Opponent, Date
FT%	100.0	2x, last by Taylor Johnson (8-8) vs. Loyola, 1/3/16
Rebounds	14	Ally Lehman at Northern Illinois, 12/21/15
Assists	12	Jackie Kempf at Saint Louis, 12/30/15
Turnovers	11	Luci Weis vs. Eureka, 11/28/15
Blocked Shots	5	Teagan Reeves vs. Western Michigan, 11/24/15
Steals	4	3x, last by Jackie Kempf at Saint Louis, 12/30/15

MISCELLANEOUS STATISTICS AND TRENDS

2015-16 BRADLEY TRENDS

BRADLEY'S RECORD BREAKDOWN & STREAKS

Current Streak	Last Four
Overall Record	4-6
MVC Record	0-0
Last 5 Games	1-4
Last 10 Games	3-7
Overtime Games	0-0
Longest Win Streak	Two

BRADLEY'S RECORD BY DAY OF THE WEEK

Sunday	0-3
Monday	0-0
Tuesday	1-2
Wednesday	1-1
Thursday	0-0
Friday	1-0
Saturday	1-2

BRADLEY'S RECORD WHEN

Leading at Halftime	4-2
Home	2-1
Away	2-1
Neutral	0-0
Trailing at Halftime	0-6
Home	0-3
Away	0-3
Neutral	0-0
Tied at Halftime	0-0
Home	0-0
Away	0-0
Neutral	0-0
BU shot 40% or better from the field	4-1
Opponent shot 40% or better from the field	1-5
Bradley shot less than 40% from the field	0-7
Opponent shot less than 40% from the field	3-3
Bradley shot 40% or better from 3-pt range	0-0
Opponent shot 40% or better from 3-pt range	0-1
Bradley outrebounded opponent	3-1
Opponent outrebounded Bradley	1-7
Bradley scored 70 or more points	2-0
Opponent scored 70 or more points	0-3
Bradley allowed fewer than 70 points	4-5
Opponent allowed fewer than 70 points	2-8
A Bradley player scored 20 or more points	1-0
An opposing player scored 20 or more points	2-4
A Bradley player had 10 or more rebounds	3-0
An opposing player had 10 or more rebounds	1-3

SEASON SHOOTING PERCENTAGES BY SITE

Field Goal Shooting	FGM-FGA	Pct.
Home	126-353	.357
Away	137-366	.374
Neutral	0-0	.000
3-Point Field Goal Shooting	3FG-3FGA	Pct.
Home	33-103	.320
Away	40-126	.317
Neutral	0-0	.000
Free Throw Shooting	FTM-FTA	Pct.
Home	85-123	.691
Away	55-87	.632
Neutral	0-0	.000

BRADLEY STATISTICAL LEADERS

Points: Schlueter 4, Tinjum 4, Lerma 3, Green 1, Sims 1

Rebounds: Lerma 7, Sims 4, Yelle 2, Brewer 1, Schlueter 1, Tinjum 1

Assists: Yelle 9, Green 4, Lerma 1, Markert 1

Steals: Schlueter 5, Lerma 4, Brewer 3, Green 3, Tinjum 3, Burrell 1, Lerma 1, Yelle 1

Blocks: Sims 10, Lerma 4, Green 1, Markert 1, Schlueter 1, Yelle 1

Bradley on Television (2-5)

ESPN3 (2-5)

A player scored 50 points ...

BU: N/A

Opp: Kandy Crosby (50) vs. National College of Education, 3/5/82

A player scored 40 points ...

BU: N/A

Opp: Amy Patton (41), at Northern Arizona, 11/24/12

A player scored 30 points ...

BU: Michelle Young (38) at Columbia, 11/26/14

Opp: Dyana Pierre (33) at Southern Illinois, 1/2/14

A player grabbed 20 rebounds ...

BU: Latasha Hollingshed (20) at Wisconsin-Milwaukee, 12/1/10

Opp: Briyana Blair (20) at Evansville, 1/8/12

A player grabbed 15 rebounds ...

BU: Leti Lerma (15) at Evansville, 1/12/15

Opp: Dyana Pierre (16) at Southern Illinois, 2/1/15

A player had a double-double ...

BU: Leti Lerma (12 pts, 12 reb.) at Chicago State, 12/2/15

Opp: Jackie Kempf (15 pts, 12 ast.) at Saint Louis, 12/30/15

A player had a triple-double ...

BU: Tammy Van Oppen (21 pts., 10 reb., 10 ast.) vs. SIU, 12/31/96

Opp: D'shara Strange (13 pts., 12 reb., 11 steals) Northern Colo., 11/12/11

A player made five three-pointers ...

BU: Kelsey Budd (5-of-8) at Missouri State, 2/8/13

Opp: Haleigh Ristovski (5-of-9) at Detroit, 11/13/15

A player made 10 free throws ...

BU: Michelle Young (10-of-12) at Indiana State, 1/9/15

Opp: Taylor Johnson (10-of-13) vs. Loyola, 3/12/15

A player had 15 free throw attempts ...

BU: Michelle Young (16-of-20) at Southern Illinois, 1/2/14

Opp: Jordan Frericks (7-of-17) vs. Missouri, 12/6/14

A player had 10 assists ...

BU: Skye Johnson (13) vs. Drake, 2/21/09

Opp: Jackie Kempf (12) at Saint Louis, 12/30/15

A player had five steals ...

BU: Leti Lerma (5) vs. Eureka, 11/28/15

Opp: Ruvanna Campbell (5) vs. Illinois-Chicago, 12/5/15

A player blocked five shots ...

BU: Tamyia Sims (6) vs. Kent State, 12/8/15

Opp: Teagan Reeves (5) vs. Western Michigan, 11/24/15

A team scored 100 points ...

BU: 112 at Wisconsin-Milwaukee (112-116), 12/4/12

Opp: 104 at Oklahoma (104-55), 11/21/14

A team made 35 field goals ...

BU: 35 vs. Illinois (35-of-68), 11/8/13

Opp: 43 at Oklahoma (43-of-73), 11/21/14

A team had 75 field goal attempts ...

BU: 86 at Southern Illinois (33-of-86), 1/31/14

Opp: 77 vs. Missouri State (29-of-77), 1/18/15

A team shot 50 percent from the field ...

BU: .500 vs. Indiana State (23-of-46), 1/31/14

Opp: .528 vs. Western Michigan (28-of-53), 11/24/15

A team made 10 three-point field goals ...

BU: 10 at Bowling Green (10-for-32), 11/15/15

Opp: 12 vs. #17 Oklahoma (12-of-26), 11/22/15

A team had 20 three-point field goal attempts ...

BU: 21 vs. Kent State (6-for-21), 12/8/15

Opp: 26 at Saint Louis (8-for-26), 12/30/15

A team shot 50 percent from 3-point range ...

BU: .625 vs. Evansville (10-of-16), 1/31/13

Opp: .571 vs. Loyola (4-of-7), 3/12/15

A team made 30 free throws ...

BU: 36 at Wisconsin-Milwaukee (36-of-43), 12/4/12

Opp: 31 vs. Missouri State (31-of-38), 12/29/11

A team had 25 assists ...

BU: 26 at Missouri State, 2/8/13

Opp: 25 at Drake, 3/5/15

A team had 15 steals ...

BU: 16 vs. Eureka (27 EC TO), 11/28/15

Opp: 15 vs. Illinois State (23 BU TO), 3/1/15

A team blocked 10 shots ...

BU: 10 at Northern Iowa, 1/20/12

Opp: 10 vs. Loyola, 3/12/15

Renaissance Coliseum Individual Records

Points: 38 by Sabina Oroszova - Eastern Illinois (12/4/13)

Field Goals Made: 16 by Sabina Oroszova - Eastern Illinois (12/4/13)

FG Att.: 29 by Sabina Oroszova - Eastern Illinois (12/4/13)

FG % (5 FG): 1.000 (7-7) Chynna Turner - Wichita St. (12/31/11)

3-Pt. FG Made: 7 by Amber Moore - Illinois (11/8/13)

3-Pt. FG Attempts: 13 (3x) last by Kyndal Clark - Drake (2/21/14)

Free Throws Made: 16 by Raisa Taylor vs. Indiana State (3/5/11)

Free Throws Attempted: 21 by Raisa Taylor vs. Indiana St. (3/5/11)

Rebounds: 19 by Leti Lerma vs. Loyola (2/15/14)

Assists: 15 by Caitlin Ingle - Drake (1/4/15)

Blocked Shots: 6 (2x) last by Tamyia Sims vs. Kent St. (12/8/15)

Steals: 11 by D'shara Strange - Northern Colo. (11/12/11)

Minutes Played: 40 (10x) last by Becca Smith - Loyola (2/20/15)

Renaissance Coliseum Team Records

Margin of Victory: 42 (90-48), Bradley vs. SIU (2/2/13)

Most Points in a Game: 98 Bradley vs. Illinois (11/8/13)

Fewest Points in a Game: 44 by Southern Illinois (1/21/11)

Most Points in a Half: 57 vs. Illinois 2nd Half (11/8/13)

Fewest Points in a Half: 13 by Eureka 2nd Half (11/28/15)

Most Combined Points: 190, Bradley (98) Illinois (92) (11/8/13)

Fewest Combined Points: 103, Bradley (54) Loyola (49) (2/15/14)

Most Field Goals Made: 39 by Illinois (11/8/13)

Fewest Field Goals Made: 13 Bradley 2x, last vs. #17 Oklahoma (11/22/15)

Field Goals Attempts: 84 by Illinois (11/8/13)

Best FG Percentage, Game: .617 BU vs. Saint Louis (12/4/10)

Worst FG Percentage, Game: .223 BU vs. Drake (1/4/15)

Best FG Percentage, Half: .696 BU vs. Saint Louis (12/4/10)

Worst FG Percentage, Half: .115 by Eureka (11/28/15)

Most Free Throws Made: 31 vs. Missouri St. (12/29/11)

Fewest Free Throws Made: 2 by Illinois (11/8/13)

Most Free Throw Attempts: 39 vs. Wis.-Milwaukee (11/28/11)

Fewest Free Throws Attempts: 2 by Illinois (11/8/13)

Free Throw Percentage: 1.000 BU (12-12) vs. Drake (1/4/15)

Rebounds: 62 by South Florida (11/17/13)

Rebound Margin: +26 (2x) last by BU vs. Eureka (11/28/15)

Assists: 29 by Drake (1/4/15)

Fewest Turnovers: 8 (3x) last by UNI (2/23/14)

Most Turnovers: 31 vs. Missouri State (1/18/15)

Blocked Shots: 9 (4x) last by BU vs. Eureka (11/28/15)

Steals: 22 by Evansville (1/23/11)

3-Pt. Field Goals Made: 15 by Drake (2/21/14)

3-Pt. Field Goals Attempted: 38 by Creighton (2/23/13)

3-Pt. Field Goal Percentage: .625 (10-16) vs. Evansville (1/31/13)

#00 • DANIELLE BREWER

5-10 • Sophomore • Guard • Coatesville, Ind.



2015-16 (SOPHOMORE)

Came off the bench in the first four games of the season, before making her first start of the year against Eureka ... Played 25 minutes against Western Michigan, tallying six points, five rebounds and one assist ... Scored nine points off the bench in the win at Chicago State ... Had eight points, three boards, three assists and two steals against UIC ... Averaging 7.9 points, 3.6 rebounds and 1.7 assists per game in the last seven games ... Pulled down a season-high eight rebounds at #24 Iowa in addition to tallying seven points and two assists ... Has made six of her last nine three-point attempts over the last five games ... Collected a season-best 14 points vs. Loyola, making 3-of-3 from beyond the arc.

points during her high school career ... Helped the Trailblazers to the Home School 5A national championship in 2009-10 ... Led the nation in scoring for Home School squads with a 20.1 points per game average as a senior.

GETTING TO KNOW DANIELLE BREWER

Parents: Jen & Don Brewer
Birthplace: Brownsburg, Ind.
Siblings: Donny (17)
Major: Sports Communication

CAREER HIGHS		
Category	Total	Opponent (Date)
Points	17	at UNI (3/7/15)
FG	7	vs. Southern Illinois (2/27/15)
FGA	12	2x, last vs. SIU (2/27/15)
3-Pt. FG	3	3x, last vs. Loyola (1/3/16)
3-Pt. FGA	7	vs. Illinois St. (3/1/15)
FT	4	5x last vs. UIC (12/5/15)
FTA	8	vs. Western Illinois (12/9/14)
Rebounds	10	vs. Chicago St. (12/18/14)
Assists	3	3x, last vs. Kent St. (12/8/15)
Blocks	1	3x, last vs. Loyola (2/20/15)
Steals	3	2x, last vs. Eureka (11/28/15)
Minutes	32	vs. Northern Ill. (12/30/14)

2014-15 (FRESHMAN)

Made 23-of-61 (37.7 percent) from beyond the arc over her last 27 outings ... Shot a team-best 34.8 percent from three-point range on the year ... Her 24 three's were the most by a Bradley freshman since Katie Yohn had 57 in 2009-10 and the fifth best total by a Bradley frosh ... Averaged 11.2 points per game, while shooting 38 percent from three in the last five outings and 8.2 per game over the last nine ... Shot 41 percent from three-point range in last nine contests ... Made her first four shots and was a perfect 3-for-3 from three-point range at UNI, where she finished with a season-best 17 points and seven rebounds ... Had 10 points in the final home game of the season to help Bradley complete the sweep of Illinois State and scored in double figures in three of the last four home contests ... Scored 15 points on 7-of-12 shooting in the home game against Southern Illinois ... Came off the bench to score all 11 of her points in the second half in the 56-50 home win against Evansville (Feb. 8) ... Averaged 9.8 points in the final four home games, while shooting 41.2 percent (7-for-17) from three-point range ... Was 3-for-4 from three-point range in the win against the Purple Aces ... Turned in 12 points in 28 minutes off the bench vs. Western Illinois ... Also had four rebounds, one assist and two steals against the Leathernecks ... Grabbed season-high 10 rebounds to go with five points, three assists and three steals vs. Chicago State.

Brewer's 2015-16 Game-by-Game Stats

Opponent	G-S	Min.	FGs	3FGs	FTs	Reb.	A	B	S	Pts.
at Detroit	1-0	10	2-6	0-1	1-2	0-1-1	2	0	1	5
at Bowling Green	1-0	20	1-4	1-4	0-0	1-2-3	1	0	2	3
OKLAHOMA	1-0	10	1-2	0-0	0-0	0-1-1	0	0	0	2
W. MICHIGAN	1-0	25	2-3	1-1	1-1	0-5-5	1	0	0	6
EUREKA	1-1	16	1-4	1-2	1-2	2-0-2	0	0	3	4
at Chicago St.	1-0	26	2-8	2-6	3-3	0-1-1	2	0	1	9
ILL.-CHICAGO	1-1	26	2-5	0-3	4-4	1-2-3	3	0	2	8
KENT STATE	1-1	25	2-5	1-3	2-4	0-2-2	3	0	2	7
at Iowa	1-1	22	3-7	1-1	0-0	1-7-8	2	0	0	7
at Northern Ill.	1-1	28	3-8	1-1	1-2	1-3-4	0	0	1	8
at Saint Louis	1-1	20	1-5	0-1	0-0	1-4-5	2	0	0	2
LOYOLA	1-1	31	5-7	3-3	1-2	1-1-2	0	0	1	14

HIGH SCHOOL

Was home schooled, but played for the Indiana Trailblazers ... Three-time Home School All-American ... Scored 51 points in a game and collected more than 3,200 career

BREWER'S CAREER STATISTICS

Yr.	GP-GS	Min.	FGM-FGA	FG%	3FG-3Att.	3P%	FTM-FTA	FT%	O-D-RB	Avg.	PF-FO	A	TO	BS	ST	TP	Avg.
14-15	28-15	556	48-161	.298	24-69	.348	30-44	.682	24-55-79	2.8	49-0	19	46	3	22	150	5.4
15-16	12-7	259	25-64	.391	11-26	.423	14-20	.700	8-29-37	3.1	25-0	16	19	0	13	75	6.3
Totals	40-22	815	73-225	.324	35-95	.368	44-64	.688	32-84-116	2.9	74-0	35	65	3	35	225	5.6

#20 • SHAREECE BURRELL

5-8 • Sophomore • Guard • Des Moines, Iowa • East



2015-16 (SOPHOMORE)

Played nine minutes off the bench in the season-opening victory at Detroit, dishing out a career-high two assists ... Has played in 10 of 12 games off the bench ... Averaging 4.7 points and 2.9 rebounds, while shooting 50 percent over the last seven games ... Played a career-high 25 minutes off the bench in the win against Eureka, finishing with four points, five boards, two assists and one block ... Had seven of her nine points at #24 Iowa in the first half, making 4-of-5 shots to go with two steals ... Scored a career-best 10 points in the win at Chicago State, including making a pair of free throws in the closing seconds ... Had six points, two boards, two assists and one steal against UIC.

GETTING TO KNOW SHAREECE BURRELL

Parents: Melinda & Charles Burrell
Birthplace: Des Moines, Iowa
Siblings: Charles (24), Jeffrey (23) & Charnise (20)
Major: Sports Communication

CAREER HIGHS

Category	Total	Opponent (Date)
Points	10	at Chicago St. (12/2/15)
FG	4	2x, last at #24 Iowa (12/19/15)
FGA	7	2x, last at Chicago St. (12/2/15)
3-Pt. FG	1	8x, last at Saint Louis (12/30/15)
3-Pt. FGA	4	vs. Loyola (2/20/15)
FT	4	vs. Northern Ill. (12/30/14)
FTA	4	2x, last at Drake (3/5/15)
Rebounds	8	at Missouri St. (2/13/15)
Assists	2	3x, last vs. UIC (12/5/15)
Blocks	1	2x, last vs. Eureka (11/28/15)
Steals	3	at Missouri St. (2/13/15)
Minutes	25	vs. Eureka (11/28/15)

2014-15 (FRESHMAN)

Averaged 4.3 points and 3.5 rebounds in the last eight games, after not scoring a point in the previous nine contests ... Hit a three-pointer to spark a 14-2 Bradley run in the home win against Illinois State ... Came off the bench to collect season highs of eight points, eight rebounds and three assists at Missouri State ... Matched the eight points in the home win against Loyola ... Nailed a three-pointer at the halftime buzzer against Northern Illinois and finished with seven points against the Huskies ... Scored six points in a reserve role against Western Illinois ... Played 11 minutes off the bench in the season opener at UIC ... Collected five points, three rebounds, one assist and one steal off the bench at #18 DePaul.

Burrell's 2015-16 Game-by-Game Stats

Opponent	G-S	Min.	FGs	3FGs	FTs	Reb.	A	B	S	Pts.
at Detroit	1-0	9	0-3	0-2	0-0	0-2-2	2	0	0	0
at Bowling Green	DNP									
OKLAHOMA	1-0	4	1-1	0-0	0-0	1-0-1	0	0	1	2
W. MICHIGAN	1-0	11	0-2	0-0	0-0	1-0-1	0	0	0	0
EUREKA	1-0	25	2-6	0-2	0-0	1-4-5	2	1	0	4
at Chicago St.	1-0	24	4-7	0-2	2-2	0-2-2	1	0	1	10
ILL.-CHICAGO	1-0	16	2-3	1-2	1-2	0-2-2	2	0	1	6
KENT STATE	1-0	18	1-2	0-1	2-2	1-4-5	1	0	1	4
at Iowa	1-0	23	4-5	0-0	1-2	1-3-4	0	0	2	9
at Northern Ill.	1-0	9	0-2	0-0	0-0	0-1-1	1	0	0	0
at Saint Louis	1-0	13	1-5	1-2	1-2	2-2-4	0	0	0	4
LOYOLA	1-0	12	0-0	0-0	0-0	0-2-2	0	0	1	0

HIGH SCHOOL

Missed the first half of her senior season due to an injury, but returned to the floor to average 14 points per game ... Was her team's leading scorer each of her last three prep season and was the top rebounder for the Scarlets as a junior and senior ... Second-team all-state pick as a junior ... Two-time all-conference selection ... Helped Des Moines East to a state title as a freshman and four consecutive conference championships.

BURRELL'S CAREER STATISTICS

Yr.	GP-GS	Min.	FGM-FGA	FG%	3FG-3Att.	3P%	FTM-FTA	FT%	O-D-RB	Avg.	PF-FO	A	TO	BS	ST	TP	Avg.
14-15	24-0	269	21-62	.339	6-23	.261	14-18	.778	22-22-44	1.8	25-0	5	17	1	11	62	2.6
15-16	11-0	164	15-36	.417	2-11	.182	7-10	.700	7-22-29	2.6	16-0	9	9	1	7	39	3.5
Totals	35-0	433	36-98	.367	8-34	.235	21-28	.750	29-44-73	2.1	41-0	14	26	2	18	101	2.9



#12 • KELLEE CLAY

5-6 • Freshman • Guard • Naperville, Ill. • Metea Valley

HIGH SCHOOL

Has not played in the first 12 games of 2015-16.

HIGH SCHOOL

Three-time letterwinner in basketball, she helped the Mustangs to a regional title her senior year ... Also lettered in track ... Two-time state qualifier in the long jump

GETTING TO KNOW KELLEE CLAY

Parents: Kim & Keith Clay

Birthplace: Chicago, Ill.

Siblings: Kenneth (23)

Major: Sports Communication

Clay's 2015-16 Game-by-Game Stats

Opponent	G-S	Min.	FGs	3FGs	FTs	Reb.	A	B	S	Pts.
at Detroit			DNP							
at Bowling Green			DNP							
OKLAHOMA			DNP							
W. MICHIGAN			DNP							
EUREKA			DNP							
at Chicago St.			DNP							
ILL.-CHICAGO			DNP							
KENT STATE			DNP							
at Iowa			DNP							
at Northern Ill.			DNP							
LOYOLA			DNP							



#32 • MADISON DELLAMUTH

5-6 • Sophomore • Guard • Cedar Rapids, Iowa • Prairie

2014-15 (SOPHOMORE)

Made her first appearance of the season against #17 Oklahoma, playing five minutes ... Matched a career-best with three steals in 15 minutes off the bench against Eureka ... Scored her first points of the season, collecting four points on 2-for-2 shooting, along with one assist and one steal at Saint Louis.

2014-15 (FRESHMAN)

Tied for the team lead with 54 assists and averaged 1.9 per game ... Had a season-best five assists in two of the last five home games averaged 3.5 assists per game in the final six home outings ... Scored a season-high seven points on 3-of-4 shooting and also had two steals in the win at Loyola ... Dished out three assists in 20 minutes off the bench in the season-opener at UIC ... Made her first career start at #18 DePaul and finished with two points, six boards and four assists ... Returned to the starting lineup for Chicago State after four straight games coming off the bench ... Started 10 consecutive games before coming off the bench in the win at Illinois State ... Snagged a season-best three steals at Indiana State ... Dished out four assists in the home contest against Missouri State (Jan. 28) to go with three points.

GETTING TO KNOW MADISON DELLAMUTH

Parents: Jackie Fett & Mark Dellamuth

Birthplace: Cedar Rapids, Iowa

Siblings: Austin (23) & Mitch (20)

Major: Academic Exploration Program

Dellamuth's 2015-16 Game-by-Game Stats

Opponent	G-S	Min.	FGs	3FGs	FTs	Reb.	A	B	S	Pts.
at Detroit			DNP							
at Bowling Green			DNP							
OKLAHOMA	1-0	5	0-0	0-0	0-0	0-0-0	1	0	0	0
W. MICHIGAN	1-0	5	0-1	0-0	0-0	0-0-0	1	0	0	0
EUREKA	1-0	15	0-1	0-0	0-0	0-2-2	1	0	3	0
at Chicago St.			DNP							
ILL.-CHICAGO	1-0	1	0-0	0-0	0-0	0-0-0	0	0	0	0
KENT STATE			DNP							
at Iowa			DNP							
at Northern Ill.			DNP							
at Saint Louis	1-0	12	2-2	0-0	0-1	1-1-2	1	0	1	4
LOYOLA	1-0	7	0-1	0-0	0-0	0-0-0	0	0	0	0

CAREER HIGHS

Category	Total	Opponent (Date)
Points	7	at Loyola (1/25/15)
FG	3	at Loyola (1/25/15)
FGA	8	vs. Drake (1/4/15)
3-Pt. FG	1	5x, last at Wichita St. (2/15/15)
3-Pt. FGA	4	vs. Drake (1/4/15)
FT	4	vs. UNI (1/2/15)
FTA	5	at Indiana St. (1/9/15)
Rebounds	6	2x, last vs. Indiana St. (2/6/15)
Assists	5	2x, last vs. Evansville (2/8/15)
Blocks	1	at Missouri St. (2/13/15)
Steals	3	2x, last vs. Eureka (11/28/15)
Minutes	38	vs. Drake (1/4/15)

DELLAMUTH'S CAREER STATISTICS

Yr.	GP-GS	Min.	FGM-FGA	FG%	3FG-3Att.	3P%	FTM-FTA	FT%	O-D-RB	Avg.	PF-FO	A	TO	BS	ST	TP	Avg.
14-15	29-13	448	20-66	.303	5-31	.161	12-17	.706	6-40-46	1.6	58-2	54	105	1	18	57	2.0
15-16	6-0	45	2-5	.400	0-0	.000	0-1	.000	1-3-4	0.7	4-0	4	10	0	4	4	0.7
Totals	35-13	493	22-71	.310	5-31	.161	12-18	.667	7-43-50	1.4	62-2	58	115	1	22	61	1.7

#15 • EMILY ESHOO

5-9 • Freshman • Guard • Naperville, Ill. • Benet Academy



2015-16 (FRESHMAN)

Has made 9-of-22 from beyond the arc (41 percent) ... Came off the bench to make a pair of three's and finished with 11 points at Bowling Green ... Scored five points and had one assist against #17 Oklahoma ... After sitting out the game at #24 Iowa, she hit a pair of three-pointers and had one rebound at Northern Illinois.

HIGH SCHOOL

Earned all-conference honors after averaging 16.8 points per game as a senior ... Third team all-state selection by the Illinois Basketball Coaches Association in 2014-15 ... Honorable mention all-state honors from the Associated Press and Chicago Sun-Time in her final prep season ... Shot 50 percent from the field and 37 percent from three-point range her senior year ... Averaged 3.4 rebounds, 2.2 assists and one steal per game in her final season with the Redwings ... Tied the IHSA state tournament record with five three-pointers in the Class 4A state semifinal and had 29 points to help her team reach the state championship... Helped Benet to a 34-3 record and IHSA Class 4A state championship as a senior ... Shot 88 percent from the free throw line in 2014-15 ... Averaged 14.5 points per game as a junior, helping the Redwings to an IHSA Regional title.

Eshoo's 2015-16 Game-by-Game Stats

Opponent	G-S	Min.	FGs	3FGs	FTs	Reb.	A	B	S	Pts.
at Detroit	1-0	11	1-2	1-2	0-0	0-1-1	0	0	0	3
at Bowling Green	1-0	14	4-7	2-4	1-1	0-0-0	1	0	0	11
OKLAHOMA	1-0	10	1-4	1-3	2-2	0-0-0	1	0	0	5
W. MICHIGAN	1-0	6	0-1	0-0	0-0	0-0-0	0	0	0	0
EUREKA	1-0	10	2-5	2-4	0-0	0-0-0	2	0	0	6
at Chicago St.	1-0	1	0-0	0-0	0-0	0-0-0	0	0	0	0
ILL.-CHICAGO	1-0	5	0-1	0-0	0-0	0-0-0	0	0	0	0
KENT STATE	1-0	4	1-3	1-2	0-0	0-0-0	0	0	0	3
at Iowa	DNP									
at Northern Ill.	1-0	10	2-6	2-5	0-0	0-1-1	0	0	0	6
at Saint Louis	1-0	8	0-2	0-2	0-0	0-2-2	0	0	1	0
LOYOLA	1-0	5	0-0	0-0	0-0	0-0-0	0	0	0	0

CAREER HIGHS

Category	Total	Opponent (Date)
Points	11	at Bowling Green (11/15/15)
FG	4	at Bowling Green (11/15/15)
FGA	7	at Bowling Green (11/15/15)
3-Pt. FG	2	3x, last at NIU (12/21/15)
3-Pt. FGA	5	at Northern Illinois (12/21/15)
FT	2	vs. Oklahoma (11/22/15)
FTA	2	vs. Oklahoma (11/22/15)
Rebounds	2	at Saint Louis (12/30/15)
Assists	2	vs. Eureka (11/28/15)
Blocks	N/A	
Steals	1	at Saint Louis (12/30/15)
Minutes	14	at Bowling Green (11/15/15)

GETTING TO KNOW EMILY ESHOO

Parents: Elizabeth & Edward Eshoo, Jr.

Birthplace: Hinsdale, Ill.

Siblings: Eddie (21)

Major: Academic Exploration Program

Did You Know: Her brother Eddie was a two-year member of the men's basketball team at Dayton and her father played collegiately at Knox College

ESHOO'S CAREER STATISTICS

Yr.	GP-GS	Min.	FGM-FGA	FG%	3FG-3Att.	3P%	FTM-FTA	FT%	O-D-RB	Avg.	PF-FO	A	TO	BS	ST	TP	Avg.
15-16	11-0	84	11-31	.355	9-22	.409	3-3	1.000	0-4-4	0.4	5-0	4	7	0	1	34	3.1

#3 • BRIANA GRAY

5-10 • Junior • Forward • Milwaukee, Wis. • Nicolet • Saint Louis



OVERVIEW

Will sit out the 2015-16 season and have two years of eligibility remaining after transferring from Saint Louis.

AT SAINT LOUIS (2013-15)

Appeared in 12 games as a sophomore in 2014-15, before having her season cut short due to an injury ... Averaged over seven minutes per game as a freshman and appeared in 20 contests during the 2013-14 campaign.

HIGH SCHOOL

High School: First-team all-state selection and garnered conference player of the year honors after averaging 16.3 points, 8.8 rebounds, 2.3 blocks and 1.9 assists per game as a senior ... Wrapped up her prep playing days fourth in free throw percentage and ninth in career scoring at Nicolet ... Played for the sister of Bradley Assistant Coach Lindsay Schultz at Nicolet High School ... Averaged 10.0 points, 6.6 rebounds, 1.4 assists and 2.0 steals per game a junior, earning second-team all-conference honors ... Competed in both basketball and track her freshman and sophomore seasons at Murrah High School in Jackson, Miss. ... Part of a state champion 4x400 meter relay team in addition to earning a third-place state finish in the triple jump her sophomore year.

Gray's 2014-15 Game-by-Game Stats

Opponent	G-S	Min.	FGs	3FGs	FTs	Reb.	A	B	S	Pts.
at SEMO	1-0	0+	0-0	0-0	0-0	0-0-0	0	0	0	0
MO-ST. LOUIS	1-0	2	0-0	0-0	0-0	0-0-0	0	0	1	0
VCU	1-0	0+	0-0	0-0	0-0	0-0-0	0	0	0	0
at Duquesne	1-0	3	1-1	0-0	0-0	0-0-0	1	0	0	2
at LaSalle	1-0	3	1-1	0-0	0-0	0-0-0	0	0	0	2
GEORGE WASH.	1-0	1	0-0	0-0	0-0	0-0-0	0	0	0	0
at Davidson	1-0	3	0-0	0-0	0-0	0-0-0	0	0	0	0
GEORGE MASON	1-0	2	0-1	0-0	0-0	0-2-2	0	0	0	0
at Rhode Island	1-0	1	0-1	0-0	0-0	0-0-0	0	0	0	0
DAYTON	1-0	3	0-0	0-0	0-0	0-0-0	0	0	0	0
vs. VCU	1-0	1	0-0	0-0	0-0	0-0-0	0	0	0	0
vs. George Wash.	1-0	1	0-0	0-0	0-0	0-0-0	0	0	0	0

CAREER HIGHS

Category	Total	Opponent (Date)
Points	12	at Murray State (11/23/13)
FG	4	2x, last at Murray St. (11/23/13)
FGA	7	at George Washington (1/8/14)
3-Pt. FG	1	at Murray State (11/23/13)
3-Pt. FGA	1	at Murray State (11/23/13)
FT	3	3x, last vs. Duquesne (1/11/14)
FTA	5	at Northern Iowa (12/7/13)
Rebounds	4	vs. Missouri (11/8/13)
Assists	3	vs. Missouri (11/8/13)
Blocks	1	3x, last at George Washington (1/8/14)
Steals	1	4x, last vs. MO-St. Louis (12/6/14)
Minutes	18	vs. Valparaiso, 11/10/13

GRAY'S CAREER STATISTICS

Yr.	GP-GS	Min.	FGM-FGA	FG%	3FG-3Att.	3P%	FTM-FTA	FT%	O-D-RB	Avg.	PF-FO	A	TO	BS	ST	TP	Avg.
13-14	20-0	142	19-46	.413	1-2	.500	11-21	.524	7-17-24	1.2	20-1	9	16	3	3	50	2.5
14-15	12-0	20	2-4	.500	0-0	.000	0-0	.000	0-2-2	0.2	3-0	1	3	0	1	4	0.3
Totals	32-71	162	21-50	.420	1-2	.500	11-21	.524	7-19-26	0.8	23-1	10	19	3	4	54	1.7



#10 • GABBY GREEN

5-6 • Freshman • Guard • Milwaukee, Wis. • Pius XI

2015-16 (FRESHMAN)

Missed the game at Saint Louis due to injury ... Averaging 2.7 assists per game ... Had seven points, three boards, three assists and one block in her debut to help Bradley to a road win at Detroit ... Scored all 17 of her game-high points in the game at Bowling Green in the second and third quarters, making 4-of-8 three-point attempts in the game ... Also had four assists and one steal at Bowling Green ... Finished with five rebounds, three assists and three steals against #17 Oklahoma ... Dished out a season-best six assists in the win at Chicago State ... Came off the bench to collect six points, two assists and one steal in 21 minutes at Northern Illinois.

Green's 2015-16 Game-by-Game Stats

Opponent	G-S	Min.	FGs	3FGs	FTs	Reb.	A	B	S	Pts.
at Detroit	1-0	32	3-4	0-1	1-2	1-2-3	3	1	0	7
at Bowling Green	1-1	30	6-15	4-8	1-1	0-1-1	4	0	1	17
OKLAHOMA	1-1	33	0-8	0-2	3-8	1-4-5	3	0	3	3
W. MICHIGAN	1-1	20	0-10	0-2	1-2	4-0-4	2	0	0	1
EUREKA	1-1	25	2-7	0-1	2-2	1-3-4	3	0	2	6
at Chicago St.	1-1	23	0-4	0-1	1-2	0-2-2	6	0	2	1
ILL.-CHICAGO	1-0	9	0-2	0-2	0-0	0-1-1	2	0	1	0
KENT STATE	1-0	11	1-2	0-1	2-2	0-0-0	2	0	0	4
at Iowa	1-0	15	1-4	0-0	0-1	1-3-4	0	0	1	2
at Northern Ill.	1-0	21	2-4	1-1	1-1	0-0-0	2	0	1	6
at Saint Louis	DNP									
LOYOLA	DNP									

CAREER HIGHS

Category	Total	Opponent (Date)
Points	17	at Bowling Green (11/15/15)
FG	6	at Bowling Green (11/15/15)
FGA	15	at Bowling Green (11/15/15)
3-Pt. FG	4	at Bowling Green (11/15/15)
3-Pt. FGA	8	at Bowling Green (11/15/15)
FT	3	vs. Oklahoma (11/22/15)
FTA	8	vs. Oklahoma (11/22/15)
Rebounds	5	vs. Oklahoma (11/22/15)
Assists	6	at Chicago St. (12/2/15)
Blocks	1	at Detroit (11/13/15)
Steals	3	vs. Oklahoma (11/22/15)
Minutes	33	vs. Oklahoma (11/22/15)

HIGH SCHOOL

A three-time all-state selection, she helped Pius XI to a state championship as a senior ... Named conference player of the year her final prep season ... Averaged 15.8 points, 4.2 assists and 3.8 steals per game as a junior ... Milwaukee Journal Sentinel First-Team All-Area ... Capped off her high school career by leading the Lady Popes to a perfect 28-0 record in 2014-15 ... Three-time first-team all-conference selection ... Led Pius XI to a combined 52-3 record her junior and senior seasons and the Lady Popes had a 94-12 overall mark during her prep career.

GETTING TO KNOW GABBY GREEN

Parents: Keith & Maritza Green

Birthplace: Milwaukee, Wis.

Siblings: Lorenzo Prado (24), Nikolas Green (23) & Lauryn Prado (16)

Major: Academic Exploration Program

GREEN'S CAREER STATISTICS

Yr.	GP-GS	Min.	FGM-FGA	FG%	3FG-3Att.	3P%	FTM-FTA	FT%	O-D-RB	Avg.	PF-FO	A	TO	BS	ST	TP	Avg.
15-16	10-5	219	15-60	.250	5-19	.263	12-21	.571	8-16-24	2.4	19-0	27	22	1	11	47	4.7

#24 • SAMEIA KENDALL

5-8 • Senior • Guard • Kansas City, Mo. • Raytown/Johnson County C.C.



2014-15 (SENIOR)

Missed the final exhibition game and the first four games of the 2015-16 due to a concussion, before making her first appearance of the year off the bench against Eureka ... Played one minute at #24 Iowa ... Saw a season-high nine minutes of action at Saint Louis, dishing out two assists.

2014-15 (JUNIOR)

Capped the year with seven points, three rebounds, five assists and a season-high six steals in the MVC Tournament game against Loyola ... Finished second on the team in steals with 40 (1.7 per game) ... Recorded a season-best five assists in the win against Missouri ... Matched the five assists in the home win against Loyola, also adding a season-best five rebounds to go with six points and one steal ... Came off the bench to tally four points, four assists and three steals Feb. 27 against Southern Illinois ... Returned to the floor at Missouri State (Feb. 13) after missing the previous six games ... Matched a season-best with nine points in the MVC opener against Northern Iowa ... Dished out three assists at #18 DePaul to go with four points and two steals ... Had at least two two steals in 15 of her 24 games ... Scored a season-high nine points at Columbia ... Collected eight points, four boards, three assists and a pair of steals in the home opener against Southeast Missouri State ... Matched a season-high with nine points off the bench vs. Chicago State to go with two assists and three steals.

GETTING TO KNOW SAMEIA KENDALL

Parents: Rochelle Fears & Steve Kendall

Birthplace: Kansas City, Mo.

Siblings: Montez (27) & Kayla (17)

Major: Health Science

Kendall's 2015-16 Game-by-Game Stats

Opponent	G-S	Min.	FGs	3FGs	FTs	Reb.	A	B	S	Pts.
at Detroit			DNP							
at Bowling Green			DNP							
OKLAHOMA			DNP							
W. MICHIGAN			DNP							
EUREKA	1-0	4	0-0	0-0	0-0	1-3-4	0	1	0	0
at Chicago St.			DNP							
ILL.-CHICAGO			DNP							
KENT STATE			DNP							
at Iowa	1-0	1	0-0	0-0	0-0	0-0-0	0	0	0	0
at Northern Ill.	1-0	4	0-1	0-0	0-0	0-1-1	0	0	0	0
at Saint Louis	1-0	9	0-0	0-0	0-0	0-0-0	2	0	0	0
LOYOLA			DNP							

CAREER HIGHS

Category	Total	Opponent (Date)
Points	9	3x, last vs. UNI (1/2/15)
FG	4	4x, last vs. UNI (1/2/15)
FGA	9	vs. SEMO (11/30/14)
3-Pt. FG	1	3x, last vs. Bowling Green (12/21/14)
3-Pt. FGA	4	2x, last vs. Wichita St., (1/16/15)
FT	4	vs. Loyola (2/20/15)
FTA	8	2x, last vs. Loyola (3/12/15)
Rebounds	5	vs. Loyola (2/20/15)
Assists	5	3x, last vs. Loyola (3/12/15)
Blocks	1	4x, last vs. Eureka (11/28/15)
Steals	6	vs. Loyola (3/12/15)
Minutes	38	vs. SEMO (11/30/14)

JOHNSON COUNTY C.C.

Honorable mention WBCA All-America as a sophomore after leading her team to back-to-back conference titles and consecutive 30-2 seasons ... Averaged 12.0 points, 3.8 rebounds, 3.5 assists and 2.1 steals per game in 2013-14 ... First-Team East Jayhawk All-Conference selection as a sophomore in addition to honorable mention All-Region ... Scored 8.6 points per game as a freshman to go with 3.0 rebounds, 2.5 assists and 1.8 steals per contest ... Helped Johnson County reach as high as second in the national polls during freshman campaign ... Shot 37.6 percent from three-point range her two seasons.

HIGH SCHOOL

Two-time honorable mention all-state selection ... Transferred to Raytown High School for her final year after playing her first three prep seasons at Sumner Academy

KENDALL'S CAREER STATISTICS

Yr.	GP-GS	Min.	FGM-FGA	FG%	3FG-3Att.	3P%	FTM-FTA	FT%	O-D-RB	Avg.	PF-FO	A	TO	BS	ST	TP	Avg.
14-15	24-9	565	42-113	.372	3-32	.094	23-49	.469	7-45-52	2.2	59-1	54	68	3	40	110	4.6
15-16	4-0	18	0-1	.000	0-0	.000	0-0	.000	1-4-5	1.3	4-0	2	2	1	0	0	0.0
Totals	28-9	583	42-114	.368	3-32	.094	23-49	.469	8-49-57	2.0	63-1	56	70	4	40	110	3.9



#23 • LETI LERMA

5-10 • Junior • Guard • Muscatine, Iowa • Muscatine

OVERVIEW

Bradley's most experienced returning player ... Is the team's active career leader in both scoring and rebounding.

2015-16 (JUNIOR)

Scored a game-high 15 points and also tallied seven boards and career-best four steals off the bench against Western Michigan ... Was the first Bradley reserve with 15 points, seven rebounds and four or more steals in a game since Genny Mueller at Drake on Jan. 4, 2003 ... Has started seven games ... Averaging 10.0 points, 7.0 rebounds and 2.5 steals per game as a reserve ... Had season highs of 19 points, 13 rebounds, two assists and a career-best five steals in the home win against Eureka to become the first Brave with at least 19 points, 13 boards and five or more steals in a game since Nov. 25, 1991 (Eileen Yerkes) ... Matched her season-best with 19 points, seven rebounds and two assists vs. Kent State ... Turned in 12 points and 12 rebounds at Chicago State for first back-to-back doubles at Bradley since Catie O'Leary in January 2014 ... Shooting 46 percent from the field over the last nine games and averaging 10.9 points, 8.1 rebounds, 1.2 assists, nearly one block and 1.8 steals per game during that span ... Grabbed her 400th career rebound during a seven-point, nine-rebound effort in the Valley opener against Loyola.

2014-15 (SOPHOMORE)

Started 17 games ... Averaged 6.2 rebounds per game ... Turned in her second career double-double with 18 points & 15 rebounds at Evansville (Jan. 13) ... Was the first Bradley player with 15 points & 15 rebounds while shooting over 50 percent from the field in a game since Monica Rogers against Drake on Feb. 21, 2009 ... Averaged 6.7 rebounds per game in her last 19 outings and 7.1 over her last 14 appearances ... Knocked down two three-pointers and tallied 15 points, four boards, two assists, one block and one steal at UNI ... Collected team highs of 19 points on 8-of-14 shooting and eight rebounds in the home game against SIU ... Had seven points & seven rebounds off the bench at Indiana State ... Came off the bench to make a career-best seven free throws (7-for-10) against Chicago State, finishing with 10 points ... Scored a career-best 21 points on 9-of-12 shooting in the home opener against Southeast Missouri State ... Had 17 of her 21 points against SEMO in the second half to help spark a Bradley rally attempt.

2013-14 (FRESHMAN)

Earned a spot on the MVC All-Freshman Team ... Averaged 6.9 points and 6.6 rebounds per outing in Missouri Valley Conference play ... Was ninth in the Valley in rebounding in league play ... Pulled down a Renaissance Coliseum record 19 rebounds and also had 10 points to help highlight the home win against Loyola ... At I-74 rival Illinois State, she had 17 points on 7-of-9 shooting and collected six boards, one assist, two blocks and came up with a steal with three seconds left to help Bradley to a 59-58 road win ... Her 136 rebounds were the most by a Bradley freshman since 2007-08

GETTING TO KNOW LETI LERMA

Parents: Oscar & Stephanie Lerma

Birthplace: Muscatine, Iowa

Siblings: Oscar (16), Alicia (13), Xavier (10), Ysabel (9) & Alani (6)

Major: Psychology

CAREER HIGHS

Category	Total	Opponent (Date)
Points	21	vs. SEMO (11/30/14)
FG	9	3x, last vs. Eureka (11/28/15)
FGA	15	vs. Loyola (2/15/14)
3-Pt. FG	3	at Illinois St. (2/27/14)
3-Pt. FGA	4	2x, last at UNI (3/7/15)
FT	7	vs. Chicago St. (12/18/14)
FTA	10	vs. Chicago St. (12/18/14)
Rebounds	19	vs. Loyola (2/15/14)
Assists	3	2x, last at Saint Louis (12/30/15)
Blocks	4	vs. Illinois St. (3/1/15)
Steals	5	vs. Eureka (11/28/15)
Minutes	34	2x, last at Evansville (1/12/15)

Lerma's 2015-16 Game-by-Game Stats

Opponent	G-S	Min.	FGs	3FGs	FTs	Reb.	A	B	S	Pts.
at Detroit	1-1	15	2-4	0-1	1-4	1-3-4	2	0	1	5
at Bowling Green	1-0	25	2-10	0-3	0-0	0-2-2	0	1	1	4
OKLAHOMA	1-0	16	1-5	0-0	0-0	1-5-6	0	0	0	2
W. MICHIGAN	1-0	25	6-13	0-0	3-4	5-2-7	0	0	4	15
EUREKA	1-0	24	9-14	0-0	1-2	7-6-13	2	0	5	19
at Chicago St.	1-1	32	5-7	0-0	2-4	7-5-12	1	0	0	12
ILL.-CHICAGO	1-1	31	1-7	0-1	3-8	4-3-7	2	2	2	5
KENT STATE	1-1	32	8-13	0-0	3-4	3-4-7	2	1	0	19
at Iowa	1-1	28	2-11	0-1	3-3	1-5-6	0	1	1	7
at Northern Ill.	1-1	28	5-10	0-0	0-1	1-6-7	1	2	1	10
at Saint Louis	1-1	24	2-5	0-0	0-0	0-5-5	3	0	2	4
LOYOLA	1-1	21	1-5	0-0	5-8	4-5-9	0	2	1	7

LERMA'S CAREER STATISTICS

Yr.	GP-GS	Min.	FGM-FGA	FG%	3FG-3Att.	3P%	FTM-FTA	FT%	O-D-RB	Avg.	PF-FO	A	TO	BS	ST	TP	Avg.
13-14	27-14	504	52-146	.356	6-21	.286	26-49	.531	50-86-136	5.0	63-0	14	41	14	12	136	5.0
14-15	29-17	623	68-161	.422	4-19	.211	31-46	.674	52-127-179	6.2	65-0	16	63	19	23	171	5.9
15-16	12-8	301	44-105	.419	0-6	.000	21-38	.553	34-51-85	7.1	29-0	13	19	9	18	109	9.1
Totals	68-39	1428	164-412	.398	10-46	.217	78-133	.586	136-264-400	5.9	157-0	43	123	42	53	416	6.1



#44 • VANESSA MARKERT

6-2 • Freshman • Forward • Mt. Sterling, Ill. • Brown County

2015-16 (FRESHMAN)

Made her first career appearance vs. #17 Oklahoma, playing five minutes off the bench ... Played most of the fourth quarter in the win against Eureka, notching nine points, three rebounds, three assists and three blocks in 15 minutes of action.

HIGH SCHOOL

All-time leading scorer in Brown County High School history, completing her career with 2,072 points ... Earned all-state honors as a sophomore, junior and senior ... Quincy Herald Whig Player of the Year as a senior ... First-Team all-conference pick all four seasons ... Three-time first-team all-area selection ... Averaged 20 points or more each of her final three prep seasons ... Collected 20.3 points, 10.3 rebounds and 4.5 blocks per game as a senior ... As a junior, she averaged 20 points, 7.5 rebounds and 4.5 blocks per game ... Posted averages of 22.4 points, 8.7 boards and 3.2 blocks as a sophomore ... Also lettered in volleyball and softball, earning first-team all-conference honors in both sports.

GETTING TO KNOW VANESSA MARKERT

Parents: Chad & Melissa Markert

Birthplace: Quincy, Ill.

Siblings: Mariah (14), Claire (12), Ashlee (8) & Bradley (5)

Major: Health Science

Did You Know: Vanessa attended the same high school as 2011-12 Second-Team All-MVC center Leah Kassing.

Markert's 2015-16 Game-by-Game Stats

Opponent	G-S	Min.	FGs	3FGs	FTs	Reb.	A	B	S	Pts.
at Detroit										
at Bowling Green										
OKLAHOMA	1-0	5	0-1	0-0	0-0	0-0-0	0	0	0	0
W. MICHIGAN	1-0	2	0-0	0-0	0-0	0-0-0	0	0	0	0
EUREKA	1-0	15	3-5	0-0	3-4	3-0-3	3	3	0	9
at Chicago St.	1-0	3	0-0	0-0	0-0	0-0-0	0	0	0	0
ILL.-CHICAGO										
KENT STATE	1-0	3	0-0	0-0	0-0	0-0-0	0	0	0	0
at Iowa	1-0	2	0-0	0-0	0-0	0-0-0	0	0	0	0
at Northern Ill.										
at Saint Louis										
LOYOLA										

CAREER HIGHS

Category	Total	Opponent (Date)
Points	9	vs. Eureka (11/28/15)
FG	3	vs. Eureka (11/28/15)
FGA	5	vs. Eureka (11/28/15)
3-Pt. FG	N/A	
3-Pt. FGA	N/A	
FT	3	vs. Eureka (11/28/15)
FTA	4	vs. Eureka (11/28/15)
Rebounds	3	vs. Eureka (11/28/15)
Assists	3	vs. Eureka (11/28/15)
Blocks	3	vs. Eureka (11/28/15)
Steals	N/A	
Minutes	15	vs. Eureka (11/28/15)

MARKERT'S CAREER STATISTICS

Yr.	GP-GS	Min.	FGM-FGA	FG%	3FG-3Att.	3P%	FTM-FTA	FT%	O-D-RB	Avg.	PF-FO	A	TO	BS	ST	TP	Avg.
15-16	6-0	30	3-6	.500	0-0	.000	3-4	.750	3-0-3	0.5	8-0	3	3	3	0	9	1.5

#33 • ANNEKE SCHLUETER

6-0 • Sophomore • Guard • Ulm, Germany • Max-Weber-Schule



2015-16 (SOPHOMORE)

Has reached double figures in eight of last 10 games and nine time this season ... Leads the team in scoring at 11.8 points per game ... First player to hit four three-pointers in four consecutive games and has made three or more triples in four of the last seven ... Second player in program history to hit a three-pointer in each of the first 12 games of a season, joining Michelle Nason (1993-94) ... Also first Bradley player with a three-pointer in 12 consecutive games since Katie Yohn (18) in 2010-11 ... Shooting 28-for-75 (37.3 percent) from beyond the arc over the last nine games ... Her 31 three's are the most at Bradley since Katie Yohn made 41 as a senior in 2012-13 ... Has the most three-pointers by a Bradley underclassmen since Catie O'Leary had 33 three's in 2011-12 ... Averaging 14.0 points per game and shooting 39.1 percent (18-for-46) from three in the six home games ... Made three three-pointers in a 70 second span and scored 12 of her team-high 13 points at #24 Iowa in the fourth quarter ... Scored a season-best 19 points against UIC, hitting 4-of-8 from three-point range ... Tallied 18 points, three assists and two steals in the win against Kent State ... Matched a career-high with four three-pointers against Eureka, tallying 15 points, four rebounds, two assists, one block and one steal ... Followed it up by making 4-of-7 three's at Chicago State and finished with 14 points and a career-high six rebounds ... Hit back-to-back three-pointers in the second half at Saint Louis and finished with 10 points and four rebounds.

GETTING TO KNOW ANNEKE SCHLUETER

Parents: Sabine & Ulf Schlueter

Birthplace: Berlin, Germany

Siblings: Kai (22) & Lars (20)

Major: International Studies

Did You Know: Anneke is the first foreign-born player for the Braves since Germany native Hanna Muegge wrapped up her four-year career in 2011-12.

Did You Know #2: Her mother played for the German National Team and her twin brother Lars is a sophomore on the men's basketball team at Calgary University. In addition, her father and older brother Kai both played professional basketball in Germany.

Schlueter's 2015-16 Game-by-Game Stats

Opponent	G-S	Min.	FGs	3FGs	FTs	Reb.	A	B	S	Pts.
at Detroit	1-1	21	5-11	2-8	0-0	0-3-3	1	0	3	12
at Bowling Green	1-1	26	1-8	1-7	0-0	0-5-5	1	0	0	3
OKLAHOMA	1-1	26	3-9	2-5	4-6	0-3-3	0	0	2	12
W. MICHIGAN	1-1	28	4-11	2-5	2-2	1-1-2	1	0	1	12
EUREKA	1-1	25	4-12	4-8	3-4	1-3-4	2	1	1	15
at Chicago St.	1-1	23	4-8	4-7	2-3	1-5-6	2	1	0	14
ILL.-CHICAGO	1-1	32	7-13	4-8	1-2	1-2-3	1	0	1	19
KENT STATE	1-1	33	5-14	4-11	4-4	0-0-0	3	0	2	18
at Iowa	1-1	31	4-16	3-11	2-3	0-3-3	0	1	2	13
at Northern Ill.	1-1	26	2-9	1-6	0-0	0-1-1	1	0	1	5
at Saint Louis	1-1	30	4-13	2-5	0-0	0-4-4	2	0	2	10
LOYOLA	1-1	32	3-11	2-9	0-0	0-0-0	1	0	2	8

CAREER HIGHS

Category	Total	Opponent (Date)
Points	20	at Missouri St. (2/13/15)
FG	7	2x, last vs. UIC (12/5/15)
FGA	16	at #24 Iowa (12/19/15)
3-Pt. FG	4	5x, last vs. Kent St. (12/8/15)
3-Pt. FGA	11	2x, last at #24 Iowa (12/19/15)
FT	4	6x, last vs. Kent St. (12/8/15)
FTA	7	at Columbia (11/26/14)
Rebounds	6	at Chicago St. (12/2/15)
Assists	4	at UIC (11/14/14)
Blocks	2	vs. Missouri (12/6/14)
Steals	3	at Detroit (11/13/15)
Minutes	40	at Columbia (11/26/14)

2014-15 (FRESHMAN)

First Bradley freshman since Michelle Lund (2008-09) to start the first 14 games of a season and was one of two players to start at least 21 games ... Eighth Brave since 1984-85 to start at least 20 games as a freshman ... Averaged 5.4 points per game and was second on the team with 20 three-pointers ... Collected a season-high 20 points on 7-of-9 shooting at Missouri State, including 4-of-5 from three-point range ... Averaged 15.3 points on 20-for-41 (48.7 percent) shooting, including 11-for-23 (47.8 percent) from beyond the arc in four games against teams from the state of Missouri ... Named MVC Newcomer of the Week after she had two three-pointers and a pair of assists to help key a 16-0 first-half Bradley run in the home win against Missouri ... Finished with a season-high 18 points against Mizzou, hitting 4-of-5 three-pointers, and also had three assists, two blocks and one steal.

SCHLUETER'S CAREER STATISTICS

Yr.	GP-GS	Min.	FGM-FGA	FG%	3FG-3Att.	3P%	FTM-FTA	FT%	O-D-RB	Avg.	PF-FO	A	TO	BS	ST	TP	Avg.
14-15	30-21	606	56-168	.333	20-83	.241	30-39	.769	11-45-56	1.9	34-1	27	46	7	13	162	5.4
15-16	12-12	333	46-135	.341	31-90	.344	18-24	.750	4-30-34	2.8	18-0	15	23	3	17	141	11.8
Totals	42-33	939	102-303	.337	51-173	.295	48-63	.762	15-75-90	2.1	52-1	42	69	10	30	303	7.2

#11 • TAMYA SIMS

6-2 • Sophomore • Forward • Milwaukee, Wis. • Oak Creek



2015-16 (SOPHOMORE)

Named MVC and Bradley Scholar-Athlete of the Week for the week of Jan. 30 ... Had blocks in each of the first six games and a streak of 12 consecutive contests with a block snapped against Illinois-Chicago ... Averaging 9.1 points, 5.6 rebounds, 2.0 blocks and 0.8 steals per outing ... Has scored in double figures in two of the last three games, averaging 11.0 points, 7.3 boards and 2.3 blocks during that stretch ... Swatted a career-best six shots to go with six points, four rebounds and two steals in the win against Kent State ... Her six blocks were the most at Bradley since March 4, 2010 and tied a Renaissance Coliseum record ... Had eight points and six rebounds against #17 Oklahoma ... Turned back three shots to go with nine points and five boards at #24 Iowa ... Collected nine points, seven boards, two blocks and three assists against Western Michigan ... Was 6-for-9 from the field and scored a season-best 14 points in 21 minutes against Eureka ... Matched a season-best with 14 points at Northern Illinois.

2014-15 (FRESHMAN)

Missed eight of the first 10 games due to injury, before returning against Northern Illinois (Dec. 30) and has missed a total of nine games during the year ... Averaged 8.0 points per game and ranked second in the MVC in blocks (45) despite playing in just 21 contests ... Her 6.38 rebounds per game average is fourth among Bradley freshman marks and was the first freshman to lead the team in rebounding since Lynn Pastucha in 1999-2000 ... Over the last six games, averaged 11.2 points, 8.2 rebounds and 2.5 blocks and over her last 14 outings averaged 8.9 points, 7.5 rebounds and 2.1 blocks per game ... In her 17 starts, she averaged 8.6 points, 6.8 boards and 2.2 blocks ... Her 45 blocks rank as the most by a Bradley freshman since Dena Williams had 52 blocks as a freshman in 2001-02 and third best total by a Bradley frosh ... Block total was eighth-best in Bradley history and most since 2009-10 ... First Bradley freshman to average 8.0 points, 6.0 rebounds and 2.0 blocks in a season ... Scored a season-best 19 points in the MVC Tournament against Loyola, where she also had nine boards, one assist, four blocks and one steal ... Turned in her first career double-double with 12 points, 10 rebounds, three blocks and one steal in the home win against Illinois State, tallying eight points and eight boards in the second half ... First Bradley freshman to score in double figures in their debut since Katie Yohn and Olivia Allen in 2009-10, finishing with team highs of 12 points and six rebounds.

GETTING TO KNOW TAMYA SIMS

Parents: Rachael & Troy Sims
Birthplace: Milwaukee, Wis.
Siblings: Teah Sims (18) & Mya Janiszewski (10)
Major: Health Science

Sims' 2015-16 Game-by-Game Stats

Opponent	G-S	Min.	FGs	3FGs	FTs	Reb.	A	B	S	Pts.
at Detroit	1-1	28	3-10	0-0	1-3	2-13	0	1	0	7
at Bowling Green	1-1	27	2-9	0-0	5-9	2-3-5	0	1	1	9
OKLAHOMA	1-1	26	3-11	0-0	2-2	4-2-6	0	1	1	8
W. MICHIGAN	1-1	29	4-14	0-0	1-1	1-6-7	1	2	3	9
EUREKA	1-1	21	6-9	0-0	2-2	3-3-6	1	2	0	14
at Chicago St.	1-1	23	4-9	0-0	0-0	1-6-7	0	1	1	8
ILL.-CHICAGO	1-1	27	2-6	0-0	2-4	0-2-2	0	0	1	6
KENT STATE	1-1	29	3-7	0-0	0-0	1-3-4	0	6	2	6
at Iowa	1-1	32	3-7	0-0	3-6	2-3-5	0	3	0	9
at Northern Ill.	1-1	33	6-12	0-0	2-4	3-3-6	0	2	0	14
at Saint Louis	1-1	29	5-14	0-0	3-3	4-3-7	1	3	1	13
LOYOLA	1-1	34	2-8	0-0	2-2	2-7-9	0	2	0	6

CAREER HIGHS

Category	Total	Opponent (Date)
Points	19	vs. Loyola (3/12/15)
FG	6	2x, last at NIU (12/21/15)
FGA	14	3x, last at Saint Louis (12/30/15)
3-Pt. FG	1	2x, last vs. Loyola (3/12/15)
3-Pt. FGA	1	2x, last vs. Loyola (3/12/15)
FT	8	vs. Loyola (3/12/15)
FTA	12	vs. Loyola (3/12/15)
Rebounds	12	vs. Evansville (2/8/15)
Assists	3	at Illinois State (1/30/15)
Blocks	6	vs. Kent State (12/8/15)
Steals	3	2x, last vs. W. Michigan (11/24/15)
Minutes	34	2x, last vs. Loyola (1/3/16)

SIMS' CAREER STATISTICS

Yr.	GP-GS	Min.	FGM-FGA	FG%	3FG-3Att.	3P%	FTM-FTA	FT%	O-D-RB	Avg.	PF-FO	A	TO	BS	ST	TP	Avg.
14-15	21-17	569	61-152	.401	2-2	1.000	43-58	.741	36-98-134	6.4	51-0	13	38	45	15	167	8.0
15-16	12-12	338	43-116	.371	0-0	.000	23-36	.639	25-42-67	5.6	28-0	3	26	24	10	109	9.1
Totals	33-29	907	104-268	.388	2-2	1.000	66-94	.702	61-140-201	6.1	79-0	16	64	69	25	276	8.4



#30 • WHITNEY TINJUM

6-1 • RS-Jr. • Forward • Stacy, Minn. • Chisago Lakes/Washington St.

2015-16 (REDSHIRT JUNIOR)

Opened the season with her fourth career double-double, tallying 21 points, 10 rebounds and two steals to help Bradley top Detroit 75-67 ... Battled foul trouble at Bowling Green, where she was limited to 16 minutes and six points ... Has scored in double figures in six of 12 games, including each of the last two contests and is second on the team in scoring at 10.2 points per game ... Had a streak of 13 consecutive made free throws ... Shooting 83 percent from the free throw line and scores nearly 25 percent of her points from the line ... Scored 11 consecutive points during the second half at Saint Louis and had all 19 of her team-high points in a 10-minute stretch to help Bradley cut a 36-point deficit to 12 points with four and a half minutes left ... Made seven consecutive shots at Saint Louis ... Led the team with 15 points in Valley opener against Loyola making 8-of-9 free throw attempts ... Averaging 10.8 points per game on 35.7 percent shooting in 20.2 minutes when she starts compared to 9.7 points per game on 46 percent shooting in 17.9 minutes per game when she comes off the bench.

... Had 16 of her 28 points vs. Northern Illinois in the first nine minutes of the game ... Her 14 free throws tied for the fifth-best single game total in school history and is the third most free throws in a game for a Bradley player who was perfect from the line ... Eighth player in program history to score in double figures in their first five games and first to do so since 1993-94.

2013-14 (SOPHOMORE)

Transferred to Bradley for the Spring Semester ... Did not appear in a game at Washington State

GETTING TO KNOW WHITNEY TINJUM

Parents: Perry & Melinda Tinjum

Birthplace: McAllen, Minn.

Siblings: William (15)

Major: Advertising

CAREER HIGHS

Category	Total	Opponent (Date)
Points	28	vs. Northern Ill. (12/30/14)
FG	8	at Drake (3/5/15)
FGA	23	vs. Bowling Green (12/21/14)
3-Pt. FG	3	2x, last at Illinois St. (1/30/15)
3-Pt. FGA	8	at Southern Illinois (2/1/15)
FT	14	vs. Northern Ill. (12/30/14)
FTA	14	vs. Northern Ill. (12/30/14)
Rebounds	14	at Loyola (1/25/15)
Assists	3	vs. Evansville (2/8/15)
Blocks	1	2x, last at Missouri St. (2/13/15)
Steals	3	vs. Kent State (12/8/15)
Minutes	36	vs. Bowling Green (12/21/14)

2014-15 (REDSHIRT SOPHOMORE)

Honorable mention MVC Scholar-Athlete ... Sat out the first eight games of the season due to NCAA transfer rules before making her Bradley debut against Chicago State on Dec. 18 ... Is the 12th player in program history to score 100 points in their first eight games as a Brave and was the 11th player to reach 200 career points in 17 games or fewer ... Averaged 11.7 points and 6.1 rebounds in her 22 games ... Came off the bench in final four games and six of the last nine, averaging 11.2 points on 42 percent shooting and 6.0 rebounds when coming off the bench ... Named MVC Newcomer of the Week for the week of Dec. 31 ... Turned in her team-best third double-double of the year with 14 points & 10 rebounds off the bench in the home win against Loyola ... Came off the bench to collect nine points, eight rebounds and three assists in the home win against Evansville ... Averaged 4.5 free throw attempts per game and shot 82 percent from the line to rank third in the MVC in free throw percentage ... Helped Bradley rally from a 23-19 halftime deficit at Loyola by scoring 11 of the team's first 13 points in the second half and collected 13 points & eight rebounds in the final 20 minutes to help a 46-45 victory ... Finished with 15 points and season-best 14 rebounds at Loyola ... Made 14-of-14 free throws and scored a career-best 28 points against Northern Illinois

Tinjum's 2015-16 Game-by-Game Stats

Opponent	G-S	Min.	FGs	3FGs	FTs	Reb.	A	B	S Pts.
at Detroit	1-1	32	6-13	2-5	7-8	3-7	10	0	2 21
at Bowling Green	1-1	16	2-6	2-4	0-0	1-3	4	0	0 6
OKLAHOMA	1-1	25	3-12	0-3	6-6	1-2	3	0	0 1 12
W. MICHIGAN	1-1	21	4-8	1-3	5-6	1-0	1	0	0 1 14
EUREKA	1-1	7	0-3	0-1	1-2	2-4	6	0	0 1 1
at Chicago St.	1-0	18	3-5	0-0	0-0	1-0	1	0	0 0 6
ILL.-CHICAGO	1-0	19	4-9	2-4	0-0	0-0	2	0	1 10
KENT STATE	1-0	14	3-8	0-2	0-0	1-4	5	0	0 3 6
at Iowa	1-0	14	3-6	0-2	0-0	0-2	2	0	0 0 6
at Northern Ill.	1-0	14	3-6	0-2	0-1	0-2	1	0	0 0 6
at Saint Louis	1-0	20	7-11	2-3	3-4	1-2	3	0	0 2 19
LOYOLA	1-0	26	3-11	1-4	8-9	2-4	6	1	0 2 15

TINJUM'S CAREER STATISTICS

Yr.	GP-GS	Min.	FGM-FGA	FG%	3FG-3Att.	3P%	FTM-FTA	FT%	O-D-RB	Avg.	PF-FO	A	TO	BS	ST	TP	Avg.	
12-13 (Wash. St.)	12-0	26	5-11	.455	2-7	.286	4-6	.667	2-6	0.7	3-0	1	5	0	1	16	1.3	
13-14		DNP																
14-15	22-16	575	79-229	.345	17-74	.230	82-100	.820	51-84	135	6.1	60-1	13	74	2	14	257	11.7
15-16	12-5	226	41-98	.418	10-33	.303	30-36	.833	13-30	43	3.6	26-1	4	26	0	13	122	10.2
Totals	46-21	827	125-338	.370	29-114	.254	116-142	.817	66-120	186	4.0	89-2	18	105	2	28	395	8.6

#21 • HALEY VAN CLEAVE

6-3 • Sophomore • Center • Dubuque, Iowa • Hempstead**2015-16 (SOPHOMORE)**

Appeared in 11 of the first 12 games of the season off the bench ... Had three points and three boards in eight minutes in the victory at Detroit ... Scored a career-best nine points on 4-of-7 shooting and also had five rebounds, one block and one steal in 13 minutes against Eureka.

2014-15 (FRESHMAN)

Played 11 minutes off the bench in the season opener at Illinois-Chicago, making 3-of-4 free throw attempts ... Played 20 minutes off the bench and snagged seven rebounds at Columbia ... Scored seven points and grabbed five rebounds at #18 DePaul ... Came away with a season-best two steals in 17 minutes at Oklahoma.

Van Cleave's 2015-16 Game-by-Game Stats

Opponent	G-S	Min.	FGs	3FGs	FTs	Reb.	A	B	S	Pts.
at Detroit	1-0	8	1-2	0-1	1-2	2-1-3	0	0	0	3
at Bowling Green	1-0	12	0-2	0-1	0-0	1-0-1	0	0	0	0
OKLAHOMA	1-0	9	0-1	0-0	0-0	2-0-2	0	0	0	0
W. MICHIGAN	1-0	3	0-2	0-0	0-0	3-0-3	0	1	1	0
EUREKA	1-0	13	4-7	0-1	1-2	1-4-5	0	1	1	9
at Chicago St.	1-0	4	0-0	0-0	0-0	0-0-0	0	0	0	0
ILL.-CHICAGO	1-0	4	1-2	0-0	0-0	1-0-1	0	0	0	2
KENT STATE	1-0	2	0-0	0-0	0-0	0-0-0	0	0	0	0
at Iowa	1-0	5	0-1	0-1	0-0	0-0-0	0	0	0	0
at Northern Ill.	1-0	5	1-1	1-1	0-0	0-1-1	1	0	0	3
at Saint Louis	1-0	7	0-2	0-1	0-0	0-1-1	0	0	0	0
LOYOLA	DNP									

CAREER HIGHS

Category	Total	Opponent (Date)
Points	9	vs. Eureka (11/28/15)
FG	4	vs. Eureka (11/28/15)
FGA	7	vs. Eureka (11/28/15)
3-Pt. FG	1	4x, last at NIU (12/21/15)
3-Pt. FGA	2	vs. Missouri (12/6/14)
FT	4	vs. Drake (1/4/15)
FTA	4	2x, last vs. Drake (1/4/15)
Rebounds	7	at Columbia (11/26/14)
Assists	1	2x, last at NIU (12/21/15)
Blocks	2	vs. Missouri (12/6/14)
Steals	2	at Oklahoma (11/21/14)
Minutes	20	at Columbia (11/26/14)

HIGH SCHOOL

Honorable mention Mississippi Valley Conference selection all four years ... Named the Mustangs' Defensive Player of the Year as a senior ... Averaged 8.3 points and 5.5 rebounds per game as a junior ... Also earned her team's Defensive Player of the Year award as a sophomore when she averaged 9.4 points and 6.0 boards per contest ... Selected as squad's most improved player as a freshman and averaged 7.2 points per tilt ... Also lettered in volleyball all four years.

GETTING TO KNOW HALEY VAN CLEAVE

Parents: Jil & Mark Van Cleave

Birthplace: Dubuque, Iowa

Siblings: Liz (29) & Conner (17)

Major: Special Education

VAN CLEAVE'S CAREER STATISTICS

Yr.	GP-GS	Min.	FGM-FGA	FG%	3FG-3Att.	3P%	FTM-FTA	FT%	O-D-RB	Avg.	PF-FO	A	TO	BS	ST	TP	Avg.
14-15	26-0	232	8-31	.258	3-9	.333	15-23	.652	13-24-37	1.4	30-0	1	15	7	2	34	1.3
15-16	11-0	72	7-20	.350	1-6	.167	2-4	.500	10-7-17	1.5	11-0	1	7	2	2	17	1.5
Totals	37-0	304	15-51	.294	4-15	.267	17-27	.630	23-31-54	1.5	41-0	2	22	9	4	51	1.4



#14 • KAT YELLE

5-7 • Graduate • Guard • Geneva, Ill. • Geneva • Ohio

OVERVIEW

Will be eligible immediately and has one more year of eligibility remaining after graduating from Ohio in 2014-15.

2015-16 (SENIOR)

In her first game on The Hilltop she tallied 12 points, four assists and one steal in addition to matching a career-best with eight rebounds to help Bradley to a 75-67 win at Detroit ... Averaging a team-best 3.7 assists per game with a 1.95 assist-to-turnover ratio ... Hit Bradley's final basket with a three to beat the shot clock in a 66-60 road win at Chicago State ... Had five assists and five rebounds at Bowling Green ... Collected five assists and three steals in the home win against Kent State.

AT OHIO (2011-15)

Three-time letterwinner at Ohio ... Led the Bobcats in assists (2.7 per game) and boasted a 1.83 assist-to-turnover ratio as she helped Ohio to a 27-5 overall record in 2014-15 ... Part of a Mid American Conference regular-season and tournament championship team in 2014-15 ... Shot 47.4 percent from the field and scored 6.4 points per game in her final year in Athens, Ohio... Started 28 of 30 games as a sophomore and dished out 2.5 assists per game to go with her 6.8 points per game ... Missed most of the 2012-13 season due to injury, playing just three games and received a medical hardship ...

HIGH SCHOOL

High School: First-team all-state selection at Geneva High School as a senior ... School's all-time leading scorer ... Part of Geneva's two-time IHSA state championship cross country team ... Earned all-state honors in track.

GETTING TO KNOW KAT YELLE

Parents: John & Delaine Yelle

Birthplace: Manhattan, Kan.

Siblings: Morgan (33), David (30), Ryan (28), Dani (26), John (23) & Myra (23)

Major: Working toward a Master's Degree in Leadership in Human Service Administration.

Yelle's 2015-16 Game-by-Game Stats

Opponent	G-S	Min.	FGs	3FGs	FTs	Reb.	A	B	S	Pts.
at Detroit	1-1	34	2-4	2-2	6-7	3-5-8	4	0	1	12
at Bowling Green	1-1	30	0-5	0-1	0-0	2-3-5	5	0	1	0
OKLAHOMA	1-1	31	0-3	0-0	0-0	2-6-8	3	0	0	0
W. MICHIGAN	1-1	25	1-3	0-0	0-0	2-1-3	4	0	0	2
EUREKA	DNP									
at Chicago St.	1-1	23	2-6	2-6	0-0	1-0-1	4	1	0	6
ILL.-CHICAGO	1-1	30	0-1	0-1	0-0	0-4-4	5	0	0	0
KENT STATE	1-1	29	0-2	0-1	1-4	0-3-3	5	0	3	1
at Iowa	1-1	27	0-0	0-0	0-0	1-1-2	3	0	1	0
at Northern Ill.	1-1	22	3-4	0-1	0-0	0-6-6	0	0	0	6
at Saint Louis	1-1	28	1-7	0-2	0-0	1-0-1	3	0	0	2
LOYOLA	1-1	32	2-7	0-2	0-2	0-4-4	5	0	0	4

CAREER HIGHS

Category	Total	Opponent (Date)
Points	14	2x, last vs. East Carolina (12/6/14)
FG	5	4x, last vs. NIU (1/21/15)
FGA	12	at Akron (1/23/14)
3-Pt. FG	3	2x, last vs. Bowling Green (2/11/15)
3-Pt. FGA	6	2x, last at Chicago St. (12/2/15)
FT	8	2x, last vs. UMASS (12/20/14)
FTA	12	at Eastern Kentucky (11/23/13)
Rebounds	8	3x, last vs. Oklahoma (11/22/15)
Assists	8	vs. Buffalo (3/13/15)
Blocks	1	3x, last at Chicago St. (12/2/15)
Steals	6	vs. Niagara (12/13/11)
Minutes	34	3x, last at Detroit (11/13/15)

YELLE'S CAREER STATISTICS

Yr.	GP-GS	Min.	FGM-FGA	FG%	3FG-3Att.	3P%	FTM-FTA	FT%	O-D-RB	Avg.	PF-FO	A	TO	BS	ST	TP	Avg.
11-12	11-11	259	17-54	.315	0-1	.000	9-15	.600	10-28-38	5.5	13-0	29	21	0	24	43	3.9
12-13	3-0	16	0-4	.000	0-0	.000	5-6	.833	1-1-2	0.7	1-0	0	2	0	0	5	1.7
13-14	30-28	779	66-162	.407	15-55	.273	58-104	.558	26-56-82	2.7	63-2	74	60	0	22	205	6.8
14-15	32-32	717	64-135	.474	14-42	.333	63-92	.685	17-58-75	2.3	59-1	86	47	2	24	205	6.4
15-16	11-11	311	11-42	.262	4-16	.250	7-13	.538	12-33-45	4.1	30-1	41	21	1	6	33	3.0
Ohio Totals	76-71	1771	147-355	.414	29-98	.296	135-217	.622	54-143-197	2.6	136-3	189	130	2	70	458	6.0
Career Totals	87-82	2082	158-397	.398	33-114	.289	142-230	.617	66-176-242	2.8	166-4	230	151	3	76	491	5.6



#00

Danielle Brewer
5-10 • So. • G
Coatesville, Ind.



#3

Briana Gray
5-10 • Jr. • F
Milwaukee, Wis.
Nicolet H.S./Saint Louis



#10

Gabby Green
5-6 • Fr. • G
Milwaukee, Wis.
Pius XI



#11

Tamyia Sims
6-2 • So. • F
Milwaukee, Wis.
Oak Creek H.S.



#12

Kellee Clay
5-6 • Fr. • G
Naperville, Ill.
Matea Valley H.S.



#14

Kat Yelle
5-7 • Grad. • G
Geneva, Ill.
Geneva H.S./Ohio



#15

Emily Eshoo
5-9 • Fr. • G
Naperville, Ill.
Benet Academy



#20

Shareece Burrell
5-8 • So. • G
Des Moines, Iowa
East H.S.



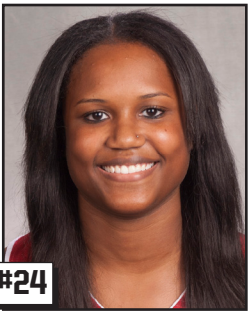
#21

Haley Van Cleave
6-3 • So. • C
Dubuque, Iowa
Hampstead H.S.



#23

Leti Lerma
5-10 • Jr. • F
Muscatine, Iowa
Muscatine H.S.



#24

Sameia Kendall
5-8 • Sr. • G
Kansas City, Mo.
Raytown H.S. [Kan.]
Johnson Country C.C.



#30

Whitney Tinjum
6-1 • RS-Jr. • F
Stacy, Minn.
Chisago Lakes H.S.
Washington State



#32

Madison Dellamuth
5-8 • So. • G
Cedar Rapids, Iowa
Prairie H.S.



#33

Anneke Schlueter
6-0 • So. • G
Ulm, Germany
Max-Weber-Schule H.S.



#44

Vanessa Markert
6-2 • Fr. • F
Mt. Sterling, Ill.
Brown County H.S.



Michael Brooks
Head Coach
Sixth Season at Bradley
Fourth Season as Head Coach



Skyler Young
Assistant Coach
Fourth Season at Bradley



Lindsay Schultz
Assistant Coach
Fourth Season at Bradley



Lindsay Weiss
Assistant Coach
Fourth Season at Bradley



Dustyn Yung
Director of Operations
First Season at Bradley